

Community College Enrollment Estimating Conference
February 27, 2004

On Thursday, February 27, 2004, a Community College Enrollment Estimating Conference was held. Bill Ammons and Kurt Hamon, Governor's Office; Paul Bryant, Senate Education Appropriations Committee; Mark Eggers and Amy Hammock, House Educations Appropriations; Beth Lines, Office of Economic and Demographic Research; Ed Cisek, Robert McMullen, and Pat Windham, Community Colleges; and Link Jarrett and Gary Yancey, Office of K-20 Budget, were in attendance.

Ed Cisek opened the meeting by explaining that the purpose was to present estimated FTE for 2003-04 which is based on actual summer, actual fall, and estimated spring enrollments. The estimate is annualized based on history and is generally accurate for credit enrollments, but somewhat less accurate for non-credit enrollments because of their nature. Two handouts were provided to the conference and explained by Robert McMullen. Attachment A is an analysis of historical data by college and by program for 2002-03 and 2003-04. Attachment B is an explanation of adjustments made to the 2003-04 Division of Community College Estimate by the staffs at each of the Community Colleges. For each College adjustment request a narrative explanation was provided. The Conference reviewed and discussed the narrative adjustments.

Beth Lines provided a graph to the conference that displayed a 5-year history of the growth rates for selected Community College programs. The graph has been included as Attachment C.

After the review and discussion, the Conference accepted the Division Estimates With College Adjustments. These estimates are reflected on pages 9 and 10 of Attachment A for 40 credit based FTE and 30 credit based FTE, respectively. Colleges will be serving 236,047 40 credit based FTE students and 299,143 30 credit based FTE students. These estimates reflect approximately a 5% increase over the prior year enrollment.

**FLORIDA
COMMUNITY
COLLEGES**

**NON-WEIGHTED FTE ENROLLMENT
FUNDED-40, LOWER LEVEL
2002 - 2003**

**CCFTE201
05-Mar-04**

COLLEGE	A & P	POSTSEC VOC	POSTSEC ADULT VOC	APPRNT	CWE	COLLEGE PREP	VOC PREP	ADULT BASIC	ADULT SECOND. & GED	ADULTS WITH DISABILITY	FTE TOTAL
BREV	4,269.0	1,739.1	674.9	687.0	137.4	598.4	0.1	0.0	0.0	0.0	8,105.9
BROW	8,692.1	4,403.6	520.6	0.0	230.5	2,924.7	0.0	0.0	0.0	0.0	16,771.5
CFLA	1,922.5	646.8	398.2	0.0	275.2	337.9	35.9	177.6	61.3	0.0	3,855.4
CHIP	713.7	163.3	166.6	0.0	69.8	91.2	23.8	0.0	0.0	0.0	1,228.4
DAYT	3,225.9	1,628.3	584.5	648.9	108.9	703.8	2.5	1,972.5	1,379.6	579.1	10,834.0
EDIS	3,360.4	912.4	6.9	0.0	45.3	637.3	0.0	0.0	0.0	0.0	4,962.3
FJAX	6,879.0	2,717.1	1,445.7	1,831.9	403.0	999.8	24.1	1,753.7	513.6	47.0	16,614.9
FKEY	400.4	230.8	38.3	0.0	13.2	43.4	0.0	0.0	0.0	0.0	726.1
GULF	1,945.9	834.7	156.5	11.0	228.8	270.2	0.0	182.7	97.7	0.0	3,727.5
HILL	6,443.9	1,824.1	459.9	1,452.4	321.0	1,635.0	0.0	0.0	0.0	0.0	12,136.3
INDR	2,622.8	1,957.3	1,072.4	829.9	56.2	341.4	1.2	2,219.3	632.5	0.0	9,733.0
LCTY	739.7	380.2	458.8	0.0	144.5	114.8	1.1	29.1	9.1	0.0	1,877.3
LSUM	972.1	403.3	5.1	0.0	56.6	128.3	0.0	0.0	0.0	0.0	1,565.4
MANA	3,527.4	368.5	0.0	0.0	66.7	578.1	0.0	19.1	9.1	0.0	4,568.9
MIAM	21,274.6	6,651.0	1,400.4	0.0	1,948.8	4,402.1	2,175.7	2,399.3	339.5	0.0	40,591.4
NFLA	394.1	96.8	195.0	0.0	41.7	52.9	1.7	40.3	1.9	0.0	824.4
OKAL	2,569.9	600.7	125.6	0.0	14.0	258.3	3.3	290.4	73.5	0.0	3,935.7
PALM	7,491.2	927.0	898.0	1,280.5	196.9	1,043.4	0.0	0.0	0.0	0.0	11,837.0
PASC	1,629.1	908.2	377.3	0.0	39.6	376.5	0.0	234.1	111.4	0.0	3,676.2
PENS	3,533.8	1,249.7	348.7	0.0	44.2	502.7	17.6	492.6	483.8	8.1	6,681.2
POLK	1,894.6	811.3	105.9	0.0	270.8	316.8	0.0	0.0	0.0	0.0	3,399.4
ST.J	1,565.4	420.7	121.2	453.6	31.4	131.3	0.2	64.7	21.0	43.2	2,852.7
ST.P	6,349.3	3,131.7	45.3	0.0	442.2	1,190.6	0.0	0.0	0.0	0.0	11,159.1
SANF	5,044.5	1,690.7	611.5	86.6	83.6	1,014.6	15.7	113.1	90.0	0.0	8,750.3
SEMI	3,280.7	1,757.9	479.7	997.7	78.6	554.6	65.2	1,076.1	818.1	24.0	9,132.6
SFLA	803.7	102.7	551.2	65.7	59.4	80.1	4.8	1,317.3	209.5	0.0	3,194.4
TALL	4,668.6	781.8	181.1	5.9	265.0	809.8	0.0	96.3	32.0	0.0	6,840.5
VALE	10,165.5	3,563.1	222.9	0.0	345.3	1,687.7	0.0	0.0	0.0	0.0	15,984.5
SYST	116,379.8	40,902.8	11,652.2	8,351.1	6,018.6	21,825.7	2,372.9	12,478.2	4,883.6	701.4	225,566.3

Source: FN32003

NOTE: Advanced & Professional, Post Secondary Vocational, and College Preparatory FTE are calculated as 40 Credit Hour FTE.

Page 1a

COLLEGE	A & P	POSTSEC VOC	POSTSEC ADULT VOC	APPRNT	CWE	COLLEGE PREP	VOC PREP	ADULT BASIC	ADULT SECOND. & GED	ADULTS WITH DISABILITY	LLL	FTE TOTAL
BREV	4,269.0	1,739.1	674.9	687.0	137.4	598.4	0.1	0.0	0.0	0.0	77.2	8,183.1
BROW	8,692.1	4,403.6	520.6	0.0	230.5	2,924.7	0.0	0.0	0.0	0.0	11.9	16,783.4
CFLA	1,922.5	646.8	398.2	0.0	275.2	337.9	35.9	177.6	61.3	0.0	1.3	3,856.7
CHIP	713.7	163.3	166.6	0.0	69.8	91.2	23.8	0.0	0.0	0.0	0.0	1,228.4
DAYT	3,225.9	1,628.3	584.5	648.9	108.9	703.8	2.5	1,972.5	1,379.6	579.1	5.7	10,839.7
EDIS	3,360.4	912.4	6.9	0.0	45.3	637.3	0.0	0.0	0.0	0.0	0.0	4,962.3
FJAX	6,879.0	2,717.1	1,445.7	1,831.9	403.0	999.8	24.1	1,753.7	513.6	47.0	0.0	16,614.9
FKEY	400.4	230.8	38.3	0.0	13.2	43.4	0.0	0.0	0.0	0.0	0.4	726.5
GULF	1,945.9	834.7	156.5	11.0	228.8	270.2	0.0	182.7	97.7	0.0	1.1	3,728.6
HILL	6,443.9	1,824.1	459.9	1,452.4	321.0	1,635.0	0.0	0.0	0.0	0.0	0.0	12,136.3
INDR	2,622.8	1,957.3	1,072.4	829.9	56.2	341.4	1.2	2,219.3	632.5	0.0	0.0	9,733.0
LCTY	739.7	380.2	458.8	0.0	144.5	114.8	1.1	29.1	9.1	0.0	0.0	1,877.3
LSUM	972.1	403.3	5.1	0.0	56.6	128.3	0.0	0.0	0.0	0.0	3.6	1,569.0
MANA	3,527.4	368.5	0.0	0.0	66.7	578.1	0.0	19.1	9.1	0.0	15.1	4,584.0
MIAM	21,274.6	6,651.0	1,400.4	0.0	1,948.8	4,402.1	2,175.7	2,399.3	339.5	0.0	2.9	40,594.3
NFLA	394.1	96.8	195.0	0.0	41.7	52.9	1.7	40.3	1.9	0.0	0.0	824.4
OKAL	2,569.9	600.7	125.6	0.0	14.0	258.3	3.3	290.4	73.5	0.0	0.0	3,935.7
PALM	7,491.2	927.0	898.0	1,280.5	196.9	1,043.4	0.0	0.0	0.0	0.0	23.1	11,860.1
PASC	1,629.1	908.2	377.3	0.0	39.6	376.5	0.0	234.1	111.4	0.0	7.0	3,683.2
PENS	3,533.8	1,249.7	348.7	0.0	44.2	502.7	17.6	492.6	483.8	8.1	48.6	6,729.8
POLK	1,894.6	811.3	105.9	0.0	270.8	316.8	0.0	0.0	0.0	0.0	7.4	3,406.8
ST.J	1,565.4	420.7	121.2	453.6	31.4	131.3	0.2	64.7	21.0	43.2	1.1	2,853.8
ST.P	6,349.3	3,131.7	45.3	0.0	442.2	1,190.6	0.0	0.0	0.0	0.0	22.3	11,181.4
SANF	5,044.5	1,690.7	611.5	86.6	83.6	1,014.6	15.7	113.1	90.0	0.0	66.5	8,816.8
SEMI	3,280.7	1,757.9	479.7	997.7	78.6	554.6	65.2	1,076.1	818.1	24.0	21.4	9,154.0
SFLA	803.7	102.7	551.2	65.7	59.4	80.1	4.8	1,317.3	209.5	0.0	0.3	3,194.7
TALL	4,668.6	781.8	181.1	5.9	265.0	809.8	0.0	96.3	32.0	0.0	0.0	6,840.5
VALE	10,165.5	3,563.1	222.9	0.0	345.3	1,687.7	0.0	0.0	0.0	0.0	2.3	15,986.8
SYST	116,379.8	40,902.8	11,652.2	8,351.1	6,018.6	21,825.7	2,372.9	12,478.2	4,883.6	701.4	319.2	225,885.5

COLLEGE	A & P	POSTSEC VOC	POSTSEC ADULT VOC	APPRNT	CWE	COLLEGE PREP	VOC PREP	ADULT BASIC	ADULT SECOND. & GED	ADULTS WITH DISABILITY	FTE TOTAL
BREV	5,690.5	2,317.5	674.9	687.0	137.4	797.6	0.1	0.0	0.0	0.0	10,305.0
BROW	11,585.7	5,868.7	520.6	0.0	230.5	3,898.9	0.0	0.0	0.0	0.0	22,104.4
CFLA	2,562.2	861.9	398.2	0.0	275.2	450.4	35.9	177.6	61.3	0.0	4,822.7
CHIP	950.7	217.7	166.6	0.0	69.8	121.5	23.8	0.0	0.0	0.0	1,550.1
DAYT	4,299.4	2,170.0	584.5	648.9	108.9	938.3	2.5	1,972.5	1,379.6	579.1	12,683.7
EDIS	4,477.9	1,214.6	6.9	0.0	45.3	849.0	0.0	0.0	0.0	0.0	6,593.7
FJAX	9,167.3	3,620.3	1,445.7	1,831.9	403.0	1,332.7	24.1	1,753.7	513.6	47.0	20,139.3
FKEY	532.1	307.4	38.3	0.0	13.2	57.8	0.0	0.0	0.0	0.0	948.8
GULF	2,591.3	1,111.0	156.5	11.0	228.8	360.2	0.0	182.7	97.7	0.0	4,739.2
HILL	8,588.6	2,430.6	459.9	1,452.4	321.0	2,179.5	0.0	0.0	0.0	0.0	15,432.0
INDR	3,492.5	2,606.3	1,072.4	829.9	56.2	454.4	1.2	2,219.3	632.5	0.0	11,364.7
LCTY	984.4	505.9	458.8	0.0	144.5	152.6	1.1	29.1	9.1	0.0	2,285.5
LSUM	1,294.8	536.9	5.1	0.0	56.6	171.0	0.0	0.0	0.0	0.0	2,064.4
MANA	4,700.2	490.1	0.0	0.0	66.7	770.3	0.0	19.1	9.1	0.0	6,055.5
MIAM	28,355.9	8,864.4	1,400.4	0.0	1,948.8	5,868.4	2,175.7	2,399.3	339.5	0.0	51,352.4
NFLA	524.1	128.3	195.0	0.0	41.7	70.5	1.7	40.3	1.9	0.0	1,003.5
OKAL	3,423.8	799.6	125.6	0.0	14.0	344.0	3.3	290.4	73.5	0.0	5,074.2
PALM	9,983.0	1,233.8	898.0	1,280.5	196.9	1,390.5	0.0	0.0	0.0	0.0	14,982.7
PASC	2,170.3	1,209.8	377.3	0.0	39.6	502.0	0.0	234.1	111.4	0.0	4,644.5
PENS	4,706.8	1,664.4	348.7	0.0	44.2	669.7	17.6	492.6	483.8	8.1	8,435.9
POLK	2,524.0	1,080.5	105.9	0.0	270.8	422.0	0.0	0.0	0.0	0.0	4,403.2
ST.J	2,085.2	560.5	121.2	453.6	31.4	174.9	0.2	64.7	21.0	43.2	3,555.9
ST.P	8,460.1	4,171.8	45.3	0.0	442.2	1,586.3	0.0	0.0	0.0	0.0	14,705.7
SANF	6,723.7	2,253.6	611.5	86.6	83.6	1,353.0	15.7	113.1	90.0	0.0	11,330.8
SEMI	4,370.6	2,342.0	479.7	997.7	78.6	738.9	65.2	1,076.1	818.1	24.0	10,990.9
SFLA	1,068.2	135.6	551.2	65.7	59.4	106.6	4.8	1,317.3	209.5	0.0	3,518.3
TALL	6,223.0	1,042.0	181.1	5.9	265.0	1,079.9	0.0	96.3	32.0	0.0	8,925.2
VALE	13,549.8	4,748.4	222.9	0.0	345.3	2,249.7	0.0	0.0	0.0	0.0	21,116.1
SYST	155,086.1	54,493.6	11,652.2	8,351.1	6,018.6	29,090.6	2,372.9	12,478.2	4,883.6	701.4	285,128.3

COLLEGE	A & P	POSTSEC VOC	POSTSEC ADULT VOC	APPRNT	CWE	COLLEGE PREP	VOC PREP	ADULT BASIC	ADULT SECOND. & GED	ADULTS WITH DISABILITY	LLL	FTE TOTAL
BREV	5,690.5	2,317.5	674.9	687.0	137.4	797.6	0.1	0.0	0.0	0.0	77.2	10,382.2
BROW	11,585.7	5,868.7	520.6	0.0	230.5	3,898.9	0.0	0.0	0.0	0.0	11.9	22,116.3
CFLA	2,562.2	861.9	398.2	0.0	275.2	450.4	35.9	177.6	61.3	0.0	1.3	4,824.0
CHIP	950.7	217.7	166.6	0.0	69.8	121.5	23.8	0.0	0.0	0.0	0.0	1,550.1
DAYT	4,299.4	2,170.0	584.5	648.9	108.9	938.3	2.5	1,972.5	1,379.6	579.1	5.7	12,689.4
EDIS	4,477.9	1,214.6	6.9	0.0	45.3	849.0	0.0	0.0	0.0	0.0	0.0	6,593.7
FJAX	9,167.3	3,620.3	1,445.7	1,831.9	403.0	1,332.7	24.1	1,753.7	513.6	47.0	0.0	20,139.3
FKEY	532.1	307.4	38.3	0.0	13.2	57.8	0.0	0.0	0.0	0.0	0.4	949.2
GULF	2,591.3	1,111.0	156.5	11.0	228.8	360.2	0.0	182.7	97.7	0.0	1.1	4,740.3
HILL	8,588.6	2,430.6	459.9	1,452.4	321.0	2,179.5	0.0	0.0	0.0	0.0	0.0	15,432.0
INDR	3,492.5	2,606.3	1,072.4	829.9	56.2	454.4	1.2	2,219.3	632.5	0.0	0.0	11,364.7
LCTY	984.4	505.9	458.8	0.0	144.5	152.6	1.1	29.1	9.1	0.0	0.0	2,285.5
LSUM	1,294.8	536.9	5.1	0.0	56.6	171.0	0.0	0.0	0.0	0.0	3.6	2,068.0
MANA	4,700.2	490.1	0.0	0.0	66.7	770.3	0.0	19.1	9.1	0.0	15.1	6,070.6
MIAM	28,355.9	8,864.4	1,400.4	0.0	1,948.8	5,868.4	2,175.7	2,399.3	339.5	0.0	2.9	51,355.3
NFLA	524.1	128.3	195.0	0.0	41.7	70.5	1.7	40.3	1.9	0.0	0.0	1,003.5
OKAL	3,423.8	799.6	125.6	0.0	14.0	344.0	3.3	290.4	73.5	0.0	0.0	5,074.2
PALM	9,983.0	1,233.8	898.0	1,280.5	196.9	1,390.5	0.0	0.0	0.0	0.0	23.1	15,005.8
PASC	2,170.3	1,209.8	377.3	0.0	39.6	502.0	0.0	234.1	111.4	0.0	7.0	4,651.5
PENS	4,706.8	1,664.4	348.7	0.0	44.2	669.7	17.6	492.6	483.8	8.1	48.6	8,484.5
POLK	2,524.0	1,080.5	105.9	0.0	270.8	422.0	0.0	0.0	0.0	0.0	7.4	4,410.6
ST.J	2,085.2	560.5	121.2	453.6	31.4	174.9	0.2	64.7	21.0	43.2	1.1	3,557.0
ST.P	8,460.1	4,171.8	45.3	0.0	442.2	1,586.3	0.0	0.0	0.0	0.0	22.3	14,728.0
SANF	6,723.7	2,253.6	611.5	86.6	83.6	1,353.0	15.7	113.1	90.0	0.0	66.5	11,397.3
SEMI	4,370.6	2,342.0	479.7	997.7	78.6	738.9	65.2	1,076.1	818.1	24.0	21.4	11,012.3
SFLA	1,068.2	135.6	551.2	65.7	59.4	106.6	4.8	1,317.3	209.5	0.0	0.3	3,518.6
TALL	6,223.0	1,042.0	181.1	5.9	265.0	1,079.9	0.0	96.3	32.0	0.0	0.0	8,925.2
VALE	13,549.8	4,748.4	222.9	0.0	345.3	2,249.7	0.0	0.0	0.0	0.0	2.3	21,118.4
SYST	155,086.1	54,493.6	11,652.2	8,351.1	6,018.6	29,090.6	2,372.9	12,478.2	4,883.6	701.4	319.2	285,447.5

NON-WEIGHTED FTE ENROLLMENT
FUNDED-40, LOWER LEVEL
2003 - 2004
DIVISION PROJECTIONS WITH COLLEGE ADJUSTMENTS

COLLEGE	A & P	POSTSEC VOC	POSTSEC ADULT VOC	APPRNT	CWE	COLLEGE PREP	VOC PREP	ADULT BASIC	ADULT SECOND. & GED	ADULTS WITH DISABILITY	FTE TOTAL
BREV	4,450.0	1,804.0	700.0	742.0	155.0	698.0	0.0	0.0	0.0	0.0	8,549.0
BROW	9,346.0	4,732.0	543.0	0.0	215.0	3,148.0	0.0	0.0	0.0	0.0	17,984.0
CFLA	2,022.0	684.0	411.0	0.0	310.0	400.0	32.0	168.0	62.0	0.0	4,089.0
CHIP	725.0	180.0	171.0	0.0	62.0	93.0	24.0	0.0	0.0	0.0	1,255.0
DAYT	3,340.0	1,668.0	990.0	656.0	126.0	749.0	3.0	2,306.0	1,844.0	738.0	12,420.0
EDIS	3,672.0	1,037.0	6.0	0.0	41.0	605.0	0.0	0.0	0.0	0.0	5,361.0
FJAX	7,489.0	2,906.0	1,469.0	1,840.0	352.0	1,010.0	27.0	1,640.0	529.0	37.0	17,299.0
FKEY	406.0	234.0	28.0	0.0	19.0	40.0	0.0	0.0	0.0	0.0	727.0
GULF	2,028.0	859.0	164.0	11.0	292.0	288.0	0.0	197.0	112.0	0.0	3,951.0
HILL	7,137.0	2,005.0	417.0	917.0	337.0	1,878.0	0.0	0.0	0.0	0.0	12,691.0
INDR	2,728.0	2,026.0	1,152.0	892.0	70.0	356.0	1.0	2,415.0	689.0	0.0	10,329.0
LCTY	760.0	386.0	374.0	0.0	121.0	124.0	2.0	32.0	7.0	0.0	1,806.0
LSUM	1,035.0	419.0	13.0	0.0	88.0	139.0	0.0	0.0	0.0	0.0	1,694.0
MANA	3,755.0	405.0	0.0	0.0	68.0	612.0	0.0	23.0	9.0	0.0	4,872.0
MIAM	23,324.0	7,342.0	1,478.0	0.0	2,009.0	4,794.0	2,344.0	2,563.0	377.0	0.0	44,231.0
NFLA	399.0	98.0	197.0	0.0	43.0	54.0	2.0	34.0	3.0	0.0	830.0
OKAL	2,632.0	615.0	129.0	0.0	12.0	265.0	4.0	292.0	69.0	0.0	4,018.0
PALM	8,435.0	982.0	931.0	1,356.0	201.0	1,186.0	0.0	0.0	0.0	0.0	13,091.0
PASC	1,699.0	945.0	392.0	0.0	40.0	394.0	0.0	236.0	114.0	0.0	3,820.0
PENS	3,628.0	1,270.0	350.0	0.0	44.0	510.0	17.0	518.0	520.0	0.0	6,857.0
POLK	1,924.0	820.0	115.0	0.0	295.0	322.0	0.0	0.0	0.0	0.0	3,476.0
ST.J	1,724.0	445.0	111.0	470.0	26.0	138.0	0.0	54.0	24.0	70.0	3,062.0
ST.P	6,689.0	3,260.0	41.0	0.0	439.0	1,249.0	0.0	0.0	0.0	0.0	11,678.0
SANF	5,265.0	1,747.0	657.0	86.0	84.0	1,046.0	14.0	114.0	71.0	0.0	9,084.0
SEMI	3,876.0	1,917.0	540.0	1,254.0	107.0	655.0	85.0	1,211.0	895.0	29.0	10,569.0
SFLA	879.0	116.0	556.0	75.0	69.0	91.0	5.0	1,491.0	234.0	0.0	3,516.0
TALL	4,949.0	826.0	206.0	17.0	242.0	878.0	0.0	73.0	31.0	0.0	7,222.0
VALE	10,624.0	3,705.0	198.0	0.0	409.0	1,772.0	0.0	0.0	0.0	0.0	16,708.0
SYST	124,940.0	43,433.0	12,339.0	8,316.0	6,276.0	23,494.0	2,560.0	13,367.0	5,590.0	874.0	241,189.0

NON-WEIGHTED FTE ENROLLMENT
FUNDED-30, LOWER LEVEL
2003 - 2004
DIVISION PROJECTIONS WITH COLLEGE ADJUSTMENTS

COLLEGE	A & P	POSTSEC VOC	POSTSEC ADULT VOC	APPRNT	CWE	COLLEGE PREP	VOC PREP	ADULT BASIC	ADULT SECOND. & GED	ADULTS WITH DISABILITY	FTE TOTAL
BREV	5,933.0	2,405.0	700.0	742.0	155.0	931.0	0.0	0.0	0.0	0.0	10,866.0
BROW	12,461.0	6,309.0	543.0	0.0	215.0	4,197.0	0.0	0.0	0.0	0.0	23,725.0
CFLA	2,696.0	912.0	411.0	0.0	310.0	533.0	32.0	168.0	62.0	0.0	5,124.0
CHIP	967.0	240.0	171.0	0.0	62.0	124.0	24.0	0.0	0.0	0.0	1,588.0
DAYT	4,453.0	2,224.0	990.0	656.0	126.0	999.0	3.0	2,306.0	1,844.0	738.0	14,339.0
EDIS	4,896.0	1,383.0	6.0	0.0	41.0	807.0	0.0	0.0	0.0	0.0	7,133.0
FJAX	9,985.0	3,875.0	1,469.0	1,840.0	352.0	1,347.0	27.0	1,640.0	529.0	37.0	21,101.0
FKEY	541.0	312.0	28.0	0.0	19.0	53.0	0.0	0.0	0.0	0.0	953.0
GULF	2,704.0	1,145.0	164.0	11.0	292.0	384.0	0.0	197.0	112.0	0.0	5,009.0
HILL	9,516.0	2,673.0	417.0	917.0	337.0	2,504.0	0.0	0.0	0.0	0.0	16,364.0
INDR	3,637.0	2,701.0	1,152.0	892.0	70.0	475.0	1.0	2,415.0	689.0	0.0	12,032.0
LCTY	1,013.0	515.0	374.0	0.0	121.0	165.0	2.0	32.0	7.0	0.0	2,229.0
LSUM	1,380.0	559.0	13.0	0.0	88.0	185.0	0.0	0.0	0.0	0.0	2,225.0
MANA	5,007.0	540.0	0.0	0.0	68.0	816.0	0.0	23.0	9.0	0.0	6,463.0
MIAM	31,099.0	9,789.0	1,478.0	0.0	2,009.0	6,392.0	2,344.0	2,563.0	377.0	0.0	56,051.0
NFLA	532.0	131.0	197.0	0.0	43.0	72.0	2.0	34.0	3.0	0.0	1,014.0
OKAL	3,509.0	820.0	129.0	0.0	12.0	353.0	4.0	292.0	69.0	0.0	5,188.0
PALM	11,247.0	1,309.0	931.0	1,356.0	201.0	1,581.0	0.0	0.0	0.0	0.0	16,625.0
PASC	2,265.0	1,260.0	392.0	0.0	40.0	525.0	0.0	236.0	114.0	0.0	4,832.0
PENS	4,837.0	1,693.0	350.0	0.0	44.0	680.0	17.0	518.0	520.0	0.0	8,659.0
POLK	2,565.0	1,093.0	115.0	0.0	295.0	429.0	0.0	0.0	0.0	0.0	4,497.0
ST.J	2,299.0	593.0	111.0	470.0	26.0	184.0	0.0	54.0	24.0	70.0	3,831.0
ST.P	8,919.0	4,347.0	41.0	0.0	439.0	1,665.0	0.0	0.0	0.0	0.0	15,411.0
SANF	7,020.0	2,329.0	657.0	86.0	84.0	1,395.0	14.0	114.0	71.0	0.0	11,770.0
SEMI	5,168.0	2,556.0	540.0	1,254.0	107.0	873.0	85.0	1,211.0	895.0	29.0	12,718.0
SFLA	1,172.0	155.0	556.0	75.0	69.0	121.0	5.0	1,491.0	234.0	0.0	3,878.0
TALL	6,599.0	1,101.0	206.0	17.0	242.0	1,171.0	0.0	73.0	31.0	0.0	9,440.0
VALE	14,165.0	4,940.0	198.0	0.0	409.0	2,363.0	0.0	0.0	0.0	0.0	22,075.0
SYST	166,585.0	57,909.0	12,339.0	8,316.0	6,276.0	31,324.0	2,560.0	13,367.0	5,590.0	874.0	305,140.0

DIVISION ESTIMATES WITH COLLEGE ADJUSTMENTS

COLLEGE	A & P	POSTSEC VOC	POSTSEC ADULT VOC	APPRNT	CWE	COLLEGE PREP	VOC PREP	ADULT BASIC	ADULT SECOND. & GED	ADULTS WITH DISABILITY	FTE TOTAL
BREV	4,448.0	1,754.0	733.0	880.0	106.0	626.0	0.0	0.0	0.0	0.0	8,547.0
BROW	9,204.0	4,642.0	489.0	0.0	206.0	3,034.0	0.0	0.0	0.0	0.0	17,575.0
CFLA	2,022.0	684.0	411.0	0.0	310.0	400.0	32.0	168.0	62.0	0.0	4,089.0
CHIP	781.0	200.0	220.0	0.0	70.0	96.0	22.0	0.0	0.0	0.0	1,389.0
DAYT	3,377.0	1,631.0	640.0	649.0	117.0	733.0	1.0	2,302.0	1,495.0	408.0	11,353.0
EDIS	3,693.0	965.0	5.0	0.0	47.0	668.0	0.0	0.0	0.0	0.0	5,378.0
FJAX	7,690.0	2,813.0	1,464.0	1,840.0	363.0	1,017.0	22.0	1,762.0	527.0	56.0	17,554.0
FKEY	390.0	245.0	36.0	0.0	25.0	33.0	0.0	0.0	0.0	0.0	729.0
GULF	2,044.0	835.0	182.0	23.0	270.0	280.0	0.0	135.0	56.0	0.0	3,825.0
HILL	7,039.0	1,814.0	502.0	1,726.0	286.0	1,812.0	0.0	0.0	0.0	0.0	13,179.0
INDR	2,928.0	1,997.0	1,088.0	859.0	106.0	409.0	5.0	2,308.0	602.0	0.0	10,302.0
LCTY	805.0	370.0	458.0	0.0	144.0	103.0	0.0	34.0	4.0	0.0	1,918.0
LSUM	1,002.0	418.0	0.0	15.0	61.0	133.0	0.0	0.0	0.0	0.0	1,629.0
MANA	3,743.0	352.0	0.0	0.0	105.0	639.0	0.0	49.0	10.0	0.0	4,898.0
MIAM	23,590.0	7,080.0	1,049.0	0.0	1,841.0	4,676.0	2,590.0	2,375.0	391.0	0.0	43,592.0
NFLA	381.0	88.0	142.0	0.0	53.0	56.0	0.0	19.0	0.0	0.0	739.0
OKAL	2,715.0	573.0	164.0	0.0	18.0	282.0	0.0	271.0	127.0	0.0	4,150.0
PALM	7,854.0	978.0	1,224.0	1,200.0	217.0	1,107.0	0.0	0.0	0.0	0.0	12,580.0
PASC	1,699.0	945.0	392.0	0.0	40.0	394.0	0.0	176.0	174.0	0.0	3,820.0
PENS	3,722.0	1,258.0	391.0	0.0	63.0	464.0	13.0	477.0	446.0	8.0	6,842.0
POLK	2,033.0	961.0	165.0	0.0	285.0	354.0	0.0	0.0	0.0	0.0	3,798.0
ST.J	1,649.0	522.0	145.0	511.0	33.0	160.0	0.0	41.0	28.0	45.0	3,134.0
ST.P	6,953.0	3,404.0	10.0	0.0	430.0	1,290.0	0.0	0.0	0.0	0.0	12,087.0
SANF	5,161.0	1,677.0	327.0	343.0	106.0	959.0	27.0	294.0	70.0	0.0	8,964.0
SEMI	3,772.0	1,818.0	445.0	1,000.0	80.0	670.0	90.0	1,129.0	843.0	23.0	9,870.0
SFLA	833.0	119.0	587.0	95.0	79.0	80.0	0.0	1,375.0	235.0	0.0	3,403.0
TALL	5,030.0	830.0	247.0	4.0	350.0	983.0	0.0	149.0	20.0	0.0	7,613.0
VALE	10,038.0	3,685.0	227.0	0.0	498.0	1,756.0	0.0	0.0	0.0	0.0	16,204.0
SYST	124,596.0	42,658.0	11,743.0	9,145.0	6,309.0	23,214.0	2,802.0	13,064.0	5,090.0	540.0	239,161.0

DIVISION ESTIMATES WITH COLLEGE ADJUSTMENTS

COLLEGE	A & P	POSTSEC VOC	POSTSEC ADULT VOC	APPRNT	CWE	COLLEGE PREP	VOC PREP	ADULT BASIC	ADULT SECOND. & GED	ADULTS WITH DISABILITY	FTE TOTAL
BREV	5,931.0	2,339.0	733.0	880.0	106.0	835.0	0.0	0.0	0.0	0.0	10,824.0
BROW	12,272.0	6,189.0	489.0	0.0	206.0	4,045.0	0.0	0.0	0.0	0.0	23,201.0
CFLA	2,696.0	912.0	411.0	0.0	310.0	533.0	32.0	168.0	62.0	0.0	5,124.0
CHIP	1,041.0	267.0	220.0	0.0	70.0	128.0	22.0	0.0	0.0	0.0	1,748.0
DAYT	4,503.0	2,175.0	640.0	649.0	117.0	977.0	1.0	2,302.0	1,495.0	408.0	13,267.0
EDIS	4,924.0	1,287.0	5.0	0.0	47.0	891.0	0.0	0.0	0.0	0.0	7,154.0
FJAX	10,253.0	3,751.0	1,464.0	1,840.0	363.0	1,356.0	22.0	1,762.0	527.0	56.0	21,394.0
FKEY	520.0	327.0	36.0	0.0	25.0	44.0	0.0	0.0	0.0	0.0	952.0
GULF	2,725.0	1,113.0	182.0	23.0	270.0	373.0	0.0	135.0	56.0	0.0	4,877.0
HILL	9,385.0	2,419.0	502.0	1,726.0	286.0	2,416.0	0.0	0.0	0.0	0.0	16,734.0
INDR	3,904.0	2,663.0	1,088.0	859.0	106.0	545.0	5.0	2,308.0	602.0	0.0	12,080.0
LCTY	1,073.0	493.0	458.0	0.0	144.0	137.0	0.0	34.0	4.0	0.0	2,343.0
LSUM	1,336.0	557.0	0.0	15.0	61.0	177.0	0.0	0.0	0.0	0.0	2,146.0
MANA	4,991.0	469.0	0.0	0.0	105.0	852.0	0.0	49.0	10.0	0.0	6,476.0
MIAM	31,453.0	9,440.0	1,049.0	0.0	1,841.0	6,235.0	2,590.0	2,375.0	391.0	0.0	55,374.0
NFLA	508.0	117.0	142.0	0.0	53.0	75.0	0.0	19.0	0.0	0.0	914.0
OKAL	3,620.0	764.0	164.0	0.0	18.0	376.0	0.0	271.0	127.0	0.0	5,340.0
PALM	10,472.0	1,304.0	1,224.0	1,200.0	217.0	1,476.0	0.0	0.0	0.0	0.0	15,893.0
PASC	2,265.0	1,260.0	392.0	0.0	40.0	525.0	0.0	176.0	174.0	0.0	4,832.0
PENS	4,963.0	1,677.0	391.0	0.0	63.0	619.0	13.0	477.0	446.0	8.0	8,657.0
POLK	2,711.0	1,281.0	165.0	0.0	285.0	472.0	0.0	0.0	0.0	0.0	4,914.0
ST.J	2,199.0	696.0	145.0	511.0	33.0	213.0	0.0	41.0	28.0	45.0	3,911.0
ST.P	9,271.0	4,539.0	10.0	0.0	430.0	1,720.0	0.0	0.0	0.0	0.0	15,970.0
SANF	6,881.0	2,236.0	327.0	343.0	106.0	1,279.0	27.0	294.0	70.0	0.0	11,563.0
SEMI	5,029.0	2,424.0	445.0	1,000.0	80.0	893.0	90.0	1,129.0	843.0	23.0	11,956.0
SFLA	1,111.0	159.0	587.0	95.0	79.0	107.0	0.0	1,375.0	235.0	0.0	3,748.0
TALL	6,707.0	1,107.0	247.0	4.0	350.0	1,311.0	0.0	149.0	20.0	0.0	9,895.0
VALE	13,384.0	4,913.0	227.0	0.0	498.0	2,341.0	0.0	0.0	0.0	0.0	21,363.0
SYST	166,128.0	56,878.0	11,743.0	9,145.0	6,309.0	30,951.0	2,802.0	13,064.0	5,090.0	540.0	302,650.0

NON-WEIGHTED FTE ENROLLMENT
FUNDED-40, LOWER LEVEL
2003 - 2004
DIVISION ESTIMATES

COLLEGE	A & P	POSTSEC VOC	POSTSEC ADULT VOC	APPRNT	CWE	COLLEGE PREP	VOC PREP	ADULT BASIC	ADULT SECOND. & GED	ADULTS WITH DISABILITY	FTE TOTAL
BREV	4,408.0	1,702.0	706.0	772.0	94.0	589.0	0.0	0.0	0.0	0.0	8,271.0
BROW	9,027.0	4,534.0	475.0	0.0	194.0	2,951.0	0.0	0.0	0.0	0.0	17,181.0
CFLA	1,699.0	601.0	248.0	0.0	93.0	312.0	0.0	112.0	45.0	0.0	3,110.0
CHIP	776.0	191.0	216.0	0.0	75.0	91.0	18.0	0.0	0.0	0.0	1,367.0
DAYT	3,399.0	1,637.0	684.0	638.0	102.0	753.0	1.0	2,228.0	1,483.0	474.0	11,399.0
EDIS	3,639.0	1,063.0	8.0	0.0	50.0	687.0	0.0	0.0	0.0	0.0	5,447.0
FJAX	7,482.0	2,744.0	1,396.0	1,409.0	301.0	995.0	25.0	1,542.0	506.0	45.0	16,445.0
FKEY	359.0	222.0	35.0	0.0	18.0	32.0	0.0	0.0	0.0	0.0	666.0
GULF	1,945.0	790.0	185.0	17.0	227.0	268.0	0.0	140.0	71.0	0.0	3,643.0
HILL	7,074.0	1,873.0	469.0	1,379.0	351.0	1,822.0	0.0	0.0	0.0	0.0	12,968.0
INDR	2,902.0	1,966.0	1,141.0	841.0	80.0	400.0	4.0	2,313.0	590.0	0.0	10,237.0
LCTY	808.0	369.0	540.0	0.0	201.0	114.0	0.0	19.0	4.0	0.0	2,055.0
LSUM	1,019.0	435.0	0.0	0.0	58.0	120.0	0.0	0.0	0.0	0.0	1,632.0
MANA	3,717.0	388.0	0.0	0.0	101.0	627.0	0.0	33.0	12.0	0.0	4,878.0
MIAM	23,023.0	6,874.0	1,171.0	72.0	1,731.0	4,759.0	2,269.0	2,604.0	394.0	0.0	42,897.0
NFLA	384.0	88.0	152.0	0.0	73.0	54.0	0.0	23.0	0.0	0.0	774.0
OKAL	2,734.0	580.0	160.0	0.0	17.0	288.0	0.0	260.0	106.0	0.0	4,145.0
PALM	7,768.0	1,017.0	1,055.0	1,396.0	204.0	1,097.0	0.0	0.0	0.0	0.0	12,537.0
PASC	1,804.0	948.0	401.0	0.0	44.0	393.0	0.0	189.0	321.0	0.0	4,100.0
PENS	3,655.0	1,290.0	378.0	0.0	57.0	471.0	12.0	430.0	468.0	4.0	6,765.0
POLK	2,012.0	906.0	126.0	0.0	246.0	351.0	0.0	0.0	0.0	0.0	3,641.0
ST.J	1,595.0	485.0	121.0	354.0	25.0	150.0	0.0	33.0	21.0	52.0	2,836.0
ST.P	7,110.0	3,298.0	2.0	0.0	369.0	1,333.0	0.0	0.0	0.0	0.0	12,112.0
SANF	5,220.0	1,708.0	292.0	372.0	103.0	939.0	18.0	187.0	109.0	0.0	8,948.0
SEMI	3,707.0	1,794.0	466.0	698.0	79.0	684.0	83.0	984.0	786.0	20.0	9,301.0
SFLA	825.0	119.0	573.0	74.0	55.0	82.0	0.0	1,101.0	196.0	0.0	3,025.0
TALL	5,028.0	822.0	163.0	3.0	277.0	954.0	0.0	134.0	15.0	0.0	7,396.0
VALE	10,109.0	3,699.0	239.0	0.0	480.0	1,760.0	0.0	0.0	0.0	0.0	16,287.0
SYST	123,228.0	42,143.0	11,402.0	8,025.0	5,705.0	23,076.0	2,430.0	12,332.0	5,127.0	595.0	234,063.0

NON-WEIGHTED FTE ENROLLMENT
FUNDED-30, LOWER LEVEL
2003 - 2004
DIVISION ESTIMATES

COLLEGE	A & P	POSTSEC VOC	POSTSEC ADULT VOC	APPRNT	CWE	COLLEGE PREP	VOC PREP	ADULT BASIC	ADULT SECOND. & GED	ADULTS WITH DISABILITY	FTE TOTAL
BREV	5,877.0	2,269.0	706.0	772.0	94.0	785.0	0.0	0.0	0.0	0.0	10,503.0
BROW	12,035.0	6,045.0	475.0	0.0	194.0	3,934.0	0.0	0.0	0.0	0.0	22,683.0
CFLA	2,266.0	801.0	248.0	0.0	93.0	416.0	0.0	112.0	45.0	0.0	3,981.0
CHIP	1,035.0	255.0	216.0	0.0	75.0	121.0	18.0	0.0	0.0	0.0	1,720.0
DAYT	4,532.0	2,183.0	684.0	638.0	102.0	1,004.0	1.0	2,228.0	1,483.0	474.0	13,329.0
EDIS	4,851.0	1,417.0	8.0	0.0	50.0	915.0	0.0	0.0	0.0	0.0	7,241.0
FJAX	9,977.0	3,658.0	1,396.0	1,409.0	301.0	1,326.0	25.0	1,542.0	506.0	45.0	20,185.0
FKEY	479.0	295.0	35.0	0.0	18.0	42.0	0.0	0.0	0.0	0.0	869.0
GULF	2,594.0	1,052.0	185.0	17.0	227.0	356.0	0.0	140.0	71.0	0.0	4,642.0
HILL	9,432.0	2,497.0	469.0	1,379.0	351.0	2,430.0	0.0	0.0	0.0	0.0	16,558.0
INDR	3,870.0	2,623.0	1,141.0	841.0	80.0	533.0	4.0	2,313.0	590.0	0.0	11,995.0
LCTY	1,076.0	492.0	540.0	0.0	201.0	153.0	0.0	19.0	4.0	0.0	2,485.0
LSUM	1,358.0	580.0	0.0	0.0	58.0	160.0	0.0	0.0	0.0	0.0	2,156.0
MANA	4,956.0	516.0	0.0	0.0	101.0	836.0	0.0	33.0	12.0	0.0	6,454.0
MIAM	30,697.0	9,166.0	1,171.0	72.0	1,731.0	6,345.0	2,269.0	2,604.0	394.0	0.0	54,449.0
NFLA	512.0	117.0	152.0	0.0	73.0	72.0	0.0	23.0	0.0	0.0	949.0
OKAL	3,645.0	773.0	160.0	0.0	17.0	384.0	0.0	260.0	106.0	0.0	5,345.0
PALM	10,357.0	1,357.0	1,055.0	1,396.0	204.0	1,462.0	0.0	0.0	0.0	0.0	15,831.0
PASC	2,405.0	1,264.0	401.0	0.0	44.0	523.0	0.0	189.0	321.0	0.0	5,147.0
PENS	4,872.0	1,722.0	378.0	0.0	57.0	628.0	12.0	430.0	468.0	4.0	8,571.0
POLK	2,682.0	1,208.0	126.0	0.0	246.0	467.0	0.0	0.0	0.0	0.0	4,729.0
ST.J	2,127.0	647.0	121.0	354.0	25.0	199.0	0.0	33.0	21.0	52.0	3,579.0
ST.P	9,480.0	4,397.0	2.0	0.0	369.0	1,778.0	0.0	0.0	0.0	0.0	16,026.0
SANF	6,960.0	2,277.0	292.0	372.0	103.0	1,252.0	18.0	187.0	109.0	0.0	11,570.0
SEMI	4,942.0	2,392.0	466.0	698.0	79.0	912.0	83.0	984.0	786.0	20.0	11,362.0
SFLA	1,101.0	157.0	573.0	74.0	55.0	109.0	0.0	1,101.0	196.0	0.0	3,366.0
TALL	6,703.0	1,096.0	163.0	3.0	277.0	1,272.0	0.0	134.0	15.0	0.0	9,663.0
VALE	13,478.0	4,931.0	239.0	0.0	480.0	2,347.0	0.0	0.0	0.0	0.0	21,475.0
SYST	164,299.0	56,187.0	11,402.0	8,025.0	5,705.0	30,761.0	2,430.0	12,332.0	5,127.0	595.0	296,863.0

DIVISION ESTIMATES WITH COLLEGE ADJUSTMENTS

COLLEGE	A & P	POSTSEC VOC	POSTSEC ADULT VOC	APPRNT	CWE	COLLEGE PREP	VOC PREP	ADULT BASIC	ADULT SECOND. & GED	ADULTS WITH DISABILITY	FTE TOTAL
BREV	4,408.0	1,702.0	706.0	772.0	94.0	589.0	0.0	0.0	0.0	0.0	8,271.0
BROW	9,027.0	4,534.0	475.0	0.0	194.0	2,951.0	0.0	0.0	0.0	0.0	17,181.0
CFLA	1,931.0	660.0	398.0	0.0	275.0	352.0	36.0	178.0	67.0	0.0	3,897.0
CHIP	776.0	191.0	216.0	0.0	50.0	91.0	18.0	0.0	0.0	0.0	1,342.0
DAYT	3,432.0	1,637.0	684.0	638.0	102.0	753.0	1.0	2,228.0	1,483.0	569.0	11,527.0
EDIS	3,639.0	1,063.0	8.0	0.0	50.0	687.0	0.0	0.0	0.0	0.0	5,447.0
FJAX	7,650.0	2,813.0	1,464.0	1,700.0	330.0	1,017.0	25.0	1,670.0	545.0	51.0	17,265.0
FKEY	369.0	222.0	38.0	0.0	25.0	32.0	0.0	0.0	0.0	0.0	686.0
GULF	2,028.0	805.0	207.0	17.0	230.0	268.0	0.0	140.0	71.0	0.0	3,766.0
HILL	7,074.0	1,873.0	469.0	1,379.0	351.0	1,822.0	0.0	0.0	0.0	0.0	12,968.0
INDR	2,902.0	1,966.0	1,141.0	841.0	80.0	400.0	4.0	2,313.0	590.0	0.0	10,237.0
LCTY	808.0	369.0	451.0	0.0	195.0	114.0	0.0	19.0	4.0	0.0	1,960.0
LSUM	1,019.0	435.0	0.0	0.0	58.0	120.0	0.0	0.0	0.0	0.0	1,632.0
MANA	3,717.0	388.0	0.0	0.0	101.0	627.0	0.0	33.0	12.0	0.0	4,878.0
MIAM	22,958.0	6,894.0	1,171.0	117.0	1,731.0	4,759.0	2,269.0	2,604.0	394.0	0.0	42,897.0
NFLA	384.0	88.0	152.0	0.0	73.0	54.0	0.0	23.0	0.0	0.0	774.0
OKAL	2,734.0	580.0	160.0	0.0	17.0	288.0	0.0	260.0	106.0	0.0	4,145.0
PALM	7,892.0	980.0	956.0	1,285.0	204.0	1,134.0	0.0	0.0	0.0	0.0	12,451.0
PASC	1,804.0	948.0	401.0	0.0	44.0	393.0	0.0	189.0	155.0	0.0	3,934.0
PENS	3,655.0	1,290.0	378.0	0.0	57.0	471.0	12.0	430.0	468.0	4.0	6,765.0
POLK	2,012.0	906.0	126.0	0.0	246.0	351.0	0.0	0.0	0.0	0.0	3,641.0
ST.J	1,623.0	485.0	126.0	468.0	25.0	150.0	0.0	33.0	21.0	52.0	2,983.0
ST.P	7,110.0	3,298.0	2.0	0.0	369.0	1,333.0	0.0	0.0	0.0	0.0	12,112.0
SANF	5,220.0	1,708.0	292.0	372.0	103.0	939.0	18.0	187.0	109.0	0.0	8,948.0
SEMI	3,707.0	1,794.0	466.0	864.0	79.0	684.0	83.0	984.0	786.0	20.0	9,467.0
SFLA	835.0	124.0	573.0	74.0	55.0	82.0	0.0	1,226.0	221.0	0.0	3,190.0
TALL	5,028.0	822.0	163.0	3.0	277.0	954.0	0.0	134.0	15.0	0.0	7,396.0
VALE	10,109.0	3,699.0	239.0	0.0	480.0	1,760.0	0.0	0.0	0.0	0.0	16,287.0
SYST	123,851.0	42,274.0	11,462.0	8,530.0	5,895.0	23,175.0	2,466.0	12,651.0	5,047.0	696.0	236,047.0

DIVISION ESTIMATES WITH COLLEGE ADJUSTMENTS

COLLEGE	A & P	POSTSEC VOC	POSTSEC ADULT VOC	APPRNT	CWE	COLLEGE PREP	VOC PREP	ADULT BASIC	ADULT SECOND. & GED	ADULTS WITH DISABILITY	FTE TOTAL
BREV	5,877.0	2,269.0	706.0	772.0	94.0	785.0	0.0	0.0	0.0	0.0	10,503.0
BROW	12,036.0	6,045.0	475.0	0.0	194.0	3,935.0	0.0	0.0	0.0	0.0	22,685.0
CFLA	2,575.0	880.0	398.0	0.0	275.0	469.0	36.0	178.0	67.0	0.0	4,878.0
CHIP	1,035.0	255.0	216.0	0.0	50.0	121.0	18.0	0.0	0.0	0.0	1,695.0
DAYT	4,576.0	2,183.0	684.0	638.0	102.0	1,004.0	1.0	2,228.0	1,483.0	569.0	13,468.0
EDIS	4,852.0	1,417.0	8.0	0.0	50.0	916.0	0.0	0.0	0.0	0.0	7,243.0
FJAX	10,200.0	3,751.0	1,464.0	1,700.0	330.0	1,356.0	25.0	1,670.0	545.0	51.0	21,092.0
FKEY	492.0	296.0	38.0	0.0	25.0	43.0	0.0	0.0	0.0	0.0	894.0
GULF	2,704.0	1,073.0	207.0	17.0	230.0	357.0	0.0	140.0	71.0	0.0	4,799.0
HILL	9,432.0	2,497.0	469.0	1,379.0	351.0	2,429.0	0.0	0.0	0.0	0.0	16,557.0
INDR	3,869.0	2,621.0	1,141.0	841.0	80.0	533.0	4.0	2,313.0	590.0	0.0	11,992.0
LCTY	1,077.0	492.0	451.0	0.0	195.0	152.0	0.0	19.0	4.0	0.0	2,390.0
LSUM	1,359.0	580.0	0.0	0.0	58.0	160.0	0.0	0.0	0.0	0.0	2,157.0
MANA	4,956.0	517.0	0.0	0.0	101.0	836.0	0.0	33.0	12.0	0.0	6,455.0
MIAM	30,611.0	9,192.0	1,171.0	117.0	1,731.0	6,345.0	2,269.0	2,604.0	394.0	0.0	54,434.0
NFLA	512.0	117.0	152.0	0.0	73.0	72.0	0.0	23.0	0.0	0.0	949.0
OKAL	3,645.0	773.0	160.0	0.0	17.0	384.0	0.0	260.0	106.0	0.0	5,345.0
PALM	10,523.0	1,307.0	956.0	1,285.0	204.0	1,512.0	0.0	0.0	0.0	0.0	15,787.0
PASC	2,405.0	1,264.0	401.0	0.0	44.0	524.0	0.0	189.0	155.0	0.0	4,982.0
PENS	4,873.0	1,720.0	378.0	0.0	57.0	628.0	12.0	430.0	468.0	4.0	8,570.0
POLK	2,683.0	1,208.0	126.0	0.0	246.0	468.0	0.0	0.0	0.0	0.0	4,731.0
ST.J	2,164.0	647.0	126.0	468.0	25.0	200.0	0.0	33.0	21.0	52.0	3,736.0
ST.P	9,480.0	4,397.0	2.0	0.0	369.0	1,777.0	0.0	0.0	0.0	0.0	16,025.0
SANF	6,960.0	2,277.0	292.0	372.0	103.0	1,252.0	18.0	187.0	109.0	0.0	11,570.0
SEMI	4,943.0	2,392.0	466.0	864.0	79.0	912.0	83.0	984.0	786.0	20.0	11,529.0
SFLA	1,113.0	165.0	573.0	74.0	55.0	109.0	0.0	1,226.0	221.0	0.0	3,536.0
TALL	6,704.0	1,096.0	163.0	3.0	277.0	1,272.0	0.0	134.0	15.0	0.0	9,664.0
VALE	13,479.0	4,932.0	239.0	0.0	480.0	2,347.0	0.0	0.0	0.0	0.0	21,477.0
SYST	165,135.0	56,363.0	11,462.0	8,530.0	5,895.0	30,898.0	2,466.0	12,651.0	5,047.0	696.0	299,143.0

Brevard

	A&P	PSV	PSAV	APPR	CWE	CP	VP	AB	ASG	AWD	TOT
2004											

No Changes

Broward

	A&P	PSV	PSAV	APPR	CWE	CP	VP	AB	ASG	AWD	TOT
2004											

No Changes

Central Florida

	A&P	PSV	PSAV	APPR	CWE	CP	VP	AB	ASG	AWD	TOT
2004	232	59	150	0	182	40	36	66	22	0	787

All – Problems with new system have caused problems in reporting of hours. Some issues have been resolved and adjustments reflect updated FTE-2 report.

Chipola

	A&P	PSV	PSAV	APPR	CWE	CP	VP	AB	ASG	AWD	TOT
2004	0	0	0	0	-25	0	0	0	0	0	-25

CWE – Department of Corrections unexpectedly withdrew funding for the remainder of the reporting year.

Daytona Beach

	A&P	PSV	PSAV	APPR	CWE	CP	VP	AB	ASG	AWD	TOT
2004	33	0	0	0	0	0	0	0	0	95	128

A&P – Actual FTE achieved to date.

AWD – Actual FTE not reflected in estimates due to omissions in the data used to generate the estimates. New Student Data Base has been submitted accurately coding AWD.

Edison

	A&P	PSV	PSAV	APPR	CWE	CP	VP	AB	ASG	AWD	TOT
2004											

No Changes

FCCJ

	A&P	PSV	PSAV	APPR	CWE	CP	VP	AB	ASG	AWD	TOT
2004	168	69	68	291	29	22	0	128	39	6	820

All – Because of scheduling, all data was not reported for Winter term. Current enrollments

meet or exceed estimates.

Florida Keys

	A&P	PSV	PSAV	APPR	CWE	CP	VP	AB	ASG	AWD	TOT
2004	10	0	3	0	7	0	0	0	0	0	20

All – Contracts with several different organizations to provide training during the remainder of the Spring term.

Gulf Coast

	A&P	PSV	PSAV	APPR	CWE	CP	VP	AB	ASG	AWD	TOT
2004	83	15	22	0	3	0	0	0	0	0	123

A&P, PSV – Dual enrollment and off-cycle course registrations not entered into system to date.

PSAV – Corrections, Fire Science and Law Enforcement courses starting off-cycle during semester.

CWE – Expect to have at least the same as last year.

Hillsborough

	A&P	PSV	PSAV	APPR	CWE	CP	VP	AB	ASG	AWD	TOT
2004											

No Changes

Indian River

	A&P	PSV	PSAV	APPR	CWE	CP	VP	AB	ASG	AWD	TOT
2004											

No Changes

Lake City

	A&P	PSV	PSAV	APPR	CWE	CP	VP	AB	ASG	AWD	TOT
2004	0	0	-89	0	-6	0	0	0	0	0	-95

PSAV, CWE – Current FTE is only 1895. Difference with estimate of 160 is unrealistic.

Historically, additional FTE is added during the semester from Corrections Training program.

While that program is healthy, only expect about 65 more FTE.

Lake-Sumter

	A&P	PSV	PSAV	APPR	CWE	CP	VP	AB	ASG	AWD	TOT
2004											

No Changes

Manatee

	A&P	PSV	PSAV	APPR	CWE	CP	VP	AB	ASG	AWD	TOT
2004											

No Changes

Miami-Dade

	A&P	PSV	PSAV	APPR	CWE	CP	VP	AB	ASG	AWD	TOT
2004	-65	20	0	45	0	0	0	0	0	0	0

AP, PSV – Early registration initiatives led to more paid FTE as spring term began, leading to overestimation by model. Reducing A&P, but adding 20 to PSV.

APPR – Apprenticeship FTE is new and not accurately projected by model. Based on current activity, expect 117 for the year.

North Florida

	A&P	PSV	PSAV	APPR	CWE	CP	VP	AB	ASG	AWD	TOT
2004											

No Changes

Okaloosa-Walton

	A&P	PSV	PSAV	APPR	CWE	CP	VP	AB	ASG	AWD	TOT
2004											

No Changes

Palm Beach

	A&P	PSV	PSAV	APPR	CWE	CP	VP	AB	ASG	AWD	TOT
2004	124	-37	-99	-111	0	37	0	0	0	0	-86

A&P, CP – Increased based on current enrollment.

PSV – Decreased due to health care programs currently enrolled to capacity.

PSAV – Decreased due to 2 programs that are not currently running because of lack of instructional personnel.

APPR – Decrease in enrollment based on economy and decrease in construction industry starts.

Pasco-Hernando

	A&P	PSV	PSAV	APPR	CWE	CP	VP	AB	ASG	AWD	TOT
2004	0	0	0	0	0	0	0	0	-166	0	-166

ASG – GED program is new so growth was initially very high, but growth has slowed.

Pensacola

	A&P	PSV	PSAV	APPR	CWE	CP	VP	AB	ASG	AWD	TOT
2004											

No Changes

Polk

	A&P	PSV	PSAV	APPR	CWE	CP	VP	AB	ASG	AWD	TOT
2004											

No Changes

St Johns River

	A&P	PSV	PSAV	APPR	CWE	CP	VP	AB	ASG	AWD	TOT
2004	28	0	5	114	0	0	0	0	0	0	147

A&P, PSAV, APPR – Currently at estimates level, reflects additional enrollments for the spring term.

St Petersburg

	A&P	PSV	PSAV	APPR	CWE	CP	VP	AB	ASG	AWD	TOT
2004											

No Changes

Santa Fe

	A&P	PSV	PSAV	APPR	CWE	CP	VP	AB	ASG	AWD	TOT
2004											

No Changes

Seminole

	A&P	PSV	PSAV	APPR	CWE	CP	VP	AB	ASG	AWD	TOT
2004	0	0	0	166	0	0	0	0	0	0	166

APPR – Due to open enrollment, estimations are problematic. Many of the enrollments occur after the preliminary submission.

South Florida

	A&P	PSV	PSAV	APPR	CWE	CP	VP	AB	ASG	AWD	TOT
2004	10	5	0	0	0	0	0	125	25	0	165

SFCC is currently at the level of the estimates. Additional FTE will be generated as follows:

A&P – 10 FTE for dual enrollment currently being processed.

PSV – 5 FTE for a Law Enforcement Academy starting in one week.

AB, ASG – 125 and 25 FTE respectively, as students continue to enroll in the program throughout the semester.

Tallahassee

	A&P	PSV	PSAV	APPR	CWE	CP	VP	AB	ASG	AWD	TOT
2004											

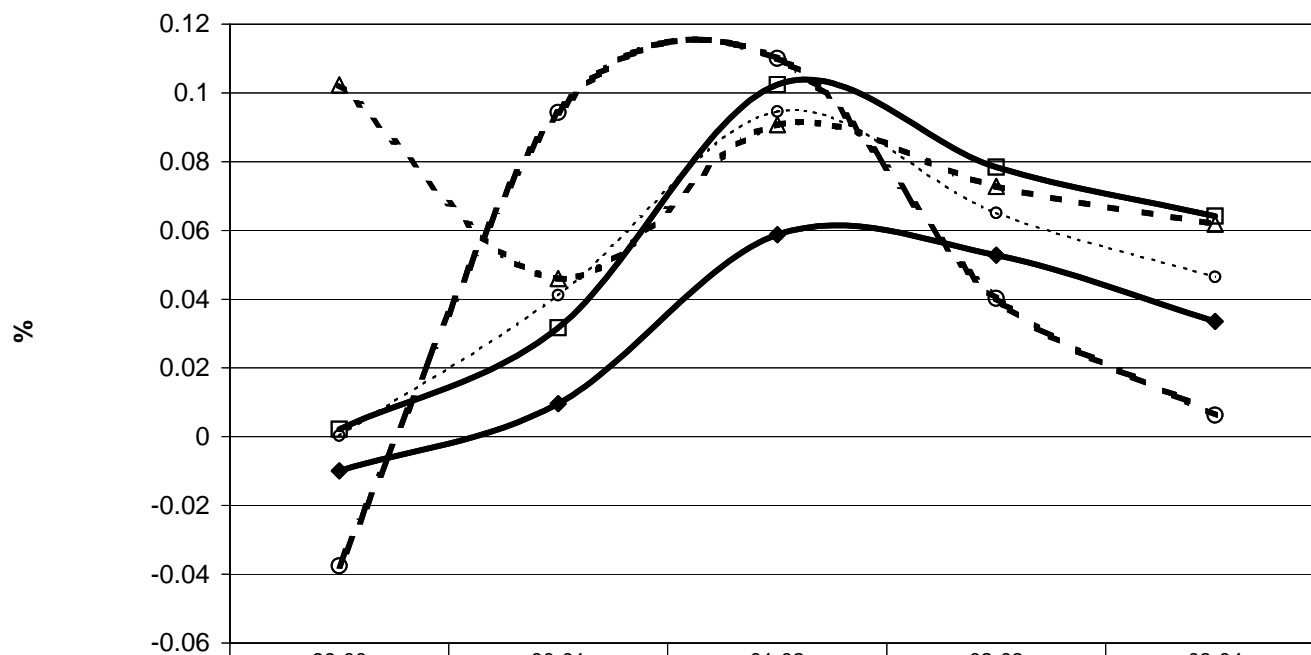
No Changes

Valencia

	A&P	PSV	PSAV	APPR	CWE	CP	VP	AB	ASG	AWD	TOT
2004											

No Changes

Growth Rates, Selected Community College Programs



	99-00	00-01	01-02	02-03	03-04
—■— Adv. & Prof.	0.002207459	0.031689992	0.102418918	0.078376558	0.064196708
—◆— Postsec. Voc.	-0.009969221	0.009590888	0.058756363	0.052793057	0.033523377
-▲- College Prep	0.102312067	0.046026583	0.090790652	0.07277428	0.061821614
—●— All Other Programs	-0.037612878	0.09430483	0.110015061	0.040215486	0.006220672
-○- TOTAL, ALL PGMS (Coll. Est.)	0.000317588	0.04113187	0.094596432	0.065097271	0.046463944

FLORIDA COMMUNITY COLLEGE SYSTEM
Student Data Base FTE Report
2003-2004 FTE Projections Compared to the 2003-2004 FTE-2 (Division Estimates)

	Adv. & Prof.	Diff. Percent	Postsec. Voc.	Diff. Percent	Postsec. Adult	Diff. Percent	Apprenticeship	Diff. Percent	CWE	Diff. Percent	College Prep	Diff. Percent	Voc. Prep	Diff. Percent	Adult Basic	Diff. Percent	Adult S&G	Diff. Percent	AWD	Diff. Percent	Total FTE	Diff. Percent	
NFLA																							
2004 PRJ	399	-15	98	-10	197	-45	0	0	43	30	54	0	2	-2	34	-11	3	-3	0	0	830	-56	
2004 FTE-2	384	-3.8	88	-10.2	152	-22.8	0	0.0	73	69.8	54	0.0	0	-100.0	23	-32.4	0	-100.0	0	0.0	774	-6.7	
OWCC																							
2004 PRJ	2632	102	615	-35	129	31	0	0	12	5	265	23	4	-4	292	-32	69	37	0	0	4018	127	
2004 FTE-2	2734	3.9	580	-5.7	160	24.0	0	0.0	17	41.7	288	8.7	0	-100.0	260	-11.0	106	53.6	0	0.0	4145	3.2	
PBCC																							
2004 PRJ	8435	-667	982	35	931	124	1356	40	201	3	1186	-89	0	0	0	0	0	0	0	0	13091	-554	
2004 FTE-2	7768	-7.9	1017	3.6	1055	13.3	1396	2.9	204	1.5	1097	-7.5	0	0.0	0	0.0	0	0.0	0	0.0	12537	-4.2	
PHCC																							
2004 PRJ	1699	105	945	3	392	9	0	0	40	4	394	-1	0	0	236	-47	114	207	0	0	3820	280	
2004 FTE-2	1804	6.2	948	0.3	401	2.3	0	0.0	44	10.0	393	-0.3	0	0.0	189	-19.9	321	181.6	0	0.0	4100	7.3	
PJC																							
2004 PRJ	3628	27	1270	20	350	28	0	0	44	13	510	-39	17	-5	518	-88	520	-52	0	4	6857	-92	
2004 FTE-2	3655	0.7	1290	1.6	378	8.0	0	0.0	57	29.5	471	-7.6	12	-29.4	430	-17.0	468	-10.0	4	0.0	6765	-1.3	
POLK																							
2004 PRJ	1924	88	820	86	115	11	0	0	295	-49	322	29	0	0	0	0	0	0	0	0	3476	165	
2004 FTE-2	2012	4.6	906	10.5	126	9.6	0	0.0	246	-16.6	351	9.0	0	0.0	0	0.0	0	0.0	0	0.0	3641	4.7	
SJRCC																							
2004 PRJ	1724	-129	445	40	111	10	470	-116	26	-1	138	12	0	0	54	-21	24	-3	70	-18	3062	-226	
2004 FTE-2	1595	-7.5	485	9.0	121	9.0	354	-24.7	25	-3.8	150	8.7	0	0.0	33	-38.9	21	-12.5	52	-25.7	2836	-7.4	
SPC																							
2004 PRJ	6689	421	3260	38	41	-39	0	0	439	-70	1249	84	0	0	0	0	0	0	0	0	11678	434	
2004 FTE-2	7110	6.3	3298	1.2	2	-95.1	0	0.0	369	-15.9	1333	6.7	0	0.0	0	0.0	0	0.0	0	0.0	12112	3.7	
SFCC																							
2004 PRJ	5265	-45	1747	-39	657	-365	86	286	84	19	1046	-107	14	4	114	73	71	38	0	0	9084	-136	
2004 FTE-2	5220	-0.9	1708	-2.2	292	-55.6	372	332.6	103	22.6	939	-10.2	18	28.6	187	64.0	109	53.5	0	0.0	8948	-1.5	
SCC																							
2004 PRJ	3876	-169	1917	-123	540	-74	1254	-556	107	-28	655	29	85	-2	1211	-227	895	-109	29	-9	10569	-1268	
2004 FTE-2	3707	-4.4	1794	-6.4	466	-13.7	698	-44.3	79	-26.2	684	4.4	83	-2.4	984	-18.7	786	-12.2	20	-31.0	9301	-12.0	
SFLA																							
2004 PRJ	879	-54	116	3	556	17	75	-1	69	-14	91	-9	5	-5	1491	-390	234	-38	0	0	3516	-491	
2004 FTE-2	825	-6.1	119	2.6	573	3.1	74	-1.3	55	-20.3	82	-9.9	0	-100.0	1101	-26.2	196	-16.2	0	0.0	3025	-14.0	
TCC																							
2004 PRJ	4949	79	826	-4	206	-43	17	-14	242	35	878	76	0	0	73	61	31	-16	0	0	7222	174	
2004 FTE-2	5028	1.6	822	-0.5	163	-20.9	3	-82.4	277	14.5	954	8.7	0	0.0	134	83.6	15	-51.6	0	0.0	7396	2.4	
VCC																							
2004 PRJ	10624	-515	3705	-6	198	41	0	0	409	71	1772	-12	0	0	0	0	0	0	0	0	16708	-421	
2004 FTE-2	10109	-4.8	3699	-0.2	239	20.7	0	0.0	480	17.4	1760	-0.7	0	0.0	0	0.0	0	0.0	0	0.0	16287	-2.5	
SYST TOTAL																							
2004 PRJ	124940	-1712	43433	-1290	12339	-937	8316	-291	6276	-571	23494	-418	2560	-130	13367	-1035	5590	-463	874	-279	241189	-7126	
2004 FTE-2	123228	-1.4	42143	-3.0	11402	-7.6	8025	-3.5	5705	-9.1	23076	-1.8	2430	-5.1	12332	-7.7	5127	-8.3	595	-31.9	234063	-3.0	

Sources: 2003-2004 FTE Projections (Division Projections with college adjustments) - Unweighted
2003-2004 Estimates FTE-2 (Division Estimates) - Unweighted

Note: Advanced and Professional, Post Secondary Vocational, and College Preparatory are calculated as 40 Credit Hour FTE.

FLORIDA COMMUNITY COLLEGE SYSTEM
Student Data Base FTE Report
2003-2004 FTE Projections Compared to the 2003-2004 FTE-2A (Division Estimates with College Adjustments)

	Adv. & Prof.	Diff. Percent	Postsec. Voc.	Diff. Percent	Postsec. Adult	Diff. Percent	Apprenticeship	Diff. Percent	CWE	Diff. Percent	College Prep	Diff. Percent	Voc. Prep	Diff. Percent	Adult Basic	Diff. Percent	Adult S&G	Diff. Percent	AWD	Diff. Percent	Total FTE	Diff. Percent	
BREV																							
2004 PRJ	4450	-42	1804	-102	700	6	742	30	155	-61	698	-109	0	0	0	0	0	0	0	0	0	8549	-278
2004 FTE-2A	4408	-0.9	1702	-5.7	706	0.9	772	4.0	94	-39.4	589	-15.6	0	0.0	0	0.0	0	0.0	0	0.0	0	8271	-3.3
BROW																							
2004 PRJ	9346	-319	4732	-198	543	-68	0	0	215	-21	3148	-197	0	0	0	0	0	0	0	0	0	17984	-803
2004 FTE-2A	9027	-3.4	4534	-4.2	475	-12.5	0	0.0	194	-9.8	2951	-6.3	0	0.0	0	0.0	0	0.0	0	0.0	0	17181	-4.5
CFLA																							
2004 PRJ	2022	-91	684	-24	411	-13	0	0	310	-35	400	-48	32	4	168	10	62	5	0	0	0	4089	-192
2004 FTE-2A	1931	-4.5	660	-3.5	398	-3.2	0	0.0	275	-11.3	352	-12.0	36	12.5	178	6.0	67	8.1	0	0.0	0	3897	-4.7
CHIP																							
2004 PRJ	725	51	180	11	171	45	0	0	62	-12	93	-2	24	-6	0	0	0	0	0	0	0	1255	87
2004 FTE-2A	776	7.0	191	6.1	216	26.3	0	0.0	50	-19.4	91	-2.2	18	-25.0	0	0.0	0	0.0	0	0.0	0	1342	6.9
DAYT																							
2004 PRJ	3340	92	1668	-31	990	-306	656	-18	126	-24	749	4	3	-2	2306	-78	1844	-361	738	-169	0	12420	-893
2004 FTE-2A	3432	2.8	1637	-1.9	684	-30.9	638	-2.7	102	-19.0	753	0.5	1	-66.7	2228	-3.4	1483	-19.6	569	-22.9	0	11527	-7.2
EDIS																							
2004 PRJ	3672	-33	1037	26	6	2	0	0	41	9	605	82	0	0	0	0	0	0	0	0	0	5361	86
2004 FTE-2A	3639	-0.9	1063	2.5	8	33.3	0	0.0	50	22.0	687	13.6	0	0.0	0	0.0	0	0.0	0	0.0	0	5447	1.6
FCCJ																							
2004 PRJ	7489	161	2906	-93	1469	-5	1840	-140	352	-22	1010	7	27	-2	1640	30	529	16	37	14	0	17299	-34
2004 FTE-2A	7650	2.1	2813	-3.2	1464	-0.3	1700	-7.6	330	-6.3	1017	0.7	25	-7.4	1670	1.8	545	3.0	51	37.8	0	17265	-0.2
FKEY																							
2004 PRJ	406	-37	234	-12	28	10	0	0	19	6	40	-8	0	0	0	0	0	0	0	0	0	727	-41
2004 FTE-2A	369	-9.1	222	-5.1	38	35.7	0	0.0	25	31.6	32	-20.0	0	0.0	0	0.0	0	0.0	0	0.0	0	686	-5.6
GULF																							
2004 PRJ	2028	0	859	-54	164	43	11	6	292	-62	288	-20	0	0	197	-57	112	-41	0	0	0	3951	-185
2004 FTE-2A	2028	0.0	805	-6.3	207	26.2	17	54.5	230	-21.2	268	-6.9	0	0.0	140	-28.9	71	-36.6	0	0.0	0	3766	-4.7
HILL																							
2004 PRJ	7137	-63	2005	-132	417	52	917	462	337	14	1878	-56	0	0	0	0	0	0	0	0	0	12691	277
2004 FTE-2A	7074	-0.9	1873	-6.6	469	12.5	1379	50.4	351	4.2	1822	-3.0	0	0.0	0	0.0	0	0.0	0	0.0	0	12968	2.2
IRCC																							
2004 PRJ	2728	174	2026	-60	1152	-11	892	-51	70	10	356	44	1	3	2415	-102	689	-99	0	0	0	10329	-92
2004 FTE-2A	2902	6.4	1966	-3.0	1141	-1.0	841	-5.7	80	14.3	400	12.4	4	300.0	2313	-4.2	590	-14.4	0	0.0	0	10237	-0.9
LCCC																							
2004 PRJ	760	48	386	-17	374	77	0	0	121	74	124	-10	2	-2	32	-13	7	-3	0	0	0	1806	154
2004 FTE-2A	808	6.3	369	-4.4	451	20.6	0	0.0	195	61.2	114	-8.1	0	-100.0	19	-40.6	4	-42.9	0	0.0	0	1960	8.5
LSCC																							
2004 PRJ	1035	-16	419	16	13	-13	0	0	88	-30	139	-19	0	0	0	0	0	0	0	0	0	1694	-62
2004 FTE-2A	1019	-1.5	435	3.8	0	-100.0	0	0.0	58	-34.1	120	-13.7	0	0.0	0	0.0	0	0.0	0	0.0	0	1632	-3.7
MCC																							
2004 PRJ	3755	-38	405	-17	0	0	0	0	68	33	612	15	0	0	23	10	9	3	0	0	0	4872	6
2004 FTE-2A	3717	-1.0	388	-4.2	0	0.0	0	0.0	101	48.5	627	2.5	0	0.0	33	43.5	12	33.3	0	0.0	0	4878	0.1
MDCC																							
2004 PRJ	23324	-366	7342	-448	1478	-307	0	117	2009	-278	4794	-35	2344	-75	2563	41	377	17	0	0	0	44231	-1334
2004 FTE-2A	22958	-1.6	6894	-6.1	1171	-20.8	117	0.0	1731	-13.8	4759	-0.7	2269	-3.2	2604	1.6	394	4.5	0	0.0	0	42897	-3.0

Sources: 2003-2004 FTE Projections (Division Projections with college adjustments) - Unweighted
2003-2004 Estimates FTE-2A (Division Estimates with college adjustments) - Unweighted
Advanced and Professional, Post Secondary Vocational, and College Preparatory are calculated as 40 Credit Hour FTE.

FLORIDA COMMUNITY COLLEGE SYSTEM
Student Data Base FTE Report
2003-2004 FTE Projections Compared to the 2003-2004 FTE-2A (Division Estimates with College Adjustments)

	Adv. & Prof.	Diff. Percent	Postsec. Voc.	Diff. Percent	Postsec. Adult	Diff. Percent	Apprenticeship	Diff. Percent	CWE	Diff. Percent	College Prep	Diff. Percent	Voc. Prep	Diff. Percent	Adult Basic	Diff. Percent	Adult S&G	Diff. Percent	AWD	Diff. Percent	Total FTE	Diff. Percent
NFLA																						
2004 PRJ	399	-15	98	-10	197	-45	0	0	43	30	54	0	2	-2	34	-11	3	-3	0	0	830	-56
2004 FTE-2A	384	-3.8	88	-10.2	152	-22.8	0	0.0	73	69.8	54	0.0	0	-100.0	23	-32.4	0	-100.0	0	0.0	774	-6.7
OWCC																						
2004 PRJ	2632	102	615	-35	129	31	0	0	12	5	265	23	4	-4	292	-32	69	37	0	0	4018	127
2004 FTE-2A	2734	3.9	580	-5.7	160	24.0	0	0.0	17	41.7	288	8.7	0	-100.0	260	-11.0	106	53.6	0	0.0	4145	3.2
PBCC																						
2004 PRJ	8435	-543	982	-2	931	25	1356	-71	201	3	1186	-52	0	0	0	0	0	0	0	0	13091	-640
2004 FTE-2A	7892	-6.4	980	-0.2	956	2.7	1285	-5.2	204	1.5	1134	-4.4	0	0.0	0	0.0	0	0.0	0	0.0	12451	-4.9
PHCC																						
2004 PRJ	1699	105	945	3	392	9	0	0	40	4	394	-1	0	0	236	-47	114	41	0	0	3820	114
2004 FTE-2A	1804	6.2	948	0.3	401	2.3	0	0.0	44	10.0	393	-0.3	0	0.0	189	-19.9	155	36.0	0	0.0	3934	3.0
PJC																						
2004 PRJ	3628	27	1270	20	350	28	0	0	44	13	510	-39	17	-5	518	-88	520	-52	0	4	6857	-92
2004 FTE-2A	3655	0.7	1290	1.6	378	8.0	0	0.0	57	29.5	471	-7.6	12	-29.4	430	-17.0	468	-10.0	4	0.0	6765	-1.3
POLK																						
2004 PRJ	1924	88	820	86	115	11	0	0	295	-49	322	29	0	0	0	0	0	0	0	0	3476	165
2004 FTE-2A	2012	4.6	906	10.5	126	9.6	0	0.0	246	-16.6	351	9.0	0	0.0	0	0.0	0	0.0	0	0.0	3641	4.7
SJRCC																						
2004 PRJ	1724	-101	445	40	111	15	470	-2	26	-1	138	12	0	0	54	-21	24	-3	70	-18	3062	-79
2004 FTE-2A	1623	-5.9	485	9.0	126	13.5	468	-0.4	25	-3.8	150	8.7	0	0.0	33	-38.9	21	-12.5	52	-25.7	2983	-2.6
SPC																						
2004 PRJ	6689	421	3260	38	41	-39	0	0	439	-70	1249	84	0	0	0	0	0	0	0	0	11678	434
2004 FTE-2A	7110	6.3	3298	1.2	2	-95.1	0	0.0	369	-15.9	1333	6.7	0	0.0	0	0.0	0	0.0	0	0.0	12112	3.7
SFCC																						
2004 PRJ	5265	-45	1747	-39	657	-365	86	286	84	19	1046	-107	14	4	114	73	71	38	0	0	9084	-136
2004 FTE-2A	5220	-0.9	1708	-2.2	292	-55.6	372	332.6	103	22.6	939	-10.2	18	28.6	187	64.0	109	53.5	0	0.0	8948	-1.5
SCC																						
2004 PRJ	3876	-169	1917	-123	540	-74	1254	-390	107	-28	655	29	85	-2	1211	-227	895	-109	29	-9	10569	-1102
2004 FTE-2A	3707	-4.4	1794	-6.4	466	-13.7	864	-31.1	79	-26.2	684	4.4	83	-2.4	984	-18.7	786	-12.2	20	-31.0	9467	-10.4
SFLA																						
2004 PRJ	879	-44	116	8	556	17	75	-1	69	-14	91	-9	5	-5	1491	-265	234	-13	0	0	3516	-326
2004 FTE-2A	835	-5.0	124	6.9	573	3.1	74	-1.3	55	-20.3	82	-9.9	0	-100.0	1226	-17.8	221	-5.6	0	0.0	3190	-9.3
TCC																						
2004 PRJ	4949	79	826	-4	206	-43	17	-14	242	35	878	76	0	0	73	61	31	-16	0	0	7222	174
2004 FTE-2A	5028	1.6	822	-0.5	163	-20.9	3	-82.4	277	14.5	954	8.7	0	0.0	134	83.6	15	-51.6	0	0.0	7396	2.4
VCC																						
2004 PRJ	10624	-515	3705	-6	198	41	0	0	409	71	1772	-12	0	0	0	0	0	0	0	0	16708	-421
2004 FTE-2A	10109	-4.8	3699	-0.2	239	20.7	0	0.0	480	17.4	1760	-0.7	0	0.0	0	0.0	0	0.0	0	0.0	16287	-2.5
SYST TOTAL																						
2004 PRJ	124940	-1089	43433	-1159	12339	-877	8316	214	6276	-381	23494	-319	2560	-94	13367	-716	5590	-543	874	-178	241189	-5142
2004 FTE-2A	123851	-0.9	42274	-2.7	11462	-7.1	8530	2.6	5895	-6.1	23175	-1.4	2466	-3.7	12651	-5.4	5047	-9.7	696	-20.4	236047	-2.1

Sources: 2003-2004 FTE Projections (Division Projections with college adjustments) - Unweighted
2003-2004 Estimates FTE-2A (Division Estimates with college adjustments) - Unweighted

Note: Advanced and Professional, Post Secondary Vocational, and College Preparatory are calculated as 40 Credit Hour FTE.

FLORIDA COMMUNITY COLLEGE SYSTEM
Student Data Base FTE Report
2003-2004 FTE-1B (Division Estimates with College Adjustments) compared to the 2003-2004 FTE-2 (Division Estimates)

	Adv. & Prof.	Diff. Percent	Postsec. Voc.	Diff. Percent	Postsec. Adult	Diff. Percent	Apprenticeship	Diff. Percent	CWE	Diff. Percent	College Prep	Diff. Percent	Voc. Prep	Diff. Percent	Adult Basic	Diff. Percent	Adult S&G	Diff. Percent	AWD	Diff. Percent	Total FTE	Diff. Percent	
BREV																							
2004 FTE-1B	4448	-40	1754	-52	733	-27	880	-108	106	-12	626	-37	0	0	0	0	0	0	0	0	0	8547	-276
2004 FTE-2	4408	-0.9	1702	-3.0	706	-3.7	772	-12.3	94	-11.3	589	-5.9	0	0.0	0	0.0	0	0.0	0	0.0	0	8271	-3.2
BROW																							
2004 FTE-1B	9204	-177	4642	-108	489	-14	0	0	206	-12	3034	-83	0	0	0	0	0	0	0	0	0	17575	-394
2004 FTE-2	9027	-1.9	4534	-2.3	475	-2.9	0	0.0	194	-5.8	2951	-2.7	0	0.0	0	0.0	0	0.0	0	0.0	0	17181	-2.2
CFLA																							
2004 FTE-1B	2022	-323	684	-83	411	-163	0	0	310	-217	400	-88	32	-32	168	-56	62	-17	0	0	0	4089	-979
2004 FTE-2	1699	-16.0	601	-12.1	248	-39.7	0	0.0	93	-70.0	312	-22.0	0	-100.0	112	-33.3	45	-27.4	0	0.0	0	3110	-23.9
CHIP																							
2004 FTE-1B	781	-5	200	-9	220	-4	0	0	70	5	96	-5	22	-4	0	0	0	0	0	0	0	1389	-22
2004 FTE-2	776	-0.6	191	-4.5	216	-1.8	0	0.0	75	7.1	91	-5.2	18	-18.2	0	0.0	0	0.0	0	0.0	0	1367	-1.6
DAYT																							
2004 FTE-1B	3377	22	1631	6	640	44	649	-11	117	-15	733	20	1	0	2302	-74	1495	-12	408	66	11353	46	
2004 FTE-2	3399	0.7	1637	0.4	684	6.9	638	-1.7	102	-12.8	753	2.7	1	0.0	2228	-3.2	1483	-0.8	474	16.2	11399	0.4	
EDIS																							
2004 FTE-1B	3693	-54	965	98	5	3	0	0	47	3	668	19	0	0	0	0	0	0	0	0	0	5378	69
2004 FTE-2	3639	-1.5	1063	10.2	8	60.0	0	0.0	50	6.4	687	2.8	0	0.0	0	0.0	0	0.0	0	0.0	0	5447	1.3
FCCJ																							
2004 FTE-1B	7690	-208	2813	-69	1464	-68	1840	-431	363	-62	1017	-22	22	3	1762	-220	527	-21	56	-11	17554	-1109	
2004 FTE-2	7482	-2.7	2744	-2.5	1396	-4.6	1409	-23.4	301	-17.1	995	-2.2	25	13.6	1542	-12.5	506	-4.0	45	-19.6	16445	-6.3	
FKEY																							
2004 FTE-1B	390	-31	245	-23	36	-1	0	0	25	-7	33	-1	0	0	0	0	0	0	0	0	0	729	-63
2004 FTE-2	359	-7.9	222	-9.4	35	-2.8	0	0.0	18	-28.0	32	-3.0	0	0.0	0	0.0	0	0.0	0	0.0	0	666	-8.6
GULF																							
2004 FTE-1B	2044	-99	835	-45	182	3	23	-6	270	-43	280	-12	0	0	135	5	56	15	0	0	0	3825	-182
2004 FTE-2	1945	-4.8	790	-5.4	185	1.6	17	-26.1	227	-15.9	268	-4.3	0	0.0	140	3.7	71	26.8	0	0.0	0	3643	-4.8
HILL																							
2004 FTE-1B	7039	35	1814	59	502	-33	1726	-347	286	65	1812	10	0	0	0	0	0	0	0	0	0	13179	-211
2004 FTE-2	7074	0.5	1873	3.3	469	-6.6	1379	-20.1	351	22.7	1822	0.6	0	0.0	0	0.0	0	0.0	0	0.0	0	12968	-1.6
IRCC																							
2004 FTE-1B	2928	-26	1997	-31	1088	53	859	-18	106	-26	409	-9	5	-1	2308	5	602	-12	0	0	0	10302	-65
2004 FTE-2	2902	-0.9	1966	-1.6	1141	4.9	841	-2.1	80	-24.5	400	-2.2	4	-20.0	2313	0.2	590	-2.0	0	0.0	0	10237	-0.6
LCCC																							
2004 FTE-1B	805	3	370	-1	458	82	0	0	144	57	103	11	0	0	34	-15	4	0	0	0	0	1918	137
2004 FTE-2	808	0.4	369	-0.3	540	17.9	0	0.0	201	39.6	114	10.7	0	0.0	19	-44.1	4	0.0	0	0.0	0	2055	7.1
LSCC																							
2004 FTE-1B	1002	17	418	17	0	0	15	-15	61	-3	133	-13	0	0	0	0	0	0	0	0	0	1629	3
2004 FTE-2	1019	1.7	435	4.1	0	0.0	0	-100.0	58	-4.9	120	-9.8	0	0.0	0	0.0	0	0.0	0	0.0	0	1632	0.2
MCC																							
2004 FTE-1B	3743	-26	352	36	0	0	0	0	105	-4	639	-12	0	0	49	-16	10	2	0	0	0	4898	-20
2004 FTE-2	3717	-0.7	388	10.2	0	0.0	0	0.0	101	-3.8	627	-1.9	0	0.0	33	-32.7	12	20.0	0	0.0	0	4878	-0.4
MDCC																							
2004 FTE-1B	23590	-567	7080	-206	1049	122	0	72	1841	-110	4676	83	2590	-321	2375	229	391	3	0	0	0	43592	-695
2004 FTE-2	23023	-2.4	6874	-2.9	1171	11.6	72	0.0	1731	-6.0	4759	1.8	2269	-12.4	2604	9.6	394	0.8	0	0.0	0	42897	-1.6

Sources: 2003-2004 Estimates FTE-1B (Division Estimates with college adjustments) - Unweighted
2003-2004 Estimates FTE-2 (Division Estimates) - Unweighted
Advanced and Professional, Post Secondary Vocational, and College Preparatory are calculated as 40 Credit Hour FTE.

FLORIDA COMMUNITY COLLEGE SYSTEM
Student Data Base FTE Report
2003-2004 FTE-1B (Division Estimates with College Adjustments) compared to the 2003-2004 FTE-2 (Division Estimates)

	Adv. & Prof.	Diff. Percent	Postsec. Voc.	Diff. Percent	Postsec. Adult	Diff. Percent	Apprenticeship	Diff. Percent	CWE	Diff. Percent	College Prep	Diff. Percent	Voc. Prep	Diff. Percent	Adult Basic	Diff. Percent	Adult S&G	Diff. Percent	AWD	Diff. Percent	Total FTE	Diff. Percent
NFLA																						
2004 FTE-1B	381	3	88	0	142	10	0	0	53	20	56	-2	0	0	19	4	0	0	0	0	739	35
2004 FTE-2	384	0.8	88	0.0	152	7.0	0	0.0	73	37.7	54	-3.6	0	0.0	23	21.1	0	0.0	0	0.0	774	4.7
OWCC																						
2004 FTE-1B	2715	19	573	7	164	-4	0	0	18	-1	282	6	0	0	271	-11	127	-21	0	0	4150	-5
2004 FTE-2	2734	0.7	580	1.2	160	-2.4	0	0.0	17	-5.6	288	2.1	0	0.0	260	-4.1	106	-16.5	0	0.0	4145	-0.1
PBCC																						
2004 FTE-1B	7854	-86	978	39	1224	-169	1200	196	217	-13	1107	-10	0	0	0	0	0	0	0	0	12580	-43
2004 FTE-2	7768	-1.1	1017	4.0	1055	-13.8	1396	16.3	204	-6.0	1097	-0.9	0	0.0	0	0.0	0	0.0	0	0.0	12537	-0.3
PHCC																						
2004 FTE-1B	1699	105	945	3	392	9	0	0	40	4	394	-1	0	0	176	13	174	147	0	0	3820	280
2004 FTE-2	1804	6.2	948	0.3	401	2.3	0	0.0	44	10.0	393	-0.3	0	0.0	189	7.4	321	84.5	0	0.0	4100	7.3
PJC																						
2004 FTE-1B	3722	-67	1258	32	391	-13	0	0	63	-6	464	7	13	-1	477	-47	446	22	8	-4	6842	-77
2004 FTE-2	3655	-1.8	1290	2.5	378	-3.3	0	0.0	57	-9.5	471	1.5	12	-7.7	430	-9.9	468	4.9	4	-50.0	6765	-1.1
POLK																						
2004 FTE-1B	2033	-21	961	-55	165	-39	0	0	285	-39	354	-3	0	0	0	0	0	0	0	0	3798	-157
2004 FTE-2	2012	-1.0	906	-5.7	126	-23.6	0	0.0	246	-13.7	351	-0.8	0	0.0	0	0.0	0	0.0	0	0.0	3641	-4.1
SJRCC																						
2004 FTE-1B	1649	-54	522	-37	145	-24	511	-157	33	-8	160	-10	0	0	41	-8	28	-7	45	7	3134	-298
2004 FTE-2	1595	-3.3	485	-7.1	121	-16.6	354	-30.7	25	-24.2	150	-6.3	0	0.0	33	-19.5	21	-25.0	52	15.6	2836	-9.5
SPC																						
2004 FTE-1B	6953	157	3404	-106	10	-8	0	0	430	-61	1290	43	0	0	0	0	0	0	0	0	12087	25
2004 FTE-2	7110	2.3	3298	-3.1	2	-80.0	0	0.0	369	-14.2	1333	3.3	0	0.0	0	0.0	0	0.0	0	0.0	12112	0.2
SFCC																						
2004 FTE-1B	5161	59	1677	31	327	-35	343	29	106	-3	959	-20	27	-9	294	-107	70	39	0	0	8964	-16
2004 FTE-2	5220	1.1	1708	1.8	292	-10.7	372	8.5	103	-2.8	939	-2.1	18	-33.3	187	-36.4	109	55.7	0	0.0	8948	-0.2
SCC																						
2004 FTE-1B	3772	-65	1818	-24	445	21	1000	-302	80	-1	670	14	90	-7	1129	-145	843	-57	23	-3	9870	-569
2004 FTE-2	3707	-1.7	1794	-1.3	466	4.7	698	-30.2	79	-1.3	684	2.1	83	-7.8	984	-12.8	786	-6.8	20	-13.0	9301	-5.8
SFLA																						
2004 FTE-1B	833	-8	119	0	587	-14	95	-21	79	-24	80	2	0	0	1375	-274	235	-39	0	0	3403	-378
2004 FTE-2	825	-1.0	119	0.0	573	-2.4	74	-22.1	55	-30.4	82	2.5	0	0.0	1101	-19.9	196	-16.6	0	0.0	3025	-11.1
TCC																						
2004 FTE-1B	5030	-2	830	-8	247	-84	4	-1	350	-73	983	-29	0	0	149	-15	20	-5	0	0	7613	-217
2004 FTE-2	5028	0.0	822	-1.0	163	-34.0	3	-25.0	277	-20.9	954	-3.0	0	0.0	134	-10.1	15	-25.0	0	0.0	7396	-2.9
VCC																						
2004 FTE-1B	10038	71	3685	14	227	12	0	0	498	-18	1756	4	0	0	0	0	0	0	0	0	16204	83
2004 FTE-2	10109	0.7	3699	0.4	239	5.3	0	0.0	480	-3.6	1760	0.2	0	0.0	0	0.0	0	0.0	0	0.0	16287	0.5
SYST TOTAL																						
2004 FTE-1B	124596	-1368	42658	-515	11743	-341	9145	-1120	6309	-604	23214	-138	2802	-372	13064	-732	5090	37	540	55	239161	-5098
2004 FTE-2	123228	-1.1	42143	-1.2	11402	-2.9	8025	-12.2	5705	-9.6	23076	-0.6	2430	-13.3	12332	-5.6	5127	0.7	595	10.2	234063	-2.1

Sources: 2003-2004 Estimates FTE-1B (Division Estimates with college adjustments) - Unweighted
2003-2004 Estimates FTE-2 (Division Estimates) - Unweighted
Note: Advanced and Professional, Post Secondary Vocational, and College Preparatory are calculated as 40 Credit Hour FTE.

**FLORIDA COMMUNITY COLLEGE SYSTEM
Student Data Base FTE Report**

2003-2004 FTE-1B (Division Estimates with College Adjustments) compared to the 2003-2004 FTE-2A (Division Estimates with College Adjustments)

	Adv. & Prof.	Diff. Percent	Postsec. Voc.	Diff. Percent	Postsec. Adult	Diff. Percent	Apprenticeship	Diff. Percent	CWE	Diff. Percent	College Prep	Diff. Percent	Voc. Prep	Diff. Percent	Adult Basic	Diff. Percent	Adult S&G	Diff. Percent	AWD	Diff. Percent	Total FTE	Diff. Percent	
BREV																							
2004 FTE-1B	4448	-40	1754	-52	733	-27	880	-108	106	-12	626	-37	0	0	0	0	0	0	0	0	0	8547	-276
2004 FTE-2A	4408	-0.9	1702	-3.0	706	-3.7	772	-12.3	94	-11.3	589	-5.9	0	0.0	0	0.0	0	0.0	0	0.0	0	8271	-3.2
BROW																							
2004 FTE-1B	9204	-177	4642	-108	489	-14	0	0	206	-12	3034	-83	0	0	0	0	0	0	0	0	0	17575	-394
2004 FTE-2A	9027	-1.9	4534	-2.3	475	-2.9	0	0.0	194	-5.8	2951	-2.7	0	0.0	0	0.0	0	0.0	0	0.0	0	17181	-2.2
CFLA																							
2004 FTE-1B	2022	-91	684	-24	411	-13	0	0	310	-35	400	-48	32	4	168	10	62	5	0	0	0	4089	-192
2004 FTE-2A	1931	-4.5	660	-3.5	398	-3.2	0	0.0	275	-11.3	352	-12.0	36	12.5	178	6.0	67	8.1	0	0.0	0	3897	-4.7
CHIP																							
2004 FTE-1B	781	-5	200	-9	220	-4	0	0	70	-20	96	-5	22	-4	0	0	0	0	0	0	0	1389	-47
2004 FTE-2A	776	-0.6	191	-4.5	216	-1.8	0	0.0	50	-28.6	91	-5.2	18	-18.2	0	0.0	0	0.0	0	0.0	0	1342	-3.4
DAYT																							
2004 FTE-1B	3377	55	1631	6	640	44	649	-11	117	-15	733	20	1	0	2302	-74	1495	-12	408	161	11353	174	
2004 FTE-2A	3432	1.6	1637	0.4	684	6.9	638	-1.7	102	-12.8	753	2.7	1	0.0	2228	-3.2	1483	-0.8	569	39.5	11527	1.5	
EDIS																							
2004 FTE-1B	3693	-54	965	98	5	3	0	0	47	3	668	19	0	0	0	0	0	0	0	0	0	5378	69
2004 FTE-2A	3639	-1.5	1063	10.2	8	60.0	0	0.0	50	6.4	687	2.8	0	0.0	0	0.0	0	0.0	0	0.0	0	5447	1.3
FCCJ																							
2004 FTE-1B	7690	-40	2813	0	1464	0	1840	-140	363	-33	1017	0	22	3	1762	-92	527	18	56	-5	17554	-289	
2004 FTE-2A	7650	-0.5	2813	0.0	1464	0.0	1700	-7.6	330	-9.1	1017	0.0	25	13.6	1670	-5.2	545	3.4	51	-8.9	17265	-1.6	
FKEY																							
2004 FTE-1B	390	-21	245	-23	36	2	0	0	25	0	33	-1	0	0	0	0	0	0	0	0	0	729	-43
2004 FTE-2A	369	-5.4	222	-9.4	38	5.6	0	0.0	25	0.0	32	-3.0	0	0.0	0	0.0	0	0.0	0	0.0	0	686	-5.9
GULF																							
2004 FTE-1B	2044	-16	835	-30	182	25	23	-6	270	-40	280	-12	0	0	135	5	56	15	0	0	0	3825	-59
2004 FTE-2A	2028	-0.8	805	-3.6	207	13.7	17	-26.1	230	-14.8	268	-4.3	0	0.0	140	3.7	71	26.8	0	0.0	0	3766	-1.5
HILL																							
2004 FTE-1B	7039	35	1814	59	502	-33	1726	-347	286	65	1812	10	0	0	0	0	0	0	0	0	0	13179	-211
2004 FTE-2A	7074	0.5	1873	3.3	469	-6.6	1379	-20.1	351	22.7	1822	0.6	0	0.0	0	0.0	0	0.0	0	0.0	0	12968	-1.6
IRCC																							
2004 FTE-1B	2928	-26	1997	-31	1088	53	859	-18	106	-26	409	-9	5	-1	2308	5	602	-12	0	0	0	10302	-65
2004 FTE-2A	2902	-0.9	1966	-1.6	1141	4.9	841	-2.1	80	-24.5	400	-2.2	4	-20.0	2313	0.2	590	-2.0	0	0.0	0	10237	-0.6
LCCC																							
2004 FTE-1B	805	3	370	-1	458	-7	0	0	144	51	103	11	0	0	34	-15	4	0	0	0	0	1918	42
2004 FTE-2A	808	0.4	369	-0.3	451	-1.5	0	0.0	195	35.4	114	10.7	0	0.0	19	-44.1	4	0.0	0	0.0	0	1960	2.2
LSCC																							
2004 FTE-1B	1002	17	418	17	0	0	15	-15	61	-3	133	-13	0	0	0	0	0	0	0	0	0	1629	3
2004 FTE-2A	1019	1.7	435	4.1	0	0.0	0	-100.0	58	-4.9	120	-9.8	0	0.0	0	0.0	0	0.0	0	0.0	0	1632	0.2
MCC																							
2004 FTE-1B	3743	-26	352	36	0	0	0	0	105	-4	639	-12	0	0	49	-16	10	2	0	0	0	4898	-20
2004 FTE-2A	3717	-0.7	388	10.2	0	0.0	0	0.0	101	-3.8	627	-1.9	0	0.0	33	-32.7	12	20.0	0	0.0	0	4878	-0.4
MDCC																							
2004 FTE-1B	23590	-632	7080	-186	1049	122	0	117	1841	-110	4676	83	2590	-321	2375	229	391	3	0	0	0	43592	-695
2004 FTE-2A	22958	-2.7	6894	-2.6	1171	11.6	117	0.0	1731	-6.0	4759	1.8	2269	-12.4	2604	9.6	394	0.8	0	0.0	0	42897	-1.6

Sources: 2003-2004 Estimates FTE-1B (Division Estimates with college adjustments) - Unweighted
2003-2004 Estimates FTE-2A (Division Estimates with college adjustments) - Unweighted
Advanced and Professional, Post Secondary Vocational, and College Preparatory are calculated as 40 Credit Hour FTE.

**FLORIDA COMMUNITY COLLEGE SYSTEM
Student Data Base FTE Report**

2003-2004 FTE-1B (Division Estimates with College Adjustments) compared to the 2003-2004 FTE-2A (Division Estimates with College Adjustments)

	Adv. & Prof.	Diff. Percent	Postsec. Voc.	Diff. Percent	Postsec. Adult	Diff. Percent	Apprenticeship	Diff. Percent	CWE	Diff. Percent	College Prep	Diff. Percent	Voc. Prep	Diff. Percent	Adult Basic	Diff. Percent	Adult S&G	Diff. Percent	AWD	Diff. Percent	Total FTE	Diff. Percent
NFLA																						
2004 FTE-1B	381	3	88	0	142	10	0	0	53	20	56	-2	0	0	19	4	0	0	0	0	739	35
2004 FTE-2A	384	0.8	88	0.0	152	7.0	0	0.0	73	37.7	54	-3.6	0	0.0	23	21.1	0	0.0	0	0.0	774	4.7
OWCC																						
2004 FTE-1B	2715	19	573	7	164	-4	0	0	18	-1	282	6	0	0	271	-11	127	-21	0	0	4150	-5
2004 FTE-2A	2734	0.7	580	1.2	160	-2.4	0	0.0	17	-5.6	288	2.1	0	0.0	260	-4.1	106	-16.5	0	0.0	4145	-0.1
PBCC																						
2004 FTE-1B	7854	38	978	2	1224	-268	1200	85	217	-13	1107	27	0	0	0	0	0	0	0	0	12580	-129
2004 FTE-2A	7892	0.5	980	0.2	956	-21.9	1285	7.1	204	-6.0	1134	2.4	0	0.0	0	0.0	0	0.0	0	0.0	12451	-1.0
PHCC																						
2004 FTE-1B	1699	105	945	3	392	9	0	0	40	4	394	-1	0	0	176	13	174	-19	0	0	3820	114
2004 FTE-2A	1804	6.2	948	0.3	401	2.3	0	0.0	44	10.0	393	-0.3	0	0.0	189	7.4	155	-10.9	0	0.0	3934	3.0
PJC																						
2004 FTE-1B	3722	-67	1258	32	391	-13	0	0	63	-6	464	7	13	-1	477	-47	446	22	8	-4	6842	-77
2004 FTE-2A	3655	-1.8	1290	2.5	378	-3.3	0	0.0	57	-9.5	471	1.5	12	-7.7	430	-9.9	468	4.9	4	-50.0	6765	-1.1
POLK																						
2004 FTE-1B	2033	-21	961	-55	165	-39	0	0	285	-39	354	-3	0	0	0	0	0	0	0	0	3798	-157
2004 FTE-2A	2012	-1.0	906	-5.7	126	-23.6	0	0.0	246	-13.7	351	-0.8	0	0.0	0	0.0	0	0.0	0	0.0	3641	-4.1
SJRCC																						
2004 FTE-1B	1649	-26	522	-37	145	-19	511	-43	33	-8	160	-10	0	0	41	-8	28	-7	45	7	3134	-151
2004 FTE-2A	1623	-1.6	485	-7.1	126	-13.1	468	-8.4	25	-24.2	150	-6.3	0	0.0	33	-19.5	21	-25.0	52	15.6	2983	-4.8
SPC																						
2004 FTE-1B	6953	157	3404	-106	10	-8	0	0	430	-61	1290	43	0	0	0	0	0	0	0	0	12087	25
2004 FTE-2A	7110	2.3	3298	-3.1	2	-80.0	0	0.0	369	-14.2	1333	3.3	0	0.0	0	0.0	0	0.0	0	0.0	12112	0.2
SFCC																						
2004 FTE-1B	5161	59	1677	31	327	-35	343	29	106	-3	959	-20	27	-9	294	-107	70	39	0	0	8964	-16
2004 FTE-2A	5220	1.1	1708	1.8	292	-10.7	372	8.5	103	-2.8	939	-2.1	18	-33.3	187	-36.4	109	55.7	0	0.0	8948	-0.2
SCC																						
2004 FTE-1B	3772	-65	1818	-24	445	21	1000	-136	80	-1	670	14	90	-7	1129	-145	843	-57	23	-3	9870	-403
2004 FTE-2A	3707	-1.7	1794	-1.3	466	4.7	864	-13.6	79	-1.3	684	2.1	83	-7.8	984	-12.8	786	-6.8	20	-13.0	9467	-4.1
SFLA																						
2004 FTE-1B	833	2	119	5	587	-14	95	-21	79	-24	80	2	0	0	1375	-149	235	-14	0	0	3403	-213
2004 FTE-2A	835	0.2	124	4.2	573	-2.4	74	-22.1	55	-30.4	82	2.5	0	0.0	1226	-10.8	221	-6.0	0	0.0	3190	-6.3
TCC																						
2004 FTE-1B	5030	-2	830	-8	247	-84	4	-1	350	-73	983	-29	0	0	149	-15	20	-5	0	0	7613	-217
2004 FTE-2A	5028	0.0	822	-1.0	163	-34.0	3	-25.0	277	-20.9	954	-3.0	0	0.0	134	-10.1	15	-25.0	0	0.0	7396	-2.9
VCC																						
2004 FTE-1B	10038	71	3685	14	227	12	0	0	498	-18	1756	4	0	0	0	0	0	0	0	0	16204	83
2004 FTE-2A	10109	0.7	3699	0.4	239	5.3	0	0.0	480	-3.6	1760	0.2	0	0.0	0	0.0	0	0.0	0	0.0	16287	0.5
SYST TOTAL																						
2004 FTE-1B	124596	-745	42658	-384	11743	-281	9145	-615	6309	-414	23214	-39	2802	-336	13064	-413	5090	-43	540	156	239161	-3114
2004 FTE-2A	123851	-0.6	42274	-0.9	11462	-2.4	8530	-6.7	5895	-6.6	23175	-0.2	2466	-12.0	12651	-3.2	5047	-0.8	696	28.9	236047	-1.3

Sources: 2003-2004 Estimates FTE-1B (Division Estimates with college adjustments) - Unweighted
2003-2004 Estimates FTE-2A (Division Estimates with college adjustments) - Unweighted

Note: Advanced and Professional, Post Secondary Vocational, and College Preparatory are calculated as 40 Credit Hour FTE.

FLORIDA COMMUNITY COLLEGE SYSTEM
Student Data Base FTE Report
2003-2004 FTE-2 (Division Estimates) compared to the 2003-2004 FTE-2A (Division Estimates with College Adjustments)

	Adv. & Prof.	Diff. Percent	Postsec. Voc.	Diff. Percent	Postsec. Adult	Diff. Percent	Apprenticeship	Diff. Percent	CWE	Diff. Percent	College Prep	Diff. Percent	Voc. Prep	Diff. Percent	Adult Basic	Diff. Percent	Adult S&G	Diff. Percent	AWD	Diff. Percent	Total FTE	Diff. Percent	
BREV																							
2004 FTE-2	4408	0	1702	0	706	0	772	0	94	0	589	0	0	0	0	0	0	0	0	0	0	8271	0
2004 FTE-2A	4408	0.0	1702	0.0	706	0.0	772	0.0	94	0.0	589	0.0	0	0.0	0	0.0	0	0.0	0	0.0	0	8271	0.0
BROW																							
2004 FTE-2	9027	0	4534	0	475	0	0	0	194	0	2951	0	0	0	0	0	0	0	0	0	0	17181	0
2004 FTE-2A	9027	0.0	4534	0.0	475	0.0	0	0.0	194	0.0	2951	0.0	0	0.0	0	0.0	0	0.0	0	0.0	0	17181	0.0
CFLA																							
2004 FTE-2	1699	232	601	59	248	150	0	0	93	182	312	40	0	36	112	66	45	22	0	0	3110	787	
2004 FTE-2A	1931	13.7	660	9.8	398	60.5	0	0.0	275	195.7	352	12.8	36	0.0	178	58.9	67	48.9	0	0.0	3897	25.3	
CHIP																							
2004 FTE-2	776	0	191	0	216	0	0	0	75	-25	91	0	18	0	0	0	0	0	0	0	1367	-25	
2004 FTE-2A	776	0.0	191	0.0	216	0.0	0	0.0	50	-33.3	91	0.0	18	0.0	0	0.0	0	0.0	0	0.0	1342	-1.8	
DAYT																							
2004 FTE-2	3399	33	1637	0	684	0	638	0	102	0	753	0	1	0	2228	0	1483	0	474	95	11399	128	
2004 FTE-2A	3432	1.0	1637	0.0	684	0.0	638	0.0	102	0.0	753	0.0	1	0.0	2228	0.0	1483	0.0	569	20.0	11527	1.1	
EDIS																							
2004 FTE-2	3639	0	1063	0	8	0	0	0	50	0	687	0	0	0	0	0	0	0	0	0	5447	0	
2004 FTE-2A	3639	0.0	1063	0.0	8	0.0	0	0.0	50	0.0	687	0.0	0	0.0	0	0.0	0	0.0	0	0.0	5447	0.0	
FCCJ																							
2004 FTE-2	7482	168	2744	69	1396	68	1409	291	301	29	995	22	25	0	1542	128	506	39	45	6	16445	820	
2004 FTE-2A	7650	2.2	2813	2.5	1464	4.9	1700	20.7	330	9.6	1017	2.2	25	0.0	1670	8.3	545	7.7	51	13.3	17265	5.0	
FKEY																							
2004 FTE-2	359	10	222	0	35	3	0	0	18	7	32	0	0	0	0	0	0	0	0	0	666	20	
2004 FTE-2A	369	2.8	222	0.0	38	8.6	0	0.0	25	38.9	32	0.0	0	0.0	0	0.0	0	0.0	0	0.0	686	3.0	
GULF																							
2004 FTE-2	1945	83	790	15	185	22	17	0	227	3	268	0	0	0	140	0	71	0	0	0	3643	123	
2004 FTE-2A	2028	4.3	805	1.9	207	11.9	17	0.0	230	1.3	268	0.0	0	0.0	140	0.0	71	0.0	0	0.0	3766	3.4	
HILL																							
2004 FTE-2	7074	0	1873	0	469	0	1379	0	351	0	1822	0	0	0	0	0	0	0	0	0	12968	0	
2004 FTE-2A	7074	0.0	1873	0.0	469	0.0	1379	0.0	351	0.0	1822	0.0	0	0.0	0	0.0	0	0.0	0	0.0	12968	0.0	
IRCC																							
2004 FTE-2	2902	0	1966	0	1141	0	841	0	80	0	400	0	4	0	2313	0	590	0	0	0	10237	0	
2004 FTE-2A	2902	0.0	1966	0.0	1141	0.0	841	0.0	80	0.0	400	0.0	4	0.0	2313	0.0	590	0.0	0	0.0	10237	0.0	
LCCC																							
2004 FTE-2	808	0	369	0	540	-89	0	0	201	-6	114	0	0	0	19	0	4	0	0	0	2055	-95	
2004 FTE-2A	808	0.0	369	0.0	451	-16.5	0	0.0	195	-3.0	114	0.0	0	0.0	19	0.0	4	0.0	0	0.0	1960	-4.6	
LSCC																							
2004 FTE-2	1019	0	435	0	0	0	0	0	58	0	120	0	0	0	0	0	0	0	0	0	1632	0	
2004 FTE-2A	1019	0.0	435	0.0	0	0.0	0	0.0	58	0.0	120	0.0	0	0.0	0	0.0	0	0.0	0	0.0	1632	0.0	
MCC																							
2004 FTE-2	3717	0	388	0	0	0	0	0	101	0	627	0	0	0	33	0	12	0	0	0	4878	0	
2004 FTE-2A	3717	0.0	388	0.0	0	0.0	0	0.0	101	0.0	627	0.0	0	0.0	33	0.0	12	0.0	0	0.0	4878	0.0	
MDCC																							
2004 FTE-2	23023	-65	6874	20	1171	0	72	45	1731	0	4759	0	2269	0	2604	0	394	0	0	0	42897	0	
2004 FTE-2A	22958	-0.3	6894	0.3	1171	0.0	117	62.5	1731	0.0	4759	0.0	2269	0.0	2604	0.0	394	0.0	0	0.0	42897	0.0	

Sources: 2003-2004 Estimates FTE-2 (Division Estimates) - Unweighted
2003-2004 Estimates FTE-2A (Division Estimates with college adjustments) - Unweighted
Advanced and Professional, Post Secondary Vocational, and College Preparatory are calculated as 40 Credit Hour FTE.

FLORIDA COMMUNITY COLLEGE SYSTEM
Student Data Base FTE Report
2003-2004 FTE-2 (Division Estimates) compared to the 2003-2004 FTE-2A (Division Estimates with College Adjustments)

	Adv. & Prof.	Diff. Percent	Postsec. Voc.	Diff. Percent	Postsec. Adult	Diff. Percent	Apprenticeship	Diff. Percent	CWE	Diff. Percent	College Prep	Diff. Percent	Voc. Prep	Diff. Percent	Adult Basic	Diff. Percent	Adult S&G	Diff. Percent	AWD	Diff. Percent	Total FTE	Diff. Percent
NFLA																						
2004 FTE-2	384	0	88	0	152	0	0	0	73	0	54	0	0	0	23	0	0	0	0	0	774	0
2004 FTE-2A	384	0.0	88	0.0	152	0.0	0	0.0	73	0.0	54	0.0	0	0.0	23	0.0	0	0.0	0	0.0	774	0.0
OWCC																						
2004 FTE-2	2734	0	580	0	160	0	0	0	17	0	288	0	0	0	260	0	106	0	0	0	4145	0
2004 FTE-2A	2734	0.0	580	0.0	160	0.0	0	0.0	17	0.0	288	0.0	0	0.0	260	0.0	106	0.0	0	0.0	4145	0.0
PBCC																						
2004 FTE-2	7768	124	1017	-37	1055	-99	1396	-111	204	0	1097	37	0	0	0	0	0	0	0	0	12537	-86
2004 FTE-2A	7892	1.6	980	-3.6	956	-9.4	1285	-8.0	204	0.0	1134	3.4	0	0.0	0	0.0	0	0.0	0	0.0	12451	-0.7
PHCC																						
2004 FTE-2	1804	0	948	0	401	0	0	0	44	0	393	0	0	0	189	0	321	-166	0	0	4100	-166
2004 FTE-2A	1804	0.0	948	0.0	401	0.0	0	0.0	44	0.0	393	0.0	0	0.0	189	0.0	155	-51.7	0	0.0	3934	-4.0
PJC																						
2004 FTE-2	3655	0	1290	0	378	0	0	0	57	0	471	0	12	0	430	0	468	0	4	0	6765	0
2004 FTE-2A	3655	0.0	1290	0.0	378	0.0	0	0.0	57	0.0	471	0.0	12	0.0	430	0.0	468	0.0	4	0.0	6765	0.0
POLK																						
2004 FTE-2	2012	0	906	0	126	0	0	0	246	0	351	0	0	0	0	0	0	0	0	0	3641	0
2004 FTE-2A	2012	0.0	906	0.0	126	0.0	0	0.0	246	0.0	351	0.0	0	0.0	0	0.0	0	0.0	0	0.0	3641	0.0
SJRCC																						
2004 FTE-2	1595	28	485	0	121	5	354	114	25	0	150	0	0	0	33	0	21	0	52	0	2836	147
2004 FTE-2A	1623	1.8	485	0.0	126	4.1	468	32.2	25	0.0	150	0.0	0	0.0	33	0.0	21	0.0	52	0.0	2983	5.2
SPC																						
2004 FTE-2	7110	0	3298	0	2	0	0	0	369	0	1333	0	0	0	0	0	0	0	0	0	12112	0
2004 FTE-2A	7110	0.0	3298	0.0	2	0.0	0	0.0	369	0.0	1333	0.0	0	0.0	0	0.0	0	0.0	0	0.0	12112	0.0
SFCC																						
2004 FTE-2	5220	0	1708	0	292	0	372	0	103	0	939	0	18	0	187	0	109	0	0	0	8948	0
2004 FTE-2A	5220	0.0	1708	0.0	292	0.0	372	0.0	103	0.0	939	0.0	18	0.0	187	0.0	109	0.0	0	0.0	8948	0.0
SCC																						
2004 FTE-2	3707	0	1794	0	466	0	698	166	79	0	684	0	83	0	984	0	786	0	20	0	9301	166
2004 FTE-2A	3707	0.0	1794	0.0	466	0.0	864	23.8	79	0.0	684	0.0	83	0.0	984	0.0	786	0.0	20	0.0	9467	1.8
SFLA																						
2004 FTE-2	825	10	119	5	573	0	74	0	55	0	82	0	0	0	1101	125	196	25	0	0	3025	165
2004 FTE-2A	835	1.2	124	4.2	573	0.0	74	0.0	55	0.0	82	0.0	0	0.0	1226	11.4	221	12.8	0	0.0	3190	5.5
TCC																						
2004 FTE-2	5028	0	822	0	163	0	3	0	277	0	954	0	0	0	134	0	15	0	0	0	7396	0
2004 FTE-2A	5028	0.0	822	0.0	163	0.0	3	0.0	277	0.0	954	0.0	0	0.0	134	0.0	15	0.0	0	0.0	7396	0.0
VCC																						
2004 FTE-2	10109	0	3699	0	239	0	0	0	480	0	1760	0	0	0	0	0	0	0	0	0	16287	0
2004 FTE-2A	10109	0.0	3699	0.0	239	0.0	0	0.0	480	0.0	1760	0.0	0	0.0	0	0.0	0	0.0	0	0.0	16287	0.0
SYST TOTAL																						
2004 FTE-2	123228	623	42143	131	11402	60	8025	505	5705	190	23076	99	2430	36	12332	319	5127	-80	595	101	234063	1984
2004 FTE-2A	123851	0.5	42274	0.3	11462	0.5	8530	6.3	5895	3.3	23175	0.4	2466	1.5	12651	2.6	5047	-1.6	696	17.0	236047	0.8

Sources: 2003-2004 Estimates FTE-2 (Division Estimates) - Unweighted
2003-2004 Estimates FTE-2A (Division Estimates with college adjustments) - Unweighted
Note: Advanced and Professional, Post Secondary Vocational, and College Preparatory are calculated as 40 Credit Hour FTE.