

FLORIDA  
COMMUNITY  
COLLEGES

NON-WEIGHTED FTE ENROLLMENT  
FUNDED-30, LOWER LEVEL  
2004-05 FTE-3

CCFTE201  
11/08/05  
15:33:36

COLL	A AND P	COLLEGE PREP	POSTSEC VOC	POSTSEC ADL VOC	APPRNT	CWE VOC	VOC PREP	ADULT BASIC	ADLT-SEC +GED-PRP	EPI	TOTAL
BREV	6,002.1	753.5	2,142.9	757.3	677.0	134.9					10,467.7
BROW	12,422.6	3,760.7	6,023.5	489.0		263.5					22,959.3
CFLA	2,422.8	449.1	847.9	458.0		260.3	13.2	136.7	174.5		4,762.5
CHIP	1,012.5	118.4	257.6	193.7		52.7	15.9				1,650.8
DAYT	4,593.9	885.5	2,105.6	702.2	661.8	74.7	1.2	1,986.3	1,347.1		12,358.3
EDIS	4,748.3	886.4	1,446.7	8.1		31.0					7,120.5
FJAX	10,549.6	1,232.0	3,571.1	1,267.3	842.7	438.1	68.9	1,439.2	499.9		19,908.8
FKEY	453.8	48.8	247.2	36.1		24.4					810.3
GULF	2,729.8	348.1	1,025.8	230.5	20.6	239.2		170.3	107.2		4,871.5
HILL	9,563.1	2,298.2	2,674.4	453.2	1,417.0	381.3		23.5	5.5		16,816.2
INDR	3,992.7	471.8	2,471.1	1,052.6	803.6	62.0	1.1	1,942.6	530.9		11,328.4
LCTY	1,149.4	176.6	413.9	578.1		187.4		1.5	2.5		2,509.4
LSUM	1,479.6	210.5	591.9			57.4					2,339.4
MANA	5,134.5	782.8	561.1			82.6		22.2	9.9		6,593.1
MIAM	29,734.1	6,222.1	8,592.3	1,151.9	351.2	1,539.5	2,799.5	2,577.3	453.3		53,421.2
NFLA	557.1	94.2	132.3	151.2		41.5	1.6	21.3	1.5		1,000.7
OKAL	3,411.4	337.8	664.3	121.6		15.7		220.2	60.7		4,831.7
PALM	10,531.4	1,399.7	1,358.8	970.2	1,337.3	277.8					15,875.2
PASC	2,520.7	520.7	1,280.3	374.3		36.0		284.2	182.5		5,198.7
PENS	4,780.2	533.5	1,695.6	365.6		52.8	11.4	408.1	500.8		8,348.0
POLK	2,617.8	465.0	1,152.1	98.7		172.0					4,505.6
ST.J	2,128.0	212.7	661.1	135.4	488.7	34.3		55.5	17.4		3,733.1
ST.P	9,365.6	1,645.8	4,239.8	35.1		364.0					15,650.3
SANF	7,244.4	1,093.8	2,144.6	285.1	371.4	83.9	18.2	237.7	81.8		11,560.9
SEMI	4,848.3	879.8	2,211.4	402.3	714.7	52.1	32.6	1,146.3	911.6		11,199.1
SFLA	1,016.6	106.0	131.1	562.4	75.7	51.1	0.3	1,141.0	165.4		3,249.6
TALL	7,078.8	1,179.8	1,129.0	255.9	3.7	311.5		215.9	82.7		10,257.3
VALE	13,315.2	1,982.2	4,985.5	207.4		406.1					20,896.4
SYST	165,404.3	29,095.5	54,758.9	11,343.2	7,765.4	5,727.8	2,963.9	12,029.8	5,135.2		294,224.0

SOURCE: FN30C32005

NOTE: A&P, PSV, AND COLLEGE PREP ARE CREDIT HOURS/30

FLORIDA  
COMMUNITY  
COLLEGES

NON-WEIGHTED FTE ENROLLMENT  
FUNDED-30, LOWER LEVEL  
2005-06 FTE-1

CCFTE201  
10/13/05  
13:13:17

DIVISION ESTIMATES

COLL	A AND P	COLLEGE PREP	POSTSEC VOC	POSTSEC ADL VOC	APPRNT	CWE VOC	VOC PREP	ADULT BASIC	ADLT-SEC +GED-PRP	EPI	TOTAL
BREV	5,872.0	678.0	2,121.0	757.0	677.0	135.0					10,240.0
BROW	12,513.0	3,449.0	5,730.0	490.0		264.0					22,446.0
CFLA	2,367.0	458.0	874.0	458.0		260.0	13.0	137.0	175.0		4,742.0
CHIP	972.0	114.0	327.0	194.0		53.0	16.0				1,676.0
DAYT	4,588.0	826.0	2,027.0	702.0	661.0	75.0	1.0	1,986.0	1,348.0		12,214.0
EDIS	4,813.0	912.0	1,552.0	8.0		32.0					7,317.0
FJAX	10,574.0	1,105.0	3,504.0	1,267.0	843.0	438.0	69.0	1,439.0	500.0	12.0	19,751.0
FKEY	435.0	48.0	234.0	35.0		24.0					776.0
GULF	2,641.0	329.0	988.0	231.0	21.0	239.0		170.0	107.0		4,726.0
HILL	9,655.0	2,031.0	2,466.0	453.0	1,416.0	381.0		24.0	6.0		16,432.0
INDR	4,102.0	533.0	2,546.0	1,053.0	804.0	62.0	1.0	1,942.0	531.0	67.0	11,641.0
LCTY	1,155.0	150.0	408.0	579.0		187.0	2.0	2.0	3.0	10.0	2,496.0
LSUM	1,416.0	216.0	576.0			57.0					2,265.0
MANA	5,226.0	782.0	610.0			82.0		22.0	10.0		6,732.0
MIAM	28,522.0	5,998.0	8,248.0	1,152.0	351.0	1,540.0	2,801.0	2,576.0	453.0		51,641.0
NFLA	548.0	88.0	154.0	151.0		43.0	2.0	21.0	2.0	16.0	1,025.0
OKAL	3,319.0	297.0	649.0	122.0		17.0		220.0	61.0		4,685.0
PALM	10,690.0	1,336.0	1,383.0	969.0	1,336.0	277.0					15,991.0
PASC	2,617.0	517.0	1,281.0	374.0		36.0		284.0	183.0		5,292.0
PENS	4,514.0	444.0	1,568.0	366.0		53.0	10.0	408.0	501.0	22.0	7,886.0
POLK	2,649.0	442.0	1,168.0	100.0		172.0					4,531.0
ST.J	2,151.0	224.0	694.0	162.0	489.0	33.0		56.0	17.0		3,826.0
ST.P	9,616.0	1,681.0	4,100.0	35.0		363.0					15,795.0
SANF	7,086.0	1,039.0	2,279.0	285.0	371.0	85.0	19.0	238.0	82.0		11,484.0
SEMI	4,592.0	825.0	2,116.0	402.0	715.0	52.0	33.0	1,147.0	912.0		10,794.0
SFLA	931.0	90.0	123.0	563.0	76.0	51.0		1,141.0	165.0		3,140.0
TALL	7,437.0	1,181.0	1,227.0	257.0	4.0	312.0		216.0	83.0		10,717.0
VALE	13,146.0	1,903.0	5,041.0	207.0		406.0					20,703.0
SYST	164,147.0	27,696.0	53,994.0	11,372.0	7,764.0	5,729.0	2,967.0	12,029.0	5,139.0	127.0	290,964.0

SOURCE: FN30C12006

NOTE: A&P, PSV, AND COLLEGE PREP ARE CREDIT HOURS/30

FLORIDA  
COMMUNITY  
COLLEGES

NON-WEIGHTED FTE ENROLLMENT  
FUNDED-30, LOWER LEVEL  
2005-06 FTE-3

CCFTE201  
11/08/05  
15:35:51

DIVISION PROJECTIONS WITH COLLEGE ADJUSTMENTS

COLLEGE	A AND P	COLLEGE PREP	POSTSEC VOC	POSTSEC ADULT VOC	APPRNT	CWE VOC	VOC PREP	ADULT BASIC	ADULT +GED	SEC PREP	EPI	TOTAL
BREV	6,238.0	783.0	2,226.0	770.0	440.0	139.0						10,596.0
BROW	12,682.0	3,840.0	6,147.0	498.0		233.0					15.0	23,415.0
CFLA	2,533.0	463.0	871.0	449.0		254.0	13.0	132.0	176.0		5.0	4,896.0
CHIP	1,067.0	124.0	302.0	282.0		55.0	17.0					1,847.0
DAYT	4,852.0	948.0	2,195.0	731.0	689.0	77.0	1.0	2,279.0	1,406.0			13,178.0
EDIS	5,284.0	980.0	1,579.0	9.0		34.0						7,886.0
FJAX	10,968.0	1,269.0	3,614.0	1,299.0	865.0	525.0	71.0	1,406.0	511.0			20,528.0
FKEY	438.0	46.0	235.0	64.0		41.0						824.0
GULF	2,863.0	360.0	1,059.0	285.0	24.0	251.0		171.0	105.0			5,118.0
HILL	10,051.0	2,417.0	2,811.0	475.0	1,408.0	359.0		27.0	5.0			17,551.0
INDR	4,114.0	498.0	2,606.0	1,109.0	850.0	64.0	1.0	2,278.0	559.0		215.0	12,294.0
LCTY	1,201.0	185.0	432.0	605.0		195.0		2.0	2.0			2,622.0
LSUM	1,565.0	223.0	627.0			61.0					14.0	2,490.0
MANA	5,345.0	823.0	579.0			87.0		27.0	16.0			6,877.0
MIAM	31,106.0	6,498.0	8,920.0	1,192.0	363.0	1,592.0	2,895.0	2,667.0	470.0		78.0	55,781.0
NFLA	568.0	96.0	134.0	155.0		41.0	2.0	22.0	2.0			1,020.0
OKAL	3,344.0	356.0	814.0	129.0		6.0		132.0	139.0			4,920.0
PALM	10,802.0	1,468.0	1,365.0	929.0	1,359.0	275.0					48.0	16,246.0
PASC	2,573.0	527.0	1,293.0	371.0		35.0		247.0	173.0		54.0	5,273.0
PENS	4,812.0	534.0	1,729.0	368.0		53.0	12.0	409.0	502.0		15.0	8,434.0
POLK	2,763.0	491.0	1,215.0	104.0		171.0						4,744.0
ST.J	2,171.0	220.0	685.0	141.0	506.0	35.0		57.0	19.0			3,834.0
ST.P	9,382.0	1,651.0	4,229.0	28.0		358.0						15,648.0
SANF	7,265.0	1,132.0	2,280.0	290.0	376.0	85.0	18.0	241.0	83.0			11,770.0
SEMI	5,063.0	919.0	2,297.0	418.0	746.0	53.0	34.0	1,198.0	951.0		1.0	11,680.0
SFLA	985.0	107.0	139.0	424.0	75.0	55.0		1,035.0	167.0			2,987.0
TALL	7,591.0	1,266.0	1,211.0	599.0	4.0	345.0		231.0	89.0			11,336.0
VALE	13,422.0	2,011.0	5,025.0	212.0		403.0						21,073.0
SYST	171,048.0	30,235.0	56,619.0	11,936.0	7,705.0	5,882.0	3,064.0	12,559.0	5,375.0		445.0	304,868.0

SOURCE: PJC30C2006A

NOTE: A&P, PSV, AND COLLEGE PREP ARE CREDIT HOURS/30

FLORIDA  
COMMUNITY  
COLLEGES

NON-WEIGHTED FTE ENROLLMENT  
FUNDED-40, LOWER LEVEL  
2005-06 FTE-1A

CCFTE201  
11/07/05  
11:12:01

DIVISION ESTIMATES WITH COLLEGE ADJUSTMENTS

COLL	A AND P	COLLEGE PREP	POSTSEC VOC	POSTSEC ADL VOC	APPRNT	CWE VOC	VOC PREP	ADULT BASIC	ADLT-SEC +GED-PRP	EPI	TOTAL
BREV	4,404.1	508.6	1,590.8	757.0	677.0	135.0					8,072.5
BROW	9,384.9	2,586.9	4,297.6	490.0		264.0					17,023.4
CFLA	1,775.3	343.5	655.5	458.0		260.0	13.0	137.0	175.0	31.5	3,848.8
CHIP	729.0	85.5	245.3	194.0		53.0	16.0				1,322.8
DAYT	3,515.3	619.5	1,520.3	717.0	661.0	75.0	1.0	1,986.0	1,348.0	12.0	10,455.1
EDIS	3,609.9	684.1	1,164.2	8.0		32.0					5,498.2
FJAX	8,150.3	840.8	2,678.3	1,280.0	600.0	548.0	69.0	1,439.0	500.0	9.0	16,114.4
FKEY	326.3	36.1	175.6	35.0		24.0					597.0
GULF	2,033.3	251.3	756.0	236.0	35.0	243.0		170.0	107.0	18.8	3,850.4
HILL	7,241.3	1,523.3	1,849.5	453.0	1,416.0	381.0		24.0	6.0		12,894.1
INDR	3,076.5	399.8	1,909.5	1,080.0	954.0	62.0	1.0	2,082.0	585.0	50.3	10,200.1
LCTY	866.4	112.6	306.1	579.0		187.0	2.0	2.0	3.0	7.6	2,065.7
LSUM	1,069.5	162.0	447.0			57.0				15.0	1,750.5
MANA	3,919.5	586.5	457.5			82.0		22.0	10.0		5,077.5
MIAM	21,444.0	4,536.0	6,186.0	1,152.0	351.0	1,590.0	2,501.0	2,676.0	453.0	22.5	40,911.5
NFLA	411.1	66.1	115.6	151.0		43.0	2.0	21.0	2.0	12.0	823.8
OKAL	2,601.8	279.0	474.8	113.0		20.0		213.0	84.0	9.0	3,794.6
PALM	8,017.5	1,002.0	994.5	802.0	1,261.0	277.0					12,354.0
PASC	1,962.9	387.8	960.9	374.0		36.0		284.0	183.0		4,188.6
PENS	3,483.8	333.0	1,228.5	366.0		58.0	10.0	408.0	501.0	16.5	6,404.8
POLK	1,986.9	331.6	876.2	100.0		172.0					3,466.7
ST.J	1,613.4	168.1	520.6	162.0	489.0	33.0		56.0	17.0		3,059.1
ST.P	7,037.3	1,238.3	3,172.5	28.0		358.0					11,834.1
SANF	5,314.6	779.3	1,709.3	285.0	371.0	85.0	19.0	238.0	82.0		8,883.2
SEMI	3,528.8	618.8	1,660.5	402.0	715.0	52.0	33.0	1,147.0	912.0		9,069.1
SFLA	662.3	67.5	93.8	474.0	72.0	62.0		1,168.0	165.0		2,764.6
TALL	5,561.3	913.5	903.0	531.0	4.0	452.0		216.0	83.0		8,663.8
VALE	9,859.7	1,427.4	3,780.8	207.0		406.0					15,680.9
SYST	123,587.0	20,888.9	40,730.2	11,434.0	7,606.0	6,047.0	2,667.0	12,289.0	5,216.0	204.2	230,669.3

SOURCE: FN1A2006

NOTE: A&P, PSV, AND COLLEGE PREP ARE CREDIT HOURS/40

FLORIDA  
COMMUNITY  
COLLEGES

NON-WEIGHTED FTE ENROLLMENT  
FUNDED-30, LOWER LEVEL  
2005-06 FTE-1A

CCFTE201  
11/07/05  
14:07:12

DIVISION ESTIMATES WITH COLLEGE ADJUSTMENTS

COLL	A AND P	COLLEGE PREP	POSTSEC VOC	POSTSEC ADL VOC	APPRNT	CWE VOC	VOC PREP	ADULT BASIC	ADLT-SEC +GED-PRP	EPI	TOTAL
BREV	5,872.0	678.0	2,121.0	757.0	677.0	135.0					10,240.0
BROW	12,513.0	3,449.0	5,730.0	490.0		264.0					22,446.0
CFLA	2,367.0	458.0	874.0	458.0		260.0	13.0	137.0	175.0	42.0	4,784.0
CHIP	972.0	114.0	327.0	194.0		53.0	16.0				1,676.0
DAYT	4,687.0	826.0	2,027.0	717.0	661.0	75.0	1.0	1,986.0	1,348.0	16.0	12,344.0
EDIS	4,813.0	912.0	1,552.0	8.0		32.0					7,317.0
FJAX	10,867.0	1,121.0	3,571.0	1,280.0	600.0	548.0	69.0	1,439.0	500.0	12.0	20,007.0
FKEY	435.0	48.0	234.0	35.0		24.0					776.0
GULF	2,711.0	335.0	1,008.0	236.0	35.0	243.0		170.0	107.0	25.0	4,870.0
HILL	9,655.0	2,031.0	2,466.0	453.0	1,416.0	381.0		24.0	6.0		16,432.0
INDR	4,102.0	533.0	2,546.0	1,080.0	954.0	62.0	1.0	2,082.0	585.0	67.0	12,012.0
LCTY	1,155.0	150.0	408.0	579.0		187.0	2.0	2.0	3.0	10.0	2,496.0
LSUM	1,426.0	216.0	596.0			57.0				20.0	2,315.0
MANA	5,226.0	782.0	610.0			82.0		22.0	10.0		6,732.0
MIAM	28,592.0	6,048.0	8,248.0	1,152.0	351.0	1,590.0	2,501.0	2,676.0	453.0	30.0	51,641.0
NFLA	548.0	88.0	154.0	151.0		43.0	2.0	21.0	2.0	16.0	1,025.0
OKAL	3,469.0	372.0	633.0	113.0		20.0		213.0	84.0	12.0	4,916.0
PALM	10,690.0	1,336.0	1,326.0	802.0	1,261.0	277.0					15,692.0
PASC	2,617.0	517.0	1,281.0	374.0		36.0		284.0	183.0		5,292.0
PENS	4,645.0	444.0	1,638.0	366.0		58.0	10.0	408.0	501.0	22.0	8,092.0
POLK	2,649.0	442.0	1,168.0	100.0		172.0					4,531.0
ST.J	2,151.0	224.0	694.0	162.0	489.0	33.0		56.0	17.0		3,826.0
ST.P	9,383.0	1,651.0	4,230.0	28.0		358.0					15,650.0
SANF	7,086.0	1,039.0	2,279.0	285.0	371.0	85.0	19.0	238.0	82.0		11,484.0
SEMI	4,705.0	825.0	2,214.0	402.0	715.0	52.0	33.0	1,147.0	912.0		11,005.0
SFLA	883.0	90.0	125.0	474.0	72.0	62.0		1,168.0	165.0		3,039.0
TALL	7,415.0	1,218.0	1,204.0	531.0	4.0	452.0		216.0	83.0		11,123.0
VALE	13,146.0	1,903.0	5,041.0	207.0		406.0					20,703.0
SYST	164,780.0	27,850.0	54,305.0	11,434.0	7,606.0	6,047.0	2,667.0	12,289.0	5,216.0	272.0	292,466.0

SOURCE: FN30C1A2006

NOTE: A&P, PSV, AND COLLEGE PREP ARE CREDIT HOURS/30

Brevard

	A&P	PSV	PSAV	APPR	CWE	CP	VP	AB	ASG	EPI	TOT
2006											

No Changes

Broward

	A&P	PSV	PSAV	APPR	CWE	CP	VP	AB	ASG	EPI	TOT
2006											

No Changes – College has been closed for Hurricane Wilma and was unable to make adjustments.

Central Florida

	A&P	PSV	PSAV	APPR	CWE	CP	VP	AB	ASG	EPI	TOT
2006	0	0	0	0	0	0	0	0	0	42	42

EPI – New Program

Chipola

	A&P	PSV	PSAV	APPR	CWE	CP	VP	AB	ASG	EPI	TOT
2006											

No Changes

Daytona Beach

	A&P	PSV	PSAV	APPR	CWE	CP	VP	AB	ASG	EPI	TOT
2006	99	0	15	0	0	0	0	0	0	16	130

A&P: New Dual Enrollment program with Volusia County Schools.

PSAV: New Building Construction Technology program.

EPI: New program.

Edison

	A&P	PSV	PSAV	APPR	CWE	CP	VP	AB	ASG	EPI	TOT
2006											

No Changes

FCCJ

	A&P	PSV	PSAV	APPR	CWE	CP	VP	AB	ASG	EPI	TOT
2006	293	67	13	-243	110	16	0	0	0	0	256

APPR: Program reductions.

All Others: Local projections of pending enrollments.

Florida Keys

	A&P	PSV	PSAV	APPR	CWE	CP	VP	AB	ASG	EPI	TOT
2006											

No Changes at this time. Adjustments may be needed after time to assess enrollment data following Hurricane Wilma.

Gulf Coast

	A&P	PSV	PSAV	APPR	CWE	CP	VP	AB	ASG	EPI	TOT
2006	70	20	5	14	4	6	0	0	0	25	144

A&P: Additional dual enrollment.

CWE: New partnership with the Naval Support Systems, St. Joe, and Nextel.

All Others: College estimates to match or better 2004-05 numbers.

Hillsborough

	A&P	PSV	PSAV	APPR	CWE	CP	VP	AB	ASG	EPI	TOT
2006											

No Changes

Indian River

	A&P	PSV	PSAV	APPR	CWE	CP	VP	AB	ASG	EPI	TOT
2006	0	0	27	150	0	0	0	140	54	0	371

All: FTE was affected by the hurricanes last year. FTE for current year is better this year. Used old estimating model to estimate non-credit FTE.

Lake City

	A&P	PSV	PSAV	APPR	CWE	CP	VP	AB	ASG	EPI	TOT
2006											

No Changes

Lake-Sumter

	A&P	PSV	PSAV	APPR	CWE	CP	VP	AB	ASG	EPI	TOT
2006	10	20	0	0	0	0	0	0	0	20	50

AP: Students in new PSV programs will be taking general ed. courses.

PSV: Electrical Distribution Technology program was restricted to students from local utility in the past. As of Winter/Spring, the program will open to general public.  
Will provide firefighter training for Sumter County.

EPI: New program.

Manatee

	A&P	PSV	PSAV	APPR	CWE	CP	VP	AB	ASG	EPI	TOT
2006											

No Changes

Miami-Dade

	A&P	PSV	PSAV	APPR	CWE	CP	VP	AB	ASG	EPI	TOT
2006	70	0	0	0	50	50	-300	100	0	30	0

EPI: New program.

All Others: Redistributed FTE to better reflect program enrollment.

North Florida

	A&P	PSV	PSAV	APPR	CWE	CP	VP	AB	ASG	EPI	TOT
2006											

No Changes

Okaloosa-Walton

	A&P	PSV	PSAV	APPR	CWE	CP	VP	AB	ASG	EPI	TOT
2006	150	-16	-9	0	3	75	0	-7	23	12	231

EPI: New program.

All Others: Local experience with enrollment patterns following hurricanes. Expansion of freshman Nursing program. Continued enrollment of hurricane evacuees.

Palm Beach

	A&P	PSV	PSAV	APPR	CWE	CP	VP	AB	ASG	EPI	TOT
2006	0	-57	-167	-75	0	0	0	0	0	0	-299

No Changes



Pasco-Hernando

	A&P	PSV	PSAV	APPR	CWE	CP	VP	AB	ASG	EPI	TOT
2006											

No Changes

Pensacola

	A&P	PSV	PSAV	APPR	CWE	CP	VP	AB	ASG	EPI	TOT
2006	131	70	0	0	5	0	0	0	0	0	206

A&P: Growth of dual enrollment. Hurricane Katrina Evacuees.

PSV: New RN class.

A&P, PSV: Change to 4 sessions per term has changed the enrollment pattern, affecting the estimates model.

CWE: New course offerings.

Polk

	A&P	PSV	PSAV	APPR	CWE	CP	VP	AB	ASG	EPI	TOT
2006											

No Changes

St Johns River

	A&P	PSV	PSAV	APPR	CWE	CP	VP	AB	ASG	EPI	TOT
2006											

No Changes

St Petersburg

	A&P	PSV	PSAV	APPR	CWE	CP	VP	AB	ASG	EPI	TOT
2006	-133	130	-7	0	-5	-30	0	0	0	0	-145

All: Lower projections based on shift in enrollments from summer to fall and spring terms, employment climate that in the past marked decrease in enrollments, higher efficiency and productivity has led to decrease in number of course offerings, and international enrollments have declined since Sept. 11, 2001.

Santa Fe

	A&P	PSV	PSAV	APPR	CWE	CP	VP	AB	ASG	EPI	TOT
2006											

No Changes

Seminole

	A&P	PSV	PSAV	APPR	CWE	CP	VP	AB	ASG	EPI	TOT
2006	113	98	0	0	0	0	0	0	0	0	211

All: College projection.

South Florida

	A&P	PSV	PSAV	APPR	CWE	CP	VP	AB	ASG	EPI	TOT
2006	-48	2	-89	-4	11	0	0	27	0	0	-101

CWE: New staff hired to add CWE programs.

A&P, PSV: College is reducing several programs. Dual enrollment is reduced as the result of movement by local school boards to “block scheduling”.

All Others: Continued negative impact from prior season’s hurricanes.

Tallahassee

	A&P	PSV	PSAV	APPR	CWE	CP	VP	AB	ASG	EPI	TOT
2006	-22	-23	274	0	140	37	0	0	0	0	406

PSAV, CWE: New programs at Law Academy.

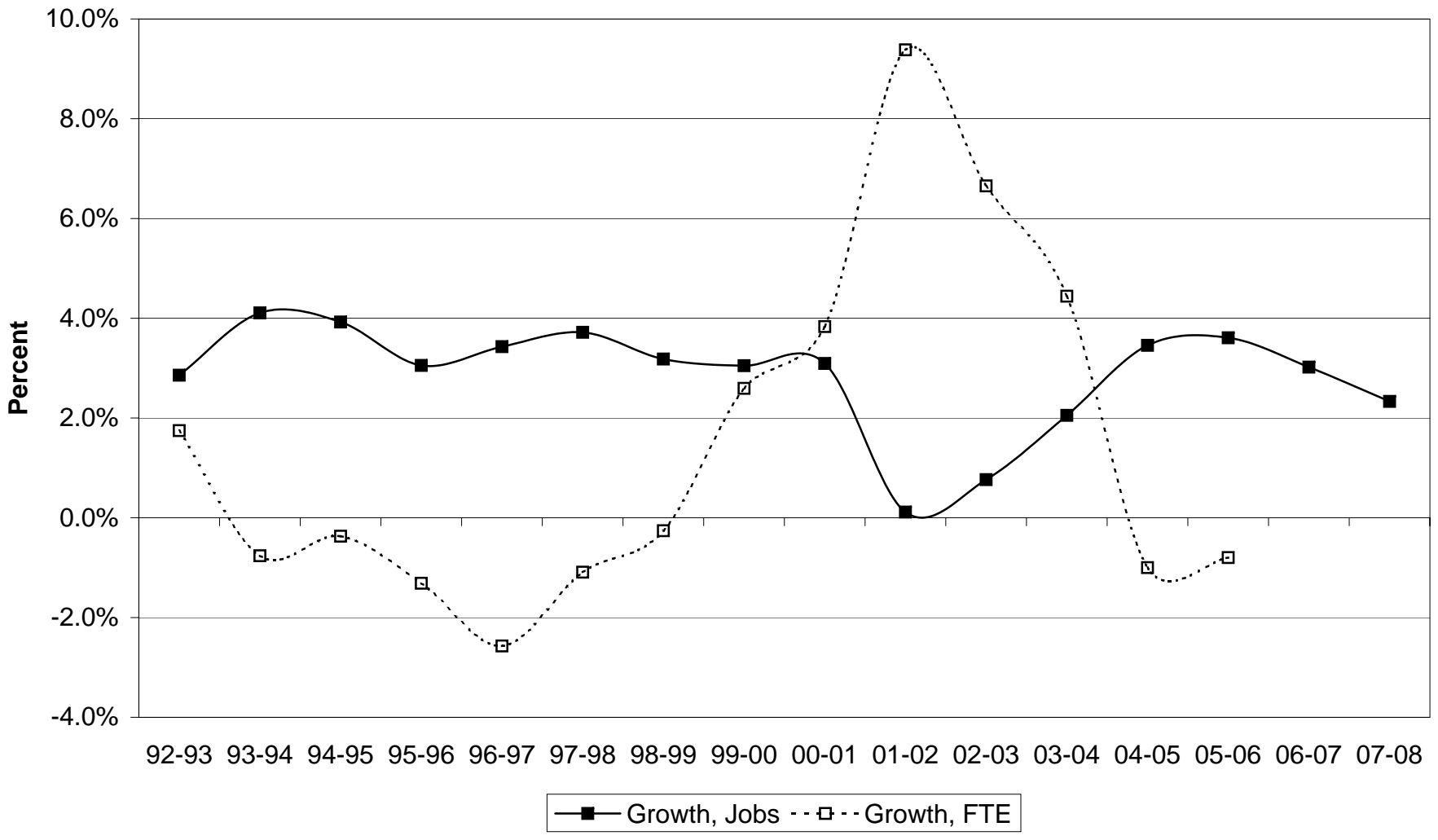
A&P, PSV, CP: Result of internal assessment and are based on actual courses that will be offered.

Valencia

	A&P	PSV	PSAV	APPR	CWE	CP	VP	AB	ASG	EPI	TOT
2006											

No Changes

## Compare Growth in Community College FTE and Growth in Florida Non-Agricultural Employment



**FLORIDA COMMUNITY COLLEGE SYSTEM**  
**Student Data Base FTE Report**  
**2004-2005 FTE-3 Compared to the 2005-2006 FTE-1 (Division Estimates)**

	Adv. & Prof.	Diff. Percent	Postsec. Voc.	Diff. Percent	Postsec. Adult	Diff. Percent	Apprenticeship	Diff. Percent	CWE	Diff. Percent	College Prep	Diff. Percent	Voc. Prep	Diff. Percent	Adult Basic	Diff. Percent	Adult S&G	Diff. Percent	EPI	Diff. Percent	Total FTE	Diff. Percent
<b>BREV</b>																						
2005 FTE-3	6002.1	-130	2142.9	-22	757.3	0	677.0	0	134.9	0	753.5	-76	0.0	0	0.0	0	0.0	0	0.0	0	10467.7	-228
2006 FTE-1	5872.0	-2.2	2121.0	-1.0	757.0	0.0	677.0	0.0	135.0	0.1	678.0	-10.0	0.0	0.0	0.0	0.0	0.0	0.0	0.0	0.0	10240.0	-2.2
<b>BROW</b>																						
2005 FTE-3	12422.6	90	6023.5	-294	489.0	1	0.0	0	263.5	1	3760.7	-312	0.0	0	0.0	0	0.0	0	0.0	0	22959.3	-513
2006 FTE-1	12513.0	0.7	5730.0	-4.9	490.0	0.2	0.0	0.0	264.0	0.2	3449.0	-8.3	0.0	0.0	0.0	0.0	0.0	0.0	0.0	0.0	22446.0	-2.2
<b>CFLA</b>																						
2005 FTE-3	2422.8	-56	847.9	26	458.0	0	0.0	0	260.3	0	449.1	9	13.2	0	136.7	0	174.5	1	0.0	0	4762.5	-21
2006 FTE-1	2367.0	-2.3	874.0	3.1	458.0	0.0	0.0	0.0	260.0	-0.1	458.0	2.0	13.0	-1.5	137.0	0.2	175.0	0.3	0.0	0.0	4742.0	-0.4
<b>CHIP</b>																						
2005 FTE-3	1012.5	-41	257.6	69	193.7	0	0.0	0	52.7	0	118.4	-4	15.9	0	0.0	0	0.0	0	0.0	0	1650.8	25
2006 FTE-1	972.0	-4.0	327.0	26.9	194.0	0.2	0.0	0.0	53.0	0.6	114.0	-3.7	16.0	0.6	0.0	0.0	0.0	0.0	0.0	0.0	1676.0	1.5
<b>DAYT</b>																						
2005 FTE-3	4593.9	-6	2105.6	-79	702.2	0	661.8	-1	74.7	0	885.5	-60	1.2	0	1986.3	0	1347.1	1	0.0	0	12358.3	-144
2006 FTE-1	4588.0	-0.1	2027.0	-3.7	702.0	0.0	661.0	-0.1	75.0	0.4	826.0	-6.7	1.0	-16.7	1986.0	0.0	1348.0	0.1	0.0	0.0	12214.0	-1.2
<b>EDIS</b>																						
2005 FTE-3	4748.3	65	1446.7	105	8.1	0	0.0	0	31.0	1	886.4	26	0.0	0	0.0	0	0.0	0	0.0	0	7120.5	197
2006 FTE-1	4813.0	1.4	1552.0	7.3	8.0	-1.2	0.0	0.0	32.0	3.2	912.0	2.9	0.0	0.0	0.0	0.0	0.0	0.0	0.0	0.0	7317.0	2.8
<b>FJAX</b>																						
2005 FTE-3	10549.6	24	3571.1	-67	1267.3	0	842.7	0	438.1	0	1232.0	-127	68.9	0	1439.2	0	499.9	0	0.0	12	19908.8	-158
2006 FTE-1	10574.0	0.2	3504.0	-1.9	1267.0	0.0	843.0	0.0	438.0	0.0	1105.0	-10.3	69.0	0.1	1439.0	0.0	500.0	0.0	12.0	0.0	19751.0	-0.8
<b>FKEY</b>																						
2005 FTE-3	453.8	-19	247.2	-13	36.1	-1	0.0	0	24.4	0	48.8	-1	0.0	0	0.0	0	0.0	0	0.0	0	810.3	-34
2006 FTE-1	435.0	-4.1	234.0	-5.3	35.0	-3.0	0.0	0.0	24.0	-1.6	48.0	-1.6	0.0	0.0	0.0	0.0	0.0	0.0	0.0	0.0	776.0	-4.2
<b>GULF</b>																						
2005 FTE-3	2729.8	-89	1025.8	-38	230.5	1	20.6	0	239.2	0	348.1	-19	0.0	0	170.3	0	107.2	0	0.0	0	4871.5	-146
2006 FTE-1	2641.0	-3.3	988.0	-3.7	231.0	0.2	21.0	1.9	239.0	-0.1	329.0	-5.5	0.0	0.0	170.0	-0.2	107.0	-0.2	0.0	0.0	4726.0	-3.0
<b>HILL</b>																						
2005 FTE-3	9563.1	92	2674.4	-208	453.2	0	1417.0	-1	381.3	0	2298.2	-267	0.0	0	23.5	1	5.5	1	0.0	0	16816.2	-384
2006 FTE-1	9655.0	1.0	2466.0	-7.8	453.0	0.0	1416.0	-0.1	381.0	-0.1	2031.0	-11.6	0.0	0.0	24.0	2.1	6.0	9.1	0.0	0.0	16432.0	-2.3
<b>INDR</b>																						
2005 FTE-3	3992.7	109	2471.1	75	1052.6	0	803.6	0	62.0	0	471.8	61	1.1	0	1942.6	-1	530.9	0	0.0	67	11328.4	313
2006 FTE-1	4102.0	2.7	2546.0	3.0	1053.0	0.0	804.0	0.0	62.0	0.0	533.0	13.0	1.0	-9.1	1942.0	0.0	531.0	0.0	67.0	0.0	11641.0	2.8
<b>LCTY</b>																						
2005 FTE-3	1149.4	6	413.9	-6	578.1	1	0.0	0	187.4	0	176.6	-27	0.0	2	1.5	1	2.5	1	0.0	10	2509.4	-13
2006 FTE-1	1155.0	0.5	408.0	-1.4	579.0	0.2	0.0	0.0	187.0	-0.2	150.0	-15.1	2.0	0.0	2.0	33.3	3.0	20.0	10.0	0.0	2496.0	-0.5
<b>LSUM</b>																						
2005 FTE-3	1479.6	-64	591.9	-16	0.0	0	0.0	0	57.4	0	210.5	6	0.0	0	0.0	0	0.0	0	0.0	0	2339.4	-74
2006 FTE-1	1416.0	-4.3	576.0	-2.7	0.0	0.0	0.0	0.0	57.0	-0.7	216.0	2.6	0.0	0.0	0.0	0.0	0.0	0.0	0.0	0.0	2265.0	-3.2
<b>MANA</b>																						
2005 FTE-3	5134.5	92	561.1	49	0.0	0	0.0	0	82.6	-1	782.8	-1	0.0	0	22.2	0	9.9	0	0.0	0	6593.1	139
2006 FTE-1	5226.0	1.8	610.0	8.7	0.0	0.0	0.0	0.0	82.0	-0.7	782.0	-0.1	0.0	0.0	22.0	-0.9	10.0	1.0	0.0	0.0	6732.0	2.1
<b>MIAM</b>																						
2005 FTE-3	29734.1	-1212	8592.3	-344	1151.9	0	351.2	0	1539.5	1	6222.1	-224	2799.5	2	2577.3	-1	453.3	0	0.0	0	53421.2	-1780
2006 FTE-1	28522.0	-4.1	8248.0	-4.0	1152.0	0.0	351.0	-0.1	1540.0	0.0	5998.0	-3.6	2801.0	0.1	2576.0	-0.1	453.0	-0.1	0.0	0.0	51641.0	-3.3

Sources: 2004-2005 Student Data Base FTE-3 - Unweighted  
2005-2006 Estimates FTE-1 (Division Estimates) - Unweighted

Note: Advanced and Professional, Post Secondary Vocational, and College Preparatory are calculated as 30 Credit Hour FTE.

**FLORIDA COMMUNITY COLLEGE SYSTEM**  
**Student Data Base FTE Report**  
**2004-2005 FTE-3 Compared to the 2005-2006 FTE-1 (Division Estimates)**

	Adv. & Prof.	Diff. Percent	Postsec. Voc.	Diff. Percent	Postsec. Adult	Diff. Percent	Apprenticeship	Diff. Percent	CWE	Diff. Percent	College Prep	Diff. Percent	Voc. Prep	Diff. Percent	Adult Basic	Diff. Percent	Adult S&G	Diff. Percent	EPI	Diff. Percent	Total FTE	Diff. Percent	
<b>NFLA</b>																							
2005 FTE-3	557.1	-9	132.3	22	151.2	0	0.0	0	41.5	2	94.2	-6	1.6	0	21.3	0	1.5	1	0.0	16	1000.7	24	
2006 FTE-1	548.0	-1.6	154.0	16.4	151.0	-0.1	0.0	0.0	43.0	3.6	88.0	-6.6	2.0	25.0	21.0	-1.4	2.0	33.3	16.0	0.0	1025.0	2.4	
<b>OKAL</b>																							
2005 FTE-3	3411.4	-92	664.3	-15	121.6	0	0.0	0	15.7	1	337.8	-41	0.0	0	220.2	0	60.7	0	0.0	0	4831.7	-147	
2006 FTE-1	3319.0	-2.7	649.0	-2.3	122.0	0.3	0.0	0.0	17.0	8.3	297.0	-12.1	0.0	0.0	220.0	-0.1	61.0	0.5	0.0	0.0	4685.0	-3.0	
<b>PALM</b>																							
2005 FTE-3	10531.4	159	1358.8	24	970.2	-1	1337.3	-1	277.8	-1	1399.7	-64	0.0	0	0.0	0	0.0	0	0.0	0	15875.2	116	
2006 FTE-1	10690.0	1.5	1383.0	1.8	969.0	-0.1	1336.0	-0.1	277.0	-0.3	1336.0	-4.6	0.0	0.0	0.0	0.0	0.0	0.0	0.0	0.0	15991.0	0.7	
<b>PASC</b>																							
2005 FTE-3	2520.7	96	1280.3	1	374.3	0	0.0	0	36.0	0	520.7	-4	0.0	0	284.2	0	182.5	1	0.0	0	5198.7	93	
2006 FTE-1	2617.0	3.8	1281.0	0.1	374.0	-0.1	0.0	0.0	36.0	0.0	517.0	-0.7	0.0	0.0	284.0	-0.1	183.0	0.3	0.0	0.0	5292.0	1.8	
<b>PENS</b>																							
2005 FTE-3	4780.2	-266	1695.6	-128	365.6	0	0.0	0	52.8	0	533.5	-90	11.4	-1	408.1	0	500.8	0	0.0	22	8348.0	-462	
2006 FTE-1	4514.0	-5.6	1568.0	-7.5	366.0	0.1	0.0	0.0	53.0	0.4	444.0	-16.8	10.0	-12.3	408.0	0.0	501.0	0.0	22.0	0.0	7886.0	-5.5	
<b>POLK</b>																							
2005 FTE-3	2617.8	31	1152.1	16	98.7	1	0.0	0	172.0	0	465.0	-23	0.0	0	0.0	0	0.0	0	0.0	0	4505.6	25	
2006 FTE-1	2649.0	1.2	1168.0	1.4	100.0	1.3	0.0	0.0	172.0	0.0	442.0	-4.9	0.0	0.0	0.0	0.0	0.0	0.0	0.0	0.0	4531.0	0.6	
<b>ST.J</b>																							
2005 FTE-3	2128.0	23	661.1	33	135.4	27	488.7	0	34.3	-1	212.7	11	0.0	0	55.5	1	17.4	0	0.0	0	3733.1	93	
2006 FTE-1	2151.0	1.1	694.0	5.0	162.0	19.6	489.0	0.1	33.0	-3.8	224.0	5.3	0.0	0.0	56.0	0.9	17.0	-2.3	0.0	0.0	3826.0	2.5	
<b>ST.P</b>																							
2005 FTE-3	9365.6	250	4239.8	-140	35.1	0	0.0	0	364.0	-1	1645.8	35	0.0	0	0.0	0	0.0	0	0.0	0	15650.3	145	
2006 FTE-1	9616.0	2.7	4100.0	-3.3	35.0	-0.3	0.0	0.0	363.0	-0.3	1681.0	2.1	0.0	0.0	0.0	0.0	0.0	0.0	0.0	0.0	15795.0	0.9	
<b>SANF</b>																							
2005 FTE-3	7244.4	-158	2144.6	134	285.1	0	371.4	0	83.9	1	1093.8	-55	18.2	1	237.7	0	81.8	0	0.0	0	11560.9	-77	
2006 FTE-1	7086.0	-2.2	2279.0	6.3	285.0	0.0	371.0	-0.1	85.0	1.3	1039.0	-5.0	19.0	4.4	238.0	0.1	82.0	0.2	0.0	0.0	11484.0	-0.7	
<b>SEMI</b>																							
2005 FTE-3	4848.3	-256	2211.4	-95	402.3	0	714.7	0	52.1	0	879.8	-55	32.6	0	1146.3	1	911.6	0	0.0	0	11199.1	-405	
2006 FTE-1	4592.0	-5.3	2116.0	-4.3	402.0	-0.1	715.0	0.0	52.0	-0.2	825.0	-6.2	33.0	1.2	1147.0	0.1	912.0	0.0	0.0	0.0	10794.0	-3.6	
<b>SFLA</b>																							
2005 FTE-3	1016.6	-86	131.1	-8	562.4	1	75.7	0	51.1	0	106.0	-16	0.3	0	1141.0	0	165.4	0	0.0	0	3249.6	-110	
2006 FTE-1	931.0	-8.4	123.0	-6.2	563.0	0.1	76.0	0.4	51.0	-0.2	90.0	-15.1	0.0	-100.0	1141.0	0.0	165.0	-0.2	0.0	0.0	3140.0	-3.4	
<b>TALL</b>																							
2005 FTE-3	7078.8	358	1129.0	98	255.9	1	3.7	0	311.5	1	1179.8	1	0.0	0	215.9	0	82.7	0	0.0	0	10257.3	460	
2006 FTE-1	7437.0	5.1	1227.0	8.7	257.0	0.4	4.0	8.1	312.0	0.2	1181.0	0.1	0.0	0.0	216.0	0.0	83.0	0.4	0.0	0.0	10717.0	4.5	
<b>VALE</b>																							
2005 FTE-3	13315.2	-169	4985.5	56	207.4	0	0.0	0	406.1	0	1982.2	-79	0.0	0	0.0	0	0.0	0	0.0	0	20896.4	-193	
2006 FTE-1	13146.0	-1.3	5041.0	1.1	207.0	-0.2	0.0	0.0	406.0	0.0	1903.0	-4.0	0.0	0.0	0.0	0.0	0.0	0.0	0.0	0.0	20703.0	-0.9	
<b>SYST TOTAL</b>																							
2005 FTE-3	165404.3	-1257	54758.9	-765	11343.2	29	7765.4	-1	5727.8	1	29095.5	-1400	2963.9	3	12029.8	-1	5135.2	4	0.0	127	294224.0	-3260	
2006 FTE-1	164147.0	-0.8	53994.0	-1.4	11372.0	0.3	7764.0	0.0	5729.0	0.0	27696.0	-4.8	2967.0	0.1	12029.0	0.0	5139.0	0.1	127.0	0.0	290964.0	-1.1	

Sources: 2004-2005 Student Data Base FTE-3 - Unweighted  
2005-2006 Estimates FTE-1 (Division Estimates) - Unweighted

Note: Advanced and Professional, Post Secondary Vocational, and College Preparatory are calculated as 30 Credit Hour FTE.

**FLORIDA COMMUNITY COLLEGE SYSTEM**  
**Student Data Base FTE Report**  
**2004-2005 FTE-3 Compared to the 2005-2006 FTE-1A (Division Estimates with college adjustments)**

	Adv. & Prof.	Diff. Percent	Postsec. Voc.	Diff. Percent	Postsec. Adult	Diff. Percent	Appren-ticeship	Diff. Percent	CWE	Diff. Percent	College Prep	Diff. Percent	Voc. Prep	Diff. Percent	Adult Basic	Diff. Percent	Adult S&G	Diff. Percent	EPI	Diff. Percent	Total FTE	Diff. Percent
<b>BREV</b>																						
2005 FTE-3	6002.1	-130	2142.9	-22	757.3	0	677.0	0	134.9	0	753.5	-76	0.0	0	0.0	0	0.0	0	0.0	0	10467.7	-228
2006 FTE-1A	5872.0	-2.2	2121.0	-1.0	757.0	0.0	677.0	0.0	135.0	0.1	678.0	-10.0	0.0	0.0	0.0	0.0	0.0	0.0	0.0	0.0	10240.0	-2.2
<b>BROW</b>																						
2005 FTE-3	12422.6	90	6023.5	-294	489.0	1	0.0	0	263.5	1	3760.7	-312	0.0	0	0.0	0	0.0	0	0.0	0	22959.3	-513
2006 FTE-1A	12513.0	0.7	5730.0	-4.9	490.0	0.2	0.0	0.0	264.0	0.2	3449.0	-8.3	0.0	0.0	0.0	0.0	0.0	0.0	0.0	0.0	22446.0	-2.2
<b>CFLA</b>																						
2005 FTE-3	2422.8	-56	847.9	26	458.0	0	0.0	0	260.3	0	449.1	9	13.2	0	136.7	0	174.5	1	0.0	42	4762.5	22
2006 FTE-1A	2367.0	-2.3	874.0	3.1	458.0	0.0	0.0	0.0	260.0	-0.1	458.0	2.0	13.0	-1.5	137.0	0.2	175.0	0.3	42.0	0.0	4784.0	0.5
<b>CHIP</b>																						
2005 FTE-3	1012.5	-41	257.6	69	193.7	0	0.0	0	52.7	0	118.4	-4	15.9	0	0.0	0	0.0	0	0.0	0	1650.8	25
2006 FTE-1A	972.0	-4.0	327.0	26.9	194.0	0.2	0.0	0.0	53.0	0.6	114.0	-3.7	16.0	0.6	0.0	0.0	0.0	0.0	0.0	0.0	1676.0	1.5
<b>DAYT</b>																						
2005 FTE-3	4593.9	93	2105.6	-79	702.2	15	661.8	-1	74.7	0	885.5	-60	1.2	0	1986.3	0	1347.1	1	0.0	16	12358.3	-14
2006 FTE-1A	4687.0	2.0	2027.0	-3.7	717.0	2.1	661.0	-0.1	75.0	0.4	826.0	-6.7	1.0	-16.7	1986.0	0.0	1348.0	0.1	16.0	0.0	12344.0	-0.1
<b>EDIS</b>																						
2005 FTE-3	4748.3	65	1446.7	105	8.1	0	0.0	0	31.0	1	886.4	26	0.0	0	0.0	0	0.0	0	0.0	0	7120.5	197
2006 FTE-1A	4813.0	1.4	1552.0	7.3	8.0	-1.2	0.0	0.0	32.0	3.2	912.0	2.9	0.0	0.0	0.0	0.0	0.0	0.0	0.0	0.0	7317.0	2.8
<b>FJAX</b>																						
2005 FTE-3	10549.6	317	3571.1	0	1267.3	13	842.7	-243	438.1	110	1232.0	-111	68.9	0	1439.2	0	499.9	0	0.0	12	19908.8	98
2006 FTE-1A	10867.0	3.0	3571.0	0.0	1280.0	1.0	600.0	-28.8	548.0	25.1	1121.0	-9.0	69.0	0.1	1439.0	0.0	500.0	0.0	12.0	0.0	20007.0	0.5
<b>FKEY</b>																						
2005 FTE-3	453.8	-19	247.2	-13	36.1	-1	0.0	0	24.4	0	48.8	-1	0.0	0	0.0	0	0.0	0	0.0	0	810.3	-34
2006 FTE-1A	435.0	-4.1	234.0	-5.3	35.0	-3.0	0.0	0.0	24.0	-1.6	48.0	-1.6	0.0	0.0	0.0	0.0	0.0	0.0	0.0	0.0	776.0	-4.2
<b>GULF</b>																						
2005 FTE-3	2729.8	-19	1025.8	-18	230.5	6	20.6	14	239.2	4	348.1	-13	0.0	0	170.3	0	107.2	0	0.0	25	4871.5	-2
2006 FTE-1A	2711.0	-0.7	1008.0	-1.7	236.0	2.4	35.0	69.9	243.0	1.6	335.0	-3.8	0.0	0.0	170.0	-0.2	107.0	-0.2	25.0	0.0	4870.0	0.0
<b>HILL</b>																						
2005 FTE-3	9563.1	92	2674.4	-208	453.2	0	1417.0	-1	381.3	0	2298.2	-267	0.0	0	23.5	1	5.5	1	0.0	0	16816.2	-384
2006 FTE-1A	9655.0	1.0	2466.0	-7.8	453.0	0.0	1416.0	-0.1	381.0	-0.1	2031.0	-11.6	0.0	0.0	24.0	2.1	6.0	9.1	0.0	0.0	16432.0	-2.3
<b>INDR</b>																						
2005 FTE-3	3992.7	109	2471.1	75	1052.6	27	803.6	150	62.0	0	471.8	61	1.1	0	1942.6	139	530.9	54	0.0	67	11328.4	684
2006 FTE-1A	4102.0	2.7	2546.0	3.0	1080.0	2.6	954.0	18.7	62.0	0.0	533.0	13.0	1.0	-9.1	2082.0	7.2	585.0	10.2	67.0	0.0	12012.0	6.0
<b>LCTY</b>																						
2005 FTE-3	1149.4	6	413.9	-6	578.1	1	0.0	0	187.4	0	176.6	-27	0.0	2	1.5	1	2.5	1	0.0	10	2509.4	-13
2006 FTE-1A	1155.0	0.5	408.0	-1.4	579.0	0.2	0.0	0.0	187.0	-0.2	150.0	-15.1	2.0	0.0	2.0	33.3	3.0	20.0	10.0	0.0	2496.0	-0.5
<b>LSUM</b>																						
2005 FTE-3	1479.6	-54	591.9	4	0.0	0	0.0	0	57.4	0	210.5	6	0.0	0	0.0	0	0.0	0	0.0	20	2339.4	-24
2006 FTE-1A	1426.0	-3.6	596.0	0.7	0.0	0.0	0.0	0.0	57.0	-0.7	216.0	2.6	0.0	0.0	0.0	0.0	0.0	0.0	20.0	0.0	2315.0	-1.0
<b>MANA</b>																						
2005 FTE-3	5134.5	92	561.1	49	0.0	0	0.0	0	82.6	-1	782.8	-1	0.0	0	22.2	0	9.9	0	0.0	0	6593.1	139
2006 FTE-1A	5226.0	1.8	610.0	8.7	0.0	0.0	0.0	0.0	82.0	-0.7	782.0	-0.1	0.0	0.0	22.0	-0.9	10.0	1.0	0.0	0.0	6732.0	2.1
<b>MIAM</b>																						
2005 FTE-3	29734.1	-1142	8592.3	-344	1151.9	0	351.2	0	1539.5	51	6222.1	-174	2799.5	-299	2577.3	99	453.3	0	0.0	30	53421.2	-1780
2006 FTE-1A	28592.0	-3.8	8248.0	-4.0	1152.0	0.0	351.0	-0.1	1590.0	3.3	6048.0	-2.8	2501.0	-10.7	2676.0	3.8	453.0	-0.1	30.0	0.0	51641.0	-3.3

Sources: 2004-2005 Student Data Base FTE-3 - Unweighted  
2005-2006 Estimates FTE-1A (Division Estimates with college adjustments) - Unweighted  
Advanced and Professional, Post Secondary Vocational, and College Preparatory are calculated as 30 Credit Hour FTE.

**FLORIDA COMMUNITY COLLEGE SYSTEM**  
**Student Data Base FTE Report**  
**2004-2005 FTE-3 Compared to the 2005-2006 FTE-1A (Division Estimates with college adjustments)**

	Adv. & Prof.	Diff. Percent	Postsec. Voc.	Diff. Percent	Postsec. Adult	Diff. Percent	Apprenticeship	Diff. Percent	CWE	Diff. Percent	College Prep	Diff. Percent	Voc. Prep	Diff. Percent	Adult Basic	Diff. Percent	Adult S&G	Diff. Percent	EPI	Diff. Percent	Total FTE	Diff. Percent
<b>NFLA</b>																						
2005 FTE-3	557.1	-9	132.3	22	151.2	0	0.0	0	41.5	2	94.2	-6	1.6	0	21.3	0	1.5	1	0.0	16	1000.7	24
2006 FTE-1A	548.0	-1.6	154.0	16.4	151.0	-0.1	0.0	0.0	43.0	3.6	88.0	-6.6	2.0	25.0	21.0	-1.4	2.0	33.3	16.0	0.0	1025.0	2.4
<b>OKAL</b>																						
2005 FTE-3	3411.4	58	664.3	-31	121.6	-9	0.0	0	15.7	4	337.8	34	0.0	0	220.2	-7	60.7	23	0.0	12	4831.7	84
2006 FTE-1A	3469.0	1.7	633.0	-4.7	113.0	-7.1	0.0	0.0	20.0	27.4	372.0	10.1	0.0	0.0	213.0	-3.3	84.0	38.4	12.0	0.0	4916.0	1.7
<b>PALM</b>																						
2005 FTE-3	10531.4	159	1358.8	-33	970.2	-168	1337.3	-76	277.8	-1	1399.7	-64	0.0	0	0.0	0	0.0	0	0.0	0	15875.2	-183
2006 FTE-1A	10690.0	1.5	1326.0	-2.4	802.0	-17.3	1261.0	-5.7	277.0	-0.3	1336.0	-4.6	0.0	0.0	0.0	0.0	0.0	0.0	0.0	0.0	15692.0	-1.2
<b>PASC</b>																						
2005 FTE-3	2520.7	96	1280.3	1	374.3	0	0.0	0	36.0	0	520.7	-4	0.0	0	284.2	0	182.5	1	0.0	0	5198.7	93
2006 FTE-1A	2617.0	3.8	1281.0	0.1	374.0	-0.1	0.0	0.0	36.0	0.0	517.0	-0.7	0.0	0.0	284.0	-0.1	183.0	0.3	0.0	0.0	5292.0	1.8
<b>PENS</b>																						
2005 FTE-3	4780.2	-135	1695.6	-58	365.6	0	0.0	0	52.8	5	533.5	-90	11.4	-1	408.1	0	500.8	0	0.0	22	8348.0	-256
2006 FTE-1A	4645.0	-2.8	1638.0	-3.4	366.0	0.1	0.0	0.0	58.0	9.8	444.0	-16.8	10.0	-12.3	408.0	0.0	501.0	0.0	22.0	0.0	8092.0	-3.1
<b>POLK</b>																						
2005 FTE-3	2617.8	31	1152.1	16	98.7	1	0.0	0	172.0	0	465.0	-23	0.0	0	0.0	0	0.0	0	0.0	0	4505.6	25
2006 FTE-1A	2649.0	1.2	1168.0	1.4	100.0	1.3	0.0	0.0	172.0	0.0	442.0	-4.9	0.0	0.0	0.0	0.0	0.0	0.0	0.0	0.0	4531.0	0.6
<b>ST.J</b>																						
2005 FTE-3	2128.0	23	661.1	33	135.4	27	488.7	0	34.3	-1	212.7	11	0.0	0	55.5	1	17.4	0	0.0	0	3733.1	93
2006 FTE-1A	2151.0	1.1	694.0	5.0	162.0	19.6	489.0	0.1	33.0	-3.8	224.0	5.3	0.0	0.0	56.0	0.9	17.0	-2.3	0.0	0.0	3826.0	2.5
<b>ST.P</b>																						
2005 FTE-3	9365.6	17	4239.8	-10	35.1	-7	0.0	0	364.0	-6	1645.8	5	0.0	0	0.0	0	0.0	0	0.0	0	15650.3	0
2006 FTE-1A	9383.0	0.2	4230.0	-0.2	28.0	-20.2	0.0	0.0	358.0	-1.6	1651.0	0.3	0.0	0.0	0.0	0.0	0.0	0.0	0.0	0.0	15650.0	0.0
<b>SANF</b>																						
2005 FTE-3	7244.4	-158	2144.6	134	285.1	0	371.4	0	83.9	1	1093.8	-55	18.2	1	237.7	0	81.8	0	0.0	0	11560.9	-77
2006 FTE-1A	7086.0	-2.2	2279.0	6.3	285.0	0.0	371.0	-0.1	85.0	1.3	1039.0	-5.0	19.0	4.4	238.0	0.1	82.0	0.2	0.0	0.0	11484.0	-0.7
<b>SEMI</b>																						
2005 FTE-3	4848.3	-143	2211.4	3	402.3	0	714.7	0	52.1	0	879.8	-55	32.6	0	1146.3	1	911.6	0	0.0	0	11199.1	-194
2006 FTE-1A	4705.0	-3.0	2214.0	0.1	402.0	-0.1	715.0	0.0	52.0	-0.2	825.0	-6.2	33.0	1.2	1147.0	0.1	912.0	0.0	0.0	0.0	11005.0	-1.7
<b>SFLA</b>																						
2005 FTE-3	1016.6	-134	131.1	-6	562.4	-88	75.7	-4	51.1	11	106.0	-16	0.3	0	1141.0	27	165.4	0	0.0	0	3249.6	-211
2006 FTE-1A	883.0	-13.1	125.0	-4.7	474.0	-15.7	72.0	-4.9	62.0	21.3	90.0	-15.1	0.0	-100.0	1168.0	2.4	165.0	-0.2	0.0	0.0	3039.0	-6.5
<b>TALL</b>																						
2005 FTE-3	7078.8	336	1129.0	75	255.9	275	3.7	0	311.5	141	1179.8	38	0.0	0	215.9	0	82.7	0	0.0	0	10257.3	866
2006 FTE-1A	7415.0	4.7	1204.0	6.6	531.0	107.5	4.0	8.1	452.0	45.1	1218.0	3.2	0.0	0.0	216.0	0.0	83.0	0.4	0.0	0.0	11123.0	8.4
<b>VALE</b>																						
2005 FTE-3	13315.2	-169	4985.5	56	207.4	0	0.0	0	406.1	0	1982.2	-79	0.0	0	0.0	0	0.0	0	0.0	0	20896.4	-193
2006 FTE-1A	13146.0	-1.3	5041.0	1.1	207.0	-0.2	0.0	0.0	406.0	0.0	1903.0	-4.0	0.0	0.0	0.0	0.0	0.0	0.0	0.0	0.0	20703.0	-0.9
<b>SYST TOTAL</b>																						
2005 FTE-3	165404.3	-624	54758.9	-454	11343.2	91	7765.4	-159	5727.8	319	29095.5	-1246	2963.9	-297	12029.8	259	5135.2	81	0.0	272	294224.0	-1758
2006 FTE-1A	164780.0	-0.4	54305.0	-0.8	11434.0	0.8	7606.0	-2.1	6047.0	5.6	27850.0	-4.3	2667.0	-10.0	12289.0	2.2	5216.0	1.6	272.0	0.0	292466.0	-0.6

Sources: 2004-2005 Student Data Base FTE-3 - Unweighted  
2005-2006 Estimates FTE-1A (Division Estimates with college adjustments) - Unweighted  
Note: Advanced and Professional, Post Secondary Vocational, and College Preparatory are calculated as 30 Credit Hour FTE.

**FLORIDA COMMUNITY COLLEGE SYSTEM**  
**Student Data Base FTE Report**  
**2005-2006 FTE-1 (Division Estimates) compared to the 2005-2006 FTE-1A (Division Estimates with College Adjustments)**

	Adv. & Prof.	Diff. Percent	Postsec. Voc.	Diff. Percent	Postsec. Adult	Diff. Percent	Apprenticeship	Diff. Percent	CWE	Diff. Percent	College Prep	Diff. Percent	Voc. Prep	Diff. Percent	Adult Basic	Diff. Percent	Adult S&G	Diff. Percent	EPI	Diff. Percent	Total FTE	Diff. Percent	
<b>BREV</b>																							
2006 FTE-1	5872	0	2121	0	757	0	677	0	135	0	678	0	0	0	0	0	0	0	0	0	0	10240	0
2006 FTE-1A	5872	0.0	2121	0.0	757	0.0	677	0.0	135	0.0	678	0.0	0	0.0	0	0.0	0	0.0	0	0.0	0	10240	0.0
<b>BROW</b>																							
2006 FTE-1	12513	0	5730	0	490	0	0	0	264	0	3449	0	0	0	0	0	0	0	0	0	0	22446	0
2006 FTE-1A	12513	0.0	5730	0.0	490	0.0	0	0.0	264	0.0	3449	0.0	0	0.0	0	0.0	0	0.0	0	0.0	0	22446	0.0
<b>CFLA</b>																							
2006 FTE-1	2367	0	874	0	458	0	0	0	260	0	458	0	13	0	137	0	175	0	0	0	42	4742	42
2006 FTE-1A	2367	0.0	874	0.0	458	0.0	0	0.0	260	0.0	458	0.0	13	0.0	137	0.0	175	0.0	42	0.0	42	4784	0.9
<b>CHIP</b>																							
2006 FTE-1	972	0	327	0	194	0	0	0	53	0	114	0	16	0	0	0	0	0	0	0	0	1676	0
2006 FTE-1A	972	0.0	327	0.0	194	0.0	0	0.0	53	0.0	114	0.0	16	0.0	0	0.0	0	0.0	0	0.0	0	1676	0.0
<b>DAYT</b>																							
2006 FTE-1	4588	99	2027	0	702	15	661	0	75	0	826	0	1	0	1986	0	1348	0	0	0	16	12214	130
2006 FTE-1A	4687	2.2	2027	0.0	717	2.1	661	0.0	75	0.0	826	0.0	1	0.0	1986	0.0	1348	0.0	16	0.0	16	12344	1.1
<b>EDIS</b>																							
2006 FTE-1	4813	0	1552	0	8	0	0	0	32	0	912	0	0	0	0	0	0	0	0	0	0	7317	0
2006 FTE-1A	4813	0.0	1552	0.0	8	0.0	0	0.0	32	0.0	912	0.0	0	0.0	0	0.0	0	0.0	0	0.0	0	7317	0.0
<b>FJAX</b>																							
2006 FTE-1	10574	293	3504	67	1267	13	843	-243	438	110	1105	16	69	0	1439	0	500	0	12	0	0	19751	256
2006 FTE-1A	10867	2.8	3571	1.9	1280	1.0	600	-28.8	548	25.1	1121	1.4	69	0.0	1439	0.0	500	0.0	12	0.0	0	20007	1.3
<b>FKEY</b>																							
2006 FTE-1	435	0	234	0	35	0	0	0	24	0	48	0	0	0	0	0	0	0	0	0	0	776	0
2006 FTE-1A	435	0.0	234	0.0	35	0.0	0	0.0	24	0.0	48	0.0	0	0.0	0	0.0	0	0.0	0	0.0	0	776	0.0
<b>GULF</b>																							
2006 FTE-1	2641	70	988	20	231	5	21	14	239	4	329	6	0	0	170	0	107	0	0	0	25	4726	144
2006 FTE-1A	2711	2.7	1008	2.0	236	2.2	35	66.7	243	1.7	335	1.8	0	0.0	170	0.0	107	0.0	25	0.0	25	4870	3.0
<b>HILL</b>																							
2006 FTE-1	9655	0	2466	0	453	0	1416	0	381	0	2031	0	0	0	24	0	6	0	0	0	0	16432	0
2006 FTE-1A	9655	0.0	2466	0.0	453	0.0	1416	0.0	381	0.0	2031	0.0	0	0.0	24	0.0	6	0.0	0	0.0	0	16432	0.0
<b>INDR</b>																							
2006 FTE-1	4102	0	2546	0	1053	27	804	150	62	0	533	0	1	0	1942	140	531	54	67	0	0	11641	371
2006 FTE-1A	4102	0.0	2546	0.0	1080	2.6	954	18.7	62	0.0	533	0.0	1	0.0	2082	7.2	585	10.2	67	0.0	0	12012	3.2
<b>LCTY</b>																							
2006 FTE-1	1155	0	408	0	579	0	0	0	187	0	150	0	2	0	2	0	3	0	10	0	0	2496	0
2006 FTE-1A	1155	0.0	408	0.0	579	0.0	0	0.0	187	0.0	150	0.0	2	0.0	2	0.0	3	0.0	10	0.0	0	2496	0.0
<b>LSUM</b>																							
2006 FTE-1	1416	10	576	20	0	0	0	0	57	0	216	0	0	0	0	0	0	0	0	0	20	2265	50
2006 FTE-1A	1426	0.7	596	3.5	0	0.0	0	0.0	57	0.0	216	0.0	0	0.0	0	0.0	0	0.0	20	0.0	20	2315	2.2
<b>MANA</b>																							
2006 FTE-1	5226	0	610	0	0	0	0	0	82	0	782	0	0	0	22	0	10	0	0	0	0	6732	0
2006 FTE-1A	5226	0.0	610	0.0	0	0.0	0	0.0	82	0.0	782	0.0	0	0.0	22	0.0	10	0.0	0	0.0	0	6732	0.0
<b>MIAM</b>																							
2006 FTE-1	28522	70	8248	0	1152	0	351	0	1540	50	5998	50	2801	-300	2576	100	453	0	0	0	30	51641	0
2006 FTE-1A	28592	0.2	8248	0.0	1152	0.0	351	0.0	1590	3.2	6048	0.8	2501	-10.7	2676	3.9	453	0.0	30	0.0	30	51641	0.0

Sources: 2005-2006 Estimates FTE-1 (Division Estimates) - Unweighted  
2005-2006 Estimates FTE-1A (Division Estimates with college adjustments) - Unweighted  
Advanced and Professional, Post Secondary Vocational, and College Preparatory are calculated as 30 Credit Hour FTE.



**FLORIDA COMMUNITY COLLEGE SYSTEM**  
**Student Data Base FTE Report**  
**2005-2006 FTE-1 (Division Estimates) compared to the 2005-2006 FTE-1A (Division Estimates with College Adjustments)**

	Adv. & Prof.	Diff. Percent	Postsec. Voc.	Diff. Percent	Postsec. Adult	Diff. Percent	Apprenticeship	Diff. Percent	CWE	Diff. Percent	College Prep	Diff. Percent	Voc. Prep	Diff. Percent	Adult Basic	Diff. Percent	Adult S&G	Diff. Percent	EPI	Diff. Percent	Total FTE	Diff. Percent	
<b>NFLA</b>																							
2006 FTE-1	548	0	154	0	151	0	0	0	43	0	88	0	2	0	21	0	2	0	16	0	1025	0	
2006 FTE-1A	548	0.0	154	0.0	151	0.0	0	0.0	43	0.0	88	0.0	2	0.0	21	0.0	2	0.0	16	0.0	1025	0.0	
<b>OKAL</b>																							
2006 FTE-1	3319	150	649	-16	122	-9	0	0	17	3	297	75	0	0	220	-7	61	23	0	12	4685	231	
2006 FTE-1A	3469	4.5	633	-2.5	113	-7.4	0	0.0	20	17.6	372	25.3	0	0.0	213	-3.2	84	37.7	12	0.0	4916	4.9	
<b>PALM</b>																							
2006 FTE-1	10690	0	1383	-57	969	-167	1336	-75	277	0	1336	0	0	0	0	0	0	0	0	0	15991	-299	
2006 FTE-1A	10690	0.0	1326	-4.1	802	-17.2	1261	-5.6	277	0.0	1336	0.0	0	0.0	0	0.0	0	0.0	0	0.0	15692	-1.9	
<b>PASC</b>																							
2006 FTE-1	2617	0	1281	0	374	0	0	0	36	0	517	0	0	0	284	0	183	0	0	0	5292	0	
2006 FTE-1A	2617	0.0	1281	0.0	374	0.0	0	0.0	36	0.0	517	0.0	0	0.0	284	0.0	183	0.0	0	0.0	5292	0.0	
<b>PENS</b>																							
2006 FTE-1	4514	131	1568	70	366	0	0	0	53	5	444	0	10	0	408	0	501	0	22	0	7886	206	
2006 FTE-1A	4645	2.9	1638	4.5	366	0.0	0	0.0	58	9.4	444	0.0	10	0.0	408	0.0	501	0.0	22	0.0	8092	2.6	
<b>POLK</b>																							
2006 FTE-1	2649	0	1168	0	100	0	0	0	172	0	442	0	0	0	0	0	0	0	0	0	4531	0	
2006 FTE-1A	2649	0.0	1168	0.0	100	0.0	0	0.0	172	0.0	442	0.0	0	0.0	0	0.0	0	0.0	0	0.0	4531	0.0	
<b>ST.J</b>																							
2006 FTE-1	2151	0	694	0	162	0	489	0	33	0	224	0	0	0	56	0	17	0	0	0	3826	0	
2006 FTE-1A	2151	0.0	694	0.0	162	0.0	489	0.0	33	0.0	224	0.0	0	0.0	56	0.0	17	0.0	0	0.0	3826	0.0	
<b>ST.P</b>																							
2006 FTE-1	9616	-233	4100	130	35	-7	0	0	363	-5	1681	-30	0	0	0	0	0	0	0	0	15795	-145	
2006 FTE-1A	9383	-2.4	4230	3.2	28	-20.0	0	0.0	358	-1.4	1651	-1.8	0	0.0	0	0.0	0	0.0	0	0.0	15650	-0.9	
<b>SANF</b>																							
2006 FTE-1	7086	0	2279	0	285	0	371	0	85	0	1039	0	19	0	238	0	82	0	0	0	11484	0	
2006 FTE-1A	7086	0.0	2279	0.0	285	0.0	371	0.0	85	0.0	1039	0.0	19	0.0	238	0.0	82	0.0	0	0.0	11484	0.0	
<b>SEMI</b>																							
2006 FTE-1	4592	113	2116	98	402	0	715	0	52	0	825	0	33	0	1147	0	912	0	0	0	10794	211	
2006 FTE-1A	4705	2.5	2214	4.6	402	0.0	715	0.0	52	0.0	825	0.0	33	0.0	1147	0.0	912	0.0	0	0.0	11005	2.0	
<b>SFLA</b>																							
2006 FTE-1	931	-48	123	2	563	-89	76	-4	51	11	90	0	0	0	1141	27	165	0	0	0	3140	-101	
2006 FTE-1A	883	-5.2	125	1.6	474	-15.8	72	-5.3	62	21.6	90	0.0	0	0.0	1168	2.4	165	0.0	0	0.0	3039	-3.2	
<b>TALL</b>																							
2006 FTE-1	7437	-22	1227	-23	257	274	4	0	312	140	1181	37	0	0	216	0	83	0	0	0	10717	406	
2006 FTE-1A	7415	-0.3	1204	-1.9	531	106.6	4	0.0	452	44.9	1218	3.1	0	0.0	216	0.0	83	0.0	0	0.0	11123	3.8	
<b>VALE</b>																							
2006 FTE-1	13146	0	5041	0	207	0	0	0	406	0	1903	0	0	0	0	0	0	0	0	0	20703	0	
2006 FTE-1A	13146	0.0	5041	0.0	207	0.0	0	0.0	406	0.0	1903	0.0	0	0.0	0	0.0	0	0.0	0	0.0	20703	0.0	
<b>SYST TOTAL</b>																							
2006 FTE-1	164147	633	53994	311	11372	62	7764	-158	5729	318	27696	154	2967	-300	12029	260	5139	77	127	145	290964	1502	
2006 FTE-1A	164780	0.4	54305	0.6	11434	0.5	7606	-2.0	6047	5.6	27850	0.6	2667	-10.1	12289	2.2	5216	1.5	272	114.2	292466	0.5	

Sources: 2005-2006 Estimates FTE-1 (Division Estimates) - Unweighted  
2005-2006 Estimates FTE-1A (Division Estimates with college adjustments) - Unweighted  
Note: Advanced and Professional, Post Secondary Vocational, and College Preparatory are calculated as 30 Credit Hour FTE.

**FLORIDA COMMUNITY COLLEGE SYSTEM**  
**Student Data Base FTE Report**  
**2005-2006 FTE Projections Compared to the 2005-2006 FTE-1A Division Estimates with College Adjustments**

	Adv. & Prof.	Diff. Percent	Postsec. Voc.	Diff. Percent	Postsec. Adult	Diff. Percent	Apprenticeship	Diff. Percent	CWE	Diff. Percent	College Prep	Diff. Percent	Voc. Prep	Diff. Percent	Adult Basic	Diff. Percent	Adult S&G	Diff. Percent	EPI	Diff. Percent	Total FTE	Diff. Percent	
<b>BREV</b>																							
2006 PRJ	6238	-366	2226	-105	770	-13	440	237	139	-4	783	-105	0	0	0	0	0	0	0	0	0	10596	-356
2006 FTE-1A	5872	-5.9	2121	-4.7	757	-1.7	677	53.9	135	-2.9	678	-13.4	0	0.0	0	0.0	0	0.0	0	0.0	0	10240	-3.4
<b>BROW</b>																							
2006 PRJ	12682	-169	6147	-417	498	-8	0	0	233	31	3840	-391	0	0	0	0	0	0	15	-15	23415	-969	
2006 FTE-1A	12513	-1.3	5730	-6.8	490	-1.6	0	0.0	264	13.3	3449	-10.2	0	0.0	0	0.0	0	0.0	0	-100.0	22446	-4.1	
<b>CFLA</b>																							
2006 PRJ	2533	-166	871	3	449	9	0	0	254	6	463	-5	13	0	132	5	176	-1	5	37	4896	-112	
2006 FTE-1A	2367	-6.6	874	0.3	458	2.0	0	0.0	260	2.4	458	-1.1	13	0.0	137	3.8	175	-0.6	42	740.0	4784	-2.3	
<b>CHIP</b>																							
2006 PRJ	1067	-95	302	25	282	-88	0	0	55	-2	124	-10	17	-1	0	0	0	0	0	0	1847	-171	
2006 FTE-1A	972	-8.9	327	8.3	194	-31.2	0	0.0	53	-3.6	114	-8.1	16	-5.9	0	0.0	0	0.0	0	0.0	1676	-9.3	
<b>DAYT</b>																							
2006 PRJ	4852	-165	2195	-168	731	-14	689	-28	77	-2	948	-122	1	0	2279	-293	1406	-58	0	16	13178	-834	
2006 FTE-1A	4687	-3.4	2027	-7.7	717	-1.9	661	-4.1	75	-2.6	826	-12.9	1	0.0	1986	-12.9	1348	-4.1	16	0.0	12344	-6.3	
<b>EDIS</b>																							
2006 PRJ	5284	-471	1579	-27	9	-1	0	0	34	-2	980	-68	0	0	0	0	0	0	0	0	7886	-569	
2006 FTE-1A	4813	-8.9	1552	-1.7	8	-11.1	0	0.0	32	-5.9	912	-6.9	0	0.0	0	0.0	0	0.0	0	0.0	7317	-7.2	
<b>FJAX</b>																							
2006 PRJ	10968	-101	3614	-43	1299	-19	865	-265	525	23	1269	-148	71	-2	1406	33	511	-11	0	12	20528	-521	
2006 FTE-1A	10867	-0.9	3571	-1.2	1280	-1.5	600	-30.6	548	4.4	1121	-11.7	69	-2.8	1439	2.3	500	-2.2	12	0.0	20007	-2.5	
<b>FKEY</b>																							
2006 PRJ	438	-3	235	-1	64	-29	0	0	41	-17	46	2	0	0	0	0	0	0	0	0	824	-48	
2006 FTE-1A	435	-0.7	234	-0.4	35	-45.3	0	0.0	24	-41.5	48	4.3	0	0.0	0	0.0	0	0.0	0	0.0	776	-5.8	
<b>GULF</b>																							
2006 PRJ	2863	-152	1059	-51	285	-49	24	11	251	-8	360	-25	0	0	171	-1	105	2	0	25	5118	-248	
2006 FTE-1A	2711	-5.3	1008	-4.8	236	-17.2	35	45.8	243	-3.2	335	-6.9	0	0.0	170	-0.6	107	1.9	25	0.0	4870	-4.8	
<b>HILL</b>																							
2006 PRJ	10051	-396	2811	-345	475	-22	1408	8	359	22	2417	-386	0	0	25	-1	5	1	0	0	17551	-1119	
2006 FTE-1A	9655	-3.9	2466	-12.3	453	-4.6	1416	0.6	381	6.1	2031	-16.0	0	0.0	24	-4.0	6	20.0	0	0.0	16432	-6.4	
<b>INDR</b>																							
2006 PRJ	4114	-12	2606	-60	1109	-29	850	104	64	-2	498	35	1	0	2278	-196	559	26	215	-148	12294	-282	
2006 FTE-1A	4102	-0.3	2546	-2.3	1080	-2.6	954	12.2	62	-3.1	533	7.0	1	0.0	2082	-8.6	585	4.7	67	-68.8	12012	-2.3	
<b>LCTY</b>																							
2006 PRJ	1201	-46	432	-24	605	-26	0	0	195	-8	185	-35	0	2	2	0	2	1	0	10	2622	-126	
2006 FTE-1A	1155	-3.8	408	-5.6	579	-4.3	0	0.0	187	-4.1	150	-18.9	2	0.0	2	0.0	3	50.0	10	0.0	2496	-4.8	
<b>LSUM</b>																							
2006 PRJ	1565	-139	627	-31	0	0	0	0	61	-4	223	-7	0	0	0	0	0	0	14	6	2490	-175	
2006 FTE-1A	1426	-8.9	596	-4.9	0	0.0	0	0.0	57	-6.6	216	-3.1	0	0.0	0	0.0	0	0.0	20	42.9	2315	-7.0	
<b>MANA</b>																							
2006 PRJ	5345	-119	579	31	0	0	0	0	87	-5	823	-41	0	0	27	-5	16	-6	0	0	6877	-145	
2006 FTE-1A	5226	-2.2	610	5.4	0	0.0	0	0.0	82	-5.7	782	-5.0	0	0.0	22	-18.5	10	-37.5	0	0.0	6732	-2.1	
<b>MIAM</b>																							
2006 PRJ	31106	-2514	8920	-672	1192	-40	363	-12	1592	-2	6498	-450	2895	-394	2667	9	470	-17	78	-48	55781	-4140	
2006 FTE-1A	28592	-8.1	8248	-7.5	1152	-3.4	351	-3.3	1590	-0.1	6048	-6.9	2501	-13.6	2676	0.3	453	-3.6	30	-61.5	51641	-7.4	

Sources: 2005-2006 FTE Projections (Division Projections with college adjustments) - Unweighted  
2005-2006 Estimates FTE-1A (Division Estimates with college adjustments) - Unweighted  
Advanced and Professional, Post Secondary Vocational, and College Preparatory are calculated as 30 Credit Hour FTE.

**FLORIDA COMMUNITY COLLEGE SYSTEM**  
**Student Data Base FTE Report**  
**2005-2006 FTE Projections Compared to the 2005-2006 FTE-1A Division Estimates with College Adjustments**

	Adv. & Prof.	Diff. Percent	Postsec. Voc.	Diff. Percent	Postsec. Adult	Diff. Percent	Apprenticeship	Diff. Percent	CWE	Diff. Percent	College Prep	Diff. Percent	Voc. Prep	Diff. Percent	Adult Basic	Diff. Percent	Adult S&G	Diff. Percent	EPI	Diff. Percent	Total FTE	Diff. Percent
<b>NFLA</b>																						
2006 PRJ	568	-20	134	20	155	-4	0	0	41	2	96	-8	2	0	22	-1	2	0	0	16	1020	5
2006 FTE-1A	548	-3.5	154	14.9	151	-2.6	0	0.0	43	4.9	88	-8.3	2	0.0	21	-4.5	2	0.0	16	0.0	1025	0.5
<b>OKAL</b>																						
2006 PRJ	3344	125	814	-181	129	-16	0	0	6	14	356	16	0	0	132	81	139	-55	0	12	4920	-4
2006 FTE-1A	3469	3.7	633	-22.2	113	-12.4	0	0.0	20	233.3	372	4.5	0	0.0	213	61.4	84	-39.6	12	0.0	4916	-0.1
<b>PALM</b>																						
2006 PRJ	10802	-112	1365	-39	929	-127	1359	-98	275	2	1468	-132	0	0	0	0	0	0	48	-48	16246	-554
2006 FTE-1A	10690	-1.0	1326	-2.9	802	-13.7	1261	-7.2	277	0.7	1336	-9.0	0	0.0	0	0.0	0	0.0	0	-100.0	15692	-3.4
<b>PASC</b>																						
2006 PRJ	2573	44	1293	-12	371	3	0	0	35	1	527	-10	0	0	247	37	173	10	54	-54	5273	19
2006 FTE-1A	2617	1.7	1281	-0.9	374	0.8	0	0.0	36	2.9	517	-1.9	0	0.0	284	15.0	183	5.8	0	-100.0	5292	0.4
<b>PENS</b>																						
2006 PRJ	4812	-167	1729	-91	368	-2	0	0	53	5	534	-90	12	-2	409	-1	502	-1	15	7	8434	-342
2006 FTE-1A	4645	-3.5	1638	-5.3	366	-0.5	0	0.0	58	9.4	444	-16.9	10	-16.7	408	-0.2	501	-0.2	22	46.7	8092	-4.1
<b>POLK</b>																						
2006 PRJ	2763	-114	1215	-47	104	-4	0	0	171	1	491	-49	0	0	0	0	0	0	0	0	4744	-213
2006 FTE-1A	2649	-4.1	1168	-3.9	100	-3.8	0	0.0	172	0.6	442	-10.0	0	0.0	0	0.0	0	0.0	0	0.0	4531	-4.5
<b>ST.J</b>																						
2006 PRJ	2171	-20	685	9	141	21	506	-17	35	-2	220	4	0	0	57	-1	19	-2	0	0	3834	-8
2006 FTE-1A	2151	-0.9	694	1.3	162	14.9	489	-3.4	33	-5.7	224	1.8	0	0.0	56	-1.8	17	-10.5	0	0.0	3826	-0.2
<b>ST.P</b>																						
2006 PRJ	9382	1	4229	1	28	0	0	0	358	0	1651	0	0	0	0	0	0	0	0	0	15648	2
2006 FTE-1A	9383	0.0	4230	0.0	28	0.0	0	0.0	358	0.0	1651	0.0	0	0.0	0	0.0	0	0.0	0	0.0	15650	0.0
<b>SANF</b>																						
2006 PRJ	7265	-179	2280	-1	290	-5	376	-5	85	0	1132	-93	18	1	241	-3	83	-1	0	0	11770	-286
2006 FTE-1A	7086	-2.5	2279	0.0	285	-1.7	371	-1.3	85	0.0	1039	-8.2	19	5.6	238	-1.2	82	-1.2	0	0.0	11484	-2.4
<b>SEMI</b>																						
2006 PRJ	5063	-358	2297	-83	418	-16	746	-31	53	-1	919	-94	34	-1	1198	-51	951	-39	1	-1	11680	-675
2006 FTE-1A	4705	-7.1	2214	-3.6	402	-3.8	715	-4.2	52	-1.9	825	-10.2	33	-2.9	1147	-4.3	912	-4.1	0	-100.0	11005	-5.8
<b>SFLA</b>																						
2006 PRJ	985	-102	139	-14	424	50	75	-3	55	7	107	-17	0	0	1035	133	167	-2	0	0	2987	52
2006 FTE-1A	883	-10.4	125	-10.1	474	11.8	72	-4.0	62	12.7	90	-15.9	0	0.0	1168	12.9	165	-1.2	0	0.0	3039	1.7
<b>TALL</b>																						
2006 PRJ	7591	-176	1211	-7	599	-68	4	0	345	107	1266	-48	0	0	231	-15	89	-6	0	0	11336	-213
2006 FTE-1A	7415	-2.3	1204	-0.6	531	-11.4	4	0.0	452	31.0	1218	-3.8	0	0.0	216	-6.5	83	-6.7	0	0.0	11123	-1.9
<b>VALE</b>																						
2006 PRJ	13422	-276	5025	16	212	-5	0	0	403	3	2011	-108	0	0	0	0	0	0	0	0	21073	-370
2006 FTE-1A	13146	-2.1	5041	0.3	207	-2.4	0	0.0	406	0.7	1903	-5.4	0	0.0	0	0.0	0	0.0	0	0.0	20703	-1.8
<b>SYST TOTAL</b>																						
2006 PRJ	171048	-6268	56619	-2314	11936	-502	7705	-99	5882	165	30235	-2385	3064	-397	12559	-270	5375	-159	445	-173	304868	-12402
2006 FTE-1A	164780	-3.7	54305	-4.1	11434	-4.2	7606	-1.3	6047	2.8	27850	-7.9	2667	-13.0	12289	-2.1	5216	-3.0	272	-38.9	292466	-4.1

Sources: 2005-2006 FTE Projections (Division Projections with college adjustments) - Unweighted  
2005-2006 Estimates FTE-1A (Division Estimates with college adjustments) - Unweighted

Note: Advanced and Professional, Post Secondary Vocational, and College Preparatory are calculated as 30 Credit Hour FTE.

Community College Enrollment Conference  
Thursday, November 10, 2005  
3:00 p.m., 1203 Turlington

On November 10, 2005, a community college enrollment conference was held for the purpose of reviewing the estimated 2006-07 FTE student enrollment. The following people were in attendance at the conference:

Governor's Office:

Bill Ammons

House Education Appropriations:

Amy Hammock

Kurt Hamon

Senate Appropriations:

Paul Bryant

Legislative Office of Economic and  
Demographic Research:

Amy Baker

Beth Lines

Department of Education:

Ed Cisek

Link Jarrett

Robert McMullen

Chuck Prince

Jennifer Seifert

Patricia Windham

Other:

Margaret Thomas, House

Ed Cisek opened the conference by asking Beth Lines to explain a graph plotting the growth in Community College FTE students compared to the growth in Florida non-agricultural employment that she had prepared. The trend line shows that when non-agricultural jobs are plentiful, enrollment in community colleges is down and when the job market slows, enrollment increases allowing workers to further their education and job skills.

Robert McMullen and Ed Cisek provided handouts to members for review and information. The handouts presented and/or compared the division FTE estimates as well as the college's estimates. Enrollment decreased 0.6% or 1,758 (total 292,466.0) from the 2004-05 year (total 294,224.0). Only 12 changes were made to the division FTE estimate by the colleges. Seven of the changes were due to new programs added by the colleges.

The estimate presented began with the 2005-06 estimate and was adjusted for the summer actual students and the initial fall enrollment after the drop/add period was completed. The model used for calculating Workforce Education and Adult FTE was changed last year and now uses the prior year actual FTE.

The Division Estimates were on the database before Hurricane Wilma hit Florida, but were sent for review during Wilma. Broward, Florida Keys and Palm Beach did not get a chance to evaluate their estimates because the schools were closed for Hurricane Wilma and were unable to make adjustments.

A new element has been added to the database to indicate the impact of Hurricane Katrina transferees to Florida's Community Colleges. This information as well as data for the Educator Preparation Institutes (EPI) grants and the Jobs for Florida's Future/SUCCEED program will be available for the next enrollment conference which is expected to be scheduled for the first week of March 2006.

The members accepted the 2005-06 community college enrollment estimates of 292,466.0 (Tables 7a and 7b).