

FLORIDA DEMOGRAPHIC ESTIMATING CONFERENCE

Tables

Held February 17, 2006

Florida Resident Population

	<u>FDEC, 10/05</u> <u>(As of 4/1)</u>	<u>% Chg</u>	<u>FDEC, 02/06</u> <u>(As of 4/1)</u>	<u>% Chg</u>
1990	12,938,071	2.27%	12,938,071	2.27%
1991	13,258,732	2.48%	13,258,732	2.48%
1992	13,497,541	1.80%	13,497,541	1.80%
1993	13,730,115	1.72%	13,730,115	1.72%
1994	14,043,757	2.28%	14,043,757	2.28%
1995	14,335,992	2.08%	14,335,992	2.08%
1996	14,623,421	2.00%	14,623,421	2.00%
1997	14,938,314	2.15%	14,938,314	2.15%
1998	15,230,421	1.96%	15,230,421	1.96%
1999	15,580,244	2.30%	15,580,244	2.30%
2000	15,982,824	2.58%	15,982,824	2.58%
2001	16,330,224	2.17%	16,330,224	2.17%
2002	16,674,608	2.11%	16,674,608	2.11%
2003	17,071,508	2.38%	17,071,508	2.38%
2004	17,516,732	2.61%	17,516,732	2.61%
2005	17,912,715	2.26%	17,918,227	2.29%
Begins forecast.				
2006	18,324,451	2.30%	18,324,606	2.27%
2007	18,737,889	2.26%	18,737,766	2.25%
2008	19,139,994	2.15%	19,139,961	2.15%
2009	19,532,514	2.05%	19,532,570	2.05%
2010	19,920,344	1.99%	19,920,344	1.99%
2011	20,303,240	1.92%	20,303,189	1.92%
2012	20,678,325	1.85%	20,678,338	1.85%
2013	21,047,539	1.79%	21,047,539	1.79%
2014	21,411,003	1.73%	21,410,966	1.73%
2015	21,767,506	1.67%	21,767,506	1.67%
2020	23,475,835	1.52%	23,475,835	1.52%
2025	24,998,014	1.26%	24,998,014	1.26%
2030	26,419,166	1.11%	26,419,266	1.11%

Florida Resident Households

	<u>FDEC, 10/05</u> <u>(As of 4/1)</u>	<u>% Chg</u>	<u>FDEC, 02/06</u> <u>(As of 4/1)</u>	<u>% Chg</u>
1990	5,134,869	3.40%	5,134,869	3.40%
1991	5,283,154	2.89%	5,283,154	2.89%
1992	5,378,499	1.80%	5,378,499	1.80%
1993	5,478,476	1.86%	5,478,476	1.86%
1994	5,589,093	2.02%	5,589,093	2.02%
1995	5,697,328	1.94%	5,697,328	1.94%
1996	5,806,031	1.91%	5,806,031	1.91%
1997	5,929,613	2.13%	5,929,613	2.13%
1998	6,040,514	1.87%	6,040,514	1.87%
1999	6,182,346	2.35%	6,182,346	2.35%
2000	6,338,075	2.52%	6,338,075	2.52%
2001	6,483,040	2.29%	6,483,040	2.29%
2002	6,620,674	2.12%	6,620,674	2.12%
2003	6,778,804	2.39%	6,778,804	2.39%
2004	6,949,759	2.52%	6,949,759	2.52%
2005	7,105,018	2.23%	7,109,208	2.29%
Begins forecast.				
2006	7,270,921	2.34%	7,271,052	2.28%
2007	7,437,287	2.29%	7,437,327	2.29%
2008	7,598,701	2.17%	7,598,846	2.17%
2009	7,756,013	2.07%	7,756,181	2.07%
2010	7,911,103	2.00%	7,911,251	2.00%
2011	8,064,023	1.93%	8,064,139	1.93%
2012	8,213,660	1.86%	8,213,799	1.86%
2013	8,360,797	1.79%	8,360,927	1.79%
2014	8,505,552	1.73%	8,505,667	1.73%
2015	8,647,562	1.67%	8,647,695	1.67%
2020	9,327,982	1.53%	9,327,971	1.53%
2025	9,934,890	1.27%	9,935,006	1.27%
2030	10,501,938	1.12%	10,502,047	1.12%

FLORIDA DEMOGRAPHIC ESTIMATING CONFERENCE

Held February 17, 2006

FISCAL YEAR AVERAGE

	<u>2005-1</u>	<u>2005-2</u>	<u>2005-3</u>	<u>2005-4</u>	<u>2006-1</u>	<u>2006-2</u>	<u>2006-3</u>	<u>2006-4</u>	<u>2007-1</u>	<u>2007-2</u>	<u>2007-3</u>	<u>2007-4</u>	<u>2008-1</u>	<u>2008-2</u>	<u>2003-04</u>	<u>2004-05</u>	<u>2005-06</u>	<u>2006-07</u>	<u>2007-08</u>
Population																			
FDEC, 10/2005	17,864.5	17,962.2	18,064.1	18,167.8	18,272.3	18,376.6	18,480.5	18,583.9	18,686.8	18,789.0	18,890.4	18,990.8	19,090.5	19,189.5	17,404.7	17,816.1	18,220.2	18,635.1	19,040.3
FDEC, 02/2006	17,869.3	17,967.0	18,067.2	18,169.4	18,272.5	18,376.7	18,480.4	18,583.9	18,686.7	18,788.8	18,890.1	18,990.6	19,090.4	19,189.5	17,405.7	17,820.1	18,221.5	18,635.0	19,040.1
Growth Rate																			
FDEC, 10/2005	2.19	2.21	2.29	2.32	2.32	2.30	2.28	2.26	2.23	2.20	2.18	2.14	2.12	2.09	2.57	2.36	2.27	2.28	2.17
FDEC, 02/2006	2.21	2.21	2.25	2.28	2.29	2.30	2.28	2.26	2.23	2.20	2.17	2.15	2.12	2.09	2.58	2.38	2.25	2.27	2.17
Net Change in Population																			
FDEC, 10/2005	96.7	97.8	101.9	103.7	104.5	104.3	103.9	103.4	102.9	102.2	101.4	100.5	99.7	99.0	442.0	393.8	414.4	412.4	400.5
FDEC, 02/2006	97.4	97.8	100.1	102.3	103.1	104.1	103.7	103.5	102.8	102.1	101.3	100.5	99.8	99.2	444.9	397.0	409.6	412.1	400.7
Households																			
FDEC, 10/2005	7,085.6	7,124.4	7,165.5	7,207.7	7,249.9	7,292.0	7,333.7	7,375.3	7,416.7	7,457.8	7,498.6	7,538.9	7,578.9	7,618.5	6,906.7	7,066.3	7,228.7	7,395.9	7,558.7
FDEC, 02/2006	7,089.7	7,128.8	7,168.5	7,209.2	7,250.2	7,291.9	7,333.6	7,375.3	7,416.8	7,457.9	7,498.6	7,539.0	7,579.0	7,618.7	6,907.2	7,069.9	7,229.9	7,395.9	7,558.8
Growth Rate																			
FDEC, 10/2005	2.19	2.21	2.32	2.38	2.36	2.34	2.31	2.29	2.27	2.24	2.20	2.17	2.14	2.11	2.49	2.31	2.30	2.31	2.20
FDEC, 02/2006	2.24	2.22	2.25	2.29	2.30	2.32	2.31	2.29	2.27	2.24	2.20	2.17	2.14	2.11	2.51	2.36	2.26	2.30	2.20
Net Change in Households																			
FDEC, 10/2005	38.3	38.8	41.0	42.2	42.2	42.1	41.8	41.6	41.4	41.1	40.7	40.3	40.0	39.7	169.1	155.1	167.5	165.9	160.7
FDEC, 02/2006	39.1	39.1	39.8	40.7	41.1	41.7	41.7	41.7	41.5	41.1	40.7	40.4	40.0	39.7	170.8	158.3	163.1	166.0	160.8
Household Size																			
FDEC, 10/2005	2.521	2.521	2.521	2.521	2.520	2.520	2.520	2.520	2.520	2.519	2.519	2.519	2.519	2.519	2.520	2.521	2.521	2.520	2.519
FDEC, 02/2006	2.520	2.520	2.520	2.520	2.520	2.520	2.520	2.520	2.520	2.519	2.519	2.519	2.519	2.519	2.520	2.521	2.520	2.520	2.519
Growth Rate																			
FDEC, 10/2005	0.00	0.00	-0.03	-0.06	-0.04	-0.04	-0.03	-0.03	-0.03	-0.03	-0.03	-0.02	-0.02	-0.02	0.08	0.05	-0.03	-0.03	-0.03
FDEC, 02/2006	-0.03	-0.02	0.00	0.00	-0.01	-0.02	-0.03	-0.04	-0.04	-0.03	-0.03	-0.02	-0.02	-0.02	0.06	0.02	-0.01	-0.03	-0.03
Net Migration																			
FDEC, 10/2005	82.8	83.8	87.9	89.7	90.4	90.2	89.9	89.4	88.9	88.2	87.4	86.6	85.8	85.2	393.7	338.8	358.1	356.3	345.0
FDEC, 02/2006	83.4	83.8	86.2	88.3	89.1	90.1	89.7	89.5	88.8	88.1	87.2	86.5	85.8	85.1	396.8	341.6	353.7	356.1	344.7
Births																			
FDEC, 10/2005	55.0	55.2	55.4	55.6	55.9	56.1	56.3	56.5	56.8	57.0	57.2	57.4	57.7	57.9	214.3	219.3	223.0	226.6	230.2
FDEC, 02/2006	55.0	55.2	55.4	55.6	55.9	56.1	56.4	56.7	56.9	57.2	57.5	57.7	58.0	58.3	214.5	219.3	223.0	227.2	231.5
Deaths																			
FDEC, 10/2005	41.1	41.2	41.4	41.6	41.8	42.0	42.3	42.5	42.8	43.0	43.3	43.5	43.8	44.1	166.0	164.4	166.7	170.5	174.7
FDEC, 02/2006	41.0	41.2	41.4	41.6	41.9	42.1	42.4	42.7	42.9	43.2	43.5	43.7	44.0	44.3	166.4	163.9	167.1	171.2	175.4
Net Natural Increase																			
FDEC, 10/2005	13.9	14.0	14.0	14.1	14.1	14.1	14.0	14.0	14.0	14.0	13.9	13.9	13.9	13.8	48.3	54.9	56.2	56.0	55.5
FDEC, 02/2006	14.0	14.0	14.0	14.0	14.0	14.0	14.0	14.0	14.0	14.0	14.0	14.0	14.0	14.0	48.1	55.4	55.9	56.0	56.1

FLORIDA DEMOGRAPHIC ESTIMATING CONFERENCE

Held February 17, 2006

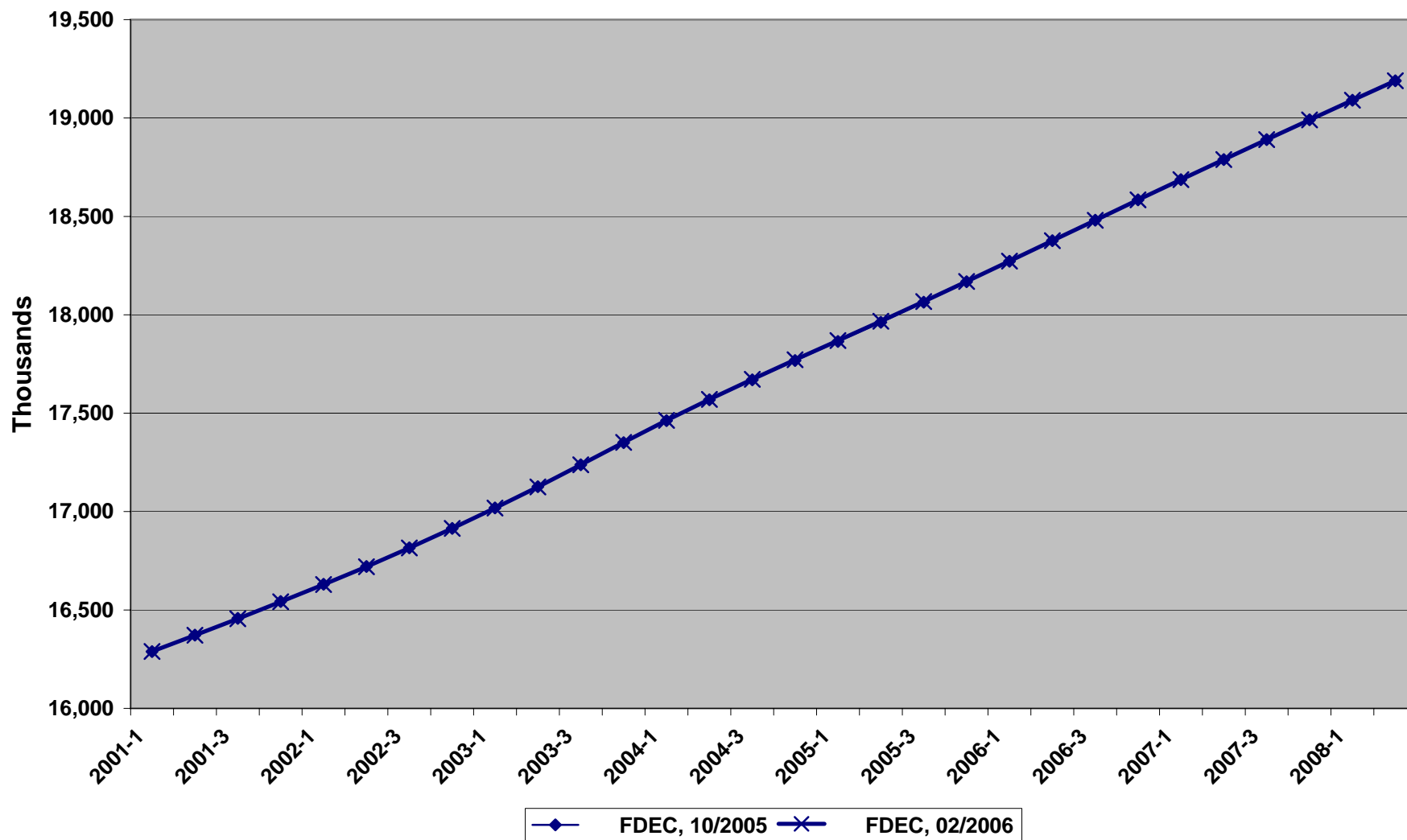
	<u>2000-01</u>	<u>2001-02</u>	<u>2002-03</u>	<u>2003-04</u>	<u>2004-05</u>	<u>2005-06</u>	<u>2006-07</u>	<u>2007-08</u>	<u>2008-09</u>	<u>2009-10</u>	<u>2010-11</u>	<u>2011-12</u>	<u>2012-13</u>	<u>2013-14</u>	<u>2014-15</u>	<u>2015-16</u>
Population																
FDEC, 10/2005	16,246.4	16,587.9	16,968.8	17,404.7	17,816.1	18,220.2	18,635.1	19,040.3	19,434.8	19,823.6	20,208.0	20,585.0	20,955.6	21,320.5	21,678.8	22,032.2
FDEC, 02/2006	16,246.6	16,586.6	16,968.2	17,405.7	17,820.1	18,221.5	18,635.0	19,040.1	19,434.9	19,823.6	20,207.9	20,585.0	20,955.6	21,320.5	21,678.8	22,032.2
Growth Rate																
FDEC, 10/2005	2.30	2.10	2.30	2.57	2.36	2.27	2.28	2.17	2.07	2.00	1.94	1.87	1.80	1.74	1.68	1.63
FDEC, 02/2006	2.29	2.09	2.30	2.58	2.38	2.25	2.27	2.17	2.07	2.00	1.94	1.87	1.80	1.74	1.68	1.63
Net Change in Population																
FDEC, 10/2005	343.4	348.6	405.4	442.0	393.8	414.4	412.4	400.5	391.7	387.4	381.9	374.2	368.5	362.8	355.6	352.2
FDEC, 02/2006	341.1	348.4	405.2	444.9	397.0	409.6	412.1	400.7	391.7	387.3	382.0	374.2	368.5	362.6	355.8	352.2
Households																
FDEC, 10/2005	6,447.1	6,586.2	6,738.9	6,906.7	7,066.3	7,228.7	7,395.9	7,558.7	7,716.9	7,872.4	8,026.0	8,176.4	8,324.2	8,469.5	8,612.2	8,753.0
FDEC, 02/2006	6,447.8	6,585.8	6,737.8	6,907.2	7,069.9	7,229.9	7,395.9	7,558.8	7,717.0	7,872.6	8,026.1	8,176.6	8,324.3	8,469.6	8,612.3	8,753.1
Growth Rate																
FDEC, 10/2005	2.35	2.16	2.32	2.49	2.31	2.30	2.31	2.20	2.09	2.02	1.95	1.87	1.81	1.75	1.68	1.63
FDEC, 02/2006	2.36	2.14	2.31	2.51	2.36	2.26	2.30	2.20	2.09	2.02	1.95	1.87	1.81	1.75	1.68	1.63
Net Change in Households																
FDEC, 10/2005	143.5	139.6	160.6	169.1	155.1	167.5	165.9	160.7	157.0	154.9	152.5	149.3	146.8	144.5	141.7	140.3
FDEC, 02/2006	143.1	138.5	161.1	170.8	158.3	163.1	166.0	160.8	157.0	154.8	152.5	149.3	146.8	144.4	141.7	140.3
Household Size																
FDEC, 10/2005	2.520	2.519	2.518	2.520	2.521	2.521	2.520	2.519	2.518	2.518	2.518	2.518	2.517	2.517	2.517	2.517
FDEC, 02/2006	2.520	2.519	2.518	2.520	2.521	2.520	2.520	2.519	2.518	2.518	2.518	2.518	2.517	2.517	2.517	2.517
Growth Rate																
FDEC, 10/2005	-0.05	-0.06	-0.02	0.08	0.05	-0.03	-0.03	-0.03	-0.02	-0.01	-0.01	-0.01	-0.01	0.00	0.00	0.00
FDEC, 02/2006	-0.06	-0.05	-0.01	0.06	0.02	-0.01	-0.03	-0.03	-0.02	-0.02	-0.01	-0.01	-0.01	0.00	0.00	0.00
Net Migration																
FDEC, 10/2005	303.1	310.8	365.8	393.7	338.8	358.1	356.3	345.0	336.8	333.1	328.6	322.0	317.8	313.9	308.9	308.1
FDEC, 02/2006	300.2	310.9	365.9	396.8	341.6	353.7	356.1	344.7	335.5	331.0	326.0	318.8	314.0	309.3	304.1	302.8
Births																
FDEC, 10/2005	205.4	205.5	208.0	214.3	219.3	223.0	226.6	230.2	233.8	237.5	241.1	244.4	247.7	250.8	253.7	256.4
FDEC, 02/2006	205.9	205.2	207.8	214.5	219.3	223.0	227.2	231.5	235.9	240.4	244.6	248.6	252.5	256.1	259.6	262.7
Deaths																
FDEC, 10/2005	165.0	167.7	168.4	166.0	164.4	166.7	170.5	174.7	178.9	183.2	187.7	192.3	197.0	201.9	206.9	212.3
FDEC, 02/2006	165.0	167.7	168.5	166.4	163.9	167.1	171.2	175.4	179.8	184.1	188.6	193.2	197.9	202.8	207.9	213.3
Net Natural Increase																
FDEC, 10/2005	40.3	37.8	39.6	48.3	54.9	56.2	56.0	55.5	54.9	54.3	53.4	52.2	50.7	48.9	46.7	44.1
FDEC, 02/2006	40.9	37.5	39.4	48.1	55.4	55.9	56.0	56.1	56.2	56.3	56.0	55.4	54.5	53.3	51.7	49.4

FLORIDA DEMOGRAPHIC ESTIMATING CONFERENCE

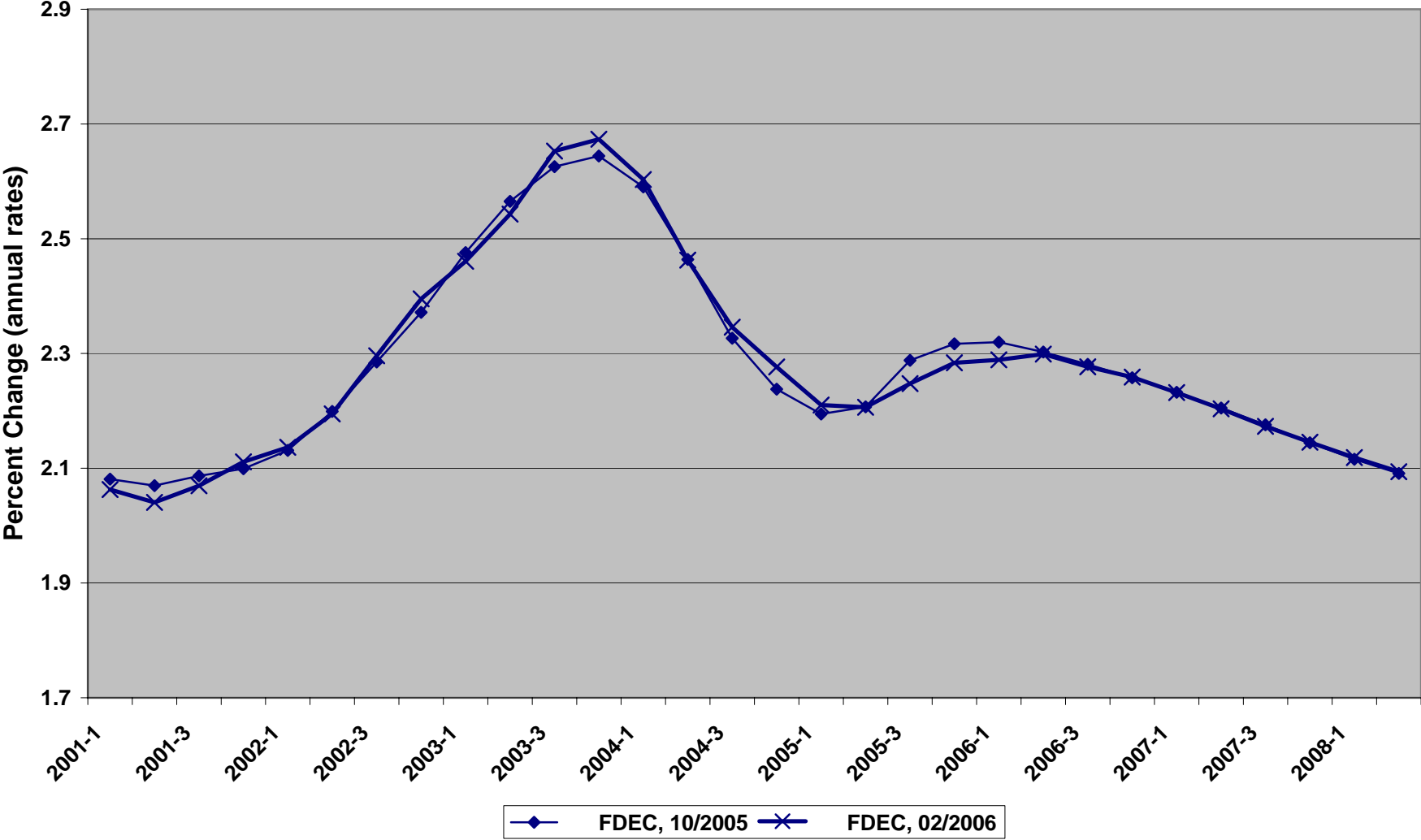
Charts

Held February 17, 2006

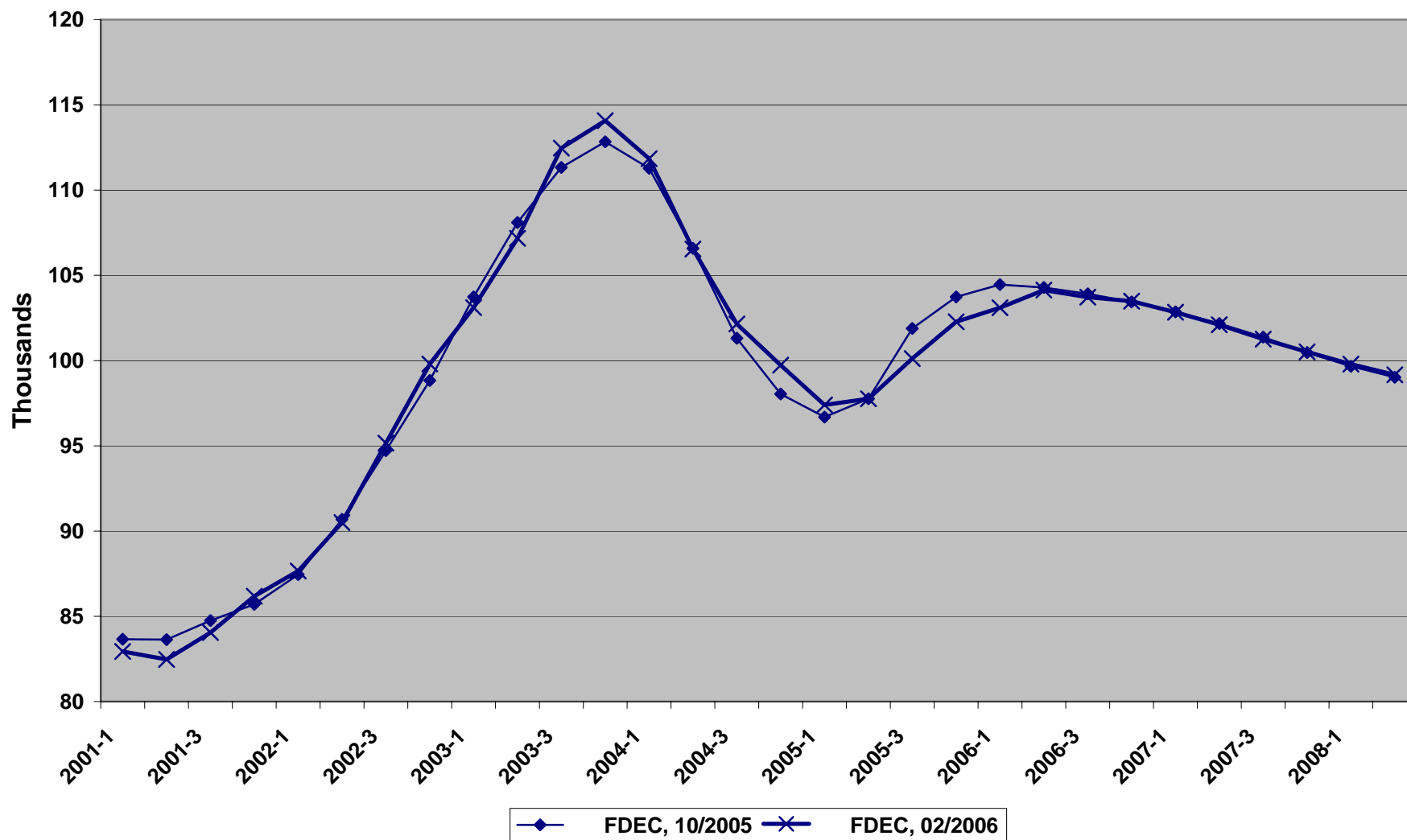
Florida Resident Population



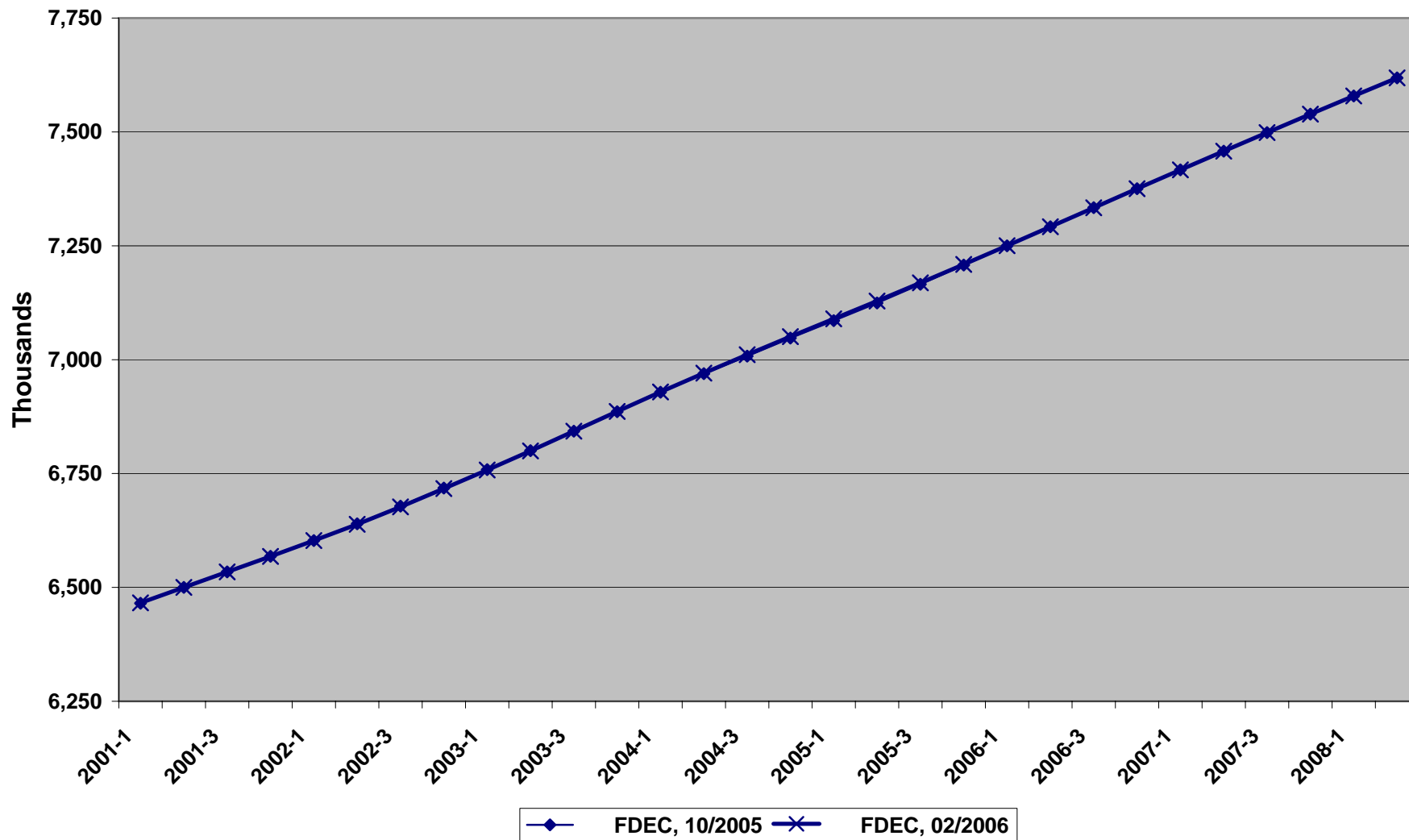
Growth In Florida Resident Population



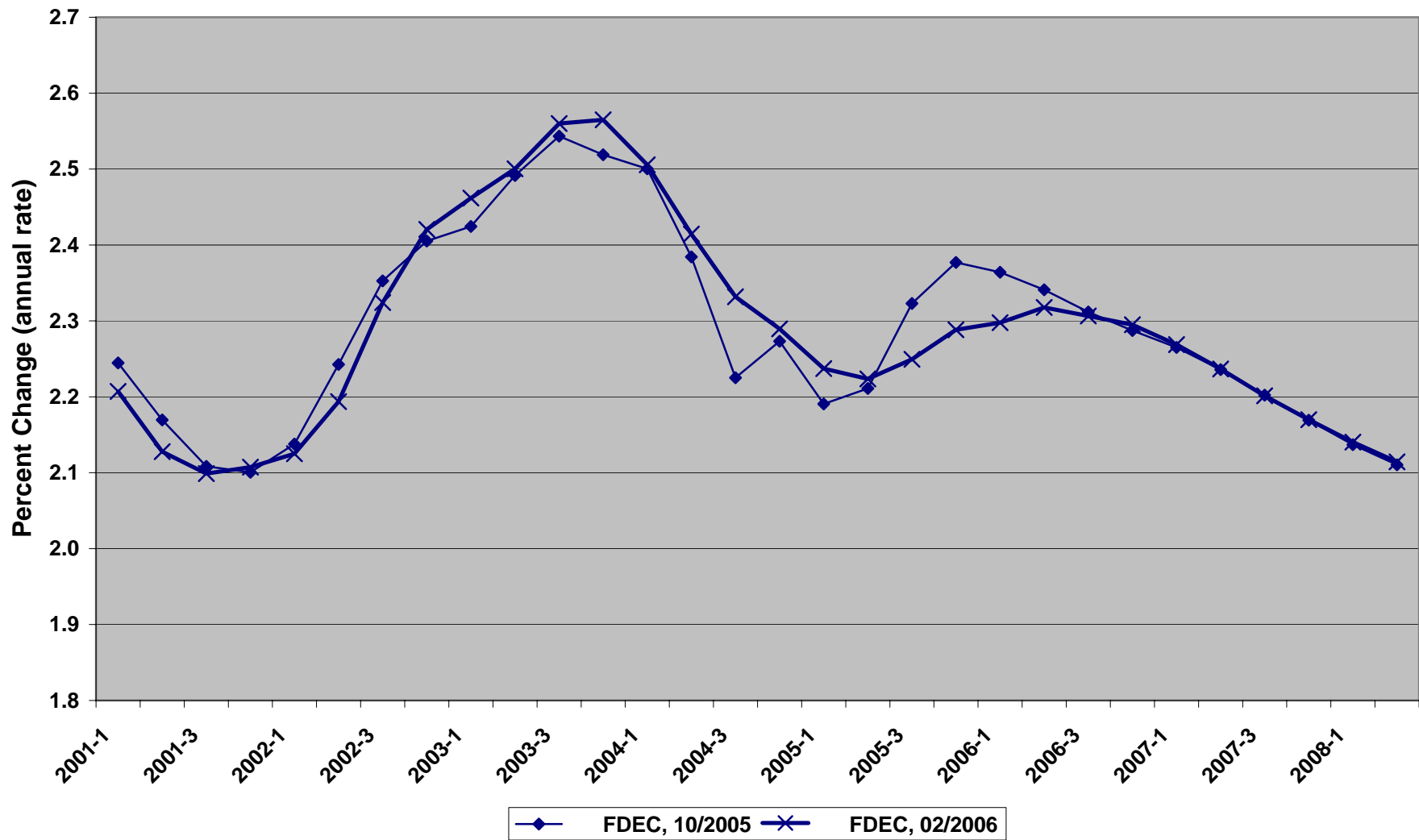
Net Change In Florida Resident Population



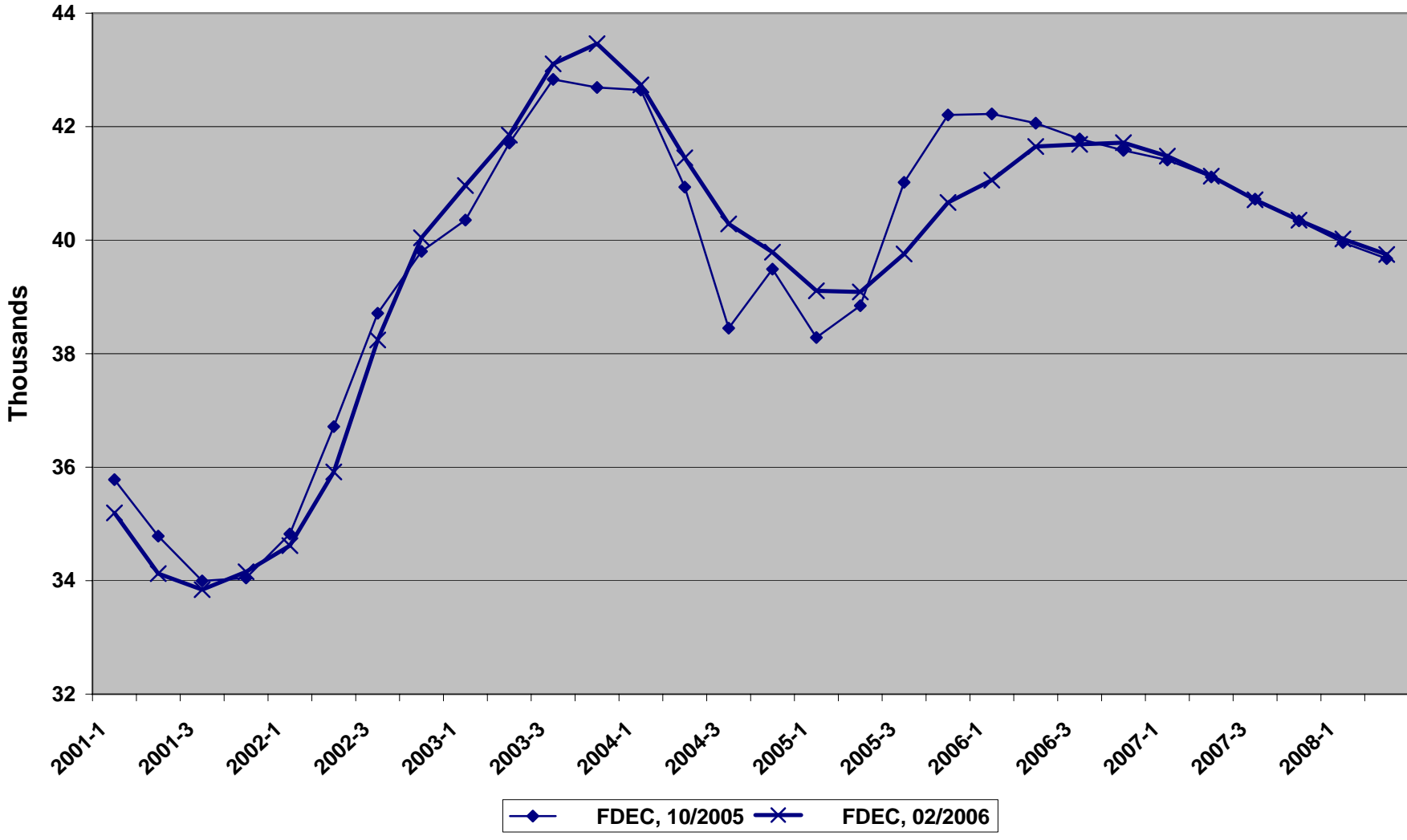
Florida Resident Households



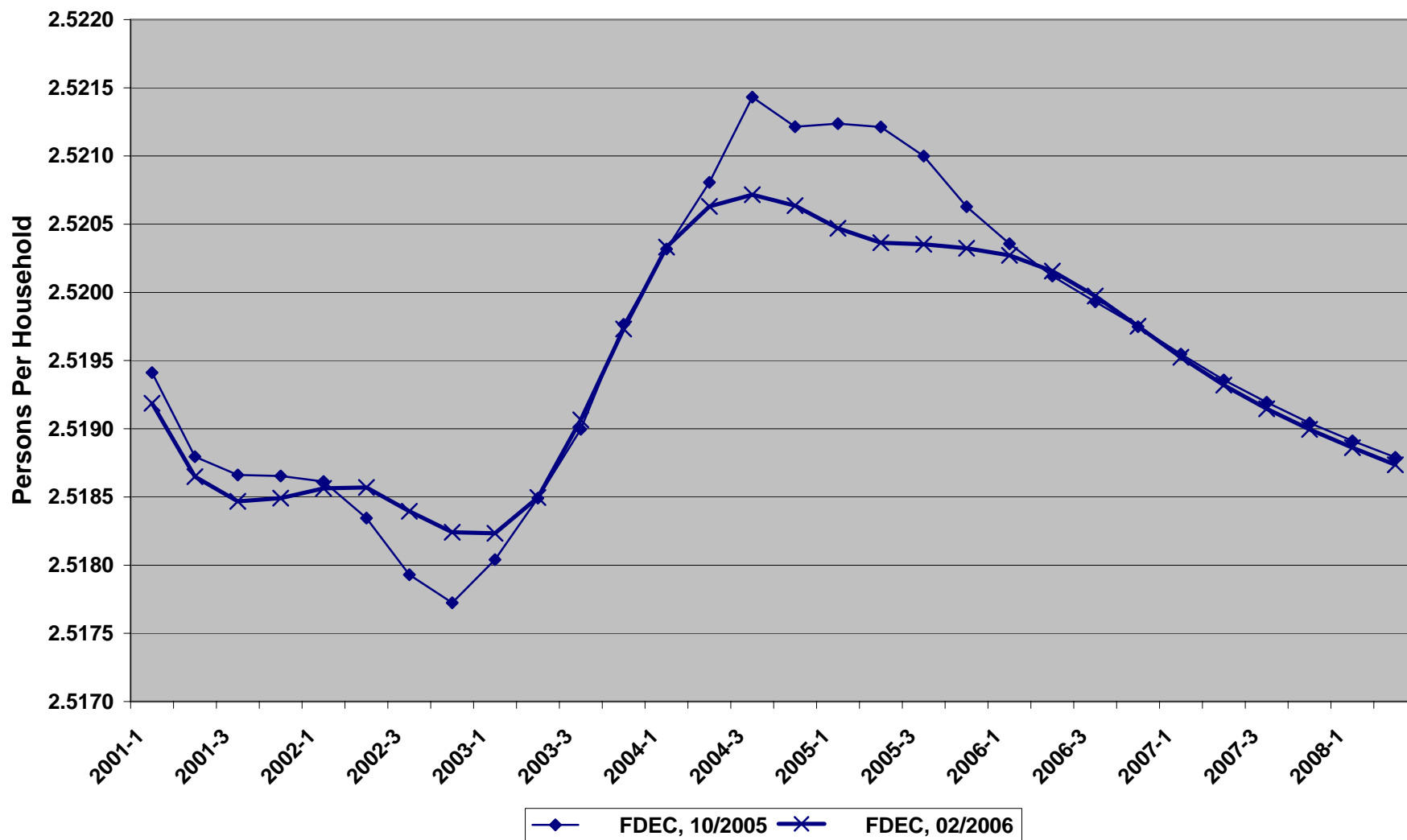
Growth In Florida Resident Households



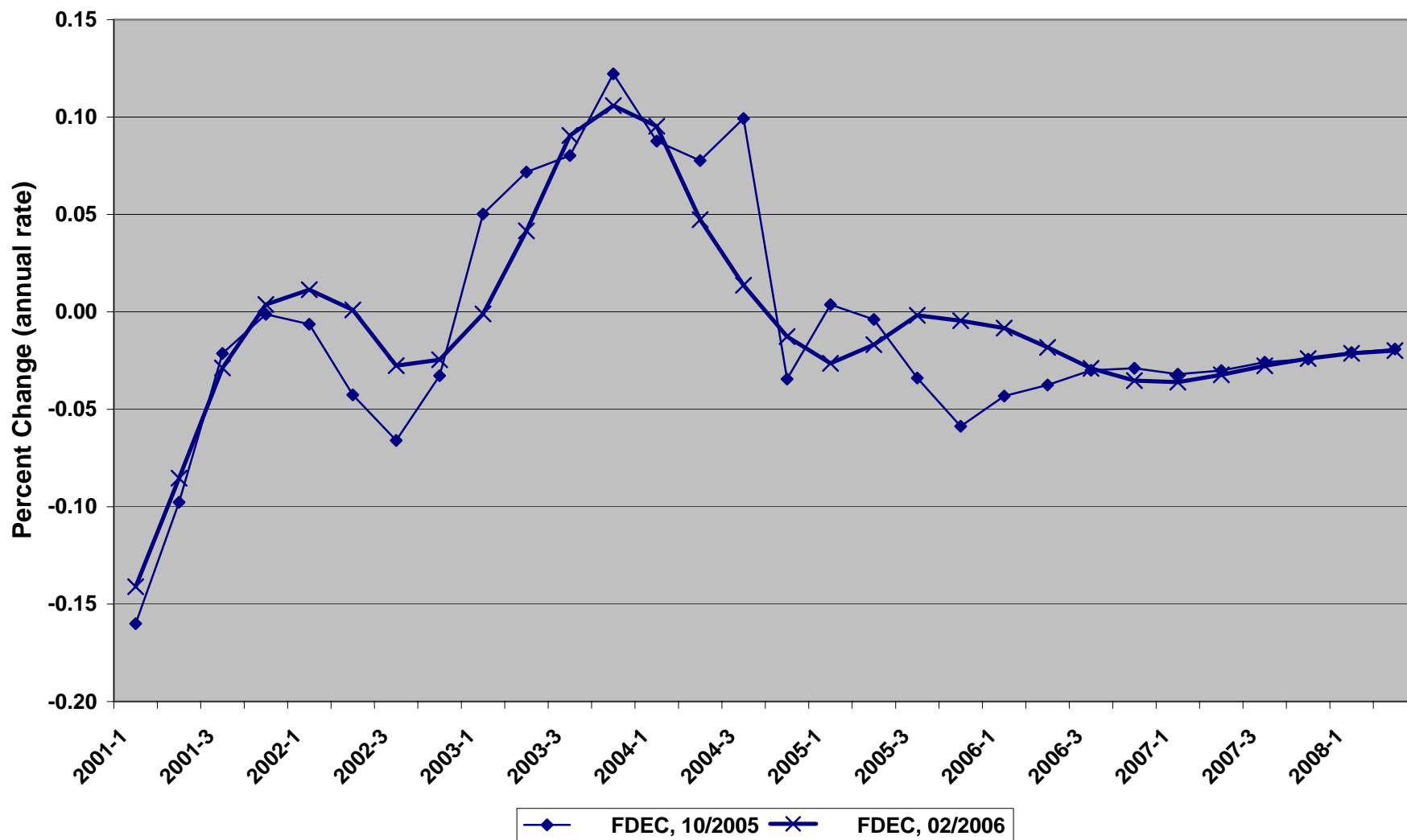
Net Change In Florida Resident Households



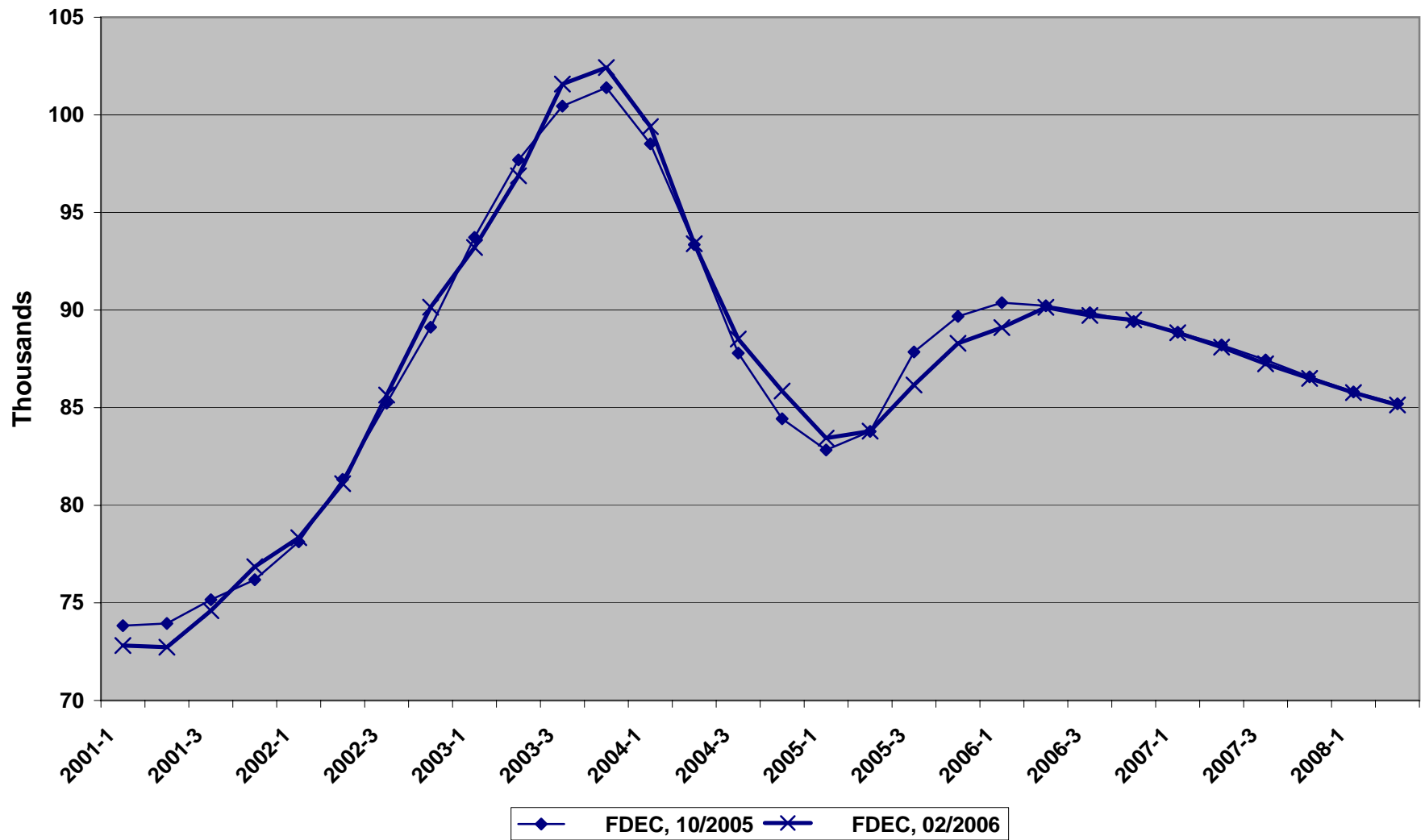
Florida Average Household Size



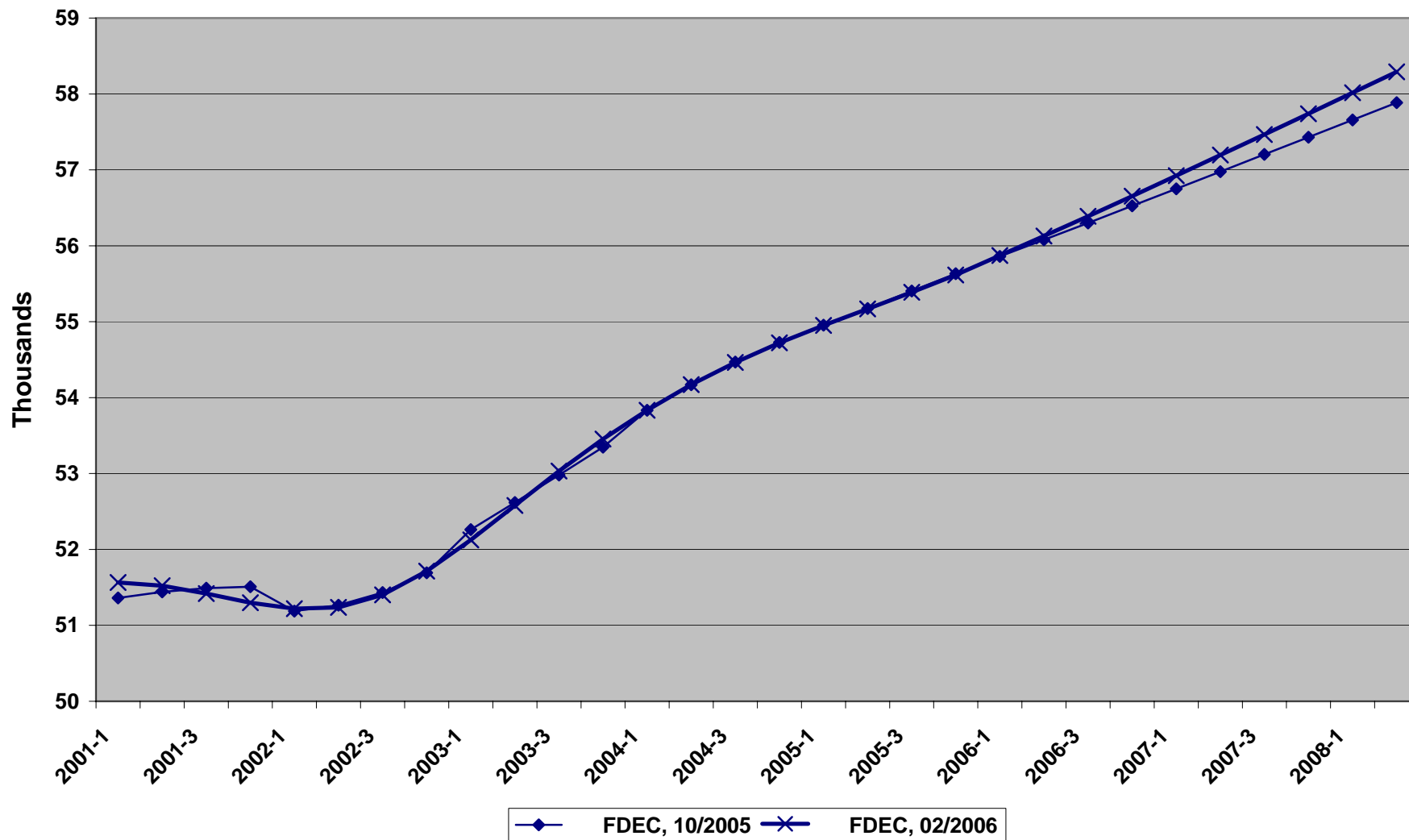
Growth In Florida Household Size



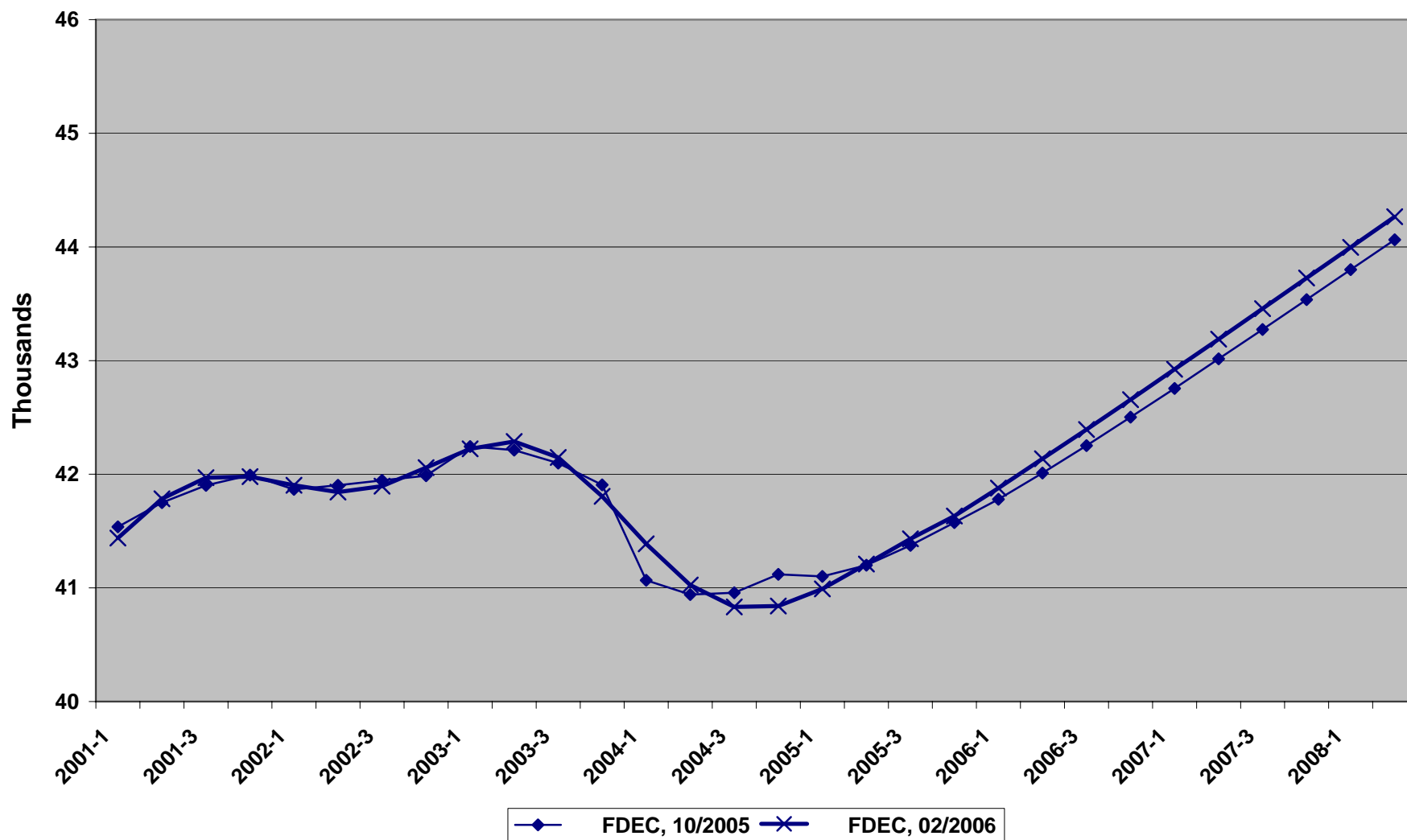
Florida Net Migration



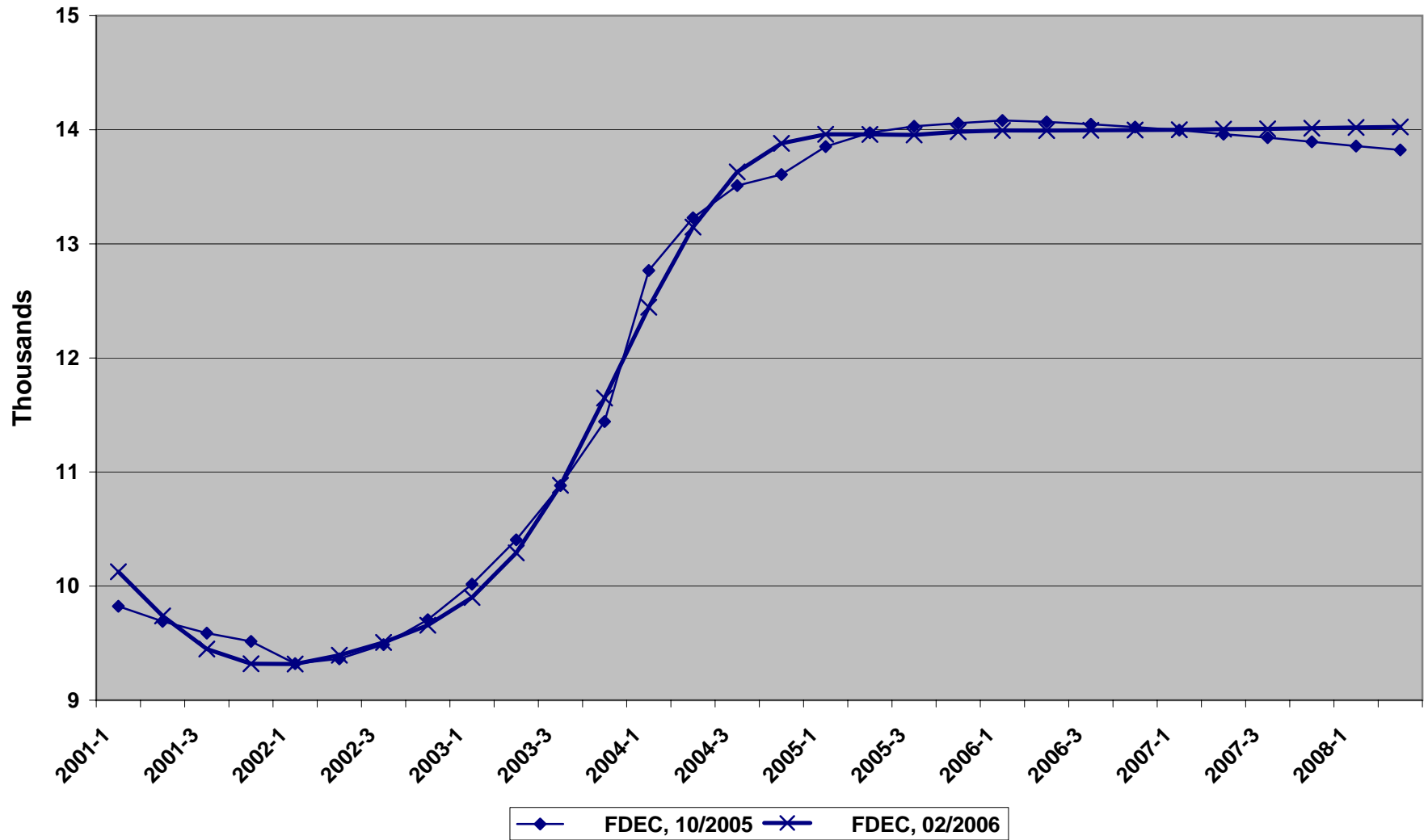
Florida Resident Births



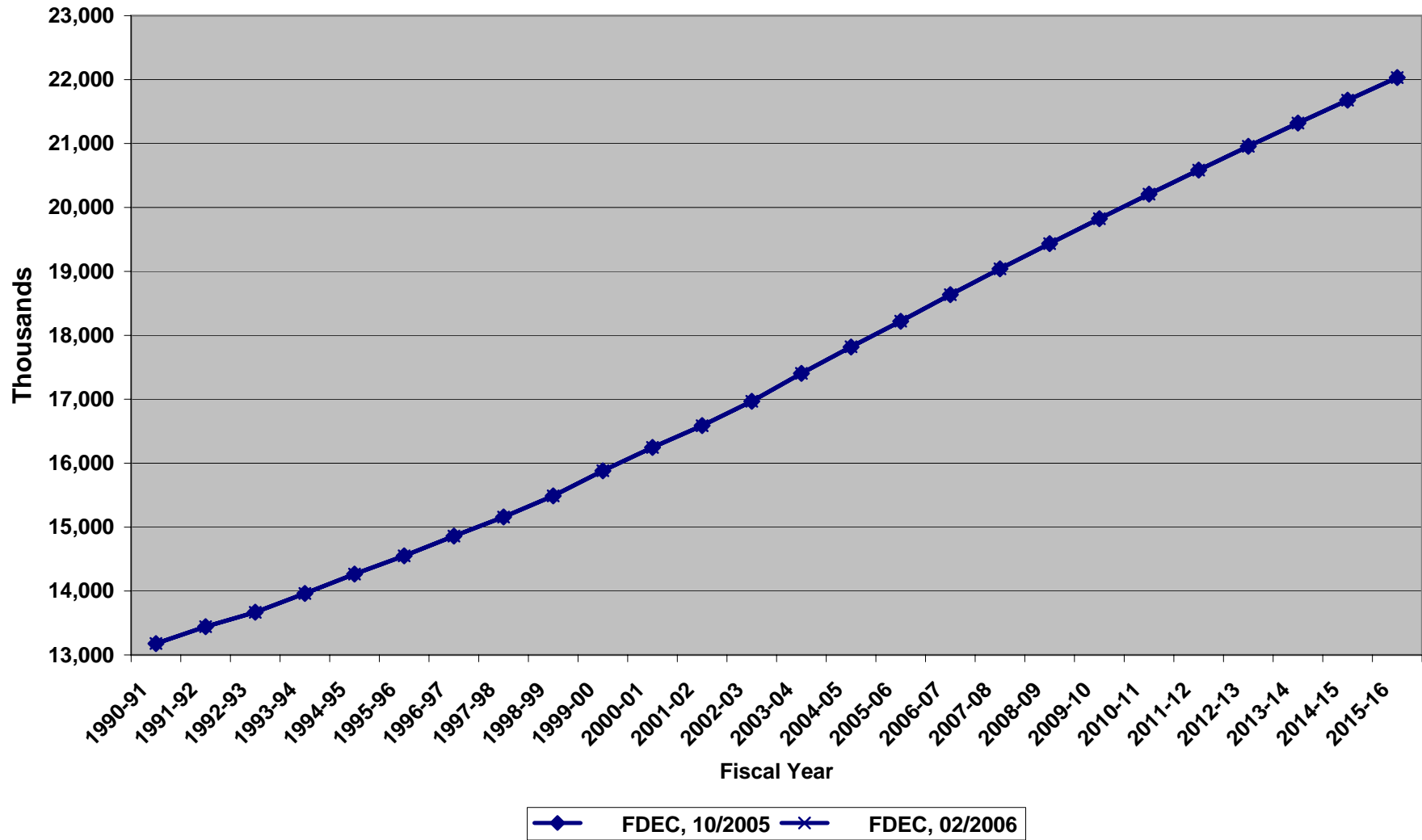
Florida Resident Deaths



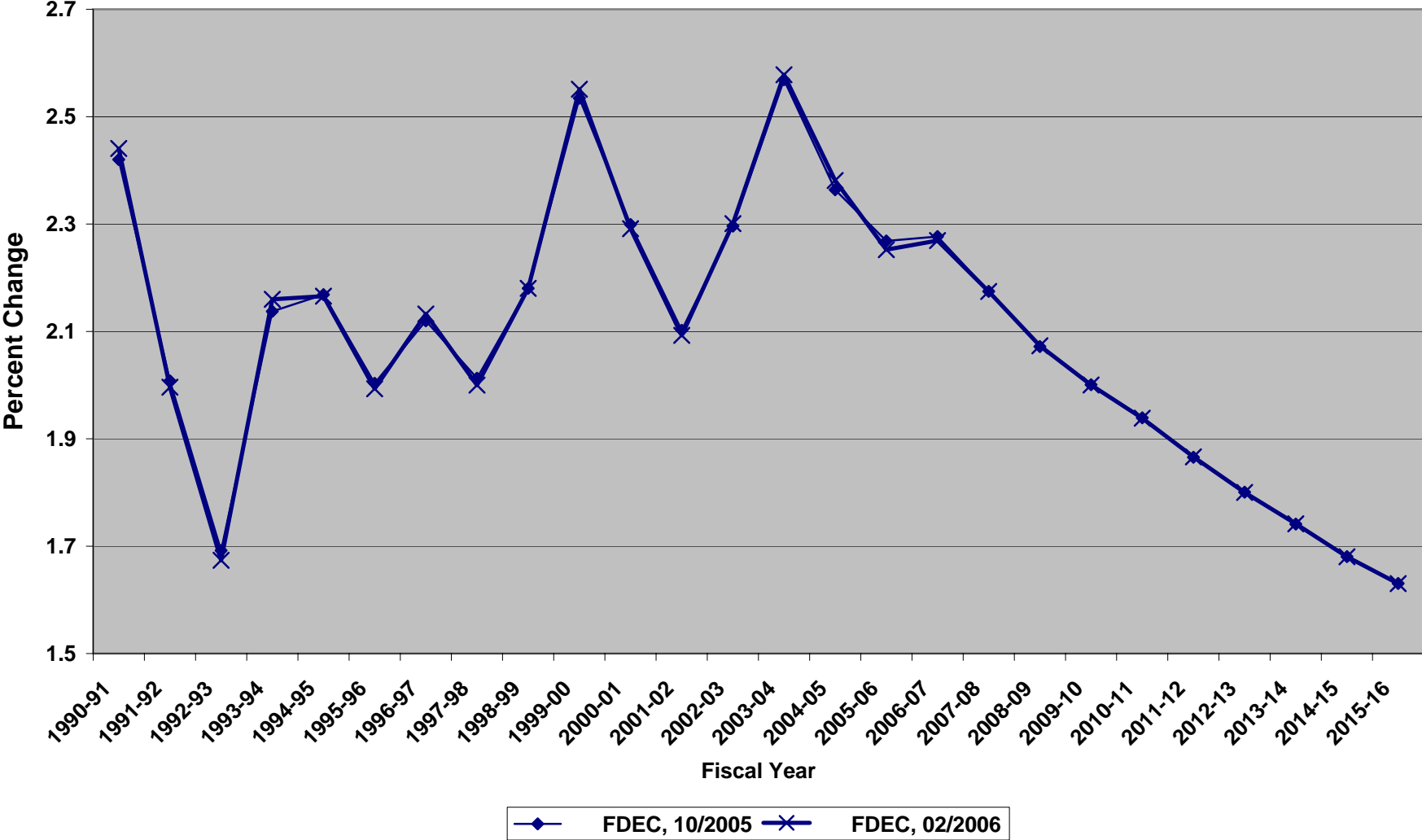
Florida Net Natural Increase



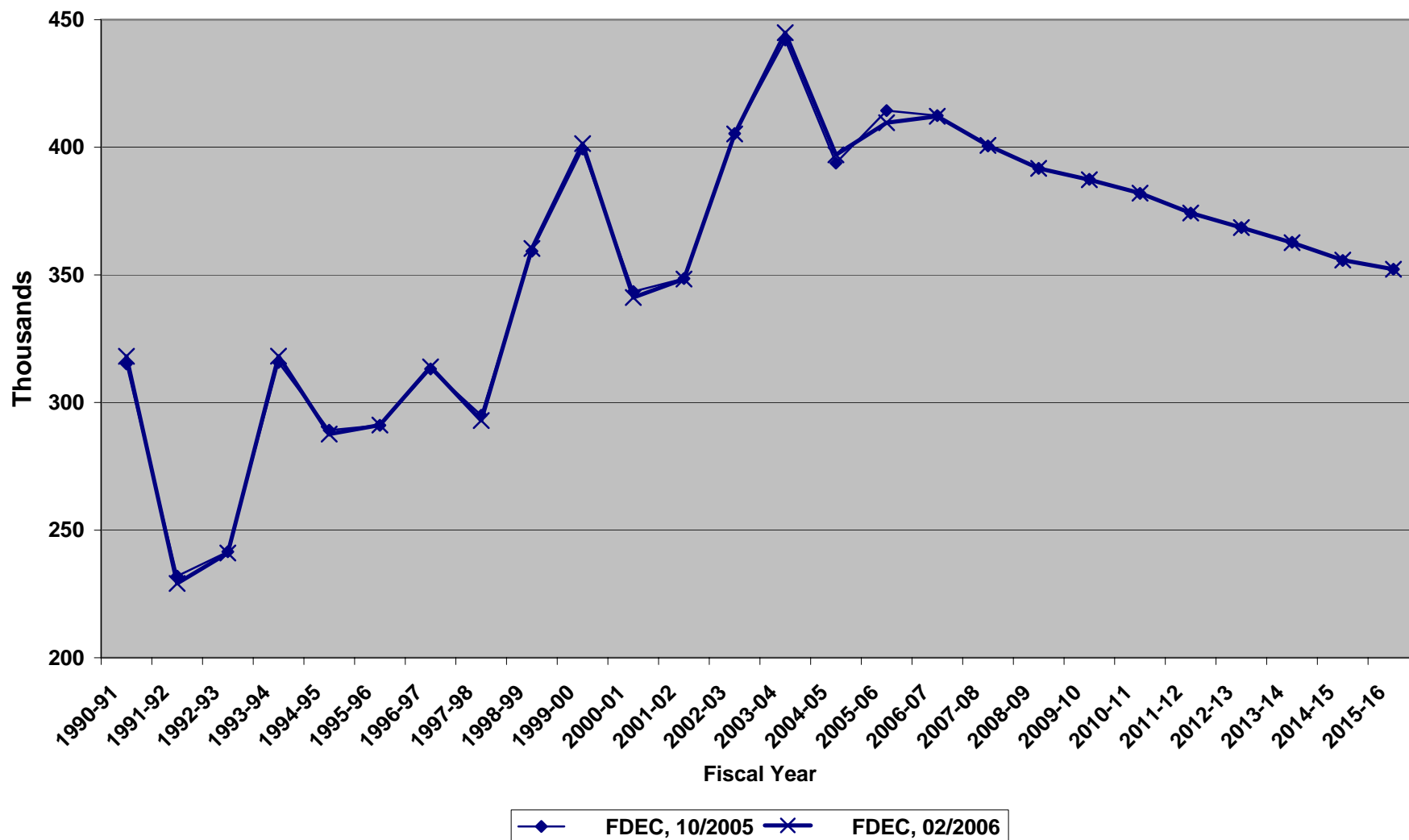
Florida Resident Population



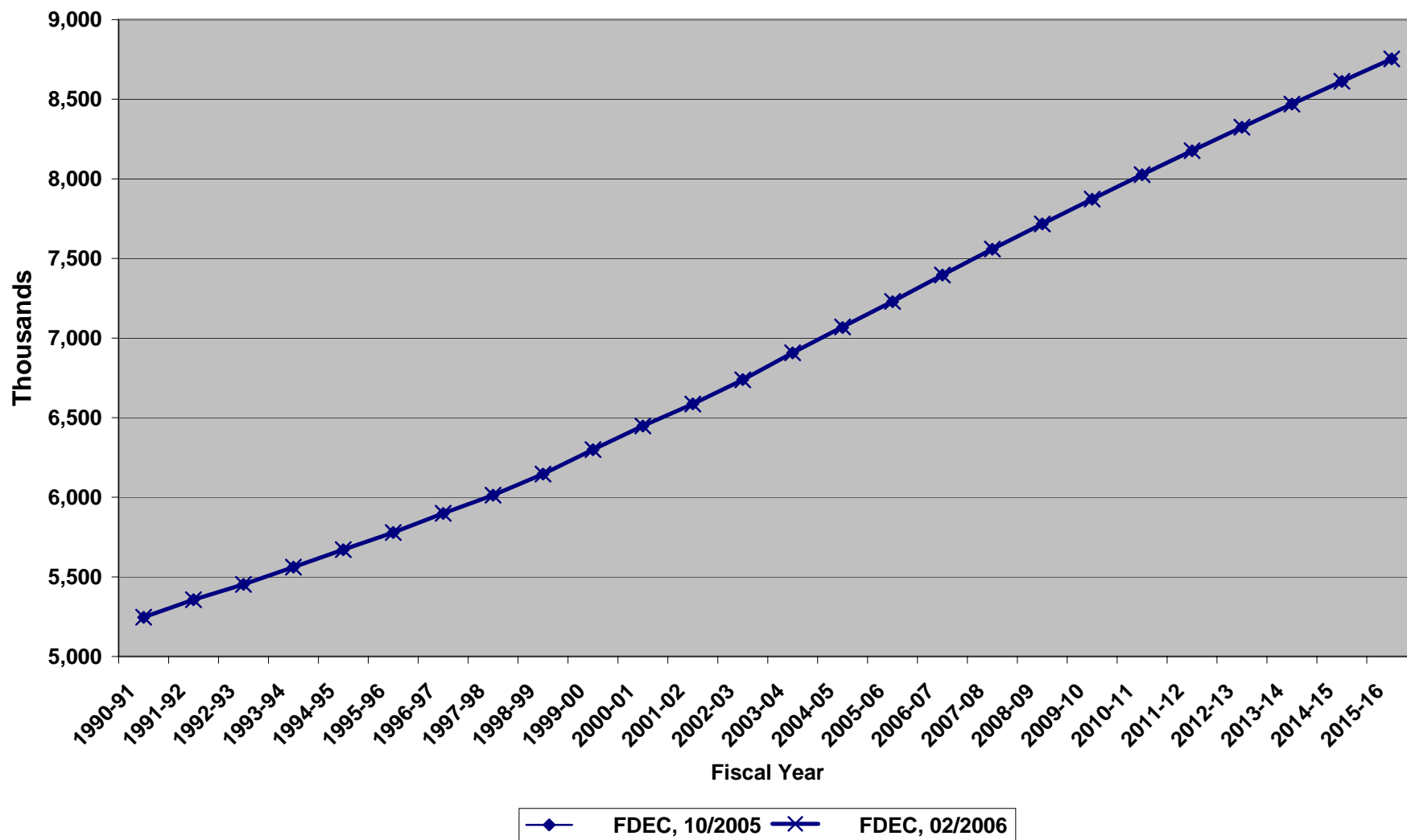
Growth In Florida Resident Population



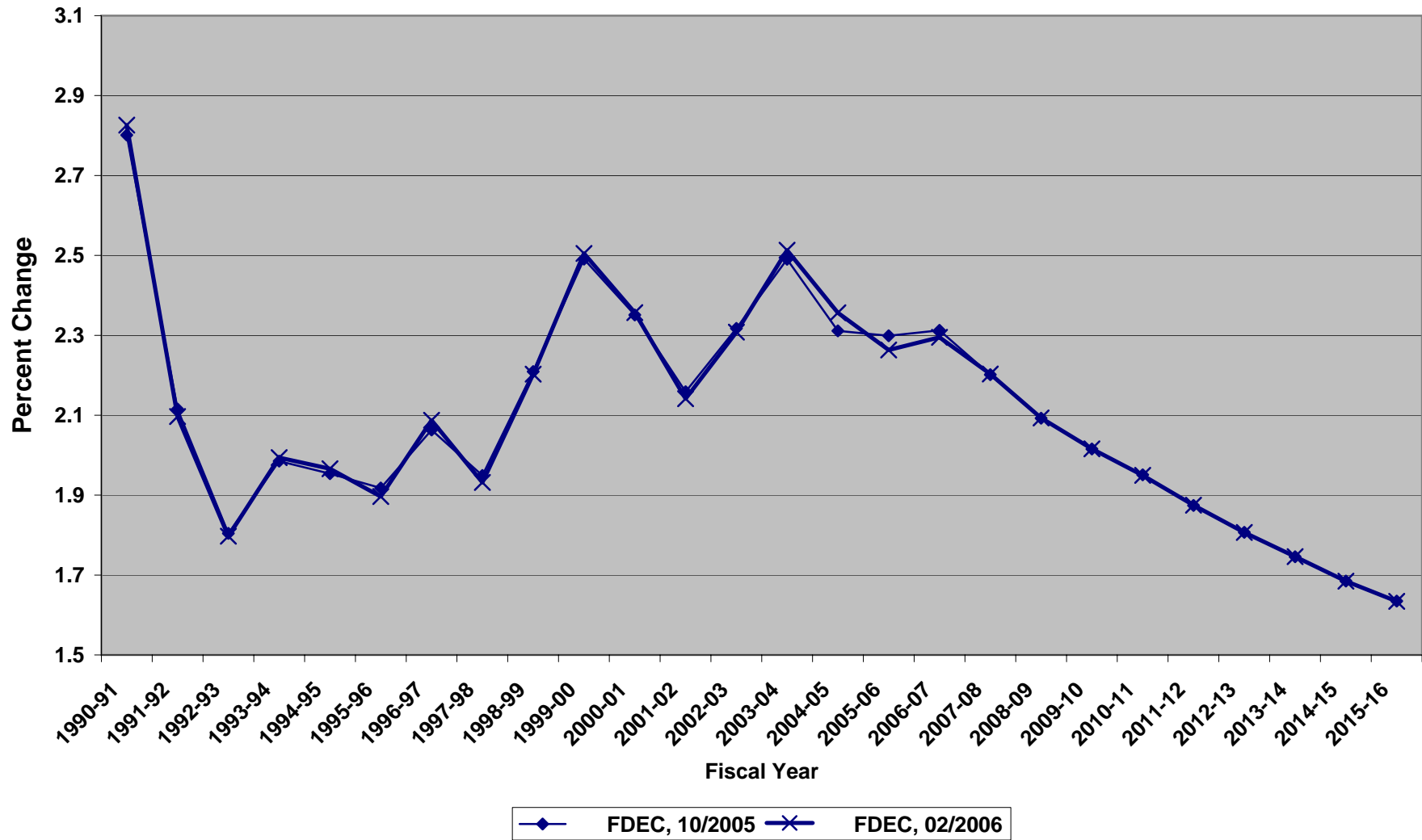
Net Change In Florida Resident Population



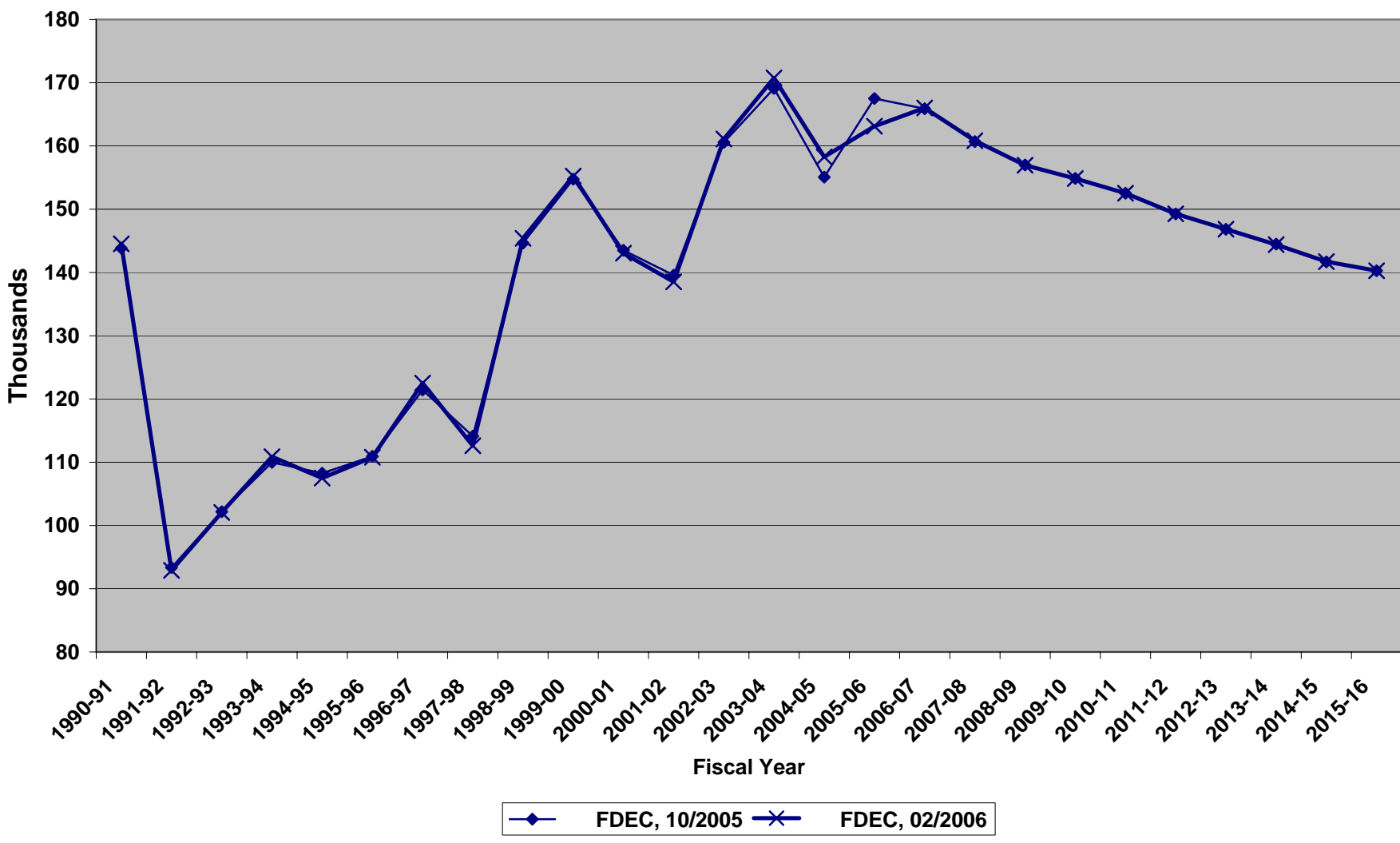
Florida Resident Households



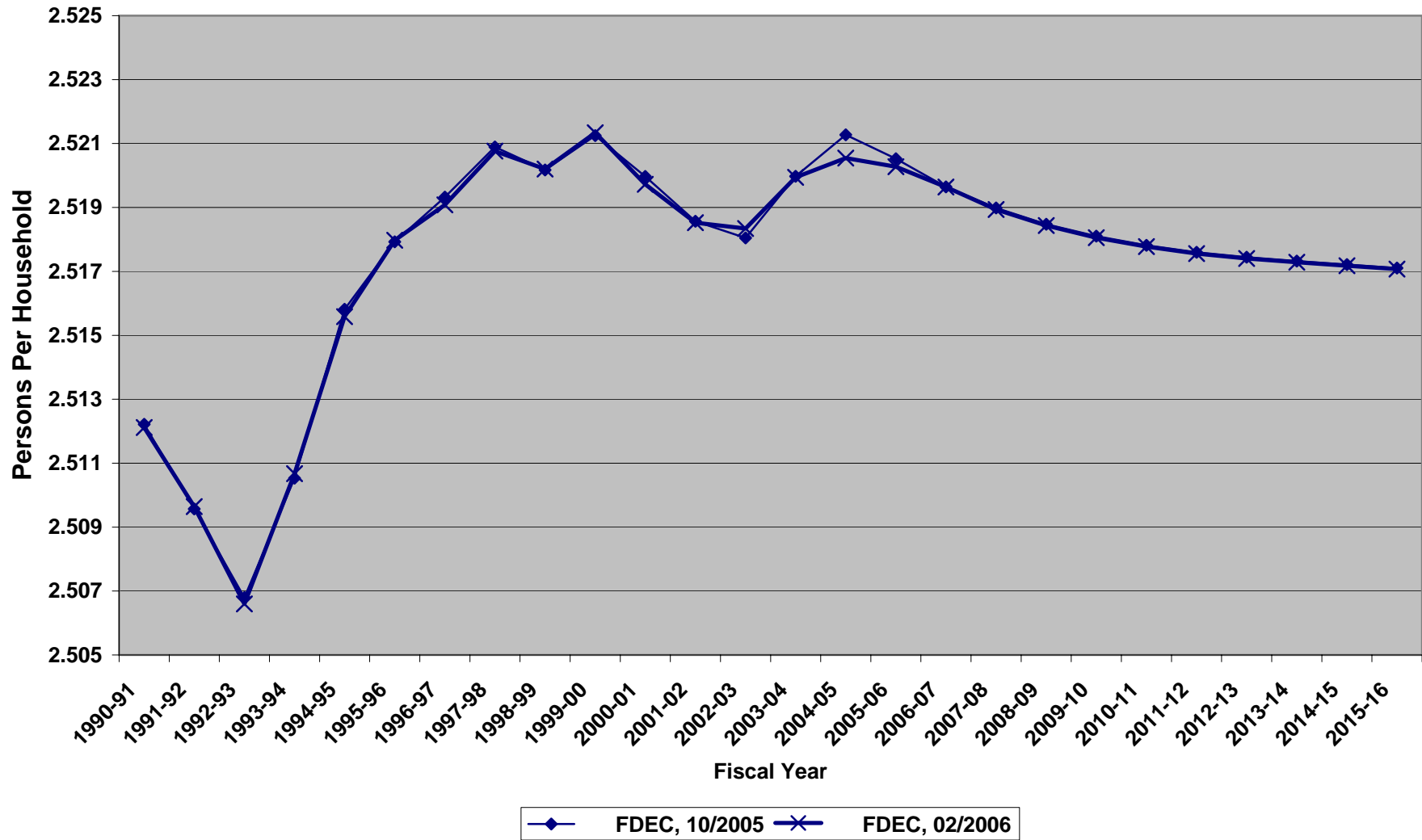
Growth In Florida Resident Households



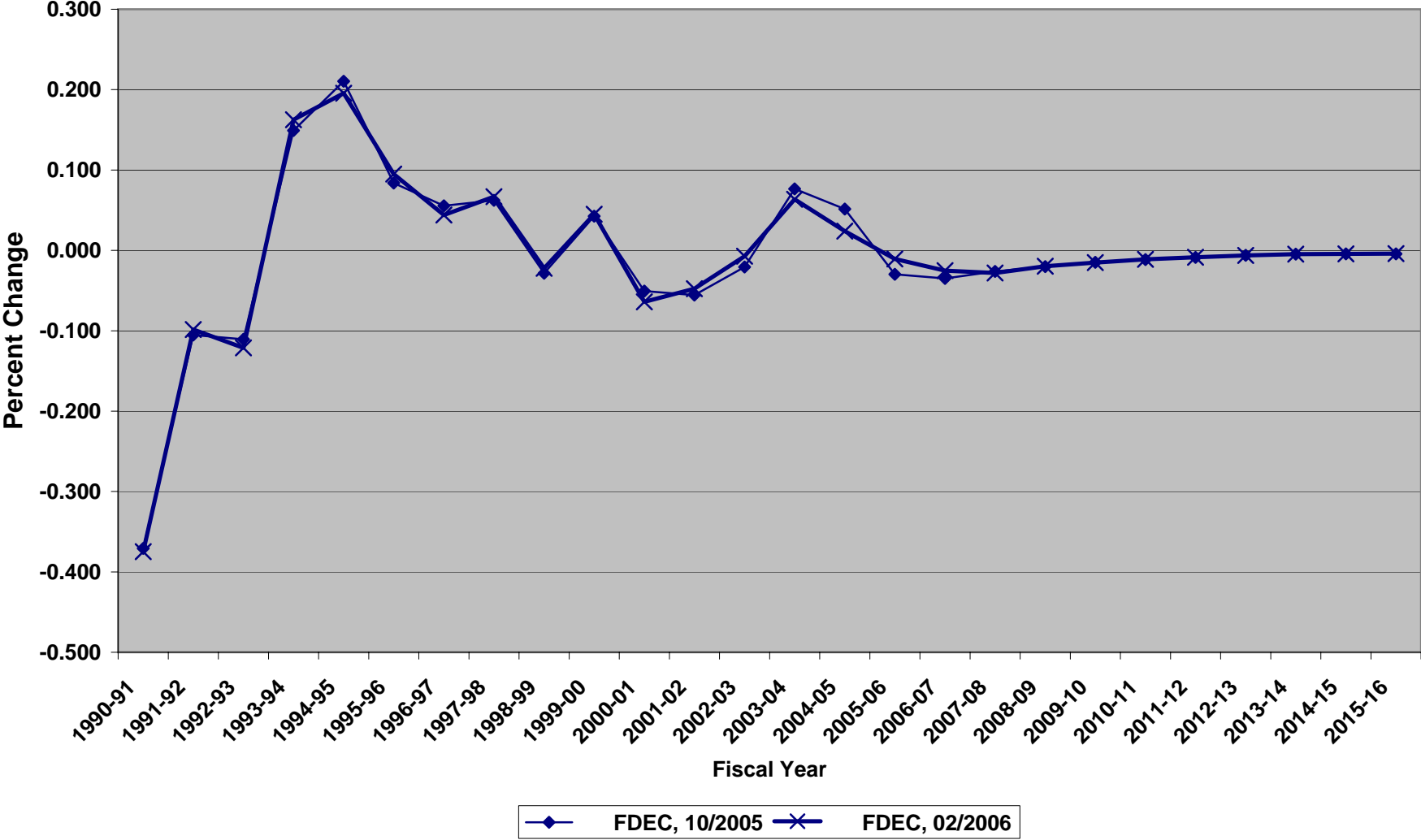
Net Change In Florida Resident Households



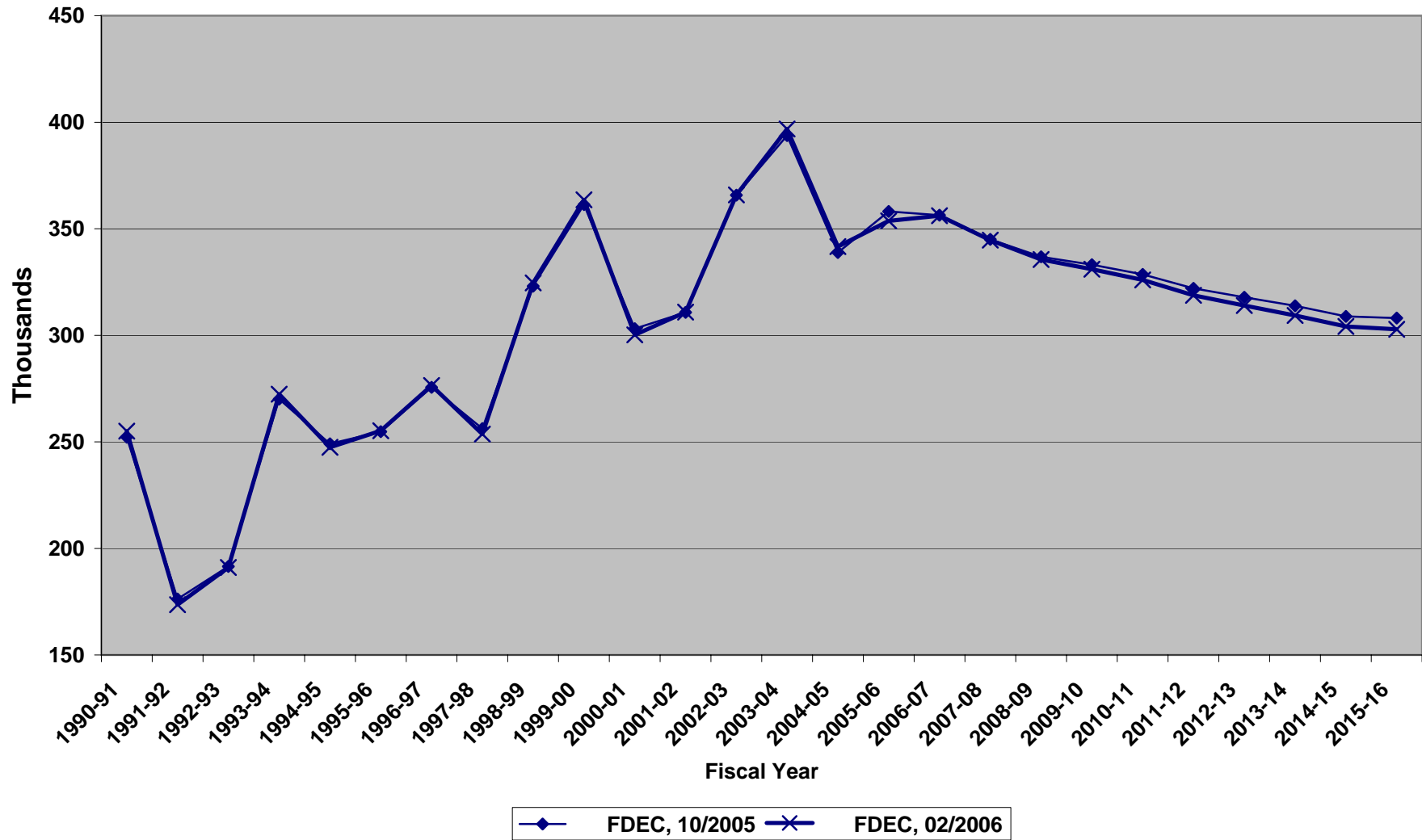
Average Florida Household Size



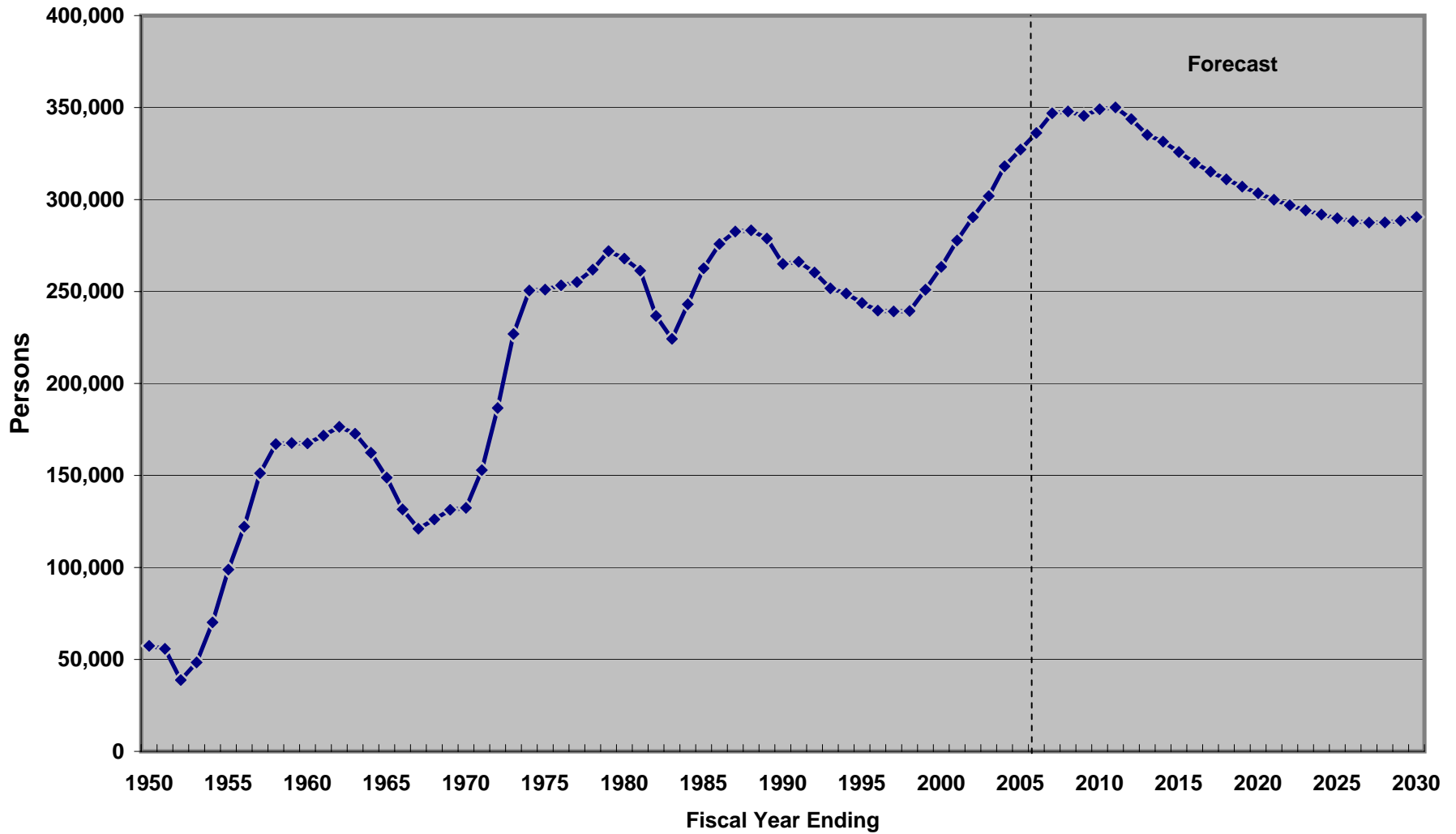
Growth In Average Florida Household Size



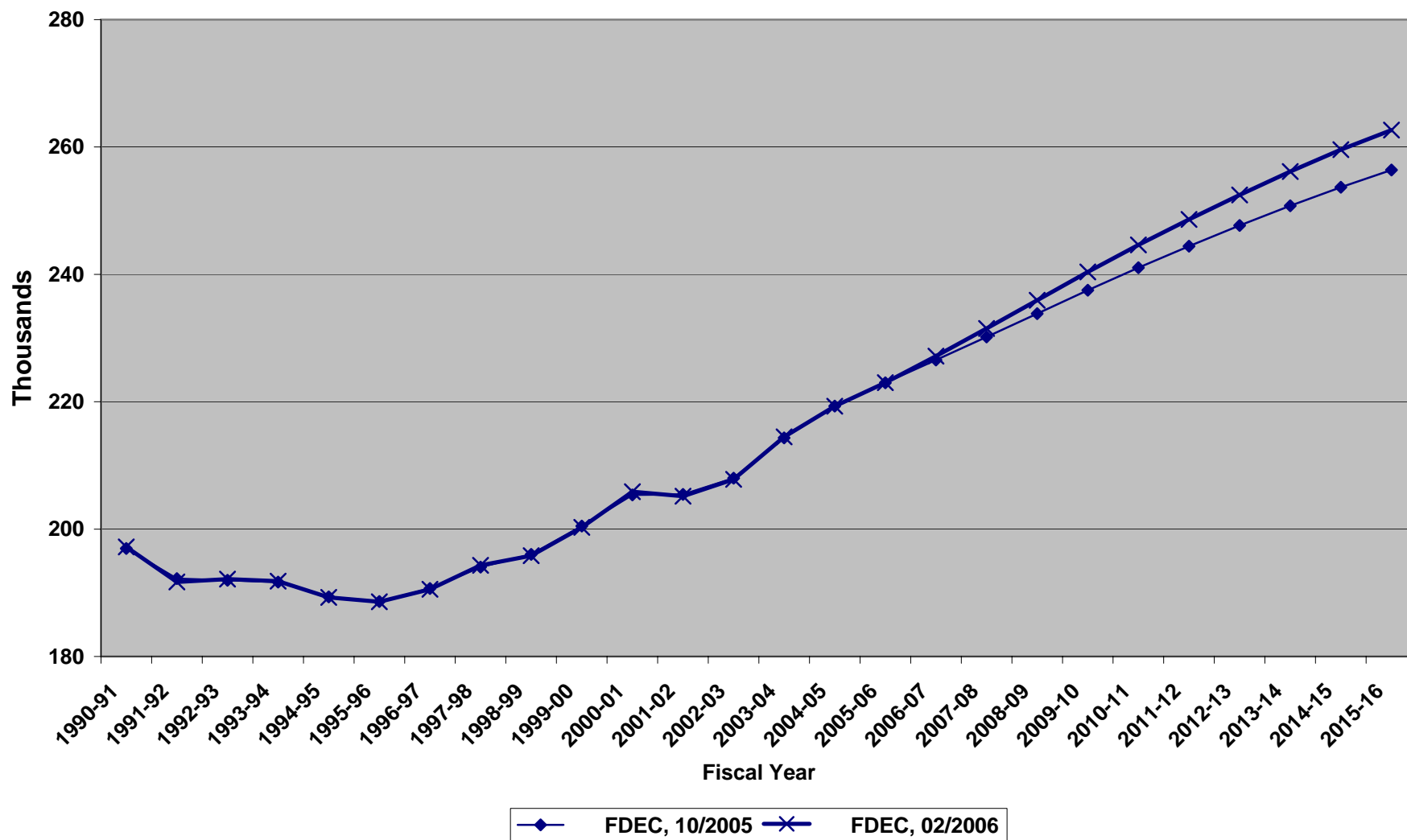
Florida Net Migration



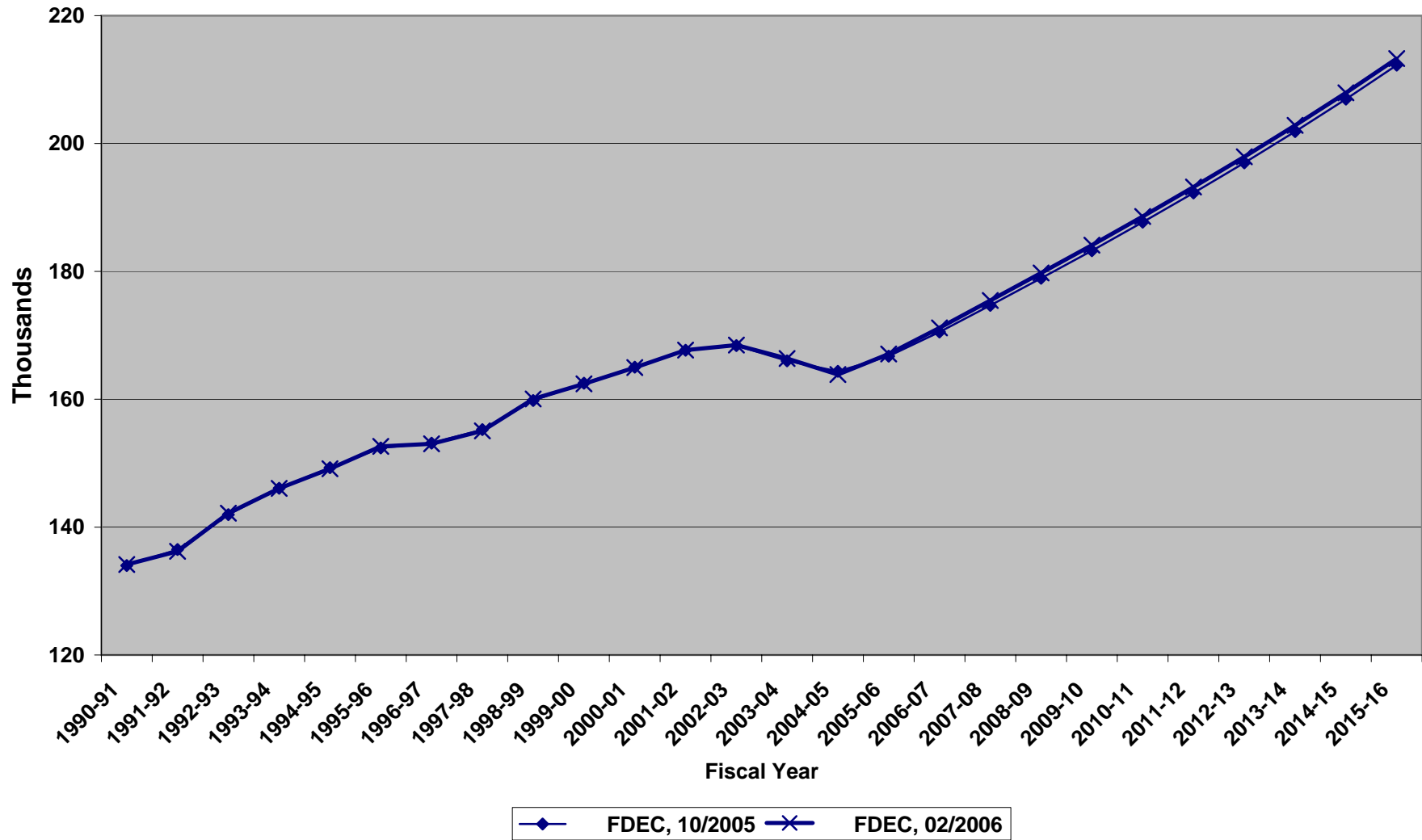
Annual Net Migration: 10-Year Moving Average



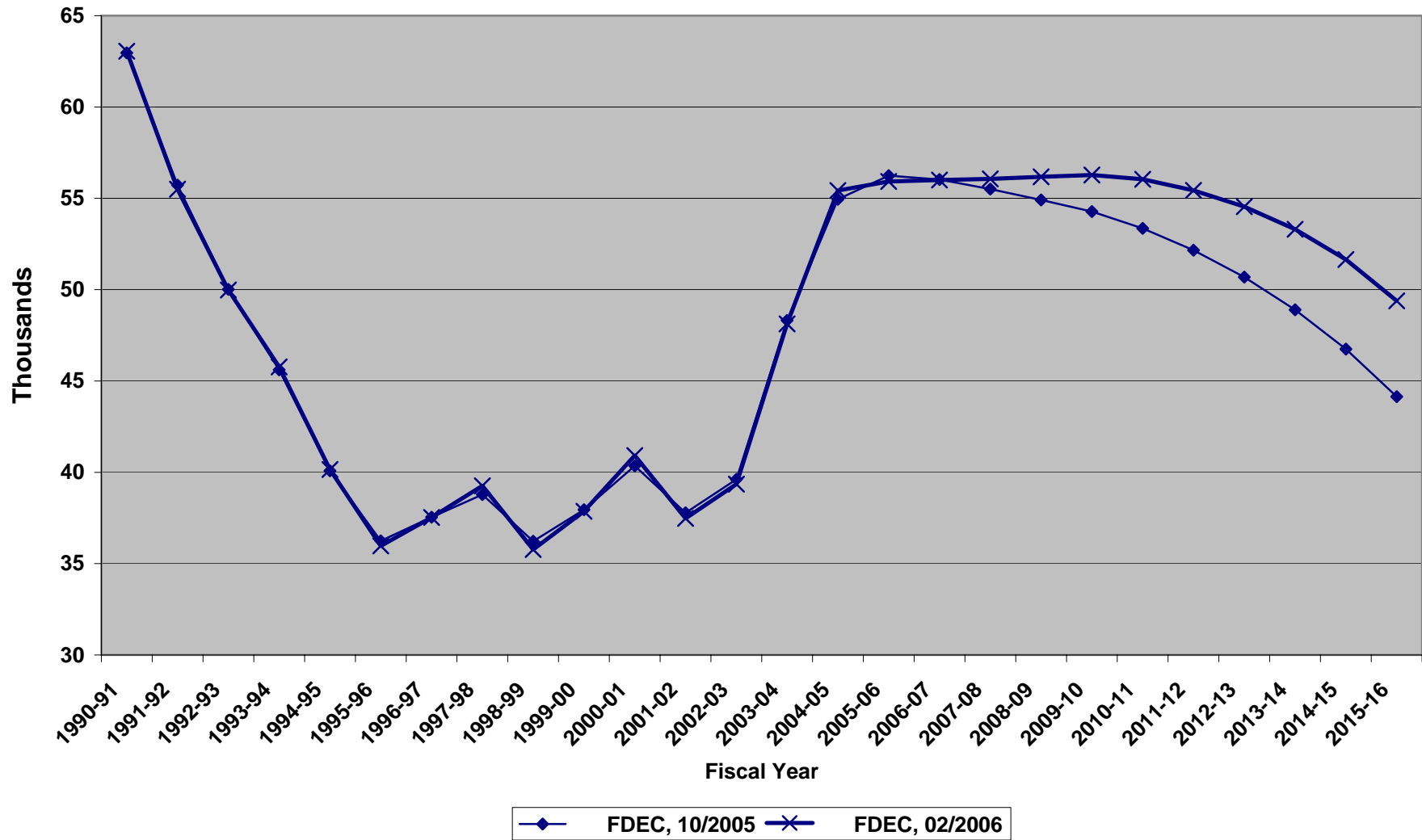
Florida Resident Live Births



Florida Resident Deaths



Florida Net Natural Increase



FLORIDA POPULATION AND COMPONENTS OF CHANGE

Fiscal Year	Population (July 1st)	Growth Rate	Annual Change in Population	Births	Deaths	Net Natural Increase	Net Migration
1950-51	2,980,000	6.19	173,190	67,576	27,187	40,389	132,801
1951-52	3,157,000	5.94	177,000	72,332	28,476	43,856	133,144
1952-53	3,310,000	4.85	153,000	76,921	29,858	47,063	105,937
1953-54	3,505,000	5.89	195,000	82,782	31,037	51,745	143,255
1954-55	3,747,000	6.90	242,000	86,571	32,151	54,420	187,580
1955-56	4,047,000	8.01	300,000	92,928	34,951	57,977	242,023
1956-57	4,372,000	8.03	325,000	101,026	38,229	62,797	262,203
1957-58	4,630,000	5.90	258,000	105,911	41,950	63,961	194,039
1958-59	4,808,000	3.84	178,000	110,416	43,625	66,791	111,209
1959-60	5,004,000	4.08	196,000	114,430	46,072	68,358	127,642
1960-61	5,243,000	4.78	239,000	116,446	48,406	68,040	170,960
1961-62	5,458,000	4.10	215,000	116,155	50,277	65,878	149,122
1962-63	5,628,000	3.11	170,000	114,633	54,512	60,121	109,879
1963-64	5,781,000	2.72	153,000	115,094	56,203	58,891	94,109
1964-65	5,954,000	2.99	173,000	110,497	57,678	52,819	120,181
1965-66	6,104,000	2.52	150,000	104,344	61,102	43,242	106,758
1966-67	6,242,000	2.26	138,000	101,267	62,647	38,620	99,380
1967-68	6,433,000	3.06	191,000	100,272	66,100	34,172	156,828
1968-69	6,641,000	3.23	208,000	104,290	71,301	32,989	175,011
1969-70	6,858,965	3.28	217,965	111,460	73,807	37,653	180,312
1970-71	7,234,230	5.47	375,265	117,071	75,328	41,743	333,522
1971-72	7,681,949	6.19	447,719	113,578	79,657	33,921	413,798
1972-73	8,159,681	6.22	477,732	107,692	86,249	21,443	456,289

FLORIDA POPULATION AND COMPONENTS OF CHANGE

Fiscal Year	Population (July 1st)	Growth Rate	Annual Change in Population	Births	Deaths	Net Natural Increase	Net Migration
1973-74	8,513,792	4.34	354,111	109,455	88,427	21,028	333,083
1974-75	8,646,585	1.56	132,793	108,752	87,157	21,595	111,198
1975-76	8,782,834	1.58	136,249	103,859	88,137	15,722	120,527
1976-77	8,972,672	2.16	189,838	107,735	90,383	17,352	172,486
1977-78	9,227,322	2.84	254,650	112,265	93,329	18,936	235,714
1978-79	9,518,233	3.15	290,911	116,269	96,801	19,468	271,443
1979-80	9,840,802	3.39	322,569	126,759	100,954	25,805	296,764
1980-81	10,222,857	3.88	382,055	135,511	107,686	27,825	354,230
1981-82	10,491,106	2.62	268,249	141,562	108,541	33,021	235,228
1982-83	10,748,180	2.45	257,074	146,890	110,529	36,361	220,713
1983-84	11,066,135	2.96	317,955	151,660	113,954	37,706	280,249
1984-85	11,405,254	3.06	339,119	159,879	117,471	42,408	296,711
1985-86	11,739,923	2.93	334,669	165,837	122,532	43,305	291,364
1986-87	12,083,010	2.92	343,087	170,743	124,842	45,901	297,186
1987-88	12,410,073	2.71	327,063	179,610	129,483	50,127	276,936
1988-89	12,723,105	2.52	313,032	188,272	131,996	56,276	256,756
1989-90	13,017,842	2.32	294,737	197,265	132,466	64,799	229,938
1990-91	13,326,534	2.37	308,692	197,197	134,144	63,053	245,639
1991-92	13,550,408	1.68	223,874	191,702	136,202	55,500	168,374
1992-93	13,803,239	1.87	252,831	192,150	142,173	49,977	202,854
1993-94	14,120,464	2.30	317,225	191,833	146,065	45,768	271,457
1994-95	14,405,457	2.02	284,993	189,272	149,122	40,150	244,843
1995-96	14,701,301	2.05	295,844	188,601	152,629	35,972	259,872

FLORIDA POPULATION AND COMPONENTS OF CHANGE

Fiscal Year	Population (July 1st)	Growth Rate	Annual Change in Population	Births	Deaths	Net Natural Increase	Net Migration
1996-97	15,011,734	2.11	310,433	190,552	153,021	37,531	272,902
1997-98	15,309,861	1.99	298,127	194,307	155,043	39,264	258,863
1998-99	15,679,863	2.42	370,002	195,826	160,054	35,772	334,230
1999-00	16,074,809	2.52	394,946	200,282	162,418	37,864	357,082
2000-01	16,413,469	2.11	338,660	205,877	164,957	40,920	297,740
2001-02	16,767,358	2.16	353,889	205,173	167,695	37,478	316,411
2002-03	17,181,411	2.47	414,053	207,820	168,465	39,355	374,698
2003-04	17,620,690	2.56	439,279	214,491	166,367	48,124	391,155
2004-05	18,017,663	2.25	396,973	219,306	163,875	55,431	341,542
2005-06	18,427,795	2.28	410,132	223,003	167,078	55,925	354,207
2006-07	18,839,179	2.23	411,384	227,159	171,161	55,998	355,386
2007-08	19,238,400	2.12	399,221	231,512	175,446	56,066	343,155
2008-09	19,629,567	2.03	391,167	235,934	179,754	56,180	334,987
2009-10	20,016,406	1.97	386,839	240,389	184,109	56,280	330,559
2010-11	20,397,255	1.90	380,849	244,632	188,591	56,041	324,808
2011-12	20,770,758	1.83	373,503	248,629	193,197	55,432	318,071
2012-13	21,138,786	1.77	368,028	252,476	197,933	54,543	313,485
2013-14	21,500,488	1.71	361,702	256,139	202,836	53,303	308,399
2014-15	21,855,527	1.65	355,039	259,582	207,932	51,650	303,389
2015-16	22,207,304	1.61	351,777	262,666	213,279	49,387	302,390
2016-17	22,554,115	1.56	346,811	265,456	218,922	46,534	300,277
2017-18	22,894,628	1.51	340,513	268,045	224,858	43,187	297,326
2018-19	23,228,928	1.46	334,300	270,446	231,101	39,345	294,955

FLORIDA POPULATION AND COMPONENTS OF CHANGE

Fiscal Year	Population (July 1st)	Growth Rate	Annual Change in Population	Births	Deaths	Net Natural Increase	Net Migration
2019-20	23,556,163	1.41	327,235	272,688	237,684	35,004	292,231
2020-21	23,872,993	1.34	316,830	274,763	244,807	29,956	286,874
2021-22	24,183,087	1.30	310,094	276,708	252,376	24,332	285,762
2022-23	24,485,336	1.25	302,249	278,557	260,219	18,338	283,911
2023-24	24,780,555	1.21	295,219	280,350	268,283	12,067	283,152
2024-25	25,069,731	1.17	289,176	282,099	276,519	5,580	283,596
2025-26	25,356,271	1.14	286,540	284,465	284,349	116	286,424
2026-27	25,641,618	1.13	285,347	287,125	292,096	-4,971	290,318
2027-28	25,926,291	1.11	284,673	289,496	300,292	-10,796	295,469
2028-29	26,209,073	1.09	282,782	291,378	309,102	-17,724	300,506
2029-30	26,488,731	1.07	279,658	292,545	318,671	-26,126	305,784