

Demographic Estimating Conference

Executive Summary

The Demographic Estimating Conference met on October 30, 2007 to adopt a new forecast through 2012 based on a preliminary April 1, 2007 population estimate, and demographic trends for births, deaths, and net migration.

Florida's April 1, 2007 preliminary population estimate was 18,680,367, down by 49,227 from the July 2007 Demographic Estimating Conference. The number of households was also estimated to be lower (7,424,897 as compared to the previous forecast of 7,444,939).

The conference focused on the components of population growth, such as births, deaths, and net migration. Discussion centered on the composition of births and birth rates by race and Hispanic origin, as well as domestic and international migration. Most of Florida's growth is from net migration: 88.7 percent between April 1, 2000 and April 1, 2006. The conference also discussed the impact that the current housing slowdown may be having on domestic migration decisions and the effect this could have on population growth in the state.

As a result of the current housing and job markets, the conference agreed to a state population forecast of slower growth through 2012. By 2012, Florida's population is expected to surpass the 20-million mark, totaling over 20,360,750.

FLORIDA DEMOGRAPHIC ESTIMATING CONFERENCE

Tables

Held October 30, 2007

Florida Resident Population

	<u>FDEC, 07/07</u> <u>(As of 4/1)</u>	<u>% Chg</u>	<u>FDEC, 10/07</u> <u>(As of 4/1)</u>	<u>% Chg</u>
1990	12,938,071	2.27%	12,938,071	2.27%
1991	13,258,732	2.48%	13,258,732	2.48%
1992	13,497,541	1.80%	13,497,541	1.80%
1993	13,730,115	1.72%	13,730,115	1.72%
1994	14,043,757	2.28%	14,043,757	2.28%
1995	14,335,992	2.08%	14,335,992	2.08%
1996	14,623,421	2.00%	14,623,421	2.00%
1997	14,938,314	2.15%	14,938,314	2.15%
1998	15,230,421	1.96%	15,230,421	1.96%
1999	15,580,244	2.30%	15,580,244	2.30%
2000	15,982,824	2.58%	15,982,824	2.58%
2001	16,330,224	2.17%	16,330,224	2.17%
2002	16,674,608	2.11%	16,674,608	2.11%
2003	17,071,508	2.38%	17,071,508	2.38%
2004	17,516,732	2.61%	17,516,732	2.61%
2005	17,918,227	2.29%	17,918,227	2.29%
2006	18,348,624	2.40%	18,349,132	2.40%
2007	18,729,588	2.08%	18,680,367	1.81%
Begins forecast.				
2008	19,132,888	2.15%	18,977,820	1.59%
2009	19,563,430	2.25%	19,278,665	1.59%
2010	19,974,790	2.10%	19,620,532	1.77%
2011	20,365,996	1.96%	19,997,465	1.92%
2012	20,742,470	1.85%	20,360,750	1.82%
2013	21,110,751	1.78%	20,704,460	1.69%
2014	21,473,421	1.72%	21,043,860	1.64%
2015	21,831,512	1.67%	21,386,860	1.63%
2016	22,185,953	1.62%	21,733,970	1.62%
2017	22,536,680	1.58%	22,084,825	1.61%
2020	23,552,138	1.53%	23,146,120	1.59%
2025	25,085,972	1.27%	24,766,129	1.36%
2030	26,513,331	1.11%	26,275,591	1.19%

Florida Resident Households

	<u>FDEC, 07/07</u> <u>(As of 4/1)</u>	<u>% Chg</u>	<u>FDEC, 10/07</u> <u>(As of 4/1)</u>	<u>% Chg</u>
1990	5,134,869	3.40%	5,134,869	3.40%
1991	5,283,154	2.89%	5,283,154	2.89%
1992	5,378,499	1.80%	5,378,499	1.80%
1993	5,478,476	1.86%	5,478,476	1.86%
1994	5,589,093	2.02%	5,589,093	2.02%
1995	5,697,328	1.94%	5,697,328	1.94%
1996	5,806,031	1.91%	5,806,031	1.91%
1997	5,929,613	2.13%	5,929,613	2.13%
1998	6,040,514	1.87%	6,040,514	1.87%
1999	6,182,346	2.35%	6,182,346	2.35%
2000	6,338,075	2.52%	6,338,075	2.52%
2001	6,483,040	2.29%	6,483,040	2.29%
2002	6,620,674	2.12%	6,620,674	2.12%
2003	6,778,804	2.39%	6,778,804	2.39%
2004	6,949,759	2.52%	6,949,759	2.52%
2005	7,109,208	2.29%	7,109,208	2.29%
2006	7,291,013	2.56%	7,291,013	2.56%
2007	7,444,939	2.11%	7,425,143	1.84%
Begins forecast.				
2008	7,607,344	2.18%	7,545,281	1.62%
2009	7,779,123	2.26%	7,665,631	1.60%
2010	7,943,089	2.11%	7,802,160	1.78%
2011	8,099,478	1.97%	7,952,641	1.93%
2012	8,249,821	1.86%	8,097,693	1.82%
2013	8,396,926	1.78%	8,234,963	1.70%
2014	8,541,818	1.73%	8,370,531	1.65%
2015	8,684,914	1.68%	8,507,540	1.64%
2016	8,826,564	1.63%	8,646,187	1.63%
2017	8,966,760	1.59%	8,786,331	1.62%
2020	9,372,836	1.54%	9,210,279	1.60%
2025	9,986,839	1.28%	9,857,755	1.37%
2030	10,558,796	1.12%	10,461,296	1.20%

FLORIDA DEMOGRAPHIC ESTIMATING CONFERENCE

Held October 30, 2007

	FISCAL YEAR AVERAGE																			
	<u>2006-1</u>	<u>2006-2</u>	<u>2006-3</u>	<u>2006-4</u>	<u>2007-1</u>	<u>2007-2</u>	<u>2007-3</u>	<u>2007-4</u>	<u>2008-1</u>	<u>2008-2</u>	<u>2008-3</u>	<u>2008-4</u>	<u>2009-1</u>	<u>2009-2</u>	<u>2004-05</u>	<u>2005-06</u>	<u>2006-07</u>	<u>2007-08</u>	<u>2008-09</u>	
Population																				
FDEC, 07/2007	18,297.4	18,397.3	18,493.1	18,588.0	18,682.3	18,776.9	18,874.0	18,975.3	19,079.4	19,186.3	19,294.8	19,403.2	19,510.5	19,616.4	17,821.6	18,242.5	18,635.1	19,028.8	19,456.2	
FDEC, 10/2007	18,296.1	18,394.9	18,482.5	18,563.5	18,642.0	18,718.7	18,793.2	18,867.3	18,941.0	19,014.6	19,088.5	19,163.2	19,239.4	19,317.9	17,819.2	18,240.2	18,601.7	18,904.0	19,202.3	
Growth Rate																				
FDEC, 07/2007	2.33	2.20	2.10	2.07	2.04	2.04	2.08	2.16	2.21	2.26	2.28	2.27	2.23	2.19	2.39	2.36	2.15	2.11	2.25	
FDEC, 10/2007	2.38	2.18	1.92	1.77	1.70	1.66	1.60	1.59	1.57	1.56	1.56	1.57	1.60	1.64	2.38	2.36	1.98	1.63	1.58	
Net Change in Population																				
FDEC, 07/2007	105.2	100.0	95.8	94.9	94.3	94.6	97.1	101.3	104.2	106.9	108.4	108.5	107.3	105.9	403.1	424.2	379.6	409.5	430.0	
FDEC, 10/2007	107.1	98.8	87.5	81.0	78.6	76.7	74.5	74.1	73.7	73.6	73.9	74.7	76.2	78.5	404.7	422.6	323.8	295.9	303.3	
Households																				
FDEC, 07/2007	7,269.5	7,310.5	7,349.2	7,387.5	7,425.7	7,464.2	7,503.5	7,544.3	7,586.0	7,628.7	7,671.9	7,715.2	7,758.0	7,800.2	7,070.6	7,246.1	7,406.6	7,565.6	7,736.3	
FDEC, 10/2007	7,269.3	7,309.5	7,344.9	7,377.7	7,409.6	7,440.7	7,470.9	7,500.9	7,530.5	7,560.0	7,589.6	7,619.5	7,650.0	7,681.3	7,069.7	7,245.3	7,393.2	7,515.6	7,635.1	
Growth Rate																				
FDEC, 07/2007	2.47	2.27	2.13	2.10	2.09	2.09	2.13	2.19	2.23	2.27	2.29	2.28	2.24	2.20	2.37	2.48	2.22	2.15	2.26	
FDEC, 10/2007	2.51	2.23	1.95	1.80	1.74	1.69	1.63	1.61	1.59	1.58	1.57	1.58	1.61	1.65	2.36	2.48	2.04	1.65	1.59	
Net Change in Households																				
FDEC, 07/2007	44.1	41.0	38.7	38.3	38.2	38.5	39.4	40.8	41.7	42.7	43.3	43.3	42.8	42.2	161.9	178.0	153.7	164.5	171.6	
FDEC, 10/2007	44.9	40.2	35.4	32.8	31.9	31.1	30.2	30.0	29.7	29.5	29.6	29.9	30.5	31.4	162.5	177.4	131.2	119.3	121.3	
Household Size																				
FDEC, 07/2007	2.517	2.517	2.516	2.516	2.516	2.516	2.515	2.515	2.515	2.515	2.515	2.515	2.515	2.515	2.521	2.518	2.516	2.515	2.515	
FDEC, 10/2007	2.517	2.517	2.516	2.516	2.516	2.516	2.516	2.515	2.515	2.515	2.515	2.515	2.515	2.515	2.521	2.518	2.516	2.515	2.515	
Growth Rate																				
FDEC, 07/2007	-0.13	-0.07	-0.03	-0.03	-0.04	-0.05	-0.04	-0.03	-0.01	-0.01	-0.01	-0.01	-0.01	-0.01	0.02	-0.12	-0.06	-0.03	-0.01	
FDEC, 10/2007	-0.13	-0.05	-0.03	-0.03	-0.03	-0.04	-0.03	-0.03	-0.02	-0.01	-0.01	-0.01	-0.01	-0.01	0.02	-0.12	-0.06	-0.03	-0.01	
Net Migration																				
FDEC, 07/2007	91.1	85.7	81.4	80.3	79.6	79.9	82.3	86.4	89.3	92.0	93.6	93.6	92.5	91.1	350.8	368.0	321.2	350.0	370.8	
FDEC, 10/2007	91.2	82.2	70.2	63.1	60.2	58.0	55.5	55.0	54.4	54.2	54.4	55.2	56.7	58.9	352.5	361.0	251.4	219.2	225.2	
Births																				
FDEC, 07/2007	57.1	57.4	57.7	57.9	58.2	58.5	58.8	59.1	59.5	59.8	60.1	60.4	60.8	61.1	221.3	227.8	232.3	237.2	242.4	
FDEC, 10/2007	58.3	59.0	59.6	60.2	60.6	61.0	61.2	61.5	61.7	62.0	62.2	62.4	62.6	62.8	221.6	231.7	241.4	246.4	249.9	
Deaths																				
FDEC, 07/2007	43.0	43.1	43.2	43.4	43.6	43.8	44.0	44.3	44.6	44.9	45.3	45.6	46.0	46.4	169.0	171.6	173.9	177.8	183.2	
FDEC, 10/2007	42.5	42.4	42.3	42.2	42.2	42.3	42.3	42.4	42.4	42.5	42.7	42.8	43.0	43.2	169.3	170.1	169.0	169.7	171.8	
Net Natural Increase																				
FDEC, 07/2007	14.1	14.3	14.4	14.6	14.7	14.7	14.8	14.9	14.9	14.9	14.9	14.8	14.8	14.7	52.3	56.3	58.4	59.4	59.2	
FDEC, 10/2007	15.8	16.6	17.4	18.0	18.4	18.7	18.9	19.1	19.3	19.4	19.5	19.5	19.6	19.6	52.2	61.6	72.4	76.7	78.2	

FLORIDA DEMOGRAPHIC ESTIMATING CONFERENCE

Held October 30, 2007

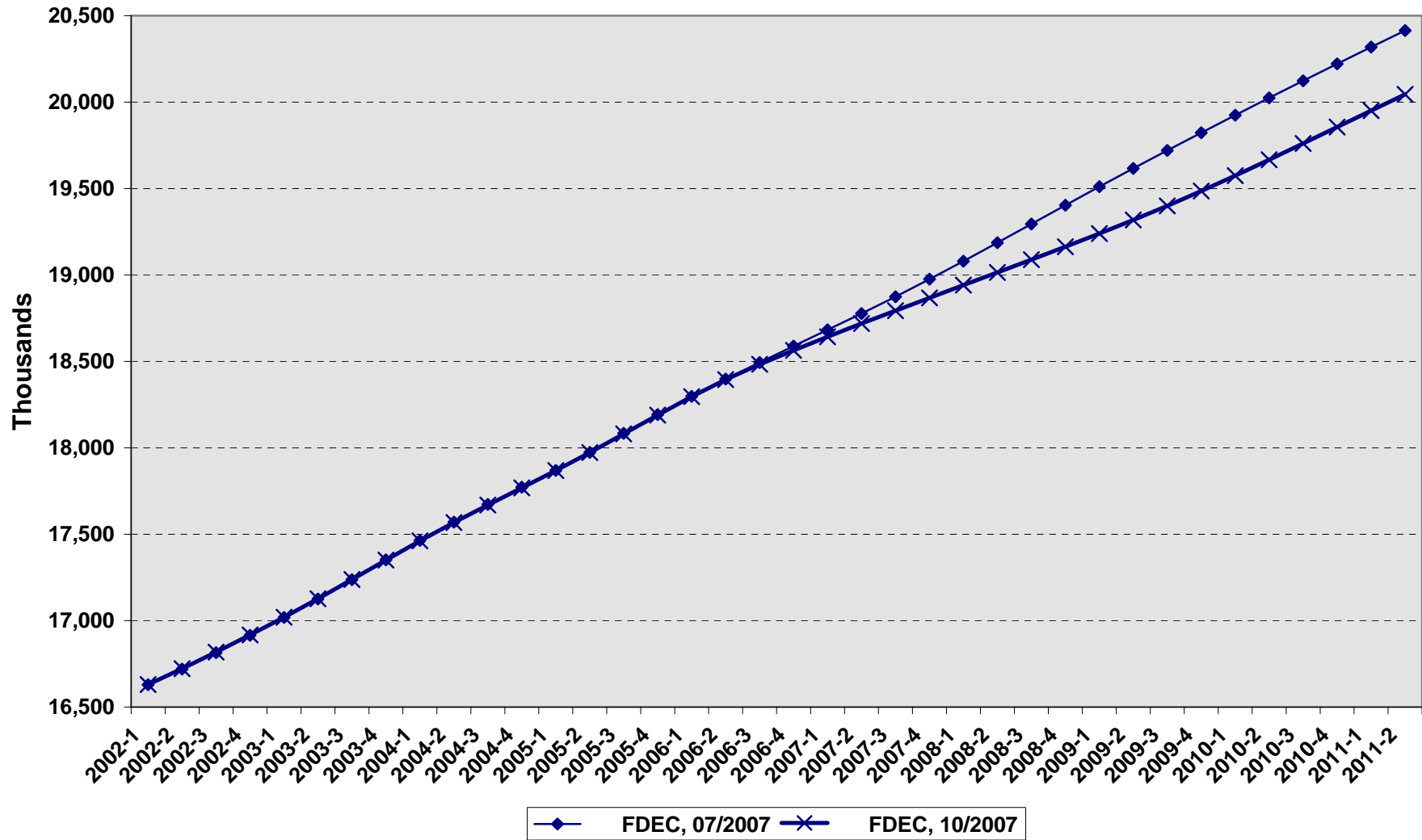
	<u>2003-04</u>	<u>2004-05</u>	<u>2005-06</u>	<u>2006-07</u>	<u>2007-08</u>	<u>2008-09</u>	<u>2009-10</u>	<u>2010-11</u>	<u>2011-12</u>	<u>2012-13</u>	<u>2013-14</u>	<u>2014-15</u>	<u>2015-16</u>	<u>2016-17</u>
Population														
FDEC, 07/2007	17,405.7	17,821.6	18,242.5	18,635.1	19,028.8	19,456.2	19,872.9	20,269.1	20,649.0	21,019.1	21,383.1	21,742.3	22,097.6	22,449.2
FDEC, 10/2007	17,404.2	17,819.2	18,240.2	18,601.7	18,904.0	19,202.3	19,531.5	19,902.7	20,271.8	20,619.3	20,959.0	21,300.9	21,647.0	21,996.9
Growth Rate														
FDEC, 07/2007	2.58	2.39	2.36	2.15	2.11	2.25	2.14	1.99	1.87	1.79	1.73	1.68	1.63	1.59
FDEC, 10/2007	2.56	2.38	2.36	1.98	1.63	1.58	1.71	1.90	1.85	1.71	1.65	1.63	1.62	1.62
Net Change in Population														
FDEC, 07/2007	444.9	403.1	424.2	379.6	409.5	430.0	407.9	389.6	375.1	367.4	362.1	357.6	354.0	350.2
FDEC, 10/2007	440.8	404.7	422.6	323.8	295.9	303.3	348.7	378.1	359.8	342.4	339.6	343.6	347.6	351.3
Households														
FDEC, 07/2007	6,907.2	7,070.6	7,246.1	7,406.6	7,565.6	7,736.3	7,902.6	8,060.8	8,212.5	8,360.3	8,505.7	8,649.2	8,791.2	8,931.8
FDEC, 10/2007	6,906.6	7,069.7	7,245.3	7,393.2	7,515.6	7,635.1	7,766.6	7,914.8	8,062.2	8,201.0	8,336.6	8,473.2	8,611.4	8,751.2
Growth Rate														
FDEC, 07/2007	2.52	2.37	2.48	2.22	2.15	2.26	2.15	2.00	1.88	1.80	1.74	1.69	1.64	1.60
FDEC, 10/2007	2.49	2.36	2.48	2.04	1.65	1.59	1.72	1.91	1.86	1.72	1.65	1.64	1.63	1.62
Net Change in Households														
FDEC, 07/2007	171.1	161.9	178.0	153.7	164.5	171.6	162.8	155.5	149.8	146.8	144.6	142.9	141.5	140.0
FDEC, 10/2007	169.5	162.5	177.4	131.2	119.3	121.3	139.2	150.9	143.7	136.7	135.6	137.2	138.8	140.3
Household Size														
FDEC, 07/2007	2.520	2.521	2.518	2.516	2.515	2.515	2.515	2.515	2.514	2.514	2.514	2.514	2.514	2.513
FDEC, 10/2007	2.520	2.521	2.518	2.516	2.515	2.515	2.515	2.515	2.514	2.514	2.514	2.514	2.514	2.514
Growth Rate														
FDEC, 07/2007	0.06	0.02	-0.12	-0.06	-0.03	-0.01	-0.01	-0.01	-0.01	-0.01	-0.01	-0.01	-0.01	-0.01
FDEC, 10/2007	0.06	0.02	-0.12	-0.06	-0.03	-0.01	-0.01	-0.01	-0.01	-0.01	-0.01	-0.01	-0.01	-0.01
Net Migration														
FDEC, 07/2007	399.3	350.8	368.0	321.2	350.0	370.8	349.9	332.8	318.9	312.1	307.9	304.8	303.0	301.5
FDEC, 10/2007	393.8	352.5	361.0	251.4	219.2	225.2	270.8	300.8	283.1	266.2	264.2	269.1	274.3	279.5
Births														
FDEC, 07/2007	214.0	221.3	227.8	232.3	237.2	242.4	247.6	252.4	257.3	262.0	266.5	270.8	275.0	278.6
FDEC, 10/2007	215.3	221.6	231.7	241.4	246.4	249.9	252.9	256.0	259.7	263.4	267.1	270.6	274.0	277.2
Deaths														
FDEC, 07/2007	168.4	169.0	171.6	173.9	177.8	183.2	189.6	195.7	201.1	206.6	212.3	218.1	223.9	229.9
FDEC, 10/2007	168.2	169.3	170.1	169.0	169.7	171.8	175.0	178.7	182.9	187.2	191.6	196.1	200.7	205.4
Net Natural Increase														
FDEC, 07/2007	45.6	52.3	56.3	58.4	59.4	59.2	58.0	56.8	56.2	55.3	54.2	52.8	51.0	48.7
FDEC, 10/2007	47.1	52.2	61.6	72.4	76.7	78.2	77.9	77.3	76.8	76.1	75.4	74.5	73.3	71.8

FLORIDA DEMOGRAPHIC ESTIMATING CONFERENCE

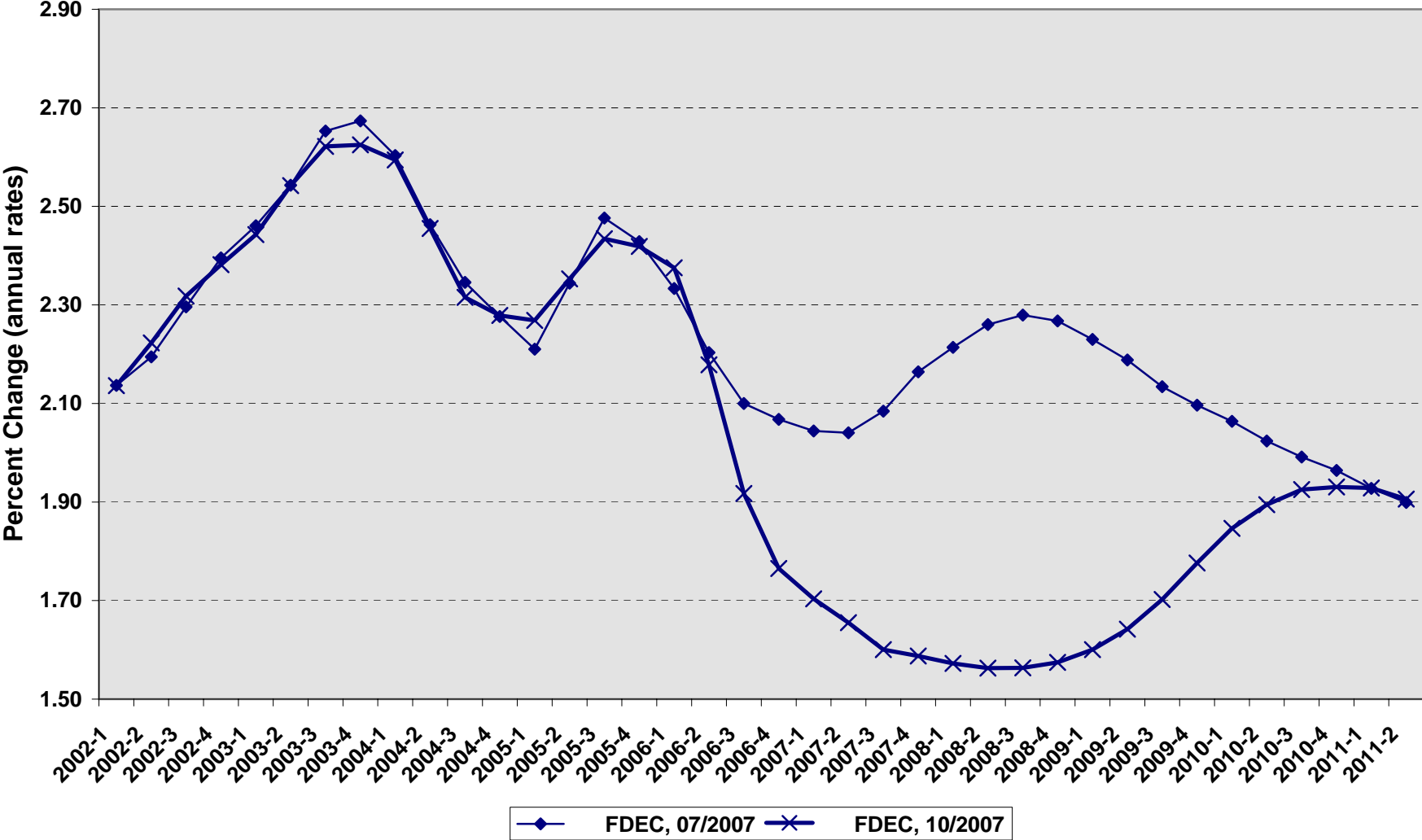
Charts

Held October 30, 2007

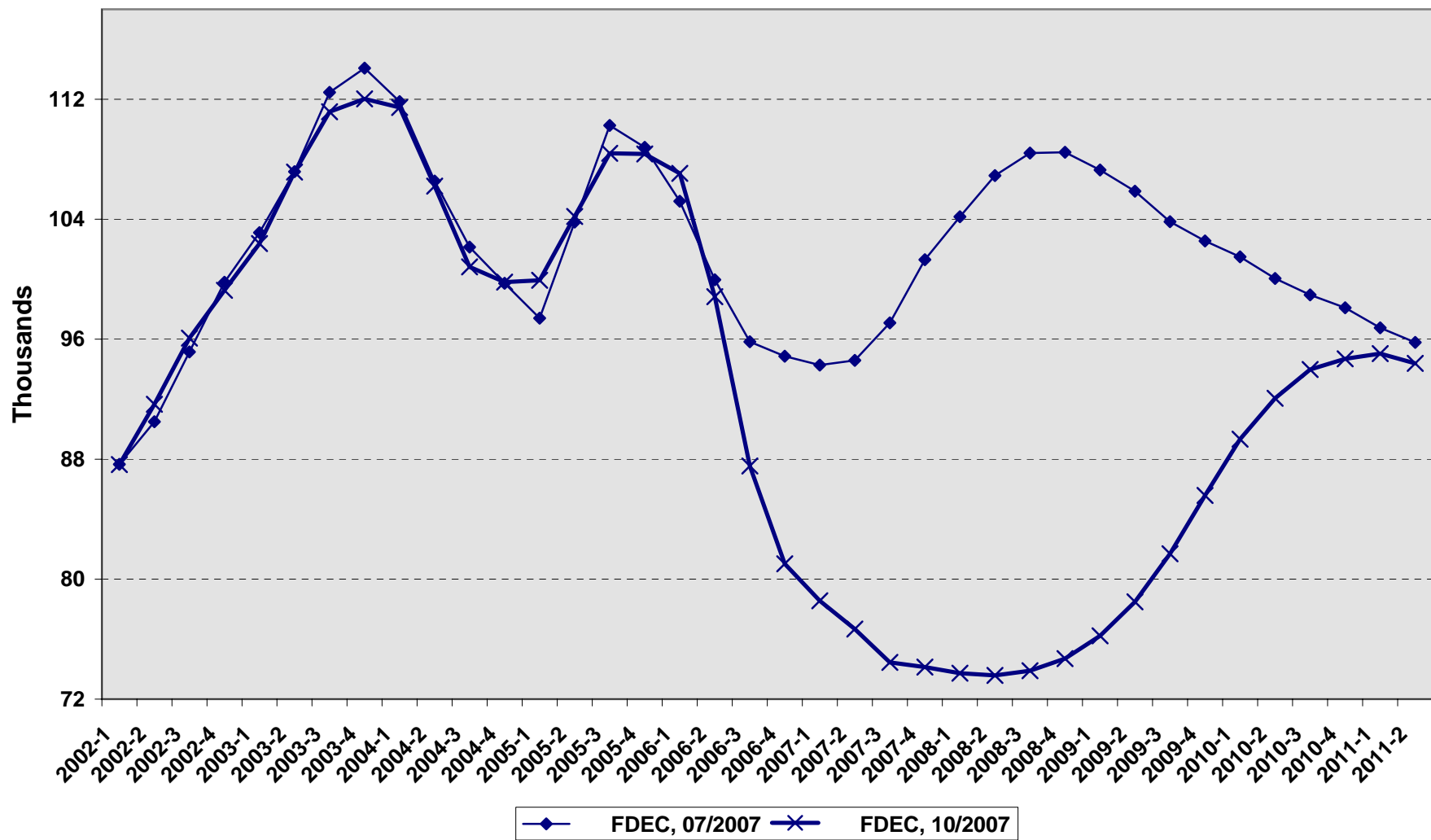
Florida Resident Population



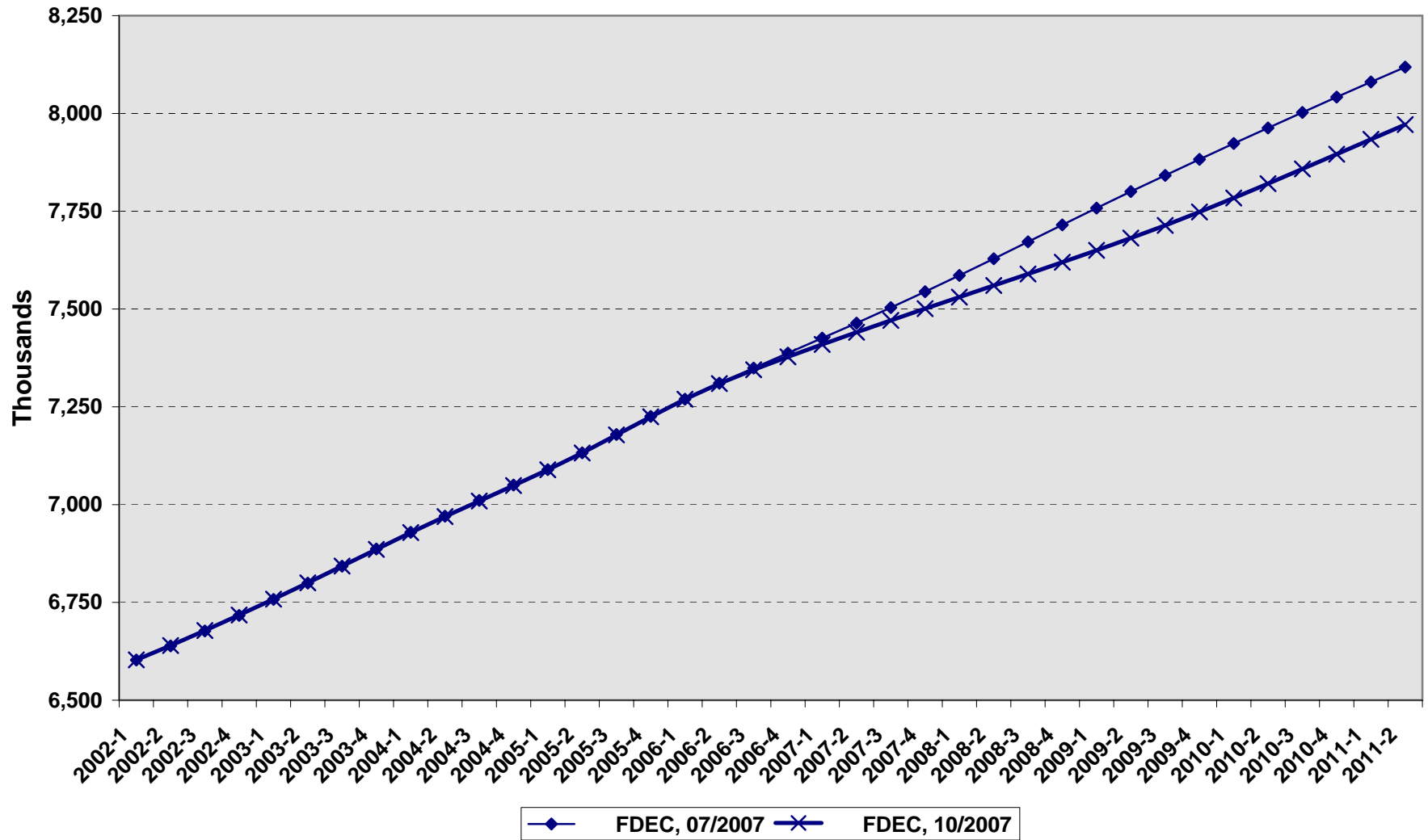
Growth In Florida Resident Population



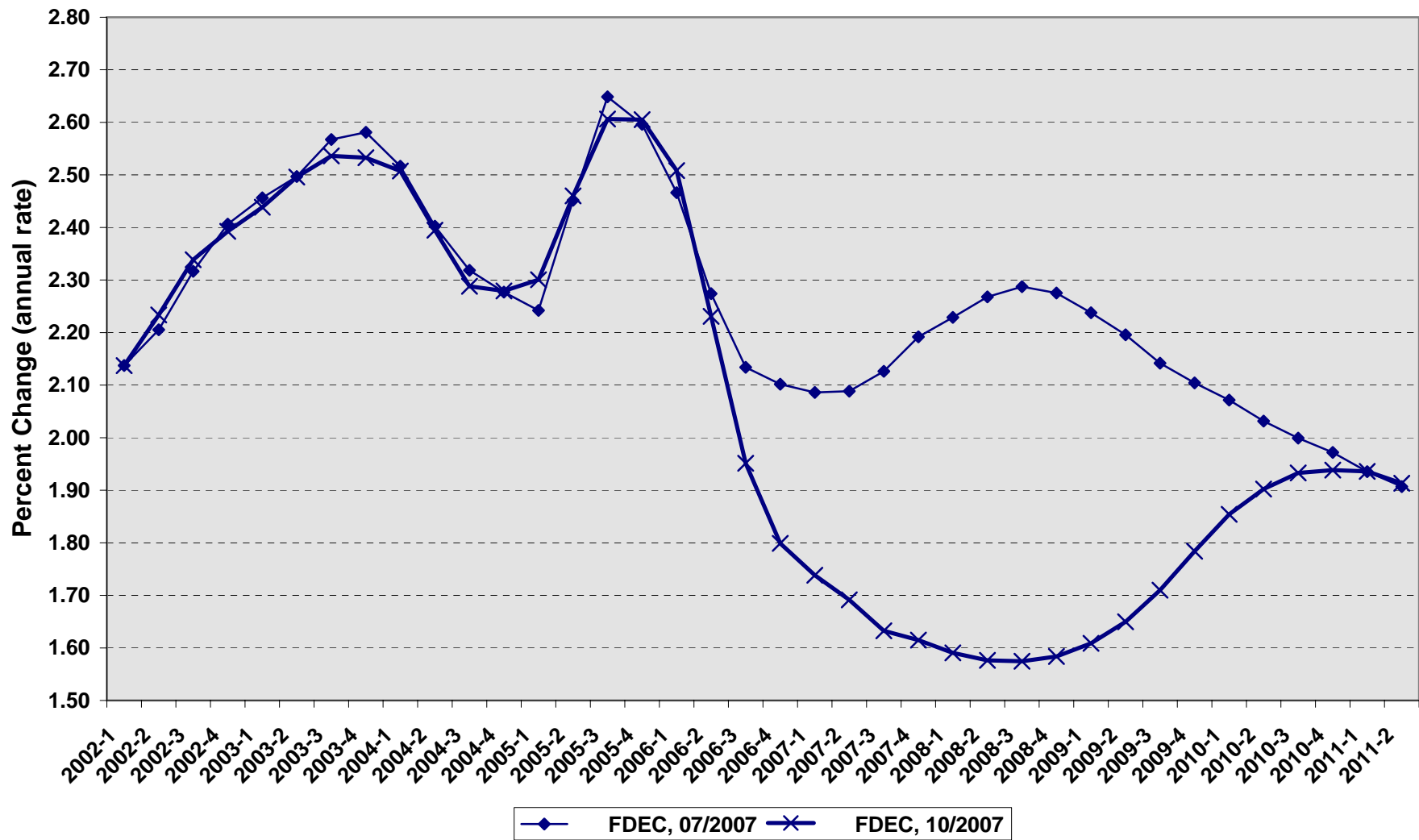
Net Change In Florida Resident Population



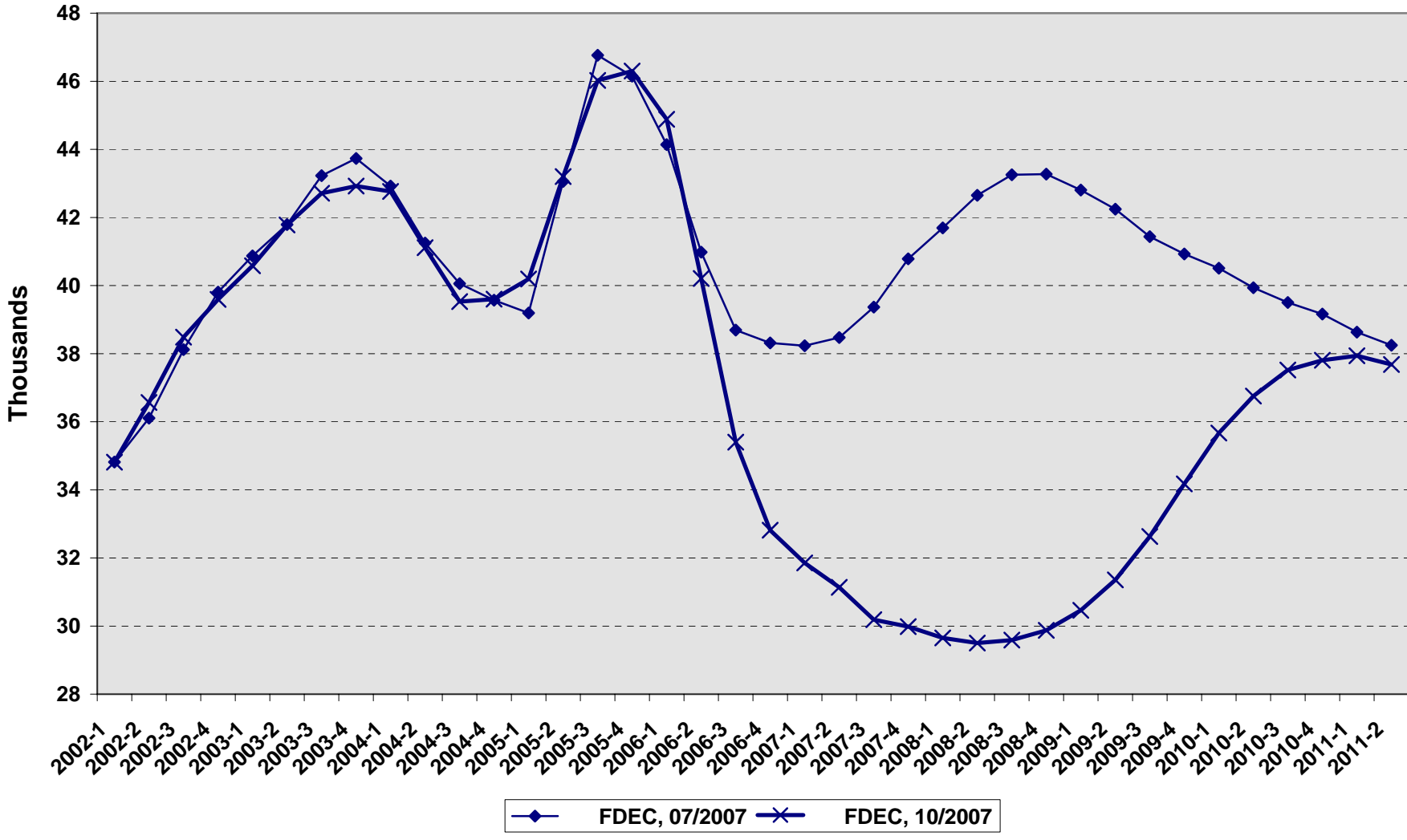
Florida Resident Households



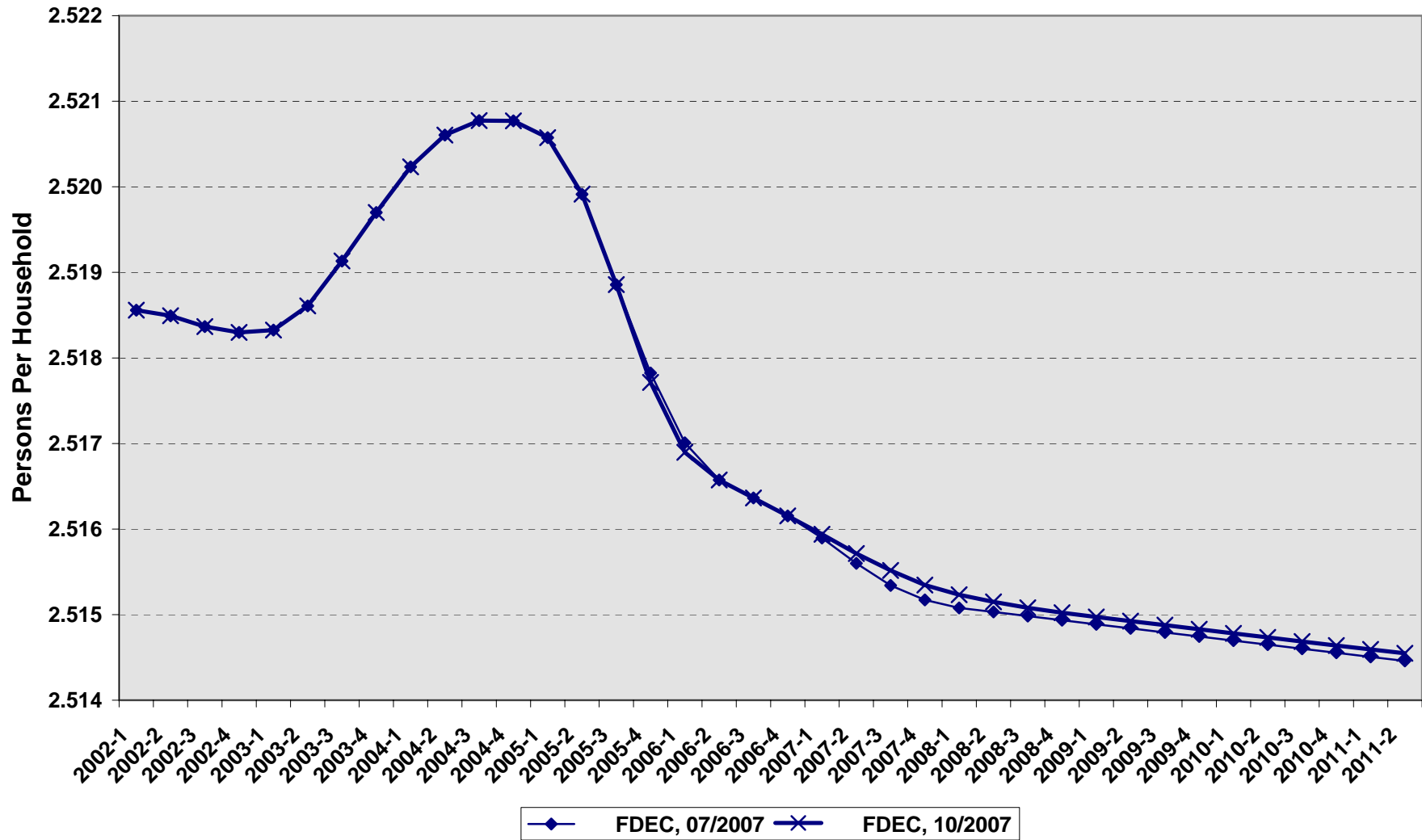
Growth In Florida Resident Households



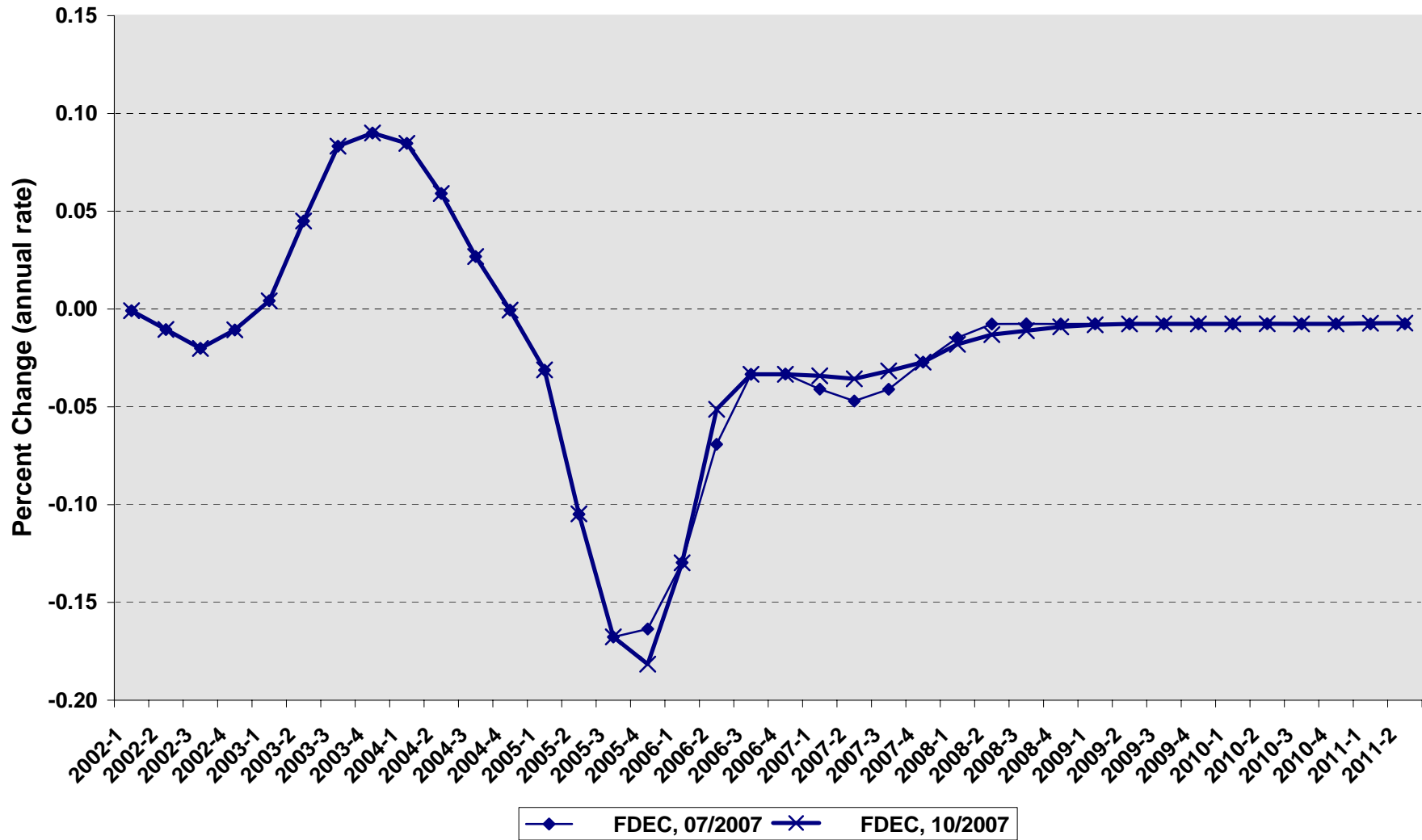
Net Change In Florida Resident Households



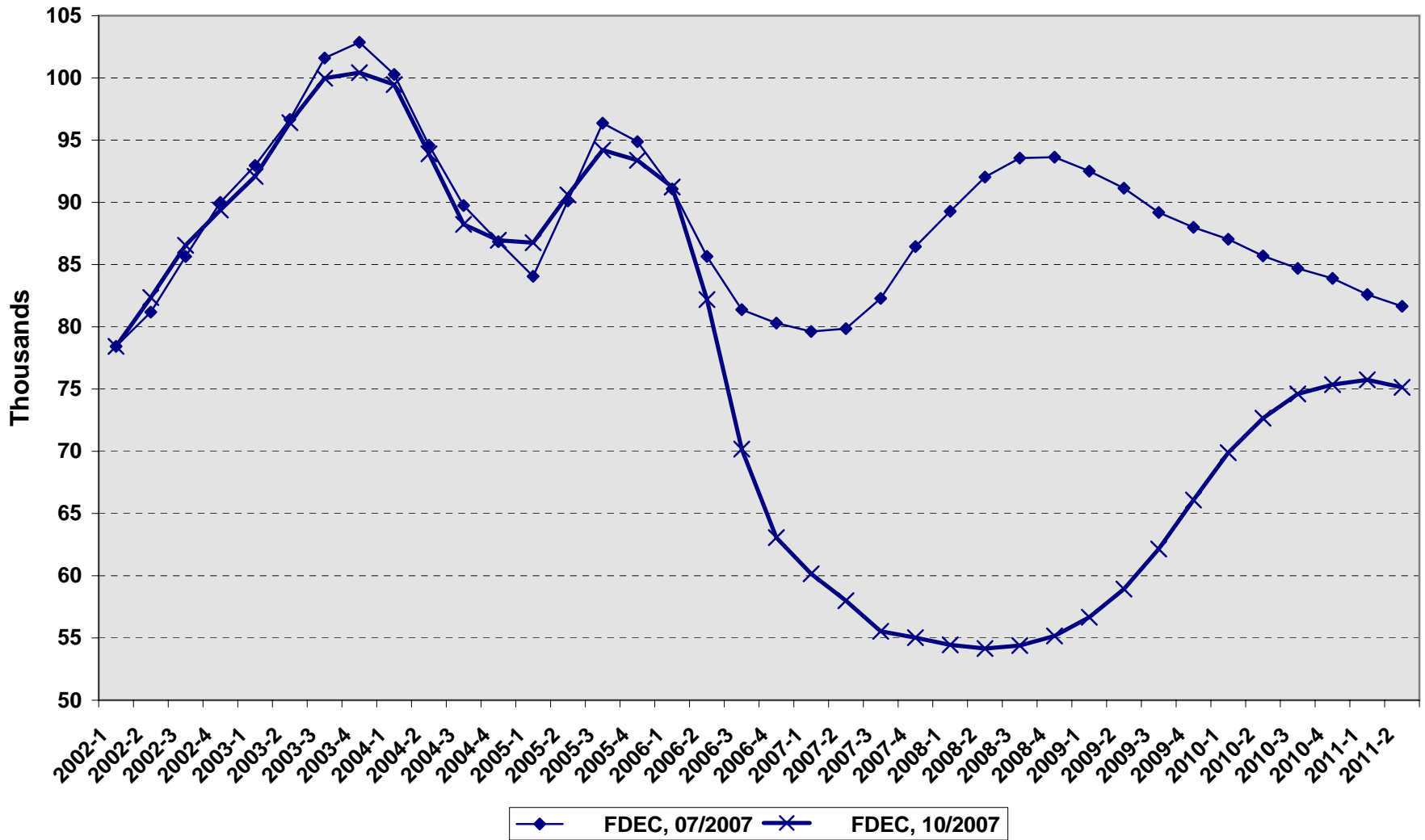
Florida Average Household Size



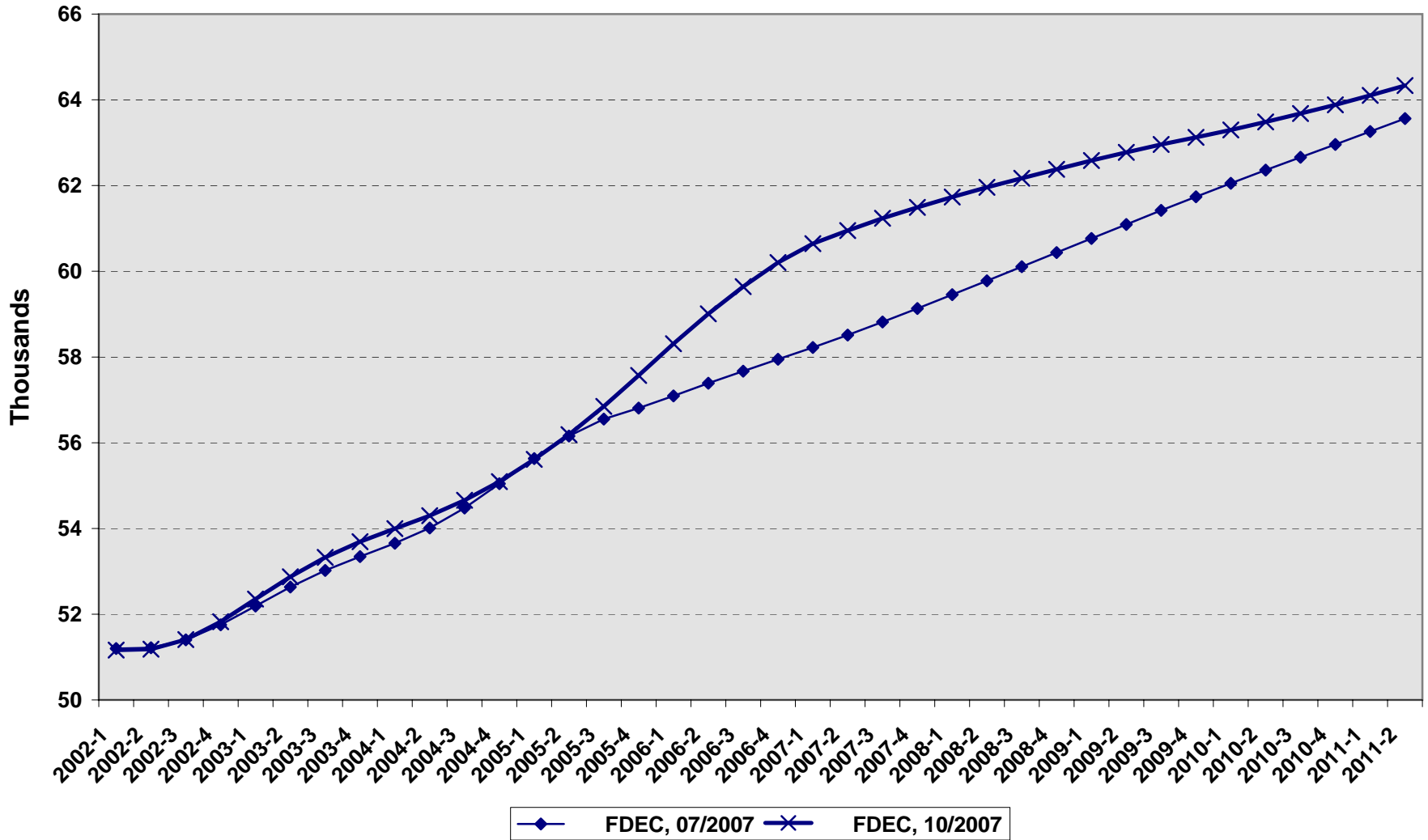
Growth In Florida Household Size



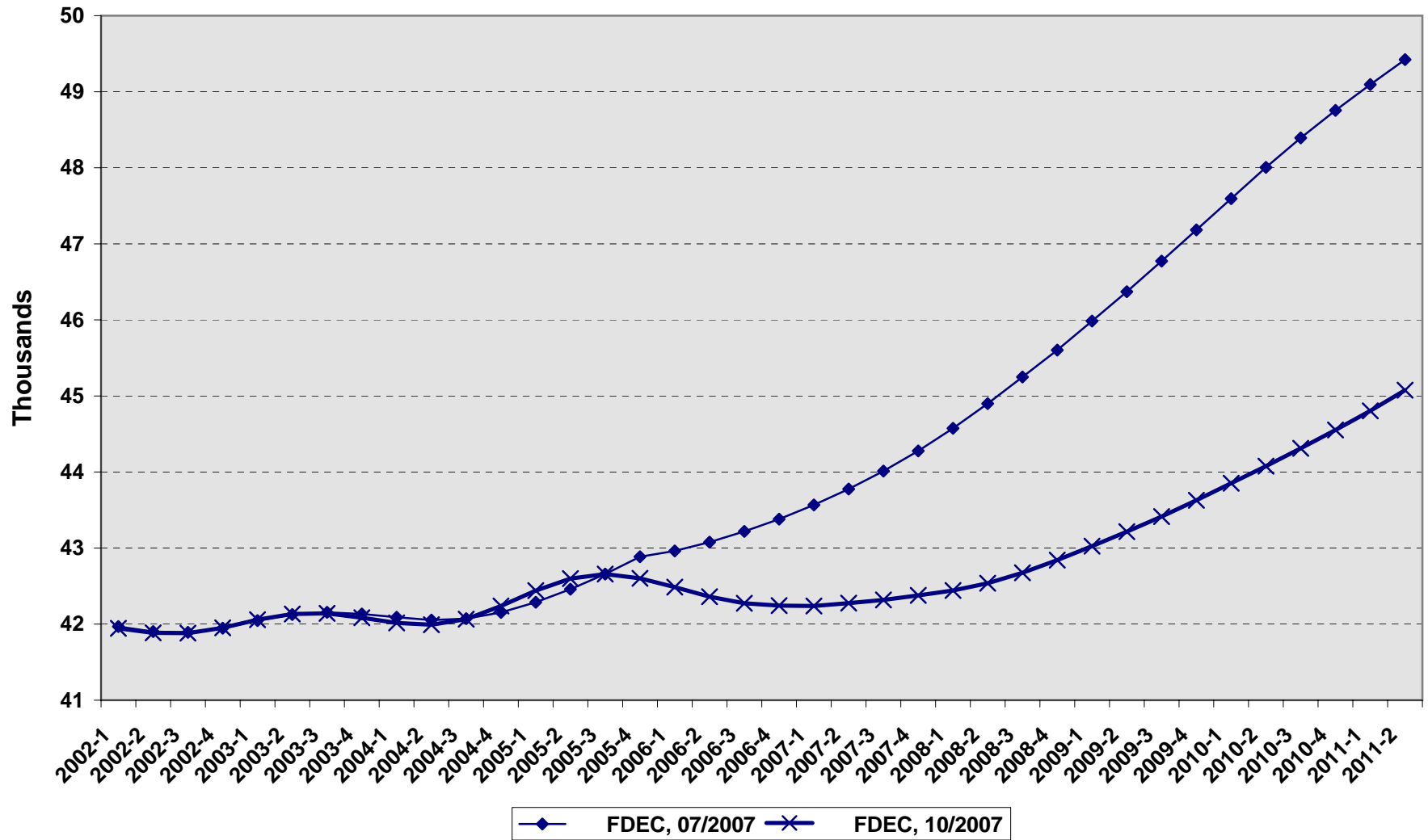
Florida Net Migration



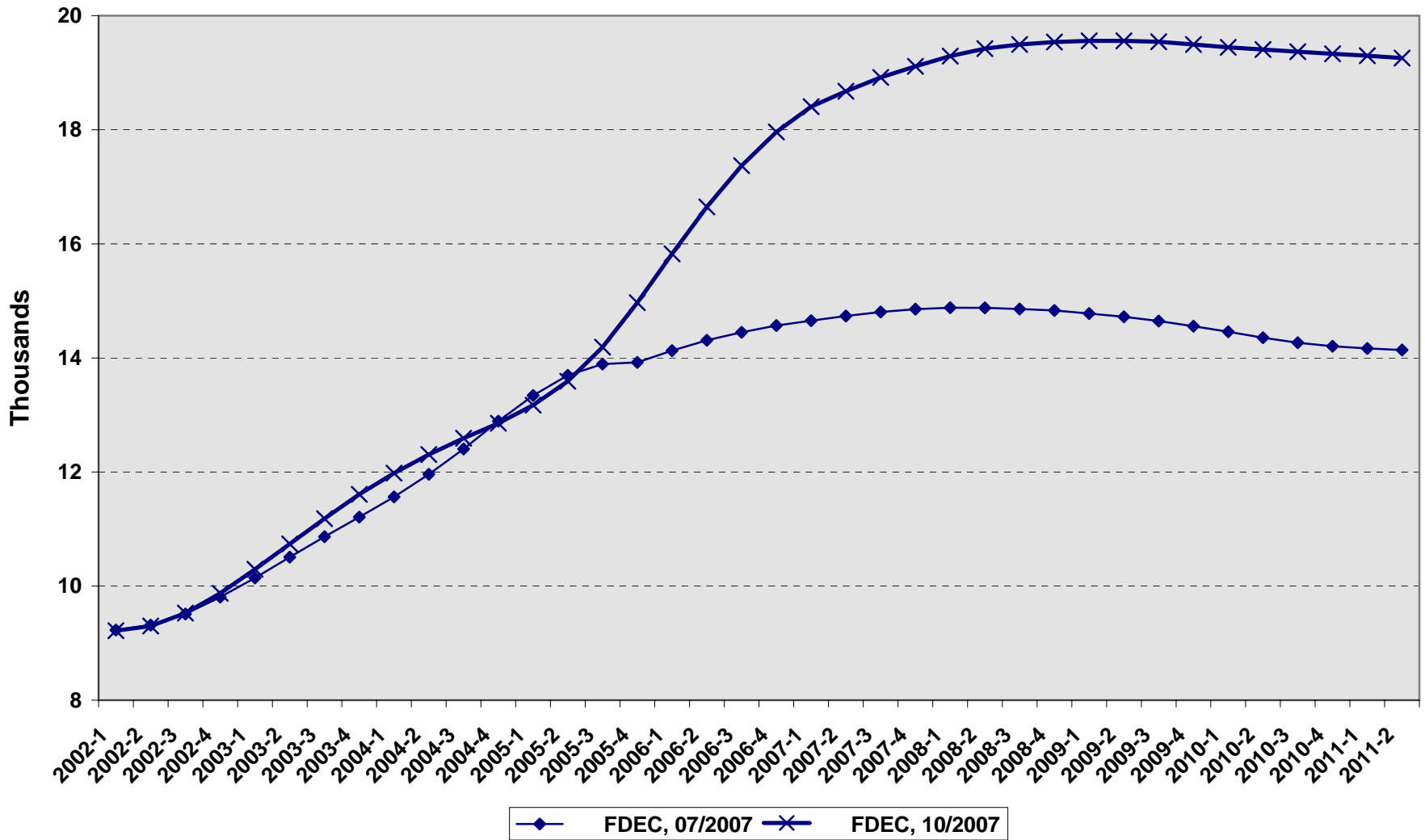
Florida Resident Births



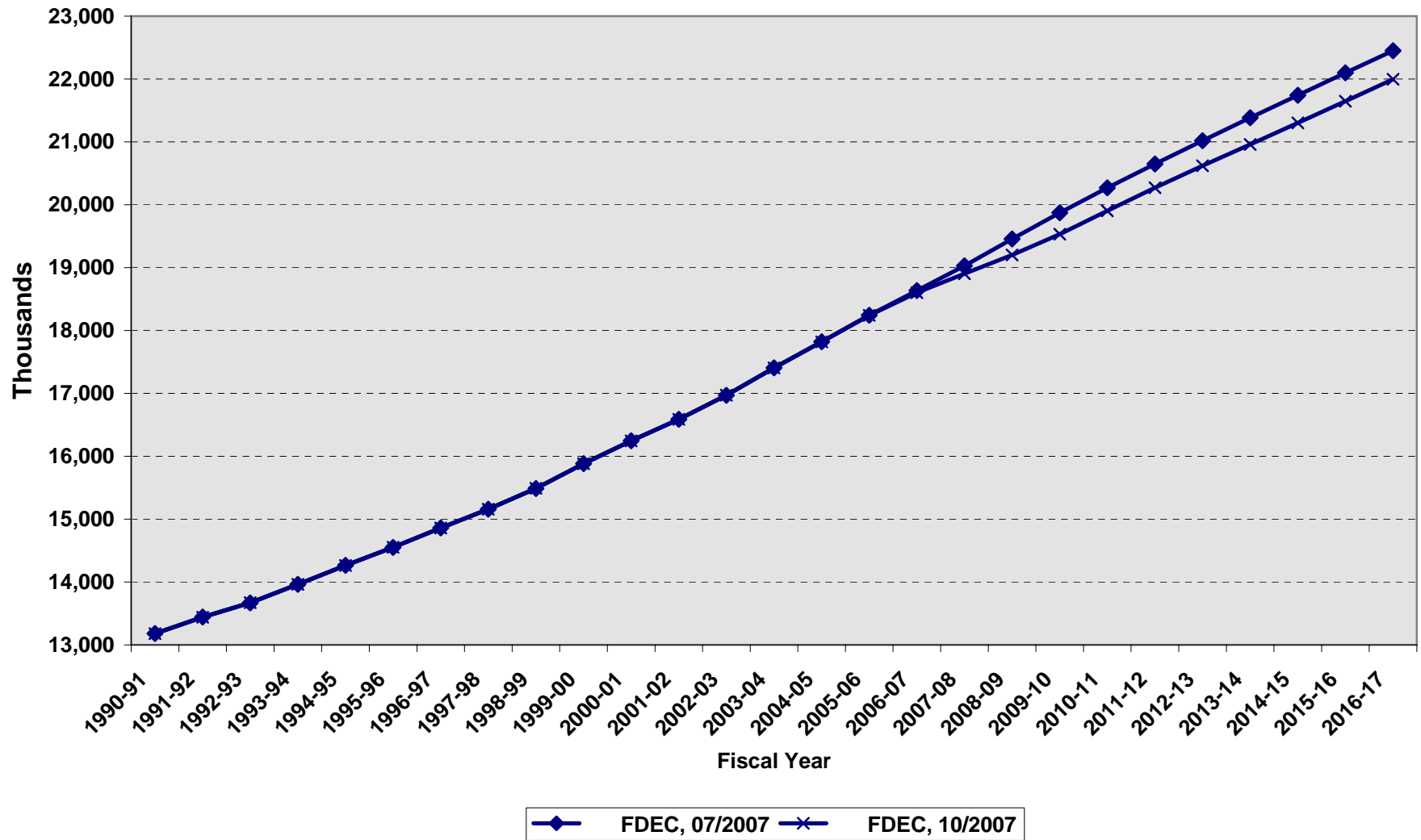
Florida Resident Deaths



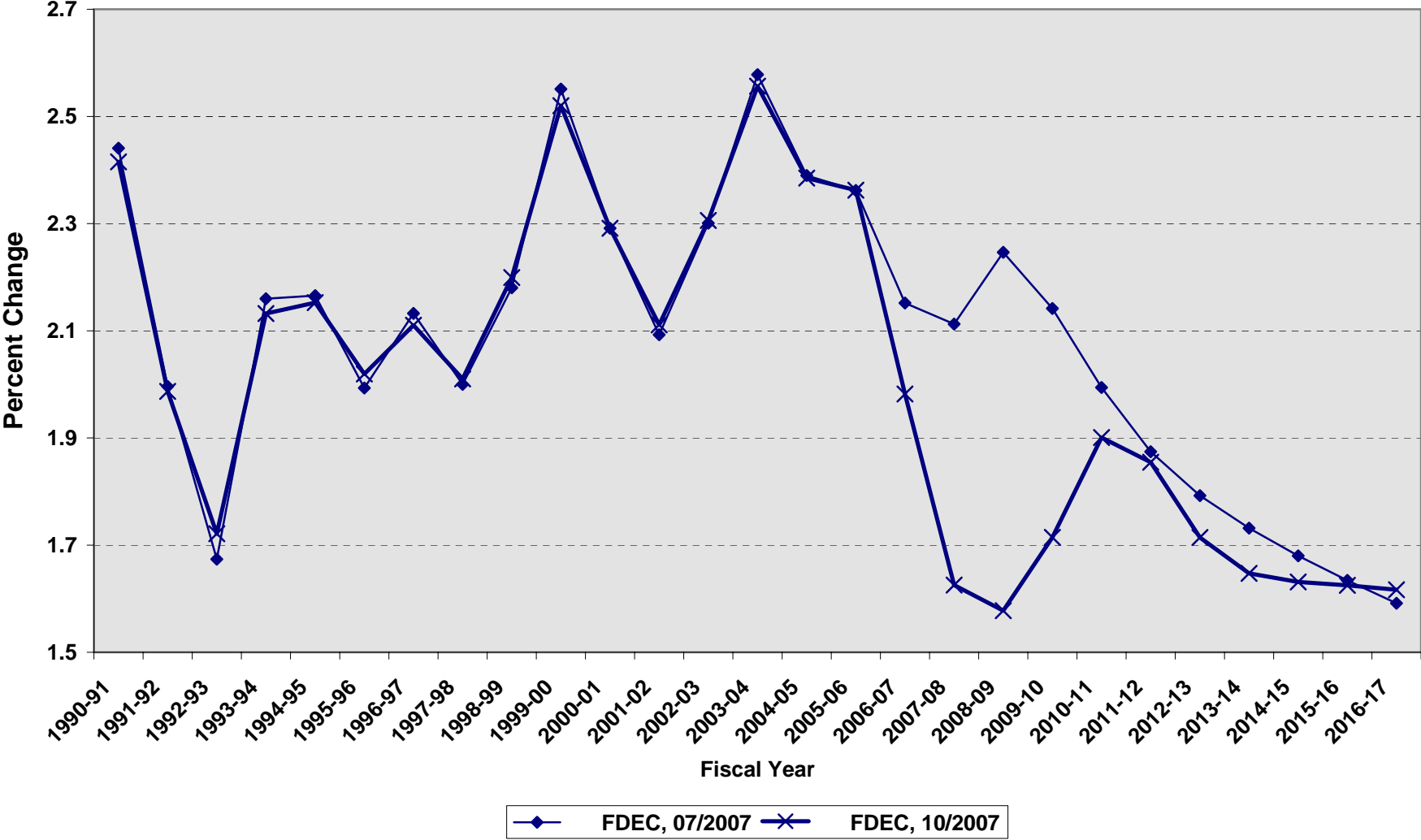
Florida Net Natural Increase



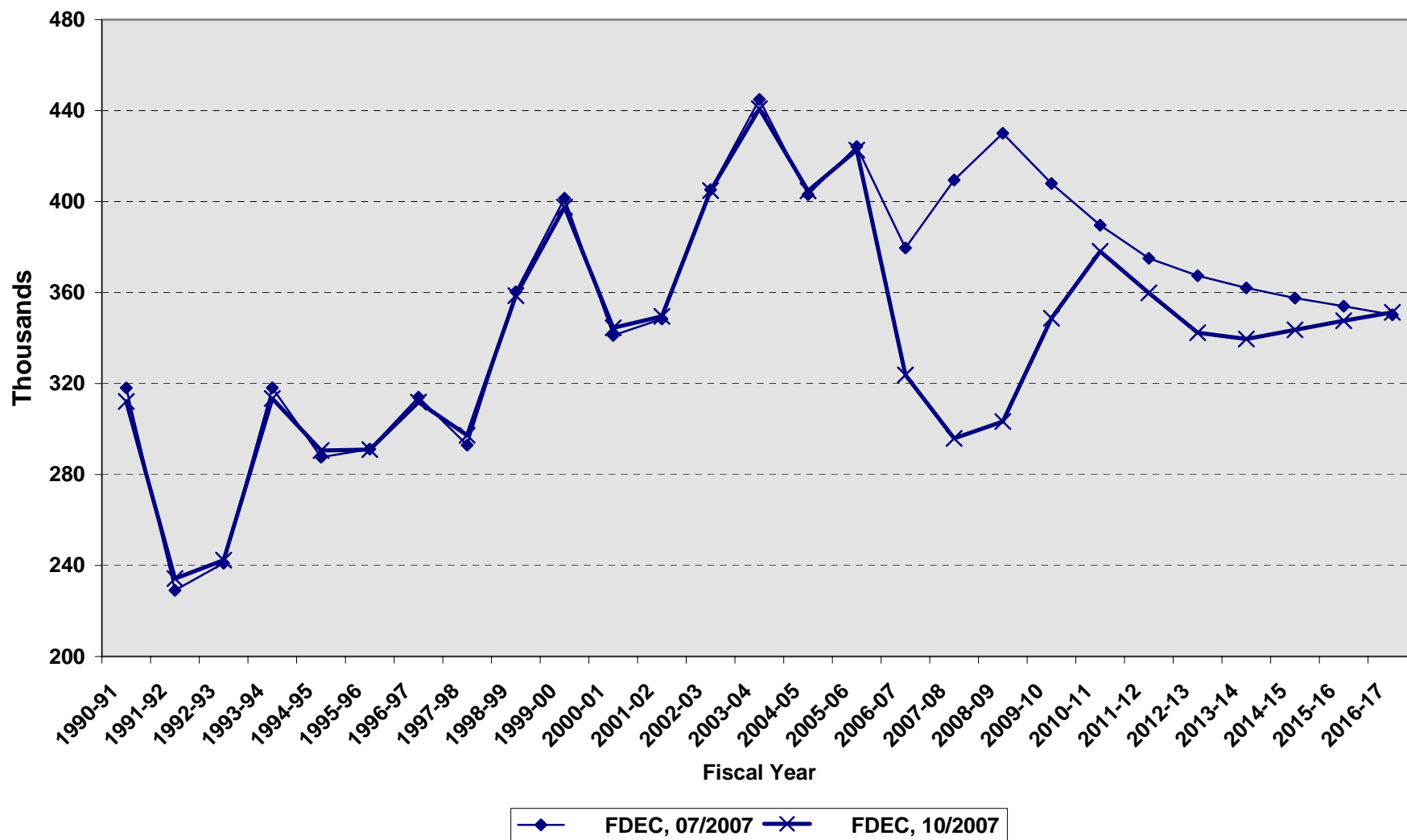
Florida Resident Population



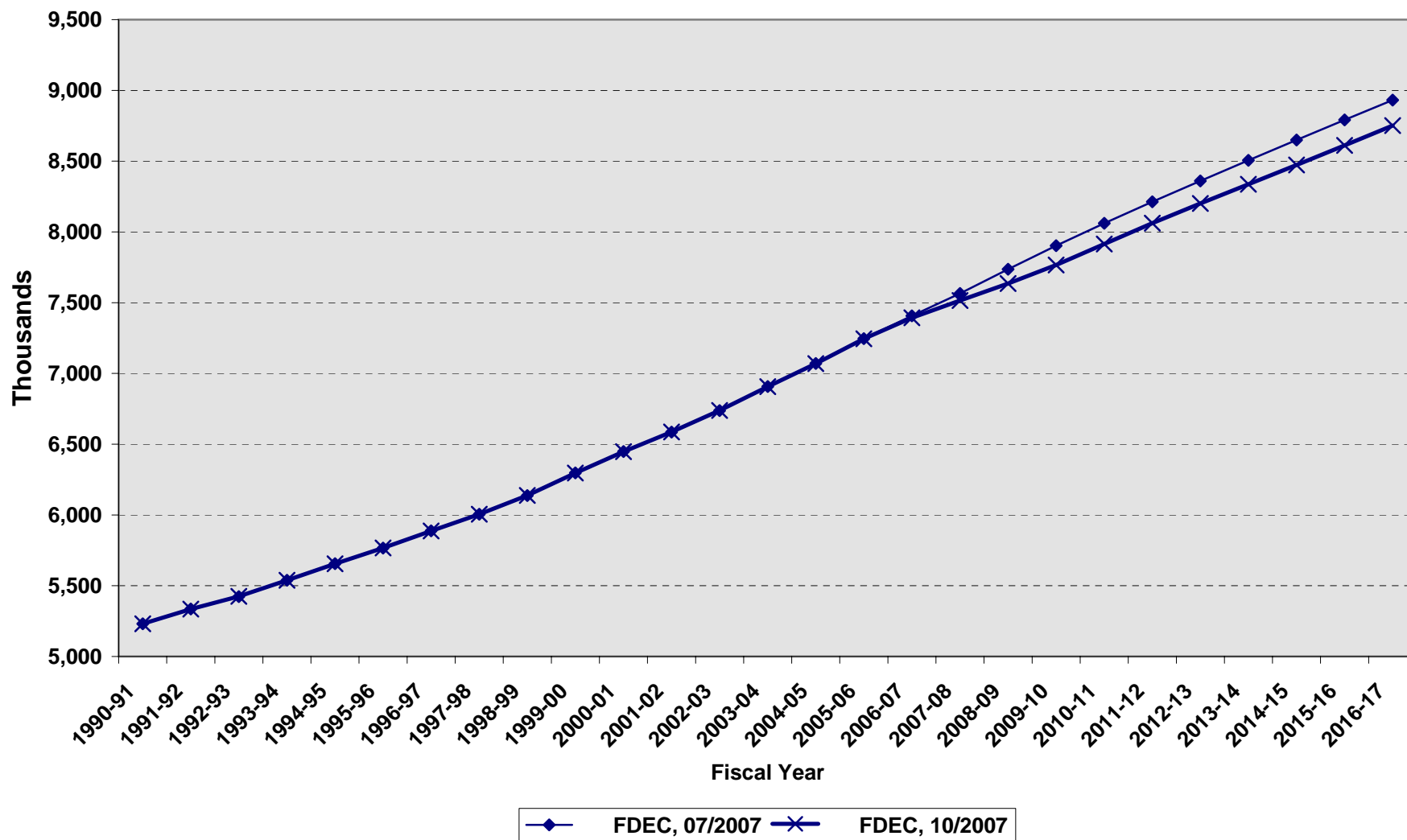
Growth In Florida Resident Population



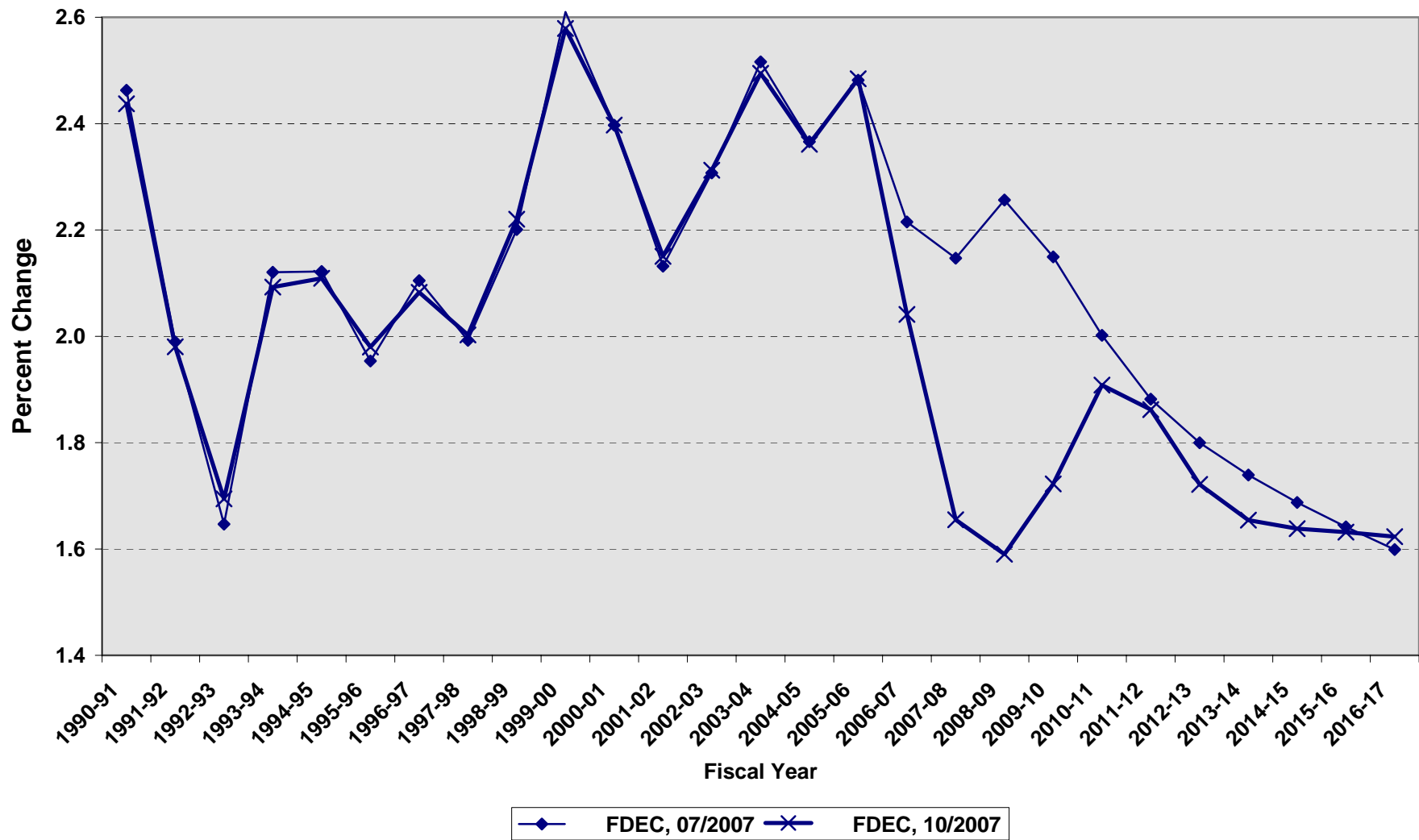
Net Change In Florida Resident Population



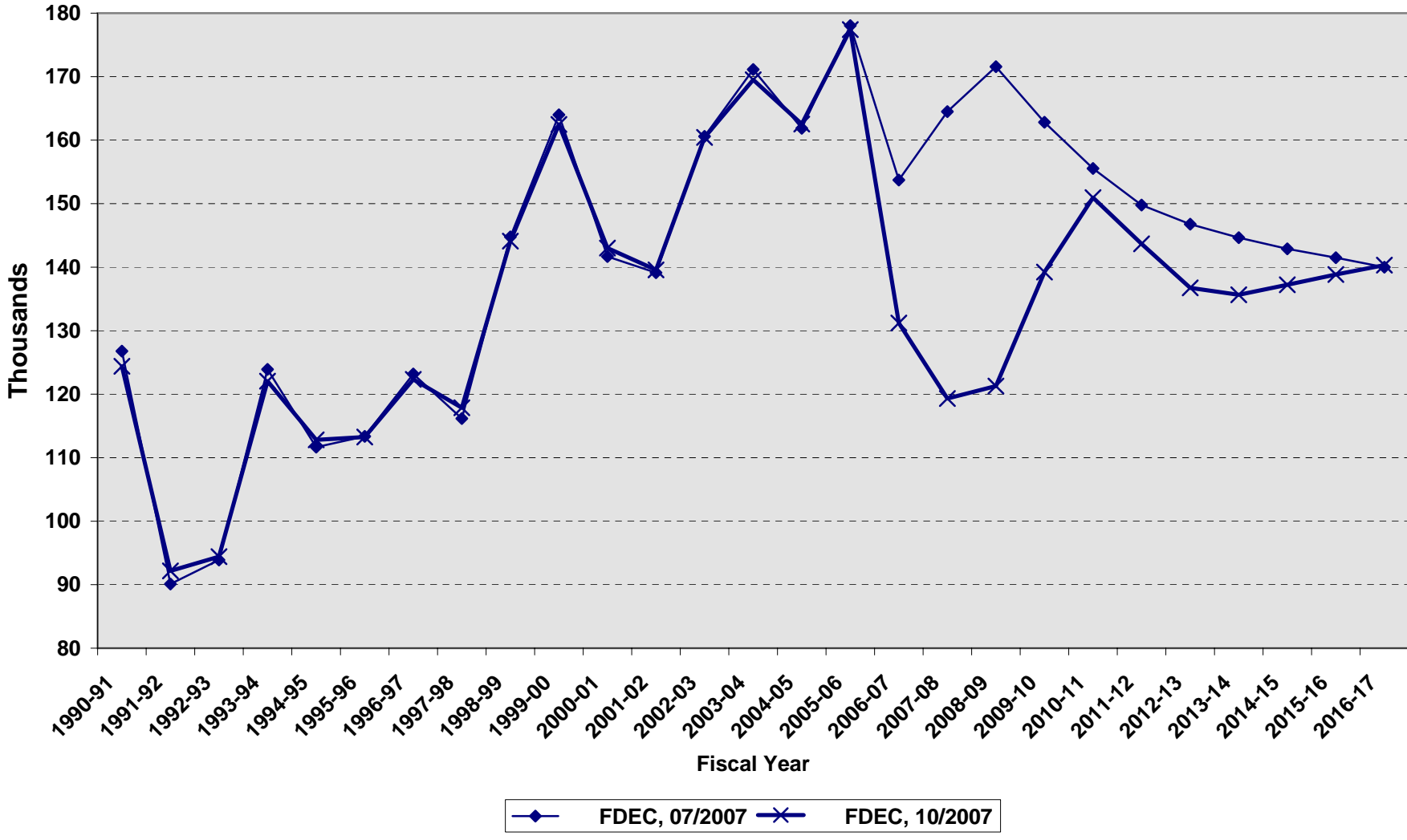
Florida Resident Households



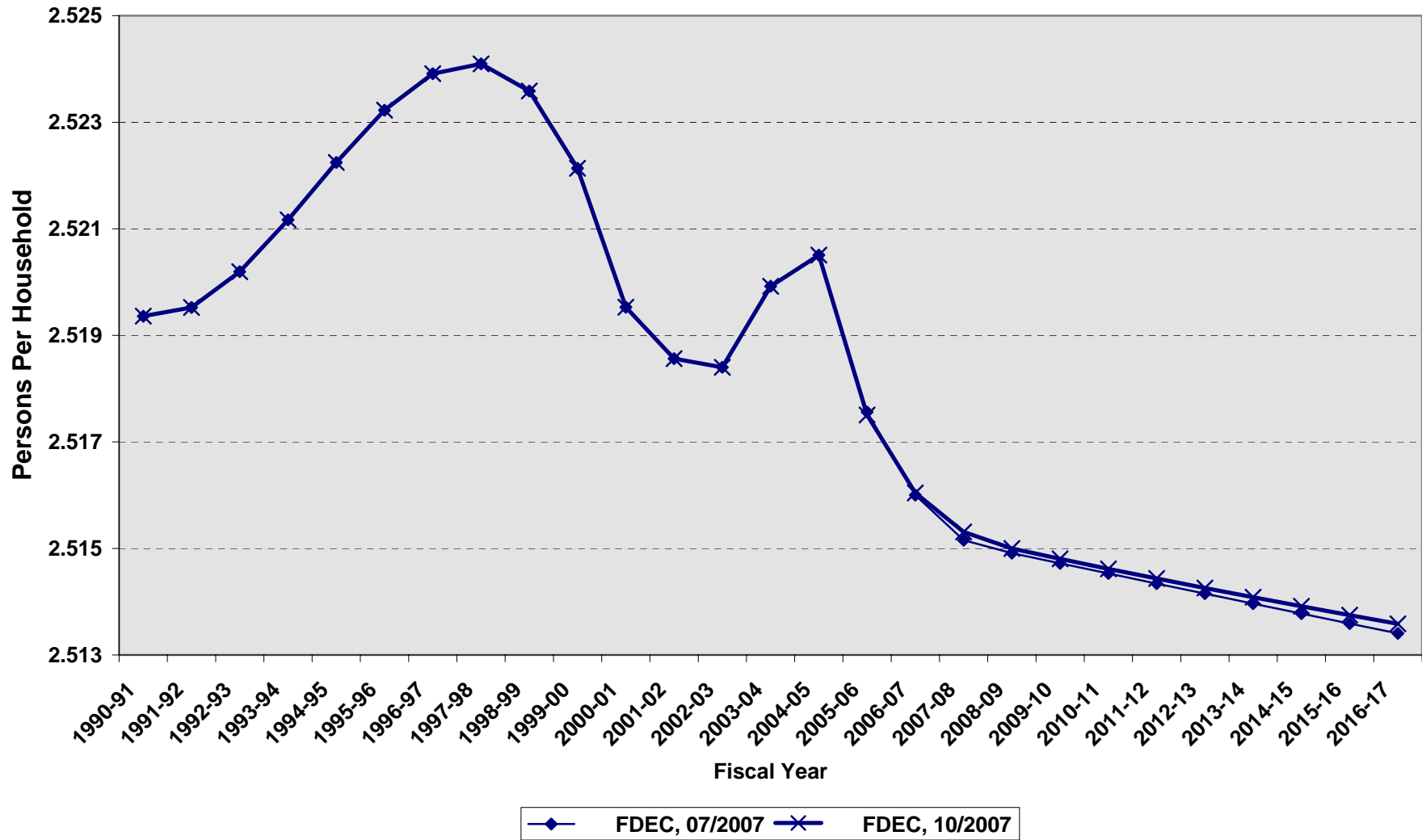
Growth In Florida Resident Households



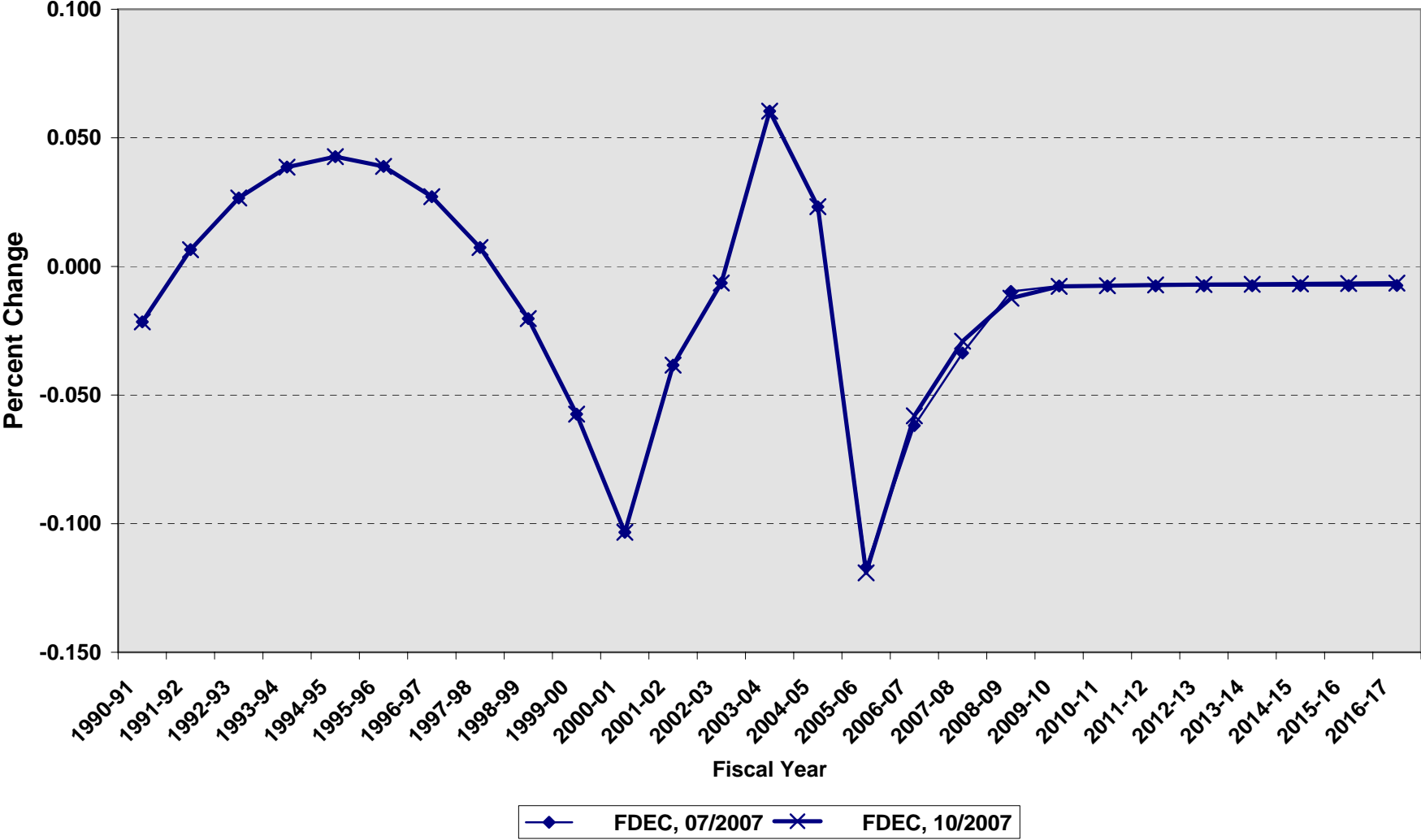
Net Change In Florida Resident Households



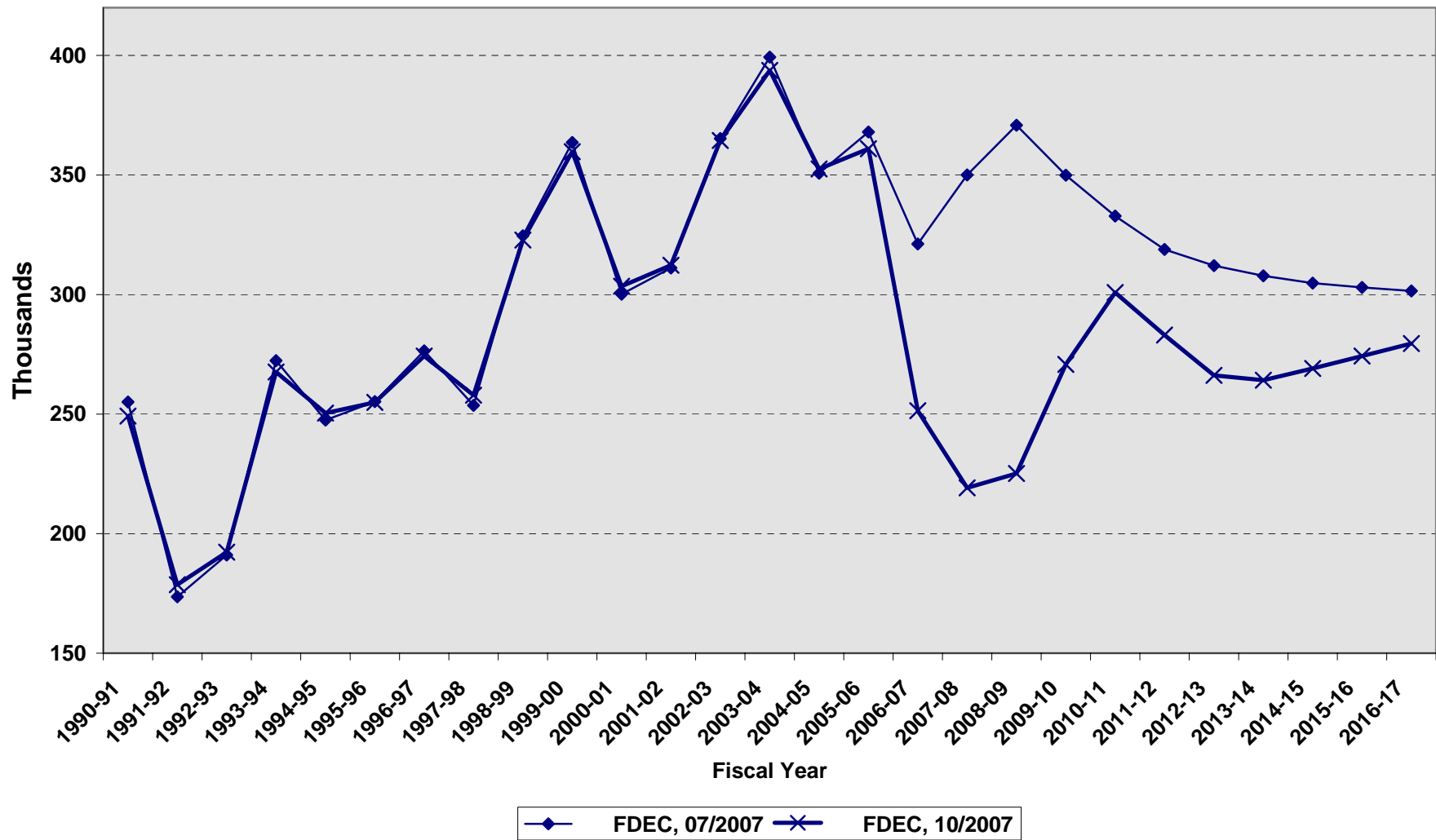
Average Florida Household Size



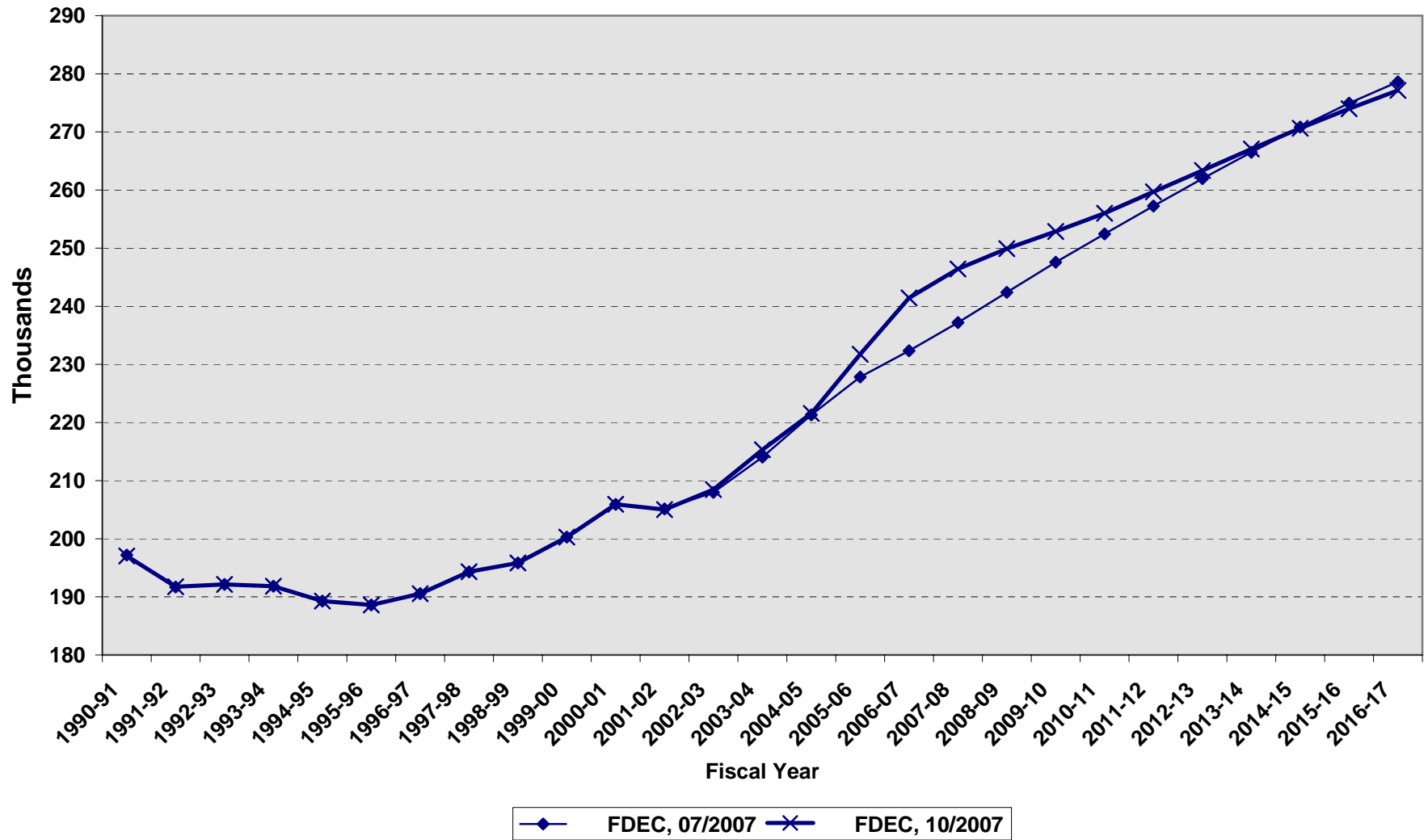
Growth In Average Florida Household Size



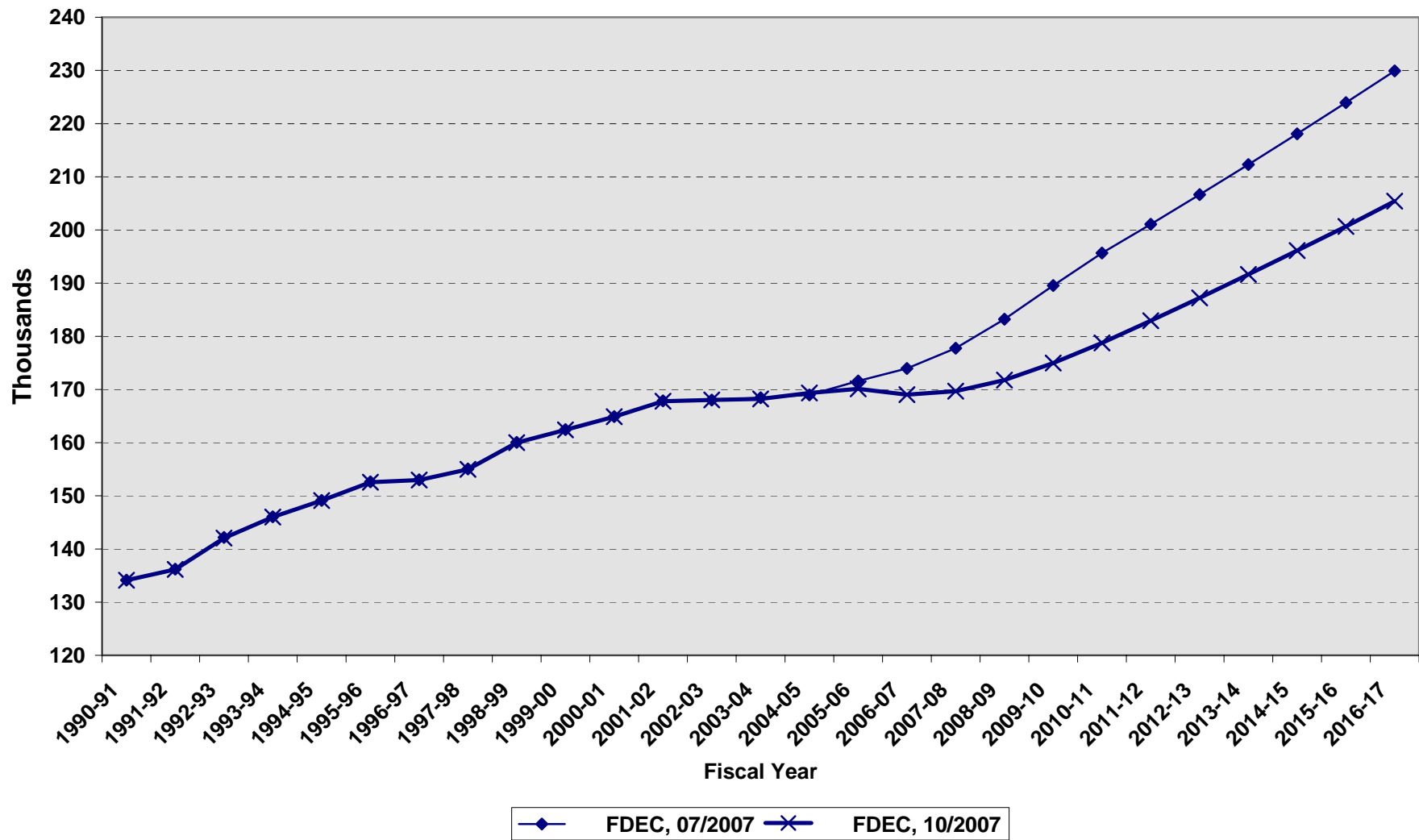
Florida Net Migration



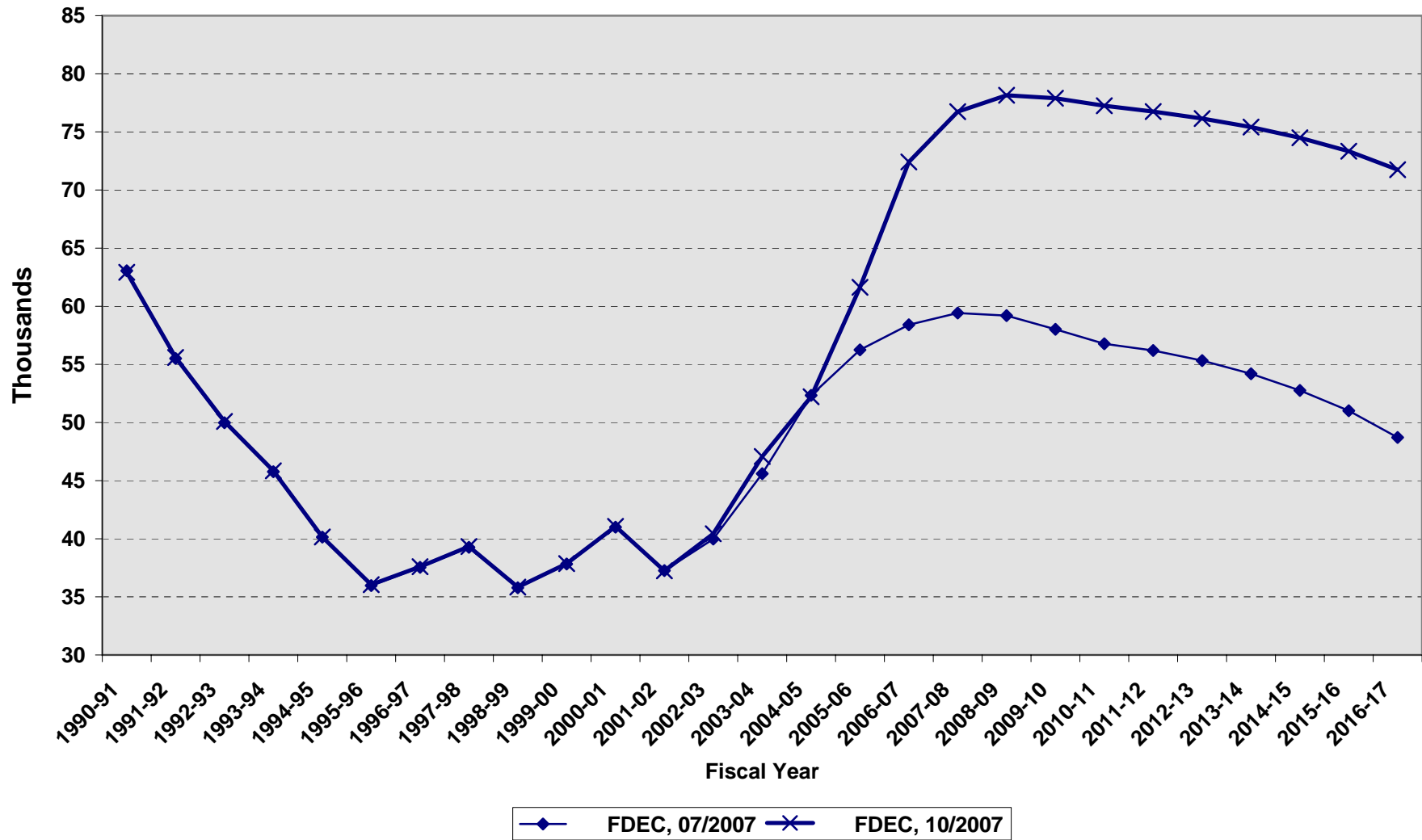
Florida Resident Live Births



Florida Resident Deaths



Florida Net Natural Increase



FLORIDA POPULATION AND COMPONENTS OF CHANGE

Fiscal Year	Population (end of FY)	Growth Rate	Annual Change in Population	Births	Deaths	Net Natural Increase	Net Migration
1950-51	2,980,000	6.05	170,000	67,604	27,186	40,418	129,582
1951-52	3,157,000	5.94	177,000	72,118	28,476	43,642	133,358
1952-53	3,310,000	4.85	153,000	77,156	29,856	47,300	105,700
1953-54	3,505,000	5.89	195,000	82,685	31,035	51,650	143,350
1954-55	3,747,000	6.90	242,000	86,265	32,083	54,182	187,818
1955-56	4,047,000	8.01	300,000	93,431	35,022	58,409	241,591
1956-57	4,372,000	8.03	325,000	100,811	38,319	62,492	262,508
1957-58	4,630,000	5.90	258,000	106,019	41,797	64,222	193,778
1958-59	4,808,000	3.84	178,000	110,457	43,746	66,711	111,289
1959-60	5,001,937	4.03	193,937	114,398	46,063	68,335	125,602
1960-61	5,185,560	3.67	183,623	116,419	48,302	68,117	115,506
1961-62	5,368,613	3.53	183,053	116,068	50,526	65,542	117,511
1962-63	5,552,114	3.42	183,501	114,946	54,302	60,644	122,857
1963-64	5,735,571	3.30	183,457	114,775	56,213	58,562	124,895
1964-65	5,884,050	2.59	148,479	110,465	57,868	52,597	95,882
1965-66	6,065,135	3.08	181,085	104,503	60,875	43,628	137,457
1966-67	6,250,236	3.05	185,101	101,129	62,765	38,364	146,737
1967-68	6,440,501	3.04	190,265	100,413	66,224	34,189	156,076
1968-69	6,632,001	2.97	191,500	104,362	71,133	33,229	158,271
1969-70	6,863,788	3.49	231,787	111,460	73,814	37,646	194,141
1970-71	7,233,605	5.39	369,817	117,071	75,362	41,709	328,108
1971-72	7,684,783	6.24	451,178	113,578	79,677	33,901	417,277
1972-73	8,157,779	6.15	472,996	107,692	86,284	21,408	451,588
1973-74	8,509,490	4.31	351,711	109,455	88,458	20,997	330,714
1974-75	8,650,224	1.65	140,734	108,752	87,185	21,567	119,167

FLORIDA POPULATION AND COMPONENTS OF CHANGE

Fiscal Year	Population (end of FY)	Growth Rate	Annual Change in Population	Births	Deaths	Net Natural Increase	Net Migration
1975-76	8,783,174	1.54	132,950	103,859	88,170	15,689	117,261
1976-77	8,973,716	2.17	190,542	107,735	90,432	17,303	173,239
1977-78	9,226,396	2.82	252,680	112,265	93,372	18,893	233,787
1978-79	9,519,160	3.17	292,764	116,269	96,826	19,443	273,321
1979-80	9,843,544	3.41	324,384	126,759	100,958	25,801	298,583
1980-81	10,218,346	3.81	374,802	135,511	107,686	27,825	346,977
1981-82	10,492,578	2.68	274,232	141,562	108,533	33,029	241,203
1982-83	10,750,266	2.46	257,688	146,890	110,534	36,356	221,332
1983-84	11,065,812	2.94	315,546	151,660	113,957	37,703	277,843
1984-85	11,405,171	3.07	339,359	159,879	117,469	42,410	296,949
1985-86	11,740,597	2.94	335,426	165,837	122,536	43,301	292,125
1986-87	12,083,205	2.92	342,608	170,743	124,846	45,897	296,711
1987-88	12,410,087	2.71	326,882	179,610	129,473	50,137	276,745
1988-89	12,723,453	2.53	313,366	188,272	131,997	56,275	257,091
1989-90	13,019,574	2.33	296,121	197,265	132,461	64,804	231,317
1990-91	13,323,139	2.33	303,565	197,197	134,147	63,050	240,515
1991-92	13,552,830	1.72	229,691	191,702	136,199	55,503	174,188
1992-93	13,804,917	1.86	252,087	192,150	142,167	49,983	202,104
1993-94	14,118,145	2.27	313,228	191,833	146,063	45,770	267,458
1994-95	14,407,012	2.05	288,867	189,272	149,127	40,145	248,722
1995-96	14,701,478	2.04	294,466	188,601	152,628	35,973	258,493
1996-97	15,010,271	2.10	308,793	190,552	153,018	37,534	271,259
1997-98	15,312,639	2.01	302,368	194,305	155,044	39,261	263,107
1998-99	15,680,103	2.40	367,464	195,827	160,050	35,777	331,687
1999-00	16,072,926	2.51	392,823	200,271	162,446	37,825	354,998

FLORIDA POPULATION AND COMPONENTS OF CHANGE

Fiscal Year	Population (end of FY)	Growth Rate	Annual Change in Population	Births	Deaths	Net Natural Increase	Net Migration
2000-01	16,414,441	2.12	341,515	205,898	164,901	40,997	300,518
2001-02	16,769,060	2.16	354,619	205,117	167,860	37,257	317,362
2002-03	17,184,076	2.47	415,016	207,979	168,011	39,968	375,048
2003-04	17,620,216	2.54	436,140	214,032	168,432	45,600	390,540
2004-05	18,026,110	2.30	405,894	221,551	169,343	52,208	353,686
2005-06	18,440,700	2.30	414,590	231,737	170,109	61,628	352,962
2006-07	18,755,570	1.71	314,870	241,442	169,032	72,410	242,460
2007-08	19,051,540	1.58	295,970	246,417	169,676	76,741	219,229
2008-09	19,358,740	1.61	307,200	249,909	171,759	78,150	229,050
2009-10	19,713,570	1.83	354,830	252,864	174,973	77,891	276,939
2010-11	20,091,110	1.92	377,540	255,999	178,745	77,254	300,286
2011-12	20,448,173	1.78	357,063	259,686	182,931	76,755	280,308
2012-13	20,789,282	1.67	341,109	263,367	187,222	76,145	264,964
2013-14	21,129,110	1.63	339,828	267,050	191,635	75,415	264,413
2014-15	21,473,247	1.63	344,137	270,623	196,129	74,494	269,643
2015-16	21,821,232	1.62	347,985	273,988	200,655	73,333	274,652
2016-17	22,172,833	1.61	351,601	277,153	205,401	71,752	279,849
2017-18	22,526,846	1.60	354,013	280,088	210,326	69,762	284,251
2018-19	22,882,161	1.58	355,315	282,854	215,447	67,407	287,908
2019-20	23,232,438	1.53	350,277	285,491	220,738	64,753	285,524
2020-21	23,568,388	1.45	335,950	288,039	226,219	61,820	274,130
2021-22	23,892,315	1.37	323,927	290,461	232,090	58,371	265,556
2022-23	24,211,576	1.34	319,261	292,822	238,268	54,554	264,707
2023-24	24,528,812	1.31	317,236	295,137	244,696	50,441	266,795
2024-25	24,845,020	1.29	316,208	297,439	251,456	45,983	270,225

FLORIDA POPULATION AND COMPONENTS OF CHANGE

Fiscal Year	Population (end of FY)	Growth Rate	Annual Change in Population	Births	Deaths	Net Natural Increase	Net Migration
2025-26	25,158,349	1.26	313,329	299,706	258,610	41,096	272,233
2026-27	25,465,500	1.22	307,151	302,131	266,085	36,046	271,105
2027-28	25,765,706	1.18	300,206	304,615	273,632	30,983	269,223
2028-29	26,059,344	1.14	293,638	307,071	281,366	25,705	267,933
2029-30	26,347,095	1.10	287,751	309,514	289,340	20,174	267,577