

Voluntary Prekindergarten Estimating Conference
March 7, 2008
2 pm
Executive Summary

Principals

Office	Representative
House (Chair)	Mark Eggers
Office of Economic & Demographic Research	Pam Schenker
Executive Office of the Governor	Kristen Pingree
Senate	Kurt Hamon

The Voluntary Prekindergarten Estimating Conference met on Friday, March 7, 2008 and adopted forecasted fiscal year enrollment for the Voluntary Prekindergarten Program (VPK) for 2008-09 and reviewed projected fiscal year enrollments for 2009-10, 2010-11, and 2011-12. The new estimates for Fiscal Years 2006-07, 2007-08 and 2008-09 are as follows:

VPK Fiscal Year Enrollment	March 7, 2008 Conference	November 15, 2007 Conference	Difference between November 15, 2007 and March 7, 2008 Conferences
Actual 2006-07	125,294	123,815	1,479
Estimated 2007-08	136,692	138,913	-2,221
Projected 2008-09	145,714	151,172	-5,458

The 2006-07 actual data were revised up slightly as a result of modifying the allocation of summer participation between fiscal years 2006-07 and 2007-08 to 50-50 from 35-65 to more closely reflect actual payouts. The estimated 2007-08 enrollment includes actual enrollments through February 20, 2008, estimated end of school year growth of 2.16 percent (same as from March 2007-May 2007), and estimated number of participants in the summer for this fiscal year of 5,000. The forecasted enrollments changed due to a lower estimate for the 2007-08 fiscal year and slower than expected growth between fiscal years 2006-07 and 2007-08.

The payment rate (pay-out rate) is the percentage of dollars actually paid out of the total that could possibly be paid. The actual pay-out rate for 2006-07 was 87.3 percent. The pay-out rate for 2007-08 was estimated to be 89.0 percent. There are no pay-out rates projected for 2008-09 through 2011-12.

**VPK Estimating
Conference
Report
March 7, 2008**

AGENCY FOR WORKFORCE INNOVATION/OFFICE OF EARLY LEARNING
VPK ESTIMATING CONFERENCE
March 7, 2008

Table of Contents	
Title	Page
Terminology	3
Statewide Summary	4
County - Level Summary	5
Growth Rate Methodology	6
Projected Growth Rates for VPK Fiscal Year Enrollments	7
2005-2006 VPK Enrollment and Participation Rates	8
Methodology 05-06	9
2006-2007 VPK Enrollment and Participation Rates	10
Methodology 06-07	11
2007-2008 VPK Estimated Enrollment	12
Methodology 07-08	13
2008-2009 VPK Projected Enrollment	14
Methodology 08-09	15
2009-2010 VPK Projected Enrollment	16
Methodology 09-10	17
2010-2011 VPK Projected Enrollment	18
Methodology 10-11	19
2011-2012 VPK Projected Enrollment	20
Methodology 11-12	21

AGENCY FOR WORKFORCE INNOVATION/OFFICE OF EARLY LEARNING
VPK ESTIMATING CONFERENCE
March 7, 2008

Terminology	
School Year	540 hour VPK Program that runs from July/August (varies by county) until May/June
Summer	300 hour VPK Program that runs from June to August
Program Year	Includes the VPK School Year and Summer Programs based on eligibility as determined by date of birth
Fiscal Year	July 1 - June 30 (Includes part of summer enrollment from two program years)

AGENCY FOR WORKFORCE INNOVATION/OFFICE OF EARLY LEARNING
 VPK ESTIMATING CONFERENCE
 March 7, 2008

Statewide Summary					
	Difference between November 15, 2007 and March 7, 2008 Conferences	March 7, 2008 Conference	November 15, 2007 Conference	July 25, 2007 Conference	March 2, 2007 Conference
2005-06 Enrollment					
School Year		93,574	93,574	93,574	93,574
Summer		12,322	12,322	12,322	12,322
Program Year		105,896	105,896	105,896	105,896
Fiscal Year (Not a Full Fiscal Year)		99,735	99,735	99,735	99,735
2006-07 Enrollment					
School Year	-79	113,973	114,052	114,172	113,021
Summer	29	10,320	10,291	11,000	13,517
Program Year	-50	124,293	124,343	125,172	126,538
Fiscal Year	1,479	125,294	123,815	124,183	123,913
2007-08 Enrollment					
School Year		126,532			
Summer		10,000			
Program Year		136,532			
Fiscal Year	-2,221	136,692	138,913	140,302	139,997
Fiscal Year Enrollment					
2007-08	-2,221	136,692	138,913	140,302	139,997
2008-09	-5,458	145,714	151,172	153,119	152,786
2009-10	-8,210	153,145	161,355	163,379	163,024
2010-11	-10,547	158,658	169,205	171,978	
2011-12		162,307			
Fiscal Year Enrollment Growth Rate					
2007-08	-3.1%	9.1%	12.2%	13.0%	13.0%
2008-09	-2.2%	6.6%	8.8%	9.1%	9.1%
2009-10	-1.6%	5.1%	6.7%	6.7%	6.7%
2010-11	-1.3%	3.6%	4.9%	5.3%	
2011-12		2.3%			
October 1 Population 4-Year Olds					
2005		221,924	221,924	222,001	222,001
2006		225,958	225,958	226,832	226,832
2007		229,476	229,476	231,062	231,062
2008		234,186	234,186	234,842	234,842
2009		239,525	239,525	238,297	238,297
2010		244,047	244,047	241,945	
2011		248,004			
Fiscal Year Pseudo Participation Rate					
2006-07	0.7%	55.5%	54.8%	54.7%	54.6%
2007-08	-1.0%	59.6%	60.5%	60.7%	60.6%
2008-09	-2.3%	62.2%	64.6%	65.2%	65.1%
2009-10	-3.4%	63.9%	67.4%	68.6%	68.4%
2010-11	-4.3%	65.0%	69.3%	71.1%	
2011-12		65.4%			
Pay-out Rate					
2006-07 School Year		87.3%	87.3%	87.5%	
2007-08 School Year		89.0%			

Key	
Data	Example
Actual	999,999
Estimated (based on actual data)	999,999
Projected (based on estimated data)	999,999
Projected Population used for Appropriation	999,999

AGENCY FOR WORKFORCE INNOVATION/OFFICE OF EARLY LEARNING
VPK ESTIMATING CONFERENCE
March 7, 2008

County - Level Summary

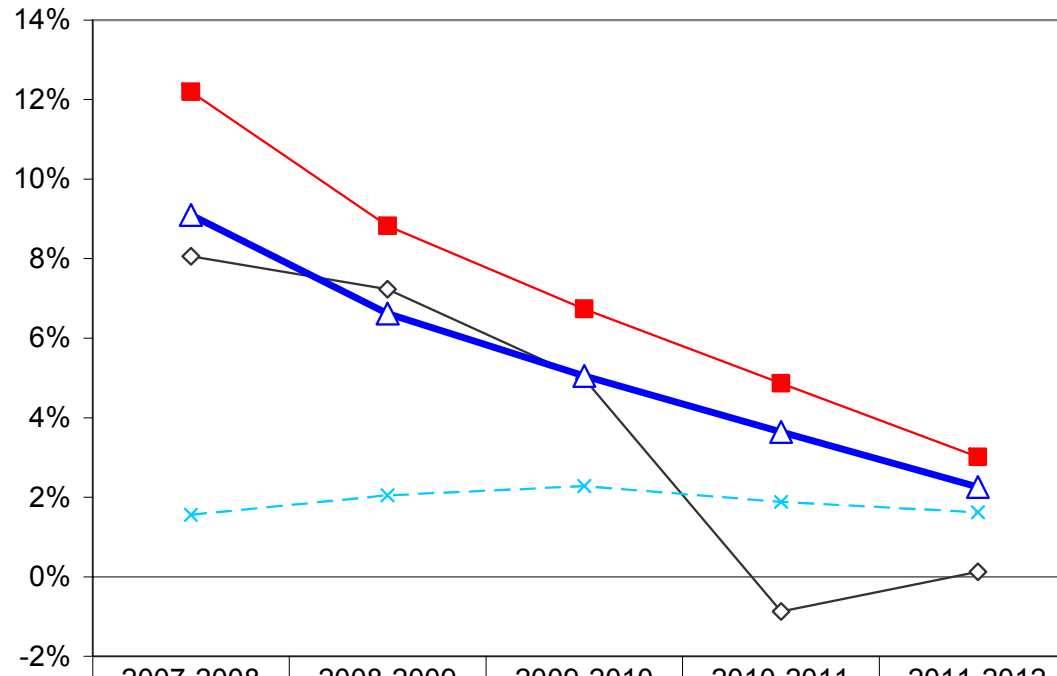
County	05-06 Enrollment	05-06	Percent of 05-06	06-07 Program	06-07	Percent of 06-07	07-08 Estimated	07-08	Percent of 07-08
	Fiscal Year	Appropriation	Appropriation	Year Enrollment (as of 3/03/08)	Appropriation	Appropriation	Enrollment	Appropriation	Appropriation
	-1-	-2-	-3-	-4-	-5-	-6-	-7-	-8-	-9-
State Total	99,735	147,235	67.7%	124,293	144,228	86.2%	136,692	139,997	97.6%
Alachua	1,021	1,608	63.5%	1,504	1,901	79.1%	1,685	1,763	95.6%
Baker	173	222	77.7%	205	202	101.5%	210	201	104.5%
Bay	1,066	1,324	80.5%	1,142	1,186	96.3%	1,215	1,276	95.2%
Bradford	256	191	134.0%	254	294	86.4%	264	282	93.5%
Brevard	3,113	3,720	83.7%	3,662	3,816	96.0%	4,155	4,032	103.0%
Broward	9,914	15,972	62.1%	12,277	15,321	80.1%	13,347	13,703	97.4%
Calhoun	64	101	63.4%	58	83	70.3%	73	70	103.7%
Charlotte	485	790	61.3%	685	1,002	68.4%	843	774	108.9%
Citrus	658	751	87.5%	700	926	75.6%	759	788	96.4%
Clay	930	1,537	60.5%	1,436	1,148	125.1%	1,813	1,616	112.2%
Collier	1,536	2,314	66.4%	1,947	2,222	87.6%	1,808	2,162	83.6%
Columbia	427	541	78.9%	537	560	95.9%	558	613	91.0%
Miami-Dade	16,858	22,904	73.6%	17,804	18,465	96.4%	19,796	21,167	93.5%
DeSoto	224	255	87.8%	223	438	50.9%	283	268	105.7%
Dixie	139	112	124.1%	126	156	80.8%	126	141	89.2%
Duval	6,197	8,231	75.3%	7,922	9,544	83.0%	8,876	9,008	98.5%
Escambia	1,803	2,513	71.7%	2,121	2,463	86.1%	2,430	2,512	96.7%
Flagler	281	432	65.0%	529	564	93.8%	588	453	129.9%
Franklin	61	73	83.6%	76	65	116.9%	65	82	78.9%
Gadsden	259	414	62.6%	496	591	83.9%	541	566	95.6%
Gilchrist	150	144	103.8%	149	171	87.1%	164	162	101.2%
Glades	52	80	64.4%	65	82	79.3%	85	65	131.4%
Gulf	89	88	101.1%	92	101	91.1%	77	99	77.4%
Hamilton	85	117	72.6%	94	109	86.2%	119	112	106.4%
Hardee	209	274	76.1%	201	272	73.9%	184	204	90.4%
Hendry	215	449	47.9%	303	384	78.9%	246	296	83.1%
Hernando	1,052	966	108.9%	1,131	1,355	83.5%	1,221	1,160	105.2%
Highlands	646	643	100.5%	722	936	77.1%	761	793	95.9%
Hillsborough	5,850	10,637	55.0%	8,117	11,645	69.7%	8,677	8,648	100.3%
Holmes	138	153	90.2%	159	157	101.3%	159	177	89.8%
Indian River	810	790	102.5%	884	994	88.9%	947	973	97.4%
Jackson	206	343	60.1%	211	314	67.2%	221	251	88.0%
Jefferson	65	97	67.0%	68	87	78.2%	39	76	51.4%
Lafayette	103	54	190.7%	90	114	78.9%	72	99	72.6%
Lake	1,448	1,862	77.7%	1,909	2,180	87.6%	2,331	2,055	113.4%
Lee	2,473	3,737	66.2%	3,736	4,880	76.6%	4,138	4,128	100.2%
Leon	1,757	2,033	86.4%	1,961	2,040	96.1%	2,177	2,241	97.1%
Levy	225	324	69.4%	284	277	102.5%	288	336	85.6%
Liberty	85	47	180.9%	116	96	120.8%	103	120	85.6%
Madison	72	140	51.4%	119	145	82.1%	82	136	60.3%
Manatee	1,384	2,324	59.5%	1,967	2,557	76.9%	2,231	2,176	102.5%
Marion	1,288	2,151	59.9%	2,131	1,840	115.8%	1,872	1,986	94.2%
Martin	829	876	94.6%	833	1,036	80.4%	882	953	92.5%
Monroe	306	459	66.7%	385	455	84.6%	397	463	85.8%
Nassau	232	587	39.4%	356	310	114.8%	451	436	103.5%
Okaloosa	1,085	1,595	68.0%	1,459	1,720	84.8%	1,617	1,669	96.9%
Okeechobee	225	324	69.4%	292	292	100.0%	261	328	79.6%
Orange	7,249	9,846	73.6%	8,418	9,438	89.2%	9,197	9,750	94.3%
Osceola	1,796	2,286	78.6%	2,371	2,116	112.1%	2,495	2,605	95.8%
Palm Beach	6,041	10,134	59.6%	7,051	9,336	75.5%	8,387	8,120	103.3%
Pasco	1,585	3,066	51.7%	2,942	2,717	108.3%	3,557	3,250	109.5%
Pinellas	4,472	6,451	69.3%	5,685	6,375	89.2%	5,795	6,324	91.6%
Polk	2,038	4,723	43.1%	2,869	3,434	83.5%	2,957	3,320	89.1%
Putnam	402	648	62.0%	613	484	126.7%	695	715	97.2%
St. Johns	602	1,166	51.6%	890	820	108.5%	1,149	1,031	111.5%
St. Lucie	1,227	1,721	71.3%	1,793	1,528	117.3%	2,178	1,972	110.4%
Santa Rosa	475	1,228	38.7%	621	633	98.1%	784	786	99.7%
Sarasota	1,237	1,952	63.4%	1,756	2,014	87.2%	1,919	1,974	97.2%
Seminole	2,803	3,750	74.7%	3,380	4,268	79.2%	3,777	3,819	98.9%
Sumter	386	353	109.3%	430	463	92.9%	448	506	88.5%
Suwannee	246	298	82.4%	296	378	78.3%	330	322	102.4%
Taylor	92	145	63.1%	134	167	80.2%	118	130	90.7%
Union	64	104	61.5%	114	85	134.1%	124	110	112.3%
Volusia	2,128	3,289	64.7%	2,909	3,861	75.3%	3,223	3,135	102.8%
Wakulla	118	223	52.7%	174	189	92.3%	123	190	64.7%
Walton	130	355	36.6%	205	292	70.2%	66	186	35.4%
Washington	115	198	58.1%	104	135	77.0%	133	130	102.2%
Total	99,735	147,235	67.7%	124,293	144,228	86.2%	136,692	139,997	97.6%

AGENCY FOR WORKFORCE INNOVATION/OFFICE OF EARLY LEARNING
 VPK ESTIMATING CONFERENCE
 March 7, 2008

Growth Rate Methodology (from EDR)

	Population	Enrollment		Participation Rates		Growth Rate (rate for 2005-06 is program year since the fiscal year was not a full-year)	
Year	October 1 Estimate (as of August 2007)	Program Year	Fiscal Year	Program Year	Fiscal Year	Rate	Type: Program Year or Fiscal Year
-1-	-2-	-3-	-4-	-5-	-6-	-8-	-9-
2005-06	221,924	105,896	99,735	47.7%	44.9%		
2006-07	225,958	124,293	125,294	55.0%	55.5%	17.4%	Program
2007-08	229,476		136,692		59.6%	9.1%	Fiscal
2008-09	234,186		145,714		62.2%	6.6%	Fiscal
2009-10	239,525		153,145		63.9%	5.1%	Fiscal
2010-11	244,047		158,658		65.0%	3.6%	Fiscal
2011-12	248,004		162,307		65.4%	2.3%	Fiscal

Projected Growth Rates for Fiscal Year VPK Enrollment Based on Actual Growth Rates for FEFP PK beginning in 1995-96



	2007-2008	2008-2009	2009-2010	2010-2011	2011-2012
—◇— FEFP PK beginning in 1995-96	8.1%	7.2%	5.0%	-0.9%	0.1%
—■— VPK Forecast 11/2007	12.2%	8.8%	6.7%	4.9%	3.0%
—△— VPK Forecast 3/2008	9.1%	6.6%	5.1%	3.6%	2.3%
- * - Population Age 4 As of Oct. 1	1.6%	2.1%	2.3%	1.9%	1.6%

AGENCY FOR WORKFORCE INNOVATION/OFFICE OF EARLY LEARNING
VPK ESTIMATING CONFERENCE
March 7, 2008

2005-2006 VPK Enrollment and Participation Rates

County	04-05 Program Year		05-06 Program Year				05-06 Fiscal Year		
	October 2005 Estimated Number of 4-Year Olds (as of August 2007)	Summer 2005 Enrollment	Updated School Year 05-06 Enrollment	Updated Summer 2006	Total Program Year Enrollment	Program Year Participation Rate	50% of Summer 2005	50% of Summer 2006	Total Fiscal Year Enrollment
	-1-	-2-	-3-	-4-	-5-	-6-	-7-	-8-	-9-
State Total	221,924	0	93,574	12,322	105,896	47.7%	0	6,161	99,735
Alachua	2,586	0	936	169	1,105	42.7%	0	85	1,021
Baker	349	0	161	23	184	52.7%	0	12	173
Bay	2,095	0	1,014	104	1,118	53.4%	0	52	1,066
Bradford	306	0	256	0	256	83.7%	0	0	256
Brevard	5,400	0	3,002	221	3,223	59.7%	0	111	3,113
Broward	22,828	0	9,329	1,169	10,498	46.0%	0	585	9,914
Calhoun	142	0	60	8	68	48.0%	0	4	64
Charlotte	1,085	0	437	95	532	49.0%	0	48	485
Citrus	1,048	0	645	25	670	63.9%	0	13	658
Clay	2,140	0	872	115	987	46.1%	0	58	930
Collier	3,728	0	1,372	328	1,700	45.6%	0	164	1,536
Columbia	813	0	415	24	439	54.0%	0	12	427
Miami-Dade	34,406	0	16,349	1,018	17,367	50.5%	0	494	16,843
DeSoto	412	0	217	14	231	56.1%	0	7	224
Dixie	168	0	139	0	139	82.9%	0	0	139
Duval	12,614	0	5,942	509	6,451	51.1%	0	255	6,197
Escambia	3,903	0	1,727	151	1,878	48.1%	0	76	1,803
Flagler	718	0	193	176	369	51.4%	0	88	281
Franklin	113	0	53	16	69	60.9%	0	8	61
Gadsden	681	0	190	138	328	48.1%	0	69	259
Gilchrist	192	0	145	9	154	80.0%	0	5	150
Glades	91	0	46	11	57	62.7%	0	6	52
Gulf	123	0	88	2	90	73.4%	0	1	89
Hamilton	169	0	85	0	85	50.4%	0	0	85
Hardee	406	0	191	35	226	55.7%	0	18	209
Hendry	644	0	164	102	266	41.3%	0	51	215
Hernando	1,391	0	1,027	49	1,076	77.4%	0	25	1,052
Highlands	974	0	616	60	676	69.4%	0	30	646
Hillsborough	15,875	0	5,238	1,224	6,462	40.7%	0	612	5,850
Holmes	228	0	134	8	142	62.2%	0	4	138
Indian River	1,247	0	795	29	824	66.1%	0	15	810
Jackson	548	0	190	32	222	40.5%	0	16	206
Jefferson	155	0	59	12	71	45.9%	0	6	65
Lafayette	80	0	103	0	103	129.1%	0	0	103
Lake	2,789	0	1,332	231	1,563	56.0%	0	116	1,448
Lee	6,464	0	2,191	563	2,754	42.6%	0	282	2,473
Leon	3,033	0	1,693	127	1,820	60.0%	0	64	1,757
Levy	481	0	217	16	233	48.4%	0	8	225
Liberty	74	0	85	0	85	114.3%	0	0	85
Madison	217	0	57	30	87	40.1%	0	15	72
Manatee	3,486	0	1,249	269	1,518	43.5%	0	135	1,384
Marion	3,347	0	1,039	497	1,536	45.9%	0	249	1,288
Martin	1,279	0	807	43	850	66.5%	0	22	829
Monroe	823	0	291	30	321	39.0%	0	15	306
Nassau	832	0	223	17	240	28.8%	0	9	232
Okaloosa	2,491	0	1,028	113	1,141	45.8%	0	57	1,085
Okeechobee	497	0	209	32	241	48.4%	0	16	225
Orange	15,832	0	7,007	483	7,490	47.3%	0	242	7,249
Osceola	3,334	0	1,694	204	1,898	56.9%	0	102	1,796
Palm Beach	14,707	0	5,608	865	6,473	44.0%	0	433	6,041
Pasco	4,416	0	1,482	206	1,688	38.2%	0	103	1,585
Pinellas	9,879	0	4,012	920	4,932	49.9%	0	460	4,472
Polk	7,387	0	1,836	403	2,239	30.3%	0	202	2,038
Putnam	955	0	399	6	405	42.4%	0	3	402
St. Johns	1,640	0	588	27	615	37.5%	0	14	602
St. Lucie	2,826	0	1,111	231	1,342	47.5%	0	116	1,227
Santa Rosa	1,699	0	434	82	516	30.4%	0	41	475
Sarasota	2,985	0	1,156	162	1,318	44.1%	0	81	1,237
Seminole	5,197	0	2,703	200	2,903	55.9%	0	100	2,803
Sumter	645	0	386	0	386	59.8%	0	0	386
Suwannee	431	0	234	23	257	59.6%	0	12	246
Taylor	230	0	79	25	104	45.2%	0	13	92
Union	137	0	58	12	70	51.0%	0	6	64
Volusia	5,014	0	1,879	498	2,377	47.4%	0	249	2,128
Wakulla	327	0	105	25	130	39.7%	0	13	118
Walton	554	0	84	92	176	31.8%	0	46	130
Washington	255	0	108	14	122	47.9%	0	7	115
Total	221,924	0	93,574	12,322	105,896	47.7%	0	6,161	99,735

AGENCY FOR WORKFORCE INNOVATION/OFFICE OF EARLY LEARNING
 VPK ESTIMATING CONFERENCE
 March 7, 2008

Methodology 05-06

Table Name	Column	Column Title	Explanation	Additional Assumptions
2005-2006 VPK Enrollment and Participation Rates	-1-	October 2005 Estimated Number of 4-Year Olds (as of August 2007)	Received from EDR	Population estimates based on the August 2007 Florida Demographic Estimating Conference Database.
	-2-	Summer 2005 Enrollment	VPK Summer was not yet implemented so enrollment numbers do not exist	These numbers have decreased since the previous estimating conference due to an adjustment in the collection of data. Children that had been pre-paid but never showed up to a VPK program were counted as 'served' and had to be removed from the final counts.
	-3-	Updated School Year 05-06 Enrollment	Reported in VPK Statistics Report as of January 10, 2007	
	-4-	Updated Summer 2006	Reported in VPK Statistics Report as of January 10, 2007	
	-5-	Total Program Year Enrollment	The sum of Columns -3-, and -4-.	
	-6-	Program Year Participation Rate	Column -5- divided by Column -1-	
	-7-	50% of Summer 2005	Column -2- * .50	Summer numbers must be allocated based on the fiscal year they are budgeted for. Approximately 50% of VPK hours occur in May through June and the other 50% occur in July through August.
	-8-	50% of Summer 2006	Column -4- * .50	
	-9-	Total Fiscal Year Enrollment	Sum of Columns -3-, -7-, and -8-	

AGENCY FOR WORKFORCE INNOVATION/OFFICE OF EARLY LEARNING
VPK ESTIMATING CONFERENCE
March 7, 2008

2006-2007 VPK Enrollment and Participation Rates

County	October 2006	06-07 Program	County Factor	06-07 Fiscal	06-07 Estimated
	Estimated Number of 4-Year Olds (as of August 2007)	Year Enrollment (as of 3/03/08)		Year Participation Rate	Fiscal Year Enrollment
	-1-	-2-	-3-	-4-	-5-
State Total	225,958	124,293	1.000	55.5%	125,294
Alachua	2,619	1,504	0.012	57.9%	1,516
Baker	356	205	0.002	58.1%	207
Bay	2,105	1,142	0.009	54.7%	1,151
Bradford	311	254	0.002	82.3%	256
Brevard	5,522	3,662	0.029	66.8%	3,691
Broward	22,832	12,277	0.099	54.2%	12,376
Calhoun	145	58	0.000	40.0%	58
Charlotte	1,140	685	0.006	60.6%	691
Citrus	1,092	700	0.006	64.7%	706
Clay	2,247	1,436	0.012	64.4%	1,448
Collier	3,799	1,947	0.016	51.7%	1,963
Columbia	832	537	0.004	65.0%	541
Miami-Dade	34,195	17,804	0.143	52.5%	17,947
DeSoto	419	223	0.002	53.7%	225
Dixie	170	126	0.001	74.7%	127
Duval	12,778	7,922	0.064	62.5%	7,986
Escambia	3,987	2,121	0.017	53.6%	2,138
Flagler	797	529	0.004	66.9%	533
Franklin	118	76	0.001	65.3%	77
Gadsden	678	496	0.004	73.7%	500
Gilchrist	197	149	0.001	76.1%	150
Glades	93	65	0.001	71.0%	66
Gulf	124	92	0.001	75.0%	93
Hamilton	169	94	0.001	56.2%	95
Hardee	414	201	0.002	49.0%	203
Hendry	665	303	0.002	45.9%	305
Hernando	1,450	1,131	0.009	78.6%	1,140
Highlands	1,007	722	0.006	72.3%	728
Hillsborough	16,263	8,117	0.065	50.3%	8,182
Holmes	233	159	0.001	68.7%	160
Indian River	1,301	884	0.007	68.5%	891
Jackson	541	211	0.002	39.4%	213
Jefferson	154	68	0.001	44.8%	69
Lafayette	82	90	0.001	111.0%	91
Lake	2,917	1,909	0.015	66.0%	1,924
Lee	6,912	3,736	0.030	54.5%	3,766
Leon	3,053	1,961	0.016	64.8%	1,977
Levy	495	284	0.002	57.8%	286
Liberty	76	116	0.001	153.9%	117
Madison	220	119	0.001	54.5%	120
Manatee	3,572	1,967	0.016	55.5%	1,983
Marion	3,464	2,131	0.017	62.0%	2,148
Martin	1,287	833	0.007	65.3%	840
Monroe	787	385	0.003	49.3%	388
Nassau	851	356	0.003	42.2%	359
Ocala	2,538	1,459	0.012	58.0%	1,471
Okeechobee	508	292	0.002	57.9%	294
Orange	16,314	8,418	0.068	52.0%	8,486
Osceola	3,590	2,371	0.019	66.6%	2,390
Palm Beach	14,836	7,051	0.057	47.9%	7,108
Pasco	4,601	2,942	0.024	64.5%	2,966
Pinellas	9,790	5,685	0.046	58.5%	5,731
Polk	7,666	2,869	0.023	37.7%	2,892
Putnam	967	613	0.005	63.9%	618
St. Johns	1,744	890	0.007	51.4%	897
St. Lucie	3,046	1,793	0.014	59.3%	1,807
Santa Rosa	1,739	621	0.005	36.0%	626
Sarasota	3,060	1,756	0.014	57.8%	1,770
Seminole	5,296	3,380	0.027	64.3%	3,407
Sumter	712	430	0.003	60.8%	433
Suwannee	439	296	0.002	67.9%	298
Taylor	236	134	0.001	57.2%	135
Union	141	114	0.001	81.6%	115
Volusia	5,102	2,909	0.023	57.5%	2,932
Wakulla	335	174	0.001	52.2%	175
Walton	575	205	0.002	36.0%	207
Washington	254	104	0.001	41.3%	105
Total	225,958	124,293	1.000	55.5%	125,294

	Program Year		Conversion	2006-2007 Fiscal Year
2005-2006	School Year Enrollment	93,574		
	Summer Enrollment	12,322	x.5	6,161
	Total Program Year Enrollment	105,896		
2006-2007	School Year Enrollment	113,973		113,973
	Summer Enrollment	10,320	x.5	5,160
	Total Enrollment	124,293		125,294

AGENCY FOR WORKFORCE INNOVATION/OFFICE OF EARLY LEARNING
 VPK ESTIMATING CONFERENCE
 March 7, 2008

Methodology 06-07

Table Name	Column	Column Title	Explanation	Additional Assumptions
2006-2007 Estimated VPK Enrollment	-1-	October 2006 Estimated Number of 4-Year Olds (as of August 2007)	Received from EDR	Population estimates based on the August 2007 Florida Demographic Estimating Conference Database.
	-2-	06-07 Program Year Enrollment (as of 3/03/08)	Reported in VPK Statistics Report as of December 5, 2007	
	-3-	County Factor	Column -2- divided by the sum of column -2-	
	-4-	06-07 Fiscal Year Participation Rate	Column -5- divided by Column -1-	
	-5-	06-07 Estimated Fiscal Year Enrollment	The sum of column -5- multiplied by column -3-	

AGENCY FOR WORKFORCE INNOVATION/OFFICE OF EARLY LEARNING
VPK ESTIMATING CONFERENCE
March 7, 2008

2007-2008 VPK Estimated Enrollment

County	October 2007	2007 Summer	07-08 Program	County Factor	Estimated	07-08 Estimated	07-08 Estimated
	Estimated Number of 4-Year Olds (as of August 2007)	Allocated to 07-08 Fiscal Year	Year Enrollment (as of 02/20/08)		Growth in Remainder of Fiscal Year	Fiscal Year Participation Rate	
	-1-	-2-	-3-	-4-	-5-	-6-	-7-
State Total	229,476	5,160	123,857	1.000	7,675	59.6%	136,692
Alachua	2,671	64	1,526	0.012	95	63.1%	1,685
Baker	359	8	190	0.002	12	58.5%	210
Bay	2,114	46	1,101	0.009	68	57.5%	1,215
Bradford	316	10	239	0.002	15	83.5%	264
Brevard	5,633	157	3,765	0.030	233	73.8%	4,155
Broward	23,008	504	12,094	0.098	749	58.0%	13,347
Calhoun	149	3	66	0.001	4	49.0%	73
Charlotte	1,174	32	764	0.006	47	71.8%	843
Citrus	1,126	29	687	0.006	43	67.4%	759
Clay	2,336	68	1,643	0.013	102	77.6%	1,813
Collier	3,912	68	1,638	0.013	102	46.2%	1,808
Columbia	845	21	506	0.004	31	66.0%	558
Miami-Dade	34,216	748	17,936	0.145	1,112	57.9%	19,796
DeSoto	428	11	256	0.002	16	66.1%	283
Dixie	173	5	114	0.001	7	72.8%	126
Duval	12,956	335	8,043	0.065	498	68.5%	8,876
Escambia	4,040	92	2,202	0.018	136	60.1%	2,430
Flagler	848	22	533	0.004	33	69.3%	588
Franklin	117	2	59	0.000	4	55.6%	65
Gadsden	680	20	491	0.004	30	79.6%	541
Gilchrist	202	6	149	0.001	9	81.2%	164
Glades	96	3	77	0.001	5	88.5%	85
Gulf	127	3	70	0.001	4	60.6%	77
Hamilton	169	4	108	0.001	7	70.4%	119
Hardee	427	7	167	0.001	10	43.1%	184
Hendry	692	9	223	0.002	14	35.5%	246
Hernando	1,496	46	1,106	0.009	69	81.6%	1,221
Highlands	1,029	29	689	0.006	43	74.0%	761
Hillsborough	16,588	328	7,862	0.063	487	52.3%	8,677
Holmes	235	6	144	0.001	9	67.7%	159
Indian River	1,339	36	858	0.007	53	70.7%	947
Jackson	540	8	201	0.002	12	40.9%	221
Jefferson	154	1	36	0.000	2	25.3%	39
Lafayette	84	3	65	0.001	4	85.7%	72
Lake	3,015	88	2,112	0.017	131	77.3%	2,331
Lee	7,235	156	3,750	0.030	232	57.2%	4,138
Leon	3,094	82	1,973	0.016	122	70.4%	2,177
Levy	506	11	261	0.002	16	56.9%	288
Liberty	75	4	93	0.001	6	137.3%	103
Madison	224	3	74	0.001	5	36.6%	82
Manatee	3,678	84	2,022	0.016	125	60.7%	2,231
Marion	3,559	71	1,696	0.014	105	52.6%	1,872
Martin	1,305	33	799	0.006	50	67.6%	882
Monroe	770	15	360	0.003	22	51.6%	397
Nassau	860	17	409	0.003	25	52.4%	451
Okaloosa	2,585	61	1,465	0.012	91	62.6%	1,617
Okeechobee	512	10	236	0.002	15	51.0%	261
Orange	16,680	347	8,334	0.067	516	55.1%	9,197
Osceola	3,730	94	2,261	0.018	140	66.9%	2,495
Palm Beach	14,951	317	7,599	0.061	471	56.1%	8,387
Pasco	4,716	134	3,223	0.026	200	75.4%	3,557
Pinellas	9,759	219	5,251	0.042	325	59.4%	5,795
Polk	7,826	112	2,679	0.022	166	37.8%	2,957
Putnam	974	26	630	0.005	39	71.4%	695
St. Johns	1,825	43	1,041	0.008	65	63.0%	1,149
St. Lucie	3,174	82	1,974	0.016	122	68.6%	2,178
Santa Rosa	1,745	30	710	0.006	44	44.9%	784
Sarasota	3,105	72	1,739	0.014	108	61.8%	1,919
Seminole	5,360	143	3,422	0.028	212	70.5%	3,777
Sumter	752	17	406	0.003	25	59.6%	448
Suwannee	446	12	299	0.002	19	74.0%	330
Taylor	240	4	107	0.001	7	49.2%	118
Union	145	5	112	0.001	7	85.5%	124
Volusia	5,167	122	2,920	0.024	181	62.4%	3,223
Wakulla	335	5	111	0.001	7	36.7%	123
Walton	590	2	60	0.000	4	11.2%	66
Washington	259	5	121	0.001	7	51.4%	133
Total	229,476	5,160	123,857	1.000	7,675	59.6%	136,692
						Estimated Annual Growth Rate	9.1%

AGENCY FOR WORKFORCE INNOVATION/OFFICE OF EARLY LEARNING
 VPK ESTIMATING CONFERENCE
 March 7, 2008

Methodology 07-08

Table Name	Column	Column Title	Explanation	Additional Assumptions
2007-2008 VPK Estimated Enrollment	-1-	October 2007 Estimated Number of 4-Year Olds (as of August 2007)	Received from EDR	Population estimates based on the August 2007 Florida Demographic Estimating Conference Database.
	-2-	2007 Summer Allocated to 07-08 Fiscal Year	Sum of column -2- multiplied by the county factor in column -4-. The sum of column -2- comes from the 06-07 fiscal year conversion of children carried over from the 2007 summer program into the 07-08 fiscal year.	
	-3-	07-08 Program Year Enrollment (as of 02/20/08)	From VPK Statistical Report run on 2/20/08.	
	-4-	County Factor	Column -3- divided by the sum of column -3-.	
	-5-	Estimated Growth in Remainder of Fiscal Year	Sum of estimated growth for the remainder of the school year plus 50% of the estimated summer enrollment of 10,000 (2,675 + 5,000 = 7,675).	Estimated growth for remainder of school year based on the application of last year's growth rate of 2.16% (between March and May) to 07-08 program year enrollment. This equates to 2,675.
	-6-	07-08 Estimated Fiscal Year Participation Rate	Column -7- divided by Column -1-.	
	-7-	07-08 Estimated Fiscal Year Enrollment	Sum of columns -2-, -3-, and -5-.	

AGENCY FOR WORKFORCE INNOVATION/OFFICE OF EARLY LEARNING
 VPK ESTIMATING CONFERENCE
 March 7, 2008

2008-2009 VPK Projected Enrollment

County	October 2008 Estimated Number of 4-Year Olds (as of August 2007)	07-08 Estimated Fiscal Year Enrollment	Maximum Additional Enrollment in Fiscal Year 08-09	County Factor	Projected Increase in Enrollment	08-09 Projected Fiscal Year Enrollment
	-1-	-2-	-3-	-4-	-5-	-6-
State Total	234,186	136,692	97,494	1.000	9,022	145,714
Alachua	2,722	1,685	1,037	0.011	96	1,781
Baker	362	210	152	0.002	14	224
Bay	2,133	1,215	918	0.009	85	1,300
Bradford	319	264	55	0.001	5	269
Brevard	5,758	4,155	1,603	0.016	148	4,303
Broward	23,379	13,347	10,032	0.103	928	14,275
Calhoun	151	73	78	0.001	7	80
Charlotte	1,208	843	365	0.004	34	877
Citrus	1,159	759	400	0.004	37	796
Clay	2,410	1,813	597	0.006	55	1,868
Collier	4,075	1,808	2,267	0.023	210	2,018
Columbia	855	558	297	0.003	27	585
Miami-Dade	34,356	19,796	14,535	0.149	1,342	21,138
DeSoto	440	283	157	0.002	15	298
Dixie	176	126	50	0.001	5	131
Duval	13,113	8,876	4,237	0.043	392	9,268
Escambia	4,115	2,430	1,685	0.017	156	2,586
Flagler	913	588	325	0.003	30	618
Franklin	115	65	50	0.001	5	70
Gadsden	679	541	138	0.001	13	554
Gilchrist	207	164	43	0.000	4	168
Glades	97	85	12	0.000	1	86
Gulf	129	77	52	0.001	5	82
Hamilton	168	119	49	0.001	5	124
Hardee	438	184	254	0.003	24	208
Hendry	717	246	471	0.005	44	290
Hernando	1,540	1,221	319	0.003	30	1,251
Highlands	1,050	761	289	0.003	27	788
Hillsborough	16,959	8,677	8,282	0.085	766	9,443
Holmes	240	159	81	0.001	7	166
Indian River	1,374	947	427	0.004	40	987
Jackson	542	221	321	0.003	30	251
Jefferson	154	39	115	0.001	11	50
Lafayette	85	72	13	0.000	1	73
Lake	3,131	2,331	800	0.008	74	2,405
Lee	7,499	4,138	3,361	0.034	311	4,449
Leon	3,181	2,177	1,004	0.010	93	2,270
Levy	515	288	227	0.002	21	309
Liberty	78	103	0	0.000	0	103
Madison	228	82	146	0.001	14	96
Manatee	3,777	2,231	1,546	0.016	143	2,374
Marion	3,668	1,872	1,796	0.018	166	2,038
Martin	1,334	882	452	0.005	42	924
Monroe	760	397	363	0.004	34	431
Nassau	877	451	426	0.004	39	490
Okaloosa	2,632	1,617	1,015	0.010	94	1,711
Okeechobee	518	261	257	0.003	24	285
Orange	17,157	9,197	7,960	0.082	737	9,934
Osceola	3,935	2,495	1,440	0.015	133	2,628
Palm Beach	15,331	8,387	6,944	0.071	643	9,030
Pasco	4,879	3,557	1,322	0.014	122	3,679
Pinellas	9,787	5,795	3,992	0.041	369	6,164
Polk	7,979	2,957	5,022	0.052	465	3,422
Putnam	986	695	291	0.003	27	722
St. Johns	1,900	1,149	751	0.008	69	1,218
St. Lucie	3,295	2,178	1,117	0.011	103	2,281
Santa Rosa	1,808	784	1,024	0.011	95	879
Sarasota	3,162	1,919	1,243	0.013	115	2,034
Seminole	5,487	3,777	1,710	0.018	158	3,935
Sumter	779	448	331	0.003	31	479
Suwannee	460	330	130	0.001	12	342
Taylor	237	118	119	0.001	11	129
Union	146	124	22	0.000	2	126
Volusia	5,294	3,223	2,071	0.021	192	3,415
Wakulla	345	123	222	0.002	21	144
Walton	618	66	552	0.006	51	117
Washington	265	133	132	0.001	12	145
Total	234,186	136,692	97,494	1.000	9,022	145,714

AGENCY FOR WORKFORCE INNOVATION/OFFICE OF EARLY LEARNING
 VPK ESTIMATING CONFERENCE
 March 7, 2008

Methodology 08-09

Table Name	Column	Column Title	Explanation	Additional Assumptions
2008-2009 VPK Projected Enrollment	-1-	October 2008 Estimated Number of 4-Year Olds (as of August 2007)	Received from EDR	Population estimates based on the August 2007 Florida Demographic Estimating Conference Database.
	-2-	07-08 Estimated Fiscal Year Enrollment	Copied from Column -7- of '2007-2008 VPK Estimated Enrollment'	
	-3-	Maximum Additional Enrollment in Fiscal Year 08-09	Column -1- minus Column -2-	In counties that are serving more children in VPK than their population estimate, a value of zero is placed in this column rather than a negative number of children not served.
	-4-	County Factor	Column -3- divided by the sum of Column -3-	
	-5-	07-08 Estimated Fiscal Year Participation Rate	Column -4- multiplied by the change in expected enrollments of the 07-08 and 08-09 program years	Multiplying the growth rate calculated by EDR (Reference Growth Rate Methodology page for more details) by the 07-08 expected enrollments, we come up with the change in expected enrollments.
	-6-	08-09 Projected Fiscal Year Enrollment	The sum of Columns -2- and -5-	

AGENCY FOR WORKFORCE INNOVATION/OFFICE OF EARLY LEARNING
VPK ESTIMATING CONFERENCE
March 7, 2008

2009-2010 VPK Projected Enrollment

County	October 2009 Estimated Number of 4- Year Olds (as of August 2007)	08-09 Projected Fiscal Year Enrollment	Maximum Additional Enrollment in Fiscal Year 09-10	County Factor	Projected Increase in Enrollment	09-10 Projected Fiscal Year Enrollment
	-1-	-2-	-3-	-4-	-5-	-6-
State Total	239,525	145,714	93,811	1.000	7,431	153,145
Alachua	2,773	1,781	992	0.011	79	1,860
Baker	363	224	139	0.001	11	235
Bay	2,151	1,300	851	0.009	67	1,367
Bradford	321	269	52	0.001	4	273
Brevard	5,879	4,303	1,576	0.017	125	4,428
Broward	23,781	14,275	9,506	0.101	753	15,028
Calhoun	153	80	73	0.001	6	86
Charlotte	1,239	877	362	0.004	29	906
Citrus	1,193	796	397	0.004	31	827
Clay	2,486	1,868	618	0.007	49	1,917
Collier	4,277	2,018	2,259	0.024	179	2,197
Columbia	861	585	276	0.003	22	607
Miami-Dade	34,548	21,138	13,386	0.143	1,058	22,196
DeSoto	455	298	157	0.002	12	310
Dixie	180	131	49	0.001	4	135
Duval	13,244	9,268	3,976	0.042	315	9,583
Escambia	4,184	2,586	1,598	0.017	127	2,713
Flagler	984	618	366	0.004	29	647
Franklin	113	70	43	0.000	3	73
Gadsden	675	554	121	0.001	10	564
Gilchrist	211	168	43	0.000	3	171
Glades	99	86	13	0.000	1	87
Gulf	130	82	48	0.001	4	86
Hamilton	167	124	43	0.000	3	127
Hardee	447	208	239	0.003	19	227
Hendry	736	290	446	0.005	35	325
Hernando	1,575	1,251	324	0.003	26	1,277
Highlands	1,071	788	283	0.003	22	810
Hillsborough	17,293	9,443	7,850	0.084	622	10,065
Holmes	247	166	81	0.001	6	172
Indian River	1,411	987	424	0.005	34	1,021
Jackson	548	251	297	0.003	24	275
Jefferson	154	50	104	0.001	8	58
Lafayette	87	73	14	0.000	1	74
Lake	3,252	2,405	847	0.009	67	2,472
Lee	7,785	4,449	3,336	0.036	264	4,713
Leon	3,297	2,270	1,027	0.011	81	2,351
Levy	528	309	219	0.002	17	326
Liberty	79	103	0	0.000	0	103
Madison	231	96	135	0.001	11	107
Manatee	3,896	2,374	1,522	0.016	121	2,495
Marion	3,796	2,038	1,758	0.019	139	2,177
Martin	1,367	924	443	0.005	35	959
Monroe	756	431	325	0.003	26	457
Nassau	901	490	411	0.004	33	523
Okaloosa	2,679	1,711	968	0.010	77	1,788
Okeechobee	523	285	238	0.003	19	304
Orange	17,714	9,934	7,780	0.083	616	10,550
Osceola	4,175	2,628	1,547	0.016	123	2,751
Palm Beach	15,807	9,030	6,777	0.072	537	9,567
Pasco	5,069	3,679	1,390	0.015	110	3,789
Pinellas	9,837	6,164	3,673	0.039	291	6,455
Polk	8,151	3,422	4,729	0.050	375	3,797
Putnam	1,000	722	278	0.003	22	744
St. Johns	1,989	1,218	771	0.008	61	1,279
St. Lucie	3,428	2,281	1,147	0.012	91	2,372
Santa Rosa	1,903	879	1,024	0.011	81	960
Sarasota	3,227	2,034	1,193	0.013	95	2,129
Seminole	5,657	3,935	1,722	0.018	136	4,071
Sumter	817	479	338	0.004	27	506
Suwannee	479	342	137	0.001	11	353
Taylor	235	129	106	0.001	8	137
Union	148	126	22	0.000	2	128
Volusia	5,467	3,415	2,052	0.022	163	3,578
Wakulla	365	144	221	0.002	18	160
Walton	658	117	541	0.006	43	160
Washington	273	145	128	0.001	10	155
Total	239,525	145,714	93,811	1.000	7,431	153,145

AGENCY FOR WORKFORCE INNOVATION/OFFICE OF EARLY LEARNING
 VPK ESTIMATING CONFERENCE
 March 7, 2008

Methodology 09-10

Table Name	Column	Column Title	Explanation	Additional Assumptions
2009-2010 VPK Projected Enrollment	-1-	October 2009 Estimated Number of 4-Year Olds (as of August 2007)	Received from EDR	Population estimates based on the August 2007 Florida Demographic Estimating Conference Database.
	-2-	08-09 Projected Fiscal Year Enrollment	Copied from Column 6- of '2008-2009 VPK Projected Enrollment'	
	-3-	Maximum Additional Enrollment in Fiscal Year 09-10	Column -1- minus Column -2-	In counties that are serving more children in VPK than their population estimate, a value of zero is placed in this column rather than a negative number of children not served.
	-4-	County Factor	Column -3- divided by the sum of Column -3-	
	-5-	07-08 Estimated Fiscal Year Participation Rate	Column -4- multiplied by the change in expected enrollments of the 08-09 and 09-10 program years	Multiplying the growth rate calculated by EDR (Reference Growth Rate Methodology page for more details) by the 08-09 expected enrollments, we come up with the change in expected enrollments.
	-6-	09-10 Projected Fiscal Year Enrollment	The sum of Columns -2- and -5-	

AGENCY FOR WORKFORCE INNOVATION/OFFICE OF EARLY LEARNING
 VPK ESTIMATING CONFERENCE
 March 7, 2008

2010-2011 VPK Projected Enrollment

County	October 2010 Estimated Number of 4-Year Olds (as of August 2007)	09-10 Projected Fiscal Year Enrollment	Maximum Additional Enrollment in Fiscal Year 10-11	County Factor	Projected Increase in Enrollment	10-11 Projected Fiscal Year Enrollment	
	-1-	-2-	-3-	-4-	-5-	-6-	
State Total	244,047	153,145	90,902	1.000	5,513	158,658	
Alachua	2,816	1,860	956	0.011	58	1,918	
Baker	362	235	127	0.001	8	243	
Bay	2,165	1,367	798	0.009	48	1,415	
Bradford	323	273	50	0.001	3	276	
Brevard	5,992	4,428	1,564	0.017	95	4,523	
Broward	24,148	15,028	9,120	0.100	553	15,581	
Calhoun	154	86	68	0.001	4	90	
Charlotte	1,269	906	363	0.004	22	928	
Citrus	1,223	827	396	0.004	24	851	
Clay	2,554	1,917	637	0.007	39	1,956	
Collier	4,494	2,197	2,297	0.025	139	2,336	
Columbia	864	607	257	0.003	16	623	
Miami-Dade	34,629	22,196	12,410	0.137	749	22,945	
DeSoto	467	310	157	0.002	10	320	
Dixie	184	135	49	0.001	3	138	
Duval	13,349	9,583	3,766	0.041	228	9,811	
Escambia	4,248	2,713	1,535	0.017	93	2,806	
Flagler	1,057	647	410	0.005	25	672	
Franklin	112	73	39	0.000	2	75	
Gadsden	669	564	105	0.001	6	570	
Gilchrist	215	171	44	0.000	3	174	
Glades	100	87	13	0.000	1	88	
Gulf	131	86	45	0.000	3	89	
Hamilton	166	127	39	0.000	2	129	
Hardee	453	227	226	0.002	14	241	
Hendry	746	325	421	0.005	26	351	
Hernando	1,603	1,277	326	0.004	20	1,297	
Highlands	1,090	810	280	0.003	17	827	
Hillsborough	17,578	10,065	7,513	0.083	456	10,521	
Holmes	252	172	80	0.001	5	177	
Indian River	1,443	1,021	422	0.005	26	1,047	
Jackson	555	275	280	0.003	17	292	
Jefferson	154	58	96	0.001	6	64	
Lafayette	88	74	14	0.000	1	75	
Lake	3,357	2,472	885	0.010	54	2,526	
Lee	8,025	4,713	3,312	0.036	201	4,914	
Leon	3,395	2,351	1,044	0.011	63	2,414	
Levy	538	326	212	0.002	13	339	
Liberty	80	103	0	0.000	0	103	
Madison	234	107	127	0.001	8	115	
Manatee	3,997	2,495	1,502	0.017	91	2,586	
Marion	3,886	2,177	1,709	0.019	104	2,281	
Martin	1,403	959	444	0.005	27	986	
Monroe	752	457	295	0.003	18	475	
Nassau	919	523	396	0.004	24	547	
Okaloosa	2,720	1,788	932	0.010	57	1,845	
Okeechobee	528	304	224	0.002	14	318	
Orange	18,190	10,550	7,640	0.084	463	11,013	
Osceola	4,391	2,751	1,640	0.018	99	2,850	
Palm Beach	16,208	9,567	6,641	0.073	403	9,970	
Pasco	5,226	3,789	1,437	0.016	87	3,876	
Pinellas	9,904	6,455	3,449	0.038	209	6,664	
Polk	8,284	3,797	4,487	0.049	272	4,069	
Putnam	1,008	744	264	0.003	16	760	
St. Johns	2,067	1,279	788	0.009	48	1,327	
St. Lucie	3,541	2,372	1,169	0.013	71	2,443	
Santa Rosa	1,977	960	1,017	0.011	62	1,022	
Sarasota	3,281	2,129	1,152	0.013	70	2,199	
Seminole	5,796	4,071	1,725	0.019	105	4,176	
Sumter	852	506	346	0.004	21	527	
Suwannee	491	353	138	0.002	8	361	
Taylor	234	137	97	0.001	6	143	
Union	149	128	21	0.000	1	129	
Volusia	5,613	3,578	2,035	0.022	123	3,701	
Wakulla	377	162	215	0.002	13	175	
Walton	691	160	531	0.006	32	192	
Washington	280	155	125	0.001	8	163	
Total	244,047	153,145	90,902	1.000	5,513	158,658	Projected Annual Growth Rate 3.6%

AGENCY FOR WORKFORCE INNOVATION/OFFICE OF EARLY LEARNING
 VPK ESTIMATING CONFERENCE
 March 7, 2008

Methodology 10-11

Table Name	Column	Column Title	Explanation	Additional Assumptions
2010-2011 VPK Projected Enrollment	-1-	October 2010 Estimated Number of 4-Year Olds (as of August 2007)	Received from EDR	Population estimates based on the August 2007 Florida Demographic Estimating Conference Database.
	-2-	09-10 Projected Fiscal Year Enrollment	Copied from Column -6- of '2009-2010 VPK Projected Enrollment'	
	-3-	Maximum Additional Enrollment in Fiscal Year 10-11	Column -1- minus Column -2-	In counties that are serving more children in VPK than their population estimate, a value of zero is placed in this column rather than a negative number of children not served.
	-4-	County Factor	Column -3- divided by the sum of Column -3-	
	-5-	07-08 Estimated Fiscal Year Participation Rate	Column -4- multiplied by the change in expected enrollments of the 09-10 and 10-11 program years	Multiplying the growth rate calculated by EDR (Reference Growth Rate Methodology page for more details) by the 09-10 expected enrollments, we come up with the change in expected enrollments.
	-6-	10-11 Projected Fiscal Year Enrollment	The sum of Columns -2- and -5-	

AGENCY FOR WORKFORCE INNOVATION/OFFICE OF EARLY LEARNING
 VPK ESTIMATING CONFERENCE
 March 7, 2008

2011-2012 VPK Projected Enrollment

County	October 2011 Estimated Number of 4-Year Olds (as of August 2007)	10-11 Projected Fiscal Year Enrollment	Maximum Additional Enrollment in Fiscal Year 11-12	County Factor	Projected Increase in Enrollment	11-12 Projected Fiscal Year Enrollment
	-1-	-2-	-3-	-4-	-5-	-6-
State Total	248,004	158,658	89,346	1.000	3,649	162,307
Alachua	2,847	1,918	929	0.010	38	1,956
Baker	361	243	118	0.001	5	248
Bay	2,174	1,415	759	0.008	31	1,446
Bradford	323	276	47	0.001	2	278
Brevard	6,100	4,523	1,577	0.018	64	4,587
Broward	24,457	15,581	8,876	0.099	363	15,944
Calhoun	155	90	65	0.001	3	93
Charlotte	1,298	928	370	0.004	15	943
Citrus	1,251	851	400	0.004	16	867
Clay	2,626	1,956	670	0.007	27	1,983
Collier	4,641	2,336	2,305	0.026	94	2,430
Columbia	869	623	246	0.003	10	633
Miami-Dade	34,720	22,945	11,753	0.132	481	23,426
DeSoto	474	320	154	0.002	6	326
Dixie	187	138	49	0.001	2	140
Duval	13,461	9,811	3,650	0.041	149	9,960
Escambia	4,304	2,806	1,498	0.017	61	2,867
Flagler	1,122	672	450	0.005	18	690
Franklin	111	75	36	0.000	1	76
Gadsden	664	570	94	0.001	4	574
Gilchrist	219	174	45	0.001	2	176
Glades	101	88	13	0.000	1	89
Gulf	132	89	43	0.000	2	91
Hamilton	165	129	36	0.000	1	130
Hardee	459	241	218	0.002	9	250
Hendry	758	351	407	0.005	17	368
Hernando	1,634	1,297	337	0.004	14	1,311
Highlands	1,103	827	276	0.003	11	838
Hillsborough	17,869	10,521	7,348	0.082	300	10,821
Holmes	257	177	80	0.001	3	180
Indian River	1,473	1,047	426	0.005	17	1,064
Jackson	557	292	265	0.003	11	303
Jefferson	154	64	90	0.001	4	68
Lafayette	89	75	14	0.000	1	76
Lake	3,446	2,526	920	0.010	38	2,564
Lee	8,234	4,914	3,320	0.037	136	5,050
Leon	3,467	2,414	1,053	0.012	43	2,457
Levy	546	339	207	0.002	8	347
Liberty	81	103	0	0.000	0	103
Madison	236	115	121	0.001	5	120
Manatee	4,078	2,586	1,492	0.017	61	2,647
Marion	3,971	2,281	1,690	0.019	69	2,350
Martin	1,432	986	446	0.005	18	1,004
Monroe	746	475	271	0.003	11	486
Nassau	935	547	388	0.004	16	563
Okaloosa	2,752	1,845	907	0.010	37	1,882
Okeechobee	534	318	216	0.002	9	327
Orange	18,614	11,013	7,601	0.085	310	11,323
Osceola	4,581	2,850	1,731	0.019	71	2,921
Palm Beach	16,542	9,970	6,572	0.074	268	10,238
Pasco	5,377	3,876	1,501	0.017	61	3,937
Pinellas	9,940	6,664	3,276	0.037	134	6,798
Polk	8,402	4,069	4,333	0.048	177	4,246
Putnam	1,013	760	253	0.003	10	770
St. Johns	2,146	1,327	819	0.009	33	1,360
St. Lucie	3,652	2,443	1,209	0.014	49	2,492
Santa Rosa	2,036	1,022	1,014	0.011	41	1,063
Sarasota	3,333	2,199	1,134	0.013	46	2,245
Seminole	5,911	4,176	1,735	0.019	71	4,247
Sumter	886	527	359	0.004	15	542
Suwannee	498	361	137	0.002	6	367
Taylor	233	143	90	0.001	4	147
Union	151	129	22	0.000	1	130
Volusia	5,728	3,701	2,027	0.023	83	3,784
Wakulla	387	175	212	0.002	9	184
Walton	716	192	524	0.006	21	213
Washington	285	163	122	0.001	5	168
Total	248,004	158,658	89,346	1.000	3,649	162,307
					Projected Annual Growth Rate	2.3%

AGENCY FOR WORKFORCE INNOVATION/OFFICE OF EARLY LEARNING
 VPK ESTIMATING CONFERENCE
 March 7, 2008

Methodology 11-12

Table Name	Column	Column Title	Explanation	Additional Assumptions
2011-2012 VPK Projected Enrollment	-1-	October 2011 Estimated Number of 4-Year Olds (as of August 2007)	Received from EDR	Population estimates based on the August 2007 Florida Demographic Estimating Conference Database.
	-2-	10-11 Projected Fiscal Year Enrollment	Copied from Column -6- of '2010-2011 VPK Projected Enrollment'	
	-3-	Maximum Additional Enrollment in Fiscal Year 11-12	Column -1- minus Column -2-	In counties that are serving more children in VPK than their population estimate, a value of zero is placed in this column rather than a negative number of children not served.
	-4-	County Factor	Column -3- divided by the sum of Column -3-	
	-5-	07-08 Estimated Fiscal Year Participation Rate	Column -4- multiplied by the change in expected enrollments of the 10-11 and 11-12 program years	Multiplying the growth rate calculated by EDR (Reference Growth Rate Methodology page for more details) by the 10-11 expected enrollments, we come up with the change in expected enrollments.
	-6-	11-12 Projected Fiscal Year Enrollment	The sum of Columns -2- and -5-	