

Voluntary Prekindergarten Estimating Conference
April 7, 2008
2 pm
Executive Summary

Principals

Office	Representative
Office of Economic & Demographic Research (Chair)	Amy Baker
Executive Office of the Governor	Kristin Pingree
House	Mark Eggers
Senate	Kurt Hamon

The Voluntary Prekindergarten Estimating Conference met on Monday, April 7, 2008 and adopted forecasted fiscal year enrollments for the Voluntary Prekindergarten Program (VPK) for 2008-09, 2009-10, 2010-11, and 2011-12.

The historical enrollments for 2005-06 and 2006-07 were revised to be unduplicated¹ counts and to refine the breakout of the summer program between fiscal years. The estimated enrollment for 2007-08 was revised to be an unduplicated count, to refine the breakout of the summer program, and to include one additional month of actual service. The revised enrollments are as follows:

VPK Fiscal Year Enrollment	April 7, 2008 Conference	March 7, 2008 Conference	Difference between April 7, 2007 and March 7, 2008 Conferences
Actual 2005-06 (Not a full fiscal year)	101,180	99,735	1,445
Actual 2006-07	123,590	125,294	-1,777
Estimated 2007-08	135,750	136,692	-942
Projected 2008-09	145,796	145,714	82
Projected 2009-10	153,018	Not Adopted	NA
Projected 2010-11	155,907	Not Adopted	NA
Projected 2011-12	158,435	Not Adopted	NA

¹ Unduplicated counts include each child only once. Duplicated counts include each child in each county served. The unduplicated count for VPK includes the child in the county in which the most service was received (dollars spent).

**VPK Estimating
Conference
Report
April 7, 2008**

Table of Contents

Title	Page
Terminology	1
Statewide Summary	2
Statewide Fiscal Year Enrollment Summary	3
County - Level Summary	4
Growth Rate Methodology	5
Projected Growth Rates for VPK Fiscal Year Enrollments	6
2005-2006 VPK Enrollment and Participation Rates	7
Methodology 05-06	8
2006-2007 VPK Enrollment and Participation Rates	9
Methodology 06-07	10
2007-2008 VPK Estimated Enrollment	11
Methodology 07-08	12
2008-2009 VPK Projected Enrollment	13
Methodology 08-09	14
2009-2010 VPK Projected Enrollment	15
Methodology 09-10	16
2010-2011 VPK Projected Enrollment	17
Methodology 10-11	18
2011-2012 VPK Projected Enrollment	19
Methodology 11-12	20

Terminology

Terminology	
School Year	540 hour VPK Program that runs from July/August (varies by county) until May/June
Summer	300 hour VPK Program that runs from June to August
Program Year	Includes the VPK School Year and Summer Programs based on eligibility as determined by date of birth
Fiscal Year	July 1 - June 30 (Includes part of summer enrollment from two program years)

Statewide Summary						
	Difference between March 7, 2008 and April 7, 2008 Conferences	April 7, 2008 Conference Unduplicated Counts	March 7, 2008 Conference	November 15, 2007 Conference	July 25, 2007 Conference	March 2, 2007 Conference
2005-06 Enrollment						
School Year	462	94,036	93,574	93,574	93,574	93,574
Summer	146	12,468	12,322	12,322	12,322	12,322
Program Year	608	106,504	105,896	105,896	105,896	105,896
Fiscal Year (Not a Full Fiscal Year)	1,445	101,180	99,735	99,735	99,735	99,735
2006-07 Enrollment						
School Year	-720	113,253	113,973	114,052	114,172	113,021
Summer	-6	10,314	10,320	10,291	11,000	13,517
Program Year	-726	123,567	124,293	124,343	125,172	126,538
Fiscal Year	-1,777	123,590	125,367	123,815	124,183	123,913
2007-08 Enrollment						
School Year	-943	125,589	126,532			
Summer		10,000	10,000			
Program Year	-943	135,589	136,532			
Fiscal Year	-942	135,750	136,692	138,913	140,302	139,997
Fiscal Year Enrollment						
2007-08	-942	135,750	136,692	138,913	140,302	139,997
2008-09	82	145,796	145,714	151,172	153,119	152,786
2009-10	-127	153,018	153,145	161,355	163,379	163,024
2010-11	-2,751	155,907	158,658	169,205	171,978	
2011-12	-3,872	158,435	162,307			
Fiscal Year Enrollment Growth Rate						
2007-08	0.7%	9.8%	9.1%	12.2%	13.0%	13.0%
2008-09	0.8%	7.4%	6.6%	8.8%	9.1%	9.1%
2009-10	-0.1%	5.0%	5.1%	6.7%	6.7%	6.7%
2010-11	-1.7%	1.9%	3.6%	4.9%	5.3%	
2011-12	-0.7%	1.6%	2.3%			
October 1 Population 4-Year Olds						
2005		221,924	221,924	221,924	222,001	222,001
2006		225,958	225,958	225,958	226,832	226,832
2007		229,476	229,476	229,476	231,062	231,062
2008		234,186	234,186	234,186	234,842	234,842
2009		239,525	239,525	239,525	238,297	238,297
2010		244,047	244,047	244,047	241,945	
2011		248,004	248,004			
Fiscal Year Pseudo Participation Rate						
2006-07	-0.8%	54.7%	55.5%	54.8%	54.7%	54.6%
2007-08	-0.4%	59.2%	59.6%	60.5%	60.7%	60.6%
2008-09	0.1%	62.3%	62.2%	64.6%	65.2%	65.1%
2009-10	0.0%	63.9%	63.9%	67.4%	68.6%	68.4%
2010-11	-1.1%	63.9%	65.0%	69.3%	71.1%	
2011-12	-1.5%	63.9%	65.4%			
Pay-out Rate - Program Year						
2006-07	0.4%	87.7%	87.3%	87.3%	87.5%	
2007-08	-1.0%	88.0%	89.0%			
Pay-out Rate - Fiscal Year						
2006-07		87.5%				
2007-08		88.0%				

Key	
Data	Example
Actual	999,999
Estimated (based on actual data)	999,999
Projected (based on estimated data)	999,999
Projected Population used for Appropriation	999,999

**Statewide Fiscal Year Enrollment Summary
2005-06, 2006-07, 2007-08**

	Unduplicated Count	Percentage of Service	Total Count
2005-2006			
Summer 2005	0		0
School Year	94,036		94,036
Summer 2006	12,468	57.3%	7,144
Total			101,180
2006-2007			
Summer 2006	12,468	42.7%	5,324
School Year	113,253		113,253
Summer 2007	10,314	48.6%	5,013
Total			123,590
2007-2008			
Summer 2007	10,314	51.4%	5,301
School Year to date	123,676		123,676
Unpaid	908		908
Expected Growth for Remainder of the School Year	1,005		1,005
Summer 2008	10,000	48.6%	4,860
Total			135,750

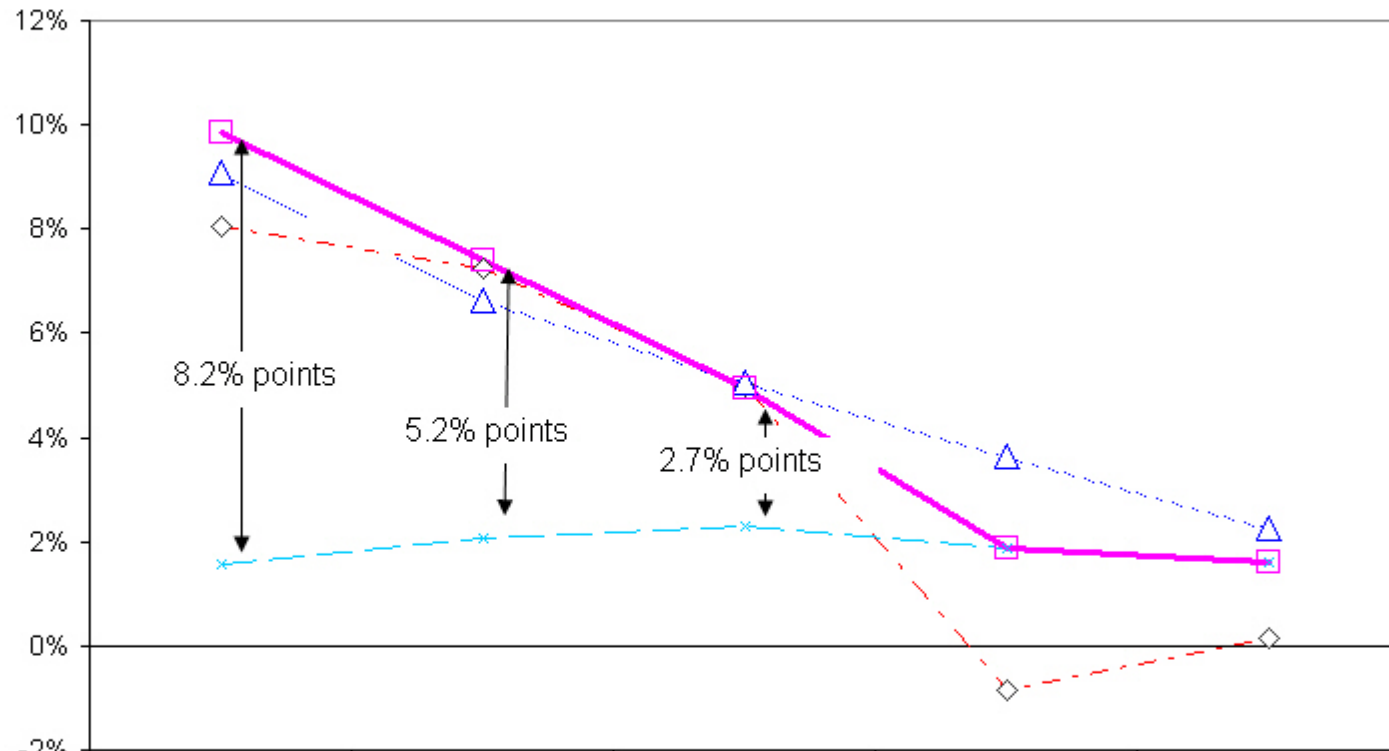
County - Level Summary

County	05-06			06-07			07-08 Estimated		
	Enrollment	05-06	Percent of 05-06	Enrollment	06-07	Percent of 06-07	Enrollment	07-08	Percent of 07-08
	Fiscal Year	Appropriation	Appropriation	Fiscal Year	Appropriation	Appropriation	Fiscal Year	Appropriation	Appropriation
	-1-	-2-	-3-	-4-	-5-	-6-	-7-	-8-	-9-
State Total	101,180	147,235	68.7%	123,590	144,228	85.7%	135,750	139,997	97.0%
Alachua	1,043	1,608	64.9%	1,556	1,901	81.9%	1,560	1,763	88.5%
Baker	175	222	78.8%	188	202	93.1%	240	201	119.5%
Bay	1,082	1,324	81.7%	1,124	1,186	94.8%	1,224	1,276	95.9%
Bradford	256	191	134.0%	252	294	85.7%	240	282	85.0%
Brevard	3,133	3,720	84.2%	3,634	3,816	95.2%	4,013	4,032	99.5%
Broward	10,196	15,972	63.8%	12,098	15,321	79.0%	13,580	13,703	99.1%
Calhoun	65	101	64.4%	57	83	69.1%	72	70	102.3%
Charlotte	442	790	55.9%	701	1,002	70.0%	806	774	104.1%
Citrus	658	751	87.6%	687	926	74.2%	713	788	90.5%
Clay	936	1,537	60.9%	1,442	1,148	125.6%	1,716	1,616	106.2%
Collier	1,584	2,314	68.5%	1,939	2,222	87.3%	1,940	2,162	89.7%
Columbia	430	541	79.5%	524	560	93.6%	521	613	85.0%
Miami-Dade	16,945	22,904	74.0%	17,841	18,465	96.6%	18,782	21,167	88.7%
DeSoto	227	255	89.0%	222	438	50.7%	268	268	100.1%
Dixie	138	112	123.2%	125	156	80.1%	113	141	80.0%
Duval	6,264	8,231	76.1%	7,939	9,544	83.2%	8,531	9,008	94.7%
Escambia	1,819	2,513	72.4%	2,136	2,463	86.7%	2,329	2,512	92.7%
Flagler	296	432	68.5%	519	564	92.0%	695	453	153.5%
Franklin	61	73	83.6%	79	65	121.5%	74	82	89.9%
Gadsden	265	414	64.0%	547	591	92.6%	495	566	87.5%
Gilchrist	148	144	102.8%	147	171	86.0%	157	162	96.9%
Glades	52	80	65.0%	64	82	78.0%	85	65	131.4%
Gulf	90	88	102.3%	87	101	86.1%	76	99	76.4%
Hamilton	83	117	70.9%	92	109	84.4%	106	112	94.7%
Hardee	212	274	77.4%	192	272	70.6%	218	204	107.1%
Hendry	229	449	51.0%	289	384	75.3%	322	296	108.7%
Hernando	1,067	966	110.5%	1,085	1,355	80.1%	1,224	1,160	105.5%
Highlands	651	643	101.2%	723	936	77.2%	732	793	92.3%
Hillsborough	5,970	10,637	56.1%	7,911	11,645	67.9%	9,393	8,648	108.6%
Holmes	141	153	92.2%	156	157	99.4%	154	177	87.0%
Indian River	806	790	102.0%	858	994	86.3%	934	973	96.0%
Jackson	207	343	60.3%	207	314	65.9%	228	251	90.8%
Jefferson	66	97	68.0%	69	87	79.3%	42	76	55.4%
Lafayette	102	54	188.9%	88	114	77.2%	65	99	65.5%
Lake	1,486	1,862	79.8%	1,917	2,180	87.9%	2,316	2,055	112.7%
Lee	2,528	3,737	67.6%	3,753	4,880	76.9%	4,210	4,128	102.0%
Leon	1,790	2,033	88.0%	1,956	2,040	95.9%	2,115	2,241	94.4%
Levy	231	324	71.3%	285	277	102.9%	272	336	80.9%
Liberty	85	47	180.9%	114	96	118.8%	93	120	77.2%
Madison	76	140	54.3%	127	145	87.6%	86	136	63.2%
Manatee	1,404	2,324	60.4%	1,971	2,557	77.1%	2,276	2,176	104.6%
Marion	1,349	2,151	62.7%	2,050	1,840	111.4%	2,273	1,986	114.4%
Martin	837	876	95.5%	833	1,036	80.4%	831	953	87.2%
Monroe	309	459	67.3%	379	455	83.3%	385	463	83.2%
Nassau	233	587	39.7%	352	310	113.5%	428	436	98.2%
Okaloosa	1,090	1,595	68.3%	1,459	1,720	84.8%	1,573	1,669	94.3%
Okeechobee	226	324	69.8%	292	292	100.0%	261	328	79.6%
Orange	7,312	9,846	74.3%	8,270	9,438	87.6%	9,011	9,750	92.4%
Osceola	1,813	2,286	79.3%	2,364	2,116	111.7%	2,406	2,605	92.4%
Palm Beach	6,140	10,134	60.6%	7,035	9,336	75.4%	8,388	8,120	103.3%
Pasco	1,606	3,066	52.4%	2,960	2,717	108.9%	3,345	3,250	102.9%
Pinellas	4,574	6,451	70.9%	5,775	6,375	90.6%	5,832	6,324	92.2%
Polk	2,068	4,723	43.8%	2,802	3,434	81.6%	3,152	3,320	94.9%
Putnam	409	648	63.1%	615	484	127.1%	631	715	88.2%
St. Johns	605	1,166	51.9%	874	820	106.6%	1,095	1,031	106.2%
St. Lucie	1,257	1,721	73.0%	1,795	1,528	117.5%	2,170	1,972	110.0%
Santa Rosa	482	1,228	39.3%	622	633	98.3%	772	786	98.2%
Sarasota	1,252	1,952	64.1%	1,751	2,014	86.9%	1,889	1,974	95.7%
Seminole	2,818	3,750	75.1%	3,326	4,268	77.9%	3,509	3,819	91.9%
Sumter	391	353	110.8%	429	463	92.7%	417	506	82.4%
Suwannee	253	298	84.9%	294	378	77.8%	313	322	97.2%
Taylor	95	145	65.5%	129	167	77.2%	139	130	106.8%
Union	66	104	63.5%	113	85	132.9%	123	110	111.4%
Volusia	2,183	3,289	66.4%	2,911	3,861	75.4%	3,364	3,135	107.3%
Wakulla	122	223	54.7%	167	189	88.6%	137	190	72.0%
Walton	136	355	38.3%	189	292	64.7%	161	186	86.4%
Washington	115	198	58.1%	103	135	76.3%	129	130	99.2%
Total	101,180	147,235	68.7%	123,590	144,228	85.7%	135,750	139,997	97.0%

Growth Rate Methodology (from EDR)

	Population	Enrollment		Participation Rates		Growth Rate (rate for 2005-06 is program year since the fiscal year was not a full-year)	
Year	October 1 Estimate (as of August 2007)	Program Year	Fiscal Year	Program Year	Fiscal Year	Rate	Type: Program Year or Fiscal Year
-1-	-2-	-3-	-4-	-5-	-6-	-8-	-9-
2005-06	221,924	106,504	101,180	48.0%	45.6%		
2006-07	225,958	123,567	123,590	54.7%	54.7%	16.0%	Program
2007-08	229,476		135,750		59.2%	9.8%	Fiscal
2008-09	234,186		145,796		62.3%	7.4%	Fiscal
2009-10	239,525		153,018		63.9%	5.0%	Fiscal
2010-11	244,047		155,907		63.9%	1.9%	Fiscal
2011-12	248,004		158,435		63.9%	1.6%	Fiscal

Projected Growth Rates for Fiscal Year VPK Enrollment Based on Actual Growth Rates for FEFP PK beginning in 1995-96



	2007-2008	2008-2009	2009-2010	2010-2011	2011-2012
-◇- FEFP PK (1996-97+)	8.1%	7.2%	5.0%	-0.9%	0.1%
-x- Pop Age 4 As of Oct. 1	1.6%	2.1%	2.3%	1.9%	1.6%
-△- VPK Forecast 3/2008	9.1%	6.6%	5.1%	3.6%	2.3%
-□- VPK Forecast 4/2008	9.8%	7.4%	5.0%	1.9%	1.6%

2005-2006 VPK Enrollment and Participation Rates

County	2004-05 Program Year		2005-06 Program Year				2005-06 Fiscal Year			
	October 2005 Estimated Number of 4-Year Olds (as of August 2007)	Summer 2005 Enrollment	School Year 2005-06 Enrollment	Summer 2006	Total Program Year Enrollment	Program Year Participation Rate	Summer 2005	School Year 2005-06 Enrollment	57.3% of Summer 2006	Total Fiscal Year Enrollment
	-1-	-2-	-3-	-4-	-5-	-6-	-7-	-8-	-9-	-10-
State Total	221,924	0	94,036	12,468	106,504	48.0%	0	94,036	7,144	101,180
Alachua	2,586	0	943	174	1,117	43.2%	0	943	100	1,043
Baker	349	0	162	23	185	53.0%	0	162	13	175
Bay	2,095	0	1,022	104	1,126	53.7%	0	1,022	60	1,082
Bradford	306	0	256	0	256	83.7%	0	256	0	256
Brevard	5,400	0	3,006	222	3,228	59.8%	0	3,006	127	3,133
Broward	22,828	0	9,514	1,190	10,704	46.9%	0	9,514	682	10,196
Calhoun	142	0	60	8	68	48.0%	0	60	5	65
Charlotte	1,085	0	386	98	484	44.6%	0	386	56	442
Citrus	1,048	0	644	25	669	63.8%	0	644	14	658
Clay	2,140	0	870	115	985	46.0%	0	870	66	936
Collier	3,728	0	1,381	355	1,736	46.6%	0	1,381	203	1,584
Columbia	813	0	416	24	440	54.1%	0	416	14	430
Miami-Dade	34,406	0	16,350	1,037	17,387	50.5%	0	16,350	595	16,945
DeSoto	412	0	219	14	233	56.5%	0	219	8	227
Dixie	168	0	138	0	138	82.3%	0	138	0	138
Duval	12,614	0	5,970	513	6,483	51.4%	0	5,970	294	6,264
Escambia	3,903	0	1,732	151	1,883	48.2%	0	1,732	87	1,819
Flagler	718	0	195	177	372	51.8%	0	195	101	296
Franklin	113	0	52	16	68	60.1%	0	52	9	61
Gadsden	681	0	186	138	324	47.5%	0	186	79	265
Gilchrist	192	0	143	9	152	79.0%	0	143	5	148
Glades	91	0	46	11	57	62.7%	0	46	6	52
Gulf	123	0	89	2	91	74.2%	0	89	1	90
Hamilton	169	0	83	0	83	49.3%	0	83	0	83
Hardee	406	0	191	36	227	55.9%	0	191	21	212
Hendry	644	0	166	110	276	42.8%	0	166	63	229
Hernando	1,391	0	1,038	50	1,088	78.2%	0	1,038	29	1,067
Highlands	974	0	617	60	677	69.5%	0	617	34	651
Hillsborough	15,875	0	5,264	1,232	6,496	40.9%	0	5,264	706	5,970
Holmes	228	0	136	8	144	63.1%	0	136	5	141
Indian River	1,247	0	789	29	818	65.6%	0	789	17	806
Jackson	548	0	189	32	221	40.3%	0	189	18	207
Jefferson	155	0	59	12	71	45.9%	0	59	7	66
Lafayette	80	0	102	0	102	127.8%	0	102	0	102
Lake	2,789	0	1,352	233	1,585	56.8%	0	1,352	134	1,486
Lee	6,464	0	2,204	566	2,770	42.8%	0	2,204	324	2,528
Leon	3,033	0	1,717	128	1,845	60.8%	0	1,717	73	1,790
Levy	481	0	222	16	238	49.5%	0	222	9	231
Liberty	74	0	85	0	85	114.3%	0	85	0	85
Madison	217	0	58	31	89	41.1%	0	58	18	76
Manatee	3,486	0	1,249	271	1,520	43.6%	0	1,249	155	1,404
Marion	3,347	0	1,061	503	1,564	46.7%	0	1,061	288	1,349
Martin	1,279	0	811	45	856	66.9%	0	811	26	837
Monroe	823	0	292	30	322	39.1%	0	292	17	309
Nassau	832	0	223	17	240	28.8%	0	223	10	233
Okaloosa	2,491	0	1,025	113	1,138	45.7%	0	1,025	65	1,090
Okeechobee	497	0	208	32	240	48.2%	0	208	18	226
Orange	15,832	0	7,034	486	7,520	47.5%	0	7,034	278	7,312
Osceola	3,334	0	1,694	207	1,901	57.0%	0	1,694	119	1,813
Palm Beach	14,707	0	5,642	869	6,511	44.3%	0	5,642	498	6,140
Pasco	4,416	0	1,487	208	1,695	38.4%	0	1,487	119	1,606
Pinellas	9,879	0	4,043	927	4,970	50.3%	0	4,043	531	4,574
Polk	7,387	0	1,837	404	2,241	30.3%	0	1,837	231	2,068
Putnam	955	0	406	6	412	43.1%	0	406	3	409
St. Johns	1,640	0	590	27	617	37.6%	0	590	15	605
St. Lucie	2,826	0	1,122	236	1,358	48.1%	0	1,122	135	1,257
Santa Rosa	1,699	0	434	83	517	30.4%	0	434	48	482
Sarasota	2,985	0	1,159	162	1,321	44.2%	0	1,159	93	1,252
Seminole	5,197	0	2,703	201	2,904	55.9%	0	2,703	115	2,818
Sumter	645	0	391	0	391	60.6%	0	391	0	391
Suwannee	431	0	239	24	263	61.0%	0	239	14	253
Taylor	230	0	81	25	106	46.1%	0	81	14	95
Union	137	0	59	12	71	51.7%	0	59	7	66
Volusia	5,014	0	1,896	500	2,396	47.8%	0	1,896	287	2,183
Wakulla	327	0	108	25	133	40.6%	0	108	14	122
Walton	554	0	83	92	175	31.6%	0	83	53	136
Washington	255	0	107	14	121	47.5%	0	107	8	115
Total	221,924	0	94,036	12,468	106,504	48.0%	0	94,036	7,144	101,180

Methodology 2005-06

Table Name	Column	Column Title	Explanation	Additional Assumptions
2005-2006 VPK Enrollment and Participation Rates	-1-	October 2005 Estimated Number of 4-Year Olds (as of August 2007)	Received from EDR	Population estimates based on the August 2007 Florida Demographic Estimating Conference Database.
	-2-	Summer 2005 Enrollment	VPK Summer was not yet implemented so enrollment numbers do not exist	
	-3-	School Year 2005-06 Enrollment	Pulled from Enhanced Field System (EFS) as of March 20, 2008.	Cut-off date for data is January 2007.
	-4-	Summer 2006	Pulled from Enhanced Field System (EFS) as of March 20, 2008.	Cut-off date for data is January 2007.
	-5-	Total Program Year Enrollment	The sum of Columns -3-, and -4-.	
	-6-	Program Year Participation Rate	Column -5- divided by Column -1-	
	-7-	Summer 2005	VPK Summer was not yet implemented so enrollment numbers do not exist	Summer numbers must be allocated based on the fiscal year they are budgeted for. For Summer 2005, no VPK hours occurred in July and August 2005.
	-8-	School Year 2005-06 Enrollment	Pulled from Enhanced Field System (EFS) as of March 20, 2008.	Cut-off date for data is January 2007.
	-9-	57.3% of Summer 2006	Column -4- * .573	Summer numbers must be allocated based on the fiscal year they are budgeted for. For Summer 2006, 57.3% of the calendar hours were in May and June 2006.
	-10-	Total Fiscal Year Enrollment	Sum of Columns -7-, -8-, and -9-	

2006-2007 VPK Enrollment and Participation Rates

County	2005-06 Program Year	2006-07 Program Year					2006-07 Fiscal Year			
	October 2006 Estimated Number of 4-Year Olds (as of August 2007)	Summer 2006 Enrollment	School Year 2006-07 Enrollment	Summer 2007	Total Program Year Enrollment	Program Year Participation Rate	42.7% of Summer 2006	School Year 2006-07 Enrollment	48.6% of Summer 2007	Total Fiscal Year Enrollment
	-1-	-2-	-3-	-4-	-5-	-6-	-7-	-8-	-9-	-10-
State Total	225,958	12,468	113,253	10,314	123,567	54.7%	5,324	113,253	5,013	123,590
Alachua	2,619	174	1,470	25	1,495	57.1%	74	1,470	12	1,556
Baker	356	23	155	48	203	57.0%	10	155	23	188
Bay	2,105	104	1,026	111	1,137	54.0%	44	1,026	54	1,124
Bradford	311	0	252	0	252	81.0%	0	252	0	252
Brevard	5,522	222	3,436	211	3,647	66.0%	95	3,436	103	3,634
Broward	22,832	1,190	10,979	1,257	12,236	53.6%	508	10,979	611	12,098
Calhoun	145	8	51	7	58	40.0%	3	51	3	57
Charlotte	1,140	98	642	36	678	59.5%	42	642	17	701
Citrus	1,092	25	664	24	688	63.0%	11	664	12	687
Clay	2,247	115	1,362	64	1,426	63.5%	49	1,362	31	1,442
Collier	3,799	355	1,648	286	1,934	50.9%	152	1,648	139	1,939
Columbia	832	24	506	17	523	62.9%	10	506	8	524
Miami-Dade	34,195	1,037	17,077	658	17,735	51.9%	441	17,077	323	17,841
DeSoto	419	14	212	9	221	52.7%	6	212	4	222
Dixie	170	0	125	0	125	73.5%	0	125	0	125
Duval	12,778	513	7,551	347	7,898	61.8%	219	7,551	169	7,939
Escambia	3,987	151	2,034	78	2,112	53.0%	64	2,034	38	2,136
Flagler	797	177	365	160	525	65.9%	76	365	78	519
Franklin	118	16	69	7	76	64.4%	7	69	3	79
Gadsden	678	138	486	4	490	72.3%	59	486	2	547
Gilchrist	197	9	138	11	149	75.6%	4	138	5	147
Glades	93	11	54	11	65	69.9%	5	54	5	64
Gulf	124	2	83	6	89	71.8%	1	83	3	87
Hamilton	169	0	92	0	92	54.4%	0	92	0	92
Hardee	414	36	155	46	201	48.6%	15	155	22	192
Hendry	665	110	194	99	293	44.1%	47	194	48	289
Hernando	1,450	50	1,011	110	1,121	77.3%	21	1,011	53	1,085
Highlands	1,007	60	678	40	718	71.3%	26	678	19	723
Hillsborough	16,263	1,232	6,732	1,343	8,075	49.7%	526	6,732	653	7,911
Holmes	233	8	149	9	158	67.8%	3	149	4	156
Indian River	1,301	29	815	64	879	67.6%	12	815	31	858
Jackson	541	32	179	29	208	38.4%	14	179	14	207
Jefferson	154	12	61	7	68	44.2%	5	61	3	69
Lafayette	82	0	88	0	88	107.3%	0	88	0	88
Lake	2,917	233	1,734	173	1,907	65.4%	99	1,734	84	1,917
Lee	6,912	566	3,320	394	3,714	53.7%	242	3,320	191	3,753
Leon	3,053	128	1,855	94	1,949	63.8%	55	1,855	46	1,956
Levy	495	16	275	6	281	56.8%	7	275	3	285
Liberty	76	0	114	0	114	150.0%	0	114	0	114
Madison	220	31	109	10	119	54.1%	13	109	5	127
Manatee	3,572	271	1,753	210	1,963	55.0%	116	1,753	102	1,971
Marion	3,464	503	1,571	544	2,115	61.1%	215	1,571	264	2,050
Martin	1,287	45	799	30	829	64.4%	19	799	15	833
Monroe	787	30	356	21	377	47.9%	13	356	10	379
Nassau	851	17	336	19	355	41.7%	7	336	9	352
Okaloosa	2,538	113	1,372	80	1,452	57.2%	48	1,372	39	1,459
Okeechobee	508	32	267	22	289	56.9%	14	267	11	292
Orange	16,314	486	7,802	536	8,338	51.1%	208	7,802	260	8,270
Osceola	3,590	207	2,213	130	2,343	65.3%	88	2,213	63	2,364
Palm Beach	14,836	869	6,322	703	7,025	47.4%	371	6,322	342	7,035
Pasco	4,601	208	2,820	104	2,924	63.6%	89	2,820	51	2,960
Pinellas	9,790	927	5,118	537	5,655	57.8%	396	5,118	261	5,775
Polk	7,666	404	2,415	440	2,855	37.2%	173	2,415	214	2,802
Putnam	967	6	612	0	612	63.3%	3	612	0	615
St. Johns	1,744	27	838	49	887	50.9%	12	838	24	874
St. Lucie	3,046	236	1,614	164	1,778	58.4%	101	1,614	80	1,795
Santa Rosa	1,739	83	557	61	618	35.5%	35	557	30	622
Sarasota	3,060	162	1,618	131	1,749	57.2%	69	1,618	64	1,751
Seminole	5,296	201	3,160	165	3,325	62.8%	86	3,160	80	3,326
Sumter	712	0	429	0	429	60.3%	0	429	0	429
Suwannee	439	24	275	18	293	66.7%	10	275	9	294
Taylor	236	25	103	31	134	56.8%	11	103	15	129
Union	141	12	103	11	114	80.9%	5	103	5	113
Volusia	5,102	500	2,519	367	2,886	56.6%	214	2,519	178	2,911
Wakulla	335	25	143	27	170	50.7%	11	143	13	167
Walton	575	92	99	105	204	35.5%	39	99	51	189
Washington	254	14	93	8	101	39.8%	6	93	4	103
Total	225,958	12,468	113,253	10,314	123,567	54.7%	5,324	113,253	5,013	123,590

Methodology 2006-07

Table Name	Column	Column Title	Explanation	Additional Assumptions
2006-2007 VPK Enrollment and Participation Rates	-1-	October 2006 Estimated Number of 4-Year Olds (as of August 2007)	Received from EDR	Population estimates based on the August 2007 Florida Demographic Estimating Conference Database.
	-2-	Summer 2006 Enrollment	Pulled from Enhanced Field System (EFS) as of March 20, 2008	Cut-off date for data is January 2007.
	-3-	School Year 2006-07 Enrollment	Pulled from Enhanced Field System (EFS) as of March 20, 2008	Cut-off date for data is January 2008.
	-4-	Summer 2007	Pulled from Enhanced Field System (EFS) as of March 20, 2008	Cut-off date for data is January 2008.
	-5-	Total Program Year Enrollment	The sum of Columns -3-, and -4-.	
	-6-	Program Year Participation Rate	Column -5- divided by Column -1-	
	-7-	42.7% of Summer 2006	Column -4- * .427	Summer numbers must be allocated based on the fiscal year they are budgeted for. For Summer 2006, 42.7% of the calendar hours were in July and August 2006.
	-8-	School Year 2006-07 Enrollment	Pulled from Enhanced Field System (EFS) as of March 20, 2008	Cut-off date for data is January 2008.
	-9-	48.6% of Summer 2007	Column -4- * .486	Summer numbers must be allocated based on the fiscal year they are budgeted for. For Summer 2007, 48.6% of the calendar hours were in May and June 2007.
		Total Fiscal Year Enrollment	Sum of Columns -7-, -8-, and -9-	

2007-2008 VPK Estimated Enrollment

County	October 2007 Estimated Number of 4-Year Olds (as of August 2007)	51.4% of 2007 Summer Allocated to 2007-08 Fiscal Year		Recent Unpaid			School Year County Factor	Estimated Growth in Remainder of School Year	2008 Summer Allocated to 2007-08 Fiscal Year	2007-08 Estimated Fiscal Year Participation Rate	2007-08 Estimated Fiscal Year Enrollment
		2007 Summer	2007 Summer	Paid 2007-08 Program School Year Enrollment (as of 03/20/08)	2007-08 Program School Year Enrollment (as of 03/20/08)	2007-08 Program School Year Enrollment (as of 03/20/08)					
	-1-	-2-	-3-	-4-	-5-	-6-	-7-	-8-	-9-	-10-	-11-
State Total	229,476	10,314	5,301	123,676	908	124,584	1,000	1,005	4,860	59.2%	135,750
Alachua	2,671	25	13	1,513	10	1,523	0.012	12	12	58.4%	1,560
Baker	359	48	25	188	2	190	0.002	2	23	66.9%	240
Bay	2,114	111	57	1,104	2	1,106	0.009	9	52	57.9%	1,224
Bradford	316	0	0	238	0	238	0.002	2	0	75.9%	240
Brevard	5,633	211	108	3,769	7	3,776	0.030	30	99	71.2%	4,013
Broward	23,008	1,257	646	12,136	107	12,243	0.098	99	592	59.0%	13,580
Calhoun	149	7	4	64	0	64	0.001	1	3	48.3%	72
Charlotte	1,174	36	19	764	0	764	0.006	6	17	68.7%	806
Citrus	1,126	24	12	681	3	684	0.005	6	11	63.3%	713
Clay	2,336	64	33	1,636	4	1,640	0.013	13	30	73.5%	1,716
Collier	3,912	286	147	1,633	12	1,645	0.013	13	135	49.6%	1,940
Columbia	845	17	9	498	2	500	0.004	4	8	61.7%	521
Miami-Dade	34,216	658	335	17,953	41	17,994	0.144	143	310	54.9%	18,782
DeSoto	428	9	5	255	2	257	0.002	2	4	62.6%	268
Dixie	173	0	0	111	1	112	0.001	1	0	65.3%	113
Duval	12,956	347	178	8,059	64	8,123	0.065	66	164	65.8%	8,531
Escambia	4,040	78	40	2,219	15	2,234	0.018	18	37	57.6%	2,329
Flagler	848	160	82	529	5	534	0.004	4	75	82.0%	695
Franklin	117	7	4	66	0	66	0.001	1	3	63.2%	74
Gadsden	680	4	2	487	0	487	0.004	4	2	72.8%	495
Gilchrist	202	11	6	145	0	145	0.001	1	5	77.7%	157
Glades	96	11	6	73	0	73	0.001	1	5	88.5%	85
Gulf	127	6	3	69	0	69	0.001	1	3	59.8%	76
Hamilton	169	0	0	105	0	105	0.001	1	0	62.7%	106
Hardee	427	46	24	169	2	171	0.001	1	22	51.1%	218
Hendry	692	99	51	221	1	222	0.002	2	47	46.5%	322
Hernando	1,496	110	57	1,091	15	1,106	0.009	9	52	81.8%	1,224
Highlands	1,029	40	21	683	3	686	0.006	6	19	71.1%	732
Hillsborough	16,588	1,343	690	7,882	123	8,005	0.064	65	633	56.6%	9,393
Holmes	235	9	5	142	2	144	0.001	1	4	65.5%	154
Indian River	1,339	64	33	856	8	864	0.007	7	30	69.8%	934
Jackson	540	29	15	195	2	197	0.002	2	14	42.2%	228
Jefferson	154	7	4	35	0	35	0.000	0	3	27.3%	42
Lafayette	84	0	0	64	0	64	0.001	1	0	77.4%	65
Lake	3,015	173	89	2,113	15	2,128	0.017	17	82	76.8%	2,316
Lee	7,235	394	203	3,764	26	3,790	0.030	31	186	58.2%	4,210
Leon	3,094	94	48	1,981	26	2,007	0.016	16	44	68.4%	2,115
Levy	506	6	3	261	3	264	0.002	2	3	53.8%	272
Liberty	75	0	0	92	1	93	0.001	0	0	124.0%	93
Madison	224	10	5	75	0	75	0.001	1	5	38.4%	86
Manatee	3,678	210	108	2,018	34	2,052	0.016	17	99	61.9%	2,276
Marion	3,559	544	280	1,682	41	1,723	0.014	14	256	63.9%	2,273
Martin	1,305	30	15	790	6	796	0.006	6	14	63.7%	831
Monroe	770	21	11	356	5	361	0.003	3	10	50.0%	385
Nassau	860	19	10	406	0	406	0.003	3	9	49.8%	428
Okaloosa	2,585	80	41	1,466	16	1,482	0.012	12	38	60.9%	1,573
Okeechobee	512	22	11	236	2	238	0.002	2	10	51.0%	261
Orange	16,680	536	276	8,307	107	8,414	0.068	68	253	54.0%	9,011
Osceola	3,730	130	67	2,253	7	2,260	0.018	18	61	64.5%	2,406
Palm Beach	14,951	703	361	7,620	14	7,634	0.061	62	331	56.1%	8,388
Pasco	4,716	104	53	3,200	17	3,217	0.026	26	49	70.9%	3,345
Pinellas	9,759	537	276	5,235	26	5,261	0.042	42	253	59.8%	5,832
Polk	7,826	440	226	2,689	8	2,697	0.022	22	207	40.3%	3,152
Putnam	974	0	0	626	0	626	0.005	5	0	64.8%	631
St. Johns	1,825	49	25	1,035	4	1,039	0.008	8	23	60.0%	1,095
St. Lucie	3,174	164	84	1,966	27	1,993	0.016	16	77	68.4%	2,170
Santa Rosa	1,745	61	31	703	3	706	0.006	6	29	44.2%	772
Sarasota	3,105	131	67	1,744	2	1,746	0.014	14	62	60.8%	1,889
Seminole	5,360	165	85	3,297	22	3,319	0.027	27	78	65.5%	3,509
Sumter	752	0	0	411	3	414	0.003	3	0	55.5%	417
Suwannee	446	18	9	293	1	294	0.002	2	8	70.2%	313
Taylor	240	31	16	107	0	107	0.001	1	15	57.9%	139
Union	145	11	6	111	0	111	0.001	1	5	84.8%	123
Volusia	5,167	367	189	2,920	58	2,978	0.024	24	173	65.1%	3,364
Wakulla	335	27	14	108	1	109	0.001	1	13	40.9%	137
Walton	590	105	54	58	0	58	0.000	0	49	27.3%	161
Washington	259	8	4	120	0	120	0.001	1	4	49.8%	129
Total	229,476	10,314	5,301	123,676	908	124,584	1,000	1,005	4,860	59.2%	135,750

Methodology 2007-08

Table Name	Column	Column Title	Explanation	Additional Assumptions
2007-2008 VPK Estimated Enrollment	-1-	October 2007 Estimated Number of 4-Year Olds (as of August 2007)	Received from EDR	Population estimates based on the August 2007 Florida Demographic Estimating Conference Database.
	-2-	2007 Summer	Pulled from Enhanced Field System (EFS) as of March 20, 2008	Cut-off date for data is January 2008.
	-3-	51.4% of 2007 Summer Allocated to 2007-08 Fiscal Year	Column -2- multiplied by .514	Summer numbers must be allocated based on the fiscal year they are budgeted for. For Summer 2007, 51.4% of the calendar hours were in July and August 2007.
	-4-	Paid 2007-08 Program School Year Enrollment (as of 03/20/08)	Pulled from Enhanced Field System (EFS) as of March 20, 2008	
	-5-	Recent Unpaid 2007-08 Program School Year Enrollment (as of 03/20/08)	Pulled from Enhanced Field System (EFS) as of March 20, 2008	Includes unpaids of most recent months (January - March).
	-6-	2007-08 Program School Year Enrollment (as of 03/20/08)	Column -4- plus Column -5-	
	-7-	School Year County Factor	Column -6- divided by the sum of Column -6-	
	-8-	Estimated Growth in Remainder of School Year	Estimated growth for remainder of school year based on the application of last year's growth rate of .813% (between March and May) to 07-08 program year enrollment. This equates to 1,005.	
	-9-	2008 Summer Allocated to 2007-08 Fiscal Year	48.6% of the estimated summer enrollment of 10,000	Percentage of service offered in May and June 2006 (48.6% - based on calendar hours reported in EFS) multiplied by the estimated summer enrollment of 10,000.
	-10-	2007-08 Estimated Fiscal Year Participation Rate	Column -11- divided by Column -1-	
	-11-	2007-08 Estimated Fiscal Year Enrollment	Sum of columns -3-, -6-, -8-, and -9-	

2008-2009 VPK Projected Enrollment

County	October 2008 Estimated Number of 4-Year Olds (as of August 2007)	Maximum Additional Enrollment in Fiscal			Projected Increase in Enrollment	2008-09 Projected Fiscal Year Enrollment	
		2007-08 Estimated Fiscal Year Enrollment	Year 2008-09	County Factor			
	-1-	-2-	-3-	-4-			-5-
State Total	234,186	135,750	98,436	1.000	10,046	145,796	
Alachua	2,722	1,560	1,162	0.012	119	1,679	
Baker	362	240	122	0.001	12	252	
Bay	2,133	1,224	909	0.009	93	1,317	
Bradford	319	240	79	0.001	8	248	
Brevard	5,758	4,013	1,745	0.018	178	4,191	
Broward	23,379	13,580	9,799	0.100	1,000	14,580	
Calhoun	151	72	79	0.001	8	80	
Charlotte	1,208	806	402	0.004	41	847	
Citrus	1,159	713	446	0.005	46	759	
Clay	2,410	1,716	694	0.007	71	1,787	
Collier	4,075	1,940	2,135	0.022	218	2,158	
Columbia	855	521	334	0.003	34	555	
Miami-Dade	34,356	18,782	15,559	0.158	1,590	20,372	
DeSoto	440	268	172	0.002	18	286	
Dixie	176	113	63	0.001	6	119	
Duval	13,113	8,531	4,582	0.047	468	8,999	
Escambia	4,115	2,329	1,786	0.018	182	2,511	
Flagler	913	695	218	0.002	22	717	
Franklin	115	74	41	0.000	4	78	
Gadsden	679	495	184	0.002	19	514	
Gilchrist	207	157	50	0.001	5	162	
Glades	97	85	12	0.000	1	86	
Gulf	129	76	53	0.001	5	81	
Hamilton	168	106	62	0.001	6	112	
Hardee	438	218	220	0.002	22	240	
Hendry	717	322	395	0.004	40	362	
Hernando	1,540	1,224	316	0.003	32	1,256	
Highlands	1,050	732	318	0.003	32	764	
Hillsborough	16,959	9,393	7,566	0.077	772	10,165	
Holmes	240	154	86	0.001	9	163	
Indian River	1,374	934	440	0.004	45	979	
Jackson	542	228	314	0.003	32	260	
Jefferson	154	42	112	0.001	11	53	
Lafayette	85	65	20	0.000	2	67	
Lake	3,131	2,316	815	0.008	83	2,399	
Lee	7,499	4,210	3,289	0.033	336	4,546	
Leon	3,181	2,115	1,066	0.011	109	2,224	
Levy	515	272	243	0.002	25	297	
Liberty	78	93	0	0.000	0	93	
Madison	228	86	142	0.001	14	100	
Manatee	3,777	2,276	1,501	0.015	153	2,429	
Marion	3,668	2,273	1,395	0.014	142	2,415	
Martin	1,334	831	503	0.005	51	882	
Monroe	760	385	375	0.004	38	423	
Nassau	877	428	449	0.005	46	474	
Okaloosa	2,632	1,573	1,059	0.011	108	1,681	
Okeechobee	518	261	257	0.003	26	287	
Orange	17,157	9,011	8,146	0.083	831	9,842	
Osceola	3,935	2,406	1,529	0.016	156	2,562	
Palm Beach	15,331	8,388	6,943	0.071	709	9,097	
Pasco	4,879	3,345	1,534	0.016	157	3,502	
Pinellas	9,787	5,832	3,955	0.040	404	6,236	
Polk	7,979	3,152	4,827	0.049	493	3,645	
Putnam	986	631	355	0.004	36	667	
St. Johns	1,900	1,095	805	0.008	82	1,177	
St. Lucie	3,295	2,170	1,125	0.011	115	2,285	
Santa Rosa	1,808	772	1,036	0.011	106	878	
Sarasota	3,162	1,889	1,273	0.013	130	2,019	
Seminole	5,487	3,509	1,978	0.020	202	3,711	
Sumter	779	417	362	0.004	37	454	
Suwannee	460	313	147	0.001	15	328	
Taylor	237	139	98	0.001	10	149	
Union	146	123	23	0.000	2	125	
Volusia	5,294	3,364	1,930	0.020	197	3,561	
Wakulla	345	137	208	0.002	21	158	
Walton	618	161	457	0.005	47	208	
Washington	265	129	136	0.001	14	143	
Total	234,186	135,750	98,436	1.000	10,046	145,796	Projected Annual Growth Rate 7.4%

Methodology 2008-09

Table Name	Column	Column Title	Explanation	Additional Assumptions
2008-2009 VPK Projected Enrollment	-1-	October 2008 Estimated Number of 4-Year Olds (as of August 2007)	Received from EDR	Population estimates based on the August 2007 Florida Demographic Estimating Conference Database.
	-2-	2007-08 Estimated Fiscal Year Enrollment	Copied from Column -11- of '2007-2008 VPK Estimated Enrollment'	
	-3-	Maximum Additional Enrollment in Fiscal Year 2008-09	Column -1- minus Column -2-	In counties that are serving more children in VPK than their population estimate, a value of zero is placed in this column rather than a negative number of children not served.
	-4-	County Factor	Column -3- divided by the sum of Column -3-	
	-5-	Projected Increase in Enrollment	Column -4- multiplied by the change in expected enrollments of the 07-08 and 08-09 program years	Multiplying the growth rate calculated by EDR (Reference Growth Rate Methodology page for more details) by the 07-08 expected enrollments, we come up with the change in expected enrollments.
	-6-	2008-09 Projected Fiscal Year Enrollment	The sum of Columns -2- and -5-	

Methodology 2009-10

Table Name	Column	Column Title	Explanation	Additional Assumptions
2009-2010 VPK Projected Enrollment	-1-	October 2009 Estimated Number of 4-Year Olds (as of August 2007)	Received from EDR	Population estimates based on the August 2007 Florida Demographic Estimating Conference Database.
	-2-	2008-09 Projected Fiscal Year Enrollment	Copied from Column -6- of '2008-2009 VPK Projected Enrollment'	
	-3-	Maximum Additional Enrollment in Fiscal Year 2009-10	Column -1- minus Column -2-	In counties that are serving more children in VPK than their population estimate, a value of zero is placed in this column rather than a negative number of children not served.
	-4-	County Factor	Column -3- divided by the sum of Column -3-	
	-5-	Projected Increase in Enrollment	Column -4- multiplied by the change in expected enrollments of the 08-09 and 09-10 program years	Multiplying the growth rate calculated by EDR (Reference Growth Rate Methodology page for more details) by the 08-09 expected enrollments, we come up with the change in expected enrollments.
	-6-	2009-10 Projected Fiscal Year Enrollment	The sum of Columns -2- and -5-	

2010-2011 VPK Projected Enrollment

County	October 2010 Estimated Number of 4-Year Olds (as of August 2007)	Maximum Additional Enrollment in Fiscal			Projected Increase in Enrollment	2010-11 Projected Fiscal Year Enrollment				
	-1-	2009-10 Projected Fiscal Year Enrollment	Year 2010-11	County Factor			-2-	-3-	-4-	-5-
State Total	244,047	153,018	91,029	1.000	2,889	155,907				
Alachua	2,816	1,763	1,053	0.012	33	1,796				
Baker	362	261	101	0.001	3	264				
Bay	2,165	1,381	784	0.009	25	1,406				
Bradford	323	254	69	0.001	2	256				
Brevard	5,992	4,321	1,671	0.018	53	4,374				
Broward	24,148	15,289	8,859	0.097	281	15,570				
Calhoun	154	86	68	0.001	2	88				
Charlotte	1,269	877	392	0.004	12	889				
Citrus	1,223	792	431	0.005	14	806				
Clay	2,554	1,841	713	0.008	23	1,864				
Collier	4,494	2,321	2,173	0.024	69	2,390				
Columbia	864	579	285	0.003	9	588				
Miami-Dade	34,629	21,459	13,157	0.145	419	21,878				
DeSoto	467	299	168	0.002	5	304				
Dixie	184	124	60	0.001	2	126				
Duval	13,349	9,326	4,023	0.044	128	9,454				
Escambia	4,248	2,640	1,608	0.018	51	2,691				
Flagler	1,057	738	319	0.004	10	748				
Franklin	112	81	31	0.000	1	82				
Gadsden	669	526	143	0.002	5	531				
Gilchrist	215	166	49	0.001	2	168				
Glades	100	87	13	0.000	0	87				
Gulf	131	85	46	0.001	1	86				
Hamilton	166	116	50	0.001	2	118				
Hardee	453	256	197	0.002	6	262				
Hendry	746	391	355	0.004	11	402				
Hernando	1,603	1,281	322	0.004	10	1,291				
Highlands	1,090	788	302	0.003	10	798				
Hillsborough	17,578	10,714	6,864	0.075	218	10,932				
Holmes	252	169	83	0.001	3	172				
Indian River	1,443	1,012	431	0.005	14	1,026				
Jackson	555	282	273	0.003	9	291				
Jefferson	154	61	93	0.001	3	64				
Lafayette	88	69	19	0.000	1	70				
Lake	3,357	2,465	892	0.010	28	2,493				
Lee	8,025	4,796	3,229	0.035	102	4,898				
Leon	3,395	2,307	1,088	0.012	35	2,342				
Levy	538	315	223	0.002	7	322				
Liberty	80	93	0	0.000	0	93				
Madison	234	110	124	0.001	4	114				
Manatee	3,997	2,542	1,455	0.016	46	2,588				
Marion	3,886	2,521	1,365	0.015	43	2,564				
Martin	1,403	919	484	0.005	15	934				
Monroe	752	449	303	0.003	10	459				
Nassau	919	507	412	0.005	13	520				
Okaloosa	2,720	1,758	962	0.011	31	1,789				
Okeechobee	528	305	223	0.002	7	312				
Orange	18,190	10,449	7,741	0.085	246	10,695				
Osceola	4,391	2,686	1,705	0.019	54	2,740				
Palm Beach	16,208	9,614	6,594	0.072	209	9,823				
Pasco	5,226	3,623	1,603	0.018	51	3,674				
Pinellas	9,904	6,513	3,391	0.037	108	6,621				
Polk	8,284	3,992	4,292	0.047	136	4,128				
Putnam	1,008	693	315	0.003	10	703				
St. Johns	2,067	1,240	827	0.009	26	1,266				
St. Lucie	3,541	2,373	1,168	0.013	37	2,410				
Santa Rosa	1,977	957	1,020	0.011	32	989				
Sarasota	3,281	2,112	1,169	0.013	37	2,149				
Seminole	5,796	3,861	1,935	0.021	61	3,922				
Sumter	852	482	370	0.004	12	494				
Suwannee	491	340	151	0.002	5	345				
Taylor	234	156	78	0.001	2	158				
Union	149	127	22	0.000	1	128				
Volusia	5,613	3,708	1,905	0.021	60	3,768				
Wakulla	377	174	203	0.002	6	180				
Walton	691	243	448	0.005	14	257				
Washington	280	153	127	0.001	4	157				
Total	244,047	153,018	91,029	1.000	2,889	155,907				Projected Annual Growth Rate 1.9%

Methodology 2010-11

Table Name	Column	Column Title	Explanation	Additional Assumptions
2010-2011 VPK Projected Enrollment	-1-	October 2010 Estimated Number of 4-Year Olds (as of August 2007)	Received from EDR	Population estimates based on the August 2007 Florida Demographic Estimating Conference Database.
	-2-	2009-10 Projected Fiscal Year Enrollment	Copied from Column -6- of '2009-2010 VPK Projected Enrollment'	
	-3-	Maximum Additional Enrollment in Fiscal Year 2010-11	Column -1- minus Column -2-	In counties that are serving more children in VPK than their population estimate, a value of zero is placed in this column rather than a negative number of children not served.
	-4-	County Factor	Column -3- divided by the sum of Column -3-	
	-5-	Projected Increase in Enrollment	Column -4- multiplied by the change in expected enrollments of the 09-10 and 10-11 program years	Multiplying the growth rate calculated by EDR (Reference Growth Rate Methodology page for more details) by the 09-10 expected enrollments, we come up with the change in expected enrollments.
	-6-	2010-11 Projected Fiscal Year Enrollment	The sum of Columns -2- and -5-	

Methodology 2011-12

Table Name	Column	Column Title	Explanation	Additional Assumptions
2011-2012 VPK Projected Enrollment	-1-	October 2011 Estimated Number of 4-Year Olds (as of August 2007)	Received from EDR	Population estimates based on the August 2007 Florida Demographic Estimating Conference Database.
	-2-	2010-11 Projected Fiscal Year Enrollment	Copied from Column -6- of '2010-2011 VPK Projected Enrollment'	
	-3-	Maximum Additional Enrollment in Fiscal Year 2011-12	Column -1- minus Column -2-	In counties that are serving more children in VPK than their population estimate, a value of zero is placed in this column rather than a negative number of children not served.
	-4-	County Factor	Column -3- divided by the sum of Column -3-	
	-5-	Projected Increase in Enrollment	Column -4- multiplied by the change in expected enrollments of the 10-11 and 11-12 program years	Multiplying the growth rate calculated by EDR (Reference Growth Rate Methodology page for more details) by the 10-11 expected enrollments, we come up with the change in expected enrollments.
	-6-	2011-12 Projected Fiscal Year Enrollment	The sum of Columns -2- and -5-	