

Voluntary Prekindergarten Estimating Conference
December 19, 2008 - 10:30 am
Executive Summary

Principals

Office	Representative
Office of Economic & Demographic Research (chair)	Amy Baker
Executive Office of the Governor	Scott Kittel
House	Allyce Heflin
Senate	Kurt Hamon

The Voluntary Prekindergarten Estimating Conference met on Friday, December 19, 2008 and adopted forecasted fiscal year enrollment for the Voluntary Prekindergarten Program (VPK) for 2009-10, 2010-11, and 2011-12. The revised Fiscal Years 2006-07, 2007-08 and 2008-09 enrollments are as follows:

VPK Fiscal Year Enrollment	December 19, 2008 Conference	July 23, 2008 Conference	Difference between July 23, 2008 and December 19, 2008 Conferences
Actual 2006-07	123,463	123,590	-127
Preliminary 2007-08	133,846	133,888	-42
Estimated 2008-09	146,277	145,796	481

The 2006-07 actual data were revised slightly as a result of modifying the allocation of summer participation between fiscal years 2006-07 and 2007-08. The preliminary 2007-08 enrollment and the estimated 2008-09 enrollment include actual enrollments through October 20, 2008. The estimated 2008-09 enrollment also includes an estimated school year enrollment and projected enrollment for the first two months (May and June) of summer 2009. The 2008-09 school year enrollment is expected to grow by 9.4 percent, up from 9.0 percent at the July estimating conference.

The forecast was based on a target program year participation rate in 2011-2012 of 70.0%. The forecast fiscal year enrollments are summarized below:

Projected VPK Fiscal Year Enrollment	December 19, 2008 Conference	July 23, 2008 Conference	Difference between July 23, 2008 and December 19, 2008 Conferences
2009-10	154,521	151,518	3,003
2010-11	159,291	154,379	4,912
2011-12	163,126	156,882	6,244

The payment rate (pay-out rate) is the percentage of dollars actually paid out of the total that could possibly be paid. The actual pay-out rate for fiscal year 2006-07 was 87.5 percent and the preliminary payout rate 2007-08 was 88.7 percent. The pay-out rate is calculated for information purposes and pay-out rates are not estimated or projected for 2008-09 through 2011-12. Similarly, Full-Time Equivalent (FTE) enrollment is presented for information purposes only in the tables.

**VPK Estimating
Conference
Report**

December 19, 2008

Table of Contents

Table of Contents	
Terminology	1
Assumptions for Estimation and Forecasting	2
Statewide Enrollment Summary	3
Statewide FTE Summary	4
Statewide Enrollment Growth Rate Summary	5
County-Level Appropriation Summary	6
2006-2007 VPK Enrollment and Participation Rates	7
2007-2008 VPK Enrollment and Participation Rates	8
2008-2009 VPK Estimated Enrollment	9
Historical FTE Summary	10
Estimated / Projected Enrollment	11
Estimated / Projected FTE	12

Terminology	
Enrollment	Headcount of students in a program, this is unduplicated unless otherwise specified.
Fiscal Year	July 1 - June 30 (Includes part of summer enrollment from two program years).
FTE Enrollment	Full Time Equivalent Enrollment calculation representing one child enrollment for the entire program. FTE clacuation is based on the number of hours paid divided by 540 or 300 depending on the child's program (either 540 for the School Year program or 300 for the summer program).
Payout Rate	The average percentage of the Base Student Allocation paid. Functionally equivalent to the FTE earned per child.
Program Year	Includes the VPK School Year and Summer Programs based on eligibility as determined by date of birth.
Psuedo Participation Rate	Fiscal Year enrollment divided by the estimated/forecasted October 1, population of 4-year olds.
School Year	540 hour VPK Program that runs from July/August (varies by county) until May/June.
Summer	300 hour VPK Program that runs from May/June to July/August.
Summer - First Half	Portion of the 300 hour VPK Program that runs from May/June.
Summer - Second Half	Portion of the 300 hour VPK Program that runs from July/August.

Assumptions for Estimation and Forecasting

1. The attendance policy will remain the same.

2. Patterns of school year and summer enrollments and FTEs for all estimates and forecasts will be similar to those of the 2007-08 school year and the 2008 summer.
 - a. Program start / end dates will remain the same as 2007-08.
 - b. Enrollment distribution by month for 2008-09 will remain the same as 2007-08.
 - c. The split of summer enrollment will be the same as summer 2008.

3. The program year enrollment will continue to increase with a declining growth rate.
 - a. The new school year 2008-09 rate is 9.4% compared with the previous 9.0%.
 - b. The July 2008 conference pattern of declining rates is used starting with 9.4% instead of 9.0% for 2008-09.

Statewide Enrollment Summary						
	Difference between July 23, 2008 and December 19, 2008 Conferences	December 19, 2008 Conference Unduplicated Counts	July 23, 2008 Conference Unduplicated Counts	April 7, 2008 Conference Unduplicated Counts	March 7, 2008 Conference	November 15, 2007 Conference
2005-06 Enrollment						
School Year		94,036	94,036	94,036	93,574	93,574
Summer		12,468	12,468	12,468	12,322	12,322
Program Year		106,504	106,504	106,504	105,896	105,896
Fiscal Year (Not a Full Fiscal Year)		101,180	101,180	101,180	99,735	99,735
2006-07 Enrollment						
School Year		113,253	113,253	113,253	113,973	114,052
Summer		10,314	10,314	10,314	10,320	10,291
Program Year		123,567	123,567	123,567	124,293	124,343
Fiscal Year	-127	123,463	123,590	123,590	125,367	123,815
2007-08 Enrollment						
School Year	-2	125,142	125,144	125,589	126,532	
Summer	9	9,573	9,564	10,000	10,000	
Program Year	7	134,715	134,708	135,589	136,532	
Fiscal Year	-42	133,846	133,888	135,750	136,692	138,913
2008-09 Enrollment						
School Year		136,905				
Summer		9,000				
Program Year		145,905				
Fiscal Year	481	146,277	145,796	145,796	145,714	151,172
Program Year Enrollment						
2007-08	7	134,715	134,708	135,589	136,532	
2008-09		145,905				
2009-10		154,261				
2010-11		159,096				
2011-12		162,996				
Program Year Enrollment Growth Rate						
2007-08		9.0%	9.0%	9.7%	9.8%	
2008-09		8.3%				
2009-10		5.7%				
2010-11		3.1%				
2011-12		2.5%				
Fiscal Year Enrollment						
2007-08	-42	133,846	133,888	135,750	136,692	138,913
2008-09	481	146,277	145,796	145,796	145,714	151,172
2009-10	3,003	154,521	151,518	153,018	153,145	161,355
2010-11	4,912	159,291	154,379	155,907	158,658	169,205
2011-12	6,244	163,126	156,882	158,435	162,307	
Fiscal Year Enrollment Growth Rate						
2007-08	0.1%	8.4%	8.3%	9.8%	9.1%	12.2%
2008-09	0.4%	9.3%	8.9%	7.4%	6.6%	8.8%
2009-10	1.7%	5.6%	3.9%	5.0%	5.1%	6.7%
2010-11	1.2%	3.1%	1.9%	1.9%	3.6%	4.9%
2011-12	0.8%	2.4%	1.6%	1.6%	2.3%	
October 1 Population 4-Year Olds						
2005		221,924	221,924	221,924	221,924	221,924
2006	691	226,649	225,958	225,958	225,958	225,958
2007	-279	229,197	229,476	229,476	229,476	229,476
2008	-4,917	229,269	234,186	234,186	234,186	234,186
2009	-10,311	229,214	239,525	239,525	239,525	239,525
2010	-13,807	230,240	244,047	244,047	244,047	244,047
2011	-15,152	232,852	248,004	248,004	248,004	
Program Year Participation Rate						
2006-07		54.5%				
2007-08		58.8%				
2008-09		63.6%				
2009-10		67.3%				
2010-11		69.1%				
2011-12		70.0%				
Fiscal Year Pseudo Participation Rate						
2006-07	-0.2%	54.5%	54.7%	54.7%	55.5%	54.8%
2007-08	0.1%	58.4%	58.3%	59.2%	59.6%	60.5%
2008-09	1.5%	63.8%	62.3%	62.3%	62.2%	64.6%
2009-10	4.2%	67.4%	63.3%	63.9%	63.9%	67.4%
2010-11	5.9%	69.2%	63.3%	63.9%	65.0%	69.3%
2011-12	6.8%	70.1%	63.3%	63.9%	65.4%	
Pay-out Rate - Program Year						
2006-07	0.00%	87.74%	87.74%	87.74%	87.30%	87.3%
2007-08	-0.10%	88.80%	88.00%	88.00%	89.00%	
Pay-out Rate - Fiscal Year						
2006-07	0.08%	87.54%	87.46%	87.46%		
2007-08	-0.08%	88.72%	88.80%	88.00%		

Key	
Data	Example
Actual	999,999
Preliminary	999,999
Estimated (based on actual data)	999,999
Projected (based on estimated data)	999,999
Projected Population used for Appropriation	999,999

Statewide FTE Summary	
	December 19, 2008 Estimating Conference
2006-07 FTE Enrollment	
School Year	99,181.6
Summer	9,231.1
Program Year	108,412.7
Fiscal Year	108,082.2
2007-08 FTE Enrollment	
School Year	110,949.7
Summer	8,683.2
Program Year	119,632.9
Fiscal Year	118,745.4
2008-09 FTE Enrollment	
School Year	121,378.7
Summer	8,163.5
Program Year	129,542.2
Fiscal Year	129,877.6
Fiscal Year FTE Enrollment	
2007-08	118,745.4
2008-09	129,877.6
2009-10	137,089.2
2010-11	141,292.3
2011-12	144,674.4
Fiscal Year FTE Enrollment Growth Rate	
2007-08	9.9%
2008-09	9.4%
2009-10	5.6%
2010-11	3.1%
2011-12	2.4%

Statewide Enrollment Growth Rate Summary

Shaded areas are disaggregations of approved fiscal year figures.
Disaggregations were computed after conference.

I. School Year Enrollment

	July 2008 Conference		December 2008 Conference		Difference	
	Enrollment	Growth Rate	Enrollment	Growth Rate	Enrollment	Growth Rate
2005-06	94,036		94,036		-	
2006-07	113,253	20.4%	113,253	20.4%	-	0.0%
2007-08	125,144	10.5%	125,142	10.5%	-2	0.0%
2008-09	136,435	9.0%	136,905	9.4%	470	0.4%
2009-10	142,662	4.6%	145,661	6.4%	2,999	1.8%
2010-11	145,887	2.3%	150,796	3.5%	4,909	1.2%
2011-12	148,654	1.9%	154,896	2.7%	6,242	0.8%

II. Summer Enrollment

	July 2008 Conference		December 2008 Conference		Note:
	Enrollment	Growth Rate	Enrollment	Growth Rate	
2006	12,468		12,468		Only change in Table II is the 2008 summer.
2007	10,314	-17.3%	10,314	-17.3%	
2008	9,564	-7.3%	9,573	-7.2%	
2009	9,000	-5.9%	9,000	-6.0%	
2010	8,600	-4.4%	8,600	-4.4%	
2011	8,300	-3.5%	8,300	-3.5%	
2012	8,100	-2.4%	8,100	-2.4%	

III. Summer Enrollment Split

	Enrollment		December 2008 Conference		Split Percentages	
	July 2008 Conference		July-Aug		December 2008 Conference	
	May-Jun	July-Aug	May-Jun	July-Aug	May-Jun	July-Aug
2006	7,144	5,324	7,219	5,249	57.9%	42.1%
2007	5,013	5,301	4,961	5,353	48.1%	51.9%
2008	3,443	6,121	3,351	6,222	35.0%	65.0%
2009	3,240	5,760	3,150	5,850	35.0%	65.0%
2010	3,096	5,504	3,010	5,590	35.0%	65.0%
2011	2,988	5,312	2,905	5,395	35.0%	65.0%
2012	2,916	5,184	2,835	5,265	35.0%	65.0%
	36.0%	64.0%				

IV. Program Year Enrollment

	July 2008 Conference		December 2008 Conference		Difference		Note:
	Enrollment	Growth Rate	Enrollment	Growth Rate	Enrollment	Growth Rate	
2005-06	106,504		106,504		-	-	Program Year is the sum of School Year and Summer.
2006-07	123,567	16.0%	123,567	16.0%	-	-	
2007-08	134,708	9.0%	134,715	9.0%	7	0.0%	
2008-09	145,435	8.0%	145,905	8.3%	470	0.3%	
2009-10	151,262	4.0%	154,261	5.7%	2,999	1.7%	
2010-11	154,187	1.9%	159,096	3.1%	4,909	1.2%	
2011-12	156,754	1.7%	162,996	2.5%	6,242	0.8%	

V. Population and Program Year Participation Rate

	July 2008 Conference		December 2008 Conference		Difference		Note:
	Population as of Oct 1	Program Participation	Population as of Oct 1	Program Participation	Population as of Oct 1	Program Participation	
2005-06	221,924	48.0%	221,924	48.0%	-	-	Population estimates have declined between the two conferences.
2006-07	225,958	54.7%	226,649	54.5%	691	-0.2%	
2007-08	229,476	58.7%	229,197	58.8%	-279	0.1%	
2008-09	234,186	62.1%	229,269	63.6%	-4,917	1.5%	
2009-10	239,525	63.2%	229,214	67.3%	-10,311	4.1%	
2010-11	244,047	63.2%	230,240	69.1%	-13,807	5.9%	
2011-12	248,004	63.2%	232,852	70.0%	-15,152	6.8%	

VI. Population and Program Year Participation Growth Rates

	July 2008 Conference		December 2008 Conference		Difference		Notes:
	Population Growth Rate	Participation Growth Rate	Population Growth Rate	Participation Growth Rate	Population Growth Rate	Participation Growth Rate	
2005-06							July 2008 Conference attributed growth in 2009-10 program enrollment to both population and participation.
2006-07	1.8%	14.2%	2.1%	13.9%	0.3%	-0.3%	
2007-08	1.6%	7.5%	1.1%	7.9%	-0.4%	0.4%	
2008-09	2.1%	5.9%	0.0%	8.3%	-2.0%	2.4%	
2009-10	2.3%	1.7%	0.0%	5.8%	-2.3%	4.0%	Dec 2008 Conference attributes growth in 2009-10 program enrollment solely to participation.
2010-11	1.9%	0.0%	0.4%	2.7%	-1.4%	2.6%	
2011-12	1.6%	0.0%	1.1%	1.3%	-0.5%	1.3%	

VII. Fiscal Year Enrollment

	July 2008 Conference		December 2008 Conference		Difference		Notes:
	Enrollment	Growth Rate	Enrollment	Growth Rate	Enrollment	Growth Rate	
2005-06	101,180		101,180		-	-	The July 2008 figure for 2008-09 was the same as the estimate for April 2008 which was used for the 2008-09 Appropriation.
2006-07	123,590		123,463		-127	-	
2007-08	133,888	8.3%	133,846	8.4%	-42	0.1%	
2008-09	145,796	8.9%	146,277	9.3%	481	0.4%	The Dec 2008 point estimate for 2008-09 is based on actual data through Oct 2008.
2009-10	151,518	3.9%	154,521	5.6%	3,003	1.7%	
2010-11	154,379	1.9%	159,291	3.1%	4,912	1.2%	The July estimate for 2008-09 is within the interval of uncertainty of the Dec 2008 estimate.
2011-12	156,882	1.6%	163,126	2.4%	6,244	0.8%	

County-Level Appropriation Summary

County	Fiscal Year 2005-06			Fiscal Year 2006-07			Fiscal Year 2007-08			Fiscal Year 2008-09		
	Final Enrollment	Appropriated Enrollment	Percent of Appropriated Enrollment	Final Enrollment	Appropriated Enrollment	Percent of Appropriated Enrollment	Preliminary Enrollment	Appropriated Enrollment	Percent of Appropriated Enrollment	Estimated Enrollment	Appropriated Enrollment	Percent of Appropriated Enrollment
	-1-	-2-	-3-	-4-	-5-	-6-	-7-	-8-	-9-	-10-	-11-	-12-
State Total	101,180	147,235	68.7%	123,463	144,228	85.6%	133,846	139,997	95.6%	146,277	145,796	100.3%
Alachua	1,043	1,608	64.9%	1,576	1,901	82.9%	1,576	1,763	89.4%	1,700	1,679	101.3%
Baker	175	222	78.8%	190	202	94.1%	237	201	118.0%	410	252	162.7%
Bay	1,082	1,324	81.7%	1,112	1,186	93.8%	1,200	1,276	94.0%	1,361	1,317	103.3%
Bradford	256	191	134.0%	252	294	85.7%	241	282	85.3%	250	248	100.8%
Brevard	3,133	3,720	84.2%	3,649	3,816	95.6%	3,959	4,032	98.2%	4,459	4,191	106.4%
Broward	10,196	15,972	63.8%	12,088	15,321	78.9%	13,381	13,703	97.7%	14,460	14,580	99.2%
Calhoun	65	101	64.4%	58	83	70.3%	68	70	96.6%	70	80	87.5%
Charlotte	442	790	55.9%	696	1,002	69.5%	808	774	104.4%	931	847	109.9%
Citrus	658	751	87.6%	685	926	74.0%	708	788	89.9%	760	759	100.1%
Clay	936	1,537	60.9%	1,445	1,148	125.9%	1,696	1,616	104.9%	1,736	1,787	97.1%
Collier	1,584	2,314	68.5%	1,971	2,222	88.7%	1,945	2,162	90.0%	2,078	2,158	96.3%
Columbia	430	541	79.5%	526	560	93.9%	516	613	84.1%	572	555	103.1%
Miami-Dade	16,945	22,904	74.0%	17,869	18,465	96.8%	18,692	21,167	88.3%	19,272	20,372	94.6%
DeSoto	227	255	89.0%	222	438	50.7%	265	268	98.9%	297	286	103.8%
Dixie	138	112	123.2%	125	156	80.1%	110	141	77.9%	117	119	98.3%
Duval	6,264	8,231	76.1%	7,958	9,544	83.4%	8,452	9,008	93.8%	9,098	8,999	101.1%
Escambia	1,819	2,513	72.4%	2,136	2,463	86.7%	2,306	2,512	91.8%	2,376	2,511	94.6%
Flagler	296	432	68.5%	502	564	89.0%	666	453	147.1%	730	717	101.8%
Franklin	61	73	83.6%	79	65	121.5%	77	82	93.5%	92	78	117.9%
Gadsden	265	414	64.0%	556	591	94.1%	488	566	86.2%	453	514	88.1%
Gilchrist	148	144	102.8%	148	171	86.5%	154	162	95.1%	136	162	84.0%
Glades	52	80	65.0%	60	82	73.2%	79	65	122.2%	102	86	118.6%
Gulf	90	88	102.3%	84	101	83.2%	77	99	77.4%	106	81	130.9%
Hamilton	83	117	70.9%	92	109	84.4%	105	112	93.8%	108	112	96.4%
Hardee	212	274	77.4%	195	272	71.7%	221	204	108.6%	325	240	135.4%
Hendry	229	449	51.0%	297	384	77.3%	310	296	104.7%	381	362	105.2%
Hernando	1,067	966	110.5%	1,089	1,355	80.4%	1,189	1,160	102.5%	1,334	1,256	106.2%
Highlands	651	643	101.2%	725	936	77.5%	721	793	90.9%	789	764	103.3%
Hillsborough	5,970	10,637	56.1%	7,764	11,645	66.7%	9,011	8,648	104.2%	11,121	10,165	109.4%
Holmes	141	153	92.2%	156	157	99.4%	150	177	84.7%	164	163	100.6%
Indian River	806	790	102.0%	889	994	89.4%	924	973	95.0%	1,028	979	105.0%
Jackson	207	343	60.3%	209	314	66.6%	226	251	90.0%	318	260	122.3%
Jefferson	66	97	68.0%	71	87	81.6%	38	76	50.1%	86	53	162.3%
Lafayette	102	54	188.9%	88	114	77.2%	67	99	67.5%	90	67	134.3%
Lake	1,486	1,862	79.8%	1,912	2,180	87.7%	2,233	2,055	108.7%	2,387	2,399	99.5%
Lee	2,528	3,737	67.6%	3,718	4,880	76.2%	4,143	4,128	100.4%	4,450	4,546	97.9%
Leon	1,790	2,033	88.0%	1,964	2,040	96.3%	2,073	2,241	92.5%	2,077	2,224	93.4%
Levy	231	324	71.3%	286	277	103.2%	267	336	79.4%	225	297	75.8%
Liberty	85	47	180.9%	114	96	118.8%	94	120	78.1%	113	93	121.5%
Madison	76	140	54.3%	130	145	89.7%	90	136	66.1%	100	100	100.0%
Manatee	1,404	2,324	60.4%	1,965	2,557	76.8%	2,211	2,176	101.6%	2,706	2,429	111.4%
Marion	1,349	2,151	62.7%	2,046	1,840	111.2%	2,124	1,986	106.9%	2,253	2,415	93.3%
Martin	837	876	95.5%	834	1,036	80.5%	842	953	88.3%	953	882	108.0%
Monroe	309	459	67.3%	364	455	80.0%	385	463	83.2%	398	423	94.1%
Nassau	233	587	39.7%	352	310	113.5%	421	436	96.6%	477	474	100.6%
Okaloosa	1,090	1,595	68.3%	1,458	1,720	84.8%	1,564	1,669	93.7%	1,716	1,681	102.1%
Okeechobee	226	324	69.8%	294	292	100.7%	262	328	79.9%	335	287	116.7%
Orange	7,312	9,846	74.3%	8,246	9,438	87.4%	8,946	9,750	91.8%	10,014	9,842	101.7%
Osceola	1,813	2,286	79.3%	2,366	2,116	111.8%	2,409	2,605	92.5%	2,746	2,562	107.2%
Palm Beach	6,140	10,134	60.6%	7,074	9,336	75.8%	8,375	8,120	103.1%	8,647	9,097	95.1%
Pasco	1,606	3,066	52.4%	2,944	2,717	108.4%	3,319	3,250	102.1%	3,875	3,502	110.7%
Pinellas	4,574	6,451	70.9%	5,739	6,375	90.0%	5,695	6,324	90.1%	6,123	6,236	98.2%
Polk	2,068	4,723	43.8%	2,768	3,434	80.6%	3,046	3,320	91.7%	3,335	3,645	91.5%
Putnam	409	648	63.1%	615	484	127.1%	626	715	87.5%	572	667	85.8%
St. Johns	605	1,166	51.9%	874	820	106.6%	1,079	1,031	104.7%	1,211	1,177	102.9%
St. Lucie	1,257	1,721	73.0%	1,808	1,528	118.3%	2,129	1,972	108.0%	2,278	2,285	99.7%
Santa Rosa	482	1,228	39.3%	612	633	96.7%	760	786	96.6%	1,080	878	123.0%
Sarasota	1,252	1,952	64.1%	1,753	2,014	87.0%	1,870	1,974	94.7%	2,018	2,019	100.0%
Seminole	2,818	3,750	75.1%	3,314	4,268	77.6%	3,585	3,819	93.9%	3,887	3,711	104.7%
Sumter	391	353	110.8%	429	463	92.7%	422	506	83.4%	509	454	112.1%
Suwannee	253	298	84.9%	294	378	77.8%	311	322	96.6%	302	328	92.1%
Taylor	95	145	65.5%	129	167	77.2%	131	130	100.6%	124	149	83.2%
Union	66	104	63.5%	113	85	132.9%	119	110	107.8%	106	125	84.8%
Volusia	2,183	3,289	66.4%	2,927	3,861	75.8%	3,231	3,135	103.1%	3,445	3,561	96.7%
Wakulla	122	223	54.7%	167	189	88.6%	147	190	77.3%	191	158	120.9%
Walton	136	355	38.3%	188	292	64.4%	146	186	78.4%	180	208	86.5%
Washington	115	198	58.1%	104	135	77.0%	128	130	98.4%	134	143	93.7%
Total	101,180	147,235	68.7%	123,463	144,228	85.6%	133,846	139,997	95.6%	146,277	145,796	100.3%

2006-2007 VPK Enrollment and Participation Rates

County			2006-07 Program Year				2006-07 Fiscal Year			
	October 2006 Estimated Number of 4-Year Olds as of November 2008	Summer 2006 Enrollment	School Year 2006-07 Enrollment	Summer 2007 Enrollment	Total Program Year Enrollment	Program Year Participation Rate	Summer 2006 July & August Enrollment	School Year 2006-07 Enrollment	Summer 2007 May & June Enrollment	Total Fiscal Year Enrollment
	-1-	-2-	-3-	-4-	-5-	-6-	-7-	-8-	-9-	-10-
State Total	226,649	12,468	113,253	10,314	123,567	54.5%	5,249	113,253	4,961	123,463
Alachua	2,614	174	1,470	25	1,495	57.2%	94	1,470	12	1,576
Baker	356	23	155	48	203	57.0%	9	155	26	190
Bay	2,108	104	1,026	111	1,137	53.9%	34	1,026	52	1,112
Bradford	311	0	252	0	252	81.0%	0	252	0	252
Brevard	5,529	222	3,436	211	3,647	66.0%	96	3,436	117	3,649
Broward	22,945	1,190	10,979	1,257	12,236	53.3%	566	10,979	543	12,088
Calhoun	145	8	51	7	58	40.0%	3	51	4	58
Charlotte	1,144	98	642	36	678	59.3%	40	642	14	696
Citrus	1,092	25	664	24	688	63.0%	11	664	10	685
Clay	2,254	115	1,362	64	1,426	63.3%	51	1,362	32	1,445
Collier	3,824	355	1,648	286	1,934	50.6%	202	1,648	121	1,971
Columbia	834	24	506	17	523	62.7%	10	506	10	526
Miami-Dade	34,201	1,037	17,077	658	17,735	51.9%	488	17,077	304	17,869
DeSoto	429	14	212	9	221	51.5%	5	212	5	222
Dixie	170	0	125	0	125	73.5%	0	125	0	125
Duval	12,795	513	7,551	347	7,898	61.7%	243	7,551	164	7,958
Escambia	3,990	151	2,034	78	2,112	52.9%	64	2,034	38	2,136
Flagler	803	177	365	160	525	65.4%	83	365	54	502
Franklin	117	16	69	7	76	65.0%	8	69	2	79
Gadsden	680	138	486	4	490	72.1%	68	486	2	556
Gilchrist	198	9	138	11	149	75.3%	4	138	6	148
Glades	93	11	54	11	65	69.9%	0	54	6	60
Gulf	124	2	83	6	89	71.8%	1	83	0	84
Hamilton	169	0	92	0	92	54.4%	0	92	0	92
Hardee	417	36	155	46	201	48.2%	17	155	23	195
Hendry	666	110	194	99	293	44.0%	47	194	56	297
Hernando	1,450	50	1,011	110	1,121	77.3%	23	1,011	55	1,089
Highlands	1,006	60	678	40	718	71.4%	28	678	19	725
Hillsborough	16,312	1,232	6,732	1,343	8,075	49.5%	355	6,732	677	7,764
Holmes	232	8	149	9	158	68.1%	2	149	5	156
Indian River	1,309	29	815	64	879	67.2%	13	815	61	889
Jackson	540	32	179	29	208	38.5%	8	179	22	209
Jefferson	154	12	61	7	68	44.2%	6	61	4	71
Lafayette	81	0	88	0	88	108.6%	0	88	0	88
Lake	2,946	233	1,734	173	1,907	64.7%	90	1,734	88	1,912
Lee	6,998	566	3,320	394	3,714	53.1%	224	3,320	174	3,718
Leon	3,049	128	1,855	94	1,949	63.9%	63	1,855	46	1,964
Levy	495	16	275	6	281	56.8%	8	275	3	286
Liberty	75	0	114	0	114	152.0%	0	114	0	114
Madison	219	31	109	10	119	54.3%	16	109	5	130
Manatee	3,585	271	1,753	210	1,963	54.8%	118	1,753	94	1,965
Marion	3,469	503	1,571	544	2,115	61.0%	185	1,571	290	2,046
Martin	1,295	45	799	30	829	64.0%	21	799	14	834
Monroe	792	30	356	21	377	47.6%	0	356	8	364
Nassau	851	17	336	19	355	41.7%	7	336	9	352
Okaloosa	2,541	113	1,372	80	1,452	57.1%	45	1,372	41	1,458
Okeechobee	508	32	267	22	289	56.9%	16	267	11	294
Orange	16,333	486	7,802	536	8,338	51.1%	178	7,802	266	8,246
Osceola	3,589	207	2,213	130	2,343	65.3%	89	2,213	64	2,366
Palm Beach	14,953	869	6,322	703	7,025	47.0%	488	6,322	264	7,074
Pasco	4,627	208	2,820	104	2,924	63.2%	74	2,820	50	2,944
Pinellas	9,840	927	5,118	537	5,655	57.5%	314	5,118	307	5,739
Polk	7,710	404	2,415	440	2,855	37.0%	128	2,415	225	2,768
Putnam	966	6	612	0	612	63.4%	3	612	0	615
St. Johns	1,746	27	838	49	887	50.8%	10	838	26	874
St. Lucie	3,068	236	1,614	164	1,778	58.0%	112	1,614	82	1,808
Santa Rosa	1,736	83	557	61	618	35.6%	29	557	26	612
Sarasota	3,070	162	1,618	131	1,749	57.0%	70	1,618	65	1,753
Seminole	5,304	201	3,160	165	3,325	62.7%	72	3,160	82	3,314
Sumter	714	0	429	0	429	60.1%	0	429	0	429
Suwannee	433	24	275	18	293	67.7%	11	275	8	294
Taylor	232	25	103	31	134	57.8%	9	103	17	129
Union	141	12	103	11	114	80.9%	5	103	5	113
Volusia	5,106	500	2,519	367	2,886	56.5%	227	2,519	181	2,927
Wakulla	336	25	143	27	170	50.6%	11	143	13	167
Walton	574	92	99	105	204	35.5%	40	99	49	188
Washington	256	14	93	8	101	39.5%	7	93	4	104
Total	226,649	12,468	113,253	10,314	123,567	54.5%	5,249	113,253	4,961	123,463

2007-2008 VPK Enrollment and Participation Rates

County	4 Year Old Population, October 1, 2007 Estimate as of November 2008 -1-	Summer 2007 Enrollment -2-	2007-08 Program Year				2007-08 Fiscal Year			
			School Year 2007-08 Enrollment -3-	Summer 2008 Enrollment -4-	Total Program Year Enrollment -5-	Program Year Participation Rate -6-	Summer 2007 July & August Enrollment -7-	School Year 2007-08 Enrollment -8-	Summer 2008 May & June Enrollment -9-	Total Fiscal Year Enrollment -10-
State Total	229,197	10,314	125,142	9,573	134,715	58.8%	5,353	125,142	3,351	133,846
Alachua	2,668	25	1,542	53	1,595	59.8%	13	1,542	21	1,576
Baker	357	48	192	55	247	69.2%	22	192	23	237
Bay	2,107	111	1,107	84	1,191	56.5%	59	1,107	34	1,200
Bradford	313	0	241	0	241	77.0%	0	241	0	241
Brevard	5,601	211	3,797	178	3,975	71.0%	94	3,797	68	3,959
Broward	22,893	1,257	12,249	1,178	13,427	58.7%	714	12,249	418	13,381
Calhoun	147	7	64	2	66	44.9%	3	64	1	68
Charlotte	1,167	36	773	32	805	69.0%	22	773	13	808
Citrus	1,121	24	684	30	714	63.7%	14	684	10	708
Clay	2,313	64	1,645	48	1,693	73.2%	32	1,645	19	1,696
Collier	3,857	286	1,652	338	1,990	51.6%	165	1,652	128	1,945
Columbia	845	17	505	10	515	60.9%	7	505	4	516
Miami-Dade	34,175	658	18,067	674	18,741	54.8%	354	18,067	271	18,692
DeSoto	447	9	258	8	266	59.5%	4	258	3	265
Dixie	171	0	110	0	110	64.3%	0	110	0	110
Duval	12,912	347	8,140	373	8,513	65.9%	183	8,140	129	8,452
Escambia	4,025	78	2,237	72	2,309	57.4%	40	2,237	29	2,306
Flagler	841	160	533	75	608	72.3%	106	533	27	666
Franklin	114	7	71	4	75	65.8%	5	71	1	77
Gadsden	691	4	486	0	486	70.3%	2	486	0	488
Gilchrist	202	11	145	12	157	77.7%	5	145	4	154
Glades	95	11	73	3	76	80.0%	5	73	1	79
Gulf	126	6	70	3	73	57.9%	6	70	1	77
Hamilton	169	0	105	0	105	62.1%	0	105	0	105
Hardee	430	46	176	64	240	55.8%	23	176	22	221
Hendry	703	99	232	82	314	44.7%	43	232	35	310
Hernando	1,487	110	1,105	77	1,182	79.5%	55	1,105	29	1,189
Highlands	1,025	40	684	43	727	70.9%	21	684	16	721
Hillsborough	16,514	1,343	8,012	1,422	9,434	57.1%	666	8,012	333	9,011
Holmes	236	9	144	7	151	64.0%	4	144	2	150
Indian River	1,349	64	863	122	985	73.0%	3	863	58	924
Jackson	546	29	196	44	240	44.0%	7	196	23	226
Jefferson	154	7	35	0	35	22.7%	3	35	0	38
Lafayette	80	0	67	0	67	83.8%	0	67	0	67
Lake	3,023	173	2,128	64	2,192	72.5%	85	2,128	20	2,233
Lee	7,322	394	3,809	342	4,151	56.7%	220	3,809	114	4,143
Leon	3,085	94	1,997	69	2,066	67.0%	48	1,997	28	2,073
Levy	507	6	264	9	273	53.8%	3	264	0	267
Liberty	78	0	94	0	94	120.5%	0	94	0	94
Madison	222	10	75	23	98	44.1%	5	75	10	90
Manatee	3,669	210	2,047	138	2,185	59.6%	116	2,047	48	2,211
Marion	3,559	544	1,729	423	2,152	60.5%	254	1,729	141	2,124
Martin	1,304	30	799	63	862	66.1%	16	799	27	842
Monroe	760	21	360	17	377	49.6%	13	360	12	385
Nassau	870	19	409	8	417	47.9%	10	409	2	421
Okaloosa	2,572	80	1,493	84	1,577	61.3%	39	1,493	32	1,564
Okeechobee	516	22	239	30	269	52.1%	11	239	12	262
Orange	16,581	536	8,481	494	8,975	54.1%	270	8,481	195	8,946
Osceola	3,710	130	2,278	190	2,468	66.5%	66	2,278	65	2,409
Palm Beach	15,019	703	7,729	613	8,342	55.5%	439	7,729	207	8,375
Pasco	4,740	104	3,231	101	3,332	70.3%	54	3,231	34	3,319
Pinellas	9,760	537	5,268	492	5,760	59.0%	230	5,268	197	5,695
Polk	7,855	440	2,712	290	3,002	38.2%	215	2,712	119	3,046
Putnam	970	0	626	0	626	64.5%	0	626	0	626
St. Johns	1,851	49	1,048	32	1,080	58.3%	23	1,048	8	1,079
St. Lucie	3,199	164	1,988	136	2,124	66.4%	82	1,988	59	2,129
Santa Rosa	1,745	61	710	43	753	43.2%	35	710	15	760
Sarasota	3,121	131	1,759	111	1,870	59.9%	66	1,759	45	1,870
Seminole	5,337	165	3,436	185	3,621	67.8%	83	3,436	66	3,585
Sumter	764	0	422	0	422	55.2%	0	422	0	422
Suwannee	438	18	292	23	315	71.9%	10	292	9	311
Taylor	238	31	107	25	132	55.5%	14	107	10	131
Union	146	11	111	6	117	80.1%	6	111	2	119
Volusia	5,154	367	2,951	306	3,257	63.2%	186	2,951	94	3,231
Wakulla	346	27	110	49	159	46.0%	14	110	23	147
Walton	586	105	59	106	165	28.2%	56	59	31	146
Washington	269	8	121	8	129	48.0%	4	121	3	128
Total	229,197	10,314	125,142	9,573	134,715	58.8%	5,353	125,142	3,351	133,846

2008-2009 VPK Estimated Enrollment

County	Program Year 2008-2009						Fiscal Year 2008-2009			
	2008 Summer Enrollment	Paid 2008-09 Program School Year Enrollment (as of 10/31/08)	Estimated Growth in Remainder of School Year	Estimated School Year Enrollment 2008-09	Projected Summer 2009	Estimated Program Year Enrollment 2008-09	Summer 2008 July & August Enrollment	Estimated School Year Enrollment 2008-09	Projected 2009 May & June Enrollment	Projected Fiscal Year 2008-09 Enrollment
		-1-	-2-	-3-	-4-	-5-	-6-	-7-	-8-	-9-
State Total	9,573	124,840	12,065	136,905	9,000	145,905	6,222	136,905	3,150	146,277
Alachua	53	1,529	119	1,648	52	1,700	32	1,648	20	1,700
Baker	55	317	40	357	50	407	32	357	21	410
Bay	84	1,191	89	1,280	77	1,357	50	1,280	31	1,361
Bradford	0	233	17	250	0	250	0	250	0	250
Brevard	178	4,057	230	4,287	162	4,449	110	4,287	62	4,459
Broward	1,178	12,414	901	13,315	1,082	14,397	760	13,315	385	14,460
Calhoun	2	68	0	68	2	70	1	68	1	70
Charlotte	32	816	83	899	32	931	19	899	13	931
Citrus	30	699	31	730	30	760	20	730	10	760
Clay	48	1,604	86	1,690	44	1,734	29	1,690	17	1,736
Collier	338	1,491	256	1,747	319	2,066	210	1,747	121	2,078
Columbia	10	520	43	563	9	572	6	563	3	572
Miami-Dade	674	17,445	1,156	18,601	659	19,260	403	18,601	268	19,272
DeSoto	8	245	44	289	8	297	5	289	3	297
Dixie	0	114	3	117	0	117	0	117	0	117
Duval	373	8,239	497	8,736	340	9,076	244	8,736	118	9,098
Escambia	72	2,160	147	2,307	66	2,373	43	2,307	26	2,376
Flagler	75	611	46	657	69	726	48	657	25	730
Franklin	4	69	19	88	4	92	3	88	1	92
Gadsden	0	430	23	453	0	453	0	453	0	453
Gilchrist	12	120	4	124	12	136	8	124	4	136
Glades	3	80	19	99	3	102	2	99	1	102
Gulf	3	93	10	103	3	106	2	103	1	106
Hamilton	0	100	8	108	0	108	0	108	0	108
Hardee	64	198	64	262	63	325	42	262	21	325
Hendry	82	258	43	301	78	379	47	301	33	381
Hernando	77	1,181	78	1,259	70	1,329	48	1,259	27	1,334
Highlands	43	671	75	746	43	789	27	746	16	789
Hillsborough	1,422	8,648	1,054	9,702	1,404	11,106	1,089	9,702	330	11,121
Holmes	7	153	4	157	7	164	5	157	2	164
Indian River	122	832	75	907	120	1,027	64	907	57	1,028
Jackson	44	260	16	276	40	316	21	276	21	318
Jefferson	0	37	49	86	0	86	0	86	0	86
Lafayette	0	63	27	90	0	90	0	90	0	90
Lake	64	2,164	161	2,325	58	2,383	44	2,325	18	2,387
Lee	342	3,783	332	4,115	323	4,438	228	4,115	107	4,450
Leon	69	1,891	118	2,009	65	2,074	41	2,009	27	2,077
Levy	9	192	24	216	9	225	9	216	0	225
Liberty	0	108	5	113	0	113	0	113	0	113
Madison	23	76	2	78	21	99	13	78	9	100
Manatee	138	2,264	308	2,572	126	2,698	90	2,572	44	2,706
Marion	423	1,656	186	1,842	386	2,228	282	1,842	129	2,253
Martin	63	838	52	890	62	952	36	890	27	953
Monroe	17	362	19	381	16	397	5	381	12	398
Nassau	8	437	32	469	8	477	6	469	2	477
Okaloosa	84	1,484	149	1,633	83	1,716	52	1,633	31	1,716
Okeechobee	30	291	14	305	30	335	18	305	12	335
Orange	494	8,253	1,284	9,537	450	9,987	299	9,537	178	10,014
Osceola	190	2,262	294	2,556	188	2,744	125	2,556	65	2,746
Palm Beach	613	7,210	841	8,051	558	8,609	406	8,051	190	8,647
Pasco	101	3,434	343	3,777	92	3,869	67	3,777	31	3,875
Pinellas	492	5,382	265	5,647	449	6,096	295	5,647	181	6,123
Polk	290	2,149	907	3,056	265	3,321	171	3,056	108	3,335
Putnam	0	551	21	572	0	572	0	572	0	572
St. Johns	32	1,119	61	1,180	29	1,209	24	1,180	7	1,211
St. Lucie	136	1,922	225	2,147	124	2,271	77	2,147	54	2,278
Santa Rosa	43	883	155	1,038	39	1,077	28	1,038	14	1,080
Sarasota	111	1,788	123	1,911	101	2,012	66	1,911	41	2,018
Seminole	185	3,343	360	3,703	182	3,885	119	3,703	65	3,887
Sumter	0	449	60	509	0	509	0	509	0	509
Suwannee	23	256	24	280	21	301	14	280	8	302
Taylor	25	96	4	100	23	123	15	100	9	124
Union	6	98	2	100	6	106	4	100	2	106
Volusia	306	2,849	298	3,147	279	3,426	212	3,147	86	3,445
Wakulla	49	118	26	144	46	190	26	144	21	191
Walton	106	70	4	74	105	179	75	74	31	180
Washington	8	116	10	126	8	134	5	126	3	134
Total	9,573	124,840	12,065	136,905	9,000	145,905	6,222	136,905	3,150	146,277

Historical FTE Summary

County	2006-07 Program Year FTE			2006-07 Fiscal Year FTE				2007-08 Program Year FTE			2007-08 Fiscal Year FTE			
	School Year	Summer	Total Program	Summer	School Year	Summer	Total Fiscal	Preliminary	Preliminary	Total Program	r	Preliminary	Summer	Total Fiscal
	2006-07	2007	Year	2006 July & August	2006-07	2007 May & June	Year	School Year 2007-08	Summer 2008	Year		School Year 2007-08	2008 May & June	Year
	-1-	-2-	-3-	4-	-5	-6-	-7-	-8-	-9-	-10-		-11-	-12-	-13-
State Total	99,181.6	9,231.1	108,412.7	4,411.3	99,181.6	4,489.3	108,082.2	110,949.7	8,683.2	119,632.9	4,741.8	110,949.7	3,053.9	118,745.4
Alachua	1,255.3	21.0	1,276.3	81.4	1,255.3	10.3	1,347.0	1,351.3	45.3	1,396.6	10.7	1,351.3	18.0	1,380.0
Baker	137.4	44.9	182.3	8.2	137.4	25.0	170.6	168.6	48.9	217.5	19.9	168.6	20.1	208.6
Bay	890.8	102.9	993.7	30.5	890.8	49.2	970.5	962.5	81.6	1,044.1	53.7	962.5	32.9	1,049.1
Bradford	211.3	0.0	211.3	0.0	211.3	0.0	211.3	205.4	0.0	205.4	0.0	205.4	0.0	205.4
Brevard	3,101.1	194.6	3,295.7	84.3	3,101.1	105.5	3,290.9	3,468.6	167.9	3,636.5	89.1	3,468.6	65.1	3,622.8
Broward	9,769.9	1,121.7	10,891.6	487.5	9,769.9	498.7	10,756.1	11,089.8	1,071.8	12,161.6	623.0	11,089.8	384.1	12,096.9
Calhoun	42.9	5.3	48.2	2.6	42.9	3.3	48.8	62.9	2.0	64.9	2.0	62.9	1.0	65.9
Charlotte	577.6	30.3	607.9	31.2	577.6	11.7	620.5	679.1	30.2	709.3	18.6	679.1	13.0	710.7
Citrus	575.6	19.8	595.4	10.7	575.6	7.6	593.9	604.4	28.9	633.3	12.2	604.4	8.8	625.4
Clay	1,185.2	57.7	1,242.9	45.2	1,185.2	31.4	1,261.8	1,445.0	44.8	1,489.8	26.3	1,445.0	18.1	1,489.4
Collier	1,467.6	267.6	1,735.2	174.8	1,467.6	116.0	1,758.4	1,459.6	315.3	1,774.9	151.6	1,459.6	122.3	1,733.5
Columbia	437.9	14.1	452.0	9.2	437.9	7.3	454.4	429.3	7.8	437.1	6.8	429.3	3.1	439.2
Miami-Dade	15,324.2	533.8	15,858.0	399.3	15,324.2	248.7	15,972.2	16,446.5	577.9	17,024.4	285.1	16,446.5	230.8	16,962.4
DeSoto	175.8	7.6	183.4	4.1	175.8	4.1	184.0	205.8	5.5	211.3	3.5	205.8	2.1	211.4
Dixie	104.7	0.0	104.7	0.0	104.7	0.0	104.7	93.9	0.0	93.9	0.0	93.9	0.0	93.9
Duval	6,542.6	300.5	6,843.1	198.0	6,542.6	143.3	6,883.9	7,237.5	337.8	7,575.3	157.2	7,237.5	116.4	7,511.1
Escambia	1,738.0	70.9	1,808.9	55.5	1,738.0	33.7	1,827.2	1,898.2	67.4	1,965.6	37.2	1,898.2	27.4	1,962.8
Flagler	311.7	148.8	460.5	62.4	311.7	52.2	426.3	455.1	70.2	525.3	66.6	455.1	25.5	577.2
Franklin	56.6	6.6	63.2	5.2	56.6	2.2	64.0	56.7	2.8	59.5	4.4	56.7	0.8	61.9
Gadsden	457.5	3.9	461.4	59.7	457.5	2.3	519.5	453.1	0.0	453.1	1.6	453.1	0.0	454.7
Gilchrist	126.7	10.2	136.9	3.8	126.7	5.3	135.8	126.2	11.9	138.1	4.9	126.2	3.8	134.9
Glades	46.1	8.2	54.3	0.0	46.1	5.1	51.2	67.8	3.0	70.8	3.1	67.8	0.9	71.8
Gulf	68.9	5.6	74.5	0.9	68.9	3.6	73.4	61.4	2.1	63.5	2.0	61.4	1.1	64.5
Hamilton	79.4	0.0	79.4	0.0	79.4	0.0	79.4	91.2	0.0	91.2	0.0	91.2	0.0	91.2
Hardee	119.4	37.8	157.2	10.5	119.4	18.3	148.2	158.3	56.5	214.8	19.5	158.3	18.4	196.2
Hendry	168.4	86.2	254.6	34.8	168.4	50.6	253.8	191.5	75.4	266.9	35.6	191.5	33.2	260.3
Hernando	866.1	98.4	964.5	19.2	866.1	50.9	936.2	974.4	70.9	1,045.3	47.5	974.4	26.4	1,048.3
Highlands	591.0	34.6	625.6	22.4	591.0	15.9	629.3	610.9	39.1	650.0	18.7	610.9	15.1	644.7
Hillsborough	5,778.1	1,196.9	6,975.0	288.7	5,778.1	618.0	6,684.8	6,942.4	1,271.1	8,213.5	578.9	6,942.4	295.9	7,817.2
Holmes	125.3	7.7	133.0	2.4	125.3	4.1	131.8	124.9	6.0	130.9	3.6	124.9	2.3	130.8
Indian River	722.7	56.3	779.0	12.5	722.7	22.7	757.9	758.7	113.5	872.2	33.6	758.7	54.1	846.4
Jackson	146.9	27.3	174.2	6.1	146.9	21.4	174.4	167.8	39.7	207.5	5.9	167.8	21.9	195.6
Jefferson	50.9	5.4	56.3	5.3	50.9	2.8	59.0	29.1	0.0	29.1	2.6	29.1	0.0	31.7
Lafayette	81.6	0.0	81.6	0.0	81.6	0.0	81.6	60.5	0.0	60.5	0.0	60.5	0.0	60.5
Lake	1,521.3	164.7	1,686.0	72.2	1,521.3	84.5	1,678.0	1,864.3	59.9	1,924.2	80.2	1,864.3	18.6	1,963.1
Lee	2,879.2	361.4	3,240.6	190.3	2,879.2	159.0	3,228.5	3,320.7	320.0	3,640.7	202.4	3,320.7	104.2	3,627.3
Leon	1,694.4	81.4	1,775.8	53.9	1,694.4	40.2	1,788.5	1,803.2	61.7	1,864.9	41.2	1,803.2	25.8	1,870.2
Levy	234.6	5.3	239.9	5.8	234.6	2.7	243.1	222.1	6.2	228.3	2.6	222.1	0.2	224.9
Liberty	101.9	0.0	101.9	0.0	101.9	0.0	101.9	88.3	0.0	88.3	0.0	88.3	0.0	88.3
Madison	90.6	7.7	98.3	12.9	90.6	4.4	107.9	65.3	20.5	85.8	3.3	65.3	7.5	76.1
Manatee	1,453.8	184.5	1,638.3	99.0	1,453.8	84.6	1,637.4	1,775.3	125.1	1,900.4	99.9	1,775.3	43.5	1,918.7
Marion	1,319.9	500.7	1,820.6	163.2	1,319.9	272.3	1,755.4	1,492.7	395.8	1,888.5	228.4	1,492.7	131.0	1,852.1
Martin	694.6	25.1	719.7	12.9	694.6	12.1	719.6	715.3	59.5	774.8	13.0	715.3	26.4	754.7
Monroe	316.7	17.9	334.6	8.6	316.7	7.3	332.6	313.5	16.5	330.0	10.6	313.5	11.7	335.8
Nassau	280.6	16.9	297.5	5.5	280.6	8.8	294.9	361.6	6.5	368.1	8.1	361.6	2.1	371.8
Okaloosa	1,172.6	70.5	1,243.1	41.2	1,172.6	37.3	1,251.1	1,273.8	76.4	1,350.2	33.2	1,273.8	27.8	1,334.8
Okeechobee	231.2	19.6	250.8	14.8	231.2	10.1	256.1	207.6	29.4	237.0	9.5	207.6	11.6	228.7
Orange	6,687.3	484.4	7,171.7	148.1	6,687.3	247.2	7,082.6	7,403.5	445.9	7,849.4	237.2	7,403.5	175.0	7,815.7
Osceola	1,866.8	110.0	1,976.8	78.7	1,866.8	57.8	2,003.3	1,943.2	174.8	2,118.0	52.2	1,943.2	59.7	2,055.1
Palm Beach	5,538.3	620.5	6,158.8	396.9	5,538.3	237.0	6,172.2	6,845.0	557.1	7,402.1	383.5	6,845.0	188.6	7,417.1
Pasco	2,447.8	99.0	2,546.8	61.2	2,447.8	47.3	2,556.3	2,871.7	90.0	2,961.7	51.7	2,871.7	31.0	2,954.4
Pinellas	4,607.9	494.0	5,101.9	262.7	4,607.9	284.4	5,155.0	4,730.6	444.6	5,175.2	209.6	4,730.6	181.1	5,121.3
Polk	2,049.0	392.5	2,441.5	109.9	2,049.0	201.6	2,360.5	2,357.1	259.7	2,616.8	190.9	2,357.1	108.9	2,656.9
Putnam	538.0	0.0	538.0	2.7	538.0	0.0	540.7	549.6	0.0	549.6	0.0	549.6	0.0	549.6
St. Johns	712.1	44.0	756.1	8.0	712.1	23.4	743.5	937.3	27.8	965.1	20.6	937.3	7.5	965.4
St. Lucie	1,379.1	147.9	1,527.0	93.4	1,379.1	74.1	1,546.6	1,725.7	118.3	1,844.0	73.8	1,725.7	54.3	1,853.8
Santa Rosa	481.4	56.6	538.0	23.9	481.4	24.9	530.2	613.6	38.8	652.4	31.7	613.6	14.0	659.3
Sarasota	1,445.9	117.9	1,563.8	60.9	1,445.9	58.8	1,565.6	1,568.1	102.9	1,671.0	59.1	1,568.1	42.5	1,669.7
Seminole	2,801.6	153.4	2,955.0	63.3	2,801.6	76.6	2,941.5	3,091.1	167.7	3,258.8	76.8	3,091.1	58.4	3,226.3
Sumter	391.9	0.0	391.9	0.0	391.9	0.0	391.9	391.8	0.0	391.8	0.0	391.8	0.0	391.8
Suwannee	243.4	17.9	261.3	8.2	243.4	7.4	259.0	249.0	20.9	269.9	10.5	249.0	8.1	267.6
Taylor	90.5	27.2	117.7	7.6	90.5	14.7	112.8	94.5	23.2	117.7	12.5	94.5	9.1	116.1
Union	84.6	10.2	94.8	3.6	84.6	4.9	93.1	101.3	5.7	107.0	5.3	101.3	1.8	108.4
Volusia	2,198.8	340.9	2,539.7	194.8	2,198.8	172.0	2,565.6	2,589.6	281.3	2,870.9	168.9	2,589.6	86.9	2,845.4
Wakulla	124.4	25.2	149.6	9.9	124.4	12.5	146.8	100.0	44.9	144.9	12.7	100.0	21.4	134.1
Walton	87.5	99.8	187.3	35.4	87.5	46.5	169.4	49.3	99.3	148.6	53.3	49.3	29.4	132.0
Washington	78.7	7.4	86.1	5.4	78.7	3.7	87.8	95.6	7.5	103.1	3.7	95.6	3.2	102.5
Total	99,181.6	9,231.1	108,412.7	4,411.3	99,181.6	4,489.3	108,082.2	110,949.7	8,683.2	119,632.9	4,741.8	110,949.7	3,053.9	118,745.4

Estimated / Projected Enrollment

County	2008-09 Program Year			2008-09 Fiscal Year				Projected 2009-10		Projected 2010-11		Projected 2011-12	
	Estimated School Year 2008-09	Projected Summer 2009	Total Program Year	Preliminary Summer 2008 July & August	Estimated School Year 2008-09	Projected Summer 2009 May & June	Total Fiscal Year	Total Program Year	Total Fiscal Year	Total Program Year	Total Fiscal Year	Total Program Year	Total Fiscal Year
	-1-	-2-	-3-	-4-	-5-	-6-	-7-	-8-	-9-	-10-	-11-	-12-	-13-
State Total	136,905	9,000	145,905	6,222	136,905	3,150	146,277	154,261	154,521	159,096	159,291	162,996	163,126
Alachua	1,648	52	1,700	32	1,648	20	1,700	1,777	1,777	1,822	1,822	1,856	1,857
Baker	357	50	407	32	357	21	410	431	432	444	446	455	456
Bay	1,280	77	1,357	50	1,280	31	1,361	1,464	1,467	1,527	1,529	1,578	1,580
Bradford	250	0	250	0	250	0	250	269	269	280	280	289	289
Brevard	4,287	162	4,449	110	4,287	62	4,459	4,814	4,821	5,032	5,036	5,209	5,213
Broward	13,315	1,082	14,397	760	13,315	385	14,460	15,119	15,163	15,529	15,562	15,863	15,884
Calhoun	68	2	70	1	68	1	70	76	76	80	80	83	83
Charlotte	899	32	931	19	899	13	931	1,009	1,010	1,055	1,056	1,093	1,093
Citrus	730	30	760	20	730	10	760	787	788	802	802	815	815
Clay	1,690	44	1,734	29	1,690	17	1,736	1,860	1,862	1,934	1,935	1,994	1,995
Collier	1,747	319	2,066	210	1,747	121	2,078	2,155	2,164	2,204	2,211	2,244	2,248
Columbia	563	9	572	6	563	3	572	593	593	605	605	615	615
Miami-Dade	18,601	659	19,260	403	18,601	268	19,272	20,111	20,116	20,580	20,588	20,934	20,936
DeSoto	289	8	297	5	289	3	297	322	322	337	337	349	349
Dixie	117	0	117	0	117	0	117	121	121	124	124	126	126
Duval	8,736	340	9,076	244	8,736	118	9,098	9,719	9,735	10,097	10,108	10,403	10,410
Escambia	2,307	66	2,373	43	2,307	26	2,376	2,457	2,460	2,504	2,506	2,542	2,543
Flagler	657	69	726	48	657	25	730	762	765	783	785	800	801
Franklin	88	4	92	3	88	1	92	100	100	105	105	109	109
Gadsden	453	0	453	0	453	0	453	470	470	480	480	488	488
Gilchrist	124	12	136	8	124	4	136	141	141	144	144	146	146
Glades	99	3	102	2	99	1	102	108	108	111	111	114	114
Gulf	103	3	106	2	103	1	106	115	115	120	120	124	124
Hamilton	108	0	108	0	108	0	108	112	112	114	114	116	116
Hardee	262	63	325	42	262	21	325	347	348	361	361	371	372
Hendry	301	78	379	47	301	33	381	393	395	401	403	407	408
Hernando	1,259	70	1,329	48	1,259	27	1,334	1,435	1,438	1,498	1,499	1,550	1,552
Highlands	746	43	789	27	746	16	789	854	854	892	893	923	924
Hillsborough	9,702	1,404	11,106	1,089	9,702	330	11,121	11,945	11,955	12,444	12,454	12,849	12,856
Holmes	157	7	164	5	157	2	164	178	178	186	186	193	193
Indian River	907	120	1,027	64	907	57	1,028	1,091	1,092	1,129	1,130	1,159	1,159
Jackson	276	40	316	21	276	21	318	337	338	350	351	361	362
Jefferson	86	0	86	0	86	0	86	89	89	91	91	92	92
Lafayette	90	0	90	0	90	0	90	93	93	95	95	97	97
Lake	2,325	58	2,383	44	2,325	18	2,387	2,526	2,529	2,609	2,611	2,676	2,677
Lee	4,115	323	4,438	228	4,115	107	4,450	4,666	4,676	4,795	4,802	4,900	4,905
Leon	2,009	65	2,074	41	2,009	27	2,077	2,148	2,150	2,190	2,191	2,223	2,224
Levy	216	9	225	9	216	0	225	233	233	238	238	242	242
Liberty	113	0	113	0	113	0	113	117	117	119	119	121	121
Madison	78	21	99	13	78	9	100	101	101	103	103	104	104
Manatee	2,572	126	2,698	90	2,572	44	2,706	2,915	2,921	3,044	3,048	3,149	3,152
Marion	1,842	386	2,228	282	1,842	129	2,253	2,283	2,301	2,310	2,323	2,335	2,343
Martin	890	62	952	36	890	27	953	1,016	1,016	1,054	1,054	1,083	1,083
Monroe	381	16	397	5	381	12	398	412	412	420	420	427	427
Nassau	469	8	477	6	469	2	477	513	513	534	534	551	551
Okaloosa	1,633	83	1,716	52	1,633	31	1,716	1,826	1,827	1,890	1,890	1,942	1,942
Okeechobee	305	30	335	18	305	12	335	356	357	368	368	378	378
Orange	9,537	450	9,987	299	9,537	178	10,014	10,768	10,786	11,230	11,244	11,607	11,617
Osceola	2,556	188	2,744	125	2,556	65	2,746	2,955	2,955	3,080	3,082	3,181	3,181
Palm Beach	8,051	558	8,609	406	8,051	190	8,647	8,878	8,903	9,027	9,045	9,147	9,159
Pasco	3,777	92	3,869	67	3,777	31	3,875	4,195	4,199	4,389	4,393	4,547	4,549
Pinellas	5,647	449	6,096	295	5,647	181	6,123	6,343	6,361	6,480	6,493	6,592	6,601
Polk	3,056	265	3,321	171	3,056	108	3,335	3,567	3,579	3,711	3,719	3,830	3,836
Putnam	572	0	572	0	572	0	572	594	594	606	606	616	616
St. Johns	1,180	29	1,209	24	1,180	7	1,211	1,252	1,254	1,277	1,277	1,296	1,297
St. Lucie	2,147	124	2,271	77	2,147	54	2,278	2,379	2,384	2,441	2,444	2,491	2,493
Santa Rosa	1,038	39	1,077	28	1,038	14	1,080	1,165	1,167	1,218	1,219	1,261	1,262
Sarasota	1,911	101	2,012	66	1,911	41	2,018	2,118	2,121	2,178	2,181	2,227	2,229
Seminole	3,703	182	3,885	119	3,703	65	3,887	4,081	4,082	4,194	4,194	4,284	4,286
Sumter	509	0	509	0	509	0	509	528	528	539	539	548	548
Suwannee	280	21	301	14	280	8	302	311	312	316	316	321	321
Taylor	100	23	123	15	100	9	124	125	126	127	127	129	129
Union	100	6	106	4	100	2	106	110	110	112	112	114	114
Volusia	3,147	279	3,426	212	3,147	86	3,445	3,605	3,617	3,706	3,717	3,789	3,795
Wakulla	144	46	190	26	144	21	191	193	195	194	195	194	195
Walton	74	105	179	75	74	31	180	183	183	185	186	187	187
Washington	126	8	134	5	126	3	134	145	145	152	152	157	157
Total	136,905	9,000	145,905	6,222	136,905	3,150	146,277	154,261	154,521	159,096	159,291	162,996	163,126

Estimated / Projected FTE

County	2008-09 Program Year FTE			2008-09 Fiscal Year FTE				Projected 2009-10 FTE		Projected 2010-11 FTE		Projected 2011-12 FTE	
	Estimated School Year 2008-09 FTE	Summer 2009 FTE	Total Program Year FTE	Summer 2008 July & August FTE	Estimated School Year 2008-09 FTE	Projected Summer 2009		Total Program Year	Total Fiscal Year	Total Program Year	Total Fiscal Year	Total Program Year	Total Fiscal Year
						May & June FTE	Total Fiscal Year FTE						
	-1-	-2-	-3-	-4-	-5-	-6-	-7-	-8-	-9-	-10-	-11-	-12-	-13-
State Total	121,378.7	8,163.5	129,542.2	5,629.3	121,378.7	2,869.6	129,877.6	136,850.4	137,089.2	141,115.7	141,292.3	144,556.6	144,674.4
Alachua	1,444.2	44.4	1,488.6	27.3	1,444.2	17.1	1,488.6	1,556.1	1,556.1	1,595.5	1,595.5	1,625.4	1,626.2
Baker	313.5	44.5	358.0	28.8	313.5	18.4	360.7	379.0	379.0	390.4	392.2	400.0	400.9
Bay	1,112.9	74.8	1,187.7	48.7	1,112.9	30.0	1,191.6	1,280.2	1,283.2	1,334.7	1,336.6	1,378.6	1,380.6
Bradford	213.1	0.0	213.1	0.0	213.1	0.0	213.1	229.3	229.3	238.6	238.6	246.3	246.3
Brevard	3,916.2	152.8	4,069.0	102.8	3,916.2	59.4	4,078.4	4,402.1	4,408.6	4,601.1	4,604.8	4,762.6	4,766.3
Broward	12,054.9	984.5	13,039.4	687.7	12,054.9	353.8	13,096.4	13,692.7	13,732.6	14,063.7	14,093.6	14,366.0	14,385.0
Calhoun	66.8	2.0	68.8	1.0	66.8	1.0	68.8	74.7	74.7	78.7	78.7	81.6	81.6
Charlotte	789.8	30.2	820.0	17.2	789.8	13.0	820.0	888.5	889.4	928.8	929.8	962.2	962.2
Citrus	645.0	28.9	673.9	20.1	645.0	8.8	673.9	697.7	698.7	710.9	710.9	722.4	722.4
Clay	1,484.5	41.1	1,525.6	26.7	1,484.5	16.2	1,524.4	1,636.1	1,637.9	1,701.0	1,701.9	1,753.7	1,754.6
Collier	1,543.5	297.6	1,841.1	193.0	1,543.5	115.6	1,852.1	1,919.1	1,927.5	1,961.9	1,968.3	1,996.9	2,000.5
Columbia	478.6	7.0	485.6	4.7	478.6	2.3	485.6	503.5	503.5	513.7	513.7	522.2	522.2
Miami-Dade	16,998.3	567.2	17,565.5	347.1	16,998.3	228.2	17,573.6	18,272.9	18,279.5	18,700.2	18,707.0	19,022.8	19,024.6
DeSoto	230.5	5.5	236.0	3.4	230.5	2.1	236.0	256.0	256.0	267.9	267.9	277.5	277.5
Dixie	99.9	0.0	99.9	0.0	99.9	0.0	99.9	103.3	103.3	105.9	105.9	107.6	107.6
Duval	7,767.4	307.9	8,075.3	221.4	7,767.4	106.5	8,093.3	8,646.7	8,661.2	8,982.5	8,992.5	9,254.3	9,267.0
Escambia	1,957.6	61.8	2,019.4	40.0	1,957.6	24.6	2,022.2	2,090.3	2,093.1	2,129.9	2,131.8	2,162.0	2,162.9
Flagler	561.0	64.6	625.6	44.7	561.0	23.6	629.3	655.9	658.7	673.6	675.5	687.9	688.9
Franklin	70.3	2.8	73.1	2.0	70.3	0.8	73.1	79.5	79.5	83.5	83.5	86.7	86.7
Gadsden	422.3	0.0	422.3	0.0	422.3	0.0	422.3	438.2	438.2	447.5	447.5	455.0	455.0
Gilchrist	107.9	11.9	119.8	8.1	107.9	3.8	119.8	124.2	124.2	126.8	126.8	128.5	128.5
Glades	91.9	3.0	94.9	2.1	91.9	0.9	94.9	100.5	100.5	103.3	103.3	106.1	106.1
Gulf	90.3	2.1	92.4	1.0	90.3	1.1	92.4	100.3	100.3	104.7	104.7	108.2	108.2
Hamilton	93.8	0.0	93.8	0.0	93.8	0.0	93.8	97.3	97.3	99.0	99.0	100.8	100.8
Hardee	235.7	55.6	291.3	38.1	235.7	17.6	291.4	311.0	311.9	323.6	323.6	332.7	333.5
Hendry	248.5	71.7	320.2	42.2	248.5	31.3	322.0	331.3	333.1	337.8	339.6	342.6	343.5
Hernando	1,110.2	64.5	1,174.7	44.5	1,110.2	24.6	1,179.3	1,268.0	1,270.8	1,323.4	1,324.4	1,369.1	1,371.0
Highlands	666.3	39.1	705.4	24.0	666.3	15.1	705.4	763.4	763.4	797.4	798.3	825.0	825.9
Hillsborough	8,406.8	1,255.0	9,661.8	975.2	8,406.8	293.2	9,675.2	10,388.4	10,397.4	10,820.5	10,829.4	11,171.2	11,177.5
Holmes	136.2	6.0	142.2	3.7	136.2	2.3	142.2	154.3	154.3	161.3	161.3	167.3	167.3
Indian River	797.4	111.6	909.0	59.4	797.4	53.2	910.0	965.2	966.1	998.6	999.5	1,024.9	1,025.0
Jackson	236.3	36.1	272.4	17.8	236.3	20.0	274.1	290.2	291.0	301.3	302.1	310.7	311.6
Jefferson	71.5	0.0	71.5	0.0	71.5	0.0	71.5	74.0	74.0	75.7	75.7	76.5	76.5
Lafayette	81.3	0.0	81.3	0.0	81.3	0.0	81.3	84.0	84.0	85.8	85.8	87.6	87.6
Lake	2,036.9	54.3	2,091.2	41.3	2,036.9	16.7	2,094.9	2,216.2	2,219.1	2,288.7	2,290.6	2,347.4	2,348.3
Lee	3,587.5	302.2	3,889.7	215.8	3,587.5	97.8	3,901.1	4,087.7	4,097.1	4,199.4	4,206.0	4,290.5	4,295.3
Leon	1,814.0	58.1	1,872.1	35.9	1,814.0	24.9	1,874.8	1,939.0	1,940.8	1,977.0	1,977.8	2,006.8	2,007.7
Levy	181.7	6.2	187.9	6.0	181.7	0.0	187.7	194.6	194.6	198.9	198.9	202.2	202.2
Liberty	106.1	0.0	106.1	0.0	106.1	0.0	106.1	109.9	109.9	111.8	111.8	113.7	113.7
Madison	67.9	18.7	86.6	13.0	67.9	6.8	87.7	88.3	88.4	90.1	90.1	90.9	90.9
Manatee	2,230.6	114.2	2,344.8	81.6	2,230.6	39.9	2,352.1	2,532.7	2,538.1	2,644.3	2,648.0	2,735.2	2,737.9
Marion	1,590.3	361.2	1,951.5	264.8	1,590.3	119.9	1,975.0	1,997.1	2,013.9	2,018.9	2,031.2	2,039.6	2,047.1
Martin	796.8	58.6	855.4	33.1	796.8	26.4	856.3	912.7	912.7	946.7	946.7	972.5	972.5
Monroe	331.8	15.5	347.3	4.8	331.8	11.7	348.3	360.4	360.4	367.3	367.3	373.4	373.4
Nassau	414.6	6.5	421.1	4.4	414.6	2.1	421.1	453.0	453.0	471.5	471.5	486.6	486.6
Okaloosa	1,393.2	75.5	1,468.7	48.6	1,393.2	26.9	1,468.7	1,562.5	1,563.4	1,617.1	1,617.1	1,661.5	1,661.5
Okeechobee	264.9	29.4	294.3	17.8	264.9	11.6	294.3	312.4	313.4	322.7	322.7	331.4	331.4
Orange	8,325.3	406.2	8,731.5	270.9	8,325.3	159.7	8,755.9	9,412.4	9,428.8	9,815.0	9,827.7	10,143.7	10,152.7
Osceola	2,180.3	173.0	2,353.3	115.1	2,180.3	59.7	2,355.1	2,533.2	2,533.3	2,639.7	2,641.5	2,725.8	2,725.8
Palm Beach	7,130.2	507.1	7,637.3	368.5	7,130.2	173.1	7,671.8	7,874.7	7,897.4	8,005.9	8,022.3	8,111.8	8,122.6
Pasco	3,357.0	82.0	3,439.0	59.0	3,357.0	28.3	3,444.3	3,728.7	3,732.2	3,901.1	3,904.6	4,041.5	4,043.3
Pinellas	5,070.9	405.7	5,476.6	263.5	5,070.9	166.4	5,500.8	5,698.3	5,714.4	5,821.2	5,832.8	5,921.7	5,929.7
Polk	2,656.1	237.3	2,893.4	150.8	2,656.1	98.8	2,905.7	3,106.7	3,117.3	3,231.6	3,238.6	3,334.7	3,340.1
Putnam	502.2	0.0	502.2	0.0	502.2	0.0	502.2	521.5	521.5	532.0	532.0	540.8	540.8
St. Johns	1,055.4	25.2	1,080.6	20.3	1,055.4	6.6	1,082.3	1,119.1	1,120.8	1,141.5	1,141.5	1,158.4	1,159.3
St. Lucie	1,863.7	107.9	1,971.6	64.0	1,863.7	49.7	1,977.4	2,065.3	2,069.5	2,119.1	2,121.5	2,162.5	2,164.2
Santa Rosa	897.1	35.2	932.3	24.8	897.1	13.1	935.0	1,008.2	1,009.9	1,053.9	1,054.8	1,091.1	1,092.0
Sarasota	1,703.6	93.6	1,797.2	60.4	1,703.6	38.7	1,802.7	1,891.5	1,894.2	1,944.8	1,947.6	1,988.5	1,990.3
Seminole	3,331.3	165.0	3,496.3	109.3	3,331.3	57.5	3,498.1	3,672.6	3,673.5	3,774.3	3,774.3	3,855.2	3,857.0
Sumter	472.6	0.0	472.6	0.0	472.6	0.0	472.6	490.2	490.2	500.4	500.4	508.8	508.8
Suwannee	238.8	19.1	257.9	12.8	238.8	7.2	258.8	266.3	267.2	270.6	270.6	274.8	274.8
Taylor	88.3	21.3	109.6	14.1	88.3	8.2	110.6	111.4	112.3	113.1	113.1	114.9	114.9
Union	91.3	5.7	97.0	3.9	91.3	1.8	97.0	100.6	100.6	102.4	102.4	104.3	104.3
Volusia	2,761.6	256.5	3,018.1	194.4	2,761.6	79.5	3,035.5	3,174.4	3,185.5	3,262.5	3,272.5	3,334.9	3,340.4
Wakulla	130.9	42.2	173.1	23.5	130.9	19.5	173.9	175.8	177.7	176.7	177.6	176.7	177.6
Walton	61.8	98.4	160.2	69.9	61.8	29.4	161.1	163.4	163.5	165.0	165.9	166.7	166.7
Washington	99.6	7.5	107.1	4.3	99.6	3.2	107.1	115.7	115.7	121.3	121.3	125.2	125.2
Total	121,378.7	8,163.5	129,542.2	5,629.3	121,378.7	2,869.6	129,877.6	136,850.4	137,089.2	141,115.7	141,292.3	144,556.6	144,674.4

VPK Estimating Conference

Growth Rates

December 19, 2008

Table A July 2008 Conference

Year	Population	Population Growth Rate	School Year Enrollment	School Year Enrollment Growth Rate	Summer Enrollment	Program Year Enrollment	Program Year Enrollment Growth Rate	May / June Summer	July / August Summer	Fiscal Year Enrollment	Fiscal Year Enrollment Growth Rate	Program Year Participation Rate
2005-2006	221,924		94,036		12,468	106,504		7,144	5,324			48.0%
2006-2007	225,958	1.8%	113,253	20.4%	10,314	123,567	16.0%	5,013	5,304	123,590		54.7%
2007-2008	229,476	1.6%	125,144	10.5%	9,564	134,715	9.0%	3,443	6,175	133,841	8.3%	58.7%
2008-2009	234,186	2.1%	136,435	9.0%	9,000	145,435	8.0%	3,240	5,760	145,796	8.9%	62.1%
2009-2010	239,525	2.3%	142,662	4.6%	8,600	151,262	4.0%	3,096	5,504	151,518	3.9%	63.2%
2010-2011	244,047	1.9%	145,887	2.3%	8,300	154,187	1.9%	2,988	5,312	154,379	1.9%	63.2%
2011-2012	248,044	1.6%	148,654	1.9%	8,100	156,754	1.7%	2,916	5,184	156,882	1.6%	63.2%

Table B December 19, 2008 Conference

Year	Population	Population Growth Rate	School Year Enrollment	School Year Enrollment Growth Rate	Summer Enrollment	Program Year Enrollment	Program Year Enrollment Growth Rate	May / June Summer	July / August Summer	Fiscal Year Enrollment	Fiscal Year Enrollment Growth Rate	Program Year Participation Rate
2005-2006	221,924		94,036		12,468	106,504		7,219	5,249			48.0%
2006-2007	226,649	2.1%	113,253	20.4%	10,314	123,567	16.0%	4,961	5,353	123,463		54.5%
2007-2008	229,197	1.1%	125,142	10.5%	9,573	134,715	9.0%	3,351	6,222	133,846	8.4%	58.8%
2008-2009	229,269	0.0%	136,905	9.4%	9,000	145,905	8.3%	3,150	5,850	146,277	9.3%	63.6%
2009-2010	229,214	0.0%	143,476	4.8%	8,600	152,076	4.2%	3,010	5,590	152,336	4.1%	66.3%
2010-2011	230,240	0.4%	146,919	2.4%	8,300	155,219	2.1%	2,905	5,395	155,414	2.0%	67.4%
2011-2012	232,852	1.1%	149,857	2.0%	8,100	157,957	1.8%	2,835	5,265	158,087	1.7%	67.8%

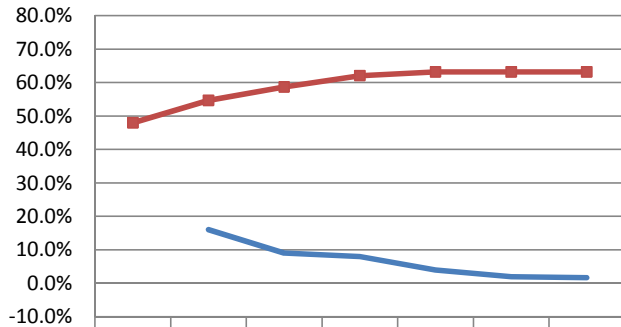
Table C Growth Rate Keeping Participation Rate Constant and Adjusting for Slowing Population Growth

Year	Program Year Enrollment	Program Year Enrollment Growth Rate	School Year Enrollment	School Year Enrollment Growth Rate	Fiscal Year Enrollment	Fiscal Year Enrollment Growth Rate	Program Year Participation Rate
2005-2006	106,504		94,036				48.0%
2006-2007	123,567	16.0%	113,253	20.4%	123,463		54.5%
2007-2008	134,715	9.0%	125,142	10.5%	133,846	8.4%	58.8%
2008-2009	145,905	8.3%	136,905	9.4%	146,277	9.3%	63.6%
2009-2010	144,863	-0.7%	136,263	-0.5%	145,123	-0.8%	63.2%
2010-2011	145,512	0.4%	137,212	0.7%	145,707	0.4%	63.2%
2011-2012	147,162	1.1%	139,062	1.3%	147,292	1.1%	63.2%

Table D Initially Assumed Participation Rate

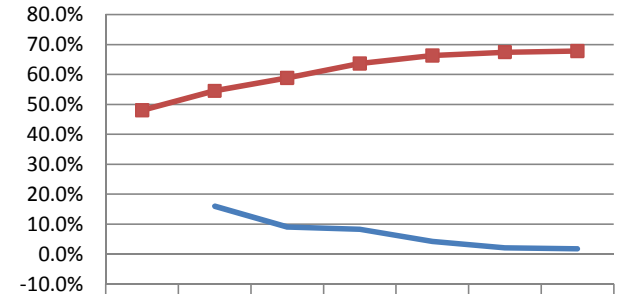
Year	Program Year Enrollment	Program Year Enrollment Growth Rate	School Year Enrollment	School Year Enrollment Growth Rate	Fiscal Year Enrollment	Fiscal Year Enrollment Growth Rate	Program Year Participation Rate
2005-2006	106,504		94,036				48.0%
2006-2007	123,567	16.0%	113,253	20.4%	123,463		54.5%
2007-2008	134,715	9.0%	125,142	10.5%	133,846	8.4%	58.8%
2008-2009	145,905	8.3%	136,905	9.4%	146,277	9.3%	63.6%
2009-2010	154,261	5.7%	145,661	6.4%	154,521	5.6%	67.3%
2010-2011	159,096	3.1%	150,796	3.5%	159,291	3.1%	69.1%
2011-2012	162,996	2.5%	154,896	2.7%	163,126	2.4%	70.0%

Figure A - July 2008 Conference



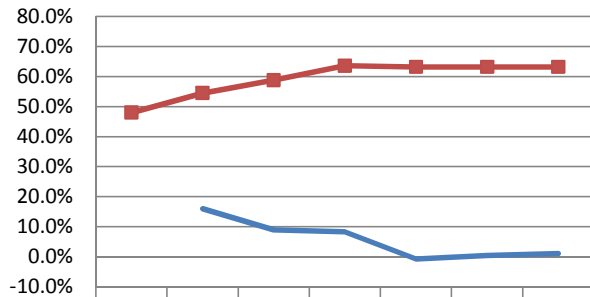
	2005-2006	2006-2007	2007-2008	2008-2009	2009-2010	2010-2011	2011-2012
Program Year Enrollment Growth Rate		16.0%	9.0%	8.0%	4.0%	1.9%	1.7%
Program Year Participation Rate	48.0%	54.7%	58.7%	62.1%	63.2%	63.2%	63.2%

Figure B - December 19, 2008 Conference



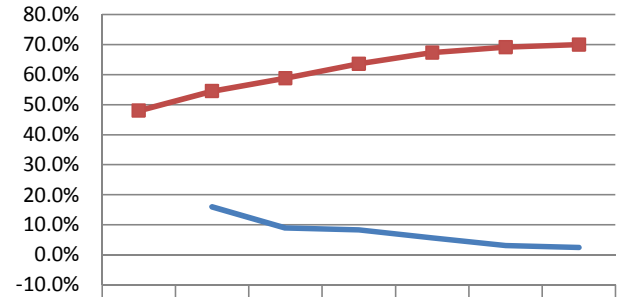
	2005-2006	2006-2007	2007-2008	2008-2009	2009-2010	2010-2011	2011-2012
Program Year Enrollment Growth Rate		16.0%	9.0%	8.3%	4.2%	2.1%	1.8%
Program Year Participation Rate	48.0%	54.5%	58.8%	63.6%	66.3%	67.4%	67.8%

Figure C - Adjusted for Slowing Population Growth



	2005-2006	2006-2007	2007-2008	2008-2009	2009-2010	2010-2011	2011-2012
Program Year Enrollment Growth Rate		16.0%	9.0%	8.3%	-0.7%	0.4%	1.1%
Program Year Participation Rate	48.0%	54.5%	58.8%	63.6%	63.2%	63.2%	63.2%

Figure D - Initially Assumed Participation Rate



	2005-2006	2006-2007	2007-2008	2008-2009	2009-2010	2010-2011	2011-2012
Program Year Enrollment Growth Rate		16.0%	9.0%	8.3%	5.7%	3.1%	2.5%
Program Year Participation Rate	48.0%	54.5%	58.8%	63.6%	67.3%	69.1%	70.0%

Figure E - Participation Rates

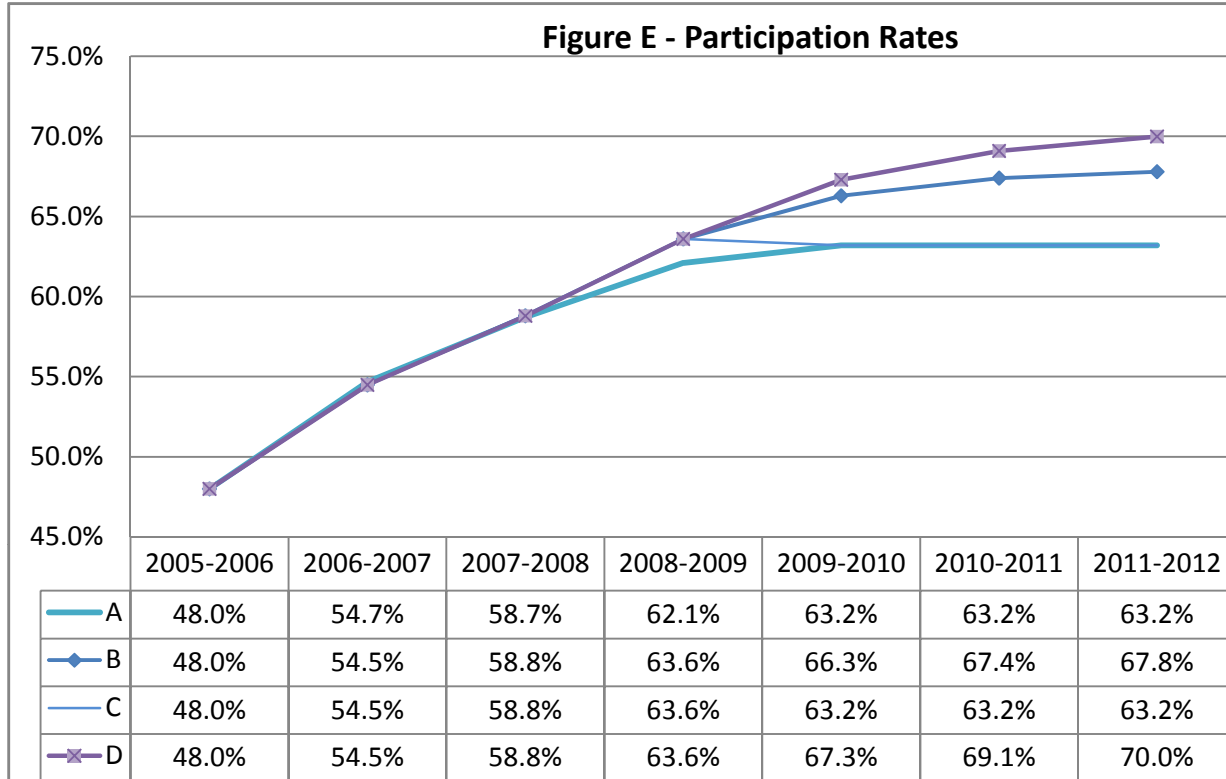
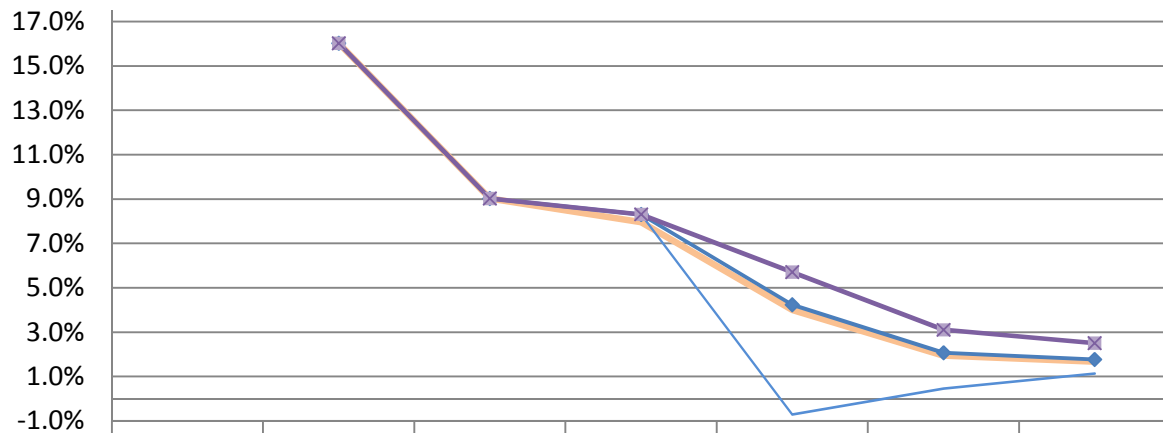


Figure F - Program Year Enrollment Growth Rates



	2005-2006	2006-2007	2007-2008	2008-2009	2009-2010	2010-2011	2011-2012
A	16.0%	9.0%	8.0%	4.0%	1.9%	1.7%	
B	16.0%	9.0%	8.3%	4.2%	2.1%	1.8%	
C	16.0%	9.0%	8.3%	-0.7%	0.4%	1.1%	
D	16.0%	9.0%	8.3%	5.7%	3.1%	2.5%	