



The Florida Legislature

Econographic News

Economic and Demographic News for Decision Makers

2016 Volume 2

Florida Vital Statistics

Florida Births

There were 224,273 resident live births in Florida in 2015, 2.0 percent above 2014's level of 219,905. In 2007, there was a record 239,120 resident live births in the state.

Most of the resident births in Florida were to white mothers (Figure 1).

Figure 1 - Florida Resident Births by Race
2015

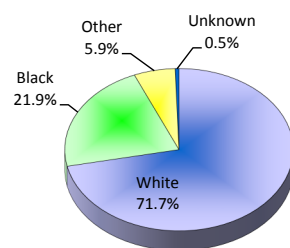


Table 1 - Florida Live Birth Rates* by Race
2015

Florida			U.S.
Total	White	Nonwhite	Total
11.3	10.4	14.2	NA

Florida's birth rate has been hovering between 11.1 and 11.4 since 2010. Birth rates were higher for nonwhites than whites, 14.2 versus 10.4 (Table 1). In 2015, the birth rate for Hispanics (regardless of race) was 13.2, while Non-Hispanics was 10.6. Hispanic births represent 28.5 percent of all births in the state.

Table 2 shows the number of live births by age and race of the mother. Overall, 51.0 percent of all births are to women aged 20-29, while over 78.0 percent are to women aged 20-34. The highest number of births are to

Table 2 - Florida Resident Births by Age and Race of Mother
2015

Mother's Age	Mother's Race				Total
	White	Black	Other NonWhite	Unknown	
<15	64	57	8	1	130
15-17	1,944	1,008	138	13	3,103
18-19	5,793	2,668	345	47	8,853
20-24	32,053	13,784	1,957	249	48,043
25-29	48,150	14,246	3,675	347	66,418
30-34	45,467	10,387	4,196	324	60,374
35-39	22,022	5,409	2,225	165	29,821
40-44	4,942	1,467	525	49	6,983
45+	391	81	58	9	539
Unknown	4	2	0	3	9
Total	160,830	49,109	13,127	1,207	224,273

Note: Totals may differ from those in text due to missing data on age and/or race.
*Rate per 1,000 women.

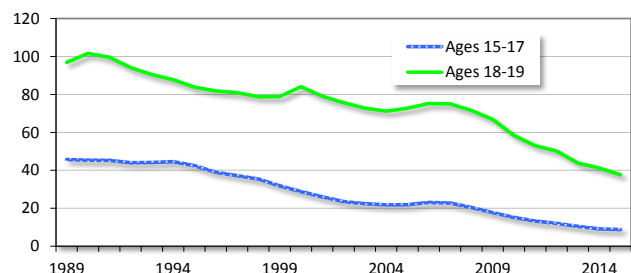
women aged 25-29, representing 29.6 percent of total births.

Teen Births

Teen births (to mothers aged 15-19) accounted for 5.3 percent of all births in 2015. These births represented 4.8 percent of births to white mothers and 6.7 percent to nonwhite mothers. Birth rates were higher for nonwhites than whites (25.0 vs 18.4), even though the number of births to teens was more for whites than nonwhites (7,737 versus 4,159).

Teen birth rates are higher for older teens (ages 18-19) than for younger teens (ages 15-17). Both rates have been trending downward over time, as shown in Figure 2. In 2015 there were 8.8 births per 1,000 girls aged 15-17 and 37.7 births per 1,000 girls aged 18-19. Since 1989, birth rates hit a high of 45.7 for girls aged 15-17 in 1989 and 101.7 for girls aged 18-19 in 1990.

Figure 2 - Florida Teen Birth Rate* by Age



Unwed Mothers

In general, the percent of live births to unwed Florida mothers had been steadily increasing, representing 15.0 percent of all births in 1970, 22.9 percent in 1980, 31.7 percent in 1990, 38.2 percent in 2000, and 47.7 percent in 2015. For white mothers, 42.6 percent of live births was to an unwed woman, while for nonwhite mothers this percentage was 61.0 percent.

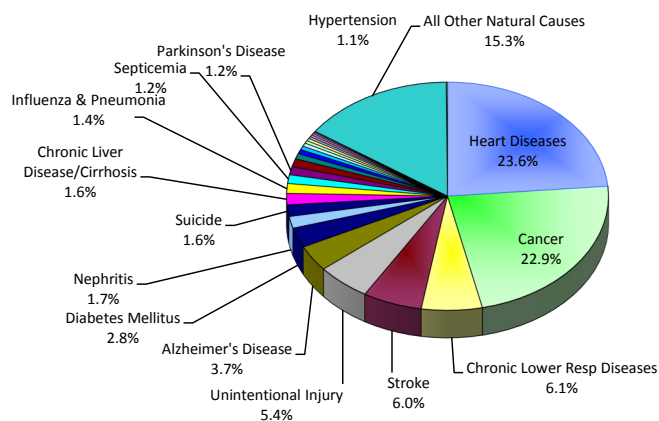
Florida Deaths

There were 191,488 resident deaths in Florida in 2015, an increase of 2.8 percent from 185,038 in 2014. As shown in Table 3, male death rates typically equal or exceed female death rates by age group. Also, for most age groups, nonwhite death rates equal or exceed the death rates for whites.

The two major causes of deaths in Florida in 2015 were heart diseases and cancer (Figure 3), representing 46.5 percent of all deaths in the state. The number of deaths due to these two major causes increases as the population ages. However, the percentage of deaths due to heart diseases and cancer relative to the total number of deaths by age group is greatest for the 65-74 year old group (55.6%).

For residents between age 1 and 44, unintentional injury (accidents) was the primary cause of death.

Figure 3 - Florida Resident Deaths by Major Cause
2015



Florida Infant Mortality

In 2015, 1,400 babies died prior to their first birthday. The infant death rate was 6.3 deaths per 1,000 live births. Since 1995, Florida's infant mortality rate had been hovering between 7.0 and 7.5; before declining over the past few years. In 1980 the rate was 14.6, higher than the 1990 rate of 9.6.

Figure 4 displays decade data (1960 through 1990) and annual data (1995 through 2014). Through the mid-1990s, infant mortality rates trended downward for both whites and nonwhites. White rates were 7.5 in 1990 and 4.4 in 2015, while nonwhite rates were 16.0 in 1990 and 11.0 in 2015. The Infant mortality rate for nonwhites is more than double the rate for whites. As shown in Figure 4, nonwhite infant mortality rates have consistently exceeded the rates for whites.

Figure 4 - Florida Infant Mortality Rate
(per 1,000 Live Births)

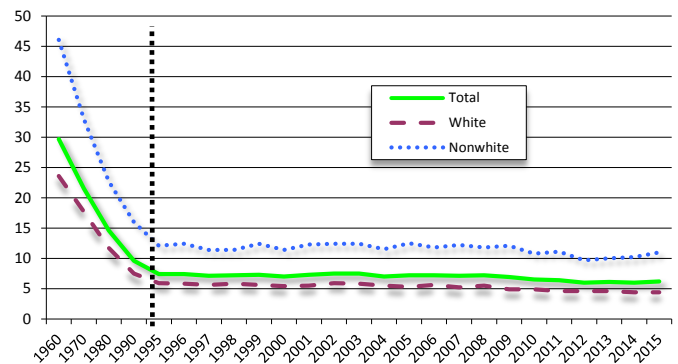


Table 3 - Florida Resident Deaths by Age and Race
2015

	White Males		White Females		Nonwhite Males		Nonwhite Females		Total*	
Age	Number	Death Rate**	Number	Death Rate**	Number	Death Rate**	Number	Death Rate**	Number	Death Rate**
<1	421	5.1	290	3.7	374	12.0	307	10.2	1,400	6.3
1-4	92	0.3	62	0.2	66	0.5	44	0.3	264	0.3
5-9	56	0.1	34	0.1	34	0.2	21	0.1	146	0.1
10-14	57	0.1	44	0.1	34	0.2	18	0.1	155	0.1
15-19	271	0.6	123	0.3	155	0.9	51	0.3	600	0.5
20-24	658	1.3	246	0.5	337	1.8	97	0.5	1,339	1.0
25-34	1,621	1.7	695	0.8	612	2.0	274	0.8	3,208	1.3
35-44	2,115	2.4	1,203	1.4	729	2.7	502	1.7	4,556	1.9
45-54	5,597	5.3	3,423	3.2	1,308	5.1	1,051	3.6	11,400	4.3
55-64	12,071	11.6	7,257	6.4	2,625	12.4	1,911	7.7	23,894	9.1
65-74	17,903	21.5	12,123	12.8	2,657	22.6	2,182	14.8	34,918	17.1
75-84	22,273	45.3	19,031	31.9	2,508	46.3	2,513	32.6	46,378	38.0
85+	24,265	131.4	34,454	117.5	1,589	108.3	2,847	97.0	63,218	121.1
Unknown	3		5		2		0		12	
Total	87,403	11.5	78,990	10.0	13,030	6.2	11,818	5.2	191,488	9.6

*Totals may not add due to unknown. **Death Rate per 1,000 population.

Data in this report are from the Florida Vital Statistics Annual Report 2015, Florida Department of Health, <http://www.flpublichealth.com/VBOOK/pdf/2014/vscomp.pdf>; Florida Department of Health, CHARTS system.