



Florida Vital Statistics

Florida Births

There were 225,018 resident live births in Florida in 2016, 0.3 percent above 2015's level of 224,273. In 2007, there was a record 239,120 resident live births in the state.

Most of the resident births in Florida were to white mothers (Figure 1).

Figure 1 - Florida Resident Births by Race 2016

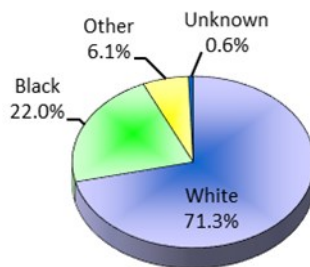


Table 1 - Florida Live Birth Rates* by Race

2016

Florida		
Total	White	Nonwhite
11.1	10.2	14.0

Florida's birth rate has been hovering between 11.1 and 11.4 since 2010. Birth rates were higher for nonwhites than whites, 14.0 versus 10.2 (Table 1). In 2016, the birth rate for Hispanics (regardless of race) was 13.2, while Non-Hispanics was 10.3. Hispanic births represent 29.1 percent of all births in the state.

Table 2 shows the number of live births by age and race of the mother. Overall, 49.9 percent of all births are to women aged 20-29, while 77.6 percent are to women aged 20-34. The highest number of births are to women

Table 2 - Florida Resident Births by Age and Race of Mother 2016

Mother's Age	Mother's Race				Total
	White	Black	Other NonWhite	Unknown	
<15	64	46	5	1	116
15-17	1,791	922	116	30	2,859
18-19	5,470	2,456	348	53	8,327
20-24	30,496	13,106	1,998	278	45,878
25-29	47,528	14,539	3,851	410	66,328
30-34	46,705	10,894	4,445	366	62,410
35-39	22,890	5,848	2,454	223	31,415
40-44	5,039	1,480	581	48	7,148
45+	379	114	35	4	532
Unknown	3	0	0	2	5
Total	160,365	49,405	13,833	1,415	225,018

Note: Totals may differ from those in text due to missing data on age and/or race.
*Rate per 1,000 women.

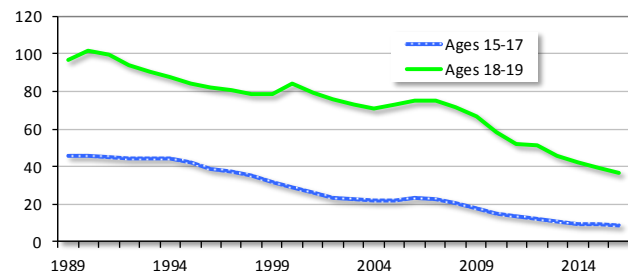
aged 25-29, representing 29.5 percent of total births.

Teen Births

Teen births (to mothers aged 15-19) accounted for 5.0 percent of all births in 2016. These births represented 4.5 percent of births to white mothers and 6.1 percent to nonwhite mothers. Birth rates were higher for nonwhites than whites (23.1 vs 17.8), even though the number of births to teens was more for whites than nonwhites (7,261 versus 3,842).

Teen birth rates are higher for older teens (ages 18-19) than for younger teens (ages 15-17). Both rates have been trending downward over time, as shown in Figure 2. In 2016 there were 8.3 births per 1,000 girls aged 15-17 and 36.4 births per 1,000 girls aged 18-19. Since 1989, birth rates hit a high of 45.7 for girls aged 15-17 in 1989 and 101.7 for girls aged 18-19 in 1990.

Figure 2 - Florida Teen Birth Rate* by Age



Unwed Mothers

In general, the percent of live births to unwed Florida mothers had been steadily increasing, representing 15.0 percent of all births in 1970, 22.9 percent in 1980, 31.7 percent in 1990, 38.2 percent in 2000, and 46.9 percent in 2016. For white mothers, 42.0 percent of live births was to an unwed woman, while for nonwhite mothers this percentage was 59.2 percent.

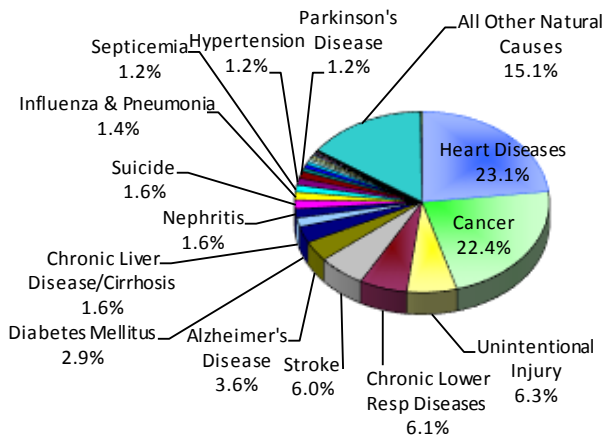
Florida Deaths

There were 197,236 resident deaths in Florida in 2016, an increase of 3.0 percent from 191,488 in 2015. As shown in Table 3, male death rates typically equal or exceed female death rates by age group. Also, for most age groups, nonwhite death rates equal or exceed the death rates for whites.

The two major causes of deaths in Florida in 2016 were heart diseases and cancer (Figure 3), representing 45.6 percent of all deaths in the state. The number of deaths due to these two major causes typically increases as the population ages. However, the percentage of deaths due to heart diseases and cancer relative to the total number of deaths by age group is greatest for the 65-74 year old group (54.3%).

For residents between age 1 and 44, unintentional injury (accidents) was the primary cause of death.

Figure 3 - Florida Resident Deaths by Major Cause 2016



Florida Infant Mortality

In 2016, 1,380 babies died prior to their first birthday. The infant death rate was 6.2 deaths per 1,000 live births. Since 1995, Florida's infant mortality rate had been hovering between 7.0 and 7.5; before declining over the past few years. In 1980 the rate was 14.6, higher than the 1990 rate of 9.6.

Figure 4 displays decade data (1960 through 1990) and annual data (1995 through 2016). Through the mid-1990s, infant mortality rates trended downward for both whites and nonwhites. White rates were 7.5 in 1990 and 4.4 in 2016, while nonwhite rates were 16.0 in 1990 and 10.9 in 2016. The Infant mortality rate for nonwhites is more than double the rate for whites. As shown in Figure 4, nonwhite infant mortality rates have consistently exceeded the rates for whites.

Figure 4 - Florida Infant Mortality Rate (per 1,000 Live Births)

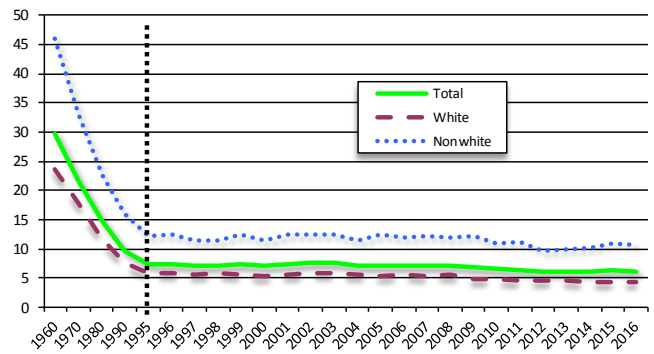


Table 3 - Florida Resident Deaths by Age and Race

Age	White Males		White Females		Nonwhite Males		Nonwhite Females		Total*	
	Number	Death Rate**	Number	Death Rate**	Number	Death Rate**	Number	Death Rate**	Number	Death Rate**
<1	379	4.7	314	4.1	373	11.7	304	9.9	1,380	6.2
1-4	87	0.3	59	0.2	61	0.4	39	0.3	246	0.3
5-9	54	0.1	35	0.1	40	0.2	26	0.2	155	0.1
10-14	54	0.1	55	0.1	26	0.2	24	0.1	161	0.1
15-19	289	0.7	132	0.3	197	1.1	54	0.3	672	0.6
20-24	719	1.5	244	0.5	303	1.6	89	0.5	1,356	1.0
25-34	2,102	2.1	896	1.0	672	2.0	323	0.9	3,997	1.5
35-44	2,478	2.7	1,350	1.5	754	2.7	588	1.9	5,173	2.1
45-54	5,684	5.3	3,512	3.2	1,474	5.6	1,116	3.8	11,799	4.3
55-64	12,461	12.0	7,677	6.7	2,609	12.3	1,989	7.8	24,760	9.4
65-74	18,344	20.6	12,944	12.8	2,815	23.1	2,364	15.4	36,503	16.8
75-84	22,502	45.3	19,388	32.7	2,630	49.6	2,642	35.2	47,174	38.7
85+	24,616	95.8	34,580	114.6	1,636	107.5	2,992	128.4	63,843	118.2
Unknown	8		3		2		1		17	
Total	89,777	11.6	81,189	10.1	13,592	6.3	12,551	5.4	197,236	9.7

*Totals may not add due to unknown. **Death Rate per 1,000 population. Data in this report are from the Florida Vital Statistics Annual Report 2016, Florida Department of Health, <http://www.flpublichealth.com/VBOOK/pdf/2014/vscomp.pdf>; Florida Department of Health, CHARTS system.