



The Florida Legislature

Econographic News

Economic and Demographic News for Decision Makers

2020 Volume 2

Florida Vital Statistics

Florida Births

There were 221,508 resident live births in Florida in 2018, 0.9 percent below 2017's level of 223,579. In 2007, there was a record 239,120 resident live births in the state.

Most of the resident births in Florida were to white mothers (Figure 1).

Figure 1 - Florida Resident Births by Race 2018

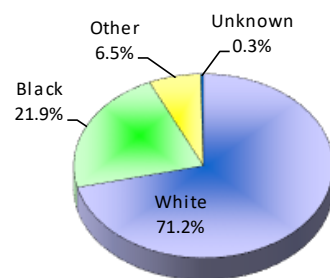


Table 1 - Florida Live Birth Rates* by Race 2018

Florida		
Total	White	Nonwhite
10.6	9.7	13.3

Florida's birth rate had been hovering between 11.1 and 11.4 since 2010, falling more recently to 10.9 in 2017 and 10.6 in 2018. Birth rates continue to be higher for nonwhites than whites, 13.3 versus 9.7 (Table 1). In 2018, the birth rate for Hispanics (regardless of race) was 12.3, while Non-Hispanics was 9.8. Hispanic births represent 29.9 percent of all births in the state.

Table 2 shows the number of live births by age and race of the mother. Overall, 47.9 percent of all births are to women aged 20-29, while 76.6 percent are to women aged 20-34. The highest number of births are to women aged 25-29, representing 29.3 percent of total births.

Table 2 - Florida Resident Births by Age and Race of Mother 2018

Mother's Age	Mother's Race				Total
	White	Black	Other NonWhite	Unknown	
<15	52	38	8	0	98
15-17	1,460	789	105	6	2,360
18-19	4,892	2,178	374	24	7,468
20-24	27,855	11,212	2,087	122	41,276
25-29	45,986	14,750	3,899	204	64,839
30-34	47,346	11,347	4,559	218	63,470
35-39	24,535	6,501	2,707	133	33,876
40-44	5,268	1,633	594	45	7,540
45+	394	117	59	0	570
Unknown	5	2	0	4	11
Total	157,793	48,567	14,392	756	221,508

Note: Totals may differ from those in text due to missing data on age and/or race.

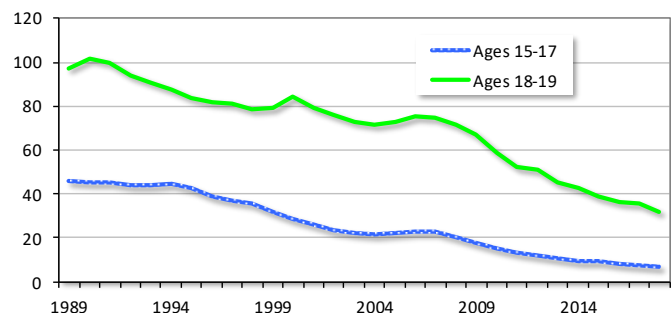
*Rate per 1,000 women.

Teen Births

Teen births (to mothers aged 15-19) accounted for 4.4 percent of all births in 2018. These births represented 4.0 percent of births to white mothers and 5.5 percent to nonwhite mothers. Birth rates were higher for nonwhites than whites (19.9 vs 15.3), even though the number of births to teens was more for whites than nonwhites (6,352 versus 3,446).

Teen birth rates are higher for older teens (ages 18-19) than for younger teens (ages 15-17). Both rates have been trending downward over time, as shown in Figure 2. In 2018 there were 6.7 births per 1,000 girls aged 15-17 and 31.9 births per 1,000 girls aged 18-19. Since 1989, birth rates hit a high of 45.7 for girls aged 15-17 in 1989 and 101.7 for girls aged 18-19 in 1990.

Figure 2 - Florida Teen Birth Rate* by Age



Unwed Mothers

In general, the percent of live births to unwed Florida mothers had been steadily increasing, representing 15.0 percent of all births in 1970, 22.9 percent in 1980, 31.7 percent in 1990, 38.2 percent in 2000, and 47.5 percent in 2010. Over the course of this decade this percentage appears to have peaked early in the decade and has fallen slowly to 46.3 percent in 2018. For white mothers, 41.7 percent of live births was to an unwed woman, while for nonwhite mothers this percentage was 58.0 percent.

Florida Deaths

There were 205,461 resident deaths in Florida in 2018, an increase of 1.0 percent from 203,353 in 2017. As shown in Table 3, male death rates typically equal or exceed female death rates by age group. Also, for most age groups, nonwhite death rates equal or exceed the death rates for whites. The exceptions are the 35-44, 45-54 and 85+ age groups for males; and the 25-34 and 85+ age groups for females.

The two major causes of deaths in Florida in 2018 were heart diseases and cancer (Figure 3), representing 44.8 percent of all deaths in the state. The number of deaths due to these two major causes typically increases as the population ages. However, the percentage of deaths due to heart diseases and cancer relative to the total number of deaths by age group is greatest for the 65-74 year old group (53.9%).

For residents between age 1 and 44, unintentional injury (accidents) was the primary cause of death, representing 39.3% of the deaths in this age group.

Figure 3 - Florida Resident Deaths by Major Cause
2018

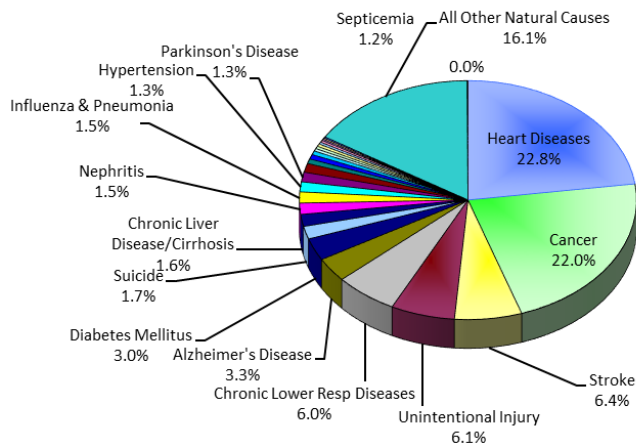


Table 3 - Florida Resident Deaths by Age and Race
2018

	White Males		White Females		Nonwhite Males		Nonwhite Females		Total*	
Age	Number	Death Rate**	Number	Death Rate**	Number	Death Rate**	Number	Death Rate**	Number	Death Rate**
<1	378	4.8	298	4.0	369	11.7	281	9.2	1,334	6.2
1-4	86	0.3	52	0.2	67	0.5	41	0.3	246	0.3
5-9	48	0.1	35	0.1	35	0.2	29	0.2	147	0.1
10-14	65	0.2	39	0.1	24	0.1	24	0.1	153	0.1
15-19	267	0.6	124	0.3	151	0.9	47	0.3	589	0.5
20-24	619	1.3	232	0.5	312	1.7	111	0.6	1,274	1.0
25-34	1,911	1.9	953	1.0	734	2.0	317	0.8	3,922	1.4
35-44	2,624	2.8	1,435	1.5	796	2.7	494	1.5	5,358	2.1
45-54	5,388	5.0	3,197	2.9	1,328	4.8	1,088	3.5	11,016	4.0
55-64	12,970	11.9	7,886	6.6	2,889	12.6	2,102	7.6	25,903	9.3
65-74	19,650	20.8	13,595	12.6	3,164	23.1	2,581	14.8	39,036	16.7
75-84	24,253	45.4	20,659	32.6	2,820	47.5	2,882	34.9	50,650	38.6
85+	25,391	125.8	35,297	116.6	1,853	113.8	3,257	102.0	65,828	119.1
Unknown	4		0		0		0		5	
Total	93,654	11.8	83,802	10.2	14,542	6.4	13,254	5.4	205,461	9.8

*Totals may not add due to unknown. **Death Rate per 1,000 population.

Data in this report are from the Florida Vital Statistics Annual Report 2018, Florida Department of Health, <http://www.flpublichealth.com/VSBOOK/pdf/2018/vscomp.pdf>; Florida Department of Health, CHARTS system.

Florida Infant Mortality

In 2018, 1,334 babies died prior to their first birthday. The infant death rate was 6.0 deaths per 1,000 live births. Between 1995 and 2008, Florida's infant mortality rate had been hovering between 7.0 and 7.5; however, over the past seven years, the rate has ranged between 6.0 and 6.2. In 1980 the rate was 14.6, higher than the 1990 rate of 9.6.

Figure 4 displays decade data (1960 through 1990) and annual data (1995 through 2018). Through the mid-1990s, infant mortality rates trended downward for both whites and nonwhites. White rates were 7.5 in 1990 and 4.3 in 2018, while nonwhite rates were 16.0 in 1990 and 10.3 in 2018. The infant mortality rate for nonwhites is more than double the rate for whites. As shown in Figure 4, nonwhite infant mortality rates have consistently exceeded the rates for whites.

Figure 4 - Florida Infant Mortality Rate
(per 1,000 Live Births)

