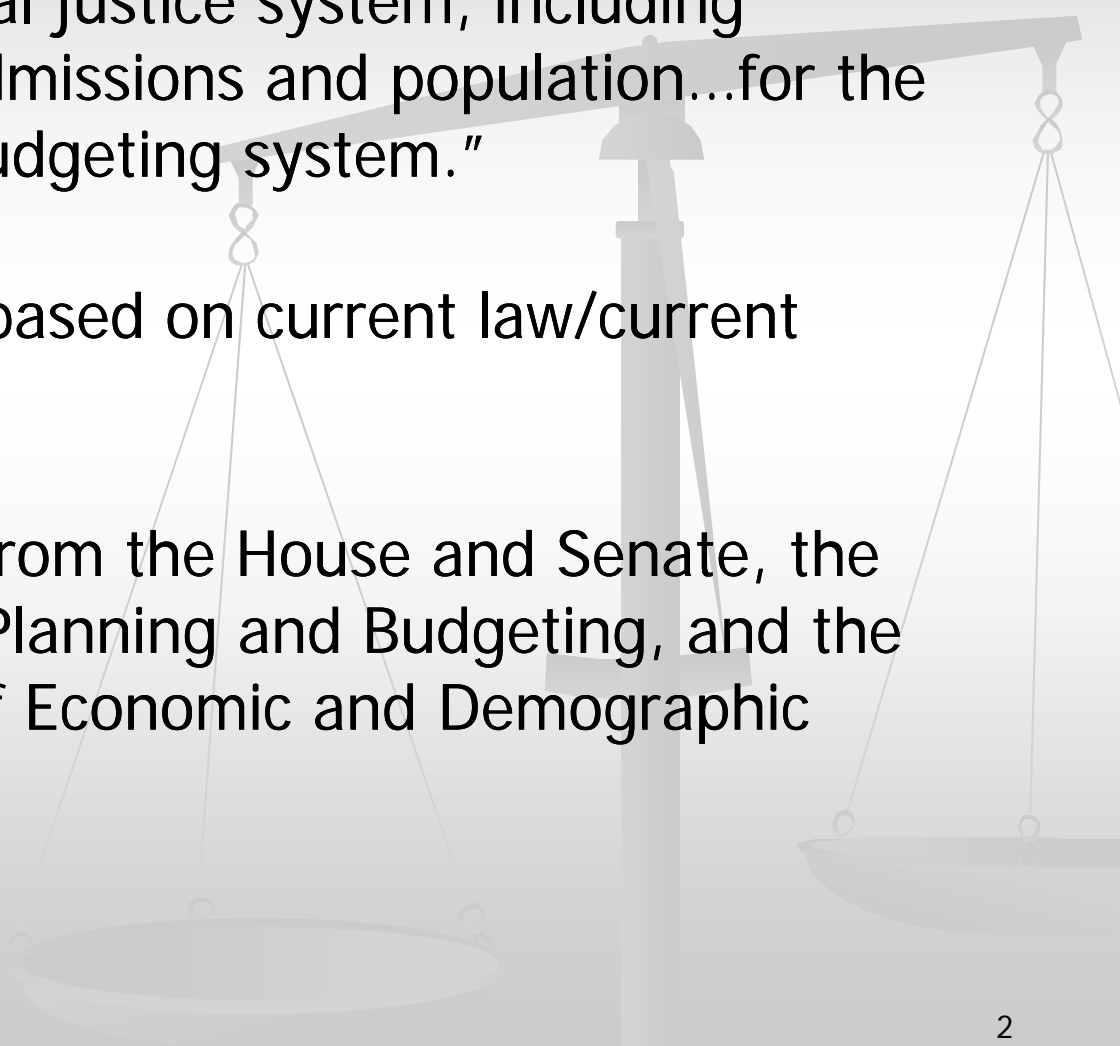




# Results of the October 2010 Criminal Justice Estimating Conference

Prepared by the Florida Legislature, Office of Economic and Demographic Research for  
the House Justice Appropriations Committee Meeting, February 9, 2011



Criminal Justice Estimating Conference will typically meet three times a year to “develop official information relating to the criminal justice system, including forecasts of prison admissions and population...for the state planning and budgeting system.”

Projections are usually based on current law/current administration.

Principals include staff from the House and Senate, the Governor’s Office of Planning and Budgeting, and the Legislature’s Office of Economic and Demographic Research.

In addition, the Criminal Justice Impact Conference meets to determine the prison bed impact of proposed legislation.

Proposed legislation which creates new felony offenses or increases the penalty for existing offenses may impact the number of prison beds that are needed.

Alternatively, proposed legislation which creates diversion programs or reduces the penalty for existing offenses may impact the number of prison beds that are needed (fewer beds).

**CJEC met last year on February 19<sup>th</sup> and on October 19<sup>th</sup>**

**February had projected that FY 09-10 admissions would decline by 6.6% from FY 08-09.**

**Actual admissions were 5.6% lower than in FY 08-09.**

**For the CURRENT fiscal year (FY 10-11)**

**February CJEC had projected that admissions would remain the same as in FY 09-10.**

**In first three months of this fiscal year, admissions were 5.1% lower than in the same period in FY 09-10.**



**Going into the October CJEC, it appeared that admissions needed to be adjusted downward from the February CJEC.**

October's CJEC projected prison  
**admissions** compared to February 2010

CJEC :

- **1,010** for **FY 10-11**
- **1,376** for **FY 11-12**
- **1,741** for **FY 12-13**

FY 10-11 admissions now projected to be  
**36,394**

# October's CJEC projected prison population compared to February's CJEC:

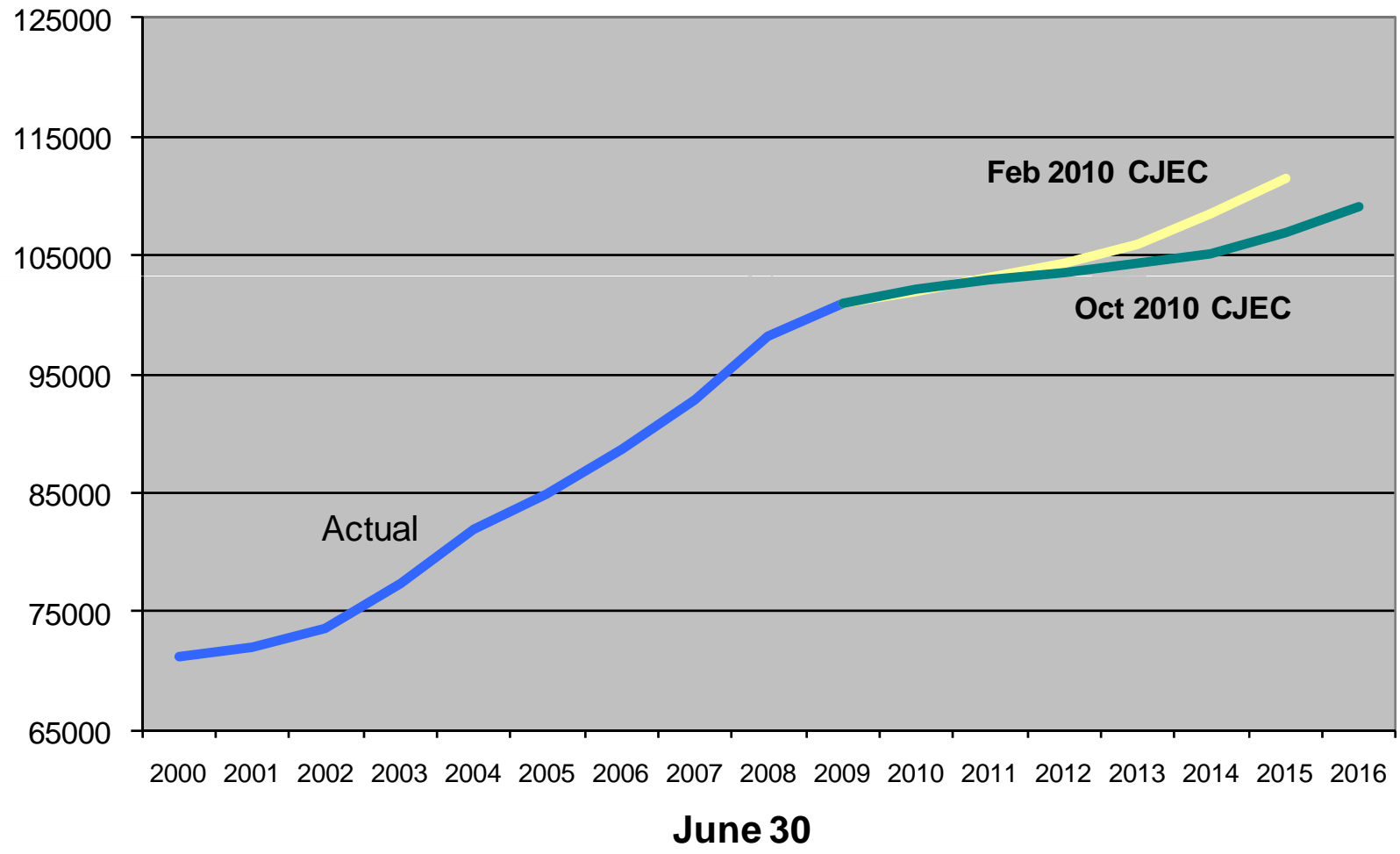
June 30<sup>th</sup> prison population:

- **169 for FY 10-11**
- **785 for FY 11-12**
- **1,572 for FY 12-13**

June 30, 2011 prison population projection  
**102,954**



### Prison Population on June 30: Actual and Projected-- February 2010 and October 2010 CJECs



# Why were projections lowered in October?

**Review of criminal justice indicators suggest that trends first observed in 2008 are continuing.**

**These trends will result in smaller numbers of new commitments coming to prison than previously anticipated.**

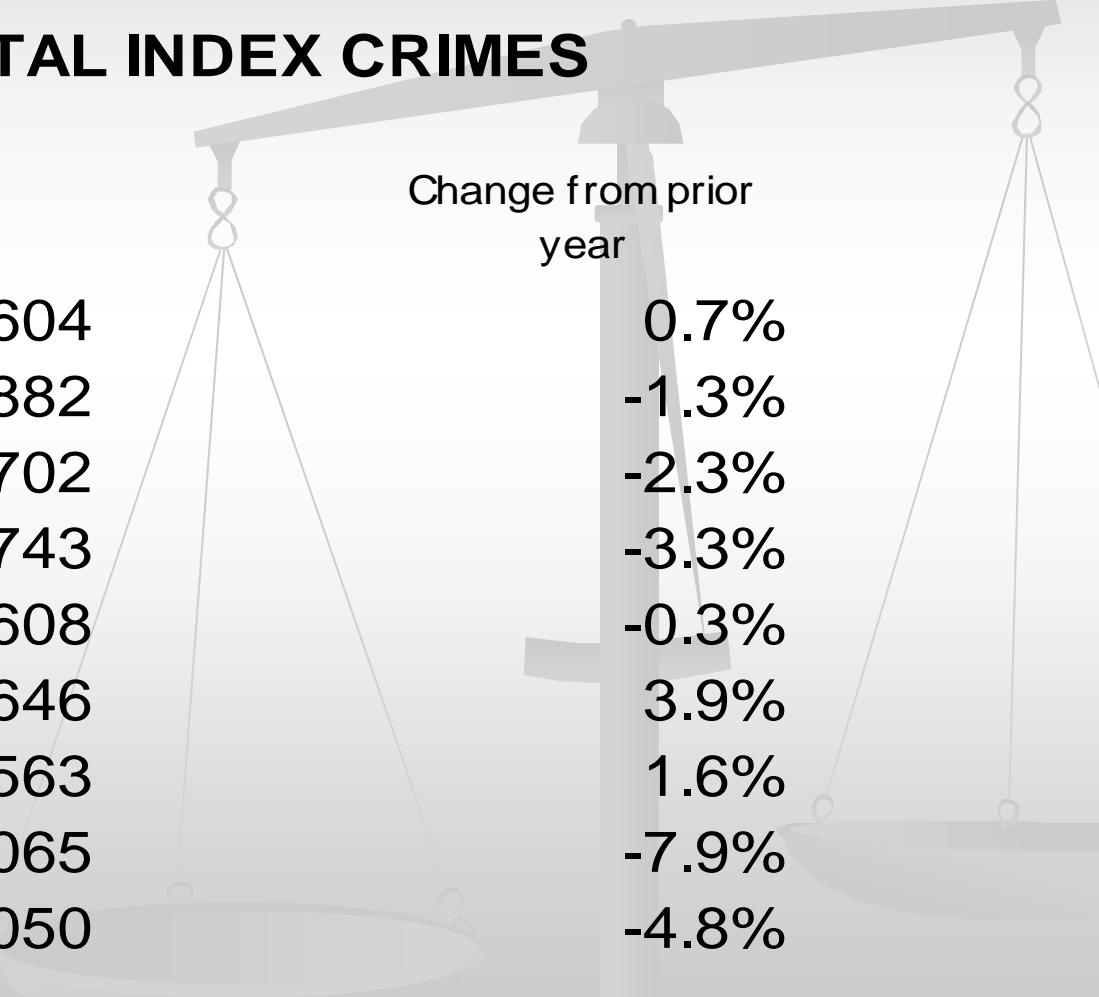
# Indicators

- **Crime Trends**
- **Judicial System Trends**
- **New Commitments to Prison**
- **Technical Violators**
- **Year-and-a Day Sentences**

# Indicator 1—Crime Trends

Six-Month Uniform Crime Report – January through June

## TOTAL INDEX CRIMES



		Change from prior year
2002	442,604	0.7%
2003	436,882	-1.3%
2004	426,702	-2.3%
2005	412,743	-3.3%
2006	411,608	-0.3%
2007	427,646	3.9%
2008	434,563	1.6%
2009	400,065	-7.9%
2010	381,050	-4.8%

# Crime Trends by Type of Crime

Six Month Uniform Crime Report: January - June

## VIOLENT CRIME

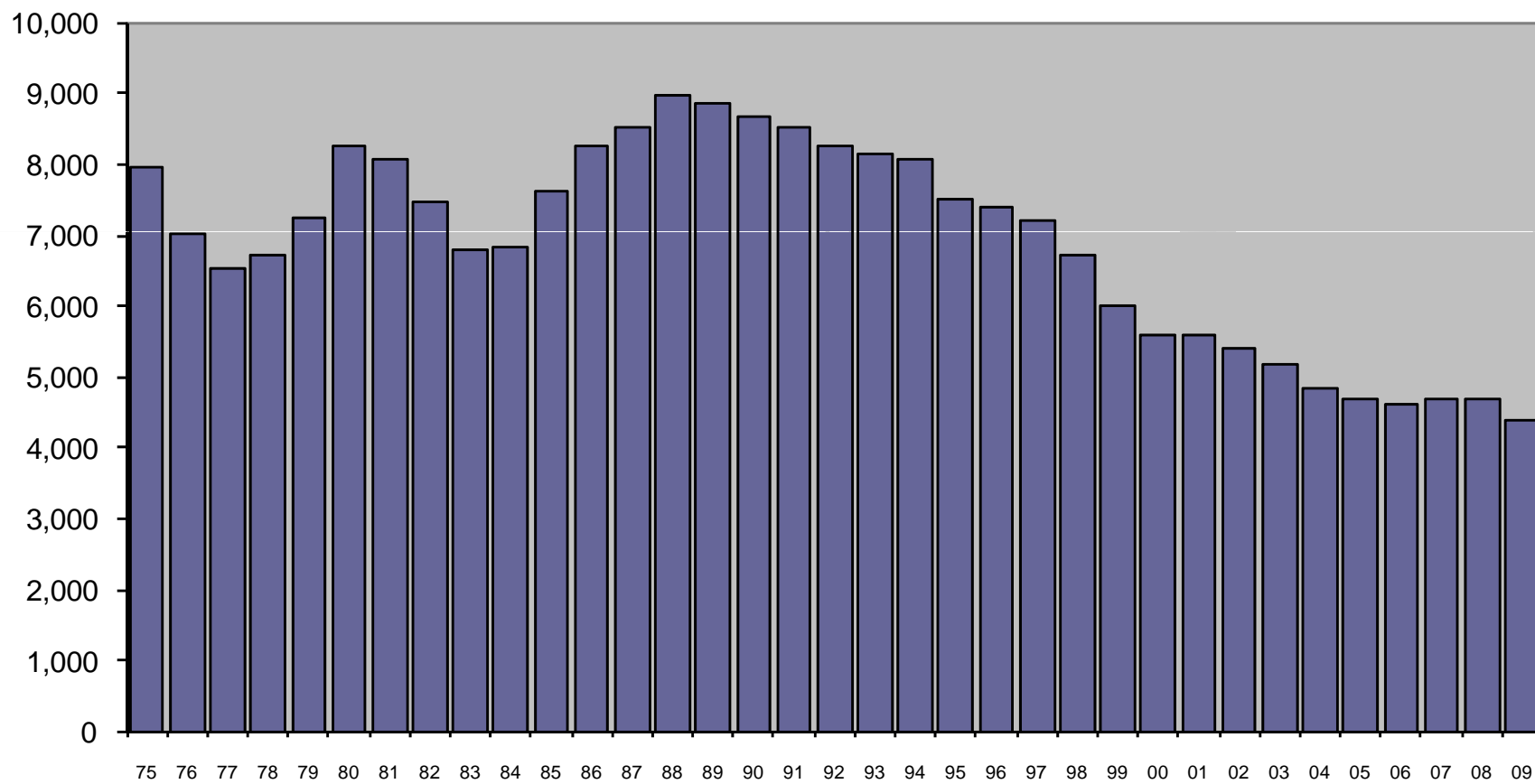
		Change from prior year
2002	62,770	-1.6%
2003	61,699	-1.7%
2004	61,345	-0.6%
2005	61,737	0.6%
2006	63,712	3.2%
2007	65,011	2.0%
2008	63,421	-2.4%
2009	57,253	-9.7%
2010	51,113	-10.7%

## NON-VIOLENT CRIME

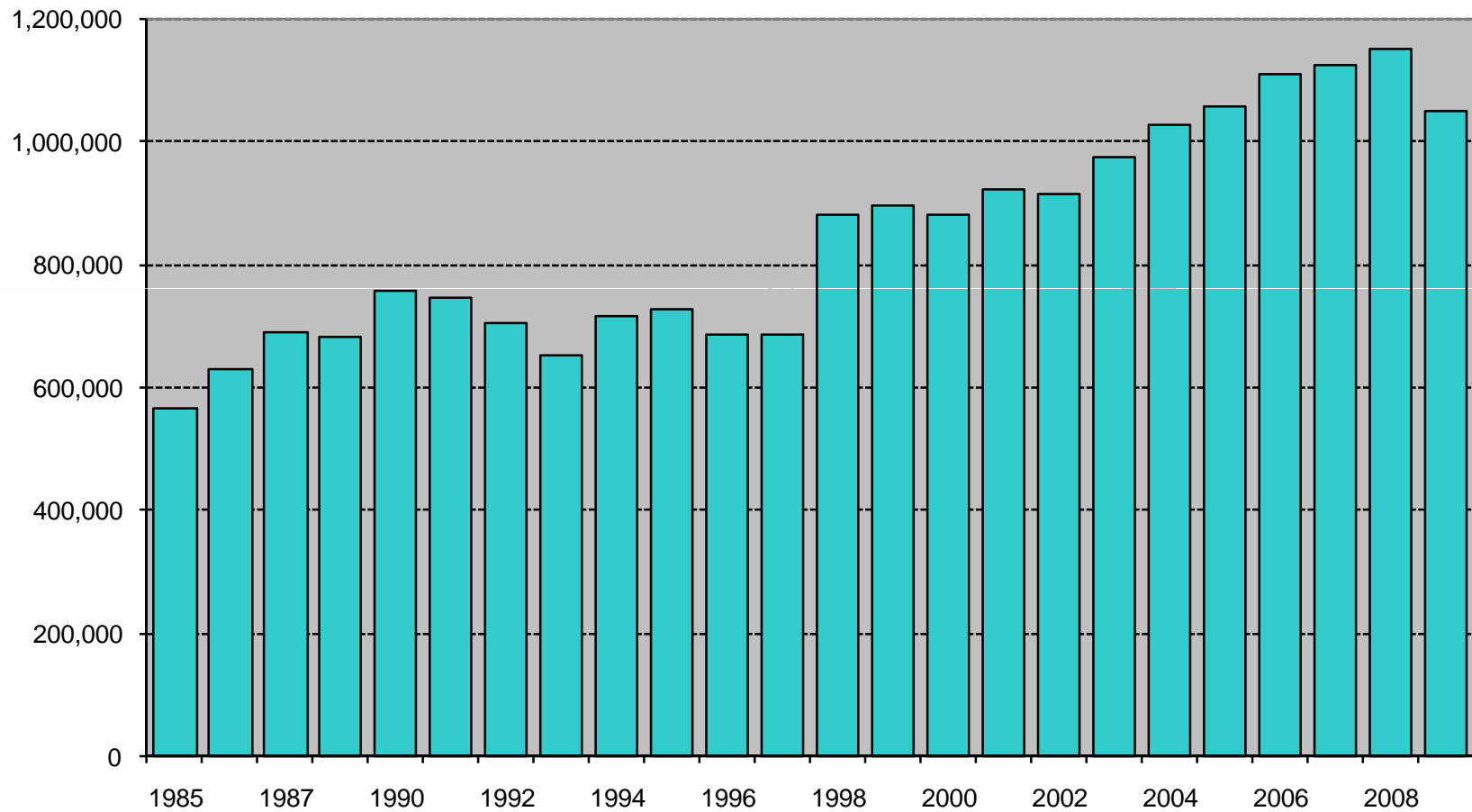
		Change from prior year
2002	379,834	1.1%
2003	375,183	-1.2%
2004	365,357	-2.6%
2005	351,006	-3.9%
2006	347,896	-0.9%
2007	362,635	4.2%
2008	371,142	2.3%
2009	342,814	-7.6%
2010	329,937	-3.8%

# CRIME RATE


## Index Crimes per 100,000 Population



# TOTAL ARRESTS



Source of data changed in 1996 to fingerprint cards and in 1998 to aggregate reports from Law Enforcement Agencies. Arrest data are not available for 1988.



# Indicator 2

## Judicial System Trends



## RECENT TRENDS IN FELONY FILINGS AND GUILTY DISPOSITIONS

Felony Filings	
Number	Percent Change

Guilty Dispositions	
Number	Percent Change

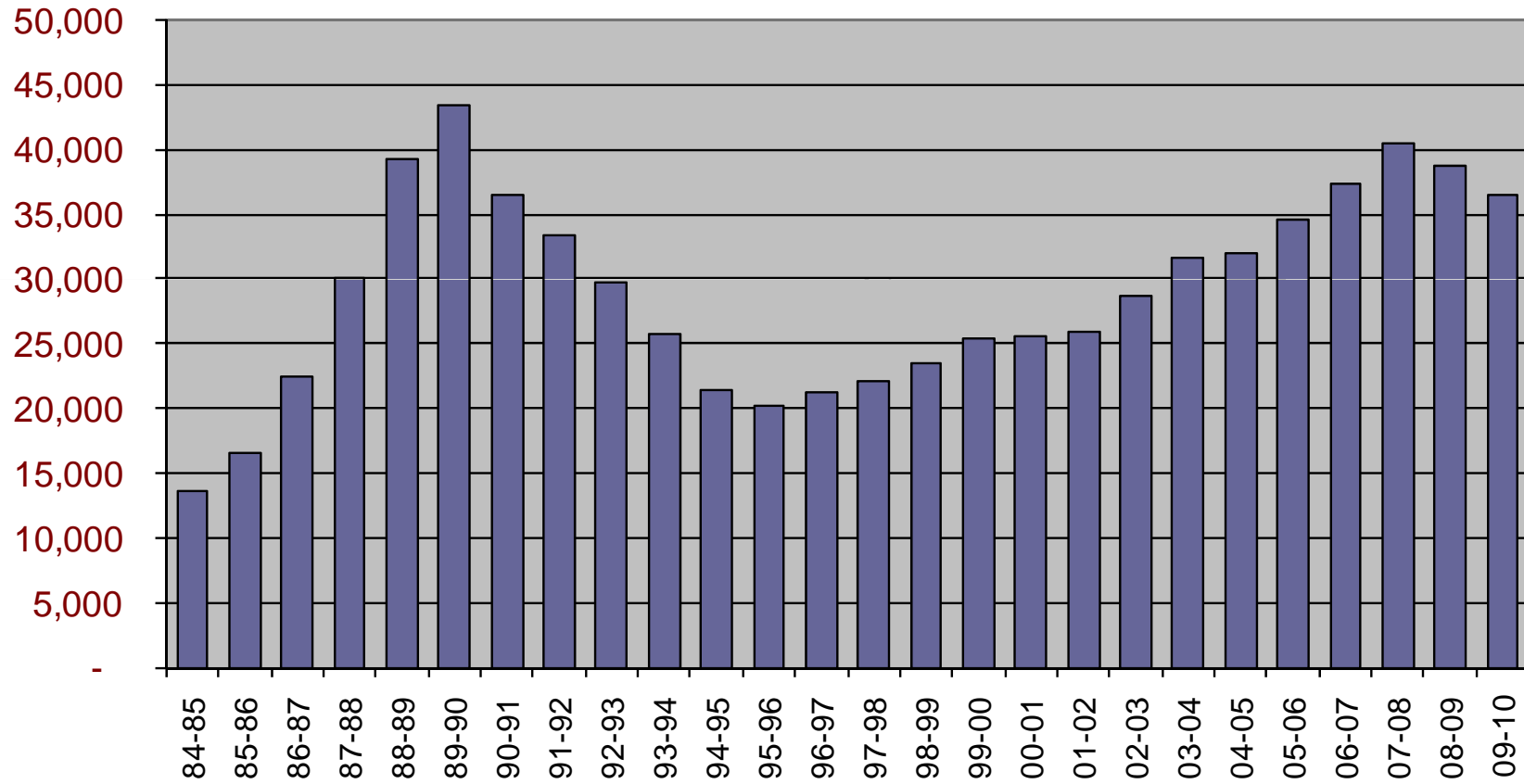
	2000	186,086		138,884	
	2001	184,571	-0.8%	142,907	2.9%
	2002	184,295	-0.1%	143,253	0.2%
	2003	187,379	1.7%	147,707	3.1%
	2004	194,863	4.0%	151,544	2.6%
	2005	208,540	7.0%	159,007	4.9%
	2006	220,757	5.9%	171,072	7.6%
	2007	230,886	4.6%	184,112	7.6%
	2008	224,743	-2.7%	186,130	1.1%
	2009	205,407	-8.6%	160,435	-13.8%
Jan-Jun 2009 <sup>1</sup>		101,848		83,393	
Jan-Jun 2010		98,124	-3.7%	75,677	-9.3%



# Indicator 3

## New Commitments

## New Commitments

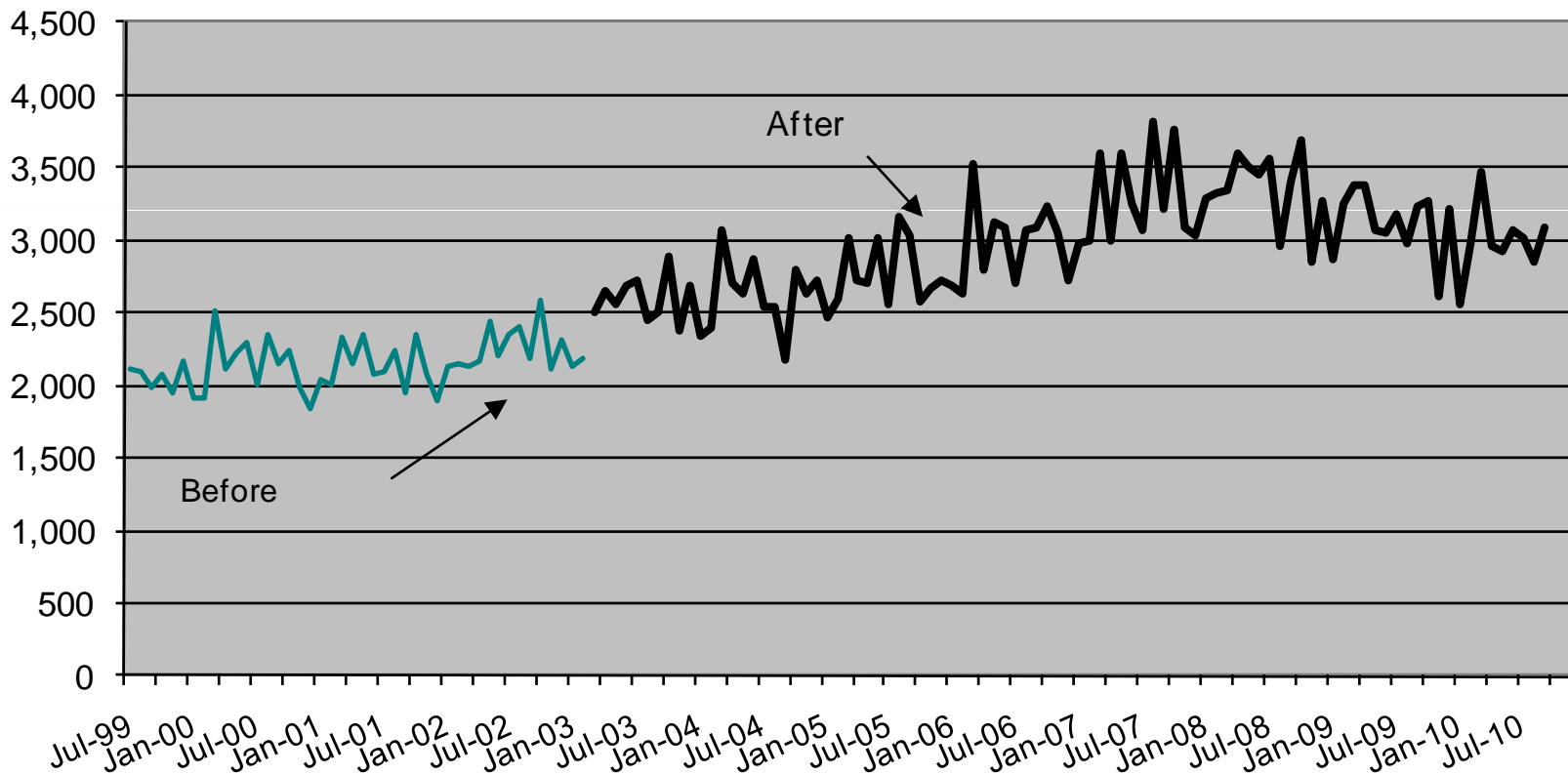




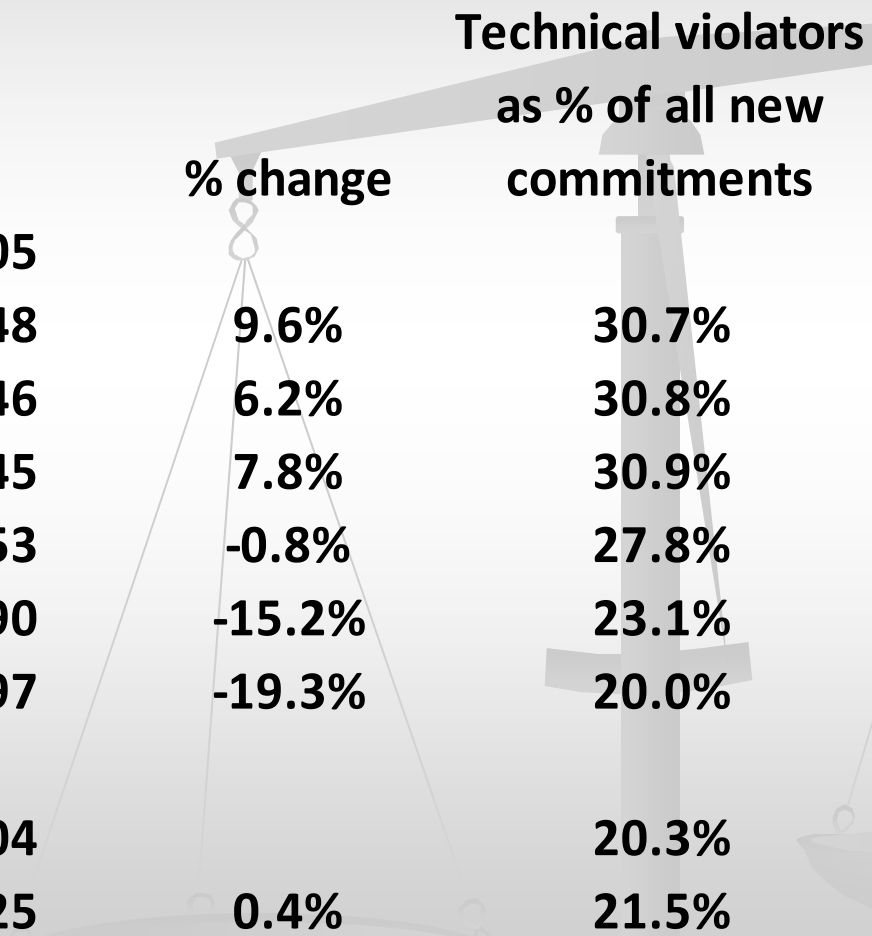
# Indicator 4

## Technical Violators

## New Commitments Before and After Zero-Tolerance Implementation



# Technical Violators to Prison

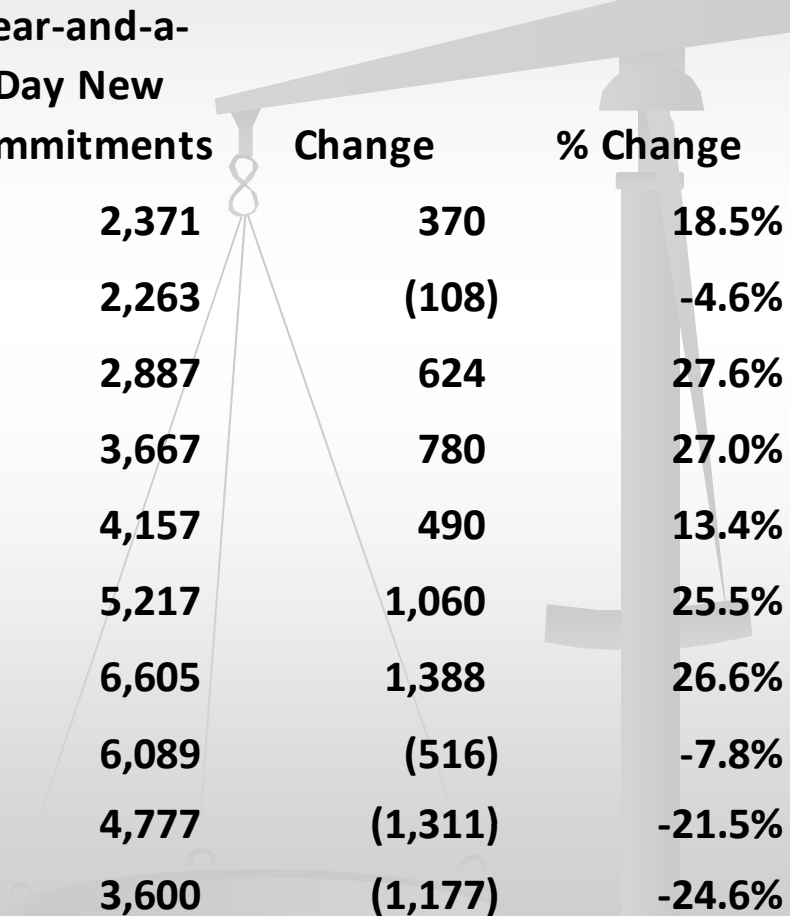


		<b>% change</b>	<b>Technical violators as % of all new commitments</b>
<b>2003</b>	<b>8,805</b>		
<b>2004</b>	<b>9,648</b>	<b>9.6%</b>	<b>30.7%</b>
<b>2005</b>	<b>10,246</b>	<b>6.2%</b>	<b>30.8%</b>
<b>2006</b>	<b>11,045</b>	<b>7.8%</b>	<b>30.9%</b>
<b>2007</b>	<b>10,953</b>	<b>-0.8%</b>	<b>27.8%</b>
<b>2008</b>	<b>9,290</b>	<b>-15.2%</b>	<b>23.1%</b>
<b>2009</b>	<b>7,497</b>	<b>-19.3%</b>	<b>20.0%</b>
<b>Jan-Aug 2009</b>	<b>5,104</b>		<b>20.3%</b>
<b>Jan-Aug 2010</b>	<b>5,125</b>	<b>0.4%</b>	<b>21.5%</b>

# Indicator 5 – Year- and-a-Day Sentences



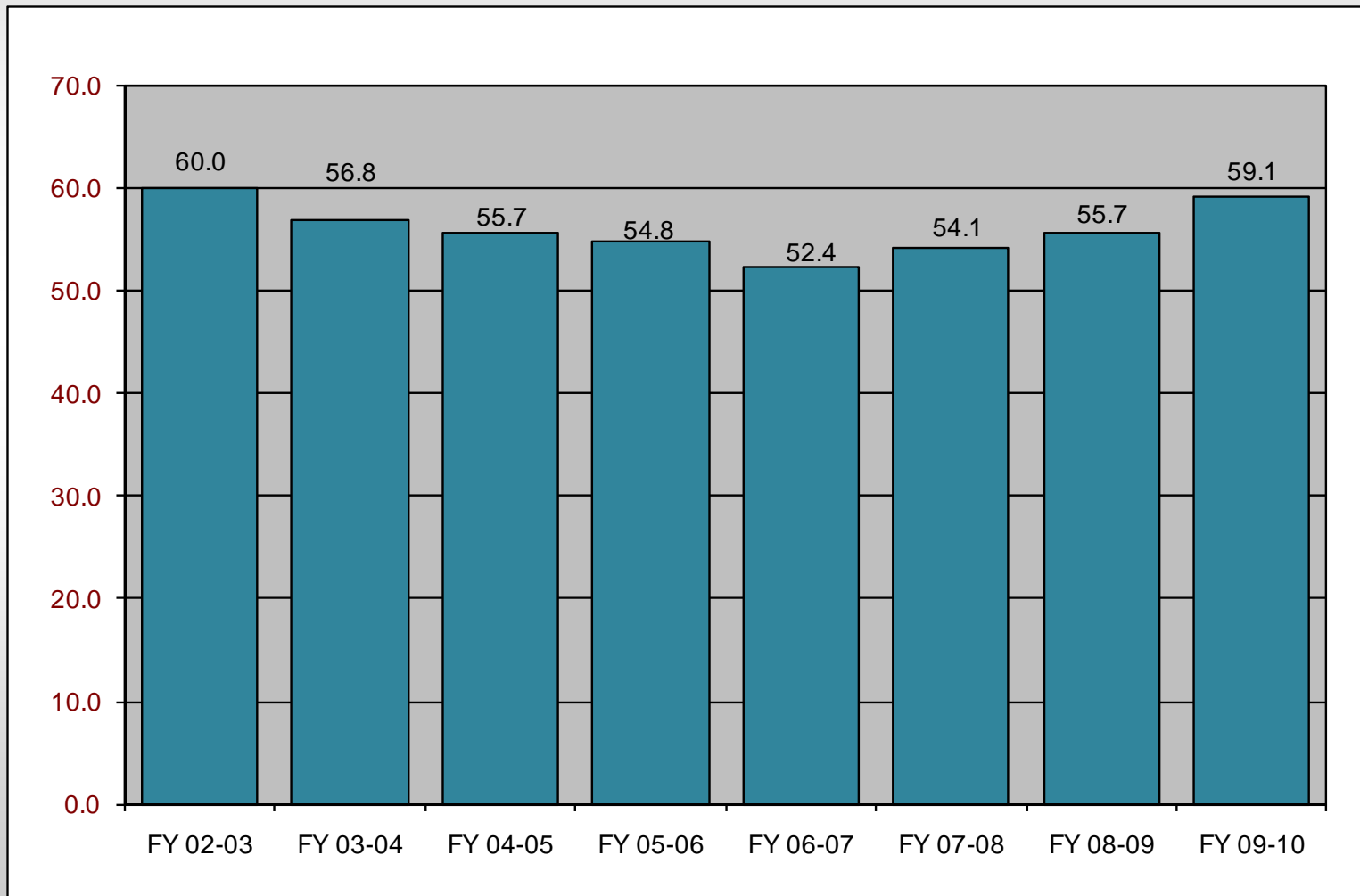
# Year-and-a-day New Commitments to Prison



	<b>Year-and-a-Day New Commitments</b>	<b>Change</b>	<b>% Change</b>
<b>FY 00-01</b>	<b>2,371</b>	<b>370</b>	<b>18.5%</b>
<b>FY 01-02</b>	<b>2,263</b>	<b>(108)</b>	<b>-4.6%</b>
<b>FY 02-03</b>	<b>2,887</b>	<b>624</b>	<b>27.6%</b>
<b>FY 03-04</b>	<b>3,667</b>	<b>780</b>	<b>27.0%</b>
<b>FY 04-05</b>	<b>4,157</b>	<b>490</b>	<b>13.4%</b>
<b>FY 05-06</b>	<b>5,217</b>	<b>1,060</b>	<b>25.5%</b>
<b>FY 06-07</b>	<b>6,605</b>	<b>1,388</b>	<b>26.6%</b>
<b>FY 07-08</b>	<b>6,089</b>	<b>(516)</b>	<b>-7.8%</b>
<b>FY 08-09</b>	<b>4,777</b>	<b>(1,311)</b>	<b>-21.5%</b>
<b>FY 09-10</b>	<b>3,600</b>	<b>(1,177)</b>	<b>-24.6%</b>



# Sentence Length of New Commitments



- 
- **Crime Trends**
  - **Judicial System Trends**
  - **New Commitments to Prison**
  - **Technical Violators**
  - **Year-and-a Day Sentences**

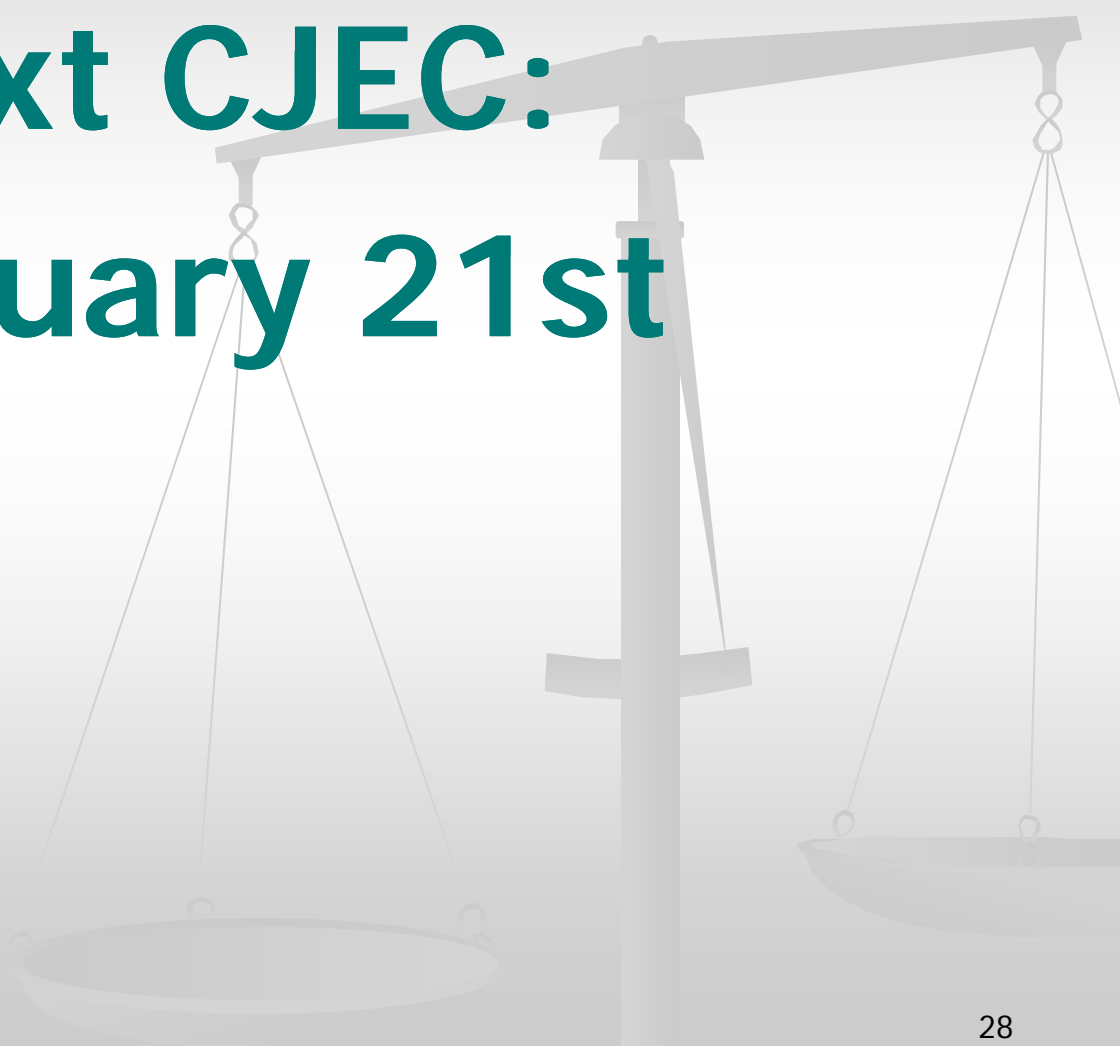
**MONITORING PRISON ADMISSIONS TO THE DEPARTMENT OF CORRECTIONS  
SINCE THE CRIMINAL JUSTICE ESTIMATING CONFERENCE HELD 10/19/2010**

MONTH	ADMISSIONS		MONTHLY CUMULATIVE	
	ESTIMATE	ACTUAL	OVER/ (UNDER)	OVER/ (UNDER)
October 2010	3,132	2,938	-194	-194
November 2010	2,692	2,686	-6	-200
December 2010	3,173	2,956	-217	-417
January 2011 *	2,668	2,608	-60	-477
<b>Total</b>	<b>11,665</b>	<b>11,188</b>	<b>% Error:</b>	<b>-4.1%</b>

\* Preliminary

**MONITORING PRISON POPULATION IN THE DEPARTMENT OF CORRECTIONS  
SINCE THE CRIMINAL JUSTICE ESTIMATING CONFERENCE HELD 10/19/2010**

MONTH	POPULATION		CUMULATIVE OVER/ (UNDER)
	ESTIMATE	ACTUAL	
October 2010	102,569	102,397	-172
November 2010	102,375	102,220	-155
December 2010	102,437	102,138	-299
January 2011	102,138	101,746	-392
	<b>-0.4%</b>	<b>Error</b>	



**Next CJEC:  
February 21st**

# For Additional Information

Florida Legislature, Office of Economic and Demographic  
Research

[edr.state.fl.us](http://edr.state.fl.us)