

Education Estimating Conference on  
Florida College System Enrollment

**EXECUTIVE SUMMARY**  
**December 7, 2018**

The Education Estimating Conference on Florida College System Enrollment met on December 7, 2018, to consider Florida College System full-time-equivalent (FTE) enrollment for FY 2018-19. The estimates are based on preliminary FY 2018-19 Term 1 enrollment data, the Division of Florida Colleges' enrollment projection model based on that data, and adjustments to the model provided by the colleges.

The Division of Florida Colleges presented its projection of 323,695 FTE for FY 2018-19. After taking into account the adjustments submitted by the colleges, the Division presented the FTE-1A estimate of 325,106, which is an increase of 1,411 FTE (0.4%) above the Division's original projection. The Conference accepted the FTE-1A estimate for FY 2018-19 as presented. For future estimates, the Conference requested that additional justifications, including back-up calculations, be provided by any college that proposes adjustments to the Division's estimates.

The adopted FTE-1A estimate is higher than the August projection by 3,629 FTE or 1.1%. Compared to prior year enrollment, the FTE-1A estimate reflects an increase of 5,064 FTE (1.6%). Twenty-one colleges are expecting year-over-year increases ranging from 0.2% to 6.5% annual growth rates. Seven colleges are anticipating year-to-year declines in enrollment ranging from -0.1% to -3.1%.

For all Lower Division programs, FTE enrollment is expected to increase by 3,476 FTE (1.1%) compared to the prior year, with decreases primarily in Developmental Education enrollment. For Upper Division programs, the FTE-1A estimate reflects an increase of 1,587 FTE (9.6%) over the prior year. Upper Division FTE is expected to be approximately 5.6% of total enrollment in FY 2018-19.

The FTE-1A estimates adopted by the Conference are shown in the table below.

**Florida College System FTE Enrollment**

	FY 2017-18	FY 2018-19					
	Final	AUG 2018 Adopted Estimate	DEC 2018 Adopted Estimate	DEC 2018 +/- AUG 2018	%	DEC 2018 +/- 2017-18 Final	%
<b>Lower Division</b>	303,491		306,967			3,476	1.1%
<b>Upper Division</b>	16,552		18,139			1,587	9.6%
<b>Total</b>	<b>320,043</b>	<b>321,477</b>	<b>325,106</b>	<b>3,629</b>	<b>1.1%</b>	<b>5,064</b>	<b>1.6%</b>

**FLORIDA COLLEGE SYSTEM  
FTE ENROLLMENT: FUNDED, LOWER AND UPPER DIVISION  
2018-19 FTE-1A ESTIMATE ADOPTED BY ENROLLMENT ESTIMATING CONFERENCE  
DECEMBER 7, 2018**

	UPPER DIVISION	A & P	POSTSEC VOC	DEVELOP MENTAL ED	EPI	POSTSEC ADULT VOC	APPREN TICE	ADULT BASIC	ADULT SEC/GED PREP	VOC PREP	TOTAL
Eastern Florida	911	7,404	2,075	278	0	343	0	0	0	0	11,011
Broward	1,302	17,576	7,771	1,647	27	379	0	0	0	0	28,702
Central Florida	354	3,226	1,236	84	0	130	0	15	16	0	5,061
Chipola	124	966	241	17	0	133	0	0	0	0	1,481
Daytona	981	6,390	2,185	126	2	696	544	610	111	6	11,651
Florida Southwestern	592	9,890	312	268	0	28	0	0	0	0	11,090
Florida Jacksonville	1,841	10,363	3,476	688	3	883	0	441	41	0	17,736
Florida Keys	15	404	216	14	0	54	15	0	0	0	718
Gulf Coast	146	2,735	652	59	10	130	0	0	0	0	3,732
Hillsborough	0	14,286	3,435	1,096	64	450	1,723	48	15	0	21,117
Indian River	1,643	7,172	2,503	114	0	645	584	698	54	0	13,413
Florida Gateway	87	1,497	549	56	15	284	0	0	0	0	2,488
Lake Sumter	53	2,589	491	75	0	0	0	0	0	0	3,208
State College Florida	462	5,660	585	184	21	0	0	0	0	0	6,912
Miami Dade	1,888	36,280	4,036	2,662	8	586	299	1,831	62	0	47,652
North Florida	20	593	141	9	0	109	0	0	0	0	872
Northwest Florida	330	2,531	522	83	0	174	0	94	33	0	3,767
Palm Beach	825	16,855	1,577	711	38	957	506	0	0	0	21,469
Pasco Hernando	380	4,524	2,058	324	14	340	0	0	0	0	7,640
Pensacola	412	4,504	1,587	254	0	387	0	107	184	0	7,435
Polk	776	3,825	1,565	160	65	95	0	0	0	0	6,486
St Johns River	221	3,255	867	62	30	123	0	31	18	0	4,607
St Petersburg	2,763	10,345	4,812	701	0	191	0	0	0	0	18,812
Santa Fe	488	7,057	2,356	383	13	246	483	127	5	0	11,158
Seminole	1,038	7,063	2,956	301	73	230	758	345	174	0	12,938
South Florida	116	1,460	3	29	0	359	98	347	21	0	2,433
Tallahassee	15	7,583	1,037	239	0	344	0	42	4	0	9,264
Valencia	356	22,531	7,806	1,182	76	302	0	0	0	0	32,253
<b>System</b>	<b>18,139</b>	<b>218,564</b>	<b>57,050</b>	<b>11,806</b>	<b>459</b>	<b>8,598</b>	<b>5,010</b>	<b>4,736</b>	<b>738</b>	<b>6</b>	<b>325,106</b>

**FLORIDA COLLEGE SYSTEM**  
**FTE ENROLLMENT: FUNDED, LOWER AND UPPER DIVISION**  
**COMPARISON OF 2018-19 FTE-1A ADOPTED ESTIMATE TO 2017-18 FTE-3 ACTUAL**  
**DECEMBER 7, 2018**

	<b>2017-18 FTE-3 ACTUAL</b>	<b>ADOPTED 2018-19 FTE-1A ESTIMATE</b>	<b>2017-18 FTE-3 to 2018-19 FTE-1A CHANGE</b>	<b>% CHANGE</b>
Eastern Florida	10,730.9	11,011.0	280.1	2.6%
Broward	28,626.3	28,702.0	75.7	0.3%
Central Florida	5,099.6	5,061.0	-38.6	-0.8%
Chipola	1,438.5	1,481.0	42.5	3.0%
Daytona	11,405.6	11,651.0	245.4	2.2%
Florida Southwestern	11,104.3	11,090.0	-14.3	-0.1%
Florida Jacksonville	16,807.5	17,736.0	928.5	5.5%
Florida Keys	714.3	718.0	3.7	0.5%
Gulf Coast	3,584.8	3,732.0	147.2	4.1%
Hillsborough	20,009.9	21,117.0	1,107.1	5.5%
Indian River	13,317.5	13,413.0	95.5	0.7%
Florida Gateway	2,335.6	2,488.0	152.4	6.5%
Lake Sumter	3,110.9	3,208.0	97.1	3.1%
State College Florida	6,900.6	6,912.0	11.4	0.2%
Miami Dade	48,188.2	47,652.0	-536.2	-1.1%
North Florida	865.5	872.0	6.5	0.8%
Northwest Florida	3,888.6	3,767.0	-121.6	-3.1%
Palm Beach	21,117.1	21,469.0	351.9	1.7%
Pasco Hernando	7,654.4	7,640.0	-14.4	-0.2%
Pensacola	7,220.2	7,435.0	214.8	3.0%
Polk	6,533.0	6,486.0	-47.0	-0.7%
St Johns River	4,535.4	4,607.0	71.6	1.6%
St Petersburg	18,568.0	18,812.0	244.0	1.3%
Santa Fe	11,246.3	11,158.0	-88.3	-0.8%
Seminole	12,649.8	12,938.0	288.2	2.3%
South Florida	2,362.3	2,433.0	70.7	3.0%
Tallahassee	9,200.2	9,264.0	63.8	0.7%
Valencia	30,827.2	32,253.0	1,425.8	4.6%
<b>System</b>	<b>320,042.5</b>	<b>325,106.0</b>	<b>5,063.5</b>	<b>1.6%</b>



**THE FLORIDA COLLEGE SYSTEM  
ENROLLMENT ESTIMATING CONFERENCE  
December 7, 2018 MEETING PACKET**

Florida Department of Education

**FLORIDA COLLEGE SYSTEM  
FTE ENROLLMENT: FUNDED, LOWER AND UPPER DIVISION**

**2017-18 FTE-3**

	UPPER DIVISION	A & P	POSTSEC VOC	DEV ED	EPI	POSTSEC ADULT VOC	APPRENTICE	ADULT BASIC	ADULT SEC/GED PREP	VOC PREP	TOTAL
EFSC	700.2	7297.3	2090.7	299.8	0.0	342.9	0.0	0.0	0.0	0.0	10730.9
BROW	1188.3	17547.6	7679.2	1788.4	43.8	379.0	0.0	0.0	0.0	0.0	28626.3
CFLA	344.4	3220.2	1225.9	148.5	0.0	129.9	0.0	14.9	15.8	0.0	5099.6
CHIP	121.2	950.1	229.2	18.4	0.0	119.5	0.0	0.0	0.0	0.1	1438.5
DAYT	864.9	6358.8	2063.5	153.4	1.6	696.1	543.7	610.0	110.6	3.0	11405.6
FSW	591.4	9584.7	627.4	272.8	0.0	28.0	0.0	0.0	0.0	0.0	11104.3
FJAX	1688.8	9937.5	3227.9	569.9	0.0	873.1	0.0	467.0	43.3	0.0	16807.5
FKEY	22.2	416.1	204.8	18.5	0.0	52.7	0.0	0.0	0.0	0.0	714.3
GULF	124.1	2612.9	633.0	64.4	20.6	129.8	0.0	0.0	0.0	0.0	3584.8
HILL	0.0	13419.2	3265.8	1016.8	71.4	449.9	1723.2	48.2	15.4	0.0	20009.9
INDR	1488.9	7106.2	2544.4	197.7	0.0	645.4	582.8	697.7	54.4	0.0	13317.5
FGC	59.4	1457.7	457.6	59.6	18.0	283.3	0.0	0.0	0.0	0.0	2335.6
LSSC	46.1	2428.8	547.8	88.2	0.0	0.0	0.0	0.0	0.0	0.0	3110.9
SCF	431.5	5677.0	547.5	213.6	31.0	0.0	0.0	0.0	0.0	0.0	6900.6
MIAM	1852.3	36169.6	3987.5	3253.5	5.7	558.9	448.6	1831.1	74.4	6.6	48188.2
NFLA	12.1	537.9	190.6	14.6	0.0	110.3	0.0	0.0	0.0	0.0	865.5
NWFC	303.4	2674.9	514.2	95.8	0.0	174.0	0.0	93.3	33.0	0.0	3888.6
PALM	724.8	16648.5	1536.0	718.3	26.0	956.8	506.7	0.0	0.0	0.0	21117.1
PASC	367.2	4493.2	2088.3	346.0	20.0	339.7	0.0	0.0	0.0	0.0	7654.4
PENS	338.8	4440.7	1493.0	269.5	0.0	386.9	0.0	107.0	184.3	0.0	7220.2
POLK	747.5	3939.9	1540.3	155.7	55.8	93.8	0.0	0.0	0.0	0.0	6533
ST.J	195.2	3207.4	892.2	79.7	28.2	83.1	0.0	30.5	19.1	0.0	4535.4
ST.P	2711.0	10169.0	4801.9	694.9	0.0	191.2	0.0	0.0	0.0	0.0	18568
SANF	439.2	7202.8	2312.2	427.2	4.1	245.8	482.7	126.7	5.6	0.0	11246.3
SEMI	896.1	7031.0	2827.5	310.6	65.7	243.5	757.7	344.0	173.7	0.0	12649.8
SFLA	107.8	1474.8	2.8	31.0	0.0	318.6	63.6	342.8	20.9	0.0	2362.3
TALL	12.2	7417.7	1049.6	329.7	0.0	344.2	0.0	42.4	4.4	0.0	9200.2
VALE	172.7	21807.2	7358.1	1086.8	99.9	302.5	0.0	0.0	0.0	0.0	30827.2
SYST	16551.7	215228.7	55938.9	12723.3	491.8	8478.9	5109.0	4755.6	754.9	9.7	320042.5

CCTCMIS:

SOURCE: FN30C3

**FLORIDA COLLEGE SYSTEM  
FTE ENROLLMENT: FUNDED, LOWER AND UPPER DIVISION  
DIVISION ESTIMATES WITH COLLEGE ADJUSTMENTS  
2018-19 FTE-1A**

	UPPER DIVISION	A & P	POSTSEC VOC	DEV ED	EPI	POSTSEC ADULT VOC	APPRENTICE	ADULT BASIC	ADULT SEC/GED PREP	VOC PREP	TOTAL
EFSC	911.0	7404.0	2075.0	278.0	0.0	343.0	0.0	0.0	0.0	0.0	11011.0
BROW	1302.0	17576.0	7771.0	1647.0	27.0	379.0	0.0	0.0	0.0	0.0	28702.0
CFLA	354.0	3226.0	1236.0	84.0	0.0	130.0	0.0	15.0	16.0	0.0	5061.0
CHIP	124.0	966.0	241.0	17.0	0.0	133.0	0.0	0.0	0.0	0.0	1481.0
DAYT	981.0	6390.0	2185.0	126.0	2.0	696.0	544.0	610.0	111.0	6.0	11651.0
FSW	592.0	9890.0	312.0	268.0	0.0	28.0	0.0	0.0	0.0	0.0	11090.0
FJAX	1841.0	10363.0	3476.0	688.0	3.0	883.0	0.0	441.0	41.0	0.0	17736.0
FKEY	15.0	404.0	216.0	14.0	0.0	54.0	15.0	0.0	0.0	0.0	718.0
GULF	146.0	2735.0	652.0	59.0	10.0	130.0	0.0	0.0	0.0	0.0	3732.0
HILL	0.0	14286.0	3435.0	1096.0	64.0	450.0	1723.0	48.0	15.0	0.0	21117.0
INDR	1643.0	7172.0	2503.0	114.0	0.0	645.0	584.0	698.0	54.0	0.0	13413.0
FGC	87.0	1497.0	549.0	56.0	15.0	284.0	0.0	0.0	0.0	0.0	2488.0
LSSC	53.0	2589.0	491.0	75.0	0.0	0.0	0.0	0.0	0.0	0.0	3208.0
SCF	462.0	5660.0	585.0	184.0	21.0	0.0	0.0	0.0	0.0	0.0	6912.0
MIAM	1888.0	36280.0	4036.0	2662.0	8.0	586.0	299.0	1831.0	62.0	0.0	47652.0
NFLA	20.0	593.0	141.0	9.0	0.0	109.0	0.0	0.0	0.0	0.0	872.0
NWFC	330.0	2531.0	522.0	83.0	0.0	174.0	0.0	94.0	33.0	0.0	3767.0
PALM	825.0	16855.0	1577.0	711.0	38.0	957.0	506.0	0.0	0.0	0.0	21469.0
PASC	380.0	4524.0	2058.0	324.0	14.0	340.0	0.0	0.0	0.0	0.0	7640.0
PENS	412.0	4504.0	1587.0	254.0	0.0	387.0	0.0	107.0	184.0	0.0	7435.0
POLK	776.0	3825.0	1565.0	160.0	65.0	95.0	0.0	0.0	0.0	0.0	6486.0
ST.J	221.0	3255.0	867.0	62.0	30.0	123.0	0.0	31.0	18.0	0.0	4607.0
ST.P	2763.0	10345.0	4812.0	701.0	0.0	191.0	0.0	0.0	0.0	0.0	18812.0
SANF	488.0	7057.0	2356.0	383.0	13.0	246.0	483.0	127.0	5.0	0.0	11158.0
SEMI	1038.0	7063.0	2956.0	301.0	73.0	230.0	758.0	345.0	174.0	0.0	12938.0
SFLA	116.0	1460.0	3.0	29.0	0.0	359.0	98.0	347.0	21.0	0.0	2433.0
TALL	15.0	7583.0	1037.0	239.0	0.0	344.0	0.0	42.0	4.0	0.0	9264.0
VALE	356.0	22531.0	7806.0	1182.0	76.0	302.0	0.0	0.0	0.0	0.0	32253.0
SYST	18139.0	218564.0	57050.0	11806.0	459.0	8598.0	5010.0	4736.0	738.0	6.0	325106.0

**FLORIDA COLLEGE SYSTEM  
ENROLLMENT ESTIMATING CONFERENCE SUMMARY  
FTE ENROLLMENT: FUNDED-30, LOWER AND UPPER DIVISION**

	2017-18 FTE3 ACTUAL	2018-19 FTE1 DIVISION ESTIMATES	FTE3 TO FTE1 CHANGE	FTE3 TO FTE1 % CHANGE	2018-19 FTE1A COLL ADJ ESTIMATE	FTE3 TO FTE1A CHANGE	FTE3 TO FTE1A % CHANGE	FTE1 TO FTE1A CHANGE	FTE1 TO FTE1A % CHANGE
	C1	C2	C1 TO C2	C1 TO C2	C3	C1 TO C3	C1 TO C3	C2 TO C3	C2 TO C3
EFSC	10730.9	11011.0	280.1	2.6%	11011.0	280.1	2.6%	0.0	0.0%
BROW	28626.3	28702.0	75.7	0.3%	28702.0	75.7	0.3%	0.0	0.0%
CFLA	5099.6	5061.0	-38.6	-0.8%	5061.0	-38.6	-0.8%	0.0	0.0%
CHIP	1438.5	1465.0	26.5	1.8%	1481.0	42.5	3.0%	16.0	1.1%
DAYT	11405.6	11651.0	245.4	2.2%	11651.0	245.4	2.2%	0.0	0.0%
FSW	11104.3	11430.0	325.7	2.9%	11090.0	-14.3	-0.1%	-340.0	-3.0%
FJAX	16807.5	17407.0	599.5	3.6%	17736.0	928.5	5.5%	329.0	1.9%
FKEY	714.3	703.0	-11.3	-1.6%	718.0	3.7	0.5%	15.0	2.1%
GULF	3584.8	3816.0	231.2	6.4%	3732.0	147.2	4.1%	-84.0	-2.2%
HILL	20009.9	21117.0	1107.1	5.5%	21117.0	1107.1	5.5%	0.0	0.0%
INDR	13317.5	13113.0	-204.5	-1.5%	13413.0	95.5	0.7%	300.0	2.3%
FGC	2335.6	2488.0	152.4	6.5%	2488.0	152.4	6.5%	0.0	0.0%
LSSC	3110.9	3208.0	97.1	3.1%	3208.0	97.1	3.1%	0.0	0.0%
SCF	6900.6	6721.0	-179.6	-2.6%	6912.0	11.4	0.2%	191.0	2.8%
MIAM	48188.2	47038.0	-1150.2	-2.4%	47652.0	-536.2	-1.1%	614.0	1.3%
NFLA	865.5	872.0	6.5	0.8%	872.0	6.5	0.8%	0.0	0.0%
NWFC	3888.6	3735.0	-153.6	-4.0%	3767.0	-121.6	-3.1%	32.0	0.9%
PALM	21117.1	21469.0	351.9	1.7%	21469.0	351.9	1.7%	0.0	0.0%
PASC	7654.4	7601.0	-53.4	-0.7%	7640.0	-14.4	-0.2%	39.0	0.5%
PENS	7220.2	7435.0	214.8	3.0%	7435.0	214.8	3.0%	0.0	0.0%
POLK	6533.0	6359.0	-174.0	-2.7%	6486.0	-47.0	-0.7%	127.0	2.0%
ST.J	4535.4	4567.0	31.6	0.7%	4607.0	71.6	1.6%	40.0	0.9%
ST.P	18568.0	18812.0	244.0	1.3%	18812.0	244.0	1.3%	0.0	0.0%
SANF	11246.3	11158.0	-88.3	-0.8%	11158.0	-88.3	-0.8%	0.0	0.0%
SEMI	12649.8	12878.0	228.2	1.8%	12938.0	288.2	2.3%	60.0	0.5%
SFLA	2362.3	2361.0	-1.3	-0.1%	2433.0	70.7	3.0%	72.0	3.0%
TALL	9200.2	9264.0	63.8	0.7%	9264.0	63.8	0.7%	0.0	0.0%
VALE	30827.2	32253.0	1425.8	4.6%	32253.0	1425.8	4.6%	0.0	0.0%
SYST	320042.5	323695.0	3652.5	1.1%	325106.0	5063.5	1.6%	1411.0	0.4%

**FLORIDA COLLEGE SYSTEM  
FTE ENROLLMENT: FUNDED-30, LOWER AND UPPER DIVISION  
DIVISION ESTIMATES WITH COLLEGE ADJUSTMENTS  
COMPARISON 2017-18 FTE-3 ADOPTED BY EEC TO 2018-19 FTE-1A**

	2017-18 FTE-3	2018-19 FTE-1A	CHANGE	%CHANGE
EFSC	10731	11011	280	2.6%
BROW	28626	28702	76	0.3%
CFLA	5100	5061	-39	-0.8%
CHIP	1439	1481	43	3.0%
DAYT	11406	11651	245	2.2%
FSW	11104	11090	-14	-0.1%
FJAX	16808	17736	929	5.5%
FKEY	714	718	4	0.5%
GULF	3585	3732	147	4.1%
HILL	20010	21117	1107	5.5%
INDR	13318	13413	96	0.7%
FGC	2336	2488	152	6.5%
LSSC	3111	3208	97	3.1%
SCF	6901	6912	11	0.2%
MIAM	48188	47652	-536	-1.1%
NFLA	866	872	7	0.8%
NWFC	3889	3767	-122	-3.1%
PALM	21117	21469	352	1.7%
PASC	7654	7640	-14	-0.2%
PENS	7220	7435	215	3.0%
POLK	6533	6486	-47	-0.7%
ST.J	4535	4607	72	1.6%
ST.P	18568	18812	244	1.3%
SANF	11246	11158	-88	-0.8%
SEMI	12650	12938	288	2.3%
SFLA	2362	2433	71	3.0%
TALL	9200	9264	64	0.7%
VALE	30827	32253	1426	4.6%
SYST	320043	325106	5064	1.6%



**THE FLORIDA COLLEGE SYSTEM**  
**FTE ENROLLMENT: FUNDED-30, LOWER AND UPPER DIVISIONS**  
**2018-2019 FTE-1A**

**THE FLORIDA COLLEGE SYSTEM**  
**FTE ENROLLMENT: FUNDED-30, LOWER AND UPPER DIVISIONS**  
**2018-2019 FTE-1A**

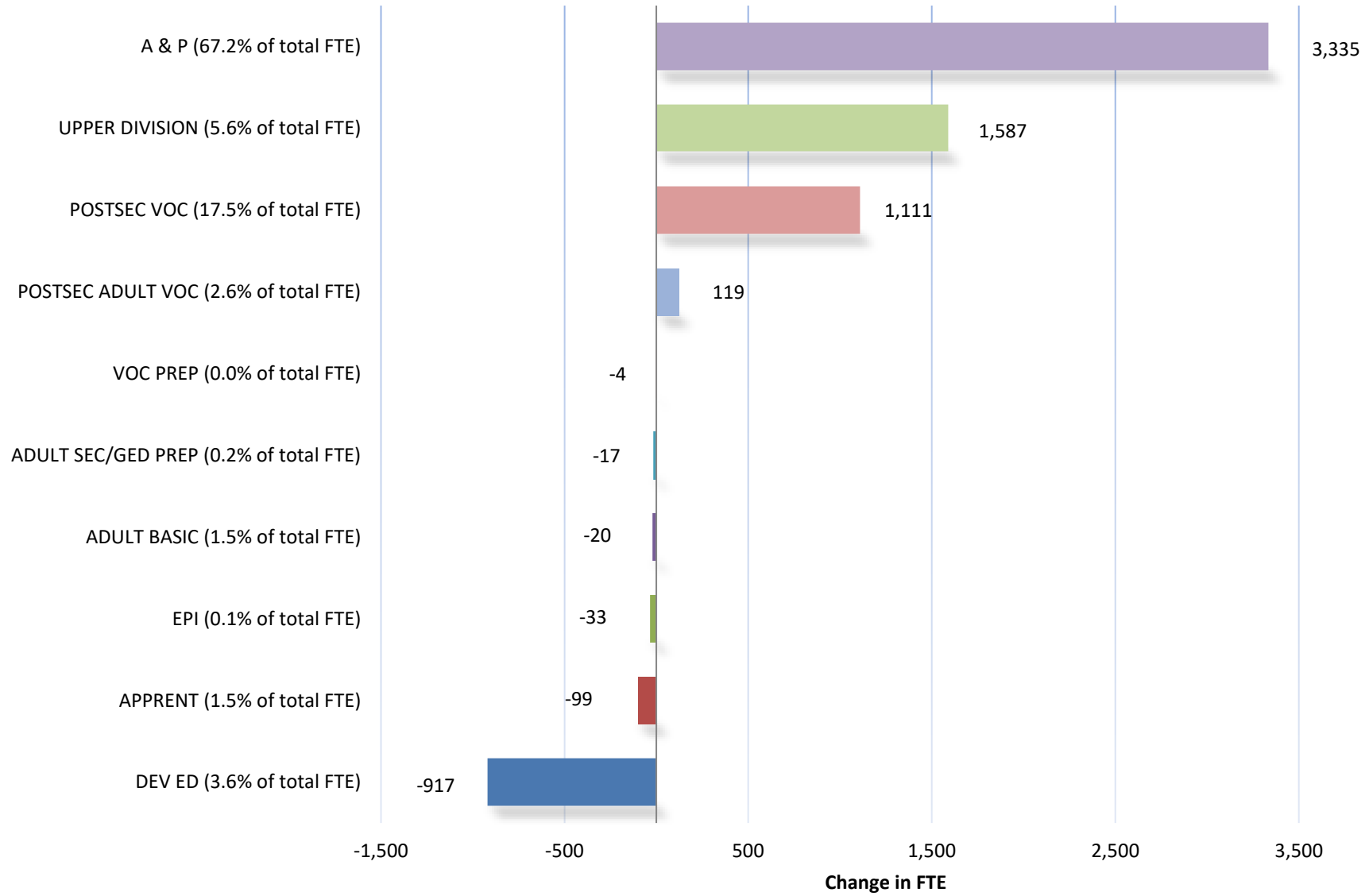
COLLEGE	UPPER DIVISION	A & P	POSTSEC VOC	DEV ED	EPI	POSTSEC ADULT VOC	APPRENT	ADULT BASIC	ADULT SEC/GED PREP	VOC PREP	2018-19 FTE-1A TOTAL
Eastern Florida State College	911	7404	2075	278	0	343	0	0	0	0	11011
Broward College	1302	17576	7771	1647	27	379	0	0	0	0	28702
College of Central Florida	354	3226	1236	84	0	130	0	15	16	0	5061
Chipola College	124	966	241	17	0	133	0	0	0	0	1481
Daytona State College	981	6390	2185	126	2	696	544	610	111	6	11651
Florida SouthWestern State College	592	9890	312	268	0	28	0	0	0	0	11090
Florida State College at Jacksonville	1841	10363	3476	688	3	883	0	441	41	0	17736
Florida Keys Community College	15	404	216	14	0	54	15	0	0	0	718
Gulf Coast State College	146	2735	652	59	10	130	0	0	0	0	3732
Hillsborough Community College	0	14286	3435	1096	64	450	1723	48	15	0	21117
Indian River State College	1643	7172	2503	114	0	645	584	698	54	0	13413
Florida Gateway College	87	1497	549	56	15	284	0	0	0	0	2488
Lake-Sumter State College	53	2589	491	75	0	0	0	0	0	0	3208
State College of Florida, Manatee-Sarasota	462	5660	585	184	21	0	0	0	0	0	6912
Miami Dade College	1888	36280	4036	2662	8	586	299	1831	62	0	47652
North Florida Community College	20	593	141	9	0	109	0	0	0	0	872
Northwest Florida State College	330	2531	522	83	0	174	0	94	33	0	3767
Palm Beach State College	825	16855	1577	711	38	957	506	0	0	0	21469
Pasco-Hernando State College	380	4524	2058	324	14	340	0	0	0	0	7640
Pensacola State College	412	4504	1587	254	0	387	0	107	184	0	7435
Polk State College	776	3825	1565	160	65	95	0	0	0	0	6486
St. Johns River State College	221	3255	867	62	30	123	0	31	18	0	4607
St. Petersburg College	2763	10345	4812	701	0	191	0	0	0	0	18812
Santa Fe College	488	7057	2356	383	13	246	483	127	5	0	11158
Seminole State College of Florida	1038	7063	2956	301	73	230	758	345	174	0	12938
South Florida State College	116	1460	3	29	0	359	98	347	21	0	2433
Tallahassee Community College	15	7583	1037	239	0	344	0	42	4	0	9264
Valencia College	356	22531	7806	1182	76	302	0	0	0	0	32253
<b>SYSTEM</b>	<b>18139</b>	<b>218564</b>	<b>57050</b>	<b>11806</b>	<b>459</b>	<b>8598</b>	<b>5010</b>	<b>4736</b>	<b>738</b>	<b>6</b>	<b>325106</b>
<b>% CHANGE 2018-19 OVER 2017-18</b>	<b>9.6%</b>	<b>1.5%</b>	<b>2.0%</b>	<b>-7.2%</b>	<b>-6.7%</b>	<b>1.4%</b>	<b>-1.9%</b>	<b>-0.4%</b>	<b>-2.2%</b>	<b>-38.1%</b>	<b>1.6%</b>

CHANGE OVER 1-YEAR 2017-18 TO 2018-19	CHANGE OVER 2-YEARS 2016-17 TO 2018-19	CHANGE OVER 3-YEARS 2015-16 TO 2018-19	CHANGE OVER 4-YEARS 2014-15 TO 2018-19	CHANGE OVER 5-YEARS 2013-14 TO 2018-19	CHANGE OVER 6-YEARS 2012-13 TO 2018-19						
2.6%	10731	2.8%	10706	4.5%	10535	-0.3%	11039	-4.6%	11545	-8.4%	12018
0.3%	28626	-2.6%	29471	-4.5%	30053	-4.7%	30126	-5.9%	30496	-4.5%	30054
-0.8%	5100	-2.0%	5162	-4.2%	5286	-12.3%	5771	-14.3%	5904	-15.3%	5976
3.0%	1439	-2.6%	1520	2.4%	1446	3.4%	1432	-2.0%	1511	-7.6%	1602
2.2%	11406	-0.1%	11658	-0.9%	11754	2.8%	11334	-1.9%	11881	-6.4%	12449
-0.1%	11104	4.2%	10641	7.1%	10353	11.5%	9950	9.3%	10149	5.5%	10513
5.5%	16808	-6.2%	18908	-9.7%	19631	-12.3%	20218	-18.2%	21676	-21.9%	22695
0.5%	714	-0.5%	721	0.5%	715	1.5%	707	-7.5%	776	-14.2%	837
4.1%	3585	1.5%	3676	-3.2%	3854	-6.5%	3990	-12.3%	4257	-17.2%	4505
5.5%	20010	7.6%	19622	5.3%	20046	4.2%	20270	5.7%	19974	3.2%	20472
0.7%	13318	-3.2%	13861	-2.3%	13725	0.8%	13309	2.2%	13123	-0.1%	13429
6.5%	2336	14.2%	2178	25.6%	1981	27.7%	1948	19.7%	2078	14.8%	2167
3.1%	3111	8.0%	2971	11.4%	2879	15.1%	2787	15.1%	2787	8.1%	2966
0.2%	6901	-2.2%	7070	-6.7%	7409	-8.3%	7538	-9.5%	7634	-13.7%	8008
-1.1%	48188	1.1%	47130	-7.5%	51526	-11.2%	53685	-12.5%	54472	-14.7%	55872
0.8%	866	4.2%	837	7.1%	814	8.2%	806	9.2%	798	-2.8%	898
-3.1%	3889	-5.3%	3978	-11.4%	4250	-21.1%	4776	-25.0%	5023	-27.5%	5196
1.7%	21117	4.5%	20537	7.5%	19962	8.0%	19881	7.0%	20057	6.9%	20085
-0.2%	7654	-1.1%	7726	-1.3%	7743	-0.8%	7705	7.7%	7095	8.5%	7041
3.0%	7220	4.6%	7108	5.4%	7054	-2.4%	7621	-12.7%	8518	-20.0%	9297
-0.7%	6533	-1.5%	6582	-10.0%	7208	-13.5%	7496	-17.9%	7905	-17.1%	7828
1.6%	4535	4.1%	4425	1.9%	4520	-2.4%	4722	-3.4%	4768	-3.9%	4795
1.3%	18568	-1.0%	18999	-6.4%	20094	-9.5%	20784	-9.4%	20692	-11.6%	21280
-0.8%	11246	-2.1%	11395	1.6%	10980	-0.3%	11191	-3.5%	11557	-6.5%	11935
2.3%	12650	2.4%	12636	3.3%	12530	-1.3%	13113	-6.7%	13867	-13.1%	14891
3.0%	2362	8.4%	2244	12.2%	2168	8.6%	2241	11.0%	2192	6.7%	2280
0.7%	9200	1.5%	9127	-0.9%	9349	-5.2%	9771	-9.2%	10208	-15.4%	10947
4.6%	30827	7.5%	30012	7.1%	30127	7.6%	29967	8.9%	29612	7.2%	30074
<b>1.6%</b>	<b>320043</b>	<b>1.3%</b>	<b>320900</b>	<b>-0.9%</b>	<b>327992</b>	<b>-2.7%</b>	<b>334178</b>	<b>-4.5%</b>	<b>340556</b>	<b>-7.1%</b>	<b>350109</b>
<b>% CHANGE 2017-18 OVER 2016-17</b>	<b>-0.3%</b>	<b>% CHANGE 2016-17 OVER 2015-16</b>	<b>-2.2%</b>	<b>% CHANGE 2015-16 OVER 2014-15</b>	<b>-1.9%</b>	<b>% CHANGE 2014-15 OVER 2013-14</b>	<b>-1.9%</b>	<b>% CHANGE 2013-14 OVER 2012-13</b>	<b>-2.7%</b>		

Source: J:\Daisy\from CCTCMIS\2018-19 FTE-1A

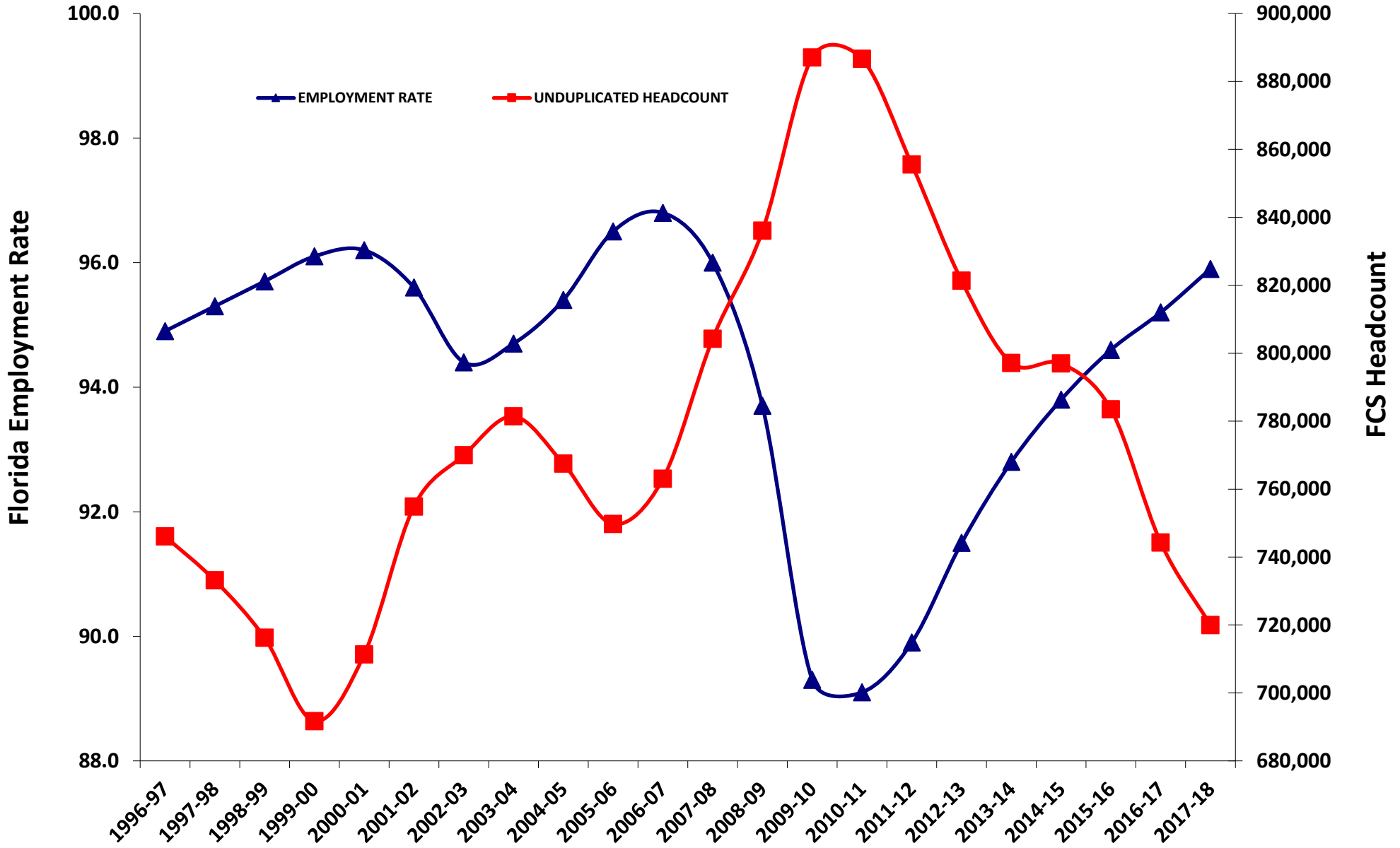
\*Beginning in FY 2010-11, enrollment in CWE programs is no longer included and upper division is included for funding purposes. This entire chart excludes CWE and includes upper division for comparison purposes.

## Florida College System 2018-19 FTE-1A Over 2017-18 FTE-3 Change in FTE by Program Area



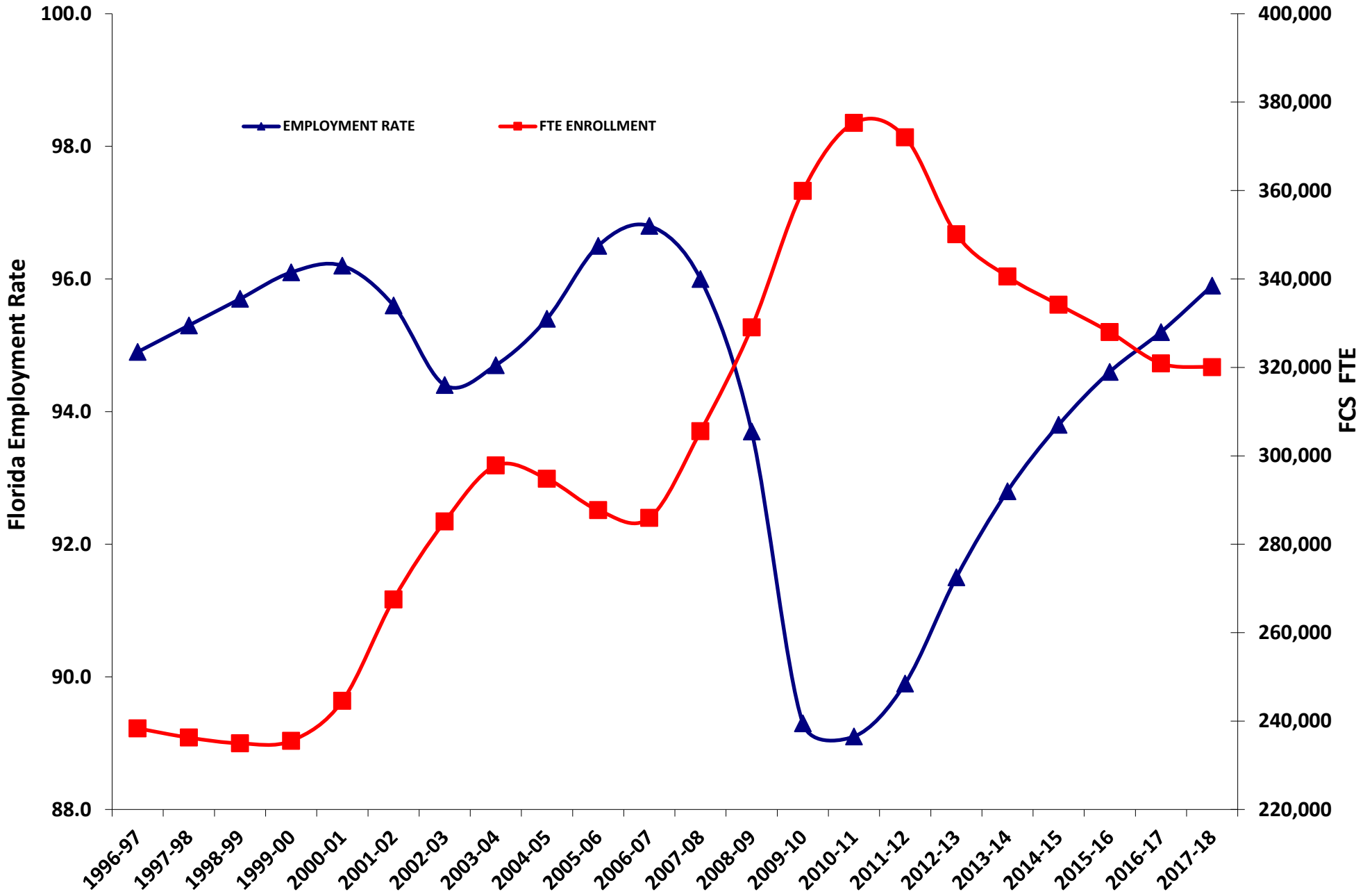
# COUNTER-CYCLICAL HEADCOUNT ENROLLMENT PATTERN

## Comparison of Florida Employment Rate to Florida College System (FCS) Headcount Enrollment

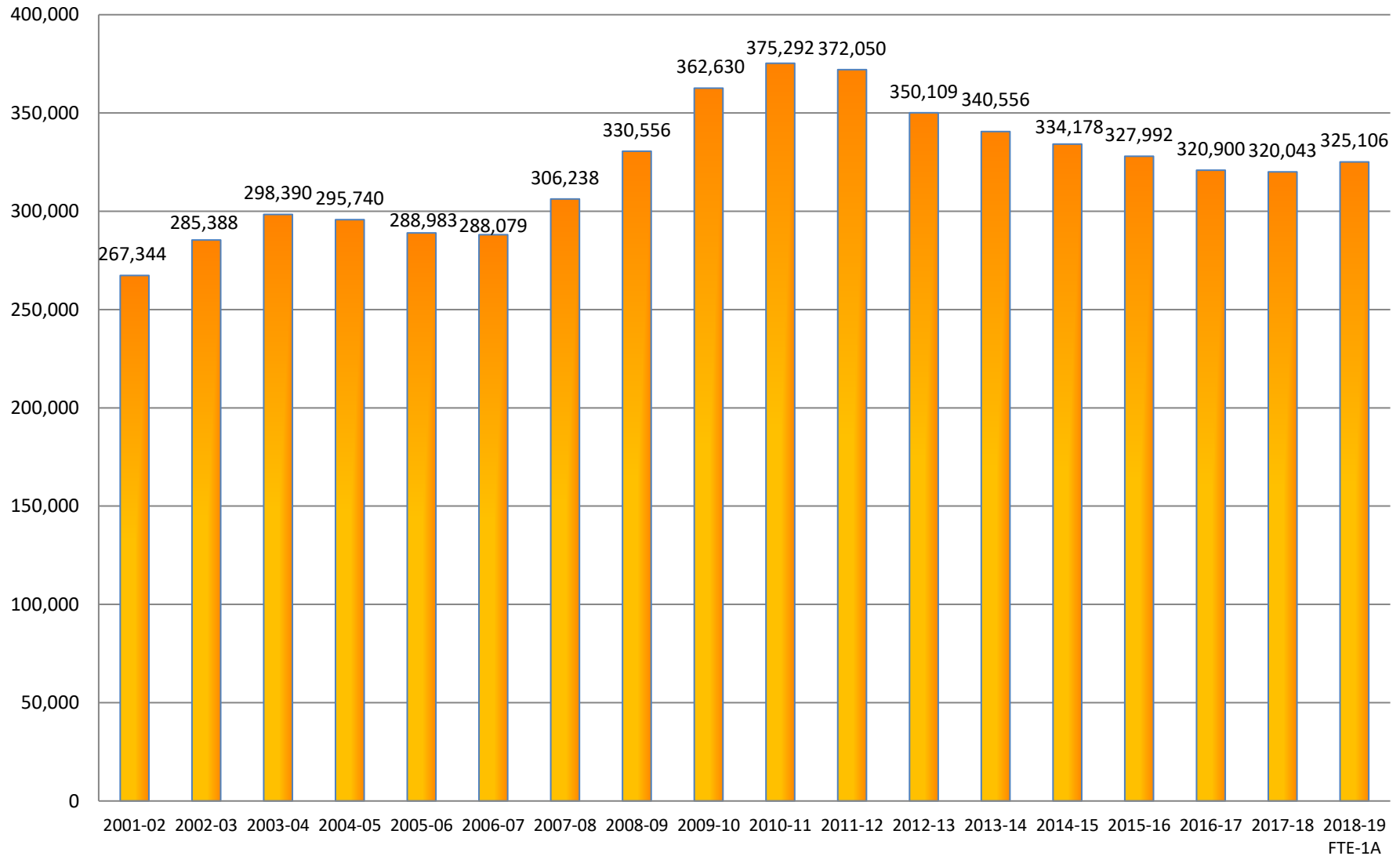


## COUNTER-CYCLICAL FTE ENROLLMENT PATTERN

Comparison of Florida Employment Rate to Florida College System FTE Enrollment



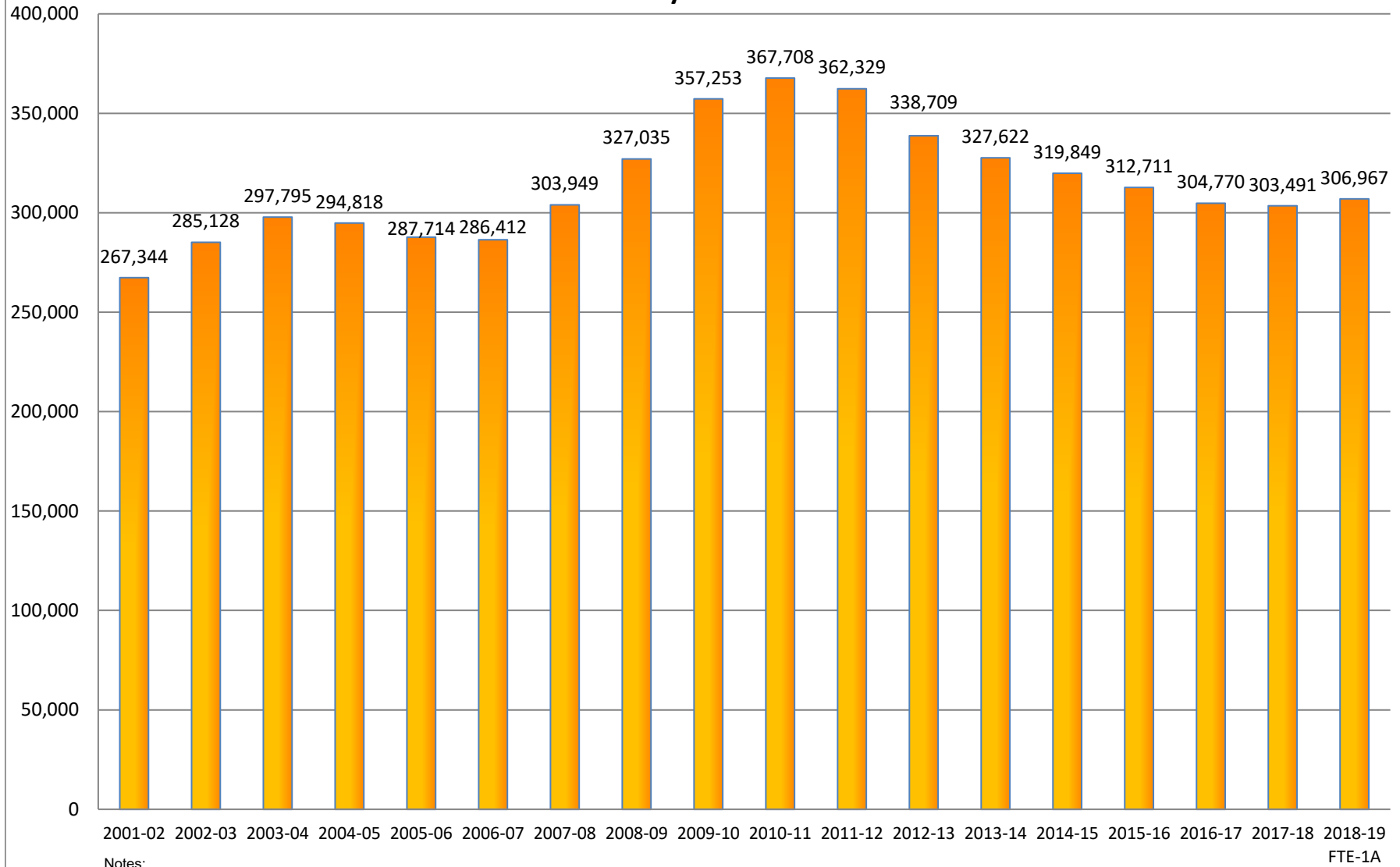
## Florida College System FTE History - Grand Total, All Programs



**Notes:**

- The Special Disabled Adult category was no longer reported starting in 2005-06.
- The EPI (Educator Preparation Institute) category began reporting in 2005-06.
- The Upper Division category began reporting in 2002-03.
- The CWE (Continuing Workforce Education) category was no longer reported starting in 2010-11.

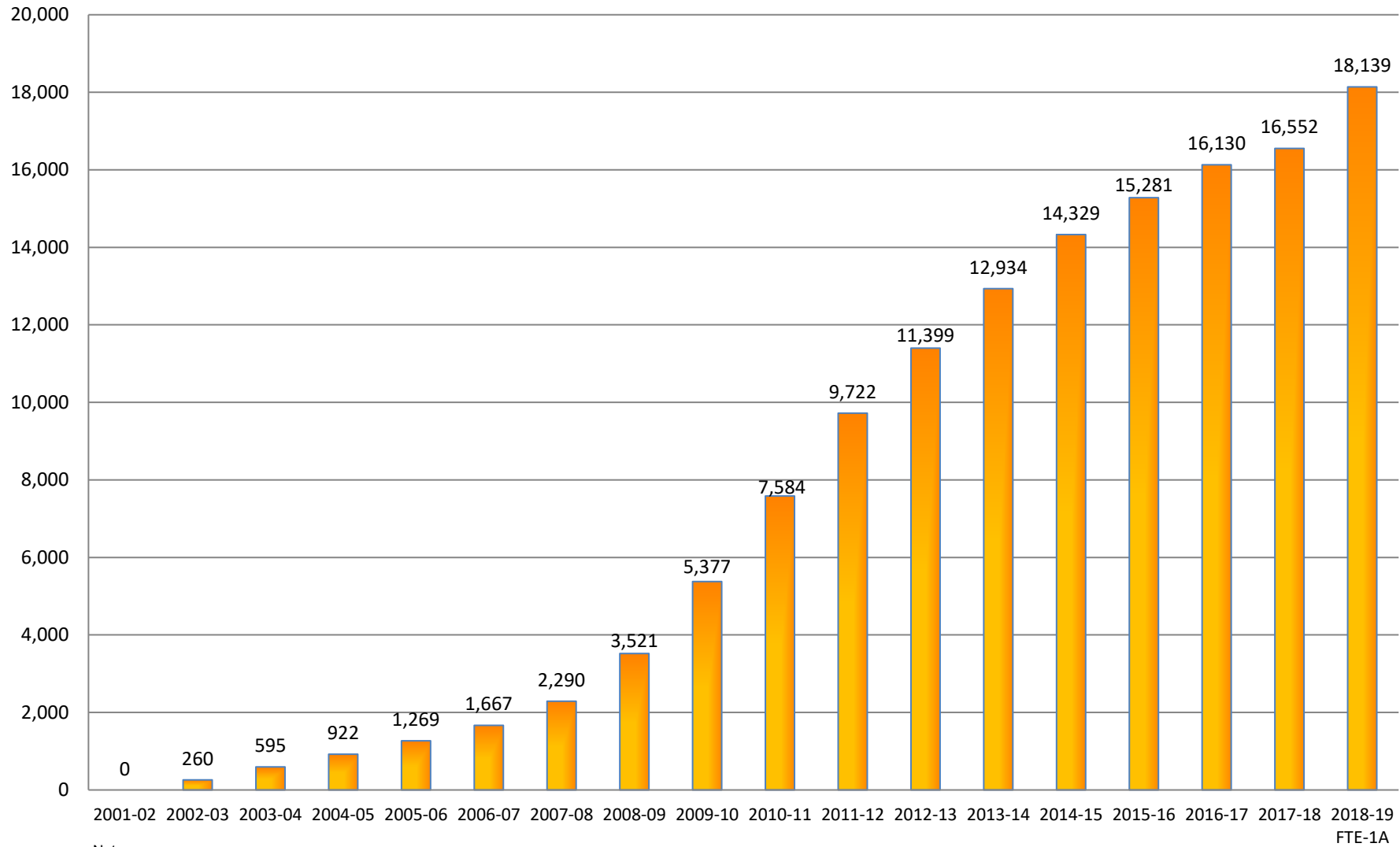
## Florida College System FTE History - Lower Division



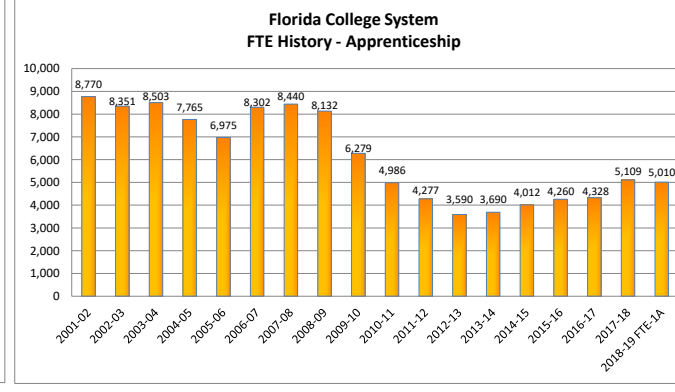
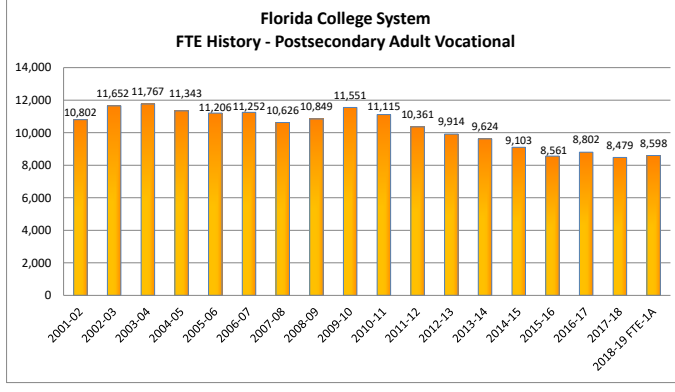
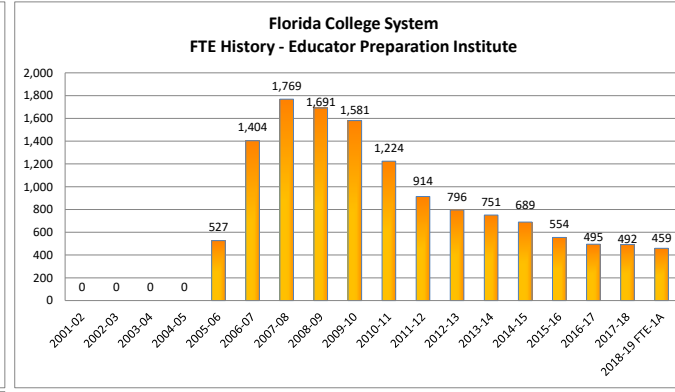
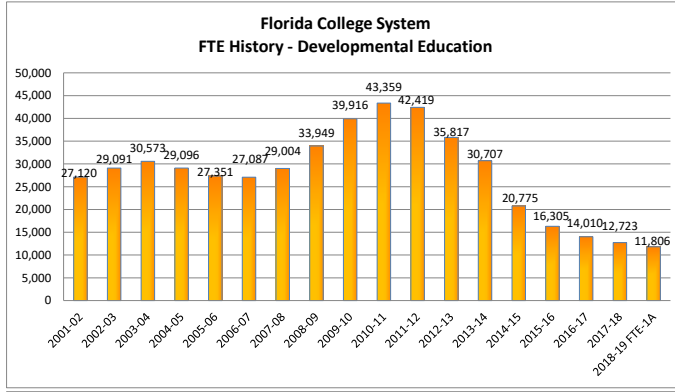
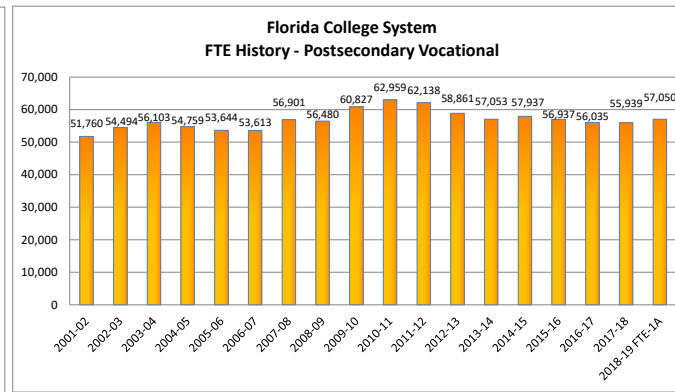
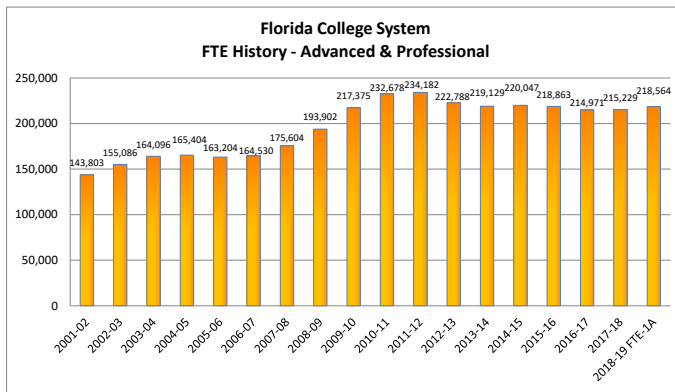
**Notes:**

- The Special Disabled Adult category was no longer reported starting in 2005-06.
- The EPI (Educator Preparation Institute) category began reporting in 2005-06.
- The Upper Division category began reporting in 2002-03.
- The CWE (Continuing Workforce Education) category was no longer reported starting in 2010-11.

## Florida College System FTE History - Upper Division

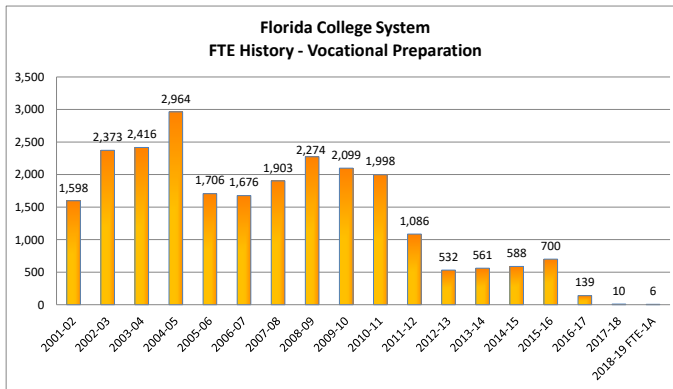
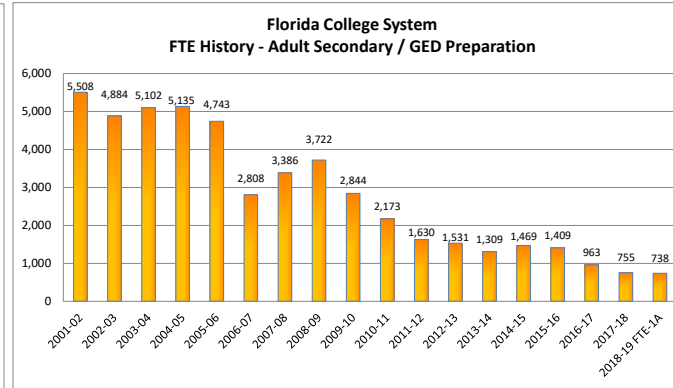
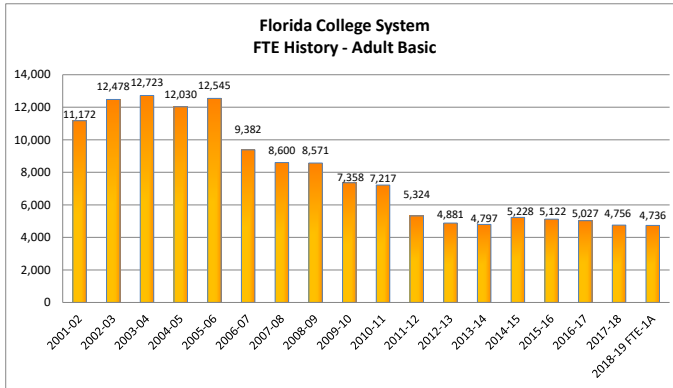


**Notes:**  
 The Special Disabled Adult category was no longer reported starting in 2005-06.  
 The EPI (Educator Preparation Institute) category began reporting in 2005-06.  
 The Upper Division category began reporting in 2002-03.  
 The CWE (Continuing Workforce Education) category was no longer reported starting in 2010-11.



**Notes:**  
 The Special Disabled Adult category was no longer reported starting in 2005-06.  
 The EPI (Educator Preparation Institute) category began reporting in 2005-06.  
 The Upper Division category began reporting in 2002-03.  
 The CWE (Continuing Workforce Education) category was no longer reported starting in 2010-11.





**Notes:**

The Special Disabled Adult category was no longer reported starting in 2005-06.  
 The EPI (Educator Preparation Institute) category began reporting in 2005-06.  
 The Upper Division category began reporting in 2002-03.  
 The CWE (Continuing Workforce Education) category was no longer reported starting in 2010-11.



**THE FLORIDA COLLEGE SYSTEM  
HISTORICAL DATA**

**FTE HISTORY**

Florida Department of Education

**FLORIDA COLLEGE SYSTEM**  
**FTE ENROLLMENT: FUNDED-30, LOWER AND UPPER DIVISION**

2018-19 FTE-1A

COLLEGE	UPPER DIVISION	A & P	POSTSEC VOC	DEV ED	EPI	POSTSEC ADULT VOC	APPRENTICE	CWE	ADULT BASIC	ADULT SEC/GED PREP	VOC PREP	SPECIAL DISABLED ADULT	TOTAL LOWER DIVISION	GRAND TOTAL
EFSC	911	7,404	2,075	278	0	343	0		0	0	0		10,100	11,011
BROW	1,302	17,576	7,771	1,647	27	379	0		0	0	0		27,400	28,702
CFLA	354	3,226	1,236	84	0	130	0		15	16	0		4,707	5,061
CHIP	124	966	241	17	0	133	0		0	0	0		1,357	1,481
DAYT	981	6,390	2,185	126	2	696	544		610	111	6		10,670	11,651
FSW	592	9,890	312	268	0	28	0		0	0	0		10,498	11,090
FJAX	1,841	10,363	3,476	688	3	883	0		441	41	0		15,895	17,736
FKEY	15	404	216	14	0	54	15		0	0	0		703	718
GULF	146	2,735	652	59	10	130	0		0	0	0		3,586	3,732
HILL	0	14,286	3,435	1,096	64	450	1,723		48	15	0		21,117	21,117
INDR	1,643	7,172	2,503	114	0	645	584		698	54	0		11,770	13,413
FGC	87	1,497	549	56	15	284	0		0	0	0		2,401	2,488
LSSC	53	2,589	491	75	0	0	0		0	0	0		3,155	3,208
SCF	462	5,660	585	184	21	0	0		0	0	0		6,450	6,912
MIAM	1,888	36,280	4,036	2,662	8	586	299		1,831	62	0		45,764	47,652
NFLA	20	593	141	9	0	109	0		0	0	0		852	872
NWFC	330	2,531	522	83	0	174	0		94	33	0		3,437	3,767
PALM	825	16,855	1,577	711	38	957	506		0	0	0		20,644	21,469
PASC	380	4,524	2,058	324	14	340	0		0	0	0		7,260	7,640
PENS	412	4,504	1,587	254	0	387	0		107	184	0		7,023	7,435
POLK	776	3,825	1,565	160	65	95	0		0	0	0		5,710	6,486
ST.J	221	3,255	867	62	30	123	0		31	18	0		4,386	4,607
ST.P	2,763	10,345	4,812	701	0	191	0		0	0	0		16,049	18,812
SANF	488	7,057	2,356	383	13	246	483		127	5	0		10,670	11,158
SEMI	1,038	7,063	2,956	301	73	230	758		345	174	0		11,900	12,938
SFLA	116	1,460	3	29	0	359	98		347	21	0		2,317	2,433
TALL	15	7,583	1,037	239	0	344	0		42	4	0		9,249	9,264
VALE	356	22,531	7,806	1,182	76	302	0		0	0	0		31,897	32,253
SYST	18,139	218,564	57,050	11,806	459	8,598	5,010		4,736	738	6		306,967	325,106

CCTCMIS: FTECOL, CO1AF29C - 11/14/2018 11:11 AM

SOURCE: FN30C1A

Notes:

The Special Disabled Adult category was no longer reported starting in 2005-06.

The EPI (Educator Preparation Institute) category began reporting in 2005-06.

The Upper Division category began reporting in 2002-03.

The CWE (Continuing Workforce Education) category was no longer reported starting in 2010-11.

**FLORIDA COLLEGE SYSTEM  
FTE ENROLLMENT: FUNDED-30, LOWER AND UPPER DIVISION**

**2017-18 FTE-3**

COLLEGE	UPPER DIVISION	A & P	POSTSEC VOC	DEV ED	EPI	POSTSEC ADULT VOC	APPRENTICE	CWE	ADULT BASIC	ADULT SEC/GED PREP	VOC PREP	SPECIAL DISABLED ADULT	TOTAL LOWER DIVISION	GRAND TOTAL
EFSC	700	7,297	2,091	300	0	343	0		0	0	0		10,031	10,731
BROW	1,188	17,548	7,679	1,788	44	379	0		0	0	0		27,438	28,626
CFLA	344	3,220	1,226	149	0	130	0		15	16	0		4,755	5,100
CHIP	121	950	229	18	0	120	0		0	0	0		1,317	1,439
DAYT	865	6,359	2,064	153	2	696	544		610	111	3		10,541	11,406
FSW	591	9,585	627	273	0	28	0		0	0	0		10,513	11,104
FJAX	1,689	9,938	3,228	570	0	873	0		467	43	0		15,119	16,808
FKEY	22	416	205	19	0	53	0		0	0	0		692	714
GULF	124	2,613	633	64	21	130	0		0	0	0		3,461	3,585
HILL	0	13,419	3,266	1,017	71	450	1,723		48	15	0		20,010	20,010
INDR	1,489	7,106	2,544	198	0	645	583		698	54	0		11,829	13,318
FGC	59	1,458	458	60	18	283	0		0	0	0		2,276	2,336
LSSC	46	2,429	548	88	0	0	0		0	0	0		3,065	3,111
SCF	432	5,677	548	214	31	0	0		0	0	0		6,469	6,901
MIAM	1,852	36,170	3,988	3,254	6	559	449		1,831	74	7		46,336	48,188
NFLA	12	538	191	15	0	110	0		0	0	0		853	866
NWFC	303	2,675	514	96	0	174	0		93	33	0		3,585	3,889
PALM	725	16,649	1,536	718	26	957	507		0	0	0		20,392	21,117
PASC	367	4,493	2,088	346	20	340	0		0	0	0		7,287	7,654
PENS	339	4,441	1,493	270	0	387	0		107	184	0		6,881	7,220
POLK	748	3,940	1,540	156	56	94	0		0	0	0		5,786	6,533
ST.J	195	3,207	892	80	28	83	0		31	19	0		4,340	4,535
ST.P	2,711	10,169	4,802	695	0	191	0		0	0	0		15,857	18,568
SANF	439	7,203	2,312	427	4	246	483		127	6	0		10,807	11,246
SEMI	896	7,031	2,828	311	66	244	758		344	174	0		11,754	12,650
SFLA	108	1,475	3	31	0	319	64		343	21	0		2,255	2,362
TALL	12	7,418	1,050	330	0	344	0		42	4	0		9,188	9,200
VALE	173	21,807	7,358	1,087	100	303	0		0	0	0		30,655	30,827
SYST	16,552	215,229	55,939	12,723	492	8,479	5,109		4,756	755	10		303,491	320,043

CCTCMIS: FTECOL, CO3B29C - 08/02/2018 11:13 AM

SOURCE: FN30C3

Notes:

The Special Disabled Adult category was no longer reported starting in 2005-06.

The EPI (Educator Preparation Institute) category began reporting in 2005-06.

The Upper Division category began reporting in 2002-03.

The CWE (Continuing Workforce Education) category was no longer reported starting in 2010-11.

**FLORIDA COLLEGE SYSTEM**  
**FTE ENROLLMENT: FUNDED-30, LOWER AND UPPER DIVISION**

2016-17 FTE-3

COLLEGE	UPPER DIVISION	A & P	POSTSEC VOC	DEV ED	EPI	POSTSEC ADULT VOC	APPRENTICE	CWE	ADULT BASIC	ADULT SEC/GED PREP	VOC PREP	SPECIAL DISABLED ADULT	TOTAL LOWER DIVISION	GRAND TOTAL
EFSC	563	7,252	2,125	349	0	418	0		0	0	0		10,143	10,706
BROW	1,096	18,241	7,604	2,013	44	473	0		0	0	0		28,376	29,471
CFLA	325	3,217	1,216	173	0	203	0		28	0	0		4,837	5,162
CHIP	119	954	273	29	0	144	0		0	0	0		1,401	1,520
DAYT	894	6,261	2,312	213	1	688	454		703	125	7		10,764	11,658
FSW	593	9,523	231	265	0	29	0		0	0	0		10,048	10,641
FJAX	1,784	11,229	3,561	805	0	799	0		625	106	0		17,125	18,908
FKEY	6	455	193	22	0	45	0		0	0	0		715	721
GULF	96	2,674	675	71	23	138	0		0	0	0		3,580	3,676
HILL	0	13,383	3,216	1,025	94	412	1,418		60	14	0		19,622	19,622
INDR	1,506	7,330	2,601	284	0	682	495		854	109	0		12,355	13,861
FGC	37	1,420	428	46	15	233	0		0	0	0		2,141	2,178
LSSC	54	2,210	625	82	0	0	0		0	0	0		2,917	2,971
SCF	444	5,799	567	236	24	0	0		0	0	0		6,626	7,070
MIAM	1,927	34,667	3,921	3,463	12	991	217		1,683	117	132		45,203	47,130
NFLA	0	531	180	21	0	105	0		0	0	0		837	837
NWFC	300	2,692	558	100	0	195	0		99	34	0		3,678	3,978
PALM	689	16,144	1,519	735	23	897	531		0	0	0		19,849	20,537
PASC	317	4,536	2,114	396	30	333	0		0	0	0		7,409	7,726
PENS	291	4,344	1,484	262	0	369	0		115	243	0		6,818	7,108
POLK	772	3,930	1,564	170	57	89	0		0	0	0		5,810	6,582
ST.J	180	3,054	900	99	32	101	0		35	24	0		4,245	4,425
ST.P	2,649	10,469	4,978	774	0	129	0		0	0	0		16,350	18,999
SANF	417	7,311	2,357	514	12	228	435		108	12	0		10,977	11,395
SEMI	803	7,218	2,730	375	41	266	714		347	142	0		11,833	12,636
SFLA	88	1,412	4	31	0	316	59		311	24	0		2,156	2,244
TALL	11	7,338	1,001	427	0	273	5		59	14	0		9,115	9,127
VALE	170	21,377	7,100	1,032	88	246	0		0	0	0		29,843	30,012
SYST	16,130	214,971	56,035	14,010	495	8,802	4,328		5,027	963	139		304,770	320,900

CCTCMIS: FTECOL, CO3F29C - 07/19/2017 3:18 PM

SOURCE: FN30C3

Notes:

The Special Disabled Adult category was no longer reported starting in 2005-06.

The EPI (Educator Preparation Institute) category began reporting in 2005-06.

The Upper Division category began reporting in 2002-03.

The CWE (Continuing Workforce Education) category was no longer reported starting in 2010-11.

**FLORIDA COLLEGE SYSTEM**  
**FTE ENROLLMENT: FUNDED-30, LOWER AND UPPER DIVISION**

2015-16 FTE-3

COLLEGE	UPPER DIVISION	A & P	POSTSEC VOC	DEV ED	EPI	POSTSEC ADULT VOC	APPRENTICE	CWE	ADULT BASIC	ADULT SEC/GED PREP	VOC PREP	SPECIAL DISABLED ADULT	TOTAL LOWER DIVISION	GRAND TOTAL
EFSC	452	7,224	2,115	391	0	353	0	0	0	0	0	0	10,083	10,535
BROW	979	18,616	7,638	2,285	64	470	0	0	0	0	0	0	29,073	30,053
CFLA	335	3,318	1,213	226	0	163	0	0	27	4	0	0	4,950	5,286
CHIP	128	881	298	33	0	107	0	0	0	0	0	0	1,318	1,446
DAYT	945	6,512	2,128	321	2	670	413	0	623	135	5	0	10,808	11,754
FSW	557	8,965	496	314	0	20	0	0	0	0	0	0	9,796	10,353
FJAX	1,648	11,769	3,678	883	0	832	109	0	591	122	0	0	17,983	19,631
FKEY	0	468	173	30	0	43	0	0	0	0	0	0	715	715
GULF	85	2,799	717	74	27	153	0	0	0	0	0	0	3,769	3,854
HILL	0	13,718	3,221	1,039	106	478	1,402	0	65	18	0	0	20,046	20,046
INDR	1,496	7,014	2,653	323	0	764	461	0	817	148	50	0	12,229	13,725
FGC	27	1,242	408	37	7	260	0	0	0	0	0	0	1,954	1,981
LSSC	53	2,094	631	101	0	0	0	0	0	0	0	0	2,826	2,879
SCF	427	6,116	554	287	26	0	0	0	0	0	0	0	6,982	7,409
MIAM	1,983	36,962	3,946	4,604	21	673	359	0	1,861	471	645	0	49,543	51,526
NFLA	0	500	179	17	0	118	0	0	0	0	0	0	814	814
NWFC	322	2,889	623	104	0	162	0	0	145	5	0	0	3,928	4,250
PALM	621	15,741	1,479	689	26	890	515	0	0	0	0	0	19,341	19,962
PASC	192	4,456	2,233	480	26	357	0	0	0	0	0	0	7,551	7,743
PENS	249	4,310	1,451	241	16	394	0	0	132	264	0	0	6,806	7,054
POLK	726	4,470	1,634	213	81	84	0	0	0	0	0	0	6,482	7,208
ST.J	182	3,071	940	148	27	79	9	0	38	27	0	0	4,338	4,520
ST.P	2,643	11,264	5,129	914	0	144	0	0	0	0	0	0	17,451	20,094
SANF	384	6,994	2,365	510	13	251	340	0	112	11	0	0	10,596	10,980
SEMI	594	7,370	2,800	405	39	214	616	0	331	160	0	0	11,936	12,530
SFLA	99	1,376	3	26	0	292	37	0	310	26	0	0	2,069	2,168
TALL	0	7,391	1,051	491	0	327	0	0	70	19	0	0	9,349	9,349
VALE	153	21,333	7,181	1,121	74	266	0	0	0	0	0	0	29,974	30,127
SYST	15,281	218,863	56,937	16,305	554	8,561	4,260	0	5,122	1,409	700	0	312,711	327,992

CCTCMIS: FTECOL, CO3F29B - 07/22/2016 4:44 PM

SOURCE: FN30C3

Notes:

The Special Disabled Adult category was no longer reported starting in 2005-06.

The EPI (Educator Preparation Institute) category began reporting in 2005-06.

The Upper Division category began reporting in 2002-03.

The CWE (Continuing Workforce Education) category was no longer reported starting in 2010-11.

**FLORIDA COLLEGE SYSTEM**  
**FTE ENROLLMENT: FUNDED-30, LOWER AND UPPER DIVISION**

2014-15 FTE-3

COLLEGE	UPPER DIVISION	A & P	POSTSEC VOC	DEV ED	EPI	POSTSEC ADULT VOC	APPRENTICE	CWE	ADULT BASIC	ADULT SEC/GED PREP	VOC PREP	SPECIAL DISABLED ADULT	TOTAL LOWER DIVISION	GRAND TOTAL
EFSC	239	7,322	2,345	428	0	706	0	0	0	0	0	0	10,800	11,039
BROW	894	18,295	7,552	2,809	58	518	0	0	0	0	0	0	29,232	30,126
CFLA	276	3,608	1,241	455	0	159	0	0	14	19	0	0	5,495	5,771
CHIP	134	875	254	46	0	122	0	0	0	0	0	0	1,298	1,432
DAYT	958	6,018	2,124	437	1	728	320	0	609	133	6	0	10,377	11,334
FSW	632	8,409	528	362	0	19	0	0	0	0	0	0	9,318	9,950
FJAX	1,394	12,067	3,629	1,211	0	906	367	0	554	88	2	0	18,824	20,218
FKEY	0	471	176	28	0	32	0	0	0	0	0	0	707	707
GULF	46	2,908	742	125	28	141	0	0	0	0	0	0	3,944	3,990
HILL	0	13,685	3,286	1,332	163	513	1,231	0	51	10	0	0	20,270	20,270
INDR	1,340	6,697	2,645	394	0	734	492	0	828	138	42	0	11,970	13,309
FGC	21	1,210	414	48	10	246	0	0	0	0	0	0	1,927	1,948
LSSC	43	2,002	622	112	9	0	0	0	0	0	0	0	2,744	2,787
SCF	387	6,169	589	356	37	0	0	0	0	0	0	0	7,152	7,538
MIAM	1,925	38,083	3,940	5,803	28	749	178	0	1,944	497	538	0	51,760	53,685
NFLA	0	518	173	24	0	91	0	0	0	0	0	0	806	806
NWFC	360	3,252	671	167	0	156	0	0	163	6	0	0	4,416	4,776
PALM	604	15,419	1,564	775	34	935	550	0	0	0	0	0	19,277	19,881
PASC	95	4,342	2,250	624	37	352	0	0	6	0	0	0	7,610	7,705
PENS	237	4,562	1,670	315	17	368	0	0	161	292	0	0	7,384	7,621
POLK	711	4,624	1,711	283	82	85	0	0	0	0	0	0	6,785	7,496
ST.J	184	3,113	1,016	170	39	84	41	0	54	22	0	0	4,538	4,722
ST.P	2,631	11,833	4,994	1,147	0	180	0	0	0	0	0	0	18,154	20,784
SANF	419	7,098	2,441	599	26	223	250	0	130	5	0	0	10,772	11,191
SEMI	573	7,588	3,027	538	43	256	557	0	327	205	0	0	12,541	13,113
SFLA	93	1,435	12	29	0	295	24	0	314	39	0	0	2,147	2,241
TALL	0	7,613	1,095	704	0	268	3	0	73	15	0	0	9,771	9,771
VALE	135	20,832	7,228	1,456	79	238	0	0	0	0	0	0	29,833	29,967
SYST	14,329	220,047	57,937	20,775	689	9,103	4,012	0	5,228	1,469	588	0	319,849	334,178

CCTCMIS: FTECOL, CO3F29C - 07/24/2015 11:11 AM

SOURCE: FN30C3

Notes:

The Special Disabled Adult category was no longer reported starting in 2005-06.

The EPI (Educator Preparation Institute) category began reporting in 2005-06.

The Upper Division category began reporting in 2002-03.

The CWE (Continuing Workforce Education) category was no longer reported starting in 2010-11.

**FLORIDA COLLEGE SYSTEM**  
**FTE ENROLLMENT: FUNDED-30, LOWER AND UPPER DIVISION**

2013-14 FTE-3

COLLEGE	UPPER DIVISION	A & P	POSTSEC VOC	DEV ED	EPI	POSTSEC ADULT VOC	APPRENTICE	CWE	ADULT BASIC	ADULT SEC/GED PREP	VOC PREP	SPECIAL DISABLED ADULT	TOTAL LOWER DIVISION	GRAND TOTAL
EFSC	76	7,530	2,575	657	0	692	15		0	0	0		11,469	11,545
BROW	797	17,470	7,502	4,216	47	464	0		0	0	0		29,699	30,496
CFLA	209	3,718	1,320	438	1	197	0		11	10	0		5,696	5,904
CHIP	135	929	239	78	0	129	0		0	0	2		1,376	1,511
DAYT	858	6,146	2,171	872	1	736	302		662	120	12		11,023	11,881
FSW	599	8,123	614	794	0	20	0		0	0	0		9,550	10,149
FJAX	1,289	12,657	3,758	1,766	0	1,245	343		522	90	7		20,388	21,676
FKEY	0	508	197	43	0	29	0		0	0	0		776	776
GULF	55	2,982	748	271	34	164	2		0	0	0		4,202	4,257
HILL	0	12,771	3,387	2,076	152	466	1,073		42	8	0		19,974	19,974
INDR	1,190	6,578	2,657	579	0	816	440		697	122	45		11,933	13,123
FGC	14	1,291	415	106	14	237	0		0	0	0		2,064	2,078
LSSC	30	1,919	640	179	18	0	0		0	0	0		2,756	2,787
SCF	376	6,055	594	560	49	0	0		0	0	0		7,258	7,634
MIAM	1,868	37,572	3,956	7,581	34	800	226		1,617	322	495		52,605	54,472
NFLA	0	485	156	63	0	94	0		0	0	0		798	798
NWFC	361	3,357	757	275	0	132	0		134	6	0		4,662	5,023
PALM	547	15,249	1,573	1,180	44	959	504		0	0	0		19,510	20,057
PASC	0	3,973	2,065	624	73	346	0		14	1	0		7,095	7,095
PENS	229	4,903	1,865	610	14	381	0		232	283	0		8,289	8,518
POLK	605	4,753	1,849	533	77	88	0		0	0	0		7,300	7,905
ST.J	163	3,099	995	271	42	93	33		50	22	0		4,606	4,768
ST.P	2,498	11,627	4,940	1,465	0	163	0		0	0	0		18,195	20,692
SANF	388	7,164	2,587	798	19	265	207		125	5	0		11,169	11,557
SEMI	512	8,008	3,001	916	42	312	509		320	248	0		13,355	13,867
SFLA	44	1,335	35	92	0	306	20		306	54	0		2,148	2,192
TALL	0	7,491	1,142	1,187	0	290	16		65	17	0		10,208	10,208
VALE	92	21,437	5,315	2,477	90	201	0		0	0	0		29,520	29,612
SYST	12,934	219,129	57,053	30,707	751	9,624	3,690		4,797	1,309	561		327,622	340,556

CCTCMIS: FTECOL, CO2AF29C - 07/16/2014 11:26 AM

SOURCE: FN30C3

Notes:

The Special Disabled Adult category was no longer reported starting in 2005-06.

The EPI (Educator Preparation Institute) category began reporting in 2005-06.

The Upper Division category began reporting in 2002-03.

The CWE (Continuing Workforce Education) category was no longer reported starting in 2010-11.



**FLORIDA COLLEGE SYSTEM  
HISTORICAL FTE ENROLLMENT: LOWER AND UPPER DIVISION**

2012-13 FTE-3

COLLEGE	UPPER DIVISION	A & P	POSTSEC VOC	DEV ED	EPI	POSTSEC ADULT VOC	APPRENTICE	CWE	ADULT BASIC	ADULT SEC/GED PREP	VOC PREP	SPECIAL DISABLED ADULT	TOTAL LOWER DIVISION	GRAND TOTAL
EFSC	0	7,718	2,541	859	3	809	86		0	0	0		12,018	12,018
BROW	728	16,732	7,370	4,751	49	424	0		0	0	0		29,326	30,054
CFLA	155	3,716	1,342	439	7	278	0		23	17	0		5,821	5,976
CHIP	137	993	257	93	0	122	0		0	0	1		1,466	1,602
DAYT	854	6,480	2,227	962	1	761	328		687	158	11		11,595	12,449
EDIS	590	8,012	987	915	0	10	0		0	0	0		9,924	10,513
FJAX	1,172	13,149	4,200	1,933	4	1,186	365		547	125	14		21,523	22,695
FKEY	0	552	206	49	0	30	0		0	0	0		837	837
GULF	43	3,021	911	307	32	186	5		1	0	0		4,462	4,505
HILL	0	12,922	3,531	2,379	144	419	1,018		50	10	0		20,472	20,472
INDR	1,013	6,708	2,830	724	42	818	454		688	152	0		12,416	13,429
FGC	7	1,335	409	128	19	269	0		0	0	0		2,160	2,167
LSSC	8	2,071	633	240	16	0	0		0	0	0		2,959	2,966
SCF	267	6,377	567	747	50	0	0		0	0	0		7,741	8,008
MIAM	1,659	37,745	4,098	8,822	25	897	182		1,562	378	504		54,213	55,872
NFLA	0	511	206	79	0	102	0		0	0	0		898	898
NWFC	378	3,445	765	300	0	155	0		142	11	0		4,819	5,196
PALM	504	15,113	1,481	1,557	44	906	479		0	0	0		19,580	20,085
PASC	0	3,950	2,032	637	73	335	0		13	1	0		7,041	7,041
PENS	218	5,195	1,970	830	2	483	0		274	326	0		9,079	9,297
POLK	432	4,787	1,827	603	90	90	0		0	0	0		7,397	7,828
ST.J	136	3,136	911	319	37	119	73		43	22	0		4,659	4,795
ST.P	2,402	12,075	4,975	1,675	0	153	0		0	0	0		18,878	21,280
SANF	299	7,321	2,742	1,025	23	288	120		112	5	0		11,636	11,935
SEMI	313	8,692	3,146	1,393	46	306	399		323	273	1		14,579	14,891
SFLA	24	1,318	63	128	0	368	27		332	22	0		2,257	2,280
TALL	0	8,114	1,205	1,225	0	233	55		84	31	0		10,947	10,947
VALE	63	21,618	5,431	2,699	93	171	0		0	0	0		30,011	30,074
SYST	11,399	222,788	58,861	35,817	796	9,914	3,590		4,881	1,531	532		338,709	350,109

CCTCMIS: FTECOL, CO3F29C - 08/01/2013 1:31 PM

SOURCE: FN30C3

Notes:

The Special Disabled Adult category was no longer reported starting in 2005-06.

The EPI (Educator Preparation Institute) category began reporting in 2005-06.

The Upper Division category began reporting in 2002-03.

The CWE (Continuing Workforce Education) category was no longer reported starting in 2010-11.

**FLORIDA COLLEGE SYSTEM  
HISTORICAL FTE ENROLLMENT: LOWER AND UPPER DIVISION**

2011-12 FTE-3

COLLEGE	UPPER DIVISION	A & P	POSTSEC VOC	DEV ED	EPI	POSTSEC ADULT VOC	APPRENTICE	CWE	ADULT BASIC	ADULT SEC/GED PREP	VOC PREP	SPECIAL DISABLED ADULT	TOTAL LOWER DIVISION	GRAND TOTAL
BREV	0	8,039	2,665	1,542	11	837	301		0	0	0		13,395	13,395
BROW	756	17,243	7,572	5,052	44	486	0		0	0	0		30,396	31,152
CFLA	79	3,940	1,449	576	10	403	0		45	11	1		6,435	6,514
CHIP	151	1,027	263	89	0	115	0		0	0	2		1,495	1,646
DAYT	782	7,346	2,505	1,160	0	776	370		719	184	3		13,063	13,844
EDIS	627	9,000	1,074	1,120	0	23	0		0	0	0		11,216	11,843
FJAX	962	14,810	4,546	2,186	50	1,340	379		708	180	21		24,220	25,182
FKEY	0	587	236	56	0	31	0		0	0	0		910	910
GULF	15	3,064	1,116	386	36	190	28		10	0	0		4,830	4,845
HILL	0	13,255	3,852	2,664	132	409	953		79	14	0		21,358	21,358
INDR	781	6,716	2,937	867	70	854	596		736	188	0		12,964	13,745
FGC	0	1,393	434	171	19	322	0		0	0	0		2,339	2,339
LSCC	0	2,261	687	276	13	0	0		0	0	0		3,238	3,238
SCF	115	6,713	581	997	57	0	0		0	0	0		8,348	8,463
MIAM	1,330	38,978	4,191	10,932	40	782	426		1,629	336	1,058		58,372	59,702
NFLA	0	572	196	93	0	103	0		0	0	0		963	963
NWFC	380	3,714	825	369	0	149	0		138	14	0		5,209	5,589
PALM	462	15,802	1,488	1,856	47	844	486		0	0	0		20,523	20,986
PASC	0	4,318	2,234	777	52	426	0		17	1	0		7,825	7,825
PENS	142	5,361	2,021	871	19	477	0		244	349	0		9,342	9,484
POLK	254	4,776	1,764	691	85	97	0		0	0	0		7,413	7,667
ST.J	83	3,329	935	401	46	126	95		25	7	0		4,964	5,047
ST.P	2,461	12,759	5,141	1,947	0	122	0		0	0	0		19,969	22,430
SANF	233	7,688	2,812	1,237	38	301	104		132	5	0		12,317	12,550
SEMI	71	8,788	3,418	1,432	44	300	472		381	262	2		15,099	15,170
SFLA	0	1,219	176	156	12	400	38		371	44	0		2,416	2,416
TALL	0	8,916	1,275	1,625	0	250	28		91	34	0		12,219	12,219
VALE	38	22,571	5,746	2,890	88	198	0		0	0	0		31,492	31,531
SYST	9,722	234,182	62,138	42,419	914	10,361	4,277		5,324	1,630	1,086		362,329	372,050

CCTCMIS: FTECOL, CO3F29C - 07/24/2012 10:59 AM

SOURCE: FN30C3

Notes:

The Special Disabled Adult category was no longer reported starting in 2005-06.

The EPI (Educator Preparation Institute) category began reporting in 2005-06.

The Upper Division category began reporting in 2002-03.

The CWE (Continuing Workforce Education) category was no longer reported starting in 2010-11.

**FLORIDA COLLEGE SYSTEM  
HISTORICAL FTE ENROLLMENT: LOWER AND UPPER DIVISION**

2010-11 FTE-3

COLLEGE	UPPER DIVISION	A & P	POSTSEC VOC	DEV ED	EPI	POSTSEC ADULT VOC	APPRENTICE	CWE	ADULT BASIC	ADULT SEC/GED PREP	VOC PREP	SPECIAL DISABLED ADULT	TOTAL LOWER DIVISION	GRAND TOTAL
BREV	0	8,245	2,753	1,160	19	1,048	289		0	0	0		13,514	13,514
BROW	427	17,015	7,545	4,994	46	444	0		0	0	0		30,043	30,470
CFLA	17	3,861	1,382	800	18	438	0		64	13	1		6,576	6,593
CHIP	129	1,058	234	107	0	137	0		0	0	2		1,537	1,666
DAYT	700	8,288	2,935	1,671	0	854	451		1,101	241	0		15,541	16,242
EDIS	555	8,922	1,386	1,336	0	16	0		0	0	0		11,660	12,215
FJAX	690	15,078	4,555	2,160	110	1,340	398		930	243	22		24,835	25,524
FKEY	0	621	255	65	2	25	0		0	0	0		968	968
GULF	3	3,074	1,057	415	34	235	76		13	1	0		4,904	4,908
HILL	0	13,041	3,850	2,850	152	334	1,060		108	25	0		21,419	21,419
INDR	613	6,657	3,053	866	91	946	614		1,063	249	0		13,539	14,151
FGC	0	1,294	450	183	23	369	0		1	0	0		2,319	2,319
LSCC	0	2,263	663	317	18	0	0		0	0	0		3,261	3,261
SCF	69	7,033	597	1,150	62	0	0		0	0	0		8,843	8,912
MIAM	1,026	38,050	4,078	10,679	41	711	515		2,215	507	1,942		58,738	59,764
NFLA	0	582	192	99	17	138	0		0	0	0		1,028	1,028
NWFC	336	3,987	839	420	0	150	0		151	24	0		5,570	5,906
PALM	352	15,356	1,476	1,979	64	939	664		0	0	0		20,478	20,830
PASC	0	4,100	2,205	878	65	514	0		14	1	0		7,778	7,778
PENS	33	5,503	1,908	707	28	453	0		306	387	11		9,304	9,336
POLK	134	4,427	1,610	742	143	107	0		0	0	0		7,029	7,163
ST.J	14	3,220	957	420	75	129	168		15	4	0		4,987	5,001
ST.P	2,319	12,874	4,993	2,025	0	119	0		0	0	0		20,011	22,330
SANF	156	7,908	2,685	1,284	54	293	155		144	4	0		12,526	12,682
SEMI	11	8,589	3,774	1,337	54	340	498		479	326	19		15,417	15,428
SFLA	0	1,206	212	162	23	530	77		445	84	0		2,737	2,737
TALL	0	8,498	1,176	1,726	0	317	21		171	66	0		11,975	11,975
VALE	0	21,930	6,141	2,827	84	192	0		0	0	0		31,174	31,174
SYST	7,584	232,678	62,959	43,359	1,224	11,115	4,986		7,217	2,173	1,998		367,708	375,292

CCTCMIS: FTECOL, CO3F29C - 07/15/2011 5:17 PM

SOURCE: FN30C3

Notes:

The Special Disabled Adult category was no longer reported starting in 2005-06.

The EPI (Educator Preparation Institute) category began reporting in 2005-06.

The Upper Division category began reporting in 2002-03.

The CWE (Continuing Workforce Education) category was no longer reported starting in 2010-11.

**FLORIDA COLLEGE SYSTEM  
HISTORICAL FTE ENROLLMENT: LOWER AND UPPER DIVISION**

2009-10 FTE-3

COLLEGE	UPPER DIVISION	A & P	POSTSEC VOC	DEV ED	EPI	POSTSEC ADULT VOC	APPRENTICE	CWE	ADULT BASIC	ADULT SEC/GED PREP	VOC PREP	SPECIAL DISABLED ADULT	TOTAL LOWER DIVISION	GRAND TOTAL
BREV	0	7,962	2,793	964	40	1,010	404	220	0	0	0		13,393	13,393
BROW	129	15,753	6,985	4,325	65	447	0	199	0	0	0		27,774	27,902
CFLA	0	3,615	1,253	771	18	529	0	133	74	8	5		6,405	6,405
CHIP	135	1,061	245	122	0	154	0	35	0	0	2		1,619	1,754
DAYT	495	7,570	2,799	1,635	27	940	542	73	1,113	286	0		14,984	15,479
EDIS	322	7,491	2,204	1,299	0	17	0	61	0	0	0		11,072	11,394
FJAX	355	14,158	4,140	2,013	153	1,416	450	2,199	1,037	216	24		25,806	26,161
FKEY	0	684	243	76	9	28	0	22	0	0	0		1,062	1,062
GULF	0	3,020	1,053	394	41	217	119	190	39	1	0		5,074	5,074
HILL	0	12,288	3,527	2,628	214	429	1,316	215	121	31	0		20,767	20,767
INDR	495	6,200	2,920	822	108	1,103	708	20	1,203	249	0		13,332	13,827
FGC	0	1,297	463	181	25	353	0	77	1	0	0		2,396	2,396
LSCC	0	2,139	626	340	24	0	0	74	0	0	0		3,203	3,203
SCF	13	7,523	559	1,262	92	0	0	117	0	0	0		9,552	9,565
MIAM	907	34,875	4,170	9,728	82	667	613	1,516	1,842	1,102	2,020		56,614	57,521
NFLA	0	532	164	88	10	128	0	19	0	0	0		941	941
NWFC	278	3,996	786	352	11	151	0	33	169	42	0		5,538	5,816
PALM	174	14,460	1,459	1,865	76	1,047	924	238	0	0	0		20,070	20,245
PASC	0	3,775	2,005	799	67	512	0	63	11	0	0		7,231	7,231
PENS	0	5,488	1,819	669	28	457	0	55	373	366	22		9,276	9,276
POLK	32	4,003	1,568	657	164	122	0	128	0	0	0		6,641	6,673
ST.J	0	2,981	938	407	83	116	239	52	92	6	0		4,913	4,913
ST.P	1,971	11,876	4,661	1,765	0	117	0	290	0	0	0		18,707	20,679
SANF	67	7,751	2,471	1,187	60	298	180	80	126	9	0		12,161	12,229
SEMI	5	7,469	3,322	1,222	52	355	651	22	503	378	25		13,998	14,003
SFLA	0	1,270	204	165	11	473	112	87	492	85	0		2,899	2,899
TALL	0	8,405	1,178	1,547	0	278	22	868	163	67	0		12,527	12,527
VALE	0	19,735	6,275	2,635	121	190	0	341	0	0	0		29,296	29,296
SYST	5,377	217,375	60,827	39,916	1,581	11,551	6,279	7,423	7,358	2,844	2,099		357,253	362,630

Daisy Date Entered: 7/07/2010

Source: 2009-2010 Student Data Base

Notes:

The Special Disabled Adult category was no longer reported starting in 2005-06.

The EPI (Educator Preparation Institute) category began reporting in 2005-06.

The Upper Division category began reporting in 2002-03.

The CWE (Continuing Workforce Education) category was no longer reported starting in 2010-11.

The total CWE enrollment for Florida State College at Jacksonville was reduced by 2,647 FTE by consensus of the November 14, 2012 Enrollment Estimating Conference. Supporting documentation is provided in the meeting packet.

**FLORIDA COLLEGE SYSTEM  
HISTORICAL FTE ENROLLMENT: LOWER AND UPPER DIVISION**

**2008-09 FTE-3**

COLLEGE	UPPER DIVISION	A & P	POSTSEC VOC	DEV ED	EPI	POSTSEC ADULT VOC	APPRENTICE	CWE	ADULT BASIC	ADULT SEC/GED PREP	VOC PREP	SPECIAL DISABLED ADULT	TOTAL LOWER DIVISION	GRAND TOTAL
BREV	0	6,959	2,499	844	51	778	490	178	0	0	0		11,799	11,799
BROW	14	14,038	6,180	3,758	81	492	0	256	0	0	0		24,805	24,818
CFLA	0	3,045	1,068	602	34	481	0	143	88	9	3		5,473	5,473
CHIP	105	1,076	226	128	0	154	7	44	0	0	6		1,640	1,745
DAYT	285	6,488	2,602	1,158	62	806	562	69	985	355	11		13,097	13,383
EDIS	114	6,118	1,885	1,041	22	0	0	57	0	0	0		9,123	9,237
FJAX	112	11,912	3,746	1,581	166	1,198	569	1,938	1,266	268	48		22,693	22,805
FKEY	0	558	215	55	16	51	0	22	0	0	0		916	916
GULF	0	2,795	1,062	342	38	205	165	206	62	1	0		4,875	4,875
HILL	0	10,837	3,052	2,238	139	415	1,623	207	117	33	0		18,661	18,661
INDR	343	5,505	2,692	681	110	1,068	942	14	1,172	278	0		12,462	12,805
FGC	0	1,240	373	161	25	254	0	58	0	0	0		2,112	2,112
LSCC	0	1,819	613	290	31	0	0	80	0	0	0		2,833	2,833
SCF	0	6,672	547	1,098	78	0	0	136	66	5	0		8,602	8,602
MIAM	765	31,894	5,402	8,591	77	840	814	1,534	2,911	1,658	2,150		55,869	56,635
NFLA	0	472	138	79	12	125	0	33	9	1	0		868	868
NWFC	182	3,866	744	335	40	144	0	41	178	52	0		5,399	5,581
PALM	0	12,776	1,412	1,576	90	1,024	1,346	230	0	0	0		18,454	18,454
PASC	0	3,242	1,643	670	65	383	0	47	8	1	0		6,060	6,060
PENS	0	5,076	1,711	548	46	435	0	45	363	431	21		8,674	8,674
POLK	0	3,568	1,396	566	167	103	0	192	0	0	0		5,992	5,992
ST.J	0	2,596	821	359	115	123	389	35	87	5	0		4,529	4,529
ST.P	1,599	10,688	4,272	1,563	0	116	0	329	0	0	0		16,967	18,566
SANF	0	7,837	2,369	1,021	54	254	230	46	114	36	1		11,961	11,961
SEMI	0	5,969	2,774	959	37	323	848	52	588	460	34		12,042	12,042
SFLA	0	1,152	181	144	10	506	135	69	467	92	0		2,757	2,757
TALL	0	8,087	1,180	1,218	7	301	13	1,004	91	38	0		11,938	11,938
VALE	0	17,621	5,678	2,342	122	271	0	404	0	0	0		26,437	26,437
SYST	3,521	193,902	56,480	33,949	1,691	10,849	8,132	7,467	8,571	3,722	2,274		327,035	330,556

Daisy Date Entered: 7/13/2009

Source: 2008-2009 Student Data Base

Notes:

The Special Disabled Adult category was no longer reported starting in 2005-06.

The EPI (Educator Preparation Institute) category began reporting in 2005-06.

The Upper Division category began reporting in 2002-03.

The CWE (Continuing Workforce Education) category was no longer reported starting in 2010-11.

The total CWE enrollment for Florida State College at Jacksonville was reduced by 2,017 FTE by consensus of the November 14, 2012 Enrollment Estimating Conference. Supporting documentation is provided in the meeting packet.

**FLORIDA COLLEGE SYSTEM  
HISTORICAL FTE ENROLLMENT: LOWER AND UPPER DIVISION**

**2007-08 FTE-3**

COLLEGE	UPPER DIVISION	A & P	POSTSEC VOC	DEV ED	EPI	POSTSEC ADULT VOC	APPRENTICE	CWE	ADULT BASIC	ADULT SEC/GED PREP	VOC PREP	SPECIAL DISABLED ADULT	TOTAL LOWER DIVISION	GRAND TOTAL
BREV	0	6,333	2,313	782	59	687	527	124	0	0	0		10,825	10,825
BROW	0	12,874	5,745	3,545	80	505	0	268	0	0	0		23,018	23,018
CFLA	0	2,627	998	477	50	477	0	178	66	11	2		4,886	4,886
CHIP	42	958	211	113	0	197	9	40	0	0	10		1,537	1,579
DAYT	176	5,675	2,383	1,068	85	757	641	69	932	410	23		12,043	12,218
EDIS	32	5,277	1,742	906	107	12	0	51	0	0	0		8,095	8,126
FJAX	2	10,646	3,468	1,514	151	1,040	577	2,080	1,099	264	39		20,878	20,880
FKEY	0	451	234	49	6	26	0	24	0	0	0		790	790
GULF	0	2,660	995	347	54	288	152	267	67	1	0		4,832	4,832
HILL	0	9,588	2,789	1,987	129	370	1,716	228	62	14	0		16,881	16,881
INDR	84	5,008	2,686	591	117	1,170	1,020	14	1,167	326	0		12,098	12,182
FGC	0	1,265	379	165	15	397	0	111	1	1	3		2,336	2,336
LSCC	0	1,616	609	269	40	0	0	46	0	0	0		2,580	2,580
SCF	0	5,872	616	992	84	0	0	110	40	5	0		7,718	7,718
MIAM	481	28,627	8,947	5,693	77	895	704	1,642	3,276	1,200	1,779		52,839	53,320
NFLA	0	509	156	110	14	103	0	53	10	2	1		956	956
NWFC	135	3,599	689	312	77	172	0	38	161	42	0		5,089	5,224
PALM	0	11,153	1,308	1,402	67	914	1,545	235	0	0	0		16,624	16,624
PASC	0	3,077	1,387	573	80	351	0	47	7	0	0		5,522	5,522
PENS	0	4,931	1,750	527	59	375	0	50	308	375	15		8,390	8,390
POLK	0	3,164	1,230	481	129	105	0	204	0	0	0		5,313	5,313
ST.J	0	2,302	784	305	86	127	400	43	122	22	0		4,190	4,190
ST.P	1,338	9,961	4,075	1,576	0	144	0	331	0	0	0		16,086	17,424
SANF	0	7,892	2,371	1,036	42	157	178	71	104	19	5		11,873	11,873
SEMI	0	5,088	2,338	880	40	302	815	11	624	542	28		10,669	10,669
SFLA	0	1,060	155	115	15	491	158	80	464	74	0		2,611	2,611
TALL	0	7,809	1,250	1,051	27	285	0	864	91	80	0		11,456	11,456
VALE	0	15,582	5,295	2,142	78	279	0	441	0	0	0		23,816	23,816
SYST	2,290	175,604	56,901	29,004	1,769	10,626	8,440	7,717	8,600	3,386	1,903		303,949	306,238

Daisy Date Entered: 7/29/2008

Source: 2007-2008 Student Data Base

Notes:

The Special Disabled Adult category was no longer reported starting in 2005-06.

The EPI (Educator Preparation Institute) category began reporting in 2005-06.

The Upper Division category began reporting in 2002-03.

The CWE (Continuing Workforce Education) category was no longer reported starting in 2010-11.

The total CWE enrollment for Florida State College at Jacksonville was reduced by 1,586 FTE by consensus of the November 14, 2012 Enrollment Estimating Conference. Supporting documentation is provided in the meeting packet.

**FLORIDA COLLEGE SYSTEM  
HISTORICAL FTE ENROLLMENT: LOWER AND UPPER DIVISION**

**2006-07 FTE-3**

COLLEGE	UPPER DIVISION	A & P	POSTSEC VOC	DEV ED	EPI	POSTSEC ADULT VOC	APPRENTICE	CWE	ADULT BASIC	ADULT SEC/GED PREP	VOC PREP	SPECIAL DISABLED ADULT	TOTAL LOWER DIVISION	GRAND TOTAL
BREV	0	5,883	2,044	650	46	776	413	125	0	0	0		9,937	9,937
BROW	0	12,344	5,512	3,236	47	662	0	288	0	0	0		22,089	22,089
CFLA	0	2,364	989	406	38	474	0	165	94	22	3		4,553	4,553
CHIP	23	933	220	103	0	190	0	60	0	0	13		1,518	1,541
DAYT	76	4,929	2,113	926	86	700	614	80	706	366	7		10,526	10,602
EDIS	13	4,604	1,498	973	120	6	0	67	0	0	0		7,266	7,279
FJAX	0	10,897	3,522	1,344	104	1,219	581	963	1,320	372	52		20,374	20,374
FKEY	0	397	210	51	0	40	0	24	0	0	0		722	722
GULF	0	2,622	955	331	56	324	124	243	64	3	0		4,720	4,720
HILL	0	9,510	2,587	2,041	66	433	1,685	235	55	11	0		16,622	16,622
INDR	0	4,491	2,639	520	93	1,162	920	19	1,227	353	2		11,425	11,425
FGC	0	1,126	411	152	22	466	0	108	2	1	2		2,290	2,290
LSCC	0	1,489	594	222	32	0	0	39	0	0	0		2,377	2,377
SCF	0	5,248	646	810	60	0	0	119	33	3	0		6,919	6,919
MIAM	261	26,904	8,263	5,579	53	929	641	1,546	3,649	520	1,535		49,617	49,878
NFLA	0	496	155	100	28	129	0	38	9	2	0		957	957
NWFC	109	3,343	641	281	76	175	0	18	138	34	0		4,705	4,814
PALM	0	10,365	1,292	1,264	64	779	1,888	279	0	0	0		15,931	15,931
PASC	0	2,794	1,299	531	64	337	0	45	71	26	0		5,167	5,167
PENS	0	4,546	1,649	505	60	362	0	57	313	381	11		7,884	7,884
POLK	0	2,746	1,159	415	72	110	0	201	0	0	0		4,702	4,702
ST.J	0	2,191	738	252	36	114	407	56	59	11	0		3,863	3,863
ST.P	1,185	9,445	3,877	1,571	0	173	0	335	0	0	0		15,402	16,587
SANF	0	7,439	2,322	1,015	61	259	272	84	143	55	21		11,669	11,669
SEMI	0	4,656	2,151	807	28	370	646	67	613	517	29		9,885	9,885
SFLA	0	992	144	89	13	473	106	86	387	41	0		2,331	2,331
TALL	0	7,562	1,219	1,084	26	274	6	581	499	94	0		11,345	11,345
VALE	0	14,215	4,763	1,831	54	318	0	435	0	0	0		21,616	21,616
SYST	1,667	164,530	53,613	27,087	1,404	11,252	8,302	6,359	9,382	2,808	1,676		286,412	288,079

July 31, 2007 RGM M:\Bris\_Prof1\Fte\2006-2007\reports\fte2007\CC Corrections v2\FTE3 cc corr.xls

Source: 2006-2007 Student Data Base

**Notes:**

The Special Disabled Adult category was no longer reported starting in 2005-06.

The EPI (Educator Preparation Institute) category began reporting in 2005-06.

The Upper Division category began reporting in 2002-03.

The CWE (Continuing Workforce Education) category was no longer reported starting in 2010-11.

The total CWE enrollment for Florida State College at Jacksonville was reduced by 343 FTE by consensus of the November 14, 2012 Enrollment Estimating Conference. Supporting documentation is provided in the meeting packet.

**FLORIDA COLLEGE SYSTEM  
HISTORICAL FTE ENROLLMENT: LOWER AND UPPER DIVISION**

2005-06 FTE-3

COLLEGE	UPPER DIVISION	A & P	POSTSEC VOC	DEV ED	EPI	POSTSEC ADULT VOC	APPRENTICE	CWE	ADULT BASIC	ADULT SEC/GED PREP	VOC PREP	SPECIAL DISABLED ADULT	TOTAL LOWER DIVISION	GRAND TOTAL
BREV	0	5,801	2,131	651	24	793	507	130	0	0	0		10,036	10,036
BROW	0	12,438	5,598	3,394	9	587	0	194	0	0	0		22,220	22,220
CFLA	0	2,295	896	423	25	457	0	211	142	114	15		4,578	4,578
CHIP	14	979	282	110	0	214	0	63	0	0	13		1,662	1,676
DAYT	3	4,568	2,022	832	15	677	608	84	1,865	1,122	1		11,795	11,798
EDIS	0	4,640	1,483	899	21	7	0	41	0	0	0		7,091	7,091
FJAX	0	10,898	3,551	1,168	54	1,244	475	418	1,317	429	65		19,619	19,619
FKEY	0	440	233	42	0	33	0	24	0	0	0		772	772
GULF	0	2,662	1,030	317	39	245	56	242	83	49	0		4,723	4,723
HILL	0	9,565	2,483	2,002	12	468	1,554	271	34	6	0		16,395	16,395
INDR	0	4,148	2,554	528	49	1,084	936	18	2,073	575	4		11,968	11,968
FGC	0	1,123	405	156	13	518	0	159	1	2	4		2,381	2,381
LSCC	0	1,435	594	214	11	0	0	59	0	0	0		2,312	2,312
SCF	0	5,149	594	760	21	0	0	83	15	7	0		6,629	6,629
MIAM	187	28,024	8,233	5,889	9	1,031	412	1,569	3,319	412	1,550		50,447	50,634
NFLA	0	533	156	100	25	131	0	44	18	1	1		1,010	1,010
NWFC	90	3,385	663	293	27	115	0	18	189	49	0		4,738	4,829
PALM	0	10,503	1,307	1,302	14	838	1,184	260	0	0	0		15,406	15,406
PASC	0	2,619	1,279	517	90	316	0	38	266	158	0		5,282	5,282
PENS	0	4,543	1,589	457	29	277	0	65	443	522	7		7,933	7,933
POLK	0	2,646	1,155	428	30	102	0	276	0	0	0		4,636	4,636
ST.J	0	2,088	686	215	4	256	291	45	84	19	0		3,687	3,687
ST.P	974	9,321	4,006	1,614	0	39	0	324	0	0	0		15,304	16,278
SANF	0	7,171	2,317	1,044	0	265	266	94	256	87	14		11,515	11,515
SEMI	0	4,598	2,140	808	0	350	650	77	1,079	914	32		10,646	10,646
SFLA	0	944	126	99	0	533	34	71	1,048	192	0		3,046	3,046
TALL	0	7,391	1,257	1,182	7	321	2	454	314	85	0		11,013	11,013
VALE	0	13,300	4,875	1,906	0	307	0	485	0	0	0		20,872	20,872
SYST	1,269	163,204	53,644	27,351	527	11,206	6,975	5,814	12,545	4,743	1,706		287,714	288,983

Daisy Date Entered: August 31, 2006  
Source: 2005-2006 Student Data Base

Notes:  
The Special Disabled Adult category was no longer reported starting in 2005-06.  
The EPI (Educator Preparation Institute) category began reporting in 2005-06.  
The Upper Division category began reporting in 2002-03.  
The CWE (Continuing Workforce Education) category was no longer reported starting in 2010-11.



**FLORIDA COLLEGE SYSTEM  
HISTORICAL FTE ENROLLMENT: LOWER AND UPPER DIVISION**

**2004-05 FTE-3**

COLLEGE	UPPER DIVISION	A & P	POSTSEC VOC	DEV ED	EPI	POSTSEC ADULT VOC	APPRENTICE	CWE	ADULT BASIC	ADULT SEC/GED PREP	VOC PREP	SPECIAL DISABLED ADULT	TOTAL LOWER DIVISION	GRAND TOTAL
BREV	0	6,002	2,143	754		757	677	135	0	0	0	0	10,468	10,468
BROW	0	12,423	6,024	3,761		489	0	264	0	0	0	0	22,959	22,959
CFLA	0	2,423	848	449		458	0	260	137	175	13	0	4,763	4,763
CHIP	18	1,013	258	118		194	0	53	0	0	16	0	1,651	1,669
DAYT	0	4,594	2,106	886		702	662	75	1,986	1,347	1	467	12,825	12,825
EDIS	0	4,748	1,447	886		8	0	31	0	0	0	0	7,121	7,121
FJAX	0	10,550	3,571	1,232		1,267	843	438	1,439	500	69	30	19,939	19,939
FKEY	0	454	247	49		36	0	24	0	0	0	0	810	810
GULF	0	2,730	1,026	348		231	21	239	170	107	0	0	4,872	4,872
HILL	0	9,563	2,674	2,298		453	1,417	381	24	6	0	0	16,816	16,816
INDR	0	3,993	2,471	472		1,053	804	62	1,943	531	1	0	11,328	11,328
FGC	0	1,149	414	177		578	0	187	2	3	0	0	2,509	2,509
LSCC	0	1,480	592	211		0	0	57	0	0	0	0	2,339	2,339
SCF	0	5,135	561	783		0	0	83	22	10	0	0	6,593	6,593
MIAM	126	29,734	8,592	6,222		1,152	351	1,540	2,577	453	2,800	0	53,421	53,547
NFLA	0	557	132	94		151	0	42	21	2	2	0	1,001	1,001
NWFC	53	3,411	664	338		122	0	16	220	61	0	0	4,832	4,885
PALM	0	10,531	1,359	1,400		970	1,337	278	0	0	0	0	15,875	15,875
PASC	0	2,521	1,280	521		374	0	36	284	183	0	0	5,199	5,199
PENS	0	4,780	1,696	534		366	0	53	408	501	11	0	8,348	8,348
POLK	0	2,618	1,152	465		99	0	172	0	0	0	0	4,506	4,506
ST.J	0	2,128	661	213		135	489	34	56	17	0	53	3,786	3,786
ST.P	725	9,366	4,240	1,646		35	0	364	0	0	0	0	15,650	16,375
SANF	0	7,244	2,145	1,094		285	371	84	238	82	18	0	11,561	11,561
SEMI	0	4,848	2,211	880		402	715	52	1,146	912	33	44	11,243	11,243
SFLA	0	1,017	131	106		562	76	51	1,141	165	0	0	3,250	3,250
TALL	0	7,079	1,129	1,180		256	4	312	216	83	0	0	10,257	10,257
VALE	0	13,315	4,986	1,982		207	0	406	0	0	0	0	20,896	20,896
SYST	922	165,404	54,759	29,096		11,343	7,765	5,728	12,030	5,135	2,964	594	294,818	295,740

Daisy Date Entered: July 28, 2005

Source: 2004-2005 Student Data Base

Notes:

The Special Disabled Adult category was no longer reported starting in 2005-06.

The EPI (Educator Preparation Institute) category began reporting in 2005-06.

The Upper Division category began reporting in 2002-03.

The CWE (Continuing Workforce Education) category was no longer reported starting in 2010-11.

**FLORIDA COLLEGE SYSTEM  
HISTORICAL FTE ENROLLMENT: LOWER AND UPPER DIVISION**

**2003-04 FTE-3**

COLLEGE	UPPER DIVISION	A & P	POSTSEC VOC	DEV ED	EPI	POSTSEC ADULT VOC	APPRENTICE	CWE	ADULT BASIC	ADULT SEC/GED PREP	VOC PREP	SPECIAL DISABLED ADULT	TOTAL LOWER DIVISION	GRAND TOTAL
BREV	0	5,874	2,258	779		760	761	102	0	0	0	0	10,535	10,535
BROW	0	12,023	6,018	3,924		498	0	220	0	0	0	0	22,682	22,682
CFLA	0	2,565	879	437		447	0	257	171	114	36	0	4,906	4,906
CHIP	6	1,035	259	121		201	0	53	0	0	17	0	1,686	1,691
DAYT	0	4,565	2,198	1,008		679	638	106	2,188	1,472	1	534	13,391	13,391
EDIS	0	4,859	1,413	911		7	0	51	0	0	0	0	7,242	7,242
FJAX	0	10,022	3,666	1,326		1,451	1,634	356	1,582	505	29	43	20,613	20,613
FKEY	0	484	297	42		40	0	17	0	0	0	0	880	880
GULF	0	2,654	1,069	358		175	17	241	142	74	0	0	4,731	4,731
HILL	0	9,427	2,524	2,418		484	1,361	337	0	0	0	0	16,551	16,551
INDR	0	3,867	2,604	535		1,128	835	75	2,328	599	3	0	11,975	11,975
FGC	0	1,072	488	148		544	0	168	18	5	0	0	2,443	2,443
LSCC	0	1,357	582	159		0	0	48	0	0	0	0	2,145	2,145
SCF	0	4,946	519	836		0	0	85	26	14	0	0	6,425	6,425
MIAM	47	30,419	9,091	6,317		1,275	194	1,704	2,740	435	2,219	0	54,393	54,439
NFLA	0	516	115	72		166	0	59	22	1	1	2	954	954
NWFC	0	3,634	764	382		160	0	15	259	112	0	0	5,326	5,326
PALM	0	10,332	1,319	1,456		1,022	1,302	201	0	0	0	0	15,633	15,633
PASC	0	2,399	1,263	525		394	0	45	201	168	0	0	4,995	4,995
PENS	0	4,898	1,722	628		382	0	56	474	476	13	15	8,663	8,663
POLK	0	2,646	1,200	466		125	0	232	0	0	0	0	4,669	4,669
ST.J	0	2,166	644	197		130	475	30	64	21	0	37	3,764	3,764
ST.P	543	9,209	4,347	1,604		27	0	434	0	0	0	0	15,621	16,163
SANF	0	6,975	2,292	1,263		274	367	98	157	99	19	0	11,542	11,542
SEMI	0	4,934	2,394	908		450	839	68	962	773	76	24	11,426	11,426
SFLA	0	1,062	155	110		559	67	73	1,244	206	0	0	3,475	3,475
TALL	0	6,663	1,085	1,265		151	13	267	146	28	0	0	9,618	9,618
VALE	0	13,495	4,939	2,380		238	0	461	0	0	0	0	21,513	21,513
SYST	595	164,096	56,103	30,573		11,767	8,503	5,857	12,723	5,102	2,416	655	297,795	298,390

Daisy Date Entered: July 7, 2004

Source: 2003-2004 Student Data Base

Notes:

The Special Disabled Adult category was no longer reported starting in 2005-06.

The EPI (Educator Preparation Institute) category began reporting in 2005-06.

The Upper Division category began reporting in 2002-03.

The CWE (Continuing Workforce Education) category was no longer reported starting in 2010-11.

**FLORIDA COLLEGE SYSTEM  
HISTORICAL FTE ENROLLMENT: LOWER AND UPPER DIVISION**

**2002-03 FTE-3**

COLLEGE	UPPER DIVISION	A & P	POSTSEC VOC	DEV ED	EPI	POSTSEC ADULT VOC	APPRENTICE	CWE	ADULT BASIC	ADULT SEC/GED PREP	VOC PREP	SPECIAL DISABLED ADULT	TOTAL LOWER DIVISION	GRAND TOTAL
BREV	0	5,691	2,318	798		675	687	137	0	0	0	0	10,305	10,305
BROW	0	11,586	5,869	3,899		521	0	231	0	0	0	0	22,104	22,104
CFLA	0	2,562	862	450		398	0	275	178	61	36	0	4,823	4,823
CHIP	0	951	218	122		167	0	70	0	0	24	0	1,550	1,550
DAYT	0	4,299	2,170	938		585	649	109	1,973	1,380	3	579	12,684	12,684
EDIS	0	4,478	1,215	849		7	0	45	0	0	0	0	6,594	6,594
FJAX	0	9,167	3,620	1,333		1,446	1,832	403	1,754	514	24	47	20,139	20,139
FKEY	0	532	307	58		38	0	13	0	0	0	0	949	949
GULF	0	2,591	1,111	360		157	11	229	183	98	0	0	4,739	4,739
HILL	0	8,589	2,431	2,180		460	1,452	321	0	0	0	0	15,432	15,432
INDR	0	3,493	2,606	454		1,072	830	56	2,219	633	1	0	11,365	11,365
FGC	0	984	506	153		459	0	145	29	9	1	0	2,286	2,286
LSCC	0	1,295	537	171		5	0	57	0	0	0	0	2,064	2,064
SCF	0	4,700	490	770		0	0	67	19	9	0	0	6,056	6,056
MIAM	0	28,356	8,864	5,868		1,400	0	1,949	2,399	340	2,176	0	51,352	51,352
NFLA	0	524	128	71		195	0	42	40	2	2	0	1,004	1,004
NWFC	0	3,424	800	344		126	0	14	290	74	3	0	5,074	5,074
PALM	0	9,983	1,234	1,391		898	1,281	197	0	0	0	0	14,983	14,983
PASC	0	2,170	1,210	502		377	0	40	234	111	0	0	4,645	4,645
PENS	0	4,707	1,664	670		349	0	44	493	484	18	8	8,436	8,436
POLK	0	2,524	1,081	422		106	0	271	0	0	0	0	4,403	4,403
ST.J	0	2,085	561	175		121	454	31	65	21	0	43	3,556	3,556
ST.P	260	8,460	4,172	1,586		45	0	442	0	0	0	0	14,706	14,966
SANF	0	6,724	2,254	1,353		612	87	84	113	90	16	0	11,331	11,331
SEMI	0	4,371	2,342	739		480	998	79	1,076	818	65	24	10,991	10,991
SFLA	0	1,068	136	107		551	66	59	1,317	210	5	0	3,518	3,518
TALL	0	6,223	1,042	1,080		181	6	265	96	32	0	0	8,925	8,925
VALE	0	13,550	4,748	2,250		223	0	345	0	0	0	0	21,116	21,116
SYST	260	155,086	54,494	29,091		11,652	8,351	6,019	12,478	4,884	2,373	701	285,128	285,388

Daisy Date Entered: July 30, 2003

Source: 2002-2003 Student Data Base

Notes:

The Special Disabled Adult category was no longer reported starting in 2005-06.

The EPI (Educator Preparation Institute) category began reporting in 2005-06.

The Upper Division category began reporting in 2002-03.

The CWE (Continuing Workforce Education) category was no longer reported starting in 2010-11.

**FLORIDA COLLEGE SYSTEM  
HISTORICAL FTE ENROLLMENT: LOWER AND UPPER DIVISION**

**2001-02 FTE-3**

COLLEGE	UPPER DIVISION	A & P	POSTSEC VOC	DEV ED	EPI	POSTSEC ADULT VOC	APPRENTICE	CWE	ADULT BASIC	ADULT SEC/GED PREP	VOC PREP	SPECIAL DISABLED ADULT	TOTAL LOWER DIVISION	GRAND TOTAL
BREV		5,134	2,208	770		583	726	152	0	0	0	0	9,571	9,571
BROW		10,754	5,585	3,642		503	0	251	0	0	0	0	20,734	20,734
CFLA		2,436	811	433		397	0	317	156	78	16	0	4,643	4,643
CHIP		866	182	86		189	0	63	0	0	25	0	1,411	1,411
DAYT		4,132	2,017	914		511	747	125	1,723	1,358	10	730	12,267	12,267
EDIS		4,143	1,034	924		11	0	81	0	0	0	0	6,193	6,193
FJAX		8,321	3,432	1,235		1,256	1,908	307	1,665	708	60	33	18,923	18,923
FKEY		521	286	49		45	0	10	0	0	0	0	911	911
GULF		2,408	1,123	348		204	19	246	134	83	0	0	4,565	4,565
HILL		7,769	2,317	1,914		373	1,522	331	0	0	0	0	14,226	14,226
INDR		3,433	2,538	346		1,339	671	95	2,125	685	2	0	11,233	11,233
FGC		851	481	192		232	0	123	36	16	1	0	1,933	1,933
LSCC		1,164	490	134		4	0	29	0	0	0	0	1,820	1,820
SCF		4,222	554	707		0	0	68	18	14	0	0	5,583	5,583
MIAM		26,038	8,484	5,250		1,505	0	1,784	2,072	462	1,376	0	46,971	46,971
NFLA		470	112	75		179	0	59	32	3	3	0	933	933
NWFC		3,233	810	296		130	0	18	252	64	7	0	4,811	4,811
PALM		9,499	1,153	1,333		707	1,305	177	0	0	0	0	14,174	14,174
PASC		1,892	1,033	412		344	0	49	93	302	0	0	4,125	4,125
PENS		4,614	1,725	677		352	0	45	523	653	15	0	8,602	8,602
POLK		2,286	962	426		98	0	260	0	0	0	0	4,031	4,031
ST.J		1,991	538	173		114	469	50	72	30	1	41	3,479	3,479
ST.P		7,575	3,871	1,387		19	0	416	0	0	0	0	13,268	13,268
SANF		6,380	2,270	1,289		247	252	81	62	42	9	0	10,633	10,633
SEMI		3,654	2,246	671		474	1,076	77	991	795	52	27	10,061	10,061
SFLA		991	117	79		557	64	64	1,165	184	20	0	3,239	3,239
TALL		6,054	988	1,060		188	12	231	54	29	0	0	8,616	8,616
VALE		12,976	4,392	2,302		242	0	476	0	0	0	0	20,388	20,388
SYST		143,803	51,760	27,120		10,802	8,770	5,983	11,172	5,508	1,598	830	267,344	267,344

Daisy Date Entered: August 14, 2002  
Source: 2001-2002 Student Data Base

Notes:  
The Special Disabled Adult category was no longer reported starting in 2005-06.  
The EPI (Educator Preparation Institute) category began reporting in 2005-06.  
The Upper Division category began reporting in 2002-03.  
The CWE (Continuing Workforce Education) category was no longer reported starting in 2010-11.



# **THE FLORIDA COLLEGE SYSTEM**

## **APPENDIX**

Florida Department of Education

**FLORIDA COMMUNITY COLLEGE SYSTEM**  
**Student Data Base FTE Report**  
**2017-2018 FTE-3 Compared to the 2018-2019 FTE-1 (Division Estimates)**

	Upper Division	Diff. Percent	Adv. & Prof.	Diff. Percent	Postsec. Voc.	Diff. Percent	Dev. Ed.	Diff. Percent	EPI	Diff. Percent	Postsec. Adult	Diff. Percent	Apprenticeship	Diff. Percent	Adult Basic	Diff. Percent	Adult S&G	Diff. Percent	Voc. Prep	Diff. Percent	Total FTE	Diff. Percent
<b>EFSC</b>																						
2018 FTE-3	700.2	211	7297.3	107	2090.7	-16	299.8	-22	0.0	0	342.9	0	0.0	0	0.0	0	0.0	0	0.0	0	10730.9	280
2019 FTE-1	911.0	30.1	7404.0	1.5	2075.0	-0.8	278.0	-7.3	0.0	0.0	343.0	0.0	0.0	0.0	0.0	0.0	0.0	0.0	0.0	0.0	11011.0	2.6
<b>BROW</b>																						
2018 FTE-3	1188.3	114	17547.6	28	7679.2	92	1788.4	-141	43.8	-17	379.0	0	0.0	0	0.0	0	0.0	0	0.0	0	28626.3	76
2019 FTE-1	1302.0	9.6	17576.0	0.2	7771.0	1.2	1647.0	-7.9	27.0	-38.4	379.0	0.0	0.0	0.0	0.0	0.0	0.0	0.0	0.0	0.0	28702.0	0.3
<b>CFLA</b>																						
2018 FTE-3	344.4	10	3220.2	6	1225.9	10	148.5	-65	0.0	0	129.9	0	0.0	0	14.9	0	15.8	0	0.0	0	5099.6	-39
2019 FTE-1	354.0	2.8	3226.0	0.2	1236.0	0.8	84.0	-43.4	0.0	0.0	130.0	0.1	0.0	0.0	15.0	0.7	16.0	1.3	0.0	0.0	5061.0	-0.8
<b>CHIP</b>																						
2018 FTE-3	121.2	3	950.1	16	229.2	6	18.4	1	0.0	0	119.5	2	0.0	0	0.0	0	0.0	0	0.1	0	1438.5	27
2019 FTE-1	124.0	2.3	966.0	1.7	235.0	2.5	19.0	3.3	0.0	0.0	121.0	1.3	0.0	0.0	0.0	0.0	0.0	0.0	0.0	-100.0	1465.0	1.8
<b>DAYT</b>																						
2018 FTE-3	864.9	116	6358.8	31	2063.5	122	153.4	-27	1.6	0	696.1	0	543.7	0	610.0	0	110.6	0	3.0	3	11405.6	245
2019 FTE-1	981.0	13.4	6390.0	0.5	2185.0	5.9	126.0	-17.9	2.0	25.0	696.0	0.0	544.0	0.1	610.0	0.0	111.0	0.4	6.0	100.0	11651.0	2.2
<b>FSW</b>																						
2018 FTE-3	591.4	1	9584.7	305	627.4	25	272.8	-5	0.0	0	28.0	0	0.0	0	0.0	0	0.0	0	0.0	0	11104.3	326
2019 FTE-1	592.0	0.1	9890.0	3.2	652.0	3.9	268.0	-1.8	0.0	0.0	28.0	0.0	0.0	0.0	0.0	0.0	0.0	0.0	0.0	0.0	11430.0	2.9
<b>FJAX</b>																						
2018 FTE-3	1688.8	99	9937.5	173	3227.9	231	569.9	97	0.0	0	873.1	0	0.0	0	467.0	0	43.3	0	0.0	0	16807.5	600
2019 FTE-1	1788.0	5.9	10110.0	1.7	3459.0	7.2	667.0	17.0	0.0	0.0	873.0	0.0	0.0	0.0	467.0	0.0	43.0	-0.7	0.0	0.0	17407.0	3.6
<b>FKEY</b>																						
2018 FTE-3	22.2	-7	416.1	-22	204.8	11	18.5	-5	0.0	0	52.7	1	0.0	10	0.0	0	0.0	0	0.0	0	714.3	-11
2019 FTE-1	15.0	-32.4	394.0	-5.3	216.0	5.5	14.0	-24.3	0.0	0.0	54.0	2.5	10.0	0.0	0.0	0.0	0.0	0.0	0.0	0.0	703.0	-1.6
<b>GULF</b>																						
2018 FTE-3	124.1	22	2612.9	206	633.0	19	64.4	-5	20.6	-11	129.8	0	0.0	0	0.0	0	0.0	0	0.0	0	3584.8	231
2019 FTE-1	146.0	17.6	2819.0	7.9	652.0	3.0	59.0	-8.4	10.0	-51.5	130.0	0.2	0.0	0.0	0.0	0.0	0.0	0.0	0.0	0.0	3816.0	6.4
<b>HILL</b>																						
2018 FTE-3	0.0	0	13419.2	867	3265.8	169	1016.8	79	71.4	-7	449.9	0	1723.2	0	48.2	0	15.4	0	0.0	0	20009.9	1107
2019 FTE-1	0.0	0.0	14286.0	6.5	3435.0	5.2	1096.0	7.8	64.0	-10.4	450.0	0.0	1723.0	0.0	48.0	-0.4	15.0	-2.6	0.0	0.0	21117.0	5.5
<b>INDR</b>																						
2018 FTE-3	1488.9	54	7106.2	-84	2544.4	-91	197.7	-84	0.0	0	645.4	0	582.8	1	697.7	0	54.4	0	0.0	0	13317.5	-205
2019 FTE-1	1543.0	3.6	7022.0	-1.2	2453.0	-3.6	114.0	-42.3	0.0	0.0	645.0	-0.1	584.0	0.2	698.0	0.0	54.0	-0.7	0.0	0.0	13113.0	-1.5
<b>FGC</b>																						
2018 FTE-3	59.4	28	1457.7	39	457.6	91	59.6	-4	18.0	-3	283.3	1	0.0	0	0.0	0	0.0	0	0.0	0	2335.6	152
2019 FTE-1	87.0	46.5	1497.0	2.7	549.0	20.0	56.0	-6.0	15.0	-16.7	284.0	0.2	0.0	0.0	0.0	0.0	0.0	0.0	0.0	0.0	2488.0	6.5
<b>LSCC</b>																						
2018 FTE-3	46.1	7	2428.8	160	547.8	-57	88.2	-13	0.0	0	0.0	0	0.0	0	0.0	0	0.0	0	0.0	0	3110.9	97
2019 FTE-1	53.0	15.0	2589.0	6.6	491.0	-10.4	75.0	-15.0	0.0	0.0	0.0	0.0	0.0	0.0	0.0	0.0	0.0	0.0	0.0	0.0	3208.0	3.1
<b>SCF</b>																						
2018 FTE-3	431.5	14	5677.0	-168	547.5	15	213.6	-30	31.0	-10	0.0	0	0.0	0	0.0	0	0.0	0	0.0	0	6900.6	-180
2019 FTE-1	445.0	3.1	5509.0	-3.0	562.0	2.6	184.0	-13.9	21.0	-32.3	0.0	0.0	0.0	0.0	0.0	0.0	0.0	0.0	0.0	0.0	6721.0	-2.6
<b>MIAM</b>																						
2018 FTE-3	1852.3	-12	36169.6	-164	3987.5	-80	3253.5	-558	5.7	2	558.9	116	448.6	-449	1831.1	0	74.4	0	6.6	-7	48188.2	-1150
2019 FTE-1	1840.0	-0.7	36006.0	-0.5	3908.0	-2.0	2696.0	-17.1	8.0	40.4	675.0	20.8	0.0	-100.0	1831.0	0.0	74.0	-0.5	0.0	-100.0	47038.0	-2.4

Sources: 2017-2018 Student Data Base FTE-3  
2018-2019 Estimates FTE-1 (Division Estimates)  
Advanced and Professional, Post Secondary Vocational, Developmental Education and EPI are calculated as 30 Credit Hour FTE.

**FLORIDA COMMUNITY COLLEGE SYSTEM**  
**Student Data Base FTE Report**  
**2017-2018 FTE-3 Compared to the 2018-2019 FTE-1 (Division Estimates)**

	Upper Division	Diff. Percent	Adv. & Prof.	Diff. Percent	Postsec. Voc.	Diff. Percent	Dev. Ed.	Diff. Percent	EPI	Diff. Percent	Postsec. Adult	Diff. Percent	Apprenticeship	Diff. Percent	Adult Basic	Diff. Percent	Adult S&G	Diff. Percent	Voc. Prep	Diff. Percent	Total FTE	Diff. Percent	
<b>NFLA</b>																							
2018 FTE-3	12.1	8	537.9	55	190.6	-50	14.6	-6	0.0	0	110.3	-1	0.0	0	0.0	0	0.0	0	0.0	0	865.5	7	
2019 FTE-1	20.0	65.3	593.0	10.2	141.0	-26.0	9.0	-38.4	0.0	0.0	109.0	-1.2	0.0	0.0	0.0	0.0	0.0	0.0	0.0	0.0	872.0	0.8	
<b>NWFC</b>																							
2018 FTE-3	303.4	18	2674.9	-145	514.2	-14	95.8	-13	0.0	0	174.0	0	0.0	0	93.3	1	33.0	0	0.0	0	3888.6	-154	
2019 FTE-1	321.0	5.8	2530.0	-5.4	500.0	-2.8	83.0	-13.4	0.0	0.0	174.0	0.0	0.0	0.0	94.0	0.8	33.0	0.0	0.0	0.0	3735.0	-4.0	
<b>PALM</b>																							
2018 FTE-3	724.8	100	16648.5	207	1536.0	41	718.3	-7	26.0	12	956.8	0	506.7	-1	0.0	0	0.0	0	0.0	0	21117.1	352	
2019 FTE-1	825.0	13.8	16855.0	1.2	1577.0	2.7	711.0	-1.0	38.0	46.2	957.0	0.0	506.0	-0.1	0.0	0.0	0.0	0.0	0.0	0.0	21469.0	1.7	
<b>PASC</b>																							
2018 FTE-3	367.2	34	4493.2	4	2088.3	-36	346.0	-43	20.0	-12	339.7	0	0.0	0	0.0	0	0.0	0	0.0	0	7654.4	-53	
2019 FTE-1	401.0	9.2	4497.0	0.1	2052.0	-1.7	303.0	-12.4	8.0	-60.0	340.0	0.1	0.0	0.0	0.0	0.0	0.0	0.0	0.0	0.0	7601.0	-0.7	
<b>PENS</b>																							
2018 FTE-3	338.8	73	4440.7	63	1493.0	94	269.5	-16	0.0	0	386.9	0	0.0	0	107.0	0	184.3	0	0.0	0	7220.2	215	
2019 FTE-1	412.0	21.6	4504.0	1.4	1587.0	6.3	254.0	-5.8	0.0	0.0	387.0	0.0	0.0	0.0	107.0	0.0	184.0	-0.2	0.0	0.0	7435.0	3.0	
<b>POLK</b>																							
2018 FTE-3	747.5	29	3939.9	-242	1540.3	25	155.7	4	55.8	9	93.8	1	0.0	0	0.0	0	0.0	0	0.0	0	6533.0	-174	
2019 FTE-1	776.0	3.8	3698.0	-6.1	1565.0	1.6	160.0	2.8	65.0	16.5	95.0	1.3	0.0	0.0	0.0	0.0	0.0	0.0	0.0	0.0	6359.0	-2.7	
<b>ST.J</b>																							
2018 FTE-3	195.2	26	3207.4	48	892.2	-25	79.7	-18	28.2	2	83.1	0	0.0	0	30.5	1	19.1	-1	0.0	0	4535.4	32	
2019 FTE-1	221.0	13.2	3255.0	1.5	867.0	-2.8	62.0	-22.2	30.0	6.4	83.0	-0.1	0.0	0.0	31.0	1.6	18.0	-5.8	0.0	0.0	4567.0	0.7	
<b>ST.P</b>																							
2018 FTE-3	2711.0	52	10169.0	176	4801.9	10	694.9	6	0.0	0	191.2	0	0.0	0	0.0	0	0.0	0	0.0	0	18568.0	244	
2019 FTE-1	2763.0	1.9	10345.0	1.7	4812.0	0.2	701.0	0.9	0.0	0.0	191.0	-0.1	0.0	0.0	0.0	0.0	0.0	0.0	0.0	0.0	18812.0	1.3	
<b>SANF</b>																							
2018 FTE-3	439.2	49	7202.8	-146	2312.2	44	427.2	-44	4.1	9	245.8	0	482.7	0	126.7	0	5.6	-1	0.0	0	11246.3	-88	
2019 FTE-1	488.0	11.1	7057.0	-2.0	2356.0	1.9	383.0	-10.3	13.0	217.1	246.0	0.1	483.0	0.1	127.0	0.2	5.0	-10.7	0.0	0.0	11158.0	-0.8	
<b>SEMI</b>																							
2018 FTE-3	896.1	102	7031.0	32	2827.5	95	310.6	-10	65.7	7	243.5	1	757.7	0	344.0	1	173.7	0	0.0	0	12649.8	228	
2019 FTE-1	998.0	11.4	7063.0	0.5	2922.0	3.3	301.0	-3.1	73.0	11.1	244.0	0.2	758.0	0.0	345.0	0.3	174.0	0.2	0.0	0.0	12878.0	1.8	
<b>SFLA</b>																							
2018 FTE-3	107.8	7	1474.8	-8	2.8	-1	31.0	0	0.0	0	318.6	-1	63.6	0	342.8	0	20.9	0	0.0	0	2362.3	-1	
2019 FTE-1	115.0	6.7	1467.0	-0.5	2.0	-28.6	31.0	0.0	0.0	0.0	318.0	-0.2	64.0	0.6	343.0	0.1	21.0	0.5	0.0	0.0	2361.0	-0.1	
<b>TALL</b>																							
2018 FTE-3	12.2	3	7417.7	165	1049.6	-13	329.7	-91	0.0	0	344.2	0	0.0	0	42.4	0	4.4	0	0.0	0	9200.2	64	
2019 FTE-1	15.0	23.0	7583.0	2.2	1037.0	-1.2	239.0	-27.5	0.0	0.0	344.0	-0.1	0.0	0.0	42.0	-0.9	4.0	-9.1	0.0	0.0	9264.0	0.7	
<b>VALE</b>																							
2018 FTE-3	172.7	183	21807.2	724	7358.1	448	1086.8	95	99.9	-24	302.5	-1	0.0	0	0.0	0	0.0	0	0.0	0	30827.2	1426	
2019 FTE-1	356.0	106.1	22531.0	3.3	7806.0	6.1	1182.0	8.8	76.0	-23.9	302.0	-0.2	0.0	0.0	0.0	0.0	0.0	0.0	0.0	0.0	32253.0	4.6	
<b>SYST TOTAL</b>																							
2018 FTE-3	16551.7	1340	215228.7	2433	55938.9	1164	12723.3	-921	491.8	-42	8478.9	119	5109.0	-437	4755.6	2	754.9	-3	9.7	-4	320042.5	3653	
2019 FTE-1	17892.0	8.1	217662.0	1.1	57103.0	2.1	11802.0	-7.2	450.0	-8.5	8598.0	1.4	4672.0	-8.6	4758.0	0.1	752.0	-0.4	6.0	-38.1	323695.0	1.1	

Sources: 2017-2018 Student Data Base FTE-3  
2018-2019 Estimates FTE-1 (Division Estimates)  
Advanced and Professional, Post Secondary Vocational, Developmental Education and EPI are calculated as 30 Credit Hour FTE.

**FLORIDA COMMUNITY COLLEGE SYSTEM**  
**Student Data Base FTE Report**  
**2017-2018 FTE-3 Compared to the 2018-2019 FTE-1A (Division Estimates with college adjustments)**

	Upper Division	Diff. Percent	Adv. & Prof.	Diff. Percent	Postsec. Voc.	Diff. Percent	Dev. Ed.	Diff. Percent	EPI	Diff. Percent	Postsec. Adult	Diff. Percent	Appren-ticeship	Diff. Percent	Adult Basic	Diff. Percent	Adult S&G	Diff. Percent	Voc. Prep	Diff. Percent	Total FTE	Diff. Percent	
<b>EFSC</b>																							
2018 FTE-3	700.2	211	7297.3	107	2090.7	-16	299.8	-22	0.0	0	342.9	0	0.0	0	0.0	0	0.0	0	0.0	0	0	10730.9	280
2019 FTE-1A	911.0	30.1	7404.0	1.5	2075.0	-0.8	278.0	-7.3	0.0	0.0	343.0	0.0	0.0	0.0	0.0	0.0	0.0	0.0	0.0	0.0	0.0	11011.0	2.6
<b>BROW</b>																							
2018 FTE-3	1188.3	114	17547.6	28	7679.2	92	1788.4	-141	43.8	-17	379.0	0	0.0	0	0.0	0	0.0	0	0.0	0	0	28626.3	76
2019 FTE-1A	1302.0	9.6	17576.0	0.2	7771.0	1.2	1647.0	-7.9	27.0	-38.4	379.0	0.0	0.0	0.0	0.0	0.0	0.0	0.0	0.0	0.0	0.0	28702.0	0.3
<b>CFLA</b>																							
2018 FTE-3	344.4	10	3220.2	6	1225.9	10	148.5	-65	0.0	0	129.9	0	0.0	0	14.9	0	15.8	0	0.0	0	0	5099.6	-39
2019 FTE-1A	354.0	2.8	3226.0	0.2	1236.0	0.8	84.0	-43.4	0.0	0.0	130.0	0.1	0.0	0.0	15.0	0.7	16.0	1.3	0.0	0.0	0.0	5061.0	-0.8
<b>CHIP</b>																							
2018 FTE-3	121.2	3	950.1	16	229.2	12	18.4	-1	0.0	0	119.5	14	0.0	0	0.0	0	0.0	0	0.1	0	0	1438.5	43
2019 FTE-1A	124.0	2.3	966.0	1.7	241.0	5.1	17.0	-7.6	0.0	0.0	133.0	11.3	0.0	0.0	0.0	0.0	0.0	0.0	0.0	0.0	-100.0	1481.0	3.0
<b>DAYT</b>																							
2018 FTE-3	864.9	116	6358.8	31	2063.5	122	153.4	-27	1.6	0	696.1	0	543.7	0	610.0	0	110.6	0	3.0	3	11405.6	245	
2019 FTE-1A	981.0	13.4	6390.0	0.5	2185.0	5.9	126.0	-17.9	2.0	25.0	696.0	0.0	544.0	0.1	610.0	0.0	111.0	0.4	6.0	100.0	11651.0	2.2	
<b>FSW</b>																							
2018 FTE-3	591.4	1	9584.7	305	627.4	-315	272.8	-5	0.0	0	28.0	0	0.0	0	0.0	0	0.0	0	0.0	0	0	11104.3	-14
2019 FTE-1A	592.0	0.1	9890.0	3.2	312.0	-50.3	268.0	-1.8	0.0	0.0	28.0	0.0	0.0	0.0	0.0	0.0	0.0	0.0	0.0	0.0	0.0	11090.0	-0.1
<b>FJAX</b>																							
2018 FTE-3	1688.8	152	9937.5	426	3227.9	248	569.9	118	0.0	3	873.1	10	0.0	0	467.0	-26	43.3	-2	0.0	0	0	16807.5	929
2019 FTE-1A	1841.0	9.0	10363.0	4.3	3476.0	7.7	688.0	20.7	3.0	0.0	883.0	1.1	0.0	0.0	441.0	-5.6	41.0	-5.3	0.0	0.0	0.0	17736.0	5.5
<b>FKEY</b>																							
2018 FTE-3	22.2	-7	416.1	-12	204.8	11	18.5	-5	0.0	0	52.7	1	0.0	15	0.0	0	0.0	0	0.0	0	0	714.3	4
2019 FTE-1A	15.0	-32.4	404.0	-2.9	216.0	5.5	14.0	-24.3	0.0	0.0	54.0	2.5	15.0	0.0	0.0	0.0	0.0	0.0	0.0	0.0	0.0	718.0	0.5
<b>GULF</b>																							
2018 FTE-3	124.1	22	2612.9	122	633.0	19	64.4	-5	20.6	-11	129.8	0	0.0	0	0.0	0	0.0	0	0.0	0	0	3584.8	147
2019 FTE-1A	146.0	17.6	2735.0	4.7	652.0	3.0	59.0	-8.4	10.0	-51.5	130.0	0.2	0.0	0.0	0.0	0.0	0.0	0.0	0.0	0.0	0.0	3732.0	4.1
<b>HILL</b>																							
2018 FTE-3	0.0	0	13419.2	867	3265.8	169	1016.8	79	71.4	-7	449.9	0	1723.2	0	48.2	0	15.4	0	0.0	0	0	20009.9	1107
2019 FTE-1A	0.0	0.0	14286.0	6.5	3435.0	5.2	1096.0	7.8	64.0	-10.4	450.0	0.0	1723.0	0.0	48.0	-0.4	15.0	-2.6	0.0	0.0	0.0	21117.0	5.5
<b>INDR</b>																							
2018 FTE-3	1488.9	154	7106.2	66	2544.4	-41	197.7	-84	0.0	0	645.4	0	582.8	1	697.7	0	54.4	0	0.0	0	0	13317.5	96
2019 FTE-1A	1643.0	10.3	7172.0	0.9	2503.0	-1.6	114.0	-42.3	0.0	0.0	645.0	-0.1	584.0	0.2	698.0	0.0	54.0	-0.7	0.0	0.0	0.0	13413.0	0.7
<b>FGC</b>																							
2018 FTE-3	59.4	28	1457.7	39	457.6	91	59.6	-4	18.0	-3	283.3	1	0.0	0	0.0	0	0.0	0	0.0	0	0	2335.6	152
2019 FTE-1A	87.0	46.5	1497.0	2.7	549.0	20.0	56.0	-6.0	15.0	-16.7	284.0	0.2	0.0	0.0	0.0	0.0	0.0	0.0	0.0	0.0	0.0	2488.0	6.5
<b>LSCC</b>																							
2018 FTE-3	46.1	7	2428.8	160	547.8	-57	88.2	-13	0.0	0	0.0	0	0.0	0	0.0	0	0.0	0	0.0	0	0	3110.9	97
2019 FTE-1A	53.0	15.0	2589.0	6.6	491.0	-10.4	75.0	-15.0	0.0	0.0	0.0	0.0	0.0	0.0	0.0	0.0	0.0	0.0	0.0	0.0	0.0	3208.0	3.1
<b>SCF</b>																							
2018 FTE-3	431.5	31	5677.0	-17	547.5	38	213.6	-30	31.0	-10	0.0	0	0.0	0	0.0	0	0.0	0	0.0	0	0	6900.6	11
2019 FTE-1A	462.0	7.1	5660.0	-0.3	585.0	6.8	184.0	-13.9	21.0	-32.3	0.0	0.0	0.0	0.0	0.0	0.0	0.0	0.0	0.0	0.0	0.0	6912.0	0.2
<b>MIAM</b>																							
2018 FTE-3	1852.3	36	36169.6	110	3987.5	49	3253.5	-592	5.7	2	558.9	27	448.6	-150	1831.1	0	74.4	-12	6.6	-7	48188.2	-536	
2019 FTE-1A	1888.0	1.9	36280.0	0.3	4036.0	1.2	2662.0	-18.2	8.0	40.4	586.0	4.8	299.0	-33.3	1831.0	0.0	62.0	-16.7	0.0	-100.0	47652.0	-1.1	

Sources: 2017-2018 Student Data Base FTE-3  
2018-2019 Estimates FTE-1A (Division Estimates with college adjustments)  
Advanced and Professional, Post Secondary Vocational, Developmental Education and EPI are calculated as 30 Credit Hour FTE.



**FLORIDA COMMUNITY COLLEGE SYSTEM**  
**Student Data Base FTE Report**  
**2017-2018 FTE-3 Compared to the 2018-2019 FTE-1A (Division Estimates with college adjustments)**

	Upper Division	Diff. Percent	Adv. & Prof.	Diff. Percent	Postsec. Voc.	Diff. Percent	Dev. Ed.	Diff. Percent	EPI	Diff. Percent	Postsec. Adult	Diff. Percent	Apprenticeship	Diff. Percent	Adult Basic	Diff. Percent	Adult S&G	Diff. Percent	Voc. Prep	Diff. Percent	Total FTE	Diff. Percent	
<b>NFLA</b>																							
2018 FTE-3	12.1	8	537.9	55	190.6	-50	14.6	-6	0.0	0	110.3	-1	0.0	0	0.0	0	0.0	0	0.0	0	0	865.5	7
2019 FTE-1A	20.0	65.3	593.0	10.2	141.0	-26.0	9.0	-38.4	0.0	0.0	109.0	-1.2	0.0	0.0	0.0	0.0	0.0	0.0	0.0	0.0	0	872.0	0.8
<b>NWFC</b>																							
2018 FTE-3	303.4	27	2674.9	-144	514.2	8	95.8	-13	0.0	0	174.0	0	0.0	0	93.3	1	33.0	0	0.0	0	0	3888.6	-122
2019 FTE-1A	330.0	8.8	2531.0	-5.4	522.0	1.5	83.0	-13.4	0.0	0.0	174.0	0.0	0.0	0.0	94.0	0.8	33.0	0.0	0.0	0.0	0	3767.0	-3.1
<b>PALM</b>																							
2018 FTE-3	724.8	100	16648.5	207	1536.0	41	718.3	-7	26.0	12	956.8	0	506.7	-1	0.0	0	0.0	0	0.0	0	0	21117.1	352
2019 FTE-1A	825.0	13.8	16855.0	1.2	1577.0	2.7	711.0	-1.0	38.0	46.2	957.0	0.0	506.0	-0.1	0.0	0.0	0.0	0.0	0.0	0.0	0	21469.0	1.7
<b>PASC</b>																							
2018 FTE-3	367.2	13	4493.2	31	2088.3	-30	346.0	-22	20.0	-6	339.7	0	0.0	0	0.0	0	0.0	0	0.0	0	0	7654.4	-14
2019 FTE-1A	380.0	3.5	4524.0	0.7	2058.0	-1.5	324.0	-6.4	14.0	-30.0	340.0	0.1	0.0	0.0	0.0	0.0	0.0	0.0	0.0	0.0	0	7640.0	-0.2
<b>PENS</b>																							
2018 FTE-3	338.8	73	4440.7	63	1493.0	94	269.5	-16	0.0	0	386.9	0	0.0	0	107.0	0	184.3	0	0.0	0	0	7220.2	215
2019 FTE-1A	412.0	21.6	4504.0	1.4	1587.0	6.3	254.0	-5.8	0.0	0.0	387.0	0.0	0.0	0.0	107.0	0.0	184.0	-0.2	0.0	0.0	0	7435.0	3.0
<b>POLK</b>																							
2018 FTE-3	747.5	29	3939.9	-115	1540.3	25	155.7	4	55.8	9	93.8	1	0.0	0	0.0	0	0.0	0	0.0	0	0	6533.0	-47
2019 FTE-1A	776.0	3.8	3825.0	-2.9	1565.0	1.6	160.0	2.8	65.0	16.5	95.0	1.3	0.0	0.0	0.0	0.0	0.0	0.0	0.0	0.0	0	6486.0	-0.7
<b>ST.J</b>																							
2018 FTE-3	195.2	26	3207.4	48	892.2	-25	79.7	-18	28.2	2	83.1	40	0.0	0	30.5	1	19.1	-1	0.0	0	0	4535.4	72
2019 FTE-1A	221.0	13.2	3255.0	1.5	867.0	-2.8	62.0	-22.2	30.0	6.4	123.0	48.0	0.0	0.0	31.0	1.6	18.0	-5.8	0.0	0.0	0	4607.0	1.6
<b>ST.P</b>																							
2018 FTE-3	2711.0	52	10169.0	176	4801.9	10	694.9	6	0.0	0	191.2	0	0.0	0	0.0	0	0.0	0	0.0	0	0	18568.0	244
2019 FTE-1A	2763.0	1.9	10345.0	1.7	4812.0	0.2	701.0	0.9	0.0	0.0	191.0	-0.1	0.0	0.0	0.0	0.0	0.0	0.0	0.0	0.0	0	18812.0	1.3
<b>SANF</b>																							
2018 FTE-3	439.2	49	7202.8	-146	2312.2	44	427.2	-44	4.1	9	245.8	0	482.7	0	126.7	0	5.6	-1	0.0	0	0	11246.3	-88
2019 FTE-1A	488.0	11.1	7057.0	-2.0	2356.0	1.9	383.0	-10.3	13.0	217.1	246.0	0.1	483.0	0.1	127.0	0.2	5.0	-10.7	0.0	0.0	0	11158.0	-0.8
<b>SEMI</b>																							
2018 FTE-3	896.1	142	7031.0	32	2827.5	129	310.6	-10	65.7	7	243.5	-14	757.7	0	344.0	1	173.7	0	0.0	0	0	12649.8	288
2019 FTE-1A	1038.0	15.8	7063.0	0.5	2956.0	4.5	301.0	-3.1	73.0	11.1	230.0	-5.5	758.0	0.0	345.0	0.3	174.0	0.2	0.0	0.0	0	12938.0	2.3
<b>SFLA</b>																							
2018 FTE-3	107.8	8	1474.8	-15	2.8	0	31.0	-2	0.0	0	318.6	40	63.6	34	342.8	4	20.9	0	0.0	0	0	2362.3	71
2019 FTE-1A	116.0	7.6	1460.0	-1.0	3.0	7.1	29.0	-6.5	0.0	0.0	359.0	12.7	98.0	54.1	347.0	1.2	21.0	0.5	0.0	0.0	0	2433.0	3.0
<b>TALL</b>																							
2018 FTE-3	12.2	3	7417.7	165	1049.6	-13	329.7	-91	0.0	0	344.2	0	0.0	0	42.4	0	4.4	0	0.0	0	0	9200.2	64
2019 FTE-1A	15.0	23.0	7583.0	2.2	1037.0	-1.2	239.0	-27.5	0.0	0.0	344.0	-0.1	0.0	0.0	42.0	-0.9	4.0	-9.1	0.0	0.0	0	9264.0	0.7
<b>VALE</b>																							
2018 FTE-3	172.7	183	21807.2	724	7358.1	448	1086.8	95	99.9	-24	302.5	-1	0.0	0	0.0	0	0.0	0	0.0	0	0	30827.2	1426
2019 FTE-1A	356.0	106.1	22531.0	3.3	7806.0	6.1	1182.0	8.8	76.0	-23.9	302.0	-0.2	0.0	0.0	0.0	0.0	0.0	0.0	0.0	0.0	0	32253.0	4.6
<b>SYST TOTAL</b>																							
2018 FTE-3	16551.7	1587	215228.7	3335	55938.9	1111	12723.3	-917	491.8	-33	8478.9	119	5109.0	-99	4755.6	-20	754.9	-17	9.7	-4	320042.5	5064	
2019 FTE-1A	18139.0	9.6	218564.0	1.5	57050.0	2.0	11806.0	-7.2	459.0	-6.7	8598.0	1.4	5010.0	-1.9	4736.0	-0.4	738.0	-2.2	6.0	-38.1	325106.0	1.6	

Sources: 2017-2018 Student Data Base FTE-3  
2018-2019 Estimates FTE-1A (Division Estimates with college adjustments)  
Advanced and Professional, Post Secondary Vocational, Developmental Education and EPI are calculated as 30 Credit Hour FTE.

**FLORIDA COMMUNITY COLLEGE SYSTEM**  
**Student Data Base FTE Report**  
**2018-2019 FTE-1 (Division Estimates) Compared to the 2018-2019 FTE-1A (Division Estimates with college adjustments)**

	Upper Division	Diff. Percent	Adv. & Prof.	Diff. Percent	Postsec. Voc.	Diff. Percent	Dev. Ed.	Diff. Percent	EPI	Diff. Percent	Postsec. Adult	Diff. Percent	Appren-ticeship	Diff. Percent	Adult Basic	Diff. Percent	Adult S&G	Diff. Percent	Voc. Prep	Diff. Percent	Total FTE	Diff. Percent	
<b>EFSC</b>																							
2019 FTE-1	911.0	0	7404.0	0	2075.0	0	278.0	0	0.0	0	343.0	0	0.0	0	0.0	0	0.0	0	0.0	0	0	11011.0	0
2019 FTE-1A	911.0	0.0	7404.0	0.0	2075.0	0.0	278.0	0.0	0.0	0.0	343.0	0.0	0.0	0.0	0.0	0.0	0.0	0.0	0.0	0.0	0.0	11011.0	0.0
<b>BROW</b>																							
2019 FTE-1	1302.0	0	17576.0	0	7771.0	0	1647.0	0	27.0	0	379.0	0	0.0	0	0.0	0	0.0	0	0.0	0	0	28702.0	0
2019 FTE-1A	1302.0	0.0	17576.0	0.0	7771.0	0.0	1647.0	0.0	27.0	0.0	379.0	0.0	0.0	0.0	0.0	0.0	0.0	0.0	0.0	0.0	0.0	28702.0	0.0
<b>CFLA</b>																							
2019 FTE-1	354.0	0	3226.0	0	1236.0	0	84.0	0	0.0	0	130.0	0	0.0	0	15.0	0	16.0	0	0.0	0	0	5061.0	0
2019 FTE-1A	354.0	0.0	3226.0	0.0	1236.0	0.0	84.0	0.0	0.0	0.0	130.0	0.0	0.0	0.0	15.0	0.0	16.0	0.0	0.0	0.0	0.0	5061.0	0.0
<b>CHIP</b>																							
2019 FTE-1	124.0	0	966.0	0	235.0	6	19.0	-2	0.0	0	121.0	12	0.0	0	0.0	0	0.0	0	0.0	0	0	1465.0	16
2019 FTE-1A	124.0	0.0	966.0	0.0	241.0	2.6	17.0	-10.5	0.0	0.0	133.0	9.9	0.0	0.0	0.0	0.0	0.0	0.0	0.0	0.0	0.0	1481.0	1.1
<b>DAYT</b>																							
2019 FTE-1	981.0	0	6390.0	0	2185.0	0	126.0	0	2.0	0	696.0	0	544.0	0	610.0	0	111.0	0	6.0	0	0	11651.0	0
2019 FTE-1A	981.0	0.0	6390.0	0.0	2185.0	0.0	126.0	0.0	2.0	0.0	696.0	0.0	544.0	0.0	610.0	0.0	111.0	0.0	6.0	0.0	0.0	11651.0	0.0
<b>FSW</b>																							
2019 FTE-1	592.0	0	9890.0	0	652.0	-340	268.0	0	0.0	0	28.0	0	0.0	0	0.0	0	0.0	0	0.0	0	0	11430.0	-340
2019 FTE-1A	592.0	0.0	9890.0	0.0	312.0	-52.1	268.0	0.0	0.0	0.0	28.0	0.0	0.0	0.0	0.0	0.0	0.0	0.0	0.0	0.0	0.0	11090.0	-3.0
<b>FJAX</b>																							
2019 FTE-1	1788.0	53	10110.0	253	3459.0	17	667.0	21	0.0	3	873.0	10	0.0	0	467.0	-26	43.0	-2	0.0	0	0	17407.0	329
2019 FTE-1A	1841.0	3.0	10363.0	2.5	3476.0	0.5	688.0	3.1	3.0	0.0	883.0	1.1	0.0	0.0	441.0	-5.6	41.0	-4.7	0.0	0.0	0.0	17736.0	1.9
<b>FKEY</b>																							
2019 FTE-1	15.0	0	394.0	10	216.0	0	14.0	0	0.0	0	54.0	0	10.0	5	0.0	0	0.0	0	0.0	0	0	703.0	15
2019 FTE-1A	15.0	0.0	404.0	2.5	216.0	0.0	14.0	0.0	0.0	0.0	54.0	0.0	15.0	50.0	0.0	0.0	0.0	0.0	0.0	0.0	0.0	718.0	2.1
<b>GULF</b>																							
2019 FTE-1	146.0	0	2819.0	-84	652.0	0	59.0	0	10.0	0	130.0	0	0.0	0	0.0	0	0.0	0	0.0	0	0	3816.0	-84
2019 FTE-1A	146.0	0.0	2735.0	-3.0	652.0	0.0	59.0	0.0	10.0	0.0	130.0	0.0	0.0	0.0	0.0	0.0	0.0	0.0	0.0	0.0	0.0	3732.0	-2.2
<b>HILL</b>																							
2019 FTE-1	0.0	0	14286.0	0	3435.0	0	1096.0	0	64.0	0	450.0	0	1723.0	0	48.0	0	15.0	0	0.0	0	0	21117.0	0
2019 FTE-1A	0.0	0.0	14286.0	0.0	3435.0	0.0	1096.0	0.0	64.0	0.0	450.0	0.0	1723.0	0.0	48.0	0.0	15.0	0.0	0.0	0.0	0.0	21117.0	0.0
<b>INDR</b>																							
2019 FTE-1	1543.0	100	7022.0	150	2453.0	50	114.0	0	0.0	0	645.0	0	584.0	0	698.0	0	54.0	0	0.0	0	0	13113.0	300
2019 FTE-1A	1643.0	6.5	7172.0	2.1	2503.0	2.0	114.0	0.0	0.0	0.0	645.0	0.0	584.0	0.0	698.0	0.0	54.0	0.0	0.0	0.0	0.0	13413.0	2.3
<b>FGC</b>																							
2019 FTE-1	87.0	0	1497.0	0	549.0	0	56.0	0	15.0	0	284.0	0	0.0	0	0.0	0	0.0	0	0.0	0	0	2488.0	0
2019 FTE-1A	87.0	0.0	1497.0	0.0	549.0	0.0	56.0	0.0	15.0	0.0	284.0	0.0	0.0	0.0	0.0	0.0	0.0	0.0	0.0	0.0	0.0	2488.0	0.0
<b>LSCC</b>																							
2019 FTE-1	53.0	0	2589.0	0	491.0	0	75.0	0	0.0	0	0.0	0	0.0	0	0.0	0	0.0	0	0.0	0	0	3208.0	0
2019 FTE-1A	53.0	0.0	2589.0	0.0	491.0	0.0	75.0	0.0	0.0	0.0	0.0	0.0	0.0	0.0	0.0	0.0	0.0	0.0	0.0	0.0	0.0	3208.0	0.0
<b>SCF</b>																							
2019 FTE-1	445.0	17	5509.0	151	562.0	23	184.0	0	21.0	0	0.0	0	0.0	0	0.0	0	0.0	0	0.0	0	0	6721.0	191
2019 FTE-1A	462.0	3.8	5660.0	2.7	585.0	4.1	184.0	0.0	21.0	0.0	0.0	0.0	0.0	0.0	0.0	0.0	0.0	0.0	0.0	0.0	0.0	6912.0	2.8
<b>MIAM</b>																							
2019 FTE-1	1840.0	48	36006.0	274	3908.0	128	2696.0	-34	8.0	0	675.0	-89	0.0	299	1831.0	0	74.0	-12	0.0	0	0	47038.0	614
2019 FTE-1A	1888.0	2.6	36280.0	0.8	4036.0	3.3	2662.0	-1.3	8.0	0.0	586.0	-13.2	299.0	0.0	1831.0	0.0	62.0	-16.2	0.0	0.0	0.0	47652.0	1.3

Sources: 2018-2019 Estimates FTE-1 (Division Estimates)  
2018-2019 Estimates FTE-1A (Division Estimates with college adjustments)  
Advanced and Professional, Post Secondary Vocational, Developmental Education and EPI are calculated as 30 Credit Hour FTE.

**FLORIDA COMMUNITY COLLEGE SYSTEM**  
**Student Data Base FTE Report**  
**2018-2019 FTE-1 (Division Estimates) Compared to the 2018-2019 FTE-1A (Division Estimates with college adjustments)**

	Upper Division	Diff. Percent	Adv. & Prof.	Diff. Percent	Postsec. Voc.	Diff. Percent	Dev. Ed.	Diff. Percent	EPI	Diff. Percent	Postsec. Adult	Diff. Percent	Appren-ticeship	Diff. Percent	Adult Basic	Diff. Percent	Adult S&G	Diff. Percent	Voc. Prep	Diff. Percent	Total FTE	Diff. Percent	
<b>NFLA</b>																							
2019 FTE-1	20.0	0	593.0	0	141.0	0	9.0	0	0.0	0	109.0	0	0.0	0	0.0	0	0.0	0	0.0	0	0	872.0	0
2019 FTE-1A	20.0	0.0	593.0	0.0	141.0	0.0	9.0	0.0	0.0	0.0	109.0	0.0	0.0	0.0	0.0	0.0	0.0	0.0	0.0	0.0	0.0	872.0	0.0
<b>NWFC</b>																							
2019 FTE-1	321.0	9	2530.0	1	500.0	22	83.0	0	0.0	0	174.0	0	0.0	0	94.0	0	33.0	0	0.0	0	0	3735.0	32
2019 FTE-1A	330.0	2.8	2531.0	0.0	522.0	4.4	83.0	0.0	0.0	0.0	174.0	0.0	0.0	0.0	94.0	0.0	33.0	0.0	0.0	0.0	0.0	3767.0	0.9
<b>PALM</b>																							
2019 FTE-1	825.0	0	16855.0	0	1577.0	0	711.0	0	38.0	0	957.0	0	506.0	0	0.0	0	0.0	0	0.0	0	0	21469.0	0
2019 FTE-1A	825.0	0.0	16855.0	0.0	1577.0	0.0	711.0	0.0	38.0	0.0	957.0	0.0	506.0	0.0	0.0	0.0	0.0	0.0	0.0	0.0	0.0	21469.0	0.0
<b>PASC</b>																							
2019 FTE-1	401.0	-21	4497.0	27	2052.0	6	303.0	21	8.0	6	340.0	0	0.0	0	0.0	0	0.0	0	0.0	0	0	7601.0	39
2019 FTE-1A	380.0	-5.2	4524.0	0.6	2058.0	0.3	324.0	6.9	14.0	75.0	340.0	0.0	0.0	0.0	0.0	0.0	0.0	0.0	0.0	0.0	0.0	7640.0	0.5
<b>PENS</b>																							
2019 FTE-1	412.0	0	4504.0	0	1587.0	0	254.0	0	0.0	0	387.0	0	0.0	0	107.0	0	184.0	0	0.0	0	0	7435.0	0
2019 FTE-1A	412.0	0.0	4504.0	0.0	1587.0	0.0	254.0	0.0	0.0	0.0	387.0	0.0	0.0	0.0	107.0	0.0	184.0	0.0	0.0	0.0	0.0	7435.0	0.0
<b>POLK</b>																							
2019 FTE-1	776.0	0	3698.0	127	1565.0	0	160.0	0	65.0	0	95.0	0	0.0	0	0.0	0	0.0	0	0.0	0	0	6359.0	127
2019 FTE-1A	776.0	0.0	3825.0	3.4	1565.0	0.0	160.0	0.0	65.0	0.0	95.0	0.0	0.0	0.0	0.0	0.0	0.0	0.0	0.0	0.0	0.0	6486.0	2.0
<b>ST.J</b>																							
2019 FTE-1	221.0	0	3255.0	0	867.0	0	62.0	0	30.0	0	83.0	40	0.0	0	31.0	0	18.0	0	0.0	0	0	4567.0	40
2019 FTE-1A	221.0	0.0	3255.0	0.0	867.0	0.0	62.0	0.0	30.0	0.0	123.0	48.2	0.0	0.0	31.0	0.0	18.0	0.0	0.0	0.0	0.0	4607.0	0.9
<b>ST.P</b>																							
2019 FTE-1	2763.0	0	10345.0	0	4812.0	0	701.0	0	0.0	0	191.0	0	0.0	0	0.0	0	0.0	0	0.0	0	0	18812.0	0
2019 FTE-1A	2763.0	0.0	10345.0	0.0	4812.0	0.0	701.0	0.0	0.0	0.0	191.0	0.0	0.0	0.0	0.0	0.0	0.0	0.0	0.0	0.0	0.0	18812.0	0.0
<b>SANF</b>																							
2019 FTE-1	488.0	0	7057.0	0	2356.0	0	383.0	0	13.0	0	246.0	0	483.0	0	127.0	0	5.0	0	0.0	0	0	11158.0	0
2019 FTE-1A	488.0	0.0	7057.0	0.0	2356.0	0.0	383.0	0.0	13.0	0.0	246.0	0.0	483.0	0.0	127.0	0.0	5.0	0.0	0.0	0.0	0.0	11158.0	0.0
<b>SEMI</b>																							
2019 FTE-1	998.0	40	7063.0	0	2922.0	34	301.0	0	73.0	0	244.0	-14	758.0	0	345.0	0	174.0	0	0.0	0	0	12878.0	60
2019 FTE-1A	1038.0	4.0	7063.0	0.0	2956.0	1.2	301.0	0.0	73.0	0.0	230.0	-5.7	758.0	0.0	345.0	0.0	174.0	0.0	0.0	0.0	0.0	12938.0	0.5
<b>SFLA</b>																							
2019 FTE-1	115.0	1	1467.0	-7	2.0	1	31.0	-2	0.0	0	318.0	41	64.0	34	343.0	4	21.0	0	0.0	0	0	2361.0	72
2019 FTE-1A	116.0	0.9	1460.0	-0.5	3.0	50.0	29.0	-6.5	0.0	0.0	359.0	12.9	98.0	53.1	347.0	1.2	21.0	0.0	0.0	0.0	0.0	2433.0	3.0
<b>TALL</b>																							
2019 FTE-1	15.0	0	7583.0	0	1037.0	0	239.0	0	0.0	0	344.0	0	0.0	0	42.0	0	4.0	0	0.0	0	0	9264.0	0
2019 FTE-1A	15.0	0.0	7583.0	0.0	1037.0	0.0	239.0	0.0	0.0	0.0	344.0	0.0	0.0	0.0	42.0	0.0	4.0	0.0	0.0	0.0	0.0	9264.0	0.0
<b>VALE</b>																							
2019 FTE-1	356.0	0	22531.0	0	7806.0	0	1182.0	0	76.0	0	302.0	0	0.0	0	0.0	0	0.0	0	0.0	0	0	32253.0	0
2019 FTE-1A	356.0	0.0	22531.0	0.0	7806.0	0.0	1182.0	0.0	76.0	0.0	302.0	0.0	0.0	0.0	0.0	0.0	0.0	0.0	0.0	0.0	0.0	32253.0	0.0
<b>SYST TOTAL</b>																							
2019 FTE-1	17892.0	247	217662.0	902	57103.0	-53	11802.0	4	450.0	9	8598.0	0	4672.0	338	4758.0	-22	752.0	-14	6.0	0	0	323695.0	1411
2019 FTE-1A	18139.0	1.4	218564.0	0.4	57050.0	-0.1	11806.0	0.0	459.0	2.0	8598.0	0.0	5010.0	7.2	4736.0	-0.5	738.0	-1.9	6.0	0.0	0.0	325106.0	0.4

Sources: 2018-2019 Estimates FTE-1 (Division Estimates)  
2018-2019 Estimates FTE-1A (Division Estimates with college adjustments)  
Advanced and Professional, Post Secondary Vocational, Developmental Education and EPI are calculated as 30 Credit Hour FTE.

Florida College System  
2017-18

College			Bachelor Enrollment Reported	
			Year	Term
1	EFSC	Eastern Florida State College	2013-14	Fall
2	BROW	Broward College	2008-09	WnSp
3	CFLA	College of Central Florida	2010-11	WnSp
4	CHIP	Chipola College	2003-04	Fall
5	DAYT	Daytona State College	2005-06	WnSp
6	FSW	Florida SouthWestern State College	2006-07	Summ
7	FJAX	Florida State College at Jacksonville	2006-07	Fall
8	FKEY	Florida Keys Community College	2016-17	WnSp
9	GULF	Gulf Coast State College	2010-11	WnSp
10	HILL	Hillsborough Community College		
11	INDR	Indian River State College	2007-08	WnSp
12	FGC	Florida Gateway College	2012-13	Fall
13	LSSC	Lake Sumter State College	2012-13	WnSp
14	SCF	State College of Florida, Manatee-Sarasota	2009-10	WnSp
15	MIAM	Miami Dade College	2003-04	Summ
16	NFLA	North Florida Community College	2017-18	Fall
17	NWFC	Northwest Florida State College	2004-05	Summ
18	PALM	Palm Beach State College	2009-10	Fall
19	PASC	Pasco-Hernando State College	2014-15	Fall
20	PENS	Pensacola State College	2010-11	WnSp
21	POLK	Polk State College	2009-10	WnSp
22	ST.J	St. Johns River State College	2010-11	WnSp
23	ST.P	St. Petersburg College	2002-03	Fall
24	SANF	Santa Fe College	2009-10	Fall
25	SEMI	Seminole State College of Florida	2009-10	WnSp
26	SFLA	South Florida State College	2012-13	Fall
27	TALL	Tallahassee Community College	2016-17	Summ
28	VALE	Valencia College	2011-12	Fall

Two Year Only
Newly Four Year
Four Year