

**Education Estimating Conference on  
Florida College System Enrollment  
Executive Summary  
March 4, 2019**

The Education Estimating Conference on Florida College System Enrollment met on March 4, 2019, to revise the estimate for full-time-equivalent (FTE) enrollment for Fiscal Year 2018-19 (FTE-2A). The estimates are based on Fiscal Year 2018-19 Term 1 enrollment data, the Division of Florida Colleges' enrollment model based on that data, and adjustments to the model provided by the colleges.

The Conference adopted the FTE-2A enrollment estimate presented by the Division of Florida Colleges, without modification. The new estimate for Fiscal Year 2018-19 total FTE enrollment is 321,884, which is an increase of approximately 1,842 FTE (0.6%) over the Fiscal Year 2017-18 final enrollment of 320,043 FTE. The 2018-19 FTE-2A estimate reflects a decrease of 3,222 FTE (1.0%) from the previous FTE-1A estimate of 325,106 FTE that was adopted in December 2018.

The projected FTE-2A enrollment for Fiscal Year 2018-19 is the first year of system-wide positive year-over-year growth since Fiscal Year 2010-11. Of the 28 colleges, 10 are projecting annual growth above 1.0% with the largest growth rate at Valencia College (5.8%). Thirteen colleges are expecting approximately level enrollments, with changes in the range of plus or minus 1% of the prior year. In contrast, the remaining five colleges are expecting declines of more than 1.0% with the most significant decline at Gulf Coast State College (-7.3%). Gulf Coast State College's campuses and the counties within its service district were severely impacted by Hurricane Michael.

The largest expected growth is within the Upper Division programs. For these programs, the FTE-2A estimate reflects an increase of approximately 1,290 FTE (7.8%) over the prior year. Upper Division FTE is expected to be 5.5% of total enrollment in Fiscal Year 2018-19. For all Lower Division programs, enrollment is expected to increase by just 551 FTE (0.2%) compared to the prior year.

The following table shows the adopted estimates compared to the prior year enrollment as well as the estimate adopted by the Conference in December.

**Florida College System FTE Enrollment**

	FY 2017-18	FY 2018-19					
	Final	DEC 2018 Adopted Estimate	MAR 2019 Adopted Estimate	MAR 2019 +/- 2017-18 Final	%	MAR 2019 +/- DEC 2018	%
<b>Lower Division</b>	303,490.8	306,967.0	304,042.0	551.2	0.2%	(2,925.0)	-1.0%
<b>Upper Division</b>	16,551.7	18,139.0	17,842.0	1,290.3	7.8%	(297.0)	-1.6%
<b>Total</b>	<b>320,042.5</b>	<b>325,106.0</b>	<b>321,884.0</b>	<b>1,841.5</b>	<b>0.6%</b>	<b>(3,222.0)</b>	<b>-1.0%</b>

**FLORIDA COLLEGE SYSTEM**  
**FTE ENROLLMENT: FUNDED, LOWER AND UPPER DIVISION**  
**2018-19 FTE-2A ESTIMATE ADOPTED BY ENROLLMENT ESTIMATING CONFERENCE**  
**MARCH 4, 2019**

	UPPER DIVISION	A & P	POSTSEC VOC	DEVELOPMENTAL ED	EPI	POSTSEC ADULT VOC	APPRENTICE	ADULT BASIC	ADULT SEC/GED PREP	VOC PREP	TOTAL
Eastern Florida	842	7,260	2,096	274	0	343	0	0	0	0	10,815
Broward	1,306	17,508	7,727	1,677	27	380	0	0	0	0	28,625
Central Florida	339	3,196	1,292	136	0	163	0	16	17	0	5,159
Chipola	135	942	240	17	0	145	0	0	0	0	1,479
Daytona	998	6,443	2,185	126	2	697	589	610	111	6	11,767
Florida Southwestern	591	9,555	703	270	0	28	0	0	0	0	11,147
Florida Jacksonville	1,712	10,118	3,409	675	2	882	0	441	41	0	17,280
Florida Keys	13	406	208	16	0	62	16	0	0	0	721
Gulf Coast	134	2,386	611	54	9	130	0	0	0	0	3,324
Hillsborough	0	13,843	3,331	1,002	54	451	1,723	48	16	0	20,468
Indian River	1,541	6,985	2,482	104	0	615	550	723	57	0	13,057
Florida Gateway	85	1,476	525	61	13	285	0	0	0	0	2,445
Lake Sumter	55	2,599	511	87	0	0	0	0	0	0	3,252
State College Florida	440	5,539	560	190	23	0	0	0	0	0	6,752
Miami Dade	1,919	35,191	3,895	2,638	13	1,177	341	1,485	47	1	46,707
North Florida	18	593	131	11	0	109	0	0	0	0	862
Northwest Florida	330	2,622	553	93	0	174	0	94	33	0	3,899
Palm Beach	834	16,826	1,559	739	33	908	483	0	0	0	21,382
Pasco Hernando	371	4,524	2,050	311	11	340	0	0	0	0	7,607
Pensacola	408	4,350	1,586	230	0	390	0	106	183	0	7,253
Polk	767	3,885	1,567	164	64	96	0	0	0	0	6,543
St Johns River	212	3,290	879	60	31	124	0	31	17	0	4,644
St Petersburg	2,753	10,191	4,874	690	0	190	0	0	0	0	18,698
Santa Fe	475	7,069	2,353	371	12	246	490	128	4	0	11,148
Seminole	972	6,981	2,879	291	68	230	826	351	164	0	12,762
South Florida	117	1,472	3	31	0	323	88	314	18	0	2,366
Tallahassee	17	7,385	1,074	232	0	344	0	48	5	0	9,105
Valencia	458	22,706	7,854	1,220	77	302	0	0	0	0	32,617
<b>System</b>	<b>17,842</b>	<b>215,341</b>	<b>57,137</b>	<b>11,770</b>	<b>439</b>	<b>9,134</b>	<b>5,106</b>	<b>4,395</b>	<b>713</b>	<b>7</b>	<b>321,884</b>

**FLORIDA COLLEGE SYSTEM**  
**FTE ENROLLMENT: FUNDED, LOWER AND UPPER DIVISION**  
**COMPARISON OF 2018-19 FTE-2A ADOPTED ESTIMATE TO 2017-18 FTE-3 FINAL AND 2018-19 FTE-1A ADOPTED ESTIMATE**  
**MARCH 4, 2019**

	<b>2017-18 FTE-3 FINAL</b>	<b>DECEMBER 2018 ADOPTED 2018-19 FTE-1A ESTIMATE</b>	<b>MARCH 2019 ADOPTED 2018-19 FTE-2A ESTIMATE</b>	<b>MARCH ADOPTED ESTIMATE +/- 2017-18 FINAL</b>	<b>% CHANGE</b>	<b>MARCH +/- DECEMBER ADOPTED ESTIMATE</b>	<b>% CHANGE</b>
Eastern Florida	10,730.9	11,011.0	10,815.0	84.1	0.8%	-196.0	-1.8%
Broward	28,626.3	28,702.0	28,625.0	-1.3	0.0%	-77.0	-0.3%
Central Florida	5,099.6	5,061.0	5,159.0	59.4	1.2%	98.0	1.9%
Chipola	1,438.5	1,481.0	1,479.0	40.5	2.8%	-2.0	-0.1%
Daytona	11,405.6	11,651.0	11,767.0	361.4	3.2%	116.0	1.0%
Florida Southwestern	11,104.3	11,090.0	11,147.0	42.7	0.4%	57.0	0.5%
Florida Jacksonville	16,807.5	17,736.0	17,280.0	472.5	2.8%	-456.0	-2.6%
Florida Keys	714.3	718.0	721.0	6.7	0.9%	3.0	0.4%
Gulf Coast	3,584.8	3,732.0	3,324.0	-260.8	-7.3%	-408.0	-10.9%
Hillsborough	20,009.9	21,117.0	20,468.0	458.1	2.3%	-649.0	-3.1%
Indian River	13,317.5	13,413.0	13,057.0	-260.5	-2.0%	-356.0	-2.7%
Florida Gateway	2,335.6	2,488.0	2,445.0	109.4	4.7%	-43.0	-1.7%
Lake Sumter	3,110.9	3,208.0	3,252.0	141.1	4.5%	44.0	1.4%
State College Florida	6,900.6	6,912.0	6,752.0	-148.6	-2.2%	-160.0	-2.3%
Miami Dade	48,188.2	47,652.0	46,707.0	-1,481.2	-3.1%	-945.0	-2.0%
North Florida	865.5	872.0	862.0	-3.5	-0.4%	-10.0	-1.1%
Northwest Florida	3,888.6	3,767.0	3,899.0	10.4	0.3%	132.0	3.5%
Palm Beach	21,117.1	21,469.0	21,382.0	264.9	1.3%	-87.0	-0.4%
Pasco Hernando	7,654.4	7,640.0	7,607.0	-47.4	-0.6%	-33.0	-0.4%
Pensacola	7,220.2	7,435.0	7,253.0	32.8	0.5%	-182.0	-2.4%
Polk	6,533.0	6,486.0	6,543.0	10.0	0.2%	57.0	0.9%
St Johns River	4,535.4	4,607.0	4,644.0	108.6	2.4%	37.0	0.8%
St Petersburg	18,568.0	18,812.0	18,698.0	130.0	0.7%	-114.0	-0.6%
Santa Fe	11,246.3	11,158.0	11,148.0	-98.3	-0.9%	-10.0	-0.1%
Seminole	12,649.8	12,938.0	12,762.0	112.2	0.9%	-176.0	-1.4%
South Florida	2,362.3	2,433.0	2,366.0	3.7	0.2%	-67.0	-2.8%
Tallahassee	9,200.2	9,264.0	9,105.0	-95.2	-1.0%	-159.0	-1.7%
Valencia	30,827.2	32,253.0	32,617.0	1,789.8	5.8%	364.0	1.1%
<b>System</b>	<b>320,042.5</b>	<b>325,106.0</b>	<b>321,884.0</b>	<b>1,841.5</b>	<b>0.6%</b>	<b>-3,222.0</b>	<b>-1.0%</b>



**THE FLORIDA COLLEGE SYSTEM  
ENROLLMENT ESTIMATING CONFERENCE  
March 4, 2019 MEETING PACKET**

Florida Department of Education

**FLORIDA COLLEGE SYSTEM  
FTE ENROLLMENT: FUNDED, LOWER AND UPPER DIVISION**

**2017-18 FTE-3**

	UPPER DIVISION	A & P	POSTSEC VOC	DEV ED	EPI	POSTSEC ADULT VOC	APPRENTICE	ADULT BASIC	ADULT SEC/GED PREP	VOC PREP	TOTAL
EFSC	700.2	7297.3	2090.7	299.8	0.0	342.9	0.0	0.0	0.0	0.0	10730.9
BROW	1188.3	17547.6	7679.2	1788.4	43.8	379.0	0.0	0.0	0.0	0.0	28626.3
CFLA	344.4	3220.2	1225.9	148.5	0.0	129.9	0.0	14.9	15.8	0.0	5099.6
CHIP	121.2	950.1	229.2	18.4	0.0	119.5	0.0	0.0	0.0	0.1	1438.5
DAYT	864.9	6358.8	2063.5	153.4	1.6	696.1	543.7	610.0	110.6	3.0	11405.6
FSW	591.4	9584.7	627.4	272.8	0.0	28.0	0.0	0.0	0.0	0.0	11104.3
FJAX	1688.8	9937.5	3227.9	569.9	0.0	873.1	0.0	467.0	43.3	0.0	16807.5
FKEY	22.2	416.1	204.8	18.5	0.0	52.7	0.0	0.0	0.0	0.0	714.3
GULF	124.1	2612.9	633.0	64.4	20.6	129.8	0.0	0.0	0.0	0.0	3584.8
HILL	0.0	13419.2	3265.8	1016.8	71.4	449.9	1723.2	48.2	15.4	0.0	20009.9
INDR	1488.9	7106.2	2544.4	197.7	0.0	645.4	582.8	697.7	54.4	0.0	13317.5
FGC	59.4	1457.7	457.6	59.6	18.0	283.3	0.0	0.0	0.0	0.0	2335.6
LSSC	46.1	2428.8	547.8	88.2	0.0	0.0	0.0	0.0	0.0	0.0	3110.9
SCF	431.5	5677.0	547.5	213.6	31.0	0.0	0.0	0.0	0.0	0.0	6900.6
MIAM	1852.3	36169.6	3987.5	3253.5	5.7	558.9	448.6	1831.1	74.4	6.6	48188.2
NFLA	12.1	537.9	190.6	14.6	0.0	110.3	0.0	0.0	0.0	0.0	865.5
NWFC	303.4	2674.9	514.2	95.8	0.0	174.0	0.0	93.3	33.0	0.0	3888.6
PALM	724.8	16648.5	1536.0	718.3	26.0	956.8	506.7	0.0	0.0	0.0	21117.1
PASC	367.2	4493.2	2088.3	346.0	20.0	339.7	0.0	0.0	0.0	0.0	7654.4
PENS	338.8	4440.7	1493.0	269.5	0.0	386.9	0.0	107.0	184.3	0.0	7220.2
POLK	747.5	3939.9	1540.3	155.7	55.8	93.8	0.0	0.0	0.0	0.0	6533
ST.J	195.2	3207.4	892.2	79.7	28.2	83.1	0.0	30.5	19.1	0.0	4535.4
ST.P	2711.0	10169.0	4801.9	694.9	0.0	191.2	0.0	0.0	0.0	0.0	18568
SANF	439.2	7202.8	2312.2	427.2	4.1	245.8	482.7	126.7	5.6	0.0	11246.3
SEMI	896.1	7031.0	2827.5	310.6	65.7	243.5	757.7	344.0	173.7	0.0	12649.8
SFLA	107.8	1474.8	2.8	31.0	0.0	318.6	63.6	342.8	20.9	0.0	2362.3
TALL	12.2	7417.7	1049.6	329.7	0.0	344.2	0.0	42.4	4.4	0.0	9200.2
VALE	172.7	21807.2	7358.1	1086.8	99.9	302.5	0.0	0.0	0.0	0.0	30827.2
SYST	16551.7	215228.7	55938.9	12723.3	491.8	8478.9	5109.0	4755.6	754.9	9.7	320042.5

CCTCMIS:

SOURCE: FN30C3

**FLORIDA COLLEGE SYSTEM  
FTE ENROLLMENT: FUNDED, LOWER AND UPPER DIVISION  
DIVISION ESTIMATES WITH COLLEGE ADJUSTMENTS  
2018-19 FTE-2A**

	UPPER DIVISION	A & P	POSTSEC VOC	DEV ED	EPI	POSTSEC ADULT VOC	APPRENTICE	ADULT BASIC	ADULT SEC/GED PREP	VOC PREP	TOTAL
EFSC	842.0	7260.0	2096.0	274.0	0.0	343.0	0.0	0.0	0.0	0.0	10815.0
BROW	1306.0	17508.0	7727.0	1677.0	27.0	380.0	0.0	0.0	0.0	0.0	28625.0
CFLA	339.0	3196.0	1292.0	136.0	0.0	163.0	0.0	16.0	17.0	0.0	5159.0
CHIP	135.0	942.0	240.0	17.0	0.0	145.0	0.0	0.0	0.0	0.0	1479.0
DAYT	998.0	6443.0	2185.0	126.0	2.0	697.0	589.0	610.0	111.0	6.0	11767.0
FSW	591.0	9555.0	703.0	270.0	0.0	28.0	0.0	0.0	0.0	0.0	11147.0
FJAX	1712.0	10118.0	3409.0	675.0	2.0	882.0	0.0	441.0	41.0	0.0	17280.0
FKEY	13.0	406.0	208.0	16.0	0.0	62.0	16.0	0.0	0.0	0.0	721.0
GULF	134.0	2386.0	611.0	54.0	9.0	130.0	0.0	0.0	0.0	0.0	3324.0
HILL	0.0	13843.0	3331.0	1002.0	54.0	451.0	1723.0	48.0	16.0	0.0	20468.0
INDR	1541.0	6985.0	2482.0	104.0	0.0	615.0	550.0	723.0	57.0	0.0	13057.0
FGC	85.0	1476.0	525.0	61.0	13.0	285.0	0.0	0.0	0.0	0.0	2445.0
LSSC	55.0	2599.0	511.0	87.0	0.0	0.0	0.0	0.0	0.0	0.0	3252.0
SCF	440.0	5539.0	560.0	190.0	23.0	0.0	0.0	0.0	0.0	0.0	6752.0
MIAM	1919.0	35191.0	3895.0	2638.0	13.0	1177.0	341.0	1485.0	47.0	1.0	46707.0
NFLA	18.0	593.0	131.0	11.0	0.0	109.0	0.0	0.0	0.0	0.0	862.0
NWFC	330.0	2622.0	553.0	93.0	0.0	174.0	0.0	94.0	33.0	0.0	3899.0
PALM	834.0	16826.0	1559.0	739.0	33.0	908.0	483.0	0.0	0.0	0.0	21382.0
PASC	371.0	4524.0	2050.0	311.0	11.0	340.0	0.0	0.0	0.0	0.0	7607.0
PENS	408.0	4350.0	1586.0	230.0	0.0	390.0	0.0	106.0	183.0	0.0	7253.0
POLK	767.0	3885.0	1567.0	164.0	64.0	96.0	0.0	0.0	0.0	0.0	6543.0
ST.J	212.0	3290.0	879.0	60.0	31.0	124.0	0.0	31.0	17.0	0.0	4644.0
ST.P	2753.0	10191.0	4874.0	690.0	0.0	190.0	0.0	0.0	0.0	0.0	18698.0
SANF	475.0	7069.0	2353.0	371.0	12.0	246.0	490.0	128.0	4.0	0.0	11148.0
SEMI	972.0	6981.0	2879.0	291.0	68.0	230.0	826.0	351.0	164.0	0.0	12762.0
SFLA	117.0	1472.0	3.0	31.0	0.0	323.0	88.0	314.0	18.0	0.0	2366.0
TALL	17.0	7385.0	1074.0	232.0	0.0	344.0	0.0	48.0	5.0	0.0	9105.0
VALE	458.0	22706.0	7854.0	1220.0	77.0	302.0	0.0	0.0	0.0	0.0	32617.0
SYST	17842.0	215341.0	57137.0	11770.0	439.0	9134.0	5106.0	4395.0	713.0	7.0	321884.0

**FLORIDA COLLEGE SYSTEM  
ENROLLMENT ESTIMATING CONFERENCE SUMMARY  
FTE ENROLLMENT: FUNDED-30, LOWER AND UPPER DIVISION**

	2017-18 FTE3 ACTUAL	2018-19 FTE2 DIVISION ESTIMATES	FTE3 TO FTE2 CHANGE	FTE3 TO FTE1 % CHANGE	2018-19 FTE2A COLL ADJ ESTIMATE	FTE3 TO FTE2A CHANGE	FTE3 TO FTE2A % CHANGE	FTE2 TO FTE2A CHANGE	FTE2 TO FTE2A % CHANGE
	C1	C2	C1 TO C2	C1 TO C2	C3	C1 TO C3	C1 TO C3	C2 TO C3	C2 TO C3
EFSC	10730.9	10815.0	84.1	0.8%	10815.0	84.1	0.8%	0.0	0.0%
BROW	28626.3	28625.0	-1.3	0.0%	28625.0	-1.3	0.0%	0.0	0.0%
CFLA	5099.6	5159.0	59.4	1.2%	5159.0	59.4	1.2%	0.0	0.0%
CHIP	1438.5	1465.0	26.5	1.8%	1479.0	40.5	2.8%	14.0	1.0%
DAYT	11405.6	11767.0	361.4	3.2%	11767.0	361.4	3.2%	0.0	0.0%
FSW	11104.3	11147.0	42.7	0.4%	11147.0	42.7	0.4%	0.0	0.0%
FJAX	16807.5	17280.0	472.5	2.8%	17280.0	472.5	2.8%	0.0	0.0%
FKEY	714.3	721.0	6.7	0.9%	721.0	6.7	0.9%	0.0	0.0%
GULF	3584.8	3447.0	-137.8	-3.8%	3324.0	-260.8	-7.3%	-123.0	-3.6%
HILL	20009.9	20133.0	123.1	0.6%	20468.0	458.1	2.3%	335.0	1.7%
INDR	13317.5	12856.0	-461.5	-3.5%	13057.0	-260.5	-2.0%	201.0	1.6%
FGC	2335.6	2445.0	109.4	4.7%	2445.0	109.4	4.7%	0.0	0.0%
LSSC	3110.9	3252.0	141.1	4.5%	3252.0	141.1	4.5%	0.0	0.0%
SCF	6900.6	6752.0	-148.6	-2.2%	6752.0	-148.6	-2.2%	0.0	0.0%
MIAM	48188.2	47014.0	-1174.2	-2.4%	46707.0	-1481.2	-3.1%	-307.0	-0.7%
NFLA	865.5	862.0	-3.5	-0.4%	862.0	-3.5	-0.4%	0.0	0.0%
NWFC	3888.6	3899.0	10.4	0.3%	3899.0	10.4	0.3%	0.0	0.0%
PALM	21117.1	21154.0	36.9	0.2%	21382.0	264.9	1.3%	228.0	1.1%
PASC	7654.4	7599.0	-55.4	-0.7%	7607.0	-47.4	-0.6%	8.0	0.1%
PENS	7220.2	7321.0	100.8	1.4%	7253.0	32.8	0.5%	-68.0	-0.9%
POLK	6533.0	6443.0	-90.0	-1.4%	6543.0	10.0	0.2%	100.0	1.6%
ST.J	4535.4	4656.0	120.6	2.7%	4644.0	108.6	2.4%	-12.0	-0.3%
ST.P	18568.0	18698.0	130.0	0.7%	18698.0	130.0	0.7%	0.0	0.0%
SANF	11246.3	11148.0	-98.3	-0.9%	11148.0	-98.3	-0.9%	0.0	0.0%
SEMI	12649.8	12834.0	184.2	1.5%	12762.0	112.2	0.9%	-72.0	-0.6%
SFLA	2362.3	2453.0	90.7	3.8%	2366.0	3.7	0.2%	-87.0	-3.5%
TALL	9200.2	9105.0	-95.2	-1.0%	9105.0	-95.2	-1.0%	0.0	0.0%
VALE	30827.2	32617.0	1789.8	5.8%	32617.0	1789.8	5.8%	0.0	0.0%
SYST	320042.5	321667.0	1624.5	0.5%	321884.0	1841.5	0.6%	217.0	0.1%

**FLORIDA COLLEGE SYSTEM  
FTE ENROLLMENT: FUNDED-30, LOWER AND UPPER DIVISION  
DIVISION ESTIMATES WITH COLLEGE ADJUSTMENTS  
COMPARISON 2017-18 FTE-3 ADOPTED BY EEC TO 2018-19 FTE-2A**

	2017-18 FTE-3	2018-19 FTE-2A	CHANGE	%CHANGE
EFSC	10731	10815	84	0.8%
BROW	28626	28625	-1	0.0%
CFLA	5100	5159	59	1.2%
CHIP	1439	1479	41	2.8%
DAYT	11406	11767	361	3.2%
FSW	11104	11147	43	0.4%
FJAX	16808	17280	473	2.8%
FKEY	714	721	7	0.9%
GULF	3585	3324	-261	-7.3%
HILL	20010	20468	458	2.3%
INDR	13318	13057	-261	-2.0%
FGC	2336	2445	109	4.7%
LSSC	3111	3252	141	4.5%
SCF	6901	6752	-149	-2.2%
MIAM	48188	46707	-1481	-3.1%
NFLA	866	862	-4	-0.4%
NWFC	3889	3899	10	0.3%
PALM	21117	21382	265	1.3%
PASC	7654	7607	-47	-0.6%
PENS	7220	7253	33	0.5%
POLK	6533	6543	10	0.2%
ST.J	4535	4644	109	2.4%
ST.P	18568	18698	130	0.7%
SANF	11246	11148	-98	-0.9%
SEMI	12650	12762	112	0.9%
SFLA	2362	2366	4	0.2%
TALL	9200	9105	-95	-1.0%
VALE	30827	32617	1790	5.8%
SYST	320043	321884	1842	0.6%



**FLORIDA COLLEGE SYSTEM**  
**FTE ENROLLMENT: FUNDED-30, LOWER AND UPPER DIVISION**  
**DIVISION ESTIMATES WITH COLLEGE ADJUSTMENTS**  
**2018-19 FTE-1A**  
**ADOPTED BY ENROLLMENT ESTIMATING CONFERENCE**

	UPPER DIVISION	A & P	POSTSEC VOC	DEV ED	EPI	POSTSEC ADULT VOC	APPRENTICE	ADULT BASIC	ADULT SEC/GED PREP	VOC PREP	TOTAL
EFSC	911	7404	2075	278	0	343	0	0	0	0	11011
BROW	1302	17576	7771	1647	27	379	0	0	0	0	28702
CFLA	354	3226	1236	84	0	130	0	15	16	0	5061
CHIP	124	966	241	17	0	133	0	0	0	0	1481
DAYT	981	6390	2185	126	2	696	544	610	111	6	11651
FSW	592	9890	312	268	0	28	0	0	0	0	11090
FJAX	1841	10363	3476	688	3	883	0	441	41	0	17736
FKEY	15	404	216	14	0	54	15	0	0	0	718
GULF	146	2735	652	59	10	130	0	0	0	0	3732
HILL	0	14286	3435	1096	64	450	1723	48	15	0	21117
INDR	1643	7172	2503	114	0	645	584	698	54	0	13413
FGC	87	1497	549	56	15	284	0	0	0	0	2488
LSSC	53	2589	491	75	0	0	0	0	0	0	3208
SCF	462	5660	585	184	21	0	0	0	0	0	6912
MIAM	1888	36280	4036	2662	8	586	299	1831	62	0	47652
NFLA	20	593	141	9	0	109	0	0	0	0	872
NWFC	330	2531	522	83	0	174	0	94	33	0	3767
PALM	825	16855	1577	711	38	957	506	0	0	0	21469
PASC	380	4524	2058	324	14	340	0	0	0	0	7640
PENS	412	4504	1587	254	0	387	0	107	184	0	7435
POLK	776	3825	1565	160	65	95	0	0	0	0	6486
ST.J	221	3255	867	62	30	123	0	31	18	0	4607
ST.P	2763	10345	4812	701	0	191	0	0	0	0	18812
SANF	488	7057	2356	383	13	246	483	127	5	0	11158
SEMI	1038	7063	2956	301	73	230	758	345	174	0	12938
SFLA	116	1460	3	29	0	359	98	347	21	0	2433
TALL	15	7583	1037	239	0	344	0	42	4	0	9264
VALE	356	22531	7806	1182	76	302	0	0	0	0	32253
SYST	18139	218564	57050	11806	459	8598	5010	4736	738	6	325106

CCTCMIS: FTECOL, CO1AF29C - 12/13/2018 9:43 AM  
SOURCE: FN30C1A

**THE FLORIDA COLLEGE SYSTEM**  
**FTE ENROLLMENT: FUNDED-30, LOWER AND UPPER DIVISIONS**  
**2018-2019 FTE-2A**

COLLEGE	UPPER DIVISION	A & P	POSTSEC VOC	DEV ED	EPI	POSTSEC ADULT VOC	APPRENT	ADULT BASIC	ADULT SEC/GED PREP	VOC PREP	2018-19 FTE-2A TOTAL
Eastern Florida State College	842	7260	2096	274	0	343	0	0	0	0	10815
Broward College	1306	17508	7727	1677	27	380	0	0	0	0	28625
College of Central Florida	339	3196	1292	136	0	163	0	16	17	0	5159
Chipola College	135	942	240	17	0	145	0	0	0	0	1479
Daytona State College	998	6443	2185	126	2	697	589	610	111	6	11767
Florida SouthWestern State College	591	9555	703	270	0	28	0	0	0	0	11147
Florida State College at Jacksonville	1712	10118	3409	675	2	882	0	441	41	0	17280
Florida Keys Community College	13	406	208	16	0	62	16	0	0	0	721
Gulf Coast State College	134	2386	611	54	9	130	0	0	0	0	3324
Hillsborough Community College	0	13843	3331	1002	54	451	1723	48	16	0	20468
Indian River State College	1541	6985	2482	104	0	615	550	723	57	0	13057
Florida Gateway College	85	1476	525	61	13	285	0	0	0	0	2445
Lake-Sumter State College	55	2599	511	87	0	0	0	0	0	0	3252
State College of Florida, Manatee-Sarasota	440	5539	560	190	23	0	0	0	0	0	6752
Miami Dade College	1919	35191	3895	2638	13	1177	341	1485	47	1	46707
North Florida Community College	18	593	131	11	0	109	0	0	0	0	862
Northwest Florida State College	330	2622	553	93	0	174	0	94	33	0	3899
Palm Beach State College	834	16826	1559	739	33	908	483	0	0	0	21382
Pasco-Hernando State College	371	4524	2050	311	11	340	0	0	0	0	7607
Pensacola State College	408	4350	1586	230	0	390	0	106	183	0	7253
Polk State College	767	3885	1567	164	64	96	0	0	0	0	6543
St. Johns River State College	212	3290	879	60	31	124	0	31	17	0	4644
St. Petersburg College	2753	10191	4874	690	0	190	0	0	0	0	18698
Santa Fe College	475	7069	2353	371	12	246	490	128	4	0	11148
Seminole State College of Florida	972	6981	2879	291	68	230	826	351	164	0	12762
South Florida State College	117	1472	3	31	0	323	88	314	18	0	2366
Tallahassee Community College	17	7385	1074	232	0	344	0	48	5	0	9105
Valencia College	458	22706	7854	1220	77	302	0	0	0	0	32617
<b>SYSTEM</b>	<b>17842</b>	<b>215341</b>	<b>57137</b>	<b>11770</b>	<b>439</b>	<b>9134</b>	<b>5106</b>	<b>4395</b>	<b>713</b>	<b>7</b>	<b>321884</b>
<b>% CHANGE 2018-19 OVER 2017-18</b>	<b>7.8%</b>	<b>0.1%</b>	<b>2.1%</b>	<b>-7.5%</b>	<b>-10.7%</b>	<b>7.7%</b>	<b>-0.1%</b>	<b>-7.6%</b>	<b>-5.6%</b>	<b>-27.8%</b>	<b>0.6%</b>

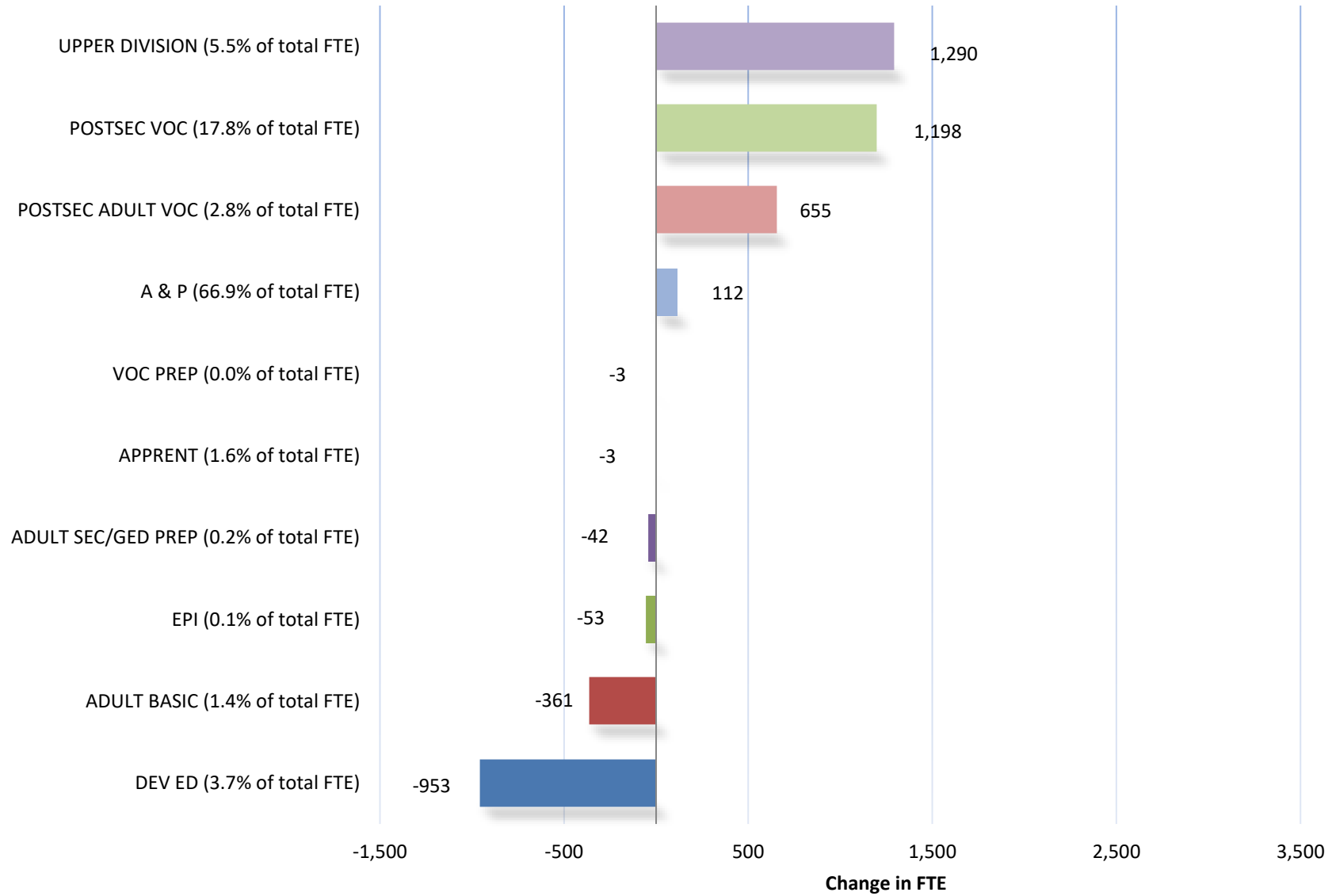
**THE FLORIDA COLLEGE SYSTEM**  
**FTE ENROLLMENT: FUNDED-30, LOWER AND UPPER DIVISIONS**  
**2018-2019 FTE-2A**

	CHANGE OVER 1-YEAR 2017-18 TO 2018-19	CHANGE OVER 2-YEARS 2016-17 TO 2018-19	CHANGE OVER 3-YEARS 2015-16 TO 2018-19	CHANGE OVER 4-YEARS 2014-15 TO 2018-19	CHANGE OVER 5-YEARS 2013-14 TO 2018-19	CHANGE OVER 6-YEARS 2012-13 TO 2018-19						
Eastern Florida State College	0.8%	10731	1.0%	10706	2.7%	10535	-2.0%	11039	-6.3%	11545	-10.0%	12018
Broward College	0.0%	28626	-2.9%	29471	-4.8%	30053	-5.0%	30126	-6.1%	30496	-4.8%	30054
College of Central Florida	1.2%	5100	-0.1%	5162	-2.4%	5286	-10.6%	5771	-12.6%	5904	-13.7%	5976
Chipola College	2.8%	1439	-2.7%	1520	2.3%	1446	3.3%	1432	-2.1%	1511	-7.7%	1602
Daytona State College	3.2%	11406	0.9%	11658	0.1%	11754	3.8%	11334	-1.0%	11881	-5.5%	12449
Florida SouthWestern State College	0.4%	11104	4.8%	10641	7.7%	10353	12.0%	9950	9.8%	10149	6.0%	10513
Florida State College at Jacksonville	2.8%	16808	-8.6%	18908	-12.0%	19631	-14.5%	20218	-20.3%	21676	-23.9%	22695
Florida Keys Community College	0.9%	714	0.0%	721	0.9%	715	1.9%	707	-7.1%	776	-13.8%	837
Gulf Coast State College	-7.3%	3585	-9.6%	3676	-13.8%	3854	-16.7%	3990	-21.9%	4257	-26.2%	4505
Hillsborough Community College	2.3%	20010	4.3%	19622	2.1%	20046	1.0%	20270	2.5%	19974	0.0%	20472
Indian River State College	-2.0%	13318	-5.8%	13861	-4.9%	13725	-1.9%	13309	-0.5%	13123	-2.8%	13429
Florida Gateway College	4.7%	2336	12.2%	2178	23.4%	1981	25.5%	1948	17.7%	2078	12.8%	2167
Lake-Sumter State College	4.5%	3111	9.5%	2971	13.0%	2879	16.7%	2787	16.7%	2787	9.6%	2966
State College of Florida, Manatee-Sarasota	-2.2%	6901	-4.5%	7070	-8.9%	7409	-10.4%	7538	-11.6%	7634	-15.7%	8008
Miami Dade College	-3.1%	48188	-0.9%	47130	-5.4%	51526	-13.0%	53685	-14.3%	54472	-16.4%	55872
North Florida Community College	-0.4%	866	3.0%	837	8.8%	814	7.0%	806	8.0%	798	-4.0%	898
Northwest Florida State College	0.3%	3889	-2.0%	3978	-8.3%	4250	-18.4%	4776	-22.4%	5023	-25.0%	5196
Palm Beach State College	1.3%	21117	4.1%	20537	7.1%	19962	7.5%	19881	6.6%	20057	6.5%	20085
Pasco-Hernando State College	-0.6%	7654	-1.5%	7726	-1.8%	7743	-1.3%	7705	7.2%	7095	8.0%	7041
Pensacola State College	0.5%	7220	2.0%	7108	2.8%	7054	-4.8%	7621	-14.9%	8518	-22.0%	9297
Polk State College	0.2%	6533	-0.6%	6582	-9.2%	7208	-12.7%	7496	-17.2%	7905	-16.4%	7828
St. Johns River State College	2.4%	4535	5.0%	4425	2.7%	4520	-1.7%	4722	-2.6%	4768	-3.1%	4795
St. Petersburg College	0.7%	18568	-1.6%	18999	-6.9%	20094	-10.0%	20784	-9.6%	20692	-12.1%	21280
Santa Fe College	-0.9%	11246	-2.2%	11395	1.5%	10980	-0.4%	11191	-3.5%	11557	-6.6%	11935
Seminole State College of Florida	0.9%	12650	1.0%	12636	1.8%	12530	-2.7%	13113	-8.0%	13867	-14.3%	14891
South Florida State College	0.2%	2362	5.4%	2244	9.1%	2168	5.6%	2241	7.9%	2192	3.8%	2280
Tallahassee Community College	-1.0%	9200	-0.2%	9127	-2.6%	9349	-6.8%	9771	-10.8%	10208	-16.8%	10947
Valencia College	5.8%	30827	8.7%	30012	8.3%	30127	8.8%	29967	10.1%	29612	8.5%	30074
<b>SYSTEM</b>	<b>0.6%</b>	<b>320043</b>	<b>0.3%</b>	<b>320900</b>	<b>-1.9%</b>	<b>327992</b>	<b>-3.7%</b>	<b>334178</b>	<b>-5.5%</b>	<b>340556</b>	<b>-8.1%</b>	<b>350109</b>
<b>% CHANGE 2017-18 OVER 2016-17</b>	<b>-0.3%</b>	<b>% CHANGE 2016-17 OVER 2015-16</b>	<b>-2.2%</b>	<b>% CHANGE 2015-16 OVER 2014-15</b>	<b>-1.9%</b>	<b>% CHANGE 2014-15 OVER 2013-14</b>	<b>-1.9%</b>	<b>% CHANGE 2013-14 OVER 2012-13</b>	<b>-2.7%</b>			

Source: J:\Daisy\from CCTCMIS\2018-19 FTE-2A

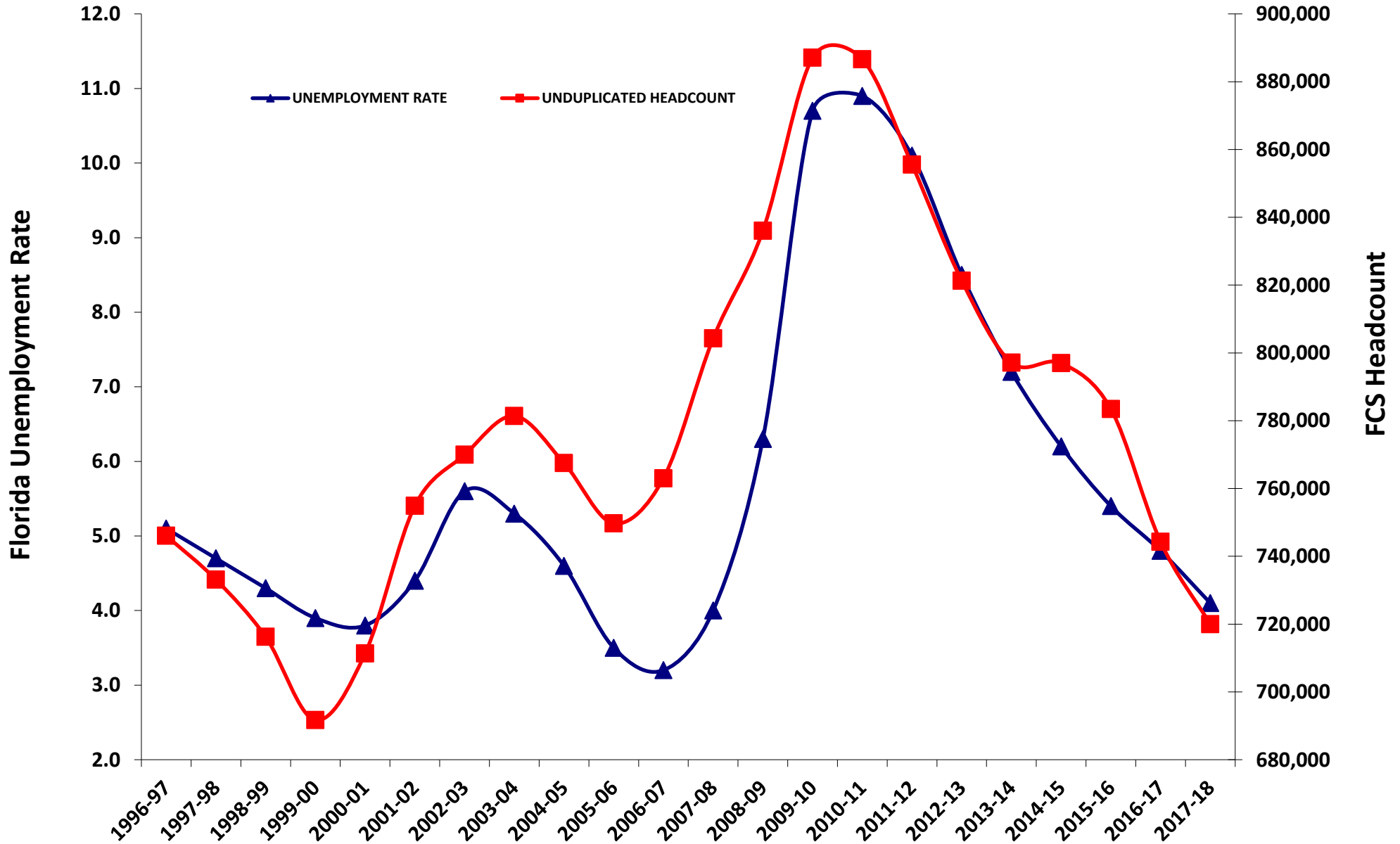
\*Beginning in FY 2010-11, enrollment in CWE programs is no longer included and upper division is included for funding purposes. This entire chart excludes CWE and includes upper division for comparison purposes.

## Florida College System 2018-19 FTE-2A Over 2017-18 FTE-3 Change in FTE by Program Area



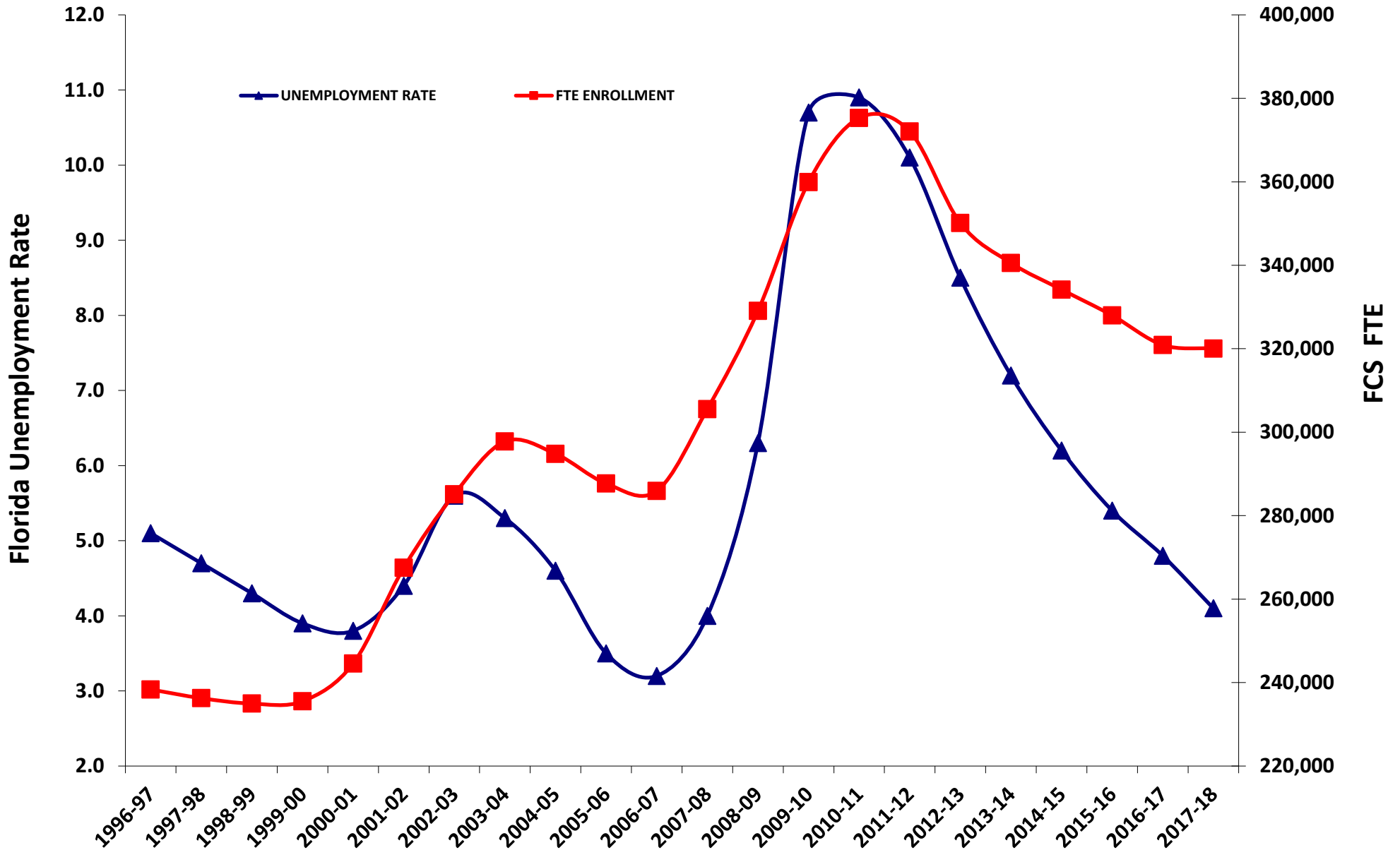
# COUNTER-CYCLICAL HEADCOUNT ENROLLMENT PATTERN

## Comparison of Florida Unemployment Rate to Florida College System (FCS) Headcount Enrollment

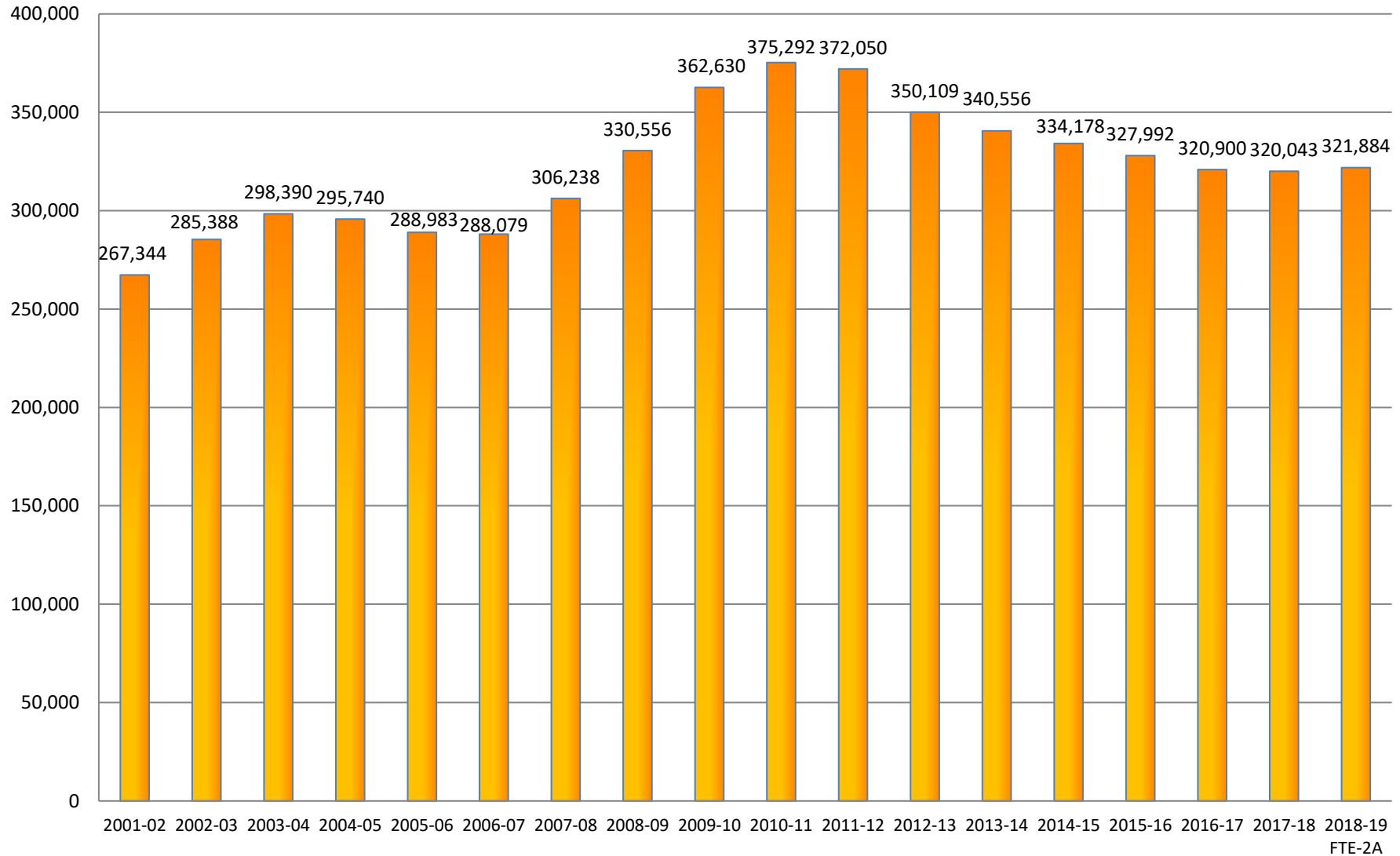


# COUNTER-CYCLICAL FTE ENROLLMENT PATTERN

## Comparison of Florida Unemployment Rate to Florida College System FTE Enrollment

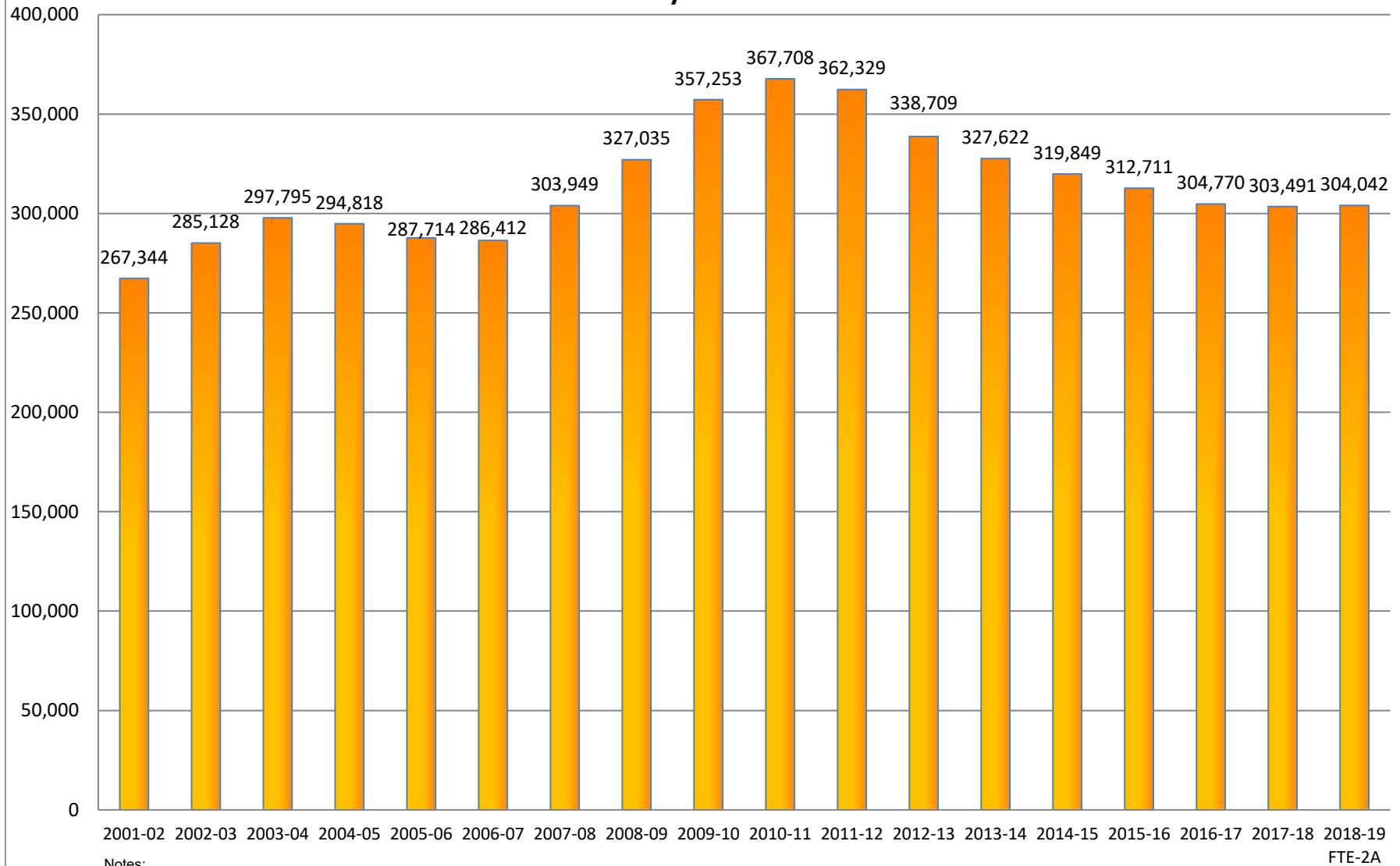


## Florida College System FTE History - Grand Total, All Programs



**Notes:**  
 The Special Disabled Adult category was no longer reported starting in 2005-06.  
 The EPI (Educator Preparation Institute) category began reporting in 2005-06.  
 The Upper Division category began reporting in 2002-03.  
 The CWE (Continuing Workforce Education) category was no longer reported starting in 2010-11.

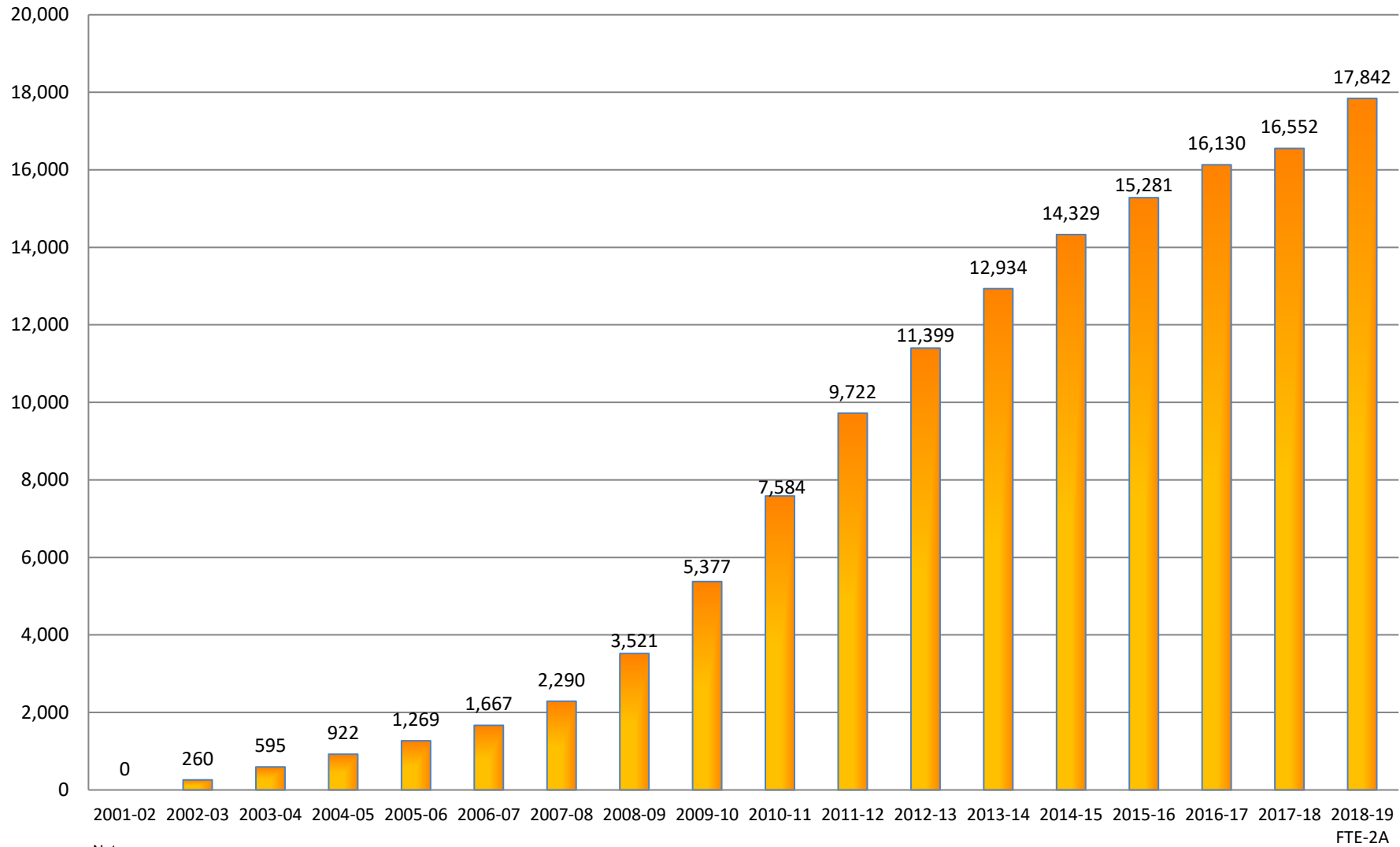
## Florida College System FTE History - Lower Division



**Notes:**

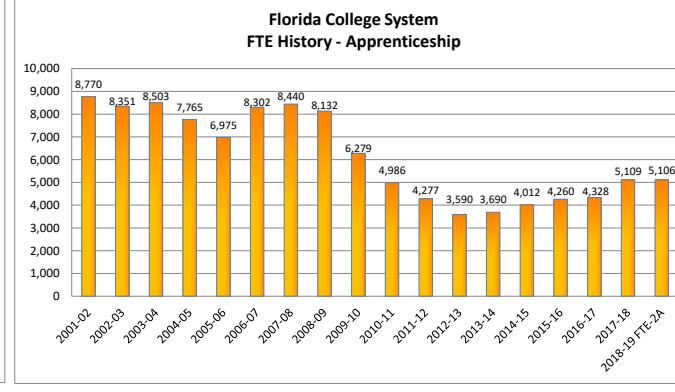
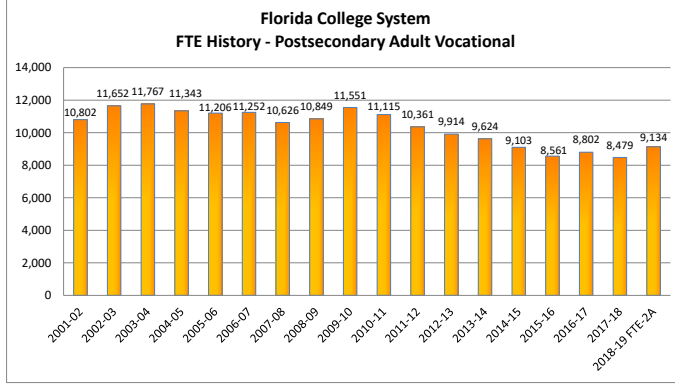
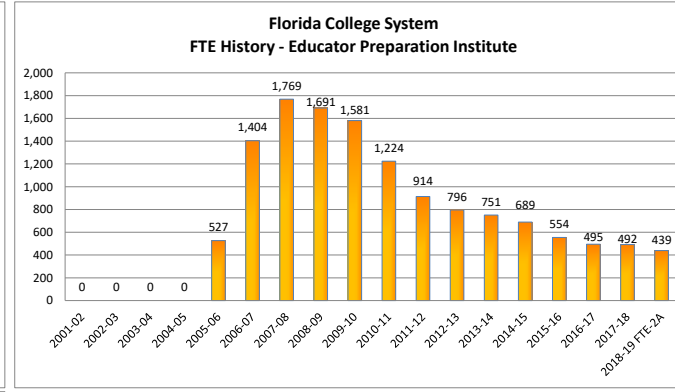
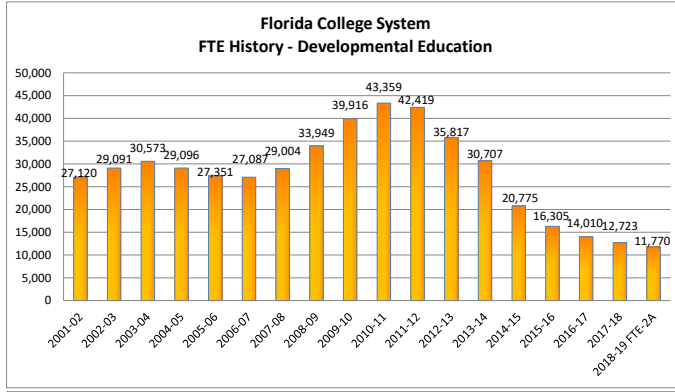
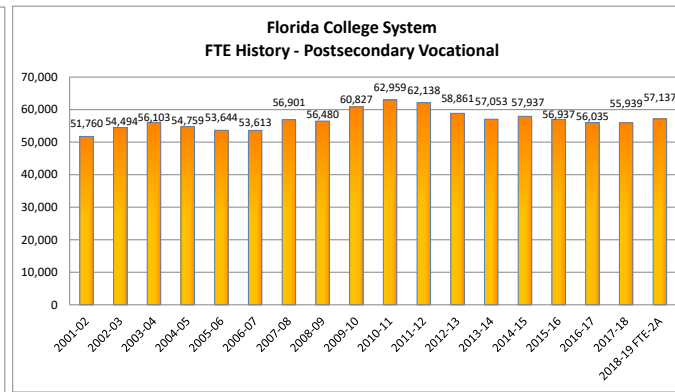
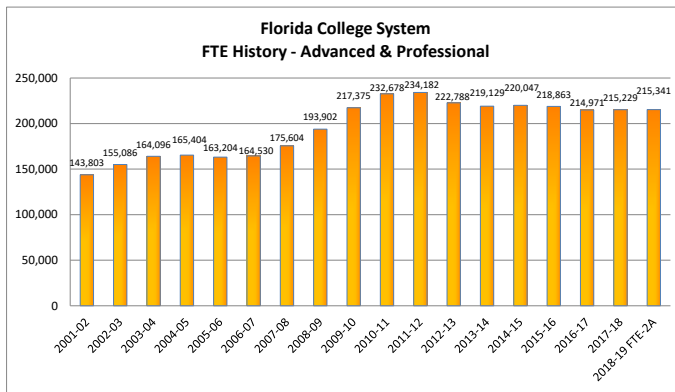
- The Special Disabled Adult category was no longer reported starting in 2005-06.
- The EPI (Educator Preparation Institute) category began reporting in 2005-06.
- The Upper Division category began reporting in 2002-03.
- The CWE (Continuing Workforce Education) category was no longer reported starting in 2010-11.

## Florida College System FTE History - Upper Division

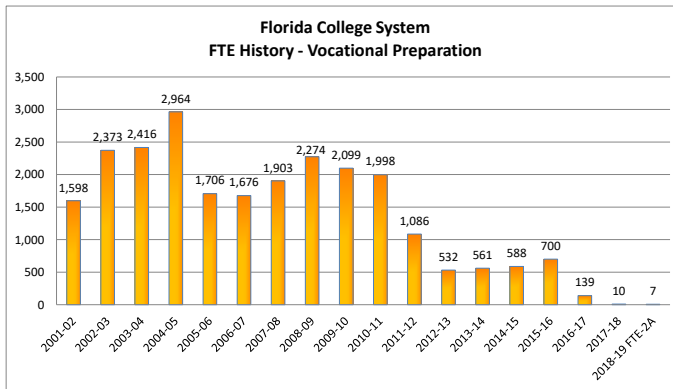
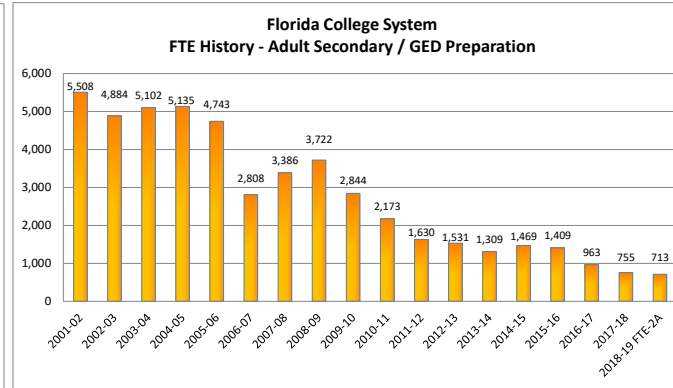
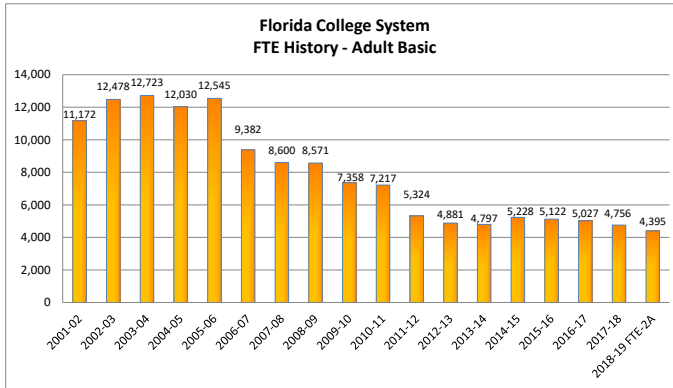


**Notes:**  
 The Special Disabled Adult category was no longer reported starting in 2005-06.  
 The EPI (Educator Preparation Institute) category began reporting in 2005-06.  
 The Upper Division category began reporting in 2002-03.  
 The CWE (Continuing Workforce Education) category was no longer reported starting in 2010-11.





**Notes:**  
 The Special Disabled Adult category was no longer reported starting in 2005-06.  
 The EPI (Educator Preparation Institute) category began reporting in 2005-06.  
 The Upper Division category began reporting in 2002-03.  
 The CWE (Continuing Workforce Education) category was no longer reported starting in 2010-11.



**Notes:**

The Special Disabled Adult category was no longer reported starting in 2005-06.  
 The EPI (Educator Preparation Institute) category began reporting in 2005-06.  
 The Upper Division category began reporting in 2002-03.  
 The CWE (Continuing Workforce Education) category was no longer reported starting in 2010-11.



**THE FLORIDA COLLEGE SYSTEM  
HISTORICAL DATA**

**FTE HISTORY**

Florida Department of Education

**FLORIDA COLLEGE SYSTEM  
FTE ENROLLMENT: FUNDED-30, LOWER AND UPPER DIVISION**

**2018-19 FTE-2A**

COLLEGE	UPPER DIVISION	A & P	POSTSEC VOC	DEV ED	EPI	POSTSEC ADULT VOC	APPRENTICE	CWE	ADULT BASIC	ADULT SEC/GED PREP	VOC PREP	SPECIAL DISABLED ADULT	TOTAL LOWER DIVISION	GRAND TOTAL
EFSC	842	7,260	2,096	274	0	343	0	0	0	0	0	0	9,973	10,815
BROW	1,306	17,508	7,727	1,677	27	380	0	0	0	0	0	0	27,319	28,625
CFLA	339	3,196	1,292	136	0	163	0	0	16	17	0	0	4,820	5,159
CHIP	135	942	240	17	0	145	0	0	0	0	0	0	1,344	1,479
DAYT	998	6,443	2,185	126	2	697	589	0	610	111	6	0	10,769	11,767
FSW	591	9,555	703	270	0	28	0	0	0	0	0	0	10,556	11,147
FJAX	1,712	10,118	3,409	675	2	882	0	0	441	41	0	0	15,568	17,290
FKEY	13	406	208	16	0	62	16	0	0	0	0	0	708	721
GULF	134	2,386	611	54	9	130	0	0	0	0	0	0	3,190	3,324
HILL	0	13,843	3,331	1,002	54	451	1,723	0	48	16	0	0	20,468	20,468
INDR	1,541	6,985	2,482	104	0	615	550	0	723	57	0	0	11,516	13,057
FGC	85	1,476	525	61	13	285	0	0	0	0	0	0	2,360	2,445
LSSC	55	2,599	511	87	0	0	0	0	0	0	0	0	3,197	3,252
SCF	440	5,539	560	190	23	0	0	0	0	0	0	0	6,312	6,752
MIAM	1,919	35,191	3,895	2,638	13	1,177	341	0	1,485	47	1	0	44,788	46,707
NFLA	18	593	131	11	0	109	0	0	0	0	0	0	844	862
NWFC	330	2,622	553	93	0	174	0	0	94	33	0	0	3,569	3,899
PALM	834	16,826	1,559	739	33	908	483	0	0	0	0	0	20,548	21,382
PASC	371	4,524	2,050	311	11	340	0	0	0	0	0	0	7,236	7,607
PENS	408	4,350	1,586	230	0	390	0	0	106	183	0	0	6,845	7,253
POLK	767	3,885	1,567	164	64	96	0	0	0	0	0	0	5,776	6,543
ST.J	212	3,290	879	60	31	124	0	0	31	17	0	0	4,432	4,644
ST.P	2,753	10,191	4,874	690	0	190	0	0	0	0	0	0	15,945	18,698
SANF	475	7,069	2,353	371	12	246	490	0	128	4	0	0	10,673	11,148
SEMI	972	6,981	2,879	291	68	230	826	0	351	164	0	0	11,790	12,762
SFLA	117	1,472	3	31	0	323	88	0	314	18	0	0	2,249	2,366
TALL	17	7,385	1,074	232	0	344	0	0	48	5	0	0	9,088	9,105
VALE	458	22,706	7,854	1,220	77	302	0	0	0	0	0	0	32,159	32,617
SYST	17,842	215,341	57,137	11,770	439	9,134	5,106	0	4,395	713	7	0	304,042	321,884

CCTCMIS: FTECOL, CO2AF29C - 02/25/2019 5:30 PM

SOURCE: FN30C2A

Notes:

The Special Disabled Adult category was no longer reported starting in 2005-06.

The EPI (Educator Preparation Institute) category began reporting in 2005-06.

The Upper Division category began reporting in 2002-03.

The CWE (Continuing Workforce Education) category was no longer reported starting in 2010-11.

**FLORIDA COLLEGE SYSTEM**  
**FTE ENROLLMENT: FUNDED-30, LOWER AND UPPER DIVISION**

2017-18 FTE-3

COLLEGE	UPPER DIVISION	A & P	POSTSEC VOC	DEV ED	EPI	POSTSEC ADULT VOC	APPRENTICE	CWE	ADULT BASIC	ADULT SEC/GED PREP	VOC PREP	SPECIAL DISABLED ADULT	TOTAL LOWER DIVISION	GRAND TOTAL
EFSC	700	7,297	2,091	300	0	343	0		0	0	0		10,031	10,731
BROW	1,188	17,548	7,679	1,788	44	379	0		0	0	0		27,438	28,626
CFLA	344	3,220	1,226	149	0	130	0		15	16	0		4,755	5,100
CHIP	121	950	229	18	0	120	0		0	0	0		1,317	1,439
DAYT	865	6,359	2,064	153	2	696	544		610	111	3		10,541	11,406
FSW	591	9,585	627	273	0	28	0		0	0	0		10,513	11,104
FJAX	1,689	9,938	3,228	570	0	873	0		467	43	0		15,119	16,808
FKEY	22	416	205	19	0	53	0		0	0	0		692	714
GULF	124	2,613	633	64	21	130	0		0	0	0		3,461	3,585
HILL	0	13,419	3,266	1,017	71	450	1,723		48	15	0		20,010	20,010
INDR	1,489	7,106	2,544	198	0	645	583		698	54	0		11,829	13,318
FGC	59	1,458	458	60	18	283	0		0	0	0		2,276	2,336
LSSC	46	2,429	548	88	0	0	0		0	0	0		3,065	3,111
SCF	432	5,677	548	214	31	0	0		0	0	0		6,469	6,901
MIAM	1,852	36,170	3,988	3,254	6	559	449		1,831	74	7		46,336	48,188
NFLA	12	538	191	15	0	110	0		0	0	0		853	866
NWFC	303	2,675	514	96	0	174	0		93	33	0		3,585	3,889
PALM	725	16,649	1,536	718	26	957	507		0	0	0		20,392	21,117
PASC	367	4,493	2,088	346	20	340	0		0	0	0		7,287	7,654
PENS	339	4,441	1,493	270	0	387	0		107	184	0		6,881	7,220
POLK	748	3,940	1,540	156	56	94	0		0	0	0		5,786	6,533
ST.J	195	3,207	892	80	28	83	0		31	19	0		4,340	4,535
ST.P	2,711	10,169	4,802	695	0	191	0		0	0	0		15,857	18,568
SANF	439	7,203	2,312	427	4	246	483		127	6	0		10,807	11,246
SEMI	896	7,031	2,828	311	66	244	758		344	174	0		11,754	12,650
SFLA	108	1,475	3	31	0	319	64		343	21	0		2,255	2,362
TALL	12	7,418	1,050	330	0	344	0		42	4	0		9,188	9,200
VALE	173	21,807	7,358	1,087	100	303	0		0	0	0		30,655	30,827
SYST	16,552	215,229	55,939	12,723	492	8,479	5,109		4,756	755	10		303,491	320,043

CCTCMIS: FTECOL, CO3B29C - 08/02/2018 11:13 AM

SOURCE: FN30C3

Notes:

The Special Disabled Adult category was no longer reported starting in 2005-06.

The EPI (Educator Preparation Institute) category began reporting in 2005-06.

The Upper Division category began reporting in 2002-03.

The CWE (Continuing Workforce Education) category was no longer reported starting in 2010-11.

**FLORIDA COLLEGE SYSTEM**  
**FTE ENROLLMENT: FUNDED-30, LOWER AND UPPER DIVISION**

2016-17 FTE-3

COLLEGE	UPPER DIVISION	A & P	POSTSEC VOC	DEV ED	EPI	POSTSEC ADULT VOC	APPRENTICE	CWE	ADULT BASIC	ADULT SEC/GED PREP	VOC PREP	SPECIAL DISABLED ADULT	TOTAL LOWER DIVISION	GRAND TOTAL
EFSC	563	7,252	2,125	349	0	418	0		0	0	0		10,143	10,706
BROW	1,096	18,241	7,604	2,013	44	473	0		0	0	0		28,376	29,471
CFLA	325	3,217	1,216	173	0	203	0		28	0	0		4,837	5,162
CHIP	119	954	273	29	0	144	0		0	0	0		1,401	1,520
DAYT	894	6,261	2,312	213	1	688	454		703	125	7		10,764	11,658
FSW	593	9,523	231	265	0	29	0		0	0	0		10,048	10,641
FJAX	1,784	11,229	3,561	805	0	799	0		625	106	0		17,125	18,908
FKEY	6	455	193	22	0	45	0		0	0	0		715	721
GULF	96	2,674	675	71	23	138	0		0	0	0		3,580	3,676
HILL	0	13,383	3,216	1,025	94	412	1,418		60	14	0		19,622	19,622
INDR	1,506	7,330	2,601	284	0	682	495		854	109	0		12,355	13,861
FGC	37	1,420	428	46	15	233	0		0	0	0		2,141	2,178
LSSC	54	2,210	625	82	0	0	0		0	0	0		2,917	2,971
SCF	444	5,799	567	236	24	0	0		0	0	0		6,626	7,070
MIAM	1,927	34,667	3,921	3,463	12	991	217		1,683	117	132		45,203	47,130
NFLA	0	531	180	21	0	105	0		0	0	0		837	837
NWFC	300	2,692	558	100	0	195	0		99	34	0		3,678	3,978
PALM	689	16,144	1,519	735	23	897	531		0	0	0		19,849	20,537
PASC	317	4,536	2,114	396	30	333	0		0	0	0		7,409	7,726
PENS	291	4,344	1,484	262	0	369	0		115	243	0		6,818	7,108
POLK	772	3,930	1,564	170	57	89	0		0	0	0		5,810	6,582
ST.J	180	3,054	900	99	32	101	0		35	24	0		4,245	4,425
ST.P	2,649	10,469	4,978	774	0	129	0		0	0	0		16,350	18,999
SANF	417	7,311	2,357	514	12	228	435		108	12	0		10,977	11,395
SEMI	803	7,218	2,730	375	41	266	714		347	142	0		11,833	12,636
SFLA	88	1,412	4	31	0	316	59		311	24	0		2,156	2,244
TALL	11	7,338	1,001	427	0	273	5		59	14	0		9,115	9,127
VALE	170	21,377	7,100	1,032	88	246	0		0	0	0		29,843	30,012
SYST	16,130	214,971	56,035	14,010	495	8,802	4,328		5,027	963	139		304,770	320,900

CCTCMIS: FTECOL, CO3F29C - 07/19/2017 3:18 PM

SOURCE: FN30C3

Notes:

The Special Disabled Adult category was no longer reported starting in 2005-06.

The EPI (Educator Preparation Institute) category began reporting in 2005-06.

The Upper Division category began reporting in 2002-03.

The CWE (Continuing Workforce Education) category was no longer reported starting in 2010-11.

**FLORIDA COLLEGE SYSTEM**  
**FTE ENROLLMENT: FUNDED-30, LOWER AND UPPER DIVISION**

2015-16 FTE-3

COLLEGE	UPPER DIVISION	A & P	POSTSEC VOC	DEV ED	EPI	POSTSEC ADULT VOC	APPRENTICE	CWE	ADULT BASIC	ADULT SEC/GED PREP	VOC PREP	SPECIAL DISABLED ADULT	TOTAL LOWER DIVISION	GRAND TOTAL
EFSC	452	7,224	2,115	391	0	353	0		0	0	0		10,083	10,535
BROW	979	18,616	7,638	2,285	64	470	0		0	0	0		29,073	30,053
CFLA	335	3,318	1,213	226	0	163	0		27	4	0		4,950	5,286
CHIP	128	881	298	33	0	107	0		0	0	0		1,318	1,446
DAYT	945	6,512	2,128	321	2	670	413		623	135	5		10,808	11,754
FSW	557	8,965	496	314	0	20	0		0	0	0		9,796	10,353
FJAX	1,648	11,769	3,678	883	0	832	109		591	122	0		17,983	19,631
FKEY	0	468	173	30	0	43	0		0	0	0		715	715
GULF	85	2,799	717	74	27	153	0		0	0	0		3,769	3,854
HILL	0	13,718	3,221	1,039	106	478	1,402		65	18	0		20,046	20,046
INDR	1,496	7,014	2,653	323	0	764	461		817	148	50		12,229	13,725
FGC	27	1,242	408	37	7	260	0		0	0	0		1,954	1,981
LSSC	53	2,094	631	101	0	0	0		0	0	0		2,826	2,879
SCF	427	6,116	554	287	26	0	0		0	0	0		6,982	7,409
MIAM	1,983	36,962	3,946	4,604	21	673	359		1,861	471	645		49,543	51,526
NFLA	0	500	179	17	0	118	0		0	0	0		814	814
NWFC	322	2,889	623	104	0	162	0		145	5	0		3,928	4,250
PALM	621	15,741	1,479	689	26	890	515		0	0	0		19,341	19,962
PASC	192	4,456	2,233	480	26	357	0		0	0	0		7,551	7,743
PENS	249	4,310	1,451	241	16	394	0		132	264	0		6,806	7,054
POLK	726	4,470	1,634	213	81	84	0		0	0	0		6,482	7,208
ST.J	182	3,071	940	148	27	79	9		38	27	0		4,338	4,520
ST.P	2,643	11,264	5,129	914	0	144	0		0	0	0		17,451	20,094
SANF	384	6,994	2,365	510	13	251	340		112	11	0		10,596	10,980
SEMI	594	7,370	2,800	405	39	214	616		331	160	0		11,936	12,530
SFLA	99	1,376	3	26	0	292	37		310	26	0		2,069	2,168
TALL	0	7,391	1,051	491	0	327	0		70	19	0		9,349	9,349
VALE	153	21,333	7,181	1,121	74	266	0		0	0	0		29,974	30,127
SYST	15,281	218,863	56,937	16,305	554	8,561	4,260		5,122	1,409	700		312,711	327,992

CCTCMIS: FTECOL, CO3F29B - 07/22/2016 4:44 PM

SOURCE: FN30C3

Notes:

The Special Disabled Adult category was no longer reported starting in 2005-06.

The EPI (Educator Preparation Institute) category began reporting in 2005-06.

The Upper Division category began reporting in 2002-03.

The CWE (Continuing Workforce Education) category was no longer reported starting in 2010-11.

**FLORIDA COLLEGE SYSTEM**  
**FTE ENROLLMENT: FUNDED-30, LOWER AND UPPER DIVISION**

2014-15 FTE-3

COLLEGE	UPPER DIVISION	A & P	POSTSEC VOC	DEV ED	EPI	POSTSEC ADULT VOC	APPRENTICE	CWE	ADULT BASIC	ADULT SEC/GED PREP	VOC PREP	SPECIAL DISABLED ADULT	TOTAL LOWER DIVISION	GRAND TOTAL
EFSC	239	7,322	2,345	428	0	706	0	0	0	0	0		10,800	11,039
BROW	894	18,295	7,552	2,809	58	518	0	0	0	0	0		29,232	30,126
CFLA	276	3,608	1,241	455	0	159	0	0	14	19	0		5,495	5,771
CHIP	134	875	254	46	0	122	0	0	0	0	0		1,298	1,432
DAYT	958	6,018	2,124	437	1	728	320	0	609	133	6		10,377	11,334
FSW	632	8,409	528	362	0	19	0	0	0	0	0		9,318	9,950
FJAX	1,394	12,067	3,629	1,211	0	906	367	0	554	88	2		18,824	20,218
FKEY	0	471	176	28	0	32	0	0	0	0	0		707	707
GULF	46	2,908	742	125	28	141	0	0	0	0	0		3,944	3,990
HILL	0	13,685	3,286	1,332	163	513	1,231	0	51	10	0		20,270	20,270
INDR	1,340	6,697	2,645	394	0	734	492	0	828	138	42		11,970	13,309
FGC	21	1,210	414	48	10	246	0	0	0	0	0		1,927	1,948
LSSC	43	2,002	622	112	9	0	0	0	0	0	0		2,744	2,787
SCF	387	6,169	589	356	37	0	0	0	0	0	0		7,152	7,538
MIAM	1,925	38,083	3,940	5,803	28	749	178	0	1,944	497	538		51,760	53,685
NFLA	0	518	173	24	0	91	0	0	0	0	0		806	806
NWFC	360	3,252	671	167	0	156	0	0	163	6	0		4,416	4,776
PALM	604	15,419	1,564	775	34	935	550	0	0	0	0		19,277	19,881
PASC	95	4,342	2,250	624	37	352	0	0	6	0	0		7,610	7,705
PENS	237	4,562	1,670	315	17	368	0	0	161	292	0		7,384	7,621
POLK	711	4,624	1,711	283	82	85	0	0	0	0	0		6,785	7,496
ST.J	184	3,113	1,016	170	39	84	41	0	54	22	0		4,538	4,722
ST.P	2,631	11,833	4,994	1,147	0	180	0	0	0	0	0		18,154	20,784
SANF	419	7,098	2,441	599	26	223	250	0	130	5	0		10,772	11,191
SEMI	573	7,588	3,027	538	43	256	557	0	327	205	0		12,541	13,113
SFLA	93	1,435	12	29	0	295	24	0	314	39	0		2,147	2,241
TALL	0	7,613	1,095	704	0	268	3	0	73	15	0		9,771	9,771
VALE	135	20,832	7,228	1,456	79	238	0	0	0	0	0		29,833	29,967
SYST	14,329	220,047	57,937	20,775	689	9,103	4,012	0	5,228	1,469	588		319,849	334,178

CCTCMIS: FTECOL, CO3F29C - 07/24/2015 11:11 AM

SOURCE: FN30C3

Notes:

The Special Disabled Adult category was no longer reported starting in 2005-06.

The EPI (Educator Preparation Institute) category began reporting in 2005-06.

The Upper Division category began reporting in 2002-03.

The CWE (Continuing Workforce Education) category was no longer reported starting in 2010-11.



**FLORIDA COLLEGE SYSTEM**  
**FTE ENROLLMENT: FUNDED-30, LOWER AND UPPER DIVISION**

2013-14 FTE-3

COLLEGE	UPPER DIVISION	A & P	POSTSEC VOC	DEV ED	EPI	POSTSEC ADULT VOC	APPRENTICE	CWE	ADULT BASIC	ADULT SEC/GED PREP	VOC PREP	SPECIAL DISABLED ADULT	TOTAL LOWER DIVISION	GRAND TOTAL
EFSC	76	7,530	2,575	657	0	692	15		0	0	0		11,469	11,545
BROW	797	17,470	7,502	4,216	47	464	0		0	0	0		29,699	30,496
CFLA	209	3,718	1,320	438	1	197	0		11	10	0		5,696	5,904
CHIP	135	929	239	78	0	129	0		0	0	2		1,376	1,511
DAYT	858	6,146	2,171	872	1	736	302		662	120	12		11,023	11,881
FSW	599	8,123	614	794	0	20	0		0	0	0		9,550	10,149
FJAX	1,289	12,657	3,758	1,766	0	1,245	343		522	90	7		20,388	21,676
FKEY	0	508	197	43	0	29	0		0	0	0		776	776
GULF	55	2,982	748	271	34	164	2		0	0	0		4,202	4,257
HILL	0	12,771	3,387	2,076	152	466	1,073		42	8	0		19,974	19,974
INDR	1,190	6,578	2,657	579	0	816	440		697	122	45		11,933	13,123
FGC	14	1,291	415	106	14	237	0		0	0	0		2,064	2,078
LSSC	30	1,919	640	179	18	0	0		0	0	0		2,756	2,787
SCF	376	6,055	594	560	49	0	0		0	0	0		7,258	7,634
MIAM	1,868	37,572	3,956	7,581	34	800	226		1,617	322	495		52,605	54,472
NFLA	0	485	156	63	0	94	0		0	0	0		798	798
NWFC	361	3,357	757	275	0	132	0		134	6	0		4,662	5,023
PALM	547	15,249	1,573	1,180	44	959	504		0	0	0		19,510	20,057
PASC	0	3,973	2,065	624	73	346	0		14	1	0		7,095	7,095
PENS	229	4,903	1,865	610	14	381	0		232	283	0		8,289	8,518
POLK	605	4,753	1,849	533	77	88	0		0	0	0		7,300	7,905
ST.J	163	3,099	995	271	42	93	33		50	22	0		4,606	4,768
ST.P	2,498	11,627	4,940	1,465	0	163	0		0	0	0		18,195	20,692
SANF	388	7,164	2,587	798	19	265	207		125	5	0		11,169	11,557
SEMI	512	8,008	3,001	916	42	312	509		320	248	0		13,355	13,867
SFLA	44	1,335	35	92	0	306	20		306	54	0		2,148	2,192
TALL	0	7,491	1,142	1,187	0	290	16		65	17	0		10,208	10,208
VALE	92	21,437	5,315	2,477	90	201	0		0	0	0		29,520	29,612
SYST	12,934	219,129	57,053	30,707	751	9,624	3,690		4,797	1,309	561		327,622	340,556

CCTCMIS: FTECOL, CO2AF29C - 07/16/2014 11:26 AM

SOURCE: FN30C3

Notes:

The Special Disabled Adult category was no longer reported starting in 2005-06.

The EPI (Educator Preparation Institute) category began reporting in 2005-06.

The Upper Division category began reporting in 2002-03.

The CWE (Continuing Workforce Education) category was no longer reported starting in 2010-11.

**FLORIDA COLLEGE SYSTEM  
HISTORICAL FTE ENROLLMENT: LOWER AND UPPER DIVISION**

2012-13 FTE-3

COLLEGE	UPPER DIVISION	A & P	POSTSEC VOC	DEV ED	EPI	POSTSEC ADULT VOC	APPRENTICE	CWE	ADULT BASIC	ADULT SEC/GED PREP	VOC PREP	SPECIAL DISABLED ADULT	TOTAL LOWER DIVISION	GRAND TOTAL
EFSC	0	7,718	2,541	859	3	809	86		0	0	0		12,018	12,018
BROW	728	16,732	7,370	4,751	49	424	0		0	0	0		29,326	30,054
CFLA	155	3,716	1,342	439	7	278	0		23	17	0		5,821	5,976
CHIP	137	993	257	93	0	122	0		0	0	1		1,466	1,602
DAYT	854	6,480	2,227	962	1	761	328		687	158	11		11,595	12,449
EDIS	590	8,012	987	915	0	10	0		0	0	0		9,924	10,513
FJAX	1,172	13,149	4,200	1,933	4	1,186	365		547	125	14		21,523	22,695
FKEY	0	552	206	49	0	30	0		0	0	0		837	837
GULF	43	3,021	911	307	32	186	5		1	0	0		4,462	4,505
HILL	0	12,922	3,531	2,379	144	419	1,018		50	10	0		20,472	20,472
INDR	1,013	6,708	2,830	724	42	818	454		688	152	0		12,416	13,429
FGC	7	1,335	409	128	19	269	0		0	0	0		2,160	2,167
LSSC	8	2,071	633	240	16	0	0		0	0	0		2,959	2,966
SCF	267	6,377	567	747	50	0	0		0	0	0		7,741	8,008
MIAM	1,659	37,745	4,098	8,822	25	897	182		1,562	378	504		54,213	55,872
NFLA	0	511	206	79	0	102	0		0	0	0		898	898
NWFC	378	3,445	765	300	0	155	0		142	11	0		4,819	5,196
PALM	504	15,113	1,481	1,557	44	906	479		0	0	0		19,580	20,085
PASC	0	3,950	2,032	637	73	335	0		13	1	0		7,041	7,041
PENS	218	5,195	1,970	830	2	483	0		274	326	0		9,079	9,297
POLK	432	4,787	1,827	603	90	90	0		0	0	0		7,397	7,828
ST.J	136	3,136	911	319	37	119	73		43	22	0		4,659	4,795
ST.P	2,402	12,075	4,975	1,675	0	153	0		0	0	0		18,878	21,280
SANF	299	7,321	2,742	1,025	23	288	120		112	5	0		11,636	11,935
SEMI	313	8,692	3,146	1,393	46	306	399		323	273	1		14,579	14,891
SFLA	24	1,318	63	128	0	368	27		332	22	0		2,257	2,280
TALL	0	8,114	1,205	1,225	0	233	55		84	31	0		10,947	10,947
VALE	63	21,618	5,431	2,699	93	171	0		0	0	0		30,011	30,074
SYST	11,399	222,788	58,861	35,817	796	9,914	3,590		4,881	1,531	532		338,709	350,109

CCTCMIS: FTECOL, CO3F29C - 08/01/2013 1:31 PM

SOURCE: FN30C3

Notes:

The Special Disabled Adult category was no longer reported starting in 2005-06.

The EPI (Educator Preparation Institute) category began reporting in 2005-06.

The Upper Division category began reporting in 2002-03.

The CWE (Continuing Workforce Education) category was no longer reported starting in 2010-11.

**FLORIDA COLLEGE SYSTEM  
HISTORICAL FTE ENROLLMENT: LOWER AND UPPER DIVISION**

2011-12 FTE-3

COLLEGE	UPPER DIVISION	A & P	POSTSEC VOC	DEV ED	EPI	POSTSEC ADULT VOC	APPRENTICE	CWE	ADULT BASIC	ADULT SEC/GED PREP	VOC PREP	SPECIAL DISABLED ADULT	TOTAL LOWER DIVISION	GRAND TOTAL
BREV	0	8,039	2,665	1,542	11	837	301		0	0	0		13,395	13,395
BROW	756	17,243	7,572	5,052	44	486	0		0	0	0		30,396	31,152
CFLA	79	3,940	1,449	576	10	403	0		45	11	1		6,435	6,514
CHIP	151	1,027	263	89	0	115	0		0	0	2		1,495	1,646
DAYT	782	7,346	2,505	1,160	0	776	370		719	184	3		13,063	13,844
EDIS	627	9,000	1,074	1,120	0	23	0		0	0	0		11,216	11,843
FJAX	962	14,810	4,546	2,186	50	1,340	379		708	180	21		24,220	25,182
FKEY	0	587	236	56	0	31	0		0	0	0		910	910
GULF	15	3,064	1,116	386	36	190	28		10	0	0		4,830	4,845
HILL	0	13,255	3,852	2,664	132	409	953		79	14	0		21,358	21,358
INDR	781	6,716	2,937	867	70	854	596		736	188	0		12,964	13,745
FGC	0	1,393	434	171	19	322	0		0	0	0		2,339	2,339
LSCC	0	2,261	687	276	13	0	0		0	0	0		3,238	3,238
SCF	115	6,713	581	997	57	0	0		0	0	0		8,348	8,463
MIAM	1,330	38,978	4,191	10,932	40	782	426		1,629	336	1,058		58,372	59,702
NFLA	0	572	196	93	0	103	0		0	0	0		963	963
NWFC	380	3,714	825	369	0	149	0		138	14	0		5,209	5,589
PALM	462	15,802	1,488	1,856	47	844	486		0	0	0		20,523	20,986
PASC	0	4,318	2,234	777	52	426	0		17	1	0		7,825	7,825
PENS	142	5,361	2,021	871	19	477	0		244	349	0		9,342	9,484
POLK	254	4,776	1,764	691	85	97	0		0	0	0		7,413	7,667
ST.J	83	3,329	935	401	46	126	95		25	7	0		4,964	5,047
ST.P	2,461	12,759	5,141	1,947	0	122	0		0	0	0		19,969	22,430
SANF	233	7,688	2,812	1,237	38	301	104		132	5	0		12,317	12,550
SEMI	71	8,788	3,418	1,432	44	300	472		381	262	2		15,099	15,170
SFLA	0	1,219	176	156	12	400	38		371	44	0		2,416	2,416
TALL	0	8,916	1,275	1,625	0	250	28		91	34	0		12,219	12,219
VALE	38	22,571	5,746	2,890	88	198	0		0	0	0		31,492	31,531
SYST	9,722	234,182	62,138	42,419	914	10,361	4,277		5,324	1,630	1,086		362,329	372,050

CCTCMIS: FTECOL, CO3F29C - 07/24/2012 10:59 AM

SOURCE: FN30C3

Notes:

The Special Disabled Adult category was no longer reported starting in 2005-06.

The EPI (Educator Preparation Institute) category began reporting in 2005-06.

The Upper Division category began reporting in 2002-03.

The CWE (Continuing Workforce Education) category was no longer reported starting in 2010-11.

**FLORIDA COLLEGE SYSTEM  
HISTORICAL FTE ENROLLMENT: LOWER AND UPPER DIVISION**

2010-11 FTE-3

COLLEGE	UPPER DIVISION	A & P	POSTSEC VOC	DEV ED	EPI	POSTSEC ADULT VOC	APPRENTICE	CWE	ADULT BASIC	ADULT SEC/GED PREP	VOC PREP	SPECIAL DISABLED ADULT	TOTAL LOWER DIVISION	GRAND TOTAL
BREV	0	8,245	2,753	1,160	19	1,048	289		0	0	0		13,514	13,514
BROW	427	17,015	7,545	4,994	46	444	0		0	0	0		30,043	30,470
CFLA	17	3,861	1,382	800	18	438	0		64	13	1		6,576	6,593
CHIP	129	1,058	234	107	0	137	0		0	0	2		1,537	1,666
DAYT	700	8,288	2,935	1,671	0	854	451		1,101	241	0		15,541	16,242
EDIS	555	8,922	1,386	1,336	0	16	0		0	0	0		11,660	12,215
FJAX	690	15,078	4,555	2,160	110	1,340	398		930	243	22		24,835	25,524
FKEY	0	621	255	65	2	25	0		0	0	0		968	968
GULF	3	3,074	1,057	415	34	235	76		13	1	0		4,904	4,908
HILL	0	13,041	3,850	2,850	152	334	1,060		108	25	0		21,419	21,419
INDR	613	6,657	3,053	866	91	946	614		1,063	249	0		13,539	14,151
FGC	0	1,294	450	183	23	369	0		1	0	0		2,319	2,319
LSCC	0	2,263	663	317	18	0	0		0	0	0		3,261	3,261
SCF	69	7,033	597	1,150	62	0	0		0	0	0		8,843	8,912
MIAM	1,026	38,050	4,078	10,679	41	711	515		2,215	507	1,942		58,738	59,764
NFLA	0	582	192	99	17	138	0		0	0	0		1,028	1,028
NWFC	336	3,987	839	420	0	150	0		151	24	0		5,570	5,906
PALM	352	15,356	1,476	1,979	64	939	664		0	0	0		20,478	20,830
PASC	0	4,100	2,205	878	65	514	0		14	1	0		7,778	7,778
PENS	33	5,503	1,908	707	28	453	0		306	387	11		9,304	9,336
POLK	134	4,427	1,610	742	143	107	0		0	0	0		7,029	7,163
ST.J	14	3,220	957	420	75	129	168		15	4	0		4,987	5,001
ST.P	2,319	12,874	4,993	2,025	0	119	0		0	0	0		20,011	22,330
SANF	156	7,908	2,685	1,284	54	293	155		144	4	0		12,526	12,682
SEMI	11	8,589	3,774	1,337	54	340	498		479	326	19		15,417	15,428
SFLA	0	1,206	212	162	23	530	77		445	84	0		2,737	2,737
TALL	0	8,498	1,176	1,726	0	317	21		171	66	0		11,975	11,975
VALE	0	21,930	6,141	2,827	84	192	0		0	0	0		31,174	31,174
SYST	7,584	232,678	62,959	43,359	1,224	11,115	4,986		7,217	2,173	1,998		367,708	375,292

CCTCMIS: FTECOL, CO3F29C - 07/15/2011 5:17 PM

SOURCE: FN30C3

Notes:

The Special Disabled Adult category was no longer reported starting in 2005-06.

The EPI (Educator Preparation Institute) category began reporting in 2005-06.

The Upper Division category began reporting in 2002-03.

The CWE (Continuing Workforce Education) category was no longer reported starting in 2010-11.

**FLORIDA COLLEGE SYSTEM  
HISTORICAL FTE ENROLLMENT: LOWER AND UPPER DIVISION**

2009-10 FTE-3

COLLEGE	UPPER DIVISION	A & P	POSTSEC VOC	DEV ED	EPI	POSTSEC ADULT VOC	APPRENTICE	CWE	ADULT BASIC	ADULT SEC/GED PREP	VOC PREP	SPECIAL DISABLED ADULT	TOTAL LOWER DIVISION	GRAND TOTAL
BREV	0	7,962	2,793	964	40	1,010	404	220	0	0	0		13,393	13,393
BROW	129	15,753	6,985	4,325	65	447	0	199	0	0	0		27,774	27,902
CFLA	0	3,615	1,253	771	18	529	0	133	74	8	5		6,405	6,405
CHIP	135	1,061	245	122	0	154	0	35	0	0	2		1,619	1,754
DAYT	495	7,570	2,799	1,635	27	940	542	73	1,113	286	0		14,984	15,479
EDIS	322	7,491	2,204	1,299	0	17	0	61	0	0	0		11,072	11,394
FJAX	355	14,158	4,140	2,013	153	1,416	450	2,199	1,037	216	24		25,806	26,161
FKEY	0	684	243	76	9	28	0	22	0	0	0		1,062	1,062
GULF	0	3,020	1,053	394	41	217	119	190	39	1	0		5,074	5,074
HILL	0	12,288	3,527	2,628	214	429	1,316	215	121	31	0		20,767	20,767
INDR	495	6,200	2,920	822	108	1,103	708	20	1,203	249	0		13,332	13,827
FGC	0	1,297	463	181	25	353	0	77	1	0	0		2,396	2,396
LSCC	0	2,139	626	340	24	0	0	74	0	0	0		3,203	3,203
SCF	13	7,523	559	1,262	92	0	0	117	0	0	0		9,552	9,565
MIAM	907	34,875	4,170	9,728	82	667	613	1,516	1,842	1,102	2,020		56,614	57,521
NFLA	0	532	164	88	10	128	0	19	0	0	0		941	941
NWFC	278	3,996	786	352	11	151	0	33	169	42	0		5,538	5,816
PALM	174	14,460	1,459	1,865	76	1,047	924	238	0	0	0		20,070	20,245
PASC	0	3,775	2,005	799	67	512	0	63	11	0	0		7,231	7,231
PENS	0	5,488	1,819	669	28	457	0	55	373	366	22		9,276	9,276
POLK	32	4,003	1,568	657	164	122	0	128	0	0	0		6,641	6,673
ST.J	0	2,981	938	407	83	116	239	52	92	6	0		4,913	4,913
ST.P	1,971	11,876	4,661	1,765	0	117	0	290	0	0	0		18,707	20,679
SANF	67	7,751	2,471	1,187	60	298	180	80	126	9	0		12,161	12,229
SEMI	5	7,469	3,322	1,222	52	355	651	22	503	378	25		13,998	14,003
SFLA	0	1,270	204	165	11	473	112	87	492	85	0		2,899	2,899
TALL	0	8,405	1,178	1,547	0	278	22	868	163	67	0		12,527	12,527
VALE	0	19,735	6,275	2,635	121	190	0	341	0	0	0		29,296	29,296
SYST	5,377	217,375	60,827	39,916	1,581	11,551	6,279	7,423	7,358	2,844	2,099		357,253	362,630

Daisy Date Entered: 7/07/2010

Source: 2009-2010 Student Data Base

Notes:

The Special Disabled Adult category was no longer reported starting in 2005-06.

The EPI (Educator Preparation Institute) category began reporting in 2005-06.

The Upper Division category began reporting in 2002-03.

The CWE (Continuing Workforce Education) category was no longer reported starting in 2010-11.

The total CWE enrollment for Florida State College at Jacksonville was reduced by 2,647 FTE by consensus of the November 14, 2012 Enrollment Estimating Conference. Supporting documentation is provided in the meeting packet.

**FLORIDA COLLEGE SYSTEM  
HISTORICAL FTE ENROLLMENT: LOWER AND UPPER DIVISION**

**2008-09 FTE-3**

COLLEGE	UPPER DIVISION	A & P	POSTSEC VOC	DEV ED	EPI	POSTSEC ADULT VOC	APPRENTICE	CWE	ADULT BASIC	ADULT SEC/GED PREP	VOC PREP	SPECIAL DISABLED ADULT	TOTAL LOWER DIVISION	GRAND TOTAL
BREV	0	6,959	2,499	844	51	778	490	178	0	0	0		11,799	11,799
BROW	14	14,038	6,180	3,758	81	492	0	256	0	0	0		24,805	24,818
CFLA	0	3,045	1,068	602	34	481	0	143	88	9	3		5,473	5,473
CHIP	105	1,076	226	128	0	154	7	44	0	0	6		1,640	1,745
DAYT	285	6,488	2,602	1,158	62	806	562	69	985	355	11		13,097	13,383
EDIS	114	6,118	1,885	1,041	22	0	0	57	0	0	0		9,123	9,237
FJAX	112	11,912	3,746	1,581	166	1,198	569	1,938	1,266	268	48		22,693	22,805
FKEY	0	558	215	55	16	51	0	22	0	0	0		916	916
GULF	0	2,795	1,062	342	38	205	165	206	62	1	0		4,875	4,875
HILL	0	10,837	3,052	2,238	139	415	1,623	207	117	33	0		18,661	18,661
INDR	343	5,505	2,692	681	110	1,068	942	14	1,172	278	0		12,462	12,805
FGC	0	1,240	373	161	25	254	0	58	0	0	0		2,112	2,112
LSCC	0	1,819	613	290	31	0	0	80	0	0	0		2,833	2,833
SCF	0	6,672	547	1,098	78	0	0	136	66	5	0		8,602	8,602
MIAM	765	31,894	5,402	8,591	77	840	814	1,534	2,911	1,658	2,150		55,869	56,635
NFLA	0	472	138	79	12	125	0	33	9	1	0		868	868
NWFC	182	3,866	744	335	40	144	0	41	178	52	0		5,399	5,581
PALM	0	12,776	1,412	1,576	90	1,024	1,346	230	0	0	0		18,454	18,454
PASC	0	3,242	1,643	670	65	383	0	47	8	1	0		6,060	6,060
PENS	0	5,076	1,711	548	46	435	0	45	363	431	21		8,674	8,674
POLK	0	3,568	1,396	566	167	103	0	192	0	0	0		5,992	5,992
ST.J	0	2,596	821	359	115	123	389	35	87	5	0		4,529	4,529
ST.P	1,599	10,688	4,272	1,563	0	116	0	329	0	0	0		16,967	18,566
SANF	0	7,837	2,369	1,021	54	254	230	46	114	36	1		11,961	11,961
SEMI	0	5,989	2,774	959	37	323	848	52	588	460	34		12,042	12,042
SFLA	0	1,152	181	144	10	506	135	69	467	92	0		2,757	2,757
TALL	0	8,087	1,180	1,218	7	301	13	1,004	91	38	0		11,938	11,938
VALE	0	17,621	5,678	2,342	122	271	0	404	0	0	0		26,437	26,437
SYST	3,521	193,902	56,480	33,949	1,691	10,849	8,132	7,467	8,571	3,722	2,274		327,035	330,556

Daisy Date Entered: 7/13/2009

Source: 2008-2009 Student Data Base

Notes:

The Special Disabled Adult category was no longer reported starting in 2005-06.

The EPI (Educator Preparation Institute) category began reporting in 2005-06.

The Upper Division category began reporting in 2002-03.

The CWE (Continuing Workforce Education) category was no longer reported starting in 2010-11.

The total CWE enrollment for Florida State College at Jacksonville was reduced by 2,017 FTE by consensus of the November 14, 2012 Enrollment Estimating Conference. Supporting documentation is provided in the meeting packet.

**FLORIDA COLLEGE SYSTEM  
HISTORICAL FTE ENROLLMENT: LOWER AND UPPER DIVISION**

**2007-08 FTE-3**

COLLEGE	UPPER DIVISION	A & P	POSTSEC VOC	DEV ED	EPI	POSTSEC ADULT VOC	APPRENTICE	CWE	ADULT BASIC	ADULT SEC/GED PREP	VOC PREP	SPECIAL DISABLED ADULT	TOTAL LOWER DIVISION	GRAND TOTAL
BREV	0	6,333	2,313	782	59	687	527	124	0	0	0		10,825	10,825
BROW	0	12,874	5,745	3,545	80	505	0	268	0	0	0		23,018	23,018
CFLA	0	2,627	998	477	50	477	0	178	66	11	2		4,886	4,886
CHIP	42	958	211	113	0	197	9	40	0	0	10		1,537	1,579
DAYT	176	5,675	2,383	1,068	85	757	641	69	932	410	23		12,043	12,218
EDIS	32	5,277	1,742	906	107	12	0	51	0	0	0		8,095	8,126
FJAX	2	10,646	3,468	1,514	151	1,040	577	2,080	1,099	264	39		20,878	20,880
FKEY	0	451	234	49	6	26	0	24	0	0	0		790	790
GULF	0	2,660	995	347	54	288	152	267	67	1	0		4,832	4,832
HILL	0	9,588	2,789	1,987	129	370	1,716	228	62	14	0		16,881	16,881
INDR	84	5,008	2,686	591	117	1,170	1,020	14	1,167	326	0		12,098	12,182
FGC	0	1,265	379	165	15	397	0	111	1	1	3		2,336	2,336
LSCC	0	1,616	609	269	40	0	0	46	0	0	0		2,580	2,580
SCF	0	5,872	616	992	84	0	0	110	40	5	0		7,718	7,718
MIAM	481	28,627	8,947	5,693	77	895	704	1,642	3,276	1,200	1,779		52,839	53,320
NFLA	0	509	156	110	14	103	0	53	10	2	1		956	956
NWFC	135	3,599	689	312	77	172	0	38	161	42	0		5,089	5,224
PALM	0	11,153	1,308	1,402	67	914	1,545	235	0	0	0		16,624	16,624
PASC	0	3,077	1,387	573	80	351	0	47	7	0	0		5,522	5,522
PENS	0	4,931	1,750	527	59	375	0	50	308	375	15		8,390	8,390
POLK	0	3,164	1,230	481	129	105	0	204	0	0	0		5,313	5,313
ST.J	0	2,302	784	305	86	127	400	43	122	22	0		4,190	4,190
ST.P	1,338	9,961	4,075	1,576	0	144	0	331	0	0	0		16,086	17,424
SANF	0	7,892	2,371	1,036	42	157	178	71	104	19	5		11,873	11,873
SEMI	0	5,088	2,338	880	40	302	815	11	624	542	28		10,669	10,669
SFLA	0	1,060	155	115	15	491	158	80	464	74	0		2,611	2,611
TALL	0	7,809	1,250	1,051	27	285	0	864	91	80	0		11,456	11,456
VALE	0	15,582	5,295	2,142	78	279	0	441	0	0	0		23,816	23,816
SYST	2,290	175,604	56,901	29,004	1,769	10,626	8,440	7,717	8,600	3,386	1,903		303,949	306,238

Daisy Date Entered: 7/29/2008

Source: 2007-2008 Student Data Base

Notes:

The Special Disabled Adult category was no longer reported starting in 2005-06.

The EPI (Educator Preparation Institute) category began reporting in 2005-06.

The Upper Division category began reporting in 2002-03.

The CWE (Continuing Workforce Education) category was no longer reported starting in 2010-11.

The total CWE enrollment for Florida State College at Jacksonville was reduced by 1,586 FTE by consensus of the November 14, 2012 Enrollment Estimating Conference. Supporting documentation is provided in the meeting packet.

**FLORIDA COLLEGE SYSTEM  
HISTORICAL FTE ENROLLMENT: LOWER AND UPPER DIVISION**

**2006-07 FTE-3**

COLLEGE	UPPER DIVISION	A & P	POSTSEC VOC	DEV ED	EPI	POSTSEC ADULT VOC	APPRENTICE	CWE	ADULT BASIC	ADULT SEC/GED PREP	VOC PREP	SPECIAL DISABLED ADULT	TOTAL LOWER DIVISION	GRAND TOTAL
BREV	0	5,883	2,044	650	46	776	413	125	0	0	0		9,937	9,937
BROW	0	12,344	5,512	3,236	47	662	0	288	0	0	0		22,089	22,089
CFLA	0	2,364	989	406	38	474	0	165	94	22	3		4,553	4,553
CHIP	23	933	220	103	0	190	0	60	0	0	13		1,518	1,541
DAYT	76	4,929	2,113	926	86	700	614	80	706	366	7		10,526	10,602
EDIS	13	4,604	1,498	973	120	6	0	67	0	0	0		7,266	7,279
FJAX	0	10,897	3,522	1,344	104	1,219	581	963	1,320	372	52		20,374	20,374
FKEY	0	397	210	51	0	40	0	24	0	0	0		722	722
GULF	0	2,622	955	331	56	324	124	243	64	3	0		4,720	4,720
HILL	0	9,510	2,587	2,041	66	433	1,685	235	55	11	0		16,622	16,622
INDR	0	4,491	2,639	520	93	1,162	920	19	1,227	353	2		11,425	11,425
FGC	0	1,126	411	152	22	466	0	108	2	1	2		2,290	2,290
LSCC	0	1,489	594	222	32	0	0	39	0	0	0		2,377	2,377
SCF	0	5,248	646	810	60	0	0	119	33	3	0		6,919	6,919
MIAM	261	26,904	8,263	5,579	53	929	641	1,546	3,649	520	1,535		49,617	49,878
NFLA	0	496	155	100	28	129	0	38	9	2	0		957	957
NWFC	109	3,343	641	281	76	175	0	18	138	34	0		4,705	4,814
PALM	0	10,365	1,292	1,264	64	779	1,888	279	0	0	0		15,931	15,931
PASC	0	2,794	1,299	531	64	337	0	45	71	26	0		5,167	5,167
PENS	0	4,546	1,649	505	60	362	0	57	313	381	11		7,884	7,884
POLK	0	2,746	1,159	415	72	110	0	201	0	0	0		4,702	4,702
ST.J	0	2,191	738	252	36	114	407	56	59	11	0		3,863	3,863
ST.P	1,185	9,445	3,877	1,571	0	173	0	335	0	0	0		15,402	16,587
SANF	0	7,439	2,322	1,015	61	259	272	84	143	55	21		11,669	11,669
SEMI	0	4,656	2,151	807	28	370	646	67	613	517	29		9,885	9,885
SFLA	0	992	144	89	13	473	106	86	387	41	0		2,331	2,331
TALL	0	7,562	1,219	1,084	26	274	6	581	499	94	0		11,345	11,345
VALE	0	14,215	4,763	1,831	54	318	0	435	0	0	0		21,616	21,616
SYST	1,667	164,530	53,613	27,087	1,404	11,252	8,302	6,359	9,382	2,808	1,676		286,412	288,079

July 31, 2007 RGM M:\Bris\_Prof1\Fte\2006-2007\reports\fte2007\CC Corrections v2\FTE3 cc corr.xls

Source: 2006-2007 Student Data Base

**Notes:**

The Special Disabled Adult category was no longer reported starting in 2005-06.

The EPI (Educator Preparation Institute) category began reporting in 2005-06.

The Upper Division category began reporting in 2002-03.

The CWE (Continuing Workforce Education) category was no longer reported starting in 2010-11.

The total CWE enrollment for Florida State College at Jacksonville was reduced by 343 FTE by consensus of the November 14, 2012 Enrollment Estimating Conference. Supporting documentation is provided in the meeting packet.



**FLORIDA COLLEGE SYSTEM  
HISTORICAL FTE ENROLLMENT: LOWER AND UPPER DIVISION**

2005-06 FTE-3

COLLEGE	UPPER DIVISION	A & P	POSTSEC VOC	DEV ED	EPI	POSTSEC ADULT VOC	APPRENTICE	CWE	ADULT BASIC	ADULT SEC/GED PREP	VOC PREP	SPECIAL DISABLED ADULT	TOTAL LOWER DIVISION	GRAND TOTAL
BREV	0	5,801	2,131	651	24	793	507	130	0	0	0		10,036	10,036
BROW	0	12,438	5,598	3,394	9	587	0	194	0	0	0		22,220	22,220
CFLA	0	2,295	896	423	25	457	0	211	142	114	15		4,578	4,578
CHIP	14	979	282	110	0	214	0	63	0	0	13		1,662	1,676
DAYT	3	4,568	2,022	832	15	677	608	84	1,865	1,122	1		11,795	11,798
EDIS	0	4,640	1,483	899	21	7	0	41	0	0	0		7,091	7,091
FJAX	0	10,898	3,551	1,168	54	1,244	475	418	1,317	429	65		19,619	19,619
FKEY	0	440	233	42	0	33	0	24	0	0	0		772	772
GULF	0	2,662	1,030	317	39	245	56	242	83	49	0		4,723	4,723
HILL	0	9,565	2,483	2,002	12	468	1,554	271	34	6	0		16,395	16,395
INDR	0	4,148	2,554	528	49	1,084	936	18	2,073	575	4		11,968	11,968
FGC	0	1,123	405	156	13	518	0	159	1	2	4		2,381	2,381
LSCC	0	1,435	594	214	11	0	0	59	0	0	0		2,312	2,312
SCF	0	5,149	594	760	21	0	0	83	15	7	0		6,629	6,629
MIAM	187	28,024	8,233	5,889	9	1,031	412	1,569	3,319	412	1,550		50,447	50,634
NFLA	0	533	156	100	25	131	0	44	18	1	1		1,010	1,010
NWFC	90	3,385	663	293	27	115	0	18	189	49	0		4,738	4,829
PALM	0	10,503	1,307	1,302	14	838	1,184	260	0	0	0		15,406	15,406
PASC	0	2,619	1,279	517	90	316	0	38	266	158	0		5,282	5,282
PENS	0	4,543	1,589	457	29	277	0	65	443	522	7		7,933	7,933
POLK	0	2,646	1,155	428	30	102	0	276	0	0	0		4,636	4,636
ST.J	0	2,088	686	215	4	256	291	45	84	19	0		3,687	3,687
ST.P	974	9,321	4,006	1,614	0	39	0	324	0	0	0		15,304	16,278
SANF	0	7,171	2,317	1,044	0	265	266	94	256	87	14		11,515	11,515
SEMI	0	4,598	2,140	808	0	350	650	77	1,079	914	32		10,646	10,646
SFLA	0	944	126	99	0	533	34	71	1,048	192	0		3,046	3,046
TALL	0	7,391	1,257	1,182	7	321	2	454	314	85	0		11,013	11,013
VALE	0	13,300	4,875	1,906	0	307	0	485	0	0	0		20,872	20,872
SYST	1,269	163,204	53,644	27,351	527	11,206	6,975	5,814	12,545	4,743	1,706		287,714	288,983

Daisy Date Entered: August 31, 2006  
Source: 2005-2006 Student Data Base

Notes:  
The Special Disabled Adult category was no longer reported starting in 2005-06.  
The EPI (Educator Preparation Institute) category began reporting in 2005-06.  
The Upper Division category began reporting in 2002-03.  
The CWE (Continuing Workforce Education) category was no longer reported starting in 2010-11.

**FLORIDA COLLEGE SYSTEM  
HISTORICAL FTE ENROLLMENT: LOWER AND UPPER DIVISION**

**2004-05 FTE-3**

COLLEGE	UPPER DIVISION	A & P	POSTSEC VOC	DEV ED	EPI	POSTSEC ADULT VOC	APPRENTICE	CWE	ADULT BASIC	ADULT SEC/GED PREP	VOC PREP	SPECIAL DISABLED ADULT	TOTAL LOWER DIVISION	GRAND TOTAL
BREV	0	6,002	2,143	754		757	677	135	0	0	0	0	10,468	10,468
BROW	0	12,423	6,024	3,761		489	0	264	0	0	0	0	22,959	22,959
CFLA	0	2,423	848	449		458	0	260	137	175	13	0	4,763	4,763
CHIP	18	1,013	258	118		194	0	53	0	0	16	0	1,651	1,669
DAYT	0	4,594	2,106	886		702	662	75	1,986	1,347	1	467	12,825	12,825
EDIS	0	4,748	1,447	886		8	0	31	0	0	0	0	7,121	7,121
FJAX	0	10,550	3,571	1,232		1,267	843	438	1,439	500	69	30	19,939	19,939
FKEY	0	454	247	49		36	0	24	0	0	0	0	810	810
GULF	0	2,730	1,026	348		231	21	239	170	107	0	0	4,872	4,872
HILL	0	9,563	2,674	2,298		453	1,417	381	24	6	0	0	16,816	16,816
INDR	0	3,993	2,471	472		1,053	804	62	1,943	531	1	0	11,328	11,328
FGC	0	1,149	414	177		578	0	187	2	3	0	0	2,509	2,509
LSCC	0	1,480	592	211		0	0	57	0	0	0	0	2,339	2,339
SCF	0	5,135	561	783		0	0	83	22	10	0	0	6,593	6,593
MIAM	126	29,734	8,592	6,222		1,152	351	1,540	2,577	453	2,800	0	53,421	53,547
NFLA	0	557	132	94		151	0	42	21	2	2	0	1,001	1,001
NWFC	53	3,411	664	338		122	0	16	220	61	0	0	4,832	4,885
PALM	0	10,531	1,359	1,400		970	1,337	278	0	0	0	0	15,875	15,875
PASC	0	2,521	1,280	521		374	0	36	284	183	0	0	5,199	5,199
PENS	0	4,780	1,696	534		366	0	53	408	501	11	0	8,348	8,348
POLK	0	2,618	1,152	465		99	0	172	0	0	0	0	4,506	4,506
ST.J	0	2,128	661	213		135	489	34	56	17	0	53	3,786	3,786
ST.P	725	9,366	4,240	1,646		35	0	364	0	0	0	0	15,650	16,375
SANF	0	7,244	2,145	1,094		285	371	84	238	82	18	0	11,561	11,561
SEMI	0	4,848	2,211	880		402	715	52	1,146	912	33	44	11,243	11,243
SFLA	0	1,017	131	106		562	76	51	1,141	165	0	0	3,250	3,250
TALL	0	7,079	1,129	1,180		256	4	312	216	83	0	0	10,257	10,257
VALE	0	13,315	4,986	1,982		207	0	406	0	0	0	0	20,896	20,896
SYST	922	165,404	54,759	29,096		11,343	7,765	5,728	12,030	5,135	2,964	594	294,818	295,740

Daisy Date Entered: July 28, 2005

Source: 2004-2005 Student Data Base

Notes:

The Special Disabled Adult category was no longer reported starting in 2005-06.

The EPI (Educator Preparation Institute) category began reporting in 2005-06.

The Upper Division category began reporting in 2002-03.

The CWE (Continuing Workforce Education) category was no longer reported starting in 2010-11.

**FLORIDA COLLEGE SYSTEM  
HISTORICAL FTE ENROLLMENT: LOWER AND UPPER DIVISION**

**2003-04 FTE-3**

COLLEGE	UPPER DIVISION	A & P	POSTSEC VOC	DEV ED	EPI	POSTSEC ADULT VOC	APPRENTICE	CWE	ADULT BASIC	ADULT SEC/GED PREP	VOC PREP	SPECIAL DISABLED ADULT	TOTAL LOWER DIVISION	GRAND TOTAL
BREV	0	5,874	2,258	779		760	761	102	0	0	0	0	10,535	10,535
BROW	0	12,023	6,018	3,924		498	0	220	0	0	0	0	22,682	22,682
CFLA	0	2,565	879	437		447	0	257	171	114	36	0	4,906	4,906
CHIP	6	1,035	259	121		201	0	53	0	0	17	0	1,686	1,691
DAYT	0	4,565	2,198	1,008		679	638	106	2,188	1,472	1	534	13,391	13,391
EDIS	0	4,859	1,413	911		7	0	51	0	0	0	0	7,242	7,242
FJAX	0	10,022	3,666	1,326		1,451	1,634	356	1,582	505	29	43	20,613	20,613
FKEY	0	484	297	42		40	0	17	0	0	0	0	880	880
GULF	0	2,654	1,069	358		175	17	241	142	74	0	0	4,731	4,731
HILL	0	9,427	2,524	2,418		484	1,361	337	0	0	0	0	16,551	16,551
INDR	0	3,867	2,604	535		1,128	835	75	2,328	599	3	0	11,975	11,975
FGC	0	1,072	488	148		544	0	168	18	5	0	0	2,443	2,443
LSCC	0	1,357	582	159		0	0	48	0	0	0	0	2,145	2,145
SCF	0	4,946	519	836		0	0	85	26	14	0	0	6,425	6,425
MIAM	47	30,419	9,091	6,317		1,275	194	1,704	2,740	435	2,219	0	54,393	54,439
NFLA	0	516	115	72		166	0	59	22	1	1	2	954	954
NWFC	0	3,634	764	382		160	0	15	259	112	0	0	5,326	5,326
PALM	0	10,332	1,319	1,456		1,022	1,302	201	0	0	0	0	15,633	15,633
PASC	0	2,399	1,263	525		394	0	45	201	168	0	0	4,995	4,995
PENS	0	4,898	1,722	628		382	0	56	474	476	13	15	8,663	8,663
POLK	0	2,646	1,200	466		125	0	232	0	0	0	0	4,669	4,669
ST.J	0	2,166	644	197		130	475	30	64	21	0	37	3,764	3,764
ST.P	543	9,209	4,347	1,604		27	0	434	0	0	0	0	15,621	16,163
SANF	0	6,975	2,292	1,263		274	367	98	157	99	19	0	11,542	11,542
SEMI	0	4,934	2,394	908		450	839	68	962	773	76	24	11,426	11,426
SFLA	0	1,062	155	110		559	67	73	1,244	206	0	0	3,475	3,475
TALL	0	6,663	1,085	1,265		151	13	267	146	28	0	0	9,618	9,618
VALE	0	13,495	4,939	2,380		238	0	461	0	0	0	0	21,513	21,513
SYST	595	164,096	56,103	30,573		11,767	8,503	5,857	12,723	5,102	2,416	655	297,795	298,390

Daisy Date Entered: July 7, 2004

Source: 2003-2004 Student Data Base

Notes:

The Special Disabled Adult category was no longer reported starting in 2005-06.

The EPI (Educator Preparation Institute) category began reporting in 2005-06.

The Upper Division category began reporting in 2002-03.

The CWE (Continuing Workforce Education) category was no longer reported starting in 2010-11.

**FLORIDA COLLEGE SYSTEM  
HISTORICAL FTE ENROLLMENT: LOWER AND UPPER DIVISION**

**2002-03 FTE-3**

COLLEGE	UPPER DIVISION	A & P	POSTSEC VOC	DEV ED	EPI	POSTSEC ADULT VOC	APPRENTICE	CWE	ADULT BASIC	ADULT SEC/GED PREP	VOC PREP	SPECIAL DISABLED ADULT	TOTAL LOWER DIVISION	GRAND TOTAL
BREV	0	5,691	2,318	798		675	687	137	0	0	0	0	10,305	10,305
BROW	0	11,586	5,869	3,899		521	0	231	0	0	0	0	22,104	22,104
CFLA	0	2,562	862	450		398	0	275	178	61	36	0	4,823	4,823
CHIP	0	951	218	122		167	0	70	0	0	24	0	1,550	1,550
DAYT	0	4,299	2,170	938		585	649	109	1,973	1,380	3	579	12,684	12,684
EDIS	0	4,478	1,215	849		7	0	45	0	0	0	0	6,594	6,594
FJAX	0	9,167	3,620	1,333		1,446	1,832	403	1,754	514	24	47	20,139	20,139
FKEY	0	532	307	58		38	0	13	0	0	0	0	949	949
GULF	0	2,591	1,111	360		157	11	229	183	98	0	0	4,739	4,739
HILL	0	8,589	2,431	2,180		460	1,452	321	0	0	0	0	15,432	15,432
INDR	0	3,493	2,606	454		1,072	830	56	2,219	633	1	0	11,365	11,365
FGC	0	984	506	153		459	0	145	29	9	1	0	2,286	2,286
LSCC	0	1,295	537	171		5	0	57	0	0	0	0	2,064	2,064
SCF	0	4,700	490	770		0	0	67	19	9	0	0	6,056	6,056
MIAM	0	28,356	8,864	5,868		1,400	0	1,949	2,399	340	2,176	0	51,352	51,352
NFLA	0	524	128	71		195	0	42	40	2	2	0	1,004	1,004
NWFC	0	3,424	800	344		126	0	14	290	74	3	0	5,074	5,074
PALM	0	9,983	1,234	1,391		898	1,281	197	0	0	0	0	14,983	14,983
PASC	0	2,170	1,210	502		377	0	40	234	111	0	0	4,645	4,645
PENS	0	4,707	1,664	670		349	0	44	493	484	18	8	8,436	8,436
POLK	0	2,524	1,081	422		106	0	271	0	0	0	0	4,403	4,403
ST.J	0	2,085	561	175		121	454	31	65	21	0	43	3,556	3,556
ST.P	260	8,460	4,172	1,586		45	0	442	0	0	0	0	14,706	14,966
SANF	0	6,724	2,254	1,353		612	87	84	113	90	16	0	11,331	11,331
SEMI	0	4,371	2,342	739		480	998	79	1,076	818	65	24	10,991	10,991
SFLA	0	1,068	136	107		551	66	59	1,317	210	5	0	3,518	3,518
TALL	0	6,223	1,042	1,080		181	6	265	96	32	0	0	8,925	8,925
VALE	0	13,550	4,748	2,250		223	0	345	0	0	0	0	21,116	21,116
SYST	260	155,086	54,494	29,091		11,652	8,351	6,019	12,478	4,884	2,373	701	285,128	285,388

Daisy Date Entered: July 30, 2003

Source: 2002-2003 Student Data Base

Notes:

The Special Disabled Adult category was no longer reported starting in 2005-06.

The EPI (Educator Preparation Institute) category began reporting in 2005-06.

The Upper Division category began reporting in 2002-03.

The CWE (Continuing Workforce Education) category was no longer reported starting in 2010-11.

**FLORIDA COLLEGE SYSTEM  
HISTORICAL FTE ENROLLMENT: LOWER AND UPPER DIVISION**

**2001-02 FTE-3**

COLLEGE	UPPER DIVISION	A & P	POSTSEC VOC	DEV ED	EPI	POSTSEC ADULT VOC	APPRENTICE	CWE	ADULT BASIC	ADULT SEC/GED PREP	VOC PREP	SPECIAL DISABLED ADULT	TOTAL LOWER DIVISION	GRAND TOTAL
BREV		5,134	2,208	770		583	726	152	0	0	0	0	9,571	9,571
BROW		10,754	5,585	3,642		503	0	251	0	0	0	0	20,734	20,734
CFLA		2,436	811	433		397	0	317	156	78	16	0	4,643	4,643
CHIP		866	182	86		189	0	63	0	0	25	0	1,411	1,411
DAYT		4,132	2,017	914		511	747	125	1,723	1,358	10	730	12,267	12,267
EDIS		4,143	1,034	924		11	0	81	0	0	0	0	6,193	6,193
FJAX		8,321	3,432	1,235		1,256	1,908	307	1,665	708	60	33	18,923	18,923
FKEY		521	286	49		45	0	10	0	0	0	0	911	911
GULF		2,408	1,123	348		204	19	246	134	83	0	0	4,565	4,565
HILL		7,769	2,317	1,914		373	1,522	331	0	0	0	0	14,226	14,226
INDR		3,433	2,538	346		1,339	671	95	2,125	685	2	0	11,233	11,233
FGC		851	481	192		232	0	123	36	16	1	0	1,933	1,933
LSCC		1,164	490	134		4	0	29	0	0	0	0	1,820	1,820
SCF		4,222	554	707		0	0	68	18	14	0	0	5,583	5,583
MIAM		26,038	8,484	5,250		1,505	0	1,784	2,072	462	1,376	0	46,971	46,971
NFLA		470	112	75		179	0	59	32	3	3	0	933	933
NWFC		3,233	810	296		130	0	18	252	64	7	0	4,811	4,811
PALM		9,499	1,153	1,333		707	1,305	177	0	0	0	0	14,174	14,174
PASC		1,892	1,033	412		344	0	49	93	302	0	0	4,125	4,125
PENS		4,614	1,725	677		352	0	45	523	653	15	0	8,602	8,602
POLK		2,286	962	426		98	0	260	0	0	0	0	4,031	4,031
ST.J		1,991	538	173		114	469	50	72	30	1	41	3,479	3,479
ST.P		7,575	3,871	1,387		19	0	416	0	0	0	0	13,268	13,268
SANF		6,380	2,270	1,289		247	252	81	62	42	9	0	10,633	10,633
SEMI		3,654	2,246	671		474	1,076	77	991	795	52	27	10,061	10,061
SFLA		991	117	79		557	64	64	1,165	184	20	0	3,239	3,239
TALL		6,054	988	1,060		188	12	231	54	29	0	0	8,616	8,616
VALE		12,976	4,392	2,302		242	0	476	0	0	0	0	20,388	20,388
SYST		143,803	51,760	27,120		10,802	8,770	5,983	11,172	5,508	1,598	830	267,344	267,344

Daisy Date Entered: August 14, 2002  
Source: 2001-2002 Student Data Base

**Notes:**

- The Special Disabled Adult category was no longer reported starting in 2005-06.
- The EPI (Educator Preparation Institute) category began reporting in 2005-06.
- The Upper Division category began reporting in 2002-03.
- The CWE (Continuing Workforce Education) category was no longer reported starting in 2010-11.



# **THE FLORIDA COLLEGE SYSTEM**

## **APPENDIX**

Florida Department of Education

**FLORIDA COLLEGE SYSTEM**  
**Student Database FTE Report**  
**2017-2018 FTE-3 Compared to the 2018-2019 FTE-2A (Division Estimates with College Adjustments)**

	Upper Division	Diff. Percent	Adv. & Prof.	Diff. Percent	Postsec. Voc.	Diff. Percent	Dev. Ed.	Diff. Percent	EPI	Diff. Percent	Postsec. Adult	Diff. Percent	Apprenticeship	Diff. Percent	Adult Basic	Diff. Percent	Adult S&G	Diff. Percent	Voc. Prep	Diff. Percent	Total FTE	Diff. Percent	
<b>EFSC</b>																							
2018 FTE-3	700.2	142	7297.3	-37	2090.7	5	299.8	-26	0.0	0	342.9	0	0.0	0	0.0	0	0.0	0	0.0	0	10730.9	84	
2019 FTE-2A	842.0	20.3	7260.0	-0.5	2096.0	0.3	274.0	-8.6	0.0	0.0	343.0	0.0	0.0	0.0	0.0	0.0	0.0	0.0	0.0	0.0	10815.0	0.8	
<b>BROW</b>																							
2018 FTE-3	1188.3	118	17547.6	-40	7679.2	48	1788.4	-111	43.8	-17	379.0	1	0.0	0	0.0	0	0.0	0	0.0	0	28626.3	-1	
2019 FTE-2A	1306.0	9.9	17508.0	-0.2	7727.0	0.6	1677.0	-6.2	27.0	-38.4	380.0	0.3	0.0	0.0	0.0	0.0	0.0	0.0	0.0	0.0	28625.0	0.0	
<b>CFLA</b>																							
2018 FTE-3	344.4	-5	3220.2	-24	1225.9	66	148.5	-13	0.0	0	129.9	33	0.0	0	14.9	1	15.8	1	0.0	0	5099.6	59	
2019 FTE-2A	339.0	-1.6	3196.0	-0.8	1292.0	5.4	136.0	-8.4	0.0	0.0	163.0	25.5	0.0	0.0	16.0	7.4	17.0	7.6	0.0	0.0	5159.0	1.2	
<b>CHIP</b>																							
2018 FTE-3	121.2	14	950.1	-8	229.2	11	18.4	-1	0.0	0	119.5	26	0.0	0	0.0	0	0.0	0	0.1	0	1438.5	41	
2019 FTE-2A	135.0	11.4	942.0	-0.9	240.0	4.7	17.0	-7.6	0.0	0.0	145.0	21.3	0.0	0.0	0.0	0.0	0.0	0.0	0.0	-100.0	1479.0	2.8	
<b>DAYT</b>																							
2018 FTE-3	864.9	133	6358.8	84	2063.5	122	153.4	-27	1.6	0	696.1	1	543.7	45	610.0	0	110.6	0	3.0	3	11405.6	361	
2019 FTE-2A	998.0	15.4	6443.0	1.3	2185.0	5.9	126.0	-17.9	2.0	25.0	697.0	0.1	589.0	8.3	610.0	0.0	111.0	0.4	6.0	100.0	11767.0	3.2	
<b>FSW</b>																							
2018 FTE-3	591.4	0	9584.7	-30	627.4	76	272.8	-3	0.0	0	28.0	0	0.0	0	0.0	0	0.0	0	0.0	0	11104.3	43	
2019 FTE-2A	591.0	-0.1	9555.0	-0.3	703.0	12.0	270.0	-1.0	0.0	0.0	28.0	0.0	0.0	0.0	0.0	0.0	0.0	0.0	0.0	0.0	11147.0	0.4	
<b>FJAX</b>																							
2018 FTE-3	1688.8	23	9937.5	181	3227.9	181	569.9	105	0.0	2	873.1	9	0.0	0	467.0	-26	43.3	-2	0.0	0	16807.5	473	
2019 FTE-2A	1712.0	1.4	10118.0	1.8	3409.0	5.6	675.0	18.4	2.0	0.0	882.0	1.0	0.0	0.0	441.0	-5.6	41.0	-5.3	0.0	0.0	17280.0	2.8	
<b>FKEY</b>																							
2018 FTE-3	22.2	-9	416.1	-10	204.8	3	18.5	-3	0.0	0	52.7	9	0.0	16	0.0	0	0.0	0	0.0	0	714.3	7	
2019 FTE-2A	13.0	-41.4	406.0	-2.4	208.0	1.6	16.0	-13.5	0.0	0.0	62.0	17.6	16.0	0.0	0.0	0.0	0.0	0.0	0.0	0.0	721.0	0.9	
<b>GULF</b>																							
2018 FTE-3	124.1	10	2612.9	-227	633.0	-22	64.4	-10	20.6	-12	129.8	0	0.0	0	0.0	0	0.0	0	0.0	0	3584.8	-261	
2019 FTE-2A	134.0	8.0	2386.0	-8.7	611.0	-3.5	54.0	-16.1	9.0	-56.3	130.0	0.2	0.0	0.0	0.0	0.0	0.0	0.0	0.0	0.0	3324.0	-7.3	
<b>HILL</b>																							
2018 FTE-3	0.0	0	13419.2	424	3265.8	65	1016.8	-15	71.4	-17	449.9	1	1723.2	0	48.2	0	15.4	1	0.0	0	20009.9	458	
2019 FTE-2A	0.0	0.0	13843.0	3.2	3331.0	2.0	1002.0	-1.5	54.0	-24.4	451.0	0.2	1723.0	0.0	48.0	-0.4	16.0	3.9	0.0	0.0	20468.0	2.3	
<b>INDR</b>																							
2018 FTE-3	1488.9	52	7106.2	-121	2544.4	-62	197.7	-94	0.0	0	645.4	-30	582.8	-33	697.7	25	54.4	3	0.0	0	13317.5	-261	
2019 FTE-2A	1541.0	3.5	6985.0	-1.7	2482.0	-2.5	104.0	-47.4	0.0	0.0	615.0	-4.7	550.0	-5.6	723.0	3.6	57.0	4.8	0.0	0.0	13057.0	-2.0	
<b>FGC</b>																							
2018 FTE-3	59.4	26	1457.7	18	457.6	67	59.6	1	18.0	-5	283.3	2	0.0	0	0.0	0	0.0	0	0.0	0	2335.6	109	
2019 FTE-2A	85.0	43.1	1476.0	1.3	525.0	14.7	61.0	2.3	13.0	-27.8	285.0	0.6	0.0	0.0	0.0	0.0	0.0	0.0	0.0	0.0	2445.0	4.7	
<b>LSSC</b>																							
2018 FTE-3	46.1	9	2428.8	170	547.8	-37	88.2	-1	0.0	0	0.0	0	0.0	0	0.0	0	0.0	0	0.0	0	3110.9	141	
2019 FTE-2A	55.0	19.3	2599.0	7.0	511.0	-6.7	87.0	-1.4	0.0	0.0	0.0	0.0	0.0	0.0	0.0	0.0	0.0	0.0	0.0	0.0	3252.0	4.5	
<b>SCF</b>																							
2018 FTE-3	431.5	9	5677.0	-138	547.5	13	213.6	-24	31.0	-8	0.0	0	0.0	0	0.0	0	0.0	0	0.0	0	6900.6	-149	
2019 FTE-2A	440.0	2.0	5539.0	-2.4	560.0	2.3	190.0	-11.0	23.0	-25.8	0.0	0.0	0.0	0.0	0.0	0.0	0.0	0.0	0.0	0.0	6752.0	-2.2	
<b>MIAM</b>																							
2018 FTE-3	1852.3	67	36169.6	-979	3987.5	-93	3253.5	-616	5.7	7	558.9	618	448.6	-108	1831.1	-346	74.4	-27	6.6	-6	48188.2	-1481	
2019 FTE-2A	1919.0	3.6	35191.0	-2.7	3895.0	-2.3	2638.0	-18.9	13.0	128.1	1177.0	110.6	341.0	-24.0	1485.0	-18.9	47.0	-36.8	1.0	-84.8	46707.0	-3.1	

Sources: 2017-2018 Student Database FTE-3  
2018-2019 Estimates FTE-2A (Division Estimates with College Adjustments)  
Advanced and Professional, Post Secondary Vocational, Developmental Education and EPI are calculated as 30 Credit Hour FTE.

**FLORIDA COLLEGE SYSTEM**  
**Student Database FTE Report**  
**2017-2018 FTE-3 Compared to the 2018-2019 FTE-2A (Division Estimates with College Adjustments)**

	Upper Division	Diff. Percent	Adv. & Prof.	Diff. Percent	Postsec. Voc.	Diff. Percent	Dev. Ed.	Diff. Percent	EPI	Diff. Percent	Postsec. Adult	Diff. Percent	Apprenticeship	Diff. Percent	Adult Basic	Diff. Percent	Adult S&G	Diff. Percent	Voc. Prep	Diff. Percent	Total FTE	Diff. Percent	
<b>NFLA</b>																							
2018 FTE-3	12.1	6	537.9	55	190.6	-60	14.6	-4	0.0	0	110.3	-1	0.0	0	0.0	0	0.0	0	0.0	0	0	865.5	-4
2019 FTE-2A	18.0	48.8	593.0	10.2	131.0	-31.3	11.0	-24.7	0.0	0.0	109.0	-1.2	0.0	0.0	0.0	0.0	0.0	0.0	0.0	0.0	0.0	862.0	-0.4
<b>NWFC</b>																							
2018 FTE-3	303.4	27	2674.9	-53	514.2	39	95.8	-3	0.0	0	174.0	0	0.0	0	93.3	1	33.0	0	0.0	0	0	3888.6	10
2019 FTE-2A	330.0	8.8	2622.0	-2.0	553.0	7.5	93.0	-2.9	0.0	0.0	174.0	0.0	0.0	0.0	94.0	0.8	33.0	0.0	0.0	0.0	0.0	3899.0	0.3
<b>PALM</b>																							
2018 FTE-3	724.8	109	16648.5	178	1536.0	23	718.3	21	26.0	7	956.8	-49	506.7	-24	0.0	0	0.0	0	0.0	0	0	21117.1	265
2019 FTE-2A	834.0	15.1	16826.0	1.1	1559.0	1.5	739.0	2.9	33.0	26.9	908.0	-5.1	483.0	-4.7	0.0	0.0	0.0	0.0	0.0	0.0	0.0	21382.0	1.3
<b>PASC</b>																							
2018 FTE-3	367.2	4	4493.2	31	2088.3	-38	346.0	-35	20.0	-9	339.7	0	0.0	0	0.0	0	0.0	0	0.0	0	0	7654.4	-47
2019 FTE-2A	371.0	1.0	4524.0	0.7	2050.0	-1.8	311.0	-10.1	11.0	-45.0	340.0	0.1	0.0	0.0	0.0	0.0	0.0	0.0	0.0	0.0	0.0	7607.0	-0.6
<b>PENS</b>																							
2018 FTE-3	338.8	69	4440.7	-91	1493.0	93	269.5	-40	0.0	0	386.9	3	0.0	0	107.0	-1	184.3	-1	0.0	0	0	7220.2	33
2019 FTE-2A	408.0	20.4	4350.0	-2.0	1586.0	6.2	230.0	-14.7	0.0	0.0	390.0	0.8	0.0	0.0	106.0	-0.9	183.0	-0.7	0.0	0.0	0.0	7253.0	0.5
<b>POLK</b>																							
2018 FTE-3	747.5	20	3939.9	-55	1540.3	27	155.7	8	55.8	8	93.8	2	0.0	0	0.0	0	0.0	0	0.0	0	0	6533.0	10
2019 FTE-2A	767.0	2.6	3885.0	-1.4	1567.0	1.7	164.0	5.3	64.0	14.7	96.0	2.3	0.0	0.0	0.0	0.0	0.0	0.0	0.0	0.0	0.0	6543.0	0.2
<b>ST.J</b>																							
2018 FTE-3	195.2	17	3207.4	83	892.2	-13	79.7	-20	28.2	3	83.1	41	0.0	0	30.5	1	19.1	-2	0.0	0	0	4535.4	109
2019 FTE-2A	212.0	8.6	3290.0	2.6	879.0	-1.5	60.0	-24.7	31.0	9.9	124.0	49.2	0.0	0.0	31.0	1.6	17.0	-11.0	0.0	0.0	0.0	4644.0	2.4
<b>ST.P</b>																							
2018 FTE-3	2711.0	42	10169.0	22	4801.9	72	694.9	-5	0.0	0	191.2	-1	0.0	0	0.0	0	0.0	0	0.0	0	0	18568.0	130
2019 FTE-2A	2753.0	1.5	10191.0	0.2	4874.0	1.5	690.0	-0.7	0.0	0.0	190.0	-0.6	0.0	0.0	0.0	0.0	0.0	0.0	0.0	0.0	0.0	18698.0	0.7
<b>SANF</b>																							
2018 FTE-3	439.2	36	7202.8	-134	2312.2	41	427.2	-56	4.1	8	245.8	0	482.7	7	126.7	1	5.6	-2	0.0	0	0	11246.3	-98
2019 FTE-2A	475.0	8.2	7069.0	-1.9	2353.0	1.8	371.0	-13.2	12.0	192.7	246.0	0.1	490.0	1.5	128.0	1.0	4.0	-28.6	0.0	0.0	0.0	11148.0	-0.9
<b>SEMI</b>																							
2018 FTE-3	896.1	76	7031.0	-50	2827.5	52	310.6	-20	65.7	2	243.5	-14	757.7	68	344.0	7	173.7	-10	0.0	0	0	12649.8	112
2019 FTE-2A	972.0	8.5	6981.0	-0.7	2879.0	1.8	291.0	-6.3	68.0	3.5	230.0	-5.5	826.0	9.0	351.0	2.0	164.0	-5.6	0.0	0.0	0.0	12762.0	0.9
<b>SFLA</b>																							
2018 FTE-3	107.8	9	1474.8	-3	2.8	0	31.0	0	0.0	0	318.6	4	63.6	24	342.8	-29	20.9	-3	0.0	0	0	2362.3	4
2019 FTE-2A	117.0	8.5	1472.0	-0.2	3.0	7.1	31.0	0.0	0.0	0.0	323.0	1.4	88.0	38.4	314.0	-8.4	18.0	-13.9	0.0	0.0	0.0	2366.0	0.2
<b>TALL</b>																							
2018 FTE-3	12.2	5	7417.7	-33	1049.6	24	329.7	-98	0.0	0	344.2	0	0.0	0	42.4	6	4.4	1	0.0	0	0	9200.2	-95
2019 FTE-2A	17.0	39.3	7385.0	-0.4	1074.0	2.3	232.0	-29.6	0.0	0.0	344.0	-0.1	0.0	0.0	48.0	13.2	5.0	13.6	0.0	0.0	0.0	9105.0	-1.0
<b>VALE</b>																							
2018 FTE-3	172.7	285	21807.2	899	7358.1	496	1086.8	133	99.9	-23	302.5	-1	0.0	0	0.0	0	0.0	0	0.0	0	0	30827.2	1790
2019 FTE-2A	458.0	165.2	22706.0	4.1	7854.0	6.7	1220.0	12.3	77.0	-22.9	302.0	-0.2	0.0	0.0	0.0	0.0	0.0	0.0	0.0	0.0	0.0	32617.0	5.8
<b>SYST TOTAL</b>																							
2018 FTE-3	16551.7	1290	215228.7	112	55938.9	1198	12723.3	-953	491.8	-53	8478.9	655	5109.0	-3	4755.6	-361	754.9	-42	9.7	-3	320042.5	1842	
2019 FTE-2A	17842.0	7.8	215341.0	0.1	57137.0	2.1	11770.0	-7.5	439.0	-10.7	9134.0	7.7	5106.0	-0.1	4395.0	-7.6	713.0	-5.6	7.0	-27.8	321884.0	0.6	

Sources: 2017-2018 Student Database FTE-3  
2018-2019 Estimates FTE-2A (Division Estimates with College Adjustments)  
Advanced and Professional, Post Secondary Vocational, Developmental Education and EPI are calculated as 30 Credit Hour FTE.



**FLORIDA COLLEGE SYSTEM**  
**Student Database FTE Report**  
**2018-2019 FTE-2 (Division Estimates) compared to the 2018-2019 FTE-2A (Division Estimates with College Adjustments)**

	Upper Division	Diff. Percent	Adv. & Prof.	Diff. Percent	Postsec. Voc.	Diff. Percent	Dev. Ed.	Diff. Percent	EPI	Diff. Percent	Postsec. Adult	Diff. Percent	Apprenticeship	Diff. Percent	Adult Basic	Diff. Percent	Adult S&G	Diff. Percent	Voc. Prep	Diff. Percent	Total FTE	Diff. Percent	
<b>EFSC</b>																							
2019 FTE-2	842	0	7260	0	2096	0	274	0	0	0	343	0	0	0	0	0	0	0	0	0	0	10815	0
2019FTE-2A	842	0.0	7260	0.0	2096	0.0	274	0.0	0	0.0	343	0.0	0	0.0	0	0.0	0	0.0	0	0.0	0	10815	0.0
<b>BROW</b>																							
2019 FTE-2	1306	0	17508	0	7727	0	1677	0	27	0	380	0	0	0	0	0	0	0	0	0	0	28625	0
2019FTE-2A	1306	0.0	17508	0.0	7727	0.0	1677	0.0	27	0.0	380	0.0	0	0.0	0	0.0	0	0.0	0	0.0	0	28625	0.0
<b>CFLA</b>																							
2019 FTE-2	339	0	3196	0	1292	0	136	0	0	0	163	0	0	0	16	0	17	0	0	0	0	5159	0
2019FTE-2A	339	0.0	3196	0.0	1292	0.0	136	0.0	0	0.0	163	0.0	0	0.0	16	0.0	17	0.0	0	0.0	0	5159	0.0
<b>CHIP</b>																							
2019 FTE-2	135	0	940	2	240	0	17	0	0	0	133	12	0	0	0	0	0	0	0	0	0	1465	14
2019FTE-2A	135	0.0	942	0.2	240	0.0	17	0.0	0	0.0	145	9.0	0	0.0	0	0.0	0	0.0	0	0.0	0	1479	1.0
<b>DAYT</b>																							
2019 FTE-2	998	0	6443	0	2139	46	137	-11	2	0	732	-35	589	0	610	0	111	0	6	0	0	11767	0
2019FTE-2A	998	0.0	6443	0.0	2185	2.2	126	-8.0	2	0.0	697	-4.8	589	0.0	610	0.0	111	0.0	6	0.0	6	11767	0.0
<b>FSW</b>																							
2019 FTE-2	591	0	9555	0	703	0	270	0	0	0	28	0	0	0	0	0	0	0	0	0	0	11147	0
2019FTE-2A	591	0.0	9555	0.0	703	0.0	270	0.0	0	0.0	28	0.0	0	0.0	0	0.0	0	0.0	0	0.0	0	11147	0.0
<b>FJAX</b>																							
2019 FTE-2	1712	0	10118	0	3409	0	675	0	2	0	882	0	0	0	441	0	41	0	0	0	0	17280	0
2019FTE-2A	1712	0.0	10118	0.0	3409	0.0	675	0.0	2	0.0	882	0.0	0	0.0	441	0.0	41	0.0	0	0.0	0	17280	0.0
<b>FKEY</b>																							
2019 FTE-2	13	0	406	0	208	0	16	0	0	0	62	0	16	0	0	0	0	0	0	0	0	721	0
2019FTE-2A	13	0.0	406	0.0	208	0.0	16	0.0	0	0.0	62	0.0	16	0.0	0	0.0	0	0.0	0	0.0	0	721	0.0
<b>GULF</b>																							
2019 FTE-2	134	0	2509	-123	611	0	54	0	9	0	130	0	0	0	0	0	0	0	0	0	0	3447	-123
2019FTE-2A	134	0.0	2386	-4.9	611	0.0	54	0.0	9	0.0	130	0.0	0	0.0	0	0.0	0	0.0	0	0.0	0	3324	-3.6
<b>HILL</b>																							
2019 FTE-2	0	0	13600	243	3288	43	953	49	54	0	451	0	1723	0	48	0	16	0	0	0	0	20133	335
2019FTE-2A	0	0.0	13843	1.8	3331	1.3	1002	5.1	54	0.0	451	0.0	1723	0.0	48	0.0	16	0.0	0	0.0	0	20468	1.7
<b>INDR</b>																							
2019 FTE-2	1522	19	6826	159	2424	58	101	3	0	0	646	-31	584	-34	698	25	55	2	0	0	0	12856	201
2019FTE-2A	1541	1.2	6985	2.3	2482	2.4	104	3.0	0	0.0	615	-4.8	550	-5.8	723	3.6	57	3.6	0	0.0	0	13057	1.6
<b>FGC</b>																							
2019 FTE-2	85	0	1476	0	525	0	61	0	13	0	285	0	0	0	0	0	0	0	0	0	0	2445	0
2019FTE-2A	85	0.0	1476	0.0	525	0.0	61	0.0	13	0.0	285	0.0	0	0.0	0	0.0	0	0.0	0	0.0	0	2445	0.0
<b>LSSC</b>																							
2019 FTE-2	55	0	2599	0	511	0	87	0	0	0	0	0	0	0	0	0	0	0	0	0	0	3252	0
2019FTE-2A	55	0.0	2599	0.0	511	0.0	87	0.0	0	0.0	0	0.0	0	0.0	0	0.0	0	0.0	0	0.0	0	3252	0.0
<b>SCF</b>																							
2019 FTE-2	434	6	5542	-3	560	0	190	0	26	-3	0	0	0	0	0	0	0	0	0	0	0	6752	0
2019FTE-2A	440	1.4	5539	-0.1	560	0.0	190	0.0	23	-11.5	0	0.0	0	0.0	0	0.0	0	0.0	0	0.0	0	6752	0.0
<b>MIAM</b>																							
2019 FTE-2	1847	72	35328	-137	3858	37	2688	-50	12	1	1089	88	299	42	1831	-346	62	-15	0	1	0	47014	-307
2019FTE-2A	1919	3.9	35191	-0.4	3895	1.0	2638	-1.9	13	8.3	1177	8.1	341	14.0	1485	-18.9	47	-24.2	1	0.0	1	46707	-0.7

Sources: 2018-2019 Estimates FTE-2 (Division Estimates)  
2018-2019 Estimates FTE-2A (Division Estimates with College Adjustments)  
Advanced and Professional, Post Secondary Vocational, Developmental Education and EPI are calculated as 30 Credit Hour FTE.

**FLORIDA COLLEGE SYSTEM**  
**Student Database FTE Report**  
**2018-2019 FTE-2 (Division Estimates) compared to the 2018-2019 FTE-2A (Division Estimates with College Adjustments)**

	Upper Division	Diff. Percent	Adv. & Prof.	Diff. Percent	Postsec. Voc.	Diff. Percent	Dev. Ed.	Diff. Percent	EPI	Diff. Percent	Postsec. Adult	Diff. Percent	Apprenticeship	Diff. Percent	Adult Basic	Diff. Percent	Adult S&G	Diff. Percent	Voc. Prep	Diff. Percent	Total FTE	Diff. Percent	
<b>NFLA</b>																							
2019 FTE-2	18	0	593	0	131	0	11	0	0	0	109	0	0	0	0	0	0	0	0	0	0	862	0
2019FTE-2A	18	0.0	593	0.0	131	0.0	11	0.0	0	0.0	109	0.0	0	0.0	0	0.0	0	0.0	0	0.0	0	862	0.0
<b>NWFC</b>																							
2019 FTE-2	330	0	2622	0	553	0	93	0	0	0	174	0	0	0	94	0	33	0	0	0	0	3899	0
2019FTE-2A	330	0.0	2622	0.0	553	0.0	93	0.0	0	0.0	174	0.0	0	0.0	94	0.0	33	0.0	0	0.0	0	3899	0.0
<b>PALM</b>																							
2019 FTE-2	809	25	16558	268	1561	-2	723	16	36	-3	957	-49	510	-27	0	0	0	0	0	0	0	21154	228
2019FTE-2A	834	3.1	16826	1.6	1559	-0.1	739	2.2	33	-8.3	908	-5.1	483	-5.3	0	0.0	0	0.0	0	0.0	0	21382	1.1
<b>PASC</b>																							
2019 FTE-2	367	4	4524	0	2046	4	311	0	11	0	340	0	0	0	0	0	0	0	0	0	0	7599	8
2019FTE-2A	371	1.1	4524	0.0	2050	0.2	311	0.0	11	0.0	340	0.0	0	0.0	0	0.0	0	0.0	0	0.0	0	7607	0.1
<b>PENS</b>																							
2019 FTE-2	412	-4	4390	-40	1601	-15	232	-2	0	0	394	-4	0	0	107	-1	185	-2	0	0	0	7321	-68
2019FTE-2A	408	-1.0	4350	-0.9	1586	-0.9	230	-0.9	0	0.0	390	-1.0	0	0.0	106	-0.9	183	-1.1	0	0.0	0	7253	-0.9
<b>POLK</b>																							
2019 FTE-2	767	0	3785	100	1567	0	164	0	64	0	96	0	0	0	0	0	0	0	0	0	0	6443	100
2019FTE-2A	767	0.0	3885	2.6	1567	0.0	164	0.0	64	0.0	96	0.0	0	0.0	0	0.0	0	0.0	0	0.0	0	6543	1.6
<b>ST.J</b>																							
2019 FTE-2	212	0	3315	-25	866	13	60	0	31	0	124	0	0	0	31	0	17	0	0	0	0	4656	-12
2019FTE-2A	212	0.0	3290	-0.8	879	1.5	60	0.0	31	0.0	124	0.0	0	0.0	31	0.0	17	0.0	0	0.0	0	4644	-0.3
<b>ST.P</b>																							
2019 FTE-2	2753	0	10191	0	4874	0	690	0	0	0	190	0	0	0	0	0	0	0	0	0	0	18698	0
2019FTE-2A	2753	0.0	10191	0.0	4874	0.0	690	0.0	0	0.0	190	0.0	0	0.0	0	0.0	0	0.0	0	0.0	0	18698	0.0
<b>SANF</b>																							
2019 FTE-2	475	0	7069	0	2353	0	371	0	12	0	246	0	490	0	128	0	4	0	0	0	0	11148	0
2019FTE-2A	475	0.0	7069	0.0	2353	0.0	371	0.0	12	0.0	246	0.0	490	0.0	128	0.0	4	0.0	0	0.0	0	11148	0.0
<b>SEMI</b>																							
2019 FTE-2	972	0	7003	-22	2905	-26	291	0	72	-4	230	0	826	0	361	-10	174	-10	0	0	0	12834	-72
2019FTE-2A	972	0.0	6981	-0.3	2879	-0.9	291	0.0	68	-5.6	230	0.0	826	0.0	351	-2.8	164	-5.7	0	0.0	0	12762	-0.6
<b>SFLA</b>																							
2019 FTE-2	117	0	1473	-1	3	0	32	-1	0	0	359	-36	99	-11	348	-34	22	-4	0	0	0	2453	-87
2019FTE-2A	117	0.0	1472	-0.1	3	0.0	31	-3.1	0	0.0	323	-10.0	88	-11.1	314	-9.8	18	-18.2	0	0.0	0	2366	-3.5
<b>TALL</b>																							
2019 FTE-2	17	0	7385	0	1074	0	232	0	0	0	344	0	0	0	48	0	5	0	0	0	0	9105	0
2019FTE-2A	17	0.0	7385	0.0	1074	0.0	232	0.0	0	0.0	344	0.0	0	0.0	48	0.0	5	0.0	0	0.0	0	9105	0.0
<b>VALE</b>																							
2019 FTE-2	458	0	22706	0	7854	0	1220	0	77	0	302	0	0	0	0	0	0	0	0	0	0	32617	0
2019FTE-2A	458	0.0	22706	0.0	7854	0.0	1220	0.0	77	0.0	302	0.0	0	0.0	0	0.0	0	0.0	0	0.0	0	32617	0.0
<b>SYST TOTAL</b>																							
2019 FTE-2	17720	122	214920	421	56979	158	11766	4	448	-9	9189	-55	5136	-30	4761	-366	742	-29	6	1	321667	217	
2019FTE-2A	17842	0.7	215341	0.2	57137	0.3	11770	0.0	439	-2.0	9134	-0.6	5106	-0.6	4395	-7.7	713	-3.9	7	16.7	321884	0.1	

Sources: 2018-2019 Estimates FTE-2 (Division Estimates)  
2018-2019 Estimates FTE-2A (Division Estimates with College Adjustments)  
Advanced and Professional, Post Secondary Vocational, Developmental Education and EPI are calculated as 30 Credit Hour FTE.

Florida College System  
2018-19

College			Bachelor Enrollment Reported	
			Year	Term
1	EFSC	Eastern Florida State College	2013-14	Fall
2	BROW	Broward College	2008-09	WnSp
3	CFLA	College of Central Florida	2010-11	WnSp
4	CHIP	Chipola College	2003-04	Fall
5	DAYT	Daytona State College	2005-06	WnSp
6	FSW	Florida SouthWestern State College	2006-07	Summ
7	FJAX	Florida State College at Jacksonville	2006-07	Fall
8	FKEY	Florida Keys Community College	2016-17	WnSp
9	GULF	Gulf Coast State College	2010-11	WnSp
10	HILL	Hillsborough Community College		
11	INDR	Indian River State College	2007-08	WnSp
12	FGC	Florida Gateway College	2012-13	Fall
13	LSSC	Lake Sumter State College	2012-13	WnSp
14	SCF	State College of Florida, Manatee-Sarasota	2009-10	WnSp
15	MIAM	Miami Dade College	2003-04	Summ
16	NFLA	North Florida Community College	2017-18	Fall
17	NWFC	Northwest Florida State College	2004-05	Summ
18	PALM	Palm Beach State College	2009-10	Fall
19	PASC	Pasco-Hernando State College	2014-15	Fall
20	PENS	Pensacola State College	2010-11	WnSp
21	POLK	Polk State College	2009-10	WnSp
22	ST.J	St. Johns River State College	2010-11	WnSp
23	ST.P	St. Petersburg College	2002-03	Fall
24	SANF	Santa Fe College	2009-10	Fall
25	SEMI	Seminole State College of Florida	2009-10	WnSp
26	SFLA	South Florida State College	2012-13	Fall
27	TALL	Tallahassee Community College	2016-17	Summ
28	VALE	Valencia College	2011-12	Fall

Two Year Only
Newly Four Year
Four Year