

EXECUTIVE SUMMARY

Criminal Justice Estimating Conference, March 21, 2006

The Criminal Justice Estimating Conference convened March 21, 2006 to revise the forecast of prison admissions and populations. During the four months since the last conference, admissions totaled 11,355, or 235 above the estimate. The population at the end of February 2006 was 86,753, or 50 below the estimate. A review of the latest criminal justice system measures included an increase of 3.3% in felony guilty dispositions for 2005 over 2004. Sentences of a year and a day, the minimum sentence served in the state prison system instead of a county jail, increased by 16.8% in 2005 from 2004. The set of background workpapers may be viewed [here](#).

Given that the population was only 50 below the estimate at the end of February, and is on track to be quite close to the estimate at the end of March, the conferees agreed to keep the current forecast, adopted in November 2005. Only admissions and releases for Fiscal Year 2005-06 were adjusted to incorporate the actuals through February 2006.

Year	Admissions	Releases	End of Year Pop	End of Year Difference from prior forecast
FY 2005-06	36,494	32,917	88,478	0
FY 2006-07	36,455	33,291	91,642	0
FY 2007-08	36,620	33,126	95,136	0
FY 2008-09	36,755	34,564	97,327	0
FY 2009-10	36,854	35,288	98,893	0
FY 2010-11	36,913	35,091	100,715	0

**CRIMINAL JUSTICE ESTIMATING CONFERENCE
HELD NOVEMBER 7, 2005 vs. MARCH 21, 2006**

**Forecast adopted at the Conference
held November 7, 2005**

**Forecast adopted at the Conference
held March 21, 2006**

Difference

Year	Admissions	Releases	End of Year Pop	Admissions	Releases	End of Year Pop	Difference
FY 2005-06	36,269	32,692	88,478	36,494	32,917	88,478	0
FY 2006-07	36,455	33,291	91,642	36,455	33,291	91,642	0
FY 2007-08	36,620	33,126	95,136	36,620	33,126	95,136	0
FY 2008-09	36,755	34,564	97,327	36,755	34,564	97,327	0
FY 2009-10	36,854	35,288	98,893	36,854	35,288	98,893	0
FY 2010-11	36,913	35,091	100,715	36,913	35,091	100,715	0

PRIOR FORECAST

NEW FORECAST

Month	Admissions	Releases	End of Month Pop	Admissions	Releases	End of Month Pop	End of Month Difference
JUL 05	2,749	2,642	85,008	2,749	2,642	85,008	
AUG 05	3,415	2,849	85,574	3,415	2,849	85,574	0
SEP 05	3,217	2,655	86,136	3,216	2,655	86,135	-1
OCT 05	2,761	2,685	86,212	2,752	2,674	86,213	1
NOV 05	2,680	2,461	86,431	2,865	2,627	86,451	20
DEC 05	2,987	2,799	86,619	2,888	2,776	86,563	-56
JAN 2006	2,700	2,744	86,575	2,855	2,852	86,566	-9
FEB 06	2,753	2,525	86,803	2,747	2,560	86,753	-50
MAR 06	3,336	2,872	87,267	3,336	2,822	87,267	0
APR 06	3,214	2,703	87,778	3,214	2,703	87,778	0
MAY 06	3,133	2,882	88,029	3,133	2,882	88,029	0
JUN 06	3,324	2,875	88,478	3,324	2,875	88,478	0

Month	PRIOR FORECAST			NEW FORECAST			End of Month Difference
	Admissions	Releases	End of Month Pop	Admissions	Releases	End of Month Pop	
JUL 06	2,969	2,832	88,615	2,969	2,832	88,615	0
AUG 06	3,024	2,848	88,791	3,024	2,848	88,791	0
SEP 06	2,852	2,806	88,837	2,852	2,806	88,837	0
OCT 06	3,333	2,844	89,326	3,333	2,844	89,326	0
NOV 06	2,695	2,845	89,176	2,695	2,845	89,176	0
DEC 06	3,006	2,792	89,390	3,006	2,792	89,390	0
JAN 2007	2,719	2,780	89,329	2,719	2,780	89,329	0
FEB 07	2,770	2,667	89,432	2,770	2,667	89,432	0
MAR 07	3,356	2,765	90,023	3,356	2,765	90,023	0
APR 07	3,236	2,715	90,544	3,236	2,715	90,544	0
MAY 07	3,152	2,743	90,953	3,152	2,743	90,953	0
JUN 07	3,343	2,654	91,642	3,343	2,654	91,642	0
JUL 07	2,982	2,735	91,889	2,982	2,735	91,889	0
AUG 07	3,035	2,752	92,172	3,035	2,752	92,172	0
SEP 07	2,867	2,655	92,384	2,867	2,655	92,384	0
OCT 07	3,348	2,765	92,967	3,348	2,765	92,967	0
NOV 07	2,707	2,748	92,926	2,707	2,748	92,926	0
DEC 07	3,021	2,766	93,181	3,021	2,766	93,181	0
JAN 2008	2,732	2,722	93,191	2,732	2,722	93,191	0
FEB 08	2,782	2,701	93,272	2,782	2,701	93,272	0
MAR 08	3,371	2,780	93,863	3,371	2,780	93,863	0
APR 08	3,252	2,806	94,309	3,252	2,806	94,309	0
MAY 08	3,166	2,840	94,635	3,166	2,840	94,635	0
JUN 08	3,357	2,856	95,136	3,357	2,856	95,136	0
JUL 08	2,992	2,928	95,200	2,992	2,928	95,200	0
AUG 08	3,045	2,937	95,308	3,045	2,937	95,308	0
SEP 08	2,879	2,888	95,299	2,879	2,888	95,299	0
OCT 08	3,361	2,897	95,763	3,361	2,897	95,763	0
NOV 08	2,716	2,872	95,607	2,716	2,872	95,607	0
DEC 08	3,033	2,853	95,787	3,033	2,853	95,787	0
JAN 2009	2,743	2,829	95,701	2,743	2,829	95,701	0
FEB 09	2,792	2,793	95,700	2,792	2,793	95,700	0
MAR 09	3,383	2,819	96,264	3,383	2,819	96,264	0
APR 09	3,264	2,859	96,669	3,264	2,859	96,669	0
MAY 09	3,178	2,942	96,905	3,178	2,942	96,905	0
JUN 09	3,369	2,947	97,327	3,369	2,947	97,327	0

Month	PRIOR FORECAST			NEW FORECAST			End of Month Difference
	Admissions	Releases	End of Month Pop	Admissions	Releases	End of Month Pop	
JUL 09	2,999	2,961	97,365	2,999	2,961	97,365	0
AUG 09	3,052	2,953	97,464	3,052	2,953	97,464	0
SEP 09	2,887	2,943	97,408	2,887	2,943	97,408	0
OCT 09	3,373	2,978	97,803	3,373	2,978	97,803	0
NOV 09	2,723	2,960	97,566	2,723	2,960	97,566	0
DEC 09	3,042	2,961	97,647	3,042	2,961	97,647	0
JAN 2010	2,750	2,962	97,435	2,750	2,962	97,435	0
FEB 10	2,799	2,910	97,324	2,799	2,910	97,324	0
MAR 10	3,391	2,887	97,828	3,391	2,887	97,828	0
APR 10	3,274	2,907	98,195	3,274	2,907	98,195	0
MAY 10	3,187	2,947	98,435	3,187	2,947	98,435	0
JUN 10	3,377	2,919	98,893	3,377	2,919	98,893	0
JUL 10	3,004	2,926	98,971	3,004	2,926	98,971	0
AUG 10	3,056	2,939	99,088	3,056	2,939	99,088	0
SEP 10	2,893	2,895	99,086	2,893	2,895	99,086	0
OCT 10	3,377	2,936	99,527	3,377	2,936	99,527	0
NOV 10	2,727	2,911	99,343	2,727	2,911	99,343	0
DEC 10	3,047	2,946	99,444	3,047	2,946	99,444	0
JAN 2011	2,755	2,917	99,282	2,755	2,917	99,282	0
FEB 11	2,804	2,888	99,198	2,804	2,888	99,198	0
MAR 11	3,397	2,889	99,706	3,397	2,889	99,706	0
APR 11	3,279	2,940	100,045	3,279	2,940	100,045	0
MAY 11	3,192	2,976	100,261	3,192	2,976	100,261	0
JUN 11	3,382	2,928	100,715	3,382	2,928	100,715	0

**CRIMINAL JUSTICE ESTIMATING CONFERENCE
PREPARED AUGUST 2005**

	FY 98-99	FY 99-00	FY 00-01	FY 01-02	FY 02-03	FY 03-04	FY 04-05	FY 05-06	FY 06-07	FY 07-08
PROBATION										
GAINS	60,234	59,434	59,321	58,450	58,827	59,123	59,174	59,872	60,201	60,201
LOSSES	57,174	61,531	60,288	62,370	60,550	62,627	65,496	60,743	60,755	60,755
POPULATION	95,020	92,923	91,956	88,036	86,313	82,809	76,487	75,616	75,062	74,508
DRUG OFFENDER PROBATION										
GAINS	9,160	8,574	8,644	10,869	12,675	13,599	13,735	14,052	14,239	14,377
LOSSES	8,676	8,549	8,468	9,529	11,848	13,238	13,607	13,859	13,922	13,922
POPULATION	11,011	11,036	11,212	12,552	13,379	13,740	13,868	14,061	14,378	14,833
SEX OFFENDER PROBATION										
GAINS	200	372	609	816	980	1,003	1,229	1,451	1,617	1,744
LOSSES	44	22	130	145	460	694	1,057	1,267	1,359	1,521
POPULATION	183	533	1,012	1,683	2,203	2,512	2,684	2,868	3,126	3,349
COMMUNITY CONTROL										
GAINS	14,739	13,889	13,306	12,535	12,485	11,232	10,964	10,548	10,477	10,392
LOSSES	14,538	14,797	13,752	12,969	13,793	11,794	11,876	10,967	10,621	10,421
POPULATION	12,140	11,232	10,786	10,352	9,044	8,482	7,570	7,151	7,007	6,978
PAROLE										
GAINS	809	716	774	673	735	789	749	734	758	744
LOSSES	835	800	825	810	710	816	796	758	747	747
POPULATION	2,244	2,160	2,109	1,972	1,997	1,970	1,923	1,899	1,910	1,907
CONDITIONAL RELEASE										
GAINS	4,254	4,357	4,582	4,466	4,202	4,493	4,607	4,762	4,792	4,811
LOSSES	4,239	4,411	4,623	4,774	4,575	4,704	4,736	4,767	4,805	4,805
POPULATION	3,063	3,009	2,968	2,660	2,287	2,076	1,947	1,942	1,929	1,935
ADDICTION RECOVERY & OTHER										
GAINS	0	0	0	0	39	672	946	1,187	1,328	1,501
LOSSES	81	110	70	52	54	614	912	1,137	1,278	1,451
POPULATION	354	244	174	122	107	165	199	249	299	349
PRE-TRIAL INTERVENTION										
GAINS	9,386	9,252	9,028	8,915	8,505	9,122	9,743	10,064	10,088	10,188
LOSSES	9,092	9,272	8,943	8,987	8,931	8,974	9,690	9,876	9,834	9,971
POPULATION	8,155	8,135	8,220	8,148	7,722	7,870	7,923	8,111	8,365	8,582
TOTAL POP 6/30	132,170	129,272	128,437	125,525	123,052	119,624	112,601	111,897	112,076	112,441

On June 30, 2005 there were 3,954 sex offenders as designated by the Public Safety Information Act (F.S. 944.606 and 944.607 who have a current or prior sexual offense but did not qualify or were not placed on Sex Offender Probation.) They are included in the above as follows: Probation: 3,212 Conditional Release: 198 Parole: 97 and Drug Offender Probation: 38. In addition, on June 30, 2004 Community Control included 203 offenders on Sex Offender Community Control and an additional 209 sex offenders.

INVOLUNTARY CIVIL COMMITMENT OF SEXUALLY VIOLENT PREDATORS FORECAST

	Jul 00	Aug 00	Sep 00	Oct 00	Nov 00	Dec 00	Jan 01	Feb 01	Mar 01	Apr 01	May 01	Jun 01	13 Beginning pop
Commitments	3	2	3	0	0	4	2	3	1	3	2	1	24 Commitments
Releases	0	1	0	0	0	0	0	0	0	0	1	0	2 Releases
Population	16	17	20	20	20	24	26	29	30	33	34	35	
	Jul 01	Aug 01	Sep 01	Oct 01	Nov 01	Dec 01	Jan 02	Feb 02	Mar 02	Apr 02	May 02	Jun 02	36 Commitments
Commitments	2	3	3	3	3	2	4	4	2	5	5	0	4 Releases
Releases	0	0	0	0	1	0	1	0	1	0	0	1	
Population	37	40	43	46	48	50	53	57	58	63	68	67	
	Jul 02	Aug 02	Sep 02	Oct 02	Nov 02	Dec 02	Jan 03	Feb 03	Mar 03	Apr 03	May 03	Jun 03	53 Commitments
Commitments	5	6	4	5	5	2	2	7	7	1	4	5	7 Releases
Releases	2	0	2	1	0	0	1	0	0	1	0	0	
Population	70	76	78	82	87	89	90	97	104	104	108	113	
	Jul 03	Aug 03	Sep 03	Oct 03	Nov 03	Dec 03	Jan 04	Feb 04	Mar 04	Apr 04	May 04	Jun 04	48 Commitments
Commitments	9	1	7	6	5	3	3	5	2	2	3	2	7 Releases
Releases	1	2	0	1	0	1	0	0	1	0	0	1	
Population	121	120	127	132	137	139	142	147	148	150	153	154	
	Jul 04	Aug 04	Sep 04	Oct 04	Nov 04	Dec 04	Jan 05	Feb 05	Mar 05	Apr 05	May 05	Jun 05	52 Commitments
Commitments	5	3	3	5	8	2	2	4	6	8	4	2	7 Releases
Releases	0	0	2	1	0	0	0	0	0	2	1	1	
Population	159	162	163	167	175	177	179	183	189	195	198	199	
	Jul 05	Aug 05	Sep 05	Oct 05	Nov 05	Dec 05	Jan 06	Feb 06	Mar 06	Apr 06	May 06	Jun 06	56 Commitments
Commitments	4	2	3	2	5	6	6	5	6	5	6	6	8 Releases
Releases	0	0	1	2	1	0	1	1	0	1	0	1	
Population	203	205	207	207	211	217	222	226	232	236	242	247	
	Jul 06	Aug 06	Sep 06	Oct 06	Nov 06	Dec 06	Jan 07	Feb 07	Mar 07	Apr 07	May 07	Jun 07	60 Commitments
Commitments	5	5	5	5	5	5	5	5	5	5	5	5	8 Releases
Releases	1	0	1	1	1	0	1	1	0	1	0	1	
Population	5	10	14	18	22	27	31	35	40	44	49	53	
	FY 00-01	FY 01-02	FY 02-03	FY 03-04	FY 04-05	FY 05-06	FY 06-07						
Commitments	24	36	53	48	52	56	60						
Releases	2	4	7	7	7	8	8						
Population	35	67	113	154	199	247	299						

**CRIMINAL JUSTICE ESTIMATING CONFERENCE
HELD NOVEMBER 7, 2005 vs. MARCH 21, 2006**

**Forecast adopted at the Conference
held November 7, 2005**

**Forecast adopted at the Conference
held March 21, 2006**

Difference

Year	Admissions	Releases	End of Year Pop	Admissions	Releases	End of Year Pop	Difference
FY 2005-06	36,269	32,692	88,478	36,494	32,917	88,478	0
FY 2006-07	36,455	33,291	91,642	36,455	33,291	91,642	0
FY 2007-08	36,620	33,126	95,136	36,620	33,126	95,136	0
FY 2008-09	36,755	34,564	97,327	36,755	34,564	97,327	0
FY 2009-10	36,854	35,288	98,893	36,854	35,288	98,893	0
FY 2010-11	36,913	35,091	100,715	36,913	35,091	100,715	0

PRIOR FORECAST

NEW FORECAST

Month	Admissions	Releases	End of Month Pop	Admissions	Releases	End of Month Pop	End of Month Difference
JUL 05	2,749	2,642	85,008	2,749	2,642	85,008	
AUG 05	3,415	2,849	85,574	3,415	2,849	85,574	0
SEP 05	3,217	2,655	86,136	3,216	2,655	86,135	-1
OCT 05	2,761	2,685	86,212	2,752	2,674	86,213	1
NOV 05	2,680	2,461	86,431	2,865	2,627	86,451	20
DEC 05	2,987	2,799	86,619	2,888	2,776	86,563	-56
JAN 2006	2,700	2,744	86,575	2,855	2,852	86,566	-9
FEB 06	2,753	2,525	86,803	2,747	2,560	86,753	-50
MAR 06	3,336	2,872	87,267	3,336	2,822	87,267	0
APR 06	3,214	2,703	87,778	3,214	2,703	87,778	0
MAY 06	3,133	2,882	88,029	3,133	2,882	88,029	0
JUN 06	3,324	2,875	88,478	3,324	2,875	88,478	0

Month	PRIOR FORECAST			NEW FORECAST			End of Month Difference
	Admissions	Releases	End of Month Pop	Admissions	Releases	End of Month Pop	
JUL 06	2,969	2,832	88,615	2,969	2,832	88,615	0
AUG 06	3,024	2,848	88,791	3,024	2,848	88,791	0
SEP 06	2,852	2,806	88,837	2,852	2,806	88,837	0
OCT 06	3,333	2,844	89,326	3,333	2,844	89,326	0
NOV 06	2,695	2,845	89,176	2,695	2,845	89,176	0
DEC 06	3,006	2,792	89,390	3,006	2,792	89,390	0
JAN 2007	2,719	2,780	89,329	2,719	2,780	89,329	0
FEB 07	2,770	2,667	89,432	2,770	2,667	89,432	0
MAR 07	3,356	2,765	90,023	3,356	2,765	90,023	0
APR 07	3,236	2,715	90,544	3,236	2,715	90,544	0
MAY 07	3,152	2,743	90,953	3,152	2,743	90,953	0
JUN 07	3,343	2,654	91,642	3,343	2,654	91,642	0
JUL 07	2,982	2,735	91,889	2,982	2,735	91,889	0
AUG 07	3,035	2,752	92,172	3,035	2,752	92,172	0
SEP 07	2,867	2,655	92,384	2,867	2,655	92,384	0
OCT 07	3,348	2,765	92,967	3,348	2,765	92,967	0
NOV 07	2,707	2,748	92,926	2,707	2,748	92,926	0
DEC 07	3,021	2,766	93,181	3,021	2,766	93,181	0
JAN 2008	2,732	2,722	93,191	2,732	2,722	93,191	0
FEB 08	2,782	2,701	93,272	2,782	2,701	93,272	0
MAR 08	3,371	2,780	93,863	3,371	2,780	93,863	0
APR 08	3,252	2,806	94,309	3,252	2,806	94,309	0
MAY 08	3,166	2,840	94,635	3,166	2,840	94,635	0
JUN 08	3,357	2,856	95,136	3,357	2,856	95,136	0
JUL 08	2,992	2,928	95,200	2,992	2,928	95,200	0
AUG 08	3,045	2,937	95,308	3,045	2,937	95,308	0
SEP 08	2,879	2,888	95,299	2,879	2,888	95,299	0
OCT 08	3,361	2,897	95,763	3,361	2,897	95,763	0
NOV 08	2,716	2,872	95,607	2,716	2,872	95,607	0
DEC 08	3,033	2,853	95,787	3,033	2,853	95,787	0
JAN 2009	2,743	2,829	95,701	2,743	2,829	95,701	0
FEB 09	2,792	2,793	95,700	2,792	2,793	95,700	0
MAR 09	3,383	2,819	96,264	3,383	2,819	96,264	0
APR 09	3,264	2,859	96,669	3,264	2,859	96,669	0
MAY 09	3,178	2,942	96,905	3,178	2,942	96,905	0
JUN 09	3,369	2,947	97,327	3,369	2,947	97,327	0

Month	PRIOR FORECAST			NEW FORECAST			End of Month Difference
	Admissions	Releases	End of Month Pop	Admissions	Releases	End of Month Pop	
JUL 09	2,999	2,961	97,365	2,999	2,961	97,365	0
AUG 09	3,052	2,953	97,464	3,052	2,953	97,464	0
SEP 09	2,887	2,943	97,408	2,887	2,943	97,408	0
OCT 09	3,373	2,978	97,803	3,373	2,978	97,803	0
NOV 09	2,723	2,960	97,566	2,723	2,960	97,566	0
DEC 09	3,042	2,961	97,647	3,042	2,961	97,647	0
JAN 2010	2,750	2,962	97,435	2,750	2,962	97,435	0
FEB 10	2,799	2,910	97,324	2,799	2,910	97,324	0
MAR 10	3,391	2,887	97,828	3,391	2,887	97,828	0
APR 10	3,274	2,907	98,195	3,274	2,907	98,195	0
MAY 10	3,187	2,947	98,435	3,187	2,947	98,435	0
JUN 10	3,377	2,919	98,893	3,377	2,919	98,893	0
JUL 10	3,004	2,926	98,971	3,004	2,926	98,971	0
AUG 10	3,056	2,939	99,088	3,056	2,939	99,088	0
SEP 10	2,893	2,895	99,086	2,893	2,895	99,086	0
OCT 10	3,377	2,936	99,527	3,377	2,936	99,527	0
NOV 10	2,727	2,911	99,343	2,727	2,911	99,343	0
DEC 10	3,047	2,946	99,444	3,047	2,946	99,444	0
JAN 2011	2,755	2,917	99,282	2,755	2,917	99,282	0
FEB 11	2,804	2,888	99,198	2,804	2,888	99,198	0
MAR 11	3,397	2,889	99,706	3,397	2,889	99,706	0
APR 11	3,279	2,940	100,045	3,279	2,940	100,045	0
MAY 11	3,192	2,976	100,261	3,192	2,976	100,261	0
JUN 11	3,382	2,928	100,715	3,382	2,928	100,715	0

**CRIMINAL JUSTICE ESTIMATING CONFERENCE
PREPARED AUGUST 2005**

	FY 98-99	FY 99-00	FY 00-01	FY 01-02	FY 02-03	FY 03-04	FY 04-05	FY 05-06	FY 06-07	FY 07-08
PROBATION										
GAINS	60,234	59,434	59,321	58,450	58,827	59,123	59,174	59,872	60,201	60,201
LOSSES	57,174	61,531	60,288	62,370	60,550	62,627	65,496	60,743	60,755	60,755
POPULATION	95,020	92,923	91,956	88,036	86,313	82,809	76,487	75,616	75,062	74,508
DRUG OFFENDER PROBATION										
GAINS	9,160	8,574	8,644	10,869	12,675	13,599	13,735	14,052	14,239	14,377
LOSSES	8,676	8,549	8,468	9,529	11,848	13,238	13,607	13,859	13,922	13,922
POPULATION	11,011	11,036	11,212	12,552	13,379	13,740	13,868	14,061	14,378	14,833
SEX OFFENDER PROBATION										
GAINS	200	372	609	816	980	1,003	1,229	1,451	1,617	1,744
LOSSES	44	22	130	145	460	694	1,057	1,267	1,359	1,521
POPULATION	183	533	1,012	1,683	2,203	2,512	2,684	2,868	3,126	3,349
COMMUNITY CONTROL										
GAINS	14,739	13,889	13,306	12,535	12,485	11,232	10,964	10,548	10,477	10,392
LOSSES	14,538	14,797	13,752	12,969	13,793	11,794	11,876	10,967	10,621	10,421
POPULATION	12,140	11,232	10,786	10,352	9,044	8,482	7,570	7,151	7,007	6,978
PAROLE										
GAINS	809	716	774	673	735	789	749	734	758	744
LOSSES	835	800	825	810	710	816	796	758	747	747
POPULATION	2,244	2,160	2,109	1,972	1,997	1,970	1,923	1,899	1,910	1,907
CONDITIONAL RELEASE										
GAINS	4,254	4,357	4,582	4,466	4,202	4,493	4,607	4,762	4,792	4,811
LOSSES	4,239	4,411	4,623	4,774	4,575	4,704	4,736	4,767	4,805	4,805
POPULATION	3,063	3,009	2,968	2,660	2,287	2,076	1,947	1,942	1,929	1,935
ADDICTION RECOVERY & OTHER										
GAINS	0	0	0	0	39	672	946	1,187	1,328	1,501
LOSSES	81	110	70	52	54	614	912	1,137	1,278	1,451
POPULATION	354	244	174	122	107	165	199	249	299	349
PRE-TRIAL INTERVENTION										
GAINS	9,386	9,252	9,028	8,915	8,505	9,122	9,743	10,064	10,088	10,188
LOSSES	9,092	9,272	8,943	8,987	8,931	8,974	9,690	9,876	9,834	9,971
POPULATION	8,155	8,135	8,220	8,148	7,722	7,870	7,923	8,111	8,365	8,582
TOTAL POP 6/30	132,170	129,272	128,437	125,525	123,052	119,624	112,601	111,897	112,076	112,441

On June 30, 2005 there were 3,954 sex offenders as designated by the Public Safety Information Act (F.S. 944.606 and 944.607 who have a current or prior sexual offense but did not qualify or were not placed on Sex Offender Probation.) They are included in the above as follows: Probation: 3,212 Conditional Release: 198 Parole: 97 and Drug Offender Probation: 38. In addition, on June 30, 2004 Community Control included 203 offenders on Sex Offender Community Control and an additional 209 sex offenders.

INVOLUNTARY CIVIL COMMITMENT OF SEXUALLY VIOLENT PREDATORS FORECAST

	Jul 00	Aug 00	Sep 00	Oct 00	Nov 00	Dec 00	Jan 01	Feb 01	Mar 01	Apr 01	May 01	Jun 01	
Commitments	3	2	3	0	0	4	2	3	1	3	2	1	13 Beginning pop
Releases	0	1	0	0	0	0	0	0	0	0	1	0	24 Commitments
Population	16	17	20	20	20	24	26	29	30	33	34	35	2 Releases
	Jul 01	Aug 01	Sep 01	Oct 01	Nov 01	Dec 01	Jan 02	Feb 02	Mar 02	Apr 02	May 02	Jun 02	
Commitments	2	3	3	3	3	2	4	4	2	5	5	0	36 Commitments
Releases	0	0	0	0	1	0	1	0	1	0	0	1	4 Releases
Population	37	40	43	46	48	50	53	57	58	63	68	67	
	Jul 02	Aug 02	Sep 02	Oct 02	Nov 02	Dec 02	Jan 03	Feb 03	Mar 03	Apr 03	May 03	Jun 03	
Commitments	5	6	4	5	5	2	2	7	7	1	4	5	53 Commitments
Releases	2	0	2	1	0	0	1	0	0	1	0	0	7 Releases
Population	70	76	78	82	87	89	90	97	104	104	108	113	
	Jul 03	Aug 03	Sep 03	Oct 03	Nov 03	Dec 03	Jan 04	Feb 04	Mar 04	Apr 04	May 04	Jun 04	
Commitments	9	1	7	6	5	3	3	5	2	2	3	2	48 Commitments
Releases	1	2	0	1	0	1	0	0	1	0	0	1	7 Releases
Population	121	120	127	132	137	139	142	147	148	150	153	154	
	Jul 04	Aug 04	Sep 04	Oct 04	Nov 04	Dec 04	Jan 05	Feb 05	Mar 05	Apr 05	May 05	Jun 05	
Commitments	5	3	3	5	8	2	2	4	6	8	4	2	52 Commitments
Releases	0	0	2	1	0	0	0	0	0	2	1	1	7 Releases
Population	159	162	163	167	175	177	179	183	189	195	198	199	
	Jul 05	Aug 05	Sep 05	Oct 05	Nov 05	Dec 05	Jan 06	Feb 06	Mar 06	Apr 06	May 06	Jun 06	
Commitments	4	2	3	2	5	6	6	5	6	5	6	6	56 Commitments
Releases	0	0	1	2	1	0	1	1	0	1	0	1	8 Releases
Population	203	205	207	207	211	217	222	226	232	236	242	247	
	Jul 06	Aug 06	Sep 06	Oct 06	Nov 06	Dec 06	Jan 07	Feb 07	Mar 07	Apr 07	May 07	Jun 07	
Commitments	5	5	5	5	5	5	5	5	5	5	5	5	60 Commitments
Releases	1	0	1	1	1	0	1	1	0	1	0	1	8 Releases
Population	5	10	14	18	22	27	31	35	40	44	49	53	
	FY 00-01	FY 01-02	FY 02-03	FY 03-04	FY 04-05	FY 05-06	FY 06-07						
Commitments	24	36	53	48	52	56	60						
Releases	2	4	7	7	7	8	8						
Population	35	67	113	154	199	247	299						

**WORKPAPERS OF THE
CRIMINAL JUSTICE ESTIMATING CONFERENCE**



HELD MARCH 21, 2006

(Web Site: <http://edr.state.fl.us>)

Florida's Crime Rate

(Total and Violent)

National Ranking

Year	Crime Rate Ranking	Violent Crime* Rate Ranking
2004	9th	2nd
2003	4th	2nd
2002	3rd	2nd
2001	2nd	1st
2000	2nd	1st
1999	1st	1st
1998	1st	2nd

*Violent crimes are offenses of murder, forcible rape, robbery and aggravated assault.

Components of Violent Crime

National Ranking and Number

Year		Murder	Rape	Robbery	Aggravated Assault
2004	Ranking	20th	19th	5th	4th
	Number	946	6,612	29,997	86,199
2003	Ranking	21st	14th	5th	3rd
	Number	924	6,727	31,523	85,106
2002	Ranking	18th	14th	4th	3rd
	Number	911	6,753	32,581	88,476
2001	Ranking	20th	11th	3rd	2nd
	Number	874	6,641	32,867	90,331
2000	Ranking	21st	7th	5th	2nd
	Number	903	7,057	31,809	90,008
1999	Ranking	21st	7th	5th	3rd
	Number	859	6,990	31,969	89,226
1998	Ranking	20th	7th	5th	3rd
	Number	967	7,404	36,198	95,447

Data source: Federal Bureau of Investigation "Crime in the United States" various years (Uniform Crime Reports) as reported in "Crime State Rankings" various years, published by Morgan Quitno Press

CRIMINAL JUSTICE SYSTEM MEASURES

	<u>1999</u>	<u>% Change</u>	<u>2000</u>	<u>% Change</u>	<u>2001</u>	<u>% Change</u>	<u>2002</u>	<u>% Change</u>	<u>2003</u>	<u>% Change</u>
REPORTED CRIMES (Part I)	934,349	-8.9%	895,708	-4.1%	911,292	1.7%	900,155	-1.2%	881,615	-2.1%
Total Violent	128,859	-7.7%	128,041	-0.6%	130,323	1.8%	127,905	-1.9%	124,236	-2.9%
CRIME RATE* (per 100,000 Pop)	5,997.0	-10.9%	5,604.2	-6.6%	5,580.4	-0.4%	5,398.4	-3.3%	5,164.2	-4.3%
ARRESTS										
Part I	186,099	-7.1%	175,615	-5.6%	186,412	6.1%	181,054	-2.9%	181,661	0.3%
Part II	711,580	4.7%	707,244	-0.6%	736,033	4.1%	732,033	-0.5%	793,262	8.4%
TOTAL	897,679	2.0%	882,859	-1.7%	922,445	4.5%	913,087	-1.0%	974,923	6.8%
FELONY FILINGS	190,051	-1.5%	186,086	-2.1%	184,571	-0.8%	184,198	-0.2%	185,903	0.9%
GUILTY DISPOSITIONS	146,882	2.2%	138,884	-5.4%	142,907	2.9%	143,198	0.2%	146,220	2.1%
% OF FILINGS FOUND GUILTY	77.3%		74.6%		77.4%		77.7%		78.7%	
PRISON ADMISSIONS	24,315	7.2%	25,541	5.0%	25,571	0.1%	27,176	6.3%	30,340	11.6%
% OF GUILTY DISPOSITIONS IMPRISONED	16.6%		18.4%		17.9%		19.0%		20.7%	
PRISON POPULATION ON JUNE 30	68,599	3.5%	71,233	3.8%	72,007	1.1%	73,553	2.1%	77,316	5.1%

CRIMINAL JUSTICE SYSTEM MEASURES

	<u>2004</u>	<u>Change</u>	<u>2005</u>	<u>Change</u>
REPORTED CRIMES (Part I)	850,490	-3.5%	NA	
Total Violent	123,697	-0.4%	NA	
CRIME RATE* (per 100,000 Pop)	4,855.3	-6.0%	NA	
ARRESTS				
Part I	175,974	-3.1%	NA	
Part II	853,026	7.5%	NA	
TOTAL	1,029,000	5.5%	NA	
FELONY FILINGS	193,429	4.0%	208,075	7.6%
GUILTY DISPOSITIONS	149,127	2.0%	153,993	3.3%
% OF FILINGS FOUND GUILTY	77.1%		74.0%	
PRISON ADMISSIONS	31,445	3.6%	33,249	5.7%
% OF GUILTY DISPOSITIONS IMPRISONED	21.1%		21.6%	
PRISON POPULATION ON JUNE 30	81,974	6.0%	84,901	3.6%

Data Sources: Florida Dept. of Law Enforcement, Uniform Crime Report
 State Court Administrator, Summary Reporting System, run February 2006
 Florida Department of Corrections, Research and Data Analysis.

CRIMINAL JUSTICE INDICES

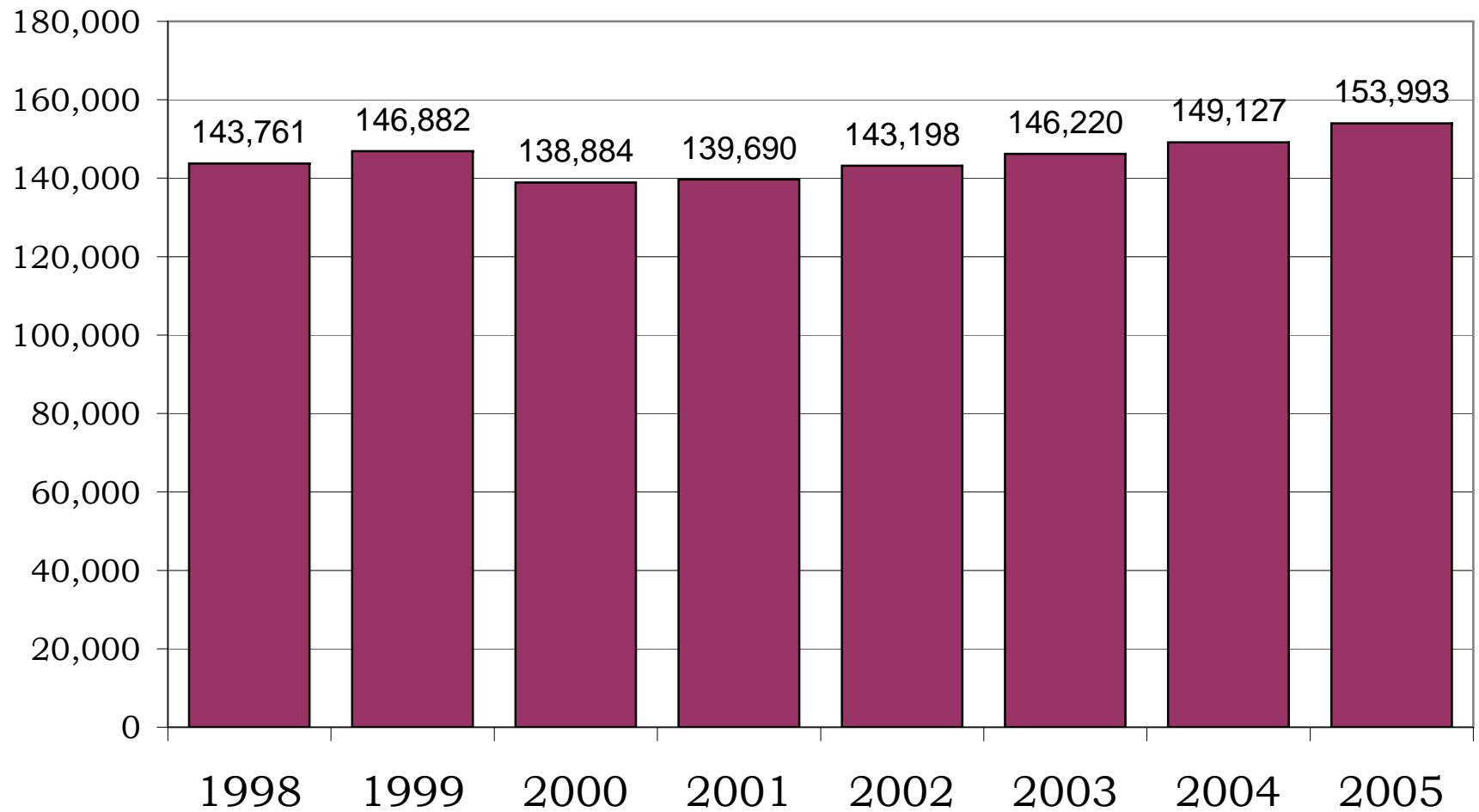
Date	Criminal Filings	Guilty Dispositions	Prison Admissions	Incarceration Rate
7-02	15,645	12,109	2,349	19.4%
8-02	16,076	12,688	2,405	19.0%
9-02	14,674	11,759	2,178	18.5%
Quarter 3	46,395	36,556	6,932	19.0%
10-02	16,714	13,831	2,583	18.7%
11-02	13,594	11,453	2,106	18.4%
12-02	13,905	9,790	2,309	23.6%
Quarter 4	44,213	35,074	6,998	20.0%
1-03	15,409	12,470	2,136	17.1%
2-03	14,487	12,053	2,186	18.1%
3-03	15,665	12,697	2,505	19.7%
Quarter 1	45,561	37,220	6,827	18.3%
4-03	15,452	12,769	2,657	20.8%
5-03	15,734	12,224	2,557	20.9%
6-03	15,806	11,577	2,687	23.2%
Quarter 2	46,992	36,570	7,901	21.6%
FY 02-03	183,161	145,420	28,658	19.7%
7-03	16,666	11,808	2,718	23.0%
8-03	15,558	12,345	2,448	19.8%
9-03	16,003	12,945	2,497	19.3%
Quarter 3	48,227	37,098	7,663	20.7%
10-03	16,797	13,966	2,886	20.7%
11-03	13,111	10,667	2,376	22.3%
12-03	15,215	10,699	2,687	25.1%
Quarter 4	45,123	35,332	7,949	22.5%
1-04	16,030	12,373	2,336	18.9%
2-04	15,565	12,105	2,401	19.8%
3-04	18,157	14,024	3,076	21.9%
Quarter 1	49,752	38,502	7,813	20.3%
4-04	16,097	13,278	2,703	20.4%
5-04	16,269	12,334	2,636	21.4%
6-04	17,286	13,202	2,874	21.8%
Quarter 2	49,652	38,814	8,213	21.2%
FY 03-04	192,754	149,746	31,638	21.1%

CRIMINAL JUSTICE INDICES

Date	Criminal Filings	Guilty Dispositions	Prison Admissions	Incarceration Rate
7-04	16,362	11,997	2,545	21.2%
8-04	16,115	13,584	2,534	18.7%
9-04	14,124	10,343	2,185	21.1%
Quarter 3	46,601	35,924	7,264	20.2%
10-04	16,011	13,108	2,803	21.4%
11-04	15,290	12,013	2,624	21.8%
12-04	16,123	10,766	2,728	25.3%
Quarter 4	47,424	35,887	8,155	22.7%
1-05	16,312	12,611	2,475	19.6%
2-05	16,464	12,230	2,599	21.3%
3-05	18,637	13,533	3,022	22.3%
Quarter 1	51,413	38,374	8,096	21.1%
4-05	17,119	12,920	2,732	21.1%
5-05	17,774	12,216	2,703	22.1%
6-05	19,069	14,058	3,014	21.4%
Quarter 2	53,962	39,194	8,449	21.6%
FY 04-05	199,400	149,379	31,964	21.4%
7-05	17,508	12,330	2,560	20.8%
8-05	19,293	15,228	3,161	20.8%
9-05	18,816	14,400	3,025	21.0%
Quarter 3	55,617	41,958	8,746	20.8%
10-05	16,292	12,603	3,025	24.0%
11-05	16,941	12,885	2,575	20.0%
12-05	13,850	8,979	2,663	29.7%
Quarter 4	47,083	34,467	8,263	24.0%

Data Sources: State Court Administrator, Summary Reporting System, (Run on February 2006) & Florida Department of Corrections. Several adjustments made to SRS data for incomplete or missing submissions.

GUILTY DISPOSITIONS



**MONITORING PRISON ADMISSIONS TO THE DEPARTMENT OF CORRECTIONS
SINCE THE CRIMINAL JUSTICE ESTIMATING CONFERENCE HELD 11/7/2005**

<u>MONTH</u>	<u>ADMISSIONS</u>		<u>MONTHLY</u>	<u>CUMULATIVE</u>
	<u>ESTIMATE</u>	<u>ACTUAL</u>	<u>OVER/ (UNDER)</u>	<u>OVER/ (UNDER)</u>
November 2005	2,680	2,865	185	185
December 2005	2,987	2,888	-99	86
January 2006	2,700	2,855	155	241
February 2006*	2,753	2,747	-6	235
Total	11,120	11,355	% Error:	2.1%

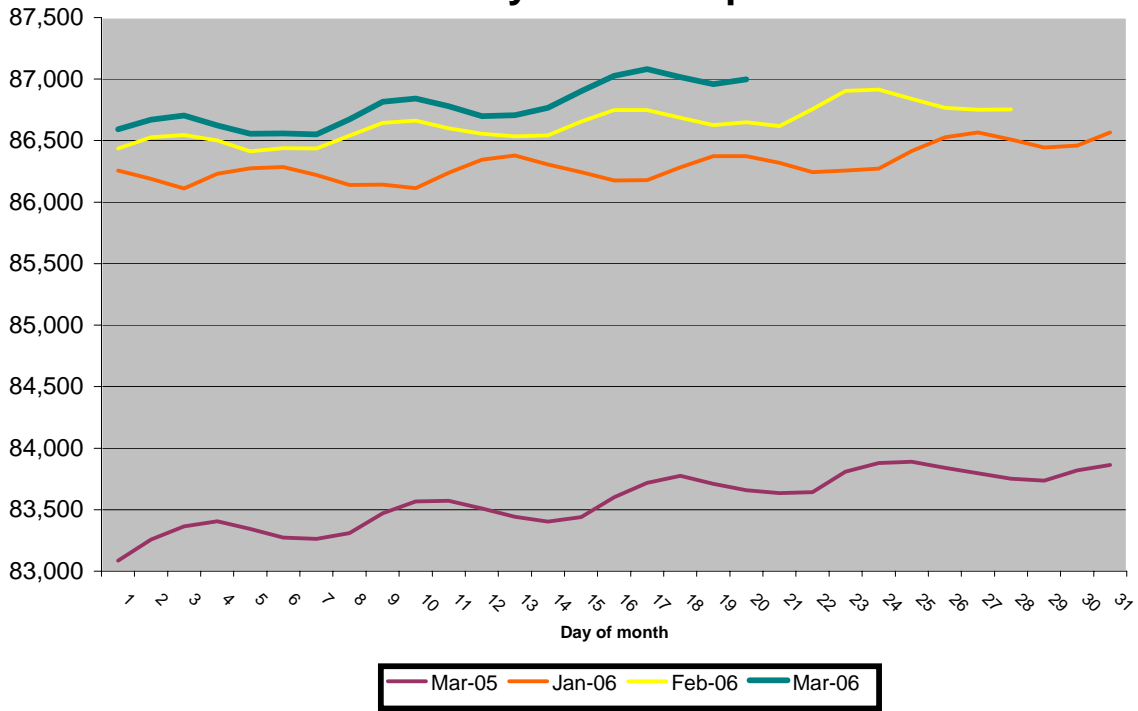
*Preliminary

**MONITORING PRISON POPULATION IN THE DEPARTMENT OF CORRECTIONS
SINCE THE CRIMINAL JUSTICE ESTIMATING CONFERENCE HELD 11/7/2005**

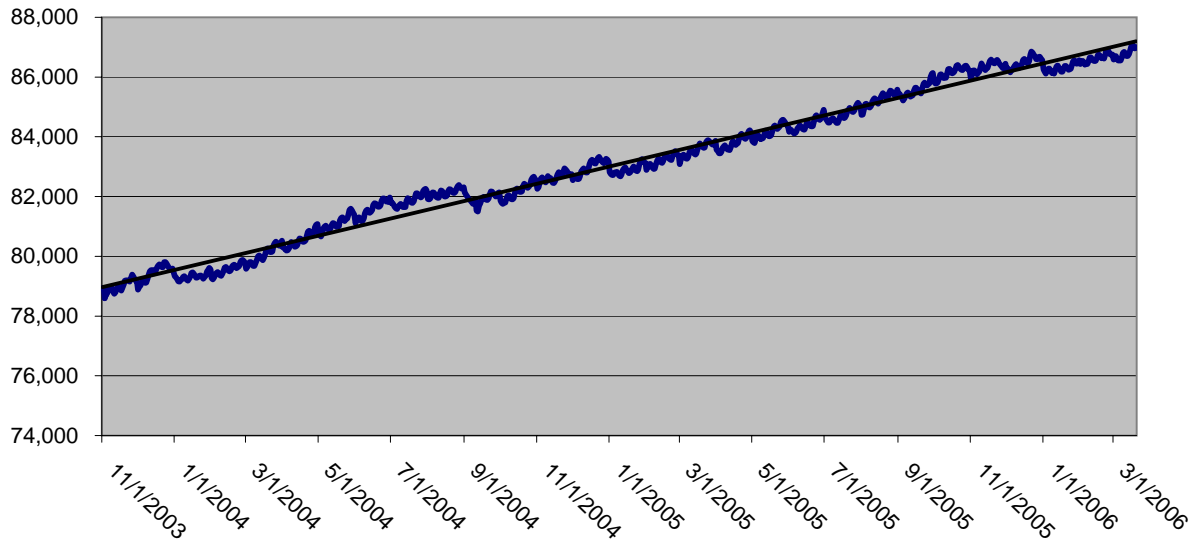
<u>MONTH</u>	<u>POPULATION</u>		<u>CUMULATIVE</u>
	<u>ESTIMATE</u>	<u>ACTUAL</u>	<u>OVER/ (UNDER)</u>
November 2005	86,431	86,450	19
December 2005	86,619	86,563	-56
January 2006	86,575	86,566	-9
February 2006	86,803	86,753	-50

-0.1% % Error

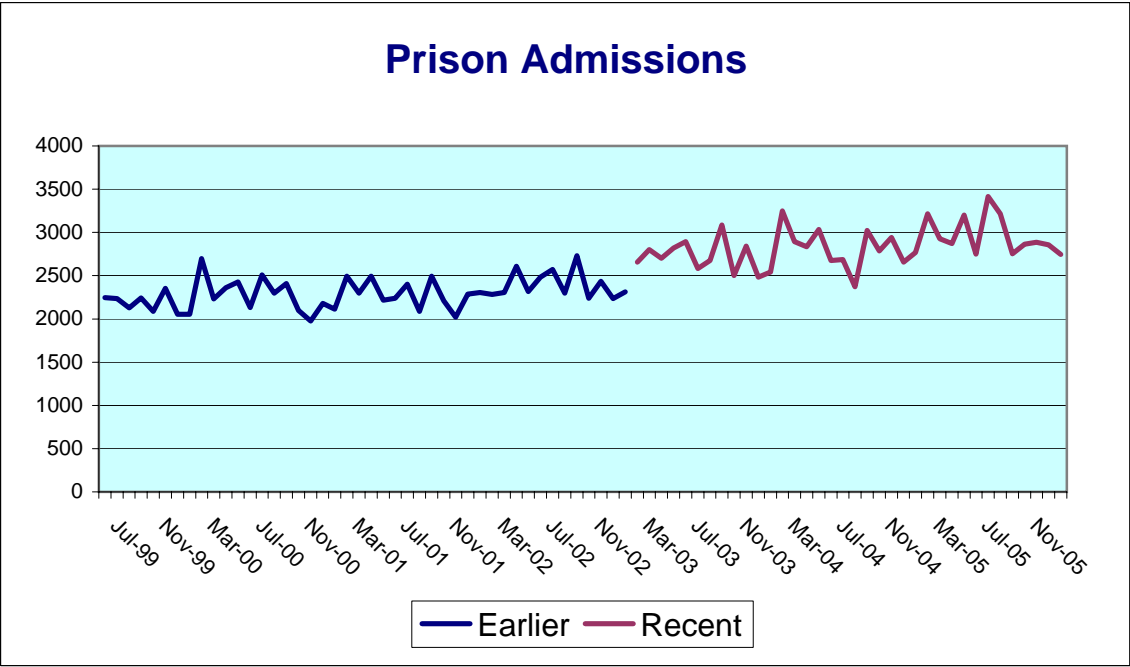
DOC Daily Status Population



DOC Daily Status Population



Prison Admissions



Average per month July 1999-February 2003	2,300
Average per month March 2003-February 2005	2,771
Average per month March 2003-October 2005	2,839
Average per month March 2003-February 2006	2,839

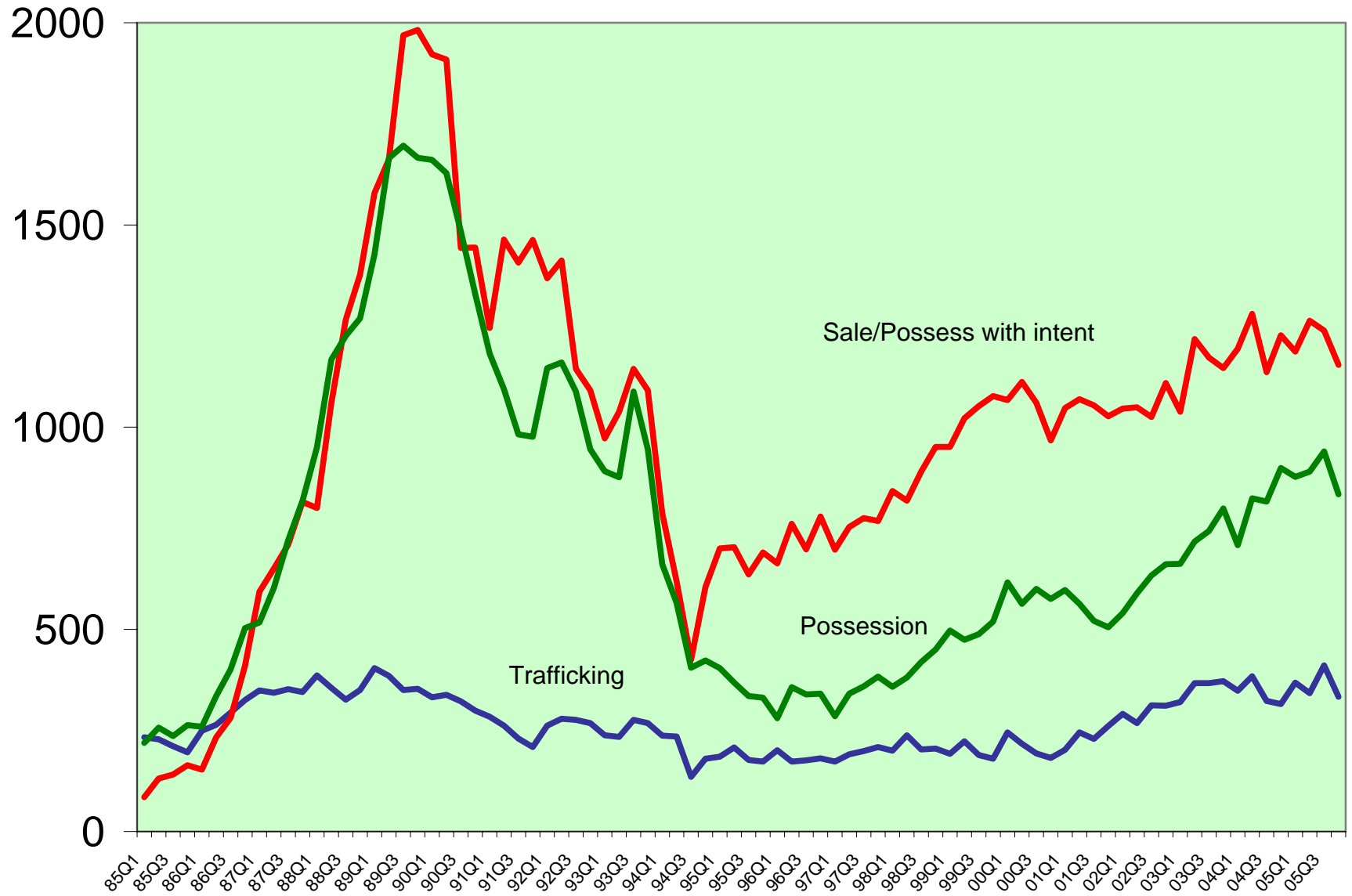
2005 New Commitments and Population

County	2005 New Commitments	2005 New Commitments Percent	2005 Official Population	2005 Population Percent
Alachua	722	2.2%	240,764	1.3%
Baker	93	0.3%	23,953	0.1%
Bay	836	2.6%	161,721	0.9%
Bradford	119	0.4%	28,118	0.2%
Brevard	1,055	3.2%	531,970	3.0%
Broward	2,598	8.0%	1,740,987	9.7%
Calhoun	61	0.2%	13,945	0.1%
Charlotte	241	0.7%	154,030	0.9%
Citrus	270	0.8%	132,635	0.7%
Clay	204	0.6%	169,623	0.9%
Collier	329	1.0%	317,788	1.8%
Columbia	217	0.7%	61,466	0.3%
DeSoto	63	0.2%	32,606	0.2%
Dixie	15	0.0%	15,377	0.1%
Duval	1,547	4.7%	861,150	4.8%
Escambia	1,000	3.1%	303,623	1.7%
Flagler	75	0.2%	78,617	0.4%
Franklin	31	0.1%	10,845	0.1%
Gadsden	242	0.7%	47,713	0.3%
Gilchrist	15	0.0%	16,221	0.1%
Glades	16	0.0%	10,729	0.1%
Gulf	31	0.1%	16,479	0.1%
Hamilton	37	0.1%	14,315	0.1%
Hardee	53	0.2%	27,333	0.2%
Hendry	52	0.2%	38,376	0.2%
Hernando	225	0.7%	150,784	0.8%
Highlands	275	0.8%	93,456	0.5%
Hillsborough	2,971	9.1%	1,131,546	6.3%
Holmes	40	0.1%	19,157	0.1%
Indian River	361	1.1%	130,043	0.7%
Jackson	196	0.6%	49,691	0.3%
Jefferson	40	0.1%	14,233	0.1%
Lafayette	24	0.1%	7,971	0.0%
Lake	471	1.4%	263,017	1.5%
Lee	607	1.9%	549,442	3.1%
Leon	1,000	3.1%	271,111	1.5%
Levy	125	0.4%	37,985	0.2%
Liberty	27	0.1%	7,581	0.0%
Madison	70	0.2%	19,696	0.1%
Manatee	366	1.1%	304,364	1.7%
Marion	1,132	3.5%	304,926	1.7%
Martin	381	1.2%	141,059	0.8%
Miami-Dade	1,876	5.8%	2,422,075	13.5%
Monroe	184	0.6%	82,413	0.5%
Nassau	147	0.5%	65,759	0.4%
Okaloosa	421	1.3%	188,939	1.1%

2005 New Commitments and Population

County	2005 New Commitments	2005 New Commitments Percent	2005 Official Population	2005 Population Percent
Okeechobee	124	0.4%	37,765	0.2%
Orange	1,699	5.2%	1,043,437	5.8%
Osceola	414	1.3%	235,156	1.3%
Palm Beach	1,136	3.5%	1,265,900	7.1%
Pasco	567	1.7%	406,898	2.3%
Pinellas	1,620	5.0%	947,744	5.3%
Polk	2,174	6.7%	541,840	3.0%
Putnam	139	0.4%	73,764	0.4%
St. Johns	247	0.8%	157,278	0.9%
St. Lucie	656	2.0%	240,039	1.3%
Santa Rosa	153	0.5%	136,443	0.8%
Sarasota	287	0.9%	367,867	2.1%
Seminole	391	1.2%	411,744	2.3%
Sumter	108	0.3%	74,052	0.4%
Suwannee	141	0.4%	38,174	0.2%
Taylor	83	0.3%	21,310	0.1%
Union	33	0.1%	15,046	0.1%
Volusia	1,397	4.3%	494,649	2.8%
Wakulla	42	0.1%	26,867	0.1%
Walton	207	0.6%	53,525	0.3%
Washington	95	0.3%	23,097	0.1%
Out-of-state/unknown/ii	22			
Total	32,596	99.9%	17,918,227	100.0%

DRUG ADMISSIONS BY TYPE QUARTERLY



**Offenders Revoked for Technical Violations and Sentenced to Prison
by Release Month and Type of Supervision**

Type of Supervision	Month and Year of Release														
	7/02	8/02	9/02	10/02	11/02	12/02	1/03	2/03	3/03	4/03	5/03	6/03	7/03	8/03	9/03
Felony Probation	274	262	266	280	253	222	266	314	301	262	334	292	344	319	367
Community Control	199	227	189	199	170	147	188	175	234	206	267	201	228	189	220
Conditional Release	75	95	90	82	70	96	77	82	61	97	66	69	106	75	110
Drug Offender Probation	85	103	74	101	68	68	70	74	82	95	107	98	91	109	114
Sex Offender Probation	7	13	7	8	8	11	9	8	5	14	14	6	12	16	10
Other	10	6	6	9	5	10	3	3	3	4	10	6	8	5	15
Total	650	706	632	679	574	554	613	656	686	678	798	672	789	713	836

	10/03	11/03	12/03	1/04	2/04	3/04	4/04	5/04	6/04	7/04	8/04	9/04	10/04	11/04	12/04
Felony Probation	419	303	302	336	321	346	366	331	306	295	342	327	380	355	280
Community Control	256	197	172	206	195	224	205	205	174	213	181	181	196	210	168
Conditional Release	100	123	103	112	104	103	140	97	108	105	136	151	116	113	125
Drug Offender Probation	130	97	83	107	124	114	128	128	95	134	148	104	154	132	125
Sex Offender Probation	17	17	17	12	19	26	15	26	22	21	20	15	20	13	17
Other	9	10	9	15	12	11	16	13	14	17	9	15	21	10	21
Total	931	747	686	788	775	824	870	800	719	785	836	793	887	833	736

	1/05	2/05	3/05	4/05	5/05	6/05	7/05	8/05	9/05	10/05	11/05	12/05	1/06		
Felony Probation	359	333	335	403	363	382	321	407	358	302	387	312	416		
Community Control	195	189	181	185	198	196	169	201	203	179	186	152	199		
Conditional Release	86	197	125	115	157	141	150	134	129	102	121	91	122		
Drug Offender Probation	143	126	132	192	147	161	109	191	128	130	121	121	155		
Sex Offender Probation	14	13	22	18	18	20	22	31	21	17	31	17	23		
Other	23	27	13	20	16	23	15	10	18	13	21	24	14		
Total	820	885	808	933	899	923	786	974	857	743	867	717	929		

"Zero Tolerance" Policy for Community Supervision Violators

Technical violators to prison FY 2002-03:	7,898	% Cng
Technical violators to prison FY 2003-04:	9,478	20.0%
Technical violators to prison FY 2004-05:	10,138	7.0%

Monthly average July 2002 through February 2003 (before zero tolerance):	633
Monthly average March 2003 through January 2006 (after zero tolerance):	809
Difference per month:	176

Total increase in violator admissions since start of zero tolerance: 6,168

By supervision type:

Community Control:

Monthly average July 2002 through February 2003:	187
Monthly average March 2003 through Jan 2006:	199
Increase per month:	12

Drug Offender Probation:

Monthly average July 2002 through February 2003:	80
Monthly average March 2003 through Jan 2006:	124
Increase per month:	44

Probation:

Monthly average July 2002 through February 2003:	267
Monthly average March 2003 through Jan 2006:	340
Increase per month:	73

Data prepared by: Florida Department of Corrections, Bureau of Research and Data Analysis; March 2006.

Other includes misdemeanor probation, state parole, conditional pardon, pretrial intervention, sex offender community control, addiction recovery, CC-parole, administrative probation, provisional release, control release, conditional medical release, and pretrial drug offender intervention.

Characteristics of offenders who have been sentenced to prison after having their probation revoked for technical violations from March 2003 through February 2006 compared with technical violators from July 2002 through February 2003

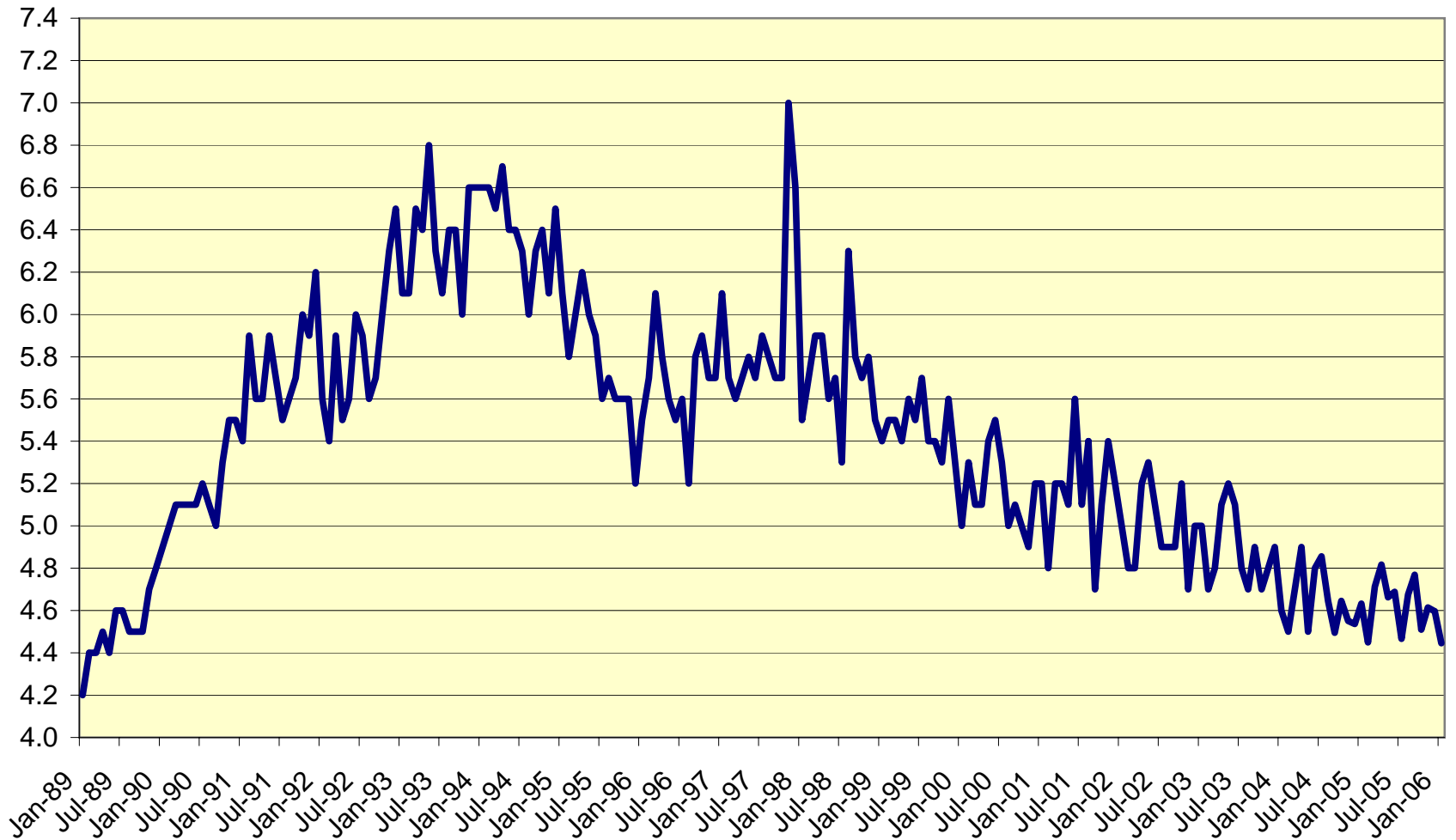
	Jul 2002 - Feb 2003		Mar 2003 - Feb 2006	
	<i>N</i>	<i>Percent</i>	<i>N</i>	<i>Percent</i>
TOTAL	4,724	100.0%	26,511	100.0%
Gender				
Male	4,110	87.0%	22,653	85.4%
Female	614	13.0%	3,858	14.6%
Total	4,724	100.0%	26,511	100.0%
Race				
White	2,447	48.1%	13,510	51.0%
Black	2,267	49.5%	12,394	46.8%
Other	10	2.4%	607	2.3%
Total	4,724	100.0%	26,511	100.0%
Age				
17 & Under	4	1.3%	50	0.2%
18-24	1,129	27.5%	5,982	22.6%
25-34	1,431	31.8%	8,216	31.0%
35-49	1,877	33.9%	10,495	39.6%
50-59	237	4.5%	1,532	5.8%
60+	46	1.0%	236	0.9%
Total	4,724	100.0%	26,511	100.0%
County of Conviction				
Hillsborough	597	12.6%	3,305	12.5%
Polk	541	11.5%	2,409	9.1%
Orange	308	6.5%	1,902	7.2%
Broward	376	8.0%	1,853	7.0%
Volusia	105	2.2%	1,169	4.4%
Miami-Dade	313	6.6%	1,153	4.3%
Leon	194	4.1%	1,092	4.1%
Bay	181	3.8%	1,049	4.0%
Brevard	117	2.5%	979	3.7%
Pinellas	191	4.0%	944	3.6%
Escambia	208	4.4%	868	3.3%
All other	1,591	33.7%	9,788	36.9%
Total	4,722	100.0%	26,511	100.0%
Missing	2			
Offense Type				
Murder/manslaughter	67	1.4%	324	1.2%
Sexual/lewd behavior	290	6.1%	1,703	6.4%
Robbery	368	7.8%	1,708	6.4%
Violent, other	683	14.5%	4,049	15.3%
Burglary	688	14.6%	3,605	13.6%
Property theft/fraud/damage	802	17.0%	4,691	17.7%
Drugs	1,364	28.9%	7,601	28.7%
Weapons	104	2.2%	568	2.1%
Other	357	7.6%	2,261	8.5%
Total	4,723	100.0%	26,510	100.0%
Missing			1	

Characteristics of offenders who have been sentenced to prison after having their probation revoked for technical violations from March 2003 through February 2006 compared with technical violators from July 2002 through February 2003

	Jul 2002 - Feb 2003		Mar 2003 - Feb 2006	
	<i>N</i>	<i>Percent</i>	<i>N</i>	<i>Percent</i>
Primary Offense				
Cocaine--Possession	515	10.9%	2,581	9.7%
Cocaine--Sale/Manufacture/ Deliver	390	8.3%	2,140	8.1%
Burglary of dwelling or occupied conveyance	299	6.3%	1,516	5.7%
Burglary of unoccupied structure or conveyance	256	5.4%	1,462	5.5%
Traffic in stolen property	207	4.4%	1,248	4.7%
Grand theft, GE \$300 and LT \$5,000	172	3.6%	1,032	3.9%
Drive with suspended/revoked license--felony	141	3.0%	875	3.3%
Robbery--no firearm or deadly weapon	178	3.8%	837	3.2%
Grand theft, motor vehicle	138	2.9%	704	2.7%
Robbery with firearm or deadly weapon	146	3.1%	616	2.3%
Aggravated assault with weapon-- no intent to kill	89	1.9%	545	2.1%
All other	2,192	46.4%	12,955	48.9%
Total	4,723	100.0%	26,511	100.0%
Sentence Length				
12 - 15 m	1,103	23.3%	7,180	27.1%
16 - 21 m	764	16.2%	4,185	15.8%
22 - 27 m	638	13.5%	3,504	13.2%
28 - 33 m	333	7.0%	1,748	6.6%
34 - 39 m	441	9.3%	2,124	8.0%
40 - 45 m	142	3.0%	721	2.7%
46 - 51 m	181	3.8%	990	3.7%
52 - 57 m	79	1.7%	317	1.2%
58 - 78 m	394	8.3%	2,048	7.7%
79 - 102 m	171	3.6%	932	3.5%
GT 102 m	478	10.1%	2,762	10.4%
Total	4,724	100.0%	26,511	100.0%

Prepared by Florida Legislature, Office of Economic and Demographic Research from data provided by the Florida Department of Corrections

AVERAGE SENTENCE LENGTH OF ADMISSIONS (in years)



SENTENCE LENGTHS BY OFFENSE TYPE
New Court Commitments

AVERAGE SENTENCE LENGTHS (In Years)

<u>CATEGORY</u>	<u>FY</u> <u>97-98</u>	<u>FY</u> <u>98-99</u>	<u>FY</u> <u>99-00</u>	<u>FY</u> <u>00-01</u>	<u>FY</u> <u>01-02</u>	<u>FY</u> <u>02-03</u>	<u>FY</u> <u>03-04</u>	<u>FY</u> <u>04-05</u>
Murder	24.9	24.3	23.6	23.9	22.9	23.2	23.8	24.8
Sexual Offenses	11.5	11.0	10.8	10.6	11.1	11.2	10.2	10.9
Robbery	8.4	8.9	8.8	8.7	8.9	8.8	8.7	8.7
Violent Personal Crime	4.8	4.7	4.7	4.7	4.6	4.5	4.4	4.2
Burglary	5.2	5.3	5.2	5.1	4.9	4.9	5.0	4.9
Theft, Forgery, Fraud	3.0	2.6	2.7	2.5	2.5	2.5	2.4	2.4
Drug Offenses	3.1	3.0	2.9	2.9	3.0	3.0	2.9	2.9
Weapon Offenses	3.9	3.9	4.1	4.0	4.3	3.8	3.9	3.7
Other Offenses	3.0	2.8	2.7	2.5	2.7	2.6	2.4	2.4
All Offenses	5.9	5.6	5.3	5.1	5.1	5.0	4.7	4.6

AVERAGE SENTENCE LENGTHS BY MONTH OF ADMISSION
(New Court Commitments)

Jan 1997	6.1	Oct 1999	5.3	Jul 2002	4.9	Apr 2005	4.8
Feb 1997	5.7	Nov 1999	5.6	Aug 2002	4.9	May 2005	4.7
Mar 1997	5.6	Dec 1999	5.3	Sep 2002	4.9	June 2005	4.7
Apr 1997	5.7	Jan 2000	5.0	Oct 2002	5.2	July 2005	4.5
May 1997	5.8	Feb 2000	5.3	Nov 2002	4.7	Aug 2005	4.7
June 1997	5.7	Mar 2000	5.1	Dec 2002	5.0	Sep 2005	4.8
July 1997	5.9	Apr 2000	5.1	Jan 2003	5.0	Oct 2005	4.5
Aug 1997	5.8	May 2000	5.4	Feb 2003	4.7	Nov 2005	4.6
Sept 1997	5.7	Jun 2000	5.5	Mar 2003	4.8	Dec 2005	4.6
Oct 1997	5.7	Jul 2000	5.3	Apr 2003	5.1	Jan 2006	4.4
Nov 1997	7.0	Aug 2000	5.0	May 2003	5.2		
Dec 1997	6.6	Sep 2000	5.1	June 2003	5.1		
Jan 1998	5.5	Oct 2000	5.0	Jul 2003	4.8		
Feb 1998	5.7	Nov 2000	4.9	Aug 2003	4.7		
Mar 1998	5.9	Dec 2000	5.2	Sep 2003	4.9		
Apr 1998	5.9	Jan 2001	5.2	Oct 2003	4.7		
May 1998	5.6	Feb 2001	4.8	Nov 2003	4.8		
Jun 1998	5.7	Mar 2001	5.2	Dec 2003	4.9		
Jul 1998	5.3	Apr 2001	5.2	Jan 2004	4.6		
Aug 1998	6.3	May 2001	5.1	Feb 2004	4.5		
Sep 1998	5.8	Jun 2001	5.6	Mar 2004	4.7		
Oct 1998	5.7	Jul 2001	5.1	Apr 2004	4.9		
Nov 1998	5.8	Aug 2001	5.4	May 2004	4.5		
Dec 1998	5.5	Sep 2001	4.7	June 2004	4.8		
Jan 1999	5.4	Oct 2001	5.1	July 2004	4.9		
Feb 1999	5.5	Nov 2001	5.4	Aug 2004	4.6		
Mar 1999	5.5	Dec 2001	5.2	Sep 2004	4.5		
Apr 1999	5.4	Jan 2002	5.0	Oct 2004	4.6		
May 1999	5.6	Feb 2002	4.8	Nov 2004	4.6		
June 1999	5.5	Mar 2002	4.8	Dec 2004	4.5		
July 1999	5.7	Apr 2002	5.2	Jan 2005	4.6		
Aug 1999	5.4	May 2002	5.3	Feb 2005	4.4		
Sept 1999	5.4	Jun 2002	5.1	Mar 2005	4.7		

(All sentences over 50 years have been treated as sentences of 50 yrs in the calculation of the mean, including life and death sentences.)

SENTENCE LENGTHS BY OFFENSE TYPE
New Court Commitments

AVERAGE SENTENCE LENGTHS (In Years)

<u>CATEGORY</u>	<u>FY</u> <u>89-90</u>	<u>FY</u> <u>90-91</u>	<u>FY</u> <u>91-92</u>	<u>FY</u> <u>92-93</u>	<u>FY</u> <u>93-94</u>	<u>FY</u> <u>94-95</u>	<u>FY</u> <u>95-96</u>	<u>FY</u> <u>96-97</u>
Murder	20.2	21.0	21.4	21.7	21.9	22.5	21.1	21.0
Sexual Offenses	12.6	13.8	13.3	13.1	13.6	12.3	10.9	11.8
Robbery	7.4	7.8	8.1	8.6	8.8	7.7	7.3	7.2
Violent Personal Crime	3.2	3.7	5.3	5.5	5.5	5.0	4.2	4.6
Burglary	4.3	5.0	5.2	5.6	5.7	5.2	4.6	4.9
Theft, Forgery, Fraud	3.1	3.6	3.7	4.2	4.2	3.6	3.0	2.9
Drug Offenses	3.4	3.7	3.9	4.2	4.2	3.6	3.1	3.3
Weapon Offenses	3.2	4.1	3.8	4.2	4.1	3.6	3.5	3.9
Other Offenses	5.8	7.1	3.8	4.3	4.2	3.6	3.7	2.9
All Offenses	4.8	5.3	5.7	6.2	6.4	6.1	5.6	5.7

AVERAGE SENTENCE LENGTHS BY MONTH OF ADMISSION
(New Court Commitments)

Jan 1989	4.2	Jan 1991	5.4	Jan 1993	6.1	Jan 1995	6.1
Feb 1989	4.4	Feb 1991	5.9	Feb 1993	6.1	Feb 1995	5.8
Mar 1989	4.4	Mar 1991	5.6	Mar 1993	6.5	Mar 1995	6.0
Apr 1989	4.5	Apr 1991	5.6	Apr 1993	6.4	Apr 1995	6.2
May 1989	4.4	May 1991	5.9	May 1993	6.8	May 1995	6.0
June 1989	4.6	June 1991	5.7	June 1993	6.3	June 1995	5.9
July 1989	4.6	July 1991	5.5	July 1993	6.1	July 1995	5.6
Aug 1989	4.5	Aug 1991	5.6	Aug 1993	6.4	Aug 1995	5.7
Sept 1989	4.5	Sept 1991	5.7	Sept 1993	6.4	Sept 1995	5.6
Oct 1989	4.5	Oct 1991	6.0	Oct 1993	6.0	Oct 1995	5.6
Nov 1989	4.7	Nov 1991	5.9	Nov 1993	6.6	Nov 1995	5.6
Dec 1989	4.8	Dec 1991	6.2	Dec 1993	6.6	Dec 1995	5.2
Jan 1990	4.9	Jan 1992	5.6	Jan 1994	6.6	Jan 1996	5.5
Feb 1990	5.0	Feb 1992	5.4	Feb 1994	6.6	Feb 1996	5.7
Mar 1990	5.1	Mar 1992	5.9	Mar 1994	6.5	Mar 1996	6.1
Apr 1990	5.1	Apr 1992	5.5	Apr 1994	6.7	Apr 1996	5.8
May 1990	5.1	May 1992	5.6	May 1994	6.4	May 1996	5.6
June 1990	5.1	June 1992	6.0	June 1994	6.4	June 1996	5.5
July 1990	5.2	July 1992	5.9	July 1994	6.3	July 1996	5.6
Aug 1990	5.1	Aug 1992	5.6	Aug 1994	6.0	Aug 1996	5.2
Sept 1990	5.0	Sept 1992	5.7	Sept 1994	6.3	Sept 1996	5.8
Oct 1990	5.3	Oct 1992	6.0	Oct 1994	6.4	Oct 1996	5.9
Nov 1990	5.5	Nov 1992	6.3	Nov 1994	6.1	Nov 1996	5.7
Dec 1990	5.5	Dec 1992	6.5	Dec 1994	6.5	Dec 1996	5.7

(All sentences over 50 years have been treated as sentences of 50 yrs in the calculation of the mean, including life and death sentences.)

SENTENCE LENGTH DISTRIBUTIONS FOR NEW COMMITMENTS BY MONTH

Sentence Length	Jul 05	Aug 05	Sep 05	Oct 05	Nov 05	Dec 05	Jan 06	Feb 06
	%	%	%	%	%	%	%	%
12 - 15 m	25.1%	24.2%	24.0%	24.7%	24.9%	26.4%	27.2%	24.6%
16 - 21 m	13.5%	13.8%	14.4%	14.4%	14.9%	13.1%	14.9%	15.2%
22 - 27 m	13.2%	13.7%	13.3%	13.9%	13.8%	13.3%	12.1%	13.4%
28 - 33 m	5.9%	5.9%	6.1%	6.3%	6.5%	6.3%	5.6%	5.8%
34 - 39 m	11.2%	10.5%	9.9%	10.3%	10.2%	9.9%	10.2%	10.2%
40 - 45 m	3.0%	2.6%	2.8%	2.5%	2.6%	2.5%	2.4%	3.0%
46 - 51 m	4.0%	4.4%	4.7%	3.7%	3.4%	3.9%	4.8%	4.0%
52 - 57 m	1.2%	0.6%	0.8%	1.0%	1.1%	1.0%	1.0%	1.3%
58 - 78 m	8.2%	9.2%	8.9%	8.5%	8.3%	9.7%	8.3%	8.8%
79 - 102 m	3.2%	2.9%	3.0%	3.1%	2.8%	2.7%	3.0%	2.3%
GT 102 m	11.5%	12.1%	12.1%	11.5%	11.5%	11.3%	10.5%	11.2%
	100.0%	100.0%	100.0%	100.0%	100.0%	100.0%	100.0%	100.0%

SENTENCE LENGTH DISTRIBUTIONS FOR NEW COMMITMENTS BY MONTH Cumulative Percentage

Sentence Length	Jul 05	Aug 05	Sep 05	Oct 05	Nov 05	Dec 05	Jan 06	Feb 06
	%	%	%	%	%	%	%	%
12 - 15 m	25.1%	24.2%	24.0%	24.7%	24.9%	26.4%	27.2%	24.6%
16 - 21 m	38.6%	38.0%	38.4%	39.1%	39.8%	39.5%	42.1%	39.9%
22 - 27 m	51.8%	51.7%	51.7%	53.0%	53.6%	52.8%	54.2%	53.3%
28 - 33 m	57.6%	57.7%	57.8%	59.4%	60.1%	59.1%	59.8%	59.1%
34 - 39 m	68.8%	68.2%	67.7%	69.7%	70.3%	69.0%	70.0%	69.3%
40 - 45 m	71.9%	70.8%	70.5%	72.2%	72.9%	71.5%	72.4%	72.3%
46 - 51 m	75.9%	75.2%	75.2%	76.0%	76.3%	75.4%	77.2%	76.3%
52 - 57 m	77.1%	75.8%	76.0%	77.0%	77.3%	76.4%	78.2%	77.7%
58 - 78 m	85.3%	84.9%	84.9%	85.5%	85.7%	86.1%	86.5%	86.5%
79 - 102 m	88.5%	87.9%	87.9%	88.5%	88.5%	88.7%	89.5%	88.8%
GT 102 m	100.0%	100.0%	100.0%	100.0%	100.0%	100.0%	100.0%	100.0%

Percent of 12-15 month sentences that are a year and a day

Jul 05	Aug 05	Sep 05	Oct 05	Nov 05	Dec 05	Jan 06	Feb 06
%	%	%	%	%	%	%	%
57.9%	60.3%	57.5%	54.8%	57.4%	57.1%	56.9%	56.9%

New Commitments to Prison

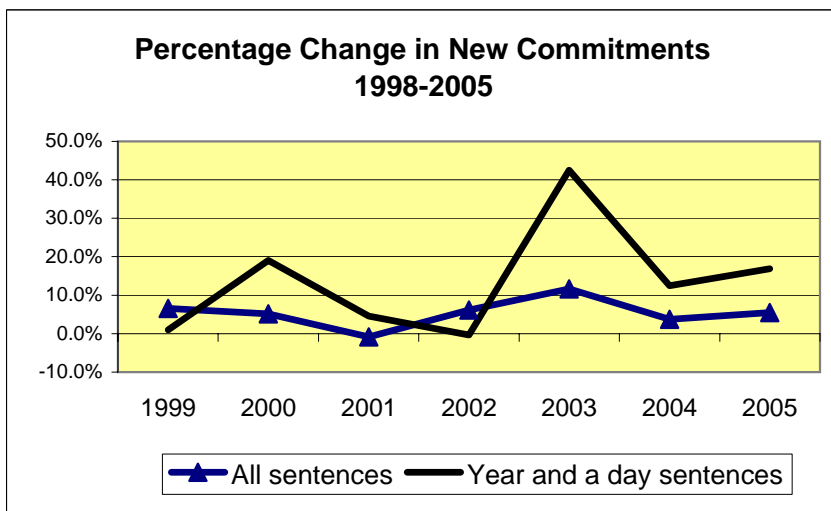
Year	All sentences	Year and a day sentences	Year and a day sentences as percent of all sentences
1998	22,629	1,835	8.1%
1999	24,118	1,853	7.7%
2000	25,350	2,206	8.7%
2001	25,140	2,306	9.2%
2002	26,687	2,298	8.6%
2003	29,788	3,274	11.0%
2004	30,894	3,681	11.9%
2005	32,596	4,301	13.2%

Change from prior year

Year	All sentences	Year and a day sentences
1999	1,489	18
2000	1,232	353
2001	(210)	100
2002	1,547	(8)
2003	3,101	976
2004	1,106	407
2005	1,702	620

Percentage change from prior year

Year	All sentences	Year and a day sentences
1999	6.6%	1.0%
2000	5.1%	19.1%
2001	-0.8%	4.5%
2002	6.2%	-0.3%
2003	11.6%	42.5%
2004	3.7%	12.4%
2005	5.5%	16.8%



**CRIMINAL JUSTICE ESTIMATING CONFERENCE MARCH 21, 2006
PRIOR YEAR ACTUALS**

	JUL 04	AUG 04	SEP 04	OCT 04	NOV 04	DEC 04	JAN 05	FEB 05	MAR 05	APR 05	MAY 05	JUN 05
ADMISSIONS	2,675	2,687	2,373	3,024	2,788	2,942	2,656	2,767	3,216	2,926	2,873	3,202
NEW COMMITMENTS	2,545	2,534	2,185	2,803	2,624	2,728	2,475	2,599	3,022	2,732	2,703	3,014
TECHNICAL VIOLATORS	130	153	188	221	164	214	181	168	194	194	170	188
CONTROL RELEASE	2	2	3	2	-	3	3	3	1	2	2	1
CONDITIONAL RELEASE	128	151	185	219	164	211	178	165	193	192	168	187
LOSSES	2,444	2,579	2,545	2,620	2,587	2,523	2,690	2,526	2,725	2,641	2,662	2,660
PAROLES	NA	NA	NA	NA	NA	NA	NA	NA	NA	NA	NA	NA
FROM NEW TECH. VIOLATORS	NA	NA	NA	NA	NA	NA	NA	NA	NA	NA	NA	NA
END OF SENTENCE	NA	NA	NA	NA	NA	NA	NA	NA	NA	NA	NA	NA
FROM STATUS POP	NA	NA	NA	NA	NA	NA	NA	NA	NA	NA	NA	NA
FROM ADMISSIONS	NA	NA	NA	NA	NA	NA	NA	NA	NA	NA	NA	NA
END OF MONTH POPULATION	82,205	82,313	82,141	82,545	82,746	83,165	83,131	83,372	83,863	84,148	84,359	84,901

November 2005 CJEC

Proposed over/(under) Nov 05 CJEC

**CRIMINAL JUSTICE ESTIMATING CONFERENCE MARCH 21, 2006
DETAILED MONTHLY FORECAST**

	JUL 05	AUG 05	SEP 05	OCT 05	NOV 05	DEC 05	JAN 06	FEB 06	MAR 06	APR 06	MAY 06	JUN 06
ADMISSIONS	2,749	3,415	3,216	2,752	2,865	2,888	2,855	2,747	3,336	3,214	3,133	3,324
NEW COMMITMENTS	2,560	3,161	3,025	2,575	2,663	2,720	2,679	2,613	3,127	2,996	2,922	3,126
TECHNICAL VIOLATORS	189	254	191	177	202	168	176	134	209	218	211	198
CONTROL RELEASE	2	1	2	3	-	2	3	2	2	2	2	2
CONDITIONAL RELEASE	187	253	189	174	202	166	173	132	207	216	209	196
LOSSES	2,642	2,849	2,655	2,674	2,627	2,776	2,852	2,560	2,822	2,703	2,882	2,875
PAROLES	NA	NA	NA	NA	NA	NA	NA	NA	4	4	4	4
FROM NEW TECH. VIOLATORS	NA	NA	NA	NA	NA	NA	NA	NA	106	121	133	138
END OF SENTENCE	NA	NA	NA	NA	NA	NA	NA	NA	2,712	2,578	2,745	2,733
FROM STATUS POP	NA	NA	NA	NA	NA	NA	NA	NA	2,471	2,262	2,342	2,210
FROM ADMISSIONS	NA	NA	NA	NA	NA	NA	NA	NA	241	316	403	523
END OF MONTH POPULATION	85,008	85,574	86,135	86,213	86,451	86,563	86,566	86,753	87,267	87,778	88,029	88,478
November 2005 CJEC					86,431	86,619	86,575	86,803	87,267	87,778	88,029	88,478
Proposed over/(under) Nov 05 CJEC					20	(56)	(9)	(50)	-	-	-	-

**CRIMINAL JUSTICE ESTIMATING CONFERENCE MARCH 21, 2006
FISCAL YEAR FORECAST**

	FY 04-05 ACTUAL	FY 05-06	FY 06-07	FY 07-08	FY 08-09	FY 09-10	FY 10-11
ADMISSIONS	34,129	36,494	36,455	36,620	36,755	36,854	36,913
NEW COMMITMENTS	31,964	34,167	33,896	33,896	33,896	33,896	33,896
TECHNICAL VIOLATORS	2,165	2,327	2,559	2,724	2,859	2,958	3,017
CONTROL RELEASE	24	23	24	24	24	24	24
CONDITIONAL RELEASE	2,141	2,304	2,535	2,700	2,835	2,934	2,993
LOSSES	31,202	32,917	33,291	33,126	34,564	35,288	35,091
PAROLES	-	16	48	48	48	48	48
FROM NEW TECH. VIOLATORS	-	498	1,916	2,303	2,637	2,817	2,931
END OF SENTENCE	31,202	32,403	31,327	30,775	31,879	32,423	32,112
FROM STATUS POP	31,202	30,920	17,590	9,558	5,937	3,866	2,974
FROM ADMISSIONS	-	1,483	13,737	21,217	25,942	28,557	29,138
END OF MONTH POPULATION	84,901	88,478	91,642	95,136	97,327	98,893	100,715
November 2005 CJEC	85,295	88,478	91,642	95,136	97,327	98,893	100,715
Proposed over/(under) Nov 05 CJEC	(394)	-	-	-	-	-	-

Criminal Justice Estimating Conference--March 21, 2006 FORECAST COMPARISON

TOTAL ADMISSIONS

	Current (Nov. 2005 CJEC) ²	Current with actuals ³	EDR Diff. from Current inc.		FEA Diff. from Current inc.		OSCA Diff. from Current inc.	
			EDR	Actuals	FEA	Actuals	OSCA	Actuals
FY 01-02 ¹	27,564	27,564	27,564	0	27,564	0	27,564	0
FY 02-03 ¹	30,288	30,288	30,288	0	30,288	0	30,288	0
FY 03-04 ¹	33,616	33,616	33,616	0	33,616	0	33,616	0
FY 04-05 ¹	34,129	34,129	34,129	0	34,129	0	34,129	0
FY 05-06	36,269	36,494	36,269	-225	36,269	-225	36,269	-225
FY 06-07	36,455	36,455	36,455	0	36,455	0	36,455	0
FY 07-08	36,620	36,620	36,620	0	36,620	0	36,620	0
FY 08-09	36,755	36,755	36,755	0	36,755	0	36,755	0
FY 09-10	36,854	36,854	36,854	0	36,854	0	36,854	0
FY 10-11	36,913	36,913	36,913	0	36,913	0	36,913	0

CHANGE FROM PRIOR YEAR

	Current	Current with actuals	EDR	FEA	OSCA
FY 02-03 ¹	2,724	2,724	2,724	2,724	2,724
FY 03-04 ¹	3,328	3,328	3,328	3,328	3,328
FY 04-05 ¹	513	513	513	513	513
FY 05-06	2,140	2,365	2,140	2,140	2,140
FY 06-07	186	-39	186	186	186
FY 07-08	165	165	165	165	165
FY 08-09	135	135	135	135	135
FY 09-10	99	99	99	99	99
FY 10-11	59	59	59	59	59

PERCENTAGE CHANGE FROM PRIOR YEAR

	Current	Current with actuals	EDR	FEA	OSCA
FY 02-03 ¹	9.9%	9.9%	9.9%	9.9%	9.9%
FY 03-04 ¹	11.0%	11.0%	11.0%	11.0%	11.0%
FY 04-05 ¹	1.5%	1.5%	1.5%	1.5%	1.5%
FY 05-06	6.3%	6.9%	6.3%	6.3%	6.3%
FY 06-07	0.5%	-0.1%	0.5%	0.5%	0.5%
FY 07-08	0.5%	0.5%	0.5%	0.5%	0.5%
FY 08-09	0.4%	0.4%	0.4%	0.4%	0.4%
FY 09-10	0.3%	0.3%	0.3%	0.3%	0.3%
FY 10-11	0.2%	0.2%	0.2%	0.2%	0.2%

¹ Actual

² Includes actuals for July 2005 through September 2005 and preliminary actual for October 2005

³ Includes actuals for July 2005 through January 2006 and preliminary actual for February 2006

NEW COMMITMENTS

	Current (Nov. 2005 CJEC) ²	Current with actuals ³	EDR		FEA		OSCA	
			EDR	Diff. from Current inc. Actuals	FEA	Diff. from Current inc. Actuals	OSCA	Diff. from Current inc. Actuals
FY 01-02 ¹	25,854	25,854	25,854	0	25,854	0	25,854	0.0
FY 02-03 ¹	28,658	28,658	28,658	0	28,658	0	28,658	0.0
FY 03-04 ¹	31,638	31,638	31,638	0	31,638	0	31,638	0
FY 04-05 ¹	31,964	31,964	31,964	0	31,964	0	31,964	0
FY 05-06	33,896	34,167	33,896	-271	33,896	-271	33,896	-271
FY 06-07	33,896	33,896	33,896	0	33,896	0	33,896	0
FY 07-08	33,896	33,896	33,896	0	33,896	0	33,896	0
FY 08-09	33,896	33,896	33,896	0	33,896	0	33,896	0
FY 09-10	33,896	33,896	33,896	0	33,896	0	33,896	0
FY 10-11	33,896	33,896	33,896	0	33,896	0	33,896	0

CHANGE FROM PRIOR YEAR

	Current	Current with actuals	EDR	FEA	OSCA
FY 02-03 ¹	2,804	2,804	2,804	2,804	2,804
FY 03-04 ¹	2,980	2,980	2,980	2,980	2,980
FY 04-05 ¹	326	326	326	326	326
FY 05-06	1,932	2,203	1,932	1,932	1,932
FY 06-07	0	-271	0	0	0
FY 07-08	0	0	0	0	0
FY 08-09	0	0	0	0	0
FY 09-10	0	0	0	0	0
FY 10-11	0	0	0	0	0

PERCENTAGE CHANGE FROM PRIOR YEAR

	Current	Current with actuals	EDR	FEA	OSCA
FY 02-03 ¹	10.8%	10.8%	10.8%	10.8%	10.8%
FY 03-04 ¹	10.4%	10.4%	10.4%	10.4%	10.4%
FY 04-05 ¹	1.0%	1.0%	1.0%	1.0%	1.0%
FY 05-06	6.0%	6.9%	6.0%	6.0%	6.0%
FY 06-07	0.0%	-0.8%	0.0%	0.0%	0.0%
FY 07-08	0.0%	0.0%	0.0%	0.0%	0.0%
FY 08-09	0.0%	0.0%	0.0%	0.0%	0.0%
FY 09-10	0.0%	0.0%	0.0%	0.0%	0.0%
FY 10-11	0.0%	0.0%	0.0%	0.0%	0.0%

¹ Actual

² Includes actuals for July 2005 through September 2005 and preliminary actual for October 2005

³ Includes actuals for July 2005 through January 2006 and preliminary actual for February 2006

CONTROL/CONDITIONAL RELEASE OFFENDERS WITH TECHNICAL VIOLATIONS

	Current (Nov. 2005 CJEC) ²	Current with actuals ³	EDR Diff. from Current inc. EDR Actuals	FEA Diff. from Current inc. FEA Actuals	OSCA Diff. from Current inc. OSCA Actuals
FY 01-02 ¹	1,710	1,710	1,710	0	1,710
FY 02-03 ¹	1,630	1,630	1,630	0	1,630
FY 03-04 ¹	1,978	1,978	1,978	0	1,978
FY 04-05 ¹	2,165	2,165	2,165	0	2,165
FY 05-06	2,373	2,327	2,373	46	2,373
FY 06-07	2,559	2,559	2,559	0	2,559
FY 07-08	2,724	2,724	2,724	0	2,724
FY 08-09	2,859	2,859	2,859	0	2,859
FY 09-10	2,958	2,958	2,958	0	2,958
FY 10-11	3,017	3,017	3,017	0	3,017

CHANGE FROM PRIOR YEAR

	Current	Current with actuals	EDR	FEA	OSCA
FY 02-03 ¹	-80	-80	-80	-80	-80
FY 03-04 ¹	348	348	348	348	348
FY 04-05 ¹	187	187	187	187	187
FY 05-06	208	162	208	208	208
FY 06-07	186	232	186	186	186
FY 07-08	165	165	165	165	165
FY 08-09	135	135	135	135	135
FY 09-10	99	99	99	99	99
FY 10-11	59	59	59	59	59

PERCENTAGE CHANGE FROM PRIOR YEAR

	Current	Current with actuals	EDR	FEA	OSCA
FY 02-03 ¹	-4.7%	-4.7%	-4.7%	-4.7%	-4.7%
FY 03-04 ¹	21.3%	21.3%	21.3%	21.3%	21.3%
FY 04-05 ¹	9.5%	9.5%	9.5%	9.5%	9.5%
FY 05-06	9.6%	7.5%	9.6%	9.6%	9.6%
FY 06-07	7.8%	10.0%	7.8%	7.8%	7.8%
FY 07-08	6.4%	6.4%	6.4%	6.4%	6.4%
FY 08-09	5.0%	5.0%	5.0%	5.0%	5.0%
FY 09-10	3.5%	3.5%	3.5%	3.5%	3.5%
FY 10-11	2.0%	2.0%	2.0%	2.0%	2.0%

¹ Actual

² Includes actuals for July 2005 through September 2005 and preliminary actual for October 2005

³ Includes actuals for July 2005 through January 2006 and preliminary actual for February 2006

Criminal Justice Estimating Conference--March 21, 2006 FORECAST COMPARISON

POPULATION JUNE 30

	Current (Nov. 2005 CJEC) ²	Current with actuals ³	EDR Difference from Current with actuals	FEA Difference from Current with actuals	OSCA Difference from Current with actuals
FY 01-02 ¹	73,553	73,553	73,553 0	73,553 0	73,553 0.0
FY 02-03 ¹	77,316	77,316	77,316 0	77,316 0	77,316 0.0
FY 03-04 ¹	81,974	81,970	81,970 0	81,970 0	81,970 0.0
FY 04-05 ¹	84,901	84,901	84,901 0	84,901 0	84,901 0
FY 05-06	88,478	88,428	88,478 50	88,478 50	88,478 50
FY 06-07	91,642	91,592	91,642 50	91,642 50	91,642 50
FY 07-08	95,136	95,086	95,136 50	95,136 50	95,136 50
FY 08-09	97,327	97,277	97,327 50	97,327 50	97,327 50
FY 09-10	98,893	98,843	98,893 50	98,893 50	98,893 50
FY 10-11	100,715	100,665	100,715 50	100,715 50	100,715 50

POPULATION CHANGE JUNE 30 FROM PRIOR YEAR

	Current	Current with actuals	EDR	FEA	OSCA
FY 02-03 ¹	3,763	3,763	3,763	3,763	3,763
FY 03-04 ¹	4,658	4,654	4,654	4,654	4,654
FY 04-05 ¹	2,927	2,931	2,931	2,931	2,931
FY 05-06	3,577	3,527	3,577	3,577	3,577
FY 06-07	3,164	3,164	3,164	3,164	3,164
FY 07-08	3,494	3,494	3,494	3,494	3,494
FY 08-09	2,191	2,191	2,191	2,191	2,191
FY 09-10	1,566	1,566	1,566	1,566	1,566
FY 10-11	1,822	1,822	1,822	1,822	1,822

PERCENTAGE CHANGE JUNE 30 FROM PRIOR YEAR

	Current	Current with actuals	EDR	FEA	OSCA
FY 02-03 ¹	5.1%	5.1%	5.1%	5.1%	5.1%
FY 03-04 ¹	6.0%	6.0%	6.0%	6.0%	6.0%
FY 04-05 ¹	3.6%	3.6%	3.6%	3.6%	3.6%
FY 05-06	4.2%	4.2%	4.2%	4.2%	4.2%
FY 06-07	3.6%	3.6%	3.6%	3.6%	3.6%
FY 07-08	3.8%	3.8%	3.8%	3.8%	3.8%
FY 08-09	2.3%	2.3%	2.3%	2.3%	2.3%
FY 09-10	1.6%	1.6%	1.6%	1.6%	1.6%
FY 10-11	1.8%	1.8%	1.8%	1.8%	1.8%

¹ Actual

² Includes actuals for July 2005 through September 2005 and preliminary actual for October 2005

³ Includes actuals for July 2005 through January 2006 and preliminary actual for February 2006