

CRIMINAL JUSTICE TRENDS



**Presented at the
Criminal Justice Estimating Conference**

Held December 15, 2023

Note: Data presented for FY 2019-20, FY 2020-21, FY 21-22, and FY 22-23 has been impacted by the effects of Coronavirus. Trends incorporating these fiscal years should be interpreted with caution.

(Web Site: <http://edr.state.fl.us>)

Table of Contents

Criminal Justice Trends	i
Accuracy of the July 28, 2023 Forecast	
Monitoring Admissions and Population from July 28, 2023 CJEC.....	1
Components of Admission Errors	2
Crime	
Reported Crime	3
Reported Crime --Violent and Non-Violent Offenses.....	4
Uniform Crime Report -- Recent Trends.....	5
Crime Rate	6
Total Arrests	7
Arrests by Offense.....	8
Judicial System	
Felony Filings	9
Felony Filings by Type.....	10
Guilty Dispositions	12
Guilty Dispositions by Type of Offense.....	13
Recent Trends in Filings and Guilty Dispositions.....	15
Percent of Guilty Dispositions Imprisoned	16
Criminal Justice System Measures	17
Prison Admissions	
Admissions to Prison by Calendar Year.....	23
New Commitments to Prison by Fiscal Year	24
New Commitments to Prison by Calendar Year	25
Conditional and Control Release Violators without New Sentences.....	26
Average Sentence Length of New Commitments	27
Recent Sentence Length Trends	29
Sentence Length Distribution of New Commitments.....	30
Year-and-a-Day New Commitments	31
Year-and-a-Day New Commitments as Percent of Total.....	32
Year-and-a-Day New Commitments by County	33
Short sentences: Hillsborough and Pinellas Counties.....	34
New Commitment Detail by County	35
Population, New Commitments, and Year-and-a-Day Sentences	37
New Commitments by Primary Offense	39

Primary Offense of Year-and-a-Day Commitments	41
Third Degree Felons as Percent of New Commitments.....	43
Offenders Sentenced to Prison under 10-20-Life	44

Other Trends

County Jail Average Daily Population	46
Sentenced Felons in County Jails as Percent of Total Jail Population	48
Offenders on Active Supervision.....	49
Offenders with Life and Death Sentences in Prison on June 30.....	50
Prison Admissions and Population by Fiscal Year	52
Age Distribution of Prison Admissions by Fiscal Year.....	55
Fiscal Year 22-23 Prison Admissions: Top Five Offenses by Age Group.....	56
Age Distribution of the Prison Population on June 30.....	57

CRIMINAL JUSTICE TRENDS

➤ Accuracy of July 2023 forecast

- **Admissions** since the July conference totaled 11,453—265 less than projected for an error of -2.3 percent. (Page 1)
- The **end-of-month population** on November 30th was 85,928. This was -453 under the projected 86,381 (-0.5% error). (Page 1)
- Over 95.9 percent of July through November admissions were new commitments, and the percentage error was lower for this group than for all admissions. There were 10,990 new commitments, -250 less than projected (-2.2% error). The number of conditional and control release violators returned to prison with technical violations was -15 less than projected in July (-3.1% error). (Page 2)

➤ Crime

- The number of index offenses decreased in 2021 by 38,524 (-8.3%) from the 2020 level of 466,048. The 427,524 index crimes reported in 2021 was lower than reported in any year since 1973. This is the thirteenth year in a row in which index offenses declined. (Page 3)
- The number of **reported violent offenses** decreased by -3.0 percent in 2021. Violent offenses, which include murder, forcible sexual offenses, robbery, and aggravated assault, were 18.9 percent of all index offenses in 2021, up from 17.9 percent in 2020. Non-violent index offenses include burglary, larceny, and motor vehicle theft. These decreased by -9.4 percent in 2021. Note that drug related offenses are not included in index offenses. (Page 4)
- The crime rate fell from 2,158.0 in 2020 to 1,952.3 in 2021 (-9.5%). This decline is smaller than observed in 2020 when the crime rate fell by -15.5 percent. (Page 6)
- 2021 **arrests** increased by 6.8 percent, from 508,490 in 2020 to 543,138 in 2021. Arrests for index offenses declined by -9.8 percent in 2021 while arrests for non-index crimes increased by 10.9 percent. The largest percentage decrease in index offense arrests was in robbery (down -16.6%). The largest percentage increase in index offense arrests was in murder (up 3.1%). (Pages 5, 7-8)

➤ Filings and Guilty Dispositions

- After two years of declines, the number of **felony filings** increased by 0.5 percent in 2021 and 1.2 percent in 2022. (Pages 9 and 15)
- **Violent** offense filings increased by 1.3 percent in 2022 and **nonviolent** offense filings increased by 4.6 percent. During the same period, **drug** filings decreased by -3.2 percent. (Pages 10 and 11)
- The share of **violent** filings remained flat at 24.1 percent in 2022. The share of filings that are **nonviolent** increased from 43.3 percent in 2021 to 44.8 percent in 2022, while the share of **drug** filings decreased from 32.6 percent to 31.1 percent. (Pages 10 and 11)
- After two years of declines, the number of **guilty dispositions** increased by 36.8 percent in 2021 and 3.7 percent in 2022. (Pages 12 and 15)

- **Violent** offense guilty dispositions increased by 9.0 percent and **nonviolent** offense guilty dispositions increased by 4.1 percent in 2022 over 2021. During the same period, drug guilty dispositions decreased by -0.3 percent. (Pages 13 and 14)
- The share of guilty dispositions for **violent** offenses increased from 20.2 to 21.2 percent between 2021 and 2022. The share for **nonviolent** offenses increased and the share for **drug** offenses decreased. (Pages 13 and 14)
- The most current available data indicate that filings are increasing and guilty dispositions are remaining relatively flat. Filings for January through September 2023 obtained from the December 2023 data were 4.8 percent above the January through September 2022 filings obtained in January 2023. January through September 2023 guilty dispositions were roughly equal when compared to the same period in 2022. (Page 15)
- The percent of **guilty dispositions which are imprisoned** as new commitments has trended upward from less than 16 percent in the late nineties to 23.3 percent in 2009. The percentage fell for three years but then increased through 2014. Following four years of declines, the percentage increased slightly in 2019, then decreased to 14.7 percent in 2020. The percentage increased to 19.1 percent in 2021, then increased to 22.5 percent in 2022. (Page 16)

➤ **Prison Admissions**

- There were 27,870 **admissions to prison** in FY 22-23, up 7.6 percent from FY 21-22. This is the second fiscal year of increasing admissions after two years of declining admissions. (Page 23)
- **New commitments**, which are 96.0 percent of all admissions, totaled 26,747 in FY 22-23. This represented a 7.3 percent increase from the prior fiscal year, and a second fiscal year of increasing new commitments. New commitments decreased the prior two fiscal years. (Page 24)
- In looking at new commitments by calendar year, new commitments in 2022 increased by 22.1 percent from the previous calendar year. (Page 25)
- **Conditional and control release violators without new sentences** comprise the remaining 4.0 percent of total admissions. These admissions increased by 15.3 percent in FY 22-23. (Page 26)
- The average **sentence length** of new commitments increased to 68.7 months in FY 22-23, up from 63.3 months in FY 21-22. (Pages 27 and 28)
- In November 2023 the average **sentence length** of new commitments was 71.8 months (6.0 years). In November 2022 the average sentence length was 63.6 months (5.3 years). (Pages 28 and 29)
- While large numbers of new commitments are sentenced to prison with short sentences, there are often shifts in the **sentence length distribution**. Total new commitments increased by 1,816 (7.3%) between FY 21-22 and FY 22-23, with the largest increases being in year-and-a-day sentences and sentences greater than 102 months. In the first five months of FY 23-24, new commitments increased by 185 (1.7%), with the largest increases being in sentences greater than 102 months and sentences from 367 days to 15 months. (Page 30)
- The **number of year-and-a-day new commitments** increased by 14.4 percent in FY 22-23. This was the second straight fiscal year with increasing year-and-a-day new commitments. (Page 31)
- The **percentage of year-and-a-day sentences** increased for a second straight fiscal year. In FY 22-23, 7.4 percent of new commitments had year-and-a-day sentences, up from 6.9 percent in FY 21-22. (Page 32)

- While **year-and-a-day sentences** increased statewide in FY 22-23, the first five months of FY 23-24 are showing a decrease in these sentences, with -4.7 percent less compared to the same time period in FY 22-23. The largest level decrease was in Palm Beach County where these sentences decreased by -34.9 percent. Columbia (-81.1 percent) and Volusia (-16.0 percent) also experienced large decreases. Year-and-a-day sentences increased by more than 20 in two counties. (Page 33)
- There was a detectable increase in **year-and-a-month sentences** in **Hillsborough County** beginning November 2007. These increases were in conjunction with a large decline in **year-and-a-day sentences**. Hillsborough's percentage of total new commitments that are either year-and-a-day or year-and-a-month in length declined after October 2006, remained stable for a couple of years and trended upward before stabilizing once again. Data for the first five months of FY 23-24 suggest that year-and-a-day sentences represent the largest share of these short sentences and are seeing growth (38.3%). Data also suggest that Pinellas County started using the year-and-a-month sentence as an alternative to year-and-a-day sentences beginning in 2010. More recent data for Pinellas County indicate a possible declining trend in both sentencing types. (Page 34)
- **Growth in new commitments** is not uniform across the state. Comparing July through November of FY 22-23 and FY 23-24, 38 counties experienced positive growth in the number of new commitments and 29 counties showed negative growth. Comparing FY 21-22 and FY 22-23, 40 counties experienced positive growth in the number of new commitments and 27 counties showed negative growth. (Pages 35 and 36)
- Duval County had the largest **number of new commitments** in the first five months of FY 23-24 (861, 7.8% of total). New commitments from Polk accounted for 5.6 percent of the state total, down from 6.2% in the first five months of FY 22-23. Miami-Dade's new commitments accounted for 5.3 percent of the total (down from 5.8%). (Page 35)
- In the first five months of FY 23-24, Pinellas County led the state in the number of **increases in new commitments**, growing by 140 (37.7%) when compared to the same time period in FY 22-23. Hillsborough increased by 84 new commitments (19.0%), while Martin (113.0%) and Lee (22.8%) each increased by 61. (Page 36)
- Florida's three **largest counties**, Miami-Dade, Broward, and Hillsborough, accounted for 27.8 percent of the state population in 2023, but only 14.4 percent of the state's new commitments to prison in FY 22-23 and 24.4 percent of the year-and-a-day sentences. On the other hand, Bay County accounts for 0.8 percent of the state's total population, but accounts for 4.0 percent of new commitments. (Pages 37 and 38)
- Similarly, Hillsborough County accounts for 6.8 percent of the state's total population, but accounts for 8.8 percent of the year-and-a-day sentences, and though Volusia only represents 2.6 percent of the state population, it accounts for 15.3 percent of year-and-a-day sentences. Perhaps even more remarkable, of the 20 counties that have double-digit shares of their new commitments with year-and-a-day sentences, more than half of them have population shares of less than three-quarters of one percent. (Pages 37 and 38)
- The 1.7 percent increase in new commitments in the first five months of FY 23-24 was distributed across most **offense groups**, with percent change ranging from 1.0% ("**Violent, Other**") to 12.9% ("**Murder/Manslaughter**"). A majority of offense groups also saw increases in average sentence length, with "**Murder/Manslaughter**" offenses increasing by over 2 months in sentence length, and "**Sexual/Lewd Behavior**" increasing by over 1 1/2 months. Overall, these increases resulted in all new commitments having an increase of less than a month in average sentence length. (Page 39)
- Increases in new commitments in the "**Murder/Manslaughter**" category were distributed across many offenses, with the largest increase being in "**2nd Degree Murder, Dangerous Act**," which increased by

29 (13.4%) between the first five months of FY 22-23 and FY 23-24. “**Homicide Manslaughter Culpable Negligence**” also increased by 27 (42.2%). (Page 40)

- Unlike new commitments as a whole, **year-and-a-day sentences** decreased between the first five months of FY 22-23 and FY 23-24. The category with the largest decrease was “**Drugs**,” with 58 fewer commitments (-21.5%). (Page 41)
- New commitments with **year-and-a-day sentences** have a wide variety of offenses. In the first five months of FY 23-24, “**Possession of a firearm etc. by convicted felon**” and “**Possess methamphetamine**” were the most common primary offenses. These two offenses accounted for 16.2 percent of the total year-and-a-day new commitments (down from 19.0% in the first five months of FY 22-23). (Page 42)
- The **percentage of new commitments sentenced for third degree felonies** increased from 41.2 percent in FY 21-22 to 41.5 percent in FY 22-23. (Page 43)
- The number of offenders sentenced to prison under **10-20-Life** increased in FY 22-23 with 1,534 offenders sentenced under these provisions receiving mandatory prison terms. Of these offenders, 13.5 percent received a sentence of at least 25 years in length, up from 12.3 percent in FY 21-22. (Pages 44 and 45)
- The total affected prison population under 10-20-Life has increased for the last two fiscal years after decreasing over the prior two years. On June 30, 2023, there were 12,242 offenders who had received a mandatory prison term under this statute in Florida’s prisons. This represented 14.4 percent of Florida’s prison population on that date. (Pages 44 and 45)

➤ COUNTY JAILS

- **Average daily population** in county jails declined with the end of zero tolerance policies. The adjusted June 2023 average daily population (ADP) of 53,894 was -0.7 percent lower than the adjusted June 30, 2022 ADP of 54,252. However, at the peak of zero tolerance, the ADP exceeded 66,000 (July 2007). (Page 46)
- The **adjusted average daily population** has been below 60,000 since December 2009. (Page 47)
- In FY 18-19, an average of 17.6 percent of the **offenders in county jail sentenced for a felony**. In FY 19-20, the percentage decreased to an average of 15.7 percent of the **offenders in county jail sentenced for a felony**. In FY 20-21, the percentage continued to decrease to an average of 12.4 percent of the **offenders in county jail sentenced for a felony**. In FY 21-22, the percentage increased to an average of 13.7 percent of the **offenders in county jail sentenced for a felony**. In FY 22-23, the percentage decreased to an average of 12.2 percent of the **offenders in county jail sentenced for a felony**. For the first four months of FY 23-24, the percentage increased to an average of 12.4 percent of the **offenders in county jail sentenced for a felony**. (Page 48)

➤ OTHER TRENDS

- After increasing from 112,529 on June 30, 2006 to 119,216 in June 2008, the number of offenders on active supervision fell over the next three years to 113,622 in June 2011. The number on active supervision grew in 2012, but then declined for another nine years and was 84,526 on June 30, 2021. It grew to 86,801 on June 30, 2022, then decreased to 84,034 on June 30, 2023 (down -3.2% from the prior year). (Page 49)
- The number of offenders with either a life or a death sentence grew for thirty-one years increasing from 4,549 in 1990 to 13,951 in 2020. This population saw its first decline in 2021, decreasing to 13,819. In

2022, it increased to 13,889, and increased to 14,174 in 2023. In 1990, 10.6 percent of inmates were serving a life or death sentence on June 30. In 2023, this percentage had increased to 16.6 percent. (Page 50)

- The percent of offenders with sentences for life, death, or within the purview of 10-20-Life, has risen over the years. As of June 30, 2023, 28.2 percent of the prison population was made up of offenders with one of these sentences. (Page 51)
- The prison population on June 30, 2023 was 85,174, an increase of 3.7 percent from June 30, 2022. (Pages 52 and 54)
- The number of **prison inmates per 100,000 Florida population** rose in FY 22-23 to 376.3. This is the second year in which the incarceration rate increased after eleven years of declining numbers. In the prior 30 years, the incarceration rate had grown from 202.3 (in FY 79-80) to 543.7 (in FY 09-10). This rate had remained relatively flat between FY 94-95 and FY 01-02, but had risen each year between FY 02-03 and FY 09-10. (Pages 52 and 53)
- The **age distribution of prison admissions** has changed significantly since FY 99-00. While the percentage of 18 to 24 year olds has declined, the percentage of those older than 50 has grown steadily. However, there have been shifts for both in recent years. After a year where percentage of prison admissions remained flat for 18 to 24 year olds and declined for 50-59 year olds, both have returned to prior historical trends in FY 21-22 and FY 22-23, with the percentage of 18 to 24 year olds decreasing, and the percentage of 50-59 year olds increasing. Additionally, the percentage of 35 to 49 year olds continues to surpass the percentage of 25 to 34 year olds. (Page 55)
- The **top five offenses by age group** varied considerably across admissions in FY 22-23, with several top crimes for older age groups connected to prior criminal history. (Page 56)
- The **age distribution of the prison population** has also changed significantly since June 30, 2000. While the percentage of 18 to 24 year olds has declined, the percentage of those older than 50 has grown steadily, with inmates aged 50 to 59 and inmates aged 60+ now making up a greater share of the prison population than 18 to 24 year olds. Furthermore, after staying relatively flat for a decade, the percentage of those 25 to 34 has now experienced a steady decline over several years. (Page 57)

**MONITORING PRISON ADMISSIONS TO THE DEPARTMENT OF CORRECTIONS
SINCE THE CRIMINAL JUSTICE ESTIMATING CONFERENCE HELD 7/28/2023**

MONTH	ADMISSIONS ESTIMATE	ACTUAL	MONTHLY OVER/ (UNDER)	CUMULATIVE OVER/ (UNDER)
July 2023	2,281	2,184	-97	-97
August 2023	2,370	1,979	-391	-488
September 2023	2,353	2,539	186	-302
October 2023	2,213	2,494	281	-21
November 2023*	2,501	2,257	-244	-265
Total	11,718	11,453	% Error:	-2.3%

* Preliminary actual

**MONITORING PRISON POPULATION IN THE DEPARTMENT OF CORRECTIONS
SINCE THE CRIMINAL JUSTICE ESTIMATING CONFERENCE HELD 7/28/2023**

MONTH	POPULATION ESTIMATE	ACTUAL	CUMULATIVE OVER/ (UNDER)
July 2023	85,345	85,172	-173
August 2023	85,663	84,953	-710
September 2023	85,874	85,308	-566
October 2023	85,930	85,711	-219
November 2023	86,381	85,928	-453
	-0.5%	Error	

COMPONENTS OF ADMISSION ERRORS SINCE JULY 28, 2023 CJEC

ALL ADMISSIONS

	July 2023 CJEC	Actual	Diff	Cumulative difference
July 2023	2,281	2,184	(97)	(97)
August 2023	2,370	1,979	(391)	(488)
September 2023	2,353	2,539	186	(302)
October 2023	2,213	2,494	281	(21)
November 2023	2,501	2,257	(244)	(265)
Total	11,718	11,453	(265)	

-2.3% error

NEW COMMITMENTS

	July 2023 CJEC	Actual	Diff	Cumulative difference
July 2023	2,180	2,089	(91)	(91)
August 2023	2,268	1,899	(369)	(460)
September 2023	2,263	2,431	168	(292)
October 2023	2,111	2,407	296	4
November 2023	2,418	2,164	(254)	(250)
Total	11,240	10,990	(250)	

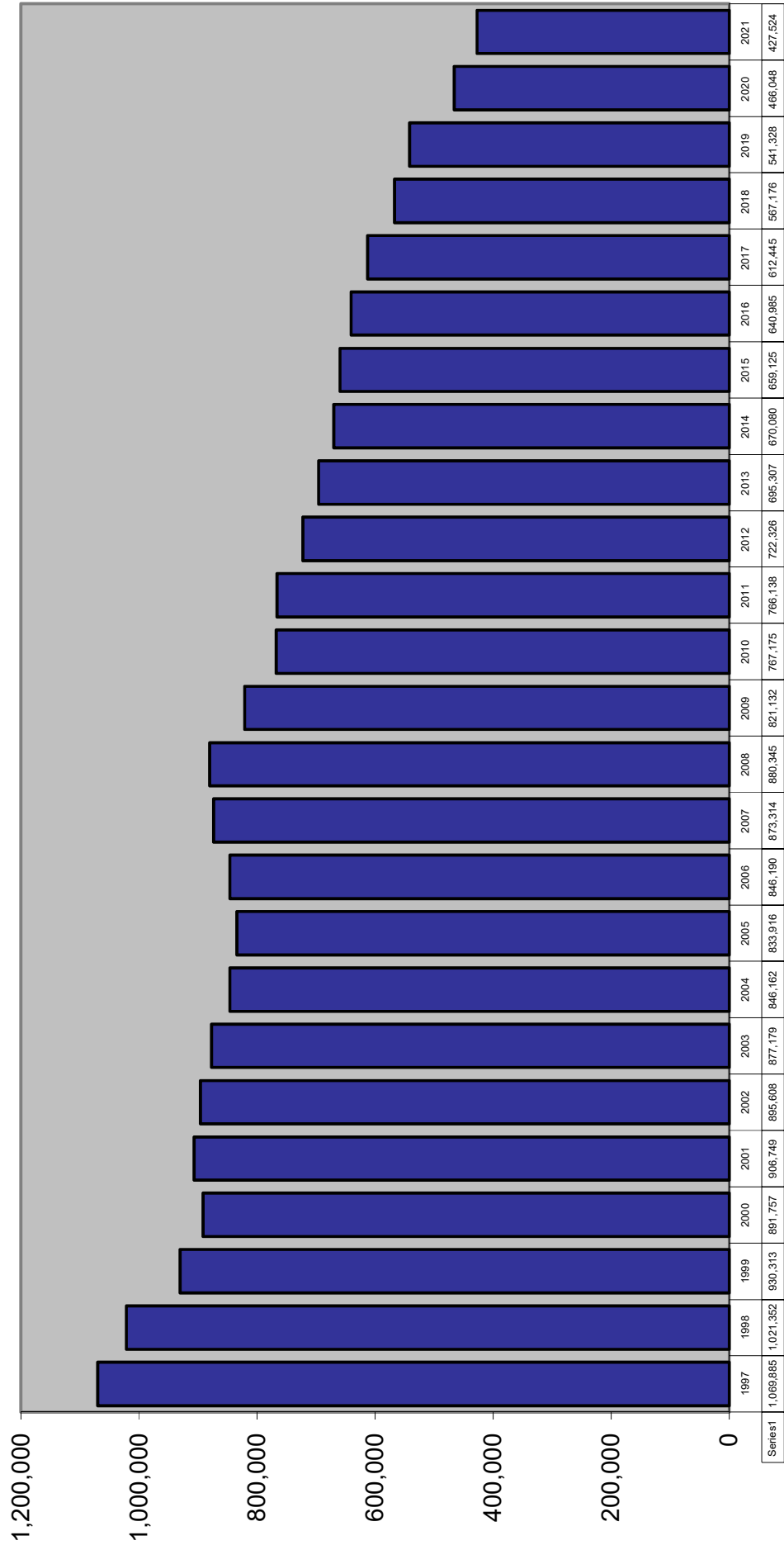
-2.2% error

CONDITIONAL AND CONTROL RELEASE OFFENDERS RETURNED WITH TECHNICAL VIOLATIONS

	July 2023 CJEC	Actual	Diff	Cumulative difference
July 2023	101	95	(6)	(6)
August 2023	102	80	(22)	(28)
September 2023	90	108	18	(10)
October 2023	102	87	(15)	(25)
November 2023	83	93	10	(15)
Total	478	463	(15)	

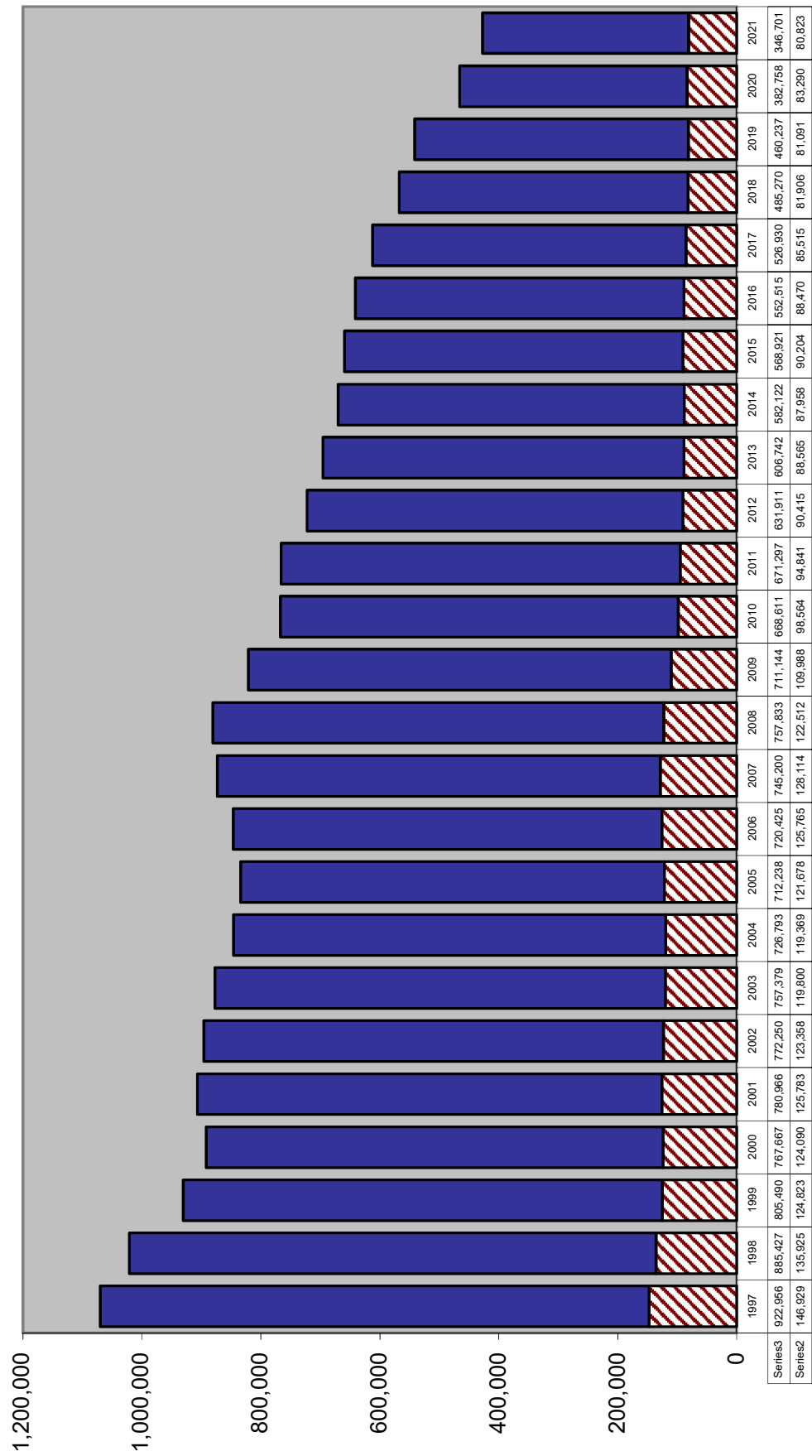
-3.1% error

REPORTED CRIME (All Index Offenses)



REPORTED CRIME

Violent and Nonviolent Index Offenses



Uniform Crime Report

TOTAL INDEX CRIMES

		Change from prior year
2012	722,326	-5.7%
2013	695,307	-3.7%
2014	670,080	-3.6%
2015	659,125	-1.6%
2016	640,985	-2.8%
2017	612,445	-4.5%
2018	567,176	-7.4%
2019	541,328	-4.6%
2020	466,048	-13.9%
2021	427,524	-8.3%

Uniform Crime Report

VIOLENT INDEX CRIMES

		Change from prior year
2012	90,415	-4.7%
2013	88,565	-2.0%
2014	87,958	-0.7%
2015	90,204	2.6%
2016	88,470	-1.9%
2017	85,515	-3.3%
2018	81,906	-4.2%
2019	81,091	-1.0%
2020	83,290	2.7%
2021	80,823	-3.0%

NON-VIOLENT INDEX CRIMES

		Change from prior year
2012	631,911	-5.9%
2013	606,742	-4.0%
2014	582,122	-4.1%
2015	568,921	-2.3%
2016	552,515	-2.9%
2017	526,930	-4.6%
2018	485,270	-7.9%
2019	460,237	-5.2%
2020	382,758	-16.8%
2021	346,701	-9.4%

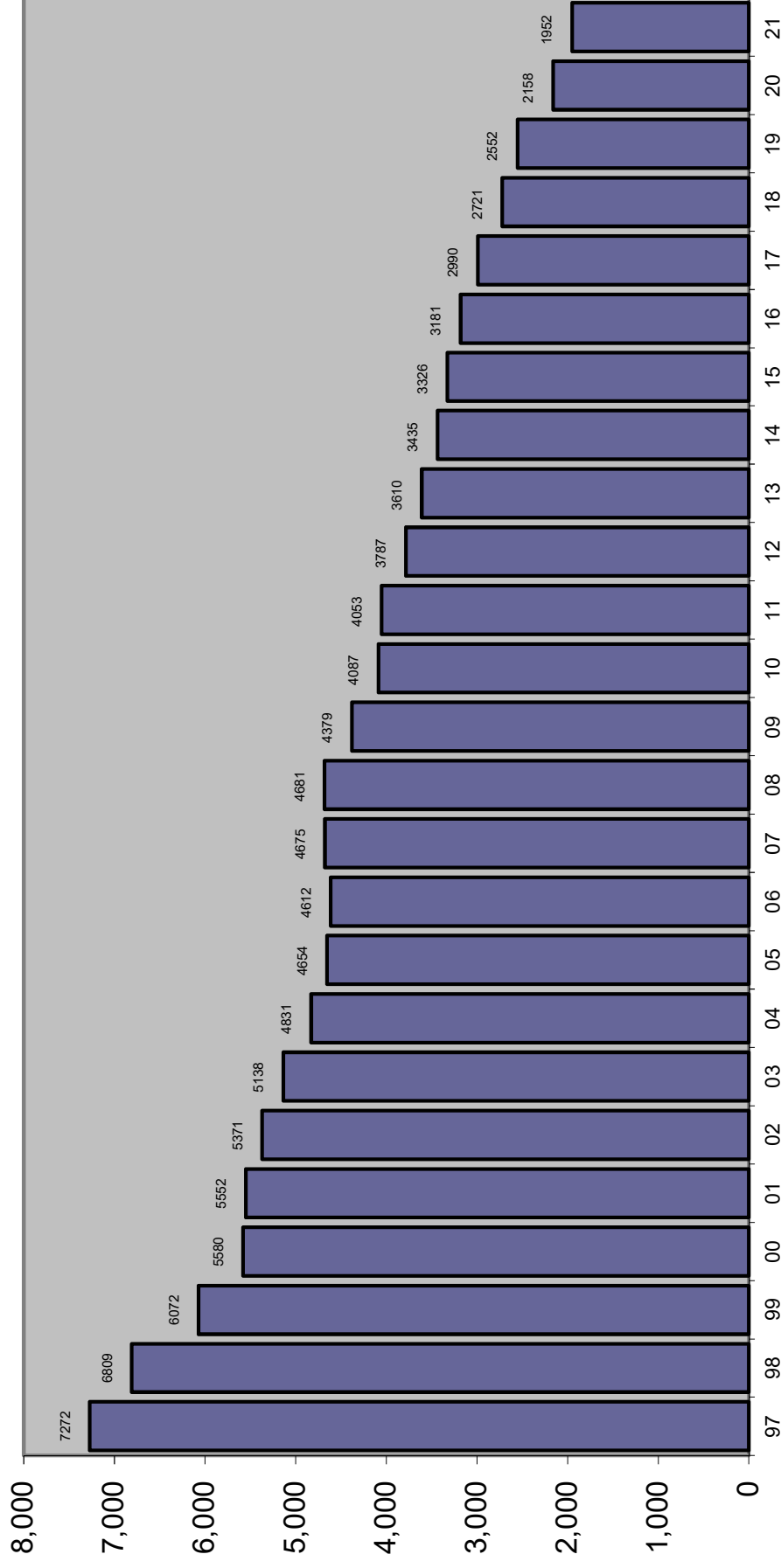
ARRESTS

		Change from prior year
2012	960,446	0.8%
2013	912,552	-5.0%
2014	867,084	-5.0%
2015	773,174	-10.8%
2016	726,491	-6.0%
2017	711,831	-2.0%
2018	718,754	1.0%
2019	679,221	-5.5%
2020	508,490	-25.1%
2021	543,138	6.8%

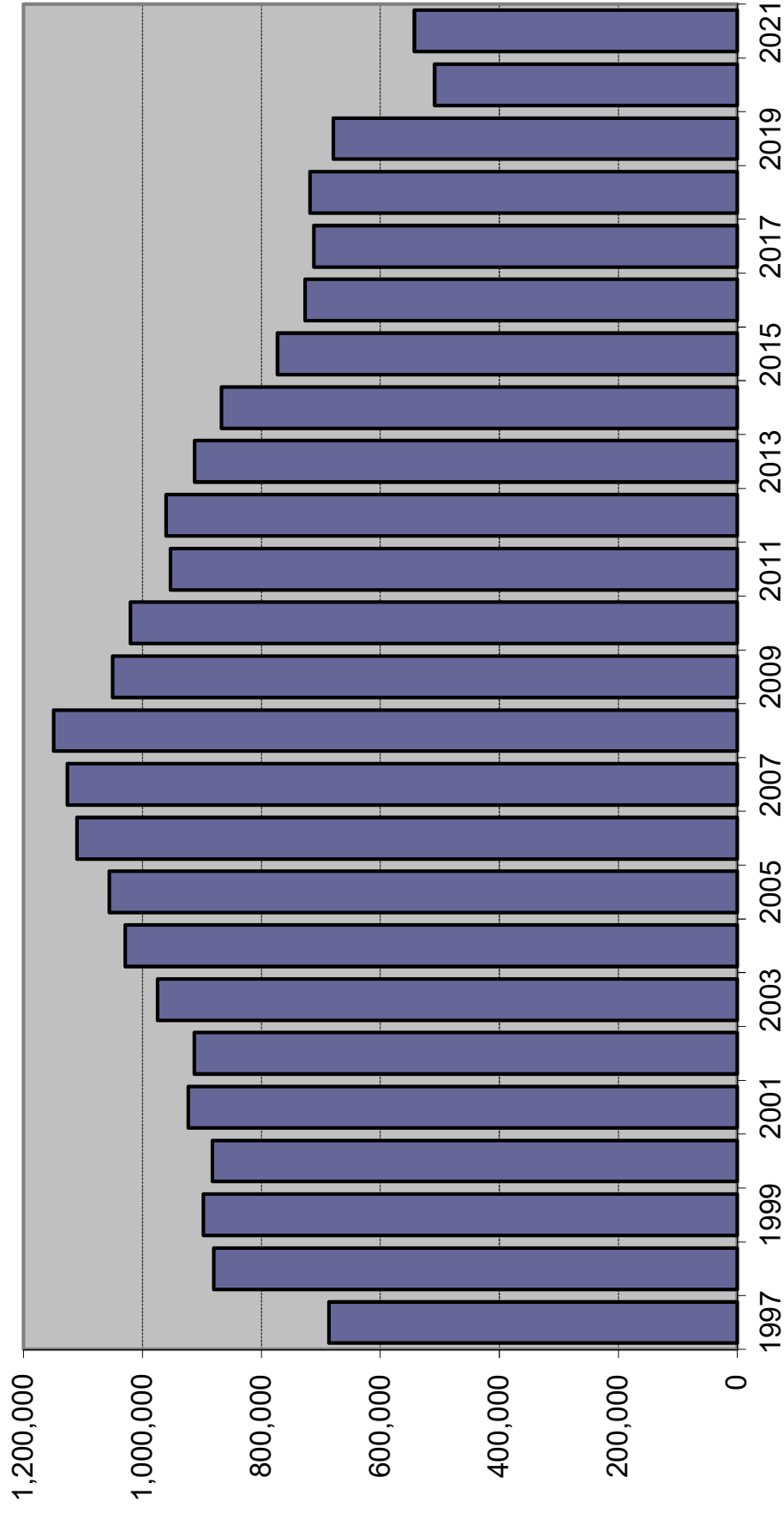
Source: Florida Department of Law Enforcement, "Crime in Florida", various years.

CRIME RATE

Index Crimes per 100,000 Population



TOTAL ARRESTS



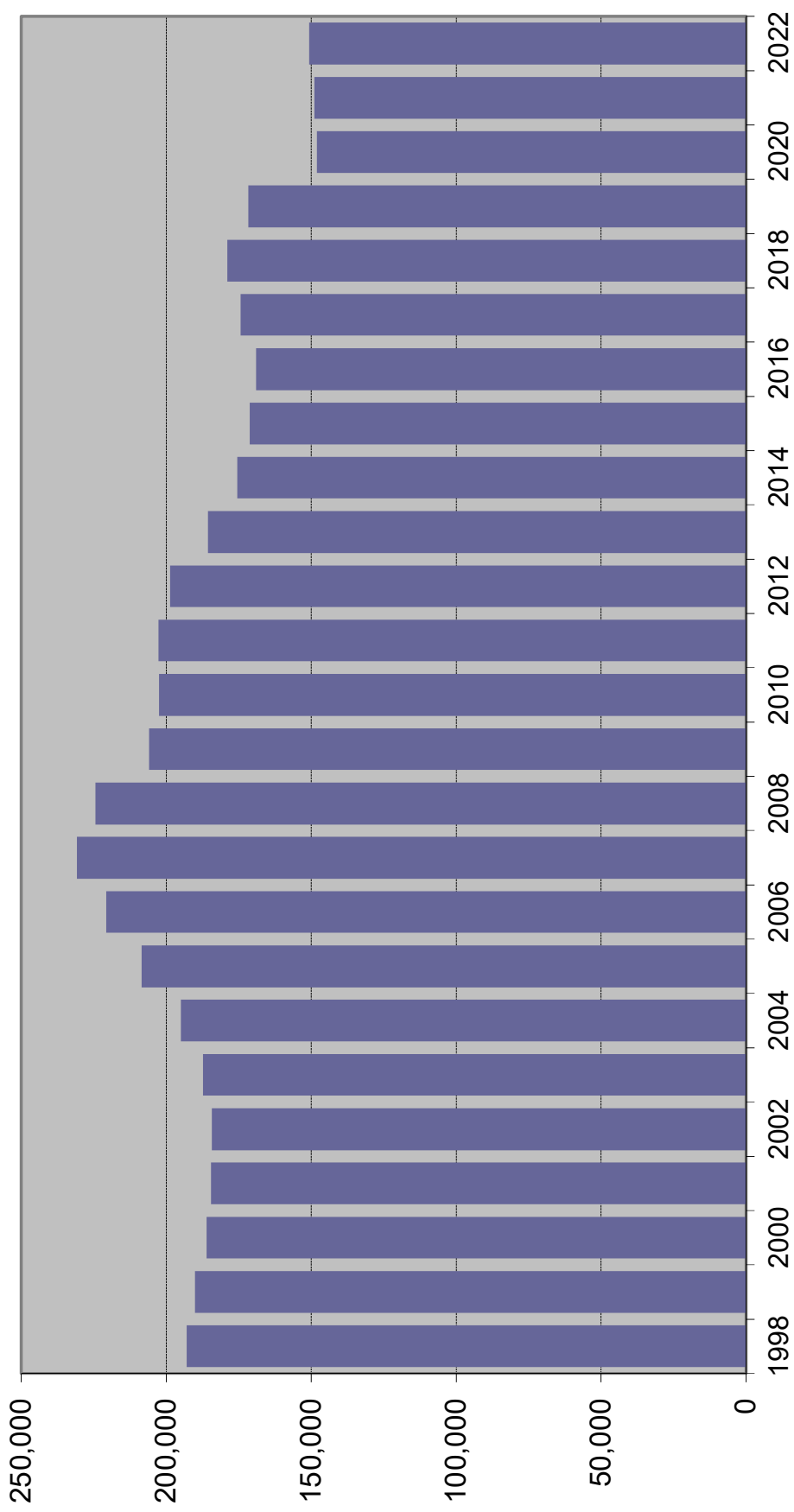
Source of data changed in 1996 to fingerprint cards and in 1998 to aggregate reports from Law Enforcement Agencies.

ARRESTS

Index Offenses	2019	% Change	2020	% Change	2021	% Change
Murder	787	10.8%	844	7.2%	870	3.1%
Forcible Sex Offenses	1,765	-9.0%	1,817	2.9%	1,777	-2.2%
Robbery	6,006	3.7%	5,485	-8.7%	4,572	-16.6%
Aggravated Assault	24,607	-4.6%	25,508	3.7%	25,848	1.3%
Burglary	13,560	-8.6%	12,584	-7.2%	11,125	-11.6%
Larceny	64,088	-3.8%	46,565	-27.3%	39,021	-16.2%
Motor Vehicle Theft	7,779	-6.7%	7,177	-7.7%	6,986	-2.7%
Total Index Offenses	118,592	-4.4%	99,980	-15.7%	90,199	-9.8%
Part II						
Manslaughter	121	28.7%	142	17.4%	113	-20.4%
Kidnap/Abduction	696	-10.7%	642	-7.8%	691	7.6%
Arson	252	1.2%	257	2.0%	303	17.9%
Simple Assault	77,981	-0.5%	73,358	-5.9%	76,711	4.6%
Drug Arrests	110,152	-18.2%	68,661	-37.7%	78,437	14.2%
Bribery	45	55.2%	49	8.9%	39	-20.4%
Embezzlement	1,047	-3.6%	650	-37.9%	662	1.8%
Fraud	11,227	-0.6%	8,256	-26.5%	8,222	-0.4%
Counterfeit/Forgery	1,808	-10.6%	1,211	-33.0%	1,091	-9.9%
Extortion/Blackmail	91	7.1%	71	-22.0%	79	11.3%
Intimidation	2,809	10.9%	2,185	-22.2%	2,577	17.9%
Prostitution/commercialized sex	2,049	6.2%	940	-54.1%	1,077	14.6%
Non-Forcible Sex Offenses	3,209	11.8%	2,924	-8.9%	3,273	11.9%
Stolen Property	1,512	-9.5%	1,318	-12.8%	1,354	2.7%
Driving Under Influence	33,873	5.2%	29,115	-14.0%	33,750	15.9%
Destruction/Vandalism	5,956	-3.4%	5,818	-2.3%	6,015	3.4%
Gambling	107	-13.0%	110	2.8%	49	-55.5%
Weapons Violations	6,552	-1.3%	7,533	15.0%	9,893	31.3%
Liquor Law Violations	10,774	1.7%	5,996	-44.3%	8,056	34.4%
Miscellaneous	290,368	-3.6%	199,274	-31.4%	220,547	10.7%
Total Part II	560,629	-5.7%	408,510	-27.1%	452,939	10.9%
ALL OFFENSES	679,221	-5.5%	508,490	-25.1%	543,138	6.8%

Source: Florida Department of Law Enforcement, Uniform Crime Reports, various years

FELONY FILINGS



FELONY FILINGS BY OFFENSE TYPE

Year	Violent ¹		Nonviolent ²		Drug ³		Total
1998	45,227	23.4%	86,874	45.0%	60,919	31.6%	193,020
1999	45,989	24.2%	83,174	43.8%	60,888	32.0%	190,051
2000	44,589	24.0%	84,970	45.7%	56,527	30.4%	186,086
2001	42,611	23.1%	85,689	46.4%	56,271	30.5%	184,571
2002	41,353	22.4%	87,134	47.3%	55,808	30.3%	184,295
2003	39,041	20.8%	90,094	48.1%	58,244	31.1%	187,379
2004	38,409	19.7%	92,730	47.6%	63,724	32.7%	194,863
2005	38,337	18.4%	100,457	48.2%	69,746	33.4%	208,540
2006	39,499	17.9%	107,295	48.6%	73,963	33.5%	220,757
2007	41,514	18.0%	115,620	50.1%	73,688	31.9%	230,822
2008	40,978	18.3%	113,932	50.8%	69,568	31.0%	224,478
2009	40,347	19.6%	102,577	49.8%	62,910	30.6%	205,834
2010	39,160	19.3%	102,443	50.6%	60,866	30.1%	202,469
2011	38,875	19.2%	107,430	53.0%	56,340	27.8%	202,645
2012	39,122	19.7%	107,677	54.2%	51,795	26.1%	198,594
2013	35,311	19.0%	100,483	54.1%	49,860	26.9%	185,654
2014	34,361	19.6%	94,060	53.6%	47,057	26.8%	175,478
2015	34,553	20.2%	90,437	52.8%	46,166	27.0%	171,156
2016	33,674	19.9%	88,039	52.1%	47,336	28.0%	169,049
2017	34,562	19.8%	87,275	50.1%	52,517	30.1%	174,354
2018	35,263	19.7%	84,525	47.2%	59,137	33.1%	178,925
2019	35,705	20.8%	80,663	47.0%	55,299	32.2%	171,667
2020	35,924	24.3%	67,451	45.6%	44,682	30.2%	148,057
2021	35,892	24.1%	64,497	43.3%	48,465	32.6%	148,854
2022	36,342	24.1%	67,450	44.8%	46,894	31.1%	150,686

Note: Filings for minimum-mandatory offenses prior to 1992 are excluded. The minimum-mandatory classification for filings was discontinued 7/1/91.

¹ Summary Reporting System categories of capital murder, non-capital murder, sexual offenses, robbery, and other crimes against persons.

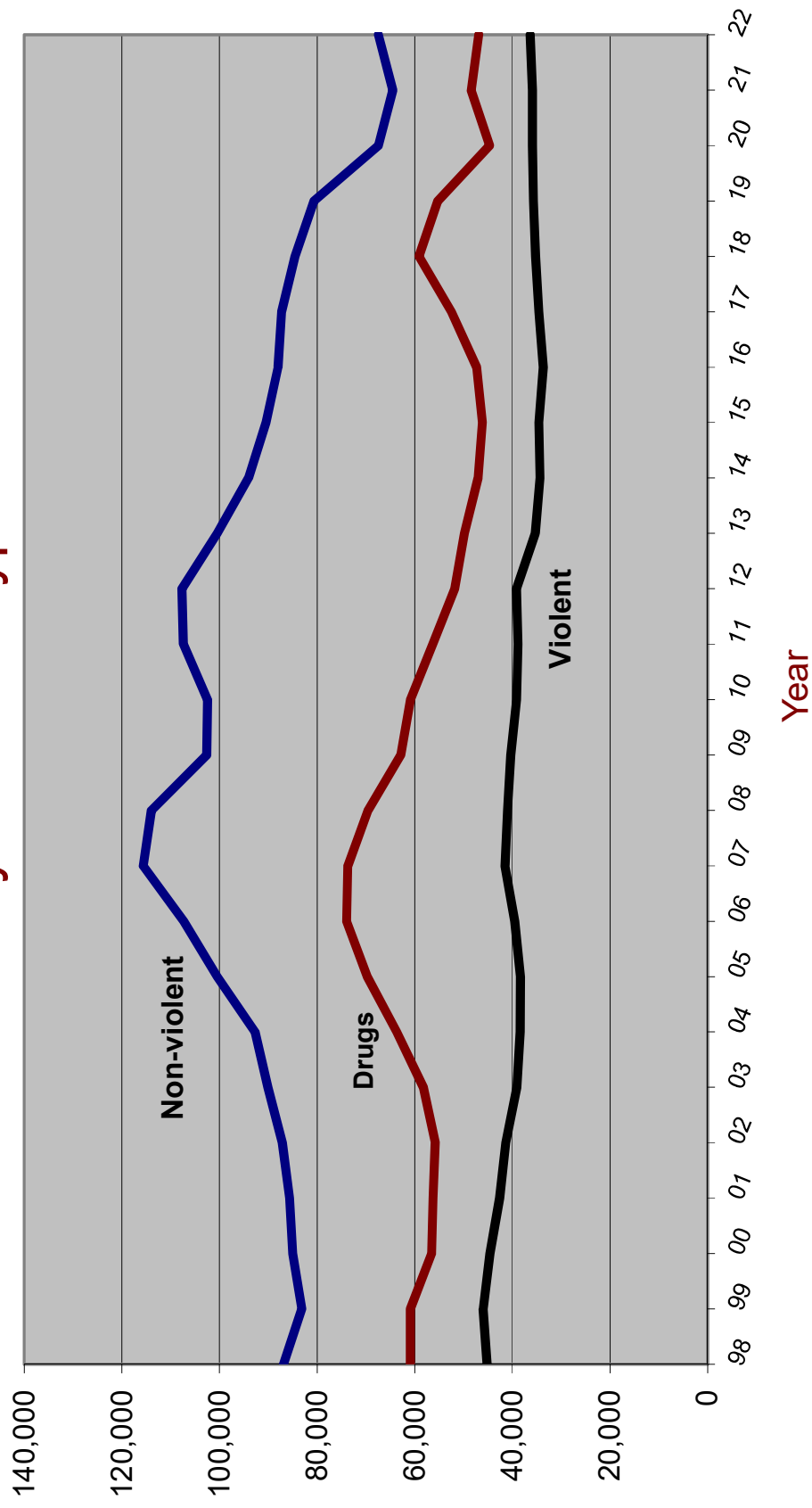
² Summary Reporting System categories of burglary, theft, forgery and fraud, worthless checks, other crimes against property and all other felonies.

³ Summary Reporting System drug category.

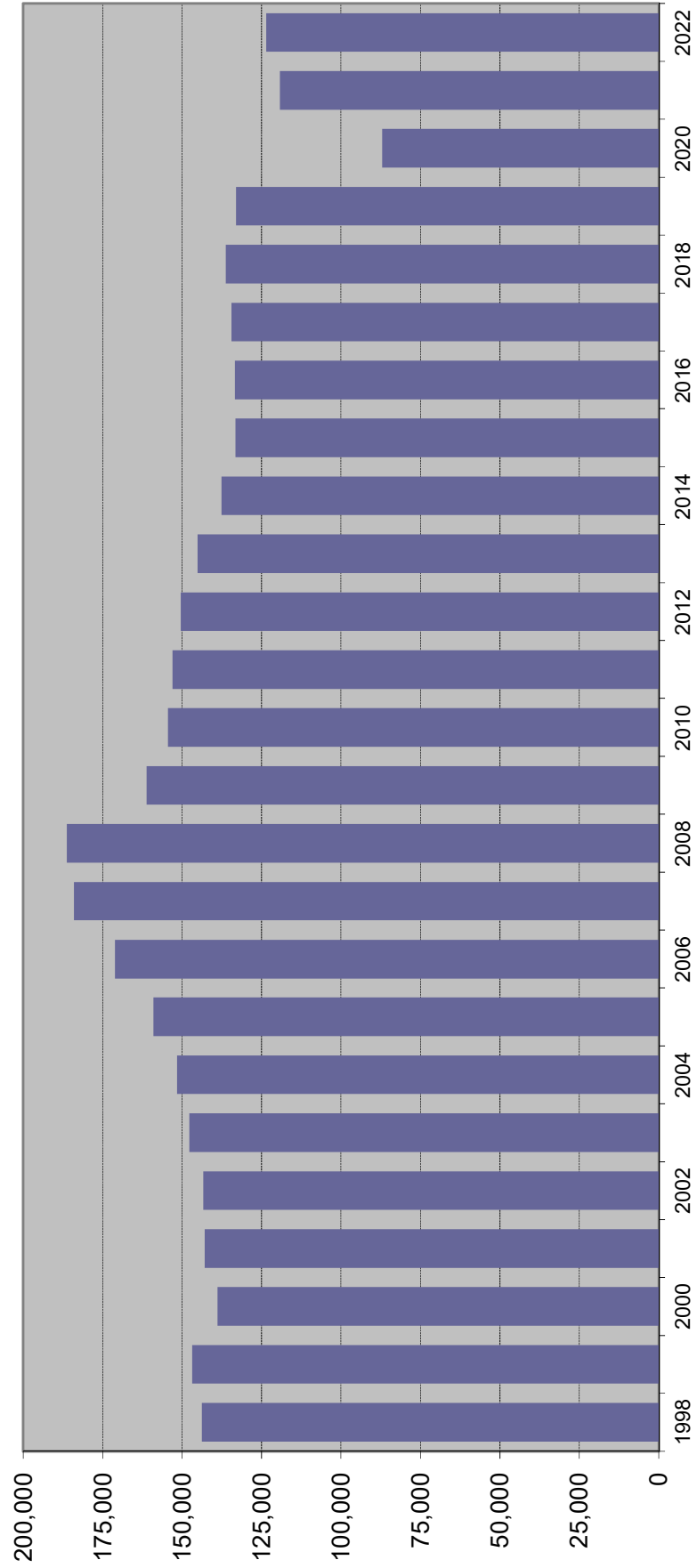
Data Source: Office of State Courts Administrator, Summary Reporting System, Update run date: 12/23.

FELONY FILINGS

By Offense Type



GUILTY DISPOSITIONS



GUILTY DISPOSITIONS BY OFFENSE TYPE

Year	Violent ¹		Nonviolent ²		Drug ³		Total
1998	31,065	21.7%	64,833	45.2%	47,557	33.2%	143,455
1999	31,622	21.5%	66,824	45.5%	48,436	33.0%	146,882
2000	31,259	22.5%	63,235	45.5%	44,390	32.0%	138,884
2001	30,393	21.3%	67,502	47.2%	45,012	31.5%	142,907
2002	29,891	20.9%	68,907	48.1%	44,455	31.0%	143,253
2003	28,256	19.1%	73,039	49.4%	46,412	31.4%	147,707
2004	26,718	17.6%	74,606	49.2%	50,220	33.1%	151,544
2005	26,201	16.5%	78,734	49.5%	54,073	34.0%	159,008
2006	26,856	15.7%	85,704	50.1%	58,524	34.2%	171,084
2007	28,481	15.5%	94,797	51.5%	60,715	33.0%	183,993
2008	29,805	16.0%	98,355	52.8%	58,105	31.2%	186,265
2009	28,165	17.5%	84,483	52.4%	48,498	30.1%	161,146
2010	26,729	17.3%	82,453	53.4%	45,220	29.3%	154,402
2011	26,266	17.2%	84,928	55.5%	41,873	27.4%	153,067
2012	26,202	17.4%	84,198	56.0%	40,012	26.6%	150,412
2013	25,625	17.7%	81,828	56.4%	37,690	26.0%	145,143
2014	24,199	17.6%	77,025	56.0%	36,402	26.4%	137,626
2015	23,683	17.8%	74,001	55.6%	35,520	26.7%	133,204
2016	24,099	18.1%	72,671	54.5%	36,552	27.4%	133,322
2017	23,658	17.6%	71,432	53.1%	39,332	29.3%	134,422
2018	23,686	17.4%	69,108	50.7%	43,463	31.9%	136,257
2019	23,565	17.7%	66,237	49.8%	43,292	32.5%	133,094
2020	16,287	18.7%	42,956	49.3%	27,835	32.0%	87,078
2021	24,084	20.2%	56,755	47.6%	38,326	32.2%	119,165
2022	26,246	21.2%	59,085	47.8%	38,198	30.9%	123,529

Note: Filings for minimum-mandatory offenses prior to 1992 are excluded. The minimum-mandatory classification for filings was discontinued 7/1/91.

¹ Summary Reporting System categories of capital murder, non-capital murder, sexual offenses, robbery, and other crimes against persons.

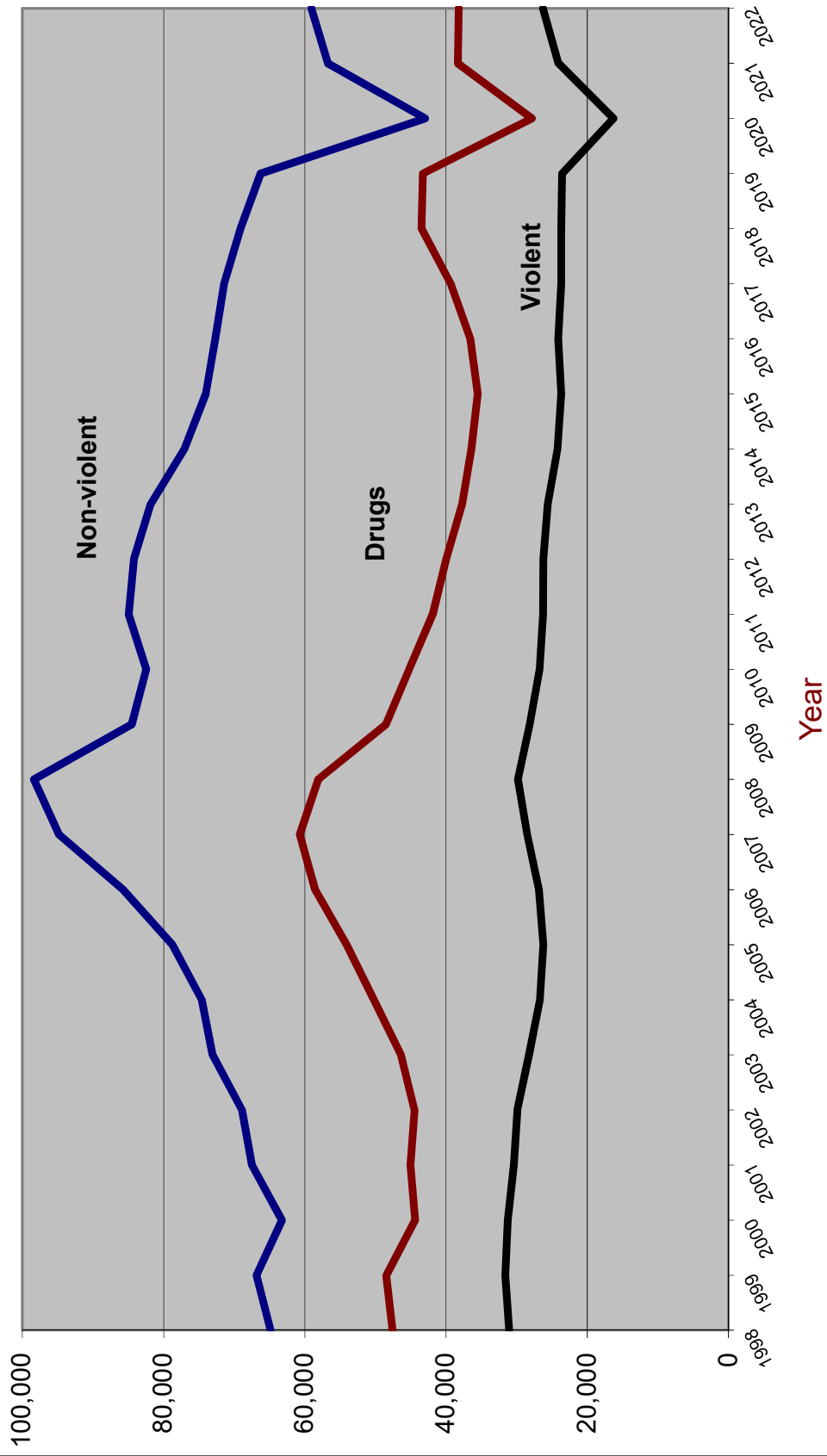
² Summary Reporting System categories of burglary, theft, forgery and fraud, worthless checks, other crimes against property and all other felonies.

³ Summary Reporting System drug category.

Data Source: Office of State Courts Administrator, Summary Reporting System, Update run date: 12/23

GUILTY DISPOSITIONS

By Offense Type



RECENT TRENDS IN FELONY FILINGS AND GUILTY DISPOSITIONS

Felony Filings			Guilty Dispositions	
	Number	Percent Change	Number	Percent Change
2000	186,086	-2.1%	138,884	-5.4%
2001	184,571	-0.8%	142,907	2.9%
2002	184,295	-0.1%	143,253	0.2%
2003	187,379	1.7%	147,707	3.1%
2004	194,863	4.0%	151,544	2.6%
2005	208,540	7.0%	159,008	4.9%
2006	220,757	5.9%	171,084	7.6%
2007	230,822	4.6%	183,993	7.5%
2008	224,478	-2.7%	186,265	1.2%
2009	205,834	-8.3%	161,146	-13.5%
2010	202,469	-1.6%	154,402	-4.2%
2011	202,645	0.1%	153,067	-0.9%
2012	198,594	-2.0%	150,412	-1.7%
2013	185,654	-6.5%	145,143	-3.5%
2014	175,478	-5.5%	137,626	-5.2%
2015	171,156	-2.5%	133,204	-3.2%
2016	169,049	-1.2%	133,322	0.1%
2017	174,354	3.1%	134,422	0.8%
2018	178,925	2.6%	136,257	1.4%
2019	171,667	-4.1%	133,094	-2.3%
2020	148,057	-13.8%	87,078	-34.6%
2021	148,854	0.5%	119,165	36.8%
2022	150,686	1.2%	123,529	3.7%
Jan-Sep 2021 ¹	114,805		88,990	
Jan-Sep 2022 ²	113,886	-0.8%	94,762	6.5%
Jan-Sep 2023 ³	119,331	4.8%	94,759	0.0%

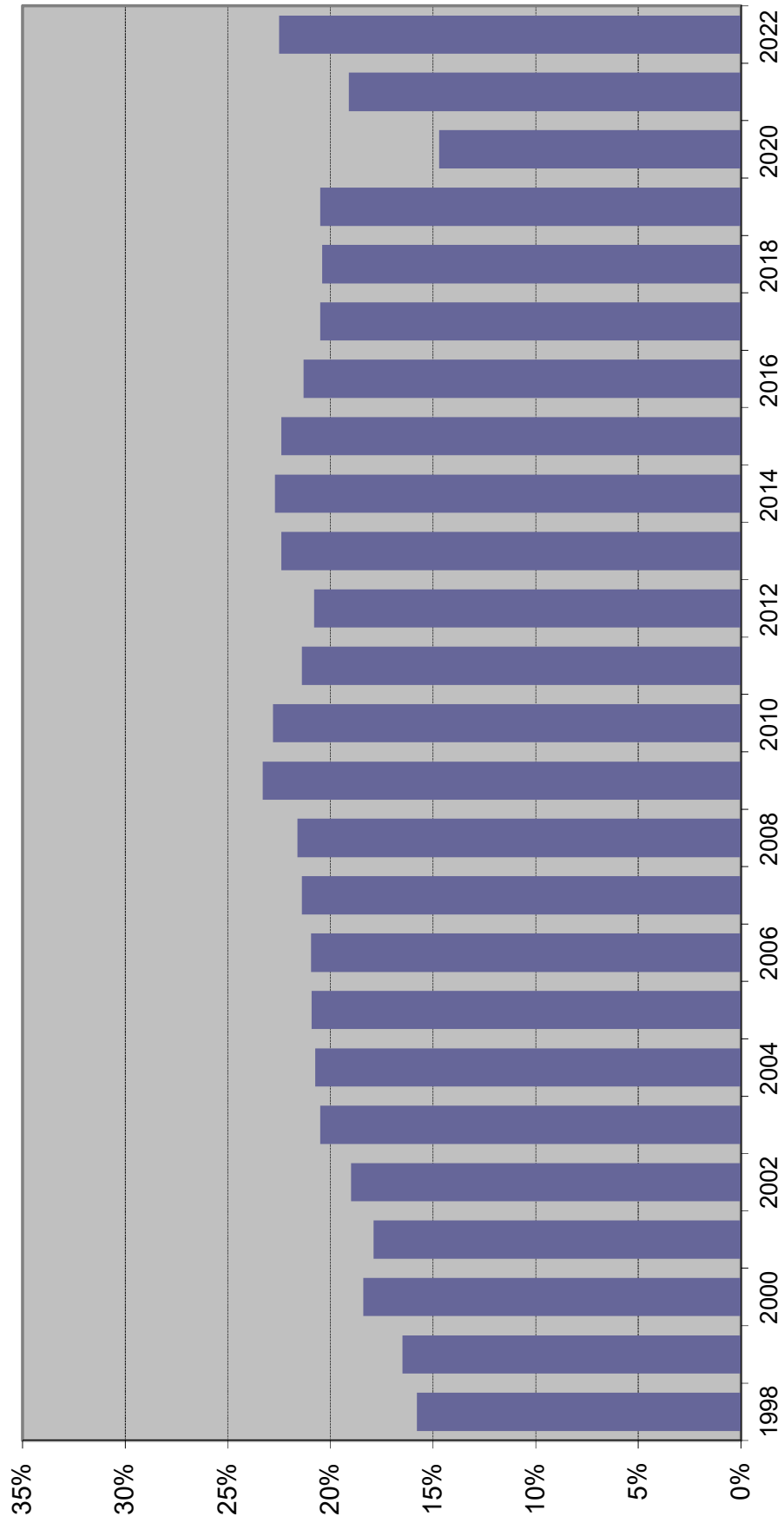
¹ From December 2021 SRS run

² From January 2023 SRS run

³ From December 2023 SRS run

Source: State Court Administrator, Summary Reporting System, (last updated with run done December 2023).

Percent of Guilty Dispositions Imprisoned



CRIMINAL JUSTICE SYSTEM MEASURES

	<u>1996</u>	<u>%</u> <u>Change</u>	<u>1997</u>	<u>%</u> <u>Change</u>	<u>1998</u>	<u>%</u> <u>Change</u>	<u>1999</u>	<u>%</u> <u>Change</u>	<u>2000</u>	<u>%</u> <u>Change</u>
REPORTED CRIMES (Part I, Index offenses)	1,075,698	-0.3%	1,069,885	-0.5%	1,021,352	-4.5%	930,313	-8.9%	891,757	-4.1%
Total Violent Offenses	147,425	-1.9%	146,929	-0.3%	135,925	-7.5%	124,823	-8.2%	124,090	-0.6%
CRIME RATE² (per 100,000 Pop)	7,464.1	-2.1%	7,271.7	-2.6%	6,808.8	-6.4%	6,071.7	-10.8%	5,579.6	-8.1%
ARRESTS										
Part I	NA	NA	NA	NA	198,948	NA	184,606	-7.2%	174,235	-5.6%
Part II	NA	NA	NA	NA	681,243	NA	713,073	4.7%	708,624	-0.6%
TOTAL	685,992	-5.5%	686,565	0.1%	880,191	28.2%	897,679	2.0%	882,859	-1.7%
FELONY FILINGS	177,687	8.2%	184,163	3.6%	192,942	4.8%	190,051	-1.5%	186,086	-2.1%
GUILTY DISPOSITIONS	132,665	3.5%	141,736	6.8%	143,761	1.4%	146,882	2.2%	138,884	-5.4%
GUILTIES AS PERCENT OF FILINGS	74.7%		77.0%		74.5%		77.3%		74.6%	
NEW COMMITMENTS TO PRISON	20,792	2.5%	21,829	5.0%	22,645	3.7%	24,273	7.2%	25,541	5.2%
% OF GUILTY DISPOSITIONS IMPRISONED	15.7%		15.4%		15.8%		16.5%		18.4%	
PRISON POPULATION ON JUNE 30	64,333	3.8%	64,713	0.6%	66,280	2.4%	68,599	3.5%	71,233	3.8%

CRIMINAL JUSTICE SYSTEM MEASURES

	<u>2001</u>	<u>%</u> <u>Change</u>	<u>2002</u>	<u>%</u> <u>Change</u>	<u>2003</u>	<u>%</u> <u>Change</u>	<u>2004</u>	<u>%</u> <u>Change</u>	<u>2005</u>	<u>%</u> <u>Change</u>
REPORTED CRIMES (Part I, Index offenses)										
Total Violent Offenses	906,749	1.7%	895,608	-1.2%	877,179	-2.1%	846,162	-3.5%	833,916	-1.4%
	125,783	1.4%	123,358	-1.9%	119,800	-2.9%	119,369	-0.4%	121,678	1.9%
CRIME RATE² (per 100,000 Pop)	5,552.1	-0.5%	5,371.1	-3.3%	5,138.3	-4.3%	4,830.6	-6.0%	4,654.0	-3.7%
ARRESTS										
Part I	184,967	6.2%	179,649	-2.9%	180,392	0.4%	174,641	-3.2%	170,929	-2.1%
Part II	738,165	4.2%	733,438	-0.6%	794,531	8.3%	854,359	7.5%	885,192	3.6%
TOTAL	923,132	4.6%	913,087	-1.1%	974,923	6.8%	1,029,000	5.5%	1,056,121	2.6%
FELONY FILINGS	184,571	-0.8%	184,295	-0.1%	187,379	1.7%	194,863	4.0%	208,540	7.0%
GUILTY DISPOSITIONS	142,907	2.9%	143,253	0.2%	147,707	3.1%	151,544	2.6%	159,008	4.9%
GUILTIES AS PERCENT OF FILINGS	77.4%		77.7%		78.8%		77.8%		76.2%	
NEW COMMITMENTS TO PRISON	25,571	0.1%	27,176	6.3%	30,340	11.6%	31,445	3.6%	33,249	5.7%
% OF GUILTY DISPOSITIONS IMPRISONED	17.9%		19.0%		20.5%		20.7%		20.9%	
PRISON POPULATION ON JUNE 30	72,007	1.1%	73,553	2.1%	77,316	5.1%	81,974	6.0%	84,901	3.6%

CRIMINAL JUSTICE SYSTEM MEASURES

	<u>2006</u>	<u>%</u> <u>Change</u>	<u>2007</u>	<u>%</u> <u>Change</u>	<u>2008</u>	<u>%</u> <u>Change</u>	<u>2009</u>	<u>%</u> <u>Change</u>	<u>2010</u>	<u>%</u> <u>Change</u>
REPORTED CRIMES (Part I, Index offenses)										
Total Violent Offenses	846,190	1.5%	873,314	3.2%	880,345	0.8%	821,132	-6.7%	767,175	-6.6%
	125,765	3.4%	128,114	1.9%	122,512	-4.4%	109,988	-10.2%	98,564	-10.4%
CRIME RATE² (per 100,000 Pop)	4,611.6	-0.9%	4,675.0	1.4%	4,680.9	0.1%	4,379.3	-6.4%	4,086.9	-6.7%
ARRESTS										
Part I	169,399	-0.9%	184,478	8.9%	200,532	8.7%	192,630	-3.9%	174,177	-9.6%
Part II	941,277	6.3%	942,046	0.1%	949,401	0.8%	857,299	-9.7%	846,320	-1.3%
TOTAL	1,110,676	5.2%	1,126,524	1.4%	1,149,933	2.1%	1,049,929	-8.7%	1,020,497	-2.8%
FELONY FILINGS	220,757	5.9%	230,822	4.6%	224,478	-2.7%	205,834	-8.3%	202,469	-1.6%
GUILTY DISPOSITIONS	171,084	7.6%	183,993	7.5%	186,265	1.2%	161,146	-13.5%	154,402	-4.2%
GUILTIES AS PERCENT OF FILINGS	77.5%		79.7%		83.0%		78.3%		76.3%	
NEW COMMITMENTS TO PRISON	35,724	7.4%	39,376	10.2%	40,274	2.3%	37,480	-6.9%	35,181	-6.1%
% OF GUILTY DISPOSITIONS IMPRISONED	20.9%		21.4%		21.6%		23.3%		22.8%	
PRISON POPULATION ON JUNE 30	88,576	4.3%	92,844	4.8%	98,192	5.8%	100,894	2.8%	102,232	1.3%

CRIMINAL JUSTICE SYSTEM MEASURES

	<u>2011</u>	<u>%</u> <u>Change</u>	<u>2012</u>	<u>%</u> <u>Change</u>	<u>2013</u>	<u>%</u> <u>Change</u>	<u>2014</u>	<u>%</u> <u>Change</u>	<u>2015</u>	<u>%</u> <u>Change</u>
REPORTED CRIMES (Part I, Index offenses)										
Total Violent Offenses	766,138	-0.1%	722,326	-5.7%	695,307	-3.7%	670,080	-3.6%	659,125	-1.6%
	94,841	-3.8%	90,415	-4.7%	88,565	-2.0%	87,958	-0.7%	90,204	2.6%
CRIME RATE (per 100,000 Pop)	4,052.6	-0.8%	3,786.9	-6.6%	3,610.2	-4.7%	3,435.0	-4.9%	3,326.4	-3.2%
ARRESTS										
Part I	169,863	-2.5%	165,210	-2.7%	162,015	-1.9%	157,326	-2.9%	152,054	-3.4%
Part II	782,811	-7.5%	795,236	1.6%	750,537	-5.6%	709,758	-5.4%	621,120	-12.5%
TOTAL	952,674	-6.6%	960,446	0.8%	912,552	-5.0%	867,084	-5.0%	773,174	-10.8%
FELONY FILINGS	202,645	0.1%	198,594	-2.0%	185,654	-6.5%	175,478	-5.5%	171,156	-2.5%
GUILTY DISPOSITIONS	153,067	-0.9%	150,412	-1.7%	145,143	-3.5%	137,626	-5.2%	133,204	-3.2%
GUILTIES AS PERCENT OF FILINGS	75.5%		75.7%		78.2%		78.4%		77.8%	
NEW COMMITMENTS TO PRISON	32,726	-7.0%	31,324	-4.3%	32,578	4.0%	31,194	-4.2%	29,849	-4.3%
% OF GUILTY DISPOSITIONS IMPRISONED	21.4%		20.8%		22.4%		22.7%		22.4%	
PRISON POPULATION ON JUNE 30	102,319	0.1%	100,527	-1.8%	100,884	0.4%	100,942	0.1%	100,050	-0.9%

CRIMINAL JUSTICE SYSTEM MEASURES

	<u>2016</u>	<u>%</u> <u>Change</u>	<u>2017</u>	<u>%</u> <u>Change</u>	<u>2018</u>	<u>%</u> <u>Change</u>	<u>2019</u>	<u>%</u> <u>Change</u>	<u>2020</u>	<u>%</u> <u>Change</u>
REPORTED CRIMES (Part I, Index offenses)										
Total Violent Offenses	640,985	-2.8%	612,445	-4.5%	567,176	-7.4%	541,328	-4.6%	466,048	-13.9%
	88,470	-1.9%	85,515	-3.3%	81,906	-4.2%	81,091	-1.0%	83,290	2.7%
CRIME RATE (per 100,000 Pop)	3,181.3	-4.4%	2,989.8	-6.0%	2,721.4	-9.0%	2,552.4	-6.2%	2,158.0	-15.5%
ARRESTS										
Part I	137,435	-9.6%	126,195	-8.2%	124,019	-1.7%	118,592	-4.4%	99,980	-15.7%
Part II	589,056	-5.2%	585,636	-0.6%	594,735	1.6%	560,629	-5.7%	408,510	-27.1%
TOTAL	726,491	-6.0%	711,831	-2.0%	718,754	1.0%	679,221	-5.5%	508,490	-25.1%
FELONY FILINGS	169,049	-1.2%	174,354	3.1%	178,925	2.6%	171,667	-4.1%	148,057	-13.8%
GUILTY DISPOSITIONS	133,322	0.1%	134,422	0.8%	136,257	1.4%	133,094	-2.3%	87,078	-34.6%
GUILTIES AS PERCENT OF FILINGS	78.9%		77.1%		76.2%		77.5%		58.8%	
NEW COMMITMENTS TO PRISON	28,404	-4.8%	27,579	-2.9%	27,808	0.8%	27,242	-2.0%	12,834	-52.9%
% OF GUILTY DISPOSITIONS IMPRISONED	21.3%		20.5%		20.4%		20.5%		14.7%	
PRISON POPULATION ON JUNE 30	99,119	-0.9%	97,794	-1.3%	96,253	-1.6%	95,626	-0.7%	87,736	-8.3%

CRIMINAL JUSTICE SYSTEM MEASURES

	<u>2021</u>	<u>% Change</u>	<u>2022</u>	<u>% Change</u>
--	-------------	-----------------	-------------	-----------------

REPORTED CRIMES (Part I, Index offenses)

	427,524	-8.3%
--	---------	-------

Total Violent Offenses

	80,823	-3.0%
--	--------	-------

CRIME RATE (per 100,000 Pop)

	1,952.3	-9.5%
--	---------	-------

ARRESTS

Part I	90,199	-9.8%
--------	--------	-------

Part II	452,939	10.9%
---------	---------	-------

TOTAL	543,138	6.8%
-------	---------	------

FELONY FILINGS

	148,854	0.5%	150,686	1.2%
--	---------	------	---------	------

GUILTY DISPOSITIONS

	119,165	36.8%	123,529	3.7%
--	---------	-------	---------	------

GUILTIES AS PERCENT OF FILINGS

	80.1%		82.0%
--	-------	--	-------

NEW COMMITMENTS TO PRISON

	22,769	77.4%	27,792	22.1%
--	--------	-------	--------	-------

% OF GUILTY DISPOSITIONS IMPRISONED

	19.1%		22.5%
--	-------	--	-------

PRISON POPULATION ON JUNE 30

	80,495	-8.3%	82,124	2.0%
--	--------	-------	--------	------

Data Sources:

Reported Crimes, Total Violent Crimes, Crime Rate, Arrests: Florida Dept. of Law Enforcement, Uniform Crime Reports.
 Felony Filings and Guilty Dispositions: State Court Administrator, Summary Reporting System, last updated with run from December 2023.
 Prison Admissions and Prison Population: Florida Department of Corrections, Research and Data Analysis.

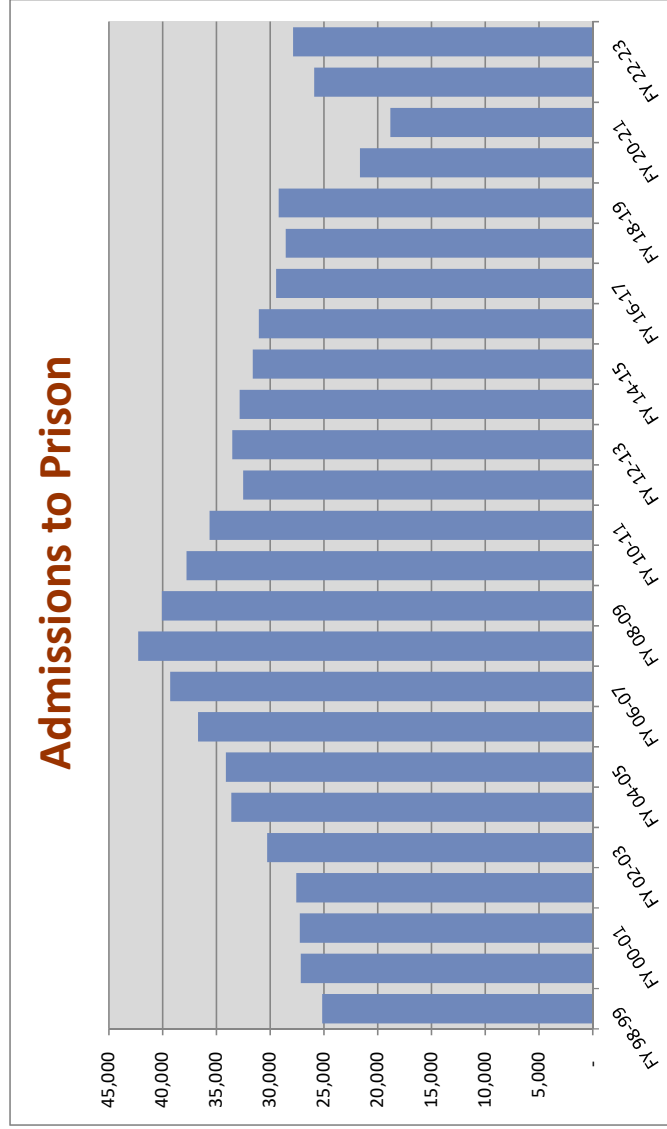
ADMISSIONS TO PRISON BY FISCAL YEAR

% Change from
prior year

FY 98-99	25,147	3.4%
FY 99-00	27,126	7.9%
FY 00-01	27,217	0.3%
FY 01-02	27,564	1.3%
FY 02-03	30,287	9.9%
FY 03-04	33,615	11.0%
FY 04-05	34,129	1.5%
FY 05-06	36,722	7.6%
FY 06-07	39,300	7.0%
FY 07-08	42,279	7.6%
FY 08-09	40,050	-5.3%
FY 09-10	37,794	-5.6%
FY 10-11	35,627	-5.7%
FY 11-12	32,508	-8.8%
FY 12-13	33,516	3.1%
FY 13-14	32,822	-2.1%
FY 14-15	31,592	-3.7%
FY 15-16	31,038	-1.8%
FY 16-17	29,432	-5.2%
FY 17-18	28,538	-3.0%
FY 18-19	29,216	2.4%
FY 19-20	21,644	-25.9%
FY 20-21	18,810	-13.1%
FY 21-22	25,905	37.7%
* FY 22-23	27,870	7.6%

Includes conditional release and control release violators **with** and **without** new sentences.

*This number may change slightly as revisions are made through 2023.



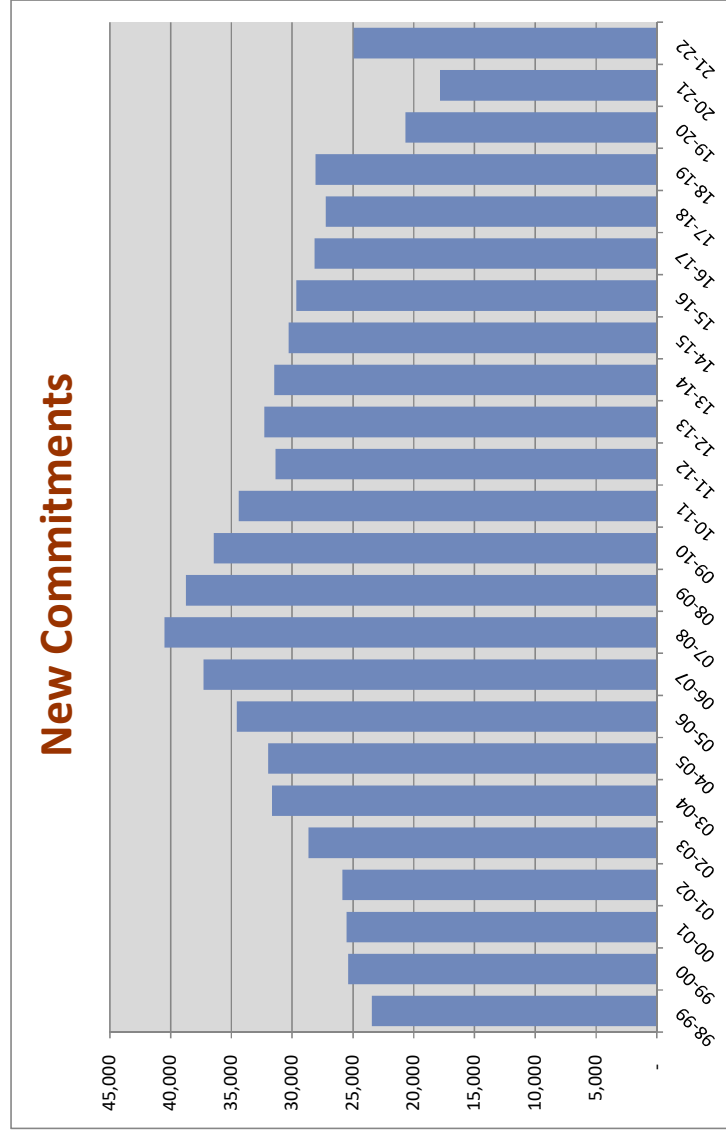
NEW COMMITMENTS BY FISCAL YEAR

% Change from
prior year

FY 98-99	23,424	6.0%
FY 99-00	25,379	8.3%
FY 00-01	25,525	0.6%
FY 01-02	25,854	1.3%
FY 02-03	28,658	10.8%
FY 03-04	31,638	10.4%
FY 04-05	31,964	1.0%
FY 05-06	34,546	8.1%
FY 06-07	37,299	8.0%
FY 07-08	40,491	8.6%
FY 08-09	38,735	-4.3%
FY 09-10	36,450	-5.9%
FY 10-11	34,394	-5.6%
FY 11-12	31,376	-8.8%
FY 12-13	32,279	2.9%
FY 13-14	31,472	-2.5%
FY 14-15	30,278	-3.8%
FY 15-16	29,652	-2.1%
FY 16-17	28,154	-5.1%
FY 17-18	27,235	-3.3%
FY 18-19	28,064	3.0%
FY 19-20	20,664	-26.4%
FY 20-21	17,830	-13.7%
FY 21-22	24,931	39.8%
* FY 22-23	26,747	7.3%

Includes conditional release and control release violators with new sentences.

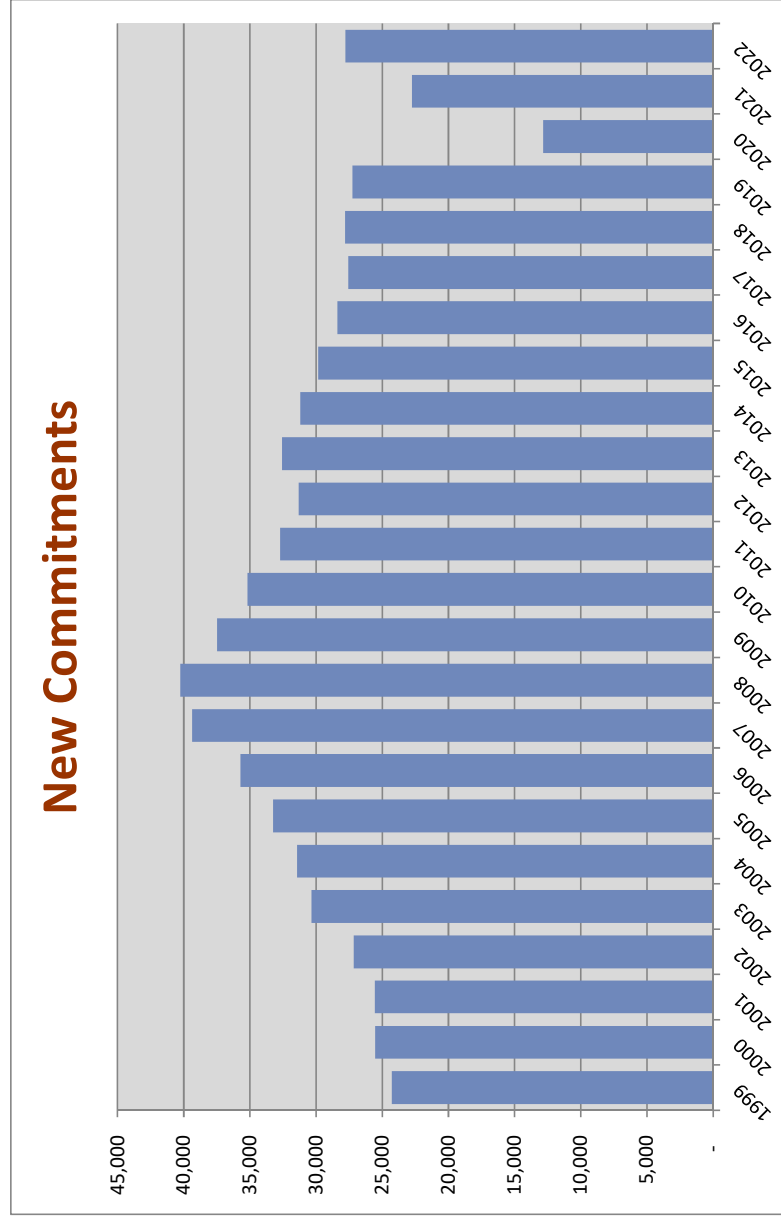
*This number may change slightly as revisions are made through 2023.



NEW COMMITMENTS BY CALENDAR YEAR

% Change
from prior
year

1999	24,273	7.2%
2000	25,541	5.2%
2001	25,571	0.1%
2002	27,176	6.3%
2003	30,340	11.6%
2004	31,445	3.6%
2005	33,249	5.7%
2006	35,724	7.4%
2007	39,376	10.2%
2008	40,274	2.3%
2009	37,480	-6.9%
2010	35,181	-6.1%
2011	32,726	-7.0%
2012	31,324	-4.3%
2013	32,578	4.0%
2014	31,194	-4.2%
2015	29,849	-4.3%
2016	28,404	-4.8%
2017	27,579	-2.9%
2018	27,808	0.8%
2019	27,242	-2.0%
2020	12,834	-52.9%
2021	22,769	77.4%
2022	27,792	22.1%



Includes conditional release and control release violators with new sentences.

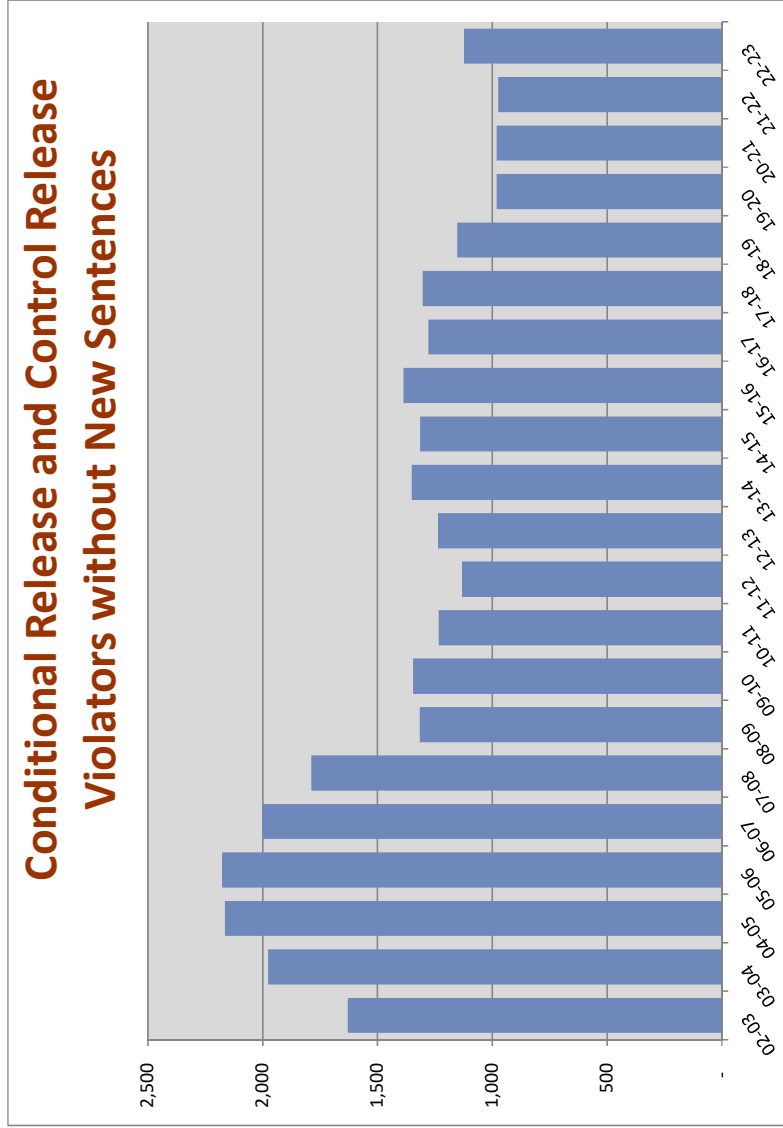
Conditional Release and Control Release Violators without New Sentences

Conditional Release and Control Release Violators without New Sentences

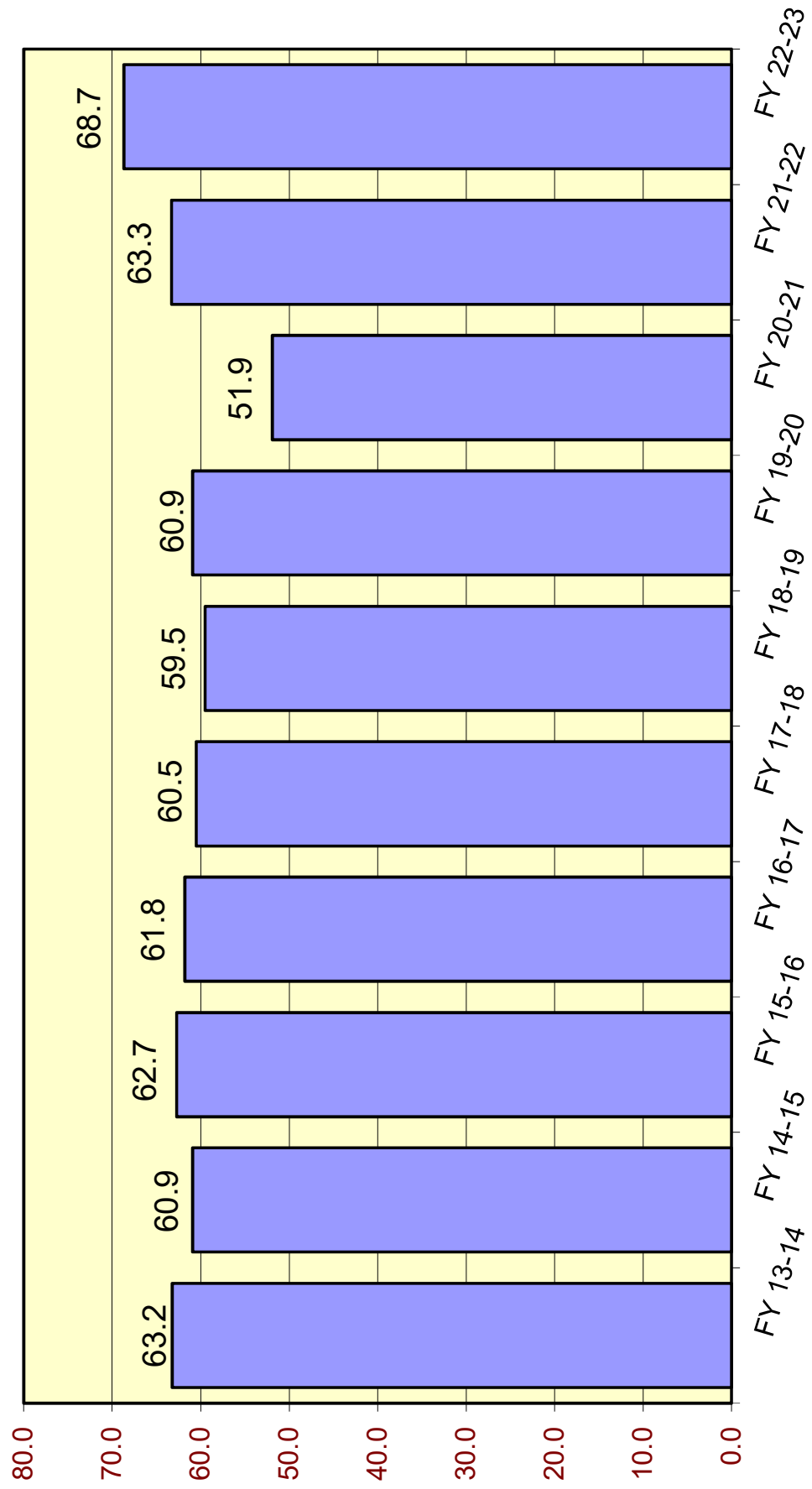
% Change from
prior year

FY 02-03	1,629	-4.7%
FY 03-04	1,977	21.4%
FY 04-05	2,165	9.5%
FY 05-06	2,176	0.5%
FY 06-07	2,001	-8.0%
FY 07-08	1,788	-10.6%
FY 08-09	1,315	-26.5%
FY 09-10	1,344	2.2%
FY 10-11	1,233	-8.3%
FY 11-12	1,132	-8.2%
FY 12-13	1,237	9.3%
FY 13-14	1,350	9.1%
FY 14-15	1,314	-2.7%
FY 15-16	1,386	5.5%
FY 16-17	1,278	-7.8%
FY 17-18	1,303	2.0%
FY 18-19	1,152	-11.6%
FY 19-20	980	-14.9%
FY 20-21	980	0.0%
FY 21-22	974	-0.6%
* FY 22-23	1,123	15.3%

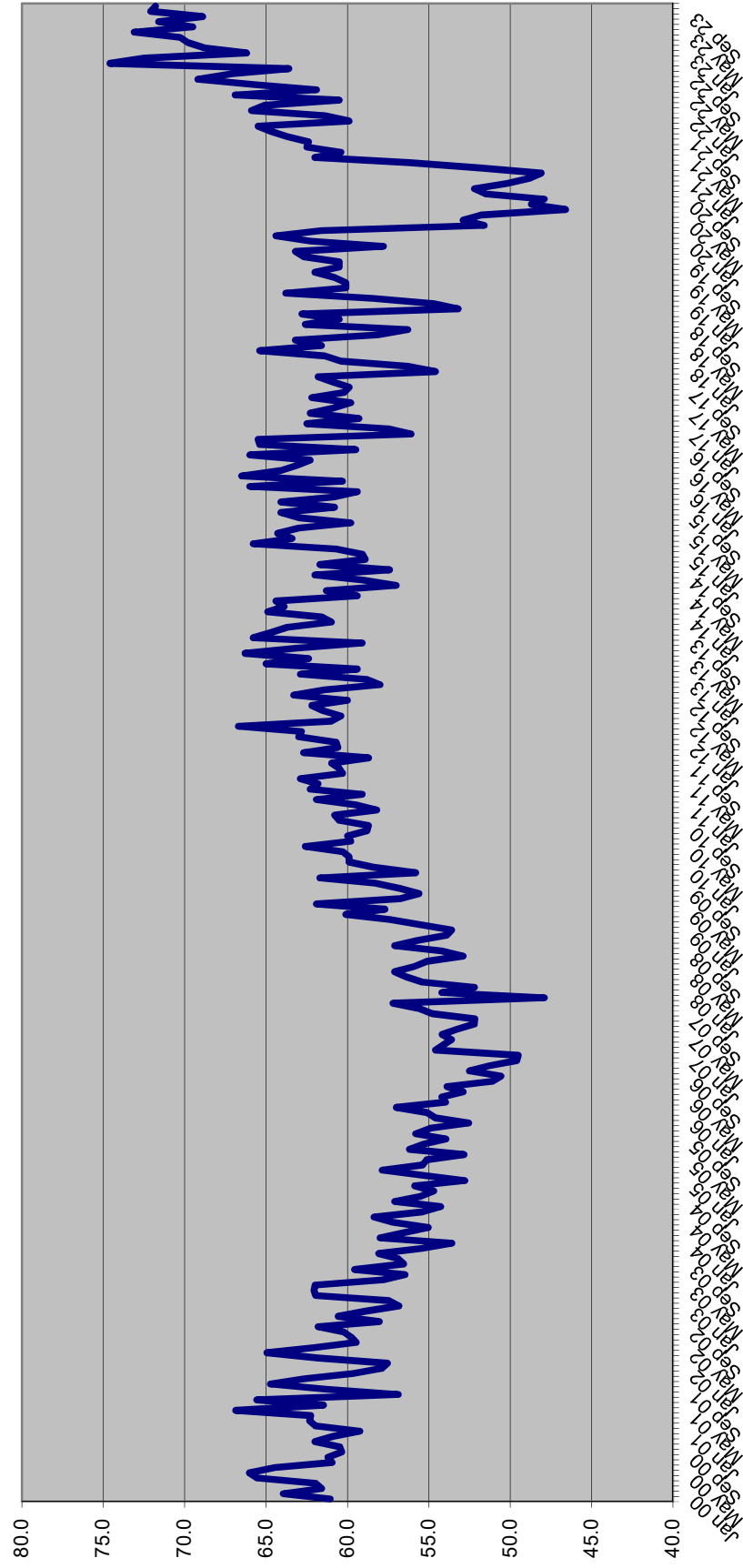
*This number may change slightly as revisions are made through 2023.



Average Sentence Length for New Commitments



Average Sentence Length (in months) for New Commitments



SENTENCE LENGTH DISTRIBUTIONS FOR NEW COMMITMENTS BY MONTH

Sentence Length	May 23	Jun 23	Jul 23	Aug 23	Sep 23	Oct 23	Nov 23
	%	%	%	%	%	%	%
12 - 15 m	16.2%	12.9%	16.0%	15.8%	14.5%	15.5%	15.9%
16 - 21 m	12.8%	12.5%	13.6%	13.5%	13.2%	13.7%	12.7%
22 - 27 m	11.6%	11.7%	12.0%	13.6%	11.7%	11.7%	11.8%
28 - 33 m	5.5%	6.1%	5.8%	5.0%	5.3%	4.9%	4.4%
34 - 39 m	12.7%	12.9%	12.8%	12.9%	13.7%	12.1%	11.3%
40 - 45 m	3.3%	3.2%	3.5%	3.0%	2.9%	2.5%	3.6%
46 - 51 m	5.4%	5.9%	5.1%	5.1%	5.9%	5.7%	5.6%
52 - 57 m	1.2%	1.4%	1.1%	1.5%	1.2%	1.7%	1.0%
58 - 78 m	9.7%	10.2%	9.7%	9.5%	10.2%	9.5%	11.1%
79 - 102 m	4.9%	5.7%	4.6%	3.9%	4.9%	5.7%	5.8%
GT 102 m	16.8%	17.4%	15.7%	16.2%	16.6%	17.0%	16.9%
	100.0%	100.0%	100.0%	100.0%	100.0%	100.0%	100.0%

Cumulative Percentage

Sentence Length	May 23	Jun 23	Jul 23	Aug 23	Sep 23	Oct 23	Nov 23
	%	%	%	%	%	%	%
12 - 15 m	16.2%	12.9%	16.0%	15.8%	14.5%	15.5%	15.9%
16 - 21 m	29.0%	25.5%	29.6%	29.3%	27.7%	29.3%	28.6%
22 - 27 m	40.5%	37.2%	41.6%	42.9%	39.3%	41.0%	40.3%
28 - 33 m	46.0%	43.3%	47.5%	47.9%	44.6%	45.9%	44.7%
34 - 39 m	58.7%	56.2%	60.3%	60.8%	58.3%	58.0%	56.0%
40 - 45 m	62.0%	59.5%	63.8%	63.8%	61.2%	60.4%	59.6%
46 - 51 m	67.4%	65.3%	68.9%	68.9%	67.2%	66.1%	65.2%
52 - 57 m	68.7%	66.7%	70.0%	70.4%	68.3%	67.8%	66.2%
58 - 78 m	78.3%	76.9%	79.7%	79.9%	78.6%	77.3%	77.3%
79 - 102 m	83.2%	82.6%	84.3%	83.8%	83.4%	83.0%	83.1%
GT 102 m	100.0%	100.0%	100.0%	100.0%	100.0%	100.0%	100.0%

Percent of all sentences that are a year and a day

May 23	Jun 23	Jul 23	Aug 23	Sep 23	Oct 23	Nov 23
%	%	%	%	%	%	%
7.0%	5.6%	7.1%	7.9%	6.4%	7.4%	7.4%

Average sentence length

Avg Sentence Length	May 23	Jun 23	Jul 23	Aug 23	Sep 23	Oct 23	Nov 23
	Average	Average	Average	Average	Average	Average	Average
Months	70.3	73.1	69.5	71.6	68.9	72.1	71.8
In years	5.9	6.1	5.8	6.0	5.7	6.0	6.0

**SENTENCE LENGTH DISTRIBUTION OF NEW COMMITMENTS AND CHANGE
FY 21-22 TO FY 22-23**

	FY 21-22	FY 22-23	Change	Percent Change
366 days	1,725	1,974	249	14.4%
367 days-15 m	2,120	2,082	(38)	-1.8%
16 - 21 m	3,360	3,484	124	3.7%
22 - 27 m	3,209	3,249	40	1.2%
28 - 33 m	1,447	1,554	107	7.4%
34 - 39 m	3,125	3,268	143	4.6%
40 - 45 m	777	850	73	9.4%
46 - 51 m	1,424	1,450	26	1.8%
52 - 57 m	332	332	-	0.0%
58 - 78 m	2,631	2,870	239	9.1%
79 - 102 m	1,216	1,326	110	9.0%
GT 102 m	3,565	4,308	743	20.8%
Total	24,931	26,747	1,816	7.3%

**SENTENCE LENGTH DISTRIBUTION OF NEW COMMITMENTS AND CHANGE
Jul 22-Nov 22 TO Jul 23-Nov 23**

	Jul 22-Nov 22	Jul 23-Nov 23	Change	Percent Change
366 days	830	791	(39)	-4.7%
367 days-15 m	813	912	99	12.2%
16 - 21 m	1,400	1,468	68	4.9%
22 - 27 m	1,370	1,329	(41)	-3.0%
28 - 33 m	619	558	(61)	-9.9%
34 - 39 m	1,332	1,383	51	3.8%
40 - 45 m	355	336	(19)	-5.4%
46 - 51 m	579	604	25	4.3%
52 - 57 m	148	144	(4)	-2.7%
58 - 78 m	1,161	1,099	(62)	-5.3%
79 - 102 m	536	551	15	2.8%
GT 102 m	1,662	1,815	153	9.2%
Total	10,805	10,990	185	1.7%

Source: Monthly datafile of status population on the last day of the month obtained from the Department of Corrections, Bureau of Research and Data Analysis. In FY 22-23, this file contained 94 percent of new commitments. Numbers were inflated to match new commitment totals obtained from DOC.

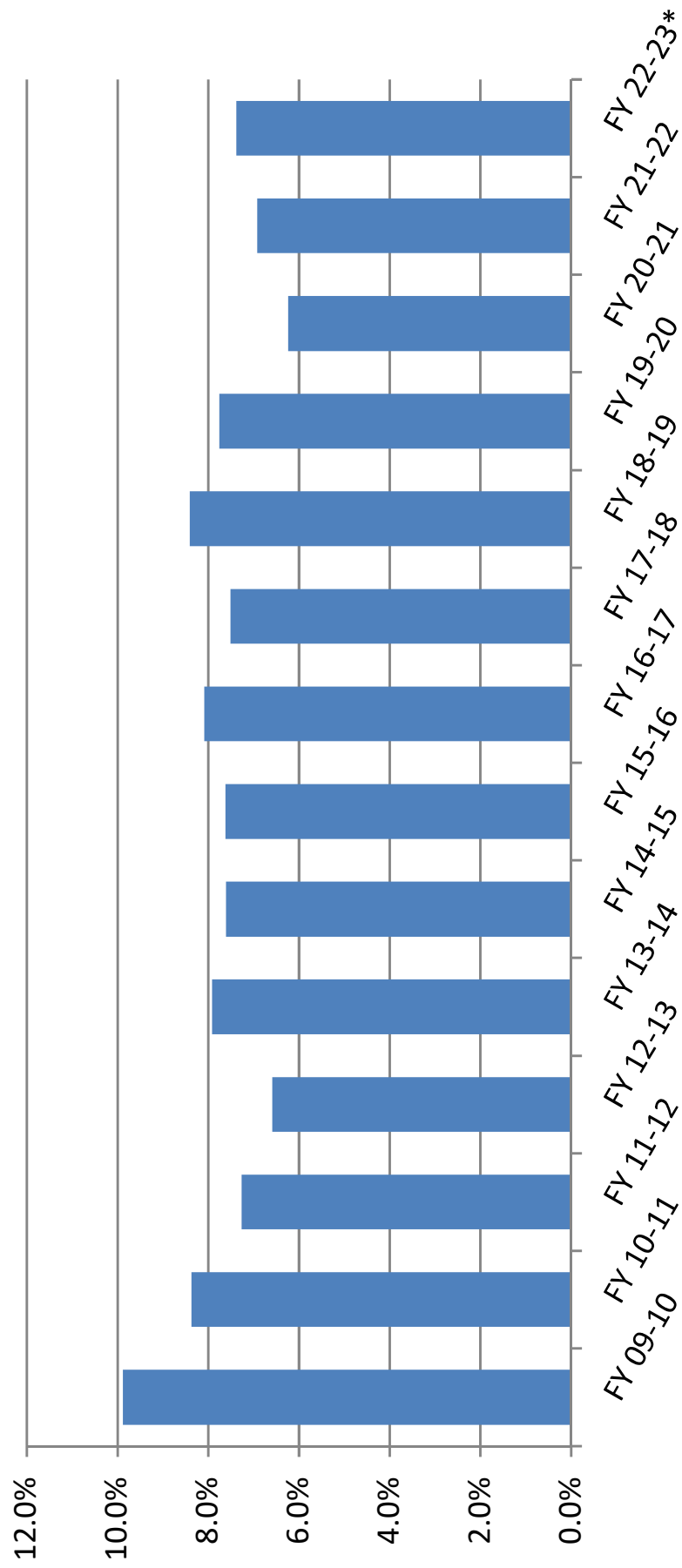
Year-and-a-Day New Commitments by Fiscal Year

Fiscal Year	Total New Commitments	Year-and-a-Day New Commitments		
		Number	Change	% Change
FY 09-10	36,450	3,601	(1,176)	-24.6%
FY 10-11	34,394	2,879	(722)	-20.0%
FY 11-12	31,376	2,281	(598)	-20.8%
FY 12-13	32,279	2,126	(155)	-6.8%
FY 13-14	31,472	2,493	367	17.3%
FY 14-15	30,278	2,302	(191)	-7.7%
FY 15-16	29,652	2,260	(42)	-1.8%
FY 16-17	28,154	2,276	16	0.7%
FY 17-18	27,235	2,044	(232)	-10.2%
FY 18-19	28,064	2,360	316	15.5%
FY 19-20	20,664	1,603	(757)	-32.1%
FY 20-21	17,830	1,112	(491)	-30.6%
FY 21-22	24,931	1,725	613	55.1%
FY 22-23*	26,747	1,974	249	14.4%

*** Preliminary**

Source: Unadjusted new commitments and year-and-a-day new commitments were obtained from the monthly datafile of status population on the last day of the month obtained from the Department of Corrections, Bureau of Research and Analysis. In FY 22-23, this file contained 94 percent of new commitments. Total new commitment numbers shown above match new commitment fiscal year totals obtained from DOC and year-and-a-day new commitments were adjusted to reflect fiscal year totals.

Year-and-a-Day New Commitments as Percent of All New Commitments

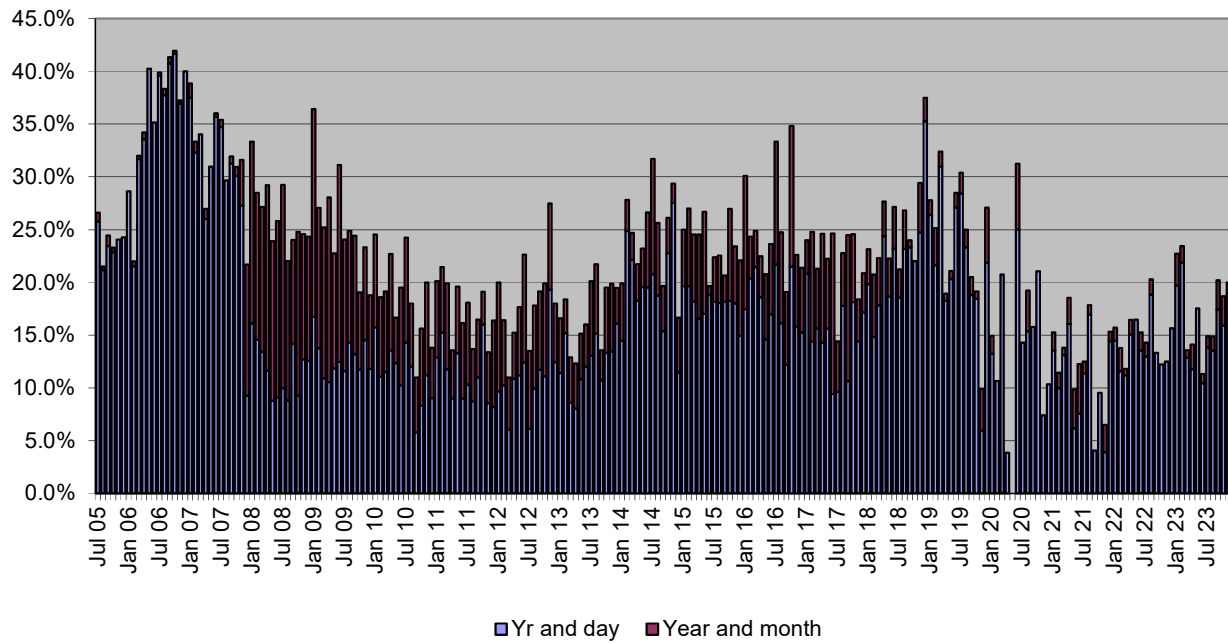


Year-and-a-Day New Commitments and Change by County

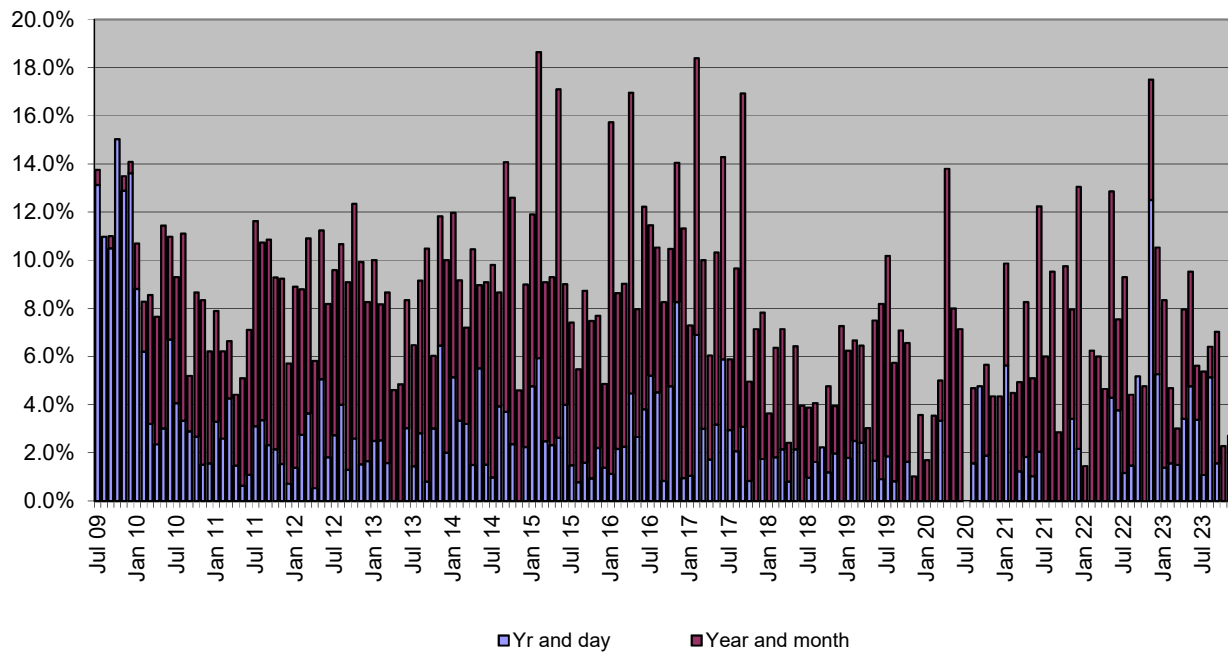
County	Jul 22-Nov 22	Jul 23-Nov 23	↓ Change	% Change
Palm Beach	91	59	(32)	-34.9%
Columbia	30	6	(24)	-81.1%
Volusia	137	115	(22)	-16.0%
St. Lucie	31	17	(14)	-45.4%
Leon	37	25	(12)	-32.8%
Brevard	13	6	(7)	-57.0%
Sarasota	11	3	(7)	-68.5%
Manatee	8	1	(7)	-86.5%
Polk	47	40	(7)	-14.8%
Seminole	21	15	(7)	-31.7%
Sub-total	425	286	(139)	-32.8%
DeSoto	1	17	16	1319.4%
Flagler	5	22	18	373.1%
Broward	46	68	22	48.0%
Hillsborough	61	85	24	38.3%
Sub-total	113	192	79	69.5%
All other counties	292	312.82	21	7.2%
Total	830	791	(39)	-4.7%

Source: Monthly status file of prison population prepared by Bureau of Research and Data Analysis, Department of Corrections. Numbers were inflated to account for missing records on the monthly status file.

**Year-and-a-day and year-and-a-month sentences as percent of total:
Hillsborough County**



**Year-and-a-day and year-and-a-month sentences as percent of total:
Pinellas County**



Counties with the Most New Commitments

County	↓		% of state total	% of state total
	Jul 22-Nov 22	Jul 23-Nov 23	Jul 22-Nov 22	Jul 23-Nov 23
Duval	894	861	8.3%	7.8%
Polk	670	618	6.2%	5.6%
Miami-Dade	624	578	5.8%	5.3%
Volusia	614	527	5.7%	4.8%
Hillsborough	441	525	4.1%	4.8%
Broward	481	513	4.5%	4.7%
Pinellas	371	511	3.4%	4.6%
Palm Beach	417	409	3.9%	3.7%
Bay	441	375	4.1%	3.4%
Marion	374	373	3.5%	3.4%
Sub-total	5,328	5,290	49.3%	48.1%
All other counties	5,477	5,700	50.7%	51.9%
Total	10,805	10,990	100.0%	100.0%

New Commitments and Change in New Commitments by County

County	Jul 22-Nov 22	Jul 23-Nov 23	Change	% Change
Pinellas	371	511	140	37.7%
Hillsborough	441	525	84	19.0%
Martin	54	115	61	113.0%
Lee	267	328	61	22.8%
Seminole	108	159	51	47.2%
Sumter	65	114	49	75.4%
Orange	247	292	45	18.2%
Highlands	48	81	33	68.8%
Broward	481	513	32	6.7%
St. Johns	84	114	30	35.7%
Columbia	161	192	31	19.3%
Sub-total	2,327	2,944	617	26.5%
Polk	670	618	(52)	-7.8%
Bay	441	375	(66)	-15.0%
Volusia	614	527	(87)	-14.2%
Sub-total	1,725	1,520	(205)	-11.9%
All other counties	6,753	6,526	(227)	-3.4%
Total	10,805	10,990	185	1.7%

Source: Monthly status file of prison population prepared by Bureau of Research and Data Analysis, Department of Corrections. This file contained 94 percent of new commitments, however county of commitment is sometimes missing. According to DOC, offenders entering prison near the end of the month may not have this information available by the time the status file is run at the end of the month. It was assumed that these missing data would not bias the county of commitment distribution. Therefore, these numbers were inflated to match new commitment totals.

Population, Total New Commitments, and Year-and-a-Day New Commitments by County

County	4/1/2023 Official population	4/1/2023 Official population percentage distribution	FY 22-23 new commitments	FY 22-23 new commitments percentage distribution	FY 22-23 year- and-a- day sentences	FY 22-23 year- and-a-day sentences percentage distribution	FY 22-23 year- and-a-day sentences as percent of all new commitments
Alachua	293,040	1.3%	642	2.4%	13	0.7%	2.1%
Baker	28,339	0.1%	129	0.5%	0	0.0%	0.0%
Bay	187,545	0.8%	1,081	4.0%	6	0.3%	0.5%
Bradford	27,389	0.1%	170	0.6%	8	0.4%	4.6%
Brevard	640,773	2.8%	625	2.3%	22	1.1%	3.6%
Broward	1,973,579	8.7%	1,147	4.3%	129	6.5%	11.3%
Calhoun	13,816	0.1%	85	0.3%	0	0.0%	0.0%
Charlotte	204,126	0.9%	189	0.7%	3	0.2%	1.8%
Citrus	162,240	0.7%	464	1.7%	30	1.5%	6.5%
Clay	231,042	1.0%	258	1.0%	0	0.0%	0.0%
Collier	399,480	1.8%	327	1.2%	0	0.0%	0.0%
Columbia	72,191	0.3%	502	1.9%	57	2.9%	11.4%
DeSoto	34,974	0.2%	121	0.5%	13	0.7%	11.2%
Dixie	17,271	0.1%	87	0.3%	21	1.1%	24.5%
Duval	1,051,278	4.6%	2,000	7.5%	6	0.3%	0.3%
Escambia	333,452	1.5%	959	3.6%	26	1.3%	2.7%
Flagler	130,756	0.6%	163	0.6%	21	1.1%	13.1%
Franklin	12,971	0.1%	37	0.1%	1	0.1%	3.0%
Gadsden	44,421	0.2%	91	0.3%	4	0.2%	5.0%
Gilchrist	19,123	0.1%	27	0.1%	0	0.0%	0.0%
Glades	12,591	0.1%	30	0.1%	3	0.2%	11.2%
Gulf	16,323	0.1%	65	0.2%	3	0.2%	5.2%
Hamilton	13,671	0.1%	66	0.2%	13	0.7%	20.4%
Hardee	25,645	0.1%	49	0.2%	3	0.2%	6.8%
Hendry	40,895	0.2%	86	0.3%	0	0.0%	0.0%
Hernando	204,265	0.9%	303	1.1%	36	1.8%	11.9%
Highlands	104,385	0.5%	157	0.6%	10	0.5%	6.5%
Hillsborough	1,541,531	6.8%	1,182	4.4%	173	8.8%	14.6%
Holmes	19,910	0.1%	113	0.4%	0	0.0%	0.0%
Indian River	167,781	0.7%	174	0.7%	15	0.7%	8.4%
Jackson	48,982	0.2%	166	0.6%	19	1.0%	11.5%
Jefferson	15,402	0.1%	50	0.2%	6	0.3%	11.2%
Lafayette	8,074	0.0%	16	0.1%	0	0.0%	0.0%
Lake	414,749	1.8%	291	1.1%	19	1.0%	6.6%
Lee	800,989	3.5%	758	2.8%	2	0.1%	0.3%
Leon	301,724	1.3%	582	2.2%	78	3.9%	13.3%
Levy	45,283	0.2%	115	0.4%	1	0.1%	1.0%
Liberty	7,977	0.0%	31	0.1%	2	0.1%	7.2%
Madison	18,698	0.1%	70	0.3%	3	0.2%	4.8%
Manatee	439,566	1.9%	472	1.8%	15	0.7%	3.1%
Marion	403,966	1.8%	841	3.1%	46	2.3%	5.5%
Martin	162,847	0.7%	196	0.7%	6	0.3%	2.9%
Miami-Dade	2,768,954	12.2%	1,530	5.7%	180	9.1%	11.7%
Monroe	84,511	0.4%	197	0.7%	3	0.2%	1.7%
Nassau	100,763	0.4%	134	0.5%	0	0.0%	0.0%
Okaloosa	219,260	1.0%	228	0.9%	0	0.0%	0.0%
Okeechobee	39,591	0.2%	141	0.5%	4	0.2%	3.2%
Orange	1,492,951	6.6%	721	2.7%	40	2.0%	5.6%
Osceola	439,225	1.9%	239	0.9%	9	0.5%	3.8%
Palm Beach	1,532,718	6.8%	1,011	3.8%	188	9.5%	18.6%
Pasco	610,743	2.7%	719	2.7%	35	1.8%	4.8%
Pinellas	974,689	4.3%	1,101	4.1%	35	1.8%	3.2%
Polk	797,616	3.5%	1,464	5.5%	100	5.1%	6.8%
Putnam	75,906	0.3%	383	1.4%	64	3.2%	16.7%

Population, Total New Commitments, and Year-and-a-Day New Commitments by County

County	4/1/2023 Official population	4/1/2023 Official population percentage distribution	FY 22-23 new commitments	FY 22-23 new commitments percentage distribution	FY 22-23 year- and-a- day sentences	FY 22-23 year- and-a-day sentences percentage distribution	FY 22-23 year- and-a-day sentences as percent of all new commitments
St. Johns	315,317	1.4%	261	1.0%	21	1.1%	8.2%
St. Lucie	368,628	1.6%	626	2.3%	72	3.6%	11.5%
Santa Rosa	202,772	0.9%	187	0.7%	2	0.1%	1.2%
Sarasota	464,223	2.1%	356	1.3%	17	0.9%	4.7%
Seminole	486,839	2.2%	367	1.4%	48	2.4%	13.2%
Sumter	155,318	0.7%	192	0.7%	1	0.1%	0.6%
Suwannee	45,448	0.2%	213	0.8%	7	0.3%	3.2%
Taylor	21,686	0.1%	136	0.5%	17	0.9%	12.3%
Union	16,137	0.1%	41	0.2%	0	0.0%	0.0%
Volusia	583,505	2.6%	1,340	5.0%	301	15.3%	22.5%
Wakulla	36,168	0.2%	48	0.2%	2	0.1%	4.7%
Walton	83,342	0.4%	131	0.5%	0	0.0%	0.0%
Washington	25,497	0.1%	63	0.2%	10	0.5%	16.1%
Total	22,634,867	100.0%	26,747	100.0%	1,974	100.0%	7.4%

Source: Population data are from the University of Florida, Bureau of Research and Data Analysis. New commitments and year-and-a-day sentences are from monthly status file of prison population prepared by Bureau of Research and Data Analysis, Department of Corrections. Numbers were inflated to account for missing data on the monthly status file.

FLORIDA NEW COMMITMENTS

	Time period		Percent		Change	Percent Change	Average Sentence Length (months)	
	Jul 22-Nov 22	Jul 23-Nov 23	Jul 22-Nov 22	Jul 23-Nov 23			Jul 22-Nov 22	Jul 23-Nov 23
Murder/Manslaughter	559	631	5.2%	5.7%	72	12.9%	260.7	285.9
Sexual/Lewd Behavior	767	790	7.1%	7.2%	23	3.0%	157.8	176.6
Robbery	537	460	5.0%	4.2%	(77)	-14.3%	87.3	95.8
Violent, Other	1,875	1,894	17.4%	17.2%	19	1.0%	50.9	50.6
Burglary	1,343	1,252	12.4%	11.4%	(91)	-6.8%	57.0	60.5
Property Theft/Fraud/Damage	1,101	1,174	10.2%	10.7%	73	6.6%	30.8	31.4
Drugs	2,655	2,739	24.6%	24.9%	84	3.2%	42.3	45.6
Weapons	1,002	1,019	9.3%	9.3%	17	1.7%	38.8	42.4
Other	966	1,031	8.9%	9.4%	65	6.7%	38.4	36.1
Total	10,805	10,990	100.0%	100.0%	185	1.7%	65.5	70.8

Source: Monthly status file of prison population prepared by Bureau of Research and Data Analysis, Department of Corrections. In FY 22-23, this file contained 94 percent of new commitments however sentencing details are often missing. According to DOC, offenders entering prison near the end of the month may not have this information available by the time the status file is run at the end of the month. It was assumed that these missing data would not bias the primary offense distribution. Therefore, the primary offense distribution was adjusted to match new commitment totals for this analysis.

FLORIDA NEW COMMITMENTS FOR MURDER, MANSLAUGHTER

	Time period		Percent		Change	Percent Change	Average Sentence Length (months)	
	Jul 22-Nov 22	Jul 23-Nov 23	Jul 22-Nov 22	Jul 23-Nov 23			Jul 22-Nov 22	Jul 23-Nov 23
2nd Degree Murder, Dangerous Act	216	245	38.6%	38.8%	29	13.4%	282.9	330.2
1st Degree Murder Premeditated, or Attempt	156	171	27.9%	27.1%	15	9.6%	367.4	357.1
DUI Manslaughter	56	52	10.0%	8.2%	(4)	-7.1%	130.2	157.6
Homicide Manslaughter Culpable Negligence	64	91	11.4%	14.4%	27	42.2%	132.3	170.1
Other Murder/Manslaughter Offenses	67	72	12.0%	11.4%	5	7.5%	168.8	204.9
Total	559	631	100.0%	100.0%	72	12.9%	260.7	285.9

Note: Data were obtained from monthly status files prepared by Bureau of Research and Data Analysis, Florida Department of Corrections and were adjusted to account for missing data.

FLORIDA YEAR-AND-A-DAY NEW COMMITMENTS

	Time period			Percent			Change	Percent Change
	Jul 22-Nov 22	Jul 23-Nov 23		Jul 22-Nov 22	Jul 23-Nov 23			
Murder/Manslaughter	1	2		0.1%	0.3%		1	100.0%
Sexual/Lewd Behavior	6	4		0.7%	0.5%		(2)	-33.3%
Robbery	19	26		2.3%	3.3%		7	36.8%
Violent, Other	123	145		14.8%	18.3%		22	17.9%
Burglary	80	95		9.6%	12.0%		15	18.8%
Property Theft/Fraud/Damage	160	130		19.3%	16.4%		(30)	-18.8%
Drugs	270	212		32.5%	26.8%		(58)	-21.5%
Weapons	80	72		9.6%	9.1%		(8)	-10.0%
Other	91	105		11.0%	13.3%		14	15.4%
Total	830	791		100.0%	100.0%		(39)	-4.7%

Source: Monthly status file of prison population prepared by Bureau of Research and Data Analysis, Department of Corrections. In FY 22-23, this file contained 94 percent of new commitments however sentencing details are often missing. According to DOC, offenders entering prison near the end of the month may not have this information available by the time the status file is run at the end of the month. It was assumed that these missing data would not bias the primary offense distribution. Therefore, the primary offense distribution was adjusted to match new commitment totals for this analysis.

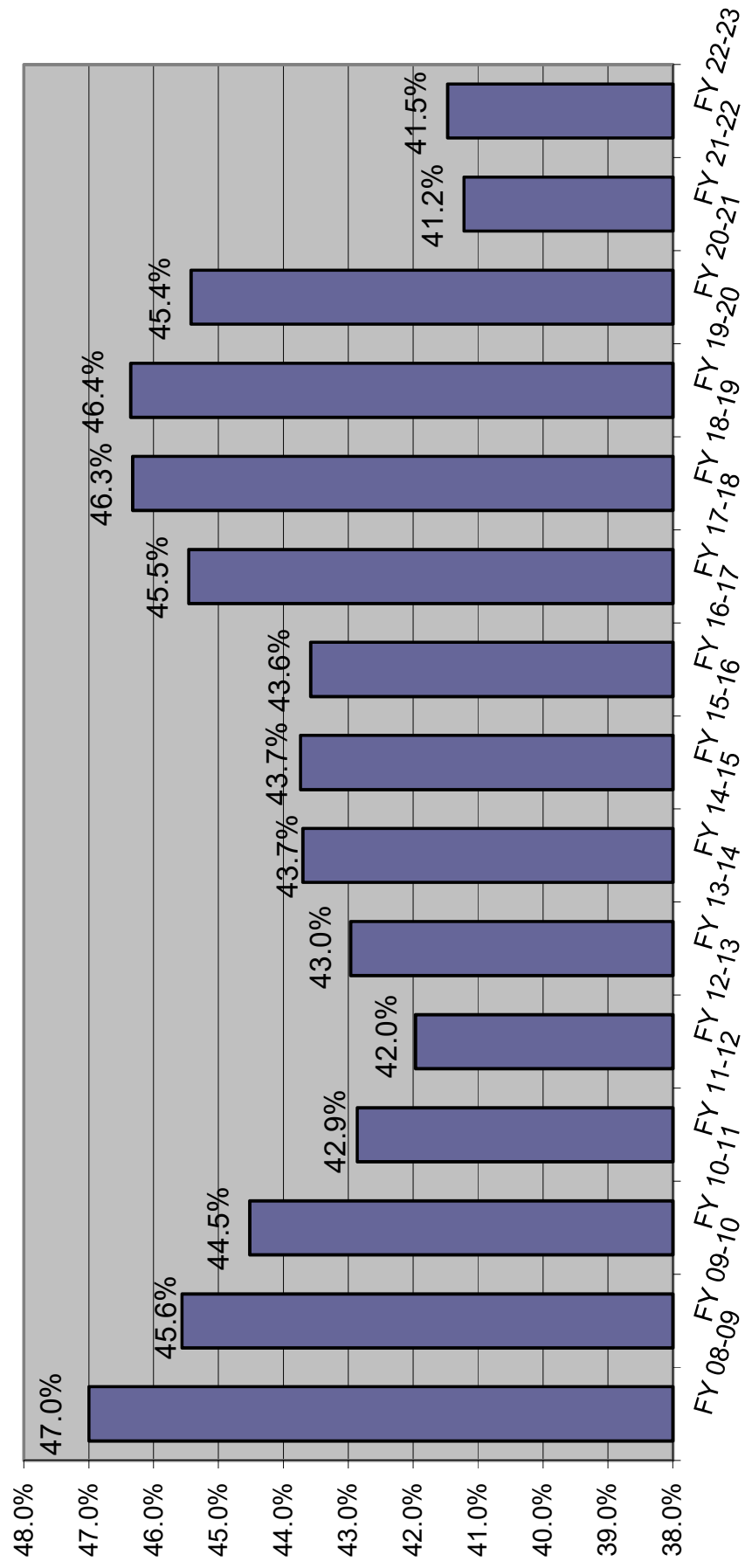
FLORIDA NEW COMMITMENTS WITH YEAR-AND-A-DAY SENTENCES

Jul 22- Nov 22 and Jul 23-Nov 23

	Time period		Percent		Change	Percent Change
	Jul 22-Nov 22	Jul 23-Nov 23	Jul 22-Nov 22	Jul 23-Nov 23		
Possession of a firearm etc. by convicted felon	68	64	8.2%	8.1%	(4)	-5.9%
Possess methamphetamine	90	64	10.8%	8.1%	(26)	-28.9%
Burglary of an unoccupied structure	42	55	5.1%	7.0%	13	31.0%
Cocaine possession	34	36	4.1%	4.6%	2	5.9%
Possess controlled substance (other)	37	30	4.5%	3.8%	(7)	-18.9%
Petit theft/3rd conviction	42	26	5.1%	3.3%	(16)	-38.1%
Grand theft motor vehicle	37	26	4.5%	3.3%	(11)	-29.7%
Grand theft, \$750 - \$4,999	26	26	3.1%	3.3%	-	0.0%
Burglary of a dwelling	28	22	3.4%	2.8%	(6)	-21.4%
Cocaine S/M/D	29	22	3.5%	2.8%	(7)	-24.1%
Aggravated battery with deadly weapon	7	21	0.8%	2.7%	14	200.0%
Resisting officer with violence	15	19	1.8%	2.4%	4	26.7%
Traffic in stolen property	16	18	1.9%	2.3%	2	12.5%
Willful flee/elude LEO	12	17	1.4%	2.1%	5	41.7%
Sex offender failure to register	13	17	1.6%	2.1%	4	30.8%
Robbery, no firearm or deadly weapon	9	16	1.1%	2.0%	7	77.8%
Aggravated assault with weapon/no intent to kill	17	16	2.0%	2.0%	(1)	-5.9%
Flee LEO/no regard	8	16	1.0%	2.0%	8	100.0%
Battery LEO/Firefighter/EMS/etc.	12	11	1.4%	1.4%	(1)	-8.3%
Methamphetamine S/M/D	12	11	1.4%	1.4%	(1)	-8.3%
Simple battery (3 or more convictions)	10	10	1.2%	1.3%	-	0.0%
Battery upon a person 65 or older	8	8	1.0%	1.0%	-	0.0%
Felony battery	12	8	1.4%	1.0%	(4)	-33.3%
Flee/elude LEO--felony	10	6	1.2%	0.8%	(4)	-40.0%
Written threats to kill/injure	1	6	0.1%	0.8%	5	500.0%
Utter forged instrument	1	6	0.1%	0.8%	5	500.0%
Habitual traffic offender	3	6	0.4%	0.8%	3	100.0%
Possess heroin under 10 grams	4	6	0.5%	0.8%	2	50.0%
Aggravated assault LEO/Firefighter/EMS/etc.	2	5	0.2%	0.6%	3	150.0%
Domestic battery (strangulation)	2	5	0.2%	0.6%	3	150.0%
Burglary assault any person	4	5	0.5%	0.6%	1	25.0%
Sale/Manufacture/Deliver Other Schedule I & II	13	5	1.6%	0.6%	(8)	-61.5%
Robbery, firearm or deadly weapon	4	4	0.5%	0.5%	-	0.0%
Aggravated battery intended harm	3	4	0.4%	0.5%	1	33.3%
Aggravated stalking, credible threat	1	4	0.1%	0.5%	3	300.0%
Burglary/assault, occupied structure	1	4	0.1%	0.5%	3	300.0%
Carrying concealed firearm	6	4	0.7%	0.5%	(2)	-33.3%
Retail theft, \$750 or more	-	4	0.0%	0.5%	4	NA
Felony drive with license suspended/revoked	3	4	0.4%	0.5%	1	33.3%
Felony DUI (3rd conviction)	2	4	0.2%	0.5%	2	100.0%
Traffic MDMA, 10 grams or more, less than 200 grams	1	4	0.1%	0.5%	3	300.0%
Other drugs S/M/D	3	4	0.4%	0.5%	1	33.3%
Sub-total	648	649	78.1%	82.0%	1	0.2%
All other year-and-a-day offenses	182	142	21.9%	18.0%	(40)	-22.0%
Total	830	791	100.0%	100.0%	(39)	-4.7%

Note: Data were obtained from monthly status files prepared by Bureau of Research and Data Analysis, Florida Department of Corrections and were adjusted to account for missing data.

Third Degree Felonies as Percent of New Commitments



Prison Admissions Sentenced Under Ch. 99-12 (3-10-20-Life)

LONGEST MANDATORY SENTENCE LENGTH

	Equal to or greater than 3 yrs but less than 10 yrs	Equal to or greater than 10 yrs but less than 20 yrs	Equal to or greater than 20 yrs but less than 25 yrs	Equal to or greater than 25 yrs but less than LIFE	LIFE	INMATES ADMITTED BY YEAR	CUMULATIVE TOTAL INMATES ADMITTED	10-20-Life population on June 30
FY 99-00	101	45	4	5	-	155	155	147
FY 00-01	310	234	26	29	7	606	761	729
FY 01-02	288	321	32	49	2	692	1,453	1,385
FY 02-03	303	327	50	64	18	762	2,215	1,985
FY 03-04	393	352	52	69	12	878	3,093	2,584
FY 04-05	317	360	48	89	12	826	3,919	3,170
FY 05-06	346	338	51	91	23	849	4,768	3,729
FY 06-07	425	350	63	105	20	963	5,731	4,377
FY 07-08	429	483	102	121	28	1,163	6,894	5,246
FY 08-09	521	589	99	117	22	1,348	8,242	6,224
FY 09-10	553	628	99	133	23	1,436	9,678	7,115
FY 10-11	529	548	110	148	24	1,359	11,037	7,899
FY 11-12	544	507	92	142	40	1,325	12,362	8,578
FY 12-13	631	506	76	167	22	1,402	13,764	9,286
FY 13-14	560	457	99	175	24	1,315	15,079	9,891
FY 14-15	584	470	81	138	35	1,308	16,387	10,437
FY 15-16	593	457	89	140	25	1,304	17,691	10,934
FY 16-17	719	445	84	147	24	1,419	19,110	11,489
FY 17-18	695	385	60	150	22	1,312	20,422	11,815
FY 18-19	737	369	67	132	20	1,325	21,747	12,071
FY 19-20	505	247	48	125	15	940	22,687	11,978
FY 20-21	445	192	18	50	7	712	23,399	11,623
FY 21-22	762	342	56	147	15	1,322	24,721	11,756
FY 22-23	847	396	84	182	25	1,534	26,255	12,242

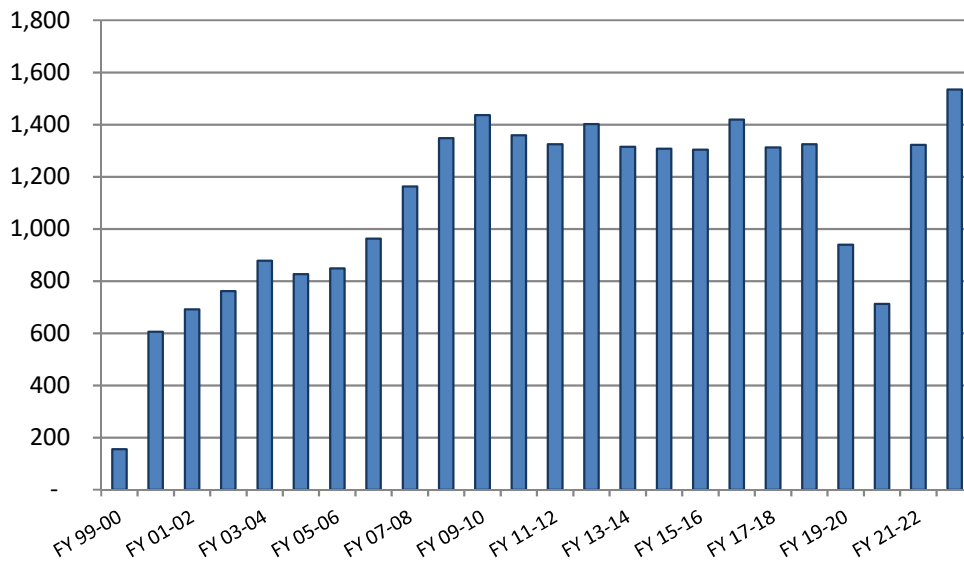
PERCENTAGE CHANGE FROM PRIOR YEAR

	Equal to or greater than 3 yrs but less than 10 yrs	Equal to or greater than 10 yrs but less than 20 yrs	Equal to or greater than 20 yrs but less than 25 yrs	Equal to or greater than 25 yrs but less than LIFE	LIFE	INMATES ADMITTED BY YEAR	10-20-Life population on June 30
FY 00-01	206.9%	420.0%	550.0%	480.0%	NA	291.0%	395.9%
FY 01-02	-7.1%	37.2%	23.1%	69.0%	-71.4%	14.2%	90.0%
FY 02-03	5.2%	1.9%	56.3%	30.6%	800.0%	10.1%	43.3%
FY 03-04	29.7%	7.6%	4.0%	7.8%	-33.3%	15.2%	30.2%
FY 04-05	-19.3%	2.3%	-7.7%	29.0%	0.0%	-5.9%	22.7%
FY 05-06	9.1%	-6.1%	6.3%	2.2%	91.7%	2.8%	17.6%
FY 06-07	22.8%	3.6%	23.5%	15.4%	-13.0%	13.4%	17.4%
FY 07-08	0.9%	38.0%	61.9%	15.2%	40.0%	20.8%	19.9%
FY 08-09	21.4%	21.9%	-2.9%	-3.3%	-21.4%	15.9%	18.6%
FY 09-10	6.1%	6.6%	0.0%	13.7%	4.5%	6.5%	14.3%
FY 10-11	-4.3%	-12.7%	11.1%	11.3%	4.3%	-5.4%	11.0%
FY 11-12	2.8%	-7.5%	-16.4%	-4.1%	66.7%	-2.5%	8.6%
FY 12-13	16.0%	-0.2%	-17.4%	17.6%	-45.0%	5.8%	8.3%
FY 13-14	-11.3%	-9.7%	30.3%	4.8%	9.1%	-6.2%	6.5%
FY 14-15	4.3%	2.8%	-18.2%	-21.1%	45.8%	-0.5%	5.5%
FY 15-16	1.5%	-2.8%	9.9%	1.4%	-28.6%	-0.3%	4.8%
FY 16-17	21.2%	-2.6%	-5.6%	5.0%	-4.0%	8.8%	5.1%
FY 17-18	-3.3%	-13.5%	-28.6%	2.0%	-8.3%	-7.5%	2.8%
FY 18-19	6.0%	-4.2%	11.7%	-12.0%	-9.1%	1.0%	2.2%
FY 19-20	-31.5%	-33.1%	-28.4%	-5.3%	-25.0%	-29.1%	-0.8%
FY 20-21	-11.9%	-22.3%	-62.5%	-60.0%	-53.3%	-24.3%	-3.0%
FY 21-22	71.2%	78.1%	211.1%	194.0%	114.3%	85.7%	1.1%
FY 22-23	11.2%	15.8%	50.0%	23.8%	66.7%	16.0%	4.1%

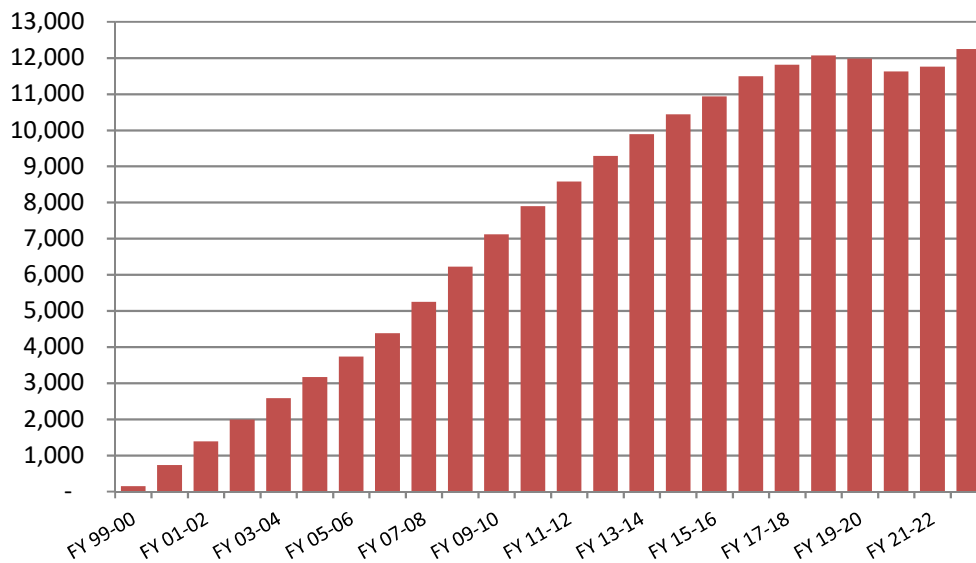
Source: Florida Department of Corrections, Bureau of Research and Data Analysis, July 18, 2023.

These numbers may differ from those reported previously due to a change by the Department of Corrections in the methodology used to report admissions

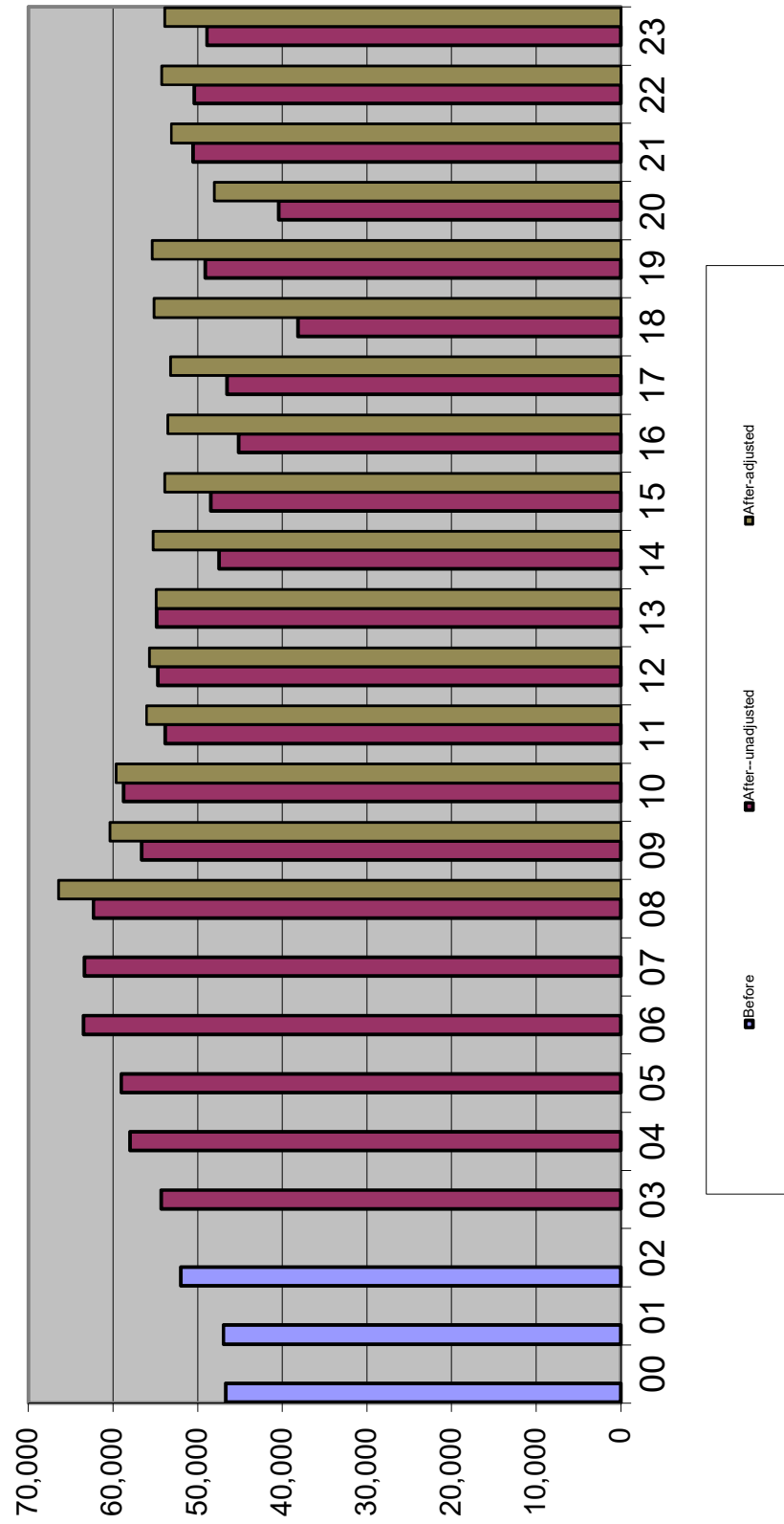
10-20-Life Admissions



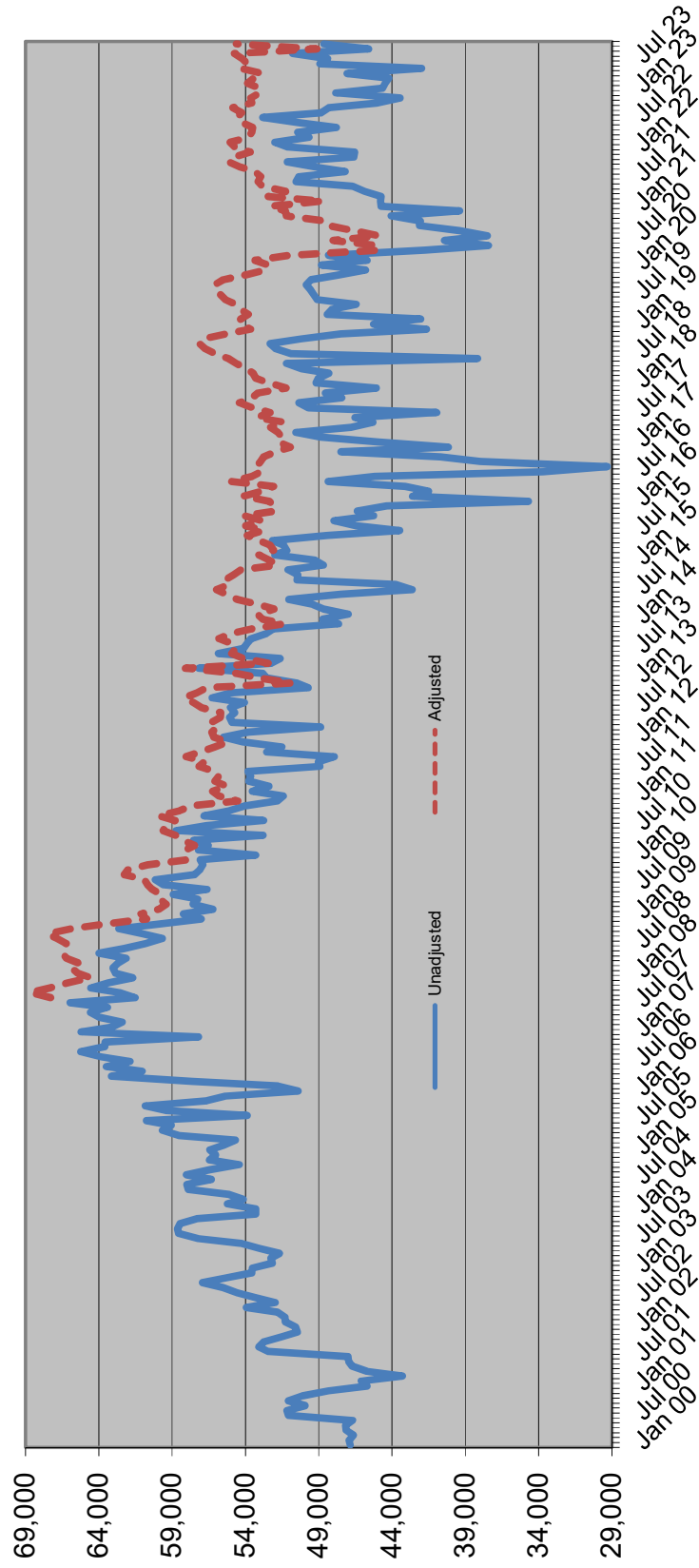
10-20-Life June 30th Population



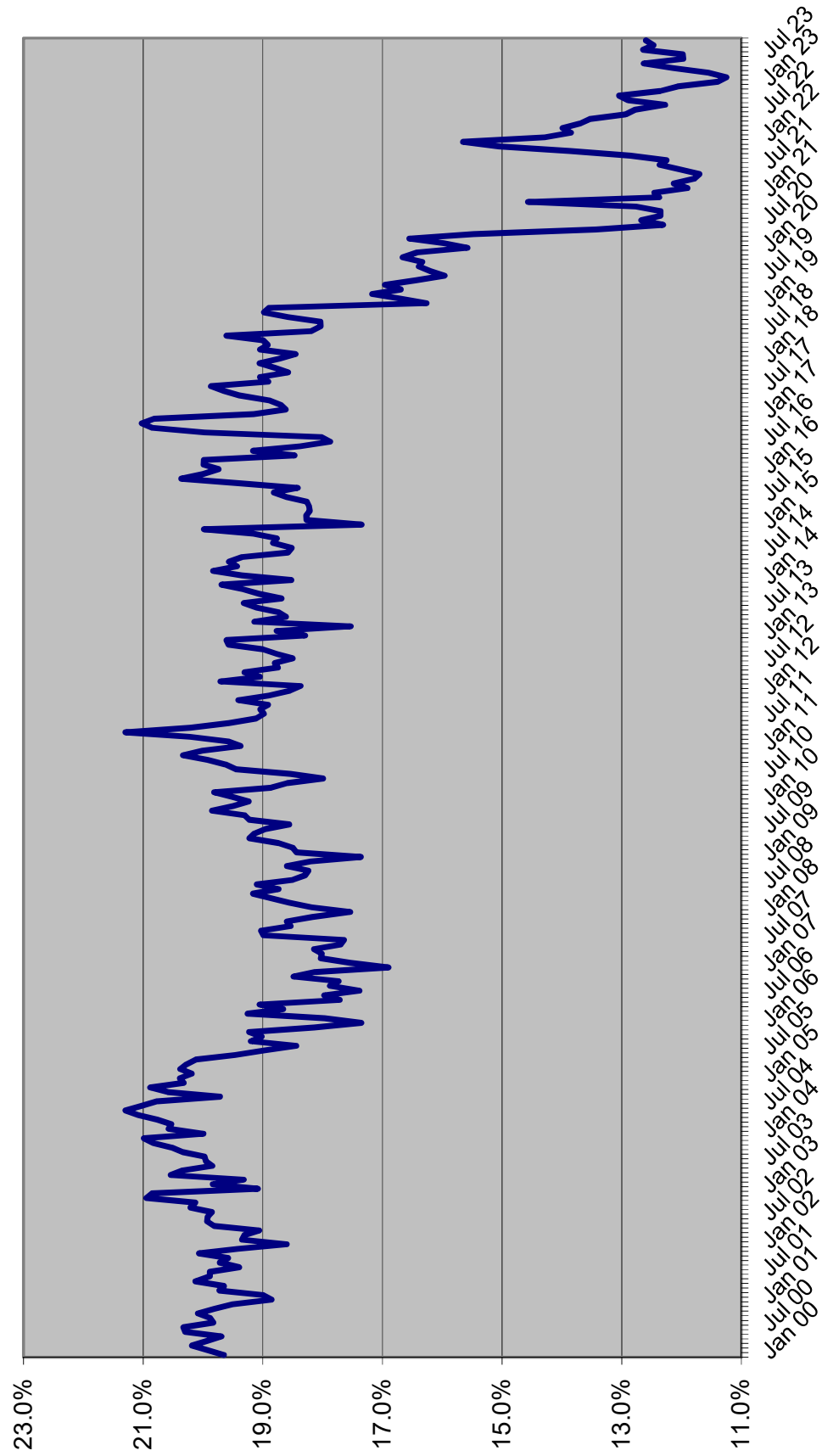
June County Jail Average Daily Population Before and After Zero Tolerance

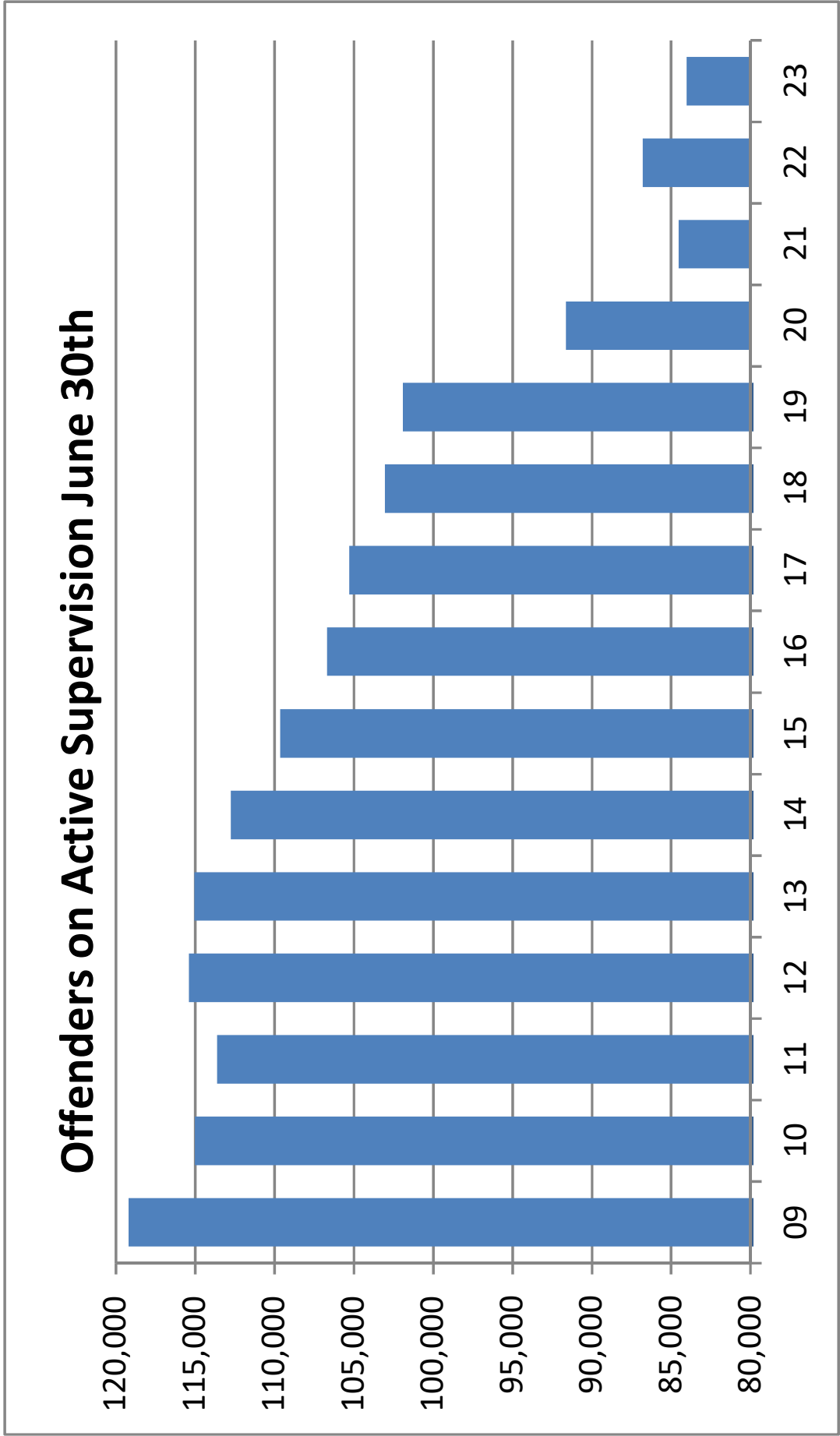


Average Daily Population in County Jails



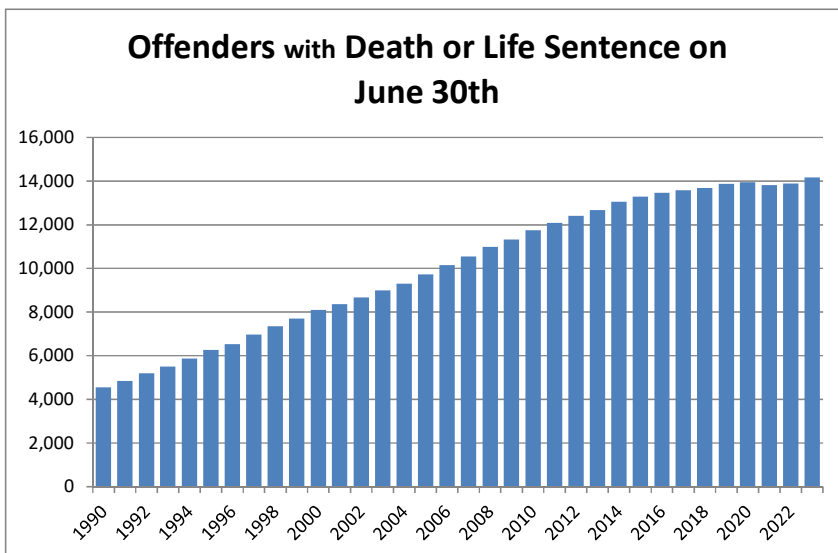
Sentenced Felons in County Jails as % of Total Jail Population



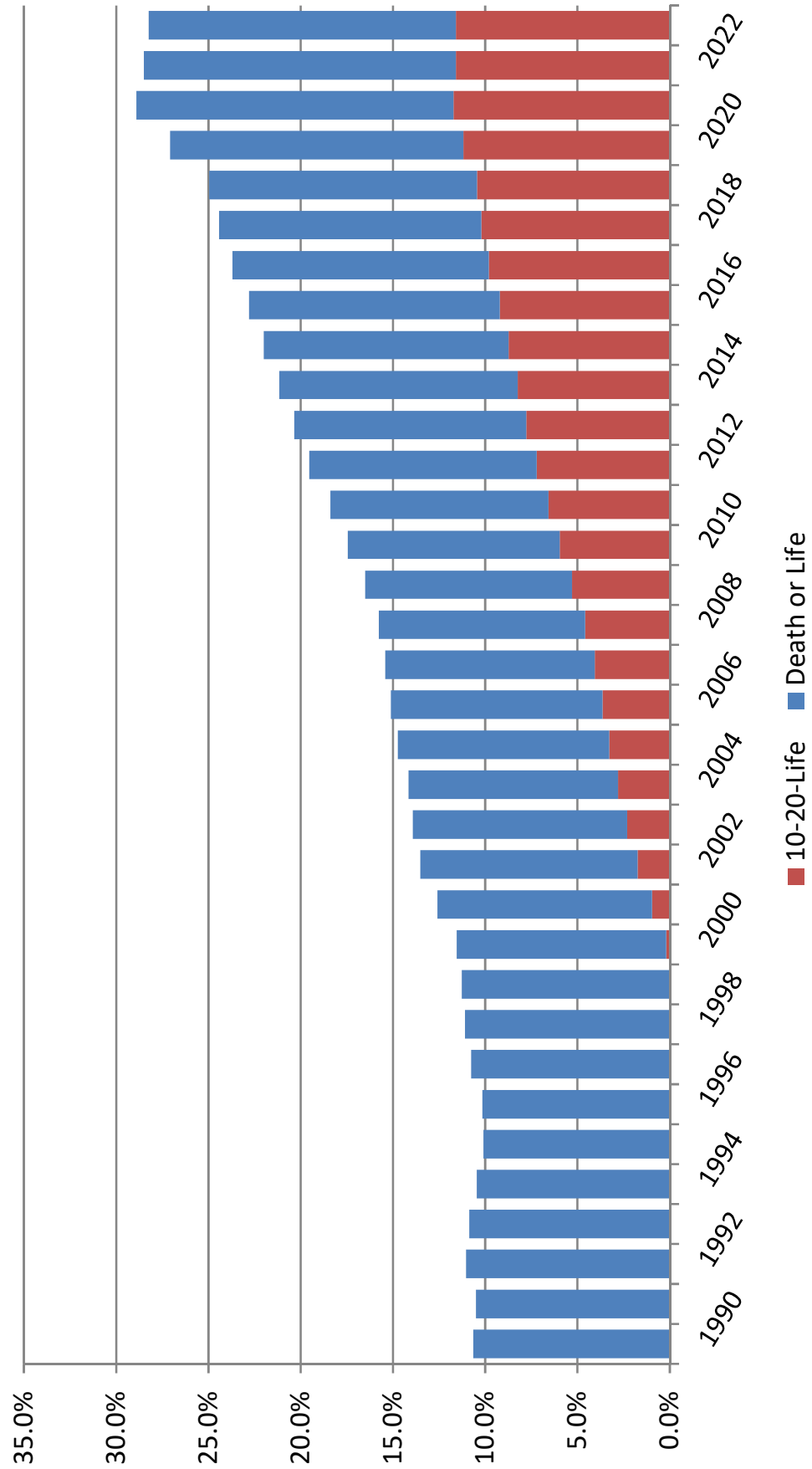


OFFENDERS WITH LIFE OR DEATH SENTENCES ON JUNE 30

June 30	Total population	Offenders with life or death sentence	Change	Percent change	Percent with death or life sentence
1990	42,733	4,549	344	8.2%	10.6%
1991	46,233	4,851	302	6.6%	10.5%
1992	47,052	5,196	345	7.1%	11.0%
1993	50,603	5,499	303	5.8%	10.9%
1994	56,052	5,869	370	6.7%	10.5%
1995	61,992	6,262	393	6.7%	10.1%
1996	64,333	6,534	272	4.3%	10.2%
1997	64,713	6,969	435	6.7%	10.8%
1998	66,280	7,355	386	5.5%	11.1%
1999	68,382	7,699	344	4.7%	11.3%
2000	71,233	8,092	393	5.1%	11.4%
2001	72,006	8,367	275	3.4%	11.6%
2002	73,553	8,659	292	3.5%	11.8%
2003	77,310	8,991	332	3.8%	11.6%
2004	81,968	9,298	307	3.4%	11.3%
2005	84,895	9,719	421	4.5%	11.4%
2006	88,575	10,152	433	4.5%	11.5%
2007	92,838	10,542	390	3.8%	11.4%
2008	98,192	10,982	440	4.2%	11.2%
2009	100,894	11,320	338	3.1%	11.2%
2010	102,232	11,737	417	3.7%	11.5%
2011	102,319	12,078	341	2.9%	11.8%
2012	100,527	12,398	320	2.6%	12.3%
2013	100,884	12,667	269	2.2%	12.6%
2014	100,942	13,046	379	3.0%	12.9%
2015	100,050	13,284	238	1.8%	13.3%
2016	99,119	13,466	182	1.4%	13.6%
2017	97,794	13,579	113	0.8%	13.9%
2018	96,253	13,681	102	0.8%	14.2%
2019	95,626	13,877	196	1.4%	14.5%
2020	87,736	13,951	74	0.5%	15.9%
2021	80,495	13,819	-132	-0.9%	17.2%
2022	82,124	13,889	70	0.5%	16.9%
2023	85,174	14,174	285	2.1%	16.6%



Percent of Offenders with Death or Life Sentence or 10-20-Life Sentence on June 30th



PRISON ADMISSIONS AND POPULATION BY FISCAL YEAR

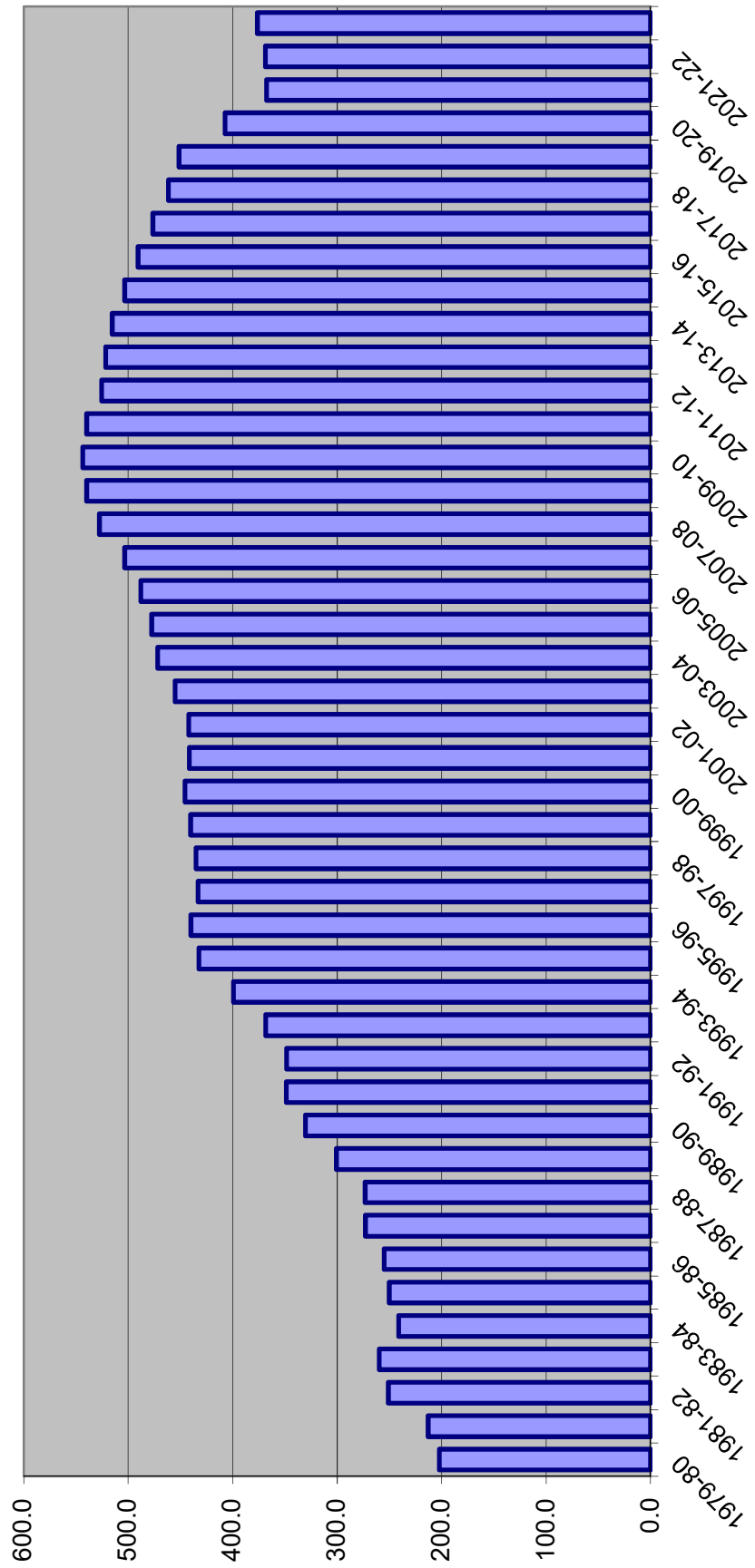
FISCAL YEAR	TOTAL PRISON ADMISSIONS	PERCENT CHANGE	PRISON POP ON JUNE 30	PERCENT CHANGE	RATIO OF ADMITS TO POP	INMATES PER 100,000 OF FL.'S POP
1978-79	8,292	3.6%	20,078	1.0%	0.41	212.5
1979-80	9,546	15.1%	19,722	-1.8%	0.48	202.3
1980-81	11,096	16.2%	21,579	9.4%	0.51	212.8
1981-82	13,621	22.8%	26,161	21.2%	0.52	250.8
1982-83	14,301	5.0%	27,717	5.9%	0.52	259.6
1983-84	12,516	-12.5%	26,471	-4.5%	0.47	241.0
1984-85	14,393	15.0%	28,310	6.9%	0.51	250.0
1985-86	17,154	19.2%	29,712	5.0%	0.58	254.9
1986-87	23,048	34.4%	32,764	10.3%	0.70	273.0
1987-88	30,454	32.1%	33,681	2.8%	0.90	273.2
1988-89	39,569	29.9%	38,059	13.0%	1.04	300.8
1989-90	43,639	10.3%	42,733	12.3%	1.02	330.3
1990-91	36,752	-15.8%	46,233	8.2%	0.79	348.7
1991-92	35,436	-3.6%	47,012	1.7%	0.75	348.3
1992-93	33,217	-6.3%	50,603	7.6%	0.66	368.6
1993-94	30,295	-8.8%	56,052	10.8%	0.54	399.1
1994-95	26,751	-11.7%	61,992	10.6%	0.43	432.4
1995-96	23,893	-10.7%	64,333	3.8%	0.37	439.9
1996-97	23,789	-0.4%	64,713	0.6%	0.37	433.2
1997-98	24,318	2.2%	66,280	2.4%	0.37	435.2
1998-99	25,147	3.4%	68,599	3.5%	0.37	440.3
1999-00	27,126	7.9%	71,233	3.8%	0.38	445.7
2000-01	27,217	0.3%	72,007	1.1%	0.38	441.6
2001-02	27,564	1.3%	73,553	2.1%	0.37	442.2
2002-03	30,287	9.9%	77,316	5.1%	0.39	455.3
2003-04	33,615	11.0%	81,974	6.0%	0.41	471.8
2004-05	34,129	1.5%	84,901	3.6%	0.40	477.6
2005-06	36,722	7.6%	88,576	4.3%	0.41	487.9
2006-07	39,300	7.0%	92,844	4.8%	0.42	503.3
2007-08	42,279	7.6%	98,192	5.8%	0.43	527.5
2008-09	40,050	-5.3%	100,894	2.8%	0.40	539.9
2009-10	37,794	-5.6%	102,232	1.3%	0.37	543.7
2010-11	35,627	-5.7%	102,319	0.1%	0.35	539.9
2011-12	32,508	-8.8%	100,527	-1.8%	0.32	525.4
2012-13	33,516	3.1%	100,884	0.4%	0.33	521.7
2013-14	32,822	-2.1%	100,942	0.1%	0.33	515.4
2014-15	31,592	-3.7%	100,050	-0.9%	0.32	503.3
2015-16	31,038	-1.8%	99,119	-0.9%	0.31	490.7
2016-17	29,432	-5.2%	97,794	-1.3%	0.30	476.5
2017-18	28,538	-3.0%	96,253	-1.6%	0.30	461.5
2018-19	29,216	2.4%	95,626	-0.7%	0.31	451.3
2019-20	21,644	-25.9%	87,736	-8.3%	0.25	407.4
2020-21	18,810	-13.1%	80,495	-8.3%	0.23	367.6
2021-22	25,905	37.7%	82,124	2.0%	0.32	368.7
2022-23	27,870	7.6%	85,174	3.7%	0.33	376.3

Data Sources: Total Admissions and June 30 Prison Population: Florida Department of Corrections, various publications and website.

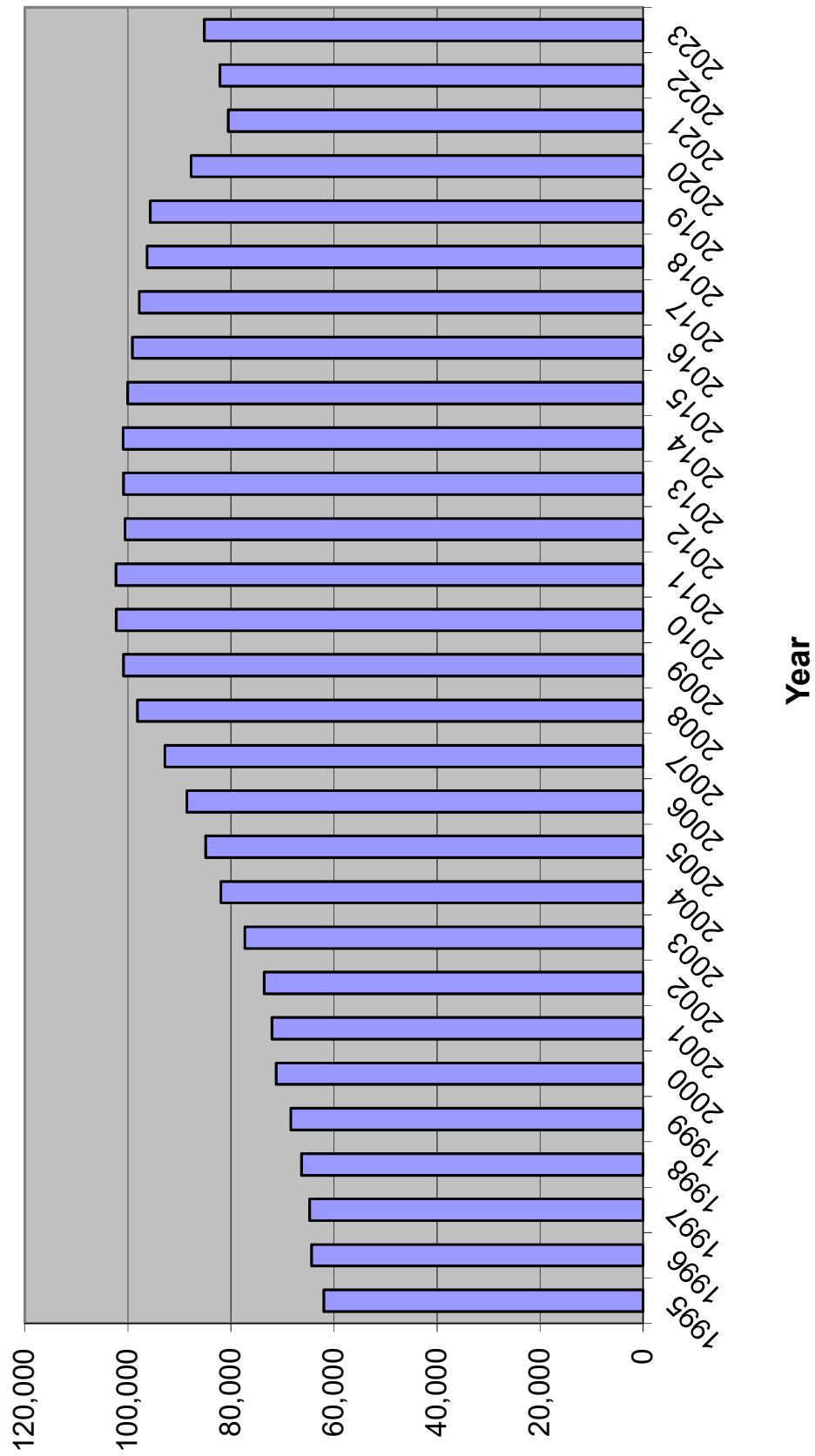
April 1 population numbers used to calculate the inmates per 100,000 Florida population are from the Florida Demographic Estimating Conference held November 28, 2023.

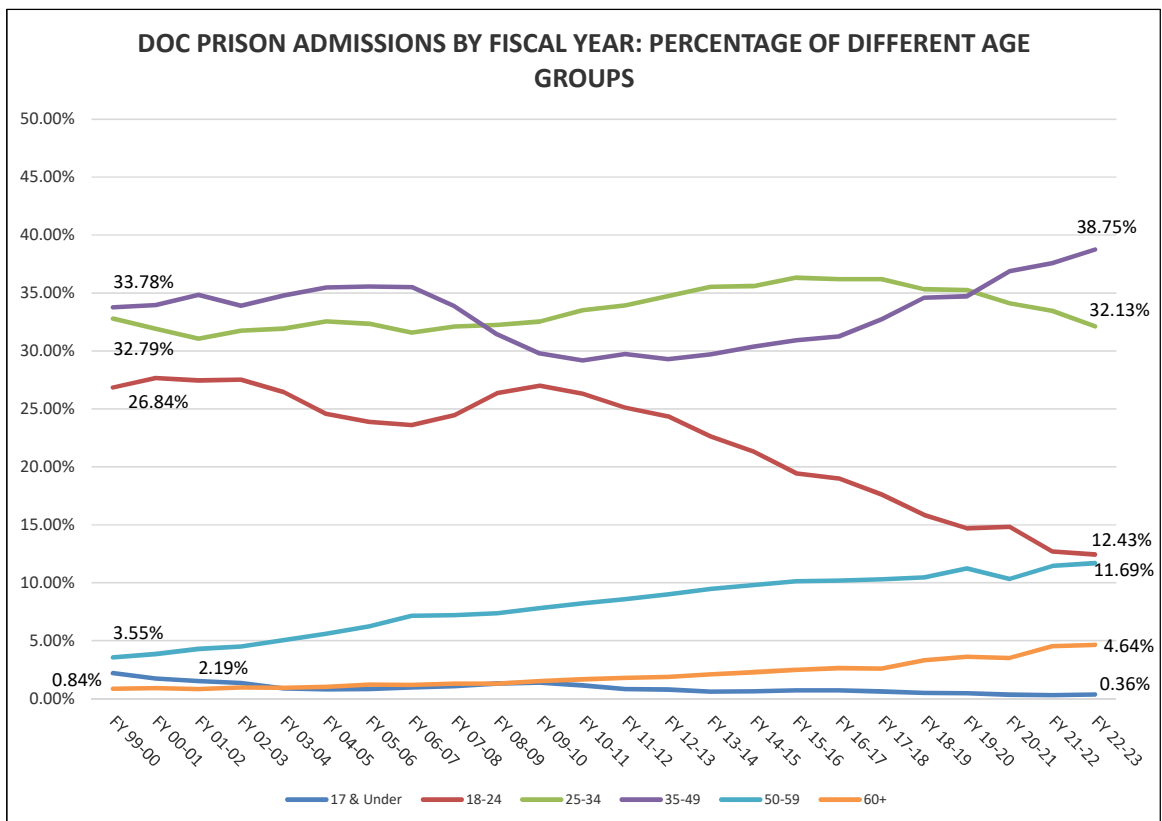
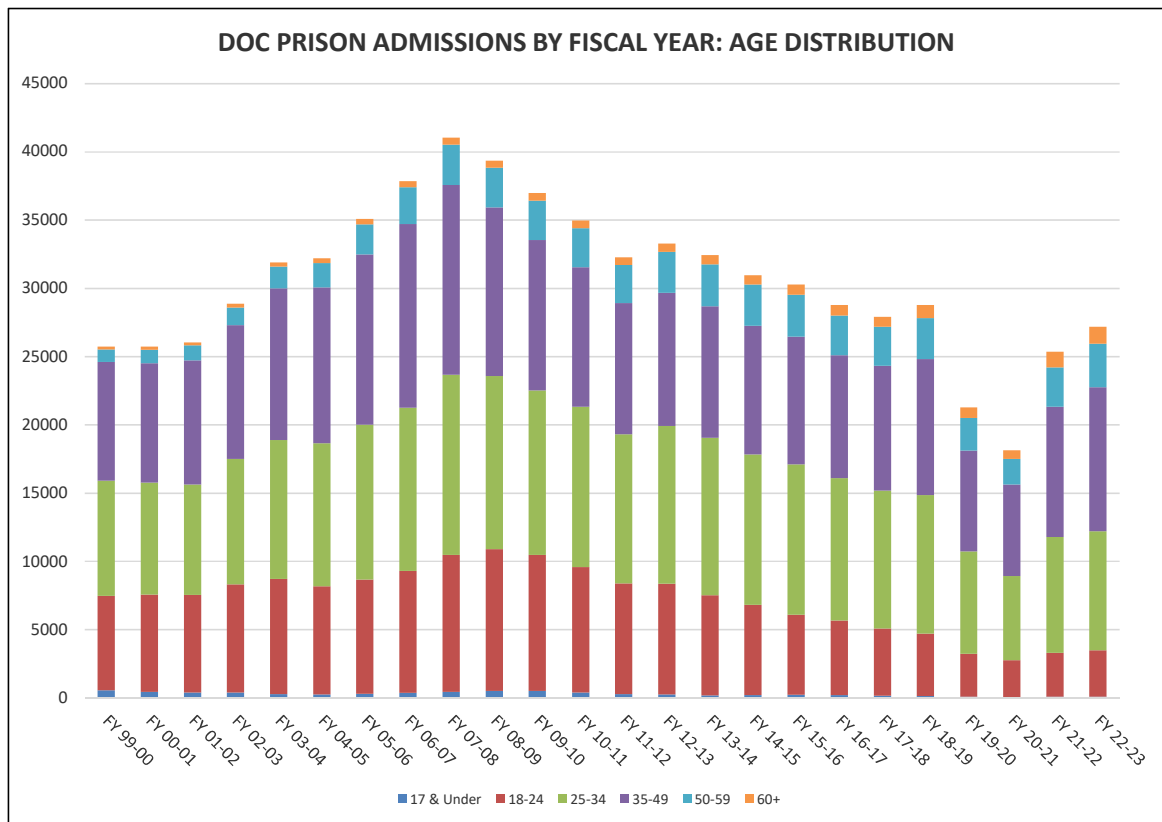
Note: Total admissions include new commitments, control releasees with and without new sentences, and conditional releasees with and without new sentences.

INMATES PER 100,000 FLORIDA RESIDENTS



DOC STATUS POPULATION: JUNE 30





Fiscal Year 22-23 Prison Admissions: Top Five Offenses by Age Group		
Ages 17 and Under	Ages 18-24	Ages 25-34
2nd Degree Murder, Dangerous Act Robbery with firearm or deadly weapon Possession of a firearm by a convicted felon Aggravated battery with deadly weapon 1st Degree Murder Premeditated, or Attempt	Possession of a firearm by a convicted felon Robbery with firearm or deadly weapon Burglary of a dwelling 2nd Degree Murder, Dangerous Act Burglary, armed with explosive or weapon	Possession of a firearm by a convicted felon Burglary of a dwelling Possess methamphetamine Burglary of an unoccupied structure Robbery with firearm or deadly weapon
Ages 35-49	Ages 50-59	Ages 60+
Possession of a firearm by a convicted felon Possess methamphetamine Burglary of a dwelling Burglary of an unoccupied structure Cocaine S/M/D	Possess methamphetamine Possession of a firearm by a convicted felon Burglary of an unoccupied structure Cocaine S/M/D Burglary of a dwelling	Cocaine S/M/D Sex offender failure to register Petit theft/3rd conviction Sexual battery by adult/victim under 12 Lewd/lascivious molestation; victim under 12/offender 18 or older

Youngest admission: 15 years
Oldest admission: 91 years

