

FLORIDA DEMOGRAPHIC ESTIMATING CONFERENCE

Executive Summary

The Florida Demographic Estimating Conference (FDEC) convened on October 18 to revisit the projections of Florida population and its components of change. The state's preliminary estimate of Florida's resident population for April 1, 2005 is 17,912,715. This was an increase of 396,983 people, or 2.26%, over 2004. This was 40,419 people more than was projected at the spring FDEC. This reflected net migration that was 32,500 higher than projected and net natural increase (births minus deaths) that was about 7,900 higher—primarily due to fewer deaths.

The state's population has increased by 1,238,000 since April 1, 2002. This is the largest three year increase since the 3-year period 1971-1974 when the state's population increased by 1,321,400 people. Florida continues to be an attractive destination due to its many natural amenities and low taxes.

The FDEC projects that the state's population will continue to grow at rates at or above two percent through 2010. The state grew by 1,929,900 people over the first five years of the decade. It is projected to add another 2,000,000 over the next five years. Net migration contributes 1,730,000 people to the state's population—only slightly higher than over the last five years. Net natural increase is projected to contribute 277,000 people to the state's population growth. This is about 60,000 more people than over the last five years. This results in a revised projection for 2010 of Florida's population that is 265,000 persons, or 1.34%, higher than the figure adopted at the spring 2005 FDEC.

	FDEC, 02/05		FDEC, 10/05	
	(As of 4/1)	% Chg	(As of 4/1)	% Chg
2000	15,982,824	2.58	15,982,824	2.58
2001	16,330,224	2.17	16,330,224	2.17
2002	16,674,608	2.11	16,674,608	2.11
2003	17,071,508	2.38	17,071,508	2.38
2004	17,516,732	2.61	17,516,732	2.61
2005	17,872,301	2.03	17,912,715	2.26
Begins forecast				
2006	18,233,076	2.02	18,324,451	2.30
2007	18,598,195	2.00	18,737,889	2.26
2008	18,958,795	1.94	19,139,994	2.15
2009	19,308,241	1.84	19,532,514	2.05
2010	19,655,135	1.80	19,920,344	1.99

FLORIDA DEMOGRAPHIC ESTIMATING CONFERENCE

Tables

Held October 18, 2005

Florida Resident Population

	FDEC, 02/05 (As of 4/1)	% Chg	FDEC, 10/05 (As of 4/1)	% Chg
1980	9,746,961	3.94	9,746,961	3.16
1981	10,112,179	3.75	10,138,197	4.01
1982	10,403,363	2.88	10,430,200	2.88
1983	10,678,558	2.65	10,678,749	2.38
1984	10,965,141	2.68	10,982,485	2.84
1985	11,272,332	2.80	11,322,340	3.09
1986	11,587,208	2.79	11,654,079	2.93
1987	11,916,396	2.84	12,000,169	2.97
1988	12,231,241	2.64	12,327,582	2.73
1989	12,547,737	2.59	12,650,935	2.62
1990	12,937,926	3.11	12,938,071	2.27
1991	13,258,732	2.48	13,258,732	2.48
1992	13,497,541	1.80	13,497,541	1.80
1993	13,730,115	1.72	13,730,115	1.72
1994	14,043,757	2.28	14,043,757	2.28
1995	14,335,992	2.08	14,335,992	2.08
1996	14,623,421	2.00	14,623,421	2.00
1997	14,938,314	2.15	14,938,314	2.15
1998	15,230,421	1.96	15,230,421	1.96
1999	15,580,244	2.30	15,580,244	2.30
2000	15,982,824	2.58	15,982,824	2.58
2001	16,330,224	2.17	16,330,224	2.17
2002	16,674,608	2.11	16,674,608	2.11
2003	17,071,508	2.38	17,071,508	2.38
2004	17,516,732	2.61	17,516,732	2.61
2005	17,872,301	2.03	17,912,715	2.26
Begins forecast.				
2006	18,233,076	2.02	18,324,451	2.30
2007	18,598,195	2.00	18,737,889	2.26
2008	18,958,795	1.94	19,139,994	2.15
2009	19,308,241	1.84	19,532,514	2.05
2010	19,655,135	1.80	19,920,344	1.99
2011	19,993,175	1.72	20,303,240	1.92
2012	20,320,187	1.64	20,678,324	1.85
2013	20,640,921	1.58	21,047,539	1.79
2014	20,960,777	1.55	21,411,003	1.73
2015	21,280,300	1.52	21,767,506	1.67
2020	22,894,144	1.47	23,475,835	1.52
2025	24,449,152	1.32	24,998,014	1.26
2030	25,898,473	1.16	26,419,166	1.11

Florida Resident Households

	FDEC, 02/05 <u>(As of 4/1)</u>	<u>% Chg</u>	FDEC, 10/05 <u>(As of 4/1)</u>	<u>% Chg</u>
1980	3,744,254	4.79%	3,744,254	4.79%
1981	3,896,414	4.06%	3,896,414	4.06%
1982	4,022,334	3.23%	4,022,334	3.23%
1983	4,142,508	2.99%	4,142,508	2.99%
1984	4,267,829	3.03%	4,267,829	3.03%
1985	4,401,848	3.14%	4,401,848	3.14%
1986	4,539,927	3.14%	4,539,927	3.14%
1987	4,684,104	3.18%	4,684,104	3.18%
1988	4,823,849	2.98%	4,823,849	2.98%
1989	4,965,884	2.94%	4,965,884	2.94%
1990	5,134,869	3.40%	5,134,869	3.40%
1991	5,283,154	2.89%	5,283,154	2.89%
1992	5,378,499	1.80%	5,378,499	1.80%
1993	5,478,476	1.86%	5,478,476	1.86%
1994	5,589,093	2.02%	5,589,093	2.02%
1995	5,697,328	1.94%	5,697,328	1.94%
1996	5,806,031	1.91%	5,806,031	1.91%
1997	5,929,613	2.13%	5,929,613	2.13%
1998	6,040,514	1.87%	6,040,514	1.87%
1999	6,182,346	2.35%	6,182,346	2.35%
2000	6,337,929	2.52%	6,338,075	2.52%
2001	6,483,040	2.29%	6,483,040	2.29%
2002	6,620,674	2.12%	6,620,674	2.12%
2003	6,778,804	2.39%	6,778,804	2.39%
2004	6,953,418	2.58%	6,949,759	2.52%
2005	7,087,574	1.93%	7,105,018	2.23%
Begins forecast.				
2006	7,230,960	2.02%	7,270,921	2.34%
2007	7,375,948	2.01%	7,437,287	2.29%
2008	7,519,075	1.94%	7,598,701	2.17%
2009	7,658,066	1.85%	7,756,013	2.07%
2010	7,795,901	1.80%	7,911,103	2.00%
2011	7,930,275	1.72%	8,064,023	1.93%
2012	8,060,250	1.64%	8,213,660	1.86%
2013	8,187,650	1.58%	8,360,797	1.79%
2014	8,314,714	1.55%	8,505,552	1.73%
2015	8,441,834	1.53%	8,647,562	1.67%
2020	9,085,032	1.48%	9,327,982	1.53%
2025	9,705,455	1.33%	9,934,890	1.27%
2030	10,284,285	1.17%	10,501,938	1.12%

FLORIDA DEMOGRAPHIC ESTIMATING CONFERENCE

Held October 18, 2005

FISCAL YEAR AVERAGE

	<u>2004-3</u>	<u>2004-4</u>	<u>2005-1</u>	<u>2005-2</u>	<u>2005-3</u>	<u>2005-4</u>	<u>2006-1</u>	<u>2006-2</u>	<u>2006-3</u>	<u>2006-4</u>	<u>2007-1</u>	<u>2007-2</u>	<u>2003-04</u>	<u>2004-05</u>	<u>2005-06</u>	<u>2006-07</u>
Population																
FDEC, 02/2005	17,658.9	17,745.4	17,829.9	17,914.7	18,004.9	18,095.9	18,187.3	18,278.9	18,370.1	18,461.4	18,552.7	18,643.7	17,407.2	17,787.2	18,141.7	18,507.0
FDEC, 10/2005	17,669.7	17,767.8	17,864.5	17,962.2	18,064.1	18,167.8	18,272.3	18,376.6	18,480.5	18,583.9	18,686.8	18,789.0	17,404.7	17,816.1	18,220.2	18,635.1
Growth Rate																
FDEC, 02/2005	2.09	1.97	1.92	1.91	2.03	2.04	2.03	2.03	2.01	2.00	1.99	1.98	2.59	2.18	1.99	2.01
FDEC, 10/2005	2.33	2.24	2.19	2.21	2.29	2.32	2.32	2.30	2.28	2.26	2.23	2.20	2.57	2.36	2.27	2.28
Net Change in Population																
FDEC, 02/2005	90.9	86.4	84.6	84.7	90.2	91.1	91.3	91.6	91.2	91.3	91.3	91.0	440.7	346.7	364.2	364.8
FDEC, 10/2005	101.3	98.0	96.7	97.8	101.9	103.7	104.5	104.3	103.9	103.4	102.9	102.2	442.0	393.8	414.4	412.4
Households																
FDEC, 02/2005	7,003.2	7,037.2	7,070.8	7,104.4	7,140.3	7,176.5	7,212.8	7,249.2	7,285.3	7,321.6	7,357.9	7,394.0	6,906.9	7,053.9	7,194.7	7,339.7
FDEC, 10/2005	7,007.8	7,047.3	7,085.6	7,124.4	7,165.5	7,207.7	7,249.9	7,292.0	7,333.7	7,375.3	7,416.7	7,457.8	6,906.7	7,066.3	7,228.7	7,395.9
Growth Rate																
FDEC, 02/2005	2.03	1.96	1.92	1.92	2.04	2.04	2.04	2.03	2.01	2.00	2.00	1.98	2.50	2.13	2.00	2.02
FDEC, 10/2005	2.23	2.27	2.19	2.21	2.32	2.38	2.36	2.34	2.31	2.29	2.27	2.24	2.49	2.31	2.30	2.31
Net Change in Households																
FDEC, 02/2005	35.1	34.1	33.5	33.6	35.9	36.2	36.3	36.4	36.2	36.2	36.3	36.2	167.6	136.3	144.8	144.9
FDEC, 10/2005	38.5	39.5	38.3	38.8	41.0	42.2	42.2	42.1	41.8	41.6	41.4	41.1	169.1	155.1	167.5	165.9
Household Size																
FDEC, 02/2005	2.522	2.522	2.522	2.522	2.522	2.522	2.522	2.522	2.522	2.522	2.521	2.521	2.520	2.522	2.522	2.521
FDEC, 10/2005	2.521	2.521	2.521	2.521	2.521	2.521	2.520	2.520	2.520	2.520	2.520	2.519	2.520	2.521	2.521	2.520
Growth Rate																
FDEC, 02/2005	0.06	0.01	0.00	0.00	-0.01	-0.01	0.00	0.00	0.00	0.00	0.00	0.00	0.09	0.05	0.00	0.00
FDEC, 10/2005	0.10	-0.03	0.00	0.00	-0.03	-0.06	-0.04	-0.04	-0.03	-0.03	-0.03	-0.03	0.08	0.05	-0.03	-0.03
Net Migration																
FDEC, 02/2005	79.3	74.8	73.0	73.1	78.7	79.6	79.9	80.2	79.8	79.9	79.9	79.7	395.8	300.3	318.4	319.4
FDEC, 10/2005	87.8	84.4	82.8	83.8	87.9	89.7	90.4	90.2	89.9	89.4	88.9	88.2	393.7	338.8	358.1	356.3
Births																
FDEC, 02/2005	54.5	54.7	54.9	55.1	55.4	55.6	55.8	56.1	56.3	56.6	56.8	57.0	214.4	219.3	222.9	226.7
FDEC, 10/2005	54.5	54.7	55.0	55.2	55.4	55.6	55.9	56.1	56.3	56.5	56.8	57.0	214.3	219.3	223.0	226.6
Deaths																
FDEC, 02/2005	42.9	43.1	43.3	43.6	43.8	44.1	44.4	44.7	44.9	45.2	45.5	45.7	169.5	172.9	177.0	181.3
FDEC, 10/2005	41.0	41.1	41.1	41.2	41.4	41.6	41.8	42.0	42.3	42.5	42.8	43.0	166.0	164.4	166.7	170.5
Net Natural Increase																
FDEC, 02/2005	11.6	11.6	11.6	11.6	11.5	11.5	11.5	11.4	11.4	11.4	11.3	11.3	44.9	46.3	45.9	45.5
FDEC, 10/2005	13.5	13.6	13.9	14.0	14.0	14.1	14.1	14.1	14.0	14.0	14.0	14.0	48.3	54.9	56.2	56.0

FLORIDA DEMOGRAPHIC ESTIMATING CONFERENCE

Held October 18, 2005

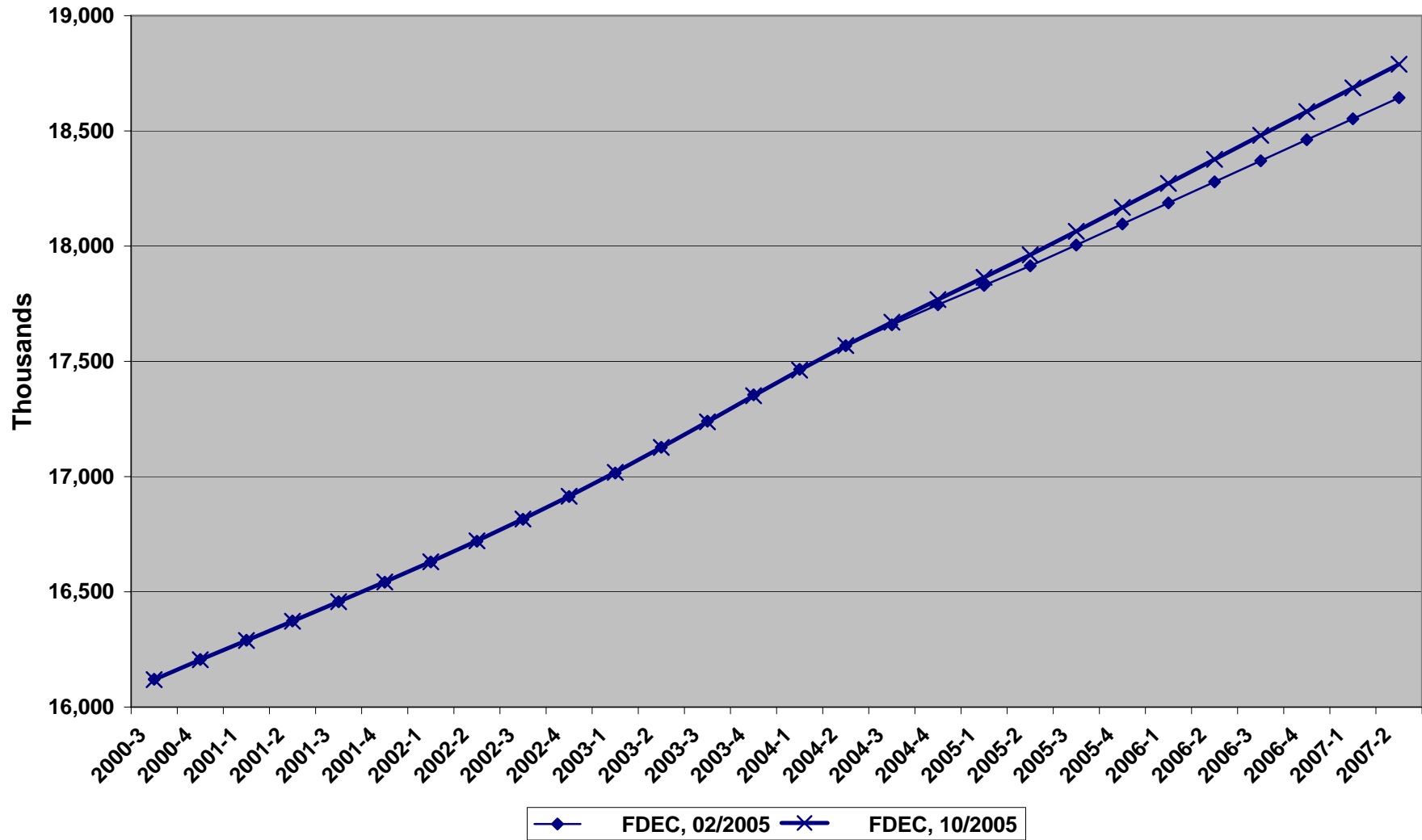
	<u>00-01</u>	<u>01-02</u>	<u>02-03</u>	<u>03-04</u>	<u>04-05</u>	<u>05-06</u>	<u>06-07</u>	<u>07-08</u>	<u>08-09</u>	<u>09-10</u>	<u>10-11</u>	<u>11-12</u>	<u>12-13</u>	<u>13-14</u>	<u>14-15</u>
Population															
FDEC, 02/2005	16,247.6	16,587.1	16,967.8	17,407.2	17,787.2	18,141.7	18,507.0	18,869.2	19,221.3	19,568.6	19,909.3	20,239.0	20,561.0	20,880.8	21,200.4
FDEC, 10/2005	16,246.4	16,587.9	16,968.8	17,404.7	17,816.1	18,220.2	18,635.1	19,040.3	19,434.8	19,823.6	20,208.0	20,585.0	20,955.6	21,320.5	21,678.8
Growth Rate															
FDEC, 02/2005	2.30	2.09	2.30	2.59	2.18	1.99	2.01	1.96	1.87	1.81	1.74	1.66	1.59	1.56	1.53
FDEC, 10/2005	2.30	2.10	2.30	2.57	2.36	2.27	2.28	2.17	2.07	2.00	1.94	1.87	1.80	1.74	1.68
Net Change in Population															
FDEC, 02/2005	342.5	346.2	407.6	440.7	346.7	364.2	364.8	359.6	348.3	346.7	336.5	325.8	320.4	319.8	319.5
FDEC, 10/2005	343.4	348.6	405.4	442.0	393.8	414.4	412.4	400.5	391.7	387.4	381.9	374.2	368.5	362.8	355.6
Households															
FDEC, 02/2005	6,447.0	6,586.3	6,738.7	6,906.9	7,053.9	7,194.7	7,339.7	7,483.5	7,623.5	7,761.5	7,896.9	8,028.0	8,155.9	8,283.0	8,410.0
FDEC, 10/2005	6,447.1	6,586.2	6,738.9	6,906.7	7,066.3	7,228.7	7,395.9	7,558.7	7,716.9	7,872.4	8,026.0	8,176.4	8,324.2	8,469.5	8,612.2
Growth Rate															
FDEC, 02/2005	2.35	2.16	2.31	2.50	2.13	2.00	2.02	1.96	1.87	1.81	1.74	1.66	1.59	1.56	1.53
FDEC, 10/2005	2.35	2.16	2.32	2.49	2.31	2.30	2.31	2.20	2.09	2.02	1.95	1.87	1.81	1.75	1.68
Net Change in Households															
FDEC, 02/2005	143.7	139.5	160.9	167.6	136.3	144.8	144.9	142.7	138.6	137.7	133.8	129.5	127.2	127.1	127.2
FDEC, 10/2005	143.5	139.6	160.6	169.1	155.1	167.5	165.9	160.7	157.0	154.9	152.5	149.3	146.8	144.5	141.7
Household Size															
FDEC, 02/2005	2.520	2.518	2.518	2.520	2.522	2.522	2.521	2.521	2.521	2.521	2.521	2.521	2.521	2.521	2.521
FDEC, 10/2005	2.520	2.519	2.518	2.520	2.521	2.521	2.520	2.519	2.518	2.518	2.518	2.518	2.517	2.517	2.517
Growth Rate															
FDEC, 02/2005	-0.05	-0.07	-0.02	0.09	0.05	0.00	0.00	0.00	0.00	0.00	0.00	0.00	0.00	0.00	0.00
FDEC, 10/2005	-0.05	-0.06	-0.02	0.08	0.05	-0.03	-0.03	-0.03	-0.02	-0.01	-0.01	-0.01	-0.01	0.00	0.00
Net Migration															
FDEC, 02/2005	302.0	308.4	367.8	395.8	300.3	318.4	319.4	314.3	302.9	300.9	290.0	278.5	272.2	271.1	270.6
FDEC, 10/2005	303.1	310.8	365.8	393.7	338.8	358.1	356.3	345.0	336.8	333.1	328.6	322.0	317.8	313.9	308.9
Births															
FDEC, 02/2005	205.5	205.4	207.8	214.4	219.3	222.9	226.7	230.7	235.0	239.5	244.4	249.5	254.6	259.7	264.7
FDEC, 10/2005	205.4	205.5	208.0	214.3	219.3	223.0	226.6	230.2	233.8	237.5	241.1	244.4	247.7	250.8	253.7
Deaths															
FDEC, 02/2005	165.0	167.7	168.0	169.5	172.9	177.0	181.3	185.5	189.6	193.8	198.0	202.2	206.5	211.0	215.7
FDEC, 10/2005	165.0	167.7	168.4	166.0	164.4	166.7	170.5	174.7	178.9	183.2	187.7	192.3	197.0	201.9	206.9
Net Natural Increase															
FDEC, 02/2005	40.5	37.7	39.8	44.9	46.3	45.9	45.5	45.3	45.4	45.7	46.5	47.3	48.1	48.7	49.0
FDEC, 10/2005	40.3	37.8	39.6	48.3	54.9	56.2	56.0	55.5	54.9	54.3	53.4	52.2	50.7	48.9	46.7

FLORIDA DEMOGRAPHIC ESTIMATING CONFERENCE

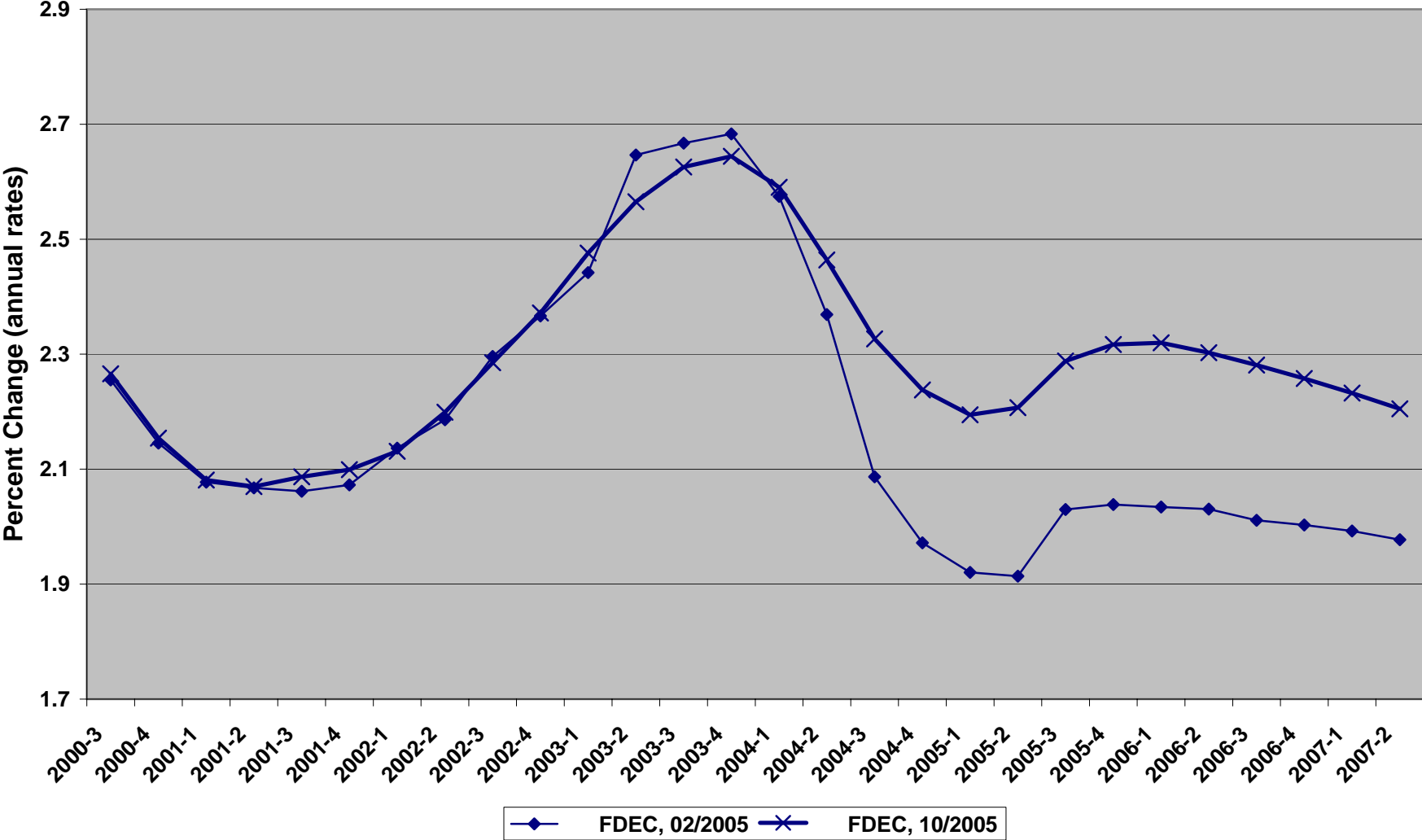
Charts

Held October 18, 2005

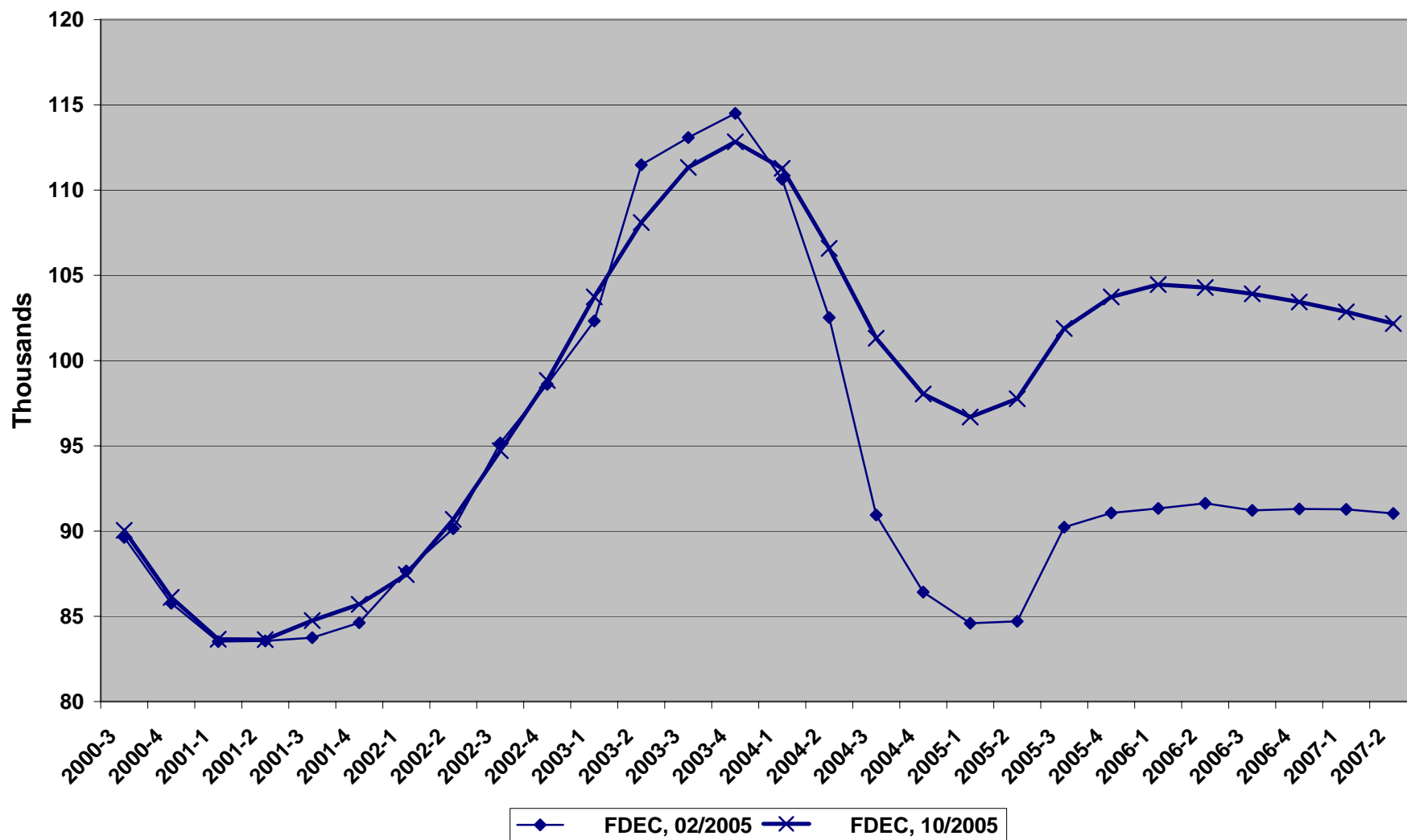
Florida Resident Population



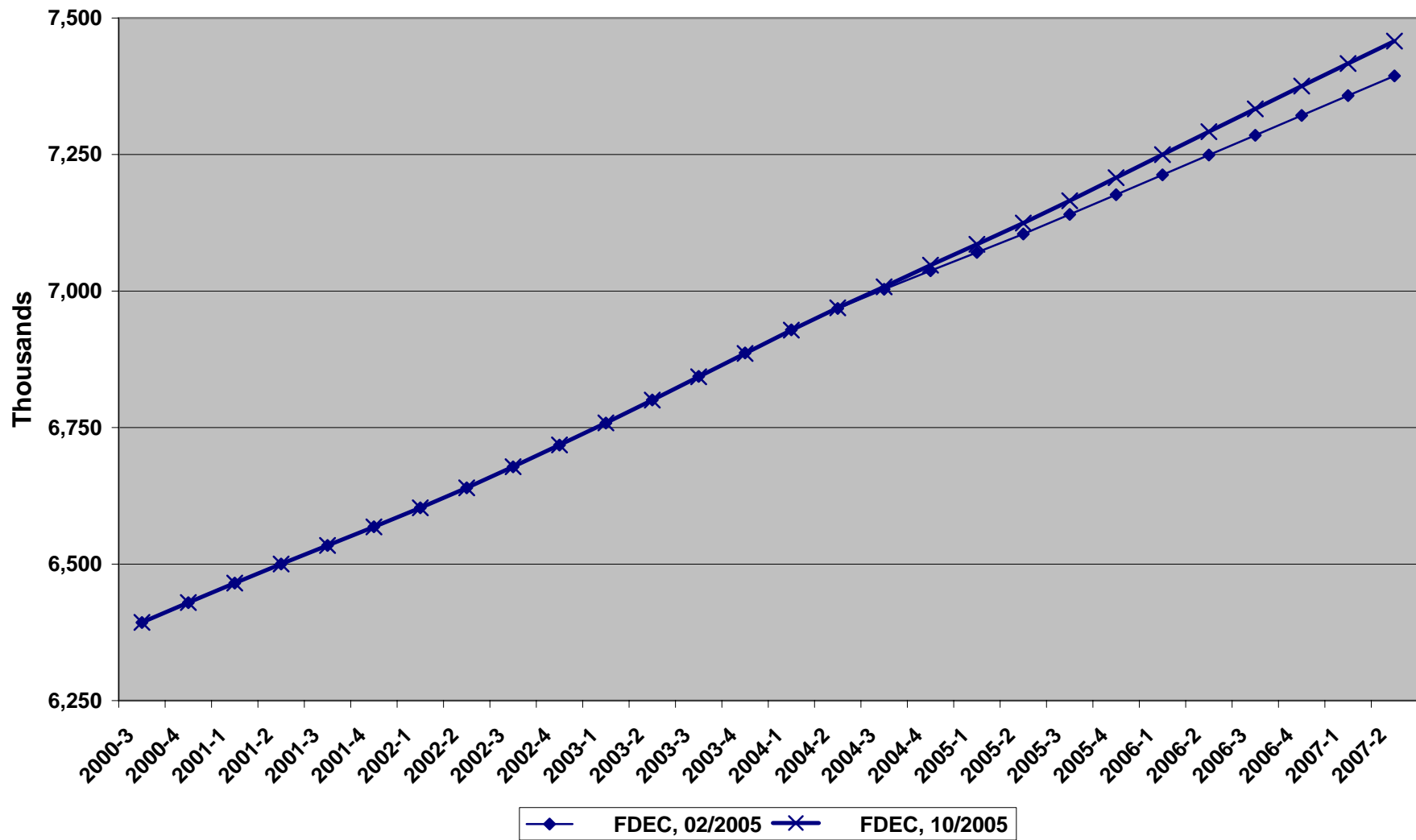
Growth In Florida Resident Population



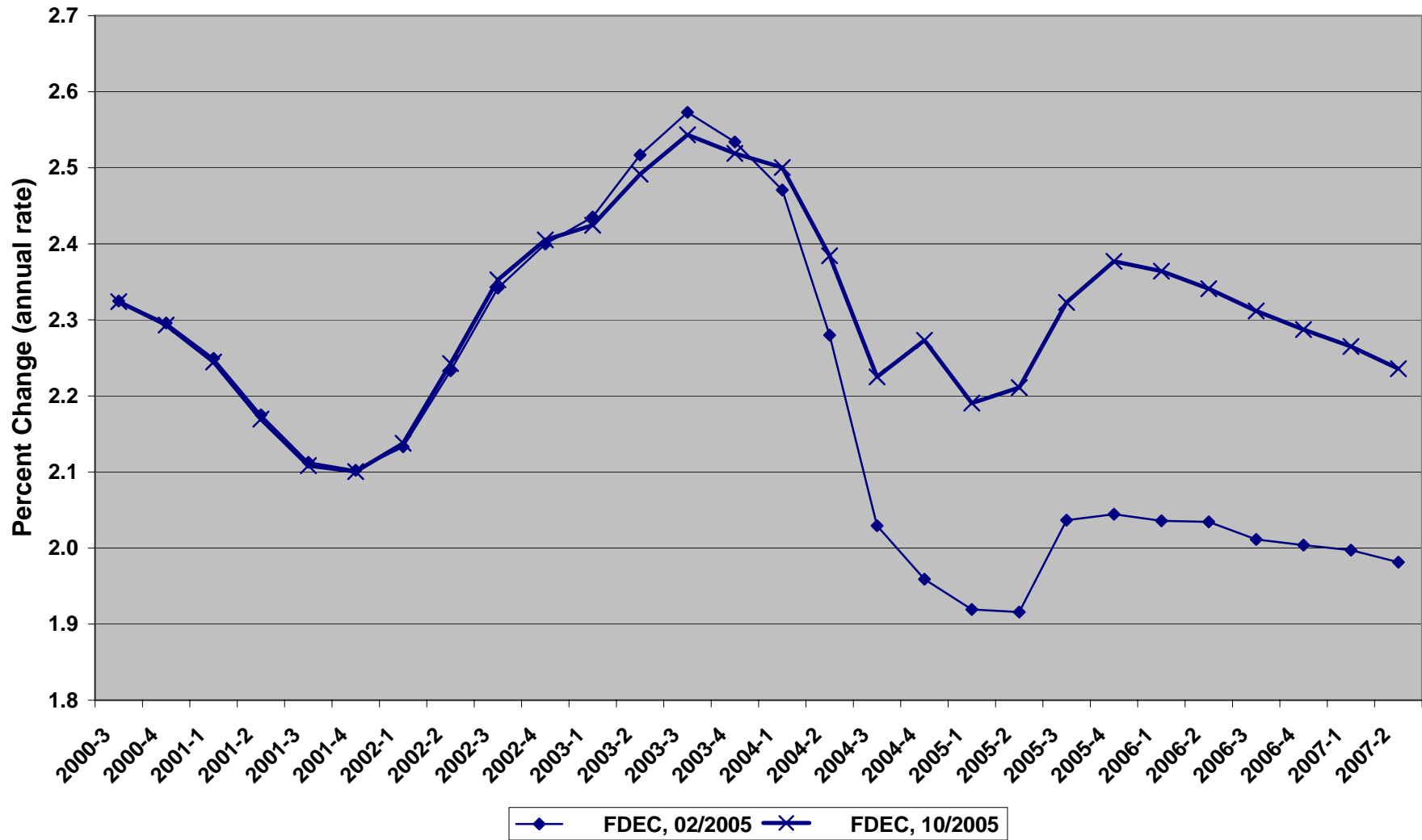
Net Change In Florida Resident Population



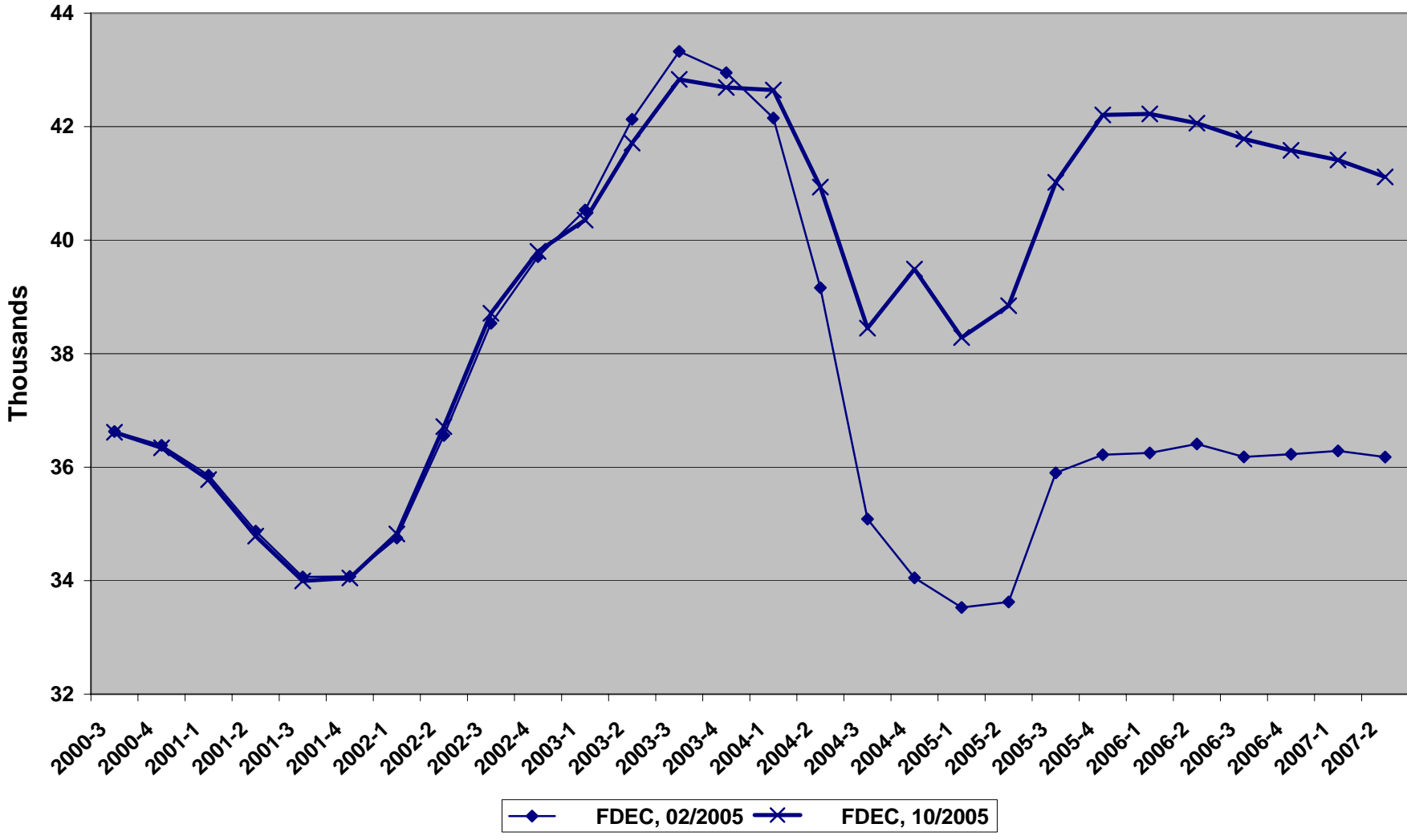
Florida Resident Households



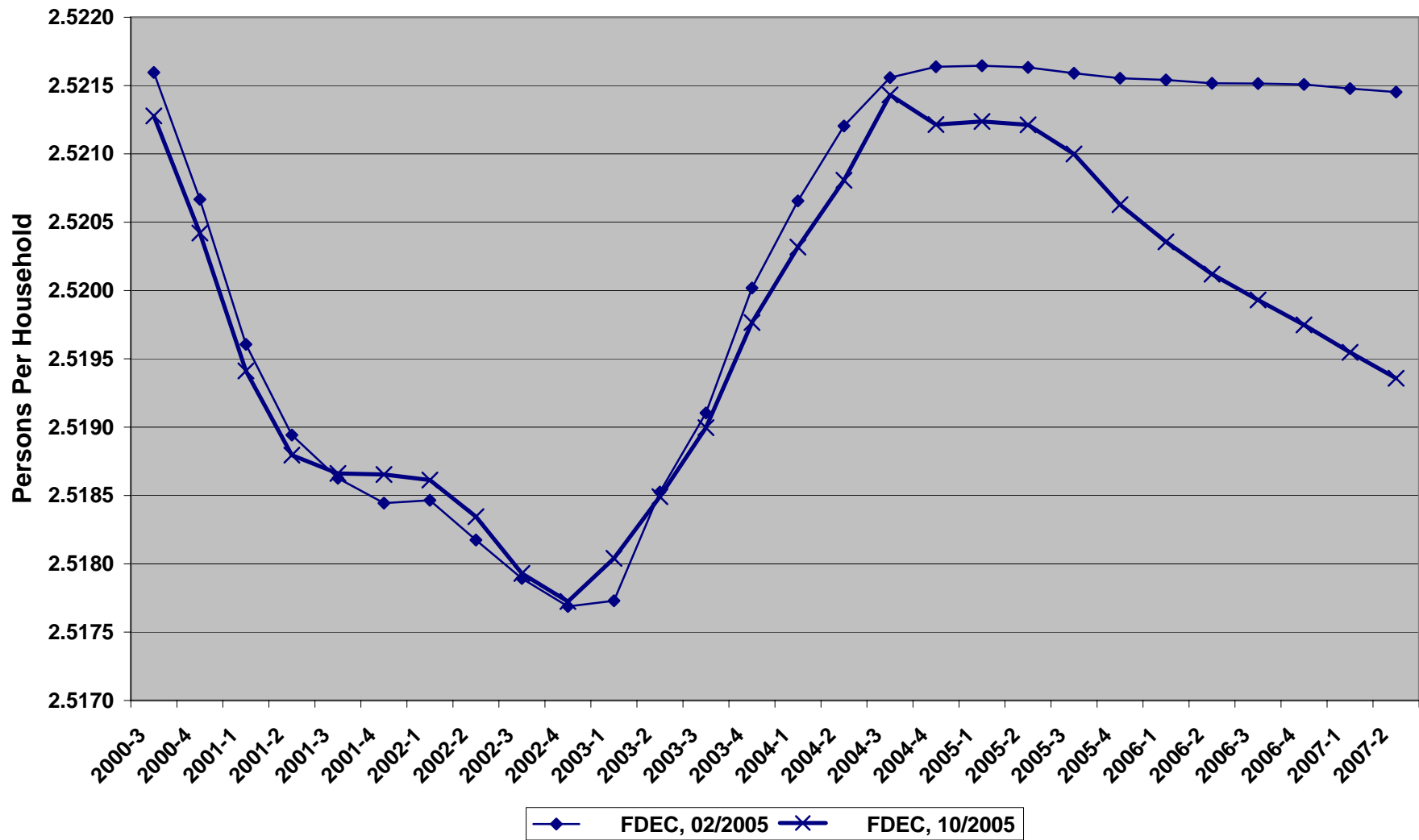
Growth In Florida Resident Households



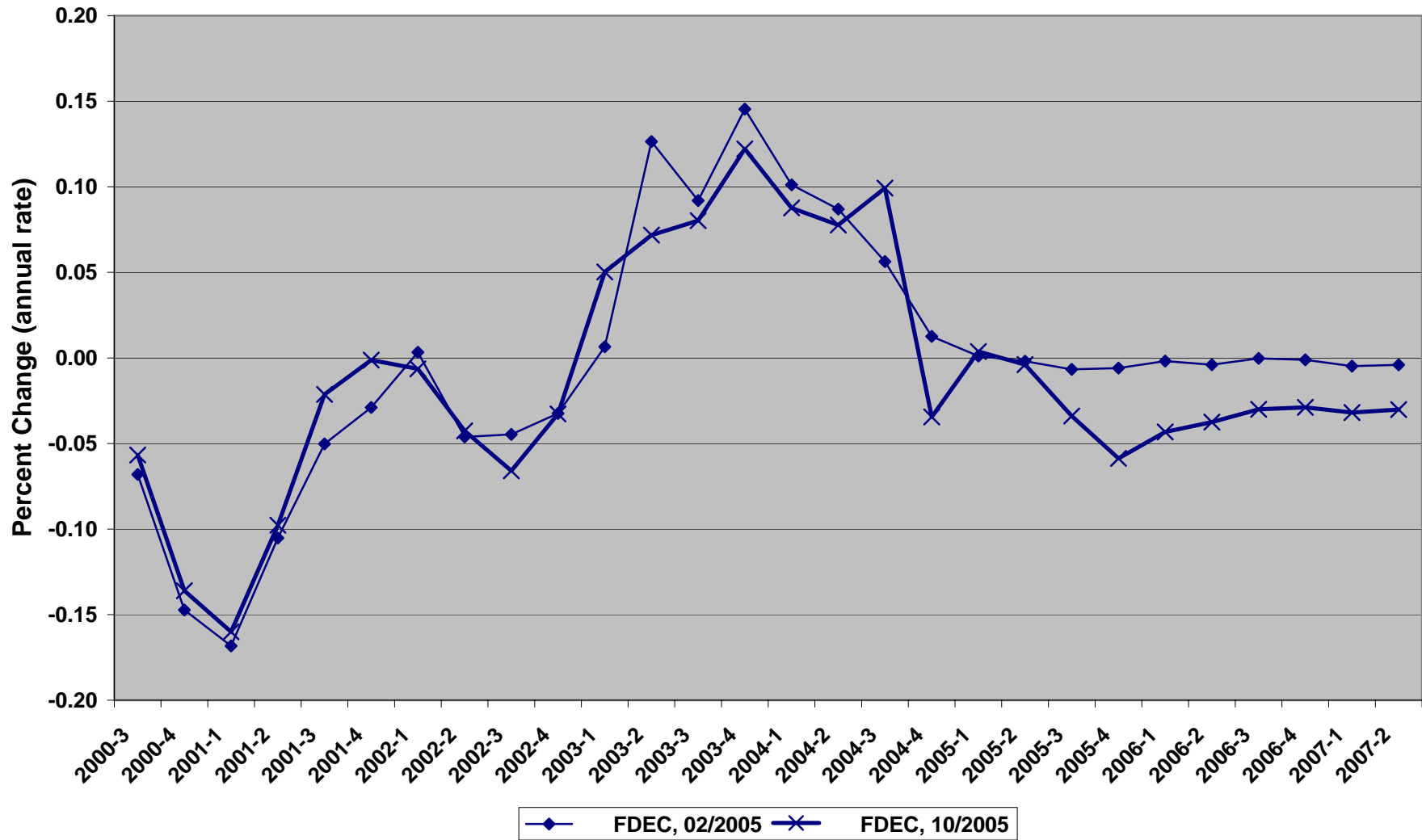
Net Change In Florida Resident Households



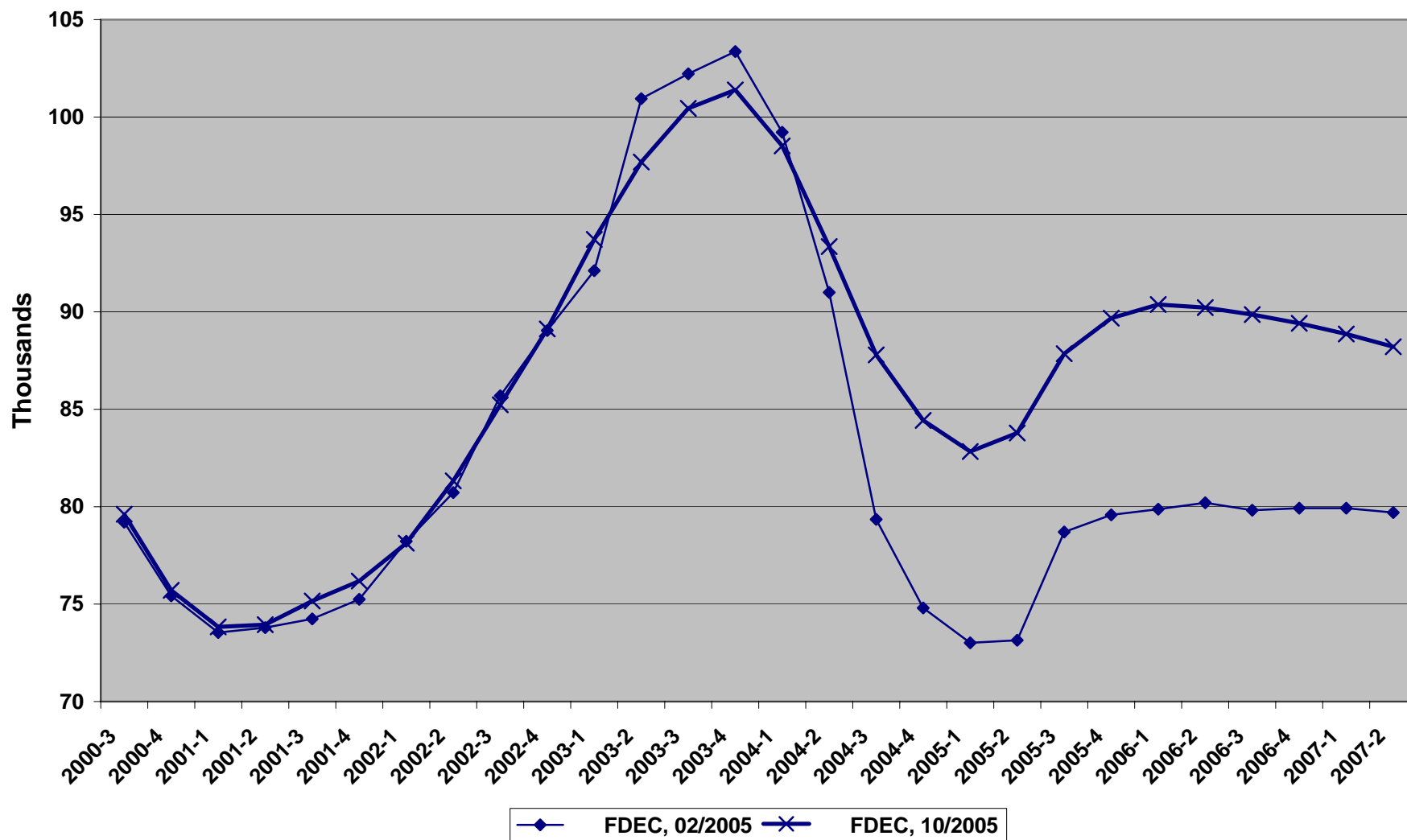
Florida Average Household Size



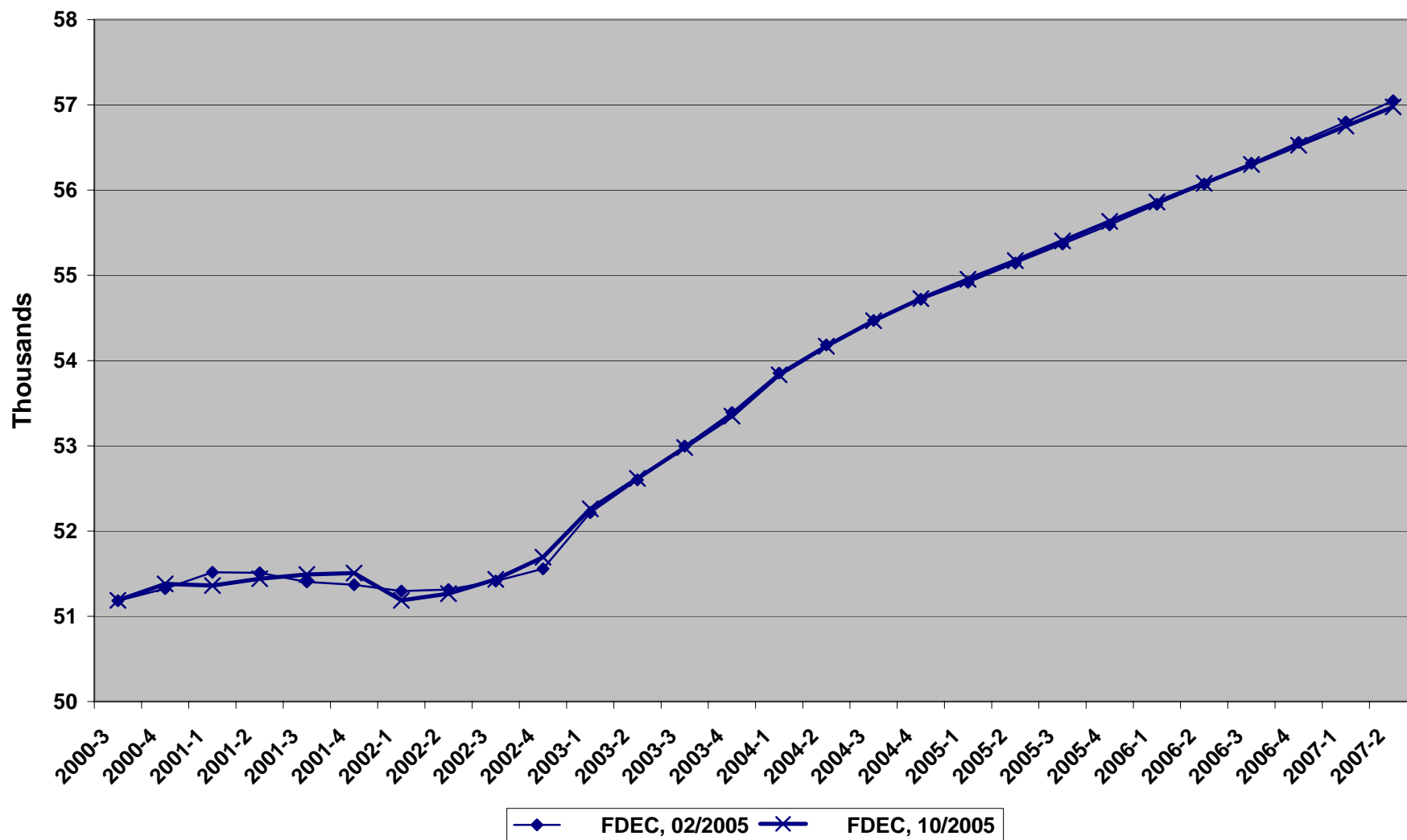
Growth In Florida Household Size



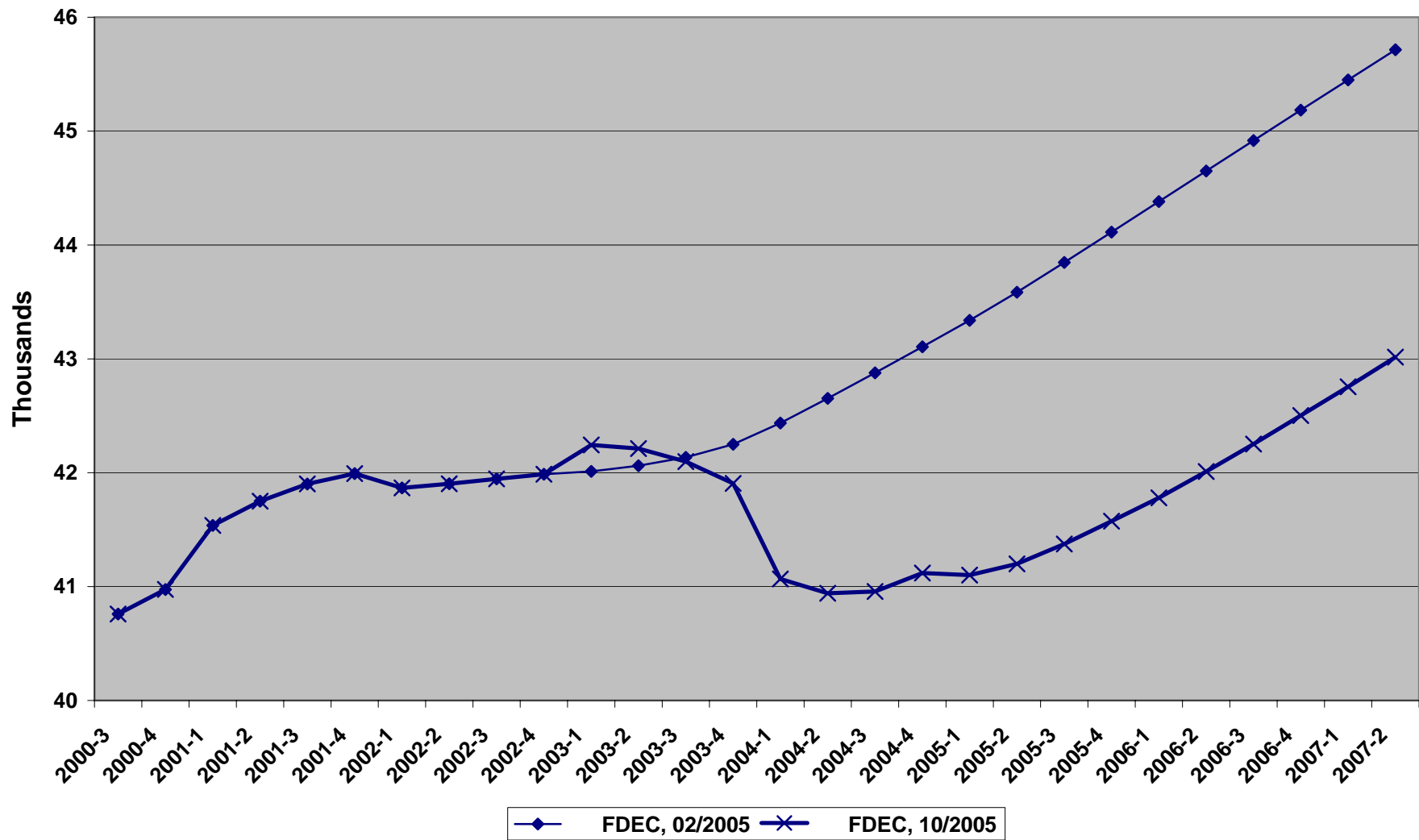
Florida Net Migration



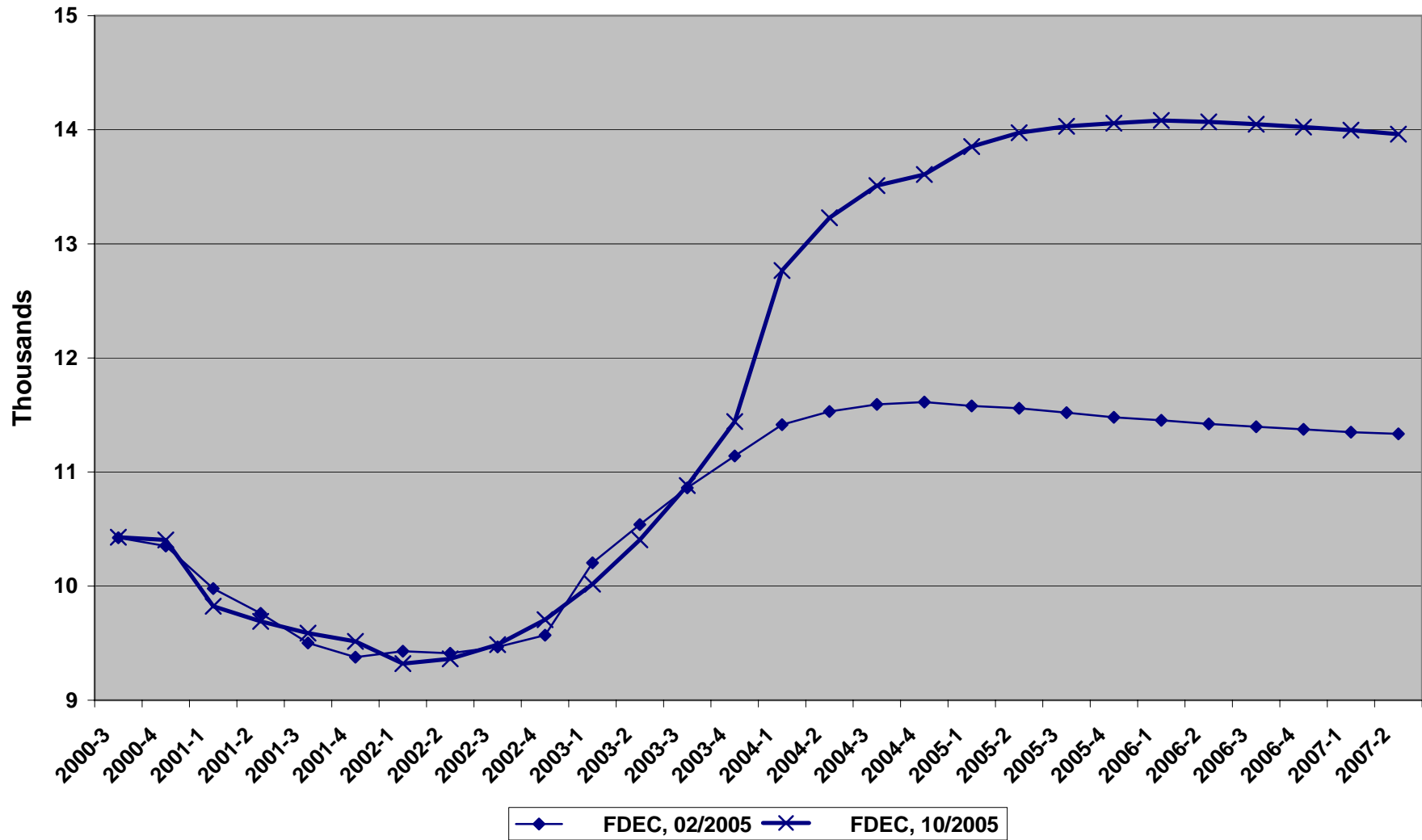
Florida Resident Births



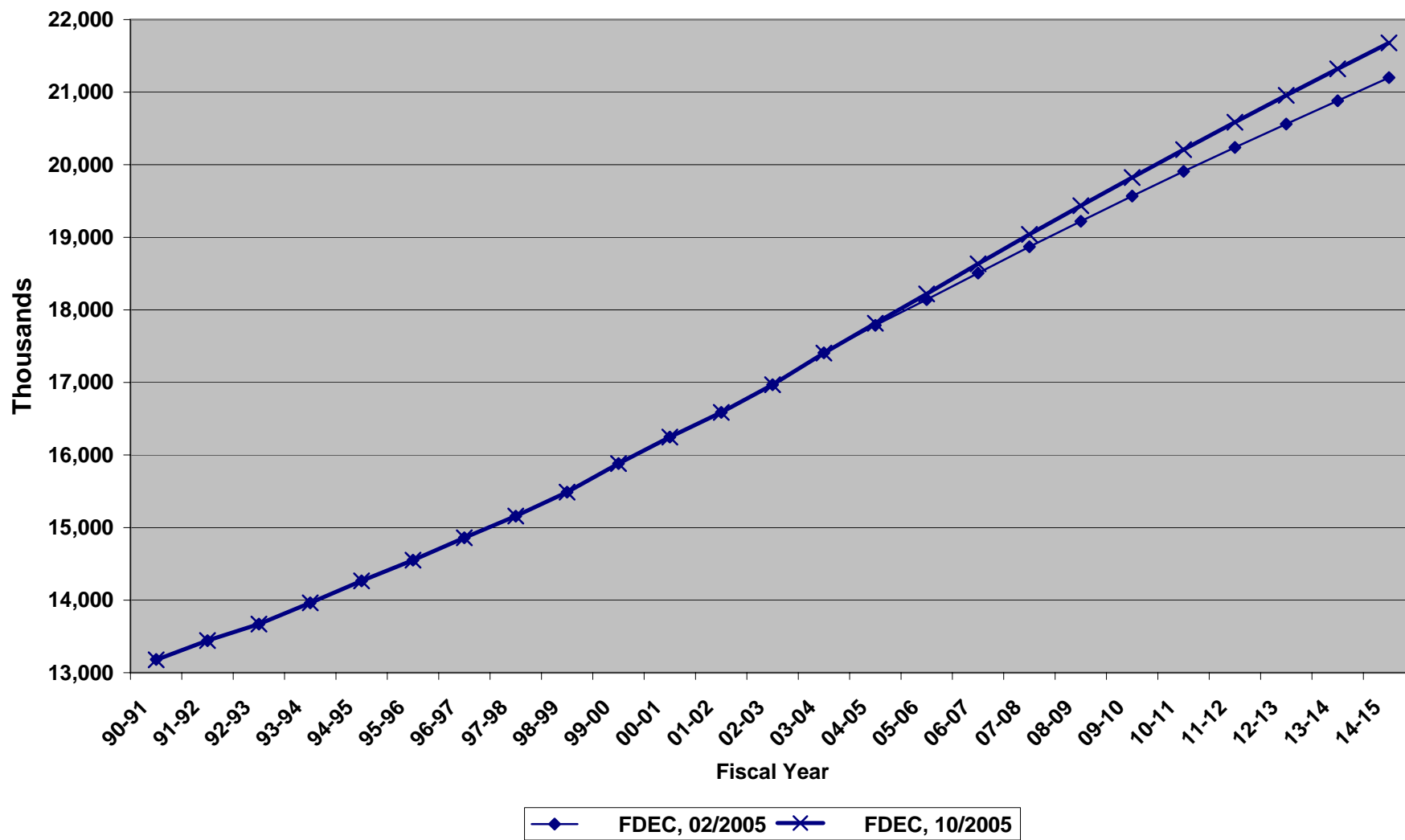
Florida Resident Deaths



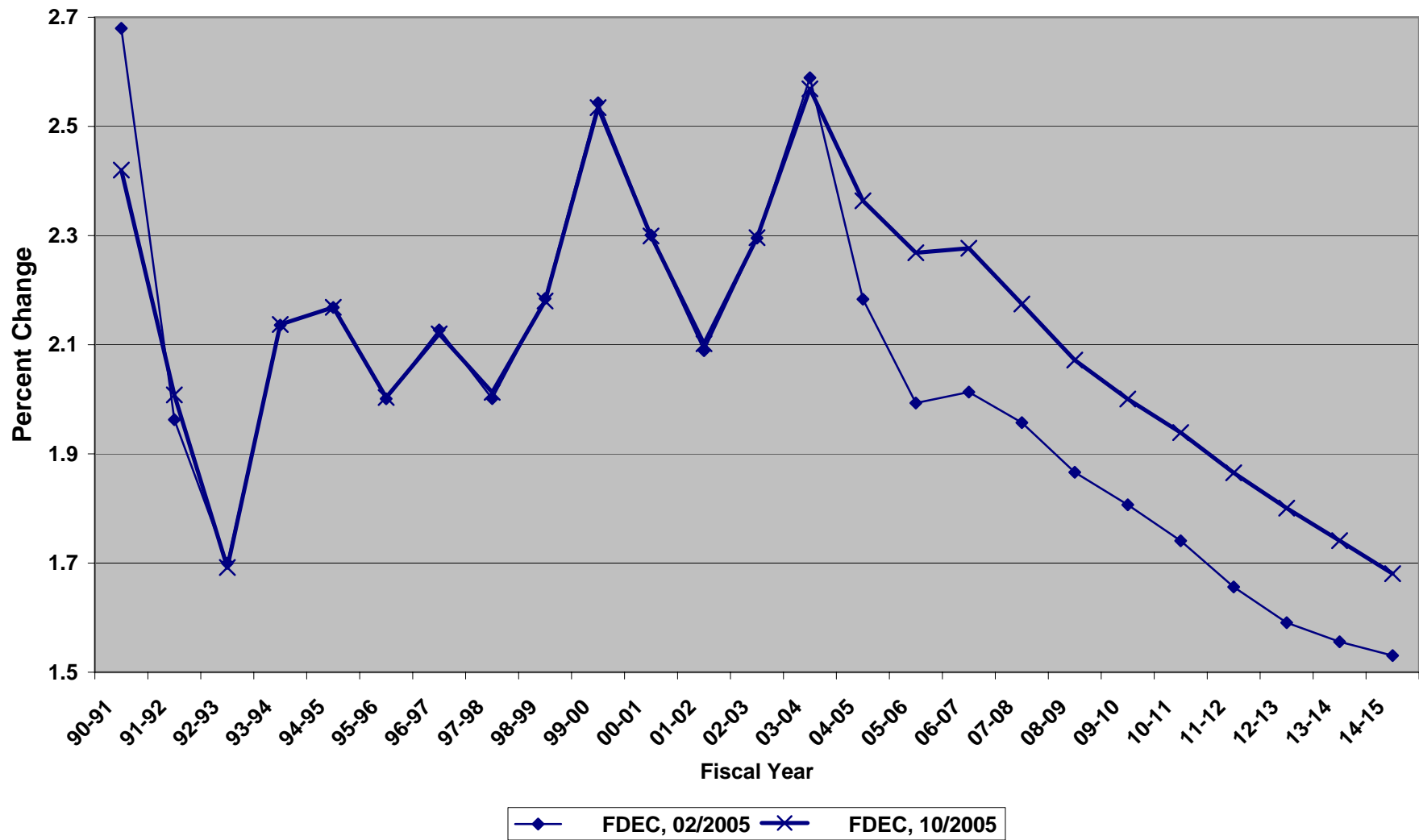
Florida Net Natural Increase



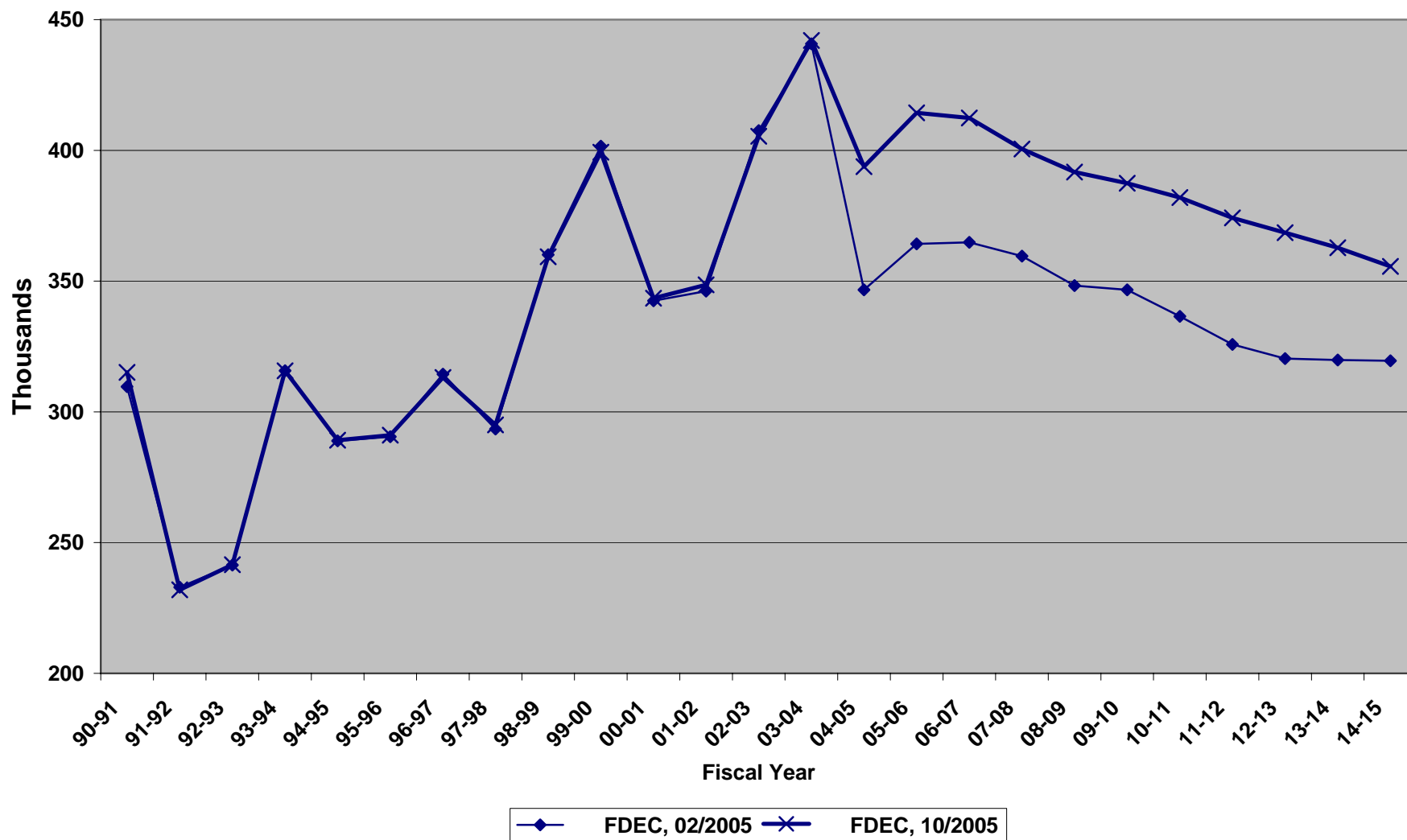
Florida Resident Population



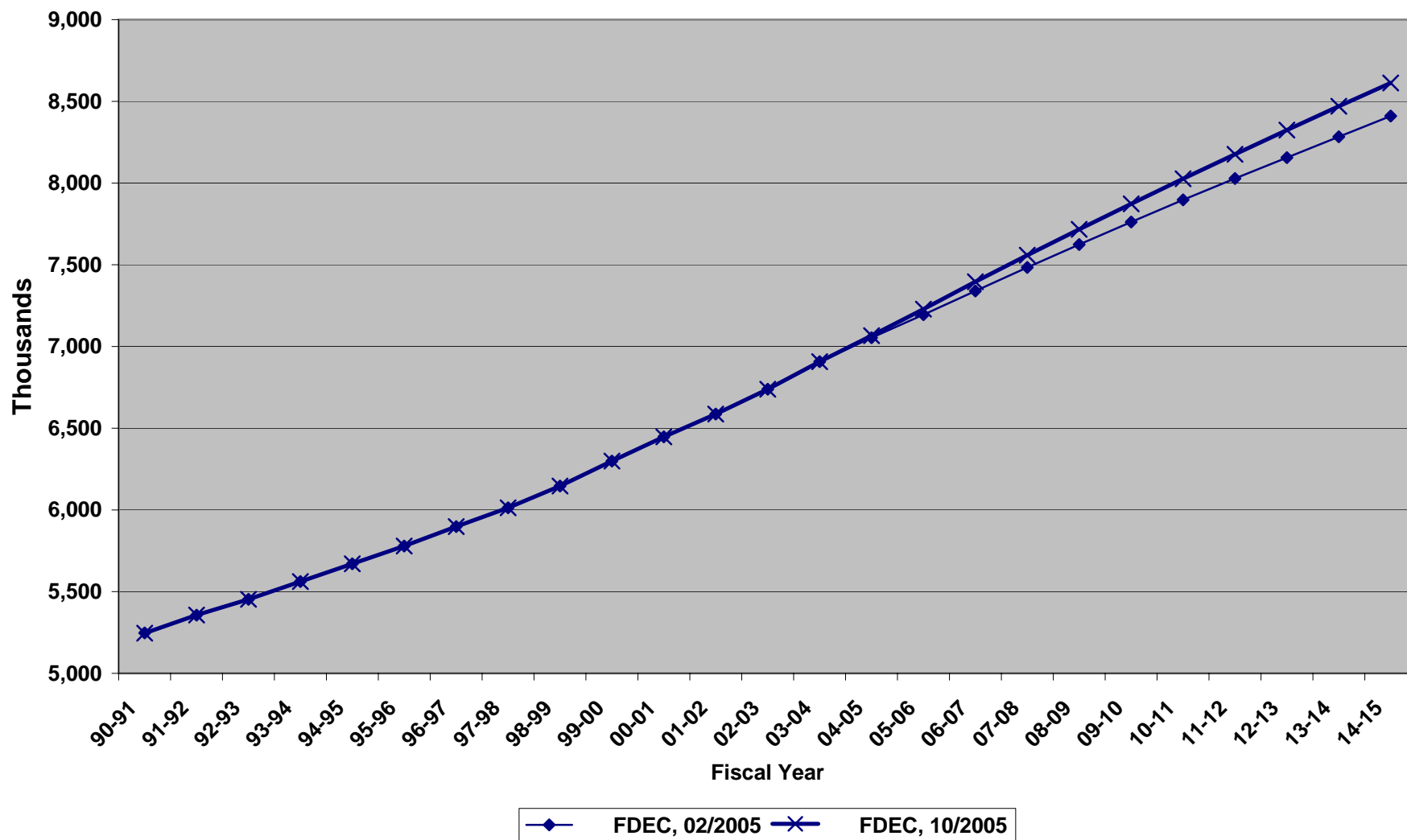
Growth In Florida Resident Population



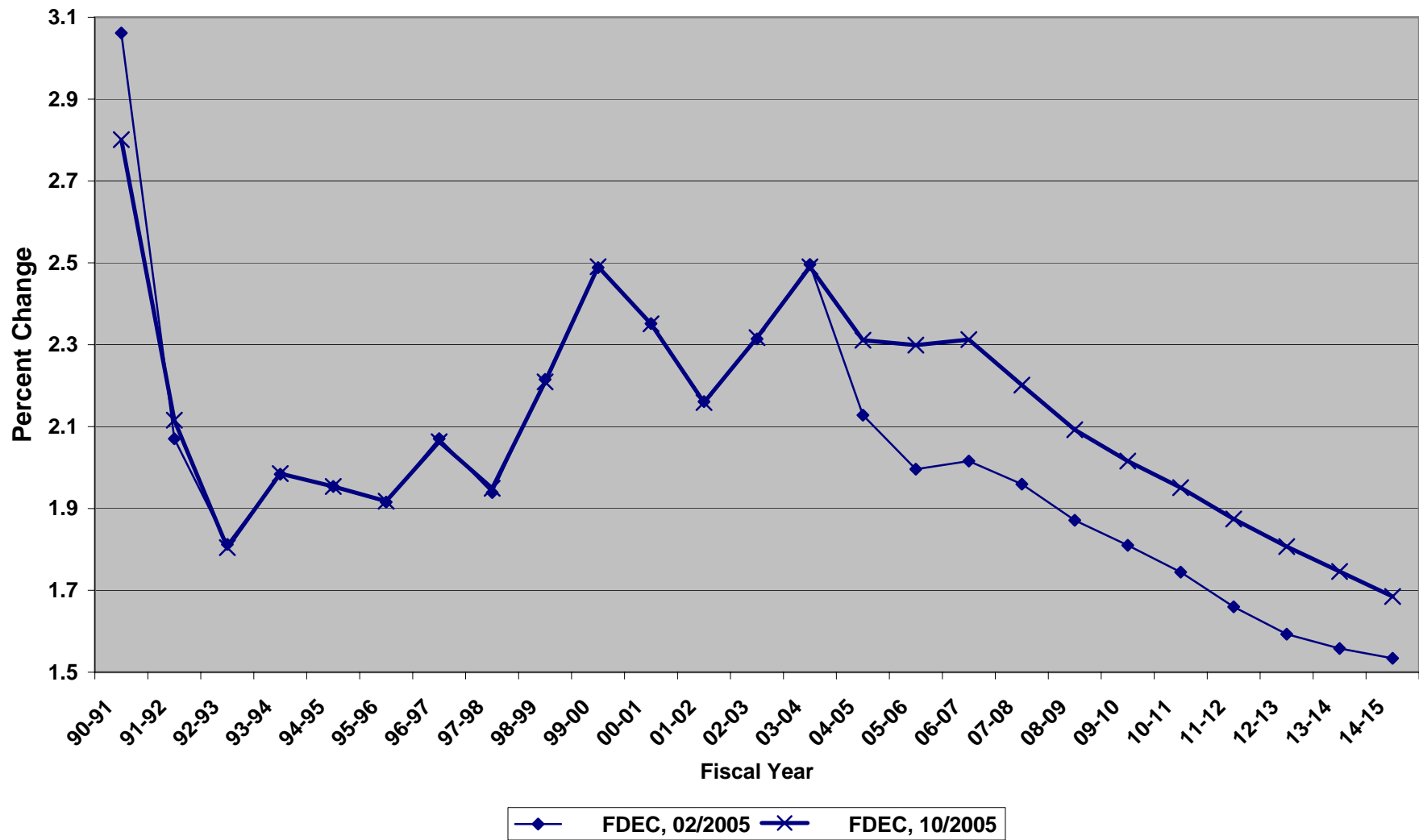
Net Change In Florida Resident Population



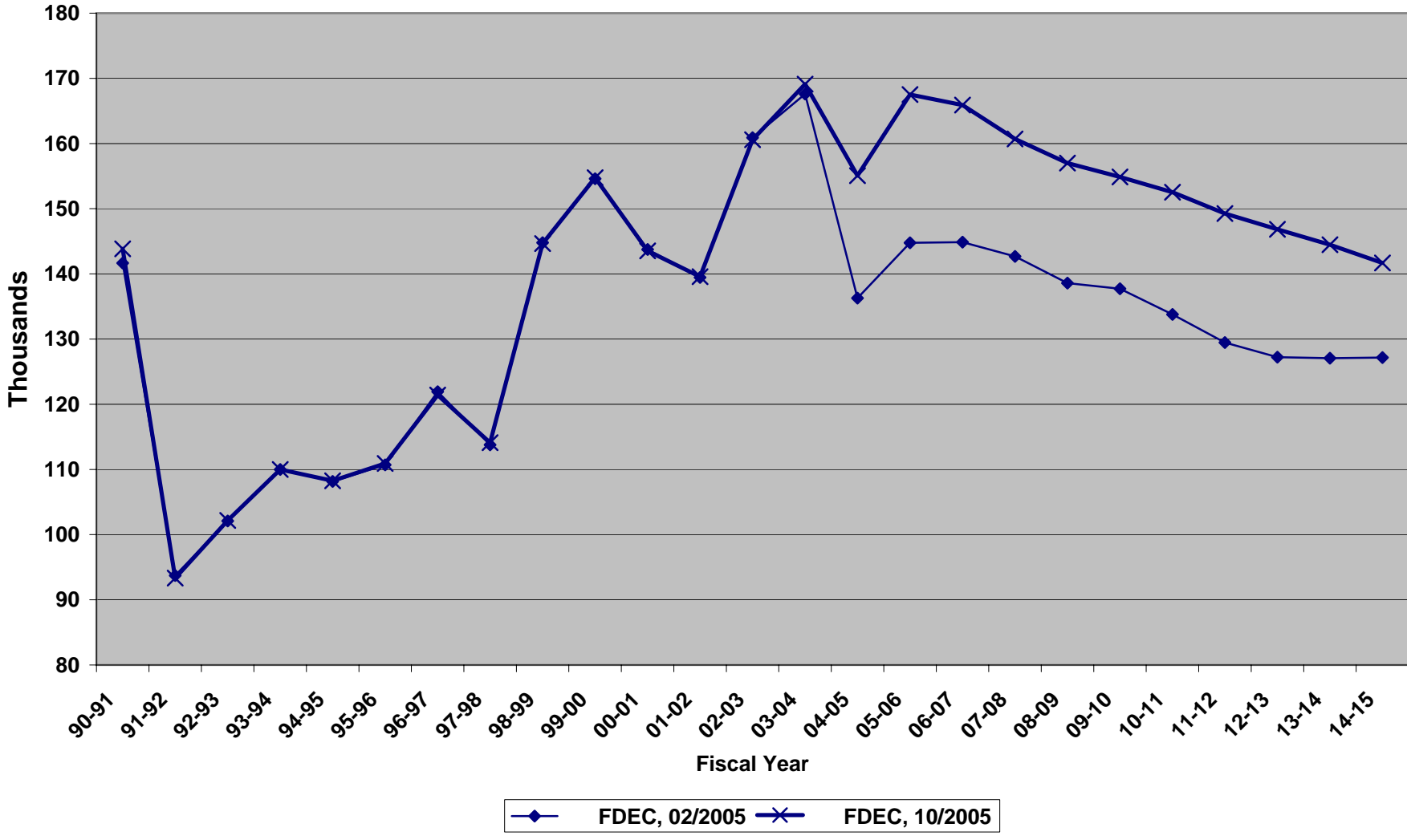
Florida Resident Households



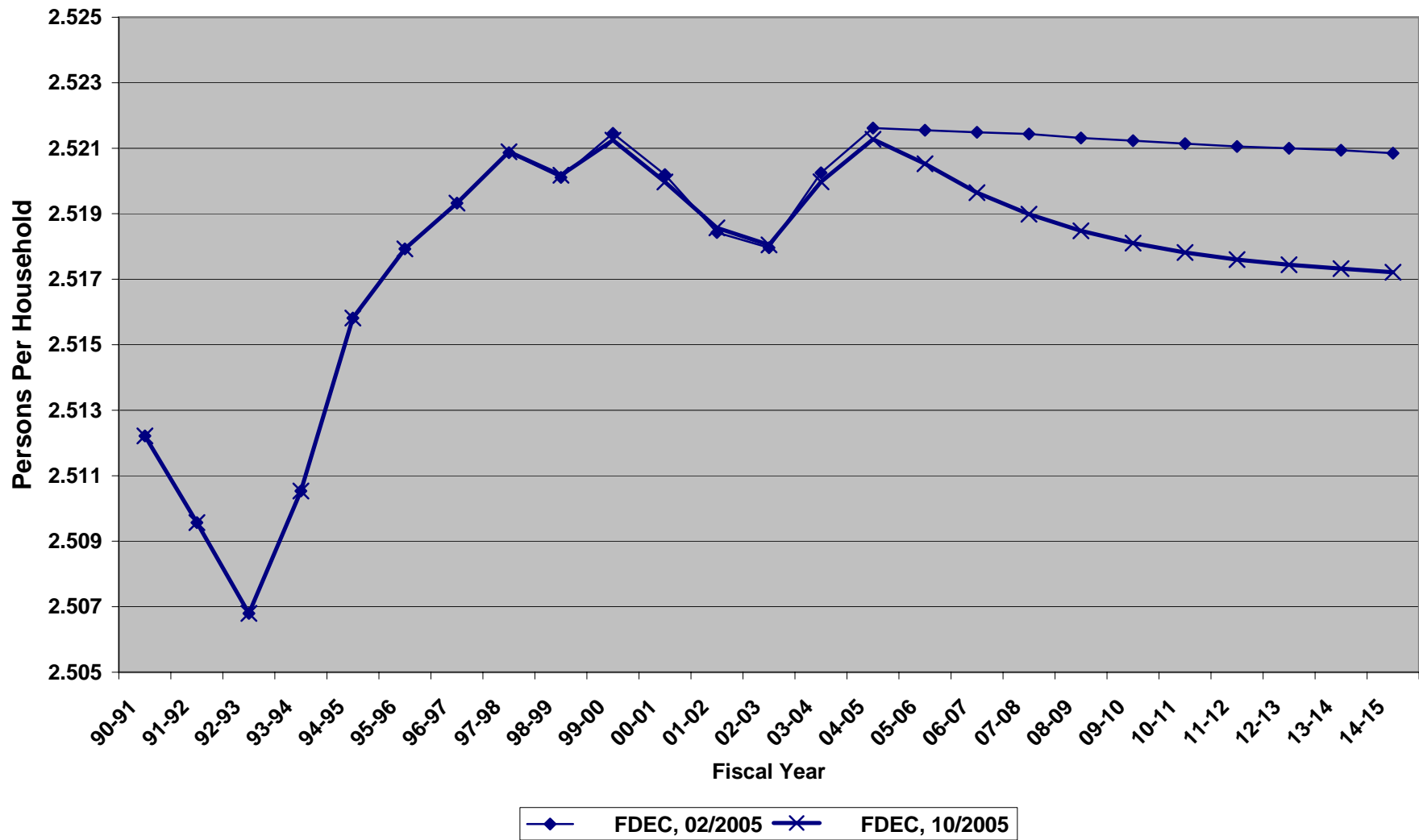
Growth In Florida Resident Households



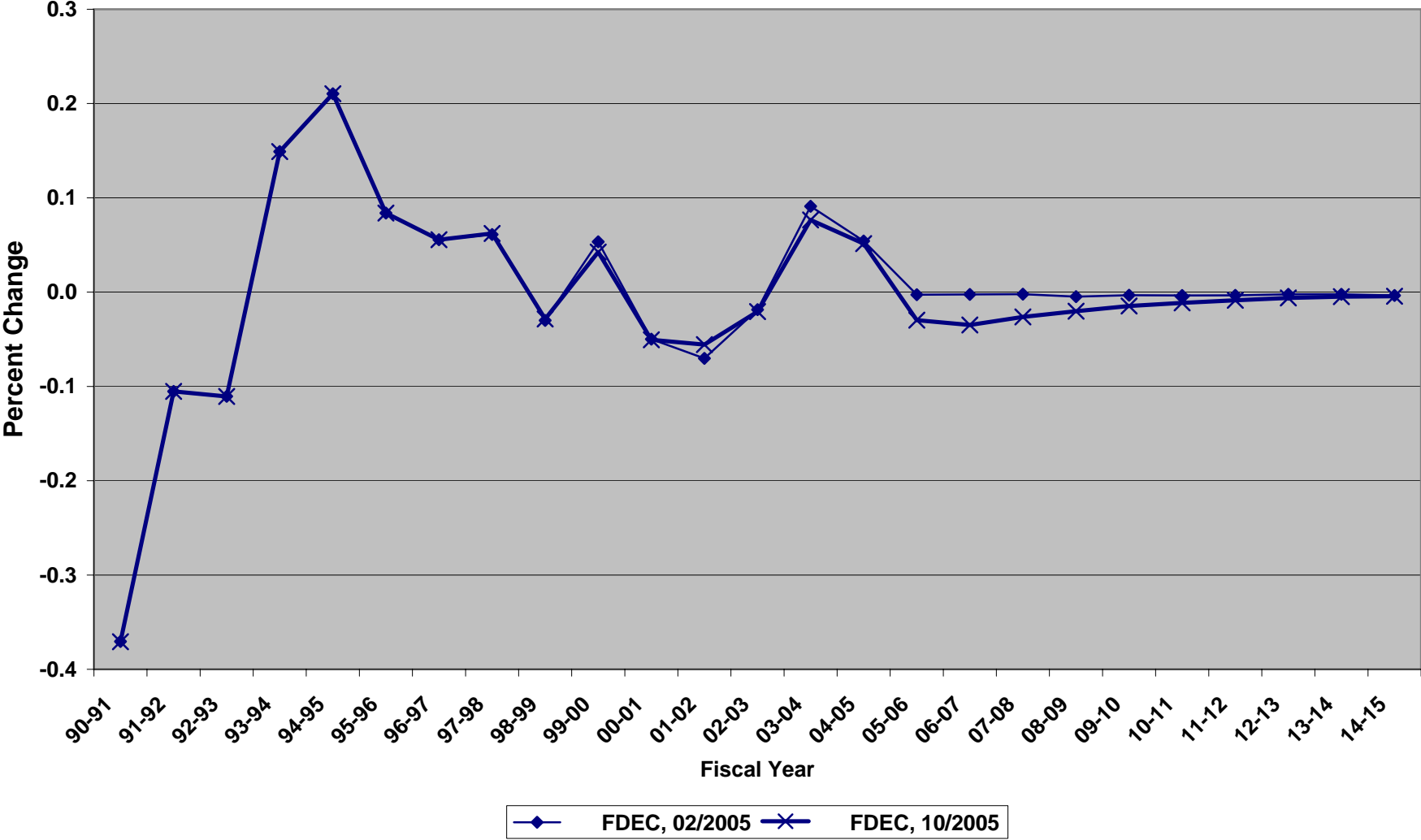
Net Change In Florida Resident Households



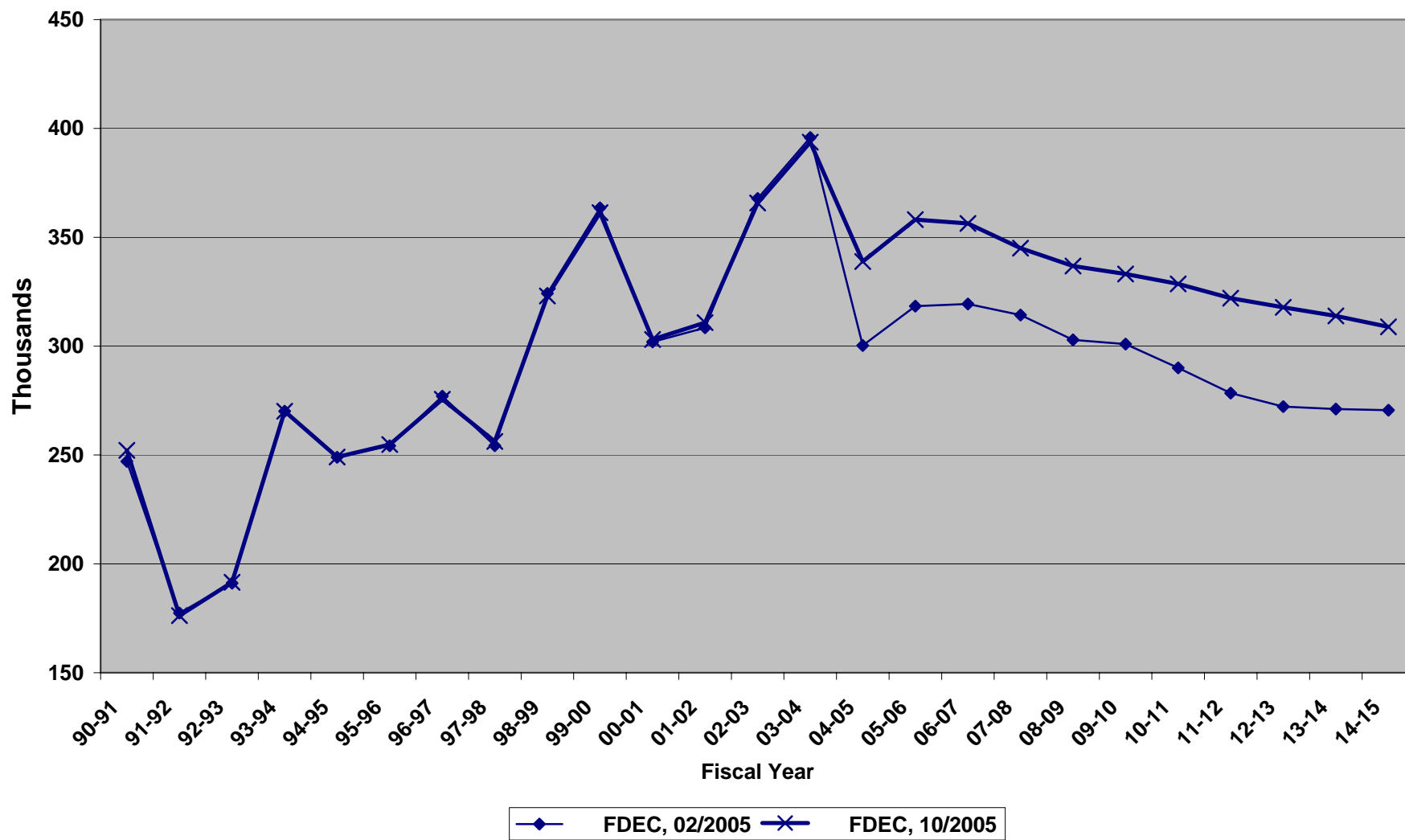
Average Florida Household Size



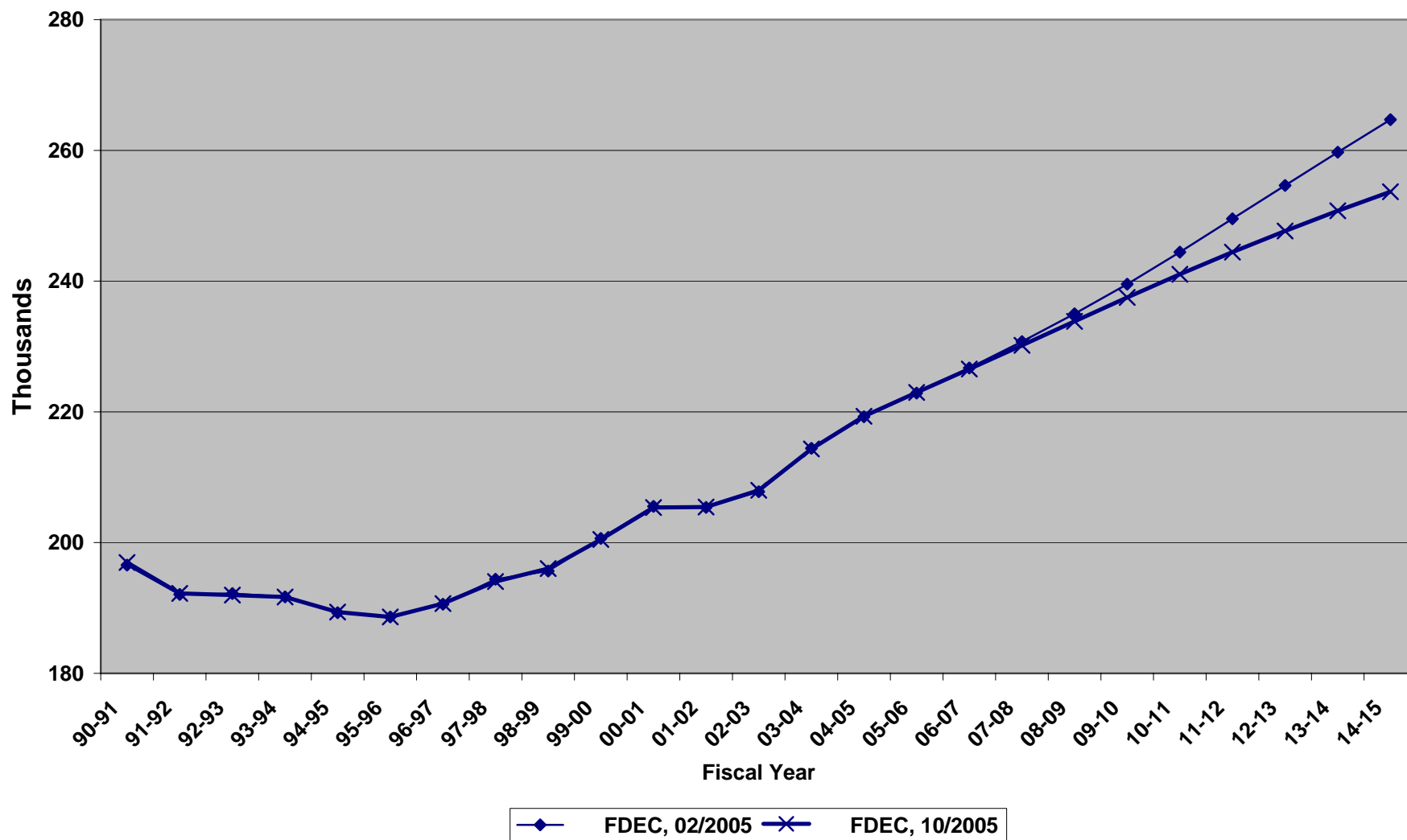
Growth In Average Florida Household Size



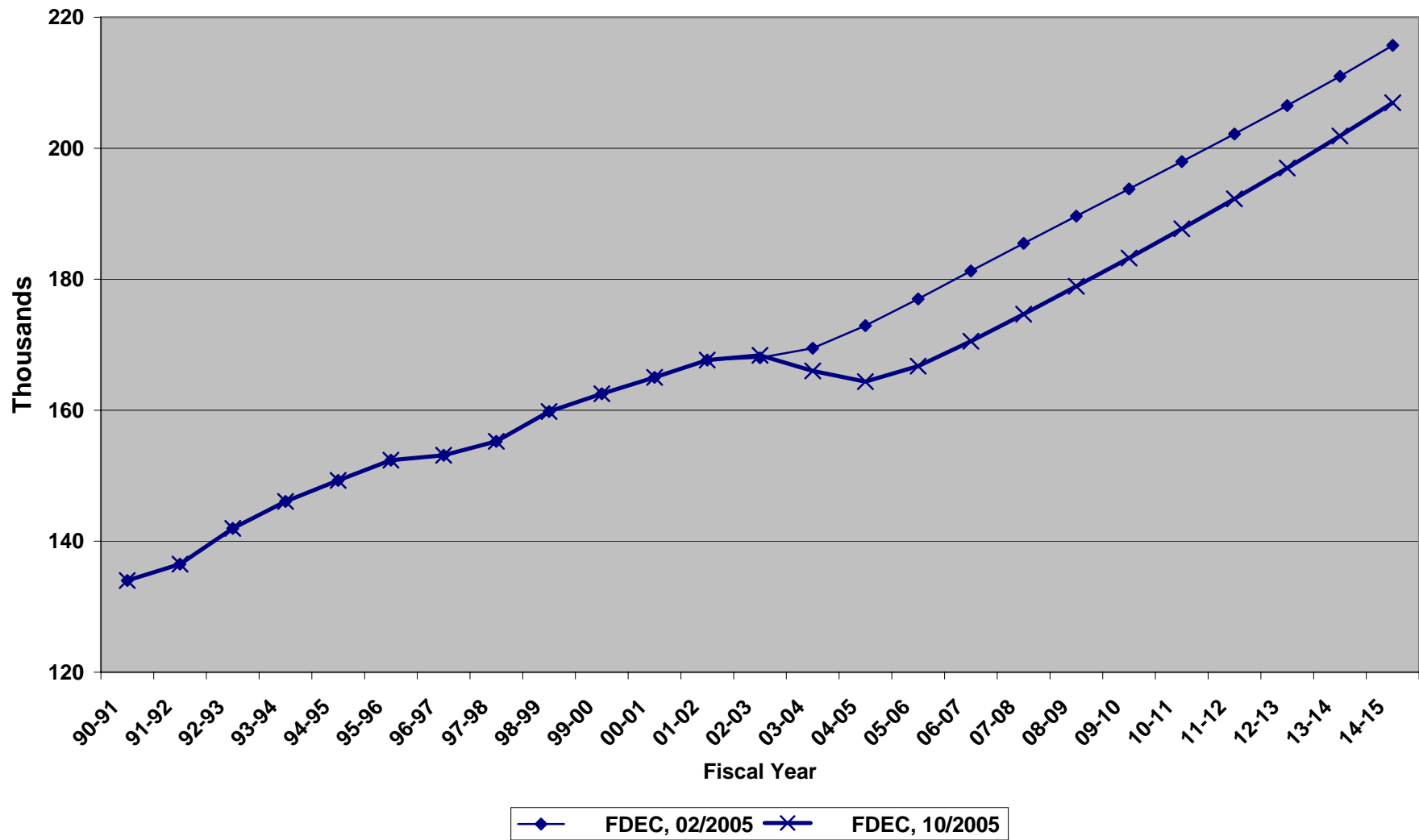
Florida Net Migration



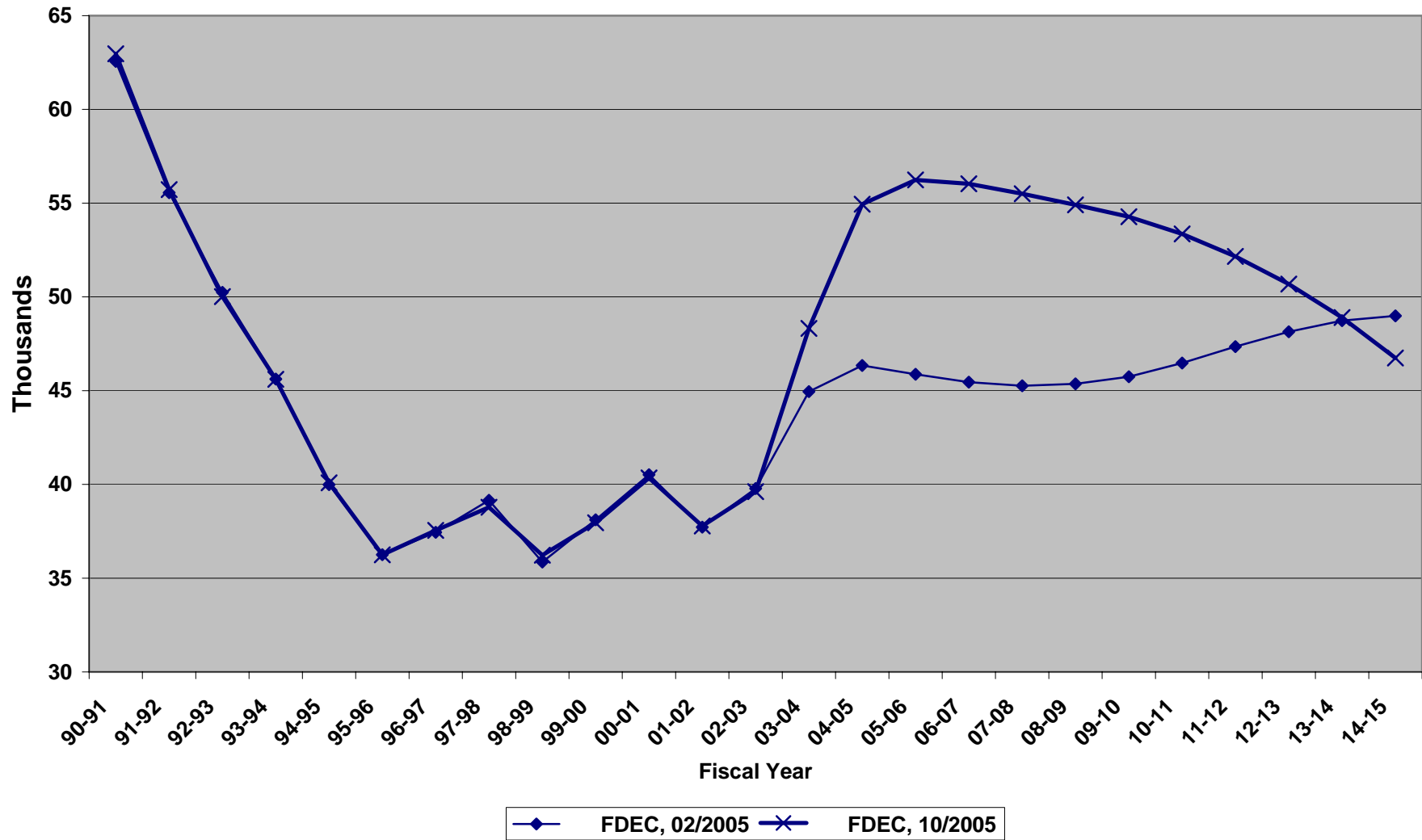
Florida Resident Live Births



Florida Resident Deaths



Florida Net Natural Increase



FLORIDA POPULATION AND COMPONENTS OF CHANGE

Fiscal Year	Population (July 1st)	Growth Rate	Annual Change in Population	Births	Deaths	Net Natural Increase	Net Migration
1950-51	2,980,135	6.07	170,545	67,604	27,186	40,418	130,127
1951-52	3,155,644	5.89	175,509	72,118	28,476	43,642	131,867
1952-53	3,312,485	4.97	156,841	77,156	29,856	47,300	109,541
1953-54	3,504,337	5.79	191,852	82,685	31,035	51,650	140,202
1954-55	3,747,378	6.94	243,041	86,265	32,083	54,182	188,859
1955-56	4,046,121	7.97	298,743	93,431	35,022	58,409	240,334
1956-57	4,369,885	8.00	323,764	100,811	38,319	62,492	261,272
1957-58	4,630,035	5.95	260,150	106,019	41,797	64,222	195,928
1958-59	4,813,142	3.95	183,107	110,457	43,746	66,711	116,396
1959-60	5,009,481	4.08	196,339	114,398	46,063	68,335	128,004
1960-61	5,241,204	4.63	231,723	116,419	48,302	68,117	163,606
1961-62	5,456,538	4.11	215,334	116,068	50,526	65,542	149,792
1962-63	5,628,501	3.15	171,963	114,946	54,302	60,644	111,319
1963-64	5,783,898	2.76	155,397	114,775	56,213	58,562	96,835
1964-65	5,951,548	2.90	167,650	110,465	57,868	52,597	115,053
1965-66	6,103,296	2.55	151,748	104,503	60,875	43,628	108,120
1966-67	6,245,644	2.33	142,348	101,129	62,765	38,364	103,984
1967-68	6,433,276	3.00	187,632	100,413	66,224	34,189	153,443
1968-69	6,634,307	3.12	201,031	104,362	71,133	33,229	167,802
1969-70	6,860,965	3.42	226,658	111,586	73,759	37,827	188,831
1970-71	7,233,610	5.43	372,645	116,685	75,440	41,245	331,400
1971-72	7,681,535	6.19	447,925	113,457	79,843	33,614	414,311
1972-73	8,157,884	6.20	476,349	108,272	86,041	22,231	454,118
1973-74	8,515,207	4.38	357,323	109,215	88,298	20,917	336,406
1974-75	8,648,587	1.57	133,380	108,306	87,350	20,956	112,424

FLORIDA POPULATION AND COMPONENTS OF CHANGE

Fiscal Year	Population (July 1st)	Growth Rate	Annual Change in Population	Births	Deaths	Net Natural Increase	Net Migration
1975-76	8,782,975	1.55	134,388	104,493	88,111	16,382	118,006
1976-77	8,972,678	2.16	189,703	107,524	90,383	17,141	172,562
1977-78	9,227,149	2.84	254,471	112,031	93,335	18,696	235,775
1978-79	9,519,205	3.17	292,056	116,744	96,735	20,009	272,047
1979-80	9,839,848	3.37	320,643	126,545	101,296	25,249	295,394
1980-81	10,222,533	3.89	382,685	135,460	107,218	28,242	354,443
1981-82	10,492,851	2.64	270,318	141,645	108,766	32,879	237,439
1982-83	10,748,466	2.44	255,615	146,763	110,575	36,188	219,427
1983-84	11,065,911	2.95	317,445	151,963	113,865	38,098	279,347
1984-85	11,405,533	3.07	339,622	159,683	117,674	42,009	297,613
1985-86	11,740,069	2.93	334,536	165,742	122,241	43,501	291,035
1986-87	12,083,241	2.92	343,172	171,036	125,150	45,886	297,286
1987-88	12,410,339	2.71	327,098	179,447	129,344	50,103	276,995
1988-89	12,723,719	2.53	313,380	188,611	131,912	56,699	256,681
1989-90	13,017,296	2.31	293,577	196,909	132,600	64,309	229,268
1990-91	13,326,892	2.38	309,596	196,959	133,994	62,965	246,631
1991-92	13,552,022	1.69	225,130	192,227	136,502	55,725	169,405
1992-93	13,802,569	1.85	250,547	191,973	141,958	50,015	200,532
1993-94	14,120,329	2.30	317,760	191,683	146,077	45,606	272,154
1994-95	14,406,402	2.03	286,073	189,369	149,287	40,082	245,991
1995-96	14,701,085	2.05	294,683	188,627	152,382	36,245	258,438
1996-97	15,012,489	2.12	311,404	190,668	153,124	37,544	273,860
1997-98	15,310,425	1.98	297,936	194,034	155,251	38,783	259,153
1998-99	15,679,194	2.41	368,769	196,029	159,803	36,226	332,543
1999-00	16,075,202	2.53	396,008	200,471	162,519	37,952	358,056

FLORIDA POPULATION AND COMPONENTS OF CHANGE

Fiscal Year	Population (July 1st)	Growth Rate	Annual Change in Population	Births	Deaths	Net Natural Increase	Net Migration
2000-01	16,414,693	2.11	339,491	205,369	165,021	40,348	299,143
2001-02	16,767,462	2.15	352,769	205,450	167,665	37,785	314,984
2002-03	17,181,323	2.47	413,861	208,005	168,389	39,616	374,245
2003-04	17,620,150	2.55	438,827	214,330	166,012	48,318	390,509
2004-05	18,013,170	2.23	393,020	219,322	164,376	54,946	338,074
2005-06	18,428,550	2.31	415,380	222,977	166,739	56,238	359,142
2006-07	18,839,660	2.23	411,110	226,554	170,524	56,030	355,080
2007-08	19,238,760	2.12	399,100	230,177	174,672	55,505	343,595
2008-09	19,629,800	2.03	391,040	233,831	178,922	54,909	336,131
2009-10	20,016,730	1.97	386,930	237,508	183,235	54,273	332,657
2010-11	20,397,630	1.90	380,900	241,056	187,698	53,358	327,542
2011-12	20,771,160	1.83	373,530	244,431	192,275	52,156	321,374
2012-13	21,138,880	1.77	367,720	247,671	196,986	50,685	317,035
2013-14	21,500,790	1.71	361,910	250,763	201,865	48,898	313,012
2014-15	21,856,000	1.65	355,210	253,677	206,934	46,743	308,467