

Demographic Estimating Conference
Executive Summary
February 13, 2017

The Demographic Estimating Conference met on February 13, 2017, to adopt a new population forecast. The new estimates reflect the final April 1, 2016 household estimate, as well as other recent demographic and economic-related data. In the short-term, the population projections were revised down slightly.

Florida's population is projected to have grown by 326,061 (1.62%) between April 1, 2016 and April 1, 2017. While this increase represents the second greatest annual increase in population since 2006, it is slightly smaller than the change seen in 2016. The most significant contributing factor to the changed forecast came from lower expectations regarding net natural increase. Since the last conference, births have been lower than expected and deaths higher, and these conditions are expected to persist through the forecast horizon.

Annual population change is expected to remain above 314,000 net new residents per year through 2021.

April 1	Population	Percent Change	Change
2012	19,074,434	0.90%	169,364
2013	19,259,543	0.97%	185,109
2014	19,507,369	1.29%	247,826
2015	19,815,183	1.58%	307,814
2016	20,148,654	1.68%	333,471
<i>Forecast</i>			
2017	20,474,715	1.62%	326,061
2018	20,798,816	1.58%	324,101
2019	21,120,553	1.55%	321,737
2020	21,438,743	1.51%	318,190
2021	21,753,007	1.47%	314,264

Between April 1, 2016 and April 1, 2021, population growth is expected to average 320,871 net new residents per year, representing a compound growth rate of 1.54% over this five-year time horizon. These increases are analogous to adding a city slightly smaller than Tampa every year.

Of note, the population estimates developed by the U.S. Census Bureau continue to be higher than the official state estimates adopted by the Demographic Estimating Conference. As of July 1, 2016, this difference was over 381,000 persons. The Legislative Office of Economic and Demographic Research is continuing to work to further understand how the different methodologies contribute to the differences in the two sets of estimates.

Florida Demographic Estimating Conference

Tables
Conference Packet

February 13, 2017

Florida Resident Population

April 1

Year	Florida Demographic Estimating Conference November 2016			Florida Demographic Estimating Conference February 2017		
	Population	% Change	Change	Population	% Change	Change
1990	12,938,071	2.27%	287,136	12,938,071	2.27%	287,136
1991	13,258,732	2.48%	320,661	13,258,732	2.48%	320,661
1992	13,497,541	1.80%	238,809	13,497,541	1.80%	238,809
1993	13,730,115	1.72%	232,574	13,730,115	1.72%	232,574
1994	14,043,757	2.28%	313,642	14,043,757	2.28%	313,642
1995	14,335,992	2.08%	292,235	14,335,992	2.08%	292,235
1996	14,623,421	2.00%	287,429	14,623,421	2.00%	287,429
1997	14,938,314	2.15%	314,893	14,938,314	2.15%	314,893
1998	15,230,421	1.96%	292,107	15,230,421	1.96%	292,107
1999	15,580,244	2.30%	349,823	15,580,244	2.30%	349,823
2000	15,982,824	2.58%	402,580	15,982,824	2.58%	402,580
2001	16,305,100	2.02%	322,276	16,305,100	2.02%	322,276
2002	16,634,256	2.02%	329,156	16,634,256	2.02%	329,156
2003	16,979,706	2.08%	345,450	16,979,706	2.08%	345,450
2004	17,374,824	2.33%	395,118	17,374,824	2.33%	395,118
2005	17,778,156	2.32%	403,332	17,778,156	2.32%	403,332
2006	18,154,475	2.12%	376,319	18,154,475	2.12%	376,319
2007	18,446,768	1.61%	292,293	18,446,768	1.61%	292,293
2008	18,613,905	0.91%	167,137	18,613,905	0.91%	167,137
2009	18,687,425	0.39%	73,520	18,687,425	0.39%	73,520
2010	18,801,332	0.61%	113,885	18,801,332	0.61%	113,907
2011	18,905,070	0.55%	103,738	18,905,070	0.55%	103,738
2012	19,074,434	0.90%	169,364	19,074,434	0.90%	169,364
2013	19,259,543	0.97%	185,109	19,259,543	0.97%	185,109
2014	19,507,369	1.29%	247,826	19,507,369	1.29%	247,826
2015	19,815,183	1.58%	307,814	19,815,183	1.58%	307,814
2016	20,148,654	1.68%	333,471	20,148,654	1.68%	333,471
Begins forecast						
2017	20,478,654	1.64%	330,000	20,474,715	1.62%	326,061
2018	20,807,004	1.60%	328,350	20,798,816	1.58%	324,101
2019	21,132,405	1.56%	325,401	21,120,553	1.55%	321,737
2020	21,453,595	1.52%	321,190	21,438,743	1.51%	318,190
2021	21,769,359	1.47%	315,764	21,753,007	1.47%	314,264
2022	22,077,340	1.41%	307,981	22,061,612	1.42%	308,605
2023	22,377,948	1.36%	300,608	22,364,274	1.37%	302,662
2024	22,670,755	1.31%	292,807	22,658,953	1.32%	294,679
5-Year Averages						
2025	22,954,444	1.36%	300,170	22,943,880	1.37%	301,027
2030	24,244,731	1.10%	258,057	24,244,326	1.11%	260,089
2035	25,391,238	0.93%	229,301	25,397,354	0.93%	230,606
2040	26,428,672	0.80%	207,487	26,426,375	0.80%	205,804

Florida Resident Households

April 1

Year	Florida Demographic Estimating Conference November 2016			Florida Demographic Estimating Conference February 2017		
	Households	% Change	Change	Households	% Change	Change
1990	5,134,869	3.40%	168,985	5,134,869	3.40%	168,985
1991	5,283,154	2.89%	148,285	5,283,154	2.89%	148,285
1992	5,378,499	1.80%	95,345	5,378,499	1.80%	95,345
1993	5,478,476	1.86%	99,977	5,478,476	1.86%	99,977
1994	5,589,093	2.02%	110,617	5,589,093	2.02%	110,617
1995	5,697,328	1.94%	108,235	5,697,328	1.94%	108,235
1996	5,806,031	1.91%	108,703	5,806,031	1.91%	108,703
1997	5,929,613	2.13%	123,582	5,929,613	2.13%	123,582
1998	6,040,514	1.87%	110,901	6,040,514	1.87%	110,901
1999	6,182,346	2.35%	141,832	6,182,346	2.35%	141,832
2000	6,338,075	2.52%	155,729	6,338,075	2.52%	155,729
2001	6,467,215	2.04%	129,140	6,467,215	2.04%	129,140
2002	6,599,035	2.04%	131,820	6,599,035	2.04%	131,820
2003	6,737,370	2.10%	138,335	6,737,370	2.10%	138,335
2004	6,895,469	2.35%	158,099	6,895,469	2.35%	158,099
2005	7,056,889	2.34%	161,420	7,056,889	2.34%	161,420
2006	7,207,645	2.14%	150,756	7,207,645	2.14%	150,756
2007	7,312,907	1.46%	105,262	7,312,907	1.46%	105,262
2008	7,368,319	0.76%	55,412	7,368,319	0.76%	55,412
2009	7,386,570	0.25%	18,251	7,386,570	0.25%	18,251
2010	7,537,442	2.04%	150,872	7,420,812	0.46%	34,242
2011	7,461,978	-1.00%	-75,464	7,461,978	0.55%	41,166
2012	7,537,442	1.01%	75,464	7,537,442	1.01%	75,464
2013	7,610,153	0.96%	72,711	7,610,153	0.96%	72,711
2014	7,669,541	0.78%	59,388	7,669,541	0.78%	59,388
2015	7,785,434	1.51%	115,893	7,785,434	1.51%	115,893
2016	7,899,900	1.47%	114,466	7,899,268	1.46%	113,834
Begins forecast						
2017	8,025,626	1.59%	125,726	8,024,836	1.59%	125,568
2018	8,154,148	1.60%	128,522	8,152,543	1.59%	127,707
2019	8,283,885	1.59%	129,737	8,281,439	1.58%	128,896
2020	8,413,983	1.57%	130,098	8,410,671	1.56%	129,232
2021	8,543,588	1.54%	129,605	8,539,384	1.53%	128,713
2022	8,672,174	1.51%	128,586	8,667,052	1.50%	127,668
2023	8,799,984	1.47%	127,810	8,793,920	1.46%	126,868
2024	8,926,028	1.43%	126,044	8,918,998	1.42%	125,078
			5-Year Averages	5-Year Averages		
2025	9,049,882	1.47%	127,180	9,041,862	1.46%	126,238
2030	9,633,032	1.26%	116,630	9,619,744	1.25%	115,576
2035	10,162,338	1.08%	105,861	10,143,301	1.07%	104,711
2040	10,634,062	0.91%	94,345	10,608,883	0.90%	93,116

Quarterly Data Table

	<u>2010-2</u>	<u>2010-3</u>	<u>2010-4</u>	<u>2011-1</u>	<u>2011-2</u>	<u>2011-3</u>	<u>2011-4</u>	<u>2012-1</u>	<u>2012-2</u>	<u>2012-3</u>	<u>2012-4</u>	<u>2013-1</u>	<u>2013-2</u>	<u>2013-3</u>
Population														
FDEC, 2016 November	18,813.9	18,838.3	18,862.7	18,890.2	18,923.4	18,962.8	19,006.3	19,051.6	19,096.7	19,141.2	19,186.6	19,234.6	19,287.0	19,344.3
FDEC, 2017 February	18,813.9	18,838.3	18,862.7	18,890.2	18,923.4	18,962.8	19,006.3	19,051.6	19,096.7	19,141.2	19,186.6	19,234.6	19,287.0	19,344.3
Population Growth Rate														
FDEC, 2016 November	0.59	0.52	0.52	0.58	0.71	0.83	0.92	0.96	0.95	0.94	0.95	1.01	1.09	1.19
FDEC, 2017 February	0.59	0.52	0.52	0.58	0.71	0.83	0.92	0.96	0.95	0.94	0.95	1.01	1.09	1.19
Net Change in Population														
FDEC, 2016 November	27.9	24.4	24.4	27.5	33.2	39.4	43.5	45.3	45.1	44.5	45.4	48.1	52.3	57.3
FDEC, 2017 February	27.9	24.4	24.4	27.5	33.2	39.4	43.5	45.3	45.1	44.5	45.4	48.1	52.3	57.3
Households														
FDEC, 2016 November	7,425.2	7,434.2	7,443.9	7,455.6	7,470.0	7,487.3	7,506.7	7,527.1	7,547.6	7,567.4	7,585.9	7,602.4	7,616.7	7,629.7
FDEC, 2017 February	7,425.2	7,434.2	7,443.9	7,455.6	7,470.0	7,487.3	7,506.7	7,527.1	7,547.6	7,567.4	7,585.9	7,602.4	7,616.7	7,629.7
Household Growth Rate														
FDEC, 2016 November	0.50	0.48	0.52	0.63	0.78	0.93	1.04	1.09	1.09	1.05	0.98	0.88	0.76	0.68
FDEC, 2017 February	0.49	0.48	0.52	0.63	0.78	0.93	1.04	1.09	1.09	1.05	0.98	0.88	0.76	0.68
Net Change in Households														
FDEC, 2016 November	9.2	9.0	9.7	11.6	14.4	17.3	19.4	20.4	20.5	19.8	18.5	16.6	14.3	13.0
FDEC, 2017 February	9.1	9.0	9.7	11.6	14.4	17.3	19.4	20.4	20.5	19.8	18.5	16.6	14.3	13.0
Household Size														
FDEC, 2016 November	2.534	2.534	2.534	2.534	2.533	2.533	2.532	2.531	2.530	2.529	2.529	2.530	2.532	2.535
FDEC, 2017 February	2.534	2.534	2.534	2.534	2.533	2.533	2.532	2.531	2.530	2.529	2.529	2.530	2.532	2.535
Household Size Growth Rate														
FDEC, 2016 November	0.10	0.04	-0.01	-0.04	-0.07	-0.10	-0.12	-0.13	-0.14	-0.12	-0.03	0.13	0.33	0.51
FDEC, 2017 February	0.10	0.04	-0.01	-0.04	-0.07	-0.10	-0.12	-0.13	-0.14	-0.12	-0.03	0.13	0.33	0.51
Net Migration														
FDEC, 2016 November	17.2	14.1	14.3	17.2	23.1	29.3	33.7	35.8	35.7	35.3	36.3	39.1	43.5	48.6
FDEC, 2017 February	17.2	14.1	14.3	17.2	23.1	29.3	33.7	35.8	35.7	35.3	36.3	39.1	43.5	48.6
Births														
FDEC, 2016 November	53.7	53.5	53.3	53.4	53.3	53.3	53.2	53.2	53.2	53.3	53.4	53.5	53.7	53.9
FDEC, 2017 February	53.7	53.5	53.3	53.4	53.3	53.3	53.2	53.2	53.2	53.3	53.4	53.5	53.7	53.9
Deaths														
FDEC, 2016 November	43.1	43.2	43.2	43.1	43.1	43.3	43.4	43.6	43.8	44.1	44.3	44.6	44.9	45.1
FDEC, 2017 February	43.1	43.2	43.2	43.1	43.1	43.3	43.4	43.6	43.8	44.1	44.3	44.6	44.9	45.1
Net Natural Increase														
FDEC, 2016 November	10.6	10.3	10.0	10.3	10.2	10.0	9.8	9.5	9.3	9.2	9.0	8.9	8.8	8.7
FDEC, 2017 February	10.6	10.3	10.0	10.3	10.2	10.0	9.8	9.5	9.3	9.2	9.0	8.9	8.8	8.7

Quarterly Data Table

	<u>2013-4</u>	<u>2014-1</u>	<u>2014-2</u>	<u>2014-3</u>	<u>2014-4</u>	<u>2015-1</u>	<u>2015-2</u>	<u>2015-3</u>	<u>2015-4</u>	<u>2016-1</u>	<u>2016-2</u>	<u>2016-3</u>	<u>2016-4</u>	<u>2017-1</u>
Population														
FDEC, 2016 November	19,406.4	19,473.0	19,543.6	19,617.8	19,695.1	19,774.8	19,856.4	19,939.3	20,023.0	20,106.8	20,190.2	20,273.0	20,355.4	20,437.6
FDEC, 2017 February	19,406.5	19,473.0	19,543.6	19,617.8	19,695.0	19,774.7	19,856.5	19,939.6	20,023.3	20,106.9	20,189.9	20,271.9	20,353.2	20,434.3
Population Growth Rate														
FDEC, 2016 November	1.29	1.38	1.46	1.53	1.58	1.63	1.66	1.68	1.69	1.68	1.67	1.65	1.64	1.62
FDEC, 2017 February	1.29	1.38	1.46	1.53	1.58	1.63	1.66	1.68	1.69	1.68	1.66	1.63	1.61	1.60
Net Change in Population														
FDEC, 2016 November	62.1	66.6	70.6	74.2	77.2	79.7	81.6	82.9	83.7	83.8	83.4	82.8	82.4	82.2
FDEC, 2017 February	62.1	66.6	70.6	74.2	77.2	79.7	81.7	83.1	83.7	83.7	82.9	82.0	81.3	81.0
Households														
FDEC, 2016 November	7,643.4	7,660.1	7,681.9	7,708.6	7,738.7	7,769.9	7,800.2	7,829.1	7,857.2	7,885.6	7,915.0	7,945.7	7,977.3	8,009.5
FDEC, 2017 February	7,643.4	7,660.1	7,681.9	7,708.7	7,738.8	7,769.9	7,800.1	7,828.8	7,856.8	7,885.0	7,914.3	7,945.0	7,976.6	8,008.7
Household Growth Rate														
FDEC, 2016 November	0.72	0.88	1.14	1.40	1.57	1.62	1.57	1.49	1.45	1.45	1.50	1.56	1.60	1.62
FDEC, 2017 February	0.72	0.88	1.14	1.40	1.57	1.62	1.56	1.48	1.44	1.44	1.49	1.56	1.60	1.62
Net Change in Households														
FDEC, 2016 November	13.7	16.7	21.7	26.8	30.1	31.2	30.3	28.9	28.1	28.4	29.4	30.7	31.7	32.2
FDEC, 2017 February	13.7	16.7	21.8	26.8	30.1	31.1	30.2	28.7	28.0	28.2	29.3	30.7	31.6	32.1
Household Size														
FDEC, 2016 November	2.539	2.542	2.544	2.545	2.545	2.545	2.546	2.547	2.548	2.550	2.551	2.551	2.552	2.552
FDEC, 2017 February	2.539	2.542	2.544	2.545	2.545	2.545	2.546	2.547	2.549	2.550	2.551	2.552	2.552	2.552
Household Size Growth Rate														
FDEC, 2016 November	0.57	0.50	0.32	0.12	0.01	0.01	0.09	0.19	0.24	0.23	0.17	0.09	0.03	0.00
FDEC, 2017 February	0.57	0.50	0.31	0.12	0.01	0.01	0.10	0.20	0.25	0.24	0.16	0.07	0.01	-0.02
Net Migration														
FDEC, 2016 November	53.4	57.8	61.9	65.5	68.6	71.4	73.4	74.8	75.5	75.4	74.9	74.3	73.9	73.6
FDEC, 2017 February	53.4	57.7	61.8	65.5	68.6	71.3	73.4	75.0	75.8	76.1	75.7	75.0	74.5	74.2
Births														
FDEC, 2016 November	54.1	54.5	54.8	55.1	55.4	55.6	55.9	56.2	56.5	56.8	57.1	57.4	57.7	58.1
FDEC, 2017 February	54.1	54.6	54.8	55.1	55.4	55.8	56.0	56.2	56.3	56.4	56.5	56.6	56.8	57.1
Deaths														
FDEC, 2016 November	45.4	45.7	46.1	46.4	46.8	47.4	47.7	48.1	48.3	48.3	48.6	48.9	49.2	49.5
FDEC, 2017 February	45.4	45.7	46.1	46.4	46.8	47.3	47.7	48.1	48.5	48.9	49.2	49.6	49.9	50.2
Net Natural Increase														
FDEC, 2016 November	8.7	8.8	8.8	8.7	8.6	8.3	8.2	8.2	8.2	8.4	8.5	8.5	8.5	8.5
FDEC, 2017 February	8.7	8.8	8.8	8.7	8.6	8.5	8.3	8.1	7.9	7.5	7.3	7.0	6.8	6.9

Quarterly Data Table

	<u>2017-2</u>	<u>2017-3</u>	<u>2017-4</u>	<u>2018-1</u>	<u>2018-2</u>	<u>2018-3</u>	<u>2018-4</u>	<u>2019-1</u>	<u>2019-2</u>	<u>2019-3</u>	<u>2019-4</u>	<u>2020-1</u>	<u>2020-2</u>	<u>2020-3</u>
Population														
FDEC, 2016 November	20,519.7	20,601.9	20,684.0	20,766.0	20,847.9	20,929.5	21,010.8	21,091.9	21,172.8	21,253.4	21,333.7	21,413.7	21,493.3	21,572.7
FDEC, 2017 February	20,515.2	20,596.3	20,677.3	20,758.3	20,839.2	20,919.8	21,000.3	21,080.5	21,160.5	21,240.3	21,319.8	21,399.1	21,478.2	21,557.1
Population Growth Rate														
FDEC, 2016 November	1.62	1.61	1.60	1.60	1.59	1.57	1.56	1.55	1.54	1.53	1.52	1.51	1.50	1.48
FDEC, 2017 February	1.59	1.59	1.58	1.58	1.57	1.56	1.55	1.54	1.53	1.52	1.51	1.50	1.49	1.48
Net Change in Population														
FDEC, 2016 November	82.1	82.2	82.1	82.0	81.8	81.6	81.4	81.1	80.9	80.6	80.3	80.0	79.7	79.3
FDEC, 2017 February	81.0	81.0	81.1	81.0	80.9	80.7	80.4	80.2	80.0	79.8	79.5	79.3	79.1	78.9
Households														
FDEC, 2016 November	8,041.7	8,073.9	8,106.0	8,138.1	8,170.3	8,202.6	8,235.1	8,267.6	8,300.2	8,332.7	8,365.2	8,397.7	8,430.2	8,462.7
FDEC, 2017 February	8,040.9	8,072.8	8,104.7	8,136.6	8,168.6	8,200.7	8,233.0	8,265.3	8,297.6	8,329.9	8,362.2	8,394.5	8,426.8	8,459.0
Household Growth Rate														
FDEC, 2016 November	1.62	1.61	1.60	1.59	1.59	1.59	1.59	1.59	1.58	1.58	1.57	1.56	1.56	1.55
FDEC, 2017 February	1.62	1.60	1.59	1.58	1.58	1.58	1.58	1.58	1.57	1.57	1.56	1.55	1.55	1.54
Net Change in Households														
FDEC, 2016 November	32.2	32.1	32.1	32.1	32.2	32.4	32.5	32.5	32.5	32.5	32.5	32.5	32.5	32.5
FDEC, 2017 February	32.1	32.0	31.9	31.9	32.0	32.1	32.2	32.3	32.3	32.3	32.3	32.3	32.3	32.2
Household Size														
FDEC, 2016 November	2.552	2.552	2.552	2.552	2.552	2.552	2.551	2.551	2.551	2.551	2.550	2.550	2.550	2.549
FDEC, 2017 February	2.551	2.551	2.551	2.551	2.551	2.551	2.551	2.550	2.550	2.550	2.550	2.549	2.549	2.548
Household Size Growth Rate														
FDEC, 2016 November	0.00	0.00	0.00	0.00	-0.01	-0.02	-0.03	-0.04	-0.04	-0.05	-0.05	-0.05	-0.06	-0.06
FDEC, 2017 February	-0.02	-0.01	0.00	-0.01	-0.01	-0.03	-0.03	-0.04	-0.05	-0.05	-0.05	-0.06	-0.06	-0.06
Net Migration														
FDEC, 2016 November	73.6	73.7	73.7	73.7	73.6	73.5	73.5	73.6	73.5	73.4	73.3	73.1	72.9	72.6
FDEC, 2017 February	74.1	74.2	74.3	74.2	74.1	73.9	73.8	73.6	73.4	73.2	73.0	72.9	72.7	72.5
Births														
FDEC, 2016 November	58.4	58.7	59.0	59.3	59.6	59.9	60.2	60.6	60.9	61.2	61.4	61.5	61.7	61.9
FDEC, 2017 February	57.4	57.6	57.8	58.1	58.3	58.6	58.8	59.0	59.2	59.5	59.7	59.9	60.1	60.3
Deaths														
FDEC, 2016 November	49.9	50.2	50.6	51.0	51.4	51.9	52.3	53.1	53.5	54.0	54.3	54.6	54.9	55.3
FDEC, 2017 February	50.5	50.8	51.0	51.3	51.6	51.8	52.1	52.4	52.6	52.9	53.2	53.4	53.7	54.0
Net Natural Increase														
FDEC, 2016 November	8.5	8.4	8.4	8.3	8.2	8.1	7.9	7.6	7.4	7.2	7.0	6.9	6.8	6.7
FDEC, 2017 February	6.9	6.9	6.8	6.8	6.8	6.7	6.7	6.6	6.6	6.6	6.5	6.5	6.4	6.4

Quarterly Data Table

	<u>2020-4</u>	<u>2021-1</u>	<u>2021-2</u>	<u>2021-3</u>	<u>2021-4</u>	<u>2022-1</u>	<u>2022-2</u>	<u>2022-3</u>	<u>2022-4</u>	<u>2023-1</u>	<u>2023-2</u>	<u>2023-3</u>	<u>2023-4</u>	<u>2024-1</u>
Population														
FDEC, 2016 November	21,651.6	21,730.2	21,808.2	21,885.7	21,962.7	22,039.2	22,115.3	22,190.9	22,266.0	22,340.7	22,414.9	22,488.7	22,561.9	22,634.6
FDEC, 2017 February	21,635.7	21,714.0	21,791.9	21,869.4	21,946.5	22,023.3	22,099.7	22,175.8	22,251.5	22,326.8	22,401.5	22,475.8	22,549.5	22,622.6
Population Growth Rate														
FDEC, 2016 November	1.47	1.46	1.44	1.43	1.41	1.40	1.39	1.37	1.36	1.35	1.34	1.32	1.31	1.29
FDEC, 2017 February	1.47	1.45	1.44	1.43	1.42	1.41	1.40	1.38	1.37	1.36	1.35	1.33	1.32	1.30
Net Change in Population														
FDEC, 2016 November	79.0	78.6	78.1	77.5	77.0	76.5	76.1	75.6	75.2	74.7	74.2	73.7	73.2	72.7
FDEC, 2017 February	78.6	78.3	77.9	77.5	77.1	76.8	76.4	76.1	75.7	75.2	74.8	74.2	73.7	73.1
Households														
FDEC, 2016 November	8,495.1	8,527.4	8,559.7	8,591.9	8,624.0	8,656.1	8,688.2	8,720.2	8,752.2	8,784.1	8,815.8	8,847.5	8,879.0	8,910.4
FDEC, 2017 February	8,491.2	8,523.3	8,555.4	8,587.4	8,619.3	8,651.1	8,683.0	8,714.8	8,746.5	8,778.1	8,809.7	8,841.1	8,872.3	8,903.5
Household Growth Rate														
FDEC, 2016 November	1.54	1.53	1.52	1.51	1.50	1.50	1.49	1.48	1.47	1.46	1.45	1.44	1.43	1.42
FDEC, 2017 February	1.53	1.52	1.51	1.50	1.49	1.49	1.48	1.47	1.46	1.45	1.44	1.43	1.42	1.41
Net Change in Households														
FDEC, 2016 November	32.4	32.3	32.3	32.2	32.1	32.1	32.1	32.0	32.0	31.9	31.8	31.6	31.5	31.4
FDEC, 2017 February	32.2	32.1	32.0	32.0	31.9	31.9	31.8	31.8	31.7	31.6	31.5	31.4	31.3	31.1
Household Size														
FDEC, 2016 November	2.549	2.548	2.548	2.547	2.547	2.546	2.545	2.545	2.544	2.543	2.543	2.542	2.541	2.540
FDEC, 2017 February	2.548	2.548	2.547	2.547	2.546	2.546	2.545	2.545	2.544	2.543	2.543	2.542	2.542	2.541
Household Size Growth Rate														
FDEC, 2016 November	-0.07	-0.07	-0.08	-0.08	-0.09	-0.09	-0.10	-0.11	-0.11	-0.11	-0.12	-0.12	-0.12	-0.12
FDEC, 2017 February	-0.06	-0.07	-0.07	-0.07	-0.08	-0.08	-0.08	-0.09	-0.09	-0.09	-0.10	-0.10	-0.10	-0.11
Net Migration														
FDEC, 2016 November	72.4	72.0	71.6	71.1	70.6	70.1	69.7	69.3	68.9	68.5	68.2	67.8	67.5	67.1
FDEC, 2017 February	72.3	72.1	71.9	71.6	71.4	71.2	71.0	70.8	70.5	70.2	69.9	69.5	69.1	68.7
Births														
FDEC, 2016 November	62.2	62.4	62.6	62.8	63.1	63.3	63.5	63.7	63.9	64.1	64.2	64.3	64.4	64.5
FDEC, 2017 February	60.6	60.8	60.9	61.1	61.3	61.4	61.6	61.7	61.9	62.1	62.2	62.4	62.5	62.7
Deaths														
FDEC, 2016 November	55.6	55.9	56.1	56.4	56.7	56.9	57.1	57.4	57.6	57.9	58.1	58.4	58.6	58.9
FDEC, 2017 February	54.3	54.6	54.9	55.2	55.5	55.8	56.1	56.4	56.7	57.1	57.4	57.7	58.0	58.2
Net Natural Increase														
FDEC, 2016 November	6.6	6.6	6.5	6.4	6.4	6.4	6.3	6.3	6.2	6.2	6.0	5.9	5.8	5.6
FDEC, 2017 February	6.3	6.2	6.0	5.9	5.7	5.6	5.4	5.3	5.2	5.0	4.9	4.7	4.6	4.4

Quarterly Data Table

	<u>2024-2</u>	<u>2024-3</u>	<u>2024-4</u>	<u>2025-1</u>	<u>2025-2</u>	<u>2025-3</u>	<u>2025-4</u>	<u>2026-1</u>	<u>2026-2</u>
Population									
FDEC, 2016 November	22,706.7	22,778.2	22,849.1	22,919.4	22,989.2	23,058.3	23,126.8	23,194.8	23,262.3
FDEC, 2017 February	22,695.0	22,766.9	22,838.1	22,908.7	22,978.8	23,048.3	23,117.2	23,185.5	23,253.3
Population Growth Rate									
FDEC, 2016 November	1.28	1.27	1.25	1.24	1.22	1.21	1.19	1.18	1.17
FDEC, 2017 February	1.29	1.27	1.26	1.24	1.23	1.22	1.20	1.19	1.17
Net Change in Population									
FDEC, 2016 November	72.1	71.5	70.9	70.3	69.7	69.1	68.5	68.0	67.4
FDEC, 2017 February	72.5	71.8	71.2	70.6	70.1	69.5	68.9	68.3	67.7
Households									
FDEC, 2016 November	8,941.6	8,972.7	9,003.7	9,034.5	9,065.2	9,095.8	9,126.2	9,156.4	9,186.6
FDEC, 2017 February	8,934.5	8,965.3	8,996.0	9,026.6	9,057.1	9,087.4	9,117.5	9,147.5	9,177.4
Household Growth Rate									
FDEC, 2016 November	1.41	1.40	1.39	1.38	1.37	1.36	1.34	1.33	1.32
FDEC, 2017 February	1.40	1.39	1.38	1.37	1.36	1.35	1.33	1.32	1.31
Net Change in Households									
FDEC, 2016 November	31.2	31.1	31.0	30.8	30.7	30.6	30.4	30.3	30.1
FDEC, 2017 February	31.0	30.9	30.7	30.6	30.4	30.3	30.2	30.0	29.9
Household Size									
FDEC, 2016 November	2.539	2.539	2.538	2.537	2.536	2.535	2.534	2.533	2.532
FDEC, 2017 February	2.540	2.539	2.539	2.538	2.537	2.536	2.535	2.535	2.534
Household Size Growth Rate									
FDEC, 2016 November	-0.13	-0.13	-0.13	-0.14	-0.14	-0.15	-0.15	-0.15	-0.15
FDEC, 2017 February	-0.11	-0.11	-0.12	-0.12	-0.13	-0.13	-0.13	-0.13	-0.14
Net Migration									
FDEC, 2016 November	66.7	66.3	65.9	65.5	65.1	64.8	64.4	64.1	63.9
FDEC, 2017 February	68.2	67.7	67.2	66.8	66.3	65.9	65.6	65.2	64.8
Births									
FDEC, 2016 November	64.6	64.6	64.7	64.8	64.9	64.9	65.0	65.1	65.1
FDEC, 2017 February	62.8	63.0	63.1	63.3	63.4	63.6	63.7	63.8	64.0
Deaths									
FDEC, 2016 November	59.2	59.4	59.7	60.0	60.3	60.6	60.9	61.2	61.5
FDEC, 2017 February	58.5	58.8	59.1	59.4	59.7	60.0	60.3	60.7	61.0
Net Natural Increase									
FDEC, 2016 November	5.4	5.2	5.0	4.8	4.6	4.4	4.1	3.9	3.6
FDEC, 2017 February	4.3	4.1	4.0	3.9	3.7	3.6	3.4	3.2	2.9

Fiscal Year Data Table

	<u>2000-01</u>	<u>2001-02</u>	<u>2002-03</u>	<u>2003-04</u>	<u>2004-05</u>	<u>2005-06</u>	<u>2006-07</u>	<u>2007-08</u>	<u>2008-09</u>	<u>2009-10</u>	<u>2010-11</u>	<u>2011-12</u>	<u>2012-13</u>
Population													
FDEC, 2016 November	16,228.0	16,551.2	16,892.0	17,273.8	17,677.3	18,062.2	18,378.2	18,578.9	18,671.4	18,770.4	18,878.6	19,029.3	19,212.3
FDEC, 2017 February	16,228.0	16,551.2	16,892.0	17,273.8	17,677.3	18,062.2	18,378.2	18,578.9	18,671.4	18,770.4	18,878.6	19,029.3	19,212.3
Growth Rate													
FDEC, 2016 November	2.18	1.99	2.06	2.26	2.34	2.18	1.75	1.09	0.50	0.53	0.58	0.80	0.96
FDEC, 2017 February	2.18	1.99	2.06	2.26	2.34	2.18	1.75	1.09	0.50	0.53	0.58	0.80	0.96
Net Change in Population													
FDEC, 2016 November	346.4	323.2	340.9	381.8	403.5	384.9	316.0	200.7	92.5	99.0	108.2	150.7	183.0
FDEC, 2017 February	346.4	323.2	340.9	381.8	403.5	384.9	316.0	200.7	92.5	99.0	108.2	150.7	183.0
Households													
FDEC, 2016 November	6,436.4	6,565.8	6,702.3	6,855.1	7,016.4	7,170.9	7,288.9	7,357.1	7,383.0	7,411.4	7,450.9	7,517.2	7,593.1
FDEC, 2017 February	6,436.3	6,565.6	6,702.3	6,855.2	7,016.6	7,171.1	7,289.0	7,356.8	7,382.6	7,411.4	7,450.9	7,517.2	7,593.1
Growth Rate													
FDEC, 2016 November	2.22	2.01	2.08	2.28	2.35	2.20	1.65	0.93	0.35	0.38	0.53	0.89	1.01
FDEC, 2017 February	2.21	2.01	2.08	2.28	2.36	2.20	1.64	0.93	0.35	0.39	0.53	0.89	1.01
Net Change in Households													
FDEC, 2016 November	139.5	129.3	136.5	152.8	161.3	154.5	118.1	68.1	26.0	28.3	39.6	66.3	75.9
FDEC, 2017 February	139.0	129.2	136.7	152.9	161.5	154.5	117.9	67.8	25.8	28.8	39.5	66.3	75.9
Household Size													
FDEC, 2016 November	2.521	2.521	2.520	2.520	2.519	2.519	2.521	2.525	2.529	2.533	2.534	2.531	2.530
FDEC, 2017 February	2.521	2.521	2.520	2.520	2.519	2.519	2.521	2.525	2.529	2.533	2.534	2.531	2.530
Growth Rate													
FDEC, 2016 November	-0.03	-0.02	-0.02	-0.02	-0.02	-0.02	0.10	0.16	0.14	0.15	0.04	-0.09	-0.05
FDEC, 2017 February	-0.03	-0.02	-0.02	-0.02	-0.02	-0.02	0.10	0.16	0.15	0.14	0.04	-0.09	-0.05
Net Migration													
FDEC, 2016 November	306.0	285.5	300.4	335.0	351.1	322.9	245.0	133.7	36.3	52.7	67.4	112.0	147.0
FDEC, 2017 February	306.0	285.5	300.4	335.0	351.1	322.9	245.0	133.7	36.3	52.7	67.4	112.0	147.0
Births													
FDEC, 2016 November	205.4	205.4	208.5	215.0	221.8	232.1	239.3	236.0	226.4	217.4	213.5	212.9	213.8
FDEC, 2017 February	205.4	205.4	208.5	215.0	221.8	232.1	239.3	236.0	226.4	217.4	213.5	212.9	213.8
Deaths													
FDEC, 2016 November	165.0	167.7	168.1	168.3	169.4	170.1	168.3	169.0	170.2	171.1	172.7	174.1	177.8
FDEC, 2017 February	165.0	167.7	168.1	168.3	169.4	170.1	168.3	169.0	170.2	171.1	172.7	174.1	177.8
Net Natural Increase													
FDEC, 2016 November	40.3	37.7	40.4	46.7	52.4	62.0	71.0	67.0	56.2	46.3	40.8	38.8	36.0
FDEC, 2017 February	40.3	37.7	40.4	46.7	52.4	62.0	71.0	67.0	56.2	46.3	40.8	38.8	36.0

Fiscal Year Data Table

	<u>2013-14</u>	<u>2014-15</u>	<u>2015-16</u>	<u>2016-17</u>	<u>2017-18</u>	<u>2018-19</u>	<u>2019-20</u>	<u>2020-21</u>	<u>2021-22</u>	<u>2022-23</u>	<u>2023-24</u>	<u>2024-25</u>	<u>2025-26</u>
Population													
FDEC, 2016 November	19,441.9	19,736.0	20,064.8	20,396.4	20,725.0	21,051.2	21,373.5	21,690.7	22,000.7	22,303.1	22,597.9	22,884.0	23,160.6
FDEC, 2017 February	19,441.9	19,736.0	20,064.9	20,393.7	20,717.8	21,040.3	21,359.4	21,674.7	21,984.7	22,288.9	22,585.7	22,873.1	23,151.1
Growth Rate													
FDEC, 2016 November	1.19	1.51	1.67	1.65	1.61	1.57	1.53	1.48	1.43	1.37	1.32	1.27	1.21
FDEC, 2017 February	1.19	1.51	1.67	1.64	1.59	1.56	1.52	1.48	1.43	1.38	1.33	1.27	1.22
Net Change in Population													
FDEC, 2016 November	229.5	294.2	328.8	331.6	328.5	326.3	322.3	317.2	310.0	302.4	294.8	286.0	276.6
FDEC, 2017 February	229.5	294.1	328.9	328.7	324.1	322.5	319.1	315.3	310.1	304.2	296.8	287.4	278.0
Households													
FDEC, 2016 November	7,653.8	7,754.3	7,871.7	7,993.5	8,122.0	8,251.4	8,381.5	8,511.2	8,640.1	8,768.1	8,894.6	9,019.0	9,141.2
FDEC, 2017 February	7,653.8	7,754.4	7,871.2	7,992.8	8,120.7	8,249.1	8,378.4	8,507.2	8,635.2	8,762.3	8,887.8	9,011.3	9,132.5
Growth Rate													
FDEC, 2016 November	0.80	1.31	1.51	1.55	1.61	1.59	1.58	1.55	1.51	1.48	1.44	1.40	1.36
FDEC, 2017 February	0.80	1.31	1.51	1.54	1.60	1.58	1.57	1.54	1.50	1.47	1.43	1.39	1.35
Net Change in Households													
FDEC, 2016 November	60.7	100.6	117.3	121.9	128.5	129.3	130.1	129.8	128.8	128.0	126.5	124.4	122.2
FDEC, 2017 February	60.7	100.6	116.9	121.6	127.9	128.5	129.2	128.9	127.9	127.1	125.6	123.4	121.2
Household Size													
FDEC, 2016 November	2.540	2.545	2.549	2.552	2.552	2.551	2.550	2.548	2.546	2.544	2.541	2.537	2.534
FDEC, 2017 February	2.540	2.545	2.549	2.552	2.551	2.551	2.549	2.548	2.546	2.544	2.541	2.538	2.535
Growth Rate													
FDEC, 2016 November	0.39	0.20	0.15	0.10	0.00	-0.02	-0.04	-0.06	-0.08	-0.11	-0.12	-0.13	-0.14
FDEC, 2017 February	0.39	0.20	0.16	0.09	-0.01	-0.02	-0.05	-0.06	-0.07	-0.09	-0.10	-0.11	-0.13
Net Migration													
FDEC, 2016 November	194.5	260.4	295.5	297.5	295.2	295.4	294.3	290.8	284.5	277.6	272.2	266.4	260.7
FDEC, 2017 February	194.5	260.1	298.2	301.1	296.9	295.9	293.1	290.4	287.4	283.8	278.8	271.6	264.9
Births													
FDEC, 2016 November	217.4	222.1	226.6	231.5	236.6	241.7	245.8	249.1	252.6	255.8	257.7	259.0	260.0
FDEC, 2017 February	217.4	222.3	225.4	227.8	231.9	235.6	239.2	242.6	245.4	247.9	250.4	252.8	255.0
Deaths													
FDEC, 2016 November	182.4	188.4	193.3	197.5	203.3	210.8	217.8	222.8	227.1	231.0	235.1	239.4	244.1
FDEC, 2017 February	182.4	188.2	194.6	200.2	204.7	209.0	213.2	217.7	222.7	227.6	232.4	237.0	242.0
Net Natural Increase													
FDEC, 2016 November	35.0	33.7	33.3	34.1	33.4	30.9	27.9	26.3	25.6	24.8	22.6	19.6	15.9
FDEC, 2017 February	35.0	34.1	30.8	27.6	27.2	26.6	26.0	24.9	22.7	20.3	18.0	15.7	13.0

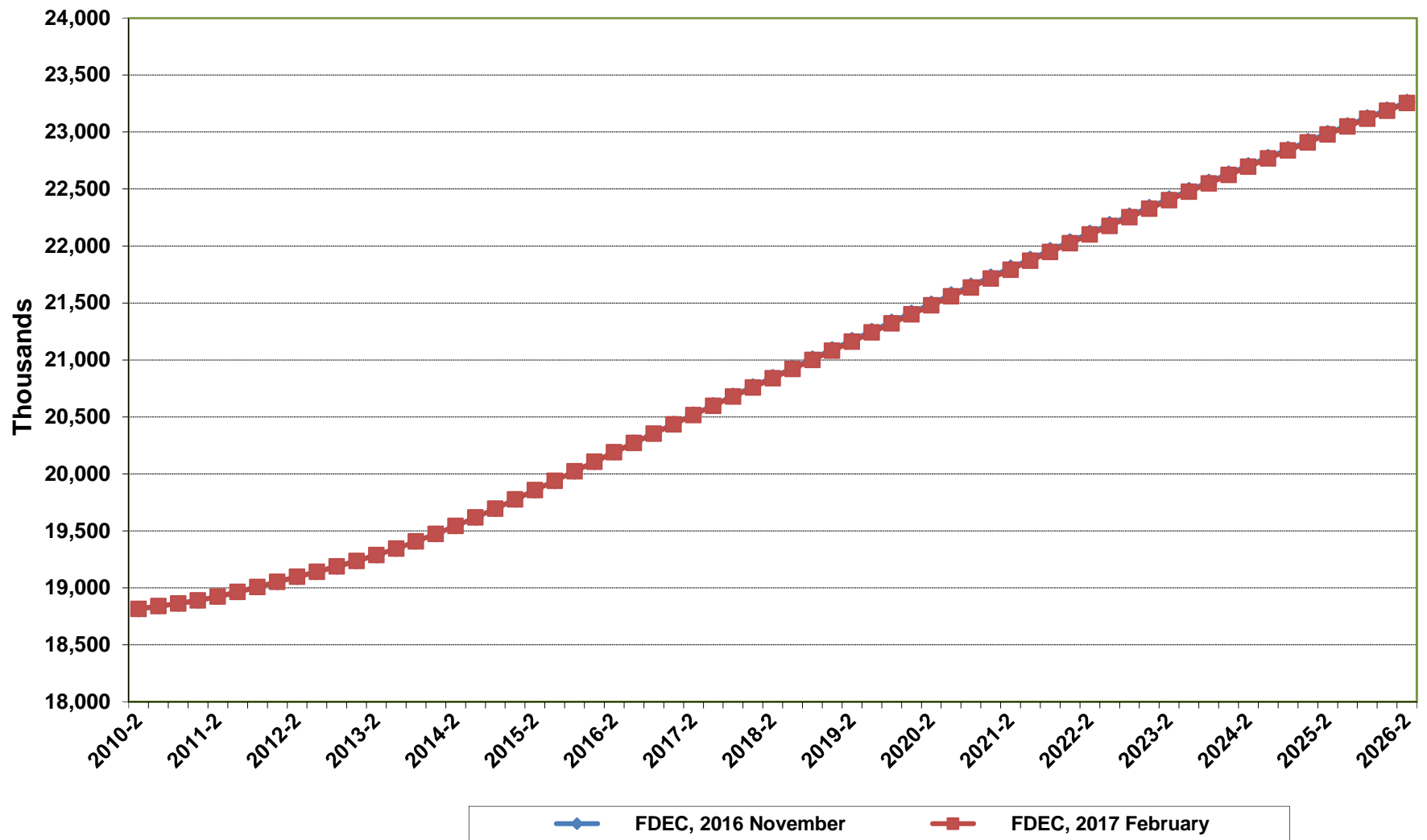
Florida Demographic Estimating Conference

Charts

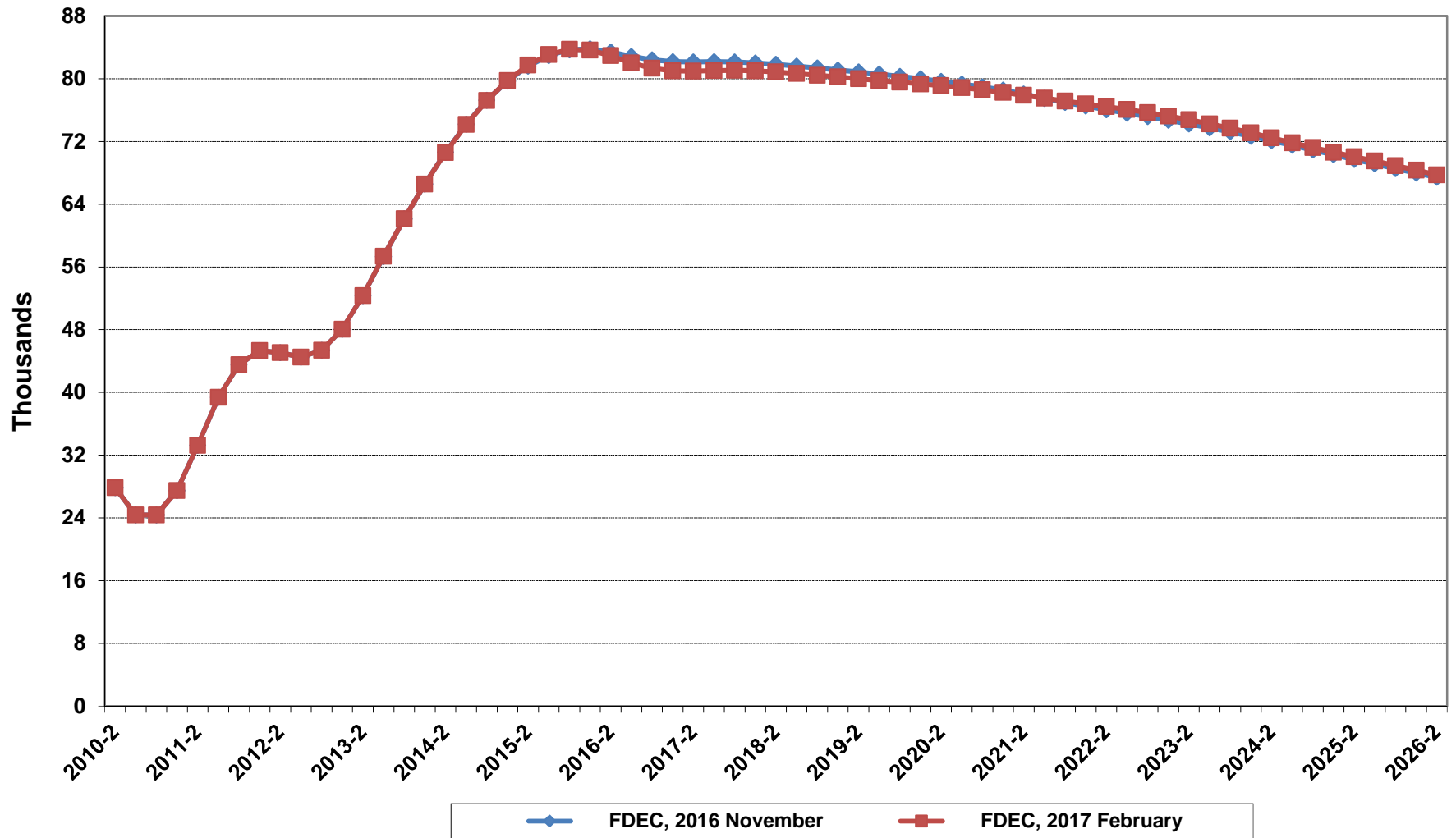
Conference Packet

February 13, 2017

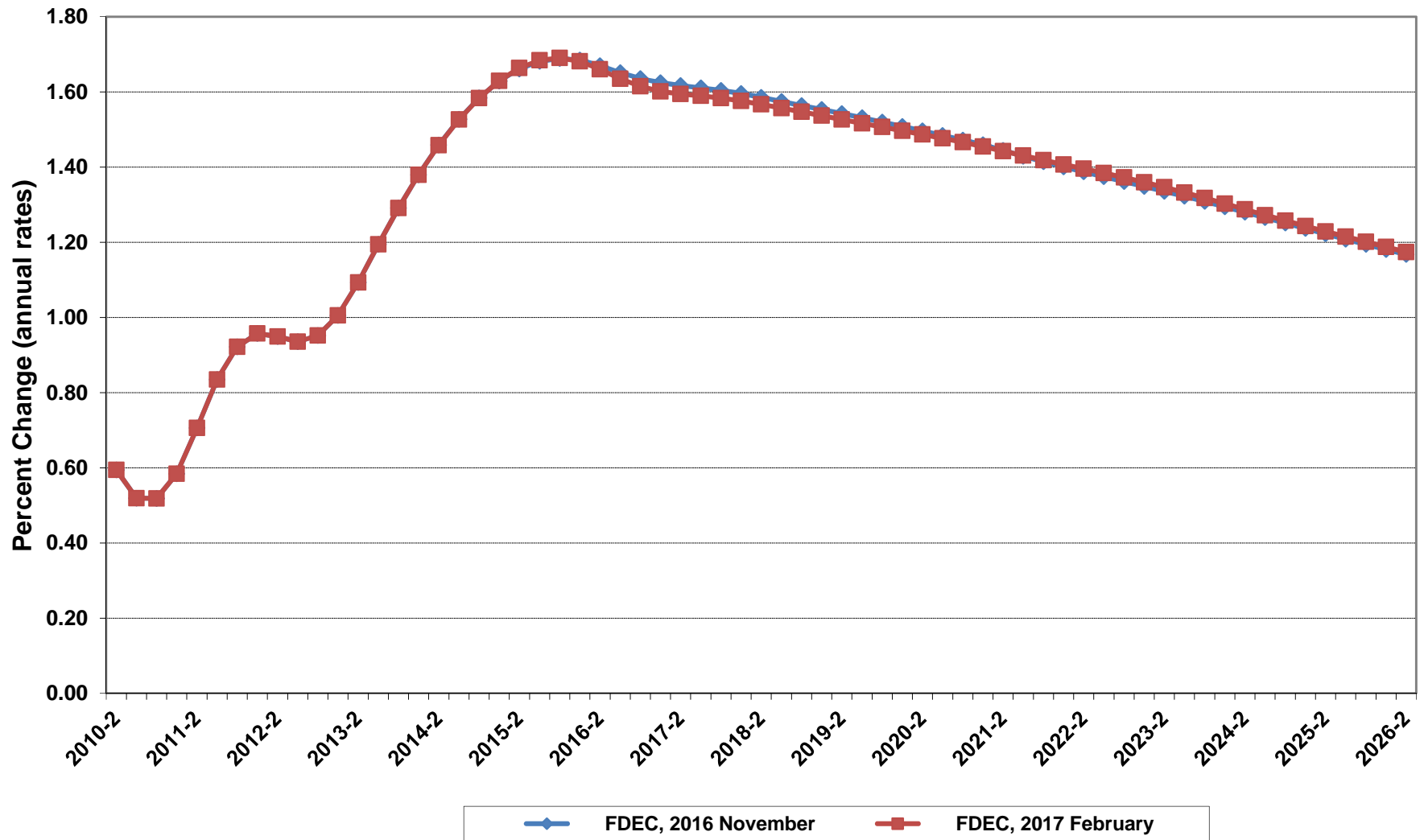
Florida Resident Population



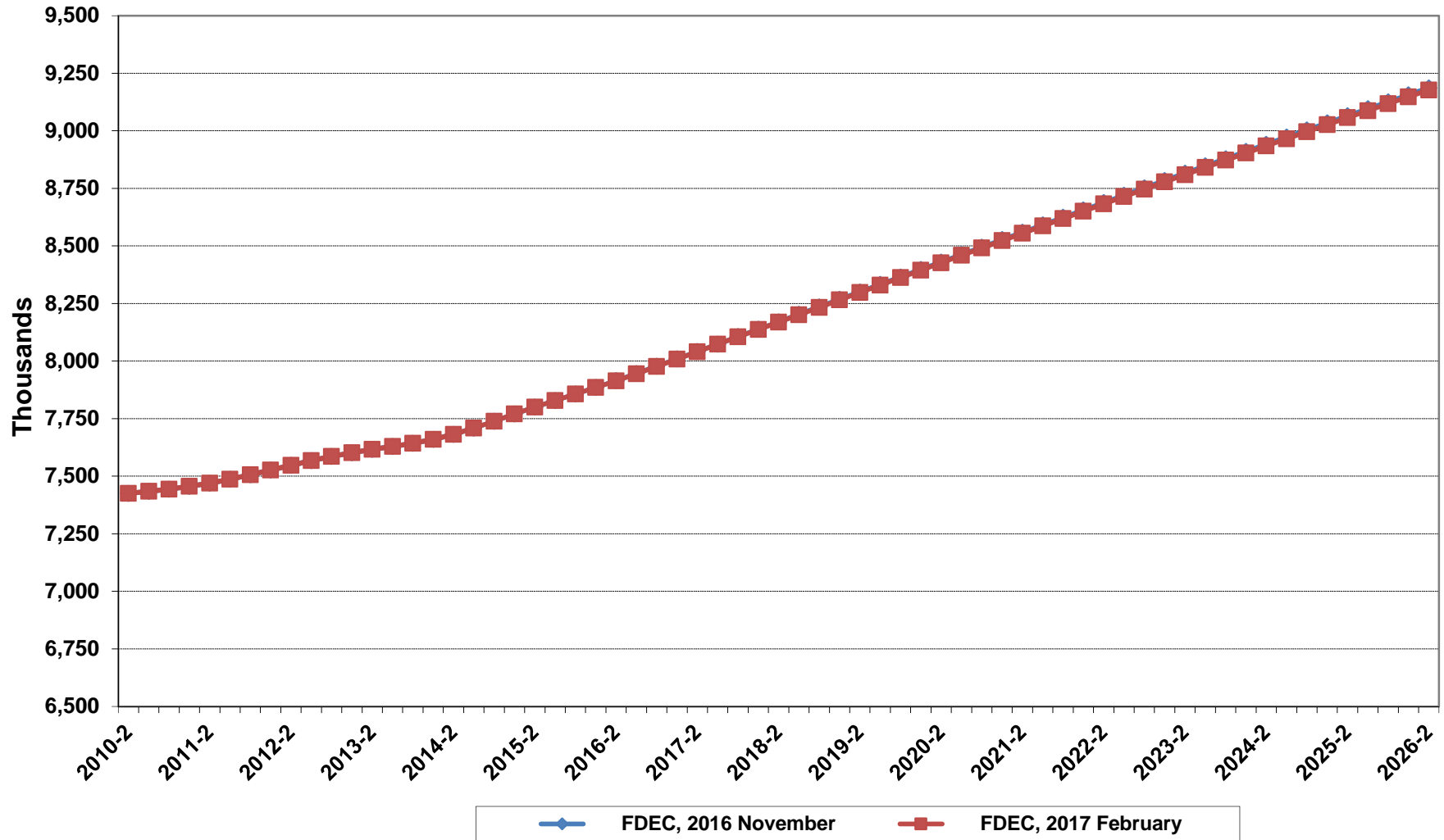
Net Change In Florida Resident Population



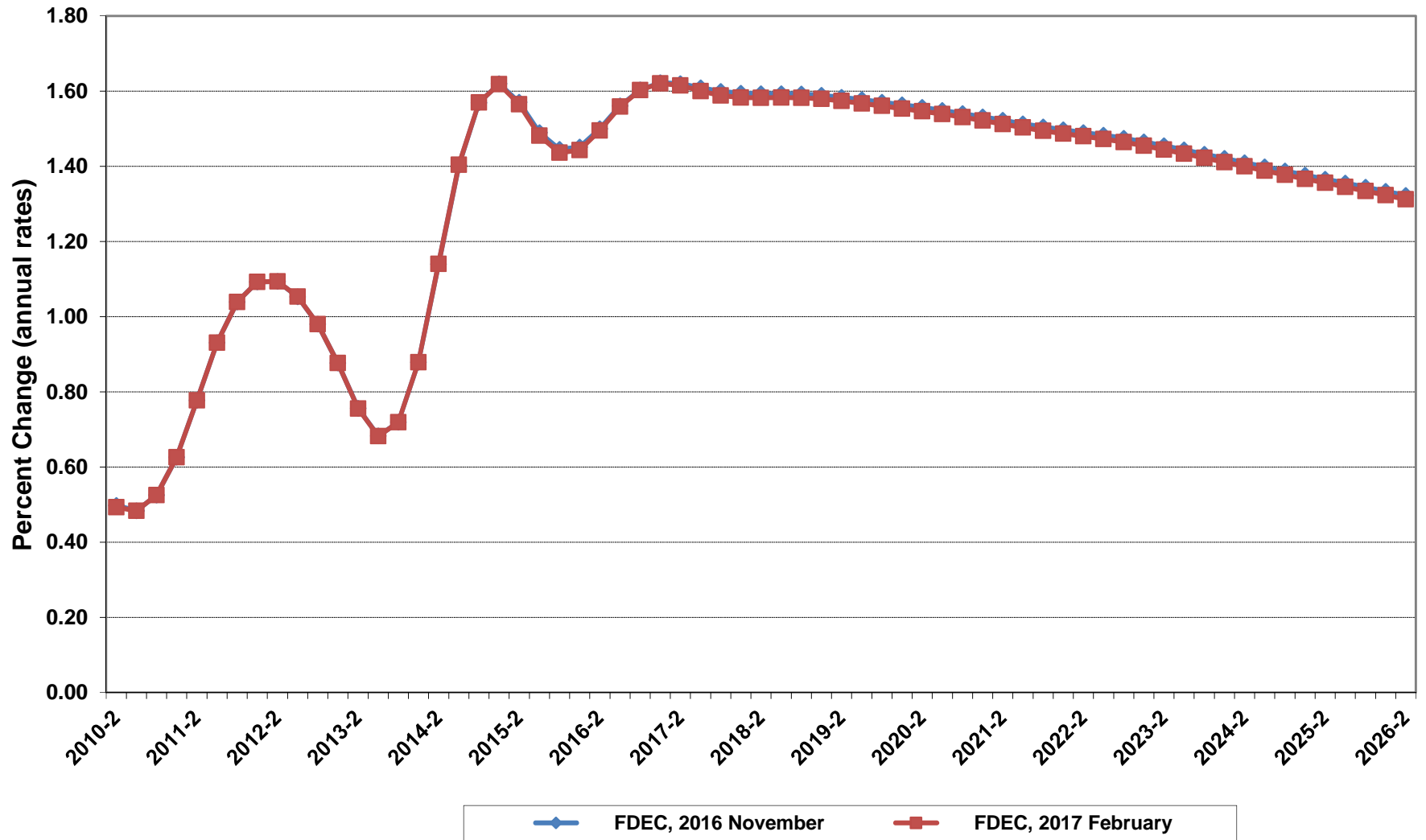
Growth In Florida Resident Population



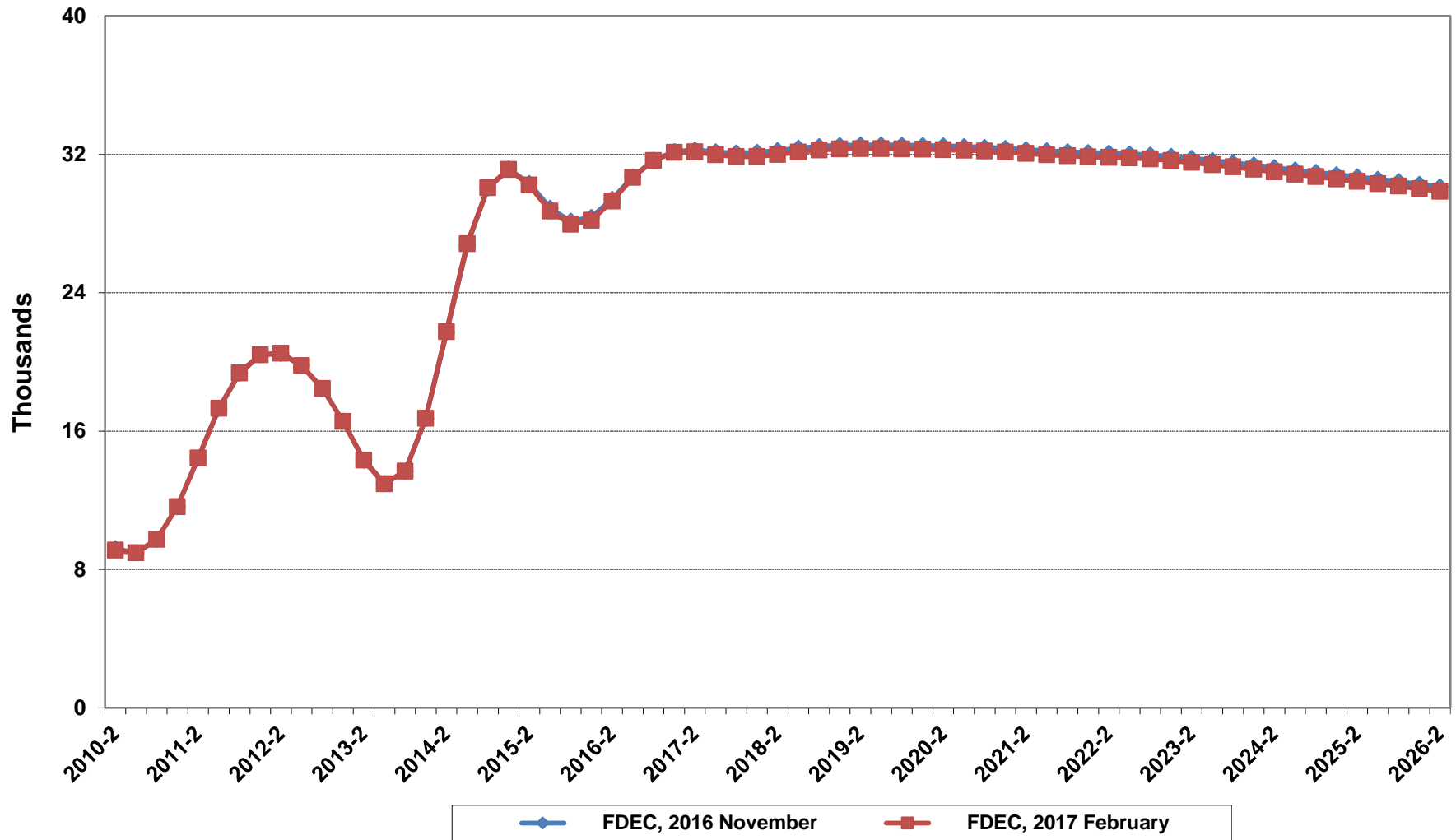
Florida Resident Households



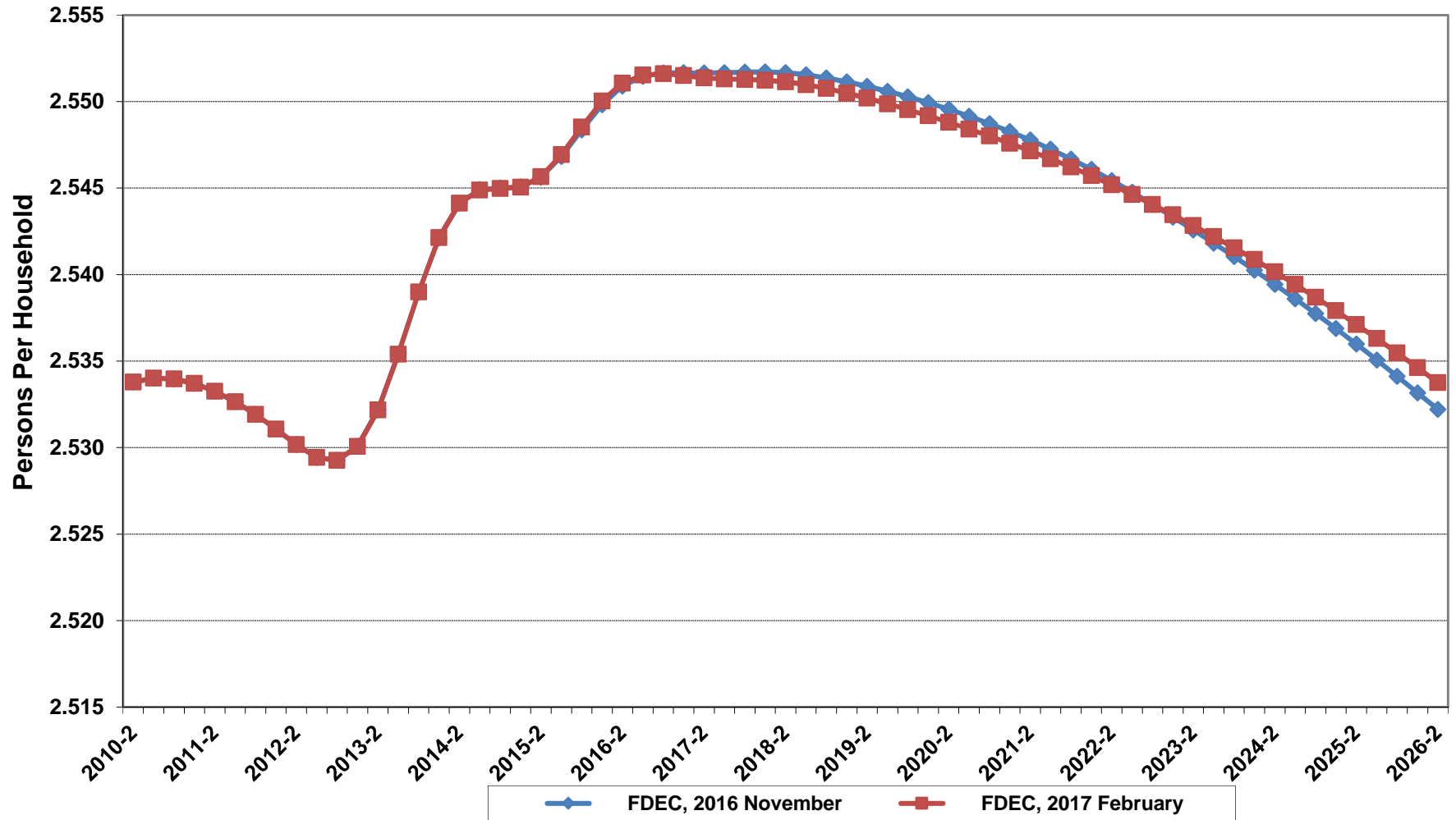
Growth In Florida Resident Households



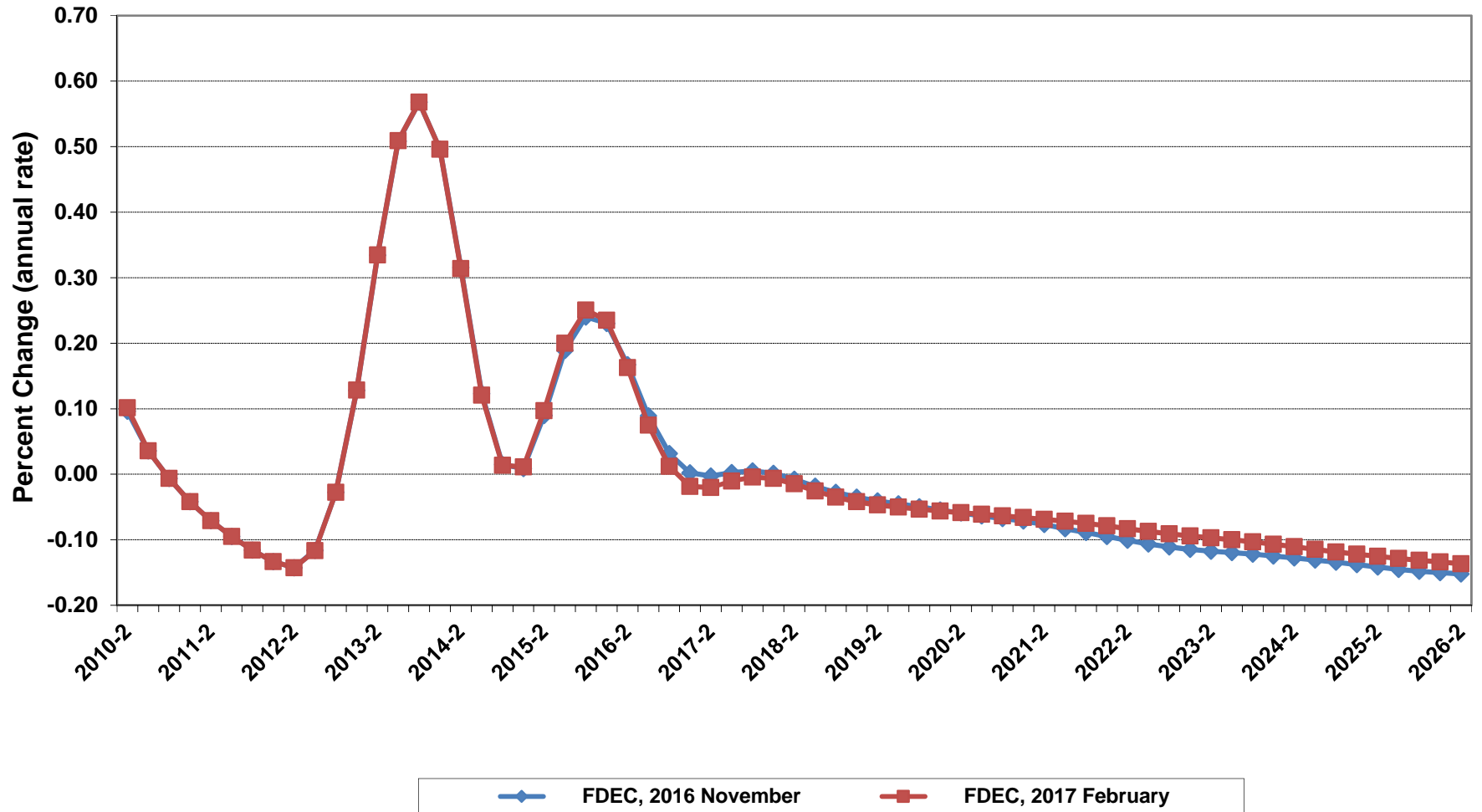
Net Change In Florida Resident Households



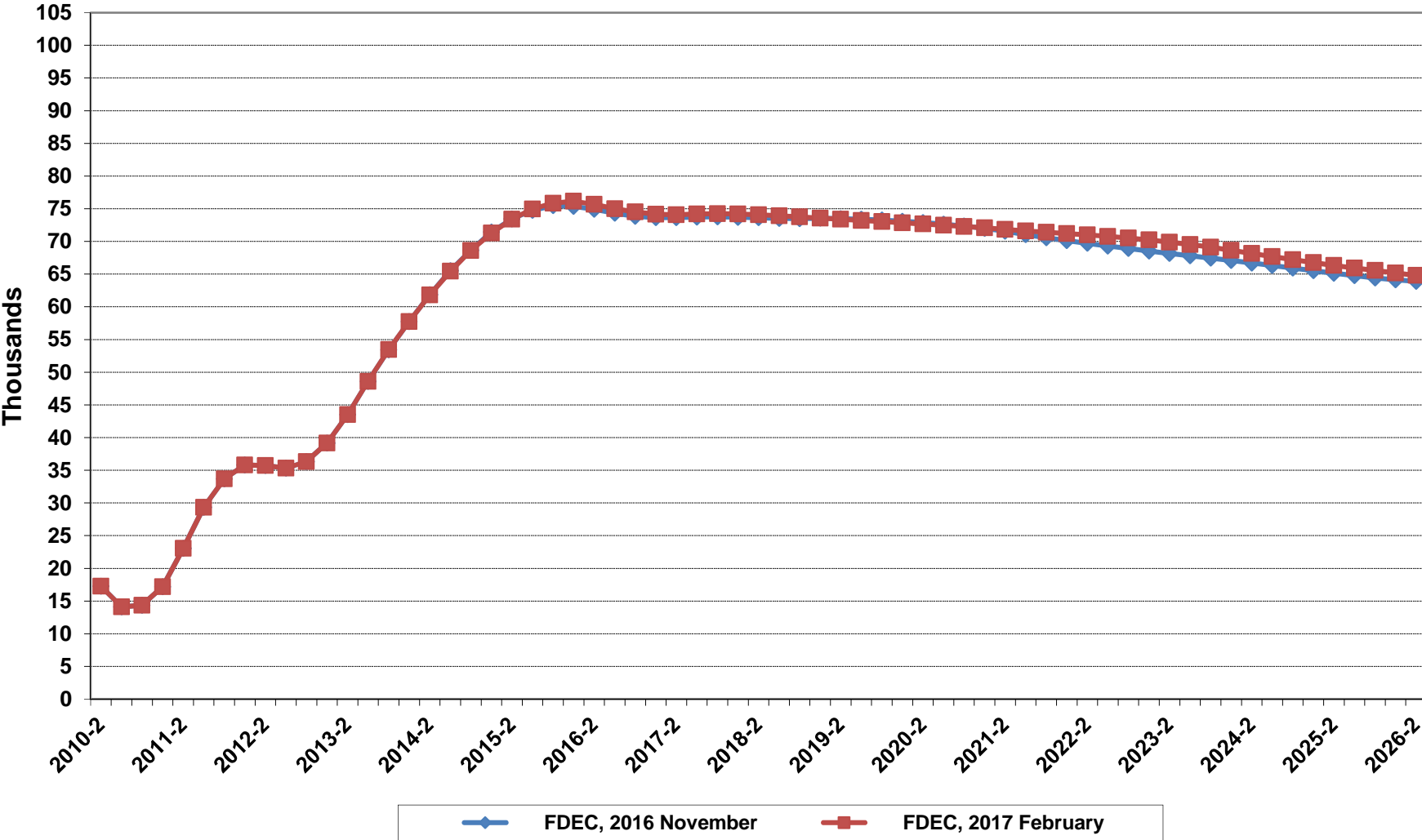
Florida Average Household Size



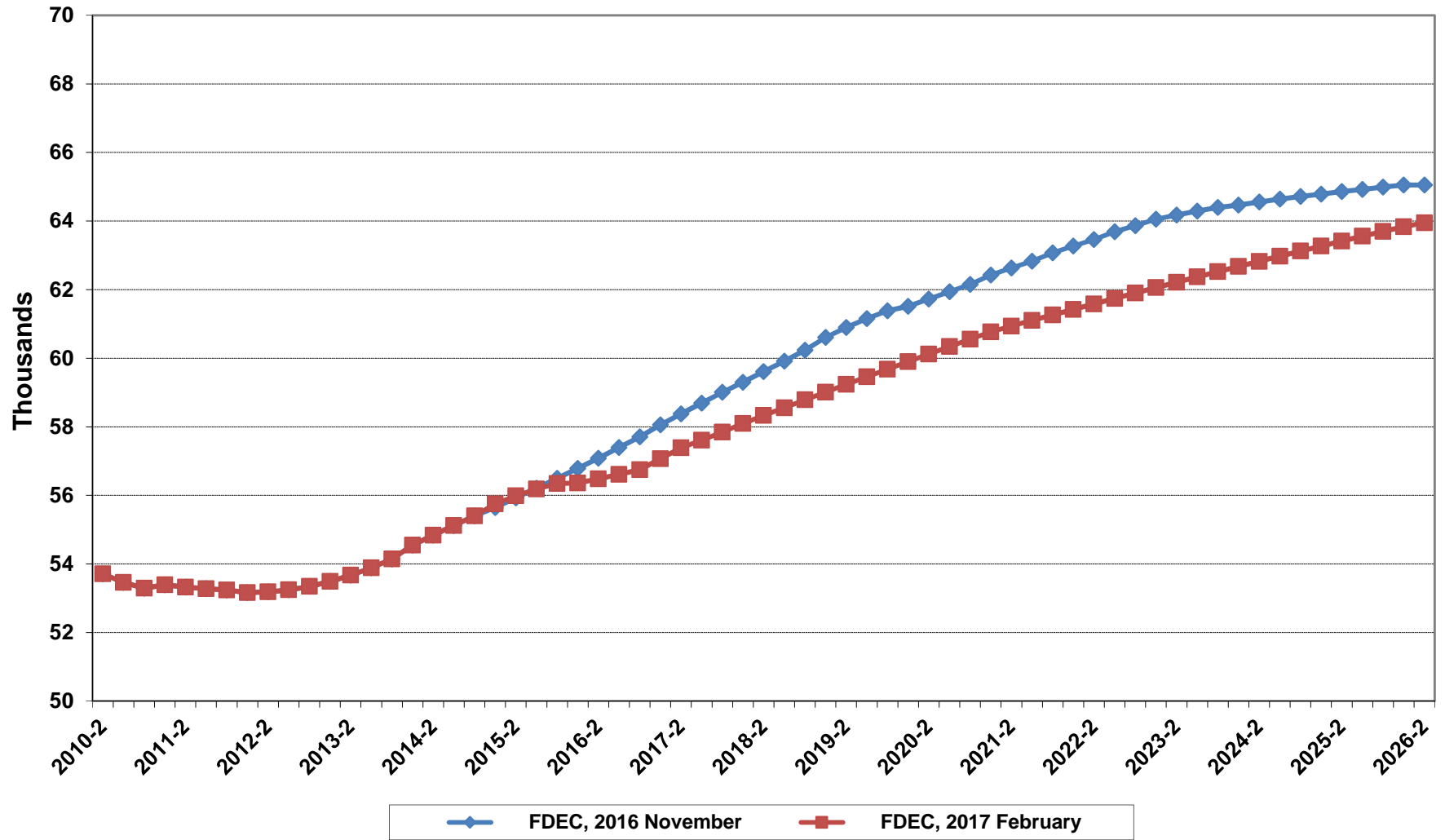
Growth In Florida Household Size



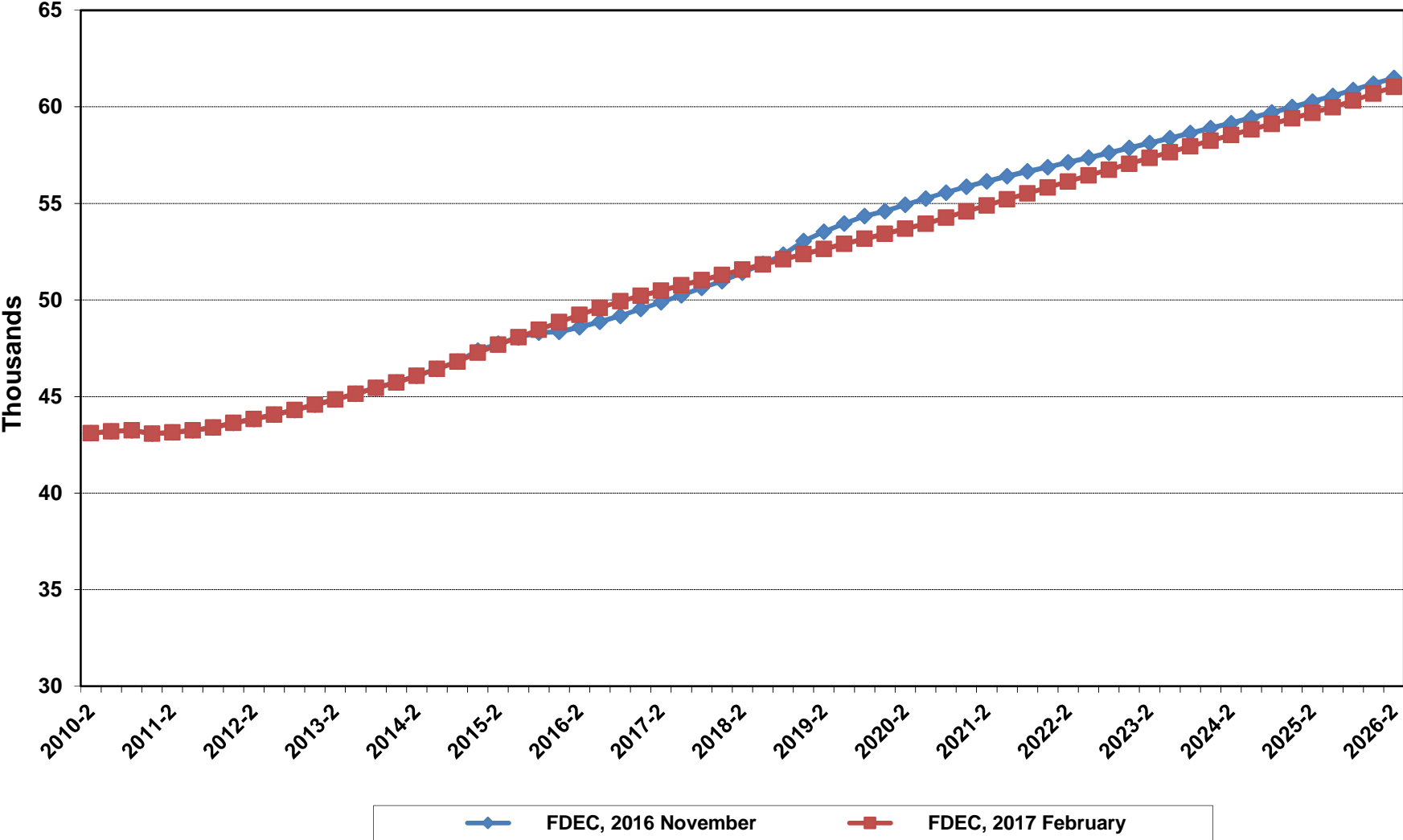
Florida Net Migration



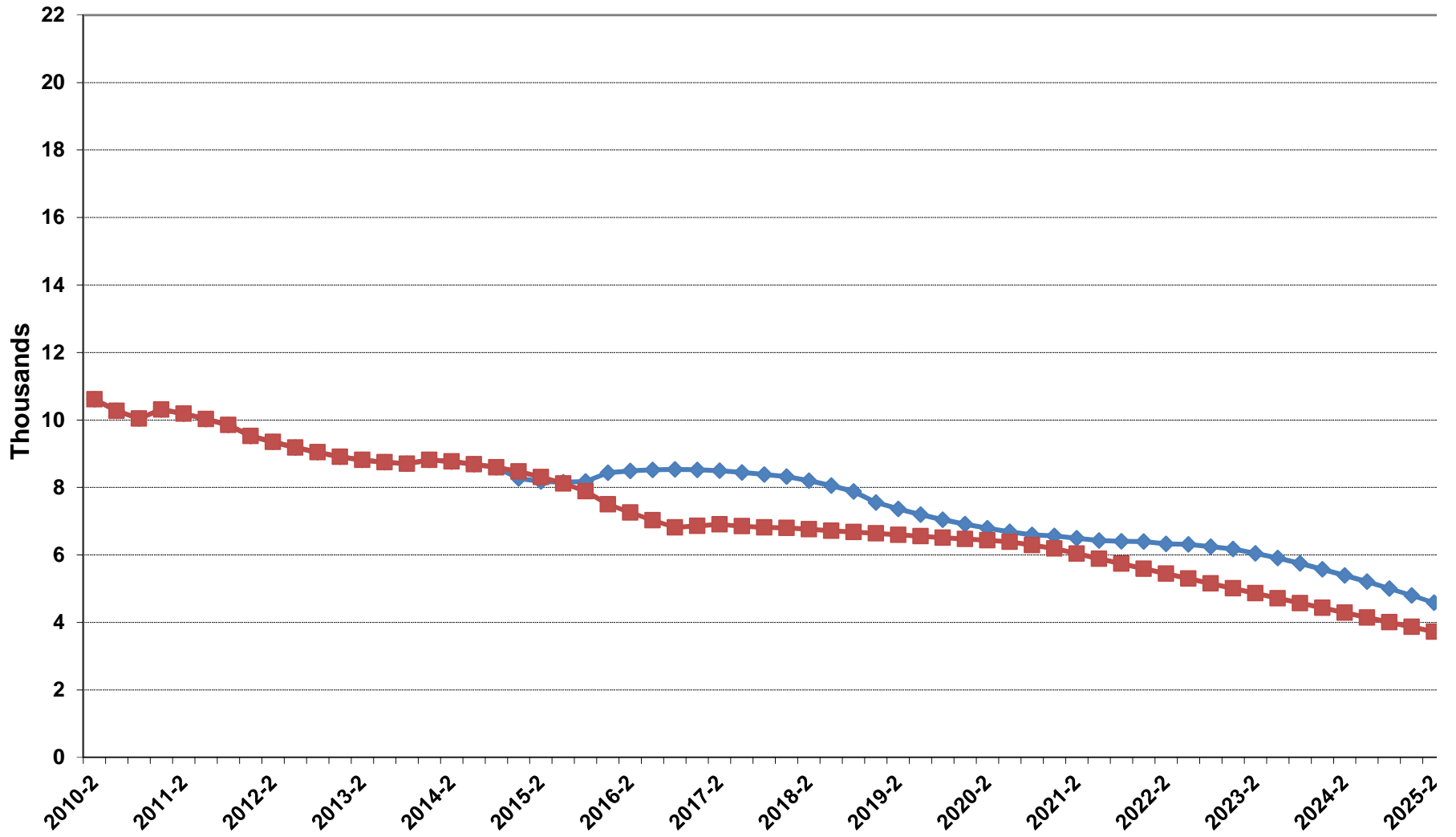
Florida Resident Births



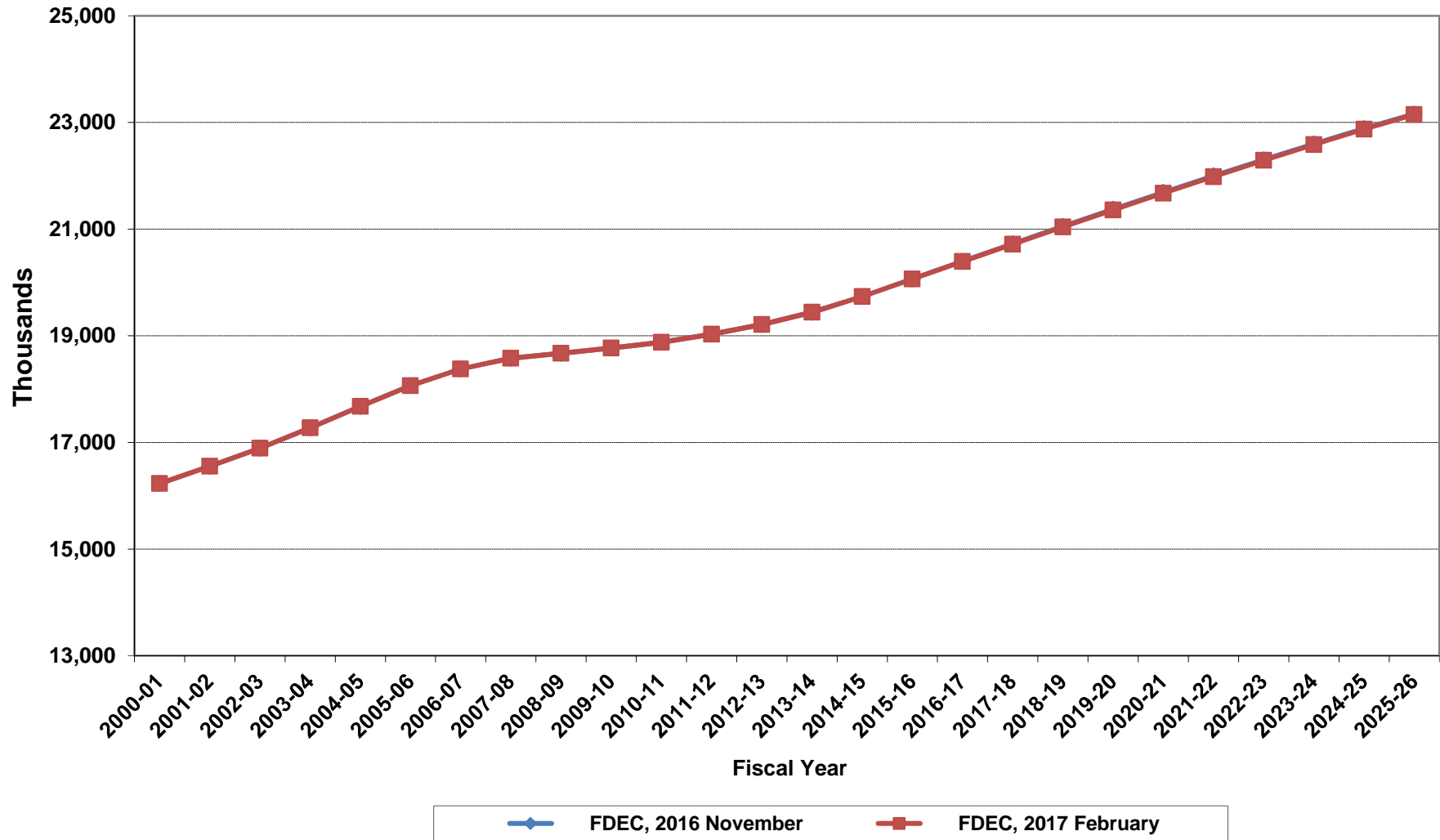
Florida Resident Deaths



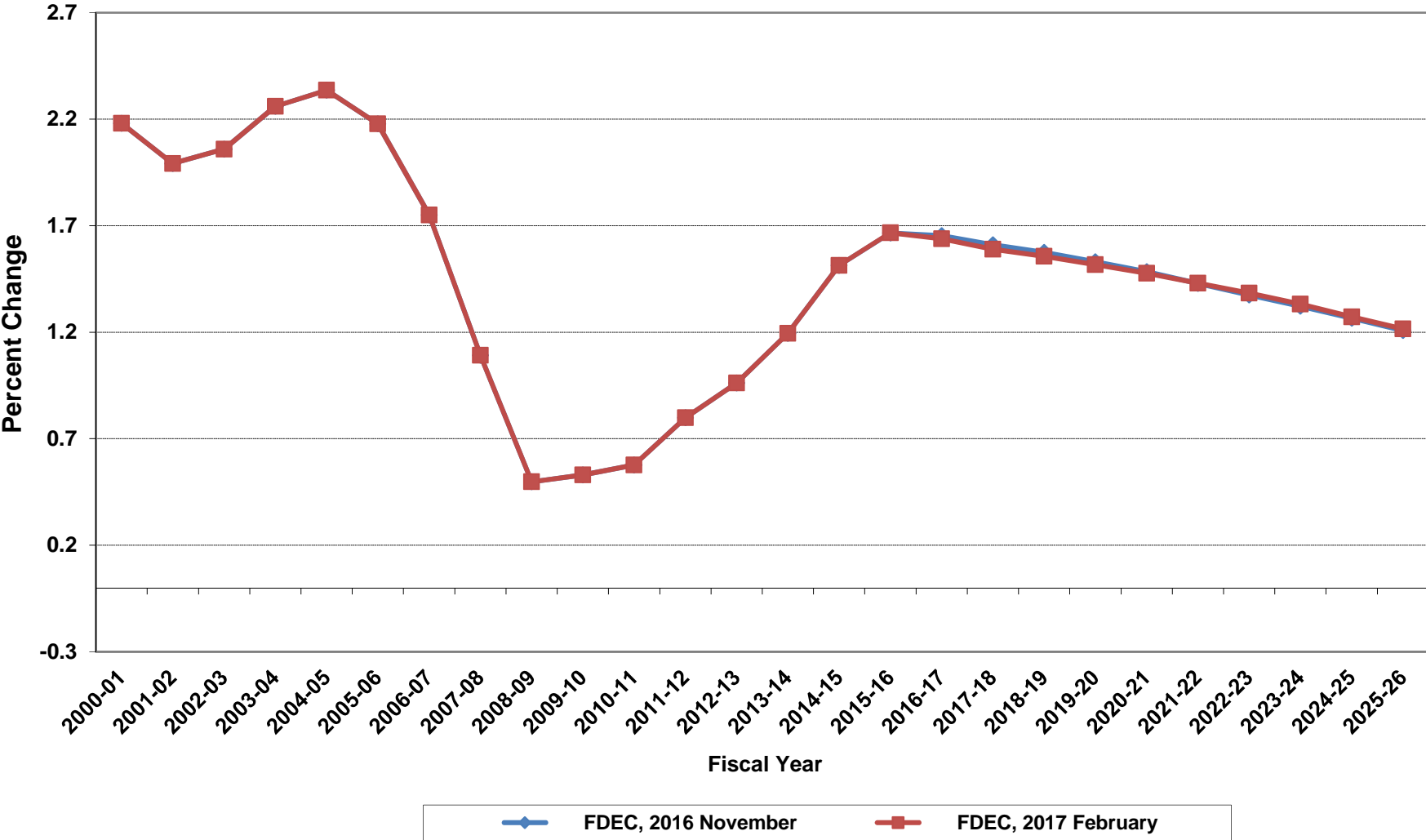
Florida Net Natural Increase



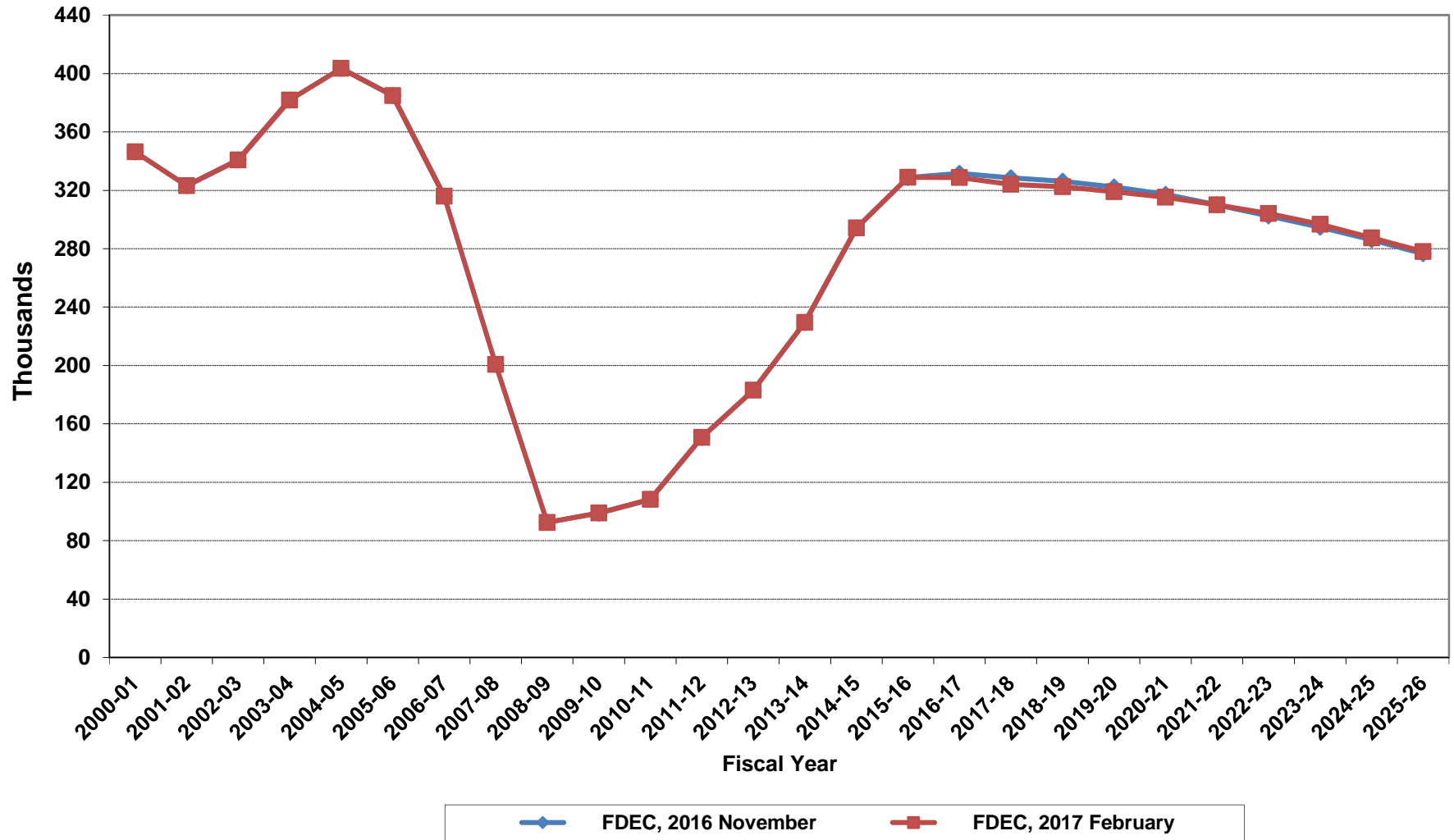
Florida Resident Population



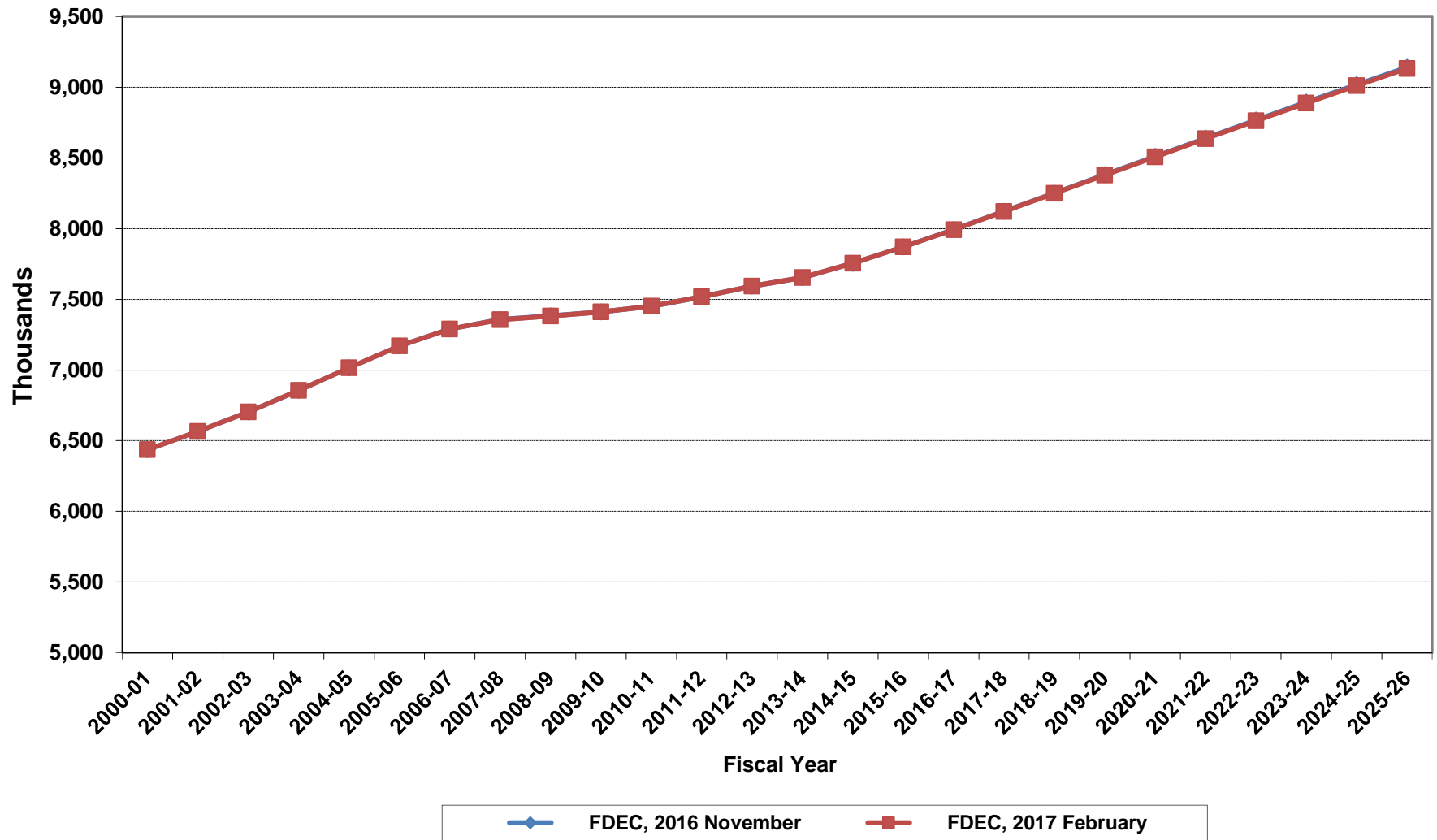
Growth In Florida Resident Population



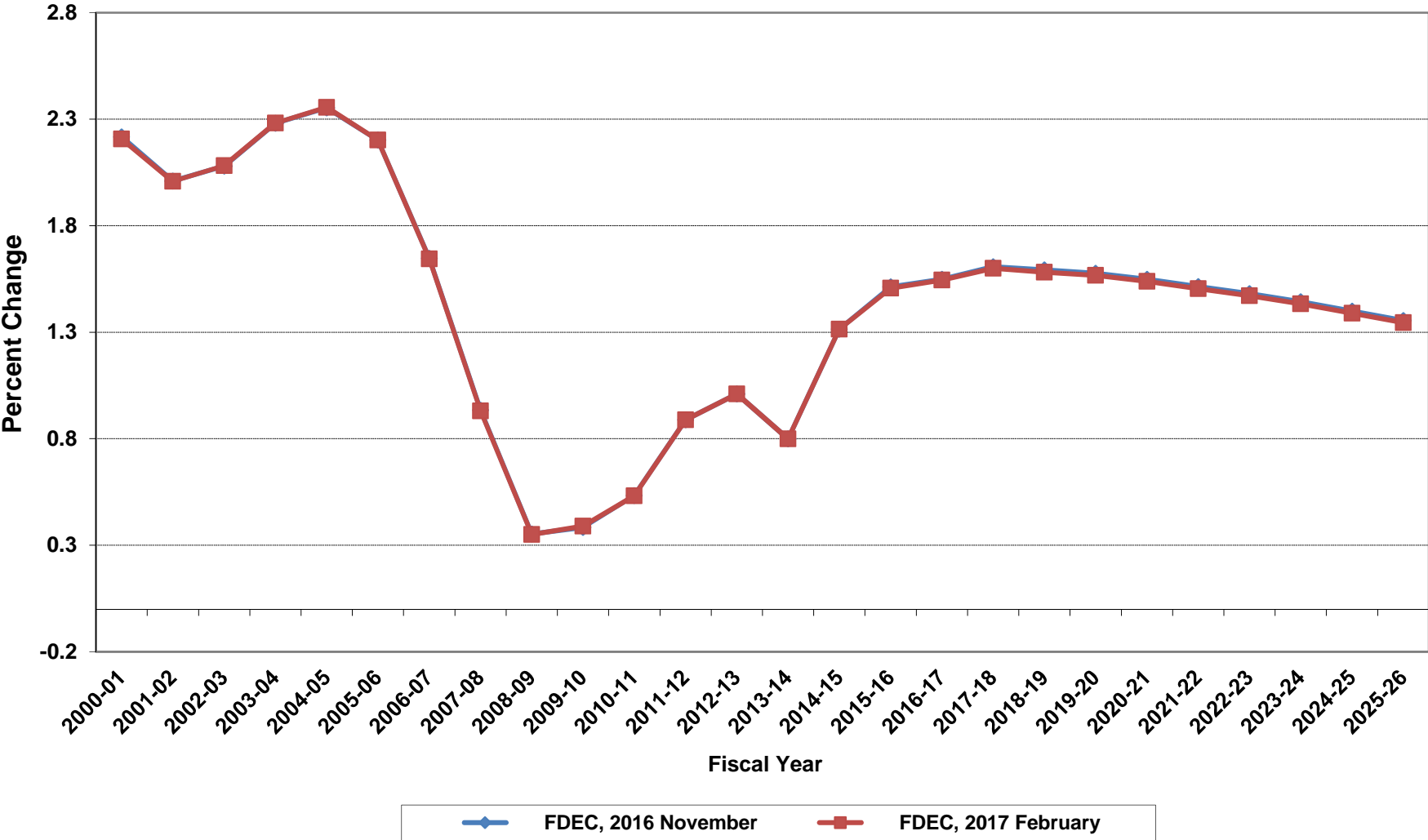
Net Change In Florida Resident Population



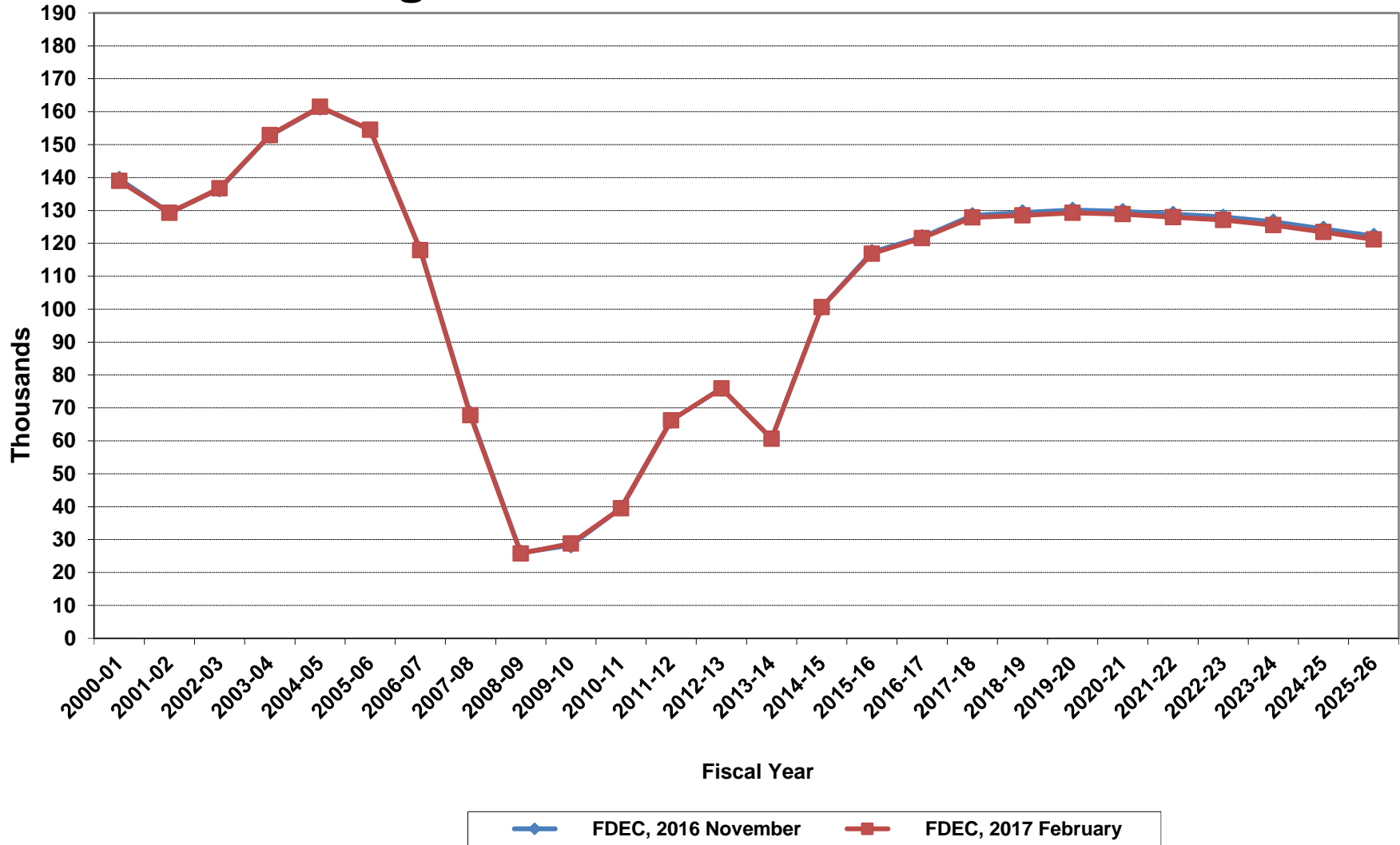
Florida Resident Households



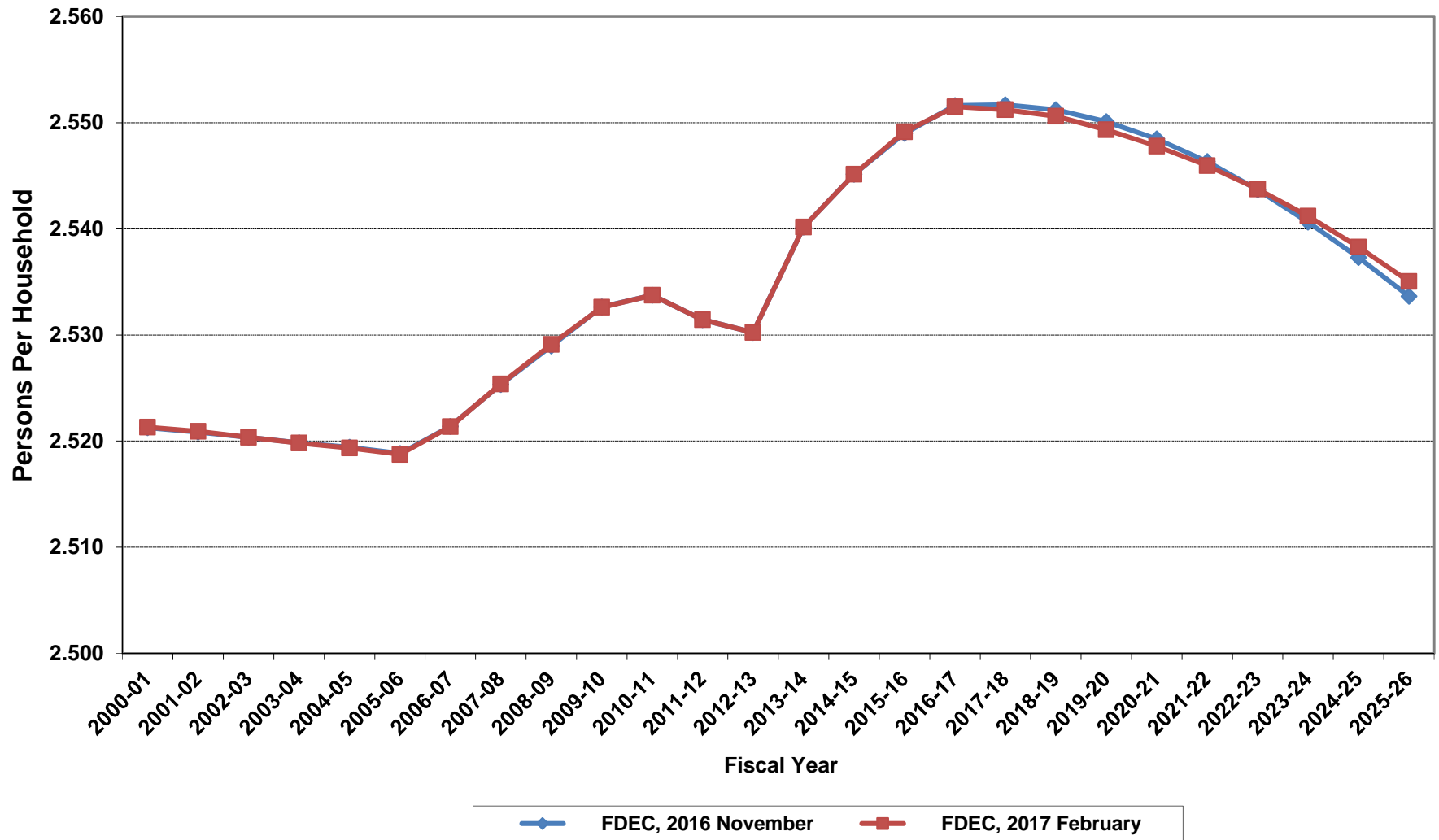
Growth In Florida Resident Households



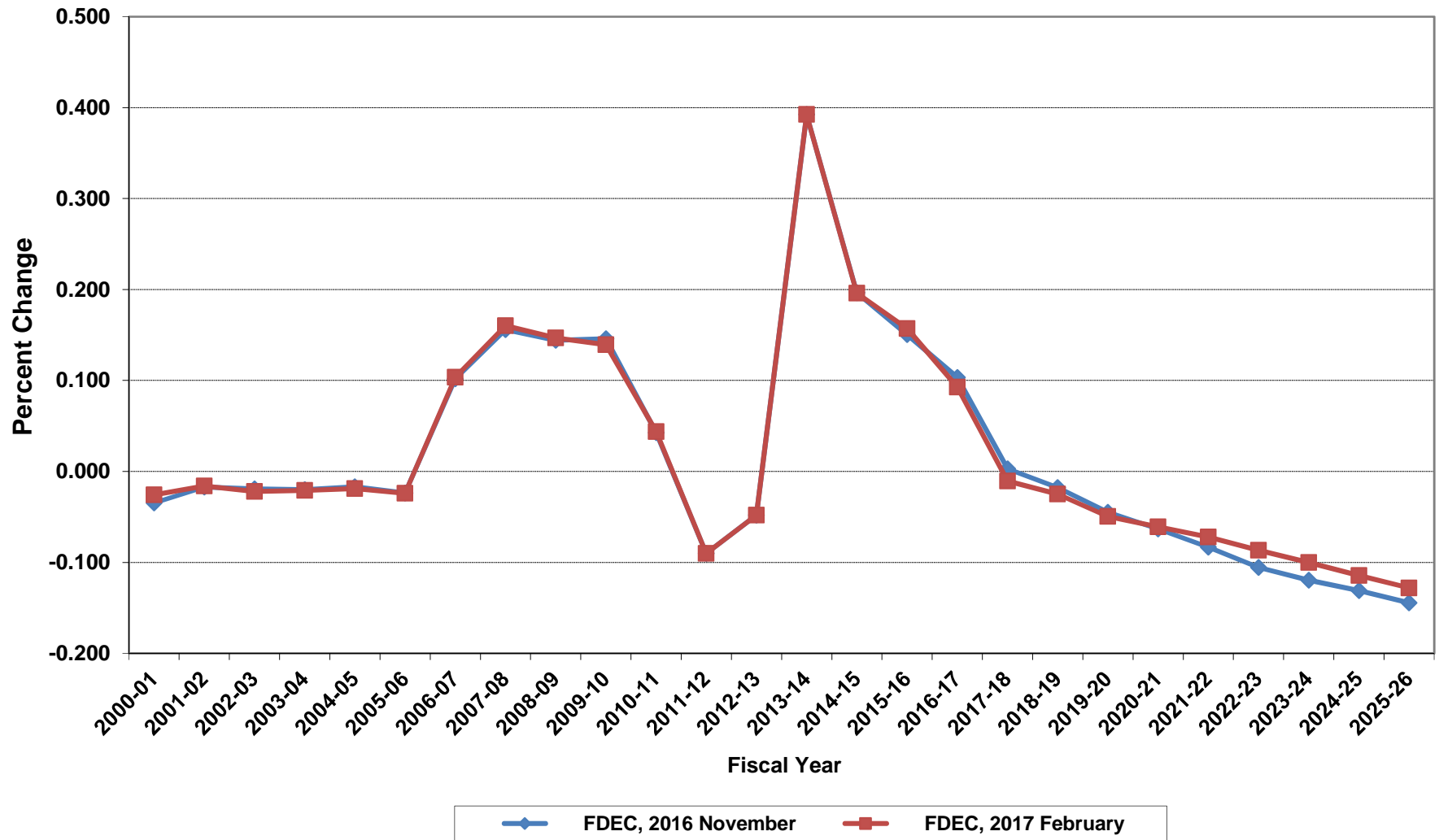
Net Change In Florida Resident Households



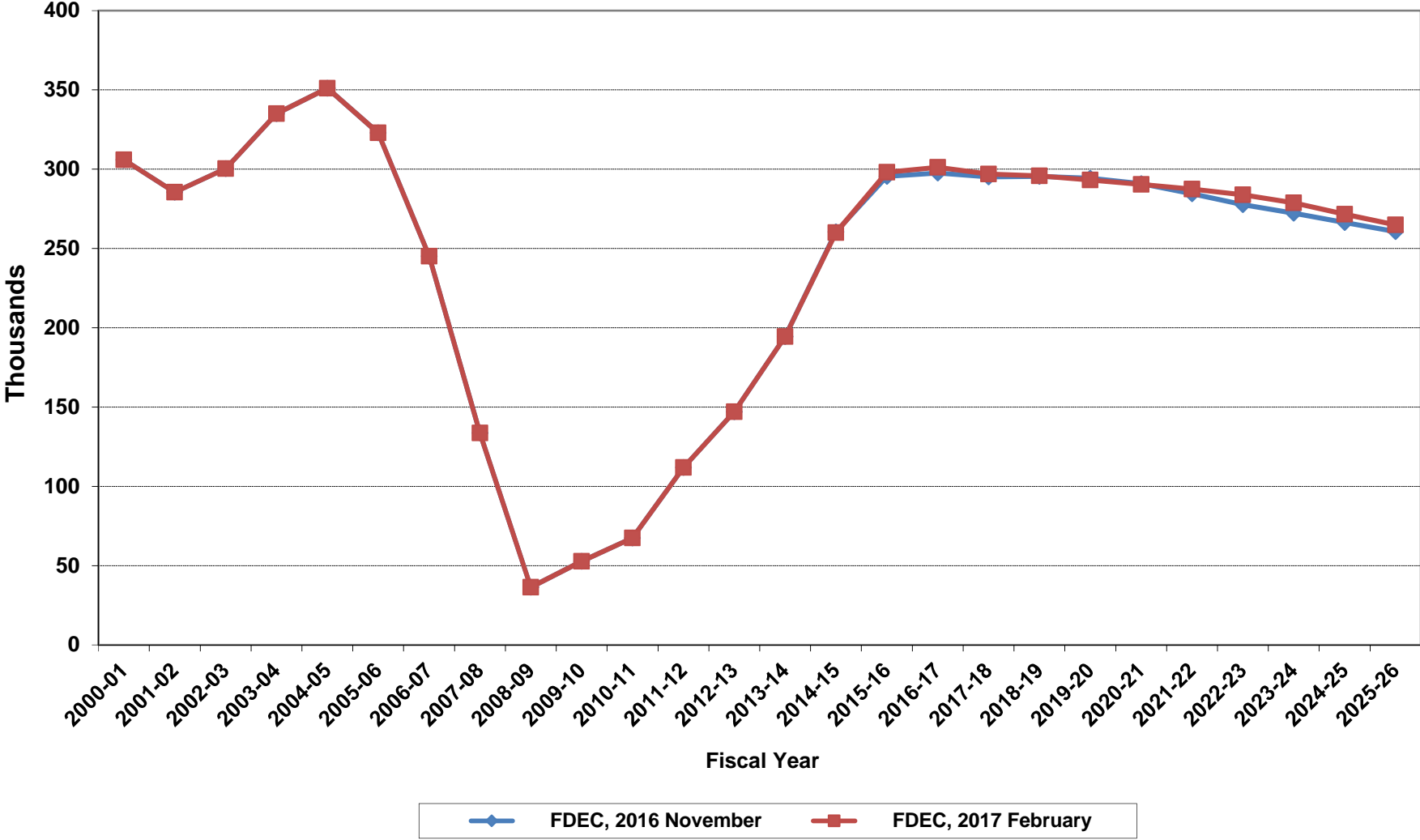
Average Florida Household Size



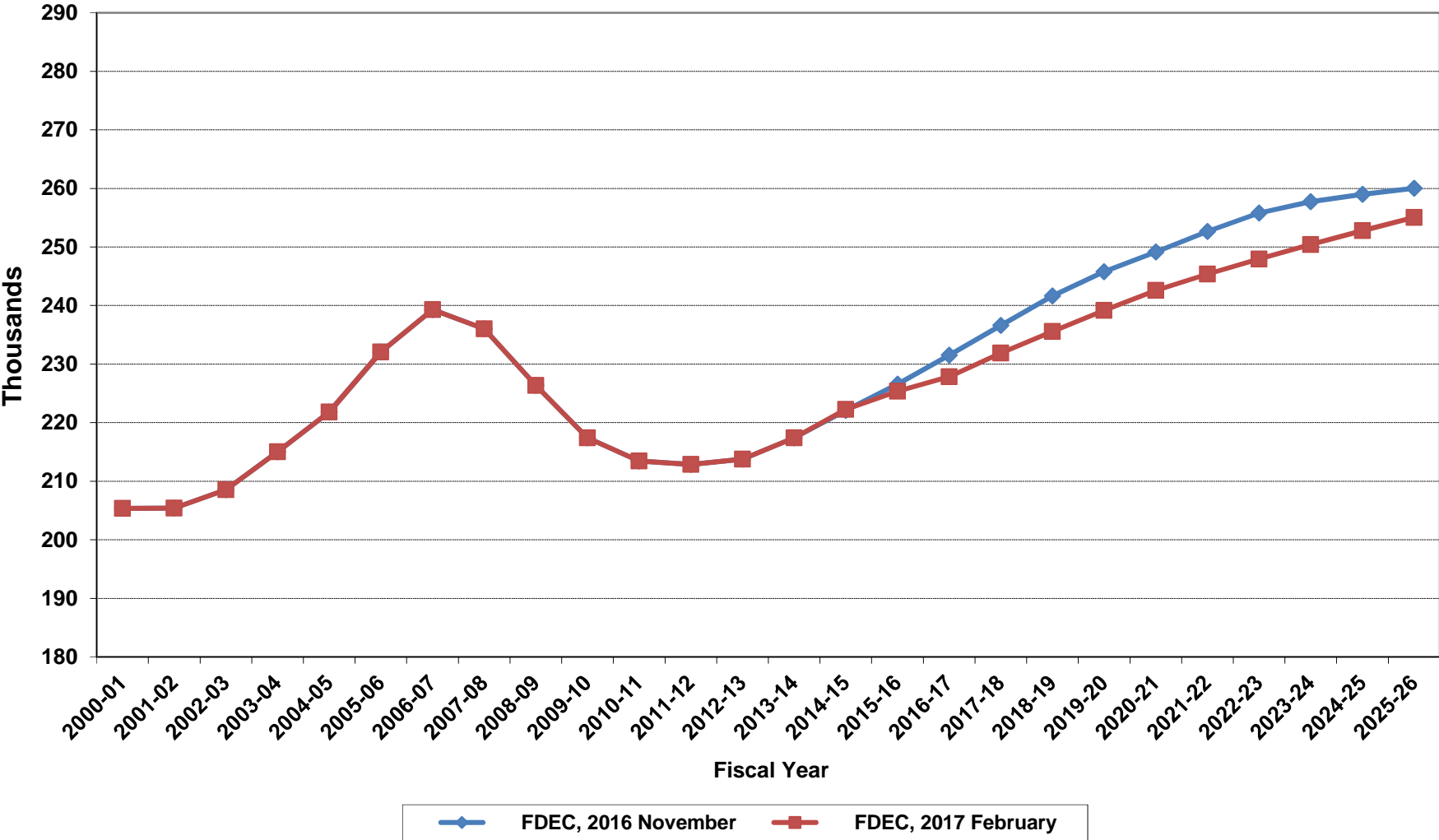
Growth In Average Florida Household Size



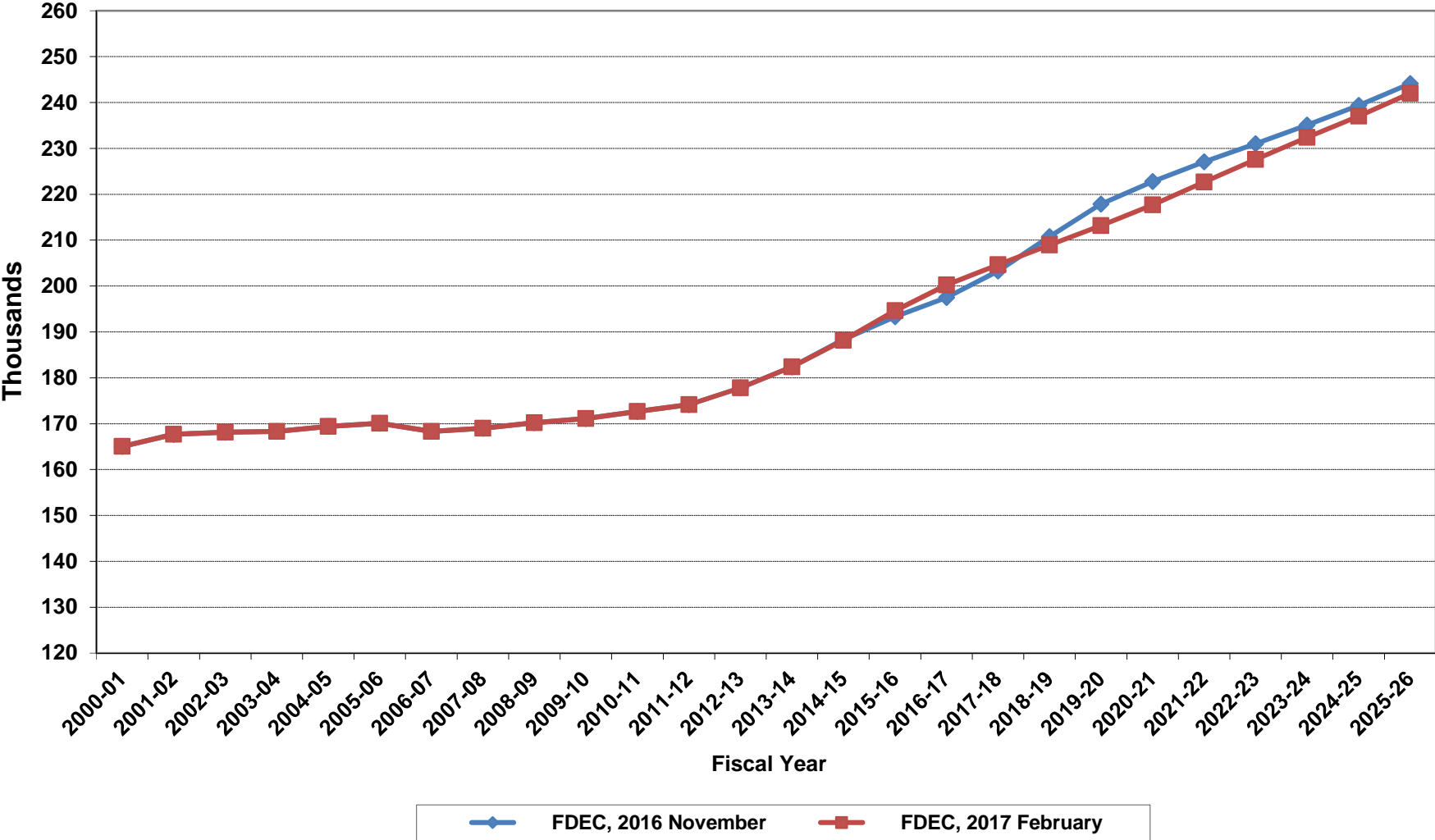
Florida Net Migration



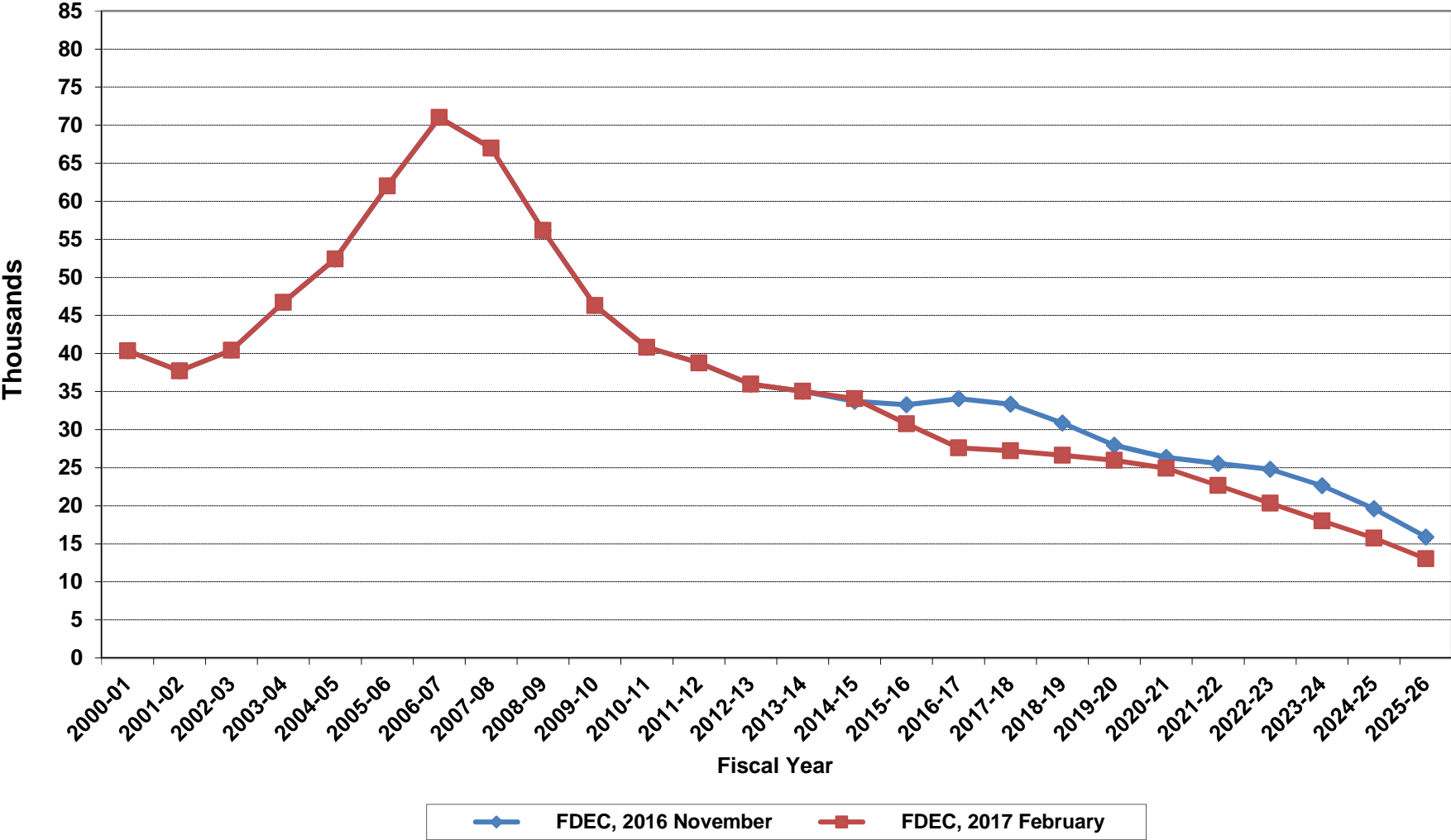
Florida Resident Live Births



Florida Resident Deaths



Florida Net Natural Increase



Florida Population and Components of Change

Fiscal Year	Population (End of Fiscal Year)	Growth Rate	Annual Change in Population	Births	Deaths	Net Natural Increase	Net Migration
1950 - 51	2,981,346	6.50%	181,931	67,486	27,670	39,816	142,115
1951 - 52	3,155,442	5.84%	174,096	72,383	28,942	43,441	130,655
1952 - 53	3,312,521	4.98%	157,079	76,954	29,761	47,193	109,886
1953 - 54	3,504,323	5.79%	191,802	82,725	31,055	51,670	140,132
1954 - 55	3,747,400	6.94%	243,077	86,643	32,176	54,467	188,610
1955 - 56	4,046,062	7.97%	298,662	92,941	34,932	58,009	240,653
1956 - 57	4,370,045	8.01%	323,983	100,990	38,269	62,721	261,262
1957 - 58	4,629,510	5.94%	259,465	105,972	41,911	64,061	195,404
1958 - 59	4,812,270	3.95%	182,760	110,409	43,674	66,735	116,025
1959 - 60	4,998,508	3.87%	186,238	114,428	46,057	68,371	117,867
1960 - 61	5,185,913	3.75%	187,405	116,449	48,388	68,061	119,344
1961 - 62	5,367,899	3.51%	181,986	116,120	50,346	65,774	116,212
1962 - 63	5,553,522	3.46%	185,623	114,709	54,453	60,256	125,367
1963 - 64	5,728,499	3.15%	174,977	115,002	56,229	58,773	116,204
1964 - 65	5,881,195	2.67%	152,696	110,515	57,734	52,781	99,915
1965 - 66	6,065,768	3.14%	184,573	104,367	61,217	43,150	141,423
1966 - 67	6,249,674	3.03%	183,906	101,209	62,577	38,632	145,274
1967 - 68	6,441,756	3.07%	192,082	100,320	66,134	34,186	157,896
1968 - 69	6,633,546	2.98%	191,790	104,286	71,285	33,001	158,789
1969 - 70	6,861,118	3.43%	227,572	111,511	73,831	37,680	189,892
1970 - 71	7,233,583	5.43%	372,465	117,012	75,354	41,658	330,807
1971 - 72	7,681,540	6.19%	447,957	113,568	79,717	33,851	414,106
1972 - 73	8,157,883	6.20%	476,343	107,804	86,232	21,572	454,771
1973 - 74	8,515,208	4.38%	357,325	109,366	88,459	20,907	336,418
1974 - 75	8,648,587	1.57%	133,379	108,686	87,224	21,462	111,917
1975 - 76	8,782,975	1.55%	134,388	104,022	88,129	15,893	118,495
1976 - 77	8,972,678	2.16%	189,703	107,623	90,443	17,180	172,523
1977 - 78	9,225,527	2.82%	252,849	112,268	93,383	18,885	233,964
1978 - 79	9,523,728	3.23%	298,201	116,393	96,801	19,592	278,609
1979 - 80	9,914,652	4.10%	390,924	126,673	101,048	25,625	365,299
1980 - 81	10,212,969	3.01%	298,317	135,560	107,562	27,998	270,319
1981 - 82	10,492,851	2.74%	279,882	141,593	108,644	32,949	246,933
1982 - 83	10,748,466	2.44%	255,615	146,853	110,497	36,356	219,259
1983 - 84	11,065,911	2.95%	317,445	151,748	113,939	37,809	279,636
1984 - 85	11,405,533	3.07%	339,622	159,819	117,539	42,280	297,342
1985 - 86	11,740,069	2.93%	334,536	165,857	122,453	43,404	291,132
1986 - 87	12,083,241	2.92%	343,172	170,819	124,946	45,873	297,299
1987 - 88	12,410,339	2.71%	327,098	179,541	129,413	50,128	276,970
1988 - 89	12,723,719	2.53%	313,380	188,390	131,992	56,398	256,982
1989 - 90	13,017,296	2.31%	293,577	197,181	132,503	64,678	228,899
1990 - 91	13,326,892	2.38%	309,596	197,180	134,093	63,087	246,509
1991 - 92	13,552,021	1.69%	225,129	191,810	136,280	55,530	169,599
1992 - 93	13,802,571	1.85%	250,550	192,051	142,087	49,964	200,586
1993 - 94	14,120,323	2.30%	317,752	191,840	146,101	45,739	272,013
1994 - 95	14,406,418	2.03%	286,095	189,292	149,161	40,131	245,964
1995 - 96	14,701,040	2.05%	294,622	188,584	152,570	36,014	258,608
1996 - 97	15,012,615	2.12%	311,575	190,587	153,067	37,520	274,055
1997 - 98	15,310,069	1.98%	297,454	194,242	155,080	39,162	258,292
1998 - 99	15,680,164	2.42%	370,095	195,897	159,988	35,909	334,186
1999 - 00	16,069,889	2.49%	389,725	200,302	162,489	37,813	351,912
2000 - 01	16,385,615	1.96%	315,726	205,798	164,919	40,879	274,847
2001 - 02	16,718,076	2.03%	332,461	205,164	167,812	37,352	295,109
2002 - 03	17,074,258	2.13%	356,182	208,403	168,079	40,324	315,858
2003 - 04	17,475,944	2.35%	401,686	215,298	168,302	46,996	354,690
2004 - 05	17,876,215	2.29%	400,271	221,533	169,302	52,231	348,040
2005 - 06	18,236,885	2.02%	360,670	232,019	170,303	61,716	298,954
2006 - 07	18,501,231	1.45%	264,346	239,635	168,117	71,518	192,828
2007 - 08	18,636,837	0.73%	135,606	236,065	168,966	67,099	68,507
2008 - 09	18,711,844	0.40%	75,007	226,337	170,615	55,722	19,285
2009 - 10	18,826,491	0.61%	114,647	217,408	171,117	46,291	68,356

Florida Population and Components of Change

Fiscal Year	Population (End of Fiscal Year)	Growth Rate	Annual Change in Population	Births	Deaths	Net Natural Increase	Net Migration
2010 - 11	18,941,742	0.61%	115,251	213,468	172,661	40,807	74,444
2011 - 12	19,118,938	0.94%	177,196	212,876	174,122	38,754	138,442
2012 - 13	19,314,396	1.02%	195,458	213,764	177,803	35,961	159,497
2013 - 14	19,579,871	1.37%	265,475	217,424	182,389	35,035	230,440
2014 - 15	19,897,762	1.62%	317,891	222,266	188,193	34,073	283,818
2015 - 16	20,231,092	1.68%	333,330	225,374	194,612	30,762	302,568
2016 - 17	20,555,728	1.60%	324,636	227,829	200,224	27,605	297,031
2017 - 18	20,879,572	1.58%	323,844	231,882	204,653	27,229	296,615
2018 - 19	21,200,433	1.54%	320,861	235,588	208,959	26,629	294,232
2019 - 20	21,517,741	1.50%	317,308	239,158	213,183	25,975	291,333
2020 - 21	21,830,711	1.45%	312,970	242,597	217,689	24,908	288,062
2021 - 22	22,137,883	1.41%	307,172	245,364	222,686	22,678	284,494
2022 - 23	22,438,790	1.36%	300,907	247,922	227,592	20,330	280,577
2023 - 24	22,731,100	1.30%	292,310	250,398	232,386	18,012	274,298
2024 - 25	23,013,660	1.24%	282,560	252,788	237,039	15,749	266,811
2025 - 26	23,287,000	1.19%	273,340	255,045	242,017	13,028	260,312
2026 - 27	23,551,496	1.14%	264,496	256,890	247,578	9,312	255,184
2027 - 28	23,808,630	1.09%	257,134	258,564	252,869	5,695	251,439
2028 - 29	24,059,482	1.05%	250,852	260,148	257,911	2,237	248,615
2029 - 30	24,305,281	1.02%	245,799	261,667	262,817	-1,150	246,949
2030 - 31	24,545,725	0.99%	240,444	263,133	267,901	-4,768	245,212
2031 - 32	24,780,472	0.96%	234,747	264,665	273,372	-8,707	243,454
2032 - 33	25,009,299	0.92%	228,827	266,157	278,714	-12,557	241,384
2033 - 34	25,232,900	0.89%	223,601	267,588	283,950	-16,362	239,963
2034 - 35	25,451,623	0.87%	218,723	268,964	289,056	-20,092	238,815
2035 - 36	25,665,410	0.84%	213,787	270,315	294,125	-23,810	237,597
2036 - 37	25,873,615	0.81%	208,205	271,999	299,213	-27,214	235,419
2037 - 38	26,077,662	0.79%	204,047	273,716	304,185	-30,469	234,516
2038 - 39	26,278,052	0.77%	200,390	275,383	309,068	-33,685	234,075