

Addendum to the Review and Update of Florida's Child Support Guidelines

*Addendum to the
Review and Update of Florida's Child Support Guidelines;
Report to the Florida Legislature
December 15, 2013*

This addendum shows the proposed guidelines for the average total expenditure of children from birth to age eighteen.¹ This measure is comparable to the existing specification in the current guidelines. Furthermore, if this table is adopted it would be easier to implement than the process in the report.

Specifically, Figure A.1 is the average annual expenditures as a fraction of net income for one child from birth through eighteen years of age. Figures A.2 to A.6 provide the same comparisons for two through six children. For the comparison we assume that each family has a newborn and that the remaining children are spaced one year apart. For example, a family with three children would have a newborn, a one-year old, and a two-year old.

In addition, we have extended the income levels to \$15,000 to show how the new proposed guidelines would differ from the current guidelines. Although the current tables only go through \$10,000 there is a fraction of net income that is applied to any amount exceeding \$10,000.

At the end of this addendum we have also included the proposed average total expenditure in table form.

¹ In the report the "Proposed Young" corresponds to the proposed guidelines in this addendum.

Figure A.1 One Child Share of Net Income

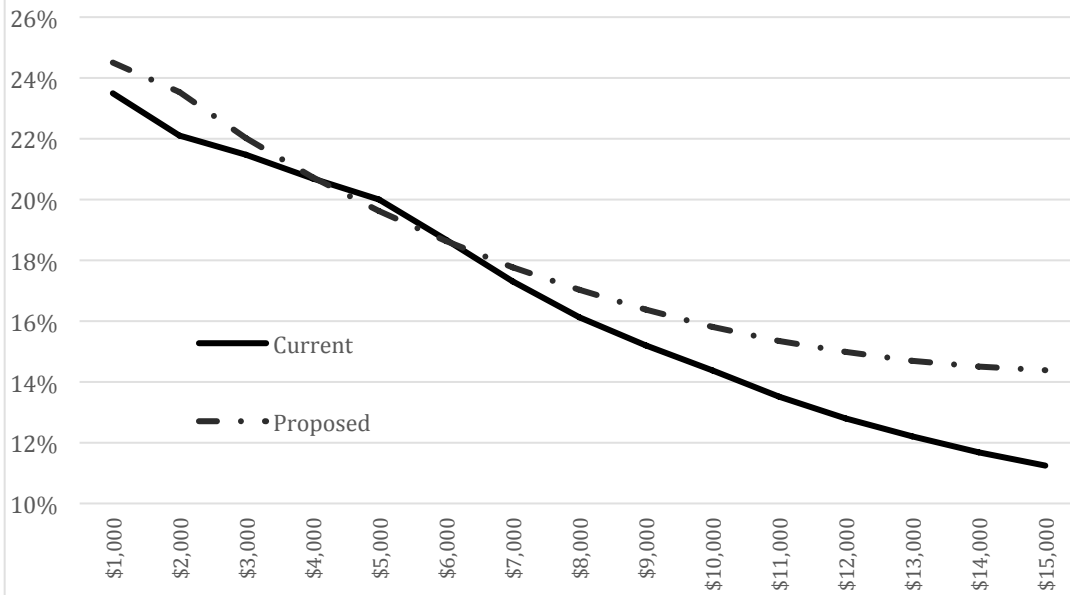


Figure A.2 Two Children Share of Net Income

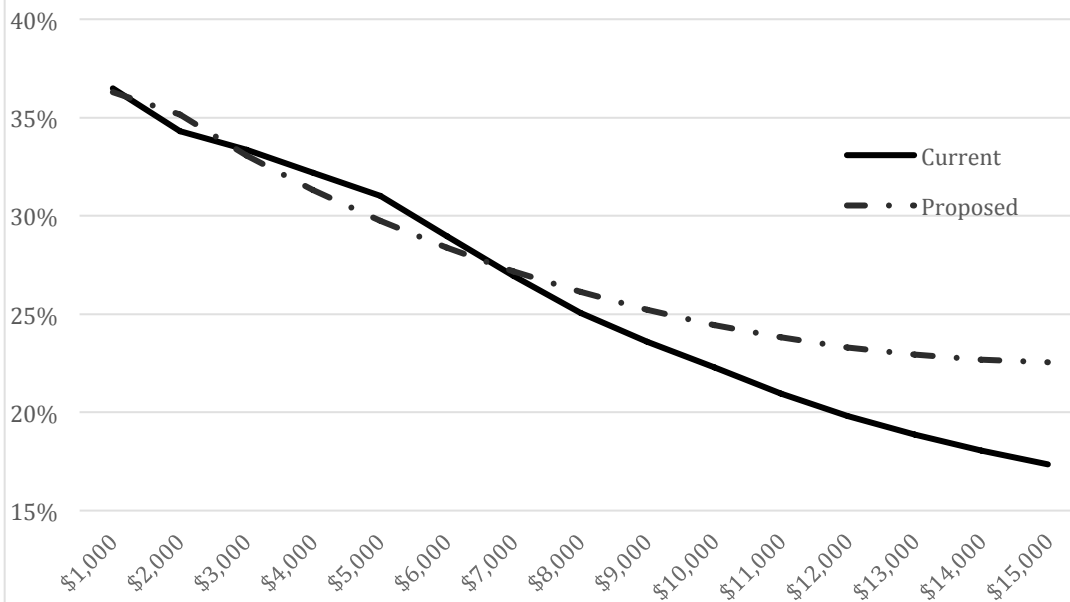


Figure A.3 Three Children Share of Net Income

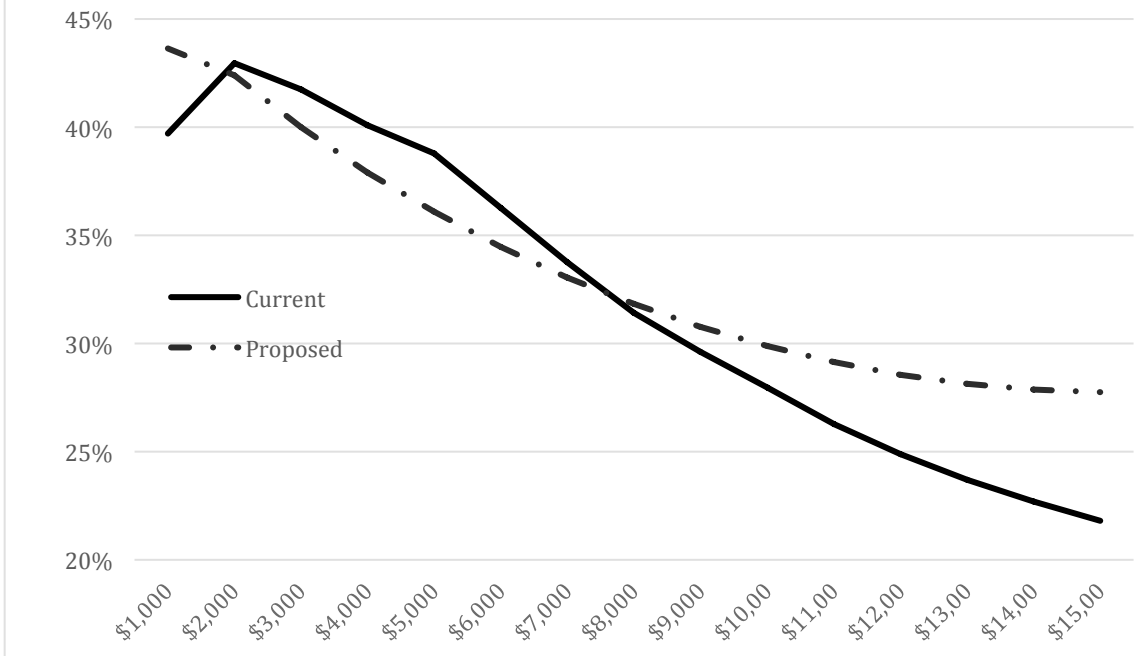


Figure A.4 Four Children Share of Net Income

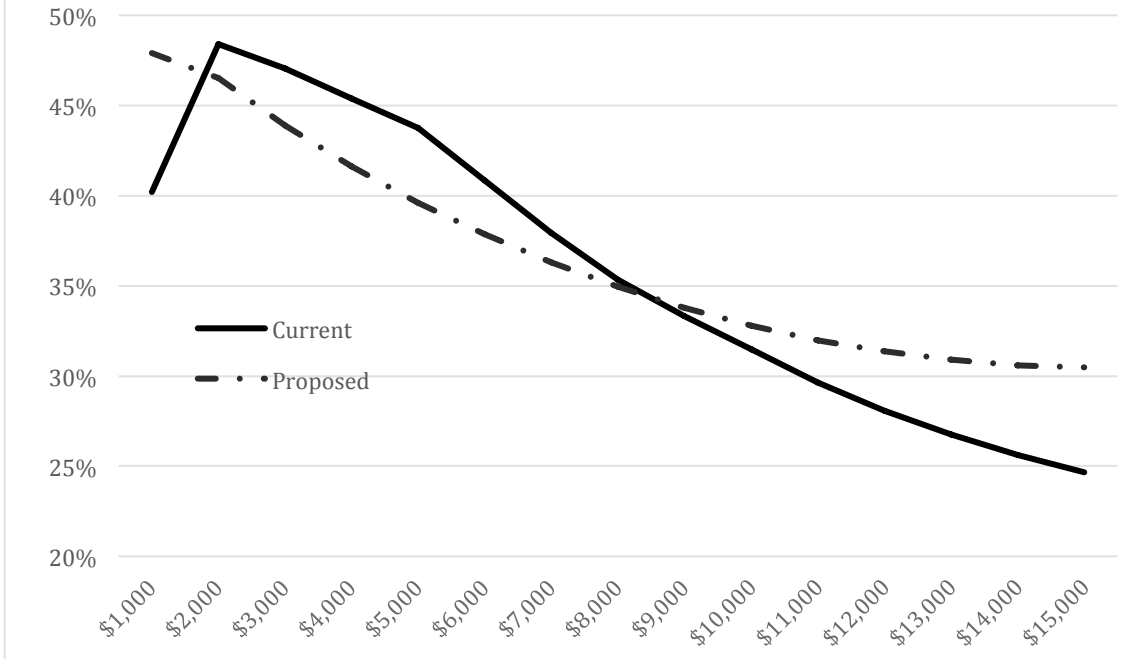


Figure A.5 Five Children Share of Net Income

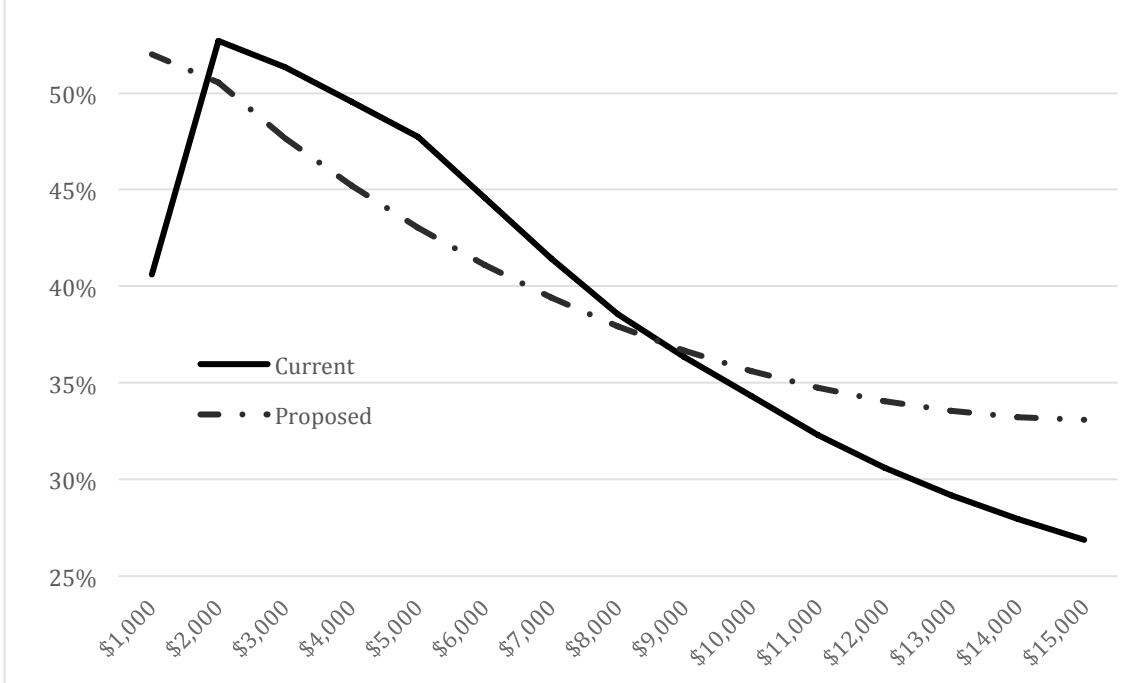
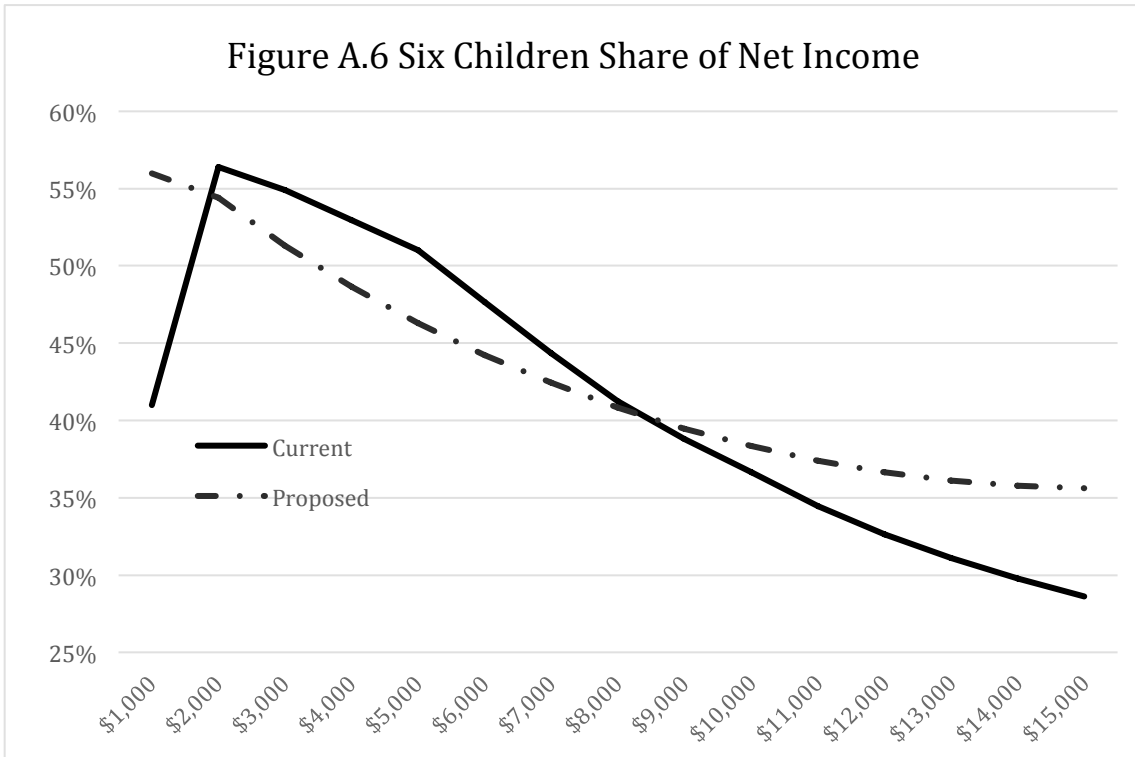


Figure A.6 Six Children Share of Net Income



Proposed Schedule of Child Support Obligations

Net Income	Children					
	<i>One</i>	<i>Two</i>	<i>Three</i>	<i>Four</i>	<i>Five</i>	<i>Six</i>
1,000	245	363	436	479	520	560
1,050	257	380	457	502	545	587
1,100	269	398	478	525	570	614
1,150	280	415	499	548	595	641
1,200	292	432	520	571	620	667
1,250	303	449	541	594	645	694
1,300	315	467	562	617	670	721
1,350	326	484	582	639	694	747
1,400	337	501	603	662	719	774
1,450	349	518	624	685	744	801
1,500	360	535	644	707	768	827
1,550	371	552	665	730	793	853
1,600	383	569	685	753	817	880
1,650	394	586	706	775	842	906
1,700	405	603	726	798	866	933
1,750	416	620	747	820	891	959
1,800	427	637	767	843	915	985
1,850	438	653	788	865	939	1,011
1,900	450	670	808	887	964	1,037
1,950	461	687	828	910	988	1,063
2,000	471	703	848	931	1,011	1,088
2,050	481	718	866	951	1,033	1,112
2,100	491	733	885	971	1,055	1,135
2,150	501	748	903	991	1,077	1,159
2,200	511	763	921	1,011	1,098	1,182
2,250	521	778	939	1,031	1,120	1,206
2,300	530	793	957	1,051	1,141	1,229
2,350	540	808	975	1,071	1,163	1,252
2,400	550	823	993	1,090	1,184	1,275
2,450	559	837	1,011	1,110	1,205	1,297
2,500	569	852	1,028	1,129	1,226	1,320
2,550	578	866	1,046	1,148	1,247	1,342
2,600	588	880	1,063	1,167	1,268	1,365
2,650	597	895	1,081	1,187	1,289	1,387
2,700	606	909	1,098	1,205	1,309	1,409
2,750	616	923	1,115	1,224	1,330	1,431
2,800	625	937	1,132	1,243	1,350	1,453
2,850	634	951	1,149	1,262	1,370	1,475
2,900	643	965	1,166	1,280	1,390	1,497

Addendum to the *Review and Update of Florida's Child Support Guidelines*

Net Income	Children					
	<i>One</i>	<i>Two</i>	<i>Three</i>	<i>Four</i>	<i>Five</i>	<i>Six</i>
2,950	652	979	1,183	1,299	1,410	1,518
3,000	661	992	1,199	1,317	1,430	1,540
3,050	670	1,006	1,216	1,335	1,450	1,561
3,100	679	1,020	1,233	1,353	1,470	1,582
3,150	687	1,033	1,249	1,371	1,489	1,603
3,200	696	1,047	1,265	1,389	1,509	1,624
3,250	705	1,060	1,282	1,407	1,528	1,645
3,300	713	1,073	1,298	1,425	1,548	1,666
3,350	722	1,086	1,314	1,443	1,567	1,687
3,400	731	1,100	1,330	1,460	1,586	1,707
3,450	739	1,113	1,346	1,478	1,605	1,728
3,500	748	1,126	1,362	1,495	1,624	1,748
3,550	756	1,139	1,378	1,513	1,643	1,768
3,600	764	1,151	1,393	1,530	1,661	1,788
3,650	773	1,164	1,409	1,547	1,680	1,809
3,700	781	1,177	1,424	1,564	1,699	1,829
3,750	789	1,190	1,440	1,581	1,717	1,848
3,800	797	1,202	1,455	1,598	1,735	1,868
3,850	805	1,215	1,471	1,615	1,754	1,888
3,900	814	1,227	1,486	1,632	1,772	1,907
3,950	822	1,240	1,501	1,648	1,790	1,927
4,000	830	1,252	1,516	1,665	1,808	1,946
4,050	838	1,264	1,531	1,681	1,826	1,966
4,100	845	1,277	1,546	1,698	1,844	1,985
4,150	853	1,289	1,561	1,714	1,861	2,004
4,200	861	1,301	1,576	1,730	1,879	2,023
4,250	869	1,313	1,591	1,746	1,897	2,042
4,300	877	1,325	1,605	1,763	1,914	2,061
4,350	884	1,337	1,620	1,779	1,932	2,079
4,400	892	1,349	1,634	1,795	1,949	2,098
4,450	900	1,361	1,649	1,810	1,966	2,117
4,500	907	1,373	1,663	1,826	1,983	2,135
4,550	915	1,384	1,678	1,842	2,000	2,154
4,600	922	1,396	1,692	1,858	2,018	2,172
4,650	930	1,408	1,706	1,873	2,034	2,190
4,700	937	1,419	1,720	1,889	2,051	2,208
4,750	945	1,431	1,734	1,904	2,068	2,226
4,800	952	1,442	1,748	1,920	2,085	2,244
4,850	959	1,453	1,762	1,935	2,101	2,262
4,900	967	1,465	1,776	1,950	2,118	2,280
4,950	974	1,476	1,790	1,966	2,135	2,298
5,000	981	1,487	1,804	1,981	2,151	2,316
5,050	988	1,499	1,818	1,996	2,167	2,333
5,100	995	1,510	1,831	2,011	2,184	2,351
5,150	1,002	1,521	1,845	2,026	2,200	2,368

Addendum to the *Review and Update of Florida's Child Support Guidelines*

Net Income	Children					
	<i>One</i>	<i>Two</i>	<i>Three</i>	<i>Four</i>	<i>Five</i>	<i>Six</i>
5,200	1,010	1,532	1,858	2,041	2,216	2,386
5,250	1,017	1,543	1,872	2,055	2,232	2,403
5,300	1,024	1,554	1,885	2,070	2,248	2,420
5,350	1,031	1,565	1,899	2,085	2,264	2,437
5,400	1,037	1,576	1,912	2,099	2,280	2,454
5,450	1,044	1,586	1,925	2,114	2,296	2,471
5,500	1,051	1,597	1,939	2,129	2,312	2,488
5,550	1,058	1,608	1,952	2,143	2,327	2,505
5,600	1,065	1,619	1,965	2,157	2,343	2,522
5,650	1,072	1,629	1,978	2,172	2,359	2,539
5,700	1,078	1,640	1,991	2,186	2,374	2,556
5,750	1,085	1,650	2,004	2,200	2,390	2,572
5,800	1,092	1,661	2,017	2,214	2,405	2,589
5,850	1,099	1,671	2,030	2,229	2,420	2,605
5,900	1,105	1,682	2,043	2,243	2,436	2,622
5,950	1,112	1,692	2,055	2,257	2,451	2,638
6,000	1,118	1,703	2,068	2,271	2,466	2,655
6,050	1,125	1,713	2,081	2,285	2,481	2,671
6,100	1,131	1,723	2,093	2,298	2,496	2,687
6,150	1,138	1,733	2,106	2,312	2,511	2,703
6,200	1,144	1,744	2,118	2,326	2,526	2,719
6,250	1,151	1,754	2,131	2,340	2,541	2,735
6,300	1,157	1,764	2,143	2,353	2,556	2,751
6,350	1,164	1,774	2,156	2,367	2,571	2,767
6,400	1,170	1,784	2,168	2,381	2,585	2,783
6,450	1,176	1,794	2,181	2,394	2,600	2,799
6,500	1,183	1,804	2,193	2,408	2,615	2,815
6,550	1,189	1,814	2,205	2,421	2,629	2,831
6,600	1,195	1,824	2,217	2,435	2,644	2,846
6,650	1,201	1,834	2,229	2,448	2,658	2,862
6,700	1,208	1,843	2,242	2,461	2,673	2,877
6,750	1,214	1,853	2,254	2,475	2,687	2,893
6,800	1,220	1,863	2,266	2,488	2,702	2,908
6,850	1,226	1,873	2,278	2,501	2,716	2,924
6,900	1,232	1,882	2,290	2,514	2,730	2,939
6,950	1,238	1,892	2,302	2,527	2,745	2,955
7,000	1,244	1,902	2,314	2,540	2,759	2,970
7,050	1,250	1,911	2,325	2,553	2,773	2,985
7,100	1,256	1,921	2,337	2,566	2,787	3,000
7,150	1,263	1,931	2,349	2,579	2,801	3,015
7,200	1,269	1,940	2,361	2,592	2,815	3,031
7,250	1,274	1,950	2,373	2,605	2,829	3,046
7,300	1,280	1,959	2,384	2,618	2,843	3,061
7,350	1,286	1,969	2,396	2,631	2,857	3,076
7,400	1,292	1,978	2,408	2,644	2,871	3,091

Addendum to the *Review and Update of Florida's Child Support Guidelines*

Net Income	Children					
	<i>One</i>	<i>Two</i>	<i>Three</i>	<i>Four</i>	<i>Five</i>	<i>Six</i>
7,450	1,298	1,987	2,419	2,656	2,885	3,106
7,500	1,304	1,997	2,431	2,669	2,899	3,121
7,550	1,310	2,006	2,443	2,682	2,913	3,135
7,600	1,316	2,015	2,454	2,695	2,926	3,150
7,650	1,322	2,025	2,466	2,707	2,940	3,165
7,700	1,327	2,034	2,477	2,720	2,954	3,180
7,750	1,333	2,043	2,489	2,732	2,967	3,194
7,800	1,339	2,053	2,500	2,745	2,981	3,209
7,850	1,345	2,062	2,511	2,758	2,995	3,224
7,900	1,351	2,071	2,523	2,770	3,008	3,238
7,950	1,356	2,080	2,534	2,782	3,022	3,253
8,000	1,362	2,089	2,545	2,795	3,035	3,267
8,050	1,368	2,098	2,557	2,807	3,049	3,282
8,100	1,373	2,107	2,568	2,820	3,062	3,297
8,150	1,379	2,117	2,579	2,832	3,076	3,311
8,200	1,385	2,126	2,591	2,844	3,089	3,325
8,250	1,390	2,135	2,602	2,857	3,103	3,340
8,300	1,396	2,144	2,613	2,869	3,116	3,354
8,350	1,402	2,153	2,624	2,881	3,129	3,369
8,400	1,407	2,162	2,635	2,894	3,143	3,383
8,450	1,413	2,171	2,647	2,906	3,156	3,397
8,500	1,418	2,180	2,658	2,918	3,169	3,412
8,550	1,424	2,189	2,669	2,930	3,182	3,426
8,600	1,429	2,198	2,680	2,943	3,196	3,440
8,650	1,435	2,207	2,691	2,955	3,209	3,454
8,700	1,441	2,215	2,702	2,967	3,222	3,469
8,750	1,446	2,224	2,713	2,979	3,235	3,483
8,800	1,452	2,233	2,724	2,991	3,248	3,497
8,850	1,457	2,242	2,735	3,003	3,262	3,511
8,900	1,463	2,251	2,746	3,015	3,275	3,525
8,950	1,468	2,260	2,757	3,027	3,288	3,539
9,000	1,474	2,269	2,768	3,040	3,301	3,553
9,050	1,479	2,277	2,779	3,052	3,314	3,568
9,100	1,485	2,286	2,790	3,064	3,327	3,582
9,150	1,490	2,295	2,801	3,076	3,340	3,596
9,200	1,495	2,304	2,812	3,088	3,353	3,610
9,250	1,501	2,313	2,823	3,100	3,366	3,624
9,300	1,506	2,321	2,834	3,112	3,379	3,638
9,350	1,512	2,330	2,845	3,124	3,392	3,652
9,400	1,517	2,339	2,856	3,136	3,405	3,666
9,450	1,523	2,348	2,867	3,148	3,418	3,680
9,500	1,528	2,357	2,878	3,160	3,431	3,694
9,550	1,533	2,365	2,889	3,172	3,444	3,708
9,600	1,539	2,374	2,899	3,184	3,457	3,722
9,650	1,544	2,383	2,910	3,196	3,470	3,736

Addendum to the *Review and Update of Florida's Child Support Guidelines*

Net Income	Children					
	<i>One</i>	<i>Two</i>	<i>Three</i>	<i>Four</i>	<i>Five</i>	<i>Six</i>
9,700	1,550	2,391	2,921	3,207	3,483	3,750
9,750	1,555	2,400	2,932	3,219	3,496	3,764
9,800	1,560	2,409	2,943	3,231	3,509	3,778
9,850	1,566	2,418	2,954	3,243	3,522	3,792
9,900	1,571	2,426	2,965	3,255	3,535	3,806
9,950	1,577	2,435	2,976	3,267	3,548	3,820
10,000	1,582	2,444	2,986	3,279	3,561	3,834
10,050	1,587	2,453	2,997	3,291	3,574	3,847
10,100	1,593	2,461	3,008	3,303	3,587	3,861
10,150	1,598	2,470	3,019	3,315	3,600	3,875
10,200	1,603	2,479	3,030	3,327	3,613	3,889
10,250	1,609	2,487	3,041	3,339	3,626	3,903
10,300	1,614	2,496	3,052	3,351	3,639	3,917
10,350	1,619	2,505	3,063	3,363	3,652	3,931
10,400	1,625	2,513	3,073	3,375	3,665	3,945
10,450	1,630	2,522	3,084	3,387	3,678	3,959
10,500	1,636	2,531	3,095	3,399	3,691	3,973
10,550	1,641	2,540	3,106	3,410	3,704	3,987
10,600	1,646	2,548	3,117	3,422	3,717	4,001
10,650	1,652	2,557	3,128	3,434	3,730	4,015
10,700	1,657	2,566	3,139	3,446	3,743	4,029
10,750	1,662	2,575	3,150	3,458	3,756	4,043
10,800	1,668	2,583	3,161	3,470	3,769	4,057
10,850	1,673	2,592	3,172	3,482	3,782	4,071
10,900	1,678	2,601	3,183	3,494	3,795	4,085
10,950	1,684	2,610	3,193	3,506	3,808	4,099
11,000	1,689	2,618	3,204	3,518	3,821	4,113
11,050	1,695	2,627	3,215	3,531	3,834	4,127
11,100	1,700	2,636	3,226	3,543	3,847	4,142
11,150	1,705	2,645	3,237	3,555	3,860	4,156
11,200	1,711	2,653	3,248	3,567	3,874	4,170
11,250	1,716	2,662	3,259	3,579	3,887	4,184
11,300	1,722	2,671	3,270	3,591	3,900	4,198
11,350	1,727	2,680	3,282	3,603	3,913	4,212
11,400	1,732	2,689	3,293	3,615	3,926	4,227
11,450	1,738	2,698	3,304	3,627	3,939	4,241
11,500	1,743	2,706	3,315	3,640	3,953	4,255
11,550	1,749	2,715	3,326	3,652	3,966	4,269
11,600	1,754	2,724	3,337	3,664	3,979	4,284
11,650	1,760	2,733	3,348	3,676	3,992	4,298
11,700	1,765	2,742	3,359	3,689	4,006	4,312
11,750	1,771	2,751	3,370	3,701	4,019	4,327
11,800	1,776	2,760	3,382	3,713	4,032	4,341
11,850	1,782	2,769	3,393	3,725	4,046	4,355
11,900	1,787	2,778	3,404	3,738	4,059	4,370

Addendum to the *Review and Update of Florida's Child Support Guidelines*

Net Income	Children					
	<i>One</i>	<i>Two</i>	<i>Three</i>	<i>Four</i>	<i>Five</i>	<i>Six</i>
11,950	1,793	2,787	3,415	3,750	4,073	4,384
12,000	1,798	2,796	3,427	3,762	4,086	4,399
12,050	1,804	2,805	3,438	3,775	4,100	4,413
12,100	1,809	2,814	3,449	3,787	4,113	4,428
12,150	1,815	2,823	3,461	3,800	4,127	4,442
12,200	1,820	2,832	3,472	3,812	4,140	4,457
12,250	1,826	2,841	3,483	3,825	4,154	4,471
12,300	1,831	2,850	3,495	3,837	4,167	4,486
12,350	1,837	2,859	3,506	3,850	4,181	4,501
12,400	1,843	2,869	3,518	3,862	4,195	4,515
12,450	1,848	2,878	3,529	3,875	4,208	4,530
12,500	1,854	2,887	3,541	3,888	4,222	4,545
12,550	1,860	2,896	3,552	3,900	4,236	4,560
12,600	1,865	2,905	3,564	3,913	4,250	4,575
12,650	1,871	2,915	3,575	3,926	4,263	4,590
12,700	1,877	2,924	3,587	3,939	4,277	4,605
12,750	1,882	2,933	3,599	3,951	4,291	4,619
12,800	1,888	2,942	3,610	3,964	4,305	4,634
12,850	1,894	2,952	3,622	3,977	4,319	4,650
12,900	1,899	2,961	3,634	3,990	4,333	4,665
12,950	1,905	2,971	3,646	4,003	4,347	4,680
13,000	1,911	2,980	3,657	4,016	4,361	4,695
13,050	1,917	2,989	3,669	4,029	4,375	4,710
13,100	1,923	2,999	3,681	4,042	4,390	4,725
13,150	1,928	3,008	3,693	4,055	4,404	4,741
13,200	1,934	3,018	3,705	4,068	4,418	4,756
13,250	1,940	3,027	3,717	4,081	4,432	4,771
13,300	1,946	3,037	3,729	4,094	4,447	4,787
13,350	1,952	3,047	3,741	4,108	4,461	4,802
13,400	1,958	3,056	3,753	4,121	4,475	4,818
13,450	1,964	3,066	3,765	4,134	4,490	4,833
13,500	1,970	3,076	3,777	4,148	4,504	4,849
13,550	1,976	3,085	3,790	4,161	4,519	4,864
13,600	1,982	3,095	3,802	4,174	4,533	4,880
13,650	1,988	3,105	3,814	4,188	4,548	4,896
13,700	1,994	3,115	3,826	4,201	4,563	4,912
13,750	2,000	3,125	3,839	4,215	4,577	4,928
13,800	2,006	3,134	3,851	4,229	4,592	4,944
13,850	2,012	3,144	3,864	4,242	4,607	4,959
13,900	2,018	3,154	3,876	4,256	4,622	4,975
13,950	2,024	3,164	3,889	4,270	4,637	4,992
14,000	2,030	3,174	3,901	4,283	4,652	5,008
14,050	2,036	3,184	3,914	4,297	4,667	5,024
14,100	2,042	3,194	3,926	4,311	4,682	5,040
14,150	2,049	3,204	3,939	4,325	4,697	5,056

Addendum to the *Review and Update of Florida's Child Support Guidelines*

Net Income	Children					
	<i>One</i>	<i>Two</i>	<i>Three</i>	<i>Four</i>	<i>Five</i>	<i>Six</i>
14,200	2,055	3,215	3,952	4,339	4,712	5,073
14,250	2,061	3,225	3,965	4,353	4,727	5,089
14,300	2,067	3,235	3,977	4,367	4,743	5,106
14,350	2,074	3,245	3,990	4,381	4,758	5,122
14,400	2,080	3,256	4,003	4,396	4,774	5,139
14,450	2,086	3,266	4,016	4,410	4,789	5,155
14,500	2,093	3,276	4,029	4,424	4,804	5,172
14,550	2,099	3,287	4,042	4,438	4,820	5,189
14,600	2,106	3,297	4,055	4,453	4,836	5,206
14,650	2,112	3,308	4,069	4,467	4,851	5,223
14,700	2,119	3,318	4,082	4,482	4,867	5,240
14,750	2,125	3,329	4,095	4,496	4,883	5,257
14,800	2,132	3,339	4,108	4,511	4,899	5,274
14,850	2,138	3,350	4,122	4,526	4,915	5,291
14,900	2,145	3,361	4,135	4,540	4,931	5,308
14,950	2,151	3,372	4,149	4,555	4,947	5,325
15,000	2,158	3,382	4,162	4,570	4,963	5,343