

# Demographic Estimating Conference

## Executive Summary

The Demographic Estimating Conference met on February 18, 2008 to review the population forecast through 2012 based on a final April 1, 2007 population estimate, and demographic trends for births, deaths, and net migration.

Florida's April 1, 2007 final population estimate was 18,680,367, the same as the preliminary estimate from the October 2007 Demographic Estimating Conference. The number of households was increased marginally from the previous conference to 7,443,963, reflecting a slightly lower average household size.

The conference focused on the components of population growth, such as births, deaths, and net migration. Most of Florida's growth is from net migration: 87.5 percent between April 1, 2000 and April 1, 2007. Discussion centered on the impact that the projected economic downturn may be having on domestic migration decisions and the effect this could have on population growth in the state.

In the short-run, the outlook for population growth is for slower growth than was previously forecast in October 2007. Instead of the increase of nearly 300,000 persons that was anticipated in the fall for 2008, the new projection calls for 171,608 or slightly less than 1 percent growth. For the remaining years, growth rates of over 1 percent are anticipated, a return to more historical levels of growth. These increases approximate adding a city the size of Tampa every year. Florida's April 1, 2012 population is expected to be 19,976,994, breaking the 20 million mark by the end of Fiscal Year 2011-2012.

# **FLORIDA DEMOGRAPHIC ESTIMATING CONFERENCE**

## **Tables**

**Held February 18, 2008**

# Florida Resident Population

April 1

Year	FDEC, 10/07			FDEC, 02/08		
	Population	% Chg	Change	Population	% Chg	Change
1990	12,938,071	2.27%	287,136	12,938,071	2.27%	287,136
1991	13,258,732	2.48%	320,661	13,258,732	2.48%	320,661
1992	13,497,541	1.80%	238,809	13,497,541	1.80%	238,809
1993	13,730,115	1.72%	232,574	13,730,115	1.72%	232,574
1994	14,043,757	2.28%	313,642	14,043,757	2.28%	313,642
1995	14,335,992	2.08%	292,235	14,335,992	2.08%	292,235
1996	14,623,421	2.00%	287,429	14,623,421	2.00%	287,429
1997	14,938,314	2.15%	314,893	14,938,314	2.15%	314,893
1998	15,230,421	1.96%	292,107	15,230,421	1.96%	292,107
1999	15,580,244	2.30%	349,823	15,580,244	2.30%	349,823
2000	15,982,824	2.58%	402,580	15,982,824	2.58%	402,580
2001	16,330,224	2.17%	347,400	16,330,224	2.17%	347,400
2002	16,674,608	2.11%	344,384	16,674,608	2.11%	344,384
2003	17,071,508	2.38%	396,900	17,071,508	2.38%	396,900
2004	17,516,732	2.61%	445,224	17,516,732	2.61%	445,224
2005	17,918,227	2.29%	401,495	17,918,227	2.29%	401,495
2006	18,349,132	2.40%	430,905	18,349,132	2.40%	430,905
2007	18,680,367	1.81%	331,235	18,680,367	1.81%	331,235
Begins forecast.						
2008	18,977,820	1.59%	297,453	18,851,975	0.92%	171,608
2009	19,278,665	1.59%	300,845	19,058,404	1.10%	206,429
2010	19,620,532	1.77%	341,867	19,308,069	1.31%	249,665
2011	19,997,465	1.92%	376,933	19,632,445	1.68%	324,376
2012	20,360,750	1.82%	363,285	19,976,994	1.75%	344,549
2013	20,704,460	1.69%	343,710	20,312,447	1.68%	335,452
2014	21,043,860	1.64%	339,400	20,637,535	1.60%	325,088
2015	21,386,860	1.63%	343,000	20,955,853	1.54%	318,318
2016	21,733,970	1.62%	347,110	21,266,839	1.48%	310,987
2017	22,084,825	1.61%	350,855	21,574,348	1.45%	307,509

# Florida Resident Households

April 1

Year	FDEC, 10/07			FDEC, 02/08		
	Households	% Chg	Change	Households	% Chg	Change
1990	5,134,869	3.40%	168,985	5,134,869	3.40%	168,985
1991	5,283,154	2.89%	148,285	5,283,154	2.89%	148,285
1992	5,378,499	1.80%	95,345	5,378,499	1.80%	95,345
1993	5,478,476	1.86%	99,977	5,478,476	1.86%	99,977
1994	5,589,093	2.02%	110,617	5,589,093	2.02%	110,617
1995	5,697,328	1.94%	108,235	5,697,328	1.94%	108,235
1996	5,806,031	1.91%	108,703	5,806,031	1.91%	108,703
1997	5,929,613	2.13%	123,582	5,929,613	2.13%	123,582
1998	6,040,514	1.87%	110,901	6,040,514	1.87%	110,901
1999	6,182,346	2.35%	141,832	6,182,346	2.35%	141,832
2000	6,338,075	2.52%	155,729	6,338,075	2.52%	155,729
2001	6,483,040	2.29%	144,965	6,483,040	2.29%	144,965
2002	6,620,674	2.12%	137,634	6,620,674	2.12%	137,634
2003	6,778,804	2.39%	158,130	6,778,804	2.39%	158,130
2004	6,949,759	2.52%	170,955	6,949,759	2.52%	170,955
2005	7,109,208	2.29%	159,449	7,109,208	2.29%	159,449
2006	7,291,013	2.56%	181,805	7,291,013	2.56%	181,805
2007	7,425,143	1.84%	134,130	7,443,963	2.10%	152,950
Begins forecast.						
2008	7,545,281	1.62%	120,137	7,529,646	1.15%	85,683
2009	7,665,631	1.60%	120,350	7,627,981	1.31%	98,335
2010	7,802,160	1.78%	136,529	7,734,875	1.40%	106,895
2011	7,952,641	1.93%	150,482	7,866,396	1.70%	131,521
2012	8,097,693	1.82%	145,052	8,007,677	1.80%	141,280
2013	8,234,963	1.70%	137,271	8,143,790	1.70%	136,113
2014	8,370,531	1.65%	135,568	8,274,788	1.61%	130,998
2015	8,507,540	1.64%	137,009	8,403,093	1.55%	128,304
2016	8,646,187	1.63%	138,647	8,528,477	1.49%	125,385
2017	8,786,331	1.62%	140,145	8,652,488	1.45%	124,010

# FLORIDA DEMOGRAPHIC ESTIMATING CONFERENCE

Held February 18, 2008

	<u>2006-1</u>	<u>2006-2</u>	<u>2006-3</u>	<u>2006-4</u>	<u>2007-1</u>	<u>2007-2</u>	<u>2007-3</u>	<u>2007-4</u>	<u>2008-1</u>	<u>2008-2</u>	<u>2008-3</u>	<u>2008-4</u>	<u>2009-1</u>	<u>2009-2</u>	<u>2009-3</u>	<u>2009-4</u>	<u>2010-1</u>	<u>2010-2</u>	<u>2010-3</u>	<u>2010-4</u>
Population																				
FDEC, 10/2007	18,296.1	18,394.9	18,482.5	18,563.5	18,642.0	18,718.7	18,793.2	18,867.3	18,941.0	19,014.6	19,088.5	19,163.2	19,239.4	19,317.9	19,399.6	19,485.2	19,574.5	19,666.6	19,760.6	19,855.2
FDEC, 02/2008	18,296.1	18,394.9	18,482.5	18,563.5	18,642.0	18,708.3	18,755.2	18,795.4	18,831.0	18,873.0	18,922.4	18,975.0	19,030.0	19,086.8	19,145.8	19,208.1	19,272.9	19,343.2	19,419.0	19,502.3
Population Growth Rate																				
FDEC, 10/2007	2.38	2.18	1.92	1.77	1.70	1.66	1.60	1.59	1.57	1.56	1.56	1.57	1.60	1.64	1.70	1.78	1.85	1.89	1.93	1.93
FDEC, 02/2008	2.38	2.18	1.92	1.77	1.70	1.43	1.01	0.86	0.76	0.89	1.05	1.12	1.16	1.20	1.24	1.31	1.36	1.47	1.58	1.73
Net Change in Population																				
FDEC, 10/2007	107.1	98.8	87.5	81.0	78.6	76.7	74.5	74.1	73.7	73.6	73.9	74.7	76.2	78.5	81.7	85.6	89.3	92.1	94.0	94.7
FDEC, 02/2008	107.1	98.8	87.5	81.0	78.6	66.3	46.9	40.2	35.6	42.0	49.4	52.7	55.0	56.7	59.1	62.2	64.9	70.2	75.9	83.3
Households																				
FDEC, 10/2007	7,269.3	7,309.5	7,344.9	7,377.7	7,409.6	7,440.7	7,470.9	7,500.9	7,530.5	7,560.0	7,589.6	7,619.5	7,650.0	7,681.3	7,713.9	7,748.1	7,783.8	7,820.5	7,858.1	7,895.9
FDEC, 02/2008	7,269.3	7,311.7	7,351.7	7,389.5	7,425.7	7,456.9	7,480.3	7,500.6	7,519.1	7,540.1	7,564.1	7,589.3	7,615.1	7,640.9	7,667.1	7,694.1	7,720.6	7,749.1	7,779.8	7,813.3
Household Growth Rate																				
FDEC, 10/2007	2.51	2.23	1.95	1.80	1.74	1.69	1.63	1.61	1.59	1.58	1.57	1.58	1.61	1.65	1.71	1.78	1.85	1.90	1.93	1.94
FDEC, 02/2008	2.51	2.35	2.21	2.07	1.97	1.69	1.26	1.09	0.99	1.12	1.28	1.34	1.37	1.36	1.38	1.41	1.39	1.49	1.59	1.74
Net Change in Households																				
FDEC, 10/2007	44.9	40.2	35.4	32.8	31.9	31.1	30.2	30.0	29.7	29.5	29.6	29.9	30.5	31.4	32.6	34.2	35.7	36.8	37.5	37.8
FDEC, 02/2008	44.9	42.4	40.1	37.8	36.2	31.2	23.4	20.4	18.5	21.0	24.0	25.1	25.8	25.8	26.2	27.0	26.5	28.5	30.7	33.5
Household Size																				
FDEC, 10/2007	2.517	2.517	2.516	2.516	2.516	2.516	2.516	2.515	2.515	2.515	2.515	2.515	2.515	2.515	2.515	2.515	2.515	2.515	2.515	2.515
FDEC, 02/2008	2.517	2.516	2.514	2.512	2.510	2.509	2.507	2.506	2.504	2.503	2.502	2.500	2.499	2.498	2.497	2.496	2.496	2.496	2.496	2.496
Household Size Growth Rate																				
FDEC, 10/2007	-0.13	-0.05	-0.03	-0.03	-0.03	-0.04	-0.03	-0.03	-0.02	-0.01	-0.01	-0.01	-0.01	-0.01	-0.01	-0.01	-0.01	-0.01	-0.01	-0.01
FDEC, 02/2008	-0.13	-0.17	-0.29	-0.30	-0.27	-0.26	-0.25	-0.23	-0.23	-0.23	-0.22	-0.21	-0.20	-0.16	-0.13	-0.11	-0.03	-0.02	-0.01	-0.01
Net Migration																				
FDEC, 10/2007	91.2	82.2	70.2	63.1	60.2	58.0	55.5	55.0	54.4	54.2	54.4	55.2	56.7	58.9	62.1	66.1	69.9	72.7	74.6	75.4
FDEC, 02/2008	91.2	82.2	70.2	63.1	60.2	47.6	27.9	21.0	16.2	22.4	29.8	33.1	35.4	37.2	39.6	42.8	45.6	51.0	56.7	64.2
Births																				
FDEC, 10/2007	58.3	59.0	59.6	60.2	60.6	61.0	61.2	61.5	61.7	62.0	62.2	62.4	62.6	62.8	63.0	63.1	63.3	63.5	63.7	63.9
FDEC, 02/2008	58.3	59.0	59.6	60.2	60.6	61.0	61.2	61.5	61.7	61.8	61.9	62.0	62.1	62.2	62.3	62.3	62.4	62.5	62.6	62.7
Deaths																				
FDEC, 10/2007	42.5	42.4	42.3	42.2	42.2	42.3	42.3	42.4	42.4	42.5	42.7	42.8	43.0	43.2	43.4	43.6	43.9	44.1	44.3	44.6
FDEC, 02/2008	42.5	42.4	42.3	42.2	42.2	42.3	42.3	42.3	42.3	42.3	42.4	42.4	42.6	42.7	42.8	43.0	43.1	43.3	43.4	43.6
Net Natural Increase																				
FDEC, 10/2007	15.8	16.6	17.4	18.0	18.4	18.7	18.9	19.1	19.3	19.4	19.5	19.5	19.6	19.6	19.5	19.5	19.4	19.4	19.4	19.3
FDEC, 10/2007	15.8	16.6	17.4	18.0	18.4	18.7	18.9	19.2	19.4	19.5	19.6	19.6	19.6	19.5	19.5	19.4	19.3	19.2	19.2	19.1

# FLORIDA DEMOGRAPHIC ESTIMATING CONFERENCE

Held February 18, 2008

FISCAL YEAR AVERAGE

	<u>2011-1</u>	<u>2011-2</u>	<u>2011-3</u>	<u>2011-4</u>	<u>2012-1</u>	<u>2012-2</u>	<u>2000-01</u>	<u>2001-02</u>	<u>2002-03</u>	<u>2003-04</u>	<u>2004-05</u>	<u>2005-06</u>	<u>2006-07</u>	<u>2007-08</u>	<u>2008-09</u>	<u>2009-10</u>	<u>2010-11</u>	<u>2011-12</u>	
<b>Population</b>																			
FDEC, 10/2007	19,950.3	20,044.7	20,137.6	20,228.2	20,317.0	20,404.5	16,244.9	16,587.9	16,970.3	17,404.2	17,819.2	18,240.2	18,601.7	18,904.0	19,202.3	19,531.5	19,902.7	20,271.8	
FDEC, 02/2008	19,588.8	19,676.1	19,763.9	19,849.7	19,934.8	20,019.2	16,244.9	16,587.9	16,970.3	17,404.2	17,819.2	18,240.2	18,599.1	18,813.6	19,003.6	19,242.5	19,546.6	19,891.9	
<b>Population Growth Rate</b>																			
FDEC, 10/2007	1.93	1.91	1.87	1.81	1.77	1.73	2.29	2.11	2.31	2.56	2.38	2.36	1.98	1.63	1.58	1.71	1.90	1.85	
FDEC, 02/2008	1.78	1.80	1.80	1.75	1.72	1.70	2.29	2.11	2.31	2.56	2.38	2.36	1.97	1.15	1.01	1.26	1.58	1.77	
<b>Net Change in Population</b>																			
FDEC, 10/2007	95.0	94.4	92.9	90.6	88.8	87.5	344.5	349.5	404.9	440.8	404.7	422.6	323.8	295.9	303.3	348.7	378.1	359.8	
FDEC, 02/2008	86.5	87.3	87.8	85.8	85.0	84.4	344.5	349.5	404.9	440.8	404.7	422.6	313.4	164.7	213.8	256.4	332.9	343.1	
<b>Households</b>																			
FDEC, 10/2007	7,933.8	7,971.5	8,008.6	8,044.8	8,080.2	8,115.2	6,447.6	6,586.2	6,738.5	6,906.6	7,069.7	7,245.3	7,393.2	7,515.6	7,635.1	7,766.6	7,914.8	8,062.2	
FDEC, 02/2008	7,848.8	7,883.9	7,920.1	7,955.5	7,990.3	8,025.0	6,447.6	6,586.2	6,738.5	6,906.6	7,069.7	7,245.9	7,406.0	7,510.0	7,602.3	7,707.7	7,831.5	7,972.7	
<b>Household Growth Rate</b>																			
FDEC, 10/2007	1.94	1.91	1.87	1.82	1.78	1.74	2.40	2.15	2.31	2.49	2.36	2.48	2.04	1.65	1.59	1.72	1.91	1.86	
FDEC, 02/2008	1.83	1.80	1.85	1.80	1.76	1.75	2.40	2.15	2.31	2.49	2.36	2.49	2.21	1.41	1.23	1.39	1.61	1.80	
<b>Net Change in Households</b>																			
FDEC, 10/2007	37.9	37.7	37.1	36.2	35.5	34.9	143.0	139.6	160.4	169.5	162.5	177.4	131.2	119.3	121.3	139.2	150.9	143.7	
FDEC, 02/2008	35.5	35.1	36.2	35.4	34.8	34.7	143.0	139.6	160.4	169.5	162.5	179.6	145.2	83.3	100.8	108.2	134.8	141.1	
<b>Household Size</b>																			
FDEC, 10/2007	2.515	2.515	2.515	2.514	2.514	2.514	2.520	2.519	2.518	2.520	2.521	2.518	2.516	2.515	2.515	2.515	2.515	2.514	
FDEC, 02/2008	2.496	2.496	2.495	2.495	2.495	2.495	2.520	2.519	2.518	2.520	2.521	2.517	2.511	2.505	2.500	2.497	2.496	2.495	
<b>Household Size Growth Rate</b>																			
FDEC, 10/2007	-0.01	-0.01	-0.01	-0.01	-0.01	-0.01	-0.10	-0.04	-0.01	0.06	0.02	-0.12	-0.06	-0.03	-0.01	-0.01	-0.01	-0.01	
FDEC, 02/2008	-0.04	-0.01	-0.05	-0.05	-0.04	-0.04	-0.10	-0.04	-0.01	0.06	0.02	-0.13	-0.24	-0.25	-0.22	-0.13	-0.03	-0.04	
<b>Net Migration</b>																			
FDEC, 10/2007	75.7	75.1	73.7	71.4	69.6	68.3	303.5	312.3	364.4	393.8	352.5	361.0	251.4	219.2	225.2	270.8	300.8	283.1	
FDEC, 02/2008	67.5	68.5	69.0	67.1	66.3	65.7	303.5	312.3	364.4	393.8	352.5	361.0	241.0	87.6	135.6	179.1	256.9	268.2	
<b>Births</b>																			
FDEC, 10/2007	64.1	64.3	64.6	64.8	65.0	65.3	205.9	205.0	208.5	215.3	221.6	231.7	241.4	246.4	249.9	252.9	256.0	259.7	
FDEC, 02/2008	62.8	62.9	63.1	63.3	63.5	63.7	205.9	205.0	208.5	215.3	221.6	231.7	241.4	246.3	248.3	249.5	251.1	253.7	
<b>Deaths</b>																			
FDEC, 10/2007	44.8	45.1	45.3	45.6	45.9	46.1	164.9	167.8	168.0	168.2	169.3	170.1	169.0	169.7	171.8	175.0	178.7	182.9	
FDEC, 02/2008	43.9	44.1	44.3	44.6	44.8	45.1	164.9	167.8	168.0	168.2	169.3	170.1	169.0	169.2	170.0	172.2	175.0	178.8	
<b>Net Natural Increase</b>																			
FDEC, 10/2007	19.3	19.3	19.2	19.2	19.2	19.1	41.1	37.2	40.4	47.1	52.2	61.6	72.4	76.7	78.2	77.9	77.3	76.8	
FDEC, 10/2007	18.9	18.8	18.8	18.8	18.7	18.7	41.1	37.2	40.4	47.1	52.2	61.6	72.4	77.1	78.2	77.4	76.0	74.9	

# FLORIDA DEMOGRAPHIC ESTIMATING CONFERENCE

Held February 18, 2008

	<u>1990-91</u>	<u>1991-92</u>	<u>1992-93</u>	<u>1993-94</u>	<u>1994-95</u>	<u>1995-96</u>	<u>1996-97</u>	<u>1997-98</u>	<u>1998-99</u>	<u>1999-00</u>	<u>2000-01</u>	<u>2001-02</u>	<u>2002-03</u>	<u>2003-04</u>	<u>2004-05</u>
Population															
FDEC, 10/2007	13,178.3	13,440.1	13,671.5	13,963.0	14,263.5	14,551.6	14,858.6	15,157.3	15,490.7	15,881.0	16,244.9	16,587.9	16,970.3	17,404.2	17,819.2
FDEC, 02/2008	13,178.3	13,440.1	13,671.5	13,963.0	14,263.5	14,551.6	14,858.6	15,157.3	15,490.7	15,881.0	16,244.9	16,587.9	16,970.3	17,404.2	17,819.2
Growth Rate															
FDEC, 10/2007	2.42	1.99	1.72	2.13	2.15	2.02	2.11	2.01	2.20	2.52	2.29	2.11	2.31	2.56	2.38
FDEC, 02/2008	2.42	1.99	1.72	2.13	2.15	2.02	2.11	2.01	2.20	2.52	2.29	2.11	2.31	2.56	2.38
Net Change in Population															
FDEC, 10/2007	312.1	234.3	242.3	313.4	290.5	291.0	311.8	297.2	358.7	397.6	344.5	349.5	404.9	440.8	404.7
FDEC, 02/2008	312.1	234.3	242.3	313.4	290.5	291.0	311.8	297.2	358.7	397.6	344.5	349.5	404.9	440.8	404.7
Households															
FDEC, 10/2007	5,230.8	5,334.4	5,424.8	5,538.3	5,655.1	5,767.0	5,887.2	6,005.0	6,138.4	6,296.7	6,447.6	6,586.2	6,738.5	6,906.6	7,069.7
FDEC, 02/2008	5,230.8	5,334.4	5,424.8	5,538.3	5,655.1	5,767.0	5,887.2	6,005.0	6,138.4	6,296.7	6,447.6	6,586.2	6,738.5	6,906.6	7,069.7
Growth Rate															
FDEC, 10/2007	2.44	1.98	1.69	2.09	2.11	1.98	2.08	2.00	2.22	2.58	2.40	2.15	2.31	2.49	2.36
FDEC, 02/2008	2.44	1.98	1.69	2.09	2.11	1.98	2.08	2.00	2.22	2.58	2.40	2.15	2.31	2.49	2.36
Net Change in Households															
FDEC, 10/2007	124.4	92.2	94.4	122.0	112.8	113.3	122.3	117.9	144.1	162.5	143.0	139.6	160.4	169.5	162.5
FDEC, 02/2008	124.4	92.2	94.4	122.0	112.8	113.3	122.3	117.9	144.1	162.5	143.0	139.6	160.4	169.5	162.5
Household Size															
FDEC, 10/2007	2.519	2.520	2.520	2.521	2.522	2.523	2.524	2.524	2.524	2.522	2.520	2.519	2.518	2.520	2.521
FDEC, 02/2008	2.519	2.520	2.520	2.521	2.522	2.523	2.524	2.524	2.524	2.522	2.520	2.519	2.518	2.520	2.521
Growth Rate															
FDEC, 10/2007	-0.02	0.01	0.03	0.04	0.04	0.04	0.03	0.01	-0.02	-0.06	-0.10	-0.04	-0.01	0.06	0.02
FDEC, 02/2008	-0.02	0.01	0.03	0.04	0.04	0.04	0.03	0.01	-0.02	-0.06	-0.10	-0.04	-0.01	0.06	0.02
Net Migration															
FDEC, 10/2007	249.2	178.7	192.2	267.6	250.4	254.9	274.3	257.9	322.8	359.8	303.5	312.3	364.4	393.8	352.5
FDEC, 02/2008	249.2	178.7	192.2	267.6	250.4	254.9	274.3	257.9	322.8	359.8	303.5	312.3	364.4	393.8	352.5
Births															
FDEC, 10/2007	197.0	191.7	192.1	191.8	189.3	188.6	190.5	194.3	195.8	200.3	205.9	205.0	208.5	215.3	221.6
FDEC, 02/2008	197.0	191.7	192.1	191.8	189.3	188.6	190.5	194.3	195.8	200.3	205.9	205.0	208.5	215.3	221.6
Deaths															
FDEC, 10/2007	134.1	136.2	142.0	146.0	149.1	152.6	153.0	155.0	160.0	162.4	164.9	167.8	168.0	168.2	169.3
FDEC, 02/2008	134.1	136.2	142.0	146.0	149.1	152.6	153.0	155.0	160.0	162.4	164.9	167.8	168.0	168.2	169.3
Net Natural Increase															
FDEC, 10/2007	62.9	55.6	50.1	45.8	40.1	36.0	37.6	39.3	35.8	37.9	41.1	37.2	40.4	47.1	52.2
FDEC, 02/2008	62.9	55.6	50.1	45.8	40.1	36.0	37.6	39.3	35.8	37.9	41.1	37.2	40.4	47.1	52.2

# FLORIDA DEMOGRAPHIC ESTIMATING CONFERENCE

Held February 18, 2008

	<u>2005-06</u>	<u>2006-07</u>	<u>2007-08</u>	<u>2008-09</u>	<u>2009-10</u>	<u>2010-11</u>	<u>2011-12</u>	<u>2012-13</u>	<u>2013-14</u>	<u>2014-15</u>	<u>2015-16</u>	<u>2016-17</u>	<u>2017-18</u>
Population													
FDEC, 10/2007	18,240.2	18,601.7	18,904.0	19,202.3	19,531.5	19,902.7	20,271.8	20,619.3	20,959.0	21,300.9	21,647.0	21,996.9	22,349.8
FDEC, 02/2008	18,240.2	18,599.1	18,813.6	19,003.6	19,242.5	19,546.6	19,891.9	20,229.3	20,556.8	20,876.7	21,189.4	21,497.7	21,802.6
Growth Rate													
FDEC, 10/2007	2.36	1.98	1.63	1.58	1.71	1.90	1.85	1.71	1.65	1.63	1.62	1.62	1.60
FDEC, 02/2008	2.36	1.97	1.15	1.01	1.26	1.58	1.77	1.70	1.62	1.56	1.50	1.45	1.42
Net Change in Population													
FDEC, 10/2007	422.6	323.8	295.9	303.3	348.7	378.1	359.8	342.4	339.6	343.6	347.6	351.3	353.8
FDEC, 02/2008	422.6	313.4	164.7	213.8	256.4	332.9	343.1	334.5	324.0	317.4	310.3	307.1	303.8
Households													
FDEC, 10/2007	7,245.3	7,393.2	7,515.6	7,635.1	7,766.6	7,914.8	8,062.2	8,201.0	8,336.6	8,473.2	8,611.4	8,751.2	8,892.2
FDEC, 02/2008	7,245.9	7,406.0	7,510.0	7,602.3	7,707.7	7,831.5	7,972.7	8,110.2	8,242.2	8,371.2	8,497.3	8,621.6	8,744.5
Growth Rate													
FDEC, 10/2007	2.48	2.04	1.65	1.59	1.72	1.91	1.86	1.72	1.65	1.64	1.63	1.62	1.61
FDEC, 02/2008	2.49	2.21	1.41	1.23	1.39	1.61	1.80	1.72	1.63	1.56	1.51	1.46	1.43
Net Change in Households													
FDEC, 10/2007	177.4	131.2	119.3	121.3	139.2	150.9	143.7	136.7	135.6	137.2	138.8	140.3	141.3
FDEC, 02/2008	179.6	145.2	83.3	100.8	108.2	134.8	141.1	135.4	130.6	127.9	125.1	123.8	122.6
Household Size													
FDEC, 10/2007	2.518	2.516	2.515	2.515	2.515	2.515	2.514	2.514	2.514	2.514	2.514	2.514	2.513
FDEC, 02/2008	2.517	2.511	2.505	2.500	2.497	2.496	2.495	2.494	2.494	2.494	2.494	2.493	2.493
Growth Rate													
FDEC, 10/2007	-0.12	-0.06	-0.03	-0.01	-0.01	-0.01	-0.01	-0.01	-0.01	-0.01	-0.01	-0.01	-0.01
FDEC, 02/2008	-0.13	-0.24	-0.25	-0.22	-0.13	-0.03	-0.04	-0.03	-0.01	-0.01	-0.01	-0.01	-0.01
Net Migration													
FDEC, 10/2007	361.0	251.4	219.2	225.2	270.8	300.8	283.1	266.2	264.2	269.1	274.3	279.5	284.0
FDEC, 02/2008	361.0	241.0	87.6	135.6	179.1	256.9	268.2	260.1	250.5	244.8	238.9	237.2	235.9
Births													
FDEC, 10/2007	231.7	241.4	246.4	249.9	252.9	256.0	259.7	263.4	267.1	270.6	274.0	277.2	280.1
FDEC, 02/2008	231.7	241.4	246.3	248.3	249.5	251.1	253.7	257.0	260.3	263.6	266.7	269.5	272.0
Deaths													
FDEC, 10/2007	170.1	169.0	169.7	171.8	175.0	178.7	182.9	187.2	191.6	196.1	200.7	205.4	210.3
FDEC, 02/2008	170.1	169.0	169.2	170.0	172.2	175.0	178.8	182.6	186.7	191.0	195.2	199.6	204.1
Net Natural Increase													
FDEC, 10/2007	61.6	72.4	76.7	78.2	77.9	77.3	76.8	76.1	75.4	74.5	73.3	71.8	69.8
FDEC, 02/2008	61.6	72.4	77.1	78.2	77.4	76.0	74.9	74.4	73.6	72.6	71.5	69.9	67.9

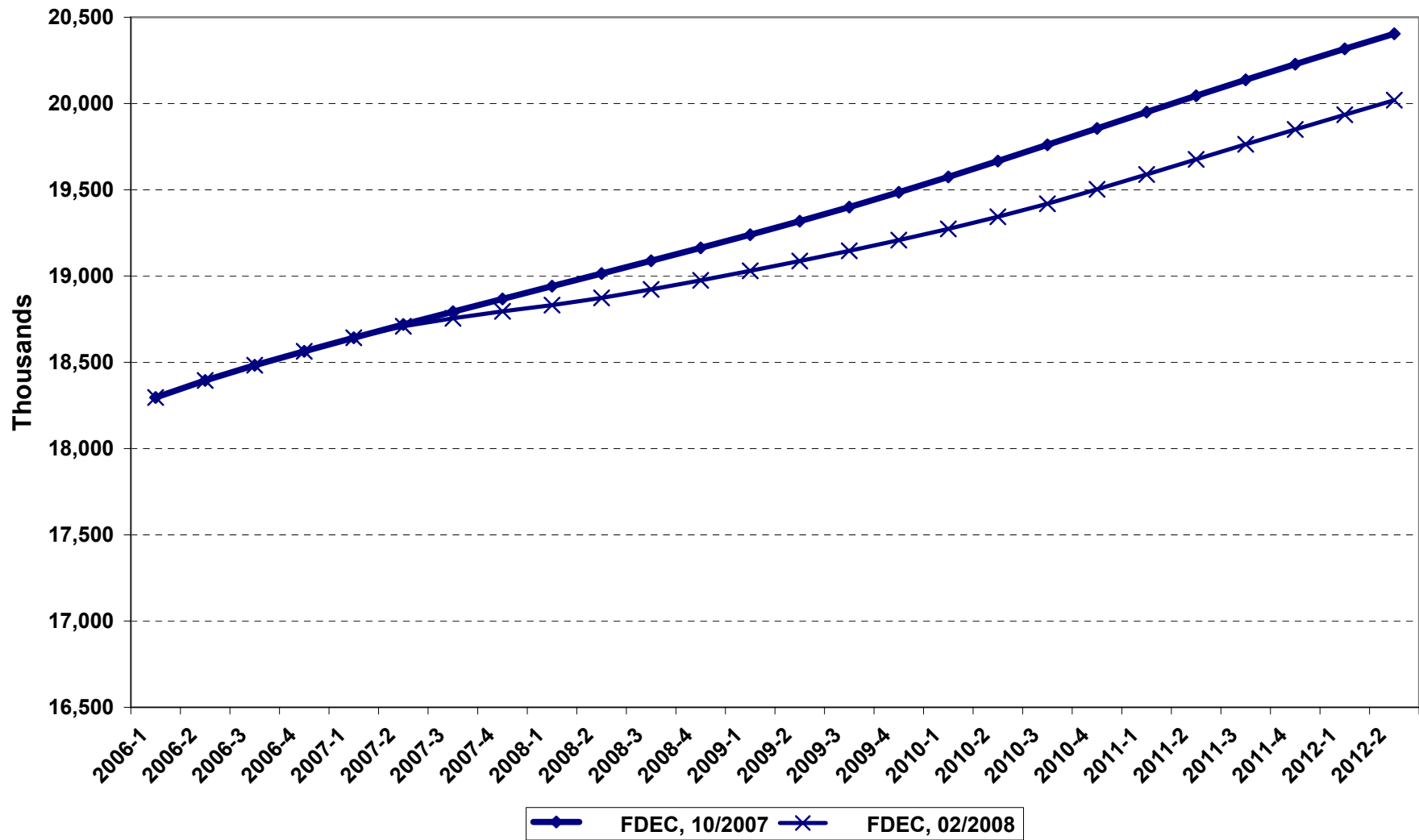


# **FLORIDA DEMOGRAPHIC ESTIMATING CONFERENCE**

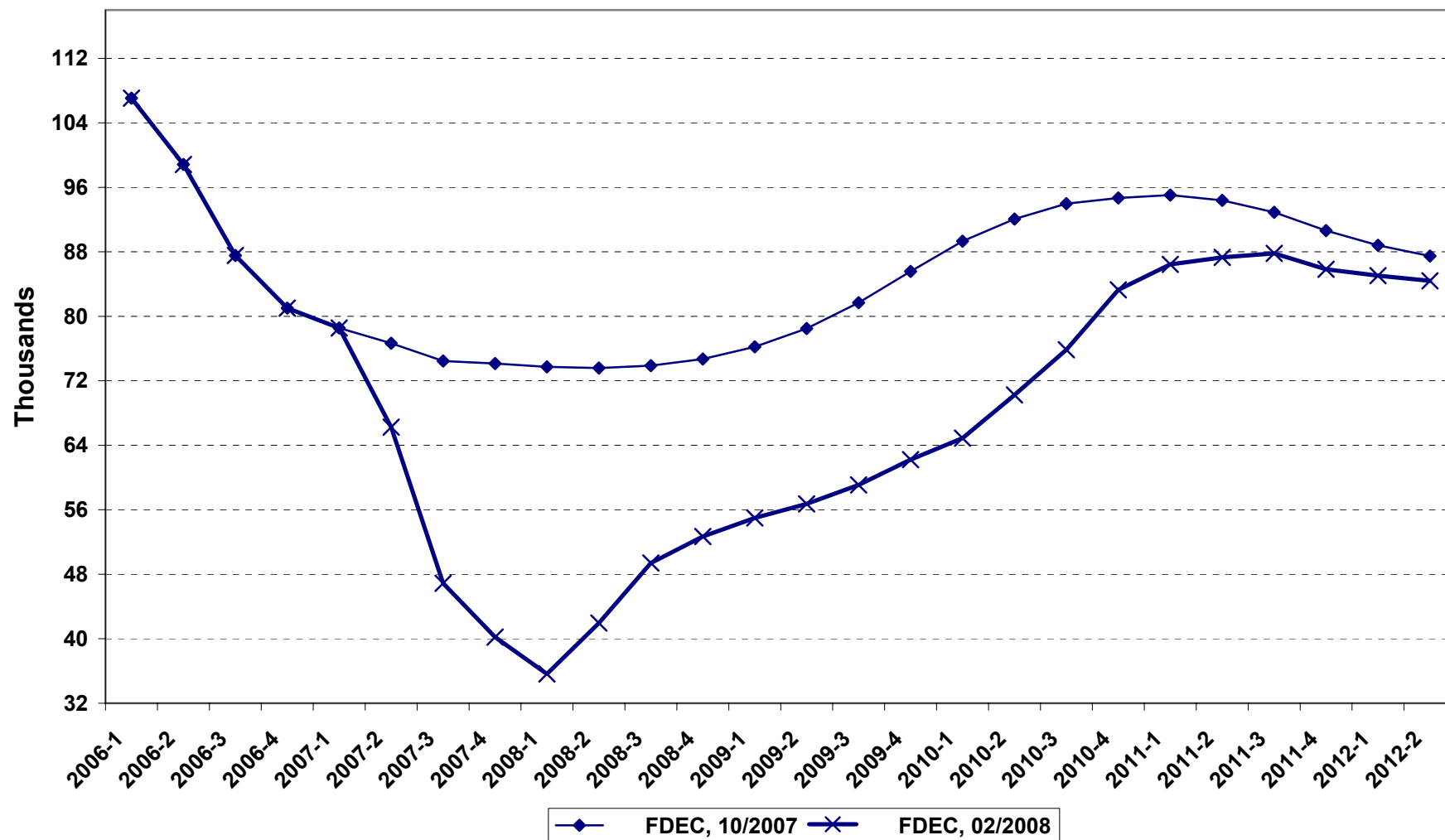
## **Charts**

**Held February 18, 2008**

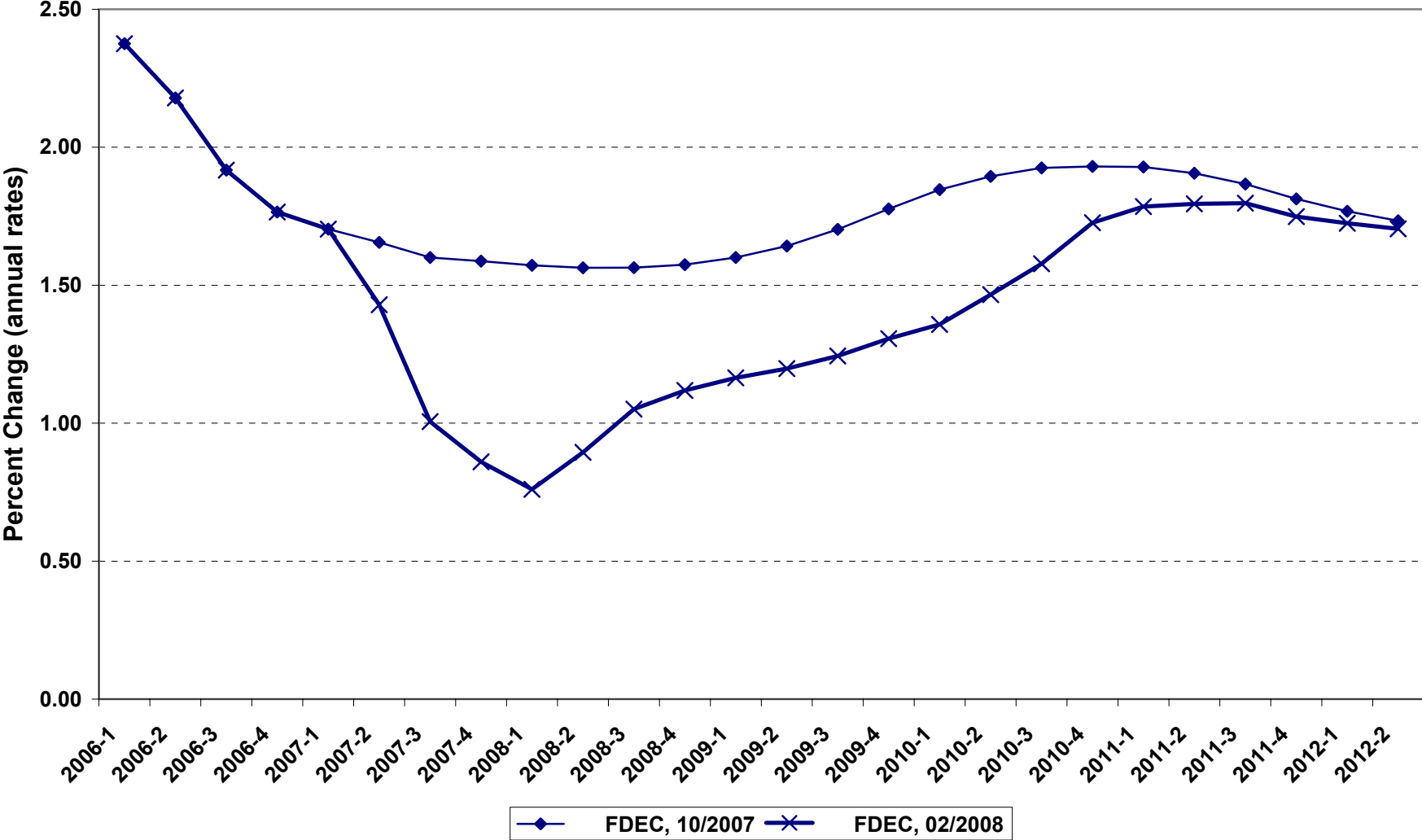
# Florida Resident Population



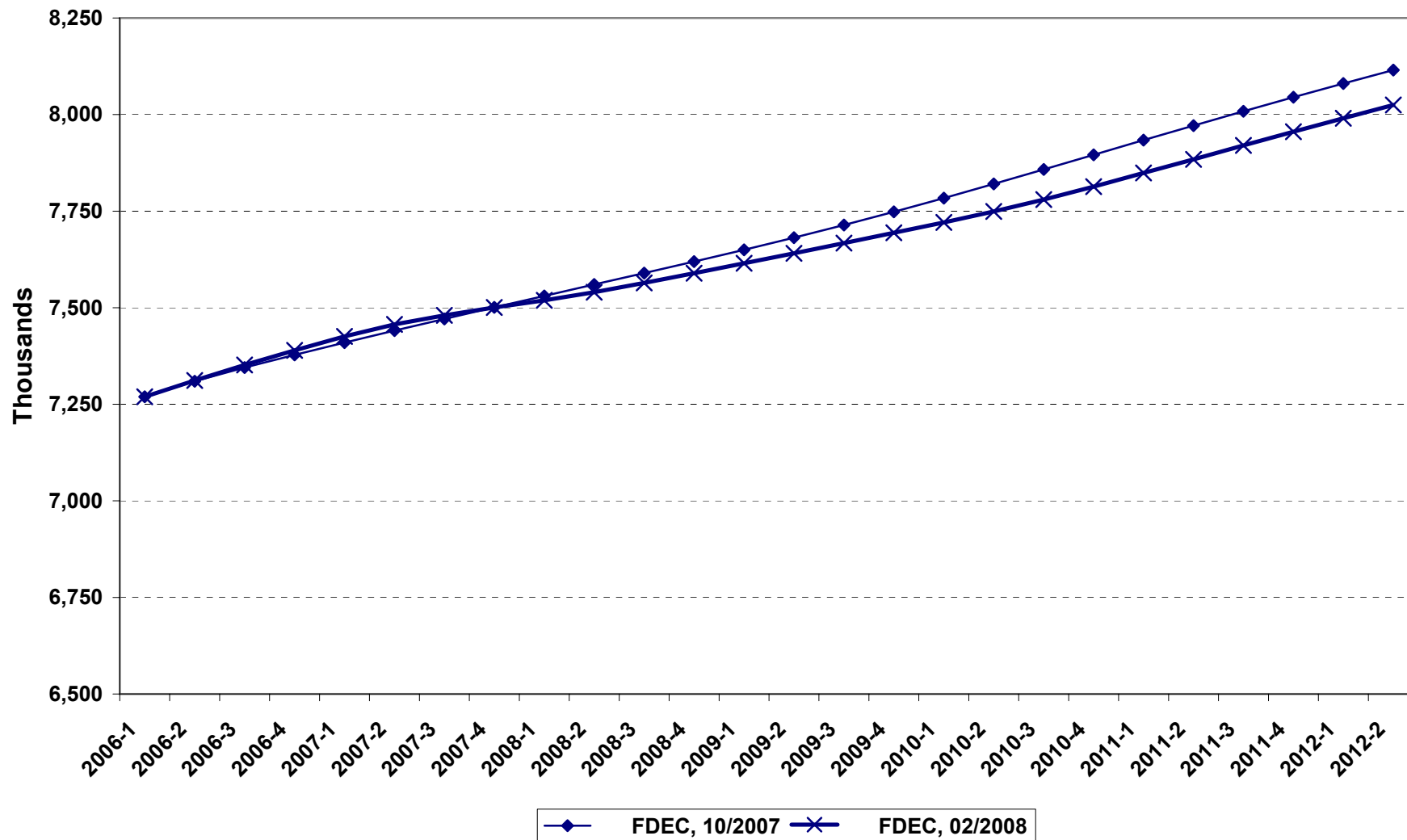
# Net Change In Florida Resident Population



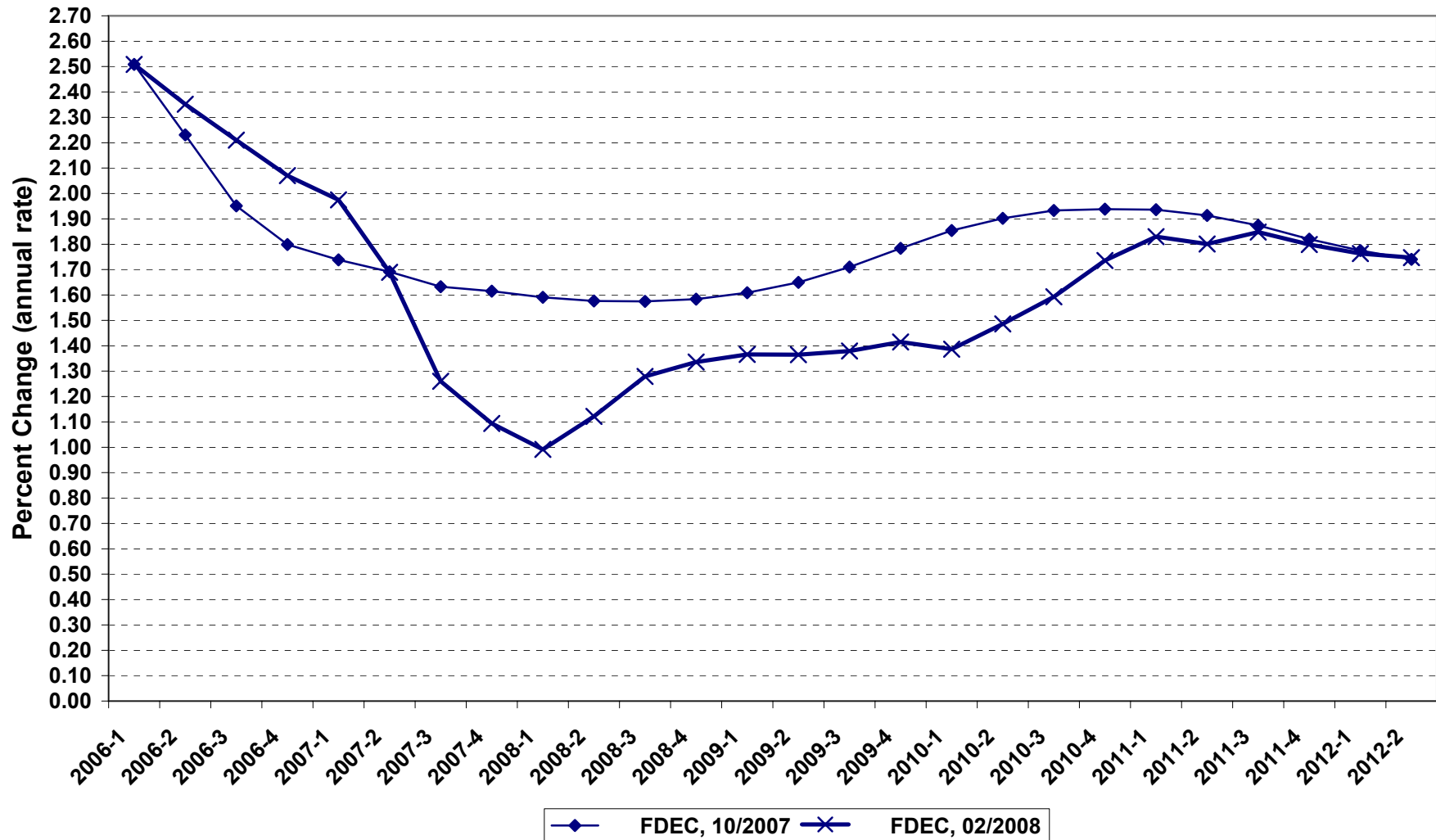
# Growth In Florida Resident Population



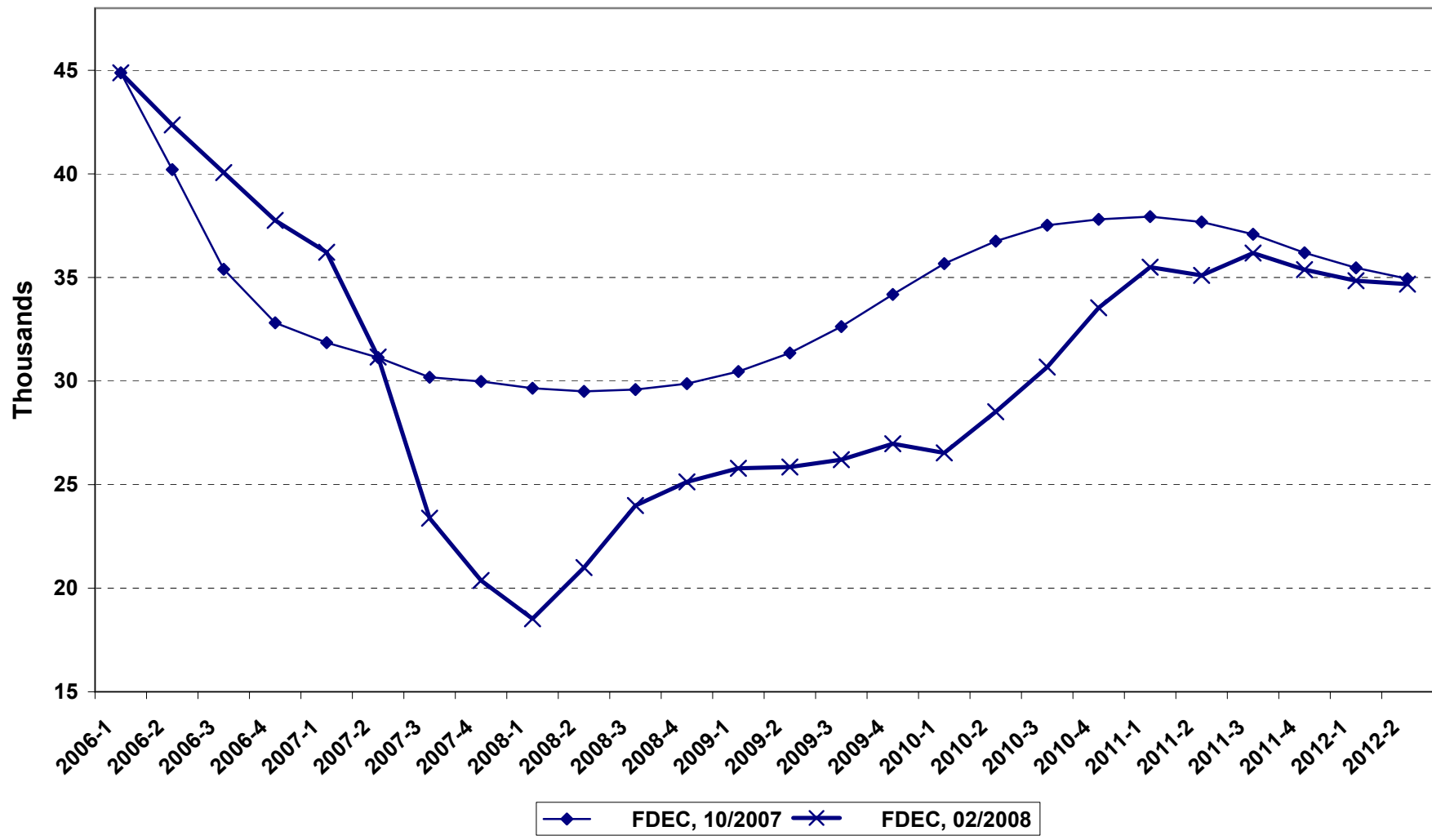
# Florida Resident Households



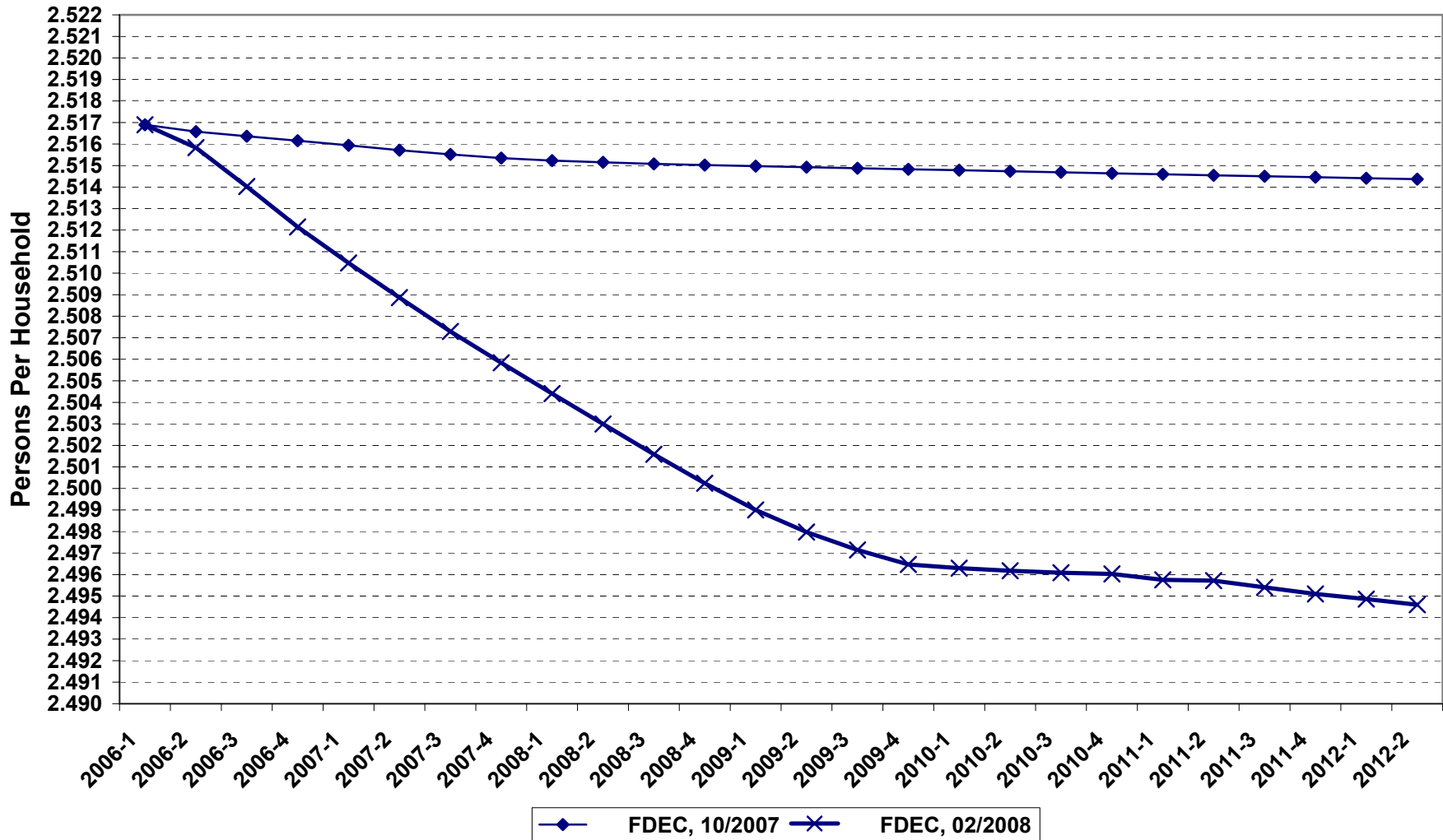
# Growth In Florida Resident Households



# Net Change In Florida Resident Households

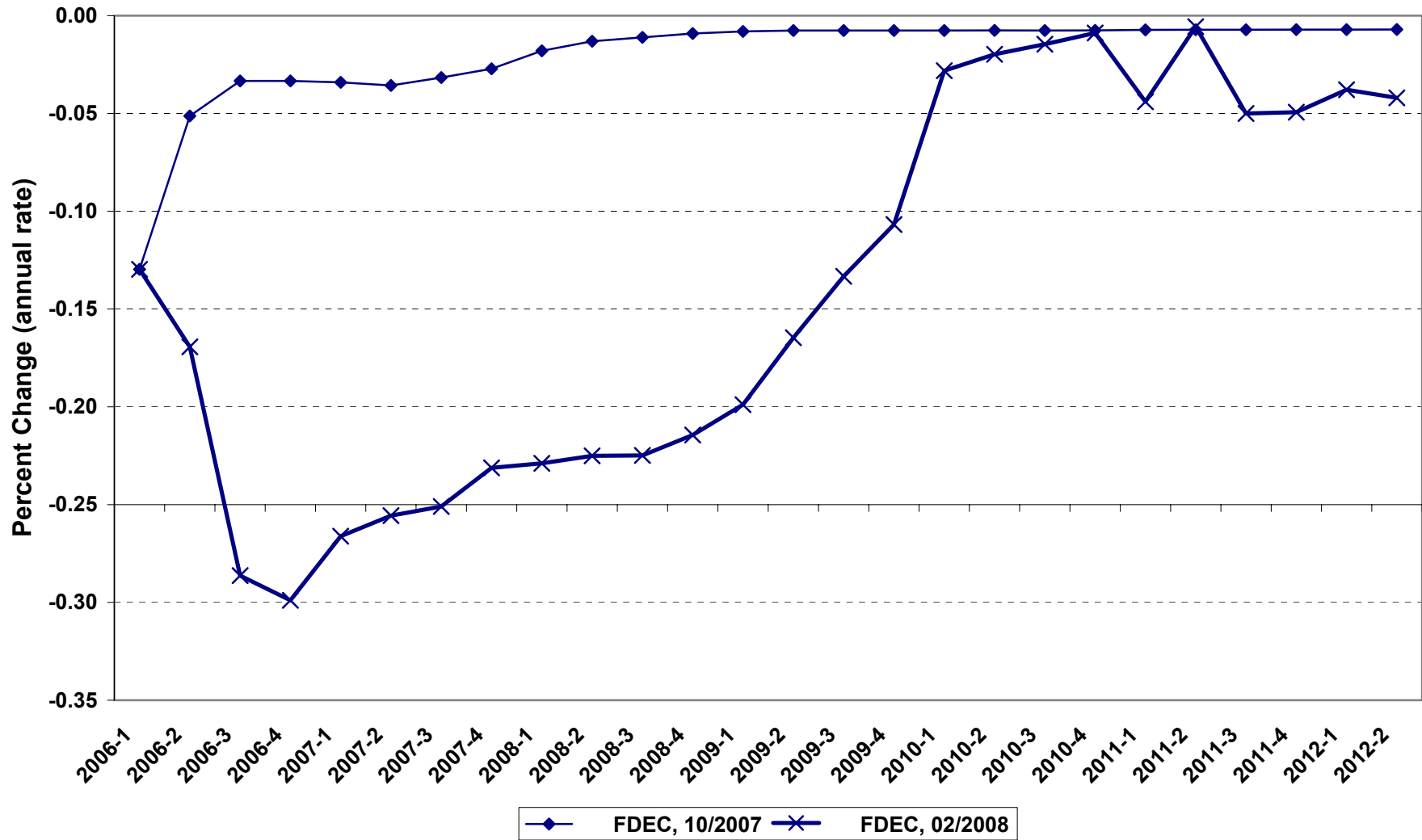


# Florida Average Household Size

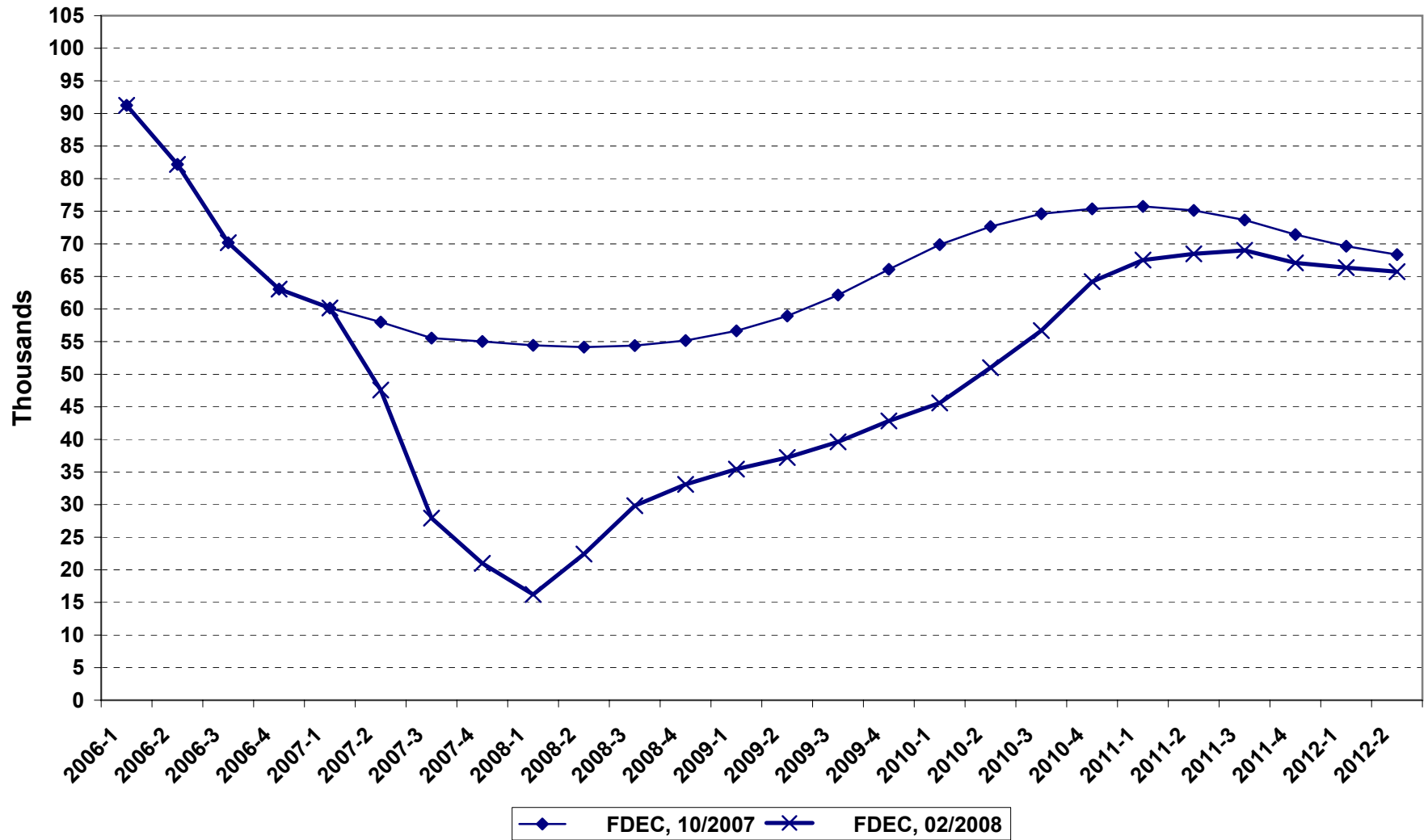




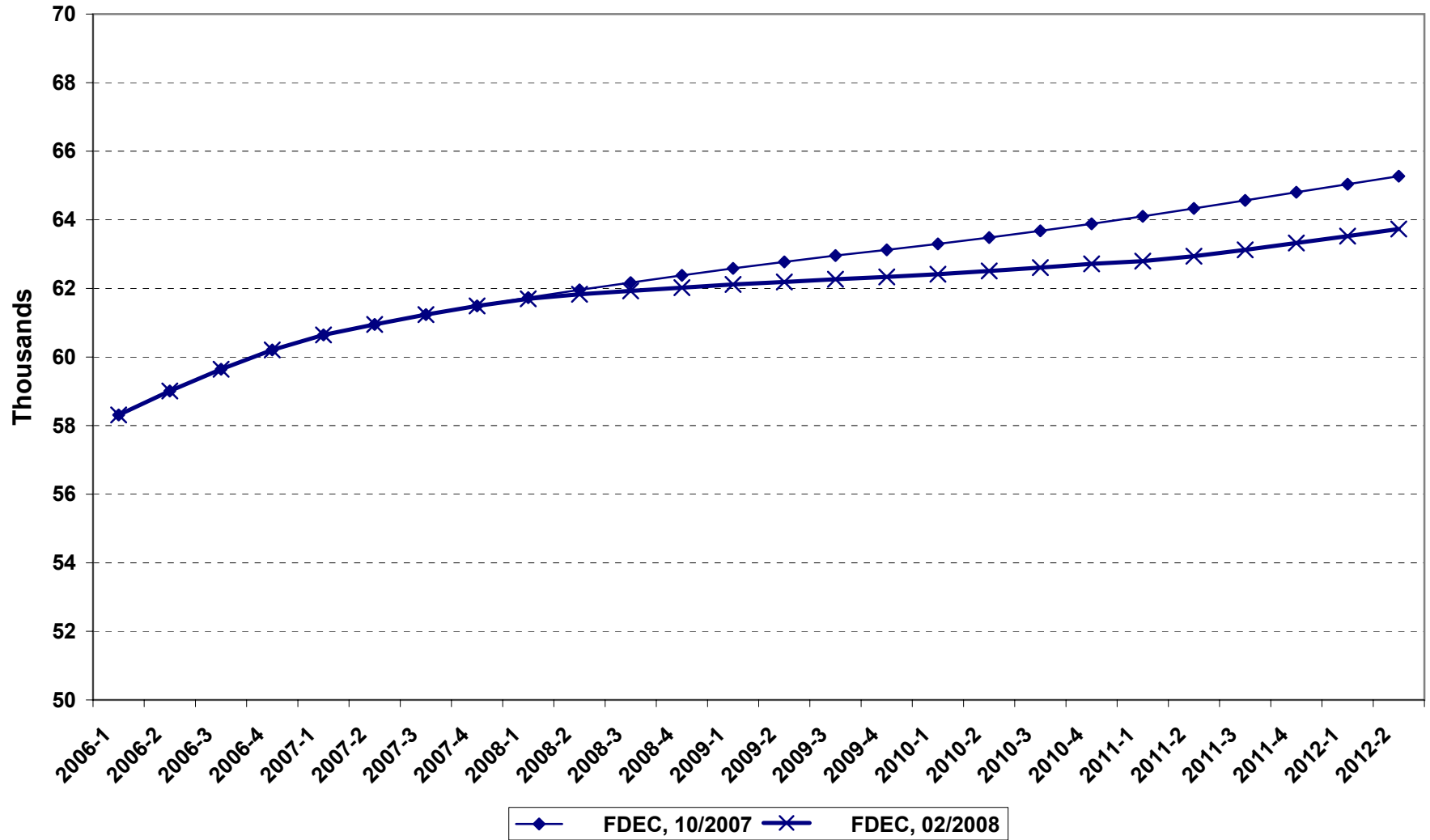
# Growth In Florida Household Size



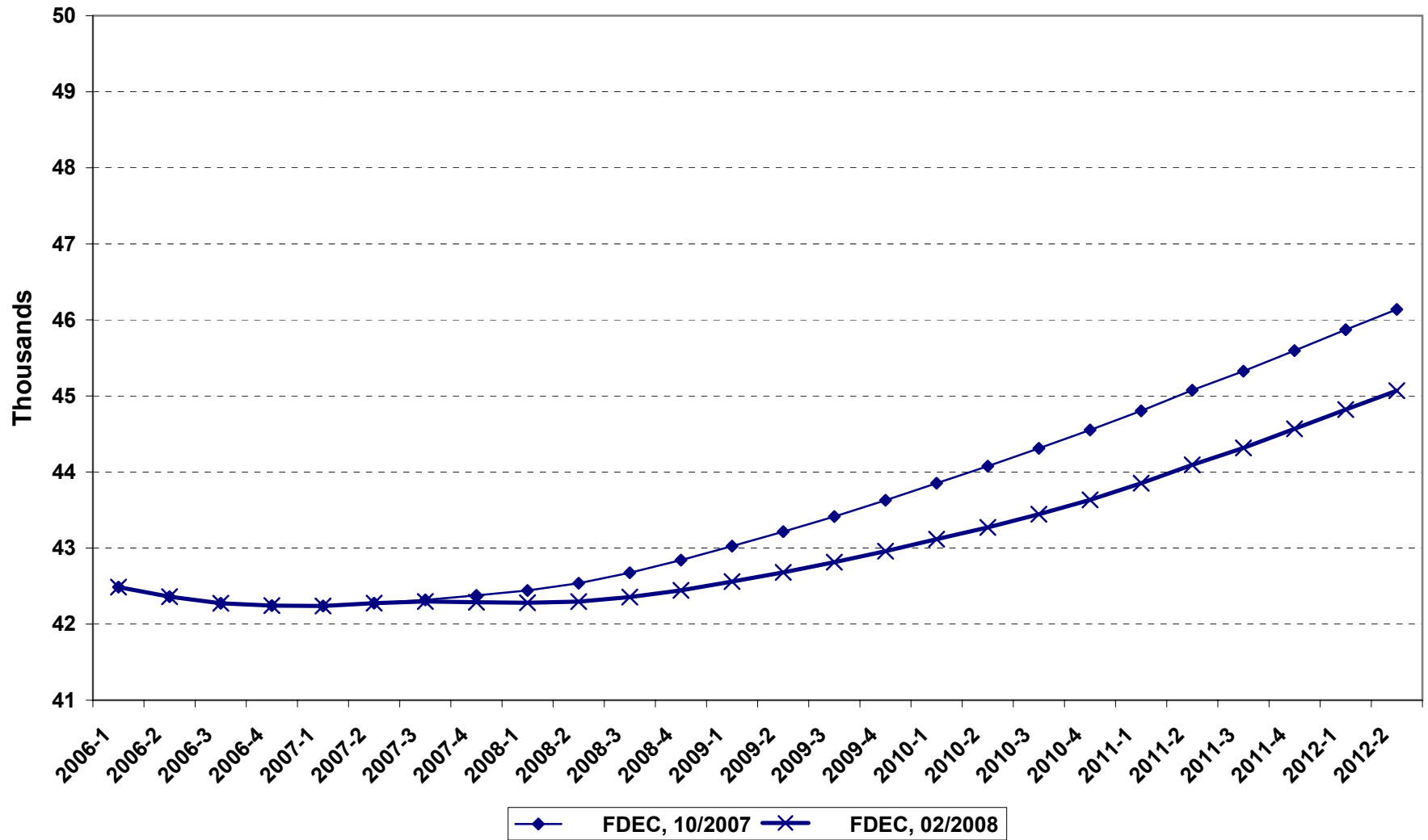
# Florida Net Migration



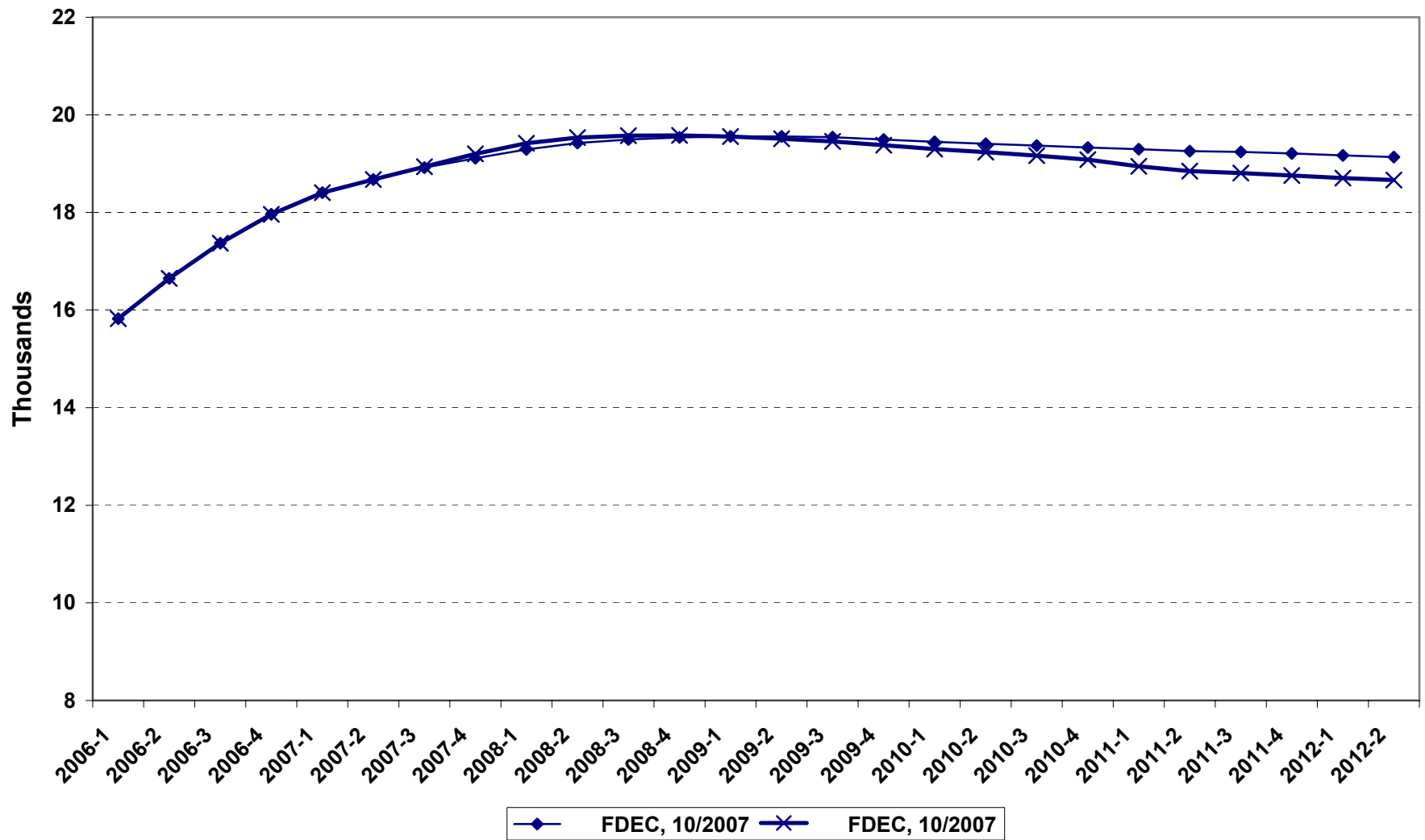
# Florida Resident Births



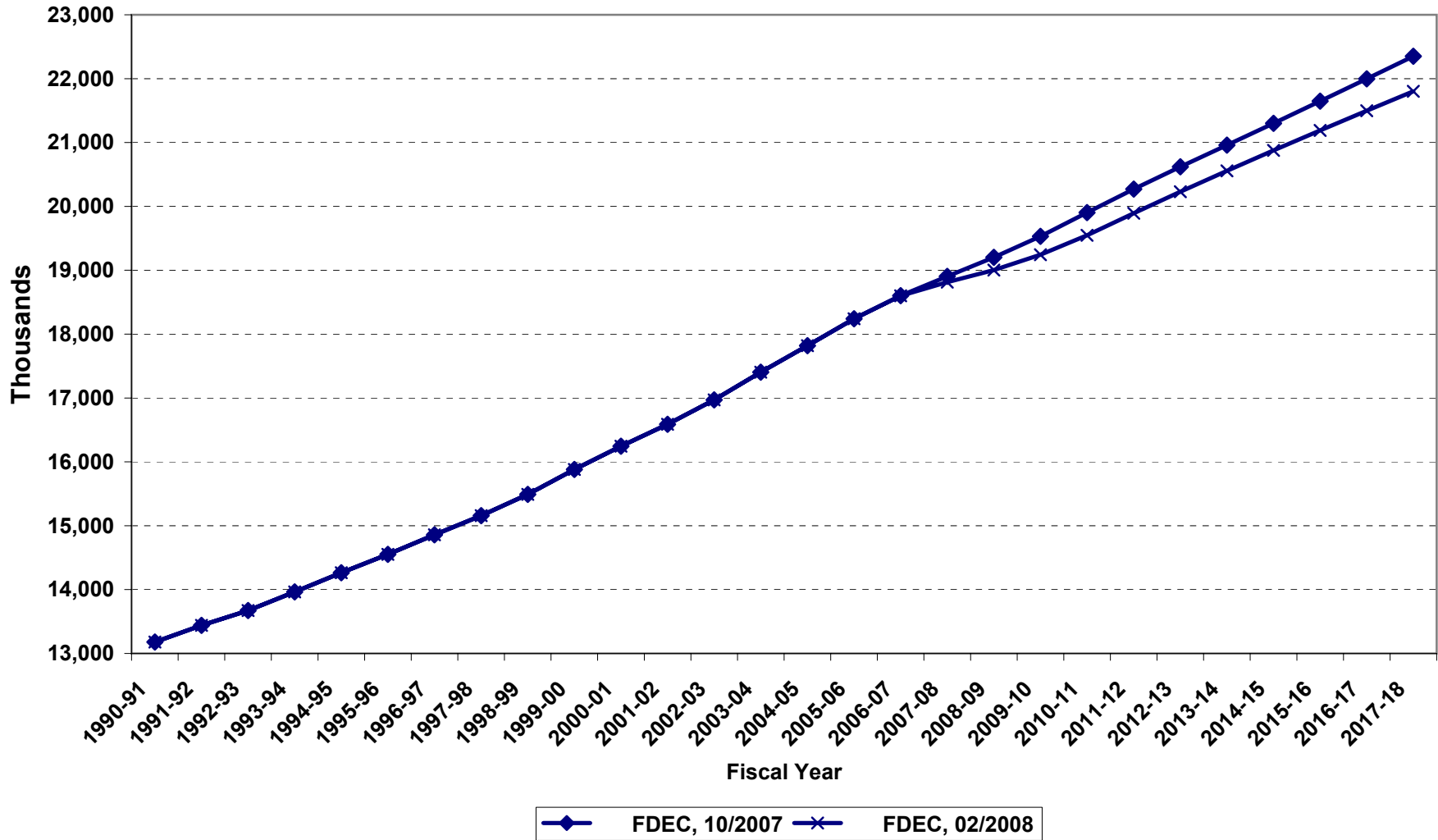
# Florida Resident Deaths



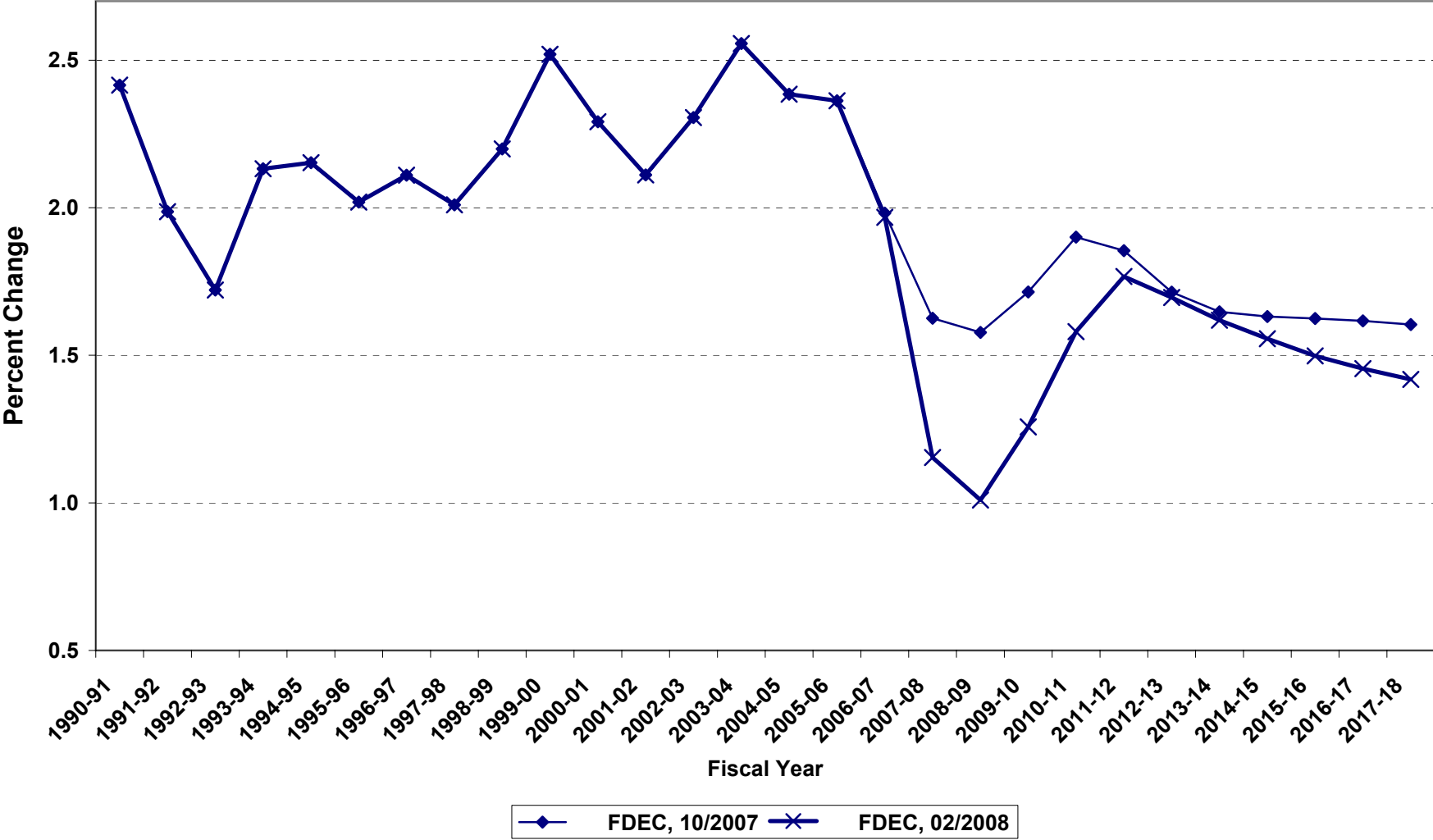
# Florida Net Natural Increase



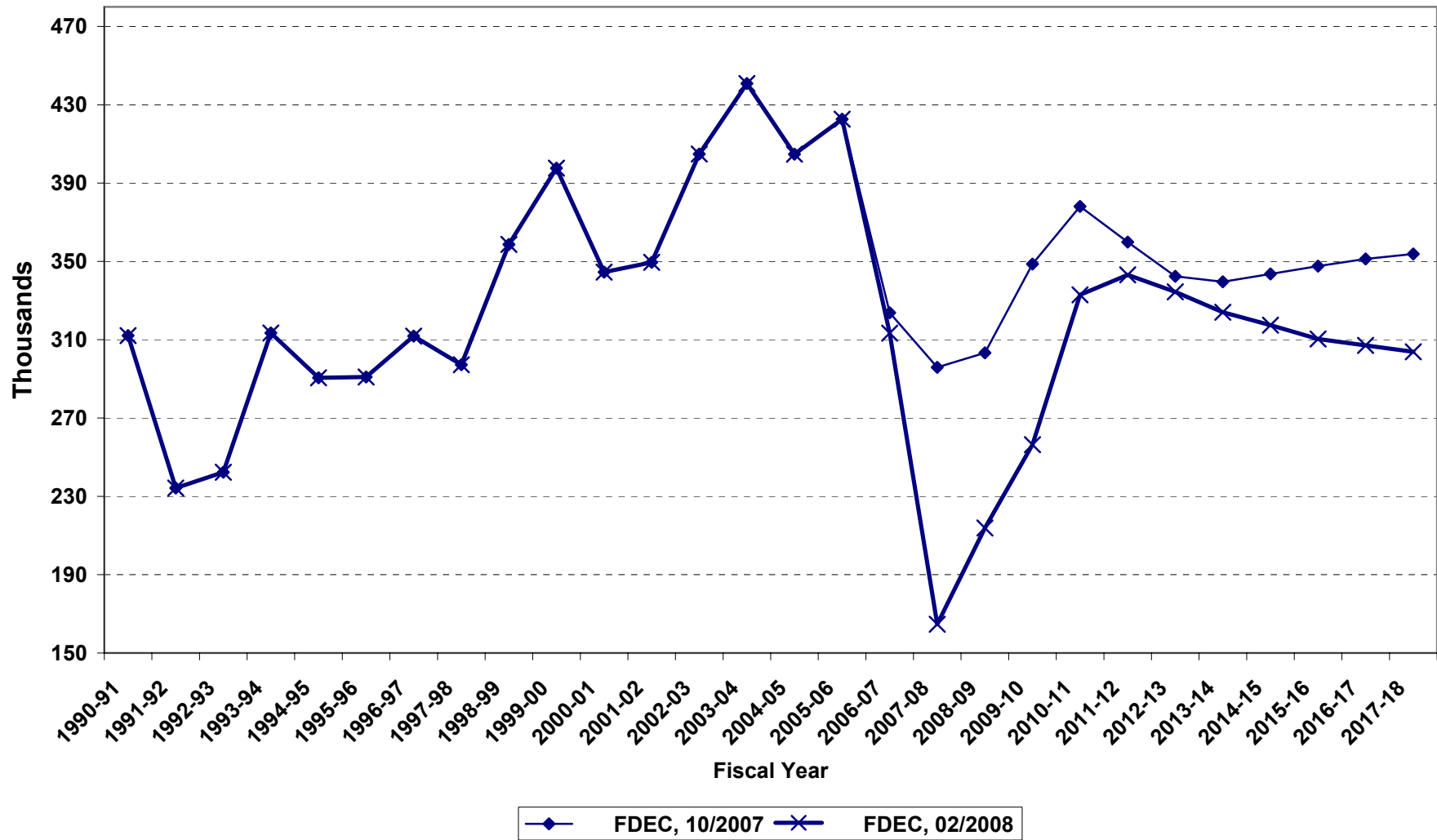
# Florida Resident Population



# Growth In Florida Resident Population

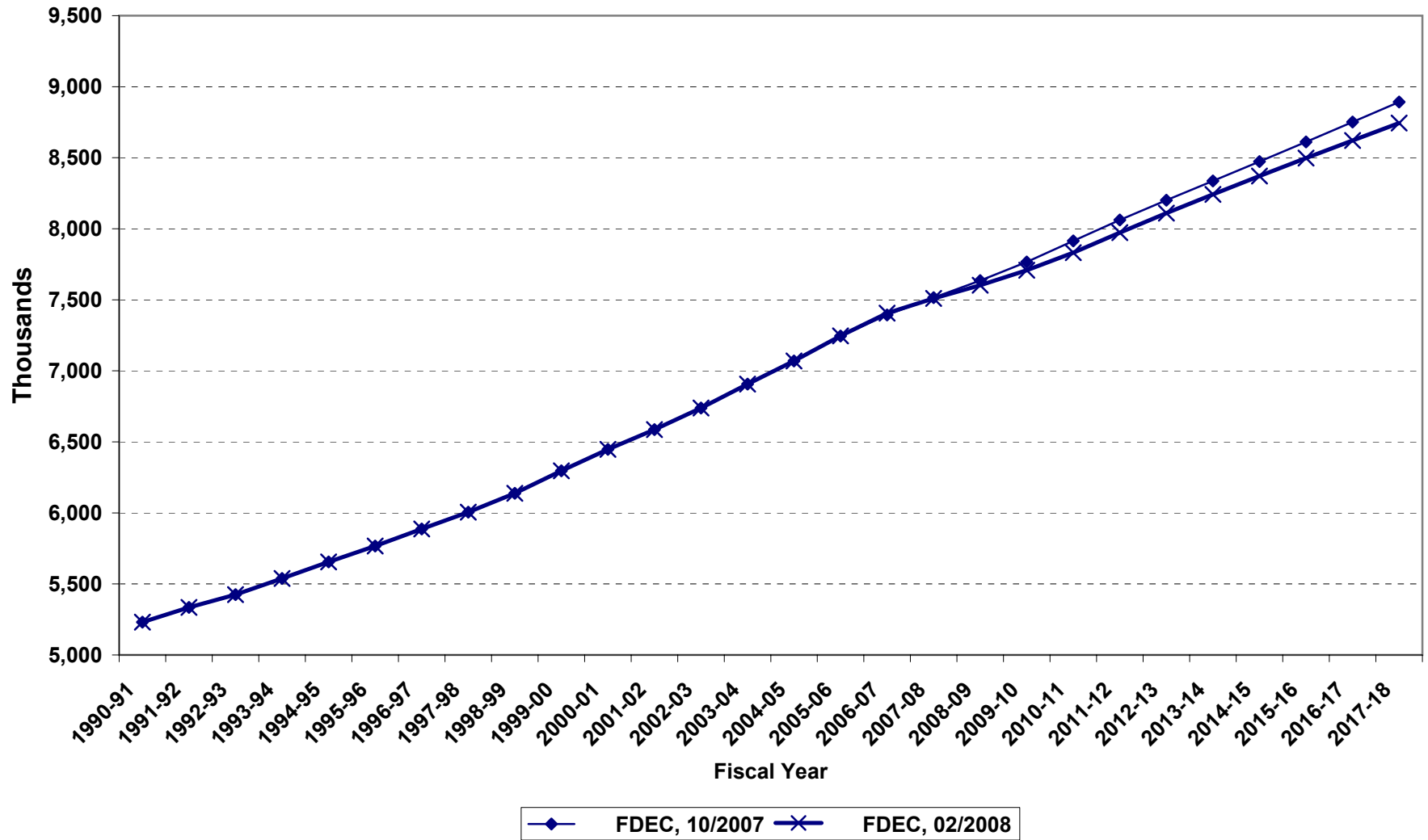


# Net Change In Florida Resident Population

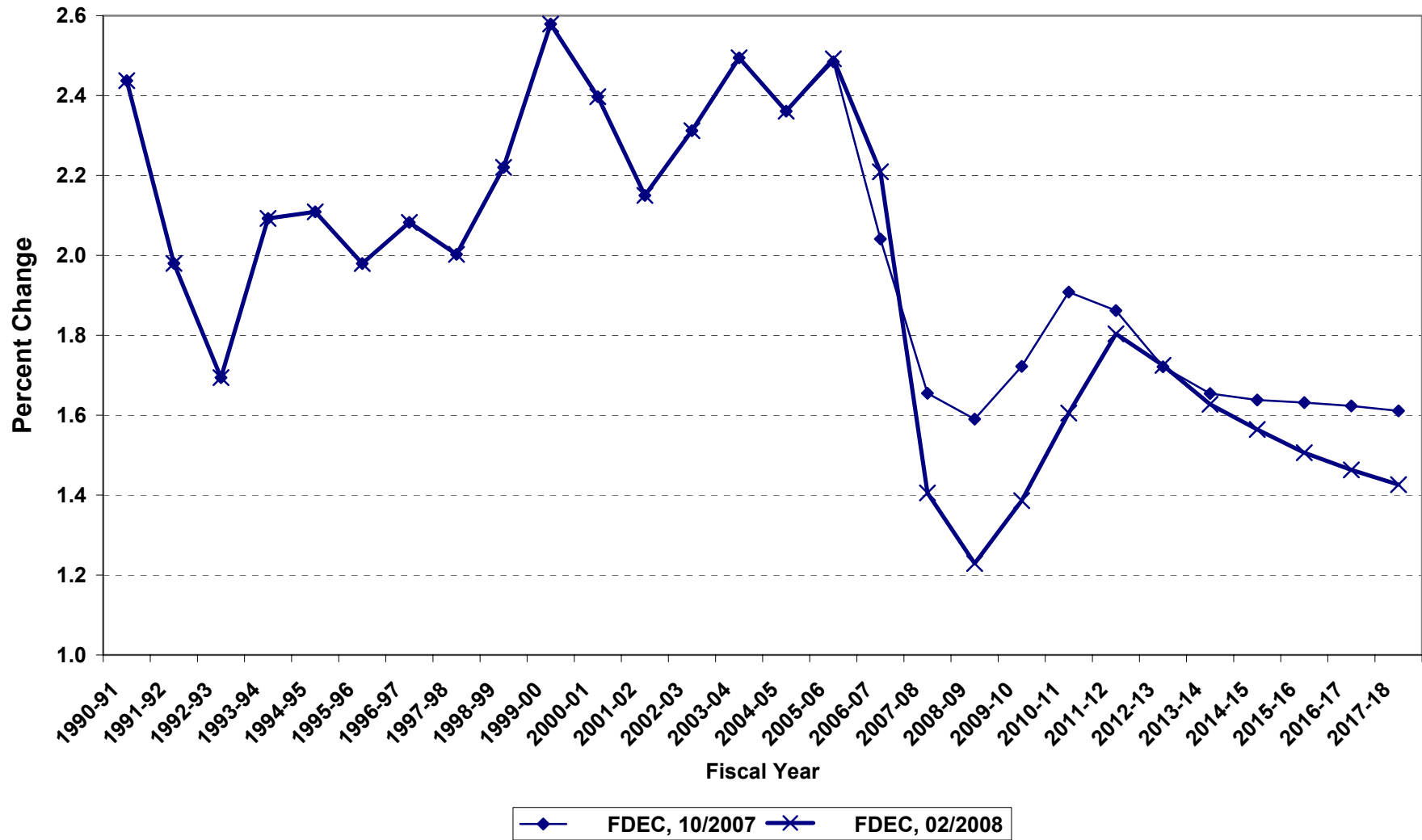




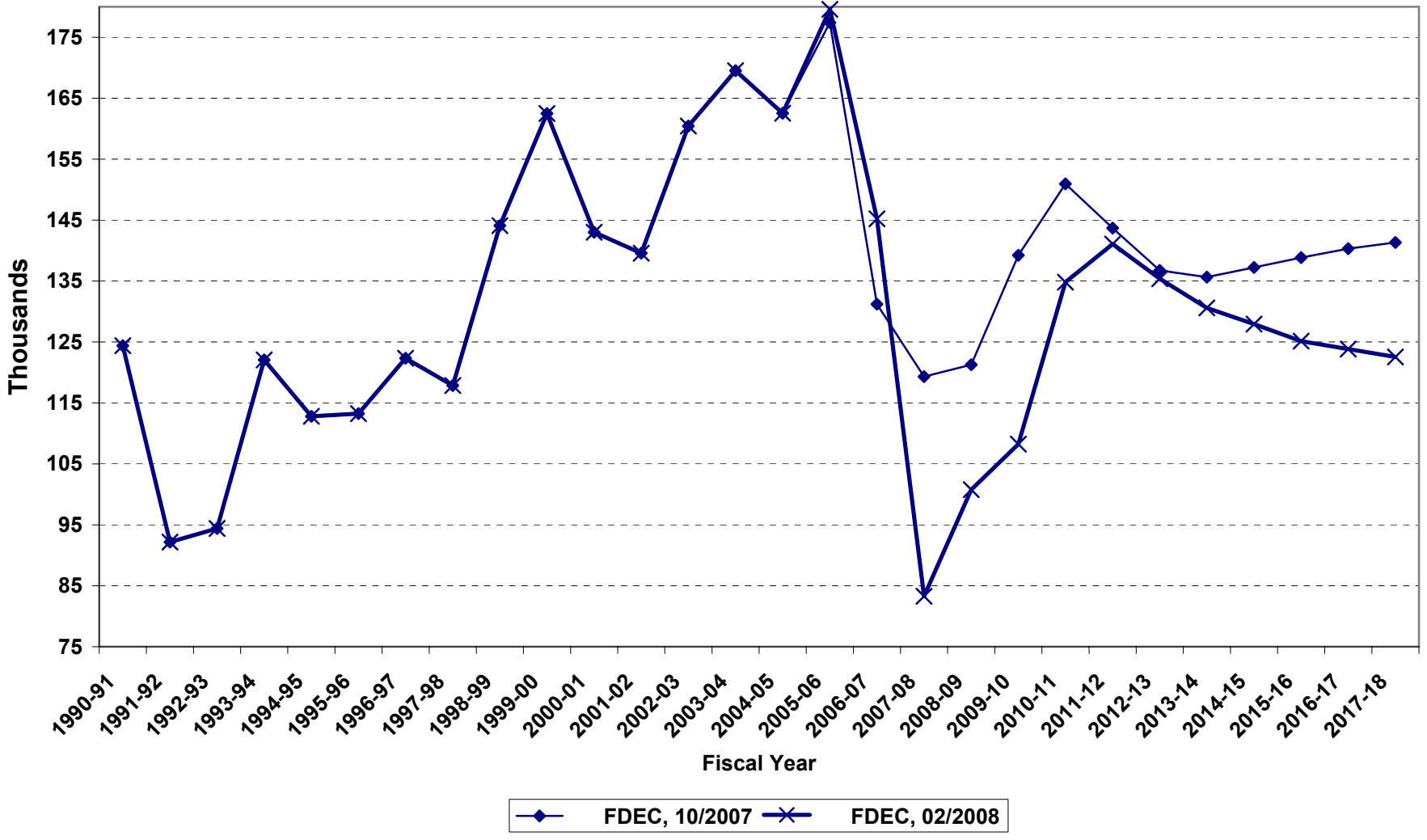
# Florida Resident Households



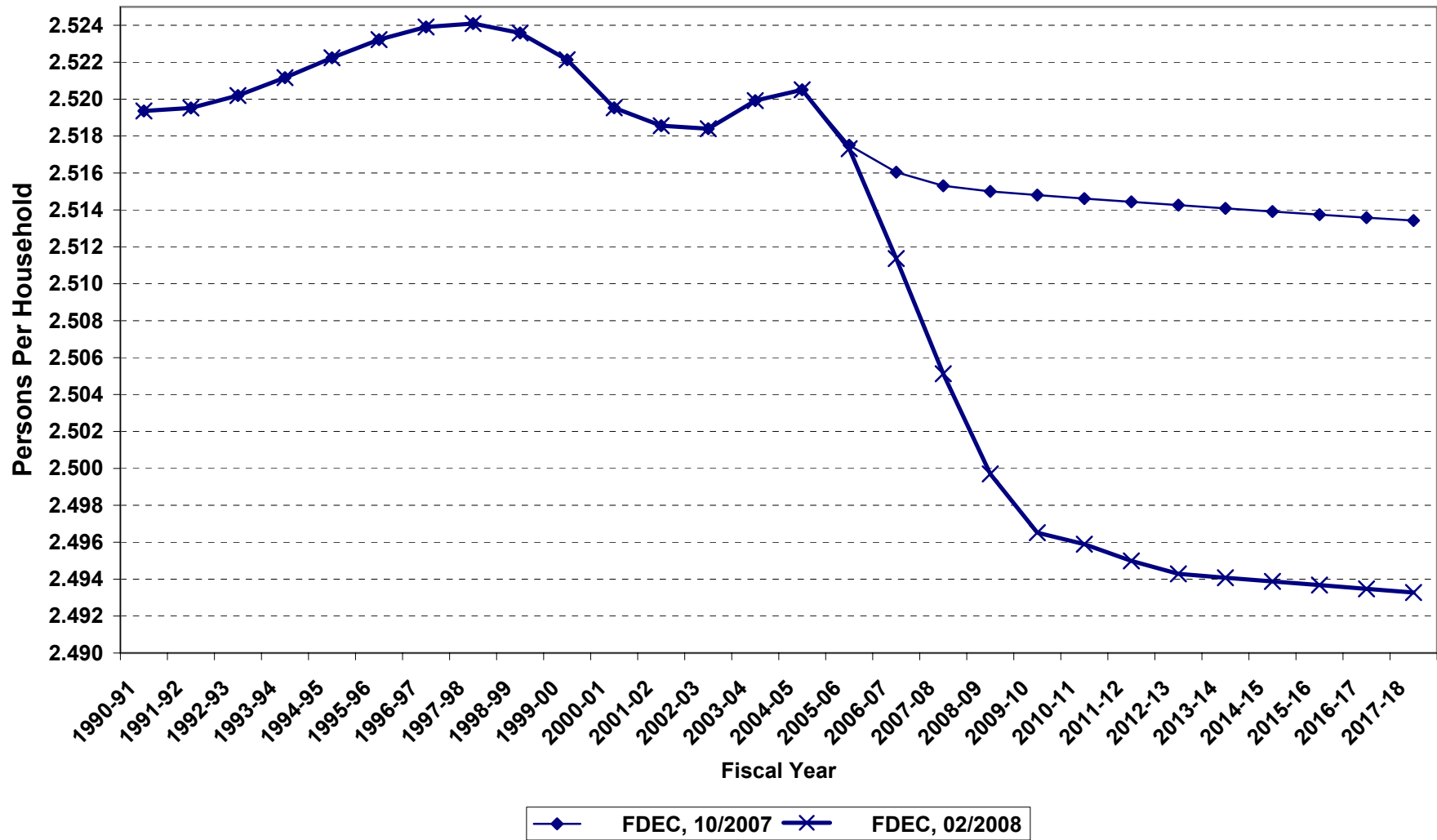
# Growth In Florida Resident Households



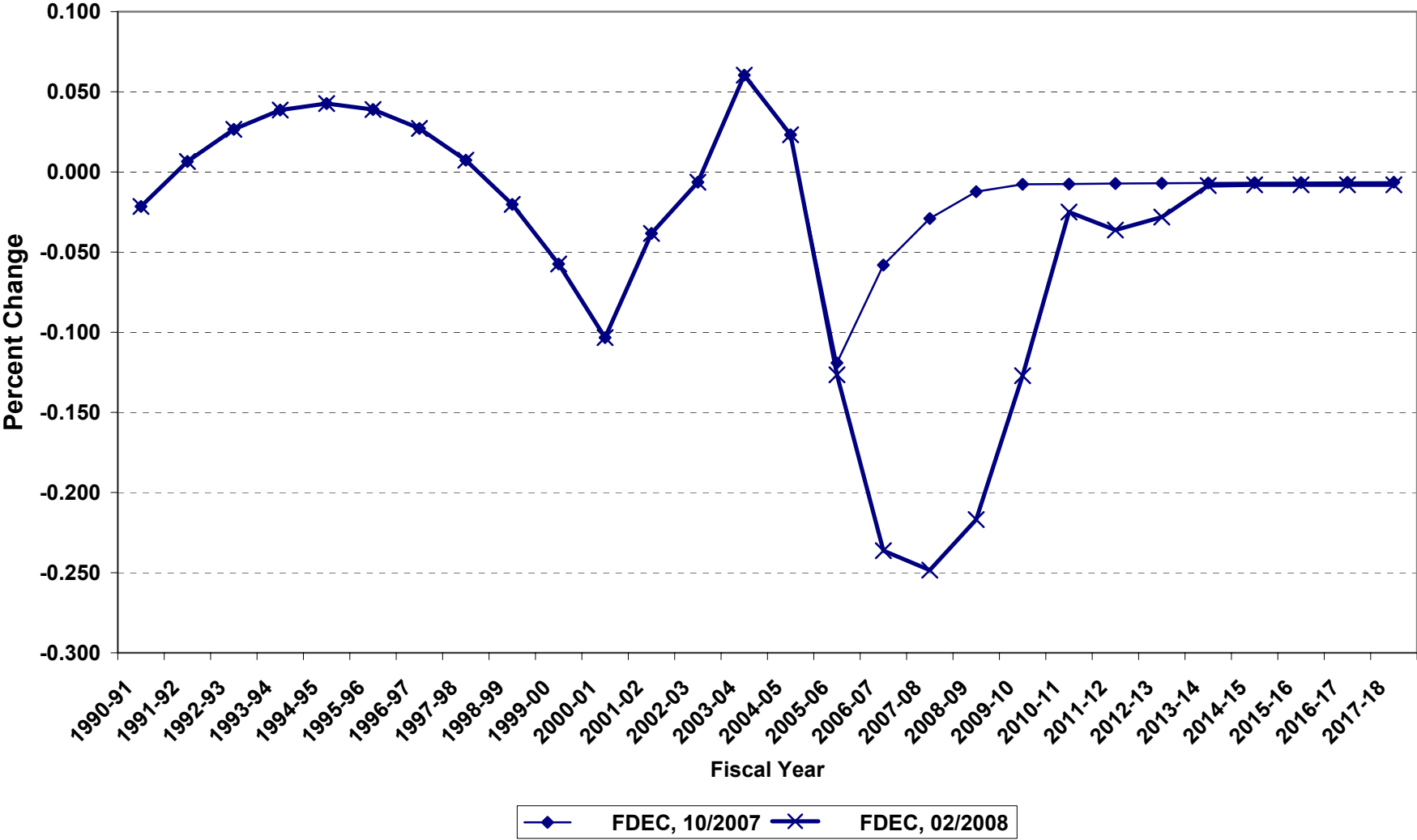
# Net Change In Florida Resident Households



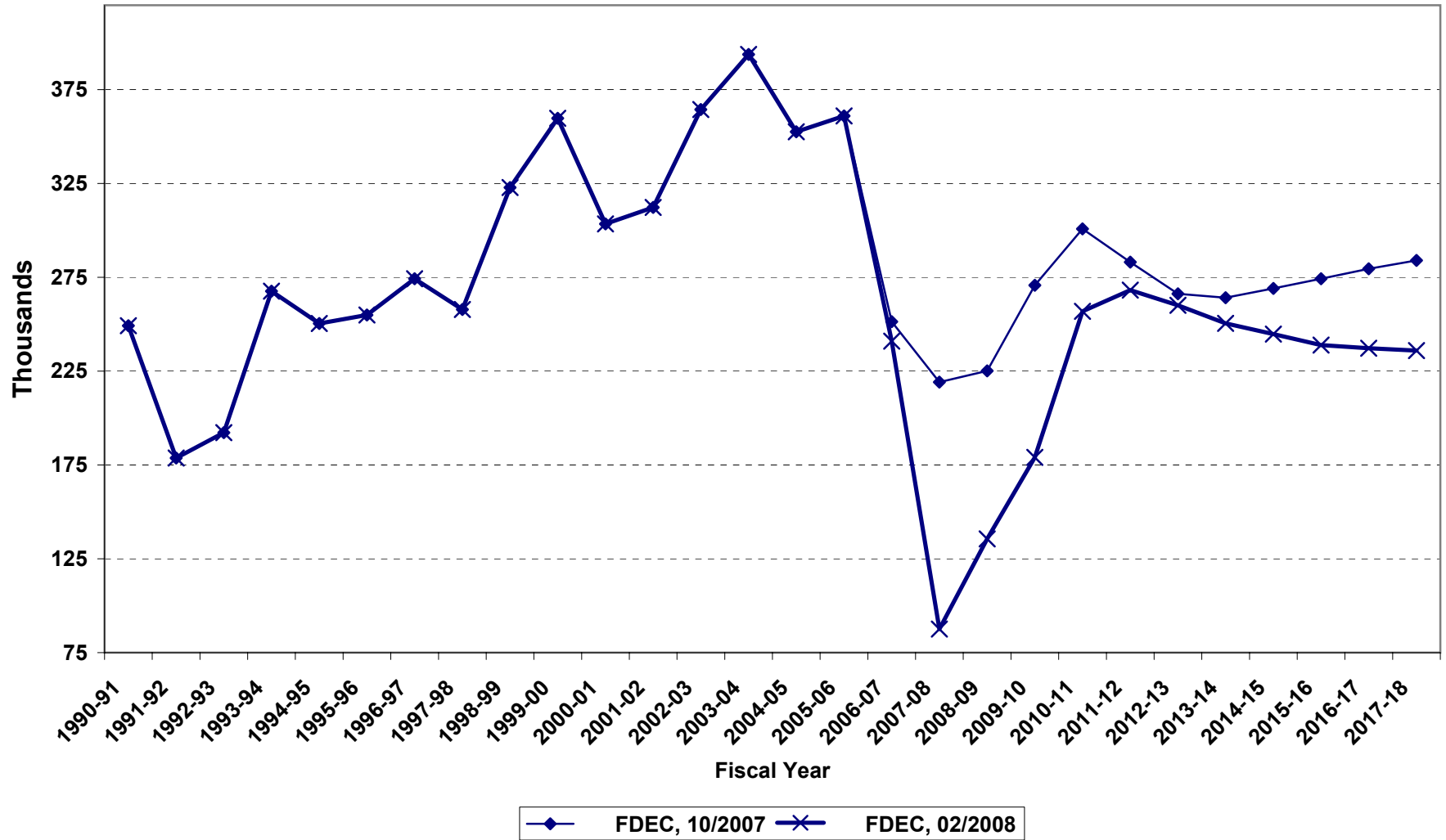
# Average Florida Household Size



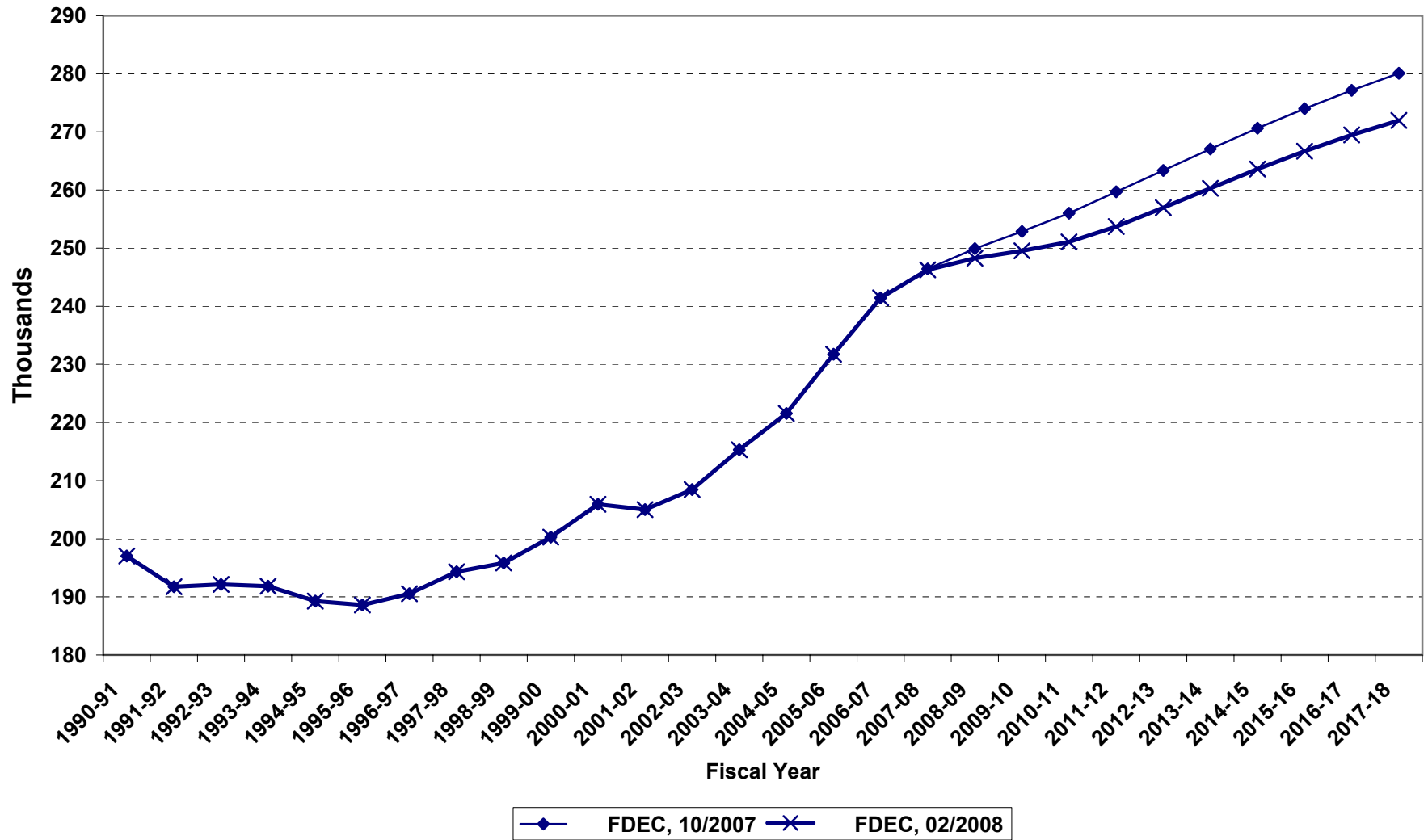
# Growth In Average Florida Household Size



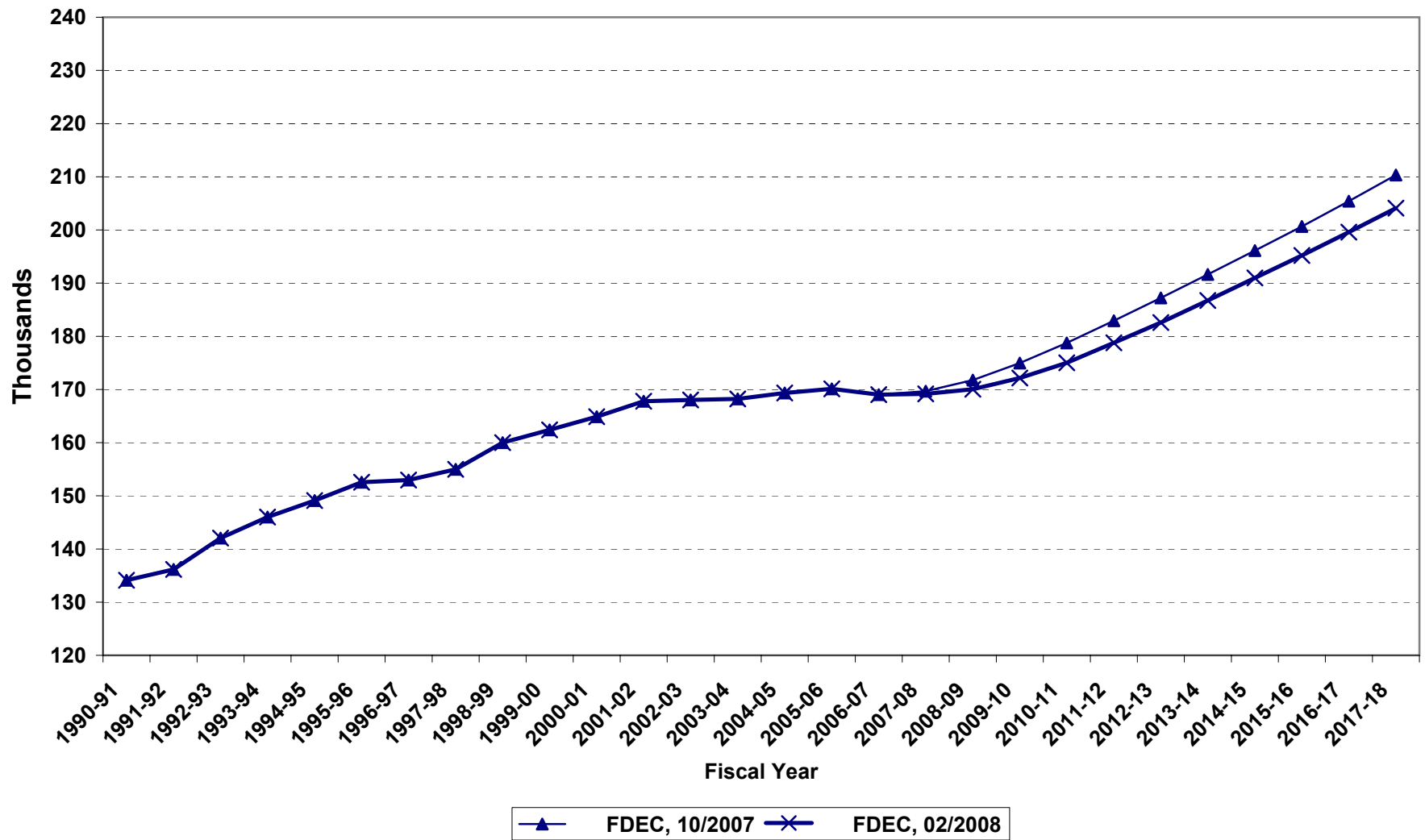
# Florida Net Migration



# Florida Resident Live Births

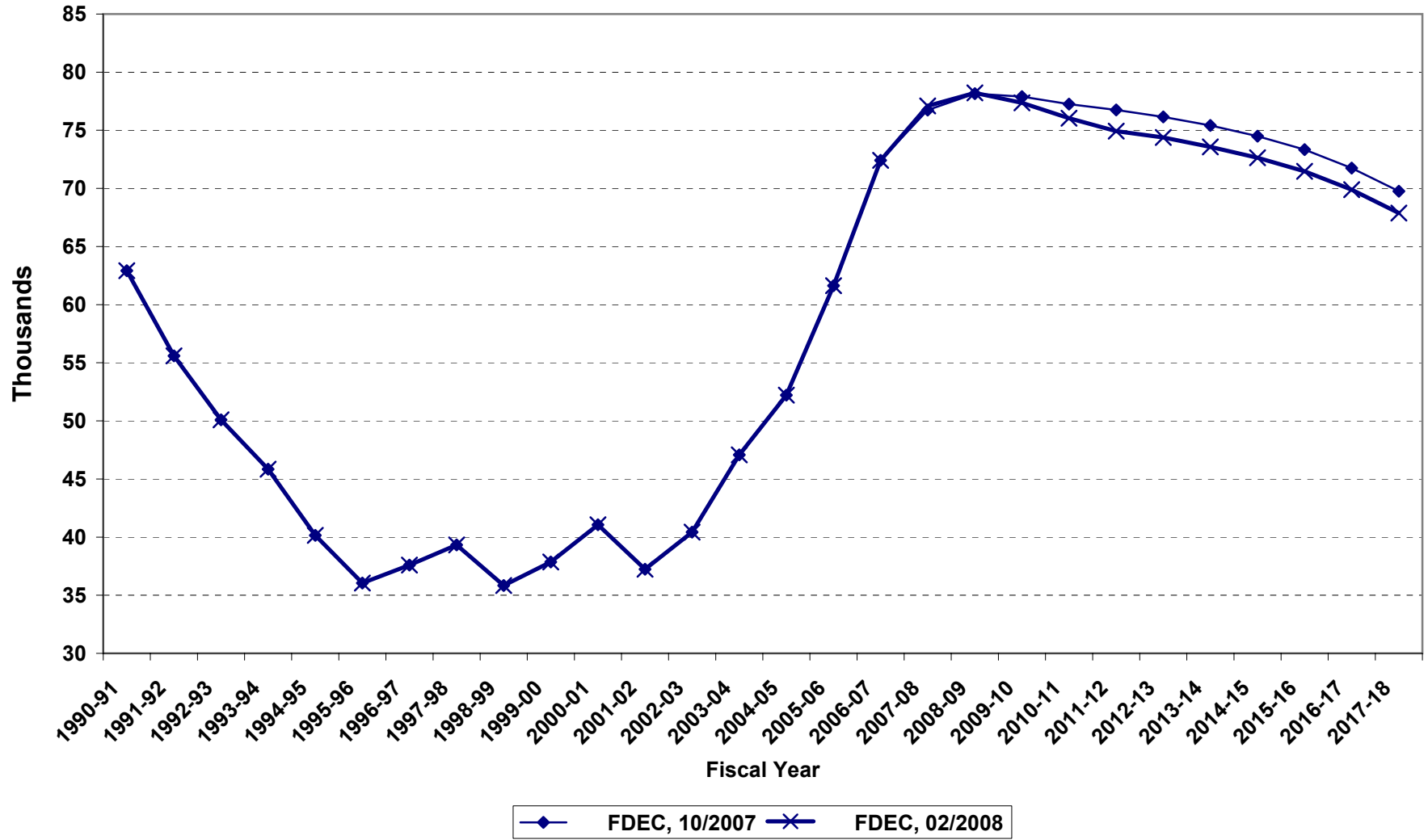


# Florida Resident Deaths





# Florida Net Natural Increase



## FLORIDA POPULATION AND COMPONENTS OF CHANGE

Fiscal Year	Population (end of FY)	Growth Rate	Annual Change in Population	Births	Deaths	Net Natural Increase	Net Migration
1950-51	2,980,000	6.05	170,000	67,604	27,186	40,418	129,582
1951-52	3,157,000	5.94	177,000	72,118	28,476	43,642	133,358
1952-53	3,310,000	4.85	153,000	77,156	29,856	47,300	105,700
1953-54	3,505,000	5.89	195,000	82,685	31,035	51,650	143,350
1954-55	3,747,000	6.90	242,000	86,265	32,083	54,182	187,818
1955-56	4,047,000	8.01	300,000	93,431	35,022	58,409	241,591
1956-57	4,372,000	8.03	325,000	100,811	38,319	62,492	262,508
1957-58	4,630,000	5.90	258,000	106,019	41,797	64,222	193,778
1958-59	4,808,000	3.84	178,000	110,457	43,746	66,711	111,289
1959-60	5,001,937	4.03	193,937	114,398	46,063	68,335	125,602
1960-61	5,185,560	3.67	183,623	116,419	48,302	68,117	115,506
1961-62	5,368,613	3.53	183,053	116,068	50,526	65,542	117,511
1962-63	5,552,114	3.42	183,501	114,946	54,302	60,644	122,857
1963-64	5,735,571	3.30	183,457	114,775	56,213	58,562	124,895
1964-65	5,884,050	2.59	148,479	110,465	57,868	52,597	95,882
1965-66	6,065,135	3.08	181,085	104,503	60,875	43,628	137,457
1966-67	6,250,236	3.05	185,101	101,129	62,765	38,364	146,737
1967-68	6,440,501	3.04	190,265	100,413	66,224	34,189	156,076
1968-69	6,632,001	2.97	191,500	104,362	71,133	33,229	158,271
1969-70	6,863,788	3.49	231,787	111,460	73,814	37,646	194,141
1970-71	7,233,605	5.39	369,817	117,071	75,362	41,709	328,108
1971-72	7,684,783	6.24	451,178	113,578	79,677	33,901	417,277
1972-73	8,157,779	6.15	472,996	107,692	86,284	21,408	451,588
1973-74	8,509,490	4.31	351,711	109,455	88,458	20,997	330,714
1974-75	8,650,224	1.65	140,734	108,752	87,185	21,567	119,167
1975-76	8,783,174	1.54	132,950	103,859	88,170	15,689	117,261
1976-77	8,973,716	2.17	190,542	107,735	90,432	17,303	173,239
1977-78	9,226,396	2.82	252,680	112,265	93,372	18,893	233,787
1978-79	9,519,160	3.17	292,764	116,269	96,826	19,443	273,321
1979-80	9,843,544	3.41	324,384	126,759	100,958	25,801	298,583
1980-81	10,218,346	3.81	374,802	135,511	107,686	27,825	346,977
1981-82	10,492,578	2.68	274,232	141,562	108,533	33,029	241,203
1982-83	10,750,266	2.46	257,688	146,890	110,534	36,356	221,332
1983-84	11,065,812	2.94	315,546	151,660	113,957	37,703	277,843
1984-85	11,405,171	3.07	339,359	159,879	117,469	42,410	296,949

## FLORIDA POPULATION AND COMPONENTS OF CHANGE

Fiscal Year	Population (end of FY)	Growth Rate	Annual Change in Population	Births	Deaths	Net Natural Increase	Net Migration
1985-86	11,740,597	2.94	335,426	165,837	122,536	43,301	292,125
1986-87	12,083,205	2.92	342,608	170,743	124,846	45,897	296,711
1987-88	12,410,087	2.71	326,882	179,610	129,473	50,137	276,745
1988-89	12,723,453	2.53	313,366	188,272	131,997	56,275	257,091
1989-90	13,019,574	2.33	296,121	197,265	132,461	64,804	231,317
1990-91	13,323,139	2.33	303,565	197,197	134,147	63,050	240,515
1991-92	13,552,830	1.72	229,691	191,702	136,199	55,503	174,188
1992-93	13,804,917	1.86	252,087	192,150	142,167	49,983	202,104
1993-94	14,118,145	2.27	313,228	191,833	146,063	45,770	267,458
1994-95	14,407,012	2.05	288,867	189,272	149,127	40,145	248,722
1995-96	14,701,478	2.04	294,466	188,601	152,628	35,973	258,493
1996-97	15,010,271	2.10	308,793	190,552	153,018	37,534	271,259
1997-98	15,312,639	2.01	302,368	194,305	155,044	39,261	263,107
1998-99	15,680,103	2.40	367,464	195,827	160,050	35,777	331,687
1999-00	16,072,926	2.51	392,823	200,271	162,446	37,825	354,998
2000-01	16,414,441	2.12	341,515	205,898	164,901	40,997	300,518
2001-02	16,769,060	2.16	354,619	205,117	167,860	37,257	317,362
2002-03	17,184,076	2.47	415,016	207,979	168,011	39,968	375,048
2003-04	17,620,216	2.54	436,140	214,032	168,432	45,600	390,540
2004-05	18,026,110	2.30	405,894	221,551	169,343	52,208	353,686
2005-06	18,440,700	2.30	414,590	231,737	170,109	61,628	352,962
2006-07	18,731,733	1.58	291,033	241,442	169,032	72,410	218,623
2007-08	18,897,652	0.89	165,919	246,254	169,163	77,091	88,828
2008-09	19,116,308	1.16	218,657	248,256	170,039	78,217	140,440
2009-10	19,381,119	1.39	264,811	249,528	172,162	77,366	187,445
2010-11	19,720,013	1.75	338,894	251,060	175,025	76,035	262,859
2011-12	20,061,690	1.73	341,677	253,708	178,776	74,932	266,745
2012-13	20,394,559	1.66	332,869	256,961	182,577	74,384	258,485
2013-14	20,717,715	1.58	323,156	260,301	186,727	73,574	249,582
2014-15	21,034,124	1.53	316,409	263,605	190,972	72,633	243,776
2015-16	21,344,014	1.47	309,890	266,679	195,205	71,474	238,416
2016-17	21,650,618	1.44	306,604	269,475	199,588	69,887	236,717
2017-18	21,954,267	1.40	303,649	271,975	204,099	67,876	235,773
2018-19	22,255,539	1.37	301,272	274,265	208,751	65,514	235,758
2019-20	22,551,446	1.33	295,907	276,407	213,557	62,850	233,057

## FLORIDA POPULATION AND COMPONENTS OF CHANGE

Fiscal Year	Population (end of FY)	Growth Rate	Annual Change in Population	Births	Deaths	Net Natural Increase	Net Migration
2020-21	22,843,056	1.29	291,610	278,490	218,618	59,872	231,738
2021-22	23,133,409	1.27	290,353	280,589	224,159	56,430	233,923
2022-23	23,427,416	1.27	294,007	282,759	230,055	52,704	241,303
2023-24	23,726,868	1.28	299,452	284,931	236,204	48,727	250,725
2024-25	24,028,971	1.27	302,103	287,089	242,665	44,424	257,679
2025-26	24,316,474	1.20	287,503	289,193	249,499	39,694	247,809
2026-27	24,596,965	1.15	280,491	291,443	256,639	34,804	245,687
2027-28	24,873,976	1.13	277,011	293,765	263,870	29,895	247,116
2028-29	25,144,772	1.09	270,796	296,104	271,312	24,792	246,004
2029-30	25,405,602	1.04	260,830	298,451	279,000	19,451	241,379