

Demographic Estimating Conference

Executive Summary

The Demographic Estimating Conference met on July 8 and 9, 2008 to establish a population forecast based on a final April 1, 2007 population estimate and recent demographic-related data.

Florida's population growth has been mostly driven by positive net migration, the flow of residents into and out of the state. Net migration is estimated to have fallen to record low levels and is expected to continue to remain low over the next year. While there was little change to natural increase (births minus deaths), it is projected to exceed net migration through the first quarter of 2009. This is largely due to current economic conditions, including weakened housing markets and a national economic contraction, making it more difficult for people to relocate to the state.

The outlook is for slower population growth between April 1, 2007 and April 1, 2008. Instead of the February 2008 Demographic Estimating Conference increase of 0.92% or 171,608 net new residents, the conference estimated population grew by 0.66% or 122,456 during this time period. The weaker national outlook coupled with current economic conditions in the state, led the conference to forecast the same growth rate for the coming year, April 1, 2008 through April 1, 2009. As the economy starts to improve, population growth is expected to increase between April 1, 2009 and April 1, 2010 to 1.07% or 203,087 net new residents.

Between April 1, 2010 and April 1, 2018, population growth is expected to average 301,795 net new residents per year. This represents a compound growth rate of 1.5% over this time horizon. These increases are analogous to adding a city the size of Tampa every year. By April 1, 2013 Florida's population is expected to have broken the 20 million mark at 20,045,549.

FLORIDA DEMOGRAPHIC ESTIMATING CONFERENCE

Tables

Held July 9, 2008

Florida Resident Population

April 1

| Year | FDEC, 02/08 | | | FDEC, 07/08 | | |
|------------------|-------------|-------|---------|-------------|-------|---------|
| | Population | % Chg | Change | Population | % Chg | Change |
| 1990 | 12,938,071 | 2.27% | 287,136 | 12,938,071 | 2.27% | 287,136 |
| 1991 | 13,258,732 | 2.48% | 320,661 | 13,258,732 | 2.48% | 320,661 |
| 1992 | 13,497,541 | 1.80% | 238,809 | 13,497,541 | 1.80% | 238,809 |
| 1993 | 13,730,115 | 1.72% | 232,574 | 13,730,115 | 1.72% | 232,574 |
| 1994 | 14,043,757 | 2.28% | 313,642 | 14,043,757 | 2.28% | 313,642 |
| 1995 | 14,335,992 | 2.08% | 292,235 | 14,335,992 | 2.08% | 292,235 |
| 1996 | 14,623,421 | 2.00% | 287,429 | 14,623,421 | 2.00% | 287,429 |
| 1997 | 14,938,314 | 2.15% | 314,893 | 14,938,314 | 2.15% | 314,893 |
| 1998 | 15,230,421 | 1.96% | 292,107 | 15,230,421 | 1.96% | 292,107 |
| 1999 | 15,580,244 | 2.30% | 349,823 | 15,580,244 | 2.30% | 349,823 |
| 2000 | 15,982,824 | 2.58% | 402,580 | 15,982,824 | 2.58% | 402,580 |
| 2001 | 16,330,224 | 2.17% | 347,400 | 16,330,224 | 2.17% | 347,400 |
| 2002 | 16,674,608 | 2.11% | 344,384 | 16,674,608 | 2.11% | 344,384 |
| 2003 | 17,071,508 | 2.38% | 396,900 | 17,071,508 | 2.38% | 396,900 |
| 2004 | 17,516,732 | 2.61% | 445,224 | 17,516,732 | 2.61% | 445,224 |
| 2005 | 17,918,227 | 2.29% | 401,495 | 17,918,227 | 2.29% | 401,495 |
| 2006 | 18,349,132 | 2.40% | 430,905 | 18,349,132 | 2.40% | 430,905 |
| 2007 | 18,680,367 | 1.81% | 331,235 | 18,680,367 | 1.81% | 331,235 |
| Begins forecast. | | | | | | |
| 2008 | 18,851,975 | 0.92% | 171,608 | 18,802,823 | 0.66% | 122,456 |
| 2009 | 19,058,404 | 1.10% | 206,429 | 18,926,619 | 0.66% | 123,796 |
| 2010 | 19,308,069 | 1.31% | 249,665 | 19,129,706 | 1.07% | 203,087 |
| 2011 | 19,632,445 | 1.68% | 324,376 | 19,422,163 | 1.53% | 292,457 |
| 2012 | 19,976,994 | 1.75% | 344,549 | 19,735,673 | 1.61% | 313,510 |
| 2013 | 20,312,447 | 1.68% | 335,452 | 20,045,549 | 1.57% | 309,876 |
| 2014 | 20,637,535 | 1.60% | 325,088 | 20,350,499 | 1.52% | 304,950 |
| 2015 | 20,955,853 | 1.54% | 318,318 | 20,652,958 | 1.49% | 302,459 |
| 2016 | 21,266,839 | 1.48% | 310,987 | 20,952,197 | 1.45% | 299,239 |
| 2017 | 21,574,348 | 1.45% | 307,509 | 21,249,668 | 1.42% | 297,471 |
| 2018 | 21,878,443 | 1.41% | 304,095 | 21,544,061 | 1.39% | 294,393 |

Florida Resident Households

April 1

| Year | FDEC, 02/08 | | | FDEC, 07/08 | | |
|------------------|-------------|-------|---------|-------------|-------|---------|
| | Households | % Chg | Change | Households | % Chg | Change |
| 1990 | 5,134,869 | 3.40% | 168,985 | 5,134,869 | 3.40% | 168,985 |
| 1991 | 5,283,154 | 2.89% | 148,285 | 5,283,154 | 2.89% | 148,285 |
| 1992 | 5,378,499 | 1.80% | 95,345 | 5,378,499 | 1.80% | 95,345 |
| 1993 | 5,478,476 | 1.86% | 99,977 | 5,478,476 | 1.86% | 99,977 |
| 1994 | 5,589,093 | 2.02% | 110,617 | 5,589,093 | 2.02% | 110,617 |
| 1995 | 5,697,328 | 1.94% | 108,235 | 5,697,328 | 1.94% | 108,235 |
| 1996 | 5,806,031 | 1.91% | 108,703 | 5,806,031 | 1.91% | 108,703 |
| 1997 | 5,929,613 | 2.13% | 123,582 | 5,929,613 | 2.13% | 123,582 |
| 1998 | 6,040,514 | 1.87% | 110,901 | 6,040,514 | 1.87% | 110,901 |
| 1999 | 6,182,346 | 2.35% | 141,832 | 6,182,346 | 2.35% | 141,832 |
| 2000 | 6,338,075 | 2.52% | 155,729 | 6,338,075 | 2.52% | 155,729 |
| 2001 | 6,483,040 | 2.29% | 144,965 | 6,483,040 | 2.29% | 144,965 |
| 2002 | 6,620,674 | 2.12% | 137,634 | 6,620,674 | 2.12% | 137,634 |
| 2003 | 6,778,804 | 2.39% | 158,130 | 6,778,804 | 2.39% | 158,130 |
| 2004 | 6,949,759 | 2.52% | 170,955 | 6,949,759 | 2.52% | 170,955 |
| 2005 | 7,109,208 | 2.29% | 159,449 | 7,109,208 | 2.29% | 159,449 |
| 2006 | 7,291,013 | 2.56% | 181,805 | 7,291,013 | 2.56% | 181,805 |
| 2007 | 7,443,963 | 2.10% | 152,950 | 7,443,963 | 2.10% | 152,950 |
| Begins forecast. | | | | | | |
| 2008 | 7,529,646 | 1.15% | 85,683 | 7,506,425 | 0.84% | 62,462 |
| 2009 | 7,627,981 | 1.31% | 98,335 | 7,558,009 | 0.69% | 51,584 |
| 2010 | 7,734,875 | 1.40% | 106,895 | 7,639,561 | 1.08% | 81,552 |
| 2011 | 7,866,396 | 1.70% | 131,521 | 7,758,032 | 1.55% | 118,471 |
| 2012 | 8,007,677 | 1.80% | 141,280 | 7,885,469 | 1.64% | 127,437 |
| 2013 | 8,143,790 | 1.70% | 136,113 | 8,011,567 | 1.60% | 126,098 |
| 2014 | 8,274,788 | 1.61% | 130,998 | 8,135,583 | 1.55% | 124,016 |
| 2015 | 8,403,093 | 1.55% | 128,304 | 8,258,580 | 1.51% | 122,997 |
| 2016 | 8,528,477 | 1.49% | 125,385 | 8,380,267 | 1.47% | 121,687 |
| 2017 | 8,652,488 | 1.45% | 124,010 | 8,501,234 | 1.44% | 120,967 |
| 2018 | 8,775,148 | 1.42% | 122,661 | 8,620,996 | 1.41% | 119,762 |

Quarterly Data Table

| | 2006-1 | 2006-2 | 2006-3 | 2006-4 | 2007-1 | 2007-2 | 2007-3 | 2007-4 | 2008-1 | 2008-2 | 2008-3 | 2008-4 | 2009-1 | 2009-2 | 2009-3 | 2009-4 |
|----------------------------|----------|----------|----------|----------|----------|----------|----------|----------|----------|----------|----------|----------|----------|----------|----------|----------|
| Population | | | | | | | | | | | | | | | | |
| FDEC, 02/2008 | 18,296.1 | 18,394.9 | 18,482.5 | 18,563.5 | 18,642.0 | 18,708.3 | 18,755.2 | 18,795.4 | 18,831.0 | 18,873.0 | 18,922.4 | 18,975.0 | 19,030.0 | 19,086.8 | 19,145.8 | 19,208.1 |
| FDEC, 07/2008 | 18,296.6 | 18,399.4 | 18,495.8 | 18,581.1 | 18,650.4 | 18,700.5 | 18,735.5 | 18,763.2 | 18,789.5 | 18,816.2 | 18,844.4 | 18,875.0 | 18,907.9 | 18,945.3 | 18,987.6 | 19,037.3 |
| Population Growth Rate | | | | | | | | | | | | | | | | |
| FDEC, 02/2008 | 2.38 | 2.18 | 1.92 | 1.77 | 1.70 | 1.43 | 1.01 | 0.86 | 0.76 | 0.89 | 1.05 | 1.12 | 1.16 | 1.20 | 1.24 | 1.31 |
| FDEC, 07/2008 | 2.39 | 2.27 | 2.11 | 1.86 | 1.50 | 1.08 | 0.75 | 0.59 | 0.56 | 0.57 | 0.60 | 0.65 | 0.70 | 0.79 | 0.90 | 1.05 |
| Net Change in Population | | | | | | | | | | | | | | | | |
| FDEC, 02/2008 | 107.1 | 98.8 | 87.5 | 81.0 | 78.6 | 66.3 | 46.9 | 40.2 | 35.6 | 42.0 | 49.4 | 52.7 | 55.0 | 56.7 | 59.1 | 62.2 |
| FDEC, 07/2008 | 107.6 | 102.8 | 96.3 | 85.4 | 69.3 | 50.1 | 35.1 | 27.7 | 26.2 | 26.7 | 28.2 | 30.6 | 33.0 | 37.4 | 42.3 | 49.6 |
| Households | | | | | | | | | | | | | | | | |
| FDEC, 02/2008 | 7,269.3 | 7,311.7 | 7,351.7 | 7,389.5 | 7,425.7 | 7,456.9 | 7,480.3 | 7,500.6 | 7,519.1 | 7,540.1 | 7,564.1 | 7,589.3 | 7,615.1 | 7,640.9 | 7,667.1 | 7,694.1 |
| FDEC, 07/2008 | 7,269.5 | 7,313.5 | 7,357.0 | 7,396.5 | 7,430.0 | 7,456.7 | 7,474.5 | 7,488.7 | 7,500.6 | 7,512.3 | 7,524.2 | 7,536.8 | 7,550.4 | 7,565.6 | 7,582.7 | 7,602.5 |
| Household Growth Rate | | | | | | | | | | | | | | | | |
| FDEC, 02/2008 | 2.51 | 2.35 | 2.21 | 2.07 | 1.97 | 1.69 | 1.26 | 1.09 | 0.99 | 1.12 | 1.28 | 1.34 | 1.37 | 1.36 | 1.38 | 1.41 |
| FDEC, 07/2008 | 2.52 | 2.44 | 2.40 | 2.16 | 1.82 | 1.45 | 0.96 | 0.76 | 0.64 | 0.62 | 0.64 | 0.68 | 0.72 | 0.81 | 0.91 | 1.05 |
| Net Change in Households | | | | | | | | | | | | | | | | |
| FDEC, 02/2008 | 44.9 | 42.4 | 40.1 | 37.8 | 36.2 | 31.2 | 23.4 | 20.4 | 18.5 | 21.0 | 24.0 | 25.1 | 25.8 | 25.8 | 26.2 | 27.0 |
| FDEC, 07/2008 | 45.1 | 43.9 | 43.6 | 39.5 | 33.4 | 26.8 | 17.8 | 14.2 | 11.9 | 11.7 | 11.9 | 12.7 | 13.6 | 15.2 | 17.1 | 19.9 |
| Household Size | | | | | | | | | | | | | | | | |
| FDEC, 02/2008 | 2.517 | 2.516 | 2.514 | 2.512 | 2.510 | 2.509 | 2.507 | 2.506 | 2.504 | 2.503 | 2.502 | 2.500 | 2.499 | 2.498 | 2.497 | 2.496 |
| FDEC, 07/2008 | 2.517 | 2.516 | 2.514 | 2.512 | 2.510 | 2.508 | 2.507 | 2.506 | 2.505 | 2.505 | 2.505 | 2.504 | 2.504 | 2.504 | 2.504 | 2.504 |
| Household Size Growth Rate | | | | | | | | | | | | | | | | |
| FDEC, 02/2008 | -0.13 | -0.17 | -0.29 | -0.30 | -0.27 | -0.26 | -0.25 | -0.23 | -0.23 | -0.23 | -0.22 | -0.21 | -0.20 | -0.16 | -0.13 | -0.11 |
| FDEC, 07/2008 | -0.13 | -0.17 | -0.29 | -0.30 | -0.32 | -0.37 | -0.20 | -0.17 | -0.08 | -0.05 | -0.04 | -0.02 | -0.02 | -0.01 | -0.01 | 0.00 |
| Net Migration | | | | | | | | | | | | | | | | |
| FDEC, 02/2008 | 91.2 | 82.2 | 70.2 | 63.1 | 60.2 | 47.6 | 27.9 | 21.0 | 16.2 | 22.4 | 29.8 | 33.1 | 35.4 | 37.2 | 39.6 | 42.8 |
| FDEC, 07/2008 | 91.6 | 86.0 | 79.0 | 67.8 | 51.6 | 32.3 | 17.2 | 9.7 | 8.0 | 8.4 | 9.9 | 12.3 | 14.7 | 19.2 | 24.2 | 31.6 |
| Births | | | | | | | | | | | | | | | | |
| FDEC, 02/2008 | 58.3 | 59.0 | 59.6 | 60.2 | 60.6 | 61.0 | 61.2 | 61.5 | 61.7 | 61.8 | 61.9 | 62.0 | 62.1 | 62.2 | 62.3 | 62.3 |
| FDEC, 07/2008 | 58.6 | 59.2 | 59.6 | 59.7 | 59.7 | 59.6 | 59.6 | 59.8 | 60.0 | 60.1 | 60.1 | 60.2 | 60.2 | 60.3 | 60.3 | 60.4 |
| Deaths | | | | | | | | | | | | | | | | |
| FDEC, 02/2008 | 42.5 | 42.4 | 42.3 | 42.2 | 42.2 | 42.3 | 42.3 | 42.3 | 42.3 | 42.3 | 42.4 | 42.4 | 42.6 | 42.7 | 42.8 | 43.0 |
| FDEC, 07/2008 | 42.6 | 42.4 | 42.3 | 42.1 | 42.0 | 41.9 | 41.8 | 41.8 | 41.8 | 41.8 | 41.8 | 41.9 | 41.9 | 42.1 | 42.2 | 42.3 |
| Net Natural Increase | | | | | | | | | | | | | | | | |
| FDEC, 02/2008 | 15.8 | 16.6 | 17.4 | 18.0 | 18.4 | 18.7 | 18.9 | 19.2 | 19.4 | 19.5 | 19.6 | 19.6 | 19.6 | 19.5 | 19.5 | 19.4 |
| FDEC, 07/2008 | 16.0 | 16.8 | 17.4 | 17.6 | 17.7 | 17.7 | 17.8 | 18.0 | 18.2 | 18.3 | 18.3 | 18.3 | 18.3 | 18.2 | 18.1 | 18.0 |

Quarterly Data Table

| | 2010-1 | 2010-2 | 2010-3 | 2010-4 | 2011-1 | 2011-2 | 2011-3 | 2011-4 | 2012-1 | 2012-2 | 2012-3 | 2012-4 | 2013-1 | 2013-2 | 2013-3 | 2013-4 | 2014-1 | 2014-2 | 2014-3 | 2014-4 |
|----------------------------|----------|----------|----------|----------|----------|----------|----------|----------|----------|----------|----------|----------|----------|----------|----------|----------|----------|----------|----------|----------|
| Population | | | | | | | | | | | | | | | | | | | | |
| FDEC, 02/2008 | 19,272.9 | 19,343.2 | 19,419.0 | 19,502.3 | 19,588.8 | 19,676.1 | 19,763.9 | 19,849.7 | 19,934.8 | 20,019.2 | 20,104.2 | 20,188.1 | 20,271.2 | 20,353.7 | 20,435.5 | 20,516.6 | 20,597.4 | 20,677.7 | 20,757.7 | 20,837.3 |
| FDEC, 07/2008 | 19,096.5 | 19,162.9 | 19,233.0 | 19,306.9 | 19,383.3 | 19,461.0 | 19,539.2 | 19,617.7 | 19,696.5 | 19,774.8 | 19,852.9 | 19,930.4 | 20,007.2 | 20,083.9 | 20,160.2 | 20,236.4 | 20,312.5 | 20,388.5 | 20,464.3 | 20,539.9 |
| Population Growth Rate | | | | | | | | | | | | | | | | | | | | |
| FDEC, 02/2008 | 1.36 | 1.47 | 1.58 | 1.73 | 1.78 | 1.80 | 1.80 | 1.75 | 1.72 | 1.70 | 1.71 | 1.68 | 1.66 | 1.64 | 1.62 | 1.60 | 1.58 | 1.57 | 1.56 | 1.54 |
| FDEC, 07/2008 | 1.25 | 1.40 | 1.47 | 1.55 | 1.59 | 1.61 | 1.62 | 1.62 | 1.62 | 1.60 | 1.59 | 1.57 | 1.55 | 1.54 | 1.53 | 1.52 | 1.51 | 1.50 | 1.50 | 1.49 |
| Net Change in Population | | | | | | | | | | | | | | | | | | | | |
| FDEC, 02/2008 | 64.9 | 70.2 | 75.9 | 83.3 | 86.5 | 87.3 | 87.8 | 85.8 | 85.0 | 84.4 | 85.0 | 83.9 | 83.1 | 82.4 | 81.8 | 81.2 | 80.7 | 80.4 | 80.0 | 79.6 |
| FDEC, 07/2008 | 59.3 | 66.4 | 70.1 | 73.9 | 76.4 | 77.7 | 78.1 | 78.5 | 78.9 | 78.3 | 78.0 | 77.5 | 76.9 | 76.6 | 76.4 | 76.2 | 76.1 | 76.0 | 75.8 | 75.6 |
| Households | | | | | | | | | | | | | | | | | | | | |
| FDEC, 02/2008 | 7,720.6 | 7,749.1 | 7,779.8 | 7,813.3 | 7,848.8 | 7,883.9 | 7,920.1 | 7,955.5 | 7,990.3 | 8,025.0 | 8,059.7 | 8,093.7 | 8,127.2 | 8,160.4 | 8,193.4 | 8,226.1 | 8,258.6 | 8,291.0 | 8,323.2 | 8,355.3 |
| FDEC, 07/2008 | 7,626.2 | 7,652.9 | 7,681.4 | 7,711.3 | 7,742.3 | 7,773.8 | 7,805.6 | 7,837.5 | 7,869.5 | 7,901.4 | 7,933.1 | 7,964.7 | 7,996.0 | 8,027.2 | 8,058.2 | 8,089.2 | 8,120.1 | 8,151.0 | 8,181.9 | 8,212.6 |
| Household Growth Rate | | | | | | | | | | | | | | | | | | | | |
| FDEC, 02/2008 | 1.39 | 1.49 | 1.59 | 1.74 | 1.83 | 1.80 | 1.85 | 1.80 | 1.76 | 1.75 | 1.74 | 1.70 | 1.67 | 1.64 | 1.63 | 1.61 | 1.59 | 1.58 | 1.56 | 1.55 |
| FDEC, 07/2008 | 1.25 | 1.41 | 1.49 | 1.57 | 1.62 | 1.64 | 1.64 | 1.65 | 1.65 | 1.63 | 1.62 | 1.60 | 1.58 | 1.57 | 1.56 | 1.55 | 1.54 | 1.53 | 1.52 | 1.51 |
| Net Change in Households | | | | | | | | | | | | | | | | | | | | |
| FDEC, 02/2008 | 26.5 | 28.5 | 30.7 | 33.5 | 35.5 | 35.1 | 36.2 | 35.4 | 34.8 | 34.7 | 34.7 | 34.0 | 33.5 | 33.2 | 33.0 | 32.7 | 32.5 | 32.4 | 32.2 | 32.1 |
| FDEC, 07/2008 | 23.7 | 26.7 | 28.4 | 29.9 | 31.0 | 31.6 | 31.8 | 31.9 | 32.1 | 31.9 | 31.7 | 31.5 | 31.3 | 31.2 | 31.1 | 31.0 | 30.9 | 30.9 | 30.8 | 30.8 |
| Household Size | | | | | | | | | | | | | | | | | | | | |
| FDEC, 02/2008 | 2.496 | 2.496 | 2.496 | 2.496 | 2.496 | 2.496 | 2.495 | 2.495 | 2.495 | 2.495 | 2.494 | 2.494 | 2.494 | 2.494 | 2.494 | 2.494 | 2.494 | 2.494 | 2.494 | 2.494 |
| FDEC, 07/2008 | 2.504 | 2.504 | 2.504 | 2.504 | 2.504 | 2.503 | 2.503 | 2.503 | 2.503 | 2.503 | 2.503 | 2.502 | 2.502 | 2.502 | 2.502 | 2.501 | 2.501 | 2.501 | 2.501 | 2.501 |
| Household Size Growth Rate | | | | | | | | | | | | | | | | | | | | |
| FDEC, 02/2008 | -0.03 | -0.02 | -0.01 | -0.01 | -0.04 | -0.01 | -0.05 | -0.05 | -0.04 | -0.04 | -0.03 | -0.02 | -0.01 | -0.01 | -0.01 | -0.01 | -0.01 | -0.01 | -0.01 | -0.01 |
| FDEC, 07/2008 | 0.00 | -0.01 | -0.02 | -0.02 | -0.02 | -0.03 | -0.03 | -0.03 | -0.03 | -0.03 | -0.03 | -0.03 | -0.03 | -0.03 | -0.03 | -0.03 | -0.03 | -0.03 | -0.03 | -0.03 |
| Net Migration | | | | | | | | | | | | | | | | | | | | |
| FDEC, 02/2008 | 45.6 | 51.0 | 56.7 | 64.2 | 67.5 | 68.5 | 69.0 | 67.1 | 66.3 | 65.7 | 66.3 | 65.3 | 64.6 | 63.9 | 63.3 | 62.8 | 62.3 | 62.0 | 61.8 | 61.4 |
| FDEC, 07/2008 | 41.3 | 48.5 | 52.3 | 56.2 | 58.8 | 60.2 | 60.6 | 61.0 | 61.5 | 61.0 | 60.7 | 60.3 | 59.7 | 59.5 | 59.3 | 59.2 | 59.1 | 59.0 | 59.0 | 58.9 |
| Births | | | | | | | | | | | | | | | | | | | | |
| FDEC, 02/2008 | 62.4 | 62.5 | 62.6 | 62.7 | 62.8 | 62.9 | 63.1 | 63.3 | 63.5 | 63.7 | 63.9 | 64.1 | 64.3 | 64.5 | 64.8 | 65.0 | 65.2 | 65.4 | 65.6 | 65.8 |
| FDEC, 07/2008 | 60.4 | 60.5 | 60.6 | 60.7 | 60.8 | 61.0 | 61.1 | 61.3 | 61.5 | 61.7 | 61.9 | 62.1 | 62.3 | 62.5 | 62.7 | 62.9 | 63.1 | 63.3 | 63.5 | 63.7 |
| Deaths | | | | | | | | | | | | | | | | | | | | |
| FDEC, 02/2008 | 43.1 | 43.3 | 43.4 | 43.6 | 43.9 | 44.1 | 44.3 | 44.6 | 44.8 | 45.1 | 45.3 | 45.5 | 45.8 | 46.0 | 46.3 | 46.5 | 46.8 | 47.1 | 47.4 | 47.6 |
| FDEC, 07/2008 | 42.5 | 42.6 | 42.8 | 43.0 | 43.2 | 43.4 | 43.6 | 43.8 | 44.1 | 44.3 | 44.6 | 44.8 | 45.1 | 45.3 | 45.6 | 45.8 | 46.1 | 46.4 | 46.6 | 46.9 |
| Net Natural Increase | | | | | | | | | | | | | | | | | | | | |
| FDEC, 02/2008 | 19.3 | 19.2 | 19.2 | 19.1 | 18.9 | 18.8 | 18.8 | 18.8 | 18.7 | 18.7 | 18.7 | 18.6 | 18.6 | 18.5 | 18.5 | 18.4 | 18.4 | 18.3 | 18.3 | 18.2 |
| FDEC, 07/2008 | 18.0 | 17.9 | 17.8 | 17.7 | 17.6 | 17.6 | 17.5 | 17.5 | 17.4 | 17.3 | 17.3 | 17.2 | 17.2 | 17.1 | 17.1 | 17.0 | 17.0 | 16.9 | 16.9 | 16.8 |

Quarterly Data Table

| | 2015-1 | 2015-2 | 2015-3 | 2015-4 | 2016-1 | 2016-2 | 2016-3 | 2016-4 | 2017-1 | 2017-2 | 2017-3 | 2017-4 | 2018-1 | 2018-2 |
|----------------------------|----------|----------|----------|----------|----------|----------|----------|----------|----------|----------|----------|----------|----------|----------|
| Population | | | | | | | | | | | | | | |
| FDEC, 02/2008 | 20,916.6 | 20,995.1 | 21,073.1 | 21,150.8 | 21,228.2 | 21,305.5 | 21,382.6 | 21,459.5 | 21,536.2 | 21,612.5 | 21,688.7 | 21,764.7 | 21,840.5 | 21,916.4 |
| FDEC, 07/2008 | 20,615.4 | 20,690.5 | 20,765.5 | 20,840.3 | 20,914.9 | 20,989.5 | 21,064.0 | 21,138.4 | 21,212.7 | 21,286.7 | 21,360.4 | 21,434.3 | 21,507.5 | 21,580.6 |
| Population Growth Rate | | | | | | | | | | | | | | |
| FDEC, 02/2008 | 1.53 | 1.51 | 1.49 | 1.48 | 1.47 | 1.46 | 1.46 | 1.45 | 1.44 | 1.43 | 1.42 | 1.41 | 1.40 | 1.40 |
| FDEC, 07/2008 | 1.48 | 1.47 | 1.46 | 1.45 | 1.44 | 1.43 | 1.43 | 1.42 | 1.41 | 1.40 | 1.39 | 1.39 | 1.37 | 1.37 |
| Net Change in Population | | | | | | | | | | | | | | |
| FDEC, 02/2008 | 79.3 | 78.5 | 78.0 | 77.7 | 77.4 | 77.2 | 77.1 | 76.9 | 76.7 | 76.4 | 76.1 | 76.0 | 75.9 | 75.8 |
| FDEC, 07/2008 | 75.4 | 75.2 | 75.0 | 74.8 | 74.6 | 74.5 | 74.5 | 74.4 | 74.2 | 74.0 | 73.8 | 73.9 | 73.2 | 73.1 |
| Households | | | | | | | | | | | | | | |
| FDEC, 02/2008 | 8,387.3 | 8,418.9 | 8,450.4 | 8,481.7 | 8,512.9 | 8,544.0 | 8,575.1 | 8,606.2 | 8,637.1 | 8,667.9 | 8,698.6 | 8,729.2 | 8,759.9 | 8,790.4 |
| FDEC, 07/2008 | 8,243.3 | 8,273.9 | 8,304.4 | 8,334.8 | 8,365.1 | 8,395.4 | 8,425.7 | 8,456.0 | 8,486.2 | 8,516.3 | 8,546.3 | 8,576.3 | 8,606.1 | 8,635.9 |
| Household Growth Rate | | | | | | | | | | | | | | |
| FDEC, 02/2008 | 1.54 | 1.52 | 1.50 | 1.49 | 1.48 | 1.47 | 1.46 | 1.45 | 1.44 | 1.43 | 1.42 | 1.42 | 1.41 | 1.40 |
| FDEC, 07/2008 | 1.50 | 1.49 | 1.48 | 1.47 | 1.46 | 1.46 | 1.45 | 1.44 | 1.44 | 1.43 | 1.42 | 1.41 | 1.40 | 1.39 |
| Net Change in Households | | | | | | | | | | | | | | |
| FDEC, 02/2008 | 32.0 | 31.7 | 31.4 | 31.3 | 31.2 | 31.1 | 31.1 | 31.0 | 30.9 | 30.8 | 30.7 | 30.6 | 30.6 | 30.6 |
| FDEC, 07/2008 | 30.7 | 30.6 | 30.5 | 30.4 | 30.3 | 30.3 | 30.3 | 30.3 | 30.2 | 30.1 | 30.0 | 30.0 | 29.8 | 29.7 |
| Household Size | | | | | | | | | | | | | | |
| FDEC, 02/2008 | 2.494 | 2.494 | 2.494 | 2.494 | 2.494 | 2.494 | 2.494 | 2.494 | 2.493 | 2.493 | 2.493 | 2.493 | 2.493 | 2.493 |
| FDEC, 07/2008 | 2.501 | 2.501 | 2.501 | 2.500 | 2.500 | 2.500 | 2.500 | 2.500 | 2.500 | 2.500 | 2.499 | 2.499 | 2.499 | 2.499 |
| Household Size Growth Rate | | | | | | | | | | | | | | |
| FDEC, 02/2008 | -0.01 | -0.01 | -0.01 | -0.01 | -0.01 | -0.01 | -0.01 | -0.01 | -0.01 | -0.01 | -0.01 | -0.01 | -0.01 | -0.01 |
| FDEC, 07/2008 | -0.02 | -0.02 | -0.02 | -0.02 | -0.02 | -0.02 | -0.02 | -0.02 | -0.02 | -0.02 | -0.02 | -0.02 | -0.02 | -0.02 |
| Net Migration | | | | | | | | | | | | | | |
| FDEC, 02/2008 | 61.1 | 60.5 | 60.0 | 59.8 | 59.6 | 59.5 | 59.5 | 59.4 | 59.2 | 59.1 | 59.0 | 58.9 | 59.0 | 59.1 |
| FDEC, 07/2008 | 58.7 | 58.5 | 58.4 | 58.3 | 58.2 | 58.2 | 58.3 | 58.3 | 58.3 | 58.1 | 58.0 | 58.3 | 57.7 | 57.7 |
| Births | | | | | | | | | | | | | | |
| FDEC, 02/2008 | 66.0 | 66.2 | 66.4 | 66.6 | 66.8 | 66.9 | 67.1 | 67.3 | 67.5 | 67.6 | 67.8 | 67.9 | 68.1 | 68.2 |
| FDEC, 07/2008 | 63.9 | 64.0 | 64.2 | 64.4 | 64.6 | 64.7 | 64.9 | 65.0 | 65.2 | 65.3 | 65.5 | 65.6 | 65.8 | 65.9 |
| Deaths | | | | | | | | | | | | | | |
| FDEC, 02/2008 | 47.9 | 48.1 | 48.4 | 48.7 | 48.9 | 49.2 | 49.5 | 49.8 | 50.0 | 50.3 | 50.6 | 50.9 | 51.2 | 51.5 |
| FDEC, 07/2008 | 47.1 | 47.4 | 47.6 | 47.9 | 48.1 | 48.4 | 48.7 | 48.9 | 49.2 | 49.5 | 49.7 | 50.0 | 50.3 | 50.6 |
| Net Natural Increase | | | | | | | | | | | | | | |
| FDEC, 02/2008 | 18.1 | 18.1 | 18.0 | 17.9 | 17.8 | 17.7 | 17.6 | 17.5 | 17.4 | 17.3 | 17.2 | 17.0 | 16.9 | 16.8 |
| FDEC, 07/2008 | 16.7 | 16.7 | 16.6 | 16.5 | 16.4 | 16.3 | 16.2 | 16.1 | 16.0 | 15.9 | 15.7 | 15.6 | 15.5 | 15.3 |

Fiscal Year Data Table

| | 1990-91 | 1991-92 | 1992-93 | 1993-94 | 1994-95 | 1995-96 | 1996-97 | 1997-98 | 1998-99 | 1999-00 | 2000-01 | 2001-02 | 2002-03 | 2003-04 | 2004-05 |
|--------------------------|----------|----------|----------|----------|----------|----------|----------|----------|----------|----------|----------|----------|----------|----------|----------|
| Population | | | | | | | | | | | | | | | |
| FDEC, 02/2008 | 13,178.3 | 13,440.1 | 13,671.5 | 13,963.0 | 14,263.5 | 14,551.6 | 14,858.6 | 15,157.3 | 15,490.7 | 15,881.0 | 16,244.9 | 16,587.9 | 16,970.3 | 17,404.2 | 17,819.2 |
| FDEC, 07/2008 | 13,178.3 | 13,440.1 | 13,671.5 | 13,963.0 | 14,263.5 | 14,551.6 | 14,858.6 | 15,157.3 | 15,490.7 | 15,881.0 | 16,244.9 | 16,587.9 | 16,970.3 | 17,404.2 | 17,819.2 |
| Growth Rate | | | | | | | | | | | | | | | |
| FDEC, 02/2008 | 2.42 | 1.99 | 1.72 | 2.13 | 2.15 | 2.02 | 2.11 | 2.01 | 2.20 | 2.52 | 2.29 | 2.11 | 2.31 | 2.56 | 2.38 |
| FDEC, 07/2008 | 2.42 | 1.99 | 1.72 | 2.13 | 2.15 | 2.02 | 2.11 | 2.01 | 2.20 | 2.52 | 2.29 | 2.11 | 2.31 | 2.56 | 2.38 |
| Net Change in Population | | | | | | | | | | | | | | | |
| FDEC, 02/2008 | 312.1 | 234.3 | 242.3 | 313.4 | 290.5 | 291.0 | 311.8 | 297.2 | 358.7 | 397.6 | 344.5 | 349.5 | 404.9 | 440.8 | 404.7 |
| FDEC, 07/2008 | 312.1 | 234.3 | 242.3 | 313.4 | 290.5 | 291.0 | 311.8 | 297.2 | 358.7 | 397.6 | 344.5 | 349.5 | 404.9 | 440.8 | 404.7 |
| Households | | | | | | | | | | | | | | | |
| FDEC, 02/2008 | 5,230.8 | 5,334.4 | 5,424.8 | 5,538.3 | 5,655.1 | 5,767.0 | 5,887.2 | 6,005.0 | 6,138.4 | 6,296.7 | 6,447.6 | 6,586.2 | 6,738.5 | 6,906.6 | 7,069.7 |
| FDEC, 07/2008 | 5,230.8 | 5,334.4 | 5,424.8 | 5,538.3 | 5,655.1 | 5,767.0 | 5,887.2 | 6,005.0 | 6,138.4 | 6,296.7 | 6,447.6 | 6,586.2 | 6,738.5 | 6,906.6 | 7,069.7 |
| Growth Rate | | | | | | | | | | | | | | | |
| FDEC, 02/2008 | 2.44 | 1.98 | 1.69 | 2.09 | 2.11 | 1.98 | 2.08 | 2.00 | 2.22 | 2.58 | 2.40 | 2.15 | 2.31 | 2.49 | 2.36 |
| FDEC, 07/2008 | 2.44 | 1.98 | 1.69 | 2.09 | 2.11 | 1.98 | 2.08 | 2.00 | 2.22 | 2.58 | 2.40 | 2.15 | 2.31 | 2.49 | 2.36 |
| Net Change in Households | | | | | | | | | | | | | | | |
| FDEC, 02/2008 | 124.4 | 92.2 | 94.4 | 122.0 | 112.8 | 113.3 | 122.3 | 117.9 | 144.1 | 162.5 | 143.0 | 139.6 | 160.4 | 169.5 | 162.5 |
| FDEC, 07/2008 | 124.4 | 92.2 | 94.4 | 122.0 | 112.8 | 113.3 | 122.3 | 117.9 | 144.1 | 162.5 | 143.0 | 139.6 | 160.4 | 169.5 | 162.5 |
| Household Size | | | | | | | | | | | | | | | |
| FDEC, 02/2008 | 2.519 | 2.520 | 2.520 | 2.521 | 2.522 | 2.523 | 2.524 | 2.524 | 2.524 | 2.522 | 2.520 | 2.519 | 2.518 | 2.520 | 2.521 |
| FDEC, 07/2008 | 2.519 | 2.520 | 2.520 | 2.521 | 2.522 | 2.523 | 2.524 | 2.524 | 2.524 | 2.522 | 2.520 | 2.519 | 2.518 | 2.520 | 2.521 |
| Growth Rate | | | | | | | | | | | | | | | |
| FDEC, 02/2008 | -0.02 | 0.01 | 0.03 | 0.04 | 0.04 | 0.04 | 0.03 | 0.01 | -0.02 | -0.06 | -0.10 | -0.04 | -0.01 | 0.06 | 0.02 |
| FDEC, 07/2008 | -0.02 | 0.01 | 0.03 | 0.04 | 0.04 | 0.04 | 0.03 | 0.01 | -0.02 | -0.06 | -0.10 | -0.04 | -0.01 | 0.06 | 0.02 |
| Net Migration | | | | | | | | | | | | | | | |
| FDEC, 02/2008 | 249.2 | 178.7 | 192.2 | 267.6 | 250.4 | 254.9 | 274.3 | 257.9 | 322.8 | 359.8 | 303.5 | 312.3 | 364.4 | 393.8 | 352.5 |
| FDEC, 07/2008 | 249.0 | 178.7 | 192.2 | 267.6 | 250.4 | 254.9 | 274.2 | 257.9 | 322.8 | 359.8 | 303.4 | 312.3 | 364.5 | 393.7 | 352.7 |
| Births | | | | | | | | | | | | | | | |
| FDEC, 02/2008 | 197.0 | 191.7 | 192.1 | 191.8 | 189.3 | 188.6 | 190.5 | 194.3 | 195.8 | 200.3 | 205.9 | 205.0 | 208.5 | 215.3 | 221.6 |
| FDEC, 07/2008 | 197.2 | 191.7 | 192.1 | 191.8 | 189.3 | 188.6 | 190.6 | 194.3 | 195.8 | 200.3 | 205.9 | 205.0 | 208.4 | 215.4 | 221.3 |
| Deaths | | | | | | | | | | | | | | | |
| FDEC, 02/2008 | 134.1 | 136.2 | 142.0 | 146.0 | 149.1 | 152.6 | 153.0 | 155.0 | 160.0 | 162.4 | 164.9 | 167.8 | 168.0 | 168.2 | 169.3 |
| FDEC, 07/2008 | 134.1 | 136.2 | 142.0 | 146.0 | 149.1 | 152.6 | 153.0 | 155.0 | 160.0 | 162.4 | 164.9 | 167.8 | 168.0 | 168.3 | 169.3 |
| Net Natural Increase | | | | | | | | | | | | | | | |
| FDEC, 02/2008 | 62.9 | 55.6 | 50.1 | 45.8 | 40.1 | 36.0 | 37.6 | 39.3 | 35.8 | 37.9 | 41.1 | 37.2 | 40.4 | 47.1 | 52.2 |
| FDEC, 07/2008 | 63.1 | 55.6 | 50.1 | 45.8 | 40.2 | 36.0 | 37.6 | 39.3 | 35.8 | 37.9 | 41.1 | 37.2 | 40.4 | 47.1 | 52.0 |

Fiscal Year Data Table

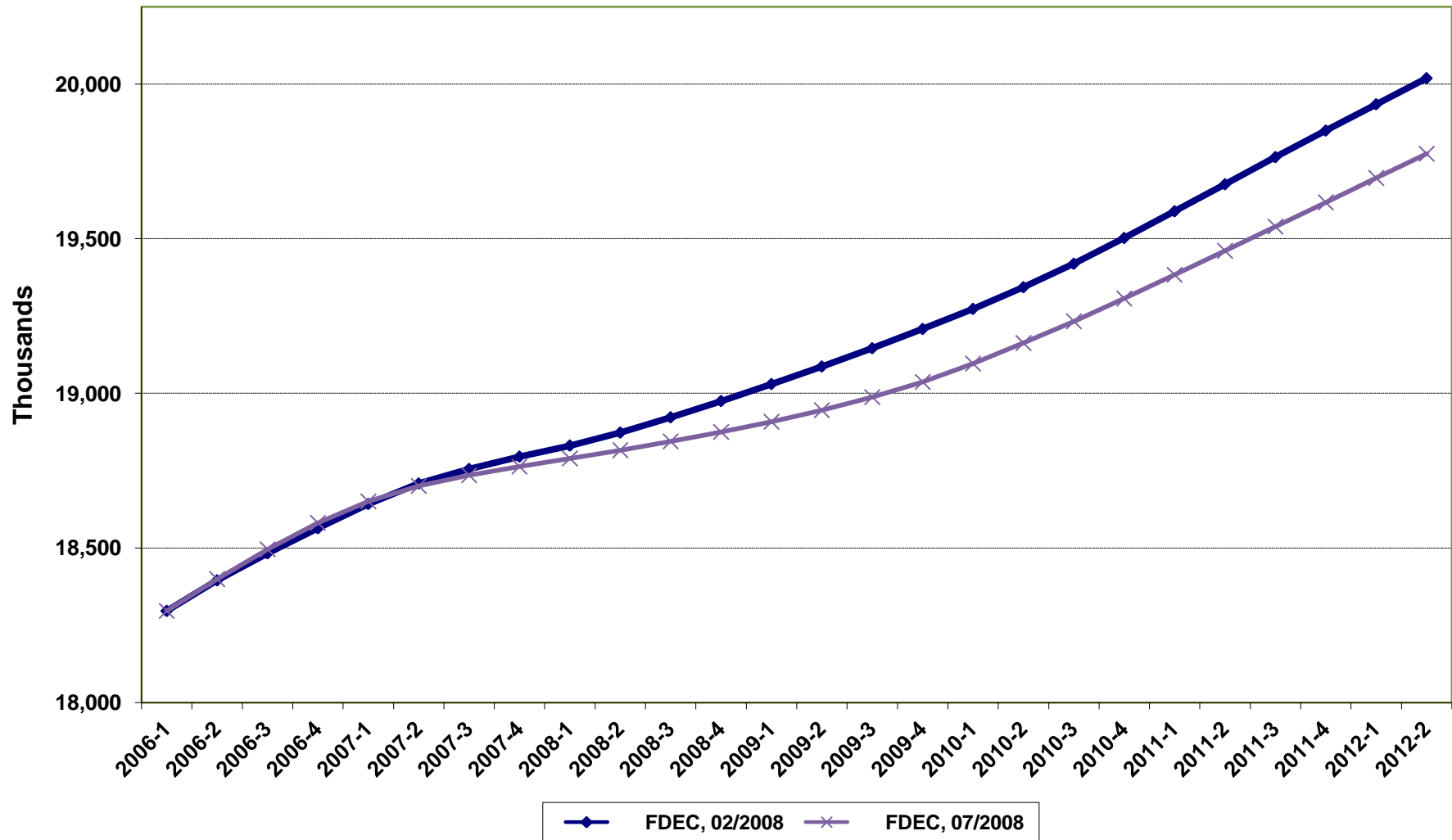
| | 2005-06 | 2006-07 | 2007-08 | 2008-09 | 2009-10 | 2010-11 | 2011-12 | 2012-13 | 2013-14 | 2014-15 | 2015-16 | 2016-17 | 2017-18 |
|--------------------------|----------|----------|----------|----------|----------|----------|----------|----------|----------|----------|----------|----------|----------|
| Population | | | | | | | | | | | | | |
| FDEC, 02/2008 | 18,240.2 | 18,599.1 | 18,813.6 | 19,003.6 | 19,242.5 | 19,546.6 | 19,891.9 | 20,229.3 | 20,556.8 | 20,876.7 | 21,189.4 | 21,497.7 | 21,802.6 |
| FDEC, 07/2008 | 18,241.4 | 18,606.9 | 18,776.1 | 18,893.1 | 19,071.1 | 19,346.1 | 19,657.0 | 19,968.6 | 20,274.4 | 20,577.5 | 20,877.6 | 21,175.4 | 21,470.7 |
| Growth Rate | | | | | | | | | | | | | |
| FDEC, 02/2008 | 2.36 | 1.97 | 1.15 | 1.01 | 1.26 | 1.58 | 1.77 | 1.70 | 1.62 | 1.56 | 1.50 | 1.45 | 1.42 |
| FDEC, 07/2008 | 2.37 | 2.00 | 0.91 | 0.62 | 0.94 | 1.44 | 1.61 | 1.58 | 1.53 | 1.50 | 1.46 | 1.43 | 1.39 |
| Net Change in Population | | | | | | | | | | | | | |
| FDEC, 02/2008 | 422.6 | 313.4 | 164.7 | 213.8 | 256.4 | 332.9 | 343.1 | 334.5 | 324.0 | 317.4 | 310.3 | 307.1 | 303.8 |
| FDEC, 07/2008 | 427.1 | 301.1 | 115.7 | 129.1 | 217.6 | 298.1 | 313.8 | 309.0 | 304.6 | 302.1 | 298.9 | 297.2 | 293.9 |
| Households | | | | | | | | | | | | | |
| FDEC, 02/2008 | 7,245.9 | 7,406.0 | 7,510.0 | 7,602.3 | 7,707.7 | 7,831.5 | 7,972.7 | 8,110.2 | 8,242.2 | 8,371.2 | 8,497.3 | 8,621.6 | 8,744.5 |
| FDEC, 07/2008 | 7,246.4 | 7,410.1 | 7,494.0 | 7,544.3 | 7,616.1 | 7,727.2 | 7,853.5 | 7,980.2 | 8,104.6 | 8,227.9 | 8,349.9 | 8,471.0 | 8,591.2 |
| Growth Rate | | | | | | | | | | | | | |
| FDEC, 02/2008 | 2.49 | 2.21 | 1.41 | 1.23 | 1.39 | 1.61 | 1.80 | 1.72 | 1.63 | 1.56 | 1.51 | 1.46 | 1.43 |
| FDEC, 07/2008 | 2.50 | 2.26 | 1.13 | 0.67 | 0.95 | 1.46 | 1.63 | 1.61 | 1.56 | 1.52 | 1.48 | 1.45 | 1.42 |
| Net Change in Households | | | | | | | | | | | | | |
| FDEC, 02/2008 | 179.6 | 145.2 | 83.3 | 100.8 | 108.2 | 134.8 | 141.1 | 135.4 | 130.6 | 127.9 | 125.1 | 123.8 | 122.6 |
| FDEC, 07/2008 | 181.4 | 143.3 | 55.5 | 53.3 | 87.3 | 120.9 | 127.6 | 125.7 | 123.9 | 122.8 | 121.6 | 120.9 | 119.6 |
| Household Size | | | | | | | | | | | | | |
| FDEC, 02/2008 | 2.517 | 2.511 | 2.505 | 2.500 | 2.497 | 2.496 | 2.495 | 2.494 | 2.494 | 2.494 | 2.494 | 2.493 | 2.493 |
| FDEC, 07/2008 | 2.517 | 2.511 | 2.505 | 2.504 | 2.504 | 2.504 | 2.503 | 2.502 | 2.502 | 2.501 | 2.500 | 2.500 | 2.499 |
| Growth Rate | | | | | | | | | | | | | |
| FDEC, 02/2008 | -0.13 | -0.24 | -0.25 | -0.22 | -0.13 | -0.03 | -0.04 | -0.03 | -0.01 | -0.01 | -0.01 | -0.01 | -0.01 |
| FDEC, 07/2008 | -0.13 | -0.25 | -0.22 | -0.05 | -0.01 | -0.02 | -0.03 | -0.03 | -0.03 | -0.03 | -0.02 | -0.02 | -0.02 |
| Net Migration | | | | | | | | | | | | | |
| FDEC, 02/2008 | 361.0 | 241.0 | 87.6 | 135.6 | 179.1 | 256.9 | 268.2 | 260.1 | 250.5 | 244.8 | 238.9 | 237.2 | 235.9 |
| FDEC, 07/2008 | 365.0 | 230.7 | 43.3 | 56.0 | 145.6 | 227.4 | 244.1 | 240.2 | 236.6 | 235.0 | 233.1 | 233.0 | 231.8 |
| Births | | | | | | | | | | | | | |
| FDEC, 02/2008 | 231.7 | 241.4 | 246.3 | 248.3 | 249.5 | 251.1 | 253.7 | 257.0 | 260.3 | 263.6 | 266.7 | 269.5 | 272.0 |
| FDEC, 07/2008 | 232.4 | 238.6 | 239.5 | 240.8 | 241.6 | 243.1 | 245.6 | 248.6 | 251.9 | 255.0 | 257.9 | 260.5 | 262.7 |
| Deaths | | | | | | | | | | | | | |
| FDEC, 02/2008 | 170.1 | 169.0 | 169.2 | 170.0 | 172.2 | 175.0 | 178.8 | 182.6 | 186.7 | 191.0 | 195.2 | 199.6 | 204.1 |
| FDEC, 07/2008 | 170.3 | 168.2 | 167.1 | 167.6 | 169.6 | 172.4 | 175.9 | 179.8 | 183.9 | 188.0 | 192.1 | 196.3 | 200.6 |
| Net Natural Increase | | | | | | | | | | | | | |
| FDEC, 02/2008 | 61.6 | 72.4 | 77.1 | 78.2 | 77.4 | 76.0 | 74.9 | 74.4 | 73.6 | 72.6 | 71.5 | 69.9 | 67.9 |
| FDEC, 07/2008 | 62.1 | 70.4 | 72.4 | 73.1 | 72.0 | 70.8 | 69.7 | 68.9 | 68.0 | 67.0 | 65.8 | 64.2 | 62.1 |

FLORIDA DEMOGRAPHIC ESTIMATING CONFERENCE

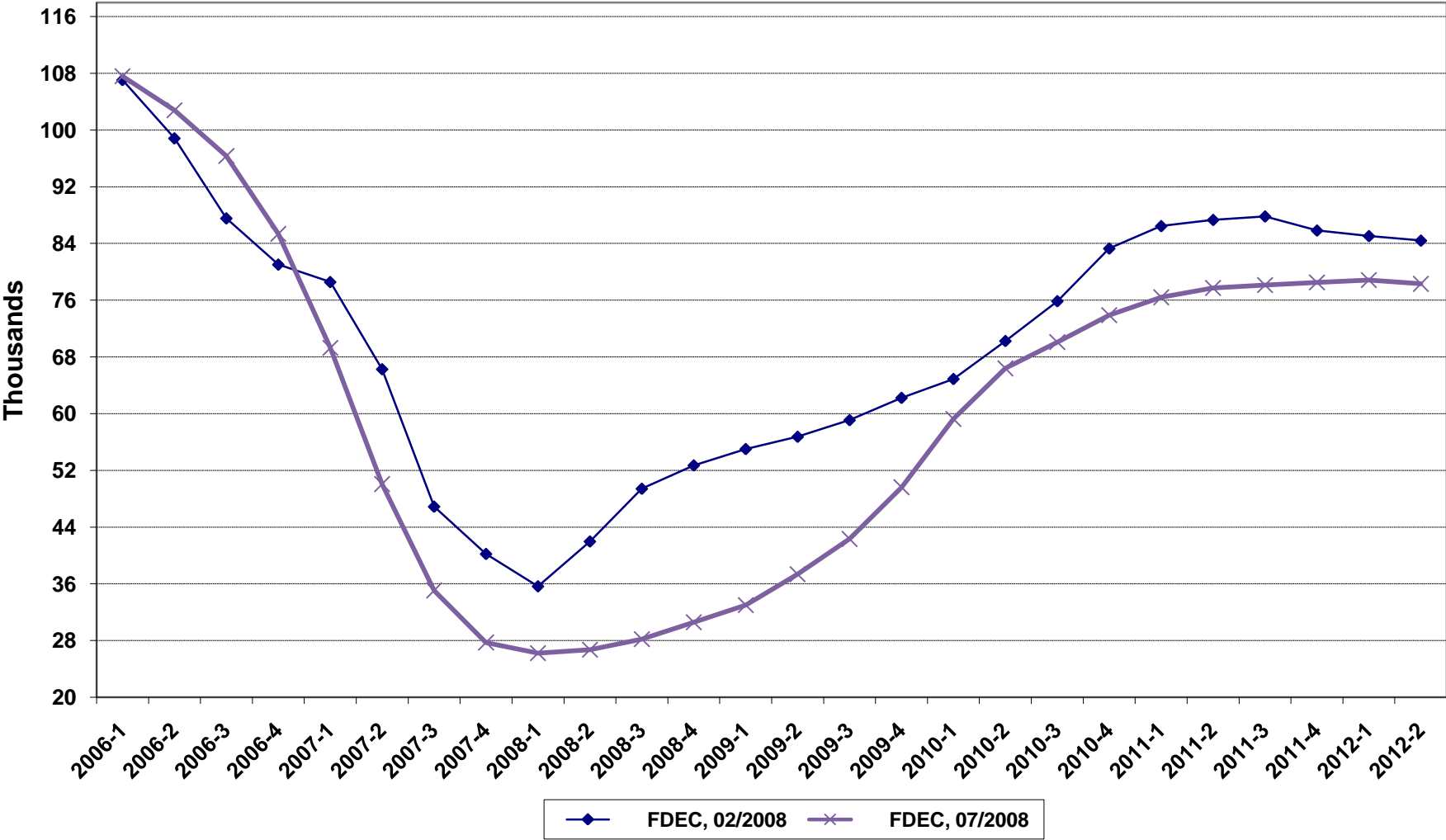
Charts

Held July 9, 2008

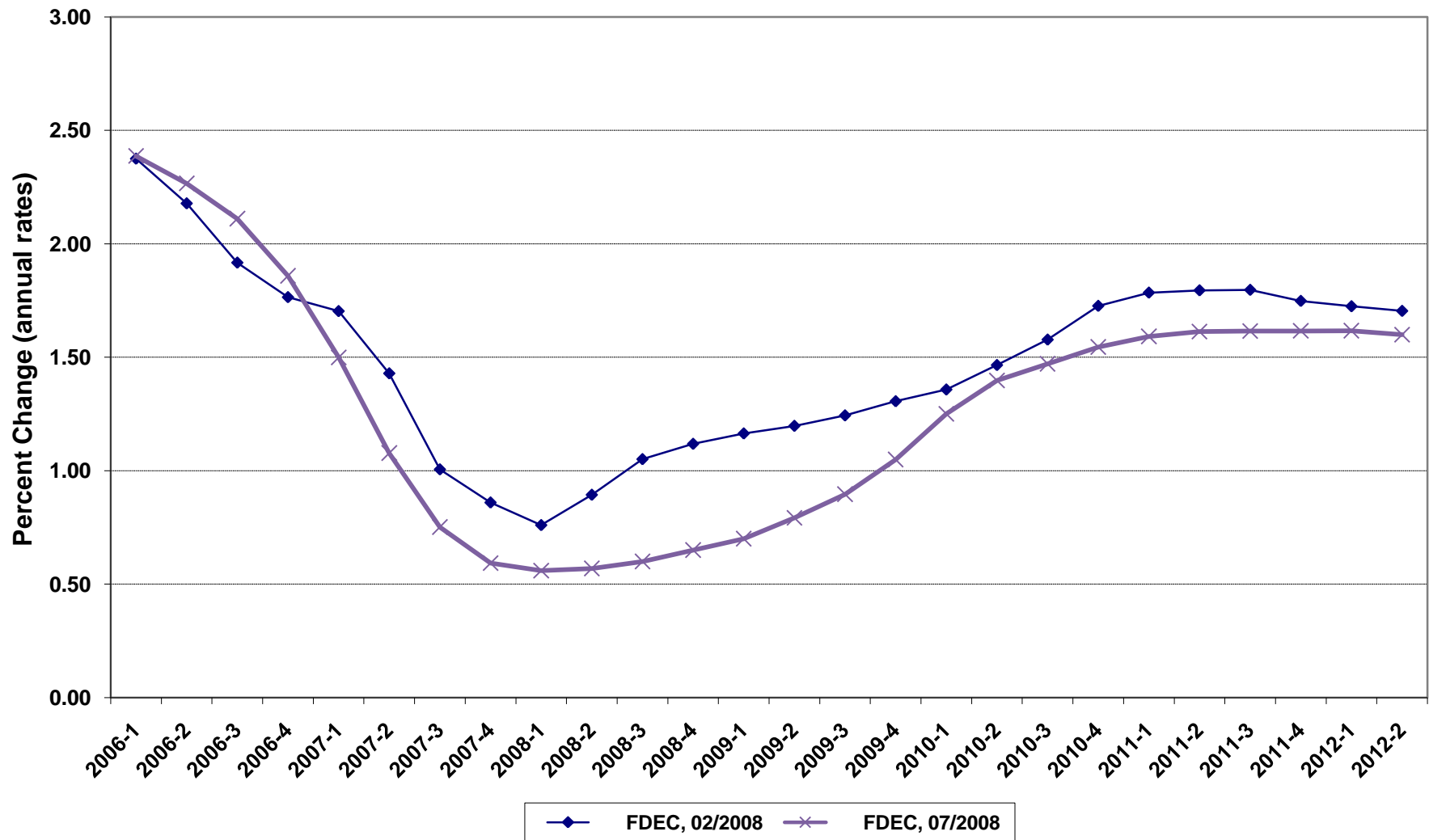
Florida Resident Population



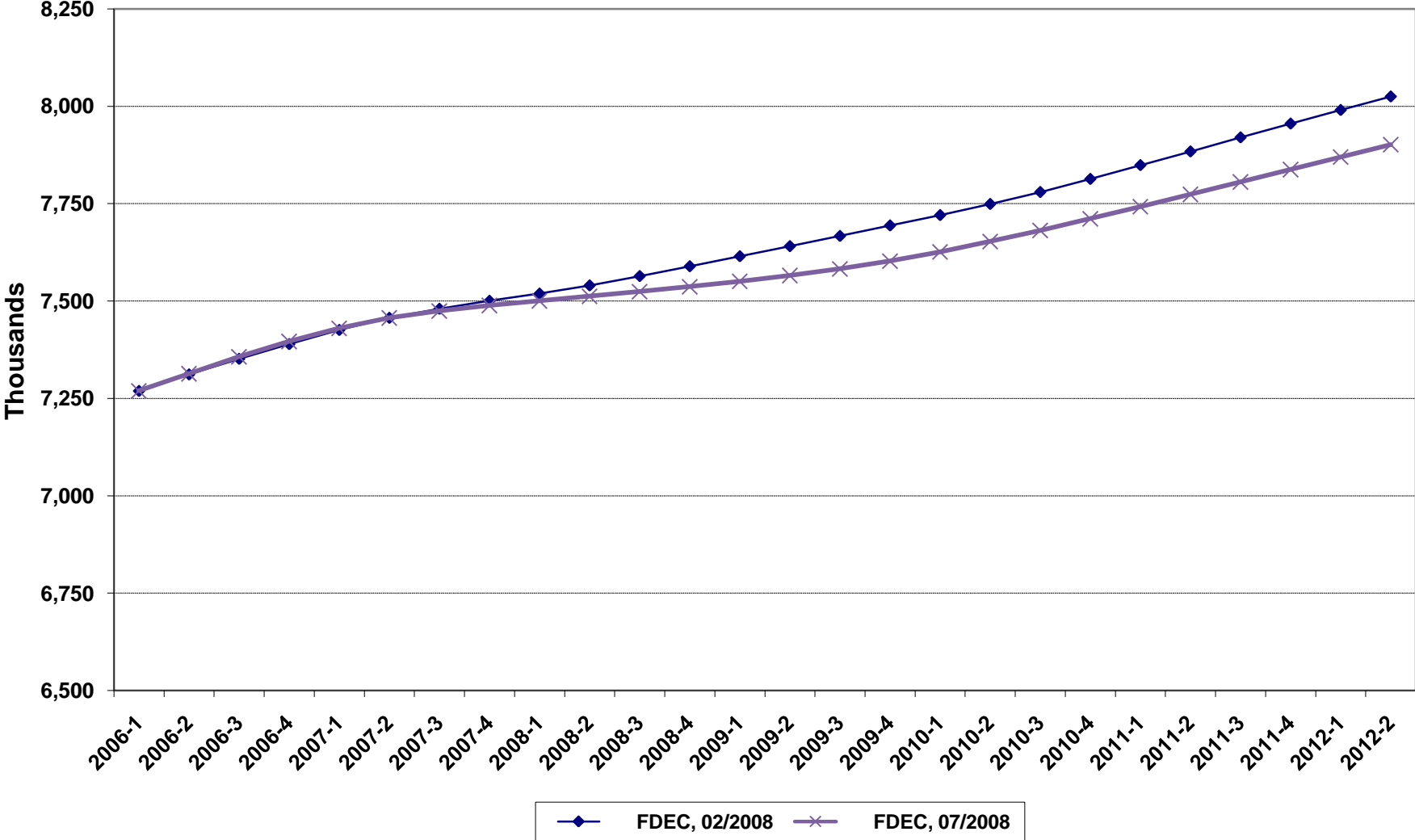
Net Change In Florida Resident Population



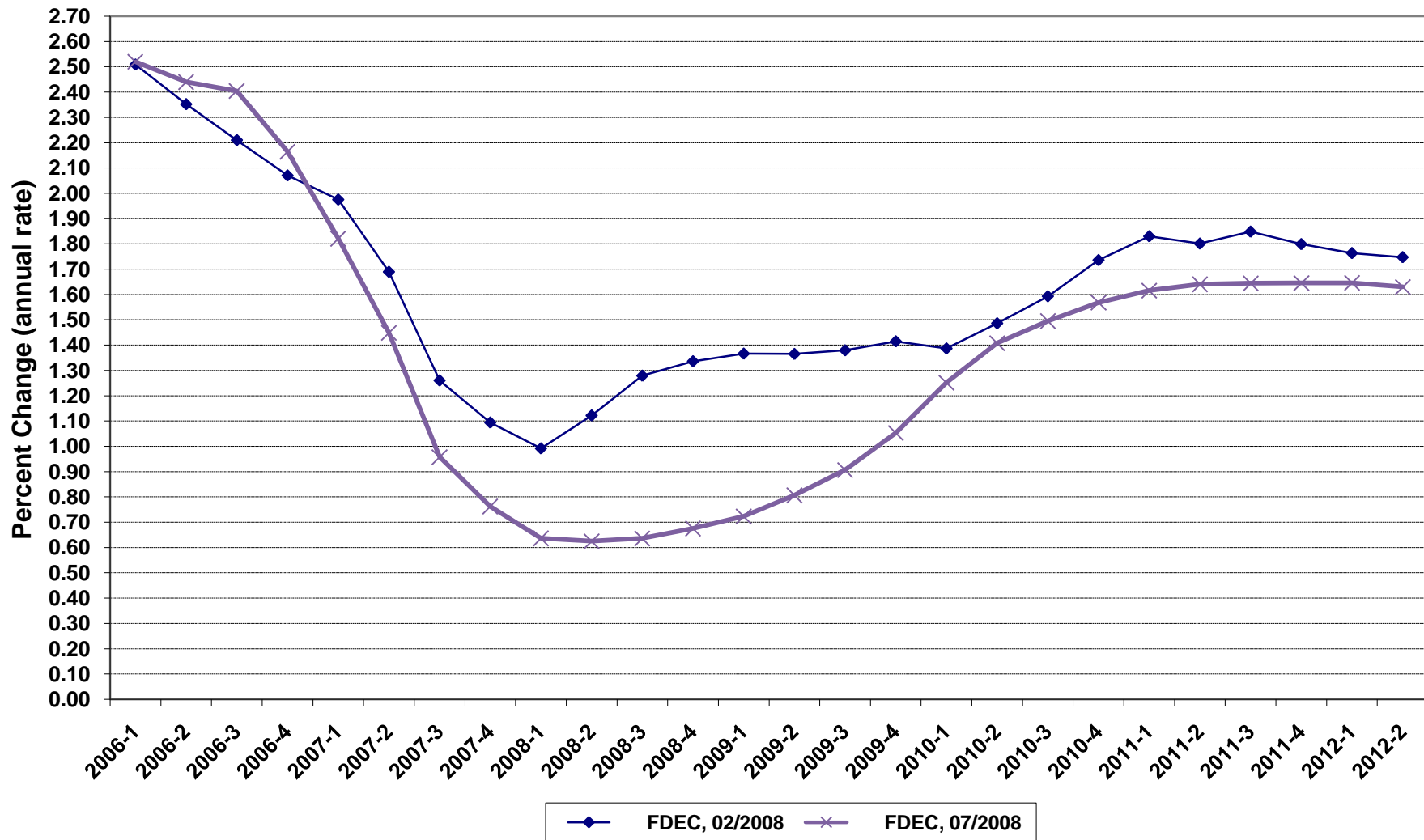
Growth In Florida Resident Population



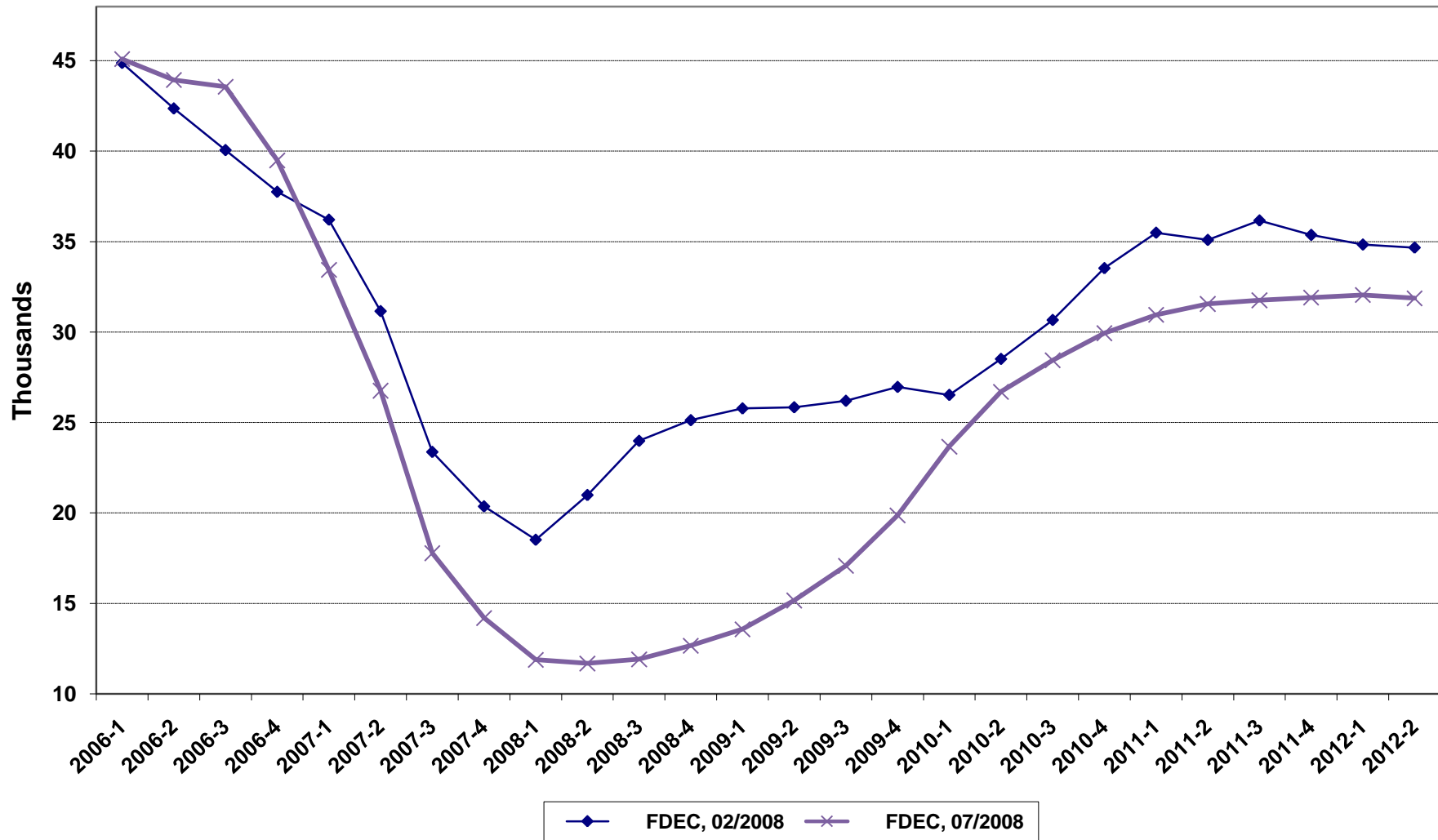
Florida Resident Households



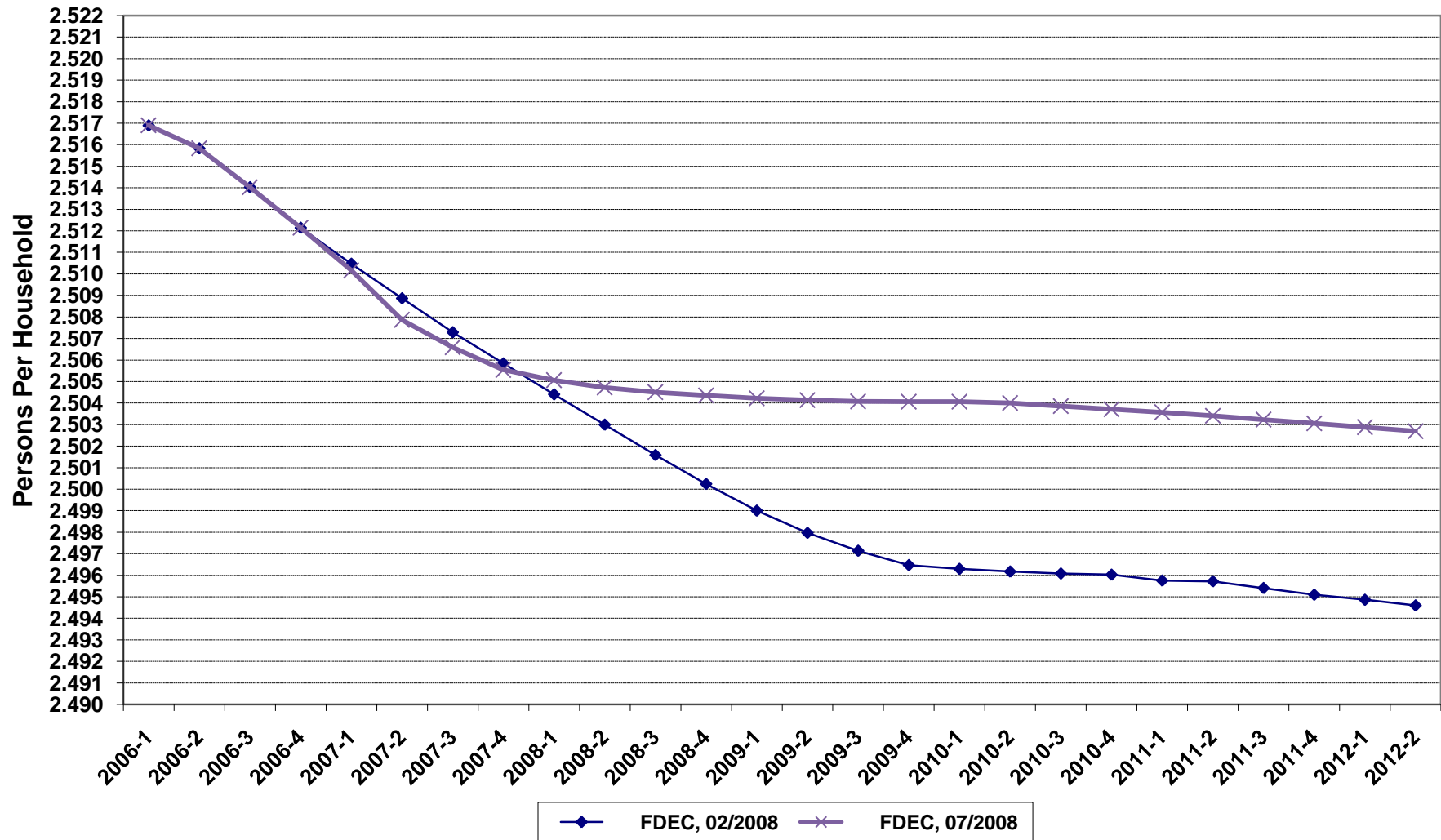
Growth In Florida Resident Households



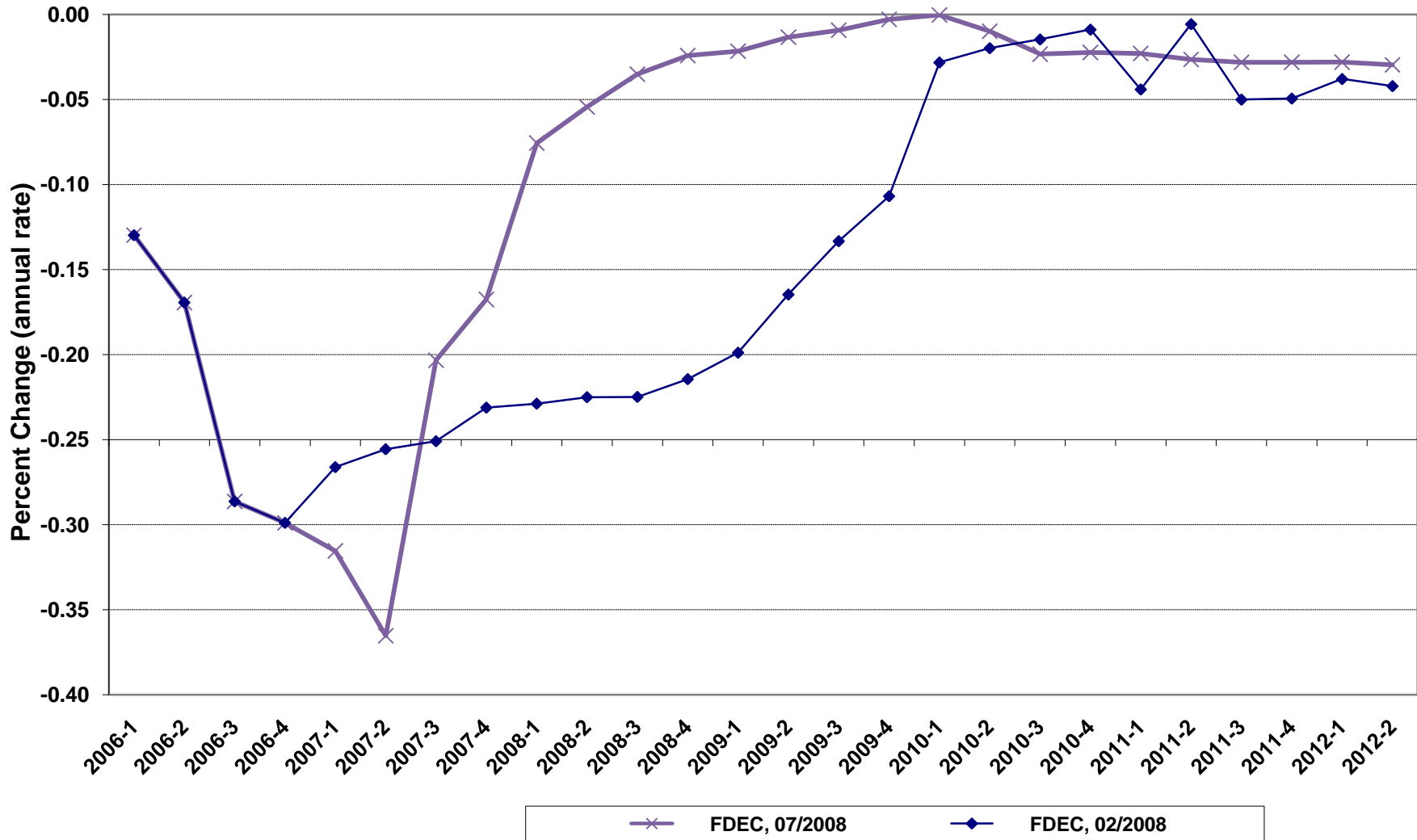
Net Change In Florida Resident Households



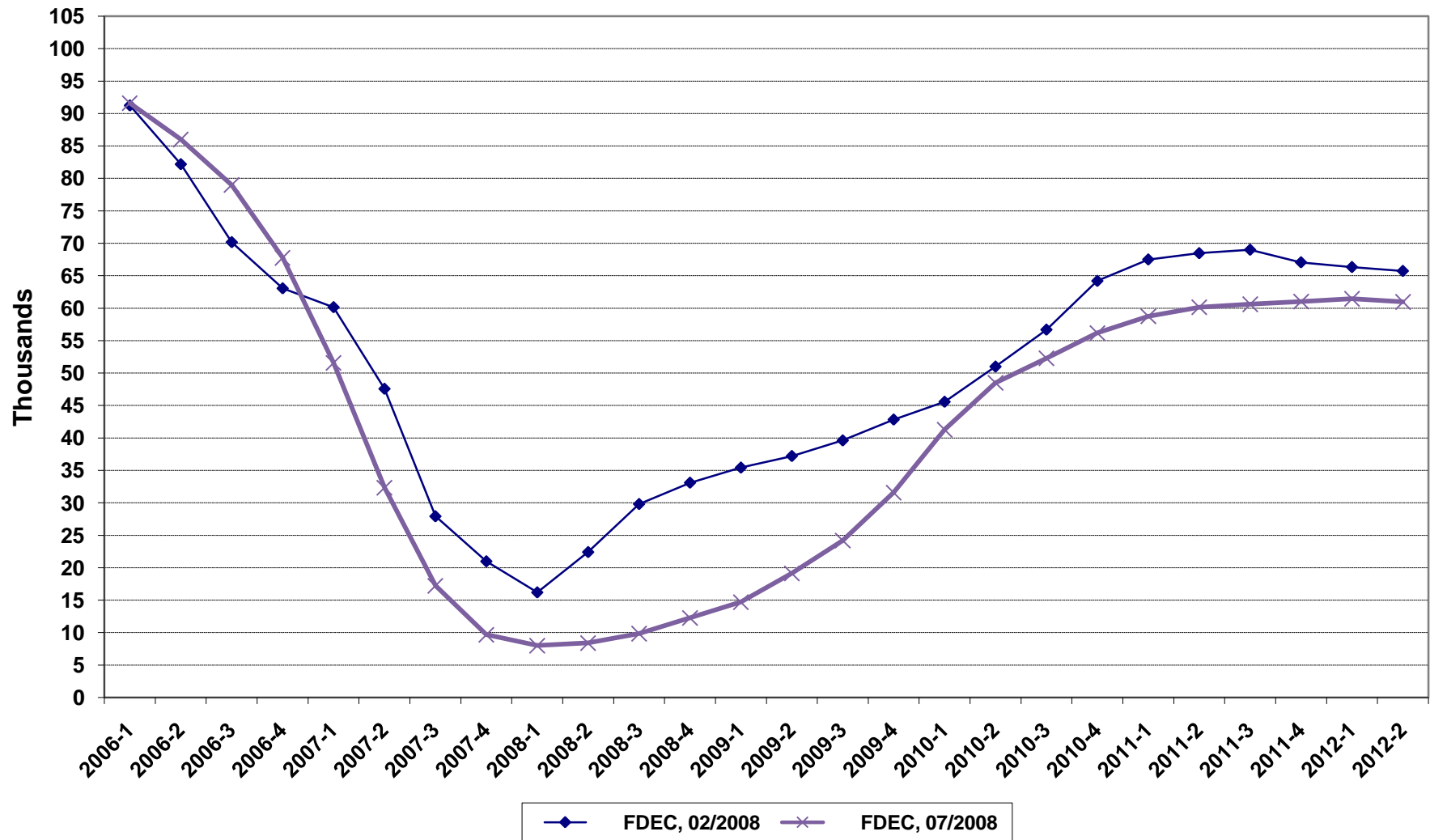
Florida Average Household Size



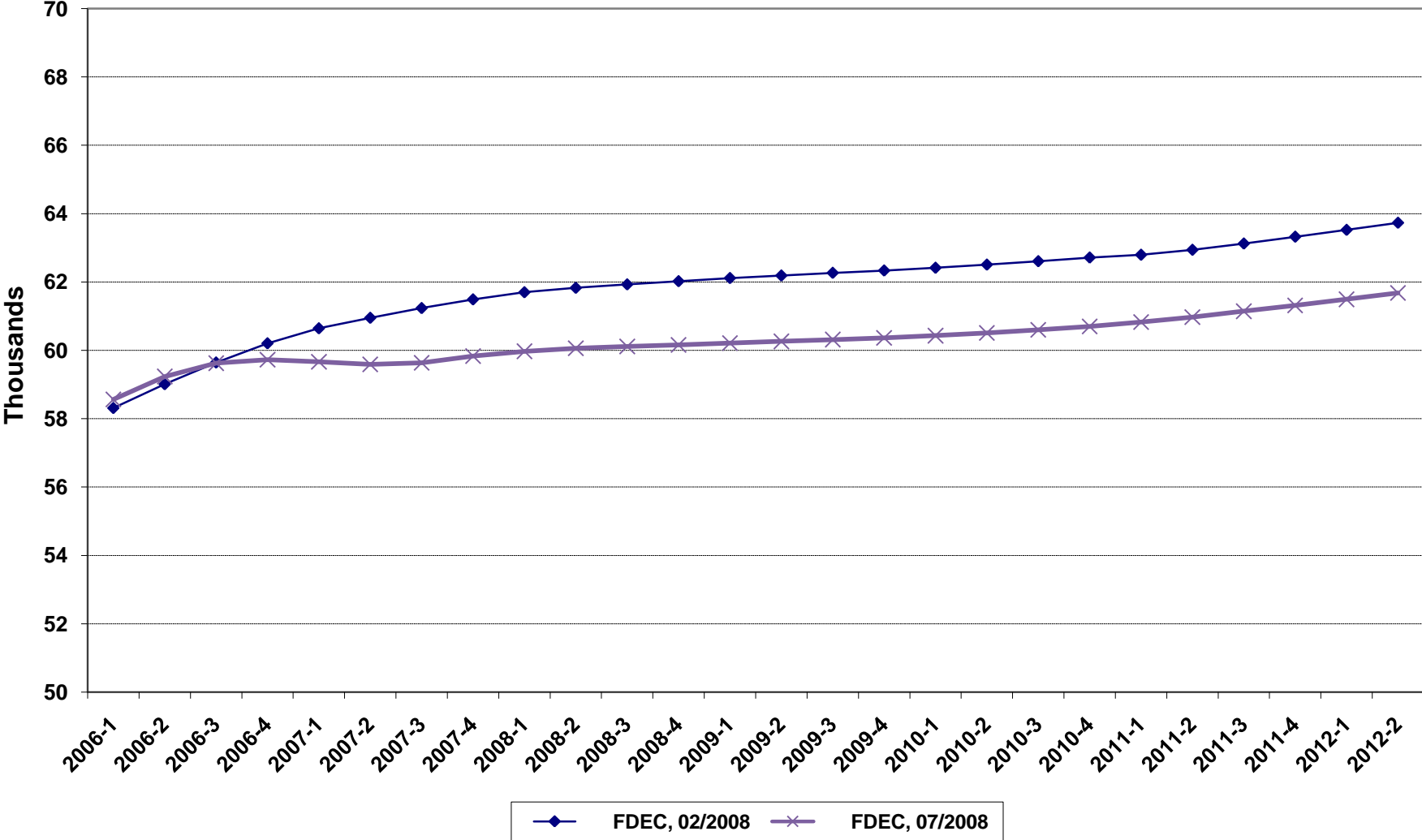
Growth In Florida Household Size



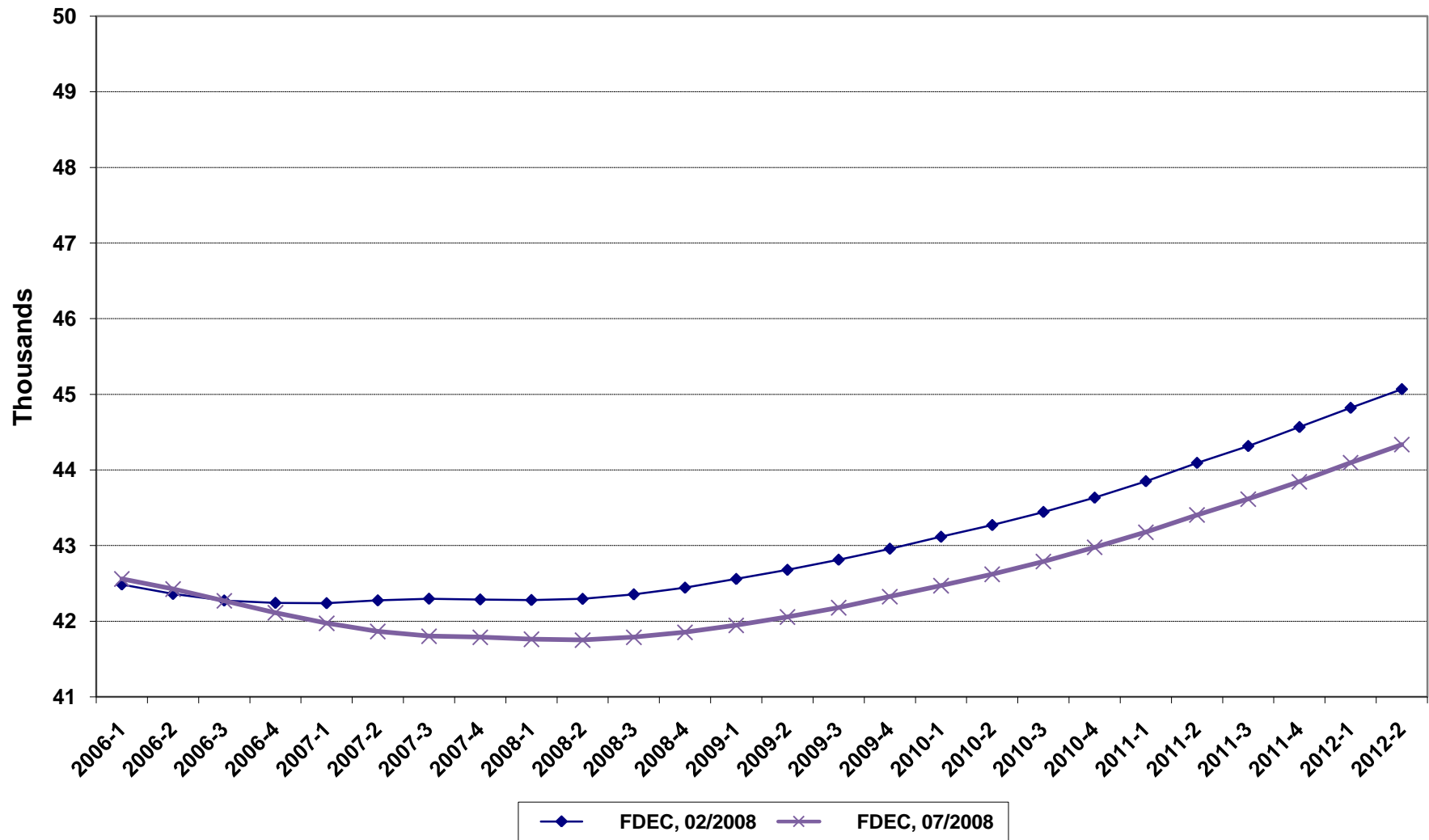
Florida Net Migration



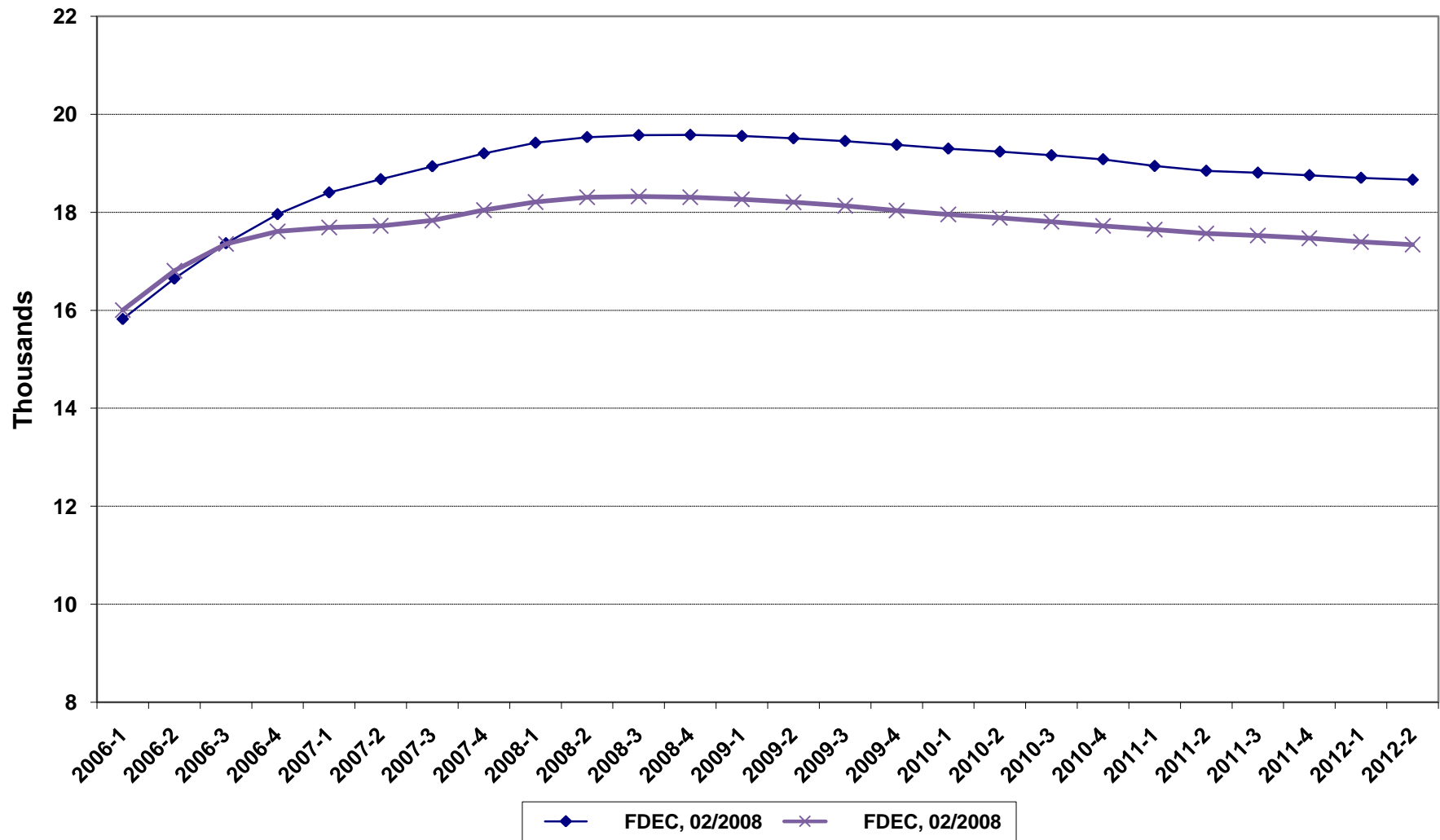
Florida Resident Births



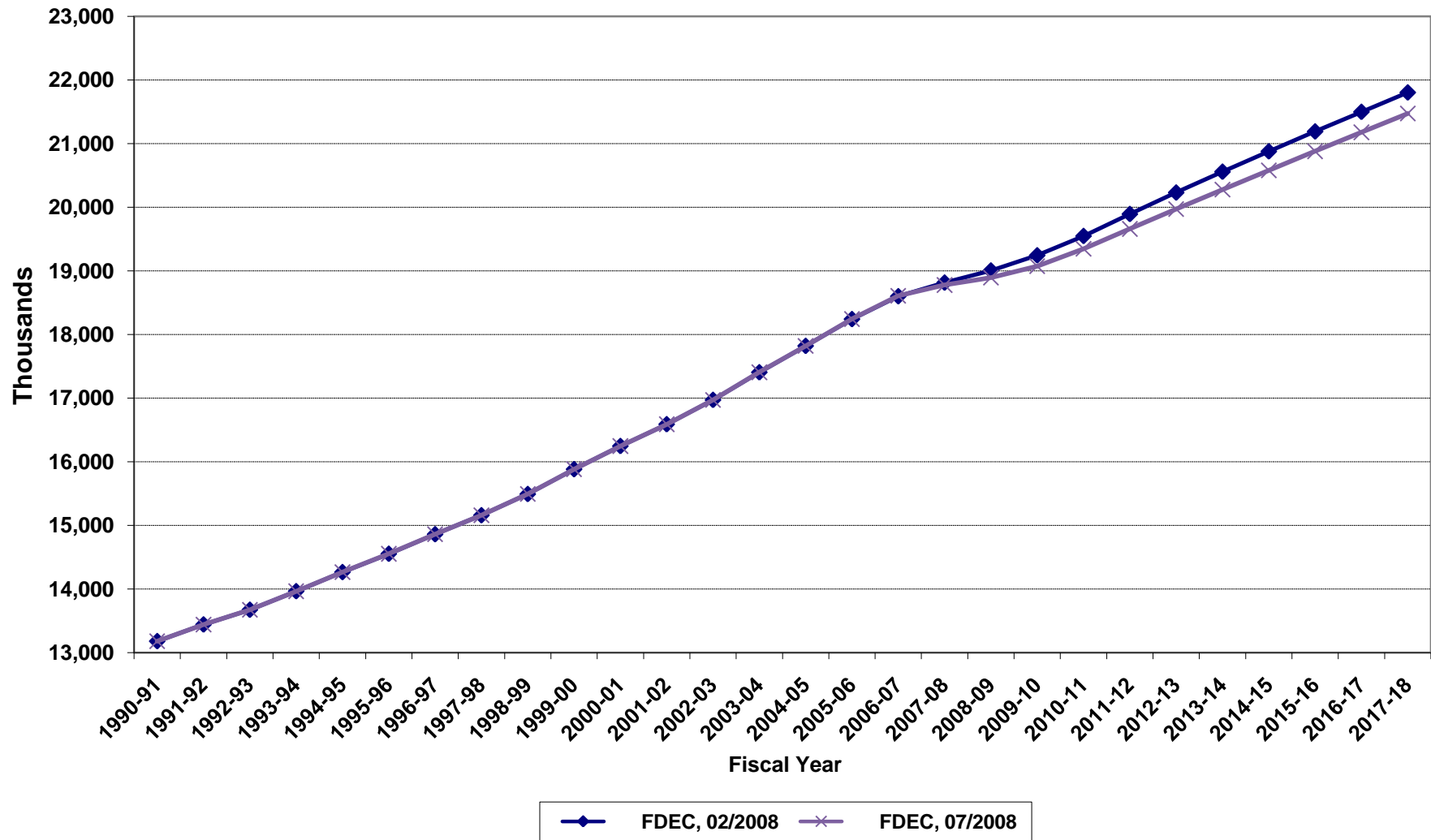
Florida Resident Deaths



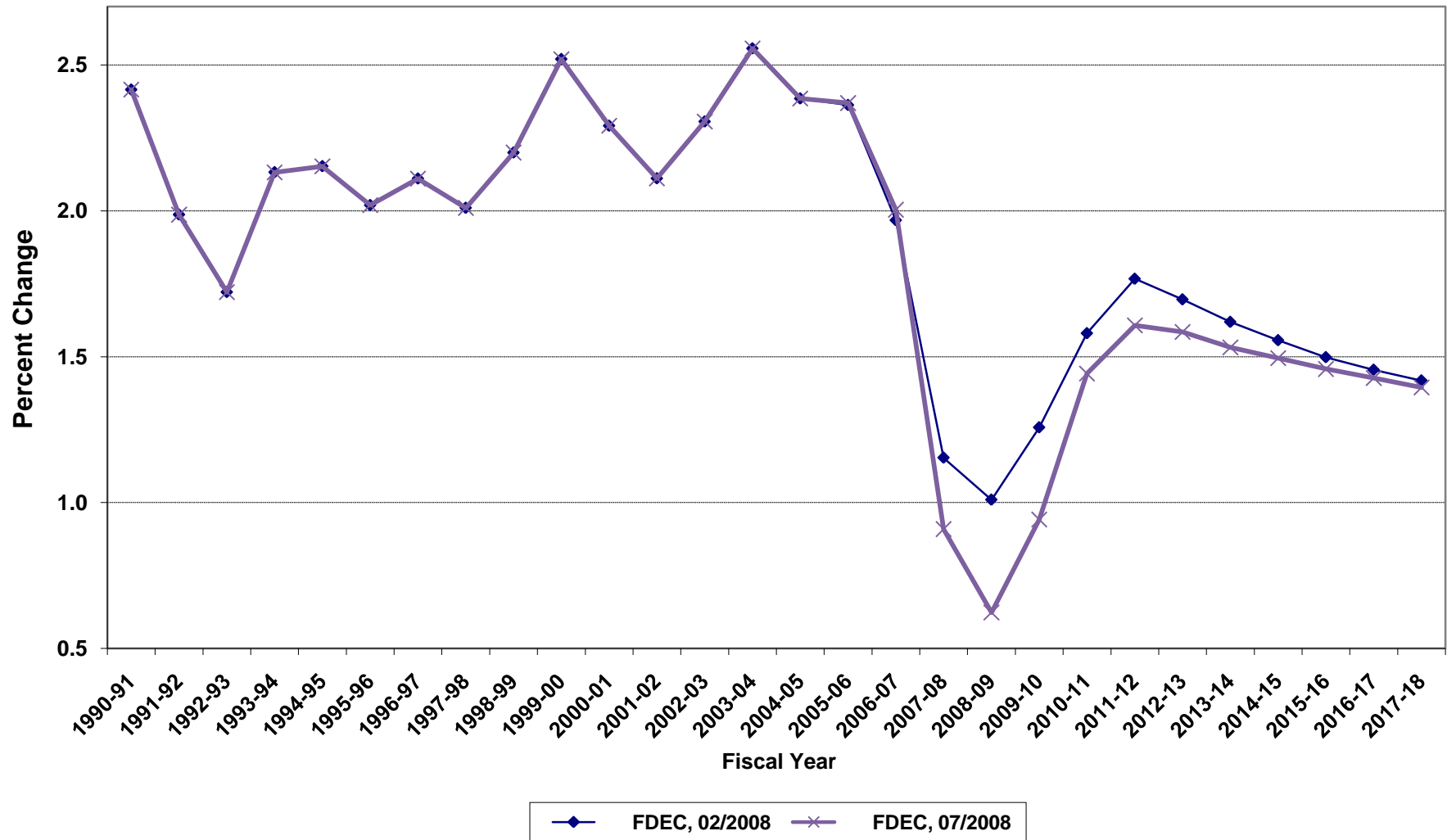
Florida Net Natural Increase



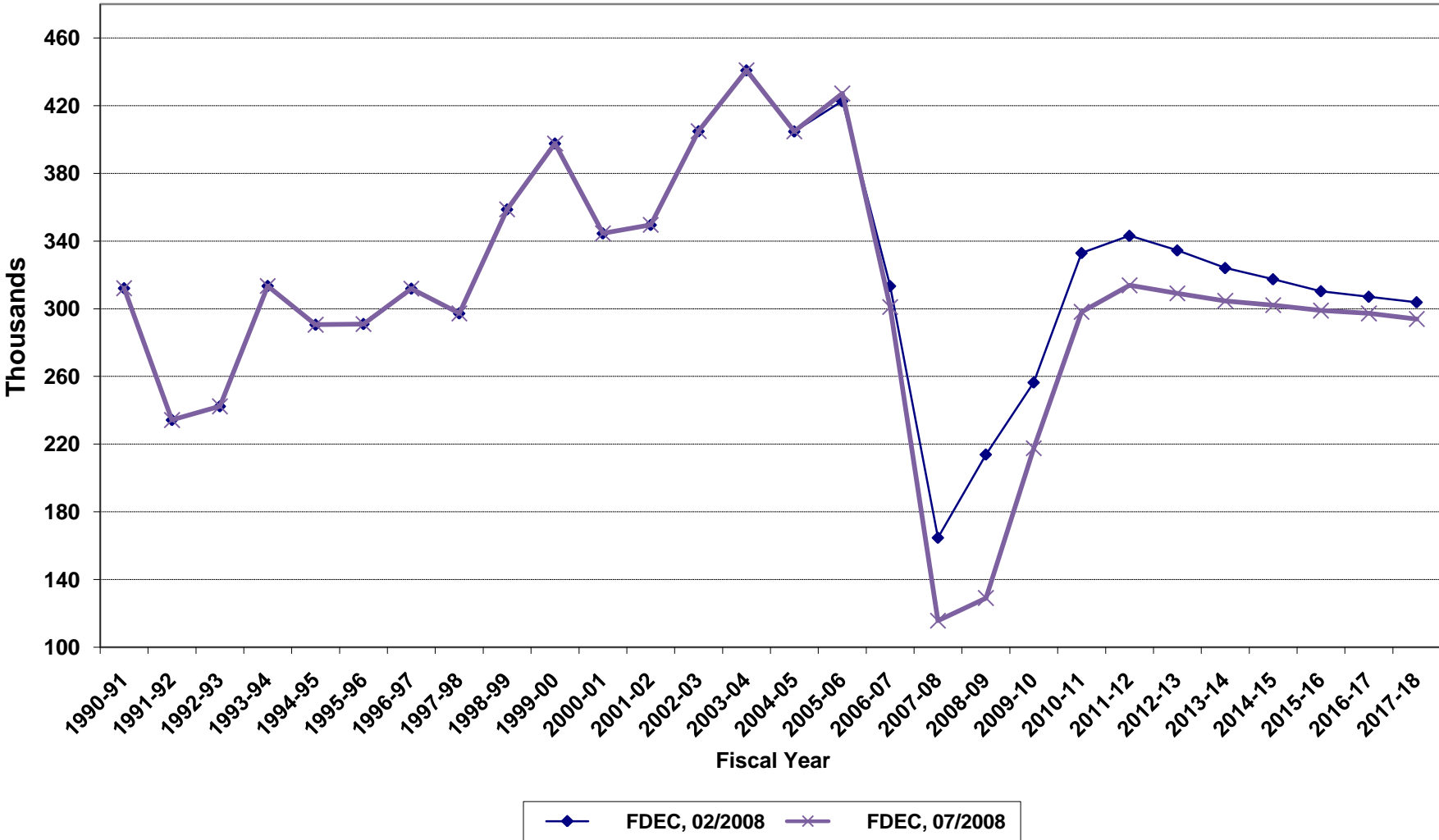
Florida Resident Population



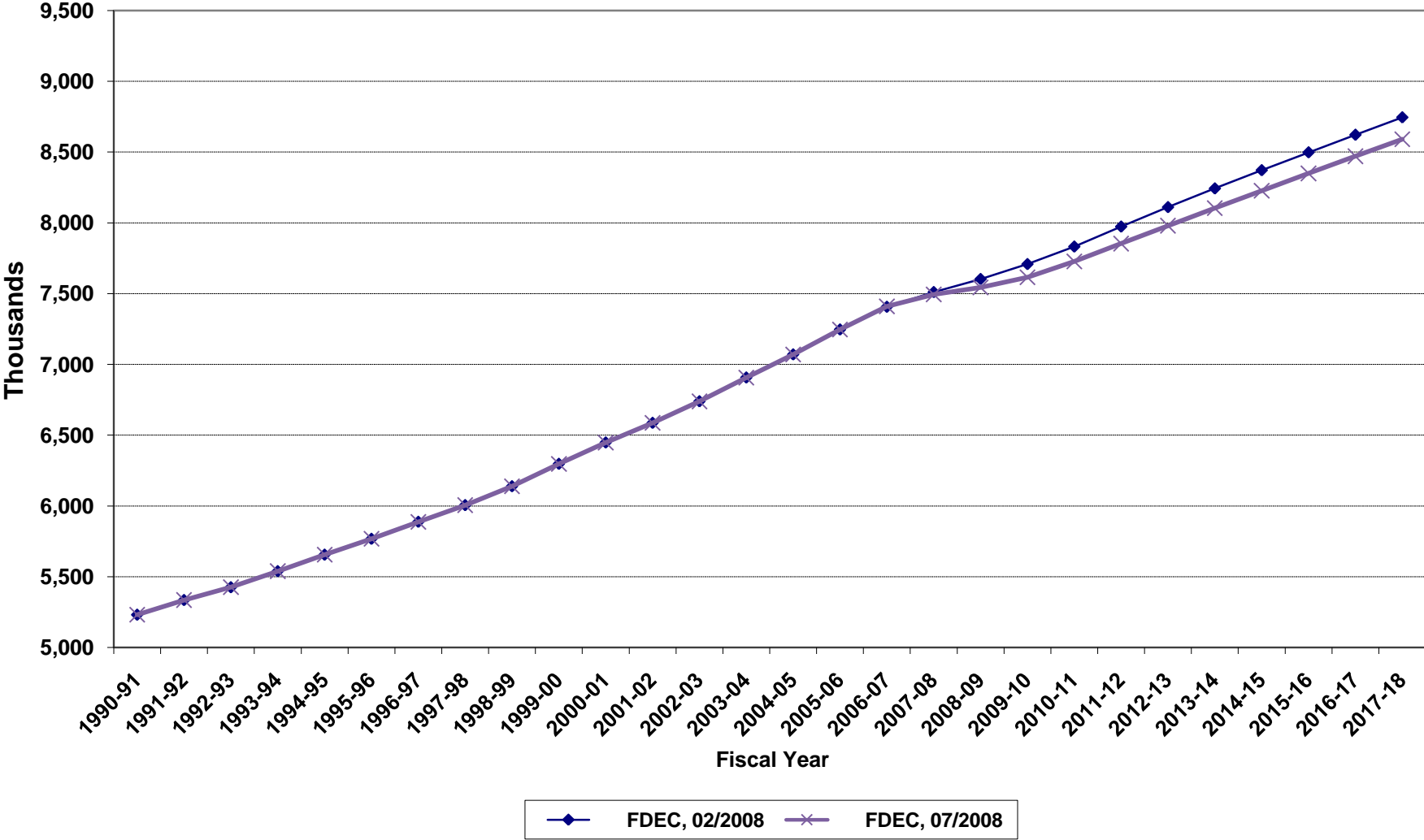
Growth In Florida Resident Population



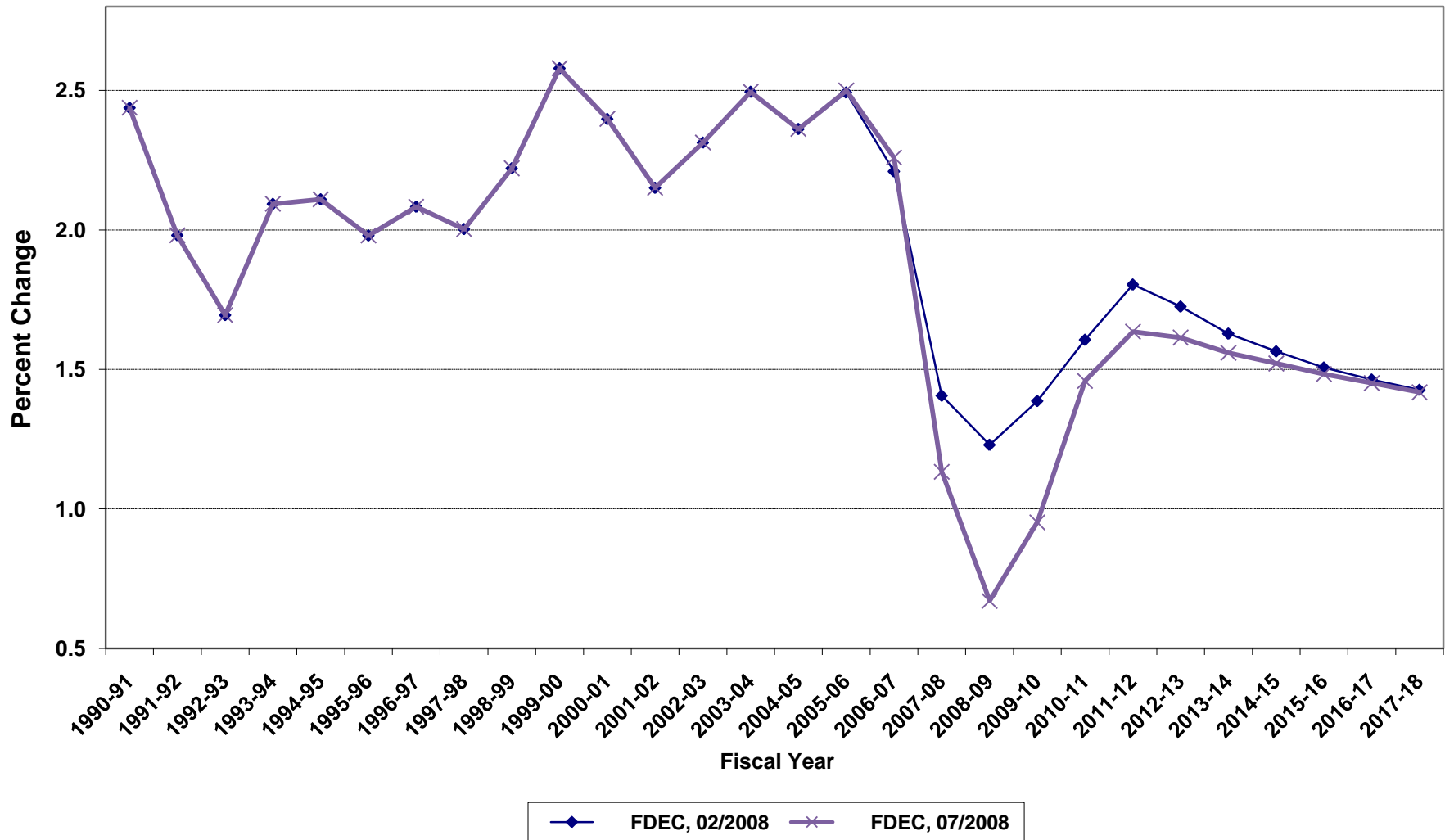
Net Change In Florida Resident Population



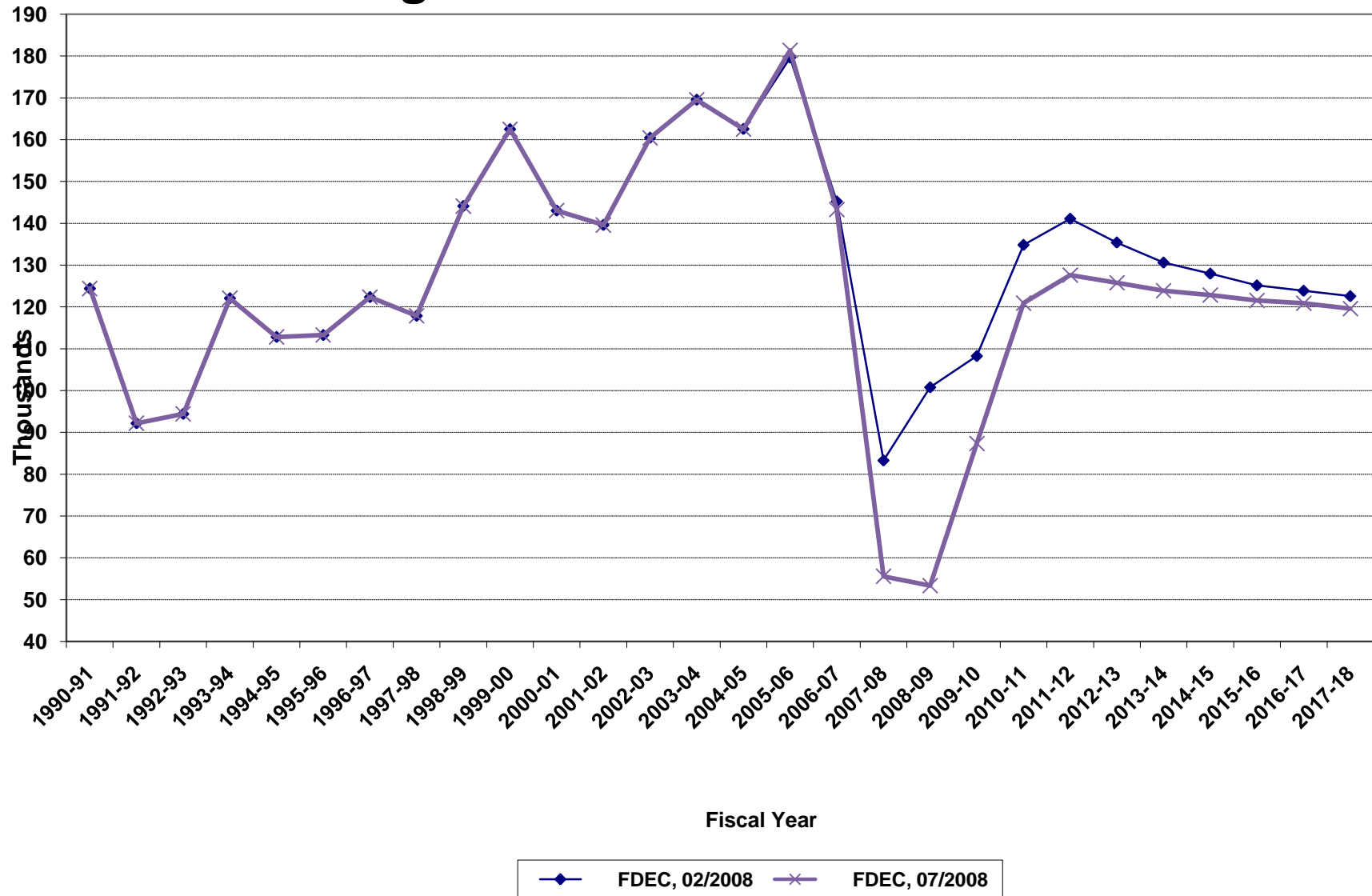
Florida Resident Households



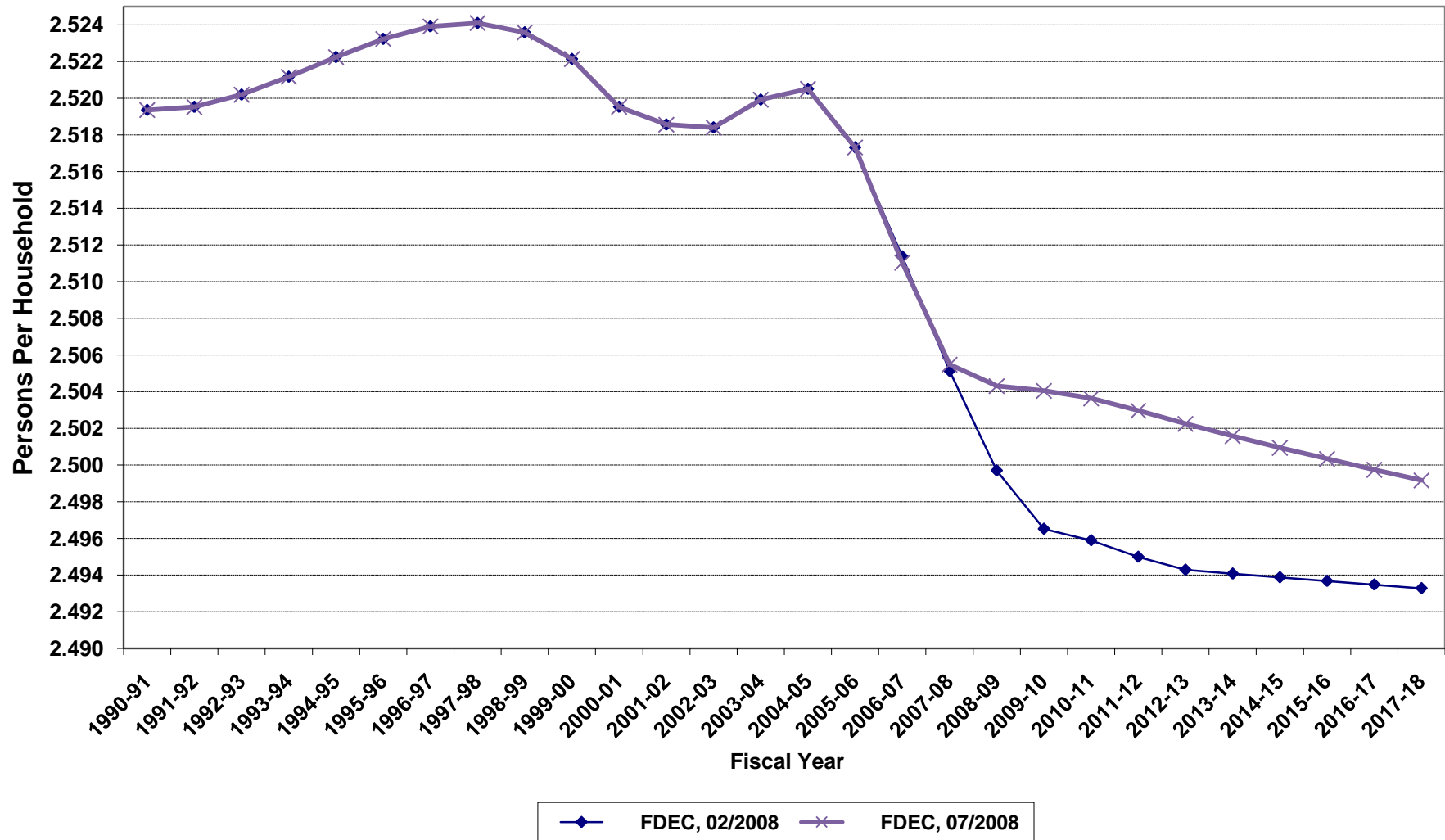
Growth In Florida Resident Households



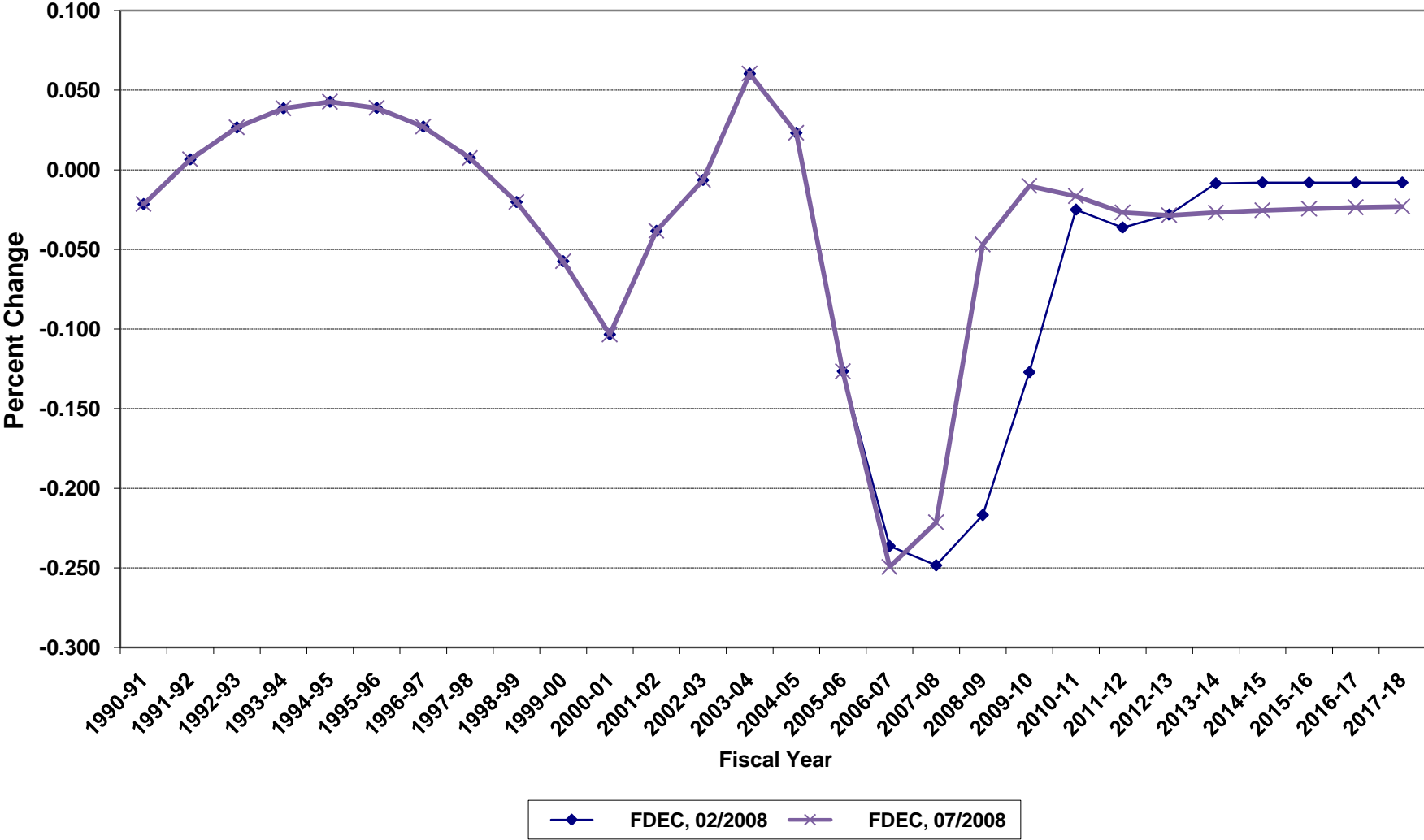
Net Change In Florida Resident Households



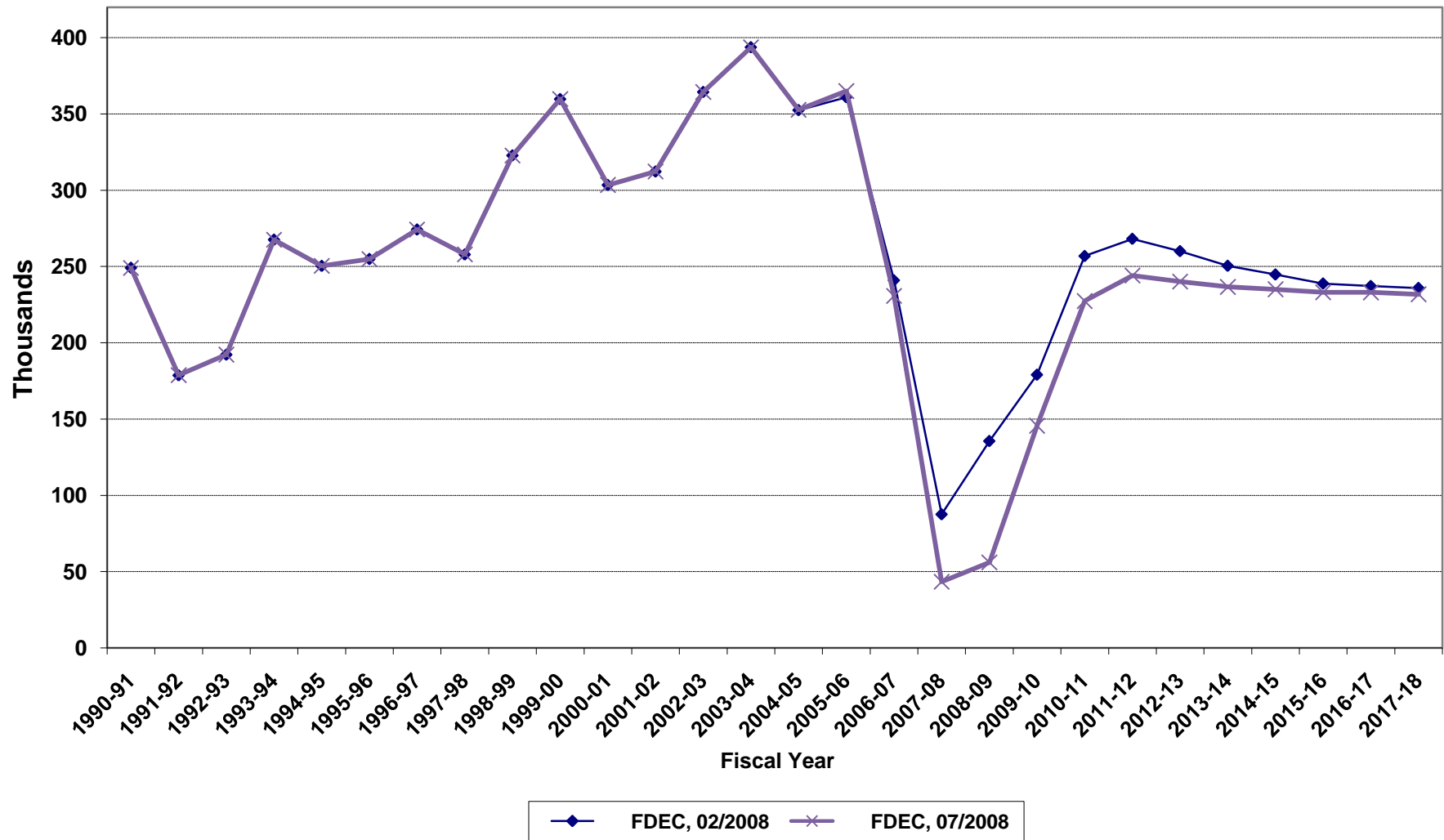
Average Florida Household Size



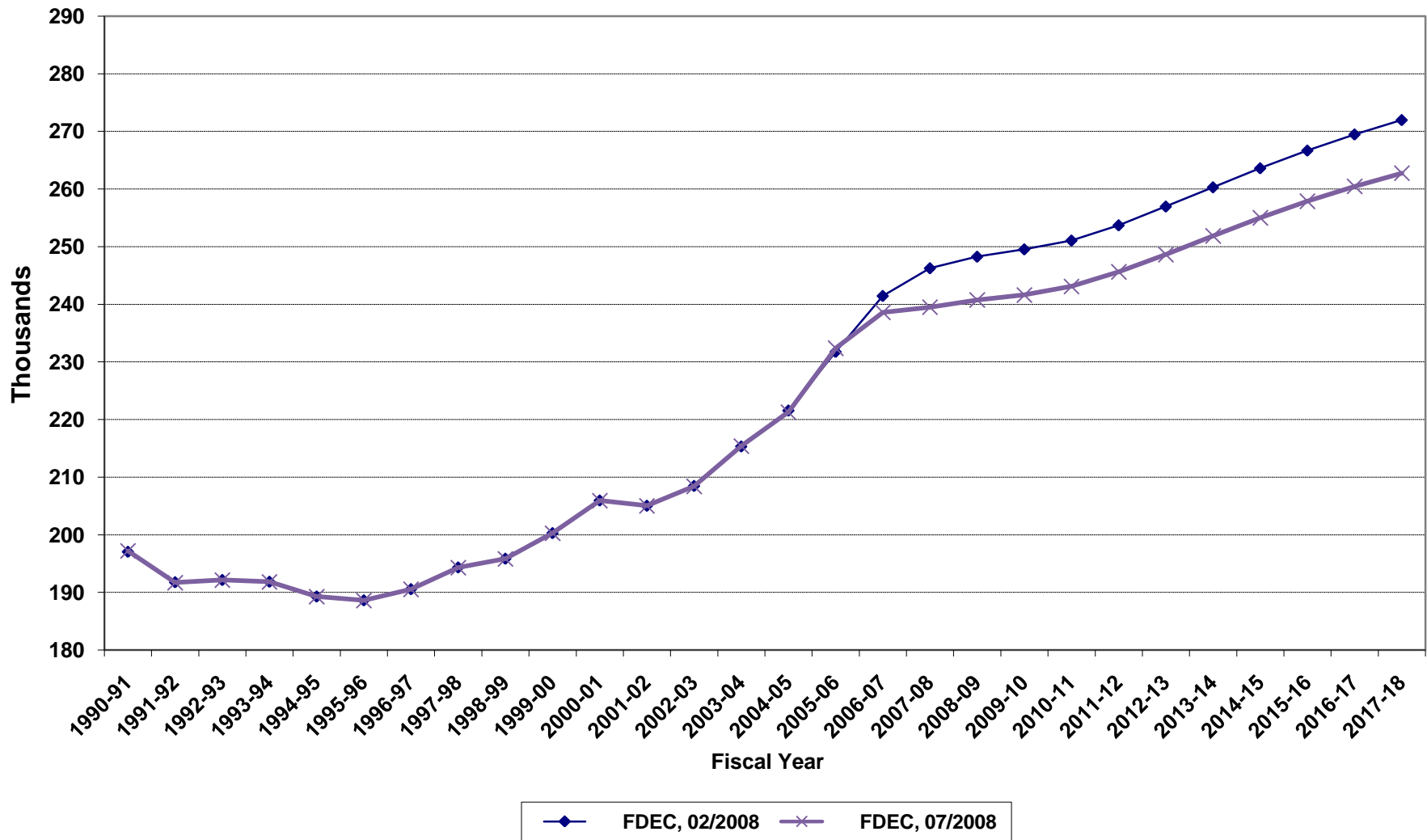
Growth In Average Florida Household Size



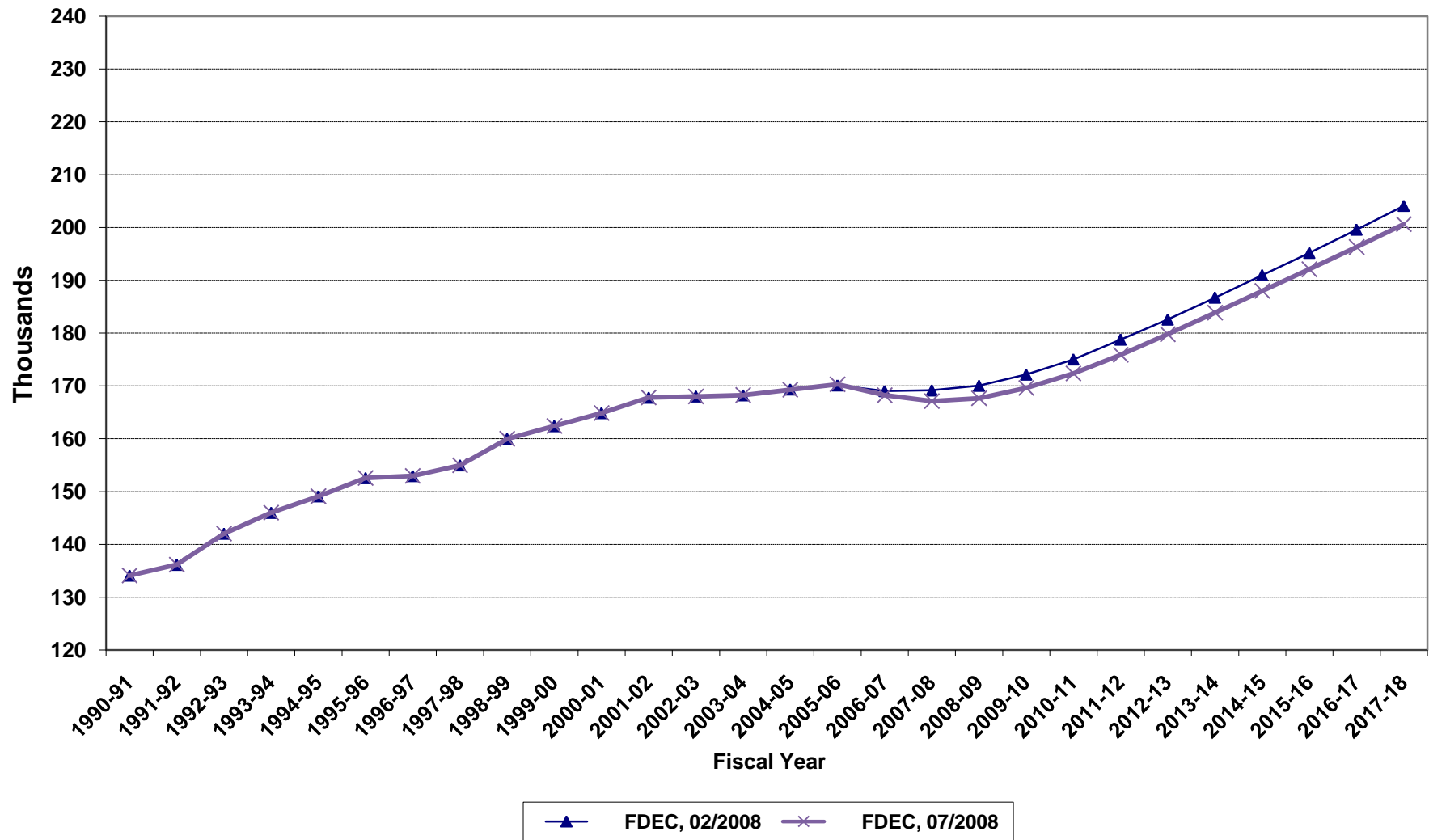
Florida Net Migration



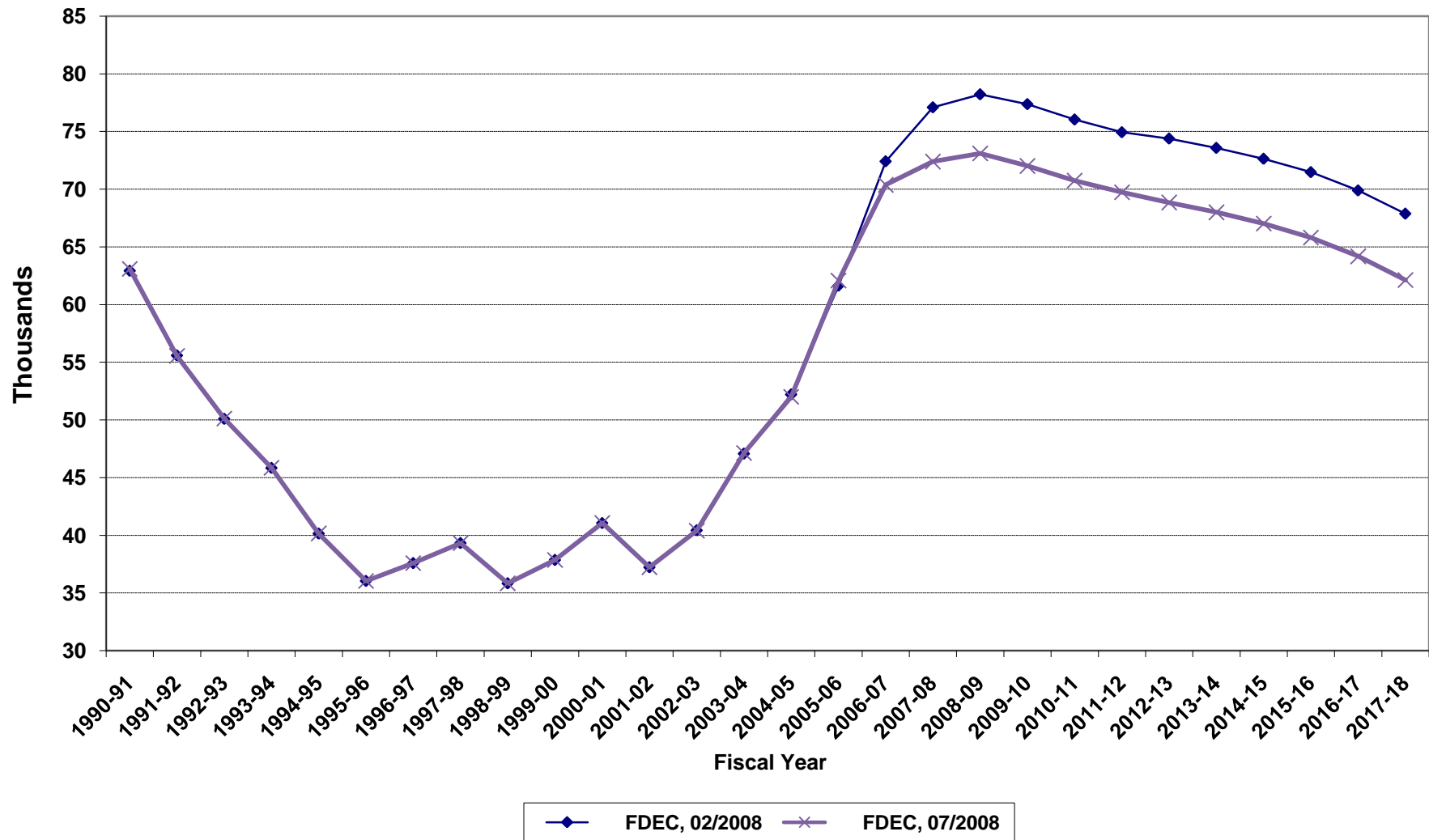
Florida Resident Live Births



Florida Resident Deaths



Florida Net Natural Increase



FLORIDA POPULATION AND COMPONENTS OF CHANGE

| Fiscal Year | Population (end of FY) | Growth Rate | Annual Change in Population | Births | Deaths | Net Natural Increase | Net Migration |
|-------------|------------------------|-------------|-----------------------------|---------|---------|----------------------|---------------|
| 1950-51 | 2,980,000 | 6.05 | 170,000 | 67,604 | 27,186 | 40,418 | 129,582 |
| 1951-52 | 3,157,000 | 5.94 | 177,000 | 72,118 | 28,476 | 43,642 | 133,358 |
| 1952-53 | 3,310,000 | 4.85 | 153,000 | 77,156 | 29,856 | 47,300 | 105,700 |
| 1953-54 | 3,505,000 | 5.89 | 195,000 | 82,685 | 31,035 | 51,650 | 143,350 |
| 1954-55 | 3,747,000 | 6.90 | 242,000 | 86,265 | 32,083 | 54,182 | 187,818 |
| 1955-56 | 4,047,000 | 8.01 | 300,000 | 93,431 | 35,022 | 58,409 | 241,591 |
| 1956-57 | 4,372,000 | 8.03 | 325,000 | 100,811 | 38,319 | 62,492 | 262,508 |
| 1957-58 | 4,630,000 | 5.90 | 258,000 | 106,019 | 41,797 | 64,222 | 193,778 |
| 1958-59 | 4,808,000 | 3.84 | 178,000 | 110,457 | 43,746 | 66,711 | 111,289 |
| 1959-60 | 5,001,937 | 4.03 | 193,937 | 114,398 | 46,063 | 68,335 | 125,602 |
| 1960-61 | 5,185,560 | 3.67 | 183,623 | 116,419 | 48,302 | 68,117 | 115,506 |
| 1961-62 | 5,368,613 | 3.53 | 183,053 | 116,068 | 50,526 | 65,542 | 117,511 |
| 1962-63 | 5,552,114 | 3.42 | 183,501 | 114,946 | 54,302 | 60,644 | 122,857 |
| 1963-64 | 5,735,571 | 3.30 | 183,457 | 114,775 | 56,213 | 58,562 | 124,895 |
| 1964-65 | 5,884,050 | 2.59 | 148,479 | 110,465 | 57,868 | 52,597 | 95,882 |
| 1965-66 | 6,065,135 | 3.08 | 181,085 | 104,503 | 60,875 | 43,628 | 137,457 |
| 1966-67 | 6,250,236 | 3.05 | 185,101 | 101,129 | 62,765 | 38,364 | 146,737 |
| 1967-68 | 6,440,501 | 3.04 | 190,265 | 100,413 | 66,224 | 34,189 | 156,076 |
| 1968-69 | 6,632,001 | 2.97 | 191,500 | 104,362 | 71,133 | 33,229 | 158,271 |
| 1969-70 | 6,863,788 | 3.49 | 231,787 | 111,460 | 73,814 | 37,646 | 194,141 |
| 1970-71 | 7,233,605 | 5.39 | 369,817 | 117,071 | 75,362 | 41,709 | 328,108 |
| 1971-72 | 7,684,783 | 6.24 | 451,178 | 113,578 | 79,677 | 33,901 | 417,277 |
| 1972-73 | 8,157,779 | 6.15 | 472,996 | 107,692 | 86,284 | 21,408 | 451,588 |
| 1973-74 | 8,509,490 | 4.31 | 351,711 | 109,455 | 88,458 | 20,997 | 330,714 |
| 1974-75 | 8,650,224 | 1.65 | 140,734 | 108,752 | 87,185 | 21,567 | 119,167 |
| 1975-76 | 8,783,174 | 1.54 | 132,950 | 103,859 | 88,170 | 15,689 | 117,261 |
| 1976-77 | 8,973,716 | 2.17 | 190,542 | 107,735 | 90,432 | 17,303 | 173,239 |
| 1977-78 | 9,226,396 | 2.82 | 252,680 | 112,265 | 93,372 | 18,893 | 233,787 |
| 1978-79 | 9,519,160 | 3.17 | 292,764 | 116,269 | 96,826 | 19,443 | 273,321 |
| 1979-80 | 9,843,544 | 3.41 | 324,384 | 126,759 | 100,958 | 25,801 | 298,583 |
| 1980-81 | 10,218,346 | 3.81 | 374,802 | 135,511 | 107,686 | 27,825 | 346,977 |
| 1981-82 | 10,492,578 | 2.68 | 274,232 | 141,562 | 108,533 | 33,029 | 241,203 |
| 1982-83 | 10,750,266 | 2.46 | 257,688 | 146,890 | 110,534 | 36,356 | 221,332 |
| 1983-84 | 11,065,812 | 2.94 | 315,546 | 151,660 | 113,957 | 37,703 | 277,843 |
| 1984-85 | 11,405,171 | 3.07 | 339,359 | 159,879 | 117,469 | 42,410 | 296,949 |

FLORIDA POPULATION AND COMPONENTS OF CHANGE

| Fiscal Year | Population (end of FY) | Growth Rate | Annual Change in Population | Births | Deaths | Net Natural Increase | Net Migration |
|-------------|------------------------|-------------|-----------------------------|---------|---------|----------------------|---------------|
| 1985-86 | 11,740,597 | 2.94 | 335,426 | 165,837 | 122,536 | 43,301 | 292,125 |
| 1986-87 | 12,083,205 | 2.92 | 342,608 | 170,743 | 124,846 | 45,897 | 296,711 |
| 1987-88 | 12,410,087 | 2.71 | 326,882 | 179,610 | 129,473 | 50,137 | 276,745 |
| 1988-89 | 12,723,453 | 2.53 | 313,366 | 188,272 | 131,997 | 56,275 | 257,091 |
| 1989-90 | 13,019,574 | 2.33 | 296,121 | 197,265 | 132,461 | 64,804 | 231,317 |
| 1990-91 | 13,323,139 | 2.33 | 303,565 | 197,197 | 134,147 | 63,050 | 240,515 |
| 1991-92 | 13,552,830 | 1.72 | 229,691 | 191,702 | 136,199 | 55,503 | 174,188 |
| 1992-93 | 13,804,917 | 1.86 | 252,087 | 192,150 | 142,167 | 49,983 | 202,104 |
| 1993-94 | 14,118,145 | 2.27 | 313,228 | 191,833 | 146,063 | 45,770 | 267,458 |
| 1994-95 | 14,407,012 | 2.05 | 288,867 | 189,272 | 149,127 | 40,145 | 248,722 |
| 1995-96 | 14,701,478 | 2.04 | 294,466 | 188,601 | 152,628 | 35,973 | 258,493 |
| 1996-97 | 15,010,271 | 2.10 | 308,793 | 190,552 | 153,018 | 37,534 | 271,259 |
| 1997-98 | 15,312,639 | 2.01 | 302,368 | 194,305 | 155,044 | 39,261 | 263,107 |
| 1998-99 | 15,680,103 | 2.40 | 367,464 | 195,827 | 160,050 | 35,777 | 331,687 |
| 1999-00 | 16,072,926 | 2.51 | 392,823 | 200,271 | 162,446 | 37,825 | 354,998 |
| 2000-01 | 16,414,604 | 2.13 | 341,678 | 205,927 | 164,862 | 41,065 | 300,613 |
| 2001-02 | 16,769,878 | 2.16 | 355,274 | 205,029 | 167,791 | 37,238 | 318,036 |
| 2002-03 | 17,182,275 | 2.46 | 412,397 | 208,411 | 168,011 | 40,400 | 371,997 |
| 2003-04 | 17,617,951 | 2.54 | 435,676 | 215,391 | 168,261 | 47,131 | 388,545 |
| 2004-05 | 18,026,473 | 2.32 | 408,522 | 221,286 | 169,274 | 52,012 | 356,509 |
| 2005-06 | 18,447,584 | 2.34 | 421,111 | 232,388 | 170,297 | 62,091 | 359,020 |
| 2006-07 | 18,717,990 | 1.47 | 270,406 | 238,604 | 168,222 | 70,382 | 200,024 |
| 2007-08 | 18,830,275 | 0.60 | 112,285 | 239,504 | 167,107 | 72,398 | 39,887 |
| 2008-09 | 18,966,464 | 0.72 | 136,189 | 240,750 | 167,646 | 73,104 | 63,085 |
| 2009-10 | 19,197,954 | 1.22 | 231,490 | 241,618 | 169,599 | 72,019 | 159,471 |
| 2010-11 | 19,500,094 | 1.57 | 302,140 | 243,102 | 172,352 | 70,750 | 231,390 |
| 2011-12 | 19,813,842 | 1.61 | 313,748 | 245,631 | 175,895 | 69,736 | 244,012 |
| 2012-13 | 20,122,051 | 1.56 | 308,209 | 248,633 | 179,783 | 68,850 | 239,359 |
| 2013-14 | 20,426,391 | 1.51 | 304,340 | 251,870 | 183,871 | 67,999 | 236,341 |
| 2014-15 | 20,728,038 | 1.48 | 301,647 | 255,012 | 187,988 | 67,024 | 234,623 |
| 2015-16 | 21,026,723 | 1.44 | 298,685 | 257,888 | 192,071 | 65,817 | 232,868 |
| 2016-17 | 21,323,555 | 1.41 | 296,833 | 260,468 | 196,282 | 64,186 | 232,647 |
| 2017-18 | 21,617,055 | 1.38 | 293,500 | 262,745 | 200,611 | 62,134 | 231,366 |