

Demographic Estimating Conference

Executive Summary

The Demographic Estimating Conference met on October 17, 2008 to establish a population forecast based on a preliminary April 1, 2008 population estimate and recent demographic-related data.

In the past, Florida's population growth has been mostly driven by positive net migration (more people permanently moving into the state than leaving). Net migration is estimated to have fallen to record low levels and is expected to continue to remain low through early 2010, before starting to bounce back. While there was little change to natural increase (births minus deaths), it is projected to exceed net migration through the first quarter of 2010. This is largely due to current economic conditions, including weakened housing markets and a national economic contraction, making it more difficult for people to relocate to the state.

Based on the preliminary population estimate for April 1, 2008 of 18,807,102, population growth was revised up slightly for the April 1, 2007 to April 1, 2008 time period from a growth rate of 0.66% (122,456 net new residents) to a rate of 0.68% (126,735 net new residents). Instead of remaining at a constant growth rate as forecast at the July 2008 conference, population growth is forecast to slow further over the current year to 0.40% (74,686 net new residents). The weaker national outlook coupled with current economic conditions in the state, led the conference to lower the forecast for population growth for the April 1, 2009 to April 1, 2010 and the April 1, 2010 to April 1, 2011 time periods. Stronger population growth is expected as the economy improves with growth rates of 1.22% (232,357 net new residents) and 1.65% (316,088 net new residents) between April 1, 2010 to April 1, 2011 and April 1, 2011 to April 1, 2012, respectively.

Between April 1, 2007 and April 1, 2018, population growth is expected to average 243,246 net new residents per year, representing a compound growth rate of 1.22% over this 11-year time horizon. These increases are analogous to adding a city the size of Orlando or St. Petersburg every year. By April 1, 2014 Florida's population is expected to have broken the 20-million mark at 20,156,092 and is forecast to be approaching the 25-million mark with 24,750,617 residents on April 1, 2030.

FLORIDA DEMOGRAPHIC ESTIMATING CONFERENCE

Tables

Held October 17, 2008

Florida Resident Population

April 1

Year	FDEC, 07/08			FDEC, 10/08		
	Population	% Chg	Change	Population	% Chg	Change
1990	12,938,071	2.27%	287,136	12,938,071	2.27%	287,136
1991	13,258,732	2.48%	320,661	13,258,732	2.48%	320,661
1992	13,497,541	1.80%	238,809	13,497,541	1.80%	238,809
1993	13,730,115	1.72%	232,574	13,730,115	1.72%	232,574
1994	14,043,757	2.28%	313,642	14,043,757	2.28%	313,642
1995	14,335,992	2.08%	292,235	14,335,992	2.08%	292,235
1996	14,623,421	2.00%	287,429	14,623,421	2.00%	287,429
1997	14,938,314	2.15%	314,893	14,938,314	2.15%	314,893
1998	15,230,421	1.96%	292,107	15,230,421	1.96%	292,107
1999	15,580,244	2.30%	349,823	15,580,244	2.30%	349,823
2000	15,982,824	2.58%	402,580	15,982,824	2.58%	402,580
2001	16,330,224	2.17%	347,400	16,330,224	2.17%	347,400
2002	16,674,608	2.11%	344,384	16,674,608	2.11%	344,384
2003	17,071,508	2.38%	396,900	17,071,508	2.38%	396,900
2004	17,516,732	2.61%	445,224	17,516,732	2.61%	445,224
2005	17,918,227	2.29%	401,495	17,918,227	2.29%	401,495
2006	18,349,132	2.40%	430,905	18,349,132	2.40%	430,905
2007	18,680,367	1.81%	331,235	18,680,367	1.81%	331,235
Begins forecast.						
2008	18,802,823	0.66%	122,456	18,807,102	0.68%	126,735
2009	18,926,619	0.66%	123,797	18,881,788	0.40%	74,686
2010	19,129,706	1.07%	203,087	18,979,698	0.52%	97,910
2011	19,422,163	1.53%	292,457	19,212,055	1.22%	232,357
2012	19,735,673	1.61%	313,510	19,528,143	1.65%	316,088
2013	20,045,549	1.57%	309,876	19,849,125	1.64%	320,982
2014	20,350,499	1.52%	304,950	20,156,092	1.55%	306,967
2015	20,652,958	1.49%	302,459	20,455,308	1.48%	299,216
2016	20,952,197	1.45%	299,239	20,755,429	1.47%	300,121
2017	21,249,668	1.42%	297,471	21,055,695	1.45%	300,266
2018	21,544,061	1.39%	294,394	21,356,070	1.43%	300,375
5-Year Annual Averages						
2020	NA	NA	NA	21,954,539	1.42%	299,846
2025	NA	NA	NA	23,402,690	1.29%	289,630
2030	NA	NA	NA	24,750,617	1.13%	269,585

Florida Resident Households

April 1

Year	FDEC, 07/08			FDEC, 10/08		
	Households	% Chg	Change	Households	% Chg	Change
1990	5,134,869	3.40%	168,985	5,134,869	3.40%	168,985
1991	5,283,154	2.89%	148,285	5,283,154	2.89%	148,285
1992	5,378,499	1.80%	95,345	5,378,499	1.80%	95,345
1993	5,478,476	1.86%	99,977	5,478,476	1.86%	99,977
1994	5,589,093	2.02%	110,617	5,589,093	2.02%	110,617
1995	5,697,328	1.94%	108,235	5,697,328	1.94%	108,235
1996	5,806,031	1.91%	108,703	5,806,031	1.91%	108,703
1997	5,929,613	2.13%	123,582	5,929,613	2.13%	123,582
1998	6,040,514	1.87%	110,901	6,040,514	1.87%	110,901
1999	6,182,346	2.35%	141,832	6,182,346	2.35%	141,832
2000	6,338,075	2.52%	155,729	6,338,075	2.52%	155,729
2001	6,483,040	2.29%	144,965	6,483,040	2.29%	144,965
2002	6,620,674	2.12%	137,634	6,620,674	2.12%	137,634
2003	6,778,804	2.39%	158,130	6,778,804	2.39%	158,130
2004	6,949,759	2.52%	170,955	6,949,759	2.52%	170,955
2005	7,109,208	2.29%	159,449	7,109,208	2.29%	159,449
2006	7,291,013	2.56%	181,805	7,291,013	2.56%	181,805
2007	7,443,963	2.10%	152,950	7,443,963	2.10%	152,950
Begins forecast.						
2008	7,506,425	0.84%	62,462	7,504,868	0.82%	60,905
2009	7,558,009	0.69%	51,584	7,536,828	0.43%	31,960
2010	7,639,561	1.08%	81,552	7,576,359	0.52%	39,531
2011	7,758,032	1.55%	118,471	7,670,769	1.25%	94,410
2012	7,885,469	1.64%	127,437	7,799,157	1.67%	128,388
2013	8,011,567	1.60%	126,098	7,929,613	1.67%	130,456
2014	8,135,583	1.55%	124,016	8,054,360	1.57%	124,747
2015	8,258,580	1.51%	122,997	8,175,988	1.51%	121,627
2016	8,380,267	1.47%	121,688	8,297,956	1.49%	121,968
2017	8,501,234	1.44%	120,967	8,419,970	1.47%	122,014
2018	8,620,996	1.41%	119,761	8,542,054	1.45%	122,084
5-Year Annual Averages						
2020	NA	NA	NA	8,785,325	1.45%	121,868
2025	NA	NA	NA	9,375,185	1.31%	117,972
2030	NA	NA	NA	9,926,146	1.15%	110,192

Quarterly Data Table

	<u>2006-1</u>	<u>2006-2</u>	<u>2006-3</u>	<u>2006-4</u>	<u>2007-1</u>	<u>2007-2</u>	<u>2007-3</u>	<u>2007-4</u>	<u>2008-1</u>	<u>2008-2</u>	<u>2008-3</u>	<u>2008-4</u>	<u>2009-1</u>	<u>2009-2</u>	<u>2009-3</u>	<u>2009-4</u>
Population																
FDEC, 07/2008	18,296.6	18,399.4	18,495.8	18,581.1	18,650.4	18,700.5	18,735.5	18,763.2	18,789.5	18,816.2	18,844.4	18,875.0	18,907.9	18,945.3	18,987.6	19,037.3
FDEC, 10/2008	18,295.7	18,398.2	18,492.3	18,576.8	18,648.3	18,703.7	18,744.0	18,773.8	18,796.8	18,816.7	18,835.8	18,854.5	18,872.8	18,890.6	18,909.4	18,932.4
Population Growth Rate																
FDEC, 07/2008	2.39	2.27	2.11	1.86	1.50	1.08	0.75	0.59	0.56	0.57	0.60	0.65	0.70	0.79	0.90	1.05
FDEC, 10/2008	2.41	2.26	2.06	1.84	1.55	1.19	0.87	0.64	0.49	0.43	0.41	0.40	0.39	0.38	0.40	0.49
Net Change in Population																
FDEC, 07/2008	107.6	102.8	96.3	85.4	69.3	50.1	35.1	27.7	26.2	26.7	28.2	30.6	33.0	37.4	42.3	49.6
FDEC, 10/2008	108.5	102.5	94.1	84.5	71.5	55.3	40.4	29.7	23.0	19.9	19.1	18.7	18.3	17.8	18.8	23.0
Households																
FDEC, 07/2008	7,269.5	7,313.5	7,357.0	7,396.5	7,430.0	7,456.7	7,474.5	7,488.7	7,500.6	7,512.3	7,524.2	7,536.8	7,550.4	7,565.6	7,582.7	7,602.5
FDEC, 10/2008	7,268.7	7,313.5	7,356.0	7,395.2	7,430.2	7,457.3	7,476.0	7,489.4	7,500.0	7,509.0	7,517.2	7,525.2	7,532.9	7,540.2	7,547.9	7,557.1
Household Growth Rate																
FDEC, 07/2008	2.52	2.44	2.40	2.16	1.82	1.45	0.96	0.76	0.64	0.62	0.64	0.68	0.72	0.81	0.91	1.05
FDEC, 10/2008	2.58	2.49	2.35	2.15	1.91	1.47	1.01	0.72	0.57	0.48	0.44	0.42	0.41	0.39	0.41	0.49
Net Change in Households																
FDEC, 07/2008	45.1	43.9	43.6	39.5	33.4	26.8	17.8	14.2	11.9	11.7	11.9	12.7	13.6	15.2	17.1	19.9
FDEC, 10/2008	45.1	43.9	42.3	38.9	35.2	26.4	18.2	14.2	10.6	9.0	8.3	7.9	7.7	7.4	7.7	9.2
Household Size																
FDEC, 07/2008	2.517	2.516	2.514	2.512	2.510	2.508	2.507	2.506	2.505	2.505	2.505	2.504	2.504	2.504	2.504	2.504
FDEC, 10/2008	2.517	2.516	2.514	2.512	2.510	2.508	2.507	2.507	2.506	2.506	2.506	2.506	2.505	2.505	2.505	2.505
Household Size Growth Rate																
FDEC, 07/2008	-0.13	-0.17	-0.29	-0.30	-0.32	-0.37	-0.20	-0.17	-0.08	-0.05	-0.04	-0.02	-0.02	-0.01	-0.01	0.00
FDEC, 10/2008	-0.16	-0.22	-0.28	-0.30	-0.35	-0.27	-0.14	-0.08	-0.08	-0.05	-0.04	-0.02	-0.02	-0.01	-0.01	0.00
Net Migration																
FDEC, 07/2008	91.6	86.0	79.0	67.8	51.6	32.3	17.2	9.7	8.0	8.4	9.9	12.3	14.7	19.2	24.2	31.6
FDEC, 10/2008	92.5	85.7	76.8	66.9	53.8	37.6	22.6	12.0	5.3	2.4	1.6	1.5	1.2	0.8	2.1	6.4
Births																
FDEC, 07/2008	58.6	59.2	59.6	59.7	59.7	59.6	59.6	59.8	60.0	60.1	60.1	60.2	60.2	60.3	60.3	60.4
FDEC, 10/2008	58.5	59.2	59.6	59.8	59.8	59.7	59.6	59.6	59.7	59.6	59.6	59.5	59.5	59.5	59.5	59.5
Deaths																
FDEC, 07/2008	42.6	42.4	42.3	42.1	42.0	41.9	41.8	41.8	41.8	41.8	41.8	41.9	41.9	42.1	42.2	42.3
FDEC, 10/2008	42.5	42.4	42.3	42.1	42.0	41.9	41.9	41.9	42.0	42.0	42.1	42.3	42.4	42.5	42.7	42.9
Net Natural Increase																
FDEC, 07/2008	16.0	16.8	17.4	17.6	17.7	17.7	17.8	18.0	18.2	18.3	18.3	18.3	18.3	18.2	18.1	18.0
FDEC, 10/2008	16.0	16.8	17.4	17.6	17.7	17.7	17.7	17.8	17.7	17.6	17.4	17.2	17.1	17.0	16.8	16.6

Quarterly Data Table

	2010-1	2010-2	2010-3	2010-4	2011-1	2011-2	2011-3	2011-4	2012-1	2012-2	2012-3	2012-4	2013-1	2013-2	2013-3	2013-4	2014-1	2014-2	2014-3	2014-4
Population																				
FDEC, 07/2008	19,096.5	19,162.9	19,233.0	19,306.9	19,383.3	19,461.0	19,539.2	19,617.7	19,696.5	19,774.8	19,852.9	19,930.4	20,007.2	20,083.9	20,160.2	20,236.4	20,312.5	20,388.5	20,464.3	20,539.9
FDEC, 10/2008	18,962.5	19,001.8	19,051.1	19,110.0	19,176.9	19,249.0	19,325.1	19,405.1	19,487.0	19,568.6	19,649.2	19,729.5	19,809.4	19,887.5	19,964.4	20,041.3	20,117.9	20,193.1	20,267.5	20,342.4
Population Growth Rate																				
FDEC, 07/2008	1.25	1.40	1.47	1.55	1.59	1.61	1.62	1.62	1.62	1.60	1.59	1.57	1.55	1.54	1.53	1.52	1.51	1.50	1.50	1.49
FDEC, 10/2008	0.64	0.83	1.04	1.24	1.41	1.51	1.59	1.67	1.70	1.69	1.66	1.64	1.63	1.59	1.55	1.55	1.54	1.50	1.48	1.49
Net Change in Population																				
FDEC, 07/2008	59.3	66.4	70.1	73.9	76.4	77.7	78.1	78.5	78.9	78.3	78.0	77.5	76.9	76.6	76.4	76.2	76.1	76.0	75.8	75.6
FDEC, 10/2008	30.1	39.3	49.3	58.9	66.9	72.1	76.1	79.9	81.9	81.6	80.6	80.3	79.9	78.1	76.9	76.9	76.6	75.2	74.3	74.9
Households																				
FDEC, 07/2008	7,626.2	7,652.9	7,681.4	7,711.3	7,742.3	7,773.8	7,805.6	7,837.5	7,869.5	7,901.4	7,933.1	7,964.7	7,996.0	8,027.2	8,058.2	8,089.2	8,120.1	8,151.0	8,181.9	8,212.6
FDEC, 10/2008	7,569.2	7,585.0	7,605.1	7,629.1	7,656.2	7,685.5	7,716.5	7,748.9	7,782.2	7,815.4	7,848.1	7,880.7	7,913.2	7,945.0	7,976.2	8,007.5	8,038.6	8,069.2	8,099.4	8,129.8
Household Growth Rate																				
FDEC, 07/2008	1.25	1.41	1.49	1.57	1.62	1.64	1.64	1.65	1.65	1.63	1.62	1.60	1.58	1.57	1.56	1.55	1.54	1.53	1.52	1.51
FDEC, 10/2008	0.64	0.84	1.07	1.27	1.43	1.54	1.62	1.69	1.73	1.72	1.69	1.67	1.66	1.61	1.58	1.58	1.56	1.53	1.51	1.51
Net Change in Households																				
FDEC, 07/2008	23.7	26.7	28.4	29.9	31.0	31.6	31.8	31.9	32.1	31.9	31.7	31.5	31.3	31.2	31.1	31.0	30.9	30.9	30.8	30.8
FDEC, 10/2008	12.1	15.8	20.1	24.0	27.1	29.3	30.9	32.5	33.3	33.2	32.8	32.6	32.5	31.8	31.2	31.3	31.1	30.6	30.2	30.4
Household Size																				
FDEC, 07/2008	2.504	2.504	2.504	2.504	2.504	2.503	2.503	2.503	2.503	2.503	2.503	2.502	2.502	2.502	2.502	2.502	2.501	2.501	2.501	2.501
FDEC, 10/2008	2.505	2.505	2.505	2.505	2.505	2.505	2.504	2.504	2.504	2.504	2.504	2.504	2.503	2.503	2.503	2.503	2.503	2.503	2.502	2.502
Household Size Growth Rate																				
FDEC, 07/2008	0.00	-0.01	-0.02	-0.02	-0.02	-0.03	-0.03	-0.03	-0.03	-0.03	-0.03	-0.03	-0.03	-0.03	-0.03	-0.03	-0.03	-0.03	-0.03	-0.03
FDEC, 10/2008	0.00	0.00	-0.02	-0.02	-0.02	-0.03	-0.03	-0.03	-0.03	-0.03	-0.03	-0.03	-0.03	-0.03	-0.03	-0.03	-0.03	-0.03	-0.03	-0.03
Net Migration																				
FDEC, 07/2008	41.3	48.5	52.3	56.2	58.8	60.2	60.6	61.0	61.5	61.0	60.7	60.3	59.7	59.5	59.3	59.2	59.1	59.0	59.0	58.9
FDEC, 10/2008	13.7	23.1	33.3	43.1	51.2	56.6	60.8	64.7	66.8	66.6	65.7	65.4	65.1	63.5	62.3	62.4	62.2	60.9	60.1	60.8
Births																				
FDEC, 07/2008	60.4	60.5	60.6	60.7	60.8	61.0	61.1	61.3	61.5	61.7	61.9	62.1	62.3	62.5	62.7	62.9	63.1	63.3	63.5	63.7
FDEC, 10/2008	59.4	59.4	59.5	59.5	59.6	59.7	59.8	60.0	60.2	60.4	60.6	60.8	61.0	61.3	61.5	61.7	61.9	62.1	62.3	62.5
Deaths																				
FDEC, 07/2008	42.5	42.6	42.8	43.0	43.2	43.4	43.6	43.8	44.1	44.3	44.6	44.8	45.1	45.3	45.6	45.8	46.1	46.4	46.6	46.9
FDEC, 10/2008	43.0	43.2	43.5	43.7	44.0	44.2	44.5	44.8	45.1	45.4	45.7	46.0	46.3	46.6	46.9	47.2	47.5	47.8	48.1	48.4
Net Natural Increase																				
FDEC, 07/2008	18.0	17.9	17.8	17.7	17.6	17.6	17.5	17.5	17.4	17.3	17.3	17.2	17.2	17.1	17.1	17.0	17.0	16.9	16.9	16.8
FDEC, 10/2008	16.4	16.2	16.0	15.8	15.6	15.5	15.3	15.2	15.1	15.0	14.9	14.8	14.8	14.7	14.6	14.5	14.4	14.3	14.2	14.1

Quarterly Data Table

	<u>2015-1</u>	<u>2015-2</u>	<u>2015-3</u>	<u>2015-4</u>	<u>2016-1</u>	<u>2016-2</u>	<u>2016-3</u>	<u>2016-4</u>	<u>2017-1</u>	<u>2017-2</u>	<u>2017-3</u>	<u>2017-4</u>	<u>2018-1</u>	<u>2018-2</u>
Population														
FDEC, 07/2008	20,615.4	20,690.5	20,765.5	20,840.3	20,914.9	20,989.5	21,064.0	21,138.4	21,212.7	21,286.7	21,360.4	21,434.3	21,507.5	21,580.6
FDEC, 10/2008	20,417.7	20,492.2	20,566.6	20,641.9	20,717.6	20,792.8	20,867.4	20,942.5	21,017.9	21,092.7	21,167.2	21,242.5	21,318.2	21,393.0
Population Growth Rate														
FDEC, 07/2008	1.48	1.47	1.46	1.45	1.44	1.43	1.43	1.42	1.41	1.40	1.39	1.39	1.37	1.37
FDEC, 10/2008	1.49	1.47	1.46	1.47	1.47	1.46	1.44	1.45	1.45	1.43	1.42	1.43	1.43	1.41
Net Change in Population														
FDEC, 07/2008	75.4	75.2	75.0	74.8	74.6	74.5	74.5	74.4	74.2	74.0	73.8	73.9	73.2	73.1
FDEC, 10/2008	75.3	74.6	74.4	75.3	75.7	75.2	74.7	75.0	75.5	74.8	74.5	75.3	75.7	74.8
Households														
FDEC, 07/2008	8,243.3	8,273.9	8,304.4	8,334.8	8,365.1	8,395.4	8,425.7	8,456.0	8,486.2	8,516.3	8,546.3	8,576.3	8,606.1	8,635.9
FDEC, 10/2008	8,160.4	8,190.7	8,221.0	8,251.6	8,282.3	8,312.9	8,343.2	8,373.7	8,404.4	8,434.7	8,465.0	8,495.6	8,526.4	8,556.8
Household Growth Rate														
FDEC, 07/2008	1.50	1.49	1.48	1.47	1.46	1.46	1.45	1.44	1.44	1.43	1.42	1.41	1.40	1.39
FDEC, 10/2008	1.51	1.49	1.48	1.50	1.50	1.48	1.47	1.47	1.47	1.45	1.44	1.45	1.46	1.43
Net Change in Households														
FDEC, 07/2008	30.7	30.6	30.5	30.4	30.3	30.3	30.3	30.3	30.2	30.1	30.0	30.0	29.8	29.7
FDEC, 10/2008	30.6	30.3	30.2	30.6	30.8	30.6	30.3	30.5	30.7	30.4	30.3	30.6	30.8	30.4
Household Size														
FDEC, 07/2008	2.501	2.501	2.501	2.500	2.500	2.500	2.500	2.500	2.500	2.500	2.499	2.499	2.499	2.499
FDEC, 10/2008	2.502	2.502	2.502	2.502	2.501	2.501	2.501	2.501	2.501	2.501	2.501	2.500	2.500	2.500
Household Size Growth Rate														
FDEC, 07/2008	-0.02	-0.02	-0.02	-0.02	-0.02	-0.02	-0.02	-0.02	-0.02	-0.02	-0.02	-0.02	-0.02	-0.02
FDEC, 10/2008	-0.02	-0.02	-0.02	-0.02	-0.02	-0.02	-0.02	-0.02	-0.02	-0.02	-0.02	-0.02	-0.02	-0.02
Net Migration														
FDEC, 07/2008	58.7	58.5	58.4	58.3	58.2	58.2	58.3	58.3	58.3	58.1	58.0	58.3	57.7	57.7
FDEC, 10/2008	61.2	60.6	60.5	61.6	62.1	61.8	61.4	61.9	62.5	61.9	61.8	62.8	63.3	62.6
Births														
FDEC, 07/2008	63.9	64.0	64.2	64.4	64.6	64.7	64.9	65.0	65.2	65.3	65.5	65.6	65.8	65.9
FDEC, 10/2008	62.7	62.9	63.1	63.3	63.5	63.6	63.7	63.9	64.0	64.2	64.3	64.5	64.6	64.8
Deaths														
FDEC, 07/2008	47.1	47.4	47.6	47.9	48.1	48.4	48.7	48.9	49.2	49.5	49.7	50.0	50.3	50.6
FDEC, 10/2008	48.7	48.9	49.3	49.6	49.9	50.2	50.5	50.7	51.0	51.3	51.6	51.9	52.2	52.5
Net Natural Increase														
FDEC, 07/2008	16.7	16.7	16.6	16.5	16.4	16.3	16.2	16.1	16.0	15.9	15.7	15.6	15.5	15.3
FDEC, 10/2008	14.0	13.9	13.8	13.7	13.6	13.4	13.3	13.2	13.0	12.8	12.7	12.6	12.4	12.2

Fiscal Year Data Table

	<u>1990-91</u>	<u>1991-92</u>	<u>1992-93</u>	<u>1993-94</u>	<u>1994-95</u>	<u>1995-96</u>	<u>1996-97</u>	<u>1997-98</u>	<u>1998-99</u>	<u>1999-00</u>	<u>2000-01</u>	<u>2001-02</u>	<u>2002-03</u>	<u>2003-04</u>	<u>2004-05</u>
Population															
FDEC, 07/2008	13,178.3	13,440.1	13,671.5	13,963.0	14,263.5	14,551.6	14,858.6	15,157.3	15,490.7	15,881.0	16,244.9	16,587.9	16,970.3	17,404.2	17,819.2
FDEC, 10/2008	13,178.3	13,440.1	13,671.5	13,963.0	14,263.5	14,551.6	14,858.6	15,157.3	15,490.7	15,881.0	16,244.9	16,587.9	16,970.3	17,404.2	17,818.2
Growth Rate															
FDEC, 07/2008	2.42	1.99	1.72	2.13	2.15	2.02	2.11	2.01	2.20	2.52	2.29	2.11	2.31	2.56	2.38
FDEC, 10/2008	2.42	1.99	1.72	2.13	2.15	2.02	2.11	2.01	2.20	2.52	2.29	2.11	2.31	2.56	2.38
Net Change in Population															
FDEC, 07/2008	312.1	234.3	242.3	313.4	290.5	291.0	311.8	297.2	358.7	397.6	344.5	349.5	404.9	440.8	404.7
FDEC, 10/2008	312.1	234.3	242.3	313.4	290.5	291.0	311.8	297.2	358.7	397.6	344.5	349.5	404.9	441.2	402.8
Households															
FDEC, 07/2008	5,230.8	5,334.4	5,424.8	5,538.3	5,655.1	5,767.0	5,887.2	6,005.0	6,138.4	6,296.7	6,447.6	6,586.2	6,738.5	6,906.6	7,069.7
FDEC, 10/2008	5,230.8	5,334.4	5,424.8	5,538.3	5,655.1	5,767.0	5,887.2	6,005.0	6,138.4	6,296.7	6,447.6	6,586.2	6,738.5	6,906.7	7,069.2
Growth Rate															
FDEC, 07/2008	2.44	1.98	1.69	2.09	2.11	1.98	2.08	2.00	2.22	2.58	2.40	2.15	2.31	2.49	2.36
FDEC, 10/2008	2.44	1.98	1.69	2.09	2.11	1.98	2.08	2.00	2.22	2.58	2.40	2.15	2.31	2.49	2.35
Net Change in Households															
FDEC, 07/2008	124.4	92.2	94.4	122.0	112.8	113.3	122.3	117.9	144.1	162.5	143.0	139.6	160.4	169.5	162.5
FDEC, 10/2008	124.4	92.2	94.4	122.0	112.8	113.3	122.3	117.9	144.1	162.5	143.0	139.6	160.4	169.5	162.5
Household Size															
FDEC, 07/2008	2.519	2.520	2.520	2.521	2.522	2.523	2.524	2.524	2.524	2.522	2.520	2.519	2.518	2.520	2.521
FDEC, 10/2008	2.519	2.520	2.520	2.521	2.522	2.523	2.524	2.524	2.524	2.522	2.520	2.519	2.518	2.520	2.521
Growth Rate															
FDEC, 07/2008	-0.02	0.01	0.03	0.04	0.04	0.04	0.03	0.01	-0.02	-0.06	-0.10	-0.04	-0.01	0.06	0.02
FDEC, 10/2008	-0.02	0.01	0.03	0.04	0.04	0.04	0.03	0.01	-0.02	-0.06	-0.10	-0.04	-0.01	0.06	0.03
Net Migration															
FDEC, 07/2008	249.0	178.7	192.2	267.6	250.4	254.9	274.2	257.9	322.8	359.8	303.4	312.3	364.5	393.7	352.7
FDEC, 10/2008	249.0	178.7	192.2	267.6	250.4	254.9	274.2	257.9	322.8	359.8	303.5	312.3	364.5	394.0	350.7
Births															
FDEC, 07/2008	197.2	191.7	192.1	191.8	189.3	188.6	190.6	194.3	195.8	200.3	205.9	205.0	208.4	215.4	221.3
FDEC, 10/2008	197.2	191.7	192.1	191.8	189.3	188.6	190.6	194.3	195.8	200.3	205.9	205.0	208.4	215.4	221.3
Deaths															
FDEC, 07/2008	134.1	136.2	142.0	146.0	149.1	152.6	153.0	155.0	160.0	162.4	164.9	167.8	168.0	168.3	169.3
FDEC, 10/2008	134.1	136.2	142.0	146.0	149.1	152.6	153.0	155.0	160.0	162.4	164.9	167.8	168.0	168.2	169.3
Net Natural Increase															
FDEC, 07/2008	63.1	55.6	50.1	45.8	40.2	36.0	37.6	39.3	35.8	37.9	41.1	37.2	40.4	47.1	52.0
FDEC, 10/2008	63.1	55.5	50.1	45.8	40.2	36.0	37.6	39.3	35.8	37.9	41.1	37.2	40.4	47.1	52.0

Fiscal Year Data Table

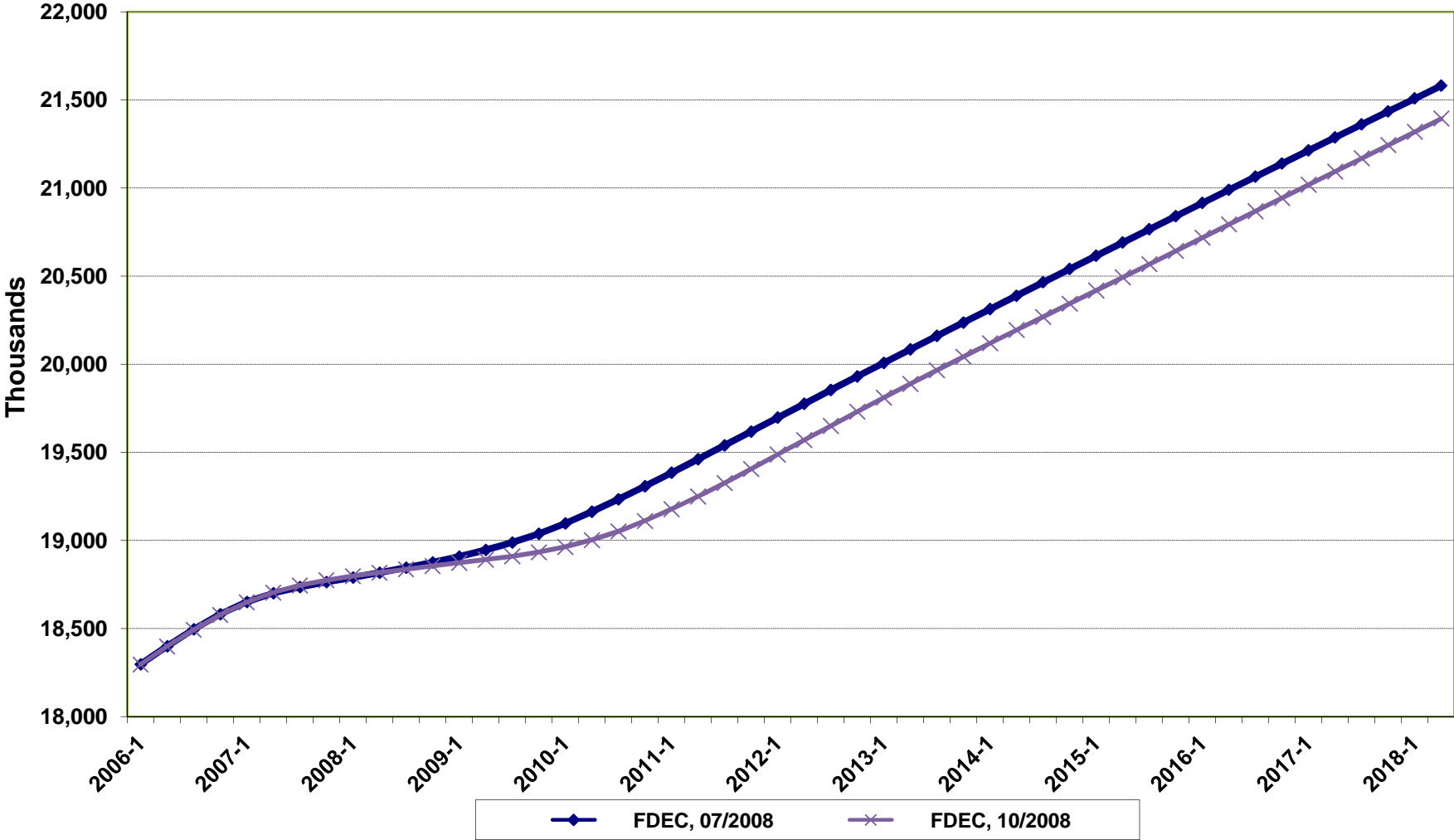
	<u>2005-06</u>	<u>2006-07</u>	<u>2007-08</u>	<u>2008-09</u>	<u>2009-10</u>	<u>2010-11</u>	<u>2011-12</u>	<u>2012-13</u>	<u>2013-14</u>	<u>2014-15</u>	<u>2015-16</u>	<u>2016-17</u>	<u>2017-18</u>
Population													
FDEC, 07/2008	18,241.4	18,606.9	18,776.1	18,893.1	19,071.1	19,346.1	19,657.0	19,968.6	20,274.4	20,577.5	20,877.6	21,175.4	21,470.7
FDEC, 10/2008	18,239.7	18,605.3	18,782.8	18,863.4	18,951.5	19,146.7	19,446.5	19,768.9	20,079.2	20,379.9	20,679.7	20,980.1	21,280.2
Growth Rate													
FDEC, 07/2008	2.37	2.00	0.91	0.62	0.94	1.44	1.61	1.58	1.53	1.50	1.46	1.43	1.39
FDEC, 10/2008	2.37	2.00	0.95	0.43	0.47	1.03	1.57	1.66	1.57	1.50	1.47	1.45	1.43
Net Change in Population													
FDEC, 07/2008	427.1	301.1	115.7	129.1	217.6	298.1	313.8	309.0	304.6	302.1	298.9	297.2	293.9
FDEC, 10/2008	427.6	305.5	113.1	73.8	111.2	247.2	319.6	318.9	305.6	299.1	300.5	299.9	300.4
Households													
FDEC, 07/2008	7,246.4	7,410.1	7,494.0	7,544.3	7,616.1	7,727.2	7,853.5	7,980.2	8,104.6	8,227.9	8,349.9	8,471.0	8,591.2
FDEC, 10/2008	7,245.4	7,409.7	7,493.6	7,528.9	7,564.8	7,644.0	7,765.7	7,896.8	8,022.9	8,145.1	8,266.9	8,389.0	8,511.0
Growth Rate													
FDEC, 07/2008	2.50	2.26	1.13	0.67	0.95	1.46	1.63	1.61	1.56	1.52	1.48	1.45	1.42
FDEC, 10/2008	2.49	2.27	1.13	0.47	0.48	1.05	1.59	1.69	1.60	1.52	1.50	1.48	1.45
Net Change in Households													
FDEC, 07/2008	181.4	143.3	55.5	53.3	87.3	120.9	127.6	125.7	123.9	122.8	121.6	120.9	119.6
FDEC, 10/2008	181.4	142.8	52.0	31.2	44.8	100.5	129.8	129.6	124.2	121.6	122.1	121.9	122.1
Household Size													
FDEC, 07/2008	2.517	2.511	2.505	2.504	2.504	2.504	2.503	2.502	2.502	2.501	2.500	2.500	2.499
FDEC, 10/2008	2.517	2.511	2.507	2.505	2.505	2.505	2.504	2.503	2.503	2.502	2.502	2.501	2.500
Growth Rate													
FDEC, 07/2008	-0.13	-0.25	-0.22	-0.05	-0.01	-0.02	-0.03	-0.03	-0.03	-0.03	-0.02	-0.02	-0.02
FDEC, 10/2008	-0.12	-0.26	-0.18	-0.04	-0.01	-0.02	-0.03	-0.03	-0.03	-0.03	-0.02	-0.02	-0.02
Net Migration													
FDEC, 07/2008	365.0	230.7	43.3	56.0	145.6	227.4	244.1	240.2	236.6	235.0	233.1	233.0	231.8
FDEC, 10/2008	365.5	235.0	42.3	5.1	45.2	184.3	259.0	259.7	247.8	242.7	246.0	247.6	250.5
Births													
FDEC, 07/2008	232.4	238.6	239.5	240.8	241.6	243.1	245.6	248.6	251.9	255.0	257.9	260.5	262.7
FDEC, 10/2008	232.3	238.8	238.5	238.1	237.8	238.3	240.5	243.7	247.1	250.4	253.4	255.9	258.2
Deaths													
FDEC, 07/2008	170.3	168.2	167.1	167.6	169.6	172.4	175.9	179.8	183.9	188.0	192.1	196.3	200.6
FDEC, 10/2008	170.3	168.4	167.7	169.3	171.8	175.3	179.8	184.6	189.3	194.0	198.9	203.6	208.3
Net Natural Increase													
FDEC, 07/2008	62.1	70.4	72.4	73.1	72.0	70.8	69.7	68.9	68.0	67.0	65.8	64.2	62.1
FDEC, 10/2008	62.0	70.5	70.8	68.7	66.0	62.9	60.7	59.2	57.8	56.4	54.5	52.3	49.9

FLORIDA DEMOGRAPHIC ESTIMATING CONFERENCE

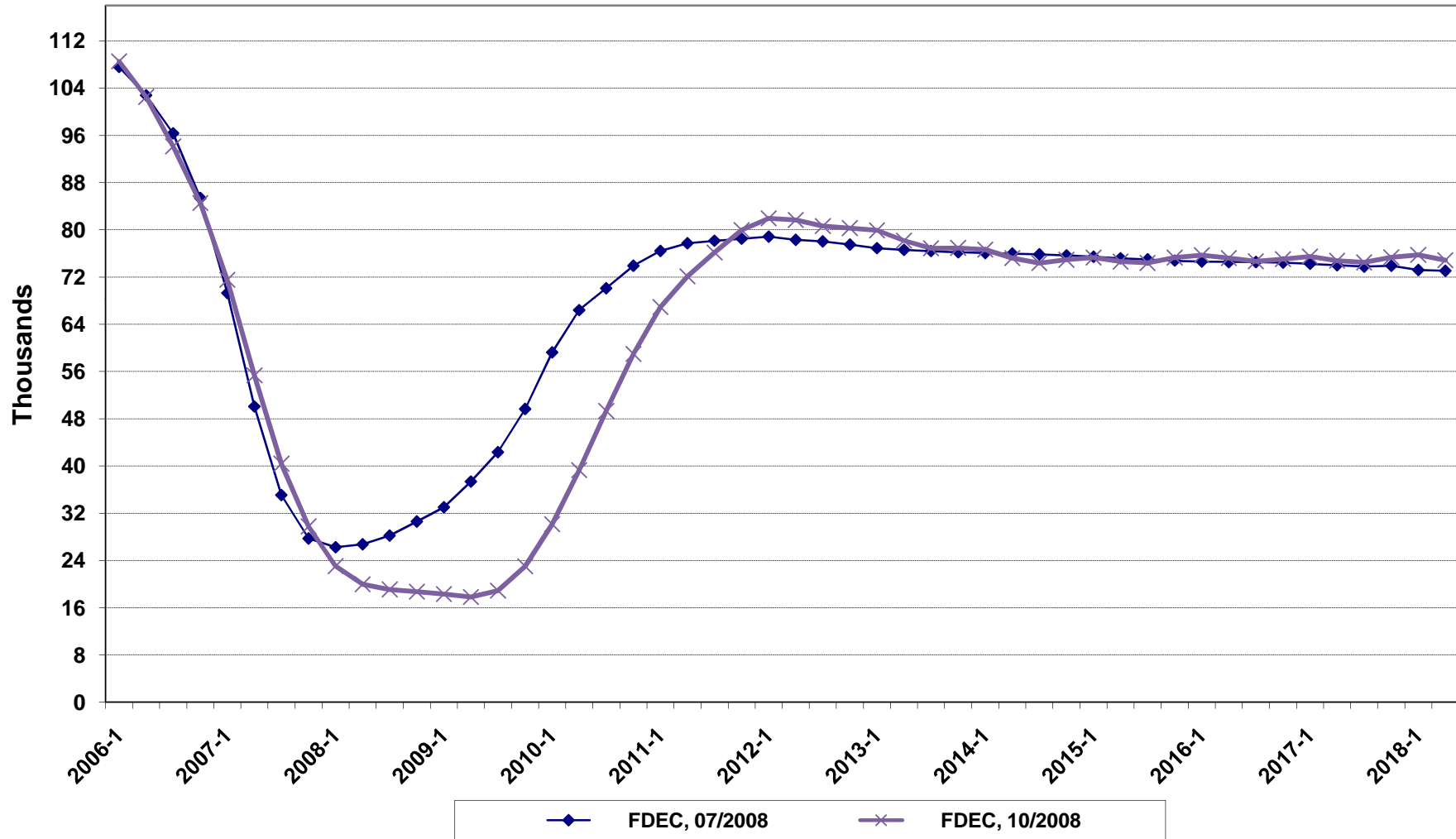
Charts

Held October 17, 2008

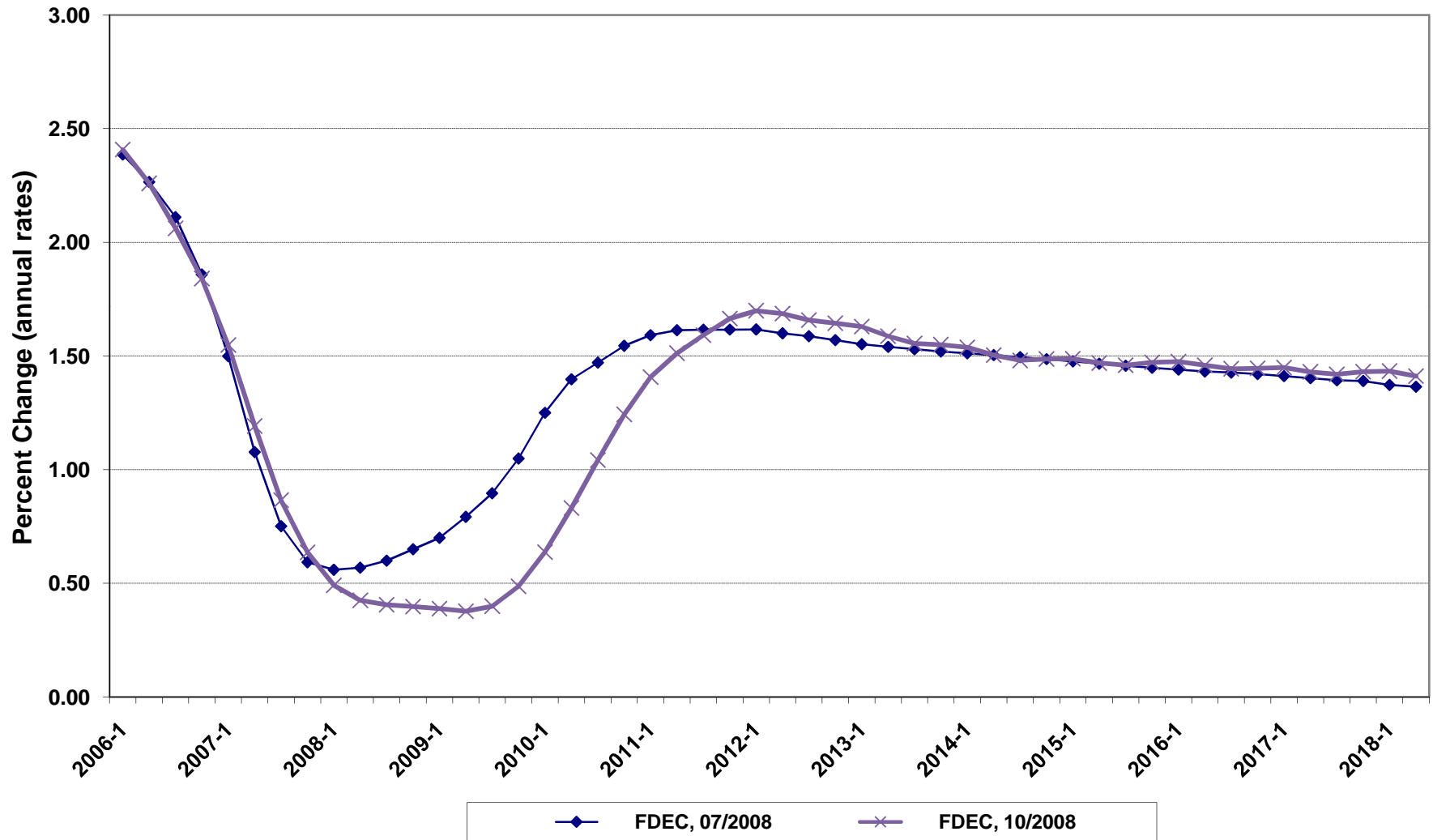
Florida Resident Population



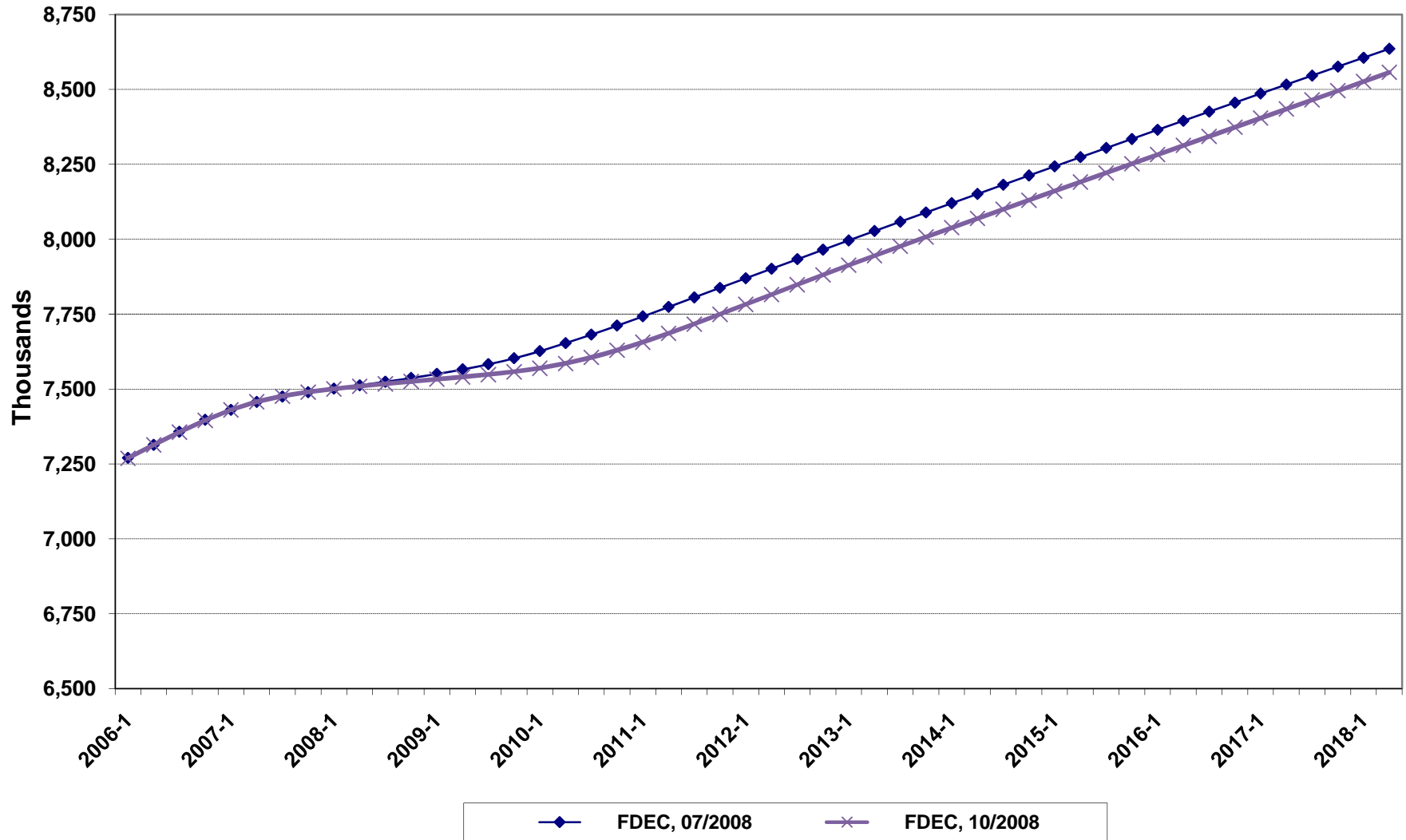
Net Change In Florida Resident Population



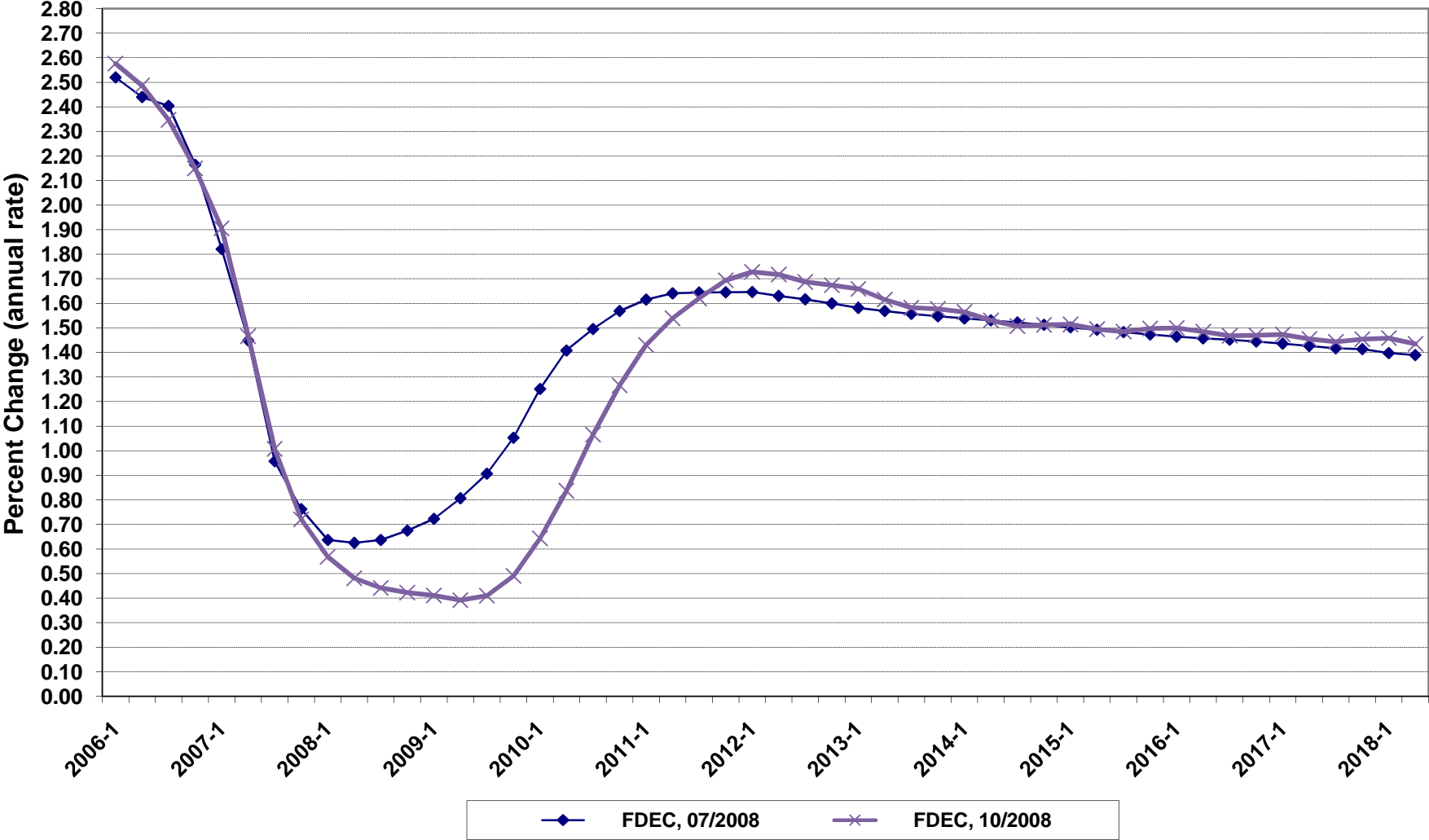
Growth In Florida Resident Population



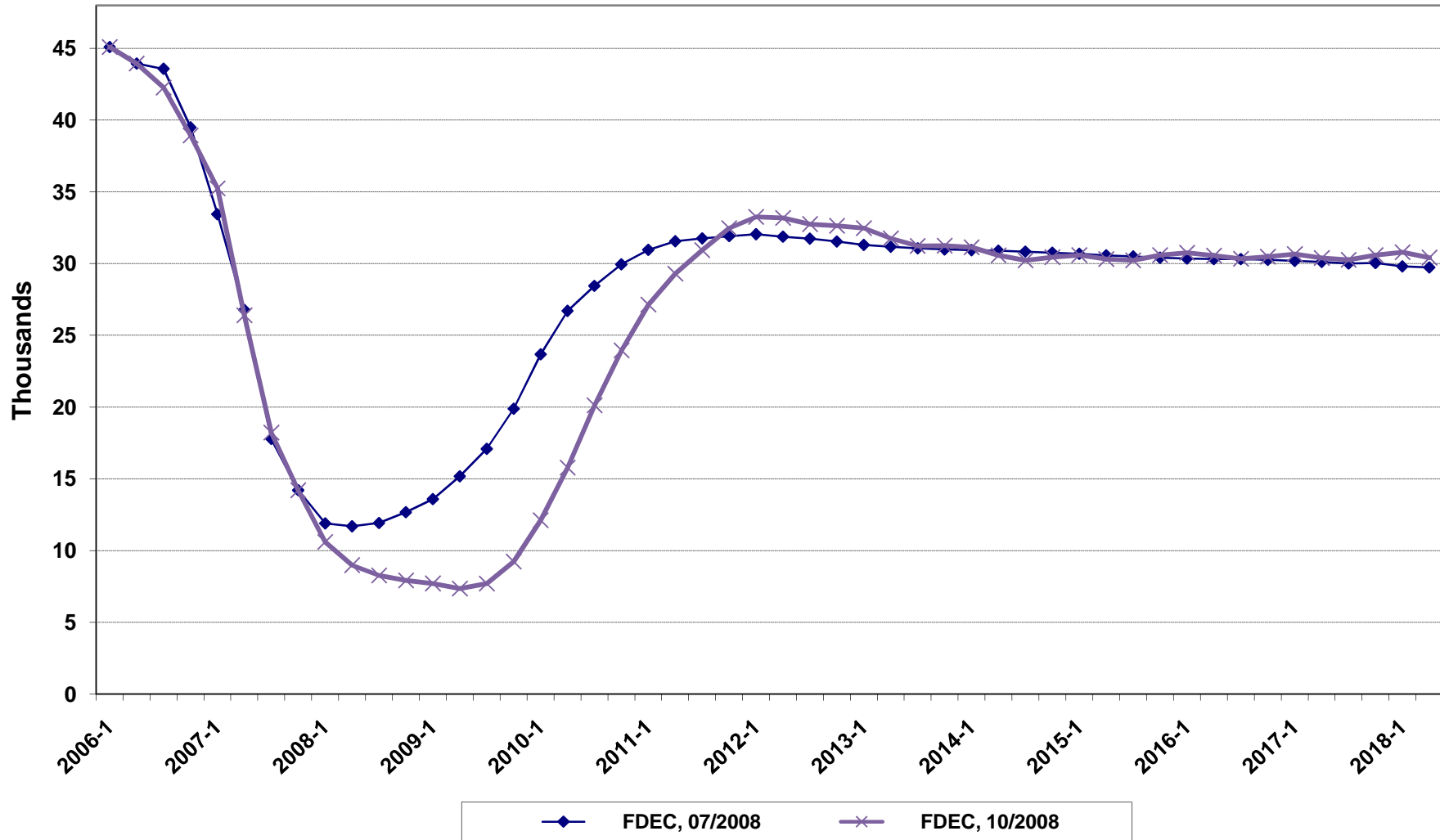
Florida Resident Households



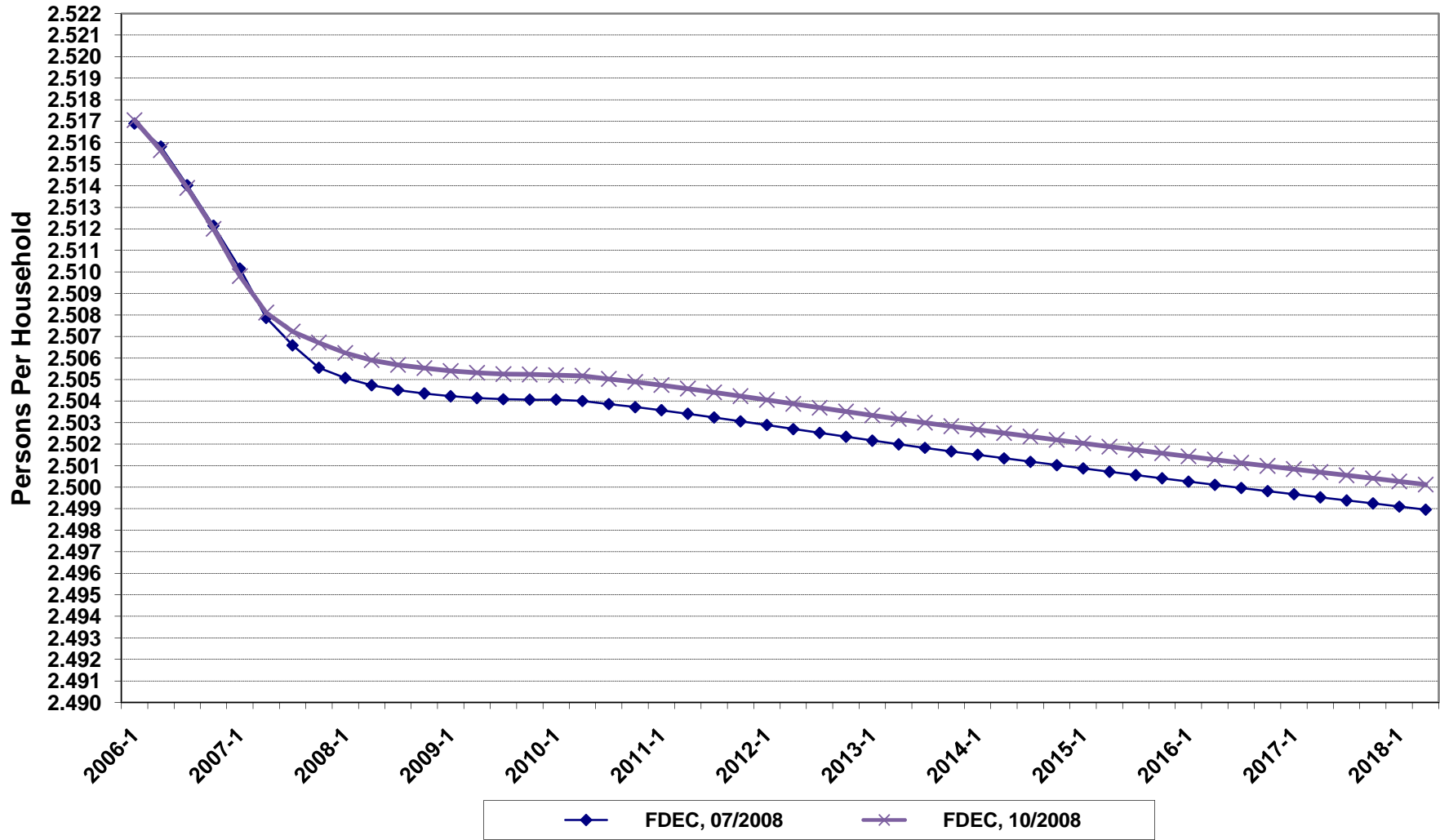
Growth In Florida Resident Households



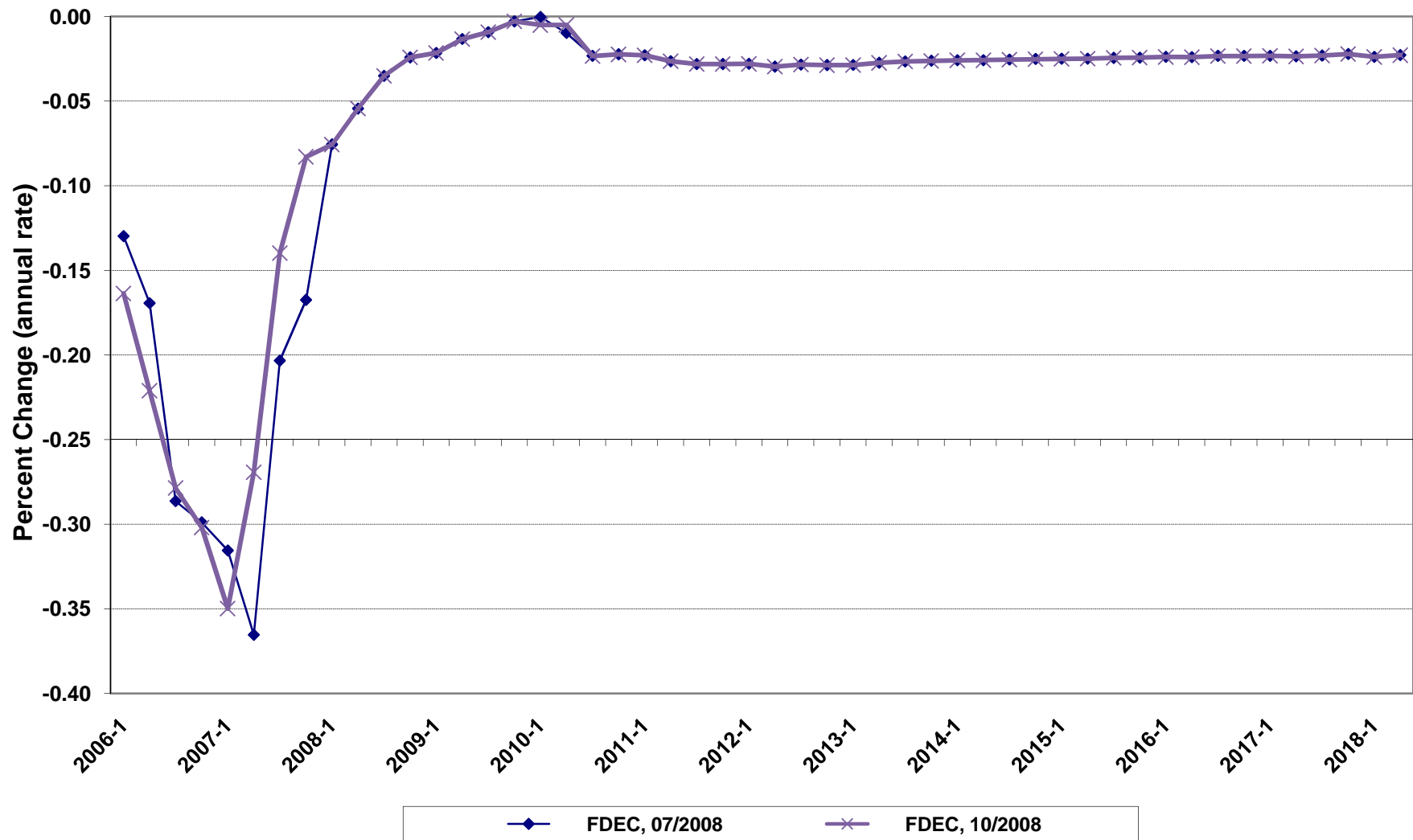
Net Change In Florida Resident Households



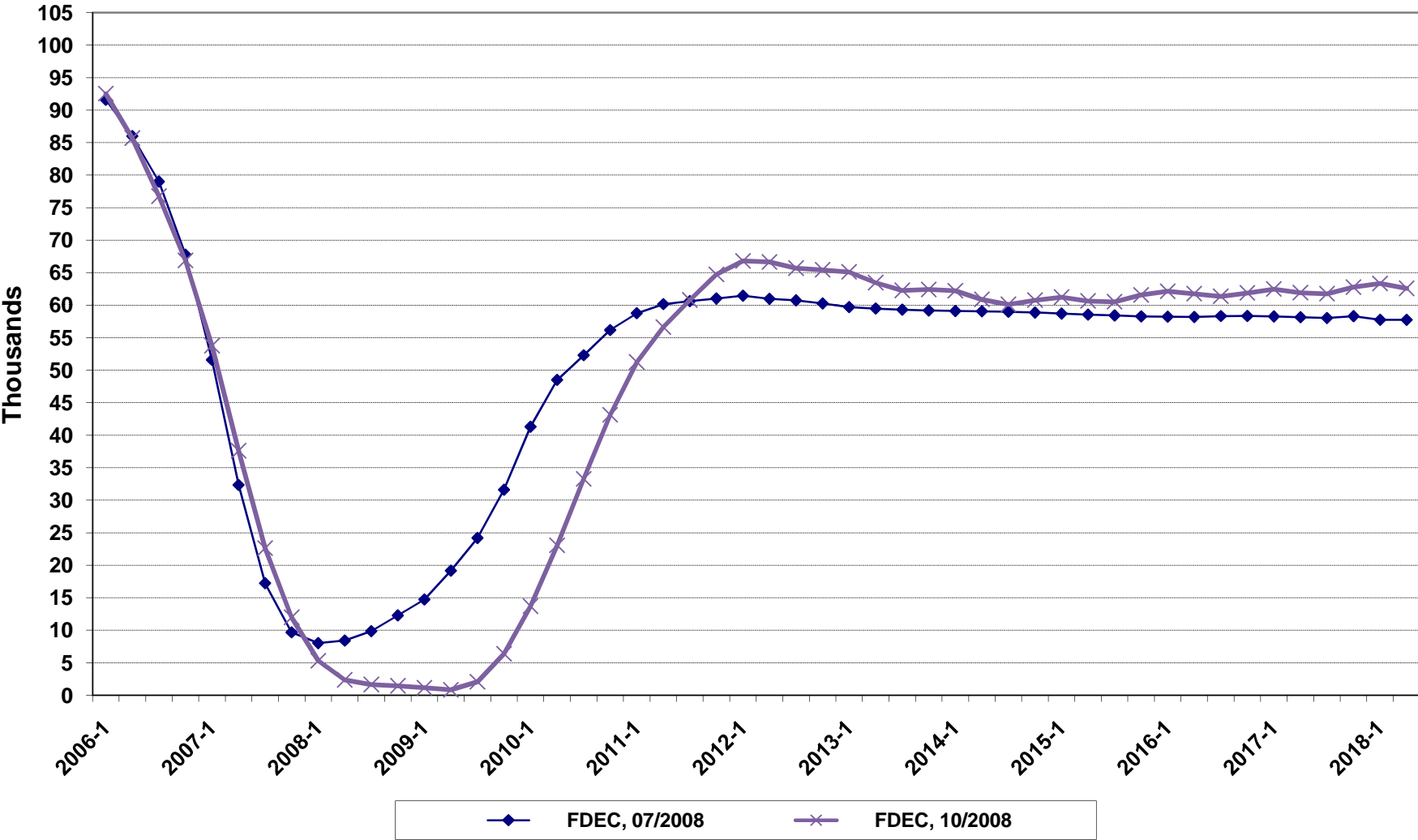
Florida Average Household Size



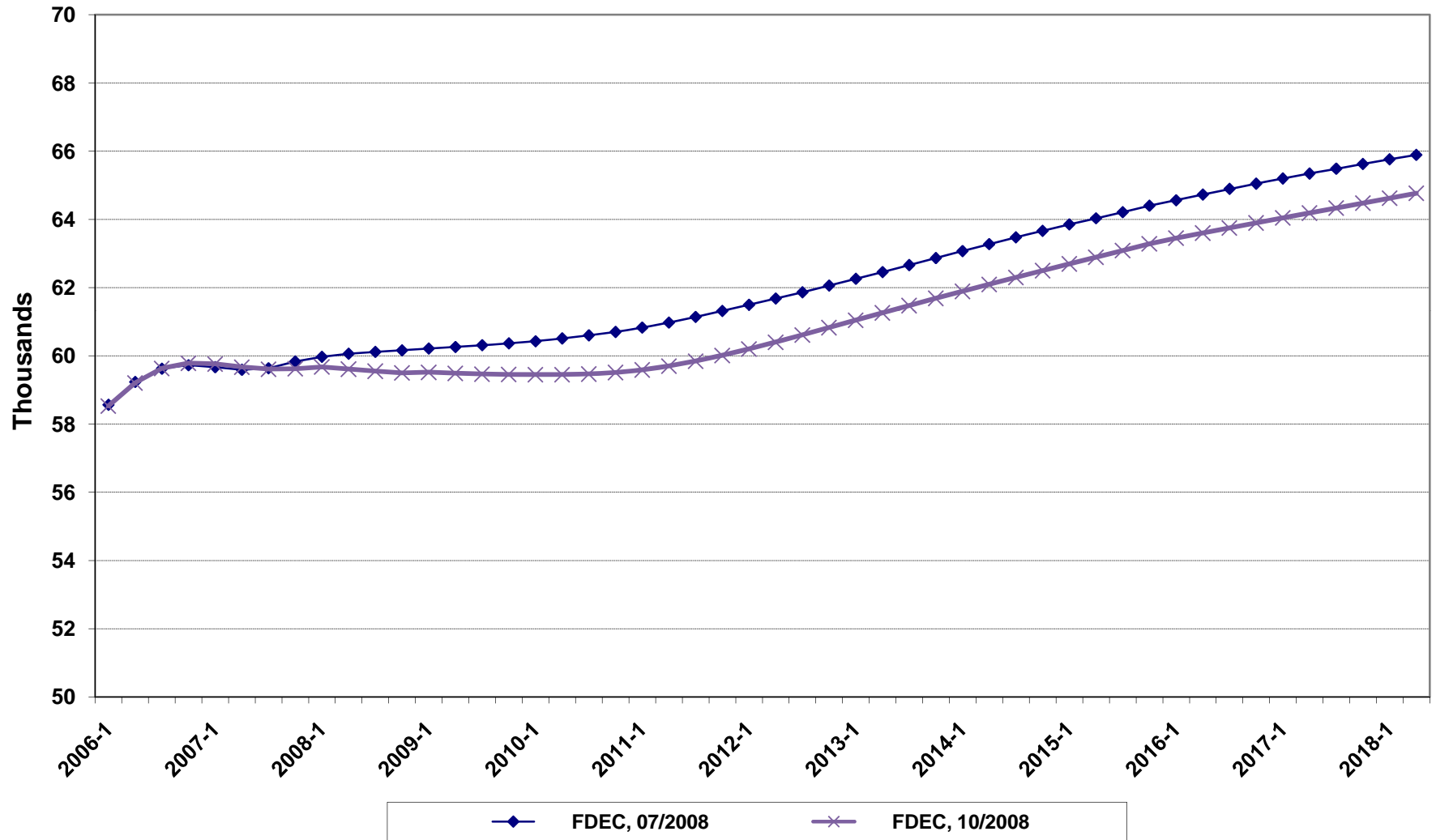
Growth In Florida Household Size



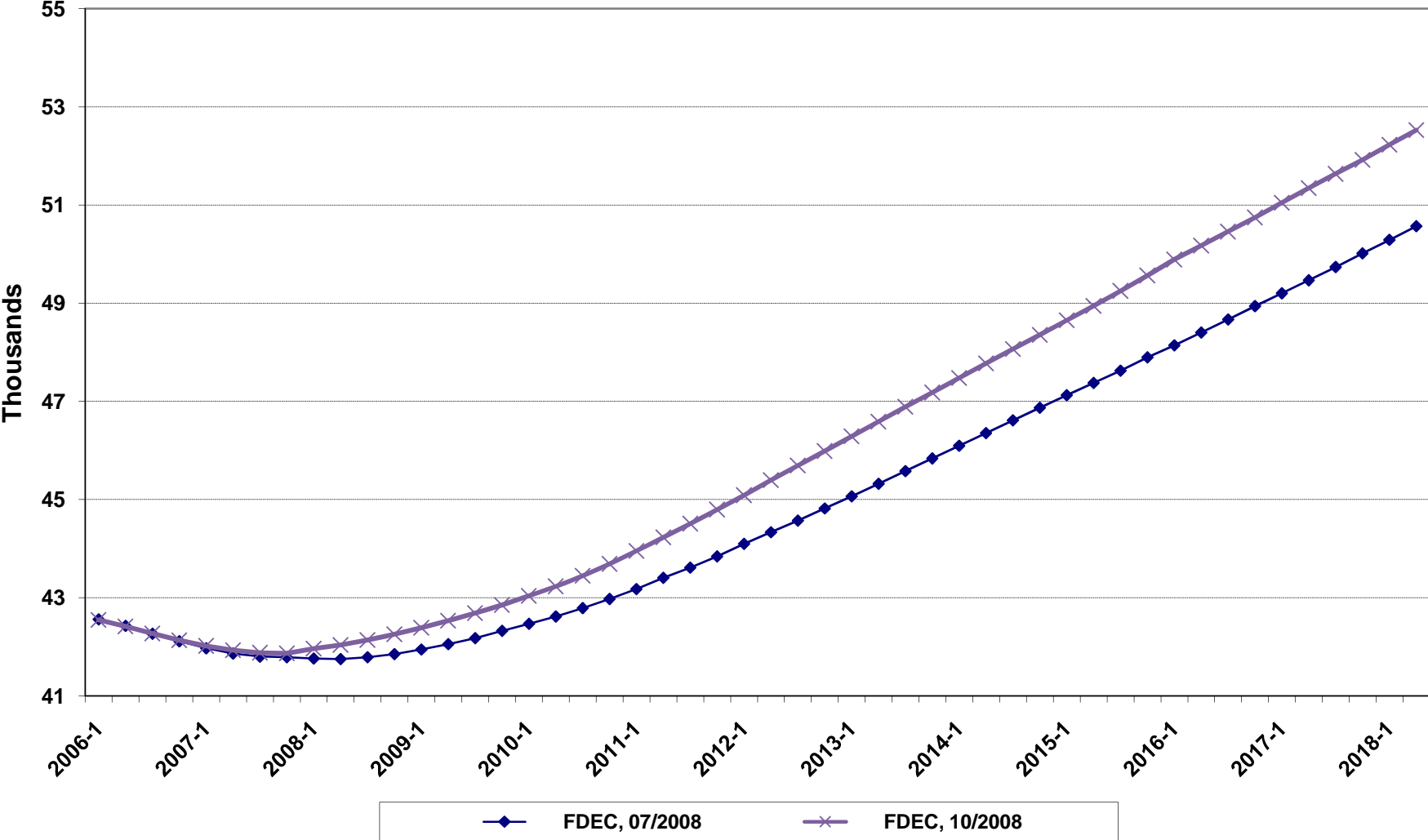
Florida Net Migration



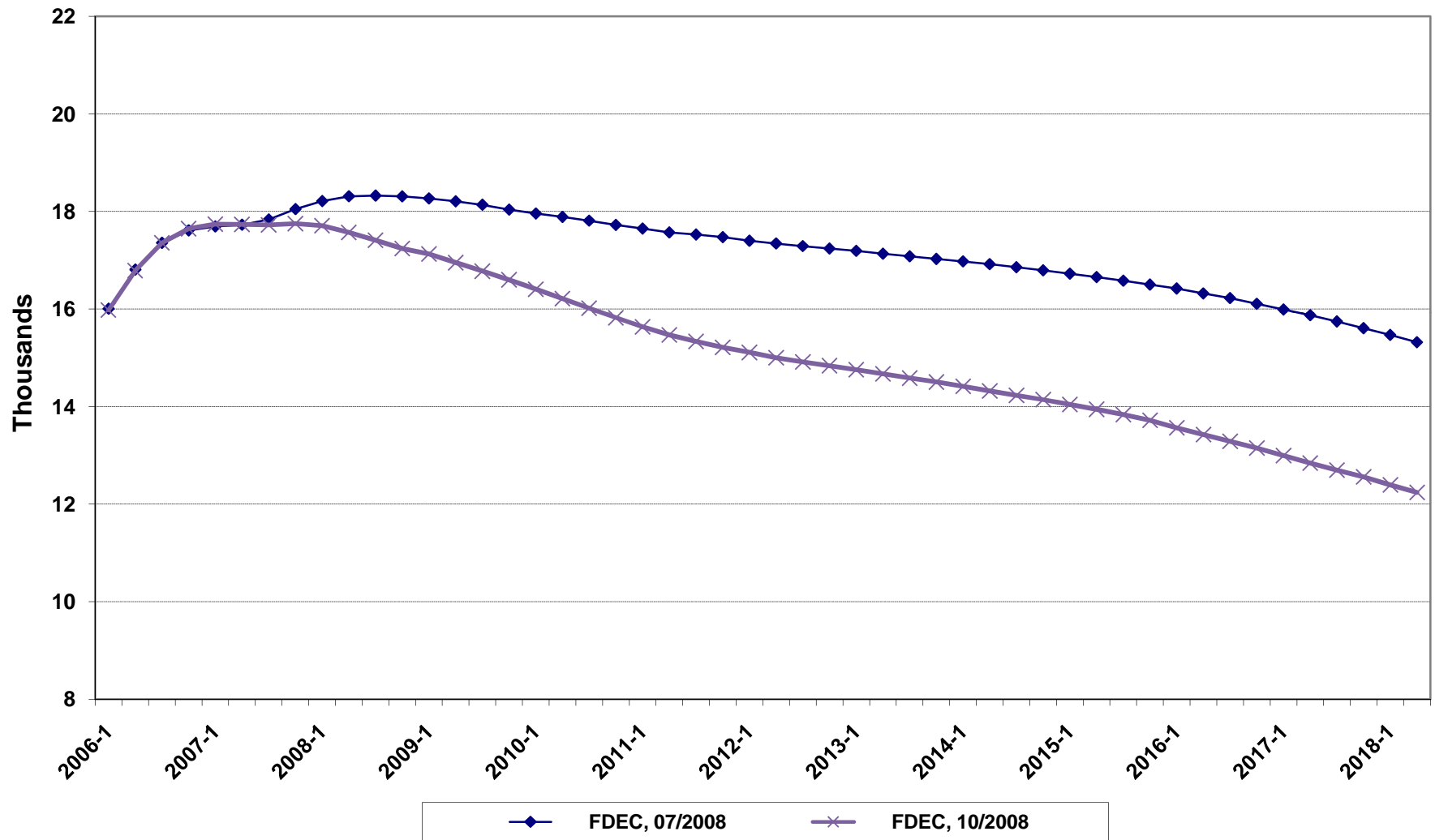
Florida Resident Births



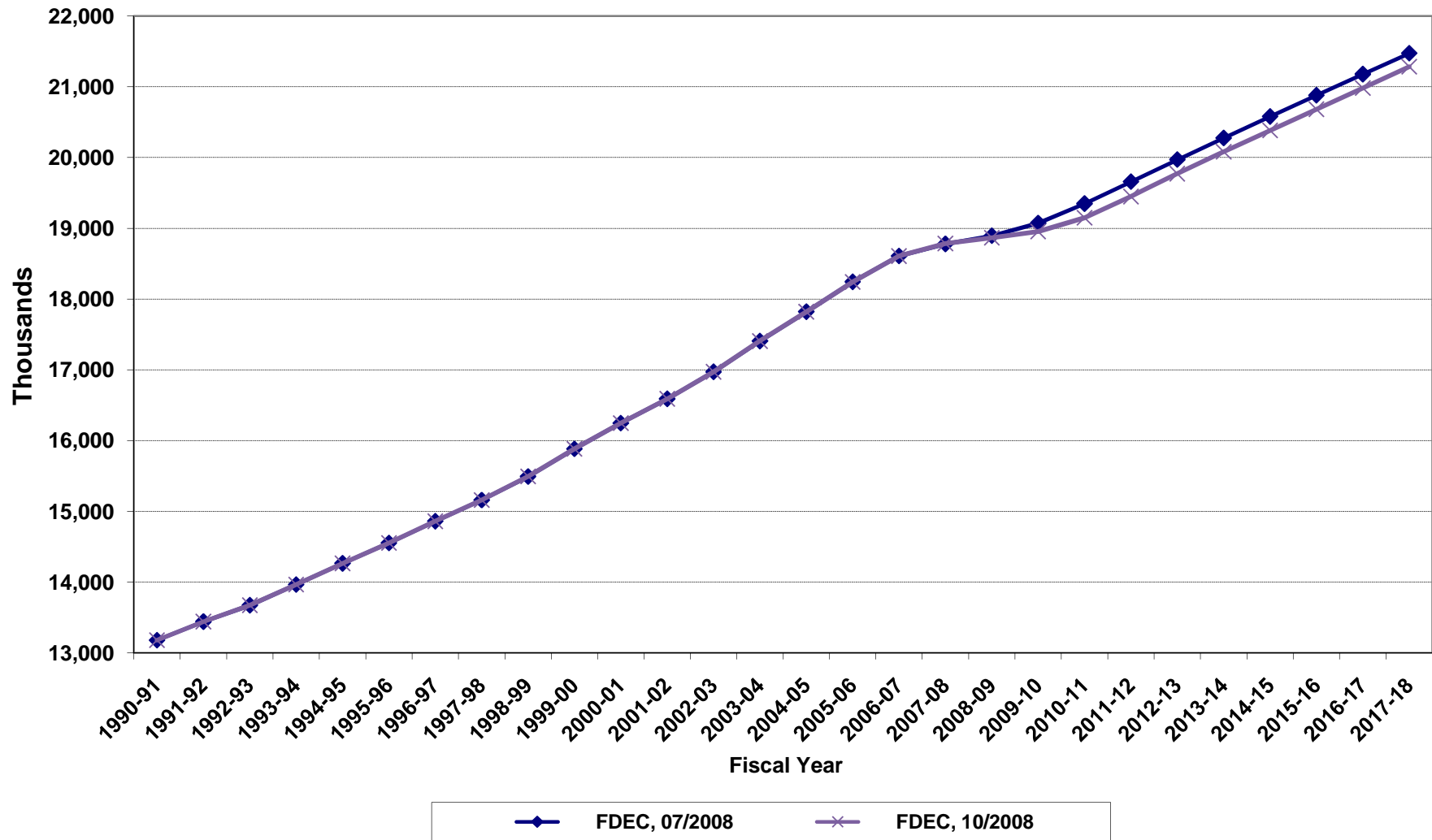
Florida Resident Deaths



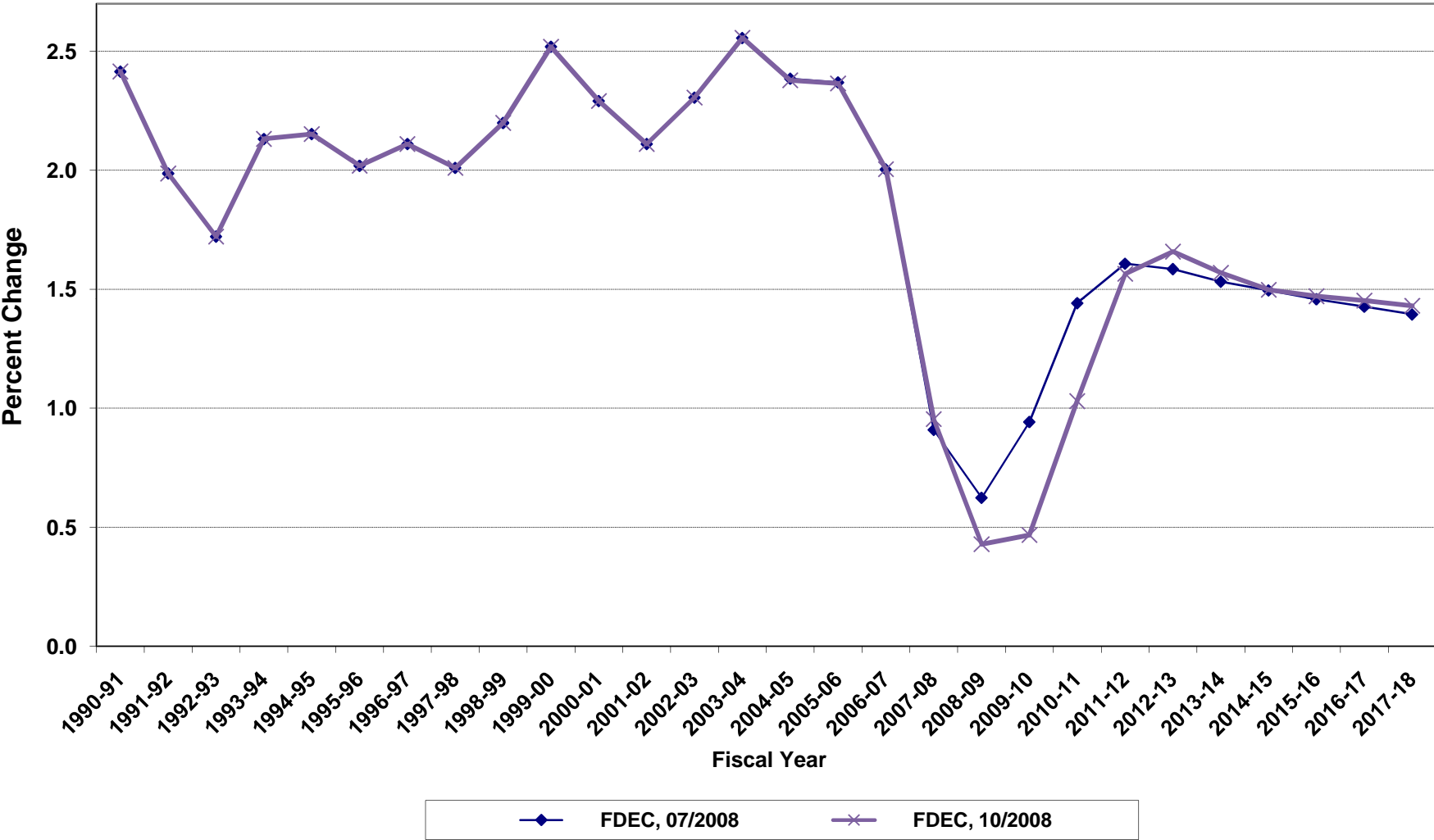
Florida Net Natural Increase



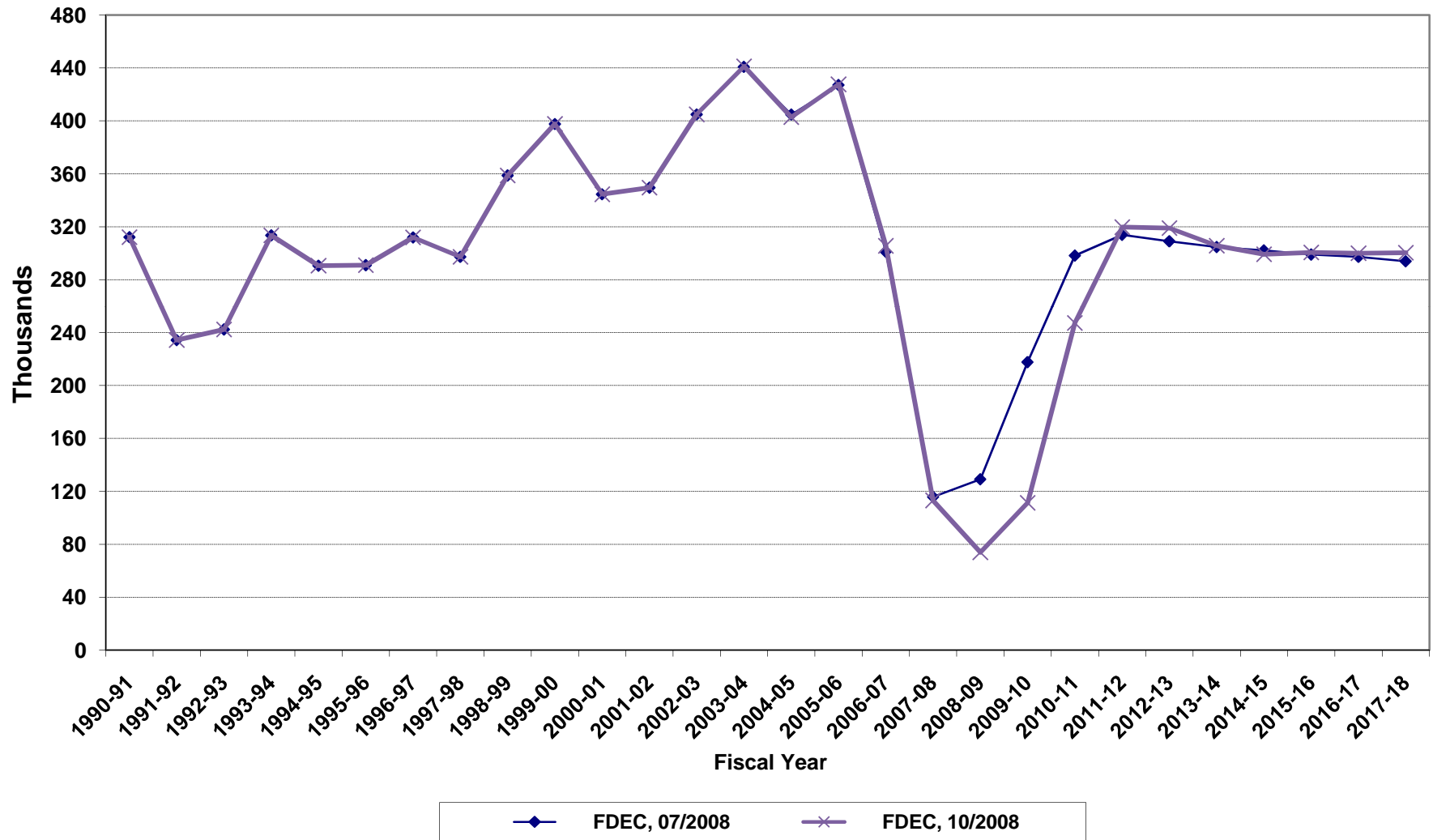
Florida Resident Population



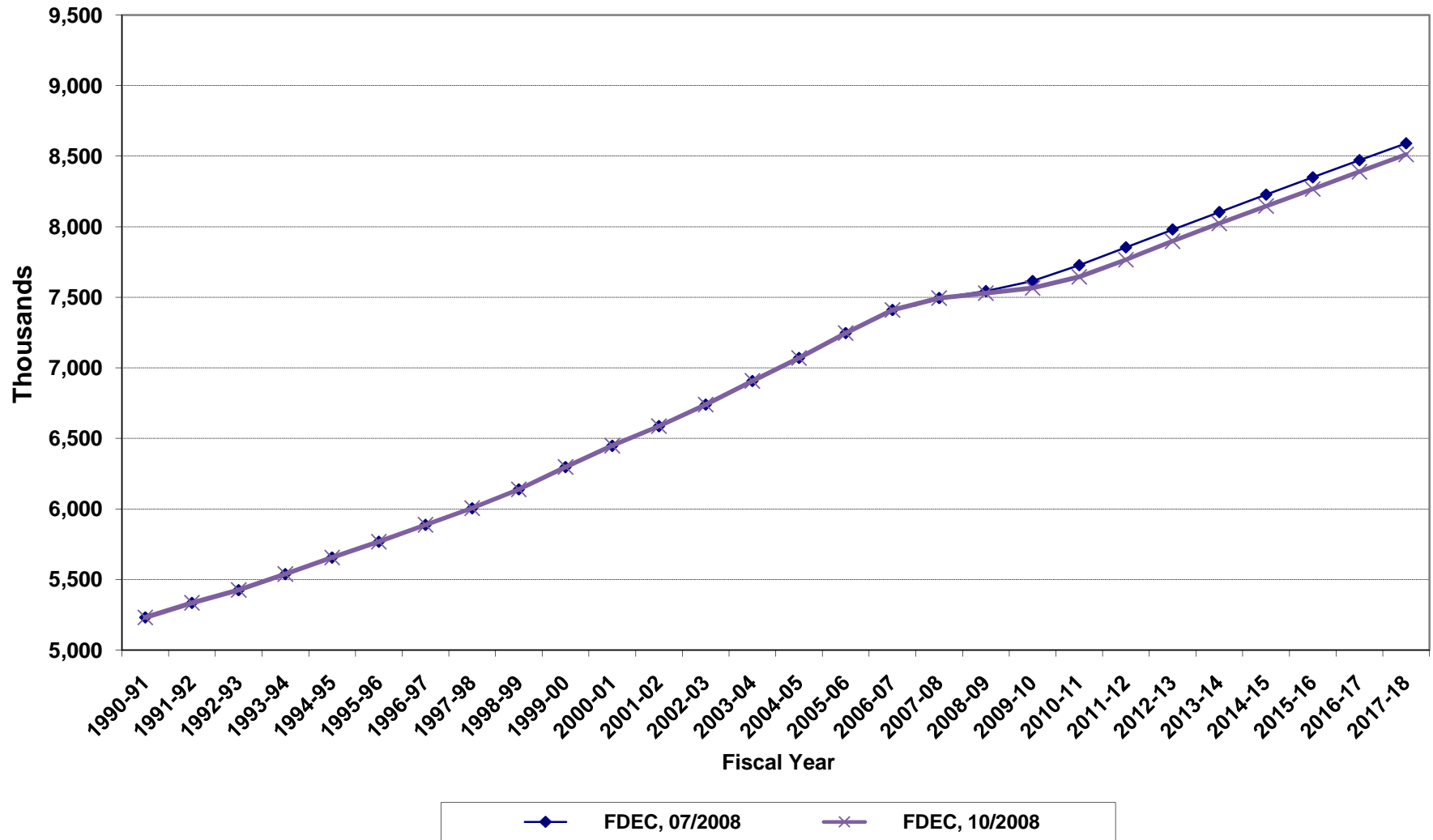
Growth In Florida Resident Population



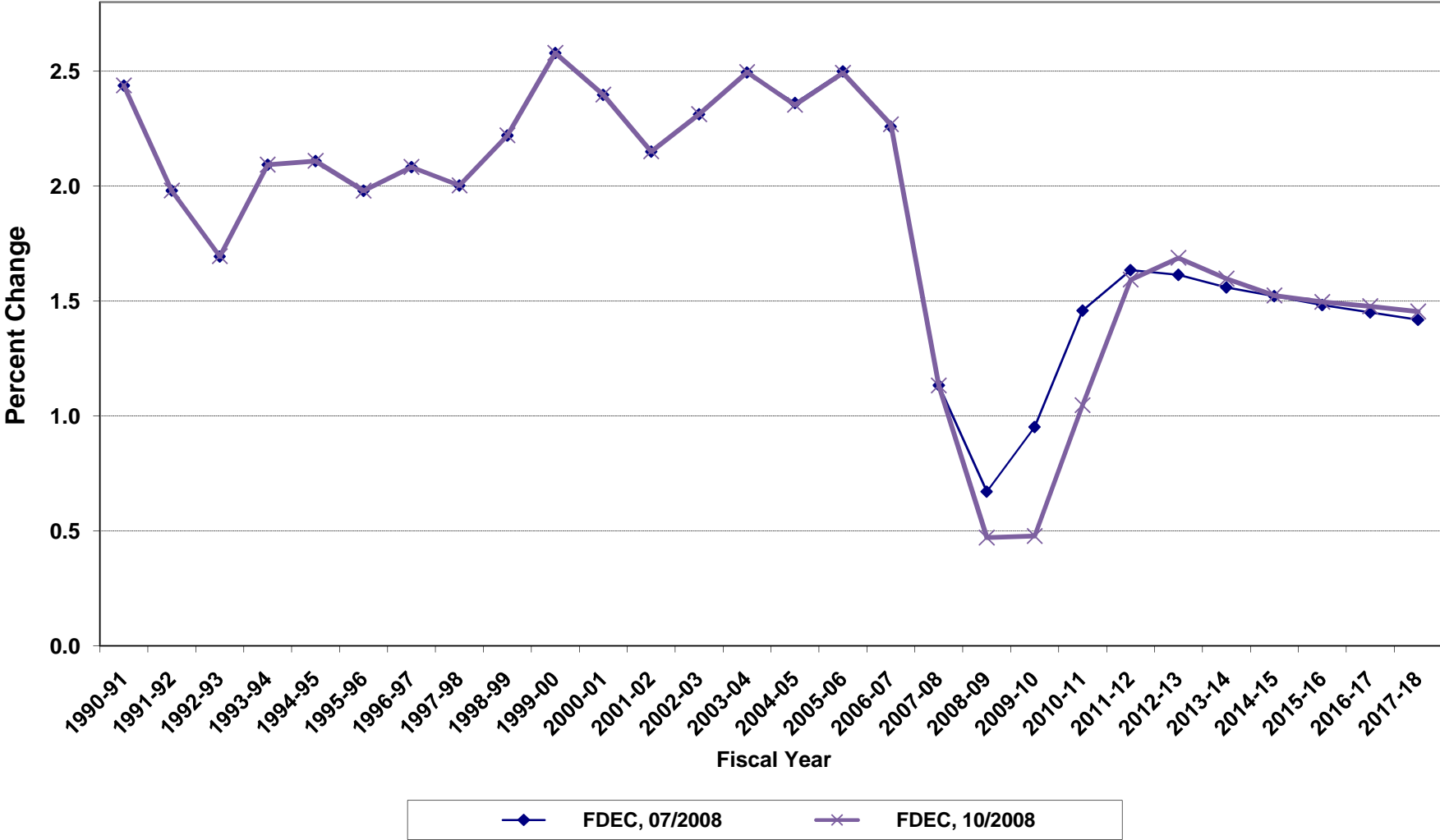
Net Change In Florida Resident Population



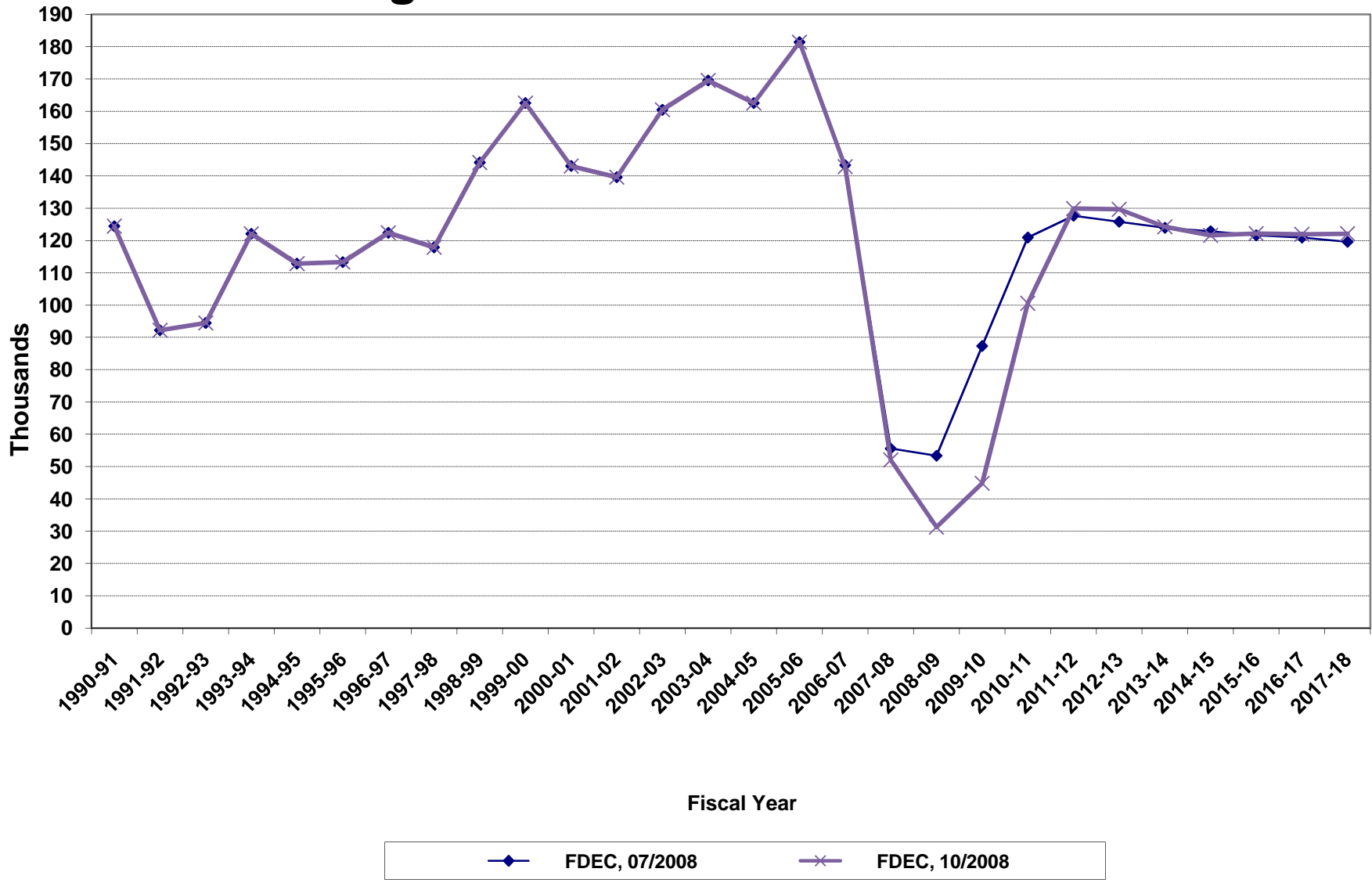
Florida Resident Households



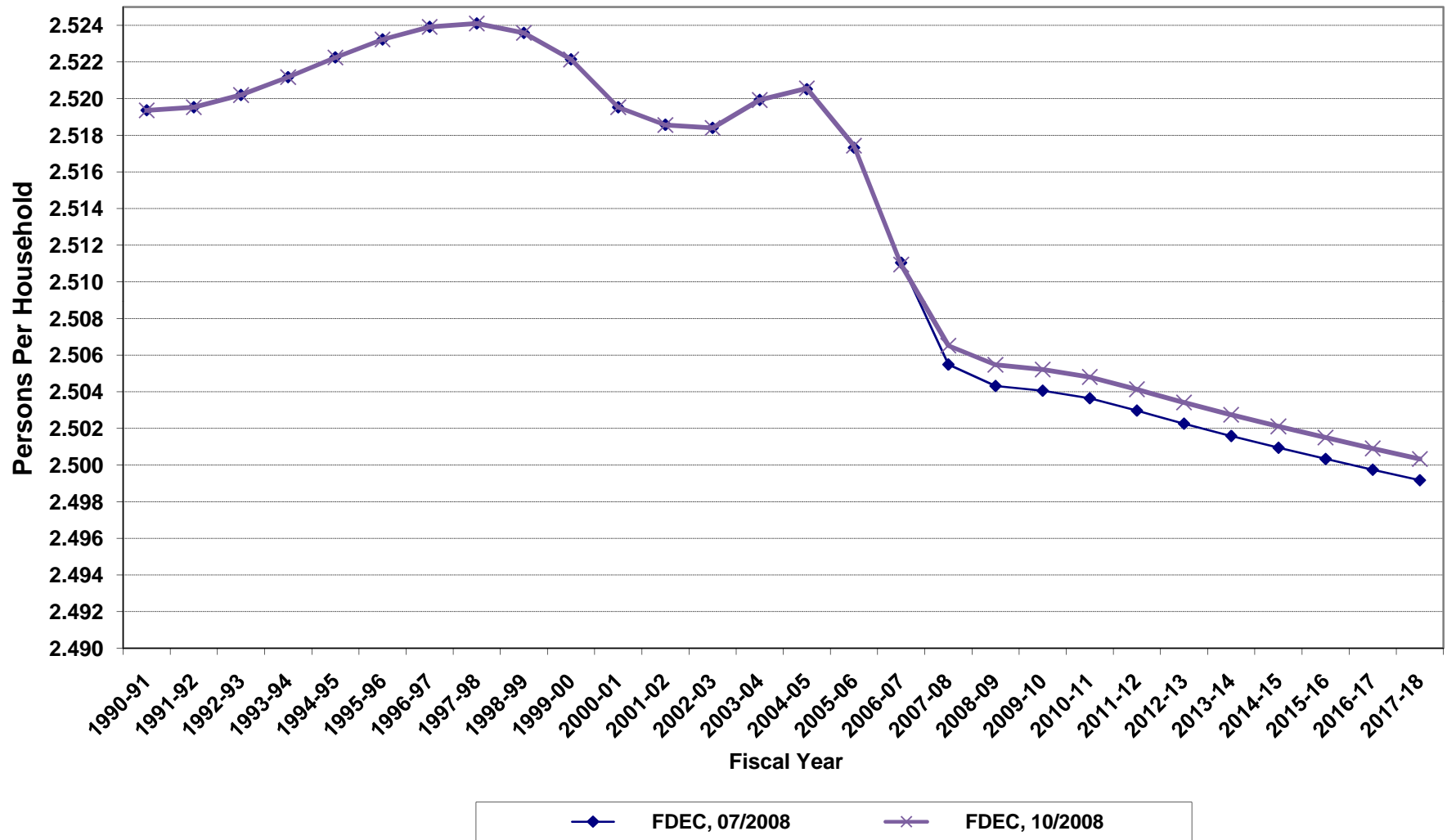
Growth In Florida Resident Households



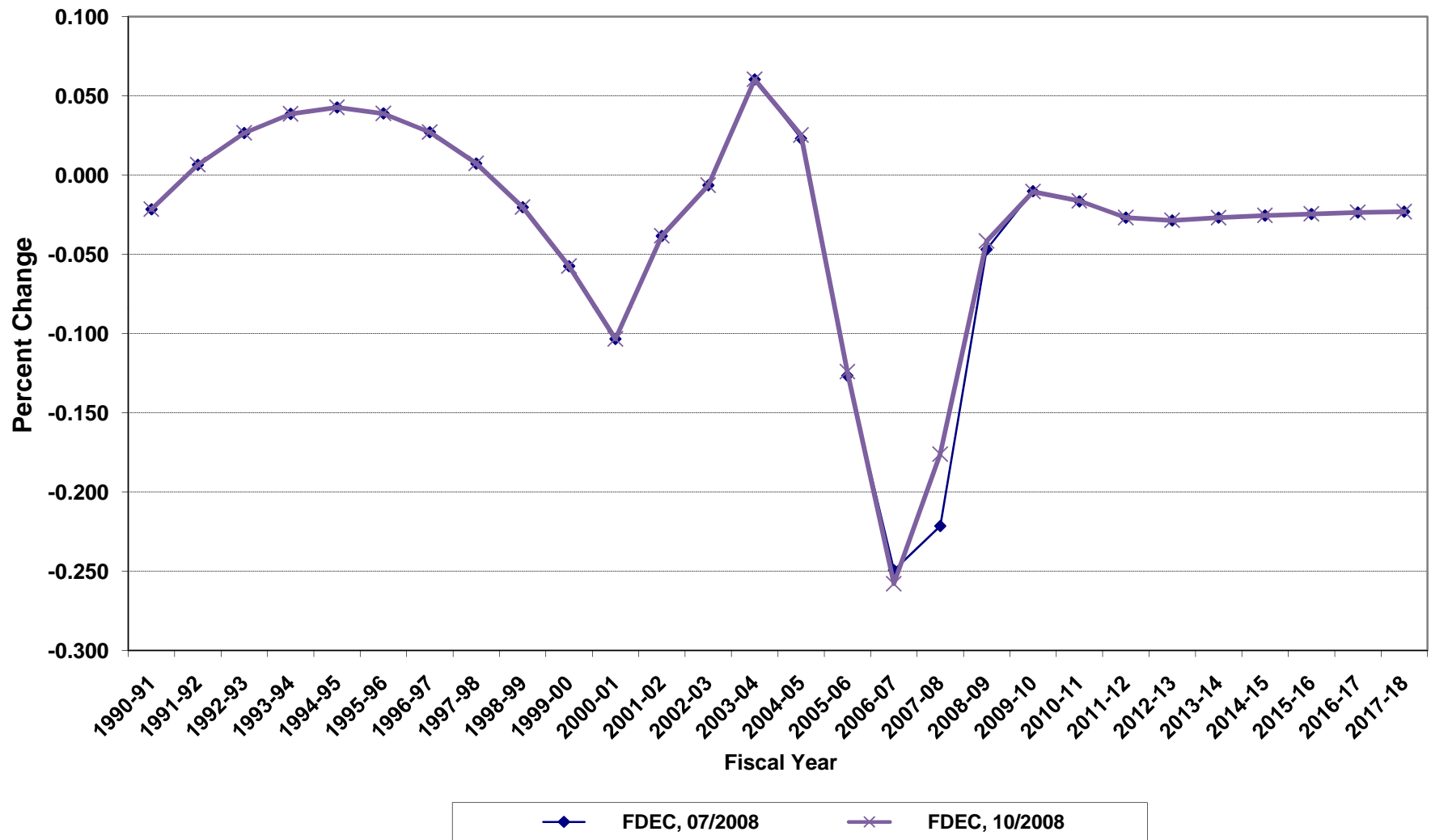
Net Change In Florida Resident Households



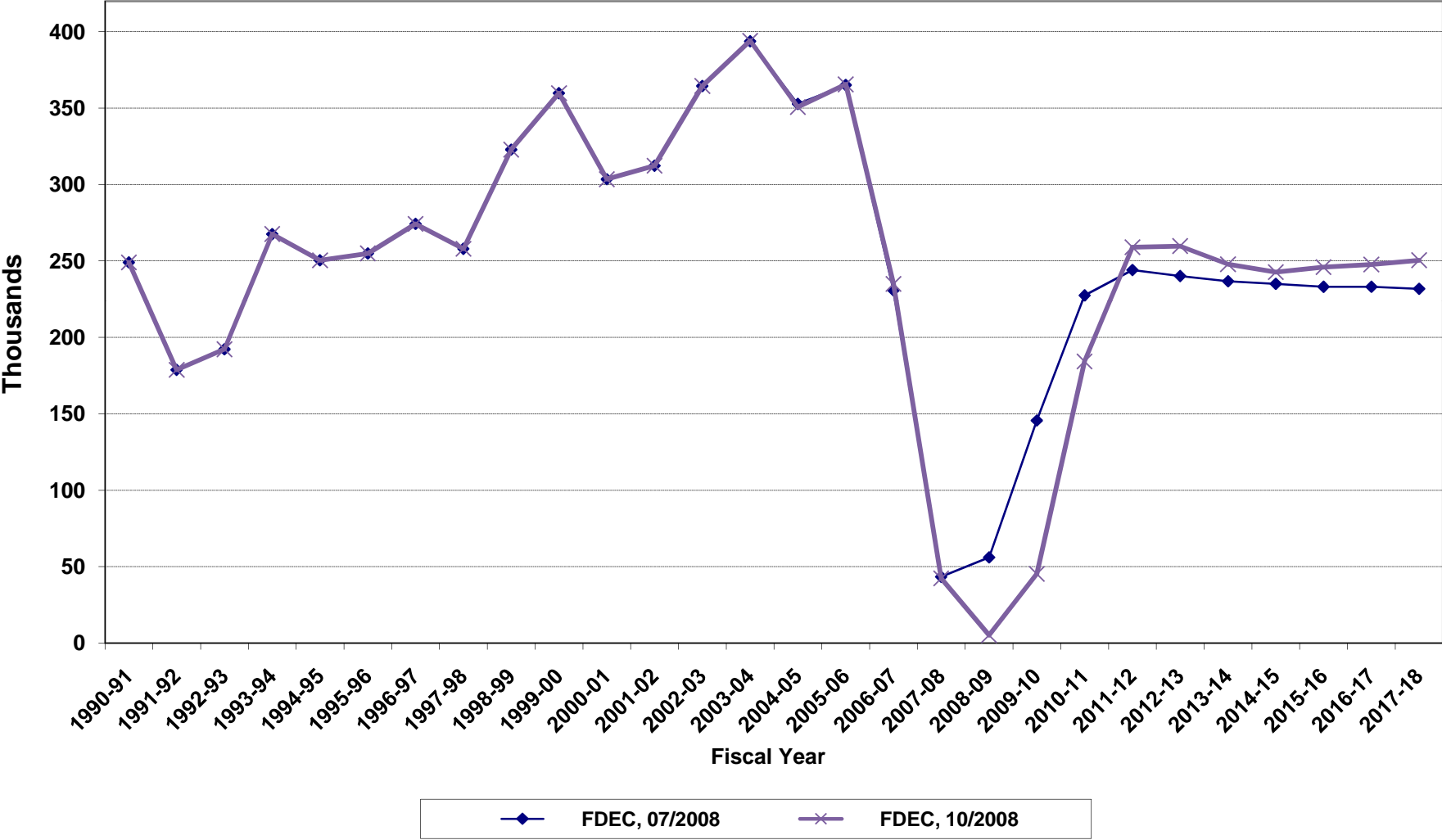
Average Florida Household Size



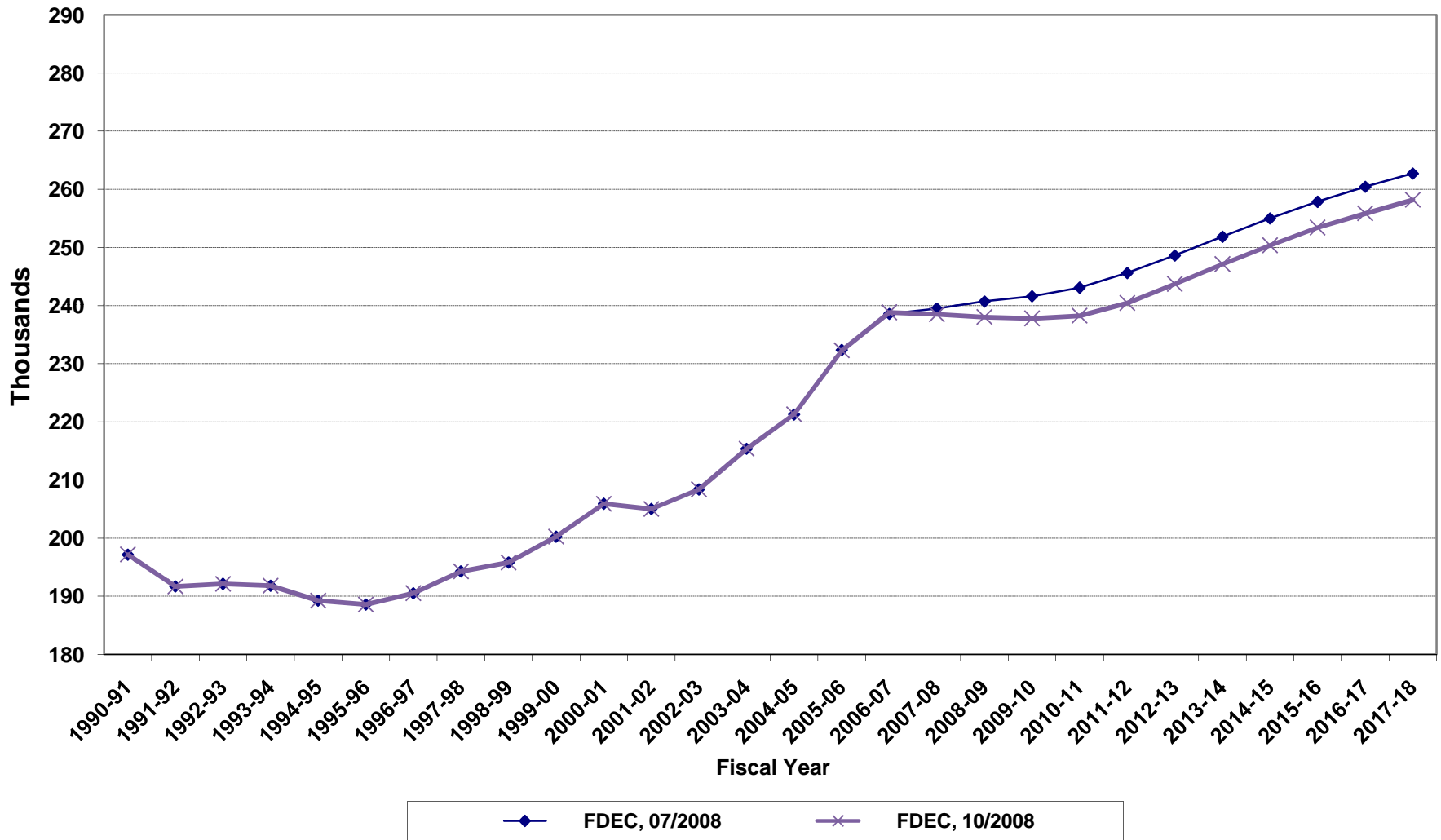
Growth In Average Florida Household Size



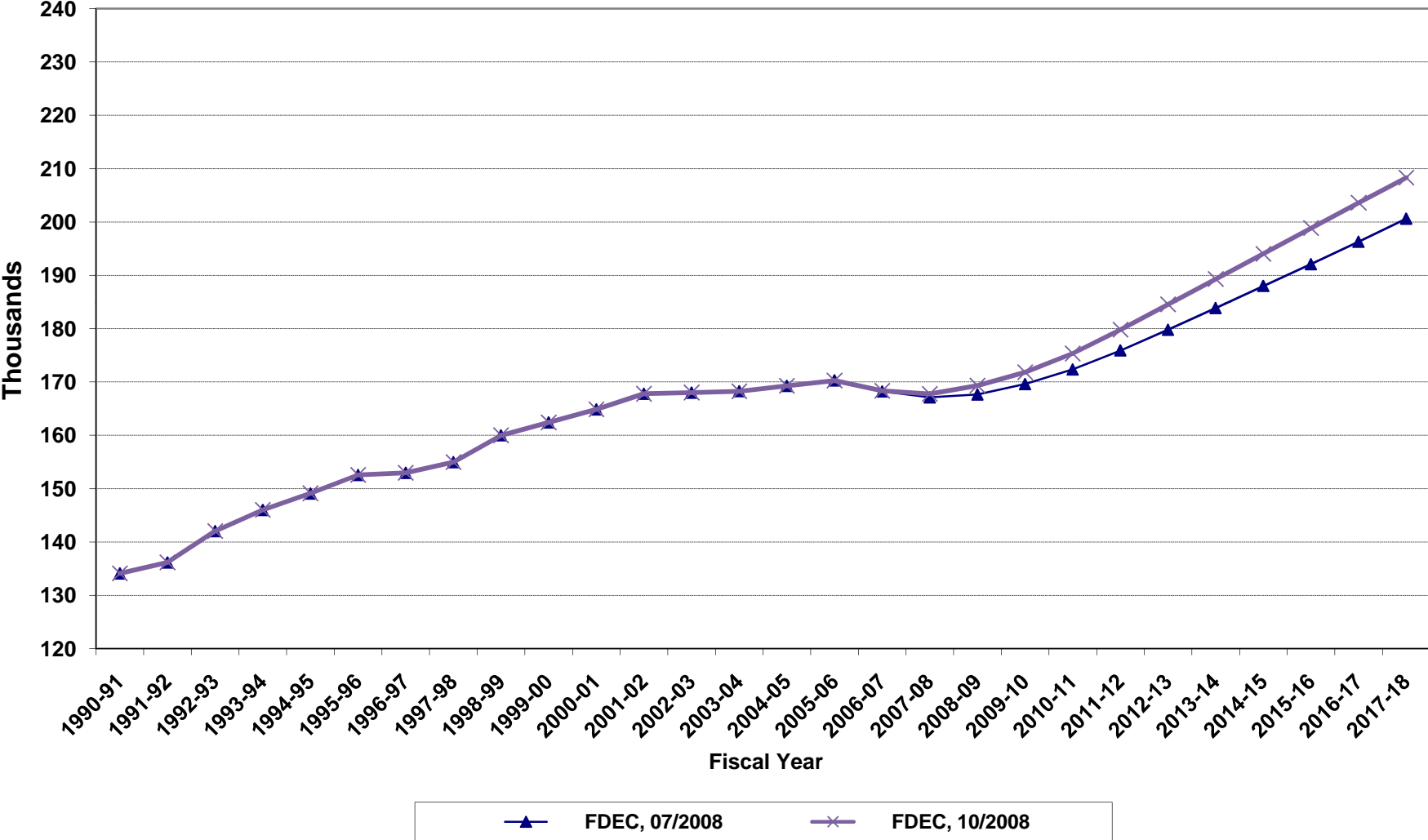
Florida Net Migration



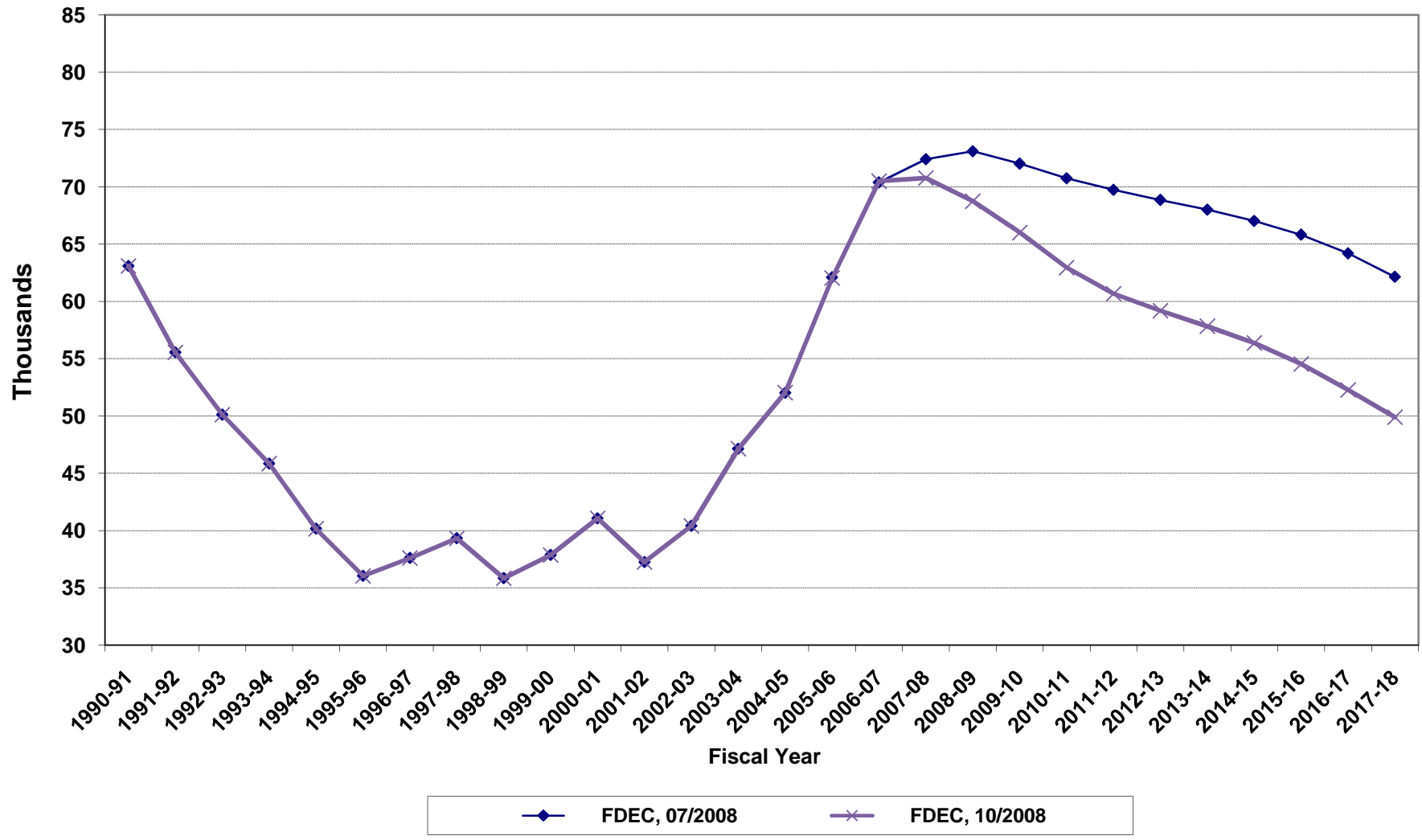
Florida Resident Live Births



Florida Resident Deaths



Florida Net Natural Increase



FLORIDA POPULATION AND COMPONENTS OF CHANGE

Fiscal Year	Population (end of FY)	Growth Rate	Annual Change in Population	Births	Deaths	Net Natural Increase	Net Migration
1950-51	2,980,000	6.05	170,000	67,604	27,186	40,418	129,582
1951-52	3,157,000	5.94	177,000	72,118	28,476	43,642	133,358
1952-53	3,310,000	4.85	153,000	77,156	29,856	47,300	105,700
1953-54	3,505,000	5.89	195,000	82,685	31,035	51,650	143,350
1954-55	3,747,000	6.90	242,000	86,265	32,083	54,182	187,818
1955-56	4,047,000	8.01	300,000	93,431	35,022	58,409	241,591
1956-57	4,372,000	8.03	325,000	100,811	38,319	62,492	262,508
1957-58	4,630,000	5.90	258,000	106,019	41,797	64,222	193,778
1958-59	4,808,000	3.84	178,000	110,457	43,746	66,711	111,289
1959-60	5,001,937	4.03	193,937	114,398	46,063	68,335	125,602
1960-61	5,185,560	3.67	183,623	116,419	48,302	68,117	115,506
1961-62	5,368,613	3.53	183,053	116,068	50,526	65,542	117,511
1962-63	5,552,114	3.42	183,501	114,946	54,302	60,644	122,857
1963-64	5,735,571	3.30	183,457	114,775	56,213	58,562	124,895
1964-65	5,884,050	2.59	148,479	110,465	57,868	52,597	95,882
1965-66	6,065,135	3.08	181,085	104,503	60,875	43,628	137,457
1966-67	6,250,236	3.05	185,101	101,129	62,765	38,364	146,737
1967-68	6,440,501	3.04	190,265	100,413	66,224	34,189	156,076
1968-69	6,632,001	2.97	191,500	104,362	71,133	33,229	158,271
1969-70	6,863,788	3.49	231,787	111,460	73,814	37,646	194,141
1970-71	7,233,605	5.39	369,817	117,071	75,362	41,709	328,108
1971-72	7,684,783	6.24	451,178	113,578	79,677	33,901	417,277
1972-73	8,157,779	6.15	472,996	107,692	86,284	21,408	451,588
1973-74	8,509,490	4.31	351,711	109,455	88,458	20,997	330,714
1974-75	8,650,224	1.65	140,734	108,752	87,185	21,567	119,167
1975-76	8,783,174	1.54	132,950	103,859	88,170	15,689	117,261
1976-77	8,973,716	2.17	190,542	107,735	90,432	17,303	173,239
1977-78	9,226,396	2.82	252,680	112,265	93,372	18,893	233,787
1978-79	9,519,160	3.17	292,764	116,269	96,826	19,443	273,321
1979-80	9,843,544	3.41	324,384	126,759	100,958	25,801	298,583

FLORIDA POPULATION AND COMPONENTS OF CHANGE

Fiscal Year	Population (end of FY)	Growth Rate	Annual Change in Population	Births	Deaths	Net Natural Increase	Net Migration
1980-81	10,218,346	3.81	374,802	135,511	107,686	27,825	346,977
1981-82	10,492,578	2.68	274,232	141,562	108,533	33,029	241,203
1982-83	10,750,266	2.46	257,688	146,890	110,534	36,356	221,332
1983-84	11,065,812	2.94	315,546	151,660	113,957	37,703	277,843
1984-85	11,405,171	3.07	339,359	159,879	117,469	42,410	296,949
1985-86	11,740,597	2.94	335,426	165,837	122,536	43,301	292,125
1986-87	12,083,205	2.92	342,608	170,743	124,846	45,897	296,711
1987-88	12,410,087	2.71	326,882	179,610	129,473	50,137	276,745
1988-89	12,723,453	2.53	313,366	188,272	131,997	56,275	257,091
1989-90	13,019,574	2.33	296,121	197,265	132,461	64,804	231,317
1990-91	13,323,139	2.33	303,565	197,197	134,147	63,050	240,515
1991-92	13,552,830	1.72	229,691	191,702	136,199	55,503	174,188
1992-93	13,804,917	1.86	252,087	192,150	142,167	49,983	202,104
1993-94	14,118,145	2.27	313,228	191,833	146,063	45,770	267,458
1994-95	14,407,012	2.05	288,867	189,272	149,127	40,145	248,722
1995-96	14,701,478	2.04	294,466	188,601	152,628	35,973	258,493
1996-97	15,010,271	2.10	308,793	190,552	153,018	37,534	271,259
1997-98	15,312,639	2.01	302,368	194,305	155,044	39,261	263,107
1998-99	15,680,103	2.40	367,464	195,827	160,050	35,777	331,687
1999-00	16,072,926	2.51	392,823	200,271	162,446	37,825	354,998
2000-01	16,413,500	2.12	340,574	205,927	164,872	41,055	299,519
2001-02	16,767,244	2.16	353,744	205,029	167,788	37,241	316,503
2002-03	17,181,840	2.47	414,596	208,411	168,025	40,386	374,210
2003-04	17,619,007	2.54	437,167	215,383	168,248	47,135	390,032
2004-05	18,023,041	2.29	404,034	221,319	169,285	52,033	352,001
2005-06	18,447,275	2.35	424,234	232,299	170,265	62,034	362,200
2006-07	18,727,004	1.52	279,729	238,844	168,356	70,489	209,240
2007-08	18,826,376	0.53	99,372	238,515	167,750	70,766	28,606
2008-09	18,899,347	0.39	72,971	238,053	169,316	68,737	4,234
2009-10	18,979,698	0.43	80,351	237,811	171,813	65,998	14,353

FLORIDA POPULATION AND COMPONENTS OF CHANGE

Fiscal Year	Population (end of FY)	Growth Rate	Annual Change in Population	Births	Deaths	Net Natural Increase	Net Migration
2010-11	19,285,937	1.61	306,239	238,270	175,327	62,943	243,296
2011-12	19,609,122	1.68	323,185	240,457	179,793	60,664	262,521
2012-13	19,925,962	1.62	316,840	243,742	184,559	59,183	257,657
2013-14	20,230,195	1.53	304,233	247,144	189,321	57,823	246,410
2014-15	20,529,182	1.48	298,987	250,382	194,019	56,363	242,624
2015-16	20,830,134	1.47	300,952	253,423	198,881	54,542	246,410
2016-17	21,129,697	1.44	299,563	255,875	203,600	52,275	247,288
2017-18	21,430,025	1.42	300,328	258,203	208,311	49,892	250,436
2018-19	21,729,575	1.40	299,550	260,509	213,122	47,387	252,163
2019-20	22,028,397	1.38	298,822	262,771	217,910	44,861	253,961
2020-21	22,322,594	1.34	294,197	264,978	221,767	43,211	250,986
2021-22	22,614,802	1.31	292,208	267,019	225,770	41,249	250,959
2022-23	22,904,009	1.28	289,207	268,982	229,612	39,370	249,837
2023-24	23,190,773	1.25	286,764	270,881	233,476	37,405	249,359
2024-25	23,471,696	1.21	280,923	272,716	237,235	35,481	245,442
2025-26	23,749,346	1.18	277,650	274,536	241,493	33,043	244,607
2026-27	24,022,767	1.15	273,421	276,670	246,208	30,462	242,959
2027-28	24,292,502	1.12	269,735	278,810	250,828	27,982	241,753
2028-29	24,555,373	1.08	262,871	280,893	255,392	25,501	237,370
2029-30	24,813,806	1.05	258,433	282,902	259,851	23,051	235,382