

Demographic Estimating Conference

Executive Summary

The Demographic Estimating Conference met on October 27, 2009 to establish a population forecast based on a preliminary April 1, 2009 population estimate and recent demographic-related data.

In the past, Florida's population growth has been mostly driven by positive net migration (more people permanently moving into the state than leaving). Net migration is estimated to have fallen to record low levels with the state experiencing more outmigration than immigration during much of 2008 and into 2009. Florida is expected to continue to experience an outflow of residents through mid-2010 followed by low levels of net migration during 2011. Natural increase (births minus deaths) is projected to exceed net migration through the second quarter of 2011. This is largely due to current economic conditions, including weakened housing markets and the national economic contraction, making it more difficult for people to relocate to the state.

The preliminary April 1, 2009 population estimate of 18,750,014 reflected a decline in population of 57,205 residents from April 1, 2008. The weaker national outlook coupled with current economic conditions in the state, led the conference to reduce the forecast for population growth over the next year. Population is forecast to decline slightly between April 1, 2009 and 2010 (-3,954 or -0.02%). Over the next two years, growth is expected to be less than one percent, as the economy rebounds (0.35% and 0.79%). Stronger population growth is expected as the economy continues to improve with growth rates of 1.43% (271,196 net new residents) and 1.63% (313,908 net new residents) between April 1, 2012 to April 1, 2013 and April 1, 2013 to April 1, 2014, respectively.

Between April 1, 2008 and April 1, 2019, population growth is expected to average 195,761 net new residents per year, representing a compound growth rate of 0.99% over this 11-year time horizon. These increases are analogous to adding a city the size of Ft. Lauderdale every year. By April 1, 2016 Florida's population is expected to have broken the 20-million mark at 20,148,965 and is forecast to be approaching the 24-million mark with 23,801,630 residents on April 1, 2030.

**Florida
Demographic Estimating Conference**

Tables

**October 27, 2009
Post Conference**

Florida Resident Population

April 1

Year	FDEC, 02/09			FDEC, 10/09		
	Population	% Chg	Change	Population	% Chg	Change
1990	12,938,071	2.27%	287,136	12,938,071	2.27%	287,136
1991	13,258,732	2.48%	320,661	13,258,732	2.48%	320,661
1992	13,497,541	1.80%	238,809	13,497,541	1.80%	238,809
1993	13,730,115	1.72%	232,574	13,730,115	1.72%	232,574
1994	14,043,757	2.28%	313,642	14,043,757	2.28%	313,642
1995	14,335,992	2.08%	292,235	14,335,992	2.08%	292,235
1996	14,623,421	2.00%	287,429	14,623,421	2.00%	287,429
1997	14,938,314	2.15%	314,893	14,938,314	2.15%	314,893
1998	15,230,421	1.96%	292,107	15,230,421	1.96%	292,107
1999	15,580,244	2.30%	349,823	15,580,244	2.30%	349,823
2000	15,982,824	2.58%	402,580	15,982,824	2.58%	402,580
2001	16,330,224	2.17%	347,400	16,330,224	2.17%	347,400
2002	16,674,608	2.11%	344,384	16,674,608	2.11%	344,384
2003	17,071,508	2.38%	396,900	17,071,508	2.38%	396,900
2004	17,516,732	2.61%	445,224	17,516,732	2.61%	445,224
2005	17,918,227	2.29%	401,495	17,918,227	2.29%	401,495
2006	18,349,132	2.40%	430,905	18,349,132	2.40%	430,905
2007	18,680,367	1.81%	331,235	18,680,367	1.81%	331,235
2008	18,807,219	0.68%	126,852	18,807,219	0.68%	126,852
Begins forecast.						
2009	18,807,219	0.00%	0	18,750,014	-0.30%	-57,205
2010	18,881,445	0.39%	74,226	18,746,060	-0.02%	-3,954
2011	18,953,150	0.38%	71,705	18,812,316	0.35%	66,256
2012	19,109,975	0.83%	156,825	18,961,072	0.79%	148,756
2013	19,393,555	1.48%	283,580	19,232,268	1.43%	271,196
2014	19,717,675	1.67%	324,120	19,546,176	1.63%	313,908
2015	20,055,865	1.72%	338,190	19,855,725	1.58%	309,549
2016	20,342,664	1.43%	286,799	20,148,965	1.48%	293,240
2017	20,615,256	1.34%	272,592	20,427,884	1.38%	278,919
2018	20,883,254	1.30%	267,998	20,696,939	1.32%	269,055
2019	21,150,560	1.28%	267,306	20,960,588	1.27%	263,649
5-Year Annual Averages						
2020	21,417,450	1.32%	272,317	21,223,289	1.34%	273,513
2025	22,738,235	1.20%	264,157	22,551,884	1.22%	265,719
2030	23,979,030	1.07%	248,159	23,801,630	1.08%	249,949

Florida Resident Households

April 1

Year	FDEC, 02/09			FDEC, 10/09		
	Households	% Chg	Change	Households	% Chg	Change
1990	5,134,869	3.40%	168,985	5,134,869	3.40%	168,985
1991	5,283,154	2.89%	148,285	5,283,154	2.89%	148,285
1992	5,378,499	1.80%	95,345	5,378,499	1.80%	95,345
1993	5,478,476	1.86%	99,977	5,478,476	1.86%	99,977
1994	5,589,093	2.02%	110,617	5,589,093	2.02%	110,617
1995	5,697,328	1.94%	108,235	5,697,328	1.94%	108,235
1996	5,806,031	1.91%	108,703	5,806,031	1.91%	108,703
1997	5,929,613	2.13%	123,582	5,929,613	2.13%	123,582
1998	6,040,514	1.87%	110,901	6,040,514	1.87%	110,901
1999	6,182,346	2.35%	141,832	6,182,346	2.35%	141,832
2000	6,338,075	2.52%	155,729	6,338,075	2.52%	155,729
2001	6,483,040	2.29%	144,965	6,483,040	2.29%	144,965
2002	6,620,674	2.12%	137,634	6,620,674	2.12%	137,634
2003	6,778,804	2.39%	158,130	6,778,804	2.39%	158,130
2004	6,949,759	2.52%	170,955	6,949,759	2.52%	170,955
2005	7,109,208	2.29%	159,449	7,109,208	2.29%	159,449
2006	7,291,013	2.56%	181,805	7,291,013	2.56%	181,805
2007	7,443,963	2.10%	152,950	7,443,963	2.10%	152,950
2008	7,499,799	0.75%	55,836	7,499,799	0.75%	55,836
Begins forecast.						
2009	7,477,418	-0.30%	-22,381	7,477,418	-0.30%	-22,381
2010	7,475,859	-0.02%	-1,559	7,475,859	-0.02%	-1,559
2011	7,502,982	0.36%	27,123	7,502,982	0.36%	27,123
2012	7,564,409	0.82%	61,427	7,564,409	0.82%	61,427
2013	7,674,790	1.46%	110,381	7,674,790	1.46%	110,381
2014	7,802,240	1.66%	127,450	7,802,240	1.66%	127,450
2015	8,009,935	2.66%	207,695	7,929,083	1.63%	126,843
2016	8,126,496	1.46%	116,561	8,048,759	1.51%	119,676
2017	8,237,437	1.37%	110,941	8,162,789	1.42%	114,030
2018	8,346,597	1.33%	109,160	8,272,948	1.35%	110,159
2019	8,455,533	1.31%	108,936	8,381,014	1.31%	108,066
5-Year Annual Averages						
2020	8,564,357	1.35%	110,884	8,488,771	1.37%	111,938
2025	9,103,802	1.23%	107,889	9,034,619	1.25%	109,170
2030	9,550,555	0.96%	89,351	9,550,555	1.12%	103,187

Quarterly Data Table

QUARTERLY FORECAST TABLES

	<u>2007-1</u>	<u>2007-2</u>	<u>2007-3</u>	<u>2007-4</u>	<u>2008-1</u>	<u>2008-2</u>	<u>2008-3</u>	<u>2008-4</u>	<u>2009-1</u>	<u>2009-2</u>	<u>2009-3</u>	<u>2009-4</u>	<u>2010-1</u>	<u>2010-2</u>	<u>2010-3</u>	<u>2010-4</u>	<u>2011-1</u>	<u>2011-2</u>
Population																		
FDEC, 02/2009	18,646.8	18,706.4	18,751.5	18,783.1	18,801.4	18,809.7	18,811.0	18,808.1	18,806.8	18,813.1	18,828.3	18,848.6	18,870.5	18,890.4	18,907.7	18,924.5	18,943.1	18,967.2
FDEC, 10/2009	18,646.8	18,706.8	18,752.9	18,785.3	18,802.5	18,804.3	18,793.6	18,776.1	18,757.7	18,742.3	18,732.2	18,732.7	18,740.4	18,751.7	18,765.0	18,781.4	18,800.8	18,823.8
Population Growth Rate																		
FDEC, 02/2009	1.58	1.28	0.97	0.68	0.39	0.18	0.03	-0.06	-0.03	0.13	0.32	0.43	0.47	0.42	0.37	0.36	0.39	0.51
FDEC, 10/2009	1.58	1.29	0.99	0.69	0.37	0.04	-0.23	-0.37	-0.39	-0.33	-0.22	0.01	0.16	0.24	0.28	0.35	0.41	0.49
Net Change in Population																		
FDEC, 02/2009	73.0	59.6	45.2	31.6	18.3	8.3	1.3	-2.9	-1.3	6.3	15.2	20.3	21.9	19.9	17.2	16.8	18.6	24.1
FDEC, 10/2009	73.1	59.9	46.2	32.4	17.2	1.8	-10.7	-17.4	-18.4	-15.4	-10.1	0.5	7.7	11.3	13.3	16.4	19.4	23.0
Households																		
FDEC, 02/2009	7,427.8	7,455.8	7,476.0	7,489.7	7,497.4	7,501.0	7,501.9	7,501.0	7,500.7	7,503.5	7,509.8	7,518.1	7,527.1	7,535.3	7,542.6	7,549.8	7,557.7	7,567.7
FDEC, 10/2009	7,427.8	7,455.9	7,476.5	7,490.5	7,497.8	7,498.8	7,494.9	7,488.2	7,480.9	7,473.9	7,470.6	7,470.7	7,473.7	7,478.1	7,483.5	7,490.1	7,498.2	7,507.8
Household Growth Rate																		
FDEC, 02/2009	1.89	1.51	1.09	0.74	0.41	0.19	0.05	-0.05	-0.02	0.15	0.34	0.44	0.48	0.44	0.39	0.38	0.42	0.54
FDEC, 10/2009	1.89	1.52	1.11	0.75	0.39	0.05	-0.21	-0.36	-0.39	-0.37	-0.18	0.01	0.16	0.24	0.29	0.36	0.43	0.51
Net Change in Households																		
FDEC, 02/2009	34.7	27.9	20.2	13.7	7.7	3.6	0.9	-0.9	-0.3	2.8	6.3	8.3	9.0	8.2	7.3	7.2	7.9	10.1
FDEC, 10/2009	34.7	28.1	20.6	14.0	7.3	1.0	-3.9	-6.7	-7.3	-7.0	-3.3	0.1	2.9	4.4	5.4	6.7	8.1	9.6
Household Size																		
FDEC, 02/2009	2.510	2.509	2.508	2.508	2.508	2.508	2.508	2.507	2.507	2.507	2.507	2.507	2.507	2.507	2.507	2.507	2.506	2.506
FDEC, 10/2009	2.510	2.509	2.508	2.508	2.508	2.508	2.508	2.507	2.507	2.508	2.507	2.507	2.508	2.508	2.508	2.507	2.507	2.507
Household Size Growth Rate																		
FDEC, 02/2009	-0.30	-0.23	-0.12	-0.06	-0.02	-0.02	-0.02	-0.02	-0.01	-0.01	-0.01	-0.01	-0.01	-0.02	-0.02	-0.02	-0.02	-0.03
FDEC, 10/2009	-0.30	-0.23	-0.12	-0.06	-0.02	-0.02	-0.02	-0.02	0.00	0.05	-0.04	0.01	0.01	0.00	0.00	-0.01	-0.02	-0.02
Net Migration																		
FDEC, 02/2009	55.3	41.7	27.2	13.7	0.4	-9.4	-16.1	-20.2	-18.6	-10.6	-1.5	3.8	5.5	3.7	1.2	1.0	3.0	8.6
FDEC, 10/2009	55.0	41.9	28.3	14.9	1.4	-13.6	-25.7	-32.3	-33.3	-30.1	-24.8	-14.2	-6.7	-3.0	-0.8	2.5	5.6	9.5
Births																		
FDEC, 02/2009	59.7	59.8	59.8	59.9	59.8	59.8	59.6	59.6	59.6	59.4	59.4	59.4	59.3	59.3	59.3	59.4	59.4	59.4
FDEC, 10/2009	60.0	59.9	59.8	59.4	58.3	57.9	57.7	57.6	57.7	57.6	57.7	57.8	57.7	57.7	57.6	57.6	57.7	57.7
Deaths																		
FDEC, 02/2009	42.0	41.9	41.9	41.9	42.0	42.1	42.1	42.3	42.4	42.5	42.6	42.8	43.0	43.1	43.3	43.5	43.7	44.0
FDEC, 10/2009	41.9	41.9	41.9	42.0	42.5	42.6	42.7	42.7	42.8	42.9	43.0	43.1	43.2	43.4	43.5	43.7	43.9	44.1
Net Natural Increase																		
FDEC, 02/2009	17.7	17.9	17.9	17.9	17.9	17.7	17.4	17.3	17.3	16.9	16.7	16.5	16.4	16.2	16.0	15.8	15.6	15.5
FDEC, 10/2009	18.1	18.1	17.9	17.4	15.8	15.3	15.0	14.8	14.9	14.7	14.7	14.6	14.4	14.3	14.1	14.0	13.7	13.6

Quarterly Data Table

QUARTERLY FORECAST TABLES

	<u>2011-3</u>	<u>2011-4</u>	<u>2012-1</u>	<u>2012-2</u>	<u>2012-3</u>	<u>2012-4</u>	<u>2013-1</u>	<u>2013-2</u>	<u>2013-3</u>	<u>2013-4</u>	<u>2014-1</u>	<u>2014-2</u>	<u>2014-3</u>	<u>2014-4</u>	<u>2015-1</u>	<u>2015-2</u>	<u>2015-3</u>	<u>2015-4</u>
Population																		
FDEC, 02/2009	18,998.6	19,037.1	19,084.1	19,140.4	19,205.4	19,277.5	19,354.3	19,432.7	19,511.8	19,592.6	19,675.6	19,760.3	19,846.0	19,931.6	20,015.0	20,094.1	20,168.5	20,239.6
FDEC, 10/2009	18,853.2	18,889.4	18,934.2	18,988.0	19,050.4	19,119.9	19,194.3	19,270.2	19,346.7	19,425.1	19,505.5	19,584.9	19,663.5	19,741.2	19,817.4	19,892.7	19,966.5	20,040.0
Population Growth Rate																		
FDEC, 02/2009	0.66	0.81	0.99	1.19	1.37	1.51	1.60	1.63	1.64	1.67	1.71	1.73	1.75	1.74	1.68	1.59	1.49	1.42
FDEC, 10/2009	0.62	0.77	0.95	1.14	1.32	1.47	1.57	1.59	1.60	1.63	1.67	1.64	1.61	1.59	1.55	1.53	1.49	1.48
Net Change in Population																		
FDEC, 02/2009	31.3	38.5	47.1	56.3	65.0	72.1	76.8	78.4	79.1	80.8	83.0	84.7	85.7	85.6	83.4	79.1	74.5	71.1
FDEC, 10/2009	29.3	36.3	44.8	53.8	62.4	69.6	74.4	75.9	76.5	78.4	80.4	79.4	78.6	77.7	76.2	75.3	73.8	73.5
Households																		
FDEC, 02/2009	7,580.7	7,596.6	7,615.9	7,638.8	7,665.3	7,694.5	7,725.7	7,757.4	7,789.5	7,822.2	7,855.9	7,890.2	7,924.9	7,959.6	7,993.4	8,025.5	8,055.7	8,084.6
FDEC, 10/2009	7,520.0	7,535.0	7,553.4	7,575.4	7,600.9	7,629.2	7,659.4	7,690.2	7,721.3	7,753.1	7,785.7	7,818.8	7,851.4	7,882.7	7,913.5	7,944.2	7,974.3	8,004.3
Household Growth Rate																		
FDEC, 02/2009	0.69	0.84	1.02	1.21	1.39	1.54	1.63	1.66	1.66	1.69	1.73	1.76	1.77	1.76	1.71	1.62	1.52	1.44
FDEC, 10/2009	0.65	0.80	0.98	1.17	1.35	1.50	1.59	1.62	1.63	1.66	1.69	1.71	1.68	1.61	1.57	1.56	1.52	1.51
Net Change in Households																		
FDEC, 02/2009	13.0	15.8	19.3	23.0	26.4	29.3	31.1	31.8	32.0	32.7	33.6	34.3	34.7	34.7	33.8	32.1	30.2	28.9
FDEC, 10/2009	12.2	15.0	18.4	22.0	25.4	28.3	30.2	30.8	31.1	31.8	32.6	33.0	32.6	31.3	30.7	30.7	30.1	30.0
Household Size																		
FDEC, 02/2009	2.506	2.506	2.506	2.506	2.506	2.505	2.505	2.505	2.505	2.505	2.505	2.504	2.504	2.504	2.504	2.504	2.504	2.503
FDEC, 10/2009	2.507	2.507	2.507	2.507	2.506	2.506	2.506	2.506	2.506	2.505	2.505	2.505	2.504	2.504	2.504	2.504	2.504	2.504
Household Size Growth Rate																		
FDEC, 02/2009	-0.03	-0.03	-0.03	-0.03	-0.03	-0.03	-0.03	-0.03	-0.02	-0.02	-0.02	-0.02	-0.02	-0.02	-0.02	-0.02	-0.02	-0.02
FDEC, 10/2009	-0.03	-0.03	-0.03	-0.03	-0.03	-0.03	-0.03	-0.03	-0.03	-0.03	-0.03	-0.07	-0.06	-0.02	-0.02	-0.03	-0.03	-0.03
Net Migration																		
FDEC, 02/2009	16.0	23.3	32.0	41.3	50.1	57.3	62.1	63.8	64.5	66.3	68.6	70.5	71.5	71.4	69.4	65.2	60.6	57.3
FDEC, 10/2009	15.9	23.0	31.5	40.7	49.4	56.5	61.4	62.9	63.7	65.6	67.7	66.8	65.8	64.8	63.2	62.2	60.6	60.2
Births																		
FDEC, 02/2009	59.5	59.7	59.8	60.0	60.2	60.4	60.5	60.7	60.9	61.1	61.3	61.5	61.7	61.9	62.1	62.3	62.5	62.7
FDEC, 10/2009	57.8	57.9	58.0	58.2	58.3	58.5	58.7	58.9	59.1	59.3	59.5	59.7	59.9	60.1	60.2	60.4	60.4	60.6
Deaths																		
FDEC, 02/2009	44.2	44.5	44.8	45.0	45.3	45.6	45.8	46.1	46.4	46.7	47.0	47.2	47.5	47.8	48.1	48.4	48.7	49.0
FDEC, 10/2009	44.3	44.6	44.7	45.1	45.3	45.5	45.7	46.0	46.2	46.5	46.8	47.1	47.1	47.2	47.2	47.2	47.3	47.3
Net Natural Increase																		
FDEC, 02/2009	15.3	15.2	15.1	15.0	14.9	14.8	14.7	14.6	14.5	14.5	14.4	14.3	14.2	14.1	14.0	13.9	13.9	13.7
FDEC, 10/2009	13.4	13.3	13.3	13.1	13.1	13.0	13.0	12.9	12.9	12.8	12.7	12.6	12.8	12.9	13.0	13.1	13.2	13.4

Quarterly Data Table

QUARTERLY FORECAST TABLES

	<u>2016-1</u>	<u>2016-2</u>	<u>2016-3</u>	<u>2016-4</u>	<u>2017-1</u>	<u>2017-2</u>	<u>2017-3</u>	<u>2017-4</u>	<u>2018-1</u>	<u>2018-2</u>	<u>2018-3</u>	<u>2018-4</u>	<u>2019-1</u>	<u>2019-2</u>
Population														
FDEC, 02/2009	20,308.6	20,377.0	20,445.5	20,513.7	20,581.5	20,648.9	20,716.1	20,783.0	20,849.9	20,916.7	20,983.6	21,050.4	21,117.2	21,183.9
FDEC, 10/2009	20,112.8	20,184.2	20,254.3	20,324.0	20,393.4	20,461.4	20,528.5	20,596.0	20,663.4	20,729.6	20,795.2	20,861.2	20,927.5	20,993.0
Population Growth Rate														
FDEC, 02/2009	1.37	1.35	1.35	1.34	1.33	1.32	1.31	1.30	1.29	1.29	1.28	1.28	1.28	1.27
FDEC, 10/2009	1.46	1.43	1.40	1.38	1.37	1.34	1.32	1.32	1.31	1.29	1.27	1.28	1.28	1.26
Net Change in Population														
FDEC, 02/2009	68.9	68.4	68.5	68.2	67.8	67.5	67.2	66.9	66.8	66.8	66.9	66.8	66.8	66.7
FDEC, 10/2009	72.8	71.4	70.1	69.7	69.4	68.0	67.2	67.4	67.4	66.3	65.6	66.1	66.3	65.5
Households														
FDEC, 02/2009	8,112.6	8,140.5	8,168.3	8,196.1	8,223.7	8,251.1	8,278.5	8,305.8	8,333.0	8,360.2	8,387.5	8,414.7	8,441.9	8,469.1
FDEC, 10/2009	8,034.0	8,063.2	8,091.8	8,120.3	8,148.7	8,176.5	8,204.0	8,231.6	8,259.2	8,286.3	8,313.2	8,340.3	8,367.4	8,394.3
Household Growth Rate														
FDEC, 02/2009	1.39	1.38	1.38	1.37	1.35	1.34	1.33	1.32	1.32	1.31	1.31	1.31	1.30	1.29
FDEC, 10/2009	1.49	1.46	1.43	1.42	1.40	1.37	1.35	1.35	1.35	1.32	1.30	1.31	1.31	1.29
Net Change in Households														
FDEC, 02/2009	28.0	27.8	27.9	27.7	27.6	27.5	27.4	27.3	27.2	27.2	27.2	27.2	27.2	27.2
FDEC, 10/2009	29.7	29.2	28.7	28.5	28.4	27.8	27.5	27.6	27.6	27.1	26.9	27.1	27.2	26.8
Household Size														
FDEC, 02/2009	2.503	2.503	2.503	2.503	2.503	2.503	2.502	2.502	2.502	2.502	2.502	2.502	2.501	2.501
FDEC, 10/2009	2.503	2.503	2.503	2.503	2.503	2.502	2.502	2.502	2.502	2.502	2.501	2.501	2.501	2.501
Household Size Growth Rate														
FDEC, 02/2009	-0.02	-0.02	-0.02	-0.02	-0.02	-0.02	-0.02	-0.02	-0.02	-0.02	-0.02	-0.02	-0.02	-0.02
FDEC, 10/2009	-0.03	-0.03	-0.03	-0.03	-0.03	-0.03	-0.03	-0.03	-0.03	-0.03	-0.03	-0.03	-0.03	-0.03
Net Migration														
FDEC, 02/2009	55.3	54.9	55.1	54.9	54.7	54.5	54.3	54.2	54.3	54.4	54.6	54.7	54.8	54.9
FDEC, 10/2009	59.3	57.8	56.3	55.8	55.4	54.1	53.2	53.5	53.5	52.4	51.7	52.2	52.4	51.6
Births														
FDEC, 02/2009	62.9	63.1	63.2	63.3	63.5	63.6	63.8	63.9	64.0	64.2	64.3	64.4	64.6	64.7
FDEC, 10/2009	60.8	61.0	61.2	61.4	61.6	61.7	61.9	62.0	62.2	62.3	62.5	62.6	62.7	62.9
Deaths														
FDEC, 02/2009	49.3	49.6	49.8	50.1	50.4	50.7	50.9	51.2	51.5	51.8	52.1	52.3	52.6	52.9
FDEC, 10/2009	47.3	47.4	47.4	47.5	47.6	47.8	47.9	48.1	48.3	48.4	48.6	48.7	48.9	49.0
Net Natural Increase														
FDEC, 02/2009	13.6	13.5	13.4	13.2	13.1	13.0	12.8	12.7	12.5	12.4	12.2	12.1	12.0	11.8
FDEC, 10/2009	13.5	13.6	13.8	13.9	13.9	13.9	13.9	13.9	13.9	13.9	13.9	13.9	13.9	13.8

Fiscal Year Data Table

FISCAL YEAR FORECAST TABLES

	<u>1990-91</u>	<u>1991-92</u>	<u>1992-93</u>	<u>1993-94</u>	<u>1994-95</u>	<u>1995-96</u>	<u>1996-97</u>	<u>1997-98</u>	<u>1998-99</u>	<u>1999-00</u>	<u>2000-01</u>	<u>2001-02</u>	<u>2002-03</u>	<u>2003-04</u>	<u>2004-05</u>
Population															
FDEC, 02/2009	13,178.0	13,442.6	13,670.0	13,962.2	14,264.9	14,550.7	14,859.1	15,158.2	15,488.7	15,881.2	16,246.4	16,587.9	16,968.7	17,404.9	17,819.2
FDEC, 10/2009	13,178.0	13,442.6	13,670.0	13,962.2	14,264.9	14,550.7	14,859.1	15,158.2	15,488.7	15,881.2	16,245.5	16,586.3	16,968.0	17,404.5	17,818.1
Growth Rate															
FDEC, 02/2009	2.42	2.01	1.69	2.14	2.17	2.00	2.12	2.01	2.18	2.53	2.30	2.10	2.30	2.57	2.38
FDEC, 10/2009	2.42	2.01	1.69	2.14	2.17	2.00	2.12	2.01	2.18	2.53	2.29	2.10	2.30	2.57	2.38
Net Change in Population															
FDEC, 02/2009	315.1	232.0	241.6	315.7	289.2	291.1	313.1	295.0	359.3	399.3	343.5	348.5	405.6	441.7	403.0
FDEC, 10/2009	315.1	232.0	241.6	315.7	289.2	291.1	313.1	295.0	359.3	399.2	342.6	349.0	405.9	441.5	403.1
Households															
FDEC, 02/2009	5,230.8	5,334.4	5,424.8	5,538.3	5,655.1	5,767.0	5,887.2	6,005.0	6,138.4	6,296.7	6,448.0	6,586.2	6,738.0	6,907.1	7,069.4
FDEC, 10/2009	5,230.8	5,334.4	5,424.8	5,538.3	5,655.1	5,767.0	5,887.2	6,005.0	6,138.4	6,296.7	6,447.7	6,585.6	6,737.7	6,906.9	7,069.0
Growth Rate															
FDEC, 02/2009	2.44	1.98	1.69	2.09	2.11	1.98	2.08	2.00	2.22	2.58	2.40	2.14	2.30	2.51	2.35
FDEC, 10/2009	2.44	1.98	1.69	2.09	2.11	1.98	2.08	2.00	2.22	2.58	2.40	2.14	2.31	2.51	2.35
Net Change in Households															
FDEC, 02/2009	124.4	92.2	94.4	122.0	112.8	113.3	122.3	117.9	144.1	162.7	142.9	139.1	160.9	169.7	161.2
FDEC, 10/2009	124.4	92.2	94.4	122.0	112.8	113.3	122.3	117.9	144.1	162.6	142.5	139.3	161.0	169.6	161.3
Household Size															
FDEC, 02/2009	2.519	2.520	2.520	2.521	2.522	2.523	2.524	2.524	2.523	2.522	2.520	2.519	2.518	2.520	2.521
FDEC, 10/2009	2.519	2.520	2.520	2.521	2.522	2.523	2.524	2.524	2.523	2.522	2.520	2.519	2.518	2.520	2.521
Growth Rate															
FDEC, 02/2009	-0.02	0.03	0.00	0.04	0.06	0.02	0.04	0.01	-0.04	-0.04	-0.10	-0.04	-0.01	0.06	0.03
FDEC, 10/2009	-0.02	0.03	0.00	0.04	0.06	0.02	0.04	0.01	-0.04	-0.04	-0.10	-0.04	-0.01	0.06	0.03
Net Migration															
FDEC, 02/2009	252.0	176.4	191.5	269.9	249.0	255.0	275.6	255.7	323.5	361.2	303.1	310.7	365.1	395.0	350.6
FDEC, 10/2009	252.1	176.2	191.4	270.0	249.0	254.8	275.5	256.2	323.0	361.2	302.2	311.3	365.4	394.7	350.7
Births															
FDEC, 02/2009	197.2	191.7	192.1	191.8	189.3	188.6	190.6	194.3	195.8	200.5	205.4	205.4	208.5	215.0	221.8
FDEC, 10/2009	197.0	192.2	192.0	191.7	189.4	188.6	190.7	194.0	196.0	200.5	205.4	205.4	208.5	215.0	221.8
Deaths															
FDEC, 02/2009	134.1	136.2	142.0	146.0	149.1	152.6	153.0	155.0	160.0	162.4	165.0	167.6	168.1	168.3	169.4
FDEC, 10/2009	134.0	136.4	141.8	146.0	149.3	152.3	153.1	155.2	159.7	162.5	165.0	167.6	168.1	168.3	169.4
Net Natural Increase															
FDEC, 02/2009	63.1	55.5	50.1	45.8	40.2	36.0	37.6	39.3	35.8	38.1	40.4	37.8	40.5	46.8	52.5
FDEC, 10/2009	63.0	55.8	50.1	45.7	40.1	36.3	37.6	38.8	36.3	38.0	40.4	37.8	40.5	46.8	52.5

Fiscal Year Data Table

FISCAL YEAR FORECAST T.

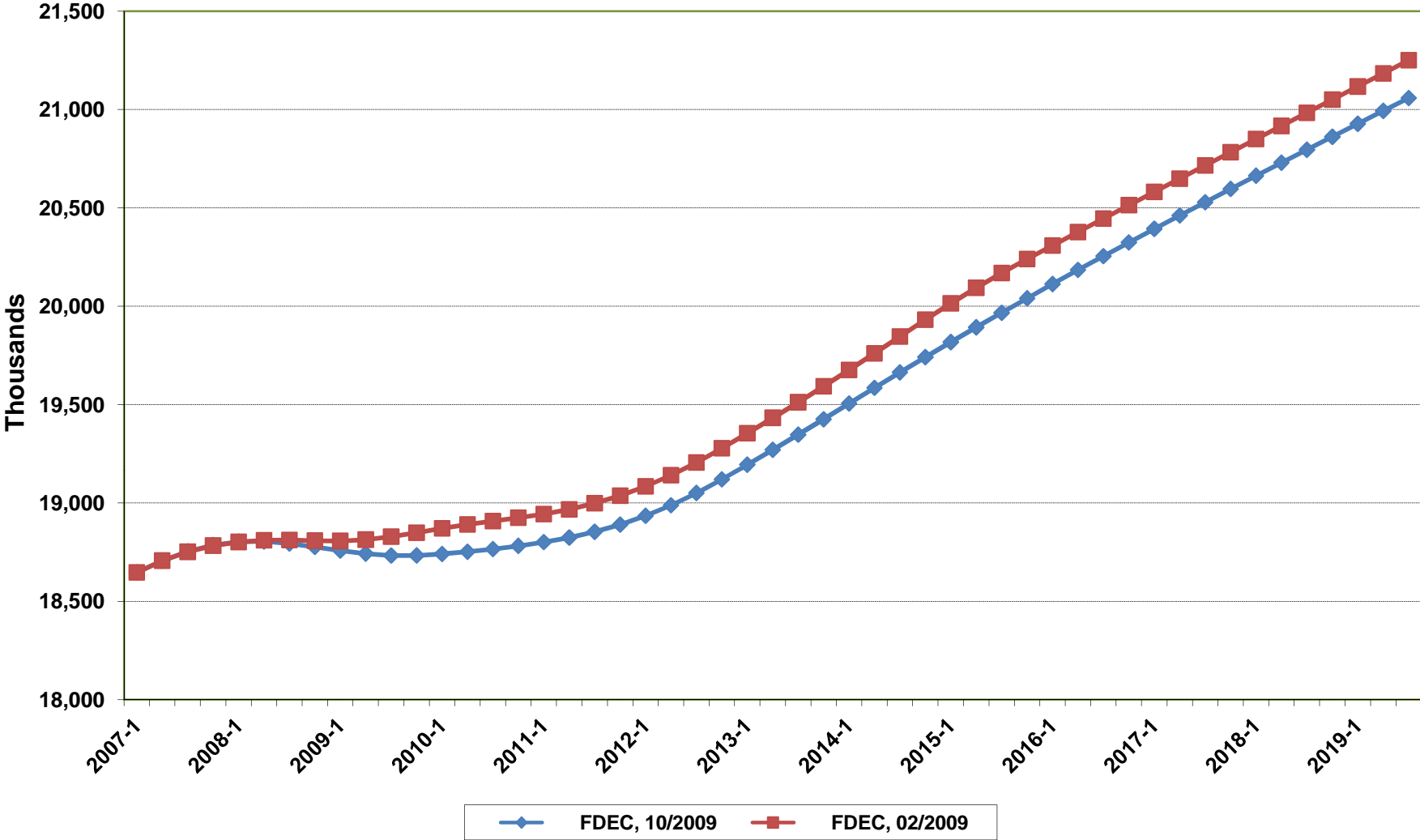
	<u>2005-06</u>	<u>2006-07</u>	<u>2007-08</u>	<u>2008-09</u>	<u>2009-10</u>	<u>2010-11</u>	<u>2011-12</u>	<u>2012-13</u>	<u>2013-14</u>	<u>2014-15</u>	<u>2015-16</u>	<u>2016-17</u>	<u>2017-18</u>	<u>2018-19</u>
Population														
FDEC, 02/2009	18,240.1	18,604.2	18,786.4	18,809.8	18,859.5	18,935.6	19,065.0	19,317.5	19,635.1	19,971.7	20,273.4	20,547.4	20,816.4	21,083.8
FDEC, 10/2009	18,240.0	18,604.3	18,786.3	18,767.4	18,739.3	18,792.8	18,916.2	19,158.7	19,465.6	19,778.7	20,075.9	20,358.3	20,629.4	20,894.2
Growth Rate														
FDEC, 02/2009	2.36	2.00	0.98	0.12	0.26	0.40	0.68	1.32	1.64	1.71	1.51	1.35	1.31	1.28
FDEC, 10/2009	2.37	2.00	0.98	-0.10	-0.15	0.29	0.66	1.28	1.60	1.61	1.50	1.41	1.33	1.28
Net Change in Population														
FDEC, 02/2009	426.1	309.0	103.3	3.4	77.3	76.8	173.2	292.3	327.6	333.8	282.9	271.9	267.8	267.2
FDEC, 10/2009	426.5	309.4	97.5	-62.0	9.4	72.1	164.1	282.2	314.7	307.7	291.6	277.2	268.2	263.3
Households														
FDEC, 02/2009	7,244.4	7,407.8	7,491.0	7,501.8	7,522.6	7,554.4	7,608.0	7,710.7	7,839.4	7,975.8	8,098.3	8,209.8	8,319.4	8,428.3
FDEC, 10/2009	7,244.4	7,407.8	7,490.9	7,484.5	7,473.3	7,494.9	7,546.0	7,644.9	7,769.7	7,897.9	8,018.9	8,134.3	8,245.3	8,353.8
Growth Rate														
FDEC, 02/2009	2.47	2.25	1.12	0.14	0.28	0.42	0.71	1.35	1.67	1.74	1.54	1.38	1.33	1.31
FDEC, 10/2009	2.48	2.26	1.12	-0.09	-0.15	0.29	0.68	1.31	1.63	1.65	1.53	1.44	1.36	1.32
Net Change in Households														
FDEC, 02/2009	181.5	143.2	45.2	2.5	31.8	32.4	71.1	118.6	132.7	135.3	115.0	110.7	109.1	108.9
FDEC, 10/2009	181.6	143.4	42.9	-24.9	4.2	29.7	67.6	114.8	128.6	125.4	119.0	113.3	109.8	108.0
Household Size														
FDEC, 02/2009	2.518	2.511	2.508	2.507	2.507	2.507	2.506	2.505	2.505	2.504	2.503	2.503	2.502	2.502
FDEC, 10/2009	2.518	2.511	2.508	2.508	2.508	2.507	2.507	2.506	2.505	2.504	2.504	2.503	2.502	2.501
Growth Rate														
FDEC, 02/2009	-0.11	-0.25	-0.14	-0.02	-0.01	-0.02	-0.03	-0.03	-0.02	-0.02	-0.02	-0.02	-0.02	-0.02
FDEC, 10/2009	-0.11	-0.25	-0.14	-0.01	0.00	0.00	-0.02	-0.03	-0.03	-0.04	-0.03	-0.03	-0.03	-0.03
Net Migration														
FDEC, 02/2009	364.0	238.6	31.9	-65.5	11.5	13.8	112.7	233.3	270.0	277.5	228.2	219.2	217.3	219.0
FDEC, 10/2009	364.5	238.4	31.1	-121.4	-48.7	16.8	111.0	230.2	263.8	255.9	237.9	221.6	212.6	207.9
Births														
FDEC, 02/2009	232.1	238.8	239.3	238.2	237.4	237.5	239.0	241.8	244.9	248.1	251.2	253.7	255.9	258.0
FDEC, 10/2009	232.1	239.3	235.4	230.5	230.8	230.6	231.9	234.4	237.5	240.6	242.9	245.8	248.4	250.7
Deaths														
FDEC, 02/2009	170.1	168.4	167.9	169.3	171.6	174.6	178.5	182.8	187.3	191.8	196.5	201.0	205.4	209.8
FDEC, 10/2009	170.1	168.3	169.0	171.1	172.7	175.3	178.7	182.4	186.6	188.7	189.2	190.3	192.8	195.2
Net Natural Increase														
FDEC, 02/2009	62.0	70.4	71.4	68.9	65.8	63.0	60.5	59.0	57.6	56.3	54.7	52.7	50.5	48.2
FDEC, 10/2009	62.0	71.0	66.4	59.4	58.1	55.4	53.1	52.0	50.9	51.9	53.7	55.5	55.6	55.4

**Florida
Demographic Estimating Conference**

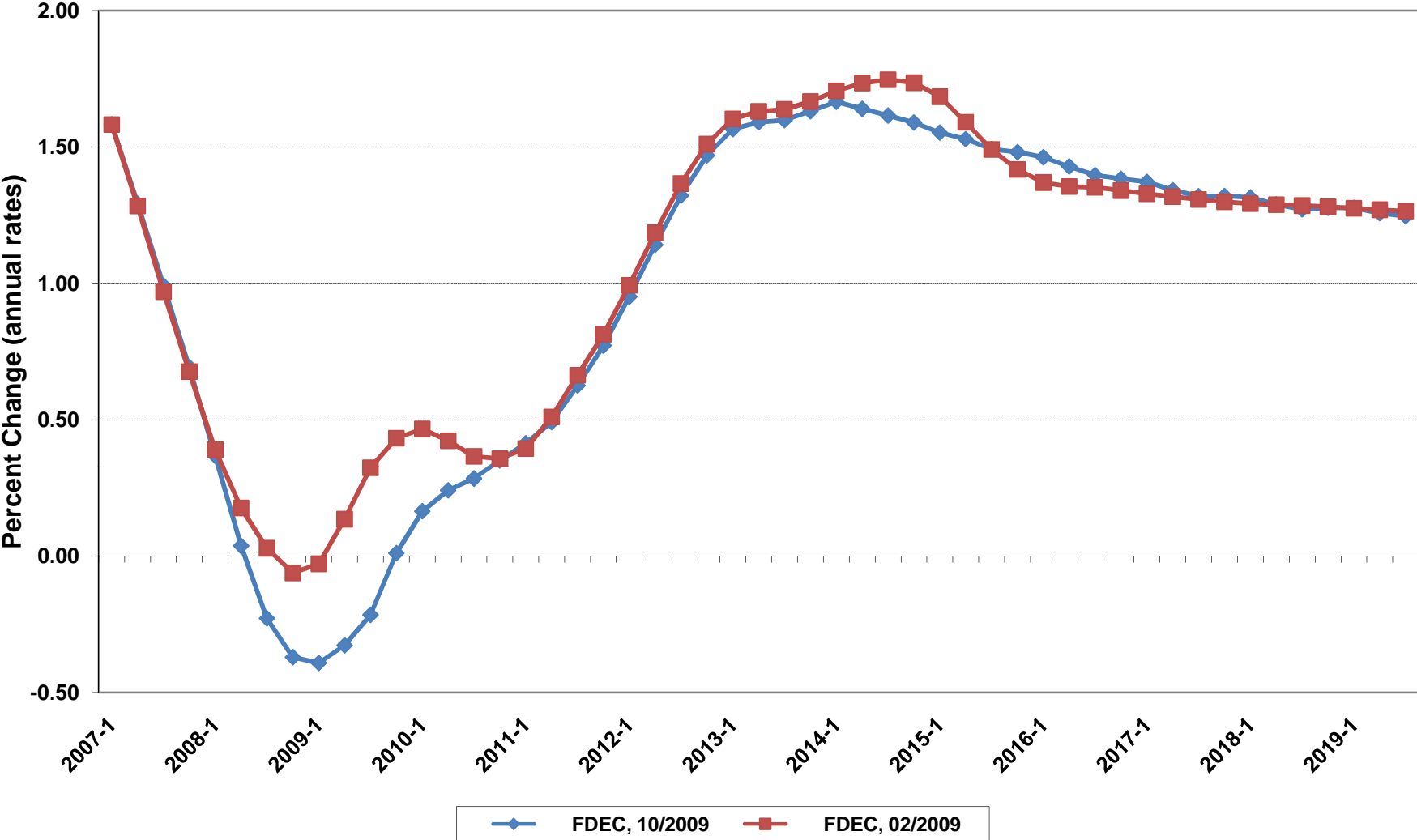
Charts

**October 27, 2009
Post Conference**

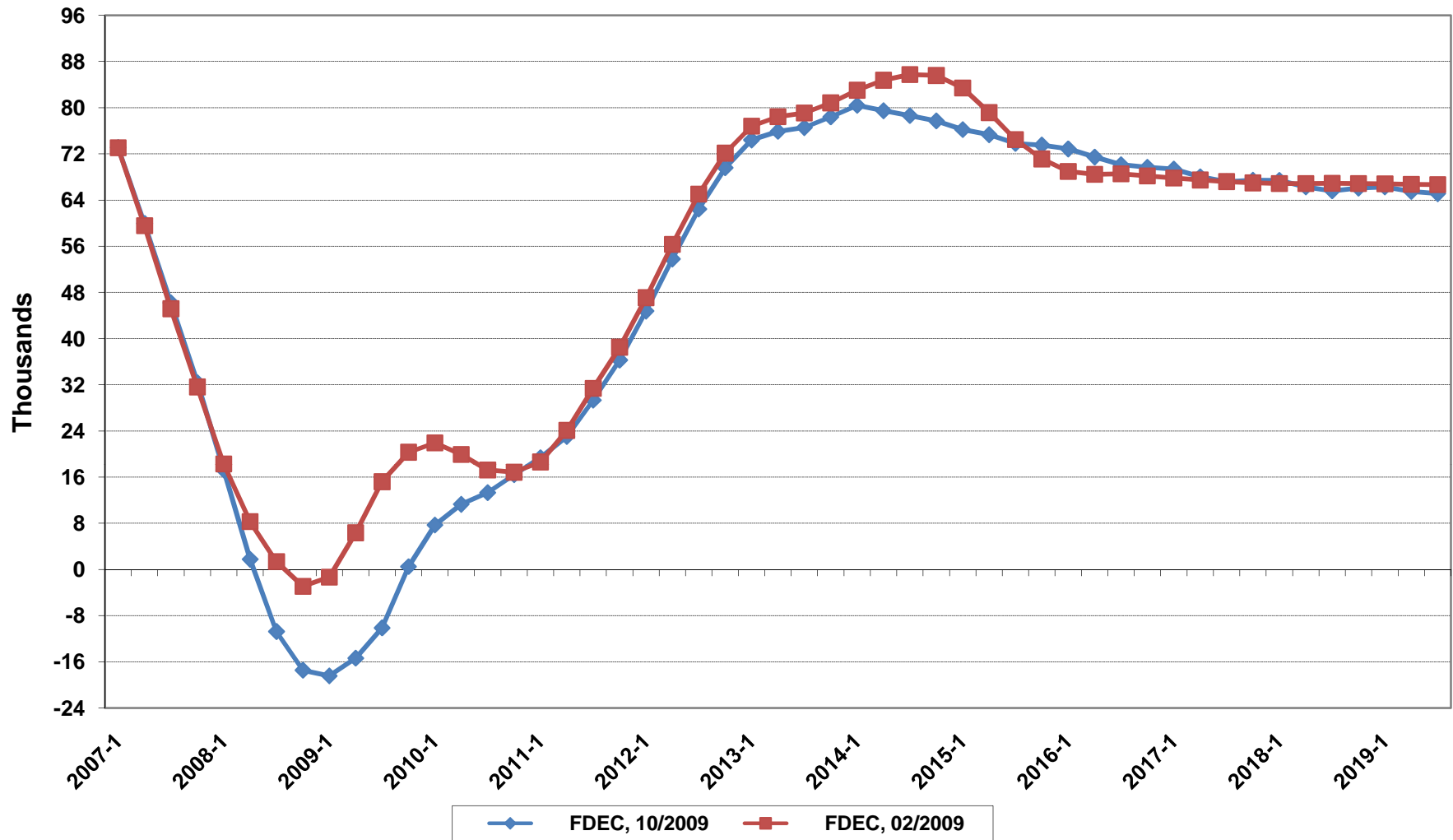
Florida Resident Population



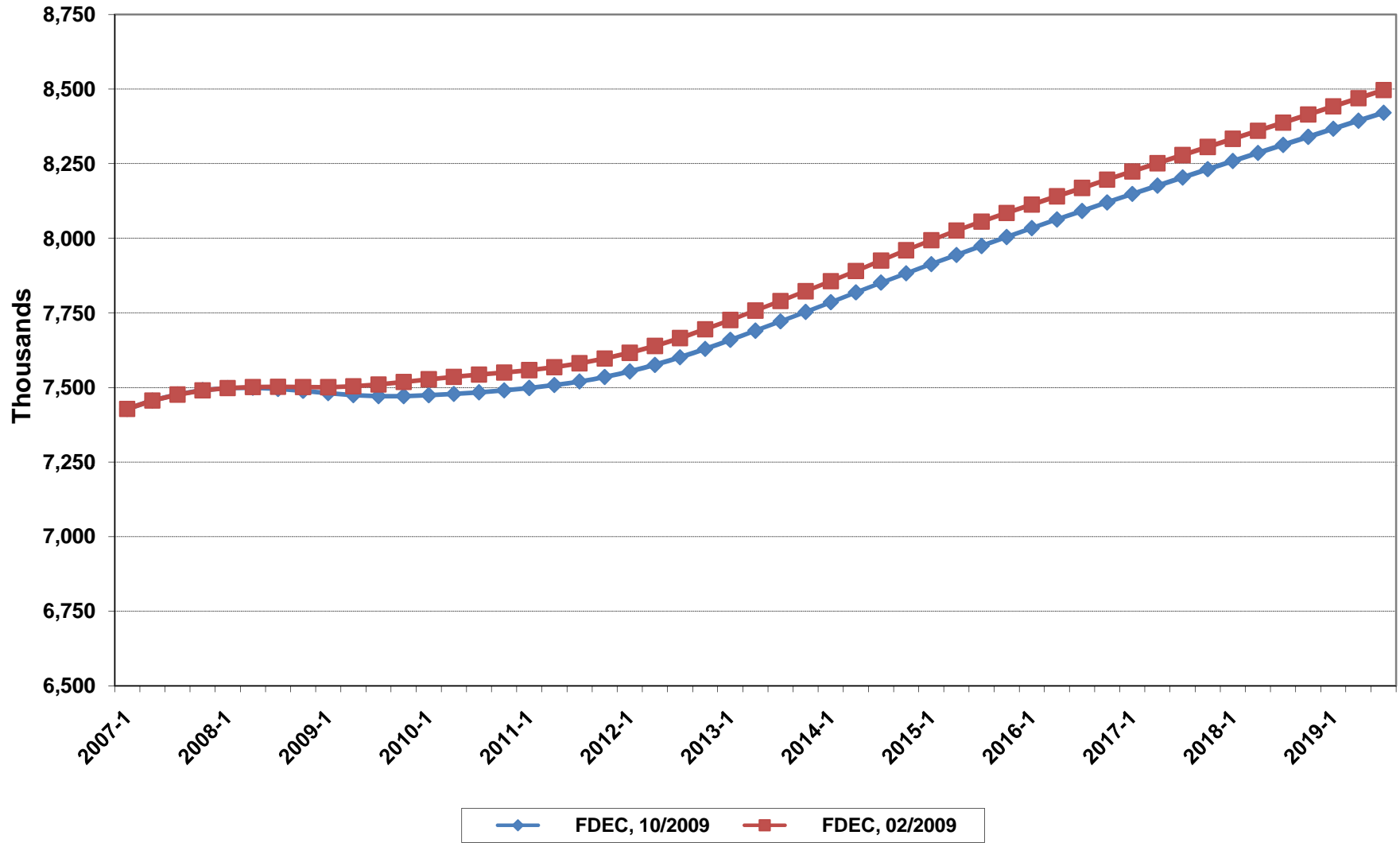
Growth In Florida Resident Population



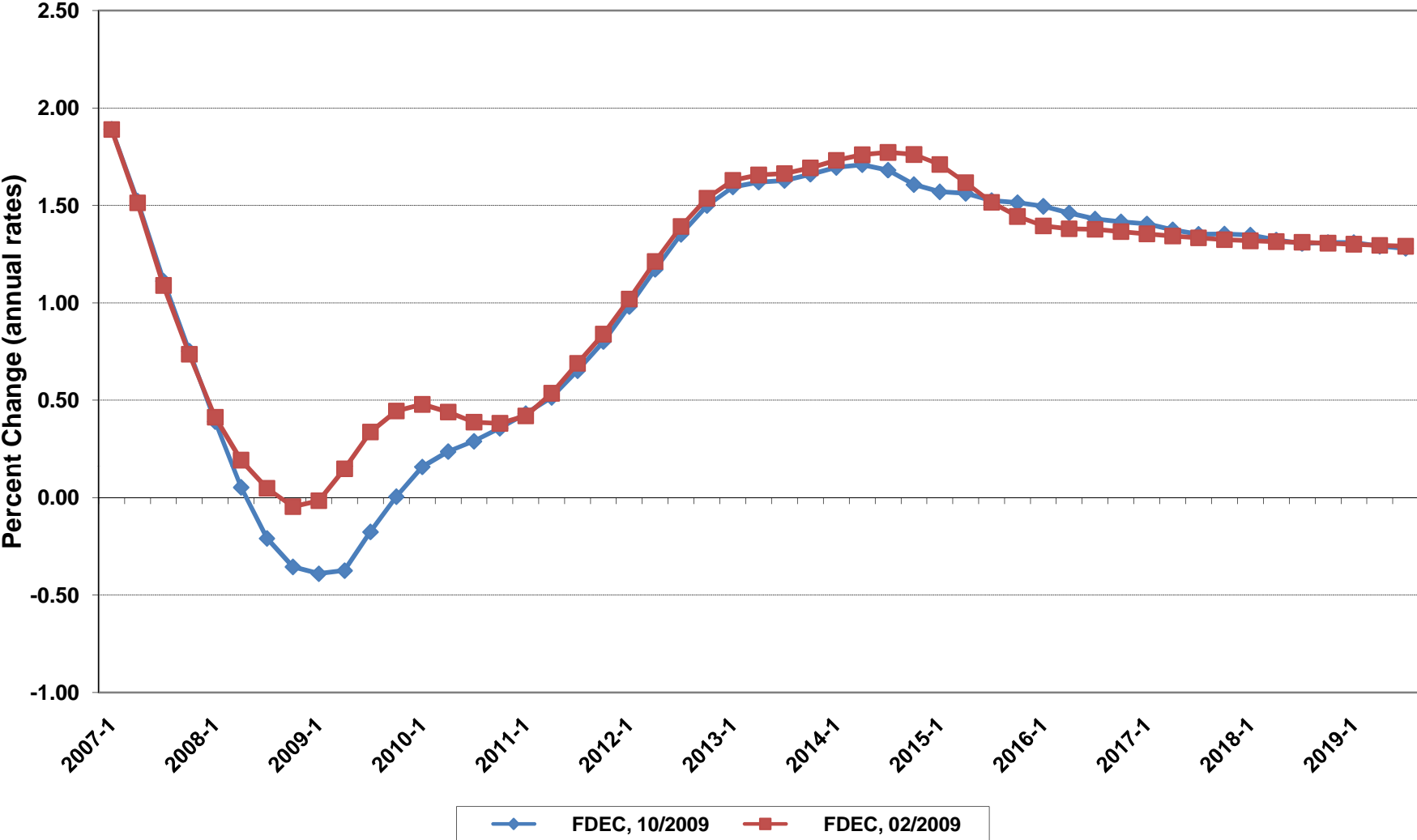
Net Change In Florida Resident Population



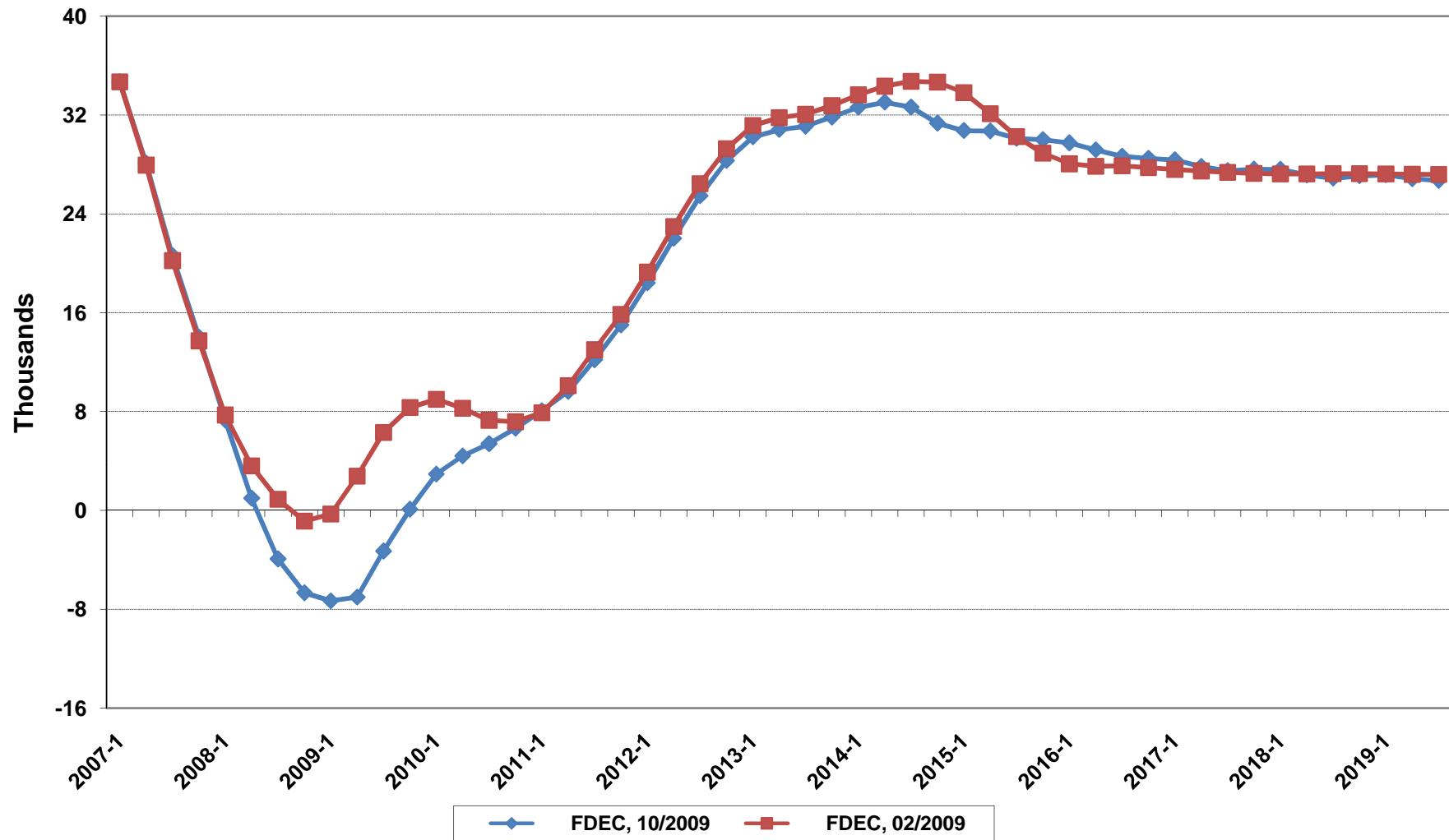
Florida Resident Households



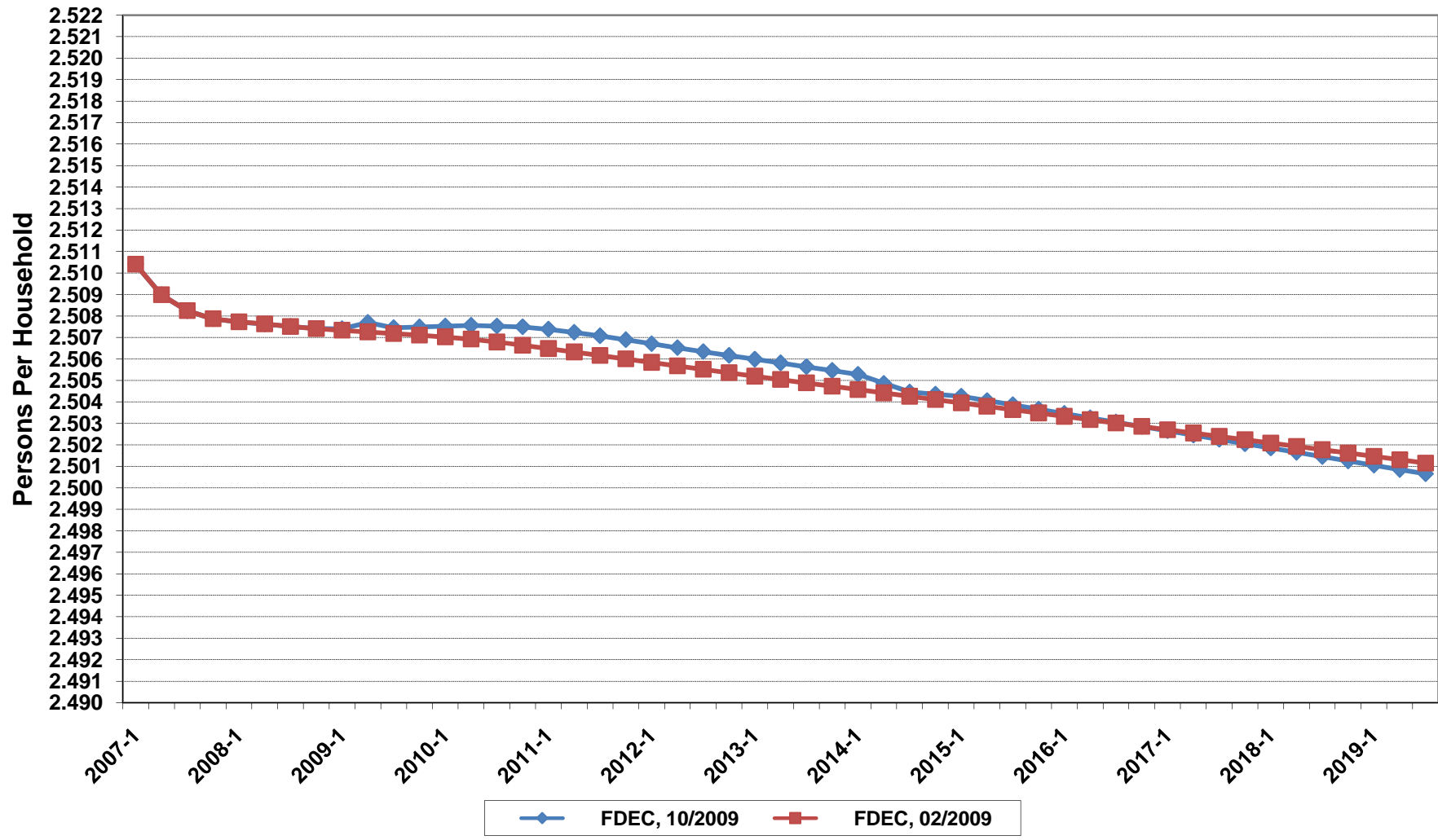
Growth In Florida Resident Households



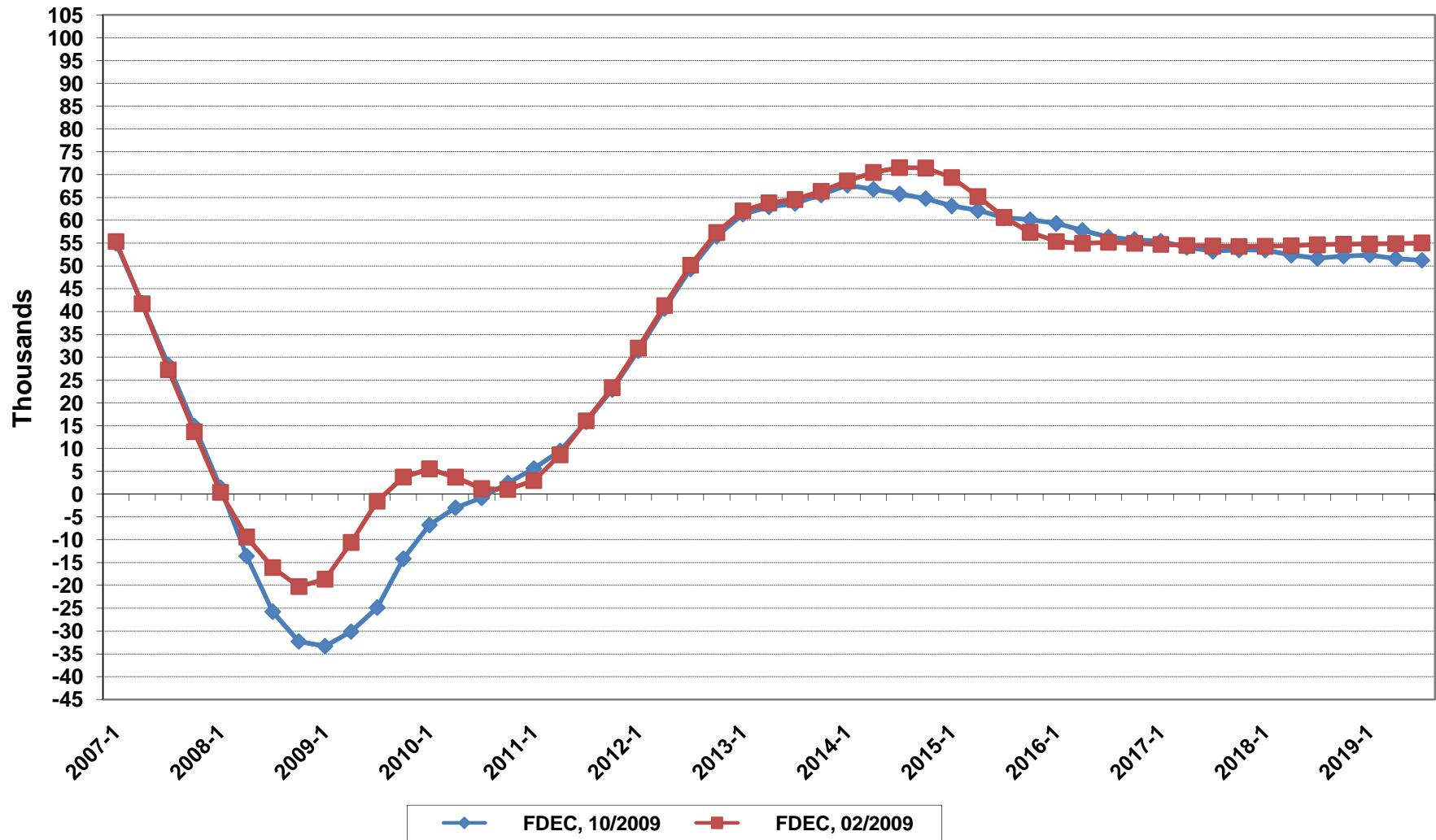
Net Change In Florida Resident Households



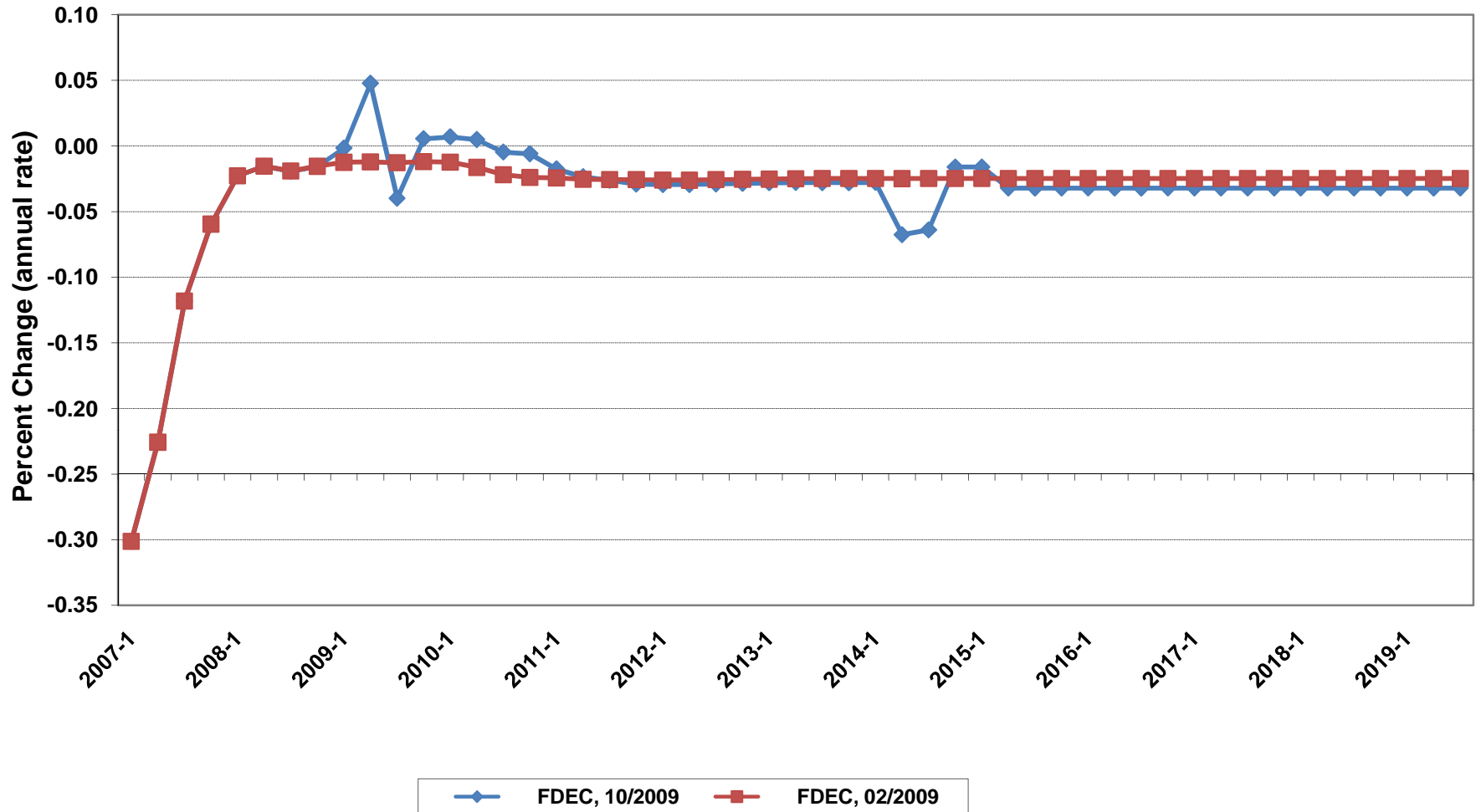
Florida Average Household Size



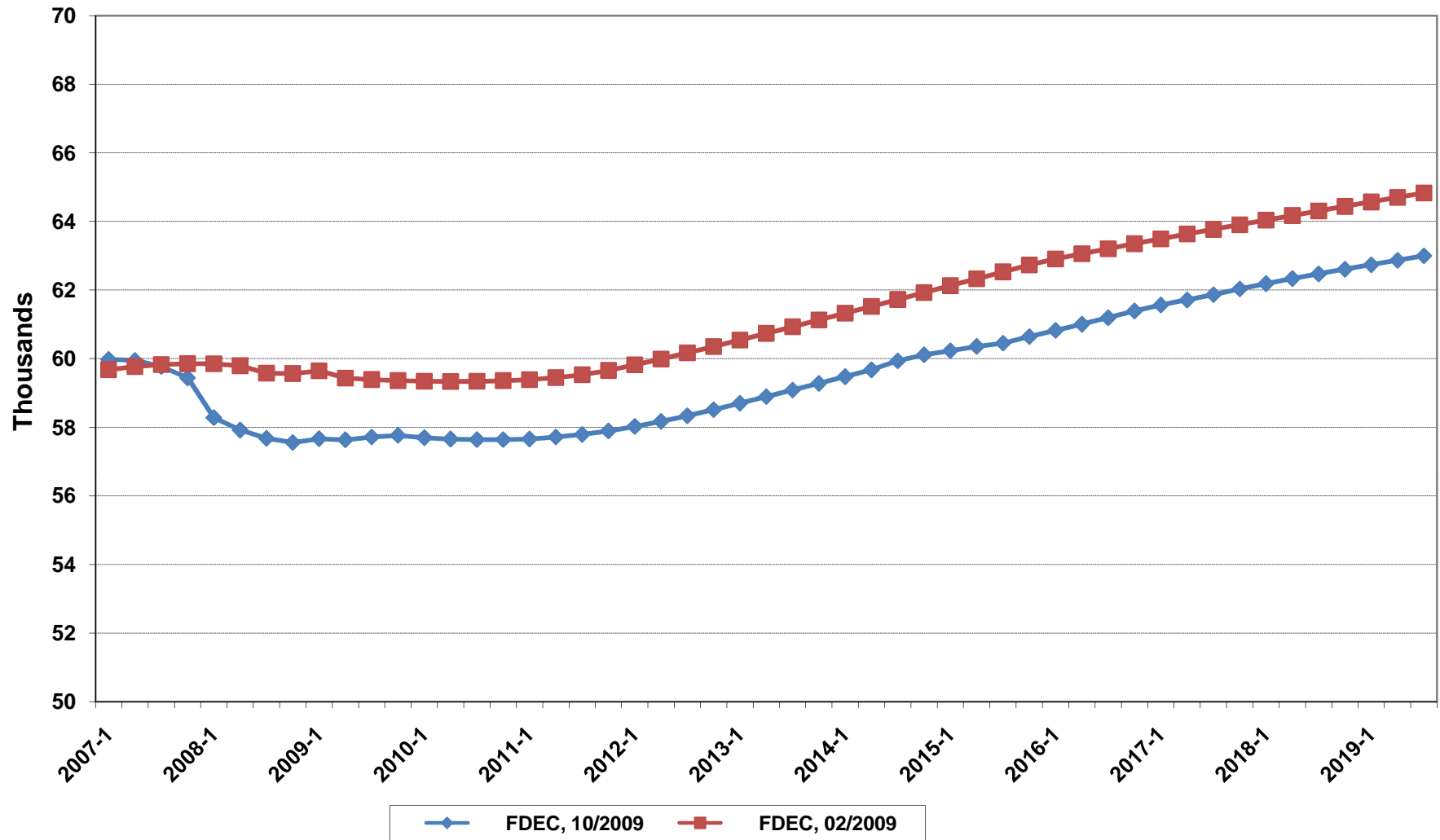
Florida Net Migration



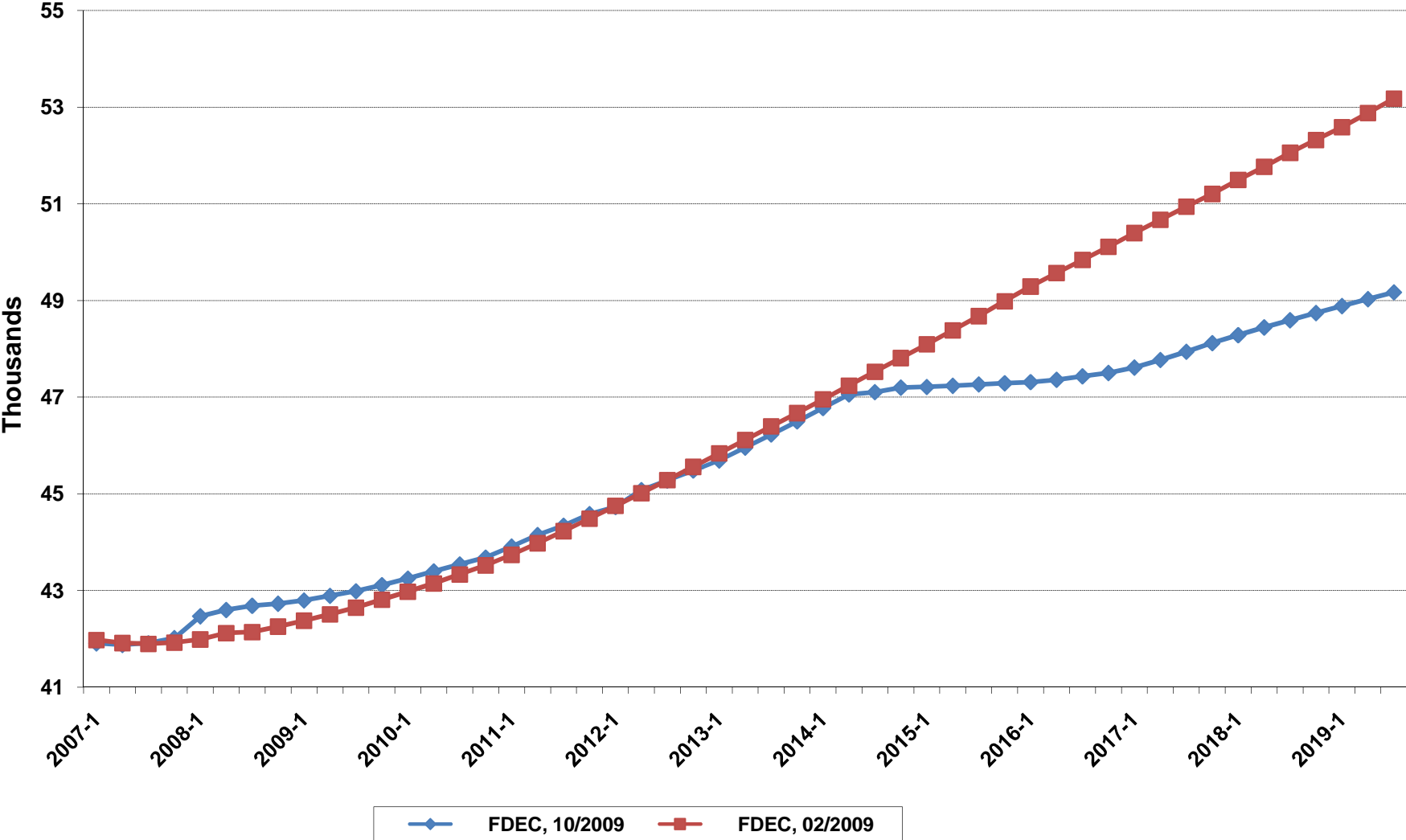
Growth In Florida Household Size



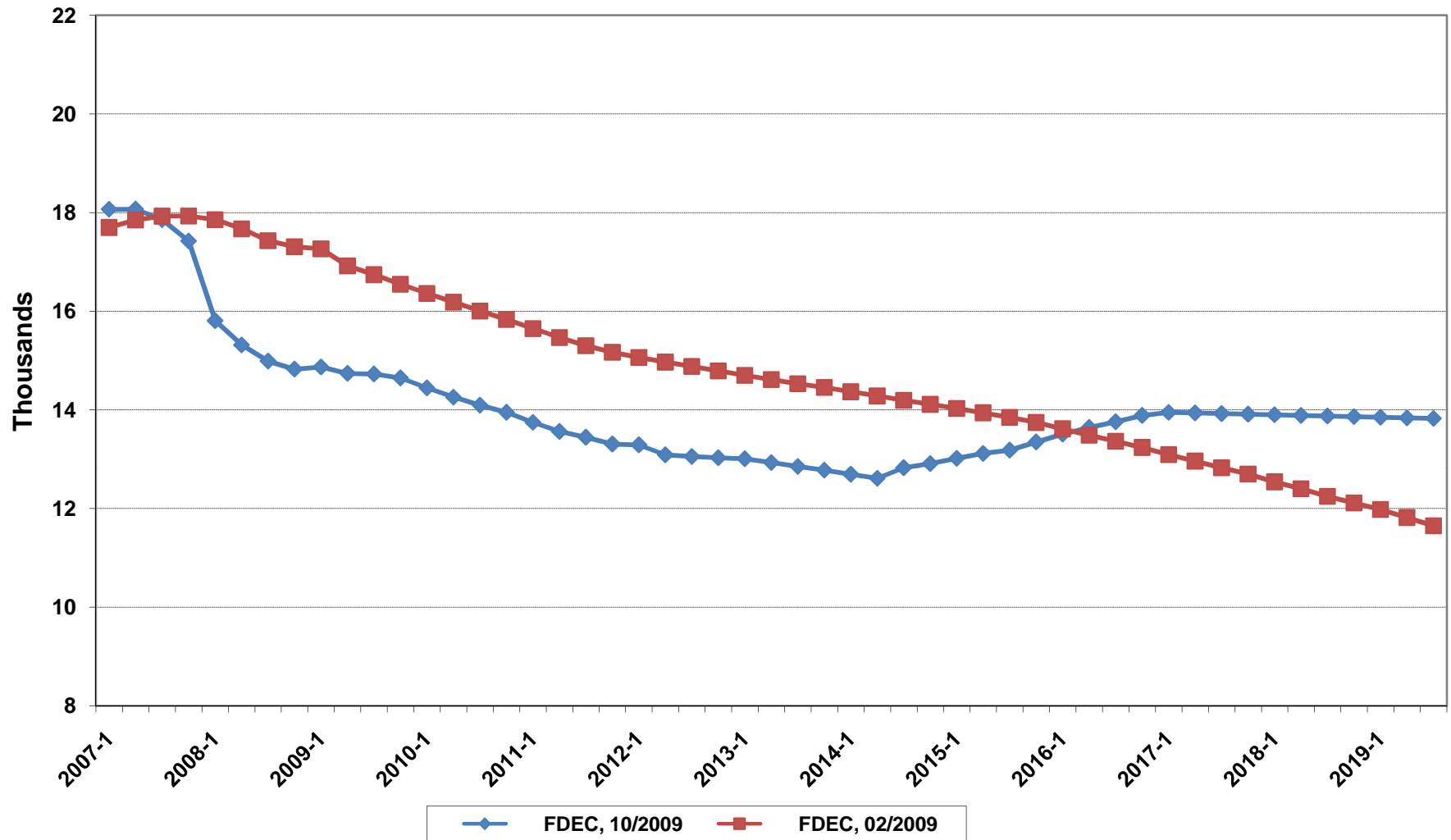
Florida Resident Births



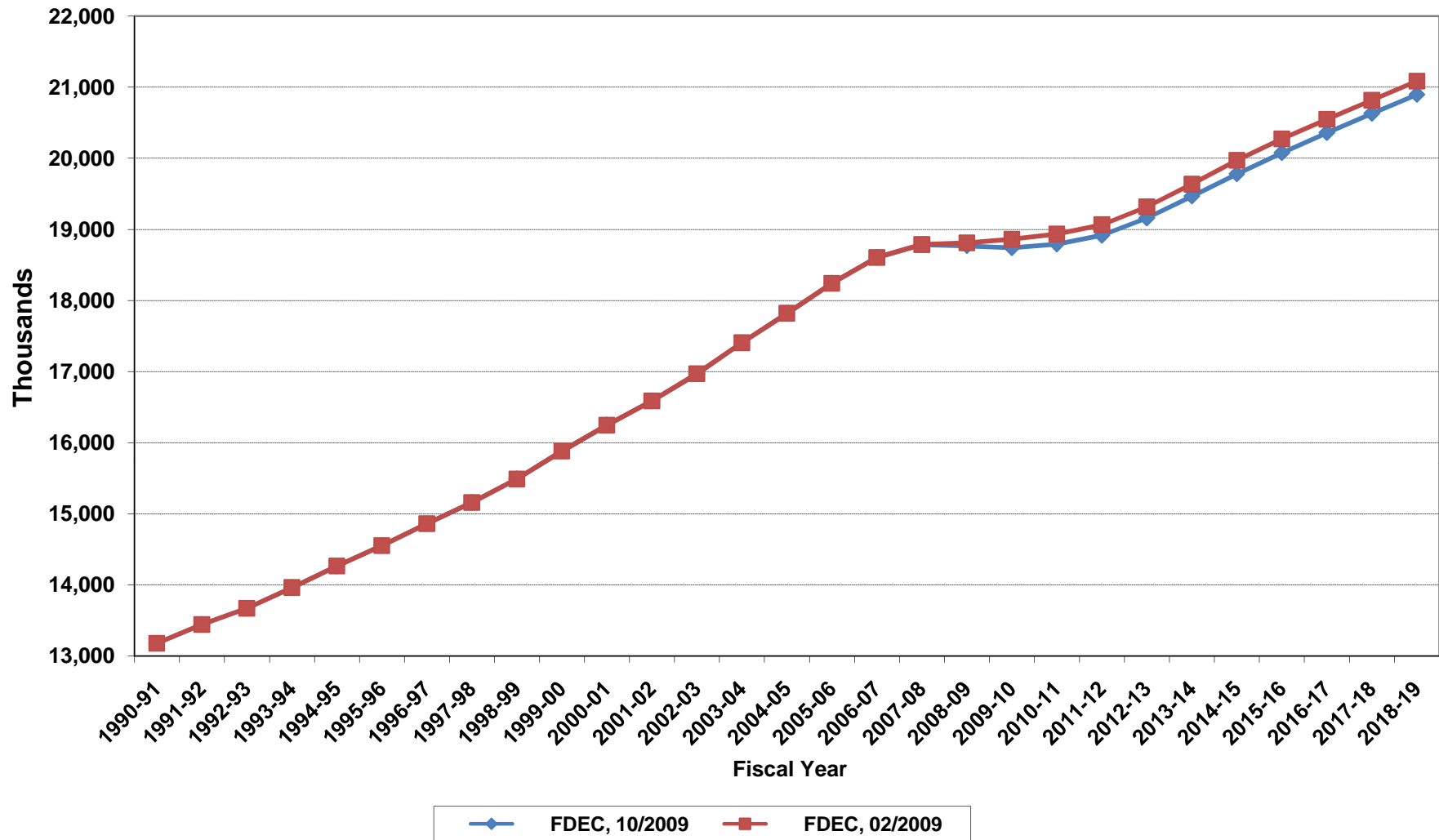
Florida Resident Deaths



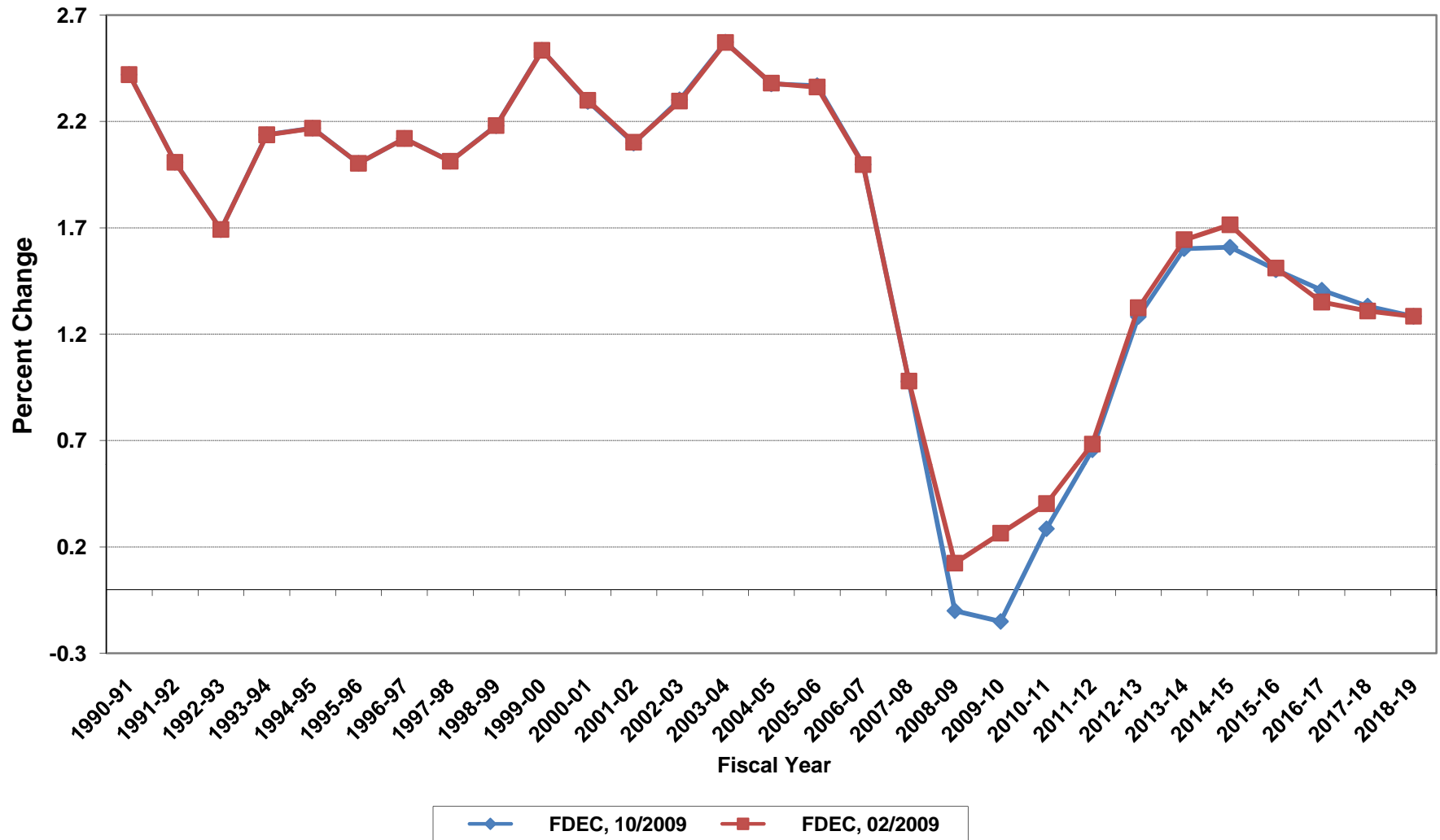
Florida Net Natural Increase



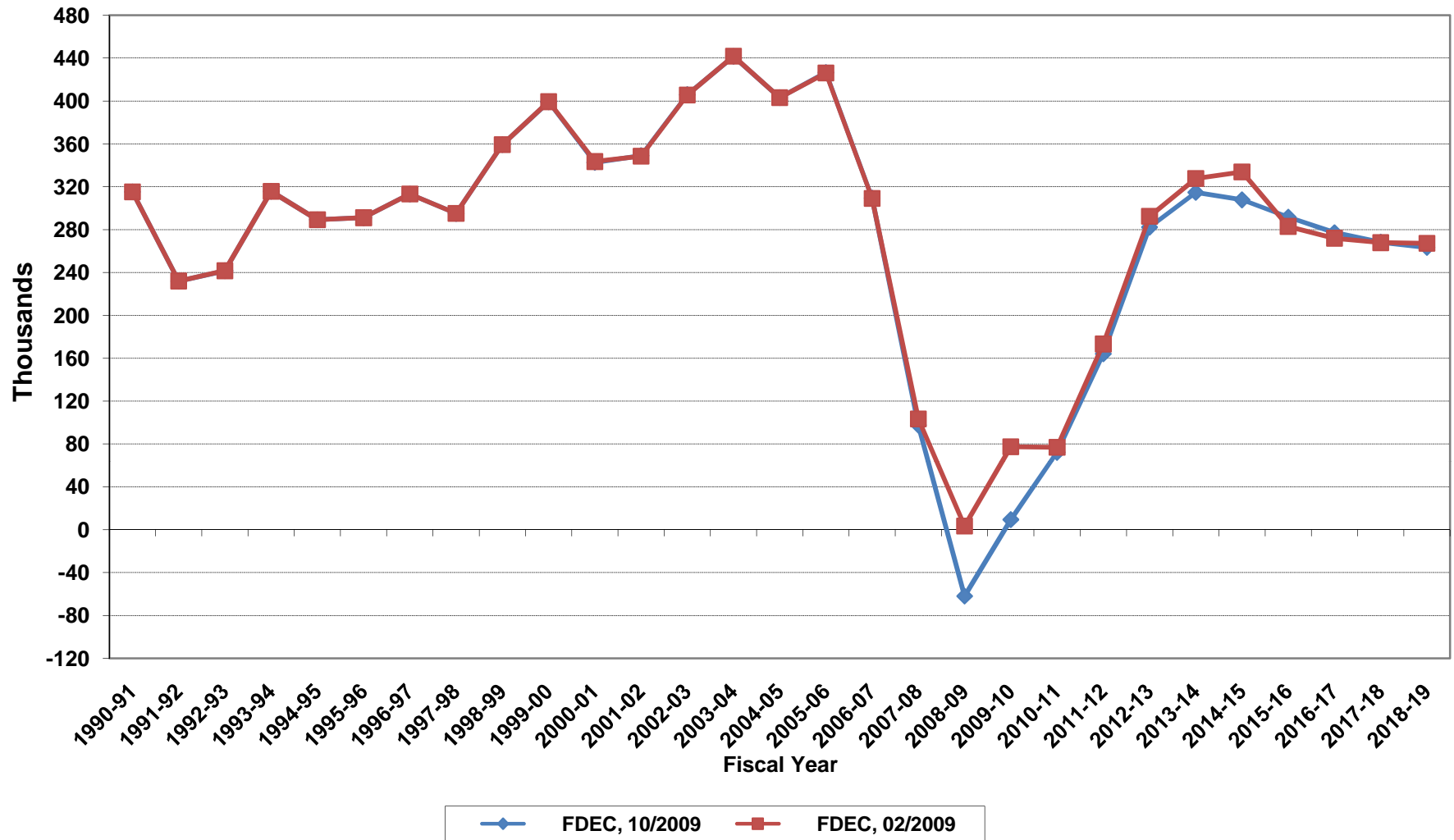
Florida Resident Population



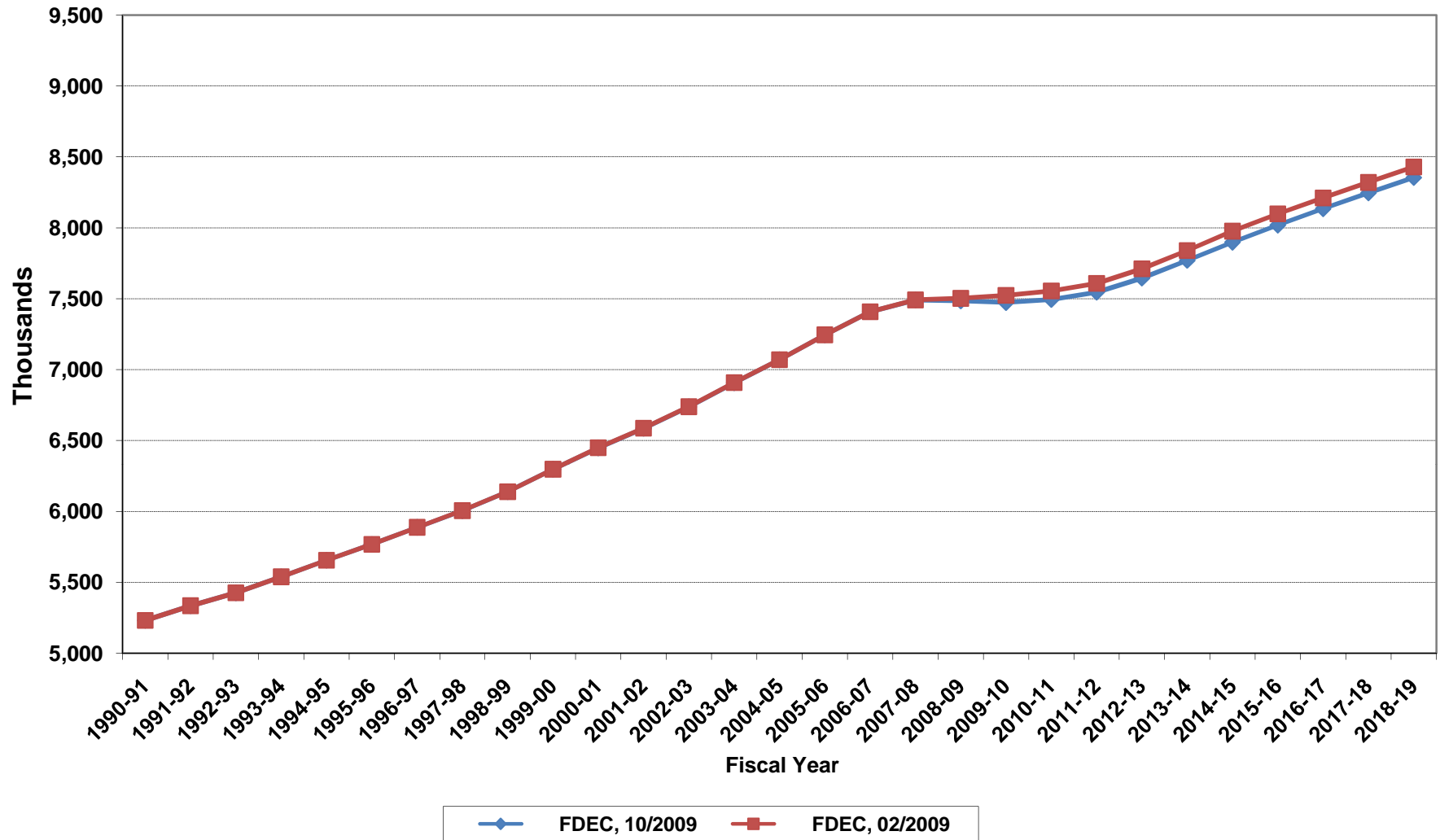
Growth In Florida Resident Population



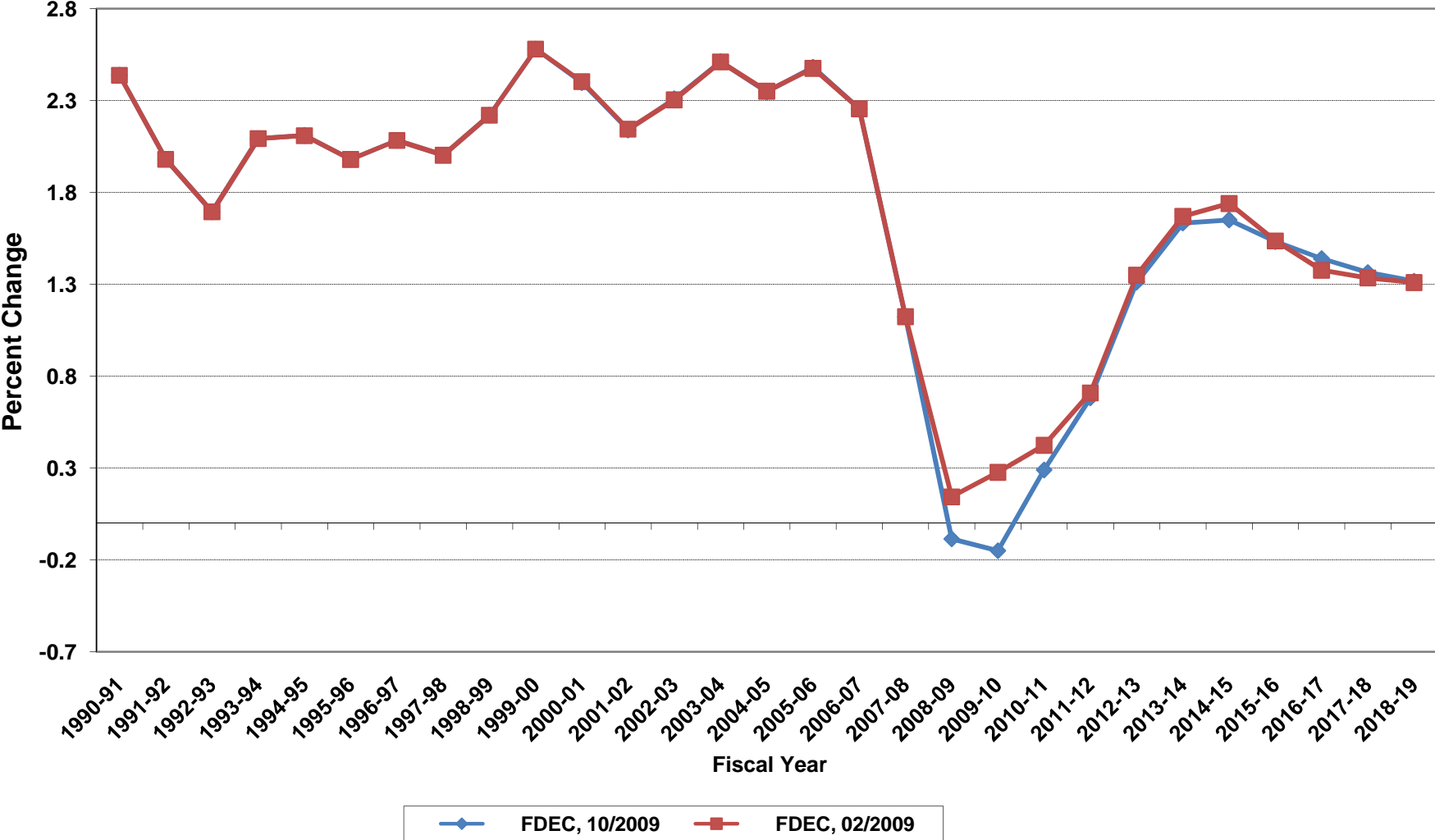
Net Change In Florida Resident Population



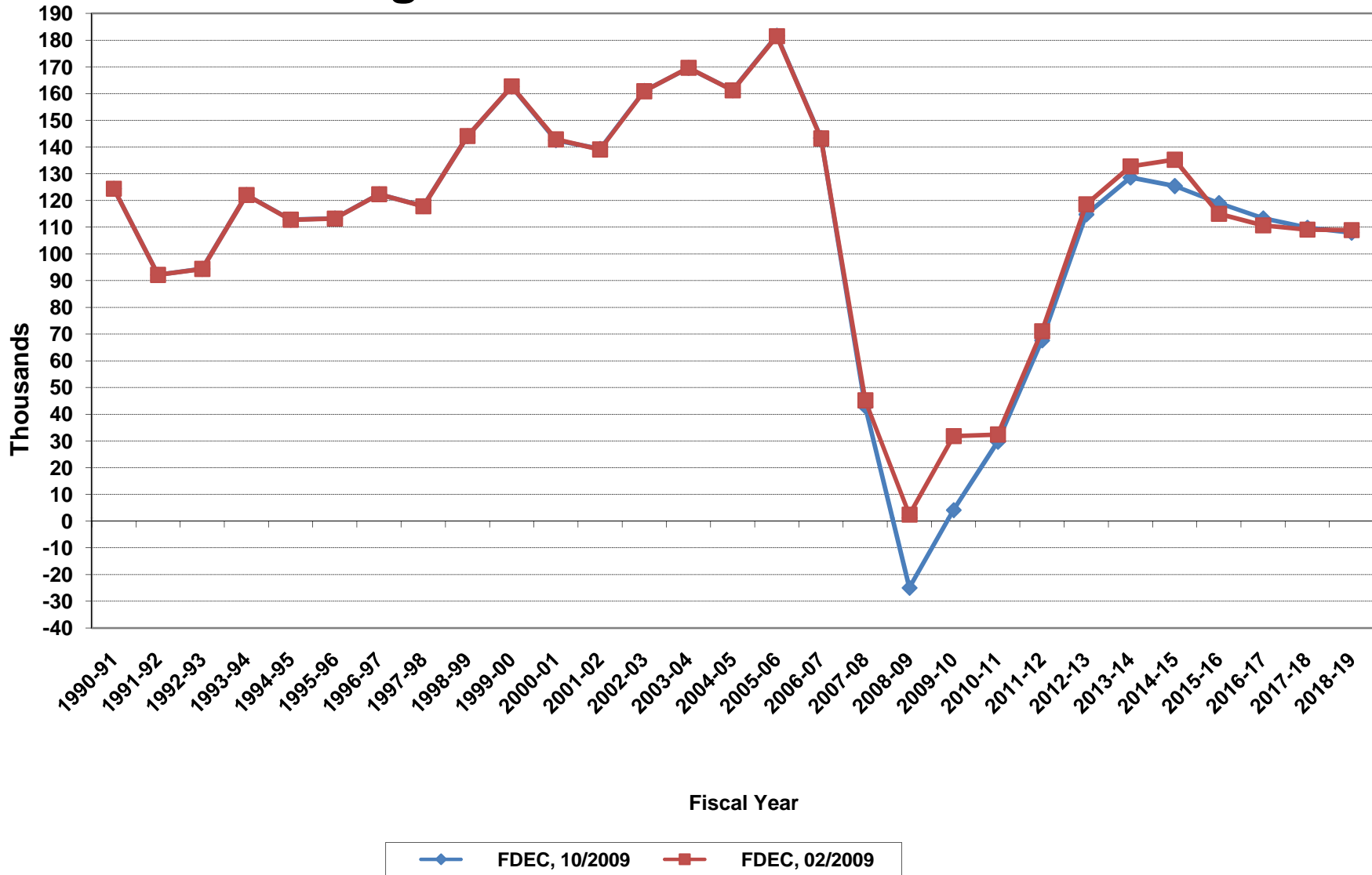
Florida Resident Households



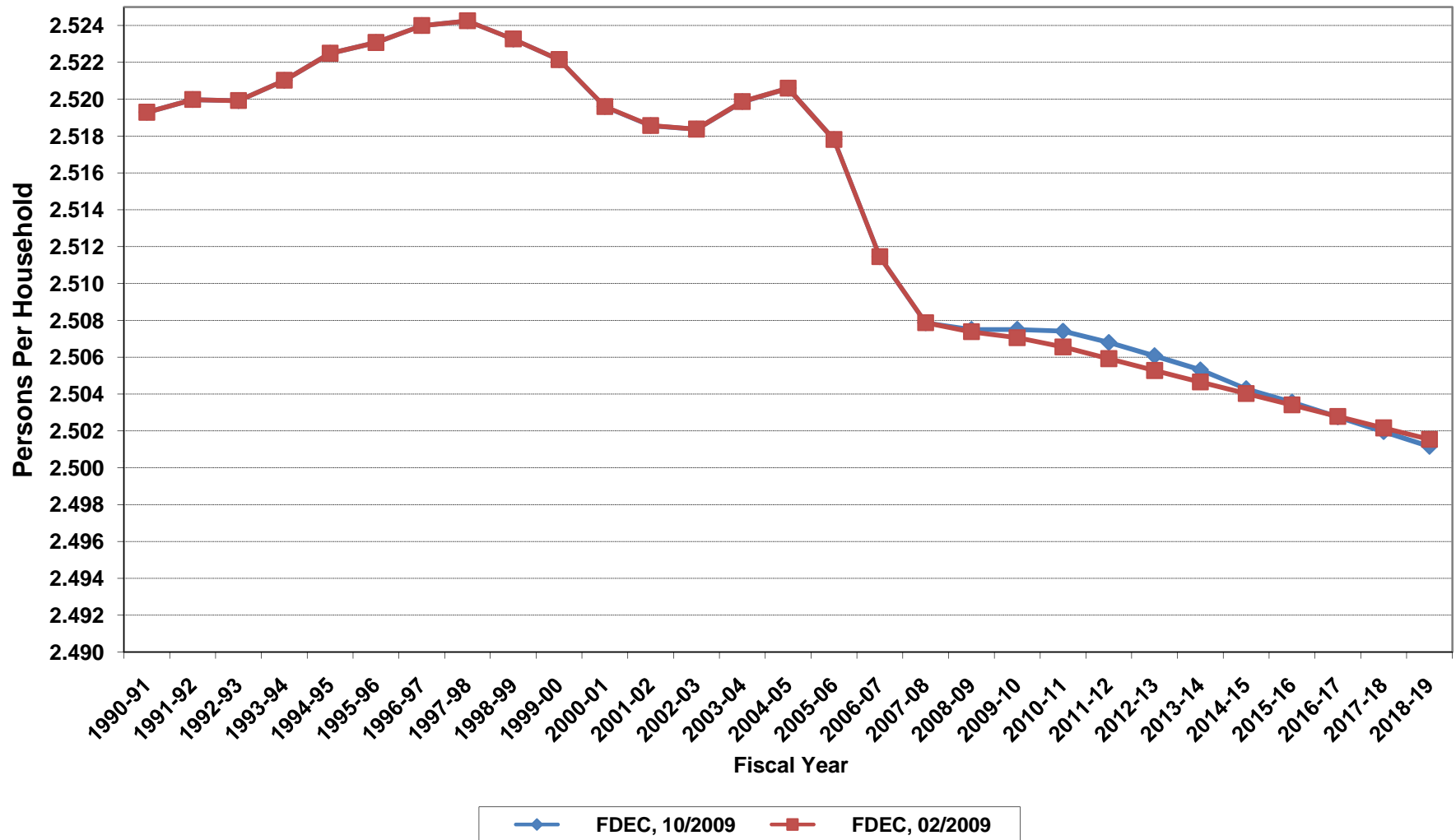
Growth In Florida Resident Households



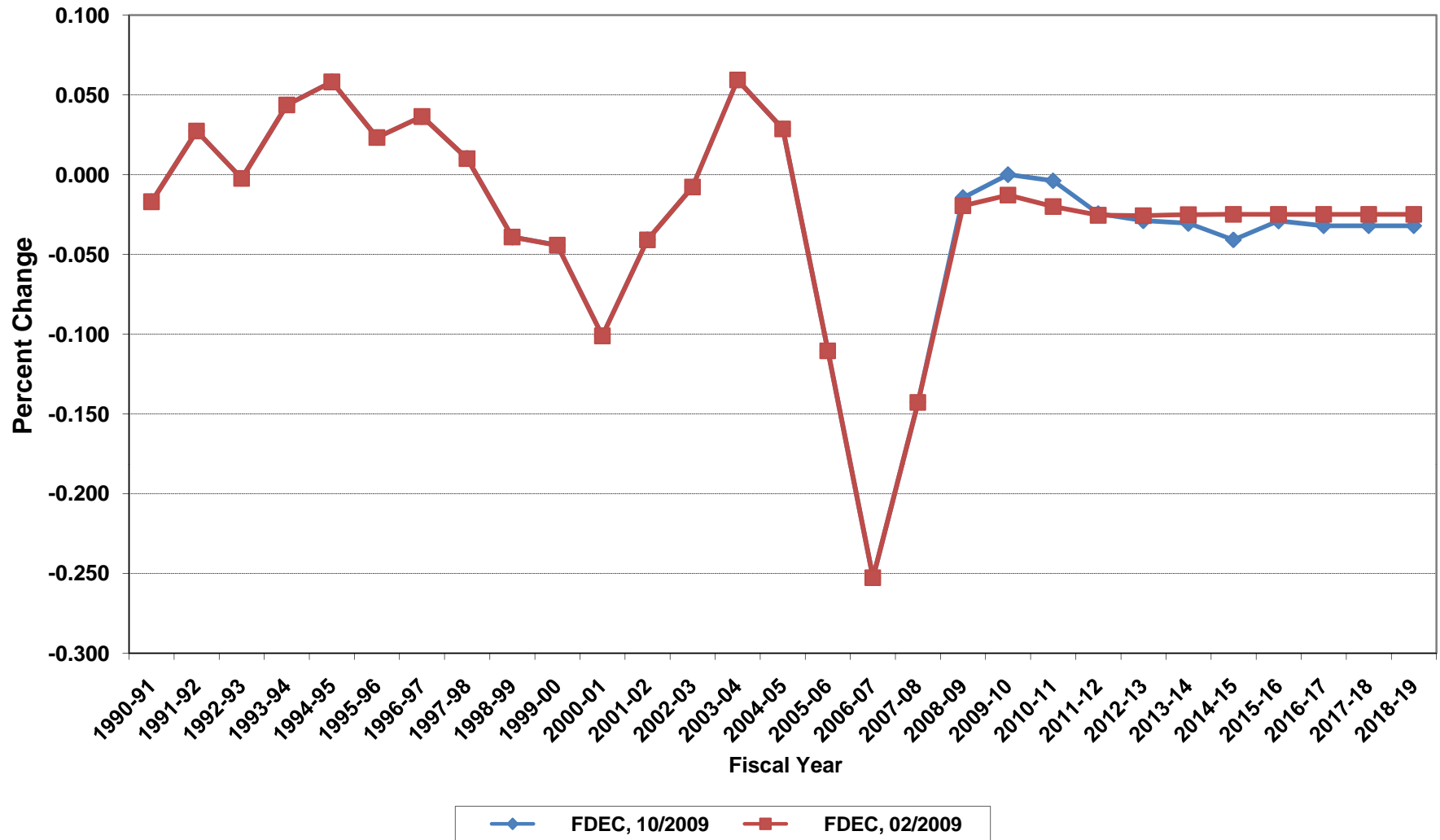
Net Change In Florida Resident Households



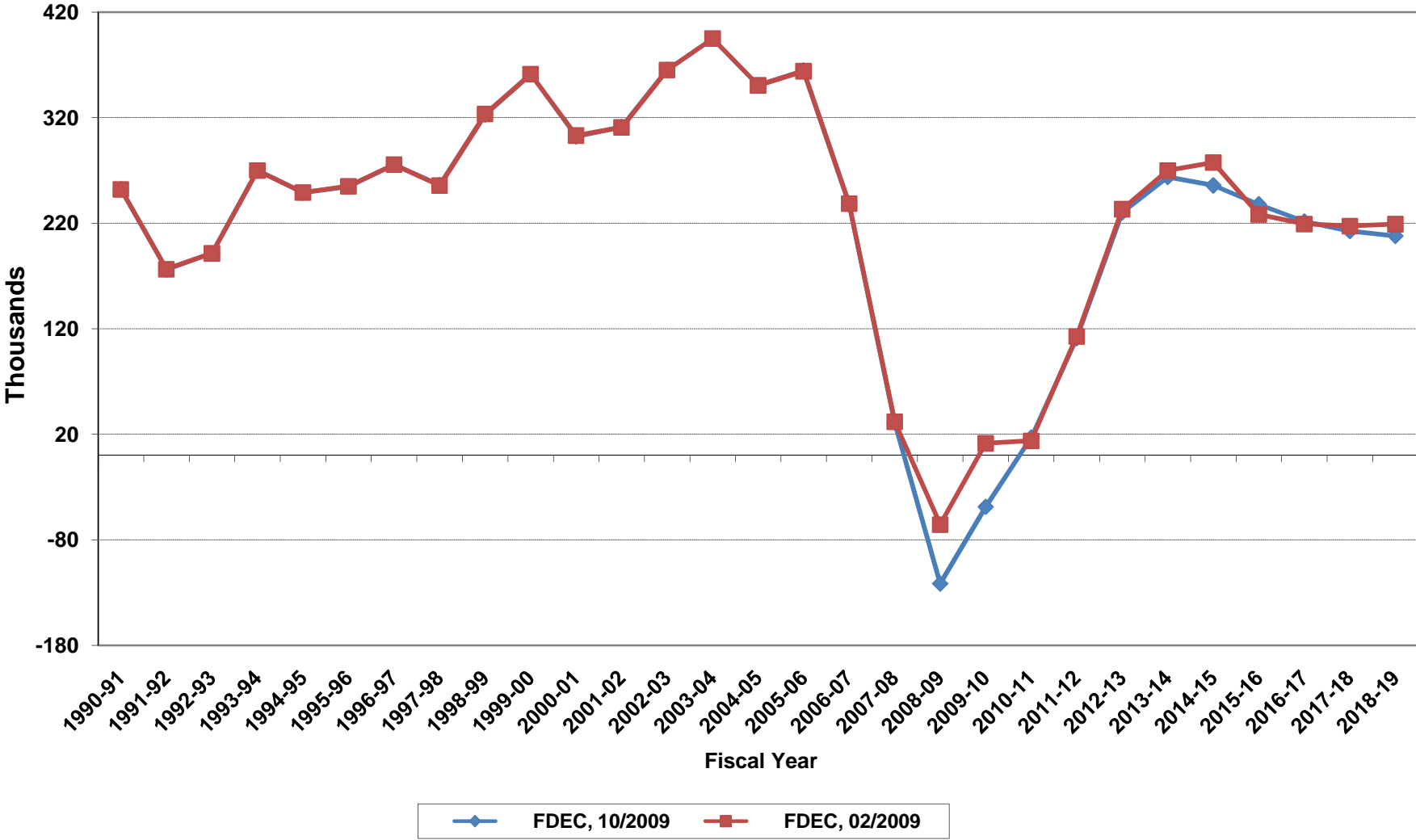
Average Florida Household Size



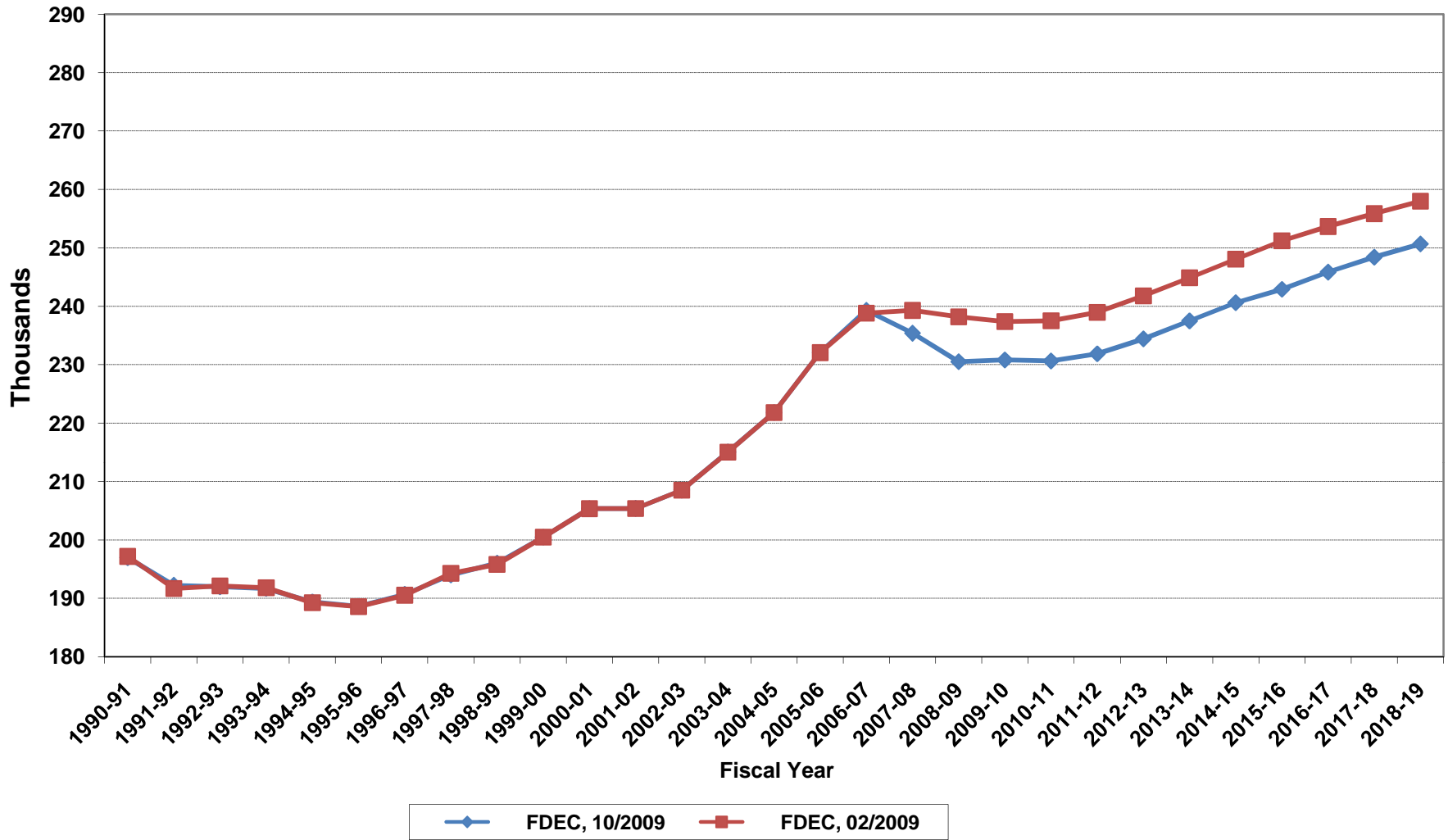
Growth In Average Florida Household Size



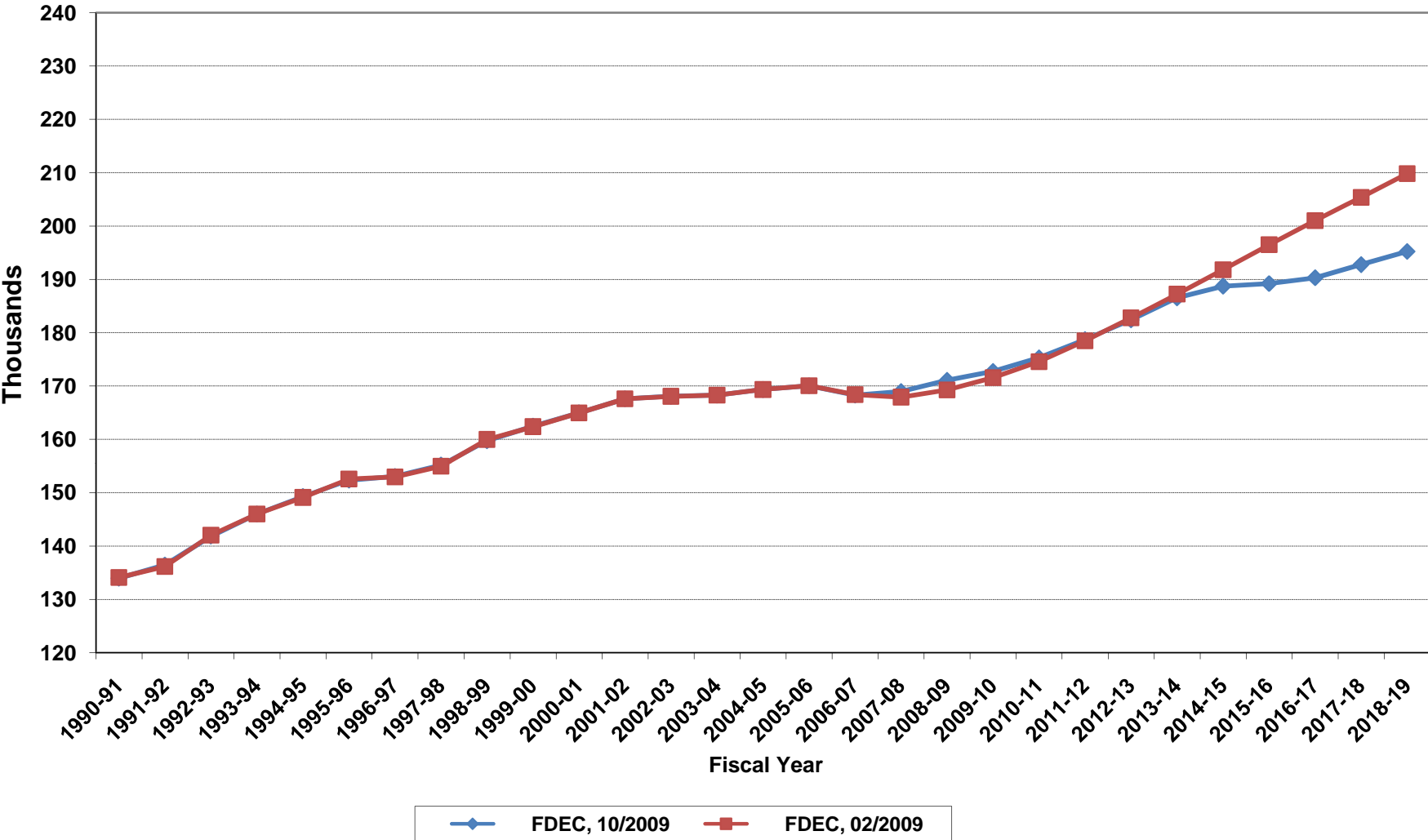
Florida Net Migration



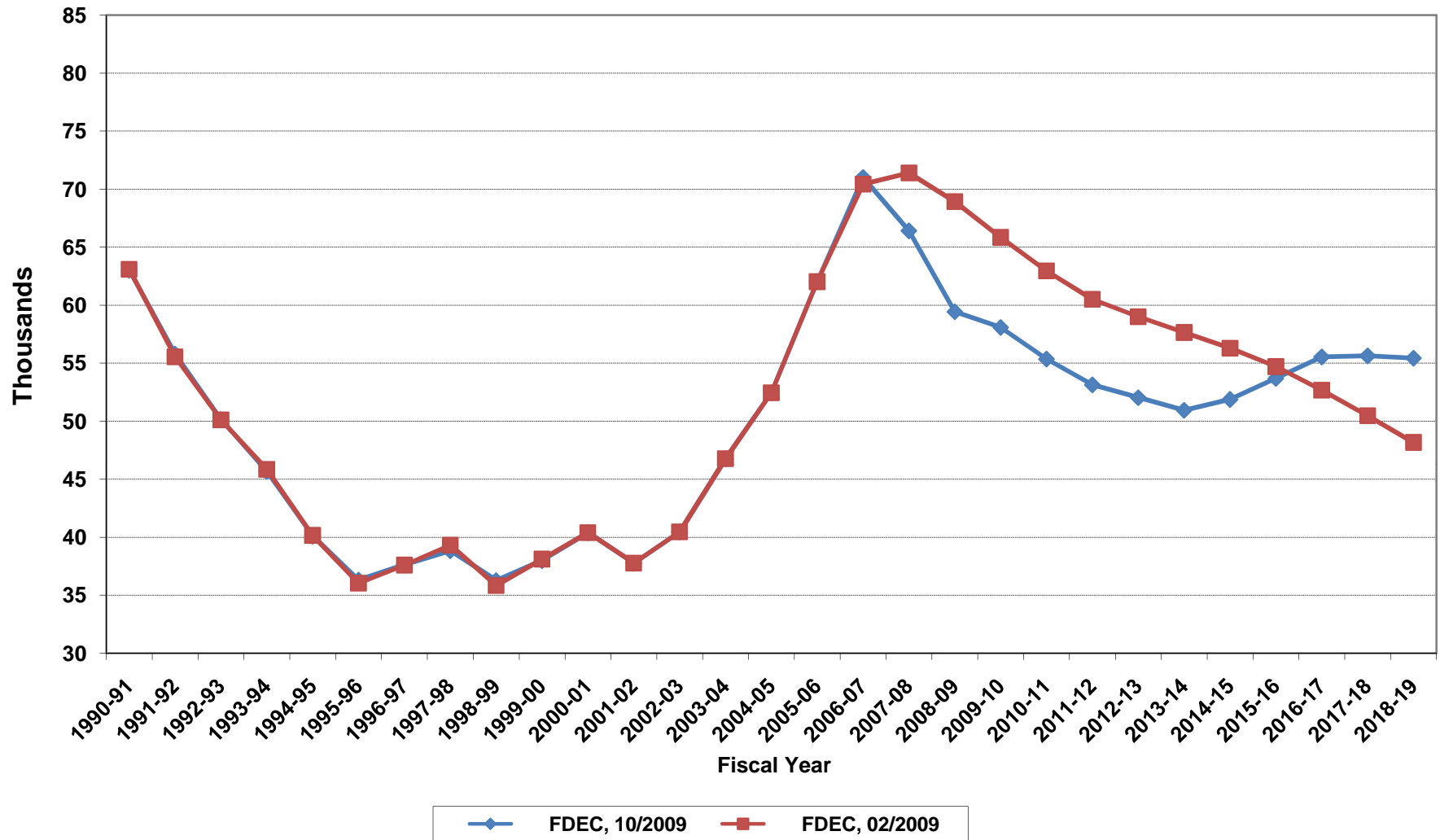
Florida Resident Live Births



Florida Resident Deaths



Florida Net Natural Increase



FLORIDA POPULATION AND COMPONENTS OF CHANGE

Fiscal Year	Population (end of FY)	Growth Rate	Annual Change in Population	Births	Deaths	Net Natural Increase	Net Migration
1950-51	2,980,000	6.05	170,000	67,604	27,186	40,418	129,582
1951-52	3,157,000	5.94	177,000	72,118	28,476	43,642	133,358
1952-53	3,310,000	4.85	153,000	77,156	29,856	47,300	105,700
1953-54	3,505,000	5.89	195,000	82,685	31,035	51,650	143,350
1954-55	3,747,000	6.90	242,000	86,265	32,083	54,182	187,818
1955-56	4,047,000	8.01	300,000	93,431	35,022	58,409	241,591
1956-57	4,372,000	8.03	325,000	100,811	38,319	62,492	262,508
1957-58	4,630,000	5.90	258,000	106,019	41,797	64,222	193,778
1958-59	4,808,000	3.84	178,000	110,457	43,746	66,711	111,289
1959-60	5,001,937	4.03	193,937	114,398	46,063	68,335	125,602
1960-61	5,185,560	3.67	183,623	116,419	48,302	68,117	115,506
1961-62	5,368,613	3.53	183,053	116,068	50,526	65,542	117,511
1962-63	5,552,114	3.42	183,501	114,946	54,302	60,644	122,857
1963-64	5,735,571	3.30	183,457	114,775	56,213	58,562	124,895
1964-65	5,884,050	2.59	148,479	110,465	57,868	52,597	95,882
1965-66	6,065,135	3.08	181,085	104,503	60,875	43,628	137,457
1966-67	6,250,236	3.05	185,101	101,129	62,765	38,364	146,737
1967-68	6,440,501	3.04	190,265	100,413	66,224	34,189	156,076
1968-69	6,632,001	2.97	191,500	104,362	71,133	33,229	158,271
1969-70	6,863,788	3.49	231,787	111,460	73,814	37,646	194,141
1970-71	7,233,605	5.39	369,817	117,071	75,362	41,709	328,108
1971-72	7,684,783	6.24	451,178	113,578	79,677	33,901	417,277
1972-73	8,157,779	6.15	472,996	107,692	86,284	21,408	451,588
1973-74	8,509,490	4.31	351,711	109,455	88,458	20,997	330,714
1974-75	8,650,224	1.65	140,734	108,752	87,185	21,567	119,167
1975-76	8,783,174	1.54	132,950	103,859	88,170	15,689	117,261
1976-77	8,973,716	2.17	190,542	107,735	90,432	17,303	173,239
1977-78	9,226,396	2.82	252,680	112,265	93,372	18,893	233,787
1978-79	9,519,160	3.17	292,764	116,269	96,826	19,443	273,321
1979-80	9,843,544	3.41	324,384	126,759	100,958	25,801	298,583

FLORIDA POPULATION AND COMPONENTS OF CHANGE

Fiscal Year	Population (end of FY)	Growth Rate	Annual Change in Population	Births	Deaths	Net Natural Increase	Net Migration
1980-81	10,218,346	3.81	374,802	135,511	107,686	27,825	346,977
1981-82	10,492,578	2.68	274,232	141,562	108,533	33,029	241,203
1982-83	10,750,266	2.46	257,688	146,890	110,534	36,356	221,332
1983-84	11,065,812	2.94	315,546	151,660	113,957	37,703	277,843
1984-85	11,405,171	3.07	339,359	159,879	117,469	42,410	296,949
1985-86	11,740,597	2.94	335,426	165,837	122,536	43,301	292,125
1986-87	12,083,205	2.92	342,608	170,743	124,846	45,897	296,711
1987-88	12,410,087	2.71	326,882	179,610	129,473	50,137	276,745
1988-89	12,723,453	2.53	313,366	188,272	131,997	56,275	257,091
1989-90	13,019,574	2.33	296,121	197,265	132,461	64,804	231,317
1990-91	13,323,139	2.33	303,565	197,197	134,147	63,050	240,515
1991-92	13,552,830	1.72	229,691	191,702	136,199	55,503	174,188
1992-93	13,804,917	1.86	252,087	192,150	142,167	49,983	202,104
1993-94	14,118,145	2.27	313,228	191,833	146,063	45,770	267,458
1994-95	14,407,012	2.05	288,867	189,272	149,127	40,145	248,722
1995-96	14,701,478	2.04	294,466	188,601	152,628	35,973	258,493
1996-97	15,010,271	2.10	308,793	190,552	153,018	37,534	271,259
1997-98	15,312,639	2.01	302,368	194,305	155,044	39,261	263,107
1998-99	15,680,103	2.40	367,464	195,827	160,050	35,777	331,687
1999-00	16,072,926	2.51	392,823	200,271	162,446	37,825	354,998
2000-01	16,412,482	2.11	339,556	205,370	164,977	40,393	299,163
2001-02	16,766,142	2.15	353,660	205,385	167,617	37,768	315,892
2002-03	17,180,979	2.47	414,837	208,536	168,080	40,456	374,381
2003-04	17,618,768	2.55	437,789	215,049	168,287	46,762	391,027
2004-05	18,023,513	2.30	404,745	221,810	169,358	52,452	352,293
2005-06	18,445,622	2.34	422,109	232,082	170,059	62,023	360,086
2006-07	18,733,147	1.56	287,525	239,308	168,304	71,004	216,521
2007-08	18,801,374	0.36	68,227	235,391	168,990	66,401	1,826
2008-09	18,737,277	-0.34	-64,097	230,522	171,096	59,426	-123,523
2009-10	18,758,360	0.11	21,083	230,817	172,739	58,078	-36,995

FLORIDA POPULATION AND COMPONENTS OF CHANGE

Fiscal Year	Population (end of FY)	Growth Rate	Annual Change in Population	Births	Deaths	Net Natural Increase	Net Migration
2010-11	18,838,500	0.43	80,140	230,635	175,277	55,358	24,782
2011-12	19,019,166	0.96	180,666	231,859	178,724	53,135	127,531
2012-13	19,308,474	1.52	289,308	234,429	182,401	52,028	237,280
2013-14	19,623,692	1.63	315,218	237,497	186,554	50,943	264,275
2014-15	19,929,638	1.56	305,946	240,621	188,746	51,875	254,071
2015-16	20,219,510	1.45	289,872	242,907	189,219	53,688	236,184
2016-17	20,494,899	1.36	275,389	245,845	190,310	55,535	219,854
2017-18	20,762,288	1.30	267,389	248,407	192,778	55,629	211,760
2018-19	21,025,313	1.27	263,025	250,668	195,239	55,429	207,596
2019-20	21,288,986	1.25	263,673	252,365	197,410	54,955	208,718
2020-21	21,554,161	1.25	265,175	251,193	199,569	51,624	213,551
2021-22	21,821,534	1.24	267,373	253,123	202,909	50,214	217,159
2022-23	22,088,717	1.22	267,183	254,922	206,762	48,160	219,023
2023-24	22,354,649	1.20	265,932	256,744	210,725	46,019	219,913
2024-25	22,616,023	1.17	261,374	257,715	214,353	43,362	218,012
2025-26	22,873,655	1.14	257,632	257,610	217,993	39,617	218,015
2026-27	23,126,776	1.11	253,121	259,370	222,227	37,143	215,978
2027-28	23,376,048	1.08	249,272	261,390	225,962	35,428	213,844
2028-29	23,620,012	1.04	243,964	263,366	229,599	33,767	210,197
2029-30	23,860,562	1.02	240,550	265,314	233,157	32,157	208,393