

Demographic Estimating Conference

Executive Summary

The Demographic Estimating Conference met on January 26, 2010 to establish a population forecast based on the final April 1, 2009 population estimate and recent demographic-related data.

In the past, Florida's population growth has been mostly driven by positive net migration (more people permanently moving into the state than leaving). Net migration is estimated to have fallen to record low levels with the state experiencing more outmigration than immigration during much of 2008 and into 2009. Florida is expected to continue to experience an outflow of residents through first quarter of 2010 followed by low levels of net migration during most of 2011. Natural increase (births minus deaths) is projected to exceed net migration through the second quarter of 2011. This is largely due to current economic conditions, including weakened housing markets and the national economic contraction, making it more difficult for people to relocate to the state.

The final April 1, 2009 population estimate of 18,750,483 reflected a decline in population of 56,736 residents from April 1, 2008. This marks the first decline since the servicemen left the state after World War II.

The conference indicated that the future impact on immigration by Haitians affected by the recent earthquake is still unknowable and thus could not be incorporated into the forecast. Otherwise, population is forecast to increase slightly between April 1, 2009 and 2010 (22,873 or 0.12%). Over the next two years, growth is expected to be less than one percent, as the economy rebounds (0.41% and 0.80%). Stronger population growth is expected as the economy continues to improve with growth rates of 1.42% (270,145 net new residents) and 1.63% (314,435 net new residents) between April 1, 2012 to April 1, 2013 and April 1, 2013 to April 1, 2014, respectively.

Between April 1, 2009 and April 1, 2019, population growth is expected to average 222,925 net new residents per year, representing a compound growth rate of 1.13% over this 10-year time horizon. These increases are analogous to adding a city the size of Hialeah every year. By April 1, 2016 Florida's population is expected to have broken the 20-million mark at 20,163,500 and is forecast to be approaching the 24-million mark with 23,821,253 residents on April 1, 2030.

**Florida
Demographic Estimating Conference**

Tables

January 26, 2010
Post Conference

Florida Resident Population

April 1

Year	FDEC, 10/09			FDEC, 1/10		
	Population	% Chg	Change	Population	% Chg	Change
1990	12,938,071	2.27%	287,136	12,938,071	2.27%	287,136
1991	13,258,732	2.48%	320,661	13,258,732	2.48%	320,661
1992	13,497,541	1.80%	238,809	13,497,541	1.80%	238,809
1993	13,730,115	1.72%	232,574	13,730,115	1.72%	232,574
1994	14,043,757	2.28%	313,642	14,043,757	2.28%	313,642
1995	14,335,992	2.08%	292,235	14,335,992	2.08%	292,235
1996	14,623,421	2.00%	287,429	14,623,421	2.00%	287,429
1997	14,938,314	2.15%	314,893	14,938,314	2.15%	314,893
1998	15,230,421	1.96%	292,107	15,230,421	1.96%	292,107
1999	15,580,244	2.30%	349,823	15,580,244	2.30%	349,823
2000	15,982,824	2.58%	402,580	15,982,824	2.58%	402,580
2001	16,330,224	2.17%	347,400	16,330,224	2.17%	347,400
2002	16,674,608	2.11%	344,384	16,674,608	2.11%	344,384
2003	17,071,508	2.38%	396,900	17,071,508	2.38%	396,900
2004	17,516,732	2.61%	445,224	17,516,732	2.61%	445,224
2005	17,918,227	2.29%	401,495	17,918,227	2.29%	401,495
2006	18,349,132	2.40%	430,905	18,349,132	2.40%	430,905
2007	18,680,367	1.81%	331,235	18,680,367	1.81%	331,235
2008	18,807,219	0.68%	126,852	18,807,219	0.68%	126,852
2009	18,750,014	-0.30%	-57,205	18,750,483	-0.30%	-56,736
Begins forecast.						
2010	18,746,060	-0.02%	-3,954	18,773,356	0.12%	22,873
2011	18,812,316	0.35%	66,256	18,850,848	0.41%	77,492
2012	18,961,072	0.79%	148,756	19,001,618	0.80%	150,770
2013	19,232,268	1.43%	271,196	19,271,763	1.42%	270,145
2014	19,546,176	1.63%	313,908	19,586,198	1.63%	314,435
2015	19,855,725	1.58%	309,549	19,881,177	1.51%	294,979
2016	20,148,965	1.48%	293,240	20,163,500	1.42%	282,323
2017	20,427,884	1.38%	278,919	20,440,157	1.37%	276,657
2018	20,696,939	1.32%	269,055	20,711,395	1.33%	271,238
2019	20,960,588	1.27%	263,649	20,979,733	1.30%	268,338
5-Year Annual Averages						
2020	21,223,289	1.34%	273,513	21,246,927	1.34%	273,150
2025	22,551,884	1.22%	265,719	22,573,558	1.22%	265,326
2030	23,801,630	1.08%	249,949	23,821,253	1.08%	249,539

Florida Resident Households

April 1

Year	FDEC, 10/09			FDEC, 1/10		
	Households	% Chg	Change	Households	% Chg	Change
1990	5,134,869	3.40%	168,985	5,134,869	3.40%	168,985
1991	5,283,154	2.89%	148,285	5,283,154	2.89%	148,285
1992	5,378,499	1.80%	95,345	5,378,499	1.80%	95,345
1993	5,478,476	1.86%	99,977	5,478,476	1.86%	99,977
1994	5,589,093	2.02%	110,617	5,589,093	2.02%	110,617
1995	5,697,328	1.94%	108,235	5,697,328	1.94%	108,235
1996	5,806,031	1.91%	108,703	5,806,031	1.91%	108,703
1997	5,929,613	2.13%	123,582	5,929,613	2.13%	123,582
1998	6,040,514	1.87%	110,901	6,040,514	1.87%	110,901
1999	6,182,346	2.35%	141,832	6,182,346	2.35%	141,832
2000	6,338,075	2.52%	155,729	6,338,075	2.52%	155,729
2001	6,483,040	2.29%	144,965	6,483,040	2.29%	144,965
2002	6,620,674	2.12%	137,634	6,620,674	2.12%	137,634
2003	6,778,804	2.39%	158,130	6,778,804	2.39%	158,130
2004	6,949,759	2.52%	170,955	6,949,759	2.52%	170,955
2005	7,109,208	2.29%	159,449	7,109,208	2.29%	159,449
2006	7,291,013	2.56%	181,805	7,291,013	2.56%	181,805
2007	7,443,963	2.10%	152,950	7,443,963	2.10%	152,950
2008	7,499,799	0.75%	55,836	7,499,799	0.75%	55,836
2009	7,477,418	-0.30%	-22,381	7,477,339	-0.30%	-22,460
Begins forecast.						
2010	7,475,859	-0.02%	-1,559	7,487,411	0.13%	10,072
2011	7,502,982	0.36%	27,123	7,518,961	0.42%	31,550
2012	7,564,409	0.82%	61,427	7,580,550	0.82%	61,589
2013	7,674,790	1.46%	110,381	7,691,198	1.46%	110,648
2014	7,802,240	1.66%	127,450	7,818,951	1.66%	127,753
2015	7,929,083	1.63%	126,843	7,939,858	1.55%	120,907
2016	8,048,759	1.51%	119,676	8,054,909	1.45%	115,051
2017	8,162,789	1.42%	114,030	8,167,889	1.40%	112,980
2018	8,272,948	1.35%	110,159	8,278,729	1.36%	110,840
2019	8,381,014	1.31%	108,066	8,388,464	1.33%	109,735
5-Year Annual Averages						
2020	8,488,771	1.37%	111,938	8,497,759	1.37%	111,580
2025	9,034,619	1.25%	109,170	9,042,114	1.25%	108,871
2030	9,550,555	1.12%	103,187	9,556,471	1.11%	102,871

Quarterly Data Table

QUARTERLY FORECAST TABLES

	<u>2007-1</u>	<u>2007-2</u>	<u>2007-3</u>	<u>2007-4</u>	<u>2008-1</u>	<u>2008-2</u>	<u>2008-3</u>	<u>2008-4</u>	<u>2009-1</u>	<u>2009-2</u>	<u>2009-3</u>	<u>2009-4</u>	<u>2010-1</u>	<u>2010-2</u>	<u>2010-3</u>	<u>2010-4</u>	<u>2011-1</u>	<u>2011-2</u>
Population																		
FDEC, 10/2009	18,646.8	18,706.8	18,752.9	18,785.3	18,802.5	18,804.3	18,793.6	18,776.1	18,757.7	18,742.3	18,732.2	18,732.7	18,740.4	18,751.7	18,765.0	18,781.4	18,800.8	18,823.8
FDEC, 1/2010	18,646.8	18,706.8	18,753.2	18,785.6	18,802.7	18,804.0	18,792.6	18,774.9	18,757.9	18,748.0	18,747.4	18,754.3	18,766.4	18,781.1	18,797.6	18,816.6	18,838.8	18,864.7
Population Growth Rate																		
FDEC, 10/2009	1.58	1.29	0.99	0.69	0.37	0.04	-0.23	-0.37	-0.39	-0.33	-0.22	0.01	0.16	0.24	0.28	0.35	0.41	0.49
FDEC, 1/2010	1.58	1.29	0.99	0.69	0.36	0.03	-0.24	-0.38	-0.36	-0.21	-0.01	0.15	0.26	0.31	0.35	0.41	0.47	0.55
Net Change in Population																		
FDEC, 10/2009	73.1	59.9	46.2	32.4	17.2	1.8	-10.7	-17.4	-18.4	-15.4	-10.1	0.5	7.7	11.3	13.3	16.4	19.4	23.0
FDEC, 1/2010	73.1	60.1	46.3	32.4	17.1	1.3	-11.4	-17.7	-17.0	-9.9	-0.6	6.9	12.1	14.7	16.5	19.0	22.2	25.8
Households																		
FDEC, 10/2009	7,427.8	7,455.9	7,476.5	7,490.5	7,497.8	7,498.8	7,494.9	7,488.2	7,480.9	7,473.9	7,470.6	7,470.7	7,473.7	7,478.1	7,483.5	7,490.1	7,498.2	7,507.8
FDEC, 1/2010	7,428.3	7,456.0	7,476.7	7,490.7	7,497.9	7,498.5	7,494.0	7,487.0	7,480.3	7,476.4	7,476.4	7,479.4	7,484.5	7,490.6	7,497.3	7,505.1	7,514.1	7,524.6
Household Growth Rate																		
FDEC, 10/2009	1.89	1.52	1.11	0.75	0.39	0.05	-0.21	-0.36	-0.39	-0.37	-0.18	0.01	0.16	0.24	0.29	0.36	0.43	0.51
FDEC, 1/2010	1.86	1.50	1.12	0.75	0.39	0.03	-0.24	-0.38	-0.36	-0.20	0.00	0.16	0.27	0.33	0.36	0.41	0.48	0.56
Net Change in Households																		
FDEC, 10/2009	34.7	28.1	20.6	14.0	7.3	1.0	-3.9	-6.7	-7.3	-7.0	-3.3	0.1	2.9	4.4	5.4	6.7	8.1	9.6
FDEC, 1/2010	34.2	27.7	20.7	14.0	7.2	0.6	-4.5	-7.0	-6.7	-3.8	0.0	3.0	5.1	6.1	6.8	7.7	9.0	10.5
Household Size																		
FDEC, 10/2009	2.510	2.509	2.508	2.508	2.508	2.508	2.508	2.507	2.507	2.508	2.507	2.507	2.508	2.508	2.508	2.507	2.507	2.507
FDEC, 1/2010	2.510	2.509	2.508	2.508	2.508	2.508	2.508	2.508	2.508	2.508	2.508	2.507	2.507	2.507	2.507	2.507	2.507	2.507
Household Size Growth Rate																		
FDEC, 10/2009	-0.30	-0.23	-0.12	-0.06	-0.02	-0.02	-0.02	-0.02	0.00	0.05	-0.04	0.01	0.01	0.00	0.00	-0.01	-0.02	-0.02
FDEC, 1/2010	-0.27	-0.20	-0.12	-0.06	-0.02	0.00	0.00	0.00	0.00	-0.01	-0.01	-0.01	-0.01	-0.01	-0.01	-0.01	-0.01	-0.01
Net Migration																		
FDEC, 10/2009	55.0	41.9	28.3	14.9	1.4	-13.6	-25.7	-32.3	-33.3	-30.1	-24.8	-14.2	-6.7	-3.0	-0.8	2.5	5.6	9.5
FDEC, 1/2010	55.0	42.0	28.5	15.0	1.3	-14.0	-26.3	-32.5	-31.9	-24.6	-15.4	-7.7	-2.4	0.4	2.3	5.0	8.4	12.2
Births																		
FDEC, 10/2009	60.0	59.9	59.8	59.4	58.3	57.9	57.7	57.6	57.7	57.6	57.7	57.8	57.7	57.7	57.6	57.6	57.7	57.7
FDEC, 1/2010	60.0	59.9	59.8	59.4	58.3	57.9	57.7	57.6	57.7	57.6	57.7	57.8	57.7	57.7	57.7	57.7	57.7	57.8
Deaths																		
FDEC, 10/2009	41.9	41.9	41.9	42.0	42.5	42.6	42.7	42.7	42.8	42.9	43.0	43.1	43.2	43.4	43.5	43.7	43.9	44.1
FDEC, 1/2010	41.9	41.9	41.9	42.0	42.5	42.6	42.7	42.7	42.8	42.9	43.0	43.1	43.2	43.4	43.5	43.7	43.9	44.1
Net Natural Increase																		
FDEC, 10/2009	18.1	18.1	17.9	17.4	15.8	15.3	15.0	14.8	14.9	14.7	14.7	14.6	14.4	14.3	14.1	14.0	13.7	13.6
FDEC, 1/2010	18.1	18.1	17.9	17.4	15.8	15.3	15.0	14.8	14.9	14.7	14.7	14.7	14.5	14.3	14.2	14.0	13.8	13.7

Quarterly Data Table

QUARTERLY FORECAST TABLES

	<u>2011-3</u>	<u>2011-4</u>	<u>2012-1</u>	<u>2012-2</u>	<u>2012-3</u>	<u>2012-4</u>	<u>2013-1</u>	<u>2013-2</u>	<u>2013-3</u>	<u>2013-4</u>	<u>2014-1</u>	<u>2014-2</u>	<u>2014-3</u>	<u>2014-4</u>	<u>2015-1</u>	<u>2015-2</u>	<u>2015-3</u>	<u>2015-4</u>
Population																		
FDEC, 10/2009	18,853.2	18,889.4	18,934.2	18,988.0	19,050.4	19,119.9	19,194.3	19,270.2	19,346.7	19,425.1	19,505.5	19,584.9	19,663.5	19,741.2	19,817.4	19,892.7	19,966.5	20,040.0
FDEC, 1/2010	18,895.3	18,932.3	18,977.1	19,030.3	19,091.5	19,159.9	19,233.8	19,310.2	19,388.1	19,467.5	19,546.8	19,623.7	19,698.3	19,772.0	19,845.0	19,916.3	19,986.8	20,057.6
Population Growth Rate																		
FDEC, 10/2009	0.62	0.77	0.95	1.14	1.32	1.47	1.57	1.59	1.60	1.63	1.67	1.64	1.61	1.59	1.55	1.53	1.49	1.48
FDEC, 1/2010	0.65	0.79	0.95	1.13	1.29	1.44	1.55	1.60	1.62	1.65	1.64	1.58	1.53	1.51	1.48	1.45	1.42	1.42
Net Change in Population																		
FDEC, 10/2009	29.3	36.3	44.8	53.8	62.4	69.6	74.4	75.9	76.5	78.4	80.4	79.4	78.6	77.7	76.2	75.3	73.8	73.5
FDEC, 1/2010	30.6	37.1	44.8	53.2	61.2	68.4	73.9	76.4	77.9	79.4	79.3	76.9	74.5	73.7	72.9	71.4	70.5	70.8
Households																		
FDEC, 10/2009	7,520.0	7,535.0	7,553.4	7,575.4	7,600.9	7,629.2	7,659.4	7,690.2	7,721.3	7,753.1	7,785.7	7,818.8	7,851.4	7,882.7	7,913.5	7,944.2	7,974.3	8,004.3
FDEC, 1/2010	7,537.0	7,552.1	7,570.5	7,592.4	7,617.5	7,645.6	7,675.7	7,706.7	7,738.1	7,770.2	7,802.7	7,834.2	7,864.6	7,894.9	7,924.9	7,954.1	7,982.7	8,011.6
Household Growth Rate																		
FDEC, 10/2009	0.65	0.80	0.98	1.17	1.35	1.50	1.59	1.62	1.63	1.66	1.69	1.71	1.68	1.61	1.57	1.56	1.52	1.51
FDEC, 1/2010	0.66	0.81	0.98	1.16	1.33	1.48	1.59	1.62	1.64	1.67	1.68	1.62	1.56	1.55	1.53	1.48	1.45	1.46
Net Change in Households																		
FDEC, 10/2009	12.2	15.0	18.4	22.0	25.4	28.3	30.2	30.8	31.1	31.8	32.6	33.0	32.6	31.3	30.7	30.7	30.1	30.0
FDEC, 1/2010	12.4	15.1	18.4	21.9	25.2	28.1	30.1	30.9	31.4	32.1	32.5	31.5	30.4	30.3	30.1	29.2	28.6	28.9
Household Size																		
FDEC, 10/2009	2.507	2.507	2.507	2.507	2.506	2.506	2.506	2.506	2.506	2.505	2.505	2.505	2.504	2.504	2.504	2.504	2.504	2.504
FDEC, 1/2010	2.507	2.507	2.507	2.507	2.506	2.506	2.506	2.506	2.506	2.505	2.505	2.505	2.505	2.504	2.504	2.504	2.504	2.504
Household Size Growth Rate																		
FDEC, 10/2009	-0.03	-0.03	-0.03	-0.03	-0.03	-0.03	-0.03	-0.03	-0.03	-0.03	-0.03	-0.07	-0.06	-0.02	-0.02	-0.03	-0.03	-0.03
FDEC, 1/2010	-0.01	-0.02	-0.03	-0.03	-0.04	-0.04	-0.03	-0.02	-0.02	-0.02	-0.04	-0.04	-0.03	-0.04	-0.05	-0.03	-0.03	-0.03
Net Migration																		
FDEC, 10/2009	15.9	23.0	31.5	40.7	49.4	56.5	61.4	62.9	63.7	65.6	67.7	66.8	65.8	64.8	63.2	62.2	60.6	60.2
FDEC, 1/2010	17.0	23.6	31.4	39.9	48.0	55.2	60.7	63.4	64.9	66.5	66.5	64.2	61.6	60.7	59.8	58.1	57.1	57.3
Births																		
FDEC, 10/2009	57.8	57.9	58.0	58.2	58.3	58.5	58.7	58.9	59.1	59.3	59.5	59.7	59.9	60.1	60.2	60.4	60.4	60.6
FDEC, 1/2010	57.9	58.0	58.1	58.3	58.5	58.6	58.8	59.0	59.2	59.4	59.6	59.8	60.1	60.2	60.4	60.5	60.6	60.8
Deaths																		
FDEC, 10/2009	44.3	44.6	44.7	45.1	45.3	45.5	45.7	46.0	46.2	46.5	46.8	47.1	47.1	47.2	47.2	47.2	47.3	47.3
FDEC, 1/2010	44.3	44.6	44.7	45.1	45.3	45.5	45.7	46.0	46.2	46.5	46.8	47.1	47.1	47.2	47.2	47.2	47.3	47.3
Net Natural Increase																		
FDEC, 10/2009	13.4	13.3	13.3	13.1	13.1	13.0	13.0	12.9	12.9	12.8	12.7	12.6	12.8	12.9	13.0	13.1	13.2	13.4
FDEC, 1/2010	13.6	13.4	13.4	13.2	13.2	13.2	13.1	13.1	13.0	12.9	12.8	12.7	13.0	13.0	13.1	13.2	13.3	13.5

Quarterly Data Table

QUARTERLY FORECAST TABLES

	<u>2016-1</u>	<u>2016-2</u>	<u>2016-3</u>	<u>2016-4</u>	<u>2017-1</u>	<u>2017-2</u>	<u>2017-3</u>	<u>2017-4</u>	<u>2018-1</u>	<u>2018-2</u>	<u>2018-3</u>	<u>2018-4</u>	<u>2019-1</u>	<u>2019-2</u>
Population														
FDEC, 10/2009	20,112.8	20,184.2	20,254.3	20,324.0	20,393.4	20,461.4	20,528.5	20,596.0	20,663.4	20,729.6	20,795.2	20,861.2	20,927.5	20,993.0
FDEC, 1/2010	20,128.3	20,198.2	20,267.3	20,336.4	20,405.6	20,473.8	20,541.3	20,609.3	20,677.4	20,744.6	20,811.2	20,878.5	20,946.0	21,012.7
Population Growth Rate														
FDEC, 10/2009	1.46	1.43	1.40	1.38	1.37	1.34	1.32	1.32	1.31	1.29	1.27	1.28	1.28	1.26
FDEC, 1/2010	1.42	1.40	1.38	1.37	1.37	1.34	1.33	1.33	1.33	1.31	1.29	1.30	1.30	1.28
Net Change in Population														
FDEC, 10/2009	72.8	71.4	70.1	69.7	69.4	68.0	67.2	67.4	67.4	66.3	65.6	66.1	66.3	65.5
FDEC, 1/2010	70.7	69.9	69.1	69.2	69.2	68.1	67.5	68.0	68.1	67.2	66.7	67.3	67.5	66.7
Households														
FDEC, 10/2009	8,034.0	8,063.2	8,091.8	8,120.3	8,148.7	8,176.5	8,204.0	8,231.6	8,259.2	8,286.3	8,313.2	8,340.3	8,367.4	8,394.3
FDEC, 1/2010	8,040.5	8,069.0	8,097.1	8,125.3	8,153.7	8,181.5	8,209.0	8,236.8	8,264.8	8,292.2	8,319.3	8,346.9	8,374.6	8,401.8
Household Growth Rate														
FDEC, 10/2009	1.49	1.46	1.43	1.42	1.40	1.37	1.35	1.35	1.35	1.32	1.30	1.31	1.31	1.29
FDEC, 1/2010	1.45	1.42	1.40	1.40	1.40	1.37	1.35	1.36	1.36	1.33	1.32	1.33	1.34	1.31
Net Change in Households														
FDEC, 10/2009	29.7	29.2	28.7	28.5	28.4	27.8	27.5	27.6	27.6	27.1	26.9	27.1	27.2	26.8
FDEC, 1/2010	28.9	28.5	28.1	28.2	28.4	27.8	27.5	27.8	28.0	27.4	27.1	27.5	27.7	27.3
Household Size														
FDEC, 10/2009	2.503	2.503	2.503	2.503	2.503	2.502	2.502	2.502	2.502	2.502	2.501	2.501	2.501	2.501
FDEC, 1/2010	2.503	2.503	2.503	2.503	2.503	2.502	2.502	2.502	2.502	2.502	2.502	2.501	2.501	2.501
Household Size Growth Rate														
FDEC, 10/2009	-0.03	-0.03	-0.03	-0.03	-0.03	-0.03	-0.03	-0.03	-0.03	-0.03	-0.03	-0.03	-0.03	-0.03
FDEC, 1/2010	-0.03	-0.03	-0.02	-0.03	-0.04	-0.03	-0.02	-0.03	-0.04	-0.03	-0.02	-0.03	-0.04	-0.03
Net Migration														
FDEC, 10/2009	59.3	57.8	56.3	55.8	55.4	54.1	53.2	53.5	53.5	52.4	51.7	52.2	52.4	51.6
FDEC, 1/2010	57.1	56.1	55.2	55.1	55.1	54.1	53.4	53.9	54.1	53.2	52.7	53.3	53.5	52.7
Births														
FDEC, 10/2009	60.8	61.0	61.2	61.4	61.6	61.7	61.9	62.0	62.2	62.3	62.5	62.6	62.7	62.9
FDEC, 1/2010	60.9	61.1	61.3	61.5	61.7	61.8	62.0	62.2	62.3	62.5	62.6	62.7	62.9	63.0
Deaths														
FDEC, 10/2009	47.3	47.4	47.4	47.5	47.6	47.8	47.9	48.1	48.3	48.4	48.6	48.7	48.9	49.0
FDEC, 1/2010	47.3	47.4	47.4	47.5	47.6	47.8	47.9	48.1	48.3	48.4	48.6	48.7	48.9	49.0
Net Natural Increase														
FDEC, 10/2009	13.5	13.6	13.8	13.9	13.9	13.9	13.9	13.9	13.9	13.9	13.9	13.9	13.9	13.8
FDEC, 1/2010	13.6	13.8	13.9	14.0	14.1	14.1	14.1	14.0	14.0	14.0	14.0	14.0	14.0	14.0

Fiscal Year Data Table

FISCAL YEAR FORECAST TABLES

	<u>1990-91</u>	<u>1991-92</u>	<u>1992-93</u>	<u>1993-94</u>	<u>1994-95</u>	<u>1995-96</u>	<u>1996-97</u>	<u>1997-98</u>	<u>1998-99</u>	<u>1999-00</u>	<u>2000-01</u>	<u>2001-02</u>	<u>2002-03</u>	<u>2003-04</u>	<u>2004-05</u>
Population															
FDEC, 10/2009	13,178.0	13,442.6	13,670.0	13,962.2	14,264.9	14,550.7	14,859.1	15,158.2	15,488.7	15,881.2	16,245.5	16,586.3	16,968.0	17,404.5	17,818.1
FDEC, 1/2010	13,178.0	13,442.6	13,670.0	13,962.2	14,264.9	14,550.7	14,859.1	15,158.2	15,488.7	15,881.3	16,245.5	16,586.3	16,968.0	17,404.5	17,818.1
Growth Rate															
FDEC, 10/2009	2.42	2.01	1.69	2.14	2.17	2.00	2.12	2.01	2.18	2.53	2.29	2.10	2.30	2.57	2.38
FDEC, 1/2010	2.42	2.01	1.69	2.14	2.17	2.00	2.12	2.01	2.18	2.53	2.29	2.10	2.30	2.57	2.38
Net Change in Population															
FDEC, 10/2009	315.1	232.0	241.6	315.7	289.2	291.1	313.1	295.0	359.3	399.2	342.6	349.0	405.9	441.5	403.1
FDEC, 1/2010	315.1	232.0	241.6	315.7	289.2	291.1	313.1	295.0	359.3	399.0	342.6	349.0	405.9	441.5	403.1
Households															
FDEC, 10/2009	5,230.8	5,334.4	5,424.8	5,538.3	5,655.1	5,767.0	5,887.2	6,005.0	6,138.4	6,296.7	6,447.7	6,585.6	6,737.7	6,906.9	7,069.0
FDEC, 1/2010	5,230.8	5,334.4	5,424.8	5,538.3	5,655.1	5,767.0	5,887.2	6,005.0	6,138.4	6,296.9	6,447.7	6,585.6	6,737.7	6,906.8	7,069.0
Growth Rate															
FDEC, 10/2009	2.44	1.98	1.69	2.09	2.11	1.98	2.08	2.00	2.22	2.58	2.40	2.14	2.31	2.51	2.35
FDEC, 1/2010	2.44	1.98	1.69	2.09	2.11	1.98	2.08	2.00	2.22	2.58	2.39	2.14	2.31	2.51	2.35
Net Change in Households															
FDEC, 10/2009	124.4	92.2	94.4	122.0	112.8	113.3	122.3	117.9	144.1	162.6	142.5	139.3	161.0	169.6	161.3
FDEC, 1/2010	124.4	92.2	94.4	122.0	112.8	113.3	122.3	117.9	144.1	162.7	142.5	139.3	161.0	169.6	161.2
Household Size															
FDEC, 10/2009	2.519	2.520	2.520	2.521	2.522	2.523	2.524	2.524	2.523	2.522	2.520	2.519	2.518	2.520	2.521
FDEC, 1/2010	2.519	2.520	2.520	2.521	2.522	2.523	2.524	2.524	2.523	2.522	2.520	2.519	2.518	2.520	2.521
Growth Rate															
FDEC, 10/2009	-0.02	0.03	0.00	0.04	0.06	0.02	0.04	0.01	-0.04	-0.04	-0.10	-0.04	-0.01	0.06	0.03
FDEC, 1/2010	-0.02	0.03	0.00	0.04	0.06	0.02	0.04	0.01	-0.04	-0.05	-0.10	-0.04	-0.01	0.06	0.03
Net Migration															
FDEC, 10/2009	252.1	176.2	191.4	270.0	249.0	254.8	275.5	256.2	323.0	361.2	302.2	311.3	365.4	394.7	350.7
FDEC, 1/2010	252.1	176.2	191.4	270.0	249.0	254.8	275.5	256.2	323.0	361.1	302.2	311.3	365.4	394.7	350.7
Births															
FDEC, 10/2009	197.0	192.2	192.0	191.7	189.4	188.6	190.7	194.0	196.0	200.5	205.4	205.4	208.5	215.0	221.8
FDEC, 1/2010	197.0	192.2	192.0	191.7	189.4	188.6	190.7	194.0	196.0	200.5	205.4	205.4	208.5	215.0	221.8
Deaths															
FDEC, 10/2009	134.0	136.4	141.8	146.0	149.3	152.3	153.1	155.2	159.7	162.5	165.0	167.6	168.1	168.3	169.4
FDEC, 1/2010	134.0	136.4	141.8	146.0	149.3	152.3	153.1	155.2	159.7	162.5	165.0	167.6	168.1	168.3	169.4
Net Natural Increase															
FDEC, 10/2009	63.0	55.8	50.1	45.7	40.1	36.3	37.6	38.8	36.3	38.0	40.4	37.8	40.5	46.8	52.5
FDEC, 1/2010	63.0	55.8	50.1	45.7	40.1	36.3	37.6	38.8	36.3	38.0	40.4	37.8	40.5	46.8	52.5

Fiscal Year Data Table

FISCAL YEAR FORECAST T.

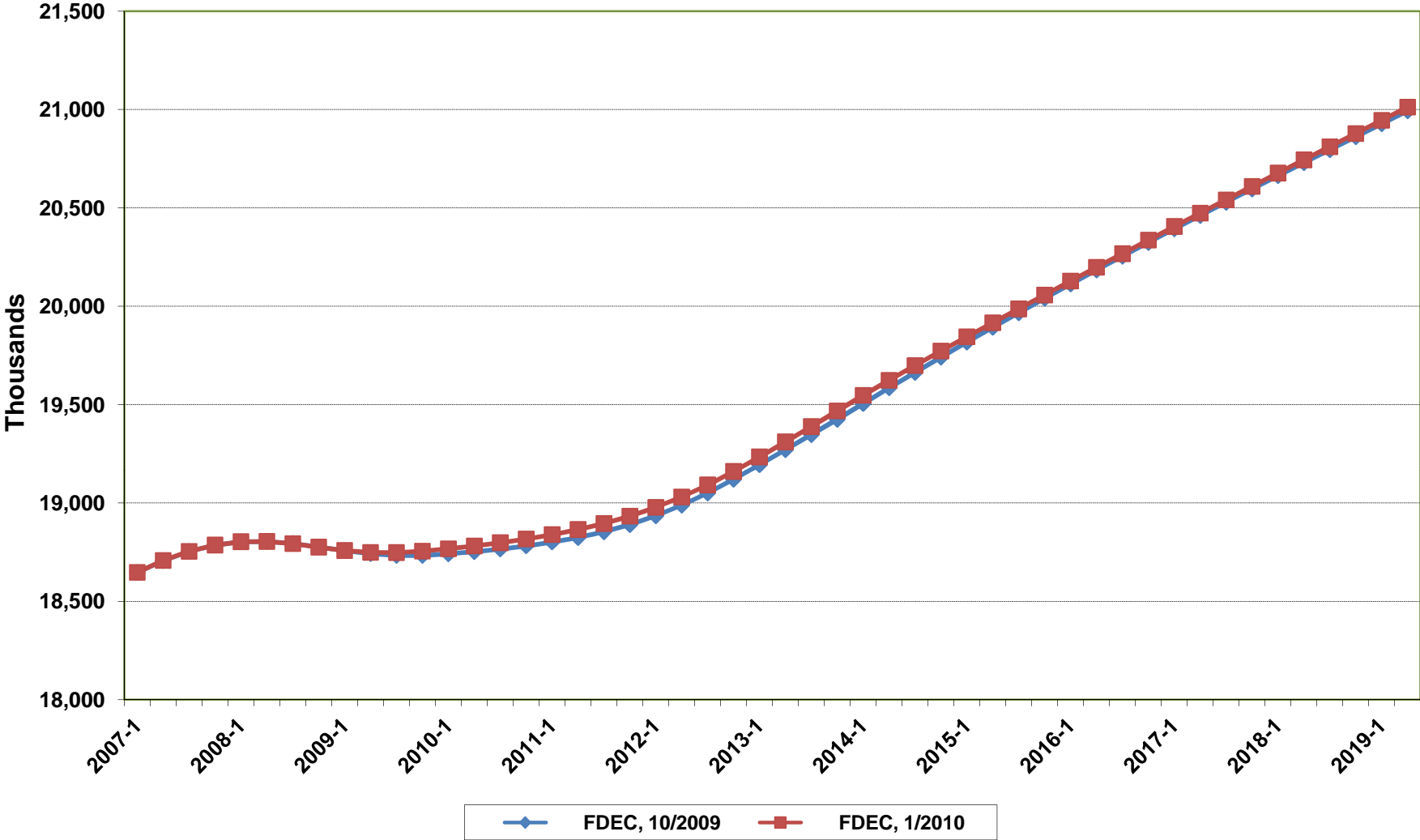
	<u>2005-06</u>	<u>2006-07</u>	<u>2007-08</u>	<u>2008-09</u>	<u>2009-10</u>	<u>2010-11</u>	<u>2011-12</u>	<u>2012-13</u>	<u>2013-14</u>	<u>2014-15</u>	<u>2015-16</u>	<u>2016-17</u>	<u>2017-18</u>	<u>2018-19</u>
Population														
FDEC, 10/2009	18,240.0	18,604.3	18,786.3	18,767.4	18,739.3	18,792.8	18,916.2	19,158.7	19,465.6	19,778.7	20,075.9	20,358.3	20,629.4	20,894.2
FDEC, 1/2010	18,240.0	18,604.3	18,786.4	18,768.4	18,762.3	18,829.4	18,958.8	19,198.8	19,506.5	19,807.9	20,092.7	20,370.8	20,643.1	20,912.1
Growth Rate														
FDEC, 10/2009	2.37	2.00	0.98	-0.10	-0.15	0.29	0.66	1.28	1.60	1.61	1.50	1.41	1.33	1.28
FDEC, 1/2010	2.37	2.00	0.98	-0.10	-0.03	0.36	0.69	1.27	1.60	1.54	1.44	1.38	1.34	1.30
Net Change in Population														
FDEC, 10/2009	426.5	309.4	97.5	-62.0	9.4	72.1	164.1	282.2	314.7	307.7	291.6	277.2	268.2	263.3
FDEC, 1/2010	426.5	309.5	97.1	-56.0	33.1	83.6	165.6	279.9	313.5	292.6	281.8	275.6	270.8	268.1
Households														
FDEC, 10/2009	7,244.4	7,407.8	7,490.9	7,484.5	7,473.3	7,494.9	7,546.0	7,644.9	7,769.7	7,897.9	8,018.9	8,134.3	8,245.3	8,353.8
FDEC, 1/2010	7,244.3	7,408.4	7,491.0	7,484.4	7,482.7	7,510.3	7,563.0	7,661.4	7,786.3	7,909.6	8,026.0	8,139.4	8,250.7	8,360.7
Growth Rate														
FDEC, 10/2009	2.48	2.26	1.12	-0.09	-0.15	0.29	0.68	1.31	1.63	1.65	1.53	1.44	1.36	1.32
FDEC, 1/2010	2.48	2.26	1.11	-0.09	-0.02	0.37	0.70	1.30	1.63	1.58	1.47	1.41	1.37	1.33
Net Change in Households														
FDEC, 10/2009	181.6	143.4	42.9	-24.9	4.2	29.7	67.6	114.8	128.6	125.4	119.0	113.3	109.8	108.0
FDEC, 1/2010	182.0	143.2	42.6	-22.1	14.1	34.0	67.8	114.3	127.5	119.9	114.9	112.5	110.7	109.7
Household Size														
FDEC, 10/2009	2.518	2.511	2.508	2.508	2.508	2.507	2.507	2.506	2.505	2.504	2.504	2.503	2.502	2.501
FDEC, 1/2010	2.518	2.511	2.508	2.508	2.507	2.507	2.507	2.506	2.505	2.504	2.503	2.503	2.502	2.501
Growth Rate														
FDEC, 10/2009	-0.11	-0.25	-0.14	-0.01	0.00	0.00	-0.02	-0.03	-0.03	-0.04	-0.03	-0.03	-0.03	-0.03
FDEC, 1/2010	-0.11	-0.26	-0.13	-0.01	-0.01	-0.01	-0.02	-0.03	-0.03	-0.04	-0.03	-0.03	-0.03	-0.03
Net Migration														
FDEC, 10/2009	364.5	238.4	31.1	-121.4	-48.7	16.8	111.0	230.2	263.8	255.9	237.9	221.6	212.6	207.9
FDEC, 1/2010	364.5	238.5	30.7	-115.4	-25.1	27.9	112.0	227.4	262.1	240.2	227.6	219.6	214.6	212.2
Births														
FDEC, 10/2009	232.1	239.3	235.4	230.5	230.8	230.6	231.9	234.4	237.5	240.6	242.9	245.8	248.4	250.7
FDEC, 1/2010	232.1	239.3	235.4	230.5	230.9	231.0	232.3	234.9	238.0	241.1	243.4	246.4	248.9	251.2
Deaths														
FDEC, 10/2009	170.1	168.3	169.0	171.1	172.7	175.3	178.7	182.4	186.6	188.7	189.2	190.3	192.8	195.2
FDEC, 1/2010	170.1	168.3	169.0	171.1	172.7	175.3	178.7	182.4	186.5	188.7	189.2	190.3	192.8	195.2
Net Natural Increase														
FDEC, 10/2009	62.0	71.0	66.4	59.4	58.1	55.4	53.1	52.0	50.9	51.9	53.7	55.5	55.6	55.4
FDEC, 1/2010	62.0	71.0	66.4	59.4	58.1	55.7	53.6	52.5	51.4	52.4	54.2	56.1	56.2	56.0

Florida Demographic Estimating Conference

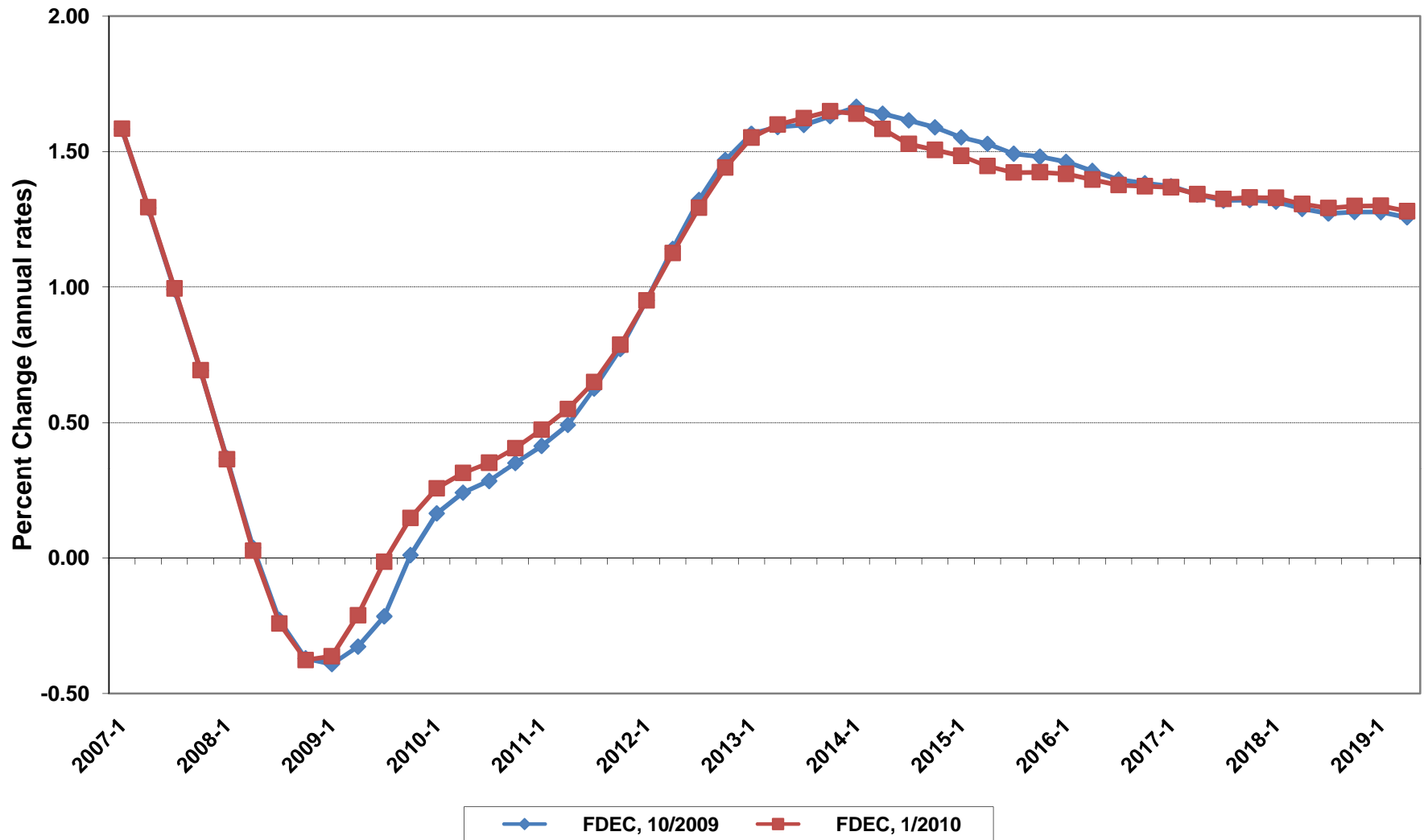
Charts

January 26, 2010
Post Conference

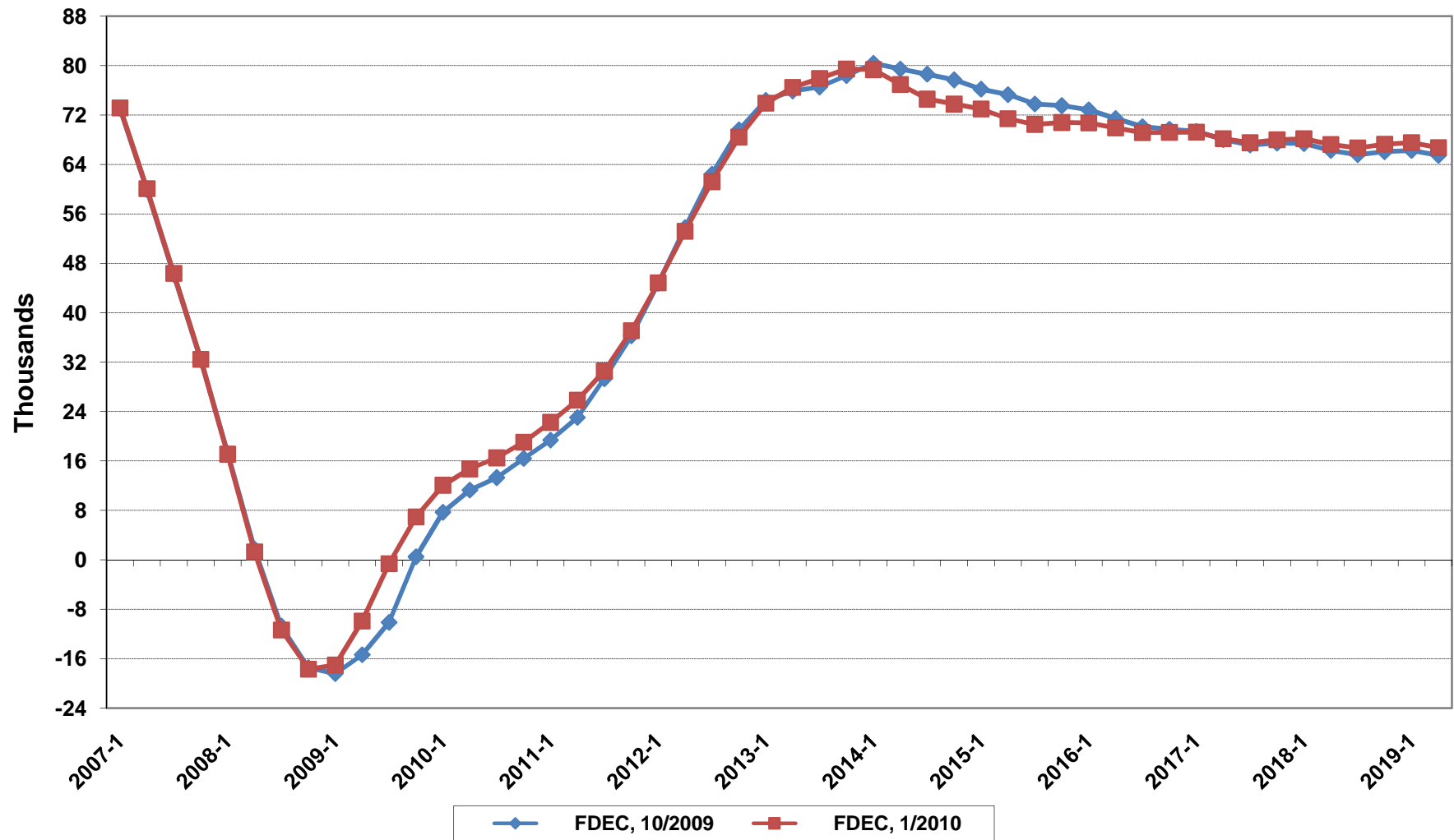
Florida Resident Population



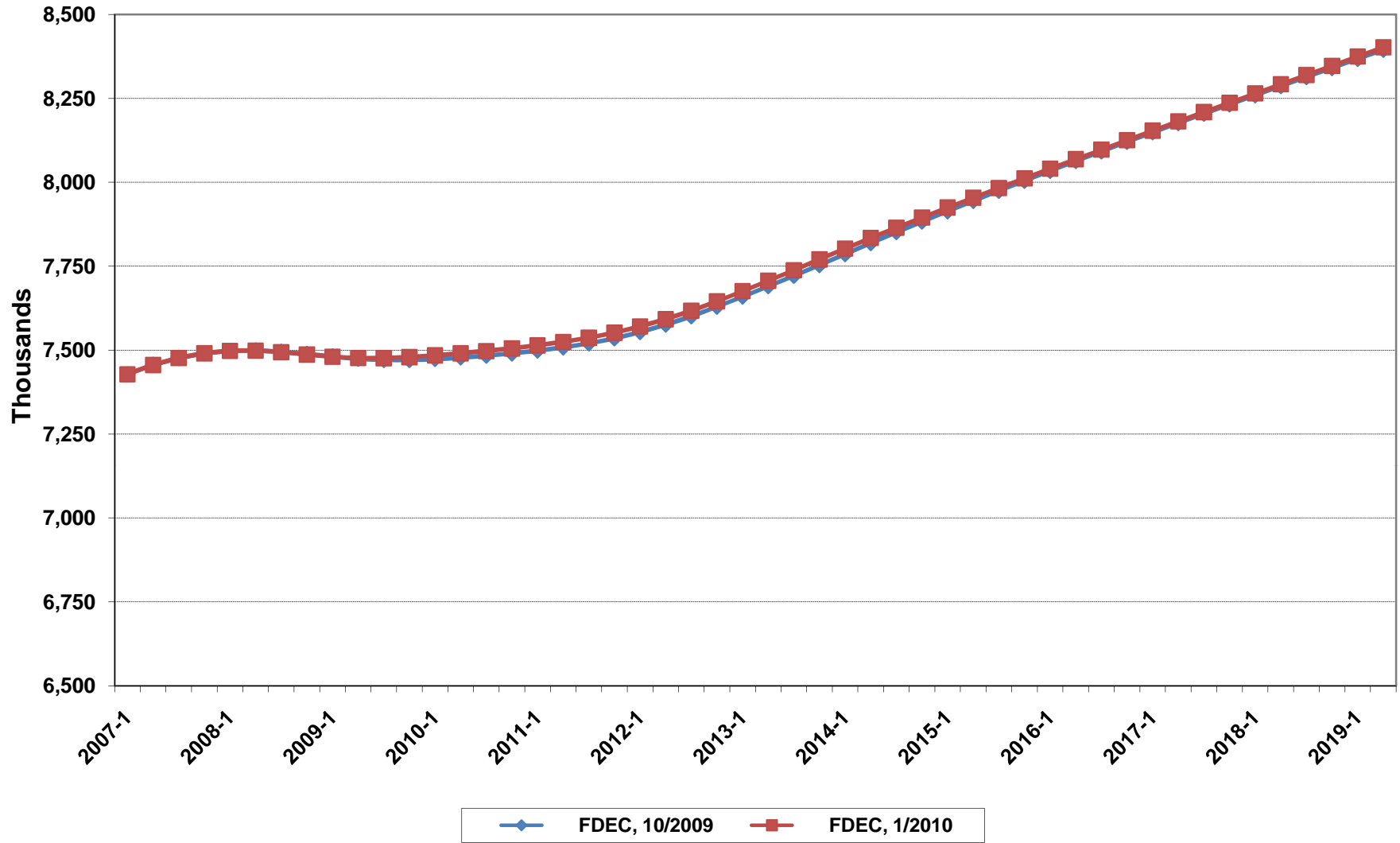
Growth In Florida Resident Population



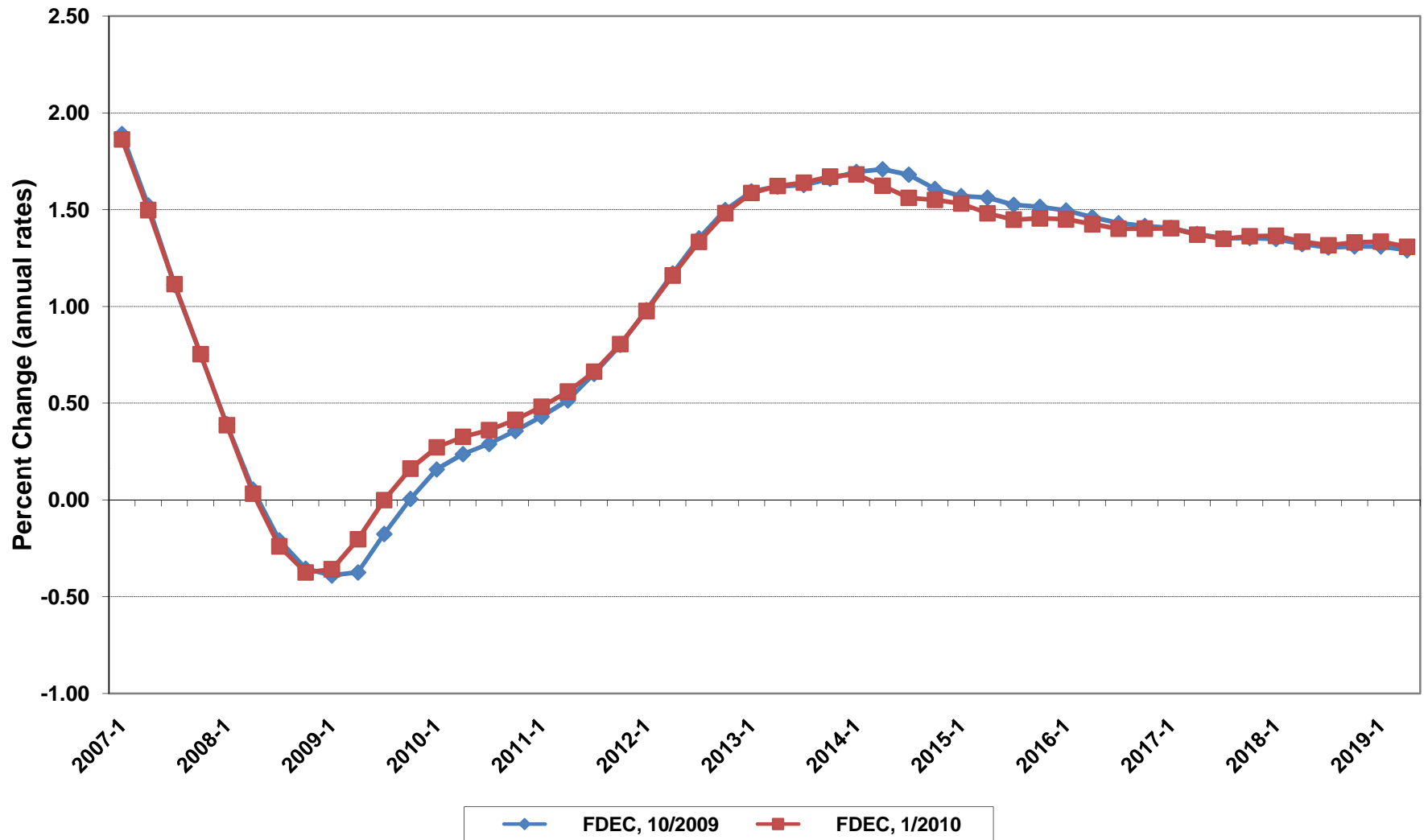
Net Change In Florida Resident Population



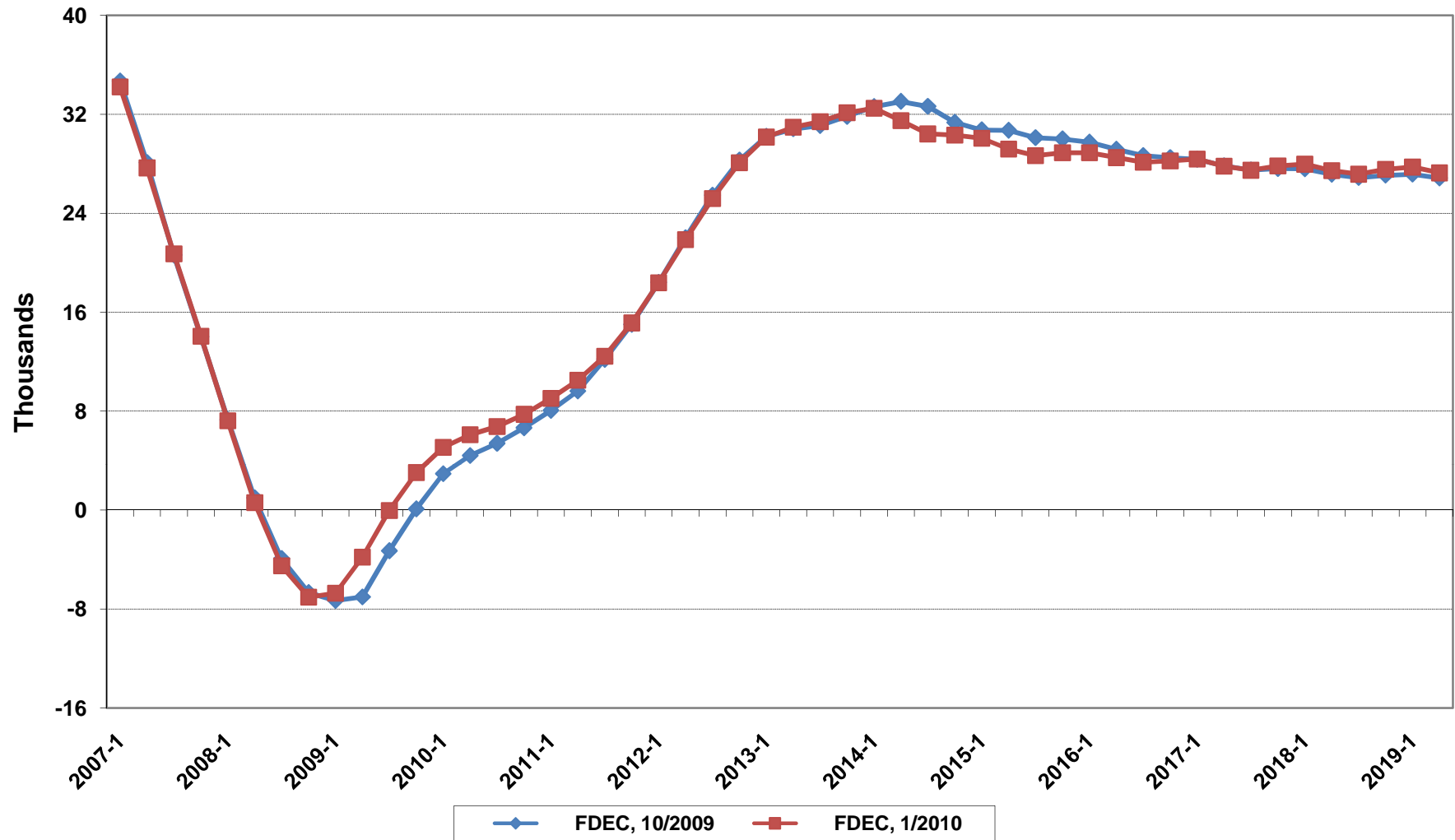
Florida Resident Households



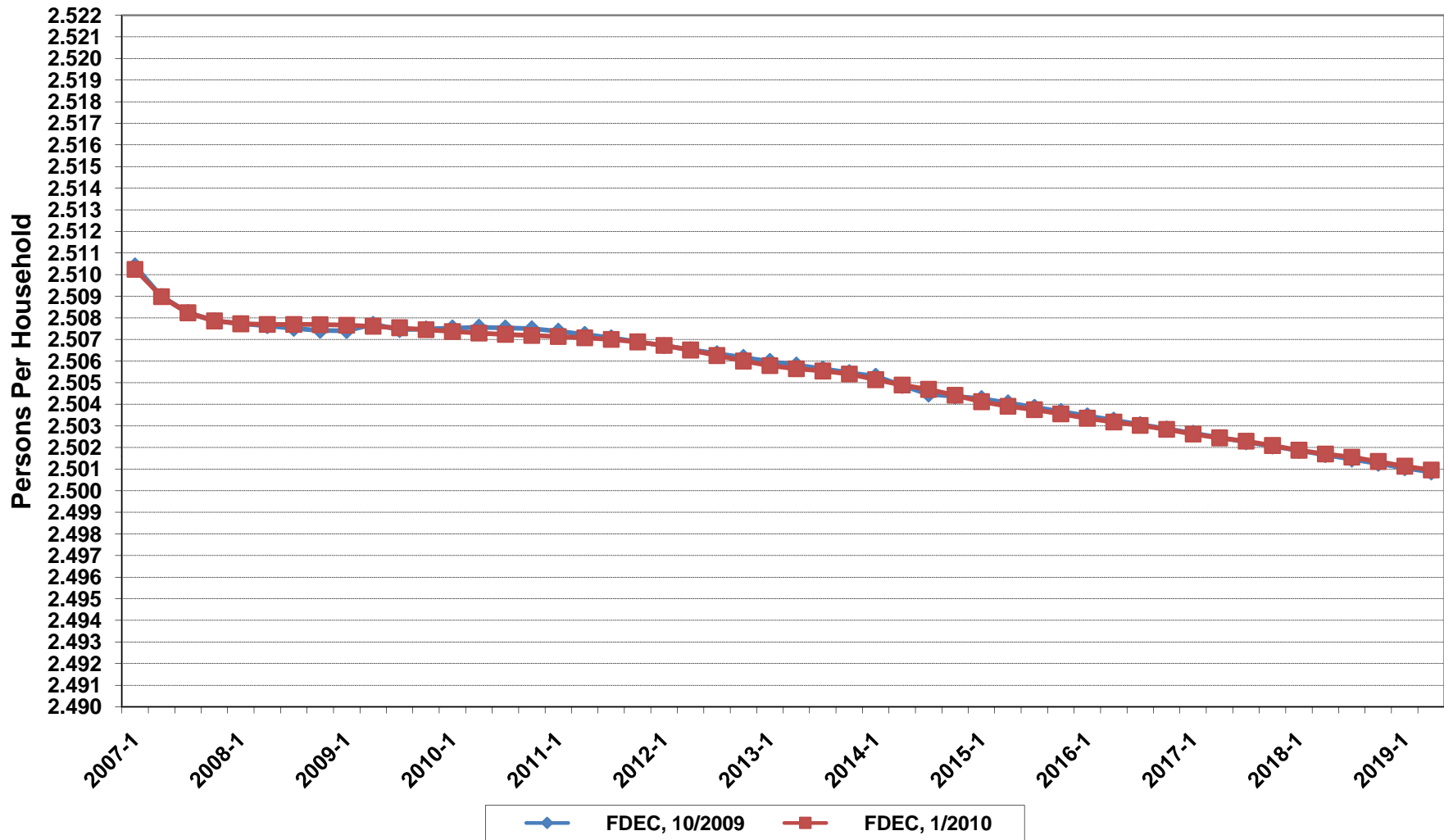
Growth In Florida Resident Households



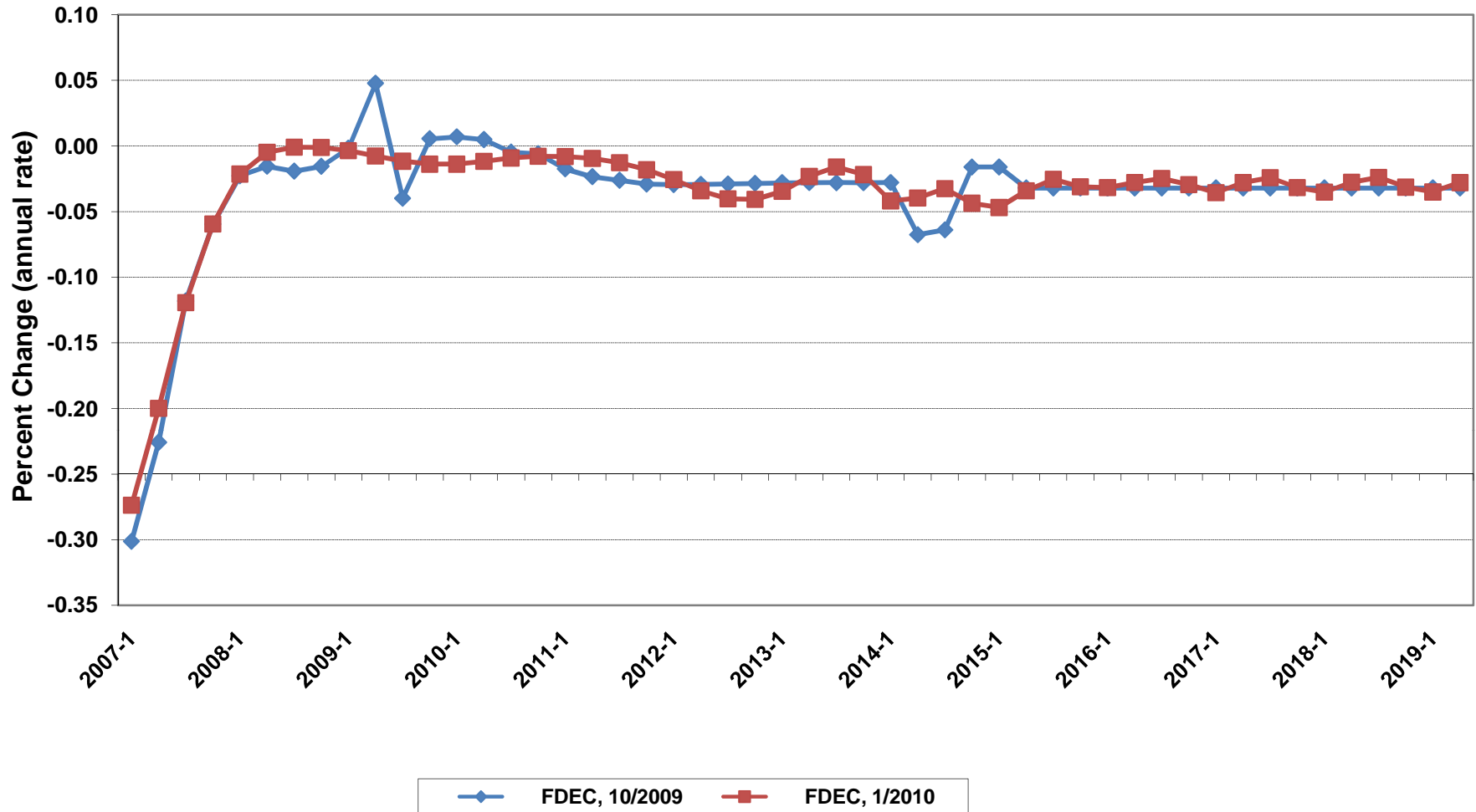
Net Change In Florida Resident Households



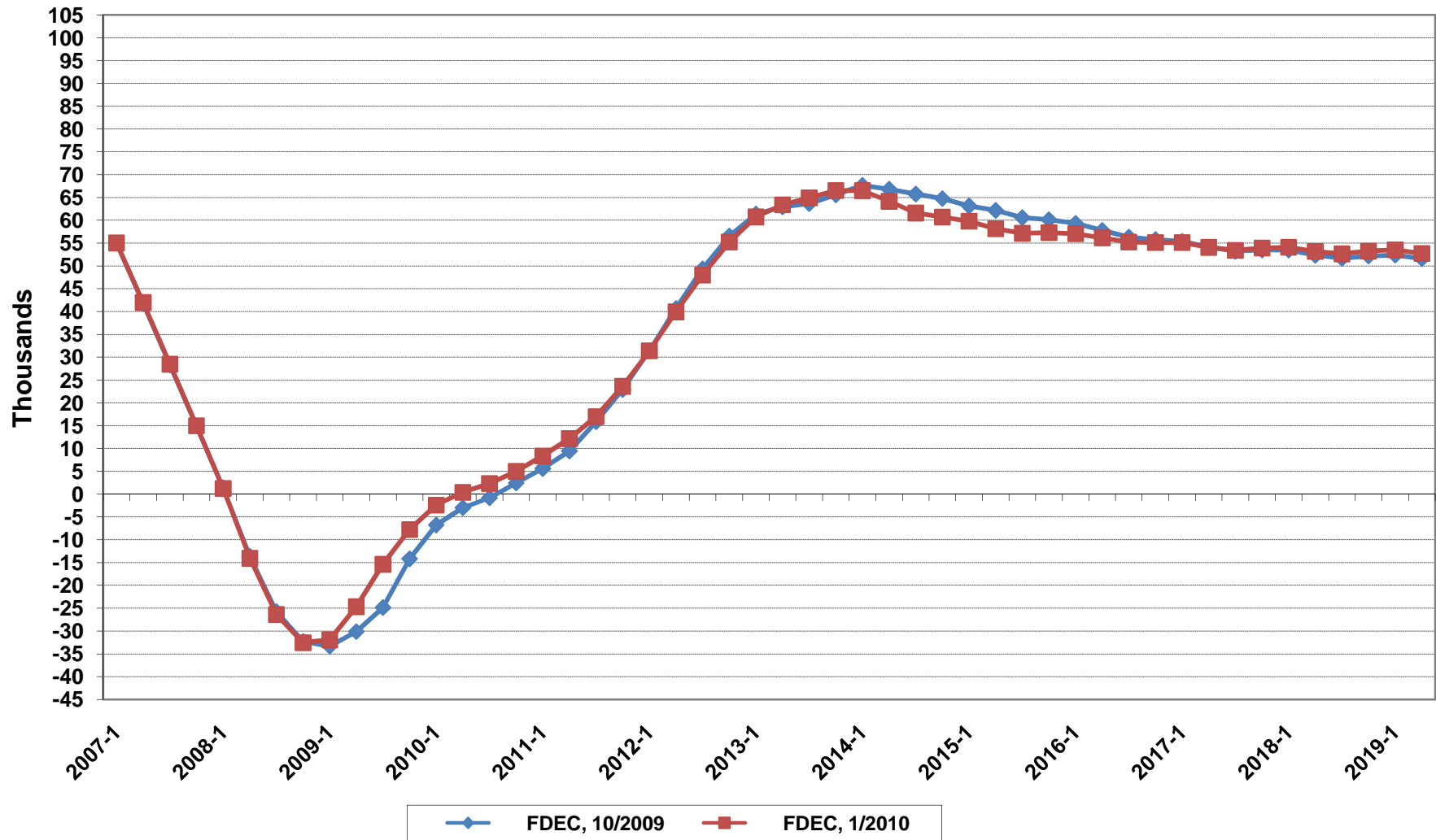
Florida Average Household Size



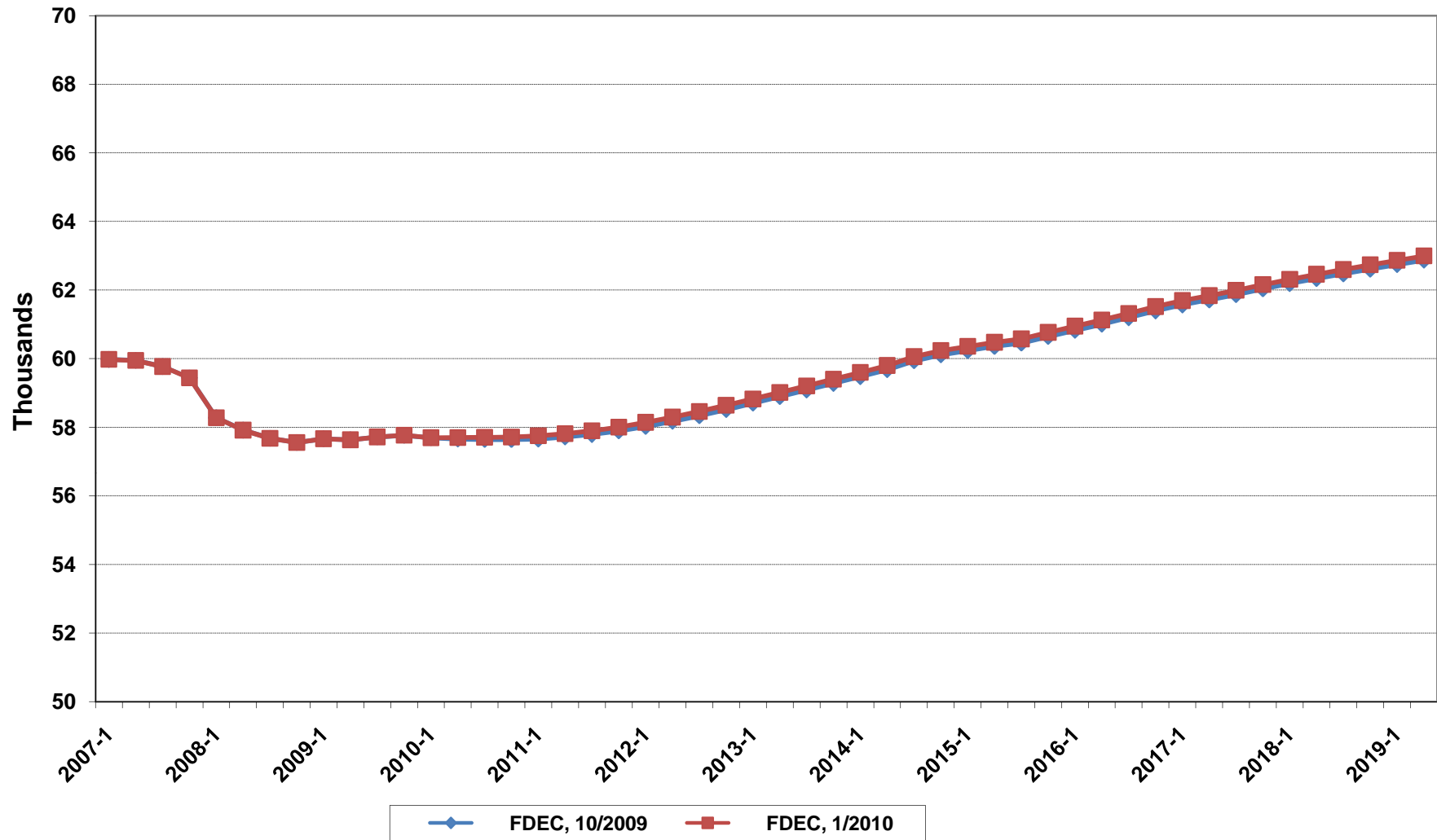
Growth In Florida Household Size



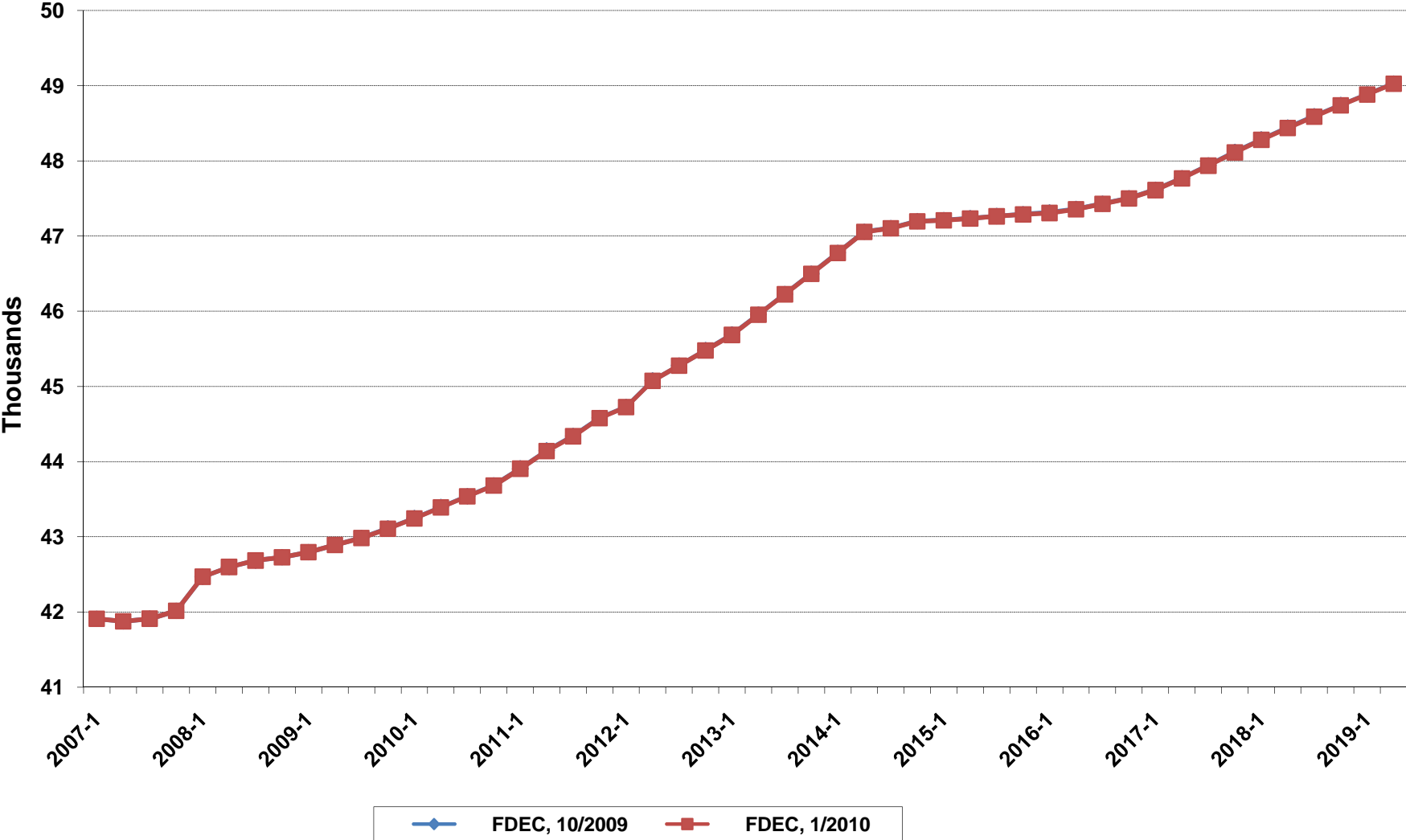
Florida Net Migration



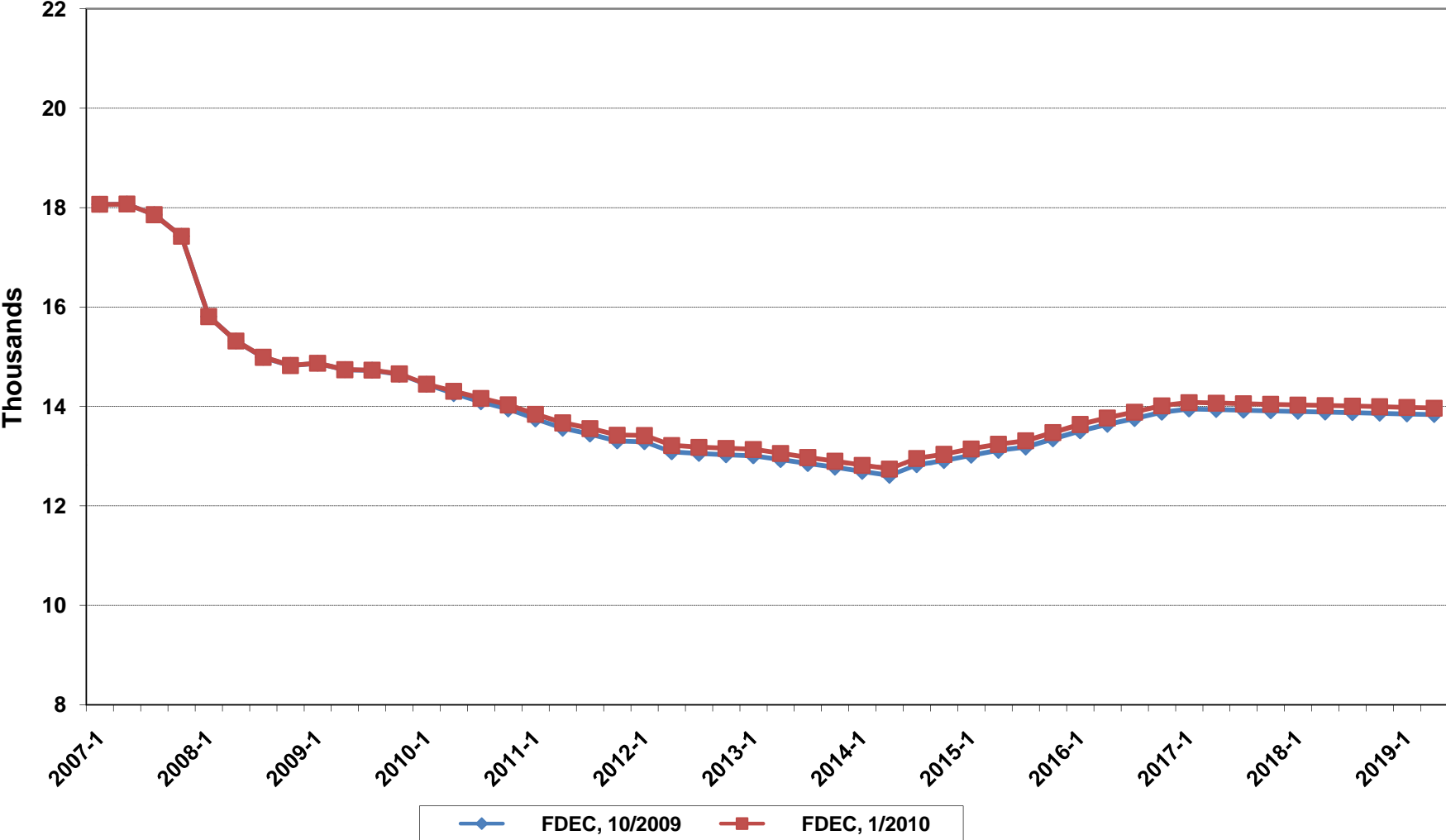
Florida Resident Births



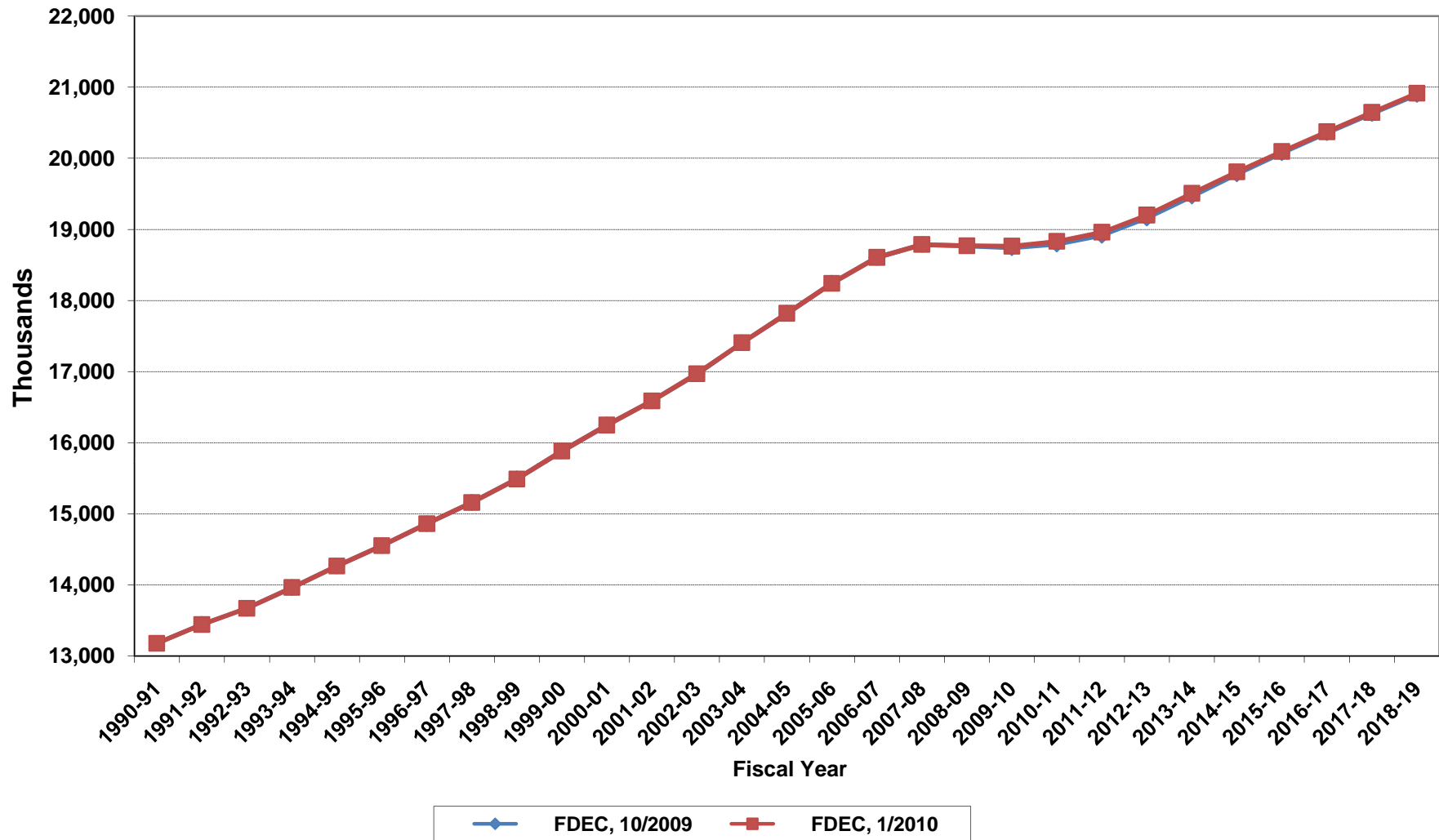
Florida Resident Deaths



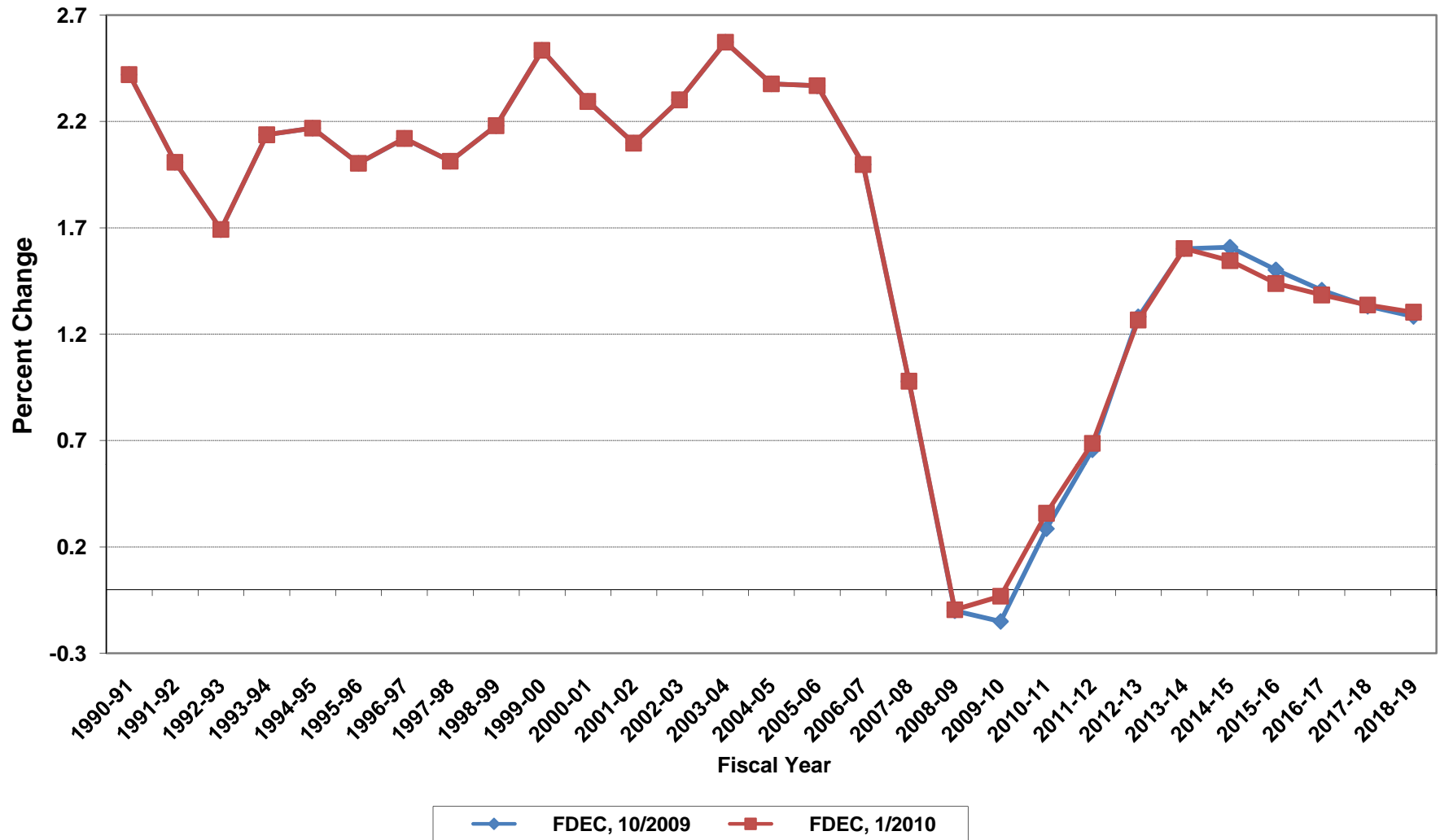
Florida Net Natural Increase



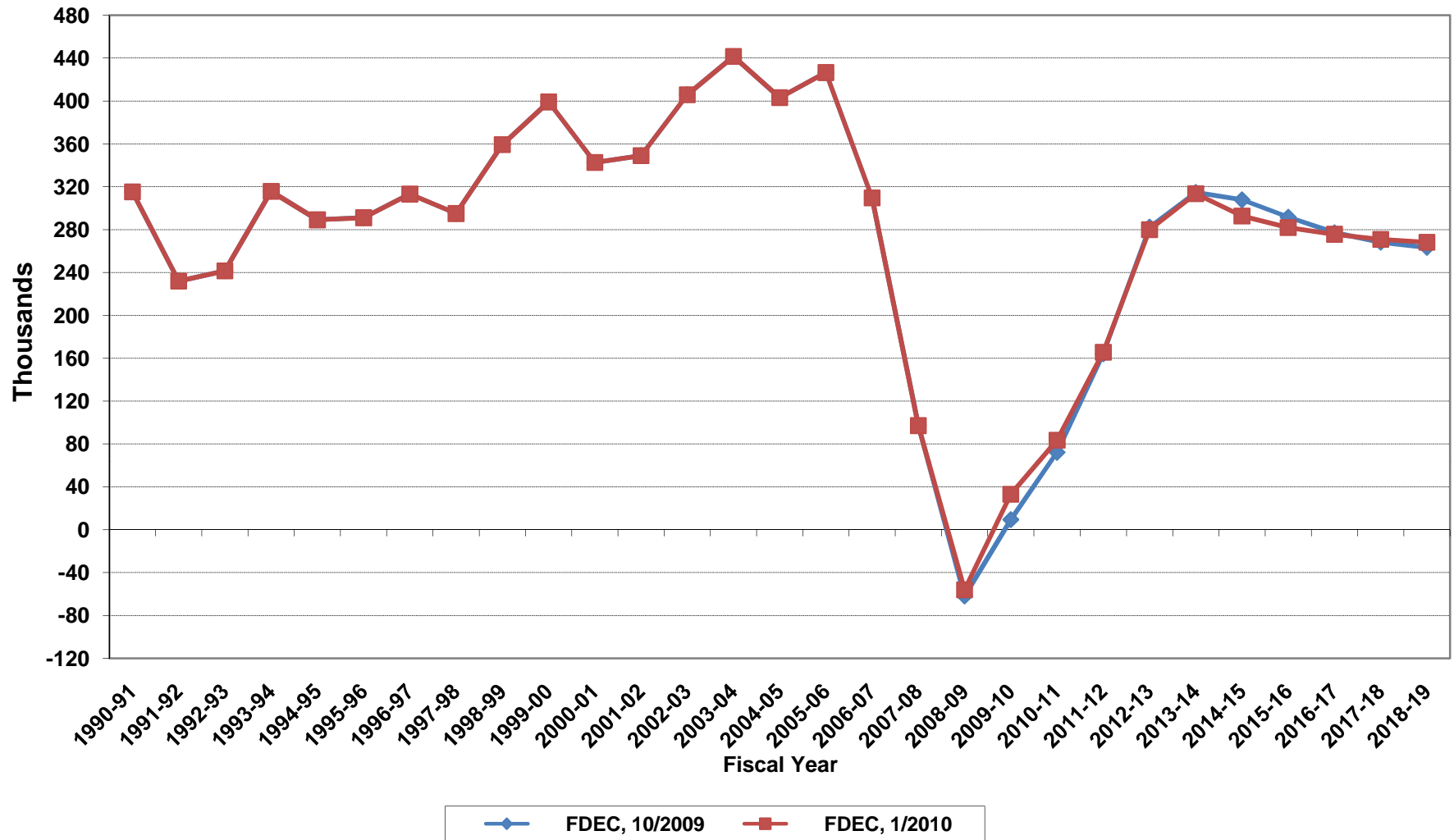
Florida Resident Population



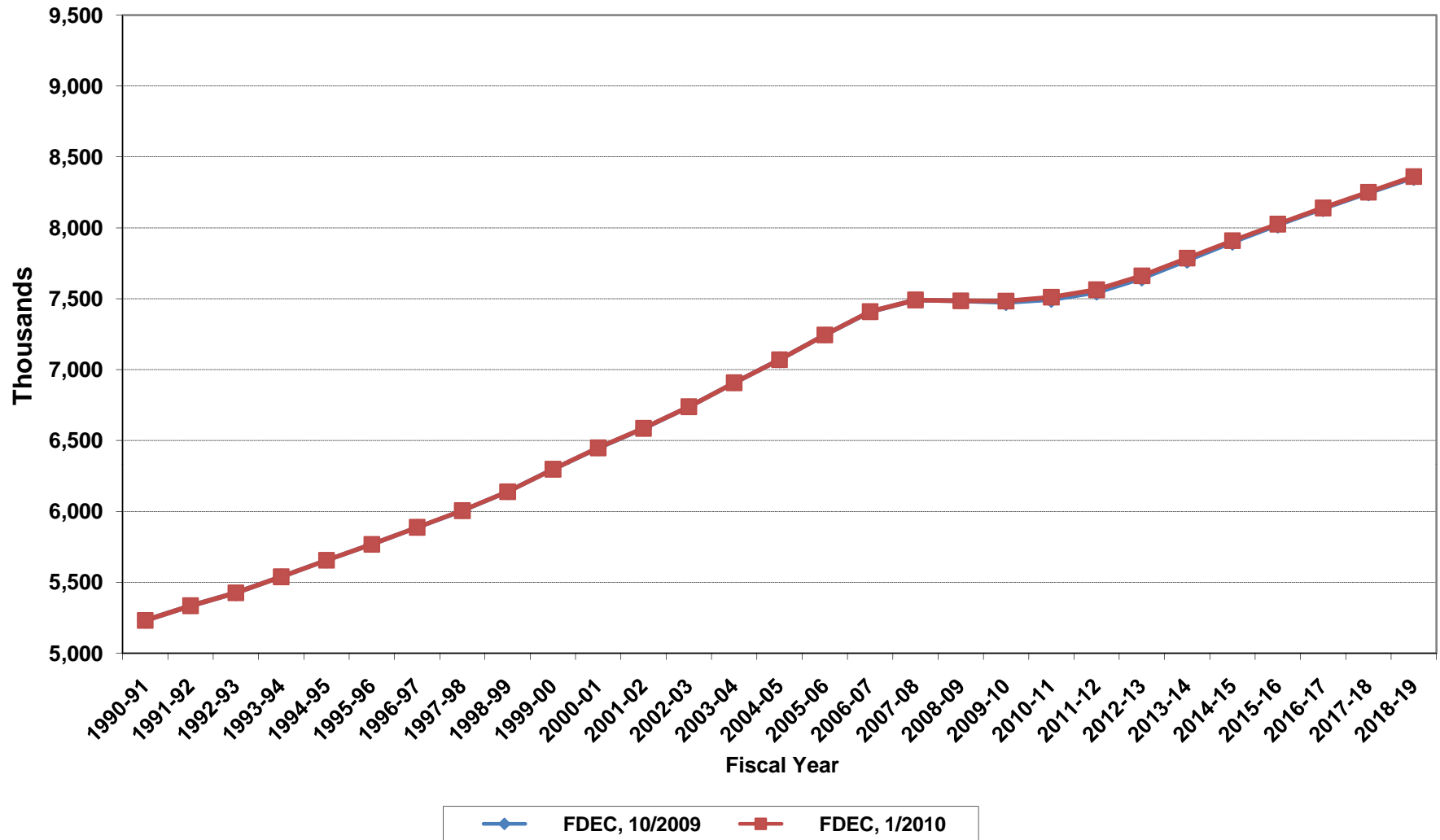
Growth In Florida Resident Population



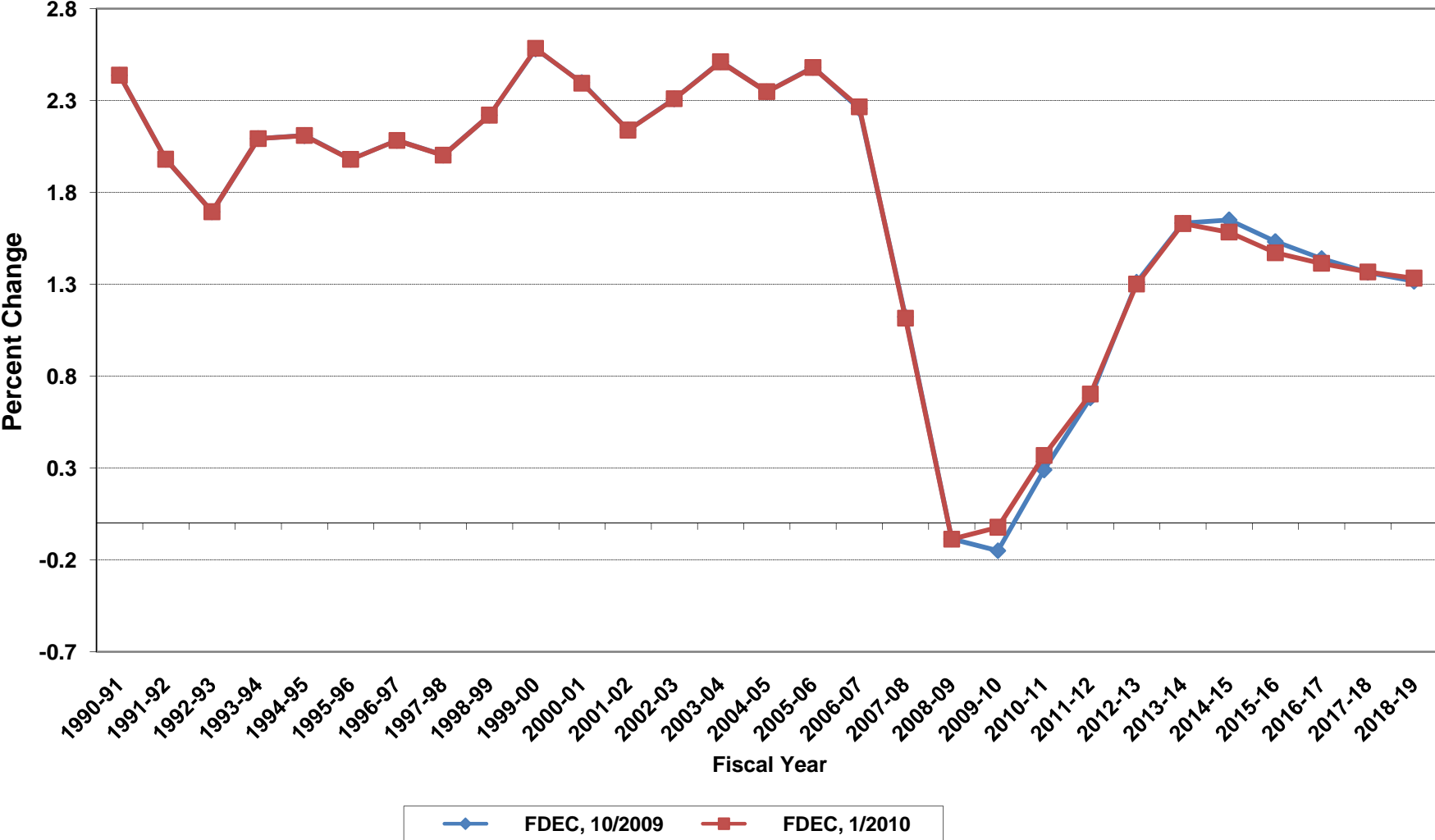
Net Change In Florida Resident Population



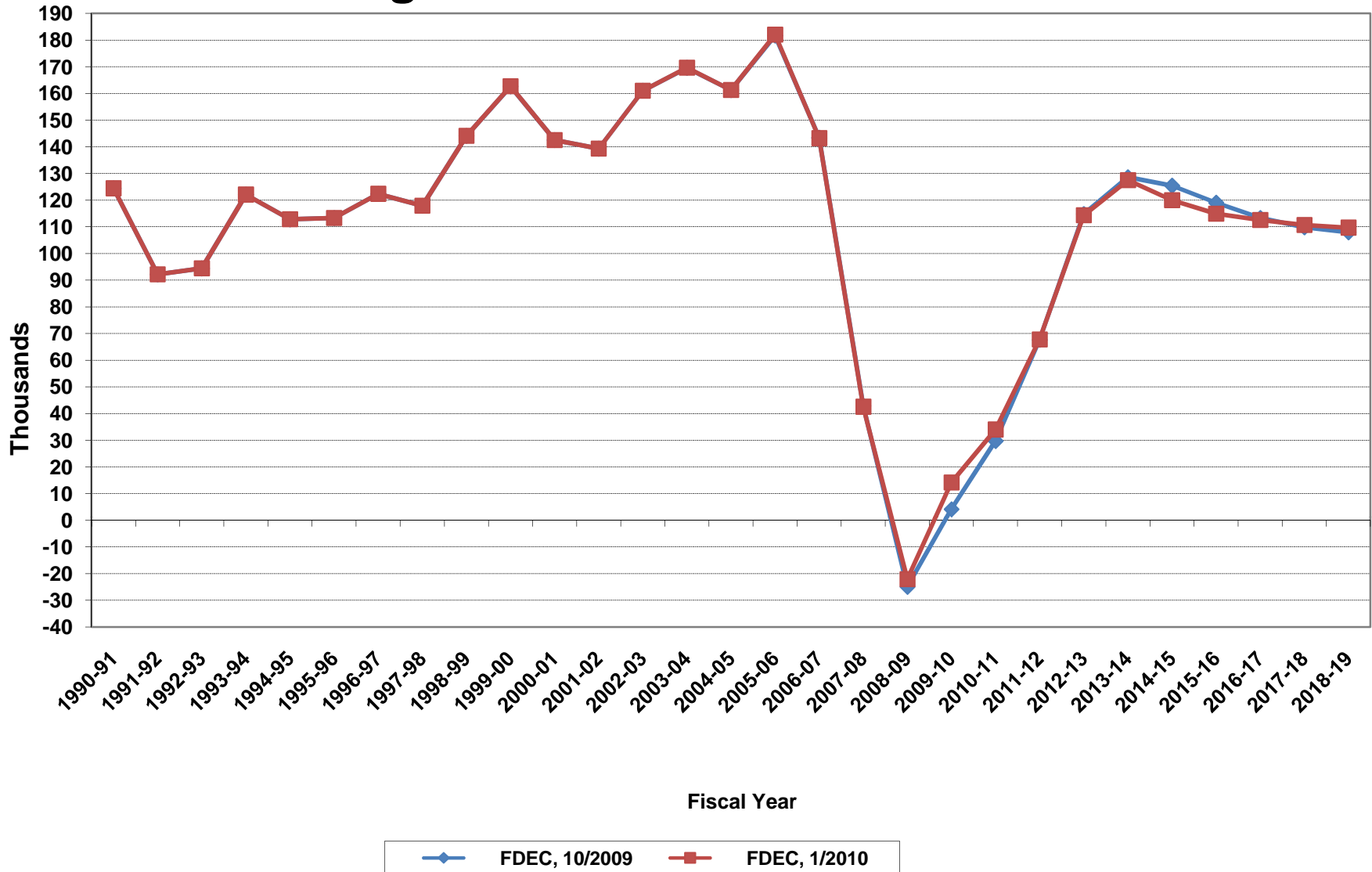
Florida Resident Households



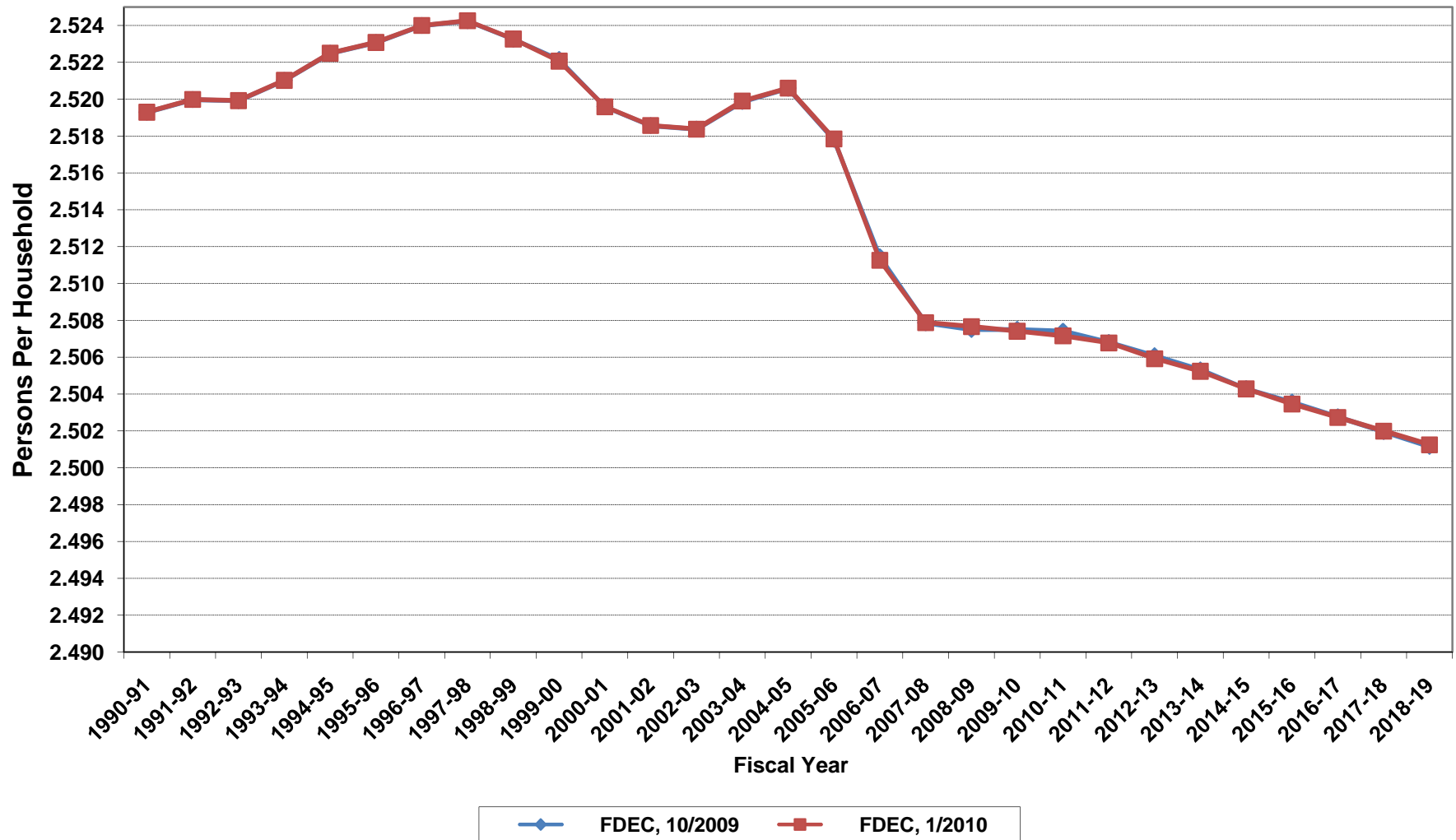
Growth In Florida Resident Households



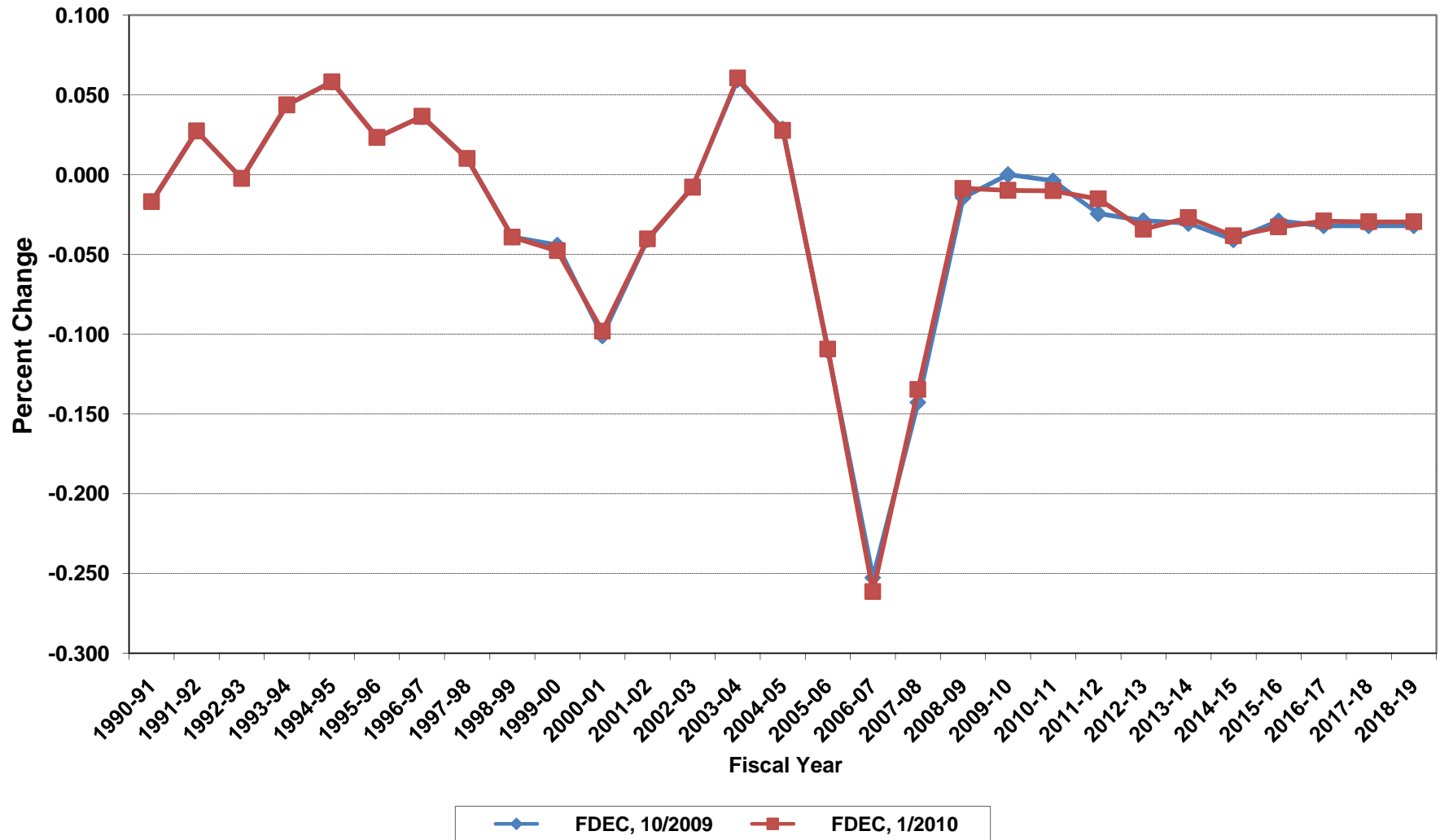
Net Change In Florida Resident Households



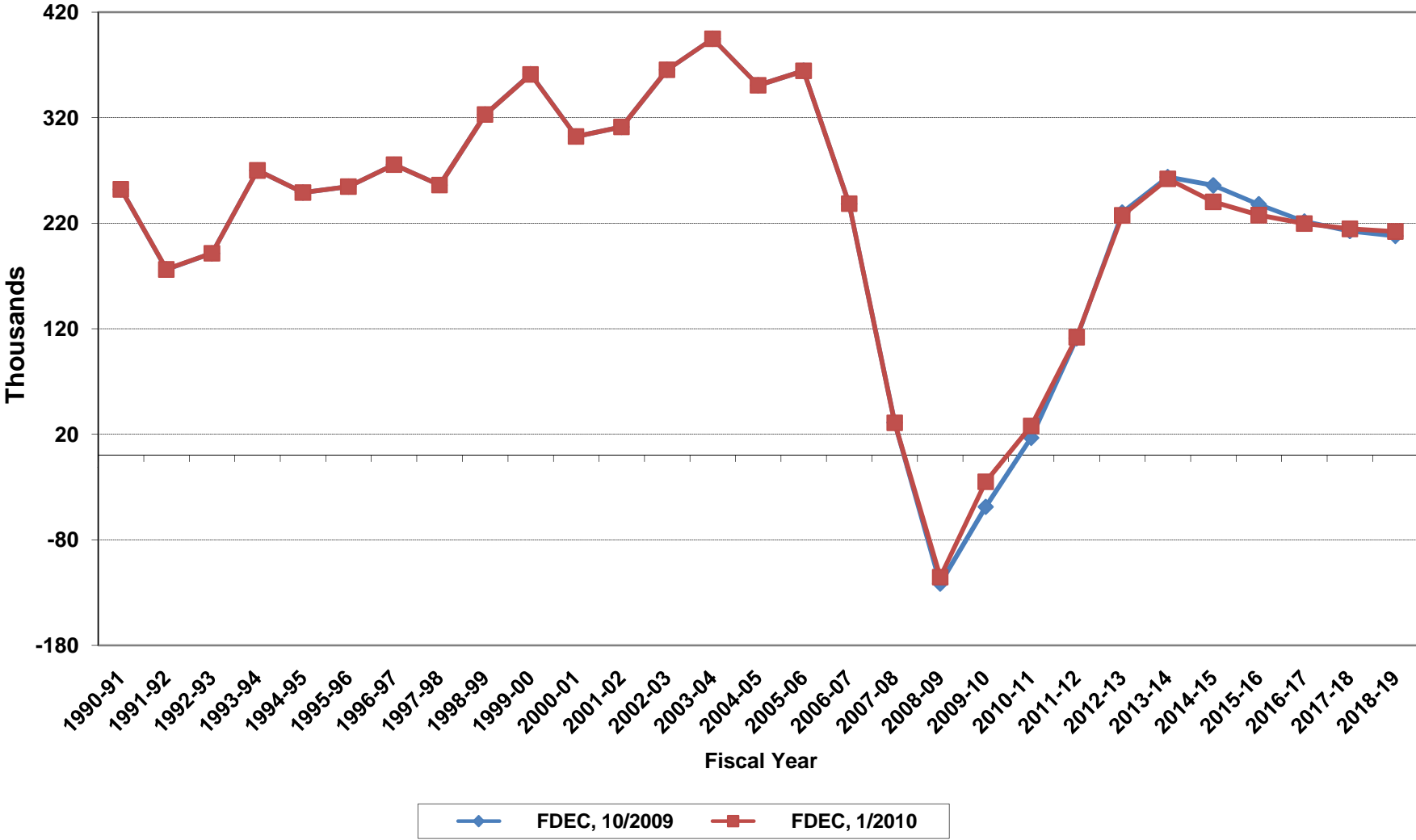
Average Florida Household Size



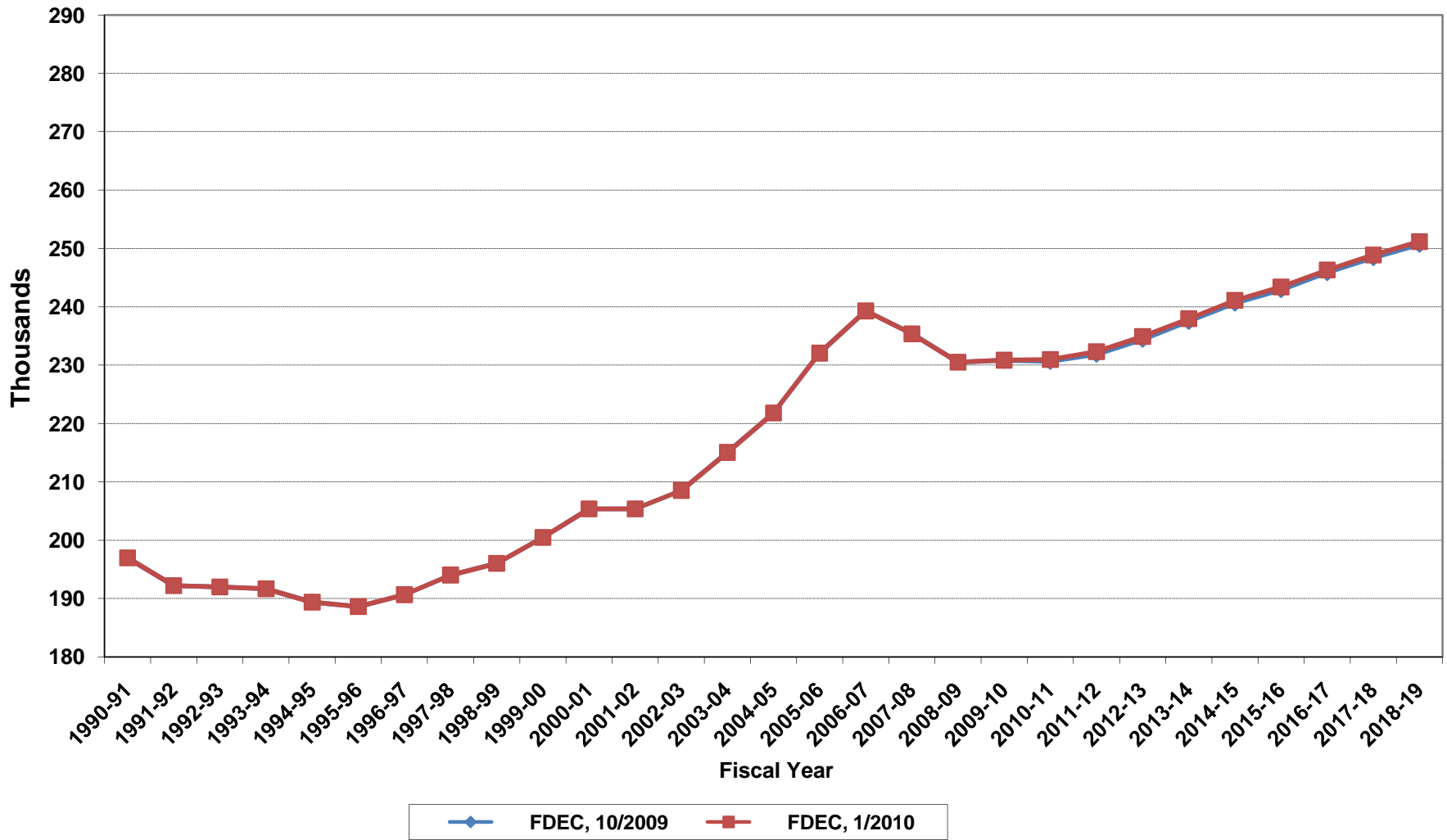
Growth In Average Florida Household Size



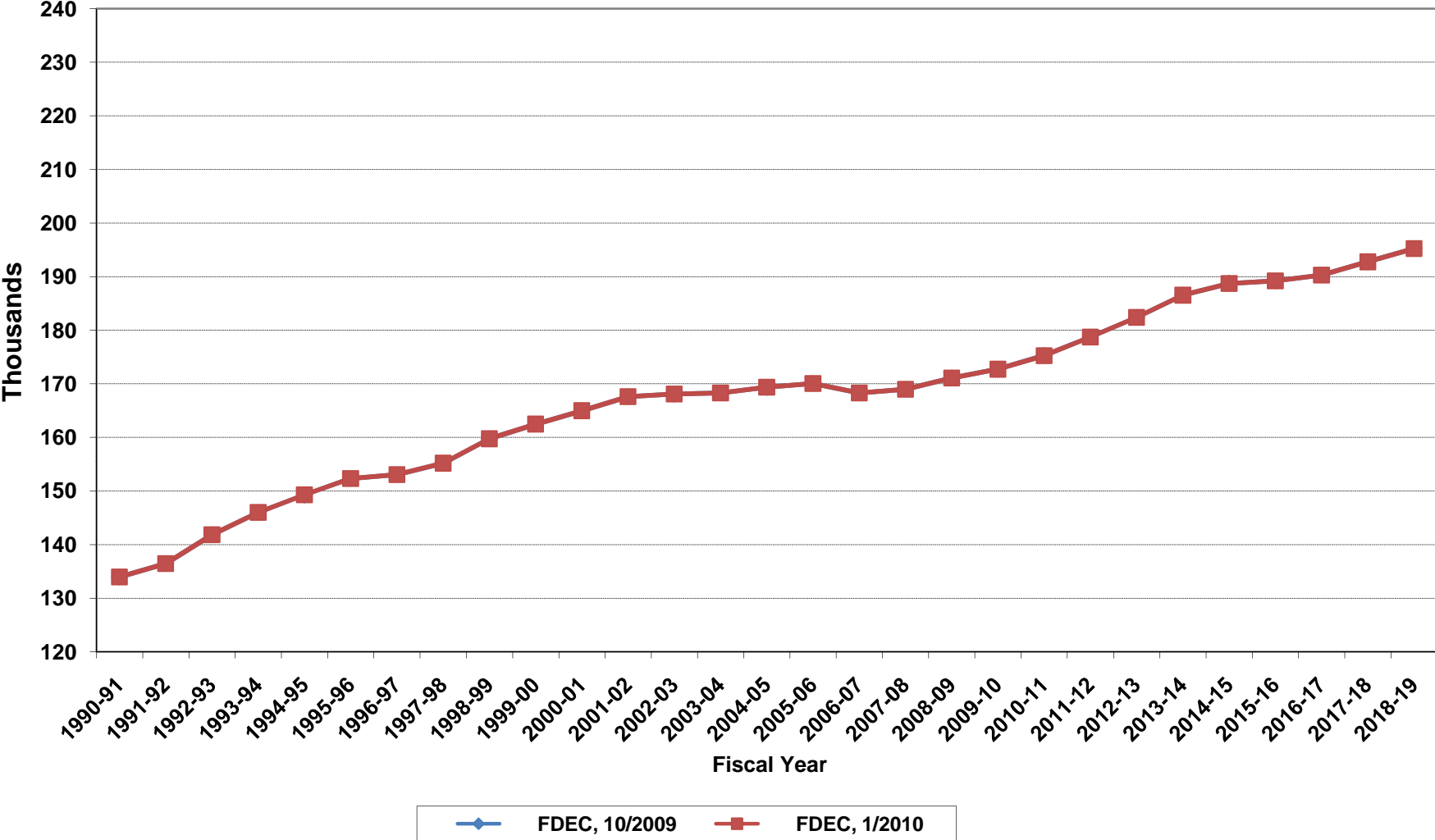
Florida Net Migration



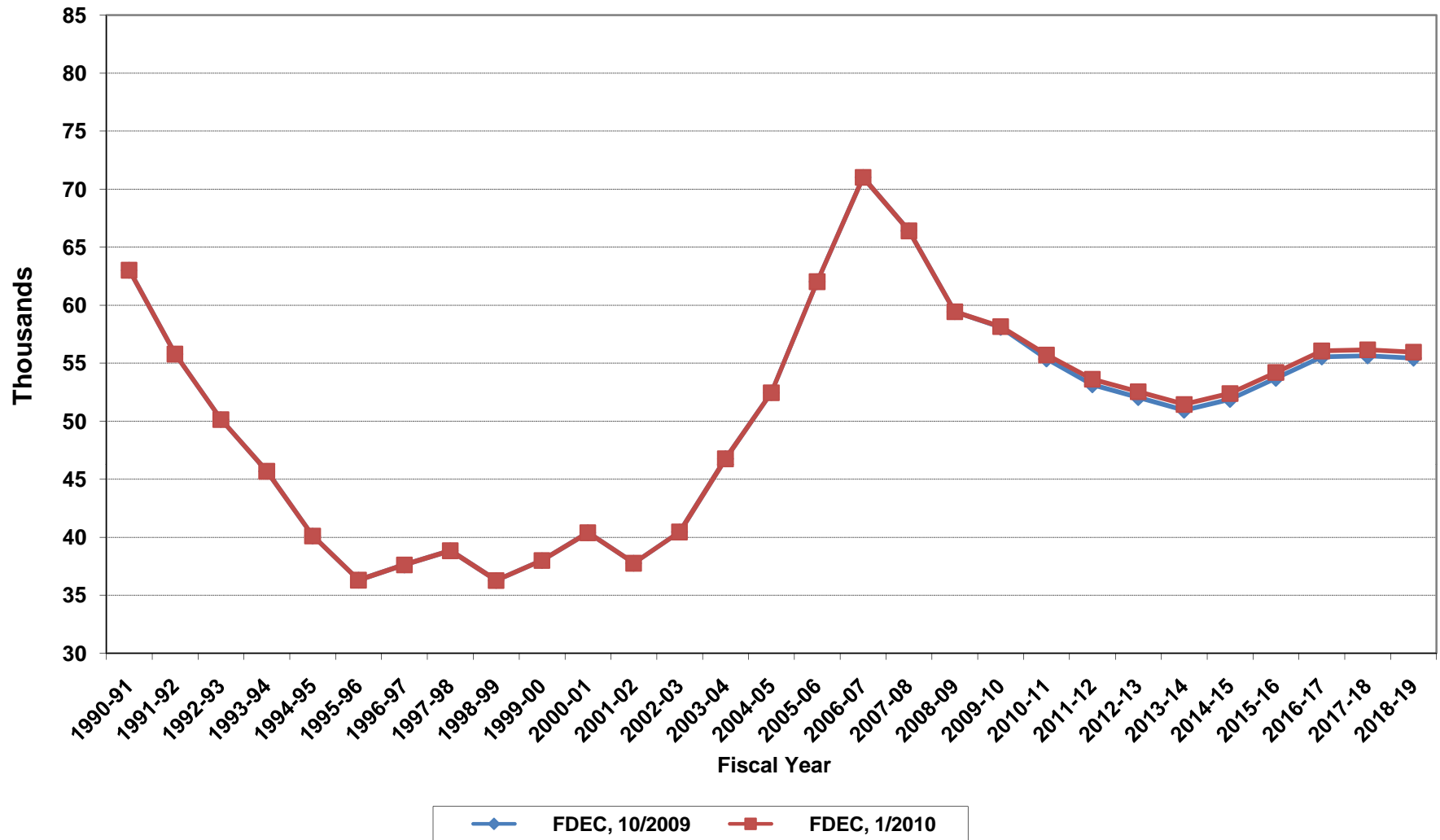
Florida Resident Live Births



Florida Resident Deaths



Florida Net Natural Increase



FLORIDA POPULATION AND COMPONENTS OF CHANGE

Fiscal Year	Population (end of FY)	Growth Rate	Annual Change in Population	Births	Deaths	Net Natural Increase	Net Migration
1950-51	2,980,000	6.05	170,000	67,604	27,186	40,418	129,582
1951-52	3,157,000	5.94	177,000	72,118	28,476	43,642	133,358
1952-53	3,310,000	4.85	153,000	77,156	29,856	47,300	105,700
1953-54	3,505,000	5.89	195,000	82,685	31,035	51,650	143,350
1954-55	3,747,000	6.90	242,000	86,265	32,083	54,182	187,818
1955-56	4,047,000	8.01	300,000	93,431	35,022	58,409	241,591
1956-57	4,372,000	8.03	325,000	100,811	38,319	62,492	262,508
1957-58	4,630,000	5.90	258,000	106,019	41,797	64,222	193,778
1958-59	4,808,000	3.84	178,000	110,457	43,746	66,711	111,289
1959-60	5,001,937	4.03	193,937	114,398	46,063	68,335	125,602
1960-61	5,185,560	3.67	183,623	116,419	48,302	68,117	115,506
1961-62	5,368,613	3.53	183,053	116,068	50,526	65,542	117,511
1962-63	5,552,114	3.42	183,501	114,946	54,302	60,644	122,857
1963-64	5,735,571	3.30	183,457	114,775	56,213	58,562	124,895
1964-65	5,884,050	2.59	148,479	110,465	57,868	52,597	95,882
1965-66	6,065,135	3.08	181,085	104,503	60,875	43,628	137,457
1966-67	6,250,236	3.05	185,101	101,129	62,765	38,364	146,737
1967-68	6,440,501	3.04	190,265	100,413	66,224	34,189	156,076
1968-69	6,632,001	2.97	191,500	104,362	71,133	33,229	158,271
1969-70	6,863,788	3.49	231,787	111,460	73,814	37,646	194,141
1970-71	7,233,605	5.39	369,817	117,071	75,362	41,709	328,108
1971-72	7,684,783	6.24	451,178	113,578	79,677	33,901	417,277
1972-73	8,157,779	6.15	472,996	107,692	86,284	21,408	451,588
1973-74	8,509,490	4.31	351,711	109,455	88,458	20,997	330,714
1974-75	8,650,224	1.65	140,734	108,752	87,185	21,567	119,167
1975-76	8,783,174	1.54	132,950	103,859	88,170	15,689	117,261
1976-77	8,973,716	2.17	190,542	107,735	90,432	17,303	173,239
1977-78	9,226,396	2.82	252,680	112,265	93,372	18,893	233,787
1978-79	9,519,160	3.17	292,764	116,269	96,826	19,443	273,321
1979-80	9,843,544	3.41	324,384	126,759	100,958	25,801	298,583

FLORIDA POPULATION AND COMPONENTS OF CHANGE

Fiscal Year	Population (end of FY)	Growth Rate	Annual Change in Population	Births	Deaths	Net Natural Increase	Net Migration
1980-81	10,218,346	3.81	374,802	135,511	107,686	27,825	346,977
1981-82	10,492,578	2.68	274,232	141,562	108,533	33,029	241,203
1982-83	10,750,266	2.46	257,688	146,890	110,534	36,356	221,332
1983-84	11,065,812	2.94	315,546	151,660	113,957	37,703	277,843
1984-85	11,405,171	3.07	339,359	159,879	117,469	42,410	296,949
1985-86	11,740,597	2.94	335,426	165,837	122,536	43,301	292,125
1986-87	12,083,205	2.92	342,608	170,743	124,846	45,897	296,711
1987-88	12,410,087	2.71	326,882	179,610	129,473	50,137	276,745
1988-89	12,723,453	2.53	313,366	188,272	131,997	56,275	257,091
1989-90	13,019,574	2.33	296,121	197,265	132,461	64,804	231,317
1990-91	13,323,139	2.33	303,565	197,197	134,147	63,050	240,515
1991-92	13,552,830	1.72	229,691	191,702	136,199	55,503	174,188
1992-93	13,804,917	1.86	252,087	192,150	142,167	49,983	202,104
1993-94	14,118,145	2.27	313,228	191,833	146,063	45,770	267,458
1994-95	14,407,012	2.05	288,867	189,272	149,127	40,145	248,722
1995-96	14,701,478	2.04	294,466	188,601	152,628	35,973	258,493
1996-97	15,010,271	2.10	308,793	190,552	153,018	37,534	271,259
1997-98	15,312,639	2.01	302,368	194,305	155,044	39,261	263,107
1998-99	15,680,103	2.40	367,464	195,827	160,050	35,777	331,687
1999-00	16,072,926	2.51	392,823	200,271	162,446	37,825	354,998
2000-01	16,412,482	2.11	339,556	205,370	164,977	40,393	299,163
2001-02	16,766,141	2.15	353,659	205,385	167,617	37,768	315,891
2002-03	17,180,980	2.47	414,839	208,536	168,080	40,456	374,383
2003-04	17,618,765	2.55	437,785	215,049	168,287	46,762	391,023
2004-05	18,023,525	2.30	404,760	221,810	169,358	52,452	352,308
2005-06	18,445,576	2.34	422,051	232,082	170,059	62,023	360,028
2006-07	18,733,318	1.56	287,742	239,308	168,304	71,004	216,738
2007-08	18,800,727	0.36	67,409	235,391	168,990	66,401	1,008
2008-09	18,745,521	-0.29	-55,206	230,522	171,096	59,426	-114,632
2009-10	18,788,794	0.23	43,273	230,867	172,723	58,144	-14,871

FLORIDA POPULATION AND COMPONENTS OF CHANGE

Fiscal Year	Population (end of FY)	Growth Rate	Annual Change in Population	Births	Deaths	Net Natural Increase	Net Migration
2010-11	18,878,541	0.48	89,747	230,974	175,262	55,712	34,035
2011-12	19,058,977	0.96	180,436	232,329	178,711	53,618	126,818
2012-13	19,348,611	1.52	289,634	234,928	182,391	52,537	237,097
2013-14	19,661,248	1.62	312,637	237,990	186,548	51,442	261,195
2014-15	19,951,482	1.48	290,234	241,121	188,736	52,385	237,849
2015-16	20,232,820	1.41	281,338	243,407	189,207	54,200	227,138
2016-17	20,507,402	1.36	274,582	246,353	190,301	56,052	218,530
2017-18	20,777,762	1.32	270,360	248,912	192,761	56,151	214,209
2018-19	21,045,655	1.29	267,893	251,183	195,230	55,953	211,940
2019-20	21,313,563	1.27	267,908	252,884	197,405	55,479	212,429
2020-21	21,580,942	1.25	267,379	251,711	199,568	52,143	215,236
2021-22	21,847,826	1.24	266,884	253,642	202,911	50,731	216,153
2022-23	22,113,327	1.22	265,501	255,442	206,773	48,669	216,832
2023-24	22,377,276	1.19	263,949	257,271	210,748	46,523	217,426
2024-25	22,637,345	1.16	260,069	258,237	214,382	43,855	216,214
2025-26	22,893,637	1.13	256,292	258,135	218,027	40,108	216,184
2026-27	23,146,046	1.10	252,409	259,896	222,264	37,632	214,777
2027-28	23,395,202	1.08	249,156	261,918	226,004	35,914	213,242
2028-29	23,639,697	1.05	244,495	263,897	229,640	34,257	210,238
2029-30	23,880,173	1.02	240,476	265,854	233,209	32,645	207,831