

Demographic Estimating Conference

Executive Summary

The Demographic Estimating Conference met on October 25, 2010 to establish a population forecast based on a preliminary April 1, 2010 population estimate and recent demographic-related data.

In the past, Florida's population growth has been mostly driven by positive net migration (more people permanently moving into the state than leaving). Net migration is estimated to have fallen to record low levels with the state experiencing more outmigration than immigration during much of 2008 and into 2009. It is anticipated that Florida experienced and will continue to have low levels of net migration through 2010 and most of 2011. Natural increase (births minus deaths) is projected to exceed net migration through the second quarter of 2011. This is largely due to national economic conditions, including weakened housing markets and other lingering effects from the recession, that make it difficult for people to relocate.

Population grew slightly less than anticipated between April 1, 2009 and 2010. Even so, population increased by 21,869 (0.12%) to 18,772,352. Over the next two years, growth is expected to be less than one percent annually as the economy continues its slow recovery (0.49% and 0.79%). Stronger population growth is expected as the recovery picks up steam with growth rates of 1.39% (264,417 net new residents) and 1.60% (309,382 net new residents) between April 1, 2012 to April 1, 2013 and April 1, 2013 to April 1, 2014, respectively.

Between April 1, 2009 and April 1, 2019, population growth is expected to average 223,675 net new residents per year, representing a compound growth rate of 1.13% over this 10-year time horizon. These increases are analogous to adding a city the size of Hialeah every year. By April 1, 2016 Florida's population is expected to have broken the 20-million mark at 20,180,412 and is forecast to be approaching the 24-million mark with 23,811,183 residents on April 1, 2030.

**Florida
Demographic Estimating Conference**

Tables

October 25, 2010
Post Conference

Florida Resident Population

April 1

Year	FDEC, 1/10			FDEC, 10/10		
	Population	% Chg	Change	Population	% Chg	Change
1990	12,938,071	2.27%	287,136	12,938,071	2.27%	287,136
1991	13,258,732	2.48%	320,661	13,258,732	2.48%	320,661
1992	13,497,541	1.80%	238,809	13,497,541	1.80%	238,809
1993	13,730,115	1.72%	232,574	13,730,115	1.72%	232,574
1994	14,043,757	2.28%	313,642	14,043,757	2.28%	313,642
1995	14,335,992	2.08%	292,235	14,335,992	2.08%	292,235
1996	14,623,421	2.00%	287,429	14,623,421	2.00%	287,429
1997	14,938,314	2.15%	314,893	14,938,314	2.15%	314,893
1998	15,230,421	1.96%	292,107	15,230,421	1.96%	292,107
1999	15,580,244	2.30%	349,823	15,580,244	2.30%	349,823
2000	15,982,824	2.58%	402,580	15,982,824	2.58%	402,580
2001	16,330,224	2.17%	347,400	16,330,224	2.17%	347,400
2002	16,674,608	2.11%	344,384	16,674,608	2.11%	344,384
2003	17,071,508	2.38%	396,900	17,071,508	2.38%	396,900
2004	17,516,732	2.61%	445,224	17,516,732	2.61%	445,224
2005	17,918,227	2.29%	401,495	17,918,227	2.29%	401,495
2006	18,349,132	2.40%	430,905	18,349,132	2.40%	430,905
2007	18,680,367	1.81%	331,235	18,680,367	1.81%	331,235
2008	18,807,219	0.68%	126,852	18,807,219	0.68%	126,852
2009	18,750,483	-0.30%	-56,736	18,750,483	-0.30%	-56,736
Begins forecast.						
2010	18,773,356	0.12%	22,873	18,772,352	0.12%	21,869
2011	18,850,848	0.41%	77,492	18,863,859	0.49%	91,507
2012	19,001,618	0.80%	150,770	19,012,578	0.79%	148,719
2013	19,271,763	1.42%	270,145	19,276,995	1.39%	264,417
2014	19,586,198	1.63%	314,435	19,586,377	1.60%	309,382
2015	19,881,177	1.51%	294,979	19,890,987	1.56%	304,610
2016	20,163,500	1.42%	282,323	20,180,412	1.46%	289,425
2017	20,440,157	1.37%	276,657	20,456,932	1.37%	276,520
2018	20,711,395	1.33%	271,238	20,724,542	1.31%	267,610
2019	20,979,733	1.30%	268,338	20,987,236	1.27%	262,694
5-Year Averages						
2020	21,246,927	1.34%	273,150	21,249,007	1.33%	271,604
2025	22,573,558	1.22%	265,326	22,569,115	1.21%	264,022
2030	23,821,253	1.08%	249,539	23,811,183	1.08%	248,414

Florida Resident Households

April 1

Year	FDEC, 1/10			FDEC, 10/10		
	Households	% Chg	Change	Households	% Chg	Change
1990	5,134,869	3.40%	168,985	5,134,869	3.40%	168,985
1991	5,283,154	2.89%	148,285	5,283,154	2.89%	148,285
1992	5,378,499	1.80%	95,345	5,378,499	1.80%	95,345
1993	5,478,476	1.86%	99,977	5,478,476	1.86%	99,977
1994	5,589,093	2.02%	110,617	5,589,093	2.02%	110,617
1995	5,697,328	1.94%	108,235	5,697,328	1.94%	108,235
1996	5,806,031	1.91%	108,703	5,806,031	1.91%	108,703
1997	5,929,613	2.13%	123,582	5,929,613	2.13%	123,582
1998	6,040,514	1.87%	110,901	6,040,514	1.87%	110,901
1999	6,182,346	2.35%	141,832	6,182,346	2.35%	141,832
2000	6,338,075	2.52%	155,729	6,338,075	2.52%	155,729
2001	6,483,040	2.29%	144,965	6,483,040	2.29%	144,965
2002	6,620,674	2.12%	137,634	6,620,674	2.12%	137,634
2003	6,778,804	2.39%	158,130	6,778,804	2.39%	158,130
2004	6,949,759	2.52%	170,955	6,949,759	2.52%	170,955
2005	7,109,208	2.29%	159,449	7,109,208	2.29%	159,449
2006	7,291,013	2.56%	181,805	7,291,013	2.56%	181,805
2007	7,443,963	2.10%	152,950	7,443,963	2.10%	152,950
2008	7,499,799	0.75%	55,836	7,499,799	0.75%	55,836
2009	7,477,339	-0.30%	-22,460	7,477,339	-0.30%	-22,460
Begins forecast.						
2010	7,487,411	0.13%	10,072	7,487,010	0.13%	9,671
2011	7,518,961	0.42%	31,550	7,525,544	0.51%	38,534
2012	7,580,550	0.82%	61,589	7,587,187	0.82%	61,643
2013	7,691,198	1.46%	110,648	7,697,932	1.46%	110,745
2014	7,818,951	1.66%	127,753	7,825,797	1.66%	127,865
2015	7,939,858	1.55%	120,907	7,943,643	1.51%	117,846
2016	8,054,909	1.45%	115,051	8,061,628	1.49%	117,985
2017	8,167,889	1.40%	112,980	8,174,496	1.40%	112,868
2018	8,278,729	1.36%	110,840	8,283,889	1.34%	109,394
2019	8,388,464	1.33%	109,735	8,391,371	1.30%	107,482
5-Year Averages						
2020	8,497,759	1.37%	111,580	8,498,553	1.36%	110,982
2025	9,042,114	1.25%	108,871	9,040,242	1.24%	108,338
2030	9,556,471	1.11%	102,871	9,552,194	1.11%	102,390

Quarterly Data Table

QUARTERLY FORECAST TABLES

	<u>2007-1</u>	<u>2007-2</u>	<u>2007-3</u>	<u>2007-4</u>	<u>2008-1</u>	<u>2008-2</u>	<u>2008-3</u>	<u>2008-4</u>	<u>2009-1</u>	<u>2009-2</u>	<u>2009-3</u>	<u>2009-4</u>	<u>2010-1</u>	<u>2010-2</u>	<u>2010-3</u>	<u>2010-4</u>	<u>2011-1</u>	<u>2011-2</u>
Population																		
FDEC, 1/2010	18,646.8	18,706.8	18,753.2	18,785.6	18,802.7	18,804.0	18,792.6	18,774.9	18,757.9	18,748.0	18,747.4	18,754.3	18,766.4	18,781.1	18,797.6	18,816.6	18,838.8	18,864.7
FDEC, 10/2010	18,647.1	18,707.1	18,753.7	18,785.8	18,802.7	18,804.1	18,792.9	18,775.3	18,758.1	18,747.4	18,745.7	18,752.0	18,764.4	18,780.3	18,800.8	18,824.2	18,850.0	18,877.8
Population Growth Rate																		
FDEC, 1/2010	1.58	1.29	0.99	0.69	0.36	0.03	-0.24	-0.38	-0.36	-0.21	-0.01	0.15	0.26	0.31	0.35	0.41	0.47	0.55
FDEC, 10/2010	1.57	1.29	1.00	0.69	0.36	0.03	-0.24	-0.37	-0.37	-0.23	-0.04	0.13	0.27	0.34	0.44	0.50	0.55	0.59
Net Change in Population																		
FDEC, 1/2010	73.1	60.1	46.3	32.4	17.1	1.3	-11.4	-17.7	-17.0	-9.9	-0.6	6.9	12.1	14.7	16.5	19.0	22.2	25.8
FDEC, 10/2010	72.4	60.0	46.5	32.1	16.9	1.4	-11.2	-17.6	-17.2	-10.7	-1.7	6.3	12.4	16.0	20.4	23.4	25.8	27.8
Households																		
FDEC, 1/2010	7,428.3	7,456.0	7,476.7	7,490.7	7,497.9	7,498.5	7,494.0	7,487.0	7,480.3	7,476.4	7,476.4	7,479.4	7,484.5	7,490.6	7,497.3	7,505.1	7,514.1	7,524.6
FDEC, 10/2010	7,428.4	7,456.1	7,476.9	7,490.8	7,497.9	7,498.6	7,494.1	7,487.1	7,480.3	7,476.2	7,475.7	7,478.5	7,483.7	7,490.3	7,498.6	7,508.1	7,518.5	7,529.8
Household Growth Rate																		
FDEC, 1/2010	1.86	1.50	1.12	0.75	0.39	0.03	-0.24	-0.38	-0.36	-0.20	0.00	0.16	0.27	0.33	0.36	0.41	0.48	0.56
FDEC, 10/2010	1.85	1.50	1.12	0.75	0.38	0.03	-0.24	-0.37	-0.36	-0.22	-0.03	0.15	0.28	0.35	0.45	0.51	0.56	0.60
Net Change in Households																		
FDEC, 1/2010	34.2	27.7	20.7	14.0	7.2	0.6	-4.5	-7.0	-6.7	-3.8	0.0	3.0	5.1	6.1	6.8	7.7	9.0	10.5
FDEC, 10/2010	33.9	27.7	20.8	13.9	7.1	0.6	-4.4	-7.0	-6.8	-4.1	-0.5	2.8	5.2	6.6	8.3	9.5	10.4	11.3
Household Size																		
FDEC, 1/2010	2.510	2.509	2.508	2.508	2.508	2.508	2.508	2.508	2.508	2.508	2.508	2.507	2.507	2.507	2.507	2.507	2.507	2.507
FDEC, 10/2010	2.510	2.509	2.508	2.508	2.508	2.508	2.508	2.508	2.508	2.508	2.508	2.507	2.507	2.507	2.507	2.507	2.507	2.507
Household Size Growth Rate																		
FDEC, 1/2010	-0.27	-0.20	-0.12	-0.06	-0.02	0.00	0.00	0.00	0.00	-0.01	-0.01	-0.01	-0.01	-0.01	-0.01	-0.01	-0.01	-0.01
FDEC, 10/2010	-0.27	-0.20	-0.12	-0.06	-0.02	0.00	0.00	0.00	0.00	-0.01	-0.01	-0.01	-0.01	-0.01	-0.01	-0.01	-0.01	-0.01
Net Migration																		
FDEC, 1/2010	55.0	42.0	28.5	15.0	1.3	-14.0	-26.3	-32.5	-31.9	-24.6	-15.4	-7.7	-2.4	0.4	2.3	5.0	8.4	12.2
FDEC, 10/2010	54.4	42.0	28.7	14.7	0.7	-14.1	-26.1	-31.9	-30.7	-23.8	-14.6	-6.4	0.0	3.6	8.1	11.2	13.7	15.9
Births																		
FDEC, 1/2010	60.0	59.9	59.8	59.4	58.3	57.9	57.7	57.6	57.7	57.6	57.7	57.8	57.7	57.7	57.7	57.7	57.7	57.8
FDEC, 10/2010	60.0	59.9	59.8	59.4	58.7	58.1	57.6	57.0	55.9	55.4	55.1	55.0	54.9	55.0	55.0	55.1	55.1	55.2
Deaths																		
FDEC, 1/2010	41.9	41.9	41.9	42.0	42.5	42.6	42.7	42.7	42.8	42.9	43.0	43.1	43.2	43.4	43.5	43.7	43.9	44.1
FDEC, 10/2010	41.9	41.9	41.9	42.0	42.5	42.6	42.7	42.7	42.4	42.3	42.3	42.3	42.5	42.6	42.7	42.8	43.1	43.3
Net Natural Increase																		
FDEC, 1/2010	18.1	18.1	17.9	17.4	15.8	15.3	15.0	14.8	14.9	14.7	14.7	14.7	14.5	14.3	14.2	14.0	13.8	13.7
FDEC, 10/2010	18.1	18.1	17.9	17.4	16.2	15.5	14.9	14.3	13.5	13.1	12.8	12.7	12.4	12.4	12.3	12.2	12.1	11.9

Quarterly Data Table

QUARTERLY FORECAST TABLES

	<u>2011-3</u>	<u>2011-4</u>	<u>2012-1</u>	<u>2012-2</u>	<u>2012-3</u>	<u>2012-4</u>	<u>2013-1</u>	<u>2013-2</u>	<u>2013-3</u>	<u>2013-4</u>	<u>2014-1</u>	<u>2014-2</u>	<u>2014-3</u>	<u>2014-4</u>	<u>2015-1</u>	<u>2015-2</u>	<u>2015-3</u>	<u>2015-4</u>
Population																		
FDEC, 1/2010	18,895.3	18,932.3	18,977.1	19,030.3	19,091.5	19,159.9	19,233.8	19,310.2	19,388.1	19,467.5	19,546.8	19,623.7	19,698.3	19,772.0	19,845.0	19,916.3	19,986.8	20,057.6
FDEC, 10/2010	18,908.5	18,944.1	18,986.8	19,038.3	19,098.7	19,166.3	19,239.0	19,315.0	19,392.6	19,470.8	19,548.4	19,625.1	19,701.6	19,777.5	19,853.3	19,927.9	20,001.4	20,073.7
Population Growth Rate																		
FDEC, 1/2010	0.65	0.79	0.95	1.13	1.29	1.44	1.55	1.60	1.62	1.65	1.64	1.58	1.53	1.51	1.48	1.45	1.42	1.42
FDEC, 10/2010	0.65	0.76	0.90	1.09	1.27	1.42	1.53	1.59	1.62	1.62	1.60	1.58	1.57	1.55	1.54	1.51	1.48	1.45
Net Change in Population																		
FDEC, 1/2010	30.6	37.1	44.8	53.2	61.2	68.4	73.9	76.4	77.9	79.4	79.3	76.9	74.5	73.7	72.9	71.4	70.5	70.8
FDEC, 10/2010	30.7	35.6	42.7	51.5	60.4	67.6	72.7	76.0	77.7	78.2	77.6	76.7	76.5	76.0	75.8	74.5	73.5	72.3
Households																		
FDEC, 1/2010	7,537.0	7,552.1	7,570.5	7,592.4	7,617.5	7,645.6	7,675.7	7,706.7	7,738.1	7,770.2	7,802.7	7,834.2	7,864.6	7,894.9	7,924.9	7,954.1	7,982.7	8,011.6
FDEC, 10/2010	7,542.3	7,556.9	7,574.4	7,595.6	7,620.4	7,648.1	7,677.8	7,708.6	7,739.9	7,771.5	7,803.3	7,834.7	7,865.9	7,897.1	7,928.3	7,958.7	7,988.6	8,018.1
Household Growth Rate																		
FDEC, 1/2010	0.66	0.81	0.98	1.16	1.33	1.48	1.59	1.62	1.64	1.67	1.68	1.62	1.56	1.55	1.53	1.48	1.45	1.46
FDEC, 10/2010	0.67	0.77	0.93	1.12	1.32	1.46	1.56	1.61	1.63	1.64	1.65	1.62	1.60	1.60	1.59	1.55	1.51	1.49
Net Change in Households																		
FDEC, 1/2010	12.4	15.1	18.4	21.9	25.2	28.1	30.1	30.9	31.4	32.1	32.5	31.5	30.4	30.3	30.1	29.2	28.6	28.9
FDEC, 10/2010	12.5	14.6	17.5	21.2	24.9	27.7	29.7	30.8	31.3	31.6	31.8	31.4	31.2	31.2	31.2	30.5	29.9	29.5
Household Size																		
FDEC, 1/2010	2.507	2.507	2.507	2.507	2.506	2.506	2.506	2.506	2.506	2.505	2.505	2.505	2.505	2.504	2.504	2.504	2.504	2.504
FDEC, 10/2010	2.507	2.507	2.507	2.507	2.506	2.506	2.506	2.506	2.506	2.505	2.505	2.505	2.505	2.504	2.504	2.504	2.504	2.504
Household Size Growth Rate																		
FDEC, 1/2010	-0.01	-0.02	-0.03	-0.03	-0.04	-0.04	-0.03	-0.02	-0.02	-0.02	-0.04	-0.04	-0.03	-0.04	-0.05	-0.03	-0.03	-0.03
FDEC, 10/2010	-0.01	-0.02	-0.03	-0.03	-0.04	-0.04	-0.03	-0.02	-0.02	-0.02	-0.04	-0.04	-0.03	-0.04	-0.05	-0.03	-0.03	-0.03
Net Migration																		
FDEC, 1/2010	17.0	23.6	31.4	39.9	48.0	55.2	60.7	63.4	64.9	66.5	66.5	64.2	61.6	60.7	59.8	58.1	57.1	57.3
FDEC, 10/2010	18.9	24.0	31.0	40.0	48.9	56.2	61.4	64.7	66.4	67.0	66.5	65.7	65.4	64.8	64.5	63.1	62.0	60.6
Births																		
FDEC, 1/2010	57.9	58.0	58.1	58.3	58.5	58.6	58.8	59.0	59.2	59.4	59.6	59.8	60.1	60.2	60.4	60.5	60.6	60.8
FDEC, 10/2010	55.3	55.4	55.5	55.7	55.8	56.0	56.2	56.3	56.5	56.7	56.9	57.1	57.2	57.4	57.5	57.6	57.7	57.9
Deaths																		
FDEC, 1/2010	44.3	44.6	44.7	45.1	45.3	45.5	45.7	46.0	46.2	46.5	46.8	47.1	47.1	47.2	47.2	47.2	47.3	47.3
FDEC, 10/2010	43.5	43.7	43.9	44.2	44.4	44.6	44.8	45.0	45.3	45.6	45.8	46.1	46.1	46.2	46.2	46.2	46.2	46.2
Net Natural Increase																		
FDEC, 1/2010	13.6	13.4	13.4	13.2	13.2	13.2	13.1	13.1	13.0	12.9	12.8	12.7	13.0	13.0	13.1	13.2	13.3	13.5
FDEC, 10/2010	11.8	11.7	11.7	11.5	11.4	11.4	11.4	11.3	11.2	11.1	11.1	11.0	11.1	11.2	11.3	11.5	11.5	11.7

Quarterly Data Table

QUARTERLY FORECAST TABLES

	<u>2016-1</u>	<u>2016-2</u>	<u>2016-3</u>	<u>2016-4</u>	<u>2017-1</u>	<u>2017-2</u>	<u>2017-3</u>	<u>2017-4</u>	<u>2018-1</u>	<u>2018-2</u>	<u>2018-3</u>	<u>2018-4</u>	<u>2019-1</u>	<u>2019-2</u>
Population														
FDEC, 1/2010	20,128.3	20,198.2	20,267.3	20,336.4	20,405.6	20,473.8	20,541.3	20,609.3	20,677.4	20,744.6	20,811.2	20,878.5	20,946.0	21,012.7
FDEC, 10/2010	20,144.9	20,215.5	20,285.3	20,354.4	20,422.9	20,490.7	20,558.1	20,624.9	20,691.4	20,757.5	20,823.4	20,889.0	20,954.5	21,019.9
Population Growth Rate														
FDEC, 1/2010	1.42	1.40	1.38	1.37	1.37	1.34	1.33	1.33	1.33	1.31	1.29	1.30	1.30	1.28
FDEC, 10/2010	1.43	1.41	1.39	1.37	1.35	1.34	1.32	1.31	1.30	1.28	1.28	1.27	1.26	1.25
Net Change in Population														
FDEC, 1/2010	70.7	69.9	69.1	69.2	69.2	68.1	67.5	68.0	68.1	67.2	66.7	67.3	67.5	66.7
FDEC, 10/2010	71.2	70.6	69.8	69.1	68.4	67.9	67.3	66.9	66.5	66.1	65.9	65.6	65.5	65.4
Households														
FDEC, 1/2010	8,040.5	8,069.0	8,097.1	8,125.3	8,153.7	8,181.5	8,209.0	8,236.8	8,264.8	8,292.2	8,319.3	8,346.9	8,374.6	8,401.8
FDEC, 10/2010	8,047.2	8,075.9	8,104.3	8,132.5	8,160.6	8,188.3	8,215.7	8,243.1	8,270.4	8,297.4	8,324.2	8,351.1	8,378.0	8,404.7
Household Growth Rate														
FDEC, 1/2010	1.45	1.42	1.40	1.40	1.40	1.37	1.35	1.36	1.36	1.33	1.32	1.33	1.34	1.31
FDEC, 10/2010	1.46	1.44	1.41	1.40	1.39	1.36	1.35	1.34	1.33	1.31	1.30	1.30	1.30	1.28
Net Change in Households														
FDEC, 1/2010	28.9	28.5	28.1	28.2	28.4	27.8	27.5	27.8	28.0	27.4	27.1	27.5	27.7	27.3
FDEC, 10/2010	29.1	28.8	28.4	28.2	28.1	27.7	27.4	27.4	27.3	27.0	26.8	26.9	26.9	26.7
Household Size														
FDEC, 1/2010	2.503	2.503	2.503	2.503	2.503	2.502	2.502	2.502	2.502	2.502	2.502	2.501	2.501	2.501
FDEC, 10/2010	2.503	2.503	2.503	2.503	2.503	2.502	2.502	2.502	2.502	2.502	2.502	2.501	2.501	2.501
Household Size Growth Rate														
FDEC, 1/2010	-0.03	-0.03	-0.02	-0.03	-0.04	-0.03	-0.02	-0.03	-0.04	-0.03	-0.02	-0.03	-0.04	-0.03
FDEC, 10/2010	-0.03	-0.03	-0.02	-0.03	-0.04	-0.03	-0.02	-0.03	-0.04	-0.03	-0.02	-0.03	-0.04	-0.03
Net Migration														
FDEC, 1/2010	57.1	56.1	55.2	55.1	55.1	54.1	53.4	53.9	54.1	53.2	52.7	53.3	53.5	52.7
FDEC, 10/2010	59.2	58.5	57.6	56.7	56.0	55.4	54.9	54.4	54.0	53.7	53.4	53.2	53.0	52.9
Births														
FDEC, 1/2010	60.9	61.1	61.3	61.5	61.7	61.8	62.0	62.2	62.3	62.5	62.6	62.7	62.9	63.0
FDEC, 10/2010	58.1	58.3	58.5	58.7	58.9	59.1	59.3	59.4	59.6	59.8	59.9	60.1	60.2	60.4
Deaths														
FDEC, 1/2010	47.3	47.4	47.4	47.5	47.6	47.8	47.9	48.1	48.3	48.4	48.6	48.7	48.9	49.0
FDEC, 10/2010	46.2	46.3	46.3	46.4	46.5	46.6	46.8	47.0	47.1	47.3	47.4	47.6	47.7	47.9
Net Natural Increase														
FDEC, 1/2010	13.6	13.8	13.9	14.0	14.1	14.1	14.1	14.0	14.0	14.0	14.0	14.0	14.0	14.0
FDEC, 10/2010	11.9	12.1	12.2	12.4	12.4	12.4	12.5	12.5	12.5	12.5	12.5	12.5	12.5	12.5

Fiscal Year Data Table

FISCAL YEAR FORECAST TABLES

	<u>1990-91</u>	<u>1991-92</u>	<u>1992-93</u>	<u>1993-94</u>	<u>1994-95</u>	<u>1995-96</u>	<u>1996-97</u>	<u>1997-98</u>	<u>1998-99</u>	<u>1999-00</u>	<u>2000-01</u>	<u>2001-02</u>	<u>2002-03</u>	<u>2003-04</u>	<u>2004-05</u>
Population															
FDEC, 1/2010	13,178.0	13,442.6	13,670.0	13,962.2	14,264.9	14,550.7	14,859.1	15,158.2	15,488.7	15,881.3	16,245.5	16,586.3	16,968.0	17,404.5	17,818.1
FDEC, 10/2010	13,178.0	13,442.6	13,670.0	13,962.2	14,264.9	14,550.7	14,859.1	15,158.2	15,488.7	15,881.3	16,246.1	16,587.2	16,969.0	17,405.4	17,818.8
Growth Rate															
FDEC, 1/2010	2.42	2.01	1.69	2.14	2.17	2.00	2.12	2.01	2.18	2.53	2.29	2.10	2.30	2.57	2.38
FDEC, 10/2010	2.42	2.01	1.69	2.14	2.17	2.00	2.12	2.01	2.18	2.53	2.30	2.10	2.30	2.57	2.38
Net Change in Population															
FDEC, 1/2010	315.1	232.0	241.6	315.7	289.2	291.1	313.1	295.0	359.3	399.0	342.6	349.0	405.9	441.5	403.1
FDEC, 10/2010	315.1	232.0	241.6	315.7	289.2	291.1	313.1	295.0	359.3	399.3	343.0	349.0	406.0	441.0	403.7
Households															
FDEC, 1/2010	5,230.8	5,334.4	5,424.8	5,538.3	5,655.1	5,767.0	5,887.2	6,005.0	6,138.4	6,296.9	6,447.7	6,585.6	6,737.7	6,906.8	7,069.0
FDEC, 10/2010	5,230.8	5,334.4	5,424.8	5,538.3	5,655.1	5,767.0	5,887.2	6,005.0	6,138.4	6,297.0	6,447.9	6,586.0	6,738.1	6,907.2	7,069.3
Growth Rate															
FDEC, 1/2010	2.44	1.98	1.69	2.09	2.11	1.98	2.08	2.00	2.22	2.58	2.39	2.14	2.31	2.51	2.35
FDEC, 10/2010	2.44	1.98	1.69	2.09	2.11	1.98	2.08	2.00	2.22	2.58	2.40	2.14	2.31	2.51	2.35
Net Change in Households															
FDEC, 1/2010	124.4	92.2	94.4	122.0	112.8	113.3	122.3	117.9	144.1	162.7	142.5	139.3	161.0	169.6	161.2
FDEC, 10/2010	124.4	92.2	94.4	122.0	112.8	113.3	122.3	117.9	144.1	162.8	142.6	139.3	161.0	169.4	161.4
Household Size															
FDEC, 1/2010	2.519	2.520	2.520	2.521	2.522	2.523	2.524	2.524	2.523	2.522	2.520	2.519	2.518	2.520	2.521
FDEC, 10/2010	2.519	2.520	2.520	2.521	2.522	2.523	2.524	2.524	2.523	2.522	2.520	2.519	2.518	2.520	2.521
Growth Rate															
FDEC, 1/2010	-0.02	0.03	0.00	0.04	0.06	0.02	0.04	0.01	-0.04	-0.05	-0.10	-0.04	-0.01	0.06	0.03
FDEC, 10/2010	-0.02	0.03	0.00	0.04	0.06	0.02	0.04	0.01	-0.04	-0.05	-0.10	-0.04	-0.01	0.06	0.03
Net Migration															
FDEC, 1/2010	252.1	176.2	191.4	270.0	249.0	254.8	275.5	256.2	323.0	361.1	302.2	311.3	365.4	394.7	350.7
FDEC, 10/2010	252.1	176.2	191.4	270.0	249.0	254.8	275.5	256.2	323.0	361.3	302.6	311.3	365.5	394.2	351.2
Births															
FDEC, 1/2010	197.0	192.2	192.0	191.7	189.4	188.6	190.7	194.0	196.0	200.5	205.4	205.4	208.5	215.0	221.8
FDEC, 10/2010	197.0	192.2	192.0	191.7	189.4	188.6	190.7	194.0	196.0	200.5	205.4	205.4	208.5	215.0	221.8
Deaths															
FDEC, 1/2010	134.0	136.4	141.8	146.0	149.3	152.3	153.1	155.2	159.7	162.5	165.0	167.6	168.1	168.3	169.4
FDEC, 10/2010	134.0	136.4	141.8	146.0	149.3	152.3	153.1	155.2	159.7	162.5	165.0	167.6	168.1	168.3	169.4
Net Natural Increase															
FDEC, 1/2010	63.0	55.8	50.1	45.7	40.1	36.3	37.6	38.8	36.3	38.0	40.4	37.8	40.5	46.8	52.5
FDEC, 10/2010	63.0	55.8	50.1	45.7	40.1	36.3	37.6	38.8	36.3	38.0	40.4	37.8	40.5	46.8	52.5

Fiscal Year Data Table

FISCAL YEAR FORECAST TABLES

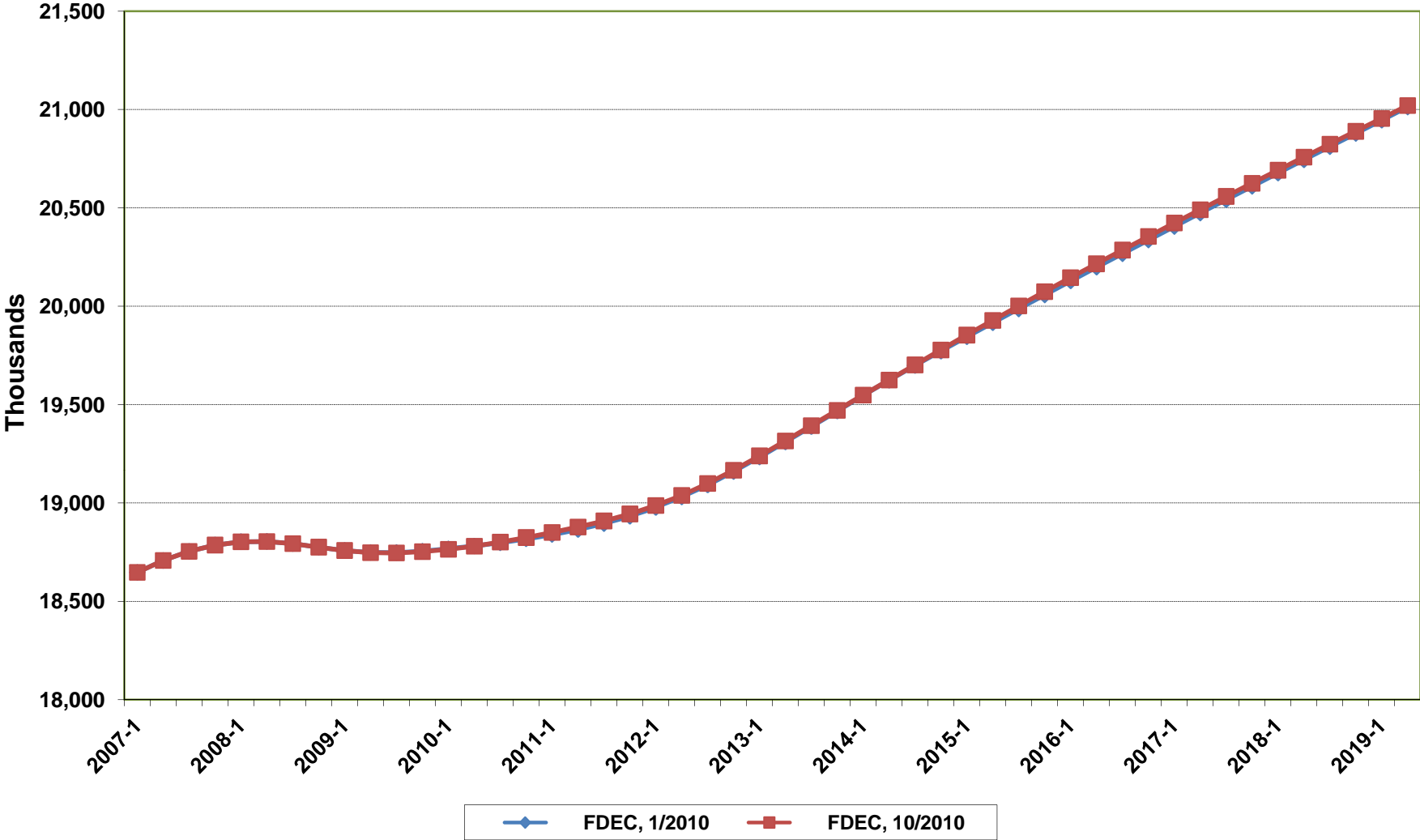
	<u>2005-06</u>	<u>2006-07</u>	<u>2007-08</u>	<u>2008-09</u>	<u>2009-10</u>	<u>2010-11</u>	<u>2011-12</u>	<u>2012-13</u>	<u>2013-14</u>	<u>2014-15</u>	<u>2015-16</u>	<u>2016-17</u>	<u>2017-18</u>	<u>2018-19</u>
Population														
FDEC, 1/2010	18,240.0	18,604.3	18,786.4	18,768.4	18,762.3	18,829.4	18,958.8	19,198.8	19,506.5	19,807.9	20,092.7	20,370.8	20,643.1	20,912.1
FDEC, 10/2010	18,241.0	18,605.0	18,786.6	18,768.4	18,760.6	18,838.2	18,969.5	19,204.7	19,509.2	19,815.1	20,108.9	20,388.3	20,658.0	20,921.7
Growth Rate														
FDEC, 1/2010	2.37	2.00	0.98	-0.10	-0.03	0.36	0.69	1.27	1.60	1.54	1.44	1.38	1.34	1.30
FDEC, 10/2010	2.37	2.00	0.98	-0.10	-0.04	0.41	0.70	1.24	1.59	1.57	1.48	1.39	1.32	1.28
Net Change in Population														
FDEC, 1/2010	426.5	309.5	97.1	-56.0	33.1	83.6	165.6	279.9	313.5	292.6	281.8	275.6	270.8	268.1
FDEC, 10/2010	426.3	309.1	96.9	-56.7	32.9	97.4	160.6	276.7	310.1	302.8	287.6	275.2	266.8	262.4
Households														
FDEC, 1/2010	7,244.3	7,408.4	7,491.0	7,484.4	7,482.7	7,510.3	7,563.0	7,661.4	7,786.3	7,909.6	8,026.0	8,139.4	8,250.7	8,360.7
FDEC, 10/2010	7,244.7	7,408.6	7,491.0	7,484.5	7,482.1	7,513.8	7,567.3	7,663.8	7,787.4	7,912.5	8,032.4	8,146.4	8,256.6	8,364.5
Growth Rate														
FDEC, 1/2010	2.48	2.26	1.11	-0.09	-0.02	0.37	0.70	1.30	1.63	1.58	1.47	1.41	1.37	1.33
FDEC, 10/2010	2.48	2.26	1.11	-0.09	-0.03	0.42	0.71	1.27	1.61	1.61	1.52	1.42	1.35	1.31
Net Change in Households														
FDEC, 1/2010	182.0	143.2	42.6	-22.1	14.1	34.0	67.8	114.3	127.5	119.9	114.9	112.5	110.7	109.7
FDEC, 10/2010	181.9	143.0	42.5	-22.4	14.1	39.5	65.8	113.0	126.1	124.0	117.2	112.4	109.1	107.4
Household Size														
FDEC, 1/2010	2.518	2.511	2.508	2.508	2.507	2.507	2.507	2.506	2.505	2.504	2.503	2.503	2.502	2.501
FDEC, 10/2010	2.518	2.511	2.508	2.508	2.507	2.507	2.507	2.506	2.505	2.504	2.503	2.503	2.502	2.501
Growth Rate														
FDEC, 1/2010	-0.11	-0.26	-0.13	-0.01	-0.01	-0.01	-0.02	-0.03	-0.03	-0.04	-0.03	-0.03	-0.03	-0.03
FDEC, 10/2010	-0.11	-0.26	-0.13	-0.01	-0.01	-0.01	-0.02	-0.03	-0.03	-0.04	-0.03	-0.03	-0.03	-0.03
Net Migration														
FDEC, 1/2010	364.5	238.5	30.7	-115.4	-25.1	27.9	112.0	227.4	262.1	240.2	227.6	219.6	214.6	212.2
FDEC, 10/2010	364.3	238.1	30.0	-112.6	-17.4	48.9	113.9	231.1	265.7	257.7	240.3	225.8	217.0	212.4
Births														
FDEC, 1/2010	232.1	239.3	235.4	230.5	230.9	231.0	232.3	234.9	238.0	241.1	243.4	246.4	248.9	251.2
FDEC, 10/2010	232.1	239.3	236.0	225.9	220.0	220.4	221.9	224.3	227.1	229.7	232.2	235.3	238.0	240.5
Deaths														
FDEC, 1/2010	170.1	168.3	169.0	171.1	172.7	175.3	178.7	182.4	186.5	188.7	189.2	190.3	192.8	195.2
FDEC, 10/2010	170.1	168.3	169.1	170.1	169.6	171.9	175.3	178.8	182.7	184.6	184.9	185.8	188.2	190.6
Net Natural Increase														
FDEC, 1/2010	62.0	71.0	66.4	59.4	58.1	55.7	53.6	52.5	51.4	52.4	54.2	56.1	56.2	56.0
FDEC, 10/2010	62.0	71.0	67.0	55.9	50.4	48.5	46.6	45.5	44.4	45.1	47.3	49.4	49.8	49.9

Florida Demographic Estimating Conference

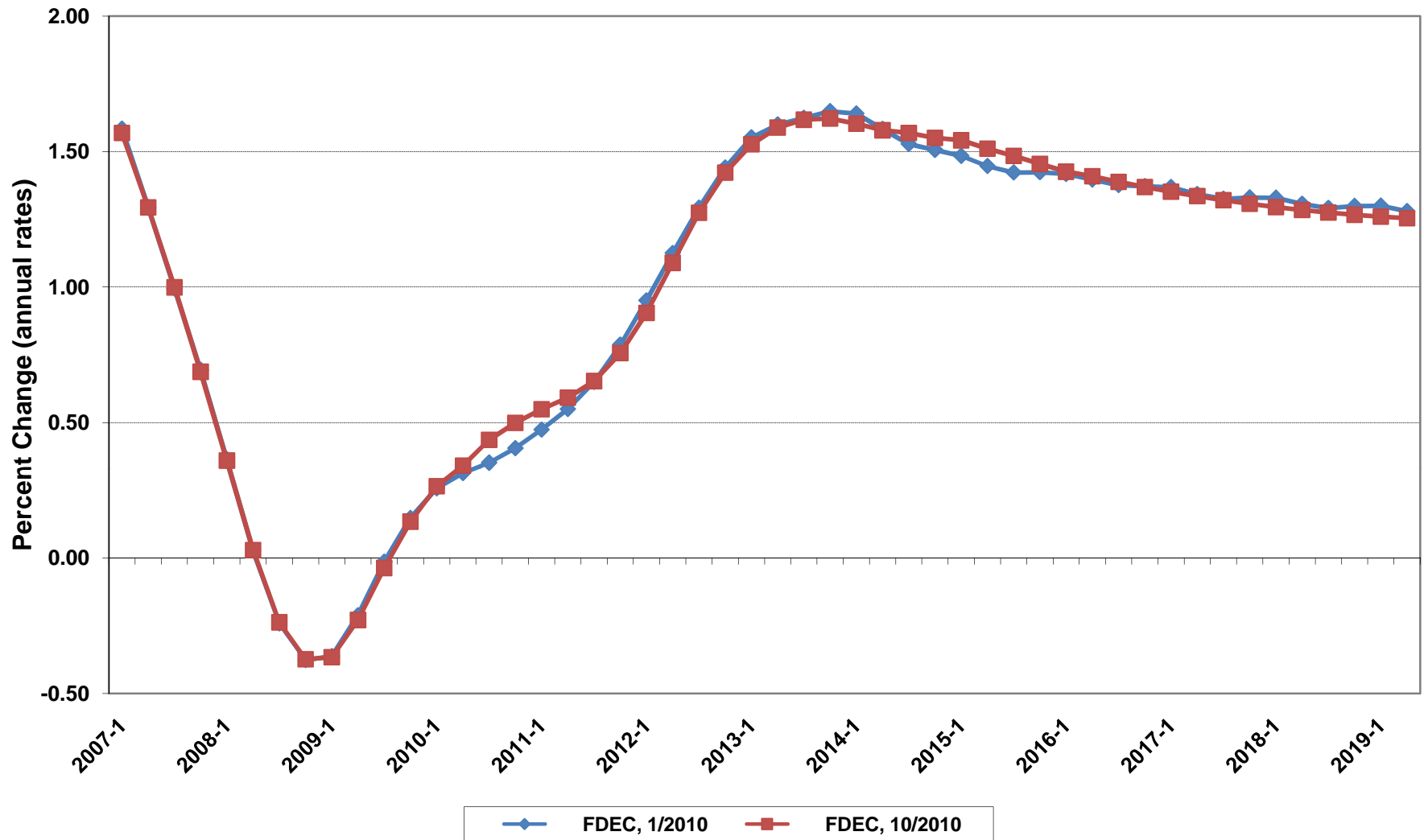
Charts

October 25, 2010
Post Conference

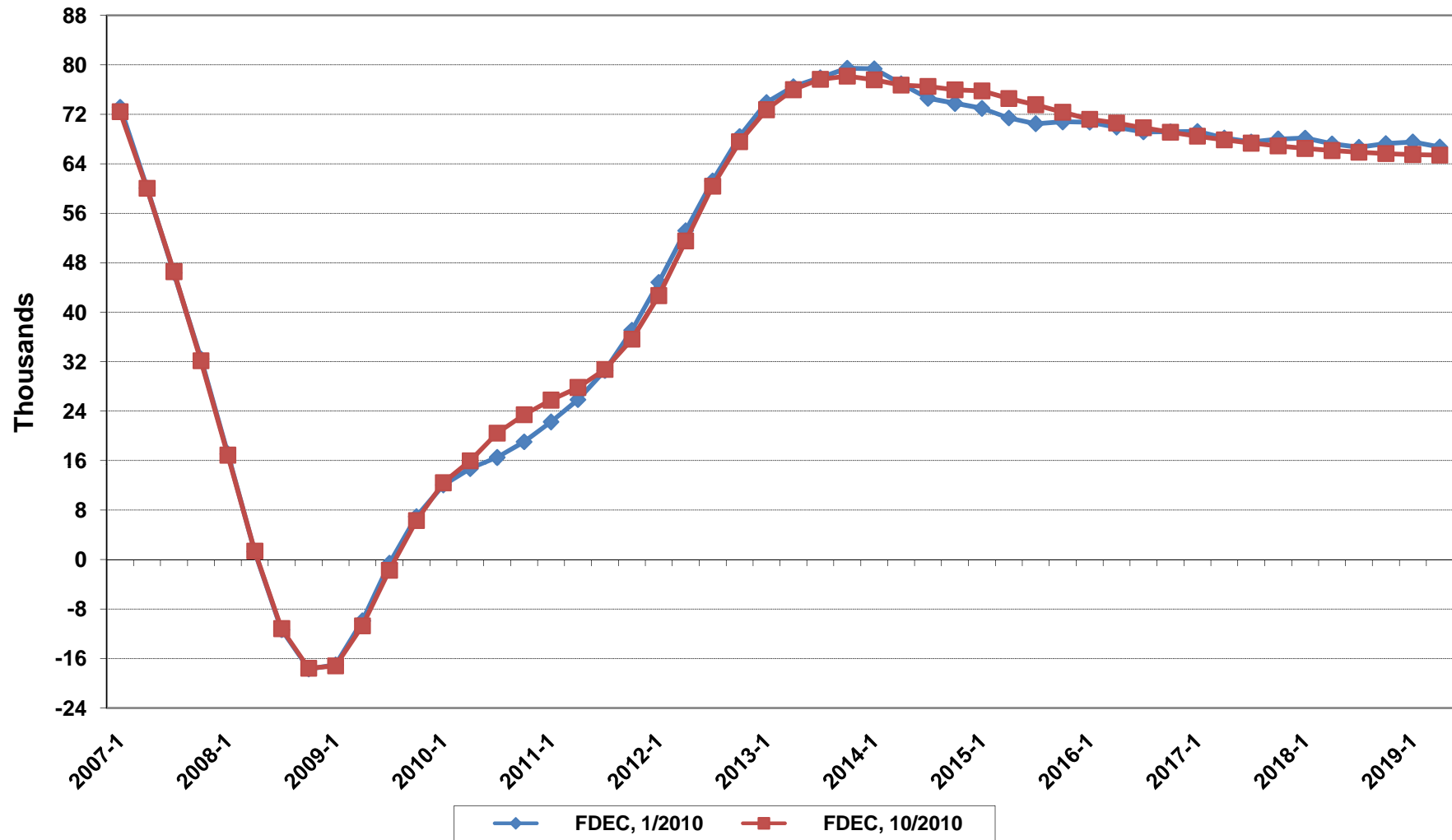
Florida Resident Population



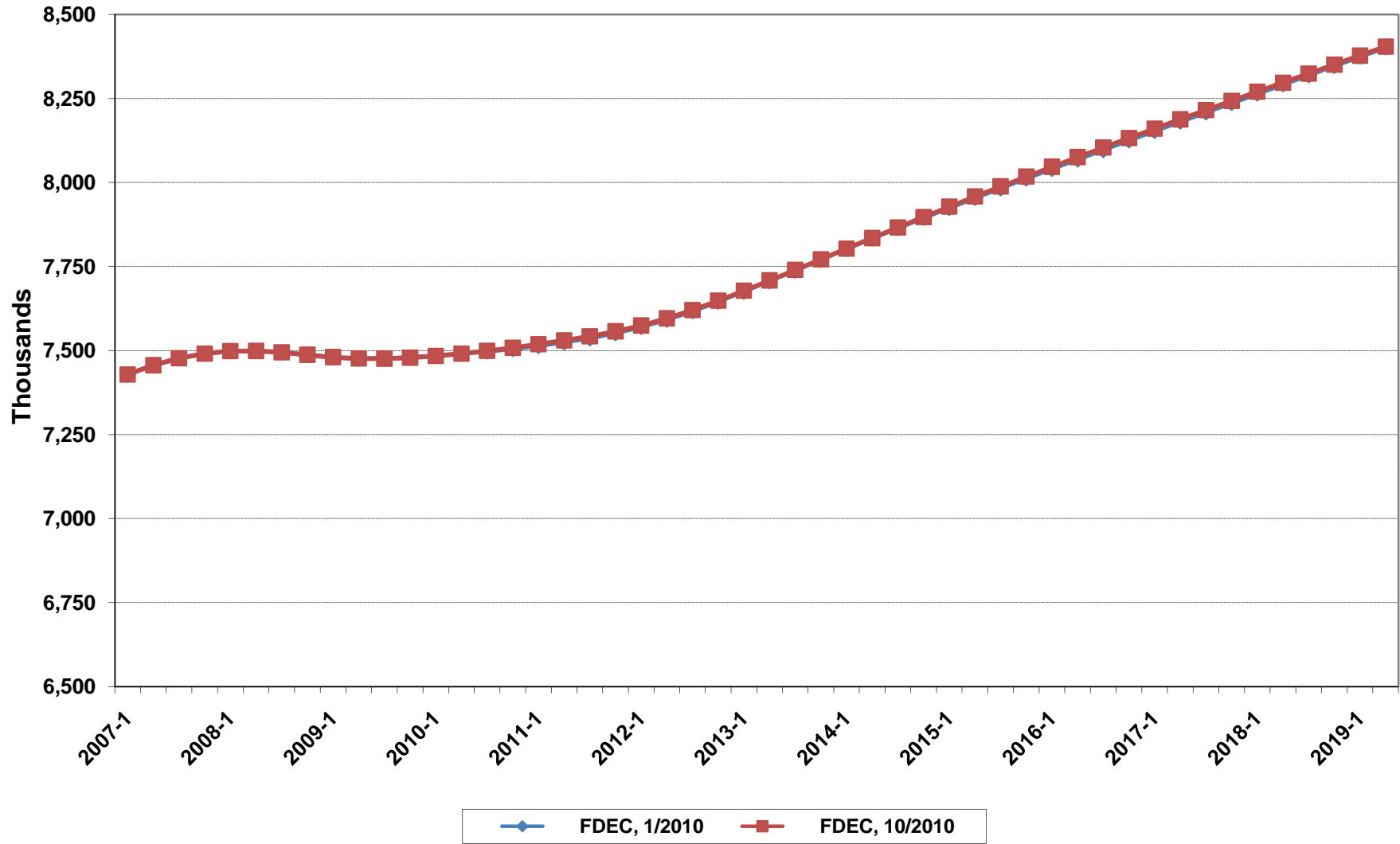
Growth In Florida Resident Population



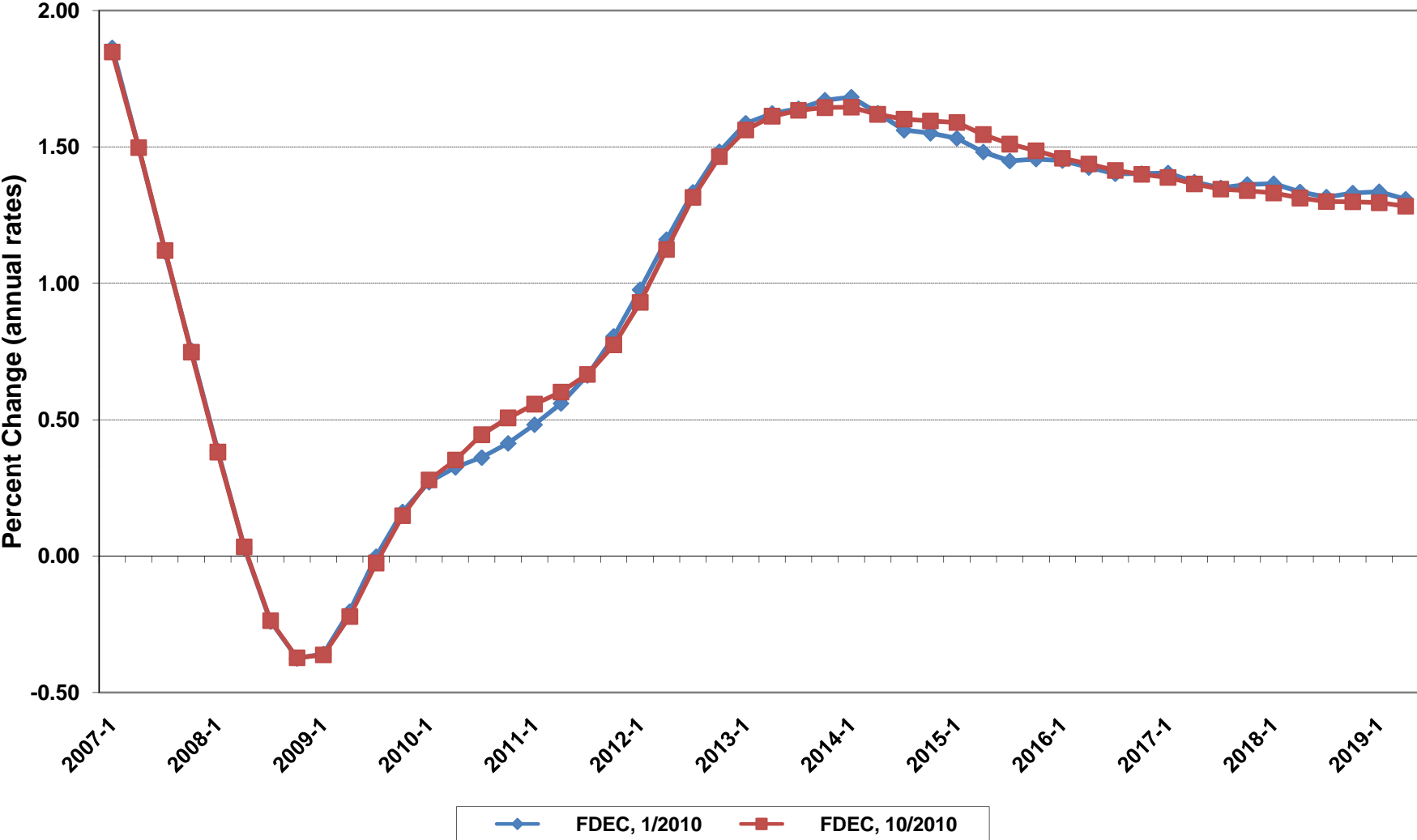
Net Change In Florida Resident Population



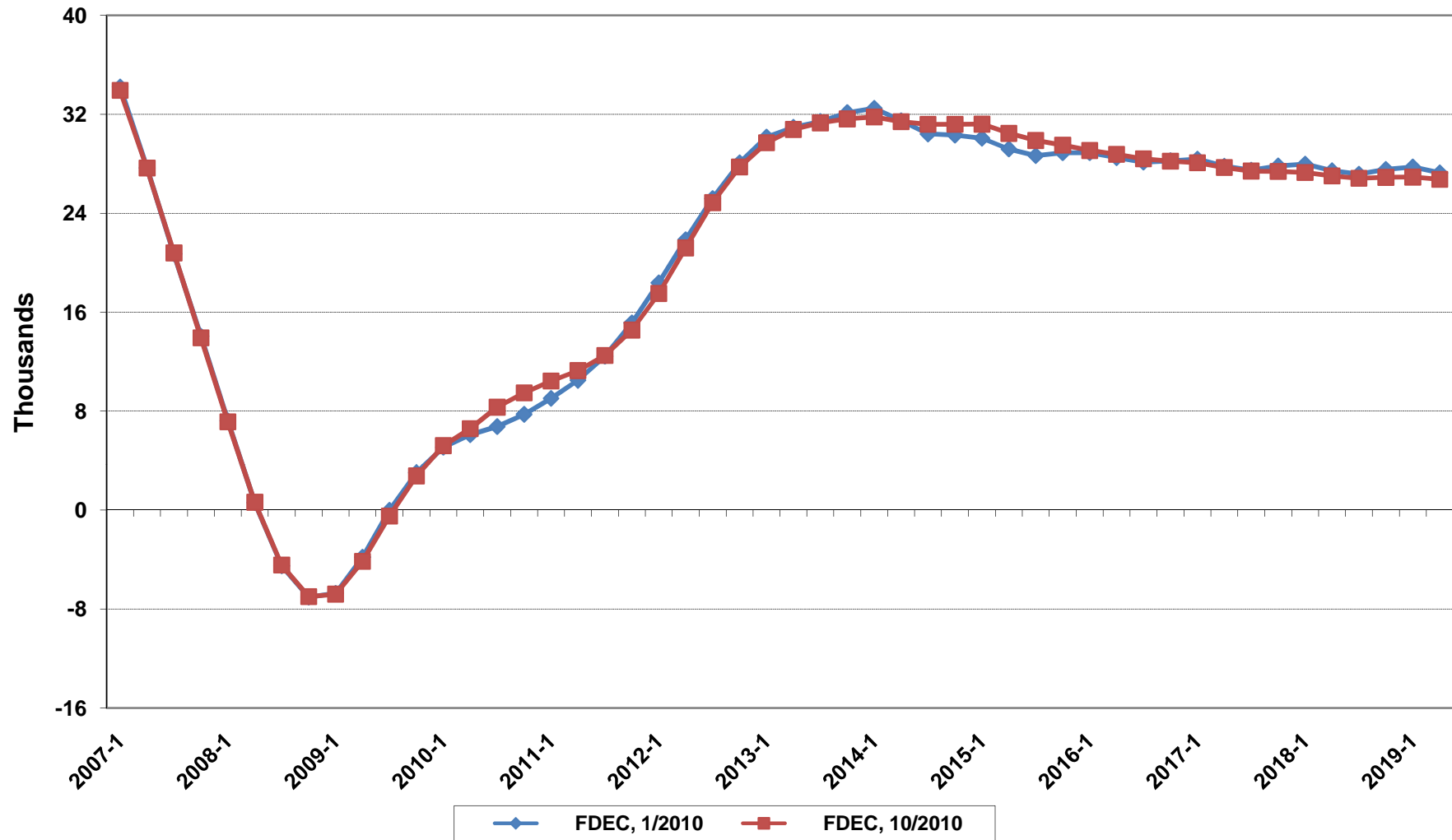
Florida Resident Households



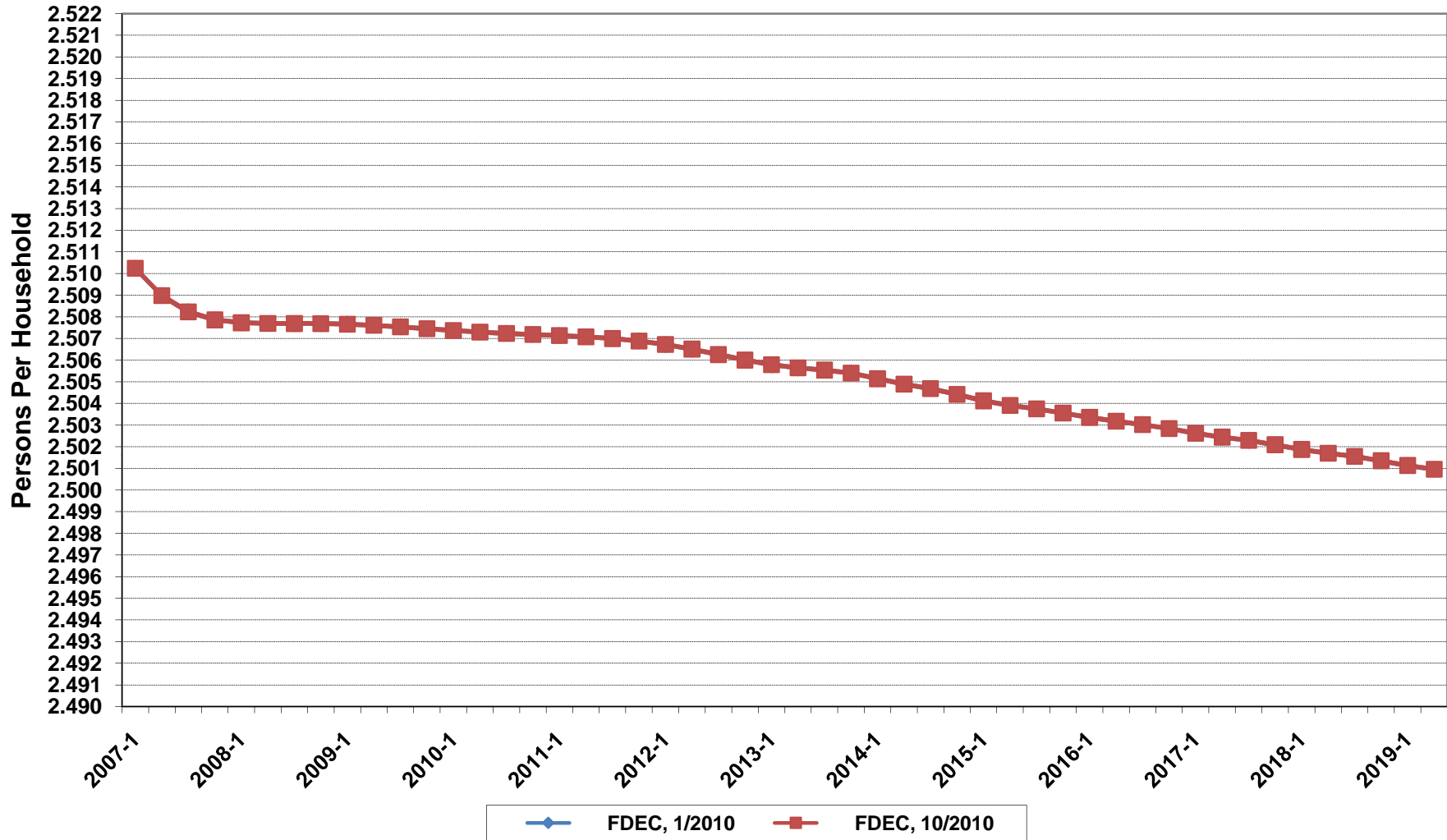
Growth In Florida Resident Households



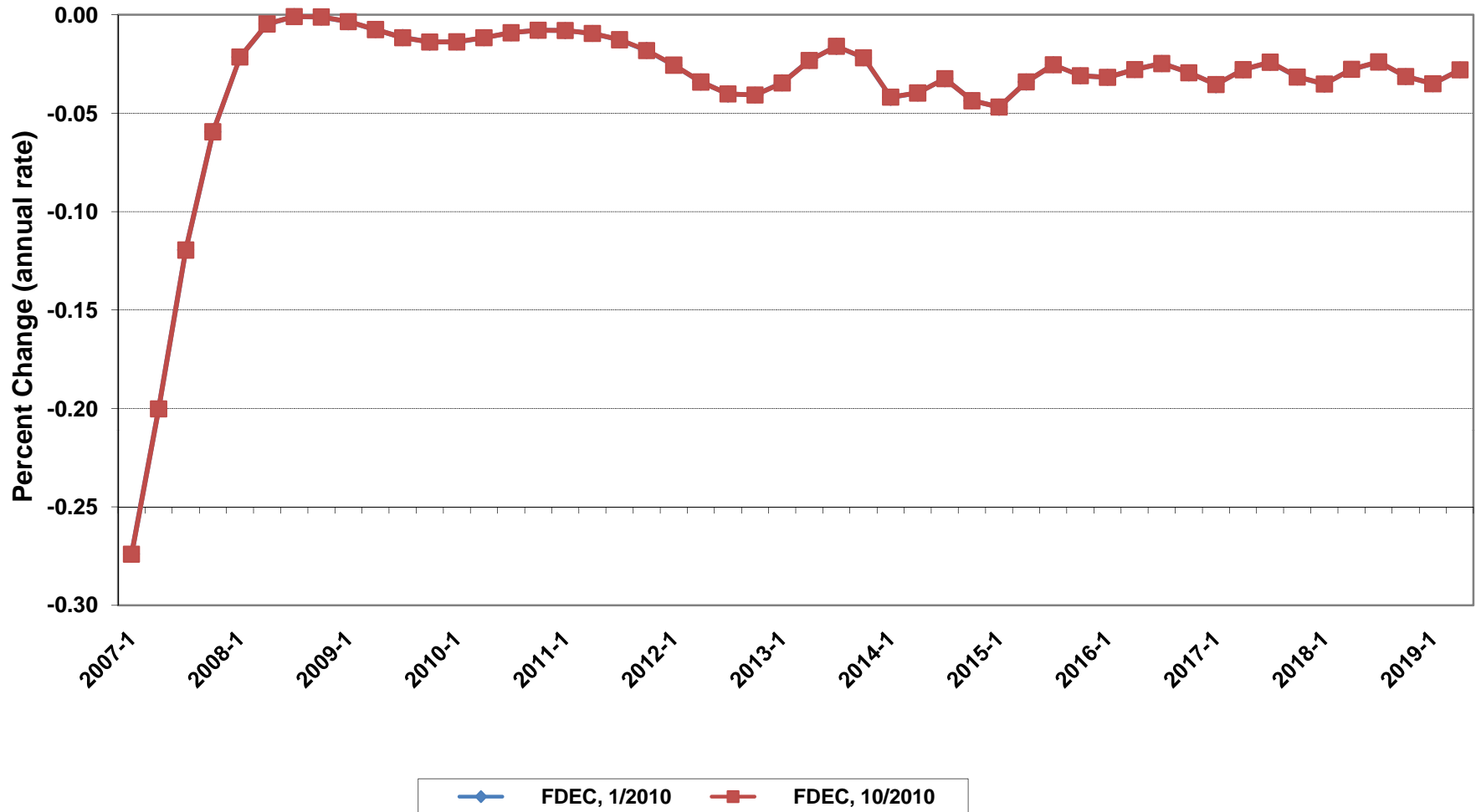
Net Change In Florida Resident Households



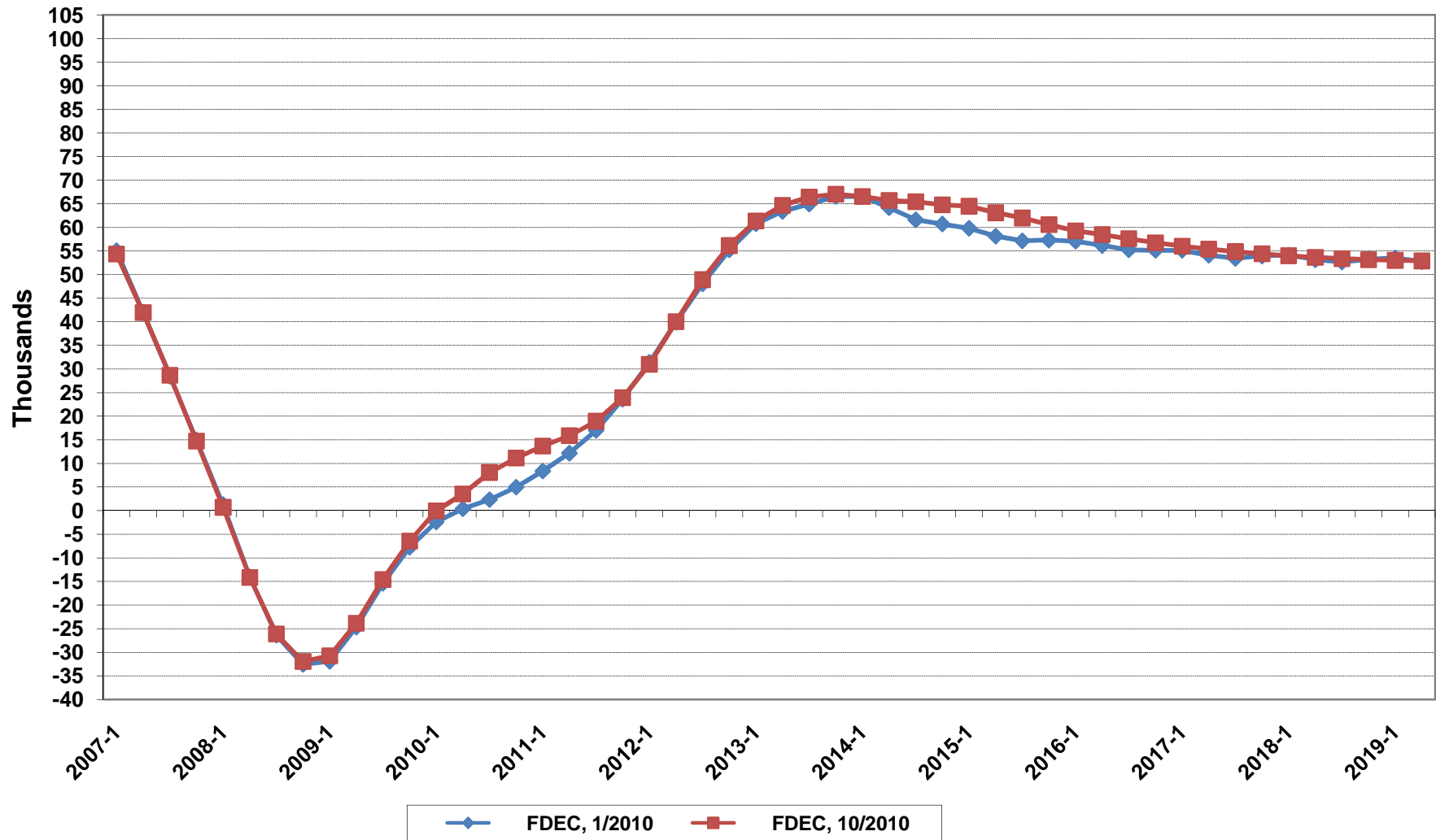
Florida Average Household Size



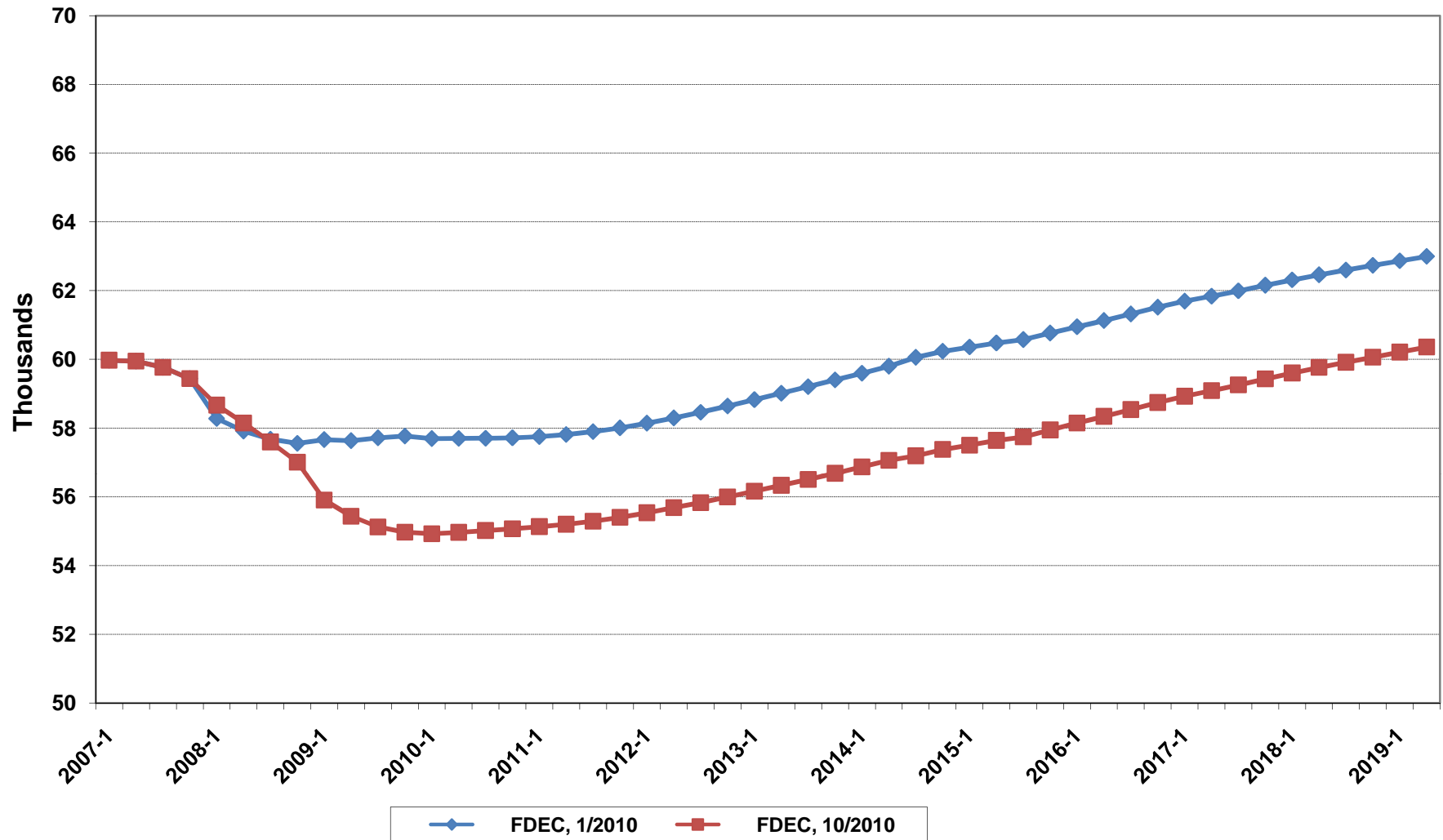
Growth In Florida Household Size



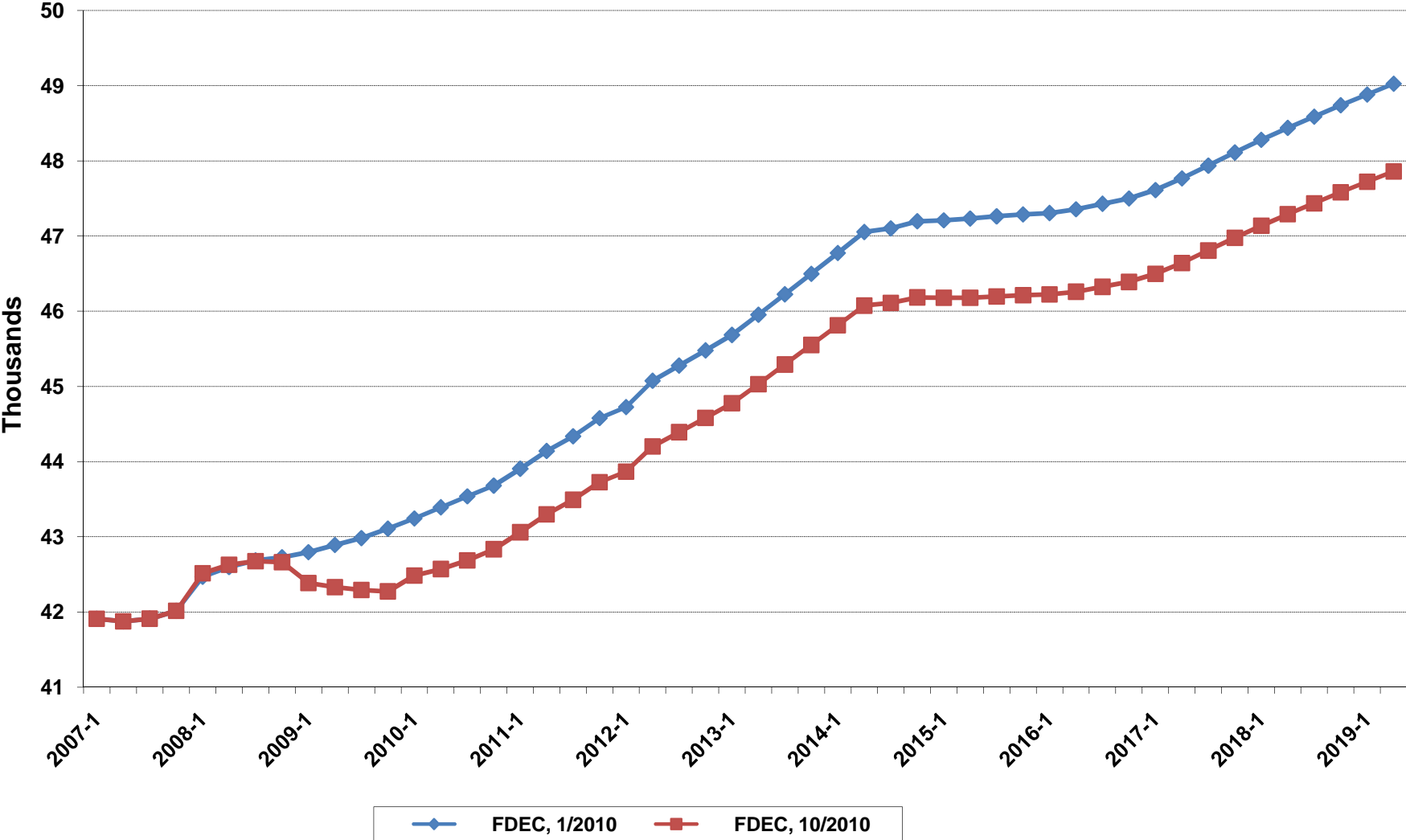
Florida Net Migration



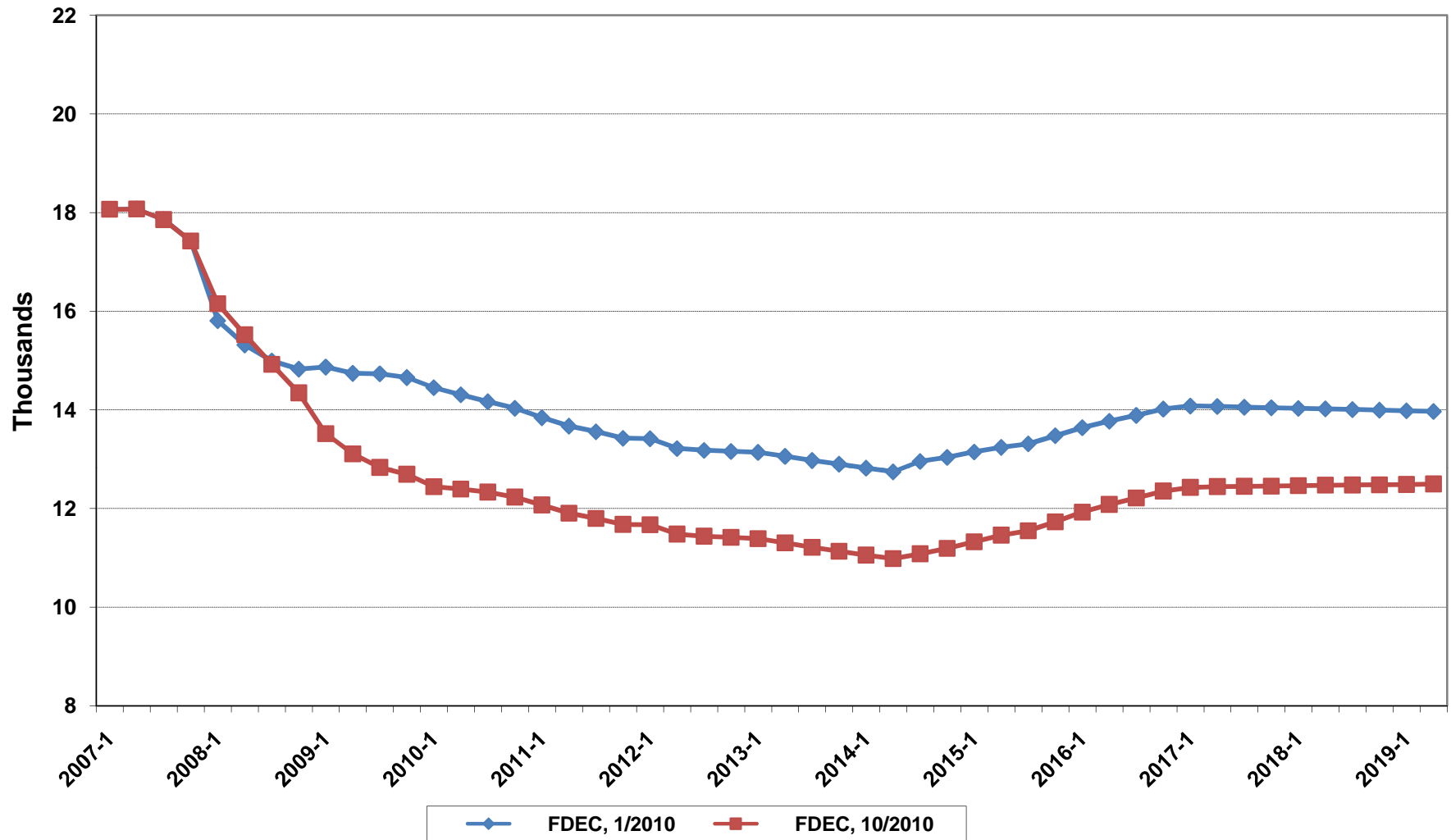
Florida Resident Births



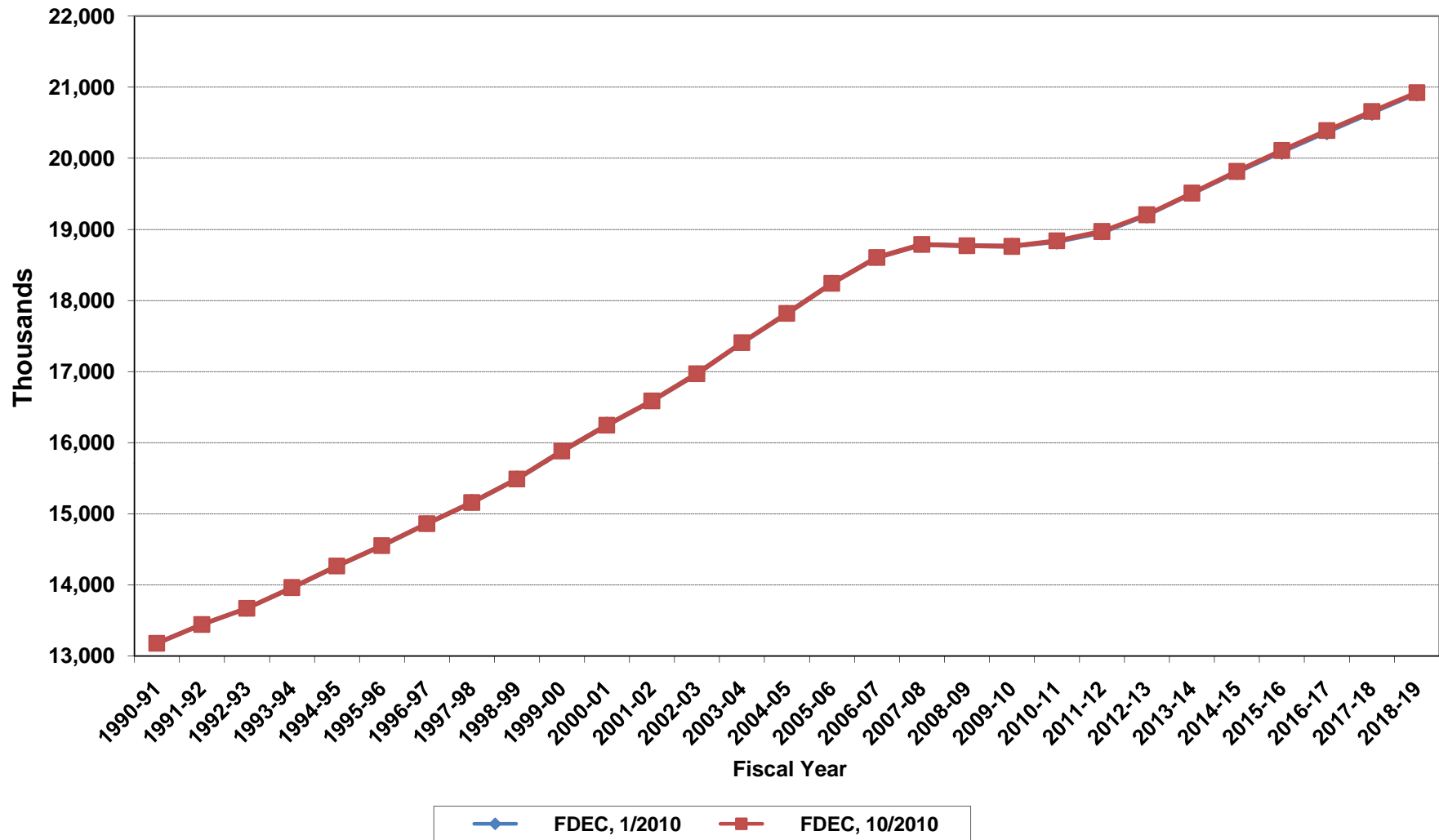
Florida Resident Deaths



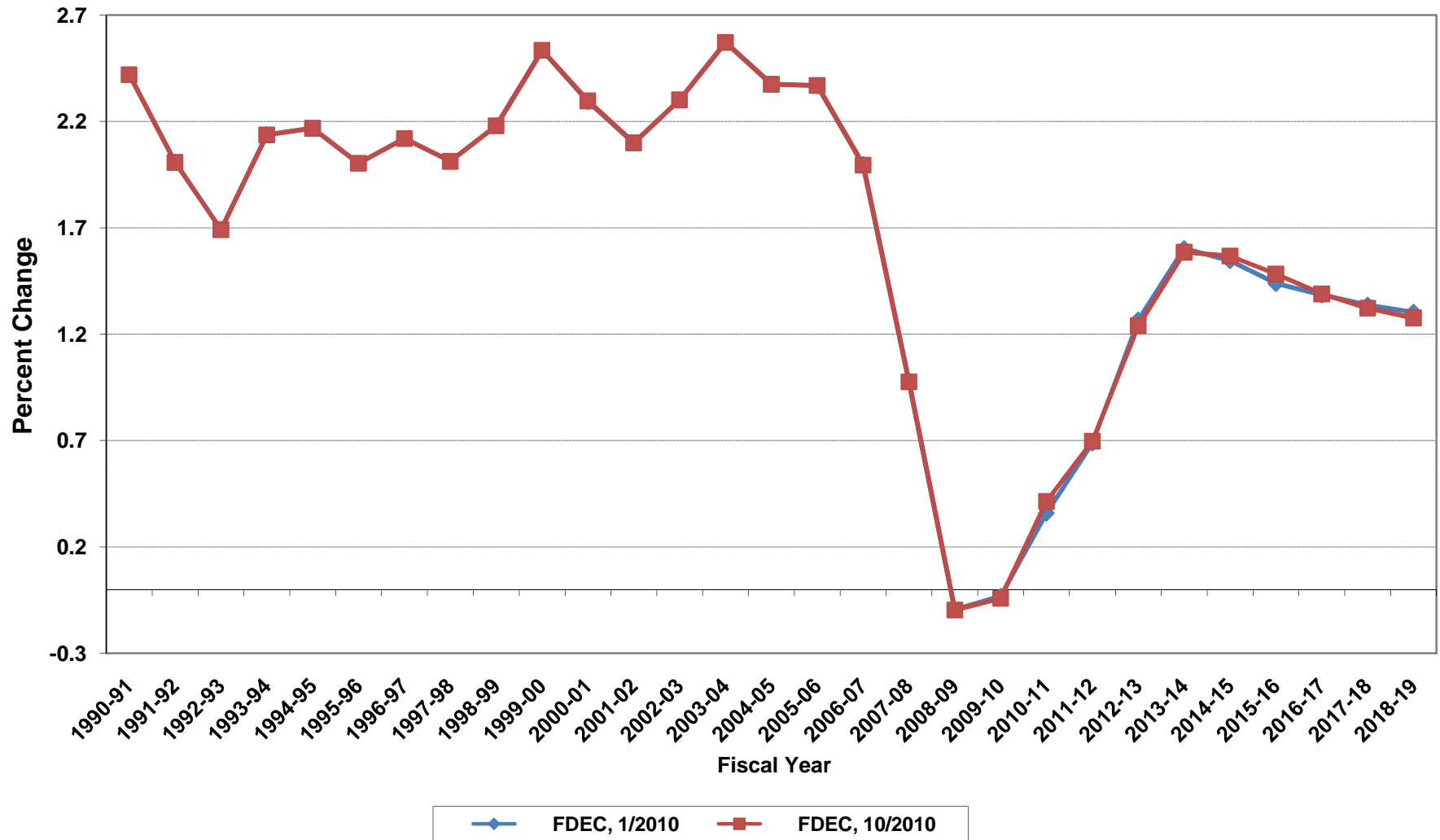
Florida Net Natural Increase



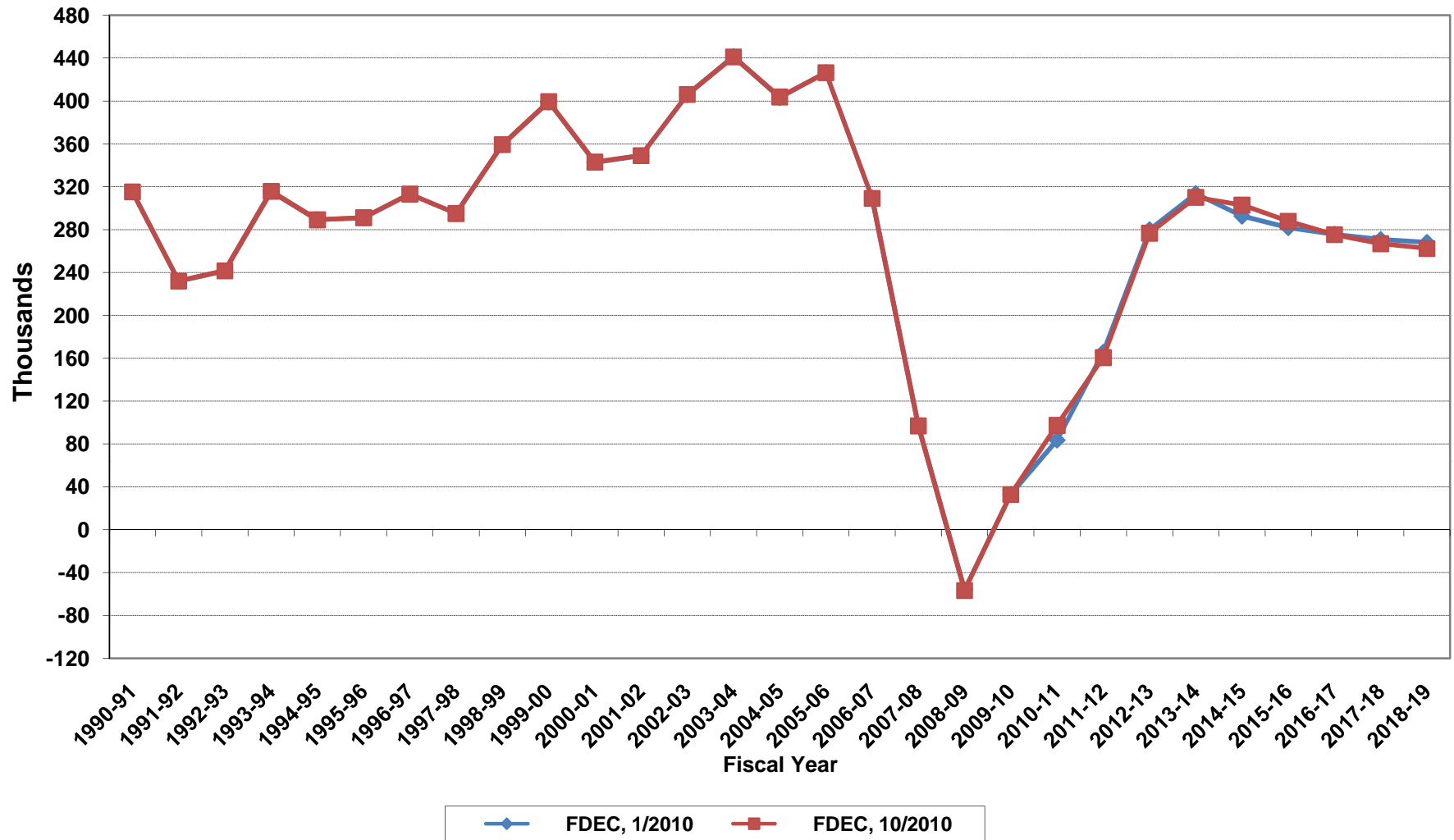
Florida Resident Population



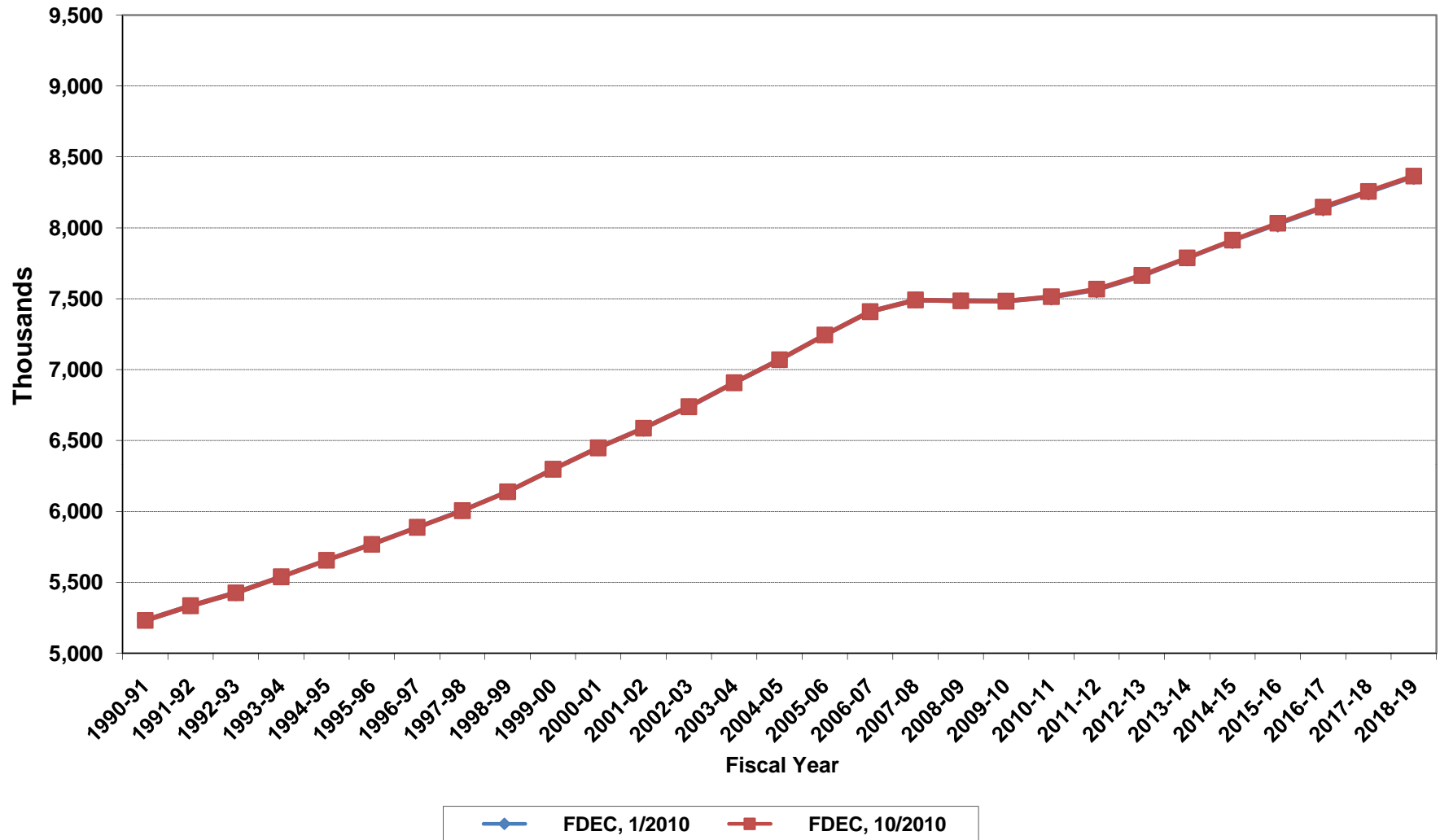
Growth In Florida Resident Population



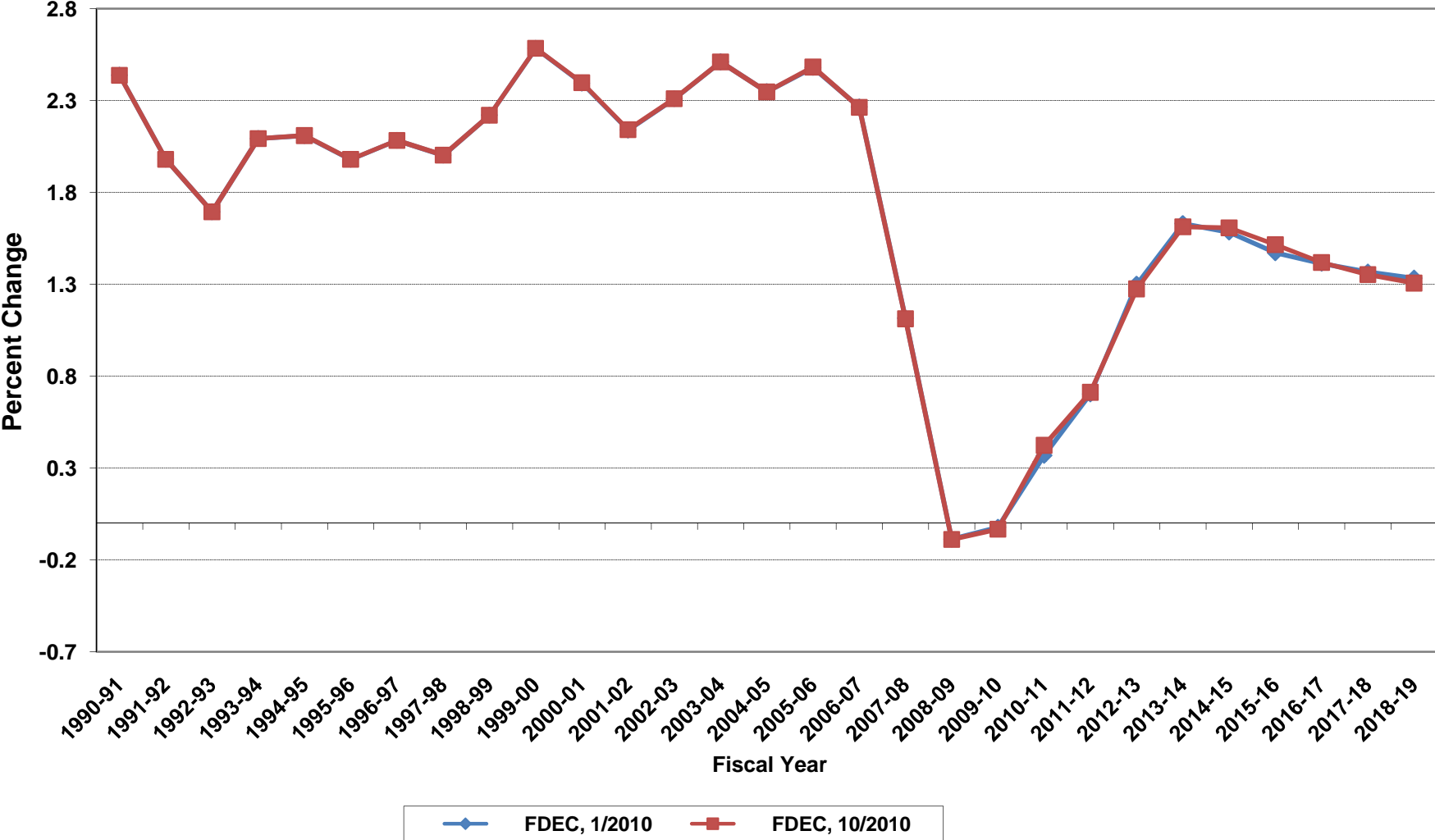
Net Change In Florida Resident Population



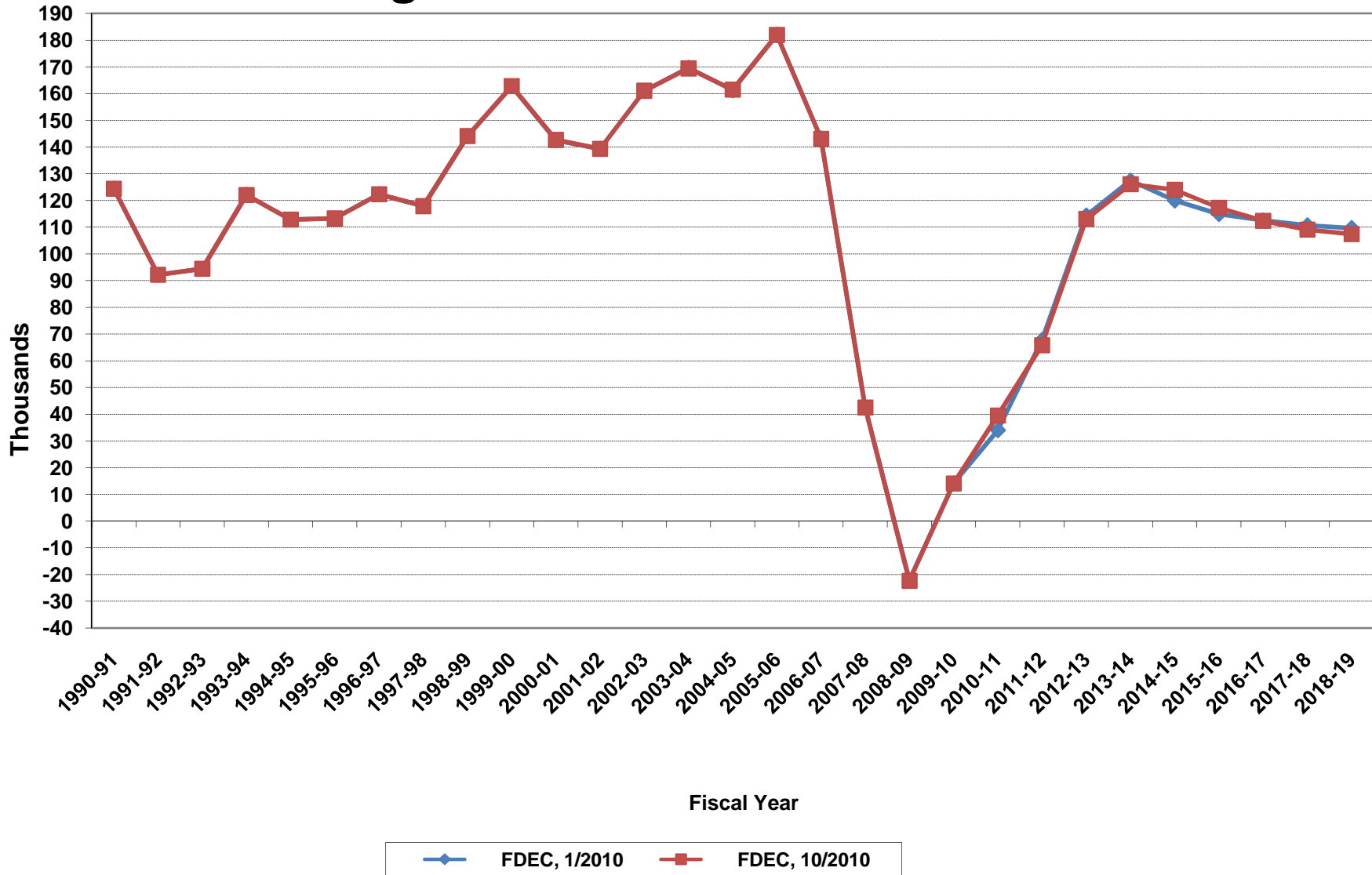
Florida Resident Households



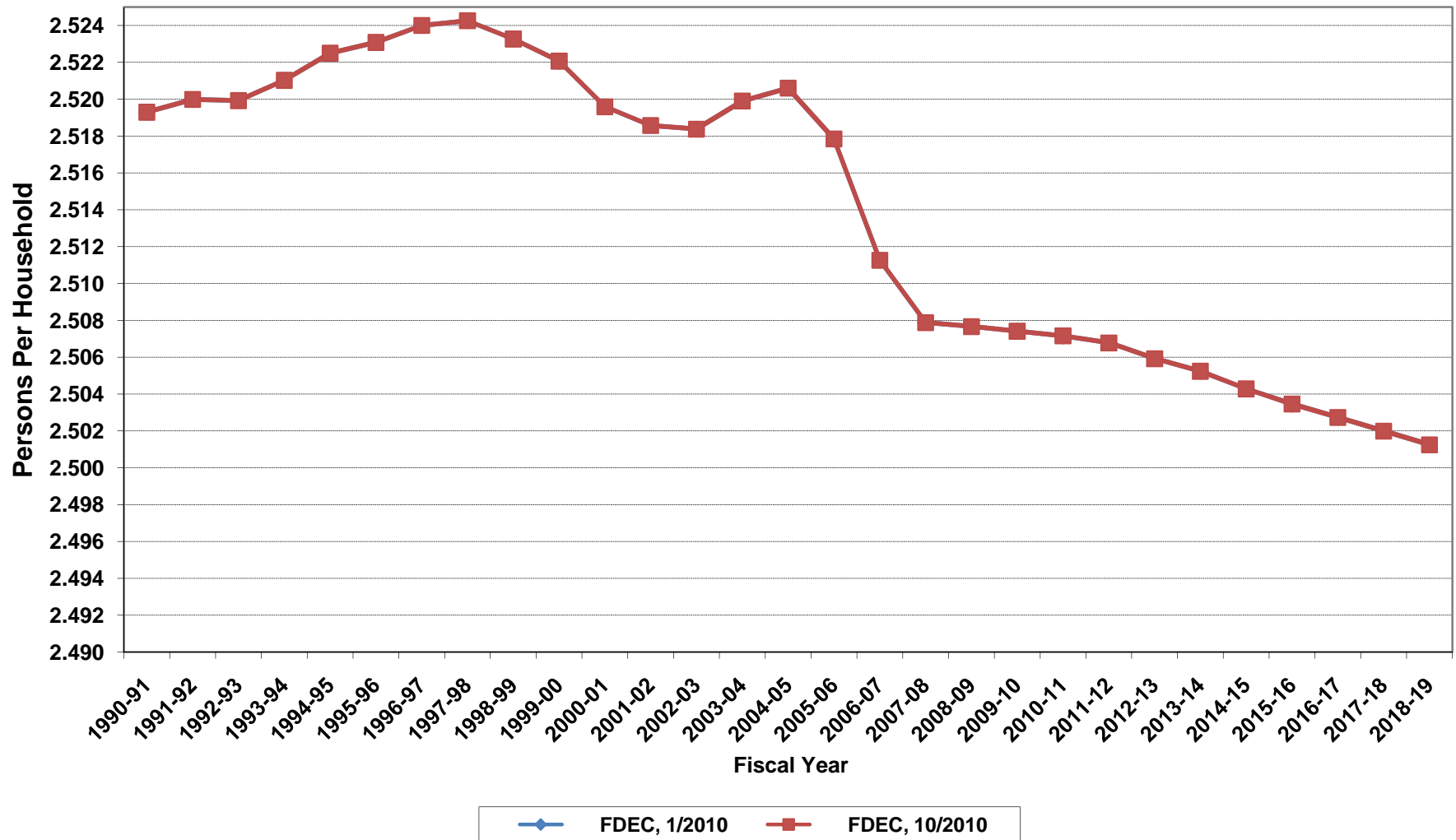
Growth In Florida Resident Households



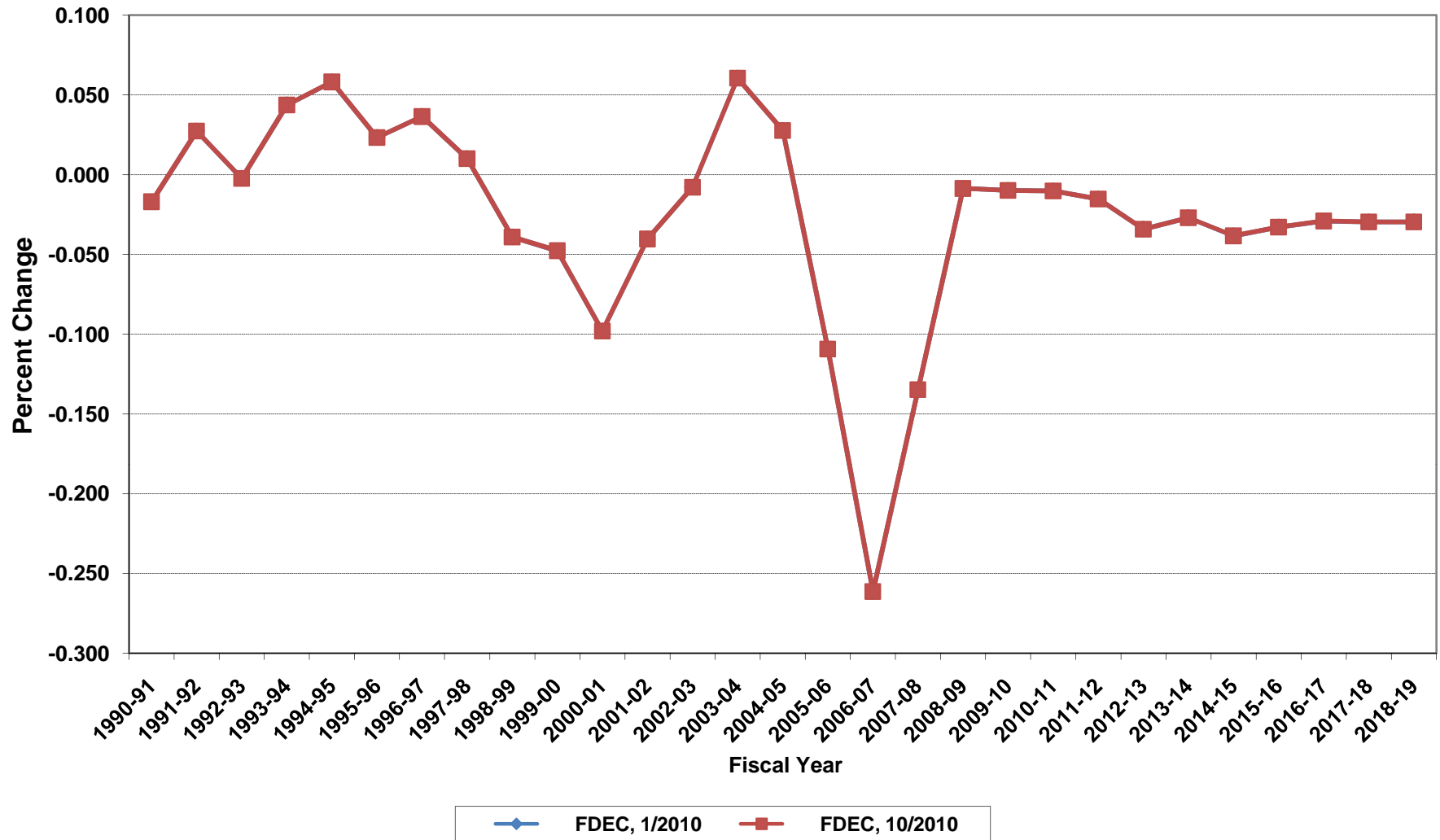
Net Change In Florida Resident Households



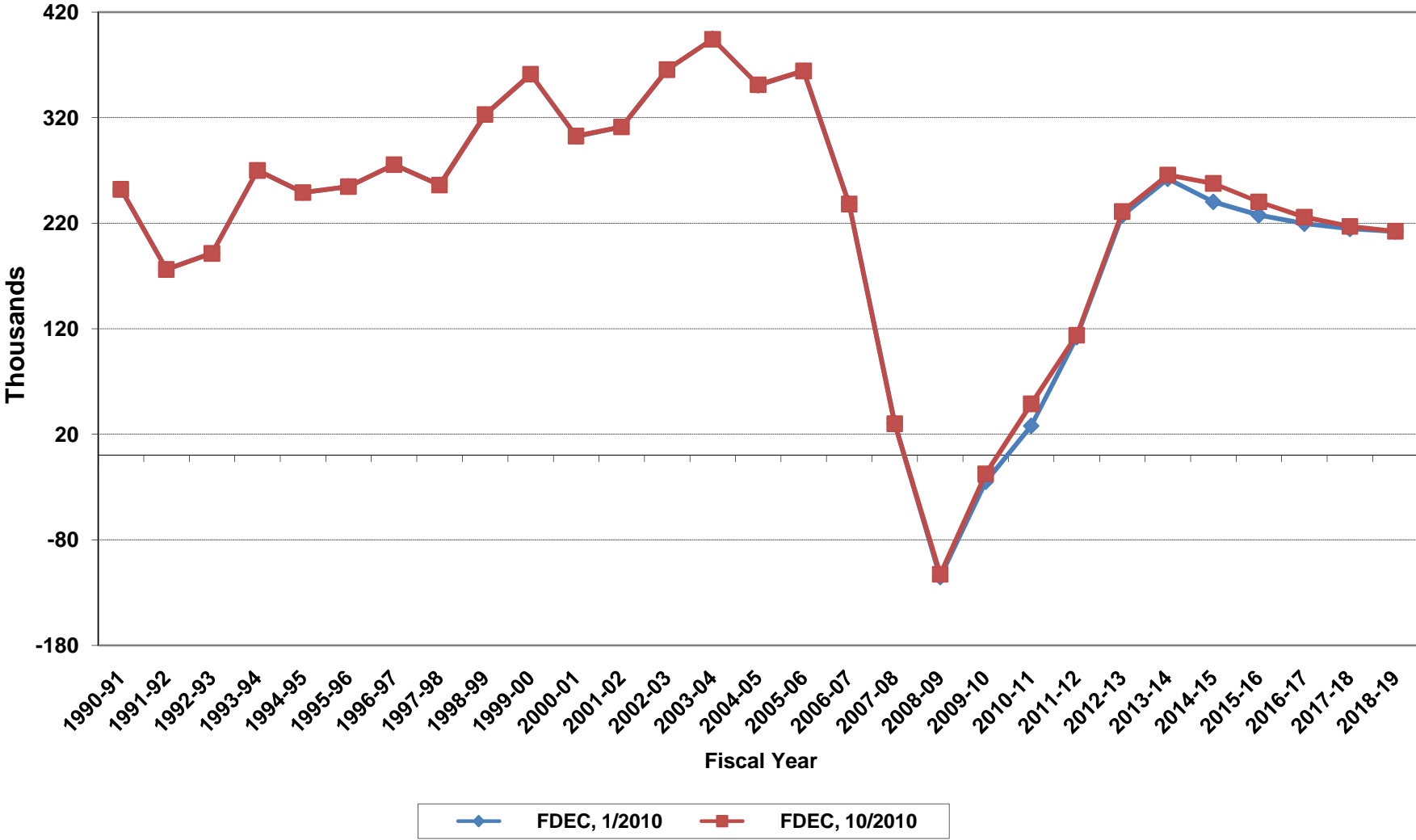
Average Florida Household Size



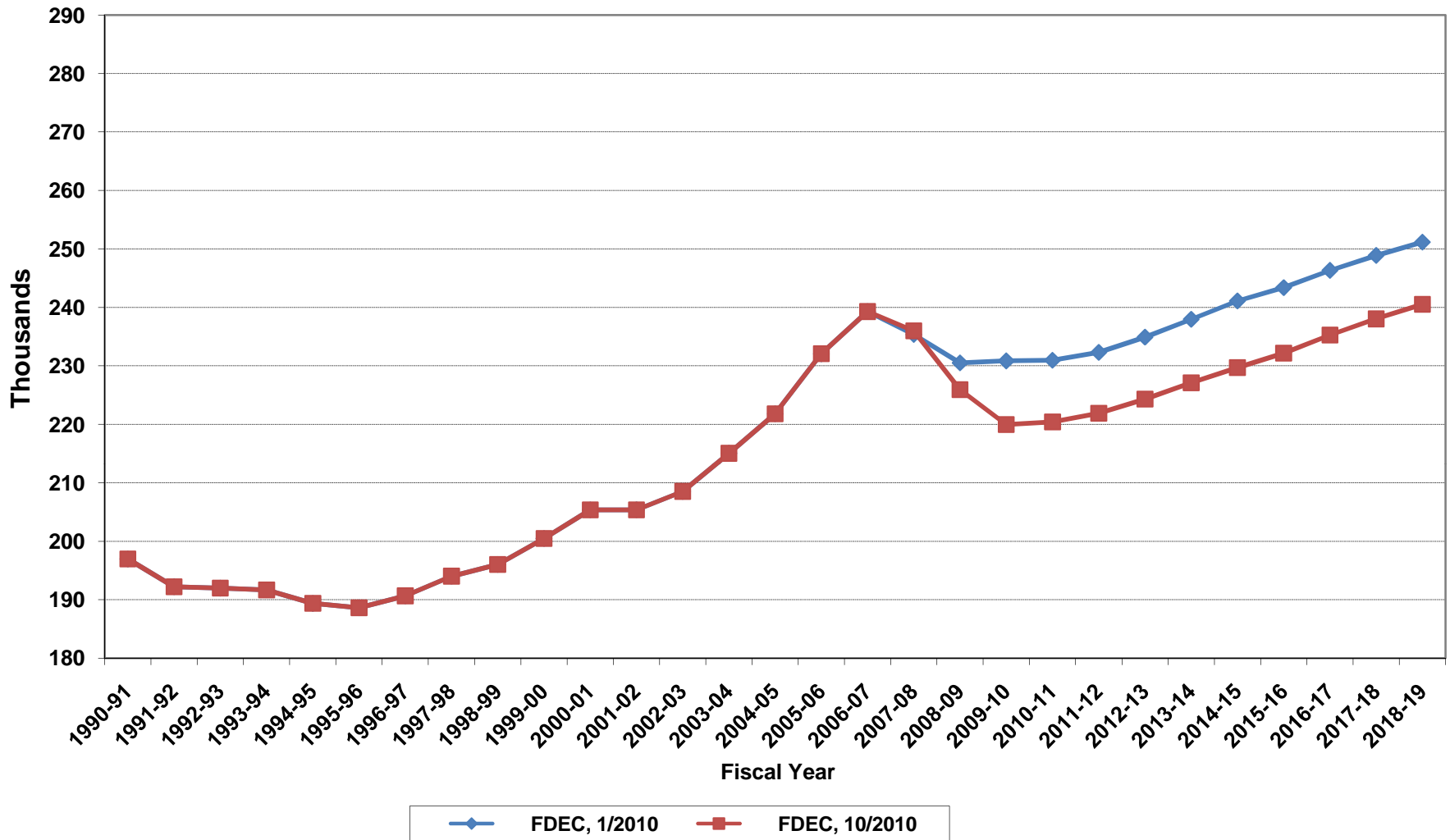
Growth In Average Florida Household Size



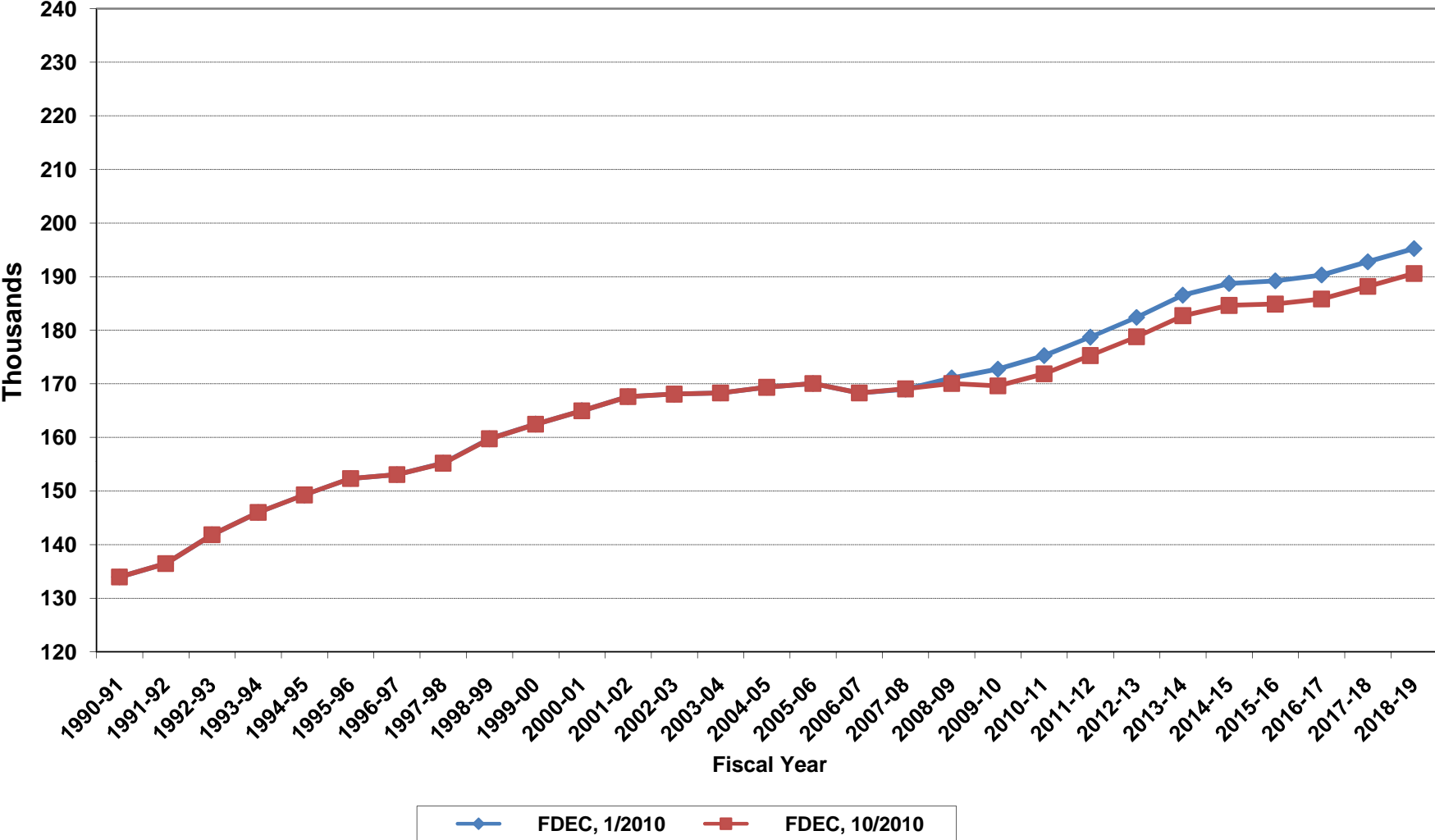
Florida Net Migration



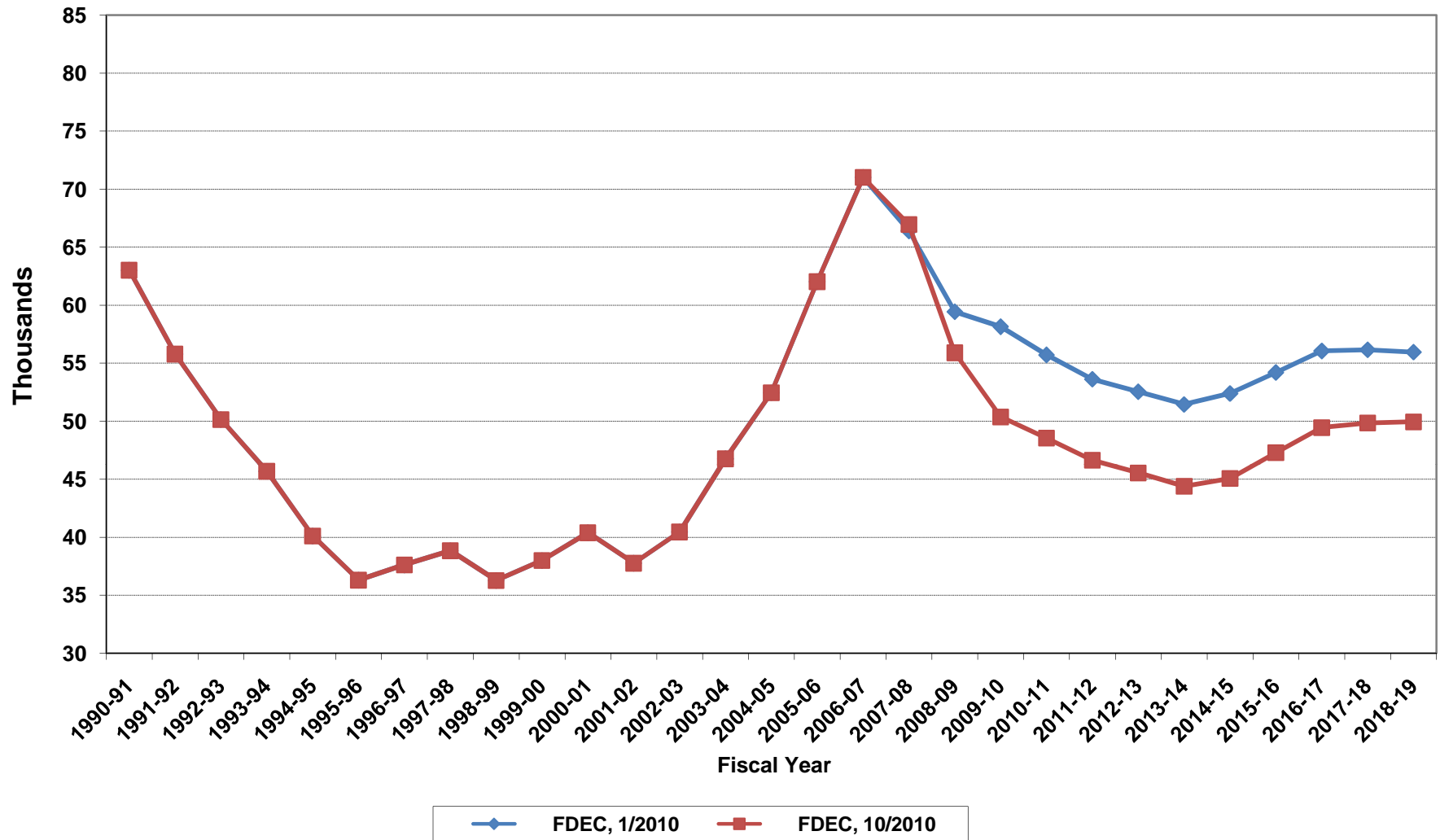
Florida Resident Live Births



Florida Resident Deaths



Florida Net Natural Increase



FLORIDA POPULATION AND COMPONENTS OF CHANGE

Fiscal Year	Population (end of FY)	Growth Rate	Annual Change in Population	Births	Deaths	Net Natural Increase	Net Migration
1950-51	2,980,000	6.05	170,000	67,604	27,186	40,418	129,582
1951-52	3,157,000	5.94	177,000	72,118	28,476	43,642	133,358
1952-53	3,310,000	4.85	153,000	77,156	29,856	47,300	105,700
1953-54	3,505,000	5.89	195,000	82,685	31,035	51,650	143,350
1954-55	3,747,000	6.90	242,000	86,265	32,083	54,182	187,818
1955-56	4,047,000	8.01	300,000	93,431	35,022	58,409	241,591
1956-57	4,372,000	8.03	325,000	100,811	38,319	62,492	262,508
1957-58	4,630,000	5.90	258,000	106,019	41,797	64,222	193,778
1958-59	4,808,000	3.84	178,000	110,457	43,746	66,711	111,289
1959-60	5,001,937	4.03	193,937	114,398	46,063	68,335	125,602
1960-61	5,185,560	3.67	183,623	116,419	48,302	68,117	115,506
1961-62	5,368,613	3.53	183,053	116,068	50,526	65,542	117,511
1962-63	5,552,114	3.42	183,501	114,946	54,302	60,644	122,857
1963-64	5,735,571	3.30	183,457	114,775	56,213	58,562	124,895
1964-65	5,884,050	2.59	148,479	110,465	57,868	52,597	95,882
1965-66	6,065,135	3.08	181,085	104,503	60,875	43,628	137,457
1966-67	6,250,236	3.05	185,101	101,129	62,765	38,364	146,737
1967-68	6,440,501	3.04	190,265	100,413	66,224	34,189	156,076
1968-69	6,632,001	2.97	191,500	104,362	71,133	33,229	158,271
1969-70	6,863,788	3.49	231,787	111,460	73,814	37,646	194,141
1970-71	7,233,605	5.39	369,817	117,071	75,362	41,709	328,108
1971-72	7,684,783	6.24	451,178	113,578	79,677	33,901	417,277
1972-73	8,157,779	6.15	472,996	107,692	86,284	21,408	451,588
1973-74	8,509,490	4.31	351,711	109,455	88,458	20,997	330,714
1974-75	8,650,224	1.65	140,734	108,752	87,185	21,567	119,167
1975-76	8,783,174	1.54	132,950	103,859	88,170	15,689	117,261
1976-77	8,973,716	2.17	190,542	107,735	90,432	17,303	173,239
1977-78	9,226,396	2.82	252,680	112,265	93,372	18,893	233,787
1978-79	9,519,160	3.17	292,764	116,269	96,826	19,443	273,321
1979-80	9,843,544	3.41	324,384	126,759	100,958	25,801	298,583

FLORIDA POPULATION AND COMPONENTS OF CHANGE

Fiscal Year	Population (end of FY)	Growth Rate	Annual Change in Population	Births	Deaths	Net Natural Increase	Net Migration
1980-81	10,218,346	3.81	374,802	135,511	107,686	27,825	346,977
1981-82	10,492,578	2.68	274,232	141,562	108,533	33,029	241,203
1982-83	10,750,266	2.46	257,688	146,890	110,534	36,356	221,332
1983-84	11,065,812	2.94	315,546	151,660	113,957	37,703	277,843
1984-85	11,405,171	3.07	339,359	159,879	117,469	42,410	296,949
1985-86	11,740,597	2.94	335,426	165,837	122,536	43,301	292,125
1986-87	12,083,205	2.92	342,608	170,743	124,846	45,897	296,711
1987-88	12,410,087	2.71	326,882	179,610	129,473	50,137	276,745
1988-89	12,723,453	2.53	313,366	188,272	131,997	56,275	257,091
1989-90	13,019,574	2.33	296,121	197,265	132,461	64,804	231,317
1990-91	13,323,139	2.33	303,565	197,197	134,147	63,050	240,515
1991-92	13,552,830	1.72	229,691	191,702	136,199	55,503	174,188
1992-93	13,804,917	1.86	252,087	192,150	142,167	49,983	202,104
1993-94	14,118,145	2.27	313,228	191,833	146,063	45,770	267,458
1994-95	14,407,012	2.05	288,867	189,272	149,127	40,145	248,722
1995-96	14,701,478	2.04	294,466	188,601	152,628	35,973	258,493
1996-97	15,010,271	2.10	308,793	190,552	153,018	37,534	271,259
1997-98	15,312,639	2.01	302,368	194,305	155,044	39,261	263,107
1998-99	15,680,103	2.40	367,464	195,827	160,050	35,777	331,687
1999-00	16,072,926	2.51	392,823	200,271	162,446	37,825	354,998
2000-01	16,413,722	2.12	340,796	205,370	164,977	40,393	300,403
2001-02	16,767,428	2.15	353,706	205,385	167,617	37,768	315,938
2002-03	17,182,474	2.48	415,046	208,536	168,080	40,456	374,590
2003-04	17,619,264	2.54	436,790	215,049	168,288	46,761	390,029
2004-05	18,025,114	2.30	405,850	221,810	169,358	52,452	353,398
2005-06	18,446,847	2.34	421,733	232,082	170,059	62,023	359,710
2006-07	18,733,900	1.56	287,053	239,308	168,304	71,004	216,049
2007-08	18,800,942	0.36	67,042	236,015	169,065	66,950	92
2008-09	18,744,318	-0.30	-56,624	225,943	170,051	55,892	-112,516
2009-10	18,790,550	0.25	46,232	219,984	169,617	50,367	-4,135

FLORIDA POPULATION AND COMPONENTS OF CHANGE

Fiscal Year	Population (end of FY)	Growth Rate	Annual Change in Population	Births	Deaths	Net Natural Increase	Net Migration
2010-11	18,893,142	0.55	102,592	220,422	171,878	48,544	54,048
2011-12	19,068,513	0.93	175,371	221,914	175,280	46,634	128,737
2012-13	19,353,808	1.50	285,295	224,321	178,773	45,548	239,747
2013-14	19,663,770	1.60	309,962	227,116	182,725	44,391	265,571
2014-15	19,964,772	1.53	301,002	229,711	184,647	45,064	255,938
2015-16	20,250,596	1.43	285,824	232,173	184,885	47,288	238,536
2016-17	20,524,514	1.35	273,918	235,290	185,846	49,444	224,474
2017-18	20,790,520	1.30	266,006	238,048	188,204	49,844	216,162
2018-19	21,052,609	1.26	262,089	240,532	190,589	49,943	212,146
2019-20	21,314,760	1.25	262,151	242,488	192,702	49,786	212,365
2020-21	21,579,217	1.24	264,457	241,689	194,714	46,975	217,482
2021-22	21,844,857	1.23	265,640	243,850	197,932	45,918	219,722
2022-23	22,110,167	1.21	265,310	245,875	201,635	44,240	221,070
2023-24	22,373,634	1.19	263,467	247,921	205,433	42,488	220,979
2024-25	22,633,750	1.16	260,116	249,151	208,909	40,242	219,874
2025-26	22,889,525	1.13	255,775	249,316	212,257	37,059	218,716
2026-27	23,140,972	1.10	251,447	251,269	216,270	34,999	216,448
2027-28	23,388,219	1.07	247,247	253,507	219,837	33,670	213,577
2028-29	23,631,395	1.04	243,176	255,715	223,287	32,428	210,748
2029-30	23,870,629	1.01	239,234	257,902	226,673	31,229	208,005