

Florida Demographic Estimating Conference

Intercensal Population and Household Estimates
Conference Packet

July 12, 2011

Florida Resident Population

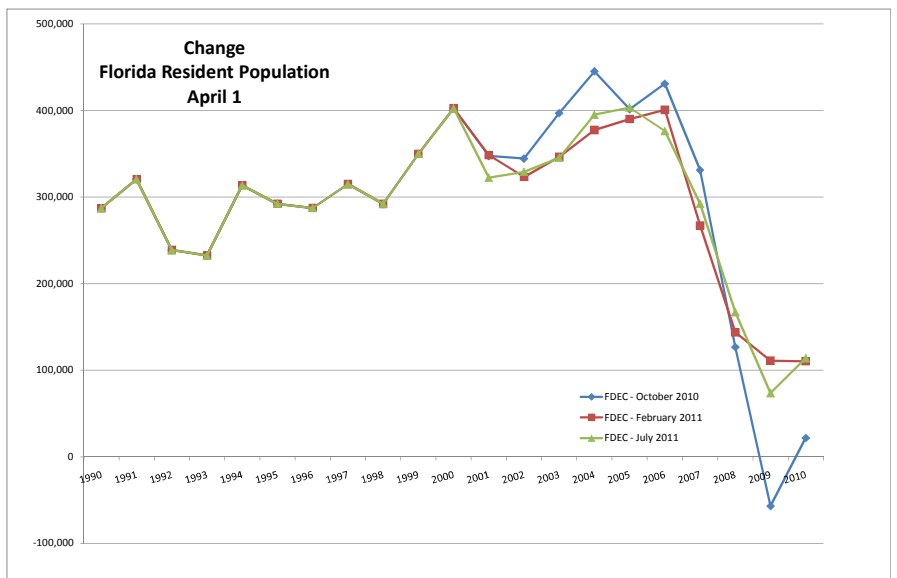
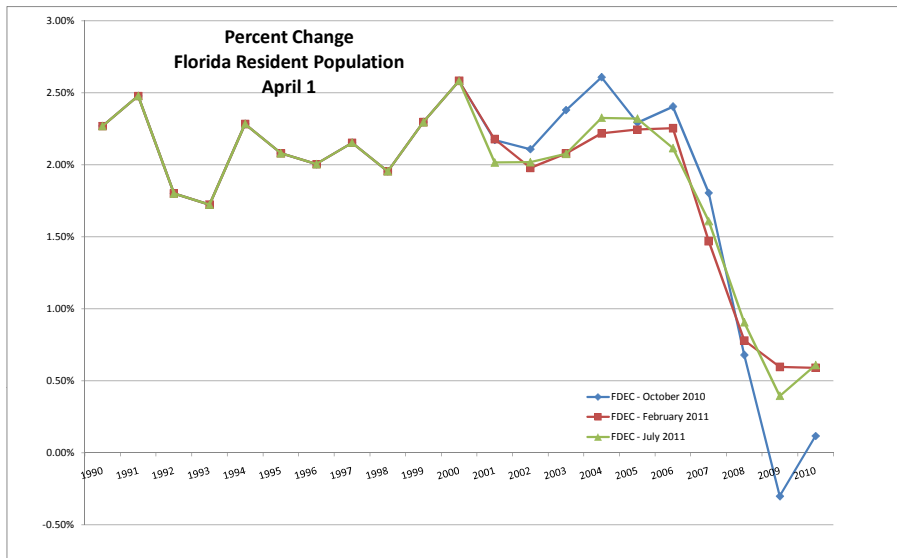
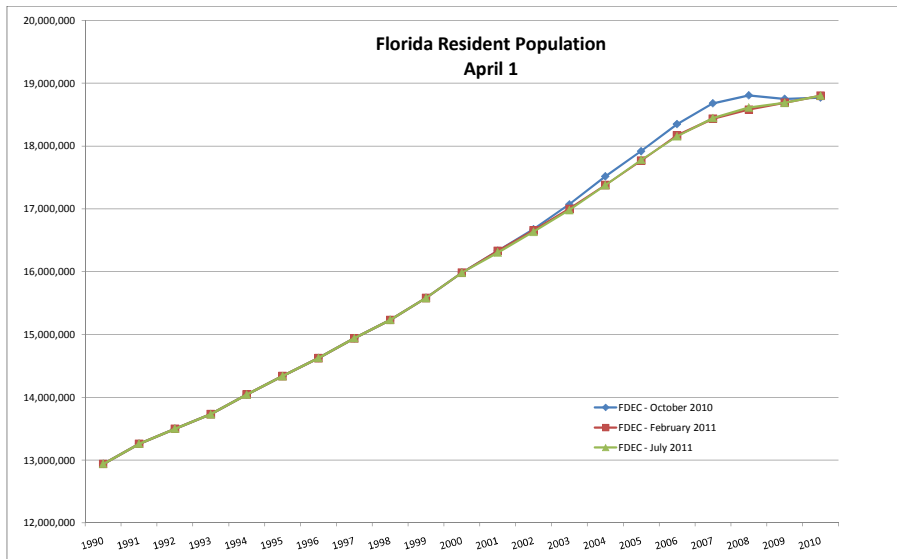
April 1

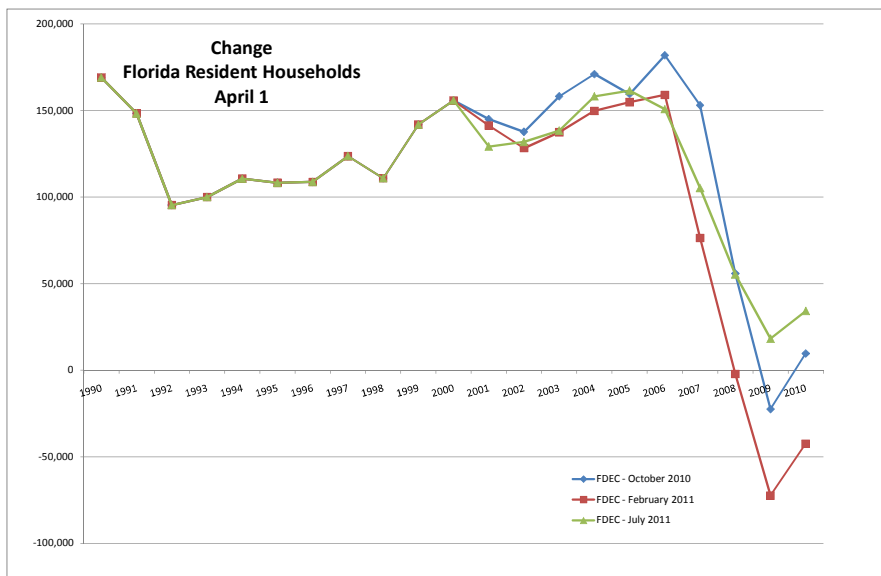
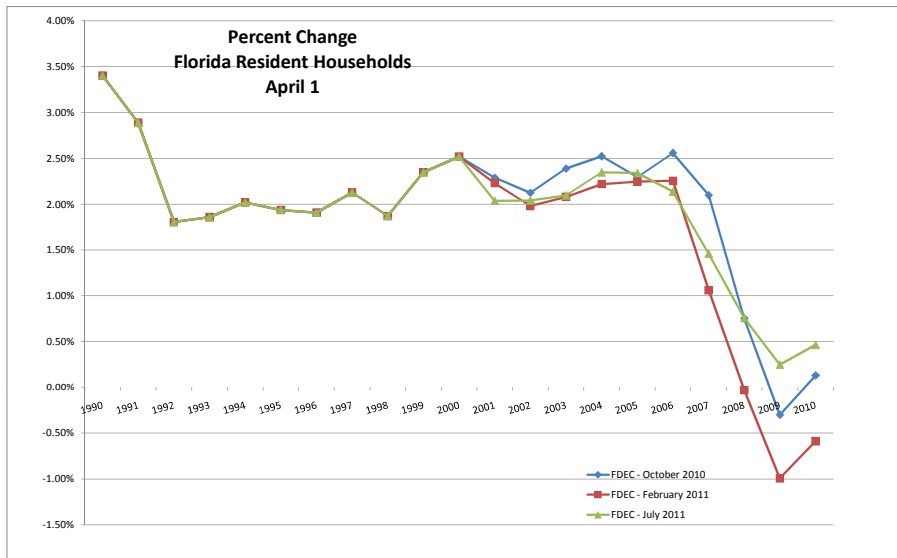
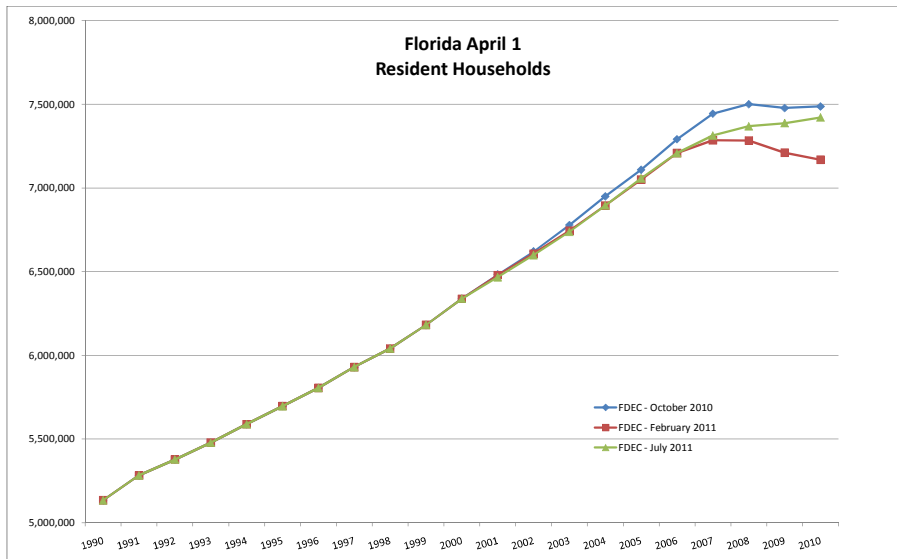
Year	FDEC, 10/10			FDEC, 2/11			FDEC, 7/11		
	Population	% Chg	Change	Population	% Chg	Change	Population	% Chg	Change
1990	12,938,071	2.27%	287,136	12,938,071	2.27%	287,136	12,938,071	2.27%	287,136
1991	13,258,732	2.48%	320,661	13,258,732	2.48%	320,661	13,258,732	2.48%	320,661
1992	13,497,541	1.80%	238,809	13,497,541	1.80%	238,809	13,497,541	1.80%	238,809
1993	13,730,115	1.72%	232,574	13,730,115	1.72%	232,574	13,730,115	1.72%	232,574
1994	14,043,757	2.28%	313,642	14,043,757	2.28%	313,642	14,043,757	2.28%	313,642
1995	14,335,992	2.08%	292,235	14,335,992	2.08%	292,235	14,335,992	2.08%	292,235
1996	14,623,421	2.00%	287,429	14,623,421	2.00%	287,429	14,623,421	2.00%	287,429
1997	14,938,314	2.15%	314,893	14,938,314	2.15%	314,893	14,938,314	2.15%	314,893
1998	15,230,421	1.96%	292,107	15,230,421	1.96%	292,107	15,230,421	1.96%	292,107
1999	15,580,244	2.30%	349,823	15,580,244	2.30%	349,823	15,580,244	2.30%	349,823
2000	15,982,824	2.58%	402,580	15,982,824	2.58%	402,580	15,982,824	2.58%	402,580
2001	16,330,224	2.17%	347,400	16,331,179	2.18%	348,355	16,305,100	2.02%	322,276
2002	16,674,608	2.11%	344,384	16,654,470	1.98%	323,291	16,634,256	2.02%	329,156
2003	17,071,508	2.38%	396,900	17,000,812	2.08%	346,342	16,979,706	2.08%	345,450
2004	17,516,732	2.61%	445,224	17,378,150	2.22%	377,338	17,374,824	2.33%	395,118
2005	17,918,227	2.29%	401,495	17,768,289	2.24%	390,139	17,778,156	2.32%	403,332
2006	18,349,132	2.40%	430,905	18,168,964	2.26%	400,675	18,154,475	2.12%	376,319
2007	18,680,367	1.81%	331,235	18,436,174	1.47%	267,210	18,446,768	1.61%	292,293
2008	18,807,219	0.68%	126,852	18,579,976	0.78%	143,802	18,613,905	0.91%	167,137
2009	18,750,483	-0.30%	-56,736	18,690,898	0.60%	110,922	18,687,425	0.39%	73,520
2010	18,772,352	0.12%	21,869	18,801,310	0.59%	110,412	18,801,310	0.61%	113,885
Begins forecast.									
2011	18,863,859	0.49%	91,507	18,920,975	0.64%	119,665	18,920,975	0.64%	119,665
2012	19,012,578	0.79%	148,719	19,073,170	0.80%	152,195	19,073,170	0.80%	152,195
2013	19,276,995	1.39%	264,417	19,340,145	1.40%	266,975	19,340,145	1.40%	266,975
2014	19,586,377	1.60%	309,382	19,656,210	1.63%	316,065	19,656,210	1.63%	316,065
2015	19,890,987	1.56%	304,610	19,974,415	1.62%	318,205	19,974,415	1.62%	318,205
2016	20,180,412	1.46%	289,425	20,274,309	1.50%	299,894	20,274,309	1.50%	299,894
2017	20,456,932	1.37%	276,520	20,552,516	1.37%	278,207	20,552,516	1.37%	278,207
2018	20,724,542	1.31%	267,610	20,816,013	1.28%	263,497	20,816,013	1.28%	263,497
2019	20,987,236	1.27%	262,694	21,071,781	1.23%	255,768	21,071,781	1.23%	255,768
5-Year Averages									
2020	21,249,007	1.33%	271,604	21,326,799	1.32%	270,477	21,326,799	1.32%	270,477
2025	22,569,115	1.21%	264,022	22,641,337	1.20%	262,908	22,641,337	1.20%	262,908
2030	23,811,183	1.08%	248,414	23,877,889	1.07%	247,310	23,877,889	1.07%	247,310

Florida Resident Households

April 1

Year	FDEC, 10/10			FDEC, 2/11			FDEC, 7/11			
	Households	% Chg	Change	Households	% Chg	Change	Households	% Chg	Change	
1990	5,134,869	3.40%	168,985	5,134,869	3.40%	168,985	5,134,869	3.40%	168,985	
1991	5,283,154	2.89%	148,285	5,283,154	2.89%	148,285	5,283,154	2.89%	148,285	
1992	5,378,499	1.80%	95,345	5,378,499	1.80%	95,345	5,378,499	1.80%	95,345	
1993	5,478,476	1.86%	99,977	5,478,476	1.86%	99,977	5,478,476	1.86%	99,977	
1994	5,589,093	2.02%	110,617	5,589,093	2.02%	110,617	5,589,093	2.02%	110,617	
1995	5,697,328	1.94%	108,235	5,697,328	1.94%	108,235	5,697,328	1.94%	108,235	
1996	5,806,031	1.91%	108,703	5,806,031	1.91%	108,703	5,806,031	1.91%	108,703	
1997	5,929,613	2.13%	123,582	5,929,613	2.13%	123,582	5,929,613	2.13%	123,582	
1998	6,040,514	1.87%	110,901	6,040,514	1.87%	110,901	6,040,514	1.87%	110,901	
1999	6,182,346	2.35%	141,832	6,182,346	2.35%	141,832	6,182,346	2.35%	141,832	
2000	6,338,075	2.52%	155,729	6,338,075	2.52%	155,729	6,338,075	2.52%	155,729	
2001	6,483,040	2.29%	144,965	6,479,362	2.23%	141,287	6,467,215	2.04%	129,140	
2002	6,620,674	2.12%	137,634	6,607,627	1.98%	128,265	6,599,035	2.04%	131,820	
2003	6,778,804	2.39%	158,130	6,745,038	2.08%	137,411	6,737,370	2.10%	138,335	
2004	6,949,759	2.52%	170,955	6,894,746	2.22%	149,708	6,895,469	2.35%	158,099	
2005	7,109,208	2.29%	159,449	7,049,533	2.24%	154,787	7,056,889	2.34%	161,420	
2006	7,291,013	2.56%	181,805	7,208,500	2.26%	158,967	7,207,645	2.14%	150,756	
2007	7,443,963	2.10%	152,950	7,284,901	1.06%	76,401	7,312,907	1.46%	105,262	
2008	7,499,799	0.75%	55,836	7,282,753	-0.03%	-2,148	7,368,319	0.76%	55,412	
2009	7,477,339	-0.30%	-22,460	7,210,402	-0.99%	-72,351	7,386,570	0.25%	18,251	
2010	7,487,010	0.13%	9,671	7,167,999	-0.59%	-42,403	7,420,802	0.46%	34,232	
Begins forecast.										
2011	7,525,544	0.51%	38,534	7,214,466	0.65%	46,467	7,468,908	0.65%	48,106	
2012	7,587,187	0.82%	61,643	7,276,548	0.86%	62,082	7,533,179	0.86%	64,271	
2013	7,697,932	1.46%	110,745	7,381,934	1.45%	105,386	7,642,282	1.45%	109,103	
2014	7,825,797	1.66%	127,865	7,536,247	2.09%	154,313	7,802,038	2.09%	159,756	
2015	7,943,643	1.51%	117,846	7,704,545	2.23%	168,298	7,976,272	2.23%	174,234	
2016	8,061,628	1.49%	117,985	7,868,451	2.13%	163,906	8,145,959	2.13%	169,687	
2017	8,174,496	1.40%	112,868	8,018,796	1.91%	150,345	8,301,606	1.91%	155,647	
2018	8,283,889	1.34%	109,393	8,157,702	1.73%	138,906	8,445,411	1.73%	143,805	
2019	8,391,371	1.30%	107,482	8,287,289	1.59%	129,587	8,579,568	1.59%	134,157	
			5-Year Averages				5-Year Averages			
2020	8,498,553	1.36%	110,982	8,409,676	1.77%	141,026	8,706,271	1.77%	146,000	
2025	9,040,242	1.24%	108,338	8,959,344	1.27%	109,934	9,275,325	1.27%	113,811	
2030	9,552,194	1.11%	102,390	9,458,963	1.09%	99,924	9,792,565	1.09%	103,448	





Florida Demographic Estimating Conference

Tables
Conference Packet

July 12, 2011

Quarterly Data Table

QUARTERLY FORECAST TABLES

	<u>2007-1</u>	<u>2007-2</u>	<u>2007-3</u>	<u>2007-4</u>	<u>2008-1</u>	<u>2008-2</u>	<u>2008-3</u>	<u>2008-4</u>	<u>2009-1</u>	<u>2009-2</u>	<u>2009-3</u>	<u>2009-4</u>	<u>2010-1</u>	<u>2010-2</u>	<u>2010-3</u>	<u>2010-4</u>	<u>2011-1</u>	<u>2011-2</u>	<u>2011-3</u>
Population																			
FDEC, 2/2011	18,409.8	18,457.9	18,498.3	18,533.5	18,565.0	18,594.2	18,622.2	18,649.8	18,677.2	18,704.3	18,731.3	18,758.9	18,787.1	18,815.6	18,844.7	18,874.6	18,905.4	18,936.6	18,969.1
FDEC, 7/2011	18,415.6	18,473.9	18,523.9	18,565.7	18,599.2	18,624.8	18,644.2	18,660.8	18,678.1	18,699.3	18,725.4	18,754.7	18,785.7	18,815.6	18,844.7	18,874.6	18,905.4	18,936.6	18,969.1
Population Growth Rate																			
FDEC, 2/2011	1.26	1.05	0.88	0.76	0.68	0.63	0.60	0.59	0.59	0.58	0.58	0.59	0.60	0.61	0.62	0.64	0.65	0.66	0.69
FDEC, 7/2011	1.45	1.27	1.09	0.91	0.72	0.55	0.42	0.36	0.37	0.46	0.56	0.63	0.66	0.64	0.62	0.64	0.65	0.66	0.69
Net Change in Population																			
FDEC, 2/2011	57.4	48.1	40.4	35.2	31.5	29.2	28.1	27.6	27.4	27.0	27.0	27.6	28.2	28.5	29.1	30.0	30.8	31.1	32.5
FDEC, 7/2011	66.2	58.3	50.0	41.8	33.5	25.6	19.4	16.6	17.3	21.2	26.0	29.4	30.9	29.9	29.1	30.0	30.8	31.1	32.5
Households																			
FDEC, 2/2011	7,279.3	7,288.2	7,292.7	7,292.5	7,286.9	7,275.8	7,259.9	7,240.8	7,220.6	7,201.4	7,185.2	7,173.5	7,168.6	7,171.8	7,183.1	7,195.1	7,207.8	7,221.2	7,235.0
FDEC, 7/2011	7,302.1	7,322.2	7,339.1	7,353.0	7,363.8	7,371.4	7,376.5	7,380.4	7,384.4	7,389.7	7,396.9	7,405.6	7,415.6	7,426.4	7,437.8	7,449.8	7,462.4	7,475.7	7,489.9
Household Growth Rate																			
FDEC, 2/2011	0.75	0.49	0.25	-0.01	-0.30	-0.61	-0.87	-1.05	-1.11	-1.06	-0.90	-0.65	-0.28	0.18	0.63	0.67	0.71	0.75	0.77
FDEC, 7/2011	1.27	1.10	0.93	0.76	0.58	0.41	0.28	0.21	0.22	0.29	0.39	0.47	0.54	0.58	0.62	0.65	0.68	0.71	0.76
Net Change in Households																			
FDEC, 2/2011	13.6	8.9	4.5	-0.2	-5.6	-11.1	-15.9	-19.1	-20.3	-19.2	-16.2	-11.6	-5.0	3.2	11.3	11.9	12.7	13.4	13.8
FDEC, 7/2011	23.1	20.0	17.0	13.9	10.7	7.6	5.1	3.9	4.0	5.3	7.2	8.8	9.9	10.8	11.4	12.0	12.6	13.3	14.2
Household Size																			
FDEC, 2/2011	2.529	2.533	2.537	2.541	2.548	2.556	2.565	2.576	2.587	2.597	2.607	2.615	2.621	2.624	2.623	2.623	2.623	2.622	2.622
FDEC, 7/2011	2.522	2.523	2.524	2.525	2.526	2.527	2.528	2.528	2.529	2.530	2.532	2.532	2.533	2.534	2.534	2.534	2.533	2.533	2.533
Household Size Growth Rate																			
FDEC, 2/2011	0.50	0.56	0.63	0.78	0.99	1.25	1.49	1.66	1.72	1.65	1.49	1.25	0.88	0.43	-0.01	-0.03	-0.05	-0.08	-0.08
FDEC, 7/2011	0.17	0.17	0.16	0.14	0.14	0.14	0.14	0.15	0.15	0.17	0.17	0.15	0.12	0.05	0.00	-0.01	-0.03	-0.05	-0.07
Net Migration																			
FDEC, 2/2011	39.3	30.0	22.5	17.7	15.3	13.7	13.1	13.3	13.7	13.9	14.4	15.5	16.8	17.4	18.0	19.0	19.9	20.4	21.9
FDEC, 7/2011	48.1	40.2	32.2	24.4	17.3	10.0	4.5	2.3	3.7	8.1	13.4	17.3	19.5	18.8	18.0	19.0	19.9	20.4	21.9
Births																			
FDEC, 2/2011	60.0	59.9	59.8	59.4	58.7	58.1	57.6	57.0	56.2	55.6	55.1	54.6	53.9	53.6	53.7	53.8	53.9	54.0	54.1
FDEC, 7/2011	60.0	59.9	59.8	59.4	58.7	58.1	57.6	57.0	56.2	55.6	55.1	54.6	53.9	53.6	53.7	53.8	53.9	54.0	54.1
Deaths																			
FDEC, 2/2011	41.9	41.9	41.9	42.0	42.5	42.6	42.7	42.7	42.5	42.5	42.5	42.4	42.5	42.5	42.6	42.7	43.0	43.2	43.4
FDEC, 7/2011	41.9	41.9	41.9	42.0	42.5	42.6	42.7	42.7	42.5	42.5	42.5	42.4	42.5	42.5	42.6	42.7	43.0	43.2	43.4
Net Natural Increase																			
FDEC, 2/2011	18.1	18.1	17.9	17.4	16.2	15.5	14.9	14.3	13.7	13.1	12.6	12.1	11.4	11.1	11.1	11.0	10.9	10.7	10.7
FDEC, 7/2011	18.1	18.1	17.9	17.4	16.2	15.5	14.9	14.3	13.7	13.1	12.6	12.1	11.4	11.1	11.1	11.0	10.9	10.7	10.7

Quarterly Data Table

QUARTERLY FORECAST TABLES

	<u>2011-4</u>	<u>2012-1</u>	<u>2012-2</u>	<u>2012-3</u>	<u>2012-4</u>	<u>2013-1</u>	<u>2013-2</u>	<u>2013-3</u>	<u>2013-4</u>	<u>2014-1</u>	<u>2014-2</u>	<u>2014-3</u>	<u>2014-4</u>	<u>2015-1</u>	<u>2015-2</u>	<u>2015-3</u>	<u>2015-4</u>	<u>2016-1</u>	<u>2016-2</u>
Population																			
FDEC, 2/2011	19,004.5	19,047.6	19,098.7	19,157.7	19,226.3	19,301.3	19,379.0	19,457.4	19,536.7	19,616.1	19,696.3	19,776.3	19,855.8	19,935.2	20,013.0	20,089.7	20,164.6	20,238.0	20,310.0
FDEC, 7/2011	19,004.5	19,047.6	19,098.7	19,157.7	19,226.3	19,301.3	19,379.0	19,457.4	19,536.7	19,616.1	19,696.3	19,776.3	19,855.8	19,935.2	20,013.0	20,089.7	20,164.6	20,238.0	20,310.0
Population Growth Rate																			
FDEC, 2/2011	0.75	0.91	1.08	1.24	1.44	1.57	1.62	1.63	1.64	1.64	1.64	1.64	1.62	1.61	1.57	1.54	1.50	1.46	1.43
FDEC, 7/2011	0.75	0.91	1.08	1.24	1.44	1.57	1.62	1.63	1.64	1.64	1.64	1.64	1.62	1.61	1.57	1.54	1.50	1.46	1.43
Net Change in Population																			
FDEC, 2/2011	35.4	43.2	51.1	59.0	68.6	75.0	77.6	78.4	79.3	79.5	80.2	80.0	79.5	79.3	77.8	76.6	74.9	73.4	72.0
FDEC, 7/2011	35.4	43.2	51.1	59.0	68.6	75.0	77.6	78.4	79.3	79.5	80.2	80.0	79.5	79.3	77.8	76.6	74.9	73.4	72.0
Households																			
FDEC, 2/2011	7,249.5	7,265.7	7,287.4	7,310.8	7,337.0	7,366.8	7,397.0	7,435.8	7,475.5	7,515.8	7,556.7	7,598.1	7,640.1	7,682.9	7,725.7	7,767.6	7,808.6	7,848.6	7,887.8
FDEC, 7/2011	7,505.7	7,523.6	7,544.3	7,568.1	7,595.2	7,626.0	7,660.4	7,698.2	7,738.6	7,780.7	7,823.7	7,867.2	7,910.8	7,954.5	7,997.9	8,041.0	8,083.6	8,125.3	8,166.1
Household Growth Rate																			
FDEC, 2/2011	0.81	0.89	1.20	1.29	1.44	1.64	1.65	2.11	2.15	2.17	2.20	2.21	2.23	2.26	2.25	2.19	2.13	2.07	2.01
FDEC, 7/2011	0.84	0.96	1.10	1.27	1.44	1.63	1.82	1.99	2.11	2.19	2.23	2.24	2.24	2.23	2.20	2.17	2.13	2.08	2.02
Net Change in Households																			
FDEC, 2/2011	14.5	16.1	21.8	23.3	26.2	29.8	30.2	38.8	39.7	40.3	40.9	41.4	42.0	42.8	42.8	41.9	41.0	40.1	39.2
FDEC, 7/2011	15.8	17.9	20.7	23.8	27.2	30.8	34.4	37.8	40.4	42.1	43.0	43.5	43.6	43.7	43.5	43.1	42.5	41.7	40.8
Household Size																			
FDEC, 2/2011	2.621	2.622	2.621	2.620	2.620	2.620	2.620	2.617	2.613	2.610	2.606	2.603	2.599	2.595	2.590	2.586	2.582	2.579	2.575
FDEC, 7/2011	2.532	2.532	2.532	2.531	2.531	2.531	2.530	2.528	2.525	2.521	2.518	2.514	2.510	2.506	2.502	2.498	2.495	2.491	2.487
Household Size Growth Rate																			
FDEC, 2/2011	-0.06	0.02	-0.13	-0.05	0.00	-0.07	-0.03	-0.48	-0.50	-0.52	-0.54	-0.56	-0.60	-0.64	-0.66	-0.63	-0.61	-0.59	-0.57
FDEC, 7/2011	-0.10	-0.05	-0.03	-0.03	0.00	-0.06	-0.20	-0.35	-0.46	-0.55	-0.57	-0.59	-0.61	-0.60	-0.62	-0.62	-0.62	-0.61	-0.58
Net Migration																			
FDEC, 2/2011	24.8	32.6	40.6	48.5	58.1	64.5	67.2	68.0	69.0	69.2	70.0	69.8	69.1	68.8	67.2	66.0	64.2	62.5	60.9
FDEC, 7/2011	24.8	32.6	40.6	48.5	58.1	64.5	67.2	68.0	69.0	69.2	70.0	69.8	69.1	68.8	67.2	66.0	64.2	62.5	60.9
Births																			
FDEC, 2/2011	54.2	54.4	54.6	54.8	55.1	55.3	55.5	55.7	55.9	56.1	56.3	56.4	56.6	56.7	56.8	56.9	57.0	57.2	57.4
FDEC, 7/2011	54.2	54.4	54.6	54.8	55.1	55.3	55.5	55.7	55.9	56.1	56.3	56.4	56.6	56.7	56.8	56.9	57.0	57.2	57.4
Deaths																			
FDEC, 2/2011	43.7	43.8	44.2	44.4	44.6	44.8	45.1	45.3	45.6	45.8	46.1	46.1	46.2	46.2	46.2	46.3	46.3	46.3	46.3
FDEC, 7/2011	43.7	43.8	44.2	44.4	44.6	44.8	45.1	45.3	45.6	45.8	46.1	46.1	46.2	46.2	46.2	46.3	46.3	46.3	46.3
Net Natural Increase																			
FDEC, 2/2011	10.6	10.6	10.4	10.4	10.5	10.5	10.4	10.4	10.3	10.2	10.2	10.3	10.4	10.5	10.6	10.6	10.8	10.9	11.1
FDEC, 7/2011	10.6	10.6	10.4	10.4	10.5	10.5	10.4	10.4	10.3	10.2	10.2	10.3	10.4	10.5	10.6	10.6	10.8	10.9	11.1

Quarterly Data Table

QUARTERLY FORECAST TABLES

	<u>2016-3</u>	<u>2016-4</u>	<u>2017-1</u>	<u>2017-2</u>	<u>2017-3</u>	<u>2017-4</u>	<u>2018-1</u>	<u>2018-2</u>	<u>2018-3</u>	<u>2018-4</u>	<u>2019-1</u>	<u>2019-2</u>	<u>2019-3</u>	<u>2019-4</u>	<u>2020-1</u>	<u>2020-2</u>
Population																
FDEC, 2/2011	20,380.7	20,450.2	20,518.6	20,586.0	20,652.6	20,718.4	20,783.6	20,848.2	20,912.4	20,976.3	21,040.0	21,103.6	21,167.1	21,230.8	21,294.8	21,359.0
FDEC, 7/2011	20,380.7	20,450.2	20,518.6	20,586.0	20,652.6	20,718.4	20,783.6	20,848.2	20,912.4	20,976.3	21,040.0	21,103.6	21,167.1	21,230.8	21,294.8	21,359.0
Population Growth Rate																
FDEC, 2/2011	1.40	1.37	1.34	1.32	1.30	1.28	1.26	1.25	1.24	1.23	1.22	1.21	1.21	1.21	1.21	1.21
FDEC, 7/2011	1.40	1.37	1.34	1.32	1.30	1.28	1.26	1.25	1.24	1.23	1.22	1.21	1.21	1.21	1.21	1.21
Net Change in Population																
FDEC, 2/2011	70.7	69.5	68.4	67.4	66.6	65.8	65.2	64.6	64.2	63.9	63.7	63.6	63.6	63.7	63.9	64.2
FDEC, 7/2011	70.7	69.5	68.4	67.4	66.6	65.8	65.2	64.6	64.2	63.9	63.7	63.6	63.6	63.7	63.9	64.2
Households																
FDEC, 2/2011	7,926.2	7,963.8	8,000.6	8,036.7	8,072.0	8,106.7	8,140.8	8,174.3	8,207.2	8,239.6	8,271.5	8,302.9	8,333.9	8,364.4	8,394.7	8,424.5
FDEC, 7/2011	8,205.9	8,244.8	8,282.8	8,320.1	8,356.7	8,392.6	8,427.9	8,462.6	8,496.7	8,530.2	8,563.2	8,595.7	8,627.8	8,659.4	8,690.7	8,721.7
Household Growth Rate																
FDEC, 2/2011	1.96	1.91	1.86	1.82	1.77	1.73	1.69	1.66	1.62	1.59	1.56	1.53	1.50	1.48	1.45	1.43
FDEC, 7/2011	1.96	1.91	1.86	1.81	1.77	1.73	1.69	1.66	1.62	1.59	1.56	1.53	1.50	1.48	1.45	1.43
Net Change in Households																
FDEC, 2/2011	38.4	37.6	36.8	36.1	35.4	34.7	34.1	33.5	32.9	32.4	31.9	31.4	31.0	30.6	30.2	29.9
FDEC, 7/2011	39.8	38.9	38.0	37.3	36.6	35.9	35.3	34.7	34.1	33.5	33.0	32.5	32.1	31.7	31.3	30.9
Household Size																
FDEC, 2/2011	2.571	2.568	2.565	2.562	2.559	2.556	2.553	2.550	2.548	2.546	2.544	2.542	2.540	2.538	2.537	2.535
FDEC, 7/2011	2.484	2.480	2.477	2.474	2.471	2.469	2.466	2.464	2.461	2.459	2.457	2.455	2.453	2.452	2.450	2.449
Household Size Growth Rate																
FDEC, 2/2011	-0.55	-0.53	-0.51	-0.49	-0.46	-0.44	-0.42	-0.40	-0.38	-0.35	-0.33	-0.31	-0.29	-0.26	-0.24	-0.22
FDEC, 7/2011	-0.55	-0.53	-0.50	-0.48	-0.46	-0.44	-0.42	-0.40	-0.38	-0.35	-0.33	-0.31	-0.29	-0.26	-0.24	-0.22
Net Migration																
FDEC, 2/2011	59.5	58.2	57.0	56.0	55.2	54.4	53.8	53.2	52.8	52.5	52.3	52.1	52.2	52.3	52.5	53.0
FDEC, 7/2011	59.5	58.2	57.0	56.0	55.2	54.4	53.8	53.2	52.8	52.5	52.3	52.1	52.2	52.3	52.5	53.0
Births																
FDEC, 2/2011	57.6	57.8	57.9	58.1	58.3	58.4	58.6	58.7	58.9	59.0	59.2	59.3	59.5	59.6	59.7	59.5
FDEC, 7/2011	57.6	57.8	57.9	58.1	58.3	58.4	58.6	58.7	58.9	59.0	59.2	59.3	59.5	59.6	59.7	59.5
Deaths																
FDEC, 2/2011	46.4	46.4	46.5	46.7	46.8	47.0	47.2	47.3	47.5	47.6	47.7	47.9	48.0	48.2	48.3	48.3
FDEC, 7/2011	46.4	46.4	46.5	46.7	46.8	47.0	47.2	47.3	47.5	47.6	47.7	47.9	48.0	48.2	48.3	48.3
Net Natural Increase																
FDEC, 2/2011	11.2	11.3	11.4	11.4	11.4	11.4	11.4	11.4	11.4	11.4	11.4	11.4	11.4	11.4	11.4	11.2
FDEC, 7/2011	11.2	11.3	11.4	11.4	11.4	11.4	11.4	11.4	11.4	11.4	11.4	11.4	11.4	11.4	11.4	11.2

Fiscal Year Data Table

FISCAL YEAR
FORECAST TABLES

	1990-91	1991-92	1992-93	1993-94	1994-95	1995-96	1996-97	1997-98	1998-99	1999-00	2000-01	2001-02	2002-03	2003-04	2004-05	2005-06	2006-07
Population																	
FDEC, 2/2011	13,178.0	13,442.6	13,670.0	13,962.2	14,264.9	14,550.7	14,859.1	15,158.2	15,488.7	15,881.4	16,246.6	16,572.8	16,911.8	17,282.1	17,668.9	18,069.7	18,376.4
FDEC, 7/2011	13,178.0	13,442.6	13,670.0	13,962.2	14,264.9	14,550.7	14,859.1	15,158.2	15,488.7	15,880.7	16,227.8	16,550.8	16,892.0	17,274.0	17,677.7	18,062.6	18,378.7
Growth Rate																	
FDEC, 2/2011	2.42	2.01	1.69	2.14	2.17	2.00	2.12	2.01	2.18	2.54	2.30	2.01	2.05	2.19	2.24	2.27	1.70
FDEC, 7/2011	2.42	2.01	1.69	2.14	2.17	2.00	2.12	2.01	2.18	2.53	2.19	1.99	2.06	2.26	2.34	2.18	1.75
Net Change in Population																	
FDEC, 2/2011	315.1	232.0	241.6	315.7	289.2	291.1	313.1	295.0	359.3	399.5	341.8	324.6	350.8	379.2	393.8	390.0	248.4
FDEC, 7/2011	315.1	232.0	241.6	315.7	289.2	291.1	313.1	295.0	359.3	396.7	318.6	331.2	350.9	398.6	401.8	368.6	277.8
Households																	
FDEC, 2/2011	5,230.8	5,334.4	5,424.8	5,538.3	5,655.1	5,767.0	5,887.2	6,005.0	6,138.4	6,296.9	6,445.1	6,575.3	6,709.7	6,856.7	7,009.9	7,169.7	7,270.1
FDEC, 7/2011	5,230.8	5,334.4	5,424.8	5,538.3	5,655.1	5,767.0	5,887.2	6,005.0	6,138.4	6,296.5	6,436.3	6,565.6	6,702.3	6,855.2	7,016.6	7,171.1	7,289.0
Growth Rate																	
FDEC, 2/2011	2.44	1.98	1.69	2.09	2.11	1.98	2.08	2.00	2.22	2.58	2.35	2.02	2.04	2.19	2.23	2.28	1.40
FDEC, 7/2011	2.44	1.98	1.69	2.09	2.11	1.98	2.08	2.00	2.22	2.58	2.22	2.01	2.08	2.28	2.36	2.20	1.64
Net Change in Households																	
FDEC, 2/2011	124.4	92.2	94.4	122.0	112.8	113.3	122.3	117.9	144.1	162.4	138.3	128.6	139.3	150.3	156.9	152.0	65.9
FDEC, 7/2011	124.4	92.2	94.4	122.0	112.8	113.3	122.3	117.9	144.1	161.1	127.5	132.7	140.5	159.4	161.1	146.4	98.9
Household Size																	
FDEC, 2/2011	2.519	2.520	2.520	2.521	2.522	2.523	2.524	2.524	2.523	2.522	2.521	2.520	2.521	2.520	2.521	2.520	2.528
FDEC, 7/2011	2.519	2.520	2.520	2.521	2.522	2.523	2.524	2.524	2.523	2.522	2.521	2.521	2.520	2.520	2.519	2.519	2.521
Growth Rate																	
FDEC, 2/2011	-0.02	0.03	0.00	0.04	0.06	0.02	0.04	0.01	-0.04	-0.05	-0.05	-0.01	0.00	0.00	0.00	-0.01	0.29
FDEC, 7/2011	-0.02	0.03	0.00	0.04	0.06	0.02	0.04	0.01	-0.04	-0.05	-0.03	-0.02	-0.02	-0.02	-0.02	-0.02	0.10
Net Migration																	
FDEC, 2/2011	252.1	176.2	191.4	270.0	249.0	254.8	275.5	256.2	323.0	361.5	301.4	286.8	310.3	332.5	341.4	328.0	177.4
FDEC, 7/2011	252.1	176.2	191.4	270.0	249.0	254.8	275.5	256.2	323.0	358.7	278.2	293.4	310.4	351.9	349.3	306.6	206.8
Births																	
FDEC, 2/2011	197.0	192.2	192.0	191.7	189.4	188.6	190.7	194.0	196.0	200.5	205.4	205.4	208.5	215.0	221.8	232.1	239.3
FDEC, 7/2011	197.0	192.2	192.0	191.7	189.4	188.6	190.7	194.0	196.0	200.5	205.4	205.4	208.5	215.0	221.8	232.1	239.3
Deaths																	
FDEC, 2/2011	134.0	136.4	141.8	146.0	149.3	152.3	153.1	155.2	159.7	162.5	165.0	167.6	168.1	168.3	169.4	170.1	168.3
FDEC, 7/2011	134.0	136.4	141.8	146.0	149.3	152.3	153.1	155.2	159.7	162.5	165.0	167.6	168.1	168.3	169.4	170.1	168.3
Net Natural Increase																	
FDEC, 2/2011	63.0	55.8	50.1	45.7	40.1	36.3	37.6	38.8	36.3	38.0	40.4	37.8	40.5	46.8	52.5	62.0	71.0
FDEC, 7/2011	63.0	55.8	50.1	45.7	40.1	36.3	37.6	38.8	36.3	38.0	40.4	37.8	40.5	46.8	52.5	62.0	71.0

Fiscal Year Data Table

FISCAL YEAR
FORECAST TABLES

	<u>2007-08</u>	<u>2008-09</u>	<u>2009-10</u>	<u>2010-11</u>	<u>2011-12</u>	<u>2012-13</u>	<u>2013-14</u>	<u>2014-15</u>	<u>2015-16</u>	<u>2016-17</u>	<u>2017-18</u>	<u>2018-19</u>	<u>2019-20</u>
Population													
FDEC, 2/2011	18,547.7	18,663.4	18,773.2	18,890.3	19,030.0	19,266.1	19,576.6	19,895.1	20,200.5	20,483.8	20,750.7	21,008.1	21,262.9
FDEC, 7/2011	18,578.4	18,670.6	18,770.3	18,890.3	19,030.0	19,266.1	19,576.6	19,895.1	20,200.5	20,483.8	20,750.7	21,008.1	21,262.9
Growth Rate													
FDEC, 2/2011	0.93	0.62	0.59	0.62	0.74	1.24	1.61	1.63	1.54	1.40	1.30	1.24	1.21
FDEC, 7/2011	1.09	0.50	0.53	0.64	0.74	1.24	1.61	1.63	1.54	1.40	1.30	1.24	1.21
Net Change in Population													
FDEC, 2/2011	136.3	110.1	111.3	121.0	162.2	280.3	317.3	316.7	296.9	276.0	262.2	255.3	255.5
FDEC, 7/2011	150.9	74.6	116.2	121.0	162.2	280.3	317.3	316.7	296.9	276.0	262.2	255.3	255.5
Households													
FDEC, 2/2011	7,287.0	7,230.7	7,174.8	7,201.8	7,259.4	7,352.9	7,496.0	7,661.7	7,828.2	7,981.8	8,123.5	8,255.3	8,379.4
FDEC, 7/2011	7,356.8	7,382.7	7,411.1	7,456.4	7,515.9	7,612.4	7,760.3	7,932.6	8,104.0	8,263.4	8,410.0	8,546.4	8,674.9
Growth Rate													
FDEC, 2/2011	0.23	-0.77	-0.77	0.38	0.80	1.29	1.95	2.21	2.17	1.96	1.77	1.62	1.50
FDEC, 7/2011	0.93	0.35	0.38	0.61	0.80	1.28	1.94	2.22	2.16	1.97	1.77	1.62	1.50
Net Change in Households													
FDEC, 2/2011	-12.4	-74.4	-29.6	49.4	66.3	109.6	159.7	169.0	162.1	148.8	137.6	128.6	121.7
FDEC, 7/2011	49.2	18.4	36.7	49.4	68.5	116.2	163.3	174.2	168.2	154.0	142.5	133.1	125.9
Household Size													
FDEC, 2/2011	2.545	2.581	2.617	2.623	2.621	2.620	2.612	2.597	2.580	2.566	2.554	2.545	2.538
FDEC, 7/2011	2.525	2.529	2.533	2.533	2.532	2.531	2.523	2.508	2.493	2.479	2.467	2.458	2.451
Growth Rate													
FDEC, 2/2011	0.70	1.41	1.37	0.25	-0.06	-0.05	-0.33	-0.57	-0.62	-0.55	-0.46	-0.38	-0.29
FDEC, 7/2011	0.16	0.14	0.15	0.03	-0.06	-0.04	-0.32	-0.58	-0.61	-0.55	-0.46	-0.38	-0.29
Net Migration													
FDEC, 2/2011	69.3	54.1	64.0	77.3	119.9	238.4	276.2	275.0	253.6	230.7	216.6	209.7	210.0
FDEC, 7/2011	83.9	18.6	69.0	77.3	119.9	238.4	276.2	275.0	253.6	230.7	216.6	209.7	210.0
Births													
FDEC, 2/2011	236.0	226.4	217.1	215.2	217.4	220.7	224.0	226.5	228.5	231.4	234.0	236.4	238.3
FDEC, 7/2011	236.0	226.4	217.1	215.2	217.4	220.7	224.0	226.5	228.5	231.4	234.0	236.4	238.3
Deaths													
FDEC, 2/2011	169.0	170.3	169.8	171.5	175.1	178.9	182.9	184.7	185.1	186.1	188.4	190.7	192.8
FDEC, 7/2011	169.0	170.3	169.8	171.5	175.1	178.9	182.9	184.7	185.1	186.1	188.4	190.7	192.8
Net Natural Increase													
FDEC, 2/2011	67.0	56.0	47.3	43.7	42.3	41.9	41.1	41.7	43.4	45.3	45.6	45.7	45.5
FDEC, 7/2011	67.0	56.0	47.3	43.7	42.3	41.9	41.1	41.7	43.4	45.3	45.6	45.7	45.5

FLORIDA POPULATION AND COMPONENTS OF CHANGE

Fiscal Year	Population (end of FY)	Growth Rate	Annual Change in Population	Births	Deaths	Net Natural Increase	Net Migration
1950-51	2,980,000	6.05	170,000	67,604	27,186	40,418	129,582
1951-52	3,157,000	5.94	177,000	72,118	28,476	43,642	133,358
1952-53	3,310,000	4.85	153,000	77,156	29,856	47,300	105,700
1953-54	3,505,000	5.89	195,000	82,685	31,035	51,650	143,350
1954-55	3,747,000	6.90	242,000	86,265	32,083	54,182	187,818
1955-56	4,047,000	8.01	300,000	93,431	35,022	58,409	241,591
1956-57	4,372,000	8.03	325,000	100,811	38,319	62,492	262,508
1957-58	4,630,000	5.90	258,000	106,019	41,797	64,222	193,778
1958-59	4,808,000	3.84	178,000	110,457	43,746	66,711	111,289
1959-60	5,001,937	4.03	193,937	114,398	46,063	68,335	125,602
1960-61	5,185,560	3.67	183,623	116,419	48,302	68,117	115,506
1961-62	5,368,613	3.53	183,053	116,068	50,526	65,542	117,511
1962-63	5,552,114	3.42	183,501	114,946	54,302	60,644	122,857
1963-64	5,735,571	3.30	183,457	114,775	56,213	58,562	124,895
1964-65	5,884,050	2.59	148,479	110,465	57,868	52,597	95,882
1965-66	6,065,135	3.08	181,085	104,503	60,875	43,628	137,457
1966-67	6,250,236	3.05	185,101	101,129	62,765	38,364	146,737
1967-68	6,440,501	3.04	190,265	100,413	66,224	34,189	156,076
1968-69	6,632,001	2.97	191,500	104,362	71,133	33,229	158,271
1969-70	6,863,788	3.49	231,787	111,460	73,814	37,646	194,141
1970-71	7,233,605	5.39	369,817	117,071	75,362	41,709	328,108
1971-72	7,684,783	6.24	451,178	113,578	79,677	33,901	417,277
1972-73	8,157,779	6.15	472,996	107,692	86,284	21,408	451,588
1973-74	8,509,490	4.31	351,711	109,455	88,458	20,997	330,714
1974-75	8,650,224	1.65	140,734	108,752	87,185	21,567	119,167
1975-76	8,783,174	1.54	132,950	103,859	88,170	15,689	117,261
1976-77	8,973,716	2.17	190,542	107,735	90,432	17,303	173,239
1977-78	9,226,396	2.82	252,680	112,265	93,372	18,893	233,787
1978-79	9,519,160	3.17	292,764	116,269	96,826	19,443	273,321
1979-80	9,843,544	3.41	324,384	126,759	100,958	25,801	298,583

FLORIDA POPULATION AND COMPONENTS OF CHANGE

Fiscal Year	Population (end of FY)	Growth Rate	Annual Change in Population	Births	Deaths	Net Natural Increase	Net Migration
1980-81	10,218,346	3.81	374,802	135,511	107,686	27,825	346,977
1981-82	10,492,578	2.68	274,232	141,562	108,533	33,029	241,203
1982-83	10,750,266	2.46	257,688	146,890	110,534	36,356	221,332
1983-84	11,065,812	2.94	315,546	151,660	113,957	37,703	277,843
1984-85	11,405,171	3.07	339,359	159,879	117,469	42,410	296,949
1985-86	11,740,597	2.94	335,426	165,837	122,536	43,301	292,125
1986-87	12,083,205	2.92	342,608	170,743	124,846	45,897	296,711
1987-88	12,410,087	2.71	326,882	179,610	129,473	50,137	276,745
1988-89	12,723,453	2.53	313,366	188,272	131,997	56,275	257,091
1989-90	13,019,574	2.33	296,121	197,265	132,461	64,804	231,317
1990-91	13,323,139	2.33	303,565	197,197	134,147	63,050	240,515
1991-92	13,552,830	1.72	229,691	191,702	136,199	55,503	174,188
1992-93	13,804,917	1.86	252,087	192,150	142,167	49,983	202,104
1993-94	14,118,145	2.27	313,228	191,833	146,063	45,770	267,458
1994-95	14,407,012	2.05	288,867	189,272	149,127	40,145	248,722
1995-96	14,701,478	2.04	294,466	188,601	152,628	35,973	258,493
1996-97	15,010,271	2.10	308,793	190,552	153,018	37,534	271,259
1997-98	15,312,639	2.01	302,368	194,305	155,044	39,261	263,107
1998-99	15,680,103	2.40	367,464	195,827	160,050	35,777	331,687
1999-00	16,072,926	2.51	392,823	200,271	162,446	37,825	354,998
2000-01	16,384,860	1.94	311,934	205,370	164,977	40,393	271,541
2001-02	16,718,033	2.03	333,173	205,385	167,617	37,768	295,405
2002-03	17,074,368	2.13	356,335	208,536	168,080	40,456	315,879
2003-04	17,476,489	2.36	402,121	215,049	168,288	46,761	355,360
2004-05	17,876,663	2.29	400,174	221,810	169,358	52,452	347,722
2005-06	18,237,566	2.02	360,903	232,082	170,059	62,023	298,880
2006-07	18,500,958	1.44	263,392	239,308	168,304	71,004	192,388
2007-08	18,635,654	0.73	134,696	236,017	169,028	66,989	67,707
2008-09	18,711,272	0.41	75,618	226,356	170,340	56,016	19,602
2009-10	18,830,109	0.64	118,837	217,075	169,809	47,266	71,571

FLORIDA POPULATION AND COMPONENTS OF CHANGE

Fiscal Year	Population (end of FY)	Growth Rate	Annual Change in Population	Births	Deaths	Net Natural Increase	Net Migration
2010-11	18,952,815	0.65	122,706	215,236	171,541	43,695	79,011
2011-12	19,128,190	0.93	175,375	217,397	175,133	42,264	133,111
2012-13	19,418,155	1.52	289,965	220,741	178,877	41,864	248,101
2013-14	19,736,310	1.64	318,155	223,975	182,871	41,103	277,052
2014-15	20,051,804	1.60	315,494	226,482	184,744	41,738	273,756
2015-16	20,345,622	1.47	293,818	228,529	185,137	43,392	250,426
2016-17	20,619,496	1.35	273,874	231,384	186,053	45,331	228,543
2017-18	20,880,407	1.27	260,911	233,997	188,357	45,640	215,271
2018-19	21,135,333	1.22	254,926	236,377	190,706	45,671	209,255
2019-20	21,391,230	1.21	255,897	238,283	192,793	45,490	210,407
2020-21	21,652,125	1.22	260,895	237,450	195,101	42,349	218,546
2021-22	21,916,358	1.22	264,233	239,560	198,287	41,273	222,960
2022-23	22,181,618	1.21	265,260	241,544	201,961	39,583	225,677
2023-24	22,445,592	1.19	263,974	243,541	205,724	37,817	226,157
2024-25	22,705,974	1.16	260,382	244,714	209,159	35,555	224,827
2025-26	22,961,296	1.12	255,322	245,122	212,522	32,600	222,722
2026-27	23,211,715	1.09	250,419	247,103	216,498	30,605	219,814
2027-28	23,457,574	1.06	245,859	249,273	220,021	29,252	216,607
2028-29	23,699,217	1.03	241,643	251,409	223,429	27,980	213,663
2029-30	23,934,677	0.99	235,460	253,532	226,773	26,759	208,701

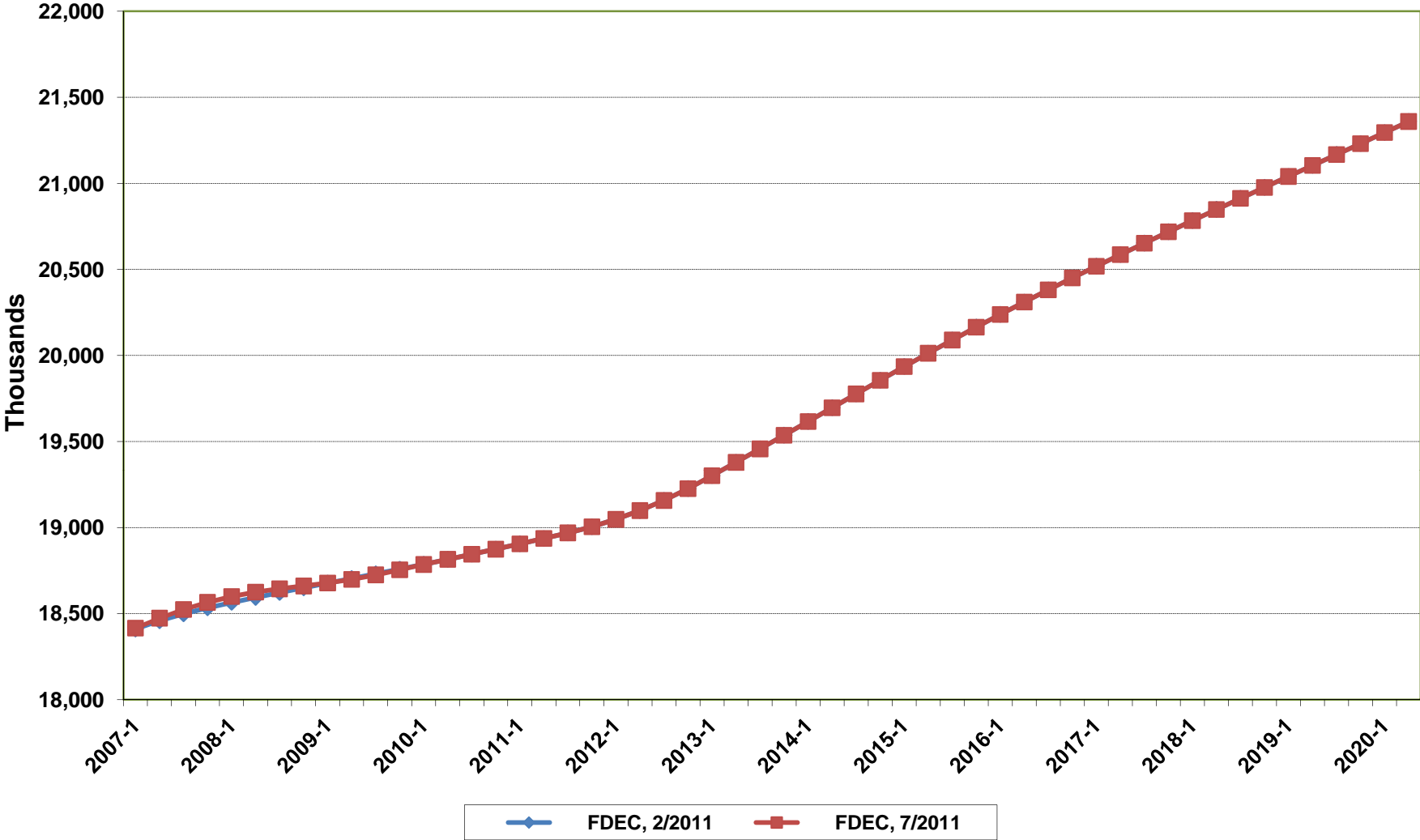
Florida Demographic Estimating Conference

Charts

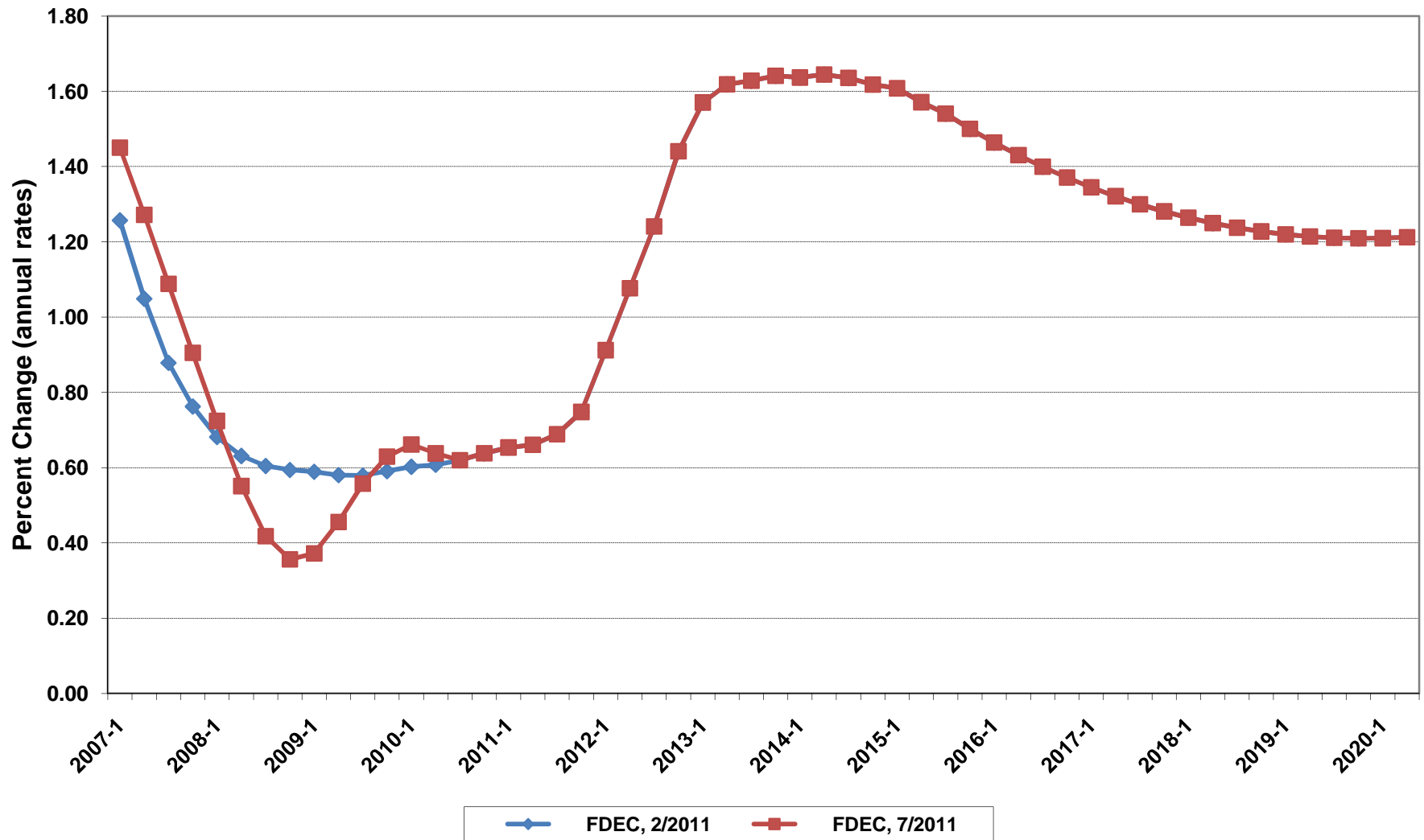
Conference Packet

July 12, 2011

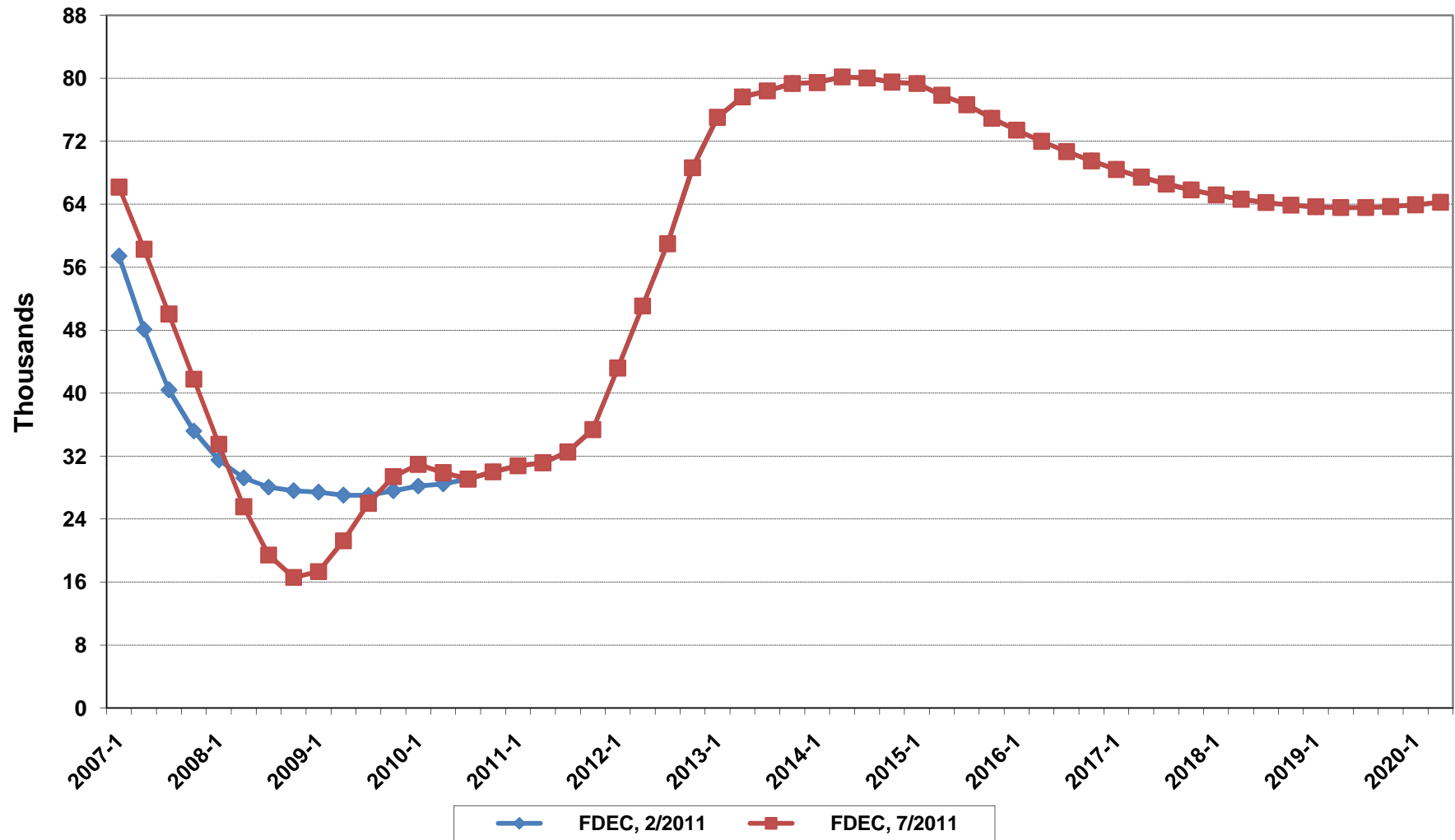
Florida Resident Population



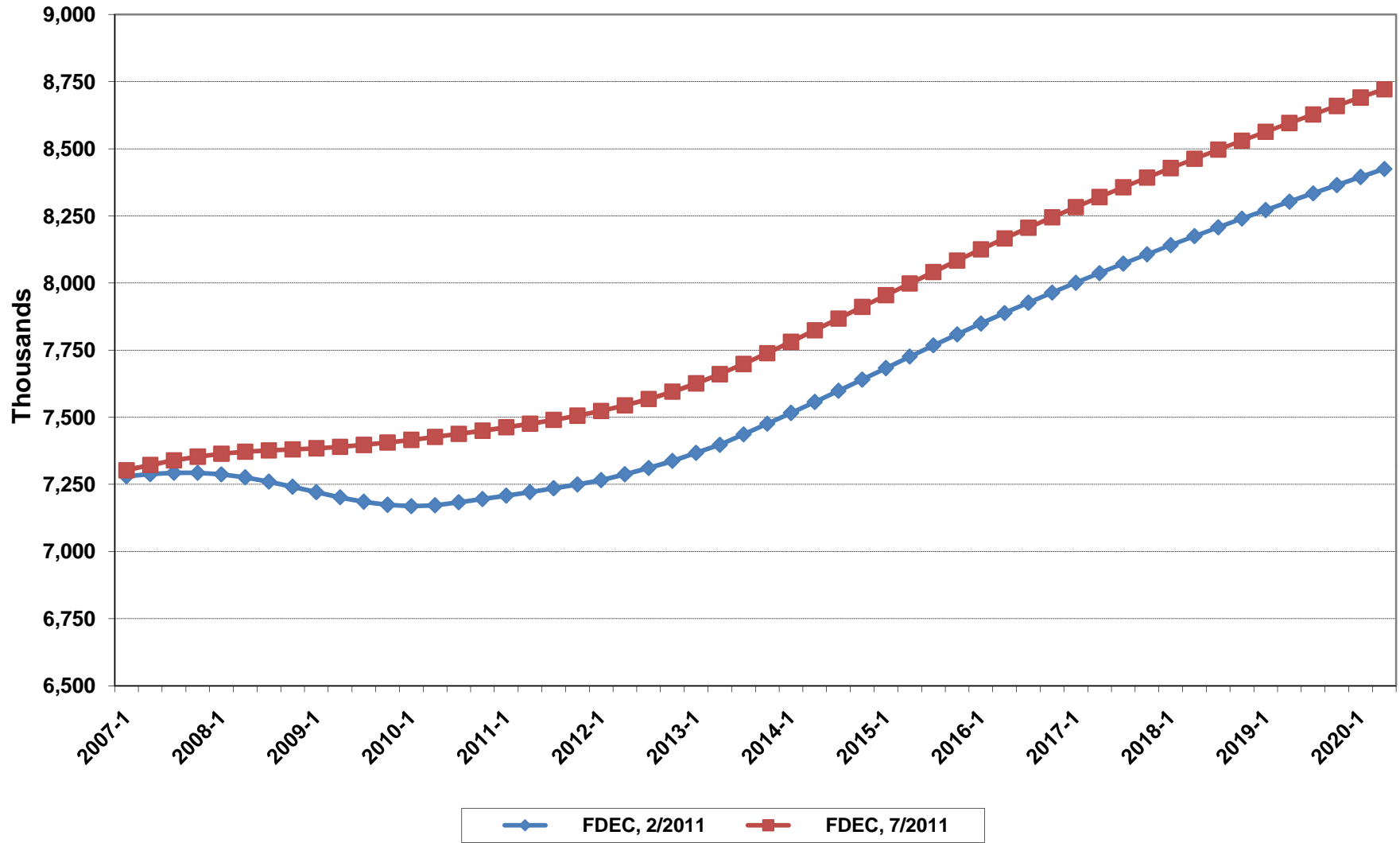
Growth In Florida Resident Population



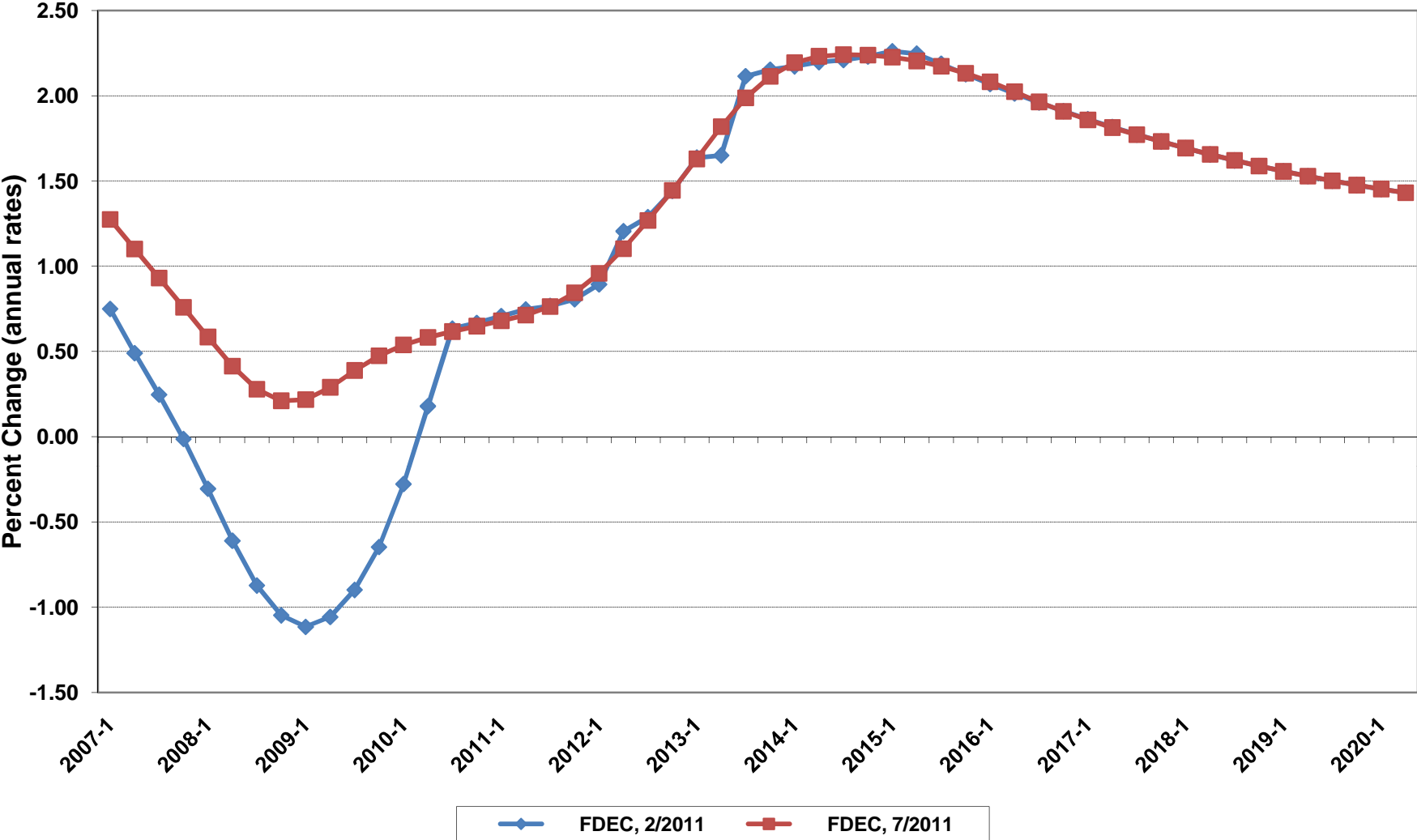
Net Change In Florida Resident Population



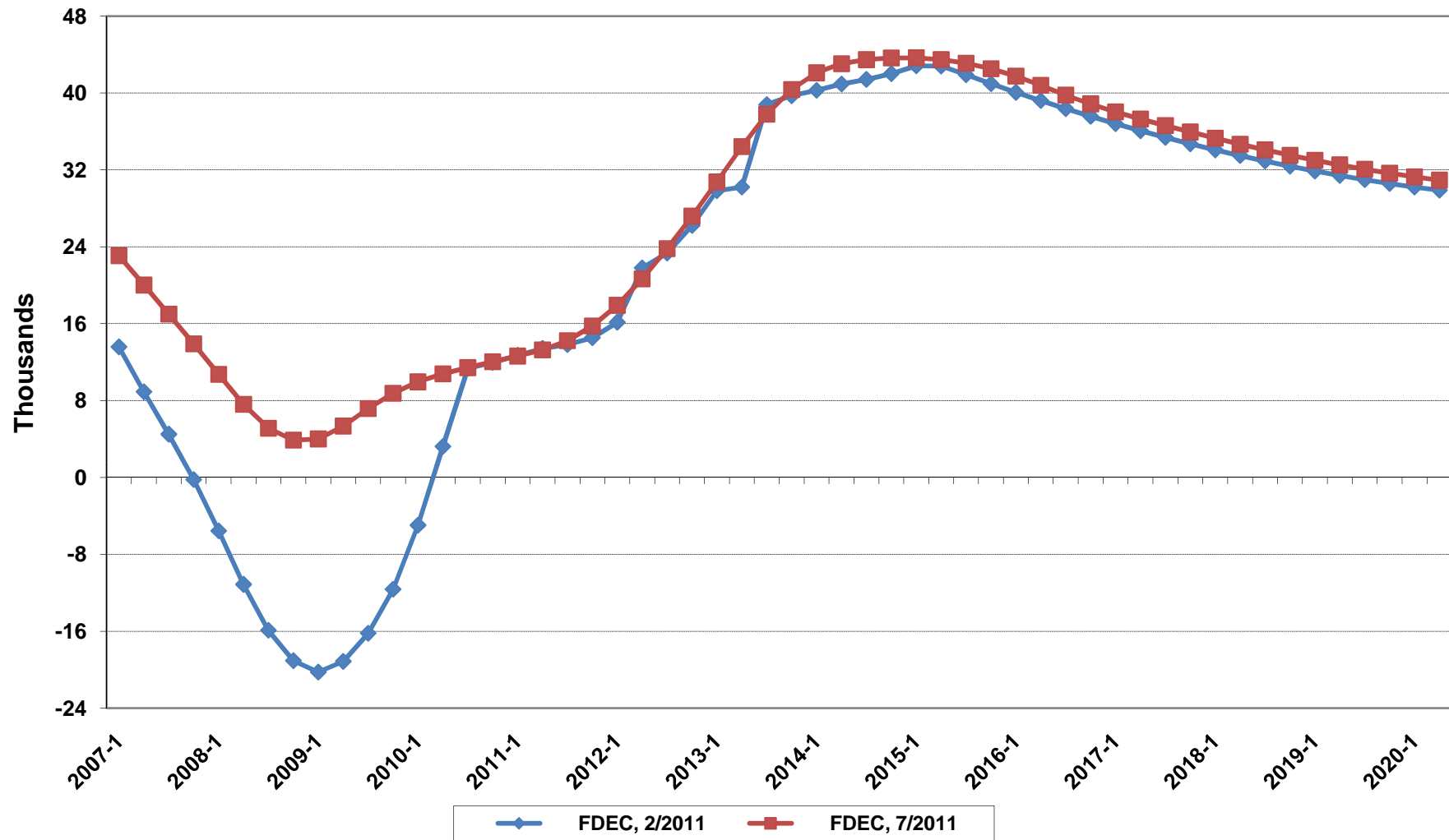
Florida Resident Households



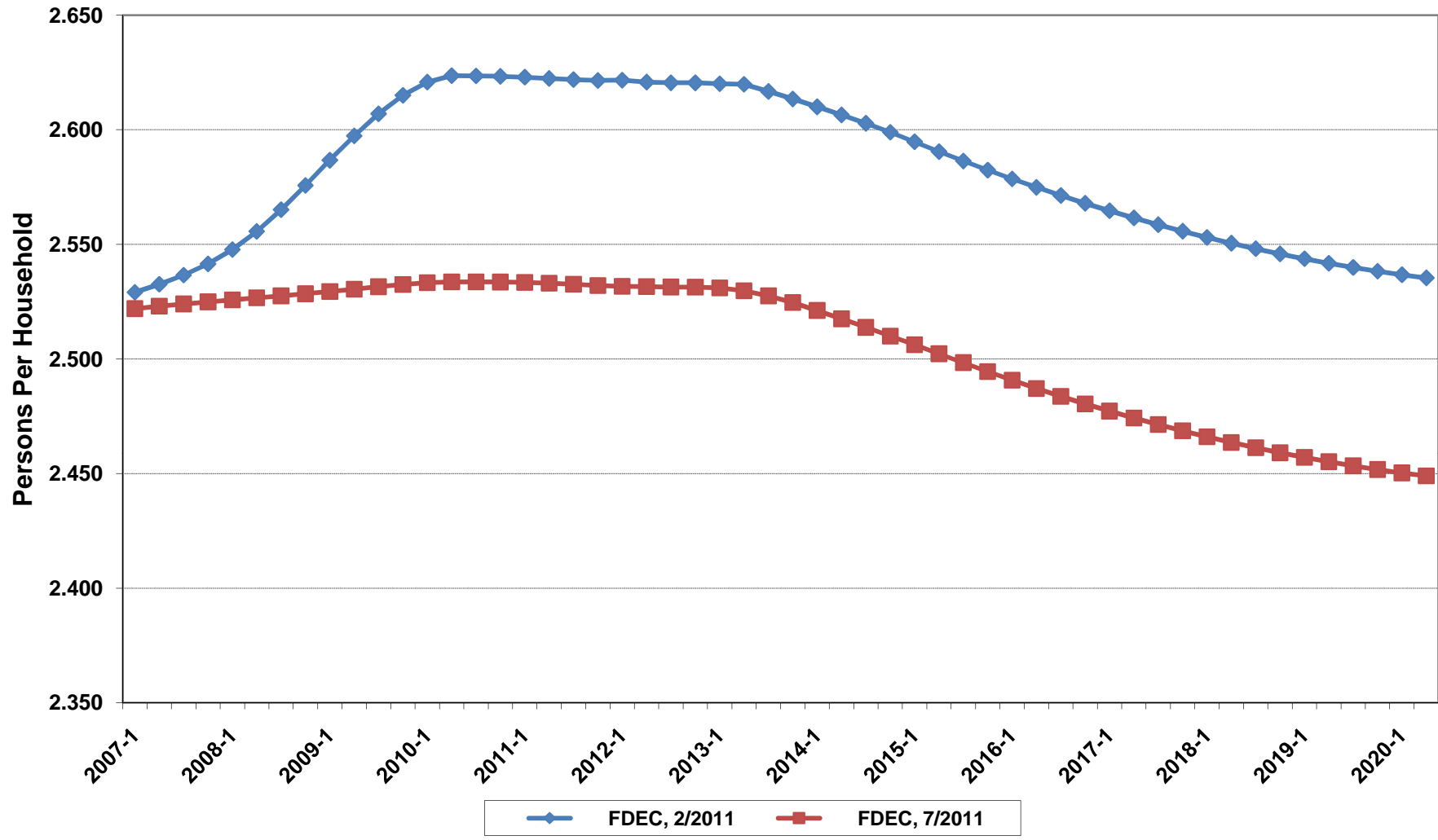
Growth In Florida Resident Households



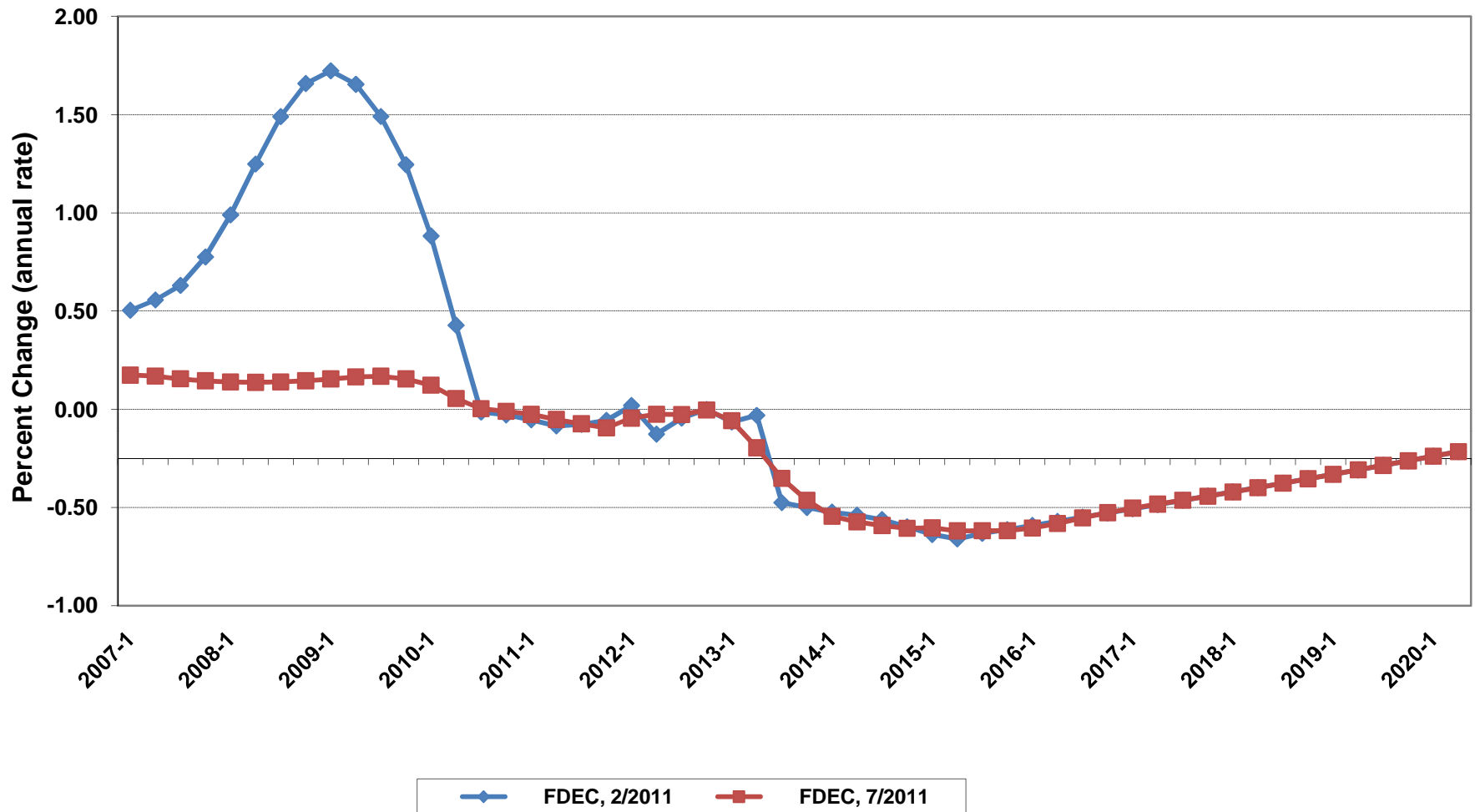
Net Change In Florida Resident Households



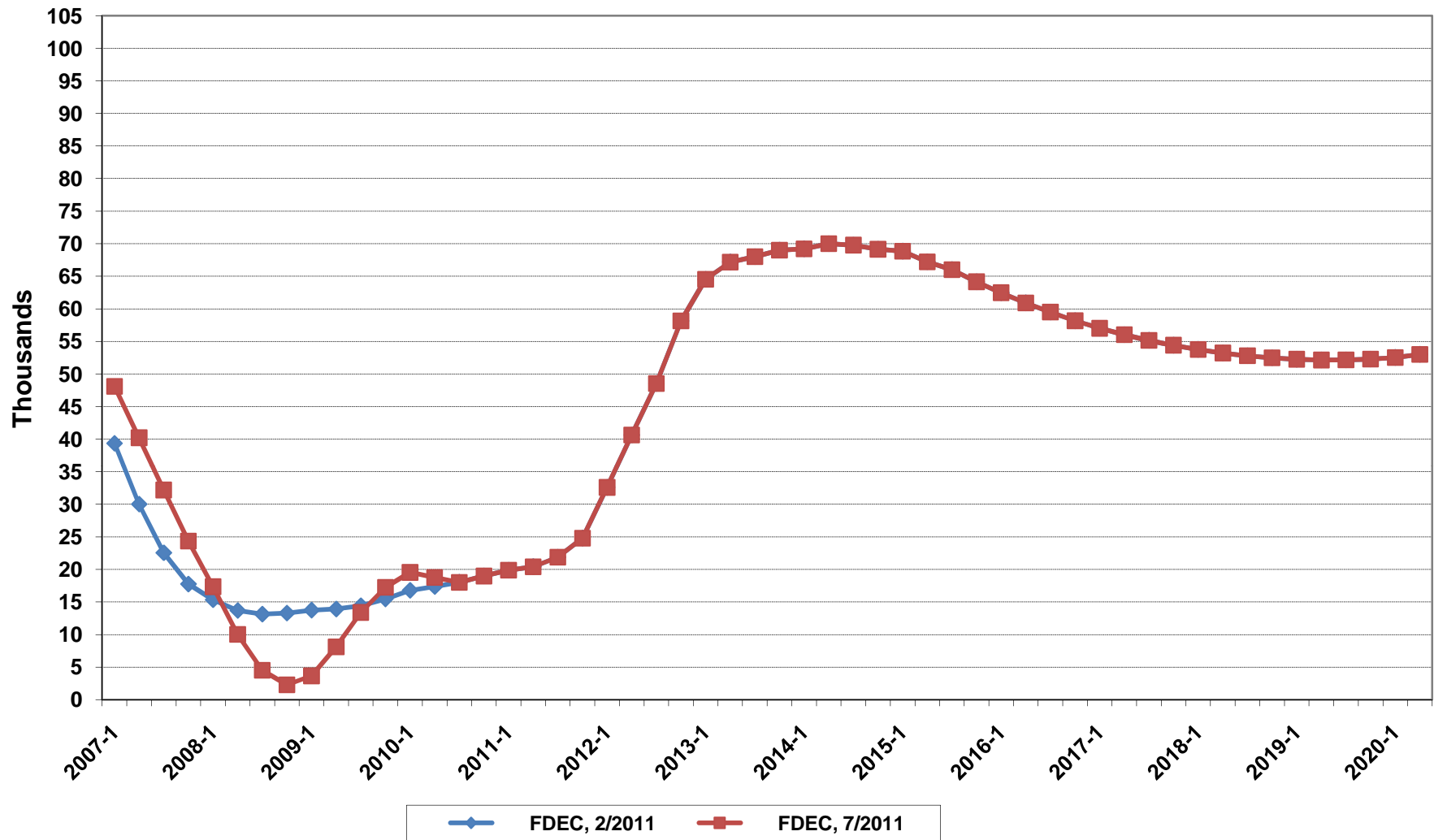
Florida Average Household Size



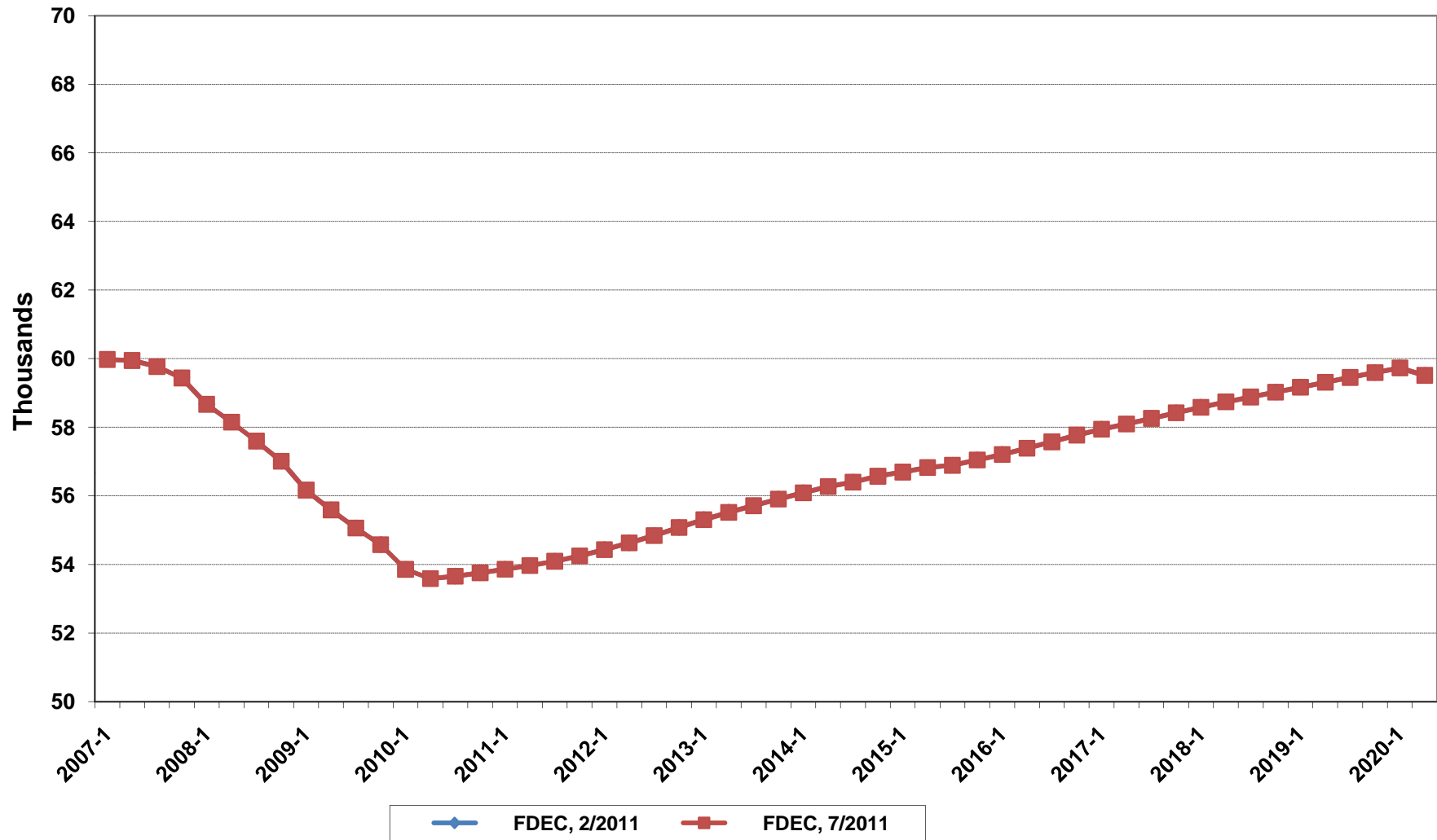
Growth In Florida Household Size



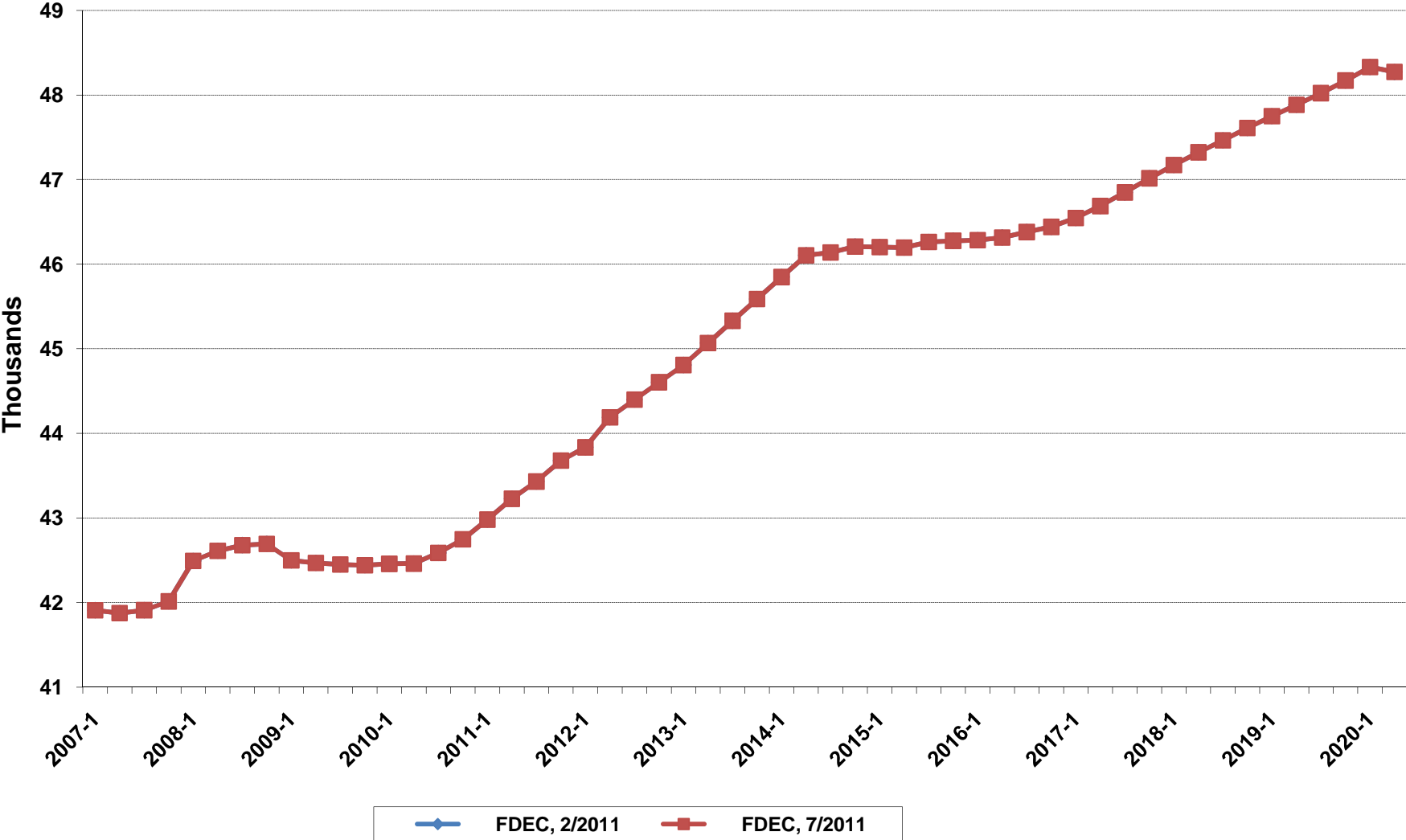
Florida Net Migration



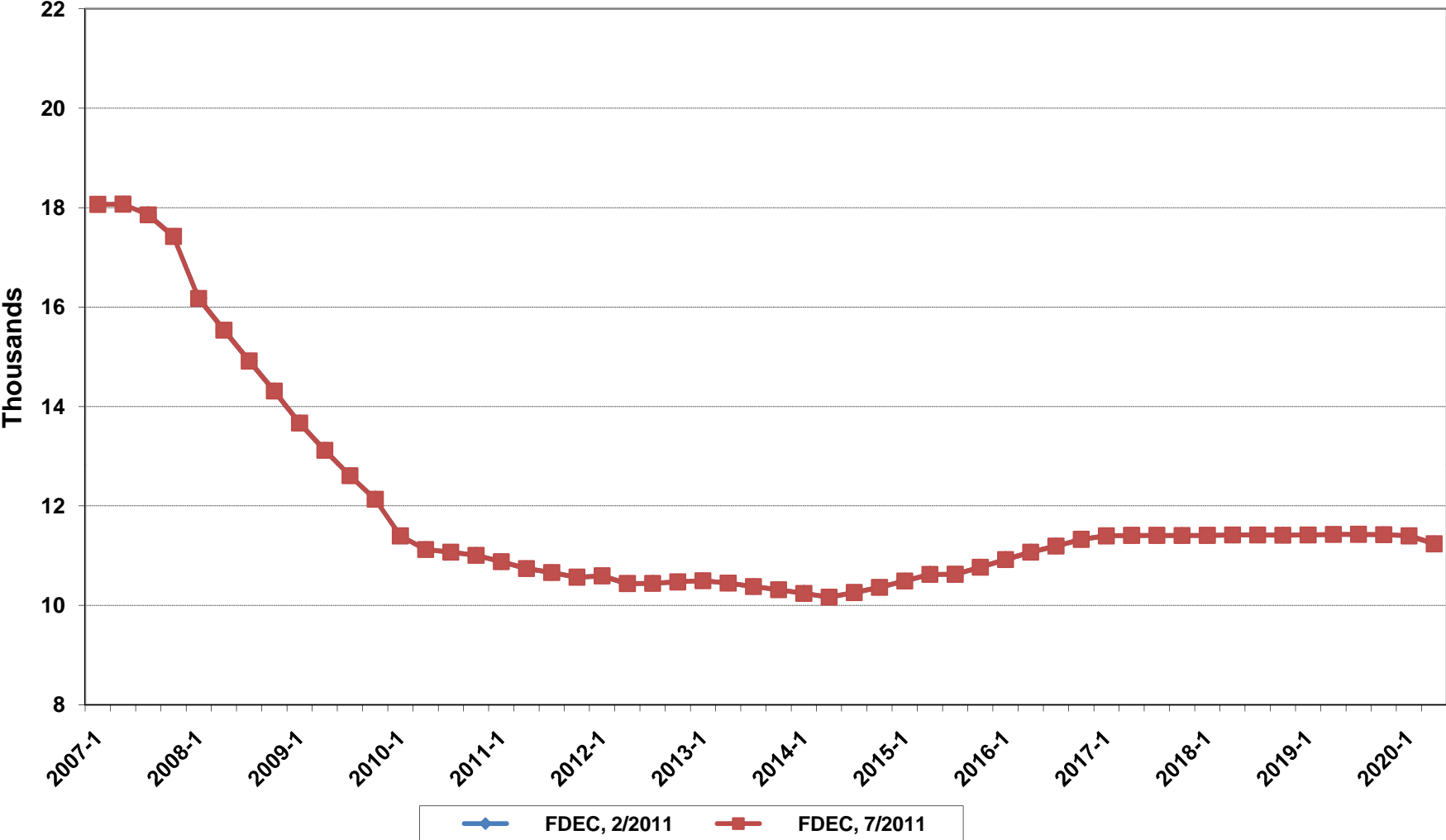
Florida Resident Births



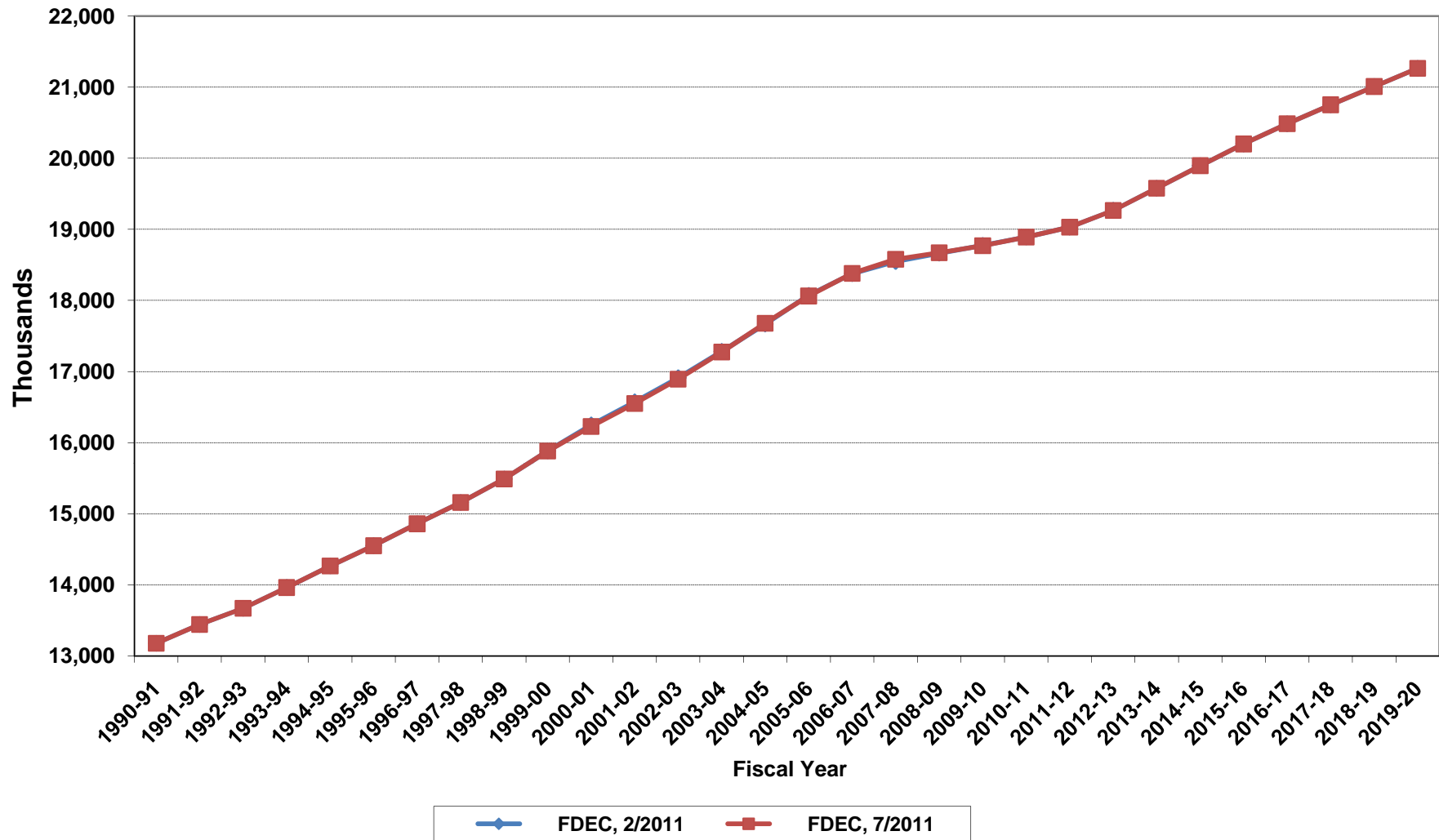
Florida Resident Deaths



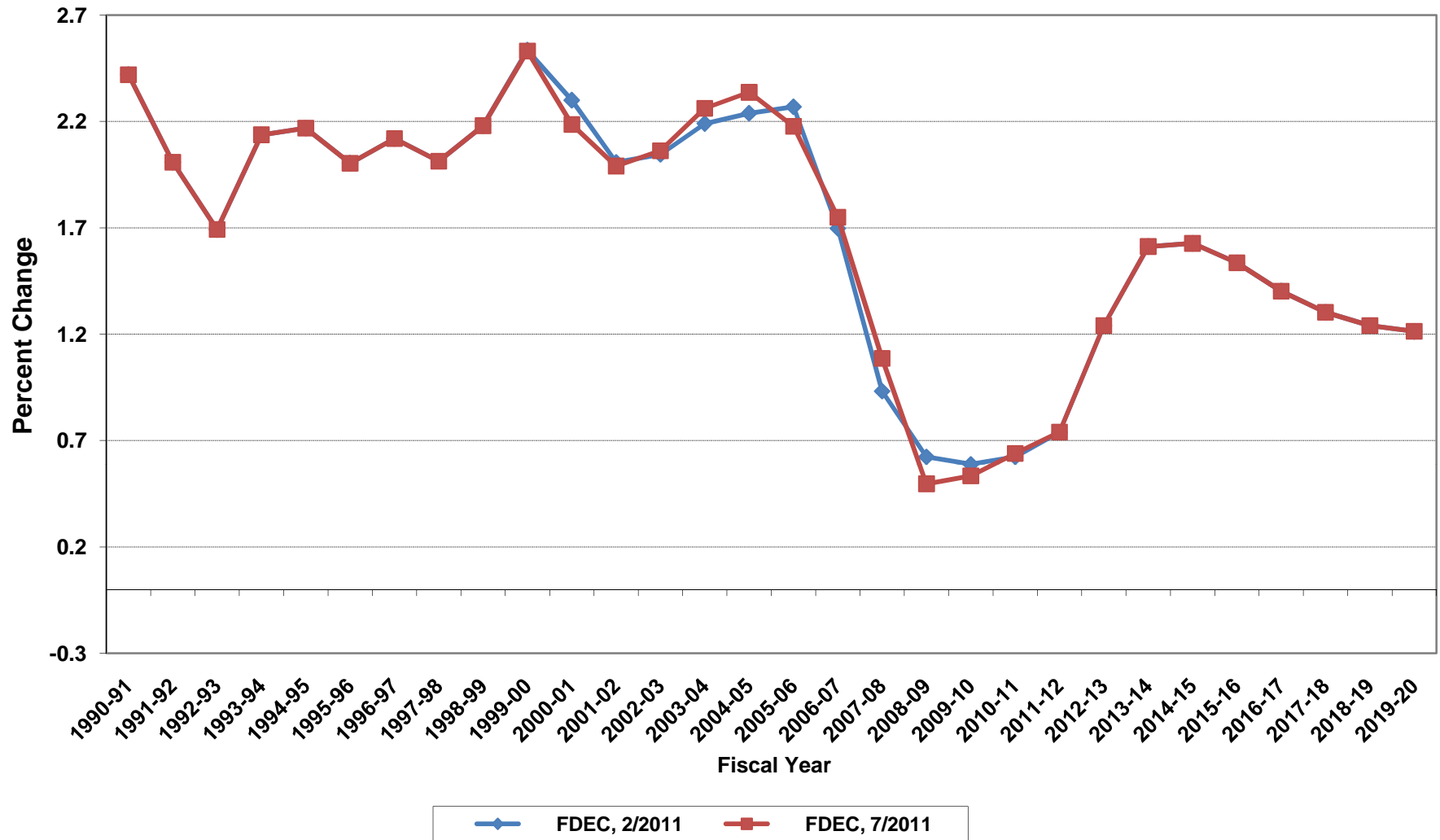
Florida Net Natural Increase



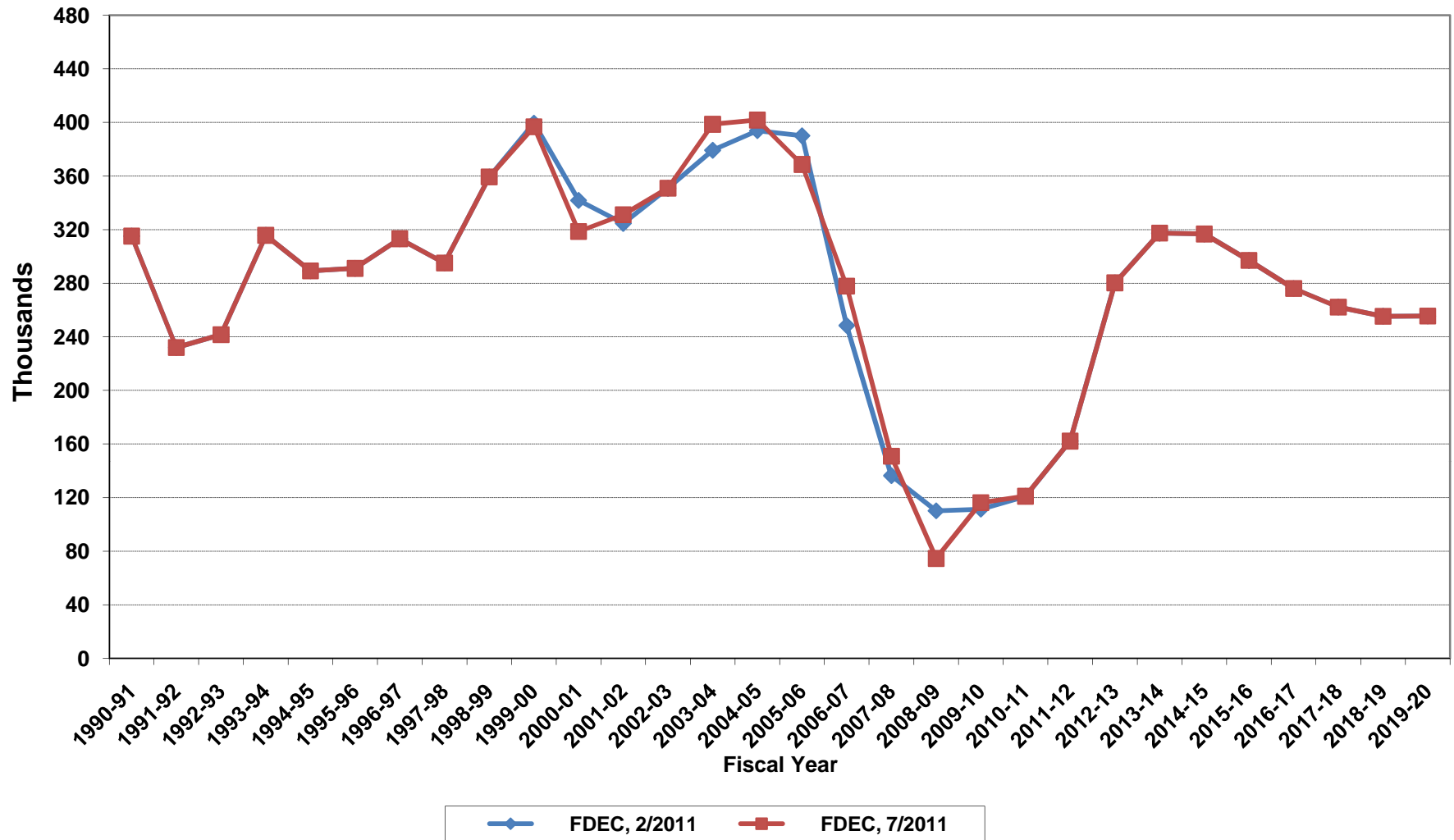
Florida Resident Population



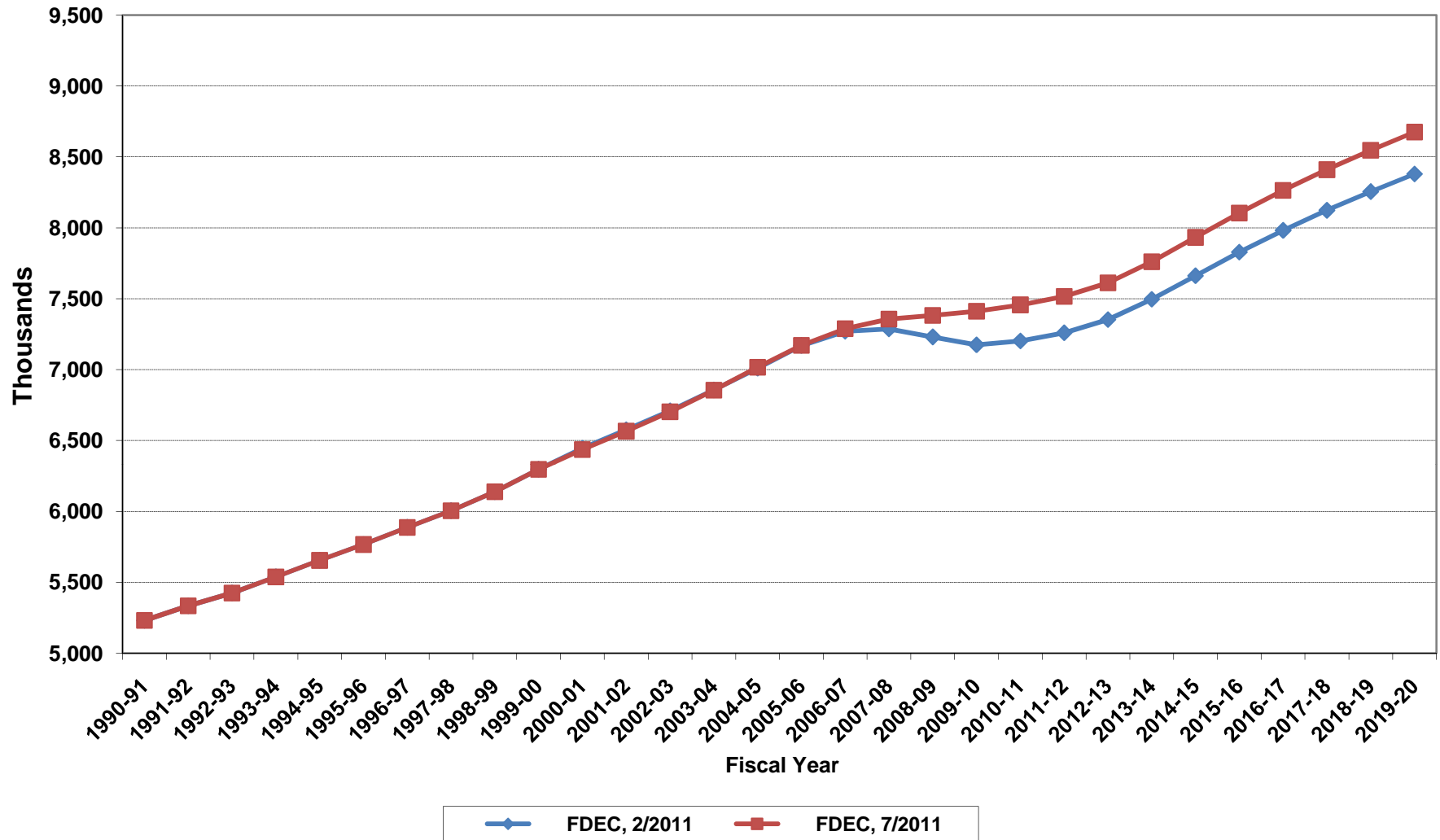
Growth In Florida Resident Population



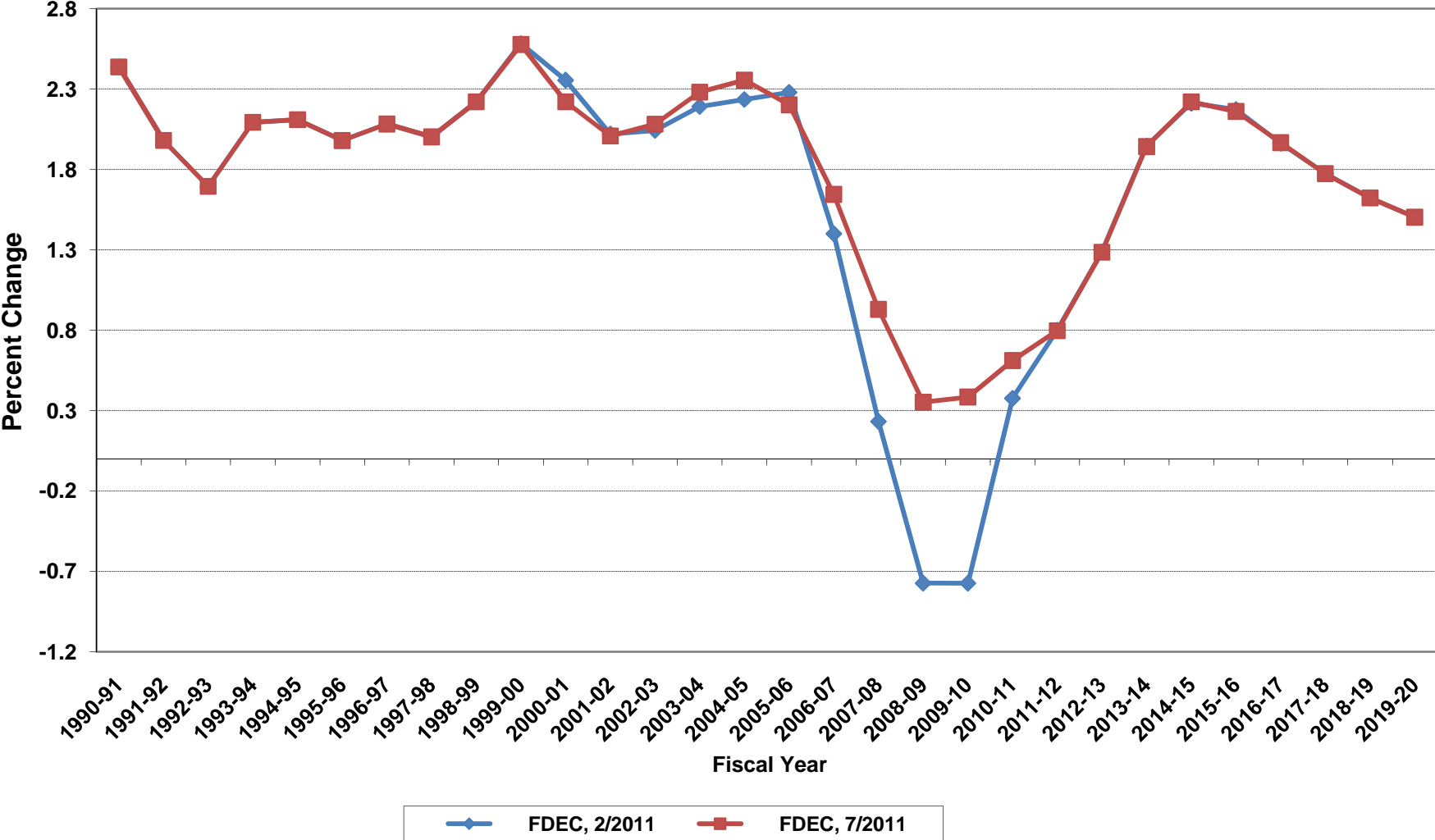
Net Change In Florida Resident Population



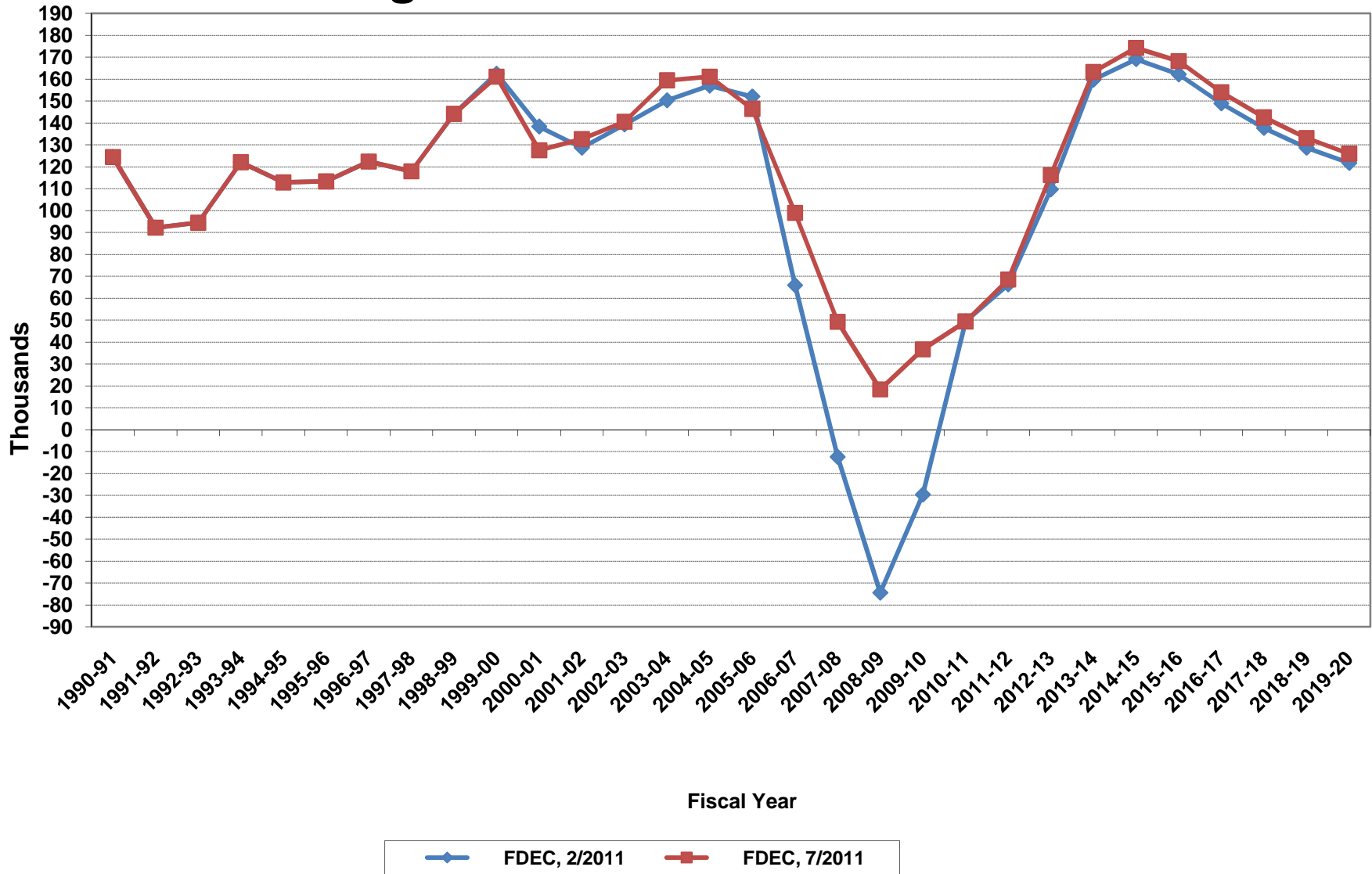
Florida Resident Households



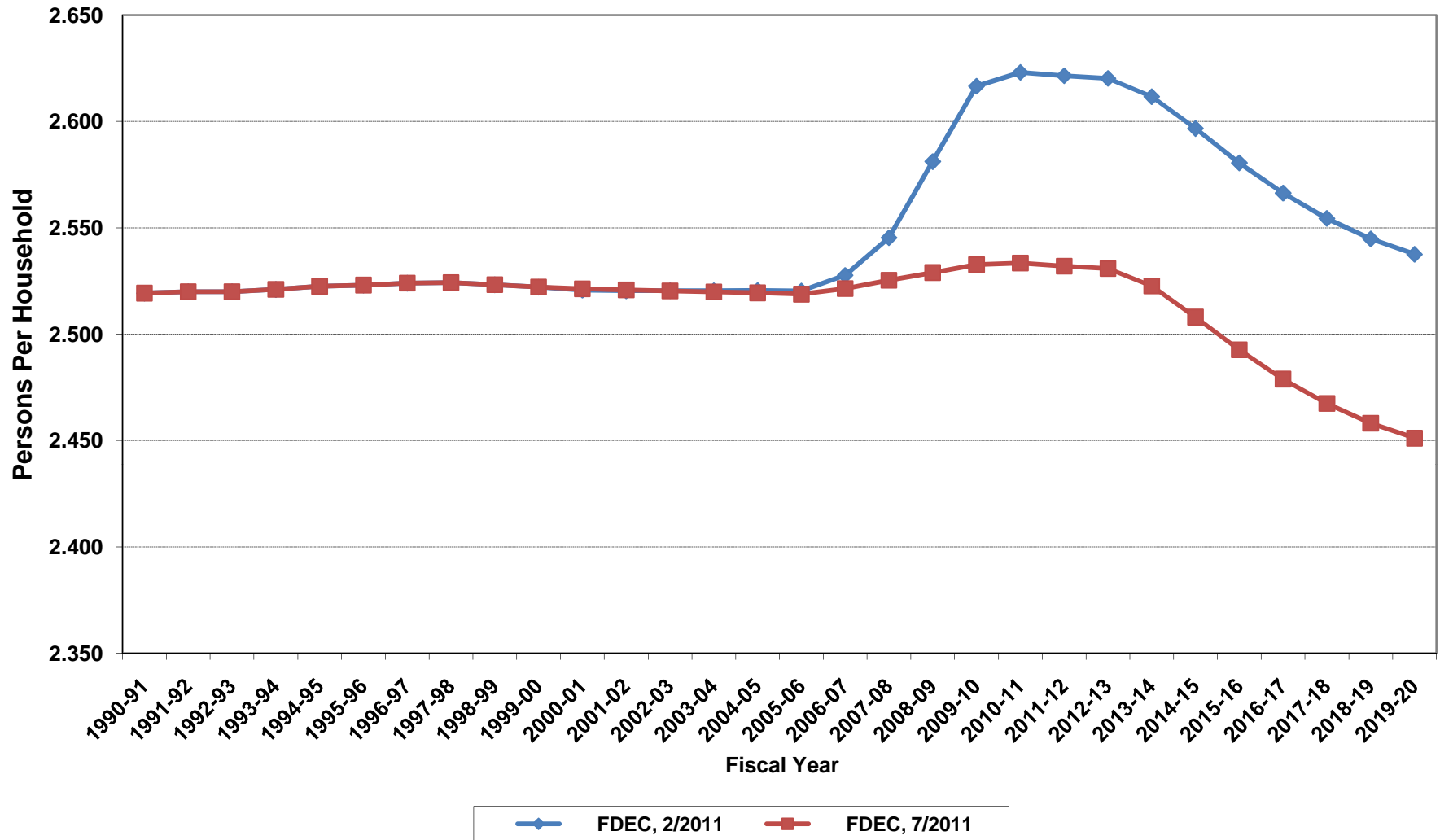
Growth In Florida Resident Households



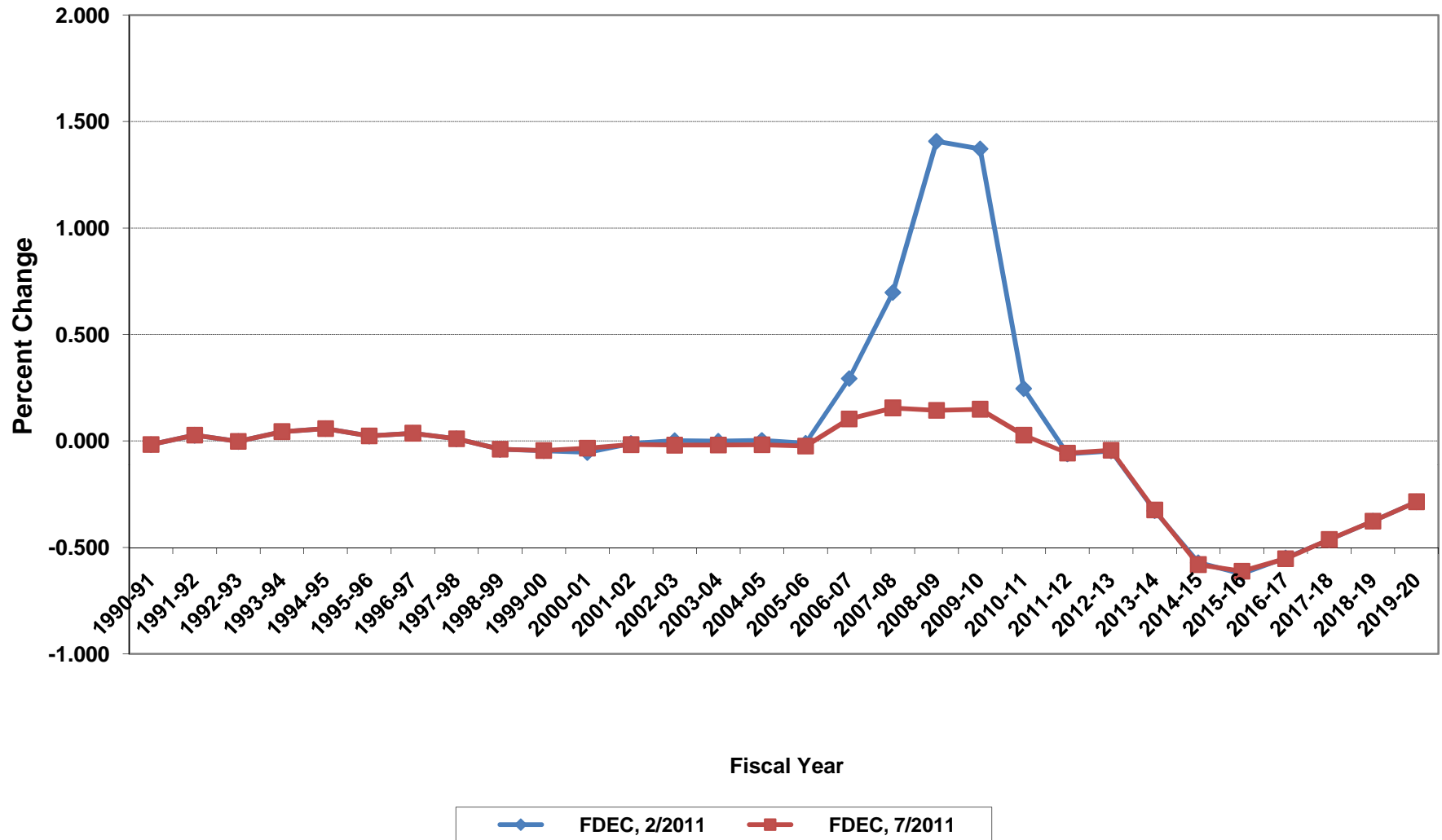
Net Change In Florida Resident Households



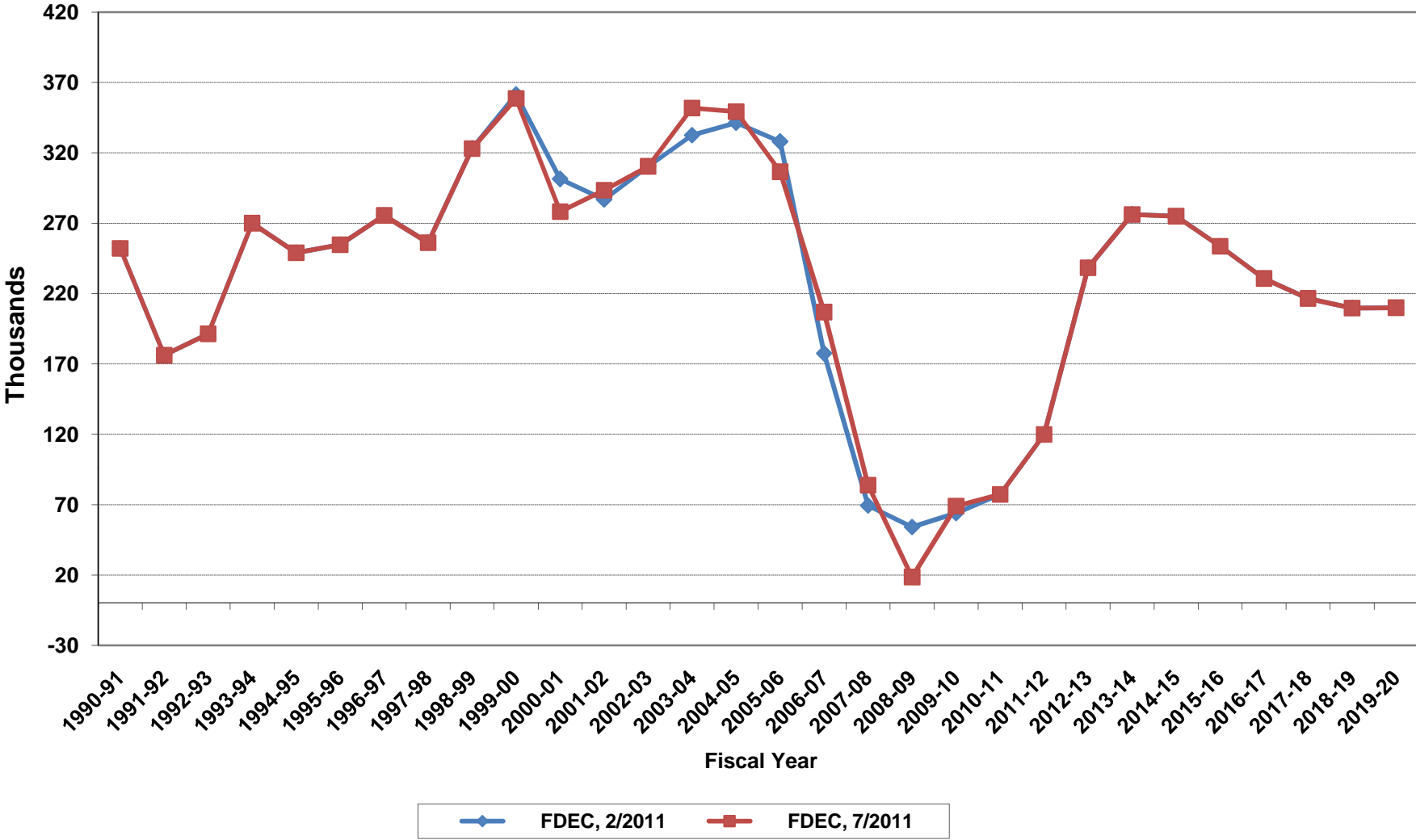
Average Florida Household Size



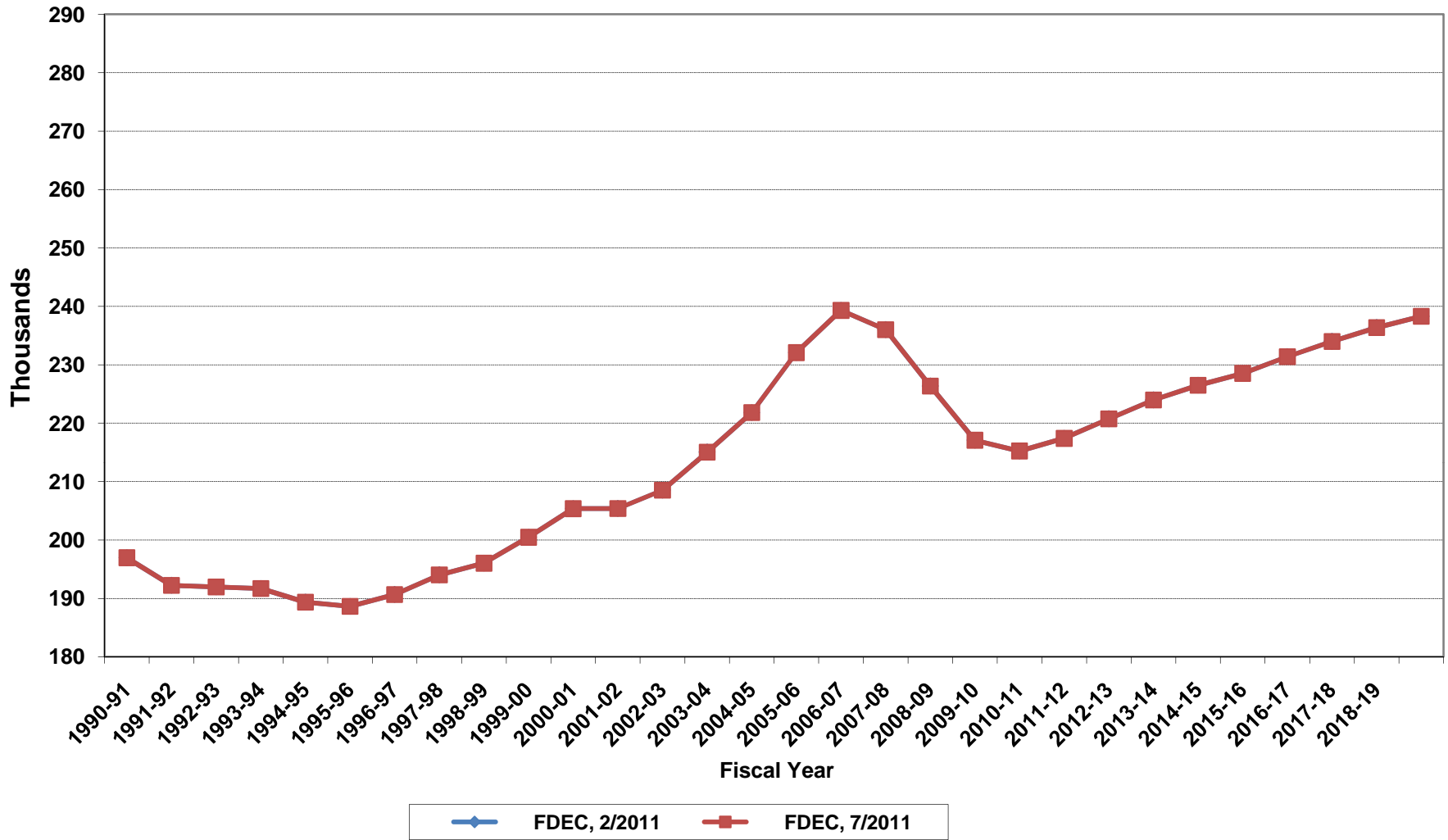
Growth In Average Florida Household Size



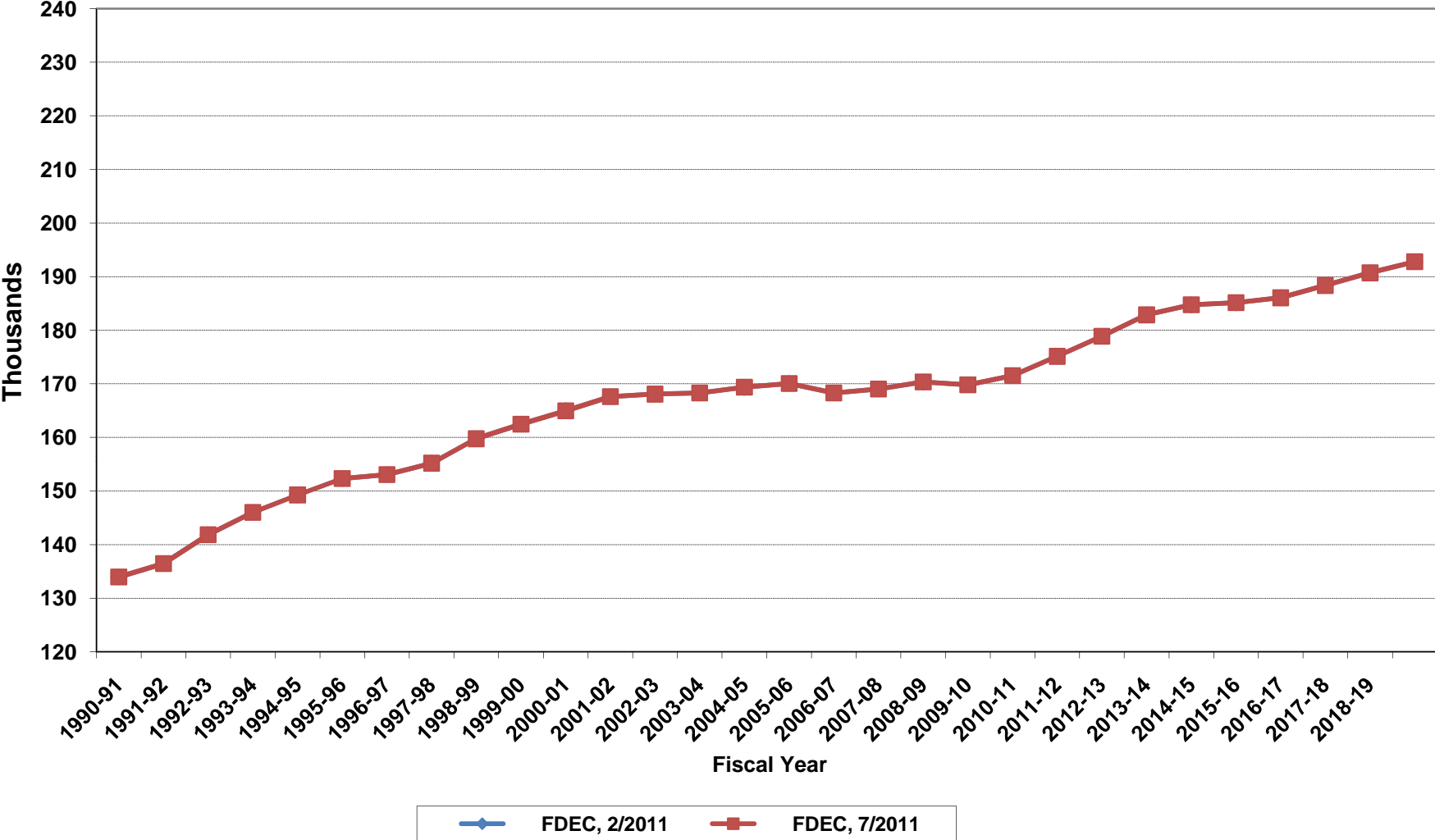
Florida Net Migration



Florida Resident Live Births



Florida Resident Deaths



Florida Net Natural Increase

