

Demographic Estimating Conference Executive Summary

The Demographic Estimating Conference met on July 13, 2012 to adopt a new population forecast. The data reflect a preliminary April 1, 2012 population estimate and recent demographic and economic-related data.

Population growth in Florida continues to rebound but at relatively low levels and rates of growth. Historically, Florida's population growth has been driven by net migration (more people permanently moving into the state than leaving). However, net migration fell to record low levels during much of 2008 and into 2009. During that time period, natural increase (births minus deaths) actually exceeded net migration. The low levels of net migration were largely due to national economic conditions, including weakened housing markets and other lingering effects from the Great Recession, that make it difficult for people to relocate.

The preliminary population estimate for April 1, 2012 indicates annual population growth of less than one percent as the state's economy continues its recovery (.89%). Annual population change is expected to exceed 200,000 net new residents in 2013 and remain above that threshold for the remainder of the forecast horizon.

April 1	Population	Percent Change	Change
2012	19,073,710	0.89%	168,662
2013	19,273,829	1.05%	200,119
2014	19,497,274	1.16%	223,445
2015	19,757,880	1.34%	260,606
2016	20,036,735	1.41%	278,855
2017	20,319,722	1.41%	282,987
2018	20,600,524	1.38%	280,802
2019	20,875,805	1.34%	275,281
2020	21,147,584	1.30%	271,779

Between April 1, 2010 and April 1, 2020, population growth is expected to average 234,627 net new residents per year, representing a compound growth rate of 1.18% over this 10-year time horizon. These increases are analogous to adding a city the size of Hialeah every year. During 2016, Florida's population is expected to break the 20-million mark.

Florida Demographic Estimating Conference

Tables

Post Conference Packet

July 13, 2012

Florida Resident Population

April 1

Year	FDEC, November 2011			FDEC, July 2012		
	Population	% Chg	Change	Population	% Chg	Change
1990	12,938,071	2.27%	287,136	12,938,071	2.27%	287,136
1991	13,258,732	2.48%	320,661	13,258,732	2.48%	320,661
1992	13,497,541	1.80%	238,809	13,497,541	1.80%	238,809
1993	13,730,115	1.72%	232,574	13,730,115	1.72%	232,574
1994	14,043,757	2.28%	313,642	14,043,757	2.28%	313,642
1995	14,335,992	2.08%	292,235	14,335,992	2.08%	292,235
1996	14,623,421	2.00%	287,429	14,623,421	2.00%	287,429
1997	14,938,314	2.15%	314,893	14,938,314	2.15%	314,893
1998	15,230,421	1.96%	292,107	15,230,421	1.96%	292,107
1999	15,580,244	2.30%	349,823	15,580,244	2.30%	349,823
2000	15,982,824	2.58%	402,580	15,982,824	2.58%	402,580
2001	16,305,100	2.02%	322,276	16,305,100	2.02%	322,276
2002	16,634,256	2.02%	329,156	16,634,256	2.02%	329,156
2003	16,979,706	2.08%	345,450	16,979,706	2.08%	345,450
2004	17,374,824	2.33%	395,118	17,374,824	2.33%	395,118
2005	17,778,156	2.32%	403,332	17,778,156	2.32%	403,332
2006	18,154,475	2.12%	376,319	18,154,475	2.12%	376,319
2007	18,446,768	1.61%	292,293	18,446,768	1.61%	292,293
2008	18,613,905	0.91%	167,137	18,613,905	0.91%	167,137
2009	18,687,425	0.39%	73,520	18,687,425	0.39%	73,520
2010	18,801,310	0.61%	113,885	18,801,310	0.61%	113,885
2011	18,905,048	0.55%	103,738	18,905,048	0.55%	103,738
Estimate						
2012	19,009,544	0.55%	104,496	19,073,710	0.89%	168,662
Begins forecast						
2013	19,165,559	0.82%	156,015	19,273,829	1.05%	200,119
2014	19,389,912	1.17%	224,353	19,497,274	1.16%	223,445
2015	19,664,970	1.42%	275,058	19,757,880	1.34%	260,606
2016	19,962,819	1.51%	297,849	20,036,735	1.41%	278,855
2017	20,237,311	1.38%	274,492	20,319,722	1.41%	282,987
2018	20,497,735	1.29%	260,424	20,600,524	1.38%	280,802
2019	20,759,148	1.28%	261,413	20,875,805	1.34%	275,281
		5-Year Averages			5-Year Averages	
2020	21,021,642	1.34%	271,334	21,147,584	1.37%	277,941
2025	22,329,540	1.21%	261,580	22,449,915	1.20%	260,466
2030	23,567,012	1.08%	247,494	23,682,570	1.07%	246,531
2035				24,842,146	0.96%	231,915
2040				25,955,509	0.88%	222,673

Florida Resident Households

April 1

Year	FDEC, November 2011			FDEC, July 2012		
	Households	% Chg	Change	Households	% Chg	Change
1990	5,134,869	3.40%	168,985	5,134,869	3.40%	168,985
1991	5,283,154	2.89%	148,285	5,283,154	2.89%	148,285
1992	5,378,499	1.80%	95,345	5,378,499	1.80%	95,345
1993	5,478,476	1.86%	99,977	5,478,476	1.86%	99,977
1994	5,589,093	2.02%	110,617	5,589,093	2.02%	110,617
1995	5,697,328	1.94%	108,235	5,697,328	1.94%	108,235
1996	5,806,031	1.91%	108,703	5,806,031	1.91%	108,703
1997	5,929,613	2.13%	123,582	5,929,613	2.13%	123,582
1998	6,040,514	1.87%	110,901	6,040,514	1.87%	110,901
1999	6,182,346	2.35%	141,832	6,182,346	2.35%	141,832
2000	6,338,075	2.52%	155,729	6,338,075	2.52%	155,729
2001	6,467,215	2.04%	129,140	6,467,215	2.04%	129,140
2002	6,599,035	2.04%	131,820	6,599,035	2.04%	131,820
2003	6,737,370	2.10%	138,335	6,737,370	2.10%	138,335
2004	6,895,469	2.35%	158,099	6,895,469	2.35%	158,099
2005	7,056,889	2.34%	161,420	7,056,889	2.34%	161,420
2006	7,207,645	2.14%	150,756	7,207,645	2.14%	150,756
2007	7,312,907	1.46%	105,262	7,312,907	1.46%	105,262
2008	7,368,319	0.76%	55,412	7,368,319	0.76%	55,412
2009	7,386,570	0.25%	18,251	7,386,570	0.25%	18,251
2010	7,420,802	0.46%	34,232	7,420,802	0.46%	34,232
2011	7,461,969	0.55%	41,167	7,461,969	0.55%	41,167
Begins forecast						
2012	7,511,843	0.67%	49,874	7,532,860	0.95%	70,891
2013	7,587,086	1.00%	75,243	7,620,428	1.16%	87,568
2014	7,687,603	1.32%	100,517	7,718,768	1.29%	98,340
2015	7,804,770	1.52%	117,167	7,829,921	1.44%	111,153
2016	7,927,662	1.57%	122,892	7,945,596	1.48%	115,675
2017	8,040,199	1.42%	112,537	8,061,315	1.46%	115,719
2018	8,146,607	1.32%	106,408	8,174,434	1.40%	113,119
2019	8,253,198	1.31%	106,591	8,284,413	1.35%	109,979
5-Year Averages			5-Year Averages			
2020	8,360,031	1.38%	111,052	8,392,826	1.40%	112,581
2025	8,890,176	1.24%	106,029	8,917,904	1.22%	105,016
2030	9,389,912	1.10%	99,947	9,415,283	1.09%	99,476
2035				9,883,372	0.98%	93,618
2040				10,333,659	0.90%	90,057

Quarterly Data Table

	2008-1	2008-2	2008-3	2008-4	2009-1	2009-2	2009-3	2009-4	2010-1	2010-2	2010-3	2010-4	2011-1	2011-2	2011-3	2011-4	2012-1	2012-2	2012-3	2012-4
Population																				
FDEC, 11/2011	18,599.6	18,625.4	18,645.5	18,661.9	18,678.6	18,699.6	18,726.1	18,755.5	18,786.0	18,815.3	18,842.4	18,868.3	18,893.0	18,917.5	18,942.6	18,968.4	18,995.6	19,026.0	19,061.0	19,100.0
FDEC, 07/2012	18,599.6	18,625.4	18,645.5	18,661.9	18,678.6	18,699.6	18,726.1	18,755.5	18,786.0	18,814.1	18,839.0	18,863.7	18,890.6	18,922.9	18,961.1	19,003.9	19,050.0	19,097.7	19,146.5	19,196.6
Population Growth Rate																				
FDEC, 11/2011	0.72	0.56	0.43	0.35	0.36	0.45	0.57	0.63	0.65	0.62	0.58	0.55	0.52	0.52	0.53	0.55	0.57	0.64	0.74	0.82
FDEC, 07/2012	0.72	0.56	0.43	0.35	0.36	0.45	0.57	0.63	0.65	0.60	0.53	0.52	0.57	0.68	0.81	0.90	0.97	1.01	1.03	1.05
Net Change in Population																				
FDEC, 11/2011	33.2	25.8	20.1	16.4	16.6	21.1	26.4	29.5	30.5	29.2	27.2	25.8	24.7	24.5	25.1	25.8	27.2	30.4	35.0	39.0
FDEC, 07/2012	33.2	25.8	20.1	16.4	16.6	21.1	26.4	29.5	30.5	28.1	24.9	24.6	27.0	32.2	38.2	42.7	46.1	47.8	48.8	50.1
Households																				
FDEC, 11/2011	7,363.9	7,371.6	7,377.0	7,380.8	7,384.5	7,389.9	7,397.3	7,406.2	7,415.9	7,426.0	7,436.5	7,447.0	7,457.5	7,468.3	7,479.7	7,491.8	7,505.0	7,519.9	7,537.1	7,556.0
FDEC, 07/2012	7,363.9	7,371.6	7,377.0	7,380.8	7,384.5	7,390.0	7,397.7	7,406.6	7,416.0	7,425.5	7,434.9	7,444.8	7,456.0	7,469.4	7,485.3	7,503.2	7,522.8	7,543.2	7,564.4	7,586.3
Household Growth Rate																				
FDEC, 11/2011	0.58	0.42	0.29	0.21	0.20	0.29	0.40	0.48	0.52	0.55	0.57	0.56	0.56	0.58	0.61	0.65	0.71	0.80	0.92	1.01
FDEC, 07/2012	0.58	0.42	0.29	0.21	0.20	0.30	0.41	0.48	0.51	0.51	0.51	0.54	0.60	0.72	0.85	0.96	1.05	1.09	1.13	1.17
Net Change in Households																				
FDEC, 11/2011	10.6	7.7	5.4	3.8	3.7	5.3	7.4	8.9	9.7	10.2	10.5	10.4	10.5	10.7	11.4	12.1	13.2	15.0	17.2	18.9
FDEC, 07/2012	10.6	7.7	5.4	3.8	3.7	5.5	7.7	8.9	9.5	9.4	9.4	10.0	11.2	13.4	15.9	17.9	19.5	20.5	21.2	22.0
Household Size																				
FDEC, 11/2011	2.526	2.527	2.528	2.528	2.529	2.530	2.531	2.532	2.533	2.534	2.534	2.534	2.533	2.533	2.533	2.532	2.531	2.530	2.529	2.528
FDEC, 07/2012	2.526	2.527	2.528	2.528	2.529	2.530	2.531	2.532	2.533	2.534	2.534	2.534	2.534	2.533	2.533	2.533	2.532	2.532	2.531	2.530
Household Size Growth Rate																				
FDEC, 11/2011	0.14	0.14	0.14	0.14	0.15	0.16	0.16	0.15	0.13	0.07	0.01	-0.01	-0.04	-0.06	-0.08	-0.10	-0.13	-0.16	-0.18	-0.18
FDEC, 07/2012	0.14	0.14	0.14	0.14	0.16	0.15	0.15	0.15	0.14	0.09	0.02	-0.01	-0.03	-0.04	-0.04	-0.06	-0.07	-0.08	-0.10	-0.11
Net Migration																				
FDEC, 11/2011	16.8	10.2	5.3	2.3	3.0	8.0	13.8	17.3	18.8	17.8	16.0	14.9	13.9	14.0	14.3	15.0	16.3	19.5	24.0	27.9
FDEC, 07/2012	17.1	10.3	5.2	2.0	2.7	7.8	13.9	17.7	19.5	17.6	14.6	14.5	16.8	22.1	28.2	32.7	36.0	37.6	38.6	39.9
Births																				
FDEC, 11/2011	58.8	58.2	57.5	56.9	56.3	55.6	55.0	54.5	54.0	53.6	53.3	53.1	52.9	52.8	53.0	53.2	53.3	53.5	53.7	53.9
FDEC, 07/2012	58.8	58.2	57.6	56.9	56.2	55.6	55.0	54.5	54.0	53.7	53.5	53.4	53.3	53.3	53.3	53.3	53.5	53.6	53.7	53.9
Deaths																				
FDEC, 11/2011	42.4	42.6	42.7	42.7	42.6	42.5	42.4	42.3	42.2	42.2	42.1	42.1	42.2	42.2	42.3	42.4	42.5	42.6	42.7	42.8
FDEC, 07/2012	42.6	42.7	42.6	42.5	42.3	42.3	42.5	42.7	43.0	43.1	43.2	43.2	43.2	43.2	43.2	43.3	43.4	43.5	43.6	43.7
Net Natural Increase																				
FDEC, 11/2011	16.4	15.6	14.8	14.2	13.6	13.1	12.6	12.2	11.7	11.4	11.1	10.9	10.8	10.6	10.7	10.8	10.9	10.9	11.0	11.1
FDEC, 07/2012	16.1	15.5	14.9	14.4	13.9	13.3	12.5	11.8	11.0	10.6	10.3	10.2	10.2	10.1	10.1	10.1	10.1	10.1	10.2	10.3

Quarterly Data Table

	2013-1	2013-2	2013-3	2013-4	2014-1	2014-2	2014-3	2014-4	2015-1	2015-2	2015-3	2015-4	2016-1	2016-2	2016-3	2016-4	2017-1	2017-2	2017-3	2017-4
Population																				
FDEC, 11/2011	19,143.0	19,190.5	19,242.6	19,298.9	19,359.0	19,422.4	19,488.8	19,557.8	19,628.9	19,701.7	19,775.7	19,850.5	19,925.4	19,998.8	20,069.1	20,137.2	20,204.1	20,270.2	20,335.6	20,400.6
FDEC, 07/2012	19,247.9	19,300.4	19,354.3	19,410.0	19,467.8	19,528.2	19,591.3	19,656.7	19,723.9	19,792.2	19,861.2	19,931.0	20,001.4	20,072.0	20,142.7	20,213.5	20,284.3	20,355.0	20,425.5	20,495.7
Population Growth Rate																				
FDEC, 11/2011	0.90	1.00	1.09	1.18	1.25	1.32	1.37	1.42	1.46	1.49	1.51	1.52	1.52	1.48	1.42	1.36	1.33	1.31	1.30	1.28
FDEC, 07/2012	1.07	1.10	1.12	1.15	1.20	1.25	1.30	1.34	1.37	1.39	1.40	1.41	1.42	1.42	1.42	1.41	1.41	1.40	1.39	1.38
Net Change in Population																				
FDEC, 11/2011	43.0	47.5	52.1	56.3	60.1	63.4	66.4	69.0	71.1	72.8	74.0	74.8	74.9	73.3	70.4	68.1	66.9	66.1	65.4	65.0
FDEC, 07/2012	51.3	52.5	53.9	55.6	57.8	60.4	63.1	65.4	67.2	68.3	69.0	69.8	70.4	70.6	70.7	70.8	70.8	70.7	70.5	70.2
Households																				
FDEC, 11/2011	7,576.4	7,598.6	7,622.3	7,647.5	7,674.0	7,701.7	7,730.3	7,759.7	7,789.7	7,820.1	7,850.7	7,881.5	7,912.3	7,942.4	7,971.3	7,999.2	8,026.6	8,053.6	8,080.4	8,106.9
FDEC, 07/2012	7,609.0	7,632.2	7,656.0	7,680.5	7,705.9	7,732.1	7,759.3	7,787.2	7,815.6	7,844.3	7,873.1	7,902.0	7,931.1	7,960.1	7,989.1	8,018.1	8,046.9	8,075.6	8,104.1	8,132.4
Household Growth Rate																				
FDEC, 11/2011	1.09	1.17	1.26	1.33	1.39	1.45	1.49	1.53	1.55	1.57	1.58	1.58	1.57	1.53	1.46	1.41	1.38	1.35	1.34	1.32
FDEC, 07/2012	1.20	1.23	1.25	1.29	1.33	1.37	1.41	1.45	1.47	1.48	1.48	1.48	1.48	1.47	1.47	1.46	1.45	1.43	1.42	1.40
Net Change in Households																				
FDEC, 11/2011	20.5	22.1	23.7	25.2	26.5	27.7	28.6	29.4	30.0	30.4	30.7	30.8	30.8	30.1	28.9	27.9	27.4	27.0	26.8	26.5
FDEC, 07/2012	22.6	23.2	23.8	24.5	25.4	26.3	27.1	27.9	28.4	28.7	28.8	28.9	29.1	29.1	29.0	29.0	28.9	28.7	28.5	28.3
Household Size																				
FDEC, 11/2011	2.527	2.526	2.525	2.524	2.523	2.522	2.521	2.520	2.520	2.519	2.519	2.519	2.518	2.518	2.518	2.517	2.517	2.517	2.517	2.516
FDEC, 07/2012	2.530	2.529	2.528	2.527	2.526	2.526	2.525	2.524	2.524	2.523	2.523	2.522	2.522	2.522	2.521	2.521	2.521	2.521	2.520	2.520
Household Size Growth Rate																				
FDEC, 11/2011	-0.18	-0.17	-0.16	-0.15	-0.14	-0.13	-0.12	-0.10	-0.09	-0.08	-0.07	-0.06	-0.05	-0.05	-0.05	-0.04	-0.04	-0.04	-0.04	-0.04
FDEC, 07/2012	-0.12	-0.13	-0.13	-0.13	-0.13	-0.12	-0.11	-0.10	-0.09	-0.08	-0.07	-0.06	-0.06	-0.05	-0.05	-0.04	-0.04	-0.03	-0.03	-0.02
Net Migration																				
FDEC, 11/2011	31.8	36.4	40.9	45.1	48.8	52.1	55.1	57.6	59.8	61.4	62.6	63.4	63.6	62.0	59.0	56.7	55.5	54.7	54.1	53.6
FDEC, 07/2012	40.9	42.1	43.4	45.0	47.1	49.6	52.2	54.5	56.3	57.3	58.0	58.8	59.4	59.6	59.6	59.7	59.7	59.6	59.4	59.1
Births																				
FDEC, 11/2011	54.1	54.3	54.5	54.8	55.0	55.2	55.5	55.7	55.9	56.1	56.3	56.5	56.6	56.8	57.0	57.2	57.4	57.5	57.7	57.9
FDEC, 07/2012	54.1	54.4	54.6	54.8	55.0	55.3	55.5	55.7	55.9	56.1	56.3	56.5	56.7	56.9	57.1	57.3	57.4	57.6	57.8	58.0
Deaths																				
FDEC, 11/2011	43.0	43.1	43.3	43.5	43.7	43.9	44.1	44.3	44.5	44.7	44.9	45.1	45.3	45.5	45.7	45.9	46.0	46.2	46.4	46.5
FDEC, 07/2012	43.8	43.9	44.0	44.1	44.3	44.5	44.6	44.8	45.0	45.1	45.3	45.5	45.7	45.8	46.0	46.2	46.4	46.5	46.7	46.9
Net Natural Increase																				
FDEC, 11/2011	11.1	11.2	11.2	11.2	11.3	11.3	11.3	11.3	11.4	11.4	11.4	11.3	11.3	11.3	11.3	11.3	11.3	11.3	11.3	11.3
FDEC, 07/2012	10.4	10.5	10.6	10.6	10.7	10.8	10.9	10.9	10.9	11.0	11.0	11.0	11.0	11.1	11.1	11.1	11.1	11.1	11.1	11.1

Quarterly Data Table

	2018-1	2018-2	2018-3	2018-4	2019-1	2019-2	2019-3	2019-4	2020-1	2020-2	2020-3	2020-4	2021-1	2021-2	2021-3	2021-4	2022-1	2022-2
Population																		
FDEC, 11/2011	20,465.3	20,530.3	20,595.5	20,660.9	20,726.4	20,791.9	20,857.5	20,923.1	20,988.8	21,054.3	21,119.7	21,185.0	21,250.4	21,315.9	21,381.3	21,446.8	21,512.4	21,578.0
FDEC, 07/2012	20,565.6	20,635.2	20,704.3	20,773.1	20,841.6	20,909.9	20,978.1	21,046.0	21,113.8	21,181.3	21,248.5	21,315.6	21,382.4	21,449.0	21,515.3	21,581.4	21,647.2	21,712.8
Population Growth Rate																		
FDEC, 11/2011	1.28	1.28	1.28	1.28	1.27	1.27	1.27	1.26	1.26	1.25	1.25	1.24	1.24	1.24	1.23	1.23	1.23	1.23
FDEC, 07/2012	1.37	1.36	1.35	1.34	1.33	1.32	1.31	1.30	1.29	1.29	1.28	1.27	1.26	1.25	1.24	1.23	1.23	1.22
Net Change in Population																		
FDEC, 11/2011	64.8	64.9	65.2	65.4	65.5	65.6	65.6	65.6	65.7	65.5	65.4	65.4	65.4	65.4	65.5	65.5	65.6	65.6
FDEC, 07/2012	69.9	69.5	69.1	68.8	68.5	68.3	68.1	68.0	67.7	67.5	67.3	67.0	66.8	66.6	66.3	66.1	65.9	65.6
Households																		
FDEC, 11/2011	8,133.4	8,159.9	8,186.5	8,213.1	8,239.8	8,266.6	8,293.3	8,320.0	8,346.7	8,373.3	8,399.9	8,426.5	8,453.0	8,479.6	8,506.2	8,532.8	8,559.3	8,586.0
FDEC, 07/2012	8,160.5	8,188.3	8,216.0	8,243.4	8,270.8	8,298.0	8,325.2	8,352.3	8,379.3	8,406.3	8,433.2	8,460.0	8,486.8	8,513.5	8,540.1	8,566.7	8,593.2	8,619.6
Household Growth Rate																		
FDEC, 11/2011	1.31	1.31	1.31	1.31	1.31	1.30	1.30	1.29	1.29	1.28	1.28	1.27	1.27	1.26	1.26	1.26	1.25	1.25
FDEC, 07/2012	1.39	1.37	1.36	1.34	1.33	1.32	1.32	1.31	1.30	1.29	1.29	1.28	1.27	1.26	1.26	1.25	1.24	1.24
Net Change in Households																		
FDEC, 11/2011	26.5	26.5	26.6	26.7	26.7	26.7	26.7	26.7	26.7	26.6	26.6	26.6	26.6	26.6	26.6	26.6	26.6	26.6
FDEC, 07/2012	28.1	27.9	27.7	27.5	27.3	27.2	27.2	27.1	27.0	27.0	26.9	26.8	26.8	26.7	26.6	26.6	26.5	26.4
Household Size																		
FDEC, 11/2011	2.516	2.516	2.516	2.516	2.515	2.515	2.515	2.515	2.515	2.514	2.514	2.514	2.514	2.514	2.514	2.513	2.513	2.513
FDEC, 07/2012	2.520	2.520	2.520	2.520	2.520	2.520	2.520	2.520	2.520	2.520	2.520	2.520	2.520	2.519	2.519	2.519	2.519	2.519
Household Size Growth Rate																		
FDEC, 11/2011	-0.03	-0.03	-0.03	-0.03	-0.03	-0.03	-0.03	-0.03	-0.03	-0.03	-0.03	-0.03	-0.03	-0.03	-0.03	-0.02	-0.02	-0.02
FDEC, 07/2012	-0.02	-0.01	-0.01	-0.01	-0.01	-0.01	-0.01	-0.01	-0.01	-0.01	-0.01	-0.01	-0.01	-0.01	-0.01	-0.02	-0.02	-0.02
Net Migration																		
FDEC, 11/2011	53.5	53.6	53.9	54.1	54.2	54.3	54.3	54.4	54.4	54.3	54.2	54.2	54.3	54.4	54.4	54.5	54.6	54.7
FDEC, 07/2012	58.8	58.4	58.0	57.7	57.5	57.3	57.2	57.0	56.8	56.6	56.4	56.3	56.1	55.9	55.8	55.6	55.5	55.4
Births																		
FDEC, 11/2011	58.0	58.2	58.4	58.5	58.7	58.9	59.0	59.2	59.4	59.5	59.7	59.9	60.1	60.2	60.4	60.6	60.7	60.9
FDEC, 07/2012	58.1	58.3	58.4	58.6	58.7	58.9	59.0	59.1	59.2	59.3	59.3	59.4	59.5	59.6	59.7	59.8	59.9	60.0
Deaths																		
FDEC, 11/2011	46.7	46.9	47.0	47.2	47.4	47.6	47.8	47.9	48.1	48.3	48.5	48.7	48.9	49.2	49.4	49.6	49.8	50.0
FDEC, 07/2012	47.0	47.2	47.3	47.5	47.7	47.9	48.0	48.2	48.2	48.4	48.5	48.7	48.8	49.0	49.2	49.3	49.6	49.8
Net Natural Increase																		
FDEC, 11/2011	11.3	11.3	11.3	11.3	11.3	11.3	11.3	11.2	11.2	11.2	11.2	11.1	11.1	11.1	11.0	11.0	10.9	10.9
FDEC, 07/2012	11.1	11.1	11.1	11.1	11.0	11.0	11.0	10.9	10.9	10.9	10.8	10.8	10.7	10.7	10.6	10.5	10.4	10.2

Fiscal Year Data Table

FISCAL YEAR
FORECAST TABLES

	<u>1990-91</u>	<u>1991-92</u>	<u>1992-93</u>	<u>1993-94</u>	<u>1994-95</u>	<u>1995-96</u>	<u>1996-97</u>	<u>1997-98</u>	<u>1998-99</u>	<u>1999-00</u>	<u>2000-01</u>	<u>2001-02</u>	<u>2002-03</u>	<u>2003-04</u>	<u>2004-05</u>	<u>2005-06</u>	<u>2006-07</u>	<u>2007-08</u>
Population																		
FDEC, 11/2011	13,178.0	13,442.6	13,670.0	13,962.2	14,264.9	14,550.7	14,859.1	15,158.3	15,488.4	15,881.5	16,228.0	16,551.2	16,892.0	17,273.8	17,677.3	18,062.2	18,378.2	18,578.9
FDEC, 07/2012	13,178.0	13,442.6	13,670.0	13,962.2	14,264.9	14,550.7	14,859.1	15,158.3	15,488.4	15,881.7	16,228.0	16,551.2	16,892.0	17,273.8	17,677.3	18,062.2	18,378.2	18,578.9
Growth Rate																		
FDEC, 11/2011	2.42	2.01	1.69	2.14	2.17	2.00	2.12	2.01	2.18	2.54	2.18	1.99	2.06	2.26	2.34	2.18	1.75	1.09
FDEC, 07/2012	2.42	2.01	1.69	2.14	2.17	2.00	2.12	2.01	2.18	2.54	2.18	1.99	2.06	2.26	2.34	2.18	1.75	1.09
Net Change in Population																		
FDEC, 11/2011	315.1	232.0	241.6	315.7	289.2	291.0	313.2	294.8	360.0	395.9	319.2	330.8	350.8	398.4	401.8	368.5	278.3	151.4
FDEC, 07/2012	315.1	232.0	241.6	315.7	289.2	291.0	313.2	294.8	360.0	396.2	319.0	330.8	350.8	398.4	401.8	368.5	278.3	151.4
Households																		
FDEC, 11/2011	5,230.7	5,335.4	5,424.2	5,538.0	5,655.6	5,766.7	5,887.3	6,005.5	6,137.4	6,296.9	6,436.4	6,565.8	6,702.3	6,855.1	7,016.4	7,170.9	7,288.9	7,357.1
FDEC, 07/2012	5,230.7	5,335.4	5,424.2	5,538.0	5,655.6	5,766.7	5,887.3	6,005.5	6,137.4	6,296.9	6,436.4	6,565.8	6,702.3	6,855.1	7,016.4	7,170.9	7,288.9	7,357.1
Growth Rate																		
FDEC, 11/2011	2.44	2.00	1.66	2.10	2.12	1.96	2.09	2.01	2.20	2.60	2.22	2.01	2.08	2.28	2.35	2.20	1.65	0.93
FDEC, 07/2012	2.44	2.00	1.66	2.10	2.12	1.96	2.09	2.01	2.20	2.60	2.22	2.01	2.08	2.28	2.35	2.20	1.65	0.93
Net Change in Households																		
FDEC, 11/2011	125.6	91.3	94.1	122.9	112.3	113.3	122.9	116.8	144.7	161.0	127.7	132.5	140.5	159.3	161.1	146.4	99.1	49.3
FDEC, 07/2012	125.6	91.3	94.1	122.9	112.3	113.3	122.9	116.8	144.7	161.0	127.7	132.5	140.5	159.3	161.1	146.4	99.1	49.3
Household Size																		
FDEC, 11/2011	2.519	2.520	2.520	2.521	2.522	2.523	2.524	2.524	2.524	2.522	2.521	2.521	2.520	2.520	2.519	2.519	2.521	2.525
FDEC, 07/2012	2.519	2.520	2.520	2.521	2.522	2.523	2.524	2.524	2.524	2.522	2.521	2.521	2.520	2.520	2.519	2.519	2.521	2.525
Growth Rate																		
FDEC, 11/2011	-0.02	0.01	0.03	0.04	0.04	0.04	0.03	0.01	-0.02	-0.06	-0.03	-0.02	-0.02	-0.02	-0.02	-0.02	0.10	0.16
FDEC, 07/2012	-0.02	0.01	0.03	0.04	0.04	0.04	0.03	0.01	-0.02	-0.06	-0.03	-0.02	-0.02	-0.02	-0.02	-0.02	0.10	0.16
Net Migration																		
FDEC, 11/2011	252.0	176.4	191.6	270.0	249.0	255.0	275.7	255.6	324.1	358.1	278.3	293.5	310.5	351.4	349.6	306.8	206.8	84.3
FDEC, 07/2012	252.6	176.1	191.8	269.6	249.5	254.7	275.8	255.4	324.8	357.3	278.8	293.4	310.3	351.5	349.9	306.4	206.6	84.9
Births																		
FDEC, 11/2011	197.2	191.8	192.1	191.8	189.3	188.6	190.6	194.2	195.9	200.3	205.8	205.2	208.4	215.3	221.5	232.0	239.6	236.1
FDEC, 07/2012	196.5	192.1	192.2	191.7	189.3	188.6	190.6	194.4	195.5	200.8	205.6	204.9	208.8	215.0	221.5	232.3	239.5	236.0
Deaths																		
FDEC, 11/2011	134.1	136.3	142.1	146.1	149.2	152.6	153.1	155.1	160.0	162.5	164.9	167.8	168.1	168.3	169.3	170.3	168.1	169.0
FDEC, 07/2012	134.1	136.2	142.5	145.6	149.6	152.3	153.1	155.0	160.3	162.0	165.4	167.5	168.3	168.1	169.5	170.2	167.9	169.5
Net Natural Increase																		
FDEC, 11/2011	63.1	55.5	50.0	45.7	40.1	36.0	37.5	39.2	35.9	37.8	40.9	37.4	40.3	47.0	52.2	61.7	71.5	67.1
FDEC, 07/2012	62.5	55.9	49.8	46.1	39.7	36.3	37.5	39.4	35.2	38.8	40.2	37.4	40.6	46.9	51.9	62.1	71.7	66.4

Fiscal Year Data Table

FISCAL YEAR
FORECAST TABLES

	<u>2008-09</u>	<u>2009-10</u>	<u>2010-11</u>	<u>2011-12</u>	<u>2012-13</u>	<u>2013-14</u>	<u>2014-15</u>	<u>2015-16</u>	<u>2016-17</u>	<u>2017-18</u>	<u>2018-19</u>	<u>2019-20</u>	<u>2020-21</u>	<u>2021-22</u>
Population														
FDEC, 11/2011	18,671.4	18,770.7	18,880.3	18,983.1	19,123.6	19,330.7	19,594.3	19,887.6	20,170.2	20,432.9	20,693.7	20,955.9	21,217.7	21,479.7
FDEC, 07/2012	18,671.4	18,770.4	18,879.1	19,028.2	19,222.9	19,440.1	19,691.0	19,966.4	20,248.9	20,530.5	20,807.2	21,079.8	21,348.9	21,614.2
Growth Rate														
FDEC, 11/2011	0.50	0.53	0.58	0.54	0.74	1.08	1.36	1.50	1.42	1.30	1.28	1.27	1.25	1.23
FDEC, 07/2012	0.50	0.53	0.58	0.79	1.02	1.13	1.29	1.40	1.41	1.39	1.35	1.31	1.28	1.24
Net Change in Population														
FDEC, 11/2011	74.3	115.6	102.2	108.5	164.5	231.9	279.3	297.0	271.4	260.1	261.7	262.4	261.6	262.2
FDEC, 07/2012	74.3	114.5	108.8	174.8	202.7	227.8	264.0	279.9	283.0	280.2	274.7	271.3	267.7	263.9
Households														
FDEC, 11/2011	7,383.1	7,411.4	7,452.3	7,499.1	7,567.0	7,661.4	7,774.9	7,896.7	8,012.7	8,120.1	8,226.5	8,333.3	8,439.7	8,546.1
FDEC, 07/2012	7,383.1	7,411.4	7,451.3	7,513.6	7,598.0	7,693.6	7,801.6	7,916.6	8,032.4	8,146.3	8,257.1	8,365.8	8,473.3	8,579.9
Growth Rate														
FDEC, 11/2011	0.35	0.38	0.55	0.63	0.91	1.25	1.48	1.57	1.47	1.34	1.31	1.30	1.28	1.26
FDEC, 07/2012	0.35	0.38	0.54	0.84	1.12	1.26	1.40	1.47	1.46	1.42	1.36	1.32	1.29	1.26
Net Change in Households														
FDEC, 11/2011	18.3	36.2	42.1	51.6	78.6	103.1	118.4	122.4	111.2	106.2	106.7	106.8	106.3	106.4
FDEC, 07/2012	18.4	35.5	43.9	73.8	89.0	100.0	112.1	115.8	115.5	112.7	109.7	108.3	107.2	106.2
Household Size														
FDEC, 11/2011	2.529	2.533	2.533	2.531	2.527	2.523	2.520	2.518	2.517	2.516	2.515	2.515	2.514	2.513
FDEC, 07/2012	2.529	2.533	2.534	2.532	2.530	2.527	2.524	2.522	2.521	2.520	2.520	2.520	2.520	2.519
Growth Rate														
FDEC, 11/2011	0.14	0.15	0.03	-0.08	-0.16	-0.16	-0.12	-0.07	-0.05	-0.04	-0.03	-0.03	-0.03	-0.03
FDEC, 07/2012	0.14	0.15	0.04	-0.05	-0.10	-0.13	-0.11	-0.07	-0.05	-0.03	-0.01	-0.01	-0.01	-0.01
Net Migration														
FDEC, 11/2011	18.5	67.7	58.8	65.2	120.1	186.9	233.9	251.6	226.0	214.8	216.5	217.5	217.1	218.3
FDEC, 07/2012	17.7	68.6	68.0	134.5	161.4	185.1	220.3	235.7	238.7	235.8	230.6	227.7	224.7	222.3
Births														
FDEC, 11/2011	226.3	217.0	212.1	213.0	216.0	219.5	223.1	226.2	229.1	231.8	234.4	237.1	239.9	242.6
FDEC, 07/2012	226.3	217.2	213.5	213.7	216.2	219.6	223.2	226.4	229.4	232.2	234.6	236.5	237.9	239.5
Deaths														
FDEC, 11/2011	170.6	169.1	168.7	169.7	171.6	174.5	177.7	180.8	183.8	186.5	189.2	192.2	195.4	198.8
FDEC, 07/2012	169.8	171.4	172.7	173.3	174.9	176.9	179.5	182.3	185.1	187.7	190.5	192.8	195.0	197.8
Net Natural Increase														
FDEC, 11/2011	55.7	47.9	43.4	43.3	44.4	45.0	45.4	45.4	45.4	45.3	45.2	44.9	44.5	43.8
FDEC, 07/2012	56.5	45.9	40.7	40.4	41.3	42.7	43.7	44.1	44.3	44.4	44.2	43.7	43.0	41.6

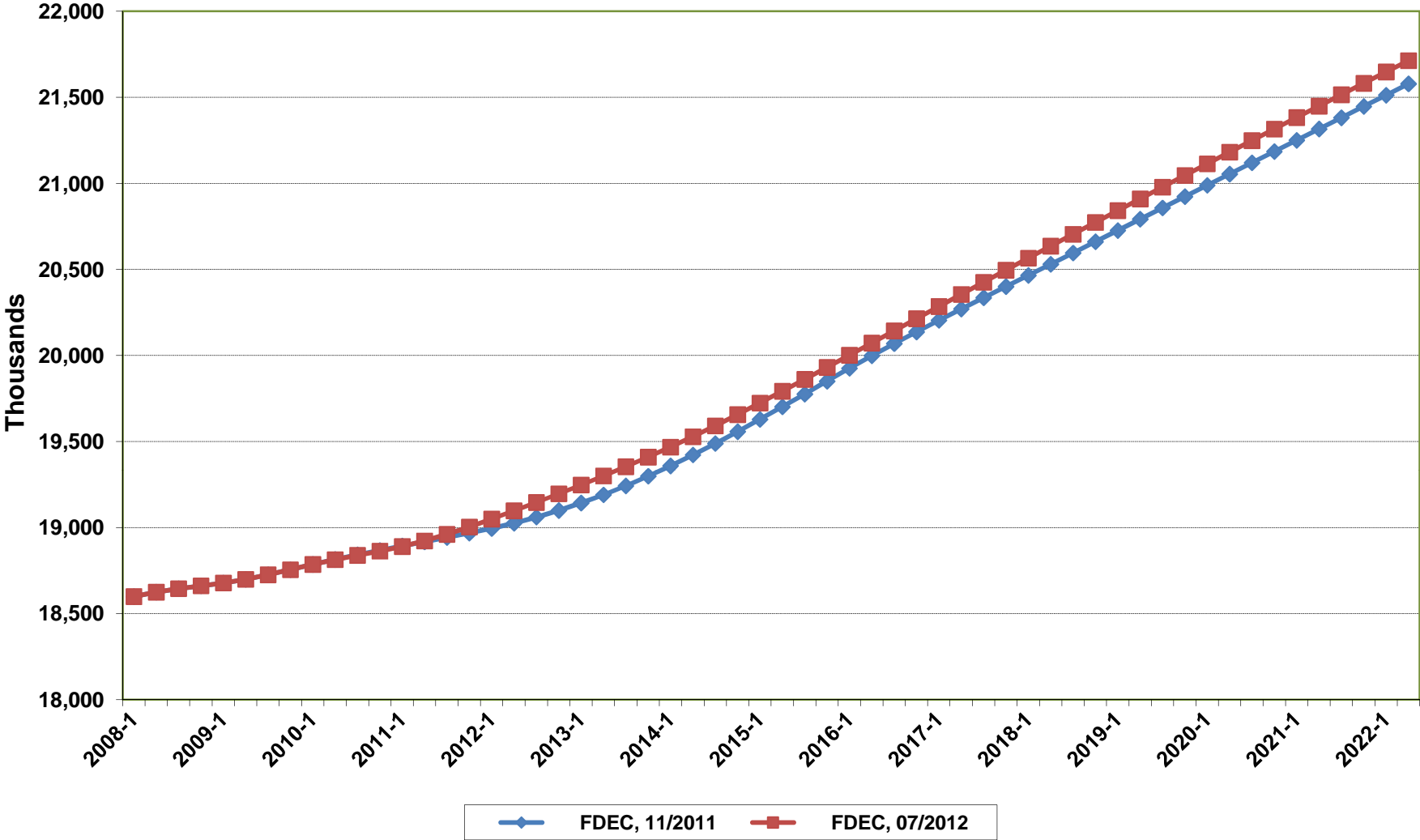
Florida Demographic Estimating Conference

Charts

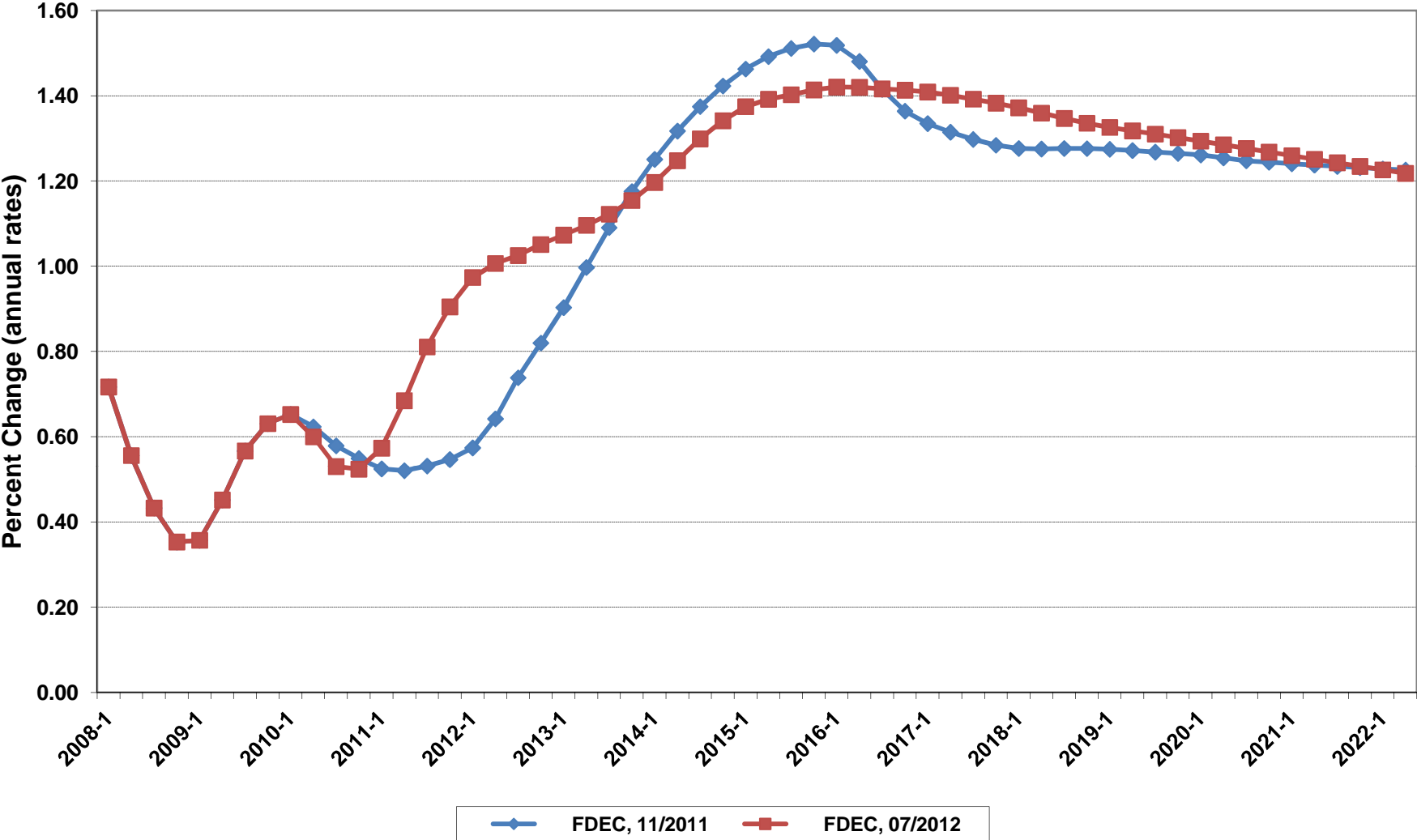
Post Conference Packet

July 13, 2012

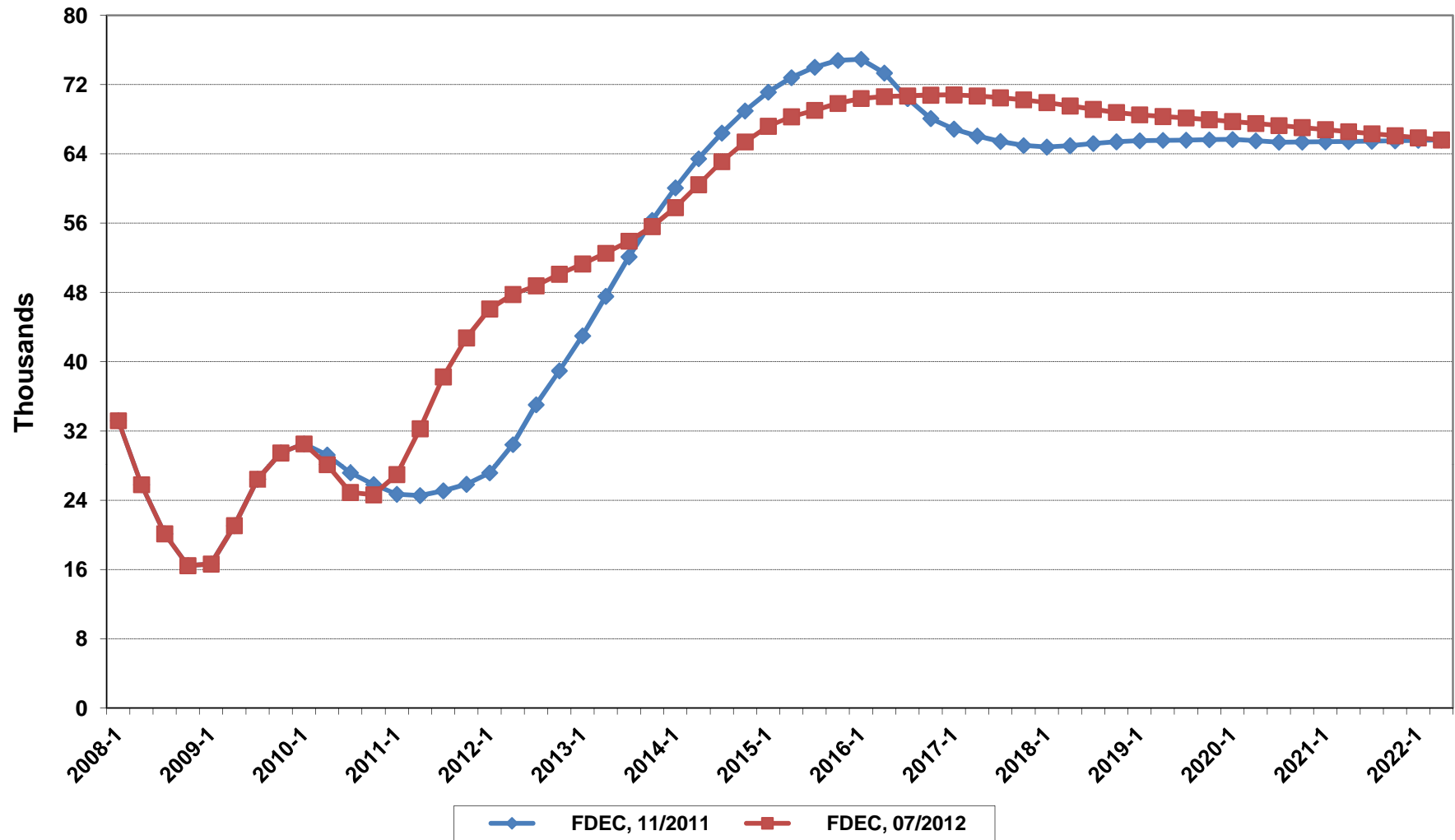
Florida Resident Population



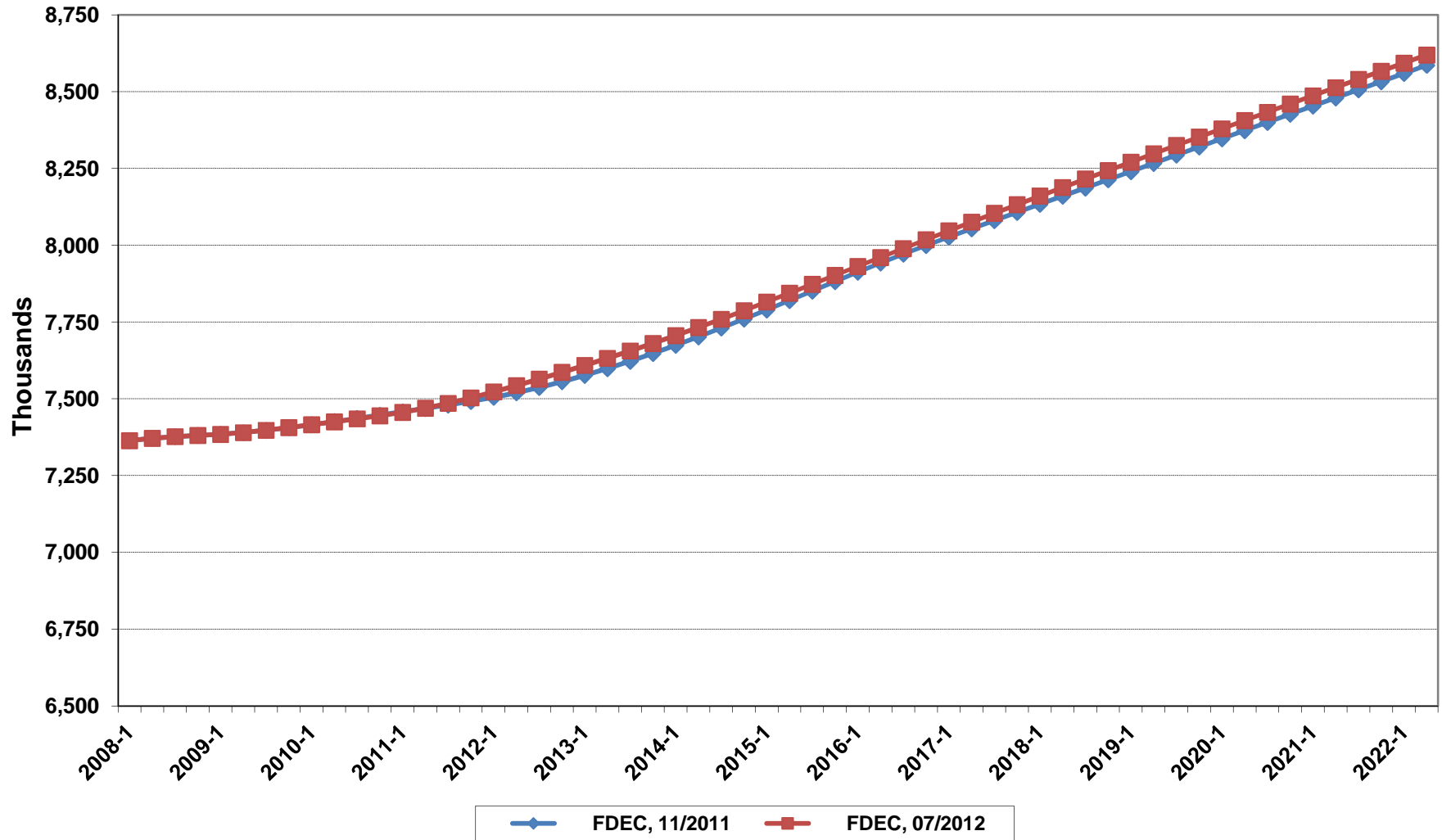
Growth In Florida Resident Population



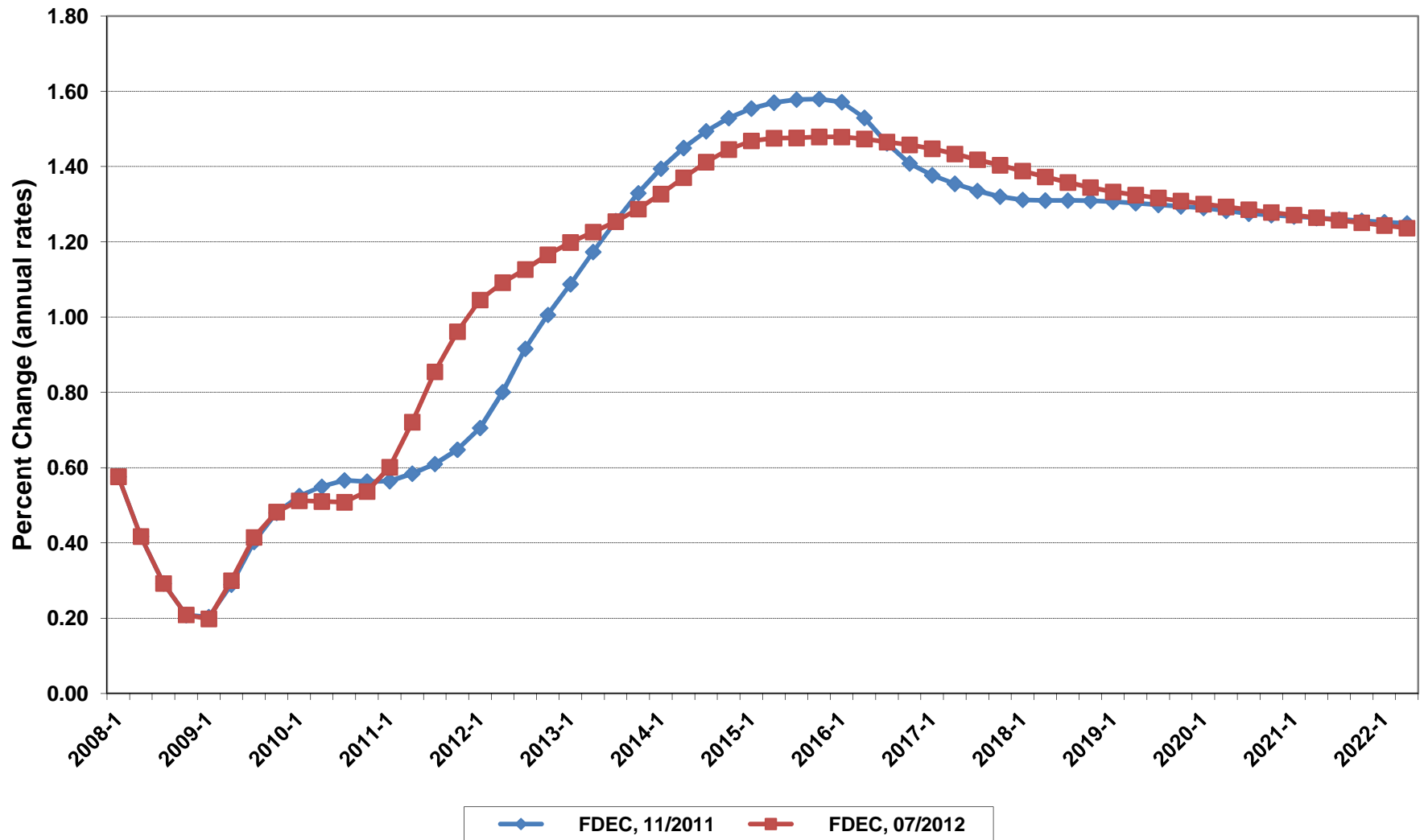
Net Change In Florida Resident Population



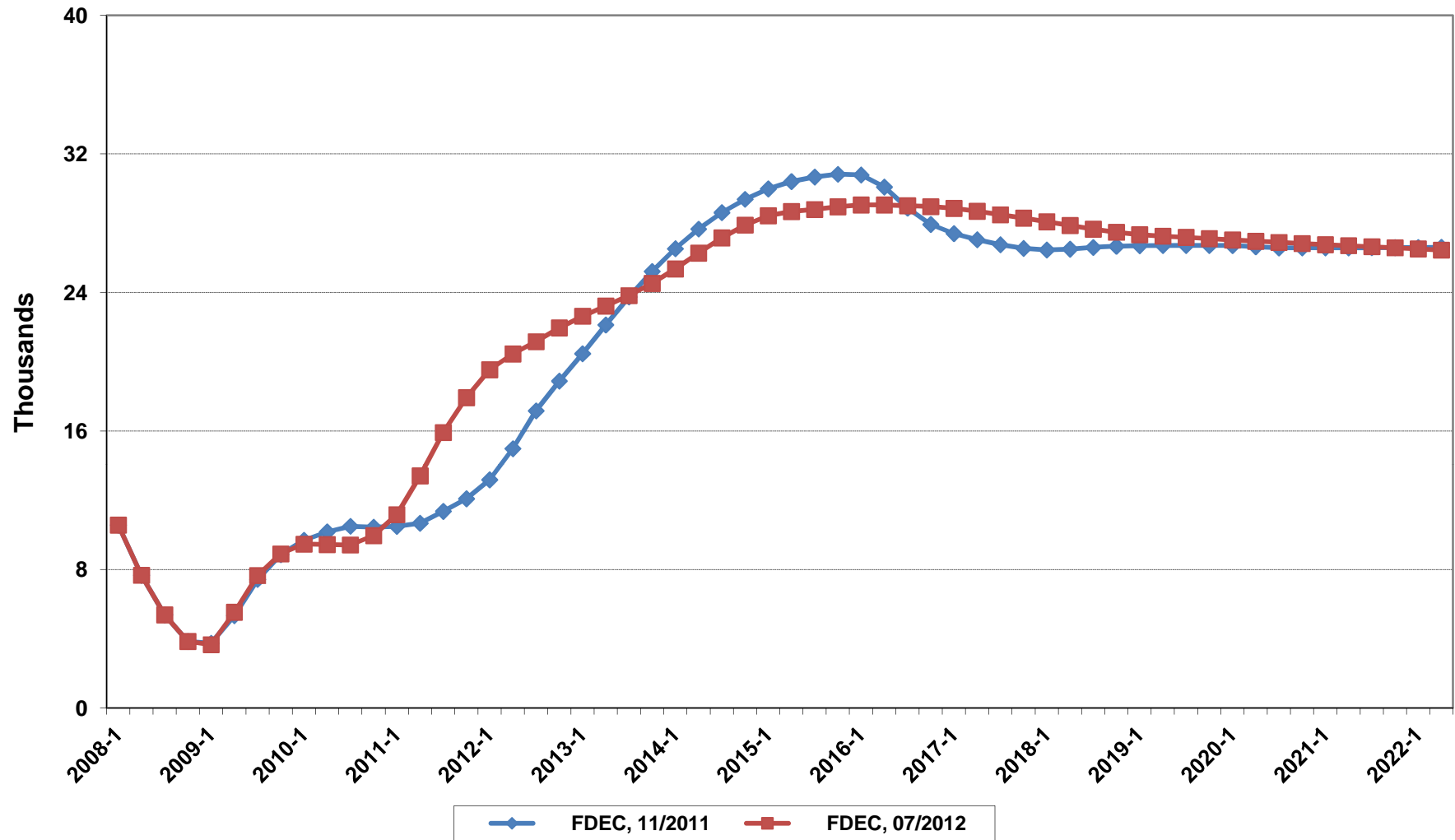
Florida Resident Households



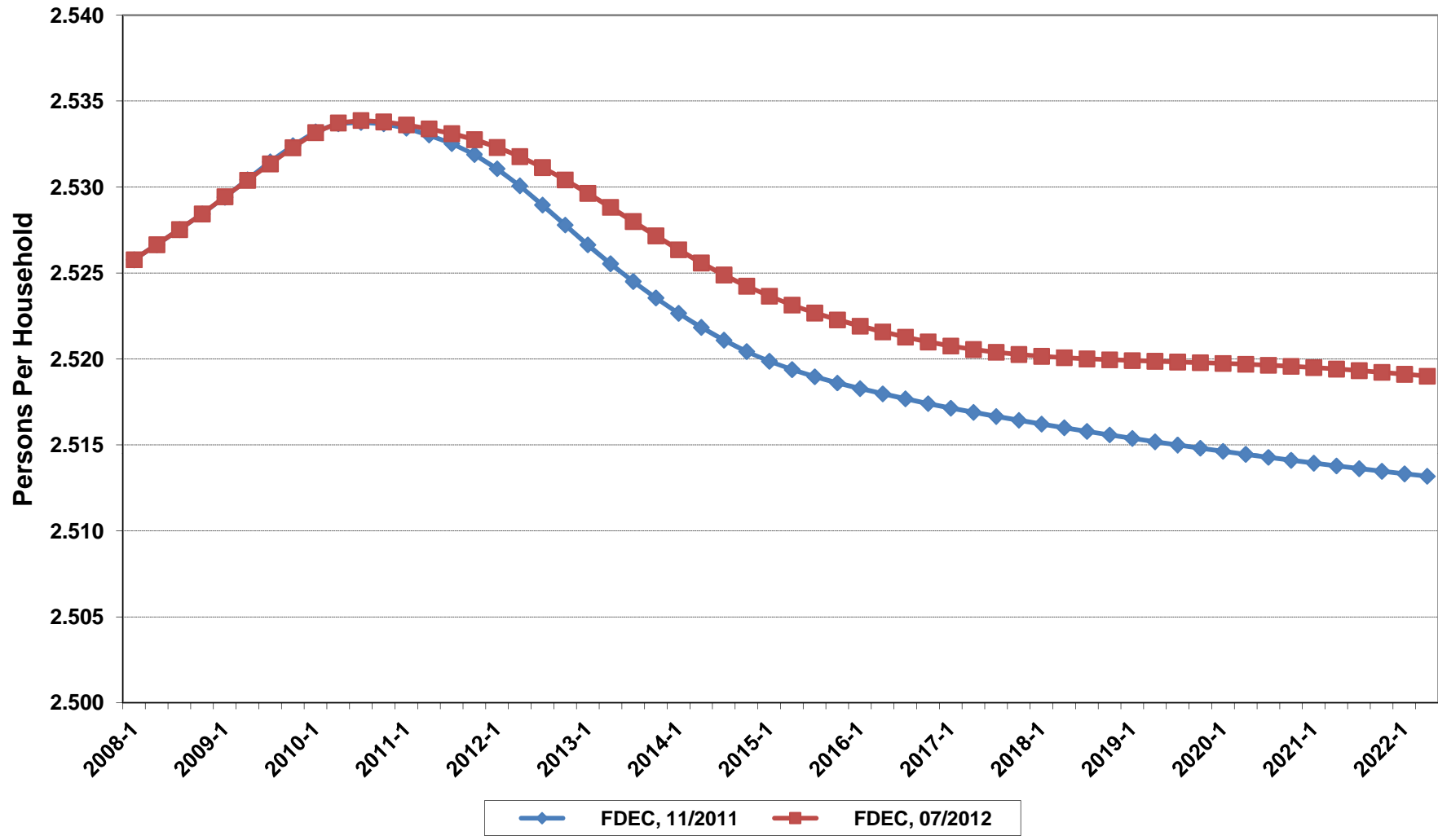
Growth In Florida Resident Households



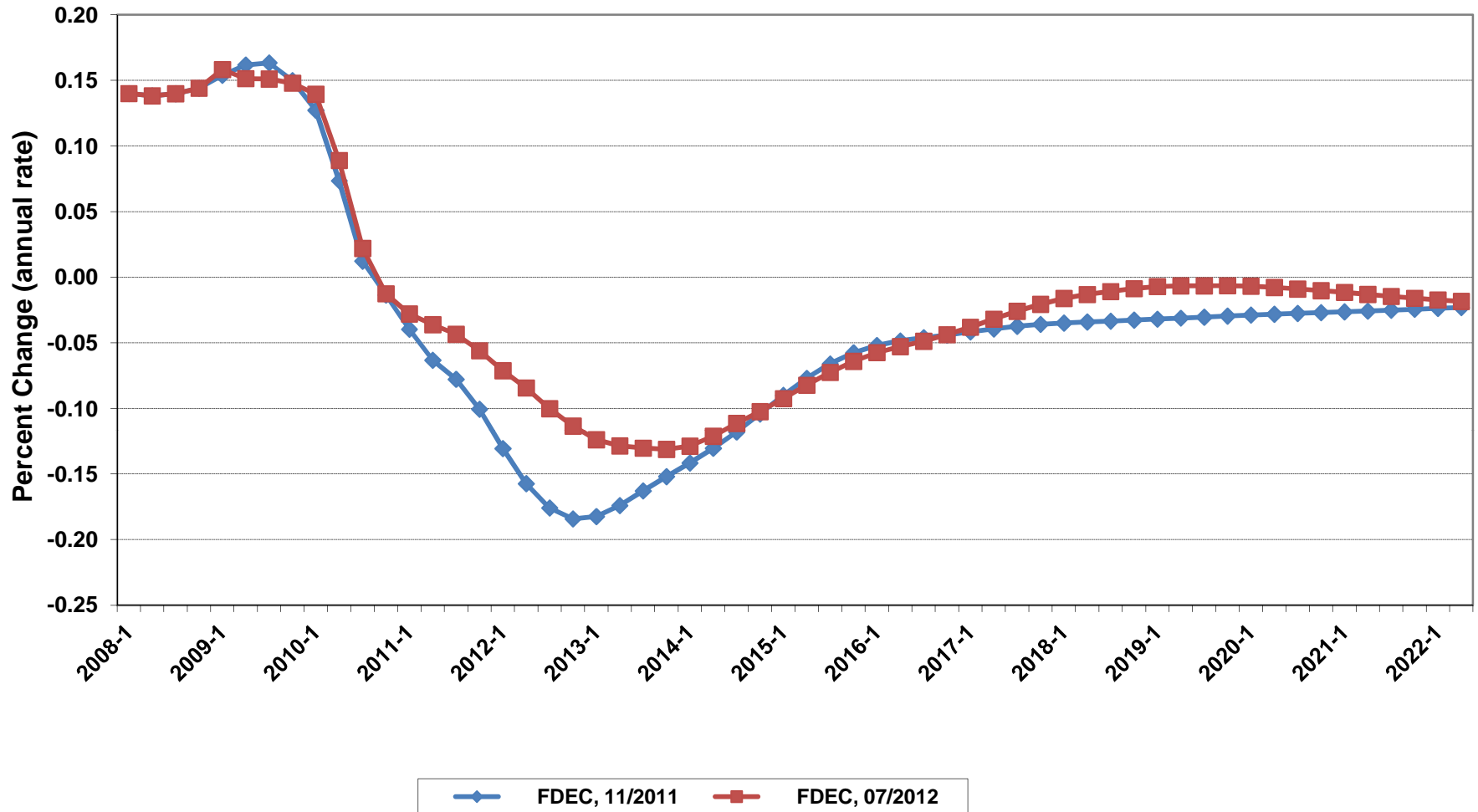
Net Change In Florida Resident Households



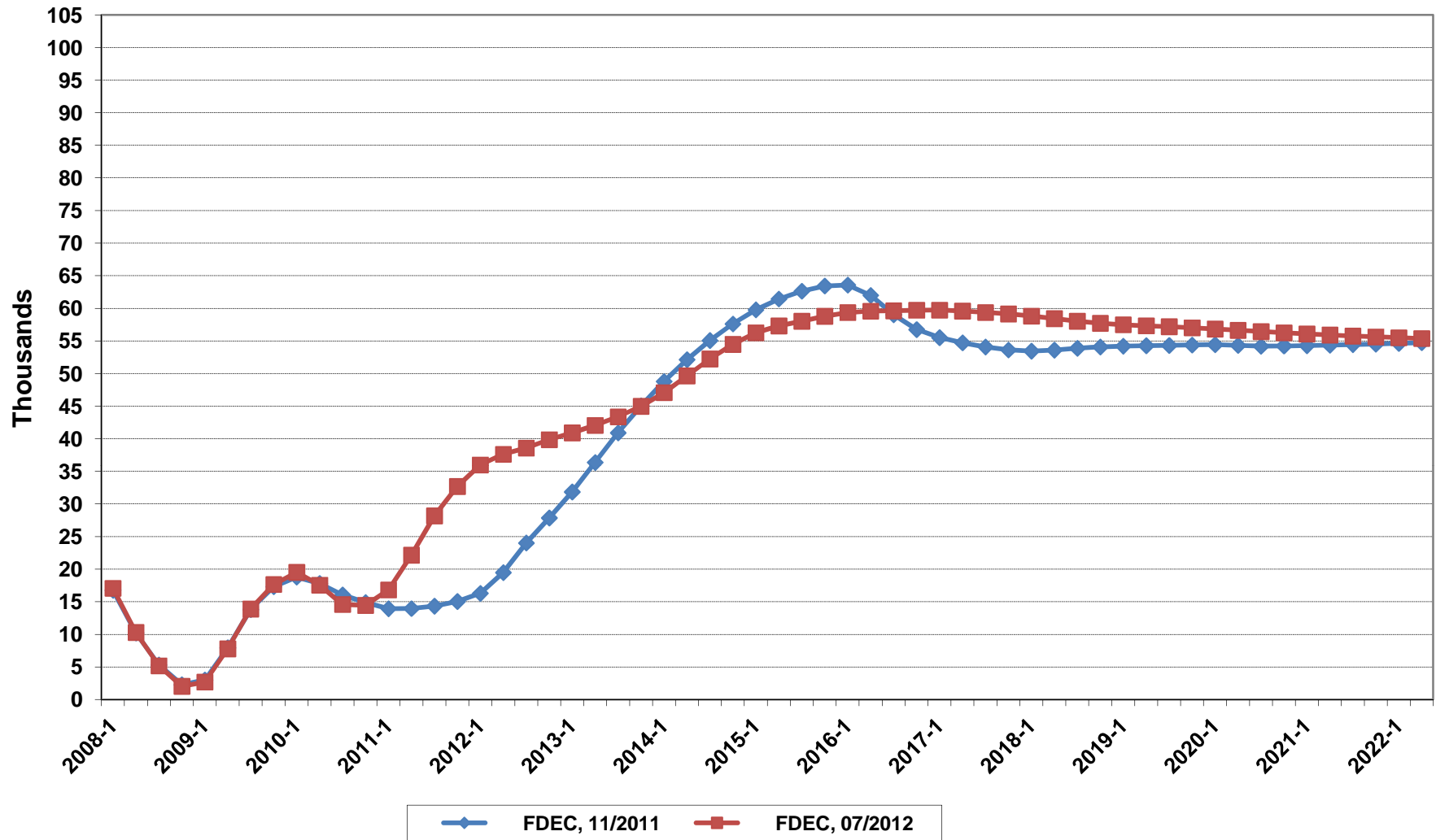
Florida Average Household Size



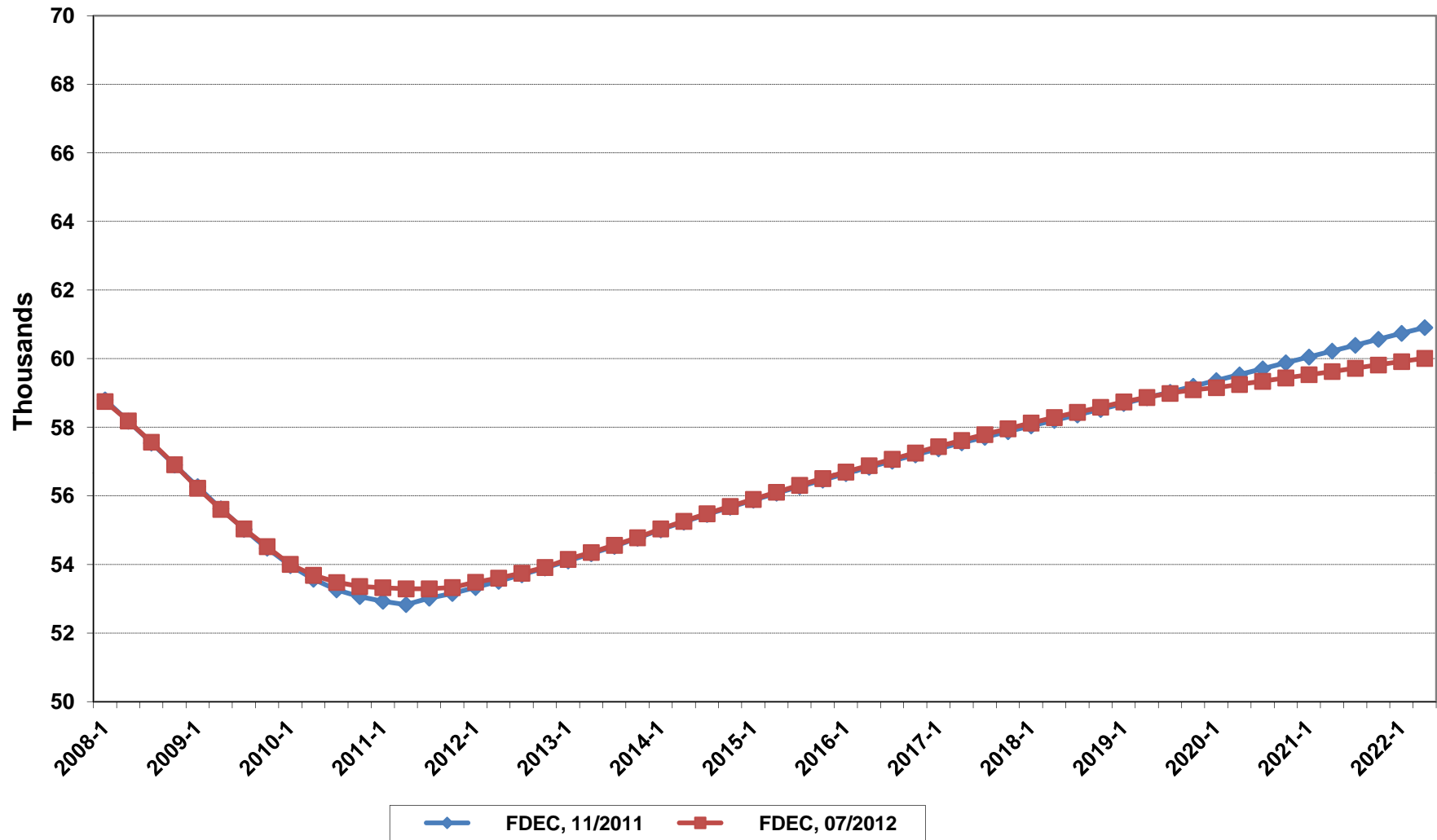
Growth In Florida Household Size



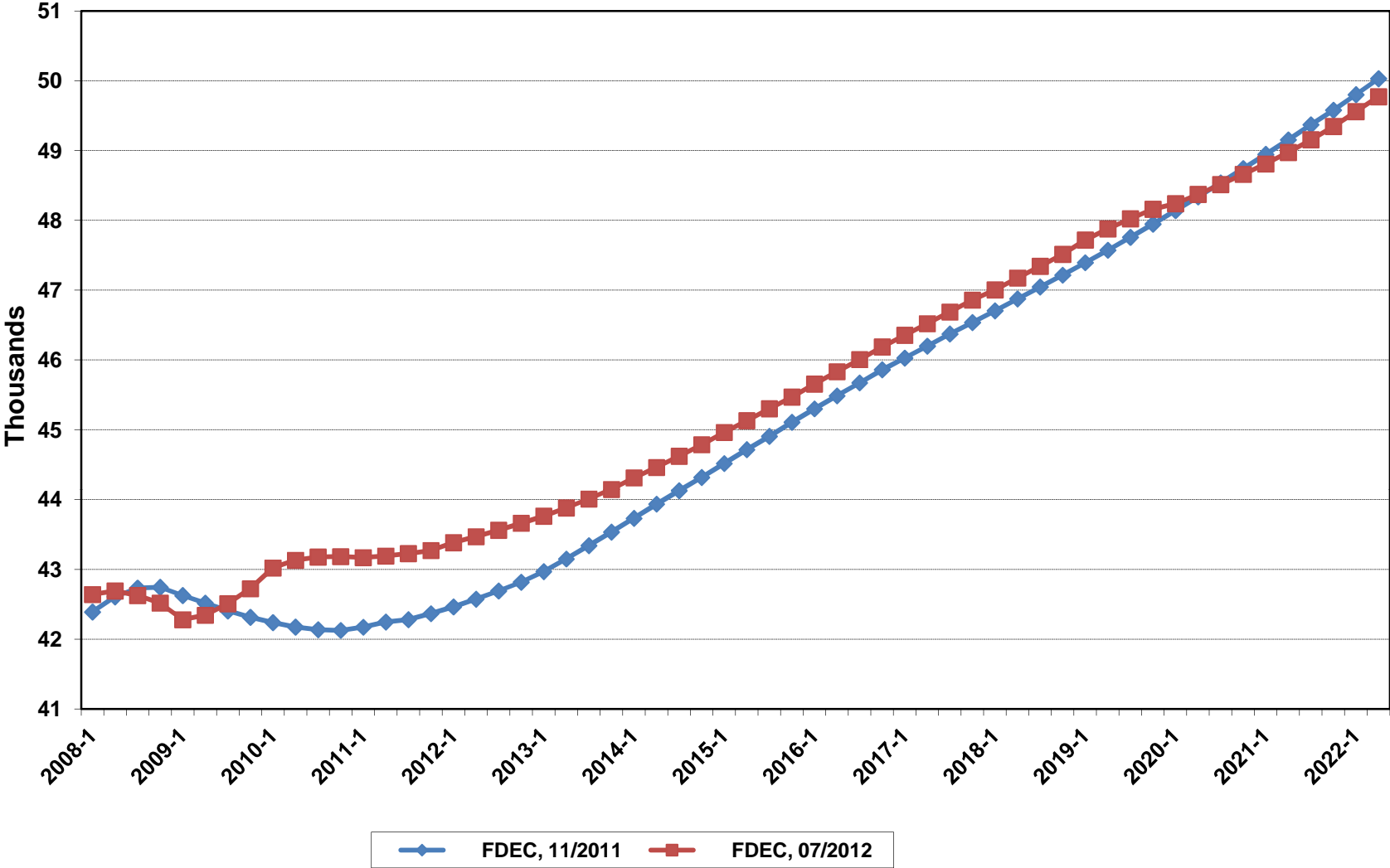
Florida Net Migration



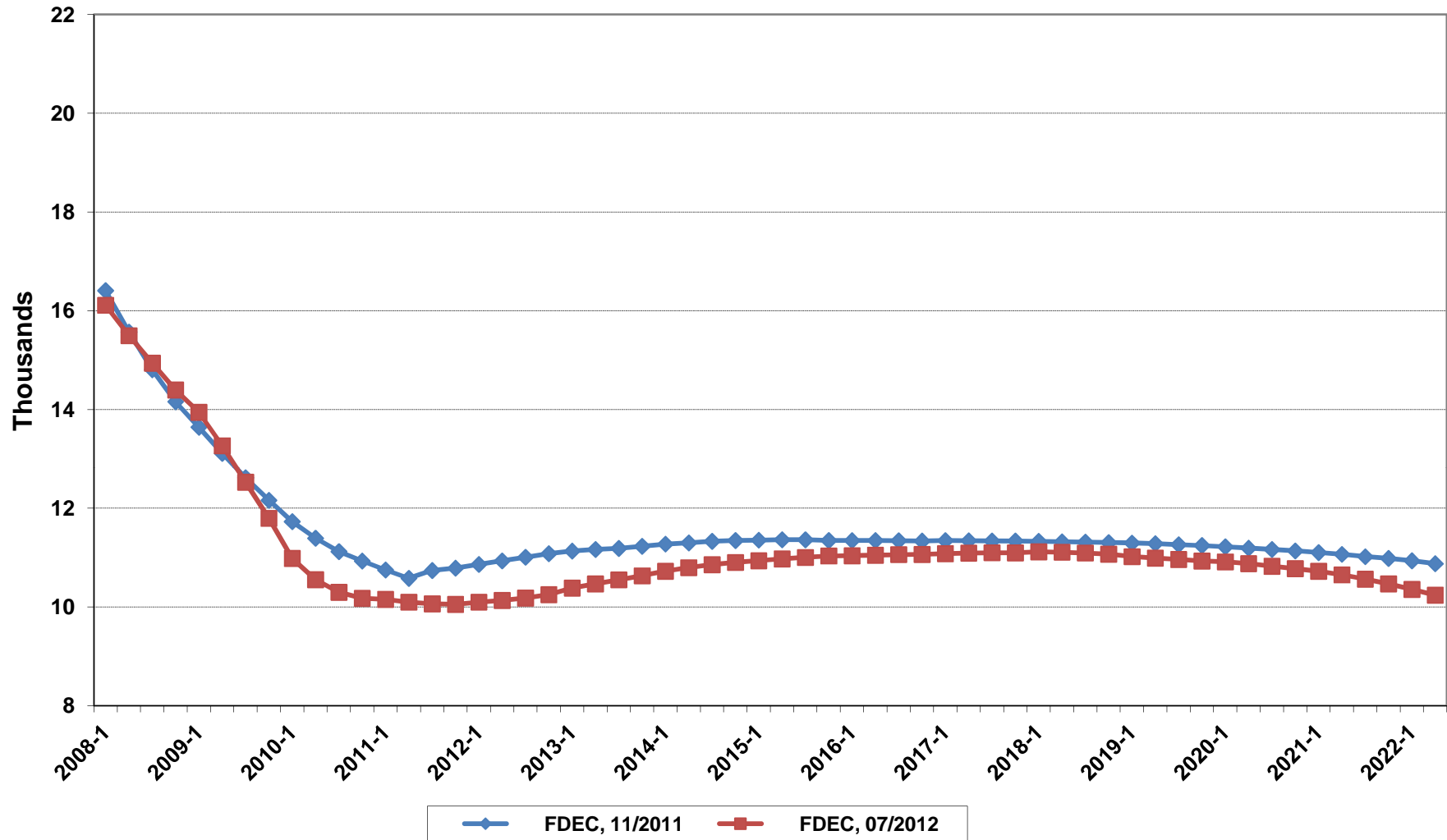
Florida Resident Births



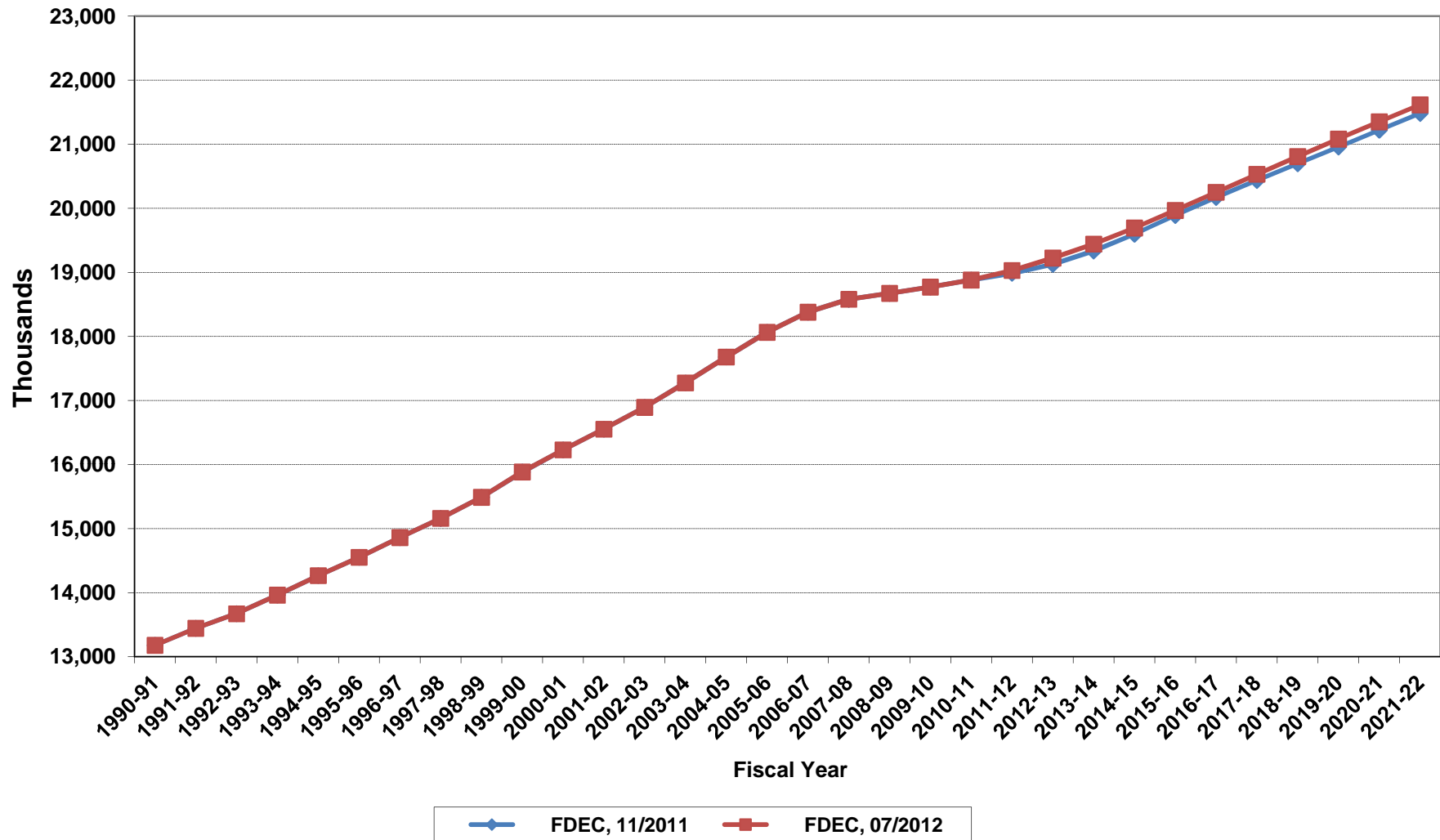
Florida Resident Deaths



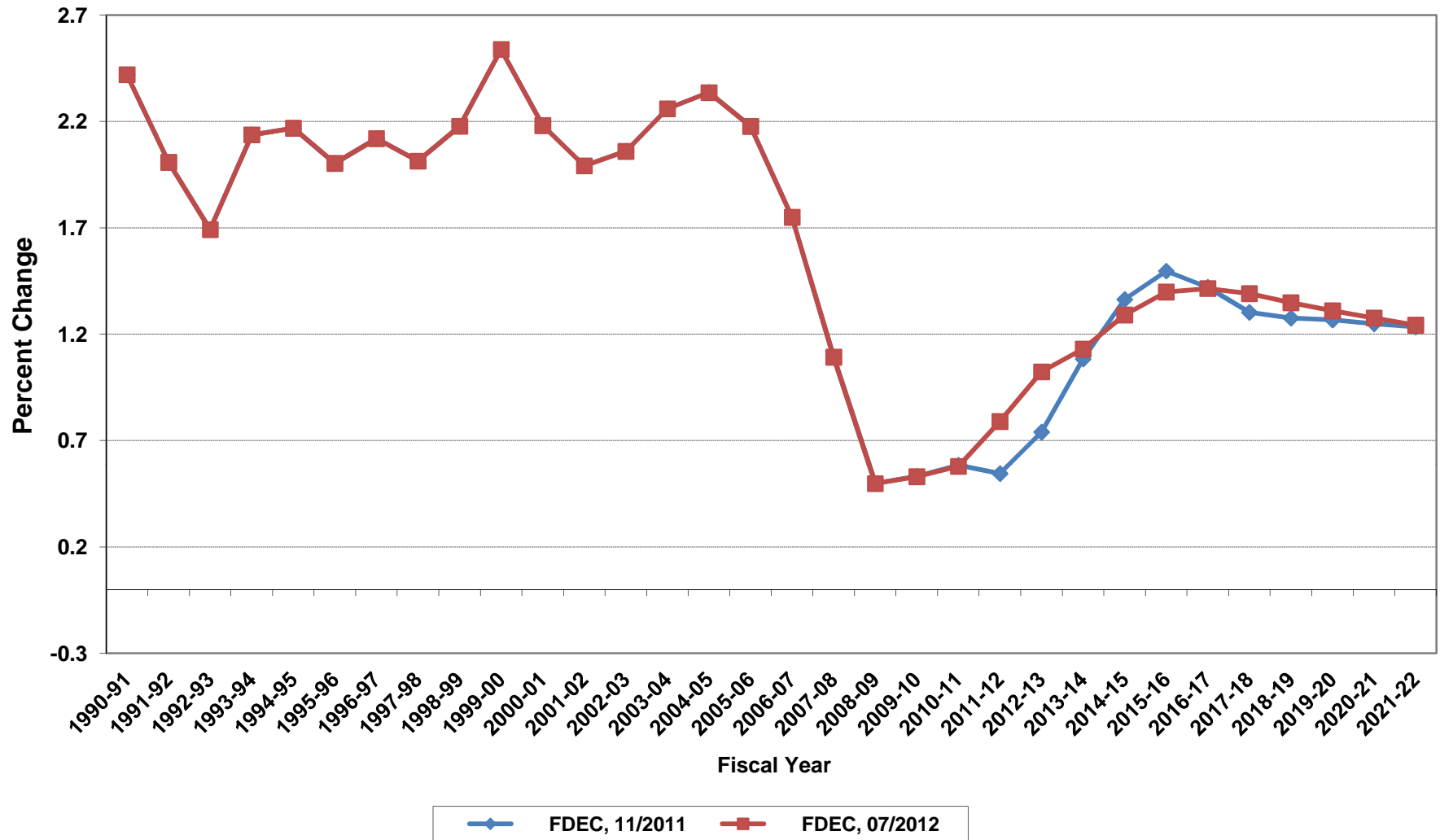
Florida Net Natural Increase



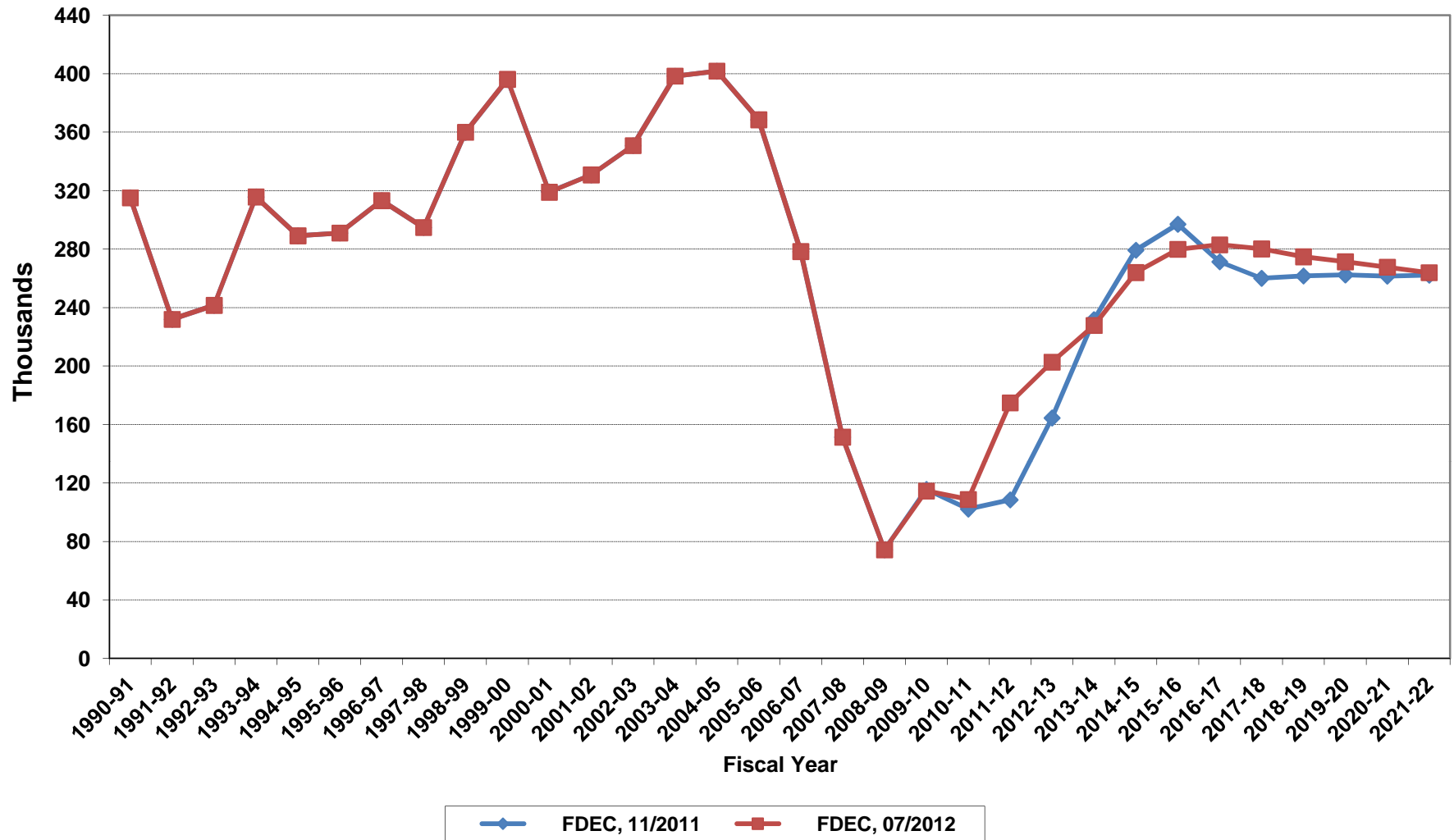
Florida Resident Population



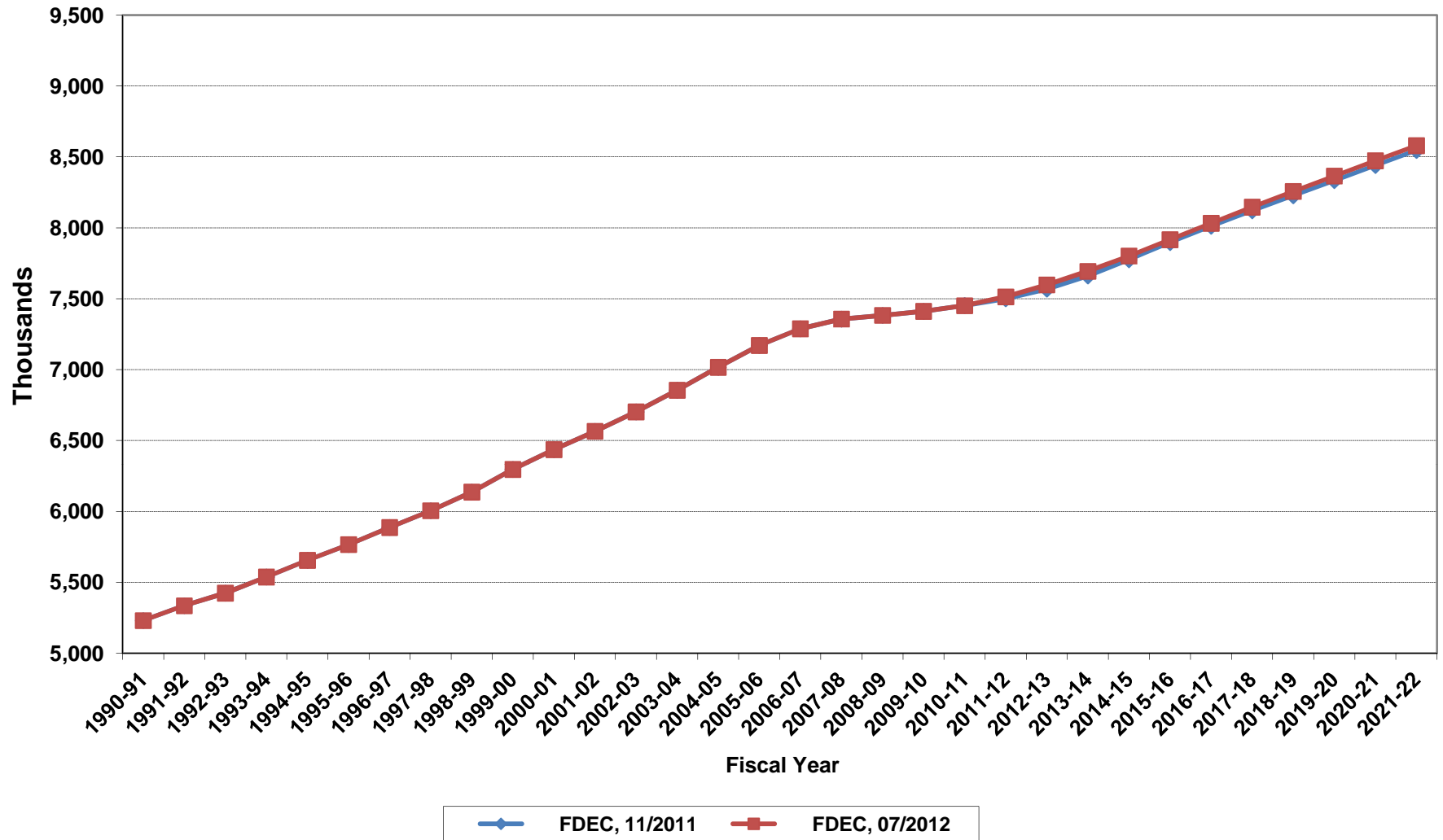
Growth In Florida Resident Population



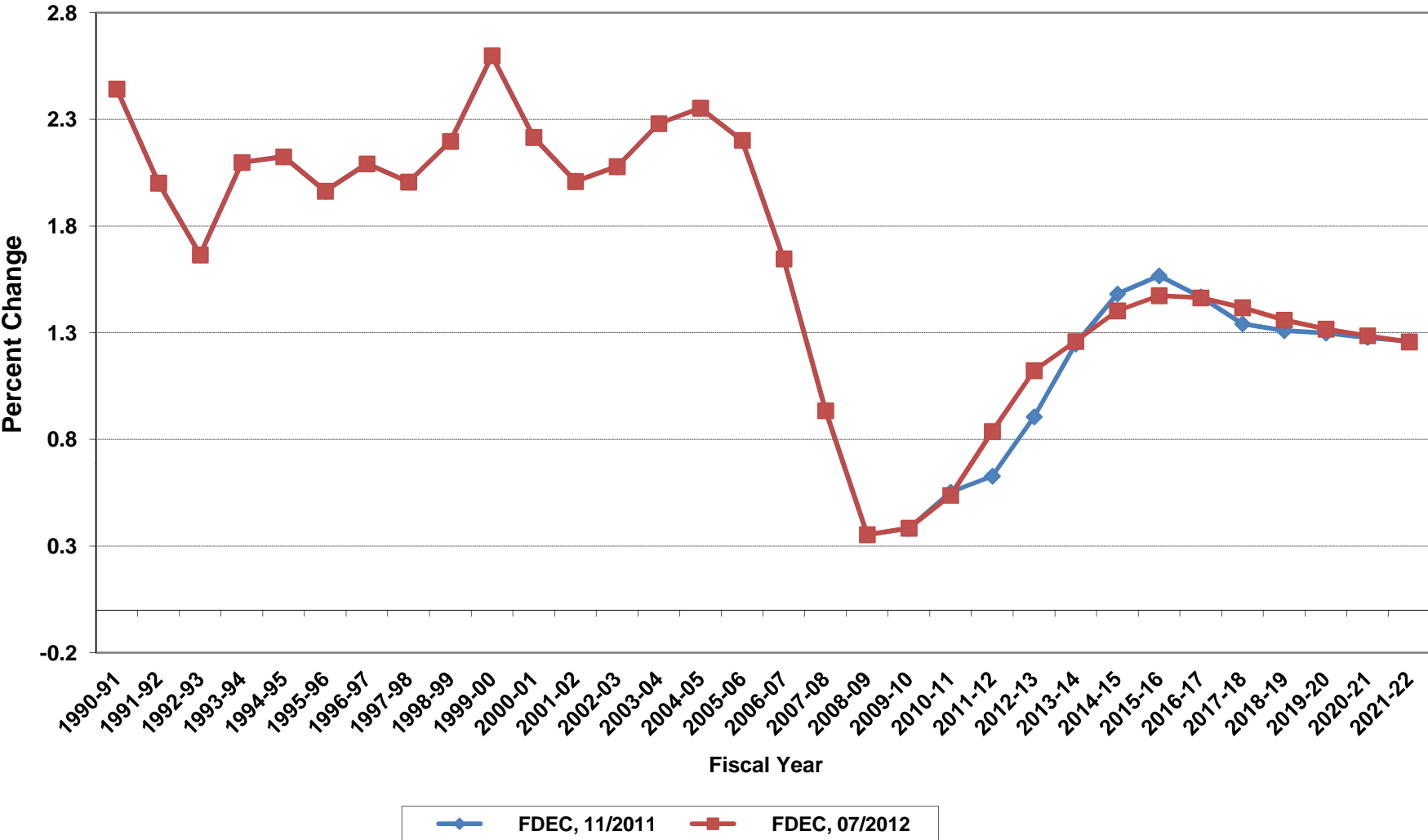
Net Change In Florida Resident Population



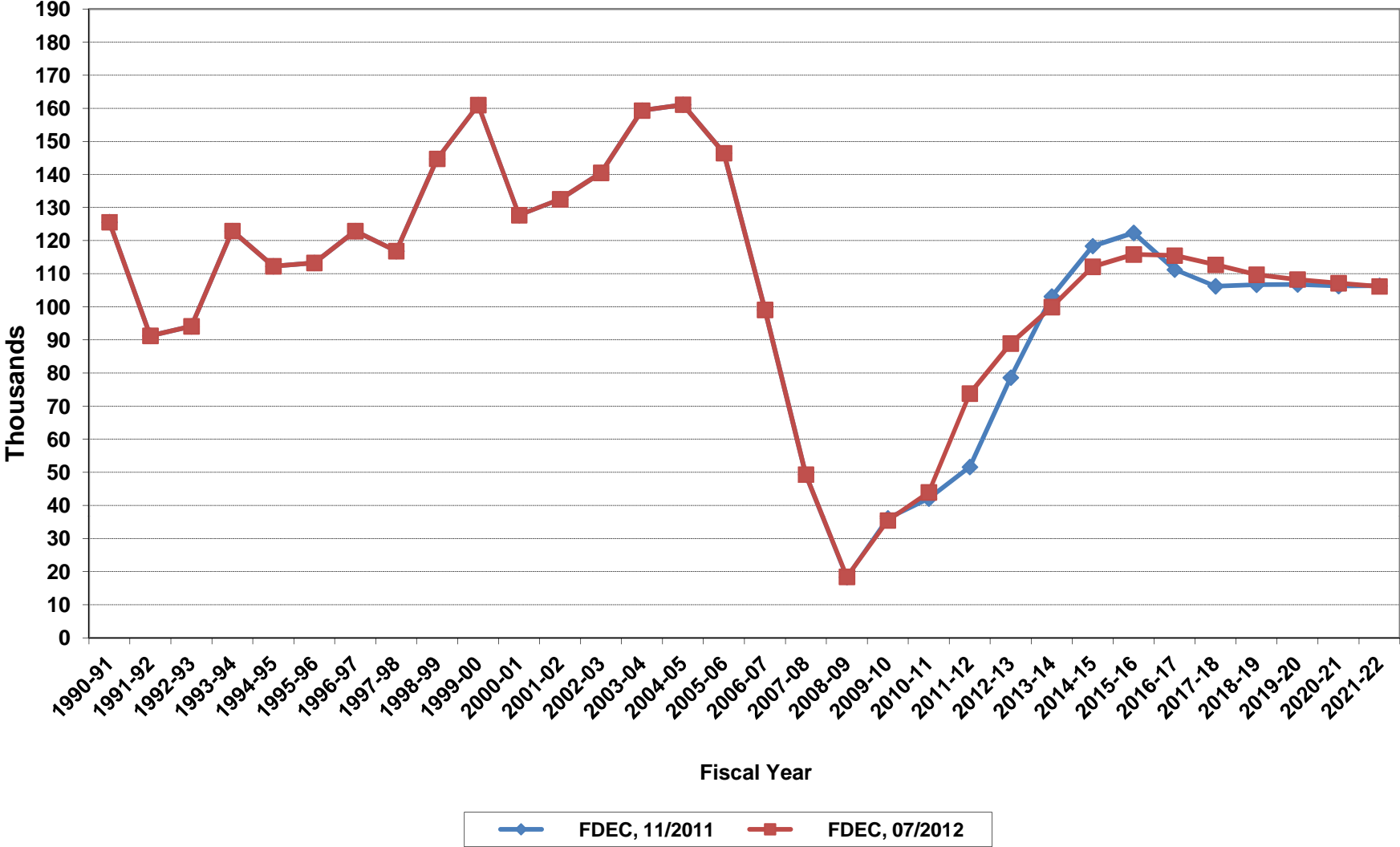
Florida Resident Households



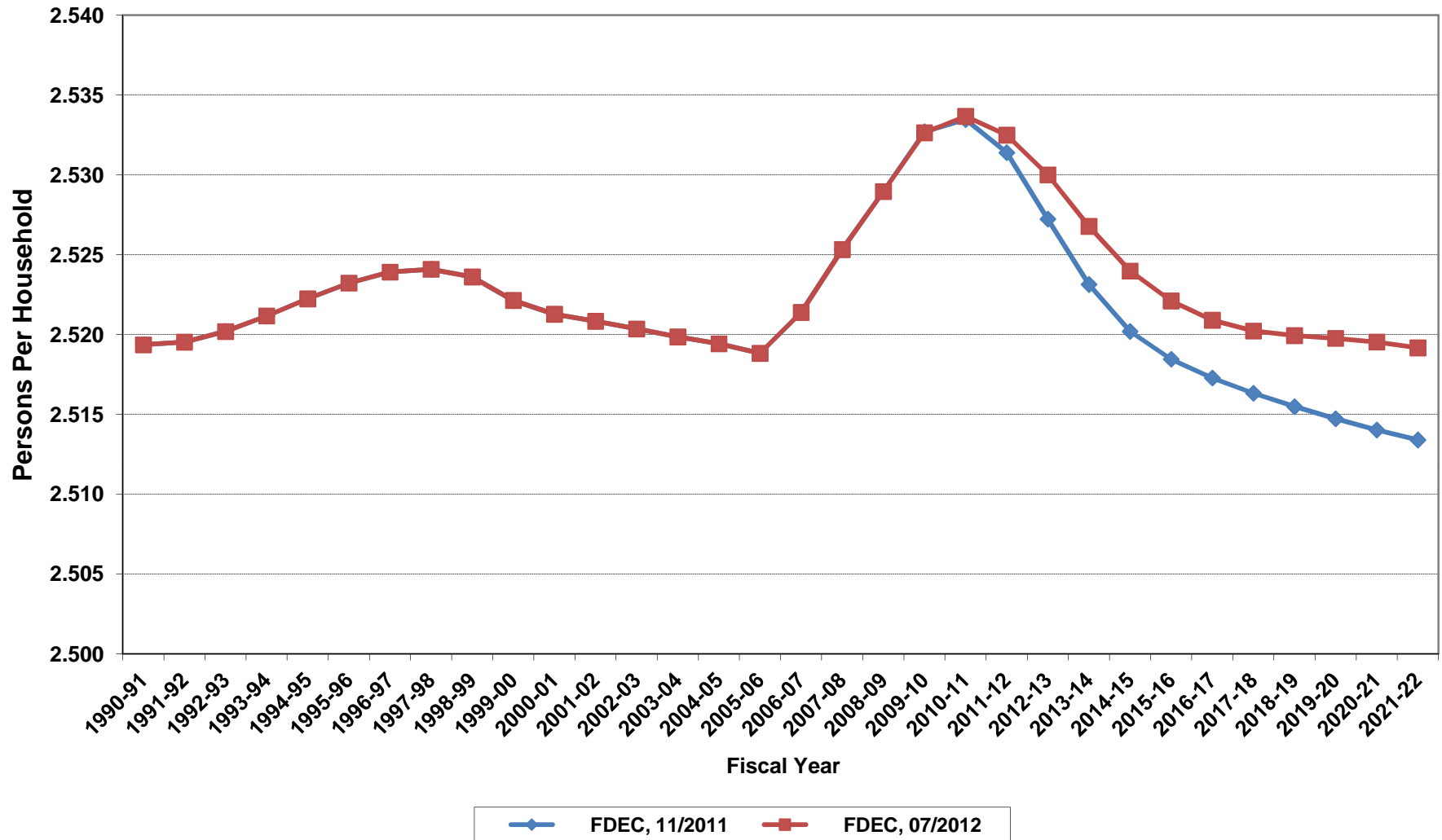
Growth In Florida Resident Households



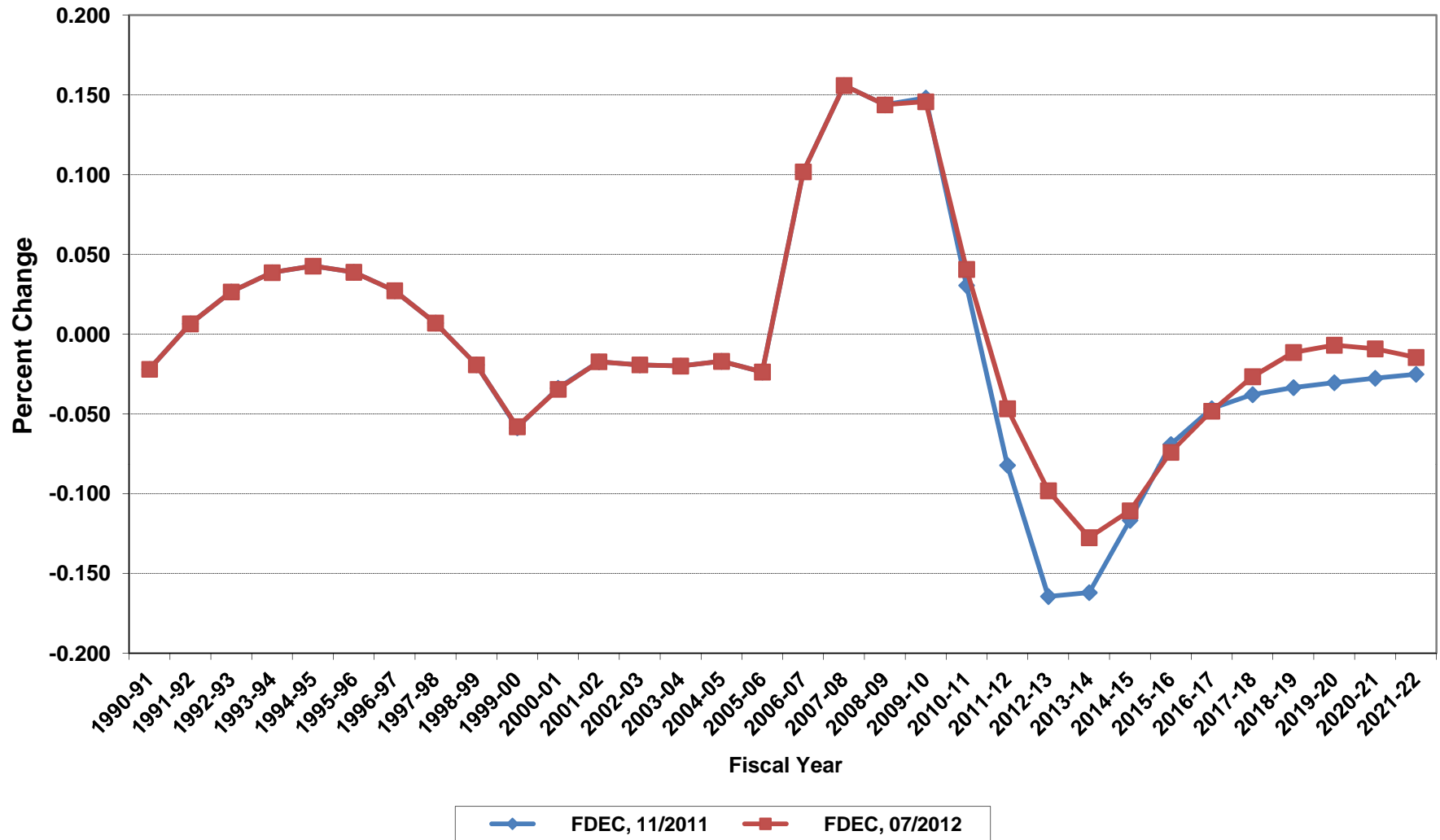
Net Change In Florida Resident Households



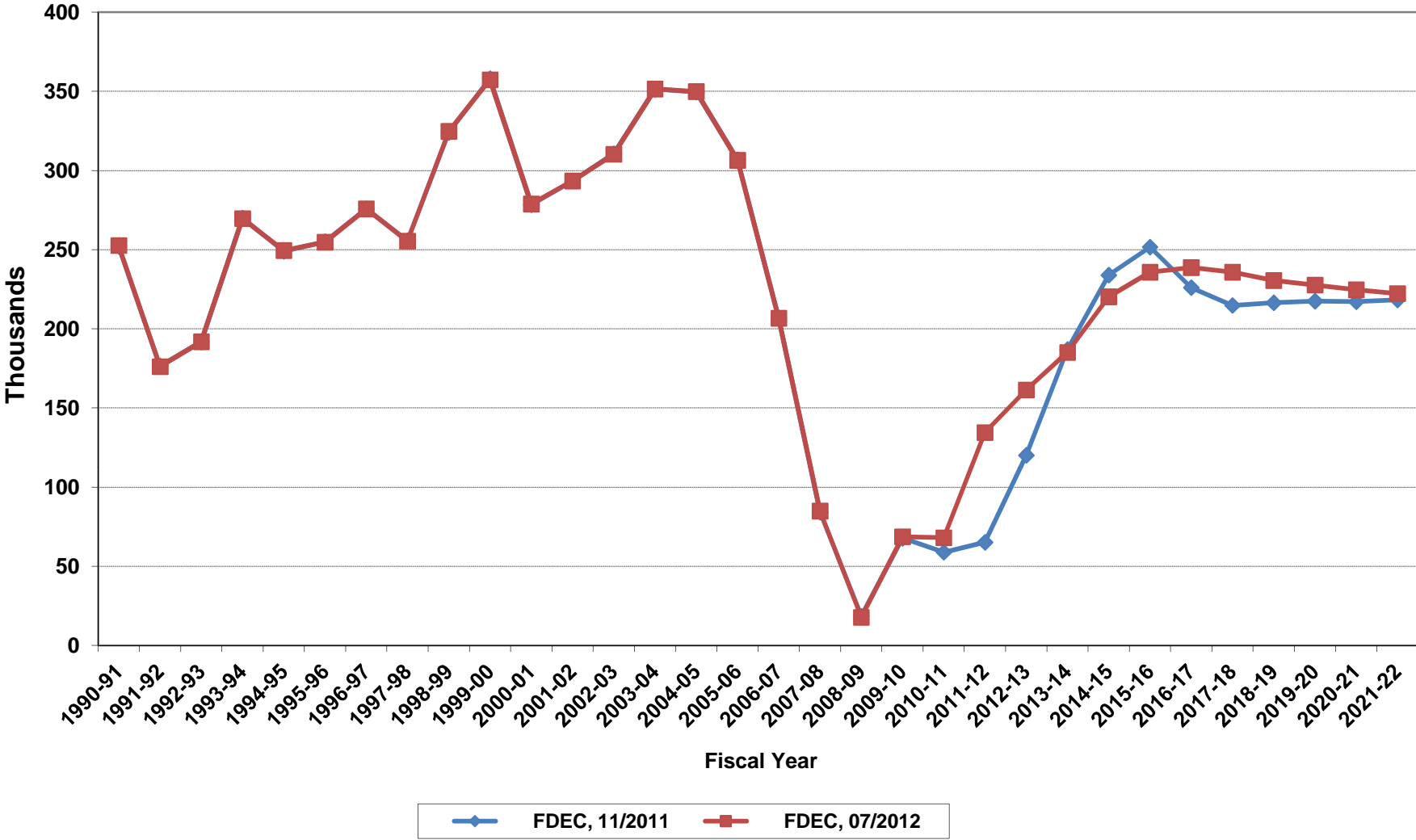
Average Florida Household Size



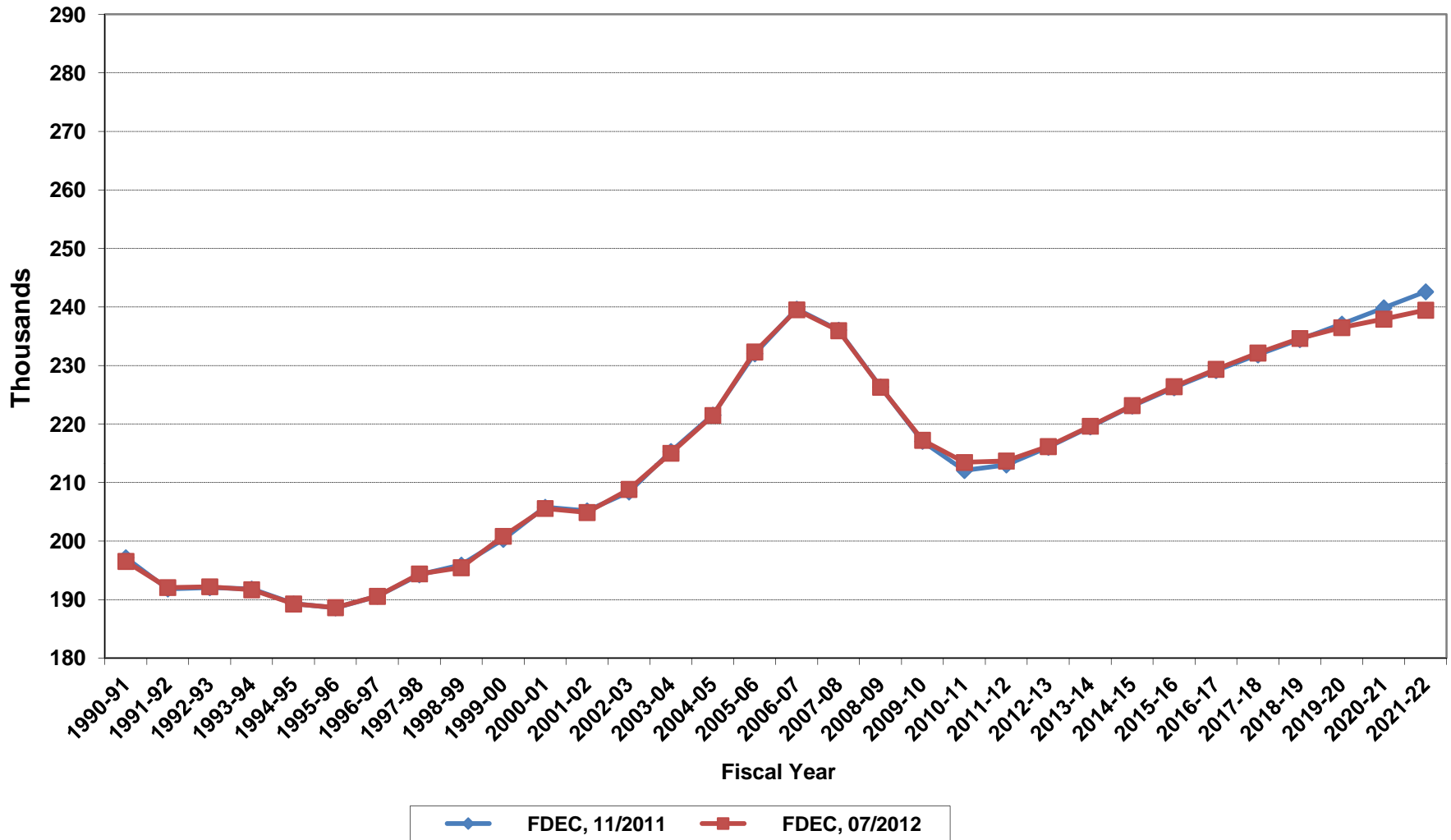
Growth In Average Florida Household Size



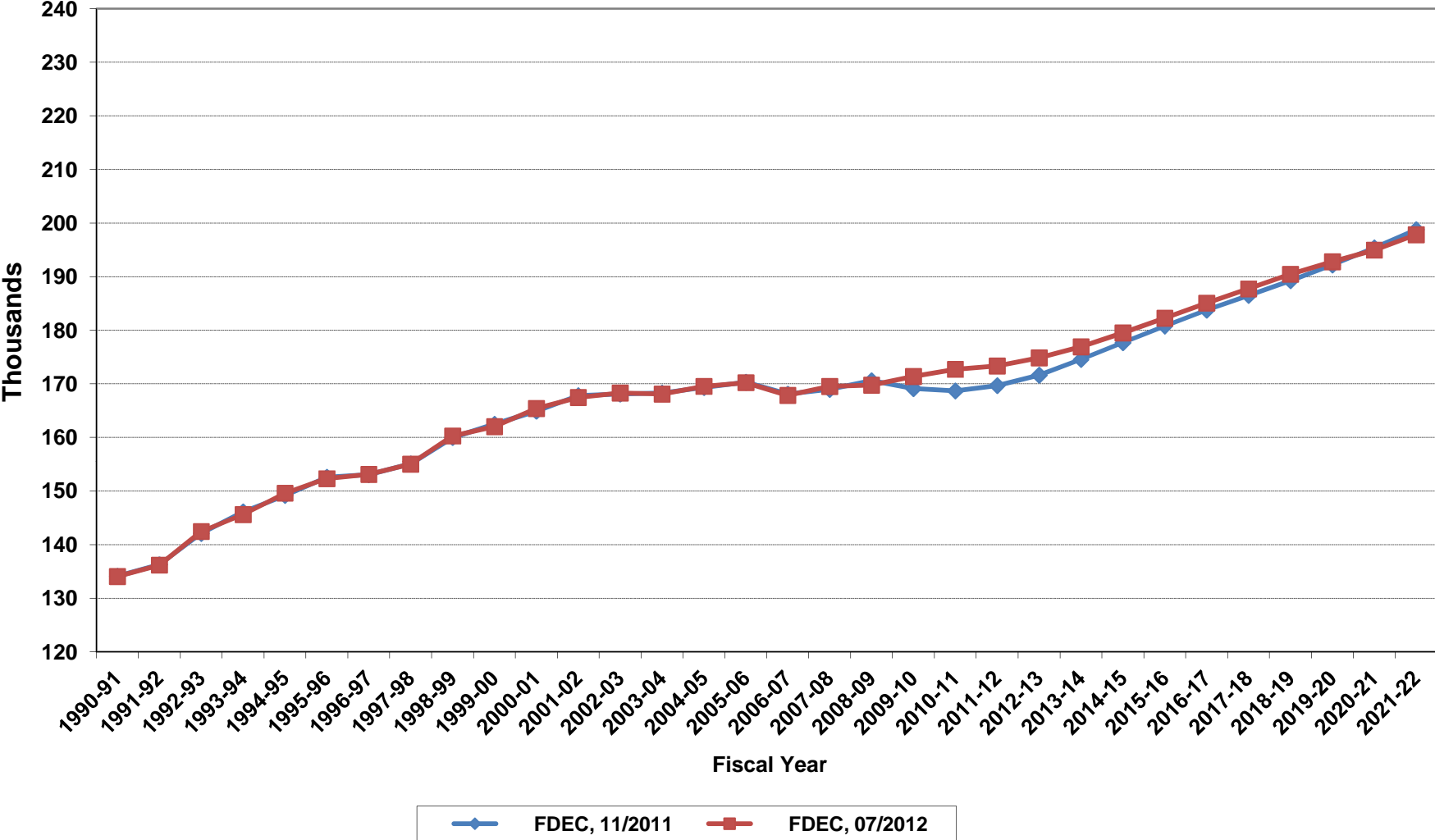
Florida Net Migration



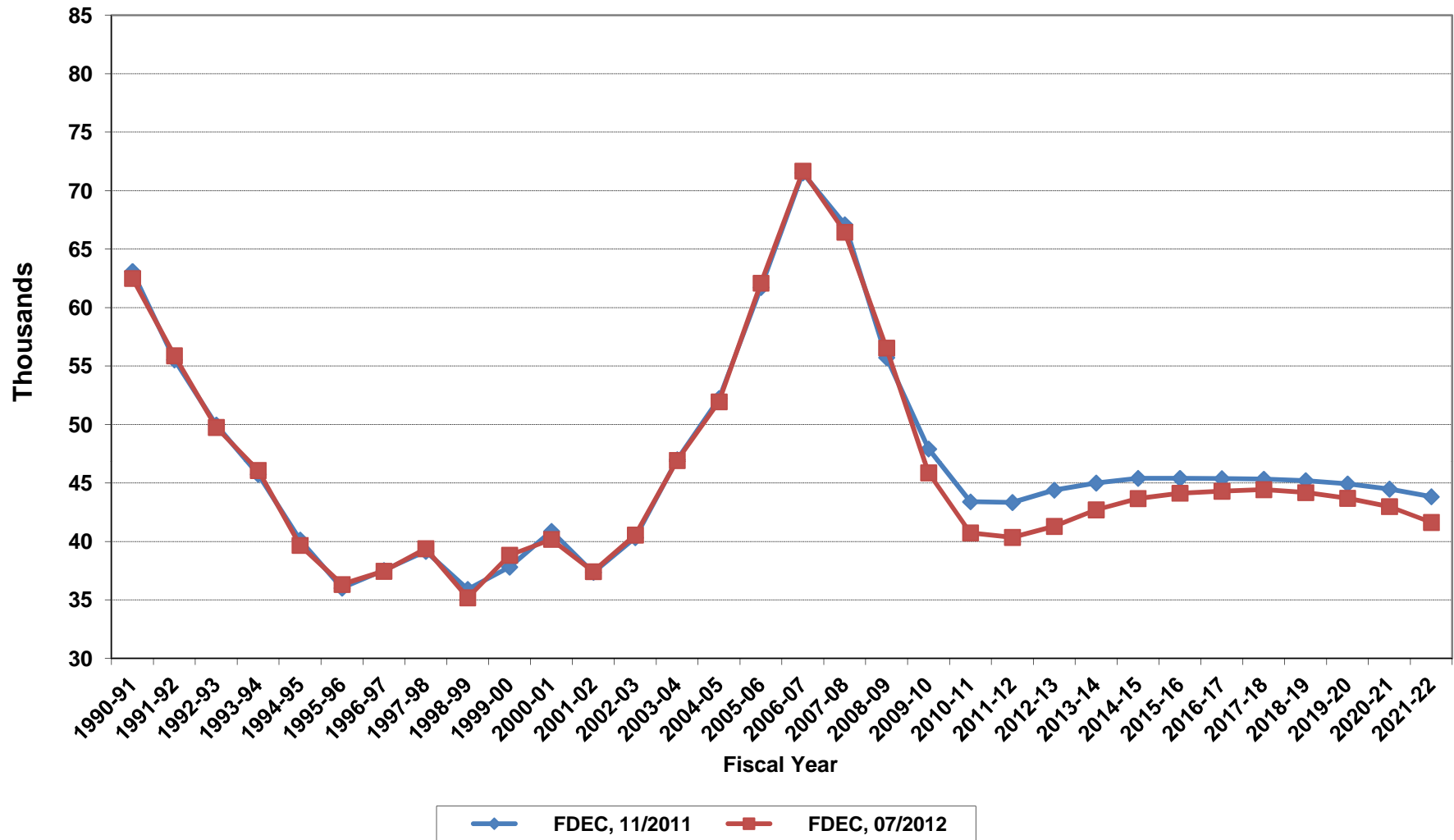
Florida Resident Live Births



Florida Resident Deaths



Florida Net Natural Increase



Florida Population and Components of Change

Fiscal Year	Population (End of Fiscal Year)	Growth Rate	Annual Change in Population	Births	Deaths	Net Natural Increase	Net Migration
1950 - 51	2,981,346	6.50%	181,931	67,486	27,670	39,816	142,115
1951 - 52	3,155,442	5.84%	174,096	72,383	28,942	43,441	130,655
1952 - 53	3,312,521	4.98%	157,079	76,954	29,761	47,193	109,886
1953 - 54	3,504,323	5.79%	191,802	82,725	31,055	51,670	140,132
1954 - 55	3,747,400	6.94%	243,077	86,643	32,176	54,467	188,610
1955 - 56	4,046,062	7.97%	298,662	92,941	34,932	58,009	240,653
1956 - 57	4,370,045	8.01%	323,983	100,990	38,269	62,721	261,262
1957 - 58	4,629,510	5.94%	259,465	105,972	41,911	64,061	195,404
1958 - 59	4,812,270	3.95%	182,760	110,409	43,674	66,735	116,025
1959 - 60	4,998,508	3.87%	186,238	114,428	46,057	68,371	117,867
1960 - 61	5,185,913	3.75%	187,405	116,449	48,388	68,061	119,344
1961 - 62	5,367,899	3.51%	181,986	116,120	50,346	65,774	116,212
1962 - 63	5,553,522	3.46%	185,623	114,709	54,453	60,256	125,367
1963 - 64	5,728,499	3.15%	174,977	115,002	56,229	58,773	116,204
1964 - 65	5,881,195	2.67%	152,696	110,515	57,734	52,781	99,915
1965 - 66	6,065,768	3.14%	184,573	104,367	61,217	43,150	141,423
1966 - 67	6,249,674	3.03%	183,906	101,209	62,577	38,632	145,274
1967 - 68	6,441,756	3.07%	192,082	100,320	66,134	34,186	157,896
1968 - 69	6,633,546	2.98%	191,790	104,286	71,285	33,001	158,789
1969 - 70	6,861,118	3.43%	227,572	111,511	73,831	37,680	189,892
1970 - 71	7,233,583	5.43%	372,465	117,012	75,354	41,658	330,807
1971 - 72	7,681,540	6.19%	447,957	113,568	79,717	33,851	414,106
1972 - 73	8,157,883	6.20%	476,343	107,804	86,232	21,572	454,771
1973 - 74	8,515,208	4.38%	357,325	109,366	88,459	20,907	336,418
1974 - 75	8,648,587	1.57%	133,379	108,686	87,224	21,462	111,917
1975 - 76	8,782,975	1.55%	134,388	104,022	88,129	15,893	118,495
1976 - 77	8,972,678	2.16%	189,703	107,623	90,443	17,180	172,523
1977 - 78	9,225,527	2.82%	252,849	112,268	93,383	18,885	233,964
1978 - 79	9,523,728	3.23%	298,201	116,393	96,801	19,592	278,609
1979 - 80	9,914,652	4.10%	390,924	126,673	101,048	25,625	365,299
1980 - 81	10,212,969	3.01%	298,317	135,560	107,562	27,998	270,319
1981 - 82	10,492,851	2.74%	279,882	141,593	108,644	32,949	246,933
1982 - 83	10,748,466	2.44%	255,615	146,853	110,497	36,356	219,259
1983 - 84	11,065,911	2.95%	317,445	151,748	113,939	37,809	279,636
1984 - 85	11,405,533	3.07%	339,622	159,819	117,539	42,280	297,342
1985 - 86	11,740,069	2.93%	334,536	165,857	122,453	43,404	291,132
1986 - 87	12,083,241	2.92%	343,172	170,819	124,946	45,873	297,299
1987 - 88	12,410,339	2.71%	327,098	179,541	129,413	50,128	276,970
1988 - 89	12,723,719	2.53%	313,380	188,390	131,992	56,398	256,982
1989 - 90	13,017,296	2.31%	293,577	197,181	132,503	64,678	228,899
1990 - 91	13,326,892	2.38%	309,596	197,180	134,093	63,087	246,509
1991 - 92	13,552,021	1.69%	225,129	191,810	136,280	55,530	169,599
1992 - 93	13,802,571	1.85%	250,550	192,051	142,087	49,964	200,586
1993 - 94	14,120,323	2.30%	317,752	191,840	146,101	45,739	272,013
1994 - 95	14,406,418	2.03%	286,095	189,292	149,161	40,131	245,964
1995 - 96	14,701,040	2.05%	294,622	188,584	152,570	36,014	258,608
1996 - 97	15,012,615	2.12%	311,575	190,587	153,067	37,520	274,055
1997 - 98	15,310,069	1.98%	297,454	194,242	155,080	39,162	258,292
1998 - 99	15,680,164	2.42%	370,095	195,897	159,988	35,909	334,186
1999 - 00	16,069,889	2.49%	389,725	200,302	162,489	37,813	351,912
2000 - 01	16,385,615	1.96%	315,726	205,798	164,919	40,879	274,847
2001 - 02	16,718,076	2.03%	332,461	205,164	167,812	37,352	295,109
2002 - 03	17,074,258	2.13%	356,182	208,403	168,079	40,324	315,858
2003 - 04	17,475,944	2.35%	401,686	215,298	168,302	46,996	354,690
2004 - 05	17,876,215	2.29%	400,271	221,533	169,302	52,231	348,040
2005 - 06	18,236,885	2.02%	360,670	232,019	170,303	61,716	298,954
2006 - 07	18,501,231	1.45%	264,346	239,635	168,117	71,518	192,828
2007 - 08	18,636,837	0.73%	135,606	236,065	168,966	67,099	68,507
2008 - 09	18,711,844	0.40%	75,007	226,337	170,615	55,722	19,285
2009 - 10	18,826,985	0.62%	115,141	217,246	171,381	45,865	69,276

Florida Population and Components of Change

Fiscal Year	Population (End of Fiscal Year)	Growth Rate	Annual Change in Population	Births	Deaths	Net Natural Increase	Net Migration
2010 - 11	18,940,747	0.60%	113,762	213,451	172,718	40,733	73,029
2011 - 12	19,121,758	0.96%	181,011	213,703	173,348	40,355	140,656
2012 - 13	19,327,027	1.07%	205,269	216,154	174,864	41,290	163,979
2013 - 14	19,559,133	1.20%	232,106	219,634	176,924	42,710	189,396
2014 - 15	19,826,450	1.37%	267,317	223,174	179,500	43,674	223,643
2015 - 16	20,107,341	1.42%	280,891	226,388	182,259	44,129	236,762
2016 - 17	20,390,283	1.41%	282,942	229,370	185,066	44,304	238,638
2017 - 18	20,669,842	1.37%	279,559	232,152	187,724	44,428	235,131
2018 - 19	20,944,050	1.33%	274,208	234,630	190,451	44,179	230,029
2019 - 20	21,214,970	1.29%	270,920	236,484	192,794	43,690	227,230
2020 - 21	21,482,176	1.26%	267,206	237,937	194,954	42,983	224,223
2021 - 22	21,745,595	1.23%	263,419	239,462	197,829	41,633	221,786
2022 - 23	22,005,143	1.19%	259,548	241,033	201,340	39,693	219,855
2023 - 24	22,260,770	1.16%	255,627	242,641	205,352	37,289	218,338
2024 - 25	22,512,520	1.13%	251,750	244,326	209,610	34,716	217,034
2025 - 26	22,761,234	1.10%	248,714	245,818	213,773	32,045	216,669
2026 - 27	23,008,482	1.09%	247,248	246,886	217,549	29,337	217,911
2027 - 28	23,255,166	1.07%	246,684	247,646	220,788	26,858	219,826
2028 - 29	23,500,597	1.06%	245,431	248,190	223,537	24,653	220,778
2029 - 30	23,742,843	1.03%	242,246	248,498	225,633	22,865	219,381

Florida Demographic Estimating Conference

July 13, 2012

Population Estimates

NCHS - National Center for Health Statistics

ACS - American Community Survey (Census Bureau survey)

IRS - Internal Revenue Service

FSCPE - Federal State Cooperative for Population Estimates (state agencies supplying data to Census Bureau)

BEBR

- **Electric Customers**
 - Electric customers minus minimum use customers
- **Building Permits**
- **Homestead Exemptions**
 - County only and lagged one year
- **Census Bureau Estimates**
 - July of previous year
- **Group Quarters**
 - Large institutions
- **Demographic data and knowledge of the local area**

Census Bureau

- **Resident Births and Deaths**
 - FSCPE & NCHS
- **Net Domestic Migration**
 - 0 – 64 IRS
 - 65+ Medicare
- **Net International Migration**
 - ACS (lagged)
- **Group Quarters**
 - Census & FSCPE
- **Controlled to the US**

Population Estimate Process

July 1, 2011

Census Bureau
Population
Estimate

July 1, 2011 Estimate	19,057,542
July 1, 2010 Household Population Estimate	18,416,899
Natural Increase	42,035
Births	213,292
Deaths	171,257
Net Domestic Migration	108,339
0-64	95,127
65+	13,212
Net International Migration	68,295
Group Quarter Population Estimate	421,706
Residual	260

Population Estimate Process

April 1, 2011

BEBR
Population
Estimate

Assumes no
change to rates

Estimate
process done at
the city / county
level

	2010	2011
Actual Estimate		18,905,048
Population	18,801,310	18,915,381
Household population	18,379,601	18,491,710
Households (HH)	7,420,802	7,466,059
Persons per Household (PPH)	2.48	2.48
GQ-Mult	1.01601	1.01601
Inmates	127,486	127,619
Electric Customers (EC)	8,546,038	8,598,157
HH to EC ratio (HHEC) (HH / EC)		
(7,420,802 / 8,546,038)	0.8683	0.8683
HH = (HHEC X EC)		7,466,059
HH POP = HH X PPH		18,491,710
HH Population including GQ HH Pop X GQ Mult		18,787,762
Total Population add inmates		18,915,381

Florida Electric Customer Data

End of Month	2008	change 2008-2009	2009	change 2009-2010	2010	change 2010-2011	2011	change 2011-2012	2012
FP&L - Progress - TECO									
Jan	6,037,452	-23,497	6,013,955	7,344	6,021,299	39,184	6,060,483	37,958	6,098,441
Feb	6,045,236	-23,470	6,021,766	12,251	6,034,017	36,855	6,070,872	37,499	6,108,371
Mar	6,047,031	-24,196	6,022,835	18,396	6,041,231	37,511	6,078,742	40,531	6,119,273
Apr	6,042,031	-22,308	6,019,723	23,357	6,043,080	37,454	6,080,534	41,032	6,121,566
May	6,035,315	-20,696	6,014,619	29,863	6,044,482	36,446	6,080,928	41,200	6,122,128
Jun	6,033,958	-20,740	6,013,218	31,195	6,044,413	34,898	6,079,311	42,585	6,121,896
Jul	6,027,919	-15,212	6,012,707	33,146	6,045,853	33,388	6,079,241		
Aug	6,023,714	-11,901	6,011,813	37,324	6,049,137	30,658	6,079,795		
Sep	6,018,096	-7,043	6,011,053	35,539	6,046,592	29,644	6,076,236		
Oct	6,015,329	-6,969	6,008,360	37,973	6,046,333	32,106	6,078,439		
Nov	6,012,670	1,005	6,013,675	35,749	6,049,424	32,980	6,082,404		
Dec	6,011,842	3,308	6,015,150	37,920	6,053,070	36,090	6,089,160		
All Companies									
Mar	8,543,847	-24,201	8,519,646	26,392	8,546,038	52,119	8,598,157	57,442	8,655,599

Population Estimate Process

April 1, 2011
&
April 1, 2012

BEBR
Population
Estimate

Assumes no
change to rates

Estimate
process done at
the city / county
level

	2010	2011	2012
Actual Estimate		18,905,048	19,073,710
Population	18,801,310	18,915,381	19,038,348
Household population	18,379,601	18,491,710	18,615,248
Households (HH)	7,420,802	7,466,059	7,515,937
Persons per Household (PPH)	2.48	2.48	2.48
GQ-Mult	1.01601	1.01601	1.01601
Inmates	127,486	127,619	125,070
Electric Customers (EC)	8,546,038	8,598,157	8,655,599
HH to EC ratio (HHEC) (HH / EC)			
(7,420,802 / 8,546,038)	0.8683	0.8683	0.8683
HH = (HHEC X EC)		7,466,059	7,515,937
HH POP = HH X PPH		18,491,710	18,615,248
HH Population including GQ HH Pop X GQ Mult		18,787,762	18,913,278
Total Population add inmates		18,915,381	19,038,348

Florida Electric Customer Data

	Mar-10		Mar-11		Mar-12	
	All Customers	MU Customers	All Customers	MU Customers	All Customers	MU Customers
FPL & Progress	5,449,829	506,040	5,483,203	501,089	5,517,111	451,206
All Companies	8,546,038		8,598,157		8,655,599	
Population April 1	18,801,310		18,905,048		19,073,710	
Average Pop per Customer	2.20		2.20		2.20	

Numeric Change	March 2010-2011		March 2011-2012	
	All Customers	MU Customers	All Customers	MU Customers
FPL	25,783	-18,545	23,162	-44,853
Progress	7,591	13,594	10,746	-5,030
FPL & Progress	33,374	-4,951	33,908	-49,883
All Companies	52,119		57,442	