

**Demographic Estimating Conference  
Executive Summary  
February 7, 2013**

The Demographic Estimating Conference met on February 7, 2013 to adopt a new population forecast. The data reflect population estimates through April 1, 2012 and recent demographic and economic-related data.

Population growth in Florida continues to rebound but at relatively low levels and rates of growth. Historically, Florida’s population growth has been driven by net migration (more people permanently moving into the state than leaving). However, net migration fell to record low levels during much of 2008 and into 2009. During that time period, natural increase (births minus deaths) actually exceeded net migration. The low levels of net migration were largely due to national economic conditions, including weakened housing markets and other lingering effects from the Great Recession, that make it difficult for people to relocate.

The final population estimate for April 1, 2012 indicated annual population growth of less than one percent as the state’s economy continued its recovery (.90%). Annual population change is expected to be 192,272 net new residents in 2013 and 223,362 in 2014. Between 2014 and 2020, annual population change is expected to remain above 200,000 net new residents per year.

<b>April 1</b>	<b>Population</b>	<b>Percent Change</b>	<b>Change</b>
2012	19,074,434	0.90%	169,364
2013	19,266,706	1.01%	192,272
2014	19,490,068	1.16%	223,362
2015	19,750,577	1.34%	260,509
2016	20,029,328	1.41%	278,751
2017	20,312,211	1.41%	282,883
2018	20,592,545	1.38%	280,334
2019	20,868,997	1.34%	276,452
2020	21,141,315	1.30%	272,318

Between April 1, 2010 and April 1, 2020, population growth is expected to average 233,998 net new residents per year, representing a compound growth rate of 1.18% over this 10-year time horizon. These increases are analogous to adding a city the size of Hialeah every year. During 2016, Florida’s population is expected to break the 20-million mark.

# **Florida Demographic Estimating Conference**

## **Tables**

Post-Conference Packet

**February 7, 2013**

# Florida Resident Population

April 1

Year	Florida Demographic Estimating Conference November 2012			Florida Demographic Estimating Conference February 2013		
	Population	% Change	Change	Population	% Change	Change
1990	12,938,071	2.27%	287,136	12,938,071	2.27%	287,136
1991	13,258,732	2.48%	320,661	13,258,732	2.48%	320,661
1992	13,497,541	1.80%	238,809	13,497,541	1.80%	238,809
1993	13,730,115	1.72%	232,574	13,730,115	1.72%	232,574
1994	14,043,757	2.28%	313,642	14,043,757	2.28%	313,642
1995	14,335,992	2.08%	292,235	14,335,992	2.08%	292,235
1996	14,623,421	2.00%	287,429	14,623,421	2.00%	287,429
1997	14,938,314	2.15%	314,893	14,938,314	2.15%	314,893
1998	15,230,421	1.96%	292,107	15,230,421	1.96%	292,107
1999	15,580,244	2.30%	349,823	15,580,244	2.30%	349,823
2000	15,982,824	2.58%	402,580	15,982,824	2.58%	402,580
2001	16,305,100	2.02%	322,276	16,305,100	2.02%	322,276
2002	16,634,256	2.02%	329,156	16,634,256	2.02%	329,156
2003	16,979,706	2.08%	345,450	16,979,706	2.08%	345,450
2004	17,374,824	2.33%	395,118	17,374,824	2.33%	395,118
2005	17,778,156	2.32%	403,332	17,778,156	2.32%	403,332
2006	18,154,475	2.12%	376,319	18,154,475	2.12%	376,319
2007	18,446,768	1.61%	292,293	18,446,768	1.61%	292,293
2008	18,613,905	0.91%	167,137	18,613,905	0.91%	167,137
2009	18,687,425	0.39%	73,520	18,687,425	0.39%	73,520
2010	18,801,332	0.61%	113,885	18,801,332	0.61%	113,907
2011	18,905,070	0.55%	103,738	18,905,070	0.55%	103,738
2012	19,074,434	0.90%	169,364	19,074,434	0.90%	169,364
Begins forecast						
2013	19,275,252	1.05%	200,818	19,266,706	1.01%	192,272
2014	19,498,713	1.16%	223,461	19,490,068	1.16%	223,362
2015	19,759,338	1.34%	260,625	19,750,577	1.34%	260,509
2016	20,038,213	1.41%	278,875	20,029,328	1.41%	278,751
2017	20,321,221	1.41%	283,008	20,312,211	1.41%	282,883
2018	20,601,973	1.38%	280,752	20,592,545	1.38%	280,334
2019	20,877,201	1.34%	275,228	20,868,997	1.34%	276,452
			5-Year Averages			
2020	21,148,923	1.37%	277,917	21,141,315	1.37%	278,148
2025	22,451,139	1.20%	260,443	22,434,013	1.19%	258,540
2030	23,683,684	1.07%	246,509	23,601,072	1.02%	233,412
2035	24,843,154	0.96%	231,894	24,639,488	0.86%	207,683
2040	25,956,419	0.88%	222,653	25,583,153	0.75%	188,733

# Florida Resident Households

April 1

Year	Florida Demographic Estimating Conference November 2012			Florida Demographic Estimating Conference February 2013		
	Households	% Change	Change	Households	% Change	Change
1990	5,134,869	3.40%	168,985	5,134,869	3.40%	168,985
1991	5,283,154	2.89%	148,285	5,283,154	2.89%	148,285
1992	5,378,499	1.80%	95,345	5,378,499	1.80%	95,345
1993	5,478,476	1.86%	99,977	5,478,476	1.86%	99,977
1994	5,589,093	2.02%	110,617	5,589,093	2.02%	110,617
1995	5,697,328	1.94%	108,235	5,697,328	1.94%	108,235
1996	5,806,031	1.91%	108,703	5,806,031	1.91%	108,703
1997	5,929,613	2.13%	123,582	5,929,613	2.13%	123,582
1998	6,040,514	1.87%	110,901	6,040,514	1.87%	110,901
1999	6,182,346	2.35%	141,832	6,182,346	2.35%	141,832
2000	6,338,075	2.52%	155,729	6,338,075	2.52%	155,729
2001	6,467,215	2.04%	129,140	6,467,215	2.04%	129,140
2002	6,599,035	2.04%	131,820	6,599,035	2.04%	131,820
2003	6,737,370	2.10%	138,335	6,737,370	2.10%	138,335
2004	6,895,469	2.35%	158,099	6,895,469	2.35%	158,099
2005	7,056,889	2.34%	161,420	7,056,889	2.34%	161,420
2006	7,207,645	2.14%	150,756	7,207,645	2.14%	150,756
2007	7,312,907	1.46%	105,262	7,312,907	1.46%	105,262
2008	7,368,319	0.76%	55,412	7,368,319	0.76%	55,412
2009	7,386,570	0.25%	18,251	7,386,570	0.25%	18,251
2010	7,420,802	0.46%	34,232	7,420,812	0.46%	34,242
2011	7,461,969	0.55%	41,167	7,461,978	0.55%	41,166
2012	7,533,227	0.95%	71,258	7,537,442	1.01%	75,464
Begins forecast						
2013	7,620,995	1.17%	87,768	7,624,162	1.15%	86,720
2014	7,719,286	1.29%	98,291	7,722,494	1.29%	98,332
2015	7,830,451	1.44%	111,165	7,833,705	1.44%	111,211
2016	7,946,166	1.48%	115,715	7,949,468	1.48%	115,763
2017	8,061,879	1.46%	115,713	8,065,229	1.46%	115,761
2018	8,174,999	1.40%	113,120	8,178,279	1.40%	113,050
2019	8,284,968	1.35%	109,969	8,288,829	1.35%	110,550
5-Year Averages						
2020	8,393,365	1.40%	112,583	8,397,555	1.40%	112,770
2025	8,918,385	1.22%	105,004	8,919,240	1.21%	104,337
2030	9,415,726	1.09%	99,468	9,390,946	1.04%	94,341
2035	9,883,772	0.97%	93,609	9,811,168	0.88%	84,044
2040	10,334,022	0.89%	90,050	10,194,165	0.77%	76,599

Quarterly Data Table

QUARTERLY FORECAST TABLES

	<u>2008-1</u>	<u>2008-2</u>	<u>2008-3</u>	<u>2008-4</u>	<u>2009-1</u>	<u>2009-2</u>	<u>2009-3</u>	<u>2009-4</u>	<u>2010-1</u>	<u>2010-2</u>	<u>2010-3</u>	<u>2010-4</u>	<u>2011-1</u>	<u>2011-2</u>	<u>2011-3</u>
<b>Population</b>															
FDEC, 11/2012	18,599.6	18,625.4	18,645.5	18,661.9	18,678.6	18,699.6	18,726.1	18,755.5	18,786.1	18,814.2	18,839.1	18,863.7	18,890.7	18,922.9	18,961.2
FDEC, 02/2013	18,599.6	18,625.4	18,645.5	18,661.9	18,678.6	18,699.6	18,726.1	18,755.5	18,786.1	18,814.2	18,839.1	18,863.7	18,890.7	18,923.1	18,961.9
<b>Population Growth Rate</b>															
FDEC, 11/2012	0.72	0.56	0.43	0.35	0.36	0.45	0.57	0.63	0.65	0.60	0.53	0.52	0.57	0.68	0.81
FDEC, 02/2013	0.72	0.56	0.43	0.35	0.36	0.45	0.57	0.63	0.65	0.60	0.53	0.52	0.57	0.69	0.82
<b>Net Change in Population</b>															
FDEC, 11/2012	33.2	25.8	20.1	16.4	16.6	21.1	26.4	29.5	30.5	28.1	24.9	24.6	27.0	32.3	38.3
FDEC, 02/2013	33.2	25.8	20.1	16.4	16.6	21.1	26.4	29.5	30.5	28.1	24.9	24.6	27.0	32.4	38.8
<b>Households</b>															
FDEC, 11/2012	7,363.9	7,371.6	7,377.0	7,380.8	7,384.5	7,390.0	7,397.7	7,406.6	7,416.0	7,425.5	7,434.9	7,444.8	7,456.0	7,469.4	7,485.4
FDEC, 02/2013	7,363.9	7,371.6	7,377.0	7,380.8	7,384.5	7,390.0	7,397.7	7,406.6	7,416.0	7,425.5	7,434.9	7,444.8	7,456.0	7,469.9	7,487.1
<b>Household Growth Rate</b>															
FDEC, 11/2012	0.58	0.42	0.29	0.21	0.20	0.30	0.41	0.48	0.51	0.51	0.51	0.54	0.60	0.72	0.86
FDEC, 02/2013	0.58	0.42	0.29	0.21	0.20	0.30	0.41	0.48	0.51	0.51	0.51	0.54	0.60	0.75	0.92
<b>Net Change in Households</b>															
FDEC, 11/2012	10.6	7.7	5.4	3.8	3.7	5.5	7.7	8.9	9.5	9.4	9.4	10.0	11.2	13.4	16.0
FDEC, 02/2013	10.6	7.7	5.4	3.8	3.7	5.5	7.7	8.9	9.5	9.4	9.4	10.0	11.2	13.9	17.2
<b>Household Size</b>															
FDEC, 11/2012	2.526	2.527	2.528	2.528	2.529	2.530	2.531	2.532	2.533	2.534	2.534	2.534	2.534	2.533	2.533
FDEC, 02/2013	2.526	2.527	2.528	2.528	2.529	2.530	2.531	2.532	2.533	2.534	2.534	2.534	2.534	2.533	2.533
<b>Household Size Growth Rate</b>															
FDEC, 11/2012	0.14	0.14	0.14	0.14	0.16	0.15	0.15	0.15	0.14	0.09	0.02	-0.01	-0.03	-0.04	-0.05
FDEC, 02/2013	0.14	0.14	0.14	0.14	0.16	0.15	0.15	0.15	0.14	0.09	0.02	-0.01	-0.03	-0.06	-0.10
<b>Net Migration</b>															
FDEC, 11/2012	17.1	10.3	5.2	2.0	2.7	7.8	13.9	17.7	19.5	17.6	14.6	14.5	16.8	22.2	28.2
FDEC, 02/2013	17.0	10.3	5.2	2.1	2.9	7.9	13.8	17.5	19.4	17.5	14.6	14.6	16.6	22.2	28.8
<b>Births</b>															
FDEC, 11/2012	58.8	58.2	57.6	56.9	56.2	55.6	55.0	54.5	54.0	53.7	53.5	53.4	53.3	53.3	53.3
FDEC, 02/2013	58.7	58.1	57.6	57.0	56.2	55.6	55.1	54.6	54.1	53.7	53.5	53.3	53.4	53.3	53.3
<b>Deaths</b>															
FDEC, 11/2012	42.6	42.7	42.6	42.5	42.3	42.3	42.5	42.7	43.0	43.1	43.2	43.2	43.2	43.2	43.2
FDEC, 02/2013	42.5	42.6	42.7	42.7	42.4	42.4	42.5	42.6	43.0	43.1	43.2	43.3	43.1	43.1	43.2
<b>Net Natural Increase</b>															
FDEC, 11/2012	16.1	15.5	14.9	14.4	13.9	13.3	12.5	11.8	11.0	10.6	10.3	10.2	10.2	10.1	10.1
FDEC, 02/2013	16.2	15.5	14.9	14.3	13.8	13.2	12.6	12.0	11.1	10.6	10.3	10.0	10.3	10.2	10.0

Quarterly Data Table

QUARTERLY FORECAST TABLES

	<u>2011-4</u>	<u>2012-1</u>	<u>2012-2</u>	<u>2012-3</u>	<u>2012-4</u>	<u>2013-1</u>	<u>2013-2</u>	<u>2013-3</u>	<u>2013-4</u>	<u>2014-1</u>	<u>2014-2</u>	<u>2014-3</u>	<u>2014-4</u>	<u>2015-1</u>	<u>2015-2</u>
<b>Population</b>															
FDEC, 11/2012	19,004.1	19,050.4	19,098.8	19,147.9	19,198.0	19,249.3	19,301.9	19,355.8	19,411.4	19,469.2	19,529.6	19,592.8	19,658.1	19,725.3	19,793.6
FDEC, 02/2013	19,005.2	19,051.1	19,097.9	19,144.9	19,192.7	19,241.7	19,292.8	19,346.1	19,401.9	19,460.3	19,521.2	19,584.5	19,649.8	19,716.7	19,784.9
<b>Population Growth Rate</b>															
FDEC, 11/2012	0.91	0.98	1.02	1.03	1.05	1.07	1.10	1.12	1.15	1.20	1.25	1.30	1.34	1.37	1.39
FDEC, 02/2013	0.92	0.97	0.99	0.99	1.00	1.03	1.07	1.11	1.16	1.21	1.26	1.30	1.34	1.37	1.39
<b>Net Change in Population</b>															
FDEC, 11/2012	42.8	46.4	48.4	49.1	50.1	51.3	52.5	53.9	55.6	57.8	60.4	63.1	65.4	67.2	68.3
FDEC, 02/2013	43.3	45.9	46.8	47.0	47.7	49.1	51.0	53.4	55.8	58.3	60.9	63.3	65.3	67.0	68.2
<b>Households</b>															
FDEC, 11/2012	7,503.4	7,523.0	7,543.7	7,565.0	7,586.9	7,609.5	7,632.8	7,656.6	7,681.1	7,706.4	7,732.7	7,759.8	7,787.7	7,816.1	7,844.8
FDEC, 02/2013	7,506.4	7,526.9	7,548.0	7,569.3	7,590.9	7,613.0	7,635.8	7,659.5	7,684.0	7,709.5	7,735.9	7,763.2	7,791.1	7,819.4	7,848.1
<b>Household Growth Rate</b>															
FDEC, 11/2012	0.96	1.05	1.11	1.13	1.17	1.20	1.23	1.25	1.29	1.33	1.37	1.41	1.45	1.47	1.48
FDEC, 02/2013	1.03	1.10	1.12	1.13	1.14	1.17	1.20	1.25	1.29	1.33	1.38	1.42	1.45	1.46	1.47
<b>Net Change in Households</b>															
FDEC, 11/2012	18.0	19.6	20.7	21.3	21.9	22.6	23.2	23.8	24.5	25.3	26.3	27.2	27.9	28.4	28.7
FDEC, 02/2013	19.3	20.6	21.1	21.3	21.6	22.1	22.8	23.7	24.6	25.5	26.4	27.2	27.9	28.4	28.7
<b>Household Size</b>															
FDEC, 11/2012	2.533	2.532	2.532	2.531	2.530	2.530	2.529	2.528	2.527	2.526	2.526	2.525	2.524	2.524	2.523
FDEC, 02/2013	2.532	2.531	2.530	2.529	2.528	2.528	2.527	2.526	2.525	2.524	2.523	2.523	2.522	2.522	2.521
<b>Household Size Growth Rate</b>															
FDEC, 11/2012	-0.06	-0.07	-0.09	-0.10	-0.11	-0.12	-0.13	-0.13	-0.13	-0.13	-0.12	-0.11	-0.10	-0.09	-0.08
FDEC, 02/2013	-0.12	-0.13	-0.14	-0.14	-0.14	-0.14	-0.14	-0.13	-0.13	-0.12	-0.12	-0.11	-0.10	-0.09	-0.08
<b>Net Migration</b>															
FDEC, 11/2012	32.8	36.3	38.2	38.9	39.9	40.9	42.1	43.4	45.0	47.1	49.6	52.3	54.5	56.3	57.3
FDEC, 02/2013	33.5	36.5	37.6	37.9	38.7	40.0	42.0	44.2	46.6	48.9	51.3	53.6	55.5	57.0	58.1
<b>Births</b>															
FDEC, 11/2012	53.3	53.5	53.6	53.7	53.9	54.1	54.4	54.6	54.8	55.0	55.3	55.5	55.7	55.9	56.1
FDEC, 02/2013	53.2	53.1	53.1	53.1	53.2	53.3	53.4	53.6	53.7	54.0	54.2	54.4	54.6	54.9	55.1
<b>Deaths</b>															
FDEC, 11/2012	43.3	43.4	43.5	43.6	43.7	43.8	43.9	44.0	44.1	44.3	44.5	44.6	44.8	45.0	45.1
FDEC, 02/2013	43.4	43.7	43.9	44.0	44.2	44.3	44.4	44.5	44.5	44.5	44.6	44.7	44.8	44.9	45.0
<b>Net Natural Increase</b>															
FDEC, 11/2012	10.1	10.1	10.1	10.2	10.3	10.4	10.5	10.6	10.6	10.7	10.8	10.9	10.9	10.9	11.0
FDEC, 02/2013	9.8	9.4	9.2	9.1	9.0	9.0	9.1	9.1	9.2	9.4	9.6	9.7	9.8	10.0	10.1

Quarterly Data Table

QUARTERLY FORECAST TABLES

	<u>2015-3</u>	<u>2015-4</u>	<u>2016-1</u>	<u>2016-2</u>	<u>2016-3</u>	<u>2016-4</u>	<u>2017-1</u>	<u>2017-2</u>	<u>2017-3</u>	<u>2017-4</u>	<u>2018-1</u>	<u>2018-2</u>	<u>2018-3</u>	<u>2018-4</u>	<u>2019-1</u>
<b>Population</b>															
FDEC, 11/2012	19,862.7	19,932.5	20,002.9	20,073.5	20,144.2	20,215.0	20,285.8	20,356.5	20,427.0	20,497.2	20,567.1	20,636.6	20,705.7	20,774.5	20,843.0
FDEC, 02/2013	19,854.0	19,923.8	19,994.1	20,064.7	20,135.4	20,206.1	20,276.9	20,347.4	20,417.7	20,487.8	20,557.7	20,627.3	20,696.7	20,765.8	20,834.6
<b>Population Growth Rate</b>															
FDEC, 11/2012	1.40	1.41	1.42	1.42	1.42	1.41	1.41	1.40	1.39	1.38	1.37	1.36	1.35	1.34	1.33
FDEC, 02/2013	1.40	1.41	1.42	1.42	1.42	1.41	1.41	1.40	1.39	1.38	1.37	1.36	1.35	1.34	1.33
<b>Net Change in Population</b>															
FDEC, 11/2012	69.0	69.8	70.4	70.6	70.7	70.8	70.8	70.7	70.5	70.2	69.9	69.5	69.1	68.8	68.5
FDEC, 02/2013	69.1	69.8	70.3	70.6	70.7	70.8	70.7	70.6	70.3	70.1	69.8	69.6	69.4	69.1	68.9
<b>Households</b>															
FDEC, 11/2012	7,873.6	7,902.6	7,931.6	7,960.7	7,989.7	8,018.6	8,047.5	8,076.2	8,104.6	8,132.9	8,161.0	8,188.9	8,216.5	8,244.0	8,271.3
FDEC, 02/2013	7,876.9	7,905.9	7,934.9	7,964.0	7,993.0	8,022.0	8,050.8	8,079.5	8,108.0	8,136.2	8,164.3	8,192.2	8,220.0	8,247.6	8,275.1
<b>Household Growth Rate</b>															
FDEC, 11/2012	1.48	1.48	1.48	1.47	1.47	1.46	1.45	1.43	1.42	1.40	1.39	1.37	1.36	1.34	1.33
FDEC, 02/2013	1.48	1.48	1.48	1.47	1.47	1.46	1.45	1.43	1.42	1.40	1.39	1.37	1.36	1.35	1.34
<b>Net Change in Households</b>															
FDEC, 11/2012	28.8	29.0	29.1	29.1	29.0	29.0	28.9	28.7	28.5	28.3	28.1	27.9	27.7	27.5	27.3
FDEC, 02/2013	28.8	29.0	29.0	29.1	29.0	29.0	28.8	28.7	28.4	28.3	28.1	27.9	27.8	27.6	27.5
<b>Household Size</b>															
FDEC, 11/2012	2.523	2.522	2.522	2.522	2.521	2.521	2.521	2.521	2.520	2.520	2.520	2.520	2.520	2.520	2.520
FDEC, 02/2013	2.521	2.520	2.520	2.519	2.519	2.519	2.519	2.518	2.518	2.518	2.518	2.518	2.518	2.518	2.518
<b>Household Size Growth Rate</b>															
FDEC, 11/2012	-0.07	-0.06	-0.06	-0.05	-0.05	-0.04	-0.04	-0.03	-0.03	-0.02	-0.02	-0.01	-0.01	-0.01	-0.01
FDEC, 02/2013	-0.07	-0.06	-0.06	-0.05	-0.05	-0.04	-0.04	-0.03	-0.03	-0.02	-0.02	-0.01	-0.01	-0.01	-0.01
<b>Net Migration</b>															
FDEC, 11/2012	58.0	58.8	59.4	59.6	59.6	59.7	59.7	59.6	59.4	59.1	58.8	58.4	58.0	57.7	57.5
FDEC, 02/2013	58.9	59.6	60.1	60.3	60.4	60.5	60.4	60.2	60.0	59.7	59.4	59.1	58.8	58.6	58.3
<b>Births</b>															
FDEC, 11/2012	56.3	56.5	56.7	56.9	57.1	57.3	57.4	57.6	57.8	58.0	58.1	58.3	58.4	58.6	58.7
FDEC, 02/2013	55.3	55.5	55.7	55.9	56.1	56.3	56.5	56.7	57.0	57.2	57.5	57.8	58.2	58.6	59.0
<b>Deaths</b>															
FDEC, 11/2012	45.3	45.5	45.7	45.8	46.0	46.2	46.4	46.5	46.7	46.9	47.0	47.2	47.3	47.5	47.7
FDEC, 02/2013	45.1	45.3	45.5	45.7	45.9	46.0	46.2	46.4	46.6	46.8	47.1	47.4	47.7	48.0	48.4
<b>Net Natural Increase</b>															
FDEC, 11/2012	11.0	11.0	11.0	11.1	11.1	11.1	11.1	11.1	11.1	11.1	11.1	11.1	11.1	11.1	11.0
FDEC, 02/2013	10.2	10.2	10.2	10.2	10.3	10.3	10.3	10.3	10.4	10.4	10.5	10.5	10.5	10.6	10.6

### Quarterly Data Table

QUARTERLY FORECAST TABLES

	<u>2019-2</u>	<u>2019-3</u>	<u>2019-4</u>	<u>2020-1</u>	<u>2020-2</u>	<u>2020-3</u>	<u>2020-4</u>	<u>2021-1</u>	<u>2021-2</u>	<u>2021-3</u>	<u>2021-4</u>	<u>2022-1</u>	<u>2022-2</u>
<b>Population</b>													
FDEC, 11/2012	20,911.3	20,979.5	21,047.4	21,115.1	21,182.6	21,249.9	21,316.9	21,383.7	21,450.3	21,516.6	21,582.7	21,648.5	21,714.1
FDEC, 02/2013	20,903.2	20,971.6	21,039.7	21,107.5	21,175.0	21,242.3	21,309.3	21,376.0	21,442.4	21,508.5	21,574.4	21,640.0	21,705.2
<b>Population Growth Rate</b>													
FDEC, 11/2012	1.32	1.31	1.30	1.29	1.28	1.28	1.27	1.26	1.25	1.24	1.23	1.23	1.22
FDEC, 02/2013	1.32	1.31	1.30	1.30	1.29	1.28	1.27	1.26	1.25	1.24	1.23	1.22	1.21
<b>Net Change in Population</b>													
FDEC, 11/2012	68.3	68.1	67.9	67.7	67.5	67.3	67.0	66.8	66.6	66.3	66.1	65.9	65.6
FDEC, 02/2013	68.6	68.3	68.1	67.8	67.5	67.3	67.0	66.7	66.4	66.1	65.9	65.6	65.3
<b>Households</b>													
FDEC, 11/2012	8,298.6	8,325.8	8,352.8	8,379.9	8,406.8	8,433.7	8,460.5	8,487.3	8,514.0	8,540.6	8,567.2	8,593.7	8,620.1
FDEC, 02/2013	8,302.5	8,329.8	8,357.0	8,384.0	8,411.0	8,437.9	8,464.8	8,491.5	8,518.2	8,544.8	8,571.3	8,597.7	8,624.0
<b>Household Growth Rate</b>													
FDEC, 11/2012	1.32	1.32	1.31	1.30	1.29	1.29	1.28	1.27	1.26	1.26	1.25	1.24	1.24
FDEC, 02/2013	1.33	1.32	1.31	1.30	1.29	1.29	1.28	1.27	1.26	1.25	1.25	1.24	1.23
<b>Net Change in Households</b>													
FDEC, 11/2012	27.2	27.2	27.1	27.0	27.0	26.9	26.8	26.8	26.7	26.6	26.6	26.5	26.4
FDEC, 02/2013	27.4	27.3	27.2	27.1	27.0	26.9	26.8	26.7	26.7	26.6	26.5	26.4	26.3
<b>Household Size</b>													
FDEC, 11/2012	2.520	2.520	2.520	2.520	2.520	2.520	2.520	2.519	2.519	2.519	2.519	2.519	2.519
FDEC, 02/2013	2.518	2.518	2.518	2.518	2.518	2.517	2.517	2.517	2.517	2.517	2.517	2.517	2.517
<b>Household Size Growth Rate</b>													
FDEC, 11/2012	-0.01	-0.01	-0.01	-0.01	-0.01	-0.01	-0.01	-0.01	-0.01	-0.01	-0.02	-0.02	-0.02
FDEC, 02/2013	-0.01	-0.01	-0.01	-0.01	-0.01	-0.01	-0.01	-0.01	-0.01	-0.01	-0.02	-0.02	-0.02
<b>Net Migration</b>													
FDEC, 11/2012	57.3	57.2	57.0	56.8	56.6	56.4	56.3	56.1	55.9	55.8	55.6	55.5	55.4
FDEC, 02/2013	58.0	57.8	57.6	57.4	57.3	57.3	57.3	57.3	57.2	57.2	57.1	57.0	56.9
<b>Births</b>													
FDEC, 11/2012	58.9	59.0	59.1	59.2	59.3	59.3	59.4	59.5	59.6	59.7	59.8	59.9	60.0
FDEC, 02/2013	59.4	59.8	60.2	60.4	60.6	60.7	60.9	60.9	61.0	61.1	61.2	61.3	61.4
<b>Deaths</b>													
FDEC, 11/2012	47.9	48.0	48.2	48.2	48.4	48.5	48.7	48.8	49.0	49.2	49.3	49.6	49.8
FDEC, 02/2013	48.8	49.2	49.7	50.0	50.4	50.8	51.1	51.5	51.8	52.1	52.4	52.7	53.0
<b>Net Natural Increase</b>													
FDEC, 11/2012	11.0	11.0	10.9	10.9	10.9	10.8	10.8	10.7	10.7	10.6	10.5	10.4	10.2
FDEC, 02/2013	10.6	10.6	10.5	10.4	10.2	10.0	9.7	9.4	9.2	9.0	8.8	8.6	8.4



FISCAL YEAR  
FORECAST TABLES

Fiscal Year Data Table

	<u>1990-91</u>	<u>1991-92</u>	<u>1992-93</u>	<u>1993-94</u>	<u>1994-95</u>	<u>1995-96</u>	<u>1996-97</u>	<u>1997-98</u>	<u>1998-99</u>	<u>1999-00</u>	<u>2000-01</u>	<u>2001-02</u>	<u>2002-03</u>	<u>2003-04</u>	<u>2004-05</u>
Population															
FDEC, 11/2012	13,178.0	13,442.6	13,670.0	13,962.2	14,264.9	14,550.7	14,859.1	15,158.3	15,488.4	15,881.7	16,228.0	16,551.2	16,892.0	17,273.8	17,677.3
FDEC, 02/2013	13,178.0	13,442.6	13,670.0	13,962.2	14,264.9	14,550.7	14,859.1	15,158.3	15,488.4	15,881.7	16,228.0	16,551.2	16,892.0	17,273.8	17,677.3
Growth Rate															
FDEC, 11/2012	2.42	2.01	1.69	2.14	2.17	2.00	2.12	2.01	2.18	2.54	2.18	1.99	2.06	2.26	2.34
FDEC, 02/2013	2.42	2.01	1.69	2.14	2.17	2.00	2.12	2.01	2.18	2.54	2.18	1.99	2.06	2.26	2.34
Net Change in Population															
FDEC, 11/2012	311.4	264.6	227.4	292.2	302.8	285.8	308.4	299.2	330.1	393.2	346.4	323.2	340.9	381.8	403.5
FDEC, 02/2013	311.4	264.6	227.4	292.2	302.8	285.8	308.4	299.2	330.1	393.2	346.4	323.2	340.9	381.8	403.5
Households															
FDEC, 11/2012	5,230.7	5,335.4	5,424.2	5,538.0	5,655.6	5,766.7	5,887.3	6,005.5	6,137.4	6,296.9	6,436.4	6,565.8	6,702.3	6,855.1	7,016.4
FDEC, 02/2013	5,230.7	5,335.4	5,424.2	5,538.0	5,655.6	5,766.7	5,887.3	6,005.5	6,137.4	6,296.9	6,436.4	6,565.8	6,702.3	6,855.1	7,016.4
Growth Rate															
FDEC, 11/2012	2.44	2.00	1.66	2.10	2.12	1.96	2.09	2.01	2.20	2.60	2.22	2.01	2.08	2.28	2.35
FDEC, 02/2013	2.44	2.00	1.66	2.10	2.12	1.96	2.09	2.01	2.20	2.60	2.22	2.01	2.08	2.28	2.35
Net Change in Households															
FDEC, 11/2012	124.7	104.7	88.8	113.8	117.7	111.1	120.6	118.1	131.9	159.5	139.5	129.3	136.5	152.8	161.3
FDEC, 02/2013	124.7	104.7	88.8	113.8	117.7	111.1	120.6	118.1	131.9	159.5	139.5	129.3	136.5	152.8	161.3
Household Size															
FDEC, 11/2012	2.519	2.520	2.520	2.521	2.522	2.523	2.524	2.524	2.524	2.522	2.521	2.521	2.520	2.520	2.519
FDEC, 02/2013	2.519	2.520	2.520	2.521	2.522	2.523	2.524	2.524	2.524	2.522	2.521	2.521	2.520	2.520	2.519
Growth Rate															
FDEC, 11/2012	-0.02	0.01	0.03	0.04	0.04	0.04	0.03	0.01	-0.02	-0.06	-0.03	-0.02	-0.02	-0.02	-0.02
FDEC, 02/2013	-0.02	0.01	0.03	0.04	0.04	0.04	0.03	0.01	-0.02	-0.06	-0.03	-0.02	-0.02	-0.02	-0.02
Net Migration															
FDEC, 11/2012	248.9	208.7	177.7	246.1	263.1	249.5	270.9	259.8	294.9	354.4	306.2	285.8	300.3	334.8	351.6
FDEC, 02/2013	248.4	208.9	177.4	246.6	262.7	249.6	270.9	260.4	293.9	355.3	306.0	285.5	300.4	335.0	351.1
Births															
FDEC, 11/2012	196.5	192.1	192.2	191.7	189.3	188.6	190.6	194.4	195.5	200.8	205.6	204.9	208.8	215.0	221.5
FDEC, 02/2013	197.0	192.2	192.0	191.7	189.4	188.6	190.7	194.0	196.0	200.5	205.4	205.4	208.5	215.0	221.8
Deaths															
FDEC, 11/2012	134.1	136.2	142.5	145.6	149.6	152.3	153.1	155.0	160.3	162.0	165.4	167.5	168.3	168.1	169.5
FDEC, 02/2013	134.0	136.5	142.0	146.1	149.3	152.4	153.1	155.3	159.8	162.5	165.0	167.7	168.1	168.3	169.4
Net Natural Increase															
FDEC, 11/2012	62.5	55.9	49.8	46.1	39.7	36.3	37.5	39.4	35.2	38.8	40.2	37.4	40.6	46.9	51.9
FDEC, 02/2013	63.0	55.7	50.0	45.6	40.1	36.2	37.5	38.8	36.2	38.0	40.3	37.7	40.4	46.7	52.4

FISCAL YEAR  
FORECAST TABLES

Fiscal Year Data Table

	<u>2005-06</u>	<u>2006-07</u>	<u>2007-08</u>	<u>2008-09</u>	<u>2009-10</u>	<u>2010-11</u>	<u>2011-12</u>	<u>2012-13</u>	<u>2013-14</u>	<u>2014-15</u>	<u>2015-16</u>	<u>2016-17</u>	<u>2017-18</u>	<u>2018-19</u>
Population														
FDEC, 11/2012	18,062.2	18,378.2	18,578.9	18,671.4	18,770.5	18,879.1	19,028.6	19,224.3	19,441.5	19,692.5	19,967.9	20,250.4	20,532.0	20,808.6
FDEC, 02/2013	18,062.2	18,378.2	18,578.9	18,671.4	18,770.5	18,879.1	19,029.0	19,218.0	19,432.4	19,684.0	19,959.1	20,241.4	20,522.6	20,800.1
Growth Rate														
FDEC, 11/2012	2.18	1.75	1.09	0.50	0.53	0.58	0.79	1.03	1.13	1.29	1.40	1.41	1.39	1.35
FDEC, 02/2013	2.18	1.75	1.09	0.50	0.53	0.58	0.79	0.99	1.12	1.29	1.40	1.41	1.39	1.35
Net Change in Population														
FDEC, 11/2012	384.9	316.0	200.7	92.5	99.0	108.6	149.5	195.6	217.2	251.0	275.4	282.5	281.6	276.7
FDEC, 02/2013	384.9	316.0	200.7	92.5	99.0	108.7	149.9	189.0	214.4	251.6	275.2	282.3	281.2	277.4
Households														
FDEC, 11/2012	7,170.9	7,288.9	7,357.1	7,383.1	7,411.4	7,451.3	7,513.9	7,598.6	7,694.2	7,802.1	7,917.1	8,033.0	8,146.9	8,257.6
FDEC, 02/2013	7,170.9	7,288.9	7,357.1	7,383.1	7,411.4	7,451.4	7,517.1	7,602.2	7,697.2	7,805.4	7,920.4	8,036.3	8,150.2	8,261.3
Growth Rate														
FDEC, 11/2012	2.20	1.65	0.93	0.35	0.38	0.54	0.84	1.13	1.26	1.40	1.47	1.46	1.42	1.36
FDEC, 02/2013	2.20	1.65	0.93	0.35	0.38	0.54	0.88	1.13	1.25	1.41	1.47	1.46	1.42	1.36
Net Change in Households														
FDEC, 11/2012	154.5	118.1	68.1	26.0	28.4	39.9	62.6	84.7	95.6	107.9	115.0	115.9	113.9	110.7
FDEC, 02/2013	154.5	118.1	68.1	26.0	28.4	40.0	65.7	85.1	95.0	108.2	115.0	115.9	113.8	111.1
Household Size														
FDEC, 11/2012	2.519	2.521	2.525	2.529	2.533	2.534	2.532	2.530	2.527	2.524	2.522	2.521	2.520	2.520
FDEC, 02/2013	2.519	2.521	2.525	2.529	2.533	2.534	2.531	2.528	2.525	2.522	2.520	2.519	2.518	2.518
Growth Rate														
FDEC, 11/2012	-0.02	0.10	0.16	0.14	0.15	0.04	-0.05	-0.10	-0.13	-0.11	-0.07	-0.05	-0.03	-0.01
FDEC, 02/2013	-0.02	0.10	0.16	0.14	0.15	0.04	-0.09	-0.14	-0.13	-0.11	-0.07	-0.05	-0.03	-0.01
Net Migration														
FDEC, 11/2012	322.8	244.4	134.2	35.9	53.2	67.9	109.2	154.4	174.5	207.3	231.3	238.2	237.2	232.5
FDEC, 02/2013	322.9	245.0	133.7	36.3	52.8	67.9	111.4	152.8	177.0	212.0	234.3	241.1	239.5	235.2
Births														
FDEC, 11/2012	232.3	239.5	236.0	226.3	217.2	213.5	213.7	216.2	219.6	223.2	226.4	229.4	232.2	234.6
FDEC, 02/2013	232.1	239.3	236.0	226.4	217.4	213.5	212.7	213.1	215.5	219.0	222.5	225.7	229.5	235.1
Deaths														
FDEC, 11/2012	170.2	167.9	169.5	169.8	171.4	172.7	173.3	174.9	176.9	179.5	182.3	185.1	187.7	190.5
FDEC, 02/2013	170.1	168.3	169.0	170.2	171.1	172.7	174.2	176.9	178.2	179.4	181.6	184.5	187.8	192.9
Net Natural Increase														
FDEC, 11/2012	62.1	71.7	66.4	56.5	45.9	40.7	40.4	41.3	42.7	43.7	44.1	44.3	44.4	44.2
FDEC, 02/2013	62.0	71.0	67.0	56.2	46.3	40.8	38.5	36.2	37.3	39.6	40.9	41.2	41.7	42.3

FISCAL YEAR  
FORECAST TABLES

Fiscal Year Data Table

	<u>2019-20</u>	<u>2020-21</u>	<u>2021-22</u>
Population			
FDEC, 11/2012	21,081.1	21,350.2	21,615.5
FDEC, 02/2013	21,073.4	21,342.5	21,607.0
Growth Rate			
FDEC, 11/2012	1.31	1.28	1.24
FDEC, 02/2013	1.31	1.28	1.24
Net Change in Population			
FDEC, 11/2012	272.5	269.0	265.3
FDEC, 02/2013	273.4	269.0	264.5
Households			
FDEC, 11/2012	8,366.3	8,473.9	8,580.4
FDEC, 02/2013	8,370.4	8,478.1	8,584.4
Growth Rate			
FDEC, 11/2012	1.32	1.29	1.26
FDEC, 02/2013	1.32	1.29	1.25
Net Change in Households			
FDEC, 11/2012	108.7	107.6	106.5
FDEC, 02/2013	109.2	107.6	106.3
Household Size			
FDEC, 11/2012	2.520	2.520	2.519
FDEC, 02/2013	2.518	2.517	2.517
Growth Rate			
FDEC, 11/2012	-0.01	-0.01	-0.01
FDEC, 02/2013	-0.01	-0.01	-0.01
Net Migration			
FDEC, 11/2012	228.8	226.1	223.7
FDEC, 02/2013	231.7	230.7	229.8
Births			
FDEC, 11/2012	236.5	237.9	239.5
FDEC, 02/2013	241.0	243.5	245.0
Deaths			
FDEC, 11/2012	192.8	195.0	197.8
FDEC, 02/2013	199.3	205.2	210.3
Net Natural Increase			
FDEC, 11/2012	43.7	43.0	41.6
FDEC, 02/2013	41.7	38.3	34.7

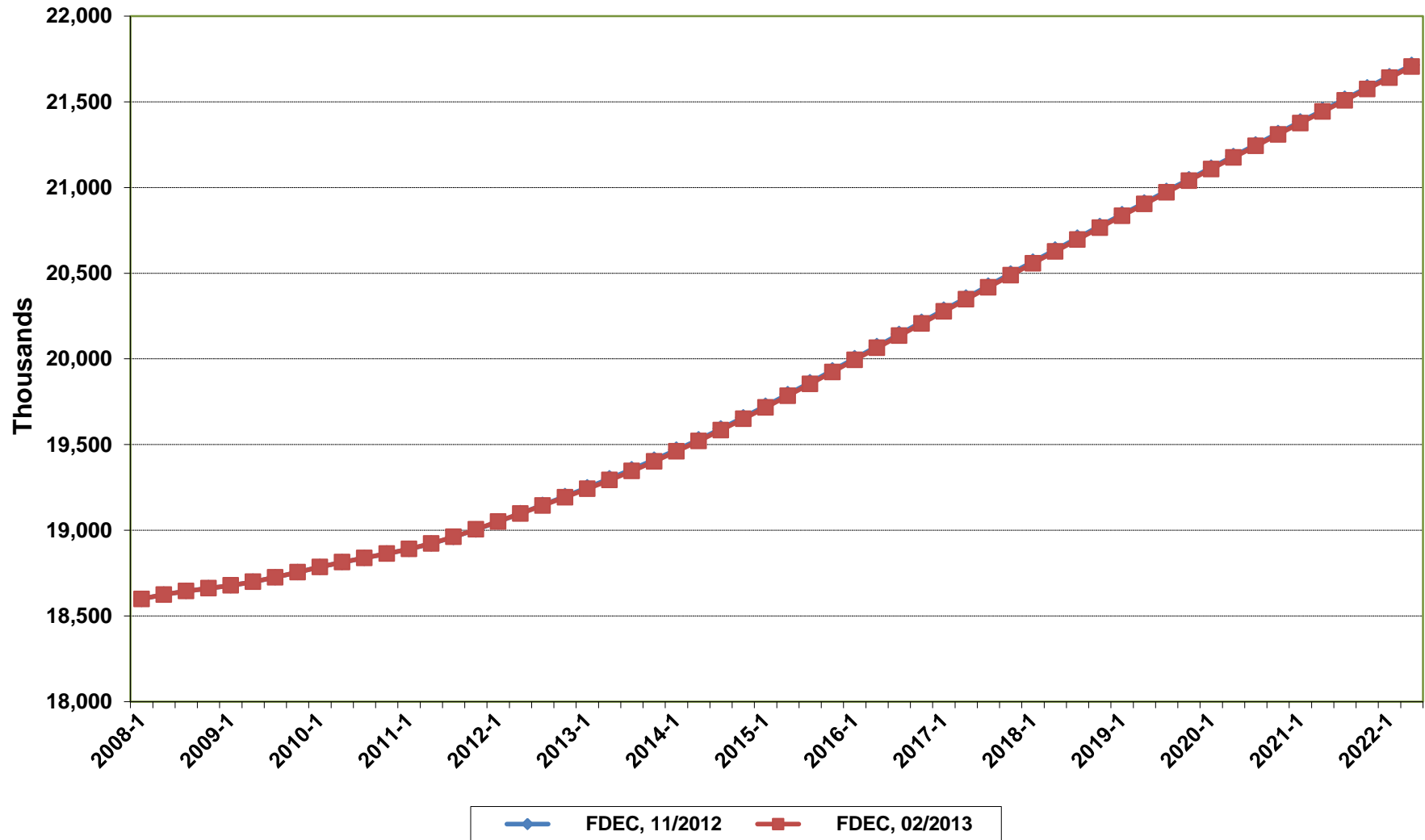
# **Florida Demographic Estimating Conference**

## **Charts**

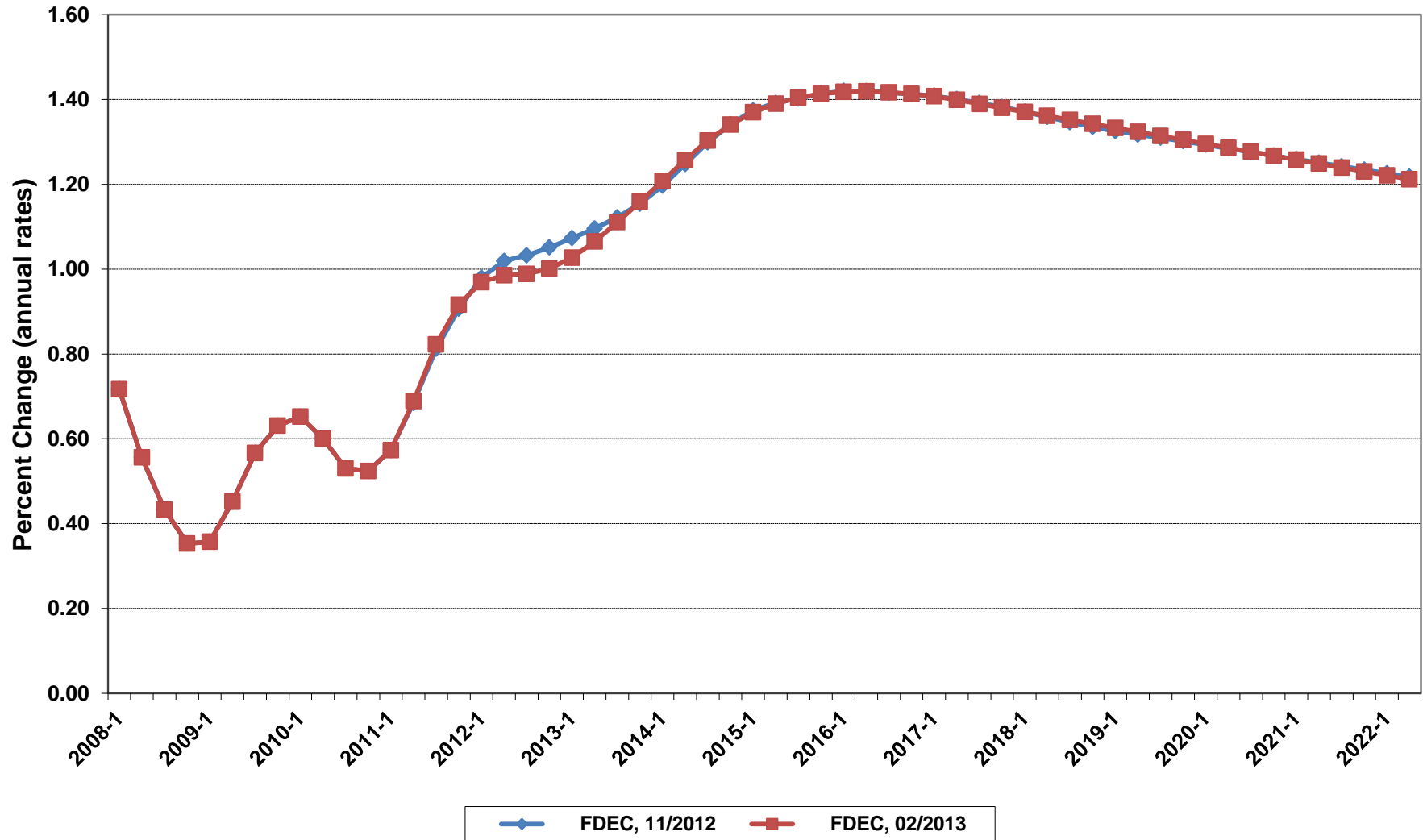
Post-Conference Packet

**February 7, 2013**

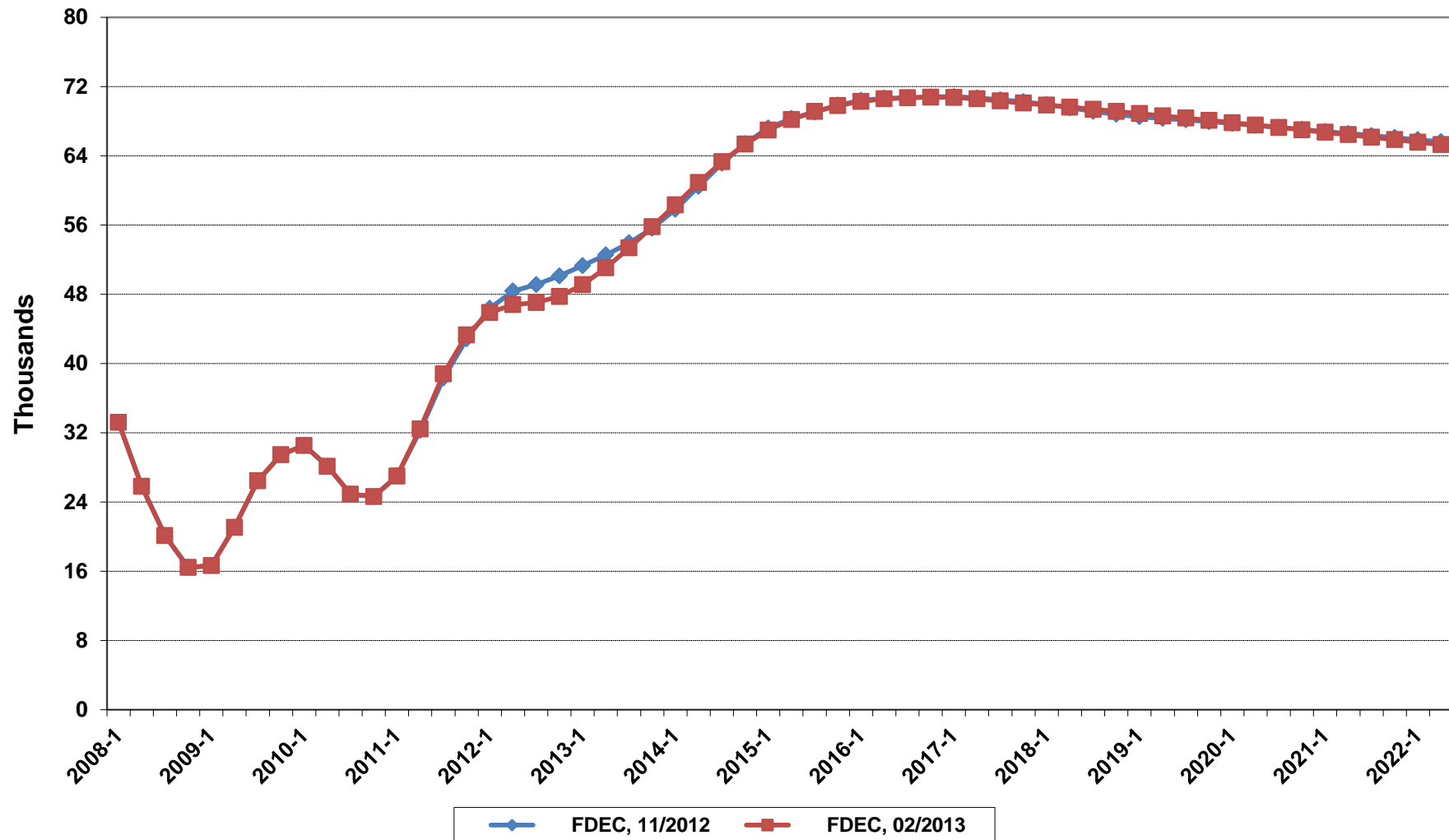
# Florida Resident Population



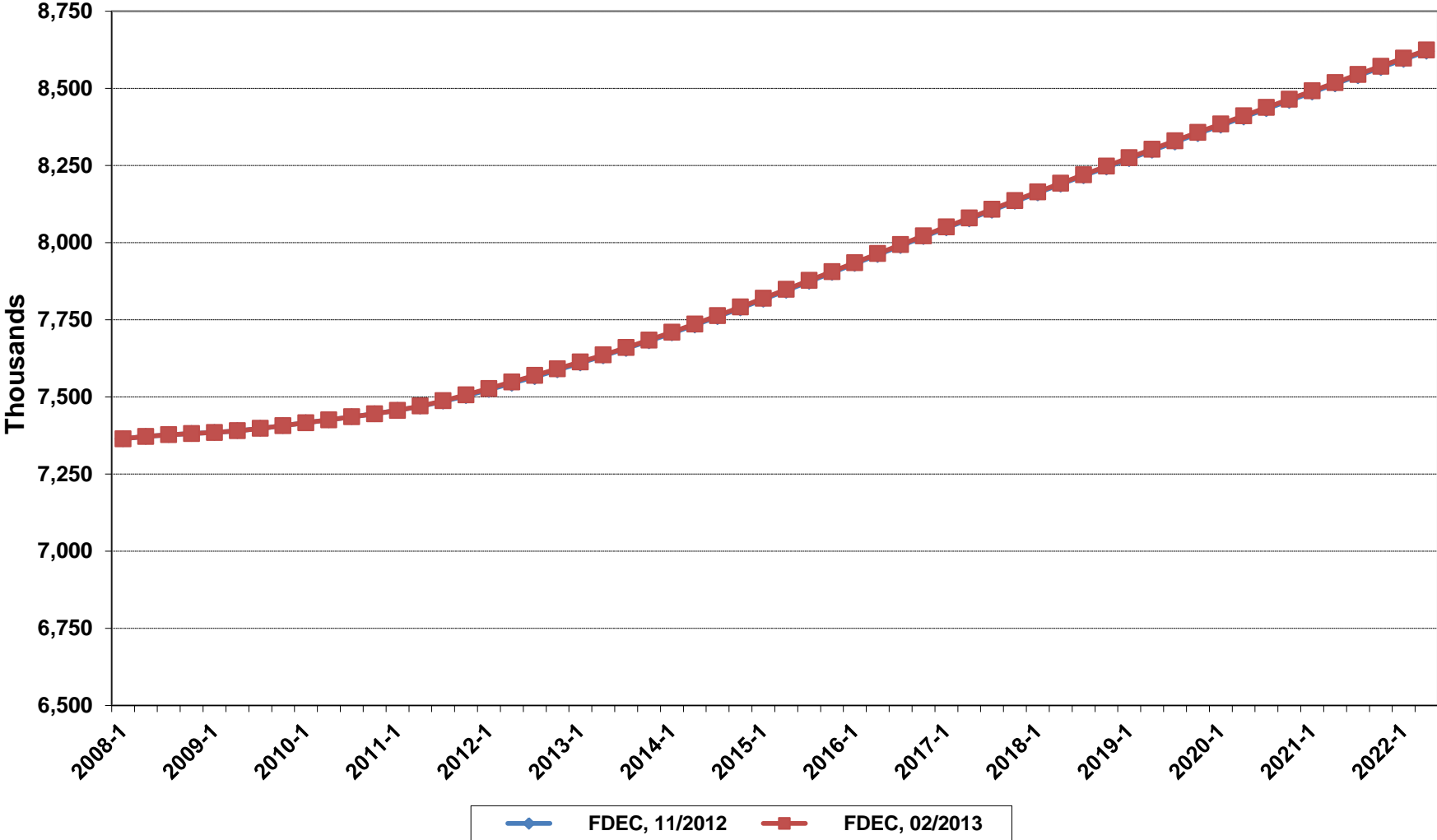
# Growth In Florida Resident Population



# Net Change In Florida Resident Population

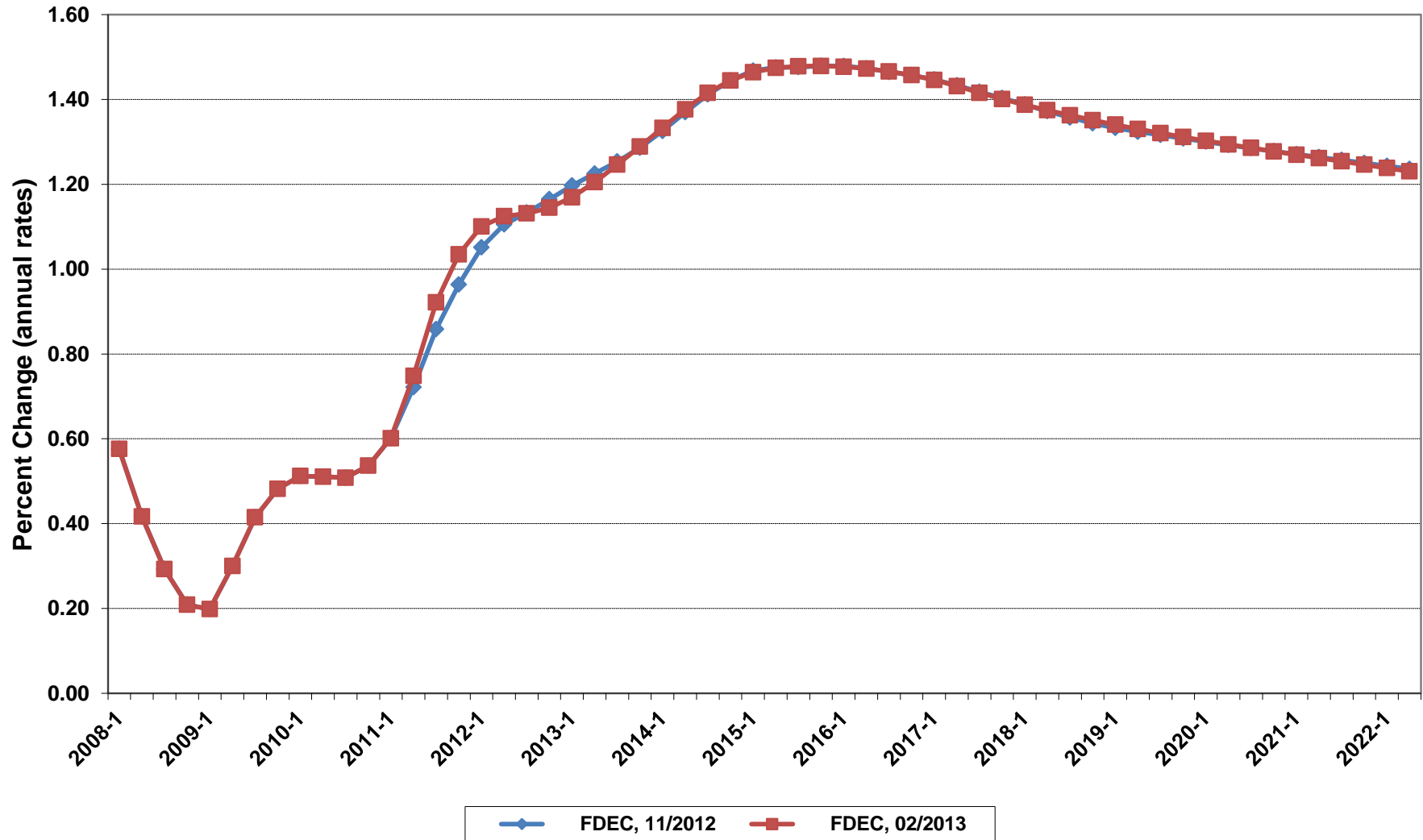


# Florida Resident Households

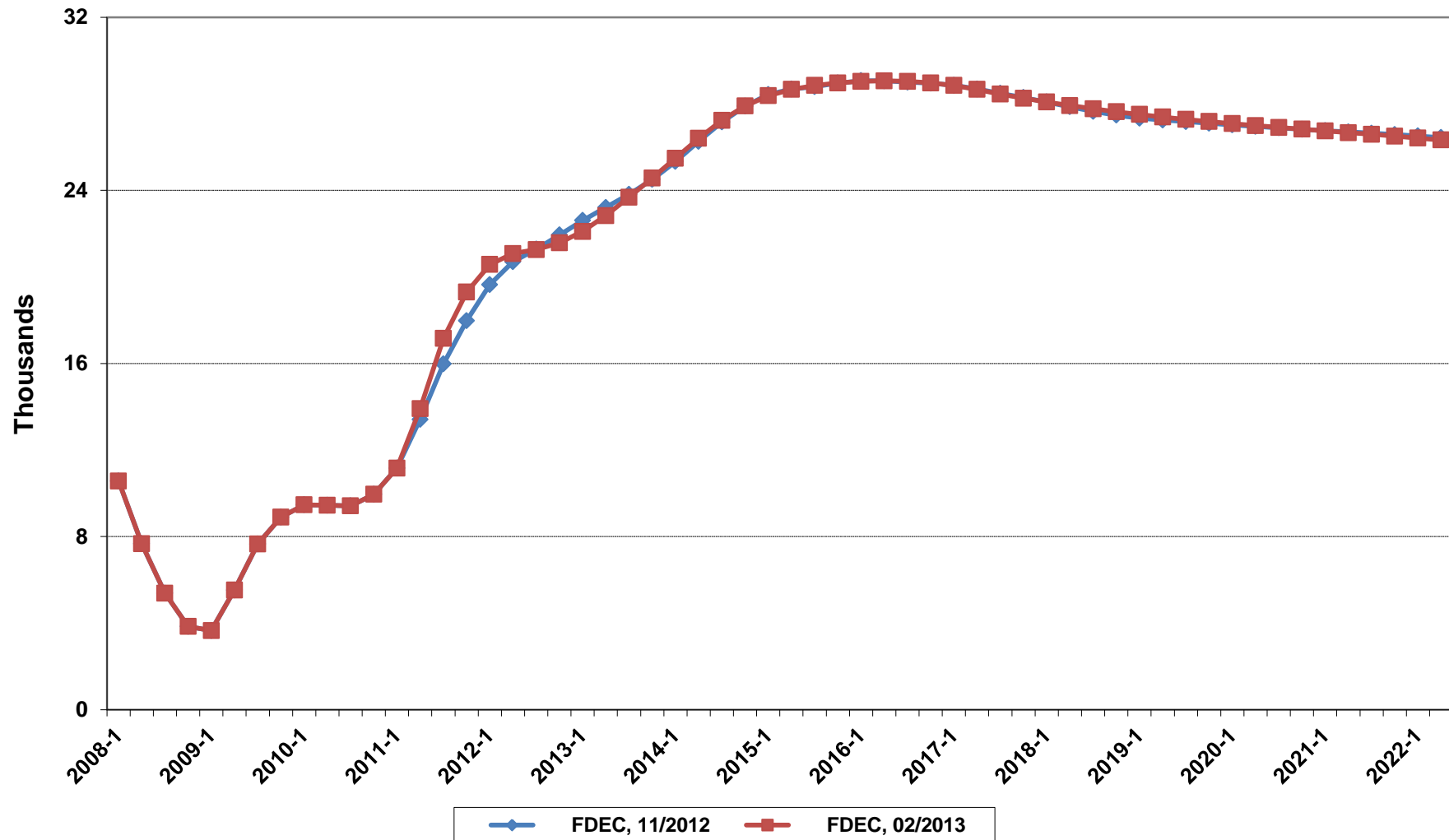




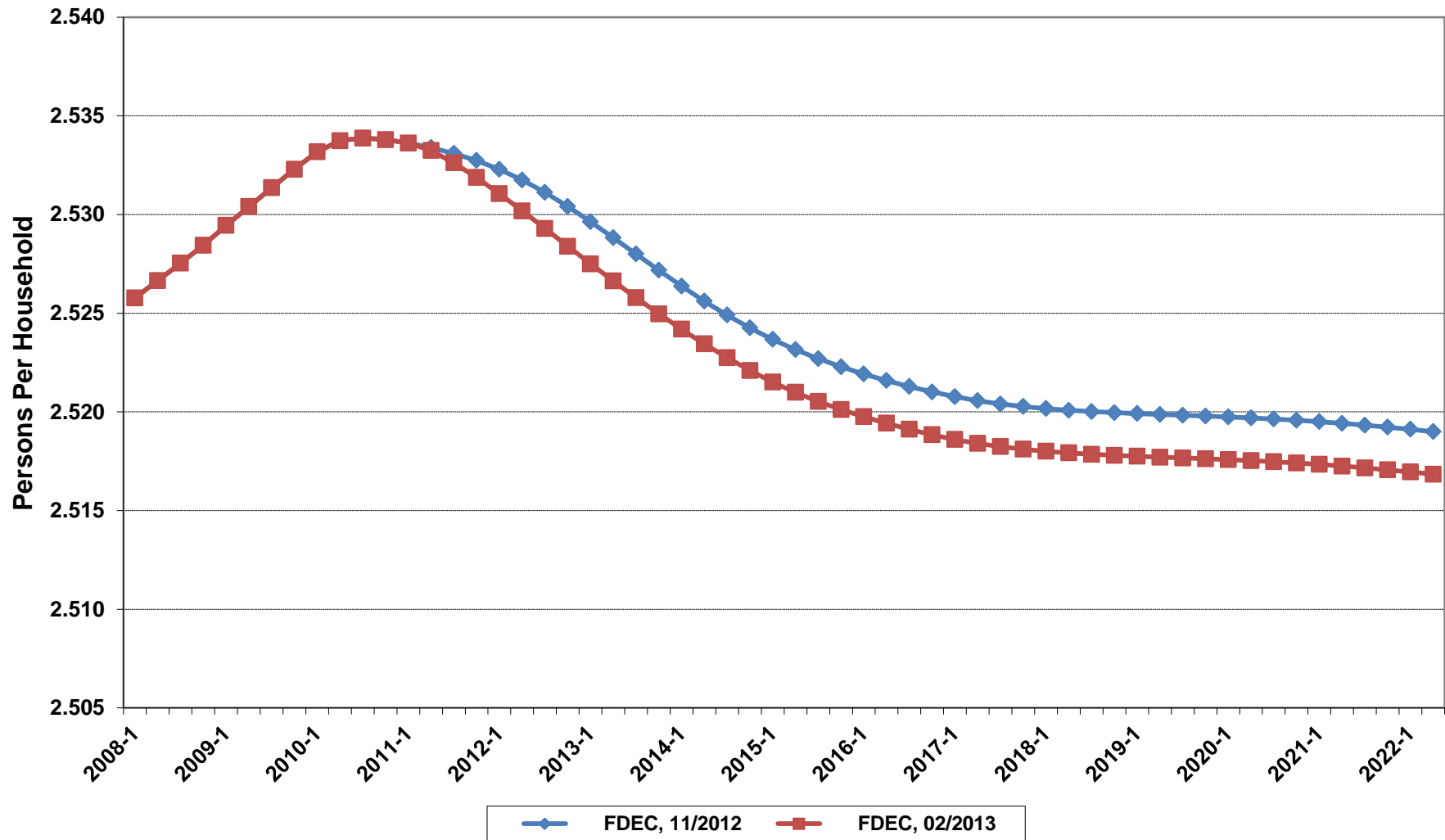
# Growth In Florida Resident Households



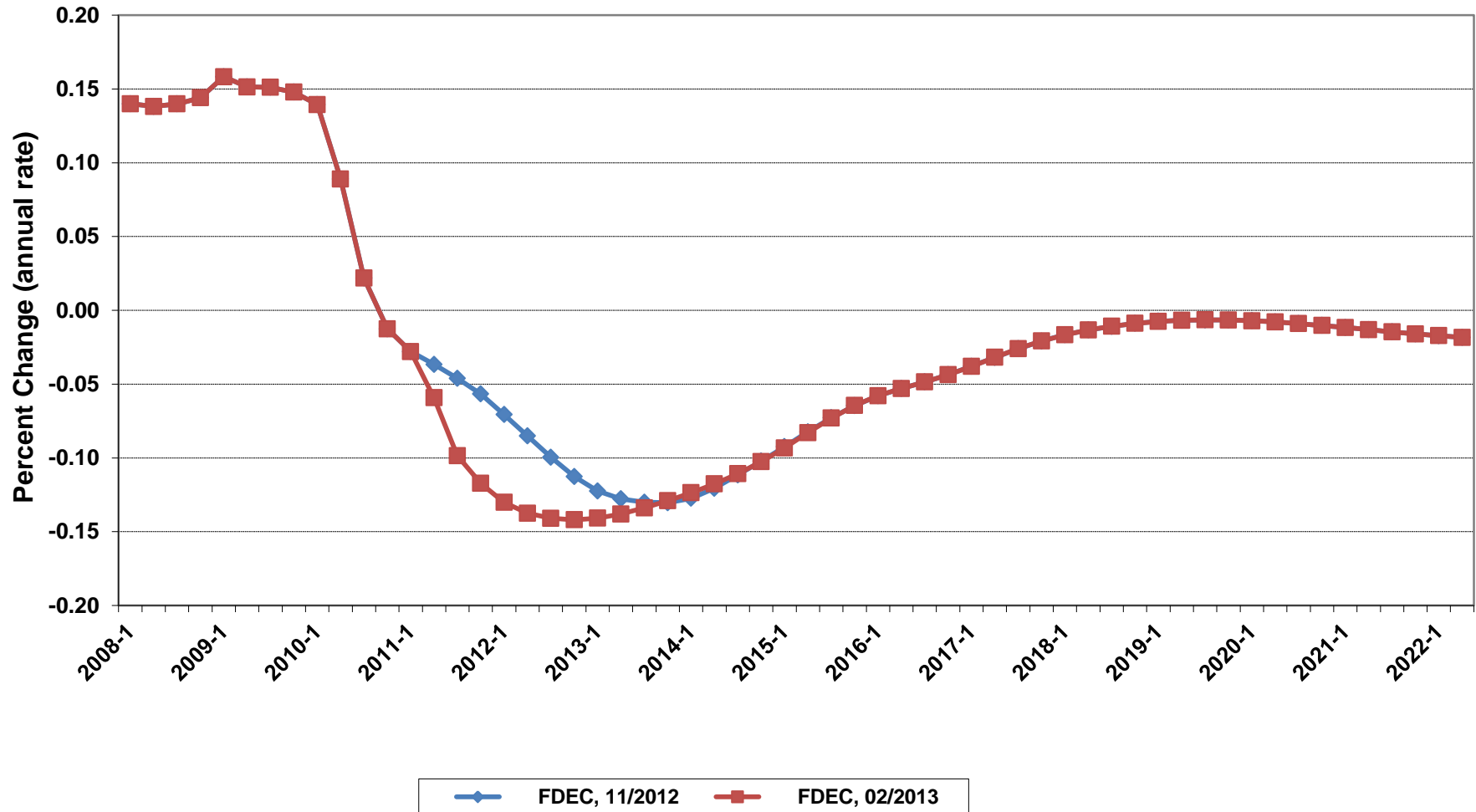
# Net Change In Florida Resident Households



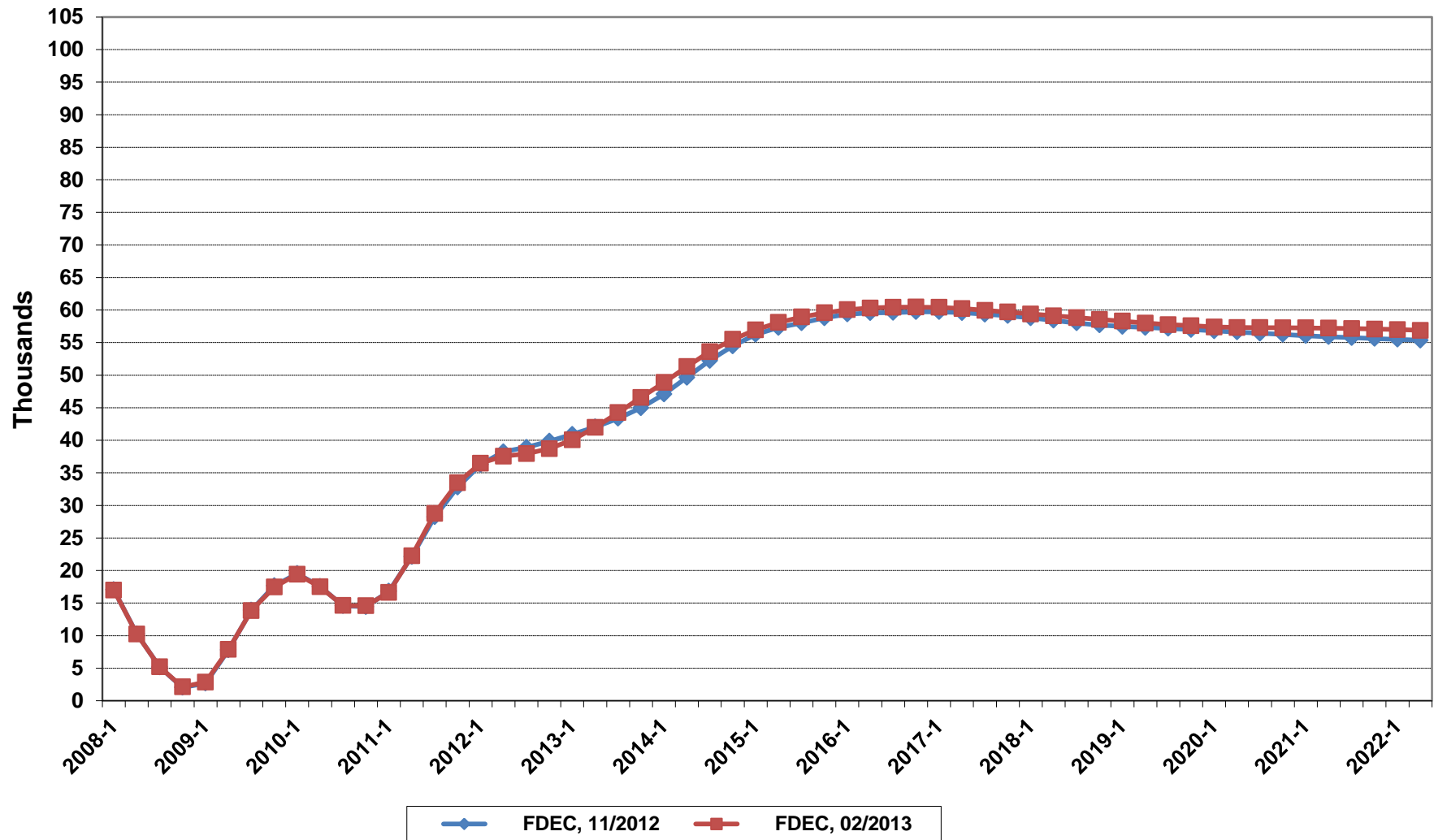
# Florida Average Household Size



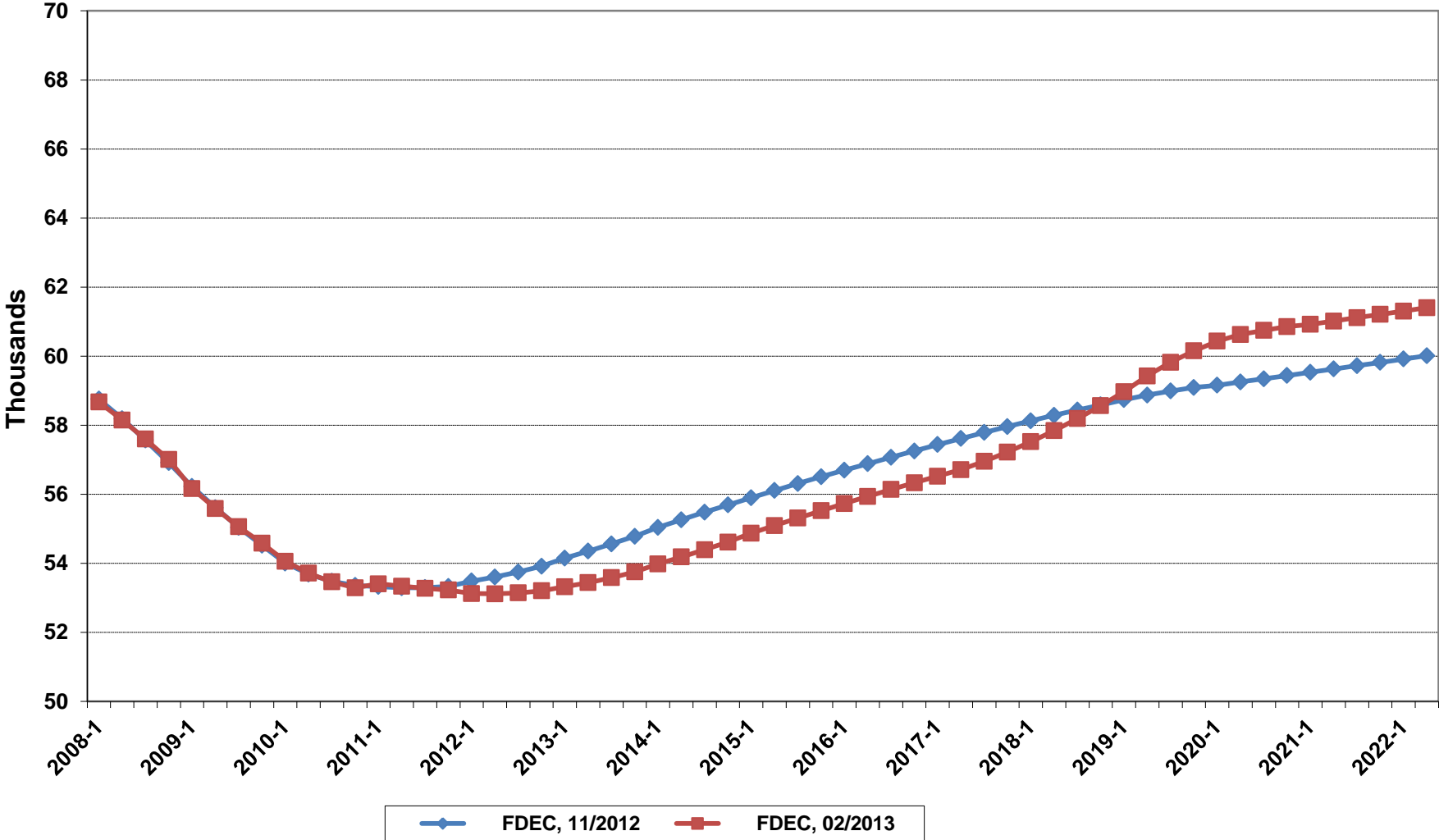
# Growth In Florida Household Size



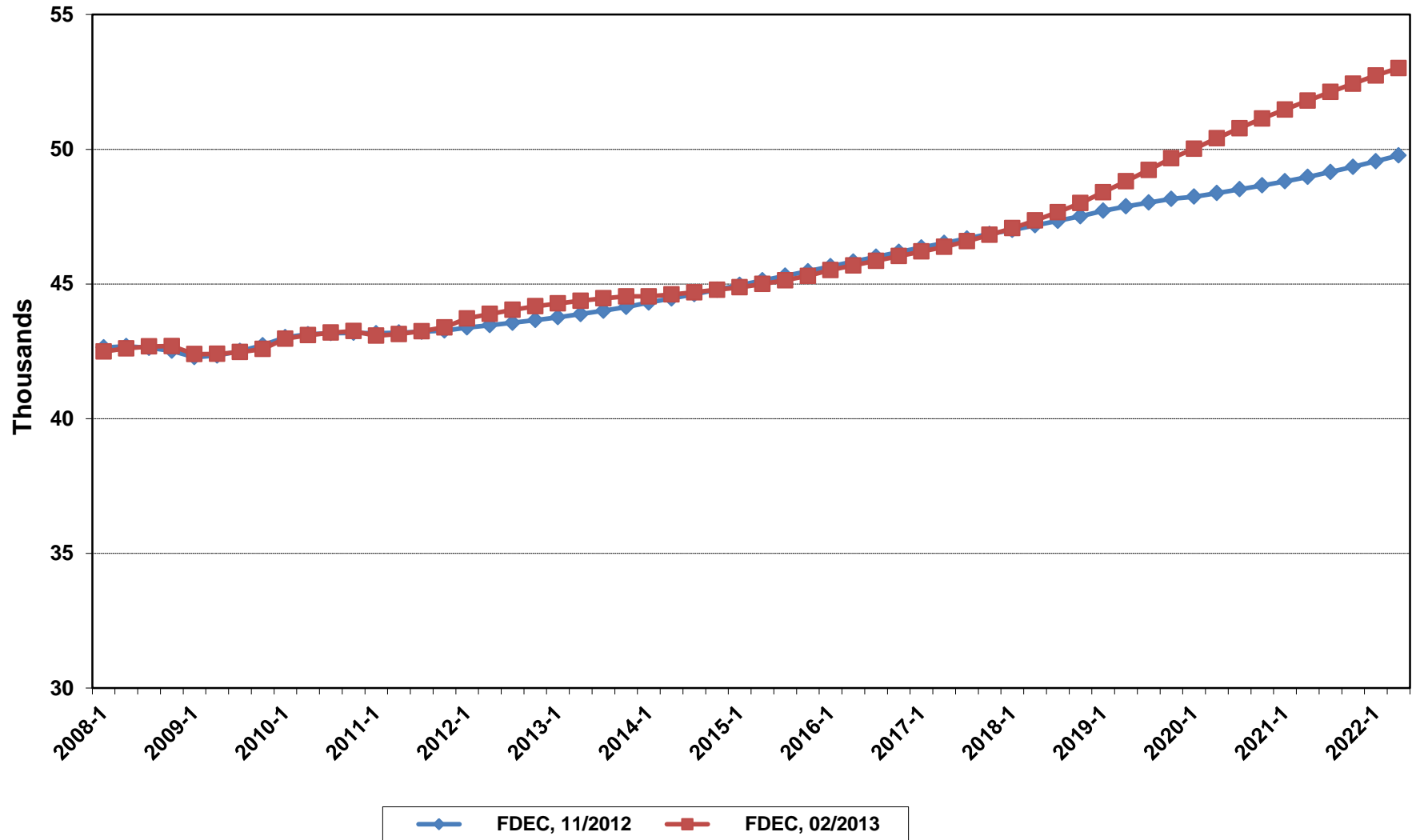
# Florida Net Migration



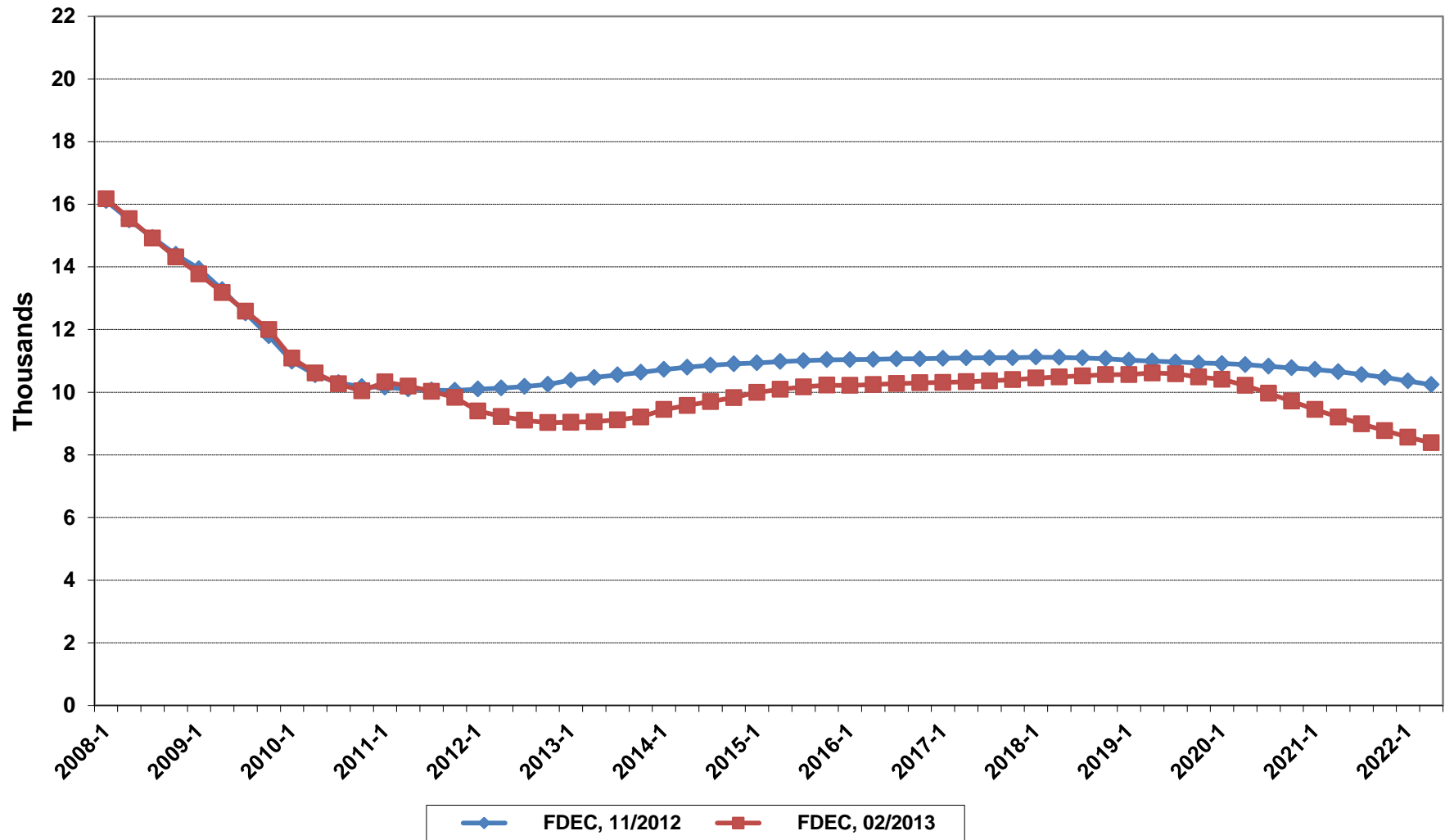
# Florida Resident Births



# Florida Resident Deaths

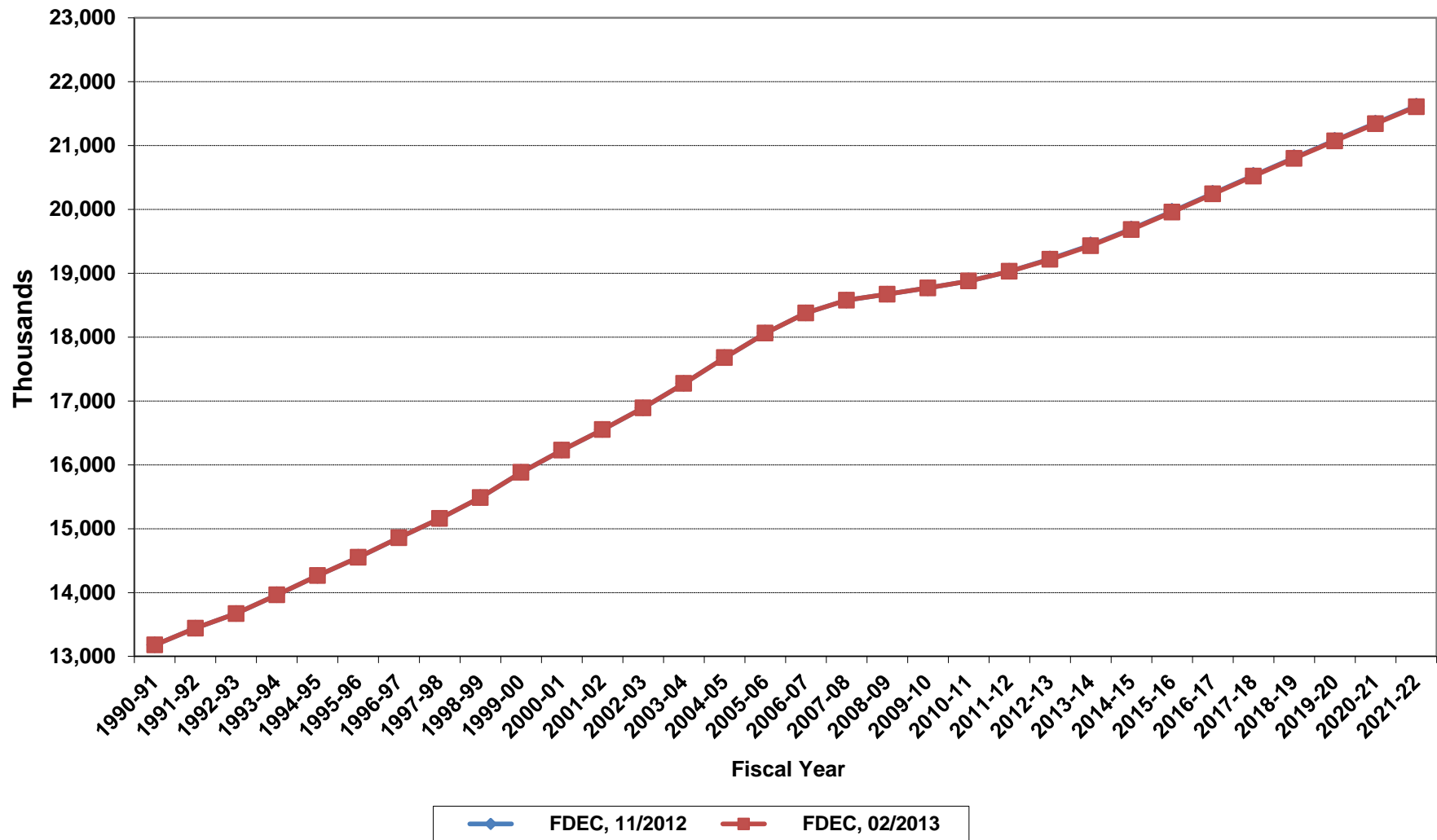


# Florida Net Natural Increase

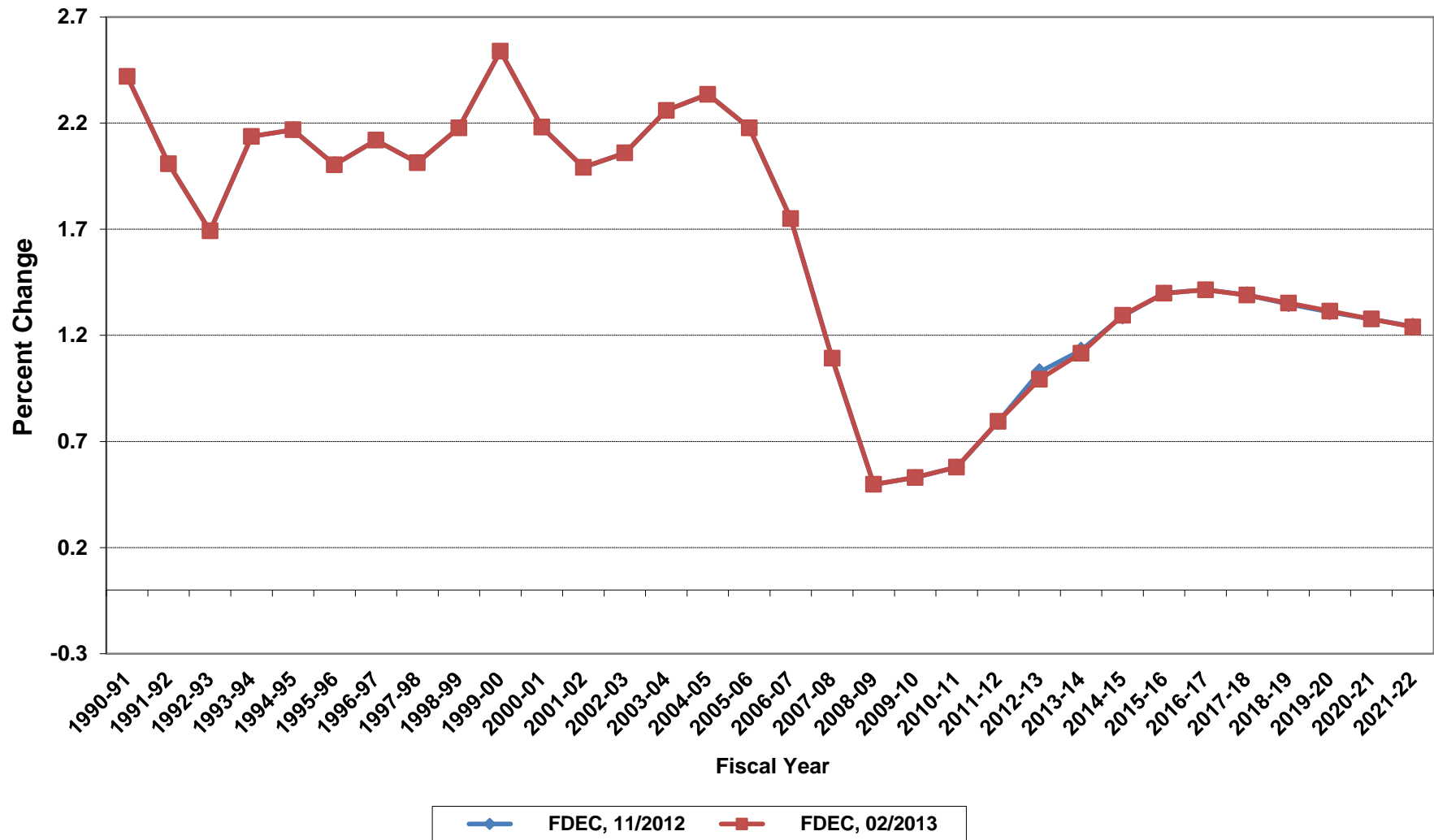




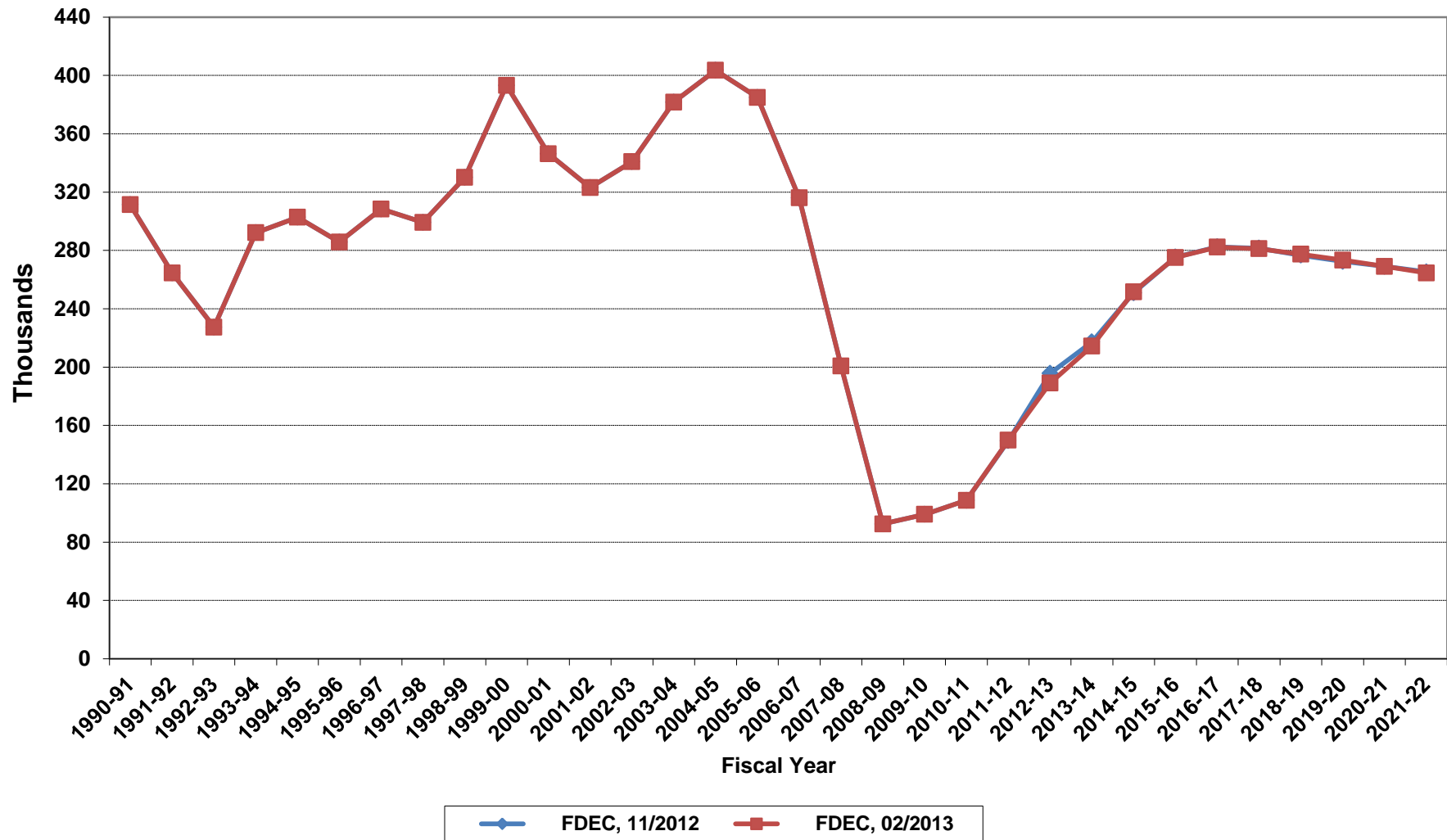
# Florida Resident Population



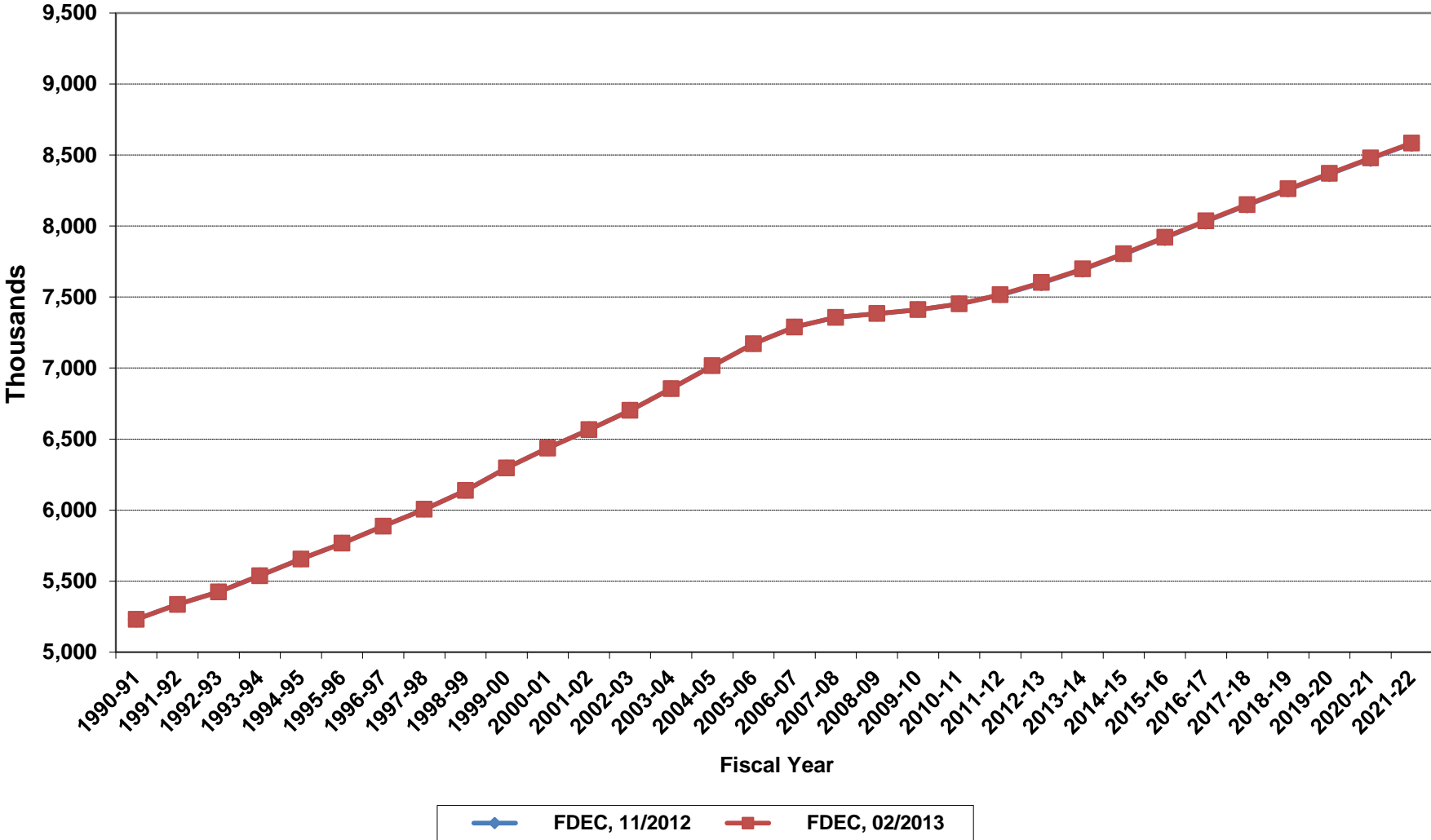
# Growth In Florida Resident Population



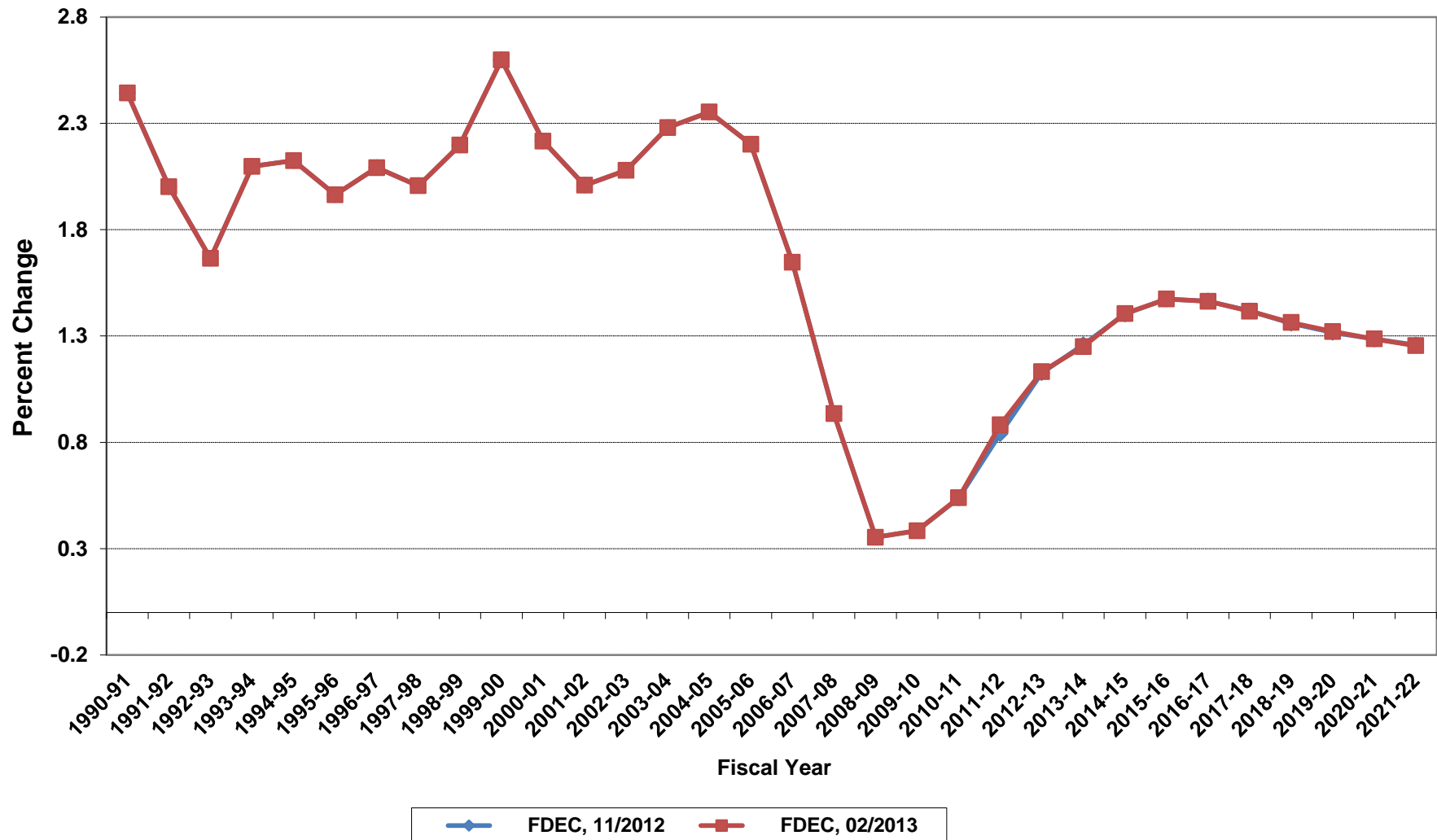
# Net Change In Florida Resident Population



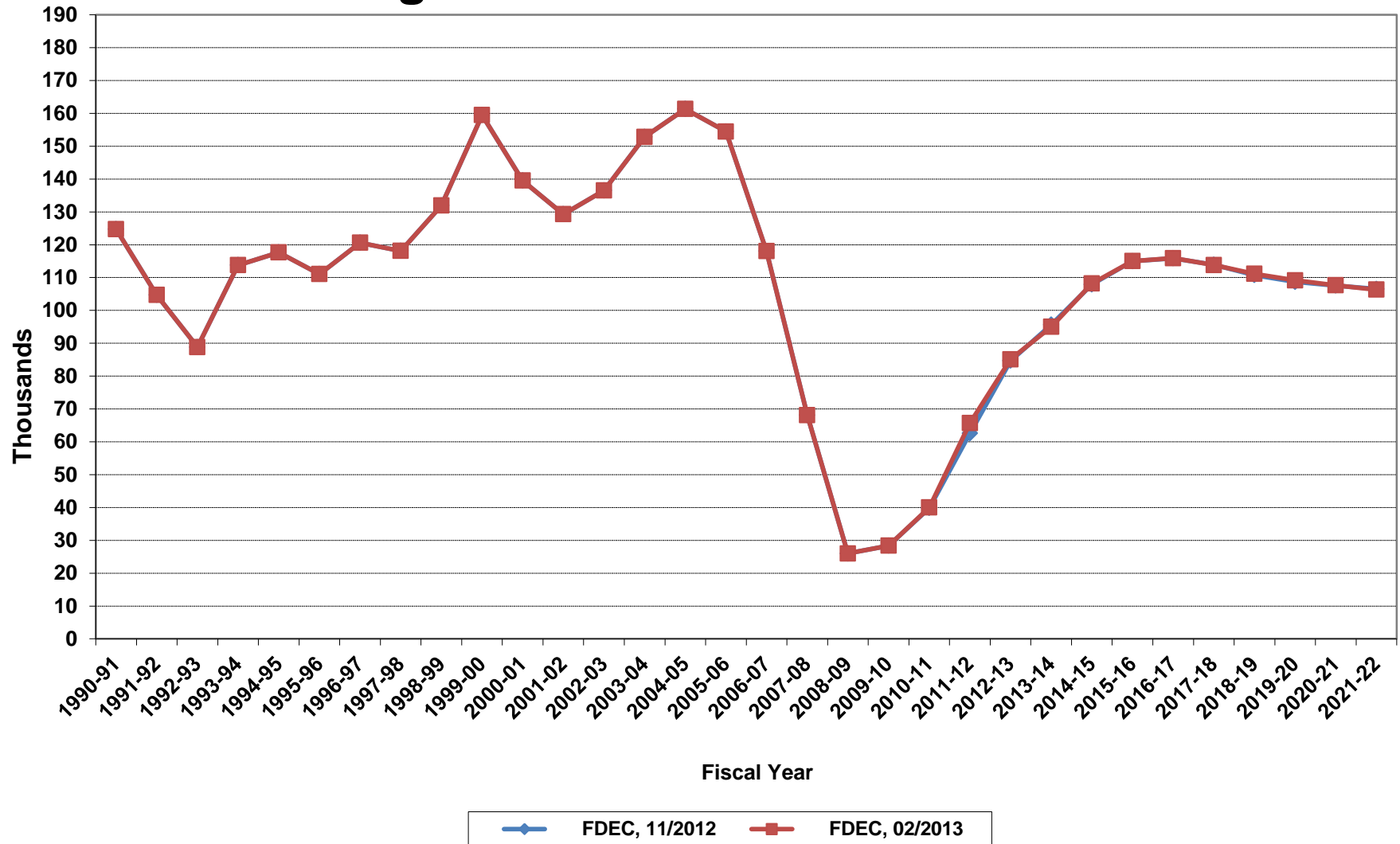
# Florida Resident Households



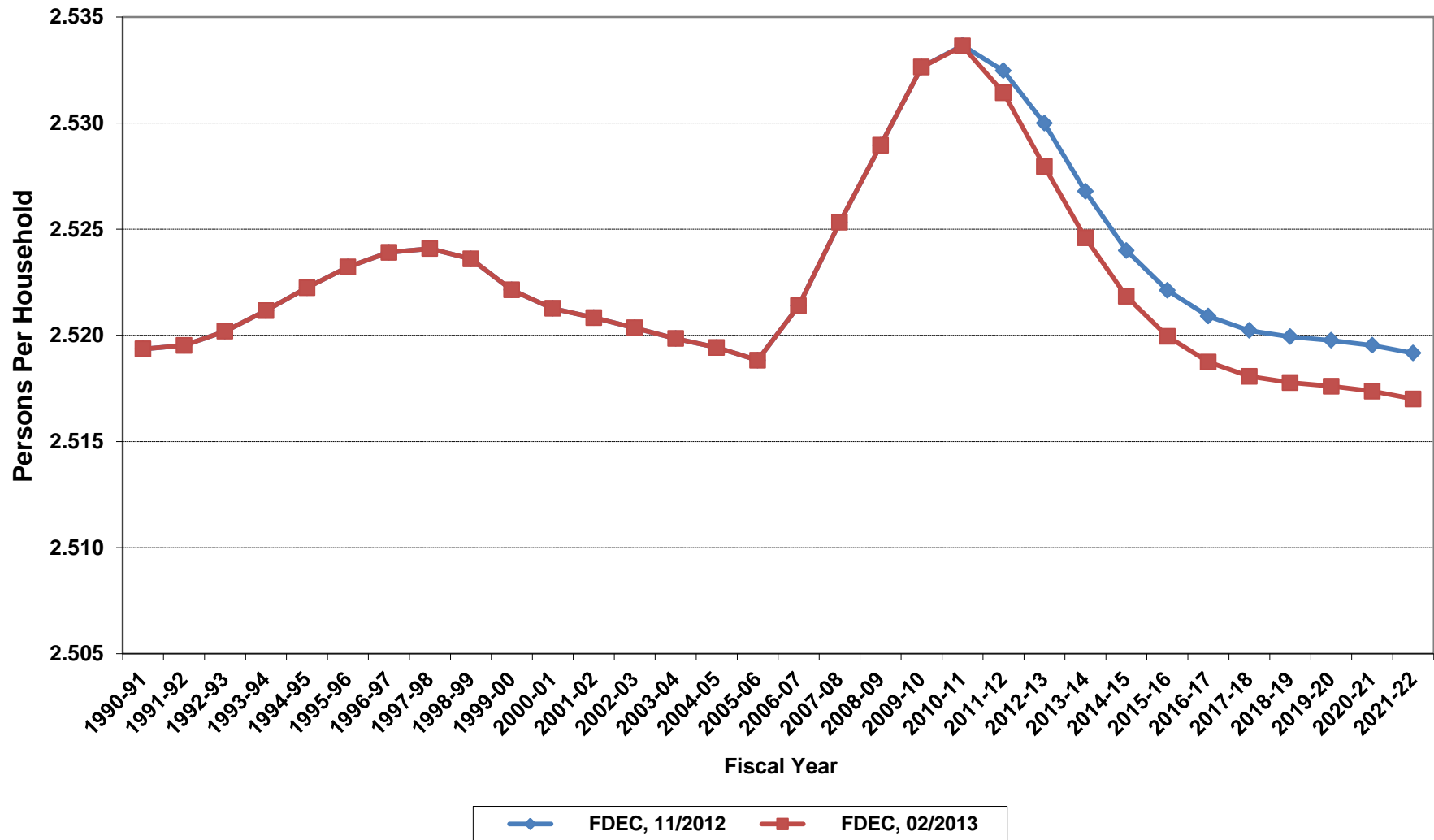
# Growth In Florida Resident Households



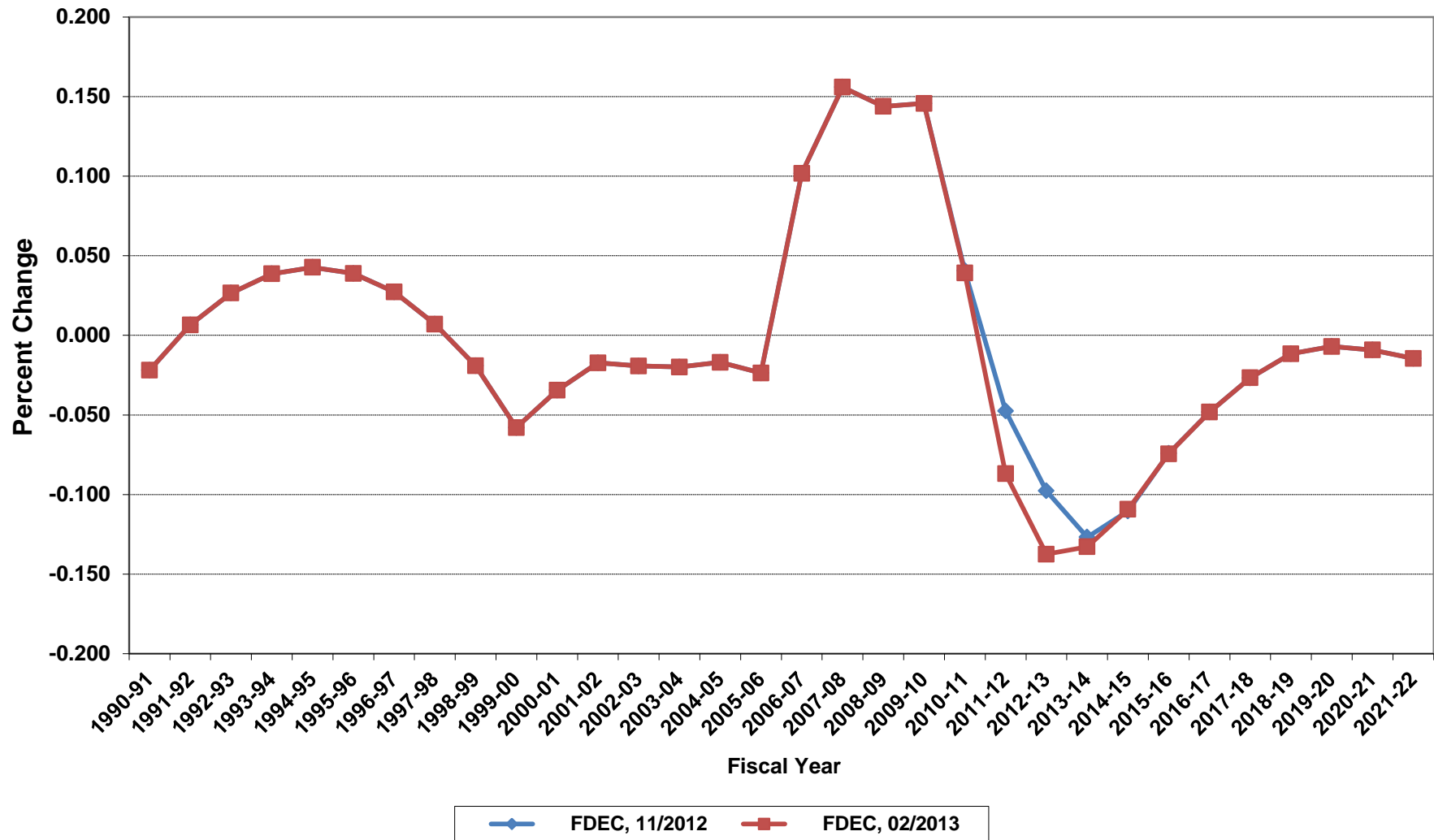
# Net Change In Florida Resident Households



# Average Florida Household Size

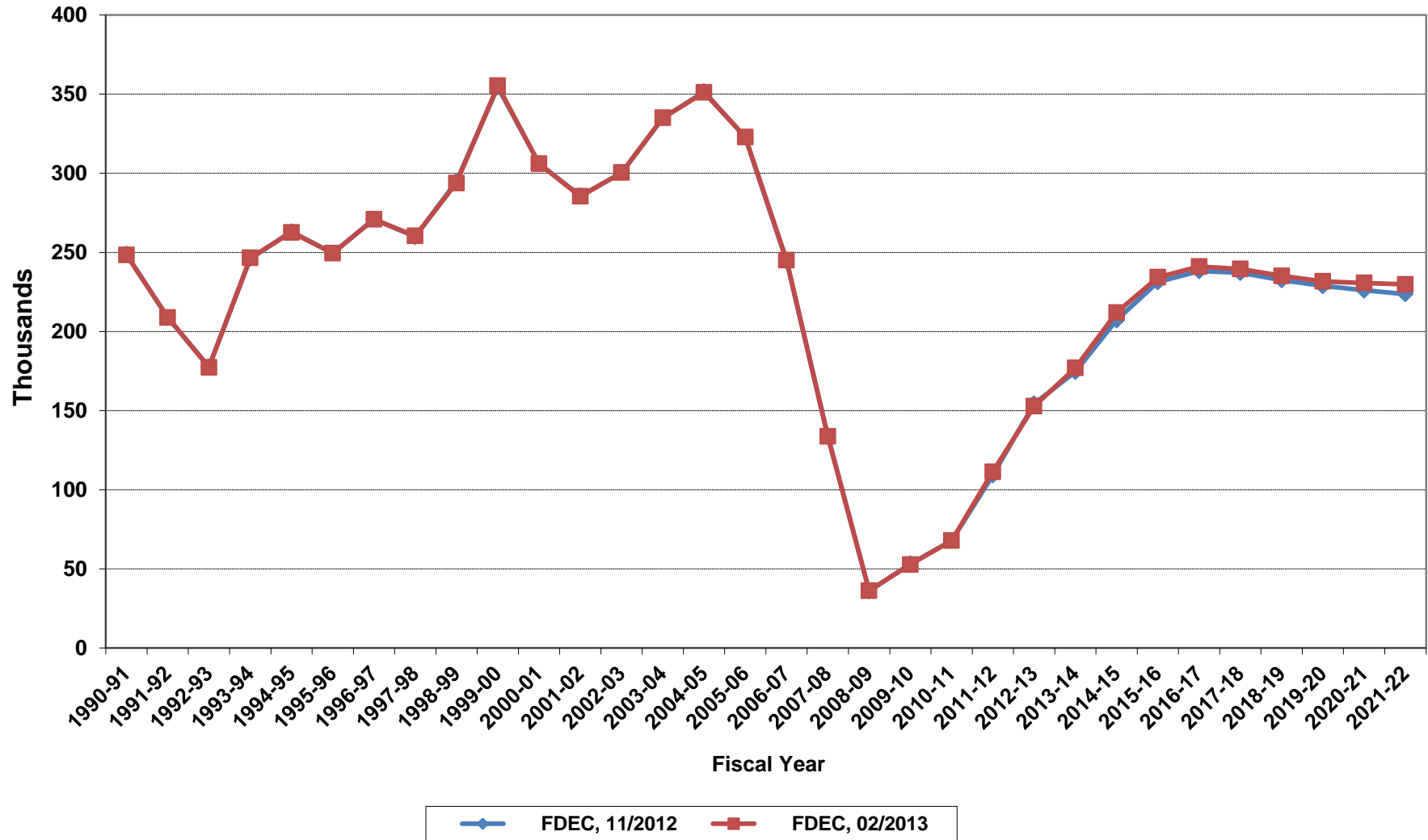


# Growth In Average Florida Household Size

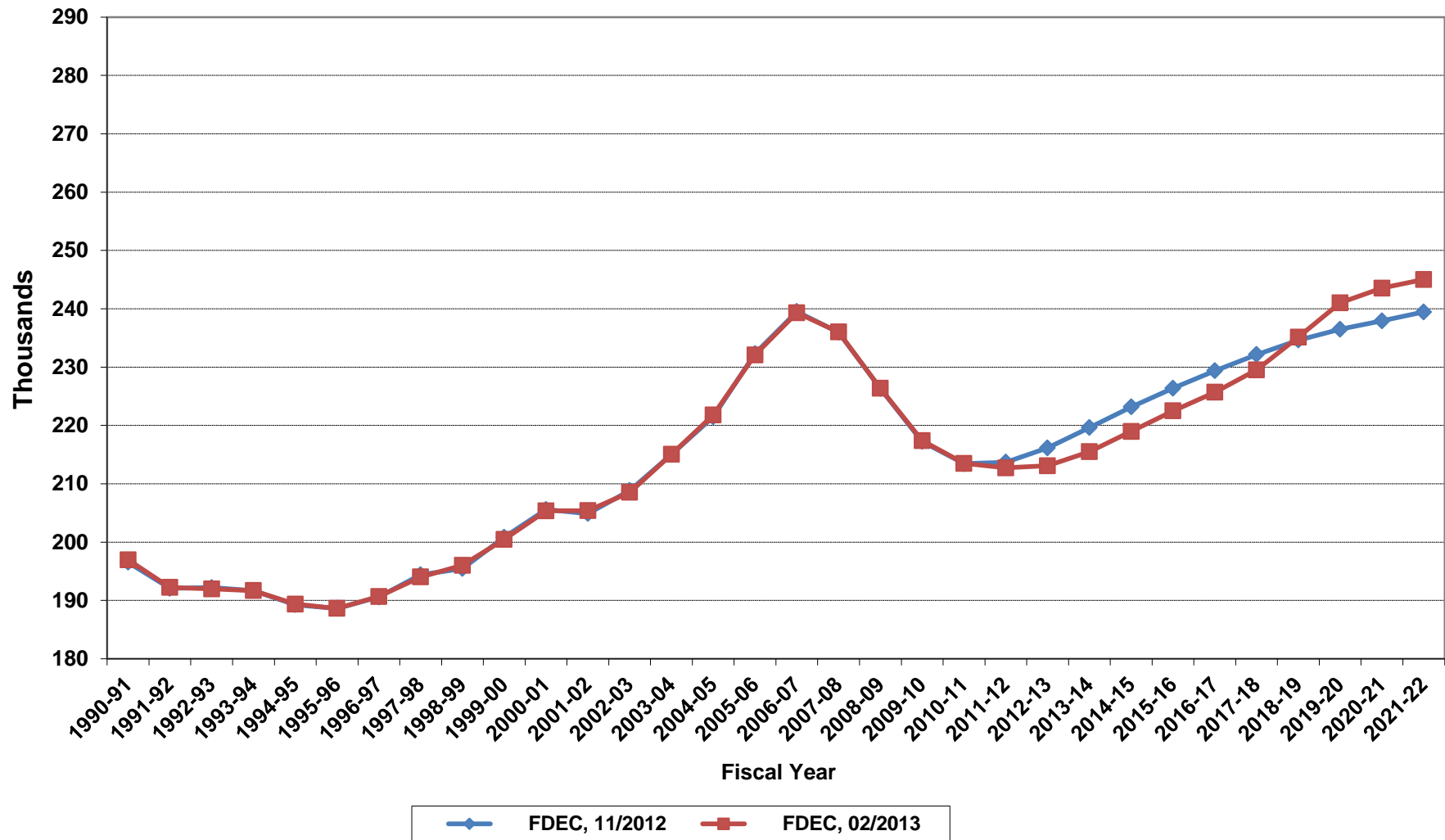




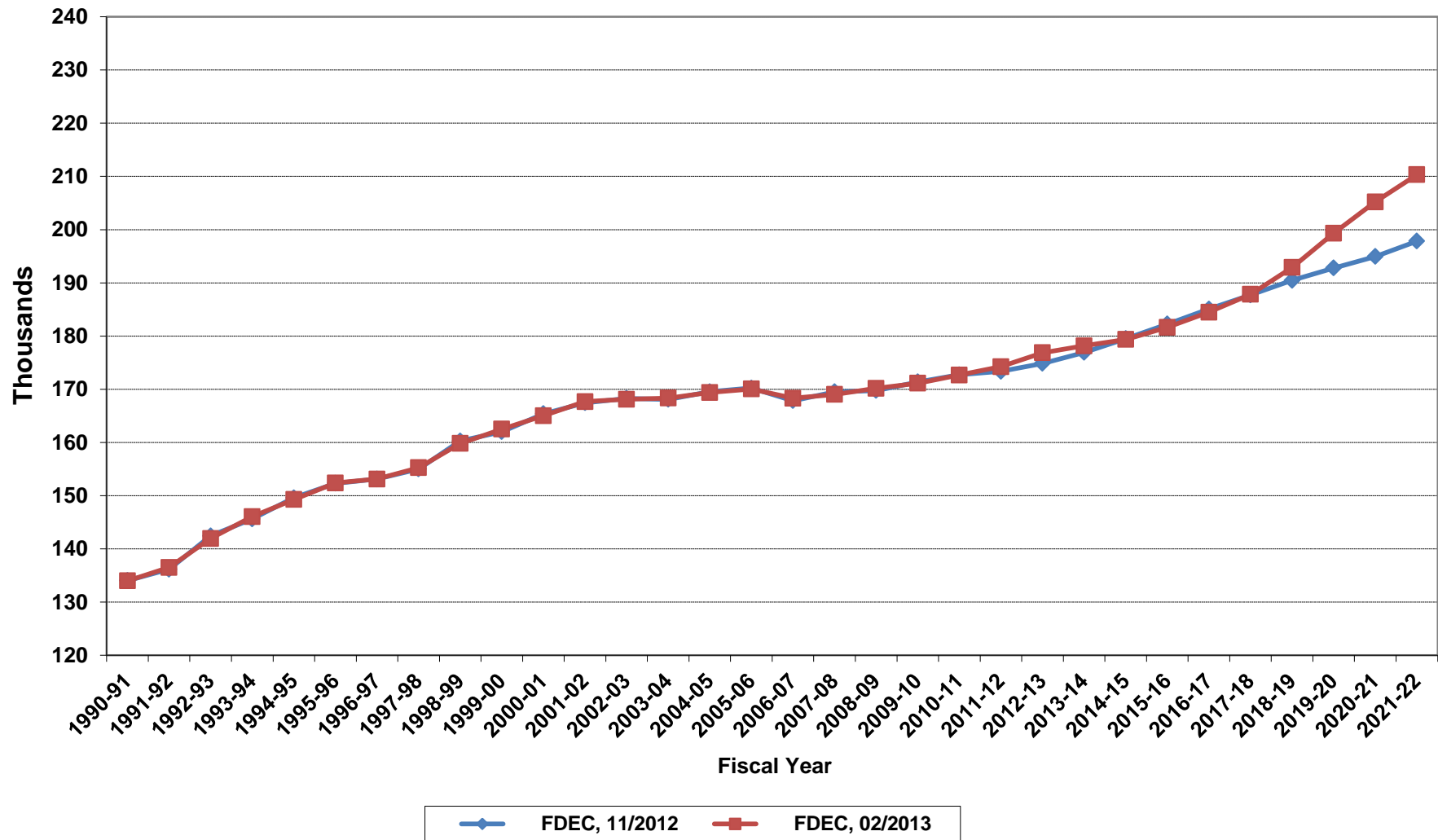
# Florida Net Migration



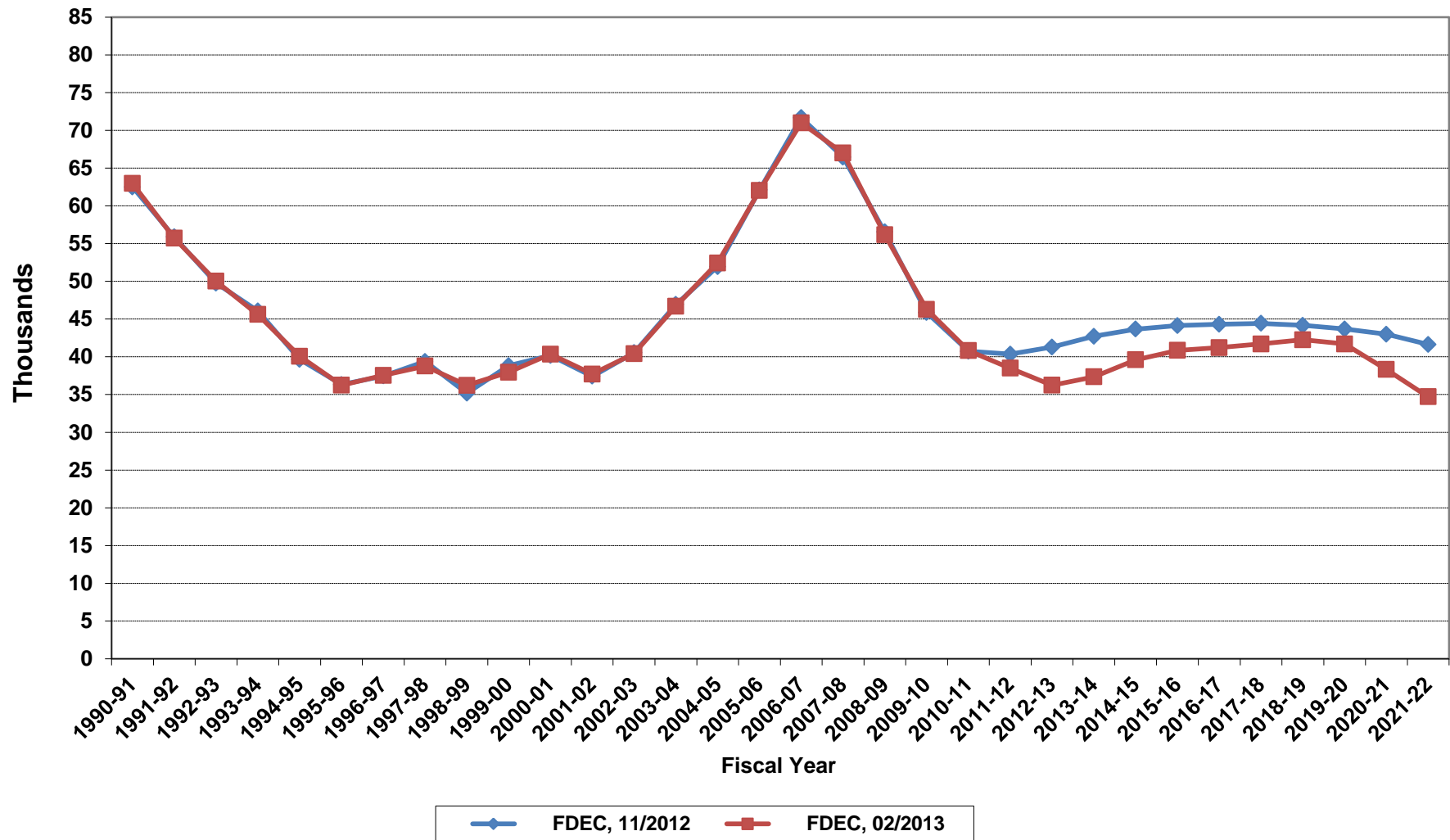
# Florida Resident Live Births



# Florida Resident Deaths



# Florida Net Natural Increase



**Florida Population and Components of Change**

<b>Fiscal Year</b>	<b>Population (End of Fiscal Year)</b>	<b>Growth Rate</b>	<b>Annual Change in Population</b>	<b>Births</b>	<b>Deaths</b>	<b>Net Natural Increase</b>	<b>Net Migration</b>
1950 - 51	2,981,346	6.50%	181,931	67,486	27,670	39,816	142,115
1951 - 52	3,155,442	5.84%	174,096	72,383	28,942	43,441	130,655
1952 - 53	3,312,521	4.98%	157,079	76,954	29,761	47,193	109,886
1953 - 54	3,504,323	5.79%	191,802	82,725	31,055	51,670	140,132
1954 - 55	3,747,400	6.94%	243,077	86,643	32,176	54,467	188,610
1955 - 56	4,046,062	7.97%	298,662	92,941	34,932	58,009	240,653
1956 - 57	4,370,045	8.01%	323,983	100,990	38,269	62,721	261,262
1957 - 58	4,629,510	5.94%	259,465	105,972	41,911	64,061	195,404
1958 - 59	4,812,270	3.95%	182,760	110,409	43,674	66,735	116,025
1959 - 60	4,998,508	3.87%	186,238	114,428	46,057	68,371	117,867
1960 - 61	5,185,913	3.75%	187,405	116,449	48,388	68,061	119,344
1961 - 62	5,367,899	3.51%	181,986	116,120	50,346	65,774	116,212
1962 - 63	5,553,522	3.46%	185,623	114,709	54,453	60,256	125,367
1963 - 64	5,728,499	3.15%	174,977	115,002	56,229	58,773	116,204
1964 - 65	5,881,195	2.67%	152,696	110,515	57,734	52,781	99,915
1965 - 66	6,065,768	3.14%	184,573	104,367	61,217	43,150	141,423
1966 - 67	6,249,674	3.03%	183,906	101,209	62,577	38,632	145,274
1967 - 68	6,441,756	3.07%	192,082	100,320	66,134	34,186	157,896
1968 - 69	6,633,546	2.98%	191,790	104,286	71,285	33,001	158,789
1969 - 70	6,861,118	3.43%	227,572	111,511	73,831	37,680	189,892
1970 - 71	7,233,583	5.43%	372,465	117,012	75,354	41,658	330,807
1971 - 72	7,681,540	6.19%	447,957	113,568	79,717	33,851	414,106
1972 - 73	8,157,883	6.20%	476,343	107,804	86,232	21,572	454,771
1973 - 74	8,515,208	4.38%	357,325	109,366	88,459	20,907	336,418
1974 - 75	8,648,587	1.57%	133,379	108,686	87,224	21,462	111,917
1975 - 76	8,782,975	1.55%	134,388	104,022	88,129	15,893	118,495
1976 - 77	8,972,678	2.16%	189,703	107,623	90,443	17,180	172,523
1977 - 78	9,225,527	2.82%	252,849	112,268	93,383	18,885	233,964
1978 - 79	9,523,728	3.23%	298,201	116,393	96,801	19,592	278,609
1979 - 80	9,914,652	4.10%	390,924	126,673	101,048	25,625	365,299
1980 - 81	10,212,969	3.01%	298,317	135,560	107,562	27,998	270,319
1981 - 82	10,492,851	2.74%	279,882	141,593	108,644	32,949	246,933
1982 - 83	10,748,466	2.44%	255,615	146,853	110,497	36,356	219,259
1983 - 84	11,065,911	2.95%	317,445	151,748	113,939	37,809	279,636
1984 - 85	11,405,533	3.07%	339,622	159,819	117,539	42,280	297,342
1985 - 86	11,740,069	2.93%	334,536	165,857	122,453	43,404	291,132
1986 - 87	12,083,241	2.92%	343,172	170,819	124,946	45,873	297,299
1987 - 88	12,410,339	2.71%	327,098	179,541	129,413	50,128	276,970
1988 - 89	12,723,719	2.53%	313,380	188,390	131,992	56,398	256,982
1989 - 90	13,017,296	2.31%	293,577	197,181	132,503	64,678	228,899
1990 - 91	13,326,892	2.38%	309,596	197,180	134,093	63,087	246,509
1991 - 92	13,552,021	1.69%	225,129	191,810	136,280	55,530	169,599
1992 - 93	13,802,571	1.85%	250,550	192,051	142,087	49,964	200,586
1993 - 94	14,120,323	2.30%	317,752	191,840	146,101	45,739	272,013
1994 - 95	14,406,418	2.03%	286,095	189,292	149,161	40,131	245,964
1995 - 96	14,701,040	2.05%	294,622	188,584	152,570	36,014	258,608
1996 - 97	15,012,615	2.12%	311,575	190,587	153,067	37,520	274,055
1997 - 98	15,310,069	1.98%	297,454	194,242	155,080	39,162	258,292
1998 - 99	15,680,164	2.42%	370,095	195,897	159,988	35,909	334,186
1999 - 00	16,069,889	2.49%	389,725	200,302	162,489	37,813	351,912
2000 - 01	16,385,615	1.96%	315,726	205,798	164,919	40,879	274,847
2001 - 02	16,718,076	2.03%	332,461	205,164	167,812	37,352	295,109
2002 - 03	17,074,258	2.13%	356,182	208,403	168,079	40,324	315,858
2003 - 04	17,475,944	2.35%	401,686	215,298	168,302	46,996	354,690
2004 - 05	17,876,215	2.29%	400,271	221,533	169,302	52,231	348,040
2005 - 06	18,236,885	2.02%	360,670	232,019	170,303	61,716	298,954
2006 - 07	18,501,231	1.45%	264,346	239,635	168,117	71,518	192,828
2007 - 08	18,636,837	0.73%	135,606	236,065	168,966	67,099	68,507
2008 - 09	18,711,844	0.40%	75,007	226,337	170,615	55,722	19,285
2009 - 10	18,827,007	0.62%	115,163	217,408	171,122	46,286	68,877
2010 - 11	18,941,142	0.61%	114,135	213,490	172,663	40,827	73,308
2011 - 12	19,121,290	0.95%	180,148	212,735	174,245	38,490	141,658
2012 - 13	19,318,859	1.03%	197,569	213,100	176,866	36,234	161,335
2013 - 14	19,552,248	1.21%	233,389	215,497	178,150	37,347	196,042
2014 - 15	19,819,278	1.37%	267,030	218,964	179,351	39,613	227,417
2015 - 16	20,099,988	1.42%	280,710	222,494	181,639	40,855	239,855
2016 - 17	20,382,645	1.41%	282,657	225,695	184,475	41,220	241,437
2017 - 18	20,662,032	1.37%	279,387	229,534	187,835	41,699	237,688
2018 - 19	20,937,474	1.33%	275,442	235,145	192,882	42,263	233,179
2019 - 20	21,208,719	1.30%	271,245	241,026	199,327	41,699	229,546
2020 - 21	21,475,545	1.26%	266,826	243,534	205,205	38,329	228,497
2021 - 22	21,737,786	1.22%	262,241	245,029	210,318	34,711	227,530
2022 - 23	21,995,284	1.18%	257,498	246,230	214,661	31,569	225,929
2023 - 24	22,247,879	1.15%	252,595	246,848	219,437	27,411	225,184
2024 - 25	22,495,414	1.11%	247,535	247,508	224,729	22,779	224,756
2025 - 26	22,737,788	1.08%	242,374	248,417	230,292	18,125	224,249
2026 - 27	22,975,015	1.04%	237,227	249,867	235,856	14,011	223,216
2027 - 28	23,207,122	1.01%	232,107	250,946	241,292	9,654	222,453
2028 - 29	23,434,137	0.98%	227,015	251,721	246,649	5,072	221,943
2029 - 30	23,656,085	0.95%	221,948	252,281	251,747	534	221,414