

**Demographic Estimating Conference
Executive Summary
October 30, 2013**

The Demographic Estimating Conference met on October 30, 2013 to adopt a new population forecast. The data reflect population estimates through April 1, 2013 and recent demographic and economic-related data.

Population growth in Florida continues to rebound but at relatively low levels and rates of growth. Historically, Florida’s population growth has been driven by net migration (more people permanently moving into the state than leaving). However, net migration fell to record low levels during much of 2008 and into 2009. During that time period, natural increase (births minus deaths) actually exceeded net migration. The low levels of net migration were largely due to national economic conditions, including weakened housing markets and other lingering effects from the Great Recession, that make it difficult for people to relocate.

The final population estimate for April 1, 2013 indicated annual population growth of less than one percent as the state’s economy continued its recovery (.97%). Annual population change is expected to be 224,537 net new residents in 2014 as the economy continues to slowly rebound. Between 2015 and 2020, annual population change is expected to remain significantly above 250,000 net new residents per year.

April 1	Population	Percent Change	Change
2012	19,074,434	0.90%	169,364
2013	19,259,543	0.97%	185,109
2014	19,484,080	1.17%	224,537
2015	19,745,610	1.34%	261,530
2016	20,025,640	1.42%	280,030
2017	20,309,920	1.42%	284,280
2018	20,591,940	1.39%	282,020
2019	20,871,928	1.36%	279,988
2020	21,148,132	1.32%	276,204

Between April 1, 2010 and April 1, 2020, population growth is expected to average 234,680 net new residents per year, representing a compound growth rate of 1.18% over this 10-year time horizon. These increases are analogous to adding a city the size of Hialeah every year. During 2016, Florida’s population is expected to break the 20-million mark.

Florida Demographic Estimating Conference

Tables

Conference Packet

October 30, 2013

Florida Resident Population

April 1

Year	Florida Demographic Estimating Conference July 2013			Florida Demographic Estimating Conference October 2013		
	Population	% Change	Change	Population	% Change	Change
1990	12,938,071	2.27%	287,136	12,938,071	2.27%	287,136
1991	13,258,732	2.48%	320,661	13,258,732	2.48%	320,661
1992	13,497,541	1.80%	238,809	13,497,541	1.80%	238,809
1993	13,730,115	1.72%	232,574	13,730,115	1.72%	232,574
1994	14,043,757	2.28%	313,642	14,043,757	2.28%	313,642
1995	14,335,992	2.08%	292,235	14,335,992	2.08%	292,235
1996	14,623,421	2.00%	287,429	14,623,421	2.00%	287,429
1997	14,938,314	2.15%	314,893	14,938,314	2.15%	314,893
1998	15,230,421	1.96%	292,107	15,230,421	1.96%	292,107
1999	15,580,244	2.30%	349,823	15,580,244	2.30%	349,823
2000	15,982,824	2.58%	402,580	15,982,824	2.58%	402,580
2001	16,305,100	2.02%	322,276	16,305,100	2.02%	322,276
2002	16,634,256	2.02%	329,156	16,634,256	2.02%	329,156
2003	16,979,706	2.08%	345,450	16,979,706	2.08%	345,450
2004	17,374,824	2.33%	395,118	17,374,824	2.33%	395,118
2005	17,778,156	2.32%	403,332	17,778,156	2.32%	403,332
2006	18,154,475	2.12%	376,319	18,154,475	2.12%	376,319
2007	18,446,768	1.61%	292,293	18,446,768	1.61%	292,293
2008	18,613,905	0.91%	167,137	18,613,905	0.91%	167,137
2009	18,687,425	0.39%	73,520	18,687,425	0.39%	73,520
2010	18,801,332	0.61%	113,885	18,801,332	0.61%	113,907
2011	18,905,070	0.55%	103,738	18,905,070	0.55%	103,738
2012	19,074,434	0.90%	169,364	19,074,434	0.90%	169,364
2013	19,261,633	0.98%	187,199	19,259,543	0.97%	185,109
Begins forecast						
2014	19,484,936	1.16%	223,303	19,484,080	1.17%	224,537
2015	19,745,376	1.34%	260,440	19,745,610	1.34%	261,530
2016	20,024,054	1.41%	278,678	20,025,640	1.42%	280,030
2017	20,306,863	1.41%	282,809	20,309,920	1.42%	284,280
2018	20,587,391	1.38%	280,528	20,591,940	1.39%	282,020
2019	20,864,297	1.35%	276,906	20,871,928	1.36%	279,988
			5-Year Averages			
2020	21,137,177	1.37%	278,360	21,148,132	1.38%	280,504
2025	22,431,360	1.20%	258,837	22,441,417	1.19%	258,657
2030	23,598,259	1.02%	233,380	23,607,427	1.02%	233,202
2035	24,644,126	0.87%	209,173	24,652,415	0.87%	208,998
2040	25,593,463	0.76%	189,867	25,600,921	0.76%	189,701

Florida Resident Households

April 1

Year	Florida Demographic Estimating Conference July 2013			Florida Demographic Estimating Conference October 2013		
	Households	% Change	Change	Households	% Change	Change
1990	5,134,869	3.40%	168,985	5,134,869	3.40%	168,985
1991	5,283,154	2.89%	148,285	5,283,154	2.89%	148,285
1992	5,378,499	1.80%	95,345	5,378,499	1.80%	95,345
1993	5,478,476	1.86%	99,977	5,478,476	1.86%	99,977
1994	5,589,093	2.02%	110,617	5,589,093	2.02%	110,617
1995	5,697,328	1.94%	108,235	5,697,328	1.94%	108,235
1996	5,806,031	1.91%	108,703	5,806,031	1.91%	108,703
1997	5,929,613	2.13%	123,582	5,929,613	2.13%	123,582
1998	6,040,514	1.87%	110,901	6,040,514	1.87%	110,901
1999	6,182,346	2.35%	141,832	6,182,346	2.35%	141,832
2000	6,338,075	2.52%	155,729	6,338,075	2.52%	155,729
2001	6,467,215	2.04%	129,140	6,467,215	2.04%	129,140
2002	6,599,035	2.04%	131,820	6,599,035	2.04%	131,820
2003	6,737,370	2.10%	138,335	6,737,370	2.10%	138,335
2004	6,895,469	2.35%	158,099	6,895,469	2.35%	158,099
2005	7,056,889	2.34%	161,420	7,056,889	2.34%	161,420
2006	7,207,645	2.14%	150,756	7,207,645	2.14%	150,756
2007	7,312,907	1.46%	105,262	7,312,907	1.46%	105,262
2008	7,368,319	0.76%	55,412	7,368,319	0.76%	55,412
2009	7,386,570	0.25%	18,251	7,386,570	0.25%	18,251
2010	7,420,802	0.46%	34,232	7,420,812	0.46%	34,242
2011	7,461,969	0.55%	41,167	7,461,978	0.55%	41,166
2012	7,537,442	1.01%	75,473	7,537,442	1.01%	75,464
Estimate 2013	7,622,155	1.12%	84,713	7,621,467	1.11%	84,025
Begins forecast						
2014	7,720,461	1.29%	98,306	7,721,043	1.31%	99,576
2015	7,831,642	1.44%	111,181	7,833,049	1.45%	112,006
2016	7,947,375	1.48%	115,733	7,949,626	1.49%	116,577
2017	8,063,106	1.46%	115,731	8,066,127	1.47%	116,501
2018	8,176,232	1.40%	113,126	8,179,975	1.41%	113,848
2019	8,286,962	1.35%	110,730	8,291,976	1.37%	112,001
		5-Year Averages			5-Year Averages	
2020	8,395,912	1.40%	112,854	8,402,297	1.41%	113,850
2025	8,918,185	1.21%	104,455	8,924,618	1.21%	104,464
2030	9,389,827	1.04%	94,328	9,396,048	1.03%	94,286
2035	9,813,015	0.89%	84,638	9,818,999	0.88%	84,590
2040	10,198,273	0.77%	77,052	10,204,102	0.77%	77,021

Quarterly Data Table

QUARTERLY FORECAST TABLES

	2008-1	2008-2	2008-3	2008-4	2009-1	2009-2	2009-3	2009-4	2010-1	2010-2	2010-3	2010-4	2011-1	2011-2	2011-3	2011-4
Population																
FDEC, 07/2013	18,599.6	18,625.4	18,645.5	18,661.9	18,678.6	18,699.6	18,726.1	18,755.5	18,786.1	18,814.0	18,838.4	18,862.8	18,890.2	18,923.2	18,962.3	19,005.7
FDEC, 10/2013	18,599.6	18,625.4	18,645.5	18,661.9	18,678.6	18,699.6	18,726.1	18,755.5	18,786.1	18,813.9	18,838.3	18,862.6	18,890.1	18,923.4	18,962.9	19,006.4
Population Growth Rate																
FDEC, 07/2013	0.72	0.56	0.43	0.35	0.36	0.45	0.57	0.63	0.65	0.60	0.52	0.52	0.58	0.70	0.83	0.92
FDEC, 10/2013	0.72	0.56	0.43	0.35	0.36	0.45	0.57	0.63	0.65	0.59	0.52	0.52	0.58	0.71	0.84	0.92
Net Change in Population																
FDEC, 07/2013	33.2	25.8	20.1	16.4	16.6	21.1	26.4	29.5	30.5	27.9	24.5	24.4	27.4	33.0	39.1	43.4
FDEC, 10/2013	33.2	25.8	20.1	16.4	16.6	21.1	26.4	29.5	30.5	27.9	24.4	24.4	27.5	33.3	39.4	43.6
Households																
FDEC, 07/2013	7,363.9	7,371.6	7,377.0	7,380.8	7,384.5	7,390.0	7,397.7	7,406.6	7,416.0	7,425.4	7,434.6	7,444.5	7,455.8	7,470.0	7,487.2	7,506.6
FDEC, 10/2013	7,363.9	7,371.6	7,377.0	7,380.8	7,384.5	7,390.0	7,397.7	7,406.6	7,416.0	7,425.4	7,434.6	7,444.4	7,455.8	7,470.0	7,487.5	7,506.9
Household Growth Rate																
FDEC, 07/2013	0.58	0.42	0.29	0.21	0.20	0.30	0.41	0.48	0.51	0.51	0.50	0.53	0.61	0.76	0.93	1.04
FDEC, 10/2013	0.58	0.42	0.29	0.21	0.20	0.30	0.41	0.48	0.51	0.50	0.50	0.53	0.61	0.77	0.94	1.04
Net Change in Households																
FDEC, 07/2013	10.6	7.7	5.4	3.8	3.7	5.5	7.7	8.9	9.5	9.4	9.2	9.9	11.3	14.1	17.3	19.3
FDEC, 10/2013	10.6	7.7	5.4	3.8	3.7	5.5	7.7	8.9	9.5	9.3	9.2	9.9	11.4	14.2	17.4	19.4
Household Size																
FDEC, 07/2013	2.526	2.527	2.528	2.528	2.529	2.530	2.531	2.532	2.533	2.534	2.534	2.534	2.534	2.533	2.533	2.532
FDEC, 10/2013	2.526	2.527	2.528	2.528	2.529	2.530	2.531	2.532	2.533	2.534	2.534	2.534	2.534	2.533	2.533	2.532
Household Size Growth Rate																
FDEC, 07/2013	0.14	0.14	0.14	0.14	0.16	0.15	0.15	0.15	0.14	0.09	0.02	-0.01	-0.03	-0.06	-0.10	-0.12
FDEC, 10/2013	0.14	0.14	0.14	0.14	0.16	0.15	0.15	0.15	0.14	0.09	0.02	-0.01	-0.03	-0.06	-0.10	-0.12
Net Migration																
FDEC, 07/2013	17.0	10.3	5.2	2.1	2.9	7.9	13.8	17.5	19.4	17.3	14.2	14.4	17.1	22.8	29.0	33.6
FDEC, 10/2013	17.0	10.3	5.2	2.1	2.9	7.9	13.8	17.5	19.4	17.2	14.1	14.3	17.2	23.1	29.4	33.7
Births																
FDEC, 07/2013	58.7	58.1	57.6	57.0	56.2	55.6	55.1	54.6	54.1	53.7	53.5	53.3	53.4	53.3	53.3	53.2
FDEC, 10/2013	58.7	58.1	57.6	57.0	56.2	55.6	55.1	54.6	54.1	53.7	53.5	53.3	53.4	53.3	53.3	53.2
Deaths																
FDEC, 07/2013	42.5	42.6	42.7	42.7	42.4	42.4	42.5	42.6	43.0	43.1	43.2	43.3	43.1	43.1	43.2	43.4
FDEC, 10/2013	42.5	42.6	42.7	42.7	42.4	42.4	42.5	42.6	43.0	43.1	43.2	43.3	43.1	43.1	43.2	43.4
Net Natural Increase																
FDEC, 07/2013	16.2	15.5	14.9	14.3	13.8	13.2	12.6	12.0	11.1	10.6	10.3	10.0	10.3	10.2	10.0	9.9
FDEC, 10/2013	16.2	15.5	14.9	14.3	13.8	13.2	12.6	12.0	11.1	10.6	10.3	10.0	10.3	10.2	10.0	9.9

Quarterly Data Table

QUARTERLY FORECAST TABLES

	2012-1	2012-2	2012-3	2012-4	2013-1	2013-2	2013-3	2013-4	2014-1	2014-2	2014-3	2014-4	2015-1	2015-2	2015-3	2015-4
Population																
FDEC, 07/2013	19,051.3	19,097.3	19,143.1	19,189.4	19,237.2	19,287.5	19,340.5	19,396.4	19,455.0	19,516.1	19,579.4	19,644.7	19,711.6	19,779.7	19,848.8	19,918.5
FDEC, 10/2013	19,051.7	19,096.6	19,140.8	19,186.1	19,234.1	19,285.0	19,338.3	19,394.5	19,453.4	19,514.8	19,578.5	19,644.1	19,711.4	19,779.9	19,849.3	19,919.5
Population Growth Rate																
FDEC, 07/2013	0.96	0.97	0.96	0.97	1.00	1.05	1.11	1.16	1.21	1.26	1.30	1.34	1.37	1.39	1.40	1.41
FDEC, 10/2013	0.96	0.95	0.93	0.95	1.00	1.06	1.11	1.17	1.22	1.27	1.31	1.35	1.38	1.40	1.41	1.42
Net Change in Population																
FDEC, 07/2013	45.6	46.0	45.8	46.3	47.8	50.2	53.1	55.9	58.6	61.1	63.4	65.3	66.9	68.1	69.1	69.8
FDEC, 10/2013	45.3	44.9	44.3	45.3	48.0	50.9	53.4	56.2	58.9	61.4	63.7	65.7	67.2	68.5	69.5	70.2
Households																
FDEC, 07/2013	7,527.0	7,547.8	7,568.6	7,589.6	7,611.2	7,633.7	7,657.3	7,681.9	7,707.4	7,733.9	7,761.2	7,789.0	7,817.4	7,846.0	7,874.8	7,903.8
FDEC, 10/2013	7,527.2	7,547.5	7,567.7	7,588.3	7,610.0	7,632.9	7,656.8	7,681.8	7,707.7	7,734.4	7,761.9	7,790.0	7,818.6	7,847.5	7,876.5	7,905.7
Household Growth Rate																
FDEC, 07/2013	1.10	1.11	1.10	1.11	1.14	1.19	1.24	1.29	1.34	1.38	1.42	1.44	1.46	1.47	1.48	1.48
FDEC, 10/2013	1.09	1.08	1.07	1.09	1.15	1.21	1.26	1.31	1.35	1.39	1.43	1.46	1.48	1.49	1.49	1.49
Net Change in Households																
FDEC, 07/2013	20.5	20.8	20.8	21.0	21.6	22.5	23.6	24.6	25.6	26.5	27.3	27.9	28.3	28.6	28.8	29.0
FDEC, 10/2013	20.3	20.3	20.2	20.6	21.7	22.9	23.9	25.0	25.9	26.7	27.5	28.1	28.6	28.9	29.1	29.2
Household Size																
FDEC, 07/2013	2.531	2.530	2.529	2.528	2.528	2.527	2.526	2.525	2.524	2.523	2.523	2.522	2.522	2.521	2.521	2.520
FDEC, 10/2013	2.531	2.530	2.529	2.528	2.527	2.527	2.526	2.525	2.524	2.523	2.522	2.522	2.521	2.521	2.520	2.520
Household Size Growth Rate																
FDEC, 07/2013	-0.13	-0.14	-0.14	-0.14	-0.14	-0.14	-0.13	-0.13	-0.12	-0.12	-0.11	-0.10	-0.09	-0.08	-0.07	-0.06
FDEC, 10/2013	-0.13	-0.14	-0.14	-0.14	-0.14	-0.15	-0.14	-0.14	-0.13	-0.12	-0.12	-0.11	-0.10	-0.09	-0.08	-0.07
Net Migration																
FDEC, 07/2013	36.1	36.7	36.6	37.2	38.8	41.2	44.0	46.7	49.2	51.6	53.7	55.5	56.9	58.1	59.0	59.6
FDEC, 10/2013	35.8	35.6	35.1	36.2	38.9	41.8	44.3	47.0	49.5	51.9	54.1	55.9	57.3	58.5	59.4	60.0
Births																
FDEC, 07/2013	53.2	53.2	53.2	53.3	53.3	53.4	53.6	53.7	53.9	54.1	54.3	54.5	54.8	55.0	55.2	55.5
FDEC, 10/2013	53.2	53.2	53.2	53.3	53.3	53.4	53.6	53.7	53.9	54.1	54.3	54.5	54.8	55.0	55.2	55.5
Deaths																
FDEC, 07/2013	43.7	43.9	44.0	44.2	44.3	44.4	44.5	44.5	44.5	44.6	44.7	44.8	44.9	45.0	45.1	45.3
FDEC, 10/2013	43.7	43.9	44.0	44.2	44.3	44.4	44.5	44.5	44.5	44.6	44.7	44.8	44.9	45.0	45.1	45.3
Net Natural Increase																
FDEC, 07/2013	9.5	9.3	9.2	9.1	9.1	9.1	9.1	9.2	9.4	9.5	9.6	9.7	9.9	10.0	10.1	10.2
FDEC, 10/2013	9.5	9.3	9.2	9.1	9.1	9.1	9.1	9.2	9.4	9.5	9.6	9.7	9.9	10.0	10.1	10.2

Quarterly Data Table

QUARTERLY FORECAST TABLES

	<u>2016-1</u>	<u>2016-2</u>	<u>2016-3</u>	<u>2016-4</u>	<u>2017-1</u>	<u>2017-2</u>	<u>2017-3</u>	<u>2017-4</u>	<u>2018-1</u>	<u>2018-2</u>	<u>2018-3</u>	<u>2018-4</u>	<u>2019-1</u>	<u>2019-2</u>	<u>2019-3</u>	<u>2019-4</u>
Population																
FDEC, 07/2013	19,988.8	20,059.4	20,130.1	20,200.9	20,271.6	20,342.1	20,412.4	20,482.6	20,552.5	20,622.2	20,691.6	20,760.9	20,829.9	20,898.6	20,967.1	21,035.3
FDEC, 10/2013	19,990.2	20,061.1	20,132.2	20,203.4	20,274.5	20,345.4	20,416.1	20,486.6	20,556.8	20,627.0	20,697.2	20,767.2	20,837.1	20,906.7	20,976.1	21,045.1
Population Growth Rate																
FDEC, 07/2013	1.42	1.42	1.42	1.41	1.41	1.40	1.39	1.38	1.37	1.36	1.35	1.35	1.34	1.33	1.32	1.31
FDEC, 10/2013	1.43	1.43	1.43	1.42	1.41	1.41	1.40	1.39	1.38	1.37	1.37	1.36	1.35	1.34	1.33	1.32
Net Change in Population																
FDEC, 07/2013	70.3	70.6	70.7	70.8	70.7	70.5	70.3	70.1	69.9	69.7	69.5	69.2	69.0	68.7	68.5	68.2
FDEC, 10/2013	70.7	71.0	71.1	71.1	71.1	70.9	70.7	70.5	70.2	70.3	70.2	70.0	69.8	69.6	69.4	69.1
Households																
FDEC, 07/2013	7,932.8	7,961.9	7,990.9	8,019.9	8,048.7	8,077.4	8,105.8	8,134.1	8,162.2	8,190.2	8,218.0	8,245.7	8,273.2	8,300.7	8,328.0	8,355.2
FDEC, 10/2013	7,935.0	7,964.3	7,993.5	8,022.7	8,051.7	8,080.5	8,109.2	8,137.6	8,165.9	8,194.1	8,222.2	8,250.2	8,278.1	8,305.9	8,333.6	8,361.2
Household Growth Rate																
FDEC, 07/2013	1.48	1.47	1.47	1.46	1.45	1.43	1.42	1.40	1.39	1.38	1.37	1.35	1.34	1.33	1.32	1.31
FDEC, 10/2013	1.49	1.48	1.48	1.47	1.45	1.44	1.43	1.41	1.40	1.39	1.38	1.37	1.36	1.35	1.34	1.33
Net Change in Households																
FDEC, 07/2013	29.0	29.1	29.0	29.0	28.8	28.6	28.5	28.3	28.1	28.0	27.8	27.7	27.6	27.4	27.3	27.2
FDEC, 10/2013	29.3	29.3	29.2	29.2	29.0	28.8	28.6	28.5	28.2	28.2	28.1	28.0	27.9	27.8	27.7	27.6
Household Size																
FDEC, 07/2013	2.520	2.519	2.519	2.519	2.519	2.518	2.518	2.518	2.518	2.518	2.518	2.518	2.518	2.518	2.518	2.518
FDEC, 10/2013	2.519	2.519	2.519	2.518	2.518	2.518	2.518	2.518	2.517	2.517	2.517	2.517	2.517	2.517	2.517	2.517
Household Size Growth Rate																
FDEC, 07/2013	-0.06	-0.05	-0.05	-0.04	-0.04	-0.03	-0.03	-0.02	-0.02	-0.01	-0.01	-0.01	-0.01	-0.01	-0.01	-0.01
FDEC, 10/2013	-0.06	-0.06	-0.05	-0.05	-0.04	-0.03	-0.03	-0.02	-0.02	-0.01	-0.01	-0.01	-0.01	-0.01	-0.01	-0.01
Net Migration																
FDEC, 07/2013	60.1	60.4	60.5	60.5	60.4	60.3	60.1	59.9	59.7	59.5	59.3	59.2	59.0	58.8	58.7	58.7
FDEC, 10/2013	60.5	60.8	60.9	60.9	60.8	60.7	60.5	60.3	60.0	60.1	60.0	60.0	59.8	59.7	59.6	59.5
Births																
FDEC, 07/2013	55.7	55.9	56.1	56.3	56.4	56.6	56.9	57.2	57.5	57.8	58.1	58.5	59.0	59.4	59.7	60.0
FDEC, 10/2013	55.7	55.9	56.1	56.3	56.4	56.6	56.9	57.2	57.5	57.8	58.1	58.5	59.0	59.4	59.7	60.0
Deaths																
FDEC, 07/2013	45.5	45.7	45.9	46.0	46.2	46.4	46.6	46.9	47.2	47.6	48.0	48.4	49.0	49.5	49.9	50.4
FDEC, 10/2013	45.5	45.7	45.9	46.0	46.2	46.4	46.6	46.9	47.2	47.6	48.0	48.4	49.0	49.5	49.9	50.4
Net Natural Increase																
FDEC, 07/2013	10.1	10.2	10.2	10.2	10.2	10.3	10.3	10.2	10.2	10.2	10.1	10.0	10.0	9.9	9.7	9.6
FDEC, 10/2013	10.1	10.2	10.2	10.2	10.2	10.3	10.3	10.2	10.2	10.2	10.1	10.0	10.0	9.9	9.7	9.6

Quarterly Data Table

QUARTERLY FORECAST TABLES

	<u>2020-1</u>	<u>2020-2</u>	<u>2020-3</u>	<u>2020-4</u>	<u>2021-1</u>	<u>2021-2</u>	<u>2021-3</u>	<u>2021-4</u>	<u>2022-1</u>	<u>2022-2</u>	<u>2022-3</u>	<u>2022-4</u>	<u>2023-1</u>	<u>2023-2</u>
Population														
FDEC, 07/2013	21,103.3	21,170.9	21,238.4	21,305.5	21,372.3	21,438.9	21,505.1	21,571.1	21,636.8	21,702.1	21,767.2	21,832.0	21,896.4	21,960.5
FDEC, 10/2013	21,113.9	21,182.2	21,250.2	21,317.7	21,384.9	21,451.7	21,518.1	21,584.2	21,649.8	21,715.1	21,780.1	21,844.6	21,908.9	21,972.8
Population Growth Rate														
FDEC, 07/2013	1.30	1.29	1.28	1.27	1.26	1.25	1.24	1.23	1.22	1.21	1.20	1.20	1.19	1.18
FDEC, 10/2013	1.31	1.30	1.29	1.28	1.27	1.26	1.24	1.23	1.22	1.21	1.20	1.19	1.18	1.17
Net Change in Population														
FDEC, 07/2013	68.0	67.7	67.4	67.1	66.8	66.6	66.3	66.0	65.7	65.4	65.1	64.8	64.5	64.1
FDEC, 10/2013	68.7	68.4	68.0	67.6	67.2	66.8	66.4	66.0	65.7	65.3	64.9	64.6	64.2	63.9
Households														
FDEC, 07/2013	8,382.4	8,409.4	8,436.4	8,463.3	8,490.1	8,516.8	8,543.4	8,570.0	8,596.4	8,622.8	8,649.0	8,675.2	8,701.3	8,727.2
FDEC, 10/2013	8,388.6	8,416.0	8,443.2	8,470.2	8,497.2	8,524.0	8,550.7	8,577.3	8,603.8	8,630.2	8,656.4	8,682.6	8,708.6	8,734.5
Household Growth Rate														
FDEC, 07/2013	1.31	1.30	1.29	1.28	1.27	1.26	1.26	1.25	1.24	1.23	1.22	1.22	1.21	1.20
FDEC, 10/2013	1.32	1.31	1.30	1.29	1.28	1.27	1.26	1.25	1.24	1.23	1.22	1.21	1.20	1.19
Net Change in Households														
FDEC, 07/2013	27.1	27.1	27.0	26.9	26.8	26.7	26.6	26.5	26.5	26.4	26.3	26.2	26.1	26.0
FDEC, 10/2013	27.5	27.3	27.2	27.1	27.0	26.8	26.7	26.6	26.5	26.4	26.2	26.1	26.0	25.9
Household Size														
FDEC, 07/2013	2.518	2.518	2.517	2.517	2.517	2.517	2.517	2.517	2.517	2.517	2.517	2.517	2.516	2.516
FDEC, 10/2013	2.517	2.517	2.517	2.517	2.517	2.517	2.517	2.516	2.516	2.516	2.516	2.516	2.516	2.516
Household Size Growth Rate														
FDEC, 07/2013	-0.01	-0.01	-0.01	-0.01	-0.01	-0.01	-0.01	-0.02	-0.02	-0.02	-0.02	-0.02	-0.02	-0.02
FDEC, 10/2013	-0.01	-0.01	-0.01	-0.01	-0.01	-0.01	-0.02	-0.02	-0.02	-0.02	-0.02	-0.02	-0.02	-0.02
Net Migration														
FDEC, 07/2013	58.6	58.5	58.5	58.4	58.5	58.5	58.4	58.3	58.2	58.1	58.0	57.9	57.9	57.8
FDEC, 10/2013	59.4	59.2	59.1	58.9	58.8	58.7	58.6	58.4	58.2	58.0	57.9	57.8	57.6	57.5
Births														
FDEC, 07/2013	60.3	60.5	60.7	60.8	60.8	60.9	61.0	61.1	61.3	61.3	61.4	61.5	61.5	61.5
FDEC, 10/2013	60.3	60.5	60.7	60.8	60.8	60.9	61.0	61.1	61.3	61.3	61.4	61.5	61.5	61.5
Deaths														
FDEC, 07/2013	50.9	51.4	51.8	52.2	52.5	52.9	53.2	53.5	53.8	54.1	54.4	54.6	54.9	55.2
FDEC, 10/2013	50.9	51.4	51.8	52.2	52.5	52.9	53.2	53.5	53.8	54.1	54.4	54.6	54.9	55.2
Net Natural Increase														
FDEC, 07/2013	9.4	9.1	8.9	8.7	8.3	8.1	7.9	7.6	7.5	7.3	7.0	6.8	6.6	6.4
FDEC, 10/2013	9.4	9.1	8.9	8.7	8.3	8.1	7.9	7.6	7.5	7.3	7.0	6.8	6.6	6.4

FISCAL YEAR
FORECAST TABLES

Fiscal Year Data Table

	<u>1990-91</u>	<u>1991-92</u>	<u>1992-93</u>	<u>1993-94</u>	<u>1994-95</u>	<u>1995-96</u>	<u>1996-97</u>	<u>1997-98</u>	<u>1998-99</u>	<u>1999-00</u>	<u>2000-01</u>	<u>2001-02</u>	<u>2002-03</u>	<u>2003-04</u>	<u>2004-05</u>
Population															
FDEC, 07/2013	13,178.0	13,442.6	13,670.0	13,962.2	14,264.9	14,550.7	14,859.1	15,158.3	15,488.4	15,881.7	16,228.0	16,551.2	16,892.0	17,273.8	17,677.3
FDEC, 10/2013	13,178.0	13,442.6	13,670.0	13,962.2	14,264.9	14,550.7	14,859.1	15,158.3	15,488.4	15,881.7	16,228.0	16,551.2	16,892.0	17,273.8	17,677.3
Growth Rate															
FDEC, 07/2013	2.42	2.01	1.69	2.14	2.17	2.00	2.12	2.01	2.18	2.54	2.18	1.99	2.06	2.26	2.34
FDEC, 10/2013	2.42	2.01	1.69	2.14	2.17	2.00	2.12	2.01	2.18	2.54	2.18	1.99	2.06	2.26	2.34
Net Change in Population															
FDEC, 07/2013	311.4	264.6	227.4	292.2	302.8	285.8	308.4	299.2	330.1	393.2	346.4	323.2	340.9	381.8	403.5
FDEC, 10/2013	311.4	264.6	227.4	292.2	302.8	285.8	308.4	299.2	330.1	393.2	346.4	323.2	340.9	381.8	403.5
Households															
FDEC, 07/2013	5,230.7	5,335.4	5,424.2	5,538.0	5,655.6	5,766.7	5,887.3	6,005.5	6,137.4	6,296.9	6,436.4	6,565.8	6,702.3	6,855.1	7,016.4
FDEC, 10/2013	5,230.7	5,335.4	5,424.2	5,538.0	5,655.6	5,766.7	5,887.3	6,005.5	6,137.4	6,296.9	6,436.4	6,565.8	6,702.3	6,855.1	7,016.4
Growth Rate															
FDEC, 07/2013	2.44	2.00	1.66	2.10	2.12	1.96	2.09	2.01	2.20	2.60	2.22	2.01	2.08	2.28	2.35
FDEC, 10/2013	2.44	2.00	1.66	2.10	2.12	1.96	2.09	2.01	2.20	2.60	2.22	2.01	2.08	2.28	2.35
Net Change in Households															
FDEC, 07/2013	124.7	104.7	88.8	113.8	117.7	111.1	120.6	118.1	131.9	159.5	139.5	129.3	136.5	152.8	161.3
FDEC, 10/2013	124.7	104.7	88.8	113.8	117.7	111.1	120.6	118.1	131.9	159.5	139.5	129.3	136.5	152.8	161.3
Household Size															
FDEC, 07/2013	2.519	2.520	2.520	2.521	2.522	2.523	2.524	2.524	2.524	2.522	2.521	2.521	2.520	2.520	2.519
FDEC, 10/2013	2.519	2.520	2.520	2.521	2.522	2.523	2.524	2.524	2.524	2.522	2.521	2.521	2.520	2.520	2.519
Growth Rate															
FDEC, 07/2013	-0.02	0.01	0.03	0.04	0.04	0.04	0.03	0.01	-0.02	-0.06	-0.03	-0.02	-0.02	-0.02	-0.02
FDEC, 10/2013	-0.02	0.01	0.03	0.04	0.04	0.04	0.03	0.01	-0.02	-0.06	-0.03	-0.02	-0.02	-0.02	-0.02
Net Migration															
FDEC, 07/2013	248.4	208.9	177.4	246.6	262.7	249.6	270.9	260.4	293.9	355.3	306.0	285.5	300.4	335.0	351.1
FDEC, 10/2013	248.4	208.9	177.4	246.6	262.7	249.6	270.9	260.4	293.9	355.3	306.0	285.5	300.4	335.0	351.1
Births															
FDEC, 07/2013	197.0	192.2	192.0	191.7	189.4	188.6	190.7	194.0	196.0	200.5	205.4	205.4	208.5	215.0	221.8
FDEC, 10/2013	197.0	192.2	192.0	191.7	189.4	188.6	190.7	194.0	196.0	200.5	205.4	205.4	208.5	215.0	221.8
Deaths															
FDEC, 07/2013	134.0	136.5	142.0	146.1	149.3	152.4	153.1	155.3	159.8	162.5	165.0	167.7	168.1	168.3	169.4
FDEC, 10/2013	134.0	136.5	142.0	146.1	149.3	152.4	153.1	155.3	159.8	162.5	165.0	167.7	168.1	168.3	169.4
Net Natural Increase															
FDEC, 07/2013	63.0	55.7	50.0	45.6	40.1	36.2	37.5	38.8	36.2	38.0	40.3	37.7	40.4	46.7	52.4
FDEC, 10/2013	63.0	55.7	50.0	45.6	40.1	36.2	37.5	38.8	36.2	38.0	40.3	37.7	40.4	46.7	52.4

FISCAL YEAR
FORECAST TABLES

Fiscal Year Data Table

	<u>2005-06</u>	<u>2006-07</u>	<u>2007-08</u>	<u>2008-09</u>	<u>2009-10</u>	<u>2010-11</u>	<u>2011-12</u>	<u>2012-13</u>	<u>2013-14</u>	<u>2014-15</u>	<u>2015-16</u>	<u>2016-17</u>	<u>2017-18</u>	<u>2018-19</u>
Population														
FDEC, 07/2013	18,062.2	18,378.2	18,578.9	18,671.4	18,770.4	18,878.7	19,029.2	19,214.3	19,427.0	19,678.9	19,953.9	20,236.2	20,517.4	20,795.2
FDEC, 10/2013	18,062.2	18,378.2	18,578.9	18,671.4	18,770.4	18,878.6	19,029.4	19,211.5	19,425.3	19,678.5	19,955.0	20,238.9	20,521.6	20,802.0
Growth Rate														
FDEC, 07/2013	2.18	1.75	1.09	0.50	0.53	0.58	0.80	0.97	1.11	1.30	1.40	1.41	1.39	1.35
FDEC, 10/2013	2.18	1.75	1.09	0.50	0.53	0.58	0.80	0.96	1.11	1.30	1.41	1.42	1.40	1.37
Net Change in Population														
FDEC, 07/2013	384.9	316.0	200.7	92.5	99.0	108.3	150.5	185.1	212.7	251.8	275.0	282.3	281.3	277.8
FDEC, 10/2013	384.9	316.0	200.7	92.5	99.0	108.2	150.8	182.1	213.7	253.2	276.6	283.9	282.8	280.4
Households														
FDEC, 07/2013	7,170.9	7,288.9	7,357.1	7,383.1	7,411.4	7,451.2	7,517.2	7,600.7	7,695.1	7,803.4	7,918.4	8,034.2	8,148.1	8,259.4
FDEC, 10/2013	7,170.9	7,288.9	7,357.1	7,383.1	7,411.4	7,451.2	7,517.2	7,599.7	7,695.2	7,804.5	7,920.4	8,037.1	8,151.7	8,264.1
Growth Rate														
FDEC, 07/2013	2.20	1.65	0.93	0.35	0.38	0.54	0.88	1.11	1.24	1.41	1.47	1.46	1.42	1.37
FDEC, 10/2013	2.20	1.65	0.93	0.35	0.38	0.54	0.89	1.10	1.26	1.42	1.48	1.47	1.43	1.38
Net Change in Households														
FDEC, 07/2013	154.5	118.1	68.1	26.0	28.3	39.8	65.9	83.6	94.4	108.3	114.9	115.9	113.8	111.3
FDEC, 10/2013	154.5	118.1	68.1	26.0	28.3	39.8	66.0	82.5	95.5	109.3	115.9	116.7	114.6	112.4
Household Size														
FDEC, 07/2013	2.519	2.521	2.525	2.529	2.533	2.534	2.531	2.528	2.525	2.522	2.520	2.519	2.518	2.518
FDEC, 10/2013	2.519	2.521	2.525	2.529	2.533	2.534	2.531	2.528	2.524	2.521	2.519	2.518	2.517	2.517
Growth Rate														
FDEC, 07/2013	-0.02	0.10	0.16	0.14	0.15	0.04	-0.09	-0.14	-0.13	-0.11	-0.07	-0.05	-0.03	-0.01
FDEC, 10/2013	-0.02	0.10	0.16	0.14	0.15	0.04	-0.09	-0.14	-0.14	-0.12	-0.08	-0.05	-0.03	-0.01
Net Migration														
FDEC, 07/2013	322.9	245.0	133.7	36.3	52.7	67.5	111.8	148.7	175.6	212.5	234.4	241.3	240.4	237.8
FDEC, 10/2013	322.9	245.0	133.7	36.3	52.7	67.4	112.1	145.7	176.6	213.9	236.0	242.9	241.9	240.3
Births														
FDEC, 07/2013	232.1	239.3	236.0	226.4	217.4	213.5	212.9	213.3	215.3	218.7	222.2	225.4	229.3	235.0
FDEC, 10/2013	232.1	239.3	236.0	226.4	217.4	213.5	212.9	213.3	215.3	218.7	222.2	225.4	229.3	235.0
Deaths														
FDEC, 07/2013	170.1	168.3	169.0	170.2	171.1	172.7	174.3	176.9	178.1	179.4	181.6	184.5	188.4	194.9
FDEC, 10/2013	170.1	168.3	169.0	170.2	171.1	172.7	174.3	176.9	178.1	179.4	181.6	184.5	188.4	194.9
Net Natural Increase														
FDEC, 07/2013	62.0	71.0	67.0	56.2	46.3	40.8	38.7	36.4	37.2	39.3	40.6	40.9	40.9	40.1
FDEC, 10/2013	62.0	71.0	67.0	56.2	46.3	40.8	38.7	36.4	37.2	39.3	40.6	40.9	40.9	40.1

FISCAL YEAR
FORECAST TABLES

Fiscal Year Data Table

	<u>2019-20</u>	<u>2020-21</u>	<u>2021-22</u>	<u>2022-23</u>
Population				
FDEC, 07/2013	21,069.2	21,338.8	21,603.8	21,864.0
FDEC, 10/2013	21,079.3	21,351.1	21,616.8	21,876.6
Growth Rate				
FDEC, 07/2013	1.32	1.28	1.24	1.20
FDEC, 10/2013	1.33	1.29	1.24	1.20
Net Change in Population				
FDEC, 07/2013	273.9	269.6	265.0	260.2
FDEC, 10/2013	277.3	271.8	265.7	259.8
Households				
FDEC, 07/2013	8,368.7	8,476.6	8,583.1	8,688.2
FDEC, 10/2013	8,374.8	8,483.7	8,590.5	8,695.5
Growth Rate				
FDEC, 07/2013	1.32	1.29	1.26	1.22
FDEC, 10/2013	1.34	1.30	1.26	1.22
Net Change in Households				
FDEC, 07/2013	109.4	107.9	106.5	105.1
FDEC, 10/2013	110.8	108.8	106.9	105.0
Household Size				
FDEC, 07/2013	2.518	2.517	2.517	2.517
FDEC, 10/2013	2.517	2.517	2.516	2.516
Growth Rate				
FDEC, 07/2013	-0.01	-0.01	-0.01	-0.02
FDEC, 10/2013	-0.01	-0.01	-0.02	-0.02
Net Migration				
FDEC, 07/2013	236.1	235.6	234.8	233.4
FDEC, 10/2013	239.5	237.8	235.4	233.0
Births				
FDEC, 07/2013	240.5	243.3	244.8	245.9
FDEC, 10/2013	240.5	243.3	244.8	245.9
Deaths				
FDEC, 07/2013	202.7	209.3	214.5	219.1
FDEC, 10/2013	202.7	209.3	214.5	219.1
Net Natural Increase				
FDEC, 07/2013	37.8	34.0	30.2	26.8
FDEC, 10/2013	37.8	34.0	30.2	26.8

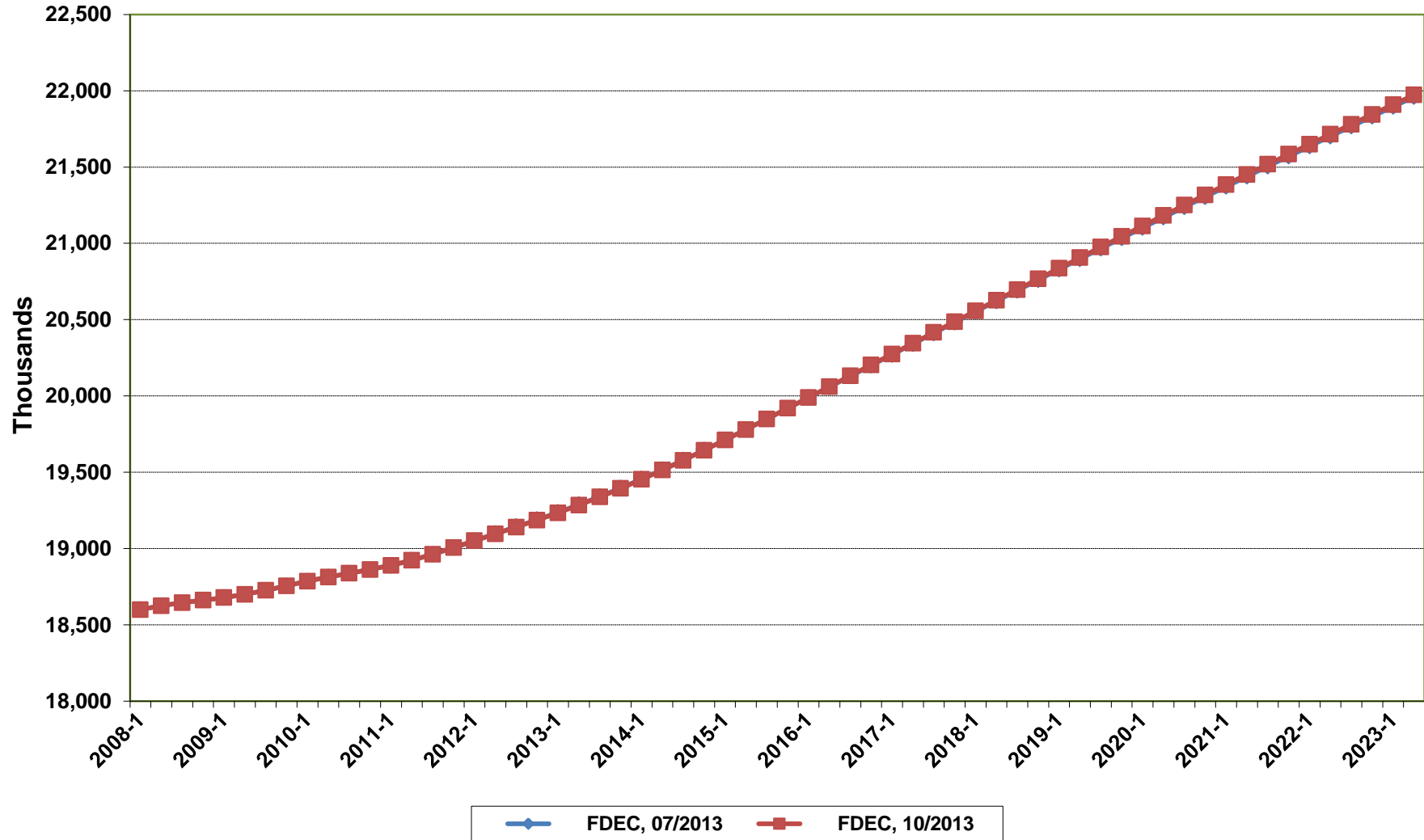
Florida Demographic Estimating Conference

Charts

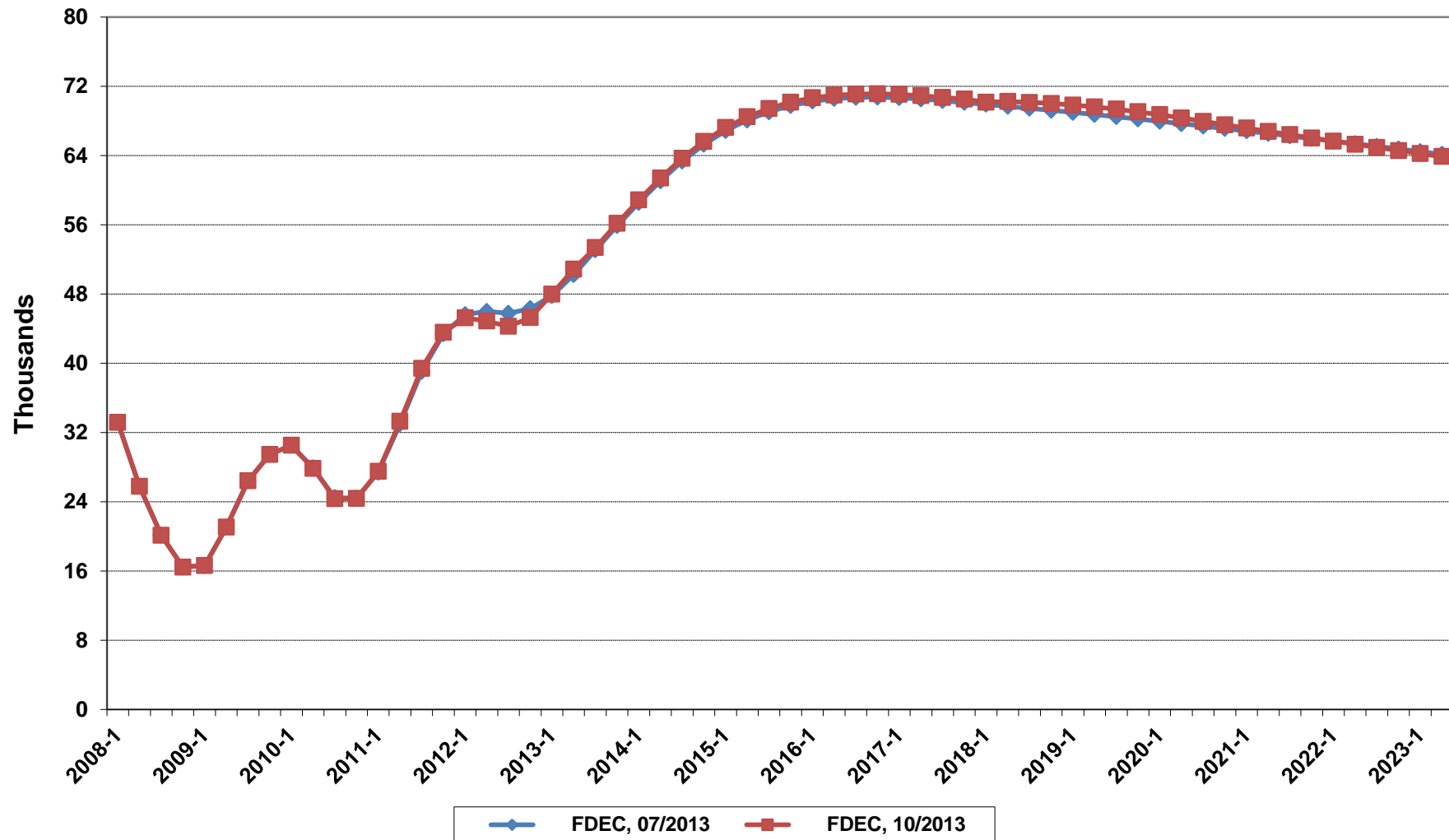
Conference Packet

October 30, 2013

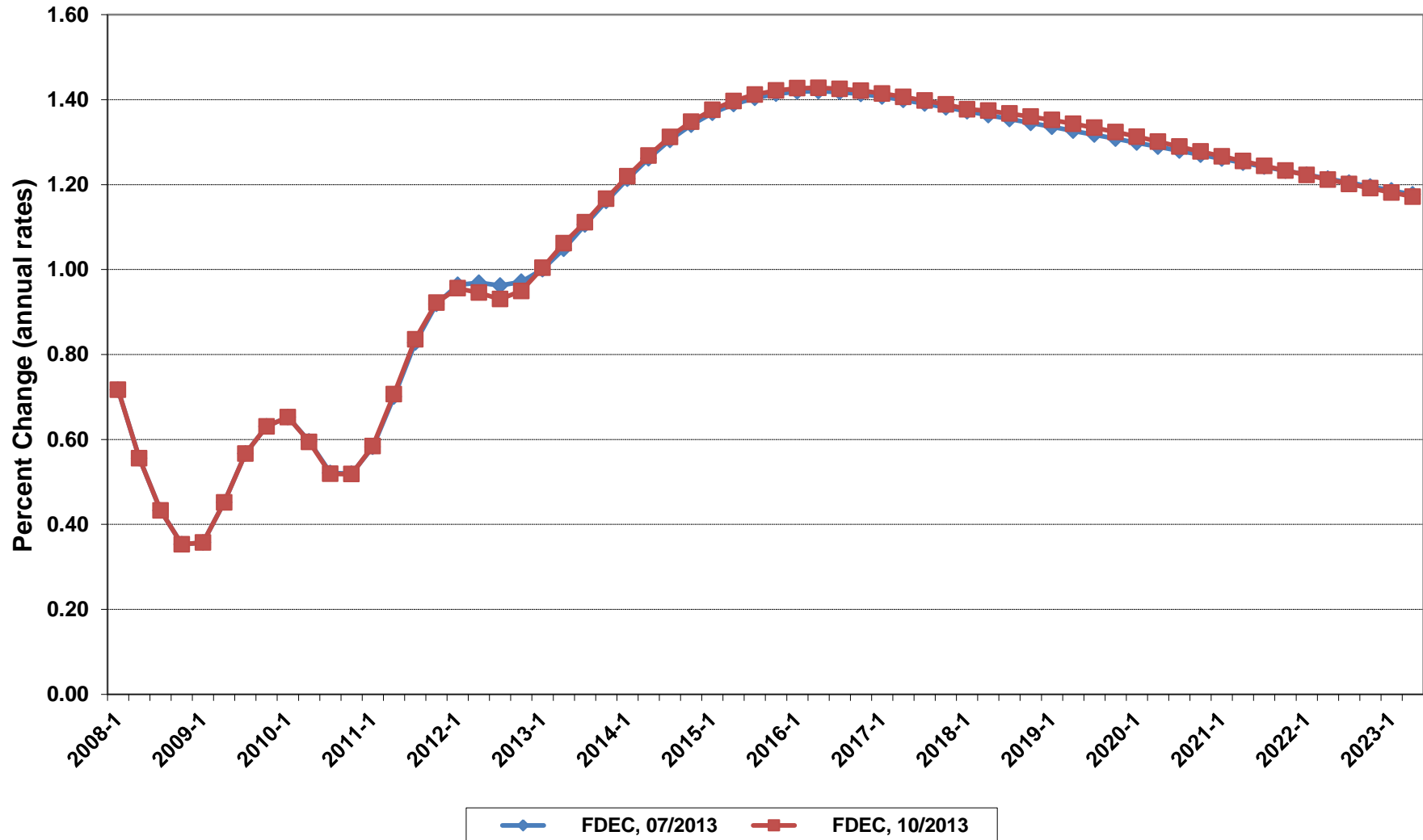
Florida Resident Population



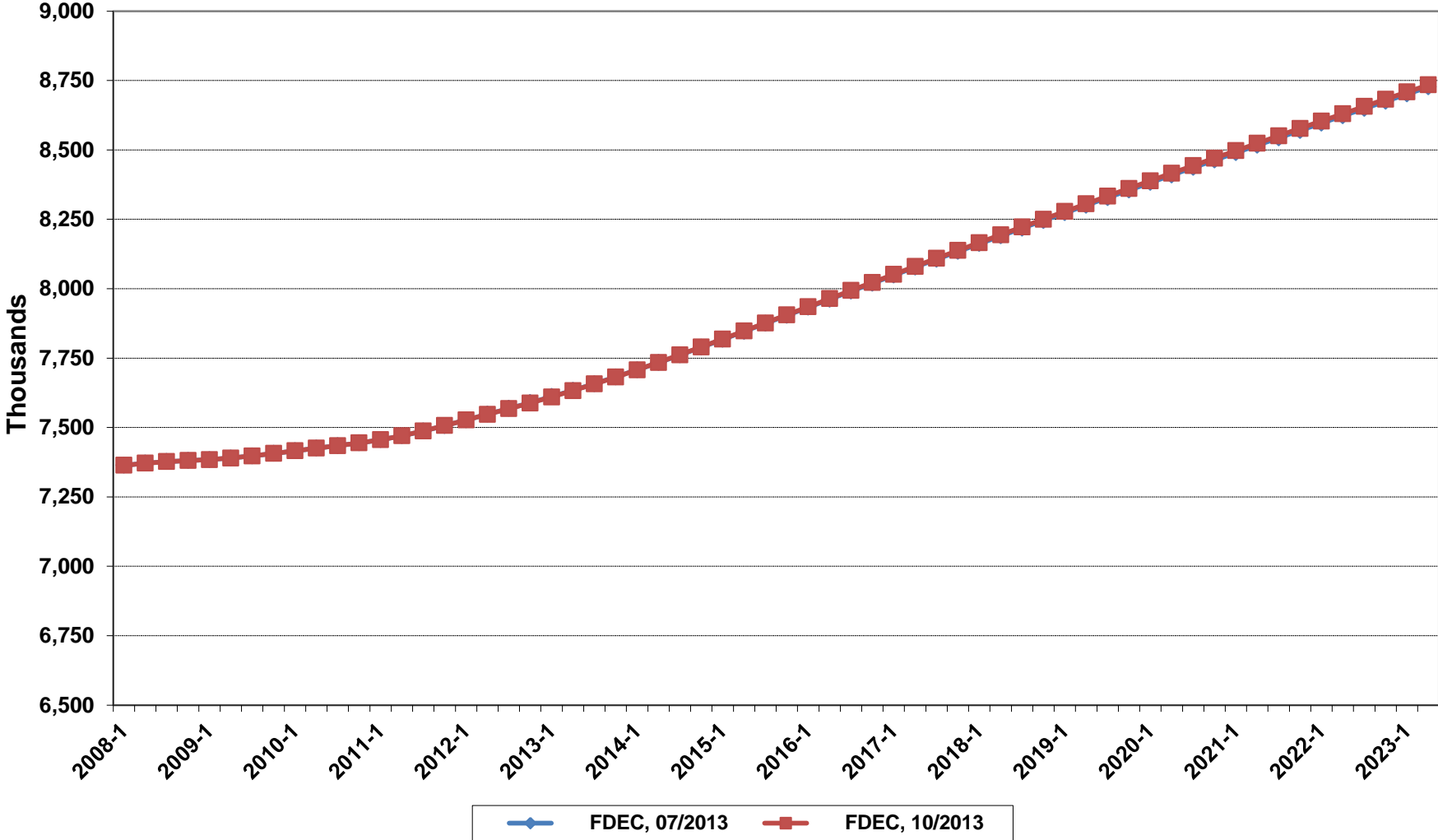
Net Change In Florida Resident Population



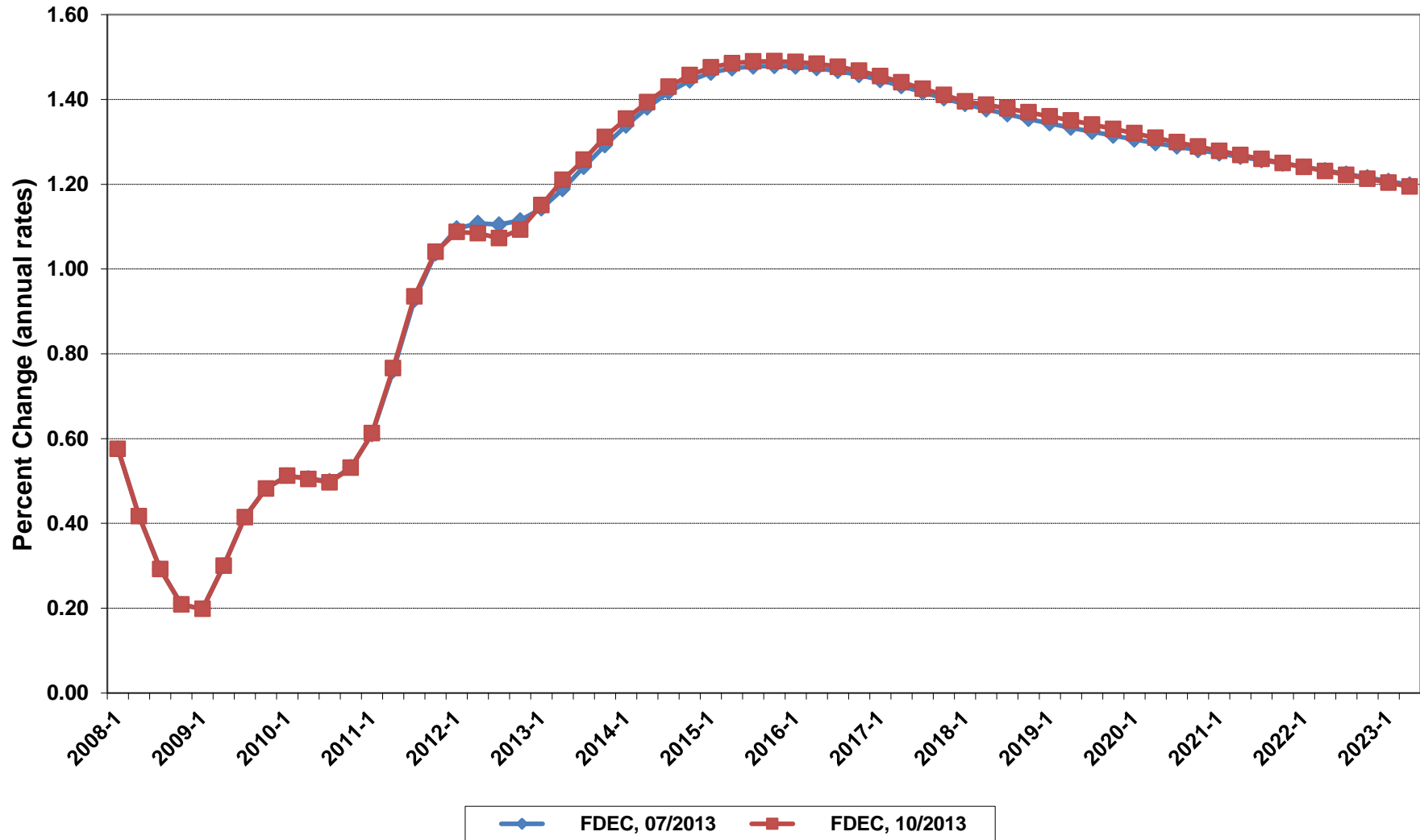
Growth In Florida Resident Population



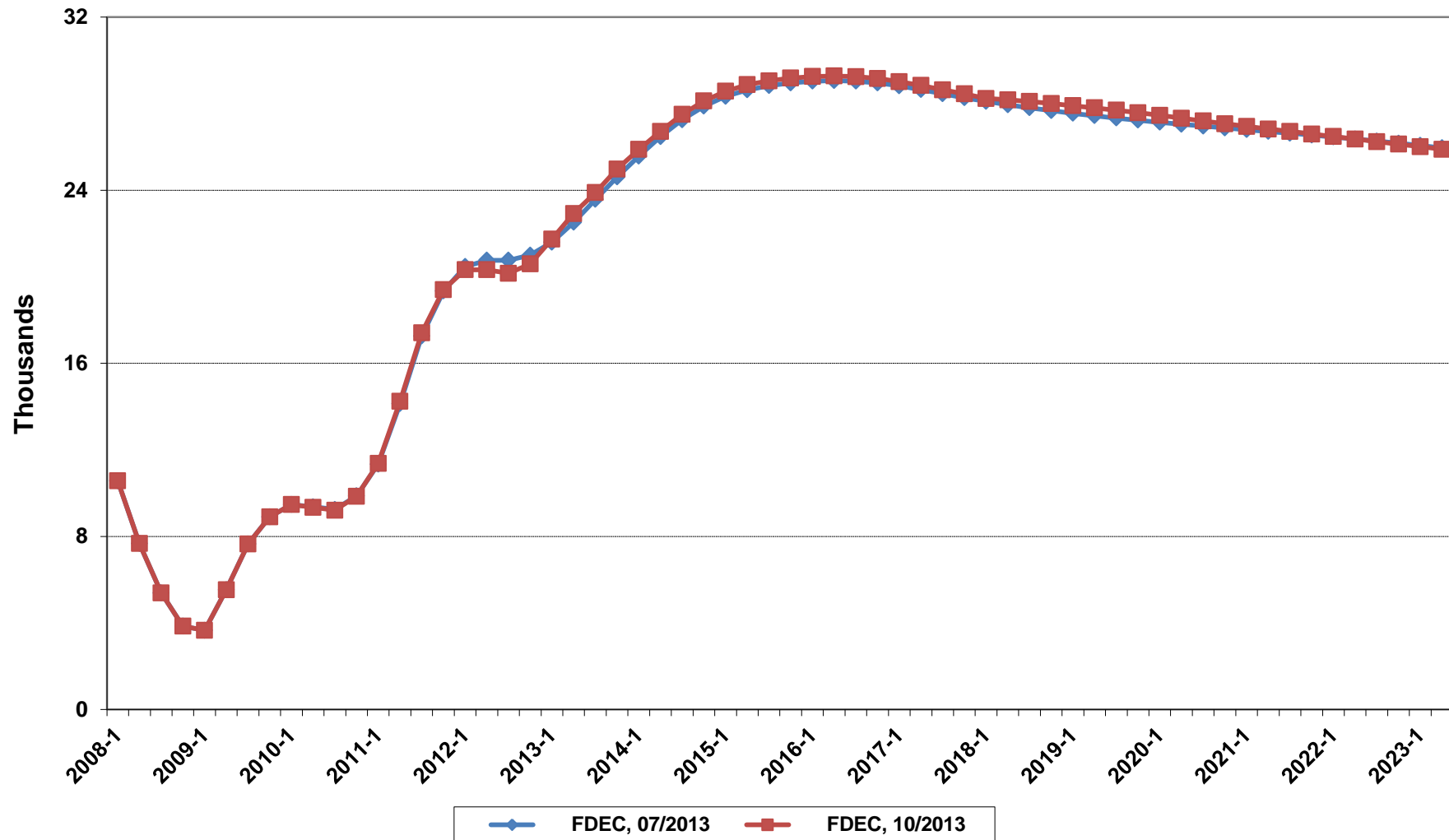
Florida Resident Households



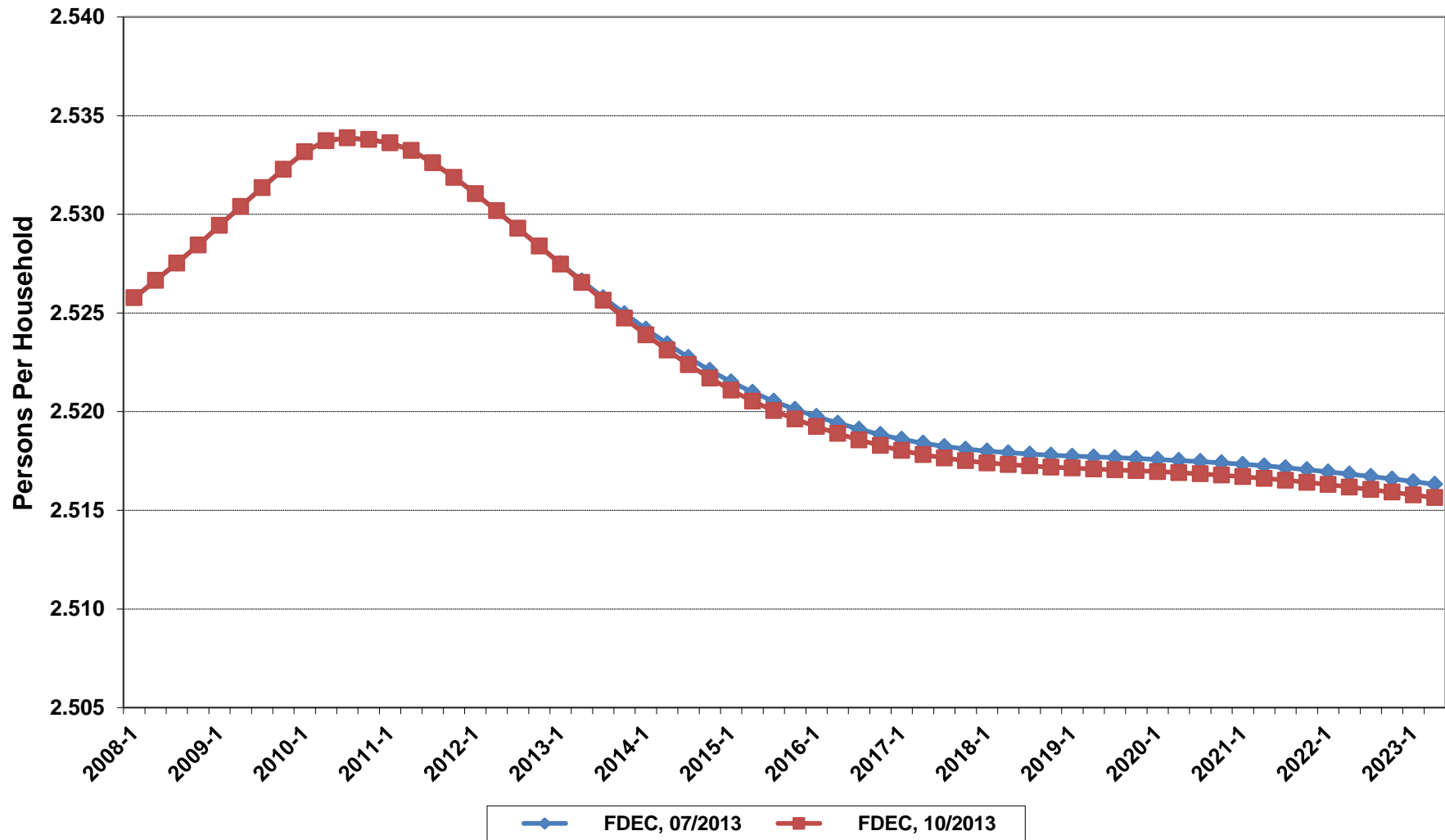
Growth In Florida Resident Households



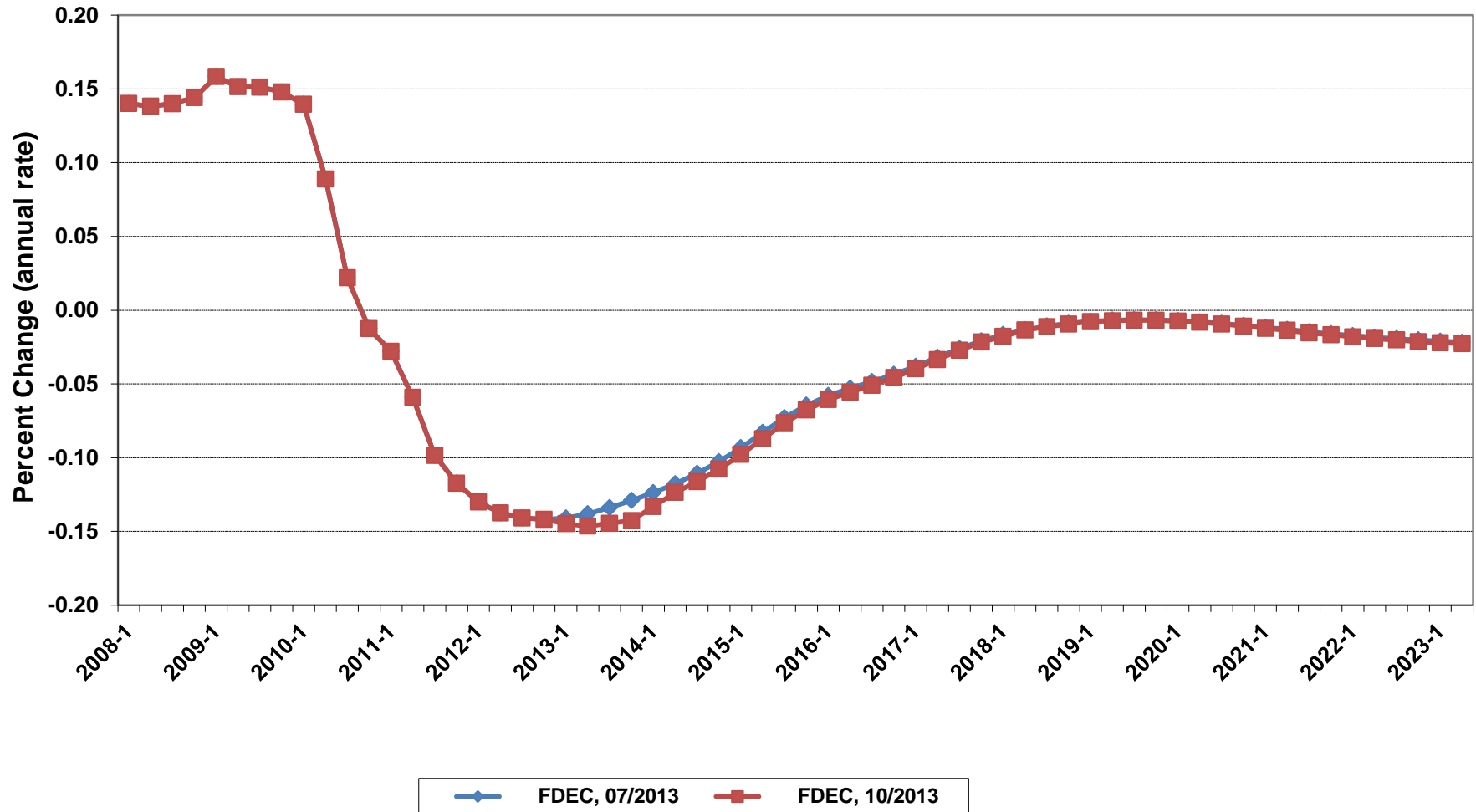
Net Change In Florida Resident Households



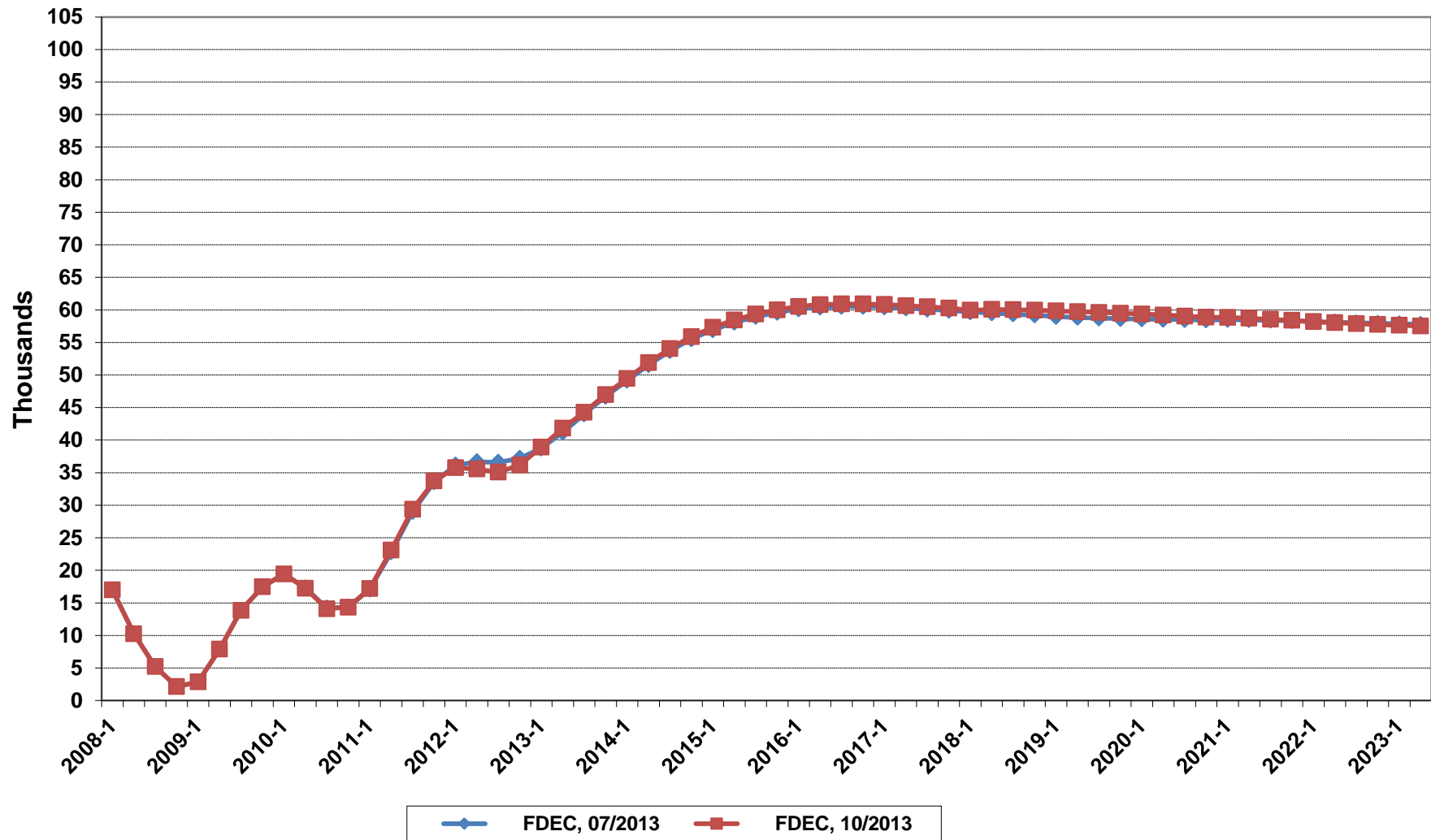
Florida Average Household Size



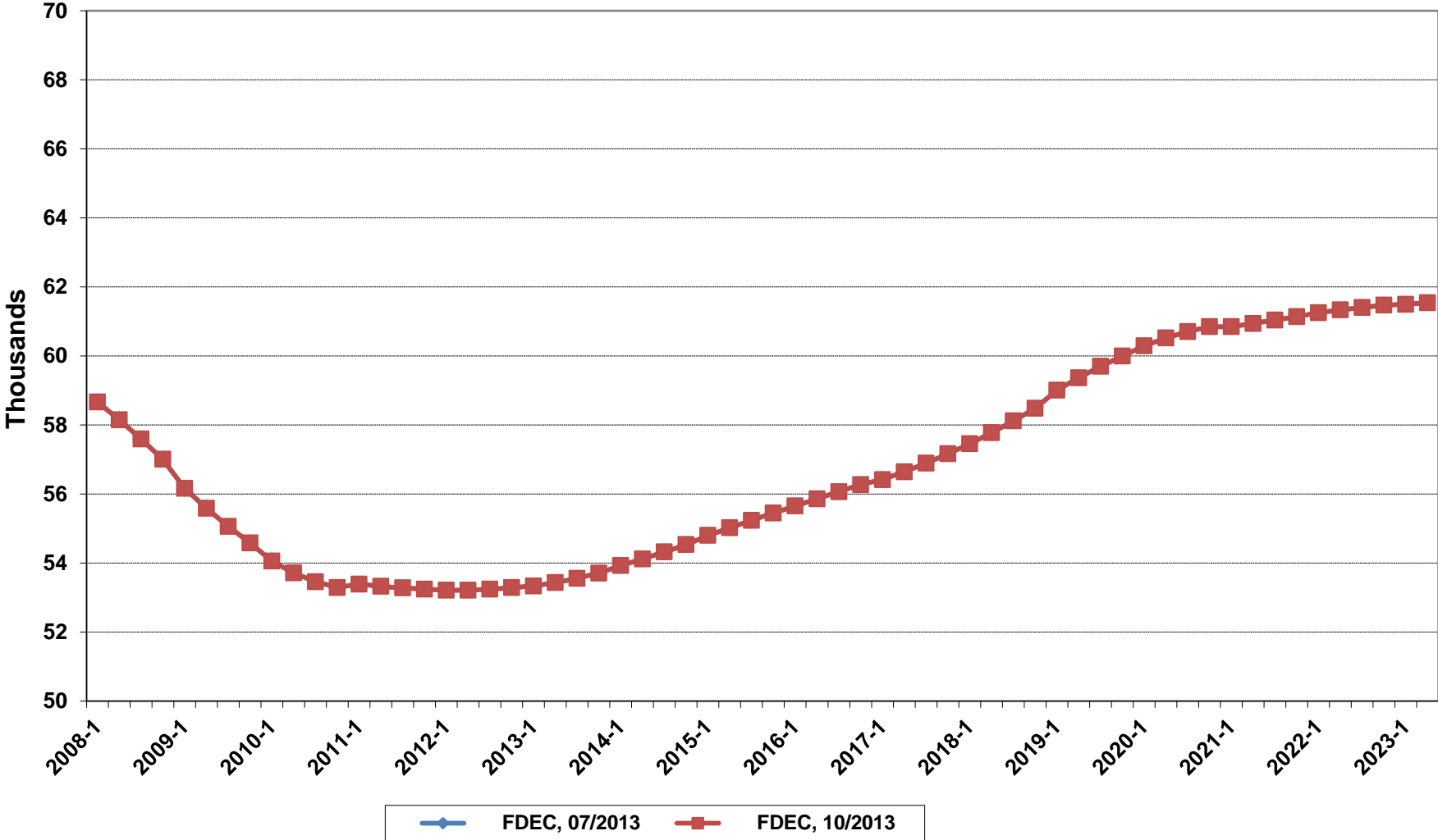
Growth In Florida Household Size



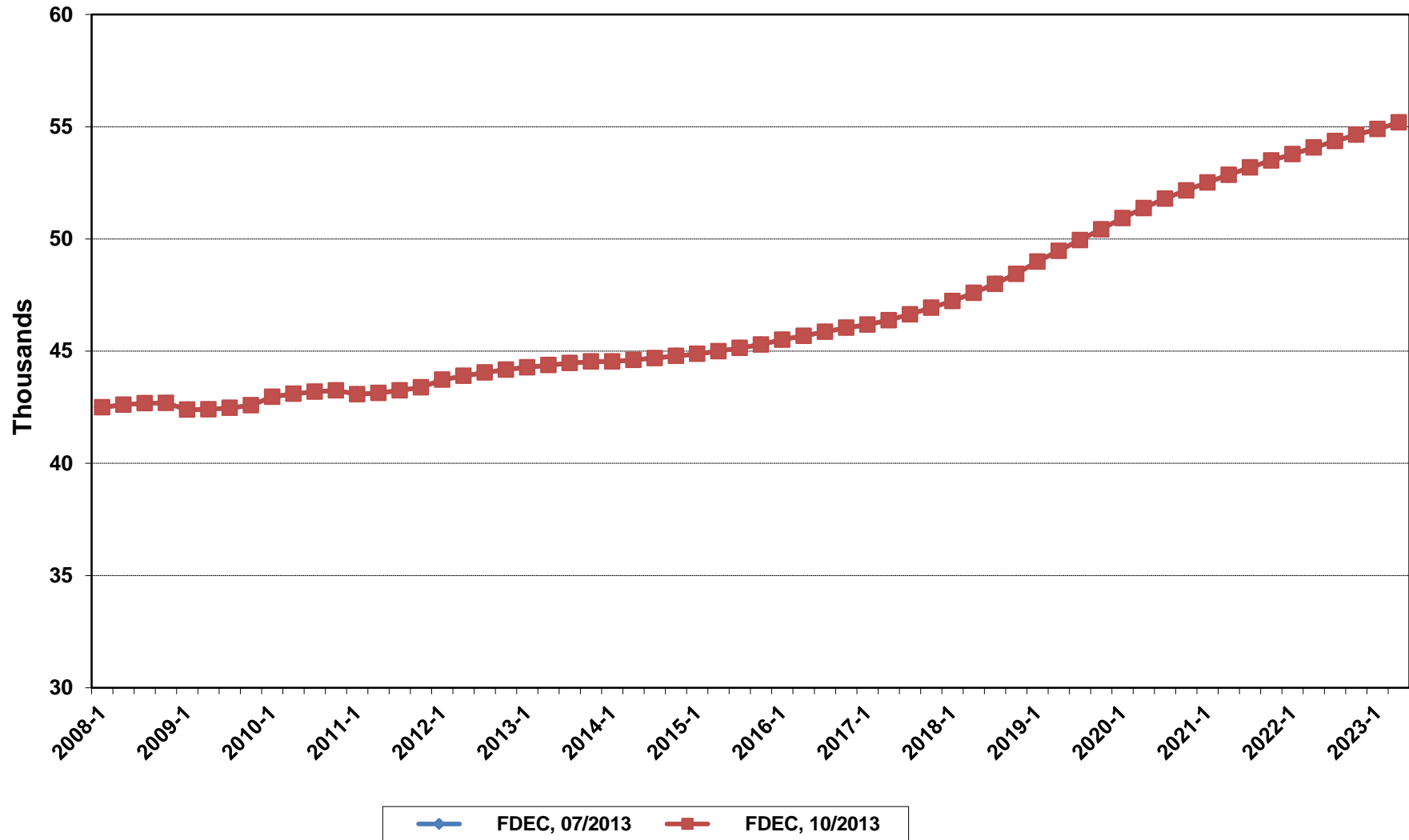
Florida Net Migration



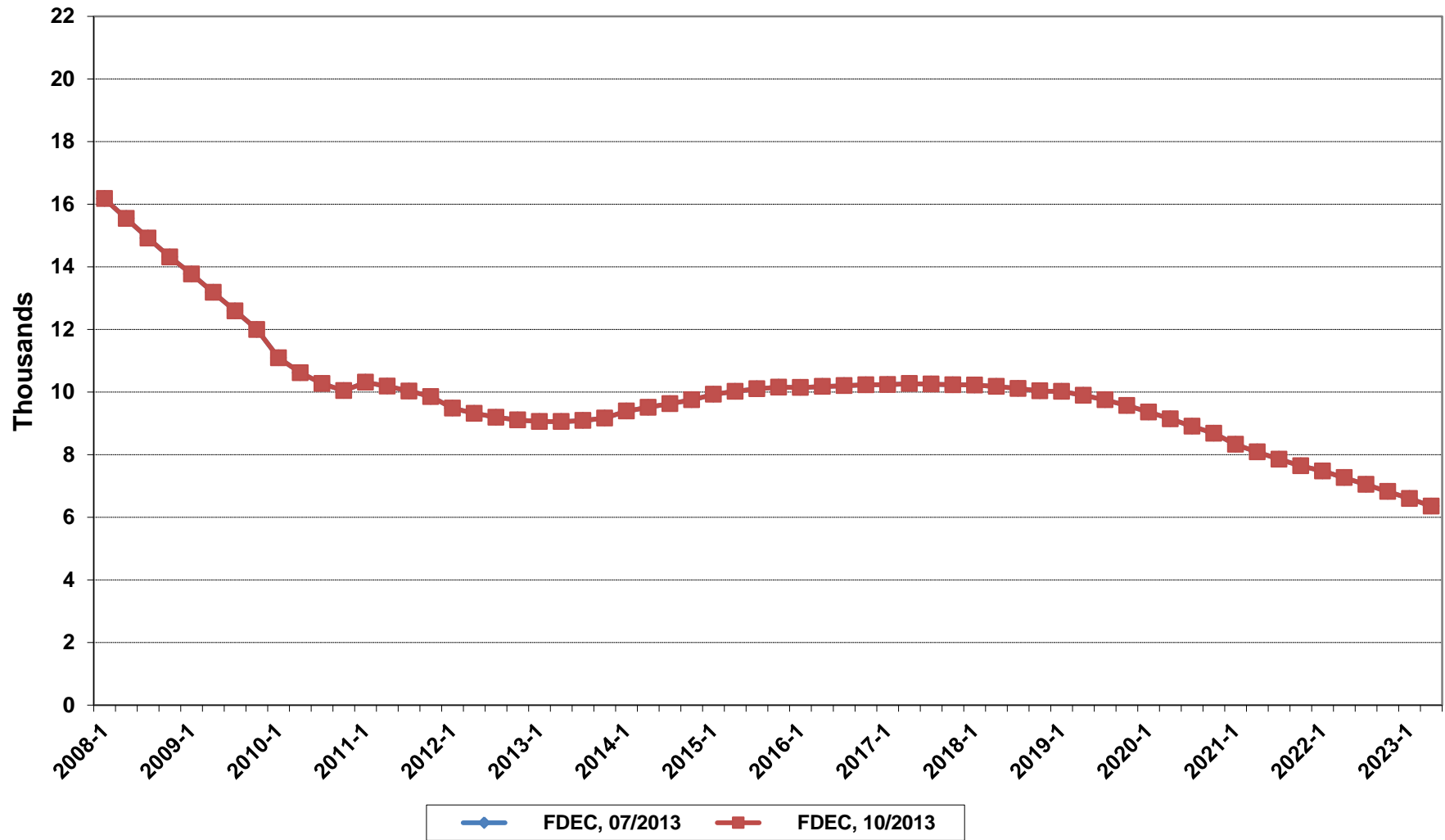
Florida Resident Births



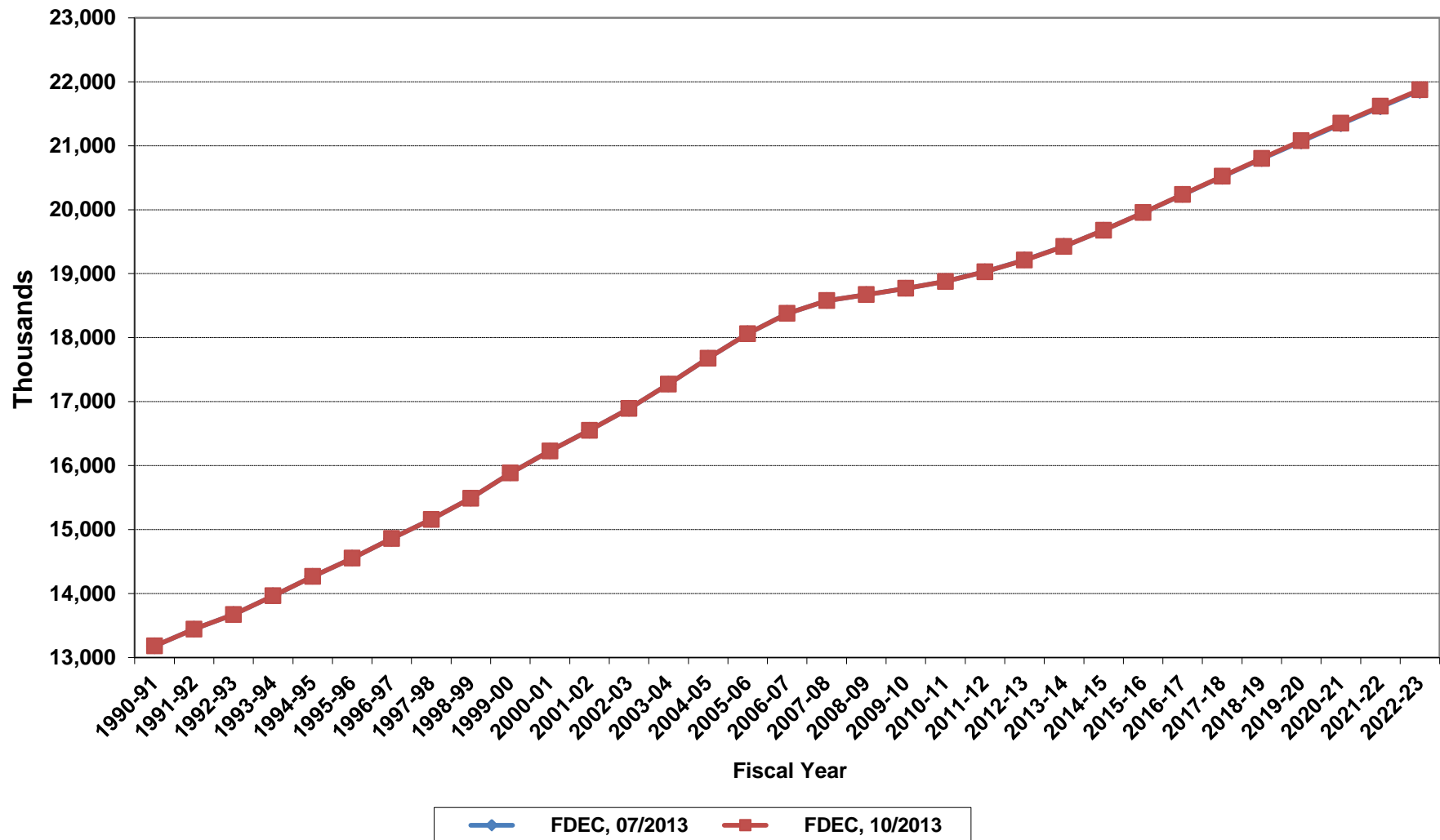
Florida Resident Deaths



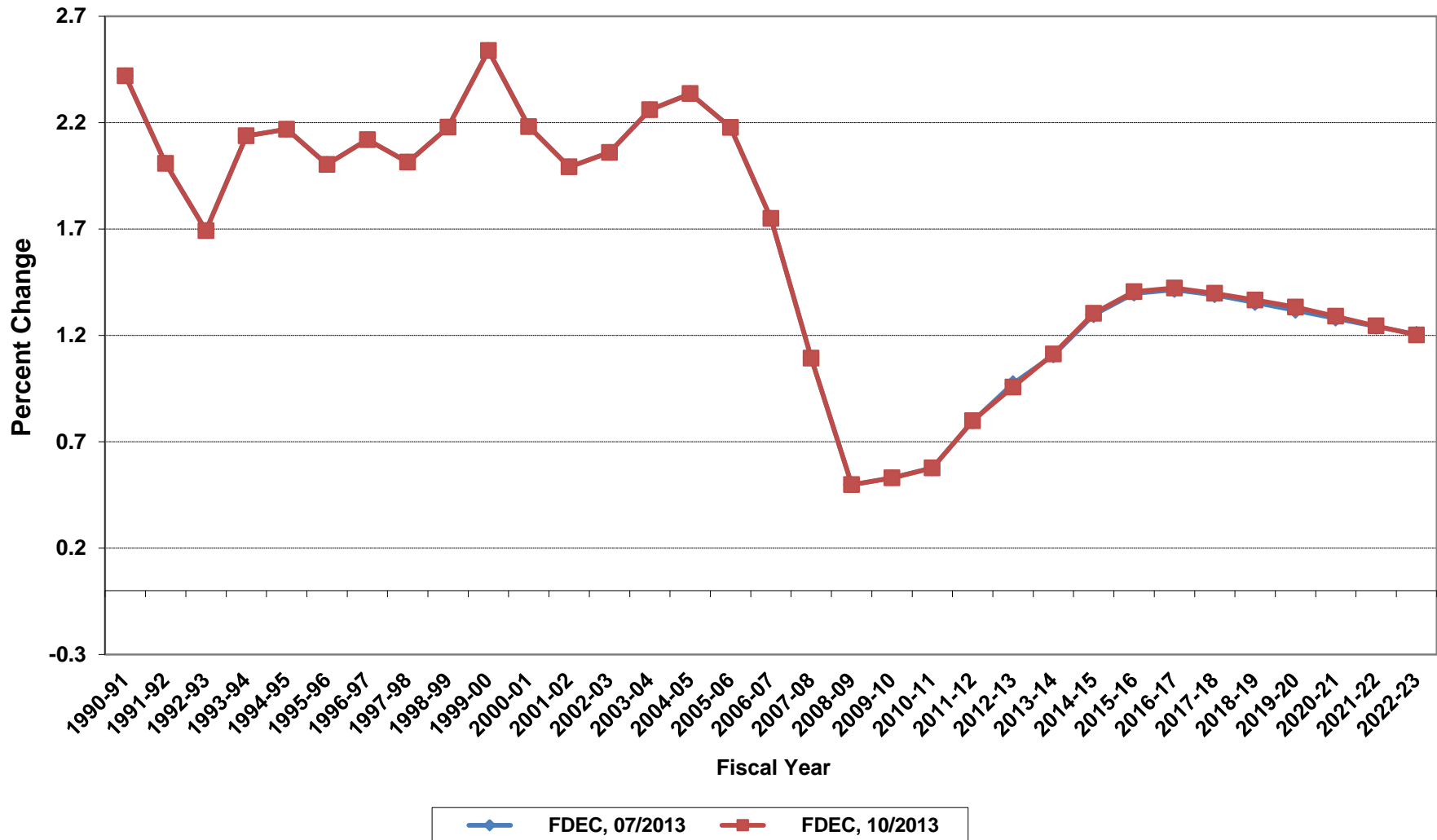
Florida Net Natural Increase



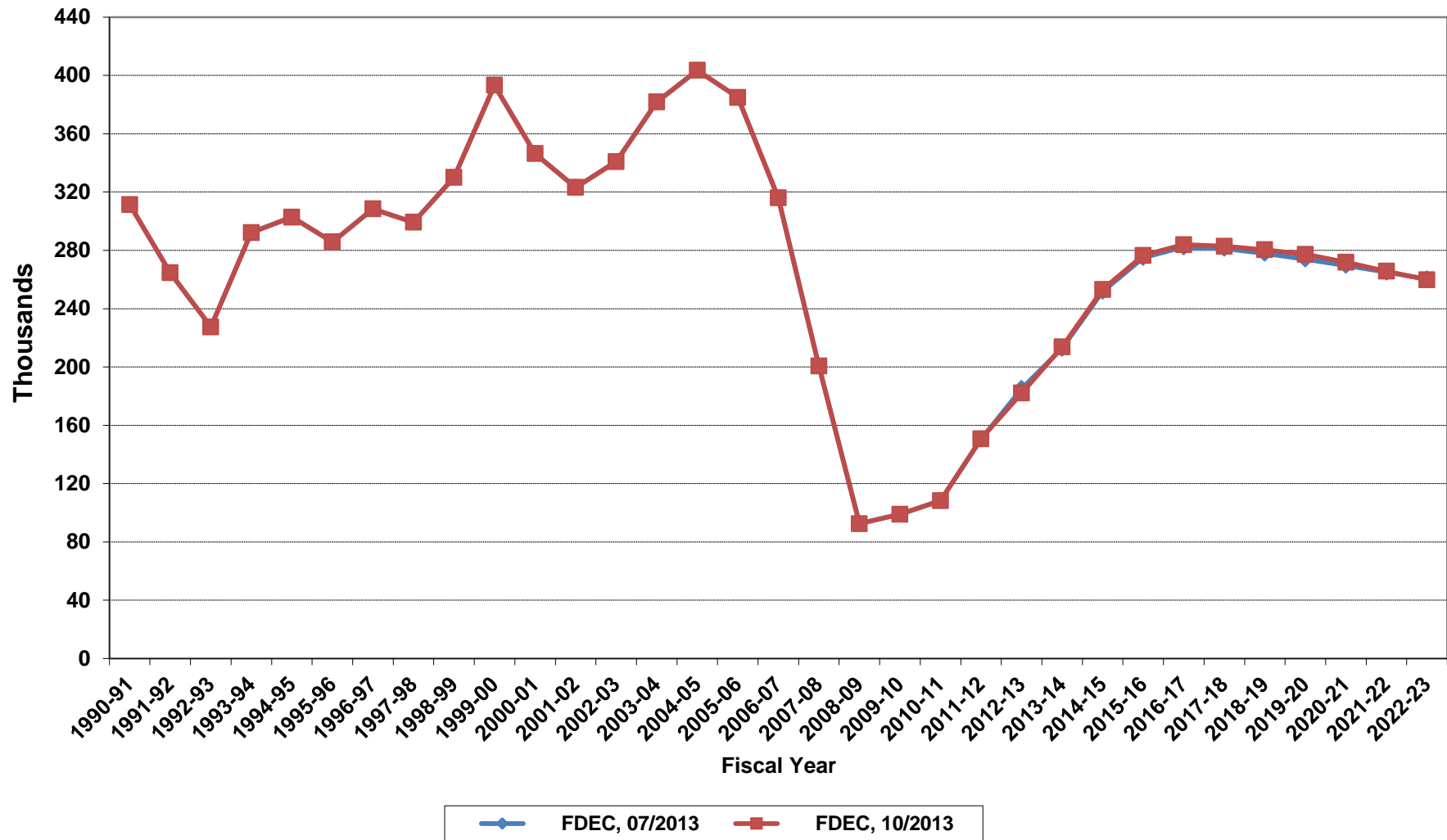
Florida Resident Population



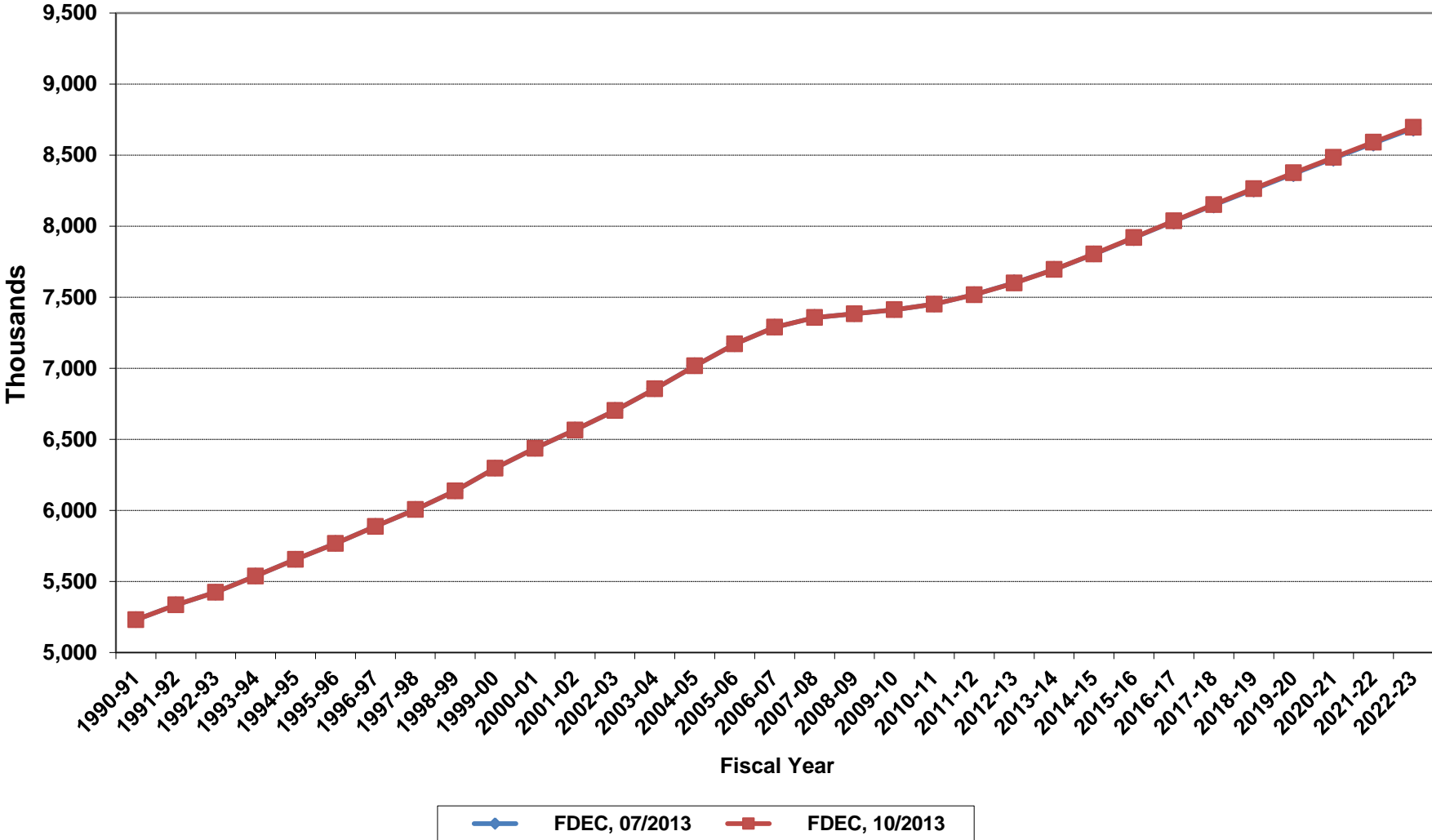
Growth In Florida Resident Population



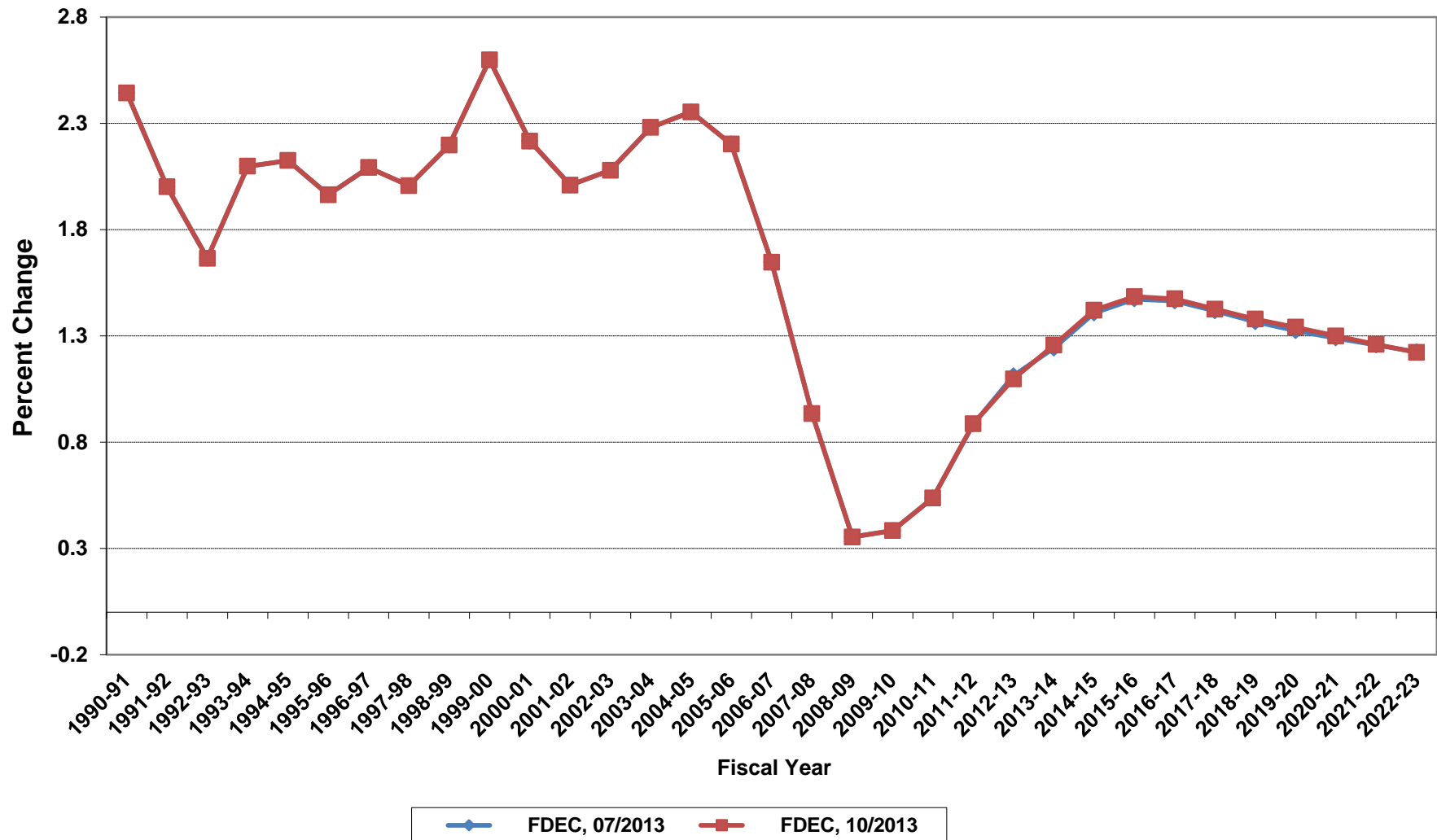
Net Change In Florida Resident Population



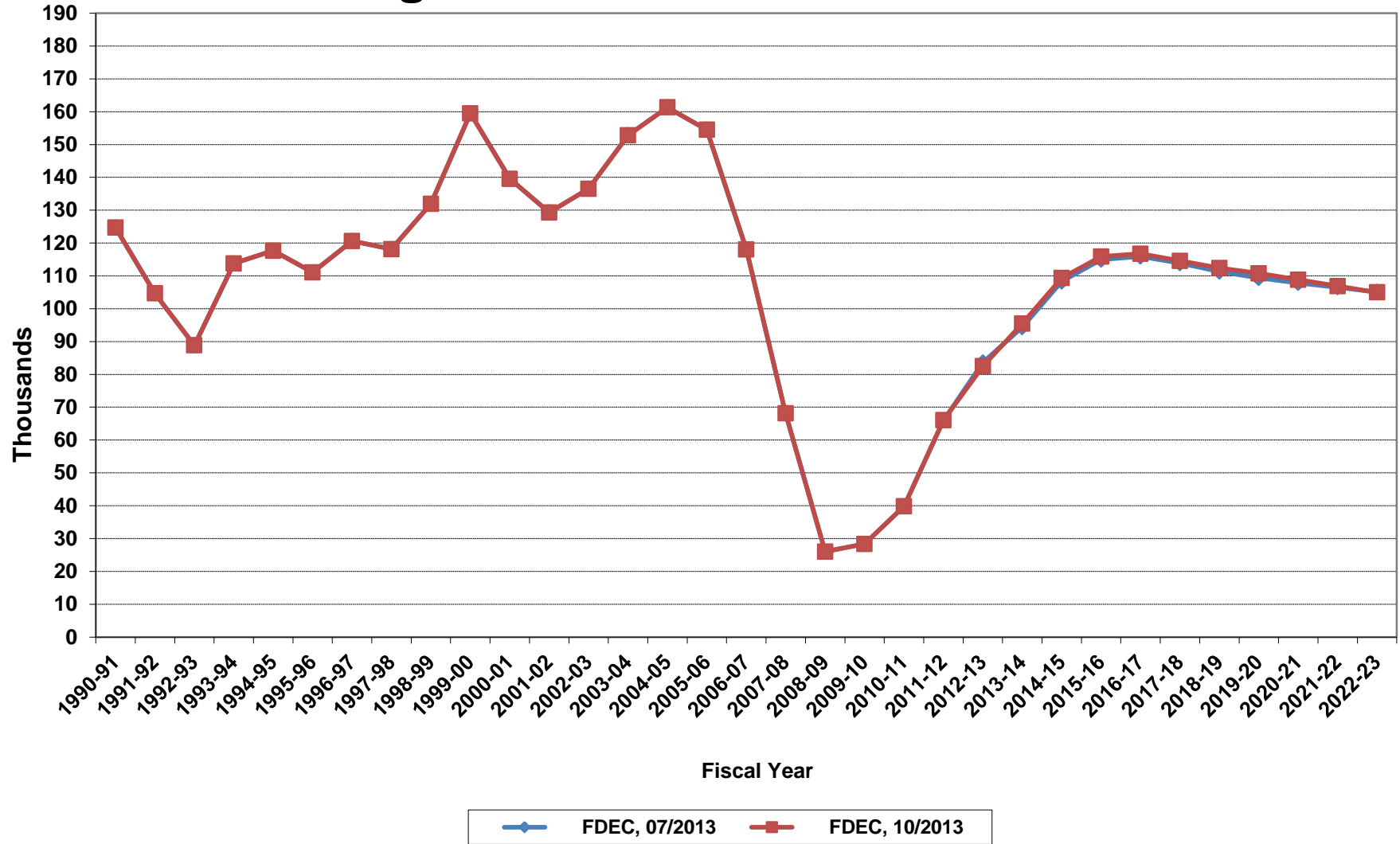
Florida Resident Households



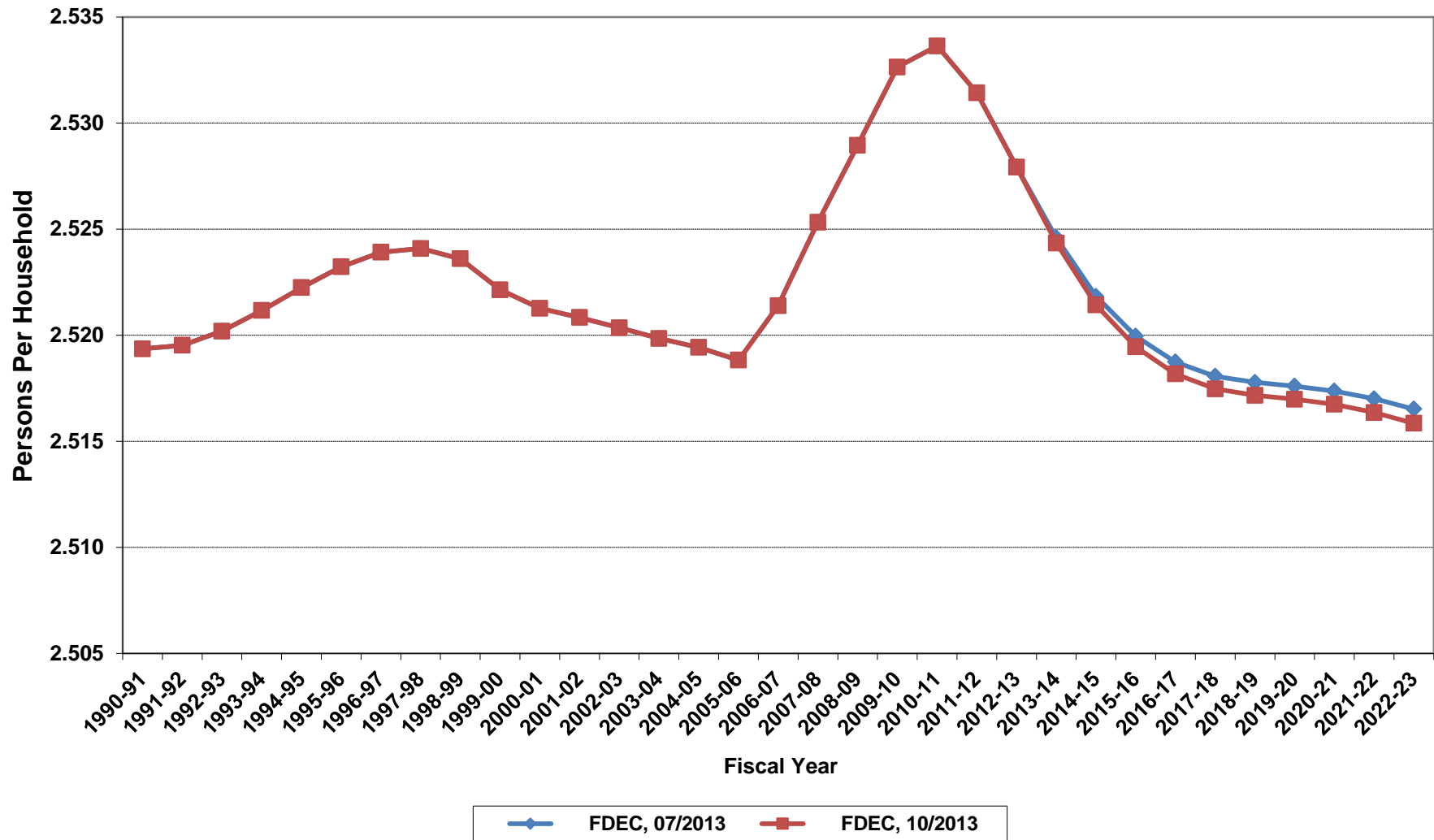
Growth In Florida Resident Households



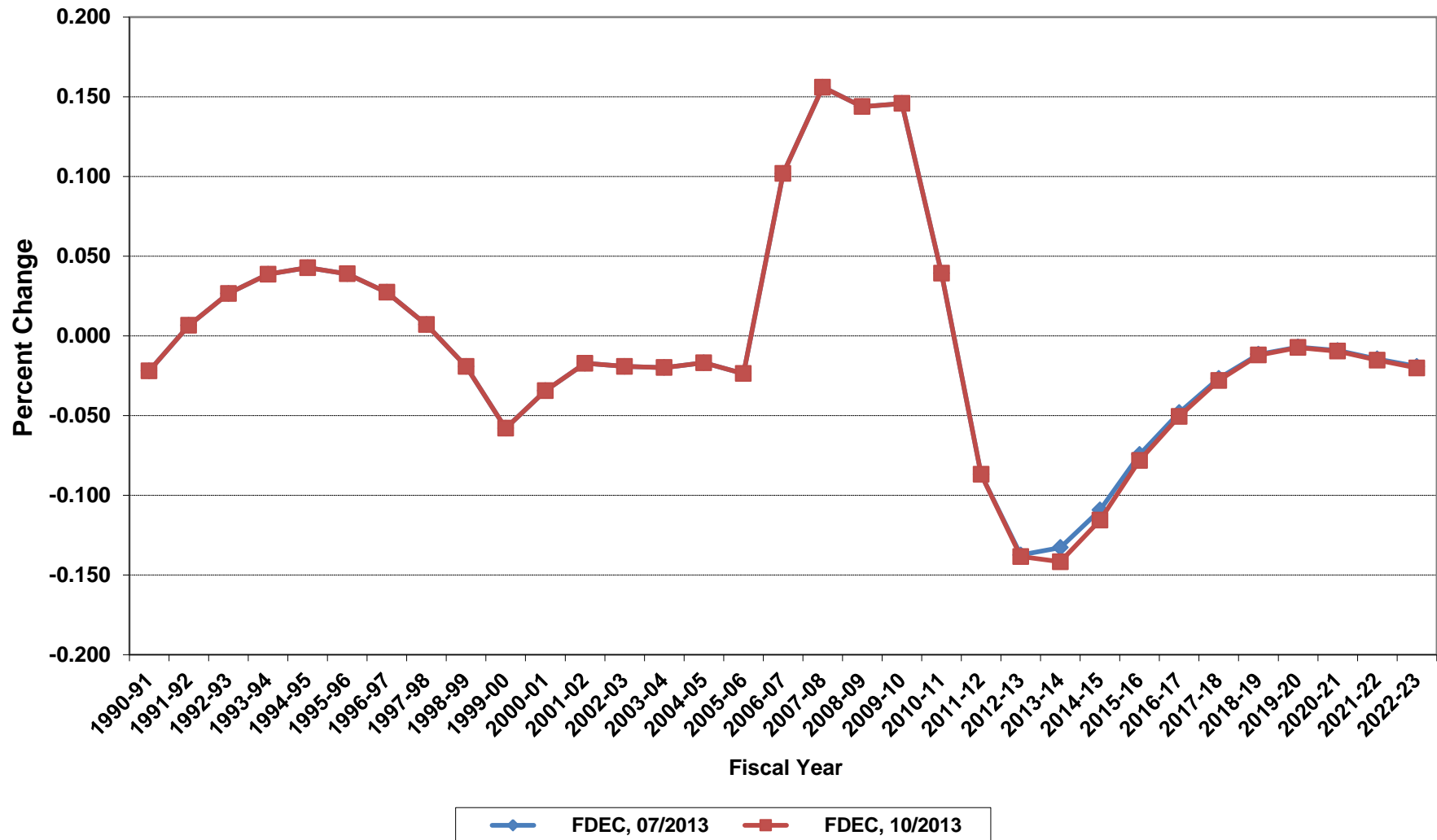
Net Change In Florida Resident Households



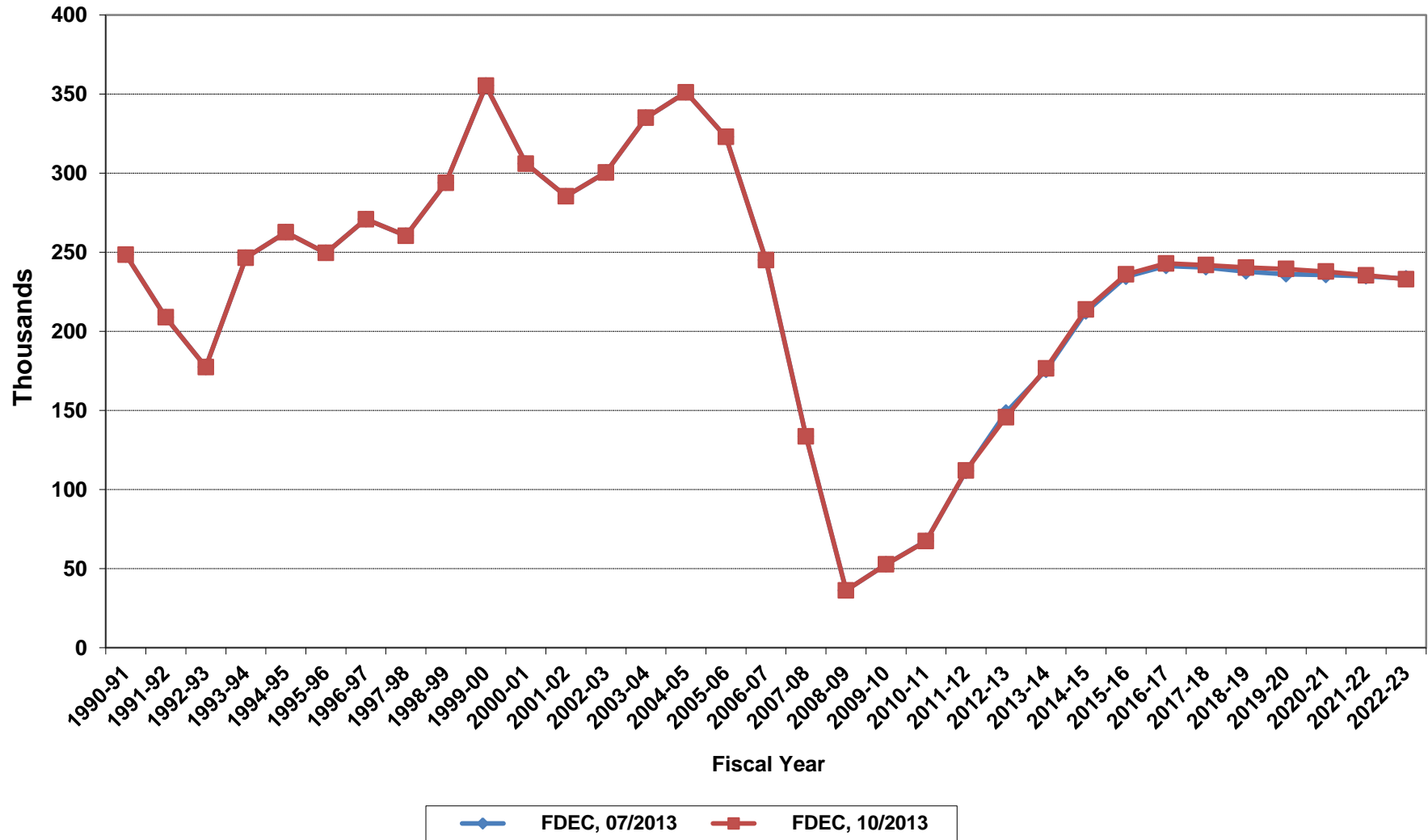
Average Florida Household Size



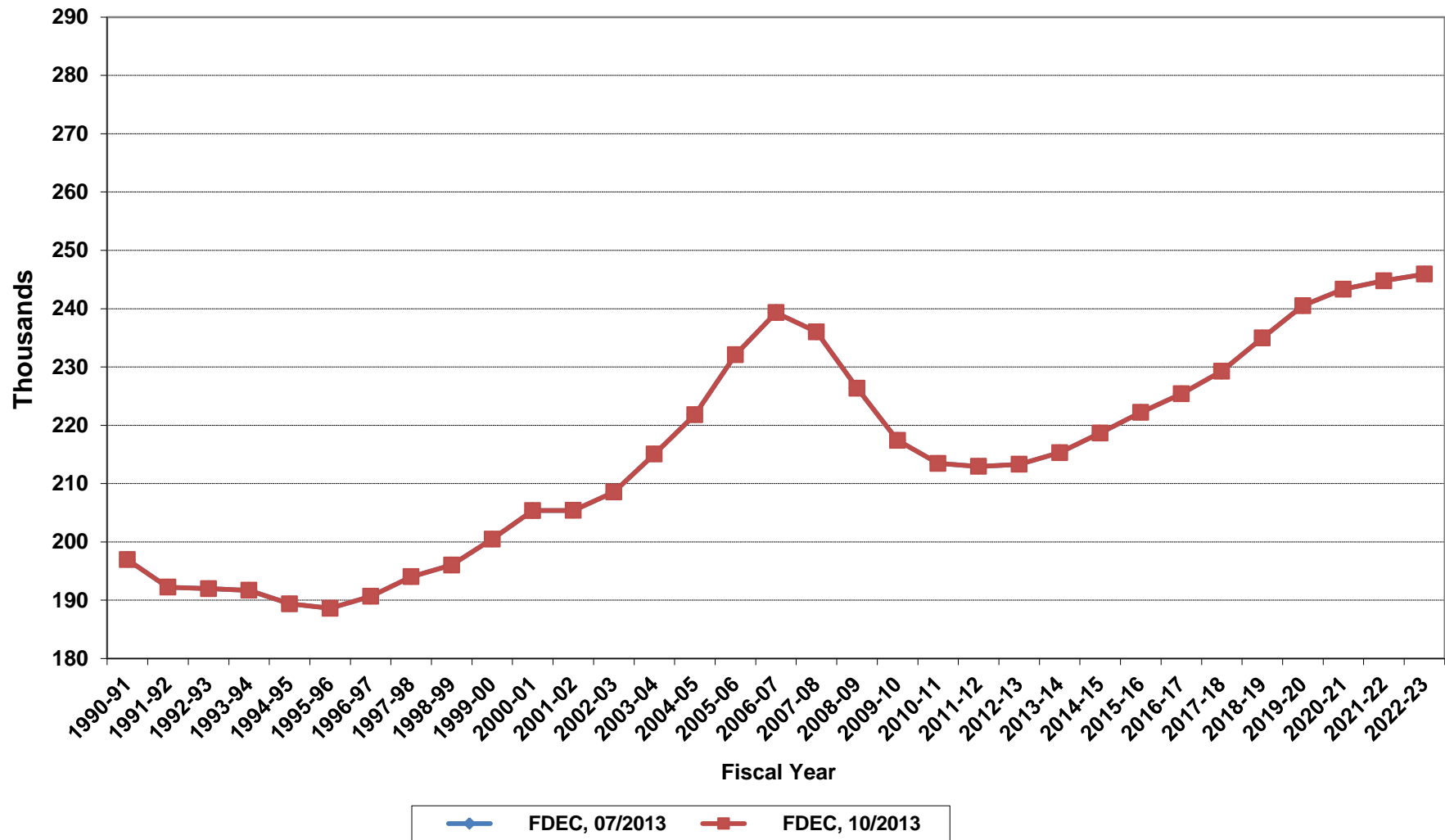
Growth In Average Florida Household Size



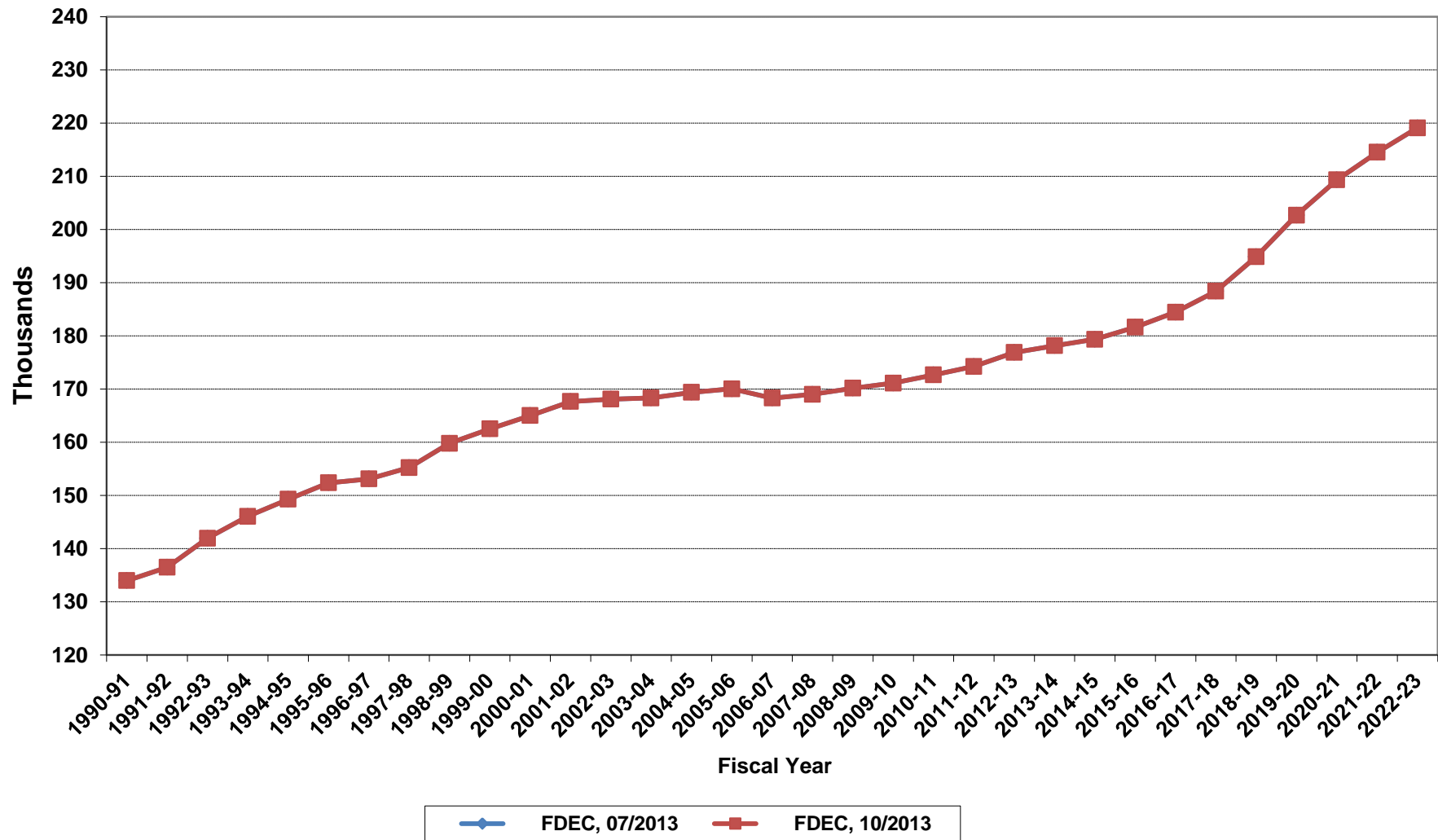
Florida Net Migration



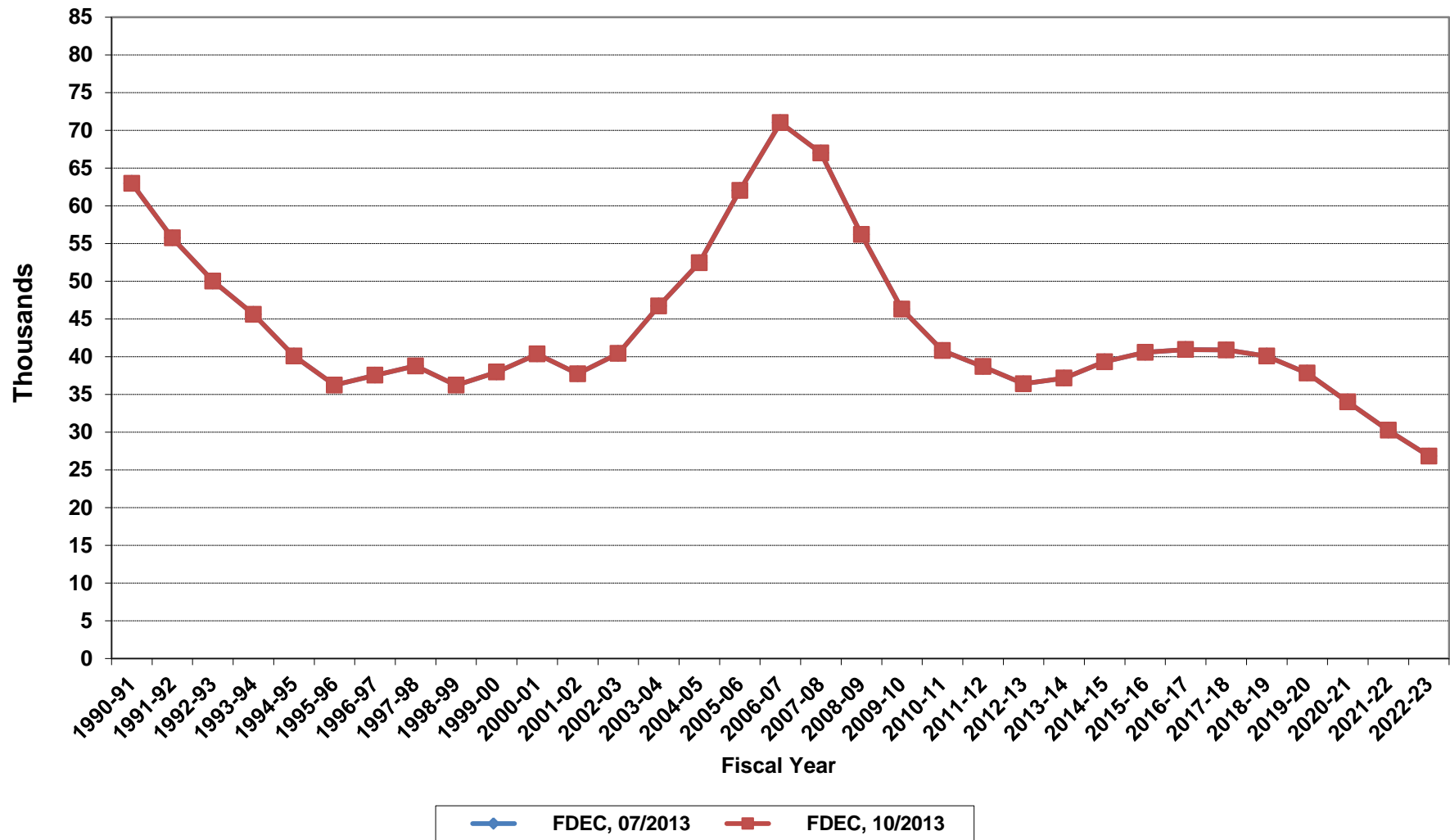
Florida Resident Live Births



Florida Resident Deaths



Florida Net Natural Increase



Florida Population and Components of Change

Fiscal Year	Population (End of Fiscal Year)	Growth Rate	Annual Change in Population	Births	Deaths	Net Natural Increase	Net Migration
1950 - 51	2,981,346	6.50%	181,931	67,486	27,670	39,816	142,115
1951 - 52	3,155,442	5.84%	174,096	72,383	28,942	43,441	130,655
1952 - 53	3,312,521	4.98%	157,079	76,954	29,761	47,193	109,886
1953 - 54	3,504,323	5.79%	191,802	82,725	31,055	51,670	140,132
1954 - 55	3,747,400	6.94%	243,077	86,643	32,176	54,467	188,610
1955 - 56	4,046,062	7.97%	298,662	92,941	34,932	58,009	240,653
1956 - 57	4,370,045	8.01%	323,983	100,990	38,269	62,721	261,262
1957 - 58	4,629,510	5.94%	259,465	105,972	41,911	64,061	195,404
1958 - 59	4,812,270	3.95%	182,760	110,409	43,674	66,735	116,025
1959 - 60	4,998,508	3.87%	186,238	114,428	46,057	68,371	117,867
1960 - 61	5,185,913	3.75%	187,405	116,449	48,388	68,061	119,344
1961 - 62	5,367,899	3.51%	181,986	116,120	50,346	65,774	116,212
1962 - 63	5,553,522	3.46%	185,623	114,709	54,453	60,256	125,367
1963 - 64	5,728,499	3.15%	174,977	115,002	56,229	58,773	116,204
1964 - 65	5,881,195	2.67%	152,696	110,515	57,734	52,781	99,915
1965 - 66	6,065,768	3.14%	184,573	104,367	61,217	43,150	141,423
1966 - 67	6,249,674	3.03%	183,906	101,209	62,577	38,632	145,274
1967 - 68	6,441,756	3.07%	192,082	100,320	66,134	34,186	157,896
1968 - 69	6,633,546	2.98%	191,790	104,286	71,285	33,001	158,789
1969 - 70	6,861,118	3.43%	227,572	111,511	73,831	37,680	189,892
1970 - 71	7,233,583	5.43%	372,465	117,012	75,354	41,658	330,807
1971 - 72	7,681,540	6.19%	447,957	113,568	79,717	33,851	414,106
1972 - 73	8,157,883	6.20%	476,343	107,804	86,232	21,572	454,771
1973 - 74	8,515,208	4.38%	357,325	109,366	88,459	20,907	336,418
1974 - 75	8,648,587	1.57%	133,379	108,686	87,224	21,462	111,917
1975 - 76	8,782,975	1.55%	134,388	104,022	88,129	15,893	118,495
1976 - 77	8,972,678	2.16%	189,703	107,623	90,443	17,180	172,523
1977 - 78	9,225,527	2.82%	252,849	112,268	93,383	18,885	233,964
1978 - 79	9,523,728	3.23%	298,201	116,393	96,801	19,592	278,609
1979 - 80	9,914,652	4.10%	390,924	126,673	101,048	25,625	365,299
1980 - 81	10,212,969	3.01%	298,317	135,560	107,562	27,998	270,319
1981 - 82	10,492,851	2.74%	279,882	141,593	108,644	32,949	246,933
1982 - 83	10,748,466	2.44%	255,615	146,853	110,497	36,356	219,259
1983 - 84	11,065,911	2.95%	317,445	151,748	113,939	37,809	279,636
1984 - 85	11,405,533	3.07%	339,622	159,819	117,539	42,280	297,342
1985 - 86	11,740,069	2.93%	334,536	165,857	122,453	43,404	291,132
1986 - 87	12,083,241	2.92%	343,172	170,819	124,946	45,873	297,299
1987 - 88	12,410,339	2.71%	327,098	179,541	129,413	50,128	276,970
1988 - 89	12,723,719	2.53%	313,380	188,390	131,992	56,398	256,982
1989 - 90	13,017,296	2.31%	293,577	197,181	132,503	64,678	228,899
1990 - 91	13,326,892	2.38%	309,596	197,180	134,093	63,087	246,509
1991 - 92	13,552,021	1.69%	225,129	191,810	136,280	55,530	169,599
1992 - 93	13,802,571	1.85%	250,550	192,051	142,087	49,964	200,586
1993 - 94	14,120,323	2.30%	317,752	191,840	146,101	45,739	272,013
1994 - 95	14,406,418	2.03%	286,095	189,292	149,161	40,131	245,964
1995 - 96	14,701,040	2.05%	294,622	188,584	152,570	36,014	258,608
1996 - 97	15,012,615	2.12%	311,575	190,587	153,067	37,520	274,055
1997 - 98	15,310,069	1.98%	297,454	194,242	155,080	39,162	258,292
1998 - 99	15,680,164	2.42%	370,095	195,897	159,988	35,909	334,186
1999 - 00	16,069,889	2.49%	389,725	200,302	162,489	37,813	351,912
2000 - 01	16,385,615	1.96%	315,726	205,798	164,919	40,879	274,847
2001 - 02	16,718,076	2.03%	332,461	205,164	167,812	37,352	295,109
2002 - 03	17,074,258	2.13%	356,182	208,403	168,079	40,324	315,858
2003 - 04	17,475,944	2.35%	401,686	215,298	168,302	46,996	354,690
2004 - 05	17,876,215	2.29%	400,271	221,533	169,302	52,231	348,040
2005 - 06	18,236,885	2.02%	360,670	232,019	170,303	61,716	298,954
2006 - 07	18,501,231	1.45%	264,346	239,635	168,117	71,518	192,828
2007 - 08	18,636,837	0.73%	135,606	236,065	168,966	67,099	68,507
2008 - 09	18,711,844	0.40%	75,007	226,337	170,615	55,722	19,285
2009 - 10	18,826,474	0.61%	114,630	217,408	171,122	46,286	68,344
2010 - 11	18,941,808	0.61%	115,334	213,466	172,661	40,805	74,529

Florida Population and Components of Change

Fiscal Year	Population (End of Fiscal Year)	Growth Rate	Annual Change in Population	Births	Deaths	Net Natural Increase	Net Migration
2011 - 12	19,118,693	0.93%	176,885	212,948	174,261	38,687	138,198
2012 - 13	19,311,659	1.01%	192,966	213,295	176,881	36,414	156,552
2013 - 14	19,546,630	1.22%	234,971	215,308	178,148	37,160	197,811
2014 - 15	19,814,575	1.37%	267,945	218,676	179,351	39,325	228,620
2015 - 16	20,096,685	1.42%	282,110	222,203	181,629	40,574	241,536
2016 - 17	20,380,740	1.41%	284,055	225,399	184,461	40,938	243,117
2017 - 18	20,662,147	1.38%	281,407	229,284	188,404	40,880	240,527
2018 - 19	20,941,437	1.35%	279,290	234,970	194,903	40,067	239,223
2019 - 20	21,216,290	1.31%	274,853	240,502	202,681	37,821	237,032
2020 - 21	21,485,004	1.27%	268,714	243,338	209,338	34,000	234,714
2021 - 22	21,747,679	1.22%	262,675	244,763	214,525	30,238	232,437
2022 - 23	22,004,623	1.18%	256,944	245,914	219,094	26,820	230,124
2023 - 24	22,256,147	1.14%	251,524	246,583	223,909	22,674	228,850
2024 - 25	22,502,556	1.11%	246,409	247,191	229,296	17,895	228,514
2025 - 26	22,744,081	1.07%	241,525	248,326	234,960	13,366	228,159
2026 - 27	22,980,795	1.04%	236,714	250,171	240,649	9,522	227,192
2027 - 28	23,212,757	1.01%	231,962	251,765	246,196	5,569	226,393
2028 - 29	23,440,024	0.98%	227,267	252,705	251,668	1,037	226,230
2029 - 30	23,662,652	0.95%	222,628	253,366	256,871	-3,505	226,133