

Demographic Estimating Conference Executive Summary February 10, 2014

The Demographic Estimating Conference met on February 10, 2014 to adopt a new population forecast. The data reflect population and household estimates through April 1, 2014; 2013 provisional vital statistics data; and, other recent demographic and economic-related data.

Population growth in Florida continues to rebound but at relatively low levels and rates of growth. Historically, Florida's population growth has been driven by net migration (more people permanently moving into the state than leaving). However, net migration fell to record low levels during much of 2008 and into 2009. During that time period, natural increase (births minus deaths) actually exceeded net migration. The low levels of net migration were largely due to national economic conditions, including weakened housing markets and other lingering effects from the Great Recession, that make it difficult for people to relocate. Reflecting migration's growing strength, the expected net migration share of Florida's FY 2013-14 population growth is 83.7%.

Florida's population grew by 0.97% between April 1, 2012 and April 1, 2013 as the state's economy continued its recovery. Annual population change is expected to be 225,727 net new residents in 2014 as the economy continues to slowly rebound. Between 2015 and 2020, annual population change is expected to remain significantly above 250,000 net new residents per year.

April 1	Population	Percent Change	Change
2012	19,074,434	0.90%	169,364
2013	19,259,543	0.97%	185,109
2014	19,485,270	1.17%	225,727
2015	19,747,233	1.34%	261,963
2016	20,027,214	1.42%	279,981
2017	20,311,486	1.42%	284,272
2018	20,593,490	1.39%	282,004
2019	20,873,474	1.36%	279,984
2020	21,149,697	1.32%	276,223

Between April 1, 2010 and April 1, 2020, population growth is expected to average 234,837 net new residents per year, representing a compound growth rate of 1.18% over this 10-year time horizon. These increases are analogous to adding a city the size of Hialeah every year. During 2016, Florida's population is expected to break the 20-million mark.

Of note, there continues to be a difference between the population estimates developed by the U.S. Census Bureau and the official state estimates adopted by the Demographic Estimating Conference. As of July 1, 2013, this difference was approaching 250,000 persons. It is likely that at least part of it may be attributable to noise introduced by discrepancies in federal income tax return filings, a primary data source for the Census Bureau. The Legislative Office of Economic and Demographic Research is currently working with the Census Bureau to investigate this further.

Florida Demographic Estimating Conference

Tables

Conference Packet

February 10, 2014

Florida Resident Population

April 1

Year	Florida Demographic Estimating Conference October 2013			Florida Demographic Estimating Conference February 2014		
	Population	% Change	Change	Population	% Change	Change
1990	12,938,071	2.27%	287,136	12,938,071	2.27%	287,136
1991	13,258,732	2.48%	320,661	13,258,732	2.48%	320,661
1992	13,497,541	1.80%	238,809	13,497,541	1.80%	238,809
1993	13,730,115	1.72%	232,574	13,730,115	1.72%	232,574
1994	14,043,757	2.28%	313,642	14,043,757	2.28%	313,642
1995	14,335,992	2.08%	292,235	14,335,992	2.08%	292,235
1996	14,623,421	2.00%	287,429	14,623,421	2.00%	287,429
1997	14,938,314	2.15%	314,893	14,938,314	2.15%	314,893
1998	15,230,421	1.96%	292,107	15,230,421	1.96%	292,107
1999	15,580,244	2.30%	349,823	15,580,244	2.30%	349,823
2000	15,982,824	2.58%	402,580	15,982,824	2.58%	402,580
2001	16,305,100	2.02%	322,276	16,305,100	2.02%	322,276
2002	16,634,256	2.02%	329,156	16,634,256	2.02%	329,156
2003	16,979,706	2.08%	345,450	16,979,706	2.08%	345,450
2004	17,374,824	2.33%	395,118	17,374,824	2.33%	395,118
2005	17,778,156	2.32%	403,332	17,778,156	2.32%	403,332
2006	18,154,475	2.12%	376,319	18,154,475	2.12%	376,319
2007	18,446,768	1.61%	292,293	18,446,768	1.61%	292,293
2008	18,613,905	0.91%	167,137	18,613,905	0.91%	167,137
2009	18,687,425	0.39%	73,520	18,687,425	0.39%	73,520
2010	18,801,332	0.61%	113,885	18,801,332	0.61%	113,907
2011	18,905,070	0.55%	103,738	18,905,070	0.55%	103,738
2012	19,074,434	0.90%	169,364	19,074,434	0.90%	169,364
2013	19,259,543	0.97%	185,109	19,259,543	0.97%	185,109
Begins forecast						
2014	19,484,080	1.17%	224,537	19,485,270	1.17%	225,727
2015	19,745,610	1.34%	261,530	19,747,233	1.34%	261,963
2016	20,025,640	1.42%	280,030	20,027,214	1.42%	279,981
2017	20,309,920	1.42%	284,280	20,311,486	1.42%	284,272
2018	20,591,940	1.39%	282,020	20,593,490	1.39%	282,004
2019	20,871,928	1.36%	279,988	20,873,474	1.36%	279,984
			5-Year Averages			
2020	21,148,132	1.38%	280,504	21,149,697	1.38%	280,493
2025	22,441,417	1.19%	258,657	22,442,973	1.19%	258,655
2030	23,607,427	1.02%	233,202	23,608,972	1.02%	233,200
2035	24,652,415	0.87%	208,998	24,653,968	0.87%	208,999
2040	25,600,921	0.76%	189,701	25,603,577	0.76%	189,922

Florida Resident Households

April 1

Year	Florida Demographic Estimating Conference October 2013			Florida Demographic Estimating Conference February 2014		
	Households	% Change	Change	Households	% Change	Change
1990	5,134,869	3.40%	168,985	5,134,869	3.40%	168,985
1991	5,283,154	2.89%	148,285	5,283,154	2.89%	148,285
1992	5,378,499	1.80%	95,345	5,378,499	1.80%	95,345
1993	5,478,476	1.86%	99,977	5,478,476	1.86%	99,977
1994	5,589,093	2.02%	110,617	5,589,093	2.02%	110,617
1995	5,697,328	1.94%	108,235	5,697,328	1.94%	108,235
1996	5,806,031	1.91%	108,703	5,806,031	1.91%	108,703
1997	5,929,613	2.13%	123,582	5,929,613	2.13%	123,582
1998	6,040,514	1.87%	110,901	6,040,514	1.87%	110,901
1999	6,182,346	2.35%	141,832	6,182,346	2.35%	141,832
2000	6,338,075	2.52%	155,729	6,338,075	2.52%	155,729
2001	6,467,215	2.04%	129,140	6,467,215	2.04%	129,140
2002	6,599,035	2.04%	131,820	6,599,035	2.04%	131,820
2003	6,737,370	2.10%	138,335	6,737,370	2.10%	138,335
2004	6,895,469	2.35%	158,099	6,895,469	2.35%	158,099
2005	7,056,889	2.34%	161,420	7,056,889	2.34%	161,420
2006	7,207,645	2.14%	150,756	7,207,645	2.14%	150,756
2007	7,312,907	1.46%	105,262	7,312,907	1.46%	105,262
2008	7,368,319	0.76%	55,412	7,368,319	0.76%	55,412
2009	7,386,570	0.25%	18,251	7,386,570	0.25%	18,251
2010	7,420,812	0.46%	34,242	7,420,812	0.46%	34,242
2011	7,461,978	0.55%	41,166	7,461,978	0.55%	41,166
2012	7,537,442	1.01%	75,464	7,537,442	1.01%	75,464
2013	7,621,467	1.11%	84,025	7,610,153	0.96%	72,711
Begins forecast						
2014	7,721,043	1.31%	99,576	7,699,731	1.18%	89,578
2015	7,833,049	1.45%	112,006	7,804,418	1.36%	104,687
2016	7,949,626	1.49%	116,577	7,917,129	1.44%	112,711
2017	8,066,127	1.47%	116,501	8,032,600	1.46%	115,471
2018	8,179,975	1.41%	113,848	8,148,076	1.44%	115,476
2019	8,291,976	1.37%	112,001	8,263,276	1.41%	115,200
			5-Year Averages			
2020	8,402,297	1.41%	113,850	8,377,401	1.43%	114,597
2025	8,924,618	1.21%	104,464	8,915,961	1.25%	107,712
2030	9,396,048	1.03%	94,286	9,407,015	1.08%	98,211
2035	9,818,999	0.88%	84,590	9,852,548	0.93%	89,107
2040	10,204,102	0.77%	77,021	10,262,410	0.82%	81,972

Quarterly Data Table

QUARTERLY FORECAST TABLES

	2008-1	2008-2	2008-3	2008-4	2009-1	2009-2	2009-3	2009-4	2010-1	2010-2	2010-3	2010-4	2011-1	2011-2	2011-3	2011-4
Population																
FDEC, 2013 Oct	18,599.6	18,625.4	18,645.5	18,661.9	18,678.6	18,699.6	18,726.1	18,755.5	18,786.1	18,813.9	18,838.3	18,862.6	18,890.1	18,923.4	18,962.9	19,006.4
FDEC, 2014 Feb	18,599.6	18,625.4	18,645.5	18,661.9	18,678.6	18,699.6	18,726.1	18,755.5	18,786.1	18,813.9	18,838.3	18,862.6	18,890.1	18,923.4	18,962.9	19,006.4
Population Growth Rate																
FDEC, 2013 Oct	0.72	0.56	0.43	0.35	0.36	0.45	0.57	0.63	0.65	0.59	0.52	0.52	0.58	0.71	0.84	0.92
FDEC, 2014 Feb	0.72	0.56	0.43	0.35	0.36	0.45	0.57	0.63	0.65	0.59	0.52	0.52	0.58	0.71	0.84	0.92
Net Change in Population																
FDEC, 2013 Oct	33.2	25.8	20.1	16.4	16.6	21.1	26.4	29.5	30.5	27.9	24.4	24.4	27.5	33.3	39.4	43.6
FDEC, 2014 Feb	33.2	25.8	20.1	16.4	16.6	21.1	26.4	29.5	30.5	27.9	24.4	24.4	27.5	33.3	39.4	43.5
Households																
FDEC, 2013 Oct	7,363.9	7,371.6	7,377.0	7,380.8	7,384.5	7,390.0	7,397.7	7,406.6	7,416.0	7,425.4	7,434.6	7,444.4	7,455.8	7,470.0	7,487.5	7,506.9
FDEC, 2014 Feb	7,363.9	7,371.6	7,377.0	7,380.8	7,384.5	7,390.0	7,397.7	7,406.6	7,416.0	7,425.2	7,434.0	7,443.7	7,455.4	7,470.2	7,488.0	7,507.6
Household Growth Rate																
FDEC, 2013 Oct	0.58	0.42	0.29	0.21	0.20	0.30	0.41	0.48	0.51	0.50	0.50	0.53	0.61	0.77	0.94	1.04
FDEC, 2014 Feb	0.58	0.42	0.29	0.21	0.20	0.30	0.41	0.48	0.51	0.49	0.48	0.52	0.63	0.80	0.95	1.05
Net Change in Households																
FDEC, 2013 Oct	10.6	7.7	5.4	3.8	3.7	5.5	7.7	8.9	9.5	9.3	9.2	9.9	11.4	14.2	17.4	19.4
FDEC, 2014 Feb	10.6	7.7	5.4	3.8	3.7	5.5	7.7	8.9	9.5	9.1	8.8	9.7	11.7	14.8	17.8	19.6
Household Size																
FDEC, 2013 Oct	2.526	2.527	2.528	2.528	2.529	2.530	2.531	2.532	2.533	2.534	2.534	2.534	2.534	2.533	2.533	2.532
FDEC, 2014 Feb	2.526	2.527	2.528	2.528	2.529	2.530	2.531	2.532	2.533	2.534	2.534	2.534	2.534	2.533	2.532	2.532
Household Size Growth Rate																
FDEC, 2013 Oct	0.14	0.14	0.14	0.14	0.16	0.15	0.15	0.15	0.14	0.09	0.02	-0.01	-0.03	-0.06	-0.10	-0.12
FDEC, 2014 Feb	0.14	0.14	0.14	0.14	0.16	0.15	0.15	0.15	0.14	0.10	0.04	0.00	-0.05	-0.09	-0.12	-0.13
Net Migration																
FDEC, 2013 Oct	17.0	10.3	5.2	2.1	2.9	7.9	13.8	17.5	19.4	17.2	14.1	14.3	17.2	23.1	29.4	33.7
FDEC, 2014 Feb	17.0	10.3	5.2	2.1	2.9	7.9	13.8	17.5	19.4	17.2	14.1	14.3	17.2	23.1	29.4	33.7
Births																
FDEC, 2013 Oct	58.7	58.1	57.6	57.0	56.2	55.6	55.1	54.6	54.1	53.7	53.5	53.3	53.4	53.3	53.3	53.2
FDEC, 2014 Feb	58.7	58.1	57.6	57.0	56.2	55.6	55.1	54.6	54.1	53.7	53.5	53.3	53.4	53.3	53.3	53.2
Deaths																
FDEC, 2013 Oct	42.5	42.6	42.7	42.7	42.4	42.4	42.5	42.6	43.0	43.1	43.2	43.3	43.1	43.1	43.2	43.4
FDEC, 2014 Feb	42.5	42.6	42.7	42.7	42.4	42.4	42.5	42.6	43.0	43.1	43.2	43.3	43.1	43.1	43.2	43.4
Net Natural Increase																
FDEC, 2013 Oct	16.2	15.5	14.9	14.3	13.8	13.2	12.6	12.0	11.1	10.6	10.3	10.0	10.3	10.2	10.0	9.9
FDEC, 2014 Feb	16.2	15.5	14.9	14.3	13.8	13.2	12.6	12.0	11.1	10.6	10.3	10.0	10.3	10.2	10.0	9.9

Quarterly Data Table

QUARTERLY FORECAST TABLES

	<u>2012-1</u>	<u>2012-2</u>	<u>2012-3</u>	<u>2012-4</u>	<u>2013-1</u>	<u>2013-2</u>	<u>2013-3</u>	<u>2013-4</u>	<u>2014-1</u>	<u>2014-2</u>	<u>2014-3</u>	<u>2014-4</u>	<u>2015-1</u>	<u>2015-2</u>	<u>2015-3</u>	<u>2015-4</u>
Population																
FDEC, 2013 Oct	19,051.7	19,096.6	19,140.8	19,186.1	19,234.1	19,285.0	19,338.3	19,394.5	19,453.4	19,514.8	19,578.5	19,644.1	19,711.4	19,779.9	19,849.3	19,919.5
FDEC, 2014 Feb	19,051.7	19,096.6	19,140.9	19,186.4	19,234.6	19,285.8	19,339.5	19,396.0	19,455.1	19,516.7	19,580.5	19,646.1	19,713.3	19,781.7	19,851.1	19,921.2
Population Growth Rate																
FDEC, 2013 Oct	0.96	0.95	0.93	0.95	1.00	1.06	1.11	1.17	1.22	1.27	1.31	1.35	1.38	1.40	1.41	1.42
FDEC, 2014 Feb	0.96	0.95	0.93	0.95	1.01	1.07	1.12	1.17	1.22	1.27	1.31	1.35	1.37	1.40	1.41	1.42
Net Change in Population																
FDEC, 2013 Oct	45.3	44.9	44.3	45.3	48.0	50.9	53.4	56.2	58.9	61.4	63.7	65.7	67.2	68.5	69.5	70.2
FDEC, 2014 Feb	45.3	44.9	44.3	45.5	48.2	51.1	53.8	56.4	59.1	61.6	63.8	65.7	67.2	68.4	69.4	70.1
Households																
FDEC, 2013 Oct	7,527.2	7,547.5	7,567.7	7,588.3	7,610.0	7,632.9	7,656.8	7,681.8	7,707.7	7,734.4	7,761.9	7,790.0	7,818.6	7,847.5	7,876.5	7,905.7
FDEC, 2014 Feb	7,527.5	7,546.7	7,564.8	7,582.6	7,600.8	7,620.3	7,641.4	7,663.9	7,687.6	7,712.3	7,737.8	7,764.0	7,790.8	7,818.2	7,846.1	7,874.3
Household Growth Rate																
FDEC, 2013 Oct	1.09	1.08	1.07	1.09	1.15	1.21	1.26	1.31	1.35	1.39	1.43	1.46	1.48	1.49	1.49	1.49
FDEC, 2014 Feb	1.07	1.02	0.96	0.94	0.97	1.03	1.11	1.18	1.24	1.29	1.33	1.36	1.39	1.41	1.43	1.45
Net Change in Households																
FDEC, 2013 Oct	20.3	20.3	20.2	20.6	21.7	22.9	23.9	25.0	25.9	26.7	27.5	28.1	28.6	28.9	29.1	29.2
FDEC, 2014 Feb	20.0	19.2	18.1	17.7	18.2	19.5	21.1	22.5	23.7	24.7	25.5	26.2	26.8	27.4	27.9	28.2
Household Size																
FDEC, 2013 Oct	2.531	2.530	2.529	2.528	2.527	2.527	2.526	2.525	2.524	2.523	2.522	2.522	2.521	2.521	2.520	2.520
FDEC, 2014 Feb	2.531	2.530	2.530	2.530	2.531	2.531	2.531	2.531	2.531	2.531	2.530	2.530	2.530	2.530	2.530	2.530
Household Size Growth Rate																
FDEC, 2013 Oct	-0.13	-0.14	-0.14	-0.14	-0.14	-0.15	-0.14	-0.14	-0.13	-0.12	-0.12	-0.11	-0.10	-0.09	-0.08	-0.07
FDEC, 2014 Feb	-0.11	-0.08	-0.03	0.01	0.04	0.04	0.01	-0.01	-0.02	-0.02	-0.01	-0.01	-0.02	-0.02	-0.02	-0.03
Net Migration																
FDEC, 2013 Oct	35.8	35.6	35.1	36.2	38.9	41.8	44.3	47.0	49.5	51.9	54.1	55.9	57.3	58.5	59.4	60.0
FDEC, 2014 Feb	35.8	35.6	35.1	36.3	38.9	41.8	44.3	46.9	49.4	51.8	54.0	55.8	57.2	58.4	59.3	60.0
Births																
FDEC, 2013 Oct	53.2	53.2	53.2	53.3	53.3	53.4	53.6	53.7	53.9	54.1	54.3	54.5	54.8	55.0	55.2	55.5
FDEC, 2014 Feb	53.2	53.2	53.2	53.3	53.6	53.7	53.9	54.0	54.2	54.4	54.5	54.7	54.9	55.0	55.2	55.4
Deaths																
FDEC, 2013 Oct	43.7	43.9	44.0	44.2	44.3	44.4	44.5	44.5	44.5	44.6	44.7	44.8	44.9	45.0	45.1	45.3
FDEC, 2014 Feb	43.7	43.9	44.0	44.2	44.2	44.3	44.4	44.5	44.5	44.6	44.7	44.8	44.9	45.0	45.1	45.3
Net Natural Increase																
FDEC, 2013 Oct	9.5	9.3	9.2	9.1	9.1	9.1	9.1	9.2	9.4	9.5	9.6	9.7	9.9	10.0	10.1	10.2
FDEC, 2014 Feb	9.4	9.3	9.2	9.2	9.3	9.4	9.4	9.5	9.7	9.8	9.8	9.9	10.0	10.0	10.1	10.1

Quarterly Data Table

QUARTERLY FORECAST TABLES

	<u>2016-1</u>	<u>2016-2</u>	<u>2016-3</u>	<u>2016-4</u>	<u>2017-1</u>	<u>2017-2</u>	<u>2017-3</u>	<u>2017-4</u>	<u>2018-1</u>	<u>2018-2</u>	<u>2018-3</u>	<u>2018-4</u>	<u>2019-1</u>	<u>2019-2</u>	<u>2019-3</u>	<u>2019-4</u>
Population																
FDEC, 2013 Oct	19,990.2	20,061.1	20,132.2	20,203.4	20,274.5	20,345.4	20,416.1	20,486.6	20,556.8	20,627.0	20,697.2	20,767.2	20,837.1	20,906.7	20,976.1	21,045.1
FDEC, 2014 Feb	19,991.8	20,062.7	20,133.8	20,204.9	20,276.0	20,346.9	20,417.6	20,488.1	20,558.4	20,628.6	20,698.8	20,768.8	20,838.6	20,908.2	20,977.6	21,046.7
Population Growth Rate																
FDEC, 2013 Oct	1.43	1.43	1.43	1.42	1.41	1.41	1.40	1.39	1.38	1.37	1.37	1.36	1.35	1.34	1.33	1.32
FDEC, 2014 Feb	1.43	1.43	1.42	1.42	1.41	1.41	1.40	1.39	1.38	1.37	1.37	1.36	1.35	1.34	1.33	1.32
Net Change in Population																
FDEC, 2013 Oct	70.7	71.0	71.1	71.1	71.1	70.9	70.7	70.5	70.2	70.3	70.2	70.0	69.8	69.6	69.4	69.1
FDEC, 2014 Feb	70.6	70.9	71.1	71.1	71.1	70.9	70.7	70.5	70.3	70.2	70.2	70.0	69.8	69.6	69.4	69.1
Households																
FDEC, 2013 Oct	7,935.0	7,964.3	7,993.5	8,022.7	8,051.7	8,080.5	8,109.2	8,137.6	8,165.9	8,194.1	8,222.2	8,250.2	8,278.1	8,305.9	8,333.6	8,361.2
FDEC, 2014 Feb	7,902.8	7,931.5	7,960.3	7,989.2	8,018.1	8,047.1	8,075.9	8,104.8	8,133.7	8,162.5	8,191.3	8,220.1	8,248.9	8,277.6	8,306.3	8,334.8
Household Growth Rate																
FDEC, 2013 Oct	1.49	1.48	1.48	1.47	1.45	1.44	1.43	1.41	1.40	1.39	1.38	1.37	1.36	1.35	1.34	1.33
FDEC, 2014 Feb	1.46	1.46	1.46	1.46	1.46	1.45	1.44	1.44	1.43	1.43	1.42	1.41	1.41	1.40	1.39	1.38
Net Change in Households																
FDEC, 2013 Oct	29.3	29.3	29.2	29.2	29.0	28.8	28.6	28.5	28.2	28.2	28.1	28.0	27.9	27.8	27.7	27.6
FDEC, 2014 Feb	28.5	28.7	28.8	28.9	28.9	28.9	28.9	28.9	28.9	28.8	28.8	28.8	28.8	28.7	28.6	28.5
Household Size																
FDEC, 2013 Oct	2.519	2.519	2.519	2.518	2.518	2.518	2.518	2.518	2.517	2.517	2.517	2.517	2.517	2.517	2.517	2.517
FDEC, 2014 Feb	2.530	2.529	2.529	2.529	2.529	2.528	2.528	2.528	2.528	2.527	2.527	2.527	2.526	2.526	2.526	2.525
Household Size Growth Rate																
FDEC, 2013 Oct	-0.06	-0.06	-0.05	-0.05	-0.04	-0.03	-0.03	-0.02	-0.02	-0.01	-0.01	-0.01	-0.01	-0.01	-0.01	-0.01
FDEC, 2014 Feb	-0.03	-0.03	-0.04	-0.04	-0.04	-0.04	-0.05	-0.05	-0.05	-0.05	-0.05	-0.05	-0.05	-0.06	-0.06	-0.06
Net Migration																
FDEC, 2013 Oct	60.5	60.8	60.9	60.9	60.8	60.7	60.5	60.3	60.0	60.1	60.0	60.0	59.8	59.7	59.6	59.5
FDEC, 2014 Feb	60.5	60.8	60.9	60.9	60.8	60.6	60.5	60.2	60.1	60.0	60.0	60.0	59.8	59.7	59.6	59.5
Births																
FDEC, 2013 Oct	55.7	55.9	56.1	56.3	56.4	56.6	56.9	57.2	57.5	57.8	58.1	58.5	59.0	59.4	59.7	60.0
FDEC, 2014 Feb	55.7	55.9	56.1	56.3	56.4	56.6	56.9	57.2	57.5	57.8	58.1	58.5	59.0	59.4	59.7	60.0
Deaths																
FDEC, 2013 Oct	45.5	45.7	45.9	46.0	46.2	46.4	46.6	46.9	47.2	47.6	48.0	48.4	49.0	49.5	49.9	50.4
FDEC, 2014 Feb	45.5	45.7	45.9	46.0	46.2	46.4	46.6	46.9	47.2	47.6	48.0	48.4	49.0	49.5	49.9	50.4
Net Natural Increase																
FDEC, 2013 Oct	10.1	10.2	10.2	10.2	10.2	10.3	10.3	10.2	10.2	10.2	10.1	10.0	10.0	9.9	9.7	9.6
FDEC, 2014 Feb	10.1	10.2	10.2	10.2	10.3	10.3	10.2	10.2	10.2	10.2	10.1	10.0	10.0	9.9	9.8	9.6

Quarterly Data Table

QUARTERLY FORECAST TABLES

	<u>2020-1</u>	<u>2020-2</u>	<u>2020-3</u>	<u>2020-4</u>	<u>2021-1</u>	<u>2021-2</u>	<u>2021-3</u>	<u>2021-4</u>	<u>2022-1</u>	<u>2022-2</u>	<u>2022-3</u>	<u>2022-4</u>	<u>2023-1</u>	<u>2023-2</u>
Population														
FDEC, 2013 Oct	21,113.9	21,182.2	21,250.2	21,317.7	21,384.9	21,451.7	21,518.1	21,584.2	21,649.8	21,715.1	21,780.1	21,844.6	21,908.9	21,972.8
FDEC, 2014 Feb	21,115.4	21,183.8	21,251.7	21,319.3	21,386.5	21,453.3	21,519.7	21,585.7	21,651.4	21,716.7	21,781.6	21,846.2	21,910.4	21,974.3
Population Growth Rate														
FDEC, 2013 Oct	1.31	1.30	1.29	1.28	1.27	1.26	1.24	1.23	1.22	1.21	1.20	1.19	1.18	1.17
FDEC, 2014 Feb	1.31	1.30	1.29	1.28	1.27	1.26	1.24	1.23	1.22	1.21	1.20	1.19	1.18	1.17
Net Change in Population														
FDEC, 2013 Oct	68.7	68.4	68.0	67.6	67.2	66.8	66.4	66.0	65.7	65.3	64.9	64.6	64.2	63.9
FDEC, 2014 Feb	68.7	68.4	68.0	67.6	67.2	66.8	66.4	66.0	65.7	65.3	64.9	64.6	64.2	63.9
Households														
FDEC, 2013 Oct	8,388.6	8,416.0	8,443.2	8,470.2	8,497.2	8,524.0	8,550.7	8,577.3	8,603.8	8,630.2	8,656.4	8,682.6	8,708.6	8,734.5
FDEC, 2014 Feb	8,363.2	8,391.5	8,419.7	8,447.7	8,475.5	8,503.3	8,530.8	8,558.3	8,585.6	8,612.7	8,639.8	8,666.7	8,693.4	8,720.1
Household Growth Rate														
FDEC, 2013 Oct	1.32	1.31	1.30	1.29	1.28	1.27	1.26	1.25	1.24	1.23	1.22	1.21	1.20	1.19
FDEC, 2014 Feb	1.37	1.36	1.35	1.34	1.33	1.31	1.30	1.29	1.28	1.27	1.26	1.25	1.24	1.23
Net Change in Households														
FDEC, 2013 Oct	27.5	27.3	27.2	27.1	27.0	26.8	26.7	26.6	26.5	26.4	26.2	26.1	26.0	25.9
FDEC, 2014 Feb	28.4	28.3	28.1	28.0	27.9	27.7	27.6	27.4	27.3	27.2	27.0	26.9	26.8	26.6
Household Size														
FDEC, 2013 Oct	2.517	2.517	2.517	2.517	2.517	2.517	2.517	2.516	2.516	2.516	2.516	2.516	2.516	2.516
FDEC, 2014 Feb	2.525	2.524	2.524	2.524	2.523	2.523	2.523	2.522	2.522	2.521	2.521	2.521	2.520	2.520
Household Size Growth Rate														
FDEC, 2013 Oct	-0.01	-0.01	-0.01	-0.01	-0.01	-0.01	-0.02	-0.02	-0.02	-0.02	-0.02	-0.02	-0.02	-0.02
FDEC, 2014 Feb	-0.06	-0.06	-0.06	-0.06	-0.06	-0.06	-0.06	-0.06	-0.06	-0.06	-0.06	-0.06	-0.06	-0.06
Net Migration														
FDEC, 2013 Oct	59.4	59.2	59.1	58.9	58.8	58.7	58.6	58.4	58.2	58.0	57.9	57.8	57.6	57.5
FDEC, 2014 Feb	59.4	59.2	59.0	58.9	58.8	58.7	58.6	58.4	58.2	58.0	57.9	57.8	57.6	57.5
Births														
FDEC, 2013 Oct	60.3	60.5	60.7	60.8	60.8	60.9	61.0	61.1	61.3	61.3	61.4	61.5	61.5	61.5
FDEC, 2014 Feb	60.3	60.5	60.7	60.8	60.8	60.9	61.0	61.1	61.3	61.3	61.4	61.5	61.5	61.5
Deaths														
FDEC, 2013 Oct	50.9	51.4	51.8	52.2	52.5	52.9	53.2	53.5	53.8	54.1	54.4	54.6	54.9	55.2
FDEC, 2014 Feb	50.9	51.4	51.8	52.2	52.5	52.9	53.2	53.5	53.8	54.1	54.4	54.6	54.9	55.2
Net Natural Increase														
FDEC, 2013 Oct	9.4	9.1	8.9	8.7	8.3	8.1	7.9	7.6	7.5	7.3	7.0	6.8	6.6	6.4
FDEC, 2014 Feb	9.4	9.1	8.9	8.7	8.3	8.1	7.9	7.6	7.5	7.3	7.0	6.8	6.6	6.4

FISCAL YEAR
FORECAST TABLES

Fiscal Year Data Table

	<u>1990-91</u>	<u>1991-92</u>	<u>1992-93</u>	<u>1993-94</u>	<u>1994-95</u>	<u>1995-96</u>	<u>1996-97</u>	<u>1997-98</u>	<u>1998-99</u>	<u>1999-00</u>	<u>2000-01</u>	<u>2001-02</u>	<u>2002-03</u>	<u>2003-04</u>	<u>2004-05</u>
Population															
FDEC, 2013 Oct	13,178.0	13,442.6	13,670.0	13,962.2	14,264.9	14,550.7	14,859.1	15,158.3	15,488.4	15,881.7	16,228.0	16,551.2	16,892.0	17,273.8	17,677.3
FDEC, 2014 Feb	13,178.0	13,442.6	13,670.0	13,962.2	14,264.9	14,550.7	14,859.1	15,158.3	15,488.4	15,881.7	16,228.0	16,551.2	16,892.0	17,273.8	17,677.3
Growth Rate															
FDEC, 2013 Oct	2.42	2.01	1.69	2.14	2.17	2.00	2.12	2.01	2.18	2.54	2.18	1.99	2.06	2.26	2.34
FDEC, 2014 Feb	2.42	2.01	1.69	2.14	2.17	2.00	2.12	2.01	2.18	2.54	2.18	1.99	2.06	2.26	2.34
Net Change in Population															
FDEC, 2013 Oct	311.4	264.6	227.4	292.2	302.8	285.8	308.4	299.2	330.1	393.2	346.4	323.2	340.9	381.8	403.5
FDEC, 2014 Feb	311.4	264.6	227.4	292.2	302.8	285.8	308.4	299.2	330.1	393.2	346.4	323.2	340.9	381.8	403.5
Households															
FDEC, 2013 Oct	5,230.7	5,335.4	5,424.2	5,538.0	5,655.6	5,766.7	5,887.3	6,005.5	6,137.4	6,296.9	6,436.4	6,565.8	6,702.3	6,855.1	7,016.4
FDEC, 2014 Feb	5,230.7	5,335.4	5,424.2	5,538.0	5,655.6	5,766.7	5,887.3	6,005.5	6,137.4	6,296.9	6,436.4	6,565.8	6,702.3	6,855.1	7,016.4
Growth Rate															
FDEC, 2013 Oct	2.44	2.00	1.66	2.10	2.12	1.96	2.09	2.01	2.20	2.60	2.22	2.01	2.08	2.28	2.35
FDEC, 2014 Feb	2.44	2.00	1.66	2.10	2.12	1.96	2.09	2.01	2.20	2.60	2.22	2.01	2.08	2.28	2.35
Net Change in Households															
FDEC, 2013 Oct	124.7	104.7	88.8	113.8	117.7	111.1	120.6	118.1	131.9	159.5	139.5	129.3	136.5	152.8	161.3
FDEC, 2014 Feb	124.7	104.7	88.8	113.8	117.7	111.1	120.6	118.1	131.9	159.5	139.5	129.3	136.5	152.8	161.3
Household Size															
FDEC, 2013 Oct	2.519	2.520	2.520	2.521	2.522	2.523	2.524	2.524	2.524	2.522	2.521	2.521	2.520	2.520	2.519
FDEC, 2014 Feb	2.519	2.520	2.520	2.521	2.522	2.523	2.524	2.524	2.524	2.522	2.521	2.521	2.520	2.520	2.519
Growth Rate															
FDEC, 2013 Oct	-0.02	0.01	0.03	0.04	0.04	0.04	0.03	0.01	-0.02	-0.06	-0.03	-0.02	-0.02	-0.02	-0.02
FDEC, 2014 Feb	-0.02	0.01	0.03	0.04	0.04	0.04	0.03	0.01	-0.02	-0.06	-0.03	-0.02	-0.02	-0.02	-0.02
Net Migration															
FDEC, 2013 Oct	248.4	208.9	177.4	246.6	262.7	249.6	270.9	260.4	293.9	355.3	306.0	285.5	300.4	335.0	351.1
FDEC, 2014 Feb	248.4	208.9	177.4	246.6	262.7	249.6	270.9	260.4	293.9	355.3	306.0	285.5	300.4	335.0	351.1
Births															
FDEC, 2013 Oct	197.0	192.2	192.0	191.7	189.4	188.6	190.7	194.0	196.0	200.5	205.4	205.4	208.5	215.0	221.8
FDEC, 2014 Feb	197.0	192.2	192.0	191.7	189.4	188.6	190.7	194.0	196.0	200.5	205.4	205.4	208.5	215.0	221.8
Deaths															
FDEC, 2013 Oct	134.0	136.5	142.0	146.1	149.3	152.4	153.1	155.3	159.8	162.5	165.0	167.7	168.1	168.3	169.4
FDEC, 2014 Feb	134.0	136.5	142.0	146.1	149.3	152.4	153.1	155.3	159.8	162.5	165.0	167.7	168.1	168.3	169.4
Net Natural Increase															
FDEC, 2013 Oct	63.0	55.7	50.0	45.6	40.1	36.2	37.5	38.8	36.2	38.0	40.3	37.7	40.4	46.7	52.4
FDEC, 2014 Feb	63.0	55.7	50.0	45.6	40.1	36.2	37.5	38.8	36.2	38.0	40.3	37.7	40.4	46.7	52.4

FISCAL YEAR
FORECAST TABLES

Fiscal Year Data Table

	<u>2005-06</u>	<u>2006-07</u>	<u>2007-08</u>	<u>2008-09</u>	<u>2009-10</u>	<u>2010-11</u>	<u>2011-12</u>	<u>2012-13</u>	<u>2013-14</u>	<u>2014-15</u>	<u>2015-16</u>	<u>2016-17</u>	<u>2017-18</u>	<u>2018-19</u>
Population														
FDEC, 2013 Oct	18,062.2	18,378.2	18,578.9	18,671.4	18,770.4	18,878.6	19,029.4	19,211.5	19,425.3	19,678.5	19,955.0	20,238.9	20,521.6	20,802.0
FDEC, 2014 Feb	18,062.2	18,378.2	18,578.9	18,671.4	18,770.4	18,878.6	19,029.4	19,211.9	19,426.8	19,680.4	19,956.7	20,240.4	20,523.2	20,803.6
Growth Rate														
FDEC, 2013 Oct	2.18	1.75	1.09	0.50	0.53	0.58	0.80	0.96	1.11	1.30	1.41	1.42	1.40	1.37
FDEC, 2014 Feb	2.18	1.75	1.09	0.50	0.53	0.58	0.80	0.96	1.12	1.31	1.40	1.42	1.40	1.37
Net Change in Population														
FDEC, 2013 Oct	384.9	316.0	200.7	92.5	99.0	108.2	150.8	182.1	213.7	253.2	276.6	283.9	282.8	280.4
FDEC, 2014 Feb	384.9	316.0	200.7	92.5	99.0	108.2	150.8	182.5	214.9	253.6	276.3	283.7	282.8	280.4
Households														
FDEC, 2013 Oct	7,170.9	7,288.9	7,357.1	7,383.1	7,411.4	7,451.2	7,517.2	7,599.7	7,695.2	7,804.5	7,920.4	8,037.1	8,151.7	8,264.1
FDEC, 2014 Feb	7,170.9	7,288.9	7,357.1	7,383.1	7,411.3	7,450.8	7,517.5	7,592.1	7,676.3	7,777.7	7,888.7	8,003.7	8,119.2	8,234.5
Growth Rate														
FDEC, 2013 Oct	2.20	1.65	0.93	0.35	0.38	0.54	0.89	1.10	1.26	1.42	1.48	1.47	1.43	1.38
FDEC, 2014 Feb	2.20	1.65	0.93	0.35	0.38	0.53	0.89	0.99	1.11	1.32	1.43	1.46	1.44	1.42
Net Change in Households														
FDEC, 2013 Oct	154.5	118.1	68.1	26.0	28.3	39.8	66.0	82.5	95.5	109.3	115.9	116.7	114.6	112.4
FDEC, 2014 Feb	154.5	118.1	68.1	26.0	28.3	39.5	66.6	74.7	84.2	101.4	111.0	115.0	115.5	115.3
Household Size														
FDEC, 2013 Oct	2.519	2.521	2.525	2.529	2.533	2.534	2.531	2.528	2.524	2.521	2.519	2.518	2.517	2.517
FDEC, 2014 Feb	2.519	2.521	2.525	2.529	2.533	2.534	2.531	2.531	2.531	2.530	2.530	2.529	2.528	2.526
Growth Rate														
FDEC, 2013 Oct	-0.02	0.10	0.16	0.14	0.15	0.04	-0.09	-0.14	-0.14	-0.12	-0.08	-0.05	-0.03	-0.01
FDEC, 2014 Feb	-0.02	0.10	0.16	0.14	0.15	0.04	-0.09	-0.03	0.01	-0.02	-0.02	-0.04	-0.05	-0.05
Net Migration														
FDEC, 2013 Oct	322.9	245.0	133.7	36.3	52.7	67.4	112.1	145.7	176.6	213.9	236.0	242.9	241.9	240.3
FDEC, 2014 Feb	322.9	245.0	133.7	36.3	52.7	67.4	112.1	145.5	176.5	213.8	235.8	242.8	241.9	240.4
Births														
FDEC, 2013 Oct	232.1	239.3	236.0	226.4	217.4	213.5	212.9	213.3	215.3	218.7	222.2	225.4	229.3	235.0
FDEC, 2014 Feb	232.1	239.3	236.0	226.4	217.4	213.5	212.9	213.9	216.4	219.1	222.1	225.4	229.3	235.0
Deaths														
FDEC, 2013 Oct	170.1	168.3	169.0	170.2	171.1	172.7	174.3	176.9	178.1	179.4	181.6	184.5	188.4	194.9
FDEC, 2014 Feb	170.1	168.3	169.0	170.2	171.1	172.7	174.3	176.8	178.1	179.4	181.6	184.5	188.4	194.9
Net Natural Increase														
FDEC, 2013 Oct	62.0	71.0	67.0	56.2	46.3	40.8	38.7	36.4	37.2	39.3	40.6	40.9	40.9	40.1
FDEC, 2014 Feb	62.0	71.0	67.0	56.2	46.3	40.8	38.6	37.1	38.4	39.8	40.5	40.9	40.9	40.1

FISCAL YEAR
FORECAST TABLES

Fiscal Year Data Table

	<u>2019-20</u>	<u>2020-21</u>	<u>2021-22</u>	<u>2022-23</u>
Population				
FDEC, 2013 Oct	21,079.3	21,351.1	21,616.8	21,876.6
FDEC, 2014 Feb	21,080.9	21,352.7	21,618.4	21,878.1
Growth Rate				
FDEC, 2013 Oct	1.33	1.29	1.24	1.20
FDEC, 2014 Feb	1.33	1.29	1.24	1.20
Net Change in Population				
FDEC, 2013 Oct	277.3	271.8	265.7	259.8
FDEC, 2014 Feb	277.3	271.8	265.7	259.8
Households				
FDEC, 2013 Oct	8,374.8	8,483.7	8,590.5	8,695.5
FDEC, 2014 Feb	8,348.9	8,461.5	8,571.9	8,680.0
Growth Rate				
FDEC, 2013 Oct	1.34	1.30	1.26	1.22
FDEC, 2014 Feb	1.39	1.35	1.30	1.26
Net Change in Households				
FDEC, 2013 Oct	110.8	108.8	106.9	105.0
FDEC, 2014 Feb	114.4	112.6	110.3	108.1
Household Size				
FDEC, 2013 Oct	2.517	2.517	2.516	2.516
FDEC, 2014 Feb	2.525	2.524	2.522	2.521
Growth Rate				
FDEC, 2013 Oct	-0.01	-0.01	-0.02	-0.02
FDEC, 2014 Feb	-0.06	-0.06	-0.06	-0.06
Net Migration				
FDEC, 2013 Oct	239.5	237.8	235.4	233.0
FDEC, 2014 Feb	239.4	237.8	235.4	233.0
Births				
FDEC, 2013 Oct	240.5	243.3	244.8	245.9
FDEC, 2014 Feb	240.5	243.3	244.8	245.9
Deaths				
FDEC, 2013 Oct	202.7	209.3	214.5	219.1
FDEC, 2014 Feb	202.7	209.3	214.5	219.1
Net Natural Increase				
FDEC, 2013 Oct	37.8	34.0	30.2	26.8
FDEC, 2014 Feb	37.8	34.0	30.2	26.8

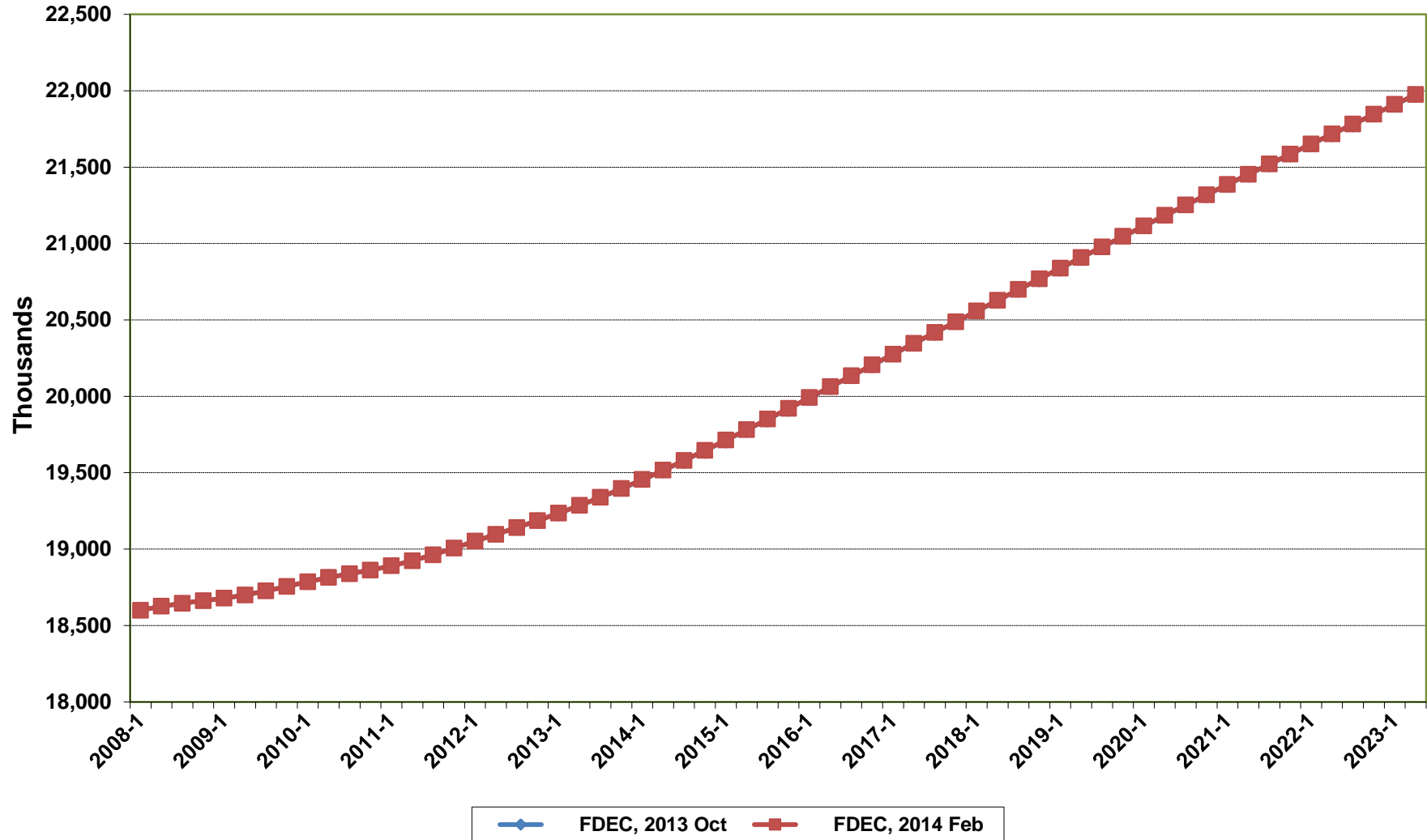
Florida Demographic Estimating Conference

Charts

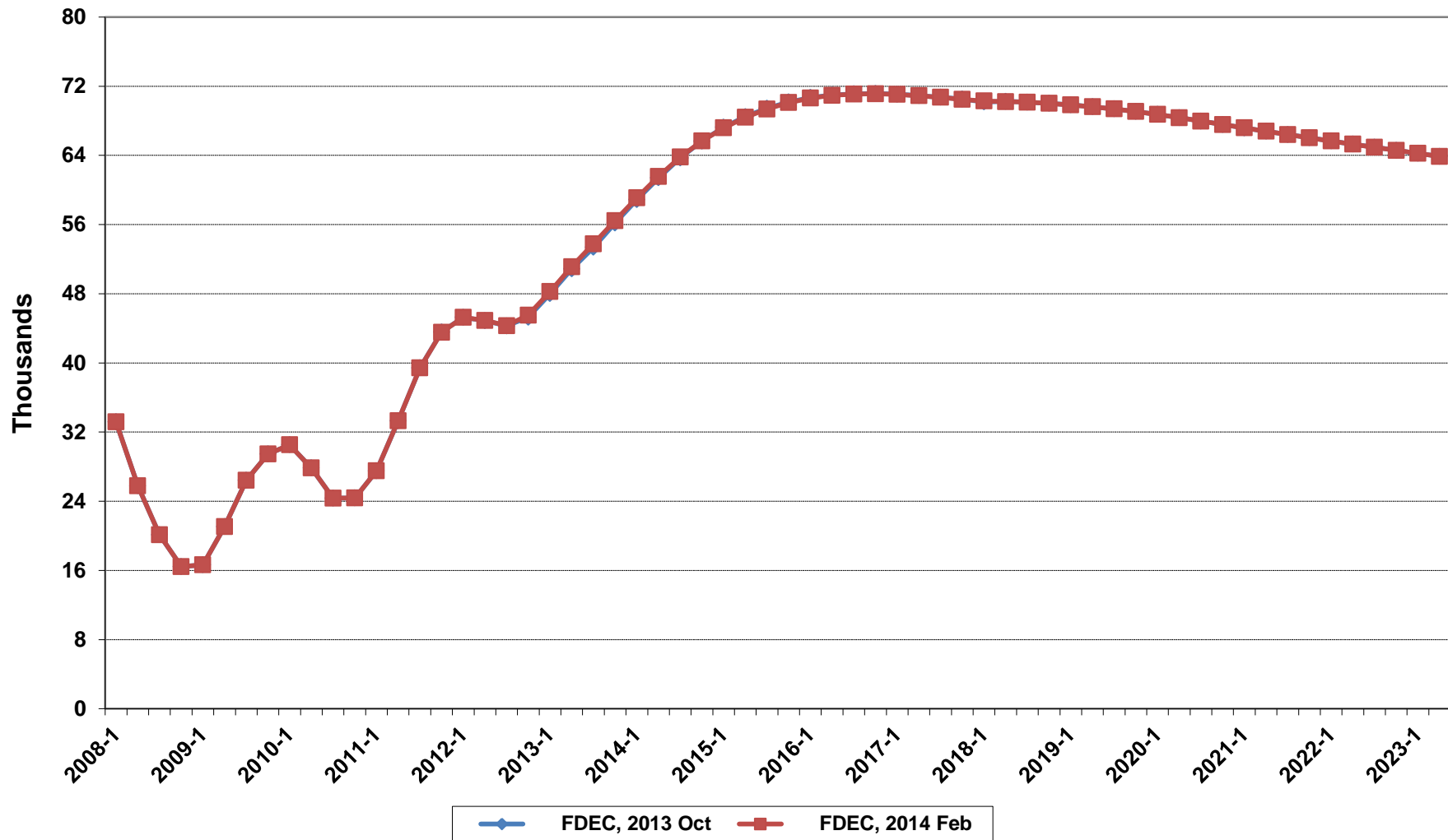
Conference Packet

February 10, 2014

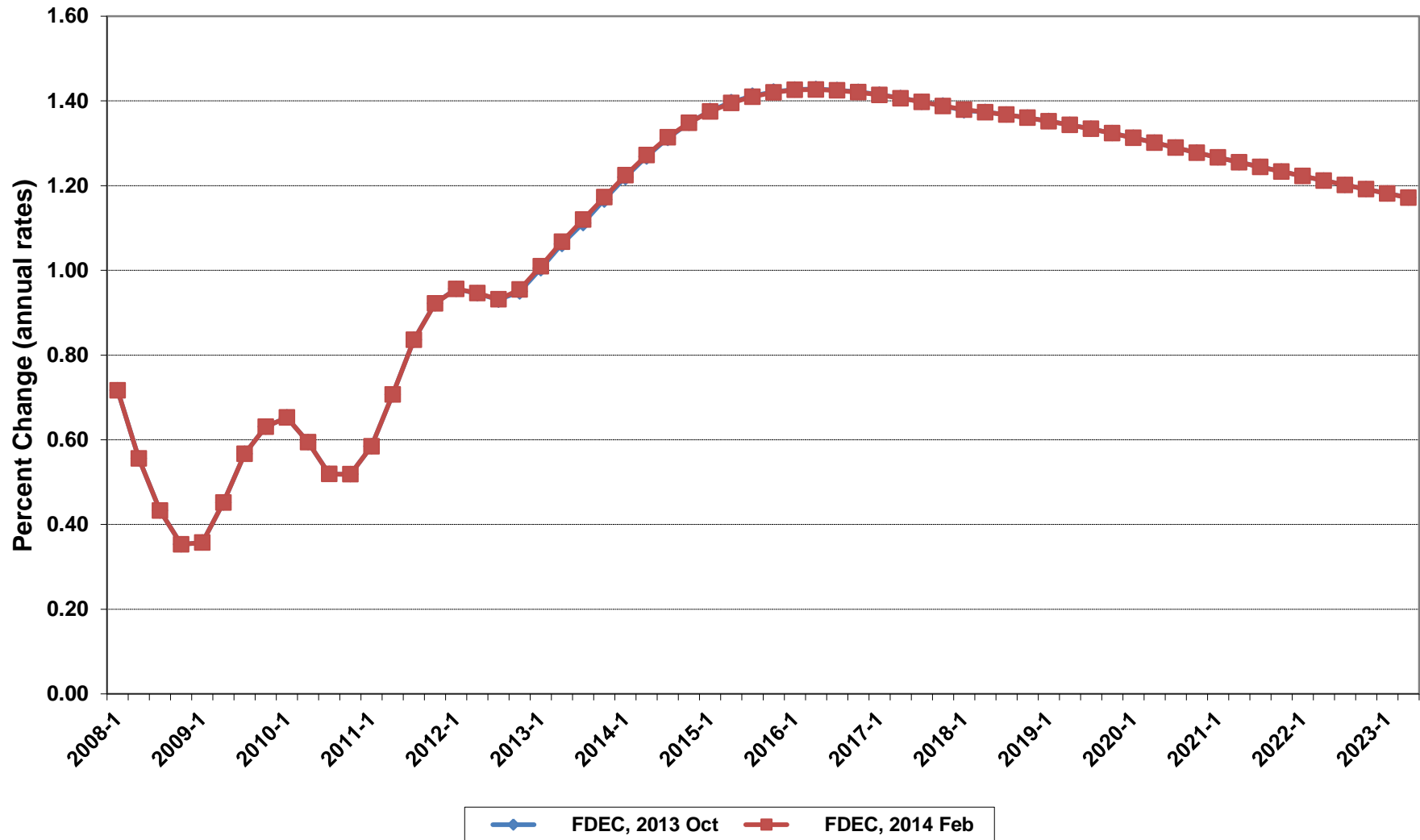
Florida Resident Population



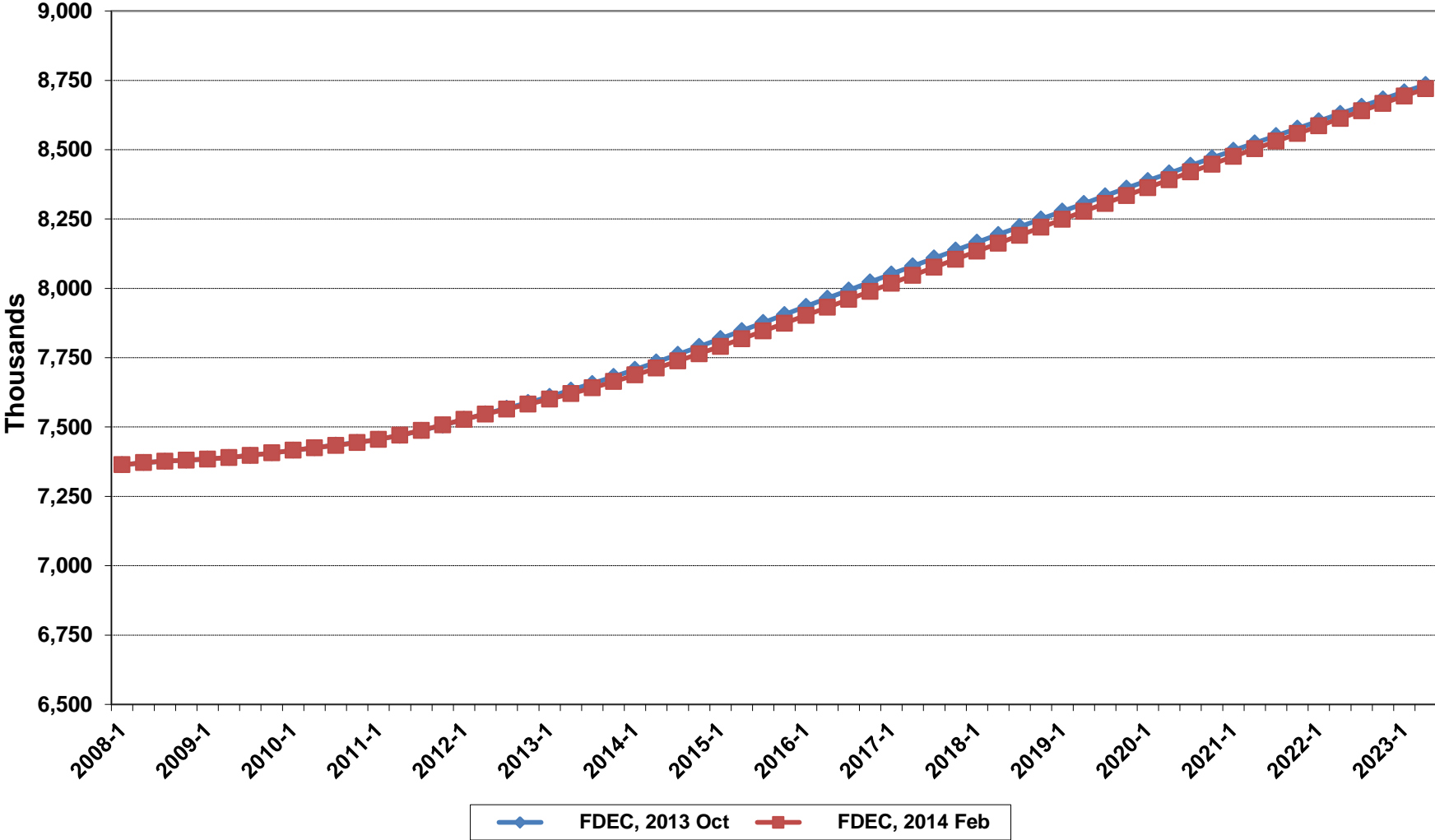
Net Change In Florida Resident Population



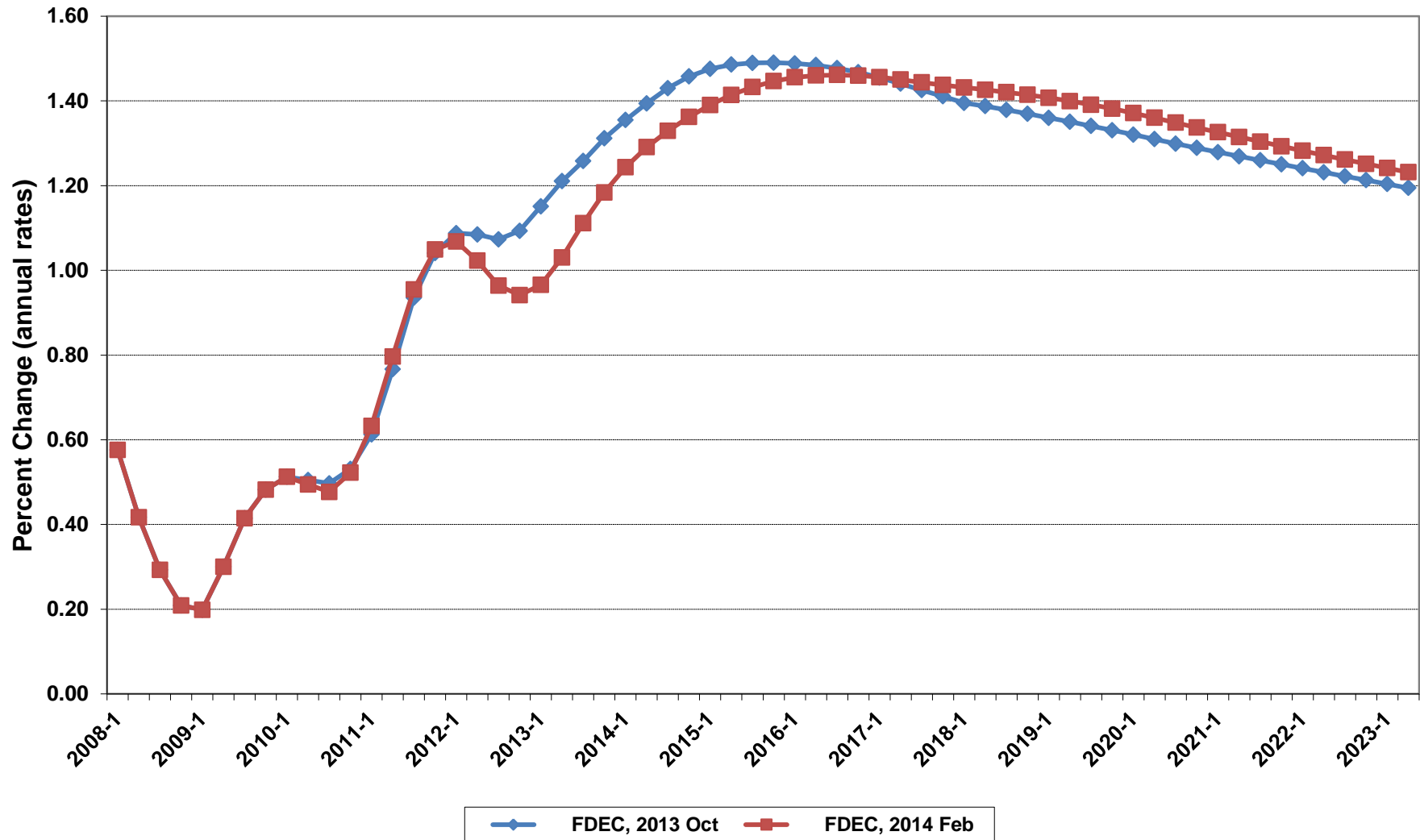
Growth In Florida Resident Population



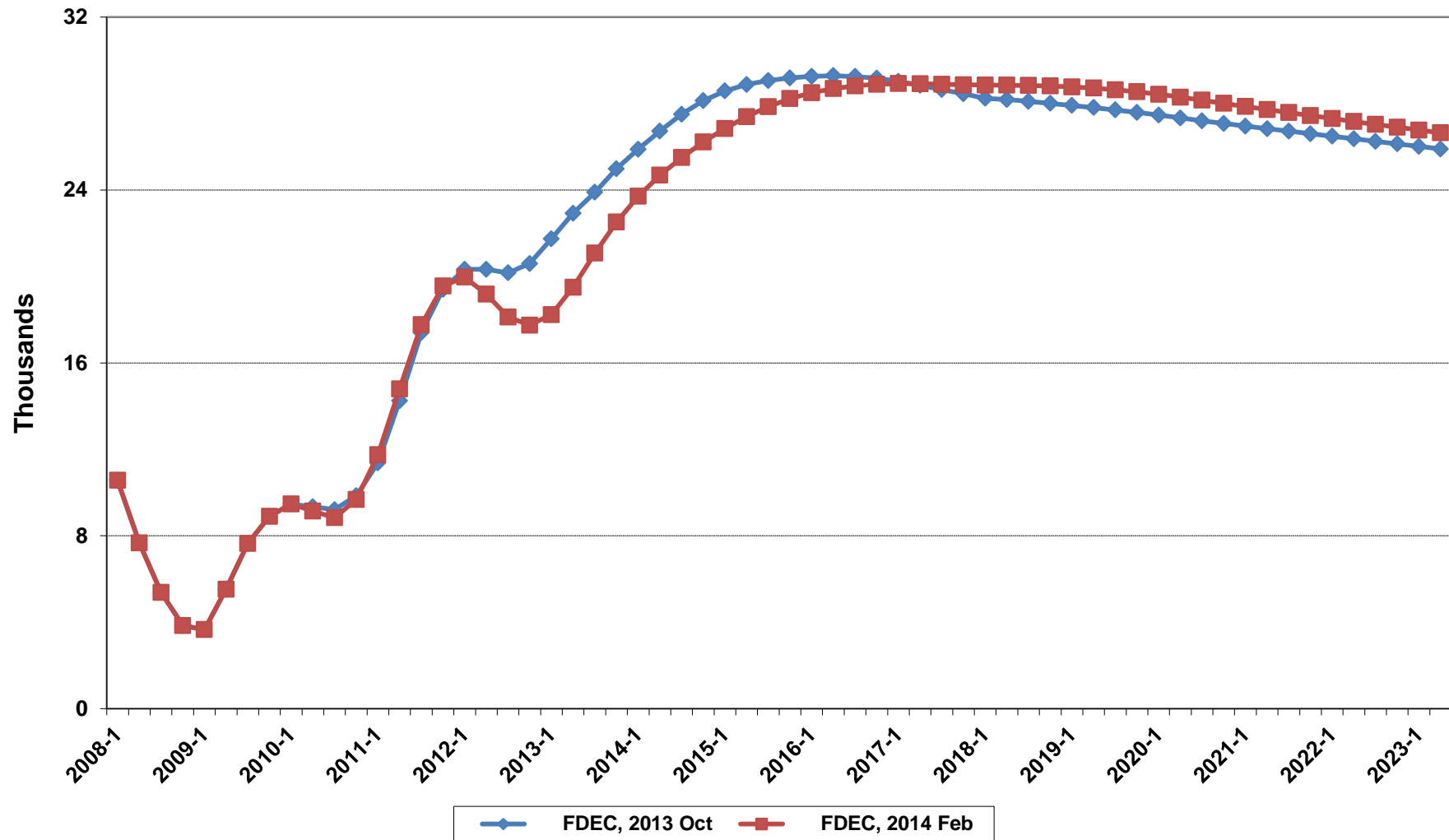
Florida Resident Households



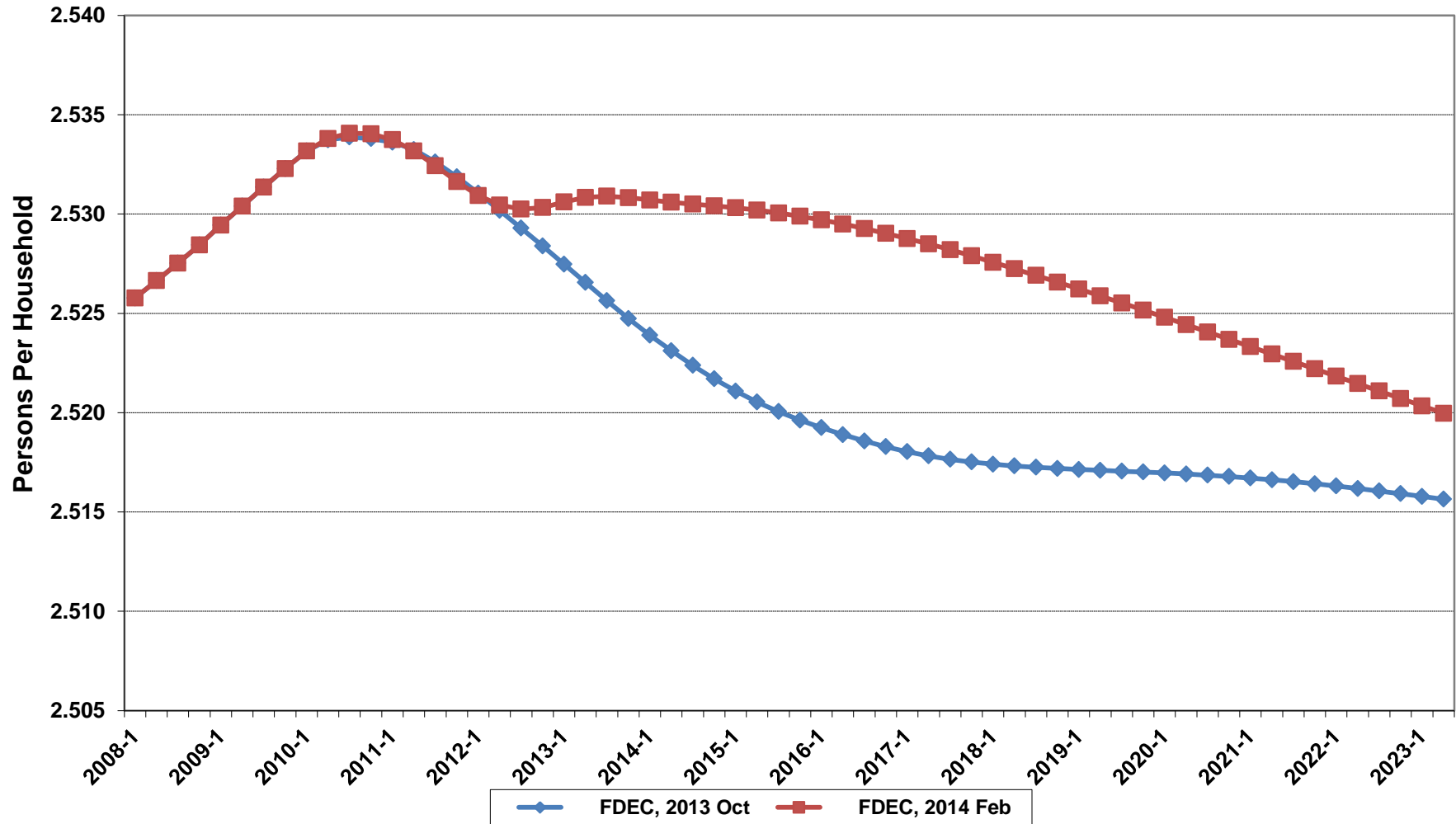
Growth In Florida Resident Households



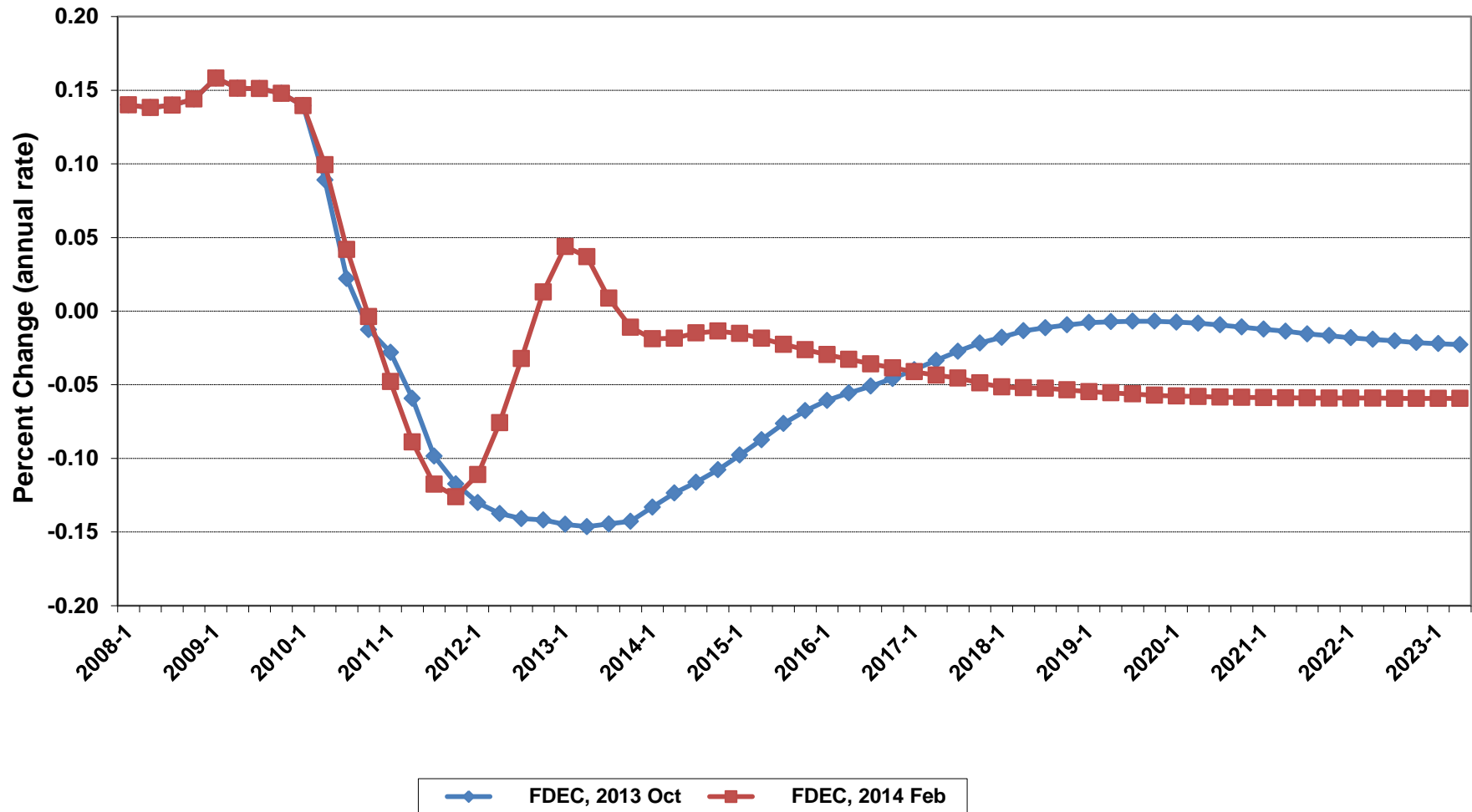
Net Change In Florida Resident Households



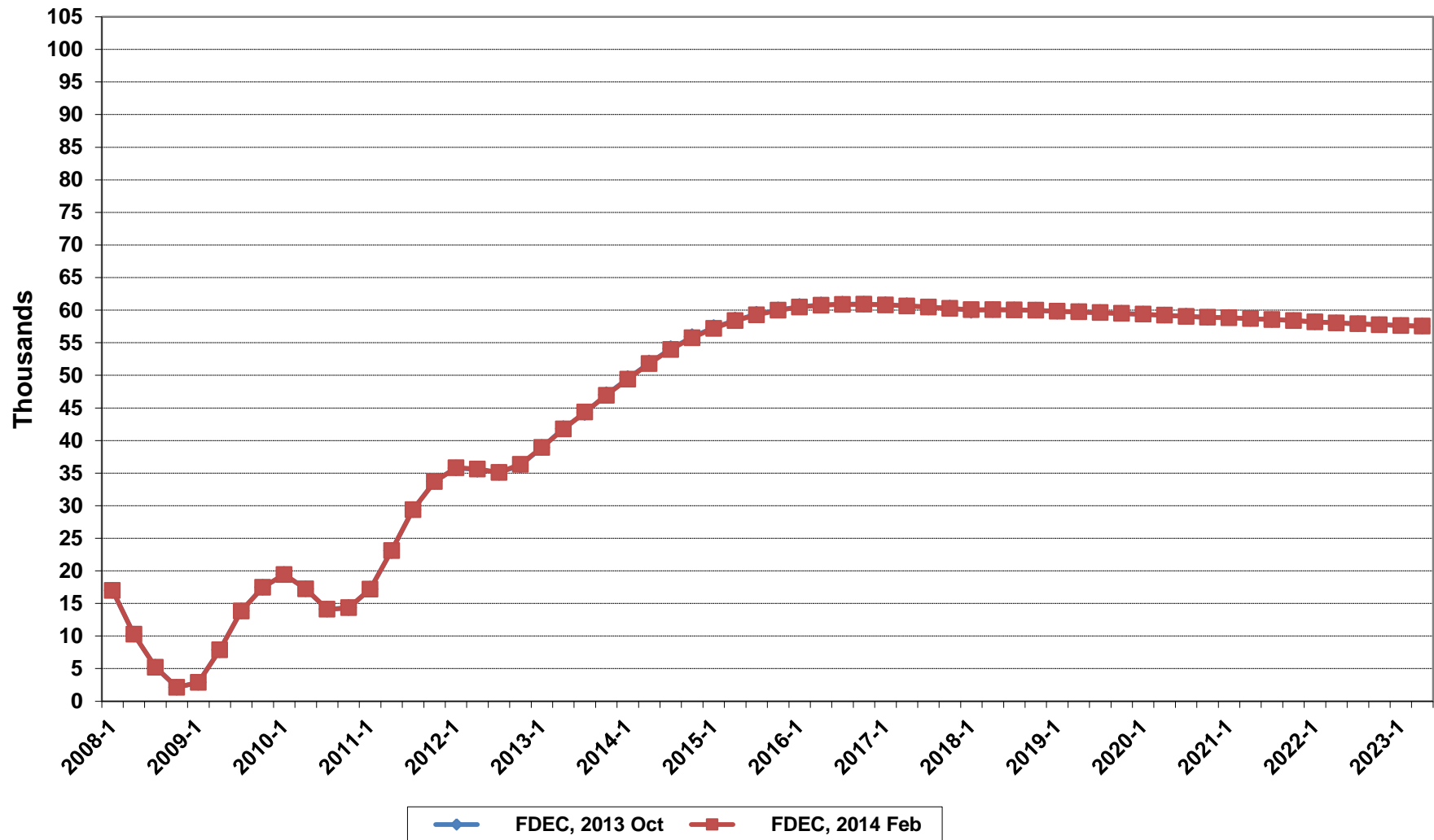
Florida Average Household Size



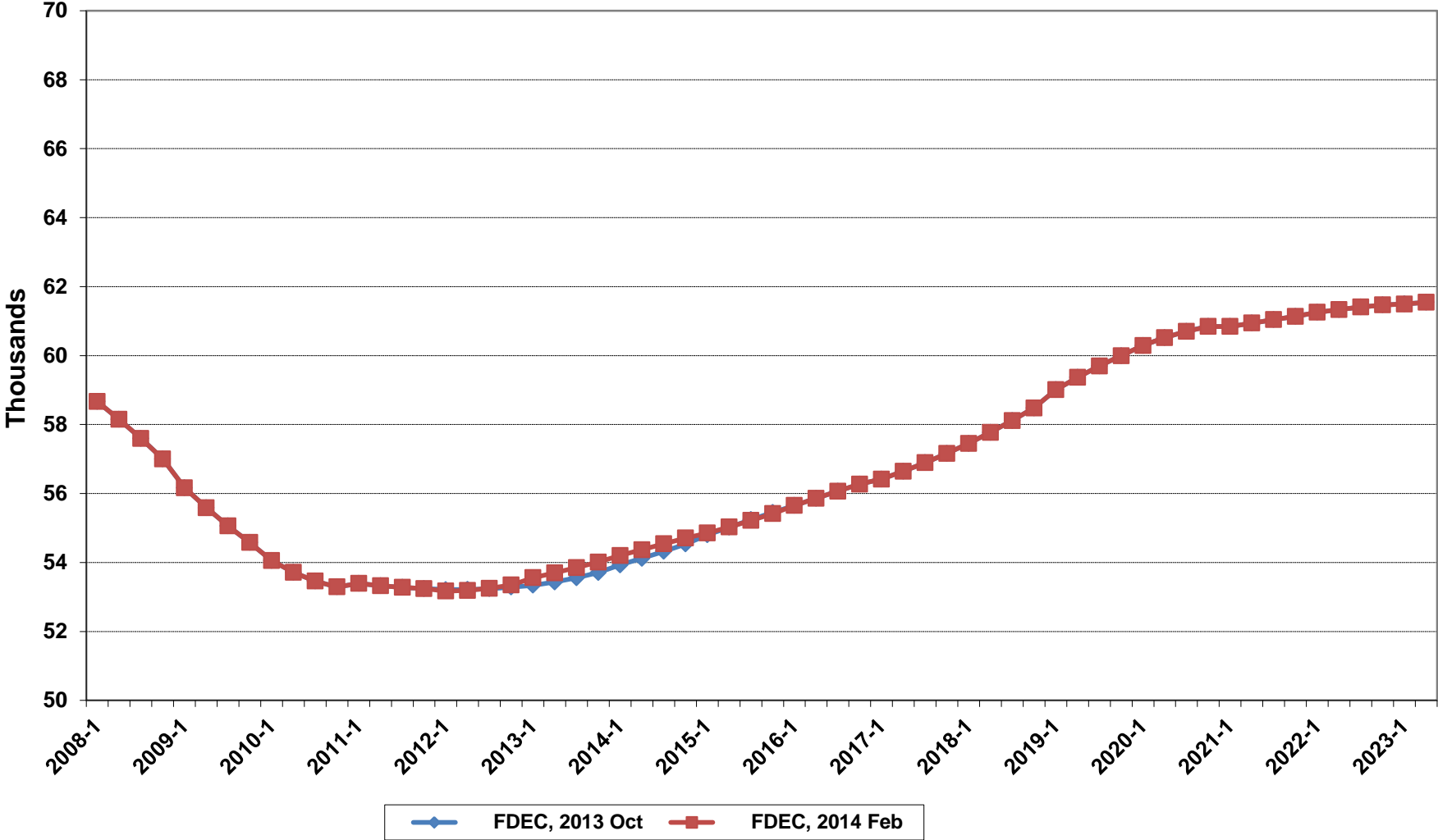
Growth In Florida Household Size



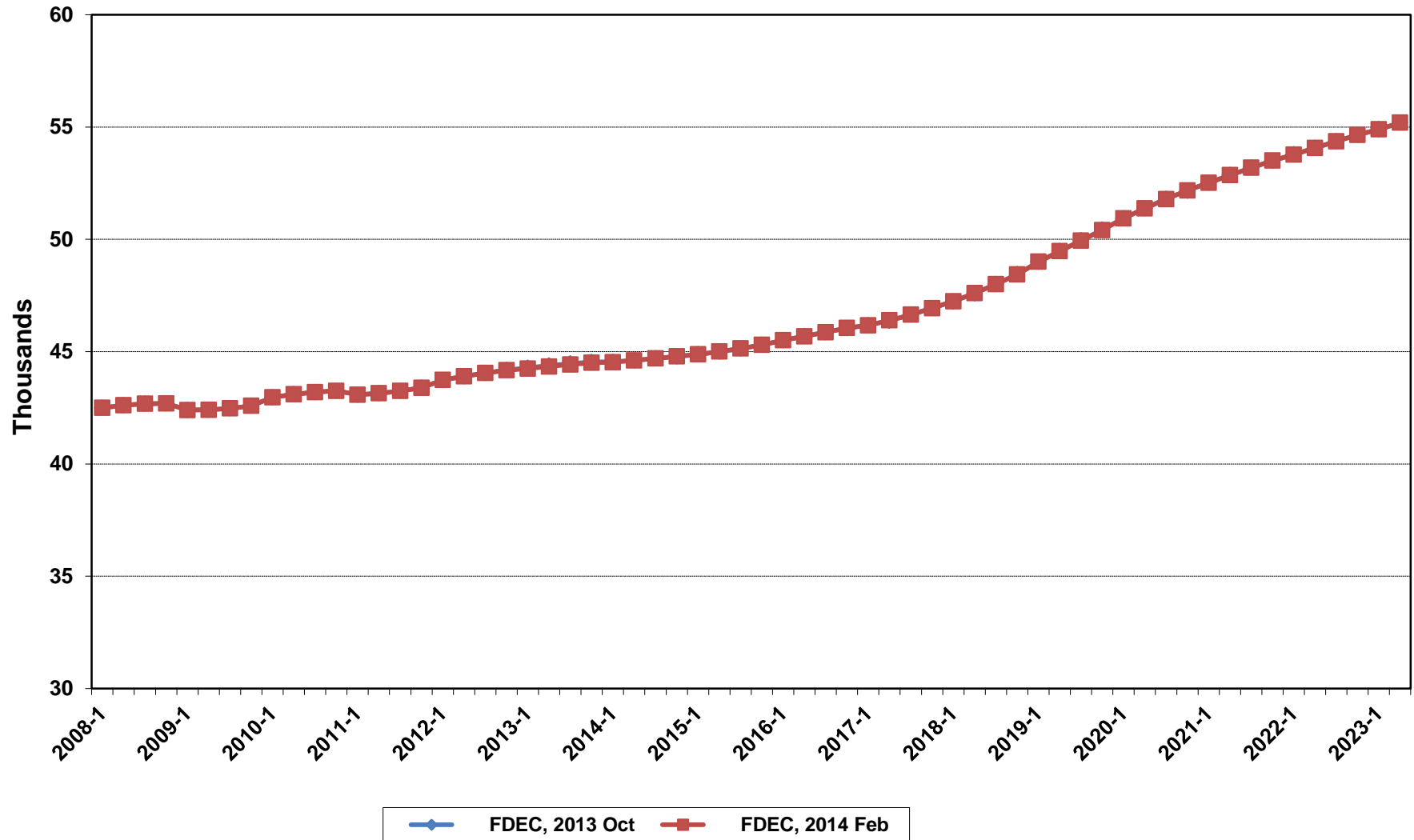
Florida Net Migration



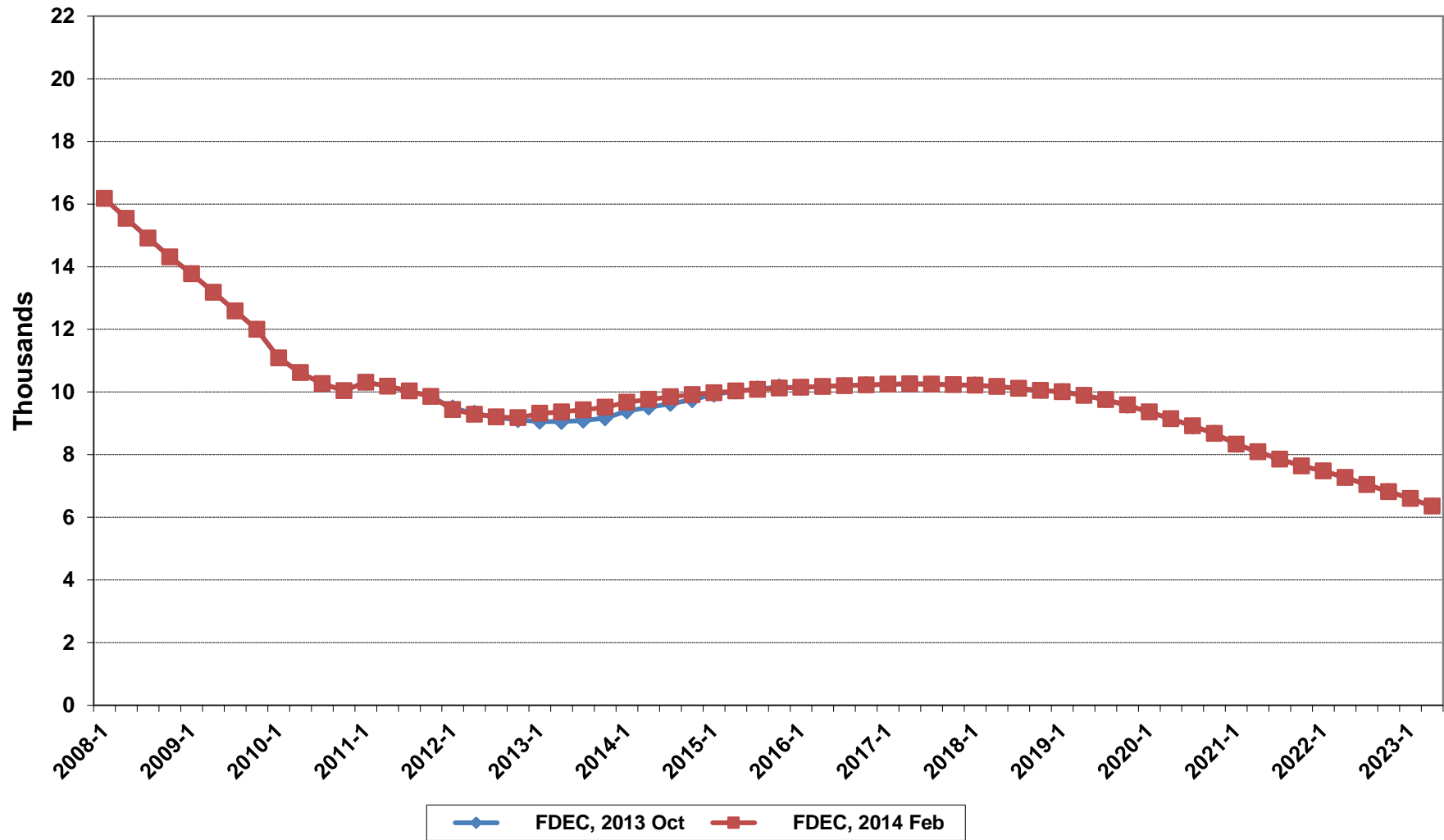
Florida Resident Births



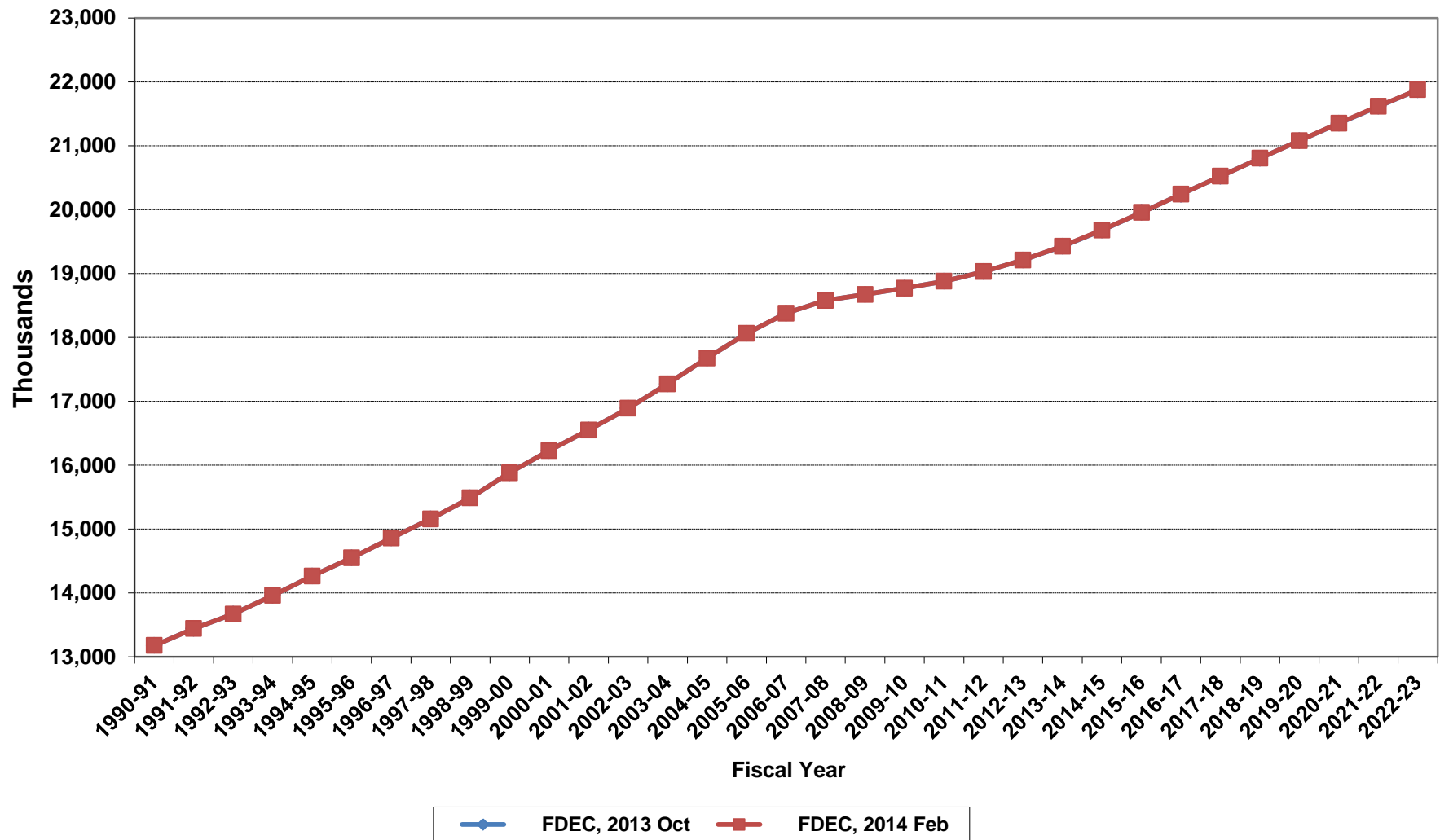
Florida Resident Deaths



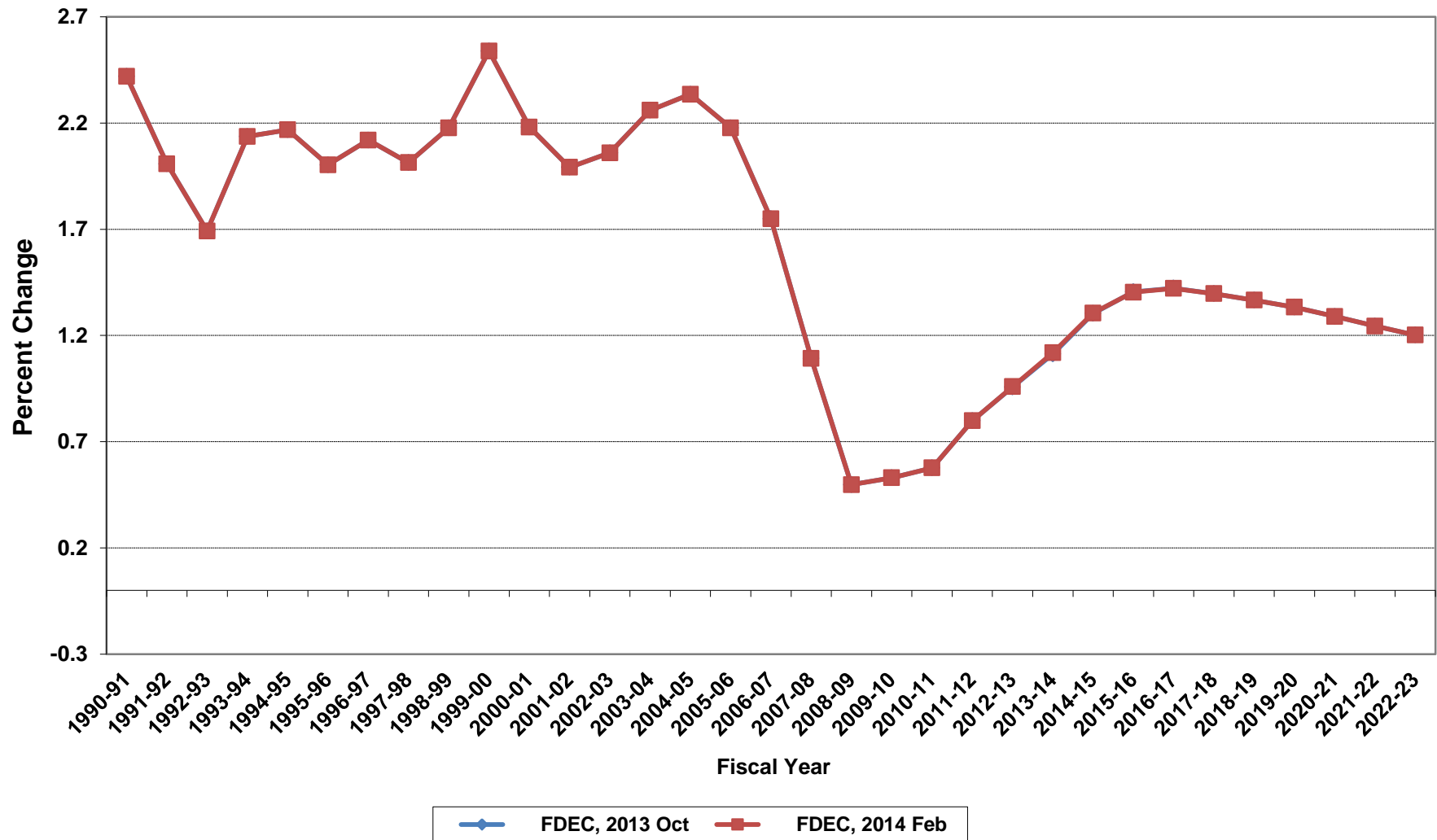
Florida Net Natural Increase



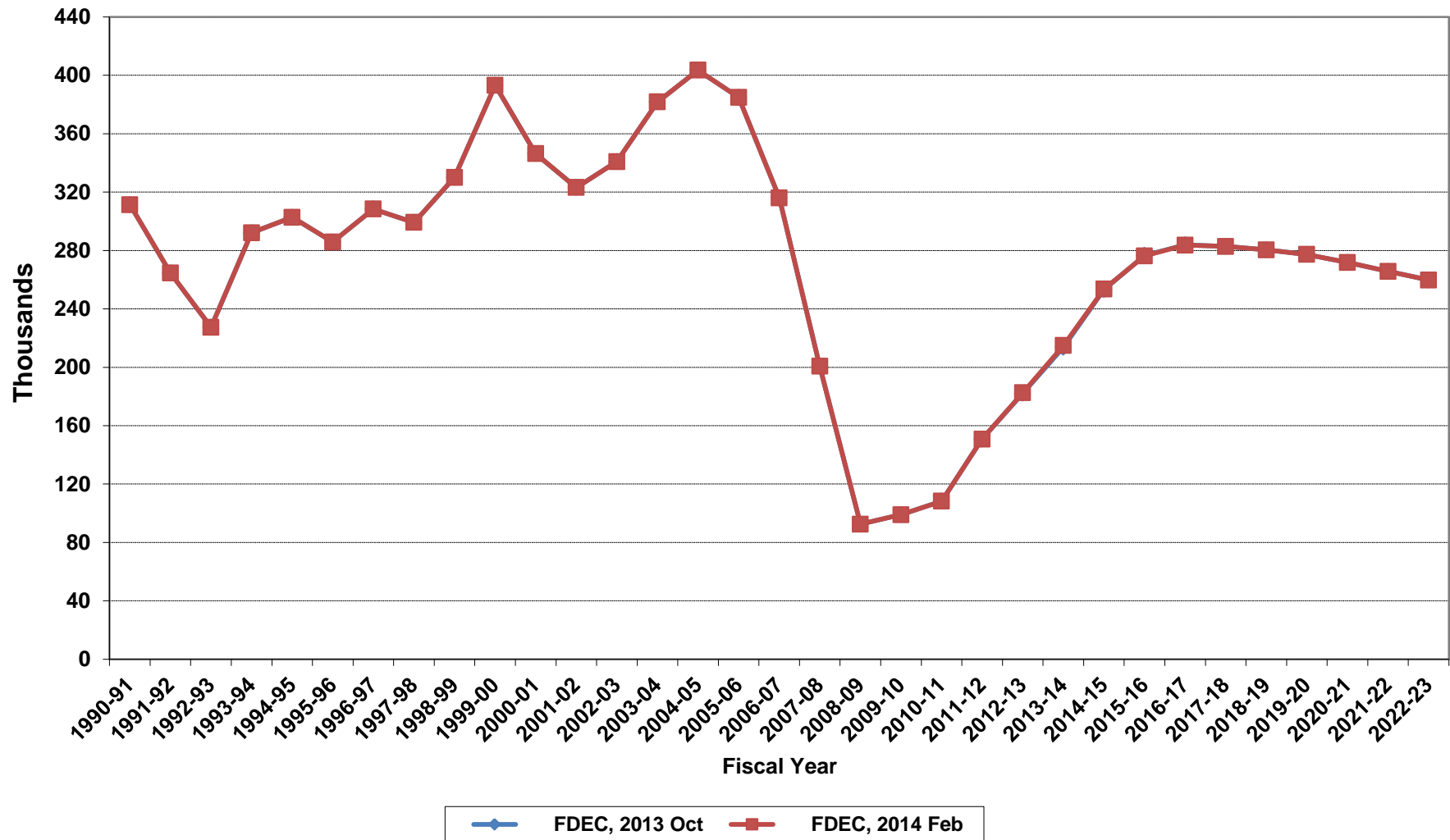
Florida Resident Population



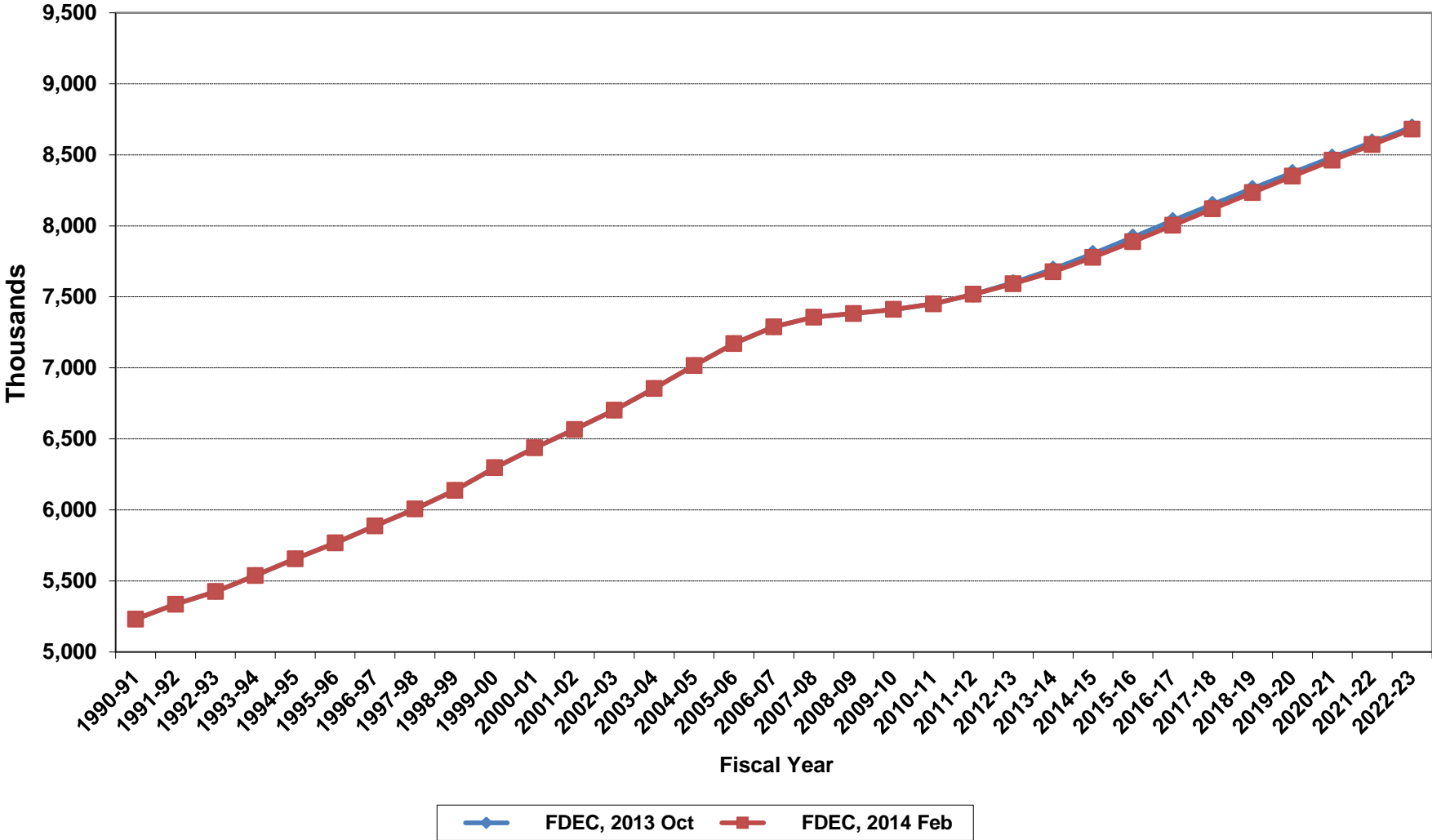
Growth In Florida Resident Population



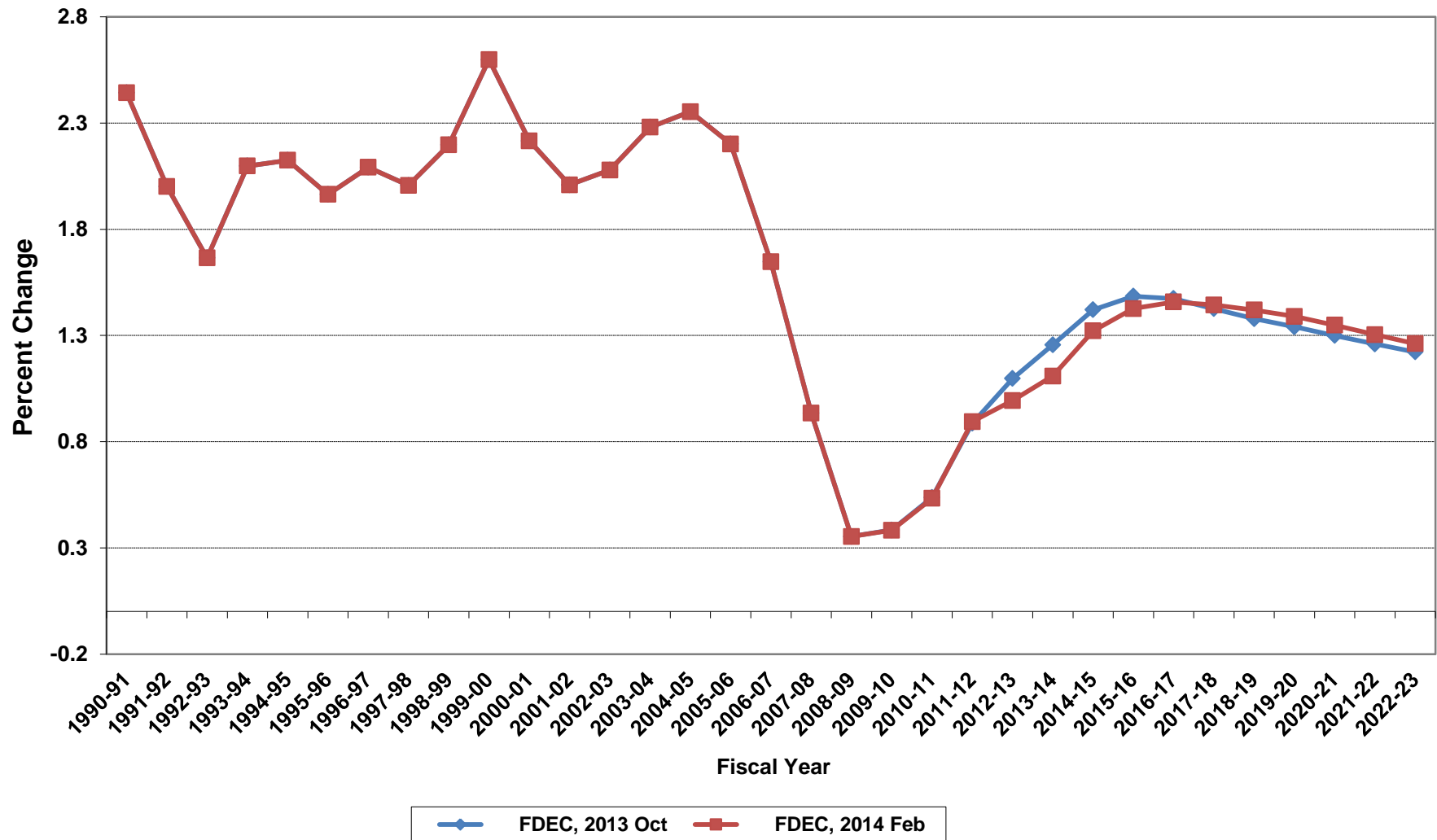
Net Change In Florida Resident Population



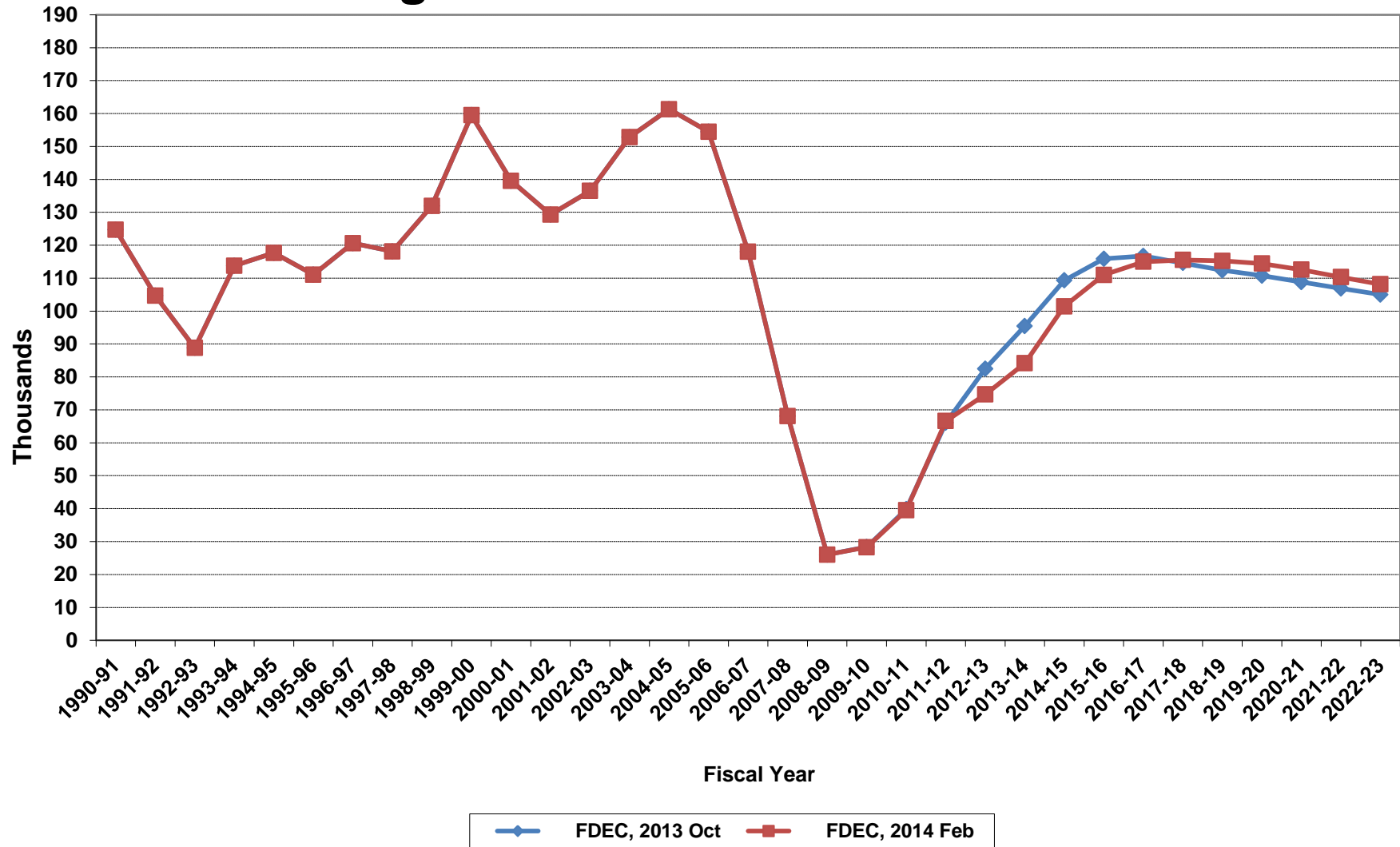
Florida Resident Households



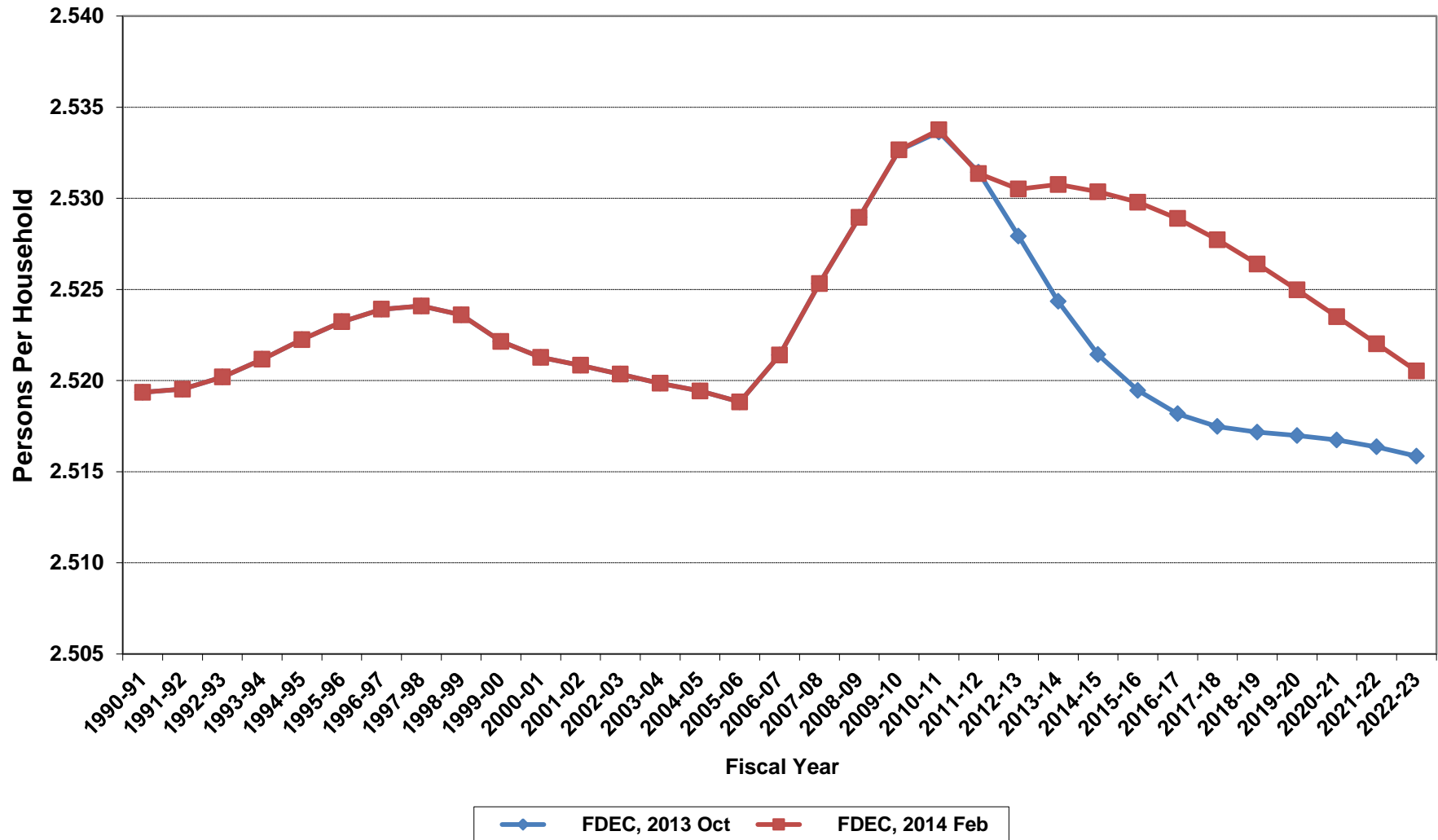
Growth In Florida Resident Households



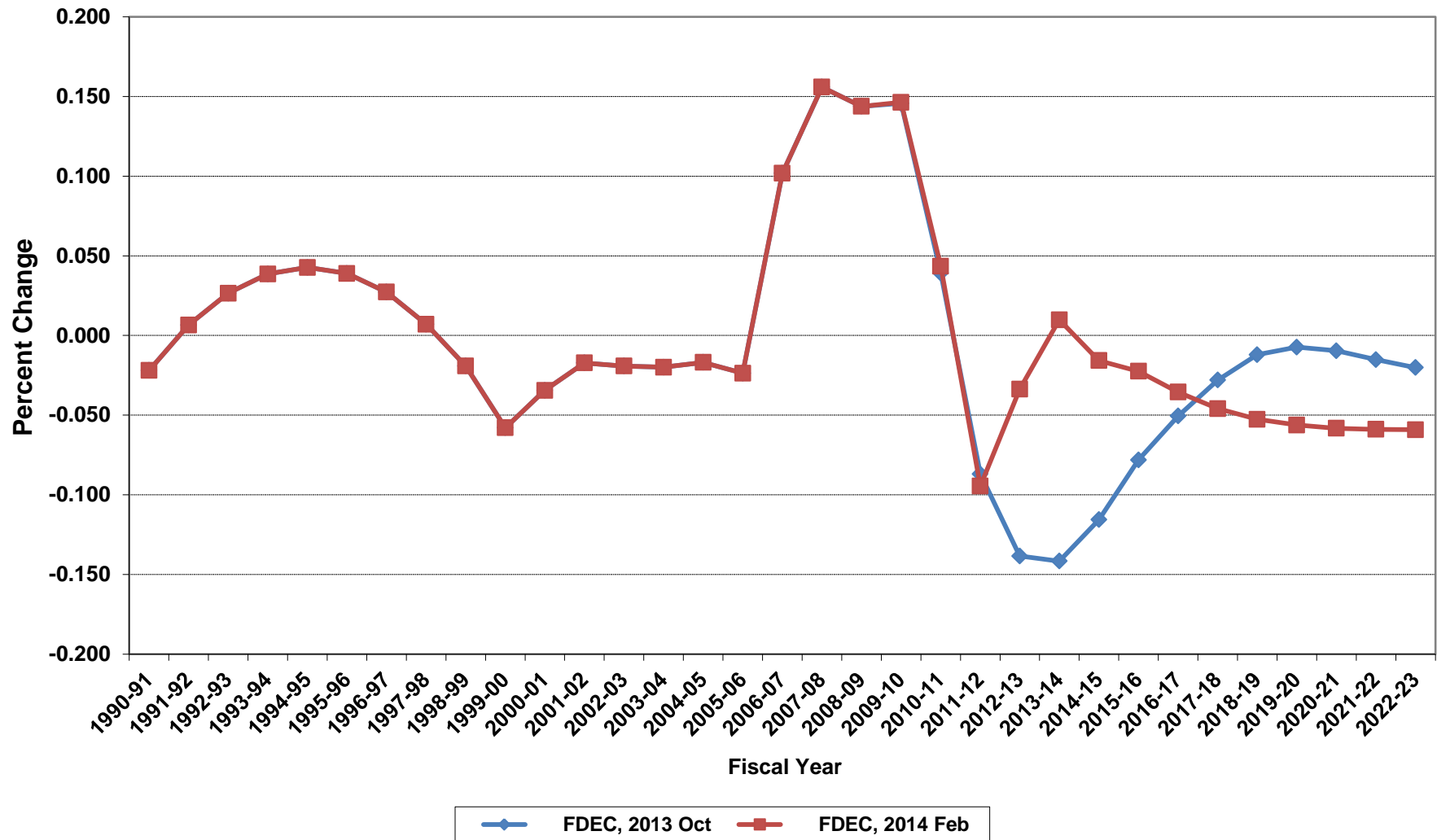
Net Change In Florida Resident Households



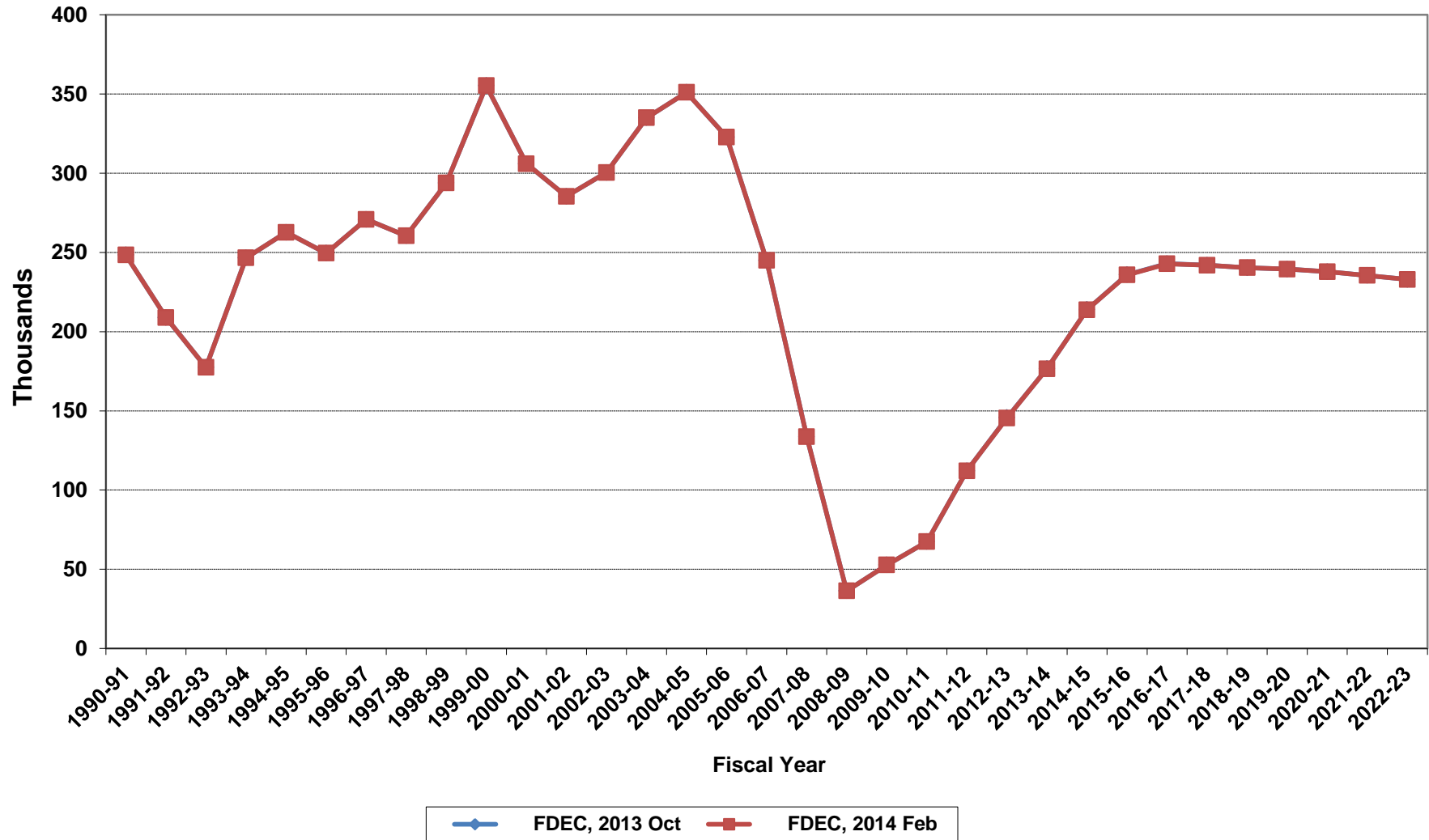
Average Florida Household Size



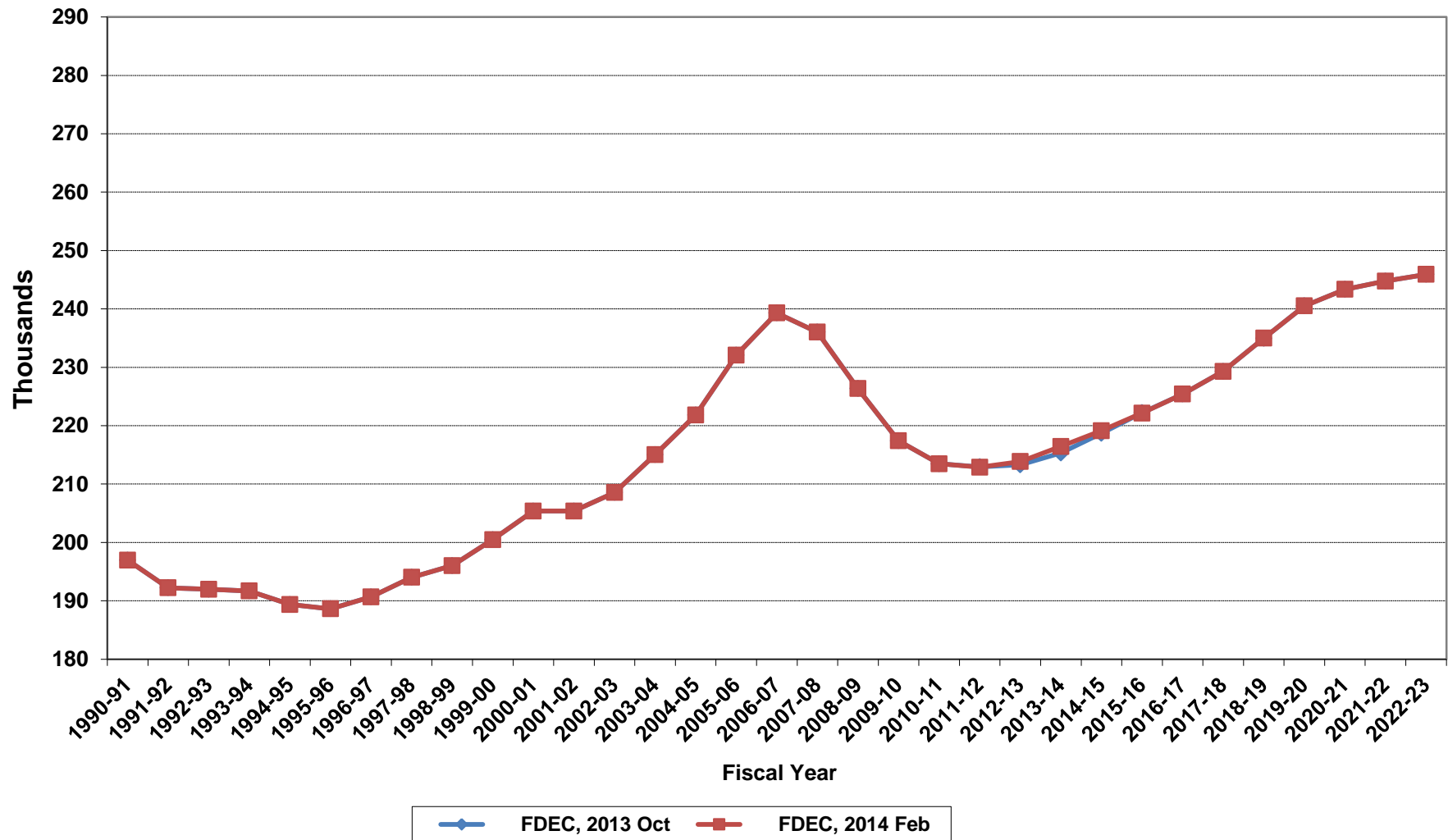
Growth In Average Florida Household Size



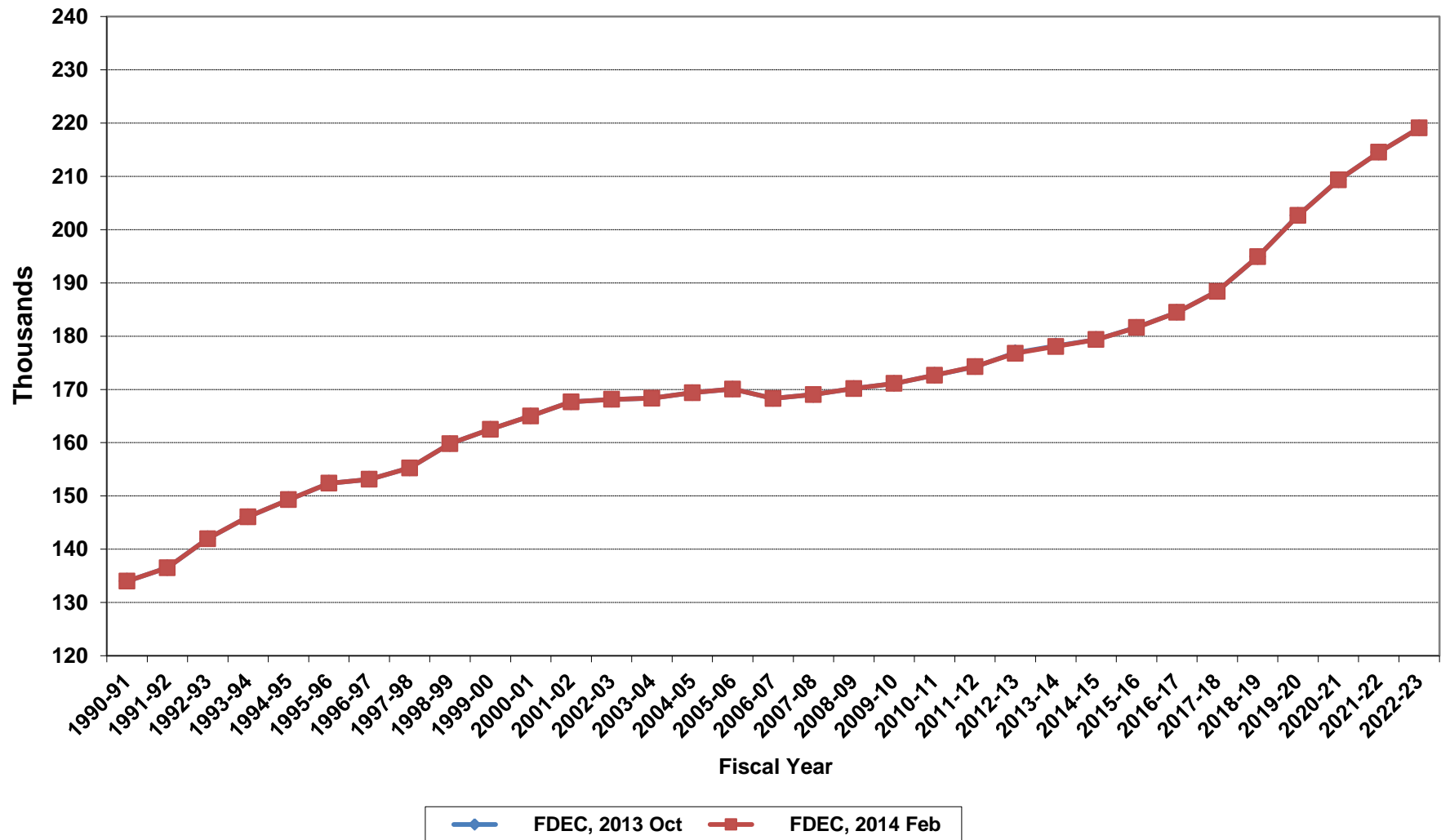
Florida Net Migration



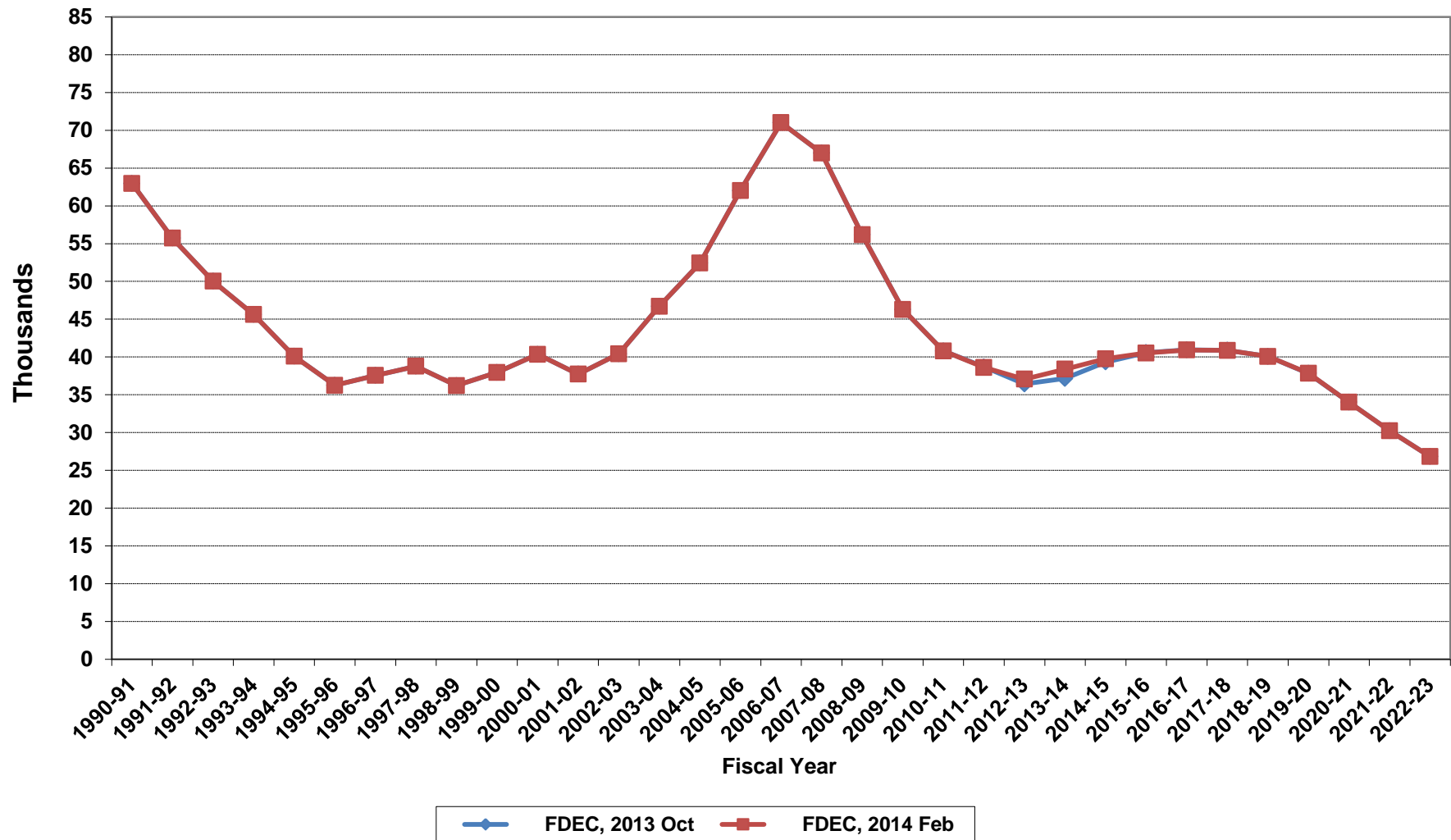
Florida Resident Live Births



Florida Resident Deaths



Florida Net Natural Increase



Florida Population and Components of Change

Fiscal Year	Population (End of Fiscal Year)	Growth Rate	Annual Change in Population	Births	Deaths	Net Natural Increase	Net Migration
1950 - 51	2,981,346	6.50%	181,931	67,486	27,670	39,816	142,115
1951 - 52	3,155,442	5.84%	174,096	72,383	28,942	43,441	130,655
1952 - 53	3,312,521	4.98%	157,079	76,954	29,761	47,193	109,886
1953 - 54	3,504,323	5.79%	191,802	82,725	31,055	51,670	140,132
1954 - 55	3,747,400	6.94%	243,077	86,643	32,176	54,467	188,610
1955 - 56	4,046,062	7.97%	298,662	92,941	34,932	58,009	240,653
1956 - 57	4,370,045	8.01%	323,983	100,990	38,269	62,721	261,262
1957 - 58	4,629,510	5.94%	259,465	105,972	41,911	64,061	195,404
1958 - 59	4,812,270	3.95%	182,760	110,409	43,674	66,735	116,025
1959 - 60	4,998,508	3.87%	186,238	114,428	46,057	68,371	117,867
1960 - 61	5,185,913	3.75%	187,405	116,449	48,388	68,061	119,344
1961 - 62	5,367,899	3.51%	181,986	116,120	50,346	65,774	116,212
1962 - 63	5,553,522	3.46%	185,623	114,709	54,453	60,256	125,367
1963 - 64	5,728,499	3.15%	174,977	115,002	56,229	58,773	116,204
1964 - 65	5,881,195	2.67%	152,696	110,515	57,734	52,781	99,915
1965 - 66	6,065,768	3.14%	184,573	104,367	61,217	43,150	141,423
1966 - 67	6,249,674	3.03%	183,906	101,209	62,577	38,632	145,274
1967 - 68	6,441,756	3.07%	192,082	100,320	66,134	34,186	157,896
1968 - 69	6,633,546	2.98%	191,790	104,286	71,285	33,001	158,789
1969 - 70	6,861,118	3.43%	227,572	111,511	73,831	37,680	189,892
1970 - 71	7,233,583	5.43%	372,465	117,012	75,354	41,658	330,807
1971 - 72	7,681,540	6.19%	447,957	113,568	79,717	33,851	414,106
1972 - 73	8,157,883	6.20%	476,343	107,804	86,232	21,572	454,771
1973 - 74	8,515,208	4.38%	357,325	109,366	88,459	20,907	336,418
1974 - 75	8,648,587	1.57%	133,379	108,686	87,224	21,462	111,917
1975 - 76	8,782,975	1.55%	134,388	104,022	88,129	15,893	118,495
1976 - 77	8,972,678	2.16%	189,703	107,623	90,443	17,180	172,523
1977 - 78	9,225,527	2.82%	252,849	112,268	93,383	18,885	233,964
1978 - 79	9,523,728	3.23%	298,201	116,393	96,801	19,592	278,609
1979 - 80	9,914,652	4.10%	390,924	126,673	101,048	25,625	365,299
1980 - 81	10,212,969	3.01%	298,317	135,560	107,562	27,998	270,319
1981 - 82	10,492,851	2.74%	279,882	141,593	108,644	32,949	246,933
1982 - 83	10,748,466	2.44%	255,615	146,853	110,497	36,356	219,259
1983 - 84	11,065,911	2.95%	317,445	151,748	113,939	37,809	279,636
1984 - 85	11,405,533	3.07%	339,622	159,819	117,539	42,280	297,342
1985 - 86	11,740,069	2.93%	334,536	165,857	122,453	43,404	291,132
1986 - 87	12,083,241	2.92%	343,172	170,819	124,946	45,873	297,299
1987 - 88	12,410,339	2.71%	327,098	179,541	129,413	50,128	276,970
1988 - 89	12,723,719	2.53%	313,380	188,390	131,992	56,398	256,982
1989 - 90	13,017,296	2.31%	293,577	197,181	132,503	64,678	228,899
1990 - 91	13,326,892	2.38%	309,596	197,180	134,093	63,087	246,509
1991 - 92	13,552,021	1.69%	225,129	191,810	136,280	55,530	169,599
1992 - 93	13,802,571	1.85%	250,550	192,051	142,087	49,964	200,586
1993 - 94	14,120,323	2.30%	317,752	191,840	146,101	45,739	272,013
1994 - 95	14,406,418	2.03%	286,095	189,292	149,161	40,131	245,964
1995 - 96	14,701,040	2.05%	294,622	188,584	152,570	36,014	258,608
1996 - 97	15,012,615	2.12%	311,575	190,587	153,067	37,520	274,055
1997 - 98	15,310,069	1.98%	297,454	194,242	155,080	39,162	258,292
1998 - 99	15,680,164	2.42%	370,095	195,897	159,988	35,909	334,186
1999 - 00	16,069,889	2.49%	389,725	200,302	162,489	37,813	351,912
2000 - 01	16,385,615	1.96%	315,726	205,798	164,919	40,879	274,847
2001 - 02	16,718,076	2.03%	332,461	205,164	167,812	37,352	295,109
2002 - 03	17,074,258	2.13%	356,182	208,403	168,079	40,324	315,858
2003 - 04	17,475,944	2.35%	401,686	215,298	168,302	46,996	354,690
2004 - 05	17,876,215	2.29%	400,271	221,533	169,302	52,231	348,040
2005 - 06	18,236,885	2.02%	360,670	232,019	170,303	61,716	298,954
2006 - 07	18,501,231	1.45%	264,346	239,635	168,117	71,518	192,828
2007 - 08	18,636,837	0.73%	135,606	236,065	168,966	67,099	68,507
2008 - 09	18,711,844	0.40%	75,007	226,337	170,615	55,722	19,285
2009 - 10	18,826,474	0.61%	114,630	217,408	171,122	46,286	68,344
2010 - 11	18,941,808	0.61%	115,334	213,466	172,661	40,805	74,529

Florida Population and Components of Change

Fiscal Year	Population (End of Fiscal Year)	Growth Rate	Annual Change in Population	Births	Deaths	Net Natural Increase	Net Migration
2011 - 12	19,118,704	0.93%	176,896	212,880	174,271	38,609	138,287
2012 - 13	19,311,990	1.01%	193,286	213,853	176,792	37,061	156,225
2013 - 14	19,548,031	1.22%	236,041	216,438	178,059	38,379	197,662
2014 - 15	19,816,176	1.37%	268,145	219,126	179,361	39,765	228,380
2015 - 16	20,098,257	1.42%	282,081	222,145	181,620	40,525	241,556
2016 - 17	20,382,303	1.41%	284,046	225,399	184,469	40,930	243,116
2017 - 18	20,663,699	1.38%	281,396	229,283	188,419	40,864	240,532
2018 - 19	20,942,987	1.35%	279,288	234,971	194,908	40,063	239,225
2019 - 20	21,217,866	1.31%	274,879	240,504	202,664	37,840	237,039
2020 - 21	21,486,573	1.27%	268,707	243,335	209,327	34,008	234,699
2021 - 22	21,749,244	1.22%	262,671	244,764	214,533	30,231	232,440
2022 - 23	22,006,184	1.18%	256,940	245,913	219,098	26,815	230,125
2023 - 24	22,257,706	1.14%	251,522	246,580	223,906	22,674	228,848
2024 - 25	22,504,113	1.11%	246,407	247,185	229,295	17,890	228,517
2025 - 26	22,745,650	1.07%	241,537	248,342	234,962	13,380	228,157
2026 - 27	22,982,362	1.04%	236,712	250,171	240,649	9,522	227,190
2027 - 28	23,214,312	1.01%	231,950	251,746	246,197	5,549	226,401
2028 - 29	23,441,585	0.98%	227,273	252,714	251,668	1,046	226,227
2029 - 30	23,664,202	0.95%	222,617	253,351	256,870	-3,519	226,136