

**Demographic Estimating Conference  
Executive Summary  
November 5, 2014**

The Demographic Estimating Conference met on November 5, 2014 to adopt a new population forecast. The data reflect a final April 1, 2014 population estimate and other recent demographic and economic-related data. Overall, each year of the forecast was slightly increased relative to July’s conference projections. April 1, 2014’s population estimate was 19,507,369 up 3,528 from July’s conference estimate.

Population growth in Florida continues to strengthen but—relative to Florida’s past trends—at low levels and rates of growth. Historically, Florida’s population growth has been driven by net migration (more people permanently moving into the state than leaving). However, net migration fell to record low levels during much of 2008 and into 2009, accounting for 25.7% of population growth during FY 2008-09. During that time period, natural increase (births minus deaths) actually exceeded net migration. Net migration includes both domestic and international migration and it was primarily the domestic migration component that led to the slowdown in population growth. The low levels of net migration were largely due to national economic conditions, including weakened housing markets and other effects from the Great Recession that made it difficult for people in the US to relocate to Florida. Reflecting migration’s return as a decisive factor, the expected net migration share of Florida’s FY 2013-14 population growth is 86.0%.

Florida’s population grew by 247,826 (1.29%) between April 1, 2013 and April 1, 2014, the strongest increase seen since 2007. Annual population change is expected to reach 286,735 net new residents (1.39%) in 2015 --- and between 2015 and 2020, annual population change is expected to remain above 280,000 net new residents per year.

<b>April 1</b>	<b>Population</b>	<b>Percent Change</b>	<b>Change</b>
2012	19,074,434	0.90%	169,364
2013	19,259,543	0.97%	185,109
2014	19,507,369	1.29%	247,826
2015	19,779,196	1.39%	271,827
2016	20,065,931	1.45%	286,735
2017	20,355,635	1.44%	289,704
2018	20,642,241	1.41%	286,606
2019	20,927,309	1.38%	285,068
2020	21,209,371	1.35%	282,062

Between April 1, 2010 and April 1, 2020, population growth is expected to average 240,804 net new residents per year, representing a compound growth rate of 1.2% over this 10-year time horizon. These increases are analogous to adding a city the size of Hialeah every year. By 2016, Florida’s population is expected to break the 20-million mark.

Of note, the population estimates developed by the U.S. Census Bureau continue to be higher than the official state estimates adopted by the Demographic Estimating Conference. As of July 1, 2013, this difference was approaching 250,000 persons. It is likely that at least part this difference may be attributable to noise introduced by discrepancies in federal income tax return filings, a primary domestic migration data source for the Census Bureau. The Legislative Office of Economic and Demographic Research is continuing to work with the Census Bureau to investigate this further.

# **Florida Demographic Estimating Conference**

## **Tables**

Conference Packet

**November 5, 2014**

# Florida Resident Population

April 1

Year	Florida Demographic Estimating Conference July 2014			Florida Demographic Estimating Conference November 2014		
	Population	% Change	Change	Population	% Change	Change
1990	12,938,071	2.27%	287,136	12,938,071	2.27%	287,136
1991	13,258,732	2.48%	320,661	13,258,732	2.48%	320,661
1992	13,497,541	1.80%	238,809	13,497,541	1.80%	238,809
1993	13,730,115	1.72%	232,574	13,730,115	1.72%	232,574
1994	14,043,757	2.28%	313,642	14,043,757	2.28%	313,642
1995	14,335,992	2.08%	292,235	14,335,992	2.08%	292,235
1996	14,623,421	2.00%	287,429	14,623,421	2.00%	287,429
1997	14,938,314	2.15%	314,893	14,938,314	2.15%	314,893
1998	15,230,421	1.96%	292,107	15,230,421	1.96%	292,107
1999	15,580,244	2.30%	349,823	15,580,244	2.30%	349,823
2000	15,982,824	2.58%	402,580	15,982,824	2.58%	402,580
2001	16,305,100	2.02%	322,276	16,305,100	2.02%	322,276
2002	16,634,256	2.02%	329,156	16,634,256	2.02%	329,156
2003	16,979,706	2.08%	345,450	16,979,706	2.08%	345,450
2004	17,374,824	2.33%	395,118	17,374,824	2.33%	395,118
2005	17,778,156	2.32%	403,332	17,778,156	2.32%	403,332
2006	18,154,475	2.12%	376,319	18,154,475	2.12%	376,319
2007	18,446,768	1.61%	292,293	18,446,768	1.61%	292,293
2008	18,613,905	0.91%	167,137	18,613,905	0.91%	167,137
2009	18,687,425	0.39%	73,520	18,687,425	0.39%	73,520
2010	18,801,332	0.61%	113,885	18,801,332	0.61%	113,907
2011	18,905,070	0.55%	103,738	18,905,070	0.55%	103,738
2012	19,074,434	0.90%	169,364	19,074,434	0.90%	169,364
2013	19,259,543	0.97%	185,109	19,259,543	0.97%	185,109
2014	19,503,841	1.27%	244,298	19,507,369	1.29%	247,826
Begins forecast						
2015	19,769,010	1.36%	265,169	19,779,196	1.39%	271,827
2016	20,051,547	1.43%	282,537	20,065,931	1.45%	286,735
2017	20,338,444	1.43%	286,897	20,355,635	1.44%	289,704
2018	20,622,557	1.40%	284,113	20,642,241	1.41%	286,606
2019	20,905,243	1.37%	282,686	20,927,309	1.38%	285,068
5-Year Averages			5-Year Averages			
2020	21,185,476	1.39%	283,293	21,209,371	1.41%	286,035
2025	22,528,663	1.24%	268,637	22,551,073	1.23%	268,340
2030	23,785,174	1.09%	251,302	23,805,958	1.09%	250,977
2035	24,921,699	0.94%	227,305	24,940,769	0.94%	226,962
2040	25,970,488	0.83%	209,758	25,987,899	0.83%	209,426

# Florida Resident Households

April 1

Year	Florida Demographic Estimating Conference July 2014			Florida Demographic Estimating Conference November 2014		
	Households	% Change	Change	Households	% Change	Change
1990	5,134,869	3.40%	168,985	5,134,869	3.40%	168,985
1991	5,283,154	2.89%	148,285	5,283,154	2.89%	148,285
1992	5,378,499	1.80%	95,345	5,378,499	1.80%	95,345
1993	5,478,476	1.86%	99,977	5,478,476	1.86%	99,977
1994	5,589,093	2.02%	110,617	5,589,093	2.02%	110,617
1995	5,697,328	1.94%	108,235	5,697,328	1.94%	108,235
1996	5,806,031	1.91%	108,703	5,806,031	1.91%	108,703
1997	5,929,613	2.13%	123,582	5,929,613	2.13%	123,582
1998	6,040,514	1.87%	110,901	6,040,514	1.87%	110,901
1999	6,182,346	2.35%	141,832	6,182,346	2.35%	141,832
2000	6,338,075	2.52%	155,729	6,338,075	2.52%	155,729
2001	6,467,215	2.04%	129,140	6,467,215	2.04%	129,140
2002	6,599,035	2.04%	131,820	6,599,035	2.04%	131,820
2003	6,737,370	2.10%	138,335	6,737,370	2.10%	138,335
2004	6,895,469	2.35%	158,099	6,895,469	2.35%	158,099
2005	7,056,889	2.34%	161,420	7,056,889	2.34%	161,420
2006	7,207,645	2.14%	150,756	7,207,645	2.14%	150,756
2007	7,312,907	1.46%	105,262	7,312,907	1.46%	105,262
2008	7,368,319	0.76%	55,412	7,368,319	0.76%	55,412
2009	7,386,570	0.25%	18,251	7,386,570	0.25%	18,251
2010	7,420,812	0.46%	34,242	7,420,812	0.46%	34,242
2011	7,461,978	0.55%	41,166	7,461,978	0.55%	41,166
2012	7,537,442	1.01%	75,464	7,537,442	1.01%	75,464
2013	7,610,153	0.96%	72,711	7,610,153	0.96%	72,711
Begins forecast						
2014	7,707,069	1.27%	96,916	7,708,463	1.29%	98,310
2015	7,813,025	1.37%	105,956	7,817,051	1.41%	108,588
2016	7,926,748	1.46%	113,723	7,932,434	1.48%	115,383
2017	8,043,261	1.47%	116,513	8,050,060	1.48%	117,626
2018	8,159,577	1.45%	116,316	8,167,365	1.46%	117,305
2019	8,275,852	1.43%	116,275	8,284,587	1.44%	117,222
			5-Year Averages			
2020	8,391,574	1.44%	115,710	8,401,039	1.45%	116,798
2025	8,950,003	1.30%	111,686	8,958,906	1.29%	111,573
2030	9,477,223	1.15%	105,444	9,485,504	1.15%	105,320
2035	9,959,542	1.00%	96,464	9,967,163	1.00%	96,332
2040	10,409,475	0.89%	89,987	10,416,454	0.89%	89,858

Quarterly Data Table

QUARTERLY FORECAST TABLES

	<u>2008-1</u>	<u>2008-2</u>	<u>2008-3</u>	<u>2008-4</u>	<u>2009-1</u>	<u>2009-2</u>	<u>2009-3</u>	<u>2009-4</u>	<u>2010-1</u>	<u>2010-2</u>	<u>2010-3</u>	<u>2010-4</u>	<u>2011-1</u>	<u>2011-2</u>	<u>2011-3</u>	<u>2011-4</u>	<u>2012-1</u>
Population																	
FDEC, 2014 July	18,599.6	18,625.4	18,645.5	18,661.9	18,678.6	18,699.6	18,726.1	18,755.5	18,786.1	18,814.0	18,838.5	18,862.9	18,890.3	18,923.5	18,962.9	19,006.4	19,051.7
FDEC, 2014 Nov	18,599.6	18,625.4	18,645.5	18,661.9	18,678.6	18,699.6	18,726.1	18,755.5	18,786.1	18,814.0	18,838.5	18,862.9	18,890.3	18,923.5	18,963.0	19,006.5	19,051.7
Population Growth Rate																	
FDEC, 2014 July	0.72	0.56	0.43	0.35	0.36	0.45	0.57	0.63	0.65	0.60	0.52	0.52	0.58	0.71	0.84	0.92	0.96
FDEC, 2014 Nov	0.72	0.56	0.43	0.35	0.36	0.45	0.57	0.63	0.65	0.60	0.52	0.52	0.58	0.71	0.84	0.92	0.96
Net Change in Population																	
FDEC, 2014 July	33.2	25.8	20.1	16.4	16.6	21.1	26.4	29.5	30.5	27.9	24.5	24.4	27.4	33.2	39.4	43.5	45.3
FDEC, 2014 Nov	33.2	25.8	20.1	16.4	16.6	21.1	26.4	29.5	30.5	27.9	24.5	24.4	27.4	33.2	39.5	43.5	45.2
Households																	
FDEC, 2014 July	7,363.9	7,371.6	7,377.0	7,380.7	7,384.5	7,390.0	7,397.7	7,406.6	7,416.0	7,425.2	7,434.0	7,443.7	7,455.4	7,470.2	7,488.0	7,507.5	7,527.5
FDEC, 2014 Nov	7,363.9	7,371.6	7,377.0	7,380.7	7,384.5	7,390.0	7,397.7	7,406.6	7,416.0	7,425.2	7,434.0	7,443.7	7,455.4	7,470.2	7,488.0	7,507.6	7,527.5
Household Growth Rate																	
FDEC, 2014 July	0.58	0.42	0.29	0.20	0.20	0.30	0.41	0.48	0.51	0.50	0.48	0.52	0.63	0.80	0.95	1.05	1.07
FDEC, 2014 Nov	0.58	0.42	0.29	0.20	0.20	0.30	0.41	0.48	0.51	0.50	0.48	0.52	0.63	0.80	0.95	1.05	1.07
Net Change in Households																	
FDEC, 2014 July	10.6	7.7	5.4	3.8	3.7	5.5	7.7	8.9	9.5	9.2	8.8	9.7	11.7	14.8	17.8	19.6	20.0
FDEC, 2014 Nov	10.6	7.7	5.4	3.8	3.7	5.5	7.7	8.9	9.5	9.2	8.8	9.7	11.7	14.8	17.8	19.6	20.0
Household Size																	
FDEC, 2014 July	2.526	2.527	2.528	2.528	2.529	2.530	2.531	2.532	2.533	2.534	2.534	2.534	2.534	2.533	2.532	2.532	2.531
FDEC, 2014 Nov	2.526	2.527	2.528	2.528	2.529	2.530	2.531	2.532	2.533	2.534	2.534	2.534	2.534	2.533	2.532	2.532	2.531
Household Size Growth Rate																	
FDEC, 2014 July	0.14	0.14	0.14	0.15	0.15	0.15	0.15	0.15	0.14	0.10	0.04	0.00	-0.05	-0.09	-0.12	-0.13	-0.11
FDEC, 2014 Nov	0.14	0.14	0.14	0.15	0.15	0.15	0.15	0.15	0.14	0.10	0.04	0.00	-0.05	-0.09	-0.12	-0.13	-0.11
Net Migration																	
FDEC, 2014 July	17.0	10.3	5.2	2.1	2.9	7.9	13.8	17.5	19.4	17.3	14.2	14.4	17.1	23.0	29.4	33.6	35.7
FDEC, 2014 Nov	17.0	10.3	5.2	2.1	2.9	7.9	13.8	17.5	19.4	17.3	14.2	14.4	17.1	23.1	29.4	33.6	35.7
Births																	
FDEC, 2014 July	58.7	58.2	57.6	57.0	56.2	55.6	55.1	54.6	54.1	53.7	53.5	53.3	53.4	53.3	53.3	53.2	53.2
FDEC, 2014 Nov	58.7	58.1	57.6	57.0	56.2	55.6	55.1	54.6	54.1	53.7	53.5	53.3	53.4	53.3	53.3	53.2	53.2
Deaths																	
FDEC, 2014 July	42.5	42.6	42.7	42.7	42.4	42.4	42.5	42.6	43.0	43.1	43.2	43.2	43.1	43.1	43.2	43.4	43.6
FDEC, 2014 Nov	42.5	42.6	42.7	42.7	42.4	42.4	42.5	42.6	43.0	43.1	43.2	43.2	43.1	43.1	43.2	43.4	43.6
Net Natural Increase																	
FDEC, 2014 July	16.2	15.5	14.9	14.3	13.8	13.2	12.6	12.0	11.1	10.6	10.3	10.0	10.3	10.2	10.0	9.9	9.5
FDEC, 2014 Nov	16.2	15.5	14.9	14.3	13.8	13.2	12.6	12.0	11.1	10.6	10.3	10.0	10.3	10.2	10.0	9.9	9.5

Quarterly Data Table

QUARTERLY FORECAST TABLES

	<u>2012-2</u>	<u>2012-3</u>	<u>2012-4</u>	<u>2013-1</u>	<u>2013-2</u>	<u>2013-3</u>	<u>2013-4</u>	<u>2014-1</u>	<u>2014-2</u>	<u>2014-3</u>	<u>2014-4</u>	<u>2015-1</u>	<u>2015-2</u>	<u>2015-3</u>	<u>2015-4</u>	<u>2016-1</u>	<u>2016-2</u>
Population																	
FDEC, 2014 July	19,096.5	19,140.8	19,186.2	19,234.5	19,287.4	19,345.4	19,407.1	19,471.3	19,536.3	19,601.6	19,667.8	19,735.1	19,803.6	19,873.4	19,944.2	20,015.7	20,087.4
FDEC, 2014 Nov	19,096.5	19,140.7	19,186.0	19,234.4	19,287.7	19,346.3	19,408.8	19,474.2	19,540.6	19,607.5	19,675.4	19,744.4	19,814.5	19,885.5	19,957.3	20,029.6	20,102.2
Population Growth Rate																	
FDEC, 2014 July	0.95	0.93	0.95	1.01	1.11	1.21	1.28	1.33	1.34	1.34	1.36	1.38	1.40	1.42	1.43	1.44	1.44
FDEC, 2014 Nov	0.94	0.93	0.95	1.01	1.11	1.22	1.30	1.35	1.37	1.38	1.39	1.41	1.43	1.44	1.45	1.46	1.46
Net Change in Population																	
FDEC, 2014 July	44.9	44.3	45.4	48.3	53.0	58.0	61.7	64.2	65.0	65.3	66.2	67.3	68.5	69.8	70.8	71.5	71.7
FDEC, 2014 Nov	44.8	44.2	45.3	48.3	53.3	58.6	62.6	65.3	66.4	66.9	67.9	69.0	70.0	71.0	71.8	72.4	72.5
Households																	
FDEC, 2014 July	7,546.5	7,564.3	7,582.0	7,600.5	7,621.1	7,644.0	7,668.5	7,694.1	7,720.0	7,746.1	7,772.5	7,799.4	7,826.9	7,854.9	7,883.4	7,912.3	7,941.3
FDEC, 2014 Nov	7,546.5	7,564.3	7,581.9	7,600.5	7,621.2	7,644.3	7,669.2	7,695.2	7,721.7	7,748.4	7,775.5	7,803.1	7,831.2	7,859.7	7,888.6	7,917.8	7,947.1
Household Growth Rate																	
FDEC, 2014 July	1.01	0.95	0.94	0.98	1.09	1.21	1.29	1.34	1.36	1.36	1.37	1.39	1.42	1.44	1.46	1.47	1.47
FDEC, 2014 Nov	1.01	0.95	0.94	0.98	1.09	1.22	1.31	1.37	1.38	1.39	1.41	1.43	1.45	1.46	1.48	1.49	1.49
Net Change in Households																	
FDEC, 2014 July	19.0	17.8	17.6	18.5	20.6	22.9	24.5	25.6	25.9	26.1	26.4	26.9	27.5	28.0	28.5	28.8	29.0
FDEC, 2014 Nov	19.0	17.8	17.6	18.6	20.7	23.1	24.9	26.0	26.5	26.7	27.1	27.6	28.1	28.5	28.9	29.2	29.3
Household Size																	
FDEC, 2014 July	2.531	2.530	2.530	2.531	2.531	2.531	2.531	2.531	2.531	2.531	2.530	2.530	2.530	2.530	2.530	2.530	2.529
FDEC, 2014 Nov	2.531	2.530	2.530	2.531	2.531	2.531	2.531	2.531	2.531	2.531	2.530	2.530	2.530	2.530	2.530	2.530	2.529
Household Size Growth Rate																	
FDEC, 2014 July	-0.07	-0.02	0.01	0.03	0.02	0.00	-0.01	-0.01	-0.01	-0.01	-0.01	-0.02	-0.02	-0.02	-0.03	-0.03	-0.03
FDEC, 2014 Nov	-0.07	-0.02	0.01	0.03	0.02	0.00	-0.01	-0.01	-0.01	-0.01	-0.01	-0.02	-0.02	-0.02	-0.03	-0.03	-0.03
Net Migration																	
FDEC, 2014 July	35.5	35.1	36.3	39.5	44.2	49.2	52.8	55.2	56.0	56.3	57.1	58.3	59.6	60.9	61.9	62.7	63.0
FDEC, 2014 Nov	35.5	35.0	36.3	39.5	44.5	49.8	53.8	56.1	57.1	57.6	58.6	59.7	60.8	61.8	62.6	63.2	63.3
Births																	
FDEC, 2014 July	53.2	53.3	53.3	53.6	53.7	53.9	54.0	54.2	54.4	54.6	54.8	55.0	55.2	55.4	55.6	55.8	56.0
FDEC, 2014 Nov	53.2	53.3	53.4	53.5	53.7	53.9	54.1	54.5	54.7	55.0	55.3	55.5	55.8	56.0	56.3	56.5	56.7
Deaths																	
FDEC, 2014 July	43.8	44.1	44.3	44.8	45.0	45.1	45.2	45.3	45.4	45.6	45.7	46.0	46.3	46.5	46.7	47.0	47.2
FDEC, 2014 Nov	43.8	44.1	44.3	44.7	44.9	45.1	45.3	45.3	45.5	45.7	45.9	46.3	46.5	46.8	47.0	47.3	47.5
Net Natural Increase																	
FDEC, 2014 July	9.4	9.2	9.0	8.8	8.7	8.8	8.9	8.9	9.0	9.0	9.1	9.0	8.9	8.9	8.8	8.8	8.8
FDEC, 2014 Nov	9.3	9.2	9.0	8.8	8.8	8.8	8.8	9.2	9.3	9.3	9.4	9.3	9.2	9.2	9.2	9.2	9.2

Quarterly Data Table

QUARTERLY FORECAST TABLES

	<u>2016-3</u>	<u>2016-4</u>	<u>2017-1</u>	<u>2017-2</u>	<u>2017-3</u>	<u>2017-4</u>	<u>2018-1</u>	<u>2018-2</u>	<u>2018-3</u>	<u>2018-4</u>	<u>2019-1</u>	<u>2019-2</u>	<u>2019-3</u>	<u>2019-4</u>	<u>2020-1</u>	<u>2020-2</u>	<u>2020-3</u>
Population																	
FDEC, 2014 July	20,159.1	20,230.9	20,302.6	20,374.1	20,445.3	20,516.3	20,587.2	20,658.0	20,728.7	20,799.4	20,870.0	20,940.4	21,010.7	21,080.8	21,150.6	21,220.2	21,289.5
FDEC, 2014 Nov	20,174.6	20,247.1	20,319.5	20,391.6	20,463.4	20,535.1	20,606.5	20,677.9	20,749.3	20,820.6	20,891.8	20,962.7	21,033.5	21,104.1	21,174.3	21,244.2	21,313.8
Population Growth Rate																	
FDEC, 2014 July	1.44	1.43	1.43	1.42	1.41	1.40	1.39	1.38	1.38	1.37	1.36	1.36	1.35	1.34	1.33	1.32	1.31
FDEC, 2014 Nov	1.45	1.44	1.44	1.43	1.42	1.41	1.40	1.39	1.39	1.38	1.37	1.37	1.36	1.35	1.34	1.33	1.32
Net Change in Population																	
FDEC, 2014 July	71.7	71.8	71.7	71.5	71.2	71.0	70.9	70.8	70.8	70.7	70.6	70.4	70.3	70.1	69.9	69.6	69.3
FDEC, 2014 Nov	72.5	72.5	72.4	72.1	71.8	71.6	71.5	71.4	71.4	71.3	71.2	71.0	70.8	70.5	70.3	69.9	69.6
Households																	
FDEC, 2014 July	7,970.3	7,999.5	8,028.7	8,057.8	8,086.9	8,116.0	8,145.0	8,174.1	8,203.2	8,232.3	8,261.3	8,290.4	8,319.3	8,348.3	8,377.2	8,405.9	8,434.6
FDEC, 2014 Nov	7,976.5	8,005.9	8,035.3	8,064.7	8,094.1	8,123.4	8,152.7	8,182.0	8,211.3	8,240.7	8,269.9	8,299.2	8,328.4	8,357.5	8,386.5	8,415.5	8,444.3
Household Growth Rate																	
FDEC, 2014 July	1.47	1.47	1.47	1.46	1.45	1.45	1.44	1.44	1.43	1.43	1.42	1.41	1.41	1.40	1.39	1.38	1.37
FDEC, 2014 Nov	1.49	1.48	1.48	1.47	1.46	1.46	1.45	1.45	1.44	1.44	1.43	1.42	1.41	1.41	1.40	1.39	1.38
Net Change in Households																	
FDEC, 2014 July	29.1	29.2	29.2	29.2	29.1	29.1	29.1	29.0	29.0	29.0	28.9	28.8	28.8	28.6	28.5	28.4	28.2
FDEC, 2014 Nov	29.4	29.4	29.4	29.4	29.3	29.3	29.3	29.3	29.3	29.3	29.3	29.3	29.2	29.1	29.0	28.9	28.8
Household Size																	
FDEC, 2014 July	2.529	2.529	2.529	2.528	2.528	2.528	2.528	2.527	2.527	2.527	2.526	2.526	2.526	2.525	2.525	2.524	2.524
FDEC, 2014 Nov	2.529	2.529	2.529	2.528	2.528	2.528	2.528	2.527	2.527	2.527	2.526	2.526	2.526	2.525	2.525	2.524	2.524
Household Size Growth Rate																	
FDEC, 2014 July	-0.04	-0.04	-0.04	-0.04	-0.05	-0.05	-0.05	-0.05	-0.05	-0.05	-0.05	-0.06	-0.06	-0.06	-0.06	-0.06	-0.06
FDEC, 2014 Nov	-0.04	-0.04	-0.04	-0.04	-0.05	-0.05	-0.05	-0.05	-0.05	-0.05	-0.05	-0.06	-0.06	-0.06	-0.06	-0.06	-0.06
Net Migration																	
FDEC, 2014 July	63.1	63.2	63.1	63.0	62.8	62.6	62.6	62.6	62.6	62.6	62.6	62.5	62.4	62.3	62.2	62.0	61.8
FDEC, 2014 Nov	63.3	63.3	63.2	63.0	62.7	62.6	62.5	62.5	62.5	62.5	62.5	62.4	62.4	62.3	62.2	62.0	61.9
Births																	
FDEC, 2014 July	56.1	56.3	56.5	56.7	56.9	57.1	57.2	57.4	57.6	57.8	57.9	58.1	58.3	58.5	58.6	58.8	59.0
FDEC, 2014 Nov	57.0	57.2	57.5	57.7	57.9	58.1	58.4	58.6	58.8	59.1	59.3	59.5	59.7	59.9	60.1	60.3	60.5
Deaths																	
FDEC, 2014 July	47.5	47.7	47.9	48.2	48.4	48.7	48.9	49.2	49.4	49.7	49.9	50.2	50.5	50.7	51.0	51.3	51.5
FDEC, 2014 Nov	47.8	48.0	48.3	48.5	48.8	49.1	49.4	49.7	50.0	50.3	50.6	51.0	51.3	51.7	52.0	52.4	52.8
Net Natural Increase																	
FDEC, 2014 July	8.7	8.6	8.6	8.5	8.4	8.4	8.3	8.2	8.2	8.1	8.0	7.9	7.8	7.7	7.7	7.6	7.5
FDEC, 2014 Nov	9.2	9.2	9.2	9.1	9.1	9.1	9.0	8.9	8.9	8.8	8.7	8.5	8.4	8.3	8.1	7.9	7.7

Quarterly Data Table

QUARTERLY FORECAST TABLES

	<u>2020-4</u>	<u>2021-1</u>	<u>2021-2</u>	<u>2021-3</u>	<u>2021-4</u>	<u>2022-1</u>	<u>2022-2</u>	<u>2022-3</u>	<u>2022-4</u>	<u>2023-1</u>	<u>2023-2</u>	<u>2023-3</u>	<u>2023-4</u>	<u>2024-1</u>	<u>2024-2</u>
Population															
FDEC, 2014 July	21,358.5	21,427.3	21,495.8	21,564.1	21,632.1	21,699.8	21,767.4	21,834.7	21,901.7	21,968.6	22,035.2	22,101.6	22,167.8	22,233.9	22,299.7
FDEC, 2014 Nov	21,383.1	21,452.0	21,520.6	21,588.9	21,656.9	21,724.6	21,792.0	21,859.2	21,926.1	21,992.8	22,059.2	22,125.4	22,191.4	22,257.2	22,322.8
Population Growth Rate															
FDEC, 2014 July	1.30	1.29	1.29	1.28	1.27	1.26	1.25	1.24	1.23	1.23	1.22	1.21	1.20	1.20	1.19
FDEC, 2014 Nov	1.31	1.30	1.29	1.28	1.27	1.26	1.25	1.24	1.23	1.22	1.21	1.21	1.20	1.19	1.18
Net Change in Population															
FDEC, 2014 July	69.0	68.8	68.5	68.3	68.0	67.8	67.5	67.3	67.1	66.8	66.6	66.4	66.2	66.0	65.8
FDEC, 2014 Nov	69.2	68.9	68.6	68.3	68.0	67.7	67.4	67.2	66.9	66.7	66.4	66.2	66.0	65.8	65.6
Households															
FDEC, 2014 July	8,463.2	8,491.7	8,520.1	8,548.4	8,576.6	8,604.8	8,632.8	8,660.8	8,688.7	8,716.5	8,744.2	8,771.9	8,799.5	8,827.0	8,854.4
FDEC, 2014 Nov	8,472.9	8,501.5	8,529.9	8,558.3	8,586.5	8,614.6	8,642.6	8,670.5	8,698.4	8,726.1	8,753.8	8,781.4	8,808.9	8,836.3	8,863.6
Household Growth Rate															
FDEC, 2014 July	1.36	1.35	1.34	1.34	1.33	1.32	1.31	1.30	1.29	1.29	1.28	1.27	1.26	1.26	1.25
FDEC, 2014 Nov	1.37	1.35	1.34	1.34	1.33	1.32	1.31	1.30	1.29	1.28	1.27	1.27	1.26	1.25	1.24
Net Change in Households															
FDEC, 2014 July	28.1	27.9	27.8	27.6	27.5	27.4	27.2	27.1	27.0	26.8	26.7	26.6	26.4	26.3	26.2
FDEC, 2014 Nov	28.7	28.6	28.4	28.3	28.2	28.1	28.0	27.9	27.8	27.7	27.7	27.6	27.5	27.4	27.4
Household Size															
FDEC, 2014 July	2.524	2.523	2.523	2.523	2.522	2.522	2.521	2.521	2.521	2.520	2.520	2.520	2.519	2.519	2.518
FDEC, 2014 Nov	2.524	2.523	2.523	2.523	2.522	2.522	2.521	2.521	2.521	2.520	2.520	2.520	2.519	2.519	2.518
Household Size Growth Rate															
FDEC, 2014 July	-0.06	-0.06	-0.06	-0.06	-0.06	-0.06	-0.06	-0.06	-0.06	-0.06	-0.06	-0.06	-0.06	-0.06	-0.06
FDEC, 2014 Nov	-0.06	-0.06	-0.06	-0.06	-0.06	-0.06	-0.06	-0.06	-0.06	-0.06	-0.06	-0.06	-0.06	-0.06	-0.06
Net Migration															
FDEC, 2014 July	61.8	61.7	61.6	61.6	61.5	61.5	61.4	61.4	61.4	61.4	61.4	61.4	61.4	61.5	61.5
FDEC, 2014 Nov	61.8	61.7	61.7	61.7	61.7	61.7	61.8	61.9	62.0	62.1	62.3	62.4	62.6	62.9	63.1
Births															
FDEC, 2014 July	59.2	59.3	59.5	59.7	59.9	60.0	60.2	60.4	60.6	60.7	60.9	61.1	61.2	61.4	61.6
FDEC, 2014 Nov	60.7	60.9	61.1	61.3	61.4	61.6	61.8	61.9	62.1	62.2	62.4	62.5	62.7	62.8	63.0
Deaths															
FDEC, 2014 July	51.9	52.3	52.6	53.0	53.4	53.8	54.1	54.5	54.9	55.3	55.7	56.1	56.4	56.8	57.2
FDEC, 2014 Nov	53.2	53.7	54.1	54.6	55.1	55.6	56.1	56.6	57.1	57.7	58.2	58.7	59.3	59.9	60.5
Net Natural Increase															
FDEC, 2014 July	7.3	7.1	6.9	6.7	6.5	6.3	6.1	5.9	5.7	5.5	5.2	5.0	4.8	4.6	4.3
FDEC, 2014 Nov	7.5	7.2	6.9	6.6	6.3	6.0	5.6	5.3	4.9	4.6	4.2	3.8	3.4	2.9	2.5



FISCAL YEAR  
FORECAST TABLES

Fiscal Year Data Table

	<u>1990-91</u>	<u>1991-92</u>	<u>1992-93</u>	<u>1993-94</u>	<u>1994-95</u>	<u>1995-96</u>	<u>1996-97</u>	<u>1997-98</u>	<u>1998-99</u>	<u>1999-00</u>	<u>2000-01</u>	<u>2001-02</u>	<u>2002-03</u>	<u>2003-04</u>	<u>2004-05</u>
Population															
FDEC, 2014 July	13,178.0	13,442.6	13,670.0	13,962.2	14,264.9	14,550.7	14,859.1	15,158.3	15,488.4	15,881.7	16,228.0	16,551.2	16,892.0	17,273.8	17,677.3
FDEC, 2014 Nov	13,178.0	13,442.6	13,670.0	13,962.2	14,264.9	14,550.7	14,859.1	15,158.3	15,488.4	15,881.7	16,228.0	16,551.2	16,892.0	17,273.8	17,677.3
Growth Rate															
FDEC, 2014 July	2.42	2.01	1.69	2.14	2.17	2.00	2.12	2.01	2.18	2.54	2.18	1.99	2.06	2.26	2.34
FDEC, 2014 Nov	2.42	2.01	1.69	2.14	2.17	2.00	2.12	2.01	2.18	2.54	2.18	1.99	2.06	2.26	2.34
Net Change in Population															
FDEC, 2014 July	311.4	264.6	227.4	292.2	302.8	285.8	308.4	299.2	330.1	393.2	346.4	323.2	340.9	381.8	403.5
FDEC, 2014 Nov	311.4	264.6	227.4	292.2	302.8	285.8	308.4	299.2	330.1	393.2	346.4	323.2	340.9	381.8	403.5
Households															
FDEC, 2014 July	5,230.7	5,335.4	5,424.2	5,538.0	5,655.6	5,766.7	5,887.3	6,005.5	6,137.4	6,296.9	6,436.4	6,565.8	6,702.3	6,855.1	7,016.4
FDEC, 2014 Nov	5,230.7	5,335.4	5,424.2	5,538.0	5,655.6	5,766.7	5,887.3	6,005.5	6,137.4	6,296.9	6,436.4	6,565.8	6,702.3	6,855.1	7,016.4
Growth Rate															
FDEC, 2014 July	2.44	2.00	1.66	2.10	2.12	1.96	2.09	2.01	2.20	2.60	2.22	2.01	2.08	2.28	2.35
FDEC, 2014 Nov	2.44	2.00	1.66	2.10	2.12	1.96	2.09	2.01	2.20	2.60	2.22	2.01	2.08	2.28	2.35
Net Change in Households															
FDEC, 2014 July	124.7	104.7	88.8	113.8	117.7	111.1	120.6	118.1	132.0	159.5	139.5	129.3	136.5	152.8	161.3
FDEC, 2014 Nov	124.7	104.7	88.8	113.8	117.7	111.1	120.6	118.1	132.0	159.5	139.5	129.3	136.5	152.8	161.3
Household Size															
FDEC, 2014 July	2.519	2.520	2.520	2.521	2.522	2.523	2.524	2.524	2.524	2.522	2.521	2.521	2.520	2.520	2.519
FDEC, 2014 Nov	2.519	2.520	2.520	2.521	2.522	2.523	2.524	2.524	2.524	2.522	2.521	2.521	2.520	2.520	2.519
Growth Rate															
FDEC, 2014 July	-0.02	0.01	0.03	0.04	0.04	0.04	0.03	0.01	-0.02	-0.06	-0.03	-0.02	-0.02	-0.02	-0.02
FDEC, 2014 Nov	-0.02	0.01	0.03	0.04	0.04	0.04	0.03	0.01	-0.02	-0.06	-0.03	-0.02	-0.02	-0.02	-0.02
Net Migration															
FDEC, 2014 July	248.4	208.9	177.4	246.6	262.7	249.5	270.9	260.5	293.9	355.3	306.0	285.5	300.4	335.0	351.1
FDEC, 2014 Nov	248.4	208.9	177.4	246.6	262.7	249.5	270.9	260.5	293.9	355.3	306.0	285.5	300.4	335.0	351.1
Births															
FDEC, 2014 July	197.0	192.2	192.0	191.7	189.4	188.6	190.7	194.0	196.0	200.5	205.4	205.4	208.5	215.0	221.8
FDEC, 2014 Nov	197.0	192.2	192.0	191.7	189.4	188.6	190.7	194.0	196.0	200.5	205.4	205.4	208.5	215.0	221.8
Deaths															
FDEC, 2014 July	134.0	136.5	142.0	146.1	149.3	152.4	153.1	155.3	159.8	162.5	165.0	167.7	168.1	168.3	169.4
FDEC, 2014 Nov	134.0	136.5	142.0	146.1	149.3	152.4	153.1	155.3	159.8	162.5	165.0	167.7	168.1	168.3	169.4
Net Natural Increase															
FDEC, 2014 July	63.0	55.7	50.0	45.6	40.1	36.2	37.5	38.8	36.2	38.0	40.3	37.7	40.4	46.7	52.4
FDEC, 2014 Nov	63.0	55.7	50.0	45.6	40.1	36.2	37.5	38.8	36.2	38.0	40.3	37.7	40.4	46.7	52.4

FISCAL YEAR  
FORECAST TABLES

Fiscal Year Data Table

	<u>2005-06</u>	<u>2006-07</u>	<u>2007-08</u>	<u>2008-09</u>	<u>2009-10</u>	<u>2010-11</u>	<u>2011-12</u>	<u>2012-13</u>	<u>2013-14</u>	<u>2014-15</u>	<u>2015-16</u>	<u>2016-17</u>	<u>2017-18</u>	<u>2018-19</u>
Population														
FDEC, 2014 July	18,062.2	18,378.2	18,578.9	18,671.4	18,770.4	18,878.8	19,029.4	19,212.2	19,440.0	19,702.0	19,980.2	20,266.7	20,551.7	20,834.6
FDEC, 2014 Nov	18,062.2	18,378.2	18,578.9	18,671.4	18,770.4	18,878.8	19,029.4	19,212.2	19,442.5	19,710.5	19,993.6	20,283.2	20,570.7	20,856.1
Growth Rate														
FDEC, 2014 July	2.18	1.75	1.09	0.50	0.53	0.58	0.80	0.96	1.19	1.35	1.41	1.43	1.41	1.38
FDEC, 2014 Nov	2.18	1.75	1.09	0.50	0.53	0.58	0.80	0.96	1.20	1.38	1.44	1.45	1.42	1.39
Net Change in Population														
FDEC, 2014 July	384.9	316.0	200.7	92.5	99.0	108.4	150.6	182.8	227.8	262.0	278.1	286.5	285.0	283.0
FDEC, 2014 Nov	384.9	316.0	200.7	92.5	99.0	108.4	150.6	182.8	230.3	268.0	283.2	289.6	287.5	285.4
Households														
FDEC, 2014 July	7,170.9	7,288.9	7,357.1	7,383.0	7,411.4	7,450.8	7,517.4	7,592.0	7,681.6	7,786.2	7,898.0	8,014.1	8,130.5	8,246.8
FDEC, 2014 Nov	7,170.9	7,288.9	7,357.1	7,383.0	7,411.4	7,450.8	7,517.4	7,592.0	7,682.6	7,789.6	7,903.3	8,020.6	8,138.1	8,255.3
Growth Rate														
FDEC, 2014 July	2.20	1.65	0.93	0.35	0.38	0.53	0.89	0.99	1.18	1.36	1.44	1.47	1.45	1.43
FDEC, 2014 Nov	2.20	1.65	0.93	0.35	0.38	0.53	0.89	0.99	1.19	1.39	1.46	1.48	1.46	1.44
Net Change in Households														
FDEC, 2014 July	154.5	118.1	68.1	26.0	28.3	39.5	66.5	74.6	89.7	104.6	111.7	116.1	116.4	116.3
FDEC, 2014 Nov	154.5	118.1	68.1	26.0	28.3	39.5	66.6	74.6	90.6	107.0	113.7	117.3	117.5	117.2
Household Size														
FDEC, 2014 July	2.519	2.521	2.525	2.529	2.533	2.534	2.531	2.531	2.531	2.530	2.530	2.529	2.528	2.526
FDEC, 2014 Nov	2.519	2.521	2.525	2.529	2.533	2.534	2.531	2.531	2.531	2.530	2.530	2.529	2.528	2.526
Growth Rate														
FDEC, 2014 July	-0.02	0.10	0.16	0.14	0.15	0.04	-0.09	-0.03	0.00	-0.01	-0.02	-0.04	-0.05	-0.05
FDEC, 2014 Nov	-0.02	0.10	0.16	0.14	0.15	0.04	-0.09	-0.03	0.00	-0.01	-0.02	-0.04	-0.05	-0.05
Net Migration														
FDEC, 2014 July	322.9	245.0	133.7	36.3	52.7	67.6	111.8	147.1	192.3	226.0	242.9	252.2	251.7	250.8
FDEC, 2014 Nov	322.9	245.0	133.7	36.3	52.7	67.6	111.9	147.0	194.2	230.8	246.3	252.9	251.4	250.5
Births														
FDEC, 2014 July	232.1	239.3	236.0	226.4	217.4	213.5	212.9	213.9	216.5	219.5	222.7	225.7	228.6	231.4
FDEC, 2014 Nov	232.1	239.3	236.0	226.4	217.4	213.5	212.9	213.8	217.2	221.6	225.5	229.3	233.1	236.7
Deaths														
FDEC, 2014 July	170.1	168.3	169.0	170.2	171.1	172.7	174.1	178.1	181.0	183.5	187.5	191.3	195.3	199.3
FDEC, 2014 Nov	170.1	168.3	169.0	170.2	171.1	172.7	174.1	178.0	181.2	184.4	188.6	192.6	197.0	201.8
Net Natural Increase														
FDEC, 2014 July	62.0	71.0	67.0	56.2	46.3	40.8	38.8	35.8	35.5	36.0	35.3	34.4	33.3	32.1
FDEC, 2014 Nov	62.0	71.0	67.0	56.2	46.3	40.8	38.8	35.8	36.1	37.2	36.9	36.7	36.1	34.8

FISCAL YEAR  
FORECAST TABLES

Fiscal Year Data Table

	<u>2019-20</u>	<u>2020-21</u>	<u>2021-22</u>	<u>2022-23</u>	<u>2023-24</u>
Population					
FDEC, 2014 July	21,115.6	21,392.8	21,665.8	21,935.0	22,200.7
FDEC, 2014 Nov	21,139.0	21,417.4	21,690.6	21,959.3	22,224.2
Growth Rate					
FDEC, 2014 July	1.35	1.31	1.28	1.24	1.21
FDEC, 2014 Nov	1.36	1.32	1.28	1.24	1.21
Net Change in Population					
FDEC, 2014 July	280.9	277.2	273.0	269.2	265.7
FDEC, 2014 Nov	282.9	278.3	273.2	268.7	264.9
Households					
FDEC, 2014 July	8,362.7	8,477.4	8,590.7	8,702.6	8,813.2
FDEC, 2014 Nov	8,372.0	8,487.1	8,600.5	8,712.2	8,822.5
Growth Rate					
FDEC, 2014 July	1.41	1.37	1.34	1.30	1.27
FDEC, 2014 Nov	1.41	1.38	1.34	1.30	1.27
Net Change in Households					
FDEC, 2014 July	115.9	114.7	113.3	111.9	110.6
FDEC, 2014 Nov	116.7	115.2	113.3	111.7	110.3
Household Size					
FDEC, 2014 July	2.525	2.524	2.522	2.521	2.519
FDEC, 2014 Nov	2.525	2.524	2.522	2.521	2.519
Growth Rate					
FDEC, 2014 July	-0.06	-0.06	-0.06	-0.06	-0.06
FDEC, 2014 Nov	-0.06	-0.06	-0.06	-0.06	-0.06
Net Migration					
FDEC, 2014 July	250.2	248.5	247.5	247.0	247.0
FDEC, 2014 Nov	250.3	249.0	248.6	249.8	252.3
Births					
FDEC, 2014 July	234.2	237.0	239.8	242.6	245.3
FDEC, 2014 Nov	240.1	243.2	246.0	248.6	251.0
Deaths					
FDEC, 2014 July	203.5	208.3	214.3	220.3	226.6
FDEC, 2014 Nov	207.4	213.9	221.4	229.6	238.4
Net Natural Increase					
FDEC, 2014 July	30.8	28.7	25.6	22.2	18.7
FDEC, 2014 Nov	32.7	29.3	24.6	18.9	12.6

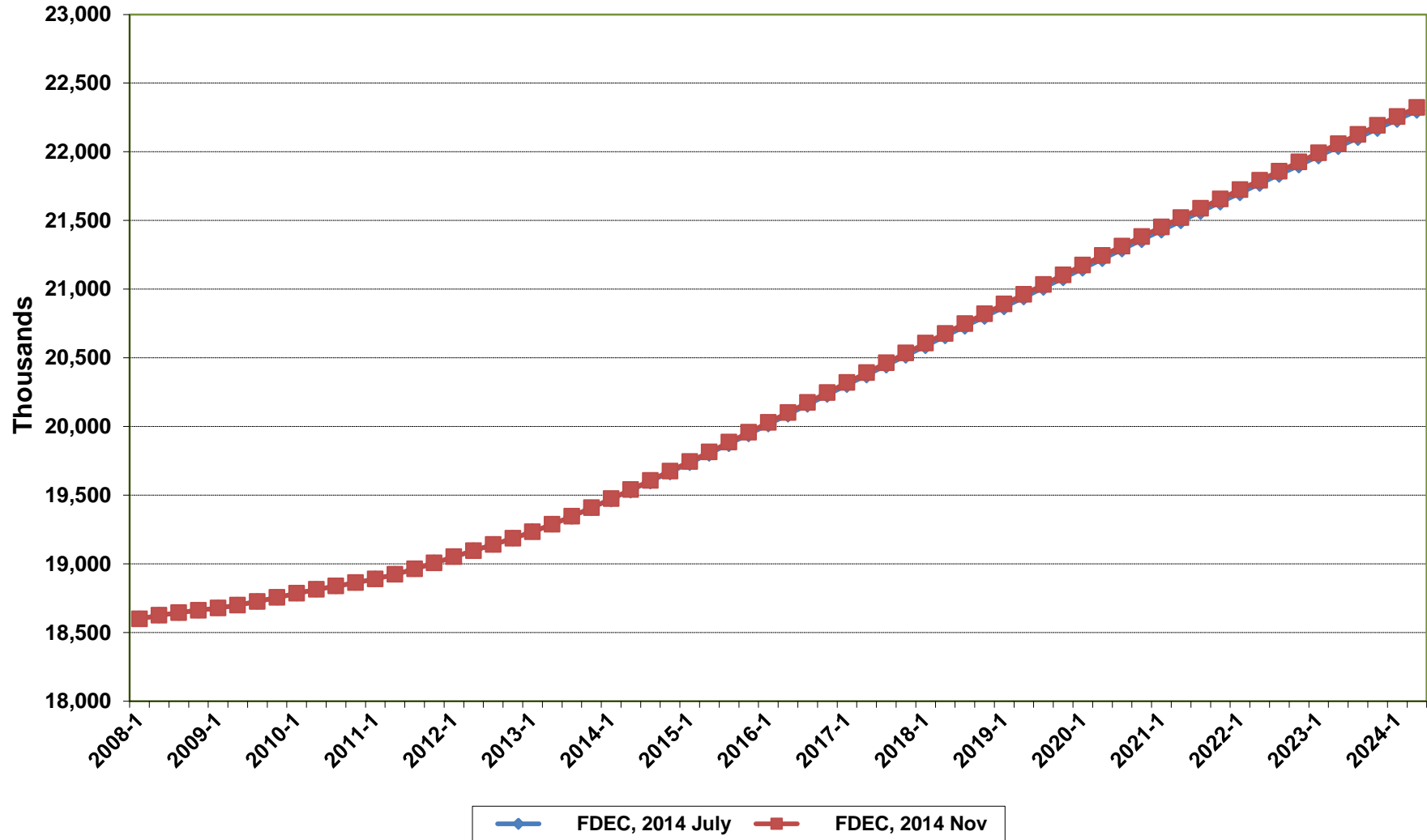
# **Florida Demographic Estimating Conference**

## **Charts**

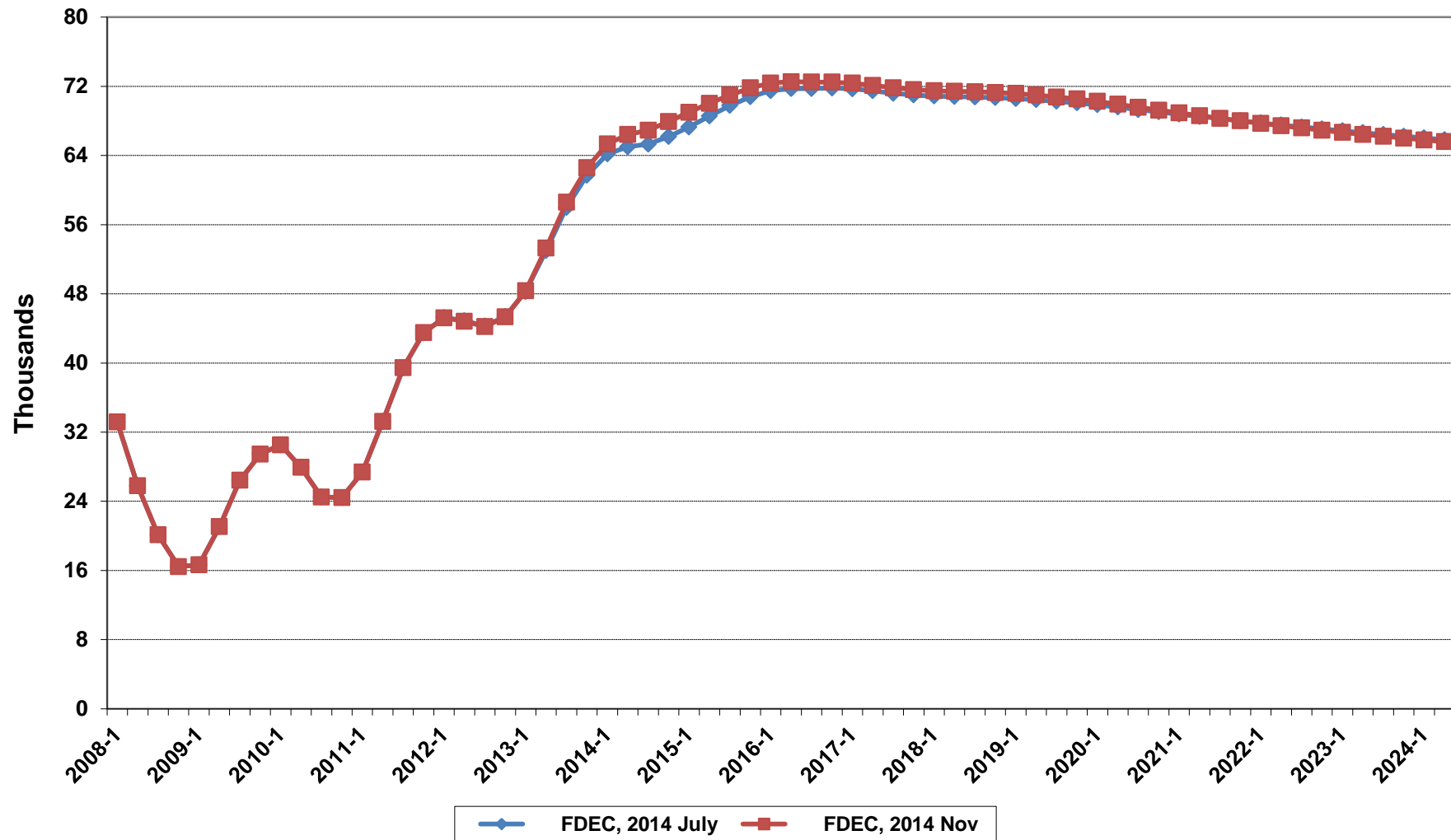
Conference Packet

**November 5, 2014**

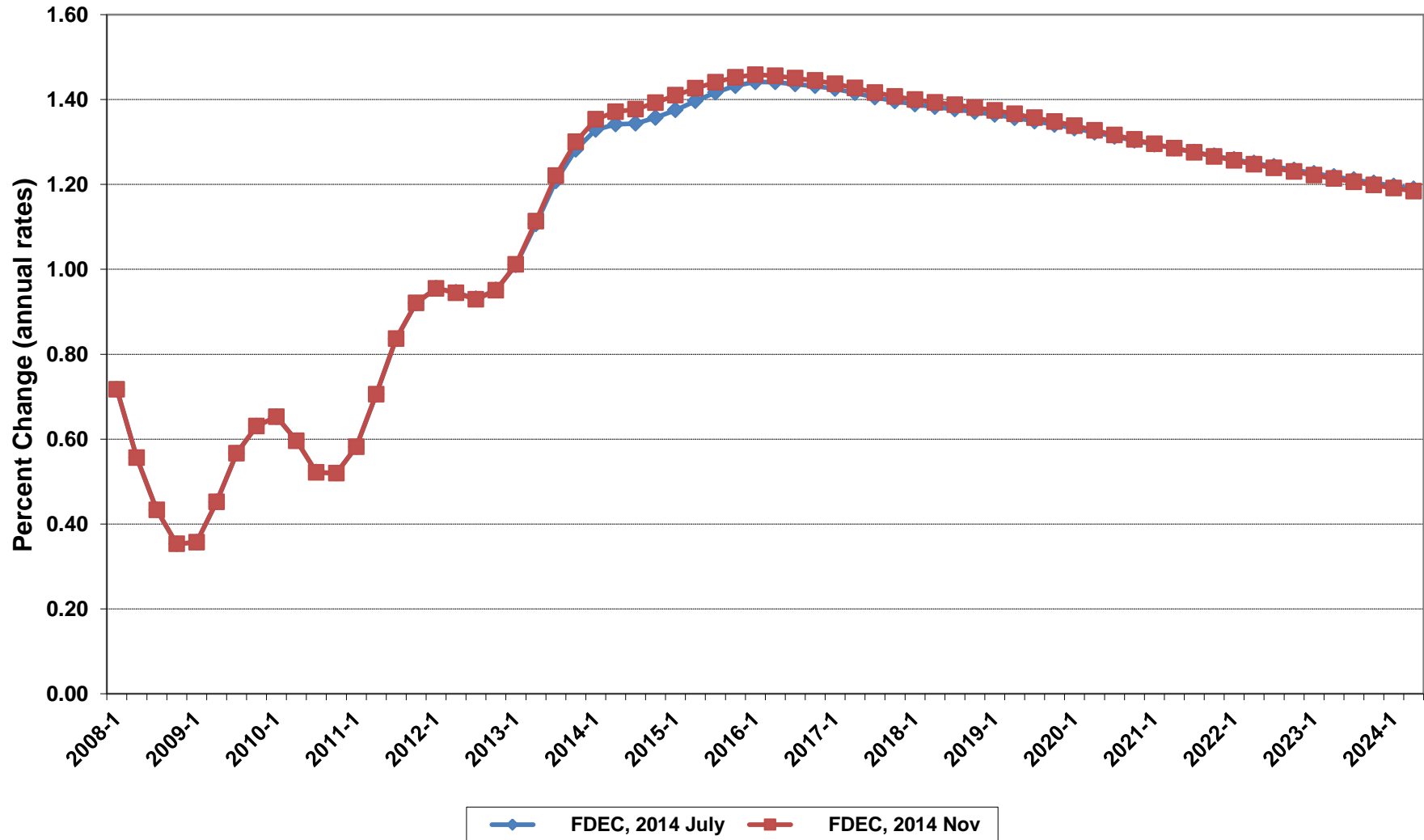
# Florida Resident Population



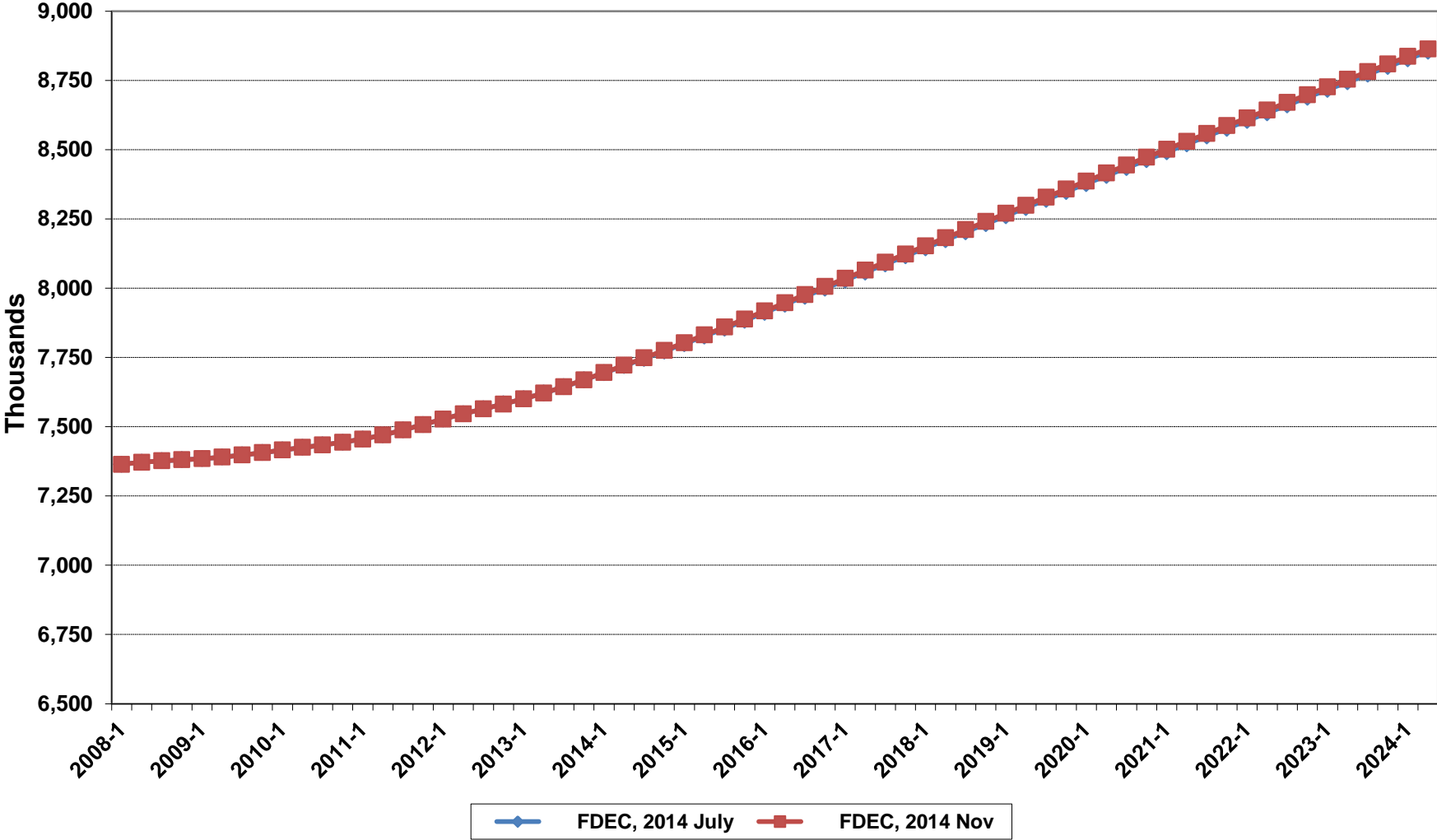
# Net Change In Florida Resident Population



# Growth In Florida Resident Population

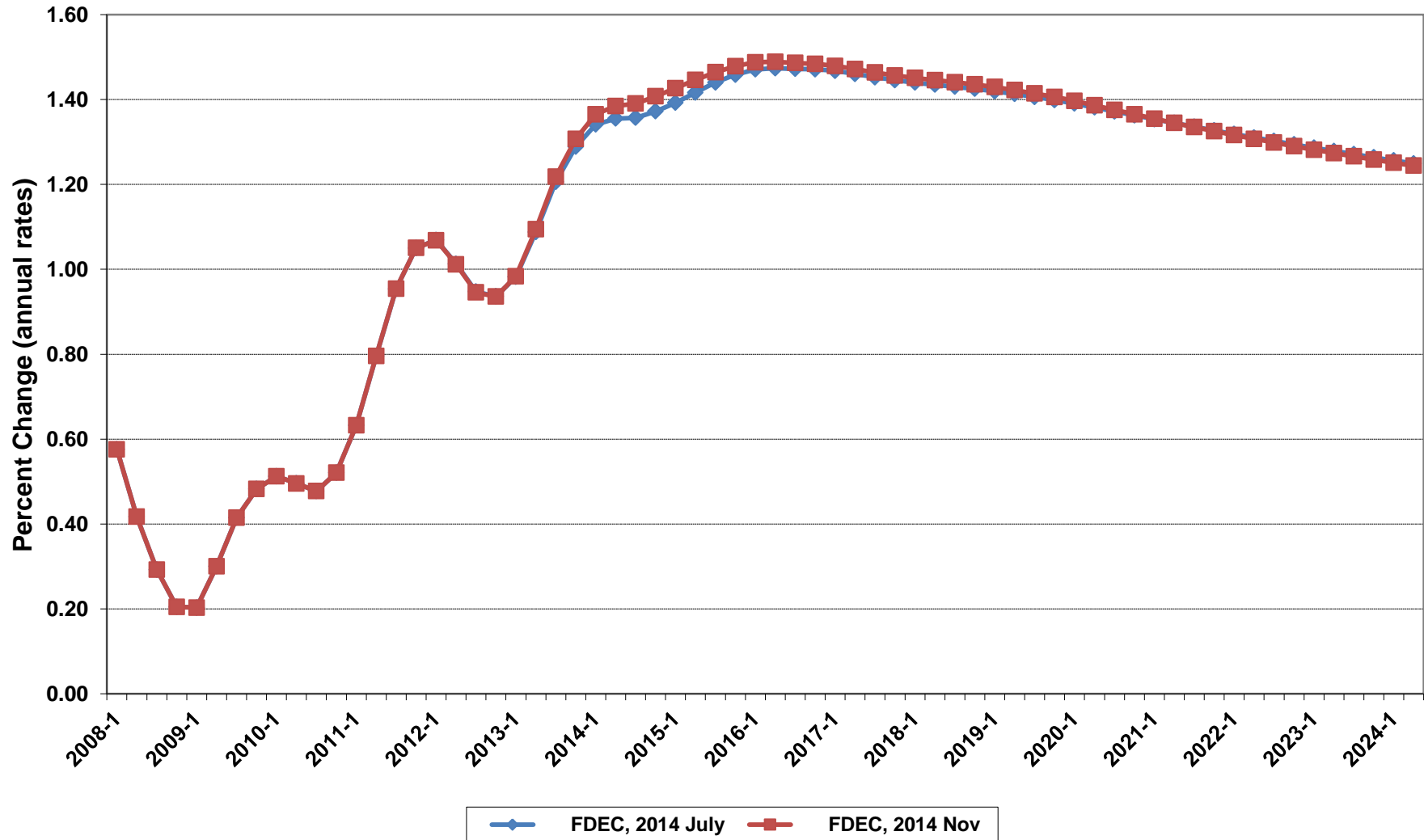


# Florida Resident Households

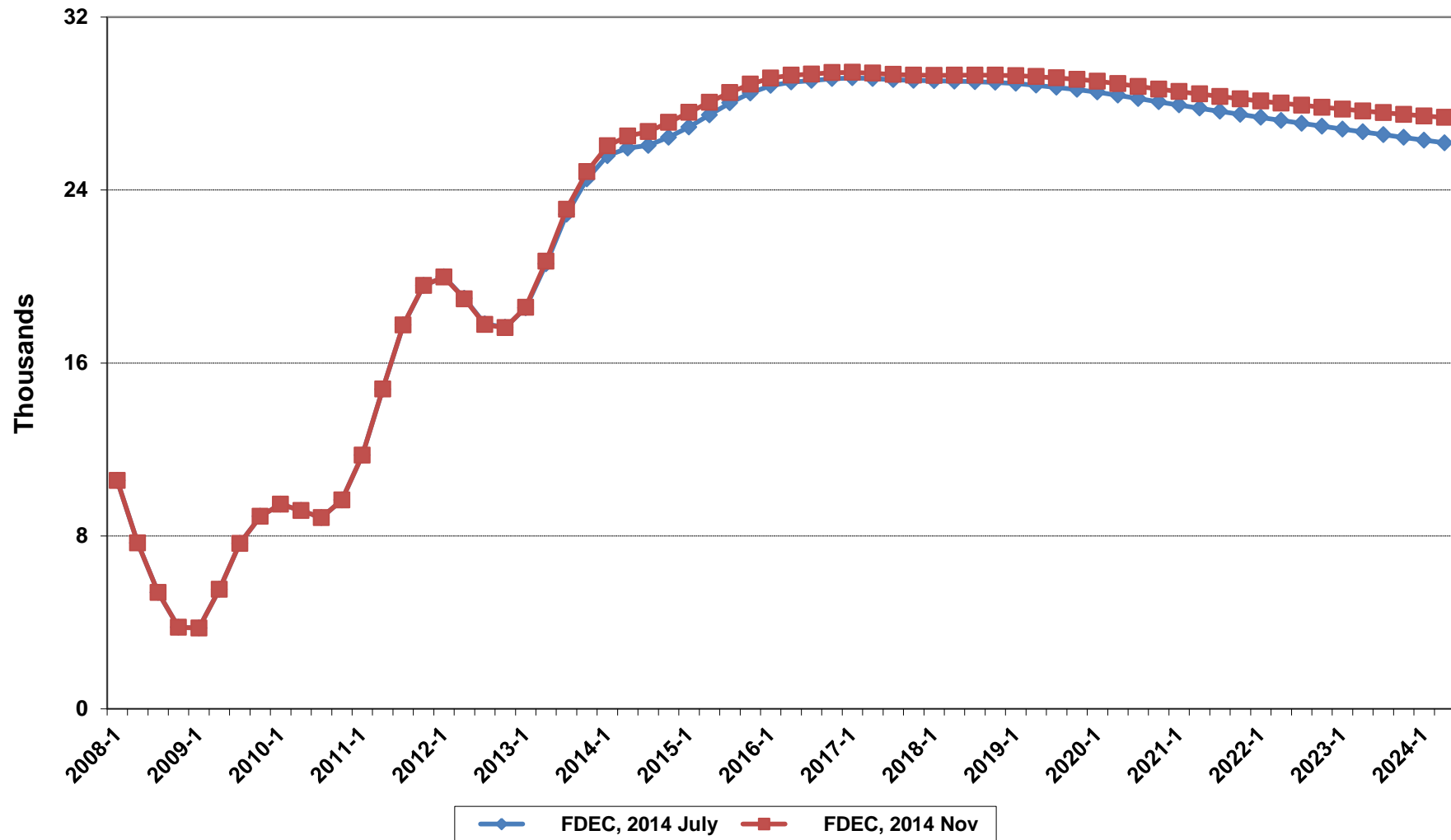




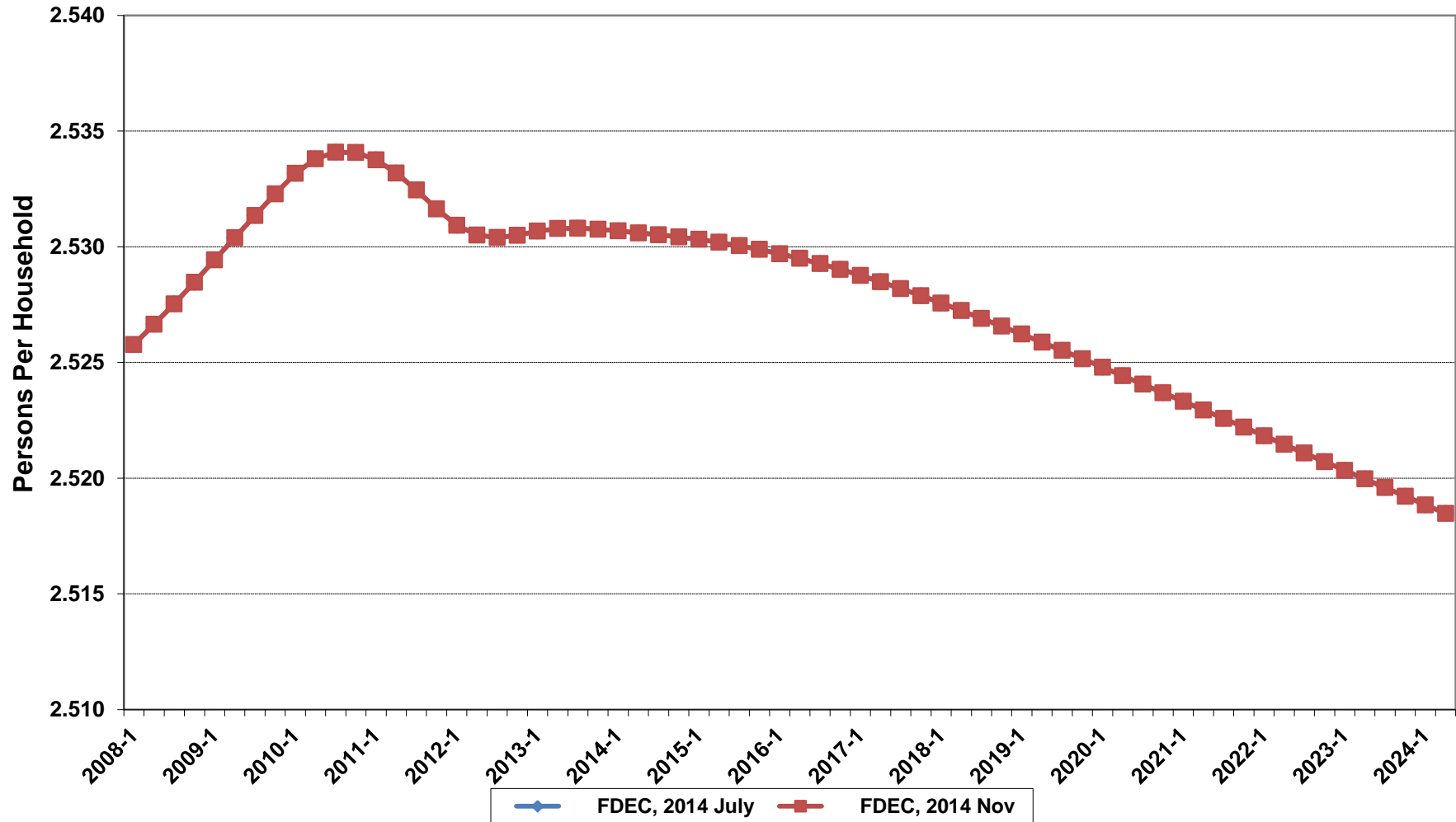
# Growth In Florida Resident Households



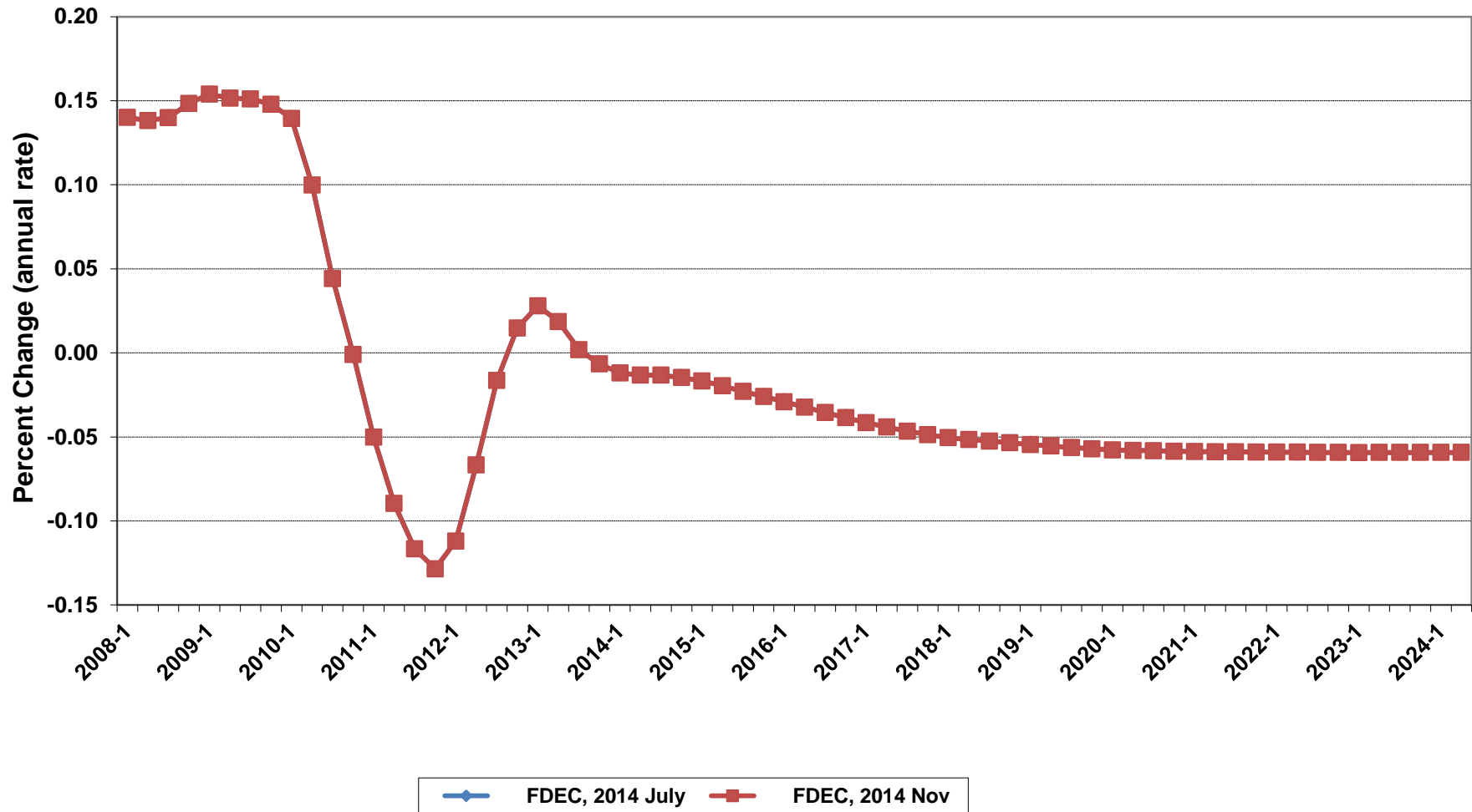
# Net Change In Florida Resident Households



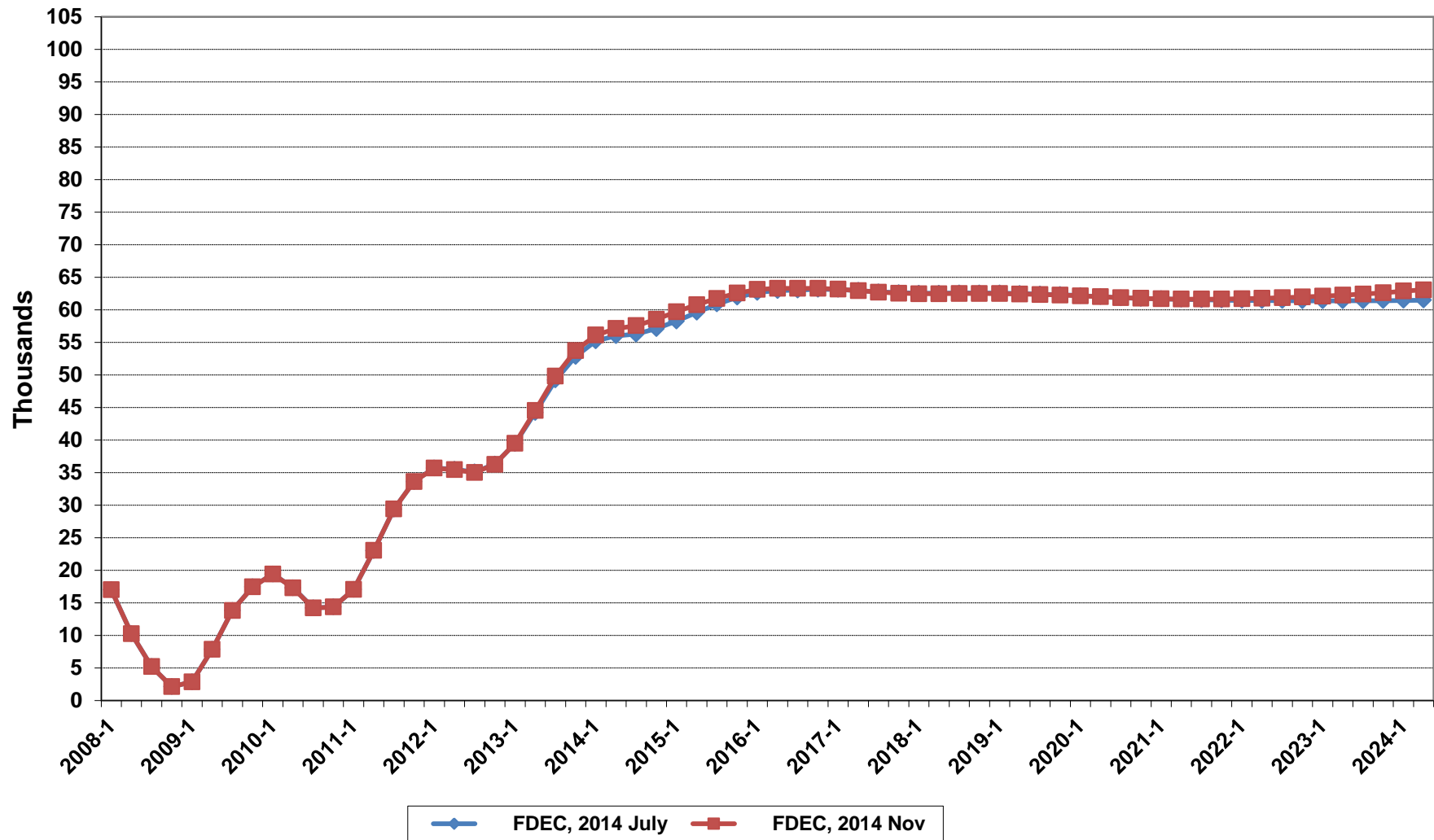
# Florida Average Household Size



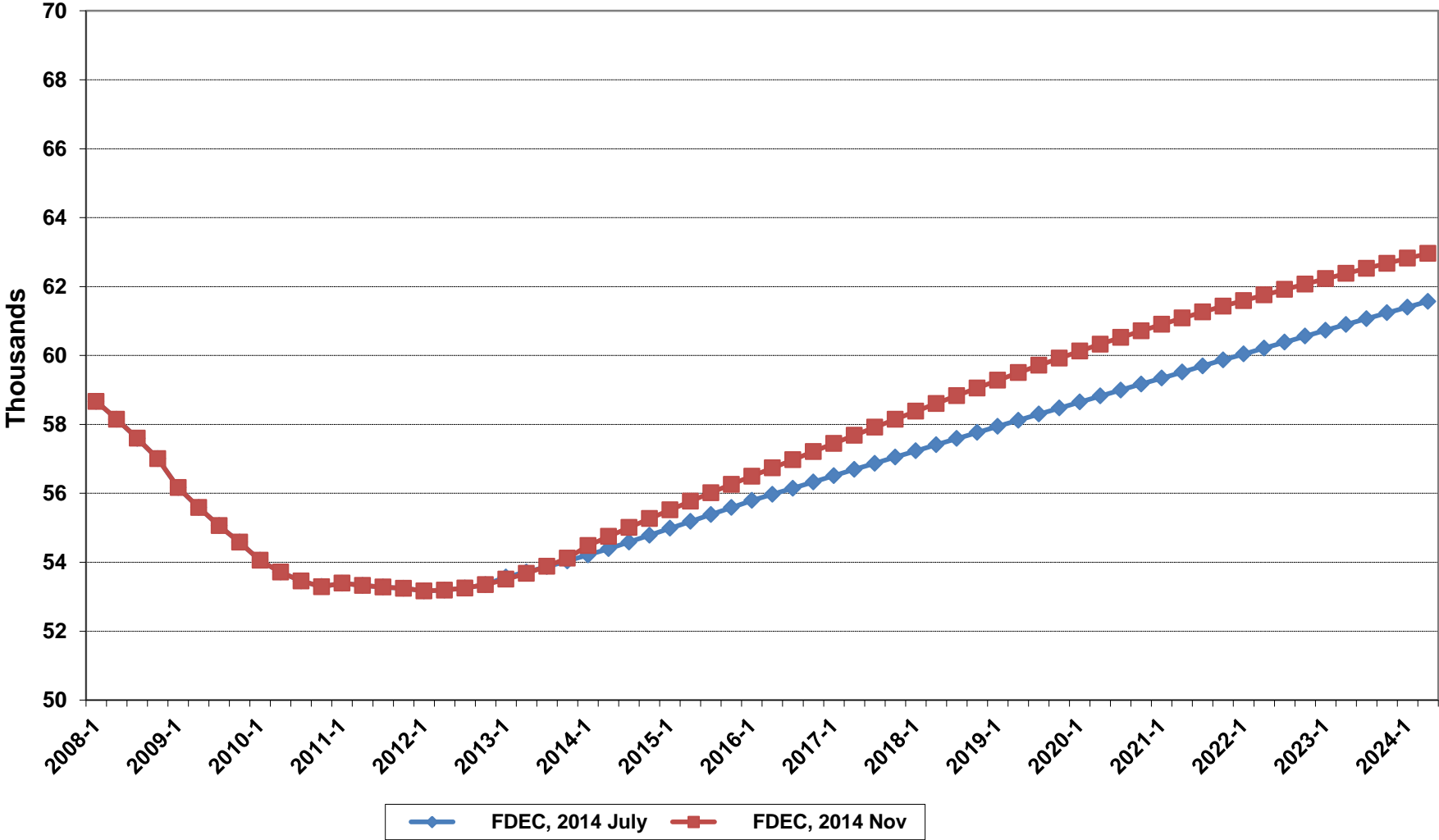
# Growth In Florida Household Size



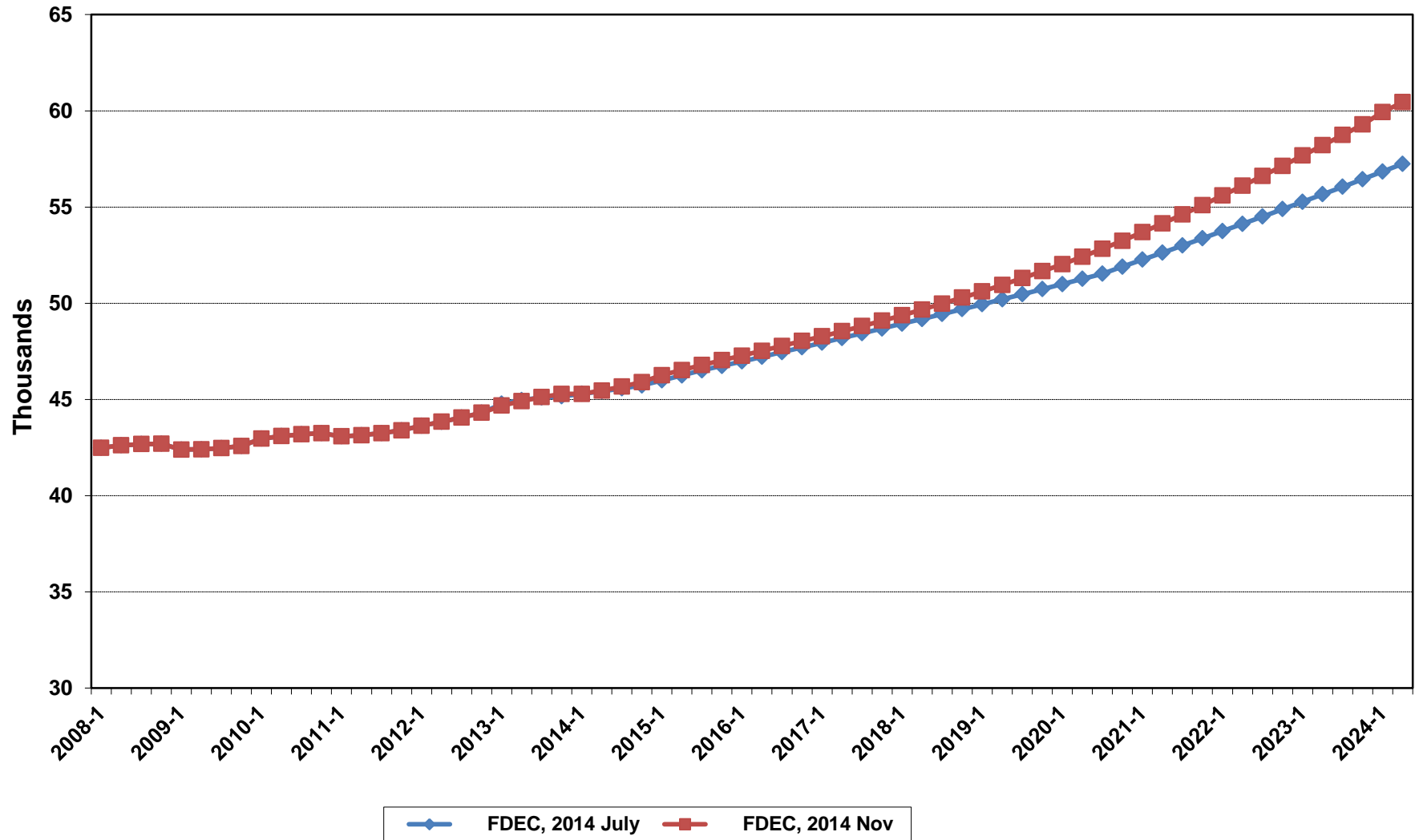
# Florida Net Migration



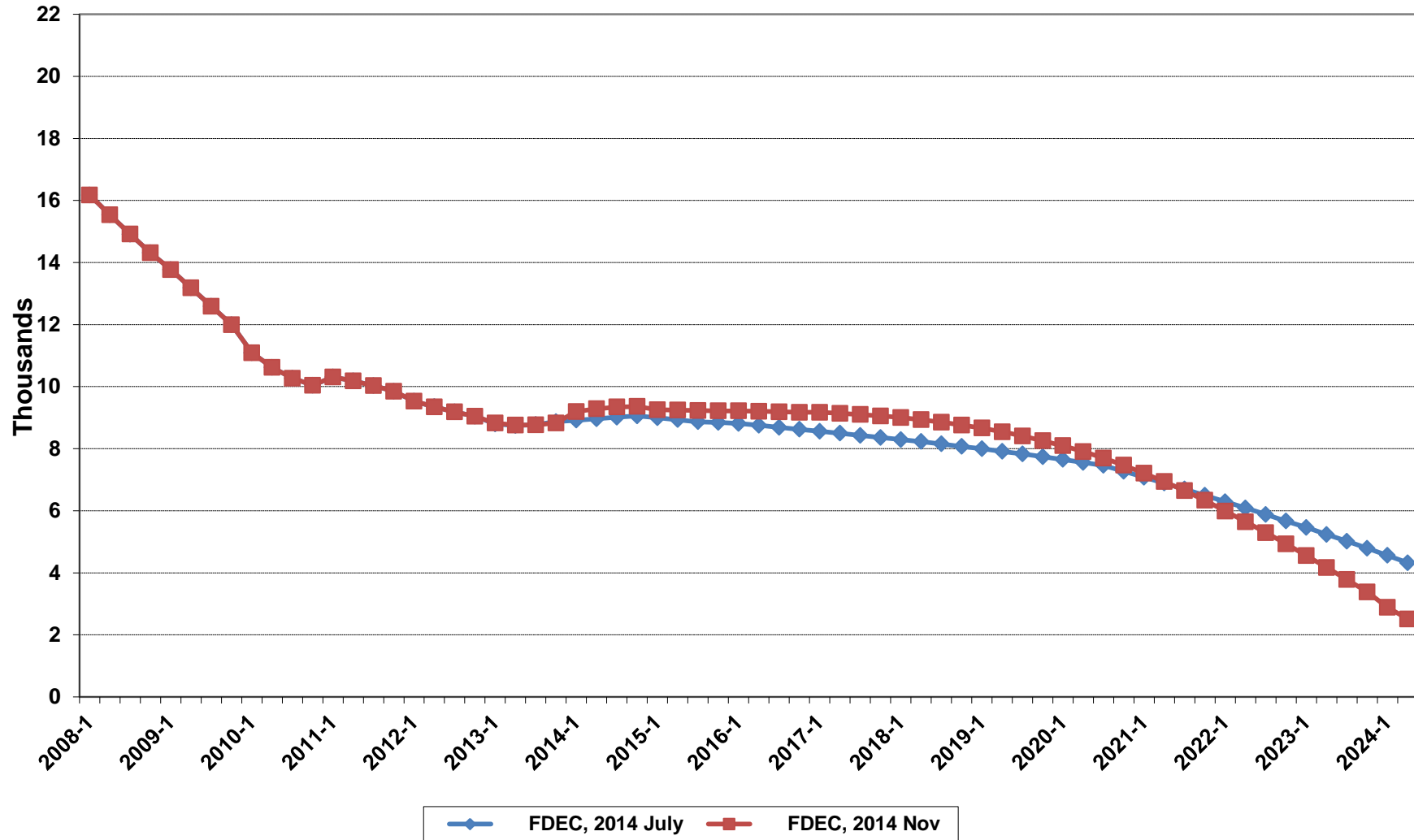
# Florida Resident Births



# Florida Resident Deaths

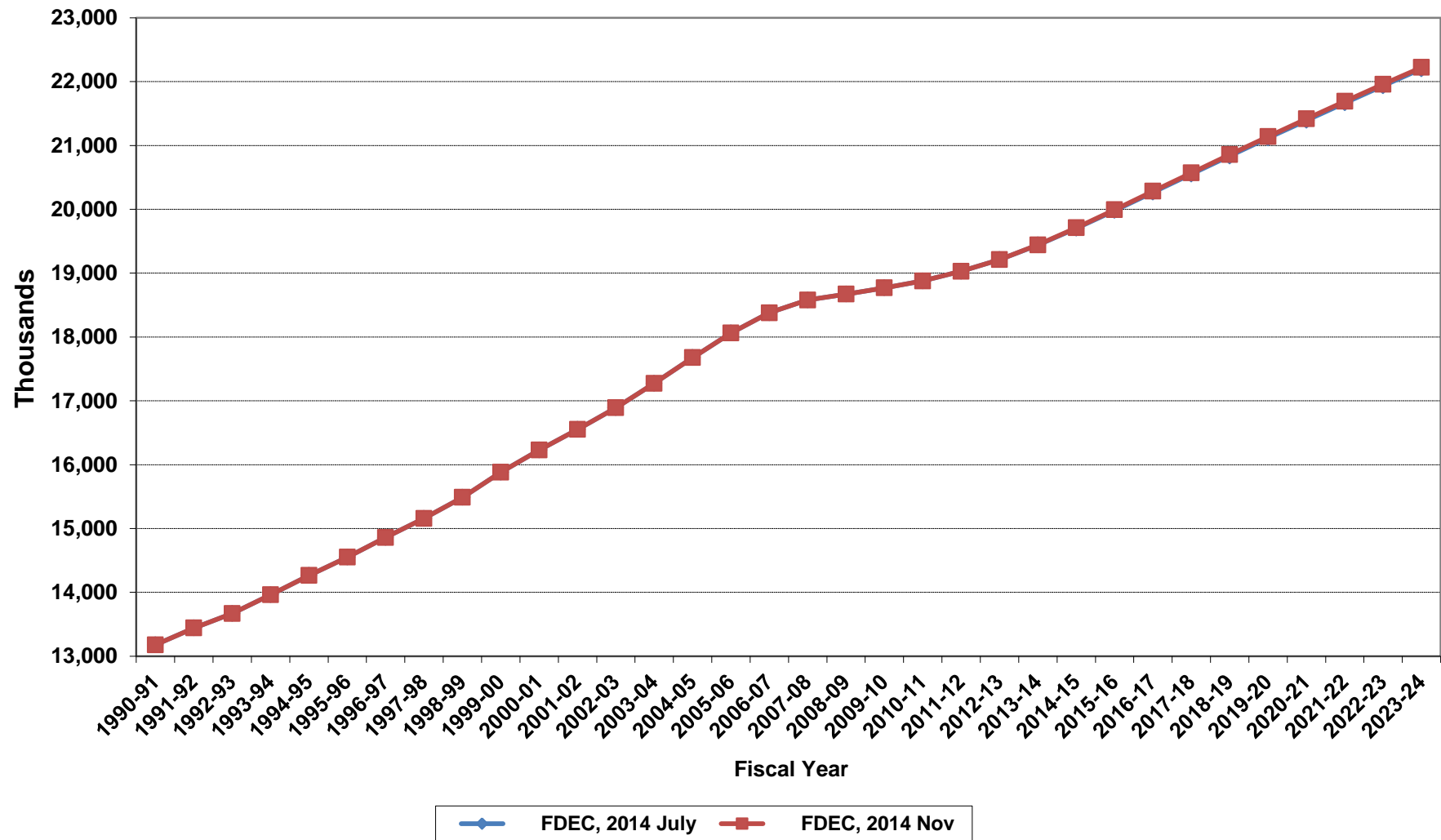


# Florida Net Natural Increase

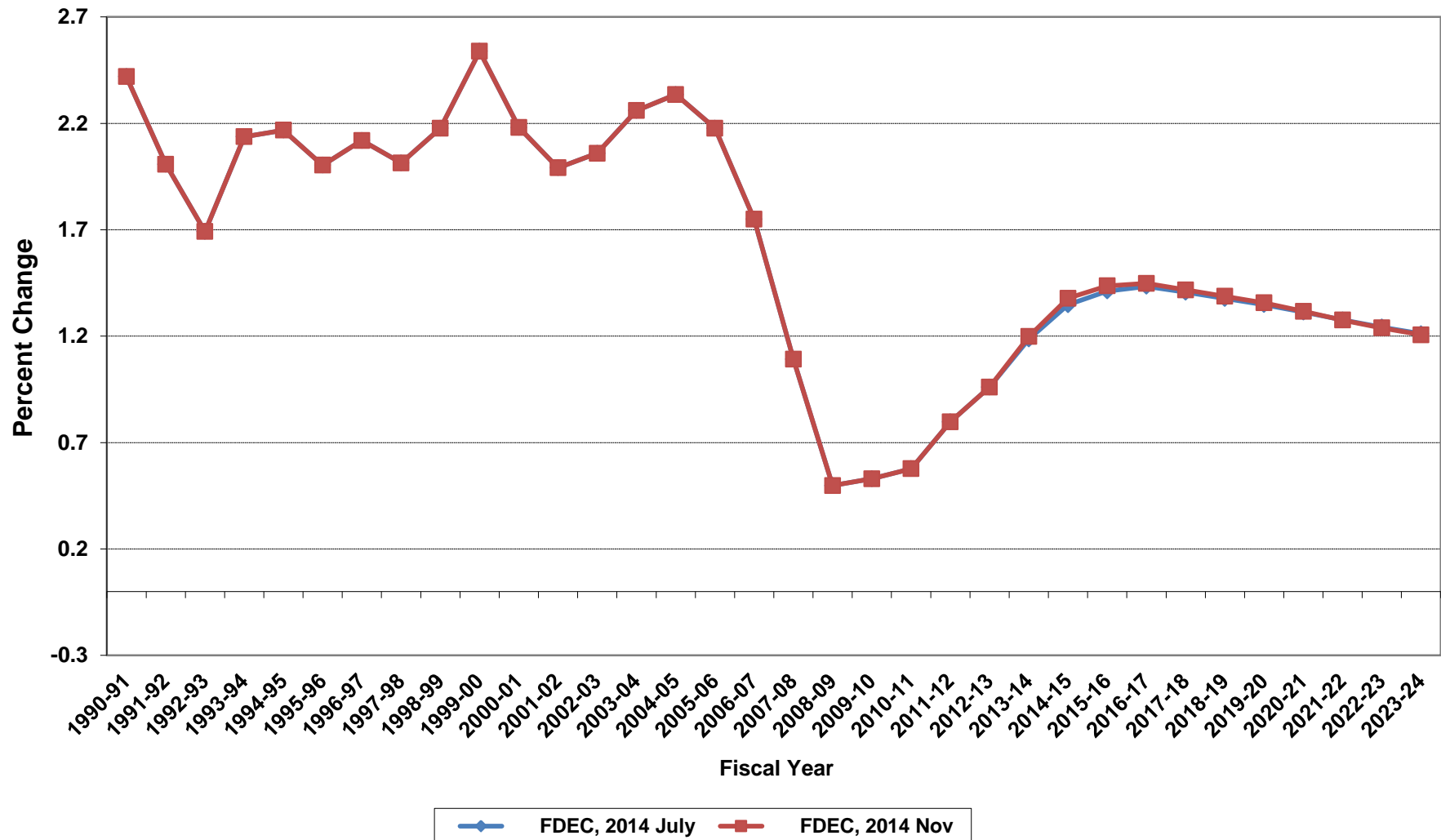




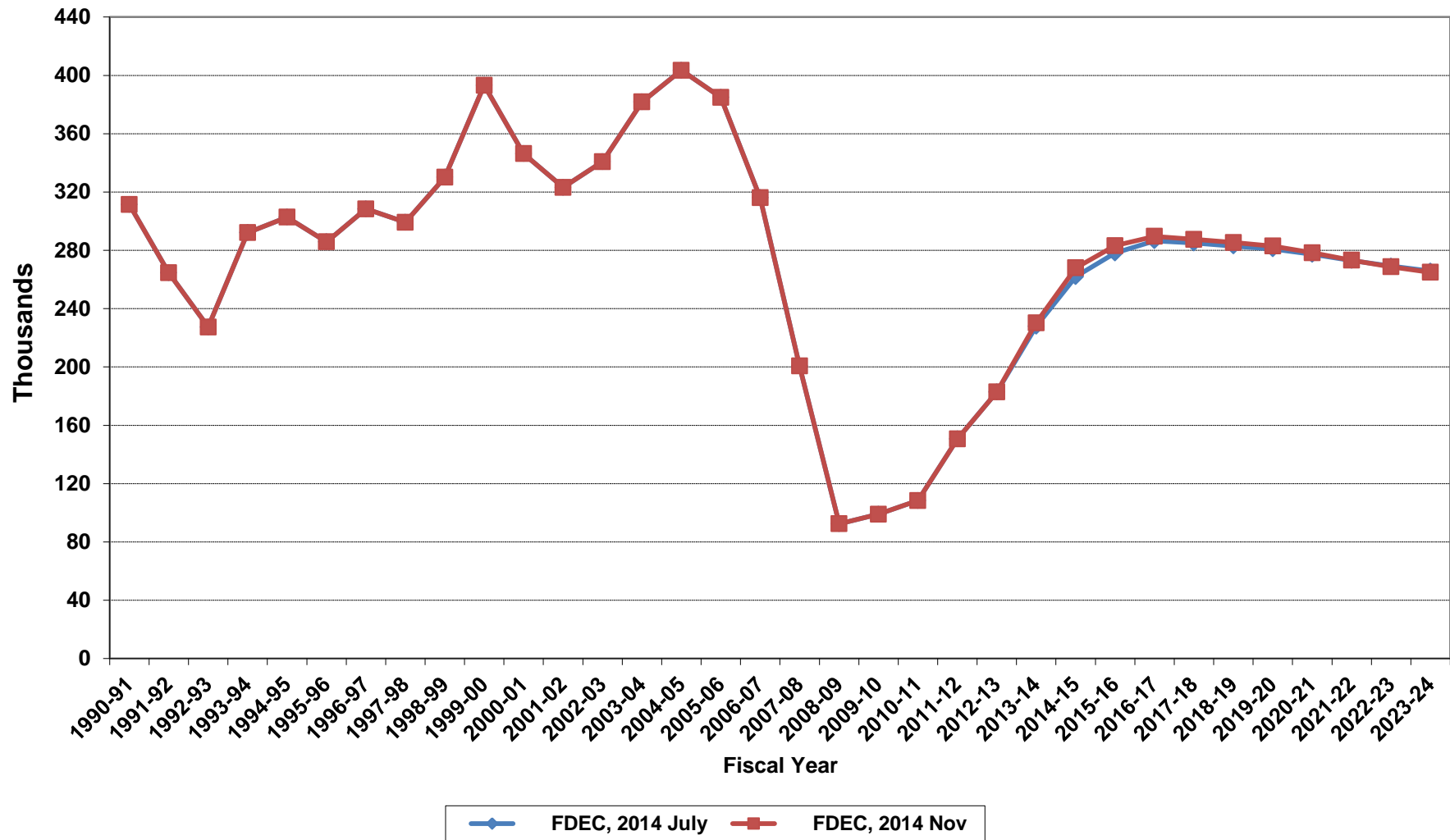
# Florida Resident Population



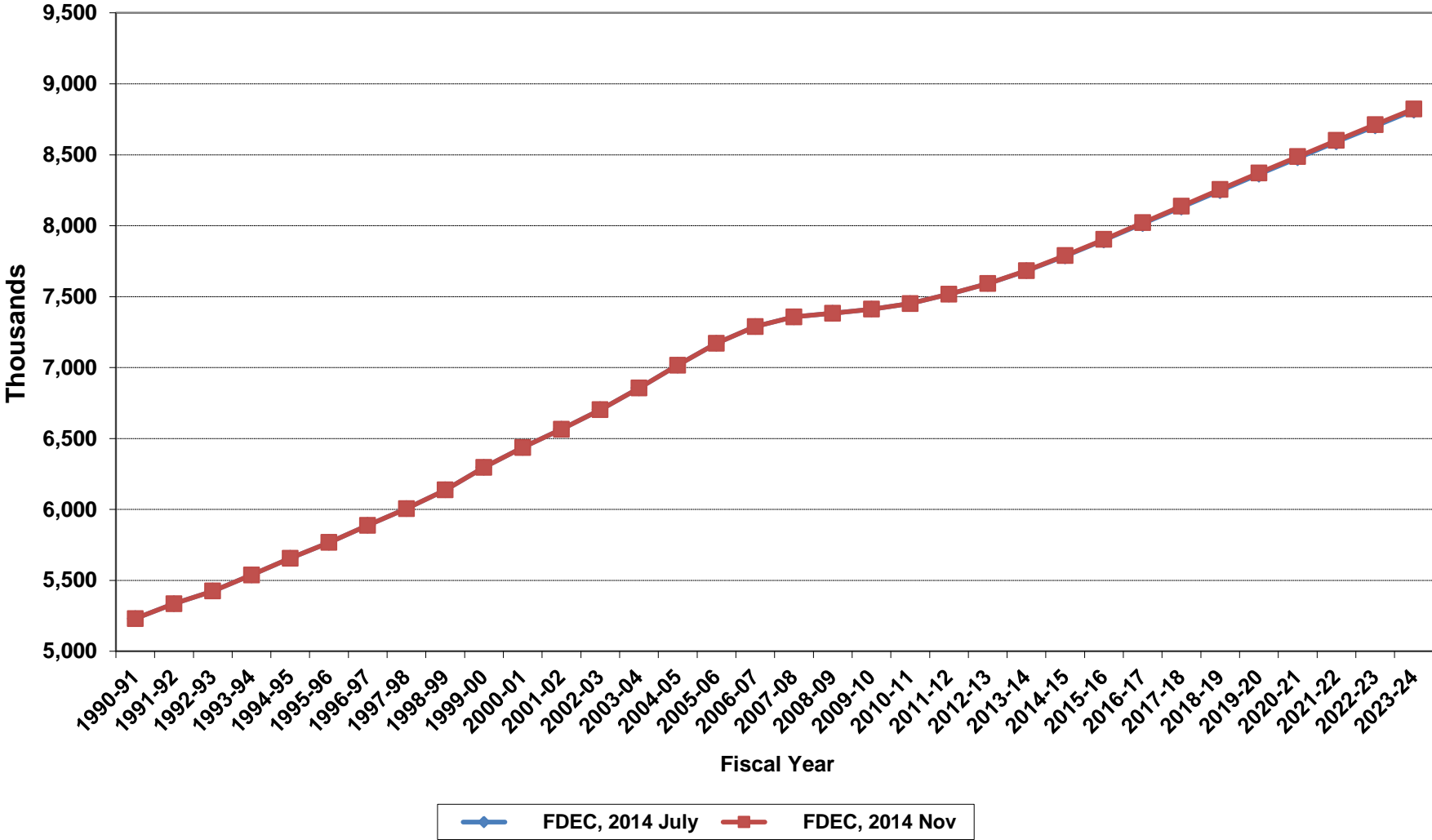
# Growth In Florida Resident Population



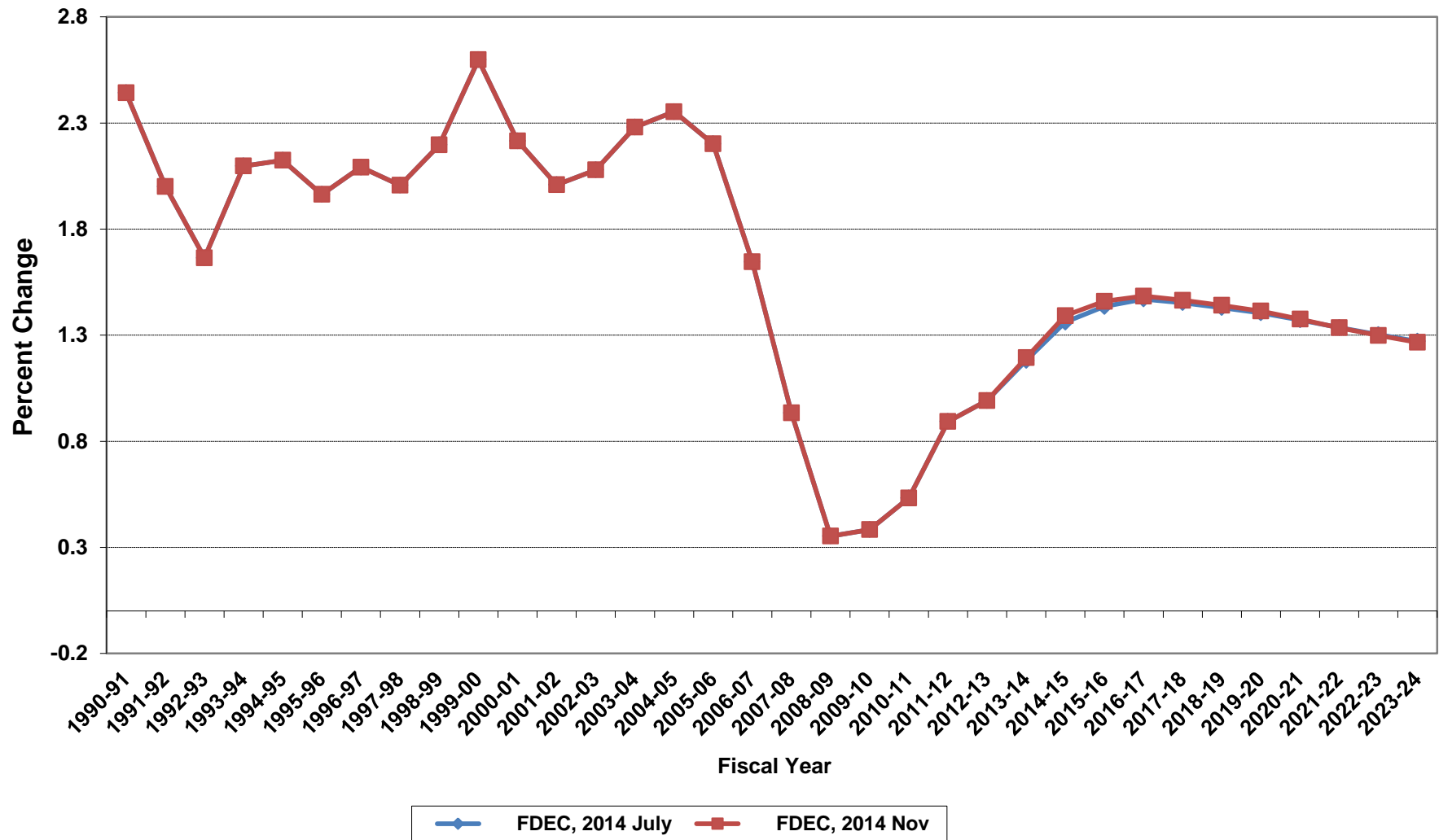
# Net Change In Florida Resident Population



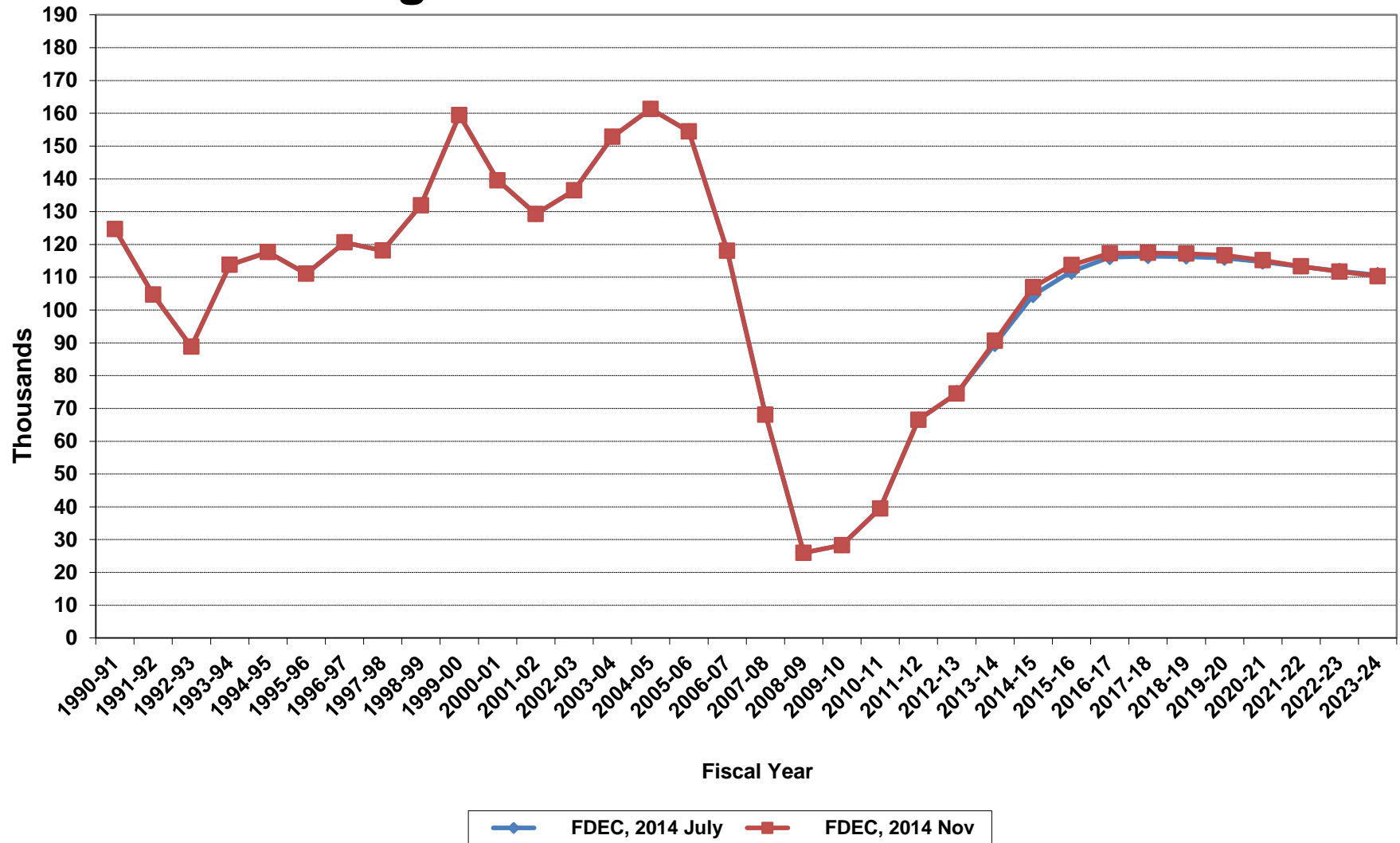
# Florida Resident Households



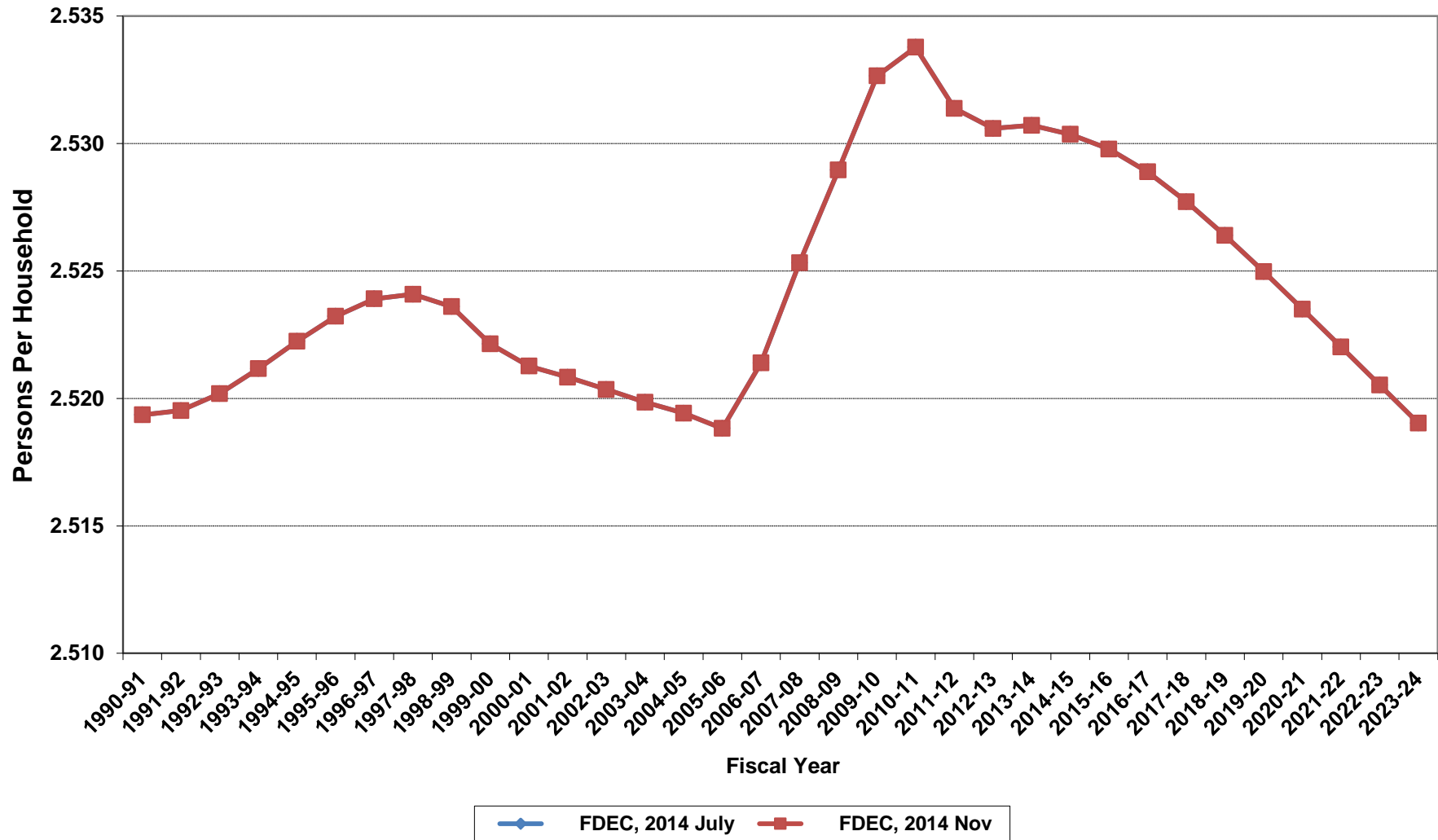
# Growth In Florida Resident Households



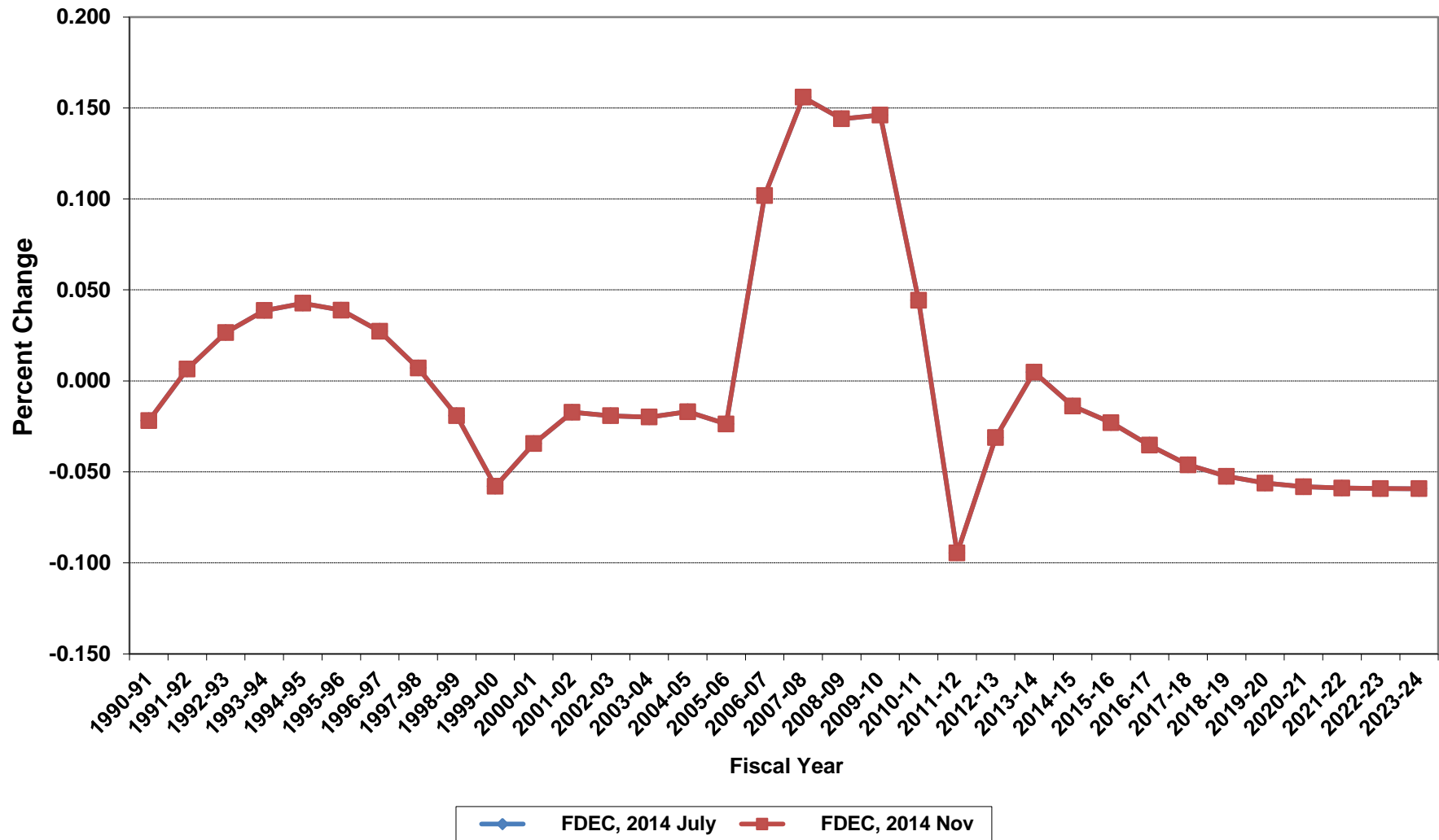
# Net Change In Florida Resident Households



# Average Florida Household Size

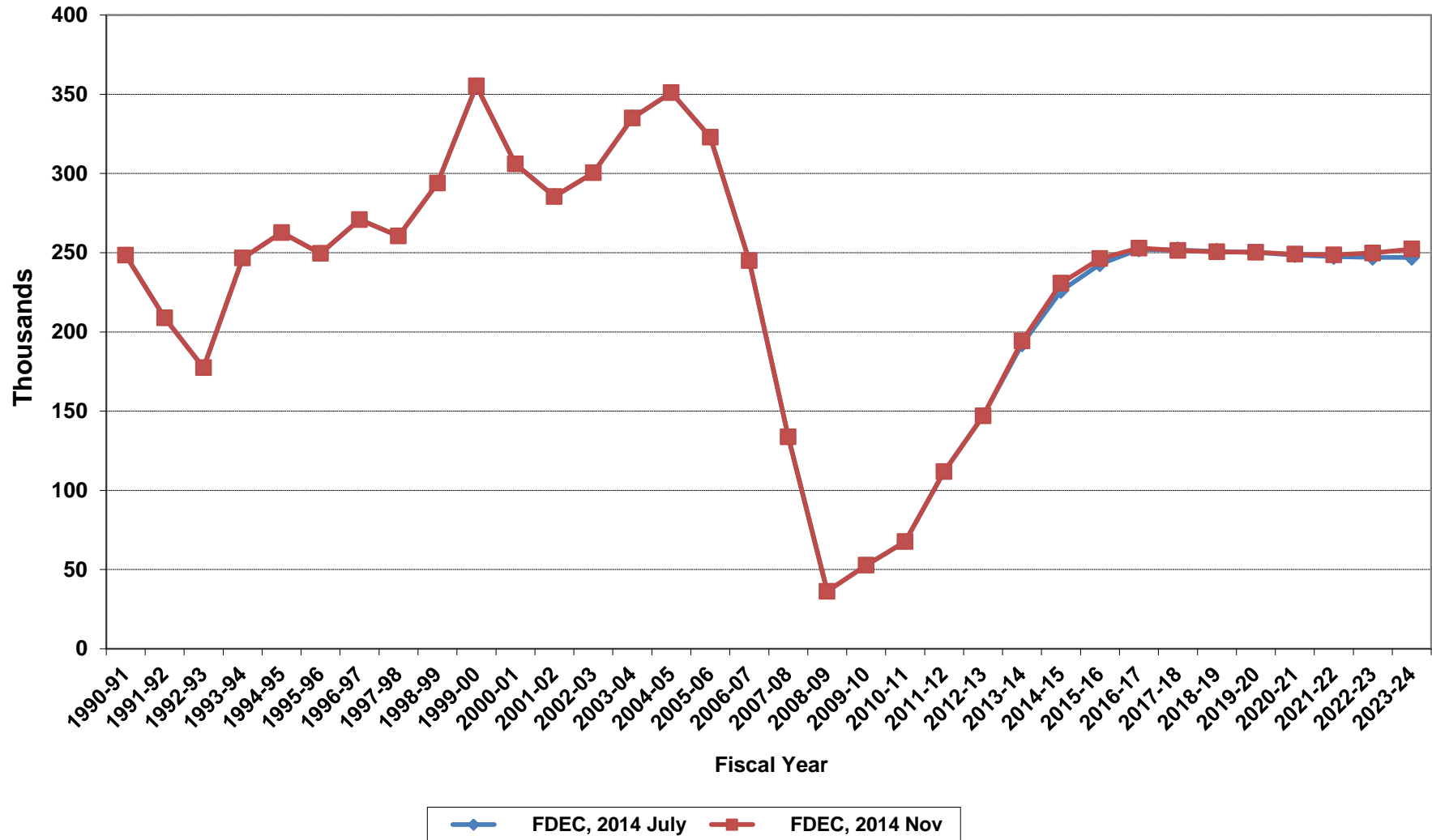


# Growth In Average Florida Household Size

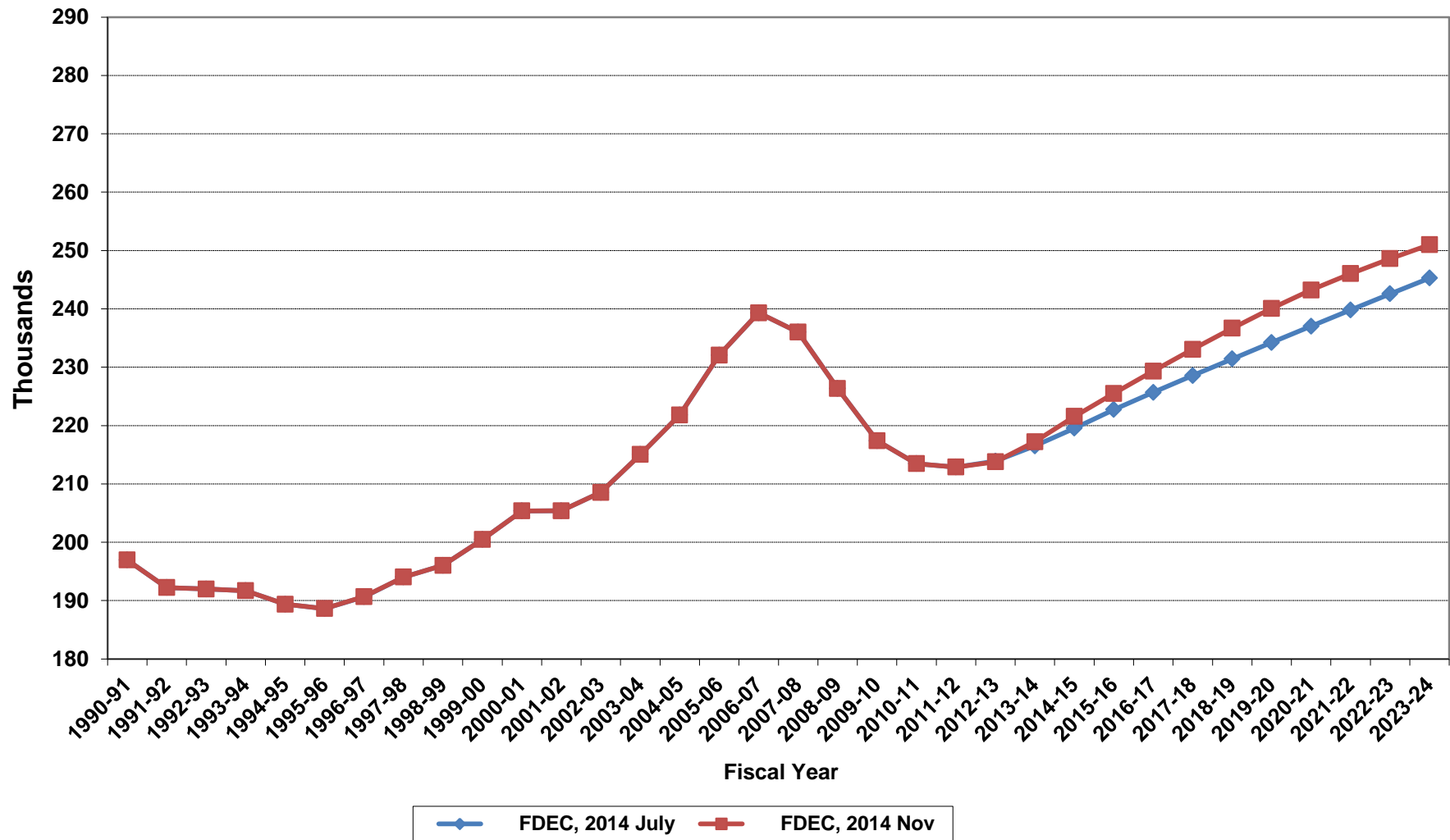




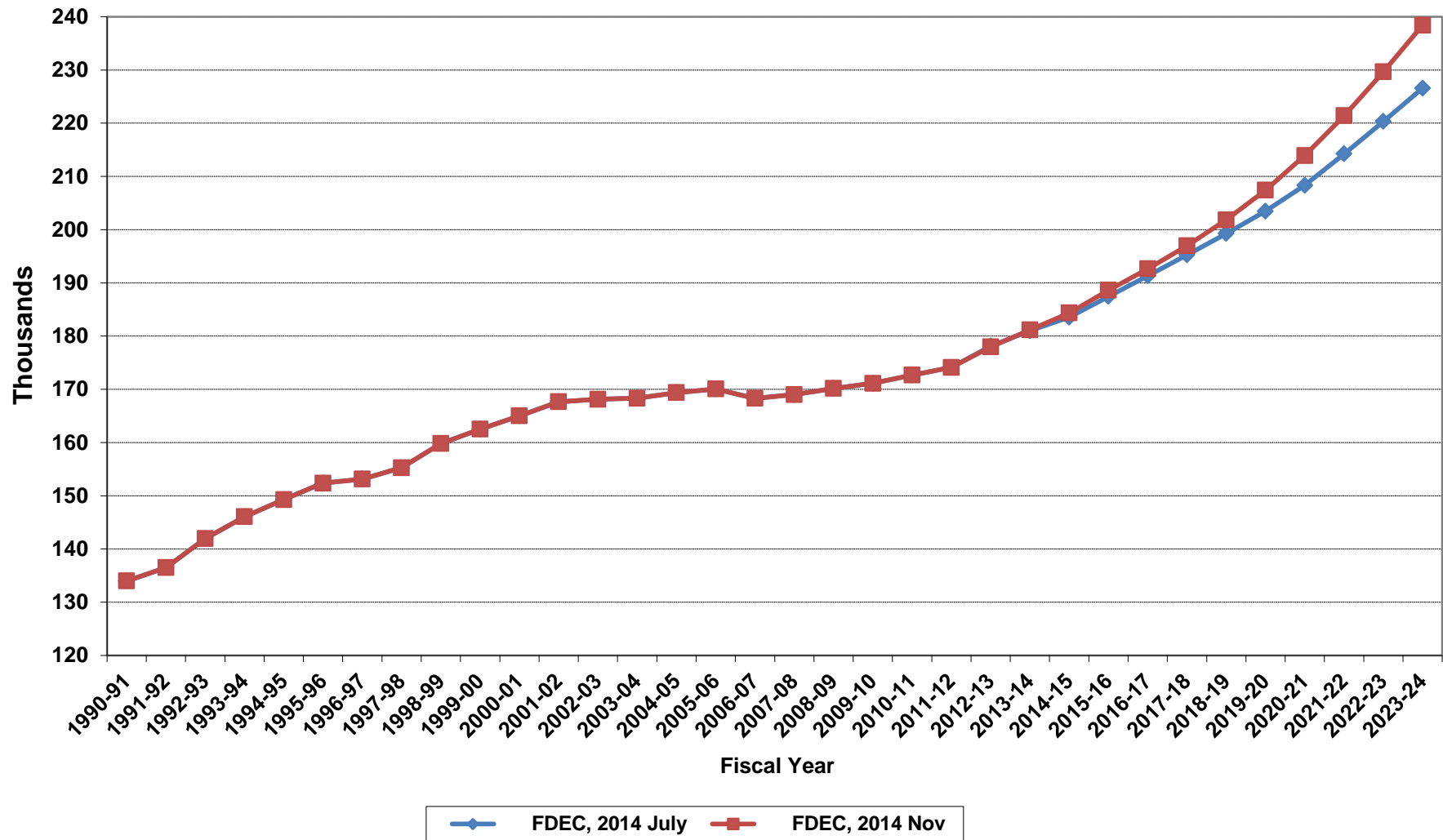
# Florida Net Migration



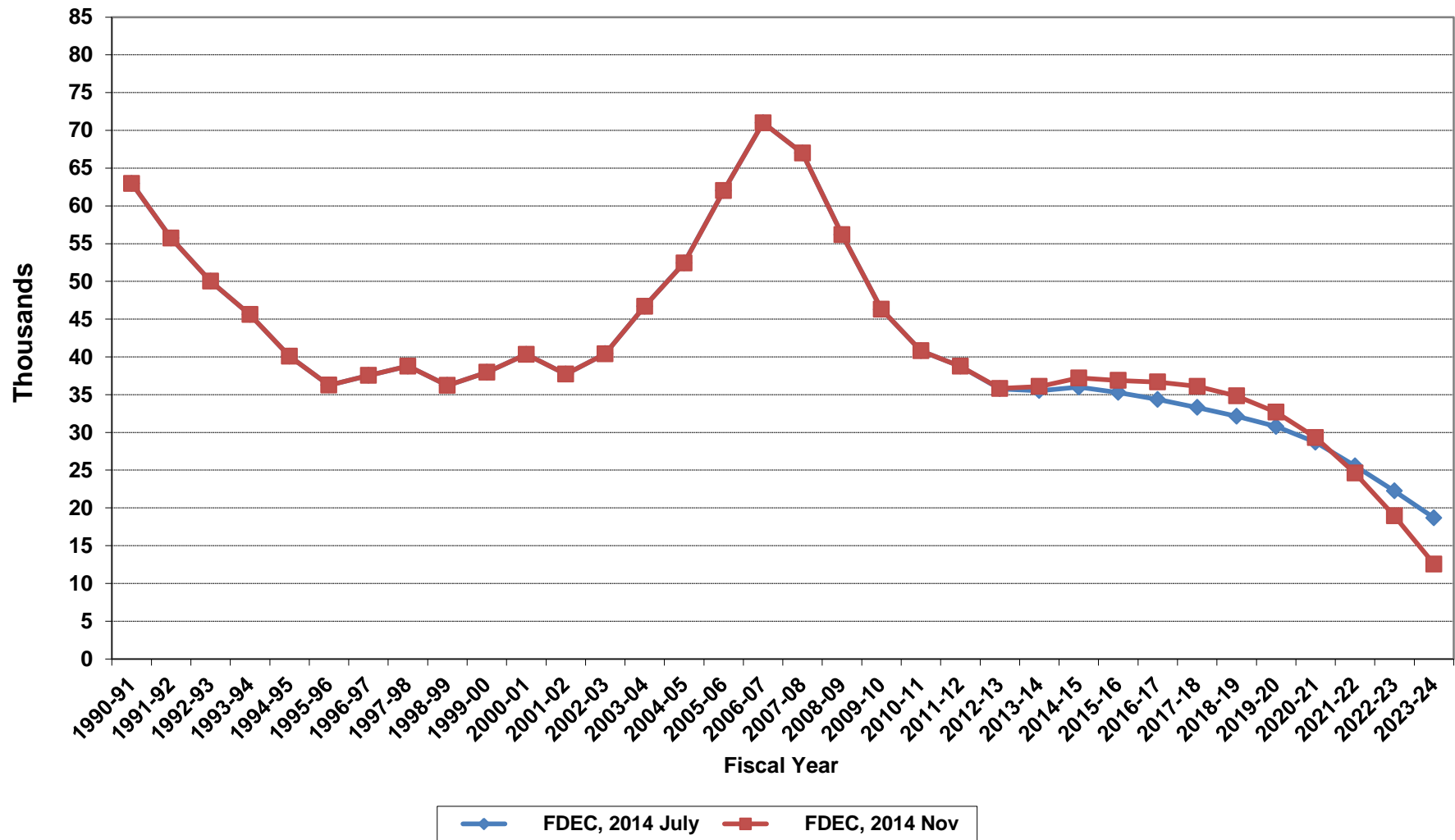
# Florida Resident Live Births



# Florida Resident Deaths



# Florida Net Natural Increase



**Florida Population and Components of Change**

<b>Fiscal Year</b>	<b>Population (End of Fiscal Year)</b>	<b>Growth Rate</b>	<b>Annual Change in Population</b>	<b>Births</b>	<b>Deaths</b>	<b>Net Natural Increase</b>	<b>Net Migration</b>
1950 - 51	2,981,346	6.50%	181,931	67,486	27,670	39,816	142,115
1951 - 52	3,155,442	5.84%	174,096	72,383	28,942	43,441	130,655
1952 - 53	3,312,521	4.98%	157,079	76,954	29,761	47,193	109,886
1953 - 54	3,504,323	5.79%	191,802	82,725	31,055	51,670	140,132
1954 - 55	3,747,400	6.94%	243,077	86,643	32,176	54,467	188,610
1955 - 56	4,046,062	7.97%	298,662	92,941	34,932	58,009	240,653
1956 - 57	4,370,045	8.01%	323,983	100,990	38,269	62,721	261,262
1957 - 58	4,629,510	5.94%	259,465	105,972	41,911	64,061	195,404
1958 - 59	4,812,270	3.95%	182,760	110,409	43,674	66,735	116,025
1959 - 60	4,998,508	3.87%	186,238	114,428	46,057	68,371	117,867
1960 - 61	5,185,913	3.75%	187,405	116,449	48,388	68,061	119,344
1961 - 62	5,367,899	3.51%	181,986	116,120	50,346	65,774	116,212
1962 - 63	5,553,522	3.46%	185,623	114,709	54,453	60,256	125,367
1963 - 64	5,728,499	3.15%	174,977	115,002	56,229	58,773	116,204
1964 - 65	5,881,195	2.67%	152,696	110,515	57,734	52,781	99,915
1965 - 66	6,065,768	3.14%	184,573	104,367	61,217	43,150	141,423
1966 - 67	6,249,674	3.03%	183,906	101,209	62,577	38,632	145,274
1967 - 68	6,441,756	3.07%	192,082	100,320	66,134	34,186	157,896
1968 - 69	6,633,546	2.98%	191,790	104,286	71,285	33,001	158,789
1969 - 70	6,861,118	3.43%	227,572	111,511	73,831	37,680	189,892
1970 - 71	7,233,583	5.43%	372,465	117,012	75,354	41,658	330,807
1971 - 72	7,681,540	6.19%	447,957	113,568	79,717	33,851	414,106
1972 - 73	8,157,883	6.20%	476,343	107,804	86,232	21,572	454,771
1973 - 74	8,515,208	4.38%	357,325	109,366	88,459	20,907	336,418
1974 - 75	8,648,587	1.57%	133,379	108,686	87,224	21,462	111,917
1975 - 76	8,782,975	1.55%	134,388	104,022	88,129	15,893	118,495
1976 - 77	8,972,678	2.16%	189,703	107,623	90,443	17,180	172,523
1977 - 78	9,225,527	2.82%	252,849	112,268	93,383	18,885	233,964
1978 - 79	9,523,728	3.23%	298,201	116,393	96,801	19,592	278,609
1979 - 80	9,914,652	4.10%	390,924	126,673	101,048	25,625	365,299
1980 - 81	10,212,969	3.01%	298,317	135,560	107,562	27,998	270,319
1981 - 82	10,492,851	2.74%	279,882	141,593	108,644	32,949	246,933
1982 - 83	10,748,466	2.44%	255,615	146,853	110,497	36,356	219,259
1983 - 84	11,065,911	2.95%	317,445	151,748	113,939	37,809	279,636
1984 - 85	11,405,533	3.07%	339,622	159,819	117,539	42,280	297,342
1985 - 86	11,740,069	2.93%	334,536	165,857	122,453	43,404	291,132
1986 - 87	12,083,241	2.92%	343,172	170,819	124,946	45,873	297,299
1987 - 88	12,410,339	2.71%	327,098	179,541	129,413	50,128	276,970
1988 - 89	12,723,719	2.53%	313,380	188,390	131,992	56,398	256,982
1989 - 90	13,017,296	2.31%	293,577	197,181	132,503	64,678	228,899
1990 - 91	13,326,892	2.38%	309,596	197,180	134,093	63,087	246,509
1991 - 92	13,552,021	1.69%	225,129	191,810	136,280	55,530	169,599
1992 - 93	13,802,571	1.85%	250,550	192,051	142,087	49,964	200,586
1993 - 94	14,120,323	2.30%	317,752	191,840	146,101	45,739	272,013
1994 - 95	14,406,418	2.03%	286,095	189,292	149,161	40,131	245,964
1995 - 96	14,701,040	2.05%	294,622	188,584	152,570	36,014	258,608
1996 - 97	15,012,615	2.12%	311,575	190,587	153,067	37,520	274,055
1997 - 98	15,310,069	1.98%	297,454	194,242	155,080	39,162	258,292
1998 - 99	15,680,164	2.42%	370,095	195,897	159,988	35,909	334,186
1999 - 00	16,069,889	2.49%	389,725	200,302	162,489	37,813	351,912
2000 - 01	16,385,615	1.96%	315,726	205,798	164,919	40,879	274,847
2001 - 02	16,718,076	2.03%	332,461	205,164	167,812	37,352	295,109
2002 - 03	17,074,258	2.13%	356,182	208,403	168,079	40,324	315,858
2003 - 04	17,475,944	2.35%	401,686	215,298	168,302	46,996	354,690
2004 - 05	17,876,215	2.29%	400,271	221,533	169,302	52,231	348,040
2005 - 06	18,236,885	2.02%	360,670	232,019	170,303	61,716	298,954
2006 - 07	18,501,231	1.45%	264,346	239,635	168,117	71,518	192,828
2007 - 08	18,636,837	0.73%	135,606	236,065	168,966	67,099	68,507
2008 - 09	18,711,844	0.40%	75,007	226,337	170,615	55,722	19,285
2009 - 10	18,826,616	0.61%	114,772	217,411	171,116	46,295	68,477

**Florida Population and Components of Change**

<b>Fiscal Year</b>	<b>Population (End of Fiscal Year)</b>	<b>Growth Rate</b>	<b>Annual Change in Population</b>	<b>Births</b>	<b>Deaths</b>	<b>Net Natural Increase</b>	<b>Net Migration</b>
2010 - 11	18,941,932	0.61%	115,316	213,467	172,663	40,804	74,512
2011 - 12	19,118,554	0.93%	176,622	212,878	174,121	38,757	137,865
2012 - 13	19,315,811	1.03%	197,257	213,786	177,973	35,813	161,444
2013 - 14	19,573,817	1.34%	258,006	217,234	181,158	36,076	221,930
2014 - 15	19,849,723	1.41%	275,906	221,564	184,361	37,203	238,703
2015 - 16	20,138,390	1.45%	288,667	225,506	188,635	36,871	251,796
2016 - 17	20,427,580	1.44%	289,190	229,319	192,647	36,672	252,518
2017 - 18	20,713,643	1.40%	286,063	233,055	196,962	36,093	249,970
2018 - 19	20,998,180	1.37%	284,537	236,671	201,848	34,823	249,714
2019 - 20	21,279,116	1.34%	280,936	240,089	207,422	32,667	248,269
2020 - 21	21,554,807	1.30%	275,691	243,223	213,914	29,309	246,382
2021 - 22	21,825,675	1.26%	270,868	246,036	221,422	24,614	246,254
2022 - 23	22,092,387	1.22%	266,712	248,594	229,647	18,947	247,765
2023 - 24	22,355,587	1.19%	263,200	250,988	238,430	12,558	250,642
2024 - 25	22,615,921	1.16%	260,334	253,161	246,247	6,914	253,420
2025 - 26	22,873,627	1.14%	257,706	254,880	251,860	3,020	254,686
2026 - 27	23,128,128	1.11%	254,501	255,847	255,801	46	254,455
2027 - 28	23,378,744	1.08%	250,616	256,206	258,476	-2,270	252,886
2028 - 29	23,624,804	1.05%	246,060	256,524	260,528	-4,004	250,064
2029 - 30	23,865,642	1.02%	240,838	257,024	263,974	-6,950	247,788