

Demographic Estimating Conference
Executive Summary
July 9, 2015

The Demographic Estimating Conference met on July 9, 2015, to adopt a new population forecast. The data reflect final April 1, 2014 population and household estimates, in addition to other recent demographic and economic-related data. Overall, each year of the forecast was slightly increased relative to February’s conference projections with larger increases in the short run and smaller increases in the long run.

Population growth in Florida continues to strengthen but—relative to Florida’s past trends—at lower levels and rates of growth. Historically, Florida’s population growth has been driven by net migration (more people permanently moving into the state than leaving). However, net migration fell to record low levels during much of 2008 and into 2009, accounting for 25.7% of population growth during FY 2008-09. During that time period, natural increase (births minus deaths) actually exceeded net migration. Net migration includes both domestic and international migration, and it was primarily the domestic migration component that led to the slowdown in population growth. The lower levels of net migration were largely due to national economic conditions, including weakened housing markets and other effects from the Great Recession that made it difficult for people in the US to relocate to Florida. Reflecting migration’s return as a decisive factor, the expected net migration share of Florida’s FY 2014-15 population growth is 88.9%.

Florida’s population is expected to grow by 310,227 (1.59%) between April 1, 2014 and April 1, 2015, the strongest increase seen since 2007. Annual population change is expected to remain above 300,000 net new residents per year between 2015 and 2019 and decrease to slightly under 300,000 in 2020.

April 1	Population	Percent Change	Change
2012	19,074,434	0.90%	169,364
2013	19,259,543	0.97%	185,109
2014	19,507,369	1.29%	247,826
2015	19,817,596	1.59%	310,227
2016	20,127,723	1.56%	310,127
2017	20,434,731	1.53%	307,008
2018	20,738,328	1.49%	303,597
2019	21,039,709	1.45%	301,381
2020	21,337,694	1.42%	297,985

Between April 1, 2010 and April 1, 2020, population growth is expected to average 253,636 net new residents per year, representing a compound growth rate of 1.27% over this 10-year time horizon. These increases are analogous to adding a city the size of Hialeah every year. By April 1, 2016, Florida’s population is expected to break the 20-million mark.

Of note, the population estimates developed by the U.S. Census Bureau continue to be higher than the official state estimates adopted by the Demographic Estimating Conference. As of July 1, 2014, this difference was over 300,000 persons. The Legislative Office of Economic and Demographic Research is continuing to work with the Census Bureau to investigate this further.

Florida Demographic Estimating Conference

Tables
Conference Packet

July 9, 2015

Florida Resident Population

April 1

Year	Florida Demographic Estimating Conference February 2015			Florida Demographic Estimating Conference July 2015		
	Population	% Change	Change	Population	% Change	Change
1990	12,938,071	2.27%	287,136	12,938,071	2.27%	287,136
1991	13,258,732	2.48%	320,661	13,258,732	2.48%	320,661
1992	13,497,541	1.80%	238,809	13,497,541	1.80%	238,809
1993	13,730,115	1.72%	232,574	13,730,115	1.72%	232,574
1994	14,043,757	2.28%	313,642	14,043,757	2.28%	313,642
1995	14,335,992	2.08%	292,235	14,335,992	2.08%	292,235
1996	14,623,421	2.00%	287,429	14,623,421	2.00%	287,429
1997	14,938,314	2.15%	314,893	14,938,314	2.15%	314,893
1998	15,230,421	1.96%	292,107	15,230,421	1.96%	292,107
1999	15,580,244	2.30%	349,823	15,580,244	2.30%	349,823
2000	15,982,824	2.58%	402,580	15,982,824	2.58%	402,580
2001	16,305,100	2.02%	322,276	16,305,100	2.02%	322,276
2002	16,634,256	2.02%	329,156	16,634,256	2.02%	329,156
2003	16,979,706	2.08%	345,450	16,979,706	2.08%	345,450
2004	17,374,824	2.33%	395,118	17,374,824	2.33%	395,118
2005	17,778,156	2.32%	403,332	17,778,156	2.32%	403,332
2006	18,154,475	2.12%	376,319	18,154,475	2.12%	376,319
2007	18,446,768	1.61%	292,293	18,446,768	1.61%	292,293
2008	18,613,905	0.91%	167,137	18,613,905	0.91%	167,137
2009	18,687,425	0.39%	73,520	18,687,425	0.39%	73,520
2010	18,801,332	0.61%	113,885	18,801,332	0.61%	113,907
2011	18,905,070	0.55%	103,738	18,905,070	0.55%	103,738
2012	19,074,434	0.90%	169,364	19,074,434	0.90%	169,364
2013	19,259,543	0.97%	185,109	19,259,543	0.97%	185,109
2014	19,507,369	1.29%	247,826	19,507,369	1.29%	247,826
Begins forecast						
2015	19,789,625	1.45%	282,256	19,817,596	1.59%	310,227
2016	20,075,695	1.45%	286,070	20,127,723	1.56%	310,127
2017	20,367,465	1.45%	291,770	20,434,731	1.53%	307,008
2018	20,658,700	1.43%	291,235	20,738,328	1.49%	303,597
2019	20,948,450	1.40%	289,750	21,039,709	1.45%	301,381
5-Year Averages						
2020	21,236,667	1.42%	289,408	21,337,694	1.49%	304,020
2025	22,600,346	1.25%	272,736	22,747,248	1.29%	281,911
2030	23,872,566	1.10%	254,444	24,022,120	1.10%	254,974
2035	25,027,345	0.95%	230,956	25,167,322	0.94%	229,040
2040	26,081,392	0.83%	210,809	26,210,922	0.82%	208,720

Florida Resident Households

April 1

Year	Florida Demographic Estimating Conference February 2015			Florida Demographic Estimating Conference July 2015			
	Households	% Change	Change	Households	% Change	Change	
1990	5,134,869	3.40%	168,985	5,134,869	3.40%	168,985	
1991	5,283,154	2.89%	148,285	5,283,154	2.89%	148,285	
1992	5,378,499	1.80%	95,345	5,378,499	1.80%	95,345	
1993	5,478,476	1.86%	99,977	5,478,476	1.86%	99,977	
1994	5,589,093	2.02%	110,617	5,589,093	2.02%	110,617	
1995	5,697,328	1.94%	108,235	5,697,328	1.94%	108,235	
1996	5,806,031	1.91%	108,703	5,806,031	1.91%	108,703	
1997	5,929,613	2.13%	123,582	5,929,613	2.13%	123,582	
1998	6,040,514	1.87%	110,901	6,040,514	1.87%	110,901	
1999	6,182,346	2.35%	141,832	6,182,346	2.35%	141,832	
2000	6,338,075	2.52%	155,729	6,338,075	2.52%	155,729	
2001	6,467,215	2.04%	129,140	6,467,215	2.04%	129,140	
2002	6,599,035	2.04%	131,820	6,599,035	2.04%	131,820	
2003	6,737,370	2.10%	138,335	6,737,370	2.10%	138,335	
2004	6,895,469	2.35%	158,099	6,895,469	2.35%	158,099	
2005	7,056,889	2.34%	161,420	7,056,889	2.34%	161,420	
2006	7,207,645	2.14%	150,756	7,207,645	2.14%	150,756	
2007	7,312,907	1.46%	105,262	7,312,907	1.46%	105,262	
2008	7,368,319	0.76%	55,412	7,368,319	0.76%	55,412	
2009	7,386,570	0.25%	18,251	7,386,570	0.25%	18,251	
2010	7,420,812	0.46%	34,242	7,420,812	0.46%	34,242	
2011	7,461,978	0.55%	41,166	7,461,978	0.55%	41,166	
2012	7,537,442	1.01%	75,464	7,537,442	1.01%	75,464	
2013	7,610,153	0.96%	72,711	7,610,153	0.96%	72,711	
2014	7,669,541	0.78%	59,388	7,669,541	0.78%	59,388	
Begins forecast							
2015	7,782,772	1.48%	113,231	7,768,092	1.28%	98,551	
2016	7,900,810	1.52%	118,038	7,892,736	1.60%	124,644	
2017	8,021,957	1.53%	121,147	8,019,541	1.61%	126,805	
2018	8,143,365	1.51%	121,408	8,145,919	1.58%	126,378	
2019	8,264,373	1.49%	121,008	8,271,934	1.55%	126,015	
			5-Year Averages				5-Year Averages
2020	8,384,948	1.50%	120,435	8,396,831	1.57%	125,748	
2025	8,964,598	1.35%	115,930	8,997,093	1.39%	120,052	
2030	9,505,195	1.18%	108,119	9,543,800	1.19%	109,341	
2035	9,994,295	1.01%	97,820	10,033,909	1.01%	98,022	
2040	10,458,267	0.91%	92,794	10,494,113	0.90%	92,041	

Quarterly Data Table

QUARTERLY FORECAST TABLES

	2008-1	2008-2	2008-3	2008-4	2009-1	2009-2	2009-3	2009-4	2010-1	2010-2	2010-3	2010-4	2011-1	2011-2	2011-3	2011-4	2012-1	2012-2
Population																		
FDEC, 2015 February	18,599.6	18,625.4	18,645.5	18,661.9	18,678.6	18,699.6	18,726.1	18,755.5	18,786.1	18,814.0	18,838.5	18,862.9	18,890.3	18,923.5	18,962.8	19,006.3	19,051.6	19,096.6
FDEC, 2015 July	18,599.6	18,625.4	18,645.5	18,661.9	18,678.6	18,699.6	18,726.1	18,755.5	18,786.1	18,813.9	18,838.3	18,862.7	18,890.2	18,923.4	18,962.7	19,006.3	19,051.6	19,096.7
Population Growth Rate																		
FDEC, 2015 February	0.72	0.56	0.43	0.35	0.36	0.45	0.57	0.63	0.65	0.60	0.52	0.52	0.58	0.70	0.83	0.92	0.96	0.95
FDEC, 2015 July	0.72	0.56	0.43	0.35	0.36	0.45	0.57	0.63	0.65	0.59	0.52	0.52	0.58	0.71	0.83	0.92	0.96	0.95
Net Change in Population																		
FDEC, 2015 February	33.2	25.8	20.1	16.4	16.6	21.1	26.4	29.5	30.5	27.9	24.5	24.4	27.3	33.2	39.4	43.5	45.3	45.0
FDEC, 2015 July	33.2	25.8	20.1	16.4	16.6	21.1	26.4	29.5	30.5	27.9	24.4	24.4	27.5	33.2	39.3	43.5	45.3	45.1
Households																		
FDEC, 2015 February	7,363.9	7,371.6	7,377.0	7,380.7	7,384.5	7,390.0	7,397.7	7,406.6	7,416.0	7,425.3	7,434.4	7,444.2	7,455.7	7,469.9	7,487.0	7,506.3	7,526.9	7,547.4
FDEC, 2015 July	7,363.9	7,371.6	7,377.0	7,380.7	7,384.5	7,390.0	7,397.7	7,406.6	7,416.0	7,425.2	7,434.2	7,443.9	7,455.5	7,470.0	7,487.4	7,506.8	7,527.2	7,547.5
Household Growth Rate																		
FDEC, 2015 February	0.58	0.42	0.29	0.20	0.20	0.30	0.41	0.48	0.51	0.50	0.49	0.53	0.62	0.77	0.92	1.03	1.10	1.10
FDEC, 2015 July	0.58	0.42	0.29	0.20	0.20	0.30	0.41	0.48	0.51	0.50	0.48	0.52	0.63	0.78	0.93	1.04	1.09	1.08
Net Change in Households																		
FDEC, 2015 February	10.6	7.7	5.4	3.8	3.7	5.5	7.7	8.9	9.5	9.3	9.1	9.8	11.5	14.2	17.1	19.2	20.6	20.5
FDEC, 2015 July	10.6	7.7	5.4	3.8	3.7	5.5	7.7	8.9	9.5	9.2	8.9	9.7	11.6	14.5	17.4	19.4	20.3	20.3
Household Size																		
FDEC, 2015 February	2.526	2.527	2.528	2.528	2.529	2.530	2.531	2.532	2.533	2.534	2.534	2.534	2.534	2.533	2.533	2.532	2.531	2.530
FDEC, 2015 July	2.526	2.527	2.528	2.528	2.529	2.530	2.531	2.532	2.533	2.534	2.534	2.534	2.534	2.533	2.533	2.532	2.531	2.530
Household Size Growth Rate																		
FDEC, 2015 February	0.14	0.14	0.14	0.15	0.15	0.15	0.15	0.15	0.14	0.09	0.03	-0.01	-0.04	-0.06	-0.08	-0.11	-0.15	-0.15
FDEC, 2015 July	0.14	0.14	0.14	0.15	0.15	0.15	0.15	0.15	0.14	0.10	0.04	-0.01	-0.04	-0.07	-0.10	-0.12	-0.13	-0.13
Net Migration																		
FDEC, 2015 February	17.0	10.3	5.2	2.1	2.9	7.9	13.8	17.5	19.4	17.3	14.3	14.4	17.0	23.0	29.3	33.6	35.8	35.7
FDEC, 2015 July	17.0	10.3	5.2	2.1	2.9	7.9	13.8	17.5	19.4	17.2	14.1	14.3	17.2	23.0	29.3	33.7	35.8	35.8
Births																		
FDEC, 2015 February	58.7	58.1	57.6	57.0	56.2	55.6	55.1	54.6	54.1	53.7	53.5	53.3	53.4	53.3	53.3	53.2	53.2	53.2
FDEC, 2015 July	58.7	58.1	57.6	57.0	56.2	55.6	55.1	54.6	54.1	53.7	53.5	53.3	53.4	53.3	53.3	53.2	53.2	53.2
Deaths																		
FDEC, 2015 February	42.5	42.6	42.7	42.7	42.4	42.4	42.5	42.6	43.0	43.1	43.2	43.2	43.1	43.1	43.2	43.4	43.6	43.8
FDEC, 2015 July	42.5	42.6	42.7	42.7	42.4	42.4	42.5	42.6	43.0	43.1	43.2	43.2	43.1	43.1	43.2	43.4	43.6	43.8
Net Natural Increase																		
FDEC, 2015 February	16.2	15.5	14.9	14.3	13.8	13.2	12.6	12.0	11.1	10.6	10.3	10.0	10.3	10.2	10.0	9.9	9.5	9.3
FDEC, 2015 July	16.2	15.5	14.9	14.3	13.8	13.2	12.6	12.0	11.1	10.6	10.3	10.0	10.3	10.2	10.0	9.9	9.5	9.3

Quarterly Data Table

QUARTERLY FORECAST TABLES

	<u>2012-3</u>	<u>2012-4</u>	<u>2013-1</u>	<u>2013-2</u>	<u>2013-3</u>	<u>2013-4</u>	<u>2014-1</u>	<u>2014-2</u>	<u>2014-3</u>	<u>2014-4</u>	<u>2015-1</u>	<u>2015-2</u>	<u>2015-3</u>	<u>2015-4</u>	<u>2016-1</u>	<u>2016-2</u>	<u>2016-3</u>	<u>2016-4</u>
Population																		
FDEC, 2015 February	19,141.0	19,186.5	19,234.6	19,287.4	19,345.3	19,407.6	19,473.5	19,542.0	19,612.2	19,683.0	19,754.1	19,825.2	19,896.5	19,967.8	20,039.5	20,111.9	20,184.7	20,257.9
FDEC, 2015 July	19,141.3	19,186.8	19,234.7	19,286.8	19,343.7	19,405.7	19,472.7	19,544.4	19,620.1	19,698.5	19,777.8	19,856.9	19,935.0	20,012.4	20,089.3	20,166.2	20,243.0	20,319.8
Population Growth Rate																		
FDEC, 2015 February	0.93	0.95	1.01	1.10	1.21	1.29	1.37	1.41	1.44	1.45	1.45	1.45	1.45	1.44	1.44	1.45	1.46	1.46
FDEC, 2015 July	0.94	0.95	1.00	1.09	1.19	1.29	1.39	1.48	1.56	1.61	1.62	1.61	1.58	1.56	1.55	1.54	1.53	1.53
Net Change in Population																		
FDEC, 2015 February	44.4	45.4	48.1	52.8	57.9	62.2	66.0	68.5	70.1	70.8	71.1	71.1	71.3	71.4	71.7	72.4	72.8	73.1
FDEC, 2015 July	44.6	45.4	48.0	52.0	57.0	62.0	66.9	71.7	75.7	78.3	79.4	79.0	78.1	77.4	77.0	76.8	76.9	76.8
Households																		
FDEC, 2015 February	7,567.0	7,585.6	7,602.4	7,617.2	7,630.8	7,644.6	7,660.7	7,681.2	7,709.9	7,739.0	7,768.2	7,797.4	7,826.7	7,856.2	7,885.8	7,915.8	7,945.9	7,976.3
FDEC, 2015 July	7,567.0	7,585.3	7,602.2	7,617.3	7,631.2	7,645.4	7,661.1	7,679.7	7,701.7	7,726.6	7,753.9	7,783.1	7,813.5	7,844.9	7,876.8	7,908.7	7,940.5	7,972.1
Household Growth Rate																		
FDEC, 2015 February	1.04	0.99	0.88	0.78	0.72	0.72	0.84	1.08	1.50	1.52	1.52	1.51	1.51	1.52	1.52	1.53	1.53	1.54
FDEC, 2015 July	1.04	0.97	0.89	0.80	0.74	0.74	0.83	0.98	1.15	1.30	1.42	1.51	1.58	1.62	1.63	1.63	1.62	1.61
Net Change in Households																		
FDEC, 2015 February	19.6	18.6	16.7	14.8	13.6	13.8	16.1	20.6	28.6	29.1	29.2	29.2	29.3	29.5	29.7	29.9	30.1	30.4
FDEC, 2015 July	19.5	18.4	16.8	15.1	14.0	14.1	15.7	18.6	22.0	24.9	27.3	29.1	30.5	31.4	31.8	31.9	31.8	31.7
Household Size																		
FDEC, 2015 February	2.530	2.529	2.530	2.532	2.535	2.539	2.542	2.544	2.544	2.543	2.543	2.543	2.542	2.542	2.541	2.541	2.540	2.540
FDEC, 2015 July	2.530	2.529	2.530	2.532	2.535	2.538	2.542	2.545	2.548	2.549	2.551	2.551	2.551	2.551	2.550	2.550	2.549	2.549
Household Size Growth Rate																		
FDEC, 2015 February	-0.11	-0.03	0.12	0.32	0.49	0.57	0.52	0.33	-0.06	-0.06	-0.06	-0.06	-0.06	-0.07	-0.07	-0.07	-0.07	-0.08
FDEC, 2015 July	-0.10	-0.02	0.11	0.29	0.45	0.54	0.56	0.50	0.41	0.30	0.20	0.09	0.01	-0.05	-0.08	-0.09	-0.08	-0.08
Net Migration																		
FDEC, 2015 February	35.2	36.4	39.3	44.0	49.2	53.5	57.0	59.5	61.1	61.9	62.2	62.2	62.4	62.5	62.8	63.5	64.0	64.3
FDEC, 2015 July	35.4	36.4	39.0	43.2	48.2	53.3	58.2	63.0	67.0	69.6	70.7	70.3	69.4	68.6	68.2	68.1	68.1	68.1
Births																		
FDEC, 2015 February	53.3	53.4	53.5	53.7	53.9	54.1	54.5	54.7	55.0	55.3	55.5	55.8	56.0	56.3	56.5	56.7	57.0	57.2
FDEC, 2015 July	53.3	53.4	53.5	53.7	53.9	54.1	54.5	54.8	55.1	55.5	55.8	56.2	56.5	56.9	57.3	57.7	58.1	58.4
Deaths																		
FDEC, 2015 February	44.1	44.3	44.6	44.9	45.1	45.4	45.5	45.8	46.0	46.3	46.6	46.9	47.1	47.4	47.6	47.9	48.1	48.4
FDEC, 2015 July	44.1	44.3	44.6	44.9	45.1	45.4	45.8	46.1	46.4	46.8	47.1	47.5	47.8	48.2	48.6	49.0	49.3	49.7
Net Natural Increase																		
FDEC, 2015 February	9.2	9.0	8.9	8.8	8.8	8.8	9.0	9.0	9.0	9.0	8.9	8.9	8.9	8.9	8.9	8.9	8.8	8.8
FDEC, 2015 July	9.2	9.0	8.9	8.8	8.7	8.7	8.7	8.7	8.7	8.7	8.7	8.7	8.7	8.7	8.7	8.7	8.7	8.7

Quarterly Data Table

QUARTERLY FORECAST TABLES

	2017-1	2017-2	2017-3	2017-4	2018-1	2018-2	2018-3	2018-4	2019-1	2019-2	2019-3	2019-4	2020-1	2020-2	2020-3	2020-4	2021-1	2021-2
Population																		
FDEC, 2015 February	20,331.0	20,404.0	20,476.9	20,549.7	20,622.4	20,695.0	20,767.6	20,840.0	20,912.4	20,984.5	21,056.8	21,128.9	21,200.8	21,272.3	21,343.4	21,414.0	21,484.3	21,554.3
FDEC, 2015 July	20,396.5	20,472.9	20,549.0	20,624.8	20,700.5	20,776.1	20,851.5	20,926.8	21,002.1	21,077.2	21,151.9	21,226.5	21,300.7	21,374.5	21,448.0	21,521.2	21,594.0	21,666.5
Population Growth Rate																		
FDEC, 2015 February	1.45	1.44	1.44	1.43	1.42	1.42	1.41	1.40	1.40	1.39	1.39	1.38	1.37	1.36	1.34	1.33	1.32	1.31
FDEC, 2015 July	1.52	1.51	1.50	1.49	1.48	1.47	1.46	1.45	1.45	1.44	1.43	1.42	1.41	1.39	1.38	1.37	1.36	1.35
Net Change in Population																		
FDEC, 2015 February	73.1	73.0	72.9	72.8	72.7	72.6	72.5	72.5	72.3	72.2	72.3	72.1	71.9	71.5	71.1	70.7	70.3	69.9
FDEC, 2015 July	76.6	76.4	76.1	75.9	75.7	75.5	75.4	75.3	75.3	75.1	74.8	74.5	74.2	73.9	73.5	73.2	72.8	72.5
Households																		
FDEC, 2015 February	8,006.7	8,037.2	8,067.6	8,097.9	8,128.2	8,158.5	8,188.8	8,219.1	8,249.3	8,279.5	8,309.7	8,339.8	8,369.9	8,399.9	8,429.8	8,459.6	8,489.2	8,518.8
FDEC, 2015 July	8,003.7	8,035.3	8,066.9	8,098.5	8,130.1	8,161.7	8,193.2	8,224.7	8,256.2	8,287.6	8,318.9	8,350.2	8,381.3	8,412.3	8,443.1	8,473.9	8,504.5	8,535.1
Household Growth Rate																		
FDEC, 2015 February	1.53	1.53	1.52	1.51	1.51	1.50	1.49	1.49	1.48	1.47	1.47	1.46	1.45	1.44	1.43	1.42	1.41	1.40
FDEC, 2015 July	1.60	1.59	1.58	1.58	1.57	1.56	1.55	1.55	1.54	1.53	1.52	1.51	1.50	1.49	1.48	1.46	1.45	1.45
Net Change in Households																		
FDEC, 2015 February	30.4	30.4	30.4	30.4	30.3	30.3	30.3	30.3	30.2	30.2	30.2	30.2	30.1	30.0	29.9	29.8	29.7	29.6
FDEC, 2015 July	31.6	31.6	31.6	31.6	31.6	31.6	31.5	31.5	31.5	31.4	31.3	31.2	31.1	31.0	30.9	30.7	30.6	30.6
Household Size																		
FDEC, 2015 February	2.539	2.539	2.538	2.538	2.537	2.537	2.536	2.536	2.535	2.535	2.534	2.533	2.533	2.532	2.532	2.531	2.531	2.530
FDEC, 2015 July	2.548	2.548	2.547	2.547	2.546	2.546	2.545	2.544	2.544	2.543	2.543	2.542	2.541	2.541	2.540	2.540	2.539	2.539
Household Size Growth Rate																		
FDEC, 2015 February	-0.08	-0.08	-0.08	-0.08	-0.08	-0.08	-0.08	-0.08	-0.08	-0.08	-0.08	-0.08	-0.08	-0.08	-0.09	-0.09	-0.09	-0.09
FDEC, 2015 July	-0.08	-0.08	-0.09	-0.09	-0.09	-0.09	-0.09	-0.09	-0.09	-0.09	-0.09	-0.09	-0.09	-0.09	-0.09	-0.09	-0.09	-0.09
Net Migration																		
FDEC, 2015 February	64.3	64.2	64.2	64.1	64.0	64.0	64.1	64.1	64.0	64.0	64.3	64.2	64.1	64.0	63.8	63.6	63.5	63.4
FDEC, 2015 July	67.9	67.7	67.4	67.1	66.9	66.8	66.7	66.7	66.6	66.5	66.3	66.2	66.1	65.9	65.8	65.6	65.6	65.5
Births																		
FDEC, 2015 February	57.5	57.7	57.9	58.1	58.4	58.6	58.8	59.1	59.3	59.5	59.7	59.9	60.1	60.3	60.5	60.7	60.9	61.1
FDEC, 2015 July	58.7	59.1	59.4	59.7	59.9	60.2	60.4	60.7	60.9	61.1	61.3	61.4	61.6	61.7	61.8	61.9	62.0	62.1
Deaths																		
FDEC, 2015 February	48.6	48.9	49.2	49.4	49.7	50.0	50.3	50.7	51.0	51.3	51.7	52.0	52.4	52.8	53.2	53.6	54.1	54.5
FDEC, 2015 July	50.0	50.3	50.6	50.9	51.2	51.4	51.7	52.0	52.2	52.5	52.8	53.1	53.4	53.8	54.1	54.4	54.8	55.1
Net Natural Increase																		
FDEC, 2015 February	8.8	8.8	8.8	8.7	8.7	8.6	8.5	8.4	8.3	8.2	8.0	7.9	7.7	7.5	7.3	7.1	6.8	6.5
FDEC, 2015 July	8.7	8.7	8.7	8.7	8.8	8.8	8.7	8.7	8.6	8.5	8.4	8.3	8.1	8.0	7.8	7.5	7.3	7.0

Quarterly Data Table

QUARTERLY FORECAST TABLES

	<u>2021-3</u>	<u>2021-4</u>	<u>2022-1</u>	<u>2022-2</u>	<u>2022-3</u>	<u>2022-4</u>	<u>2023-1</u>	<u>2023-2</u>	<u>2023-3</u>	<u>2023-4</u>	<u>2024-1</u>	<u>2024-2</u>
Population												
FDEC, 2015 February	21,623.8	21,693.1	21,761.9	21,830.5	21,898.8	21,966.7	22,034.4	22,101.8	22,169.0	22,235.9	22,302.6	22,369.1
FDEC, 2015 July	21,738.7	21,810.5	21,882.0	21,953.1	22,023.9	22,094.4	22,164.6	22,234.4	22,303.8	22,373.0	22,441.8	22,510.2
Population Growth Rate												
FDEC, 2015 February	1.30	1.29	1.28	1.27	1.26	1.25	1.24	1.23	1.22	1.21	1.21	1.20
FDEC, 2015 July	1.34	1.33	1.32	1.31	1.30	1.29	1.28	1.27	1.26	1.25	1.24	1.23
Net Change in Population												
FDEC, 2015 February	69.6	69.2	68.9	68.6	68.3	68.0	67.7	67.4	67.2	66.9	66.7	66.5
FDEC, 2015 July	72.2	71.8	71.5	71.2	70.8	70.5	70.1	69.8	69.5	69.1	68.8	68.5
Households												
FDEC, 2015 February	8,548.3	8,577.6	8,606.9	8,636.0	8,665.1	8,694.0	8,723.0	8,751.8	8,780.6	8,809.3	8,837.9	8,866.3
FDEC, 2015 July	8,565.6	8,596.0	8,626.3	8,656.5	8,686.7	8,716.7	8,746.6	8,776.5	8,806.2	8,835.8	8,865.4	8,894.9
Household Growth Rate												
FDEC, 2015 February	1.39	1.38	1.37	1.36	1.35	1.34	1.34	1.33	1.32	1.31	1.30	1.29
FDEC, 2015 July	1.44	1.43	1.42	1.41	1.40	1.39	1.38	1.37	1.36	1.35	1.34	1.34
Net Change in Households												
FDEC, 2015 February	29.5	29.4	29.2	29.1	29.1	29.0	28.9	28.9	28.8	28.7	28.6	28.4
FDEC, 2015 July	30.5	30.4	30.3	30.2	30.1	30.0	29.9	29.8	29.7	29.6	29.6	29.5
Household Size												
FDEC, 2015 February	2.530	2.529	2.528	2.528	2.527	2.527	2.526	2.525	2.525	2.524	2.524	2.523
FDEC, 2015 July	2.538	2.537	2.537	2.536	2.535	2.535	2.534	2.533	2.533	2.532	2.531	2.531
Household Size Growth Rate												
FDEC, 2015 February	-0.09	-0.09	-0.09	-0.09	-0.09	-0.10	-0.10	-0.10	-0.10	-0.10	-0.10	-0.09
FDEC, 2015 July	-0.10	-0.10	-0.10	-0.10	-0.10	-0.10	-0.10	-0.10	-0.10	-0.11	-0.11	-0.11
Net Migration												
FDEC, 2015 February	63.3	63.3	63.3	63.3	63.4	63.4	63.5	63.7	63.8	64.0	64.2	64.4
FDEC, 2015 July	65.5	65.5	65.6	65.6	65.6	65.7	65.7	65.8	65.8	65.8	65.8	65.9
Births												
FDEC, 2015 February	61.3	61.4	61.6	61.8	61.9	62.1	62.2	62.4	62.5	62.7	62.8	63.0
FDEC, 2015 July	62.1	62.2	62.1	62.2	62.2	62.3	62.3	62.4	62.4	62.5	62.6	62.7
Deaths												
FDEC, 2015 February	55.0	55.5	56.0	56.5	57.0	57.6	58.1	58.6	59.2	59.7	60.4	60.9
FDEC, 2015 July	55.5	55.9	56.2	56.6	57.0	57.4	57.9	58.3	58.7	59.2	59.6	60.1
Net Natural Increase												
FDEC, 2015 February	6.3	5.9	5.6	5.2	4.9	4.5	4.1	3.7	3.4	3.0	2.5	2.1
FDEC, 2015 July	6.7	6.3	5.9	5.6	5.2	4.8	4.4	4.0	3.7	3.3	3.0	2.6

FISCAL YEAR
FORECAST TABLES

Fiscal Year Data Table

	<u>1990-91</u>	<u>1991-92</u>	<u>1992-93</u>	<u>1993-94</u>	<u>1994-95</u>	<u>1995-96</u>	<u>1996-97</u>	<u>1997-98</u>	<u>1998-99</u>	<u>1999-00</u>	<u>2000-01</u>	<u>2001-02</u>	<u>2002-03</u>	<u>2003-04</u>	<u>2004-05</u>
Population															
FDEC, 2015 February	13,178.0	13,442.6	13,670.0	13,962.2	14,264.9	14,550.7	14,859.1	15,158.3	15,488.4	15,881.7	16,228.0	16,551.2	16,892.0	17,273.8	17,677.3
FDEC, 2015 July	13,178.0	13,442.6	13,670.0	13,962.2	14,264.9	14,550.7	14,859.1	15,158.3	15,488.4	15,881.7	16,228.0	16,551.2	16,892.0	17,273.8	17,677.3
Growth Rate															
FDEC, 2015 February	2.42	2.01	1.69	2.14	2.17	2.00	2.12	2.01	2.18	2.54	2.18	1.99	2.06	2.26	2.34
FDEC, 2015 July	2.42	2.01	1.69	2.14	2.17	2.00	2.12	2.01	2.18	2.54	2.18	1.99	2.06	2.26	2.34
Net Change in Population															
FDEC, 2015 February	311.4	264.6	227.4	292.2	302.8	285.8	308.4	299.2	330.1	393.2	346.4	323.2	340.9	381.8	403.5
FDEC, 2015 July	311.4	264.6	227.4	292.2	302.8	285.8	308.4	299.2	330.1	393.2	346.4	323.2	340.9	381.8	403.5
Households															
FDEC, 2015 February	5,230.7	5,335.4	5,424.2	5,538.0	5,655.6	5,766.7	5,887.3	6,005.5	6,137.4	6,296.9	6,436.4	6,565.8	6,702.3	6,855.1	7,016.4
FDEC, 2015 July	5,230.7	5,335.4	5,424.2	5,538.0	5,655.6	5,766.7	5,887.3	6,005.5	6,137.4	6,296.9	6,436.4	6,565.8	6,702.3	6,855.1	7,016.4
Growth Rate															
FDEC, 2015 February	2.44	2.00	1.66	2.10	2.12	1.96	2.09	2.01	2.20	2.60	2.22	2.01	2.08	2.28	2.35
FDEC, 2015 July	2.44	2.00	1.66	2.10	2.12	1.96	2.09	2.01	2.20	2.60	2.22	2.01	2.08	2.28	2.35
Net Change in Households															
FDEC, 2015 February	124.7	104.7	88.8	113.8	117.7	111.1	120.6	118.1	132.0	159.5	139.5	129.3	136.5	152.8	161.3
FDEC, 2015 July	124.7	104.7	88.8	113.8	117.7	111.1	120.6	118.1	132.0	159.5	139.5	129.3	136.5	152.8	161.3
Household Size															
FDEC, 2015 February	2.519	2.520	2.520	2.521	2.522	2.523	2.524	2.524	2.524	2.522	2.521	2.521	2.520	2.520	2.519
FDEC, 2015 July	2.519	2.520	2.520	2.521	2.522	2.523	2.524	2.524	2.524	2.522	2.521	2.521	2.520	2.520	2.519
Growth Rate															
FDEC, 2015 February	-0.02	0.01	0.03	0.04	0.04	0.04	0.03	0.01	-0.02	-0.06	-0.03	-0.02	-0.02	-0.02	-0.02
FDEC, 2015 July	-0.02	0.01	0.03	0.04	0.04	0.04	0.03	0.01	-0.02	-0.06	-0.03	-0.02	-0.02	-0.02	-0.02
Net Migration															
FDEC, 2015 February	248.4	208.9	177.4	246.6	262.7	249.6	270.9	260.5	293.9	355.3	306.0	285.5	300.4	335.0	351.1
FDEC, 2015 July	248.4	208.9	177.4	246.6	262.7	249.6	270.9	260.5	293.9	355.3	306.0	285.5	300.4	335.0	351.1
Births															
FDEC, 2015 February	197.0	192.2	192.0	191.7	189.4	188.6	190.7	194.0	196.0	200.5	205.4	205.4	208.5	215.0	221.8
FDEC, 2015 July	197.0	192.2	192.0	191.7	189.4	188.6	190.7	194.0	196.0	200.5	205.4	205.4	208.5	215.0	221.8
Deaths															
FDEC, 2015 February	134.0	136.5	142.0	146.1	149.3	152.4	153.1	155.3	159.8	162.5	165.0	167.7	168.1	168.3	169.4
FDEC, 2015 July	134.0	136.5	142.0	146.1	149.3	152.4	153.1	155.3	159.8	162.5	165.0	167.7	168.1	168.3	169.4
Net Natural Increase															
FDEC, 2015 February	63.0	55.7	50.0	45.6	40.1	36.2	37.5	38.8	36.2	38.0	40.3	37.7	40.4	46.7	52.4
FDEC, 2015 July	63.0	55.7	50.0	45.6	40.1	36.2	37.5	38.8	36.2	38.0	40.3	37.7	40.4	46.7	52.4

FISCAL YEAR
FORECAST TABLES

Fiscal Year Data Table

	<u>2005-06</u>	<u>2006-07</u>	<u>2007-08</u>	<u>2008-09</u>	<u>2009-10</u>	<u>2010-11</u>	<u>2011-12</u>	<u>2012-13</u>	<u>2013-14</u>	<u>2014-15</u>	<u>2015-16</u>	<u>2016-17</u>	<u>2017-18</u>	<u>2018-19</u>
Population														
FDEC, 2015 February	18,062.2	18,378.2	18,578.9	18,671.4	18,770.4	18,878.8	19,029.3	19,212.4	19,442.1	19,718.6	20,003.9	20,294.4	20,586.0	20,876.1
FDEC, 2015 July	18,062.2	18,378.2	18,578.9	18,671.4	18,770.4	18,878.6	19,029.3	19,212.4	19,441.6	19,738.3	20,050.7	20,358.0	20,662.6	20,964.4
Growth Rate														
FDEC, 2015 February	2.18	1.75	1.09	0.50	0.53	0.58	0.80	0.96	1.20	1.42	1.45	1.45	1.44	1.41
FDEC, 2015 July	2.18	1.75	1.09	0.50	0.53	0.58	0.80	0.96	1.19	1.53	1.58	1.53	1.50	1.46
Net Change in Population														
FDEC, 2015 February	384.9	316.0	200.7	92.5	99.0	108.4	150.5	183.0	229.7	276.5	285.3	290.5	291.6	290.1
FDEC, 2015 July	384.9	316.0	200.7	92.5	99.0	108.2	150.7	183.1	229.2	296.7	312.4	307.3	304.6	301.8
Households														
FDEC, 2015 February	7,170.9	7,288.9	7,357.1	7,383.0	7,411.4	7,451.0	7,516.9	7,593.1	7,654.3	7,753.6	7,871.1	7,991.5	8,113.0	8,234.2
FDEC, 2015 July	7,170.9	7,288.9	7,357.1	7,383.0	7,411.4	7,450.9	7,517.2	7,592.9	7,654.4	7,741.3	7,861.0	7,987.9	8,114.3	8,240.4
Growth Rate														
FDEC, 2015 February	2.20	1.65	0.93	0.35	0.38	0.53	0.88	1.01	0.81	1.30	1.52	1.53	1.52	1.49
FDEC, 2015 July	2.20	1.65	0.93	0.35	0.38	0.53	0.89	1.01	0.81	1.14	1.55	1.61	1.58	1.55
Net Change in Households														
FDEC, 2015 February	154.5	118.1	68.1	26.0	28.3	39.6	65.9	76.2	61.3	99.3	117.5	120.4	121.5	121.1
FDEC, 2015 July	154.5	118.1	68.1	26.0	28.3	39.5	66.3	75.7	61.4	87.0	119.7	126.9	126.4	126.1
Household Size														
FDEC, 2015 February	2.519	2.521	2.525	2.529	2.533	2.534	2.532	2.530	2.540	2.543	2.541	2.539	2.537	2.535
FDEC, 2015 July	2.519	2.521	2.525	2.529	2.533	2.534	2.531	2.530	2.540	2.550	2.551	2.549	2.546	2.544
Growth Rate														
FDEC, 2015 February	-0.02	0.10	0.16	0.14	0.15	0.04	-0.09	-0.05	0.39	0.12	-0.07	-0.08	-0.08	-0.08
FDEC, 2015 July	-0.02	0.10	0.16	0.14	0.15	0.04	-0.09	-0.04	0.38	0.39	0.04	-0.08	-0.09	-0.09
Net Migration														
FDEC, 2015 February	322.9	245.0	133.7	36.3	52.7	67.6	111.8	147.1	194.3	240.7	249.8	255.2	257.0	256.7
FDEC, 2015 July	322.9	245.0	133.7	36.3	52.7	67.4	111.9	147.1	194.3	261.8	277.5	272.4	269.6	267.2
Births														
FDEC, 2015 February	232.1	239.3	236.0	226.4	217.4	213.5	212.9	213.8	217.2	221.6	225.5	229.3	233.1	236.7
FDEC, 2015 July	232.1	239.3	236.0	226.4	217.4	213.5	212.9	213.8	217.3	222.6	228.5	234.3	239.1	243.0
Deaths														
FDEC, 2015 February	170.1	168.3	169.0	170.2	171.1	172.7	174.1	177.9	181.8	185.7	190.0	194.0	198.4	203.3
FDEC, 2015 July	170.1	168.3	169.0	170.2	171.1	172.7	174.1	177.8	182.4	187.7	193.6	199.4	204.1	208.4
Net Natural Increase														
FDEC, 2015 February	62.0	71.0	67.0	56.2	46.3	40.8	38.8	35.9	35.5	35.8	35.5	35.3	34.7	33.4
FDEC, 2015 July	62.0	71.0	67.0	56.2	46.3	40.8	38.8	36.0	34.9	34.9	34.9	34.9	35.0	34.6

FISCAL YEAR
FORECAST TABLES

Fiscal Year Data Table

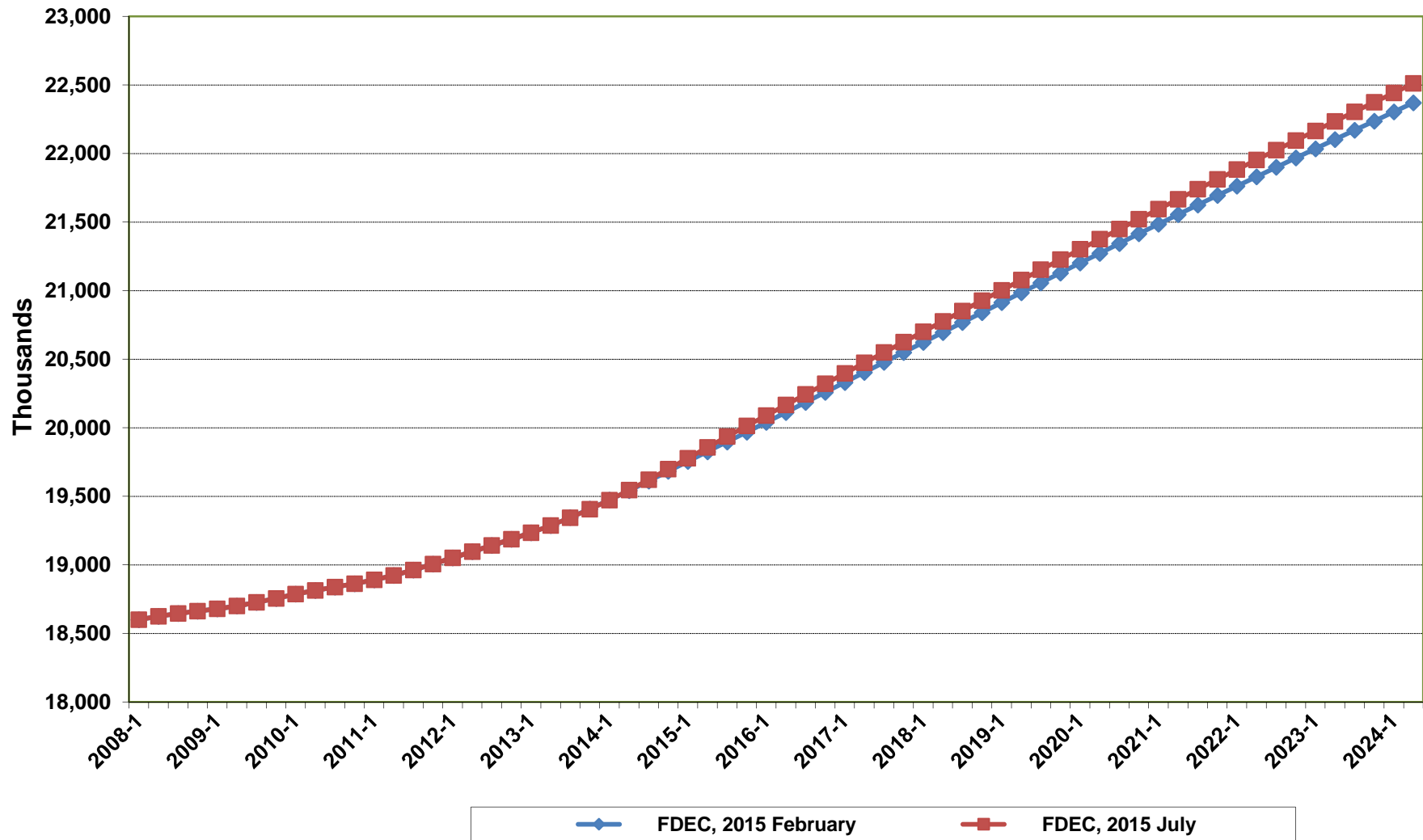
	<u>2019-20</u>	<u>2020-21</u>	<u>2021-22</u>	<u>2022-23</u>	<u>2023-24</u>
Population					
FDEC, 2015 February	21,164.7	21,449.0	21,727.3	22,000.4	22,269.2
FDEC, 2015 July	21,263.4	21,557.4	21,846.1	22,129.3	22,407.2
Growth Rate					
FDEC, 2015 February	1.38	1.34	1.30	1.26	1.22
FDEC, 2015 July	1.43	1.38	1.34	1.30	1.26
Net Change in Population					
FDEC, 2015 February	288.6	284.3	278.3	273.1	268.7
FDEC, 2015 July	299.0	294.0	288.6	283.3	277.9
Households					
FDEC, 2015 February	8,354.8	8,474.4	8,592.2	8,708.5	8,823.6
FDEC, 2015 July	8,365.7	8,489.2	8,611.1	8,731.6	8,850.6
Growth Rate					
FDEC, 2015 February	1.47	1.43	1.39	1.35	1.32
FDEC, 2015 July	1.52	1.48	1.44	1.40	1.36
Net Change in Households					
FDEC, 2015 February	120.7	119.5	117.8	116.3	115.1
FDEC, 2015 July	125.2	123.5	121.9	120.5	119.0
Household Size					
FDEC, 2015 February	2.533	2.531	2.529	2.526	2.524
FDEC, 2015 July	2.542	2.539	2.537	2.534	2.532
Growth Rate					
FDEC, 2015 February	-0.08	-0.09	-0.09	-0.10	-0.10
FDEC, 2015 July	-0.09	-0.09	-0.10	-0.10	-0.11
Net Migration					
FDEC, 2015 February	257.4	256.5	255.3	255.8	257.9
FDEC, 2015 July	266.2	264.5	264.1	264.8	265.3
Births					
FDEC, 2015 February	240.1	243.2	246.0	248.6	251.0
FDEC, 2015 July	246.0	247.9	248.7	249.1	250.2
Deaths					
FDEC, 2015 February	208.9	215.5	223.0	231.3	240.2
FDEC, 2015 July	213.1	218.4	224.2	230.6	237.6
Net Natural Increase					
FDEC, 2015 February	31.2	27.8	23.0	17.3	10.8
FDEC, 2015 July	32.8	29.5	24.5	18.5	12.6

Florida Demographic Estimating Conference

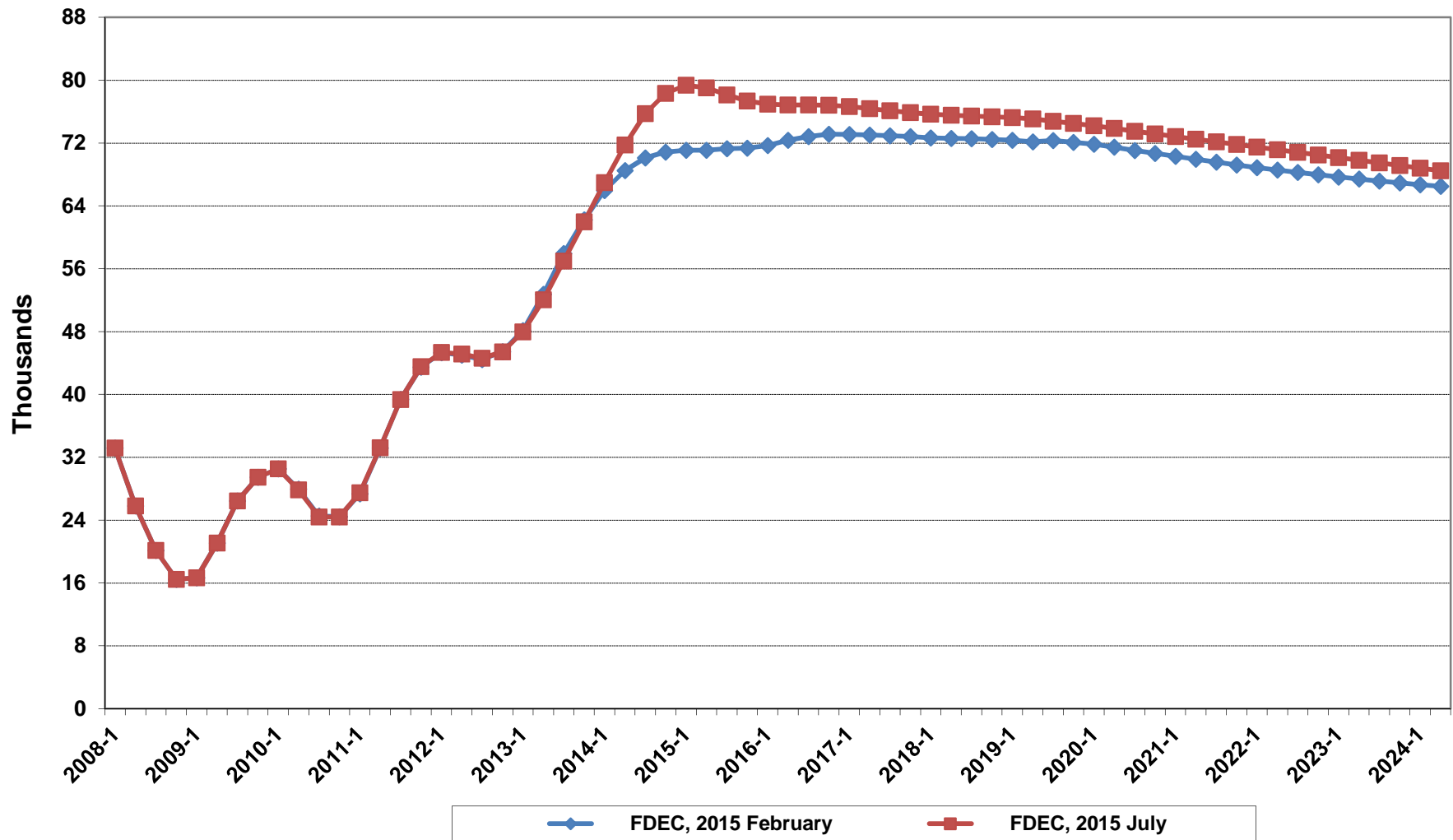
Charts
Conference Packet

July 9, 2015

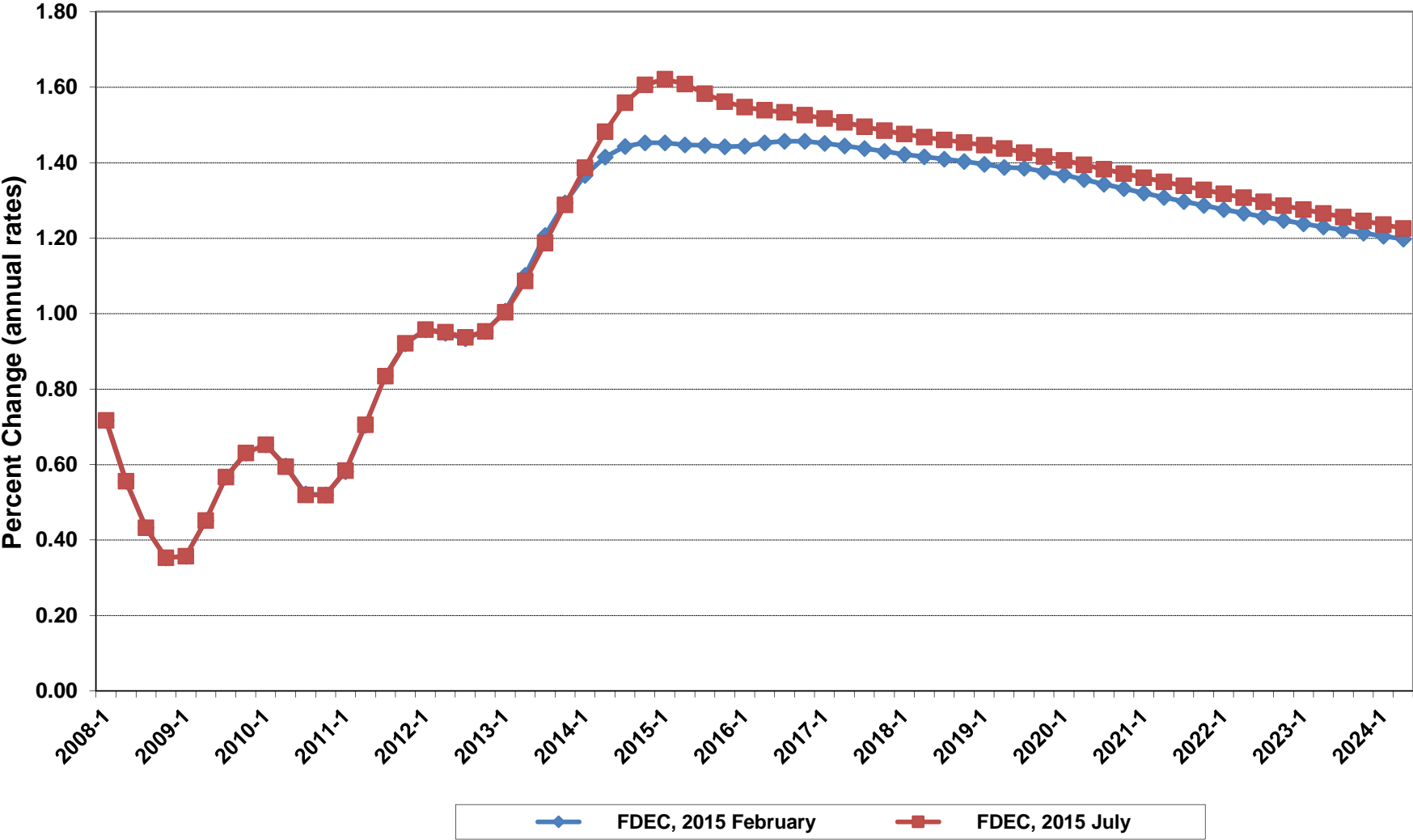
Florida Resident Population



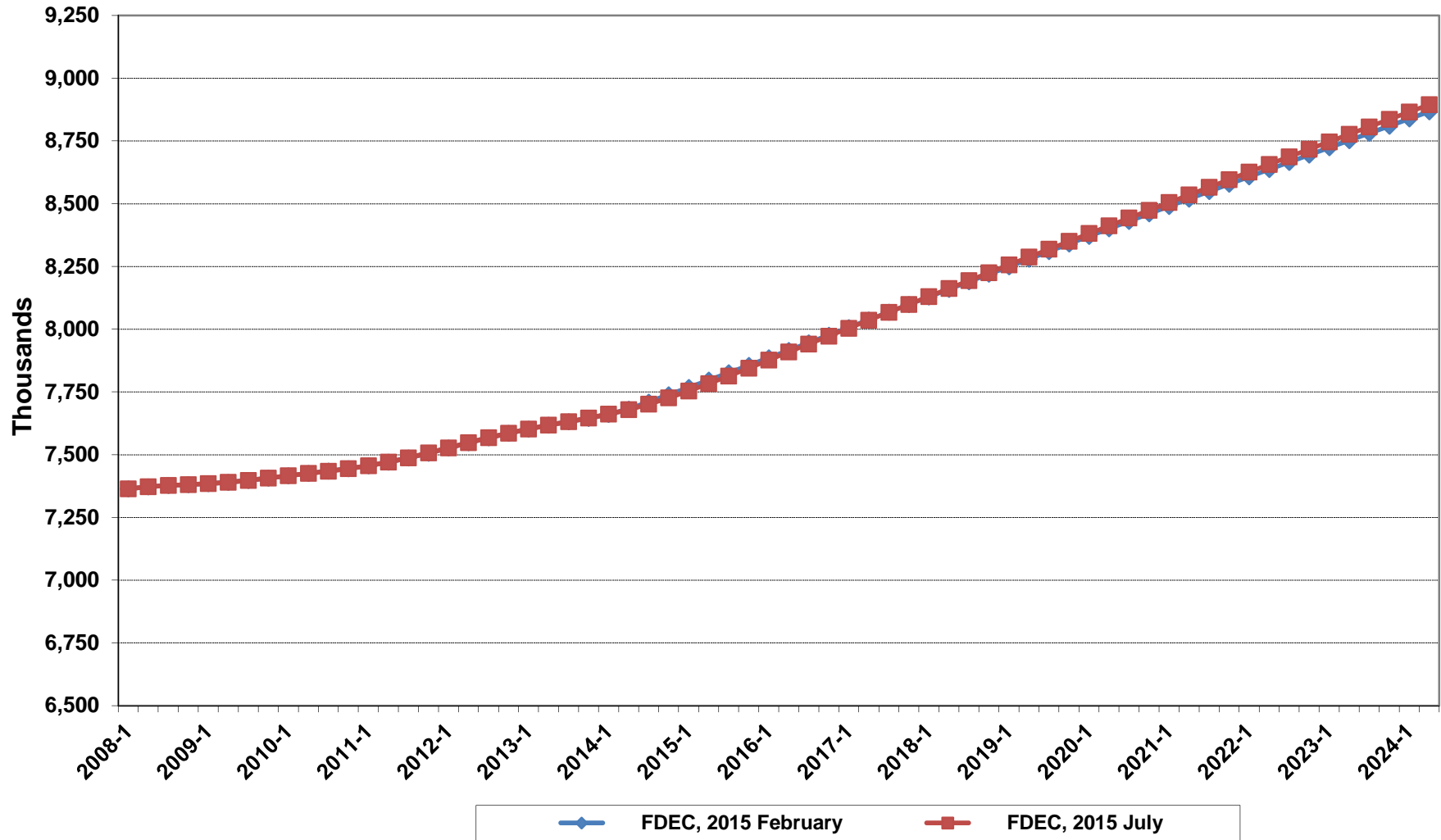
Net Change In Florida Resident Population



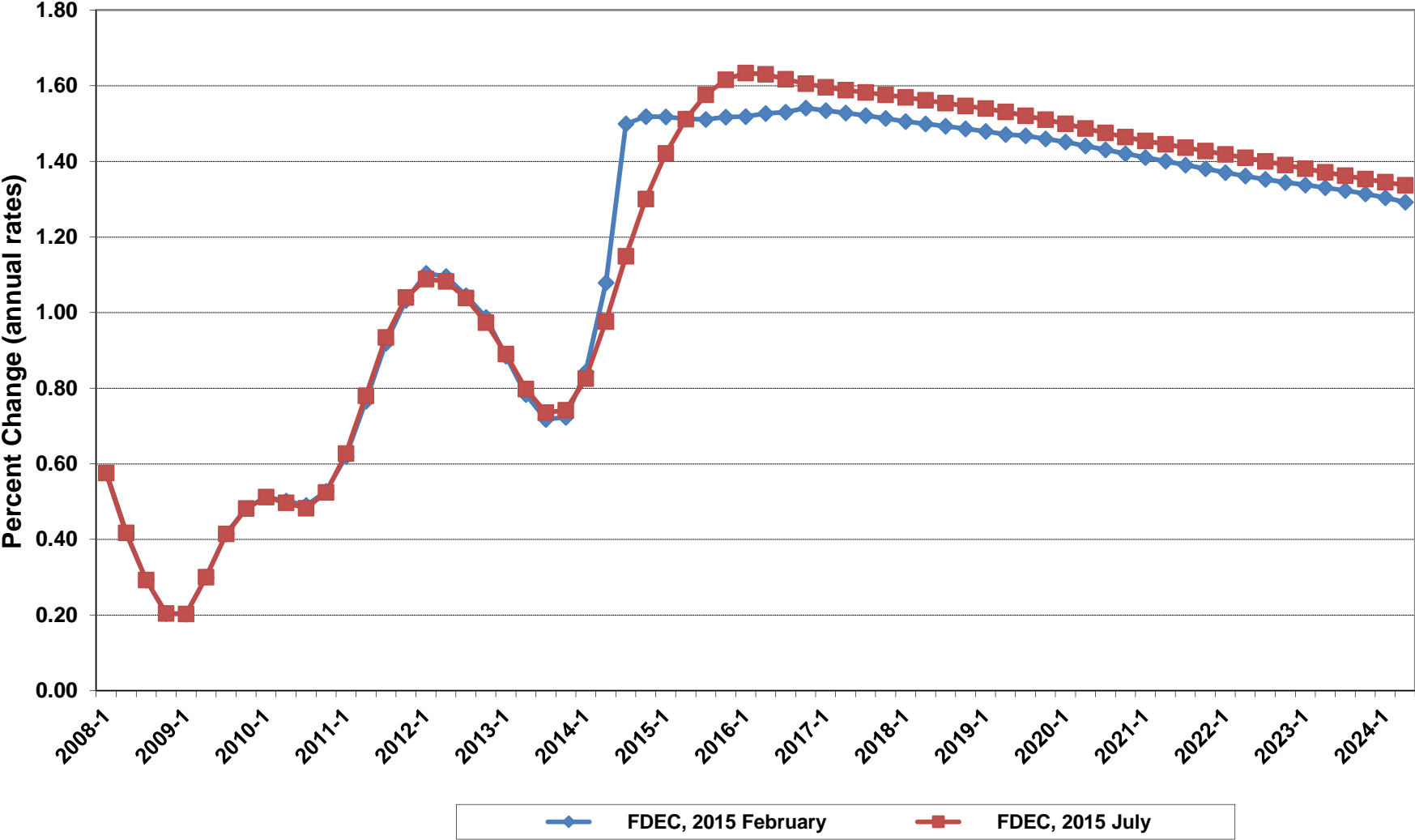
Growth In Florida Resident Population



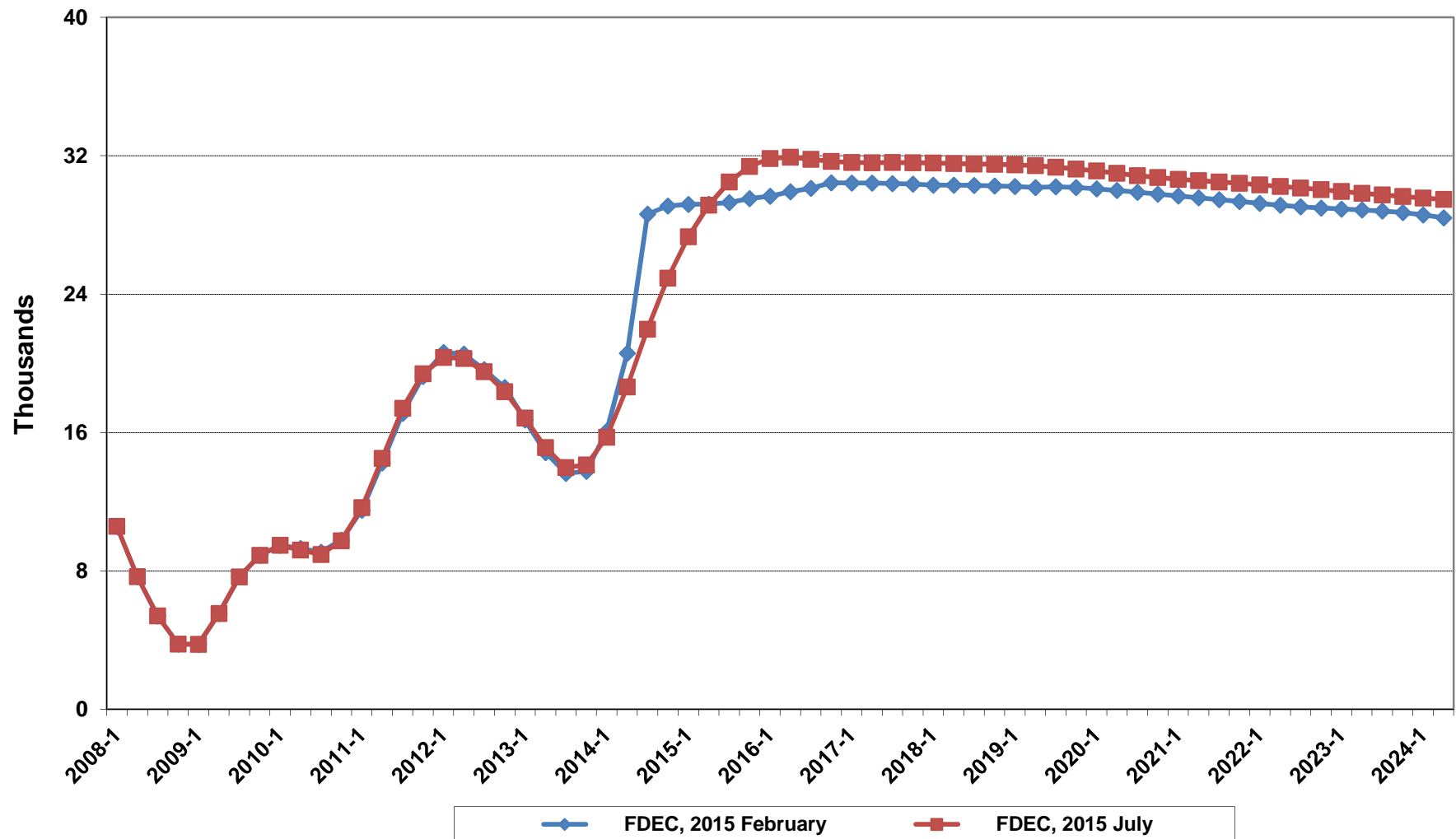
Florida Resident Households



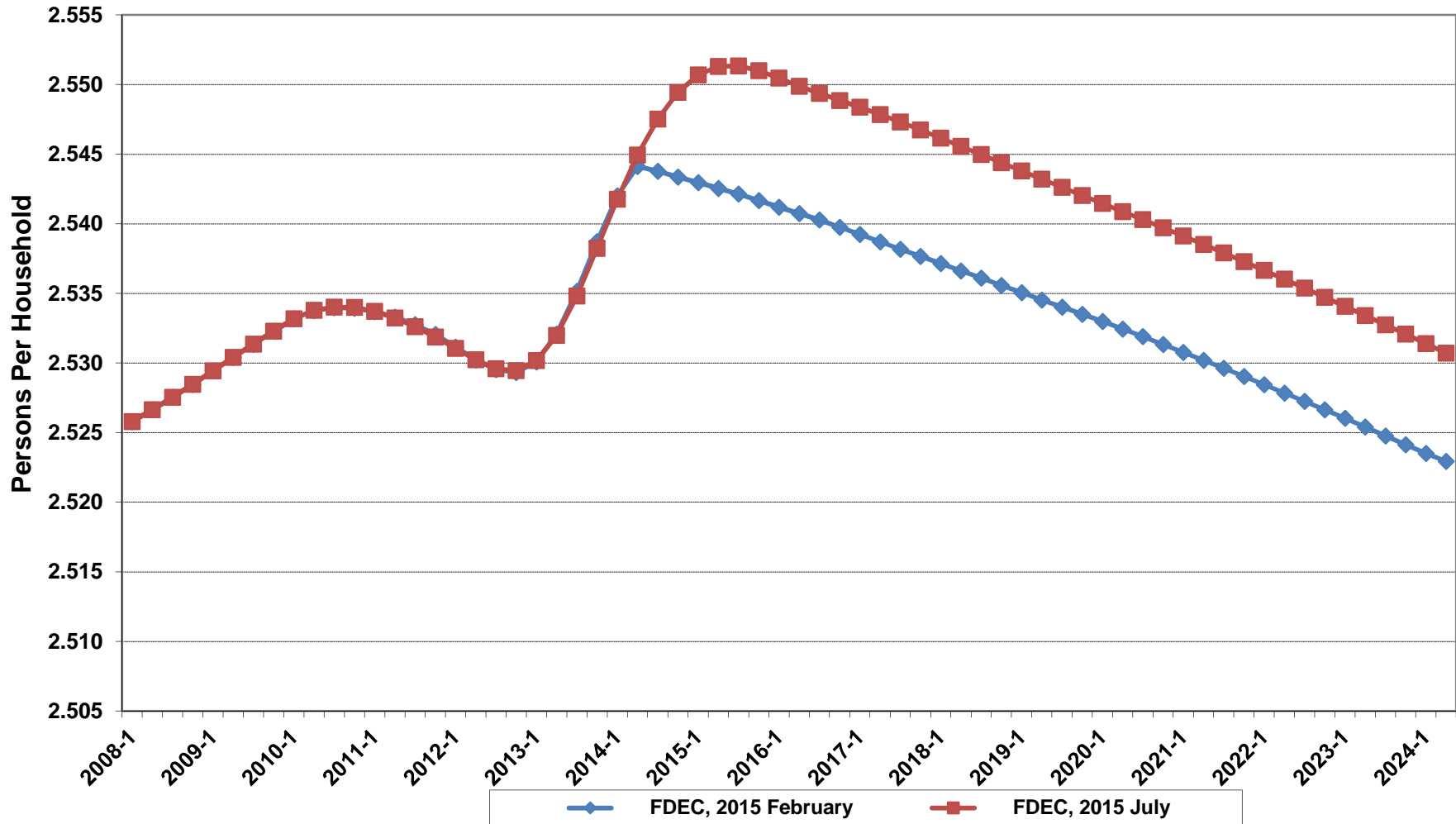
Growth In Florida Resident Households



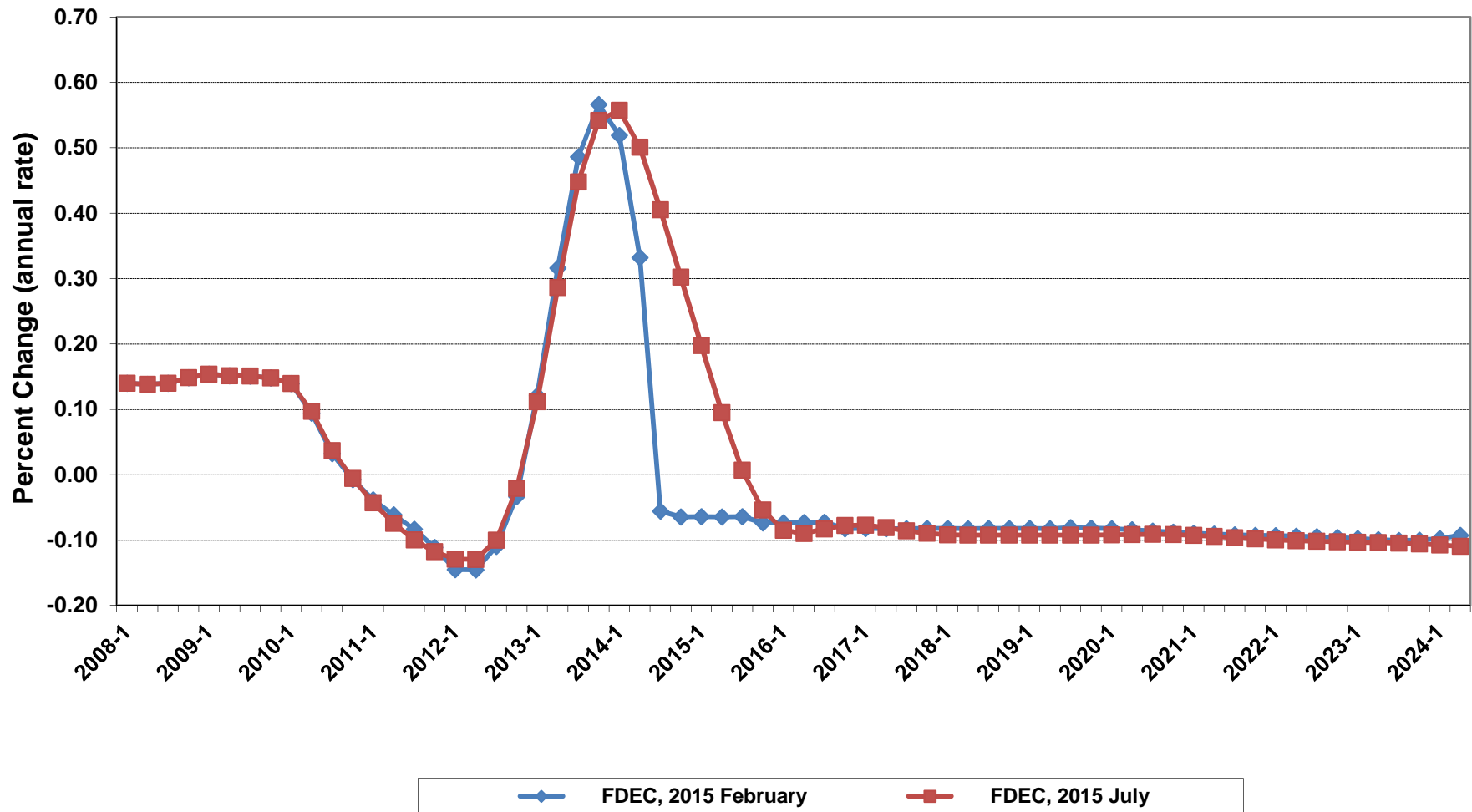
Net Change In Florida Resident Households



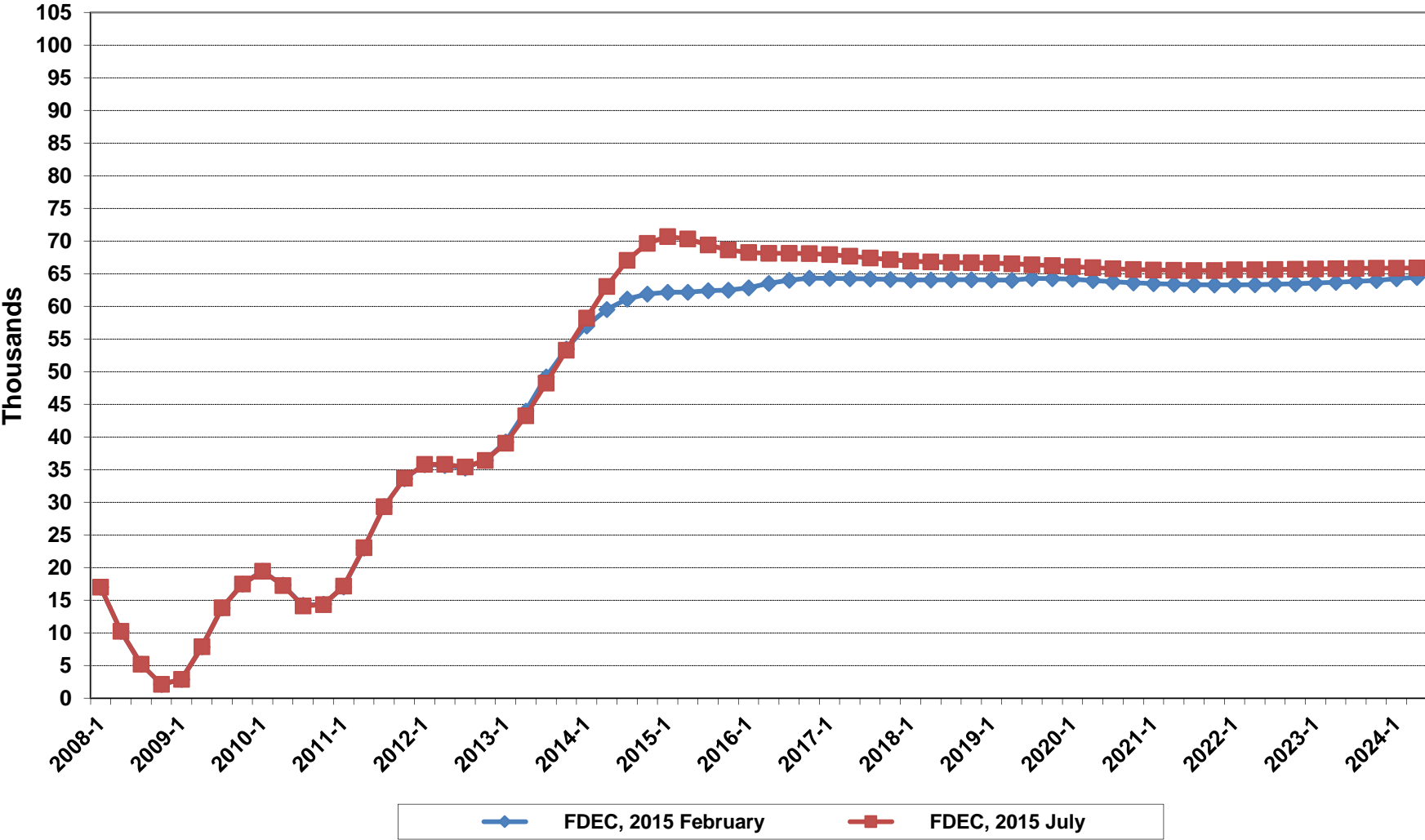
Florida Average Household Size



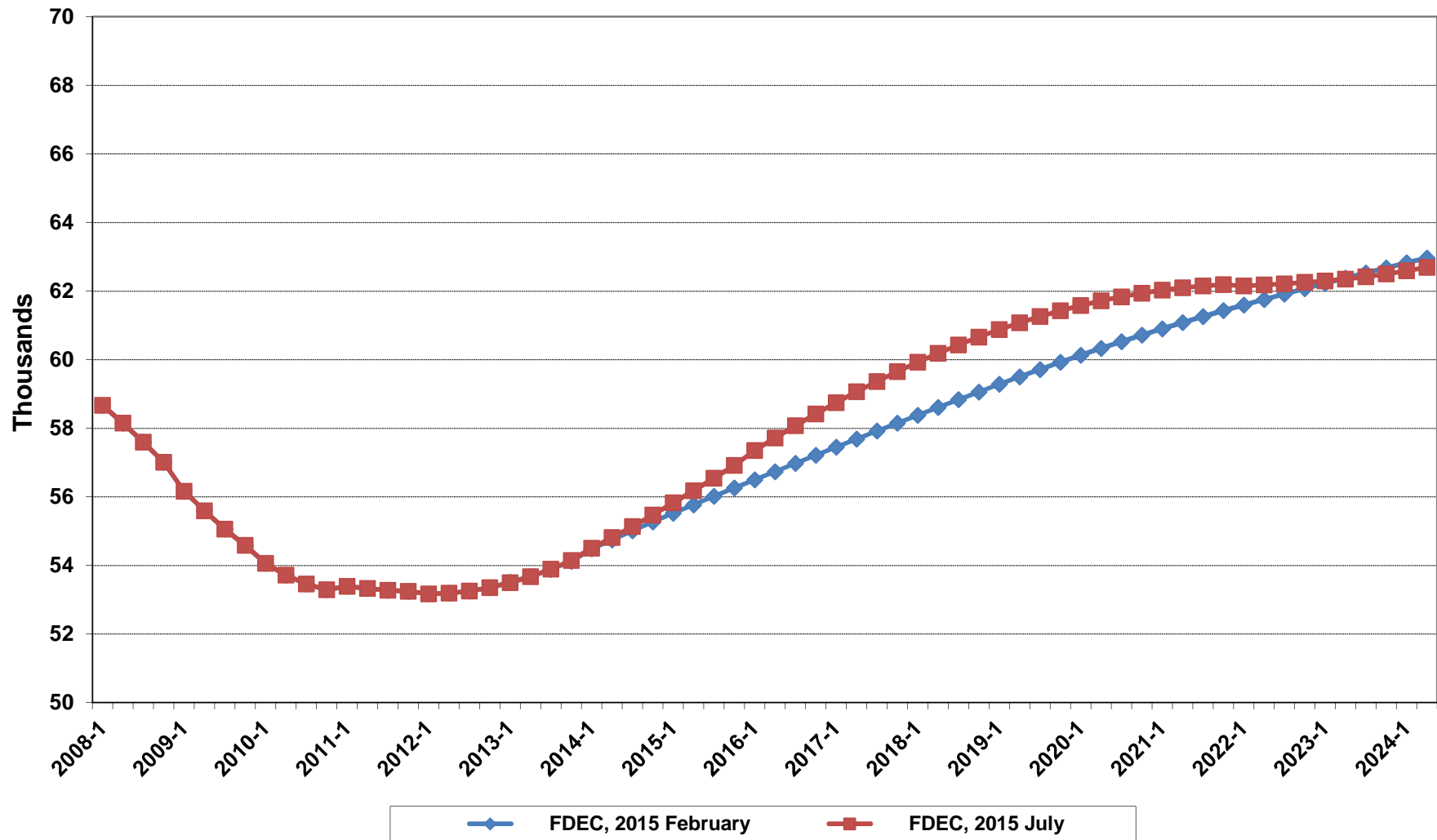
Growth In Florida Household Size



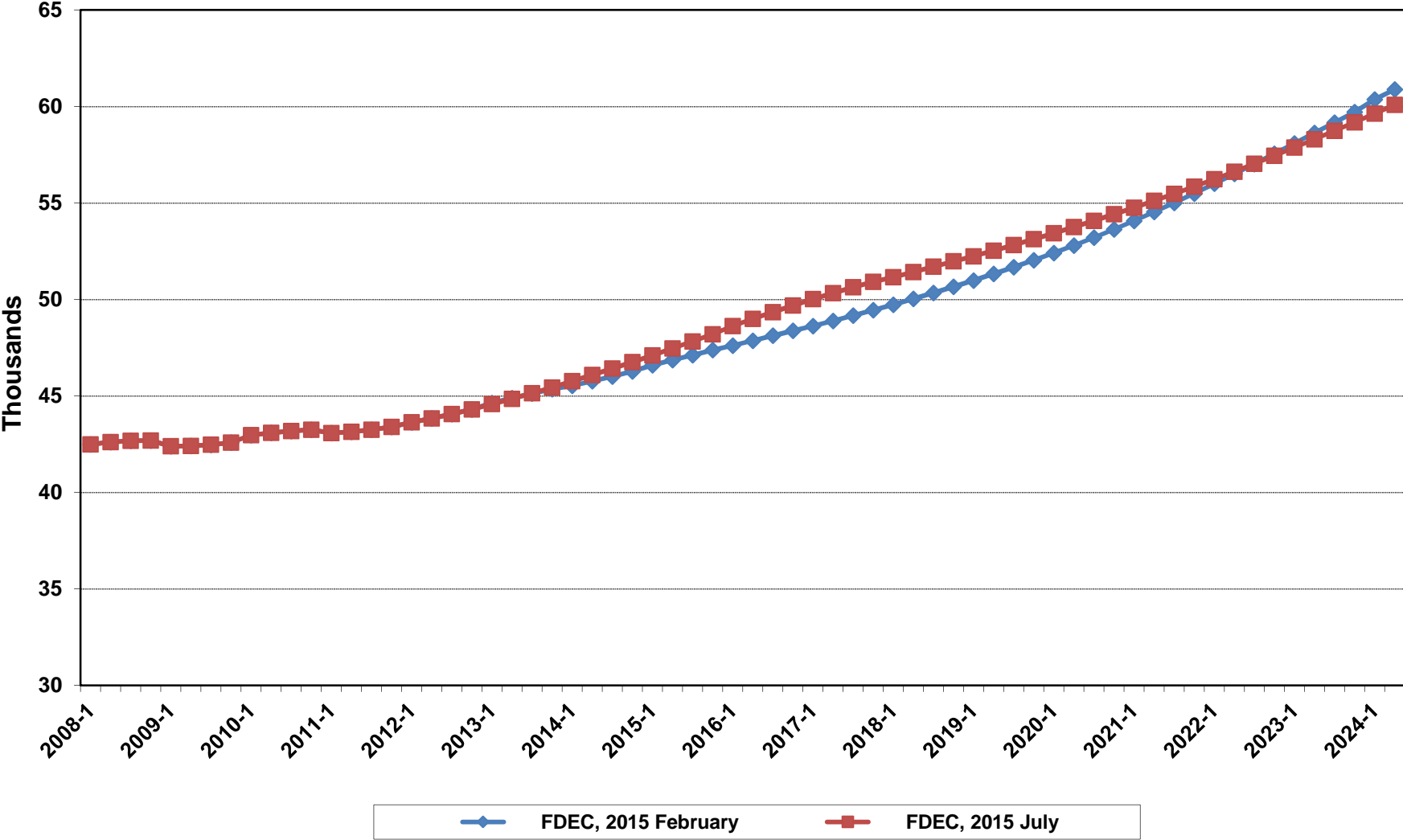
Florida Net Migration



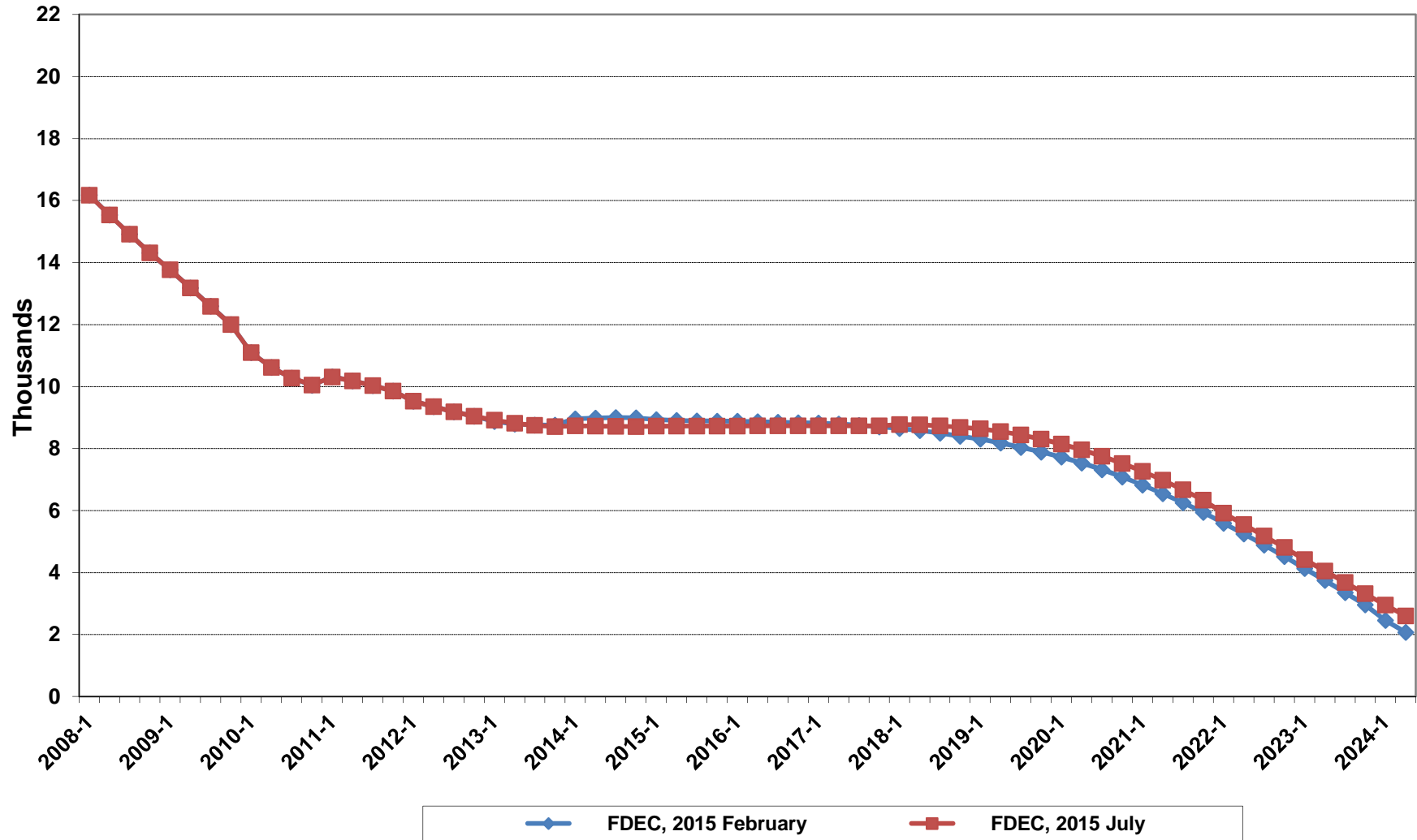
Florida Resident Births



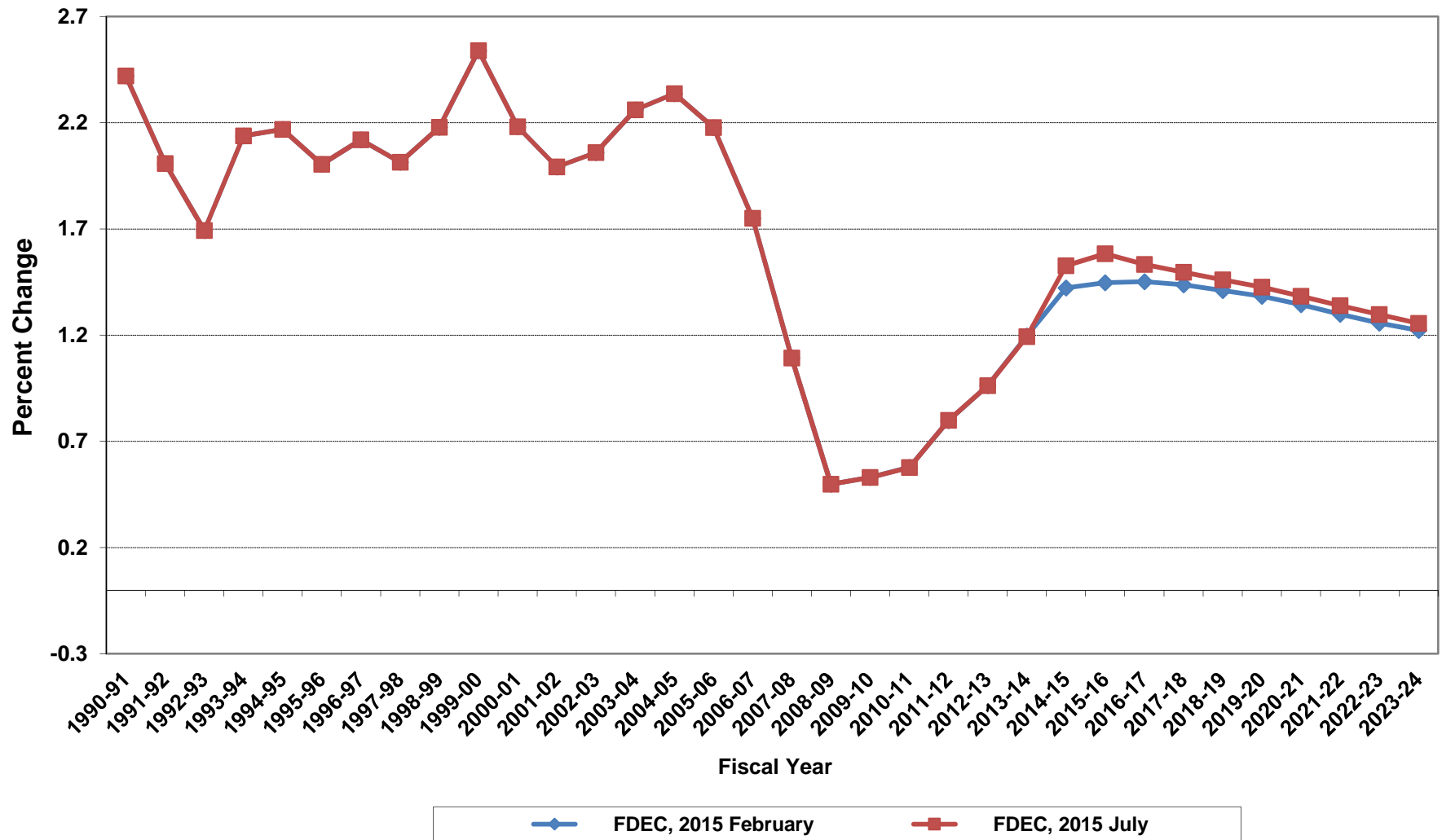
Florida Resident Deaths



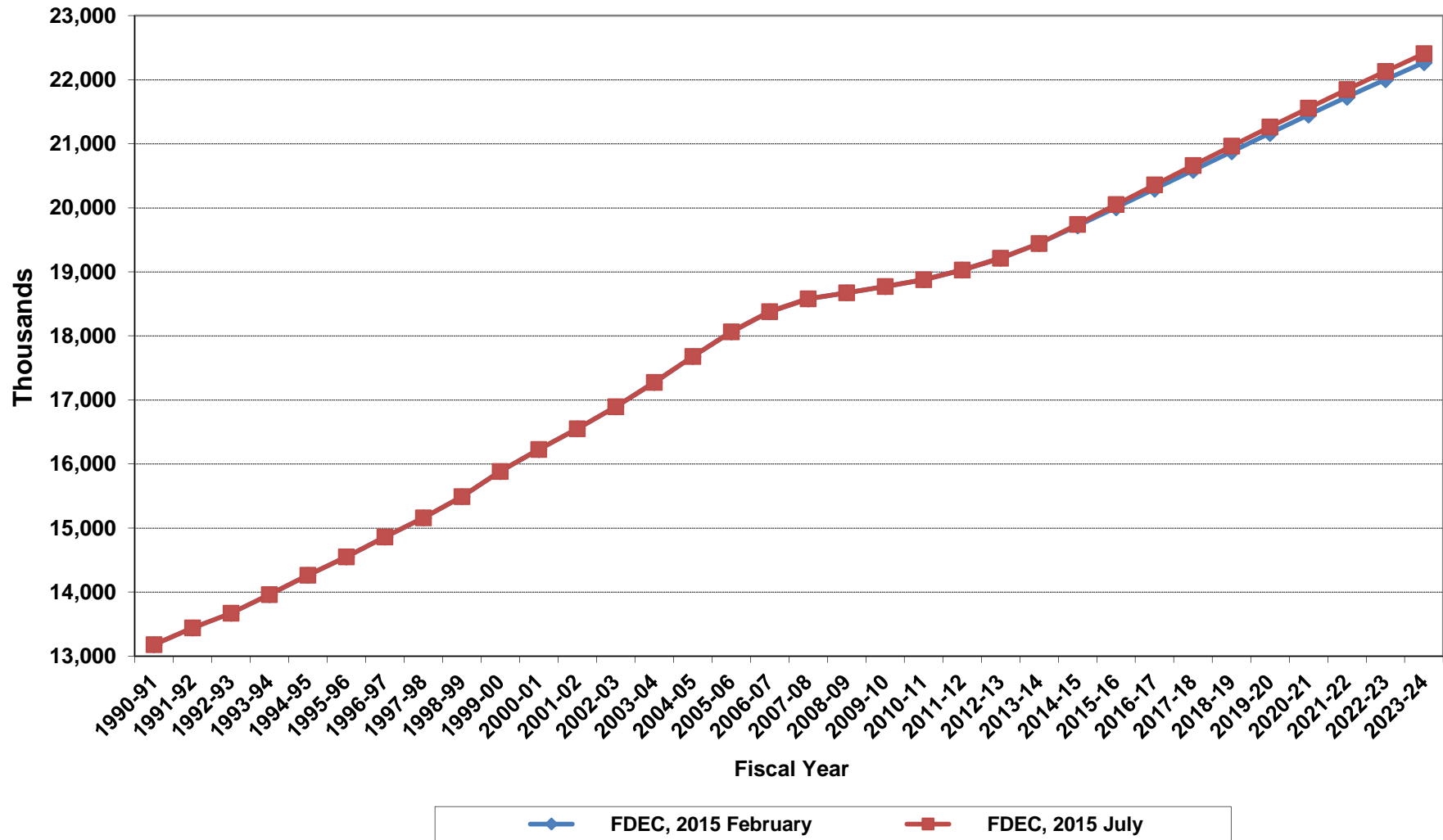
Florida Net Natural Increase



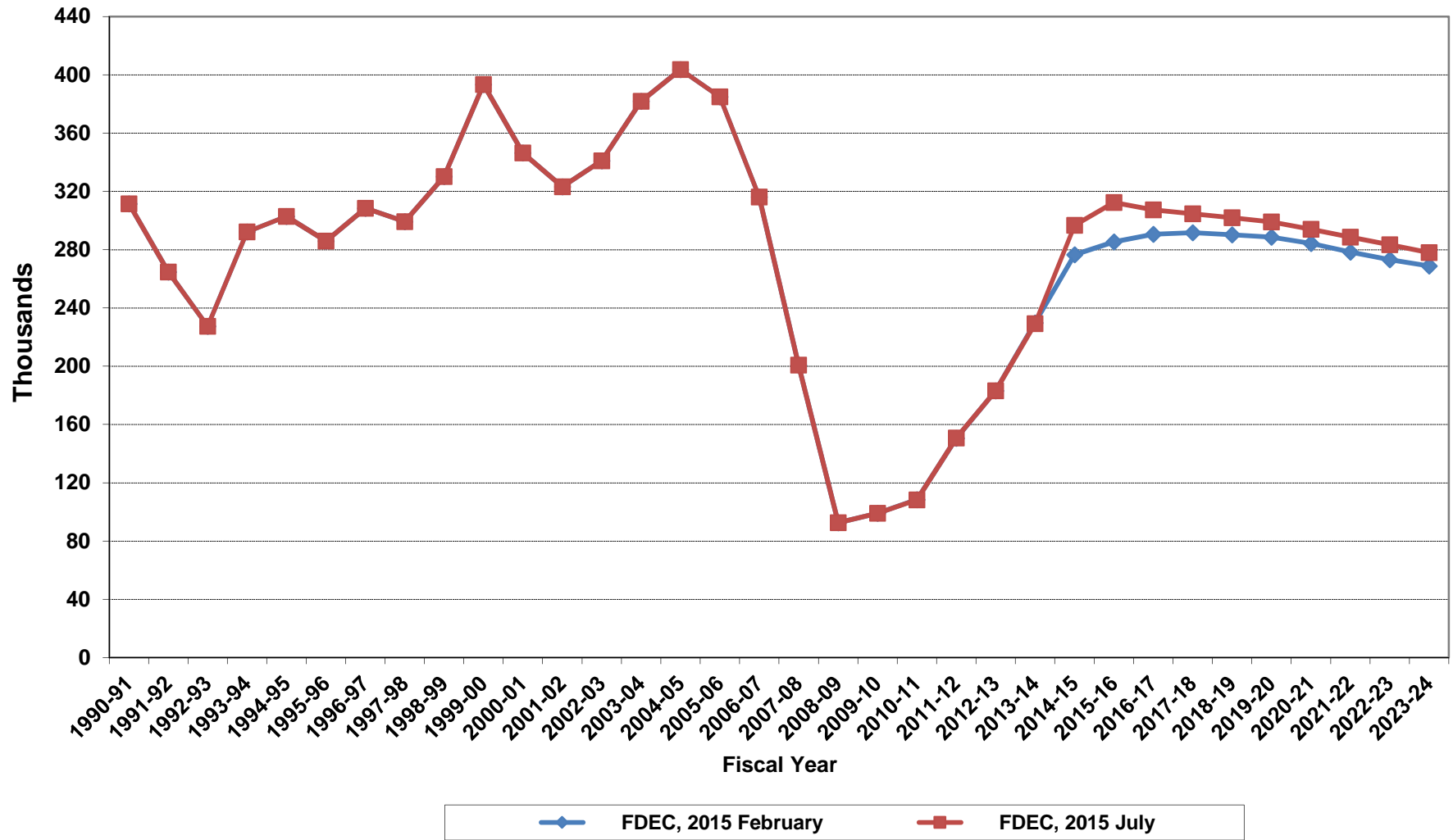
Growth In Florida Resident Population



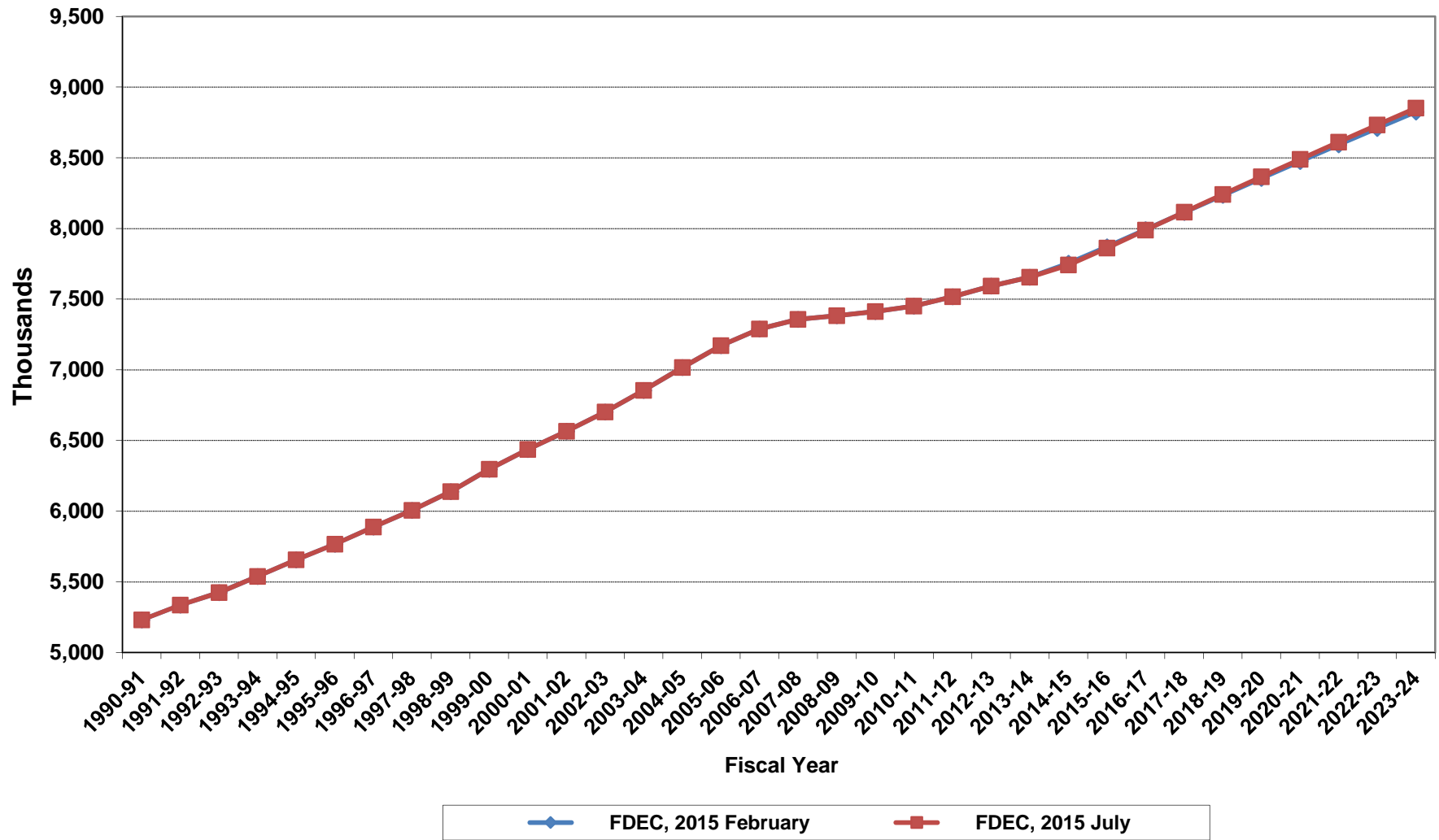
Florida Resident Population



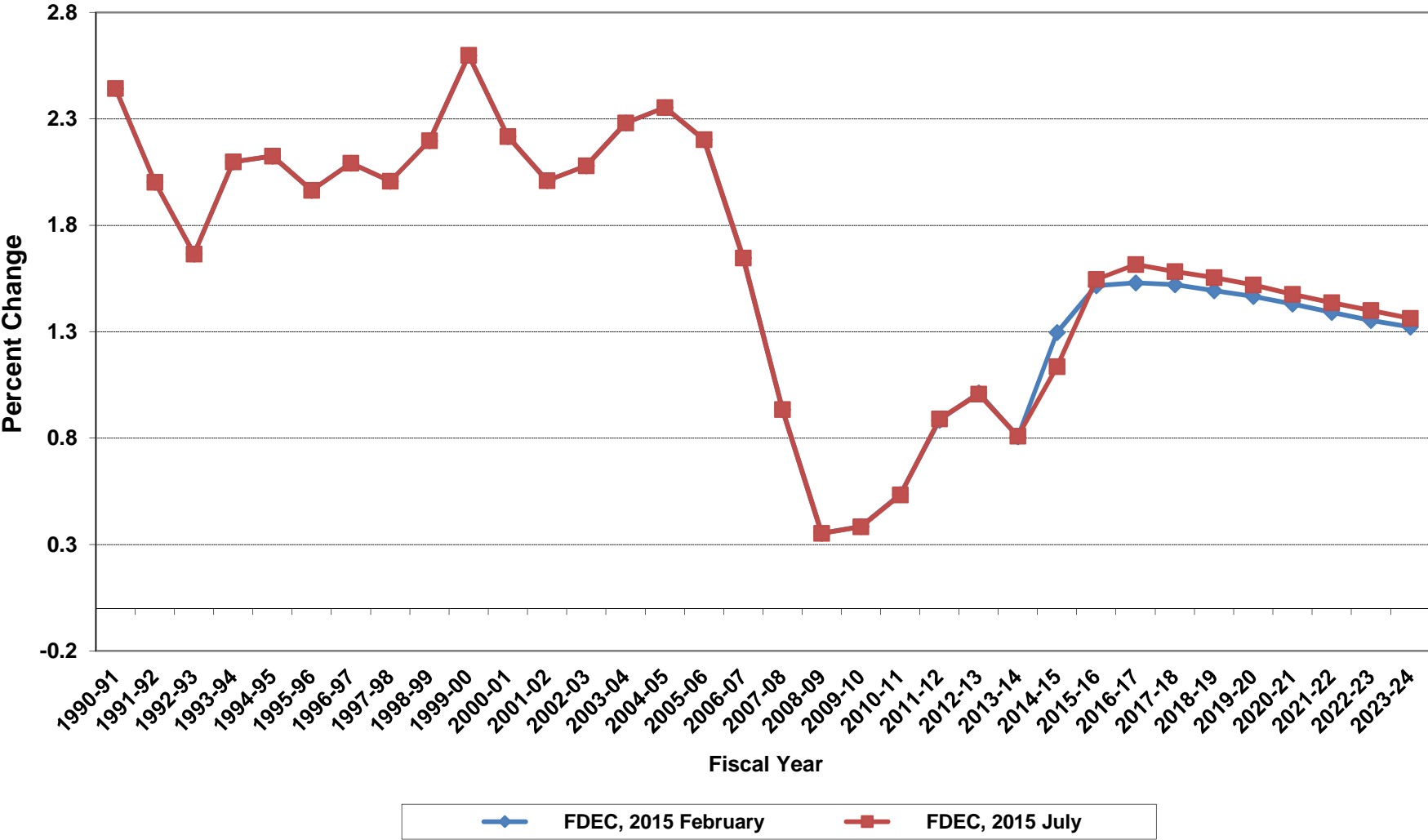
Net Change In Florida Resident Population



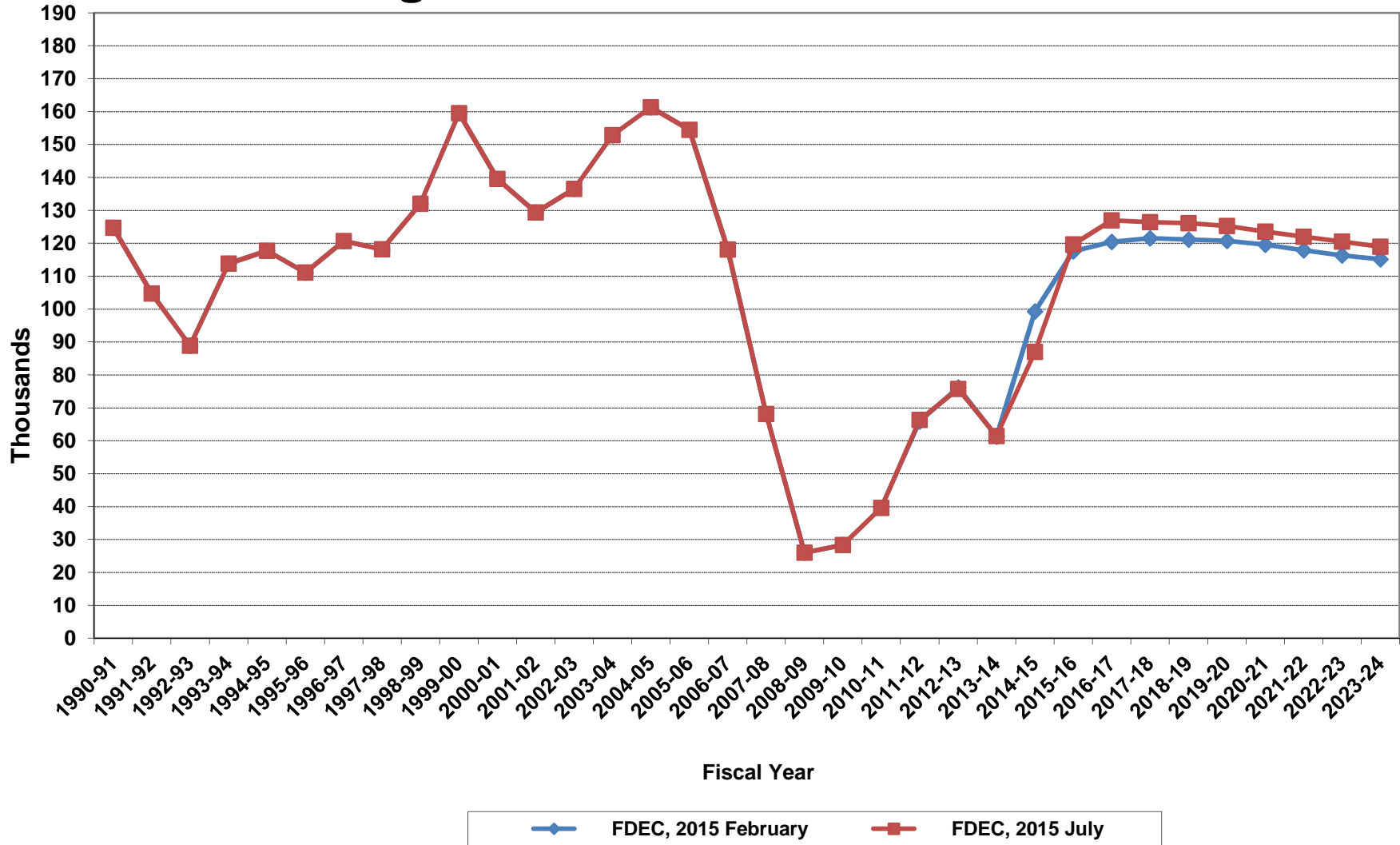
Florida Resident Households



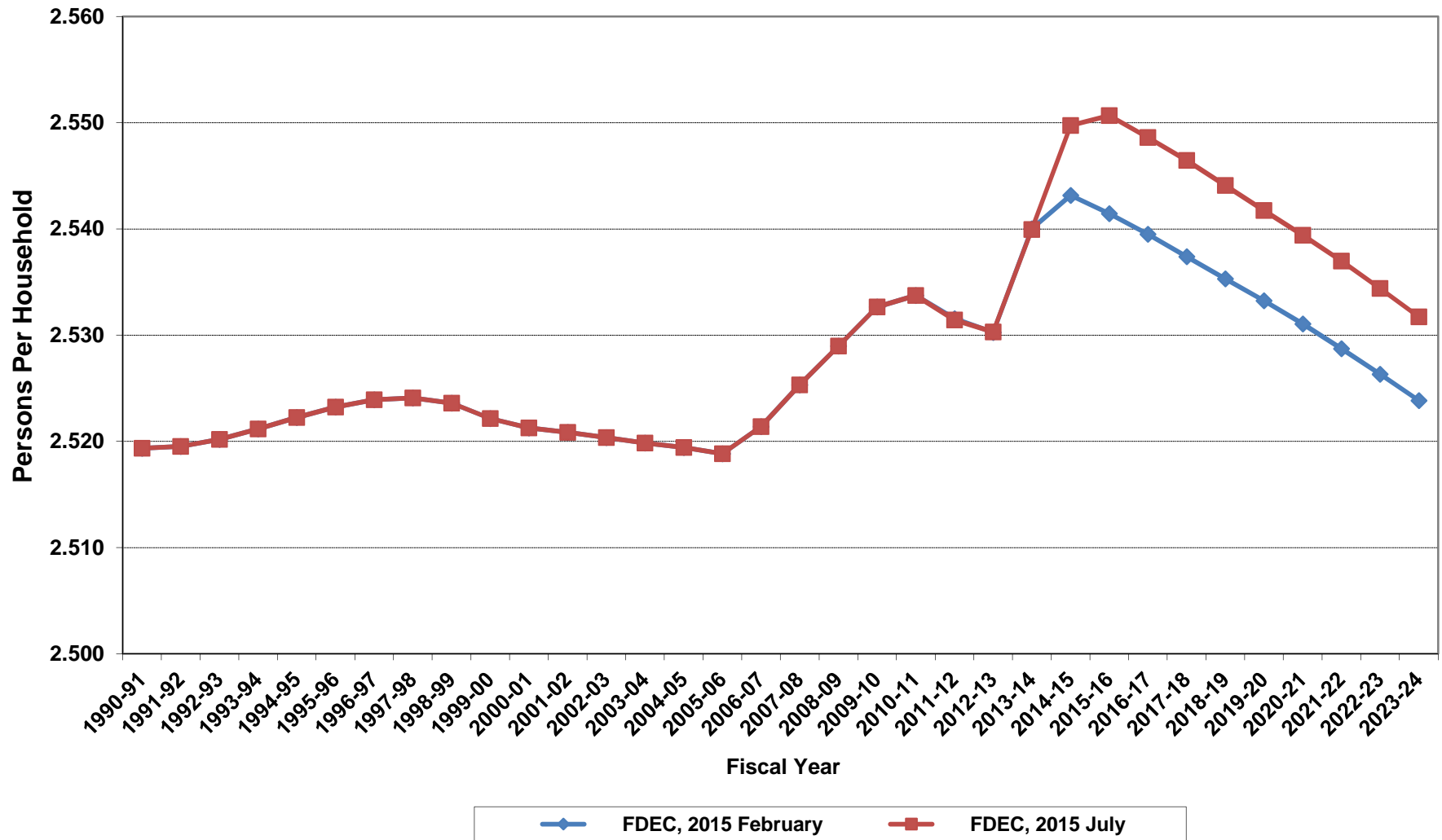
Growth In Florida Resident Households



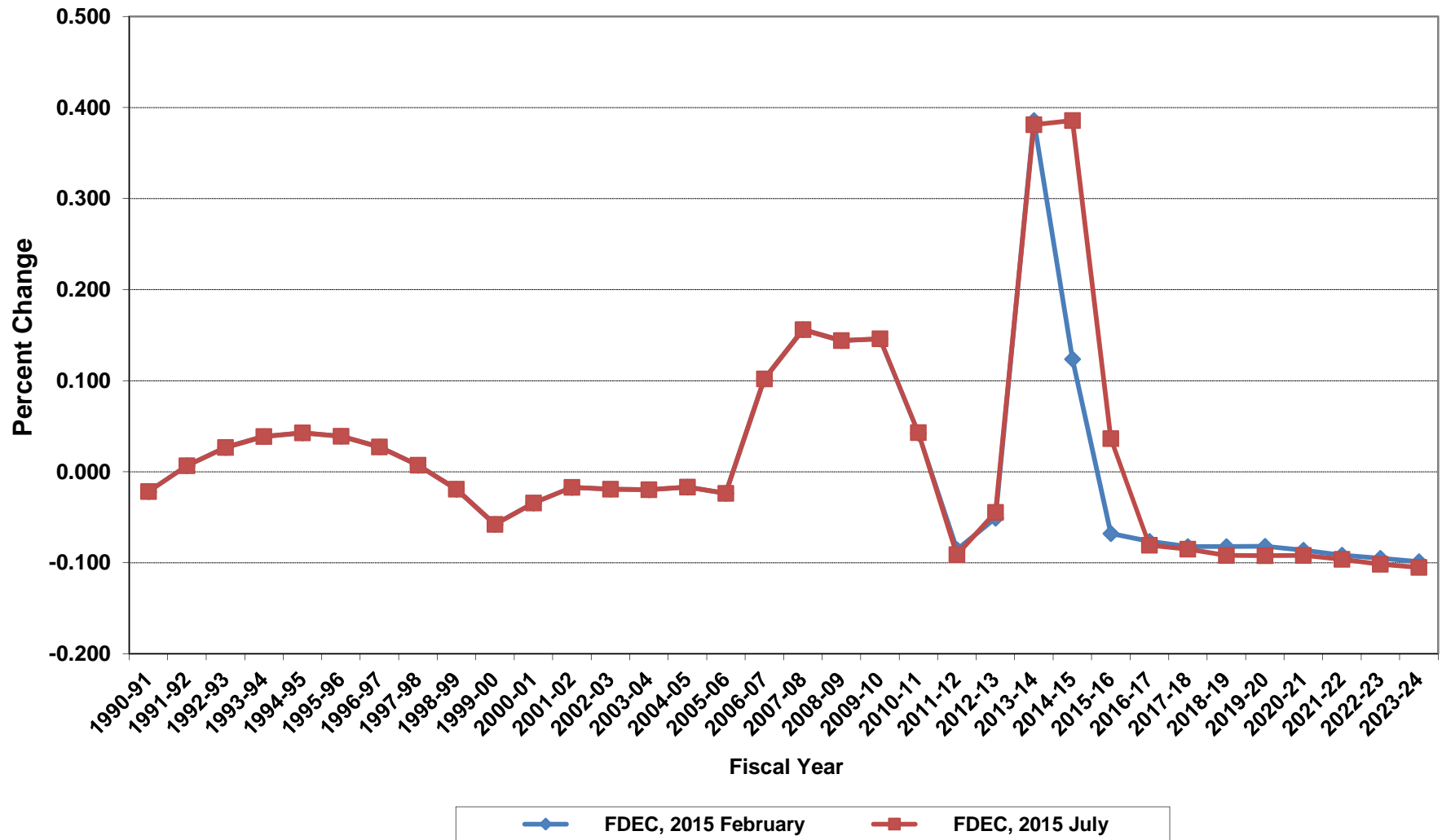
Net Change In Florida Resident Households



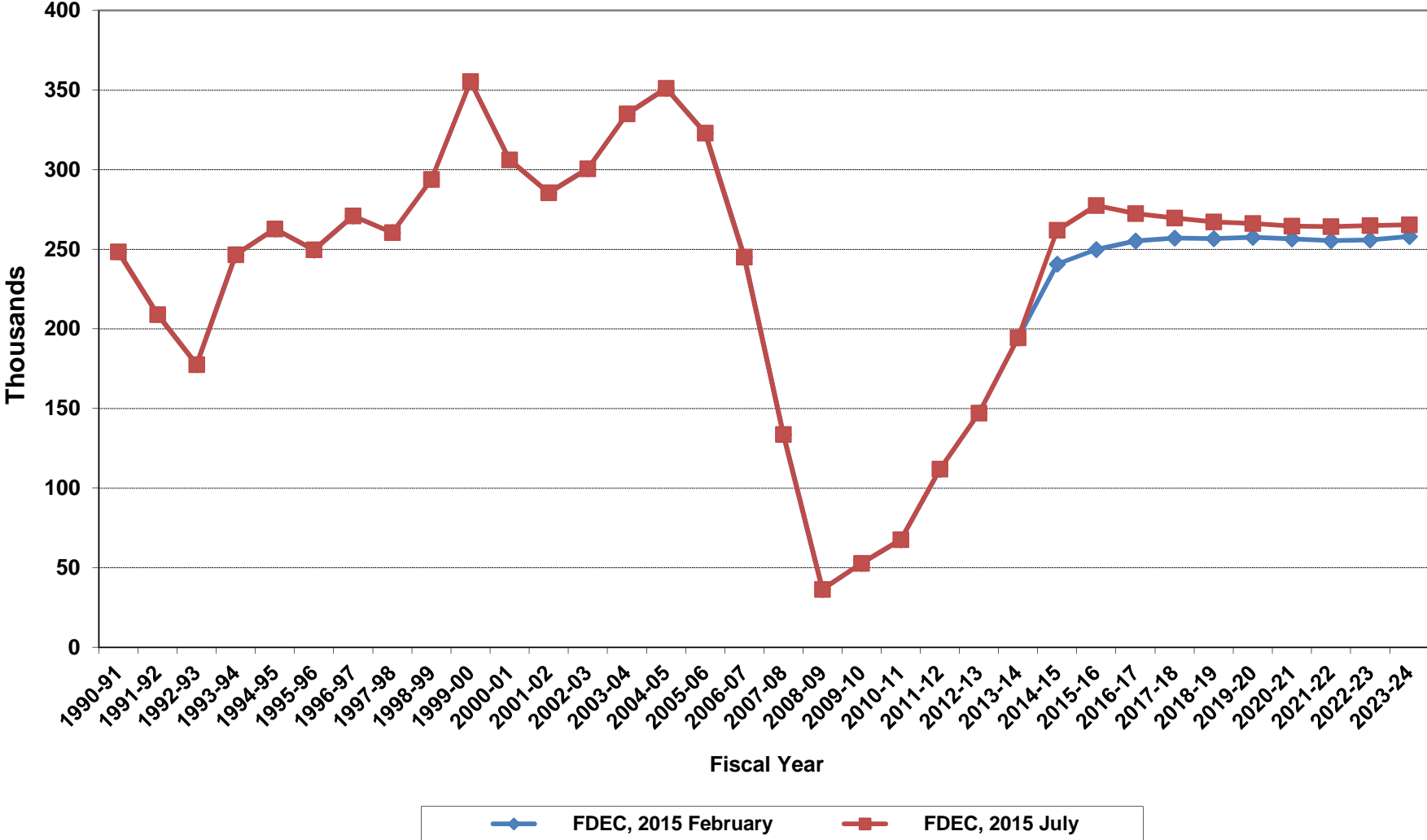
Average Florida Household Size



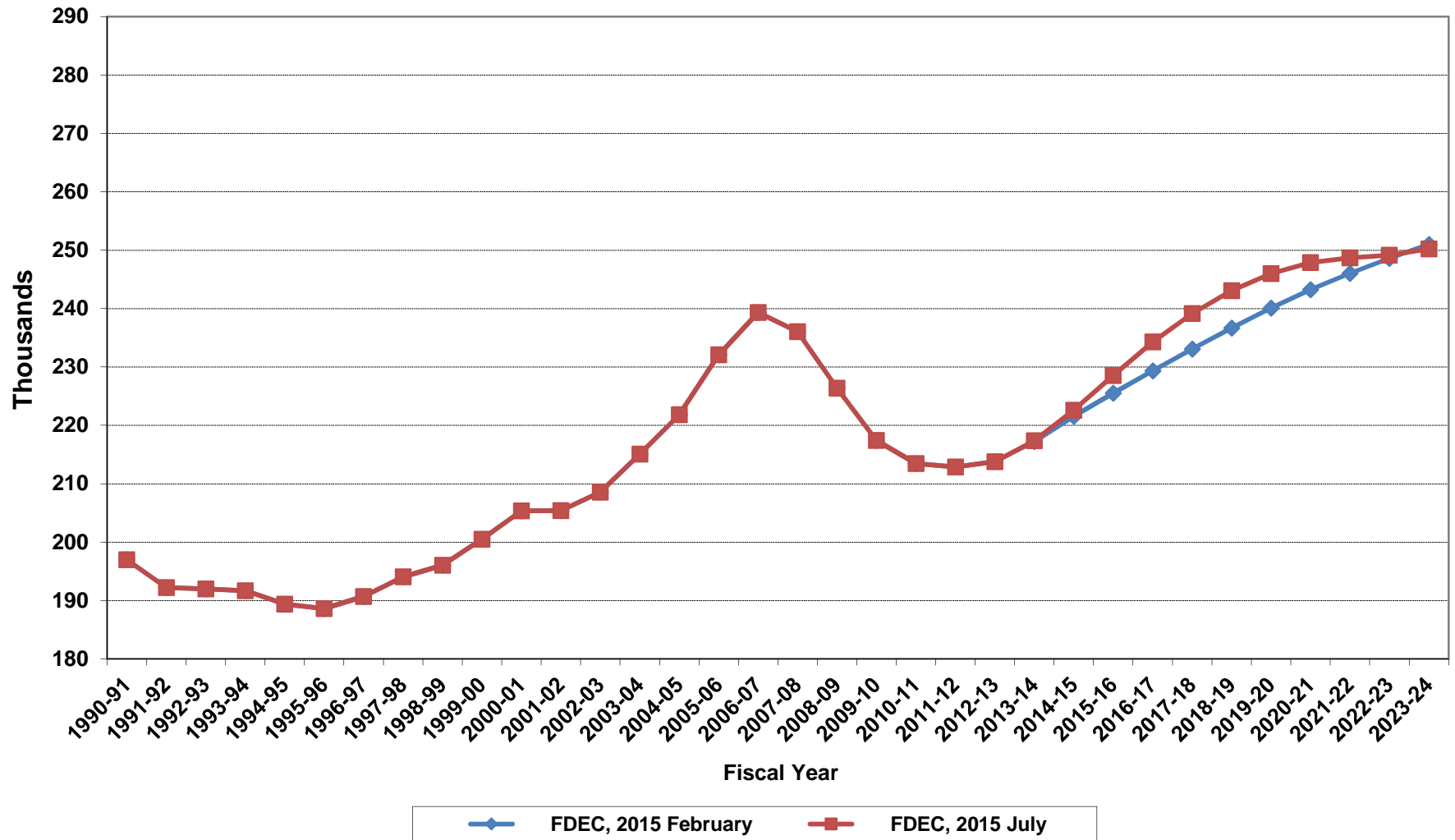
Growth In Average Florida Household Size



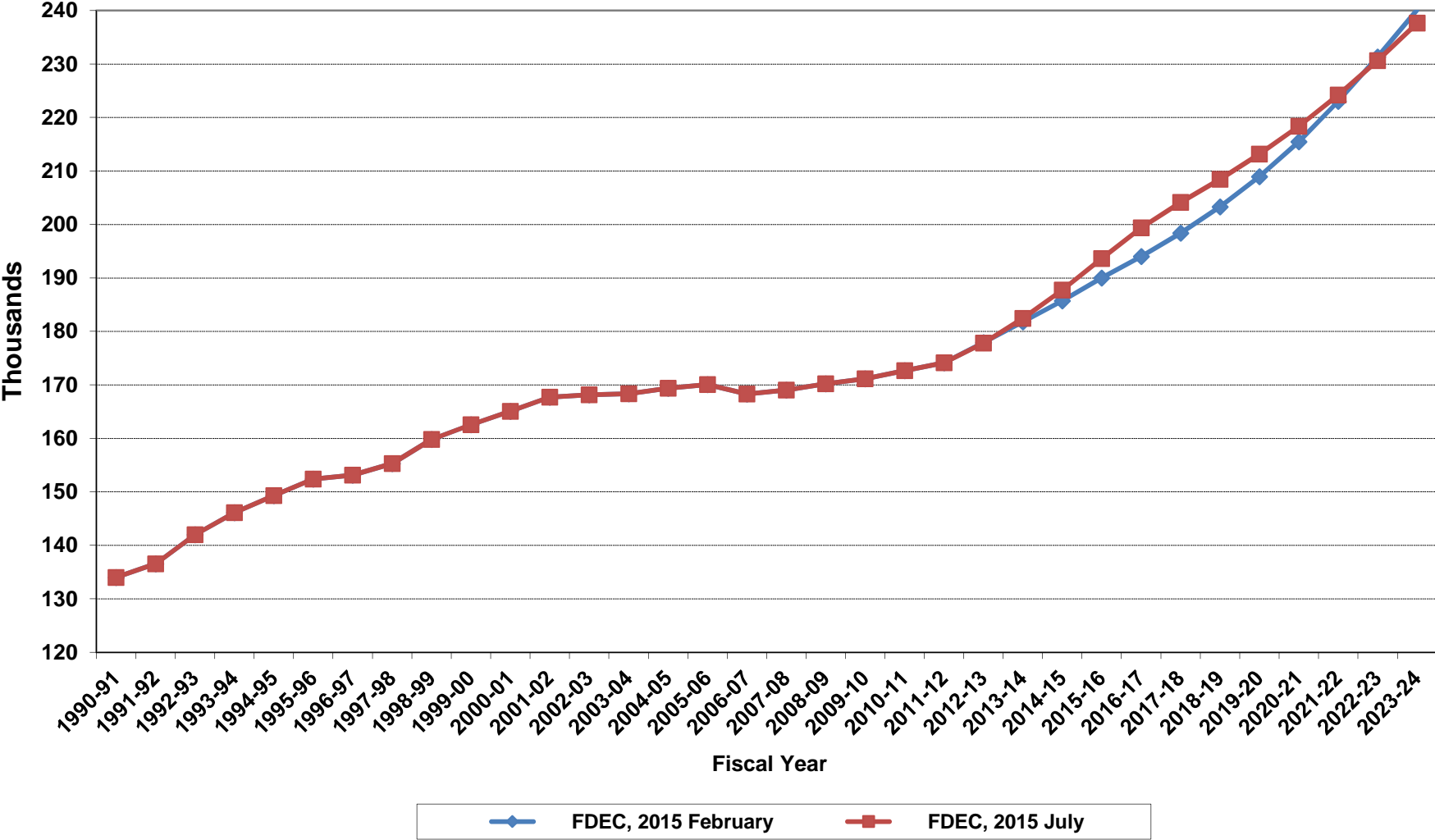
Florida Net Migration



Florida Resident Live Births



Florida Resident Deaths



Florida Net Natural Increase

