

**Demographic Estimating Conference  
Executive Summary  
December 1, 2015**

The Demographic Estimating Conference met on December 1, 2015, to adopt a new population forecast. The data reflect final April 1, 2015 population estimates, in addition to other recent demographic and economic-related data. Overall, each year of the forecast was slightly increased relative to July's conference projections with larger increases in the short run and smaller increases in the long run.

Population growth in Florida continues to strengthen. Historically, Florida's population growth has been driven by net migration (more people permanently moving into the state than leaving). However, net migration fell to record low levels during much of 2008 and into 2009, accounting for just 25.7% of population growth during FY 2008-09. During that time period, natural increase (births minus deaths) actually exceeded net migration. Net migration includes both domestic and international migration, and it was primarily the domestic migration component that led to the slowdown in population growth. The lower levels of net migration were largely due to national economic conditions, including weakened housing markets and other effects from the Great Recession that made it difficult for people in other states to relocate to Florida. Reflecting migration's return as a decisive factor, the expected net migration share of Florida's FY 2015-16 population growth is 90.3%.

Florida's population is expected to grow by 315,597 (1.59%) between April 1, 2015 and April 1, 2016, the strongest increase seen since 2007. Annual population change is expected to remain above 300,000 net new residents per year between 2016 and 2020.

<b>April 1</b>	<b>Population</b>	<b>Percent Change</b>	<b>Change</b>
2012	19,074,434	0.00%	169,364
2013	19,259,543	0.97%	185,109
2014	19,507,369	1.29%	247,826
2015	19,815,183	1.58%	307,814
2016	20,130,780	1.59%	315,597
2017	20,445,808	1.56%	315,028
2018	20,757,668	1.53%	311,860
2019	21,066,063	1.49%	308,395
2020	21,372,207	1.45%	306,144

Between April 1, 2010 and April 1, 2020, population growth is expected to average 257,088 net new residents per year, representing a compound growth rate of 1.29% over this 10-year time horizon. These increases are analogous to adding a city the size of St. Petersburg every year. By April 1, 2016, Florida's population is expected to break the 20-million mark.

Of note, the population estimates developed by the U.S. Census Bureau continue to be higher than the official state estimates adopted by the Demographic Estimating Conference. As of July 1, 2014, this difference was over 300,000 persons. The Legislative Office of Economic and Demographic Research is continuing to work with the Census Bureau to further understand how the different methodologies contribute to the difference in the two sets of estimates.

# **Florida Demographic Estimating Conference**

**Tables**  
Conference Packet

December 1, 2015

# Florida Resident Population

April 1

Year	Florida Demographic Estimating Conference July 2015			Florida Demographic Estimating Conference December 2015		
	Population	% Change	Change	Population	% Change	Change
1990	12,938,071	2.27%	287,136	12,938,071	2.27%	287,136
1991	13,258,732	2.48%	320,661	13,258,732	2.48%	320,661
1992	13,497,541	1.80%	238,809	13,497,541	1.80%	238,809
1993	13,730,115	1.72%	232,574	13,730,115	1.72%	232,574
1994	14,043,757	2.28%	313,642	14,043,757	2.28%	313,642
1995	14,335,992	2.08%	292,235	14,335,992	2.08%	292,235
1996	14,623,421	2.00%	287,429	14,623,421	2.00%	287,429
1997	14,938,314	2.15%	314,893	14,938,314	2.15%	314,893
1998	15,230,421	1.96%	292,107	15,230,421	1.96%	292,107
1999	15,580,244	2.30%	349,823	15,580,244	2.30%	349,823
2000	15,982,824	2.58%	402,580	15,982,824	2.58%	402,580
2001	16,305,100	2.02%	322,276	16,305,100	2.02%	322,276
2002	16,634,256	2.02%	329,156	16,634,256	2.02%	329,156
2003	16,979,706	2.08%	345,450	16,979,706	2.08%	345,450
2004	17,374,824	2.33%	395,118	17,374,824	2.33%	395,118
2005	17,778,156	2.32%	403,332	17,778,156	2.32%	403,332
2006	18,154,475	2.12%	376,319	18,154,475	2.12%	376,319
2007	18,446,768	1.61%	292,293	18,446,768	1.61%	292,293
2008	18,613,905	0.91%	167,137	18,613,905	0.91%	167,137
2009	18,687,425	0.39%	73,520	18,687,425	0.39%	73,520
2010	18,801,332	0.61%	113,885	18,801,332	0.61%	113,907
2011	18,905,070	0.55%	103,738	18,905,070	0.55%	103,738
2012	19,074,434	0.90%	169,364	19,074,434	0.90%	169,364
2013	19,259,543	0.97%	185,109	19,259,543	0.97%	185,109
2014	19,507,369	1.29%	247,826	19,507,369	1.29%	247,826
2015	19,817,596	1.59%	310,227	19,815,183	1.58%	307,814
Begins forecast						
2016	20,127,723	1.56%	310,127	20,130,780	1.59%	315,597
2017	20,434,731	1.53%	307,008	20,445,808	1.56%	315,028
2018	20,738,328	1.49%	303,597	20,757,668	1.53%	311,860
2019	21,039,709	1.45%	301,381	21,066,063	1.49%	308,395
2020	21,337,694	1.42%	297,985	21,372,207	1.45%	306,144
5-Year Averages						
2025	22,747,248	1.29%	281,911	22,799,508	1.30%	285,460
2030	24,022,120	1.10%	254,974	24,070,978	1.09%	254,294
2035	25,167,322	0.94%	229,040	25,212,399	0.93%	228,284
2040	26,210,922	0.82%	208,720	26,252,141	0.81%	207,948

# Florida Resident Households

April 1

Year	Florida Demographic Estimating Conference July 2015			Florida Demographic Estimating Conference December 2015		
	Households	% Change	Change	Households	% Change	Change
1990	5,134,869	3.40%	168,985	5,134,869	3.40%	168,985
1991	5,283,154	2.89%	148,285	5,283,154	2.89%	148,285
1992	5,378,499	1.80%	95,345	5,378,499	1.80%	95,345
1993	5,478,476	1.86%	99,977	5,478,476	1.86%	99,977
1994	5,589,093	2.02%	110,617	5,589,093	2.02%	110,617
1995	5,697,328	1.94%	108,235	5,697,328	1.94%	108,235
1996	5,806,031	1.91%	108,703	5,806,031	1.91%	108,703
1997	5,929,613	2.13%	123,582	5,929,613	2.13%	123,582
1998	6,040,514	1.87%	110,901	6,040,514	1.87%	110,901
1999	6,182,346	2.35%	141,832	6,182,346	2.35%	141,832
2000	6,338,075	2.52%	155,729	6,338,075	2.52%	155,729
2001	6,467,215	2.04%	129,140	6,467,215	2.04%	129,140
2002	6,599,035	2.04%	131,820	6,599,035	2.04%	131,820
2003	6,737,370	2.10%	138,335	6,737,370	2.10%	138,335
2004	6,895,469	2.35%	158,099	6,895,469	2.35%	158,099
2005	7,056,889	2.34%	161,420	7,056,889	2.34%	161,420
2006	7,207,645	2.14%	150,756	7,207,645	2.14%	150,756
2007	7,312,907	1.46%	105,262	7,312,907	1.46%	105,262
2008	7,368,319	0.76%	55,412	7,368,319	0.76%	55,412
2009	7,386,570	0.25%	18,251	7,386,570	0.25%	18,251
2010	7,420,812	0.46%	34,242	7,420,812	0.46%	34,242
2011	7,461,978	0.55%	41,166	7,461,978	0.55%	41,166
2012	7,537,442	1.01%	75,464	7,537,442	1.01%	75,464
2013	7,610,153	0.96%	72,711	7,610,153	0.96%	72,711
2014	7,669,541	0.78%	59,388	7,669,541	0.78%	59,388
Begins forecast						
2015	7,768,092	1.28%	98,551	7,767,146	1.27%	97,605
2016	7,892,736	1.60%	124,644	7,886,910	1.54%	119,764
2017	8,019,541	1.61%	126,805	8,013,461	1.60%	126,551
2018	8,145,919	1.58%	126,378	8,142,206	1.61%	128,745
2019	8,271,934	1.55%	126,015	8,270,517	1.58%	128,311
2020	8,396,831	1.51%	124,897	8,398,460	1.55%	127,943
5-Year Averages			5-Year Averages			
2025	8,997,093	1.39%	120,052	9,003,433	1.40%	120,995
2030	9,543,800	1.19%	109,341	9,550,189	1.19%	109,351
2035	10,033,909	1.01%	98,022	10,040,029	1.01%	97,968
2040	10,494,113	0.90%	92,041	10,494,787	0.89%	90,952

Quarterly Data Table

QUARTERLY FORECAST TABLES

	<u>2010-1</u>	<u>2010-2</u>	<u>2010-3</u>	<u>2010-4</u>	<u>2011-1</u>	<u>2011-2</u>	<u>2011-3</u>	<u>2011-4</u>	<u>2012-1</u>	<u>2012-2</u>	<u>2012-3</u>	<u>2012-4</u>	<u>2013-1</u>	<u>2013-2</u>
Population														
FDEC, 2015 July	18,786.1	18,813.9	18,838.3	18,862.7	18,890.2	18,923.4	18,962.7	19,006.3	19,051.6	19,096.7	19,141.3	19,186.8	19,234.7	19,286.8
FDEC, 2015 December	18,786.1	18,813.9	18,838.3	18,862.7	18,890.2	18,923.4	18,962.7	19,006.3	19,051.6	19,096.7	19,141.3	19,186.7	19,234.7	19,286.9
Population Growth Rate														
FDEC, 2015 July	0.65	0.59	0.52	0.52	0.58	0.71	0.83	0.92	0.96	0.95	0.94	0.95	1.00	1.09
FDEC, 2015 December	0.65	0.59	0.52	0.52	0.58	0.71	0.83	0.92	0.96	0.95	0.94	0.95	1.00	1.09
Net Change in Population														
FDEC, 2015 July	30.5	27.9	24.4	24.4	27.5	33.2	39.3	43.5	45.3	45.1	44.6	45.4	48.0	52.0
FDEC, 2015 December	30.5	27.9	24.4	24.4	27.5	33.2	39.3	43.5	45.3	45.1	44.6	45.4	48.0	52.2
Households														
FDEC, 2015 July	7,416.0	7,425.2	7,434.2	7,443.9	7,455.5	7,470.0	7,487.4	7,506.8	7,527.2	7,547.5	7,567.0	7,585.3	7,602.2	7,617.3
FDEC, 2015 December	7,416.0	7,425.2	7,434.2	7,443.9	7,455.5	7,470.0	7,487.4	7,506.8	7,527.2	7,547.5	7,567.0	7,585.3	7,602.2	7,617.3
Household Growth Rate														
FDEC, 2015 July	0.51	0.50	0.48	0.52	0.63	0.78	0.93	1.04	1.09	1.08	1.04	0.97	0.89	0.80
FDEC, 2015 December	0.51	0.50	0.48	0.52	0.63	0.78	0.93	1.04	1.09	1.08	1.04	0.97	0.89	0.80
Net Change in Households														
FDEC, 2015 July	9.5	9.2	8.9	9.7	11.6	14.5	17.4	19.4	20.3	20.3	19.5	18.4	16.8	15.1
FDEC, 2015 December	9.5	9.2	8.9	9.7	11.6	14.5	17.4	19.4	20.3	20.3	19.5	18.4	16.8	15.1
Household Size														
FDEC, 2015 July	2.533	2.534	2.534	2.534	2.534	2.533	2.533	2.532	2.531	2.530	2.530	2.529	2.530	2.532
FDEC, 2015 December	2.533	2.534	2.534	2.534	2.534	2.533	2.533	2.532	2.531	2.530	2.530	2.529	2.530	2.532
Household Size Growth Rate														
FDEC, 2015 July	0.14	0.10	0.04	-0.01	-0.04	-0.07	-0.10	-0.12	-0.13	-0.13	-0.10	-0.02	0.11	0.29
FDEC, 2015 December	0.14	0.10	0.04	-0.01	-0.04	-0.07	-0.10	-0.12	-0.13	-0.13	-0.10	-0.02	0.11	0.29
Net Migration														
FDEC, 2015 July	19.4	17.2	14.1	14.3	17.2	23.0	29.3	33.7	35.8	35.8	35.4	36.4	39.0	43.2
FDEC, 2015 December	19.4	17.2	14.1	14.3	17.2	23.1	29.3	33.7	35.8	35.8	35.4	36.4	39.1	43.4
Births														
FDEC, 2015 July	54.1	53.7	53.5	53.3	53.4	53.3	53.3	53.2	53.2	53.2	53.3	53.4	53.5	53.7
FDEC, 2015 December	54.1	53.7	53.5	53.3	53.4	53.3	53.3	53.2	53.2	53.2	53.3	53.4	53.5	53.7
Deaths														
FDEC, 2015 July	43.0	43.1	43.2	43.2	43.1	43.1	43.2	43.4	43.6	43.8	44.1	44.3	44.6	44.9
FDEC, 2015 December	43.0	43.1	43.2	43.2	43.1	43.1	43.2	43.4	43.6	43.8	44.1	44.3	44.6	44.9
Net Natural Increase														
FDEC, 2015 July	11.1	10.6	10.3	10.0	10.3	10.2	10.0	9.9	9.5	9.3	9.2	9.0	8.9	8.8
FDEC, 2015 December	11.1	10.6	10.3	10.0	10.3	10.2	10.0	9.8	9.5	9.3	9.2	9.0	8.9	8.8

Quarterly Data Table

QUARTERLY FORECAST TABLES

	<u>2013-3</u>	<u>2013-4</u>	<u>2014-1</u>	<u>2014-2</u>	<u>2014-3</u>	<u>2014-4</u>	<u>2015-1</u>	<u>2015-2</u>	<u>2015-3</u>	<u>2015-4</u>	<u>2016-1</u>	<u>2016-2</u>	<u>2016-3</u>	<u>2016-4</u>	<u>2017-1</u>	<u>2017-2</u>
Population																
FDEC, 2015 July	19,343.7	19,405.7	19,472.7	19,544.4	19,620.1	19,698.5	19,777.8	19,856.9	19,935.0	20,012.4	20,089.3	20,166.2	20,243.0	20,319.8	20,396.5	20,472.9
FDEC, 2015 December	19,344.0	19,406.1	19,472.8	19,544.0	19,619.0	19,696.5	19,775.5	19,854.8	19,933.8	20,012.7	20,091.4	20,170.2	20,249.0	20,327.8	20,406.5	20,485.0
Population Growth Rate																
FDEC, 2015 July	1.19	1.29	1.39	1.48	1.56	1.61	1.62	1.61	1.58	1.56	1.55	1.54	1.53	1.53	1.52	1.51
FDEC, 2015 December	1.19	1.29	1.38	1.47	1.54	1.59	1.61	1.61	1.60	1.59	1.58	1.58	1.57	1.57	1.56	1.55
Net Change in Population																
FDEC, 2015 July	57.0	62.0	66.9	71.7	75.7	78.3	79.4	79.0	78.1	77.4	77.0	76.8	76.9	76.8	76.6	76.4
FDEC, 2015 December	57.1	62.1	66.8	71.2	74.9	77.6	79.0	79.3	79.0	78.8	78.8	78.8	78.8	78.8	78.7	78.5
Households																
FDEC, 2015 July	7,631.2	7,645.4	7,661.1	7,679.7	7,701.7	7,726.6	7,753.9	7,783.1	7,813.5	7,844.9	7,876.8	7,908.7	7,940.5	7,972.1	8,003.7	8,035.3
FDEC, 2015 December	7,631.2	7,645.3	7,661.1	7,679.7	7,701.7	7,726.5	7,753.3	7,781.6	7,810.8	7,840.8	7,871.5	7,902.5	7,933.9	7,965.6	7,997.5	8,029.5
Household Growth Rate																
FDEC, 2015 July	0.74	0.74	0.83	0.98	1.15	1.30	1.42	1.51	1.58	1.62	1.63	1.63	1.62	1.61	1.60	1.59
FDEC, 2015 December	0.73	0.74	0.83	0.98	1.15	1.29	1.40	1.47	1.51	1.55	1.57	1.59	1.60	1.61	1.61	1.61
Net Change in Households																
FDEC, 2015 July	14.0	14.1	15.7	18.6	22.0	24.9	27.3	29.1	30.5	31.4	31.8	31.9	31.8	31.7	31.6	31.6
FDEC, 2015 December	14.0	14.1	15.7	18.7	22.0	24.8	26.8	28.3	29.3	30.0	30.6	31.1	31.4	31.7	31.9	32.0
Household Size																
FDEC, 2015 July	2.535	2.538	2.542	2.545	2.548	2.549	2.551	2.551	2.551	2.551	2.550	2.550	2.549	2.549	2.548	2.548
FDEC, 2015 December	2.535	2.538	2.542	2.545	2.547	2.549	2.551	2.552	2.552	2.552	2.552	2.552	2.552	2.552	2.552	2.551
Household Size Growth Rate																
FDEC, 2015 July	0.45	0.54	0.56	0.50	0.41	0.30	0.20	0.09	0.01	-0.05	-0.08	-0.09	-0.08	-0.08	-0.08	-0.08
FDEC, 2015 December	0.45	0.54	0.55	0.49	0.39	0.30	0.21	0.14	0.09	0.04	0.01	-0.01	-0.03	-0.04	-0.05	-0.06
Net Migration																
FDEC, 2015 July	48.2	53.3	58.2	63.0	67.0	69.6	70.7	70.3	69.4	68.6	68.2	68.1	68.1	68.1	67.9	67.7
FDEC, 2015 December	48.4	53.4	57.9	62.4	66.3	69.0	70.9	71.4	71.3	71.2	71.1	71.2	71.3	71.3	71.1	70.9
Births																
FDEC, 2015 July	53.9	54.1	54.5	54.8	55.1	55.5	55.8	56.2	56.5	56.9	57.3	57.7	58.1	58.4	58.7	59.1
FDEC, 2015 December	53.9	54.1	54.5	54.8	55.1	55.4	55.7	55.9	56.2	56.5	56.8	57.1	57.5	57.8	58.2	58.5
Deaths																
FDEC, 2015 July	45.1	45.4	45.8	46.1	46.4	46.8	47.1	47.5	47.8	48.2	48.6	49.0	49.3	49.7	50.0	50.3
FDEC, 2015 December	45.1	45.4	45.7	46.0	46.4	46.9	47.6	48.0	48.5	48.9	49.2	49.5	49.9	50.3	50.6	51.0
Net Natural Increase																
FDEC, 2015 July	8.7	8.7	8.7	8.7	8.7	8.7	8.7	8.7	8.7	8.7	8.7	8.7	8.7	8.7	8.7	8.7
FDEC, 2015 December	8.7	8.7	8.9	8.8	8.7	8.5	8.1	7.9	7.8	7.7	7.6	7.6	7.6	7.5	7.6	7.6

Quarterly Data Table

QUARTERLY FORECAST TABLES

	<u>2017-3</u>	<u>2017-4</u>	<u>2018-1</u>	<u>2018-2</u>	<u>2018-3</u>	<u>2018-4</u>	<u>2019-1</u>	<u>2019-2</u>	<u>2019-3</u>	<u>2019-4</u>	<u>2020-1</u>	<u>2020-2</u>	<u>2020-3</u>	<u>2020-4</u>	<u>2021-1</u>	<u>2021-2</u>
Population																
FDEC, 2015 July	20,549.0	20,624.8	20,700.5	20,776.1	20,851.5	20,926.8	21,002.1	21,077.2	21,151.9	21,226.5	21,300.7	21,374.5	21,448.0	21,521.2	21,594.0	21,666.5
FDEC, 2015 December	20,563.2	20,641.2	20,718.9	20,796.4	20,873.6	20,950.7	21,027.6	21,104.4	21,181.1	21,257.7	21,334.1	21,410.0	21,485.4	21,560.3	21,634.8	21,708.7
Population Growth Rate																
FDEC, 2015 July	1.50	1.49	1.48	1.47	1.46	1.45	1.45	1.44	1.43	1.42	1.41	1.39	1.38	1.37	1.36	1.35
FDEC, 2015 December	1.54	1.53	1.51	1.50	1.49	1.49	1.48	1.47	1.46	1.45	1.45	1.43	1.42	1.40	1.39	1.37
Net Change in Population																
FDEC, 2015 July	76.1	75.9	75.7	75.5	75.4	75.3	75.3	75.1	74.8	74.5	74.2	73.9	73.5	73.2	72.8	72.5
FDEC, 2015 December	78.2	78.0	77.7	77.5	77.3	77.1	76.9	76.8	76.7	76.5	76.4	76.0	75.4	74.9	74.4	74.0
Households																
FDEC, 2015 July	8,066.9	8,098.5	8,130.1	8,161.7	8,193.2	8,224.7	8,256.2	8,287.6	8,318.9	8,350.2	8,381.3	8,412.3	8,443.1	8,473.9	8,504.5	8,535.1
FDEC, 2015 December	8,061.7	8,093.9	8,126.1	8,158.3	8,190.4	8,222.5	8,254.5	8,286.5	8,318.6	8,350.5	8,382.5	8,414.3	8,445.9	8,477.3	8,508.5	8,539.5
Household Growth Rate																
FDEC, 2015 July	1.58	1.58	1.57	1.56	1.55	1.55	1.54	1.53	1.52	1.51	1.50	1.49	1.48	1.46	1.45	1.45
FDEC, 2015 December	1.61	1.61	1.60	1.59	1.58	1.58	1.57	1.56	1.55	1.55	1.54	1.53	1.51	1.50	1.48	1.47
Net Change in Households																
FDEC, 2015 July	31.6	31.6	31.6	31.6	31.5	31.5	31.5	31.4	31.3	31.2	31.1	31.0	30.9	30.7	30.6	30.6
FDEC, 2015 December	32.2	32.2	32.2	32.2	32.1	32.1	32.0	32.0	32.0	32.0	32.0	31.8	31.6	31.4	31.2	31.0
Household Size																
FDEC, 2015 July	2.547	2.547	2.546	2.546	2.545	2.544	2.544	2.543	2.543	2.542	2.541	2.541	2.540	2.540	2.539	2.539
FDEC, 2015 December	2.551	2.550	2.550	2.549	2.549	2.548	2.547	2.547	2.546	2.546	2.545	2.544	2.544	2.543	2.543	2.542
Household Size Growth Rate																
FDEC, 2015 July	-0.09	-0.09	-0.09	-0.09	-0.09	-0.09	-0.09	-0.09	-0.09	-0.09	-0.09	-0.09	-0.09	-0.09	-0.09	-0.09
FDEC, 2015 December	-0.07	-0.08	-0.09	-0.09	-0.09	-0.09	-0.09	-0.09	-0.09	-0.09	-0.09	-0.09	-0.09	-0.09	-0.09	-0.09
Net Migration																
FDEC, 2015 July	67.4	67.1	66.9	66.8	66.7	66.7	66.6	66.5	66.3	66.2	66.1	65.9	65.8	65.6	65.6	65.5
FDEC, 2015 December	70.6	70.4	70.2	70.0	69.8	69.6	69.6	69.5	69.5	69.4	69.4	69.1	68.6	68.3	67.9	67.6
Births																
FDEC, 2015 July	59.4	59.7	59.9	60.2	60.4	60.7	60.9	61.1	61.3	61.4	61.6	61.7	61.8	61.9	62.0	62.1
FDEC, 2015 December	58.9	59.2	59.5	59.7	60.0	60.2	60.5	60.7	60.9	61.1	61.3	61.4	61.6	61.7	61.8	61.9
Deaths																
FDEC, 2015 July	50.6	50.9	51.2	51.4	51.7	52.0	52.2	52.5	52.8	53.1	53.4	53.8	54.1	54.4	54.8	55.1
FDEC, 2015 December	51.3	51.6	51.9	52.2	52.5	52.8	53.1	53.4	53.7	54.0	54.2	54.5	54.8	55.0	55.3	55.6
Net Natural Increase																
FDEC, 2015 July	8.7	8.7	8.8	8.8	8.7	8.7	8.6	8.5	8.4	8.3	8.1	8.0	7.8	7.5	7.3	7.0
FDEC, 2015 December	7.6	7.6	7.6	7.5	7.5	7.4	7.4	7.3	7.2	7.1	7.0	6.9	6.8	6.6	6.5	6.3

Quarterly Data Table

QUARTERLY FORECAST TABLES

	<u>2021-3</u>	<u>2021-4</u>	<u>2022-1</u>	<u>2022-2</u>	<u>2022-3</u>	<u>2022-4</u>	<u>2023-1</u>	<u>2023-2</u>	<u>2023-3</u>	<u>2023-4</u>	<u>2024-1</u>	<u>2024-2</u>	<u>2024-3</u>	<u>2024-4</u>	<u>2025-1</u>	<u>2025-2</u>
Population																
FDEC, 2015 July	21,738.7	21,810.5	21,882.0	21,953.1	22,023.9	22,094.4	22,164.6	22,234.4	22,303.8	22,373.0	22,441.8	22,510.2	22,578.4	22,646.2	22,713.6	22,780.7
FDEC, 2015 December	21,782.2	21,855.3	21,927.9	22,000.1	22,071.8	22,143.0	22,213.9	22,284.3	22,354.3	22,423.9	22,493.1	22,561.9	22,630.2	22,698.2	22,765.8	22,833.0
Population Growth Rate																
FDEC, 2015 July	1.34	1.33	1.32	1.31	1.30	1.29	1.28	1.27	1.26	1.25	1.24	1.23	1.22	1.21	1.20	1.19
FDEC, 2015 December	1.36	1.35	1.34	1.32	1.31	1.30	1.29	1.27	1.26	1.25	1.24	1.23	1.22	1.21	1.20	1.19
Net Change in Population																
FDEC, 2015 July	72.2	71.8	71.5	71.2	70.8	70.5	70.1	69.8	69.5	69.1	68.8	68.5	68.1	67.8	67.5	67.1
FDEC, 2015 December	73.5	73.1	72.6	72.2	71.7	71.3	70.8	70.4	70.0	69.6	69.2	68.8	68.4	68.0	67.6	67.2
Households																
FDEC, 2015 July	8,565.6	8,596.0	8,626.3	8,656.5	8,686.7	8,716.7	8,746.6	8,776.5	8,806.2	8,835.8	8,865.4	8,894.9	8,924.3	8,953.5	8,982.6	9,011.5
FDEC, 2015 December	8,570.4	8,601.1	8,631.7	8,662.2	8,692.5	8,722.7	8,752.8	8,782.7	8,812.6	8,842.3	8,871.8	8,901.3	8,930.6	8,959.8	8,988.9	9,017.9
Household Growth Rate																
FDEC, 2015 July	1.44	1.43	1.42	1.41	1.40	1.39	1.38	1.37	1.36	1.35	1.34	1.34	1.33	1.32	1.31	1.29
FDEC, 2015 December	1.45	1.44	1.43	1.42	1.41	1.40	1.39	1.38	1.37	1.36	1.34	1.33	1.32	1.31	1.31	1.30
Net Change in Households																
FDEC, 2015 July	30.5	30.4	30.3	30.2	30.1	30.0	29.9	29.8	29.7	29.6	29.6	29.5	29.4	29.3	29.1	28.9
FDEC, 2015 December	30.9	30.7	30.6	30.4	30.3	30.2	30.1	30.0	29.8	29.7	29.6	29.4	29.3	29.2	29.1	29.0
Household Size																
FDEC, 2015 July	2.538	2.537	2.537	2.536	2.535	2.535	2.534	2.533	2.533	2.532	2.531	2.531	2.530	2.529	2.529	2.528
FDEC, 2015 December	2.542	2.541	2.540	2.540	2.539	2.539	2.538	2.537	2.537	2.536	2.535	2.535	2.534	2.533	2.533	2.532
Household Size Growth Rate																
FDEC, 2015 July	-0.10	-0.10	-0.10	-0.10	-0.10	-0.10	-0.10	-0.10	-0.10	-0.11	-0.11	-0.11	-0.11	-0.11	-0.11	-0.10
FDEC, 2015 December	-0.09	-0.09	-0.09	-0.09	-0.10	-0.10	-0.10	-0.10	-0.10	-0.10	-0.10	-0.10	-0.10	-0.11	-0.11	-0.11
Net Migration																
FDEC, 2015 July	65.5	65.5	65.6	65.6	65.6	65.7	65.7	65.8	65.8	65.8	65.8	65.9	65.9	65.9	66.0	65.9
FDEC, 2015 December	67.4	67.1	66.9	66.7	66.5	66.3	66.0	65.8	65.7	65.5	65.3	65.1	65.0	64.8	64.7	64.5
Births																
FDEC, 2015 July	62.1	62.2	62.1	62.2	62.2	62.3	62.3	62.4	62.4	62.5	62.6	62.7	62.8	62.9	63.1	63.2
FDEC, 2015 December	62.0	62.1	62.1	62.2	62.2	62.3	62.4	62.5	62.6	62.7	62.8	62.9	63.0	63.1	63.3	63.4
Deaths																
FDEC, 2015 July	55.5	55.9	56.2	56.6	57.0	57.4	57.9	58.3	58.7	59.2	59.6	60.1	60.6	61.0	61.6	62.0
FDEC, 2015 December	55.9	56.1	56.4	56.7	57.0	57.3	57.6	57.9	58.2	58.5	58.9	59.2	59.6	60.0	60.4	60.8
Net Natural Increase																
FDEC, 2015 July	6.7	6.3	5.9	5.6	5.2	4.8	4.4	4.0	3.7	3.3	3.0	2.6	2.3	1.9	1.5	1.2
FDEC, 2015 December	6.2	6.0	5.7	5.5	5.2	5.0	4.8	4.6	4.4	4.1	3.9	3.7	3.4	3.2	2.9	2.7



Fiscal Year Data Table

FISCAL YEAR  
FORECAST TABLES

	<u>1990-91</u>	<u>1991-92</u>	<u>1992-93</u>	<u>1993-94</u>	<u>1994-95</u>	<u>1995-96</u>	<u>1996-97</u>	<u>1997-98</u>	<u>1998-99</u>	<u>1999-00</u>	<u>2000-01</u>	<u>2001-02</u>	<u>2002-03</u>	<u>2003-04</u>	<u>2004-05</u>
Population															
FDEC, 2015 July	13,178.0	13,442.6	13,670.0	13,962.2	14,264.9	14,550.7	14,859.1	15,158.3	15,488.4	15,881.7	16,228.0	16,551.2	16,892.0	17,273.8	17,677.3
FDEC, 2015 December	13,178.0	13,442.6	13,670.0	13,962.2	14,264.9	14,550.7	14,859.1	15,158.3	15,488.4	15,881.7	16,228.0	16,551.2	16,892.0	17,273.8	17,677.3
Growth Rate															
FDEC, 2015 July	2.42	2.01	1.69	2.14	2.17	2.00	2.12	2.01	2.18	2.54	2.18	1.99	2.06	2.26	2.34
FDEC, 2015 December	2.42	2.01	1.69	2.14	2.17	2.00	2.12	2.01	2.18	2.54	2.18	1.99	2.06	2.26	2.34
Net Change in Population															
FDEC, 2015 July	311.4	264.6	227.4	292.2	302.8	285.8	308.4	299.2	330.1	393.2	346.4	323.2	340.9	381.8	403.5
FDEC, 2015 December	311.4	264.6	227.4	292.2	302.8	285.8	308.4	299.2	330.1	393.2	346.4	323.2	340.9	381.8	403.5
Households															
FDEC, 2015 July	5,230.7	5,335.4	5,424.2	5,538.0	5,655.6	5,766.7	5,887.3	6,005.5	6,137.4	6,296.9	6,436.4	6,565.8	6,702.3	6,855.1	7,016.4
FDEC, 2015 December	5,230.7	5,335.4	5,424.2	5,538.0	5,655.6	5,766.7	5,887.3	6,005.5	6,137.4	6,296.9	6,436.4	6,565.8	6,702.3	6,855.1	7,016.4
Growth Rate															
FDEC, 2015 July	2.44	2.00	1.66	2.10	2.12	1.96	2.09	2.01	2.20	2.60	2.22	2.01	2.08	2.28	2.35
FDEC, 2015 December	2.44	2.00	1.66	2.10	2.12	1.96	2.09	2.01	2.20	2.60	2.22	2.01	2.08	2.28	2.35
Net Change in Households															
FDEC, 2015 July	124.7	104.7	88.8	113.8	117.7	111.1	120.6	118.1	132.0	159.5	139.5	129.3	136.5	152.8	161.3
FDEC, 2015 December	124.7	104.7	88.8	113.8	117.7	111.1	120.6	118.1	132.0	159.5	139.5	129.3	136.5	152.8	161.3
Household Size															
FDEC, 2015 July	2.519	2.520	2.520	2.521	2.522	2.523	2.524	2.524	2.524	2.522	2.521	2.521	2.520	2.520	2.519
FDEC, 2015 December	2.519	2.520	2.520	2.521	2.522	2.523	2.524	2.524	2.524	2.522	2.521	2.521	2.520	2.520	2.519
Growth Rate															
FDEC, 2015 July	-0.02	0.01	0.03	0.04	0.04	0.04	0.03	0.01	-0.02	-0.06	-0.03	-0.02	-0.02	-0.02	-0.02
FDEC, 2015 December	-0.02	0.01	0.03	0.04	0.04	0.04	0.03	0.01	-0.02	-0.06	-0.03	-0.02	-0.02	-0.02	-0.02
Net Migration															
FDEC, 2015 July	248.4	208.9	177.4	246.6	262.7	249.6	270.9	260.5	293.9	355.3	306.0	285.5	300.4	335.0	351.1
FDEC, 2015 December	248.4	208.9	177.4	246.6	262.7	249.6	270.9	260.5	293.9	355.3	306.0	285.5	300.4	335.0	351.1
Births															
FDEC, 2015 July	197.0	192.2	192.0	191.7	189.4	188.6	190.7	194.0	196.0	200.5	205.4	205.4	208.5	215.0	221.8
FDEC, 2015 December	197.0	192.2	192.0	191.7	189.4	188.6	190.7	194.0	196.0	200.5	205.4	205.4	208.5	215.0	221.8
Deaths															
FDEC, 2015 July	134.0	136.5	142.0	146.1	149.3	152.4	153.1	155.3	159.8	162.5	165.0	167.7	168.1	168.3	169.4
FDEC, 2015 December	134.0	136.5	142.0	146.1	149.3	152.4	153.1	155.3	159.8	162.5	165.0	167.7	168.1	168.3	169.4
Net Natural Increase															
FDEC, 2015 July	63.0	55.7	50.0	45.6	40.1	36.2	37.5	38.8	36.2	38.0	40.3	37.7	40.4	46.7	52.4
FDEC, 2015 December	63.0	55.7	50.0	45.6	40.1	36.2	37.5	38.8	36.2	38.0	40.3	37.7	40.4	46.7	52.4

Fiscal Year Data Table

FISCAL YEAR  
FORECAST TABLES

	<u>2005-06</u>	<u>2006-07</u>	<u>2007-08</u>	<u>2008-09</u>	<u>2009-10</u>	<u>2010-11</u>	<u>2011-12</u>	<u>2012-13</u>	<u>2013-14</u>	<u>2014-15</u>	<u>2015-16</u>	<u>2016-17</u>
Population												
FDEC, 2015 July	18,062.2	18,378.2	18,578.9	18,671.4	18,770.4	18,878.6	19,029.3	19,212.4	19,441.6	19,738.3	20,050.7	20,358.0
FDEC, 2015 December	18,062.2	18,378.2	18,578.9	18,671.4	18,770.4	18,878.6	19,029.3	19,212.4	19,441.7	19,736.4	20,052.0	20,367.1
Growth Rate												
FDEC, 2015 July	2.18	1.75	1.09	0.50	0.53	0.58	0.80	0.96	1.19	1.53	1.58	1.53
FDEC, 2015 December	2.18	1.75	1.09	0.50	0.53	0.58	0.80	0.96	1.19	1.52	1.60	1.57
Net Change in Population												
FDEC, 2015 July	384.9	316.0	200.7	92.5	99.0	108.2	150.7	183.1	229.2	296.7	312.4	307.3
FDEC, 2015 December	384.9	316.0	200.7	92.5	99.0	108.2	150.7	183.0	229.4	294.7	315.6	315.1
Households												
FDEC, 2015 July	7,170.9	7,288.9	7,357.1	7,383.0	7,411.4	7,450.9	7,517.2	7,592.9	7,654.4	7,741.3	7,861.0	7,987.9
FDEC, 2015 December	7,170.9	7,288.9	7,357.1	7,383.0	7,411.4	7,450.9	7,517.2	7,592.9	7,654.3	7,740.8	7,856.4	7,981.6
Growth Rate												
FDEC, 2015 July	2.20	1.65	0.93	0.35	0.38	0.53	0.89	1.01	0.81	1.14	1.55	1.61
FDEC, 2015 December	2.20	1.65	0.93	0.35	0.38	0.53	0.89	1.01	0.81	1.13	1.49	1.59
Net Change in Households												
FDEC, 2015 July	154.5	118.1	68.1	26.0	28.3	39.5	66.3	75.7	61.4	87.0	119.7	126.9
FDEC, 2015 December	154.5	118.1	68.1	26.0	28.3	39.5	66.3	75.7	61.4	86.4	115.7	125.2
Household Size												
FDEC, 2015 July	2.519	2.521	2.525	2.529	2.533	2.534	2.531	2.530	2.540	2.550	2.551	2.549
FDEC, 2015 December	2.519	2.521	2.525	2.529	2.533	2.534	2.531	2.530	2.540	2.550	2.552	2.552
Growth Rate												
FDEC, 2015 July	-0.02	0.10	0.16	0.14	0.15	0.04	-0.09	-0.04	0.38	0.39	0.04	-0.08
FDEC, 2015 December	-0.02	0.10	0.16	0.14	0.15	0.04	-0.09	-0.04	0.38	0.38	0.10	-0.02
Net Migration												
FDEC, 2015 July	322.9	245.0	133.7	36.3	52.7	67.4	111.9	147.1	194.3	261.8	277.5	272.4
FDEC, 2015 December	322.9	245.0	133.7	36.3	52.7	67.4	111.9	147.1	194.2	261.5	284.9	284.8
Births												
FDEC, 2015 July	232.1	239.3	236.0	226.4	217.4	213.5	212.9	213.8	217.3	222.6	228.5	234.3
FDEC, 2015 December	232.1	239.3	236.0	226.4	217.4	213.5	212.9	213.8	217.4	222.1	226.7	232.0
Deaths												
FDEC, 2015 July	170.1	168.3	169.0	170.2	171.1	172.7	174.1	177.8	182.4	187.7	193.6	199.4
FDEC, 2015 December	170.1	168.3	169.0	170.2	171.1	172.7	174.1	177.8	182.3	188.9	196.1	201.7
Net Natural Increase												
FDEC, 2015 July	62.0	71.0	67.0	56.2	46.3	40.8	38.8	36.0	34.9	34.9	34.9	34.9
FDEC, 2015 December	62.0	71.0	67.0	56.2	46.3	40.8	38.8	36.0	35.1	33.2	30.7	30.3

Fiscal Year Data Table

FISCAL YEAR  
FORECAST TABLES

	<u>2017-18</u>	<u>2018-19</u>	<u>2019-20</u>	<u>2020-21</u>	<u>2021-22</u>	<u>2022-23</u>	<u>2023-24</u>	<u>2024-25</u>
Population								
FDEC, 2015 July	20,662.6	20,964.4	21,263.4	21,557.4	21,846.1	22,129.3	22,407.2	22,679.7
FDEC, 2015 December	20,679.9	20,989.1	21,295.7	21,597.3	21,891.4	22,178.3	22,458.3	22,731.8
Growth Rate								
FDEC, 2015 July	1.50	1.46	1.43	1.38	1.34	1.30	1.26	1.22
FDEC, 2015 December	1.54	1.50	1.46	1.42	1.36	1.31	1.26	1.22
Net Change in Population								
FDEC, 2015 July	304.6	301.8	299.0	294.0	288.6	283.3	277.9	272.5
FDEC, 2015 December	312.8	309.2	306.6	301.6	294.1	286.9	280.0	273.5
Households								
FDEC, 2015 July	8,114.3	8,240.4	8,365.7	8,489.2	8,611.1	8,731.6	8,850.6	8,968.0
FDEC, 2015 December	8,110.0	8,238.5	8,366.5	8,492.8	8,616.4	8,737.7	8,857.0	8,974.3
Growth Rate								
FDEC, 2015 July	1.58	1.55	1.52	1.48	1.44	1.40	1.36	1.33
FDEC, 2015 December	1.61	1.58	1.55	1.51	1.45	1.41	1.37	1.32
Net Change in Households								
FDEC, 2015 July	126.4	126.1	125.2	123.5	121.9	120.5	119.0	117.4
FDEC, 2015 December	128.4	128.5	128.0	126.3	123.5	121.3	119.3	117.3
Household Size								
FDEC, 2015 July	2.546	2.544	2.542	2.539	2.537	2.534	2.532	2.529
FDEC, 2015 December	2.550	2.548	2.545	2.543	2.541	2.538	2.536	2.533
Growth Rate								
FDEC, 2015 July	-0.09	-0.09	-0.09	-0.09	-0.10	-0.10	-0.11	-0.11
FDEC, 2015 December	-0.07	-0.09	-0.09	-0.09	-0.09	-0.10	-0.10	-0.11
Net Migration								
FDEC, 2015 July	269.6	267.2	266.2	264.5	264.1	264.8	265.3	265.7
FDEC, 2015 December	282.6	279.6	278.3	275.3	270.8	267.3	264.0	261.3
Births								
FDEC, 2015 July	239.1	243.0	246.0	247.9	248.7	249.1	250.2	252.0
FDEC, 2015 December	237.2	241.4	244.6	247.0	248.3	249.4	250.9	252.9
Deaths								
FDEC, 2015 July	204.1	208.4	213.1	218.4	224.2	230.6	237.6	245.2
FDEC, 2015 December	207.0	211.8	216.4	220.7	225.1	229.7	234.9	240.7
Net Natural Increase								
FDEC, 2015 July	35.0	34.6	32.8	29.5	24.5	18.5	12.6	6.8
FDEC, 2015 December	30.2	29.6	28.3	26.3	23.2	19.6	16.0	12.2

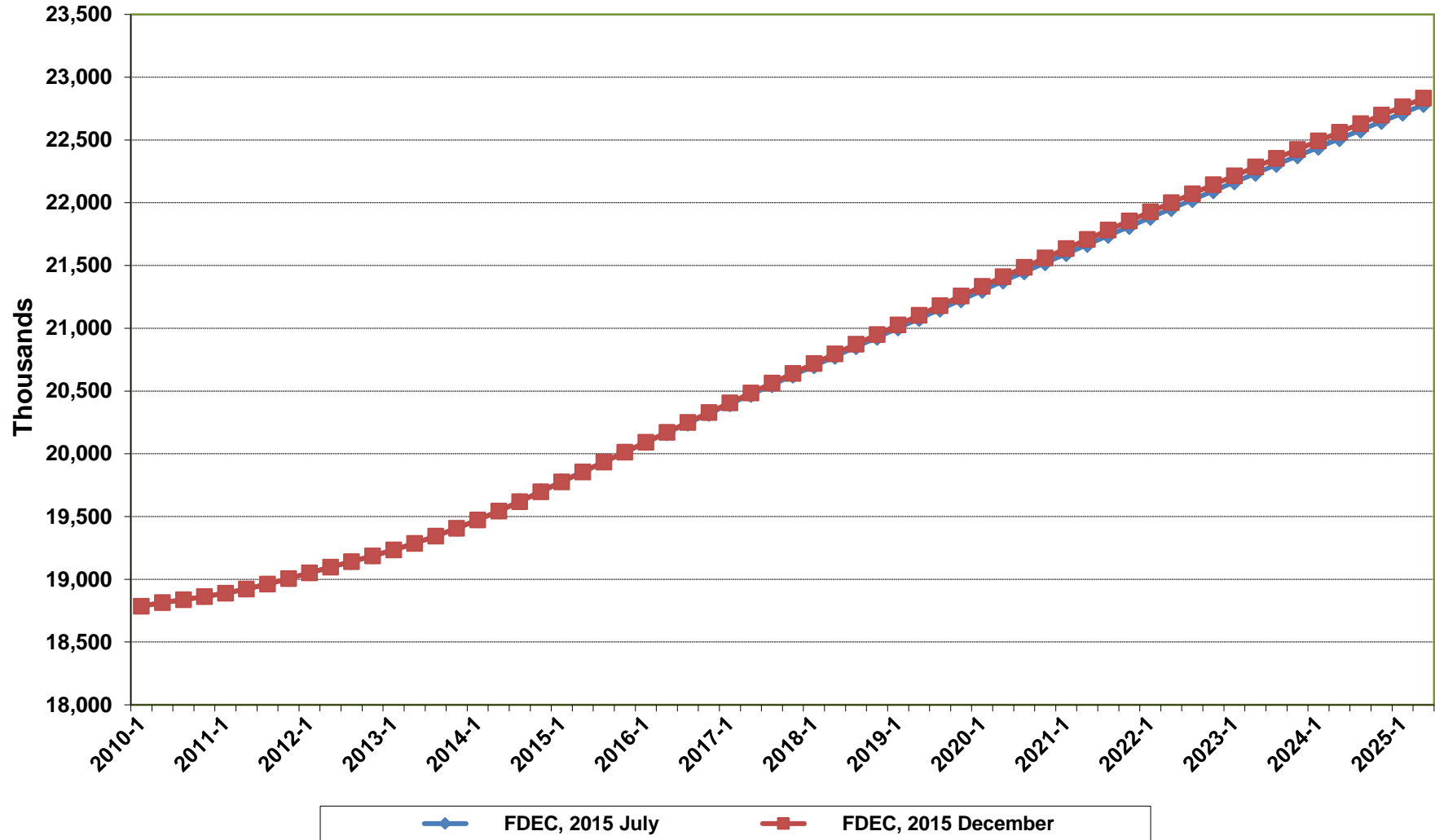
# **Florida Demographic Estimating Conference**

## **Charts**

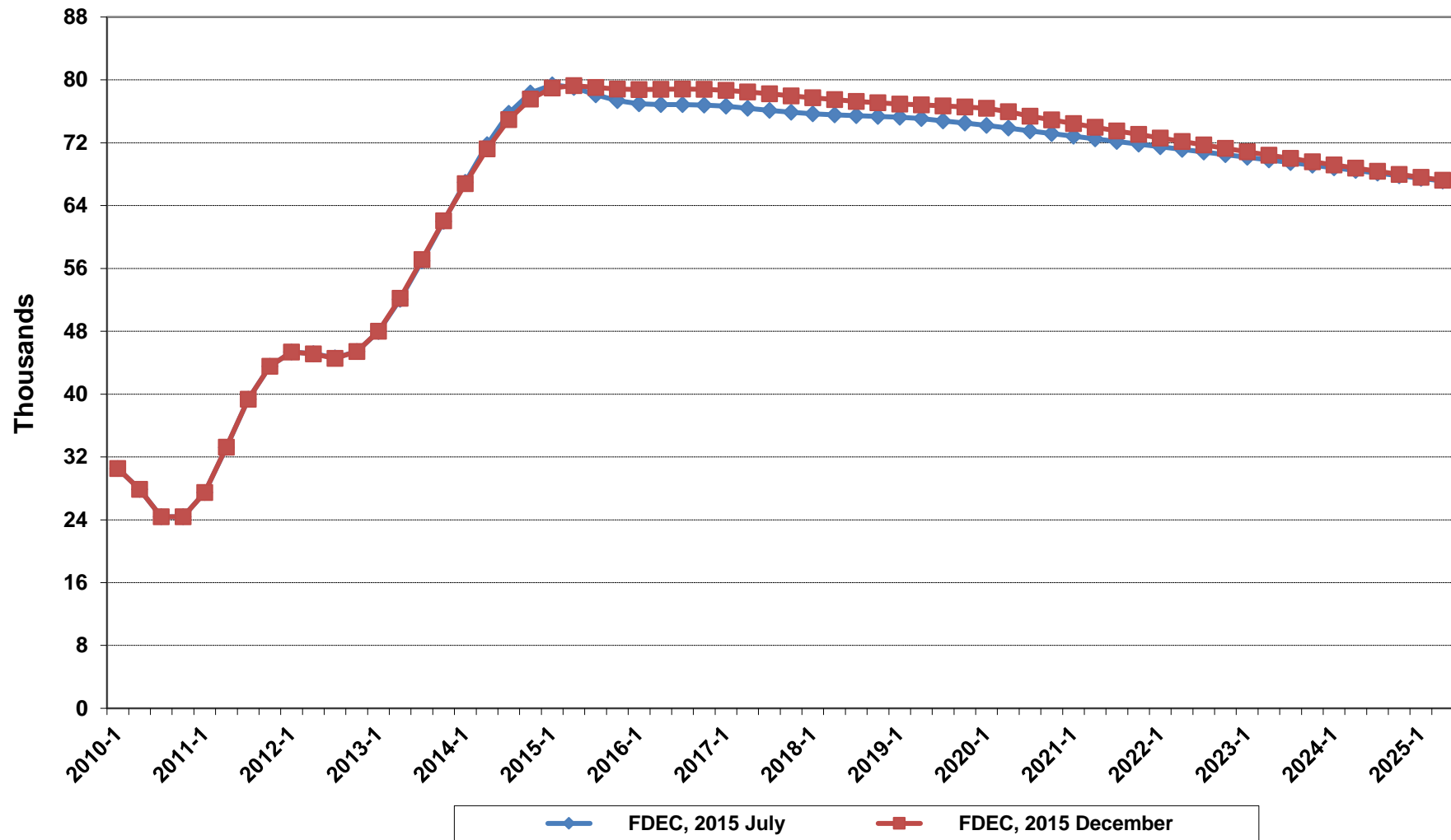
Conference Packet

December 1, 2015

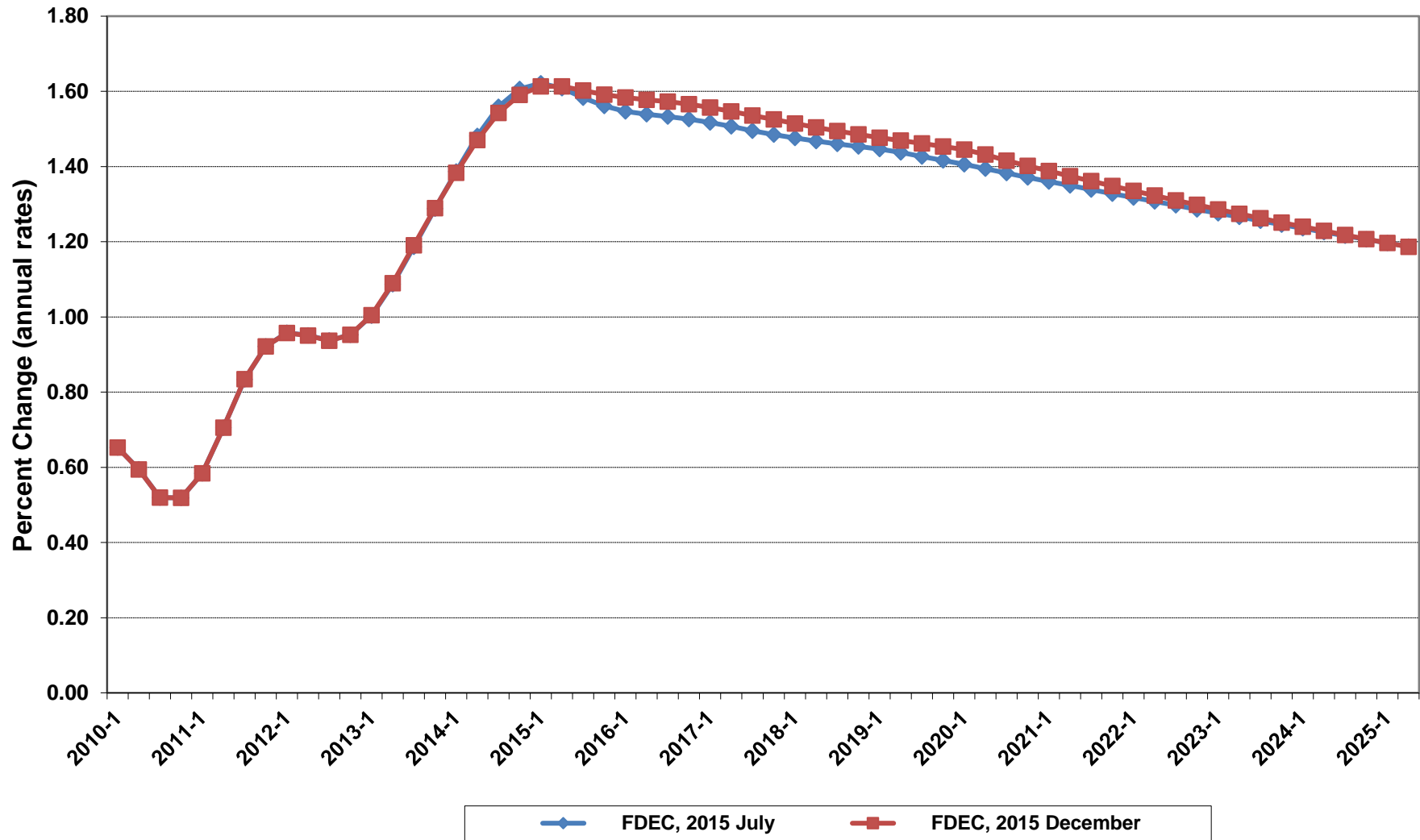
# Florida Resident Population



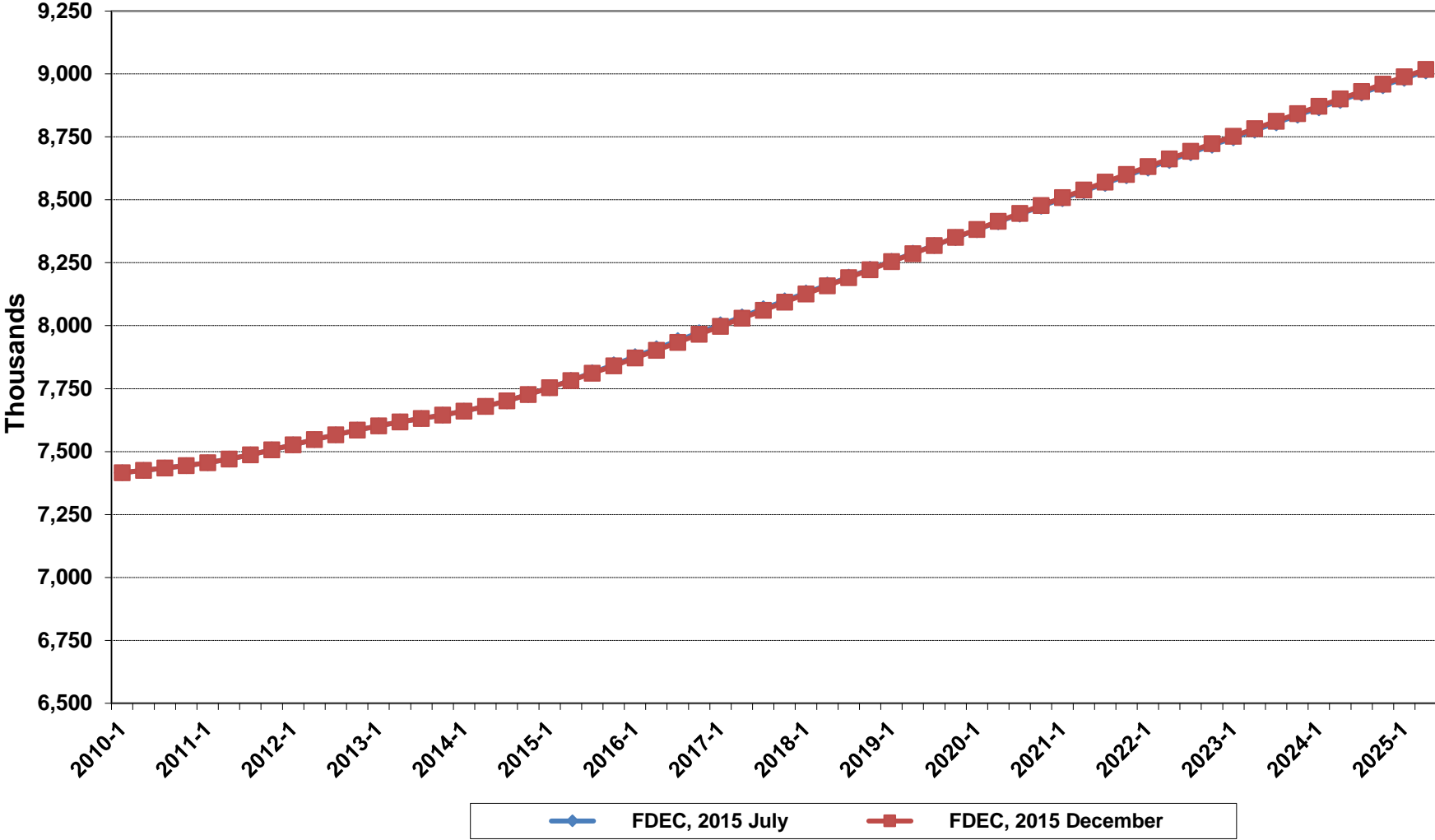
# Net Change In Florida Resident Population



# Growth In Florida Resident Population

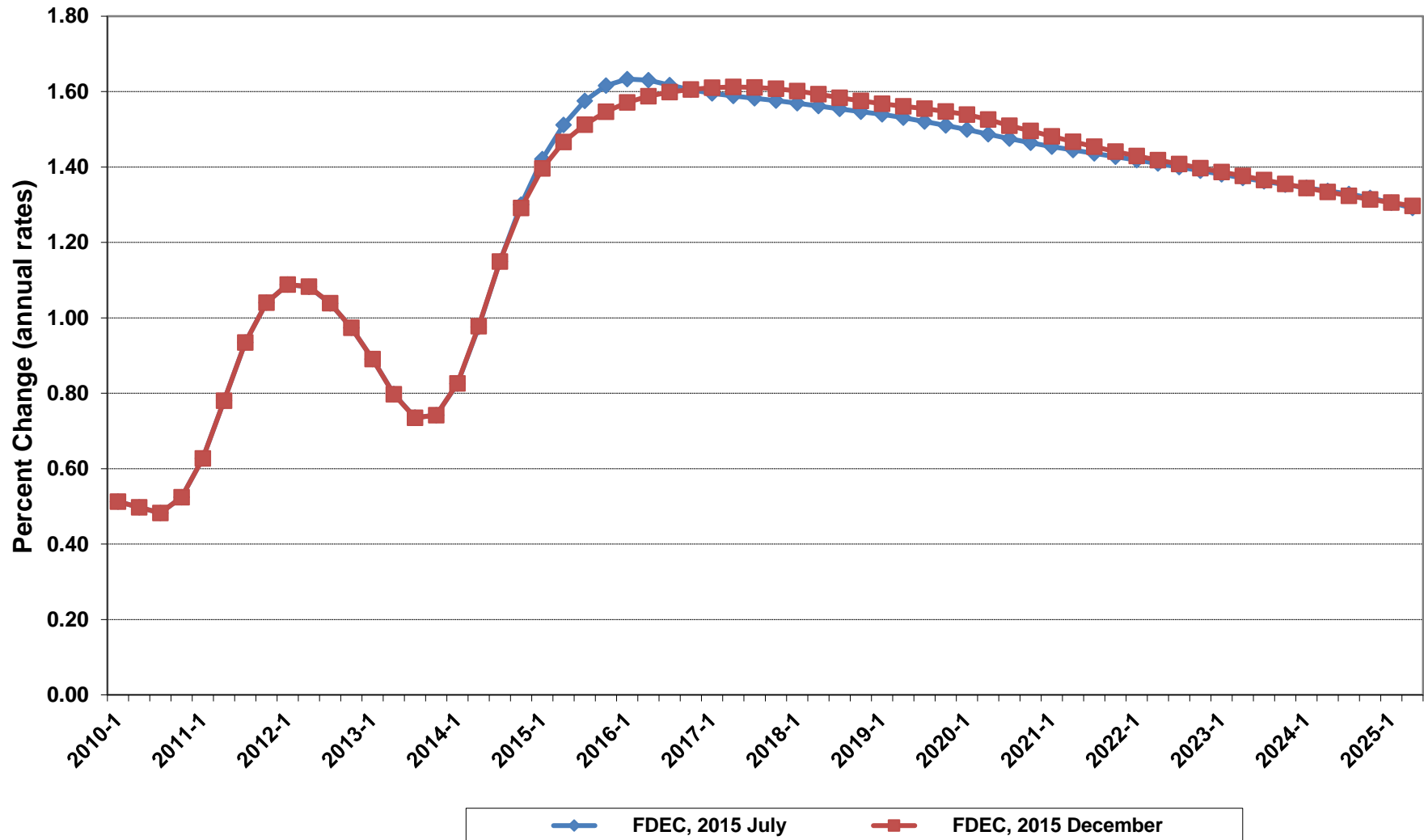


# Florida Resident Households

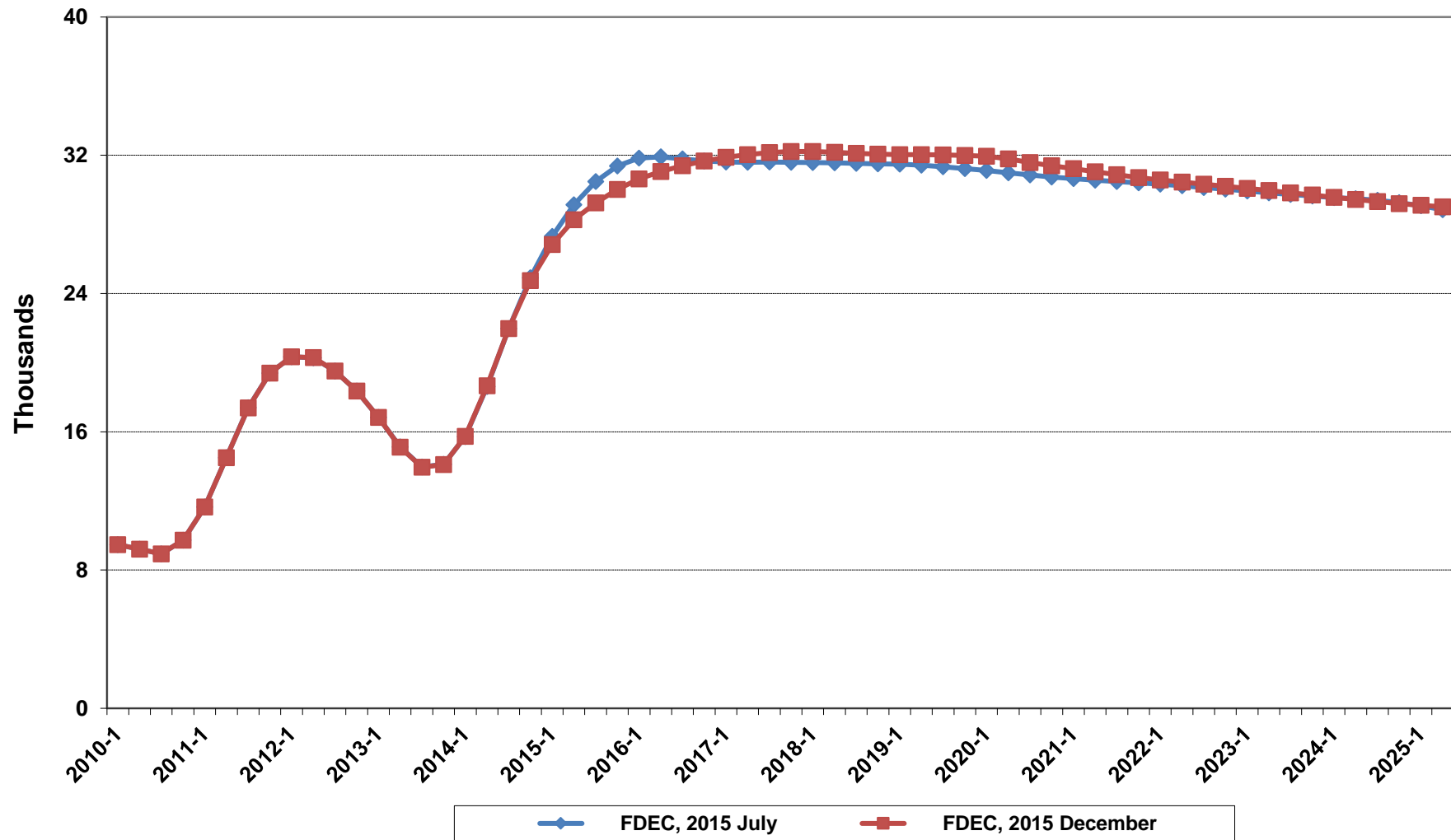




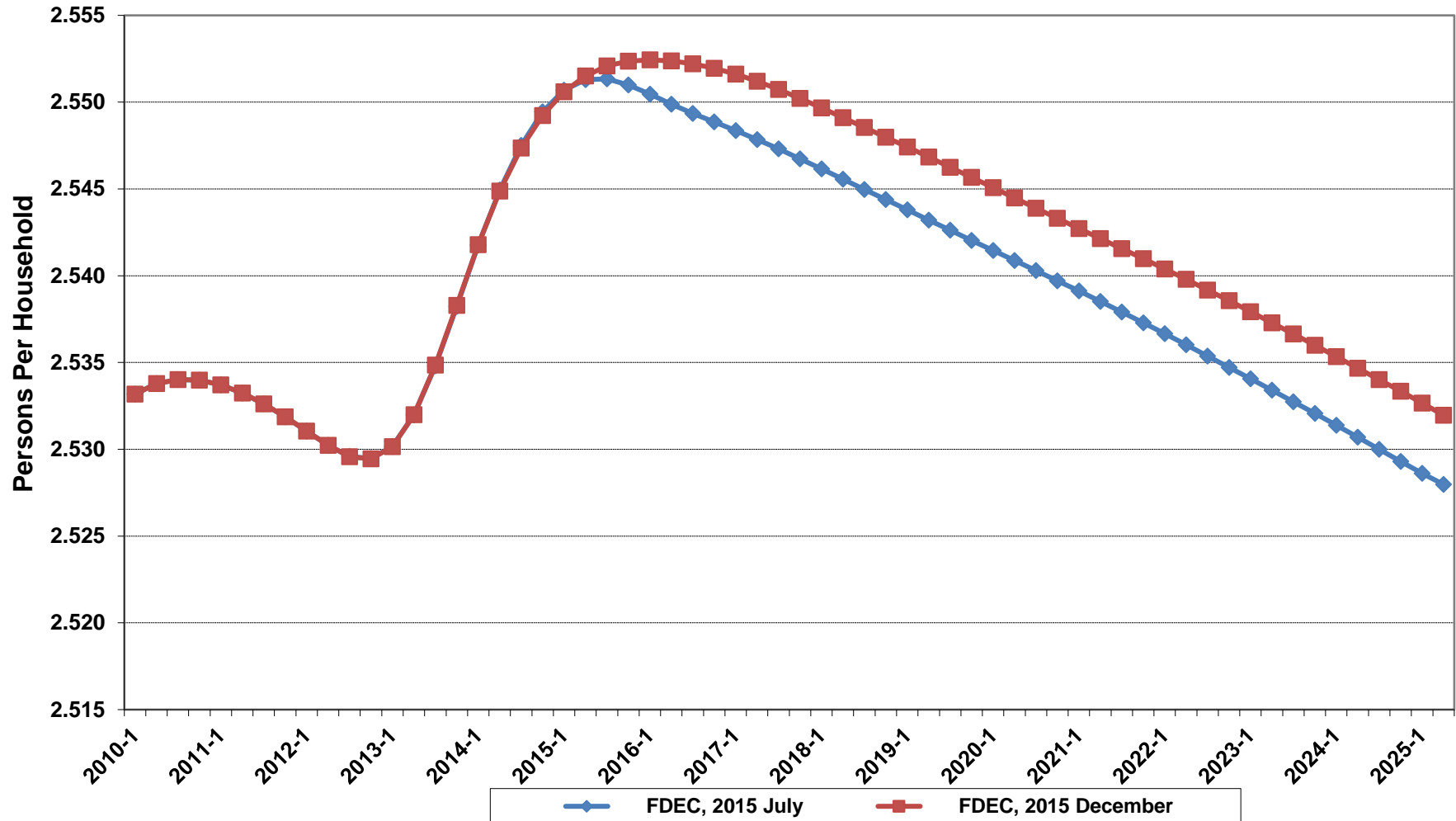
# Growth In Florida Resident Households



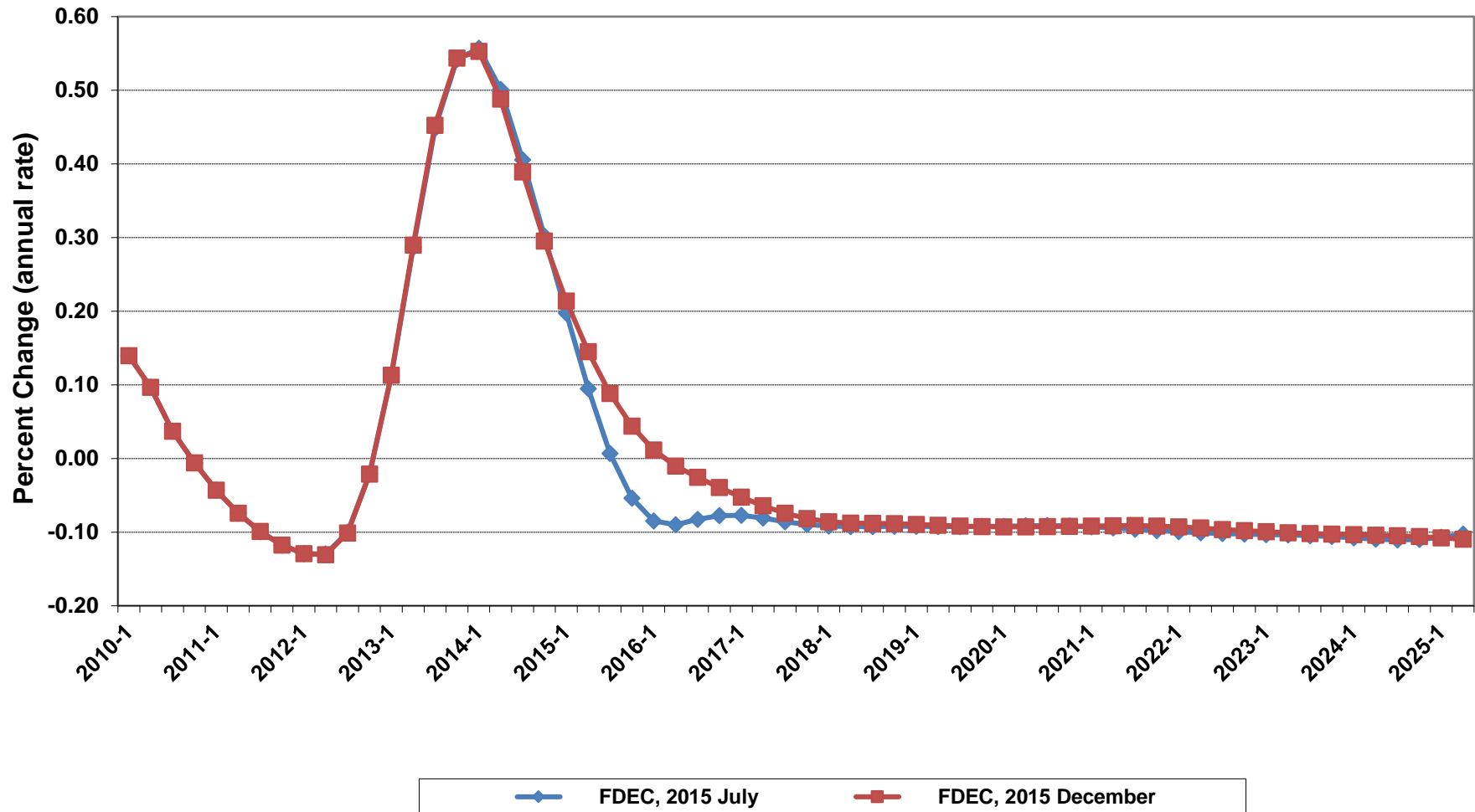
# Net Change In Florida Resident Households



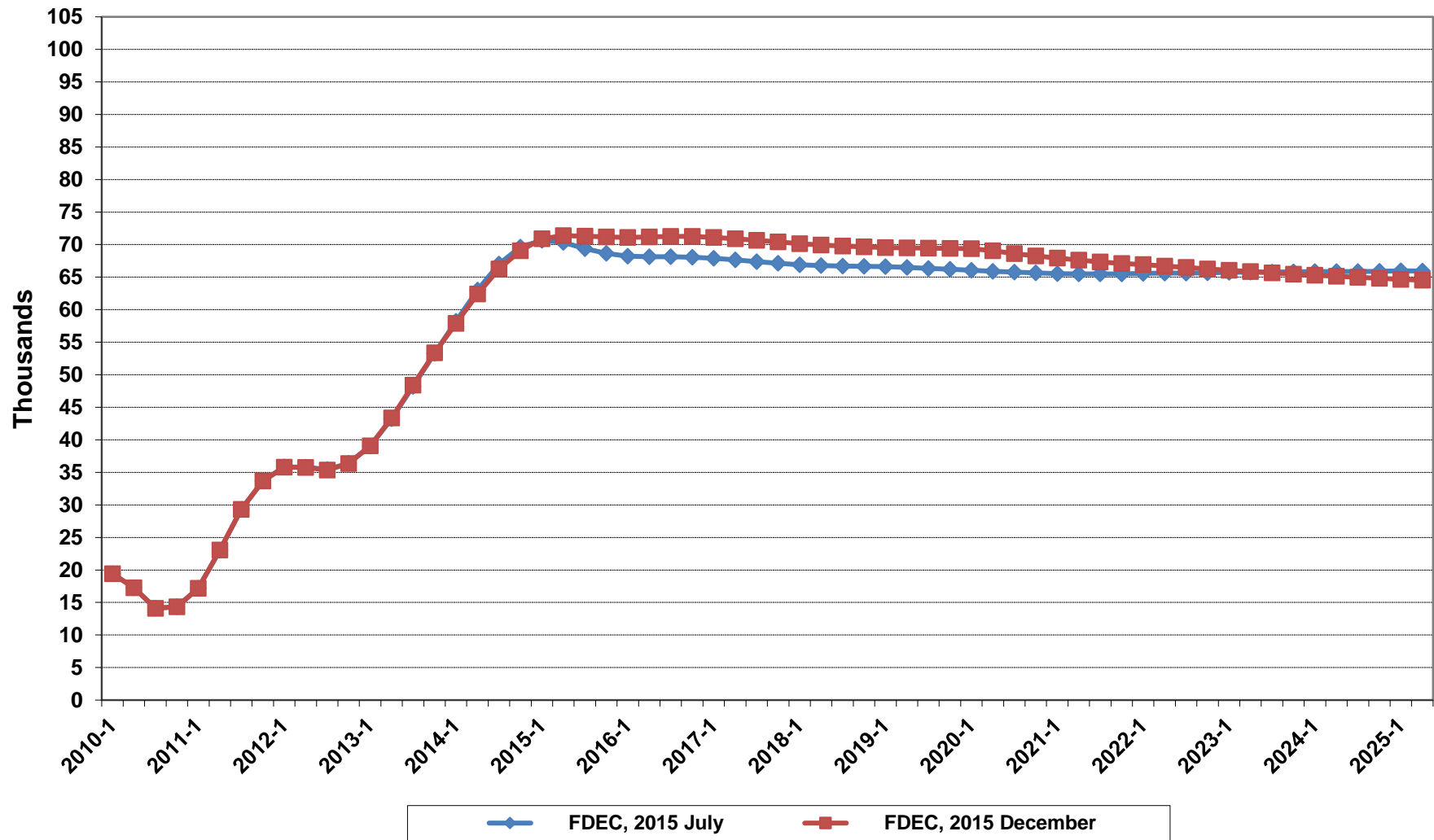
# Florida Average Household Size



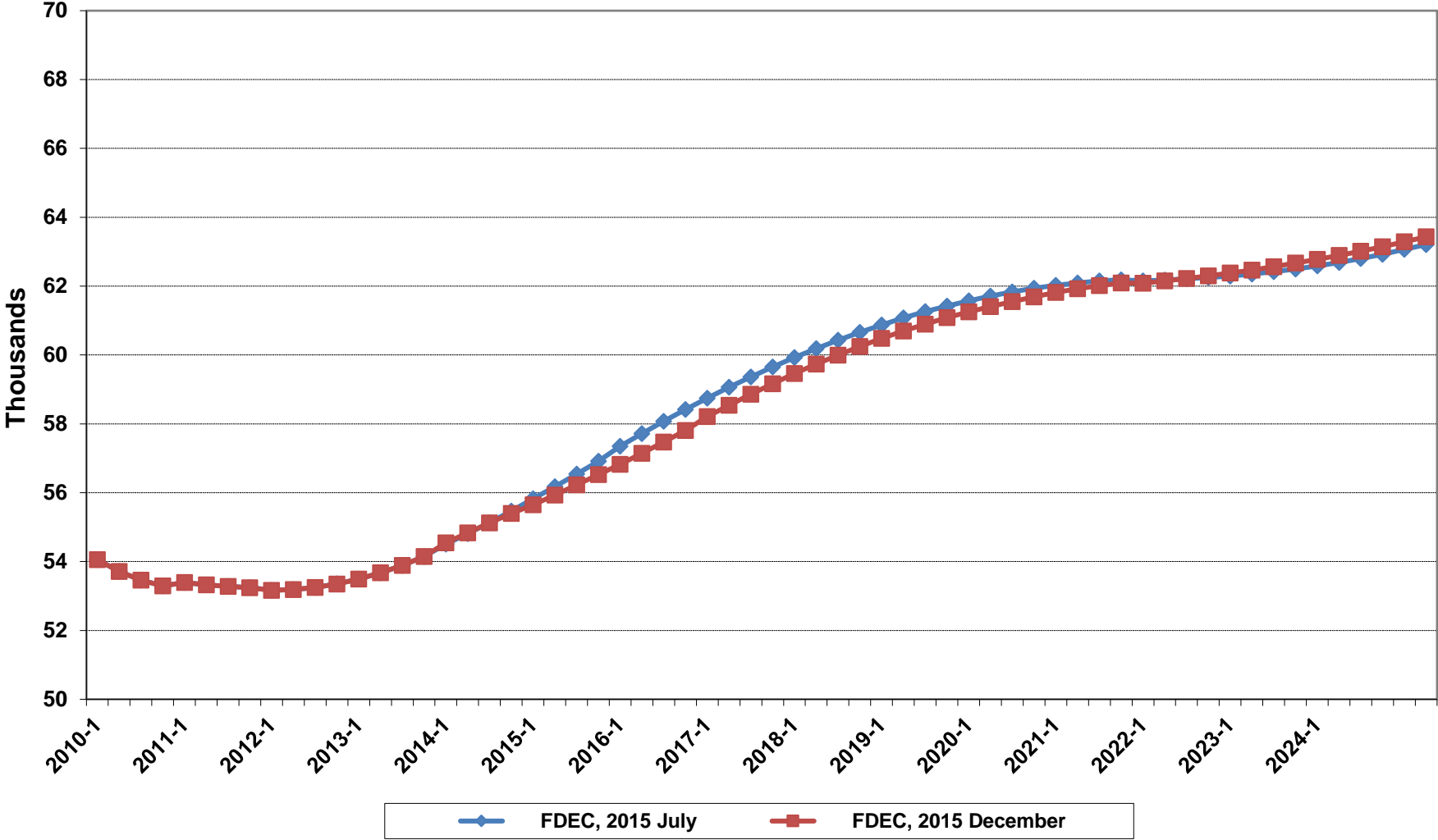
# Growth In Florida Household Size



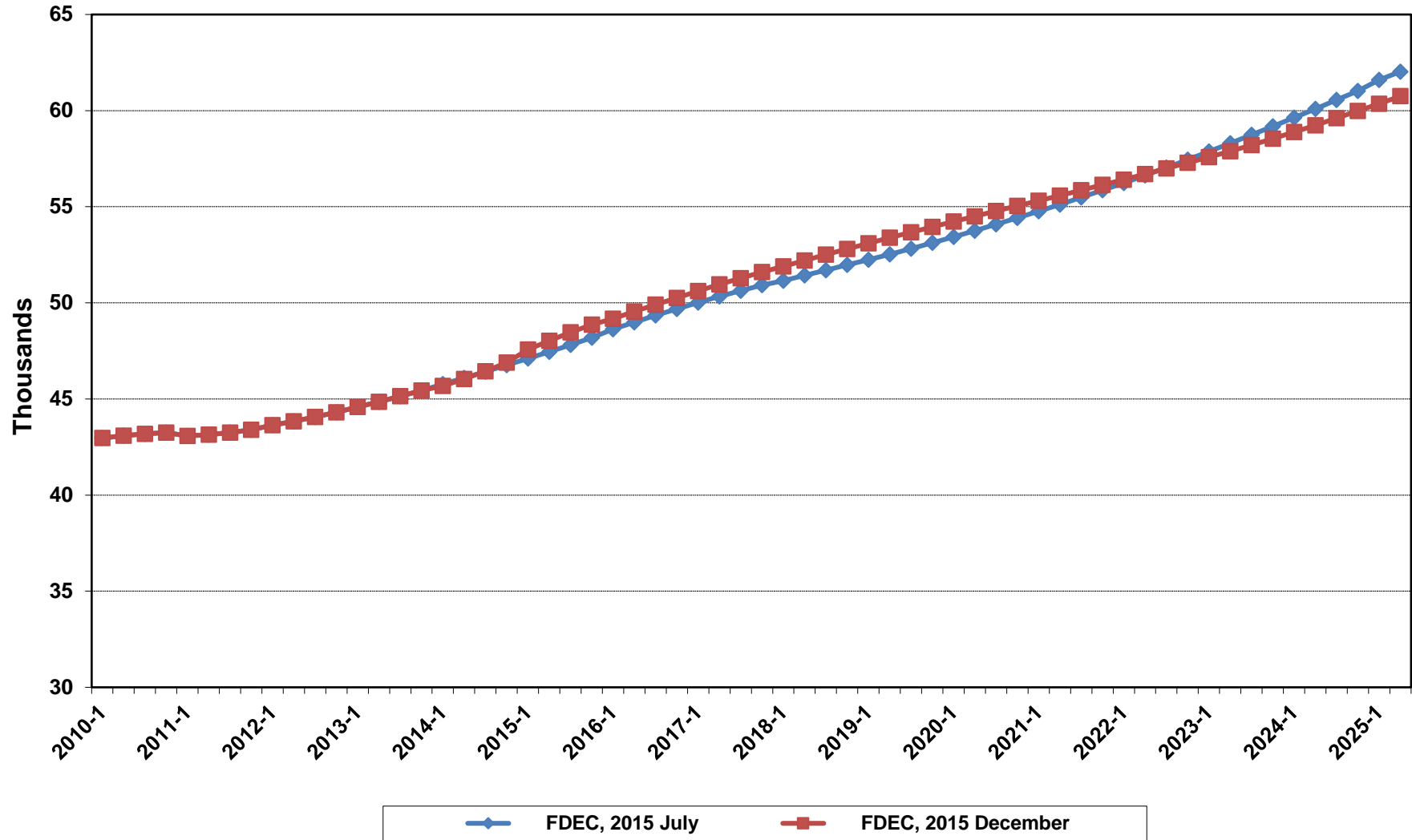
# Florida Net Migration



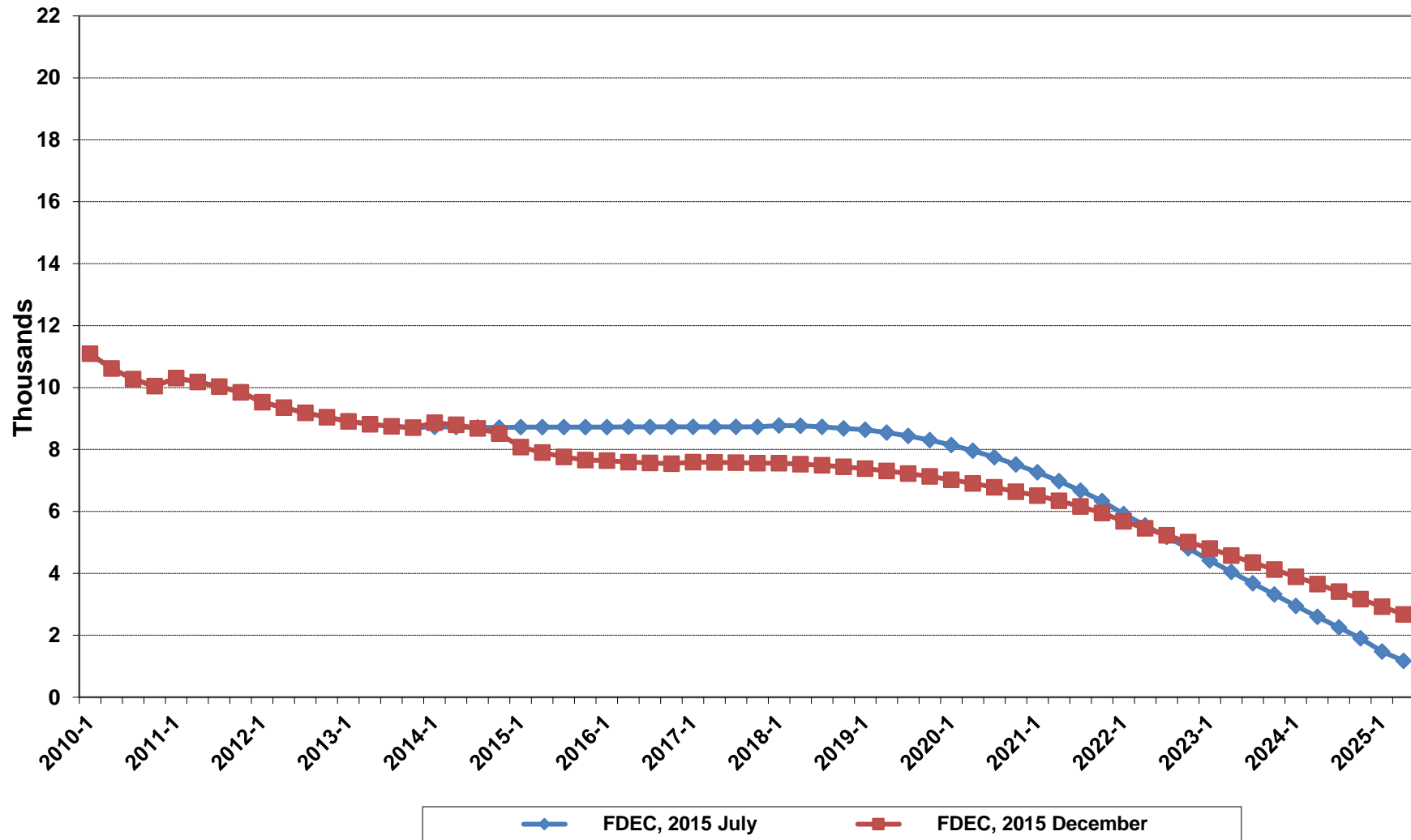
# Florida Resident Births



# Florida Resident Deaths

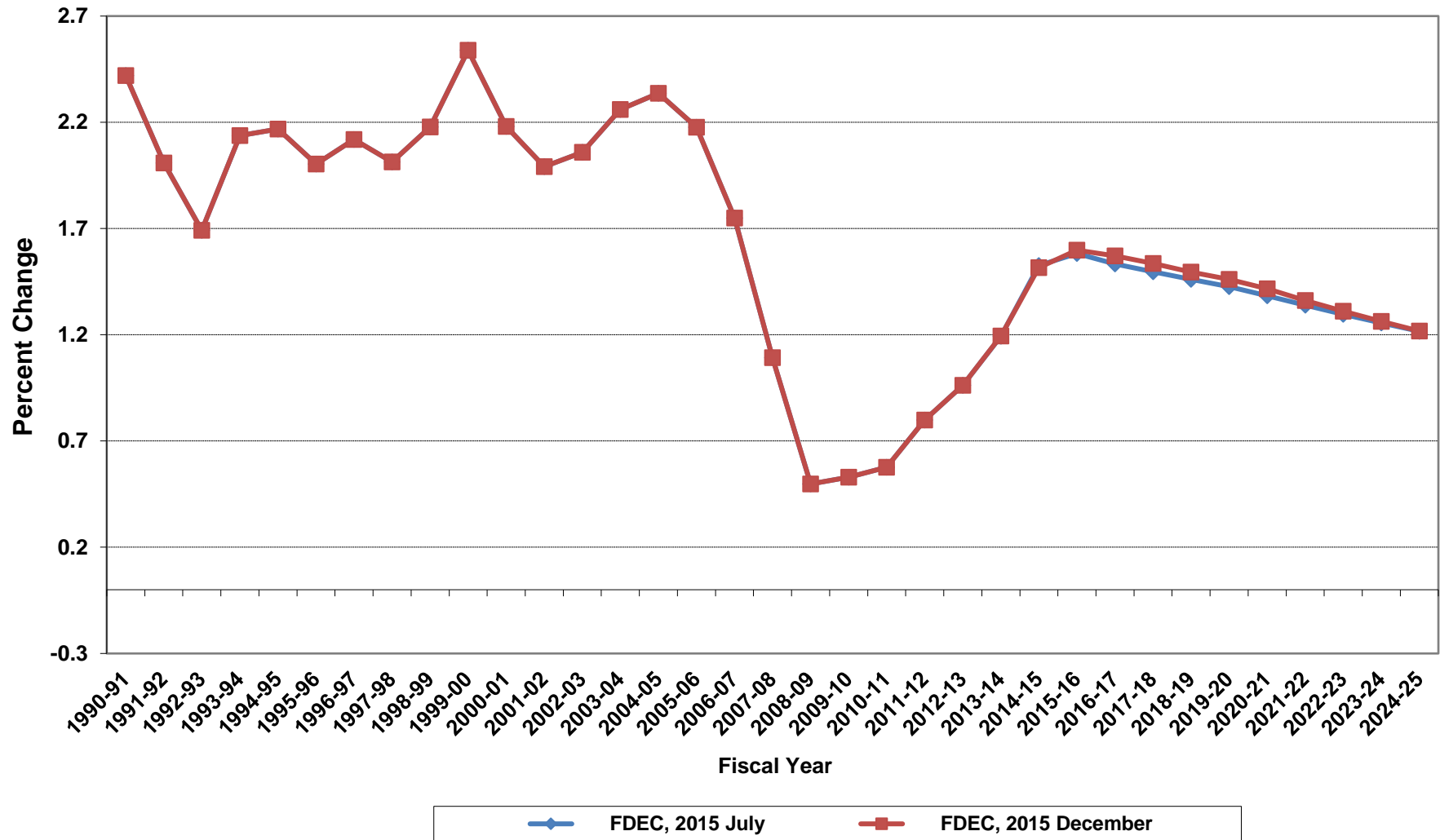


# Florida Net Natural Increase

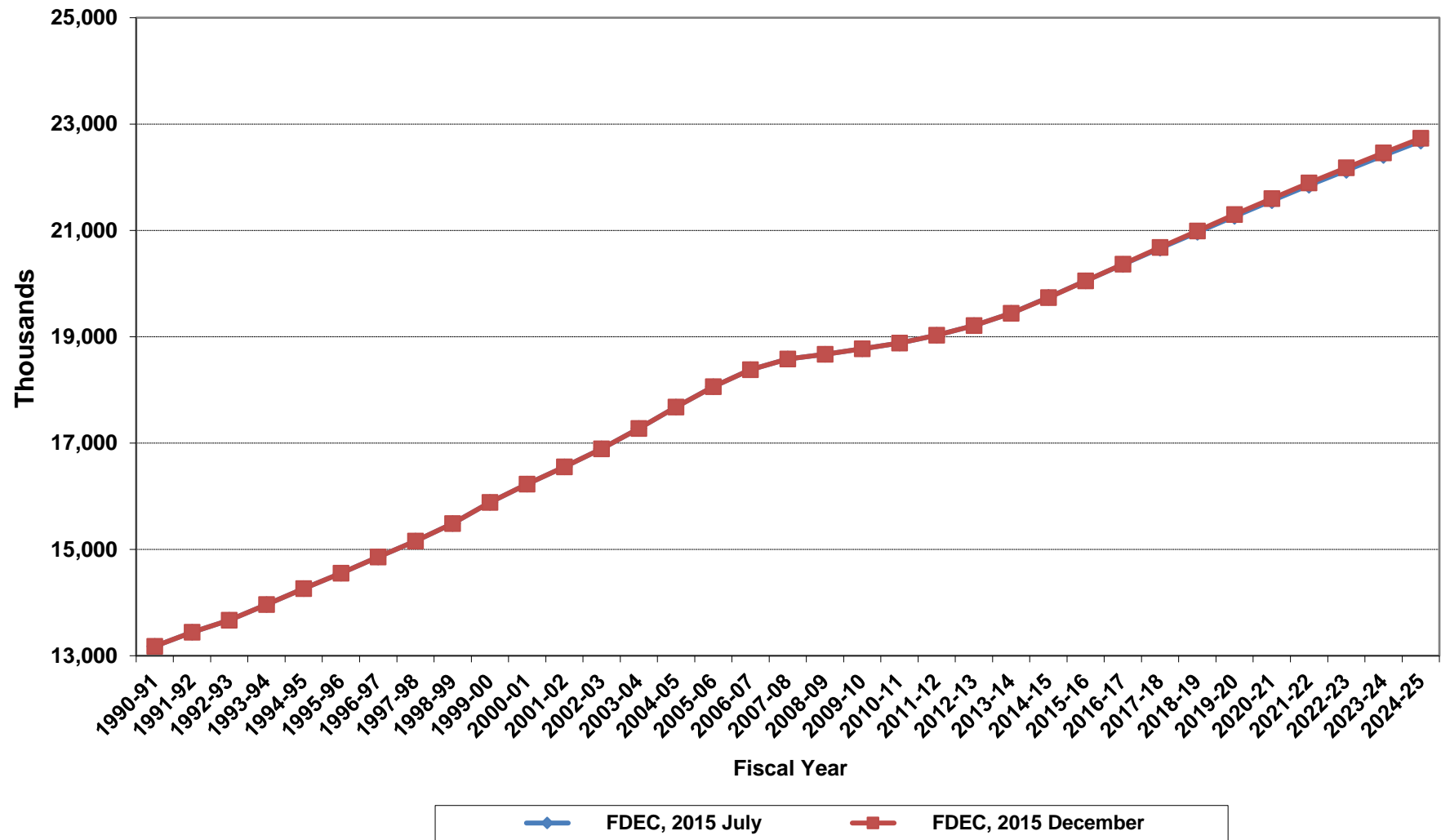




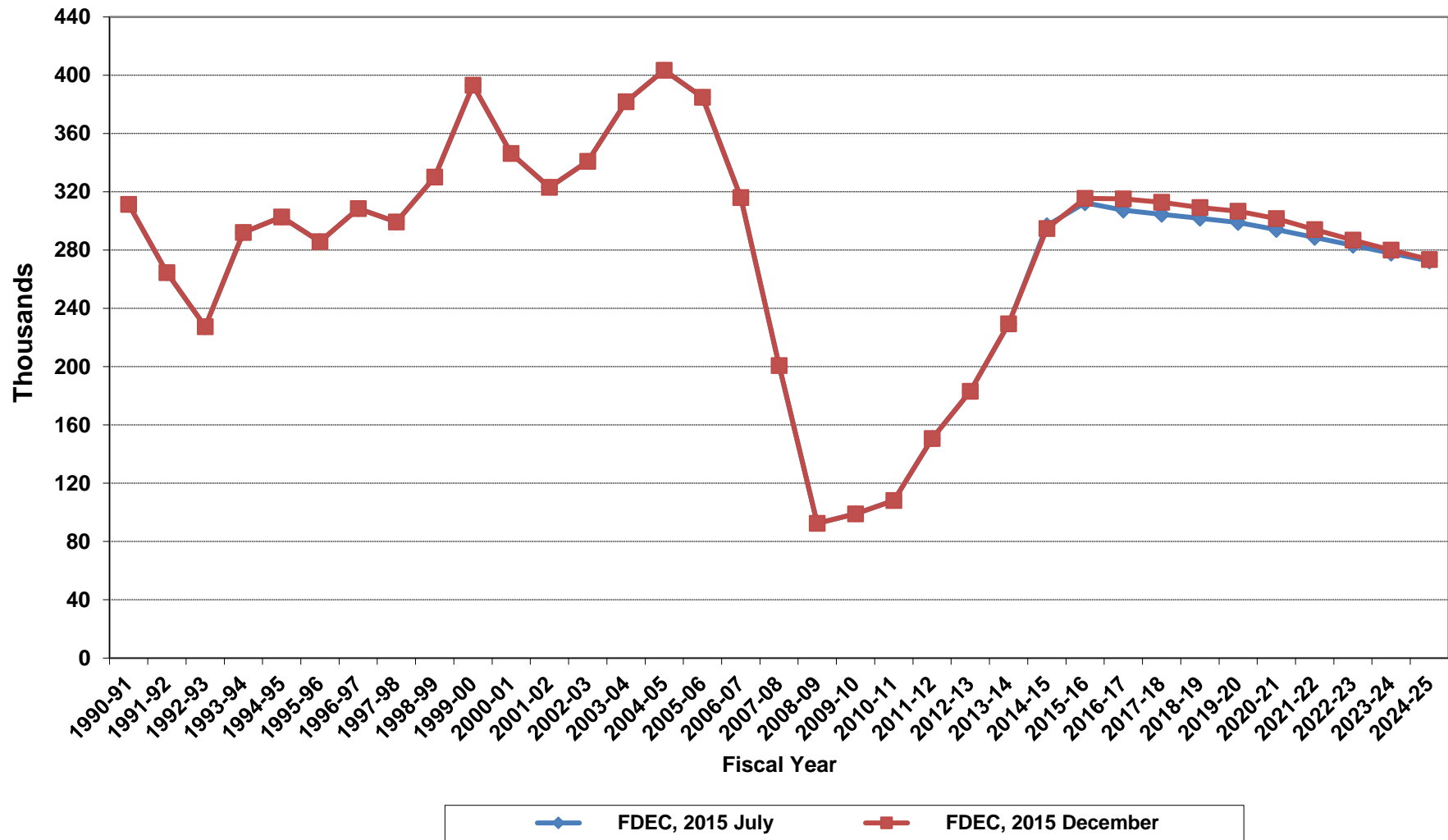
# Growth In Florida Resident Population



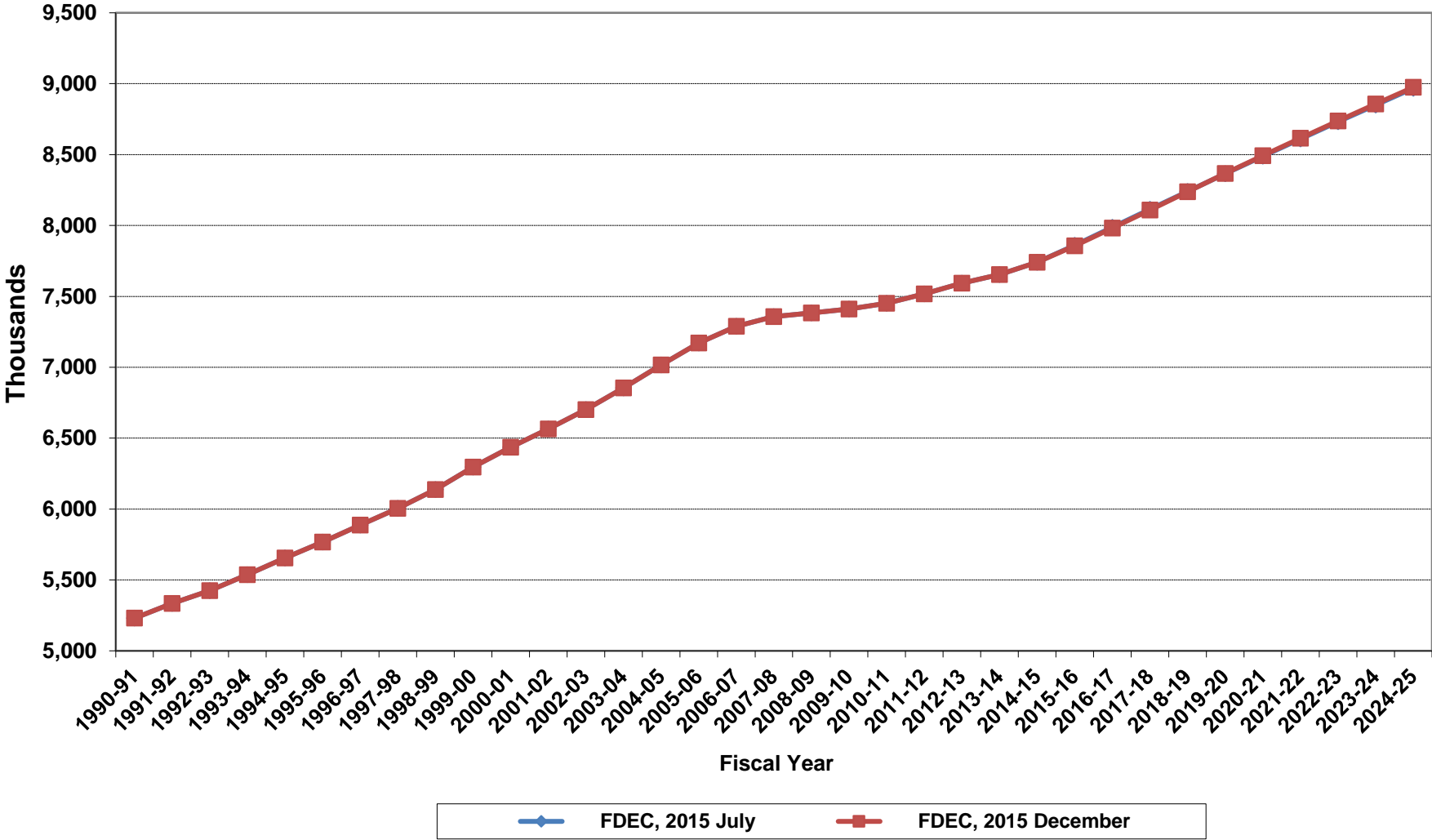
# Florida Resident Population



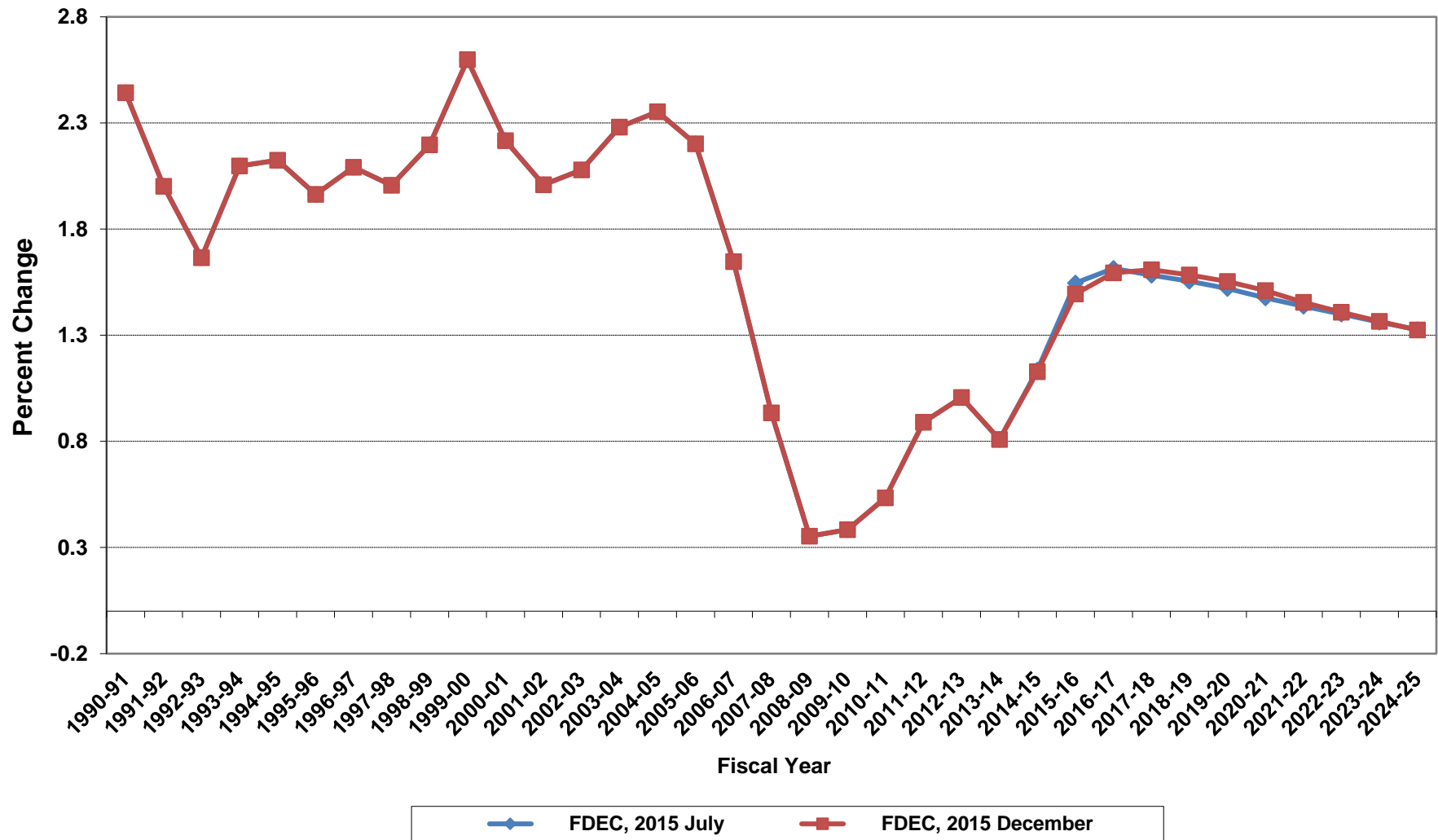
# Net Change In Florida Resident Population



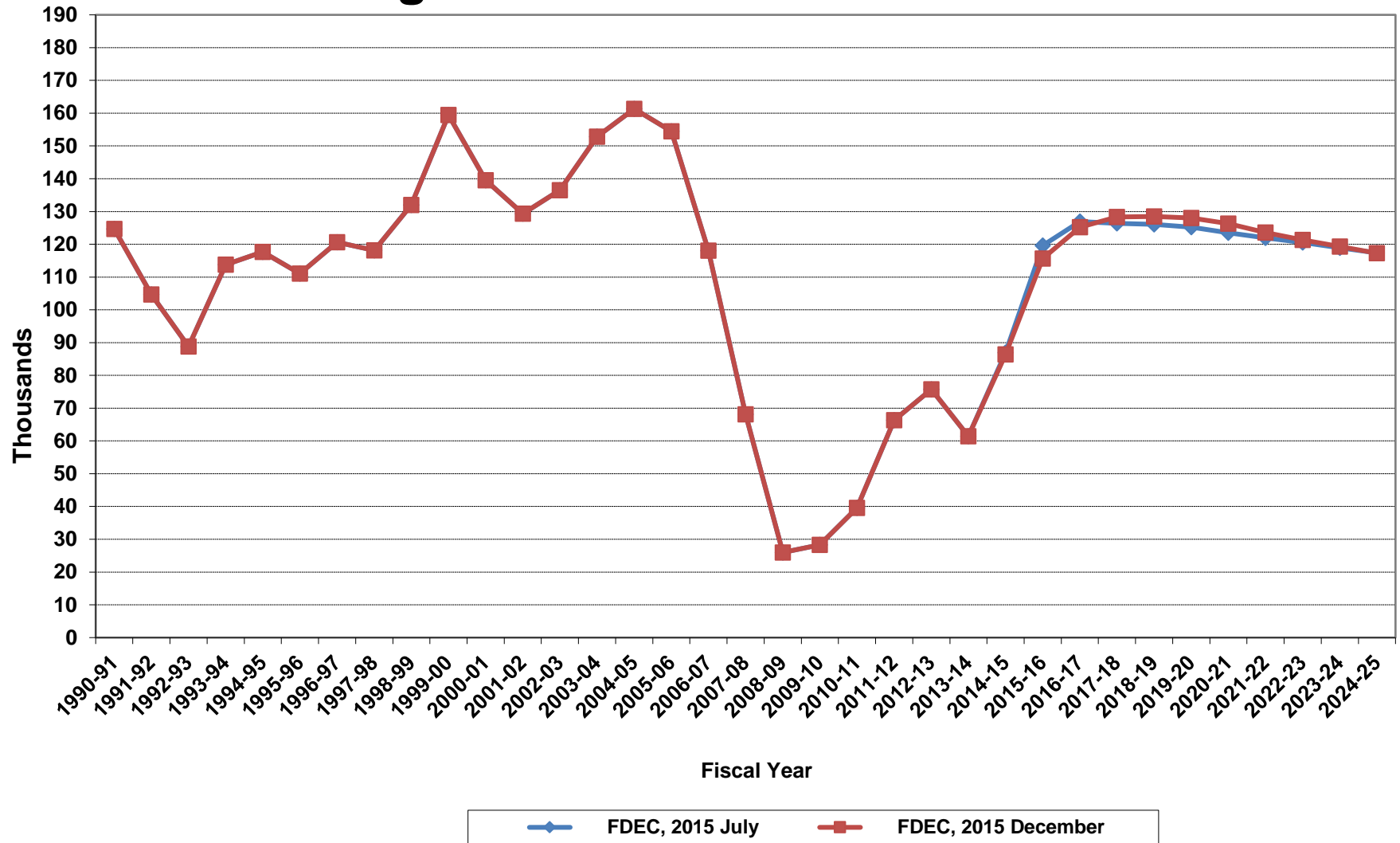
# Florida Resident Households



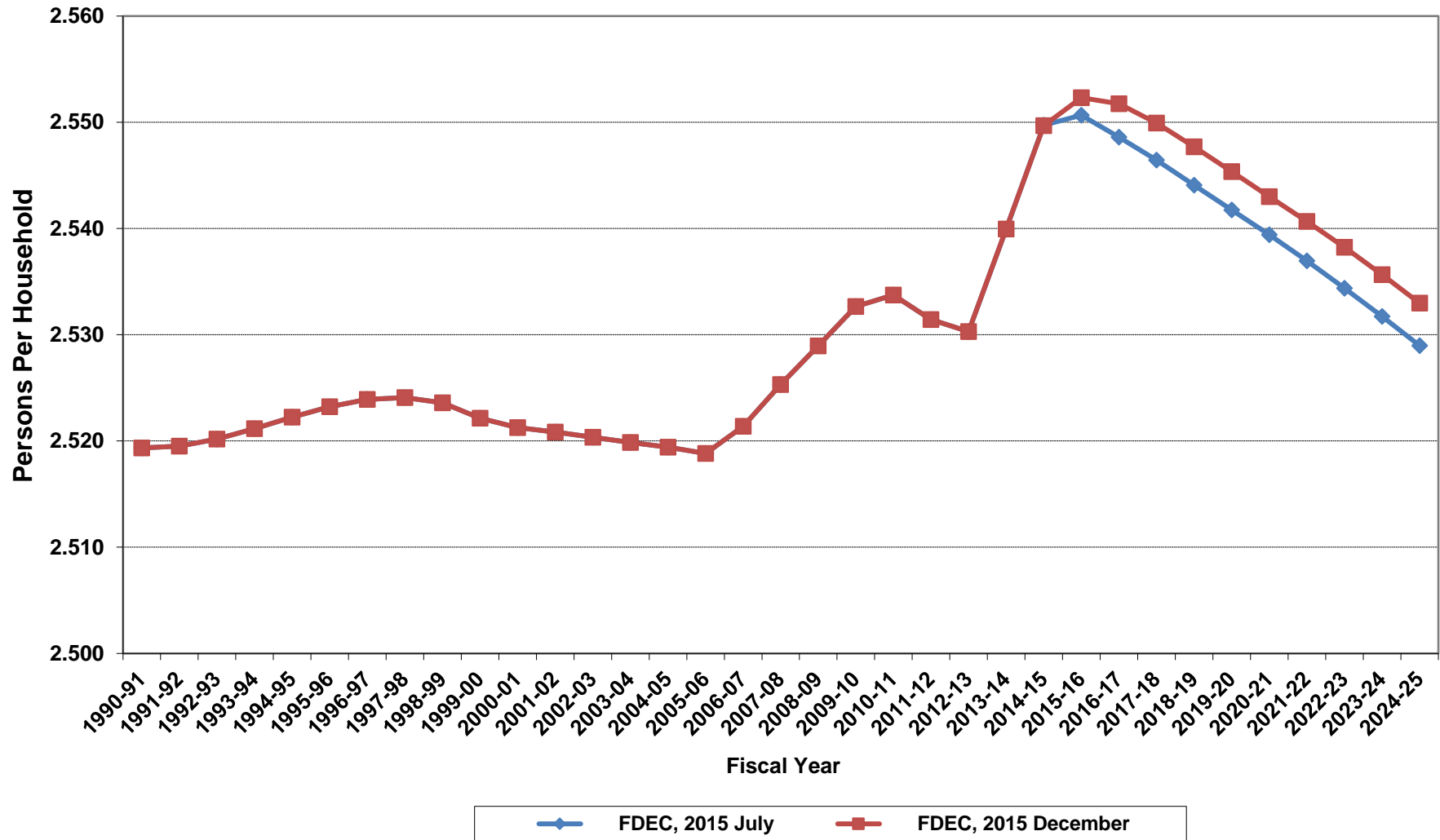
# Growth In Florida Resident Households



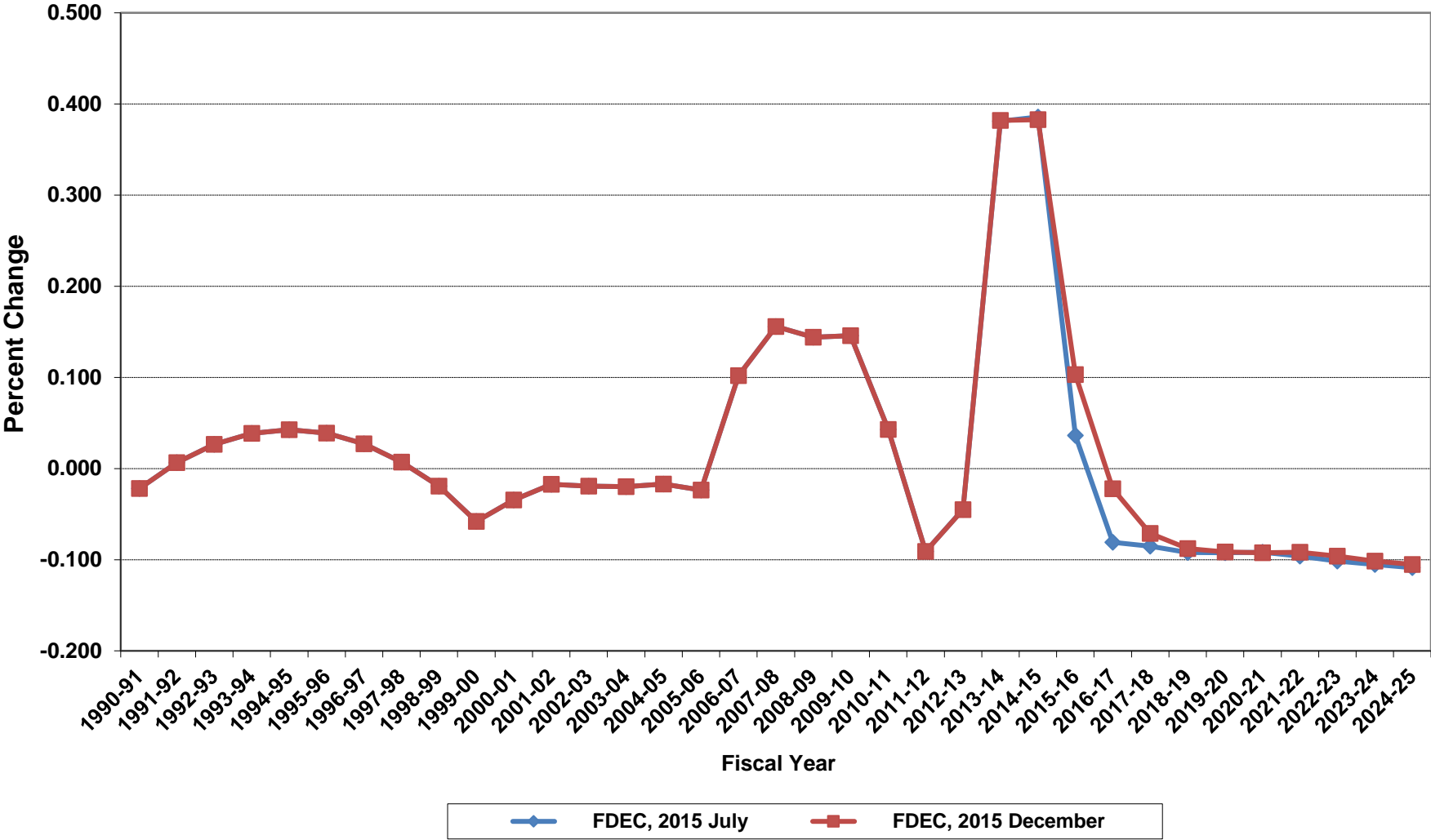
# Net Change In Florida Resident Households



# Average Florida Household Size

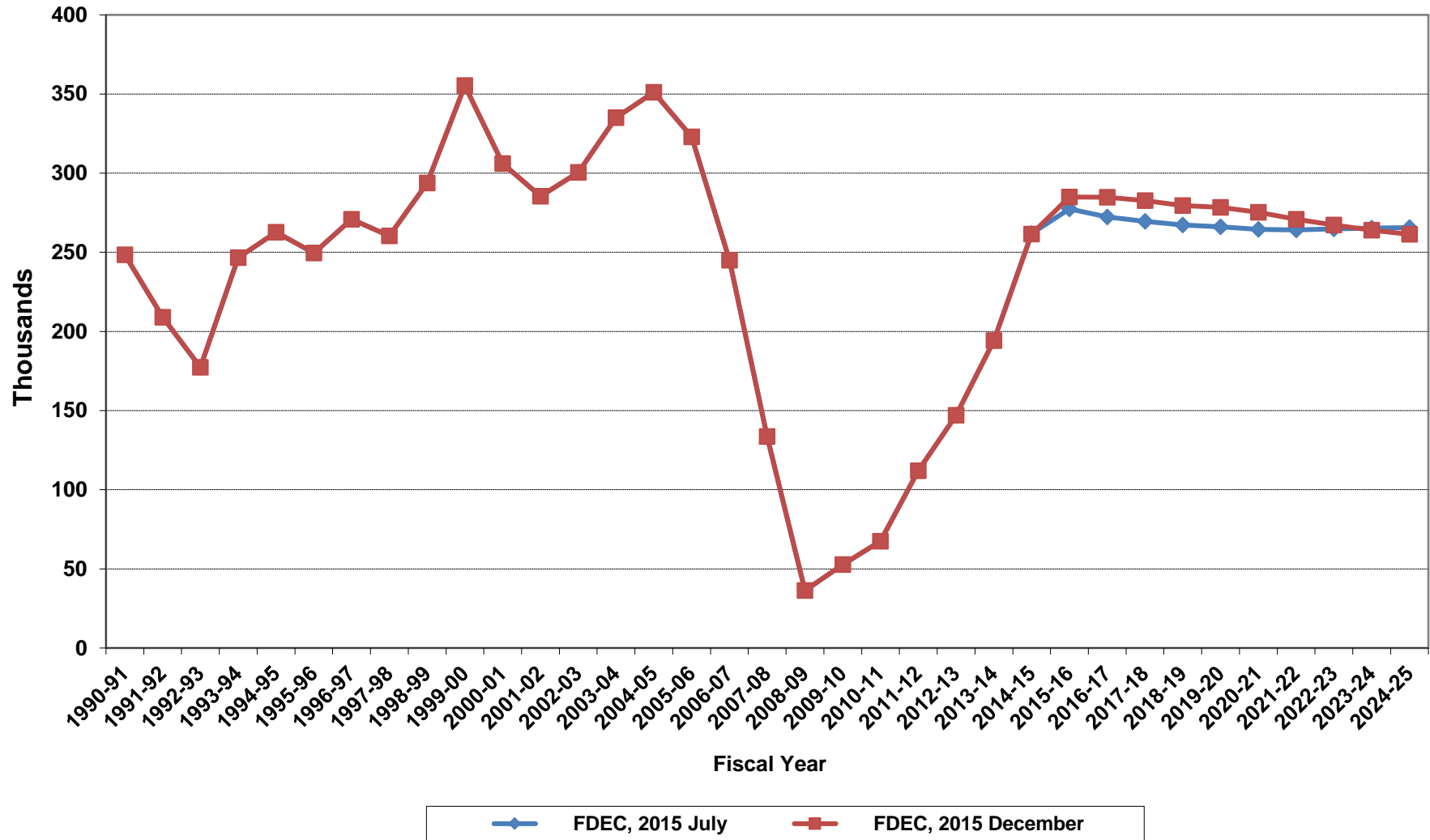


# Growth In Average Florida Household Size

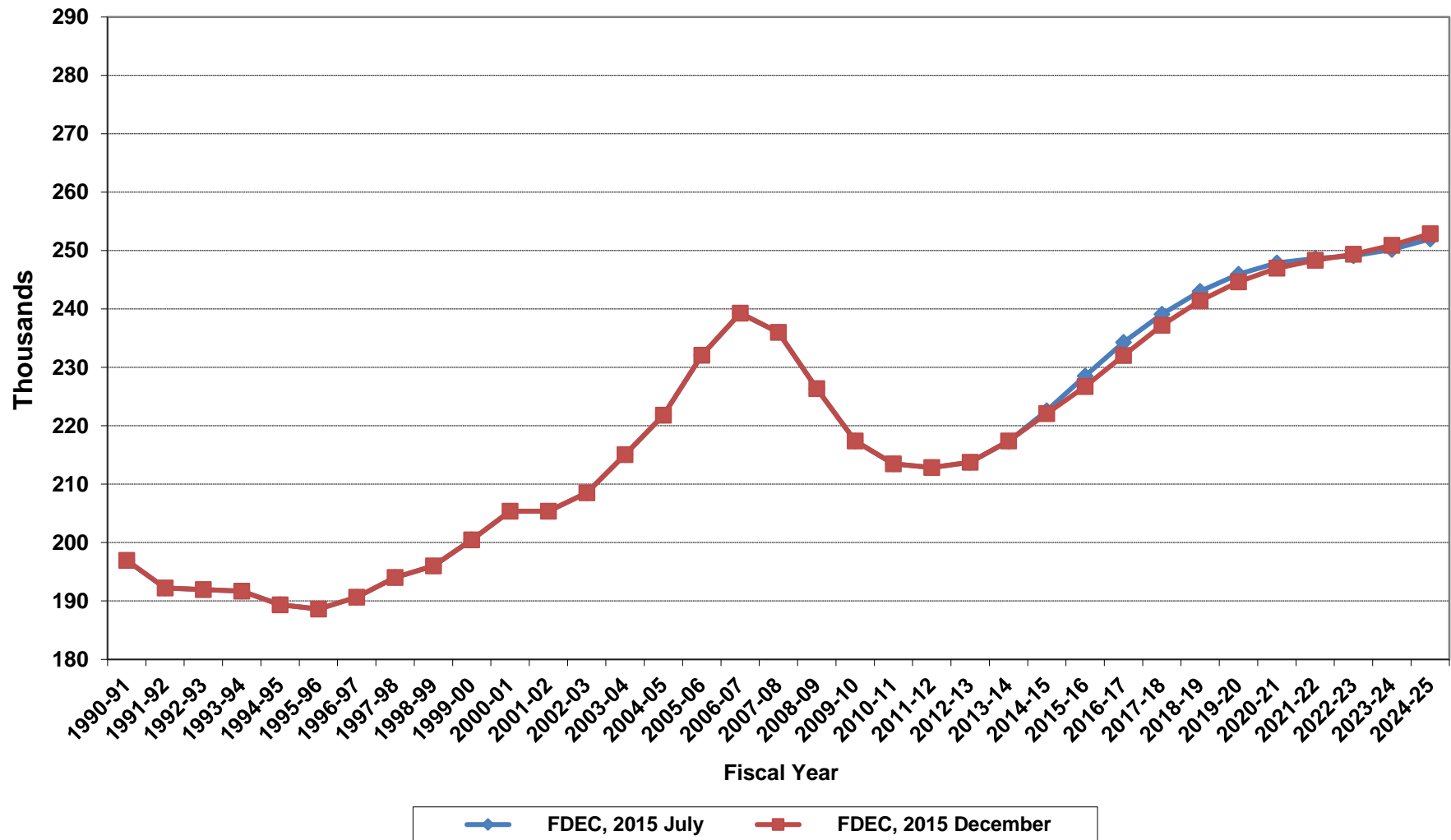




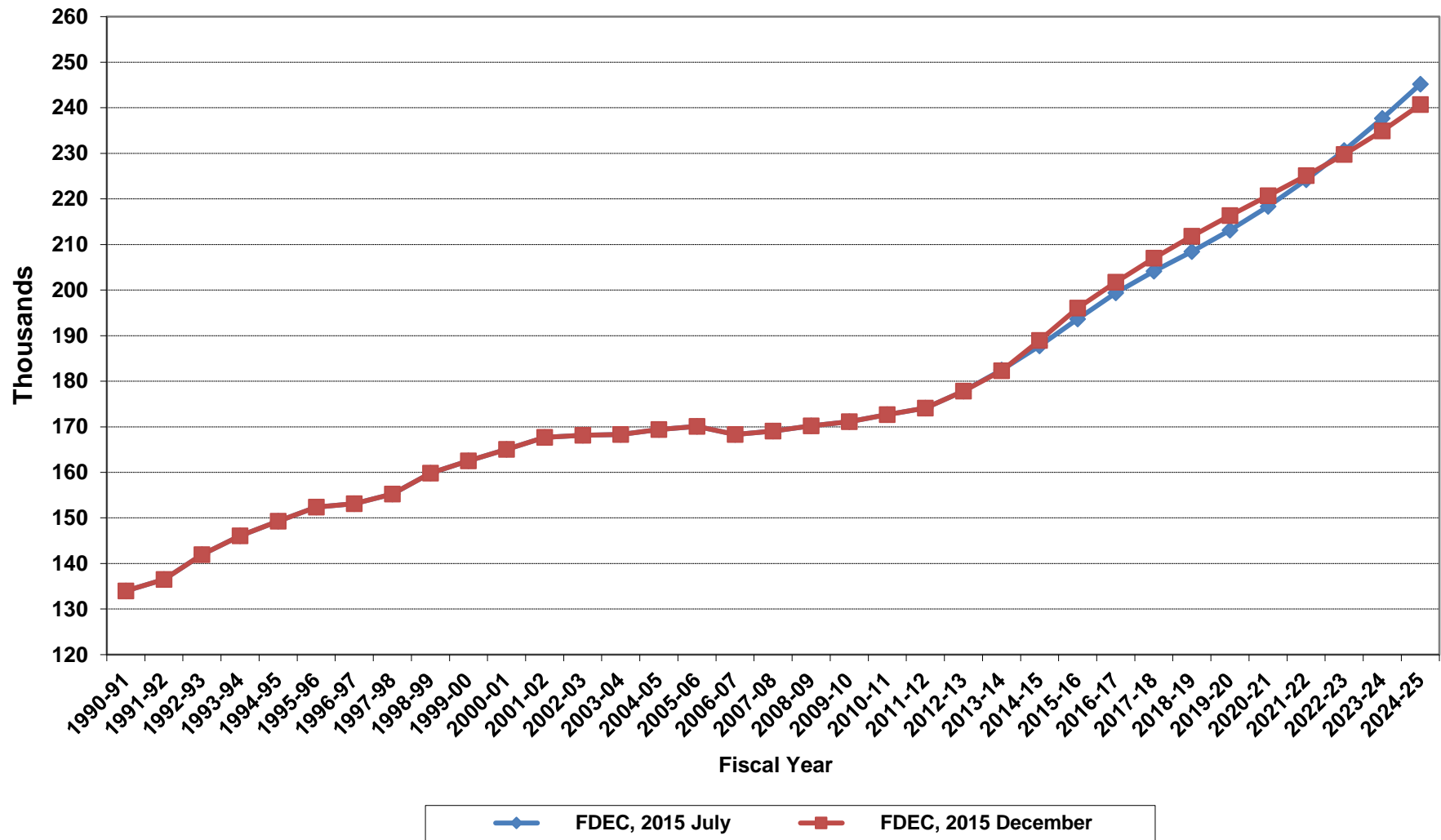
# Florida Net Migration



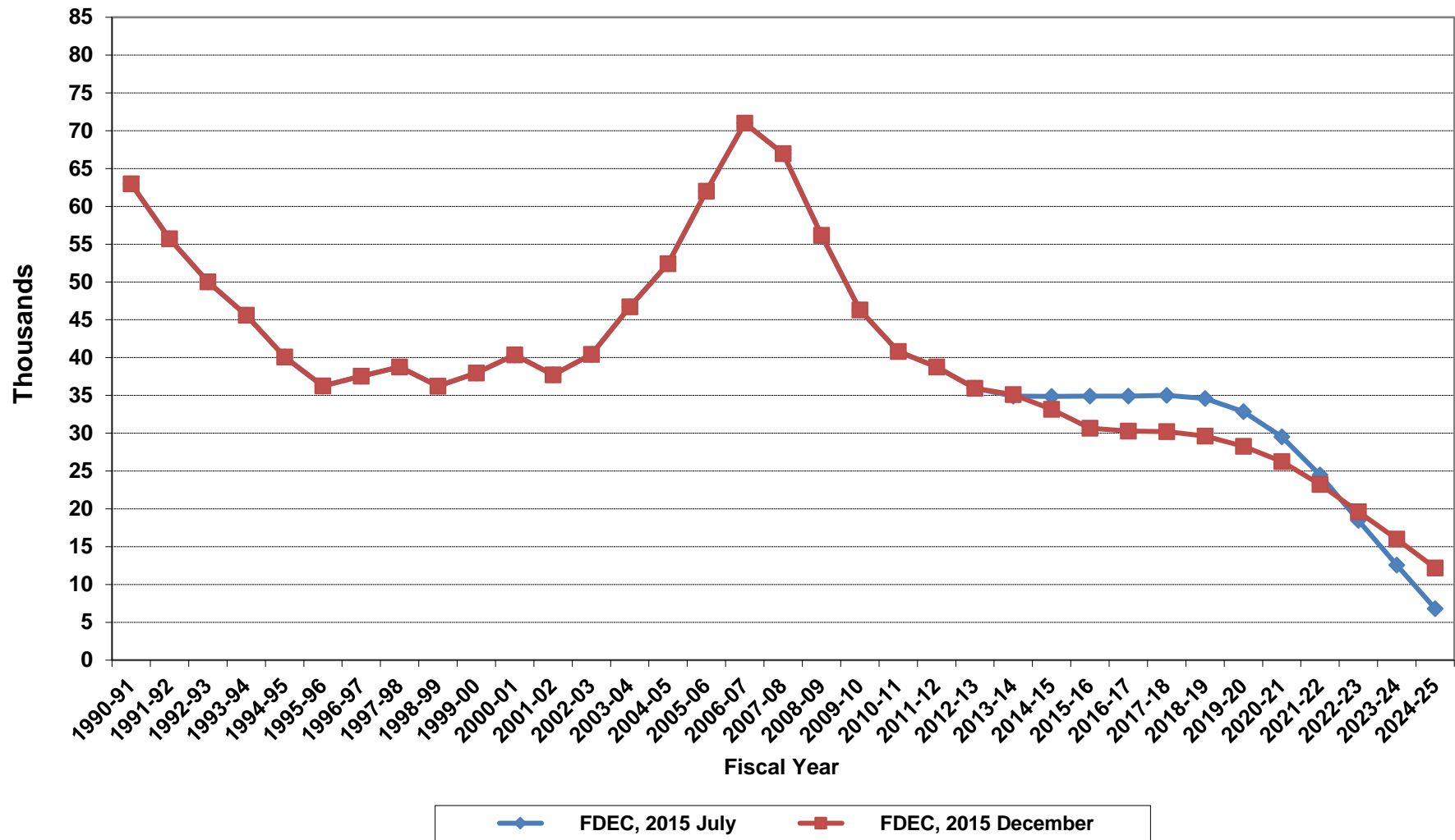
# Florida Resident Live Births



# Florida Resident Deaths



# Florida Net Natural Increase



**Florida Population and Components of Change**

<b>Fiscal Year</b>	<b>Population (End of Fiscal Year)</b>	<b>Growth Rate</b>	<b>Annual Change in Population</b>	<b>Births</b>	<b>Deaths</b>	<b>Net Natural Increase</b>	<b>Net Migration</b>
1950 - 51	2,981,346	6.50%	181,931	67,486	27,670	39,816	142,115
1951 - 52	3,155,442	5.84%	174,096	72,383	28,942	43,441	130,655
1952 - 53	3,312,521	4.98%	157,079	76,954	29,761	47,193	109,886
1953 - 54	3,504,323	5.79%	191,802	82,725	31,055	51,670	140,132
1954 - 55	3,747,400	6.94%	243,077	86,643	32,176	54,467	188,610
1955 - 56	4,046,062	7.97%	298,662	92,941	34,932	58,009	240,653
1956 - 57	4,370,045	8.01%	323,983	100,990	38,269	62,721	261,262
1957 - 58	4,629,510	5.94%	259,465	105,972	41,911	64,061	195,404
1958 - 59	4,812,270	3.95%	182,760	110,409	43,674	66,735	116,025
1959 - 60	4,998,508	3.87%	186,238	114,428	46,057	68,371	117,867
1960 - 61	5,185,913	3.75%	187,405	116,449	48,388	68,061	119,344
1961 - 62	5,367,899	3.51%	181,986	116,120	50,346	65,774	116,212
1962 - 63	5,553,522	3.46%	185,623	114,709	54,453	60,256	125,367
1963 - 64	5,728,499	3.15%	174,977	115,002	56,229	58,773	116,204
1964 - 65	5,881,195	2.67%	152,696	110,515	57,734	52,781	99,915
1965 - 66	6,065,768	3.14%	184,573	104,367	61,217	43,150	141,423
1966 - 67	6,249,674	3.03%	183,906	101,209	62,577	38,632	145,274
1967 - 68	6,441,756	3.07%	192,082	100,320	66,134	34,186	157,896
1968 - 69	6,633,546	2.98%	191,790	104,286	71,285	33,001	158,789
1969 - 70	6,861,118	3.43%	227,572	111,511	73,831	37,680	189,892
1970 - 71	7,233,583	5.43%	372,465	117,012	75,354	41,658	330,807
1971 - 72	7,681,540	6.19%	447,957	113,568	79,717	33,851	414,106
1972 - 73	8,157,883	6.20%	476,343	107,804	86,232	21,572	454,771
1973 - 74	8,515,208	4.38%	357,325	109,366	88,459	20,907	336,418
1974 - 75	8,648,587	1.57%	133,379	108,686	87,224	21,462	111,917
1975 - 76	8,782,975	1.55%	134,388	104,022	88,129	15,893	118,495
1976 - 77	8,972,678	2.16%	189,703	107,623	90,443	17,180	172,523
1977 - 78	9,225,527	2.82%	252,849	112,268	93,383	18,885	233,964
1978 - 79	9,523,728	3.23%	298,201	116,393	96,801	19,592	278,609
1979 - 80	9,914,652	4.10%	390,924	126,673	101,048	25,625	365,299
1980 - 81	10,212,969	3.01%	298,317	135,560	107,562	27,998	270,319
1981 - 82	10,492,851	2.74%	279,882	141,593	108,644	32,949	246,933
1982 - 83	10,748,466	2.44%	255,615	146,853	110,497	36,356	219,259
1983 - 84	11,065,911	2.95%	317,445	151,748	113,939	37,809	279,636
1984 - 85	11,405,533	3.07%	339,622	159,819	117,539	42,280	297,342
1985 - 86	11,740,069	2.93%	334,536	165,857	122,453	43,404	291,132
1986 - 87	12,083,241	2.92%	343,172	170,819	124,946	45,873	297,299
1987 - 88	12,410,339	2.71%	327,098	179,541	129,413	50,128	276,970
1988 - 89	12,723,719	2.53%	313,380	188,390	131,992	56,398	256,982
1989 - 90	13,017,296	2.31%	293,577	197,181	132,503	64,678	228,899
1990 - 91	13,326,892	2.38%	309,596	197,180	134,093	63,087	246,509
1991 - 92	13,552,021	1.69%	225,129	191,810	136,280	55,530	169,599
1992 - 93	13,802,571	1.85%	250,550	192,051	142,087	49,964	200,586
1993 - 94	14,120,323	2.30%	317,752	191,840	146,101	45,739	272,013
1994 - 95	14,406,418	2.03%	286,095	189,292	149,161	40,131	245,964
1995 - 96	14,701,040	2.05%	294,622	188,584	152,570	36,014	258,608
1996 - 97	15,012,615	2.12%	311,575	190,587	153,067	37,520	274,055
1997 - 98	15,310,069	1.98%	297,454	194,242	155,080	39,162	258,292
1998 - 99	15,680,164	2.42%	370,095	195,897	159,988	35,909	334,186
1999 - 00	16,069,889	2.49%	389,725	200,302	162,489	37,813	351,912
2000 - 01	16,385,615	1.96%	315,726	205,798	164,919	40,879	274,847
2001 - 02	16,718,076	2.03%	332,461	205,164	167,812	37,352	295,109
2002 - 03	17,074,258	2.13%	356,182	208,403	168,079	40,324	315,858
2003 - 04	17,475,944	2.35%	401,686	215,298	168,302	46,996	354,690
2004 - 05	17,876,215	2.29%	400,271	221,533	169,302	52,231	348,040
2005 - 06	18,236,885	2.02%	360,670	232,019	170,303	61,716	298,954
2006 - 07	18,501,231	1.45%	264,346	239,635	168,117	71,518	192,828
2007 - 08	18,636,837	0.73%	135,606	236,065	168,966	67,099	68,507
2008 - 09	18,711,844	0.40%	75,007	226,337	170,615	55,722	19,285
2009 - 10	18,826,496	0.61%	114,652	217,408	171,118	46,290	68,362

**Florida Population and Components of Change**

<b>Fiscal Year</b>	<b>Population (End of Fiscal Year)</b>	<b>Growth Rate</b>	<b>Annual Change in Population</b>	<b>Births</b>	<b>Deaths</b>	<b>Net Natural Increase</b>	<b>Net Migration</b>
2010 - 11	18,941,726	0.61%	115,230	213,468	172,662	40,806	74,424
2011 - 12	19,118,998	0.94%	177,272	212,876	174,122	38,754	138,518
2012 - 13	19,314,172	1.02%	195,174	213,763	177,805	35,958	159,216
2013 - 14	19,580,707	1.38%	266,535	217,409	182,293	35,116	231,419
2014 - 15	19,894,364	1.60%	313,657	222,104	188,930	33,174	280,483
2015 - 16	20,209,604	1.58%	315,240	226,715	196,059	30,656	284,584
2016 - 17	20,524,152	1.56%	314,548	232,021	201,742	30,279	284,269
2017 - 18	20,835,034	1.51%	310,882	237,219	207,001	30,218	280,664
2018 - 19	21,142,816	1.48%	307,782	241,422	211,809	29,613	278,169
2019 - 20	21,447,836	1.44%	305,020	244,641	216,360	28,281	276,739
2020 - 21	21,745,601	1.39%	297,765	246,989	220,719	26,270	271,495
2021 - 22	22,036,017	1.34%	290,416	248,345	225,103	23,242	267,174
2022 - 23	22,319,419	1.29%	283,402	249,361	229,740	19,621	263,781
2023 - 24	22,596,145	1.24%	276,726	250,905	234,888	16,017	260,709
2024 - 25	22,866,527	1.20%	270,382	252,881	240,692	12,189	258,193
2025 - 26	23,130,848	1.16%	264,321	255,288	247,189	8,099	256,222
2026 - 27	23,389,285	1.12%	258,437	258,158	254,302	3,856	254,581
2027 - 28	23,642,000	1.08%	252,715	261,446	261,796	-350	253,065
2028 - 29	23,889,158	1.05%	247,158	264,247	269,437	-5,190	252,348
2029 - 30	24,130,923	1.01%	241,765	265,779	276,773	-10,994	252,759