

**Demographic Estimating Conference**  
**Executive Summary**  
**November 1, 2016**

The Demographic Estimating Conference met on November 1, 2016 to adopt a new population forecast. The data reflect final April 1, 2016 population and preliminary April 1, 2016 household estimates, in addition to other recent demographic and economic-related data. In the short-term, the population projections were revised up slightly.

Population growth in Florida continues to strengthen. Historically, Florida’s population growth has been driven by net migration (more people permanently moving into the state than leaving). However, net migration fell to record low levels during much of 2008 and into 2009, accounting for just 25.7% of population growth during FY 2008-09. During that time period, natural increase (births minus deaths) actually exceeded net migration. Net migration includes both domestic and international migration, and it was primarily the domestic migration component that led to the slowdown in population growth. The lower levels of net migration were largely due to national economic conditions, including weakened housing markets and other effects from the Great Recession that made it difficult for people in other states to relocate to Florida. Reflecting migration’s return as a decisive factor, the expected net migration share of Florida’s FY 2016-17 population growth is 89.6%.

Florida’s population is estimated to have grown by 333,471 (1.68%) between April 1, 2015 and April 1, 2016, representing the greatest annual increase in population since 2006. Annual population change is expected to remain above 315,000 net new residents per year for the next five years.

<b>April 1</b>	<b>Population</b>	<b>Percent Change</b>	<b>Change</b>
2012	19,074,434	0.90%	169,364
2013	19,259,543	0.97%	185,109
2014	19,507,369	1.29%	247,826
2015	19,815,183	1.58%	307,814
2016	20,148,654	1.68%	333,471
<i>Forecast</i>			
2017	20,478,654	1.64%	330,000
2018	20,807,004	1.60%	328,350
2019	21,132,405	1.56%	325,401
2020	21,453,595	1.52%	321,190
2021	21,769,359	1.47%	315,764

Between April 1, 2016 and April 1, 2021, population growth is expected to average 324,141 net new residents per year, representing a compound growth rate of 1.56% over this five-year time horizon. These increases are analogous to adding a city slightly smaller than Tampa every year.

Of note, the population estimates developed by the U.S. Census Bureau continue to be higher than the official state estimates adopted by the Demographic Estimating Conference. As of July 1, 2015, this difference was over 375,000 persons. The Legislative Office of Economic and Demographic Research is continuing to work to further understand how the different methodologies contribute to the difference in the two sets of estimates.

# **Florida Demographic Estimating Conference**

**Tables**  
Conference Packet

November 1, 2016

# Florida Resident Population

April 1

Year	Florida Demographic Estimating Conference July 2016			Florida Demographic Estimating Conference November 2016		
	Population	% Change	Change	Population	% Change	Change
1990	12,938,071	2.27%	287,136	12,938,071	2.27%	287,136
1991	13,258,732	2.48%	320,661	13,258,732	2.48%	320,661
1992	13,497,541	1.80%	238,809	13,497,541	1.80%	238,809
1993	13,730,115	1.72%	232,574	13,730,115	1.72%	232,574
1994	14,043,757	2.28%	313,642	14,043,757	2.28%	313,642
1995	14,335,992	2.08%	292,235	14,335,992	2.08%	292,235
1996	14,623,421	2.00%	287,429	14,623,421	2.00%	287,429
1997	14,938,314	2.15%	314,893	14,938,314	2.15%	314,893
1998	15,230,421	1.96%	292,107	15,230,421	1.96%	292,107
1999	15,580,244	2.30%	349,823	15,580,244	2.30%	349,823
2000	15,982,824	2.58%	402,580	15,982,824	2.58%	402,580
2001	16,305,100	2.02%	322,276	16,305,100	2.02%	322,276
2002	16,634,256	2.02%	329,156	16,634,256	2.02%	329,156
2003	16,979,706	2.08%	345,450	16,979,706	2.08%	345,450
2004	17,374,824	2.33%	395,118	17,374,824	2.33%	395,118
2005	17,778,156	2.32%	403,332	17,778,156	2.32%	403,332
2006	18,154,475	2.12%	376,319	18,154,475	2.12%	376,319
2007	18,446,768	1.61%	292,293	18,446,768	1.61%	292,293
2008	18,613,905	0.91%	167,137	18,613,905	0.91%	167,137
2009	18,687,425	0.39%	73,520	18,687,425	0.39%	73,520
2010	18,801,332	0.61%	113,885	18,801,332	0.61%	113,907
2011	18,905,070	0.55%	103,738	18,905,070	0.55%	103,738
2012	19,074,434	0.90%	169,364	19,074,434	0.90%	169,364
2013	19,259,543	0.97%	185,109	19,259,543	0.97%	185,109
2014	19,507,369	1.29%	247,826	19,507,369	1.29%	247,826
2015	19,815,183	1.58%	307,814	19,815,183	1.58%	307,814
2016	20,129,234	1.58%	314,051	20,148,654	1.68%	333,471
Begins forecast						
2017	20,443,216	1.56%	313,982	20,478,654	1.64%	330,000
2018	20,755,036	1.53%	311,820	20,807,004	1.60%	328,350
2019	21,063,392	1.49%	308,356	21,132,405	1.56%	325,401
2020	21,369,497	1.45%	306,105	21,453,595	1.52%	321,190
2021	21,669,990	1.41%	300,493	21,769,359	1.47%	315,764
2022	21,964,365	1.36%	294,375	22,077,340	1.41%	307,981
2023	22,253,785	1.32%	289,420	22,377,948	1.36%	300,608
2024	22,536,818	1.27%	283,033	22,670,755	1.31%	292,807
5-Year Averages						
2025	22,813,018	1.32%	288,704	22,954,444	1.36%	300,170
2030	24,099,828	1.10%	257,362	24,244,731	1.10%	258,057
2035	25,263,285	0.95%	232,691	25,391,238	0.93%	229,301
2040	26,316,424	0.82%	210,628	26,428,672	0.80%	207,487

# Florida Resident Households

April 1

Year	Florida Demographic Estimating Conference July 2016			Florida Demographic Estimating Conference November 2016			
	Households	% Change	Change	Households	% Change	Change	
1990	5,134,869	3.40%	168,985	5,134,869	3.40%	168,985	
1991	5,283,154	2.89%	148,285	5,283,154	2.89%	148,285	
1992	5,378,499	1.80%	95,345	5,378,499	1.80%	95,345	
1993	5,478,476	1.86%	99,977	5,478,476	1.86%	99,977	
1994	5,589,093	2.02%	110,617	5,589,093	2.02%	110,617	
1995	5,697,328	1.94%	108,235	5,697,328	1.94%	108,235	
1996	5,806,031	1.91%	108,703	5,806,031	1.91%	108,703	
1997	5,929,613	2.13%	123,582	5,929,613	2.13%	123,582	
1998	6,040,514	1.87%	110,901	6,040,514	1.87%	110,901	
1999	6,182,346	2.35%	141,832	6,182,346	2.35%	141,832	
2000	6,338,075	2.52%	155,729	6,338,075	2.52%	155,729	
2001	6,467,215	2.04%	129,140	6,467,215	2.04%	129,140	
2002	6,599,035	2.04%	131,820	6,599,035	2.04%	131,820	
2003	6,737,370	2.10%	138,335	6,737,370	2.10%	138,335	
2004	6,895,469	2.35%	158,099	6,895,469	2.35%	158,099	
2005	7,056,889	2.34%	161,420	7,056,889	2.34%	161,420	
2006	7,207,645	2.14%	150,756	7,207,645	2.14%	150,756	
2007	7,312,907	1.46%	105,262	7,312,907	1.46%	105,262	
2008	7,368,319	0.76%	55,412	7,368,319	0.76%	55,412	
2009	7,386,570	0.25%	18,251	7,386,570	0.25%	18,251	
2010	7,537,442	2.04%	150,872	7,420,812	0.46%	34,242	
2011	7,461,978	-1.00%	-75,464	7,461,978	0.55%	41,166	
2012	7,537,442	1.01%	75,464	7,537,442	1.01%	75,464	
2013	7,610,153	0.96%	72,711	7,610,153	0.96%	72,711	
2014	7,669,541	0.78%	59,388	7,669,541	0.78%	59,388	
2015	7,785,434	1.51%	115,893	7,785,434	1.51%	115,893	
Begins forecast							
2016	7,914,312	1.66%	128,878	7,899,900	1.47%	114,466	
2017	8,043,474	1.63%	129,162	8,025,626	1.59%	125,726	
2018	8,172,701	1.61%	129,227	8,154,148	1.60%	128,522	
2019	8,301,493	1.58%	128,792	8,283,885	1.59%	129,737	
2020	8,429,915	1.55%	128,422	8,413,983	1.57%	130,098	
2021	8,555,996	1.50%	126,081	8,543,588	1.54%	129,605	
2022	8,679,343	1.44%	123,347	8,672,174	1.51%	128,586	
2023	8,800,628	1.40%	121,285	8,799,984	1.47%	127,810	
2024	8,919,882	1.36%	119,254	8,926,028	1.43%	126,044	
			5-Year Averages				5-Year Averages
2025	9,037,154	1.40%	121,448	9,049,882	1.47%	127,180	
2030	9,585,958	1.19%	109,761	9,633,032	1.26%	116,630	
2035	10,077,634	1.01%	98,335	10,162,338	1.08%	105,861	
2040	10,534,097	0.89%	91,293	10,634,062	0.91%	94,345	

Quarterly Data Table

	<u>2010-2</u>	<u>2010-3</u>	<u>2010-4</u>	<u>2011-1</u>	<u>2011-2</u>	<u>2011-3</u>	<u>2011-4</u>	<u>2012-1</u>	<u>2012-2</u>	<u>2012-3</u>	<u>2012-4</u>	<u>2013-1</u>	<u>2013-2</u>	<u>2013-3</u>
Population														
FDEC, 2016 July	18,813.9	18,838.3	18,862.7	18,890.2	18,923.4	18,962.7	19,006.3	19,051.6	19,096.7	19,141.3	19,186.7	19,234.7	19,286.8	19,344.0
FDEC, 2016 November	18,813.9	18,838.3	18,862.7	18,890.2	18,923.4	18,962.8	19,006.3	19,051.6	19,096.7	19,141.2	19,186.6	19,234.6	19,287.0	19,344.3
Population Growth Rate														
FDEC, 2016 July	0.59	0.52	0.52	0.58	0.71	0.83	0.92	0.96	0.95	0.94	0.95	1.00	1.09	1.19
FDEC, 2016 November	0.59	0.52	0.52	0.58	0.71	0.83	0.92	0.96	0.95	0.94	0.95	1.01	1.09	1.19
Net Change in Population														
FDEC, 2016 July	27.9	24.4	24.4	27.5	33.2	39.3	43.5	45.3	45.1	44.6	45.4	48.0	52.2	57.1
FDEC, 2016 November	27.9	24.4	24.4	27.5	33.2	39.4	43.5	45.3	45.1	44.5	45.4	48.1	52.3	57.3
Households														
FDEC, 2016 July	7,425.2	7,434.2	7,443.9	7,455.6	7,470.0	7,487.3	7,506.7	7,527.1	7,547.6	7,567.3	7,585.8	7,602.4	7,616.8	7,630.0
FDEC, 2016 November	7,425.2	7,434.2	7,443.9	7,455.6	7,470.0	7,487.3	7,506.7	7,527.1	7,547.6	7,567.4	7,585.9	7,602.4	7,616.7	7,629.7
Household Growth Rate														
FDEC, 2016 July	0.50	0.48	0.52	0.63	0.78	0.93	1.04	1.09	1.09	1.05	0.98	0.88	0.76	0.69
FDEC, 2016 November	0.50	0.48	0.52	0.63	0.78	0.93	1.04	1.09	1.09	1.05	0.98	0.88	0.76	0.68
Net Change in Households														
FDEC, 2016 July	9.2	9.0	9.7	11.6	14.5	17.3	19.4	20.4	20.5	19.7	18.4	16.6	14.5	13.2
FDEC, 2016 November	9.2	9.0	9.7	11.6	14.4	17.3	19.4	20.4	20.5	19.8	18.5	16.6	14.3	13.0
Household Size														
FDEC, 2016 July	2.534	2.534	2.534	2.534	2.533	2.533	2.532	2.531	2.530	2.529	2.529	2.530	2.532	2.535
FDEC, 2016 November	2.534	2.534	2.534	2.534	2.533	2.533	2.532	2.531	2.530	2.529	2.529	2.530	2.532	2.535
Household Size Growth Rate														
FDEC, 2016 July	0.10	0.04	-0.01	-0.04	-0.07	-0.10	-0.12	-0.13	-0.14	-0.11	-0.03	0.12	0.32	0.49
FDEC, 2016 November	0.10	0.04	-0.01	-0.04	-0.07	-0.10	-0.12	-0.13	-0.14	-0.12	-0.03	0.13	0.33	0.51
Net Migration														
FDEC, 2016 July	17.2	14.1	14.3	17.2	23.0	29.3	33.7	35.8	35.8	35.4	36.4	39.1	43.3	48.4
FDEC, 2016 November	17.2	14.1	14.3	17.2	23.1	29.3	33.7	35.8	35.7	35.3	36.3	39.1	43.5	48.6
Births														
FDEC, 2016 July	53.7	53.5	53.3	53.4	53.3	53.3	53.2	53.2	53.2	53.3	53.4	53.5	53.7	53.9
FDEC, 2016 November	53.7	53.5	53.3	53.4	53.3	53.3	53.2	53.2	53.2	53.3	53.4	53.5	53.7	53.9
Deaths														
FDEC, 2016 July	43.1	43.2	43.2	43.1	43.1	43.3	43.4	43.6	43.8	44.1	44.3	44.6	44.9	45.1
FDEC, 2016 November	43.1	43.2	43.2	43.1	43.1	43.3	43.4	43.6	43.8	44.1	44.3	44.6	44.9	45.1
Net Natural Increase														
FDEC, 2016 July	10.6	10.3	10.0	10.3	10.2	10.0	9.8	9.5	9.3	9.2	9.0	8.9	8.8	8.7
FDEC, 2016 November	10.6	10.3	10.0	10.3	10.2	10.0	9.8	9.5	9.3	9.2	9.0	8.9	8.8	8.7

**Quarterly Data Table**

	<u>2013-4</u>	<u>2014-1</u>	<u>2014-2</u>	<u>2014-3</u>	<u>2014-4</u>	<u>2015-1</u>	<u>2015-2</u>	<u>2015-3</u>	<u>2015-4</u>	<u>2016-1</u>	<u>2016-2</u>	<u>2016-3</u>	<u>2016-4</u>	<u>2017-1</u>
<b>Population</b>														
FDEC, 2016 July	19,406.0	19,472.8	19,544.1	19,619.1	19,696.7	19,775.6	19,854.6	19,933.3	20,011.8	20,090.1	20,168.5	20,247.0	20,325.5	20,404.0
FDEC, 2016 November	19,406.4	19,473.0	19,543.6	19,617.8	19,695.1	19,774.8	19,856.4	19,939.3	20,023.0	20,106.8	20,190.2	20,273.0	20,355.4	20,437.6
<b>Population Growth Rate</b>														
FDEC, 2016 July	1.29	1.38	1.47	1.54	1.59	1.61	1.61	1.60	1.58	1.57	1.57	1.57	1.56	1.55
FDEC, 2016 November	1.29	1.38	1.46	1.53	1.58	1.63	1.66	1.68	1.69	1.68	1.67	1.65	1.64	1.62
<b>Net Change in Population</b>														
FDEC, 2016 July	62.0	66.8	71.3	75.0	77.6	78.9	79.1	78.7	78.4	78.3	78.4	78.5	78.5	78.5
FDEC, 2016 November	62.1	66.6	70.6	74.2	77.2	79.7	81.6	82.9	83.7	83.8	83.4	82.8	82.4	82.2
<b>Households</b>														
FDEC, 2016 July	7,643.8	7,660.3	7,681.5	7,707.6	7,737.3	7,769.2	7,801.7	7,834.0	7,866.1	7,898.3	7,930.4	7,962.7	7,995.0	8,027.3
FDEC, 2016 November	7,643.4	7,660.1	7,681.9	7,708.6	7,738.7	7,769.9	7,800.2	7,829.1	7,857.2	7,885.6	7,915.0	7,945.7	7,977.3	8,009.5
<b>Household Growth Rate</b>														
FDEC, 2016 July	0.72	0.87	1.11	1.37	1.55	1.66	1.68	1.67	1.65	1.64	1.64	1.64	1.63	1.63
FDEC, 2016 November	0.72	0.88	1.14	1.40	1.57	1.62	1.57	1.49	1.45	1.45	1.50	1.56	1.60	1.62
<b>Net Change in Households</b>														
FDEC, 2016 July	13.8	16.5	21.2	26.1	29.8	31.9	32.5	32.3	32.1	32.1	32.2	32.2	32.3	32.3
FDEC, 2016 November	13.7	16.7	21.7	26.8	30.1	31.2	30.3	28.9	28.1	28.4	29.4	30.7	31.7	32.2
<b>Household Size</b>														
FDEC, 2016 July	2.539	2.542	2.544	2.545	2.546	2.545	2.545	2.544	2.544	2.544	2.543	2.543	2.542	2.542
FDEC, 2016 November	2.539	2.542	2.544	2.545	2.545	2.545	2.546	2.547	2.548	2.550	2.551	2.551	2.552	2.552
<b>Household Size Growth Rate</b>														
FDEC, 2016 July	0.56	0.51	0.36	0.18	0.04	-0.04	-0.07	-0.07	-0.07	-0.07	-0.07	-0.07	-0.07	-0.07
FDEC, 2016 November	0.57	0.50	0.32	0.12	0.01	0.01	0.09	0.19	0.24	0.23	0.17	0.09	0.03	0.00
<b>Net Migration</b>														
FDEC, 2016 July	53.3	57.9	62.5	66.3	69.0	70.7	71.0	70.8	70.6	70.6	70.8	71.0	71.1	71.0
FDEC, 2016 November	53.4	57.8	61.9	65.5	68.6	71.4	73.4	74.8	75.5	75.4	74.9	74.3	73.9	73.6
<b>Births</b>														
FDEC, 2016 July	54.1	54.6	54.9	55.1	55.4	55.5	55.8	56.0	56.3	56.7	57.0	57.3	57.6	57.9
FDEC, 2016 November	54.1	54.5	54.8	55.1	55.4	55.6	55.9	56.2	56.5	56.8	57.1	57.4	57.7	58.1
<b>Deaths</b>														
FDEC, 2016 July	45.4	45.7	46.1	46.4	46.8	47.3	47.7	48.1	48.5	49.0	49.4	49.8	50.1	50.4
FDEC, 2016 November	45.4	45.7	46.1	46.4	46.8	47.4	47.7	48.1	48.3	48.3	48.6	48.9	49.2	49.5
<b>Net Natural Increase</b>														
FDEC, 2016 July	8.7	8.8	8.8	8.7	8.6	8.2	8.1	7.9	7.8	7.7	7.6	7.5	7.5	7.5
FDEC, 2016 November	8.7	8.8	8.8	8.7	8.6	8.3	8.2	8.2	8.2	8.4	8.5	8.5	8.5	8.5

Quarterly Data Table

	<u>2017-2</u>	<u>2017-3</u>	<u>2017-4</u>	<u>2018-1</u>	<u>2018-2</u>	<u>2018-3</u>	<u>2018-4</u>	<u>2019-1</u>	<u>2019-2</u>	<u>2019-3</u>	<u>2019-4</u>	<u>2020-1</u>	<u>2020-2</u>	<u>2020-3</u>
<b>Population</b>														
FDEC, 2016 July	20,482.4	20,560.5	20,638.5	20,716.2	20,793.7	20,870.9	20,948.0	21,024.9	21,101.8	21,178.6	21,255.2	21,331.5	21,407.4	21,482.9
FDEC, 2016 November	20,519.7	20,601.9	20,684.0	20,766.0	20,847.9	20,929.5	21,010.8	21,091.9	21,172.8	21,253.4	21,333.7	21,413.7	21,493.3	21,572.7
<b>Population Growth Rate</b>														
FDEC, 2016 July	1.55	1.54	1.53	1.51	1.50	1.49	1.49	1.48	1.47	1.46	1.45	1.44	1.43	1.42
FDEC, 2016 November	1.62	1.61	1.60	1.60	1.59	1.57	1.56	1.55	1.54	1.53	1.52	1.51	1.50	1.48
<b>Net Change in Population</b>														
FDEC, 2016 July	78.4	78.2	78.0	77.7	77.5	77.2	77.1	76.9	76.9	76.8	76.6	76.3	75.9	75.5
FDEC, 2016 November	82.1	82.2	82.1	82.0	81.8	81.6	81.4	81.1	80.9	80.6	80.3	80.0	79.7	79.3
<b>Households</b>														
FDEC, 2016 July	8,059.6	8,092.0	8,124.3	8,156.6	8,188.8	8,221.0	8,253.2	8,285.4	8,317.6	8,349.8	8,381.9	8,413.9	8,445.8	8,477.5
FDEC, 2016 November	8,041.7	8,073.9	8,106.0	8,138.1	8,170.3	8,202.6	8,235.1	8,267.6	8,300.2	8,332.7	8,365.2	8,397.7	8,430.2	8,462.7
<b>Household Growth Rate</b>														
FDEC, 2016 July	1.62	1.61	1.61	1.60	1.59	1.58	1.58	1.57	1.56	1.56	1.55	1.54	1.52	1.51
FDEC, 2016 November	1.62	1.61	1.60	1.59	1.59	1.59	1.59	1.59	1.58	1.58	1.57	1.56	1.56	1.55
<b>Net Change in Households</b>														
FDEC, 2016 July	32.3	32.3	32.3	32.3	32.2	32.2	32.2	32.2	32.2	32.2	32.1	32.0	31.9	31.7
FDEC, 2016 November	32.2	32.1	32.1	32.1	32.2	32.4	32.5	32.5	32.5	32.5	32.5	32.5	32.5	32.5
<b>Household Size</b>														
FDEC, 2016 July	2.541	2.541	2.540	2.540	2.539	2.539	2.538	2.538	2.537	2.536	2.536	2.535	2.535	2.534
FDEC, 2016 November	2.552	2.552	2.552	2.552	2.552	2.552	2.551	2.551	2.551	2.551	2.550	2.550	2.550	2.549
<b>Household Size Growth Rate</b>														
FDEC, 2016 July	-0.08	-0.08	-0.08	-0.08	-0.08	-0.09	-0.09	-0.09	-0.09	-0.09	-0.09	-0.09	-0.09	-0.09
FDEC, 2016 November	0.00	0.00	0.00	0.00	-0.01	-0.02	-0.03	-0.04	-0.04	-0.05	-0.05	-0.05	-0.06	-0.06
<b>Net Migration</b>														
FDEC, 2016 July	70.9	70.8	70.6	70.3	70.1	69.9	69.7	69.6	69.5	69.5	69.4	69.2	69.1	68.8
FDEC, 2016 November	73.6	73.7	73.7	73.7	73.6	73.5	73.5	73.6	73.5	73.4	73.3	73.1	72.9	72.6
<b>Births</b>														
FDEC, 2016 July	58.2	58.5	58.8	59.2	59.5	59.8	60.1	60.6	60.9	61.2	61.4	61.6	61.8	61.9
FDEC, 2016 November	58.4	58.7	59.0	59.3	59.6	59.9	60.2	60.6	60.9	61.2	61.4	61.5	61.7	61.9
<b>Deaths</b>														
FDEC, 2016 July	50.7	51.1	51.4	51.8	52.1	52.5	52.8	53.2	53.6	53.9	54.2	54.6	54.9	55.3
FDEC, 2016 November	49.9	50.2	50.6	51.0	51.4	51.9	52.3	53.1	53.5	54.0	54.3	54.6	54.9	55.3
<b>Net Natural Increase</b>														
FDEC, 2016 July	7.5	7.4	7.4	7.4	7.4	7.3	7.3	7.4	7.3	7.3	7.2	7.0	6.9	6.7
FDEC, 2016 November	8.5	8.4	8.4	8.3	8.2	8.1	7.9	7.6	7.4	7.2	7.0	6.9	6.8	6.7

**Quarterly Data Table**

	<u>2020-4</u>	<u>2021-1</u>	<u>2021-2</u>	<u>2021-3</u>	<u>2021-4</u>	<u>2022-1</u>	<u>2022-2</u>	<u>2022-3</u>	<u>2022-4</u>	<u>2023-1</u>	<u>2023-2</u>	<u>2023-3</u>	<u>2023-4</u>	<u>2024-1</u>
<b>Population</b>														
FDEC, 2016 July	21,558.0	21,632.7	21,707.0	21,781.0	21,854.5	21,927.8	22,000.8	22,073.5	22,145.9	22,217.9	22,289.5	22,360.6	22,431.4	22,501.7
FDEC, 2016 November	21,651.6	21,730.2	21,808.2	21,885.7	21,962.7	22,039.2	22,115.3	22,190.9	22,266.0	22,340.7	22,414.9	22,488.7	22,561.9	22,634.6
<b>Population Growth Rate</b>														
FDEC, 2016 July	1.41	1.39	1.38	1.37	1.36	1.35	1.34	1.33	1.32	1.31	1.30	1.28	1.27	1.26
FDEC, 2016 November	1.47	1.46	1.44	1.43	1.41	1.40	1.39	1.37	1.36	1.35	1.34	1.32	1.31	1.29
<b>Net Change in Population</b>														
FDEC, 2016 July	75.1	74.7	74.3	73.9	73.6	73.3	73.0	72.7	72.4	72.0	71.6	71.2	70.8	70.3
FDEC, 2016 November	79.0	78.6	78.1	77.5	77.0	76.5	76.1	75.6	75.2	74.7	74.2	73.7	73.2	72.7
<b>Households</b>														
FDEC, 2016 July	8,509.0	8,540.4	8,571.5	8,602.5	8,633.3	8,664.0	8,694.6	8,725.0	8,755.4	8,785.6	8,815.6	8,845.6	8,875.4	8,905.1
FDEC, 2016 November	8,495.1	8,527.4	8,559.7	8,591.9	8,624.0	8,656.1	8,688.2	8,720.2	8,752.2	8,784.1	8,815.8	8,847.5	8,879.0	8,910.4
<b>Household Growth Rate</b>														
FDEC, 2016 July	1.50	1.48	1.47	1.45	1.44	1.43	1.42	1.41	1.40	1.39	1.38	1.37	1.36	1.34
FDEC, 2016 November	1.54	1.53	1.52	1.51	1.50	1.50	1.49	1.48	1.47	1.46	1.45	1.44	1.43	1.42
<b>Net Change in Households</b>														
FDEC, 2016 July	31.5	31.3	31.2	31.0	30.8	30.7	30.6	30.4	30.3	30.2	30.1	29.9	29.8	29.7
FDEC, 2016 November	32.4	32.3	32.3	32.2	32.1	32.1	32.1	32.0	32.0	31.9	31.8	31.6	31.5	31.4
<b>Household Size</b>														
FDEC, 2016 July	2.534	2.533	2.532	2.532	2.531	2.531	2.530	2.530	2.529	2.529	2.528	2.528	2.527	2.527
FDEC, 2016 November	2.549	2.548	2.548	2.547	2.547	2.546	2.545	2.545	2.544	2.543	2.543	2.542	2.541	2.540
<b>Household Size Growth Rate</b>														
FDEC, 2016 July	-0.09	-0.09	-0.09	-0.08	-0.08	-0.08	-0.08	-0.08	-0.08	-0.08	-0.08	-0.08	-0.08	-0.08
FDEC, 2016 November	-0.07	-0.07	-0.08	-0.08	-0.09	-0.09	-0.10	-0.11	-0.11	-0.11	-0.12	-0.12	-0.12	-0.12
<b>Net Migration</b>														
FDEC, 2016 July	68.5	68.1	67.8	67.5	67.3	67.0	66.9	66.7	66.4	66.1	65.8	65.5	65.2	65.0
FDEC, 2016 November	72.4	72.0	71.6	71.1	70.6	70.1	69.7	69.3	68.9	68.5	68.2	67.8	67.5	67.1
<b>Births</b>														
FDEC, 2016 July	62.2	62.4	62.6	62.8	63.0	63.1	63.3	63.4	63.6	63.8	64.0	64.1	64.2	64.3
FDEC, 2016 November	62.2	62.4	62.6	62.8	63.1	63.3	63.5	63.7	63.9	64.1	64.2	64.3	64.4	64.5
<b>Deaths</b>														
FDEC, 2016 July	55.6	55.9	56.1	56.4	56.7	56.9	57.1	57.4	57.6	57.9	58.1	58.4	58.7	58.9
FDEC, 2016 November	55.6	55.9	56.1	56.4	56.7	56.9	57.1	57.4	57.6	57.9	58.1	58.4	58.6	58.9
<b>Net Natural Increase</b>														
FDEC, 2016 July	6.6	6.6	6.5	6.4	6.3	6.2	6.1	6.0	6.0	5.9	5.8	5.7	5.6	5.4
FDEC, 2016 November	6.6	6.6	6.5	6.4	6.4	6.4	6.3	6.3	6.2	6.2	6.0	5.9	5.8	5.6



Quarterly Data Table

	<u>2024-2</u>	<u>2024-3</u>	<u>2024-4</u>	<u>2025-1</u>	<u>2025-2</u>	<u>2025-3</u>	<u>2025-4</u>	<u>2026-1</u>	<u>2026-2</u>
Population									
FDEC, 2016 July	22,571.7	22,641.2	22,710.3	22,778.9	22,846.9	22,914.4	22,981.4	23,048.0	23,114.3
FDEC, 2016 November	22,706.7	22,778.2	22,849.1	22,919.4	22,989.2	23,058.3	23,126.8	23,194.8	23,262.3
Population Growth Rate									
FDEC, 2016 July	1.25	1.24	1.23	1.21	1.20	1.19	1.18	1.16	1.16
FDEC, 2016 November	1.28	1.27	1.25	1.24	1.22	1.21	1.19	1.18	1.17
Net Change in Population									
FDEC, 2016 July	69.9	69.5	69.1	68.6	68.0	67.5	67.0	66.6	66.3
FDEC, 2016 November	72.1	71.5	70.9	70.3	69.7	69.1	68.5	68.0	67.4
Households									
FDEC, 2016 July	8,934.6	8,964.0	8,993.4	9,022.6	9,051.7	9,080.7	9,109.6	9,138.2	9,166.6
FDEC, 2016 November	8,941.6	8,972.7	9,003.7	9,034.5	9,065.2	9,095.8	9,126.2	9,156.4	9,186.6
Household Growth Rate									
FDEC, 2016 July	1.33	1.32	1.31	1.31	1.30	1.29	1.28	1.26	1.25
FDEC, 2016 November	1.41	1.40	1.39	1.38	1.37	1.36	1.34	1.33	1.32
Net Change in Households									
FDEC, 2016 July	29.6	29.4	29.3	29.2	29.1	29.0	28.9	28.7	28.4
FDEC, 2016 November	31.2	31.1	31.0	30.8	30.7	30.6	30.4	30.3	30.1
Household Size									
FDEC, 2016 July	2.526	2.526	2.525	2.525	2.524	2.523	2.523	2.522	2.522
FDEC, 2016 November	2.539	2.539	2.538	2.537	2.536	2.535	2.534	2.533	2.532
Household Size Growth Rate									
FDEC, 2016 July	-0.08	-0.08	-0.09	-0.09	-0.10	-0.10	-0.10	-0.10	-0.09
FDEC, 2016 November	-0.13	-0.13	-0.13	-0.14	-0.14	-0.15	-0.15	-0.15	-0.15
Net Migration									
FDEC, 2016 July	64.7	64.5	64.2	63.9	63.5	63.2	63.0	62.8	62.7
FDEC, 2016 November	66.7	66.3	65.9	65.5	65.1	64.8	64.4	64.1	63.9
Births									
FDEC, 2016 July	64.4	64.5	64.6	64.7	64.8	64.8	64.9	65.0	65.1
FDEC, 2016 November	64.6	64.6	64.7	64.8	64.9	64.9	65.0	65.1	65.1
Deaths									
FDEC, 2016 July	59.2	59.4	59.7	60.0	60.3	60.6	60.9	61.2	61.5
FDEC, 2016 November	59.2	59.4	59.7	60.0	60.3	60.6	60.9	61.2	61.5
Net Natural Increase									
FDEC, 2016 July	5.2	5.1	4.9	4.7	4.5	4.3	4.0	3.8	3.6
FDEC, 2016 November	5.4	5.2	5.0	4.8	4.6	4.4	4.1	3.9	3.6

**Fiscal Year Data Table**

	<u>2000-01</u>	<u>2001-02</u>	<u>2002-03</u>	<u>2003-04</u>	<u>2004-05</u>	<u>2005-06</u>	<u>2006-07</u>	<u>2007-08</u>	<u>2008-09</u>	<u>2009-10</u>	<u>2010-11</u>	<u>2011-12</u>	<u>2012-13</u>
<b>Population</b>													
FDEC, 2016 July	16,228.0	16,551.2	16,892.0	17,273.8	17,677.3	18,062.2	18,378.2	18,578.9	18,671.4	18,770.4	18,878.6	19,029.3	19,212.4
FDEC, 2016 November	16,228.0	16,551.2	16,892.0	17,273.8	17,677.3	18,062.2	18,378.2	18,578.9	18,671.4	18,770.4	18,878.6	19,029.3	19,212.3
<b>Growth Rate</b>													
FDEC, 2016 July	2.18	1.99	2.06	2.26	2.34	2.18	1.75	1.09	0.50	0.53	0.58	0.80	0.96
FDEC, 2016 November	2.18	1.99	2.06	2.26	2.34	2.18	1.75	1.09	0.50	0.53	0.58	0.80	0.96
<b>Net Change in Population</b>													
FDEC, 2016 July	346.4	323.2	340.9	381.8	403.5	384.9	316.0	200.7	92.5	99.0	108.2	150.7	183.0
FDEC, 2016 November	346.4	323.2	340.9	381.8	403.5	384.9	316.0	200.7	92.5	99.0	108.2	150.7	183.0
<b>Households</b>													
FDEC, 2016 July	6,436.4	6,565.8	6,702.3	6,855.1	7,016.4	7,170.9	7,288.9	7,357.1	7,383.0	7,411.4	7,450.9	7,517.2	7,593.1
FDEC, 2016 November	6,436.4	6,565.8	6,702.3	6,855.1	7,016.4	7,170.9	7,288.9	7,357.1	7,383.0	7,411.4	7,450.9	7,517.2	7,593.1
<b>Growth Rate</b>													
FDEC, 2016 July	2.22	2.01	2.08	2.28	2.35	2.20	1.65	0.93	0.35	0.38	0.53	0.89	1.01
FDEC, 2016 November	2.22	2.01	2.08	2.28	2.35	2.20	1.65	0.93	0.35	0.38	0.53	0.89	1.01
<b>Net Change in Households</b>													
FDEC, 2016 July	139.5	129.3	136.5	152.8	161.3	154.5	118.1	68.1	26.0	28.3	39.6	66.3	75.9
FDEC, 2016 November	139.5	129.3	136.5	152.8	161.3	154.5	118.1	68.1	26.0	28.3	39.6	66.3	75.9
<b>Household Size</b>													
FDEC, 2016 July	2.521	2.521	2.520	2.520	2.519	2.519	2.521	2.525	2.529	2.533	2.534	2.531	2.530
FDEC, 2016 November	2.521	2.521	2.520	2.520	2.519	2.519	2.521	2.525	2.529	2.533	2.534	2.531	2.530
<b>Growth Rate</b>													
FDEC, 2016 July	-0.03	-0.02	-0.02	-0.02	-0.02	-0.02	0.10	0.16	0.14	0.15	0.04	-0.09	-0.05
FDEC, 2016 November	-0.03	-0.02	-0.02	-0.02	-0.02	-0.02	0.10	0.16	0.14	0.15	0.04	-0.09	-0.05
<b>Net Migration</b>													
FDEC, 2016 July	306.0	285.5	300.4	335.0	351.1	322.9	245.0	133.7	36.3	52.7	67.4	111.9	147.1
FDEC, 2016 November	306.0	285.5	300.4	335.0	351.1	322.9	245.0	133.7	36.3	52.7	67.4	112.0	147.0
<b>Births</b>													
FDEC, 2016 July	205.4	205.4	208.5	215.0	221.8	232.1	239.3	236.0	226.4	217.4	213.5	212.9	213.8
FDEC, 2016 November	205.4	205.4	208.5	215.0	221.8	232.1	239.3	236.0	226.4	217.4	213.5	212.9	213.8
<b>Deaths</b>													
FDEC, 2016 July	165.0	167.7	168.1	168.3	169.4	170.1	168.3	169.0	170.2	171.1	172.7	174.1	177.8
FDEC, 2016 November	165.0	167.7	168.1	168.3	169.4	170.1	168.3	169.0	170.2	171.1	172.7	174.1	177.8
<b>Net Natural Increase</b>													
FDEC, 2016 July	40.3	37.7	40.4	46.7	52.4	62.0	71.0	67.0	56.2	46.3	40.8	38.8	36.0
FDEC, 2016 November	40.3	37.7	40.4	46.7	52.4	62.0	71.0	67.0	56.2	46.3	40.8	38.8	36.0

**Fiscal Year Data Table**

	<u>2013-14</u>	<u>2014-15</u>	<u>2015-16</u>	<u>2016-17</u>	<u>2017-18</u>	<u>2018-19</u>	<u>2019-20</u>	<u>2020-21</u>	<u>2021-22</u>	<u>2022-23</u>	<u>2023-24</u>	<u>2024-25</u>	<u>2025-26</u>
Population													
FDEC, 2016 July	19,441.7	19,736.5	20,050.9	20,364.7	20,677.2	20,986.4	21,293.1	21,595.2	21,891.0	22,181.7	22,466.4	22,744.3	23,014.5
FDEC, 2016 November	19,441.9	19,736.0	20,064.8	20,396.4	20,725.0	21,051.2	21,373.5	21,690.7	22,000.7	22,303.1	22,597.9	22,884.0	23,160.6
Growth Rate													
FDEC, 2016 July	1.19	1.52	1.59	1.56	1.53	1.50	1.46	1.42	1.37	1.33	1.28	1.24	1.19
FDEC, 2016 November	1.19	1.51	1.67	1.65	1.61	1.57	1.53	1.48	1.43	1.37	1.32	1.27	1.21
Net Change in Population													
FDEC, 2016 July	229.3	294.8	314.4	313.8	312.5	309.2	306.7	302.0	295.9	290.7	284.7	277.9	270.2
FDEC, 2016 November	229.5	294.2	328.8	331.6	328.5	326.3	322.3	317.2	310.0	302.4	294.8	286.0	276.6
Households													
FDEC, 2016 July	7,653.9	7,753.9	7,882.2	8,011.1	8,140.4	8,269.3	8,397.9	8,524.6	8,648.6	8,770.4	8,890.2	9,007.9	9,123.8
FDEC, 2016 November	7,653.8	7,754.3	7,871.7	7,993.5	8,122.0	8,251.4	8,381.5	8,511.2	8,640.1	8,768.1	8,894.6	9,019.0	9,141.2
Growth Rate													
FDEC, 2016 July	0.80	1.31	1.65	1.64	1.61	1.58	1.55	1.51	1.45	1.41	1.37	1.32	1.29
FDEC, 2016 November	0.80	1.31	1.51	1.55	1.61	1.59	1.58	1.55	1.51	1.48	1.44	1.40	1.36
Net Change in Households													
FDEC, 2016 July	60.8	100.1	128.3	128.9	129.3	128.9	128.6	126.8	124.0	121.8	119.8	117.8	115.9
FDEC, 2016 November	60.7	100.6	117.3	121.9	128.5	129.3	130.1	129.8	128.8	128.0	126.5	124.4	122.2
Household Size													
FDEC, 2016 July	2.540	2.545	2.544	2.542	2.540	2.538	2.536	2.533	2.531	2.529	2.527	2.525	2.522
FDEC, 2016 November	2.540	2.545	2.549	2.552	2.552	2.551	2.550	2.548	2.546	2.544	2.541	2.537	2.534
Growth Rate													
FDEC, 2016 July	0.39	0.21	-0.06	-0.07	-0.08	-0.09	-0.09	-0.09	-0.08	-0.08	-0.08	-0.09	-0.10
FDEC, 2016 November	0.39	0.20	0.15	0.10	0.00	-0.02	-0.04	-0.06	-0.08	-0.11	-0.12	-0.13	-0.14
Net Migration													
FDEC, 2016 July	194.3	261.2	283.4	283.8	283.0	279.8	278.4	275.7	270.8	266.9	262.8	258.9	254.6
FDEC, 2016 November	194.5	260.4	295.5	297.5	295.2	295.4	294.3	290.8	284.5	277.6	272.2	266.4	260.7
Births													
FDEC, 2016 July	217.5	221.7	226.1	231.0	236.0	241.4	246.0	249.1	252.2	254.7	257.0	258.5	259.8
FDEC, 2016 November	217.4	222.1	226.6	231.5	236.6	241.7	245.8	249.1	252.6	255.8	257.7	259.0	260.0
Deaths													
FDEC, 2016 July	182.4	188.2	195.0	201.1	206.4	212.1	217.7	222.8	227.1	231.0	235.1	239.4	244.1
FDEC, 2016 November	182.4	188.4	193.3	197.5	203.3	210.8	217.8	222.8	227.1	231.0	235.1	239.4	244.1
Net Natural Increase													
FDEC, 2016 July	35.1	33.6	31.0	29.9	29.6	29.4	28.3	26.3	25.1	23.7	21.9	19.1	15.7
FDEC, 2016 November	35.0	33.7	33.3	34.1	33.4	30.9	27.9	26.3	25.6	24.8	22.6	19.6	15.9

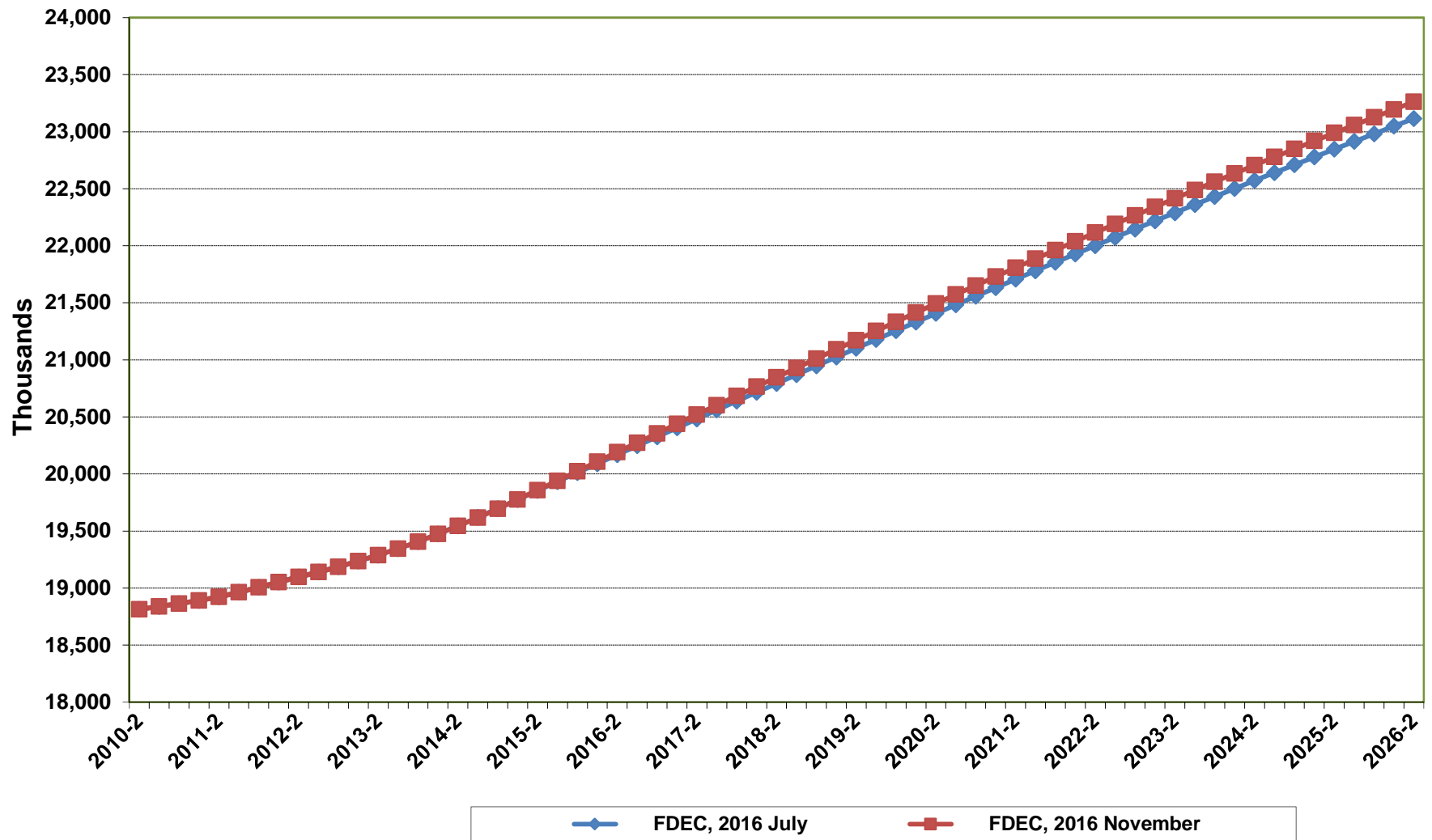
# **Florida Demographic Estimating Conference**

## **Charts**

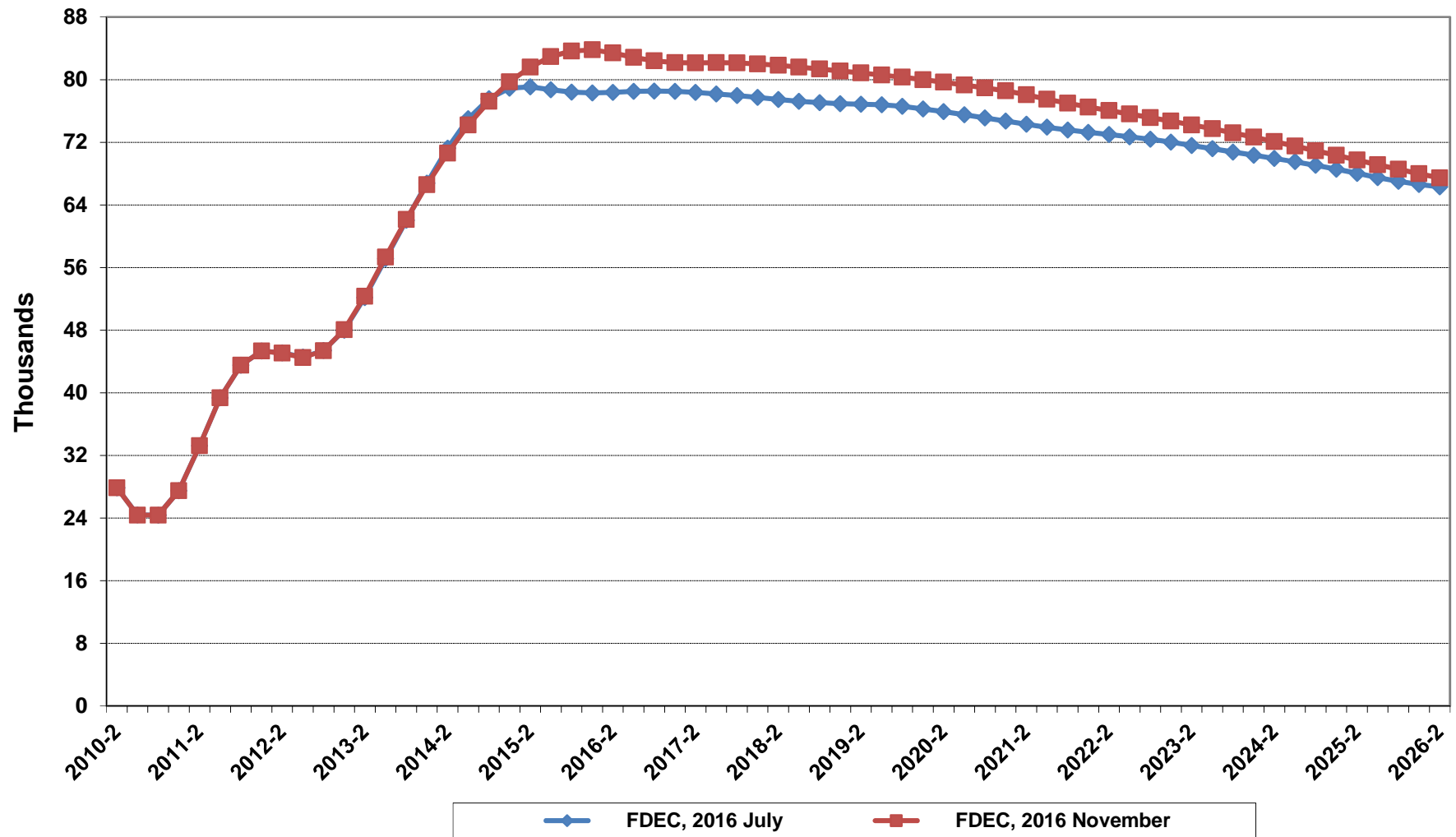
Conference Packet

November 1, 2016

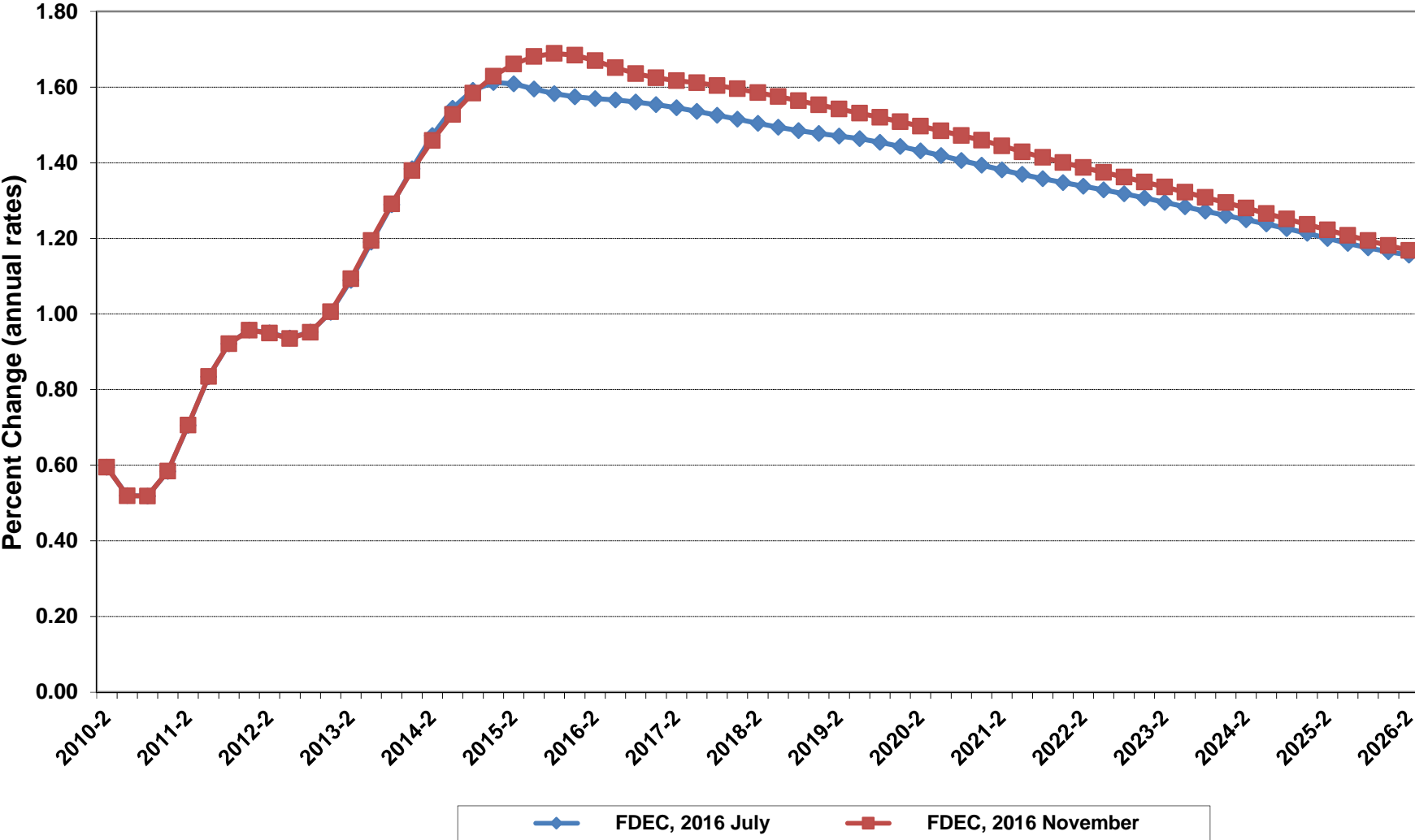
# Florida Resident Population



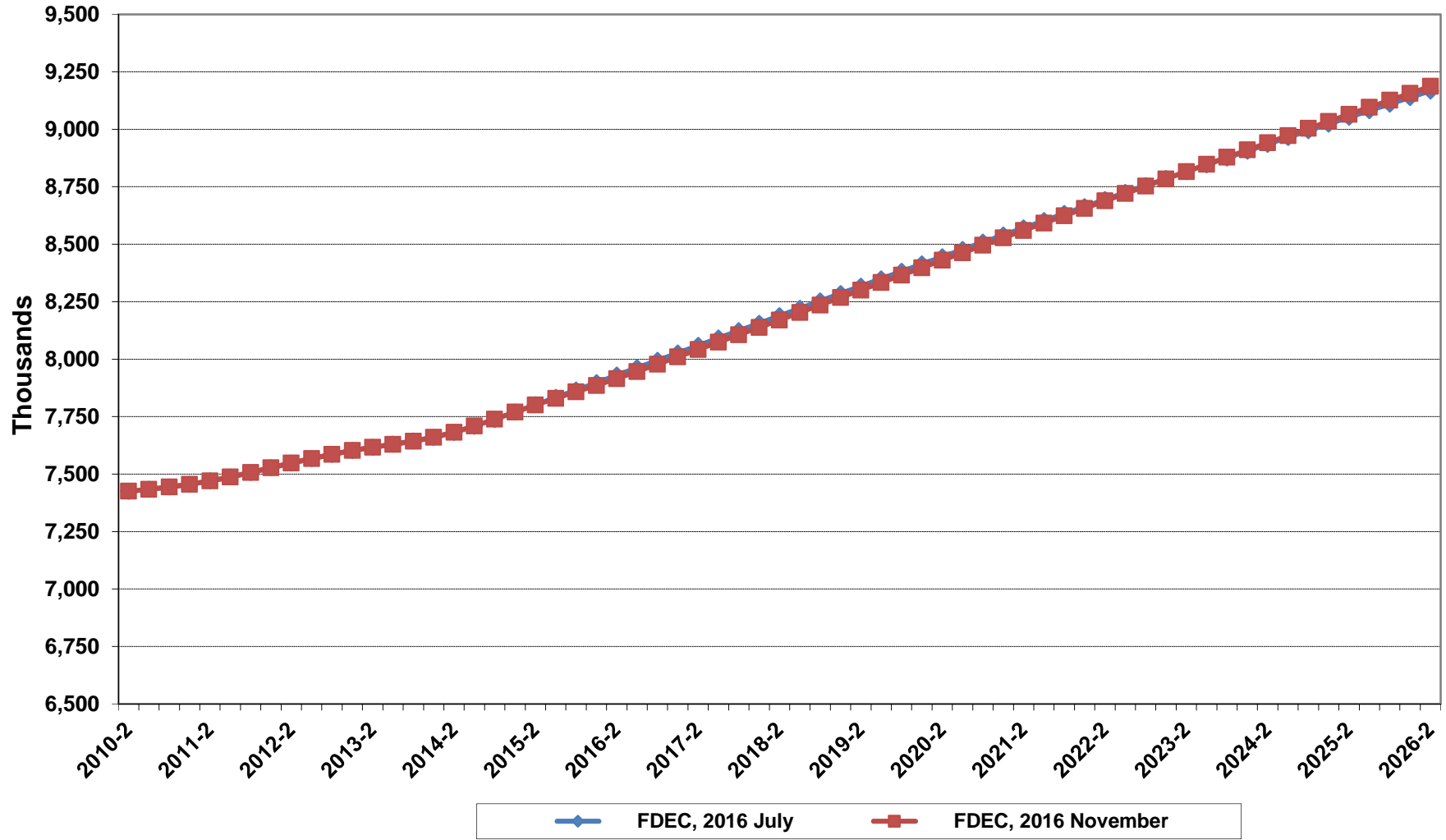
# Net Change In Florida Resident Population



# Growth In Florida Resident Population

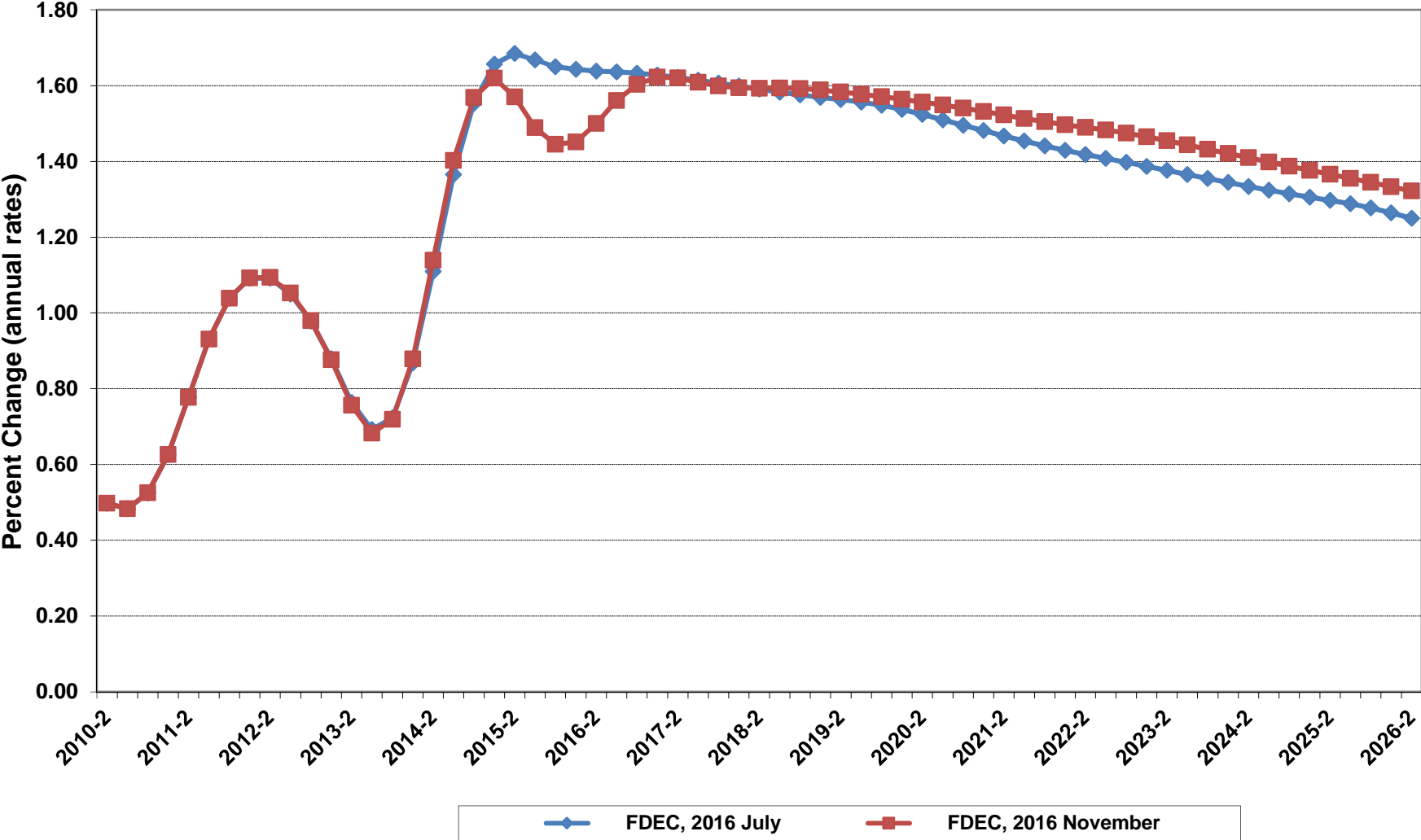


# Florida Resident Households

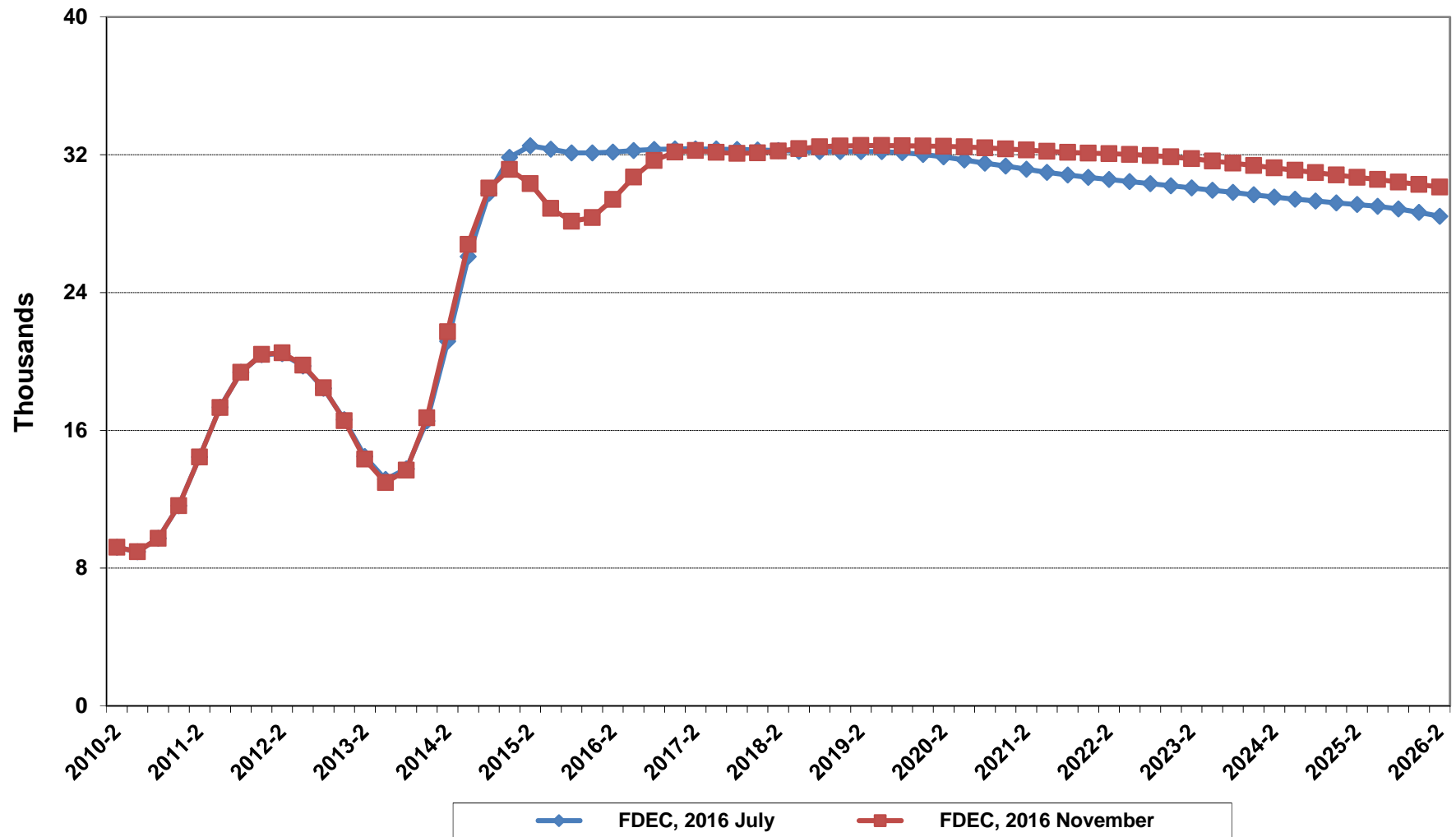




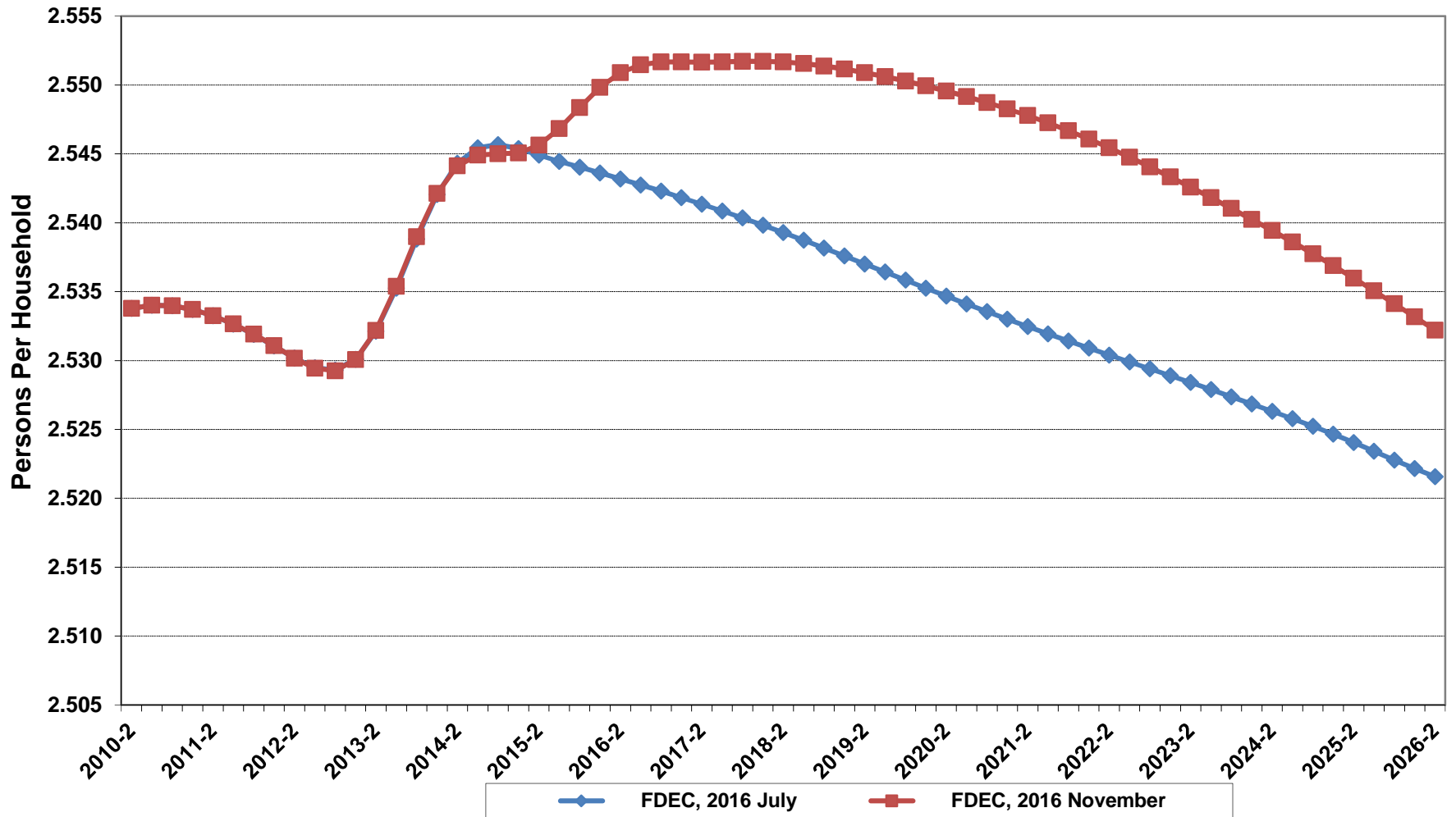
# Growth In Florida Resident Households



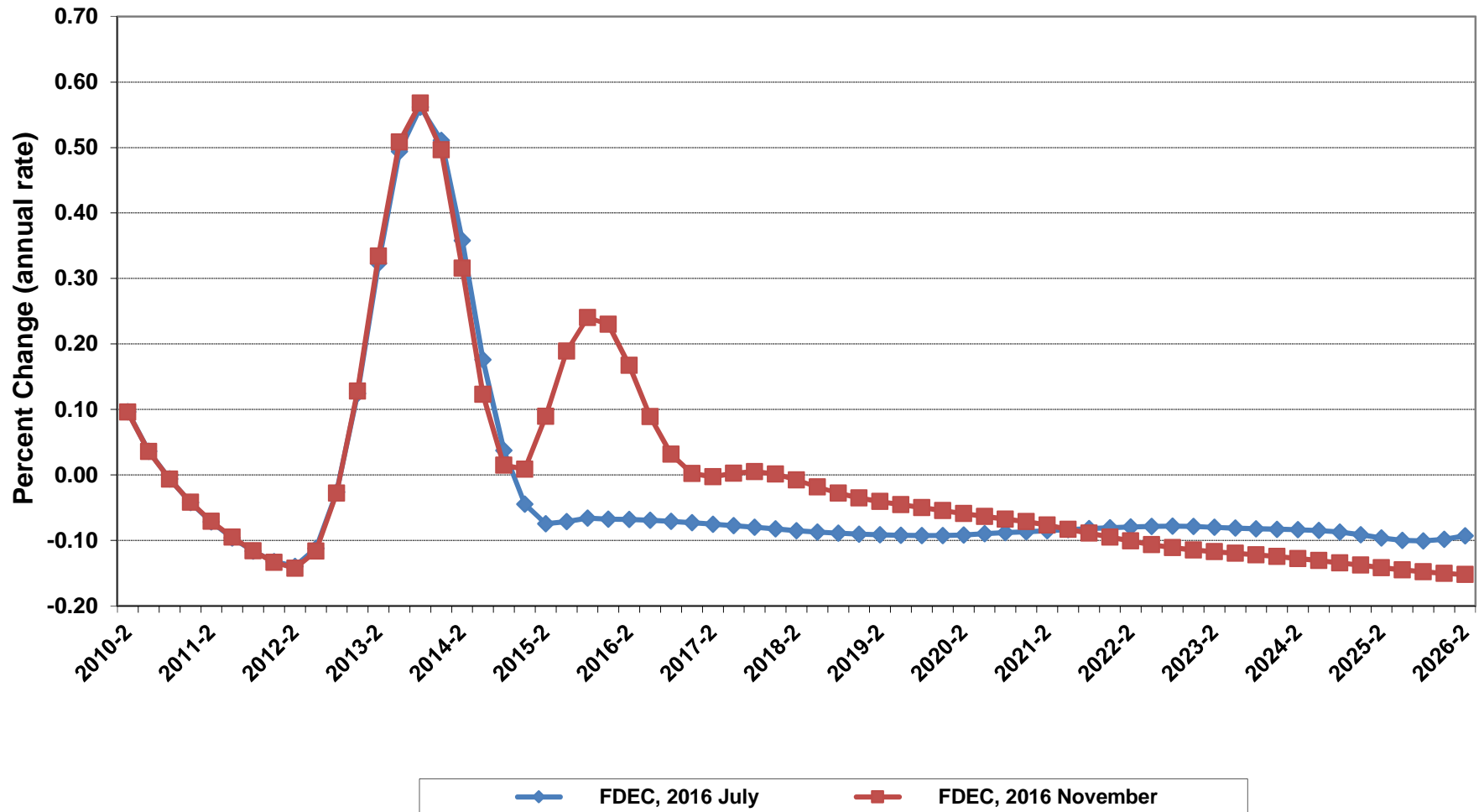
# Net Change In Florida Resident Households



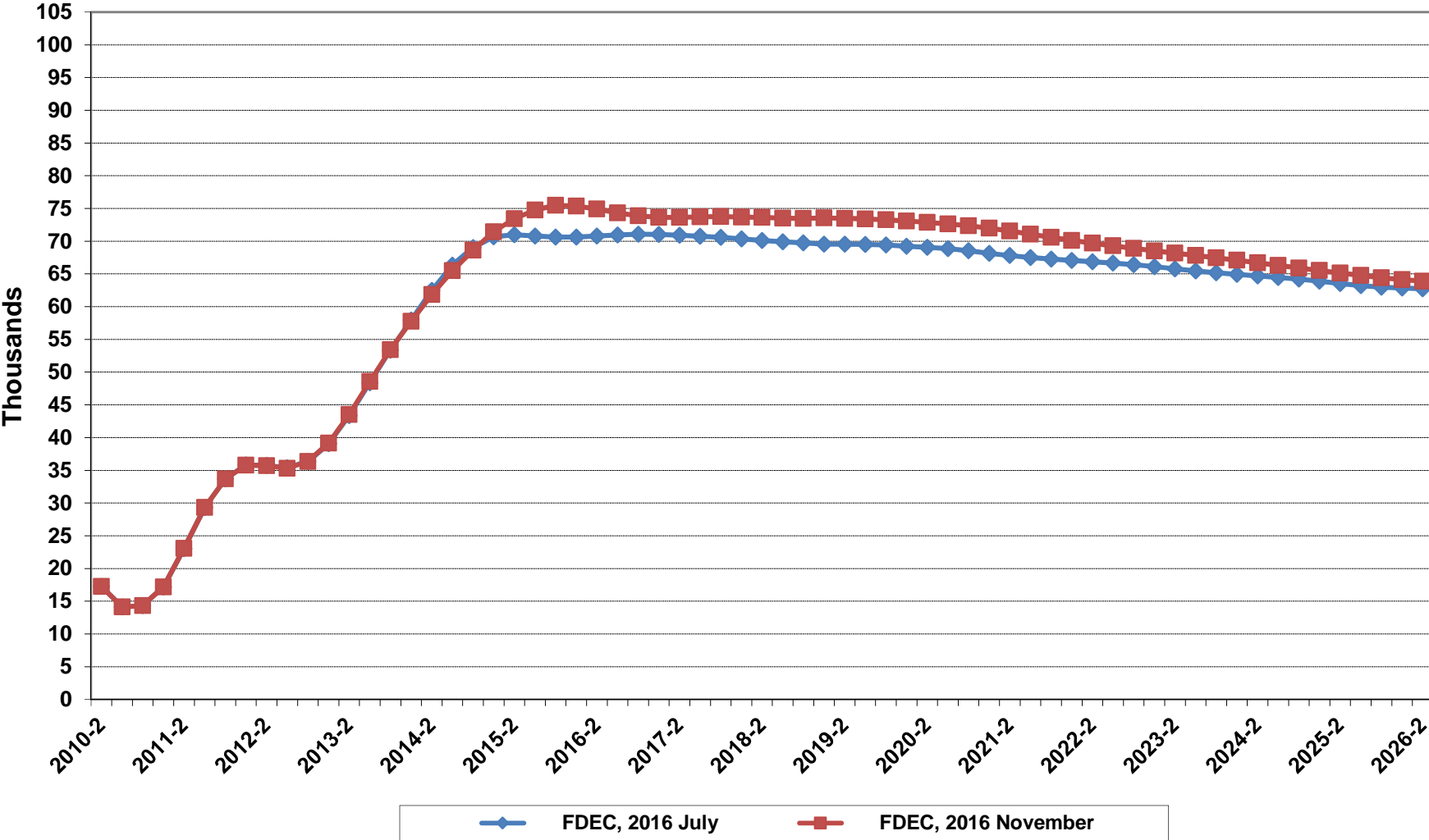
# Florida Average Household Size



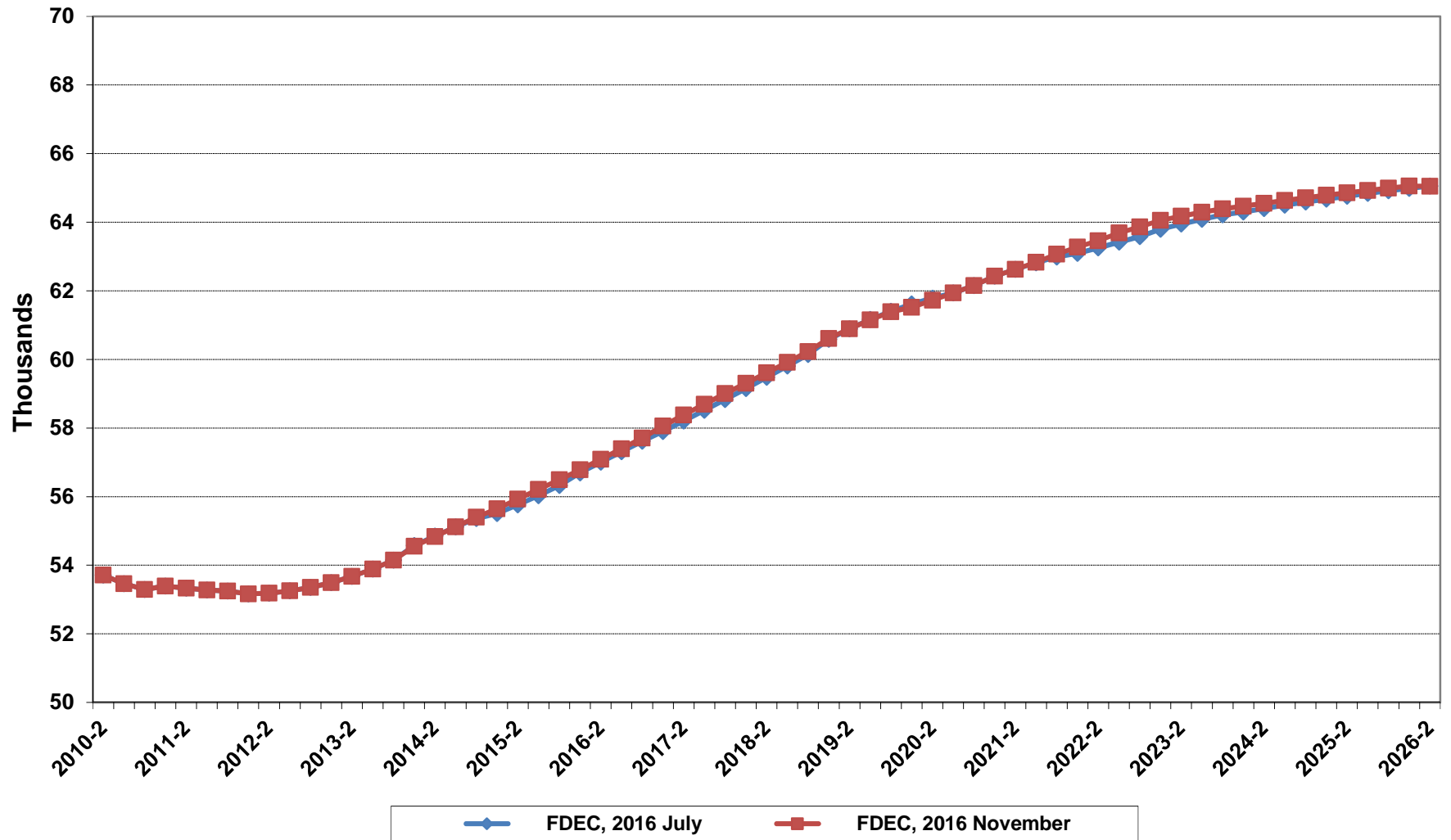
# Growth In Florida Household Size



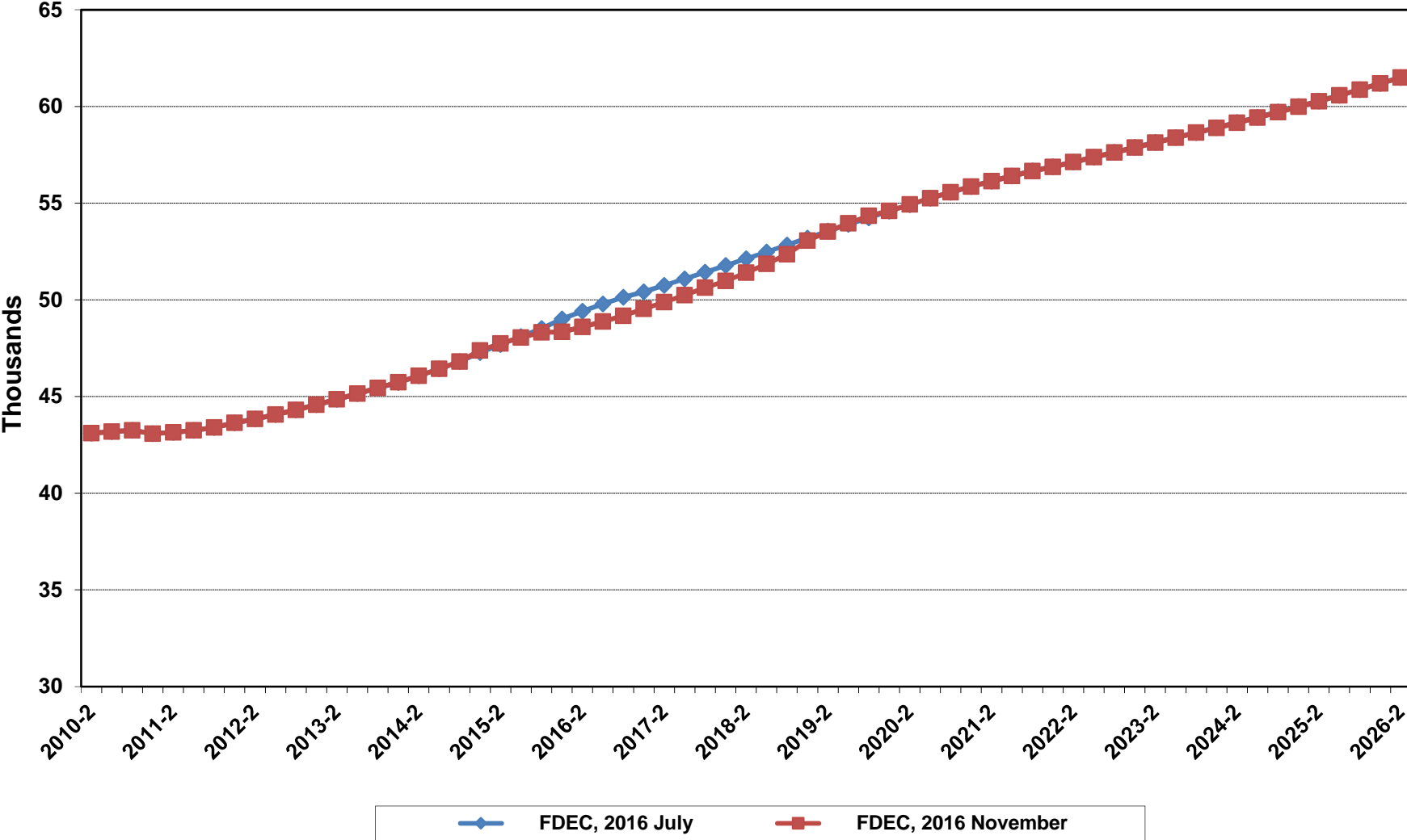
# Florida Net Migration



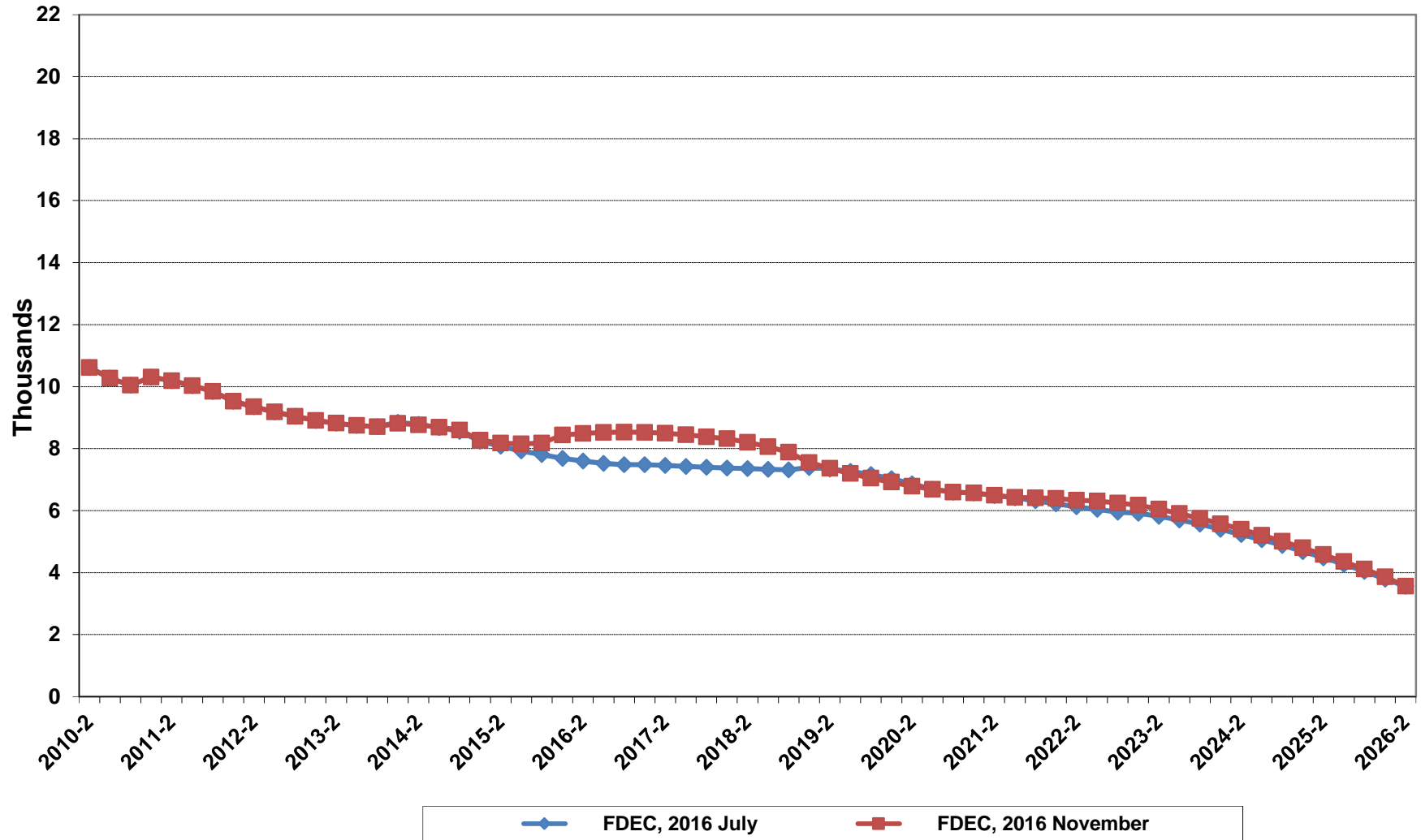
# Florida Resident Births



# Florida Resident Deaths

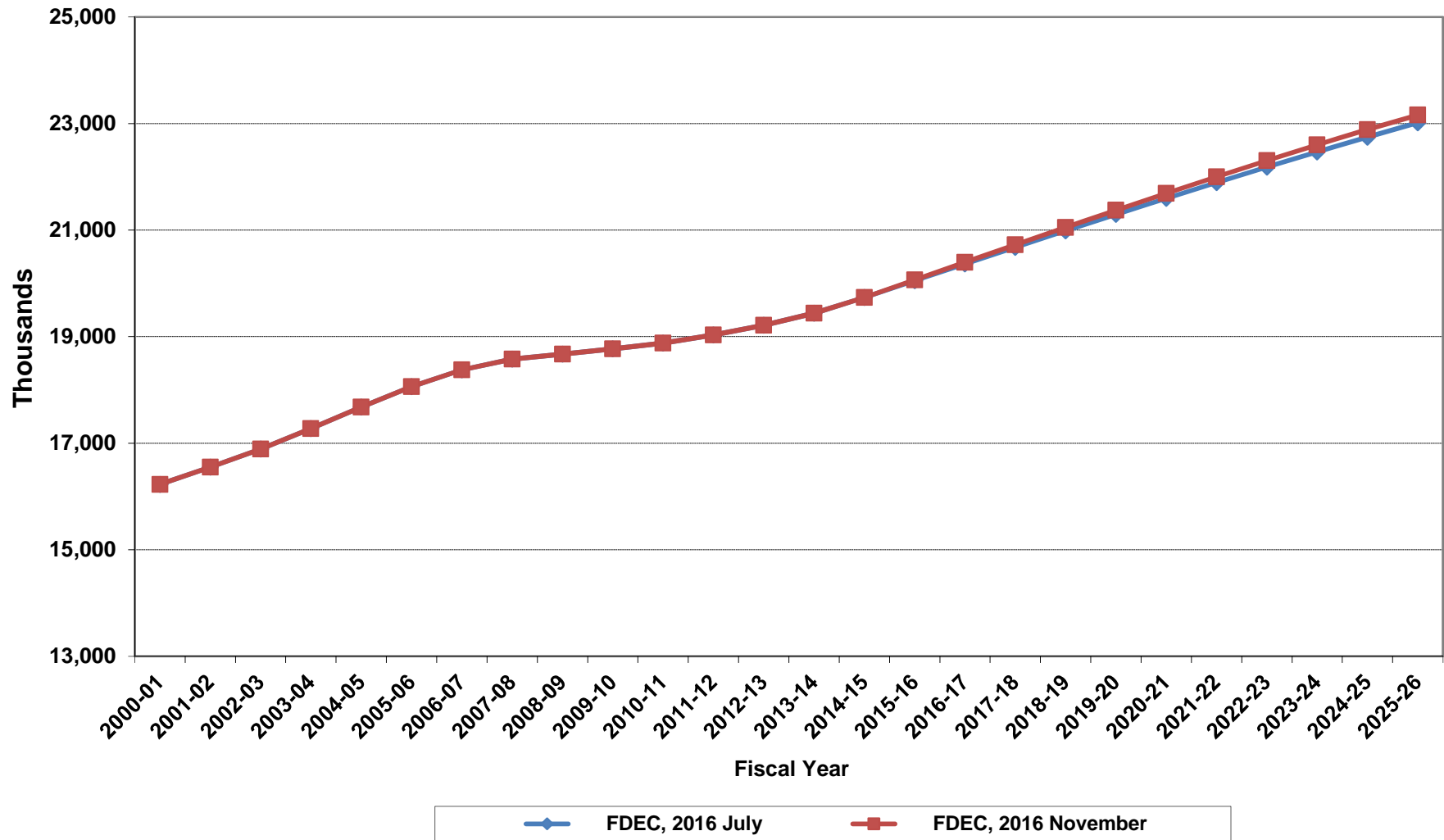


# Florida Net Natural Increase

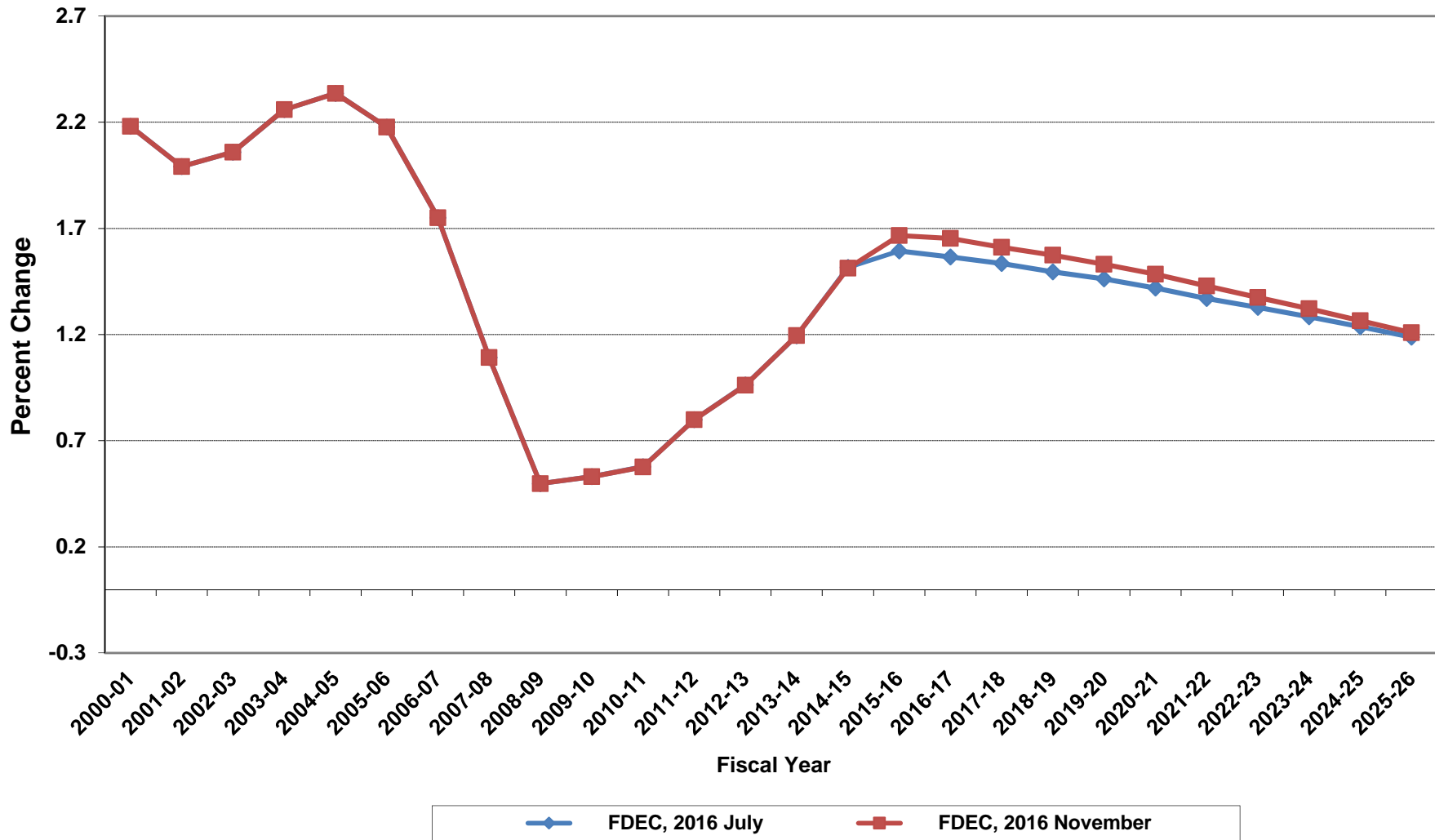




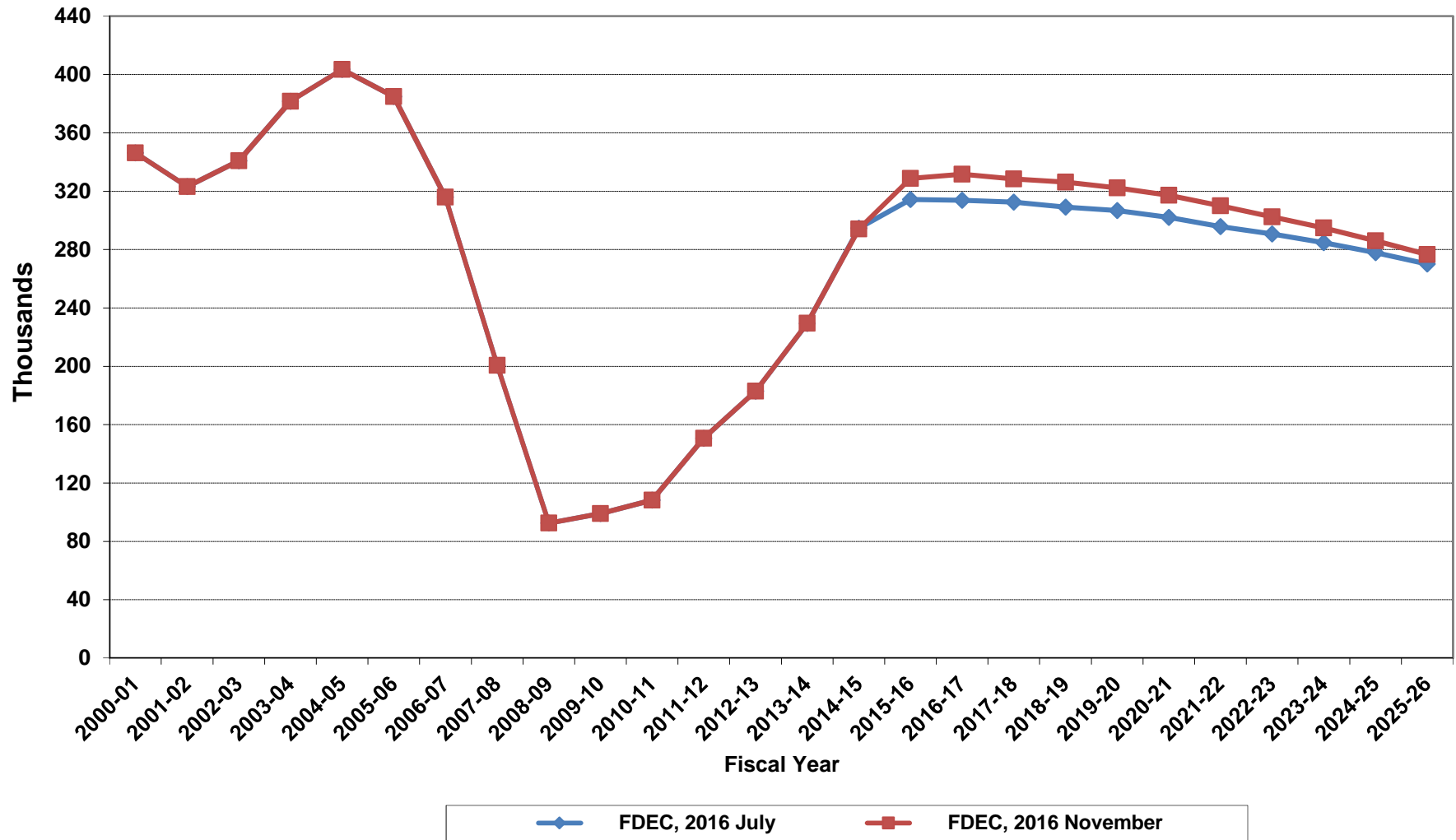
# Florida Resident Population



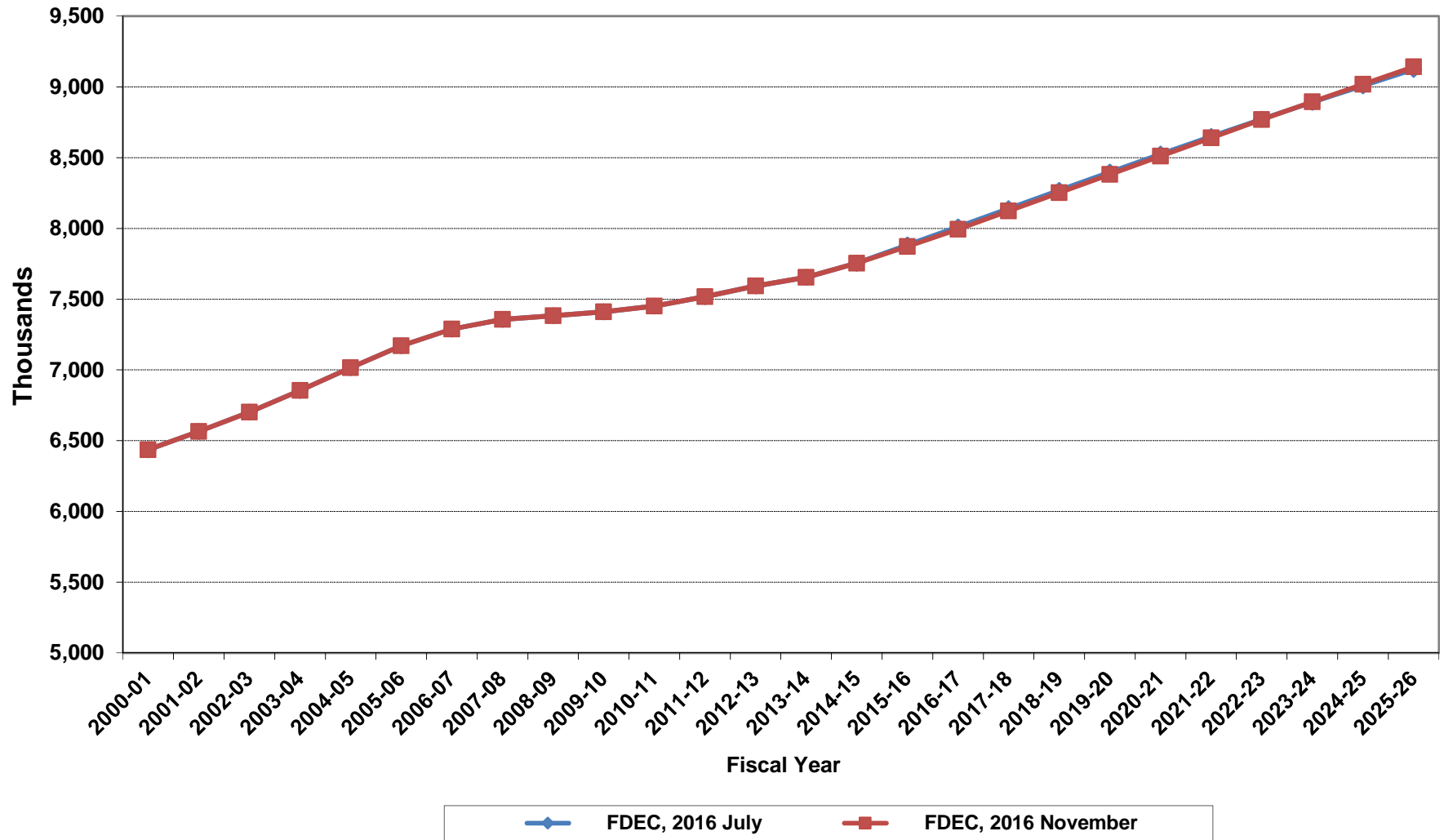
# Growth In Florida Resident Population



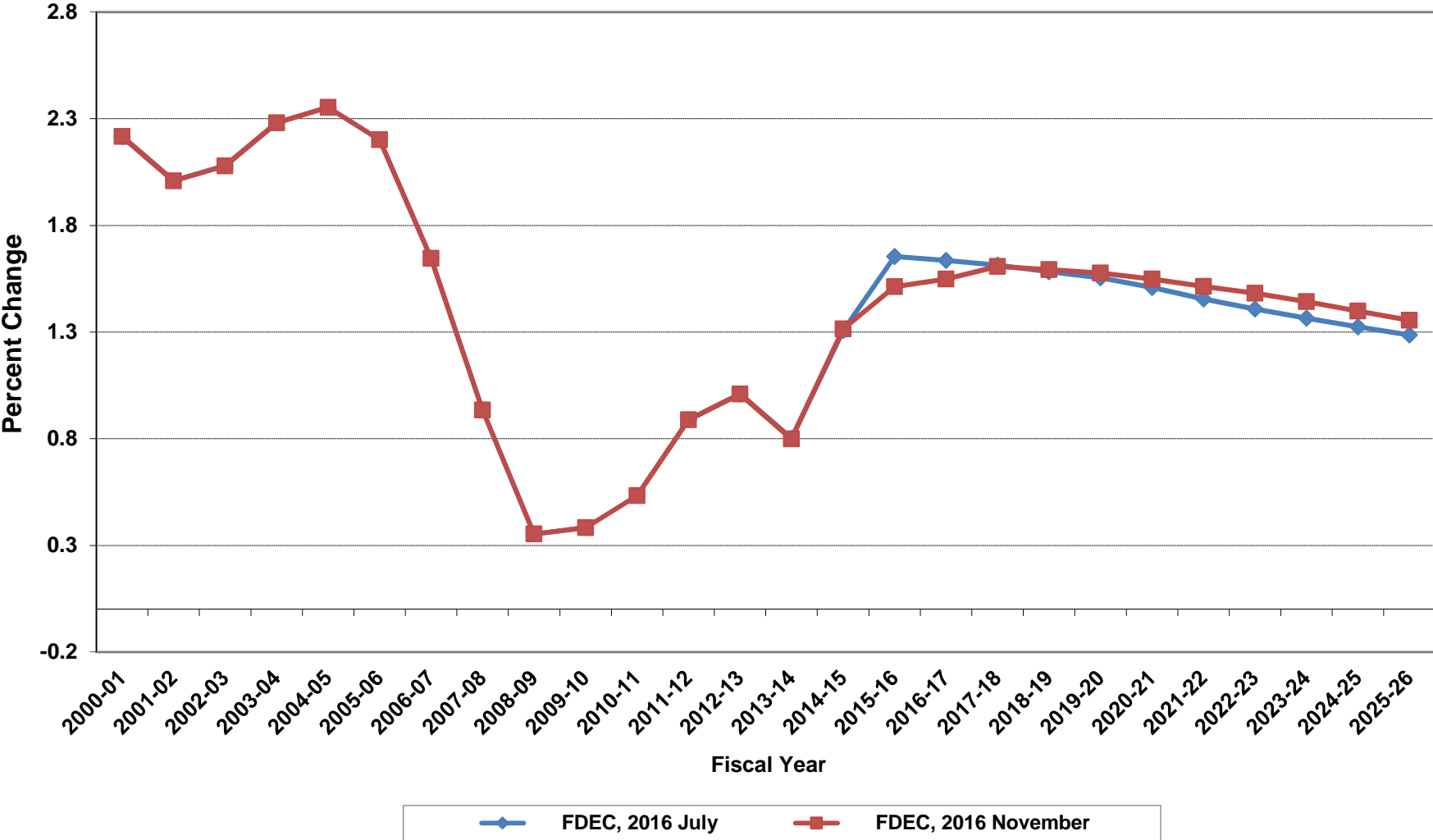
# Net Change In Florida Resident Population



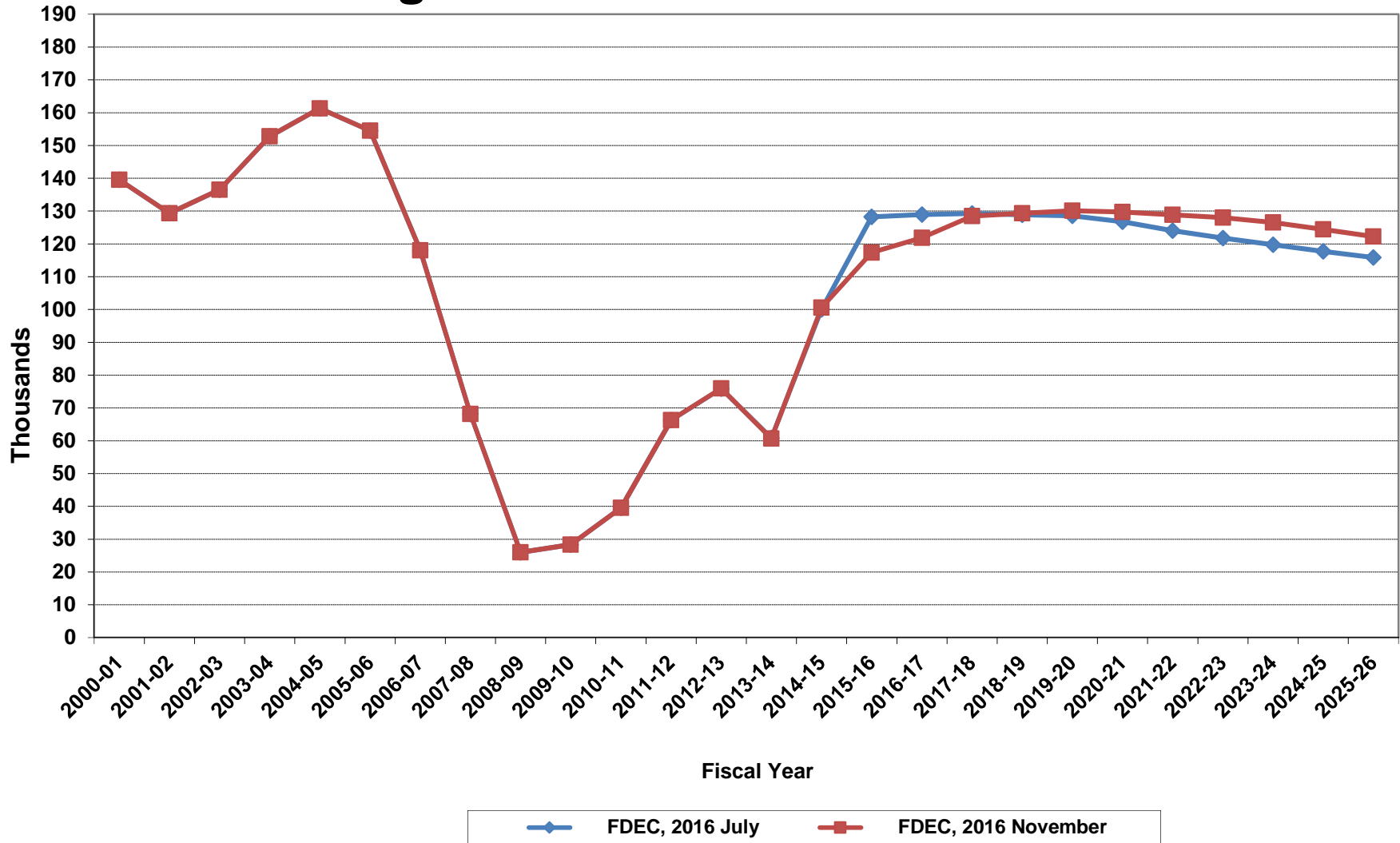
# Florida Resident Households



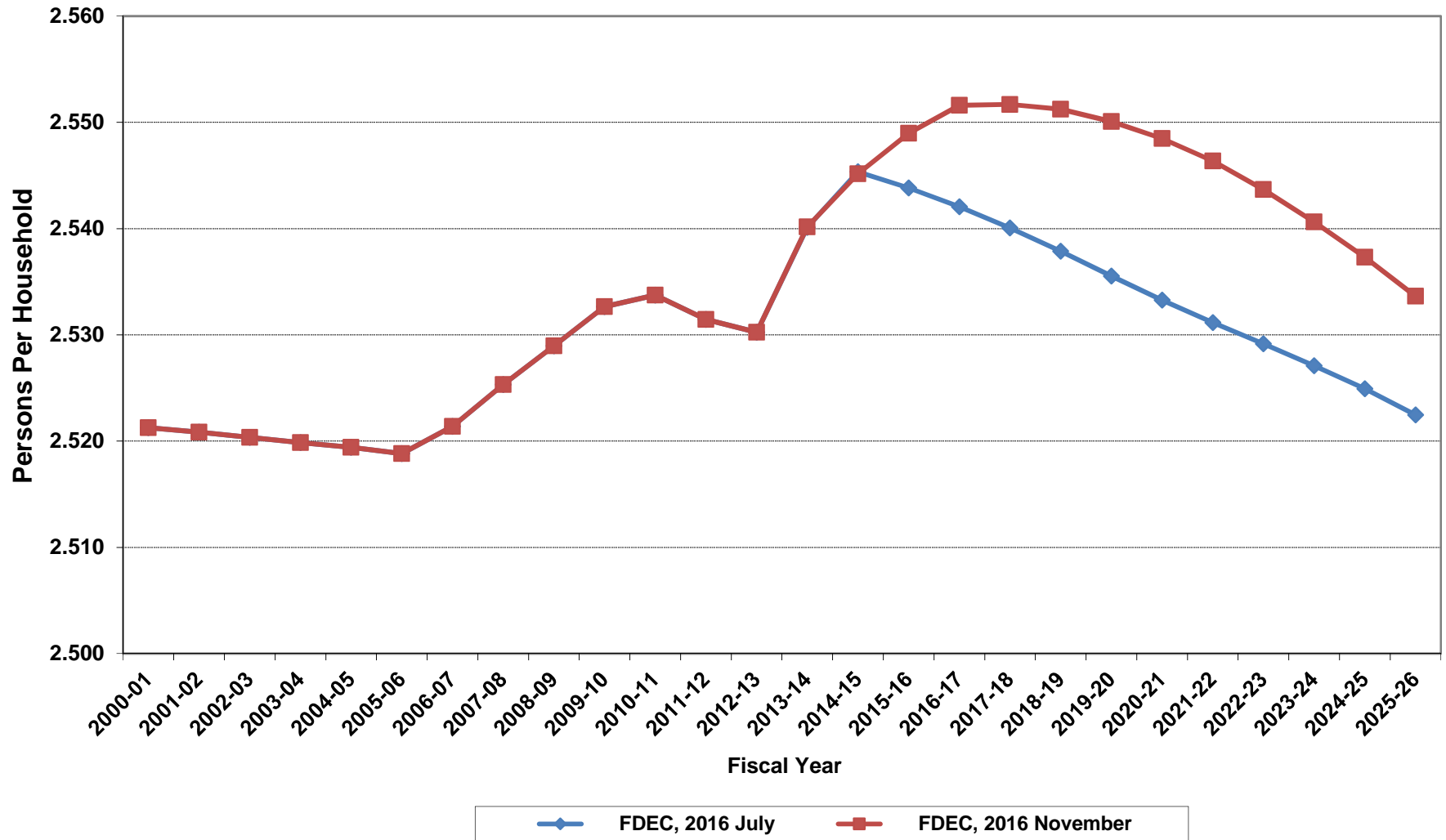
# Growth In Florida Resident Households



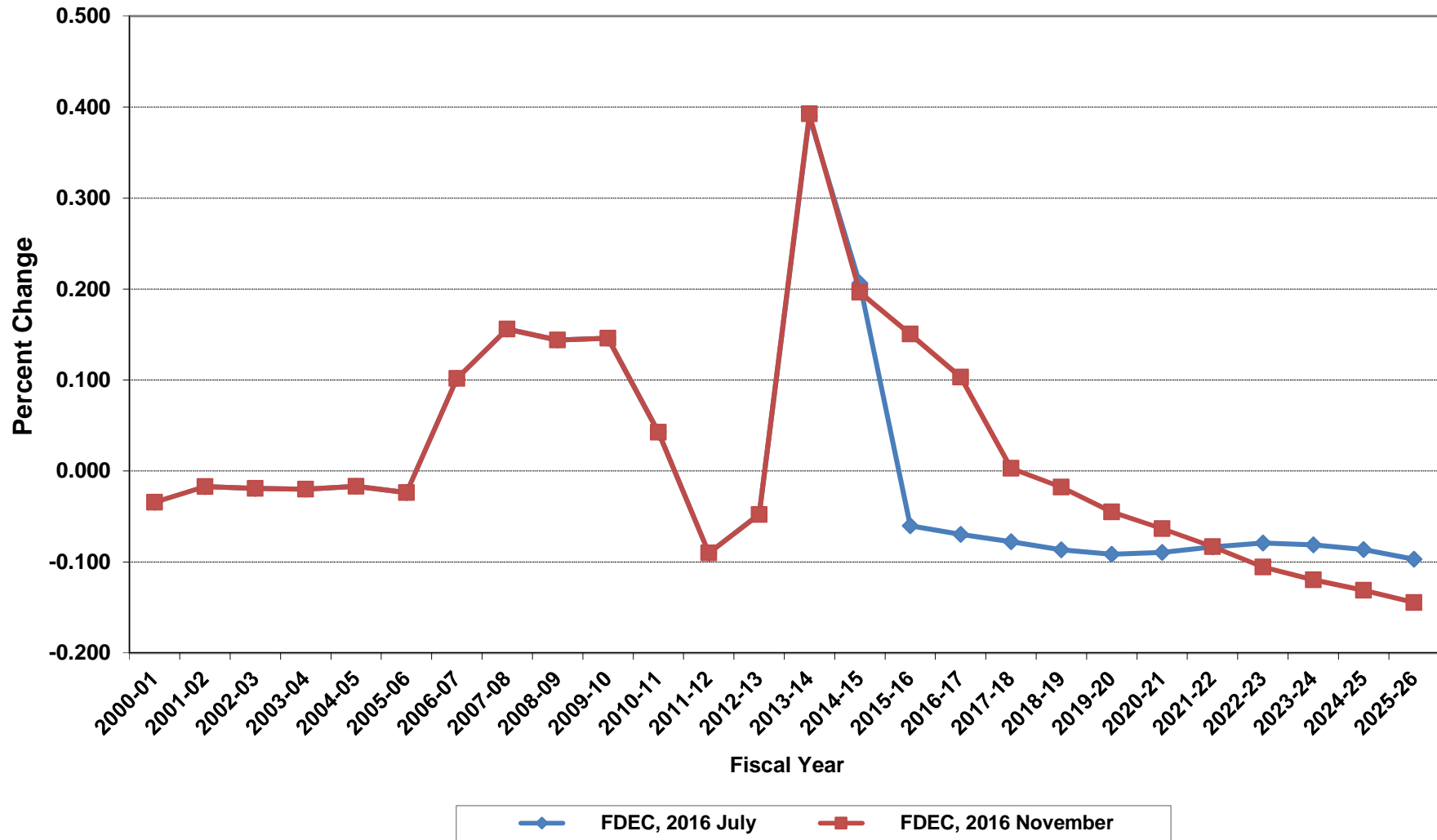
# Net Change In Florida Resident Households



# Average Florida Household Size

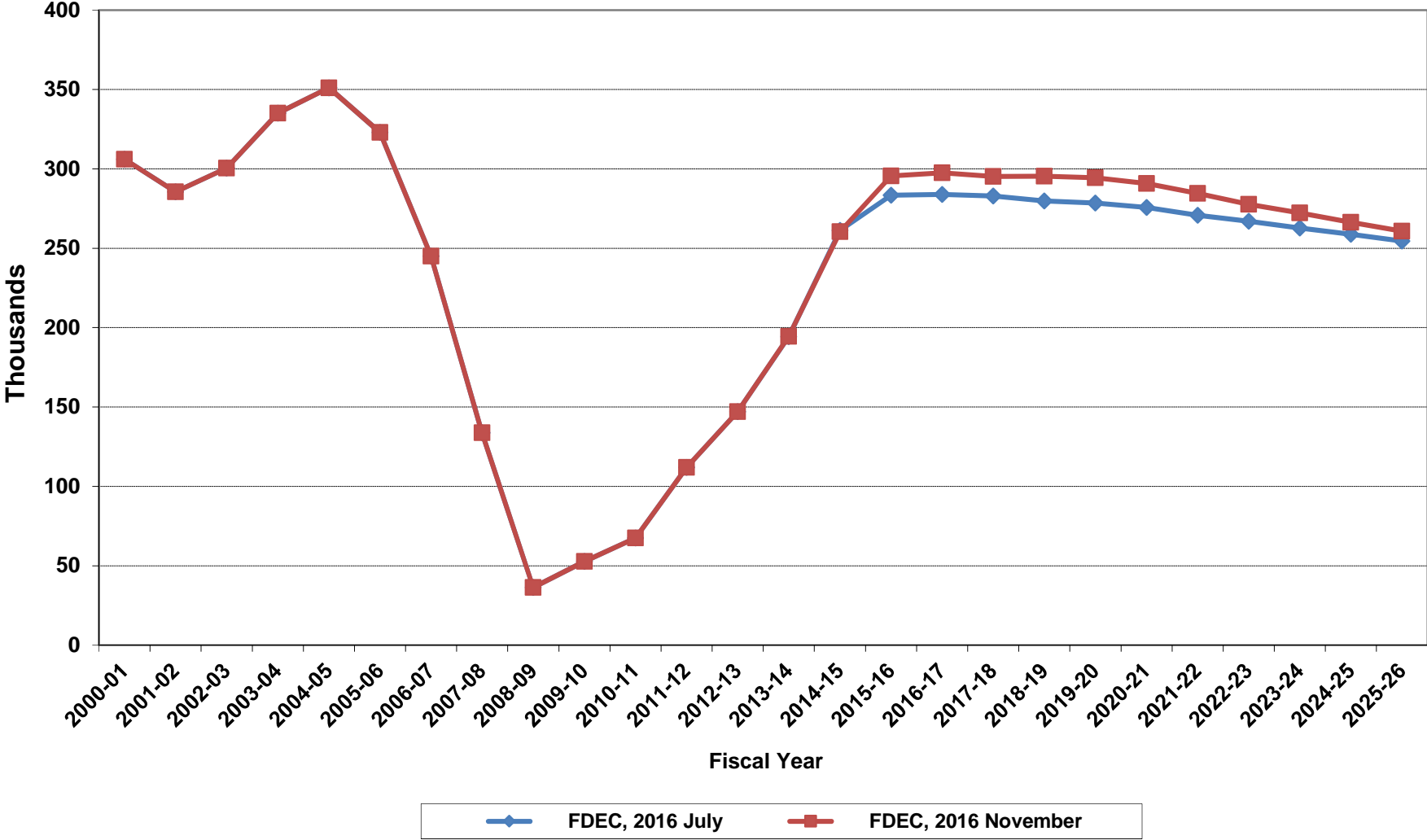


# Growth In Average Florida Household Size

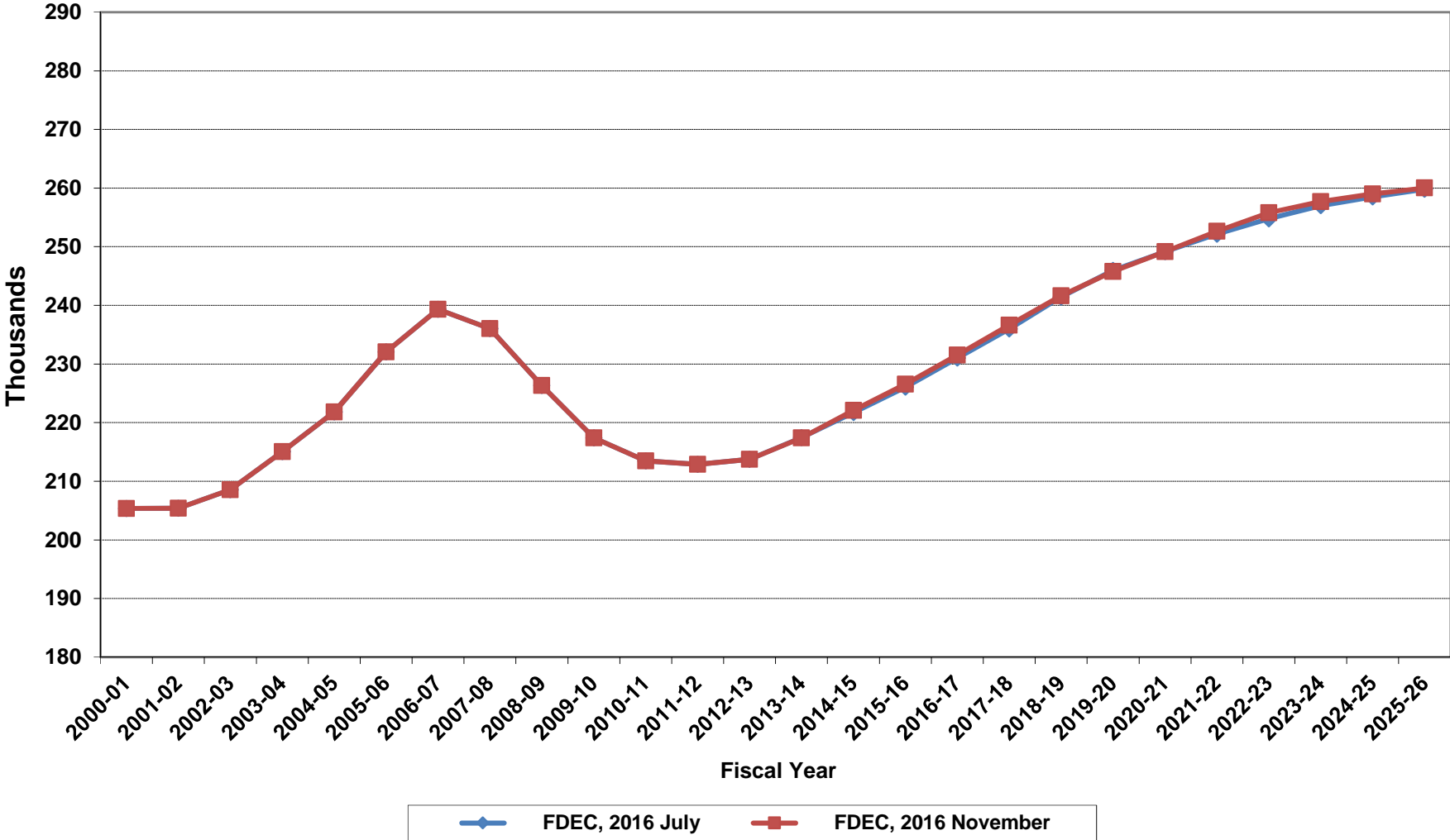




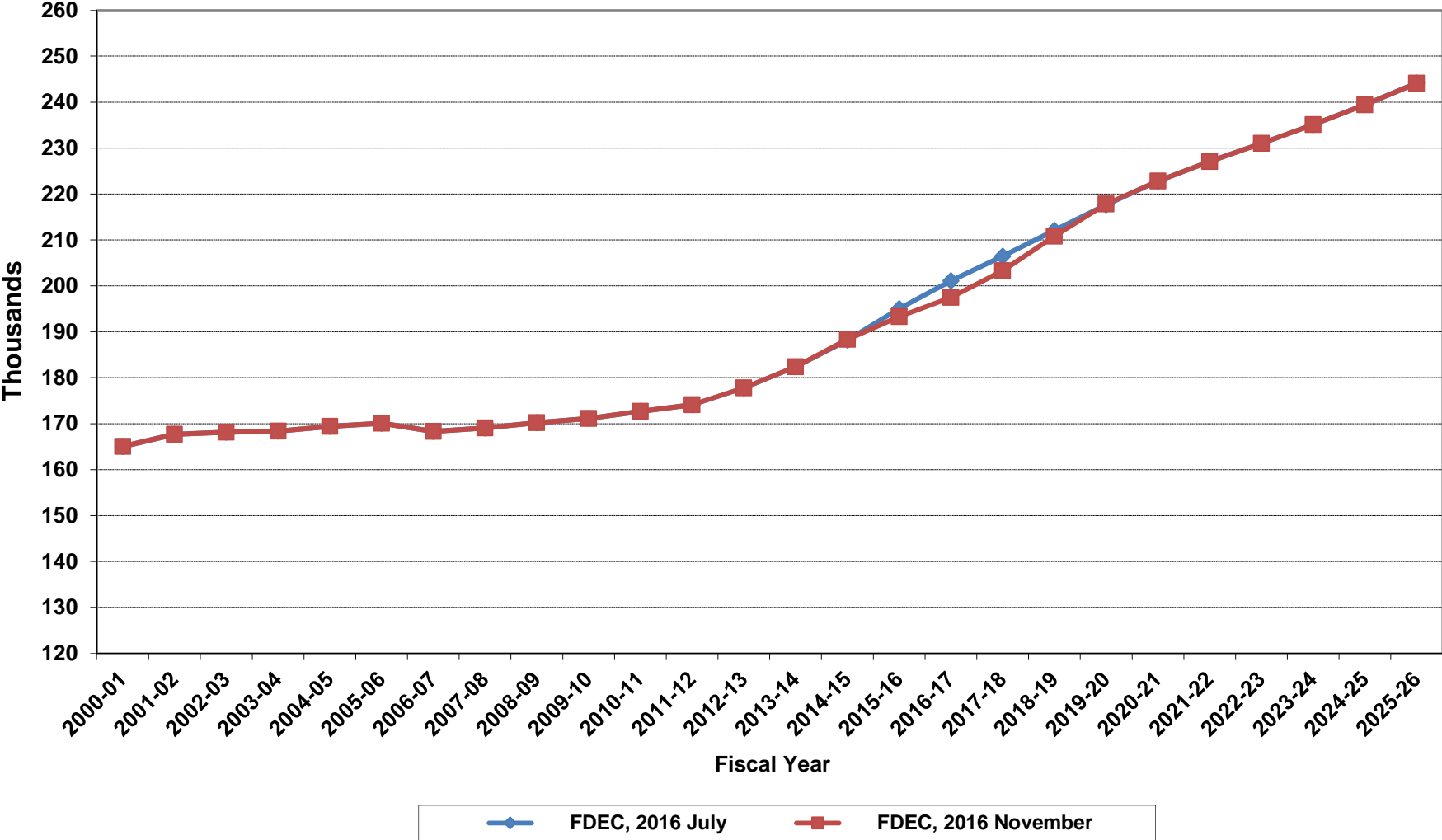
# Florida Net Migration



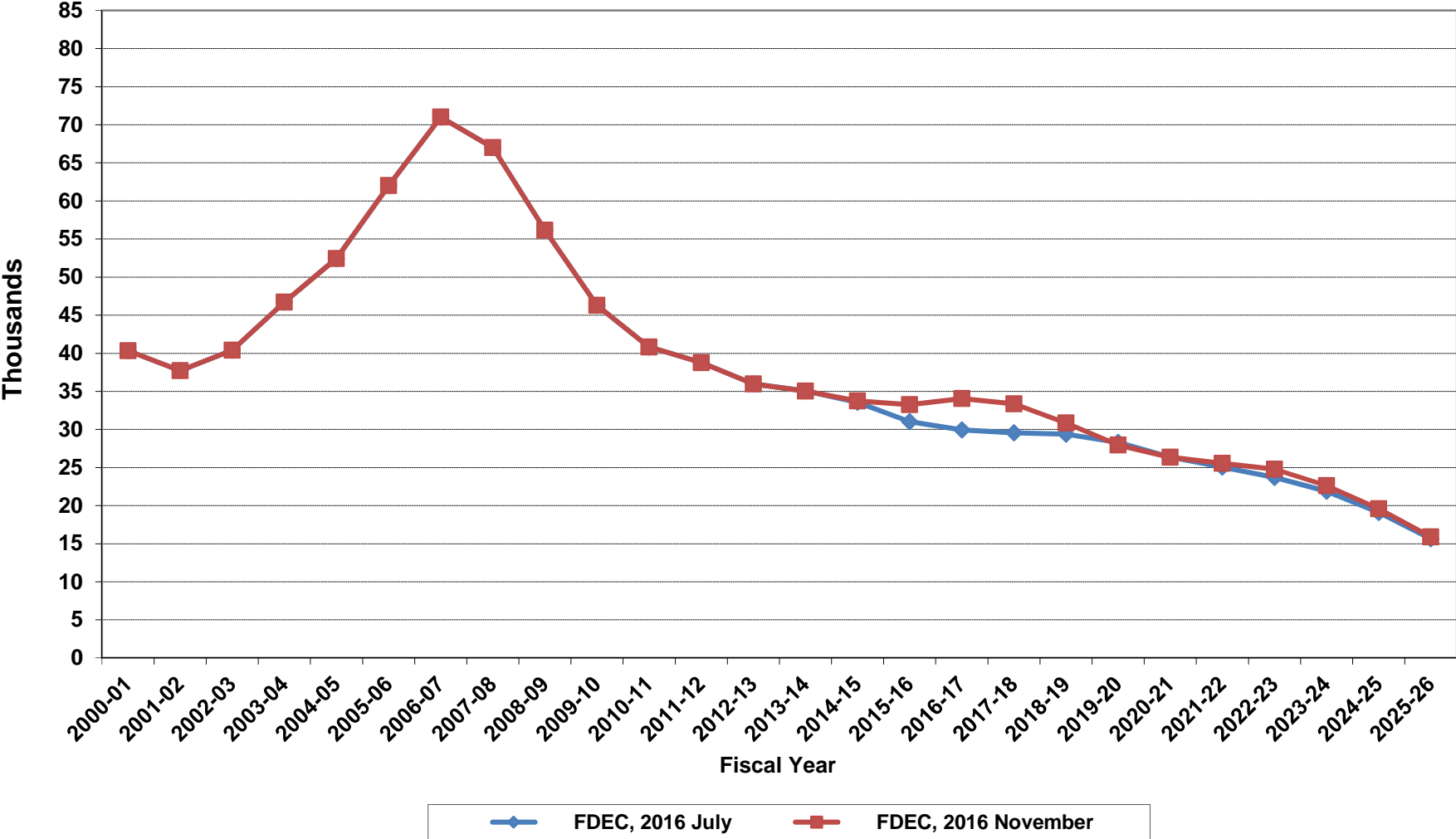
# Florida Resident Live Births



# Florida Resident Deaths



# Florida Net Natural Increase



**Florida Population and Components of Change**

<b>Fiscal Year</b>	<b>Population (End of Fiscal Year)</b>	<b>Growth Rate</b>	<b>Annual Change in Population</b>	<b>Births</b>	<b>Deaths</b>	<b>Net Natural Increase</b>	<b>Net Migration</b>
1950 - 51	2,981,346	6.50%	181,931	67,486	27,670	39,816	142,115
1951 - 52	3,155,442	5.84%	174,096	72,383	28,942	43,441	130,655
1952 - 53	3,312,521	4.98%	157,079	76,954	29,761	47,193	109,886
1953 - 54	3,504,323	5.79%	191,802	82,725	31,055	51,670	140,132
1954 - 55	3,747,400	6.94%	243,077	86,643	32,176	54,467	188,610
1955 - 56	4,046,062	7.97%	298,662	92,941	34,932	58,009	240,653
1956 - 57	4,370,045	8.01%	323,983	100,990	38,269	62,721	261,262
1957 - 58	4,629,510	5.94%	259,465	105,972	41,911	64,061	195,404
1958 - 59	4,812,270	3.95%	182,760	110,409	43,674	66,735	116,025
1959 - 60	4,998,508	3.87%	186,238	114,428	46,057	68,371	117,867
1960 - 61	5,185,913	3.75%	187,405	116,449	48,388	68,061	119,344
1961 - 62	5,367,899	3.51%	181,986	116,120	50,346	65,774	116,212
1962 - 63	5,553,522	3.46%	185,623	114,709	54,453	60,256	125,367
1963 - 64	5,728,499	3.15%	174,977	115,002	56,229	58,773	116,204
1964 - 65	5,881,195	2.67%	152,696	110,515	57,734	52,781	99,915
1965 - 66	6,065,768	3.14%	184,573	104,367	61,217	43,150	141,423
1966 - 67	6,249,674	3.03%	183,906	101,209	62,577	38,632	145,274
1967 - 68	6,441,756	3.07%	192,082	100,320	66,134	34,186	157,896
1968 - 69	6,633,546	2.98%	191,790	104,286	71,285	33,001	158,789
1969 - 70	6,861,118	3.43%	227,572	111,511	73,831	37,680	189,892
1970 - 71	7,233,583	5.43%	372,465	117,012	75,354	41,658	330,807
1971 - 72	7,681,540	6.19%	447,957	113,568	79,717	33,851	414,106
1972 - 73	8,157,883	6.20%	476,343	107,804	86,232	21,572	454,771
1973 - 74	8,515,208	4.38%	357,325	109,366	88,459	20,907	336,418
1974 - 75	8,648,587	1.57%	133,379	108,686	87,224	21,462	111,917
1975 - 76	8,782,975	1.55%	134,388	104,022	88,129	15,893	118,495
1976 - 77	8,972,678	2.16%	189,703	107,623	90,443	17,180	172,523
1977 - 78	9,225,527	2.82%	252,849	112,268	93,383	18,885	233,964
1978 - 79	9,523,728	3.23%	298,201	116,393	96,801	19,592	278,609
1979 - 80	9,914,652	4.10%	390,924	126,673	101,048	25,625	365,299
1980 - 81	10,212,969	3.01%	298,317	135,560	107,562	27,998	270,319
1981 - 82	10,492,851	2.74%	279,882	141,593	108,644	32,949	246,933
1982 - 83	10,748,466	2.44%	255,615	146,853	110,497	36,356	219,259
1983 - 84	11,065,911	2.95%	317,445	151,748	113,939	37,809	279,636
1984 - 85	11,405,533	3.07%	339,622	159,819	117,539	42,280	297,342
1985 - 86	11,740,069	2.93%	334,536	165,857	122,453	43,404	291,132
1986 - 87	12,083,241	2.92%	343,172	170,819	124,946	45,873	297,299
1987 - 88	12,410,339	2.71%	327,098	179,541	129,413	50,128	276,970
1988 - 89	12,723,719	2.53%	313,380	188,390	131,992	56,398	256,982
1989 - 90	13,017,296	2.31%	293,577	197,181	132,503	64,678	228,899
1990 - 91	13,326,892	2.38%	309,596	197,180	134,093	63,087	246,509
1991 - 92	13,552,021	1.69%	225,129	191,810	136,280	55,530	169,599
1992 - 93	13,802,571	1.85%	250,550	192,051	142,087	49,964	200,586
1993 - 94	14,120,323	2.30%	317,752	191,840	146,101	45,739	272,013
1994 - 95	14,406,418	2.03%	286,095	189,292	149,161	40,131	245,964
1995 - 96	14,701,040	2.05%	294,622	188,584	152,570	36,014	258,608
1996 - 97	15,012,615	2.12%	311,575	190,587	153,067	37,520	274,055
1997 - 98	15,310,069	1.98%	297,454	194,242	155,080	39,162	258,292
1998 - 99	15,680,164	2.42%	370,095	195,897	159,988	35,909	334,186
1999 - 00	16,069,889	2.49%	389,725	200,302	162,489	37,813	351,912
2000 - 01	16,385,615	1.96%	315,726	205,798	164,919	40,879	274,847
2001 - 02	16,718,076	2.03%	332,461	205,164	167,812	37,352	295,109
2002 - 03	17,074,258	2.13%	356,182	208,403	168,079	40,324	315,858
2003 - 04	17,475,944	2.35%	401,686	215,298	168,302	46,996	354,690
2004 - 05	17,876,215	2.29%	400,271	221,533	169,302	52,231	348,040
2005 - 06	18,236,885	2.02%	360,670	232,019	170,303	61,716	298,954
2006 - 07	18,501,231	1.45%	264,346	239,635	168,117	71,518	192,828
2007 - 08	18,636,837	0.73%	135,606	236,065	168,966	67,099	68,507
2008 - 09	18,711,844	0.40%	75,007	226,337	170,615	55,722	19,285
2009 - 10	18,826,492	0.61%	114,648	217,408	171,117	46,291	68,357

**Florida Population and Components of Change**

<b>Fiscal Year</b>	<b>Population (End of Fiscal Year)</b>	<b>Growth Rate</b>	<b>Annual Change in Population</b>	<b>Births</b>	<b>Deaths</b>	<b>Net Natural Increase</b>	<b>Net Migration</b>
2010 - 11	18,941,741	0.61%	115,249	213,468	172,661	40,807	74,442
2011 - 12	19,118,941	0.94%	177,200	212,876	174,123	38,753	138,447
2012 - 13	19,314,384	1.02%	195,443	213,763	177,804	35,959	159,484
2013 - 14	19,579,915	1.37%	265,531	217,422	182,389	35,033	230,498
2014 - 15	19,897,601	1.62%	317,686	222,092	188,358	33,734	283,952
2015 - 16	20,231,756	1.68%	334,155	226,576	193,310	33,266	300,889
2016 - 17	20,560,808	1.63%	329,052	231,544	197,470	34,074	294,978
2017 - 18	20,888,718	1.59%	327,910	236,611	203,259	33,352	294,558
2018 - 19	21,213,136	1.55%	324,418	241,652	210,796	30,856	293,562
2019 - 20	21,533,093	1.51%	319,957	245,781	217,834	27,947	292,010
2020 - 21	21,847,103	1.46%	314,010	249,149	222,810	26,339	287,671
2021 - 22	22,153,171	1.40%	306,068	252,634	227,074	25,560	280,508
2022 - 23	22,451,932	1.35%	298,761	255,784	231,002	24,782	273,979
2023 - 24	22,742,567	1.29%	290,635	257,711	235,081	22,630	268,005
2024 - 25	23,023,869	1.24%	281,302	258,998	239,397	19,601	261,701
2025 - 26	23,295,840	1.18%	271,971	260,022	244,124	15,898	256,073
2026 - 27	23,558,930	1.13%	263,090	260,899	249,033	11,866	251,224
2027 - 28	23,813,826	1.08%	254,896	261,962	254,013	7,949	246,947
2028 - 29	24,062,277	1.04%	248,451	263,023	259,347	3,676	244,775
2029 - 30	24,304,971	1.01%	242,694	264,085	264,810	-725	243,419
2030 - 31	24,543,088	0.98%	238,117	265,207	270,133	-4,926	243,043
2031 - 32	24,776,063	0.95%	232,975	266,382	275,944	-9,562	242,537
2032 - 33	25,003,745	0.92%	227,682	267,721	282,015	-14,294	241,976
2033 - 34	25,226,802	0.89%	223,057	269,293	287,886	-18,593	241,650
2034 - 35	25,445,574	0.87%	218,772	270,933	293,338	-22,405	241,177
2035 - 36	25,660,011	0.84%	214,437	272,643	298,989	-26,346	240,783
2036 - 37	25,869,495	0.82%	209,484	274,622	305,223	-30,601	240,085
2037 - 38	26,075,360	0.80%	205,865	276,841	311,184	-34,343	240,208
2038 - 39	26,278,248	0.78%	202,888	279,293	316,551	-37,258	240,146