

**Demographic Estimating Conference
Executive Summary
February 6, 2019**

The Demographic Estimating Conference met on February 6, 2019, to adopt a new population forecast. The new estimates reflect recent demographic and economic-related data. Compared to the last conference, the population projection for April 1, 2019 was revised upward by 14,133, reflecting stronger residential electric meter growth than anticipated in November. The upward revisions grow to 28,258 on April 1, 2024.

The Conference reaffirmed that the effect of Hurricane Michael likely caused some shifting of population among counties and cities, however it was unlikely that the overall state total population was negatively affected. Therefore, no discrete adjustment was made to the forecast.

In the new forecast, changes in population growth are due mostly to net migration, as natural increase represented even a smaller percentage of the change relative to the last conference.

April 1	Population	Change from the Prior Year	
		Percent	Numeric
2012	19,074,434	0.90%	169,364
2013	19,259,543	0.97%	185,109
2014	19,507,369	1.29%	247,826
2015	19,815,183	1.58%	307,814
2016	20,148,654	1.68%	333,471
2017	20,484,142	1.67%	335,488
2018	20,840,568	1.74%	356,426
<i>Forecast</i>			
2019	21,184,532	1.65%	343,964
2020	21,517,610	1.57%	333,078
2021	21,842,151	1.51%	324,541
2022	22,158,870	1.45%	316,719
2023	22,466,893	1.39%	308,023
2024	22,764,194	1.32%	297,301

Between April 1, 2018 and April 1, 2024, population growth is expected to average 320,604 net new residents per year (878 per day), representing a compound growth rate of 1.48% over this six-year time horizon. These increases are analogous to adding a city slightly larger than Orlando every year.

Of note, the population estimates developed by the U.S. Census Bureau continue to be higher than the official state estimates adopted by the Demographic Estimating Conference. In the latest comparable set of estimates (July 1, 2018), the difference was about 370,990 persons. The Legislative Office of Economic and Demographic Research is continuing its efforts to identify how the differing underlying methodologies contribute to the gap between the two sets of estimates.

Florida Demographic Estimating Conference

Tables
Conference Packet

February 6, 2019

Florida Resident Population

April 1

Year	Florida Demographic Estimating Conference November 2018			Florida Demographic Estimating Conference February 2019			
	Population	% Change	Change	Population	% Change	Change	
2000	15,982,824	2.58%	402,580	15,982,824	2.58%	402,580	
2001	16,305,100	2.02%	322,276	16,305,100	2.02%	322,276	
2002	16,634,256	2.02%	329,156	16,634,256	2.02%	329,156	
2003	16,979,706	2.08%	345,450	16,979,706	2.08%	345,450	
2004	17,374,824	2.33%	395,118	17,374,824	2.33%	395,118	
2005	17,778,156	2.32%	403,332	17,778,156	2.32%	403,332	
2006	18,154,475	2.12%	376,319	18,154,475	2.12%	376,319	
2007	18,446,768	1.61%	292,293	18,446,768	1.61%	292,293	
2008	18,613,905	0.91%	167,137	18,613,905	0.91%	167,137	
2009	18,687,425	0.39%	73,520	18,687,425	0.39%	73,520	
2010	18,801,332	0.61%	113,907	18,801,332	0.61%	113,907	
2011	18,905,070	0.55%	103,738	18,905,070	0.55%	103,738	
2012	19,074,434	0.90%	169,364	19,074,434	0.90%	169,364	
2013	19,259,543	0.97%	185,109	19,259,543	0.97%	185,109	
2014	19,507,369	1.29%	247,826	19,507,369	1.29%	247,826	
2015	19,815,183	1.58%	307,814	19,815,183	1.58%	307,814	
2016	20,148,654	1.68%	333,471	20,148,654	1.68%	333,471	
2017	20,484,142	1.67%	335,488	20,484,142	1.67%	335,488	
2018	20,840,568	1.74%	356,426	20,840,568	1.74%	356,426	
Begins forecast							
2019	21,170,399	1.58%	329,831	21,184,532	1.65%	343,964	
2020	21,496,410	1.54%	326,011	21,517,610	1.57%	333,078	
2021	21,817,417	1.49%	321,007	21,842,151	1.51%	324,541	
2022	22,132,369	1.44%	314,952	22,158,870	1.45%	316,719	
2023	22,439,508	1.39%	307,139	22,466,893	1.39%	308,023	
2024	22,735,936	1.32%	296,428	22,764,194	1.32%	297,301	
			5-Year Averages				5-Year Averages
2025	23,021,659	1.38%	305,050	23,050,820	1.39%	306,642	
2030	24,300,834	1.09%	255,835	24,340,457	1.09%	257,927	
2035	25,394,497	0.88%	218,733	25,429,340	0.88%	217,777	
2040	26,343,525	0.74%	189,806	26,373,603	0.73%	188,853	
2045	27,194,481	0.64%	170,191	27,219,985	0.63%	169,276	

Florida Resident Households

April 1

Year	Florida Demographic Estimating Conference November 2018			Florida Demographic Estimating Conference February 2019			
	Households	% Change	Change	Households	% Change	Change	
2000	6,338,075	2.52%	155,729	6,338,075	2.65%	163,703	
2001	6,467,215	2.04%	129,140	6,460,934	1.94%	122,859	
2002	6,599,035	2.04%	131,820	6,586,806	1.95%	125,872	
2003	6,737,370	2.10%	138,335	6,719,399	2.01%	132,593	
2004	6,895,469	2.35%	158,099	6,872,318	2.28%	152,919	
2005	7,056,889	2.34%	161,420	7,029,787	2.29%	157,469	
2006	7,207,645	2.14%	150,756	7,178,486	2.12%	148,699	
2007	7,312,907	1.46%	105,262	7,292,550	1.59%	114,064	
2008	7,368,319	0.76%	55,412	7,354,880	0.85%	62,330	
2009	7,386,570	0.25%	18,251	7,379,964	0.34%	25,084	
2010	7,525,335	1.88%	138,765	7,420,802	0.55%	40,838	
2011	7,456,791	-0.91%	-68,544	7,456,791	0.48%	35,989	
2012	7,525,335	0.92%	68,544	7,525,335	0.92%	68,544	
2013	7,602,417	1.02%	77,082	7,602,417	1.02%	77,082	
2014	7,708,538	1.40%	106,121	7,708,538	1.40%	106,121	
2015	7,840,780	1.72%	132,242	7,840,780	1.72%	132,242	
2016	7,982,938	1.81%	142,158	7,982,938	1.81%	142,158	
2017	8,125,176	1.78%	142,238	8,125,176	1.78%	142,238	
2018	8,275,600	1.85%	150,424	8,271,058	1.80%	145,882	
Begins forecast							
2019	8,414,576	1.68%	138,976	8,416,658	1.76%	145,600	
2020	8,555,197	1.67%	140,621	8,558,104	1.68%	141,446	
2021	8,695,424	1.64%	140,227	8,699,034	1.65%	140,930	
2022	8,833,823	1.59%	138,399	8,837,951	1.60%	138,917	
2023	8,968,446	1.52%	134,623	8,973,363	1.53%	135,412	
2024	9,103,376	1.50%	134,930	9,108,523	1.51%	135,160	
			5-Year Averages				5-Year Averages
2025	9,238,895	1.55%	136,740	9,244,463	1.55%	137,272	
2030	9,865,319	1.32%	125,285	9,884,007	1.35%	127,909	
2035	10,420,326	1.10%	111,001	10,438,083	1.10%	110,815	
2040	10,868,670	0.85%	89,669	10,883,349	0.84%	89,053	
2045	11,234,724	0.66%	73,211	11,247,107	0.66%	72,752	

Note: Household series has been revised from 2001 forward.

Quarterly Data Table

	<u>2010-2</u>	<u>2010-3</u>	<u>2010-4</u>	<u>2011-1</u>	<u>2011-2</u>	<u>2011-3</u>	<u>2011-4</u>	<u>2012-1</u>	<u>2012-2</u>	<u>2012-3</u>	<u>2012-4</u>	<u>2013-1</u>	<u>2013-2</u>	<u>2013-3</u>
Population														
FDEC, November 2018	18,813.9	18,838.3	18,862.7	18,890.2	18,923.4	18,962.8	19,006.3	19,051.6	19,096.7	19,141.2	19,186.6	19,234.6	19,286.9	19,344.2
FDEC, February 2019	18,813.9	18,838.3	18,862.7	18,890.2	18,923.4	18,962.8	19,006.3	19,051.6	19,096.7	19,141.2	19,186.6	19,234.6	19,286.9	19,344.2
Population Growth Rate														
FDEC, November 2018	0.59	0.52	0.52	0.58	0.71	0.83	0.92	0.96	0.95	0.94	0.95	1.01	1.09	1.19
FDEC, February 2019	0.59	0.52	0.52	0.58	0.71	0.83	0.92	0.96	0.95	0.94	0.95	1.01	1.09	1.19
Net Change in Population														
FDEC, November 2018	27.9	24.4	24.4	27.5	33.2	39.4	43.5	45.3	45.1	44.5	45.4	48.0	52.3	57.3
FDEC, February 2019	27.9	24.4	24.4	27.5	33.2	39.4	43.5	45.3	45.1	44.5	45.4	48.0	52.3	57.3
Households														
FDEC, November 2018	7,425.0	7,433.2	7,441.5	7,451.3	7,463.9	7,479.6	7,497.3	7,515.9	7,534.5	7,552.9	7,571.8	7,591.9	7,614.1	7,638.5
FDEC, February 2019	7,425.0	7,433.2	7,441.5	7,451.3	7,463.9	7,479.6	7,497.3	7,515.9	7,534.5	7,552.9	7,571.8	7,591.9	7,614.1	7,638.5
Household Growth Rate														
FDEC, November 2018	0.50	0.44	0.45	0.53	0.68	0.84	0.95	1.00	0.99	0.98	1.00	1.07	1.17	1.29
FDEC, February 2019	0.50	0.44	0.45	0.53	0.68	0.84	0.95	1.00	0.99	0.98	1.00	1.07	1.17	1.29
Net Change in Households														
FDEC, November 2018	9.3	8.2	8.3	9.8	12.6	15.6	17.7	18.6	18.6	18.4	18.9	20.1	22.1	24.4
FDEC, February 2019	9.3	8.2	8.3	9.8	12.6	15.6	17.7	18.6	18.6	18.4	18.9	20.1	22.1	24.4
Household Size														
FDEC, November 2018	2.534	2.534	2.535	2.535	2.535	2.535	2.535	2.535	2.535	2.534	2.534	2.534	2.533	2.532
FDEC, February 2019	2.534	2.534	2.535	2.535	2.535	2.535	2.535	2.535	2.535	2.534	2.534	2.534	2.533	2.532
Household Size Growth Rate														
FDEC, November 2018	0.09	0.08	0.07	0.05	0.02	-0.01	-0.03	-0.04	-0.04	-0.04	-0.05	-0.06	-0.08	-0.09
FDEC, February 2019	0.09	0.08	0.07	0.05	0.02	-0.01	-0.03	-0.04	-0.04	-0.04	-0.05	-0.06	-0.08	-0.09
Net Migration														
FDEC, November 2018	17.2	14.1	14.3	17.2	23.1	29.3	33.7	35.8	35.7	35.3	36.3	39.1	43.5	48.6
FDEC, February 2019	17.2	14.1	14.3	17.2	23.1	29.3	33.7	35.8	35.7	35.3	36.3	39.1	43.5	48.5
Births														
FDEC, November 2018	53.7	53.5	53.3	53.4	53.3	53.3	53.2	53.2	53.2	53.3	53.4	53.5	53.7	53.9
FDEC, February 2019	53.7	53.5	53.3	53.4	53.3	53.3	53.2	53.2	53.2	53.3	53.4	53.5	53.7	53.9
Deaths														
FDEC, November 2018	43.1	43.2	43.2	43.1	43.1	43.2	43.4	43.6	43.8	44.1	44.3	44.6	44.9	45.1
FDEC, February 2019	43.1	43.2	43.2	43.1	43.1	43.2	43.4	43.6	43.8	44.1	44.3	44.6	44.9	45.1
Net Natural Increase														
FDEC, November 2018	10.6	10.3	10.0	10.3	10.2	10.0	9.9	9.5	9.3	9.2	9.0	8.9	8.8	8.8
FDEC, February 2019	10.6	10.3	10.0	10.3	10.2	10.0	9.9	9.5	9.3	9.2	9.0	8.9	8.8	8.8

Quarterly Data Table

	<u>2013-4</u>	<u>2014-1</u>	<u>2014-2</u>	<u>2014-3</u>	<u>2014-4</u>	<u>2015-1</u>	<u>2015-2</u>	<u>2015-3</u>	<u>2015-4</u>	<u>2016-1</u>	<u>2016-2</u>	<u>2016-3</u>	<u>2016-4</u>	<u>2017-1</u>
Population														
FDEC, November 2018	19,406.4	19,473.0	19,543.7	19,618.0	19,695.3	19,774.9	19,856.1	19,938.6	20,022.1	20,106.3	20,191.2	20,276.2	20,360.4	20,443.2
FDEC, February 2019	19,406.4	19,473.0	19,543.7	19,618.1	19,695.4	19,774.9	19,856.1	19,938.5	20,022.0	20,106.3	20,191.3	20,276.4	20,360.8	20,443.4
Population Growth Rate														
FDEC, November 2018	1.29	1.38	1.46	1.53	1.59	1.63	1.65	1.67	1.68	1.69	1.70	1.69	1.67	1.64
FDEC, February 2019	1.29	1.38	1.46	1.53	1.59	1.63	1.65	1.67	1.68	1.70	1.70	1.70	1.67	1.63
Net Change in Population														
FDEC, November 2018	62.1	66.6	70.7	74.3	77.3	79.6	81.2	82.5	83.5	84.3	84.9	85.0	84.3	82.8
FDEC, February 2019	62.1	66.6	70.7	74.3	77.3	79.6	81.2	82.4	83.4	84.3	85.0	85.1	84.4	82.6
Households														
FDEC, November 2018	7,665.1	7,693.7	7,724.2	7,756.1	7,789.4	7,823.5	7,858.3	7,893.5	7,929.1	7,965.0	8,001.0	8,037.0	8,072.7	8,107.8
FDEC, February 2019	7,665.1	7,693.7	7,724.2	7,756.2	7,789.4	7,823.5	7,858.3	7,893.4	7,928.9	7,964.9	8,001.1	8,037.5	8,073.3	8,108.1
Household Growth Rate														
FDEC, November 2018	1.40	1.50	1.59	1.67	1.72	1.77	1.79	1.81	1.82	1.82	1.82	1.81	1.79	1.75
FDEC, February 2019	1.40	1.50	1.59	1.67	1.72	1.76	1.79	1.80	1.81	1.83	1.83	1.83	1.80	1.74
Net Change in Households														
FDEC, November 2018	26.6	28.6	30.4	32.0	33.2	34.1	34.8	35.2	35.6	35.8	36.0	36.0	35.7	35.1
FDEC, February 2019	26.6	28.6	30.4	32.0	33.2	34.1	34.7	35.1	35.5	35.9	36.3	36.3	35.8	34.8
Household Size														
FDEC, November 2018	2.532	2.531	2.530	2.529	2.528	2.528	2.527	2.526	2.525	2.524	2.524	2.523	2.522	2.521
FDEC, February 2019	2.532	2.531	2.530	2.529	2.528	2.528	2.527	2.526	2.525	2.524	2.524	2.523	2.522	2.521
Household Size Growth Rate														
FDEC, November 2018	-0.11	-0.12	-0.13	-0.13	-0.14	-0.14	-0.13	-0.13	-0.13	-0.12	-0.12	-0.12	-0.11	-0.11
FDEC, February 2019	-0.11	-0.12	-0.13	-0.13	-0.14	-0.14	-0.13	-0.13	-0.13	-0.13	-0.13	-0.13	-0.12	-0.10
Net Migration														
FDEC, November 2018	53.4	57.8	62.0	65.6	68.7	71.1	72.9	74.3	75.6	76.8	77.7	78.2	77.9	77.2
FDEC, February 2019	53.4	57.8	62.0	65.7	68.7	71.1	72.9	74.3	75.6	76.8	77.8	78.4	78.0	77.0
Births														
FDEC, November 2018	54.1	54.5	54.8	55.1	55.4	55.8	56.0	56.2	56.3	56.3	56.3	56.3	56.2	55.9
FDEC, February 2019	54.1	54.5	54.8	55.1	55.4	55.8	56.0	56.2	56.3	56.3	56.3	56.3	56.2	56.0
Deaths														
FDEC, November 2018	45.4	45.7	46.1	46.4	46.8	47.3	47.7	48.1	48.4	48.8	49.1	49.5	49.9	50.3
FDEC, February 2019	45.4	45.7	46.1	46.4	46.8	47.3	47.7	48.1	48.4	48.8	49.1	49.5	49.9	50.4
Net Natural Increase														
FDEC, November 2018	8.7	8.8	8.8	8.7	8.6	8.5	8.3	8.1	7.8	7.5	7.2	6.8	6.3	5.6
FDEC, February 2019	8.7	8.8	8.8	8.7	8.6	8.5	8.3	8.1	7.8	7.5	7.2	6.8	6.3	5.6

Quarterly Data Table

	<u>2017-2</u>	<u>2017-3</u>	<u>2017-4</u>	<u>2018-1</u>	<u>2018-2</u>	<u>2018-3</u>	<u>2018-4</u>	<u>2019-1</u>	<u>2019-2</u>	<u>2019-3</u>	<u>2019-4</u>	<u>2020-1</u>	<u>2020-2</u>	<u>2020-3</u>
Population														
FDEC, November 2018	20,523.9	20,602.6	20,697.1	20,796.6	20,883.1	20,966.9	21,048.9	21,130.0	21,211.0	21,292.5	21,374.2	21,455.7	21,536.9	21,617.5
FDEC, February 2019	20,523.5	20,612.2	20,706.4	20,795.9	20,884.5	20,971.5	21,057.4	21,142.3	21,226.5	21,310.3	21,393.6	21,476.4	21,558.6	21,640.2
Population Growth Rate														
FDEC, November 2018	1.59	1.54	1.85	1.94	1.67	1.62	1.57	1.55	1.54	1.55	1.54	1.53	1.52	1.51
FDEC, February 2019	1.58	1.74	1.84	1.74	1.71	1.68	1.65	1.62	1.60	1.59	1.57	1.56	1.54	1.52
Net Change in Population														
FDEC, November 2018	80.7	78.7	94.5	99.5	86.5	83.8	82.0	81.1	81.1	81.5	81.7	81.5	81.2	80.7
FDEC, February 2019	80.2	88.7	94.2	89.6	88.5	87.1	85.8	84.9	84.3	83.8	83.3	82.8	82.2	81.7
Households														
FDEC, November 2018	8,142.1	8,175.7	8,215.4	8,257.1	8,293.5	8,328.7	8,363.2	8,397.4	8,432.0	8,466.9	8,502.2	8,537.5	8,572.8	8,608.0
FDEC, February 2019	8,141.4	8,177.7	8,216.0	8,252.7	8,289.4	8,326.0	8,362.5	8,398.6	8,434.5	8,470.0	8,505.3	8,540.5	8,575.7	8,611.0
Household Growth Rate														
FDEC, November 2018	1.70	1.66	1.96	2.04	1.77	1.71	1.67	1.65	1.65	1.67	1.68	1.67	1.66	1.65
FDEC, February 2019	1.65	1.79	1.89	1.80	1.79	1.78	1.76	1.74	1.72	1.70	1.68	1.67	1.66	1.65
Net Change in Households														
FDEC, November 2018	34.3	33.6	39.8	41.7	36.4	35.2	34.5	34.3	34.5	35.0	35.2	35.4	35.3	35.2
FDEC, February 2019	33.3	36.3	38.3	36.7	36.7	36.6	36.4	36.2	35.8	35.5	35.3	35.2	35.2	35.3
Household Size														
FDEC, November 2018	2.521	2.520	2.519	2.519	2.518	2.517	2.517	2.516	2.516	2.515	2.514	2.513	2.512	2.511
FDEC, February 2019	2.521	2.521	2.520	2.520	2.519	2.519	2.518	2.517	2.517	2.516	2.515	2.515	2.514	2.513
Household Size Growth Rate														
FDEC, November 2018	-0.11	-0.11	-0.11	-0.11	-0.10	-0.09	-0.09	-0.10	-0.11	-0.12	-0.13	-0.14	-0.14	-0.14
FDEC, February 2019	-0.08	-0.05	-0.05	-0.05	-0.08	-0.10	-0.11	-0.12	-0.11	-0.11	-0.10	-0.11	-0.12	-0.13
Net Migration														
FDEC, November 2018	75.5	73.9	89.9	95.1	82.3	79.8	77.9	77.0	77.1	77.5	77.7	77.5	77.2	76.7
FDEC, February 2019	75.0	83.8	89.6	85.1	84.2	83.0	81.9	81.3	80.8	80.5	80.2	79.9	79.5	79.0
Births														
FDEC, November 2018	55.8	55.9	56.0	56.2	56.4	56.6	56.9	57.2	57.5	57.8	58.1	58.5	58.8	59.0
FDEC, February 2019	55.9	55.8	55.8	55.5	55.5	55.5	55.6	55.8	56.0	56.2	56.4	56.6	56.8	57.0
Deaths														
FDEC, November 2018	50.6	51.0	51.4	51.8	52.2	52.5	52.9	53.2	53.5	53.8	54.1	54.4	54.7	55.0
FDEC, February 2019	50.7	51.0	51.2	51.0	51.2	51.4	51.6	52.2	52.5	52.9	53.3	53.7	54.1	54.4
Net Natural Increase														
FDEC, November 2018	5.2	4.9	4.6	4.4	4.2	4.1	4.0	4.0	4.0	4.0	4.0	4.0	4.0	4.0
FDEC, February 2019	5.2	4.8	4.6	4.5	4.3	4.1	3.9	3.7	3.5	3.3	3.1	2.9	2.7	2.6

Quarterly Data Table

	<u>2020-4</u>	<u>2021-1</u>	<u>2021-2</u>	<u>2021-3</u>	<u>2021-4</u>	<u>2022-1</u>	<u>2022-2</u>	<u>2022-3</u>	<u>2022-4</u>	<u>2023-1</u>	<u>2023-2</u>	<u>2023-3</u>	<u>2023-4</u>	<u>2024-1</u>
Population														
FDEC, November 2018	21,697.8	21,777.6	21,857.1	21,936.2	22,015.0	22,093.3	22,171.2	22,248.5	22,325.3	22,401.5	22,477.1	22,551.9	22,626.0	22,699.4
FDEC, February 2019	21,721.3	21,802.0	21,882.1	21,961.8	22,041.0	22,119.6	22,197.8	22,275.5	22,352.5	22,428.9	22,504.6	22,579.6	22,653.9	22,727.5
Population Growth Rate														
FDEC, November 2018	1.49	1.48	1.47	1.46	1.44	1.43	1.42	1.40	1.39	1.37	1.36	1.34	1.32	1.30
FDEC, February 2019	1.51	1.49	1.48	1.46	1.45	1.44	1.42	1.41	1.39	1.37	1.36	1.34	1.32	1.31
Net Change in Population														
FDEC, November 2018	80.2	79.8	79.5	79.2	78.8	78.3	77.8	77.3	76.8	76.3	75.6	74.8	74.1	73.4
FDEC, February 2019	81.1	80.6	80.1	79.7	79.2	78.7	78.2	77.6	77.0	76.4	75.7	75.0	74.3	73.6
Households														
FDEC, November 2018	8,643.0	8,678.0	8,712.8	8,747.6	8,782.3	8,816.7	8,850.8	8,884.7	8,918.3	8,951.7	8,985.2	9,018.9	9,052.6	9,086.5
FDEC, February 2019	8,646.3	8,681.5	8,716.5	8,751.5	8,786.2	8,820.7	8,855.0	8,889.1	8,923.0	8,956.6	8,990.2	9,023.9	9,057.7	9,091.6
Household Growth Rate														
FDEC, November 2018	1.64	1.63	1.62	1.61	1.59	1.58	1.56	1.54	1.52	1.51	1.51	1.51	1.50	1.50
FDEC, February 2019	1.65	1.64	1.63	1.61	1.60	1.58	1.56	1.55	1.53	1.52	1.51	1.51	1.51	1.50
Net Change in Households														
FDEC, November 2018	35.0	34.9	34.9	34.8	34.6	34.4	34.1	33.8	33.6	33.5	33.5	33.6	33.7	33.8
FDEC, February 2019	35.3	35.2	35.1	34.9	34.7	34.5	34.3	34.1	33.8	33.6	33.6	33.7	33.8	33.8
Household Size														
FDEC, November 2018	2.510	2.510	2.509	2.508	2.507	2.506	2.505	2.504	2.503	2.502	2.502	2.501	2.499	2.498
FDEC, February 2019	2.512	2.511	2.510	2.509	2.509	2.508	2.507	2.506	2.505	2.504	2.503	2.502	2.501	2.500
Household Size Growth Rate														
FDEC, November 2018	-0.14	-0.15	-0.15	-0.15	-0.15	-0.14	-0.14	-0.13	-0.13	-0.13	-0.15	-0.17	-0.18	-0.20
FDEC, February 2019	-0.14	-0.14	-0.15	-0.15	-0.14	-0.14	-0.14	-0.14	-0.14	-0.14	-0.15	-0.17	-0.18	-0.19
Net Migration														
FDEC, November 2018	76.3	76.0	75.8	75.5	75.2	74.9	74.6	74.2	73.8	73.3	72.8	72.1	71.6	71.1
FDEC, February 2019	78.6	78.1	77.7	77.3	76.9	76.5	76.1	75.7	75.2	74.6	74.1	73.5	72.9	72.3
Births														
FDEC, November 2018	59.3	59.4	59.6	59.8	60.0	60.2	60.4	60.5	60.7	60.9	61.1	61.4	61.5	61.7
FDEC, February 2019	57.2	57.4	57.7	57.9	58.1	58.2	58.4	58.6	58.8	59.0	59.2	59.4	59.6	59.7
Deaths														
FDEC, November 2018	55.3	55.6	55.9	56.2	56.5	56.8	57.1	57.4	57.7	58.0	58.3	58.7	59.1	59.4
FDEC, February 2019	54.7	54.9	55.2	55.5	55.8	56.1	56.4	56.7	57.0	57.3	57.5	57.8	58.1	58.4
Net Natural Increase														
FDEC, November 2018	3.9	3.8	3.7	3.6	3.5	3.4	3.3	3.2	3.0	2.9	2.8	2.7	2.5	2.3
FDEC, February 2019	2.5	2.5	2.5	2.4	2.3	2.2	2.1	2.0	1.8	1.7	1.6	1.5	1.4	1.3

Quarterly Data Table

	<u>2024-2</u>	<u>2024-3</u>	<u>2024-4</u>	<u>2025-1</u>	<u>2025-2</u>	<u>2025-3</u>	<u>2025-4</u>	<u>2026-1</u>	<u>2026-2</u>	<u>2026-3</u>	<u>2026-4</u>	<u>2027-1</u>	<u>2027-2</u>
Population													
FDEC, November 2018	22,772.1	22,844.2	22,915.7	22,986.4	23,056.5	23,126.0	23,194.7	23,262.9	23,330.4	23,397.3	23,463.6	23,529.2	23,594.2
FDEC, February 2019	22,800.5	22,872.8	22,944.5	23,015.5	23,085.9	23,155.6	23,224.8	23,293.4	23,361.3	23,428.7	23,495.4	23,561.6	23,627.1
Population Growth Rate													
FDEC, November 2018	1.29	1.27	1.26	1.24	1.23	1.21	1.19	1.18	1.17	1.15	1.14	1.12	1.11
FDEC, February 2019	1.29	1.27	1.26	1.24	1.23	1.21	1.20	1.19	1.17	1.16	1.14	1.13	1.12
Net Change in Population													
FDEC, November 2018	72.8	72.1	71.4	70.8	70.1	69.4	68.8	68.1	67.5	66.9	66.3	65.6	65.0
FDEC, February 2019	73.0	72.3	71.6	71.0	70.4	69.8	69.2	68.6	68.0	67.4	66.7	66.2	65.6
Households													
FDEC, November 2018	9,120.3	9,154.2	9,188.1	9,222.0	9,255.7	9,289.4	9,322.8	9,356.1	9,389.1	9,421.8	9,454.2	9,486.4	9,518.3
FDEC, February 2019	9,125.5	9,159.5	9,193.5	9,227.5	9,261.4	9,295.2	9,328.9	9,362.5	9,395.8	9,429.0	9,462.0	9,494.7	9,527.3
Household Growth Rate													
FDEC, November 2018	1.50	1.50	1.49	1.48	1.47	1.46	1.45	1.43	1.42	1.40	1.38	1.37	1.35
FDEC, February 2019	1.50	1.50	1.49	1.49	1.48	1.47	1.46	1.45	1.43	1.42	1.41	1.39	1.38
Net Change in Households													
FDEC, November 2018	33.9	33.9	33.9	33.9	33.8	33.6	33.5	33.2	33.0	32.7	32.4	32.2	31.9
FDEC, February 2019	33.9	34.0	34.0	34.0	33.9	33.8	33.7	33.5	33.4	33.2	33.0	32.8	32.6
Household Size													
FDEC, November 2018	2.497	2.495	2.494	2.493	2.491	2.490	2.488	2.486	2.485	2.483	2.482	2.480	2.479
FDEC, February 2019	2.499	2.497	2.496	2.494	2.493	2.491	2.490	2.488	2.486	2.485	2.483	2.482	2.480
Household Size Growth Rate													
FDEC, November 2018	-0.21	-0.22	-0.23	-0.24	-0.24	-0.25	-0.25	-0.25	-0.25	-0.25	-0.24	-0.24	-0.24
FDEC, February 2019	-0.21	-0.22	-0.23	-0.24	-0.25	-0.25	-0.25	-0.26	-0.26	-0.26	-0.26	-0.26	-0.26
Net Migration													
FDEC, November 2018	70.6	70.1	69.7	69.1	68.7	68.2	67.8	67.4	67.0	66.6	66.3	65.9	65.5
FDEC, February 2019	71.7	71.2	70.6	70.1	69.6	69.1	68.7	68.3	67.8	67.4	67.0	66.7	66.3
Births													
FDEC, November 2018	61.8	62.0	62.1	62.2	62.3	62.5	62.6	62.7	62.8	62.9	63.0	63.1	63.1
FDEC, February 2019	59.9	60.1	60.3	60.5	60.6	60.8	61.0	61.1	61.3	61.4	61.6	61.7	61.8
Deaths													
FDEC, November 2018	59.7	60.0	60.3	60.6	60.9	61.2	61.6	61.9	62.3	62.6	63.0	63.3	63.7
FDEC, February 2019	58.7	59.0	59.3	59.5	59.8	60.1	60.5	60.8	61.2	61.5	61.9	62.2	62.6
Net Natural Increase													
FDEC, November 2018	2.1	2.0	1.8	1.6	1.4	1.2	1.0	0.7	0.5	0.3	0.0	-0.3	-0.5
FDEC, February 2019	1.2	1.1	1.0	0.9	0.8	0.7	0.5	0.3	0.1	-0.1	-0.3	-0.5	-0.8

Quarterly Data Table

	<u>2027-3</u>	<u>2027-4</u>	<u>2028-1</u>	<u>2028-2</u>
Population				
FDEC, November 2018	23,658.5	23,722.3	23,785.4	23,848.1
FDEC, February 2019	23,692.1	23,756.5	23,820.3	23,883.6
Population Growth Rate				
FDEC, November 2018	1.10	1.08	1.07	1.06
FDEC, February 2019	1.10	1.09	1.08	1.07
Net Change in Population				
FDEC, November 2018	64.4	63.7	63.2	62.6
FDEC, February 2019	65.0	64.4	63.8	63.3
Households				
FDEC, November 2018	9,549.9	9,581.1	9,612.0	9,642.5
FDEC, February 2019	9,559.7	9,591.9	9,623.8	9,655.4
Household Growth Rate				
FDEC, November 2018	1.33	1.32	1.30	1.28
FDEC, February 2019	1.37	1.35	1.34	1.32
Net Change in Households				
FDEC, November 2018	31.6	31.3	30.9	30.5
FDEC, February 2019	32.4	32.2	31.9	31.6
Household Size				
FDEC, November 2018	2.477	2.476	2.475	2.473
FDEC, February 2019	2.478	2.477	2.475	2.474
Household Size Growth Rate				
FDEC, November 2018	-0.24	-0.23	-0.22	-0.22
FDEC, February 2019	-0.26	-0.26	-0.26	-0.25
Net Migration				
FDEC, November 2018	65.2	64.8	64.5	64.2
FDEC, February 2019	65.9	65.6	65.2	64.9
Births				
FDEC, November 2018	63.2	63.3	63.4	63.5
FDEC, February 2019	61.9	62.0	62.1	62.3
Deaths				
FDEC, November 2018	64.0	64.4	64.7	65.0
FDEC, February 2019	62.9	63.2	63.5	63.9
Net Natural Increase				
FDEC, November 2018	-0.8	-1.1	-1.3	-1.6
FDEC, February 2019	-1.0	-1.2	-1.4	-1.6

Fiscal Year Data Table

	<u>2000-01</u>	<u>2001-02</u>	<u>2002-03</u>	<u>2003-04</u>	<u>2004-05</u>	<u>2005-06</u>	<u>2006-07</u>	<u>2007-08</u>	<u>2008-09</u>	<u>2009-10</u>	<u>2010-11</u>	<u>2011-12</u>	<u>2012-13</u>	<u>2013-14</u>	<u>2014-15</u>
Population															
FDEC, November 2018	16,228.0	16,551.2	16,892.0	17,273.8	17,677.3	18,062.2	18,378.2	18,578.9	18,671.4	18,770.4	18,878.6	19,029.3	19,212.3	19,441.8	19,736.1
FDEC, February 2019	16,228.0	16,551.2	16,892.0	17,273.8	17,677.3	18,062.2	18,378.2	18,578.9	18,671.4	18,770.4	18,878.6	19,029.3	19,212.3	19,441.8	19,736.1
Growth Rate															
FDEC, November 2018	2.18	1.99	2.06	2.26	2.34	2.18	1.75	1.09	0.50	0.53	0.58	0.80	0.96	1.19	1.51
FDEC, February 2019	2.18	1.99	2.06	2.26	2.34	2.18	1.75	1.09	0.50	0.53	0.58	0.80	0.96	1.19	1.51
Net Change in Population															
FDEC, November 2018	346.4	323.2	340.9	381.8	403.5	384.9	316.0	200.7	92.5	99.0	108.2	150.7	183.0	229.5	294.3
FDEC, February 2019	346.4	323.2	340.9	381.8	403.5	384.9	316.0	200.7	92.5	99.0	108.2	150.7	183.0	229.5	294.3
Households															
FDEC, November 2018	6,431.8	6,554.7	6,685.7	6,833.2	6,990.5	7,142.1	7,266.1	7,341.9	7,374.2	7,410.1	7,447.5	7,506.8	7,582.7	7,680.4	7,806.8
FDEC, February 2019	6,431.8	6,554.7	6,685.7	6,833.2	6,990.5	7,142.1	7,266.1	7,341.9	7,374.2	7,410.1	7,447.5	7,506.8	7,582.7	7,680.4	7,806.8
Growth Rate															
FDEC, November 2018	2.14	1.91	2.00	2.21	2.30	2.17	1.74	1.04	0.44	0.49	0.50	0.80	1.01	1.29	1.65
FDEC, February 2019	2.14	1.91	2.00	2.21	2.30	2.17	1.74	1.04	0.44	0.49	0.50	0.80	1.01	1.29	1.65
Net Change in Households															
FDEC, November 2018	134.6	122.9	131.0	147.5	157.3	151.7	124.0	75.7	32.3	35.9	37.4	59.3	75.9	97.7	126.4
FDEC, February 2019	134.6	122.9	131.0	147.5	157.3	151.7	124.0	75.7	32.3	35.9	37.4	59.3	75.9	97.7	126.5
Household Size															
FDEC, November 2018	2.523	2.525	2.527	2.528	2.529	2.529	2.529	2.531	2.532	2.533	2.535	2.535	2.534	2.531	2.528
FDEC, February 2019	2.523	2.525	2.527	2.528	2.529	2.529	2.529	2.531	2.532	2.533	2.535	2.535	2.534	2.531	2.528
Growth Rate															
FDEC, November 2018	0.04	0.08	0.06	0.05	0.03	0.01	0.01	0.05	0.06	0.04	0.07	0.00	-0.05	-0.09	-0.13
FDEC, February 2019	0.04	0.08	0.06	0.05	0.03	0.01	0.01	0.05	0.06	0.04	0.07	0.00	-0.05	-0.09	-0.13
Net Migration															
FDEC, November 2018	306.0	285.5	300.4	335.0	351.1	322.9	245.0	133.7	36.3	52.7	67.4	112.0	147.0	194.4	260.2
FDEC, February 2019	306.0	285.5	300.4	335.0	351.1	322.9	245.0	133.7	36.3	52.7	67.4	112.0	147.0	194.4	260.2
Births															
FDEC, November 2018	205.4	205.4	208.5	215.0	221.8	232.1	239.3	236.0	226.4	217.4	213.5	212.9	213.8	217.4	222.3
FDEC, February 2019	205.4	205.4	208.5	215.0	221.8	232.1	239.3	236.0	226.4	217.4	213.5	212.9	213.8	217.4	222.3
Deaths															
FDEC, November 2018	165.0	167.7	168.1	168.3	169.4	170.1	168.3	169.0	170.2	171.1	172.7	174.1	177.8	182.4	188.2
FDEC, February 2019	165.0	167.7	168.1	168.3	169.4	170.1	168.3	169.0	170.2	171.1	172.7	174.1	177.8	182.4	188.2
Net Natural Increase															
FDEC, November 2018	40.3	37.7	40.4	46.7	52.4	62.0	71.0	67.0	56.2	46.3	40.8	38.8	36.0	35.0	34.1
FDEC, February 2019	40.3	37.7	40.4	46.7	52.4	62.0	71.0	67.0	56.2	46.3	40.8	38.8	36.0	35.0	34.1

Fiscal Year Data Table

	<u>2015-16</u>	<u>2016-17</u>	<u>2017-18</u>	<u>2018-19</u>	<u>2019-20</u>	<u>2020-21</u>	<u>2021-22</u>	<u>2022-23</u>	<u>2023-24</u>	<u>2024-25</u>	<u>2025-26</u>	<u>2026-27</u>	<u>2027-28</u>
Population													
FDEC, November 2018	20,064.5	20,400.9	20,744.8	21,089.2	21,414.8	21,737.5	22,053.9	22,363.1	22,662.3	22,950.7	23,228.5	23,496.1	23,753.6
FDEC, February 2019	20,064.5	20,401.0	20,749.7	21,099.4	21,434.7	21,761.4	22,080.1	22,390.4	22,690.4	22,979.6	23,258.8	23,528.2	23,788.1
Growth Rate													
FDEC, November 2018	1.66	1.68	1.69	1.66	1.54	1.51	1.46	1.40	1.34	1.27	1.21	1.15	1.10
FDEC, February 2019	1.66	1.68	1.71	1.69	1.59	1.52	1.46	1.41	1.34	1.27	1.21	1.16	1.10
Net Change in Population													
FDEC, November 2018	328.4	336.4	343.9	344.4	325.6	322.7	316.4	309.2	299.3	288.4	277.8	267.5	257.5
FDEC, February 2019	328.4	336.5	348.7	349.7	335.3	326.7	318.6	310.3	300.0	289.3	279.1	269.4	259.9
Households													
FDEC, November 2018	7,947.1	8,089.9	8,235.4	8,380.3	8,519.8	8,660.5	8,799.3	8,935.0	9,069.6	9,205.0	9,339.3	9,470.2	9,596.4
FDEC, February 2019	7,947.1	8,090.1	8,234.0	8,380.4	8,522.9	8,663.8	8,803.4	8,939.7	9,074.7	9,210.5	9,345.6	9,478.3	9,607.7
Growth Rate													
FDEC, November 2018	1.80	1.80	1.80	1.76	1.67	1.65	1.60	1.54	1.51	1.49	1.46	1.40	1.33
FDEC, February 2019	1.80	1.80	1.78	1.78	1.70	1.65	1.61	1.55	1.51	1.50	1.47	1.42	1.37
Net Change in Households													
FDEC, November 2018	140.3	142.7	145.5	144.9	139.5	140.6	138.9	135.6	134.6	135.4	134.3	130.8	126.2
FDEC, February 2019	140.2	143.0	143.9	146.4	142.5	140.9	139.6	136.4	135.0	135.8	135.2	132.6	129.4
Household Size													
FDEC, November 2018	2.525	2.522	2.519	2.517	2.514	2.510	2.506	2.503	2.499	2.493	2.487	2.481	2.475
FDEC, February 2019	2.525	2.522	2.520	2.518	2.515	2.512	2.508	2.505	2.500	2.495	2.489	2.482	2.476
Growth Rate													
FDEC, November 2018	-0.13	-0.12	-0.11	-0.10	-0.12	-0.14	-0.15	-0.14	-0.17	-0.22	-0.25	-0.25	-0.23
FDEC, February 2019	-0.13	-0.12	-0.07	-0.09	-0.11	-0.13	-0.14	-0.14	-0.17	-0.22	-0.25	-0.26	-0.26
Net Migration													
FDEC, November 2018	297.8	312.5	325.9	328.2	309.6	307.2	302.6	297.2	289.7	281.6	274.3	268.1	262.3
FDEC, February 2019	297.8	312.6	330.5	334.5	323.3	316.5	309.8	303.1	294.5	285.4	277.6	271.1	265.1
Births													
FDEC, November 2018	225.0	224.2	224.5	228.2	233.1	237.4	240.4	243.2	246.5	248.6	250.5	252.1	253.4
FDEC, February 2019	225.0	224.4	222.6	222.9	225.9	229.3	232.6	235.6	238.6	241.5	244.2	246.5	248.4
Deaths													
FDEC, November 2018	194.4	200.3	206.4	212.0	217.1	221.9	226.6	231.3	236.9	241.8	247.0	252.7	258.1
FDEC, February 2019	194.4	200.5	204.4	207.8	213.9	219.2	223.7	228.4	233.0	237.6	242.7	248.2	253.5
Net Natural Increase													
FDEC, November 2018	30.6	23.9	18.0	16.1	16.0	15.4	13.8	11.9	9.6	6.8	3.4	-0.6	-4.7
FDEC, February 2019	30.6	23.9	18.2	15.2	12.0	10.1	8.9	7.2	5.5	3.9	1.5	-1.7	-5.2

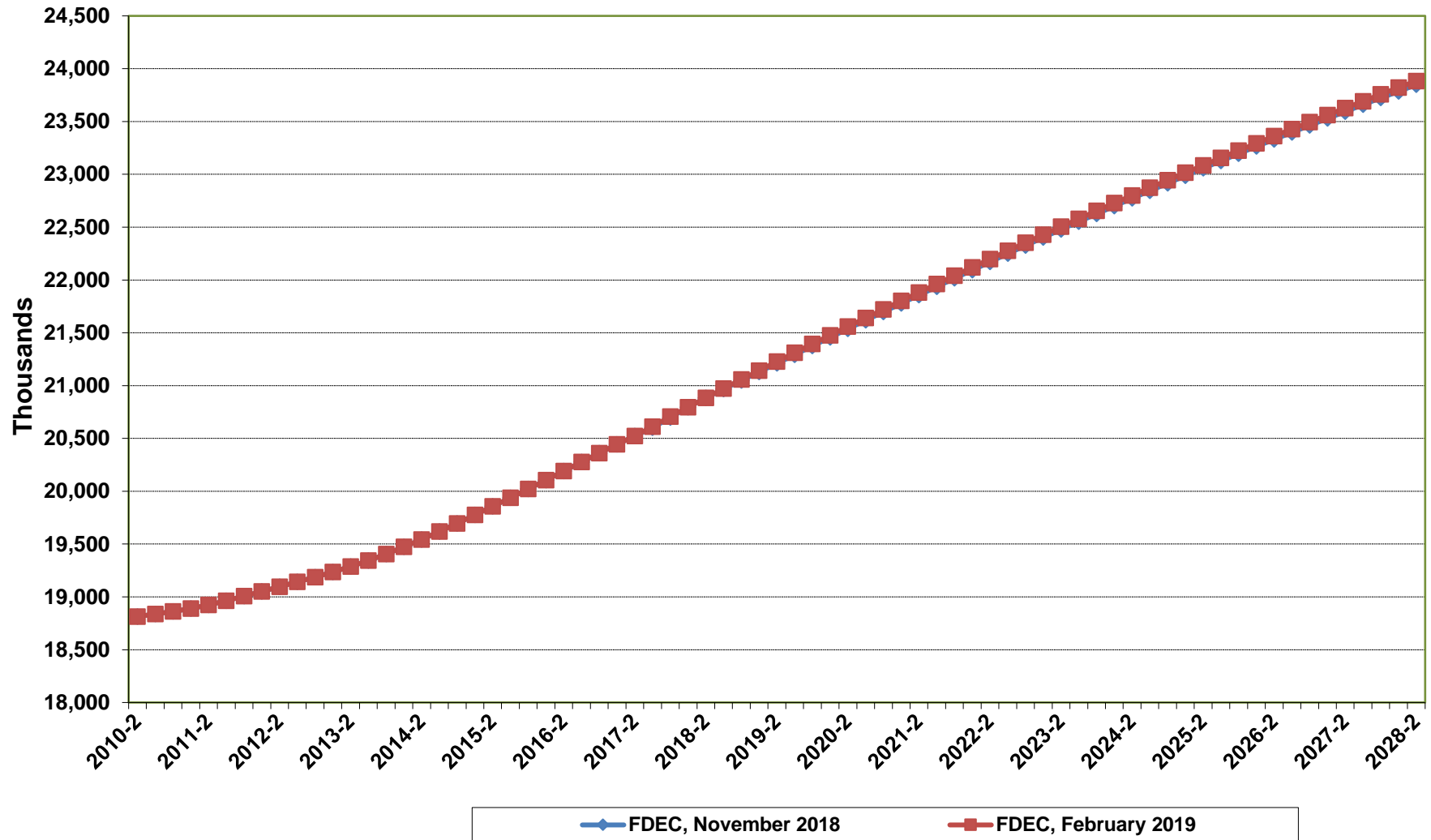
Florida Demographic Estimating Conference

Charts

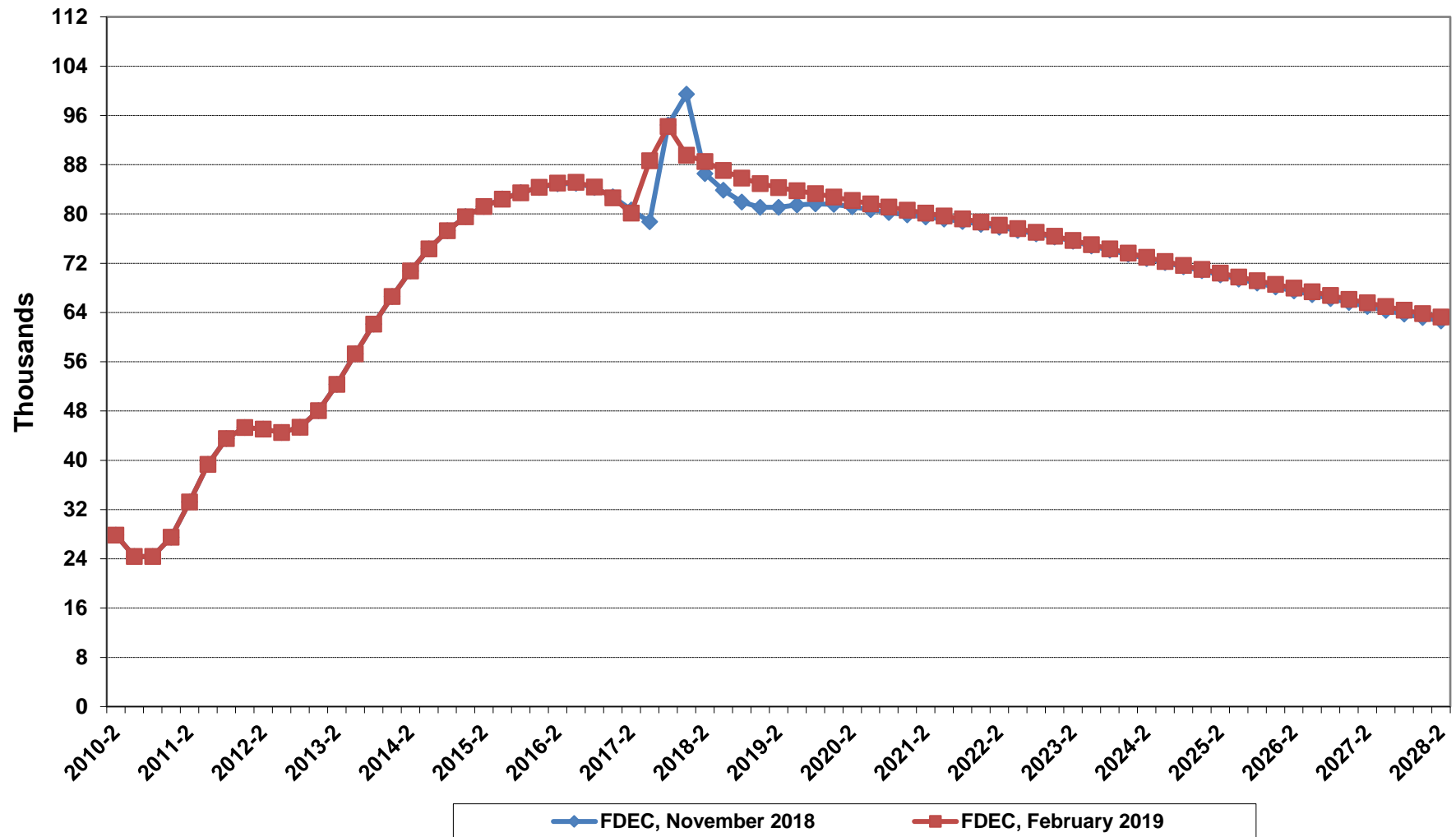
Conference Packet

February 6, 2019

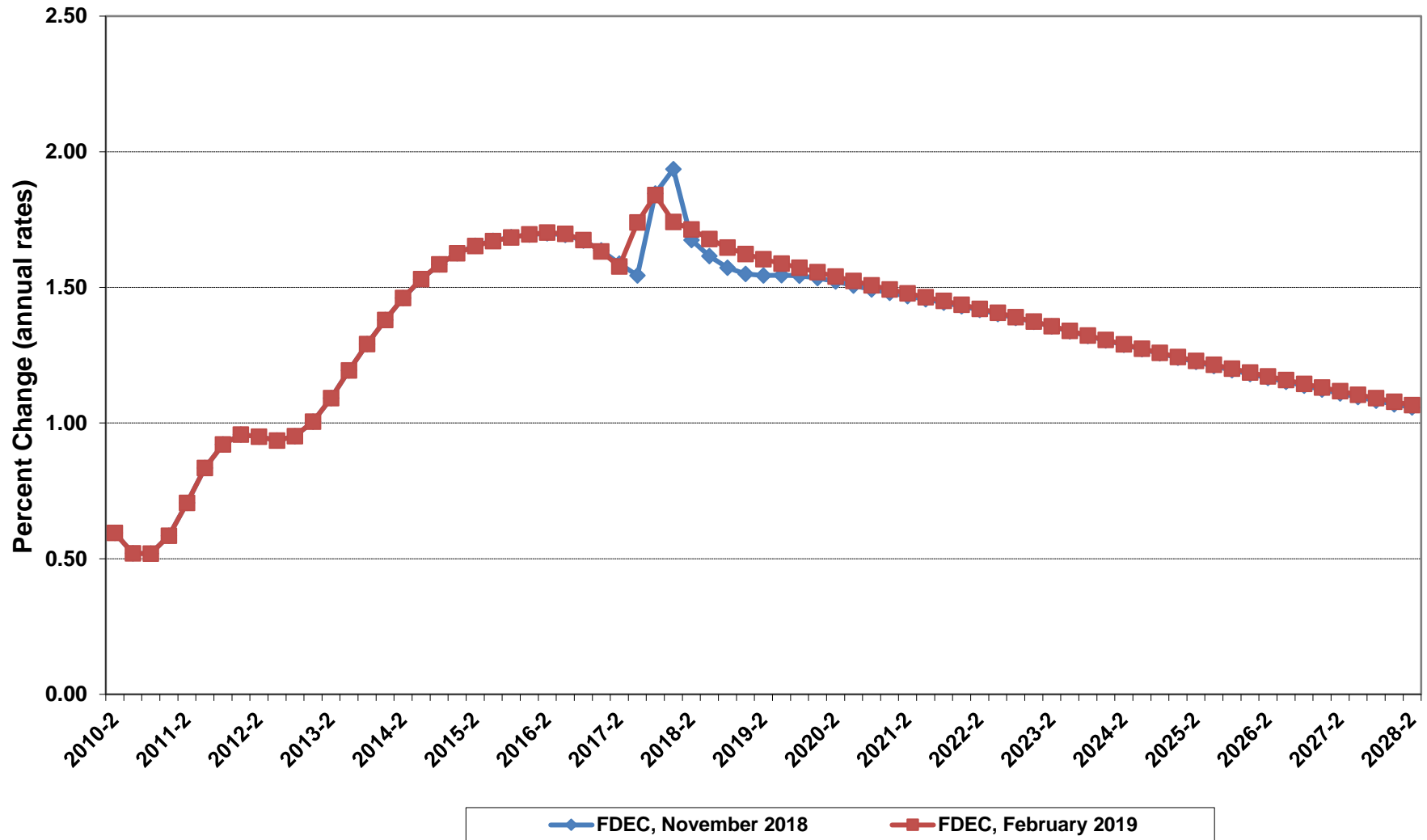
Florida Resident Population



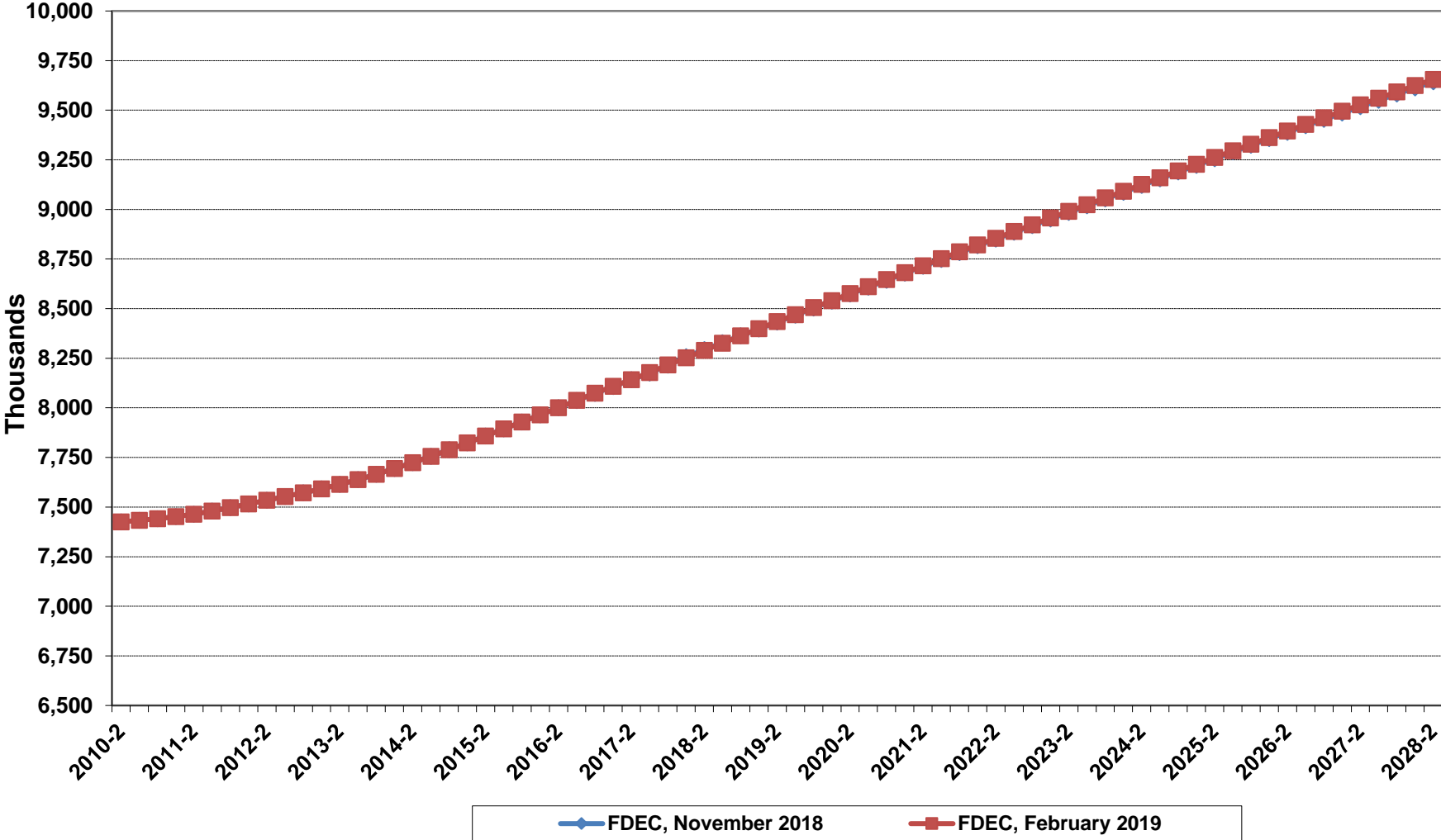
Net Change In Florida Resident Population



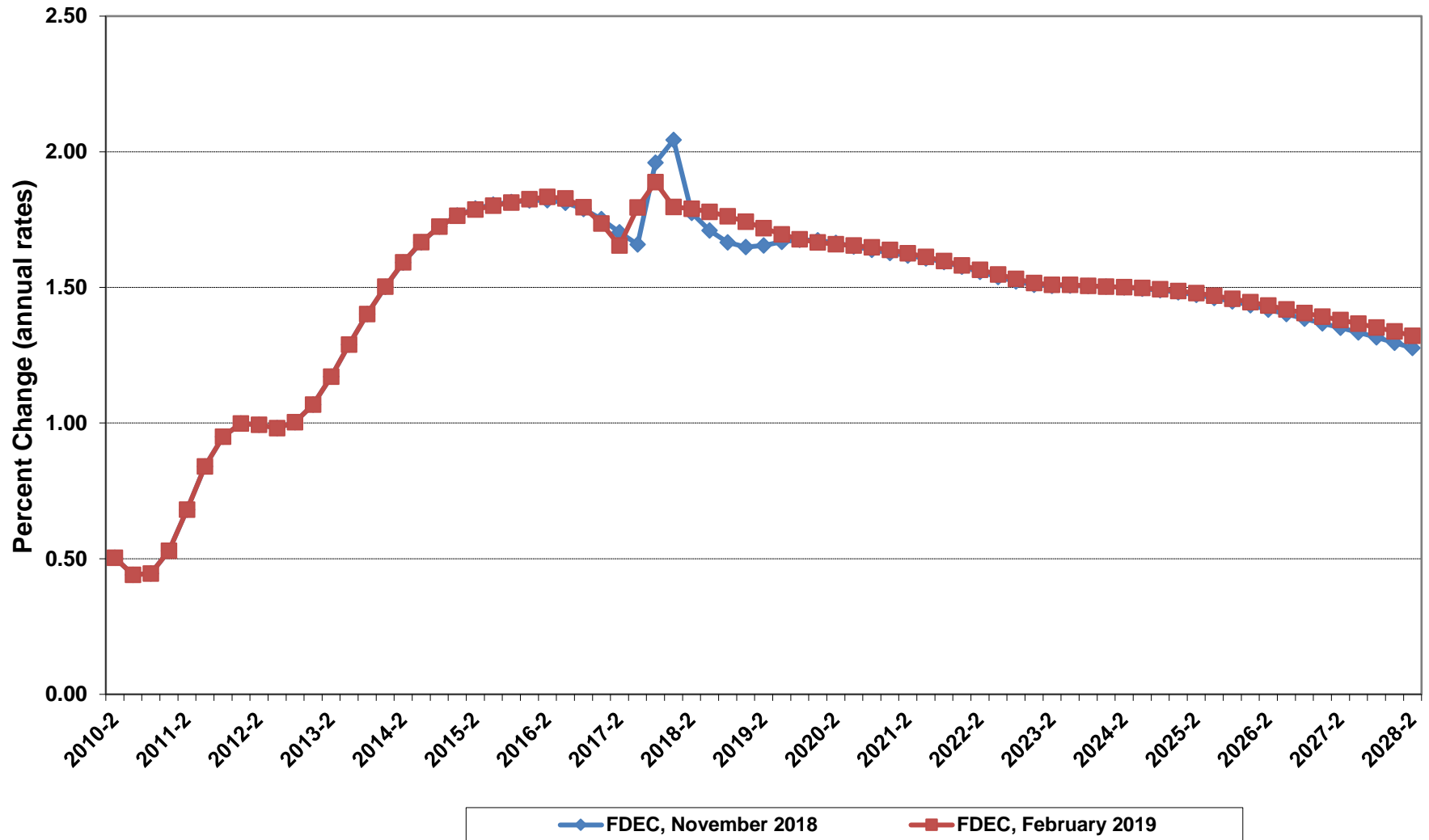
Growth In Florida Resident Population



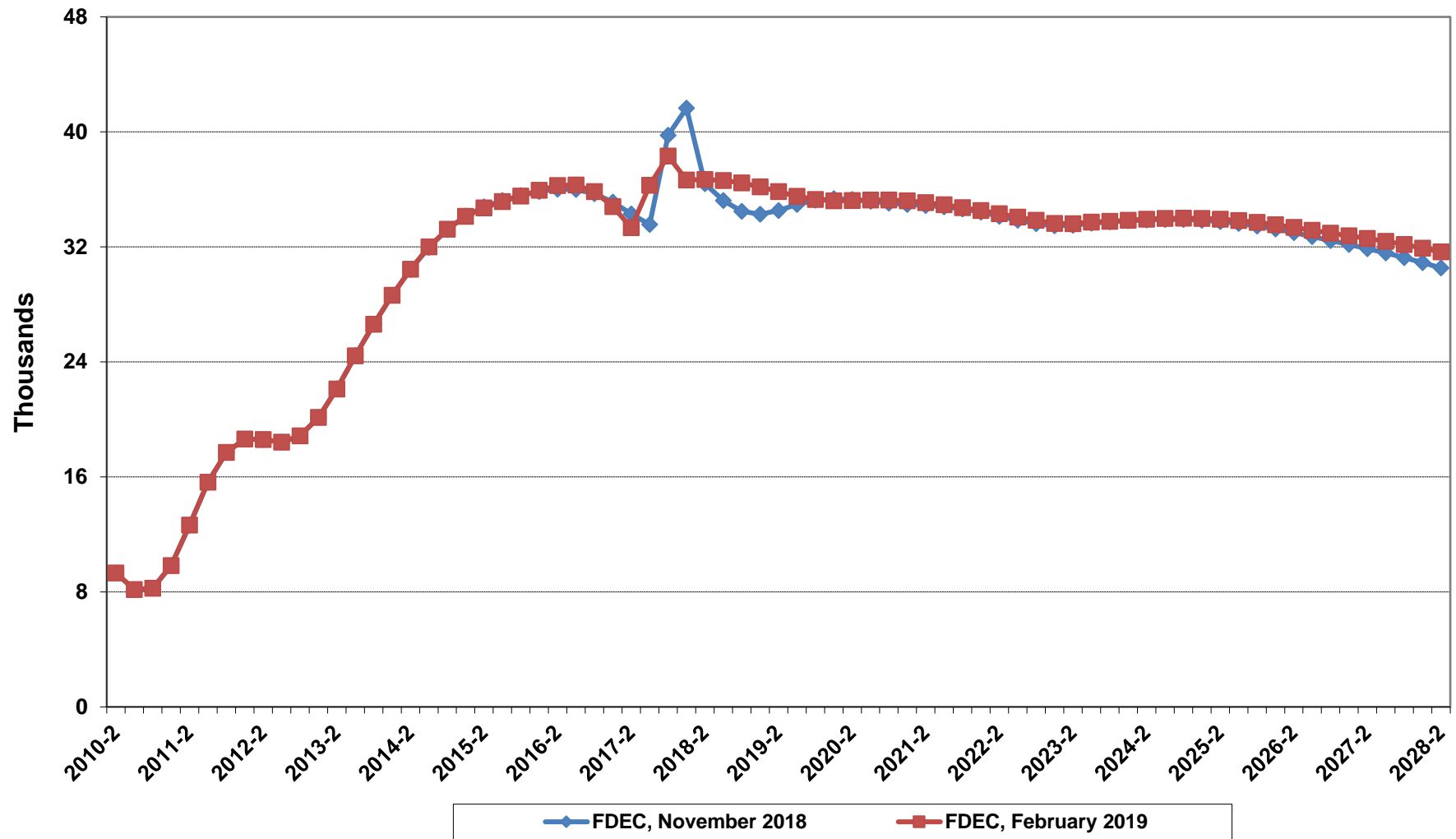
Florida Resident Households



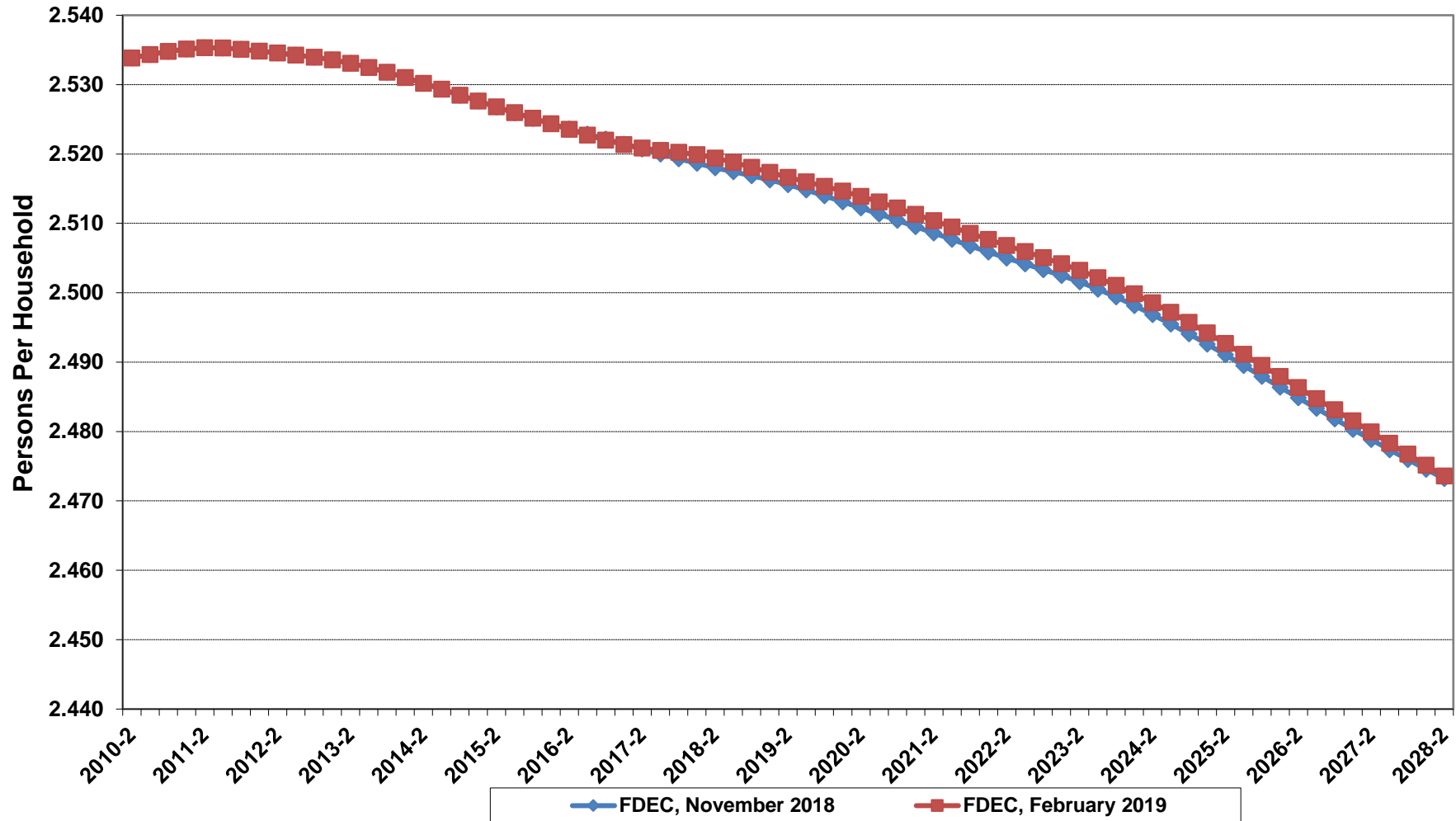
Growth In Florida Resident Households



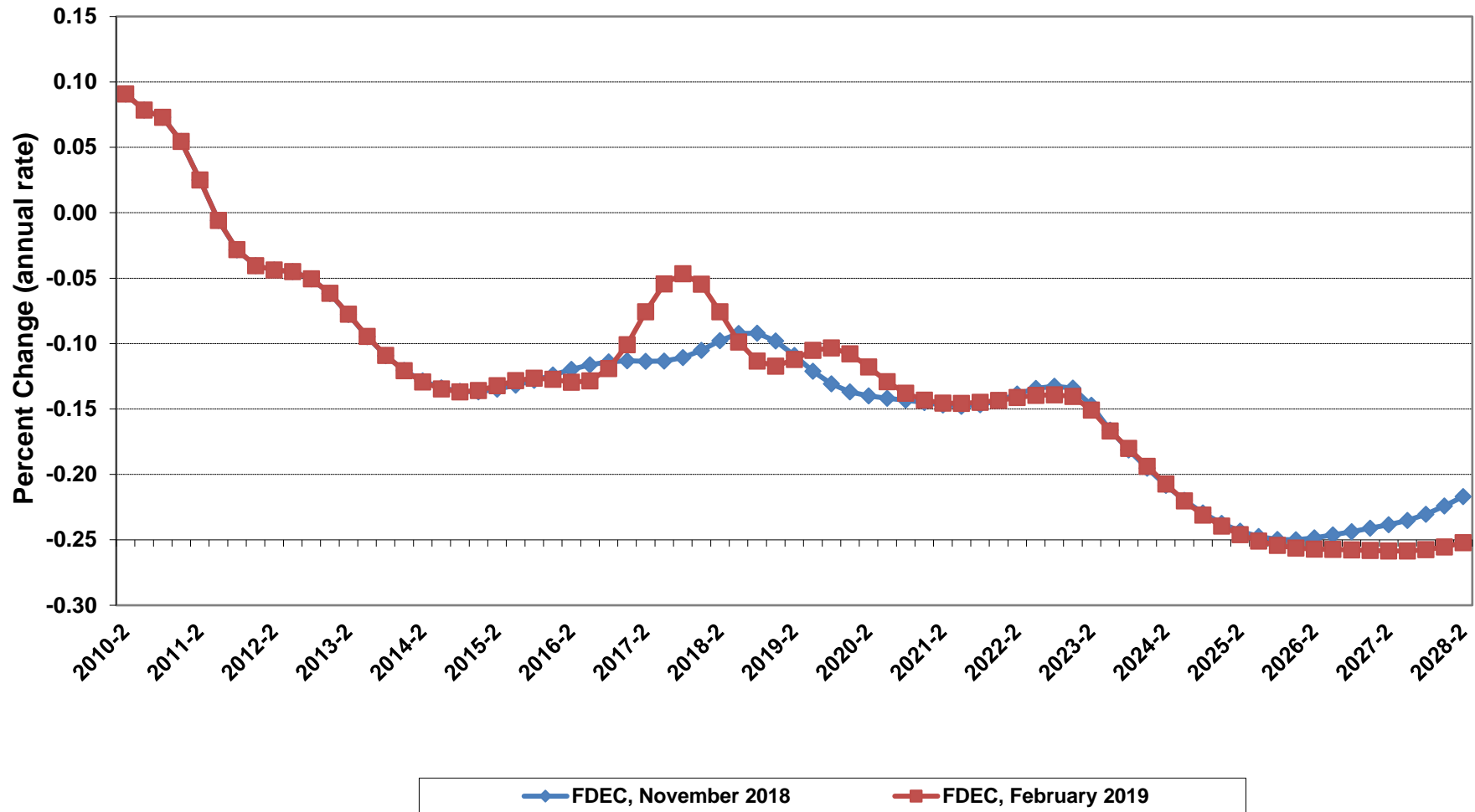
Net Change In Florida Resident Households



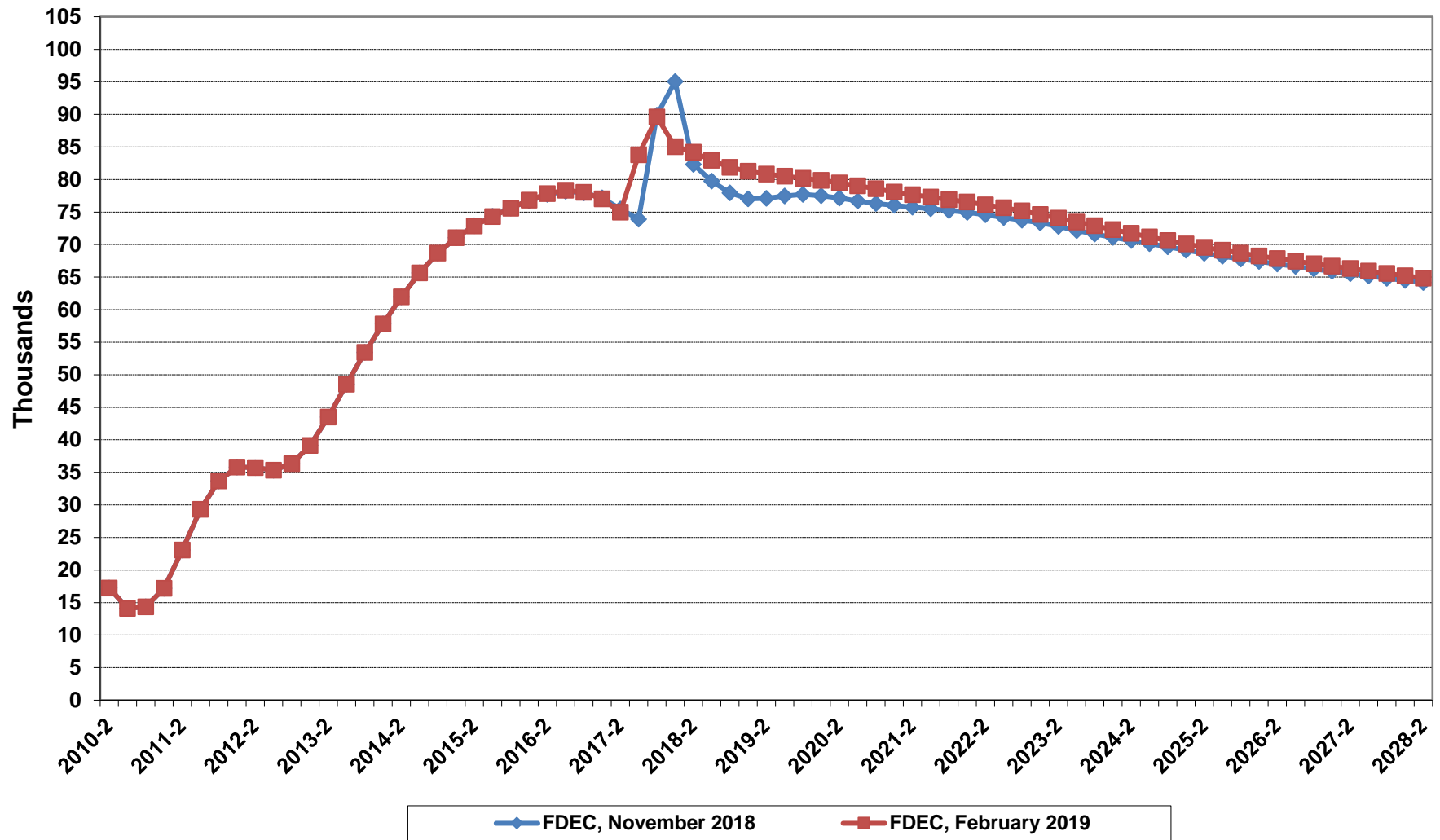
Florida Average Household Size



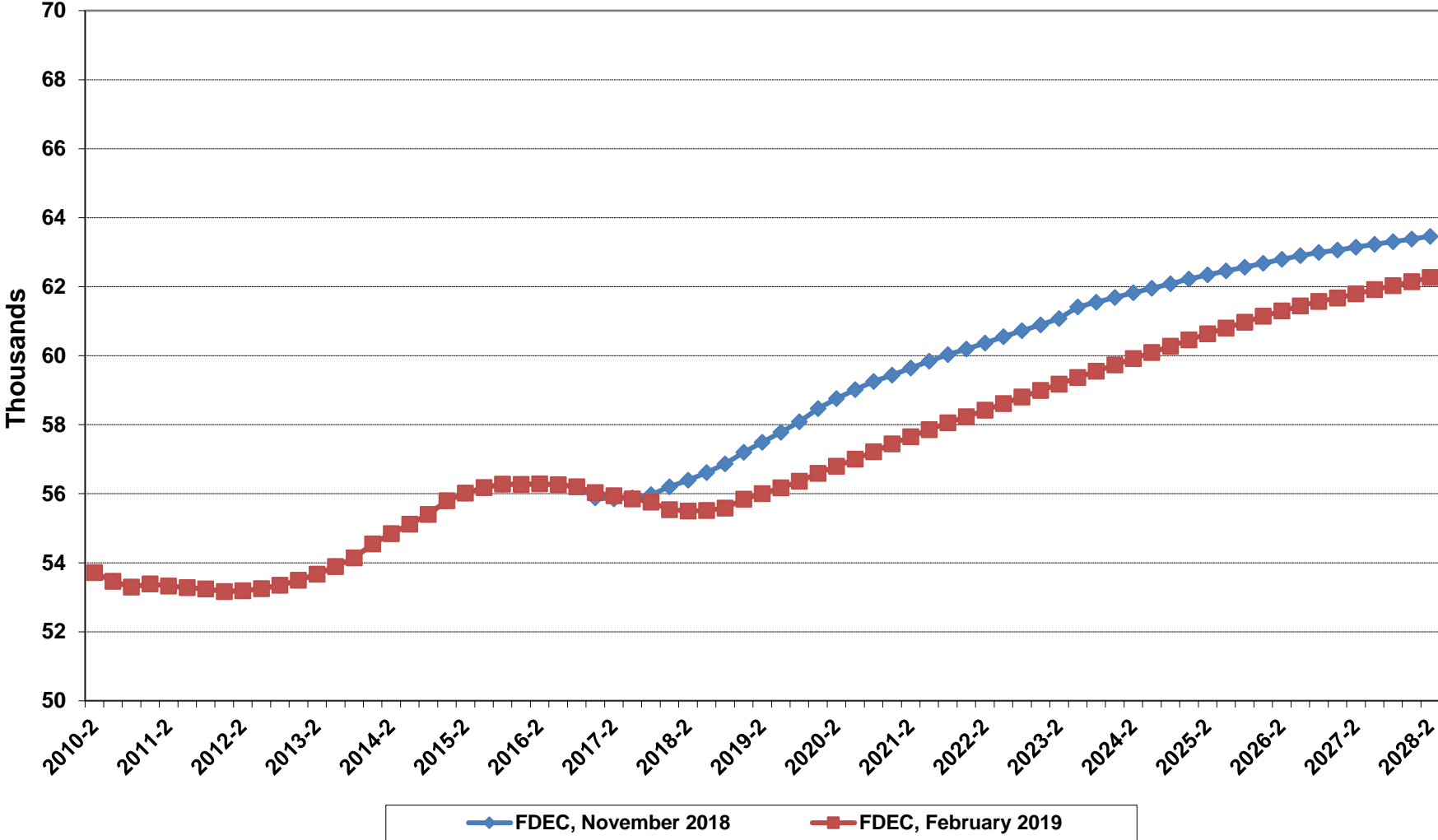
Growth In Florida Household Size



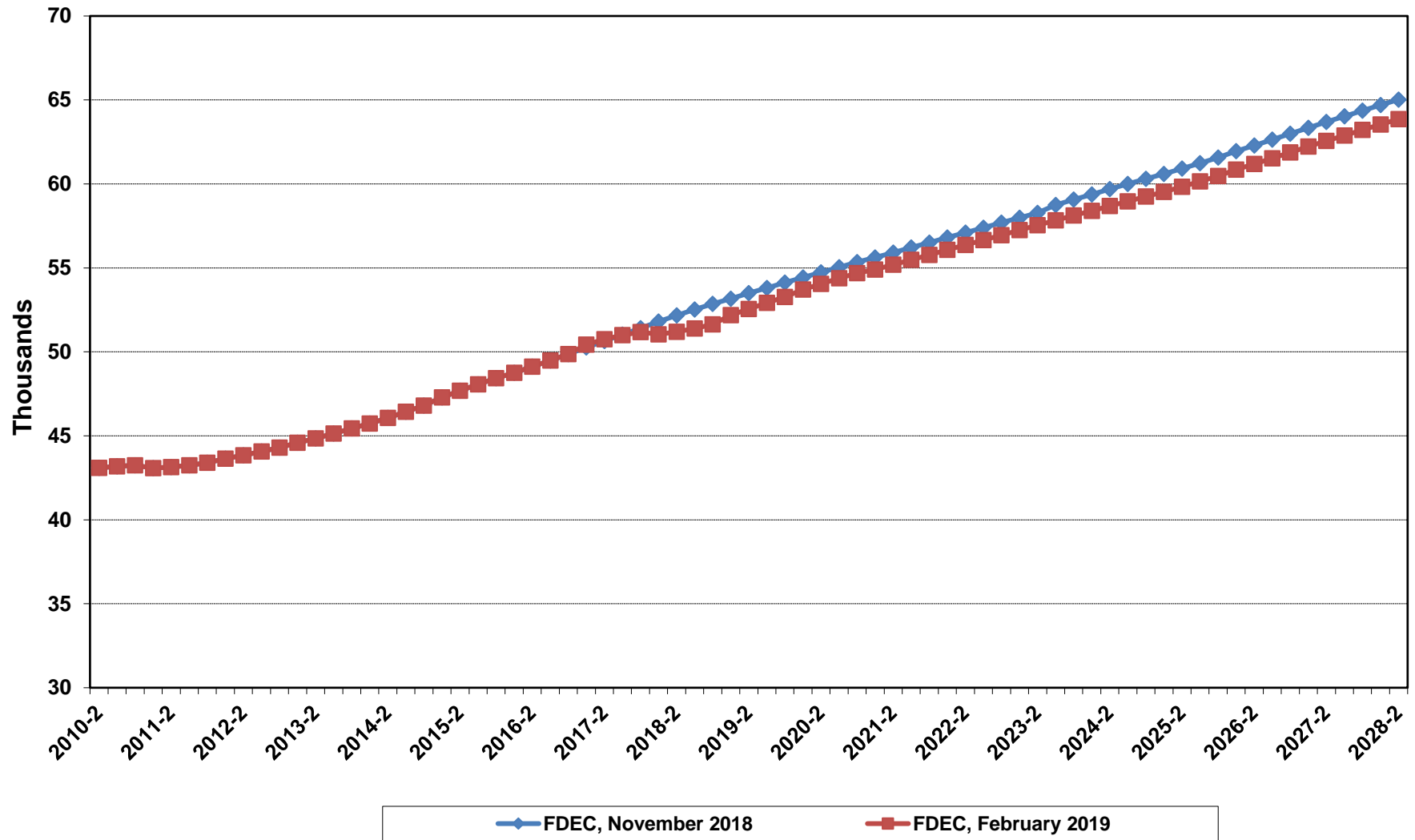
Florida Net Migration



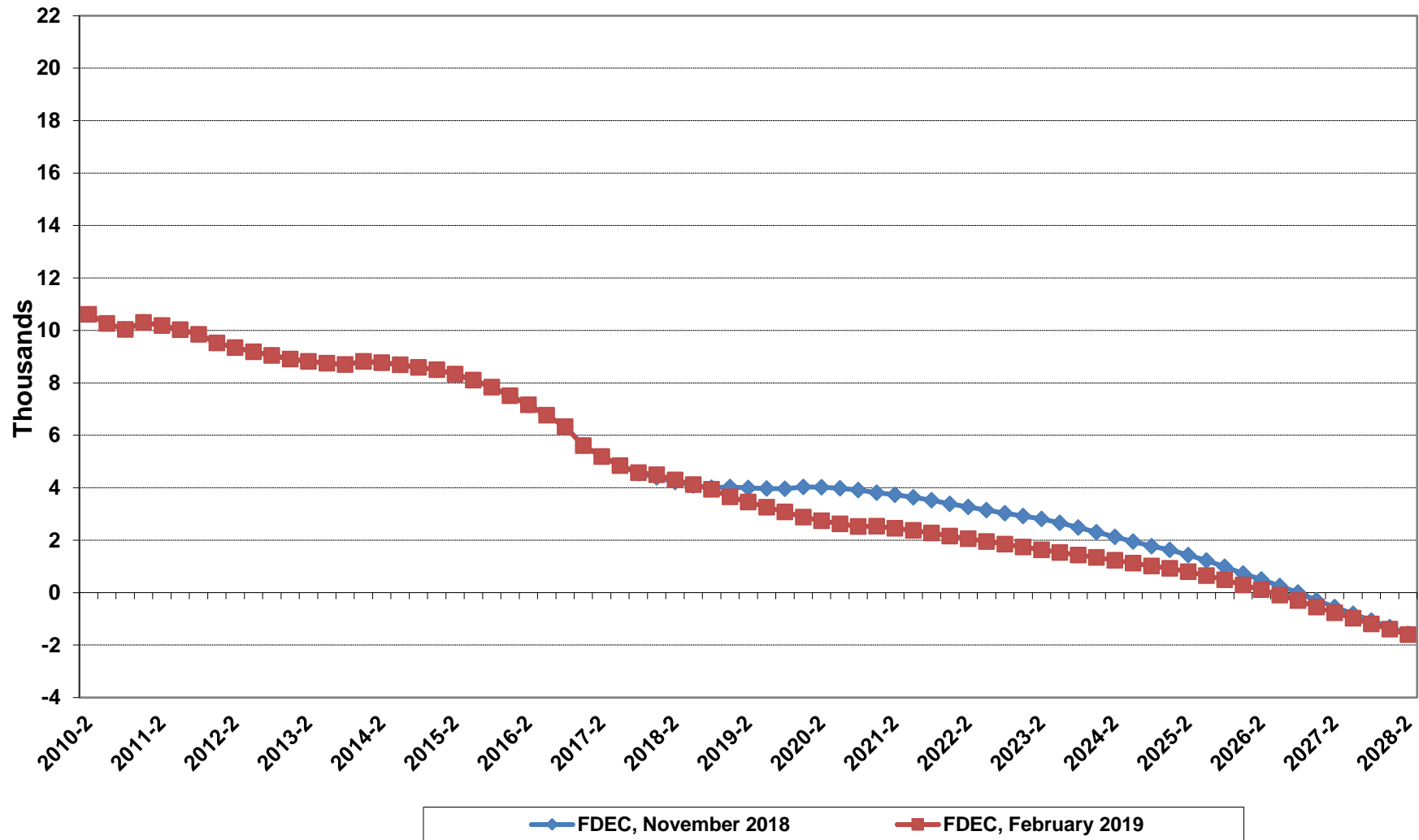
Florida Resident Births



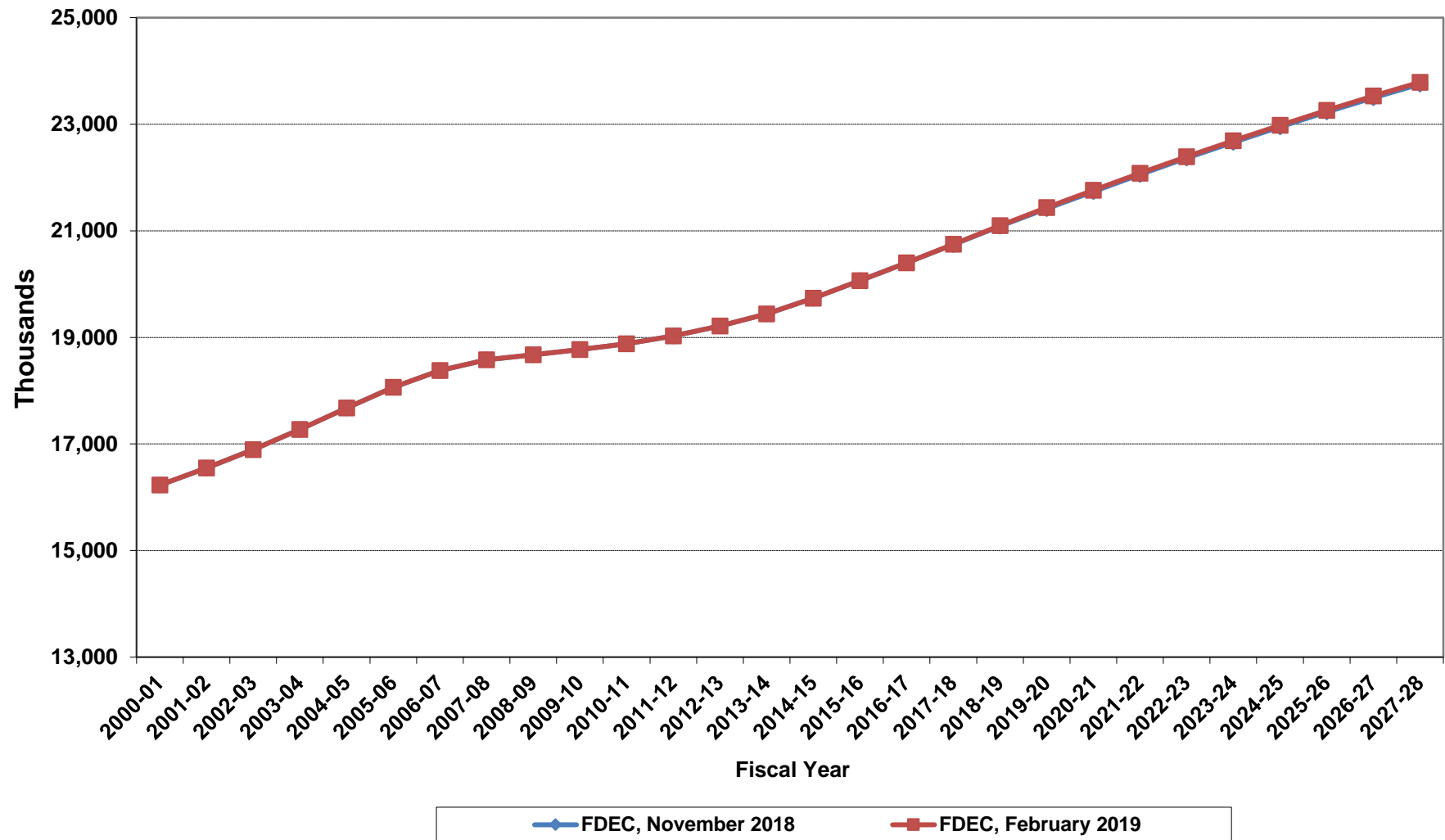
Florida Resident Deaths



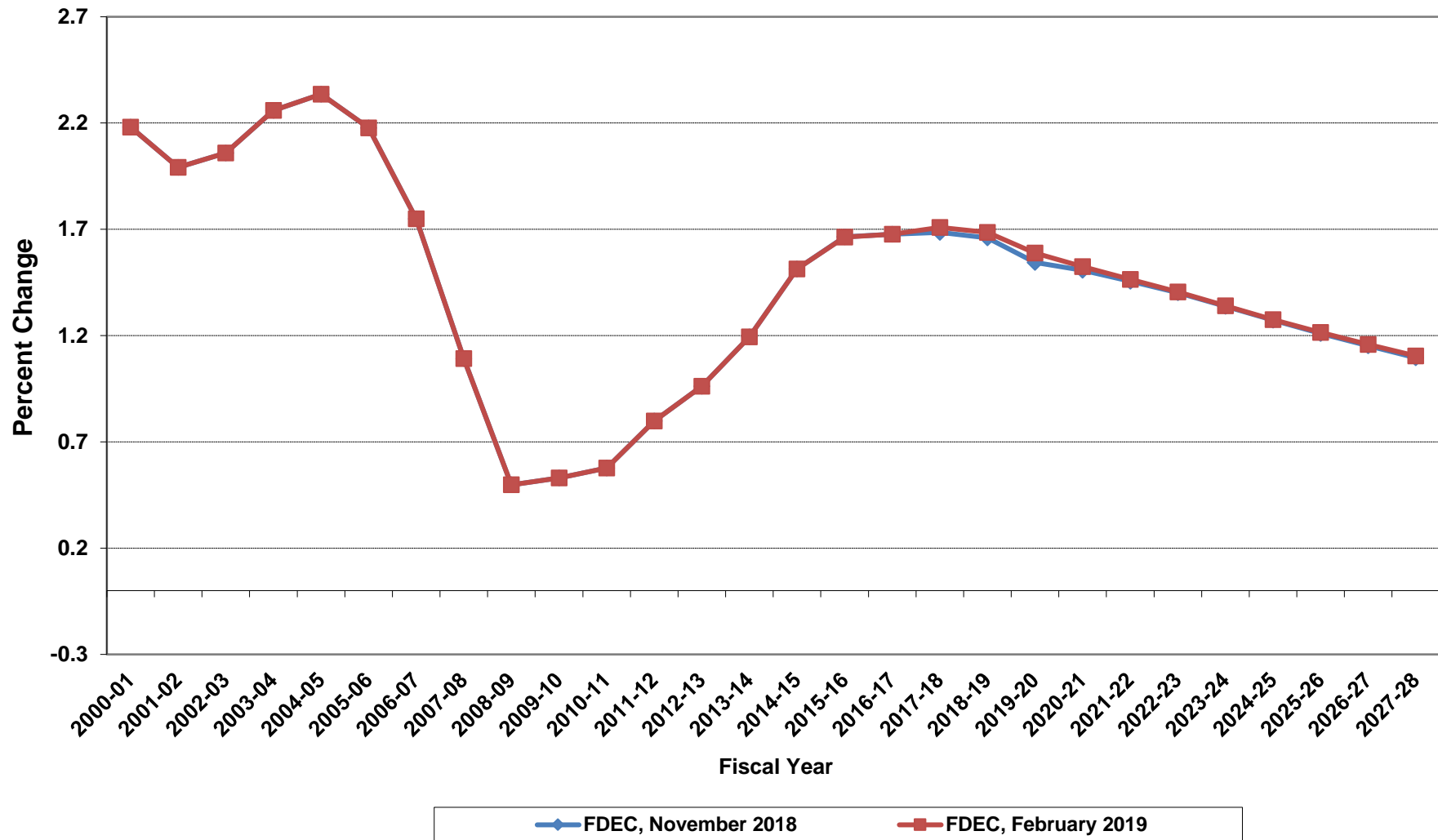
Florida Net Natural Increase



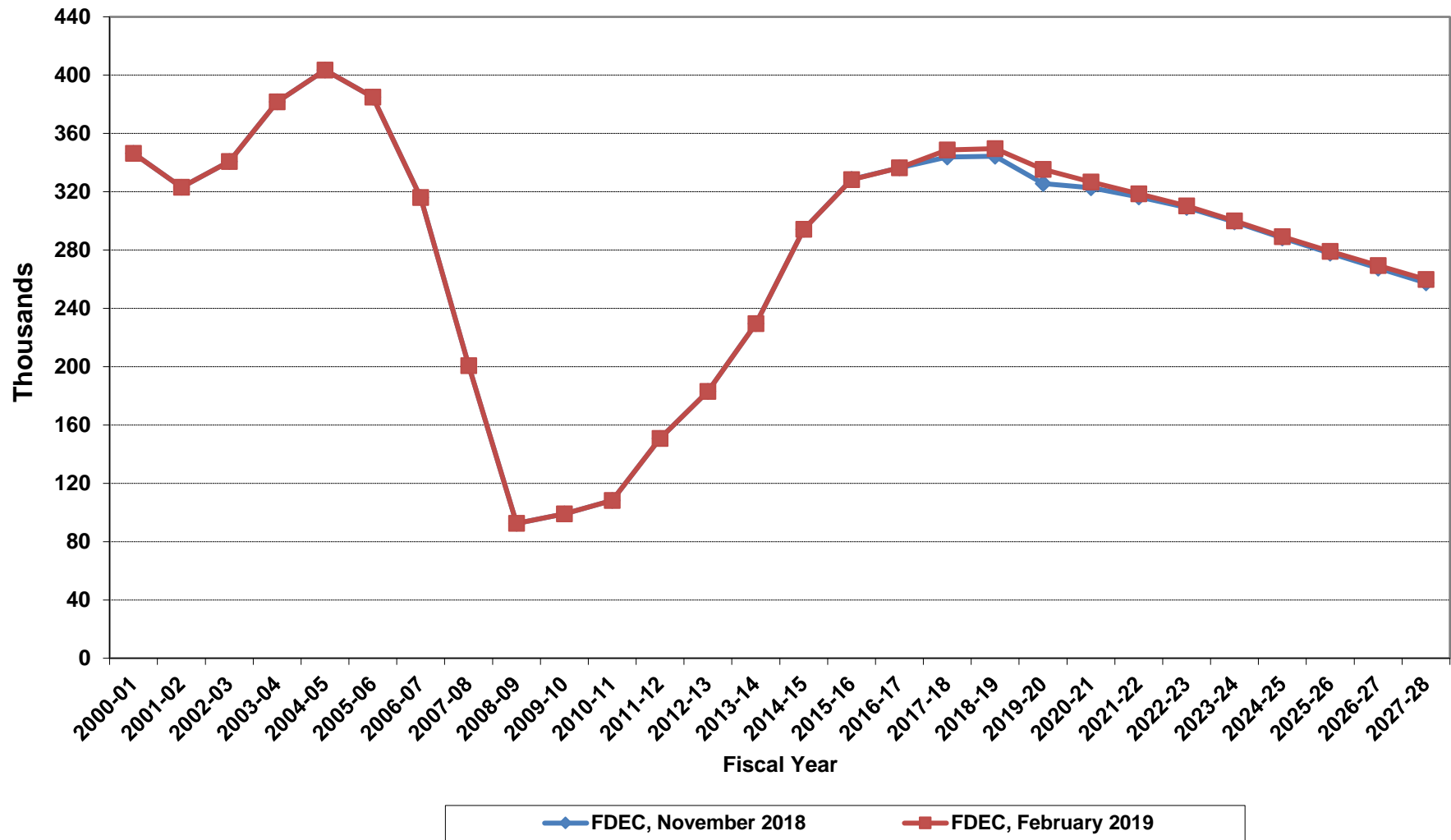
Florida Resident Population



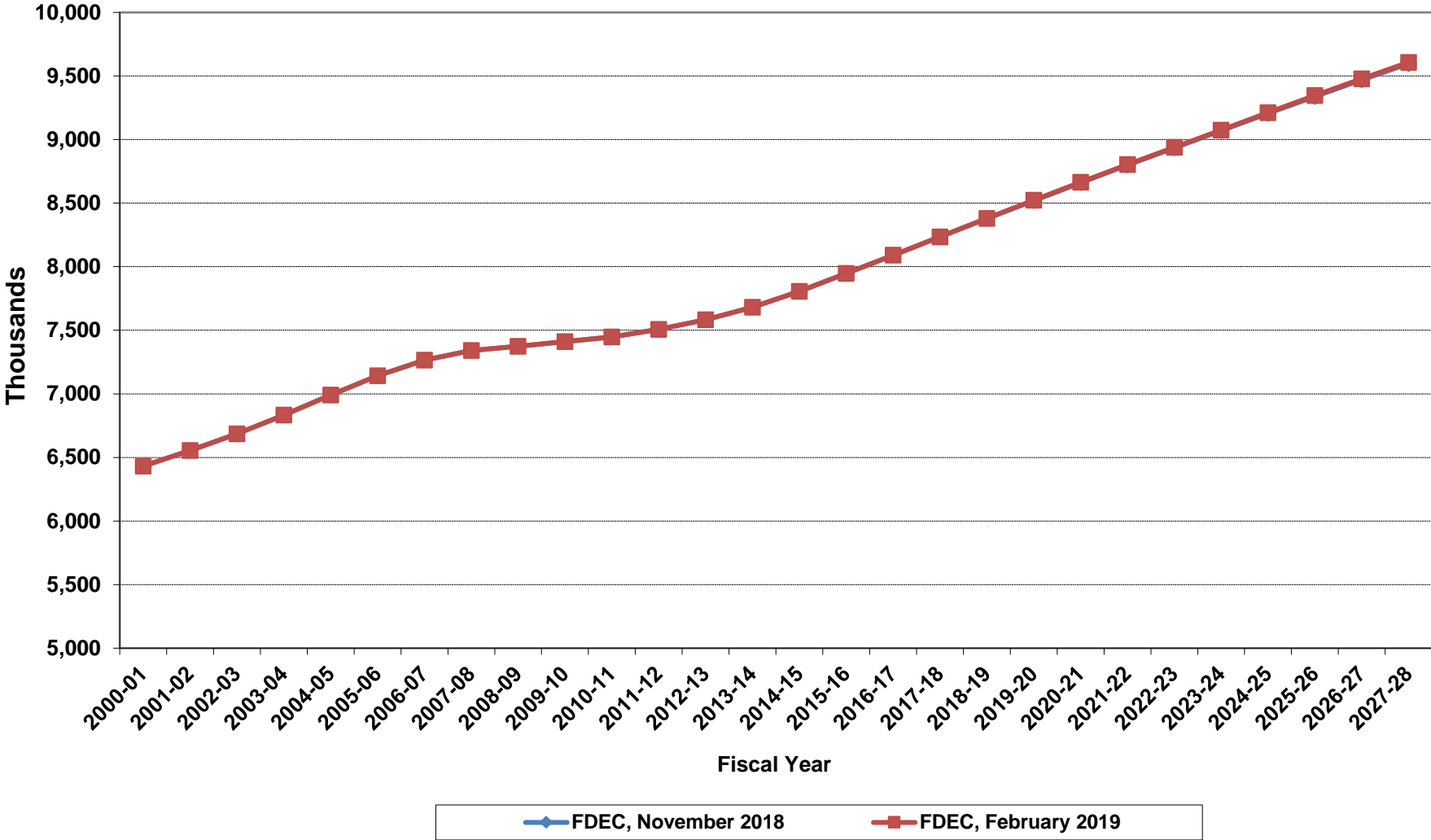
Growth In Florida Resident Population



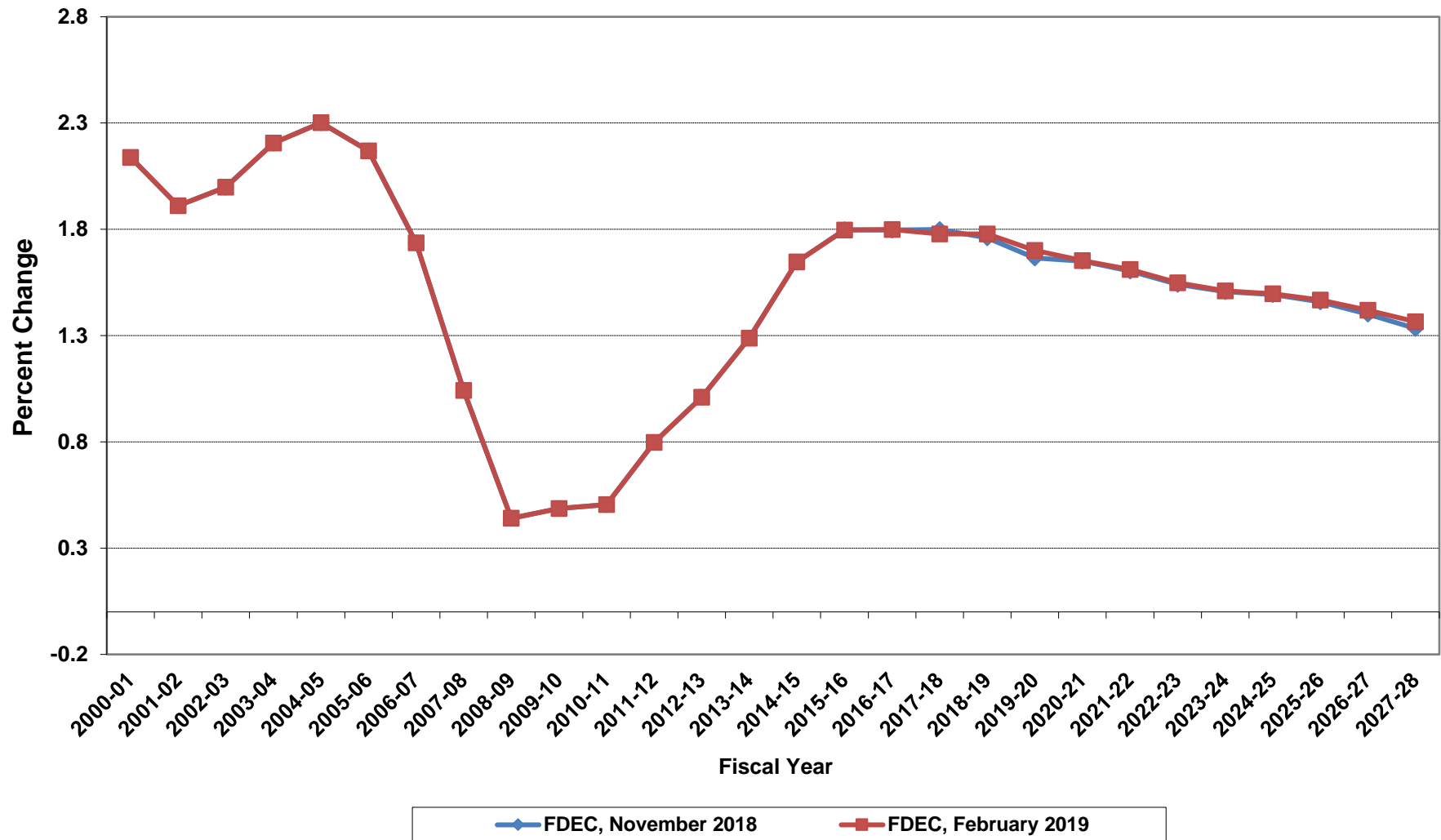
Net Change In Florida Resident Population



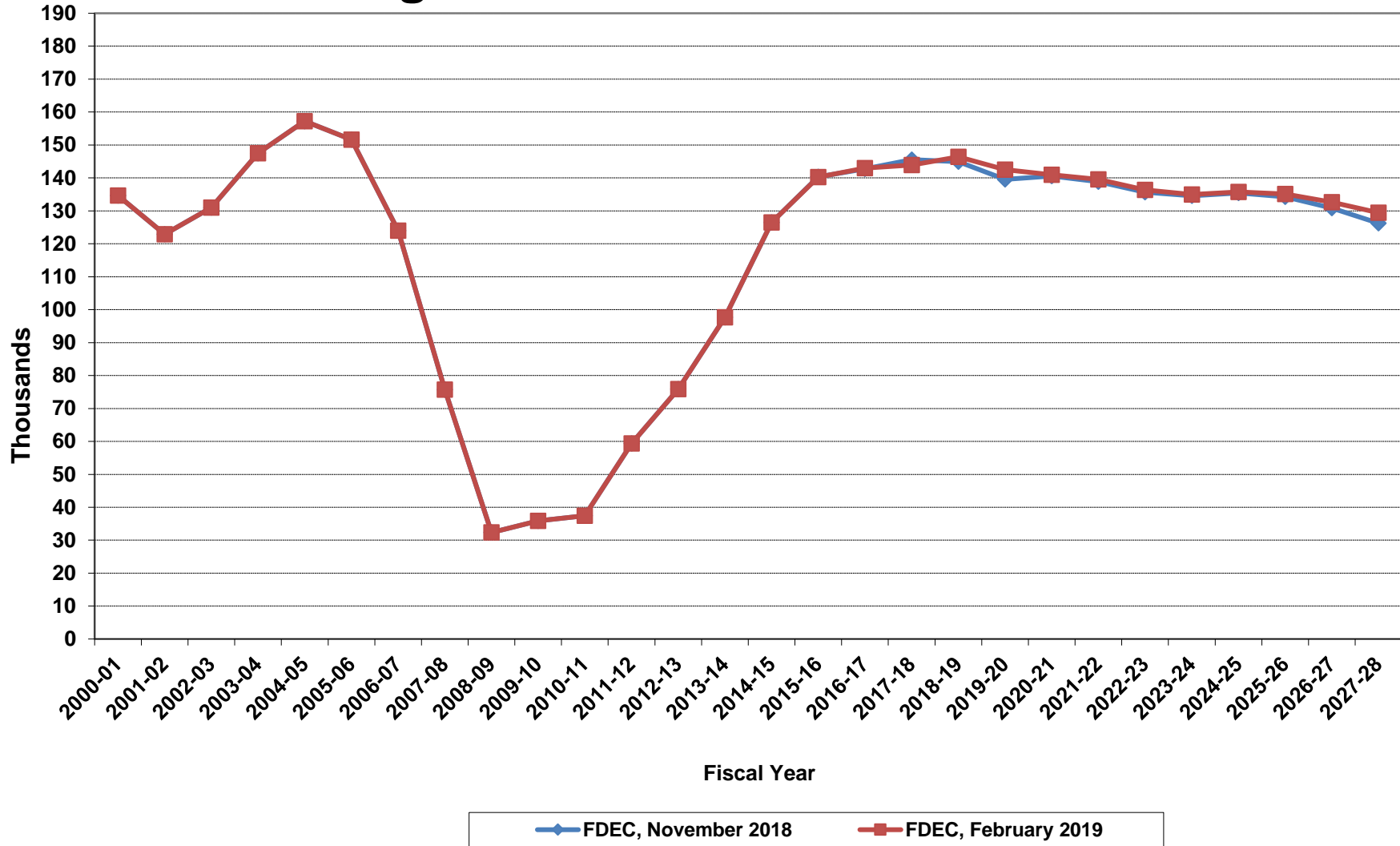
Florida Resident Households



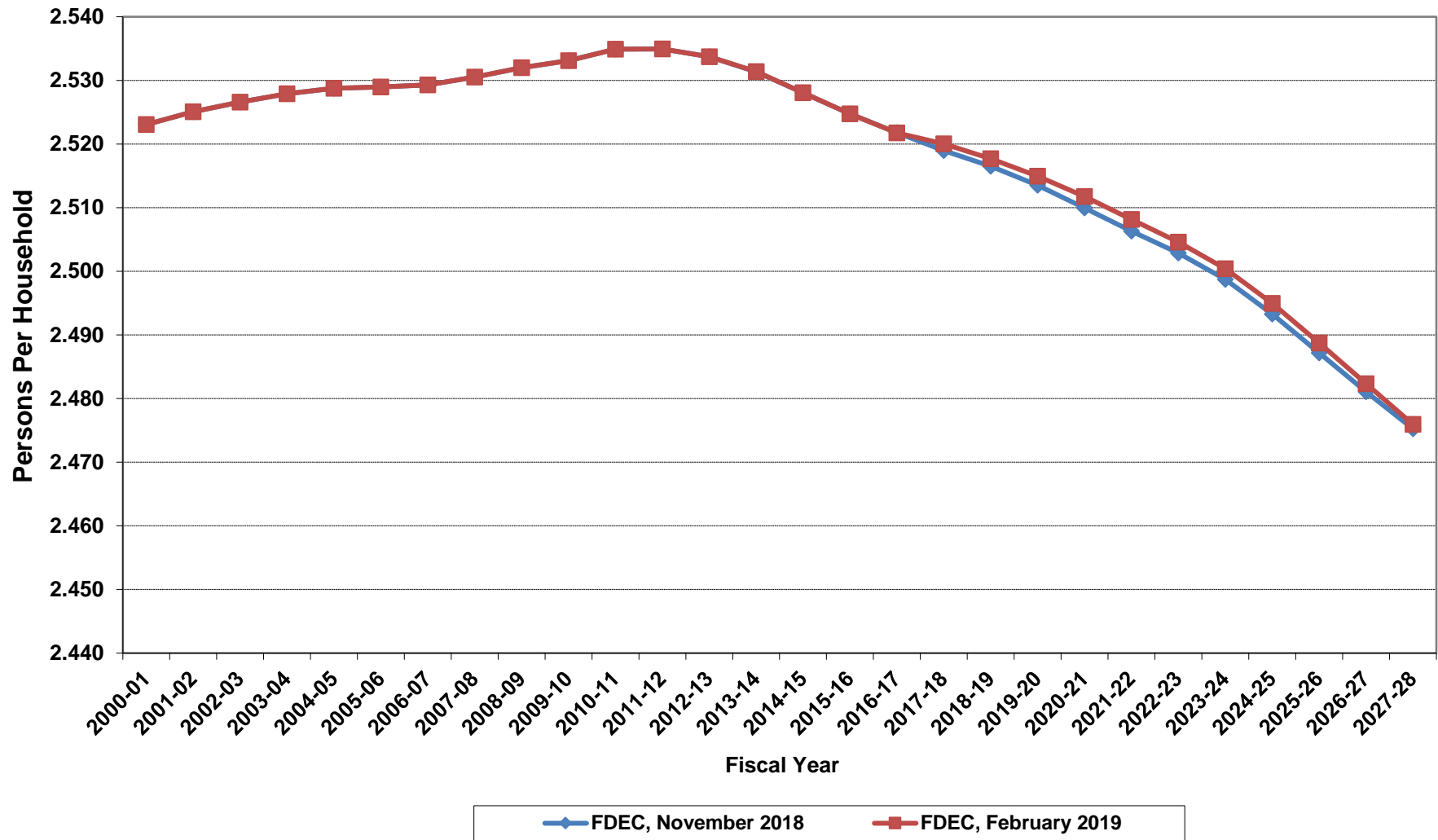
Growth In Florida Resident Households



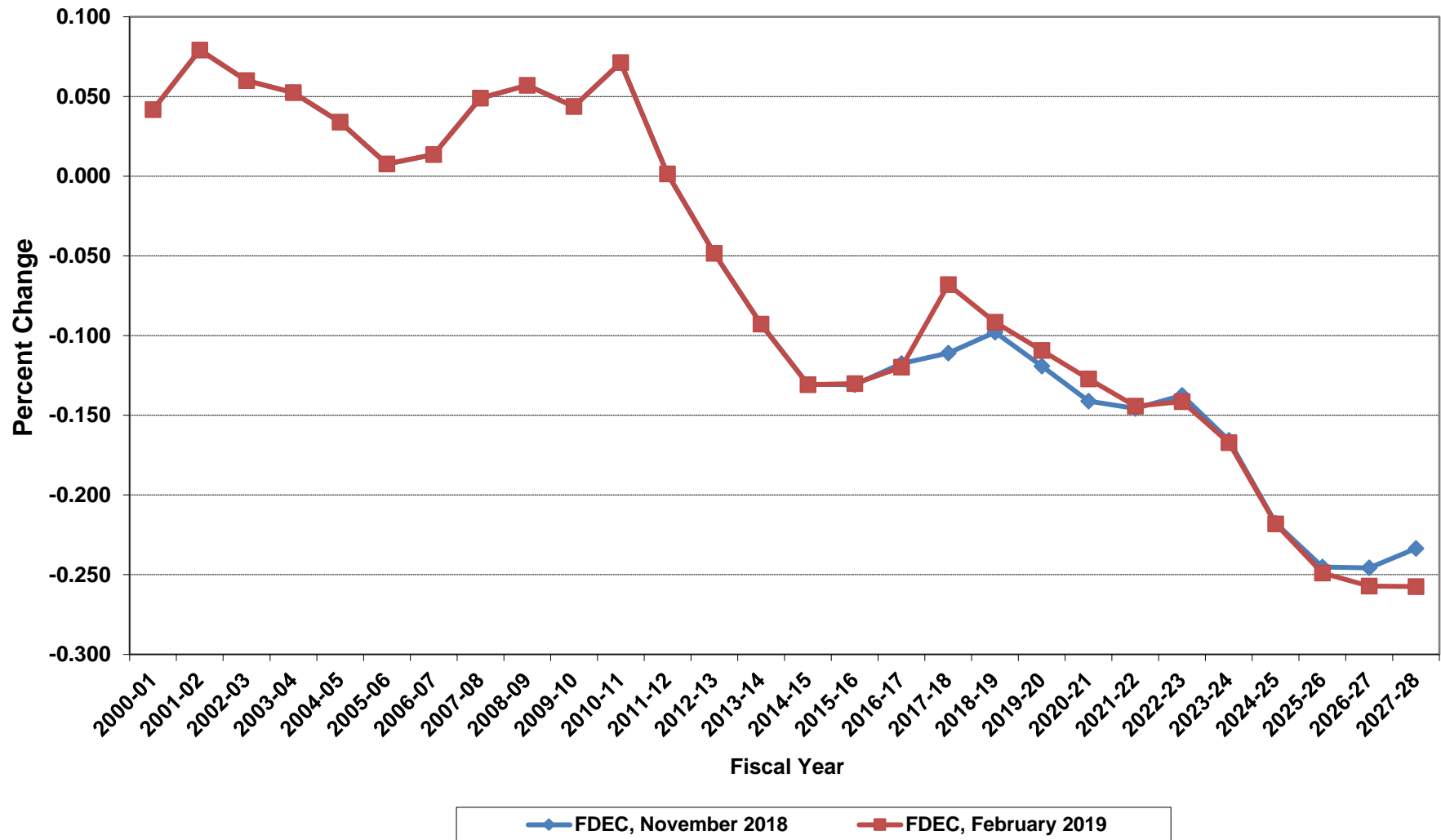
Net Change In Florida Resident Households



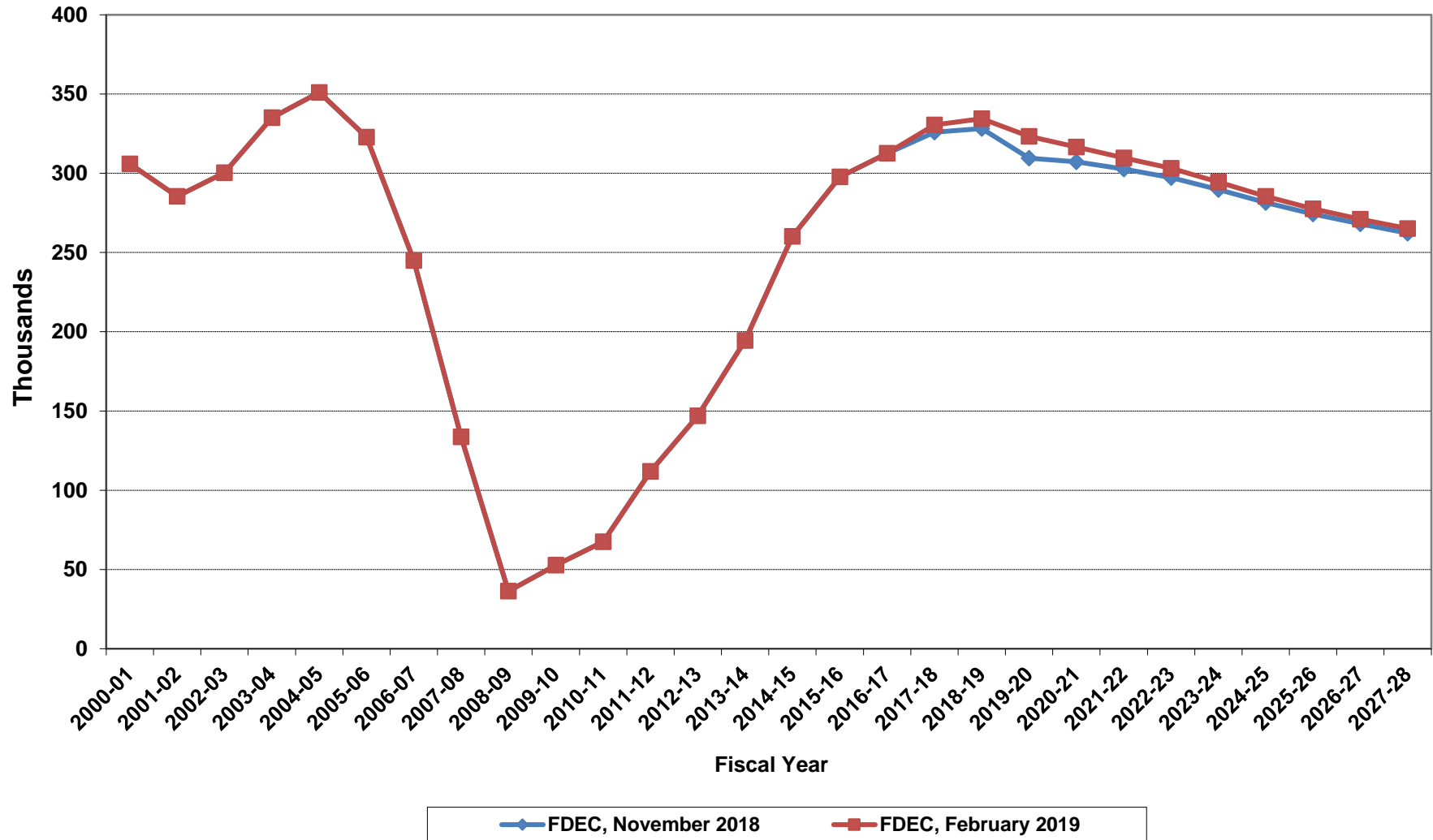
Average Florida Household Size



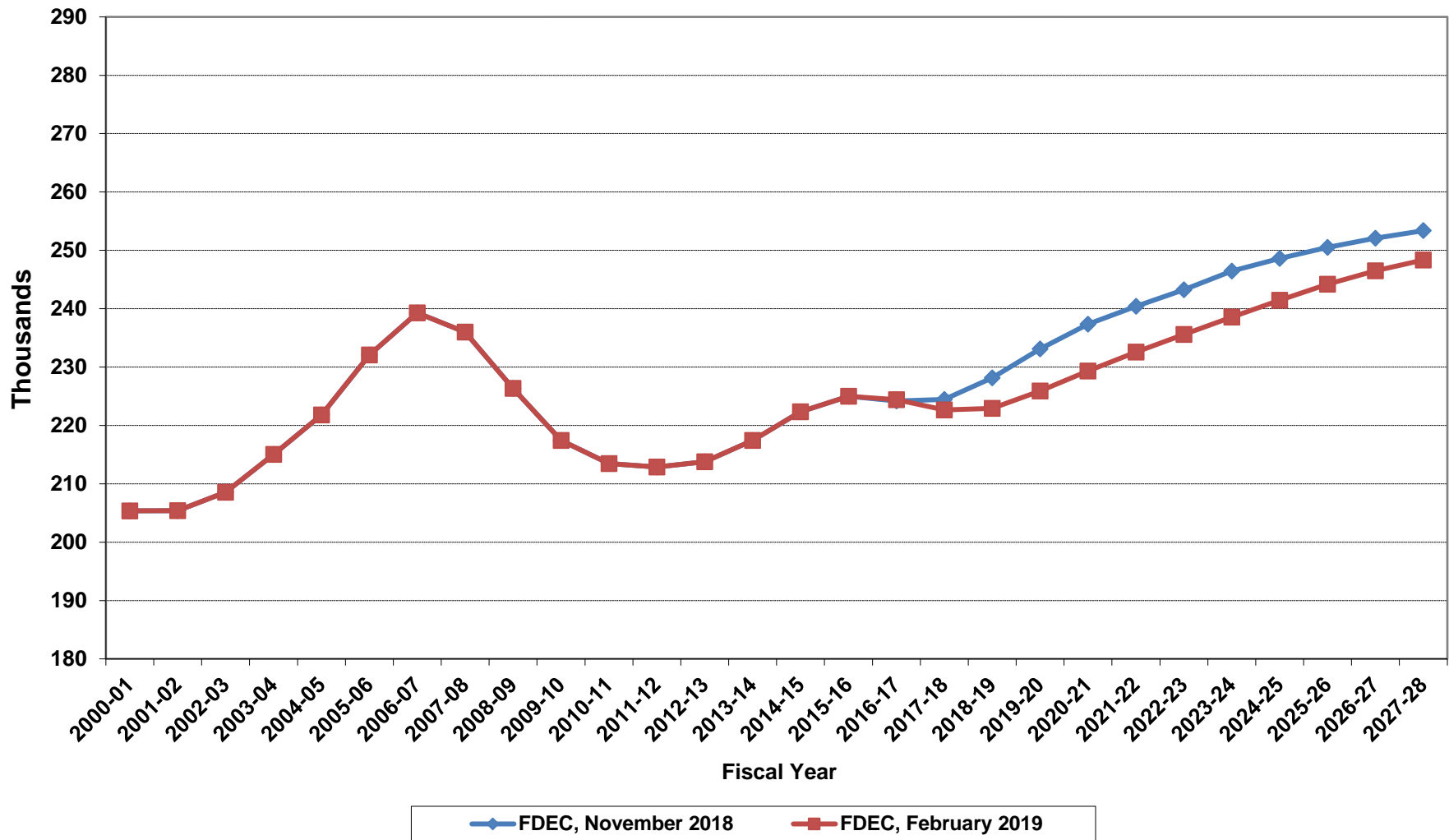
Growth In Average Florida Household Size



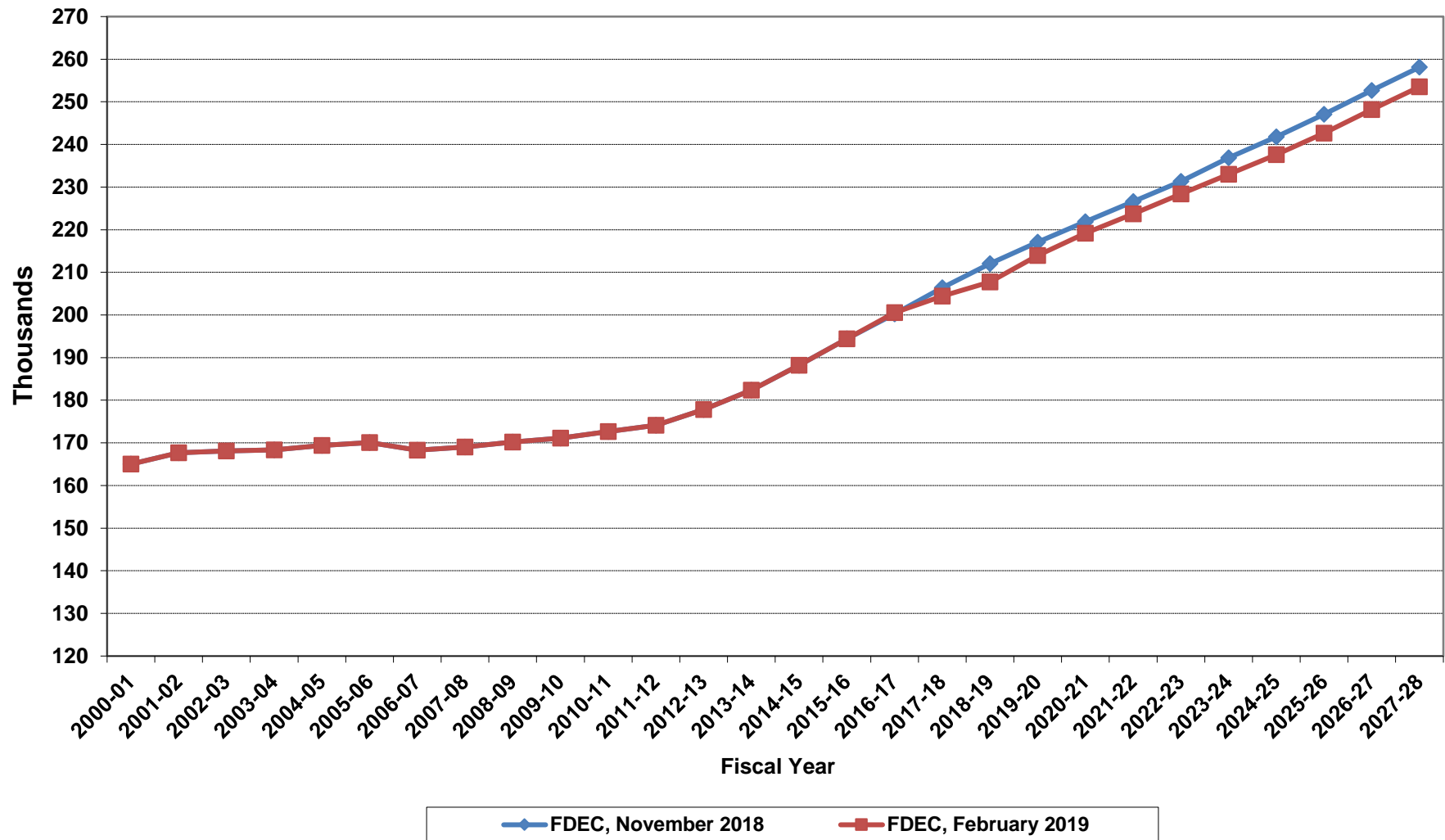
Florida Net Migration



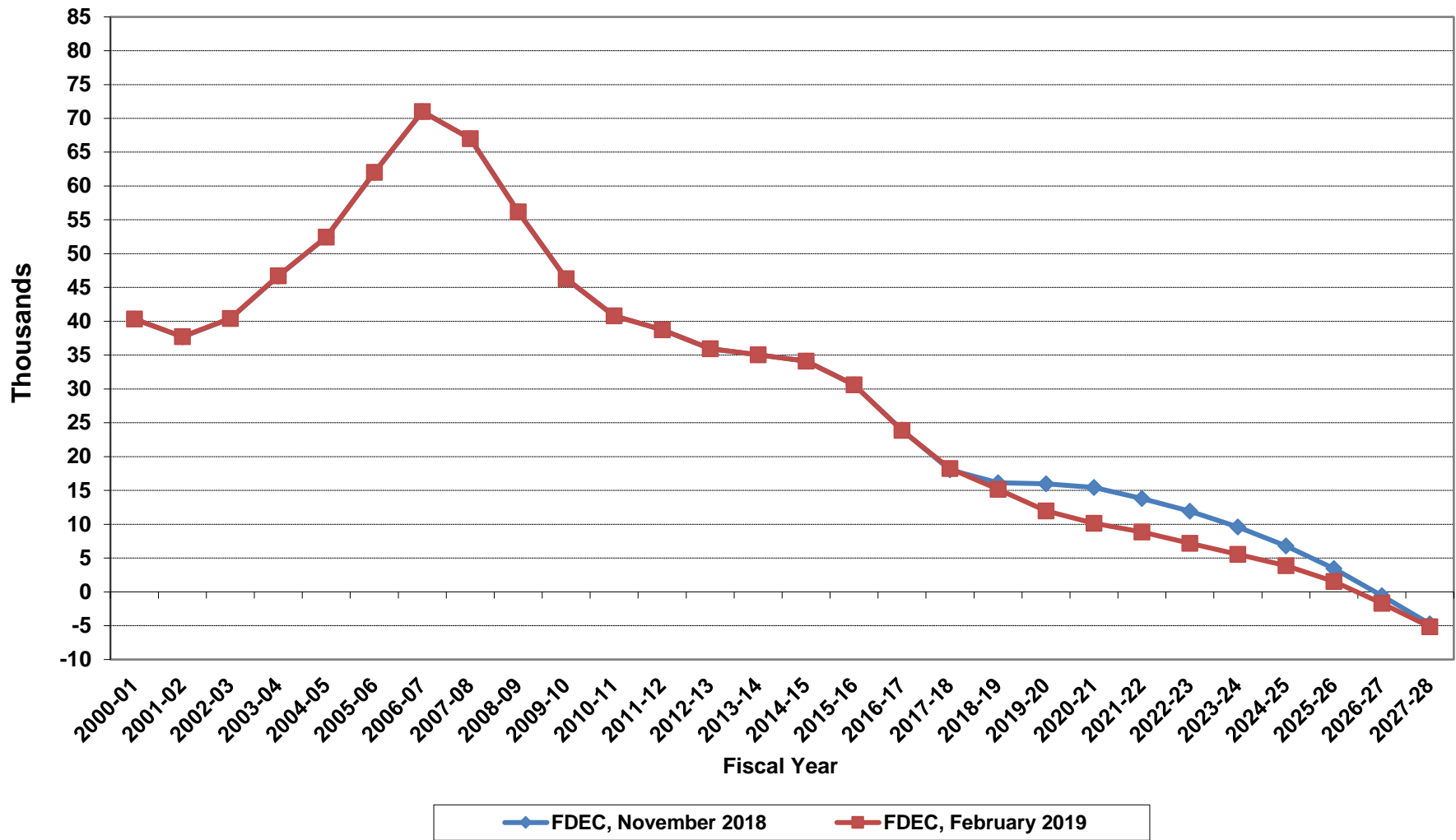
Florida Resident Live Births



Florida Resident Deaths



Florida Net Natural Increase



Florida Population and Components of Change

Fiscal Year	Population (End of Fiscal Year)	Growth Rate	Annual Change in Population	Births	Deaths	Net Natural Increase	Net Migration
1950 - 51	2,981,346	6.50%	181,931	67,486	27,670	39,816	142,115
1951 - 52	3,155,442	5.84%	174,096	72,383	28,942	43,441	130,655
1952 - 53	3,312,521	4.98%	157,079	76,954	29,761	47,193	109,886
1953 - 54	3,504,323	5.79%	191,802	82,725	31,055	51,670	140,132
1954 - 55	3,747,400	6.94%	243,077	86,643	32,176	54,467	188,610
1955 - 56	4,046,062	7.97%	298,662	92,941	34,932	58,009	240,653
1956 - 57	4,370,045	8.01%	323,983	100,990	38,269	62,721	261,262
1957 - 58	4,629,510	5.94%	259,465	105,972	41,911	64,061	195,404
1958 - 59	4,812,270	3.95%	182,760	110,409	43,674	66,735	116,025
1959 - 60	4,998,508	3.87%	186,238	114,428	46,057	68,371	117,867
1960 - 61	5,185,913	3.75%	187,405	116,449	48,388	68,061	119,344
1961 - 62	5,367,899	3.51%	181,986	116,120	50,346	65,774	116,212
1962 - 63	5,553,522	3.46%	185,623	114,709	54,453	60,256	125,367
1963 - 64	5,728,499	3.15%	174,977	115,002	56,229	58,773	116,204
1964 - 65	5,881,195	2.67%	152,696	110,515	57,734	52,781	99,915
1965 - 66	6,065,768	3.14%	184,573	104,367	61,217	43,150	141,423
1966 - 67	6,249,674	3.03%	183,906	101,209	62,577	38,632	145,274
1967 - 68	6,441,756	3.07%	192,082	100,320	66,134	34,186	157,896
1968 - 69	6,633,546	2.98%	191,790	104,286	71,285	33,001	158,789
1969 - 70	6,861,118	3.43%	227,572	111,511	73,831	37,680	189,892
1970 - 71	7,233,583	5.43%	372,465	117,012	75,354	41,658	330,807
1971 - 72	7,681,540	6.19%	447,957	113,568	79,717	33,851	414,106
1972 - 73	8,157,883	6.20%	476,343	107,804	86,232	21,572	454,771
1973 - 74	8,515,208	4.38%	357,325	109,366	88,459	20,907	336,418
1974 - 75	8,648,587	1.57%	133,379	108,686	87,224	21,462	111,917
1975 - 76	8,782,975	1.55%	134,388	104,022	88,129	15,893	118,495
1976 - 77	8,972,678	2.16%	189,703	107,623	90,443	17,180	172,523
1977 - 78	9,225,527	2.82%	252,849	112,268	93,383	18,885	233,964
1978 - 79	9,523,728	3.23%	298,201	116,393	96,801	19,592	278,609
1979 - 80	9,914,652	4.10%	390,924	126,673	101,048	25,625	365,299
1980 - 81	10,212,969	3.01%	298,317	135,560	107,562	27,998	270,319
1981 - 82	10,492,851	2.74%	279,882	141,593	108,644	32,949	246,933
1982 - 83	10,748,466	2.44%	255,615	146,853	110,497	36,356	219,259
1983 - 84	11,065,911	2.95%	317,445	151,748	113,939	37,809	279,636
1984 - 85	11,405,533	3.07%	339,622	159,819	117,539	42,280	297,342
1985 - 86	11,740,069	2.93%	334,536	165,857	122,453	43,404	291,132
1986 - 87	12,083,241	2.92%	343,172	170,819	124,946	45,873	297,299
1987 - 88	12,410,339	2.71%	327,098	179,541	129,413	50,128	276,970
1988 - 89	12,723,719	2.53%	313,380	188,390	131,992	56,398	256,982
1989 - 90	13,017,296	2.31%	293,577	197,181	132,503	64,678	228,899
1990 - 91	13,326,892	2.38%	309,596	197,180	134,093	63,087	246,509
1991 - 92	13,552,021	1.69%	225,129	191,810	136,280	55,530	169,599
1992 - 93	13,802,571	1.85%	250,550	192,051	142,087	49,964	200,586
1993 - 94	14,120,323	2.30%	317,752	191,840	146,101	45,739	272,013
1994 - 95	14,406,418	2.03%	286,095	189,292	149,161	40,131	245,964
1995 - 96	14,701,040	2.05%	294,622	188,584	152,570	36,014	258,608
1996 - 97	15,012,615	2.12%	311,575	190,587	153,067	37,520	274,055
1997 - 98	15,310,069	1.98%	297,454	194,242	155,080	39,162	258,292
1998 - 99	15,680,164	2.42%	370,095	195,897	159,988	35,909	334,186
1999 - 00	16,069,889	2.49%	389,725	200,302	162,489	37,813	351,912
2000 - 01	16,385,615	1.96%	315,726	205,798	164,919	40,879	274,847
2001 - 02	16,718,076	2.03%	332,461	205,164	167,812	37,352	295,109
2002 - 03	17,074,258	2.13%	356,182	208,403	168,079	40,324	315,858
2003 - 04	17,475,944	2.35%	401,686	215,298	168,302	46,996	354,690
2004 - 05	17,876,215	2.29%	400,271	221,533	169,302	52,231	348,040
2005 - 06	18,236,885	2.02%	360,670	232,019	170,303	61,716	298,954
2006 - 07	18,501,231	1.45%	264,346	239,635	168,117	71,518	192,828
2007 - 08	18,636,837	0.73%	135,606	236,065	168,966	67,099	68,507
2008 - 09	18,711,844	0.40%	75,007	226,337	170,615	55,722	19,285
2009 - 10	18,826,492	0.61%	114,648	217,409	171,122	46,287	68,361

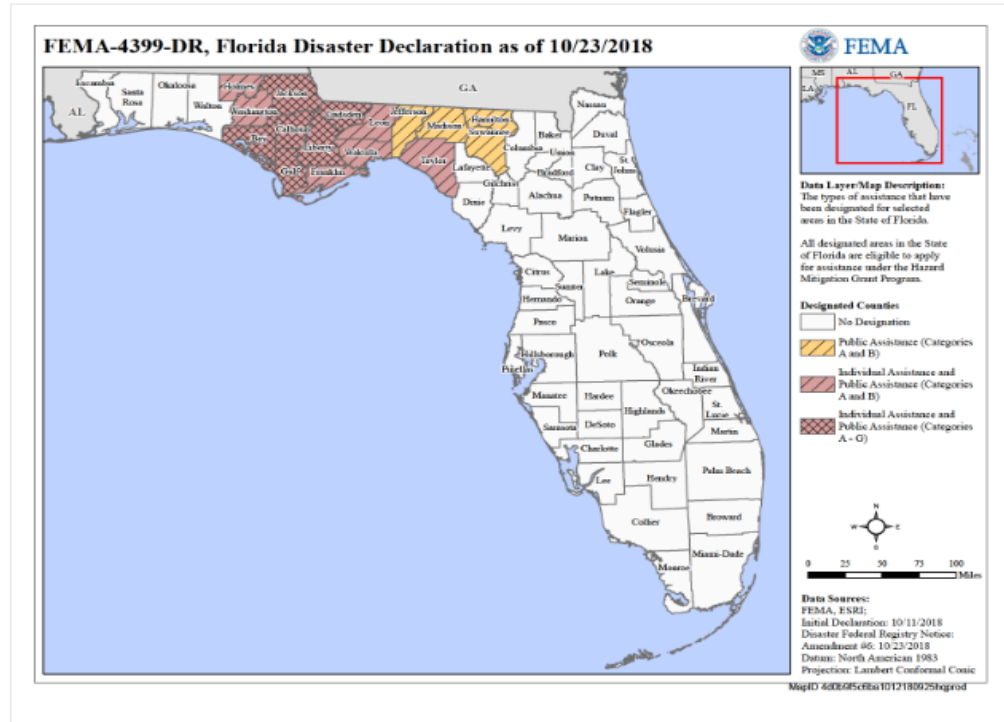
Florida Population and Components of Change

Fiscal Year	Population (End of Fiscal Year)	Growth Rate	Annual Change in Population	Births	Deaths	Net Natural Increase	Net Migration
2010 - 11	18,941,738	0.61%	115,246	213,468	172,661	40,807	74,439
2011 - 12	19,118,952	0.94%	177,214	212,876	174,121	38,755	138,459
2012 - 13	19,314,344	1.02%	195,392	213,762	177,807	35,955	159,437
2013 - 14	19,580,064	1.38%	265,720	217,422	182,383	35,039	230,681
2014 - 15	19,897,044	1.62%	316,980	222,338	188,217	34,121	282,859
2015 - 16	20,233,922	1.69%	336,878	225,014	194,385	30,629	306,249
2016 - 17	20,562,945	1.63%	329,023	224,436	200,540	23,896	305,127
2017 - 18	20,928,335	1.78%	365,390	222,641	204,416	18,225	347,165
2018 - 19	21,268,553	1.63%	340,218	222,947	207,776	15,171	325,047
2019 - 20	21,599,535	1.56%	330,982	225,921	213,947	11,974	319,008
2020 - 21	21,922,055	1.49%	322,520	229,319	219,172	10,147	312,373
2021 - 22	22,236,793	1.44%	314,738	232,566	223,702	8,864	305,874
2022 - 23	22,542,256	1.37%	305,463	235,590	228,411	7,179	298,284
2023 - 24	22,836,821	1.31%	294,565	238,561	233,024	5,537	289,028
2024 - 25	23,120,906	1.24%	284,085	241,455	237,582	3,873	280,212
2025 - 26	23,395,156	1.19%	274,250	244,211	242,662	1,549	272,701
2026 - 27	23,659,763	1.13%	264,607	246,477	248,180	-1,703	266,310
2027 - 28	23,915,040	1.08%	255,277	248,352	253,516	-5,164	260,441
2028 - 29	24,161,447	1.03%	246,407	250,188	258,612	-8,424	254,831
2029 - 30	24,398,989	0.98%	237,542	251,962	263,541	-11,579	249,121
2030 - 31	24,628,189	0.94%	229,200	253,667	268,952	-15,285	244,485
2031 - 32	24,850,525	0.90%	222,336	255,183	275,045	-19,862	242,198
2032 - 33	25,066,184	0.87%	215,659	256,552	281,087	-24,535	240,194
2033 - 34	25,275,844	0.84%	209,660	257,810	286,940	-29,130	238,790
2034 - 35	25,479,861	0.81%	204,017	258,705	292,692	-33,987	238,004
2035 - 36	25,678,151	0.78%	198,290	259,429	298,140	-38,711	237,001
2036 - 37	25,870,033	0.75%	191,882	260,398	303,251	-42,853	234,735
2037 - 38	26,056,903	0.72%	186,870	261,466	308,265	-46,799	233,669
2038 - 39	26,239,395	0.70%	182,492	262,447	313,192	-50,745	233,237

Florida Hurricane Michael (DR-4399)

Incident Period: October 07, 2018 - October 19, 2018

Major Disaster Declaration declared on October 11, 2018



Florida Disaster Counties			
	April 1, 2018 Population		
	Population	% of Disaster Counties	% of State Total
Public Assistance	93,706	11.5%	0.4%
Hamilton	14,621	1.8%	0.1%
Jefferson	14,733	1.8%	0.1%
Madison	19,473	2.4%	0.1%
Suwannee	44,879	5.5%	0.2%
Individual Assistance and Public Assistance (Categories A&B)	403,829	49.4%	1.9%
Franklin	12,009	1.5%	0.1%
Holmes	20,133	2.5%	0.1%
Leon	292,332	35.8%	1.4%
Taylor	22,283	2.7%	0.1%
Wakulla	31,943	3.9%	0.2%
Washington	25,129	3.1%	0.1%
Individual Assistance and Public Assistance (Categories A-G)	319,969	39.1%	1.5%
Bay	181,199	22.2%	0.9%
Calhoun	15,093	1.8%	0.1%
Gadsden	47,828	5.9%	0.2%
Gulf	16,499	2.0%	0.1%
Jackson	50,435	6.2%	0.2%
Liberty	8,915	1.1%	0.0%
Total of Above Counties	817,504	100.0%	
Total for State	20,840,568		3.9%