

**Demographic Estimating Conference**  
**Executive Summary**  
**July 8, 2019**

The Demographic Estimating Conference met on July 8, 2019, to adopt a new population forecast. The new estimates reflect recent demographic and economic-related data. Compared to the last conference, the population projection for April 1, 2019 was revised upward by 16,264, reflecting stronger residential electric meter growth than anticipated in February. The upward revisions grow to around 60,000 by April 1, 2024.

Data was presented to the Conference that indicated there were some regional impacts to select panhandle counties from Hurricane Michael. The forecast adopted by the Conference did not make a discrete adjustment, as the hurricane is thought to have caused some shifting of population among counties and cities, not affecting the overall state total population.

In the new forecast, changes in population growth are due mostly to net migration, as natural increase represented even a smaller percentage of the change relative to the last conference, reflecting the most recent provisional 2018 vital statistics information.

April 1	Population	Change from the Prior Year	
		Percent	Numeric
2012	19,074,434	0.90%	169,364
2013	19,259,543	0.97%	185,109
2014	19,507,369	1.29%	247,826
2015	19,815,183	1.58%	307,814
2016	20,148,654	1.68%	333,471
2017	20,484,142	1.67%	335,488
2018	20,840,568	1.74%	356,426
<i>Forecast</i>			
2019	21,200,796	1.73%	360,228
2020	21,546,885	1.63%	346,089
2021	21,881,835	1.55%	334,950
2022	22,206,881	1.49%	325,046
2023	22,521,566	1.42%	314,685
2024	22,824,196	1.34%	302,630

Between April 1, 2018 and April 1, 2024, population growth is expected to average 330,605 net new residents per year (906 per day), representing a compound growth rate of 1.53% over this six-year time horizon. These increases are analogous to adding a city slightly larger than Orlando every year.

Of note, the population estimates developed by the U.S. Census Bureau continue to be higher than the official state estimates adopted by the Demographic Estimating Conference. In the latest comparable set of estimates (July 1, 2018), the difference was about 370,990 persons. The Legislative Office of Economic and Demographic Research is continuing its efforts to identify how the differing underlying methodologies contribute to the gap between the two sets of estimates.

# **Florida Demographic Estimating Conference**

**Tables**  
Conference Packet

July 8, 2019

# Florida Resident Population

April 1

Year	Florida Demographic Estimating Conference February 2019			Florida Demographic Estimating Conference July 2019			
	Population	% Change	Change	Population	% Change	Change	
2000	15,982,824	2.58%	402,580	15,982,824	2.58%	402,580	
2001	16,305,100	2.02%	322,276	16,305,100	2.02%	322,276	
2002	16,634,256	2.02%	329,156	16,634,256	2.02%	329,156	
2003	16,979,706	2.08%	345,450	16,979,706	2.08%	345,450	
2004	17,374,824	2.33%	395,118	17,374,824	2.33%	395,118	
2005	17,778,156	2.32%	403,332	17,778,156	2.32%	403,332	
2006	18,154,475	2.12%	376,319	18,154,475	2.12%	376,319	
2007	18,446,768	1.61%	292,293	18,446,768	1.61%	292,293	
2008	18,613,905	0.91%	167,137	18,613,905	0.91%	167,137	
2009	18,687,425	0.39%	73,520	18,687,425	0.39%	73,520	
2010	18,801,332	0.61%	113,907	18,801,332	0.61%	113,907	
2011	18,905,070	0.55%	103,738	18,905,070	0.55%	103,738	
2012	19,074,434	0.90%	169,364	19,074,434	0.90%	169,364	
2013	19,259,543	0.97%	185,109	19,259,543	0.97%	185,109	
2014	19,507,369	1.29%	247,826	19,507,369	1.29%	247,826	
2015	19,815,183	1.58%	307,814	19,815,183	1.58%	307,814	
2016	20,148,654	1.68%	333,471	20,148,654	1.68%	333,471	
2017	20,484,142	1.67%	335,488	20,484,142	1.67%	335,488	
2018	20,840,568	1.74%	356,426	20,840,568	1.74%	356,426	
Begins forecast							
2019	21,184,532	1.65%	343,964	21,200,796	1.73%	360,228	
2020	21,517,610	1.57%	333,078	21,546,885	1.63%	346,089	
2021	21,842,151	1.51%	324,541	21,881,835	1.55%	334,950	
2022	22,158,870	1.45%	316,719	22,206,881	1.49%	325,046	
2023	22,466,893	1.39%	308,023	22,521,566	1.42%	314,685	
2024	22,764,194	1.32%	297,301	22,824,196	1.34%	302,630	
			5-Year Averages				5-Year Averages
2025	23,050,820	1.39%	306,642	23,115,024	1.41%	313,628	
2030	24,340,457	1.09%	257,927	24,408,513	1.09%	258,698	
2035	25,429,340	0.88%	217,777	25,488,114	0.87%	215,920	
2040	26,373,603	0.73%	188,853	26,424,424	0.72%	187,262	
2045	27,219,985	0.63%	169,276	27,265,701	0.63%	168,255	

# Florida Resident Households

April 1

Year	Florida Demographic Estimating Conference February 2019			Florida Demographic Estimating Conference July 2019			
	Households	% Change	Change	Households	% Change	Change	
2000	6,338,075	2.52%	155,729	6,338,075	2.65%	163,703	
2001	6,467,215	2.04%	129,140	6,460,934	1.94%	122,859	
2002	6,599,035	2.04%	131,820	6,586,806	1.95%	125,872	
2003	6,737,370	2.10%	138,335	6,719,399	2.01%	132,593	
2004	6,895,469	2.35%	158,099	6,872,318	2.28%	152,919	
2005	7,056,889	2.34%	161,420	7,029,787	2.29%	157,469	
2006	7,207,645	2.14%	150,756	7,178,486	2.12%	148,699	
2007	7,312,907	1.46%	105,262	7,292,550	1.59%	114,064	
2008	7,368,319	0.76%	55,412	7,354,880	0.85%	62,330	
2009	7,386,570	0.25%	18,251	7,379,964	0.34%	25,084	
2010	7,525,335	1.88%	138,765	7,420,802	0.55%	40,838	
2011	7,456,791	-0.91%	-68,544	7,456,791	0.48%	35,989	
2012	7,525,335	0.92%	68,544	7,525,335	0.92%	68,544	
2013	7,602,417	1.02%	77,082	7,602,417	1.02%	77,082	
2014	7,708,538	1.40%	106,121	7,708,538	1.40%	106,121	
2015	7,840,780	1.72%	132,242	7,840,780	1.72%	132,242	
2016	7,982,938	1.81%	142,158	7,982,938	1.81%	142,158	
2017	8,125,176	1.78%	142,238	8,125,176	1.78%	142,238	
2018	8,271,058	1.80%	145,882	8,271,058	1.80%	145,882	
Begins forecast							
2019	8,416,658	1.76%	145,600	8,423,120	1.84%	152,062	
2020	8,558,104	1.68%	141,446	8,569,747	1.74%	146,627	
2021	8,699,034	1.65%	140,930	8,714,038	1.68%	144,291	
2022	8,837,951	1.60%	138,917	8,856,556	1.64%	142,518	
2023	8,973,363	1.53%	135,412	8,997,192	1.59%	140,636	
2024	9,108,523	1.51%	135,160	9,135,335	1.54%	138,143	
			5-Year Averages				5-Year Averages
2025	9,244,463	1.55%	137,272	9,274,234	1.59%	140,897	
2030	9,884,007	1.35%	127,909	9,941,867	1.40%	133,527	
2035	10,438,083	1.10%	110,815	10,491,968	1.08%	110,020	
2040	10,883,349	0.84%	89,053	10,930,545	0.82%	87,715	
2045	11,247,107	0.66%	72,752	11,289,758	0.65%	71,843	

Note: Household series has been revised from 2001 forward.

	<u>2010-2</u>	<u>2010-3</u>	<u>2010-4</u>	<u>2011-1</u>	<u>2011-2</u>	<u>2011-3</u>	<u>2011-4</u>	<u>2012-1</u>	<u>2012-2</u>	<u>2012-3</u>	<u>2012-4</u>	<u>2013-1</u>	<u>2013-2</u>	<u>2013-3</u>
<b>Population</b>														
FDEC, February 2019	18,813.9	18,838.3	18,862.7	18,890.2	18,923.4	18,962.8	19,006.3	19,051.6	19,096.7	19,141.2	19,186.6	19,234.6	19,286.9	19,344.2
FDEC, July 2019	18,813.9	18,838.3	18,862.7	18,890.2	18,923.4	18,962.8	19,006.3	19,051.6	19,096.7	19,141.2	19,186.6	19,234.6	19,286.9	19,344.2
<b>Population Growth Rate</b>														
FDEC, February 2019	0.59	0.52	0.52	0.58	0.71	0.83	0.92	0.96	0.95	0.94	0.95	1.01	1.09	1.19
FDEC, July 2019	0.59	0.52	0.52	0.58	0.71	0.83	0.92	0.96	0.95	0.94	0.95	1.01	1.09	1.19
<b>Net Change in Population</b>														
FDEC, February 2019	27.9	24.4	24.4	27.5	33.2	39.4	43.5	45.3	45.1	44.5	45.4	48.0	52.3	57.3
FDEC, July 2019	27.9	24.4	24.4	27.5	33.2	39.4	43.5	45.3	45.1	44.5	45.4	48.0	52.3	57.3
<b>Households</b>														
FDEC, February 2019	7,425.0	7,433.2	7,441.5	7,451.3	7,463.9	7,479.6	7,497.3	7,515.9	7,534.5	7,552.9	7,571.8	7,591.9	7,614.1	7,638.5
FDEC, July 2019	7,425.0	7,433.2	7,441.5	7,451.3	7,463.9	7,479.6	7,497.3	7,515.9	7,534.5	7,552.9	7,571.8	7,591.9	7,614.1	7,638.5
<b>Household Growth Rate</b>														
FDEC, February 2019	0.50	0.44	0.45	0.53	0.68	0.84	0.95	1.00	0.99	0.98	1.00	1.07	1.17	1.29
FDEC, July 2019	0.50	0.44	0.45	0.53	0.68	0.84	0.95	1.00	0.99	0.98	1.00	1.07	1.17	1.29
<b>Net Change in Households</b>														
FDEC, February 2019	9.3	8.2	8.3	9.8	12.6	15.6	17.7	18.6	18.6	18.4	18.9	20.1	22.1	24.4
FDEC, July 2019	9.3	8.2	8.3	9.8	12.6	15.6	17.7	18.6	18.6	18.4	18.9	20.1	22.1	24.4
<b>Household Size</b>														
FDEC, February 2019	2.534	2.534	2.535	2.535	2.535	2.535	2.535	2.535	2.535	2.534	2.534	2.534	2.533	2.532
FDEC, July 2019	2.534	2.534	2.535	2.535	2.535	2.535	2.535	2.535	2.535	2.534	2.534	2.534	2.533	2.532
<b>Household Size Growth Rate</b>														
FDEC, February 2019	0.09	0.08	0.07	0.05	0.02	-0.01	-0.03	-0.04	-0.04	-0.04	-0.05	-0.06	-0.08	-0.09
FDEC, July 2019	0.09	0.08	0.07	0.05	0.02	-0.01	-0.03	-0.04	-0.04	-0.04	-0.05	-0.06	-0.08	-0.09
<b>Net Migration</b>														
FDEC, February 2019	17.2	14.1	14.3	17.2	23.1	29.3	33.7	35.8	35.7	35.3	36.3	39.1	43.5	48.5
FDEC, July 2019	17.2	14.1	14.3	17.2	23.1	29.3	33.7	35.8	35.7	35.3	36.3	39.1	43.5	48.5
<b>Births</b>														
FDEC, February 2019	53.7	53.5	53.3	53.4	53.3	53.3	53.2	53.2	53.2	53.3	53.4	53.5	53.7	53.9
FDEC, July 2019	53.7	53.5	53.3	53.4	53.3	53.3	53.2	53.2	53.2	53.3	53.4	53.5	53.7	53.9
<b>Deaths</b>														
FDEC, February 2019	43.1	43.2	43.2	43.1	43.1	43.2	43.4	43.6	43.8	44.1	44.3	44.6	44.9	45.1
FDEC, July 2019	43.1	43.2	43.3	43.1	43.1	43.2	43.4	43.6	43.8	44.1	44.3	44.6	44.9	45.1
<b>Net Natural Increase</b>														
FDEC, February 2019	10.6	10.3	10.0	10.3	10.2	10.0	9.9	9.5	9.3	9.2	9.0	8.9	8.8	8.8
FDEC, July 2019	10.6	10.3	10.0	10.3	10.2	10.0	9.9	9.5	9.3	9.2	9.0	8.9	8.8	8.7

	<u>2013-4</u>	<u>2014-1</u>	<u>2014-2</u>	<u>2014-3</u>	<u>2014-4</u>	<u>2015-1</u>	<u>2015-2</u>	<u>2015-3</u>	<u>2015-4</u>	<u>2016-1</u>	<u>2016-2</u>	<u>2016-3</u>	<u>2016-4</u>	<u>2017-1</u>
<b>Population</b>														
FDEC, February 2019	19,406.4	19,473.0	19,543.7	19,618.1	19,695.4	19,774.9	19,856.1	19,938.5	20,022.0	20,106.3	20,191.3	20,276.4	20,360.8	20,443.4
FDEC, July 2019	19,406.4	19,473.0	19,543.7	19,618.1	19,695.4	19,774.9	19,856.1	19,938.5	20,021.9	20,106.2	20,191.4	20,276.7	20,361.1	20,443.6
<b>Population Growth Rate</b>														
FDEC, February 2019	1.29	1.38	1.46	1.53	1.59	1.63	1.65	1.67	1.68	1.70	1.70	1.70	1.67	1.63
FDEC, July 2019	1.29	1.38	1.46	1.53	1.59	1.63	1.65	1.67	1.68	1.70	1.70	1.70	1.68	1.63
<b>Net Change in Population</b>														
FDEC, February 2019	62.1	66.6	70.7	74.3	77.3	79.6	81.2	82.4	83.4	84.3	85.0	85.1	84.4	82.6
FDEC, July 2019	62.1	66.6	70.7	74.4	77.3	79.6	81.2	82.4	83.4	84.4	85.1	85.3	84.4	82.4
<b>Households</b>														
FDEC, February 2019	7,665.1	7,693.7	7,724.2	7,756.2	7,789.4	7,823.5	7,858.3	7,893.4	7,928.9	7,964.9	8,001.1	8,037.5	8,073.3	8,108.1
FDEC, July 2019	7,665.1	7,693.7	7,724.2	7,756.2	7,789.4	7,823.5	7,858.2	7,893.4	7,928.9	7,964.9	8,001.2	8,037.6	8,073.4	8,108.2
<b>Household Growth Rate</b>														
FDEC, February 2019	1.40	1.50	1.59	1.67	1.72	1.76	1.79	1.80	1.81	1.83	1.83	1.83	1.80	1.74
FDEC, July 2019	1.40	1.50	1.59	1.67	1.72	1.76	1.79	1.80	1.81	1.83	1.84	1.83	1.80	1.73
<b>Net Change in Households</b>														
FDEC, February 2019	26.6	28.6	30.4	32.0	33.2	34.1	34.7	35.1	35.5	35.9	36.3	36.3	35.8	34.8
FDEC, July 2019	26.6	28.6	30.4	32.0	33.2	34.1	34.7	35.1	35.5	36.0	36.3	36.4	35.9	34.7
<b>Household Size</b>														
FDEC, February 2019	2.532	2.531	2.530	2.529	2.528	2.528	2.527	2.526	2.525	2.524	2.524	2.523	2.522	2.521
FDEC, July 2019	2.532	2.531	2.530	2.529	2.528	2.528	2.527	2.526	2.525	2.524	2.524	2.523	2.522	2.521
<b>Household Size Growth Rate</b>														
FDEC, February 2019	-0.11	-0.12	-0.13	-0.13	-0.14	-0.14	-0.13	-0.13	-0.13	-0.13	-0.13	-0.13	-0.12	-0.10
FDEC, July 2019	-0.11	-0.12	-0.13	-0.13	-0.14	-0.14	-0.13	-0.13	-0.13	-0.13	-0.13	-0.13	-0.12	-0.10
<b>Net Migration</b>														
FDEC, February 2019	53.4	57.8	62.0	65.7	68.7	71.1	72.9	74.3	75.6	76.8	77.8	78.4	78.0	77.0
FDEC, July 2019	53.4	57.8	62.0	65.7	68.7	71.0	72.8	74.3	75.6	76.9	78.0	78.5	78.1	76.8
<b>Births</b>														
FDEC, February 2019	54.1	54.5	54.8	55.1	55.4	55.8	56.0	56.2	56.3	56.3	56.3	56.3	56.2	56.0
FDEC, July 2019	54.1	54.5	54.8	55.1	55.4	55.8	56.0	56.2	56.3	56.3	56.3	56.3	56.2	56.1
<b>Deaths</b>														
FDEC, February 2019	45.4	45.7	46.1	46.4	46.8	47.3	47.7	48.1	48.4	48.8	49.1	49.5	49.9	50.4
FDEC, July 2019	45.4	45.7	46.1	46.4	46.8	47.3	47.7	48.1	48.4	48.8	49.1	49.5	49.9	50.4
<b>Net Natural Increase</b>														
FDEC, February 2019	8.7	8.8	8.8	8.7	8.6	8.5	8.3	8.1	7.8	7.5	7.2	6.8	6.3	5.6
FDEC, July 2019	8.7	8.8	8.8	8.7	8.6	8.5	8.3	8.1	7.8	7.5	7.2	6.8	6.3	5.7

	<u>2017-2</u>	<u>2017-3</u>	<u>2017-4</u>	<u>2018-1</u>	<u>2018-2</u>	<u>2018-3</u>	<u>2018-4</u>	<u>2019-1</u>	<u>2019-2</u>	<u>2019-3</u>	<u>2019-4</u>	<u>2020-1</u>	<u>2020-2</u>	<u>2020-3</u>
<b>Population</b>														
FDEC, February 2019	20,523.5	20,612.2	20,706.4	20,795.9	20,884.5	20,971.5	21,057.4	21,142.3	21,226.5	21,310.3	21,393.6	21,476.4	21,558.6	21,640.2
FDEC, July 2019	20,523.2	20,611.2	20,705.1	20,795.3	20,885.9	20,976.5	21,066.7	21,156.3	21,244.8	21,332.2	21,418.6	21,504.3	21,589.2	21,673.6
<b>Population Growth Rate</b>														
FDEC, February 2019	1.58	1.74	1.84	1.74	1.71	1.68	1.65	1.62	1.60	1.59	1.57	1.56	1.54	1.52
FDEC, July 2019	1.57	1.73	1.83	1.75	1.75	1.75	1.73	1.71	1.68	1.66	1.63	1.61	1.59	1.57
<b>Net Change in Population</b>														
FDEC, February 2019	80.2	88.7	94.2	89.6	88.5	87.1	85.8	84.9	84.3	83.8	83.3	82.8	82.2	81.7
FDEC, July 2019	79.6	88.0	93.9	90.2	90.6	90.6	90.2	89.5	88.5	87.4	86.4	85.6	84.9	84.3
<b>Households</b>														
FDEC, February 2019	8,141.4	8,177.7	8,216.0	8,252.7	8,289.4	8,326.0	8,362.5	8,398.6	8,434.5	8,470.0	8,505.3	8,540.5	8,575.7	8,611.0
FDEC, July 2019	8,141.3	8,177.3	8,215.5	8,252.5	8,290.0	8,328.0	8,366.2	8,404.2	8,441.8	8,478.8	8,515.3	8,551.6	8,587.8	8,624.0
<b>Household Growth Rate</b>														
FDEC, February 2019	1.65	1.79	1.89	1.80	1.79	1.78	1.76	1.74	1.72	1.70	1.68	1.67	1.66	1.65
FDEC, July 2019	1.64	1.78	1.88	1.81	1.83	1.85	1.85	1.83	1.80	1.76	1.74	1.72	1.70	1.69
<b>Net Change in Households</b>														
FDEC, February 2019	33.3	36.3	38.3	36.7	36.7	36.6	36.4	36.2	35.8	35.5	35.3	35.2	35.2	35.3
FDEC, July 2019	33.1	36.0	38.2	36.9	37.5	38.0	38.2	38.0	37.6	37.0	36.6	36.3	36.2	36.1
<b>Household Size</b>														
FDEC, February 2019	2.521	2.521	2.520	2.520	2.519	2.519	2.518	2.517	2.517	2.516	2.515	2.515	2.514	2.513
FDEC, July 2019	2.521	2.521	2.520	2.520	2.519	2.519	2.518	2.517	2.517	2.516	2.515	2.515	2.514	2.513
<b>Household Size Growth Rate</b>														
FDEC, February 2019	-0.08	-0.05	-0.05	-0.05	-0.08	-0.10	-0.11	-0.12	-0.11	-0.11	-0.10	-0.11	-0.12	-0.13
FDEC, July 2019	-0.08	-0.05	-0.05	-0.05	-0.08	-0.10	-0.11	-0.12	-0.11	-0.11	-0.10	-0.11	-0.11	-0.12
<b>Net Migration</b>														
FDEC, February 2019	75.0	83.8	89.6	85.1	84.2	83.0	81.9	81.3	80.8	80.5	80.2	79.9	79.5	79.0
FDEC, July 2019	74.4	83.1	89.4	86.0	86.7	86.9	86.8	86.3	85.5	84.6	83.8	83.2	82.7	82.2
<b>Births</b>														
FDEC, February 2019	55.9	55.8	55.8	55.5	55.5	55.5	55.6	55.8	56.0	56.2	56.4	56.6	56.8	57.0
FDEC, July 2019	56.0	55.8	55.7	55.3	55.2	55.2	55.2	55.5	55.6	55.8	56.0	56.2	56.4	56.6
<b>Deaths</b>														
FDEC, February 2019	50.7	51.0	51.2	51.0	51.2	51.4	51.6	52.2	52.5	52.9	53.3	53.7	54.1	54.4
FDEC, July 2019	50.7	51.0	51.2	51.0	51.2	51.5	51.8	52.3	52.6	53.0	53.3	53.8	54.1	54.5
<b>Net Natural Increase</b>														
FDEC, February 2019	5.2	4.8	4.6	4.5	4.3	4.1	3.9	3.7	3.5	3.3	3.1	2.9	2.7	2.6
FDEC, July 2019	5.2	4.8	4.5	4.3	4.0	3.7	3.5	3.2	3.0	2.8	2.6	2.4	2.3	2.2

	<u>2020-4</u>	<u>2021-1</u>	<u>2021-2</u>	<u>2021-3</u>	<u>2021-4</u>	<u>2022-1</u>	<u>2022-2</u>	<u>2022-3</u>	<u>2022-4</u>	<u>2023-1</u>	<u>2023-2</u>	<u>2023-3</u>	<u>2023-4</u>	<u>2024-1</u>
<b>Population</b>														
FDEC, February 2019	21,721.3	21,802.0	21,882.1	21,961.8	22,041.0	22,119.6	22,197.8	22,275.5	22,352.5	22,428.9	22,504.6	22,579.6	22,653.9	22,727.5
FDEC, July 2019	21,757.3	21,840.4	21,922.9	22,004.8	22,086.1	22,166.7	22,246.7	22,326.1	22,404.8	22,482.8	22,560.0	22,636.4	22,712.0	22,786.9
<b>Population Growth Rate</b>														
FDEC, February 2019	1.51	1.49	1.48	1.46	1.45	1.44	1.42	1.41	1.39	1.37	1.36	1.34	1.32	1.31
FDEC, July 2019	1.55	1.54	1.52	1.50	1.49	1.47	1.45	1.43	1.42	1.40	1.38	1.36	1.34	1.33
<b>Net Change in Population</b>														
FDEC, February 2019	81.1	80.6	80.1	79.7	79.2	78.7	78.2	77.6	77.0	76.4	75.7	75.0	74.3	73.6
FDEC, July 2019	83.7	83.1	82.5	81.9	81.3	80.6	80.0	79.4	78.7	78.0	77.2	76.4	75.7	74.9
<b>Households</b>														
FDEC, February 2019	8,646.3	8,681.5	8,716.5	8,751.5	8,786.2	8,820.7	8,855.0	8,889.1	8,923.0	8,956.6	8,990.2	9,023.9	9,057.7	9,091.6
FDEC, July 2019	8,660.1	8,696.1	8,731.9	8,767.7	8,803.3	8,838.8	8,874.2	8,909.5	8,944.7	8,979.7	9,014.6	9,049.2	9,083.7	9,118.1
<b>Household Growth Rate</b>														
FDEC, February 2019	1.65	1.64	1.63	1.61	1.60	1.58	1.56	1.55	1.53	1.52	1.51	1.51	1.51	1.50
FDEC, July 2019	1.68	1.67	1.66	1.65	1.64	1.62	1.61	1.60	1.59	1.58	1.56	1.55	1.53	1.52
<b>Net Change in Households</b>														
FDEC, February 2019	35.3	35.2	35.1	34.9	34.7	34.5	34.3	34.1	33.8	33.6	33.6	33.7	33.8	33.8
FDEC, July 2019	36.1	36.0	35.9	35.7	35.6	35.5	35.4	35.3	35.2	35.0	34.8	34.7	34.5	34.4
<b>Household Size</b>														
FDEC, February 2019	2.512	2.511	2.510	2.509	2.509	2.508	2.507	2.506	2.505	2.504	2.503	2.502	2.501	2.500
FDEC, July 2019	2.512	2.512	2.511	2.510	2.509	2.508	2.507	2.506	2.505	2.504	2.503	2.501	2.500	2.499
<b>Household Size Growth Rate</b>														
FDEC, February 2019	-0.14	-0.14	-0.15	-0.15	-0.14	-0.14	-0.14	-0.14	-0.14	-0.14	-0.15	-0.17	-0.18	-0.19
FDEC, July 2019	-0.13	-0.13	-0.14	-0.14	-0.15	-0.15	-0.16	-0.16	-0.17	-0.17	-0.18	-0.18	-0.19	-0.20
<b>Net Migration</b>														
FDEC, February 2019	78.6	78.1	77.7	77.3	76.9	76.5	76.1	75.7	75.2	74.6	74.1	73.5	72.9	72.3
FDEC, July 2019	81.6	81.0	80.4	79.9	79.3	78.8	78.2	77.7	77.1	76.5	75.8	75.1	74.4	73.7
<b>Births</b>														
FDEC, February 2019	57.2	57.4	57.7	57.9	58.1	58.2	58.4	58.6	58.8	59.0	59.2	59.4	59.6	59.7
FDEC, July 2019	56.9	57.1	57.3	57.5	57.7	57.9	58.1	58.3	58.5	58.8	59.0	59.2	59.4	59.6
<b>Deaths</b>														
FDEC, February 2019	54.7	54.9	55.2	55.5	55.8	56.1	56.4	56.7	57.0	57.3	57.5	57.8	58.1	58.4
FDEC, July 2019	54.8	54.9	55.2	55.5	55.8	56.1	56.4	56.6	56.9	57.2	57.5	57.8	58.1	58.4
<b>Net Natural Increase</b>														
FDEC, February 2019	2.5	2.5	2.5	2.4	2.3	2.2	2.1	2.0	1.8	1.7	1.6	1.5	1.4	1.3
FDEC, July 2019	2.1	2.1	2.1	2.0	1.9	1.9	1.8	1.7	1.6	1.5	1.4	1.3	1.3	1.2



	<u>2024-2</u>	<u>2024-3</u>	<u>2024-4</u>	<u>2025-1</u>	<u>2025-2</u>	<u>2025-3</u>	<u>2025-4</u>	<u>2026-1</u>	<u>2026-2</u>	<u>2026-3</u>	<u>2026-4</u>	<u>2027-1</u>	<u>2027-2</u>
<b>Population</b>													
FDEC, February 2019	22,800.5	22,872.8	22,944.5	23,015.5	23,085.9	23,155.6	23,224.8	23,293.4	23,361.3	23,428.7	23,495.4	23,561.6	23,627.1
FDEC, July 2019	22,861.1	22,934.5	23,007.2	23,079.2	23,150.5	23,221.0	23,290.8	23,359.9	23,428.4	23,496.1	23,563.2	23,629.6	23,695.4
<b>Population Growth Rate</b>													
FDEC, February 2019	1.29	1.27	1.26	1.24	1.23	1.21	1.20	1.19	1.17	1.16	1.14	1.13	1.12
FDEC, July 2019	1.31	1.29	1.27	1.26	1.24	1.22	1.21	1.19	1.18	1.16	1.15	1.13	1.12
<b>Net Change in Population</b>													
FDEC, February 2019	73.0	72.3	71.6	71.0	70.4	69.8	69.2	68.6	68.0	67.4	66.7	66.2	65.6
FDEC, July 2019	74.2	73.4	72.7	72.0	71.3	70.5	69.8	69.1	68.4	67.7	67.1	66.4	65.8
<b>Households</b>													
FDEC, February 2019	9,125.5	9,159.5	9,193.5	9,227.5	9,261.4	9,295.2	9,328.9	9,362.5	9,395.8	9,429.0	9,462.0	9,494.7	9,527.3
FDEC, July 2019	9,152.6	9,187.3	9,222.1	9,256.8	9,291.6	9,326.3	9,361.1	9,395.8	9,430.5	9,465.2	9,499.9	9,534.4	9,568.7
<b>Household Growth Rate</b>													
FDEC, February 2019	1.50	1.50	1.49	1.49	1.48	1.47	1.46	1.45	1.43	1.42	1.41	1.39	1.38
FDEC, July 2019	1.52	1.52	1.52	1.52	1.51	1.50	1.50	1.49	1.49	1.48	1.47	1.46	1.45
<b>Net Change in Households</b>													
FDEC, February 2019	33.9	34.0	34.0	34.0	33.9	33.8	33.7	33.5	33.4	33.2	33.0	32.8	32.6
FDEC, July 2019	34.5	34.7	34.7	34.8	34.8	34.7	34.7	34.7	34.7	34.7	34.7	34.5	34.3
<b>Household Size</b>													
FDEC, February 2019	2.499	2.497	2.496	2.494	2.493	2.491	2.490	2.488	2.486	2.485	2.483	2.482	2.480
FDEC, July 2019	2.498	2.496	2.495	2.493	2.492	2.490	2.488	2.486	2.484	2.482	2.480	2.478	2.476
<b>Household Size Growth Rate</b>													
FDEC, February 2019	-0.21	-0.22	-0.23	-0.24	-0.25	-0.25	-0.25	-0.26	-0.26	-0.26	-0.26	-0.26	-0.26
FDEC, July 2019	-0.21	-0.23	-0.24	-0.26	-0.27	-0.28	-0.28	-0.30	-0.31	-0.31	-0.32	-0.32	-0.32
<b>Net Migration</b>													
FDEC, February 2019	71.7	71.2	70.6	70.1	69.6	69.1	68.7	68.3	67.8	67.4	67.0	66.7	66.3
FDEC, July 2019	73.1	72.4	71.8	71.2	70.6	70.1	69.5	69.1	68.6	68.1	67.7	67.3	66.9
<b>Births</b>													
FDEC, February 2019	59.9	60.1	60.3	60.5	60.6	60.8	61.0	61.1	61.3	61.4	61.6	61.7	61.8
FDEC, July 2019	59.8	60.0	60.2	60.4	60.6	60.8	61.0	61.2	61.4	61.5	61.7	61.8	62.0
<b>Deaths</b>													
FDEC, February 2019	58.7	59.0	59.3	59.5	59.8	60.1	60.5	60.8	61.2	61.5	61.9	62.2	62.6
FDEC, July 2019	58.7	59.0	59.3	59.6	60.0	60.3	60.7	61.1	61.5	61.9	62.3	62.7	63.1
<b>Net Natural Increase</b>													
FDEC, February 2019	1.2	1.1	1.0	0.9	0.8	0.7	0.5	0.3	0.1	-0.1	-0.3	-0.5	-0.8
FDEC, July 2019	1.1	1.0	0.9	0.8	0.6	0.5	0.3	0.1	-0.1	-0.4	-0.6	-0.9	-1.1

	<u>2027-3</u>	<u>2027-4</u>	<u>2028-1</u>	<u>2028-2</u>	<u>2028-3</u>	<u>2028-4</u>	<u>2029-1</u>	<u>2029-2</u>
Population								
FDEC, February 2019	23,692.1	23,756.5	23,820.3	23,883.6	23,946.3	24,008.4	24,070.0	24,131.1
FDEC, July 2019	23,760.5	23,825.0	23,888.8	23,952.1	24,014.8	24,076.9	24,138.4	24,199.4
Population Growth Rate								
FDEC, February 2019	1.10	1.09	1.08	1.07	1.05	1.04	1.03	1.02
FDEC, July 2019	1.10	1.09	1.08	1.06	1.05	1.04	1.03	1.01
Net Change in Population								
FDEC, February 2019	65.0	64.4	63.8	63.3	62.7	62.1	61.6	61.1
FDEC, July 2019	65.1	64.5	63.9	63.3	62.7	62.1	61.5	61.0
Households								
FDEC, February 2019	9,559.7	9,591.9	9,623.8	9,655.4	9,686.8	9,717.9	9,748.7	9,779.2
FDEC, July 2019	9,602.8	9,636.6	9,670.2	9,703.4	9,736.4	9,769.0	9,801.3	9,833.2
Household Growth Rate								
FDEC, February 2019	1.37	1.35	1.34	1.32	1.31	1.29	1.27	1.26
FDEC, July 2019	1.43	1.42	1.40	1.38	1.37	1.35	1.33	1.31
Net Change in Households								
FDEC, February 2019	32.4	32.2	31.9	31.6	31.4	31.1	30.8	30.5
FDEC, July 2019	34.1	33.8	33.5	33.3	33.0	32.6	32.3	31.9
Household Size								
FDEC, February 2019	2.478	2.477	2.475	2.474	2.472	2.471	2.469	2.468
FDEC, July 2019	2.474	2.472	2.470	2.468	2.466	2.465	2.463	2.461
Household Size Growth Rate								
FDEC, February 2019	-0.26	-0.26	-0.26	-0.25	-0.25	-0.24	-0.24	-0.24
FDEC, July 2019	-0.32	-0.32	-0.32	-0.32	-0.31	-0.31	-0.30	-0.29
Net Migration								
FDEC, February 2019	65.9	65.6	65.2	64.9	64.5	64.2	63.8	63.5
FDEC, July 2019	66.5	66.1	65.7	65.3	65.0	64.6	64.3	63.9
Births								
FDEC, February 2019	61.9	62.0	62.1	62.3	62.4	62.5	62.6	62.7
FDEC, July 2019	62.1	62.3	62.4	62.6	62.7	62.9	63.0	63.1
Deaths								
FDEC, February 2019	62.9	63.2	63.5	63.9	64.2	64.5	64.8	65.1
FDEC, July 2019	63.5	63.8	64.2	64.6	65.0	65.4	65.7	66.1
Net Natural Increase								
FDEC, February 2019	-1.0	-1.2	-1.4	-1.6	-1.8	-2.0	-2.2	-2.4
FDEC, July 2019	-1.3	-1.6	-1.8	-2.0	-2.3	-2.5	-2.7	-3.0

	<u>2000-01</u>	<u>2001-02</u>	<u>2002-03</u>	<u>2003-04</u>	<u>2004-05</u>	<u>2005-06</u>	<u>2006-07</u>	<u>2007-08</u>	<u>2008-09</u>	<u>2009-10</u>	<u>2010-11</u>	<u>2011-12</u>	<u>2012-13</u>	<u>2013-14</u>	<u>2014-15</u>
<b>Population</b>															
FDEC, February 2019	16,228.0	16,551.2	16,892.0	17,273.8	17,677.3	18,062.2	18,378.2	18,578.9	18,671.4	18,770.4	18,878.6	19,029.3	19,212.3	19,441.8	19,736.1
FDEC, July 2019	16,228.0	16,551.2	16,892.0	17,273.8	17,677.3	18,062.2	18,378.2	18,578.9	18,671.4	18,770.4	18,878.6	19,029.3	19,212.3	19,441.8	19,736.1
<b>Growth Rate</b>															
FDEC, February 2019	2.18	1.99	2.06	2.26	2.34	2.18	1.75	1.09	0.50	0.53	0.58	0.80	0.96	1.19	1.51
FDEC, July 2019	2.18	1.99	2.06	2.26	2.34	2.18	1.75	1.09	0.50	0.53	0.58	0.80	0.96	1.19	1.51
<b>Net Change in Population</b>															
FDEC, February 2019	346.4	323.2	340.9	381.8	403.5	384.9	316.0	200.7	92.5	99.0	108.2	150.7	183.0	229.5	294.3
FDEC, July 2019	346.4	323.2	340.9	381.8	403.5	384.9	316.0	200.7	92.5	99.0	108.2	150.7	183.0	229.5	294.3
<b>Households</b>															
FDEC, February 2019	6,431.8	6,554.7	6,685.7	6,833.2	6,990.5	7,142.1	7,266.1	7,341.9	7,374.2	7,410.1	7,447.5	7,506.8	7,582.7	7,680.4	7,806.8
FDEC, July 2019	6,431.8	6,554.7	6,685.7	6,833.2	6,990.5	7,142.1	7,266.1	7,341.9	7,374.2	7,410.1	7,447.5	7,506.8	7,582.7	7,680.4	7,806.8
<b>Growth Rate</b>															
FDEC, February 2019	2.14	1.91	2.00	2.21	2.30	2.17	1.74	1.04	0.44	0.49	0.50	0.80	1.01	1.29	1.65
FDEC, July 2019	2.14	1.91	2.00	2.21	2.30	2.17	1.74	1.04	0.44	0.49	0.50	0.80	1.01	1.29	1.65
<b>Net Change in Households</b>															
FDEC, February 2019	134.6	122.9	131.0	147.5	157.3	151.7	124.0	75.7	32.3	35.9	37.4	59.3	75.9	97.7	126.5
FDEC, July 2019	134.6	122.9	131.0	147.5	157.3	151.7	124.0	75.7	32.3	35.9	37.4	59.3	75.9	97.7	126.5
<b>Household Size</b>															
FDEC, February 2019	2.523	2.525	2.527	2.528	2.529	2.529	2.529	2.531	2.532	2.533	2.535	2.535	2.534	2.531	2.528
FDEC, July 2019	2.523	2.525	2.527	2.528	2.529	2.529	2.529	2.531	2.532	2.533	2.535	2.535	2.534	2.531	2.528
<b>Growth Rate</b>															
FDEC, February 2019	0.04	0.08	0.06	0.05	0.03	0.01	0.01	0.05	0.06	0.04	0.07	0.00	-0.05	-0.09	-0.13
FDEC, July 2019	0.04	0.08	0.06	0.05	0.03	0.01	0.01	0.05	0.06	0.04	0.07	0.00	-0.05	-0.09	-0.13
<b>Net Migration</b>															
FDEC, February 2019	306.0	285.5	300.4	335.0	351.1	322.9	245.0	133.7	36.3	52.7	67.4	112.0	147.0	194.4	260.2
FDEC, July 2019	306.0	285.5	300.4	335.0	351.1	322.9	245.0	133.7	36.3	52.7	67.4	111.9	147.0	194.4	260.2
<b>Births</b>															
FDEC, February 2019	205.4	205.4	208.5	215.0	221.8	232.1	239.3	236.0	226.4	217.4	213.5	212.9	213.8	217.4	222.3
FDEC, July 2019	205.4	205.4	208.5	215.0	221.8	232.1	239.3	236.0	226.4	217.4	213.5	212.9	213.8	217.4	222.3
<b>Deaths</b>															
FDEC, February 2019	165.0	167.7	168.1	168.3	169.4	170.1	168.3	169.0	170.2	171.1	172.7	174.1	177.8	182.4	188.2
FDEC, July 2019	165.0	167.7	168.1	168.3	169.4	170.1	168.3	169.0	170.2	171.1	172.7	174.1	177.8	182.4	188.2
<b>Net Natural Increase</b>															
FDEC, February 2019	40.3	37.7	40.4	46.7	52.4	62.0	71.0	67.0	56.2	46.3	40.8	38.8	36.0	35.0	34.1
FDEC, July 2019	40.3	37.7	40.4	46.7	52.4	62.0	71.0	67.0	56.2	46.3	40.8	38.8	36.0	35.0	34.1

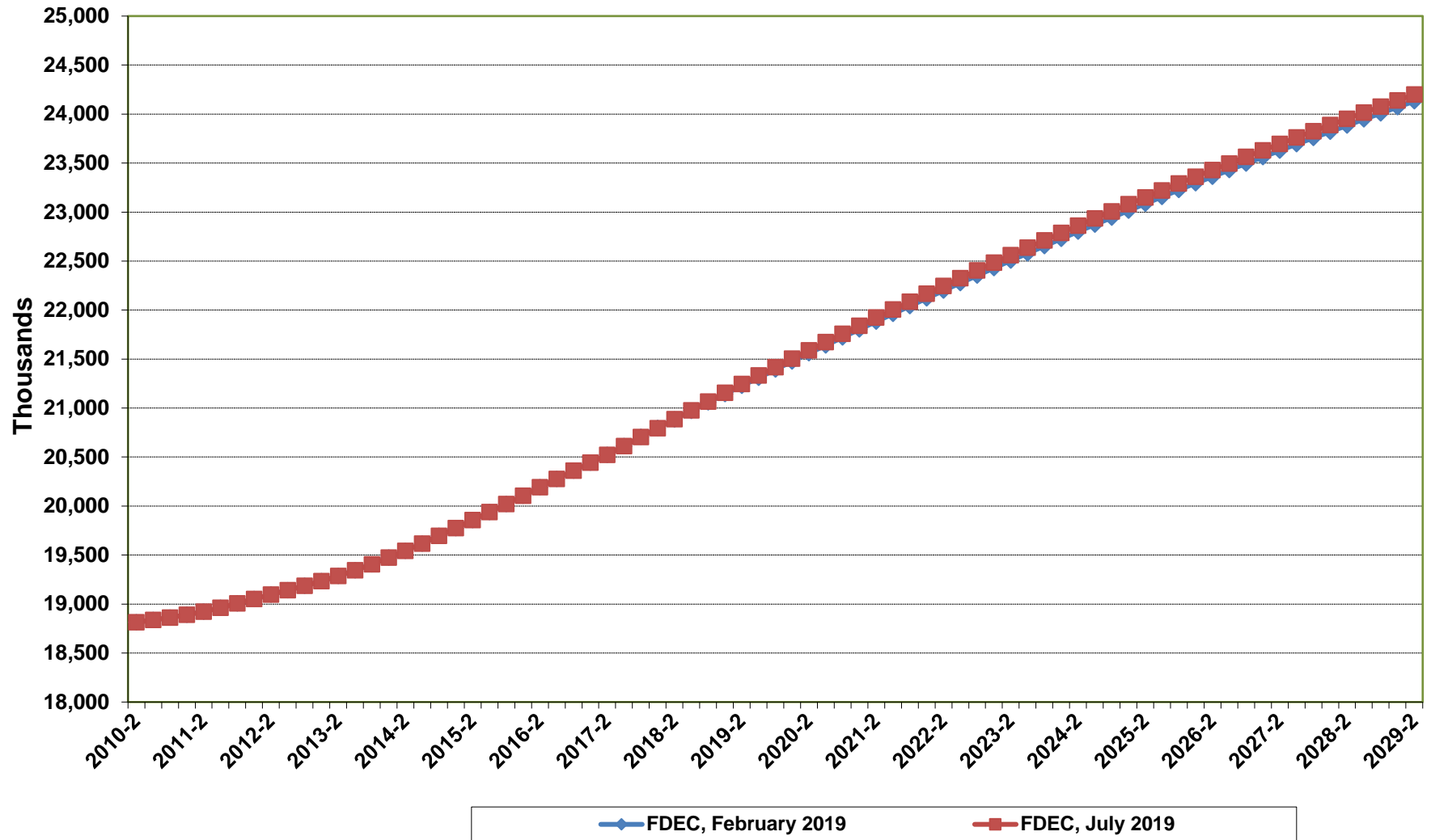
	<u>2015-16</u>	<u>2016-17</u>	<u>2017-18</u>	<u>2018-19</u>	<u>2019-20</u>	<u>2020-21</u>	<u>2021-22</u>	<u>2022-23</u>	<u>2023-24</u>	<u>2024-25</u>	<u>2025-26</u>	<u>2026-27</u>	<u>2027-28</u>	<u>2028-29</u>
<b>Population</b>														
FDEC, February 2019	20,064.5	20,401.0	20,749.7	21,099.4	21,434.7	21,761.4	22,080.1	22,390.4	22,690.4	22,979.6	23,258.8	23,528.2	23,788.1	24,038.9
FDEC, July 2019	20,064.5	20,401.1	20,749.4	21,111.1	21,461.1	21,798.5	22,126.1	22,443.4	22,749.1	23,042.9	23,325.0	23,596.1	23,856.6	24,107.4
<b>Growth Rate</b>														
FDEC, February 2019	1.66	1.68	1.71	1.69	1.59	1.52	1.46	1.41	1.34	1.27	1.21	1.16	1.10	1.05
FDEC, July 2019	1.66	1.68	1.71	1.74	1.66	1.57	1.50	1.43	1.36	1.29	1.22	1.16	1.10	1.05
<b>Net Change in Population</b>														
FDEC, February 2019	328.4	336.5	348.7	349.7	335.3	326.7	318.6	310.3	300.0	289.3	279.1	269.4	259.9	250.8
FDEC, July 2019	328.4	336.7	348.2	361.7	350.0	337.5	327.5	317.3	305.7	293.7	282.2	271.0	260.5	250.8
<b>Households</b>														
FDEC, February 2019	7,947.1	8,090.1	8,234.0	8,380.4	8,522.9	8,663.8	8,803.4	8,939.7	9,074.7	9,210.5	9,345.6	9,478.3	9,607.7	9,733.1
FDEC, July 2019	7,947.1	8,090.1	8,233.8	8,385.0	8,533.4	8,678.0	8,821.0	8,962.1	9,100.9	9,239.5	9,378.4	9,517.1	9,653.2	9,785.0
<b>Growth Rate</b>														
FDEC, February 2019	1.80	1.80	1.78	1.78	1.70	1.65	1.61	1.55	1.51	1.50	1.47	1.42	1.37	1.31
FDEC, July 2019	1.80	1.80	1.78	1.84	1.77	1.69	1.65	1.60	1.55	1.52	1.50	1.48	1.43	1.36
<b>Net Change in Households</b>														
FDEC, February 2019	140.2	143.0	143.9	146.4	142.5	140.9	139.6	136.4	135.0	135.8	135.2	132.6	129.4	125.4
FDEC, July 2019	140.2	143.0	143.7	151.2	148.4	144.6	143.0	141.1	138.8	138.5	139.0	138.6	136.2	131.7
<b>Household Size</b>														
FDEC, February 2019	2.525	2.522	2.520	2.518	2.515	2.512	2.508	2.505	2.500	2.495	2.489	2.482	2.476	2.470
FDEC, July 2019	2.525	2.522	2.520	2.518	2.515	2.512	2.508	2.504	2.500	2.494	2.487	2.479	2.471	2.464
<b>Growth Rate</b>														
FDEC, February 2019	-0.13	-0.12	-0.07	-0.09	-0.11	-0.13	-0.14	-0.14	-0.17	-0.22	-0.25	-0.26	-0.26	-0.25
FDEC, July 2019	-0.13	-0.12	-0.07	-0.09	-0.11	-0.12	-0.14	-0.16	-0.18	-0.23	-0.28	-0.31	-0.32	-0.31
<b>Net Migration</b>														
FDEC, February 2019	297.8	312.6	330.5	334.5	323.3	316.5	309.8	303.1	294.5	285.4	277.6	271.1	265.1	259.2
FDEC, July 2019	297.7	312.7	330.7	348.3	339.9	329.0	320.0	311.1	300.8	290.5	281.5	274.0	267.3	261.3
<b>Births</b>														
FDEC, February 2019	225.0	224.4	222.6	222.9	225.9	229.3	232.6	235.6	238.6	241.5	244.2	246.5	248.4	250.2
FDEC, July 2019	225.0	224.5	222.0	221.5	224.4	227.9	231.3	234.6	237.8	241.1	244.3	247.0	249.4	251.7
<b>Deaths</b>														
FDEC, February 2019	194.4	200.5	204.4	207.8	213.9	219.2	223.7	228.4	233.0	237.6	242.7	248.2	253.5	258.6
FDEC, July 2019	194.4	200.5	204.4	208.1	214.3	219.4	223.7	228.4	232.9	237.8	243.7	250.0	256.1	262.2
<b>Net Natural Increase</b>														
FDEC, February 2019	30.6	23.9	18.2	15.2	12.0	10.1	8.9	7.2	5.5	3.9	1.5	-1.7	-5.2	-8.4
FDEC, July 2019	30.6	24.0	17.6	13.4	10.1	8.5	7.6	6.2	4.9	3.2	0.6	-2.9	-6.7	-10.5

# **Florida Demographic Estimating Conference**

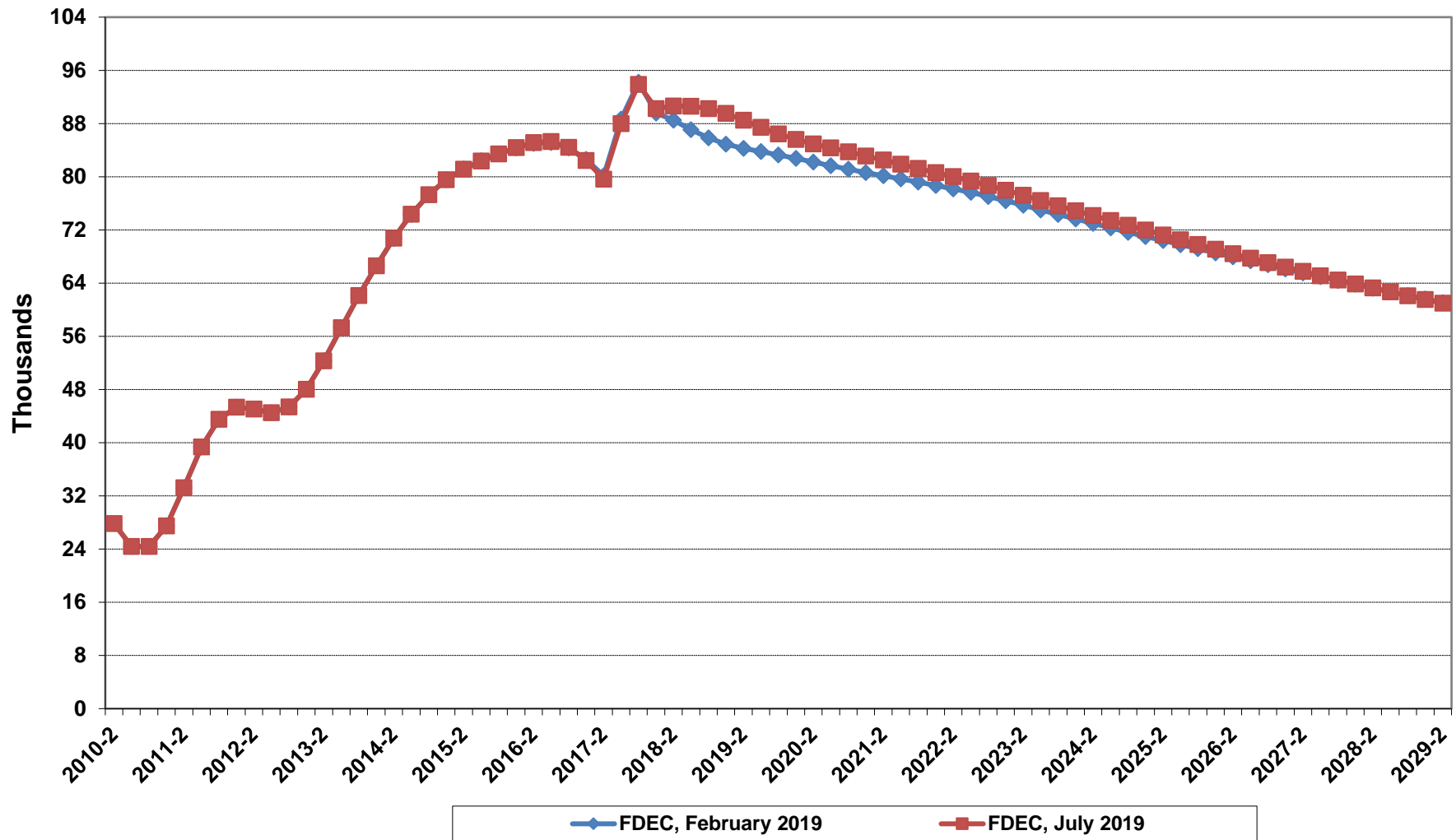
**Charts**  
Conference Packet

July 8, 2019

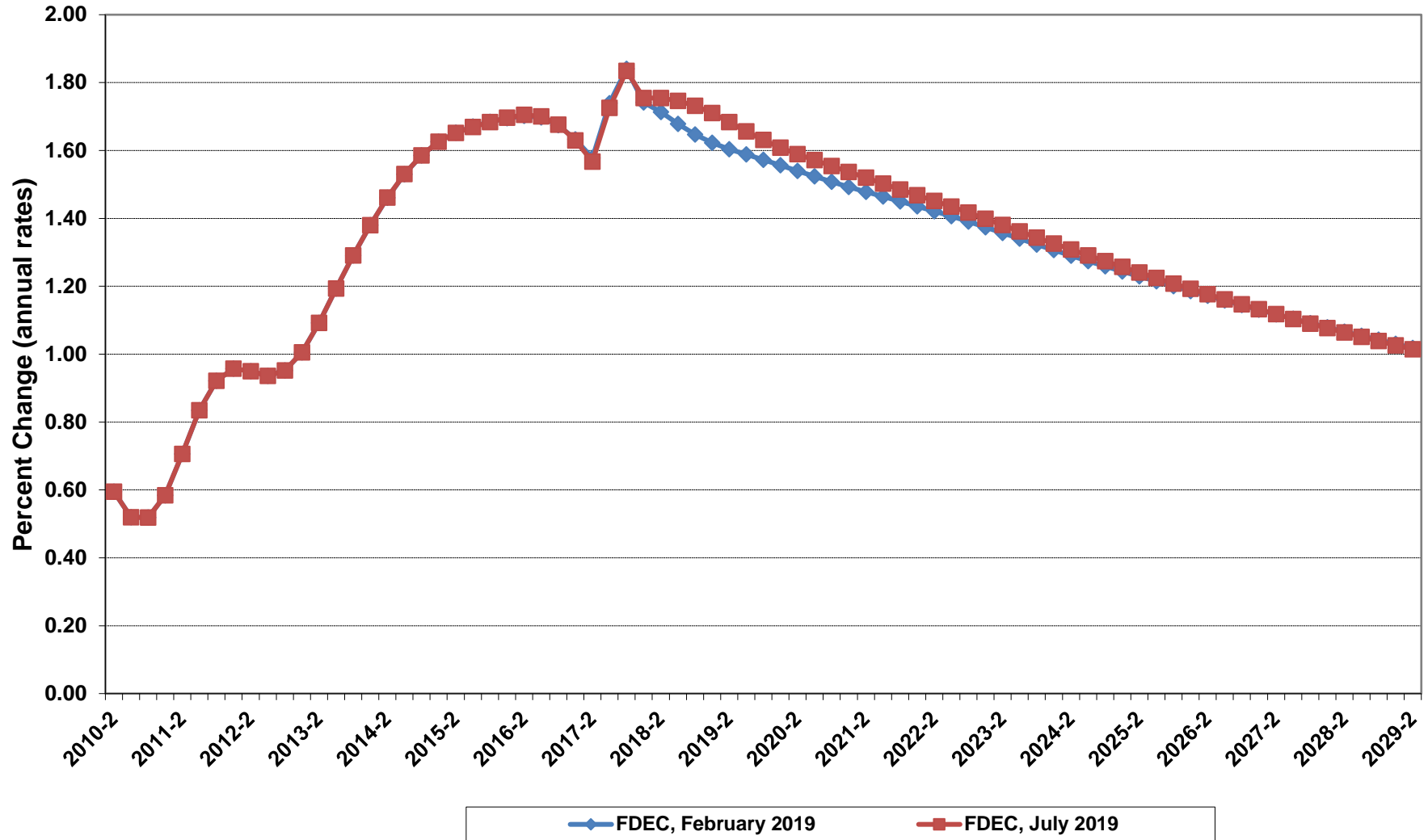
# Florida Resident Population



# Net Change In Florida Resident Population

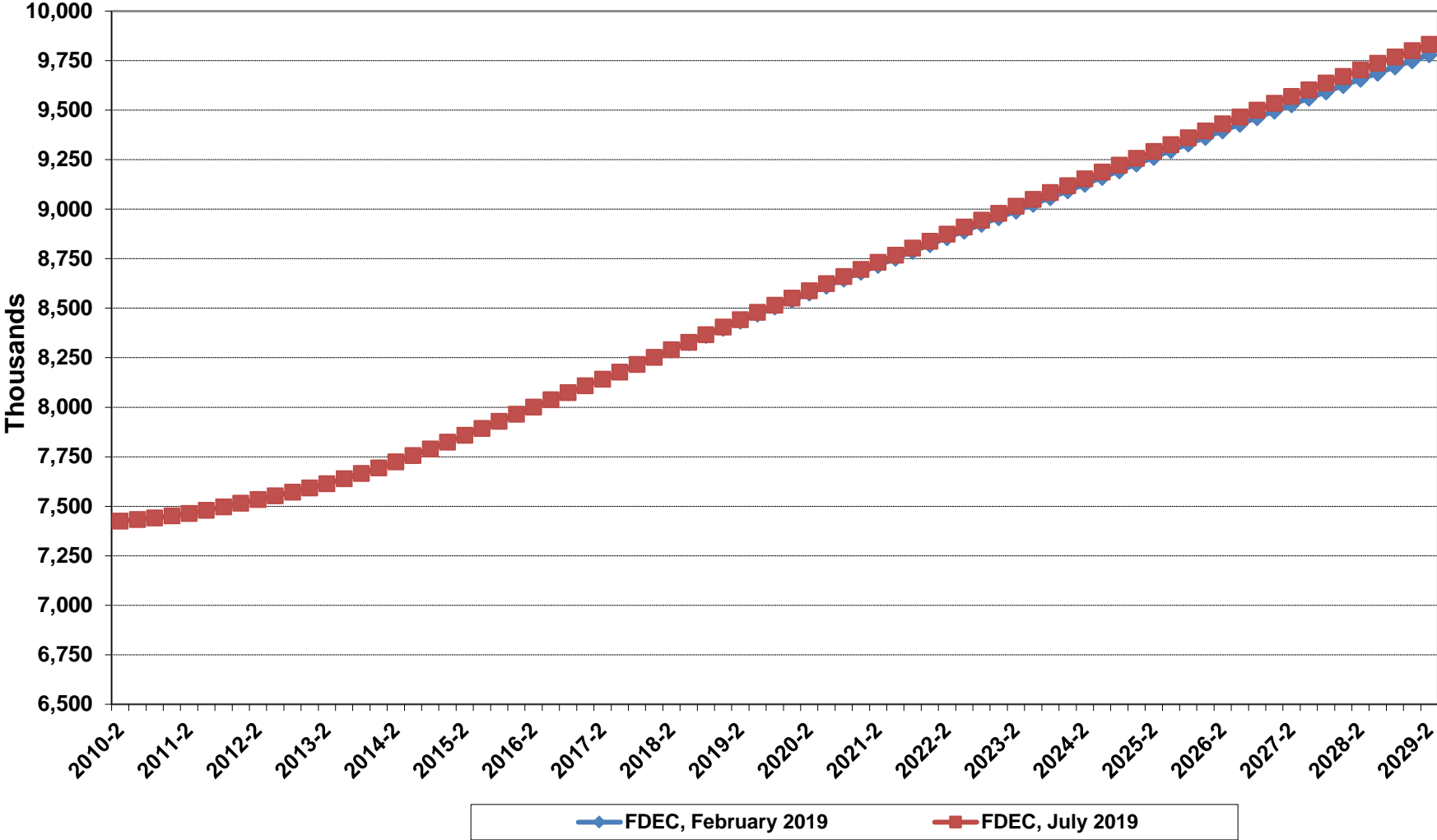


# Growth In Florida Resident Population

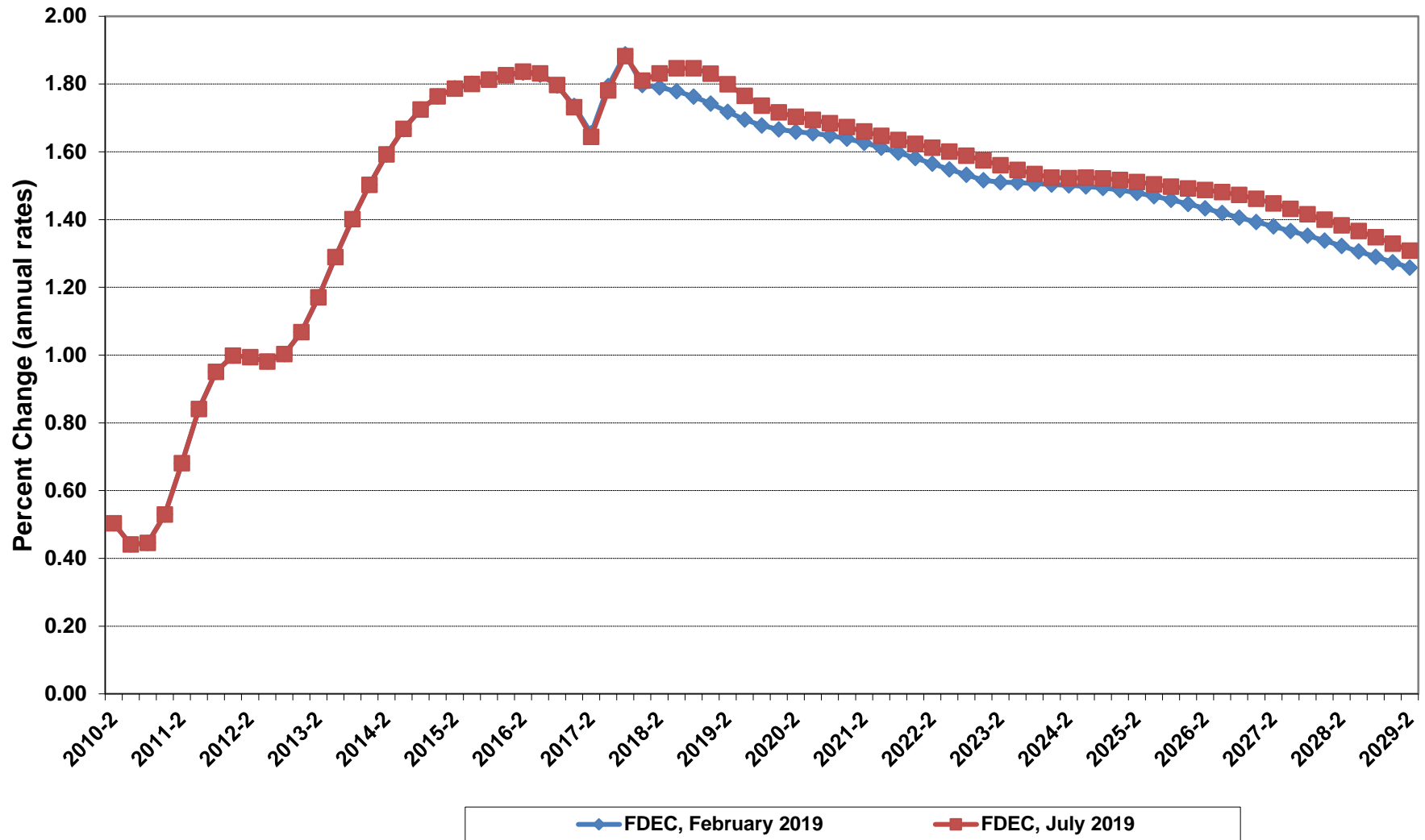




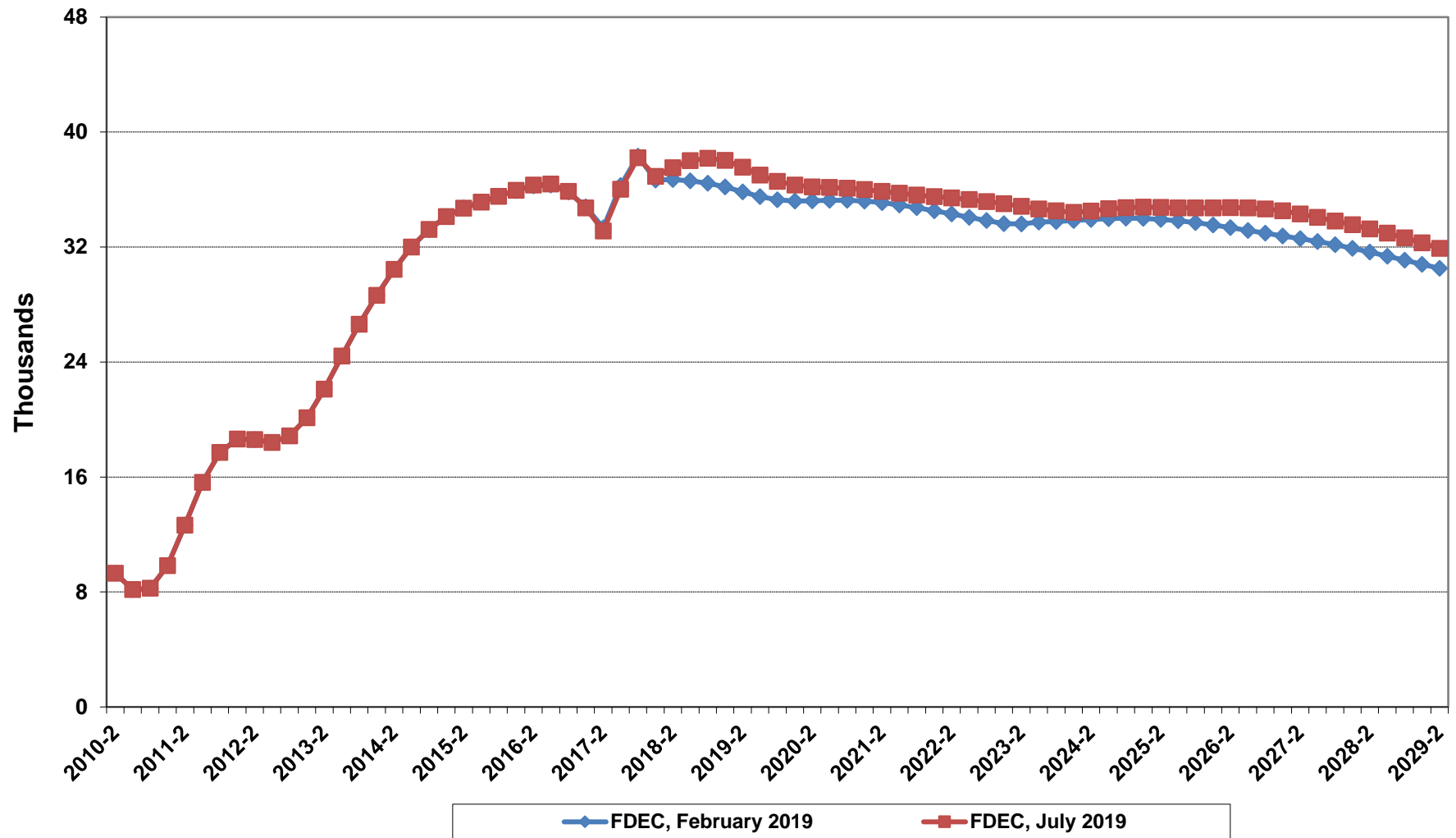
# Florida Resident Households



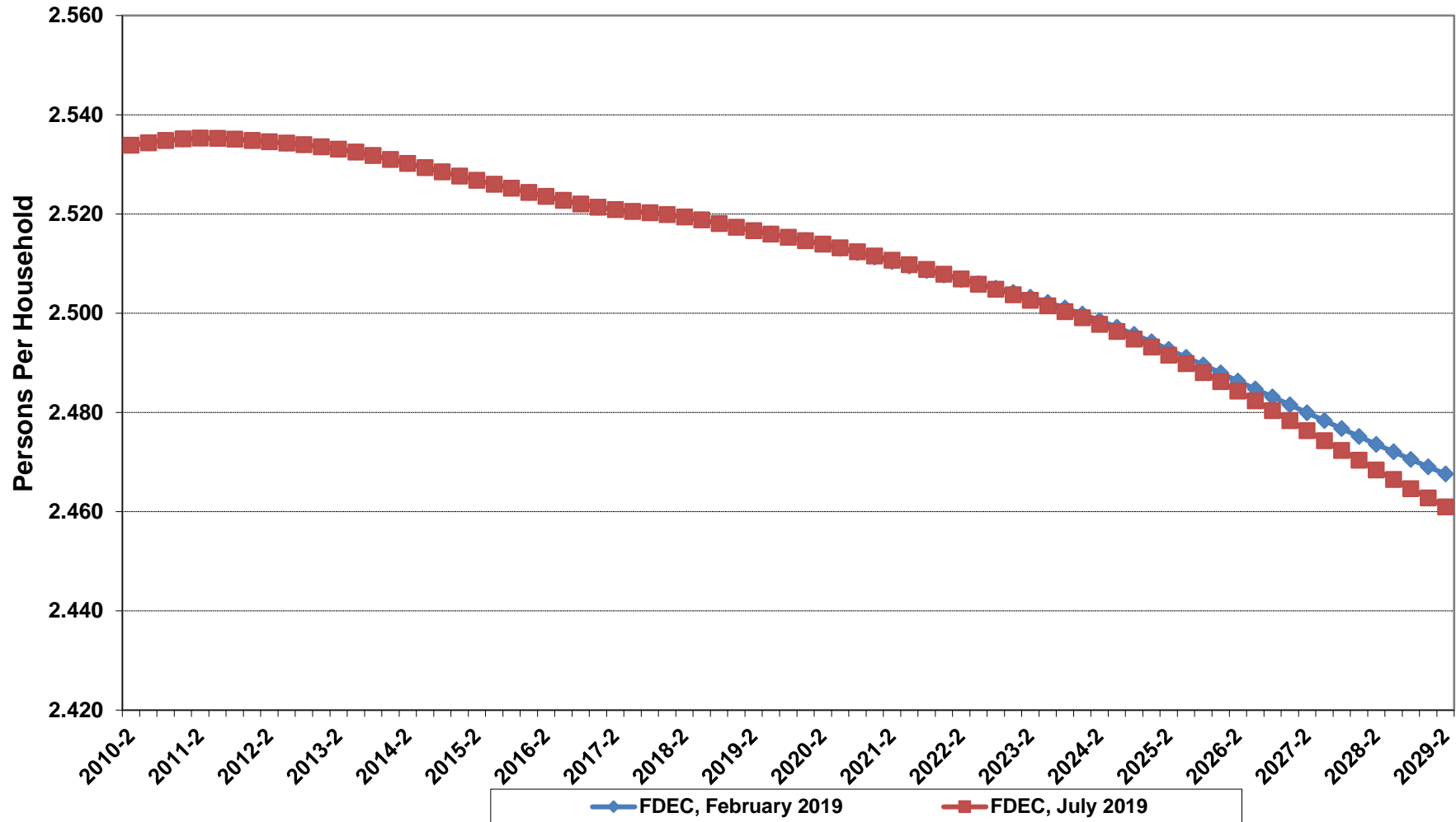
# Growth In Florida Resident Households



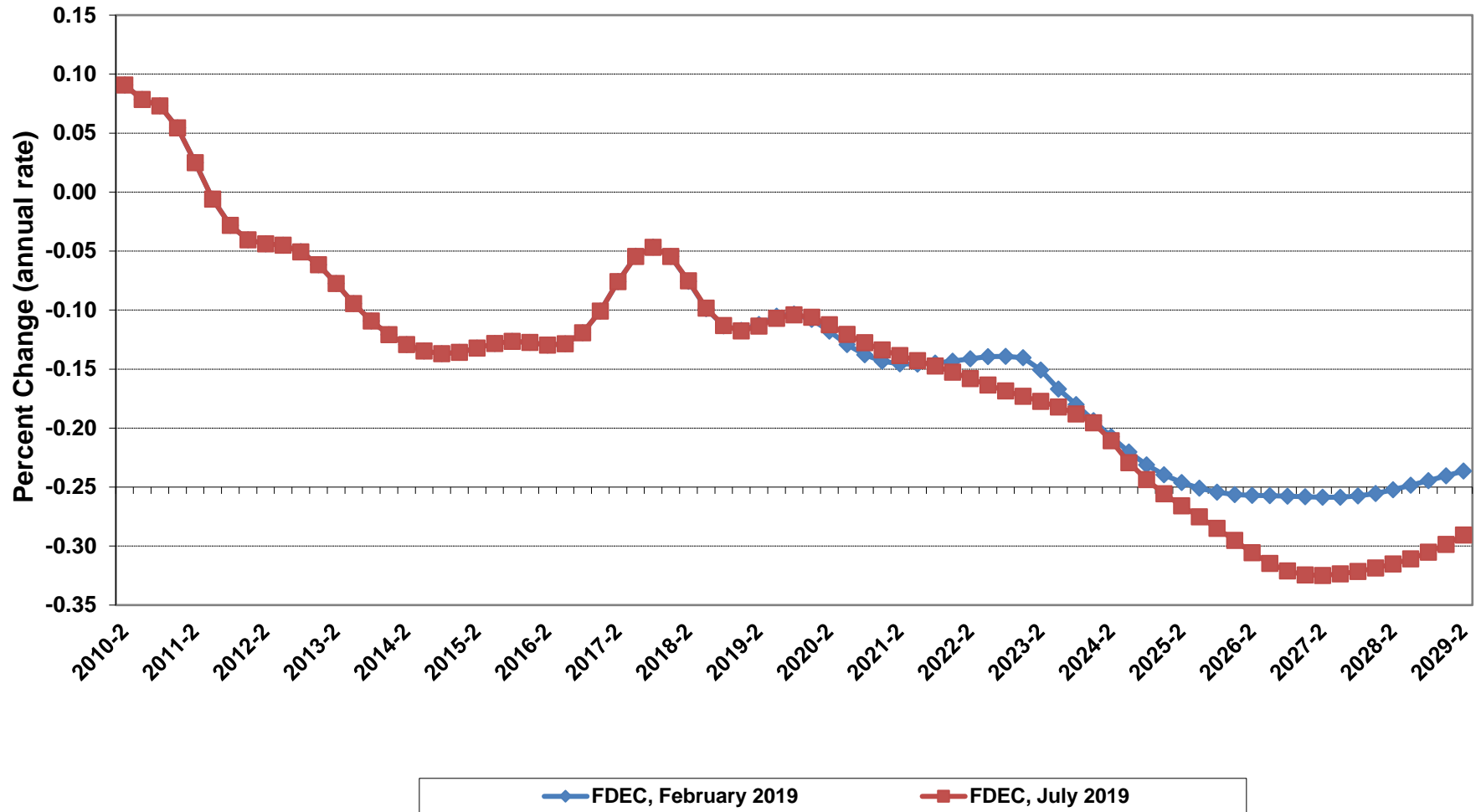
# Net Change In Florida Resident Households



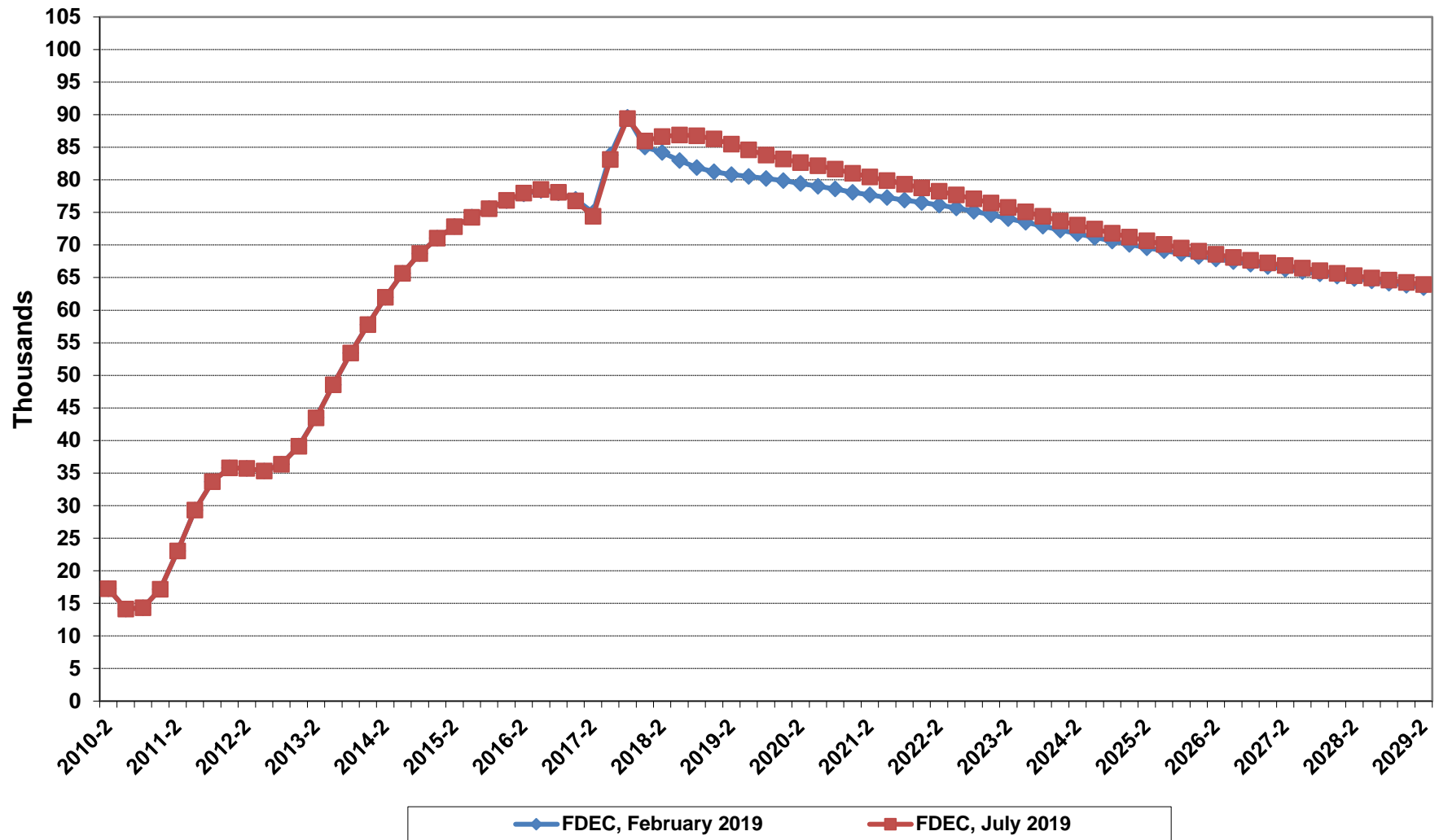
# Florida Average Household Size



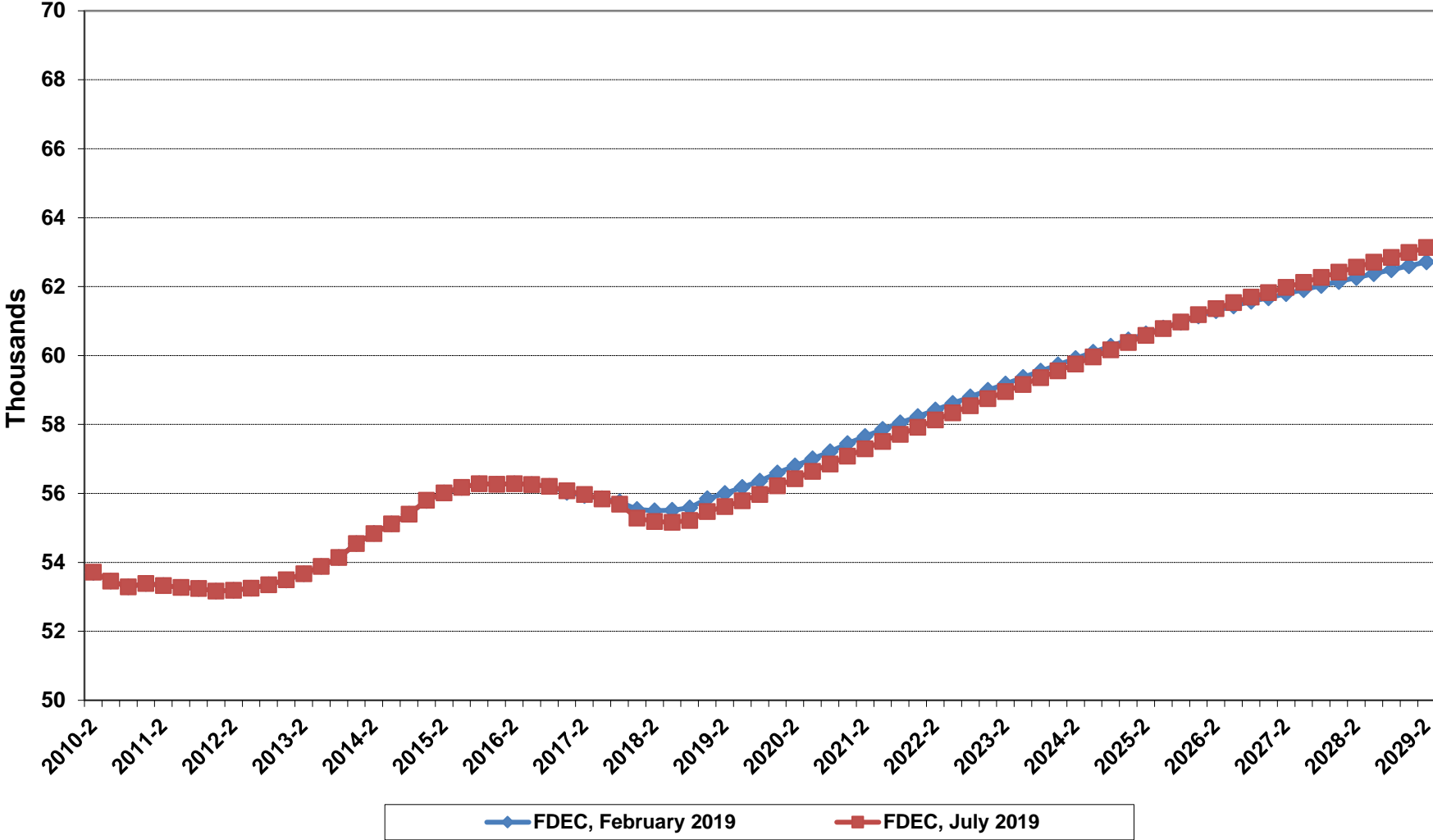
# Growth In Florida Household Size



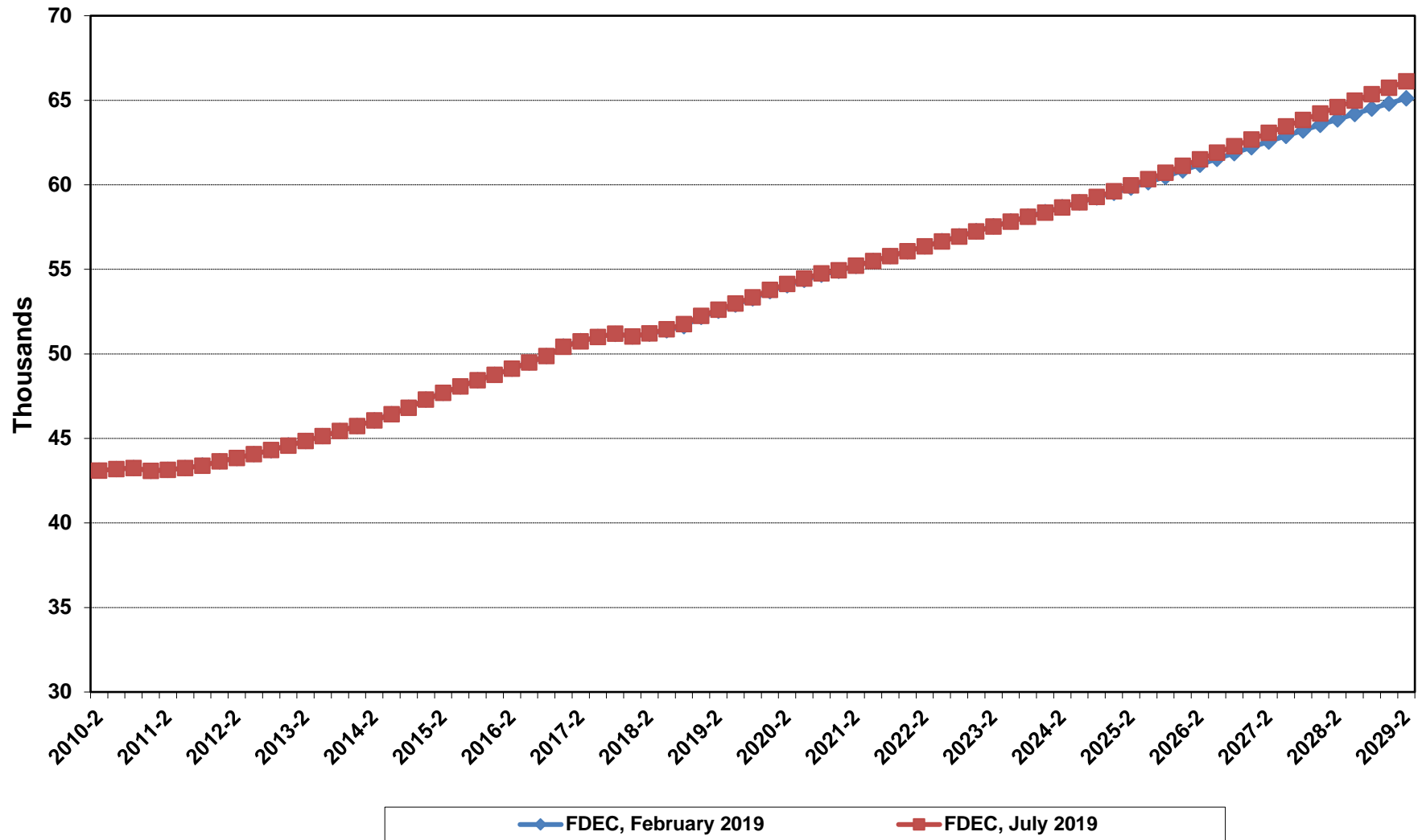
# Florida Net Migration



# Florida Resident Births

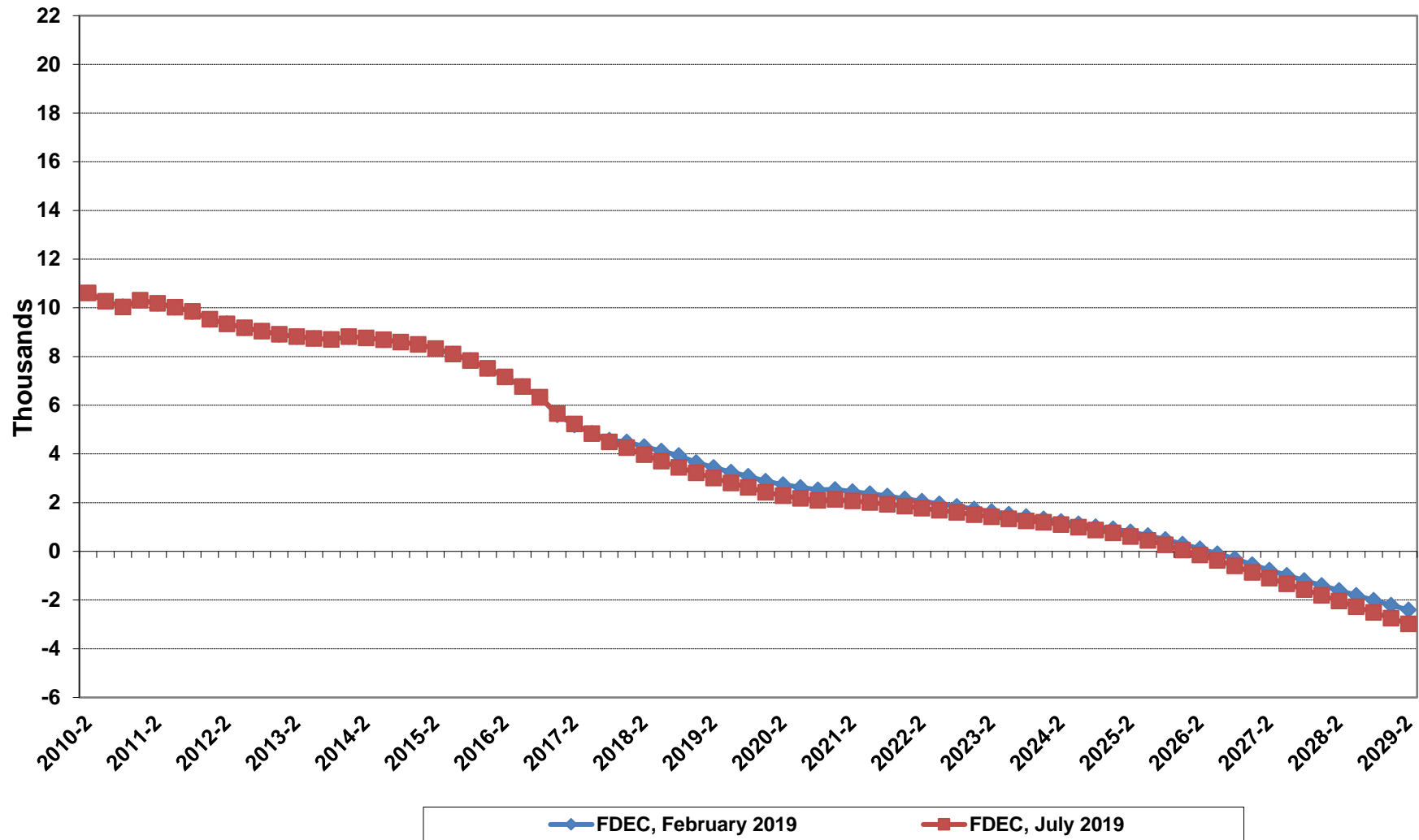


# Florida Resident Deaths

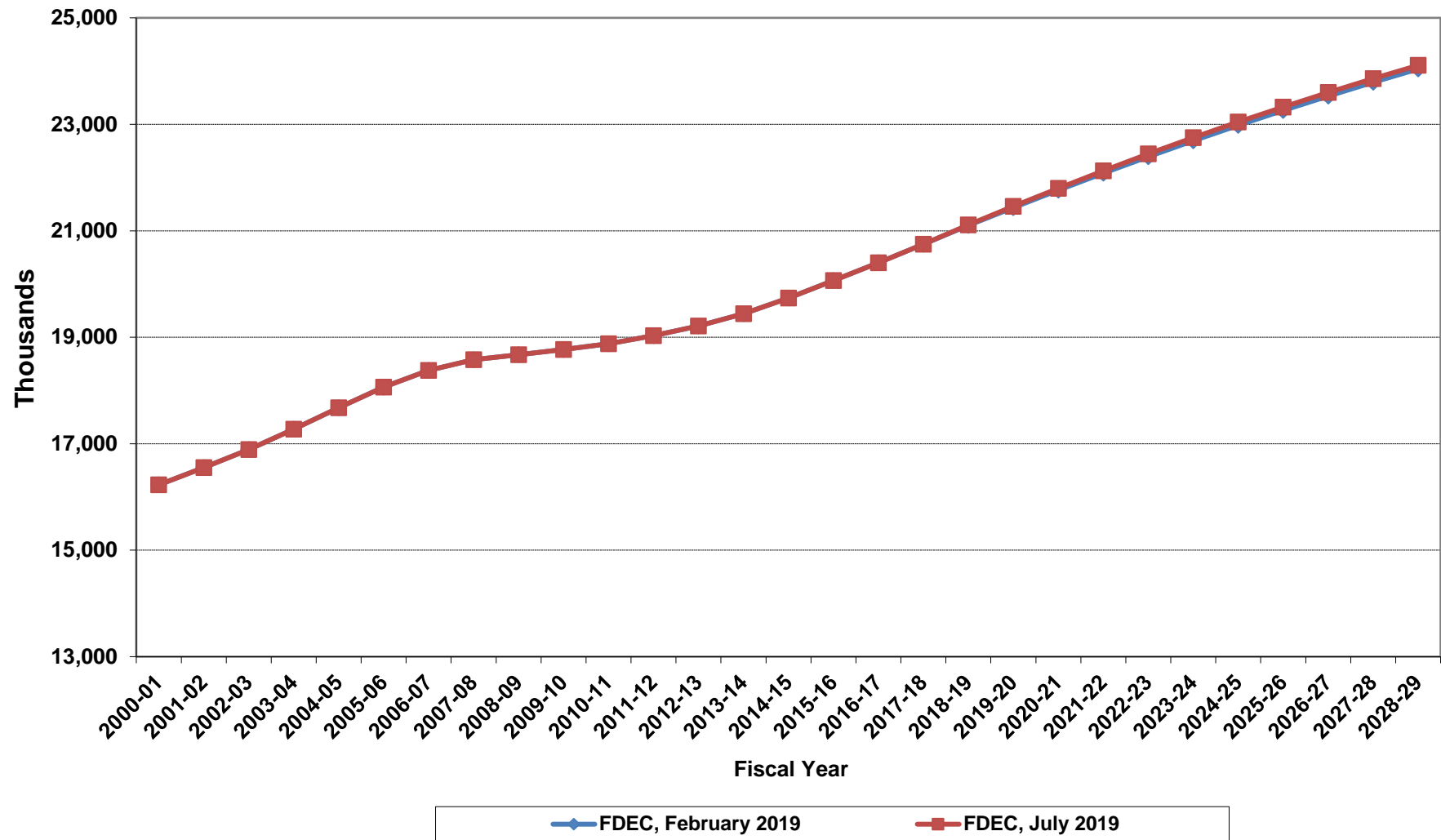




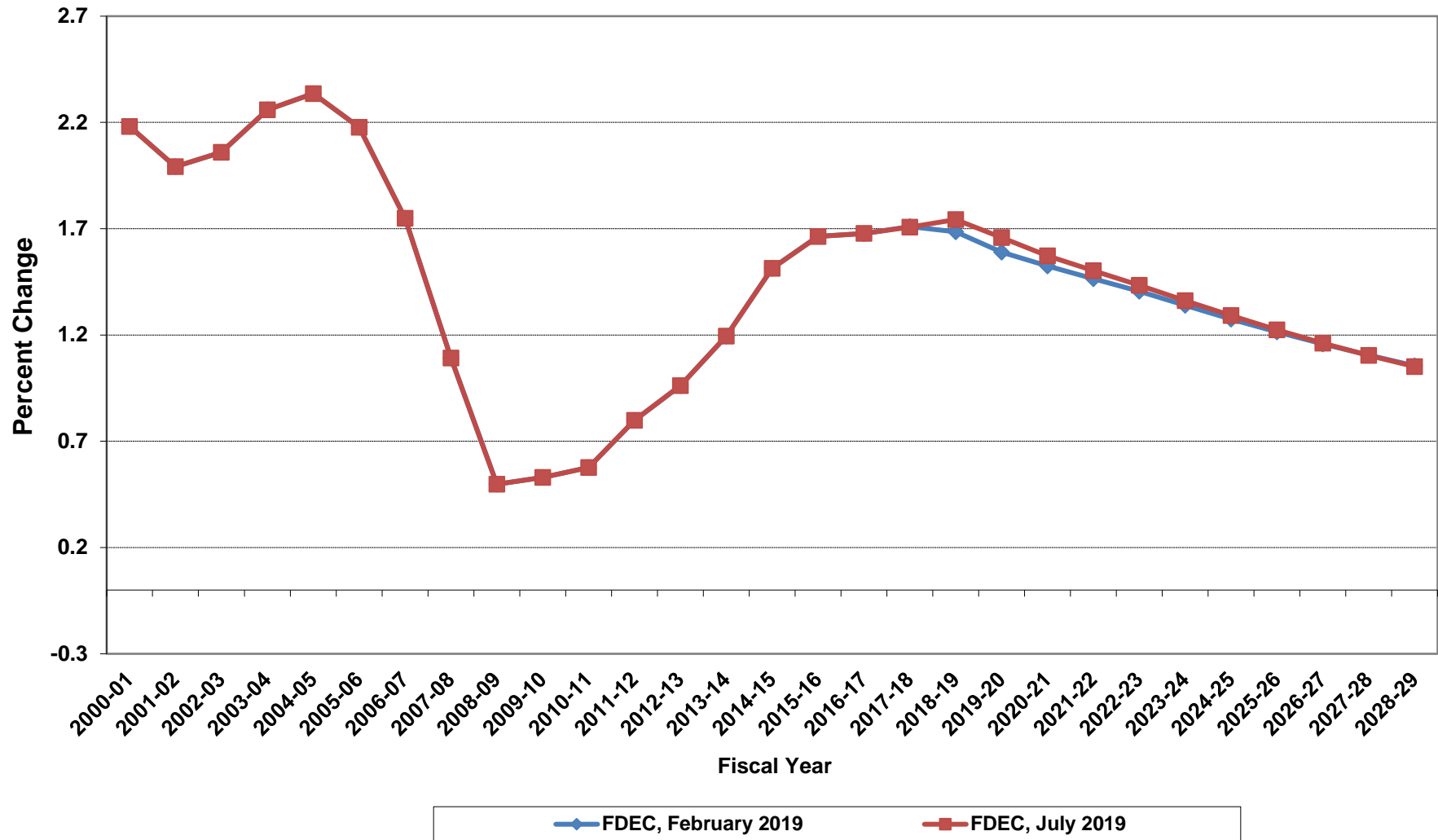
# Florida Net Natural Increase



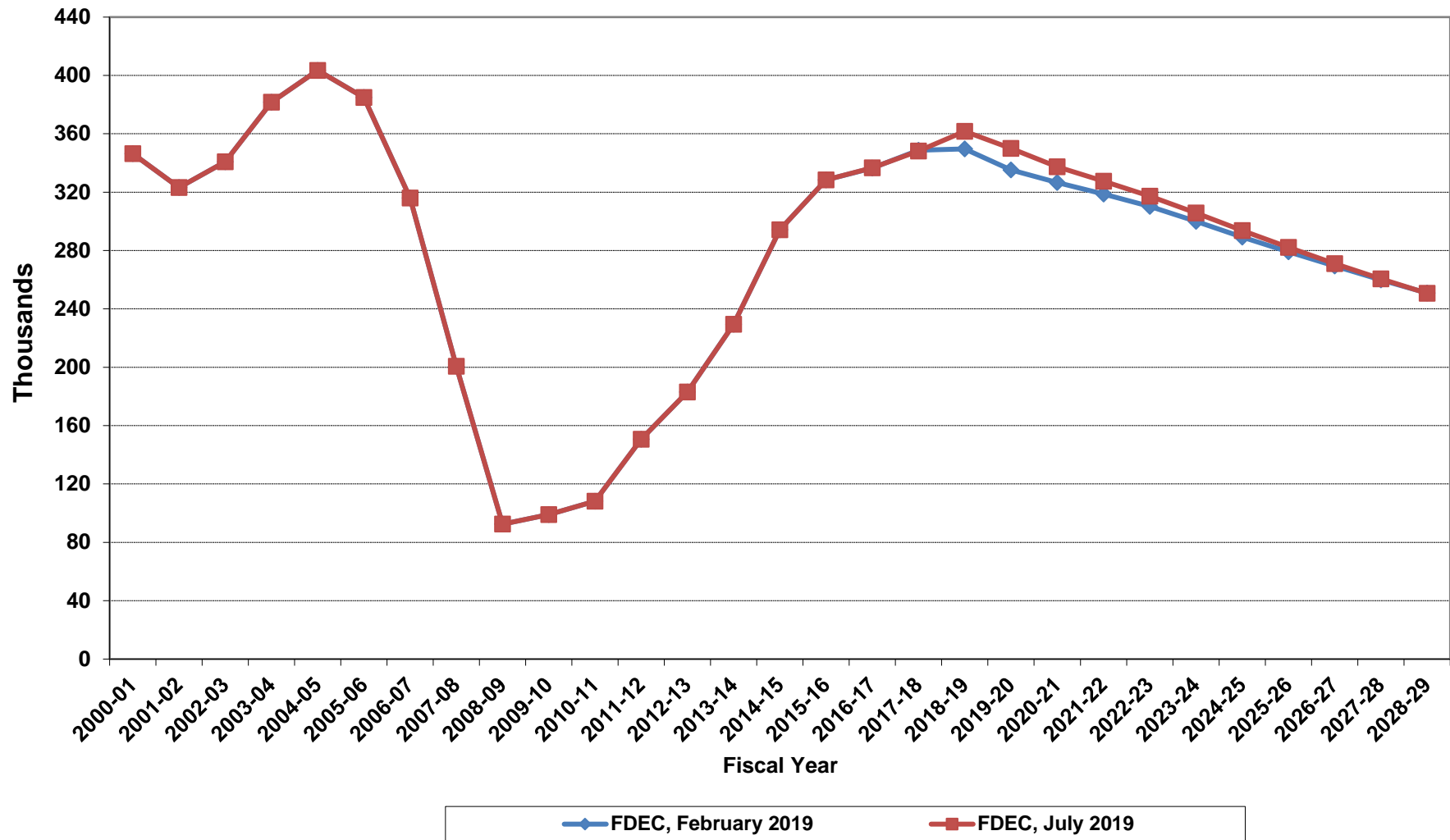
# Florida Resident Population



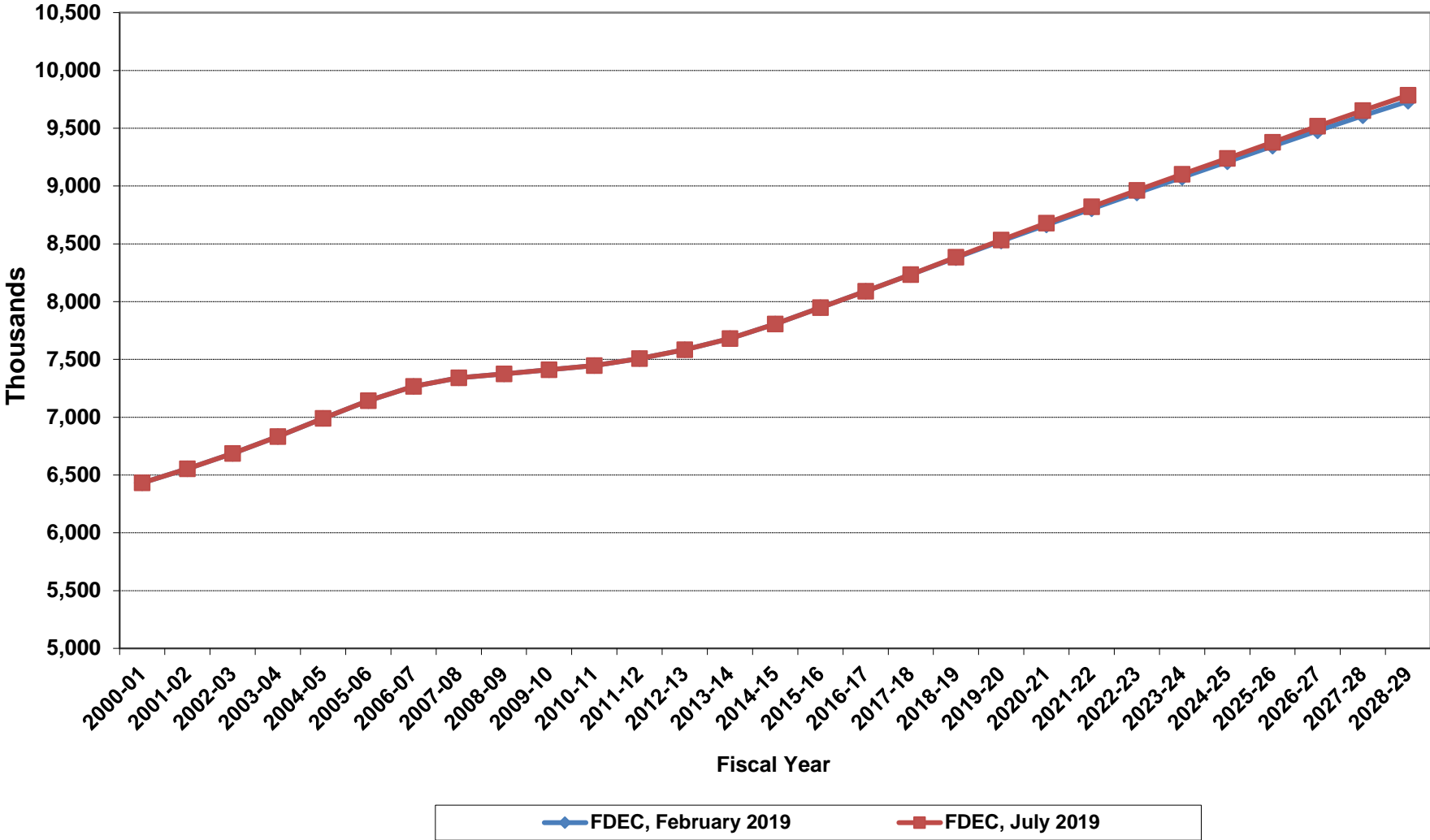
# Growth In Florida Resident Population



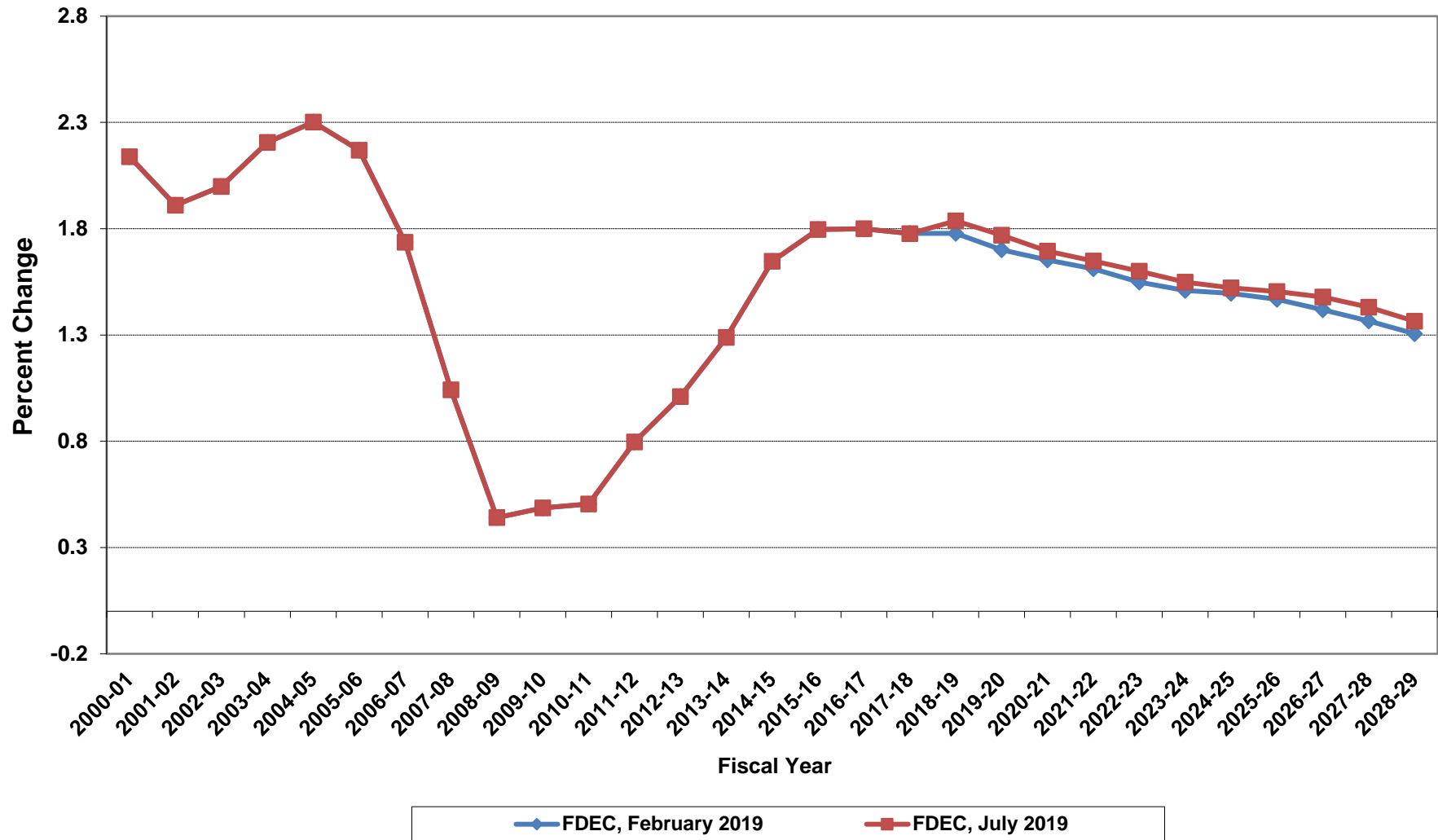
# Net Change In Florida Resident Population



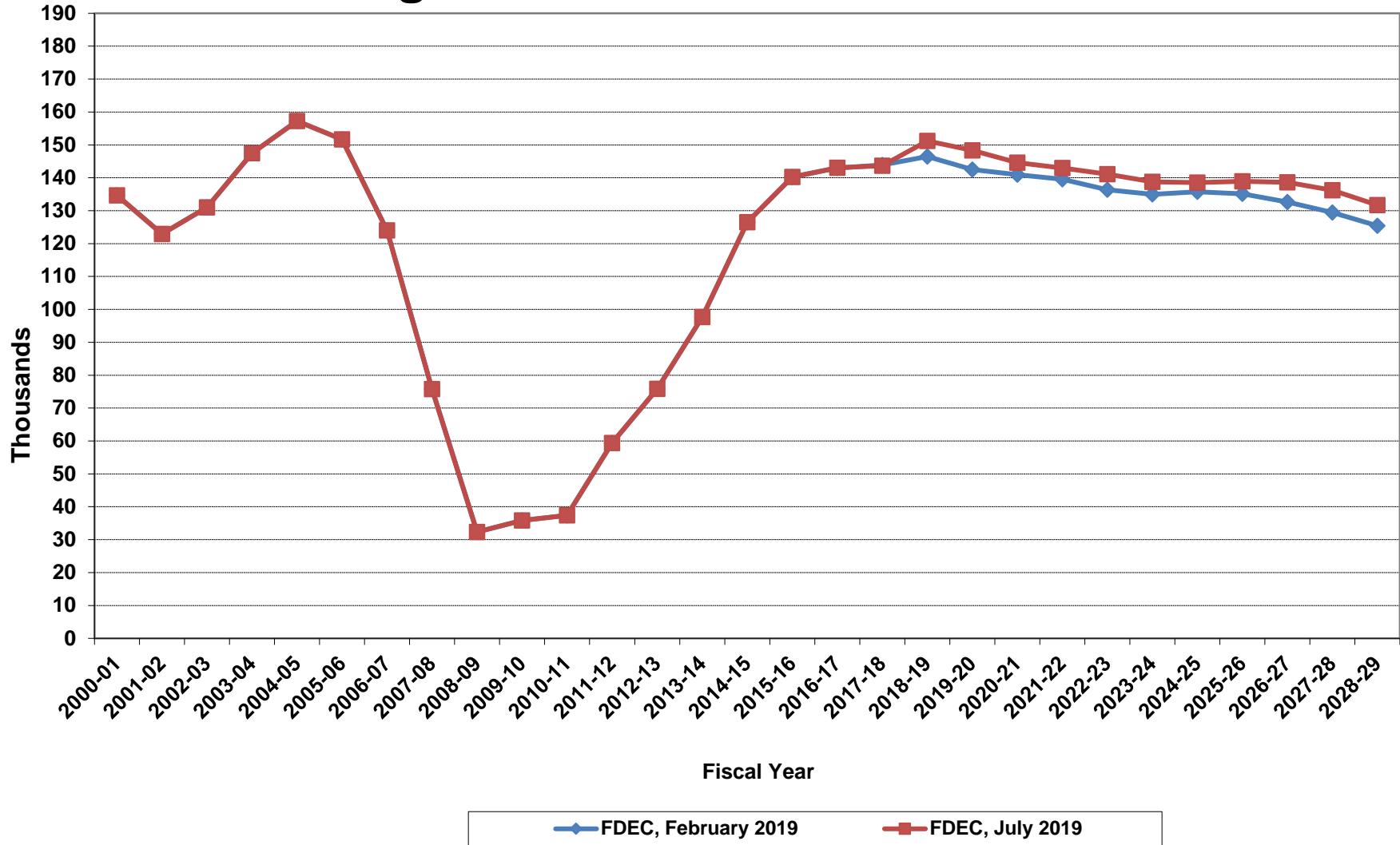
# Florida Resident Households



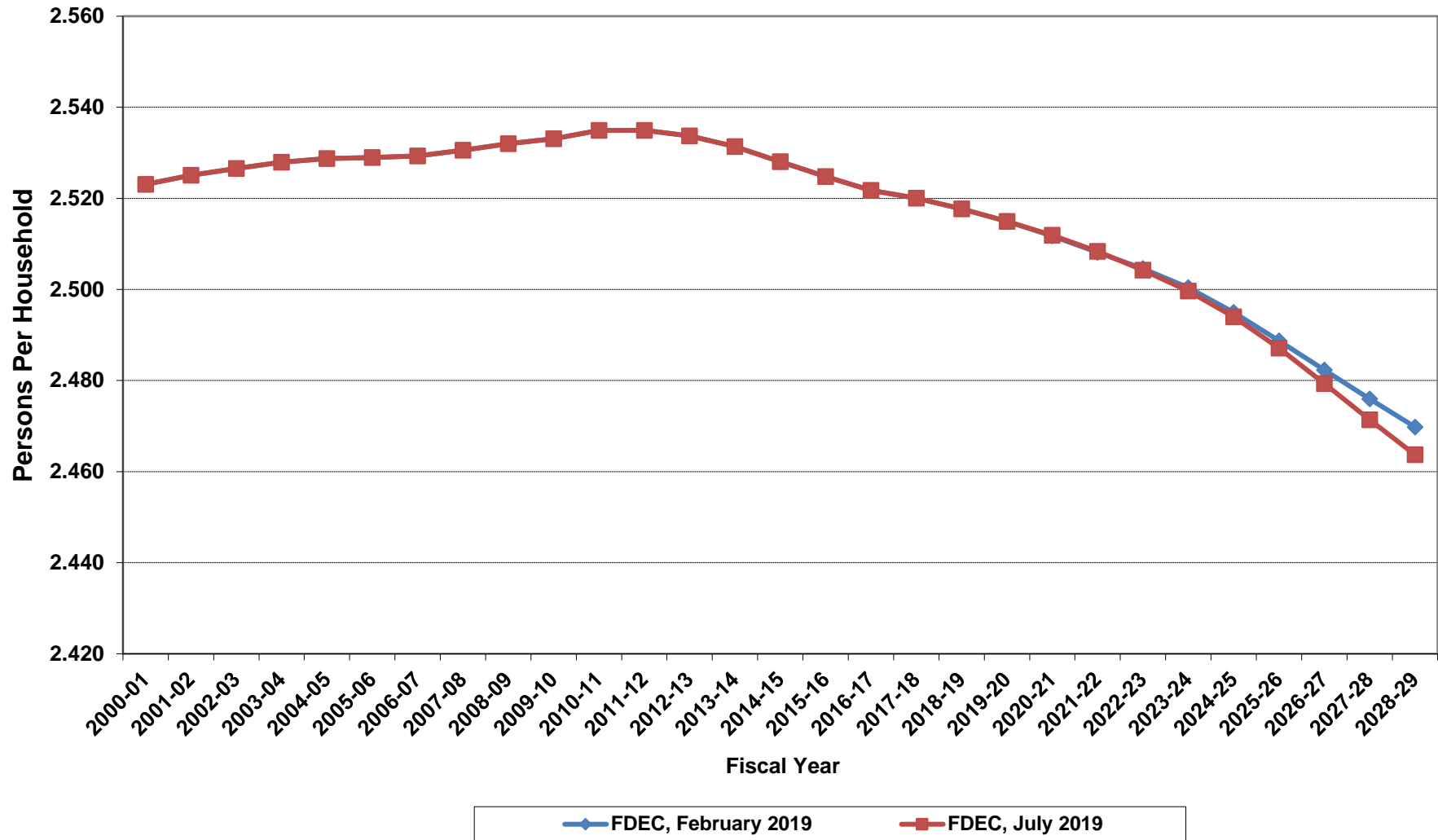
# Growth In Florida Resident Households



# Net Change In Florida Resident Households

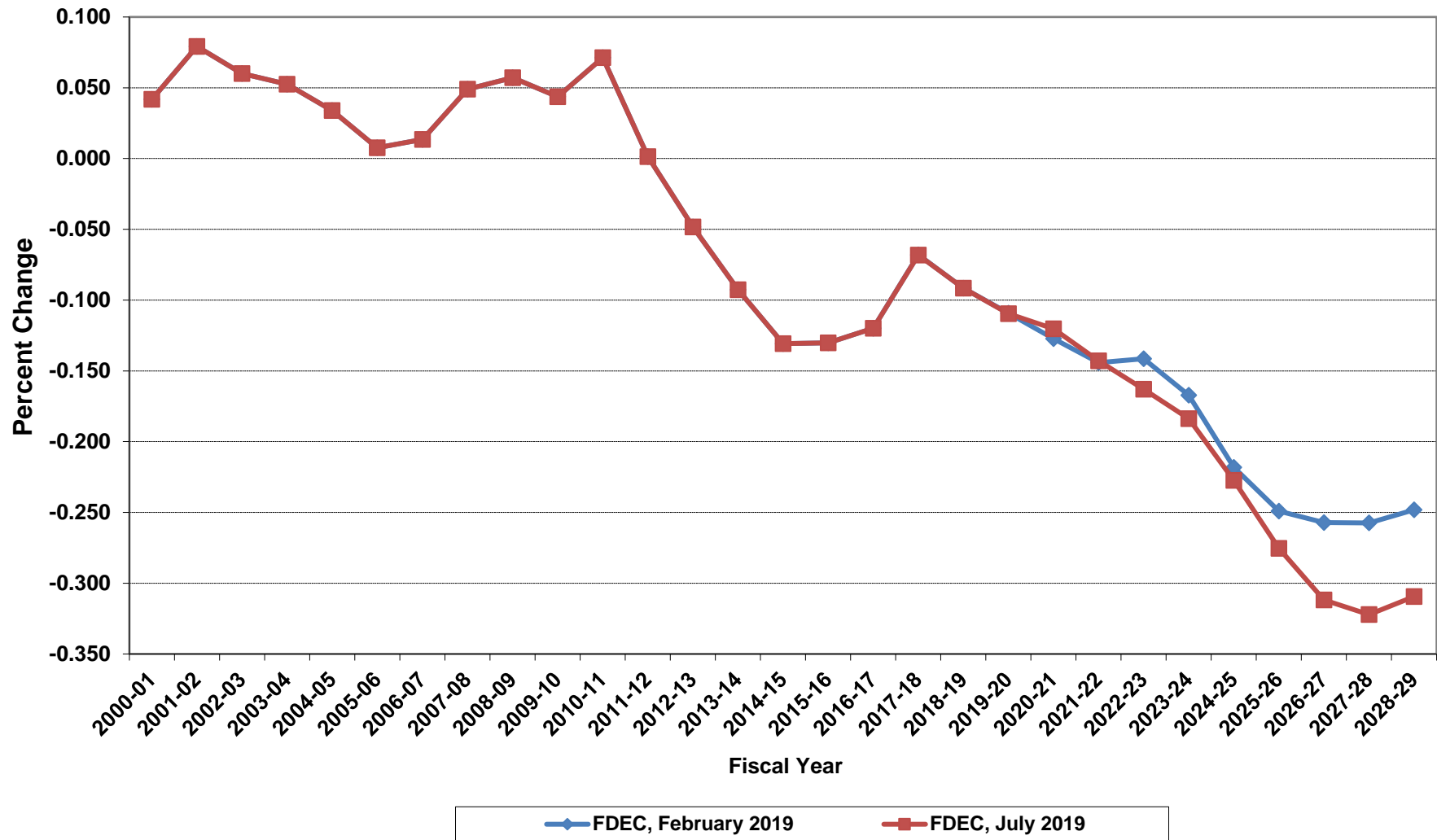


# Average Florida Household Size

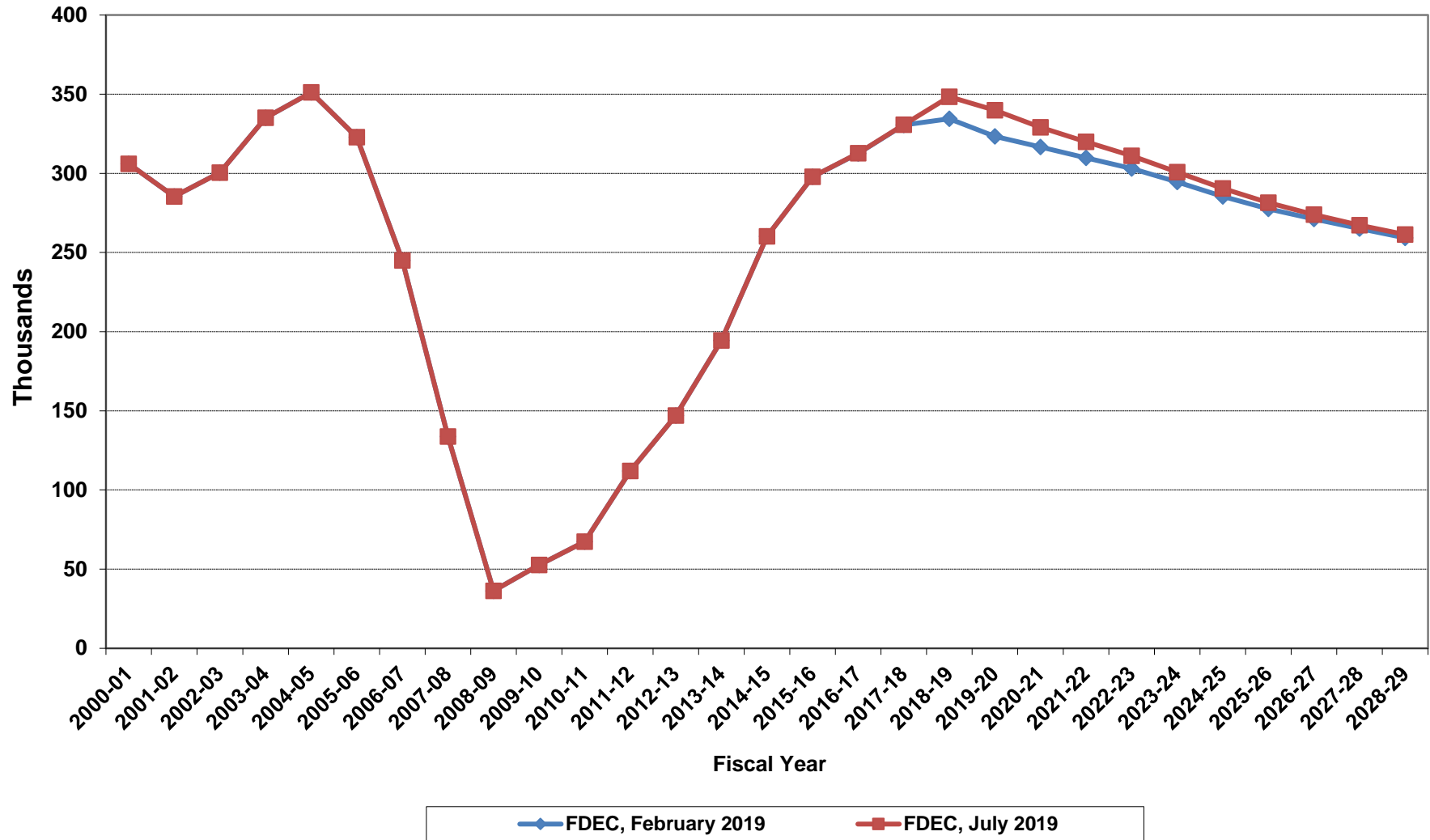




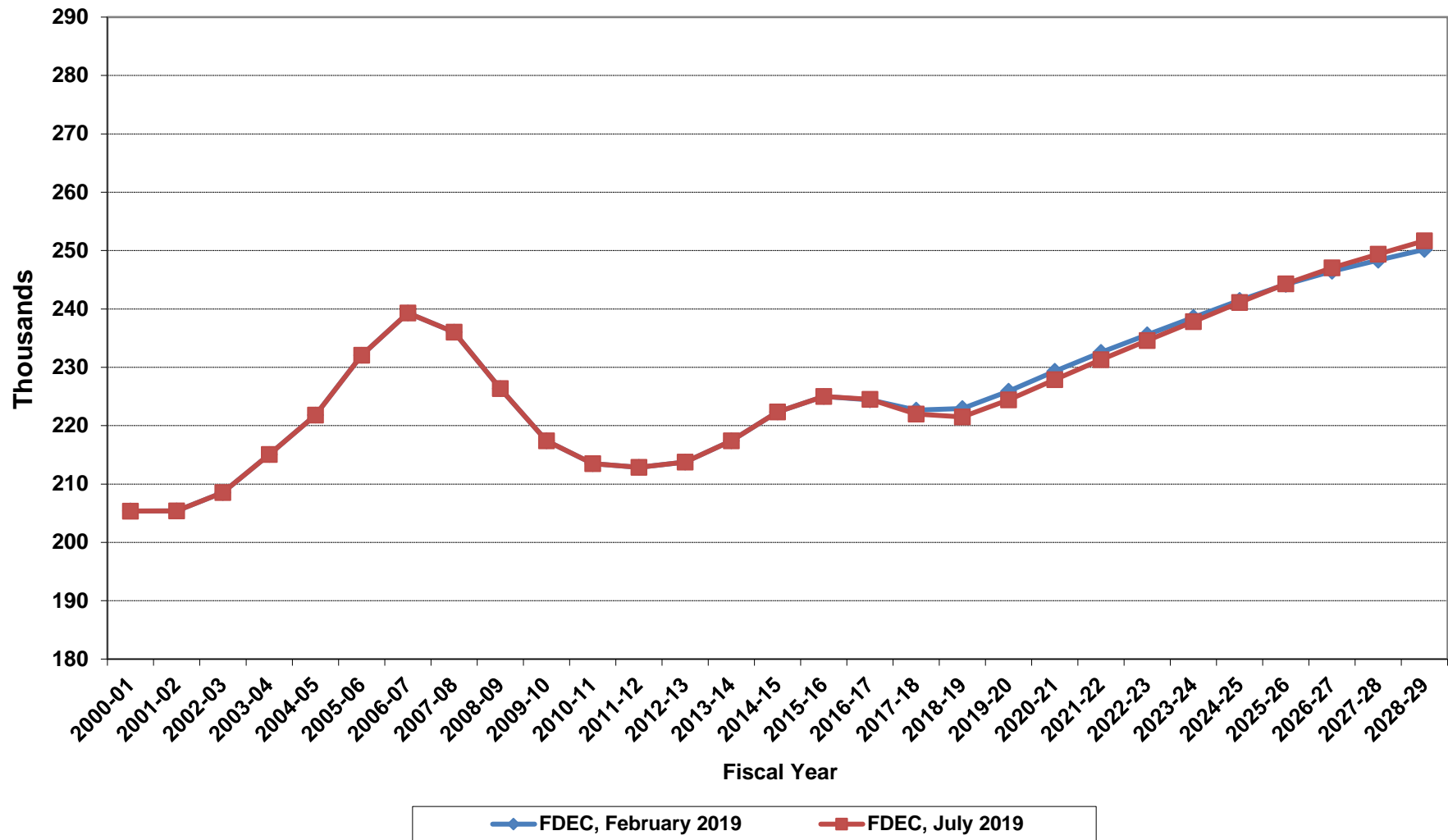
# Growth In Average Florida Household Size



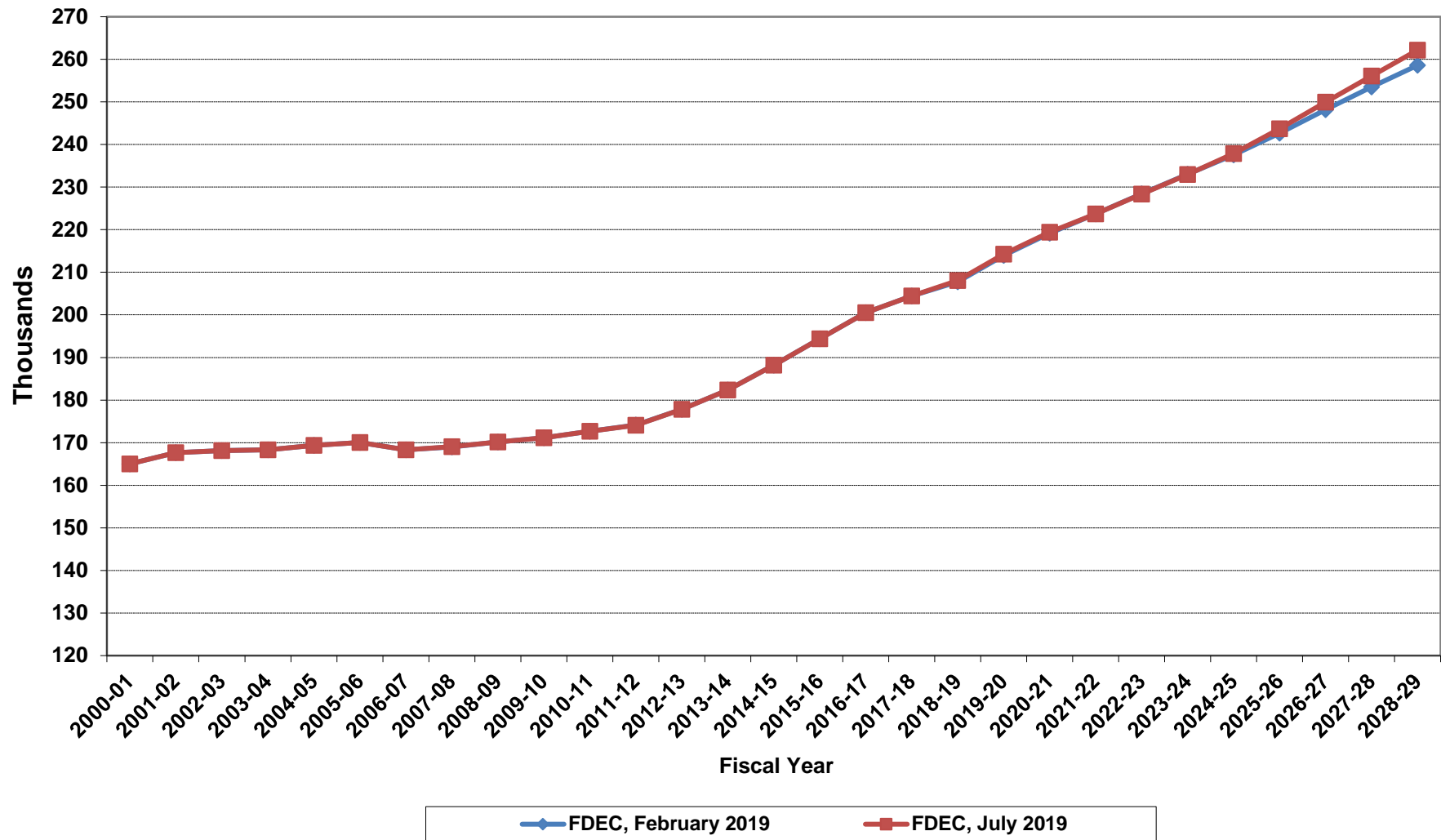
# Florida Net Migration



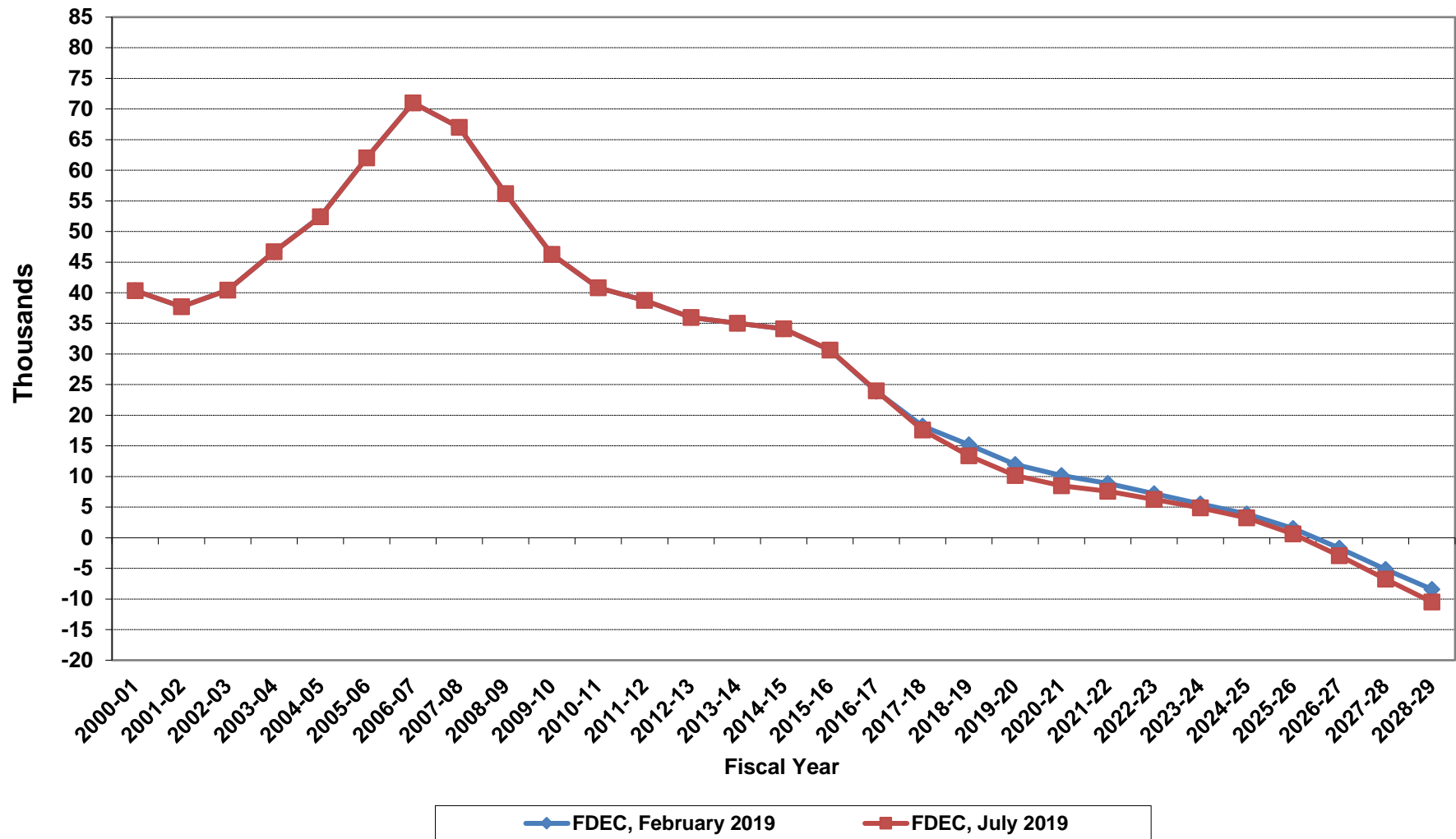
# Florida Resident Live Births



# Florida Resident Deaths



# Florida Net Natural Increase



**Florida Population and Components of Change**

<b>Fiscal Year</b>	<b>Population (End of Fiscal Year)</b>	<b>Growth Rate</b>	<b>Annual Change in Population</b>	<b>Births</b>	<b>Deaths</b>	<b>Net Natural Increase</b>	<b>Net Migration</b>
1950 - 51	2,981,346	6.50%	181,931	67,486	27,670	39,816	142,115
1951 - 52	3,155,442	5.84%	174,096	72,383	28,942	43,441	130,655
1952 - 53	3,312,521	4.98%	157,079	76,954	29,761	47,193	109,886
1953 - 54	3,504,323	5.79%	191,802	82,725	31,055	51,670	140,132
1954 - 55	3,747,400	6.94%	243,077	86,643	32,176	54,467	188,610
1955 - 56	4,046,062	7.97%	298,662	92,941	34,932	58,009	240,653
1956 - 57	4,370,045	8.01%	323,983	100,990	38,269	62,721	261,262
1957 - 58	4,629,510	5.94%	259,465	105,972	41,911	64,061	195,404
1958 - 59	4,812,270	3.95%	182,760	110,409	43,674	66,735	116,025
1959 - 60	4,998,508	3.87%	186,238	114,428	46,057	68,371	117,867
1960 - 61	5,185,913	3.75%	187,405	116,449	48,388	68,061	119,344
1961 - 62	5,367,899	3.51%	181,986	116,120	50,346	65,774	116,212
1962 - 63	5,553,522	3.46%	185,623	114,709	54,453	60,256	125,367
1963 - 64	5,728,499	3.15%	174,977	115,002	56,229	58,773	116,204
1964 - 65	5,881,195	2.67%	152,696	110,515	57,734	52,781	99,915
1965 - 66	6,065,768	3.14%	184,573	104,367	61,217	43,150	141,423
1966 - 67	6,249,674	3.03%	183,906	101,209	62,577	38,632	145,274
1967 - 68	6,441,756	3.07%	192,082	100,320	66,134	34,186	157,896
1968 - 69	6,633,546	2.98%	191,790	104,286	71,285	33,001	158,789
1969 - 70	6,861,118	3.43%	227,572	111,511	73,831	37,680	189,892
1970 - 71	7,233,583	5.43%	372,465	117,012	75,354	41,658	330,807
1971 - 72	7,681,540	6.19%	447,957	113,568	79,717	33,851	414,106
1972 - 73	8,157,883	6.20%	476,343	107,804	86,232	21,572	454,771
1973 - 74	8,515,208	4.38%	357,325	109,366	88,459	20,907	336,418
1974 - 75	8,648,587	1.57%	133,379	108,686	87,224	21,462	111,917
1975 - 76	8,788,975	1.55%	134,388	104,022	88,129	15,893	118,495
1976 - 77	8,972,678	2.16%	189,703	107,623	90,443	17,180	172,523
1977 - 78	9,225,527	2.82%	252,849	112,268	93,383	18,885	233,964
1978 - 79	9,523,728	3.23%	298,201	116,393	96,801	19,592	278,609
1979 - 80	9,914,652	4.10%	390,924	126,673	101,048	25,625	365,299
1980 - 81	10,212,969	3.01%	298,317	135,560	107,562	27,998	270,319
1981 - 82	10,492,851	2.74%	279,882	141,593	108,644	32,949	246,933
1982 - 83	10,748,466	2.44%	255,615	146,853	110,497	36,356	219,259
1983 - 84	11,065,911	2.95%	317,445	151,748	113,939	37,809	279,636
1984 - 85	11,405,533	3.07%	339,622	159,819	117,539	42,280	297,342
1985 - 86	11,740,069	2.93%	334,536	165,857	122,453	43,404	291,132
1986 - 87	12,083,241	2.92%	343,172	170,819	124,946	45,873	297,299
1987 - 88	12,410,339	2.71%	327,098	179,541	129,413	50,128	276,970
1988 - 89	12,723,719	2.53%	313,380	188,390	131,992	56,398	256,982
1989 - 90	13,017,296	2.31%	293,577	197,181	132,503	64,678	228,899
1990 - 91	13,326,892	2.38%	309,596	197,180	134,093	63,087	246,509
1991 - 92	13,552,021	1.69%	225,129	191,810	136,280	55,530	169,599
1992 - 93	13,802,571	1.85%	250,550	192,051	142,087	49,964	200,586
1993 - 94	14,120,323	2.30%	317,752	191,840	146,101	45,739	272,013
1994 - 95	14,406,418	2.03%	286,095	189,292	149,161	40,131	245,964
1995 - 96	14,701,040	2.05%	294,622	188,584	152,570	36,014	258,608
1996 - 97	15,012,615	2.12%	311,575	190,587	153,067	37,520	274,055
1997 - 98	15,310,069	1.98%	297,454	194,242	155,080	39,162	258,292
1998 - 99	15,680,164	2.42%	370,095	195,897	159,988	35,909	334,186
1999 - 00	16,069,889	2.49%	389,725	200,302	162,489	37,813	351,912
2000 - 01	16,385,615	1.96%	315,726	205,798	164,919	40,879	274,847
2001 - 02	16,718,076	2.03%	332,461	205,164	167,812	37,352	295,109
2002 - 03	17,074,258	2.13%	356,182	208,403	168,079	40,324	315,858
2003 - 04	17,475,944	2.35%	401,686	215,298	168,302	46,996	354,690
2004 - 05	17,876,215	2.29%	400,271	221,533	169,302	52,231	348,040
2005 - 06	18,236,885	2.02%	360,670	232,019	170,303	61,716	298,954
2006 - 07	18,501,231	1.45%	264,346	239,635	168,117	71,518	192,828
2007 - 08	18,636,837	0.73%	135,606	236,065	168,966	67,099	68,507
2008 - 09	18,711,844	0.40%	75,007	226,337	170,615	55,722	19,285
2009 - 10	18,826,492	0.61%	114,648	217,411	171,123	46,288	68,360

**Florida Population and Components of Change**

<b>Fiscal Year</b>	<b>Population (End of Fiscal Year)</b>	<b>Growth Rate</b>	<b>Annual Change in Population</b>	<b>Births</b>	<b>Deaths</b>	<b>Net Natural Increase</b>	<b>Net Migration</b>
2010 - 11	18,941,738	0.61%	115,246	213,466	172,661	40,805	74,441
2011 - 12	19,118,953	0.94%	177,215	212,877	174,114	38,763	138,452
2012 - 13	19,314,341	1.02%	195,388	213,765	177,804	35,961	159,427
2013 - 14	19,580,078	1.38%	265,737	217,417	182,383	35,034	230,703
2014 - 15	19,896,992	1.62%	316,914	222,337	188,218	34,119	282,795
2015 - 16	20,234,114	1.69%	337,122	225,008	194,383	30,625	306,497
2016 - 17	20,562,227	1.62%	328,113	224,516	200,522	23,994	304,119
2017 - 18	20,931,269	1.79%	369,042	222,004	204,436	17,568	351,474
2018 - 19	21,288,744	1.71%	357,475	221,485	208,094	13,391	344,084
2019 - 20	21,631,526	1.61%	342,782	224,405	214,260	10,145	332,637
2020 - 21	21,964,031	1.54%	332,505	227,864	219,384	8,480	324,025
2021 - 22	22,286,586	1.47%	322,555	231,279	223,701	7,578	314,977
2022 - 23	22,598,377	1.40%	311,791	234,585	228,354	6,231	305,560
2023 - 24	22,897,993	1.33%	299,616	237,830	232,941	4,889	294,727
2024 - 25	23,185,914	1.26%	287,921	241,094	237,846	3,248	284,673
2025 - 26	23,462,406	1.19%	276,492	244,309	243,682	627	275,865
2026 - 27	23,728,070	1.13%	265,664	247,031	249,953	-2,922	268,586
2027 - 28	23,983,590	1.08%	255,520	249,374	256,118	-6,744	262,264
2028 - 29	24,229,731	1.03%	246,141	251,683	262,191	-10,508	256,649
2029 - 30	24,467,043	0.98%	237,312	254,013	268,170	-14,157	251,469
2030 - 31	24,695,842	0.94%	228,799	255,590	274,698	-19,108	247,907
2031 - 32	24,916,353	0.89%	220,511	256,538	281,844	-25,306	245,817
2032 - 33	25,129,553	0.86%	213,200	257,631	288,727	-31,096	244,296
2033 - 34	25,336,460	0.82%	206,907	258,572	295,248	-36,676	243,583
2034 - 35	25,538,076	0.80%	201,616	259,257	301,467	-42,210	243,826
2035 - 36	25,734,356	0.77%	196,280	259,986	307,135	-47,149	243,429
2036 - 37	25,924,516	0.74%	190,160	260,948	312,323	-51,375	241,535
2037 - 38	26,109,901	0.72%	185,385	261,924	317,188	-55,264	240,649
2038 - 39	26,291,092	0.69%	181,191	262,823	321,797	-58,974	240,165

# Electric Customer and DMV Data: Estimating the Impact of Hurricane Michael

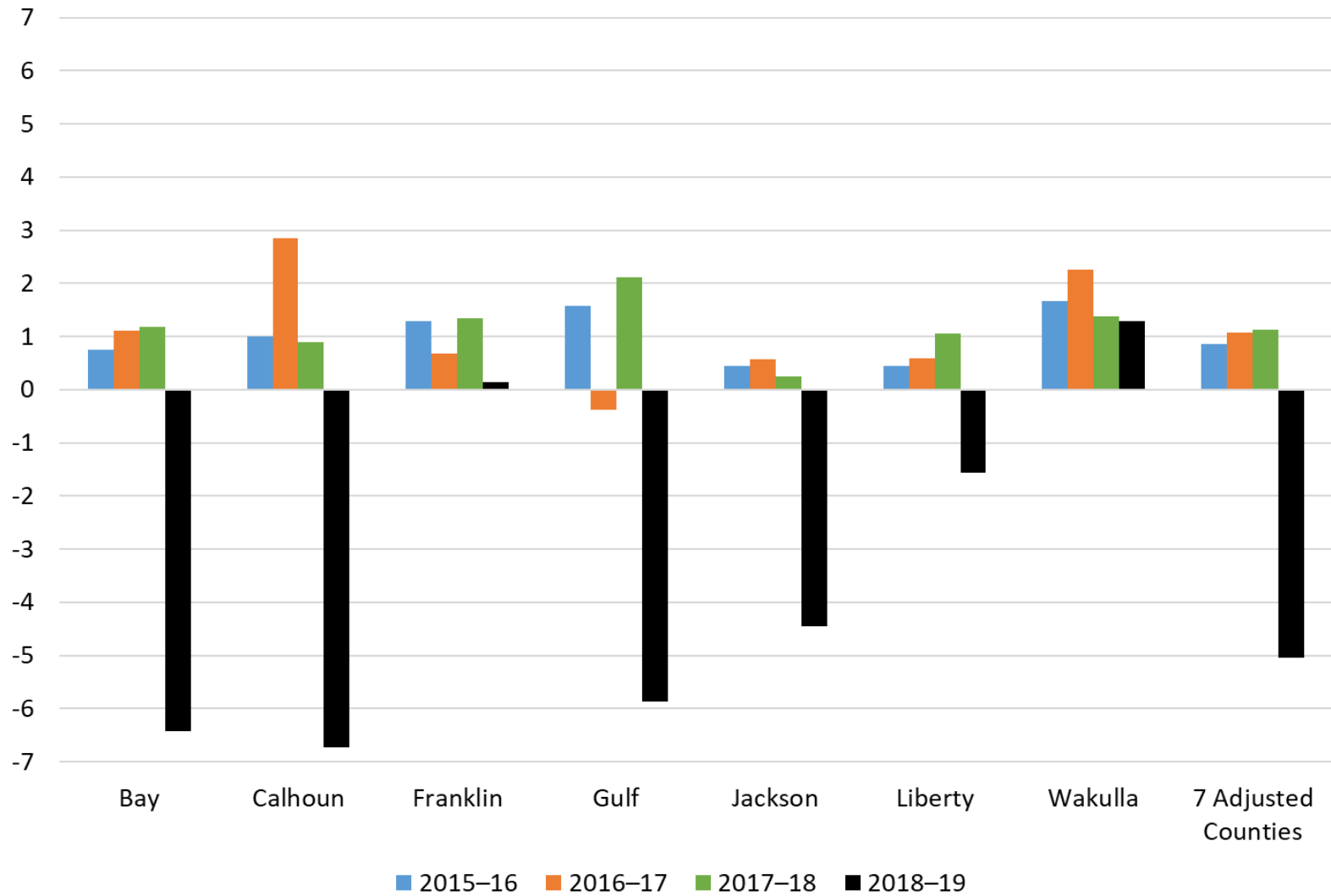
Stefan Rayer

Bureau of Economic and Business Research  
University of Florida

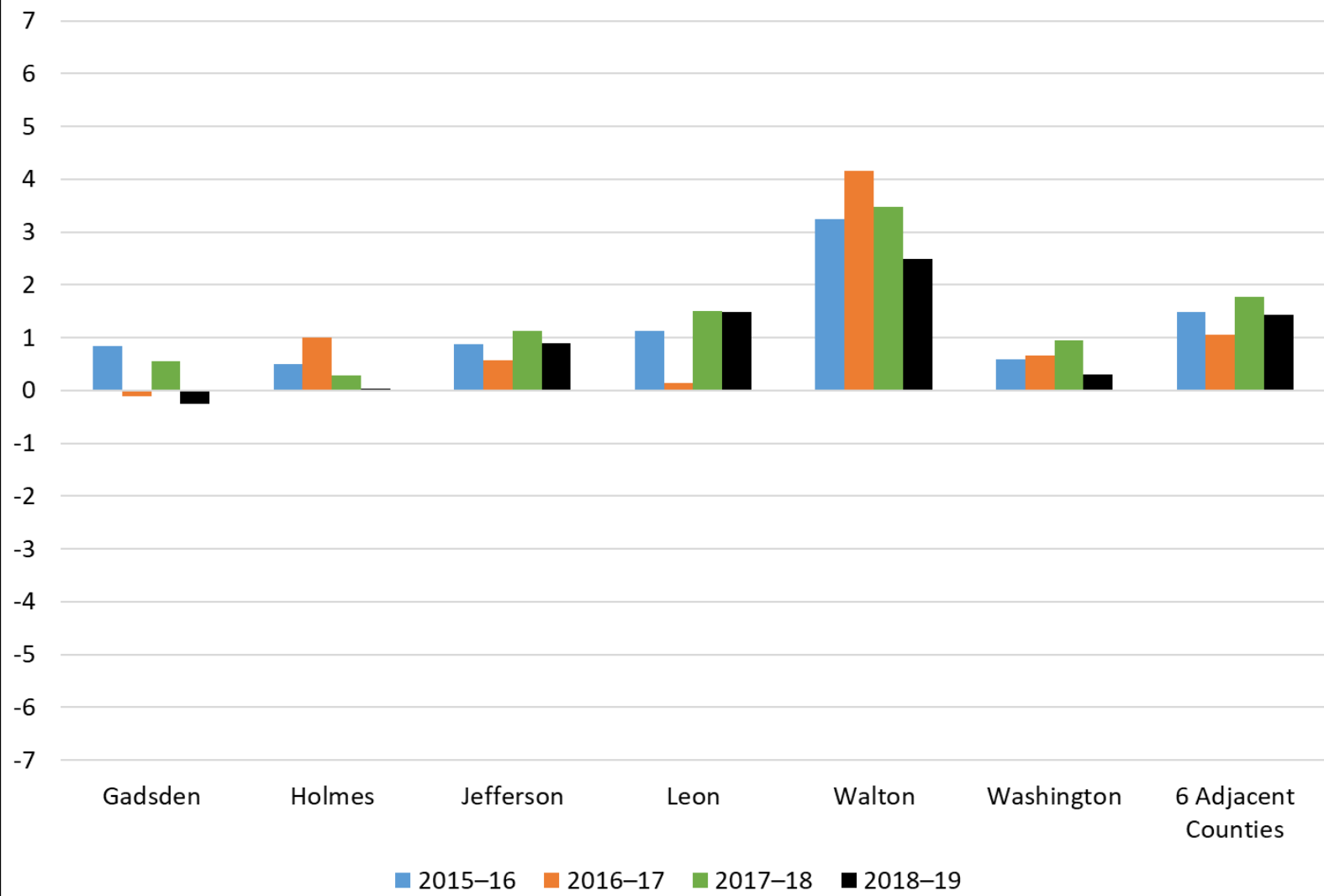
Demographic Estimating Conference  
July 8, 2019  
Tallahassee, FL



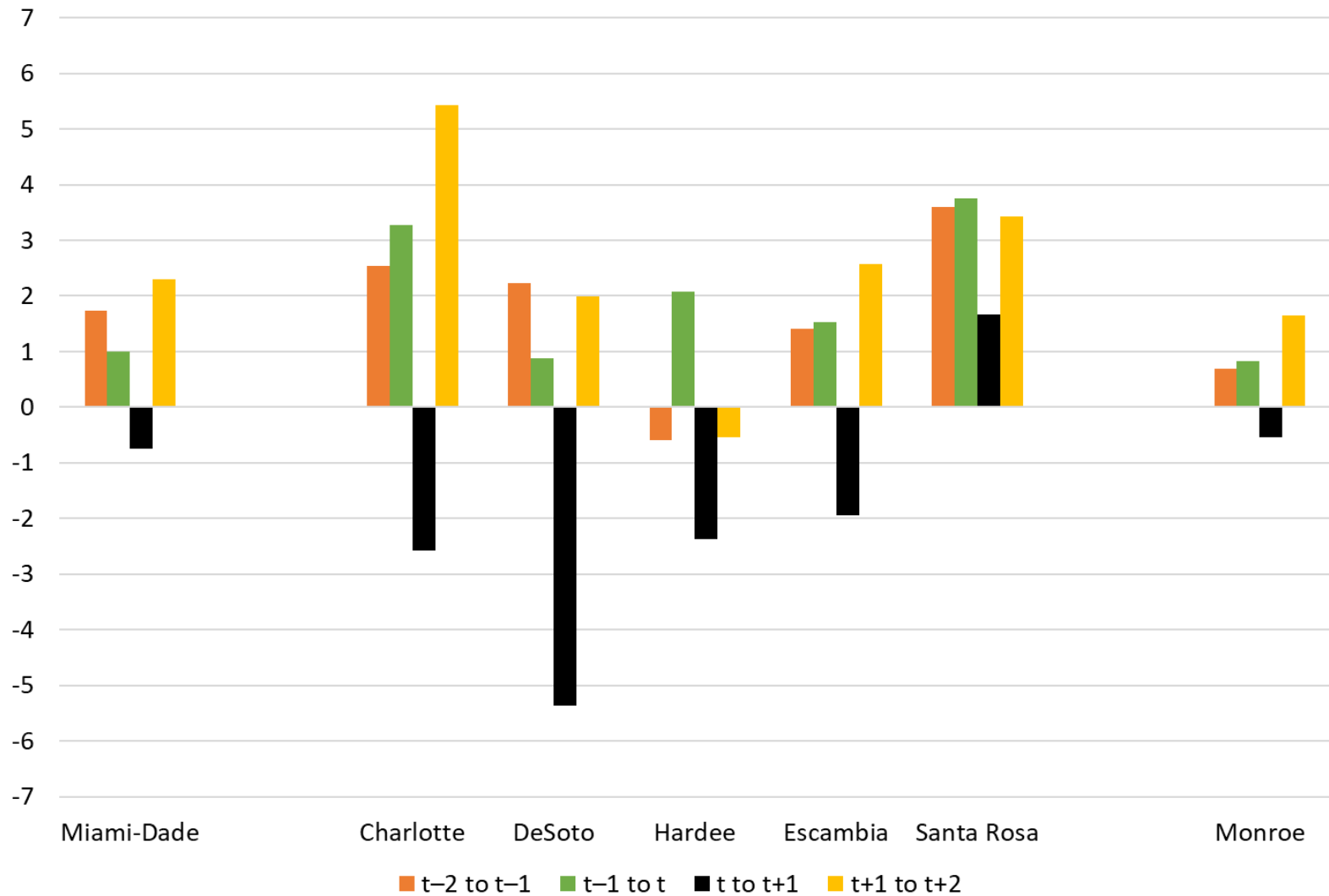
### Annual Change in Electric Customers (in %): Adjusted Counties



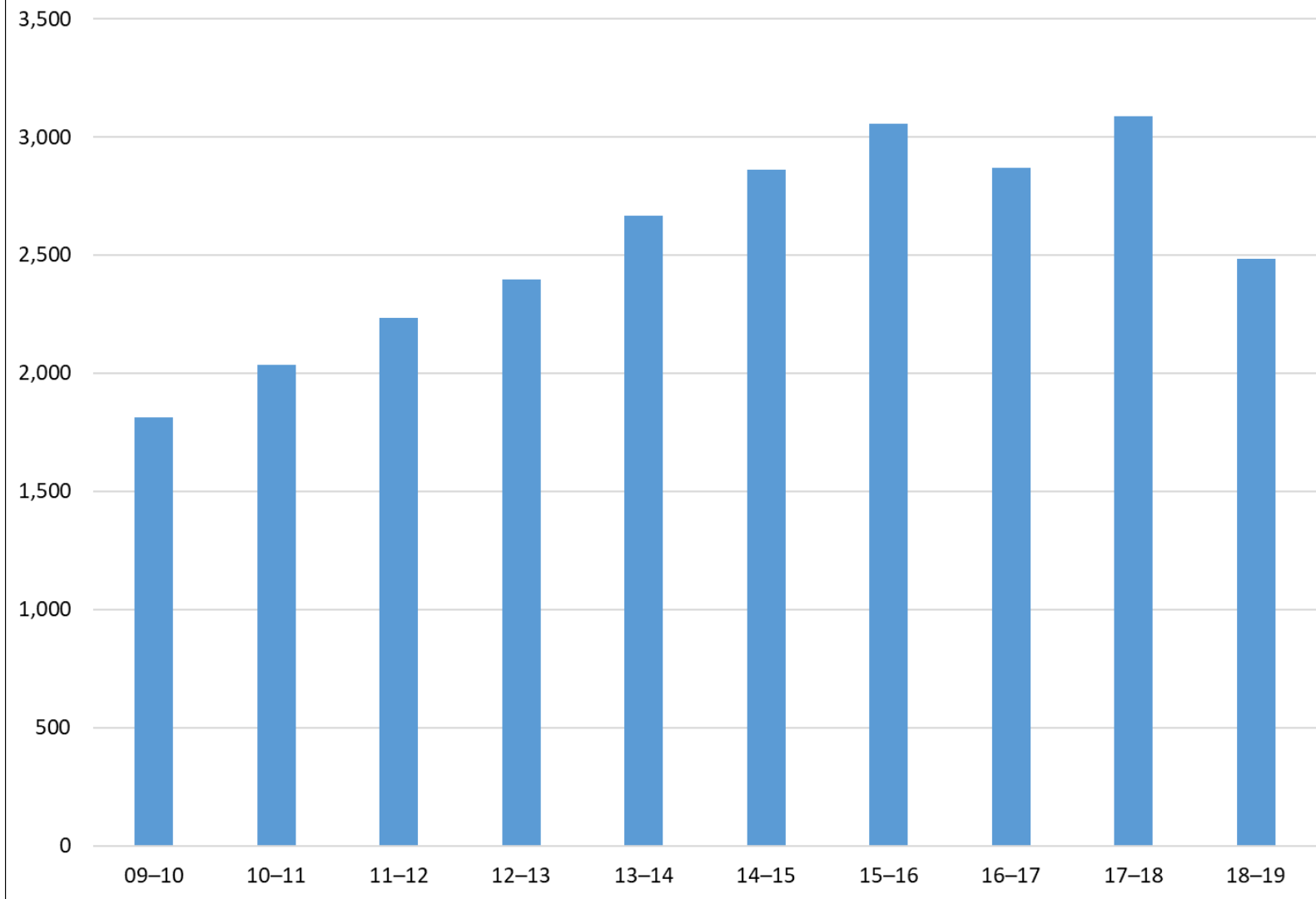
**Annual Change in Electric Customers (in %): Adjacent Counties**



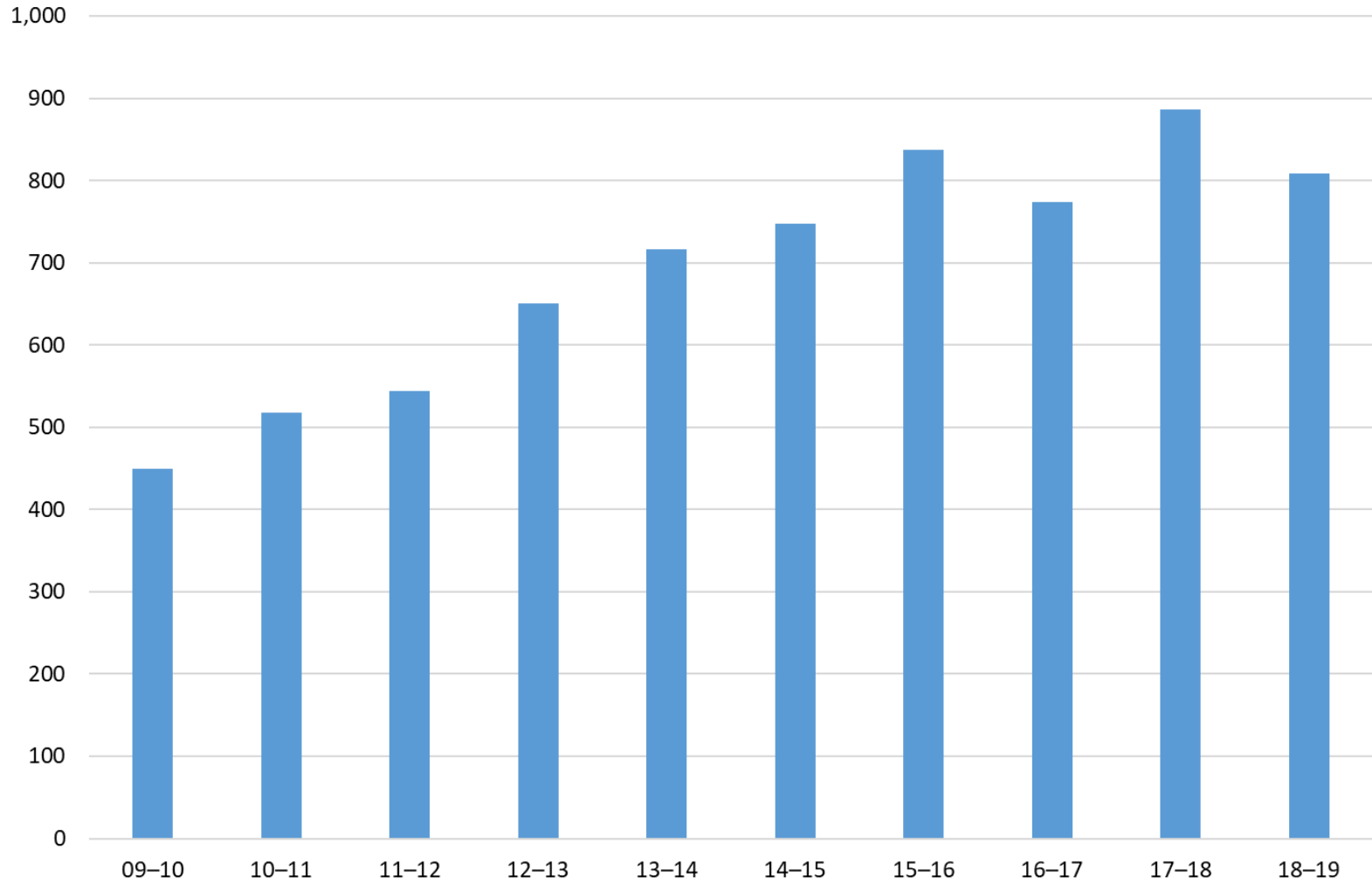
Annual Change in Electric Customers (in %): Past Florida Hurricanes (1992, 2004, 2017)



### DMV Exchanges, November–May: Bay County



DMV Exchanges, November–May: Adjusted Counties Ex. Bay County  
(Calhoun, Franklin, Gulf, Jackson, Liberty, and Wakulla)



DMV Exchanges, November–May: **Adjacent Counties**  
(Gadsden, Holmes, Jefferson, Leon, Walton, and Washington)

