

Demographic Estimating Conference
Executive Summary
December 3, 2019

The Demographic Estimating Conference met on December 3, 2019, to adopt a new population forecast. The new estimates reflect a final April 1, 2019 population estimate of 21,208,589 (an increase of 7,793 from the July conference) and recent demographic and economic-related data. Compared to the last conference, the population projection for April 1, 2020 was revised upward by 9,101, while the revision to April 1, 2024 was around 15,000.

The final April 1, 2019 population estimates by county that were presented to the Conference indicated there were some regional impacts to select panhandle counties from Hurricane Michael. The overall state forecast adopted by the Conference did not continue these changes into the future, as the hurricane is thought to have caused some shifting of population among counties and cities or other changes that are temporary in nature, which would not affect the statewide numbers.

Over the forecast period, changes in population growth are due mostly to net migration, as natural increase is expected to represent less than 2% of total population growth in FY 2023-24.

April 1	Population	Change from the Prior Year	
		Percent	Numeric
2012	19,074,434	0.90%	169,364
2013	19,259,543	0.97%	185,109
2014	19,507,369	1.29%	247,826
2015	19,815,183	1.58%	307,814
2016	20,148,654	1.68%	333,471
2017	20,484,142	1.67%	335,488
2018	20,840,568	1.74%	356,426
2019	21,208,589	1.77%	368,021
<i>Forecast</i>			
2020	21,555,986	1.64%	347,397
2021	21,892,371	1.56%	336,385
2022	22,219,631	1.49%	327,260
2023	22,536,052	1.42%	316,421
2024	22,839,102	1.34%	303,050

Between April 1, 2019 and April 1, 2024, population growth is expected to average 326,103 net new residents per year (893 per day), representing a compound growth rate of 1.49% over this five-year time horizon. These increases are analogous to adding a city slightly larger than Orlando every year.

Of note, the population estimates developed by the U.S. Census Bureau continue to be higher than the official state estimates adopted by the Demographic Estimating Conference. In the latest comparable set of estimates (July 1, 2018), the difference was about 370,990 persons. The Legislative Office of Economic and Demographic Research is continuing its efforts to identify how the differing underlying methodologies contribute to the gap between the two sets of estimates.

Florida Demographic Estimating Conference

Tables

Conference Packet

December 3, 2019

Florida Resident Population

April 1

Year	Florida Demographic Estimating Conference July 2019			Florida Demographic Estimating Conference December 2019		
	Population	% Change	Change	Population	% Change	Change
2000	15,982,824	2.58%	402,580	15,982,824	2.58%	402,580
2001	16,305,100	2.02%	322,276	16,305,100	2.02%	322,276
2002	16,634,256	2.02%	329,156	16,634,256	2.02%	329,156
2003	16,979,706	2.08%	345,450	16,979,706	2.08%	345,450
2004	17,374,824	2.33%	395,118	17,374,824	2.33%	395,118
2005	17,778,156	2.32%	403,332	17,778,156	2.32%	403,332
2006	18,154,475	2.12%	376,319	18,154,475	2.12%	376,319
2007	18,446,768	1.61%	292,293	18,446,768	1.61%	292,293
2008	18,613,905	0.91%	167,137	18,613,905	0.91%	167,137
2009	18,687,425	0.39%	73,520	18,687,425	0.39%	73,520
2010	18,801,332	0.61%	113,907	18,801,332	0.61%	113,907
2011	18,905,070	0.55%	103,738	18,905,070	0.55%	103,738
2012	19,074,434	0.90%	169,364	19,074,434	0.90%	169,364
2013	19,259,543	0.97%	185,109	19,259,543	0.97%	185,109
2014	19,507,369	1.29%	247,826	19,507,369	1.29%	247,826
2015	19,815,183	1.58%	307,814	19,815,183	1.58%	307,814
2016	20,148,654	1.68%	333,471	20,148,654	1.68%	333,471
2017	20,484,142	1.67%	335,488	20,484,142	1.67%	335,488
2018	20,840,568	1.74%	356,426	20,840,568	1.74%	356,426
2019	21,200,796	1.73%	360,228	21,208,589	1.77%	368,021
Begins forecast						
2020	21,546,885	1.63%	346,089	21,555,986	1.64%	347,397
2021	21,881,835	1.55%	334,950	21,892,371	1.56%	336,385
2022	22,206,881	1.49%	325,046	22,219,631	1.49%	327,260
2023	22,521,566	1.42%	314,685	22,536,052	1.42%	316,421
2024	22,824,196	1.34%	302,630	22,839,102	1.34%	303,050
5-Year Averages						
2025	23,115,024	1.41%	313,628	23,130,870	1.42%	314,977
2030	24,408,513	1.09%	258,698	24,426,178	1.10%	259,062
2035	25,488,114	0.87%	215,920	25,497,950	0.86%	214,354
2040	26,424,424	0.72%	187,262	26,428,726	0.72%	186,155
2045	27,265,701	0.63%	168,255	27,266,909	0.63%	167,637

Florida Resident Households

April 1

Year	Florida Demographic Estimating Conference July 2019			Florida Demographic Estimating Conference December 2019			
	Households	% Change	Change	Households	% Change	Change	
2000	6,338,075	2.52%	155,729	6,338,075	2.65%	163,703	
2001	6,467,215	2.04%	129,140	6,460,934	1.94%	122,859	
2002	6,599,035	2.04%	131,820	6,586,806	1.95%	125,872	
2003	6,737,370	2.10%	138,335	6,719,399	2.01%	132,593	
2004	6,895,469	2.35%	158,099	6,872,318	2.28%	152,919	
2005	7,056,889	2.34%	161,420	7,029,787	2.29%	157,469	
2006	7,207,645	2.14%	150,756	7,178,486	2.12%	148,699	
2007	7,312,907	1.46%	105,262	7,292,550	1.59%	114,064	
2008	7,368,319	0.76%	55,412	7,354,880	0.85%	62,330	
2009	7,386,570	0.25%	18,251	7,379,964	0.34%	25,084	
2010	7,525,335	1.88%	138,765	7,420,802	0.55%	40,838	
2011	7,456,791	-0.91%	-68,544	7,456,791	0.48%	35,989	
2012	7,525,335	0.92%	68,544	7,525,335	0.92%	68,544	
2013	7,602,417	1.02%	77,082	7,602,417	1.02%	77,082	
2014	7,708,538	1.40%	106,121	7,708,538	1.40%	106,121	
2015	7,840,780	1.72%	132,242	7,840,780	1.72%	132,242	
2016	7,982,938	1.81%	142,158	7,982,938	1.81%	142,158	
2017	8,125,176	1.78%	142,238	8,125,176	1.78%	142,238	
2018	8,271,058	1.80%	145,882	8,271,058	1.80%	145,882	
Begins forecast							
2019	8,423,120	1.84%	152,062	8,427,764	1.89%	156,706	
2020	8,569,747	1.74%	146,627	8,576,928	1.77%	149,164	
2021	8,714,038	1.68%	144,291	8,722,850	1.70%	145,922	
2022	8,856,556	1.64%	142,518	8,866,333	1.64%	143,483	
2023	8,997,192	1.59%	140,636	9,007,746	1.59%	141,413	
2024	9,135,335	1.54%	138,143	9,146,142	1.54%	138,396	
			5-Year Averages				5-Year Averages
2025	9,274,234	1.59%	140,897	9,283,605	1.60%	141,335	
2030	9,941,867	1.40%	133,527	9,940,987	1.38%	131,476	
2035	10,491,968	1.08%	110,020	10,500,268	1.10%	111,856	
2040	10,930,545	0.82%	87,715	10,933,439	0.81%	86,634	
2045	11,289,758	0.65%	71,843	11,291,335	0.65%	71,579	

Note: Household series has been revised from 2001 forward.

	<u>2010-2</u>	<u>2010-3</u>	<u>2010-4</u>	<u>2011-1</u>	<u>2011-2</u>	<u>2011-3</u>	<u>2011-4</u>	<u>2012-1</u>	<u>2012-2</u>	<u>2012-3</u>	<u>2012-4</u>	<u>2013-1</u>	<u>2013-2</u>	<u>2013-3</u>
Population														
FDEC, July 2019	18,813.9	18,838.3	18,862.7	18,890.2	18,923.4	18,962.8	19,006.3	19,051.6	19,096.7	19,141.2	19,186.6	19,234.6	19,286.9	19,344.2
FDEC, December 2019	18,813.9	18,838.3	18,862.7	18,890.2	18,923.4	18,962.8	19,006.3	19,051.6	19,096.7	19,141.2	19,186.6	19,234.6	19,286.9	19,344.2
Population Growth Rate														
FDEC, July 2019	0.59	0.52	0.52	0.58	0.71	0.83	0.92	0.96	0.95	0.94	0.95	1.01	1.09	1.19
FDEC, December 2019	0.59	0.52	0.52	0.58	0.71	0.83	0.92	0.96	0.95	0.94	0.95	1.01	1.09	1.19
Net Change in Population														
FDEC, July 2019	27.9	24.4	24.4	27.5	33.2	39.4	43.5	45.3	45.1	44.5	45.4	48.0	52.3	57.3
FDEC, December 2019	27.9	24.4	24.4	27.5	33.2	39.4	43.5	45.3	45.1	44.5	45.4	48.0	52.3	57.3
Households														
FDEC, July 2019	7,425.0	7,433.2	7,441.5	7,451.3	7,463.9	7,479.6	7,497.3	7,515.9	7,534.5	7,552.9	7,571.8	7,591.9	7,614.1	7,638.5
FDEC, December 2019	7,425.0	7,433.2	7,441.5	7,451.3	7,463.9	7,479.6	7,497.3	7,515.9	7,534.5	7,552.9	7,571.8	7,591.9	7,614.1	7,638.5
Household Growth Rate														
FDEC, July 2019	0.50	0.44	0.45	0.53	0.68	0.84	0.95	1.00	0.99	0.98	1.00	1.07	1.17	1.29
FDEC, December 2019	0.50	0.44	0.45	0.53	0.68	0.84	0.95	1.00	0.99	0.98	1.00	1.07	1.17	1.29
Net Change in Households														
FDEC, July 2019	9.3	8.2	8.3	9.8	12.6	15.6	17.7	18.6	18.6	18.4	18.9	20.1	22.1	24.4
FDEC, December 2019	9.3	8.2	8.3	9.8	12.6	15.6	17.7	18.6	18.6	18.4	18.9	20.1	22.1	24.4
Household Size														
FDEC, July 2019	2.534	2.534	2.535	2.535	2.535	2.535	2.535	2.535	2.535	2.534	2.534	2.534	2.533	2.532
FDEC, December 2019	2.534	2.534	2.535	2.535	2.535	2.535	2.535	2.535	2.535	2.534	2.534	2.534	2.533	2.532
Household Size Growth Rate														
FDEC, July 2019	0.09	0.08	0.07	0.05	0.02	-0.01	-0.03	-0.04	-0.04	-0.04	-0.05	-0.06	-0.08	-0.09
FDEC, December 2019	0.09	0.08	0.07	0.05	0.02	-0.01	-0.03	-0.04	-0.04	-0.04	-0.05	-0.06	-0.08	-0.09
Net Migration														
FDEC, July 2019	17.2	14.1	14.3	17.2	23.1	29.3	33.7	35.8	35.7	35.3	36.3	39.1	43.5	48.5
FDEC, December 2019	17.2	14.1	14.3	17.2	23.1	29.3	33.7	35.8	35.7	35.3	36.3	39.1	43.5	48.5
Births														
FDEC, July 2019	53.7	53.5	53.3	53.4	53.3	53.3	53.2	53.2	53.2	53.3	53.4	53.5	53.7	53.9
FDEC, December 2019	53.7	53.5	53.3	53.4	53.3	53.3	53.2	53.2	53.2	53.3	53.4	53.5	53.7	53.9
Deaths														
FDEC, July 2019	43.1	43.2	43.3	43.1	43.1	43.2	43.4	43.6	43.8	44.1	44.3	44.6	44.9	45.1
FDEC, December 2019	43.1	43.2	43.2	43.1	43.1	43.2	43.4	43.6	43.8	44.1	44.3	44.6	44.9	45.1
Net Natural Increase														
FDEC, July 2019	10.6	10.3	10.0	10.3	10.2	10.0	9.9	9.5	9.3	9.2	9.0	8.9	8.8	8.7
FDEC, December 2019	10.6	10.3	10.0	10.3	10.2	10.0	9.9	9.5	9.3	9.2	9.0	8.9	8.8	8.8

	<u>2013-4</u>	<u>2014-1</u>	<u>2014-2</u>	<u>2014-3</u>	<u>2014-4</u>	<u>2015-1</u>	<u>2015-2</u>	<u>2015-3</u>	<u>2015-4</u>	<u>2016-1</u>	<u>2016-2</u>	<u>2016-3</u>	<u>2016-4</u>	<u>2017-1</u>
Population														
FDEC, July 2019	19,406.4	19,473.0	19,543.7	19,618.1	19,695.4	19,774.9	19,856.1	19,938.5	20,021.9	20,106.2	20,191.4	20,276.7	20,361.1	20,443.6
FDEC, December 2019	19,406.4	19,473.0	19,543.7	19,618.1	19,695.4	19,774.9	19,856.1	19,938.4	20,021.8	20,106.2	20,191.4	20,276.8	20,361.3	20,443.7
Population Growth Rate														
FDEC, July 2019	1.29	1.38	1.46	1.53	1.59	1.63	1.65	1.67	1.68	1.70	1.70	1.70	1.68	1.63
FDEC, December 2019	1.29	1.38	1.46	1.53	1.59	1.63	1.65	1.67	1.68	1.70	1.71	1.70	1.68	1.63
Net Change in Population														
FDEC, July 2019	62.1	66.6	70.7	74.4	77.3	79.6	81.2	82.4	83.4	84.4	85.1	85.3	84.4	82.4
FDEC, December 2019	62.1	66.6	70.7	74.4	77.3	79.5	81.1	82.3	83.4	84.4	85.2	85.4	84.5	82.3
Households														
FDEC, July 2019	7,665.1	7,693.7	7,724.2	7,756.2	7,789.4	7,823.5	7,858.2	7,893.4	7,928.9	7,964.9	8,001.2	8,037.6	8,073.4	8,108.2
FDEC, December 2019	7,665.1	7,693.7	7,724.2	7,756.2	7,789.4	7,823.5	7,858.2	7,893.4	7,928.9	7,964.8	8,001.2	8,037.7	8,073.6	8,108.2
Household Growth Rate														
FDEC, July 2019	1.40	1.50	1.59	1.67	1.72	1.76	1.79	1.80	1.81	1.83	1.84	1.83	1.80	1.73
FDEC, December 2019	1.40	1.50	1.59	1.67	1.72	1.76	1.79	1.80	1.81	1.83	1.84	1.83	1.80	1.73
Net Change in Households														
FDEC, July 2019	26.6	28.6	30.4	32.0	33.2	34.1	34.7	35.1	35.5	36.0	36.3	36.4	35.9	34.7
FDEC, December 2019	26.6	28.6	30.5	32.0	33.2	34.1	34.7	35.1	35.5	36.0	36.4	36.4	35.9	34.7
Household Size														
FDEC, July 2019	2.532	2.531	2.530	2.529	2.528	2.528	2.527	2.526	2.525	2.524	2.524	2.523	2.522	2.521
FDEC, December 2019	2.532	2.531	2.530	2.529	2.528	2.528	2.527	2.526	2.525	2.524	2.524	2.523	2.522	2.521
Household Size Growth Rate														
FDEC, July 2019	-0.11	-0.12	-0.13	-0.13	-0.14	-0.14	-0.13	-0.13	-0.13	-0.13	-0.13	-0.13	-0.12	-0.10
FDEC, December 2019	-0.11	-0.12	-0.13	-0.13	-0.14	-0.14	-0.13	-0.13	-0.13	-0.13	-0.13	-0.13	-0.12	-0.10
Net Migration														
FDEC, July 2019	53.4	57.8	62.0	65.7	68.7	71.0	72.8	74.3	75.6	76.9	78.0	78.5	78.1	76.8
FDEC, December 2019	53.4	57.8	62.0	65.7	68.7	71.0	72.8	74.2	75.6	76.9	78.1	78.6	78.1	76.7
Births														
FDEC, July 2019	54.1	54.5	54.8	55.1	55.4	55.8	56.0	56.2	56.3	56.3	56.3	56.3	56.2	56.1
FDEC, December 2019	54.1	54.5	54.8	55.1	55.4	55.8	56.0	56.2	56.3	56.3	56.3	56.3	56.2	56.1
Deaths														
FDEC, July 2019	45.4	45.7	46.1	46.4	46.8	47.3	47.7	48.1	48.4	48.8	49.1	49.5	49.9	50.4
FDEC, December 2019	45.4	45.7	46.1	46.4	46.8	47.3	47.7	48.1	48.4	48.8	49.1	49.5	49.9	50.4
Net Natural Increase														
FDEC, July 2019	8.7	8.8	8.8	8.7	8.6	8.5	8.3	8.1	7.8	7.5	7.2	6.8	6.3	5.7
FDEC, December 2019	8.7	8.8	8.8	8.7	8.6	8.5	8.3	8.1	7.8	7.5	7.2	6.8	6.3	5.6

	<u>2017-2</u>	<u>2017-3</u>	<u>2017-4</u>	<u>2018-1</u>	<u>2018-2</u>	<u>2018-3</u>	<u>2018-4</u>	<u>2019-1</u>	<u>2019-2</u>	<u>2019-3</u>	<u>2019-4</u>	<u>2020-1</u>	<u>2020-2</u>	<u>2020-3</u>
Population														
FDEC, July 2019	20,523.2	20,611.2	20,705.1	20,795.3	20,885.9	20,976.5	21,066.7	21,156.3	21,244.8	21,332.2	21,418.6	21,504.3	21,589.2	21,673.6
FDEC, December 2019	20,523.0	20,610.6	20,704.3	20,794.9	20,886.7	20,979.2	21,071.6	21,163.2	21,253.1	21,341.1	21,427.8	21,513.4	21,598.4	21,683.0
Population Growth Rate														
FDEC, July 2019	1.57	1.73	1.83	1.75	1.75	1.75	1.73	1.71	1.68	1.66	1.63	1.61	1.59	1.57
FDEC, December 2019	1.56	1.72	1.83	1.76	1.78	1.78	1.77	1.75	1.71	1.67	1.63	1.61	1.59	1.58
Net Change in Population														
FDEC, July 2019	79.6	88.0	93.9	90.2	90.6	90.6	90.2	89.5	88.5	87.4	86.4	85.6	84.9	84.3
FDEC, December 2019	79.3	87.6	93.7	90.6	91.8	92.5	92.4	91.5	89.9	88.1	86.6	85.6	85.0	84.6
Households														
FDEC, July 2019	8,141.3	8,177.3	8,215.5	8,252.5	8,290.0	8,328.0	8,366.2	8,404.2	8,441.8	8,478.8	8,515.3	8,551.6	8,587.8	8,624.0
FDEC, December 2019	8,141.2	8,177.0	8,215.1	8,252.3	8,290.4	8,329.5	8,368.9	8,408.2	8,446.9	8,484.7	8,521.8	8,558.6	8,595.2	8,631.8
Household Growth Rate														
FDEC, July 2019	1.64	1.78	1.88	1.81	1.83	1.85	1.85	1.83	1.80	1.76	1.74	1.72	1.70	1.69
FDEC, December 2019	1.64	1.77	1.88	1.82	1.86	1.90	1.91	1.89	1.85	1.80	1.76	1.74	1.72	1.71
Net Change in Households														
FDEC, July 2019	33.1	36.0	38.2	36.9	37.5	38.0	38.2	38.0	37.6	37.0	36.6	36.3	36.2	36.1
FDEC, December 2019	33.0	35.8	38.1	37.1	38.2	39.1	39.5	39.3	38.6	37.8	37.2	36.8	36.6	36.6
Household Size														
FDEC, July 2019	2.521	2.521	2.520	2.520	2.519	2.519	2.518	2.517	2.517	2.516	2.515	2.515	2.514	2.513
FDEC, December 2019	2.521	2.521	2.520	2.520	2.519	2.519	2.518	2.517	2.516	2.515	2.514	2.514	2.513	2.512
Household Size Growth Rate														
FDEC, July 2019	-0.08	-0.05	-0.05	-0.05	-0.08	-0.10	-0.11	-0.12	-0.11	-0.11	-0.10	-0.11	-0.11	-0.12
FDEC, December 2019	-0.07	-0.05	-0.05	-0.06	-0.08	-0.11	-0.13	-0.14	-0.14	-0.13	-0.13	-0.13	-0.13	-0.14
Net Migration														
FDEC, July 2019	74.4	83.1	89.4	86.0	86.7	86.9	86.8	86.3	85.5	84.6	83.8	83.2	82.7	82.2
FDEC, December 2019	74.1	82.8	89.2	86.3	87.7	88.6	88.7	87.9	86.4	84.8	83.5	82.6	82.1	81.9
Births														
FDEC, July 2019	56.0	55.8	55.7	55.3	55.2	55.2	55.2	55.5	55.6	55.8	56.0	56.2	56.4	56.6
FDEC, December 2019	56.0	55.8	55.7	55.4	55.3	55.3	55.4	55.6	55.8	56.0	56.2	56.4	56.6	56.9
Deaths														
FDEC, July 2019	50.7	51.0	51.2	51.0	51.2	51.5	51.8	52.3	52.6	53.0	53.3	53.8	54.1	54.5
FDEC, December 2019	50.7	51.0	51.2	51.1	51.2	51.5	51.7	52.0	52.3	52.6	53.0	53.4	53.8	54.1
Net Natural Increase														
FDEC, July 2019	5.2	4.8	4.5	4.3	4.0	3.7	3.5	3.2	3.0	2.8	2.6	2.4	2.3	2.2
FDEC, December 2019	5.2	4.8	4.5	4.3	4.1	3.9	3.7	3.6	3.5	3.3	3.2	3.0	2.9	2.7

	<u>2020-4</u>	<u>2021-1</u>	<u>2021-2</u>	<u>2021-3</u>	<u>2021-4</u>	<u>2022-1</u>	<u>2022-2</u>	<u>2022-3</u>	<u>2022-4</u>	<u>2023-1</u>	<u>2023-2</u>	<u>2023-3</u>	<u>2023-4</u>	<u>2024-1</u>
Population														
FDEC, July 2019	21,757.3	21,840.4	21,922.9	22,004.8	22,086.1	22,166.7	22,246.7	22,326.1	22,404.8	22,482.8	22,560.0	22,636.4	22,712.0	22,786.9
FDEC, December 2019	21,767.1	21,850.7	21,933.7	22,016.2	22,098.0	22,179.2	22,259.7	22,339.6	22,418.8	22,497.1	22,574.6	22,651.1	22,726.9	22,801.8
Population Growth Rate														
FDEC, July 2019	1.55	1.54	1.52	1.50	1.49	1.47	1.45	1.43	1.42	1.40	1.38	1.36	1.34	1.33
FDEC, December 2019	1.56	1.55	1.53	1.51	1.49	1.48	1.46	1.44	1.42	1.40	1.38	1.36	1.34	1.33
Net Change in Population														
FDEC, July 2019	83.7	83.1	82.5	81.9	81.3	80.6	80.0	79.4	78.7	78.0	77.2	76.4	75.7	74.9
FDEC, December 2019	84.1	83.6	83.0	82.4	81.8	81.2	80.6	79.9	79.1	78.3	77.5	76.6	75.7	74.9
Households														
FDEC, July 2019	8,660.1	8,696.1	8,731.9	8,767.7	8,803.3	8,838.8	8,874.2	8,909.5	8,944.7	8,979.7	9,014.6	9,049.2	9,083.7	9,118.1
FDEC, December 2019	8,668.3	8,704.7	8,740.9	8,776.9	8,812.8	8,848.5	8,884.1	8,919.7	8,955.1	8,990.2	9,025.1	9,059.8	9,094.4	9,128.9
Household Growth Rate														
FDEC, July 2019	1.68	1.67	1.66	1.65	1.64	1.62	1.61	1.60	1.59	1.58	1.56	1.55	1.53	1.52
FDEC, December 2019	1.70	1.69	1.67	1.66	1.64	1.63	1.62	1.61	1.60	1.58	1.56	1.55	1.53	1.53
Net Change in Households														
FDEC, July 2019	36.1	36.0	35.9	35.7	35.6	35.5	35.4	35.3	35.2	35.0	34.8	34.7	34.5	34.4
FDEC, December 2019	36.5	36.4	36.2	36.0	35.9	35.7	35.6	35.5	35.4	35.2	34.9	34.7	34.5	34.5
Household Size														
FDEC, July 2019	2.512	2.512	2.511	2.510	2.509	2.508	2.507	2.506	2.505	2.504	2.503	2.501	2.500	2.499
FDEC, December 2019	2.511	2.510	2.509	2.508	2.508	2.507	2.506	2.505	2.503	2.502	2.501	2.500	2.499	2.498
Household Size Growth Rate														
FDEC, July 2019	-0.13	-0.13	-0.14	-0.14	-0.15	-0.15	-0.16	-0.16	-0.17	-0.17	-0.18	-0.18	-0.19	-0.20
FDEC, December 2019	-0.14	-0.14	-0.14	-0.14	-0.15	-0.15	-0.16	-0.16	-0.17	-0.17	-0.18	-0.18	-0.19	-0.20
Net Migration														
FDEC, July 2019	81.6	81.0	80.4	79.9	79.3	78.8	78.2	77.7	77.1	76.5	75.8	75.1	74.4	73.7
FDEC, December 2019	81.6	81.2	80.8	80.3	79.8	79.2	78.7	78.1	77.5	76.8	76.0	75.2	74.5	73.7
Births														
FDEC, July 2019	56.9	57.1	57.3	57.5	57.7	57.9	58.1	58.3	58.5	58.8	59.0	59.2	59.4	59.6
FDEC, December 2019	57.1	57.3	57.6	57.8	58.0	58.2	58.5	58.7	58.9	59.1	59.4	59.6	59.8	60.0
Deaths														
FDEC, July 2019	54.8	54.9	55.2	55.5	55.8	56.1	56.4	56.6	56.9	57.2	57.5	57.8	58.1	58.4
FDEC, December 2019	54.5	54.9	55.3	55.7	56.0	56.3	56.6	56.9	57.2	57.6	57.9	58.2	58.5	58.8
Net Natural Increase														
FDEC, July 2019	2.1	2.1	2.1	2.0	1.9	1.9	1.8	1.7	1.6	1.5	1.4	1.3	1.3	1.2
FDEC, December 2019	2.6	2.4	2.2	2.1	2.0	1.9	1.9	1.8	1.7	1.6	1.5	1.4	1.3	1.2

	<u>2024-2</u>	<u>2024-3</u>	<u>2024-4</u>	<u>2025-1</u>	<u>2025-2</u>	<u>2025-3</u>	<u>2025-4</u>	<u>2026-1</u>	<u>2026-2</u>	<u>2026-3</u>	<u>2026-4</u>	<u>2027-1</u>	<u>2027-2</u>
Population													
FDEC, July 2019	22,861.1	22,934.5	23,007.2	23,079.2	23,150.5	23,221.0	23,290.8	23,359.9	23,428.4	23,496.1	23,563.2	23,629.6	23,695.4
FDEC, December 2019	22,876.1	22,949.7	23,022.7	23,094.9	23,166.5	23,237.3	23,307.5	23,376.9	23,445.6	23,513.7	23,581.0	23,647.7	23,713.7
Population Growth Rate													
FDEC, July 2019	1.31	1.29	1.27	1.26	1.24	1.22	1.21	1.19	1.18	1.16	1.15	1.13	1.12
FDEC, December 2019	1.31	1.29	1.28	1.26	1.25	1.23	1.21	1.20	1.18	1.17	1.15	1.14	1.12
Net Change in Population													
FDEC, July 2019	74.2	73.4	72.7	72.0	71.3	70.5	69.8	69.1	68.4	67.7	67.1	66.4	65.8
FDEC, December 2019	74.3	73.6	73.0	72.3	71.6	70.8	70.1	69.4	68.7	68.0	67.4	66.7	66.0
Households													
FDEC, July 2019	9,152.6	9,187.3	9,222.1	9,256.8	9,291.6	9,326.3	9,361.1	9,395.8	9,430.5	9,465.2	9,499.9	9,534.4	9,568.7
FDEC, December 2019	9,163.3	9,197.8	9,232.1	9,266.5	9,300.7	9,334.9	9,369.0	9,403.1	9,437.0	9,470.8	9,504.5	9,538.0	9,571.3
Household Growth Rate													
FDEC, July 2019	1.52	1.52	1.52	1.52	1.51	1.50	1.50	1.49	1.49	1.48	1.47	1.46	1.45
FDEC, December 2019	1.52	1.51	1.50	1.50	1.49	1.48	1.47	1.46	1.45	1.44	1.43	1.42	1.41
Net Change in Households													
FDEC, July 2019	34.5	34.7	34.7	34.8	34.8	34.7	34.7	34.7	34.7	34.7	34.7	34.5	34.3
FDEC, December 2019	34.5	34.4	34.4	34.3	34.3	34.2	34.1	34.0	33.9	33.8	33.7	33.5	33.3
Household Size													
FDEC, July 2019	2.498	2.496	2.495	2.493	2.492	2.490	2.488	2.486	2.484	2.482	2.480	2.478	2.476
FDEC, December 2019	2.496	2.495	2.494	2.492	2.491	2.489	2.488	2.486	2.484	2.483	2.481	2.479	2.478
Household Size Growth Rate													
FDEC, July 2019	-0.21	-0.23	-0.24	-0.26	-0.27	-0.28	-0.28	-0.30	-0.31	-0.31	-0.32	-0.32	-0.32
FDEC, December 2019	-0.21	-0.21	-0.22	-0.23	-0.24	-0.25	-0.25	-0.26	-0.27	-0.27	-0.28	-0.28	-0.28
Net Migration													
FDEC, July 2019	73.1	72.4	71.8	71.2	70.6	70.1	69.5	69.1	68.6	68.1	67.7	67.3	66.9
FDEC, December 2019	73.2	72.6	72.1	71.6	71.0	70.5	70.0	69.6	69.1	68.7	68.2	67.8	67.4
Births													
FDEC, July 2019	59.8	60.0	60.2	60.4	60.6	60.8	61.0	61.2	61.4	61.5	61.7	61.8	62.0
FDEC, December 2019	60.2	60.4	60.7	60.9	61.1	61.3	61.5	61.7	61.9	62.0	62.2	62.3	62.5
Deaths													
FDEC, July 2019	58.7	59.0	59.3	59.6	60.0	60.3	60.7	61.1	61.5	61.9	62.3	62.7	63.1
FDEC, December 2019	59.1	59.5	59.8	60.2	60.6	61.0	61.4	61.8	62.2	62.7	63.1	63.5	63.9
Net Natural Increase													
FDEC, July 2019	1.1	1.0	0.9	0.8	0.6	0.5	0.3	0.1	-0.1	-0.4	-0.6	-0.9	-1.1
FDEC, December 2019	1.1	1.0	0.8	0.7	0.5	0.3	0.1	-0.1	-0.4	-0.6	-0.9	-1.2	-1.4

	<u>2027-3</u>	<u>2027-4</u>	<u>2028-1</u>	<u>2028-2</u>	<u>2028-3</u>	<u>2028-4</u>	<u>2029-1</u>	<u>2029-2</u>
Population								
FDEC, July 2019	23,760.5	23,825.0	23,888.8	23,952.1	24,014.8	24,076.9	24,138.4	24,199.4
FDEC, December 2019	23,779.0	23,843.6	23,907.6	23,970.9	24,033.5	24,095.5	24,156.9	24,217.7
Population Growth Rate								
FDEC, July 2019	1.10	1.09	1.08	1.06	1.05	1.04	1.03	1.01
FDEC, December 2019	1.11	1.09	1.08	1.06	1.05	1.04	1.02	1.01
Net Change in Population								
FDEC, July 2019	65.1	64.5	63.9	63.3	62.7	62.1	61.5	61.0
FDEC, December 2019	65.3	64.6	64.0	63.3	62.6	62.0	61.4	60.8
Households								
FDEC, July 2019	9,602.8	9,636.6	9,670.2	9,703.4	9,736.4	9,769.0	9,801.3	9,833.2
FDEC, December 2019	9,604.5	9,637.5	9,670.3	9,702.9	9,735.3	9,767.5	9,799.5	9,831.3
Household Growth Rate								
FDEC, July 2019	1.43	1.42	1.40	1.38	1.37	1.35	1.33	1.31
FDEC, December 2019	1.39	1.38	1.37	1.36	1.34	1.33	1.32	1.30
Net Change in Households								
FDEC, July 2019	34.1	33.8	33.5	33.3	33.0	32.6	32.3	31.9
FDEC, December 2019	33.2	33.0	32.8	32.6	32.4	32.2	32.0	31.8
Household Size								
FDEC, July 2019	2.474	2.472	2.470	2.468	2.466	2.465	2.463	2.461
FDEC, December 2019	2.476	2.474	2.472	2.470	2.469	2.467	2.465	2.463
Household Size Growth Rate								
FDEC, July 2019	-0.32	-0.32	-0.32	-0.32	-0.31	-0.31	-0.30	-0.29
FDEC, December 2019	-0.28	-0.29	-0.29	-0.29	-0.29	-0.29	-0.29	-0.29
Net Migration								
FDEC, July 2019	66.5	66.1	65.7	65.3	65.0	64.6	64.3	63.9
FDEC, December 2019	67.0	66.6	66.2	65.8	65.4	65.0	64.6	64.3
Births								
FDEC, July 2019	62.1	62.3	62.4	62.6	62.7	62.9	63.0	63.1
FDEC, December 2019	62.6	62.8	62.9	63.1	63.2	63.4	63.5	63.7
Deaths								
FDEC, July 2019	63.5	63.8	64.2	64.6	65.0	65.4	65.7	66.1
FDEC, December 2019	64.3	64.8	65.2	65.6	66.0	66.4	66.8	67.2
Net Natural Increase								
FDEC, July 2019	-1.3	-1.6	-1.8	-2.0	-2.3	-2.5	-2.7	-3.0
FDEC, December 2019	-1.7	-2.0	-2.2	-2.5	-2.7	-3.0	-3.2	-3.5

	<u>2000-01</u>	<u>2001-02</u>	<u>2002-03</u>	<u>2003-04</u>	<u>2004-05</u>	<u>2005-06</u>	<u>2006-07</u>	<u>2007-08</u>	<u>2008-09</u>	<u>2009-10</u>	<u>2010-11</u>	<u>2011-12</u>	<u>2012-13</u>	<u>2013-14</u>	<u>2014-15</u>
Population															
FDEC, July 2019	16,228.0	16,551.2	16,892.0	17,273.8	17,677.3	18,062.2	18,378.2	18,578.9	18,671.4	18,770.4	18,878.6	19,029.3	19,212.3	19,441.8	19,736.1
FDEC, December 2019	16,228.0	16,551.2	16,892.0	17,273.8	17,677.3	18,062.2	18,378.2	18,578.9	18,671.4	18,770.4	18,878.6	19,029.3	19,212.3	19,441.8	19,736.1
Growth Rate															
FDEC, July 2019	2.18	1.99	2.06	2.26	2.34	2.18	1.75	1.09	0.50	0.53	0.58	0.80	0.96	1.19	1.51
FDEC, December 2019	2.18	1.99	2.06	2.26	2.34	2.18	1.75	1.09	0.50	0.53	0.58	0.80	0.96	1.19	1.51
Net Change in Population															
FDEC, July 2019	346.4	323.2	340.9	381.8	403.5	384.9	316.0	200.7	92.5	99.0	108.2	150.7	183.0	229.5	294.3
FDEC, December 2019	346.4	323.2	340.9	381.8	403.5	384.9	316.0	200.7	92.5	99.0	108.2	150.7	183.0	229.5	294.3
Households															
FDEC, July 2019	6,431.8	6,554.7	6,685.7	6,833.2	6,990.5	7,142.1	7,266.1	7,341.9	7,374.2	7,410.1	7,447.5	7,506.8	7,582.7	7,680.4	7,806.8
FDEC, December 2019	6,431.8	6,554.7	6,685.7	6,833.2	6,990.5	7,142.1	7,266.1	7,341.9	7,374.2	7,410.1	7,447.5	7,506.8	7,582.7	7,680.4	7,806.9
Growth Rate															
FDEC, July 2019	2.14	1.91	2.00	2.21	2.30	2.17	1.74	1.04	0.44	0.49	0.50	0.80	1.01	1.29	1.65
FDEC, December 2019	2.14	1.91	2.00	2.21	2.30	2.17	1.74	1.04	0.44	0.49	0.50	0.80	1.01	1.29	1.65
Net Change in Households															
FDEC, July 2019	134.6	122.9	131.0	147.5	157.3	151.7	124.0	75.7	32.3	35.9	37.4	59.3	75.9	97.7	126.5
FDEC, December 2019	134.6	122.9	131.0	147.5	157.3	151.7	124.0	75.7	32.3	35.9	37.4	59.3	75.9	97.7	126.5
Household Size															
FDEC, July 2019	2.523	2.525	2.527	2.528	2.529	2.529	2.529	2.531	2.532	2.533	2.535	2.535	2.534	2.531	2.528
FDEC, December 2019	2.523	2.525	2.527	2.528	2.529	2.529	2.529	2.531	2.532	2.533	2.535	2.535	2.534	2.531	2.528
Growth Rate															
FDEC, July 2019	0.04	0.08	0.06	0.05	0.03	0.01	0.01	0.05	0.06	0.04	0.07	0.00	-0.05	-0.09	-0.13
FDEC, December 2019	0.04	0.08	0.06	0.05	0.03	0.01	0.01	0.05	0.06	0.04	0.07	0.00	-0.05	-0.09	-0.13
Net Migration															
FDEC, July 2019	306.0	285.5	300.4	335.0	351.1	322.9	245.0	133.7	36.3	52.7	67.4	111.9	147.0	194.4	260.2
FDEC, December 2019	306.0	285.5	300.4	335.0	351.1	322.9	245.0	133.7	36.3	52.7	67.4	112.0	147.0	194.4	260.2
Births															
FDEC, July 2019	205.4	205.4	208.5	215.0	221.8	232.1	239.3	236.0	226.4	217.4	213.5	212.9	213.8	217.4	222.3
FDEC, December 2019	205.4	205.4	208.5	215.0	221.8	232.1	239.3	236.0	226.4	217.4	213.5	212.9	213.8	217.4	222.3
Deaths															
FDEC, July 2019	165.0	167.7	168.1	168.3	169.4	170.1	168.3	169.0	170.2	171.1	172.7	174.1	177.8	182.4	188.2
FDEC, December 2019	165.0	167.7	168.1	168.3	169.4	170.1	168.3	169.0	170.2	171.1	172.7	174.1	177.8	182.4	188.2
Net Natural Increase															
FDEC, July 2019	40.3	37.7	40.4	46.7	52.4	62.0	71.0	67.0	56.2	46.3	40.8	38.8	36.0	35.0	34.1
FDEC, December 2019	40.3	37.7	40.4	46.7	52.4	62.0	71.0	67.0	56.2	46.3	40.8	38.8	36.0	35.0	34.1

	<u>2015-16</u>	<u>2016-17</u>	<u>2017-18</u>	<u>2018-19</u>	<u>2019-20</u>	<u>2020-21</u>	<u>2021-22</u>	<u>2022-23</u>	<u>2023-24</u>	<u>2024-25</u>	<u>2025-26</u>	<u>2026-27</u>	<u>2027-28</u>	<u>2028-29</u>
Population														
FDEC, July 2019	20,064.5	20,401.1	20,749.4	21,111.1	21,461.1	21,798.5	22,126.1	22,443.4	22,749.1	23,042.9	23,325.0	23,596.1	23,856.6	24,107.4
FDEC, December 2019	20,064.5	20,401.2	20,749.1	21,116.8	21,470.2	21,808.6	22,138.3	22,457.5	22,764.0	23,058.4	23,341.8	23,614.0	23,875.3	24,125.9
Growth Rate														
FDEC, July 2019	1.66	1.68	1.71	1.74	1.66	1.57	1.50	1.43	1.36	1.29	1.22	1.16	1.10	1.05
FDEC, December 2019	1.66	1.68	1.71	1.77	1.67	1.58	1.51	1.44	1.36	1.29	1.23	1.17	1.11	1.05
Net Change in Population														
FDEC, July 2019	328.4	336.7	348.2	361.7	350.0	337.5	327.5	317.3	305.7	293.7	282.2	271.0	260.5	250.8
FDEC, December 2019	328.3	336.7	347.9	367.6	353.4	338.4	329.7	319.2	306.5	294.5	283.4	272.2	261.2	250.6
Households														
FDEC, July 2019	7,947.1	8,090.1	8,233.8	8,385.0	8,533.4	8,678.0	8,821.0	8,962.1	9,100.9	9,239.5	9,378.4	9,517.1	9,653.2	9,785.0
FDEC, December 2019	7,947.1	8,090.2	8,233.7	8,388.4	8,540.1	8,686.4	8,830.6	8,972.5	9,111.6	9,249.3	9,386.0	9,521.1	9,653.8	9,783.4
Growth Rate														
FDEC, July 2019	1.80	1.80	1.78	1.84	1.77	1.69	1.65	1.60	1.55	1.52	1.50	1.48	1.43	1.36
FDEC, December 2019	1.80	1.80	1.77	1.88	1.81	1.71	1.66	1.61	1.55	1.51	1.48	1.44	1.39	1.34
Net Change in Households														
FDEC, July 2019	140.2	143.0	143.7	151.2	148.4	144.6	143.0	141.1	138.8	138.5	139.0	138.6	136.2	131.7
FDEC, December 2019	140.2	143.1	143.5	154.7	151.7	146.4	144.1	141.9	139.1	137.7	136.7	135.1	132.6	129.6
Household Size														
FDEC, July 2019	2.525	2.522	2.520	2.518	2.515	2.512	2.508	2.504	2.500	2.494	2.487	2.479	2.471	2.464
FDEC, December 2019	2.525	2.522	2.520	2.517	2.514	2.511	2.507	2.503	2.498	2.493	2.487	2.480	2.473	2.466
Growth Rate														
FDEC, July 2019	-0.13	-0.12	-0.07	-0.09	-0.11	-0.12	-0.14	-0.16	-0.18	-0.23	-0.28	-0.31	-0.32	-0.31
FDEC, December 2019	-0.13	-0.12	-0.07	-0.10	-0.13	-0.14	-0.15	-0.16	-0.18	-0.21	-0.25	-0.27	-0.28	-0.29
Net Migration														
FDEC, July 2019	297.7	312.7	330.7	348.3	339.9	329.0	320.0	311.1	300.8	290.5	281.5	274.0	267.3	261.3
FDEC, December 2019	297.7	312.8	330.1	352.9	341.0	328.5	321.8	312.8	301.5	291.4	283.5	276.3	269.6	263.1
Births														
FDEC, July 2019	225.0	224.5	222.0	221.5	224.4	227.9	231.3	234.6	237.8	241.1	244.3	247.0	249.4	251.7
FDEC, December 2019	225.0	224.5	222.3	222.2	225.2	228.8	232.5	236.1	239.6	243.1	246.3	249.1	251.5	253.8
Deaths														
FDEC, July 2019	194.4	200.5	204.4	208.1	214.3	219.4	223.7	228.4	232.9	237.8	243.7	250.0	256.1	262.2
FDEC, December 2019	194.4	200.5	204.5	207.5	212.8	218.9	224.6	229.6	234.7	240.0	246.4	253.2	259.8	266.3
Net Natural Increase														
FDEC, July 2019	30.6	24.0	17.6	13.4	10.1	8.5	7.6	6.2	4.9	3.2	0.6	-2.9	-6.7	-10.5
FDEC, December 2019	30.6	24.0	17.8	14.7	12.4	9.9	7.9	6.4	5.0	3.0	-0.1	-4.1	-8.4	-12.5

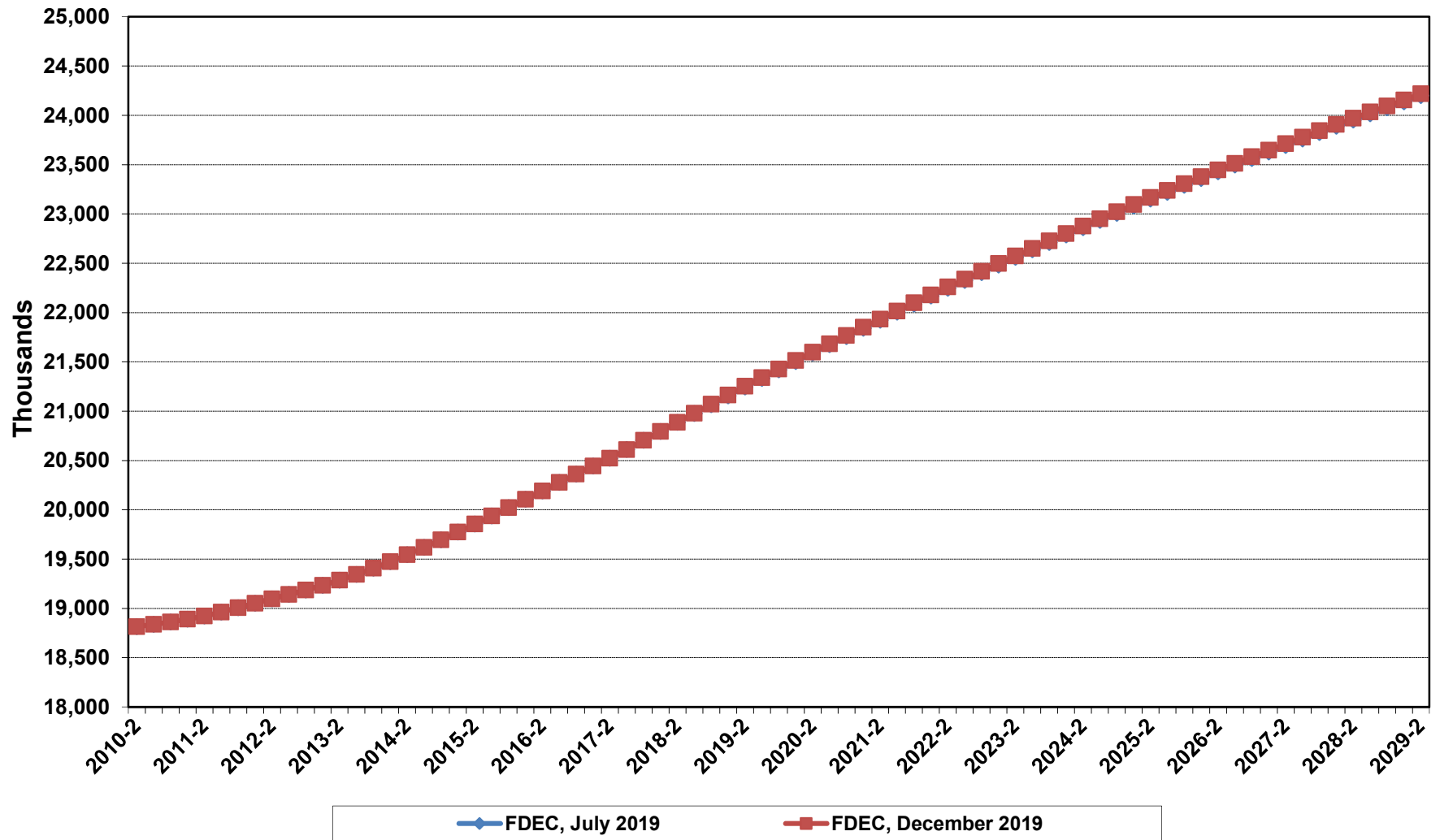
Florida Demographic Estimating Conference

Charts

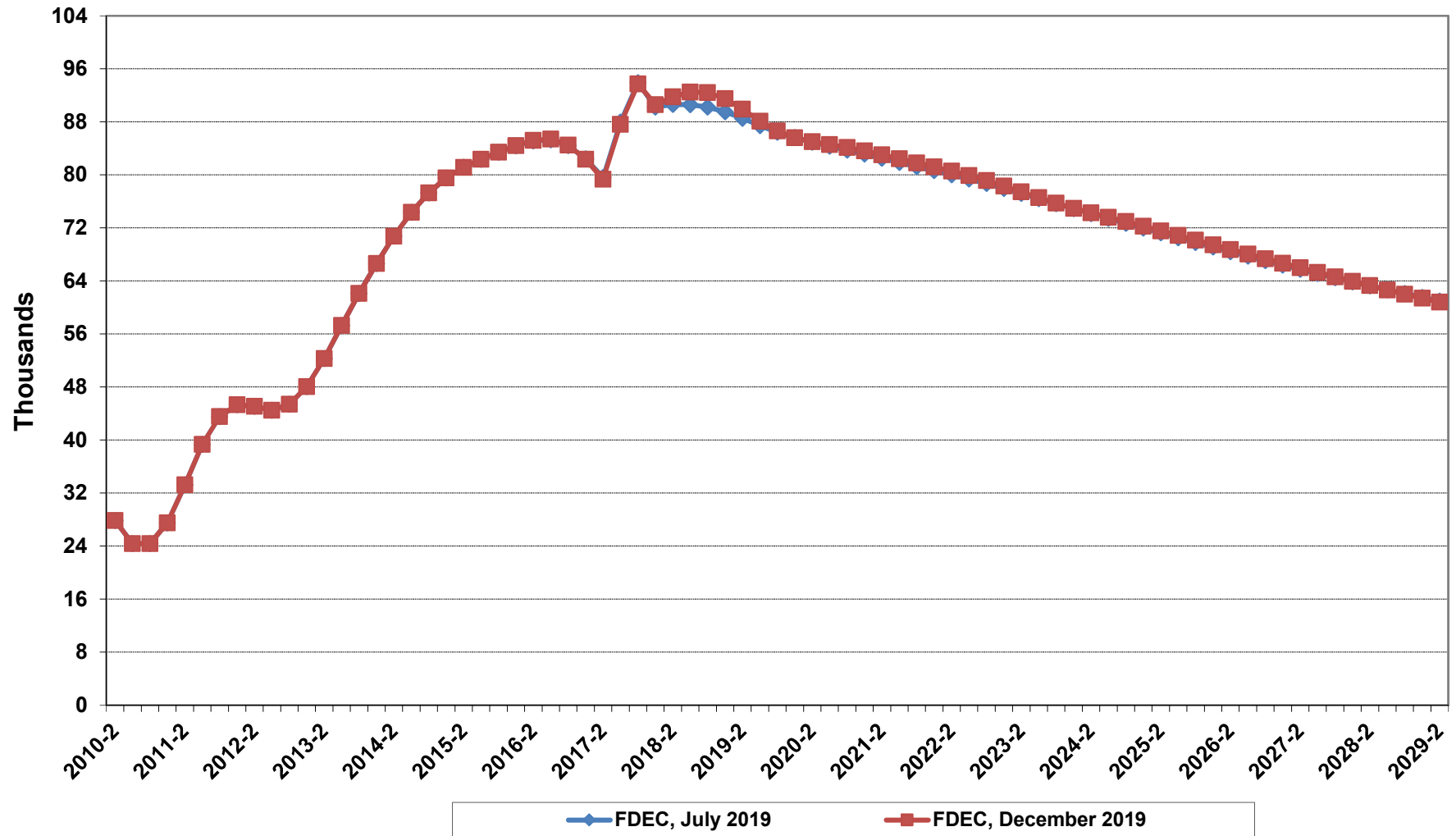
Conference Packet

December 3, 2019

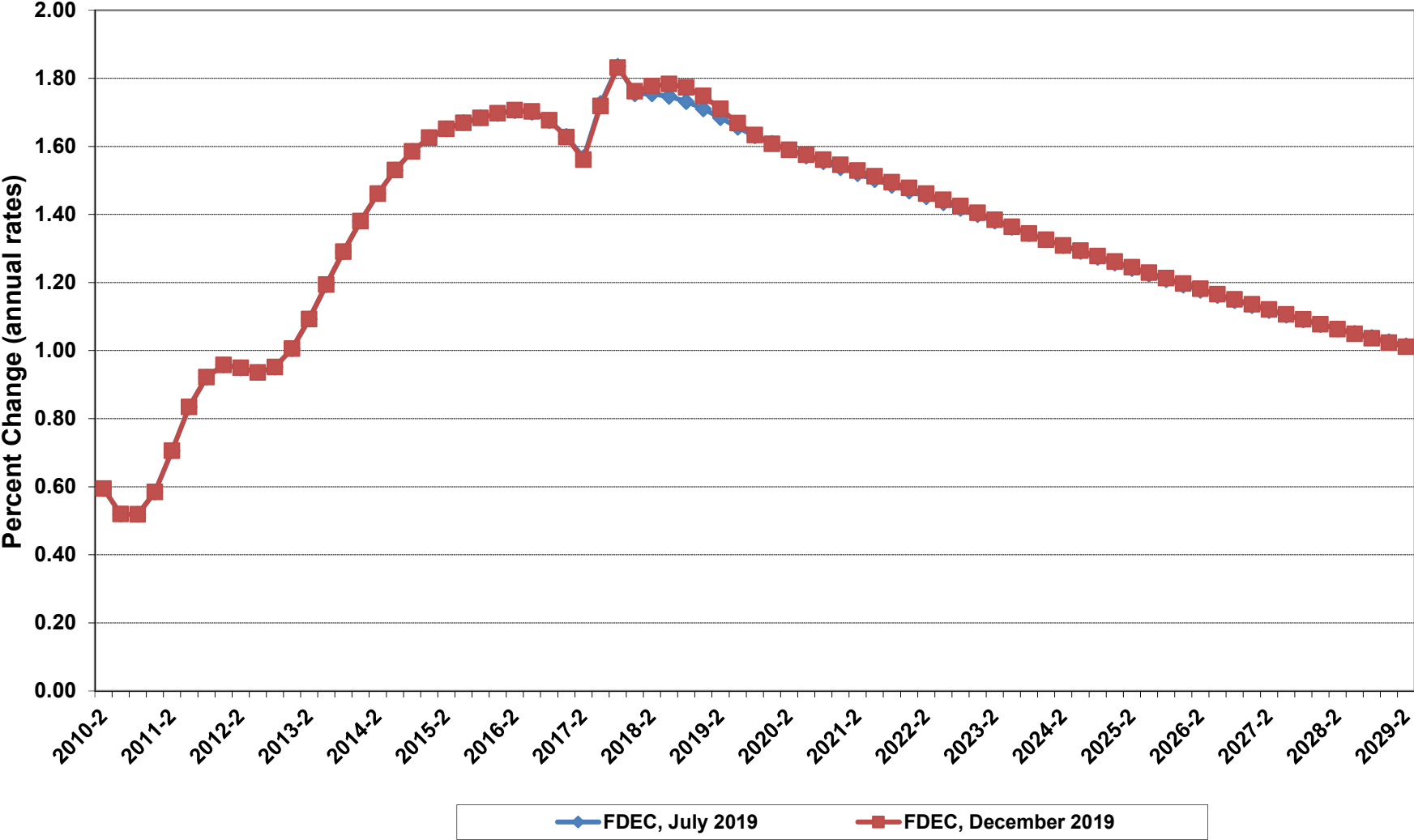
Florida Resident Population



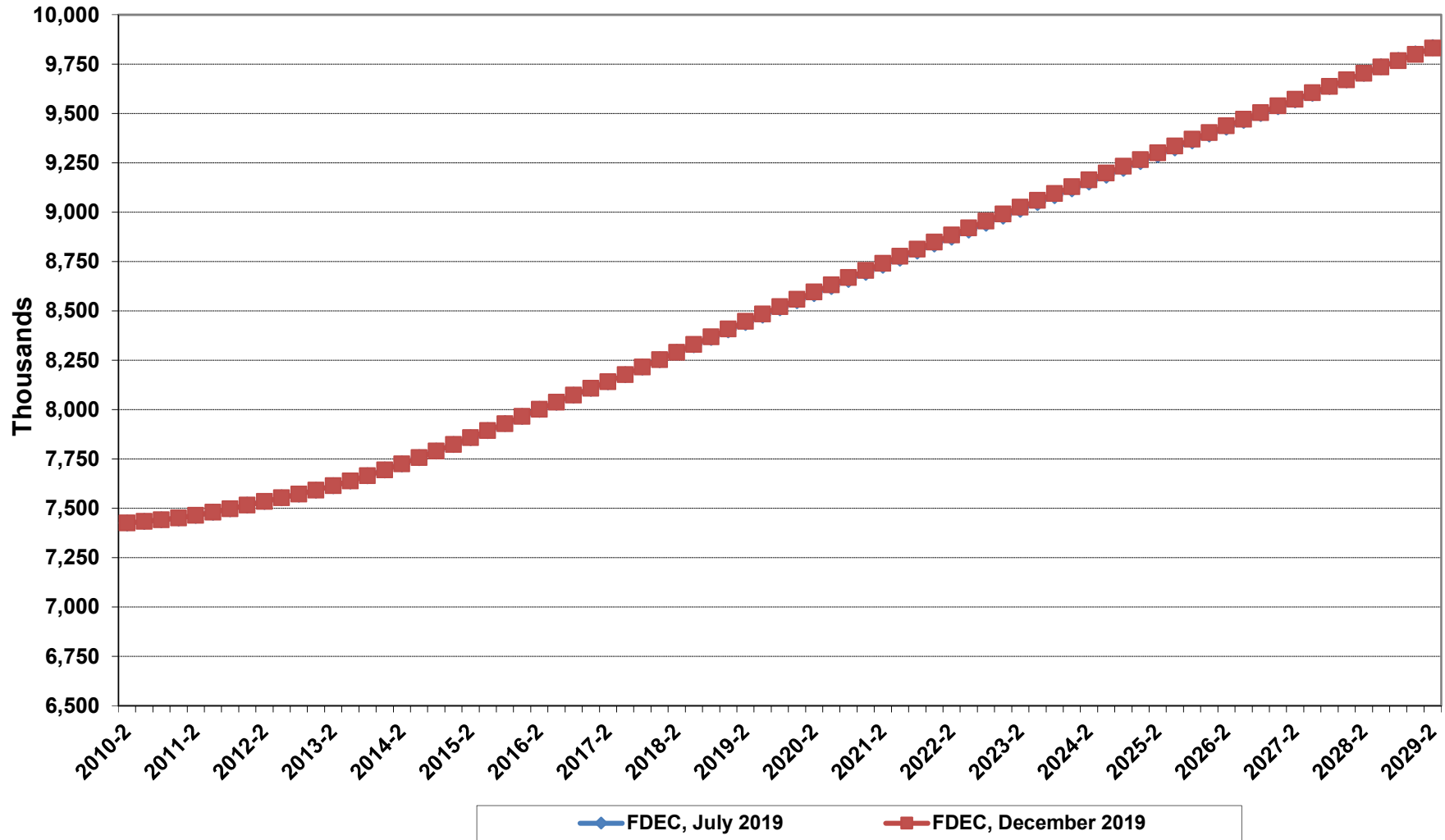
Net Change In Florida Resident Population



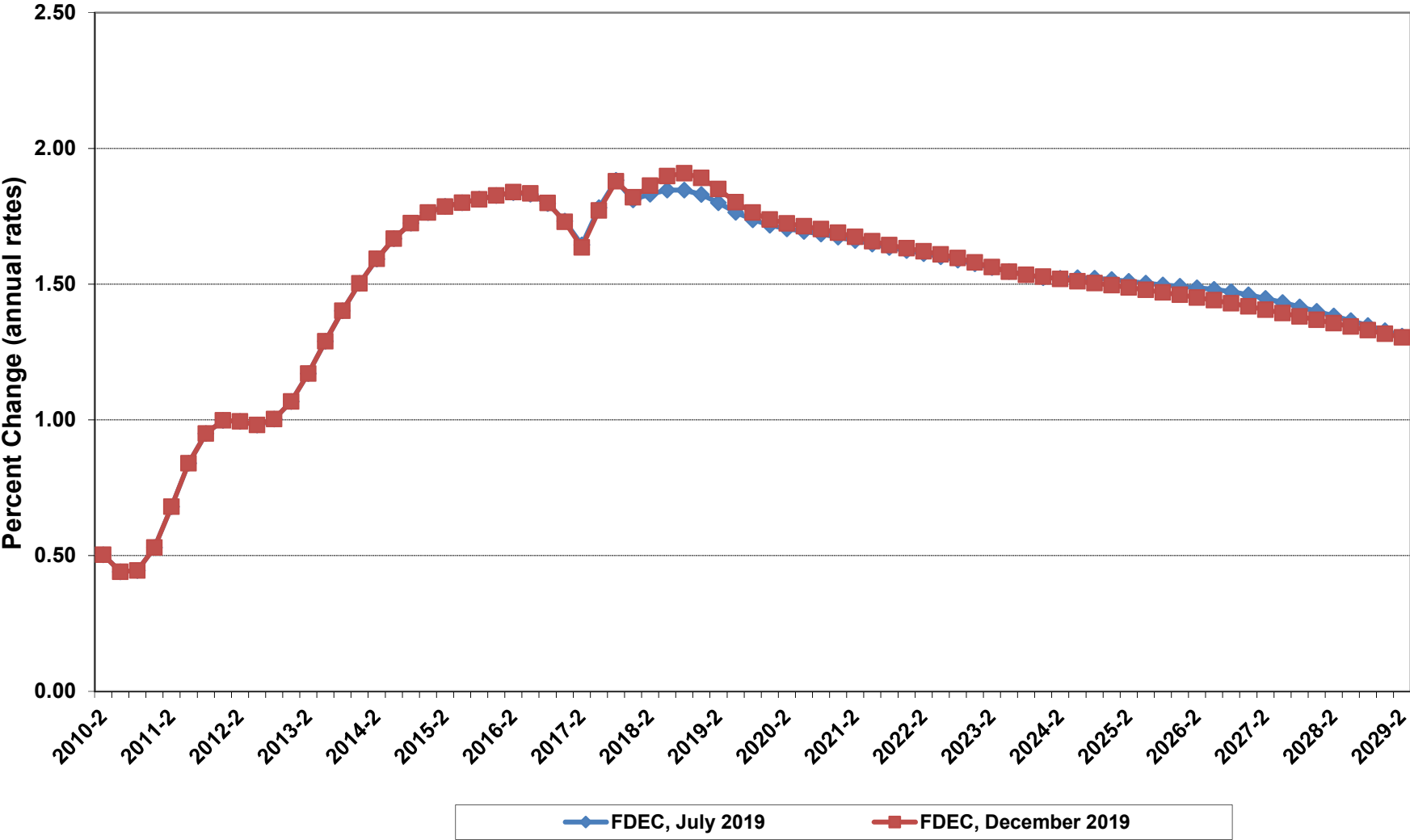
Growth In Florida Resident Population



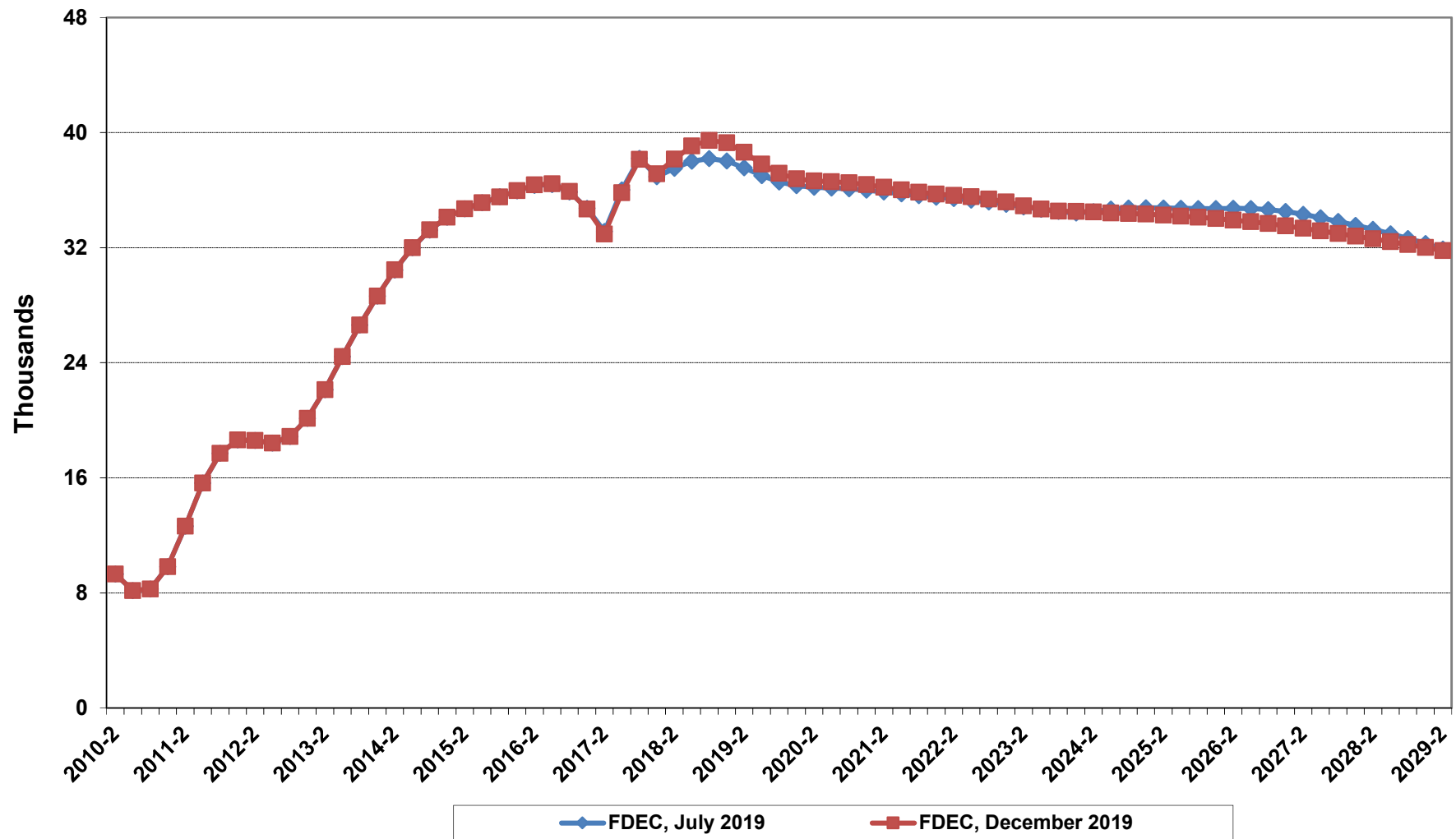
Florida Resident Households



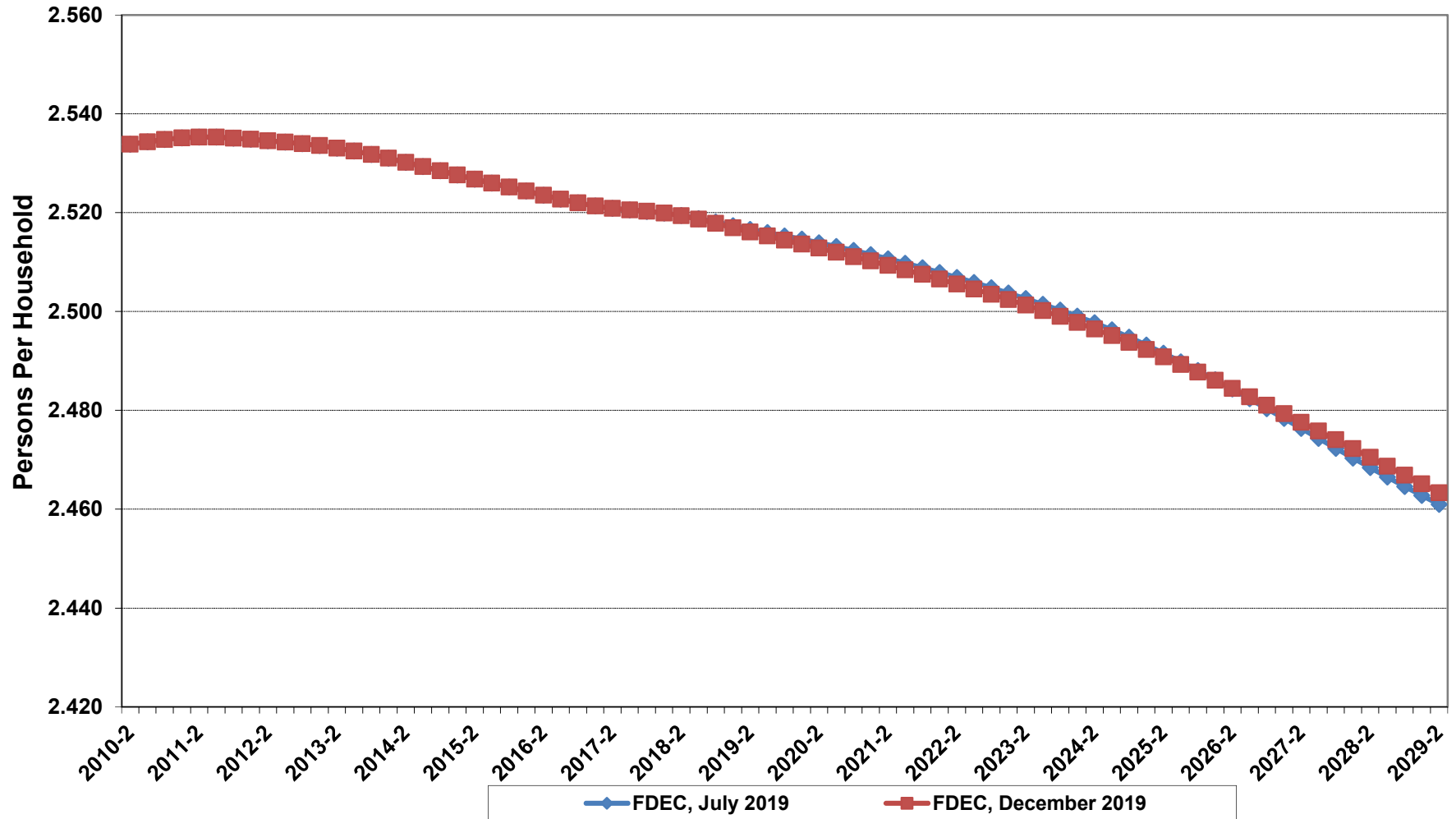
Growth In Florida Resident Households



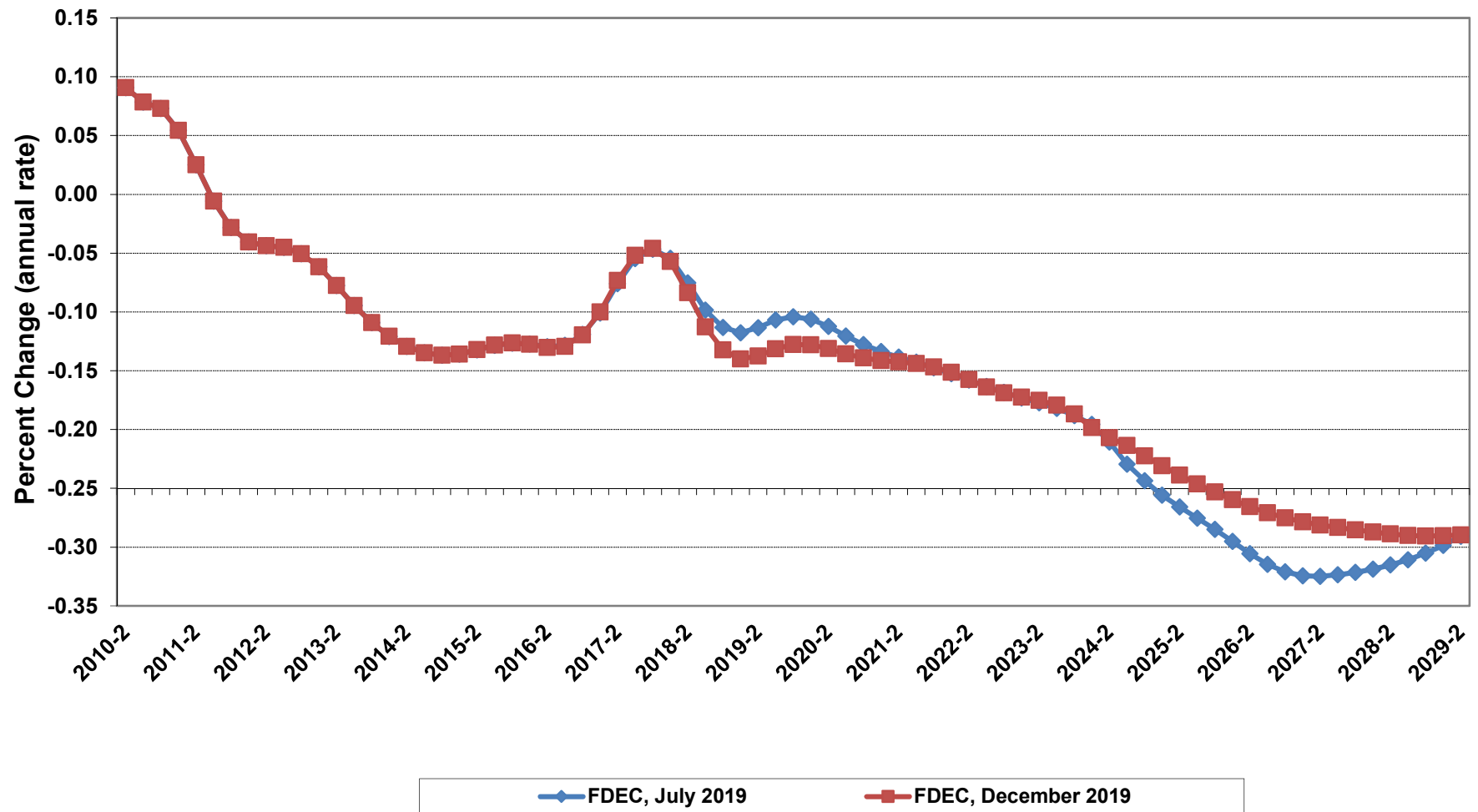
Net Change In Florida Resident Households



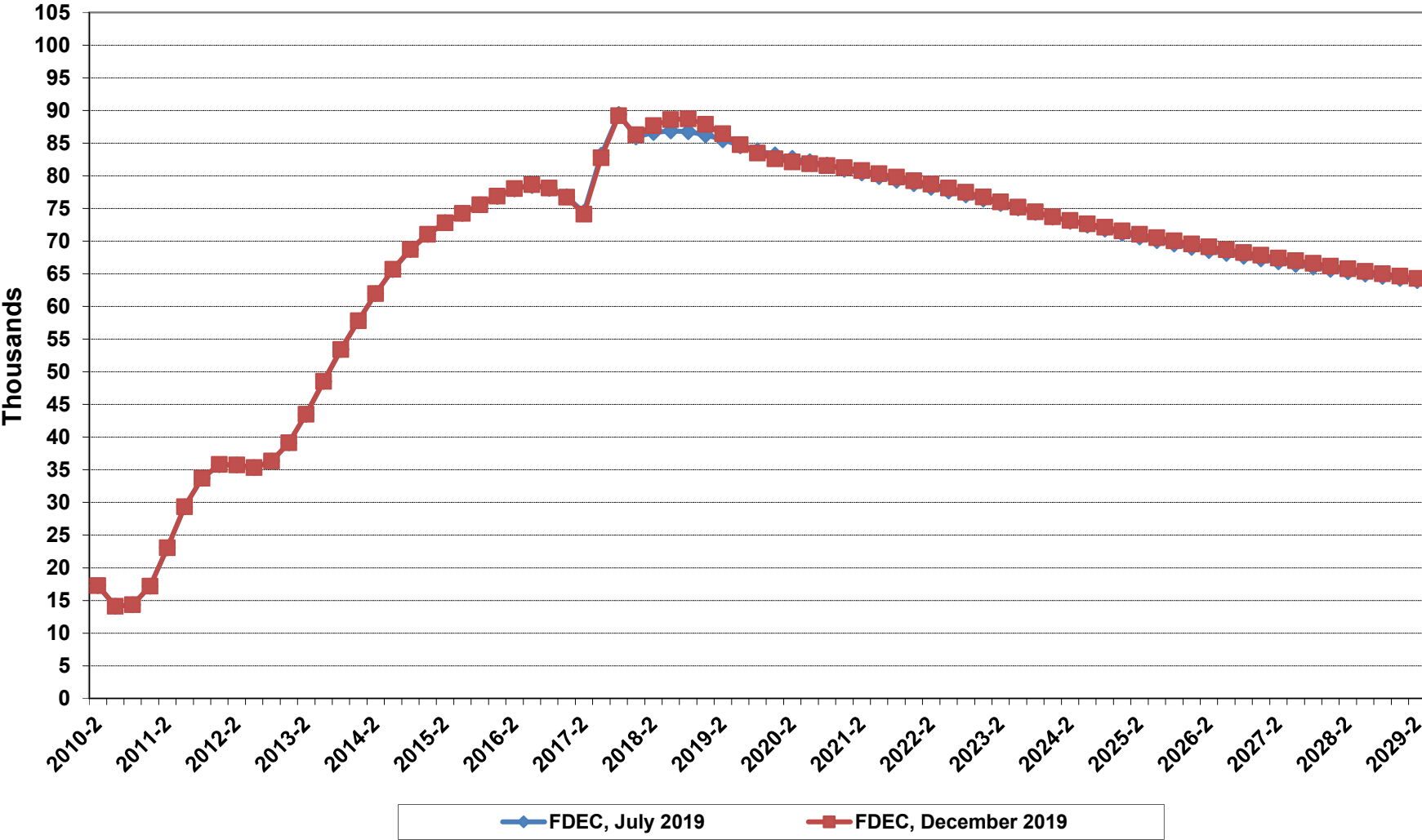
Florida Average Household Size



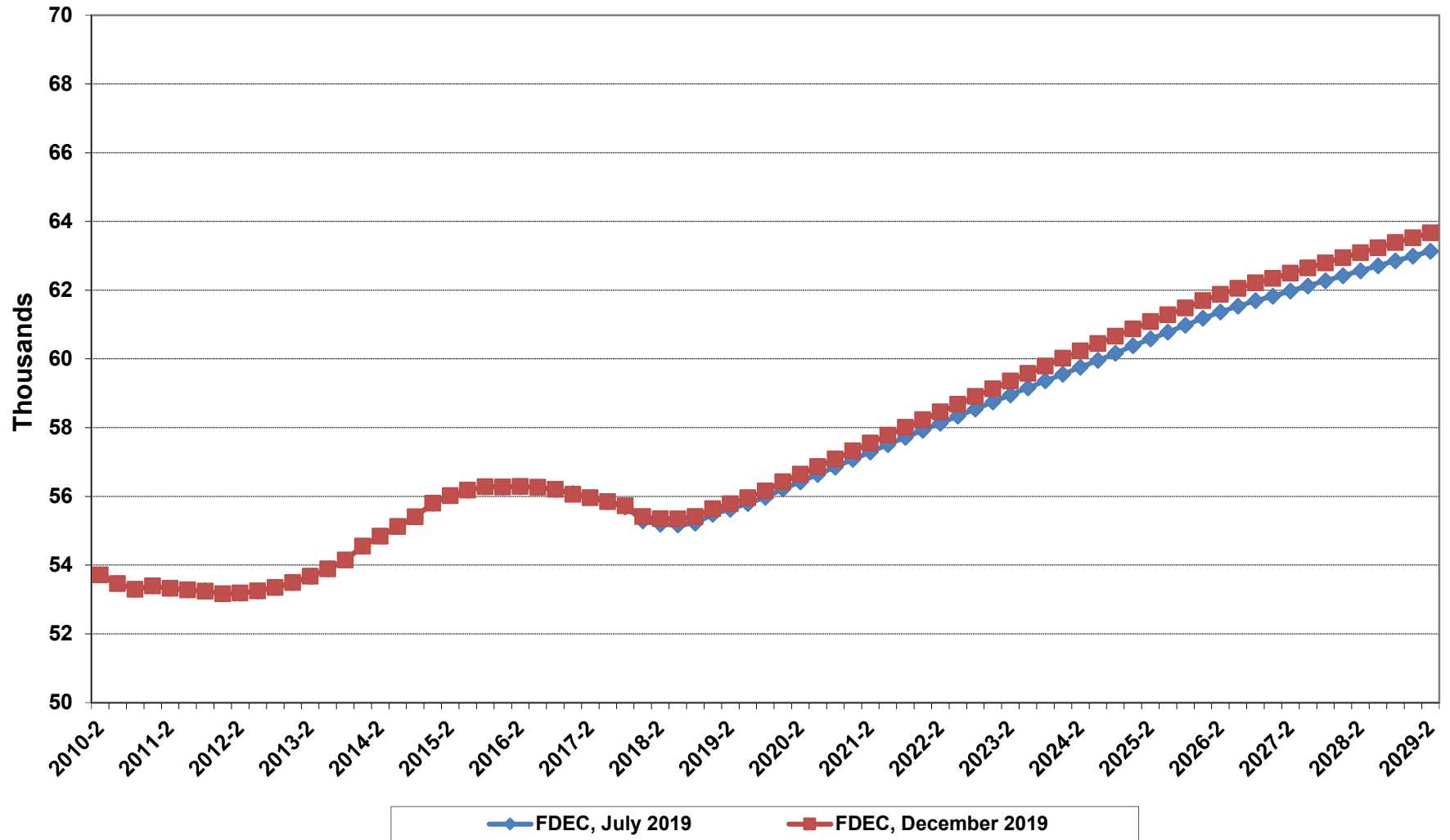
Growth In Florida Household Size



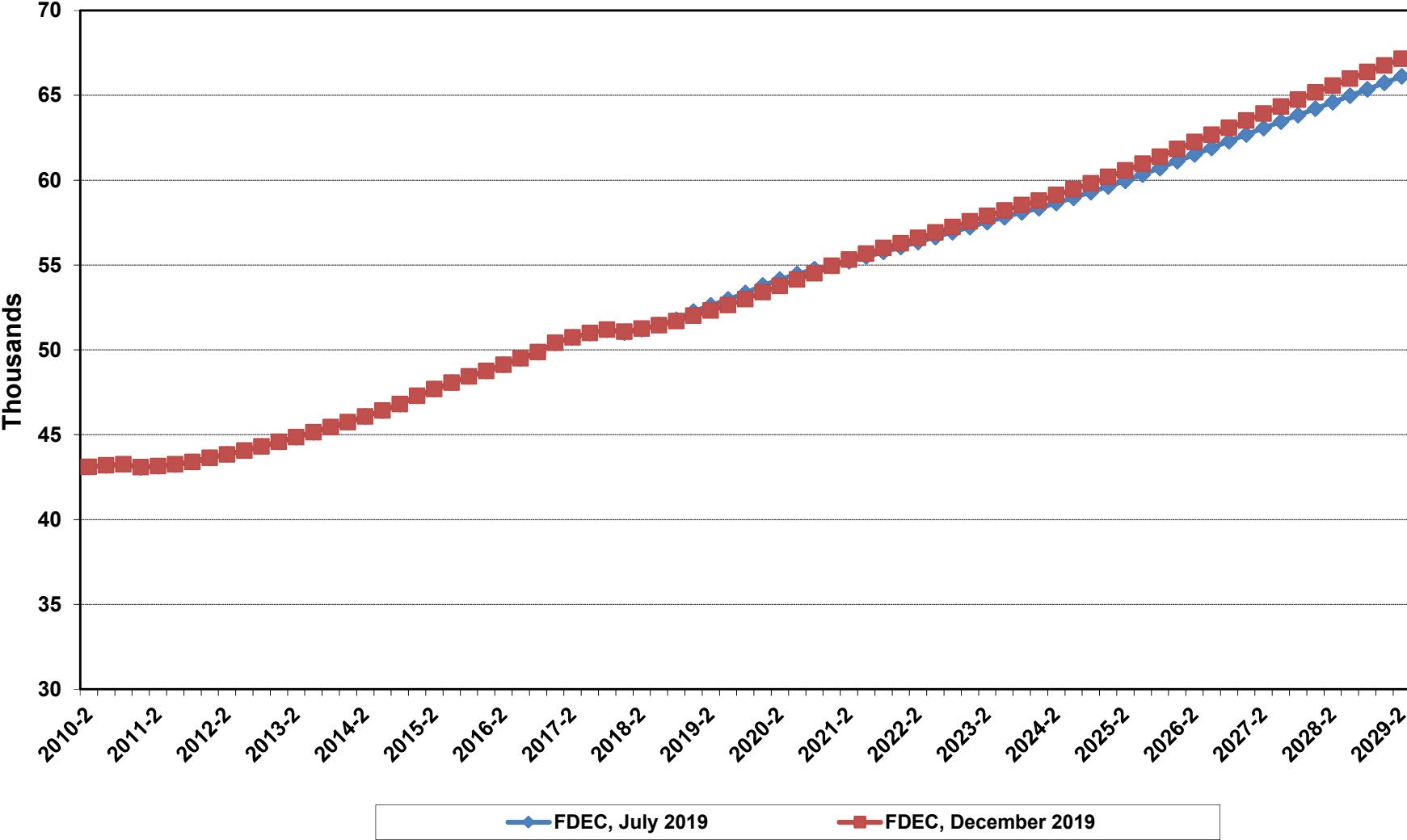
Florida Net Migration



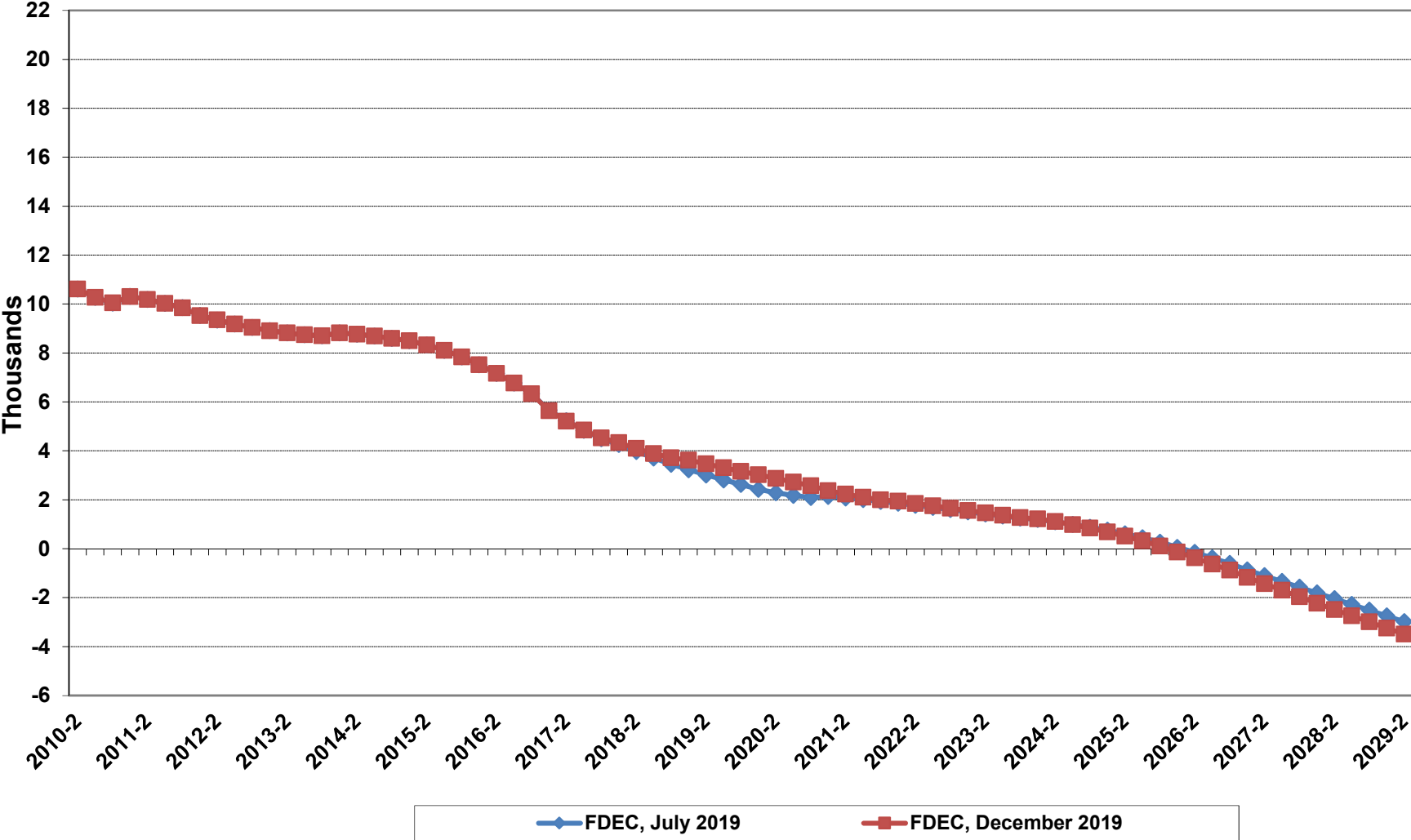
Florida Resident Births



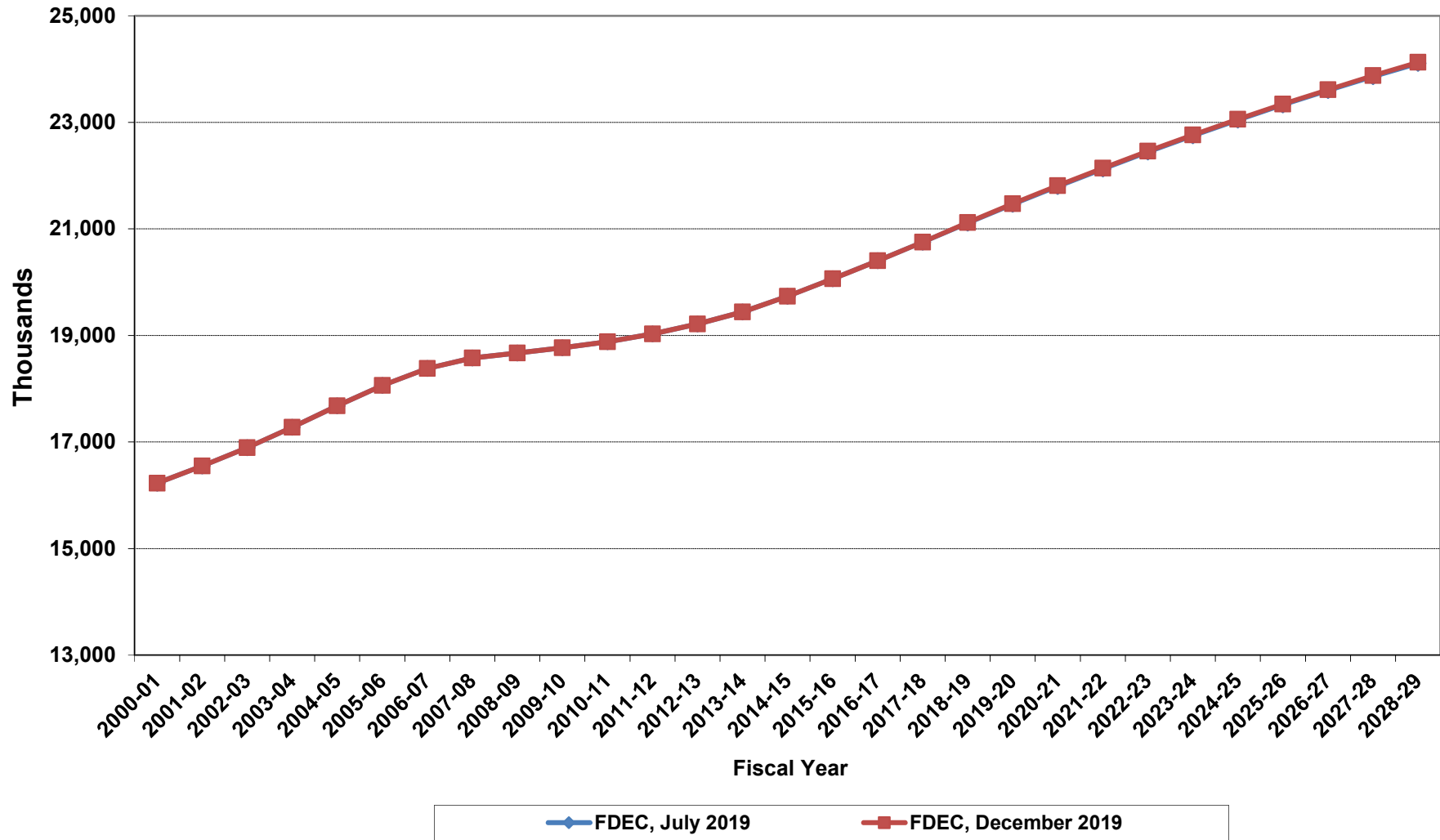
Florida Resident Deaths



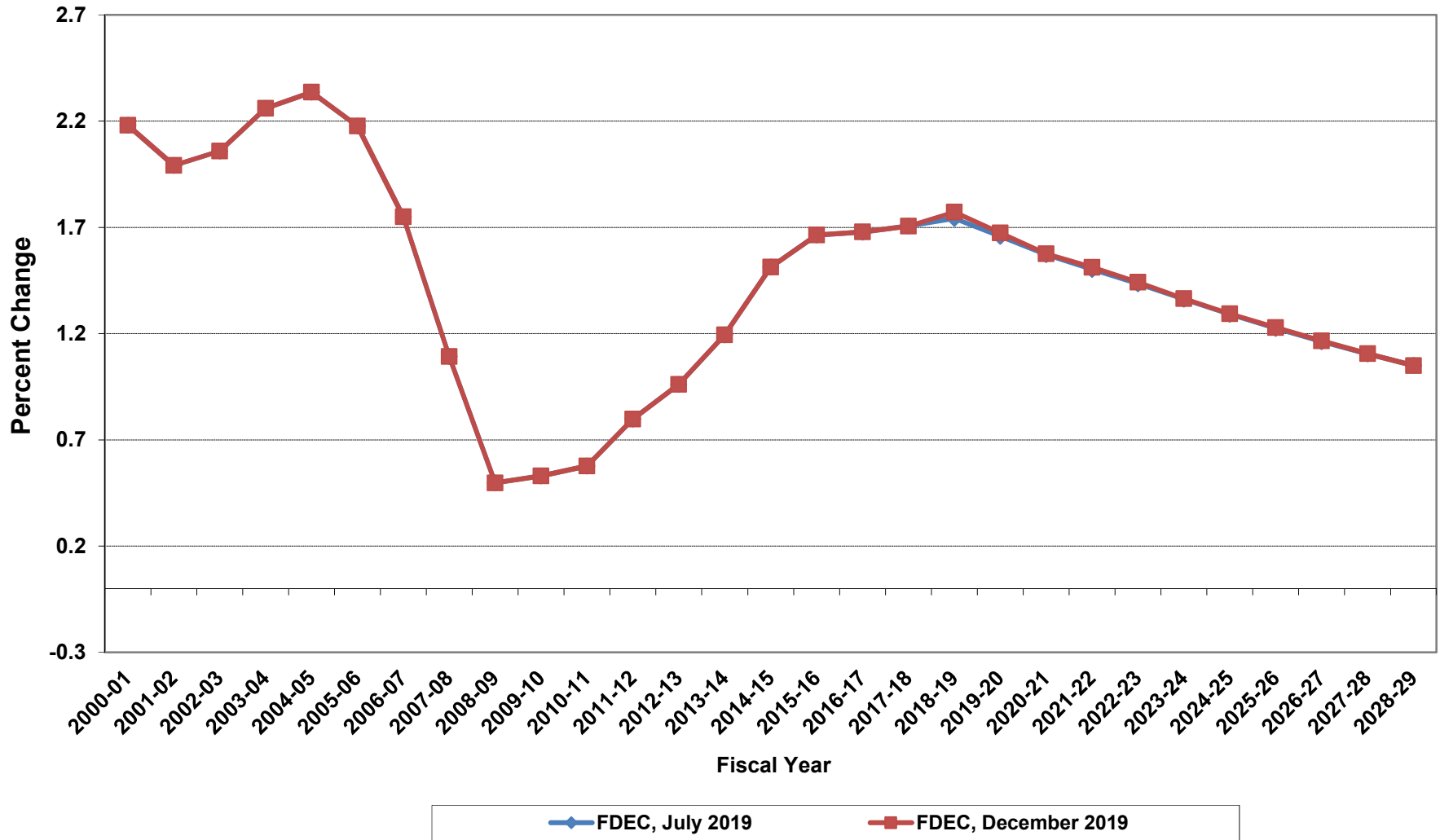
Florida Net Natural Increase



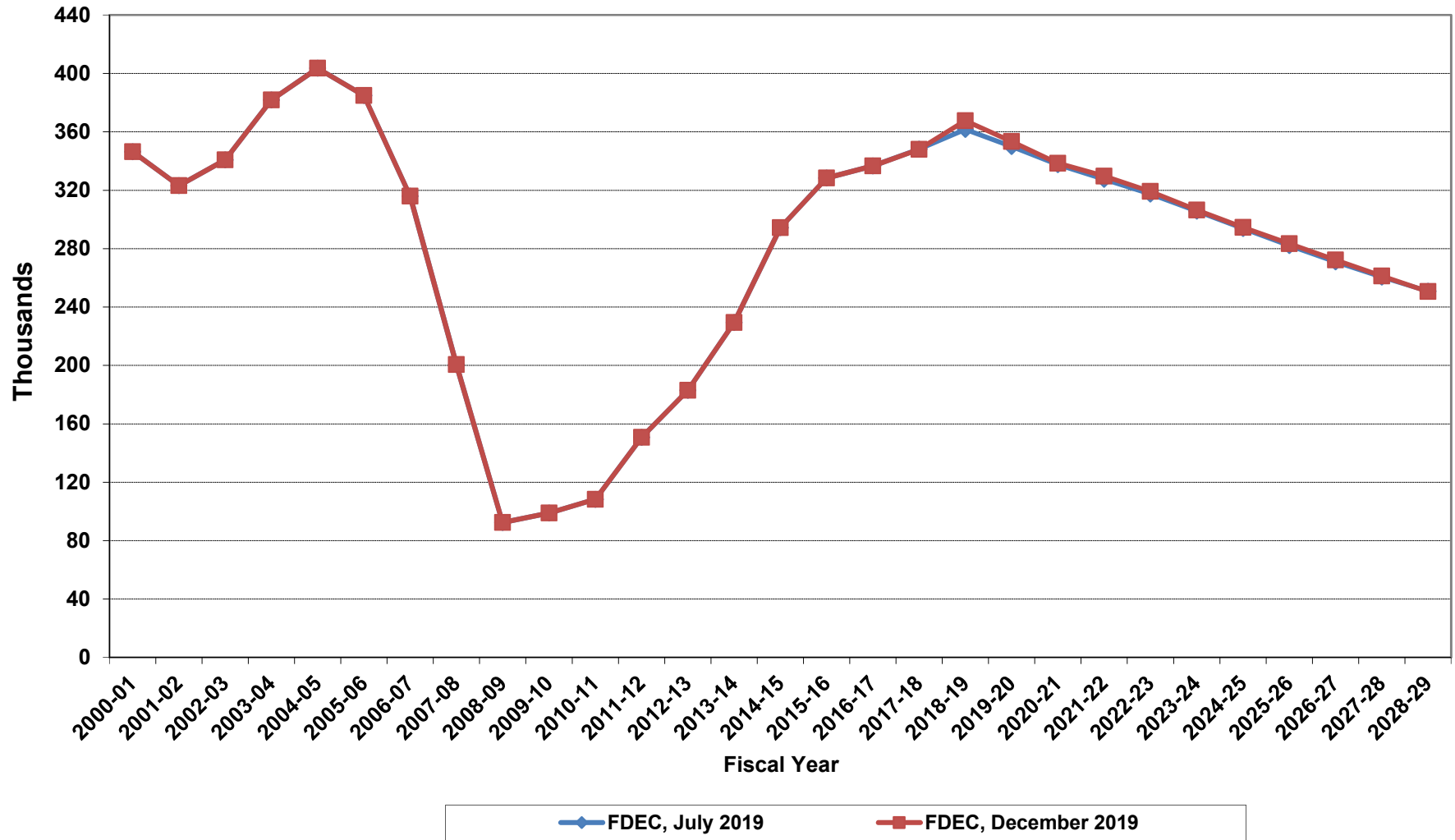
Florida Resident Population



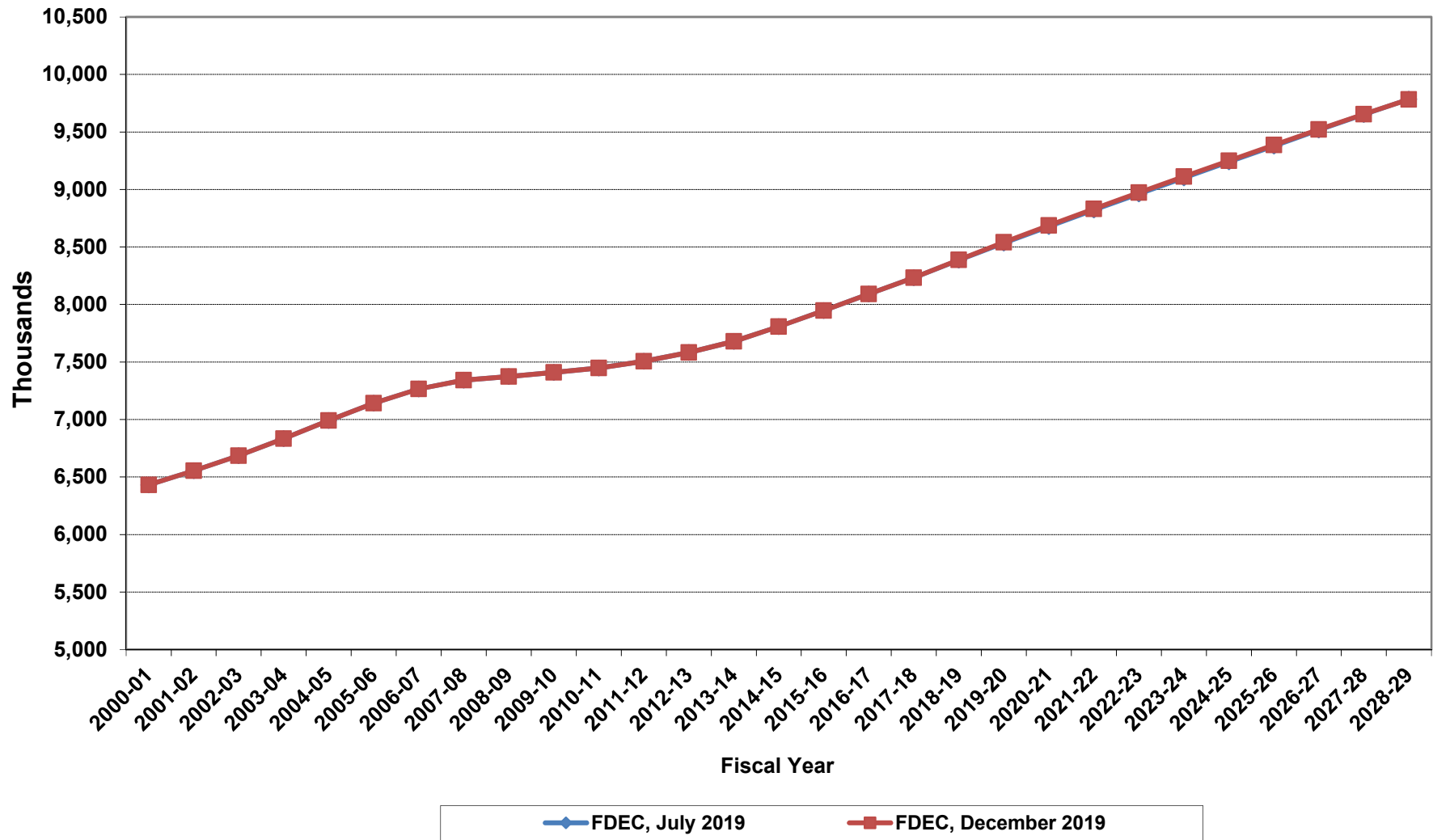
Growth In Florida Resident Population



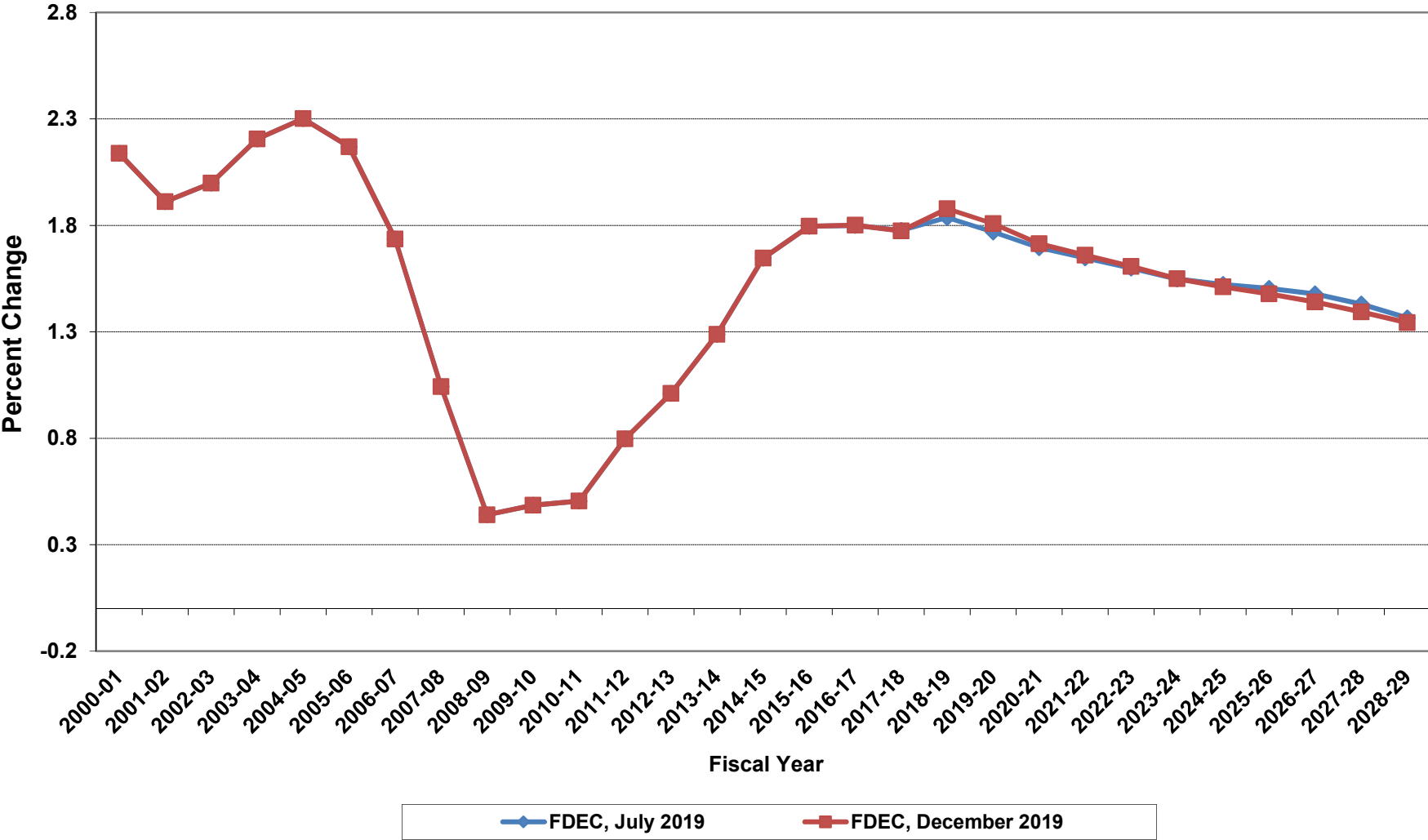
Net Change In Florida Resident Population



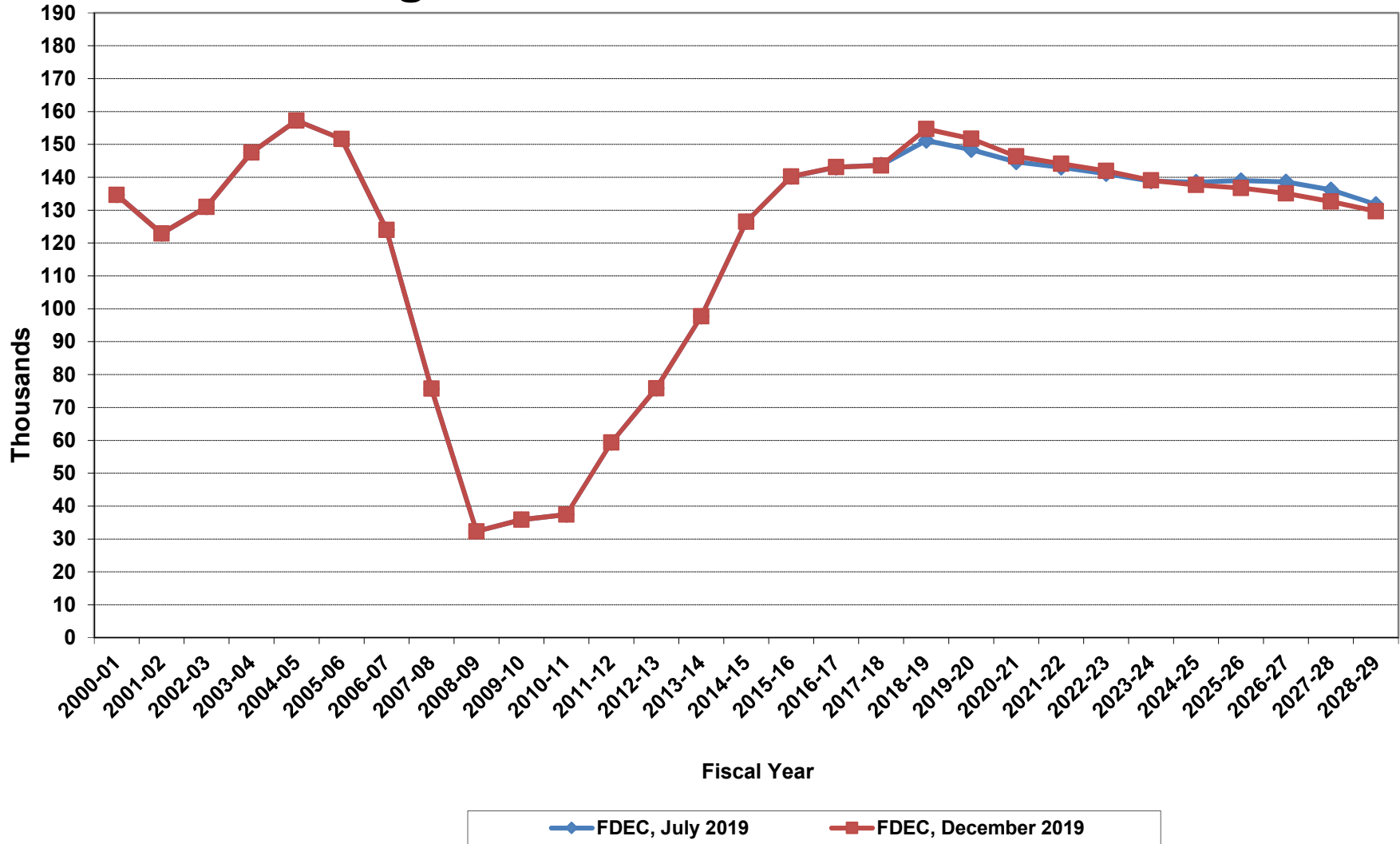
Florida Resident Households



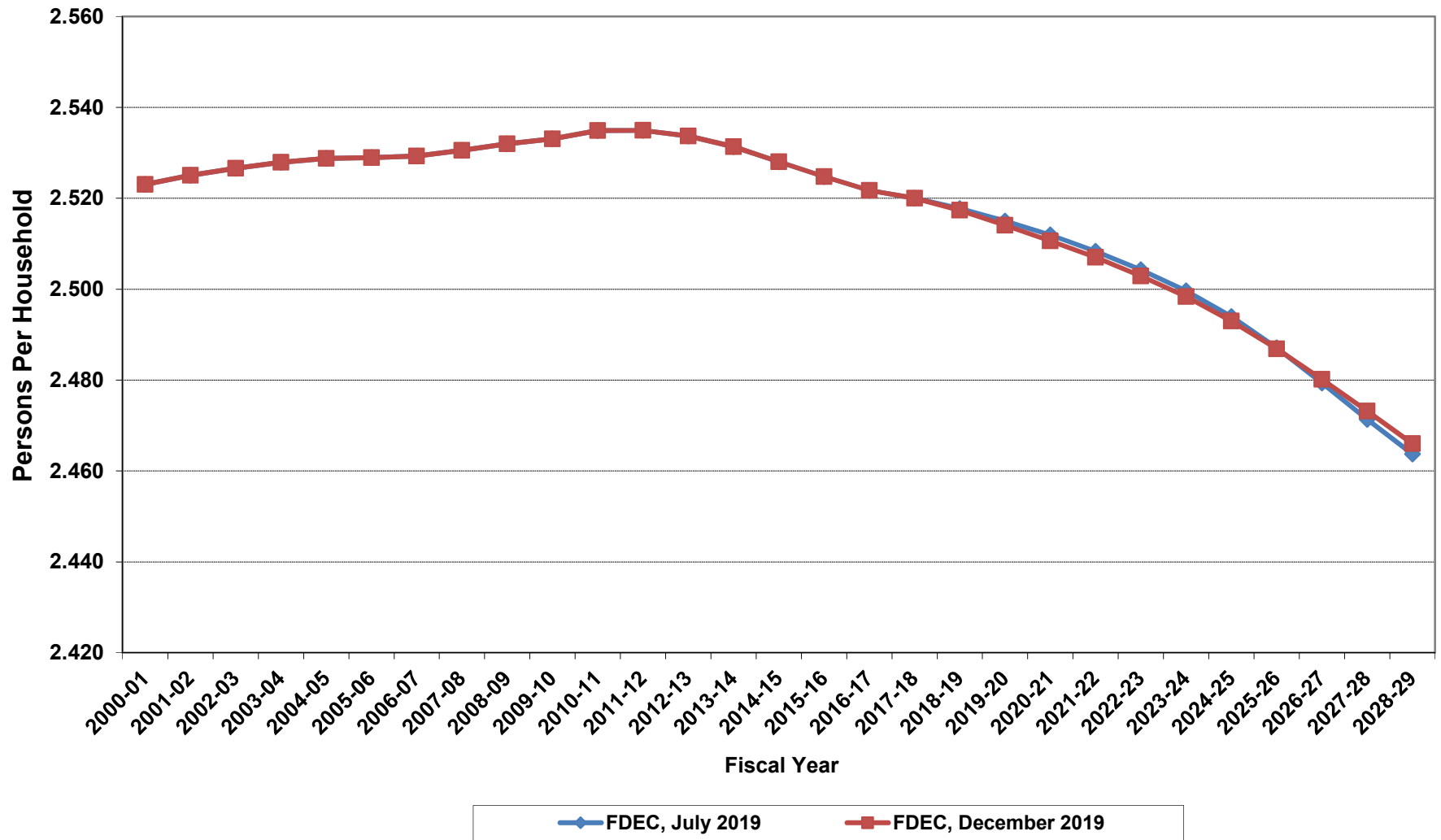
Growth In Florida Resident Households



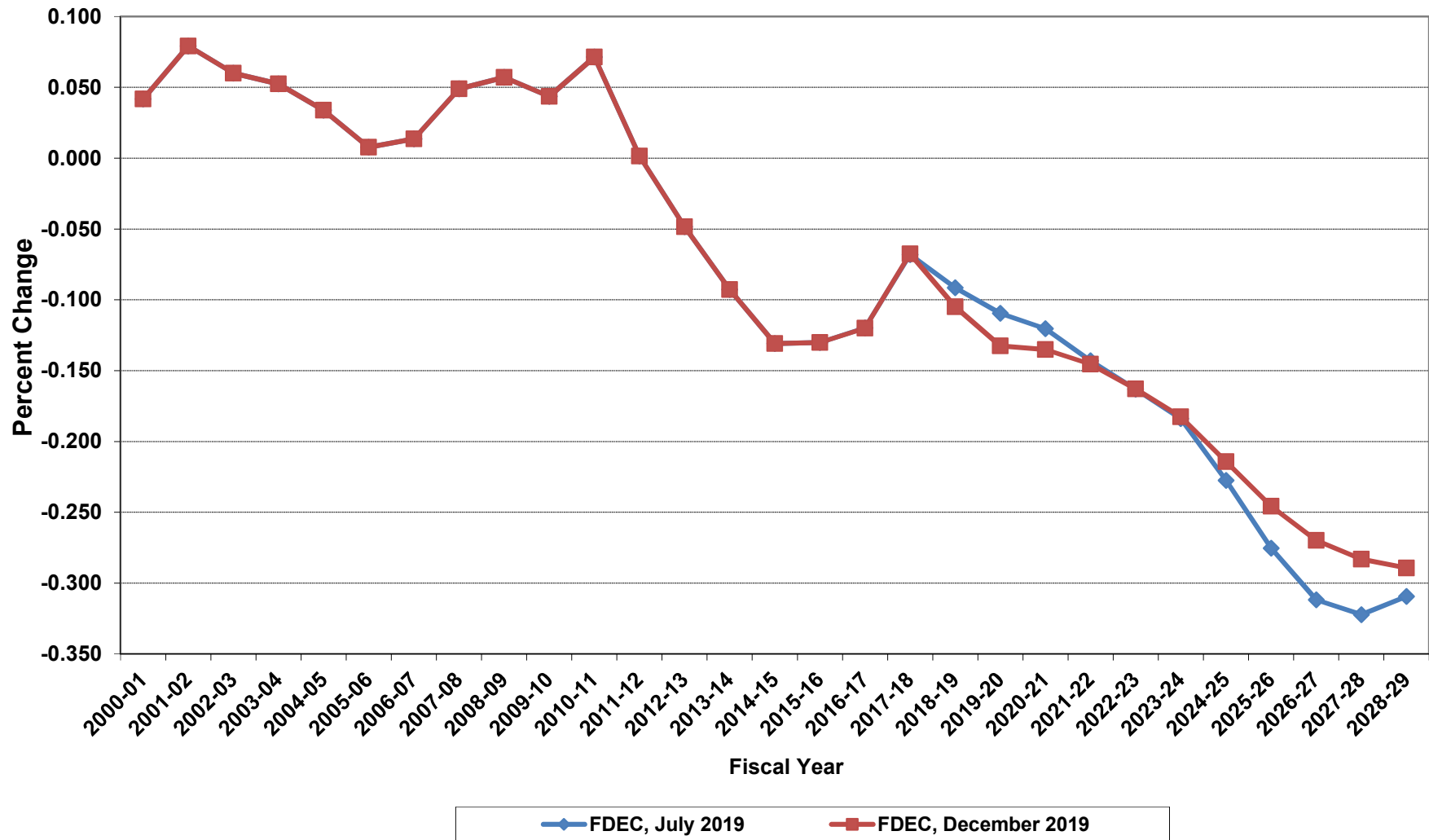
Net Change In Florida Resident Households



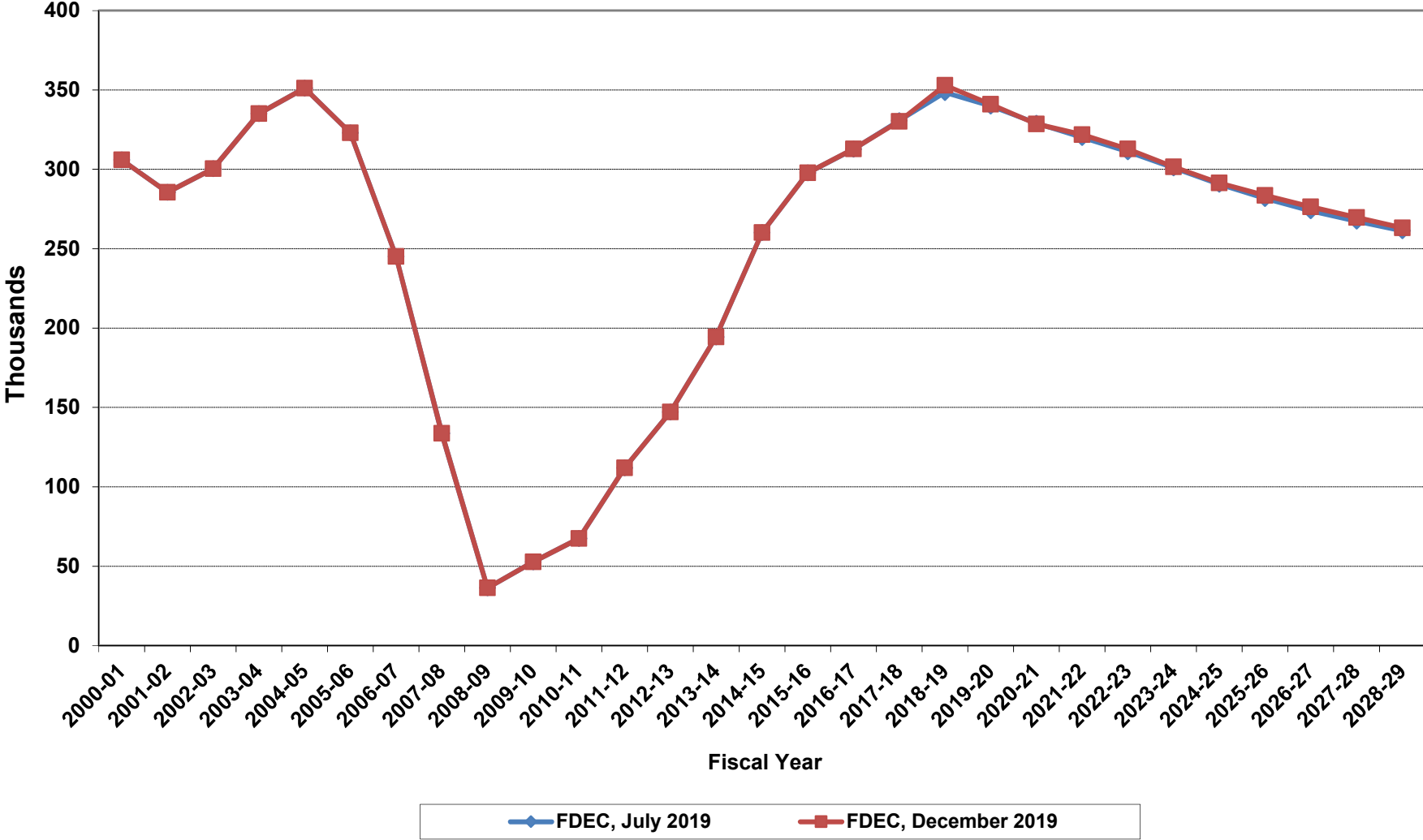
Average Florida Household Size



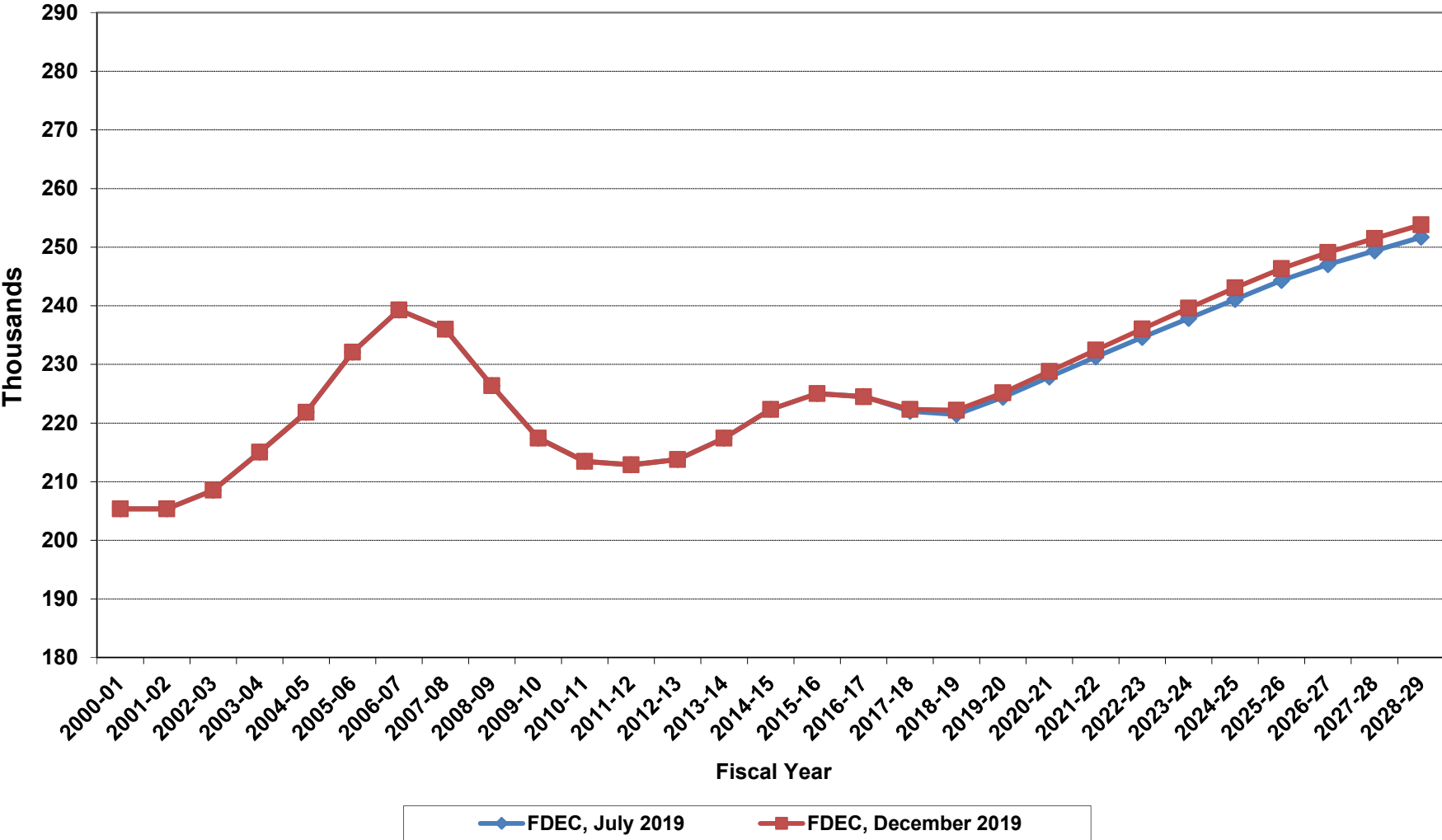
Growth In Average Florida Household Size



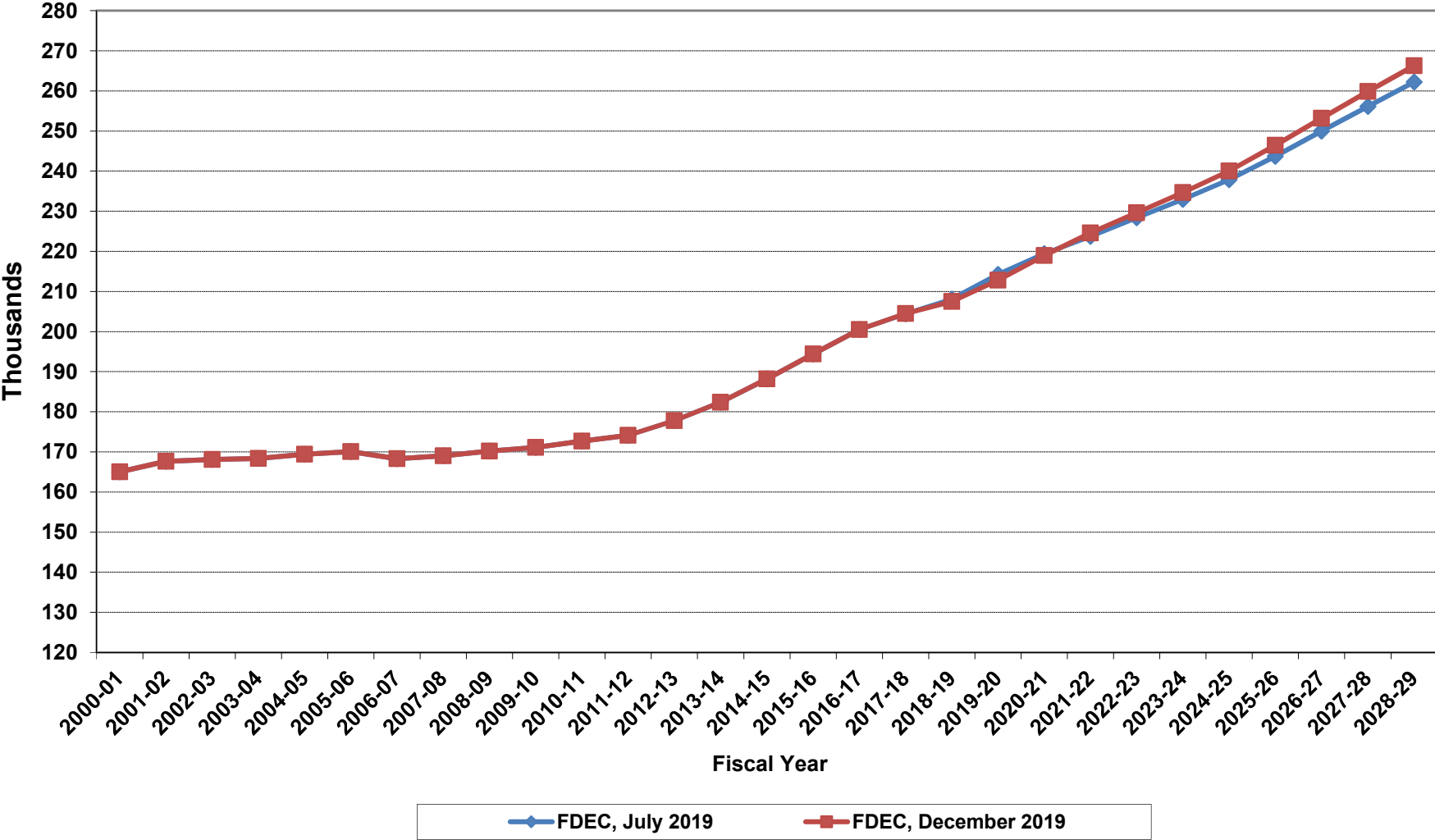
Florida Net Migration



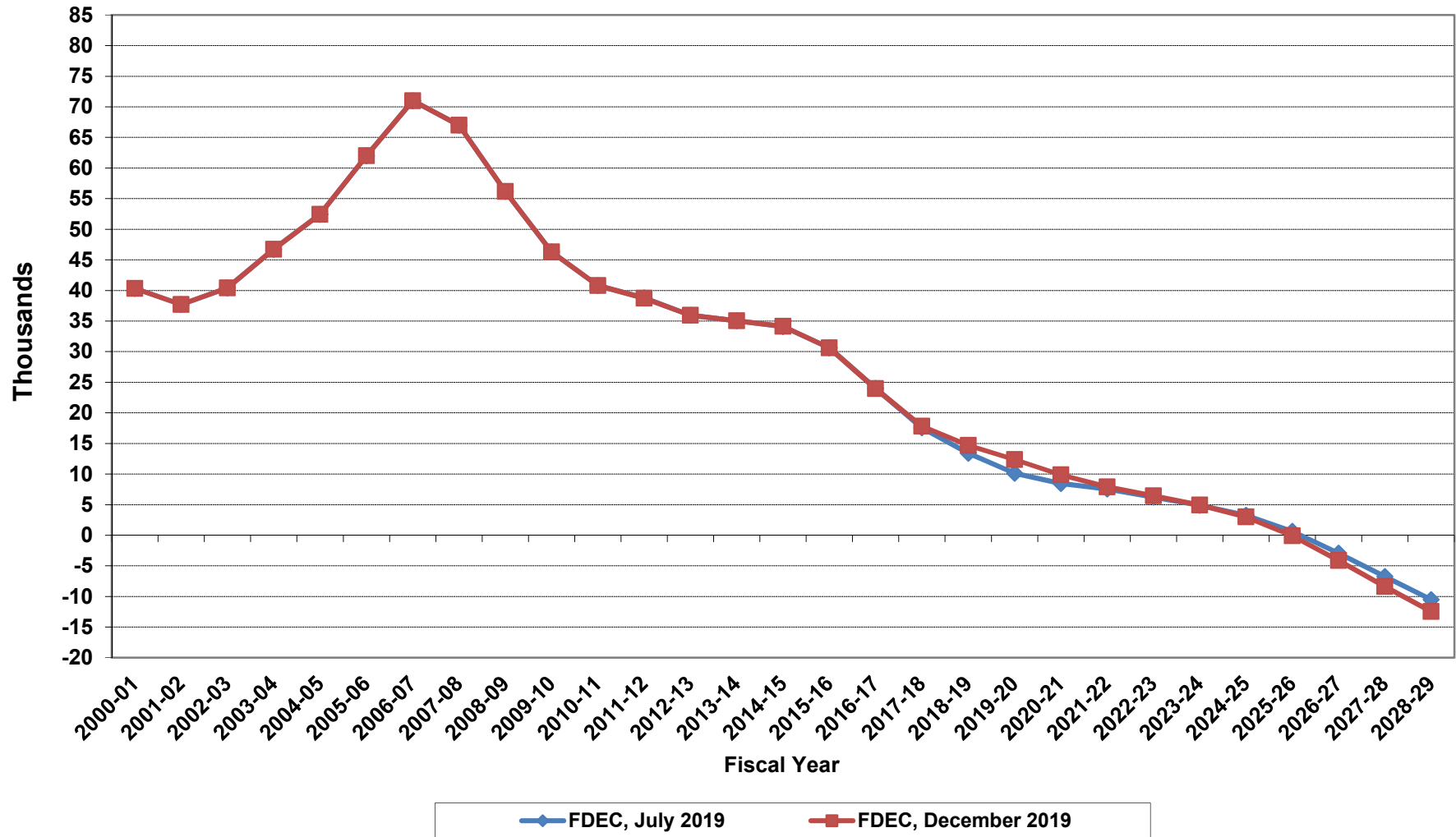
Florida Resident Live Births



Florida Resident Deaths



Florida Net Natural Increase

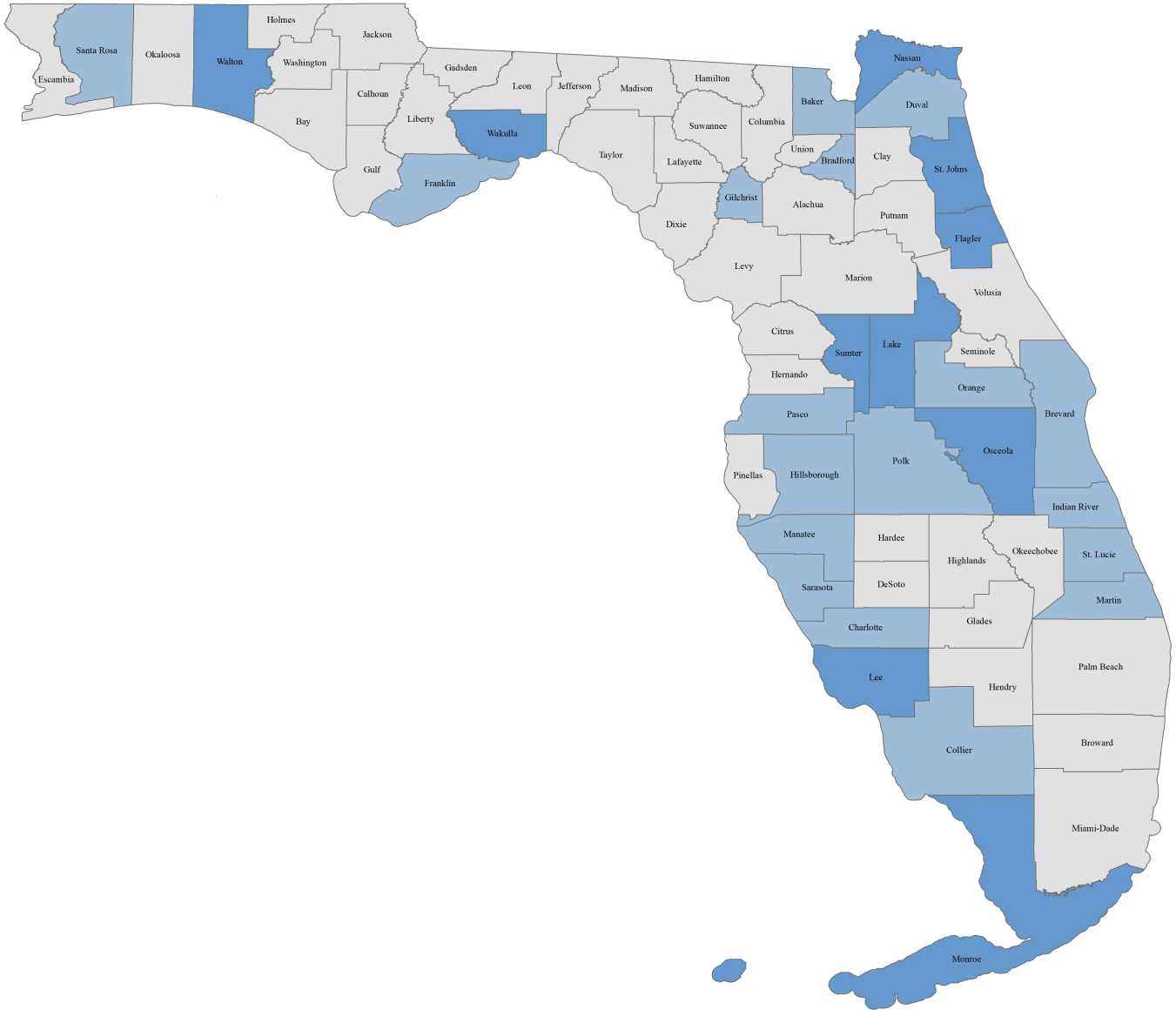


Florida Population and Components of Change

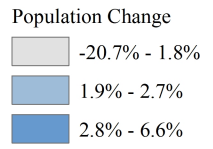
Fiscal Year	Population (End of Fiscal Year)	Growth Rate	Annual Change in Population	Births	Deaths	Net Natural Increase	Net Migration
1950 - 51	2,981,346	6.50%	181,931	67,486	27,670	39,816	142,115
1951 - 52	3,155,442	5.84%	174,096	72,383	28,942	43,441	130,655
1952 - 53	3,312,521	4.98%	157,079	76,954	29,761	47,193	109,886
1953 - 54	3,504,323	5.79%	191,802	82,725	31,055	51,670	140,132
1954 - 55	3,747,400	6.94%	243,077	86,643	32,176	54,467	188,610
1955 - 56	4,046,062	7.97%	298,662	92,941	34,932	58,009	240,653
1956 - 57	4,370,045	8.01%	323,983	100,990	38,269	62,721	261,262
1957 - 58	4,629,510	5.94%	259,465	105,972	41,911	64,061	195,404
1958 - 59	4,812,270	3.95%	182,760	110,409	43,674	66,735	116,025
1959 - 60	4,998,508	3.87%	186,238	114,428	46,057	68,371	117,867
1960 - 61	5,185,913	3.75%	187,405	116,449	48,388	68,061	119,344
1961 - 62	5,367,899	3.51%	181,986	116,120	50,346	65,774	116,212
1962 - 63	5,553,522	3.46%	185,623	114,709	54,453	60,256	125,367
1963 - 64	5,728,499	3.15%	174,977	115,002	56,229	58,773	116,204
1964 - 65	5,881,195	2.67%	152,696	110,515	57,734	52,781	99,915
1965 - 66	6,065,768	3.14%	184,573	104,367	61,217	43,150	141,423
1966 - 67	6,249,674	3.03%	183,906	101,209	62,577	38,632	145,274
1967 - 68	6,441,756	3.07%	192,082	100,320	66,134	34,186	157,896
1968 - 69	6,633,546	2.98%	191,790	104,286	71,285	33,001	158,789
1969 - 70	6,861,118	3.43%	227,572	111,511	73,831	37,680	189,892
1970 - 71	7,233,583	5.43%	372,465	117,012	75,354	41,658	330,807
1971 - 72	7,681,540	6.19%	447,957	113,568	79,717	33,851	414,106
1972 - 73	8,157,883	6.20%	476,343	107,804	86,232	21,572	454,771
1973 - 74	8,515,208	4.38%	357,325	109,366	88,459	20,907	336,418
1974 - 75	8,648,587	1.57%	133,379	108,686	87,224	21,462	111,917
1975 - 76	8,782,975	1.55%	134,388	104,022	88,129	15,893	118,495
1976 - 77	8,972,678	2.16%	189,703	107,623	90,443	17,180	172,523
1977 - 78	9,225,527	2.82%	252,849	112,268	93,383	18,885	233,964
1978 - 79	9,523,728	3.23%	298,201	116,393	96,801	19,592	278,609
1979 - 80	9,914,652	4.10%	390,924	126,673	101,048	25,625	365,299
1980 - 81	10,212,969	3.01%	298,317	135,560	107,562	27,998	270,319
1981 - 82	10,492,851	2.74%	279,882	141,593	108,644	32,949	246,933
1982 - 83	10,748,466	2.44%	255,615	146,853	110,497	36,356	219,259
1983 - 84	11,065,911	2.95%	317,445	151,748	113,939	37,809	279,636
1984 - 85	11,405,533	3.07%	339,622	159,819	117,539	42,280	297,342
1985 - 86	11,740,069	2.93%	334,536	165,857	122,453	43,404	291,132
1986 - 87	12,083,241	2.92%	343,172	170,819	124,946	45,873	297,299
1987 - 88	12,410,339	2.71%	327,098	179,541	129,413	50,128	276,970
1988 - 89	12,723,719	2.53%	313,380	188,390	131,992	56,398	256,982
1989 - 90	13,017,296	2.31%	293,577	197,181	132,503	64,678	228,899
1990 - 91	13,326,892	2.38%	309,596	197,180	134,093	63,087	246,509
1991 - 92	13,552,021	1.69%	225,129	191,810	136,280	55,530	169,599
1992 - 93	13,802,571	1.85%	250,550	192,051	142,087	49,964	200,586
1993 - 94	14,120,323	2.30%	317,752	191,840	146,101	45,739	272,013
1994 - 95	14,406,418	2.03%	286,095	189,292	149,161	40,131	245,964
1995 - 96	14,701,040	2.05%	294,622	188,584	152,570	36,014	258,608
1996 - 97	15,012,615	2.12%	311,575	190,587	153,067	37,520	274,055
1997 - 98	15,310,069	1.98%	297,454	194,242	155,080	39,162	258,292
1998 - 99	15,680,164	2.42%	370,095	195,897	159,988	35,909	334,186
1999 - 00	16,069,889	2.49%	389,725	200,302	162,489	37,813	351,912
2000 - 01	16,385,615	1.96%	315,726	205,798	164,919	40,879	274,847
2001 - 02	16,718,076	2.03%	332,461	205,164	167,812	37,352	295,109
2002 - 03	17,074,258	2.13%	356,182	208,403	168,079	40,324	315,858
2003 - 04	17,475,944	2.35%	401,686	215,298	168,302	46,996	354,690
2004 - 05	17,876,215	2.29%	400,271	221,533	169,302	52,231	348,040
2005 - 06	18,236,885	2.02%	360,670	232,019	170,303	61,716	298,954
2006 - 07	18,501,231	1.45%	264,346	239,635	168,117	71,518	192,828
2007 - 08	18,636,837	0.73%	135,606	236,065	168,966	67,099	68,507
2008 - 09	18,711,844	0.40%	75,007	226,337	170,615	55,722	19,285
2009 - 10	18,826,492	0.61%	114,648	217,408	171,122	46,286	68,362

Florida Population and Components of Change

Fiscal Year	Population (End of Fiscal Year)	Growth Rate	Annual Change in Population	Births	Deaths	Net Natural Increase	Net Migration
2010 - 11	18,941,738	0.61%	115,246	213,468	172,661	40,807	74,439
2011 - 12	19,118,953	0.94%	177,215	212,876	174,121	38,755	138,460
2012 - 13	19,314,339	1.02%	195,386	213,762	177,807	35,955	159,431
2013 - 14	19,580,085	1.38%	265,746	217,422	182,383	35,039	230,707
2014 - 15	19,896,963	1.62%	316,878	222,338	188,216	34,122	282,756
2015 - 16	20,234,222	1.70%	337,259	225,014	194,385	30,629	306,630
2016 - 17	20,561,824	1.62%	327,602	224,476	200,522	23,954	303,648
2017 - 18	20,932,893	1.80%	371,069	222,329	204,516	17,813	353,256
2018 - 19	21,297,524	1.74%	364,631	222,176	207,477	14,699	349,932
2019 - 20	21,640,766	1.61%	343,242	225,173	212,795	12,378	330,864
2020 - 21	21,975,117	1.55%	334,351	228,824	218,925	9,899	324,452
2021 - 22	22,299,864	1.48%	324,747	232,467	224,559	7,908	316,839
2022 - 23	22,613,063	1.40%	313,199	236,067	229,628	6,439	306,760
2023 - 24	22,913,055	1.33%	299,992	239,616	234,662	4,954	295,038
2024 - 25	23,202,074	1.26%	289,019	243,066	240,041	3,025	285,994
2025 - 26	23,479,839	1.20%	277,765	246,338	246,421	-83	277,848
2026 - 27	23,746,517	1.14%	266,678	249,104	253,206	-4,102	270,780
2027 - 28	24,002,344	1.08%	255,827	251,470	259,839	-8,369	264,196
2028 - 29	24,247,983	1.02%	245,639	253,809	266,265	-12,456	258,095
2029 - 30	24,484,463	0.98%	236,480	256,179	272,308	-16,129	252,609
2030 - 31	24,712,078	0.93%	227,615	257,642	278,724	-21,082	248,697
2031 - 32	24,931,096	0.89%	219,018	258,420	285,595	-27,175	246,193
2032 - 33	25,142,506	0.85%	211,410	259,464	292,149	-32,685	244,095
2033 - 34	25,347,626	0.82%	205,120	260,345	298,407	-38,062	243,182
2034 - 35	25,547,505	0.79%	199,879	260,965	304,211	-43,246	243,125
2035 - 36	25,742,348	0.76%	194,843	261,641	309,320	-47,679	242,522
2036 - 37	25,931,308	0.73%	188,960	262,559	313,907	-51,348	240,308
2037 - 38	26,115,678	0.71%	184,370	263,490	318,286	-54,796	239,166
2038 - 39	26,295,979	0.69%	180,301	264,357	322,525	-58,168	238,469



Legend



Florida Legislature Office of
Economic & Demographic Research

111 W. Madison St., Rm. 574
Tallahassee, FL 32399-6588
Phone: 850.487.1402
URL: edr.state.fl.us
December 2019

