

**Demographic Estimating Conference**  
**Executive Summary**  
**July 13, 2020**

The Demographic Estimating Conference met on July 13, 2020, to adopt a new population forecast. The new estimates reflect recent demographic and economic-related data and trends. Compared to the last conference, the population projection for April 1, 2020 was revised upward by 18,097, reflecting stronger growth in the number of active residential electric customers than expected.

The world-wide pandemic and its accompanying economic fallout has strongly colored this forecast, producing slower population growth throughout the near-term forecast. Compared to the last conference, the population projection for April 1, 2025 was lowered by 200,139. In addition, average household size was increased, reflecting the economic impact the pandemic is expected to have on household dynamics and structure; all else being equal, larger household sizes lead to a lower number of households.

April 1	Population	Change from the Prior Year		Change from the Prior Forecast
		Percent	Numeric	
2012	19,074,434	0.90%	169,364	
2013	19,259,543	0.97%	185,109	
2014	19,507,369	1.29%	247,826	
2015	19,815,183	1.58%	307,814	
2016	20,148,654	1.68%	333,471	
2017	20,484,142	1.67%	335,488	
2018	20,840,568	1.74%	356,426	
2019	21,208,589	1.77%	368,021	
<i>Forecast</i>				
2020	21,574,083	1.72%	365,494	18,097
2021	21,830,364	1.19%	256,281	-62,007
2022	22,119,075	1.32%	288,711	-100,556
2023	22,400,685	1.27%	281,610	-135,367
2024	22,671,115	1.21%	270,430	-167,987
2025	22,930,731	1.15%	259,616	-200,139

Between April 1, 2020 and April 1, 2025, population growth is expected to average 271,330 net new residents per year (743 per day), representing a compound growth rate of 1.23% over this five-year time horizon. These increases are analogous to adding a city slightly larger than St. Petersburg every year.

Of note, the population estimates developed by the U.S. Census Bureau continue to be higher than the official state estimates adopted by the Demographic Estimating Conference. In the latest comparable set of estimates (July 1, 2019), the difference was 169,575 persons. The Legislative Office of Economic and Demographic Research is continuing its efforts to identify how the differing underlying methodologies contribute to the gap between the two sets of estimates. In addition, after the 2020 Census counts are released, the historical series will be re-estimated to take this new data point into consideration.

# **Florida Demographic Estimating Conference**

**Tables**  
Conference Packet

July 13, 2020

# Florida Resident Population

April 1

Year	Florida Demographic Estimating Conference December 2019			Florida Demographic Estimating Conference July 2020		
	Population	% Change	Change	Population	% Change	Change
2000	15,982,824	2.58%	402,580	15,982,824	2.58%	402,580
2001	16,305,100	2.02%	322,276	16,305,100	2.02%	322,276
2002	16,634,256	2.02%	329,156	16,634,256	2.02%	329,156
2003	16,979,706	2.08%	345,450	16,979,706	2.08%	345,450
2004	17,374,824	2.33%	395,118	17,374,824	2.33%	395,118
2005	17,778,156	2.32%	403,332	17,778,156	2.32%	403,332
2006	18,154,475	2.12%	376,319	18,154,475	2.12%	376,319
2007	18,446,768	1.61%	292,293	18,446,768	1.61%	292,293
2008	18,613,905	0.91%	167,137	18,613,905	0.91%	167,137
2009	18,687,425	0.39%	73,520	18,687,425	0.39%	73,520
2010	18,801,332	0.61%	113,907	18,801,332	0.61%	113,907
2011	18,905,070	0.55%	103,738	18,905,070	0.55%	103,738
2012	19,074,434	0.90%	169,364	19,074,434	0.90%	169,364
2013	19,259,543	0.97%	185,109	19,259,543	0.97%	185,109
2014	19,507,369	1.29%	247,826	19,507,369	1.29%	247,826
2015	19,815,183	1.58%	307,814	19,815,183	1.58%	307,814
2016	20,148,654	1.68%	333,471	20,148,654	1.68%	333,471
2017	20,484,142	1.67%	335,488	20,484,142	1.67%	335,488
2018	20,840,568	1.74%	356,426	20,840,568	1.74%	356,426
2019	21,208,589	1.77%	368,021	21,208,589	1.77%	368,021
Begins forecast						
2020	21,555,986	1.64%	347,397	21,574,083	1.72%	365,494
2021	21,892,371	1.56%	336,385	21,830,364	1.19%	256,281
2022	22,219,631	1.49%	327,260	22,119,075	1.32%	288,711
2023	22,536,052	1.42%	316,421	22,400,685	1.27%	281,610
2024	22,839,102	1.34%	303,050	22,671,115	1.21%	270,430
2025	23,130,870	1.28%	291,768	22,930,731	1.15%	259,616
			5-Year Averages			
2030	24,426,178	1.10%	259,062	24,179,166	1.07%	249,687
2035	25,497,950	0.86%	214,354	25,275,629	0.89%	219,293
2040	26,428,726	0.72%	186,155	26,218,547	0.74%	188,584
2045	27,266,909	0.63%	167,637	27,050,151	0.63%	166,321

# Florida Resident Households

April 1

Year	Florida Demographic Estimating Conference December 2019			Florida Demographic Estimating Conference July 2020		
	Households	% Change	Change	Households	% Change	Change
2000	6,338,075	2.52%	155,729	6,338,075	2.65%	163,703
2001	6,467,215	2.04%	129,140	6,460,934	1.94%	122,859
2002	6,599,035	2.04%	131,820	6,586,806	1.95%	125,872
2003	6,737,370	2.10%	138,335	6,719,399	2.01%	132,593
2004	6,895,469	2.35%	158,099	6,872,318	2.28%	152,919
2005	7,056,889	2.34%	161,420	7,029,787	2.29%	157,469
2006	7,207,645	2.14%	150,756	7,178,486	2.12%	148,699
2007	7,312,907	1.46%	105,262	7,292,550	1.59%	114,064
2008	7,368,319	0.76%	55,412	7,354,880	0.85%	62,330
2009	7,386,570	0.25%	18,251	7,379,964	0.34%	25,084
2010	7,525,335	1.88%	138,765	7,420,802	0.55%	40,838
2011	7,456,791	-0.91%	-68,544	7,456,791	0.48%	35,989
2012	7,525,335	0.92%	68,544	7,525,335	0.92%	68,544
2013	7,602,417	1.02%	77,082	7,602,417	1.02%	77,082
2014	7,708,538	1.40%	106,121	7,708,538	1.40%	106,121
2015	7,840,780	1.72%	132,242	7,840,780	1.72%	132,242
2016	7,982,938	1.81%	142,158	7,982,938	1.81%	142,158
2017	8,125,176	1.78%	142,238	8,125,176	1.78%	142,238
2018	8,271,058	1.80%	145,882	8,271,058	1.80%	145,882
2019	8,427,764	1.89%	156,706	8,427,696	1.89%	156,638
Begins forecast						
2020	8,576,928	1.77%	149,164	8,580,271	1.81%	152,575
2021	8,722,850	1.70%	145,922	8,683,883	1.21%	103,612
2022	8,866,333	1.64%	143,483	8,815,721	1.52%	131,838
2023	9,007,746	1.59%	141,413	8,938,034	1.39%	122,313
2024	9,146,142	1.54%	138,396	9,056,739	1.33%	118,705
2025	9,283,605	1.50%	137,463	9,172,711	1.28%	115,972
5-Year Averages						
2030	9,940,987	1.38%	131,476	9,789,811	1.31%	123,420
2035	10,500,268	1.10%	111,856	10,391,642	1.20%	120,366
2040	10,933,439	0.81%	86,634	10,868,341	0.90%	95,340
2045	11,291,335	0.65%	71,579	11,251,855	0.70%	76,703

QUARTERLY FORECAST TABLES

	<u>2010-2</u>	<u>2010-3</u>	<u>2010-4</u>	<u>2011-1</u>	<u>2011-2</u>	<u>2011-3</u>	<u>2011-4</u>	<u>2012-1</u>	<u>2012-2</u>	<u>2012-3</u>	<u>2012-4</u>	<u>2013-1</u>	<u>2013-2</u>	<u>2013-3</u>	<u>2013-4</u>	<u>2014-1</u>	<u>2014-2</u>
<b>Population</b>																	
FDEC, December 2019	18,813.9	18,838.3	18,862.7	18,890.2	18,923.4	18,962.8	19,006.3	19,051.6	19,096.7	19,141.2	19,186.6	19,234.6	19,286.9	19,344.2	19,406.4	19,473.0	19,543.7
FDEC, July 2020	18,813.9	18,838.3	18,862.7	18,890.2	18,923.4	18,962.8	19,006.3	19,051.6	19,096.7	19,141.2	19,186.6	19,234.6	19,286.9	19,344.2	19,406.4	19,473.0	19,543.7
<b>Population Growth Rate</b>																	
FDEC, December 2019	0.59	0.52	0.52	0.58	0.71	0.83	0.92	0.96	0.95	0.94	0.95	1.01	1.09	1.19	1.29	1.38	1.46
FDEC, July 2020	0.59	0.52	0.52	0.58	0.71	0.83	0.92	0.96	0.95	0.94	0.95	1.01	1.09	1.19	1.29	1.38	1.46
<b>Net Change in Population</b>																	
FDEC, December 2019	27.9	24.4	24.4	27.5	33.2	39.4	43.5	45.3	45.1	44.5	45.4	48.0	52.3	57.3	62.1	66.6	70.7
FDEC, July 2020	27.9	24.4	24.4	27.5	33.2	39.4	43.5	45.3	45.1	44.5	45.4	48.0	52.3	57.3	62.1	66.6	70.7
<b>Households</b>																	
FDEC, December 2019	7,425.0	7,433.2	7,441.5	7,451.3	7,463.9	7,479.6	7,497.3	7,515.9	7,534.5	7,552.9	7,571.8	7,591.9	7,614.1	7,638.5	7,665.1	7,693.7	7,724.2
FDEC, July 2020	7,425.0	7,433.2	7,441.5	7,451.3	7,463.9	7,479.6	7,497.3	7,515.9	7,534.5	7,552.9	7,571.8	7,591.9	7,614.1	7,638.5	7,665.1	7,693.7	7,724.2
<b>Household Growth Rate</b>																	
FDEC, December 2019	0.50	0.44	0.45	0.53	0.68	0.84	0.95	1.00	0.99	0.98	1.00	1.07	1.17	1.29	1.40	1.50	1.59
FDEC, July 2020	0.50	0.44	0.45	0.53	0.68	0.84	0.95	1.00	0.99	0.98	1.00	1.07	1.17	1.29	1.40	1.50	1.59
<b>Net Change in Households</b>																	
FDEC, December 2019	9.3	8.2	8.3	9.8	12.6	15.6	17.7	18.6	18.6	18.4	18.9	20.1	22.1	24.4	26.6	28.6	30.5
FDEC, July 2020	9.3	8.2	8.3	9.8	12.6	15.6	17.7	18.6	18.6	18.4	18.9	20.1	22.1	24.4	26.6	28.6	30.4
<b>Household Size</b>																	
FDEC, December 2019	2.534	2.534	2.535	2.535	2.535	2.535	2.535	2.535	2.535	2.534	2.534	2.534	2.533	2.532	2.532	2.531	2.530
FDEC, July 2020	2.534	2.534	2.535	2.535	2.535	2.535	2.535	2.535	2.535	2.534	2.534	2.534	2.533	2.532	2.532	2.531	2.530
<b>Household Size Growth Rate</b>																	
FDEC, December 2019	0.09	0.08	0.07	0.05	0.02	-0.01	-0.03	-0.04	-0.04	-0.04	-0.05	-0.06	-0.08	-0.09	-0.11	-0.12	-0.13
FDEC, July 2020	0.09	0.08	0.07	0.05	0.02	-0.01	-0.03	-0.04	-0.04	-0.04	-0.05	-0.06	-0.08	-0.09	-0.11	-0.12	-0.13
<b>Net Migration</b>																	
FDEC, December 2019	17.2	14.1	14.3	17.2	23.1	29.3	33.7	35.8	35.7	35.3	36.3	39.1	43.5	48.5	53.4	57.8	62.0
FDEC, July 2020	17.2	14.1	14.3	17.2	23.1	29.3	33.7	35.8	35.7	35.3	36.3	39.1	43.5	48.5	53.4	57.8	62.0
<b>Net International Migration</b>																	
FDEC, December 2019																	
FDEC, July 2020	20.5	20.6	20.8	20.3	20.8	21.7	23.0	25.4	27.1	28.8	30.5	33.0	34.5	35.8	36.8	37.4	38.0
<b>Births</b>																	
FDEC, December 2019	53.7	53.5	53.3	53.4	53.3	53.3	53.2	53.2	53.2	53.3	53.4	53.5	53.7	53.9	54.1	54.5	54.8
FDEC, July 2020	53.7	53.5	53.3	53.4	53.3	53.3	53.2	53.2	53.2	53.3	53.4	53.5	53.7	53.9	54.1	54.5	54.8
<b>Deaths</b>																	
FDEC, December 2019	43.1	43.2	43.2	43.1	43.1	43.2	43.4	43.6	43.8	44.1	44.3	44.6	44.9	45.1	45.4	45.7	46.1
FDEC, July 2020	43.1	43.2	43.2	43.1	43.1	43.2	43.4	43.6	43.8	44.1	44.3	44.6	44.9	45.1	45.4	45.7	46.1
<b>Net Natural Increase</b>																	
FDEC, December 2019	10.6	10.3	10.0	10.3	10.2	10.0	9.9	9.5	9.3	9.2	9.0	8.9	8.8	8.8	8.7	8.8	8.8
FDEC, July 2020	10.6	10.3	10.0	10.3	10.2	10.0	9.9	9.5	9.3	9.2	9.0	8.9	8.8	8.8	8.7	8.8	8.8

QUARTERLY FORECAST TABLES

	<u>2014-3</u>	<u>2014-4</u>	<u>2015-1</u>	<u>2015-2</u>	<u>2015-3</u>	<u>2015-4</u>	<u>2016-1</u>	<u>2016-2</u>	<u>2016-3</u>	<u>2016-4</u>	<u>2017-1</u>	<u>2017-2</u>	<u>2017-3</u>	<u>2017-4</u>	<u>2018-1</u>	<u>2018-2</u>	<u>2018-3</u>	
<b>Population</b>																		
FDEC, December 2019	19,618.1	19,695.4	19,774.9	19,856.1	19,938.4	20,021.8	20,106.2	20,191.4	20,276.8	20,361.3	20,443.7	20,523.0	20,610.6	20,704.3	20,794.9	20,886.7	20,979.2	
FDEC, July 2020	19,618.1	19,695.4	19,774.9	19,856.1	19,938.5	20,021.9	20,106.3	20,191.3	20,276.6	20,361.0	20,443.5	20,523.3	20,611.6	20,705.7	20,795.6	20,885.4	20,975.3	
<b>Population Growth Rate</b>																		
FDEC, December 2019	1.53	1.59	1.63	1.65	1.67	1.68	1.70	1.71	1.70	1.68	1.63	1.56	1.72	1.83	1.76	1.78	1.78	
FDEC, July 2020	1.53	1.59	1.63	1.65	1.67	1.68	1.70	1.70	1.70	1.68	1.63	1.57	1.73	1.84	1.75	1.74	1.73	
<b>Net Change in Population</b>																		
FDEC, December 2019	74.4	77.3	79.5	81.1	82.3	83.4	84.4	85.2	85.4	84.5	82.3	79.3	87.6	93.7	90.6	91.8	92.5	
FDEC, July 2020	74.3	77.3	79.6	81.2	82.4	83.4	84.4	85.1	85.2	84.4	82.5	79.9	88.3	94.0	89.9	89.8	89.9	
<b>Households</b>																		
FDEC, December 2019	7,756.2	7,789.4	7,823.5	7,858.2	7,893.4	7,928.9	7,964.8	8,001.2	8,037.7	8,073.6	8,108.2	8,141.2	8,177.0	8,215.1	8,252.3	8,290.4	8,329.5	
FDEC, July 2020	7,756.2	7,789.4	7,823.5	7,858.2	7,893.4	7,928.9	7,964.9	8,001.2	8,037.5	8,073.4	8,108.2	8,141.3	8,177.4	8,215.7	8,252.5	8,289.9	8,327.9	
<b>Household Growth Rate</b>																		
FDEC, December 2019	1.67	1.72	1.76	1.79	1.80	1.81	1.83	1.84	1.83	1.80	1.73	1.64	1.77	1.88	1.82	1.86	1.90	
FDEC, July 2020	1.67	1.72	1.76	1.79	1.80	1.81	1.83	1.84	1.83	1.80	1.73	1.65	1.78	1.88	1.81	1.82	1.85	
<b>Net Change in Households</b>																		
FDEC, December 2019	32.0	33.2	34.1	34.7	35.1	35.5	36.0	36.4	36.4	35.9	34.7	33.0	35.8	38.1	37.1	38.2	39.1	
FDEC, July 2020	32.0	33.2	34.1	34.7	35.1	35.5	35.9	36.3	36.4	35.9	34.7	33.2	36.1	38.3	36.9	37.3	38.0	
<b>Household Size</b>																		
FDEC, December 2019	2.529	2.528	2.528	2.527	2.526	2.525	2.524	2.524	2.523	2.522	2.521	2.521	2.521	2.520	2.520	2.519	2.519	
FDEC, July 2020	2.529	2.528	2.528	2.527	2.526	2.525	2.524	2.524	2.523	2.522	2.521	2.521	2.521	2.520	2.520	2.519	2.519	
<b>Household Size Growth Rate</b>																		
FDEC, December 2019	-0.13	-0.14	-0.14	-0.13	-0.13	-0.13	-0.13	-0.13	-0.13	-0.12	-0.10	-0.07	-0.05	-0.05	-0.06	-0.08	-0.11	
FDEC, July 2020	-0.13	-0.14	-0.14	-0.13	-0.13	-0.13	-0.13	-0.13	-0.13	-0.12	-0.10	-0.07	-0.05	-0.05	-0.06	-0.08	-0.11	
<b>Net Migration</b>																		
FDEC, December 2019	65.7	68.7	71.0	72.8	74.2	75.6	76.9	78.1	78.6	78.1	76.7	74.1	82.8	89.2	86.3	87.7	88.6	
FDEC, July 2020	65.7	68.7	71.1	72.8	74.3	75.6	76.8	77.9	78.5	78.1	76.9	74.7	83.4	89.5	85.6	85.7	86.1	
<b>Net International Migration</b>																		
FDEC, December 2019																		
FDEC, July 2020	38.5	38.8	37.7	38.3	39.2	40.6	45.2	46.2	46.4	45.9	41.9	40.9	40.2	39.9	42.0	41.4	40.3	
<b>Births</b>																		
FDEC, December 2019	55.1	55.4	55.8	56.0	56.2	56.3	56.3	56.3	56.3	56.2	56.1	56.0	55.8	55.7	55.4	55.3	55.3	
FDEC, July 2020	55.1	55.4	55.8	56.0	56.2	56.3	56.3	56.3	56.3	56.2	56.1	56.0	55.8	55.7	55.5	55.4	55.3	
<b>Deaths</b>																		
FDEC, December 2019	46.4	46.8	47.3	47.7	48.1	48.4	48.8	49.1	49.5	49.9	50.4	50.7	51.0	51.2	51.1	51.2	51.5	
FDEC, July 2020	46.4	46.8	47.3	47.7	48.1	48.4	48.8	49.1	49.5	49.9	50.4	50.7	51.0	51.2	51.2	51.3	51.4	
<b>Net Natural Increase</b>																		
FDEC, December 2019	8.7	8.6	8.5	8.3	8.1	7.8	7.5	7.2	6.8	6.3	5.6	5.2	4.8	4.5	4.3	4.1	3.9	
FDEC, July 2020	8.7	8.6	8.5	8.3	8.1	7.8	7.5	7.2	6.8	6.3	5.6	5.2	4.8	4.5	4.4	4.1	3.9	

QUARTERLY FORECAST TABLES

	<u>2018-4</u>	<u>2019-1</u>	<u>2019-2</u>	<u>2019-3</u>	<u>2019-4</u>	<u>2020-1</u>	<u>2020-2</u>	<u>2020-3</u>	<u>2020-4</u>	<u>2021-1</u>	<u>2021-2</u>	<u>2021-3</u>	<u>2021-4</u>	<u>2022-1</u>	<u>2022-2</u>	<u>2022-3</u>
<b>Population</b>																
FDEC, December 2019	21,071.6	21,163.2	21,253.1	21,341.1	21,427.8	21,513.4	21,598.4	21,683.0	21,767.1	21,850.7	21,933.7	22,016.2	22,098.0	22,179.2	22,259.7	22,339.6
FDEC, July 2020	21,066.6	21,160.7	21,258.4	21,358.0	21,449.8	21,533.0	21,609.5	21,676.6	21,738.2	21,799.3	21,864.2	21,934.1	22,007.4	22,081.9	22,155.4	22,227.0
<b>Population Growth Rate</b>																
FDEC, December 2019	1.77	1.75	1.71	1.67	1.63	1.61	1.59	1.58	1.56	1.55	1.53	1.51	1.49	1.48	1.46	1.44
FDEC, July 2020	1.75	1.80	1.86	1.89	1.73	1.56	1.43	1.25	1.14	1.13	1.20	1.29	1.34	1.36	1.34	1.30
<b>Net Change in Population</b>																
FDEC, December 2019	92.4	91.5	89.9	88.1	86.6	85.6	85.0	84.6	84.1	83.6	83.0	82.4	81.8	81.2	80.6	79.9
FDEC, July 2020	91.3	94.1	97.7	99.6	91.9	83.2	76.5	67.0	61.6	61.1	64.9	69.9	73.3	74.4	73.5	71.7
<b>Households</b>																
FDEC, December 2019	8,368.9	8,408.2	8,446.9	8,484.7	8,521.8	8,558.6	8,595.2	8,631.8	8,668.3	8,704.7	8,740.9	8,776.9	8,812.8	8,848.5	8,884.1	8,919.7
FDEC, July 2020	8,366.9	8,407.2	8,448.9	8,491.3	8,529.6	8,563.5	8,594.4	8,620.9	8,645.5	8,670.8	8,699.0	8,730.7	8,764.5	8,798.7	8,831.9	8,863.4
<b>Household Growth Rate</b>																
FDEC, December 2019	1.91	1.89	1.85	1.80	1.76	1.74	1.72	1.71	1.70	1.69	1.67	1.66	1.64	1.63	1.62	1.61
FDEC, July 2020	1.89	1.94	2.00	2.02	1.82	1.60	1.45	1.24	1.14	1.17	1.31	1.46	1.56	1.57	1.52	1.43
<b>Net Change in Households</b>																
FDEC, December 2019	39.5	39.3	38.6	37.8	37.2	36.8	36.6	36.6	36.5	36.4	36.2	36.0	35.9	35.7	35.6	35.5
FDEC, July 2020	39.0	40.3	41.7	42.4	38.3	33.9	30.9	26.6	24.6	25.2	28.2	31.7	33.8	34.2	33.1	31.5
<b>Household Size</b>																
FDEC, December 2019	2.518	2.517	2.516	2.515	2.514	2.514	2.513	2.512	2.511	2.510	2.509	2.508	2.508	2.507	2.506	2.505
FDEC, July 2020	2.518	2.517	2.516	2.515	2.515	2.515	2.514	2.514	2.514	2.514	2.513	2.512	2.511	2.510	2.509	2.508
<b>Household Size Growth Rate</b>																
FDEC, December 2019	-0.13	-0.14	-0.14	-0.13	-0.13	-0.13	-0.13	-0.14	-0.14	-0.14	-0.14	-0.14	-0.15	-0.15	-0.16	-0.16
FDEC, July 2020	-0.13	-0.14	-0.14	-0.13	-0.08	-0.04	-0.02	0.00	0.00	-0.04	-0.11	-0.18	-0.21	-0.21	-0.17	-0.13
<b>Net Migration</b>																
FDEC, December 2019	88.7	87.9	86.4	84.8	83.5	82.6	82.1	81.9	81.6	81.2	80.8	80.3	79.8	79.2	78.7	78.1
FDEC, July 2020	87.6	90.5	94.3	96.4	89.0	81.2	74.7	65.2	59.6	58.8	62.3	67.2	70.6	72.0	71.2	69.4
<b>Net International Migration</b>																
FDEC, December 2019																
FDEC, July 2020	38.6	33.6	31.9	30.7	30.1	21.1	13.2	15.0	19.9	19.9	19.9	20.0	20.1	20.2	20.5	20.8
<b>Births</b>																
FDEC, December 2019	55.4	55.6	55.8	56.0	56.2	56.4	56.6	56.9	57.1	57.3	57.6	57.8	58.0	58.2	58.5	58.7
FDEC, July 2020	55.2	55.0	54.9	55.0	55.1	55.5	55.7	55.9	56.2	56.6	56.8	57.1	57.3	57.5	57.7	58.0
<b>Deaths</b>																
FDEC, December 2019	51.7	52.0	52.3	52.6	53.0	53.4	53.8	54.1	54.5	54.9	55.3	55.7	56.0	56.3	56.6	56.9
FDEC, July 2020	51.5	51.4	51.5	51.8	52.2	53.5	53.9	54.1	54.2	54.2	54.3	54.3	54.6	55.1	55.4	55.7
<b>Net Natural Increase</b>																
FDEC, December 2019	3.7	3.6	3.5	3.3	3.2	3.0	2.9	2.7	2.6	2.4	2.2	2.1	2.0	1.9	1.9	1.8
FDEC, July 2020	3.7	3.6	3.4	3.2	2.9	2.0	1.8	1.9	2.0	2.3	2.5	2.8	2.7	2.4	2.3	2.2

QUARTERLY FORECAST TABLES

	<u>2022-4</u>	<u>2023-1</u>	<u>2023-2</u>	<u>2023-3</u>	<u>2023-4</u>	<u>2024-1</u>	<u>2024-2</u>	<u>2024-3</u>	<u>2024-4</u>	<u>2025-1</u>	<u>2025-2</u>	<u>2025-3</u>	<u>2025-4</u>	<u>2026-1</u>	<u>2026-2</u>	<u>2026-3</u>
<b>Population</b>																
FDEC, December 2019	22,418.8	22,497.1	22,574.6	22,651.1	22,726.9	22,801.8	22,876.1	22,949.7	23,022.7	23,094.9	23,166.5	23,237.3	23,307.5	23,376.9	23,445.6	23,513.7
FDEC, July 2020	22,297.2	22,366.3	22,434.9	22,503.0	22,570.7	22,637.8	22,704.1	22,769.6	22,834.5	22,898.7	22,962.9	23,027.1	23,091.2	23,155.1	23,218.9	23,282.5
<b>Population Growth Rate</b>																
FDEC, December 2019	1.42	1.40	1.38	1.36	1.34	1.33	1.31	1.29	1.28	1.26	1.25	1.23	1.21	1.20	1.18	1.17
FDEC, July 2020	1.27	1.25	1.23	1.22	1.21	1.19	1.18	1.16	1.14	1.13	1.12	1.12	1.12	1.11	1.11	1.10
<b>Net Change in Population</b>																
FDEC, December 2019	79.1	78.3	77.5	76.6	75.7	74.9	74.3	73.6	73.0	72.3	71.6	70.8	70.1	69.4	68.7	68.0
FDEC, July 2020	70.1	69.1	68.5	68.2	67.7	67.1	66.3	65.5	64.9	64.3	64.1	64.2	64.1	64.0	63.8	63.6
<b>Households</b>																
FDEC, December 2019	8,955.1	8,990.2	9,025.1	9,059.8	9,094.4	9,128.9	9,163.3	9,197.8	9,232.1	9,266.5	9,300.7	9,334.9	9,369.0	9,403.1	9,437.0	9,470.8
FDEC, July 2020	8,893.6	8,923.3	8,952.9	8,982.5	9,012.3	9,042.0	9,071.4	9,100.6	9,129.5	9,158.3	9,187.4	9,217.0	9,246.9	9,277.1	9,307.3	9,337.7
<b>Household Growth Rate</b>																
FDEC, December 2019	1.60	1.58	1.56	1.55	1.53	1.53	1.52	1.51	1.50	1.50	1.49	1.48	1.47	1.46	1.45	1.44
FDEC, July 2020	1.37	1.34	1.33	1.33	1.33	1.32	1.31	1.29	1.28	1.27	1.28	1.30	1.30	1.31	1.31	1.31
<b>Net Change in Households</b>																
FDEC, December 2019	35.4	35.2	34.9	34.7	34.5	34.5	34.5	34.4	34.4	34.3	34.3	34.2	34.1	34.0	33.9	33.8
FDEC, July 2020	30.3	29.6	29.6	29.7	29.7	29.7	29.4	29.2	29.0	28.8	29.1	29.6	29.9	30.1	30.3	30.4
<b>Household Size</b>																
FDEC, December 2019	2.503	2.502	2.501	2.500	2.499	2.498	2.496	2.495	2.494	2.492	2.491	2.489	2.488	2.486	2.484	2.483
FDEC, July 2020	2.507	2.507	2.506	2.505	2.504	2.504	2.503	2.502	2.501	2.500	2.499	2.498	2.497	2.496	2.495	2.493
<b>Household Size Growth Rate</b>																
FDEC, December 2019	-0.17	-0.17	-0.18	-0.18	-0.19	-0.20	-0.21	-0.21	-0.22	-0.23	-0.24	-0.25	-0.25	-0.26	-0.27	-0.27
FDEC, July 2020	-0.10	-0.09	-0.10	-0.11	-0.12	-0.13	-0.13	-0.13	-0.13	-0.14	-0.15	-0.17	-0.18	-0.19	-0.20	-0.21
<b>Net Migration</b>																
FDEC, December 2019	77.5	76.8	76.0	75.2	74.5	73.7	73.2	72.6	72.1	71.6	71.0	70.5	70.0	69.6	69.1	68.7
FDEC, July 2020	68.0	67.0	66.5	66.2	65.8	65.1	64.5	63.8	63.3	62.9	62.9	63.2	63.4	63.6	63.8	64.0
<b>Net International Migration</b>																
FDEC, December 2019																
FDEC, July 2020	21.2	21.6	22.2	22.9	23.2	23.5	23.2	22.9	22.6	22.3	22.1	21.9	21.7	21.5	21.3	21.1
<b>Births</b>																
FDEC, December 2019	58.9	59.1	59.4	59.6	59.8	60.0	60.2	60.4	60.7	60.9	61.1	61.3	61.5	61.7	61.9	62.0
FDEC, July 2020	58.2	58.6	58.8	59.1	59.4	59.7	59.9	60.2	60.4	60.7	60.9	61.1	61.3	61.3	61.4	61.5
<b>Deaths</b>																
FDEC, December 2019	57.2	57.6	57.9	58.2	58.5	58.8	59.1	59.5	59.8	60.2	60.6	61.0	61.4	61.8	62.2	62.7
FDEC, July 2020	56.1	56.4	56.8	57.1	57.4	57.8	58.1	58.5	58.9	59.3	59.7	60.1	60.5	61.0	61.4	61.9
<b>Net Natural Increase</b>																
FDEC, December 2019	1.7	1.6	1.5	1.4	1.3	1.2	1.1	1.0	0.8	0.7	0.5	0.3	0.1	-0.1	-0.4	-0.6
FDEC, July 2020	2.2	2.1	2.1	2.0	1.9	1.9	1.8	1.7	1.6	1.4	1.2	1.0	0.7	0.3	0.0	-0.4



QUARTERLY FORECAST TABLES

	<u>2026-4</u>	<u>2027-1</u>	<u>2027-2</u>	<u>2027-3</u>	<u>2027-4</u>	<u>2028-1</u>	<u>2028-2</u>	<u>2028-3</u>	<u>2028-4</u>	<u>2029-1</u>	<u>2029-2</u>	<u>2029-3</u>	<u>2029-4</u>	<u>2030-1</u>	<u>2030-2</u>
<b>Population</b>															
FDEC, December 2019	23,581.0	23,647.7	23,713.7	23,779.0	23,843.6	23,907.6	23,970.9	24,033.5	24,095.5	24,156.9	24,217.7	24,278.0	24,337.6	24,396.8	24,455.3
FDEC, July 2020	23,345.8	23,409.1	23,472.2	23,535.2	23,598.0	23,660.7	23,723.0	23,785.1	23,846.8	23,908.1	23,969.1	24,029.6	24,089.7	24,149.4	24,208.7
<b>Population Growth Rate</b>															
FDEC, December 2019	1.15	1.14	1.12	1.11	1.09	1.08	1.06	1.05	1.04	1.02	1.01	1.00	0.99	0.98	0.96
FDEC, July 2020	1.09	1.09	1.08	1.08	1.07	1.07	1.06	1.05	1.04	1.03	1.02	1.01	1.00	0.99	0.99
<b>Net Change in Population</b>															
FDEC, December 2019	67.4	66.7	66.0	65.3	64.6	64.0	63.3	62.6	62.0	61.4	60.8	60.2	59.7	59.1	58.6
FDEC, July 2020	63.4	63.2	63.1	63.0	62.8	62.6	62.4	62.1	61.7	61.3	60.9	60.5	60.1	59.7	59.3
<b>Households</b>															
FDEC, December 2019	9,504.5	9,538.0	9,571.3	9,604.5	9,637.5	9,670.3	9,702.9	9,735.3	9,767.5	9,799.5	9,831.3	9,862.9	9,894.3	9,925.5	9,956.4
FDEC, July 2020	9,368.2	9,398.7	9,429.3	9,459.9	9,490.6	9,521.5	9,552.6	9,583.9	9,615.5	9,647.1	9,678.7	9,710.4	9,742.1	9,773.9	9,805.8
<b>Household Growth Rate</b>															
FDEC, December 2019	1.43	1.42	1.41	1.39	1.38	1.37	1.36	1.34	1.33	1.32	1.30	1.29	1.28	1.27	1.25
FDEC, July 2020	1.31	1.31	1.31	1.30	1.31	1.31	1.31	1.32	1.32	1.32	1.32	1.32	1.31	1.31	1.31
<b>Net Change in Households</b>															
FDEC, December 2019	33.7	33.5	33.3	33.2	33.0	32.8	32.6	32.4	32.2	32.0	31.8	31.6	31.4	31.2	31.0
FDEC, July 2020	30.5	30.5	30.6	30.6	30.7	30.9	31.1	31.3	31.5	31.6	31.6	31.7	31.7	31.8	31.9
<b>Household Size</b>															
FDEC, December 2019	2.481	2.479	2.478	2.476	2.474	2.472	2.470	2.469	2.467	2.465	2.463	2.462	2.460	2.458	2.456
FDEC, July 2020	2.492	2.491	2.489	2.488	2.486	2.485	2.483	2.482	2.480	2.478	2.476	2.475	2.473	2.471	2.469
<b>Household Size Growth Rate</b>															
FDEC, December 2019	-0.28	-0.28	-0.28	-0.28	-0.29	-0.29	-0.29	-0.29	-0.29	-0.29	-0.29	-0.29	-0.29	-0.29	-0.29
FDEC, July 2020	-0.22	-0.22	-0.22	-0.22	-0.23	-0.24	-0.25	-0.26	-0.28	-0.28	-0.29	-0.30	-0.30	-0.31	-0.32
<b>Net Migration</b>															
FDEC, December 2019	68.2	67.8	67.4	67.0	66.6	66.2	65.8	65.4	65.0	64.6	64.3	64.0	63.6	63.2	62.9
FDEC, July 2020	64.1	64.4	64.7	64.9	65.1	65.3	65.4	65.5	65.5	65.5	65.5	65.4	65.4	65.3	65.2
<b>Net International Migration</b>															
FDEC, December 2019															
FDEC, July 2020	20.9	20.7	20.5	20.4	20.2	20.1	19.9	19.8	19.7	19.6	19.4	19.3	19.2	19.1	19.1
<b>Births</b>															
FDEC, December 2019	62.2	62.3	62.5	62.6	62.8	62.9	63.1	63.2	63.4	63.5	63.7	63.8	64.0	64.2	64.3
FDEC, July 2020	61.6	61.6	61.7	61.7	61.8	61.8	61.9	61.9	62.0	62.1	62.1	62.2	62.2	62.3	62.3
<b>Deaths</b>															
FDEC, December 2019	63.1	63.5	63.9	64.3	64.8	65.2	65.6	66.0	66.4	66.8	67.2	67.5	67.9	68.2	68.6
FDEC, July 2020	62.3	62.8	63.2	63.6	64.1	64.5	65.0	65.4	65.8	66.2	66.7	67.1	67.5	67.9	68.3
<b>Net Natural Increase</b>															
FDEC, December 2019	-0.9	-1.2	-1.4	-1.7	-2.0	-2.2	-2.5	-2.7	-3.0	-3.2	-3.5	-3.7	-4.0	-4.1	-4.4
FDEC, July 2020	-0.8	-1.2	-1.5	-1.9	-2.3	-2.7	-3.1	-3.4	-3.8	-4.2	-4.5	-4.9	-5.3	-5.6	-6.0

FISCAL YEAR  
FORECAST TABLES

	<u>2000-01</u>	<u>2001-02</u>	<u>2002-03</u>	<u>2003-04</u>	<u>2004-05</u>	<u>2005-06</u>	<u>2006-07</u>	<u>2007-08</u>	<u>2008-09</u>	<u>2009-10</u>	<u>2010-11</u>	<u>2011-12</u>	<u>2012-13</u>	<u>2013-14</u>	<u>2014-15</u>
<b>Population</b>															
FDEC, December 2019	16,228.0	16,551.2	16,892.0	17,273.8	17,677.3	18,062.2	18,378.2	18,578.9	18,671.4	18,770.4	18,878.6	19,029.3	19,212.3	19,441.8	19,736.1
FDEC, July 2020	16,228.0	16,551.2	16,892.0	17,273.8	17,677.3	18,062.2	18,378.2	18,578.9	18,671.4	18,770.4	18,878.6	19,029.3	19,212.3	19,441.8	19,736.1
<b>Growth Rate</b>															
FDEC, December 2019	2.18	1.99	2.06	2.26	2.34	2.18	1.75	1.09	0.50	0.53	0.58	0.80	0.96	1.19	1.51
FDEC, July 2020	2.18	1.99	2.06	2.26	2.34	2.18	1.75	1.09	0.50	0.53	0.58	0.80	0.96	1.19	1.51
<b>Net Change in Population</b>															
FDEC, December 2019	346.4	323.2	340.9	381.8	403.5	384.9	316.0	200.7	92.5	99.0	108.2	150.7	183.0	229.5	294.3
FDEC, July 2020	346.4	323.2	340.9	381.8	403.5	384.9	316.0	200.7	92.5	99.0	108.2	150.7	183.0	229.5	294.3
<b>Households</b>															
FDEC, December 2019	6,431.8	6,554.7	6,685.7	6,833.2	6,990.5	7,142.1	7,266.1	7,341.9	7,374.2	7,410.1	7,447.5	7,506.8	7,582.7	7,680.4	7,806.9
FDEC, July 2020	6,431.8	6,554.7	6,685.7	6,833.2	6,990.5	7,142.1	7,266.1	7,341.9	7,374.2	7,410.1	7,447.5	7,506.8	7,582.7	7,680.4	7,806.8
<b>Growth Rate</b>															
FDEC, December 2019	2.14	1.91	2.00	2.21	2.30	2.17	1.74	1.04	0.44	0.49	0.50	0.80	1.01	1.29	1.65
FDEC, July 2020	2.14	1.91	2.00	2.21	2.30	2.17	1.74	1.04	0.44	0.49	0.50	0.80	1.01	1.29	1.65
<b>Net Change in Households</b>															
FDEC, December 2019	134.6	122.9	131.0	147.5	157.3	151.7	124.0	75.7	32.3	35.9	37.4	59.3	75.9	97.7	126.5
FDEC, July 2020	134.6	122.9	131.0	147.5	157.3	151.7	124.0	75.7	32.3	35.9	37.4	59.3	75.9	97.7	126.5
<b>Household Size</b>															
FDEC, December 2019	2.523	2.525	2.527	2.528	2.529	2.529	2.529	2.531	2.532	2.533	2.535	2.535	2.534	2.531	2.528
FDEC, July 2020	2.523	2.525	2.527	2.528	2.529	2.529	2.529	2.531	2.532	2.533	2.535	2.535	2.534	2.531	2.528
<b>Growth Rate</b>															
FDEC, December 2019	0.04	0.08	0.06	0.05	0.03	0.01	0.01	0.05	0.06	0.04	0.07	0.00	-0.05	-0.09	-0.13
FDEC, July 2020	0.04	0.08	0.06	0.05	0.03	0.01	0.01	0.05	0.06	0.04	0.07	0.00	-0.05	-0.09	-0.13
<b>Net Migration</b>															
FDEC, December 2019	306.0	285.5	300.4	335.0	351.1	322.9	245.0	133.7	36.3	52.7	67.4	112.0	147.0	194.4	260.2
FDEC, July 2020	306.0	285.5	300.4	335.0	351.1	322.9	245.0	133.7	36.3	52.7	67.4	112.0	147.0	194.4	260.2
<b>Net International Migration</b>															
FDEC, December 2019															
FDEC, July 2020	99.3	97.0	90.3	88.9	92.4	95.0	92.0	78.6	76.0	82.7	82.4	97.2	126.7	148.0	153.3
<b>Births</b>															
FDEC, December 2019	205.4	205.4	208.5	215.0	221.8	232.1	239.3	236.0	226.4	217.4	213.5	212.9	213.8	217.4	222.3
FDEC, July 2020	205.4	205.4	208.5	215.0	221.8	232.1	239.3	236.0	226.4	217.4	213.5	212.9	213.8	217.4	222.3
<b>Deaths</b>															
FDEC, December 2019	165.0	167.7	168.1	168.3	169.4	170.1	168.3	169.0	170.2	171.1	172.7	174.1	177.8	182.4	188.2
FDEC, July 2020	165.0	167.7	168.1	168.3	169.4	170.1	168.3	169.0	170.2	171.1	172.7	174.1	177.8	182.4	188.2
<b>Net Natural Increase</b>															
FDEC, December 2019	40.3	37.7	40.4	46.7	52.4	62.0	71.0	67.0	56.2	46.3	40.8	38.8	36.0	35.0	34.1
FDEC, July 2020	40.3	37.7	40.4	46.7	52.4	62.0	71.0	67.0	56.2	46.3	40.8	38.8	36.0	35.0	34.1

FISCAL YEAR  
FORECAST TABLES

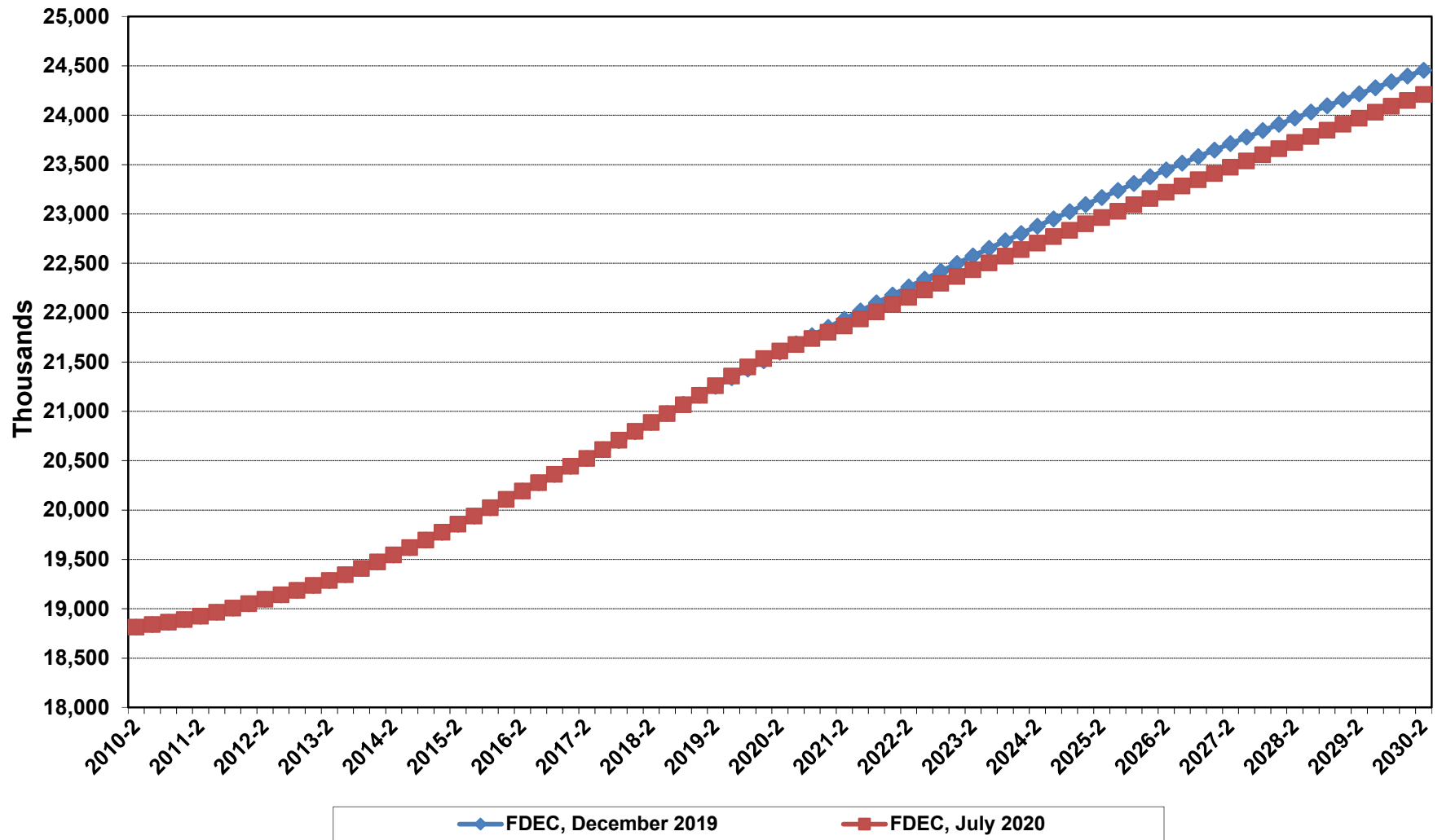
	<u>2015-16</u>	<u>2016-17</u>	<u>2017-18</u>	<u>2018-19</u>	<u>2019-20</u>	<u>2020-21</u>	<u>2021-22</u>	<u>2022-23</u>	<u>2023-24</u>	<u>2024-25</u>	<u>2025-26</u>	<u>2026-27</u>	<u>2027-28</u>	<u>2028-29</u>	<u>2029-30</u>
<b>Population</b>															
FDEC, December 2019	20,064.5	20,401.2	20,749.1	21,116.8	21,470.2	21,808.6	22,138.3	22,457.5	22,764.0	23,058.4	23,341.8	23,614.0	23,875.3	24,125.9	24,366.9
FDEC, July 2020	20,064.5	20,401.1	20,749.6	21,115.3	21,487.6	21,769.6	22,044.7	22,331.4	22,603.9	22,866.4	23,123.1	23,377.4	23,629.2	23,877.3	24,119.4
<b>Growth Rate</b>															
FDEC, December 2019	1.66	1.68	1.71	1.77	1.67	1.58	1.51	1.44	1.36	1.29	1.23	1.17	1.11	1.05	1.00
FDEC, July 2020	1.66	1.68	1.71	1.76	1.76	1.31	1.26	1.30	1.22	1.16	1.12	1.10	1.08	1.05	1.01
<b>Net Change in Population</b>															
FDEC, December 2019	328.3	336.7	347.9	367.6	353.4	338.4	329.7	319.2	306.5	294.5	283.4	272.2	261.2	250.6	241.0
FDEC, July 2020	328.4	336.6	348.5	365.7	372.3	282.0	275.1	286.7	272.5	262.5	256.6	254.3	251.8	248.0	242.1
<b>Households</b>															
FDEC, December 2019	7,947.1	8,090.2	8,233.7	8,388.4	8,540.1	8,686.4	8,830.6	8,972.5	9,111.6	9,249.3	9,386.0	9,521.1	9,653.8	9,783.4	9,909.8
FDEC, July 2020	7,947.1	8,090.1	8,233.9	8,387.7	8,544.7	8,659.1	8,781.4	8,908.3	9,027.0	9,144.0	9,262.1	9,383.5	9,506.1	9,631.3	9,758.0
<b>Growth Rate</b>															
FDEC, December 2019	1.80	1.80	1.77	1.88	1.81	1.71	1.66	1.61	1.55	1.51	1.48	1.44	1.39	1.34	1.29
FDEC, July 2020	1.80	1.80	1.78	1.87	1.87	1.34	1.41	1.44	1.33	1.30	1.29	1.31	1.31	1.32	1.32
<b>Net Change in Households</b>															
FDEC, December 2019	140.2	143.1	143.5	154.7	151.7	146.4	144.1	141.9	139.1	137.7	136.7	135.1	132.6	129.6	126.3
FDEC, July 2020	140.2	143.0	143.8	153.9	157.0	114.4	122.4	126.9	118.8	116.9	118.1	121.4	122.7	125.1	126.7
<b>Household Size</b>															
FDEC, December 2019	2.525	2.522	2.520	2.517	2.514	2.511	2.507	2.503	2.498	2.493	2.487	2.480	2.473	2.466	2.459
FDEC, July 2020	2.525	2.522	2.520	2.517	2.515	2.514	2.510	2.507	2.504	2.501	2.497	2.491	2.486	2.479	2.472
<b>Growth Rate</b>															
FDEC, December 2019	-0.13	-0.12	-0.07	-0.10	-0.13	-0.14	-0.15	-0.16	-0.18	-0.21	-0.25	-0.27	-0.28	-0.29	-0.29
FDEC, July 2020	-0.13	-0.12	-0.07	-0.10	-0.11	-0.03	-0.15	-0.14	-0.11	-0.13	-0.17	-0.21	-0.23	-0.26	-0.30
<b>Net Migration</b>															
FDEC, December 2019	297.7	312.8	330.1	352.9	341.0	328.5	321.8	312.8	301.5	291.4	283.5	276.3	269.6	263.1	257.1
FDEC, July 2020	297.8	312.6	330.6	351.1	362.5	273.2	264.9	278.0	264.9	256.6	254.6	258.2	261.8	264.0	263.8
<b>Net International Migration</b>															
FDEC, December 2019															
FDEC, July 2020	171.2	175.0	163.5	144.3	95.1	74.7	80.7	85.8	92.7	89.9	86.3	83.2	80.6	78.5	76.8
<b>Births</b>															
FDEC, December 2019	225.0	224.5	222.3	222.2	225.2	228.8	232.5	236.1	239.6	243.1	246.3	249.1	251.5	253.8	256.2
FDEC, July 2020	225.0	224.5	222.5	220.4	221.3	225.5	229.6	233.6	238.1	242.2	245.1	246.3	247.2	248.1	249.0
<b>Deaths</b>															
FDEC, December 2019	194.4	200.5	204.5	207.5	212.8	218.9	224.6	229.6	234.7	240.0	246.4	253.2	259.8	266.3	272.3
FDEC, July 2020	194.4	200.5	204.7	205.9	211.5	216.8	219.4	225.0	230.4	236.3	243.0	250.2	257.2	264.1	270.8
<b>Net Natural Increase</b>															
FDEC, December 2019	30.6	24.0	17.8	14.7	12.4	9.9	7.9	6.4	5.0	3.0	-0.1	-4.1	-8.4	-12.5	-16.1
FDEC, July 2020	30.6	24.0	17.8	14.6	9.8	8.8	10.3	8.6	7.7	5.9	2.0	-3.9	-10.0	-16.0	-21.7

# **Florida Demographic Estimating Conference**

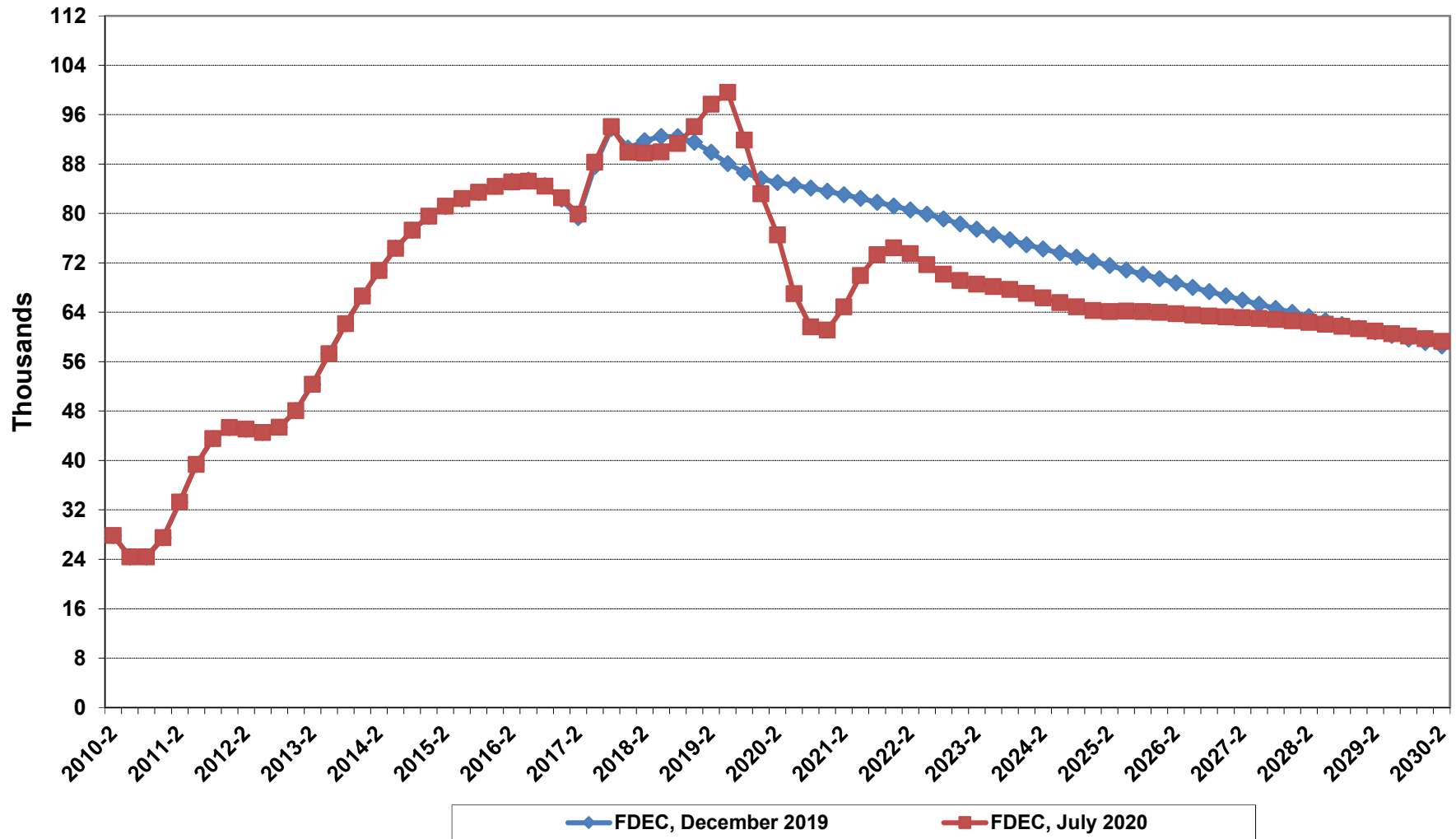
**Charts**  
Conference Packet

July 13, 2020

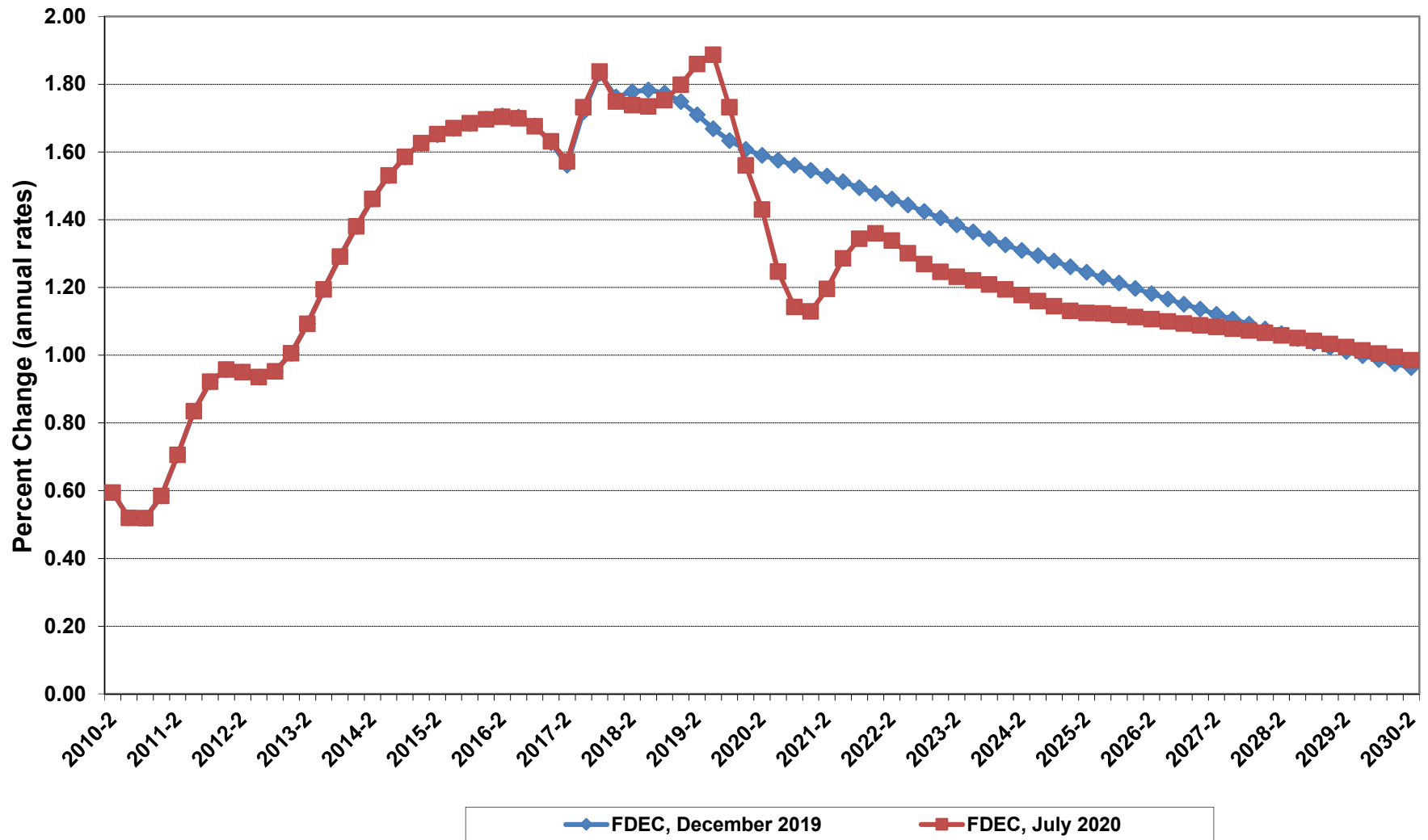
# Florida Resident Population



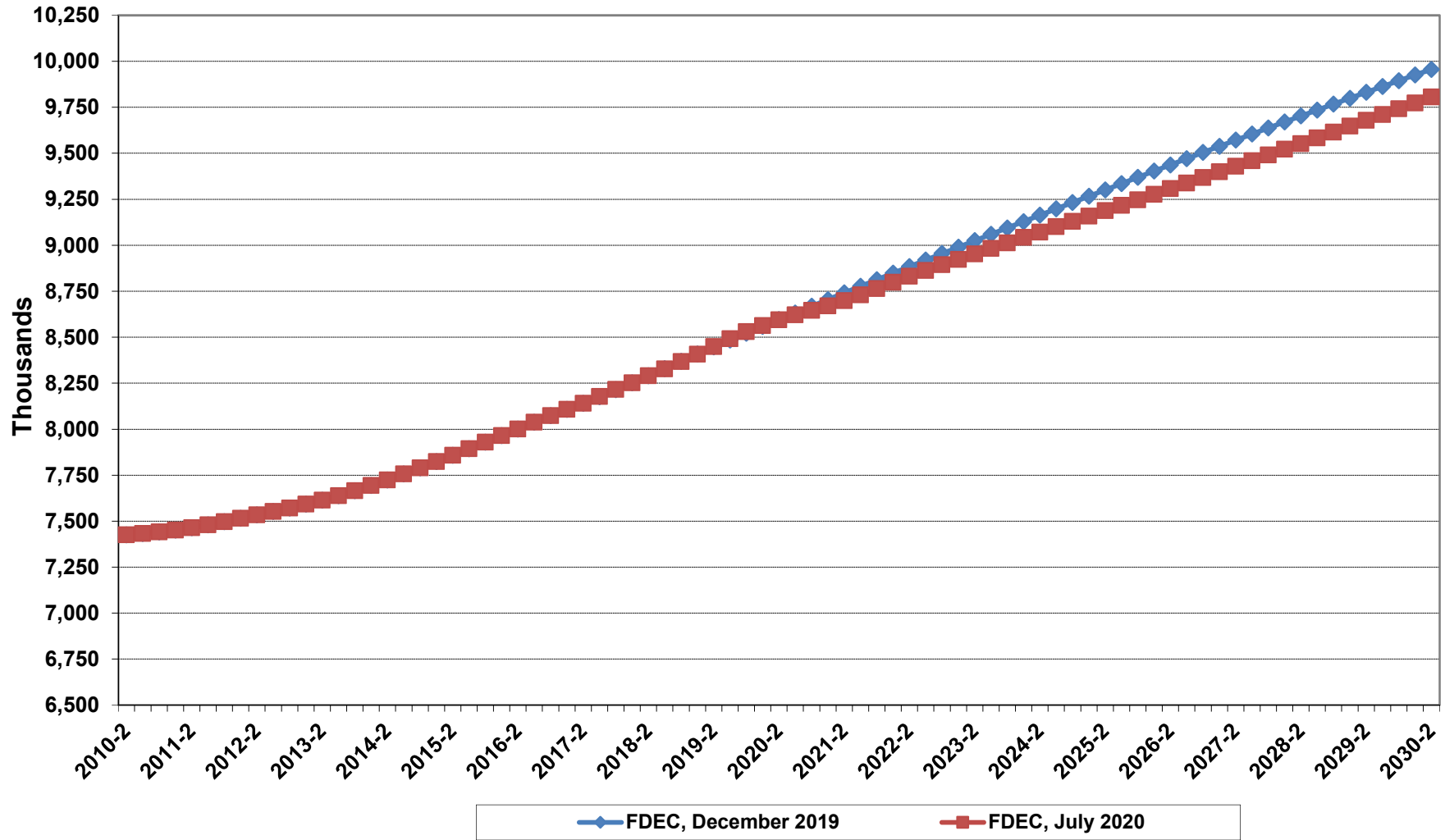
# Net Change In Florida Resident Population



# Growth In Florida Resident Population

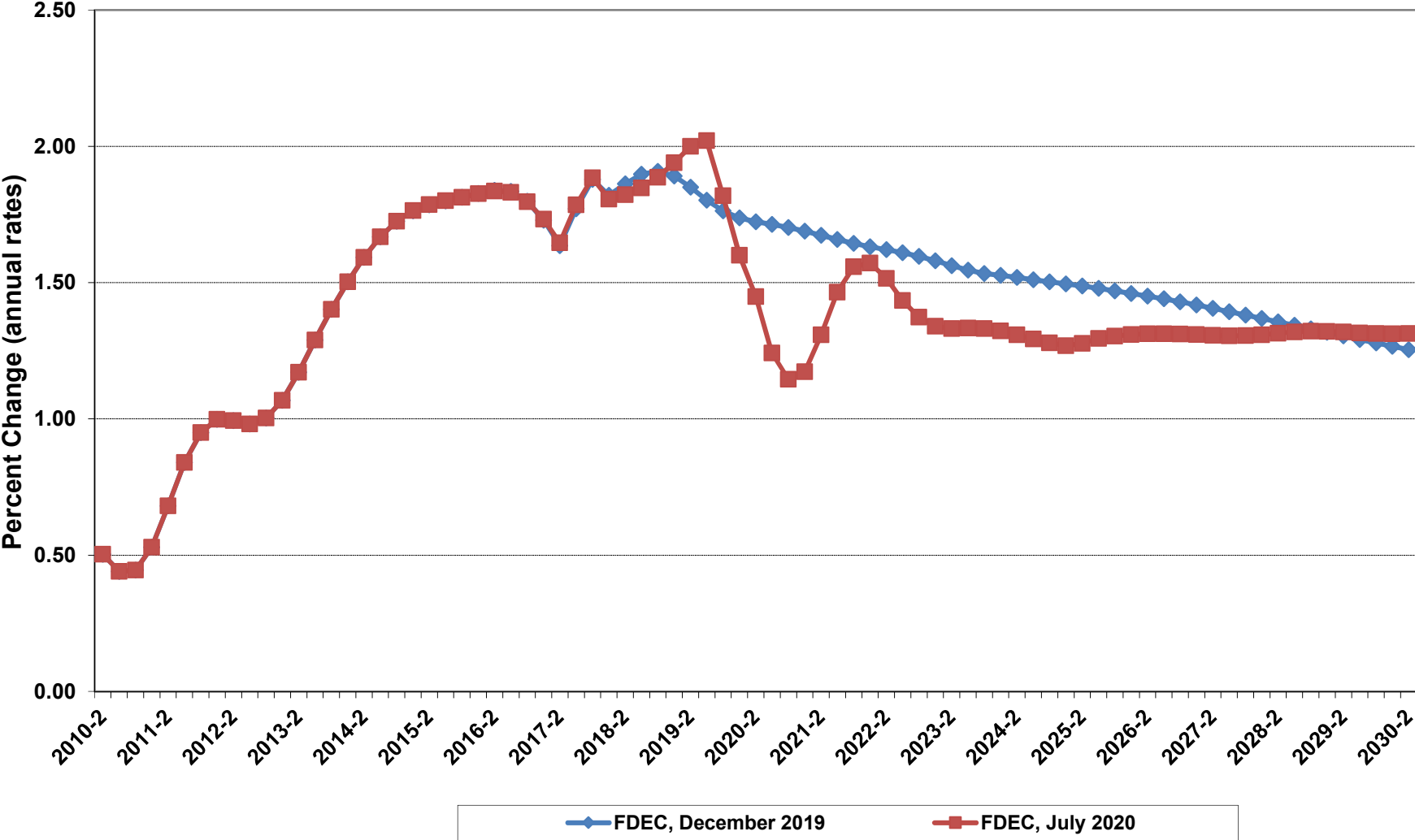


# Florida Resident Households

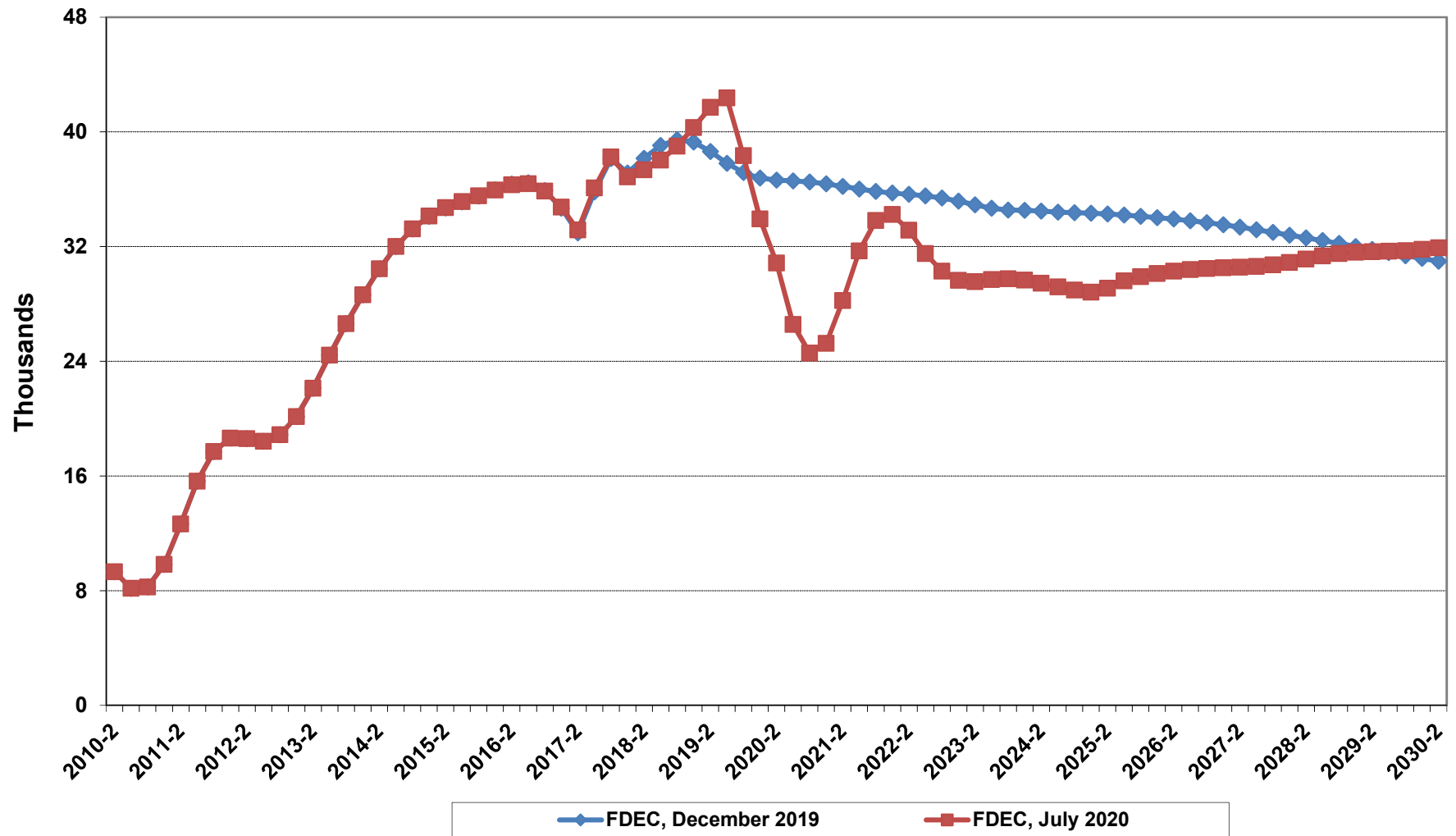




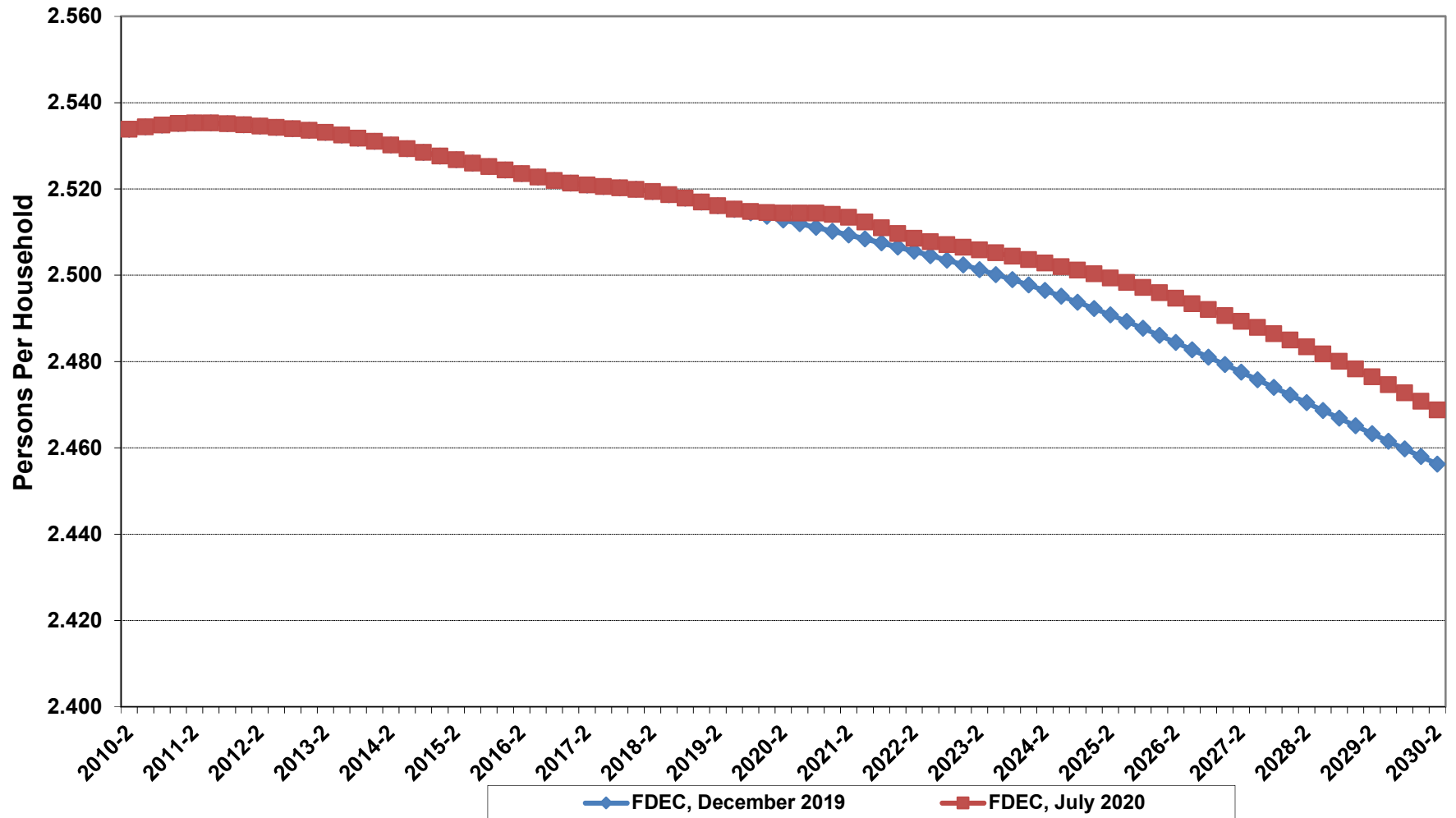
# Growth In Florida Resident Households



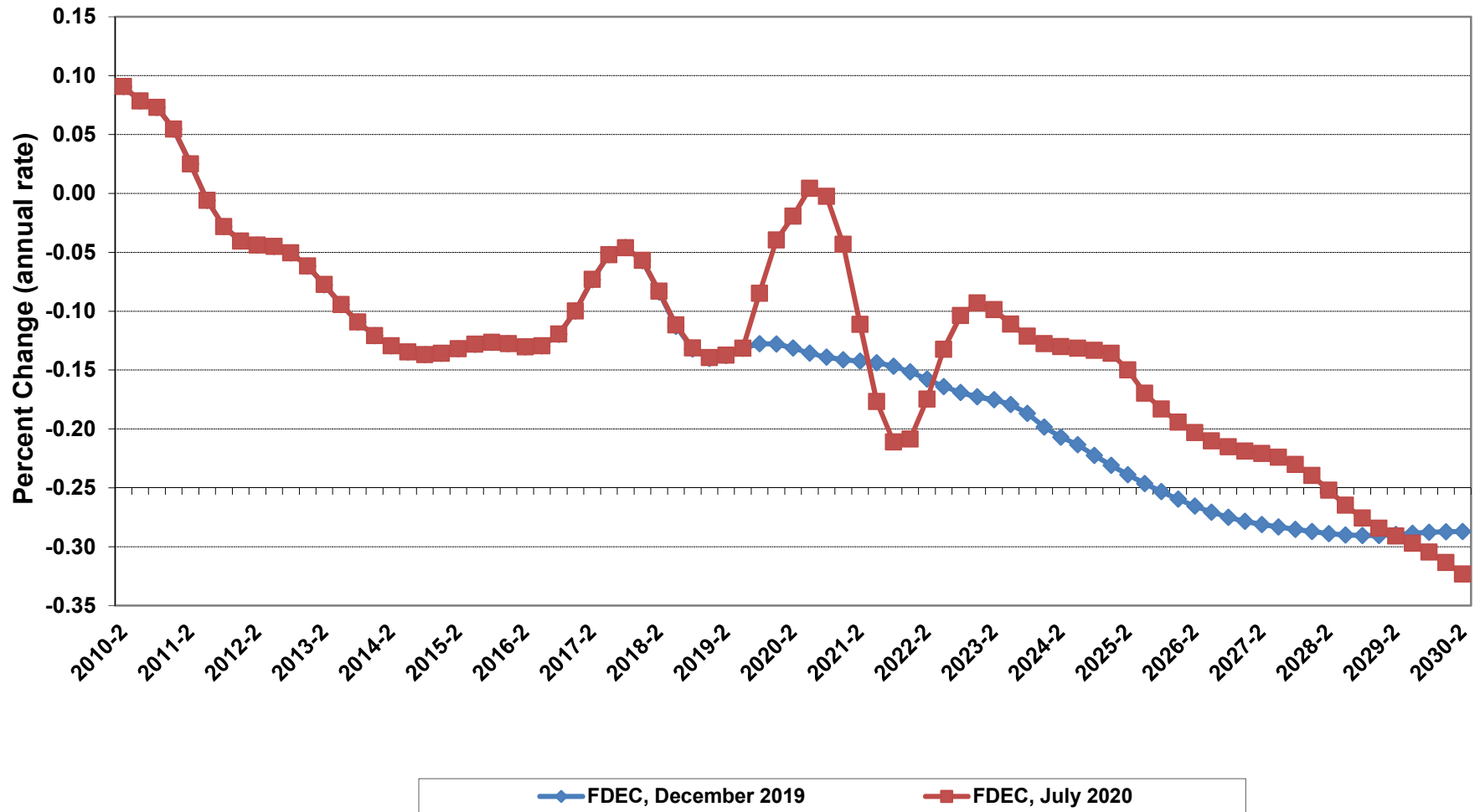
# Net Change In Florida Resident Households



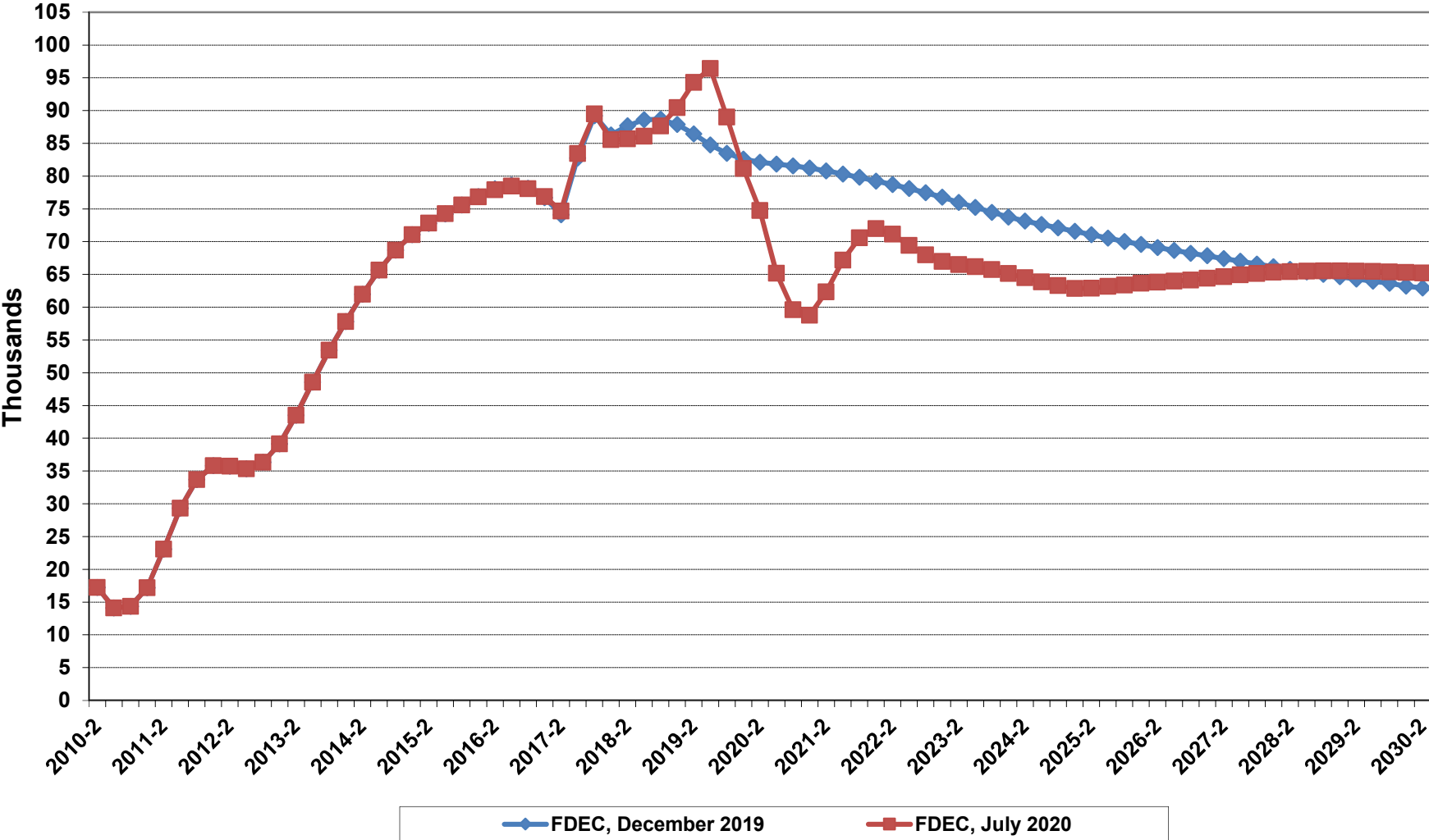
# Florida Average Household Size



# Growth In Florida Household Size



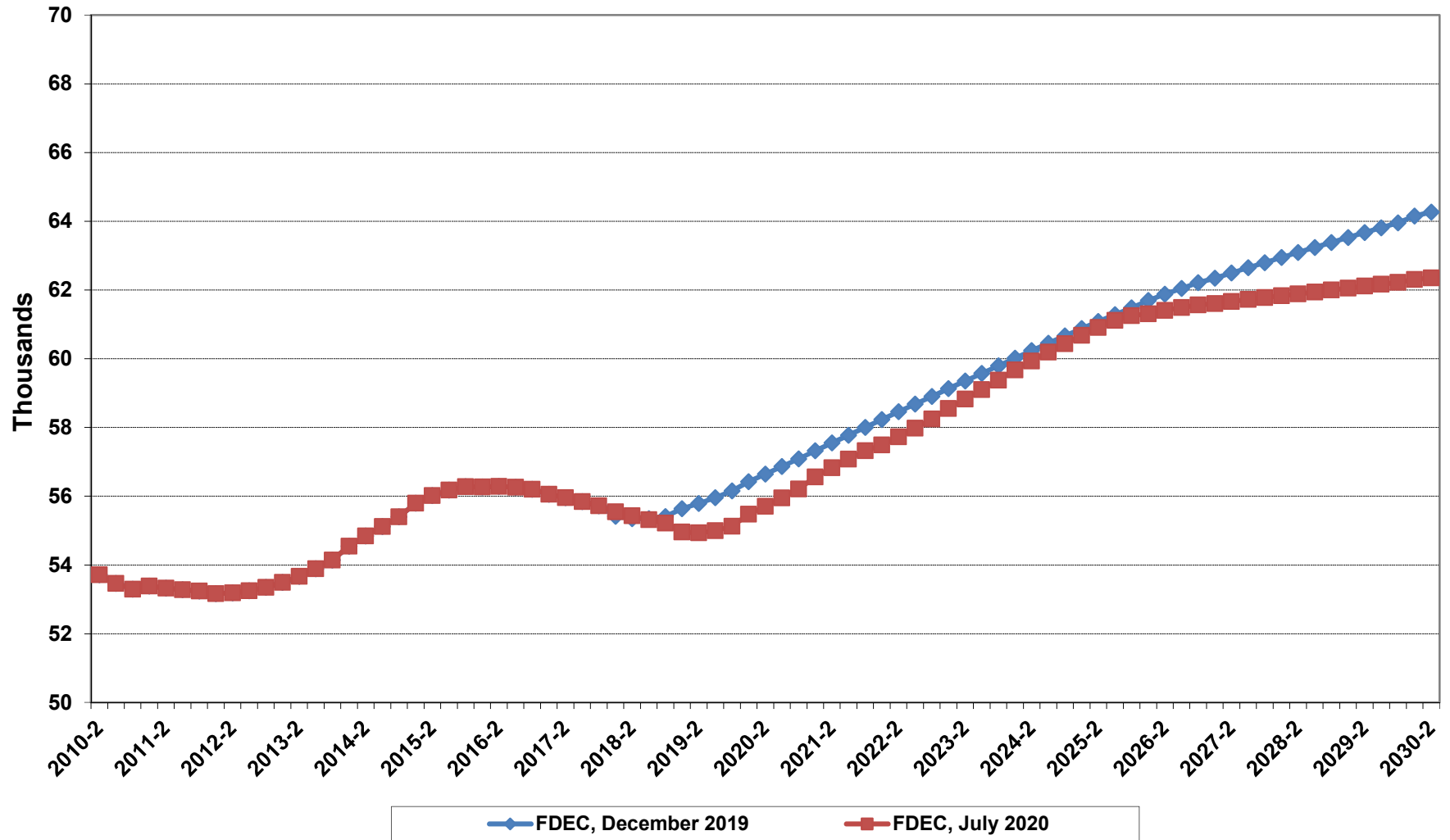
# Florida Net Migration



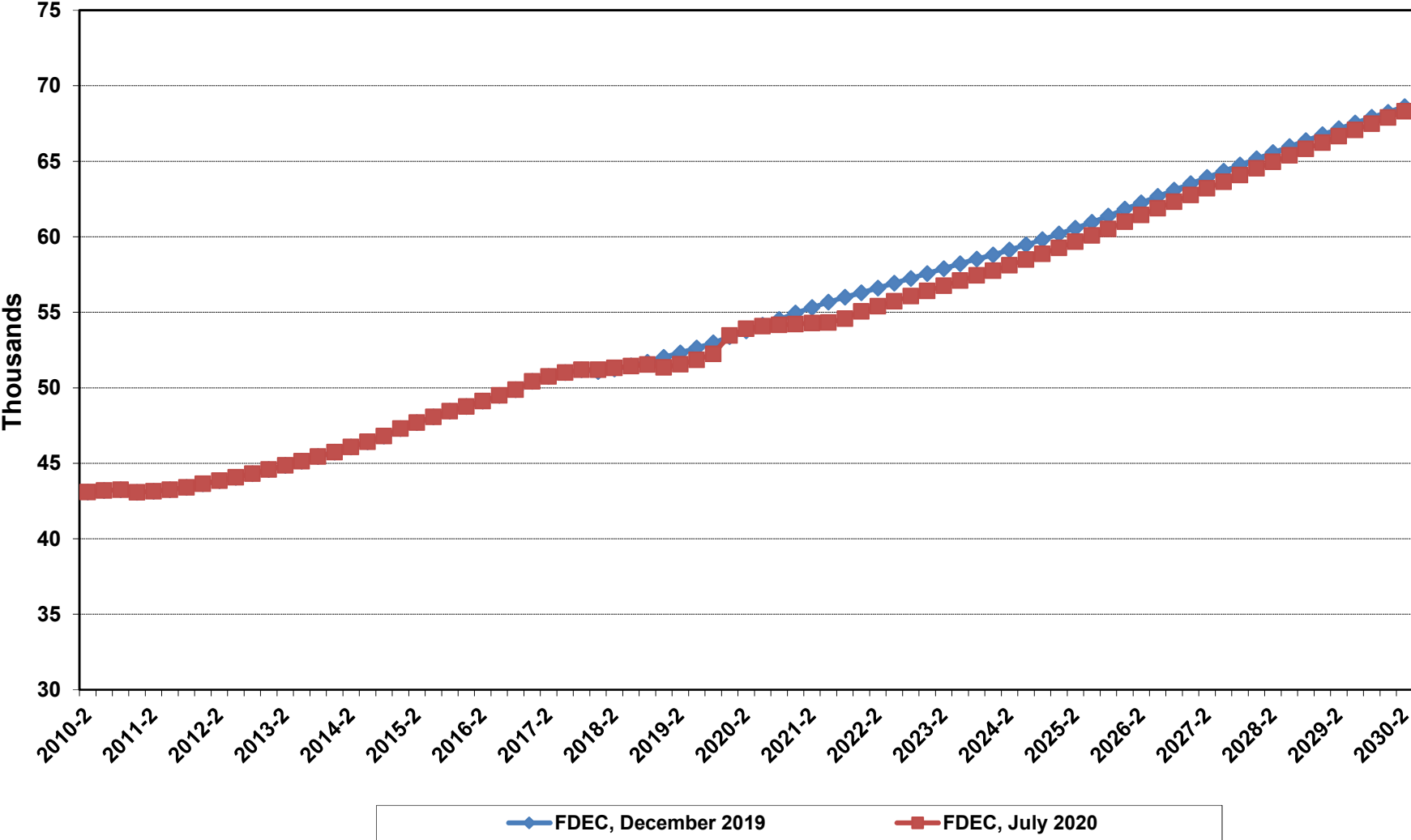
# Florida Net International Migration



# Florida Resident Births

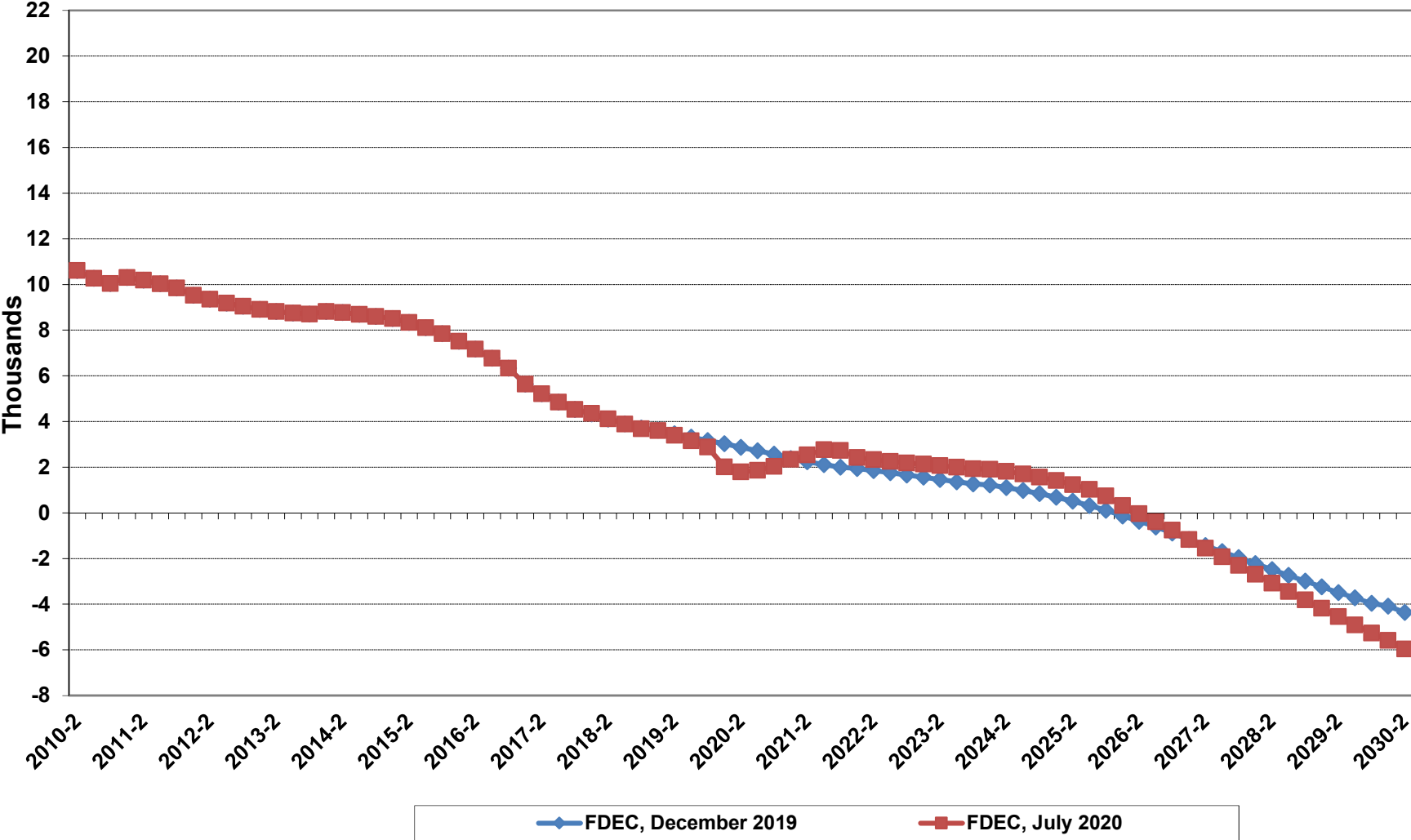


# Florida Resident Deaths

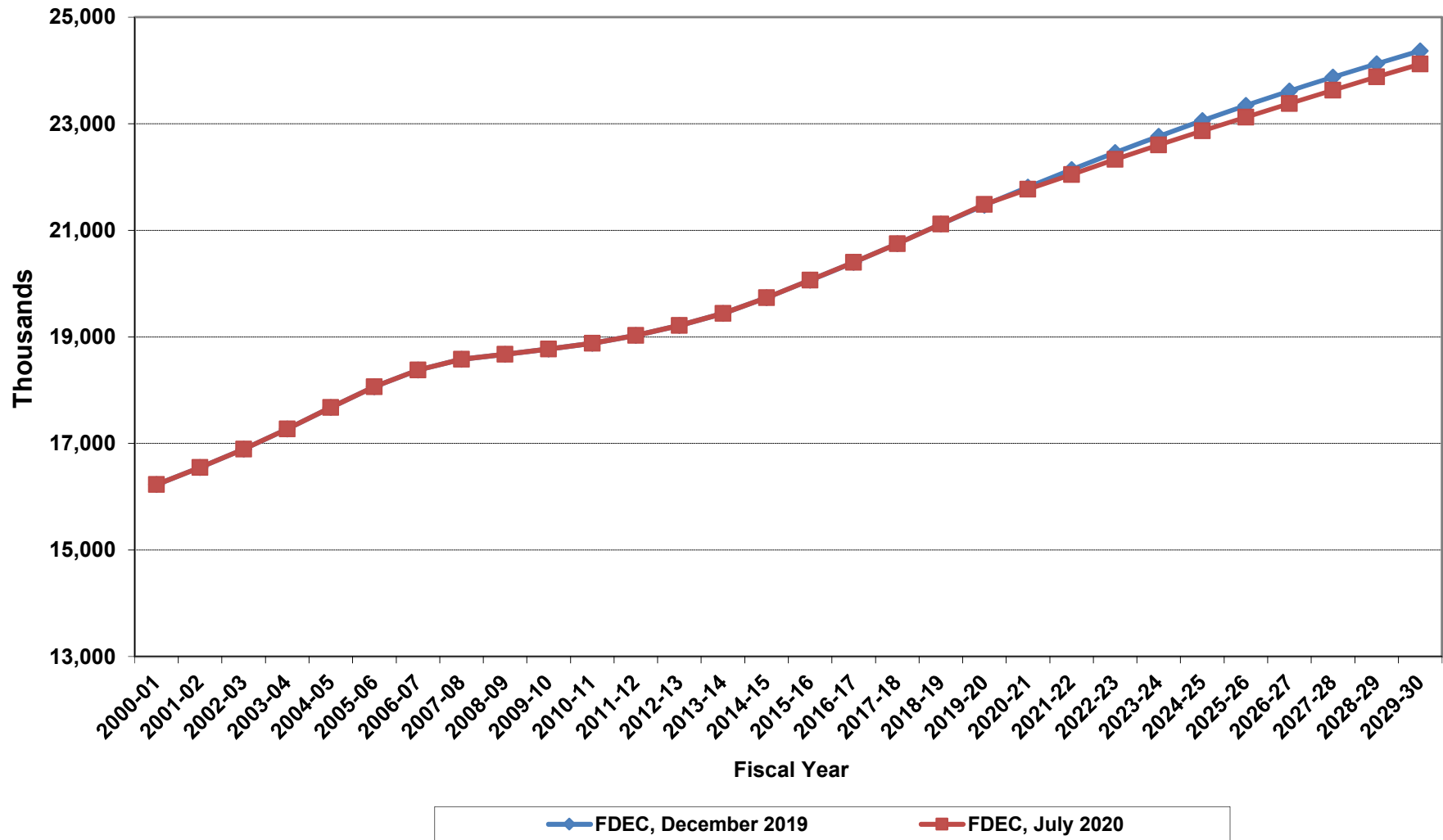




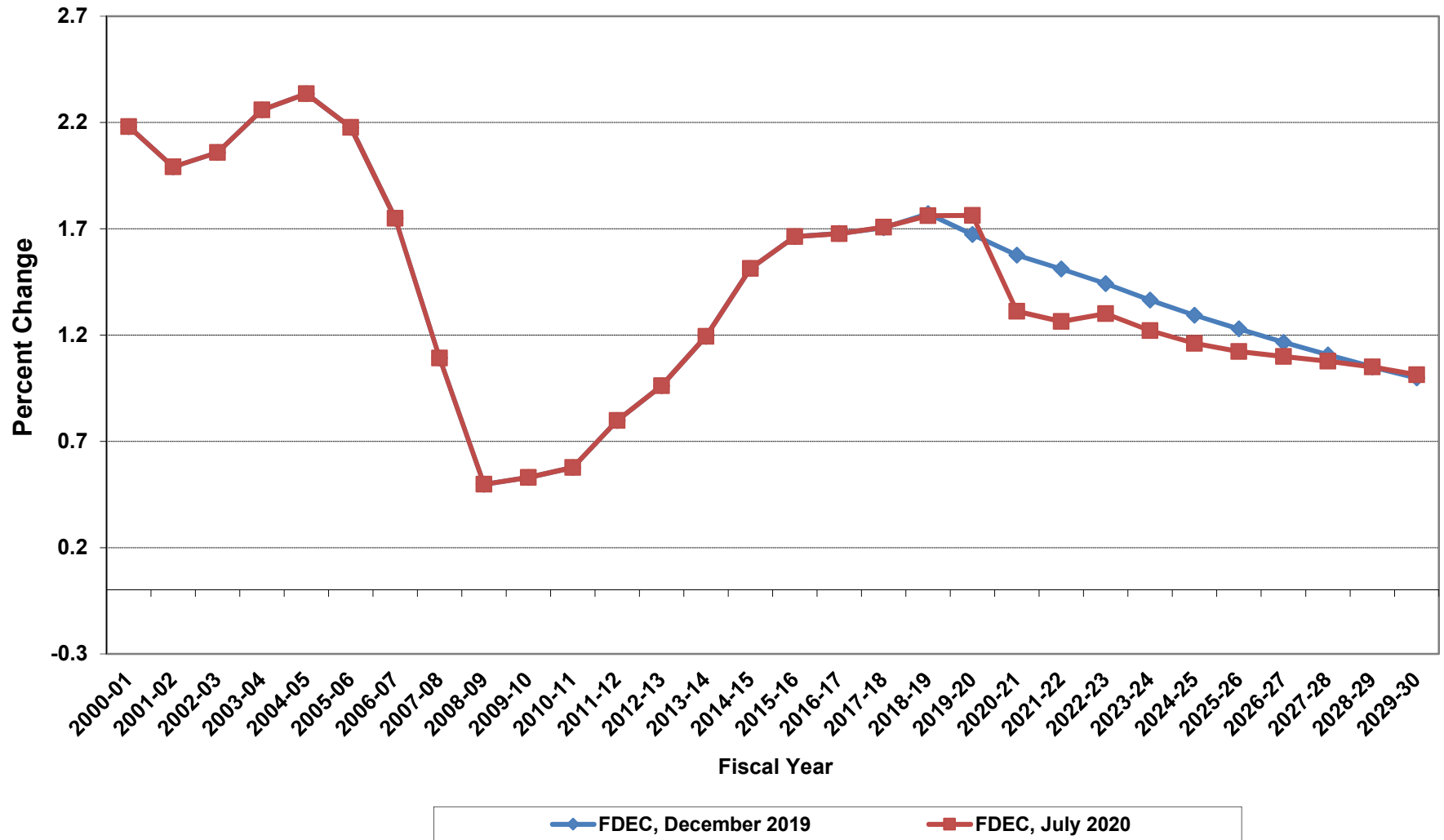
# Florida Net Natural Increase



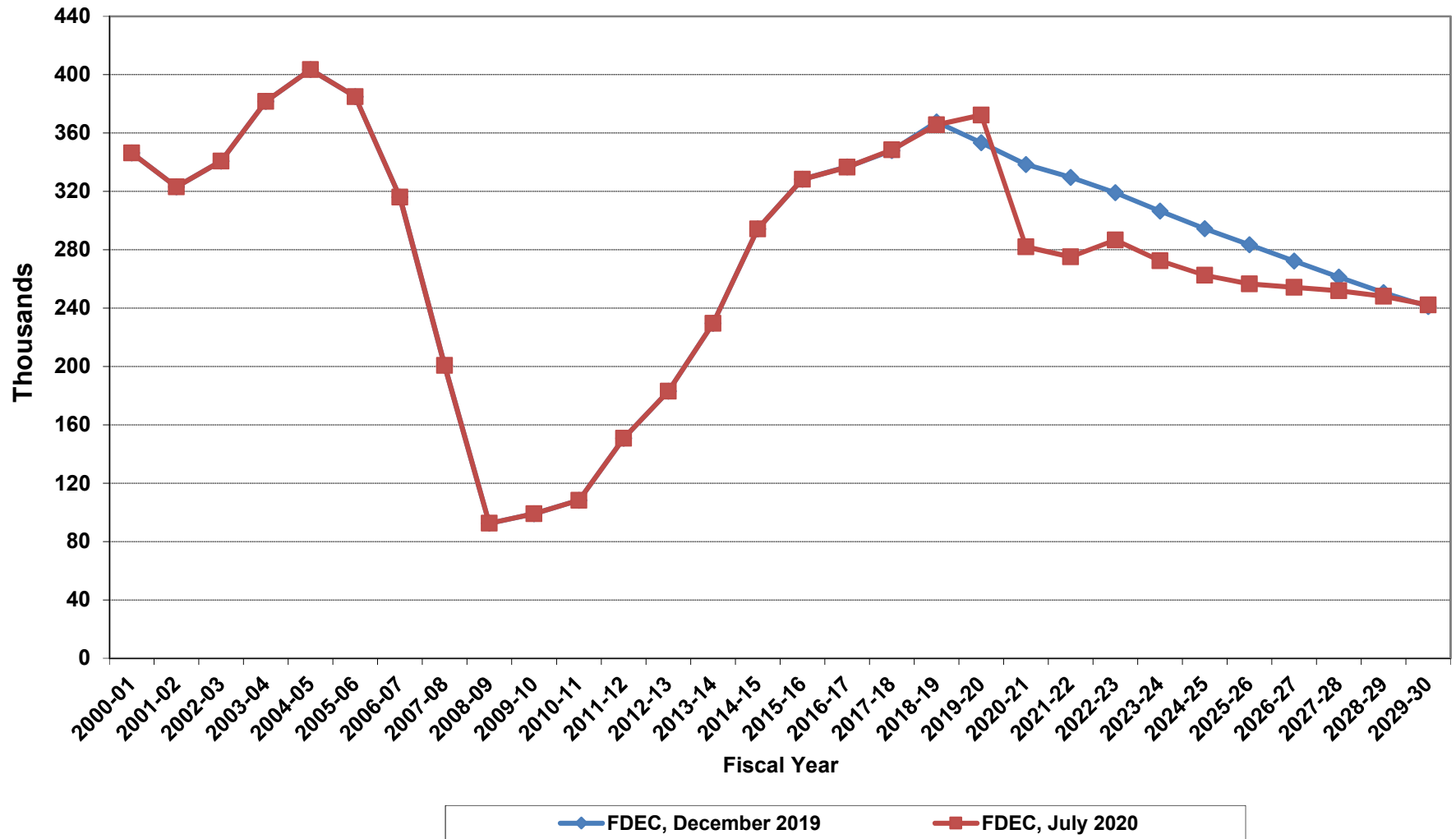
# Florida Resident Population



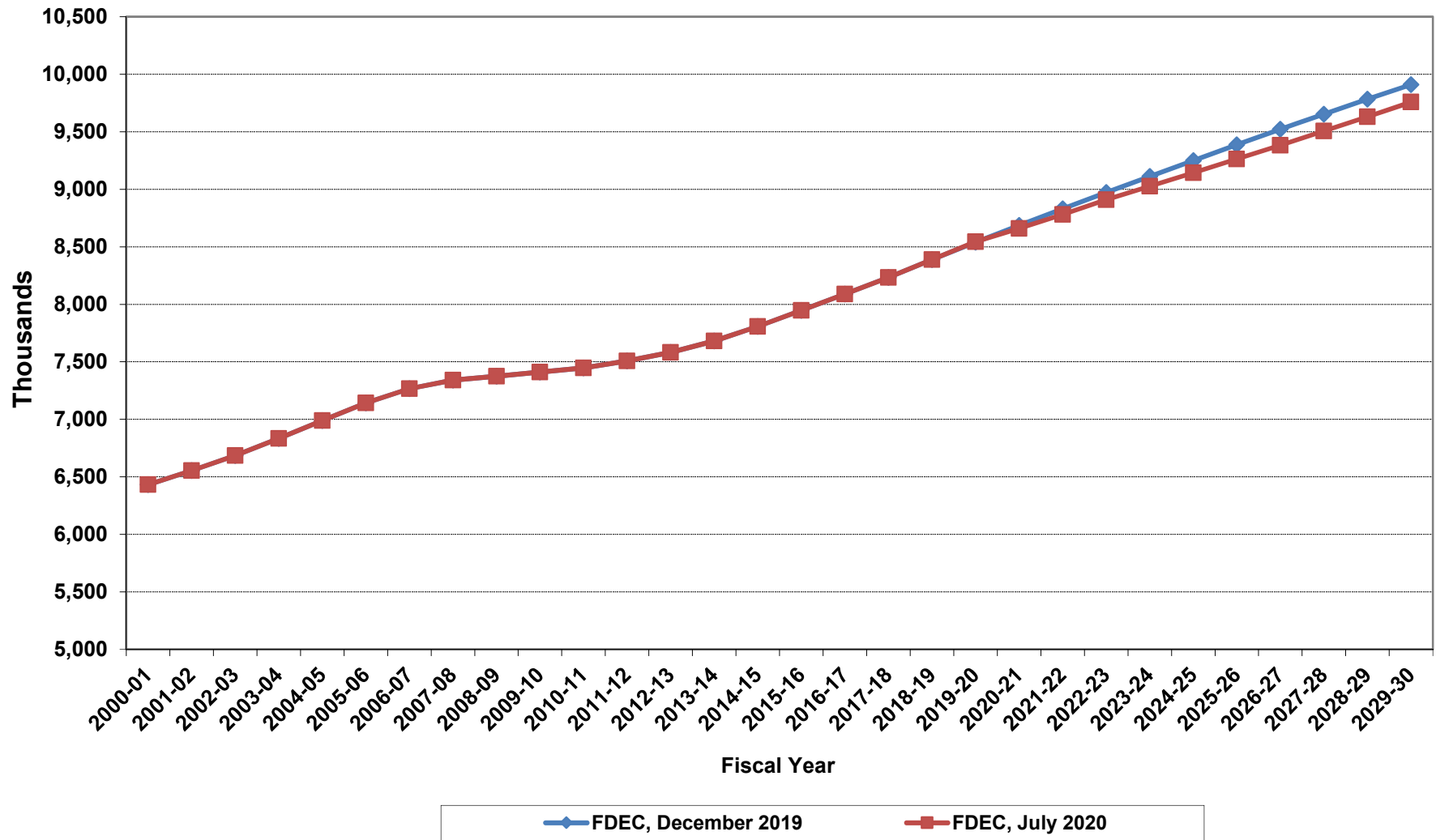
# Growth In Florida Resident Population



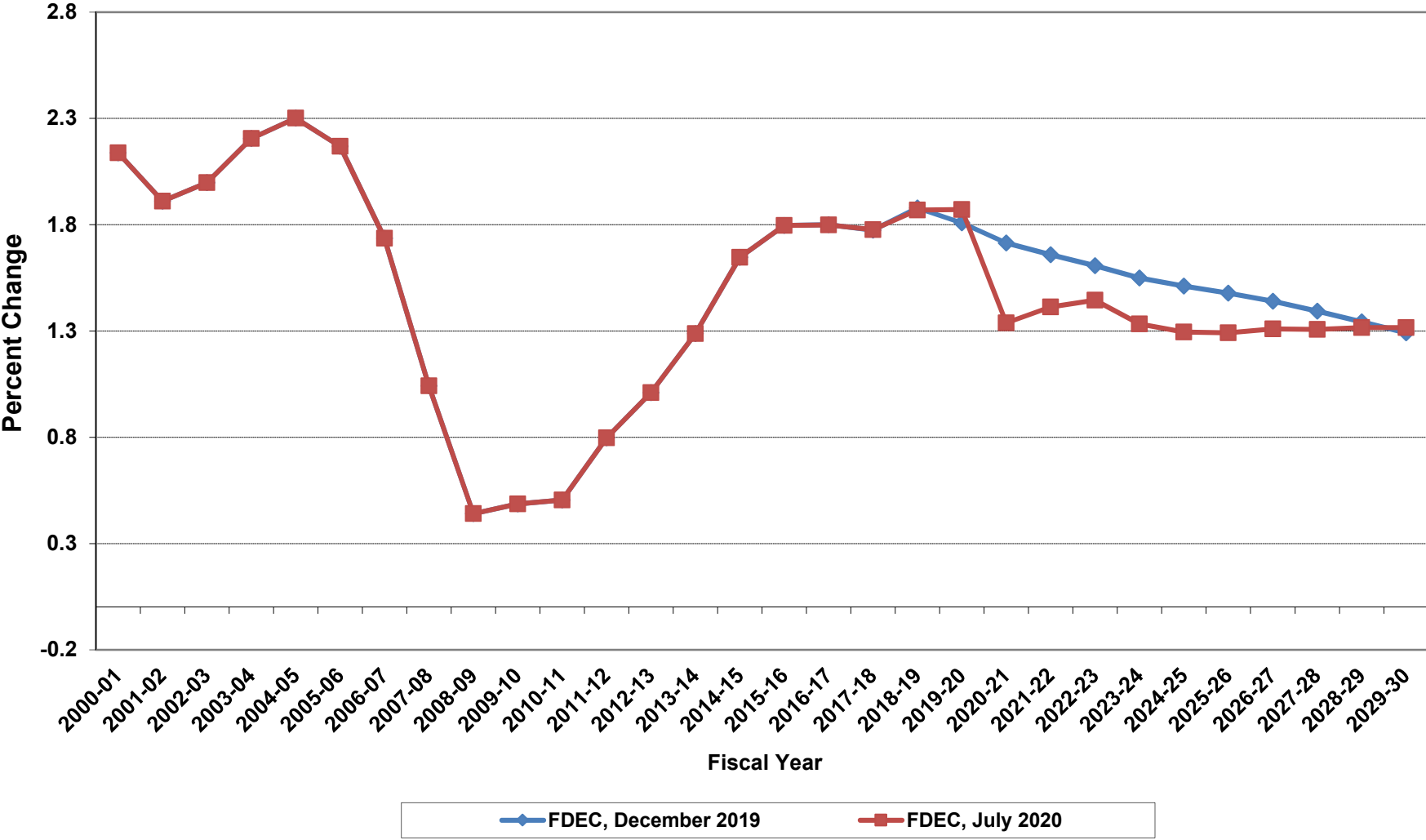
# Net Change In Florida Resident Population



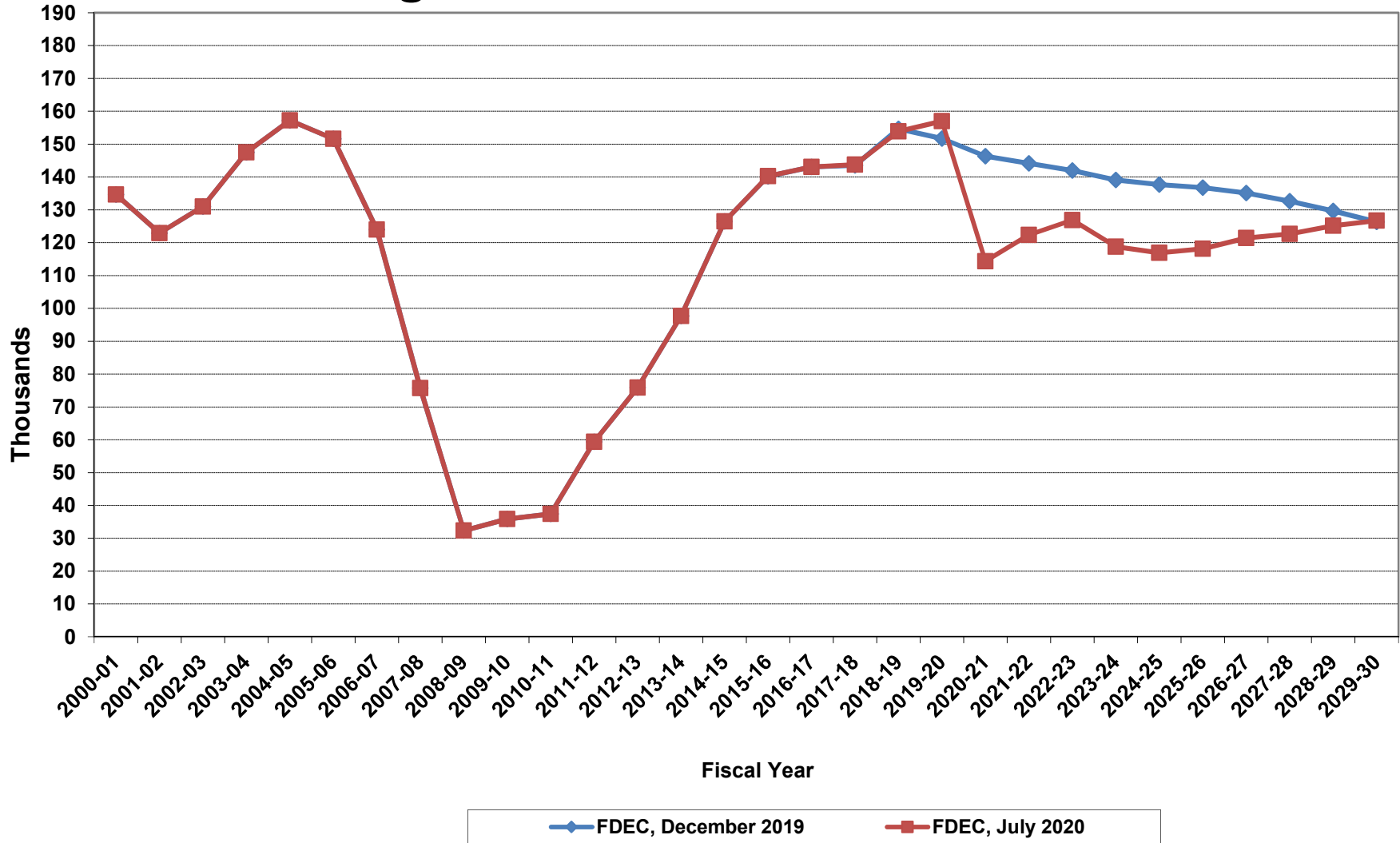
# Florida Resident Households



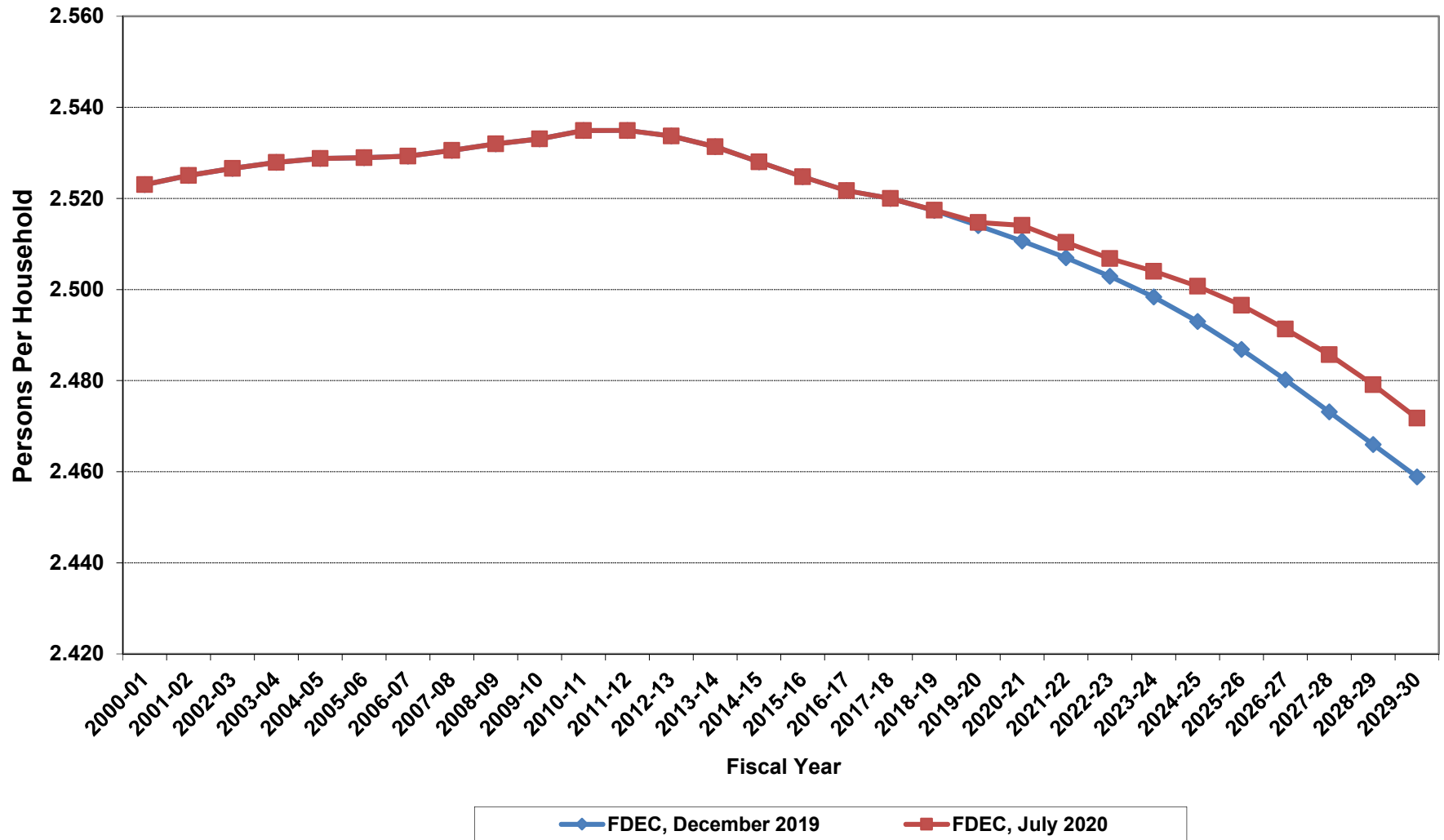
# Growth In Florida Resident Households



# Net Change In Florida Resident Households

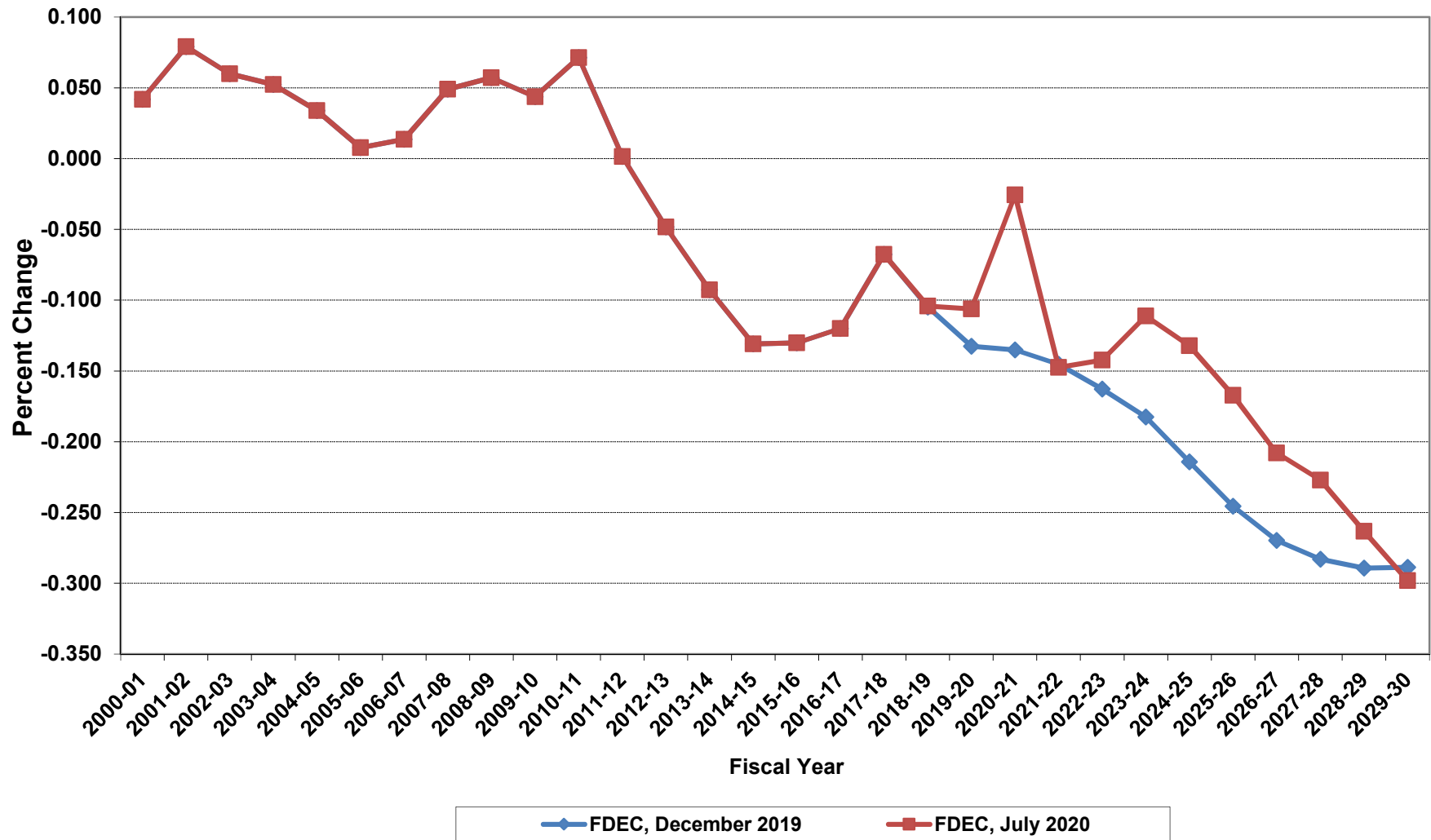


# Average Florida Household Size

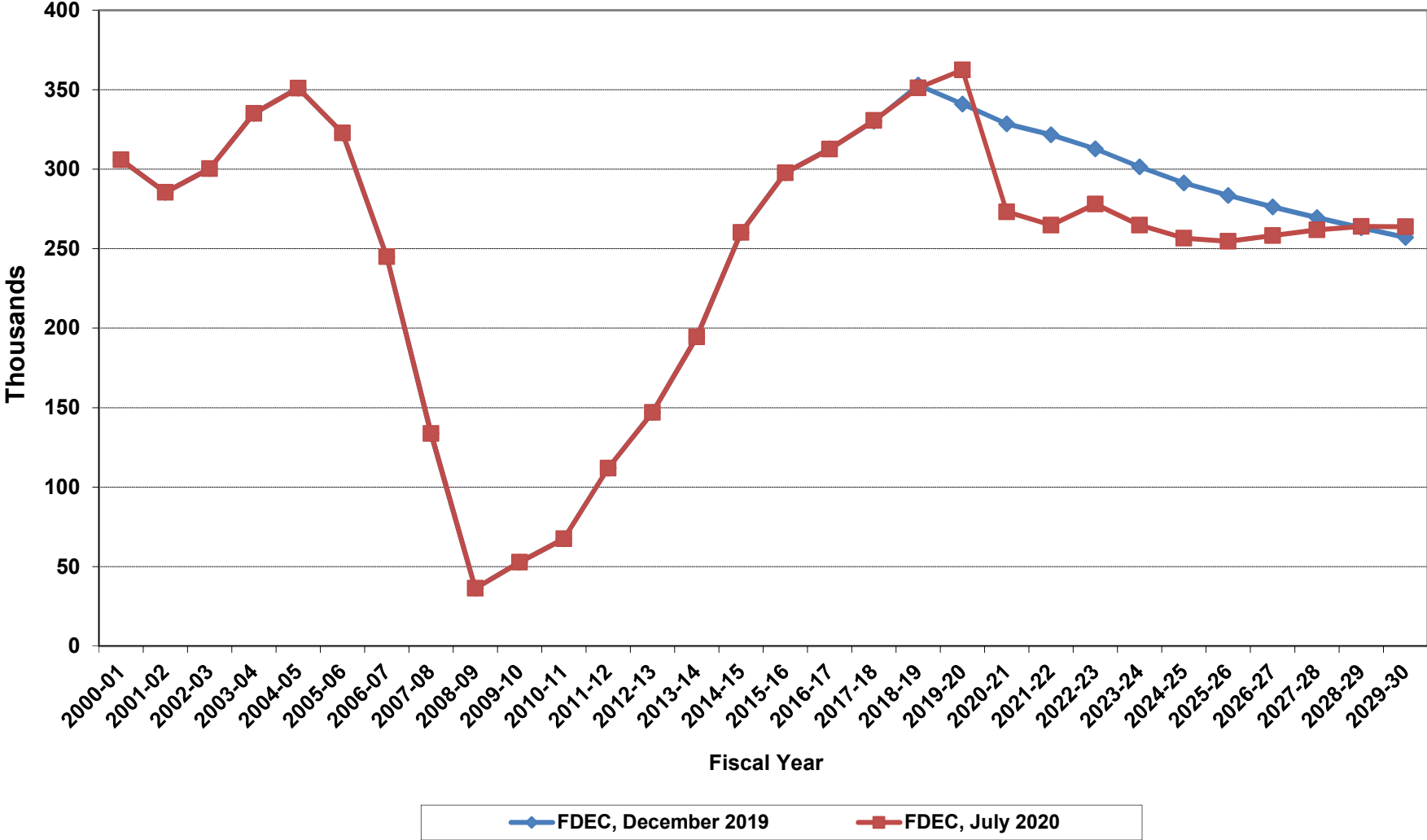




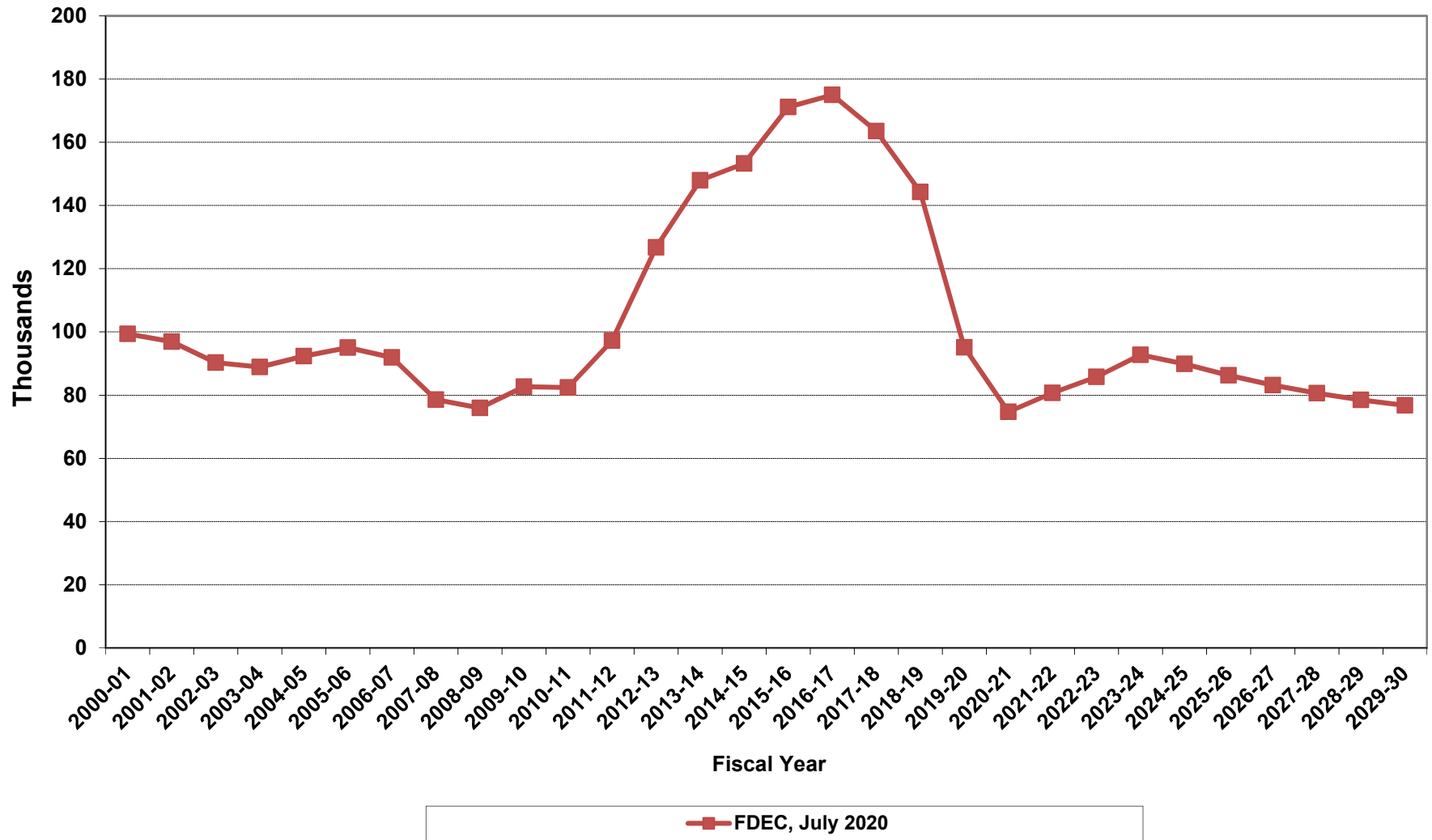
# Growth In Average Florida Household Size



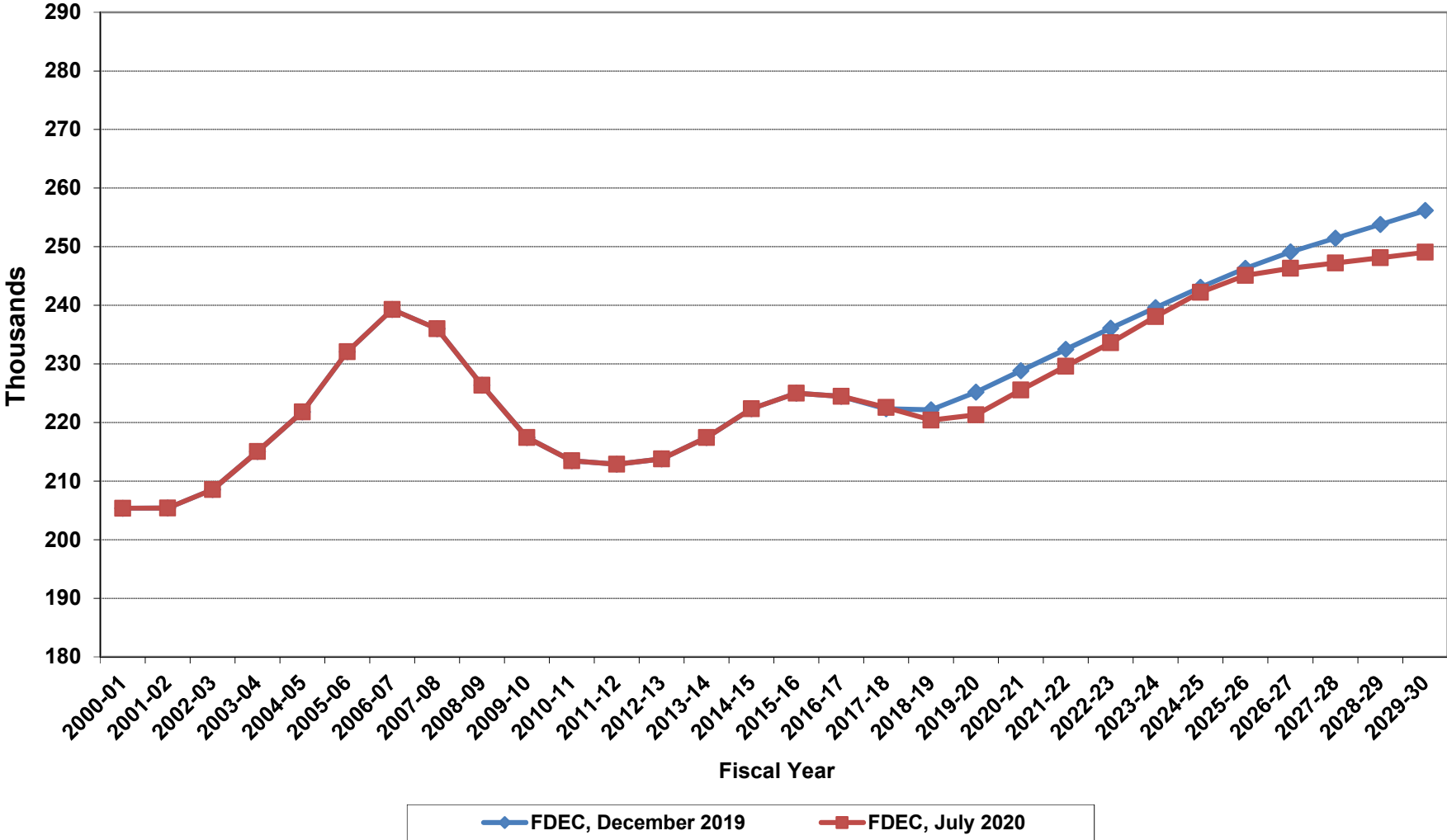
# Florida Net Migration



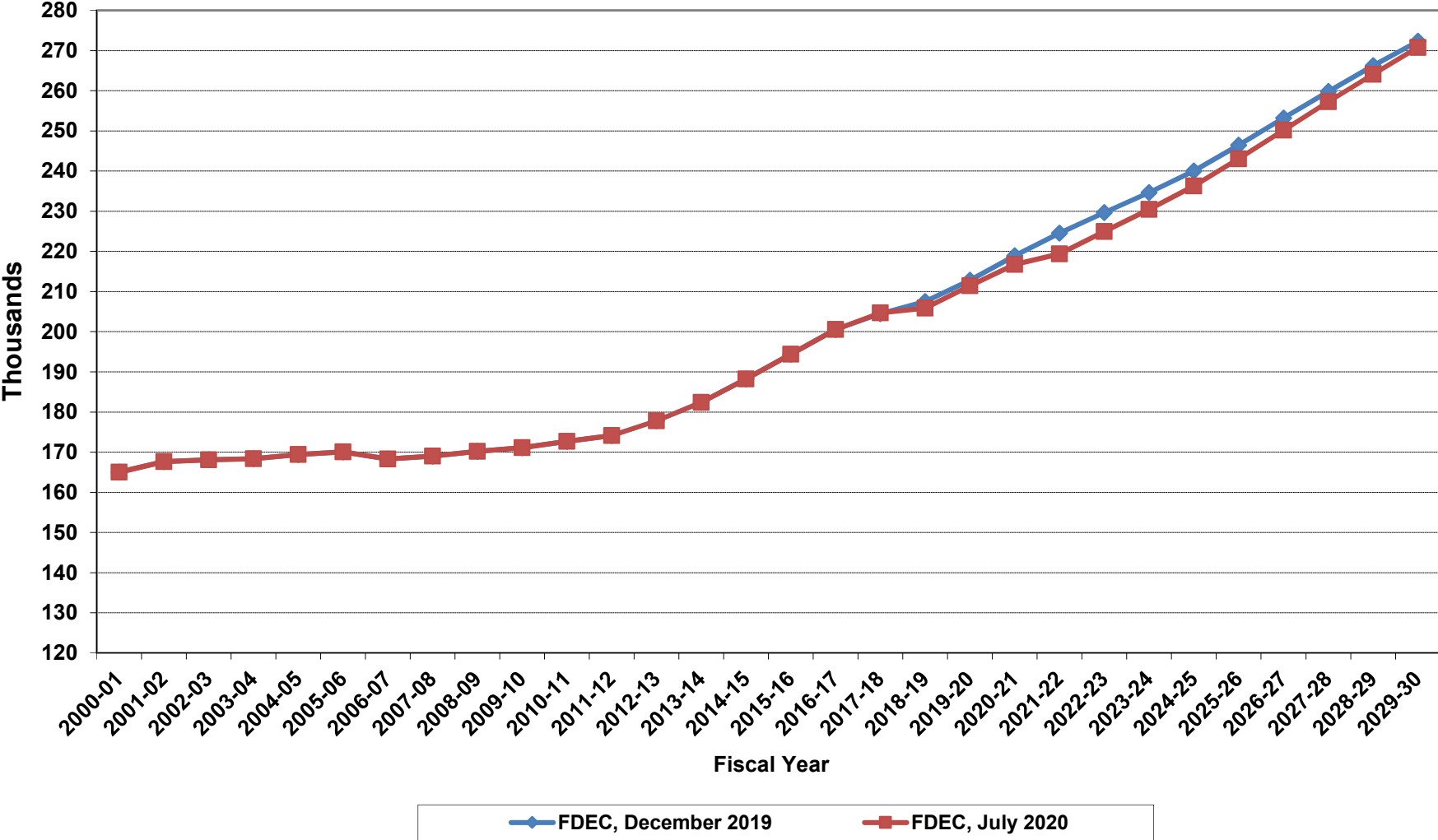
# Florida Net International Migration



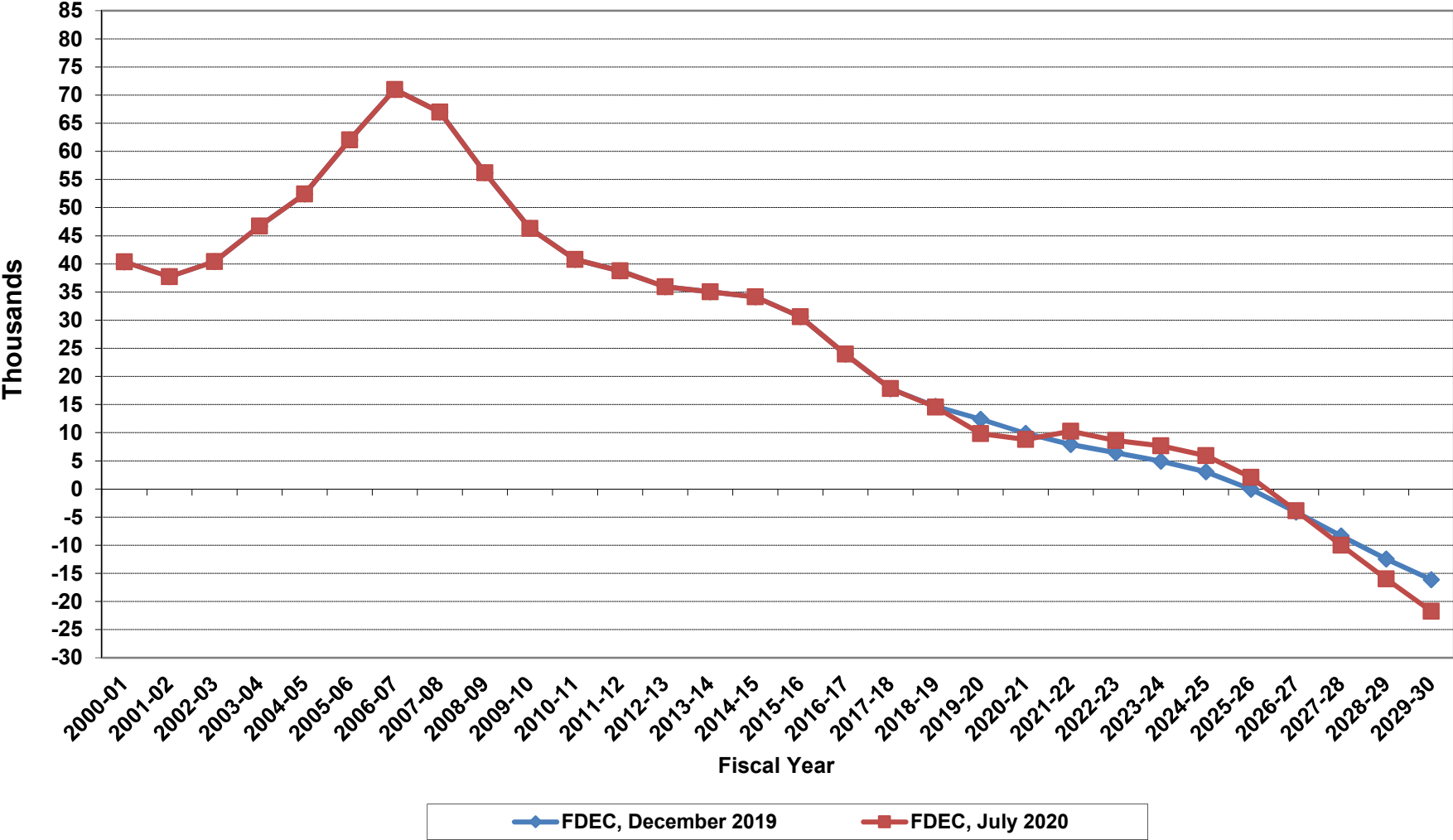
# Florida Resident Live Births



# Florida Resident Deaths



# Florida Net Natural Increase



**Florida Population and Components of Change**

<b>Fiscal Year</b>	<b>Population (End of Fiscal Year)</b>	<b>Growth Rate</b>	<b>Annual Change in Population</b>	<b>Births</b>	<b>Deaths</b>	<b>Net Natural Increase</b>	<b>Net Migration</b>
1950 - 51	2,981,346	6.50%	181,931	67,486	27,670	39,816	142,115
1951 - 52	3,155,442	5.84%	174,096	72,383	28,942	43,441	130,655
1952 - 53	3,312,521	4.98%	157,079	76,954	29,761	47,193	109,886
1953 - 54	3,504,323	5.79%	191,802	82,725	31,055	51,670	140,132
1954 - 55	3,747,400	6.94%	243,077	86,643	32,176	54,467	188,610
1955 - 56	4,046,062	7.97%	298,662	92,941	34,932	58,009	240,653
1956 - 57	4,370,045	8.01%	323,983	100,990	38,269	62,721	261,262
1957 - 58	4,629,510	5.94%	259,465	105,972	41,911	64,061	195,404
1958 - 59	4,812,270	3.95%	182,760	110,409	43,674	66,735	116,025
1959 - 60	4,998,508	3.87%	186,238	114,428	46,057	68,371	117,867
1960 - 61	5,185,913	3.75%	187,405	116,449	48,388	68,061	119,344
1961 - 62	5,367,899	3.51%	181,986	116,120	50,346	65,774	116,212
1962 - 63	5,553,522	3.46%	185,623	114,709	54,453	60,256	125,367
1963 - 64	5,728,499	3.15%	174,977	115,002	56,229	58,773	116,204
1964 - 65	5,881,195	2.67%	152,696	110,515	57,734	52,781	99,915
1965 - 66	6,065,768	3.14%	184,573	104,367	61,217	43,150	141,423
1966 - 67	6,249,674	3.03%	183,906	101,209	62,577	38,632	145,274
1967 - 68	6,441,756	3.07%	192,082	100,320	66,134	34,186	157,896
1968 - 69	6,633,546	2.98%	191,790	104,286	71,285	33,001	158,789
1969 - 70	6,861,118	3.43%	227,572	111,511	73,831	37,680	189,892
1970 - 71	7,233,583	5.43%	372,465	117,012	75,354	41,658	330,807
1971 - 72	7,681,540	6.19%	447,957	113,568	79,717	33,851	414,106
1972 - 73	8,157,883	6.20%	476,343	107,804	86,232	21,572	454,771
1973 - 74	8,515,208	4.38%	357,325	109,366	88,459	20,907	336,418
1974 - 75	8,648,587	1.57%	133,379	108,686	87,224	21,462	111,917
1975 - 76	8,782,975	1.55%	134,388	104,022	88,129	15,893	118,495
1976 - 77	8,972,678	2.16%	189,703	107,623	90,443	17,180	172,523
1977 - 78	9,225,527	2.82%	252,849	112,268	93,383	18,885	233,964
1978 - 79	9,523,728	3.23%	298,201	116,393	96,801	19,592	278,609
1979 - 80	9,914,652	4.10%	390,924	126,673	101,048	25,625	365,299
1980 - 81	10,212,969	3.01%	298,317	135,560	107,562	27,998	270,319
1981 - 82	10,492,851	2.74%	279,882	141,593	108,644	32,949	246,933
1982 - 83	10,748,466	2.44%	255,615	146,853	110,497	36,356	219,259
1983 - 84	11,065,911	2.95%	317,445	151,748	113,939	37,809	279,636
1984 - 85	11,405,533	3.07%	339,622	159,819	117,539	42,280	297,342
1985 - 86	11,740,069	2.93%	334,536	165,857	122,453	43,404	291,132
1986 - 87	12,083,241	2.92%	343,172	170,819	124,946	45,873	297,299
1987 - 88	12,410,339	2.71%	327,098	179,541	129,413	50,128	276,970
1988 - 89	12,723,719	2.53%	313,380	188,390	131,992	56,398	256,982
1989 - 90	13,017,296	2.31%	293,577	197,181	132,503	64,678	228,899
1990 - 91	13,326,892	2.38%	309,596	197,180	134,093	63,087	246,509
1991 - 92	13,552,021	1.69%	225,129	191,810	136,280	55,530	169,599
1992 - 93	13,802,571	1.85%	250,550	192,051	142,087	49,964	200,586
1993 - 94	14,120,323	2.30%	317,752	191,840	146,101	45,739	272,013
1994 - 95	14,406,418	2.03%	286,095	189,292	149,161	40,131	245,964
1995 - 96	14,701,040	2.05%	294,622	188,584	152,570	36,014	258,608
1996 - 97	15,012,615	2.12%	311,575	190,587	153,067	37,520	274,055
1997 - 98	15,310,069	1.98%	297,454	194,242	155,080	39,162	258,292
1998 - 99	15,680,164	2.42%	370,095	195,897	159,988	35,909	334,186
1999 - 00	16,069,889	2.49%	389,725	200,302	162,489	37,813	351,912
2000 - 01	16,385,615	1.96%	315,726	205,798	164,919	40,879	274,847
2001 - 02	16,718,076	2.03%	332,461	205,164	167,812	37,352	295,109
2002 - 03	17,074,258	2.13%	356,182	208,403	168,079	40,324	315,858
2003 - 04	17,475,944	2.35%	401,686	215,298	168,302	46,996	354,690
2004 - 05	17,876,215	2.29%	400,271	221,533	169,302	52,231	348,040
2005 - 06	18,236,885	2.02%	360,670	232,019	170,303	61,716	298,954
2006 - 07	18,501,231	1.45%	264,346	239,635	168,117	71,518	192,828
2007 - 08	18,636,837	0.73%	135,606	236,065	168,966	67,099	68,507
2008 - 09	18,711,844	0.40%	75,007	226,337	170,615	55,722	19,285
2009 - 10	18,826,492	0.61%	114,648	217,408	171,122	46,286	68,362

**Florida Population and Components of Change**

<b>Fiscal Year</b>	<b>Population (End of Fiscal Year)</b>	<b>Growth Rate</b>	<b>Annual Change in Population</b>	<b>Births</b>	<b>Deaths</b>	<b>Net Natural Increase</b>	<b>Net Migration</b>
2010 - 11	18,941,738	0.61%	115,246	213,468	172,661	40,807	74,439
2011 - 12	19,118,952	0.94%	177,214	212,876	174,121	38,755	138,459
2012 - 13	19,314,342	1.02%	195,390	213,762	177,807	35,955	159,435
2013 - 14	19,580,071	1.38%	265,729	217,422	182,383	35,039	230,690
2014 - 15	19,897,015	1.62%	316,944	222,338	188,216	34,122	282,822
2015 - 16	20,234,027	1.69%	337,012	225,014	194,385	30,629	306,383
2016 - 17	20,562,552	1.62%	328,525	224,476	200,523	23,953	304,572
2017 - 18	20,930,176	1.79%	367,624	222,547	204,706	17,841	349,783
2018 - 19	21,308,162	1.81%	377,986	220,422	205,864	14,558	363,428
2019 - 20	21,645,009	1.58%	336,847	221,302	211,461	9,841	327,006
2020 - 21	21,898,040	1.17%	253,031	225,542	216,760	8,782	244,249
2021 - 22	22,191,651	1.34%	293,611	229,614	219,361	10,253	283,358
2022 - 23	22,469,049	1.25%	277,398	233,597	224,968	8,629	268,769
2023 - 24	22,737,022	1.19%	267,973	238,078	230,418	7,660	260,313
2024 - 25	22,994,968	1.13%	257,946	242,211	236,289	5,922	252,024
2025 - 26	23,250,719	1.11%	255,751	245,082	243,039	2,043	253,708
2026 - 27	23,503,742	1.09%	253,023	246,321	250,183	-3,862	256,885
2027 - 28	23,754,132	1.07%	250,390	247,219	257,221	-10,002	260,392
2028 - 29	23,999,459	1.03%	245,327	248,106	264,092	-15,986	261,313
2029 - 30	24,238,213	0.99%	238,754	249,043	270,766	-21,723	260,477
2030 - 31	24,470,026	0.96%	231,813	249,581	277,469	-27,888	259,701
2031 - 32	24,694,538	0.92%	224,512	249,700	284,333	-34,633	259,145
2032 - 33	24,911,625	0.88%	217,087	249,864	290,948	-41,084	258,171
2033 - 34	25,121,905	0.84%	210,280	250,110	297,098	-46,988	257,268
2034 - 35	25,326,272	0.81%	204,367	250,296	302,820	-52,524	256,891
2035 - 36	25,525,045	0.78%	198,773	250,459	308,122	-57,663	256,436
2036 - 37	25,716,961	0.75%	191,916	250,813	313,150	-62,337	254,253
2037 - 38	25,903,520	0.73%	186,559	251,232	318,003	-66,771	253,330
2038 - 39	26,085,243	0.70%	181,723	251,676	322,786	-71,110	252,833