

The Community College Enrollment Estimating Conference met on March 4, 2008 to consider revised estimates for FY 2007-08 FTE. The Conference adopted a new estimate of 307,046 FTE (based on 30 credit hours for fee-paying programs), up 1,274 FTE from the old estimates adopted in November 2007.

**FLORIDA COMMUNITY COLLEGE SYSTEM
2007-08 FTE-2A REPORT**

SUMMARY					2006-07 Final compared to 2007-08 FTE-2A	
PROGRAMS	2005-06 Final FTE	2006-07 Final FTE	2007-08 Estimated FTE-1	2007-08 Estimated FTE-2A	Amount Change	Percent Change
A & P	163,204	164,530	175,477	176,500	11,971	7.28%
PSV	53,644	53,613	57,034	56,990	3,377	6.30%
COLLEGE PREP	27,351	27,087	29,132	29,303	2,216	8.18%
EPI	527	1,404	1,947	1,786	382	27.23%
PSAV	11,206	11,252	11,606	11,347	95	0.85%
SUBTOTAL FEE PAYING	255,932	257,885	275,196	275,926	18,041	7.00%
APPRENTICESHIP	6,974	8,302	8,744	8,469	167	2.02%
CWE	5,814	6,702	7,294	7,744	1,042	15.54%
SUBTOTAL W/O ADULT	268,720	272,889	291,234	292,139	19,250	7.05%
VOCATIONAL PREP	1,706	1,676	2,054	1,839	163	9.71%
ADULT EDUCATION	17,288	12,190	12,485	13,068	878	7.20%
SUBTOTAL ADULT	18,994	13,866	14,539	14,907	1,041	7.51%
TOTAL (ALL PROGRAMS)	287,714	286,755	305,773	307,046	20,291	7.08%

FLORIDA
COMMUNITY
COLLEGES

NON-WEIGHTED FTE ENROLLMENT
FUNDED-30, LOWER LEVEL
2006-07 FTE-3

CCFTE201
10/30/07
12:51:51

COLL	A AND P	POSTSEC VOC	COLLEGE PREP	EPI	POSTSEC ADL VOC	APPRNT	CWE VOC	ADULT BASIC	ADLT-SEC +GED-PRP	VOC PREP	TOTAL
BREV	5,883.4	2,044.2	650.4	45.7	775.6	413.0	124.9				9,937.2
BROW	12,343.5	5,512.3	3,236.0	46.8	662.3		287.8				22,088.7
CFLA	2,339.9	981.4	392.1	38.3	472.3		163.6	93.6	21.6	2.9	4,505.7
CHIP	932.7	219.5	102.7		189.8		59.6			13.4	1,517.7
DAYT	4,657.2	2,028.7	849.2	75.0	662.6	572.0	73.8	538.4	279.0	6.2	9,742.1
EDIS	4,603.7	1,497.9	972.9	119.6	5.8		66.5				7,266.4
FJAX	10,897.3	3,522.3	1,343.9	104.1	1,219.0	580.5	1,305.7	1,319.9	371.5	52.4	20,716.6
FKEY	396.8	210.4	51.1		40.0		23.7				722.0
GULF	2,621.7	954.8	331.3	55.8	323.8	124.0	242.6	63.6	2.6		4,720.2
HILL	9,509.7	2,587.2	2,040.7	66.0	433.4	1,684.7	234.8	55.0	10.9		16,622.4
INDR	4,491.2	2,639.4	519.9	92.6	1,161.6	920.2	18.7	1,227.3	353.0	1.5	11,425.4
LCTY	1,126.4	411.2	151.6	21.5	466.1		107.8	2.2	1.2	2.1	2,290.1
LSUM	1,488.7	594.3	222.4	32.4			39.0				2,376.8
MANA	5,248.3	646.3	809.6	59.5			118.7	33.4	3.0		6,918.8
MIAM	26,903.7	8,262.8	5,578.6	53.3	928.6	640.5	1,546.4	3,648.8	519.8	1,534.8	49,617.3
NFLA	496.4	155.0	100.3	27.9	128.7		37.6	9.0	1.6	0.4	956.9
OKAL	3,343.0	641.4	280.5	75.8	174.5		17.8	138.0	34.0		4,705.0
PALM	10,365.1	1,292.3	1,263.6	63.9	778.8	1,887.8	279.4				15,930.9
PASC	2,794.0	1,298.9	531.3	64.3	336.5		45.0	71.3	25.8		5,167.1
PENS	4,545.9	1,648.5	504.8	59.9	361.7		57.4	313.4	381.1	11.1	7,883.8
POLK	2,745.9	1,158.9	415.1	72.0	109.8		200.7				4,702.4
ST.J	2,190.7	737.6	252.3	36.0	113.5	407.1	55.9	58.6	11.0		3,862.7
ST.P	9,445.3	3,877.2	1,571.4		173.2		335.0				15,402.1
SANF	7,438.5	2,321.8	1,014.8	60.5	259.4	271.6	83.9	142.6	54.8	21.2	11,669.1
SEMI	4,656.3	2,151.2	807.1	28.4	370.2	646.1	66.5	612.9	516.9	29.0	9,884.6
SFLA	991.7	143.8	89.2	12.7	473.3	106.4	86.3	387.4	40.5		2,331.3
TALL	7,561.9	1,219.0	1,083.6	26.4	273.8	6.2	581.4	499.1	93.5		11,344.9
VALE	14,215.0	4,763.2	1,830.9	54.1	318.2		434.5				21,615.9
SYST	164,233.9	53,521.5	26,997.3	1,392.5	11,212.5	8,260.1	6,695.0	9,214.5	2,721.8	1,675.0	285,924.1

SOURCE: FN30C32007

NOTE: A&P, PSV, COLLEGE PREP AND EPI ARE CREDIT HOURS/30

DIVISION PROJECTIONS WITH COLLEGE ADJUSTMENTS

COLL	A AND P	POSTSEC VOC	COLLEGE PREP	EPI	POSTSEC ADL VOC	APPRNT	CWE VOC	ADULT BASIC	ADLT-SEC +GED-PRP	VOC PREP	TOTAL
BREV	6,047.0	2,118.0	672.0	51.0	795.0	422.0	131.0				10,236.0
BROW	12,676.0	5,678.0	3,310.0	55.0	661.0		258.0				22,638.0
CFLA	2,333.0	1,005.0	390.0	39.0	511.0		288.0	155.0	33.0	10.0	4,764.0
CHIP	1,013.0	237.0	106.0		300.0	20.0	61.0			14.0	1,751.0
DAYT	5,810.0	2,453.0	1,076.0	101.0	812.0	713.0	91.0	548.0	285.0	9.0	11,898.0
EDIS	4,787.0	1,566.0	973.0	120.0	6.0		67.0				7,519.0
FJAX	11,161.0	3,607.0	1,376.0	105.0	1,248.0	593.0	1,337.0	1,360.0	381.0	52.0	21,220.0
FKEY	450.0	221.0	49.0	4.0	22.0		22.0				768.0
GULF	2,657.0	966.0	340.0	57.0	328.0	128.0	251.0	67.0	3.0		4,797.0
HILL	9,715.0	2,643.0	2,085.0	67.0	466.0	1,685.0	239.0	56.0	11.0		16,967.0
INDR	4,819.0	2,832.0	559.0	113.0	1,160.0	976.0	19.0	1,456.0	404.0	1.0	12,339.0
LCTY	1,186.0	434.0	160.0	23.0	491.0		108.0	2.0	1.0	2.0	2,407.0
LSUM	1,569.0	627.0	235.0	34.0			41.0				2,506.0
MANA	5,332.0	674.0	840.0	80.0			120.0	44.0	6.0		7,096.0
MIAM	28,064.0	8,470.0	5,717.0	54.0	943.0	653.0	1,706.0	3,721.0	533.0	1,561.0	51,422.0
NFLA	511.0	160.0	103.0	28.0	133.0		37.0	9.0	2.0		983.0
OKAL	3,499.0	672.0	293.0	40.0	194.0		27.0	237.0	65.0		5,027.0
PALM	10,640.0	1,279.0	1,324.0	77.0	774.0	1,819.0	272.0				16,185.0
PASC	2,976.0	1,330.0	543.0	68.0	342.0		47.0	76.0	27.0		5,409.0
PENS	4,499.0	1,847.0	502.0	64.0	436.0		57.0	309.0	376.0	11.0	8,101.0
POLK	2,775.0	1,170.0	427.0	69.0	104.0		193.0				4,738.0
ST.J	2,373.0	795.0	275.0	39.0	120.0	429.0	47.0	94.0	21.0		4,193.0
ST.P	10,002.0	3,659.0	1,480.0		166.0		301.0				15,608.0
SANF	7,614.0	2,364.0	1,043.0	64.0	265.0	276.0	85.0	145.0	56.0	22.0	11,934.0
SEMI	4,871.0	2,764.0	982.0	40.0	406.0	583.0	158.0	625.0	526.0	34.0	10,989.0
SFLA	1,027.0	155.0	95.0	13.0	489.0	111.0	125.0	450.0	58.0		2,523.0
TALL	7,533.0	1,242.0	1,144.0	7.0	384.0		782.0	450.0	125.0		11,667.0
VALE	14,702.0	4,909.0	1,894.0	56.0	328.0		411.0				22,300.0
SYST	170,641.0	55,877.0	27,993.0	1,468.0	11,884.0	8,408.0	7,281.0	9,804.0	2,913.0	1,716.0	297,985.0

SOURCE: PJC30C2008B
 FTE FILES: FN30C32003, FN30C32004, FN30C32005, FN30C32006, FN30C2A2007
 POPULATION: POPCOL2007
 NOTE: A&P, PSV, AND COLLEGE PREP ARE CREDIT HOURS/30

FLORIDA
COMMUNITY
COLLEGES

NON-WEIGHTED FTE ENROLLMENT
FUNDED-30, LOWER LEVEL
2007-08 FTE-1B

CCFTE201
11/14/07
15:06:35

DIVISION ESTIMATES WITH COLLEGE ADJUSTMENTS AS OF NOVEMBER 2007
ADOPTED BY ENROLLMENT ESTIMATING CONFERENCE

COLL	A AND P	POSTSEC VOC	COLLEGE PREP	EPI	POSTSEC ADL VOC	APPRNT	CWE VOC	ADULT BASIC	ADLT-SEC +GED-PRP	VOC PREP	TOTAL
BREV	6,168.0	2,243.0	725.0	101.0	777.0	413.0	126.0				10,553.0
BROW	12,960.0	5,670.0	3,532.0	76.0	675.0		300.0				23,213.0
CFLA	2,642.0	1,035.0	498.0	59.0	472.0		170.0	94.0	21.0	2.0	4,993.0
CHIP	958.0	231.0	116.0		223.0	12.0	45.0			13.0	1,598.0
DAYT	5,680.0	2,444.0	1,046.0	86.0	1,074.0	643.0	87.0	891.0	456.0	12.0	12,419.0
EDIS	5,053.0	1,727.0	889.0	122.0	6.0		66.0				7,863.0
FJAX	10,920.0	3,522.0	1,600.0	120.0	1,125.0	551.0	1,750.0	1,242.0	373.0	52.0	21,255.0
FKEY	426.0	233.0	49.0	9.0	29.0		22.0				768.0
GULF	2,658.0	1,013.0	337.0	65.0	328.0	130.0	243.0	70.0	3.0		4,847.0
HILL	9,752.0	2,863.0	1,999.0	181.0	432.0	1,685.0	235.0	55.0	11.0		17,213.0
INDR	5,084.0	2,800.0	594.0	127.0	1,253.0	999.0	20.0	1,227.0	353.0	2.0	12,459.0
LCTY	1,216.0	434.0	167.0	16.0	465.0		108.0	2.0	1.0	3.0	2,412.0
LSUM	1,582.0	629.0	252.0	47.0			39.0				2,549.0
MANA	5,597.0	660.0	980.0	180.0			119.0	33.0	4.0		7,573.0
MIAM	28,866.0	9,007.0	5,862.0	66.0	929.0	753.0	1,586.0	3,649.0	519.0	1,908.0	53,145.0
NFLA	519.0	168.0	118.0	19.0	129.0		39.0	9.0	2.0		1,003.0
OKAL	3,572.0	650.0	307.0	68.0	165.0		29.0	156.0	38.0		4,985.0
PALM	11,079.0	1,304.0	1,432.0	74.0	779.0	1,888.0	272.0				16,828.0
PASC	3,040.0	1,375.0	550.0	98.0	346.0		47.0	50.0	10.0		5,516.0
PENS	4,952.0	1,710.0	512.0	64.0	363.0		53.0	306.0	406.0	11.0	8,377.0
POLK	3,108.0	1,219.0	460.0	96.0	110.0		201.0				5,194.0
ST.J	2,257.0	779.0	285.0	74.0	113.0	394.0	46.0	75.0	16.0		4,039.0
ST.P	9,926.0	4,091.0	1,564.0		173.0		336.0				16,090.0
SANF	7,847.0	2,309.0	1,062.0	45.0	232.0	272.0	84.0	120.0	48.0	21.0	12,040.0
SEMI	5,175.0	2,280.0	937.0	32.0	313.0	856.0	76.0	635.0	519.0	30.0	10,853.0
SFLA	1,044.0	163.0	101.0	14.0	480.0	145.0	104.0	427.0	45.0		2,523.0
TALL	7,864.0	1,268.0	1,073.0	20.0	297.0	3.0	656.0	456.0	162.0		11,799.0
VALE	15,532.0	5,207.0	2,085.0	88.0	318.0		435.0				23,665.0
SYST	175,477.0	57,034.0	29,132.0	1,947.0	11,606.0	8,744.0	7,294.0	9,497.0	2,987.0	2,054.0	305,772.0

SOURCE: FN30C1B2008

NOTE: A&P, PSV, COLLEGE PREP AND EPI ARE CREDIT HOURS/30

DIVISION ESTIMATES AS OF MARCH 2008

COLL	A AND P	POSTSEC VOC	COLLEGE PREP	EPI	POSTSEC ADL VOC	APPRNT	CWE VOC	ADULT BASIC	ADLT-SEC +GED-PRP	VOC PREP	TOTAL
BREV	6,313.0	2,287.0	784.0	59.0	778.0	527.0	126.0				10,874.0
BROW	12,835.0	5,744.0	3,520.0	80.0	676.0		301.0				23,156.0
CFLA	2,630.0	1,011.0	477.0	97.0	473.0		170.0	94.0	25.0	2.0	4,979.0
CHIP	957.0	215.0	112.0		223.0	12.0	45.0			13.0	1,577.0
DAYT	5,662.0	2,365.0	1,062.0	83.0	1,075.0	649.0	87.0	970.0	456.0	19.0	12,428.0
EDIS	5,281.0	1,732.0	910.0	119.0	15.0		65.0				8,122.0
FJAX	10,531.0	3,437.0	1,469.0	166.0	1,125.0	552.0	2,139.0	1,243.0	373.0	52.0	21,087.0
FKEY	466.0	231.0	49.0	6.0	29.0		22.0				803.0
GULF	2,653.0	1,011.0	347.0	61.0	327.0	143.0	243.0	70.0	3.0		4,858.0
HILL	9,800.0	2,824.0	2,039.0	155.0	432.0	1,684.0	235.0	55.0	11.0		17,235.0
INDR	5,014.0	2,690.0	591.0	119.0	1,252.0	999.0	21.0	1,393.0	366.0		12,445.0
LCTY	1,241.0	416.0	166.0	15.0	465.0		108.0			3.0	2,414.0
LSUM	1,624.0	611.0	271.0	41.0			40.0				2,587.0
MANA	5,829.0	618.0	998.0	89.0			119.0	33.0	5.0		7,691.0
MIAM	28,460.0	8,897.0	5,693.0	67.0	929.0	753.0	1,585.0	3,649.0	518.0	1,907.0	52,458.0
NFLA	510.0	157.0	112.0	14.0	130.0		42.0	10.0	2.0		977.0
OKAL	3,568.0	693.0	313.0	94.0	166.0		33.0	156.0	41.0		5,064.0
PALM	11,072.0	1,304.0	1,386.0	67.0	779.0	1,888.0	271.0				16,767.0
PASC	3,040.0	1,388.0	575.0	101.0	346.0		49.0	49.0	10.0		5,558.0
PENS	4,936.0	1,753.0	529.0	60.0	364.0		53.0	306.0	407.0	13.0	8,421.0
POLK	3,170.0	1,239.0	483.0	156.0	110.0		202.0				5,360.0
ST.J	2,278.0	779.0	305.0	86.0	114.0	396.0	46.0	109.0	18.0		4,131.0
ST.P	10,146.0	4,177.0	1,622.0		173.0		336.0				16,454.0
SANF	7,865.0	2,353.0	1,031.0	59.0	257.0	281.0	85.0	119.0	48.0	21.0	12,119.0
SEMI	5,098.0	2,347.0	884.0	44.0	314.0	856.0	77.0	661.0	525.0	31.0	10,837.0
SFLA	1,057.0	157.0	115.0	17.0	481.0	147.0	103.0	428.0	45.0		2,550.0
TALL	7,881.0	1,260.0	1,063.0	25.0	296.0	17.0	656.0		595.0		11,793.0
VALE	15,650.0	5,310.0	2,151.0	92.0	318.0		435.0				23,956.0
SYST	175,567.0	57,006.0	29,057.0	1,972.0	11,647.0	8,904.0	7,694.0	9,345.0	3,448.0	2,061.0	306,701.0

SOURCE: FN30C22008

NOTE: A&P, PSV, COLLEGE PREP AND EPI ARE CREDIT HOURS/30

DIVISION ESTIMATES WITH COLLEGE ADJUSTMENTS AS OF MARCH 2008

COLL	A AND P	POSTSEC VOC	COLLEGE PREP	EPI	POSTSEC ADL VOC	APPRNT	CWE VOC	ADULT BASIC	ADLT-SEC +GED-PRP	VOC PREP	TOTAL
BREV	6,313.0	2,287.0	784.0	59.0	778.0	527.0	126.0				10,874.0
BROW	12,885.0	5,744.0	3,549.0	80.0	676.0		301.0				23,235.0
CFLA	2,630.0	995.0	477.0	55.0	450.0		172.0	129.0	30.0	3.0	4,941.0
CHIP	957.0	215.0	112.0		190.0	10.0	33.0			11.0	1,528.0
DAYT	5,670.0	2,384.0	1,074.0	83.0	1,075.0	649.0	87.0	970.0	456.0	19.0	12,467.0
EDIS	5,123.0	1,697.0	910.0	119.0	15.0		65.0				7,929.0
FJAX	11,000.0	3,525.0	1,562.0	145.0	1,050.0	412.0	2,300.0	1,200.0	300.0	30.0	21,524.0
FKEY	455.0	235.0	49.0	6.0	29.0		23.0				797.0
GULF	2,668.0	1,011.0	357.0	58.0	327.0	143.0	243.0	70.0	3.0		4,880.0
HILL	9,800.0	2,824.0	2,039.0	155.0	432.0	1,684.0	235.0	55.0	11.0		17,235.0
INDR	5,014.0	2,690.0	591.0	119.0	1,167.0	999.0	21.0	1,227.0	353.0		12,181.0
LCTY	1,241.0	416.0	166.0	15.0	386.0		108.0			3.0	2,335.0
LSUM	1,624.0	611.0	271.0	41.0			40.0				2,587.0
MANA	5,829.0	618.0	998.0	89.0			119.0	33.0	5.0		7,691.0
MIAM	28,670.0	8,904.0	5,710.0	67.0	918.0	812.0	1,598.0	3,969.0	615.0	1,725.0	52,988.0
NFLA	510.0	157.0	112.0	14.0	130.0		42.0	10.0	2.0		977.0
OKAL	3,609.0	689.0	314.0	67.0	168.0		34.0	164.0	45.0		5,090.0
PALM	11,338.0	1,293.0	1,459.0	68.0	826.0	1,519.0	207.0				16,710.0
PASC	3,088.0	1,390.0	575.0	78.0	349.0		45.0	38.0	5.0		5,568.0
PENS	4,936.0	1,753.0	529.0	60.0	364.0		53.0	306.0	407.0	13.0	8,421.0
POLK	3,223.0	1,239.0	502.0	127.0	110.0		206.0				5,407.0
ST.J	2,310.0	790.0	309.0	86.0	107.0	410.0	56.0	95.0	40.0		4,203.0
ST.P	10,079.0	4,115.0	1,604.0		149.0		253.0				16,200.0
SANF	7,865.0	2,353.0	1,031.0	47.0	247.0	271.0	75.0	119.0	38.0	7.0	12,053.0
SEMI	5,098.0	2,335.0	886.0	37.0	304.0	815.0	51.0	666.0	528.0	28.0	10,748.0
SFLA	1,062.0	154.0	115.0	15.0	501.0	201.0	81.0	479.0	77.0		2,685.0
TALL	7,853.0	1,256.0	1,067.0	20.0	281.0	17.0	735.0	519.0	104.0		11,852.0
VALE	15,650.0	5,310.0	2,151.0	76.0	318.0		435.0				23,940.0
SYST	176,500.0	56,990.0	29,303.0	1,786.0	11,347.0	8,469.0	7,744.0	10,049.0	3,019.0	1,839.0	307,046.0

SOURCE: FN30C2A2008

NOTE: A&P, PSV, COLLEGE PREP AND EPI ARE CREDIT HOURS/30

DIVISION ESTIMATES WITH COLLEGE ADJUSTMENTS AS OF MARCH 2008

COLL	A AND P	POSTSEC VOC	COLLEGE PREP	EPI	POSTSEC ADL VOC	APPRNT	CWE VOC	ADULT BASIC	ADLT-SEC +GED-PRP	VOC PREP	TOTAL
BREV	4,734.9	1,715.4	588.0	44.4	778.0	527.0	126.0				8,513.7
BROW	9,663.8	4,308.0	2,661.8	60.0	676.0		301.0				17,670.6
CFLA	1,972.5	746.3	357.8	41.3	450.0		172.0	129.0	30.0	3.0	3,901.9
CHIP	717.8	161.3	84.0		190.0	10.0	33.0			11.0	1,207.1
DAYT	4,252.5	1,788.0	805.5	62.3	1,075.0	649.0	87.0	970.0	456.0	19.0	10,164.3
EDIS	3,842.3	1,272.8	682.5	89.3	15.0		65.0				5,966.9
FJAX	8,250.0	2,643.8	1,171.5	108.8	1,050.0	412.0	2,300.0	1,200.0	300.0	30.0	17,466.1
FKEY	341.3	176.3	36.8	4.5	29.0		23.0				610.9
GULF	2,001.0	758.3	267.8	43.5	327.0	143.0	243.0	70.0	3.0		3,856.6
HILL	7,350.1	2,118.1	1,529.3	116.4	432.0	1,684.0	235.0	55.0	11.0		13,530.9
INDR	3,760.5	2,017.5	443.3	89.3	1,167.0	999.0	21.0	1,227.0	353.0		10,077.6
LCTY	930.8	312.0	124.5	11.3	386.0		108.0			3.0	1,875.6
LSUM	1,218.0	458.3	203.3	30.8			40.0				1,950.4
MANA	4,371.9	463.7	748.7	66.9			119.0	33.0	5.0		5,808.2
MIAM	21,502.5	6,678.0	4,282.5	50.3	918.0	812.0	1,598.0	3,969.0	615.0	1,725.0	42,150.3
NFLA	382.5	117.8	84.0	10.5	130.0		42.0	10.0	2.0		778.8
OKAL	2,706.8	516.8	235.5	50.3	168.0		34.0	164.0	45.0		3,920.4
PALM	8,503.5	969.8	1,094.3	51.0	826.0	1,519.0	207.0				13,170.6
PASC	2,316.0	1,042.5	431.3	58.5	349.0		45.0	38.0	5.0		4,285.3
PENS	3,702.1	1,314.8	396.9	45.1	364.0		53.0	306.0	407.0	13.0	6,601.9
POLK	2,417.3	929.3	376.5	95.3	110.0		206.0				4,134.4
ST.J	1,732.5	592.5	231.8	64.5	107.0	410.0	56.0	95.0	40.0		3,329.3
ST.P	7,559.3	3,086.3	1,203.0		149.0		253.0				12,250.6
SANF	5,898.8	1,764.8	773.3	35.3	247.0	271.0	75.0	119.0	38.0	7.0	9,229.2
SEMI	3,823.5	1,751.3	664.5	27.8	304.0	815.0	51.0	666.0	528.0	28.0	8,659.1
SFLA	796.5	115.5	86.3	11.3	501.0	201.0	81.0	479.0	77.0		2,348.6
TALL	5,889.8	942.0	800.3	15.0	281.0	17.0	735.0	519.0	104.0		9,303.1
VALE	11,737.5	3,982.5	1,613.3	57.0	318.0		435.0				18,143.3
SYST	132,376.0	42,743.7	21,978.3	1,340.7	11,347.0	8,469.0	7,744.0	10,049.0	3,019.0	1,839.0	240,905.7

SOURCE: FN2A2008

NOTE: A&P, PSV, COLLEGE PREP AND EPI ARE CREDIT HOURS/40

FLORIDA COMMUNITY COLLEGES
 ENROLLMENT ESTIMATING CONFERENCE SUMMARY
 FUNDED-30, LOWER LEVEL

	2006-07 FTE3	2007-08 FTE2 DIVISION			2007-08 FTE2A COLL ADJ				
	ACTUAL C1	ESTIMATE C2	CHANGE C1-C2	%CHANGE C1/C2	ESTIMATE C3	CHANGE C3-C1	%CHANGE C3/C1	CHANGE C3-C2	%CHANGE C3/C2
BREVARD	9,937.2	10,874	936.8	9.40	10,874	936.8	9.40	0.0	0.00
BROWARD	22,088.7	23,156	1067.3	4.80	23,235	1146.3	5.20	79.0	0.30
CENTRAL FLORIDA	4,553.3	4,979	425.7	9.30	4,941	387.7	8.50	-38.0	-0.80
CHIPOLA	1,517.7	1,577	59.3	3.90	1,528	10.3	0.70	-49.0	-3.10
DAYTONA BEACH	10,525.8	12,428	1902.2	18.10	12,467	1941.2	18.40	39.0	0.30
EDISON	7,266.4	8,122	855.6	11.80	7,929	662.6	9.10	-193.0	-2.40
FCC JACKSONVILL	20,716.6	21,087	370.4	1.80	21,524	807.4	3.90	437.0	2.10
FLORIDA KEYS	722.0	803	81.0	11.20	797	75.0	10.40	-6.0	-0.70
GULF COAST	4,720.2	4,858	137.8	2.90	4,880	159.8	3.40	22.0	0.50
HILLSBOROUGH	16,622.4	17,235	612.6	3.70	17,235	612.6	3.70	0.0	0.00
INDIAN RIVER	11,425.4	12,445	1019.6	8.90	12,181	755.6	6.60	-264.0	-2.10
LAKE CITY	2,290.1	2,414	123.9	5.40	2,335	44.9	2.00	-79.0	-3.30
LAKE-SUMTER	2,376.8	2,587	210.2	8.80	2,587	210.2	8.80	0.0	0.00
MANATEE	6,918.8	7,691	772.2	11.20	7,691	772.2	11.20	0.0	0.00
MIAMI-DADE	49,617.2	52,458	2840.8	5.70	52,988	3370.8	6.80	530.0	1.00
NORTH FLORIDA	956.9	977	20.1	2.10	977	20.1	2.10	0.0	0.00
OKALOOSA-WALTON	4,705.0	5,064	359.0	7.60	5,090	385.0	8.20	26.0	0.50
PALM BEACH	15,930.9	16,767	836.1	5.20	16,710	779.1	4.90	-57.0	-0.30
PASCO-HERNANDO	5,167.1	5,558	390.9	7.60	5,568	400.9	7.80	10.0	0.20
PENSACOLA	7,883.8	8,421	537.2	6.80	8,421	537.2	6.80	0.0	0.00
POLK	4,702.4	5,360	657.6	14.00	5,407	704.6	15.00	47.0	0.90
ST. JOHNS RIVER	3,862.7	4,131	268.3	6.90	4,203	340.3	8.80	72.0	1.70
ST. PETERSBURG	15,402.1	16,454	1051.9	6.80	16,200	797.9	5.20	-254.0	-1.50
SANTA FE	11,669.1	12,119	449.9	3.90	12,053	383.9	3.30	-66.0	-0.50
SEMINOLE	9,884.6	10,837	952.4	9.60	10,748	863.4	8.70	-89.0	-0.80
SOUTH FLORIDA	2,331.3	2,550	218.7	9.40	2,685	353.7	15.20	135.0	5.30
TALLAHASSEE	11,344.9	11,793	448.1	3.90	11,852	507.1	4.50	59.0	0.50
VALENCIA	21,615.9	23,956	2340.1	10.80	23,940	2324.1	10.80	-16.0	-0.10
SYSTEM TOTAL	286,755.3	306,701	19945.7	7.00	307,046	20290.7	7.10	345.0	0.10

SOURCE: FN30C3A, FN30C2, FN30C2A

**FLORIDA COMMUNITY COLLEGE SYSTEM
FULL TIME EQUIVALENT (FTE) Report
2006-2007 FTE-3 Compared to the 2007-2008 FTE-2 (Division Estimates)**

	Adv. & Prof.	Diff. Percent	Postsec. Voc.	Diff. Percent	College Prep	Diff. Percent	EPI	Diff. Percent	Postsec. Adult	Diff. Percent	Apprenticeship	Diff. Percent	CWE	Diff. Percent	Adult Basic	Diff. Percent	Adult S&G	Diff. Percent	Voc. Prep	Diff. Percent	Total FTE	Diff. Percent
BREV																						
2007 FTE-3	5883.4	430	2044.2	243	650.4	134	45.7	13	775.6	2	413.0	114	124.9	1	0.0	0	0.0	0	0.0	0	9937.2	937
2008 FTE-2	6313.0	7.3	2287.0	11.9	784.0	20.5	59.0	29.1	778.0	0.3	527.0	27.6	126.0	0.9	0.0	0.0	0.0	0.0	0.0	0.0	10874.0	9.4
BROW																						
2007 FTE-3	12343.5	492	5512.3	232	3236.0	284	46.8	33	662.3	14	0.0	0	287.8	13	0.0	0	0.0	0	0.0	0	22088.7	1067
2008 FTE-2	12835.0	4.0	5744.0	4.2	3520.0	8.8	80.0	70.9	676.0	2.1	0.0	0.0	301.0	4.6	0.0	0.0	0.0	0.0	0.0	0.0	23156.0	4.8
CFLA																						
2007 FTE-3	2339.9	290	981.4	30	392.1	85	38.3	59	472.3	1	0.0	0	163.6	6	93.6	0	21.6	3	2.9	-1	4505.7	473
2008 FTE-2	2630.0	12.4	1011.0	3.0	477.0	21.7	97.0	153.3	473.0	0.1	0.0	0.0	170.0	3.9	94.0	0.4	25.0	15.7	2.0	-31.0	4979.0	10.5
CHIP																						
2007 FTE-3	932.7	24	219.5	-5	102.7	9	0.0	0	189.8	33	0.0	12	59.6	-15	0.0	0	0.0	0	13.4	0	1517.7	59
2008 FTE-2	957.0	2.6	215.0	-2.1	112.0	9.1	0.0	0.0	223.0	17.5	12.0	0.0	45.0	-24.5	0.0	0.0	0.0	0.0	13.0	-3.0	1577.0	3.9
DAYT																						
2007 FTE-3	4657.2	1005	2028.7	336	849.2	213	75.0	8	662.6	412	572.0	77	73.8	13	538.4	432	279.0	177	6.2	13	9742.1	2686
2008 FTE-2	5662.0	21.6	2365.0	16.6	1062.0	25.1	83.0	10.7	1075.0	62.2	649.0	13.5	87.0	17.9	970.0	80.2	456.0	63.4	19.0	206.5	12428.0	27.6
EDIS																						
2007 FTE-3	4603.7	677	1497.9	234	972.9	-63	119.6	-1	5.8	9	0.0	0	66.5	-2	0.0	0	0.0	0	0.0	0	7266.4	856
2008 FTE-2	5281.0	14.7	1732.0	15.6	910.0	-6.5	119.0	-0.5	15.0	158.6	0.0	0.0	65.0	-2.3	0.0	0.0	0.0	0.0	0.0	0.0	8122.0	11.8
FJAX																						
2007 FTE-3	10897.3	-366	3522.3	-85	1343.9	125	104.1	62	1219.0	-94	580.5	-29	1305.7	833	1319.9	-77	371.5	2	52.4	0	20716.6	370
2008 FTE-2	10531.0	-3.4	3437.0	-2.4	1469.0	9.3	166.0	59.5	1125.0	-7.7	552.0	-4.9	2139.0	63.8	1243.0	-5.8	373.0	0.4	52.0	-0.8	21087.0	1.8
FKEY																						
2007 FTE-3	396.8	69	210.4	21	51.1	-2	0.0	6	40.0	-11	0.0	0	23.7	-2	0.0	0	0.0	0	0.0	0	722.0	81
2008 FTE-2	466.0	17.4	231.0	9.8	49.0	-4.1	6.0	0.0	29.0	-27.5	0.0	0.0	22.0	-7.2	0.0	0.0	0.0	0.0	0.0	0.0	803.0	11.2
GULF																						
2007 FTE-3	2621.7	31	954.8	56	331.3	16	55.8	5	323.8	3	124.0	19	242.6	0	63.6	6	2.6	0	0.0	0	4720.2	138
2008 FTE-2	2653.0	1.2	1011.0	5.9	347.0	4.7	61.0	9.3	327.0	1.0	143.0	15.3	243.0	0.2	70.0	10.1	3.0	15.4	0.0	0.0	4858.0	2.9
HILL																						
2007 FTE-3	9509.7	290	2587.2	237	2040.7	-2	66.0	89	433.4	-1	1684.7	-1	234.8	0	55.0	0	10.9	0	0.0	0	16622.4	613
2008 FTE-2	9800.0	3.1	2824.0	9.2	2039.0	-0.1	155.0	134.8	432.0	-0.3	1684.0	0.0	235.0	0.1	55.0	0.0	11.0	0.9	0.0	0.0	17235.0	3.7
INDR																						
2007 FTE-3	4491.2	523	2639.4	51	519.9	71	92.6	26	1161.6	90	920.2	79	18.7	2	1227.3	166	353.0	13	1.5	-2	11425.4	1020
2008 FTE-2	5014.0	11.6	2690.0	1.9	591.0	13.7	119.0	28.5	1252.0	7.8	999.0	8.6	21.0	12.3	1393.0	13.5	366.0	3.7	0.0	-100.0	12445.0	8.9
LCTY																						
2007 FTE-3	1126.4	115	411.2	5	151.6	14	21.5	-7	466.1	-1	0.0	0	107.8	0	2.2	-2	1.2	-1	2.1	1	2290.1	124
2008 FTE-2	1241.0	10.2	416.0	1.2	166.0	9.5	15.0	-30.2	465.0	-0.2	0.0	0.0	108.0	0.2	0.0	-100.0	0.0	-100.0	3.0	42.9	2414.0	5.4
LSUM																						
2007 FTE-3	1488.7	135	594.3	17	222.4	49	32.4	9	0.0	0	0.0	0	39.0	1	0.0	0	0.0	0	0.0	0	2376.8	210
2008 FTE-2	1624.0	9.1	611.0	2.8	271.0	21.9	41.0	26.5	0.0	0.0	0.0	0.0	40.0	2.6	0.0	0.0	0.0	0.0	0.0	0.0	2587.0	8.8
MANA																						
2007 FTE-3	5248.3	581	646.3	-28	809.6	188	59.5	30	0.0	0	0.0	0	118.7	0	33.4	0	3.0	2	0.0	0	6918.8	772
2008 FTE-2	5829.0	11.1	618.0	-4.4	998.0	23.3	89.0	49.6	0.0	0.0	0.0	0.0	119.0	0.3	33.0	-1.2	5.0	66.7	0.0	0.0	7691.0	11.2
MIAM																						
2007 FTE-3	26903.7	1556	8262.8	634	5578.6	114	53.3	14	928.6	0	640.5	113	1546.4	39	3648.8	0	519.8	-2	1534.8	372	49617.3	2841
2008 FTE-2	28460.0	5.8	8897.0	7.7	5693.0	2.1	67.0	25.7	929.0	0.0	753.0	17.6	1585.0	2.5	3649.0	0.0	518.0	-0.3	1907.0	24.3	52458.0	5.7

Sources: 2006-2007 Student Data Base FTE-3
2007-2008 Estimates FTE-2 (Division Estimates)

Note: Advanced and Professional, Post Secondary Vocational, College Preparatory, and EPI are calculated as 30 Credit Hour FTE.

RGM 11:00am February 28, 2008 M:\BRIS_PROF1\FTE\2007-2008\Reports\est2\FTE2 Compare.xls

**FLORIDA COMMUNITY COLLEGE SYSTEM
FULL TIME EQUIVALENT (FTE) Report
2006-2007 FTE-3 Compared to the 2007-2008 FTE-2 (Division Estimates)**

	Adv. & Prof.	Diff. Percent	Postsec. Voc.	Diff. Percent	College Prep	Diff. Percent	EPI	Diff. Percent	Postsec. Adult	Diff. Percent	Apprenticeship	Diff. Percent	CWE	Diff. Percent	Adult Basic	Diff. Percent	Adult S&G	Diff. Percent	Voc. Prep	Diff. Percent	Total FTE	Diff. Percent	
NFLA																							
2007 FTE-3	496.4	14	155.0	2	100.3	12	27.9	-14	128.7	1	0.0	0	37.6	4	9.0	1	1.6	0	0.4	0	956.9	20	
2008 FTE-2	510.0	2.7	157.0	1.3	112.0	11.7	14.0	-49.8	130.0	1.0	0.0	0.0	42.0	11.7	10.0	11.1	2.0	25.0	0.0	-100.0	977.0	2.1	
OKAL																							
2007 FTE-3	3343.0	225	641.4	52	280.5	33	75.8	18	174.5	-9	0.0	0	17.8	15	138.0	18	34.0	7	0.0	0	4705.0	359	
2008 FTE-2	3568.0	6.7	693.0	8.0	313.0	11.6	94.0	24.0	166.0	-4.9	0.0	0.0	33.0	85.4	156.0	13.0	41.0	20.6	0.0	0.0	5064.0	7.6	
PALM																							
2007 FTE-3	10365.1	707	1292.3	12	1263.6	122	63.9	3	778.8	0	1887.8	0	279.4	-8	0.0	0	0.0	0	0.0	0	15930.9	836	
2008 FTE-2	11072.0	6.8	1304.0	0.9	1386.0	9.7	67.0	4.9	779.0	0.0	1888.0	0.0	271.0	-3.0	0.0	0.0	0.0	0.0	0.0	0.0	16767.0	5.2	
PASC																							
2007 FTE-3	2794.0	246	1298.9	89	531.3	44	64.3	37	336.5	10	0.0	0	45.0	4	71.3	-22	25.8	-16	0.0	0	5167.1	391	
2008 FTE-2	3040.0	8.8	1388.0	6.9	575.0	8.2	101.0	57.1	346.0	2.8	0.0	0.0	49.0	8.9	49.0	-31.3	10.0	-61.2	0.0	0.0	5558.0	7.6	
PENS																							
2007 FTE-3	4545.9	390	1648.5	105	504.8	24	59.9	0	361.7	2	0.0	0	57.4	-4	313.4	-7	381.1	26	11.1	2	7883.8	537	
2008 FTE-2	4936.0	8.6	1753.0	6.3	529.0	4.8	60.0	0.2	364.0	0.6	0.0	0.0	53.0	-7.7	306.0	-2.4	407.0	6.8	13.0	17.1	8421.0	6.8	
POLK																							
2007 FTE-3	2745.9	424	1158.9	80	415.1	68	72.0	84	109.8	0	0.0	0	200.7	1	0.0	0	0.0	0	0.0	0	4702.4	658	
2008 FTE-2	3170.0	15.4	1239.0	6.9	483.0	16.4	156.0	116.7	110.0	0.2	0.0	0.0	202.0	0.6	0.0	0.0	0.0	0.0	0.0	0.0	5360.0	14.0	
ST.J																							
2007 FTE-3	2190.7	87	737.6	41	252.3	53	36.0	50	113.5	1	407.1	-11	55.9	-10	58.6	50	11.0	7	0.0	0	3862.7	268	
2008 FTE-2	2278.0	4.0	779.0	5.6	305.0	20.9	86.0	138.9	114.0	0.4	396.0	-2.7	46.0	-17.7	109.0	86.0	18.0	63.6	0.0	0.0	4131.0	6.9	
ST.P																							
2007 FTE-3	9445.3	701	3877.2	300	1571.4	51	0.0	0	173.2	0	0.0	0	335.0	1	0.0	0	0.0	0	0.0	0	15402.1	1052	
2008 FTE-2	10146.0	7.4	4177.0	7.7	1622.0	3.2	0.0	0.0	173.0	-0.1	0.0	0.0	336.0	0.3	0.0	0.0	0.0	0.0	0.0	0.0	16454.0	6.8	
SANF																							
2007 FTE-3	7438.5	427	2321.8	31	1014.8	16	60.5	-2	259.4	-2	271.6	9	83.9	1	142.6	-24	54.8	-7	21.2	0	11669.1	450	
2008 FTE-2	7865.0	5.7	2353.0	1.3	1031.0	1.6	59.0	-2.5	257.0	-0.9	281.0	3.5	85.0	1.3	119.0	-16.5	48.0	-12.4	21.0	-0.9	12119.0	3.9	
SEMI																							
2007 FTE-3	4656.3	442	2151.2	196	807.1	77	28.4	16	370.2	-56	646.1	210	66.5	11	612.9	48	516.9	8	29.0	2	9884.6	952	
2008 FTE-2	5098.0	9.5	2347.0	9.1	884.0	9.5	44.0	54.9	314.0	-15.2	856.0	32.5	77.0	15.8	661.0	7.8	525.0	1.6	31.0	6.9	10837.0	9.6	
SFLA																							
2007 FTE-3	991.7	65	143.8	13	89.2	26	12.7	4	473.3	8	106.4	41	86.3	17	387.4	41	40.5	5	0.0	0	2331.3	219	
2008 FTE-2	1057.0	6.6	157.0	9.2	115.0	28.9	17.0	33.9	481.0	1.6	147.0	38.2	103.0	19.4	428.0	10.5	45.0	11.1	0.0	0.0	2550.0	9.4	
TALL																							
2007 FTE-3	7561.9	319	1219.0	41	1083.6	-21	26.4	-1	273.8	22	6.2	11	581.4	75	499.1	-499	93.5	502	0.0	0	11344.9	448	
2008 FTE-2	7881.0	4.2	1260.0	3.4	1063.0	-1.9	25.0	-5.3	296.0	8.1	17.0	174.2	656.0	12.8	0.0	-100.0	595.0	536.4	0.0	0.0	11793.0	3.9	
VALE																							
2007 FTE-3	14215.0	1435	4763.2	547	1830.9	320	54.1	38	318.2	0	0.0	0	434.5	1	0.0	0	0.0	0	0.0	0	21615.9	2340	
2008 FTE-2	15650.0	10.1	5310.0	11.5	2151.0	17.5	92.0	70.1	318.0	-0.1	0.0	0.0	435.0	0.1	0.0	0.0	0.0	0.0	0.0	0.0	23956.0	10.8	
SYST TOTAL																							
2007 FTE-3	164233.9	11333	53521.5	3485	26997.3	2060	1392.5	580	11212.5	435	8260.1	644	6695.0	999	9214.5	130	2721.8	726	1675.0	386	285924.1	20777	
2008 FTE-2	175567.0	6.9	57006.0	6.5	29057.0	7.6	1972.0	41.6	11647.0	3.9	8904.0	7.8	7694.0	14.9	9345.0	1.4	3448.0	26.7	2061.0	23.0	306701.0	7.3	

Sources: 2006-2007 Student Data Base FTE-3
2007-2008 Estimates FTE-2B (Division Estimates with college adjustments)

Note: Advanced and Professional, Post Secondary Vocational, College Preparatory, and EPI are calculated as 30 Credit Hour FTE.

RGM 11:00am February 28, 2008 M:\BRIS_PROF1\FTE\2007-2008\Reports\lest2\FTE2 Compare.xls

**FLORIDA COMMUNITY COLLEGE SYSTEM
FULL TIME EQUIVALENT (FTE) Report
2006-2007 FTE-3 Compared to the 2007-2008 FTE-2A (Division Estimates with college adjustments)**

	Adv. & Prof.	Diff. Percent	Postsec. Voc.	Diff. Percent	College Prep	Diff. Percent	EPI	Diff. Percent	Postsec. Adult	Diff. Percent	Apprenticeship	Diff. Percent	CWE	Diff. Percent	Adult Basic	Diff. Percent	Adult S&G	Diff. Percent	Voc. Prep	Diff. Percent	Total FTE	Diff. Percent	
NFLA																							
2007 FTE-3	496.4	14	155.0	2	100.3	12	27.9	-14	128.7	1	0.0	0	37.6	4	9.0	1	1.6	0	0.4	0	956.9	20	
2008 FTE-2A	510.0	2.7	157.0	1.3	112.0	11.7	14.0	-49.8	130.0	1.0	0.0	0.0	42.0	11.7	10.0	11.1	2.0	25.0	0.0	-100.0	977.0	2.1	
OKAL																							
2007 FTE-3	3343.0	266	641.4	48	280.5	34	75.8	-9	174.5	-7	0.0	0	17.8	16	138.0	26	34.0	11	0.0	0	4705.0	385	
2008 FTE-2A	3609.0	8.0	689.0	7.4	314.0	11.9	67.0	-11.6	168.0	-3.7	0.0	0.0	34.0	91.0	164.0	18.8	45.0	32.4	0.0	0.0	5090.0	8.2	
PALM																							
2007 FTE-3	10365.1	973	1292.3	1	1263.6	195	63.9	4	778.8	47	1887.8	-369	279.4	-72	0.0	0	0.0	0	0.0	0	15930.9	779	
2008 FTE-2A	11338.0	9.4	1293.0	0.1	1459.0	15.5	68.0	6.4	826.0	6.1	1519.0	-19.5	207.0	-25.9	0.0	0.0	0.0	0.0	0.0	0.0	16710.0	4.9	
PASC																							
2007 FTE-3	2794.0	294	1298.9	91	531.3	44	64.3	14	336.5	13	0.0	0	45.0	0	71.3	-33	25.8	-21	0.0	0	5167.1	401	
2008 FTE-2A	3088.0	10.5	1390.0	7.0	575.0	8.2	78.0	21.3	349.0	3.7	0.0	0.0	45.0	0.0	38.0	-46.7	5.0	-80.6	0.0	0.0	5568.0	7.8	
PENS																							
2007 FTE-3	4545.9	390	1648.5	105	504.8	24	59.9	0	361.7	2	0.0	0	57.4	-4	313.4	-7	381.1	26	11.1	2	7883.8	537	
2008 FTE-2A	4936.0	8.6	1753.0	6.3	529.0	4.8	60.0	0.2	364.0	0.6	0.0	0.0	53.0	-7.7	306.0	-2.4	407.0	6.8	13.0	17.1	8421.0	6.8	
POLK																							
2007 FTE-3	2745.9	477	1158.9	80	415.1	87	72.0	55	109.8	0	0.0	0	200.7	5	0.0	0	0.0	0	0.0	0	4702.4	705	
2008 FTE-2A	3223.0	17.4	1239.0	6.9	502.0	20.9	127.0	76.4	110.0	0.2	0.0	0.0	206.0	2.6	0.0	0.0	0.0	0.0	0.0	0.0	5407.0	15.0	
ST.J																							
2007 FTE-3	2190.7	119	737.6	52	252.3	57	36.0	50	113.5	-7	407.1	3	55.9	0	58.6	36	11.0	29	0.0	0	3862.7	340	
2008 FTE-2A	2310.0	5.4	790.0	7.1	309.0	22.5	86.0	138.9	107.0	-5.7	410.0	0.7	56.0	0.2	95.0	62.1	40.0	263.6	0.0	0.0	4203.0	8.8	
ST.P																							
2007 FTE-3	9445.3	634	3877.2	238	1571.4	33	0.0	0	173.2	-24	0.0	0	335.0	-82	0.0	0	0.0	0	0.0	0	15402.1	798	
2008 FTE-2A	10079.0	6.7	4115.0	6.1	1604.0	2.1	0.0	0.0	149.0	-14.0	0.0	0.0	253.0	-24.5	0.0	0.0	0.0	0.0	0.0	0.0	16200.0	5.2	
SANF																							
2007 FTE-3	7438.5	427	2321.8	31	1014.8	16	60.5	-14	259.4	-12	271.6	-1	83.9	-9	142.6	-24	54.8	-17	21.2	-14	11669.1	384	
2008 FTE-2A	7865.0	5.7	2353.0	1.3	1031.0	1.6	47.0	-22.3	247.0	-4.8	271.0	-0.2	75.0	-10.6	119.0	-16.5	38.0	-30.7	7.0	-67.0	12053.0	3.3	
SEMI																							
2007 FTE-3	4656.3	442	2151.2	184	807.1	79	28.4	9	370.2	-66	646.1	169	66.5	-16	612.9	53	516.9	11	29.0	-1	9884.6	863	
2008 FTE-2A	5098.0	9.5	2335.0	8.5	886.0	9.8	37.0	30.3	304.0	-17.9	815.0	26.1	51.0	-23.3	666.0	8.7	528.0	2.1	28.0	-3.4	10748.0	8.7	
SFLA																							
2007 FTE-3	991.7	70	143.8	10	89.2	26	12.7	2	473.3	28	106.4	95	86.3	-5	387.4	92	40.5	37	0.0	0	2331.3	354	
2008 FTE-2A	1062.0	7.1	154.0	7.1	115.0	28.9	15.0	18.1	501.0	5.9	201.0	88.9	81.0	-6.1	479.0	23.6	77.0	90.1	0.0	0.0	2685.0	15.2	
TALL																							
2007 FTE-3	7561.9	291	1219.0	37	1083.6	-17	26.4	-6	273.8	7	6.2	11	581.4	154	499.1	20	93.5	11	0.0	0	11344.9	507	
2008 FTE-2A	7853.0	3.8	1256.0	3.0	1067.0	-1.5	20.0	-24.2	281.0	2.6	17.0	174.2	735.0	26.4	519.0	4.0	104.0	11.2	0.0	0.0	11852.0	4.5	
VALE																							
2007 FTE-3	14215.0	1435	4763.2	547	1830.9	320	54.1	22	318.2	0	0.0	0	434.5	1	0.0	0	0.0	0	0.0	0	21615.9	2324	
2008 FTE-2A	15650.0	10.1	5310.0	11.5	2151.0	17.5	76.0	40.5	318.0	-0.1	0.0	0.0	435.0	0.1	0.0	0.0	0.0	0.0	0.0	0.0	23940.0	10.8	
SYST TOTAL																							
2007 FTE-3	164233.9	12266	53521.5	3469	26997.3	2306	1392.5	394	11212.5	135	8260.1	209	6695.0	1049	9214.5	834	2721.8	297	1675.0	164	285924.1	21122	
2008 FTE-2A	176500.0	7.5	56990.0	6.5	29303.0	8.5	1786.0	28.3	11347.0	1.2	8469.0	2.5	7744.0	15.7	10049.0	9.1	3019.0	10.9	1839.0	9.8	307046.0	7.4	

Sources: 2006-2007 Student Data Base FTE-3
2007-2008 Estimates FTE-2A (Division Estimates with college adjustments)
Note: Advanced and Professional, Post Secondary Vocational, College Preparatory, and EPI are calculated as 30 Credit Hour FTE.

**FLORIDA COMMUNITY COLLEGE SYSTEM
FULL TIME EQUIVALENT (FTE) Report
2007-2008 FTE Projections Compared to the 2007-2008 FTE-2 (Division Estimates)**

	Adv. & Prof.	Diff. Percent	Postsec. Voc.	Diff. Percent	College Prep	Diff. Percent	EPI	Diff. Percent	Postsec. Adult	Diff. Percent	Apprenticeship	Diff. Percent	CWE	Diff. Percent	Adult Basic	Diff. Percent	Adult S&G	Diff. Percent	Voc. Prep	Diff. Percent	Total FTE	Diff. Percent	
BREV																							
2008 PRJ	6047	266	2118	169	672	112	51	8	795	-17	422	105	131	-5	0	0	0	0	0	0	0	10236	638
2008 FTE-2	6313	4.4	2287	8.0	784	16.7	59	15.7	778	-2.1	527	24.9	126	-3.8	0	0.0	0	0.0	0	0.0	0	10874	6.2
BROW																							
2008 PRJ	12676	159	5678	66	3310	210	55	25	661	15	0	0	258	43	0	0	0	0	0	0	0	22638	518
2008 FTE-2	12835	1.3	5744	1.2	3520	6.3	80	45.5	676	2.3	0	0.0	301	16.7	0	0.0	0	0.0	0	0.0	0	23156	2.3
CFLA																							
2008 PRJ	2333	297	1005	6	390	87	39	58	511	-38	0	0	288	-118	155	-61	33	-8	10	-8	4764	215	
2008 FTE-2	2630	12.7	1011	0.6	477	22.3	97	148.7	473	-7.4	0	0.0	170	-41.0	94	-39.4	25	-24.2	2	-80.0	4979	4.5	
CHIP																							
2008 PRJ	1013	-56	237	-22	106	6	0	0	300	-77	20	-8	61	-16	0	0	0	0	14	-1	1751	-174	
2008 FTE-2	957	-5.5	215	-9.3	112	5.7	0	0.0	223	-25.7	12	-40.0	45	-26.2	0	0.0	0	0.0	13	-7.1	1577	-9.9	
DAYT																							
2008 PRJ	5810	-148	2453	-88	1076	-14	101	-18	812	263	713	-64	91	-4	548	422	285	171	9	10	11898	530	
2008 FTE-2	5662	-2.5	2365	-3.6	1062	-1.3	83	-17.8	1075	32.4	649	-9.0	87	-4.4	970	77.0	456	60.0	19	111.1	12428	4.5	
EDIS																							
2008 PRJ	4787	494	1566	166	973	-63	120	-1	6	9	0	0	67	-2	0	0	0	0	0	0	7519	603	
2008 FTE-2	5281	10.3	1732	10.6	910	-6.5	119	-0.8	15	150.0	0	0.0	65	-3.0	0	0.0	0	0.0	0	0.0	8122	8.0	
FJAX																							
2008 PRJ	11161	-630	3607	-170	1376	93	105	61	1248	-123	593	-41	1337	802	1360	-117	381	-8	52	0	21220	-133	
2008 FTE-2	10531	-5.6	3437	-4.7	1469	6.8	166	58.1	1125	-9.9	552	-6.9	2139	60.0	1243	-8.6	373	-2.1	52	0.0	21087	-0.6	
FKEY																							
2008 PRJ	450	16	221	10	49	0	4	2	22	7	0	0	22	0	0	0	0	0	0	0	768	35	
2008 FTE-2	466	3.6	231	4.5	49	0.0	6	50.0	29	31.8	0	0.0	22	0.0	0	0.0	0	0.0	0	0.0	803	4.6	
GULF																							
2008 PRJ	2657	-4	966	45	340	7	57	4	328	-1	128	15	251	-8	67	3	3	0	0	0	4797	61	
2008 FTE-2	2653	-0.2	1011	4.7	347	2.1	61	7.0	327	-0.3	143	11.7	243	-3.2	70	4.5	3	0.0	0	0.0	4858	1.3	
HILL																							
2008 PRJ	9715	85	2643	181	2085	-46	67	88	466	-34	1685	-1	239	-4	56	-1	11	0	0	0	16967	268	
2008 FTE-2	9800	0.9	2824	6.8	2039	-2.2	155	131.3	432	-7.3	1684	-0.1	235	-1.7	55	-1.8	11	0.0	0	0.0	17235	1.6	
INDR																							
2008 PRJ	4819	195	2832	-142	559	32	113	6	1160	92	976	23	19	2	1456	-63	404	-38	1	-1	12339	106	
2008 FTE-2	5014	4.0	2690	-5.0	591	5.7	119	5.3	1252	7.9	999	2.4	21	10.5	1393	-4.3	366	-9.4	0	-100.0	12445	0.9	
LCTY																							
2008 PRJ	1186	55	434	-18	160	6	23	-8	491	-26	0	0	108	0	2	-2	1	-1	2	1	2407	7	
2008 FTE-2	1241	4.6	416	-4.1	166	3.8	15	-34.8	465	-5.3	0	0.0	108	0.0	0	-100.0	0	-100.0	3	50.0	2414	0.3	
LSUM																							
2008 PRJ	1569	55	627	-16	235	36	34	7	0	0	0	0	41	-1	0	0	0	0	0	0	2506	81	
2008 FTE-2	1624	3.5	611	-2.6	271	15.3	41	20.6	0	0.0	0	0.0	40	-2.4	0	0.0	0	0.0	0	0.0	2587	3.2	
MANA																							
2008 PRJ	5332	497	674	-56	840	158	80	9	0	0	0	0	120	-1	44	-11	6	-1	0	0	7096	595	
2008 FTE-2	5829	9.3	618	-8.3	998	18.8	89	11.3	0	0.0	0	0.0	119	-0.8	33	-25.0	5	-16.7	0	0.0	7691	8.4	
MIAM																							
2008 PRJ	28064	396	8470	427	5717	-24	54	13	943	-14	653	100	1706	-121	3721	-72	533	-15	1561	346	51422	1036	
2008 FTE-2	28460	1.4	8897	5.0	5693	-0.4	67	24.1	929	-1.5	753	15.3	1585	-7.1	3649	-1.9	518	-2.8	1907	22.2	52458	2.0	

Sources: 2007-2008 FTE Projections (Division Projections with college adjustments)
2007-2008 Estimates FTE-2A (Division Estimates with college adjustments)
Advanced and Professional, Post Secondary Vocational, College Preparatory, and EPI are calculated as 30 Credit Hour FTE.

**FLORIDA COMMUNITY COLLEGE SYSTEM
FULL TIME EQUIVALENT (FTE) Report
2007-2008 FTE Projections Compared to the 2007-2008 FTE-2 (Division Estimates)**

	Adv. & Prof.	Diff. Percent	Postsec. Voc.	Diff. Percent	College Prep	Diff. Percent	EPI	Diff. Percent	Postsec. Adult	Diff. Percent	Apprenticeship	Diff. Percent	CWE	Diff. Percent	Adult Basic	Diff. Percent	Adult S&G	Diff. Percent	Voc. Prep	Diff. Percent	Total FTE	Diff. Percent	
NFLA																							
2008 PRJ	511	-1	160	-3	103	9	28	-14	133	-3	0	0	37	5	9	1	2	0	0	0	983	-6	
2008 FTE-2	510	-0.2	157	-1.9	112	8.7	14	-50.0	130	-2.3	0	0.0	42	13.5	10	11.1	2	0.0	0	0.0	977	-0.6	
OKAL																							
2008 PRJ	3499	69	672	21	293	20	40	54	194	-28	0	0	27	6	237	-81	65	-24	0	0	5027	37	
2008 FTE-2	3568	2.0	693	3.1	313	6.8	94	135.0	166	-14.4	0	0.0	33	22.2	156	-34.2	41	-36.9	0	0.0	5064	0.7	
PALM																							
2008 PRJ	10640	432	1279	25	1324	62	77	-10	774	5	1819	69	272	-1	0	0	0	0	0	0	16185	582	
2008 FTE-2	11072	4.1	1304	2.0	1386	4.7	67	-13.0	779	0.6	1888	3.8	271	-0.4	0	0.0	0	0.0	0	0.0	16767	3.6	
PASC																							
2008 PRJ	2976	64	1330	58	543	32	68	33	342	4	0	0	47	2	76	-27	27	-17	0	0	5409	149	
2008 FTE-2	3040	2.2	1388	4.4	575	5.9	101	48.5	346	1.2	0	0.0	49	4.3	49	-35.5	10	-63.0	0	0.0	5558	2.8	
PENS																							
2008 PRJ	4499	437	1847	-94	502	27	64	-4	436	-72	0	0	57	-4	309	-3	376	31	11	2	8101	320	
2008 FTE-2	4936	9.7	1753	-5.1	529	5.4	60	-6.3	364	-16.5	0	0.0	53	-7.0	306	-1.0	407	8.2	13	18.2	8421	4.0	
POLK																							
2008 PRJ	2775	395	1170	69	427	56	69	87	104	6	0	0	193	9	0	0	0	0	0	0	4738	622	
2008 FTE-2	3170	14.2	1239	5.9	483	13.1	156	126.1	110	5.8	0	0.0	202	4.7	0	0.0	0	0.0	0	0.0	5360	13.1	
ST.J																							
2008 PRJ	2373	-95	795	-16	275	30	39	47	120	-6	429	-33	47	-1	94	15	21	-3	0	0	4193	-62	
2008 FTE-2	2278	-4.0	779	-2.0	305	10.9	86	120.5	114	-5.0	396	-7.7	46	-2.1	109	16.0	18	-14.3	0	0.0	4131	-1.5	
ST.P																							
2008 PRJ	10002	144	3659	518	1480	142	0	0	166	7	0	0	301	35	0	0	0	0	0	0	15608	846	
2008 FTE-2	10146	1.4	4177	14.2	1622	9.6	0	0.0	173	4.2	0	0.0	336	11.6	0	0.0	0	0.0	0	0.0	16454	5.4	
SANF																							
2008 PRJ	7614	251	2364	-11	1043	-12	64	-5	265	-8	276	5	85	0	145	-26	56	-8	22	-1	11934	185	
2008 FTE-2	7865	3.3	2353	-0.5	1031	-1.2	59	-7.8	257	-3.0	281	1.8	85	0.0	119	-17.9	48	-14.3	21	-4.5	12119	1.6	
SEMI																							
2008 PRJ	4871	227	2764	-417	982	-98	40	4	406	-92	583	273	158	-81	625	36	526	-1	34	-3	10989	-152	
2008 FTE-2	5098	4.7	2347	-15.1	884	-10.0	44	10.0	314	-22.7	856	46.8	77	-51.3	661	5.8	525	-0.2	31	-8.8	10837	-1.4	
SFLA																							
2008 PRJ	1027	30	155	2	95	20	13	4	489	-8	111	36	125	-22	450	-22	58	-13	0	0	2523	27	
2008 FTE-2	1057	2.9	157	1.3	115	21.1	17	30.8	481	-1.6	147	32.4	103	-17.6	428	-4.9	45	-22.4	0	0.0	2550	1.1	
TALL																							
2008 PRJ	7533	348	1242	18	1144	-81	7	18	384	-88	0	17	782	-126	450	-450	125	470	0	0	11667	126	
2008 FTE-2	7881	4.6	1260	1.4	1063	-7.1	25	257.1	296	-22.9	17	0.0	656	-16.1	0	-100.0	595	376.0	0	0.0	11793	1.1	
VALE																							
2008 PRJ	14702	948	4909	401	1894	257	56	36	328	-10	0	0	411	24	0	0	0	0	0	0	22300	1656	
2008 FTE-2	15650	6.4	5310	8.2	2151	13.6	92	64.3	318	-3.0	0	0.0	435	5.8	0	0.0	0	0.0	0	0.0	23956	7.4	
SYST TOTAL																							
2008 PRJ	170641	4926	55877	1129	27993	1064	1468	504	11884	-237	8408	496	7281	413	9804	-459	2913	535	1716	345	297985	8716	
2008 FTE-2	175567	2.9	57006	2.0	29057	3.8	1972	34.3	11647	-2.0	8904	5.9	7694	5.7	9345	-4.7	3448	18.4	2061	20.1	306701	2.9	

Sources: 2007-2008 FTE Projections (Division Projections with college adjustments)
2007-2008 Estimates FTE-2A (Division Estimates with college adjustments)

Note: Advanced and Professional, Post Secondary Vocational, College Preparatory, and EPI are calculated as 30 Credit Hour FTE.

FLORIDA COMMUNITY COLLEGE SYSTEM
FULL TIME EQUIVALENT (FTE) Report
2007-2008 FTE Projections Compared to the 2007-2008 FTE-2A (Division Estimates with College Adjustments)

	Adv. & Prof.	Diff. Percent	Postsec. Voc.	Diff. Percent	College Prep	Diff. Percent	EPI	Diff. Percent	Postsec. Adult	Diff. Percent	Apprenticeship	Diff. Percent	CWE	Diff. Percent	Adult Basic	Diff. Percent	Adult S&G	Diff. Percent	Voc. Prep	Diff. Percent	Total FTE	Diff. Percent	
BREV																							
2008 PRJ	6047	266	2118	169	672	112	51	8	795	-17	422	105	131	-5	0	0	0	0	0	0	0	10236	638
2008 FTE-2A	6313	4.4	2287	8.0	784	16.7	59	15.7	778	-2.1	527	24.9	126	-3.8	0	0.0	0	0.0	0	0.0	0	10874	6.2
BROW																							
2008 PRJ	12676	209	5678	66	3310	239	55	25	661	15	0	0	258	43	0	0	0	0	0	0	0	22638	597
2008 FTE-2A	12885	1.6	5744	1.2	3549	7.2	80	45.5	676	2.3	0	0.0	301	16.7	0	0.0	0	0.0	0	0.0	0	23235	2.6
CFLA																							
2008 PRJ	2333	297	1005	-10	390	87	39	16	511	-61	0	0	288	-116	155	-26	33	-3	10	-7	4764	177	
2008 FTE-2A	2630	12.7	995	-1.0	477	22.3	55	41.0	450	-11.9	0	0.0	172	-40.3	129	-16.8	30	-9.1	3	-70.0	4941	3.7	
CHIP																							
2008 PRJ	1013	-56	237	-22	106	6	0	0	300	-110	20	-10	61	-28	0	0	0	0	14	-3	1751	-223	
2008 FTE-2A	957	-5.5	215	-9.3	112	5.7	0	0.0	190	-36.7	10	-50.0	33	-45.9	0	0.0	0	0.0	11	-21.4	1528	-12.7	
DAYT																							
2008 PRJ	5810	-140	2453	-69	1076	-2	101	-18	812	263	713	-64	91	-4	548	422	285	171	9	10	11898	569	
2008 FTE-2A	5670	-2.4	2384	-2.8	1074	-0.2	83	-17.8	1075	32.4	649	-9.0	87	-4.4	970	77.0	456	60.0	19	111.1	12467	4.8	
EDIS																							
2008 PRJ	4787	336	1566	131	973	-63	120	-1	6	9	0	0	67	-2	0	0	0	0	0	0	7519	410	
2008 FTE-2A	5123	7.0	1697	8.4	910	-6.5	119	-0.8	15	150.0	0	0.0	65	-3.0	0	0.0	0	0.0	0	0.0	7929	5.5	
FJAX																							
2008 PRJ	11161	-161	3607	-82	1376	186	105	40	1248	-198	593	-181	1337	963	1360	-160	381	-81	52	-22	21220	304	
2008 FTE-2A	11000	-1.4	3525	-2.3	1562	13.5	145	38.1	1050	-15.9	412	-30.5	2300	72.0	1200	-11.8	300	-21.3	30	-42.3	21524	1.4	
FKEY																							
2008 PRJ	450	5	221	14	49	0	4	2	22	7	0	0	22	1	0	0	0	0	0	0	768	29	
2008 FTE-2A	455	1.1	235	6.3	49	0.0	6	50.0	29	31.8	0	0.0	23	4.5	0	0.0	0	0.0	0	0.0	797	3.8	
GULF																							
2008 PRJ	2657	11	966	45	340	17	57	1	328	-1	128	15	251	-8	67	3	3	0	0	0	4797	83	
2008 FTE-2A	2668	0.4	1011	4.7	357	5.0	58	1.8	327	-0.3	143	11.7	243	-3.2	70	4.5	3	0.0	0	0.0	4880	1.7	
HILL																							
2008 PRJ	9715	85	2643	181	2085	-46	67	88	466	-34	1685	-1	239	-4	56	-1	11	0	0	0	16967	268	
2008 FTE-2A	9800	0.9	2824	6.8	2039	-2.2	155	131.3	432	-7.3	1684	-0.1	235	-1.7	55	-1.8	11	0.0	0	0.0	17235	1.6	
INDR																							
2008 PRJ	4819	195	2832	-142	559	32	113	6	1160	7	976	23	19	2	1456	-229	404	-51	1	-1	12339	-158	
2008 FTE-2A	5014	4.0	2690	-5.0	591	5.7	119	5.3	1167	0.6	999	2.4	21	10.5	1227	-15.7	353	-12.6	0	-100.0	12181	-1.3	
LCTY																							
2008 PRJ	1186	55	434	-18	160	6	23	-8	491	-105	0	0	108	0	2	-2	1	-1	2	1	2407	-72	
2008 FTE-2A	1241	4.6	416	-4.1	166	3.8	15	-34.8	386	-21.4	0	0.0	108	0.0	0	-100.0	0	-100.0	3	50.0	2335	-3.0	
LSUM																							
2008 PRJ	1569	55	627	-16	235	36	34	7	0	0	0	0	41	-1	0	0	0	0	0	0	2506	81	
2008 FTE-2A	1624	3.5	611	-2.6	271	15.3	41	20.6	0	0.0	0	0.0	40	-2.4	0	0.0	0	0.0	0	0.0	2587	3.2	
MANA																							
2008 PRJ	5332	497	674	-56	840	158	80	9	0	0	0	0	120	-1	44	-11	6	-1	0	0	7096	595	
2008 FTE-2A	5829	9.3	618	-8.3	998	18.8	89	11.3	0	0.0	0	0.0	119	-0.8	33	-25.0	5	-16.7	0	0.0	7691	8.4	
MIAM																							
2008 PRJ	28064	606	8470	434	5717	-7	54	13	943	-25	653	159	1706	-108	3721	248	533	82	1561	164	51422	1566	
2008 FTE-2A	28670	2.2	8904	5.1	5710	-0.1	67	24.1	918	-2.7	812	24.3	1598	-6.3	3969	6.7	615	15.4	1725	10.5	52988	3.0	

Sources: 2007-2008 FTE Projections (Division Projections with college adjustments)
2007-2008 Estimates FTE-2A (Division Estimates with college adjustments)
Advanced and Professional, Post Secondary Vocational, College Preparatory, and EPI are calculated as 30 Credit Hour FTE.

**FLORIDA COMMUNITY COLLEGE SYSTEM
FULL TIME EQUIVALENT (FTE) Report
2007-2008 FTE Projections Compared to the 2007-2008 FTE-2A (Division Estimates with College Adjustments)**

	Adv. & Prof.	Diff. Percent	Postsec. Voc.	Diff. Percent	College Prep	Diff. Percent	EPI	Diff. Percent	Postsec. Adult	Diff. Percent	Apprenticeship	Diff. Percent	CWE	Diff. Percent	Adult Basic	Diff. Percent	Adult S&G	Diff. Percent	Voc. Prep	Diff. Percent	Total FTE	Diff. Percent	
NFLA																							
2008 PRJ	511	-1	160	-3	103	9	28	-14	133	-3	0	0	37	5	9	1	2	0	0	0	983	-6	
2008 FTE-2A	510	-0.2	157	-1.9	112	8.7	14	-50.0	130	-2.3	0	0.0	42	13.5	10	11.1	2	0.0	0	0.0	977	-0.6	
OKAL																							
2008 PRJ	3499	110	672	17	293	21	40	27	194	-26	0	0	27	7	237	-73	65	-20	0	0	5027	63	
2008 FTE-2A	3609	3.1	689	2.5	314	7.2	67	67.5	168	-13.4	0	0.0	34	25.9	164	-30.8	45	-30.8	0	0.0	5090	1.3	
PALM																							
2008 PRJ	10640	698	1279	14	1324	135	77	-9	774	52	1819	-300	272	-65	0	0	0	0	0	0	16185	525	
2008 FTE-2A	11338	6.6	1293	1.1	1459	10.2	68	-11.7	826	6.7	1519	-16.5	207	-23.9	0	0.0	0	0.0	0	0.0	16710	3.2	
PASC																							
2008 PRJ	2976	112	1330	60	543	32	68	10	342	7	0	0	47	-2	76	-38	27	-22	0	0	5409	159	
2008 FTE-2A	3088	3.8	1390	4.5	575	5.9	78	14.7	349	2.0	0	0.0	45	-4.3	38	-50.0	5	-81.5	0	0.0	5568	2.9	
PENS																							
2008 PRJ	4499	437	1847	-94	502	27	64	-4	436	-72	0	0	57	-4	309	-3	376	31	11	2	8101	320	
2008 FTE-2A	4936	9.7	1753	-5.1	529	5.4	60	-6.3	364	-16.5	0	0.0	53	-7.0	306	-1.0	407	8.2	13	18.2	8421	4.0	
POLK																							
2008 PRJ	2775	448	1170	69	427	75	69	58	104	6	0	0	193	13	0	0	0	0	0	0	4738	669	
2008 FTE-2A	3223	16.1	1239	5.9	502	17.6	127	84.1	110	5.8	0	0.0	206	6.7	0	0.0	0	0.0	0	0.0	5407	14.1	
ST.J																							
2008 PRJ	2373	-63	795	-5	275	34	39	47	120	-13	429	-19	47	9	94	1	21	19	0	0	4193	10	
2008 FTE-2A	2310	-2.7	790	-0.6	309	12.4	86	120.5	107	-10.8	410	-4.4	56	19.1	95	1.1	40	90.5	0	0.0	4203	0.2	
ST.P																							
2008 PRJ	10002	77	3659	456	1480	124	0	0	166	-17	0	0	301	-48	0	0	0	0	0	0	15608	592	
2008 FTE-2A	10079	0.8	4115	12.5	1604	8.4	0	0.0	149	-10.2	0	0.0	253	-15.9	0	0.0	0	0.0	0	0.0	16200	3.8	
SANF																							
2008 PRJ	7614	251	2364	-11	1043	-12	64	-17	265	-18	276	-5	85	-10	145	-26	56	-18	22	-15	11934	119	
2008 FTE-2A	7865	3.3	2353	-0.5	1031	-1.2	47	-26.6	247	-6.8	271	-1.8	75	-11.8	119	-17.9	38	-32.1	7	-68.2	12053	1.0	
SEMI																							
2008 PRJ	4871	227	2764	-429	982	-96	40	-3	406	-102	583	232	158	-107	625	41	526	2	34	-6	10989	-241	
2008 FTE-2A	5098	4.7	2335	-15.5	886	-9.8	37	-7.5	304	-25.1	815	39.8	51	-67.7	666	6.6	528	0.4	28	-17.6	10748	-2.2	
SFLA																							
2008 PRJ	1027	35	155	-1	95	20	13	2	489	12	111	90	125	-44	450	29	58	19	0	0	2523	162	
2008 FTE-2A	1062	3.4	154	-0.6	115	21.1	15	15.4	501	2.5	201	81.1	81	-35.2	479	6.4	77	32.8	0	0.0	2685	6.4	
TALL																							
2008 PRJ	7533	320	1242	14	1144	-77	7	13	384	-103	0	17	782	-47	450	69	125	-21	0	0	11667	185	
2008 FTE-2A	7853	4.2	1256	1.1	1067	-6.7	20	185.7	281	-26.8	17	0.0	735	-6.0	519	15.3	104	-16.8	0	0.0	11852	1.6	
VALE																							
2008 PRJ	14702	948	4909	401	1894	257	56	20	328	-10	0	0	411	24	0	0	0	0	0	0	22300	1640	
2008 FTE-2A	15650	6.4	5310	8.2	2151	13.6	76	35.7	318	-3.0	0	0.0	435	5.8	0	0.0	0	0.0	0	0.0	23940	7.4	
SYST TOTAL																							
2008 PRJ	170641	5859	55877	1113	27993	1310	1468	318	11884	-537	8408	61	7281	463	9804	245	2913	106	1716	123	297985	9061	
2008 FTE-2A	176500	3.4	56990	2.0	29303	4.7	1786	21.7	11347	-4.5	8469	0.7	7744	6.4	10049	2.5	3019	3.6	1839	7.2	307046	3.0	

Sources: 2007-2008 FTE Projections (Division Projections with college adjustments)
2007-2008 Estimates FTE-2A (Division Estimates with college adjustments)

Note: Advanced and Professional, Post Secondary Vocational, College Preparatory, and EPI are calculated as 30 Credit Hour FTE.

FLORIDA COMMUNITY COLLEGE SYSTEM
FULL TIME EQUIVALENT (FTE) Report
2007-2008 FTE-1B (Division Estimates with College Adjustments) compared to the 2007-2008 FTE-2 (Division Estimates)

	Adv. & Prof.	Diff. Percent	Postsec. Voc.	Diff. Percent	College Prep	Diff. Percent	EPI	Diff. Percent	Postsec. Adult	Diff. Percent	Apprenticeship	Diff. Percent	CWE	Diff. Percent	Adult Basic	Diff. Percent	Adult S&G	Diff. Percent	Voc. Prep	Diff. Percent	Total FTE	Diff. Percent	
BREV																							
2008 FTE-1B	6168	145	2243	44	725	59	101	-42	777	1	413	114	126	0	0	0	0	0	0	0	0	10553	321
2008 FTE-2	6313	2.4	2287	2.0	784	8.1	59	-41.6	778	0.1	527	27.6	126	0.0	0	0.0	0	0.0	0	0.0	0	10874	3.0
BROW																							
2008 FTE-1B	12960	-125	5670	74	3532	-12	76	4	675	1	0	0	300	1	0	0	0	0	0	0	0	23213	-57
2008 FTE-2	12835	-1.0	5744	1.3	3520	-0.3	80	5.3	676	0.1	0	0.0	301	0.3	0	0.0	0	0.0	0	0.0	0	23156	-0.2
CFLA																							
2008 FTE-1B	2642	-12	1035	-24	498	-21	59	38	472	1	0	0	170	0	94	0	21	4	2	0	4993	-14	
2008 FTE-2	2630	-0.5	1011	-2.3	477	-4.2	97	64.4	473	0.2	0	0.0	170	0.0	94	0.0	25	19.0	2	0.0	4979	-0.3	
CHIP																							
2008 FTE-1B	958	-1	231	-16	116	-4	0	0	223	0	12	0	45	0	0	0	0	0	13	0	1598	-21	
2008 FTE-2	957	-0.1	215	-6.9	112	-3.4	0	0.0	223	0.0	12	0.0	45	0.0	0	0.0	0	0.0	13	0.0	1577	-1.3	
DAYT																							
2008 FTE-1B	5680	-18	2444	-79	1046	16	86	-3	1074	1	643	6	87	0	891	79	456	0	12	7	12419	9	
2008 FTE-2	5662	-0.3	2365	-3.2	1062	1.5	83	-3.5	1075	0.1	649	0.9	87	0.0	970	8.9	456	0.0	19	58.3	12428	0.1	
EDIS																							
2008 FTE-1B	5053	228	1727	5	889	21	122	-3	6	9	0	0	66	-1	0	0	0	0	0	0	7863	259	
2008 FTE-2	5281	4.5	1732	0.3	910	2.4	119	-2.5	15	150.0	0	0.0	65	-1.5	0	0.0	0	0.0	0	0.0	8122	3.3	
FJAX																							
2008 FTE-1B	10920	-389	3522	-85	1600	-131	120	46	1125	0	551	1	1750	389	1242	1	373	0	52	0	21255	-168	
2008 FTE-2	10531	-3.6	3437	-2.4	1469	-8.2	166	38.3	1125	0.0	552	0.2	2139	22.2	1243	0.1	373	0.0	52	0.0	21087	-0.8	
FKEY																							
2008 FTE-1B	426	40	233	-2	49	0	9	-3	29	0	0	0	22	0	0	0	0	0	0	0	768	35	
2008 FTE-2	466	9.4	231	-0.9	49	0.0	6	-33.3	29	0.0	0	0.0	22	0.0	0	0.0	0	0.0	0	0.0	803	4.6	
GULF																							
2008 FTE-1B	2658	-5	1013	-2	337	10	65	-4	328	-1	130	13	243	0	70	0	3	0	0	0	4847	11	
2008 FTE-2	2653	-0.2	1011	-0.2	347	3.0	61	-6.2	327	-0.3	143	10.0	243	0.0	70	0.0	3	0.0	0	0.0	4858	0.2	
HILL																							
2008 FTE-1B	9752	48	2863	-39	1999	40	181	-26	432	0	1685	-1	235	0	55	0	11	0	0	0	17213	22	
2008 FTE-2	9800	0.5	2824	-1.4	2039	2.0	155	-14.4	432	0.0	1684	-0.1	235	0.0	55	0.0	11	0.0	0	0.0	17235	0.1	
INDR																							
2008 FTE-1B	5084	-70	2800	-110	594	-3	127	-8	1253	-1	999	0	20	1	1227	166	353	13	2	-2	12459	-14	
2008 FTE-2	5014	-1.4	2690	-3.9	591	-0.5	119	-6.3	1252	-0.1	999	0.0	21	5.0	1393	13.5	366	3.7	0	-100.0	12445	-0.1	
LCTY																							
2008 FTE-1B	1216	25	434	-18	167	-1	16	-1	465	0	0	0	108	0	2	-2	1	-1	3	0	2412	2	
2008 FTE-2	1241	2.1	416	-4.1	166	-0.6	15	-6.3	465	0.0	0	0.0	108	0.0	0	-100.0	0	-100.0	3	0.0	2414	0.1	
LSUM																							
2008 FTE-1B	1582	42	629	-18	252	19	47	-6	0	0	0	0	39	1	0	0	0	0	0	0	2549	38	
2008 FTE-2	1624	2.7	611	-2.9	271	7.5	41	-12.8	0	0.0	0	0.0	40	2.6	0	0.0	0	0.0	0	0.0	2587	1.5	
MANA																							
2008 FTE-1B	5597	232	660	-42	980	18	180	-91	0	0	0	0	119	0	33	0	4	1	0	0	7573	118	
2008 FTE-2	5829	4.1	618	-6.4	998	1.8	89	-50.6	0	0.0	0	0.0	119	0.0	33	0.0	5	25.0	0	0.0	7691	1.6	
MIAM																							
2008 FTE-1B	28866	-406	9007	-110	5862	-169	66	1	929	0	753	0	1586	-1	3649	0	519	-1	1908	-1	53145	-687	
2008 FTE-2	28460	-1.4	8897	-1.2	5693	-2.9	67	1.5	929	0.0	753	0.0	1585	-0.1	3649	0.0	518	-0.2	1907	-0.1	52458	-1.3	

Sources: 2007-2008 Estimates FTE-1B (Division Estimates with college adjustments)
2007-2008 Estimates FTE-2 (Division Estimates)
Advanced and Professional, Post Secondary Vocational, College Preparatory, and EPI are calculated as 30 Credit Hour FTE.

**FLORIDA COMMUNITY COLLEGE SYSTEM
FULL TIME EQUIVALENT (FTE) Report
2007-2008 FTE-1B (Division Estimates with College Adjustments) compared to the 2007-2008 FTE-2 (Division Estimates)**

	Adv. & Prof.	Diff. Percent	Postsec. Voc.	Diff. Percent	College Prep	Diff. Percent	EPI	Diff. Percent	Postsec. Adult	Diff. Percent	Apprenticeship	Diff. Percent	CWE	Diff. Percent	Adult Basic	Diff. Percent	Adult S&G	Diff. Percent	Voc. Prep	Diff. Percent	Total FTE	Diff. Percent	
NFLA																							
2008 FTE-1B	519	-9	168	-11	118	-6	19	-5	129	1	0	0	39	3	9	1	2	0	0	0	1003	-26	
2008 FTE-2	510	-1.7	157	-6.5	112	-5.1	14	-26.3	130	0.8	0	0.0	42	7.7	10	11.1	2	0.0	0	0.0	977	-2.6	
OKAL																							
2008 FTE-1B	3572	-4	650	43	307	6	68	26	165	1	0	0	29	4	156	0	38	3	0	0	4985	79	
2008 FTE-2	3568	-0.1	693	6.6	313	2.0	94	38.2	166	0.6	0	0.0	33	13.8	156	0.0	41	7.9	0	0.0	5064	1.6	
PALM																							
2008 FTE-1B	11079	-7	1304	0	1432	-46	74	-7	779	0	1888	0	272	-1	0	0	0	0	0	0	16828	-61	
2008 FTE-2	11072	-0.1	1304	0.0	1386	-3.2	67	-9.5	779	0.0	1888	0.0	271	-0.4	0	0.0	0	0.0	0	0.0	16767	-0.4	
PASC																							
2008 FTE-1B	3040	0	1375	13	550	25	98	3	346	0	0	0	47	2	50	-1	10	0	0	0	5516	42	
2008 FTE-2	3040	0.0	1388	0.9	575	4.5	101	3.1	346	0.0	0	0.0	49	4.3	49	-2.0	10	0.0	0	0.0	5558	0.8	
PENS																							
2008 FTE-1B	4952	-16	1710	43	512	17	64	-4	363	1	0	0	53	0	306	0	406	1	11	2	8377	44	
2008 FTE-2	4936	-0.3	1753	2.5	529	3.3	60	-6.3	364	0.3	0	0.0	53	0.0	306	0.0	407	0.2	13	18.2	8421	0.5	
POLK																							
2008 FTE-1B	3108	62	1219	20	460	23	96	60	110	0	0	0	201	1	0	0	0	0	0	0	5194	166	
2008 FTE-2	3170	2.0	1239	1.6	483	5.0	156	62.5	110	0.0	0	0.0	202	0.5	0	0.0	0	0.0	0	0.0	5360	3.2	
ST.J																							
2008 FTE-1B	2257	21	779	0	285	20	74	12	113	1	394	2	46	0	75	34	16	2	0	0	4039	92	
2008 FTE-2	2278	0.9	779	0.0	305	7.0	86	16.2	114	0.9	396	0.5	46	0.0	109	45.3	18	12.5	0	0.0	4131	2.3	
ST.P																							
2008 FTE-1B	9926	220	4091	86	1564	58	0	0	173	0	0	0	336	0	0	0	0	0	0	0	16090	364	
2008 FTE-2	10146	2.2	4177	2.1	1622	3.7	0	0.0	173	0.0	0	0.0	336	0.0	0	0.0	0	0.0	0	0.0	16454	2.3	
SANF																							
2008 FTE-1B	7847	18	2309	44	1062	-31	45	14	232	25	272	9	84	1	120	-1	48	0	21	0	12040	79	
2008 FTE-2	7865	0.2	2353	1.9	1031	-2.9	59	31.1	257	10.8	281	3.3	85	1.2	119	-0.8	48	0.0	21	0.0	12119	0.7	
SEMI																							
2008 FTE-1B	5175	-77	2280	67	937	-53	32	12	313	1	856	0	76	1	635	26	519	6	30	1	10853	-16	
2008 FTE-2	5098	-1.5	2347	2.9	884	-5.7	44	37.5	314	0.3	856	0.0	77	1.3	661	4.1	525	1.2	31	3.3	10837	-0.1	
SFLA																							
2008 FTE-1B	1044	13	163	-6	101	14	14	3	480	1	145	2	104	-1	427	1	45	0	0	0	2523	27	
2008 FTE-2	1057	1.2	157	-3.7	115	13.9	17	21.4	481	0.2	147	1.4	103	-1.0	428	0.2	45	0.0	0	0.0	2550	1.1	
TALL																							
2008 FTE-1B	7864	17	1268	-8	1073	-10	20	5	297	-1	3	14	656	0	456	-456	162	433	0	0	11799	-6	
2008 FTE-2	7881	0.2	1260	-0.6	1063	-0.9	25	25.0	296	-0.3	17	466.7	656	0.0	0	-100.0	595	267.3	0	0.0	11793	-0.1	
VALE																							
2008 FTE-1B	15532	118	5207	103	2085	66	88	4	318	0	0	0	435	0	0	0	0	0	0	0	23665	291	
2008 FTE-2	15650	0.8	5310	2.0	2151	3.2	92	4.5	318	0.0	0	0.0	435	0.0	0	0.0	0	0.0	0	0.0	23956	1.2	
SYST TOTAL																							
2008 FTE-1B	175477	90	57034	-28	29132	-75	1947	25	11606	41	8744	160	7294	400	9497	-152	2987	461	2054	7	305772	929	
2008 FTE-2	175567	0.1	57006	0.0	29057	-0.3	1972	1.3	11647	0.4	8904	1.8	7694	5.5	9345	-1.6	3448	15.4	2061	0.3	306701	0.3	

Sources: 2007-2008 Estimates FTE-1B (Division Estimates with college adjustments)
2007-2008 Estimates FTE-2 (Division Estimates)

Note: Advanced and Professional, Post Secondary Vocational, College Preparatory, and EPI are calculated as 30 Credit Hour FTE.

**FLORIDA COMMUNITY COLLEGE SYSTEM
FULL TIME EQUIVALENT (FTE) Report**

2007-2008 FTE-1B (Division Estimates with College Adjustments) compared to the 2007-2008 FTE-2A (Division Estimates with College Adjustments)

	Adv. & Prof.	Diff. Percent	Postsec. Voc.	Diff. Percent	College Prep	Diff. Percent	EPI	Diff. Percent	Postsec. Adult	Diff. Percent	Apprenticeship	Diff. Percent	CWE	Diff. Percent	Adult Basic	Diff. Percent	Adult S&G	Diff. Percent	Voc. Prep	Diff. Percent	Total FTE	Diff. Percent	
BREV																							
2008 FTE-1B	6168	145	2243	44	725	59	101	-42	777	1	413	114	126	0	0	0	0	0	0	0	0	10553	321
2008 FTE-2A	6313	2.4	2287	2.0	784	8.1	59	-41.6	778	0.1	527	27.6	126	0.0	0	0.0	0	0.0	0	0.0	0	10874	3.0
BROW																							
2008 FTE-1B	12960	-75	5670	74	3532	17	76	4	675	1	0	0	300	1	0	0	0	0	0	0	0	23213	22
2008 FTE-2A	12885	-0.6	5744	1.3	3549	0.5	80	5.3	676	0.1	0	0.0	301	0.3	0	0.0	0	0.0	0	0.0	0	23235	0.1
CFLA																							
2008 FTE-1B	2642	-12	1035	-40	498	-21	59	-4	472	-22	0	0	170	2	94	35	21	9	2	1	4993	-52	
2008 FTE-2A	2630	-0.5	995	-3.9	477	-4.2	55	-6.8	450	-4.7	0	0.0	172	1.2	129	37.2	30	42.9	3	50.0	4941	-1.0	
CHIP																							
2008 FTE-1B	958	-1	231	-16	116	-4	0	0	223	-33	12	-2	45	-12	0	0	0	0	13	-2	1598	-70	
2008 FTE-2A	957	-0.1	215	-6.9	112	-3.4	0	0.0	190	-14.8	10	-16.7	33	-26.7	0	0.0	0	0.0	11	-15.4	1528	-4.4	
DAYT																							
2008 FTE-1B	5680	-10	2444	-60	1046	28	86	-3	1074	1	643	6	87	0	891	79	456	0	12	7	12419	48	
2008 FTE-2A	5670	-0.2	2384	-2.5	1074	2.7	83	-3.5	1075	0.1	649	0.9	87	0.0	970	8.9	456	0.0	19	58.3	12467	0.4	
EDIS																							
2008 FTE-1B	5053	70	1727	-30	889	21	122	-3	6	9	0	0	66	-1	0	0	0	0	0	0	7863	66	
2008 FTE-2A	5123	1.4	1697	-1.7	910	2.4	119	-2.5	15	150.0	0	0.0	65	-1.5	0	0.0	0	0.0	0	0.0	7929	0.8	
FJAX																							
2008 FTE-1B	10920	80	3522	3	1600	-38	120	25	1125	-75	551	-139	1750	550	1242	-42	373	-73	52	-22	21255	269	
2008 FTE-2A	11000	0.7	3525	0.1	1562	-2.4	145	20.8	1050	-6.7	412	-25.2	2300	31.4	1200	-3.4	300	-19.6	30	-42.3	21524	1.3	
FKEY																							
2008 FTE-1B	426	29	233	2	49	0	9	-3	29	0	0	0	22	1	0	0	0	0	0	0	768	29	
2008 FTE-2A	455	6.8	235	0.9	49	0.0	6	-33.3	29	0.0	0	0.0	23	4.5	0	0.0	0	0.0	0	0.0	797	3.8	
GULF																							
2008 FTE-1B	2658	10	1013	-2	337	20	65	-7	328	-1	130	13	243	0	70	0	3	0	0	0	4847	33	
2008 FTE-2A	2668	0.4	1011	-0.2	357	5.9	58	-10.8	327	-0.3	143	10.0	243	0.0	70	0.0	3	0.0	0	0.0	4880	0.7	
HILL																							
2008 FTE-1B	9752	48	2863	-39	1999	40	181	-26	432	0	1685	-1	235	0	55	0	11	0	0	0	17213	22	
2008 FTE-2A	9800	0.5	2824	-1.4	2039	2.0	155	-14.4	432	0.0	1684	-0.1	235	0.0	55	0.0	11	0.0	0	0.0	17235	0.1	
INDR																							
2008 FTE-1B	5084	-70	2800	-110	594	-3	127	-8	1253	-86	999	0	20	1	1227	0	353	0	2	-2	12459	-278	
2008 FTE-2A	5014	-1.4	2690	-3.9	591	-0.5	119	-6.3	1167	-6.9	999	0.0	21	5.0	1227	0.0	353	0.0	0	-100.0	12181	-2.2	
LCTY																							
2008 FTE-1B	1216	25	434	-18	167	-1	16	-1	465	-79	0	0	108	0	2	-2	1	-1	3	0	2412	-77	
2008 FTE-2A	1241	2.1	416	-4.1	166	-0.6	15	-6.3	386	-17.0	0	0.0	108	0.0	0	-100.0	0	-100.0	3	0.0	2335	-3.2	
LSUM																							
2008 FTE-1B	1582	42	629	-18	252	19	47	-6	0	0	0	0	39	1	0	0	0	0	0	0	2549	38	
2008 FTE-2A	1624	2.7	611	-2.9	271	7.5	41	-12.8	0	0.0	0	0.0	40	2.6	0	0.0	0	0.0	0	0.0	2587	1.5	
MANA																							
2008 FTE-1B	5597	232	660	-42	980	18	180	-91	0	0	0	0	119	0	33	0	4	1	0	0	7573	118	
2008 FTE-2A	5829	4.1	618	-6.4	998	1.8	89	-50.6	0	0.0	0	0.0	119	0.0	33	0.0	5	25.0	0	0.0	7691	1.6	
MIAM																							
2008 FTE-1B	28866	-196	9007	-103	5862	-152	66	1	929	-11	753	59	1586	12	3649	320	519	96	1908	-183	53145	-157	
2008 FTE-2A	28670	-0.7	8904	-1.1	5710	-2.6	67	1.5	918	-1.2	812	7.8	1598	0.8	3969	8.8	615	18.5	1725	-9.6	52988	-0.3	

Sources: 2007-2008 Estimates FTE-1B (Division Estimates with college adjustments)
2007-2008 Estimates FTE-2A (Division Estimates with college adjustments)
Advanced and Professional, Post Secondary Vocational, College Preparatory, and EPI are calculated as 30 Credit Hour FTE.

**FLORIDA COMMUNITY COLLEGE SYSTEM
FULL TIME EQUIVALENT (FTE) Report**

2007-2008 FTE-1B (Division Estimates with College Adjustments) compared to the 2007-2008 FTE-2A (Division Estimates with College Adjustments)

	Adv. & Prof.	Diff. Percent	Postsec. Voc.	Diff. Percent	College Prep	Diff. Percent	EPI	Diff. Percent	Postsec. Adult	Diff. Percent	Apprenticeship	Diff. Percent	CWE	Diff. Percent	Adult Basic	Diff. Percent	Adult S&G	Diff. Percent	Voc. Prep	Diff. Percent	Total FTE	Diff. Percent	
NFLA																							
2008 FTE-1B	519	-9	168	-11	118	-6	19	-5	129	1	0	0	39	3	9	1	2	0	0	0	1003	-26	
2008 FTE-2A	510	-1.7	157	-6.5	112	-5.1	14	-26.3	130	0.8	0	0.0	42	7.7	10	11.1	2	0.0	0	0.0	977	-2.6	
OKAL																							
2008 FTE-1B	3572	37	650	39	307	7	68	-1	165	3	0	0	29	5	156	8	38	7	0	0	4985	105	
2008 FTE-2A	3609	1.0	689	6.0	314	2.3	67	-1.5	168	1.8	0	0.0	34	17.2	164	5.1	45	18.4	0	0.0	5090	2.1	
PALM																							
2008 FTE-1B	11079	259	1304	-11	1432	27	74	-6	779	47	1888	-369	272	-65	0	0	0	0	0	0	16828	-118	
2008 FTE-2A	11338	2.3	1293	-0.8	1459	1.9	68	-8.1	826	6.0	1519	-19.5	207	-23.9	0	0.0	0	0.0	0	0.0	16710	-0.7	
PASC																							
2008 FTE-1B	3040	48	1375	15	550	25	98	-20	346	3	0	0	47	-2	50	-12	10	-5	0	0	5516	52	
2008 FTE-2A	3088	1.6	1390	1.1	575	4.5	78	-20.4	349	0.9	0	0.0	45	-4.3	38	-24.0	5	-50.0	0	0.0	5568	0.9	
PENS																							
2008 FTE-1B	4952	-16	1710	43	512	17	64	-4	363	1	0	0	53	0	306	0	406	1	11	2	8377	44	
2008 FTE-2A	4936	-0.3	1753	2.5	529	3.3	60	-6.3	364	0.3	0	0.0	53	0.0	306	0.0	407	0.2	13	18.2	8421	0.5	
POLK																							
2008 FTE-1B	3108	115	1219	20	460	42	96	31	110	0	0	0	201	5	0	0	0	0	0	0	5194	213	
2008 FTE-2A	3223	3.7	1239	1.6	502	9.1	127	32.3	110	0.0	0	0.0	206	2.5	0	0.0	0	0.0	0	0.0	5407	4.1	
ST.J																							
2008 FTE-1B	2257	53	779	11	285	24	74	12	113	-6	394	16	46	10	75	20	16	24	0	0	4039	164	
2008 FTE-2A	2310	2.3	790	1.4	309	8.4	86	16.2	107	-5.3	410	4.1	56	21.7	95	26.7	40	150.0	0	0.0	4203	4.1	
ST.P																							
2008 FTE-1B	9926	153	4091	24	1564	40	0	0	173	-24	0	0	336	-83	0	0	0	0	0	0	16090	110	
2008 FTE-2A	10079	1.5	4115	0.6	1604	2.6	0	0.0	149	-13.9	0	0.0	253	-24.7	0	0.0	0	0.0	0	0.0	16200	0.7	
SANF																							
2008 FTE-1B	7847	18	2309	44	1062	-31	45	2	232	15	272	-1	84	-9	120	-1	48	-10	21	-14	12040	13	
2008 FTE-2A	7865	0.2	2353	1.9	1031	-2.9	47	4.4	247	6.5	271	-0.4	75	-10.7	119	-0.8	38	-20.8	7	-66.7	12053	0.1	
SEMI																							
2008 FTE-1B	5175	-77	2280	55	937	-51	32	5	313	-9	856	-41	76	-25	635	31	519	9	30	-2	10853	-105	
2008 FTE-2A	5098	-1.5	2335	2.4	886	-5.4	37	15.6	304	-2.9	815	-4.8	51	-32.9	666	4.9	528	1.7	28	-6.7	10748	-1.0	
SFLA																							
2008 FTE-1B	1044	18	163	-9	101	14	14	1	480	21	145	56	104	-23	427	52	45	32	0	0	2523	162	
2008 FTE-2A	1062	1.7	154	-5.5	115	13.9	15	7.1	501	4.4	201	38.6	81	-22.1	479	12.2	77	71.1	0	0.0	2685	6.4	
TALL																							
2008 FTE-1B	7864	-11	1268	-12	1073	-6	20	0	297	-16	3	14	656	79	456	63	162	-58	0	0	11799	53	
2008 FTE-2A	7853	-0.1	1256	-0.9	1067	-0.6	20	0.0	281	-5.4	17	466.7	735	12.0	519	13.8	104	-35.8	0	0.0	11852	0.4	
VALE																							
2008 FTE-1B	15532	118	5207	103	2085	66	88	-12	318	0	0	0	435	0	0	0	0	0	0	0	23665	275	
2008 FTE-2A	15650	0.8	5310	2.0	2151	3.2	76	-13.6	318	0.0	0	0.0	435	0.0	0	0.0	0	0.0	0	0.0	23940	1.2	
SYST TOTAL																							
2008 FTE-1B	175477	1023	57034	-44	29132	171	1947	-161	11606	-259	8744	-275	7294	450	9497	552	2987	32	2054	-215	305772	1274	
2008 FTE-2A	176500	0.6	56990	-0.1	29303	0.6	1786	-8.3	11347	-2.2	8469	-3.1	7744	6.2	10049	5.8	3019	1.1	1839	-10.5	307046	0.4	

Sources: 2007-2008 Estimates FTE-1B (Division Estimates with college adjustments)
2007-2008 Estimates FTE-2A (Division Estimates with college adjustments)

Note: Advanced and Professional, Post Secondary Vocational, College Preparatory, and EPI are calculated as 30 Credit Hour FTE.

FLORIDA COMMUNITY COLLEGE SYSTEM
FULL TIME EQUIVALENT (FTE) Report
2007-2008 FTE-2 (Division Estimates) compared to the 2007-2008 FTE-2A (Division Estimates with College Adjustments)

	Adv. & Prof.	Diff. Percent	Postsec. Voc.	Diff. Percent	College Prep	Diff. Percent	EPI	Diff. Percent	Postsec. Adult	Diff. Percent	Apprenticeship	Diff. Percent	CWE	Diff. Percent	Adult Basic	Diff. Percent	Adult S&G	Diff. Percent	Voc. Prep	Diff. Percent	Total FTE	Diff. Percent	
BREV																							
2008 FTE-2	6313	0	2287	0	784	0	59	0	778	0	527	0	126	0	0	0	0	0	0	0	0	10874	0
2008 FTE-2A	6313	0.0	2287	0.0	784	0.0	59	0.0	778	0.0	527	0.0	126	0.0	0	0.0	0	0.0	0	0.0	0	10874	0.0
BROW																							
2008 FTE-2	12835	50	5744	0	3520	29	80	0	676	0	0	0	301	0	0	0	0	0	0	0	0	23156	79
2008 FTE-2A	12885	0.4	5744	0.0	3549	0.8	80	0.0	676	0.0	0	0.0	301	0.0	0	0.0	0	0.0	0	0.0	0	23235	0.3
CFLA																							
2008 FTE-2	2630	0	1011	-16	477	0	97	-42	473	-23	0	0	170	2	94	35	25	5	2	1	4979	-38	
2008 FTE-2A	2630	0.0	995	-1.6	477	0.0	55	-43.3	450	-4.9	0	0.0	172	1.2	129	37.2	30	20.0	3	50.0	4941	-0.8	
CHIP																							
2008 FTE-2	957	0	215	0	112	0	0	0	223	-33	12	-2	45	-12	0	0	0	0	13	-2	1577	-49	
2008 FTE-2A	957	0.0	215	0.0	112	0.0	0	0.0	190	-14.8	10	-16.7	33	-26.7	0	0.0	0	0.0	11	-15.4	1528	-3.1	
DAYT																							
2008 FTE-2	5662	8	2365	19	1062	12	83	0	1075	0	649	0	87	0	970	0	456	0	19	0	12428	39	
2008 FTE-2A	5670	0.1	2384	0.8	1074	1.1	83	0.0	1075	0.0	649	0.0	87	0.0	970	0.0	456	0.0	19	0.0	12467	0.3	
EDIS																							
2008 FTE-2	5281	-158	1732	-35	910	0	119	0	15	0	0	0	65	0	0	0	0	0	0	0	8122	-193	
2008 FTE-2A	5123	-3.0	1697	-2.0	910	0.0	119	0.0	15	0.0	0	0.0	65	0.0	0	0.0	0	0.0	0	0.0	7929	-2.4	
FJAX																							
2008 FTE-2	10531	469	3437	88	1469	93	166	-21	1125	-75	552	-140	2139	161	1243	-43	373	-73	52	-22	21087	437	
2008 FTE-2A	11000	4.5	3525	2.6	1562	6.3	145	-12.7	1050	-6.7	412	-25.4	2300	7.5	1200	-3.5	300	-19.6	30	-42.3	21524	2.1	
FKEY																							
2008 FTE-2	466	-11	231	4	49	0	6	0	29	0	0	0	22	1	0	0	0	0	0	0	803	-6	
2008 FTE-2A	455	-2.4	235	1.7	49	0.0	6	0.0	29	0.0	0	0.0	23	4.5	0	0.0	0	0.0	0	0.0	797	-0.7	
GULF																							
2008 FTE-2	2653	15	1011	0	347	10	61	-3	327	0	143	0	243	0	70	0	3	0	0	0	4858	22	
2008 FTE-2A	2668	0.6	1011	0.0	357	2.9	58	-4.9	327	0.0	143	0.0	243	0.0	70	0.0	3	0.0	0	0.0	4880	0.5	
HILL																							
2008 FTE-2	9800	0	2824	0	2039	0	155	0	432	0	1684	0	235	0	55	0	11	0	0	0	17235	0	
2008 FTE-2A	9800	0.0	2824	0.0	2039	0.0	155	0.0	432	0.0	1684	0.0	235	0.0	55	0.0	11	0.0	0	0.0	17235	0.0	
INDR																							
2008 FTE-2	5014	0	2690	0	591	0	119	0	1252	-85	999	0	21	0	1393	-166	366	-13	0	0	12445	-264	
2008 FTE-2A	5014	0.0	2690	0.0	591	0.0	119	0.0	1167	-6.8	999	0.0	21	0.0	1227	-11.9	353	-3.6	0	0.0	12181	-2.1	
LCTY																							
2008 FTE-2	1241	0	416	0	166	0	15	0	465	-79	0	0	108	0	0	0	0	0	3	0	2414	-79	
2008 FTE-2A	1241	0.0	416	0.0	166	0.0	15	0.0	386	-17.0	0	0.0	108	0.0	0	0.0	0	0.0	3	0.0	2335	-3.3	
LSUM																							
2008 FTE-2	1624	0	611	0	271	0	41	0	0	0	0	0	40	0	0	0	0	0	0	0	2587	0	
2008 FTE-2A	1624	0.0	611	0.0	271	0.0	41	0.0	0	0.0	0	0.0	40	0.0	0	0.0	0	0.0	0	0.0	2587	0.0	
MANA																							
2008 FTE-2	5829	0	618	0	998	0	89	0	0	0	0	0	119	0	33	0	5	0	0	0	7691	0	
2008 FTE-2A	5829	0.0	618	0.0	998	0.0	89	0.0	0	0.0	0	0.0	119	0.0	33	0.0	5	0.0	0	0.0	7691	0.0	
MIAM																							
2008 FTE-2	28460	210	8897	7	5693	17	67	0	929	-11	753	59	1585	13	3649	320	518	97	1907	-182	52458	530	
2008 FTE-2A	28670	0.7	8904	0.1	5710	0.3	67	0.0	918	-1.2	812	7.8	1598	0.8	3969	8.8	615	18.7	1725	-9.5	52988	1.0	

Sources: 2007-2008 Estimates FTE-2 (Division Estimates)
2007-2008 Estimates FTE-2A (Division Estimates with college adjustments)
Advanced and Professional, Post Secondary Vocational, College Preparatory, and EPI are calculated as 30 Credit Hour FTE.

FLORIDA COMMUNITY COLLEGE SYSTEM
FULL TIME EQUIVALENT (FTE) Report
2007-2008 FTE-2 (Division Estimates) compared to the 2007-2008 FTE-2A (Division Estimates with College Adjustments)

	Adv. & Prof.	Diff. Percent	Postsec. Voc.	Diff. Percent	College Prep	Diff. Percent	EPI	Diff. Percent	Postsec. Adult	Diff. Percent	Apprenticeship	Diff. Percent	CWE	Diff. Percent	Adult Basic	Diff. Percent	Adult S&G	Diff. Percent	Voc. Prep	Diff. Percent	Total FTE	Diff. Percent	
NFLA																							
2008 FTE-2	510	0	157	0	112	0	14	0	130	0	0	0	42	0	10	0	2	0	0	0	977	0	
2008 FTE-2A	510	0.0	157	0.0	112	0.0	14	0.0	130	0.0	0	0.0	42	0.0	10	0.0	2	0.0	0	0.0	977	0.0	
OKAL																							
2008 FTE-2	3568	41	693	-4	313	1	94	-27	166	2	0	0	33	1	156	8	41	4	0	0	5064	26	
2008 FTE-2A	3609	1.1	689	-0.6	314	0.3	67	-28.7	168	1.2	0	0.0	34	3.0	164	5.1	45	9.8	0	0.0	5090	0.5	
PALM																							
2008 FTE-2	11072	266	1304	-11	1386	73	67	1	779	47	1888	-369	271	-64	0	0	0	0	0	0	16767	-57	
2008 FTE-2A	11338	2.4	1293	-0.8	1459	5.3	68	1.5	826	6.0	1519	-19.5	207	-23.6	0	0.0	0	0.0	0	0.0	16710	-0.3	
PASC																							
2008 FTE-2	3040	48	1388	2	575	0	101	-23	346	3	0	0	49	-4	49	-11	10	-5	0	0	5558	10	
2008 FTE-2A	3088	1.6	1390	0.1	575	0.0	78	-22.8	349	0.9	0	0.0	45	-8.2	38	-22.4	5	-50.0	0	0.0	5568	0.2	
PENS																							
2008 FTE-2	4936	0	1753	0	529	0	60	0	364	0	0	0	53	0	306	0	407	0	13	0	8421	0	
2008 FTE-2A	4936	0.0	1753	0.0	529	0.0	60	0.0	364	0.0	0	0.0	53	0.0	306	0.0	407	0.0	13	0.0	8421	0.0	
POLK																							
2008 FTE-2	3170	53	1239	0	483	19	156	-29	110	0	0	0	202	4	0	0	0	0	0	0	5360	47	
2008 FTE-2A	3223	1.7	1239	0.0	502	3.9	127	-18.6	110	0.0	0	0.0	206	2.0	0	0.0	0	0.0	0	0.0	5407	0.9	
ST.J																							
2008 FTE-2	2278	32	779	11	305	4	86	0	114	-7	396	14	46	10	109	-14	18	22	0	0	4131	72	
2008 FTE-2A	2310	1.4	790	1.4	309	1.3	86	0.0	107	-6.1	410	3.5	56	21.7	95	-12.8	40	122.2	0	0.0	4203	1.7	
ST.P																							
2008 FTE-2	10146	-67	4177	-62	1622	-18	0	0	173	-24	0	0	336	-83	0	0	0	0	0	0	16454	-254	
2008 FTE-2A	10079	-0.7	4115	-1.5	1604	-1.1	0	0.0	149	-13.9	0	0.0	253	-24.7	0	0.0	0	0.0	0	0.0	16200	-1.5	
SANF																							
2008 FTE-2	7865	0	2353	0	1031	0	59	-12	257	-10	281	-10	85	-10	119	0	48	-10	21	-14	12119	-66	
2008 FTE-2A	7865	0.0	2353	0.0	1031	0.0	47	-20.3	247	-3.9	271	-3.6	75	-11.8	119	0.0	38	-20.8	7	-66.7	12053	-0.5	
SEMI																							
2008 FTE-2	5098	0	2347	-12	884	2	44	-7	314	-10	856	-41	77	-26	661	5	525	3	31	-3	10837	-89	
2008 FTE-2A	5098	0.0	2335	-0.5	886	0.2	37	-15.9	304	-3.2	815	-4.8	51	-33.8	666	0.8	528	0.6	28	-9.7	10748	-0.8	
SFLA																							
2008 FTE-2	1057	5	157	-3	115	0	17	-2	481	20	147	54	103	-22	428	51	45	32	0	0	2550	135	
2008 FTE-2A	1062	0.5	154	-1.9	115	0.0	15	-11.8	501	4.2	201	36.7	81	-21.4	479	11.9	77	71.1	0	0.0	2685	5.3	
TALL																							
2008 FTE-2	7881	-28	1260	-4	1063	4	25	-5	296	-15	17	0	656	79	0	519	595	-491	0	0	11793	59	
2008 FTE-2A	7853	-0.4	1256	-0.3	1067	0.4	20	-20.0	281	-5.1	17	0.0	735	12.0	519	0.0	104	-82.5	0	0.0	11852	0.5	
VALE																							
2008 FTE-2	15650	0	5310	0	2151	0	92	-16	318	0	0	0	435	0	0	0	0	0	0	0	23956	-16	
2008 FTE-2A	15650	0.0	5310	0.0	2151	0.0	76	-17.4	318	0.0	0	0.0	435	0.0	0	0.0	0	0.0	0	0.0	23940	-0.1	
SYST TOTAL																							
2008 FTE-2	175567	933	57006	-16	29057	246	1972	-186	11647	-300	8904	-435	7694	50	9345	704	3448	-429	2061	-222	306701	345	
2008 FTE-2A	176500	0.5	56990	0.0	29303	0.8	1786	-9.4	11347	-2.6	8469	-4.9	7744	0.6	10049	7.5	3019	-12.4	1839	-10.8	307046	0.1	

Sources: 2007-2008 Estimates FTE-2 (Division Estimates)
2007-2008 Estimates FTE-2A (Division Estimates with college adjustments)
Note: Advanced and Professional, Post Secondary Vocational, College Preparatory, and EPI are calculated as 30 Credit Hour FTE.

Brevard

	A&P	PSV	CP	EPI	PSAV	APP	CWE	AB	ASG	VP	TOT
2008											

All: No change. Reflects current enrollment.

Broward

	A&P	PSV	CP	EPI	PSAV	APP	CWE	AB	ASG	VP	TOT
2008	50	0	20	0	0	0	0	0	0	0	79

A&P,CP: Current enrollment.

Central Florida

	A&P	PSV	CP	EPI	PSAV	APP	CWE	AB	ASG	VP	TOT
2008	0	-16	0	-42	-23	0	2	35	5	1	-38

PSV,EPI,PSAV: Population growth and economic downturn raised enrollment 8% over last year, but less than model estimates.

AB, ASG: Increased demand in Levy county area.

Chipola

	A&P	PSV	CP	EPI	PSAV	APP	CWE	AB	ASG	VP	TOT
2008	0	0	0	0	-33	-2	-12	0	0	-2	-49

PSAV: Training of additional correctional officers to staff the new prison in Graceville fell short of expectations.

APP: Expected enrollments for the new Masonry and Surveying/Mapping programs fell short of expectations.

CWE: Current projected course offerings require estimates to be reduced.

VP: Lower Workforce Development enrollments typically yield lower VP enrollments.

Daytona Beach

	A&P	PSV	CP	EPI	PSAV	APP	CWE	AB	ASG	VP	TOT
2008	8	19	12	0	0	0	0	0	0	0	39

A&P,PSV,CP: Reflects actual paid, not projected enrollments through 2/26/08. College continues to enroll student for the second, eight-week Spring term which will increase enrollment.

EPI,APP: Reflects actual paid enrollment to date.

PSAV,CWE,AB,ASG,VP: Continuing to register students for Spring term and college does not project significant differences with model estimates.

Edison

	A&P	PSV	CP	EPI	PSAV	APP	CWE	AB	ASG	VP	TOT
2008	-158	-35	0	0	0	0	0	0	0	0	-193

ALL: Reorganization for campus based accountability for enrollment. Strong retention, marketing, and recruiting initiatives. Addition of new courses and new support services for on-line courses. Budget cuts have limited freshman enrollment at Florida Gulf Coast University.

FCCJ

	A&P	PSV	CP	EPI	PSAV	APP	CWE	AB	ASG	VP	TOT
2008	469	88	93	-21	-75	-140	161	-43	-73	-22	437

ALL: Current enrollment through Feb. 20.

Florida Keys

	A&P	PSV	CP	EPI	PSAV	APP	CWE	AB	ASG	VP	TOT
2008	-11	4	0	0	0	0	1	0	0	0	-6

ALL: Adjustments between major program areas to achieve proper program balance.

Gulf Coast

	A&P	PSV	CP	EPI	PSAV	APP	CWE	AB	ASG	VP	TOT
2008	15	0	10	-3	0	0	0	0	0	0	22

A&P: New dual enrollment academy. New position to develop e-learning courses. More mini-mester courses. Created interest in sciences with Sizzling Science Initiative. Interactive math courses to reach off site centers. High Schools started later, dual enrollment was delayed.

CP: Spring enrollment up 12%.

EPI: Demand in local area for teachers has decreased slightly.

Hillsborough

	A&P	PSV	CP	EPI	PSAV	APP	CWE	AB	ASG	VP	TOT
2008											

ALL: No change.

Indian River

	A&P	PSV	CP	EPI	PSAV	APP	CWE	AB	ASG	VP	TOT
2008	0	0	0	0	-85	0	0	-166	-13	0	-264

PSAV: Not produced as expected.

AG, ASG: Model does not take into account, the reduction for the Minimum Hours and Annual Cap. Because this is only second year of the new rules, the estimate was reduced to last year's total.

Lake City

	A&P	PSV	CP	EPI	PSAV	APP	CWE	AB	ASG	VP	TOT
2008	0	0	0	0	-79	0	0	0	0	0	-79

PSAV: Suspension by DOC of the Basic Corrections courses for remainder of fiscal year.

Lake-Sumter

	A&P	PSV	CP	EPI	PSAV	APP	CWE	AB	ASG	VP	TOT
2008											

ALL: No change.

A&P,CP: Current enrollment.

PSV,EPI,CWE: Current enrollment plus other courses opening later in term.

Manatee

	A&P	PSV	CP	EPI	PSAV	APP	CWE	AB	ASG	VP	TOT
2008											

ALL: No change. Based on current enrollment and addition of dual enrollment.

Miami-Dade

	A&P	PSV	CP	EPI	PSAV	APP	CWE	AB	ASG	VP	TOT
2008	210	7	17	0	-11	59	13	320	97	-182	530

ALL: Actual enrollment.

North Florida

	A&P	PSV	CP	EPI	PSAV	APP	CWE	AB	ASG	VP	TOT
2008											

ALL: No change.

Okaloosa-Walton

	A&P	PSV	CP	EPI	PSAV	APP	CWE	AB	ASG	VP	TOT
2008	41	-4	1	-27	2	0	1	8	4	0	26

ALL: More current data. Growth is combination of normal population and program expansion, increased retention strategies, recovery from impact of hurricanes and down-turn in economy.

EPI: Market saturation. Program well received at inception, but because it is available only to prospective teachers with a bachelor's degree, target population is limited.

Palm Beach

	A&P	PSV	CP	EPI	PSAV	APP	CWE	AB	ASG	VP	TOT
2008	266	-11	73	1	47	-369	-64	0	0	0	-57

A&P, CP: Increase in enrollment.
 PSV: Changes in curriculum related to a required course.
 EPI: Additional sections were offered.
 PSAV: Additional sections will start later in the term.
 APP,CWE: Reductions in the offerings of programs.

Pasco-Hernando

	A&P	PSV	CP	EPI	PSAV	APP	CWE	AB	ASG	VP	TOT
2008	48	2	0	-23	3	0	-4	-11	-5	0	10

ALL: Current enrollment patterns.
 PSAV: New Law Enforcement class in March.

Pensacola

	A&P	PSV	CP	EPI	PSAV	APP	CWE	AB	ASG	VP	TOT
2008											

ALL: No change.

Polk

	A&P	PSV	CP	EPI	PSAV	APP	CWE	AB	ASG	VP	TOT
2008	53	0	19	-29	0	0	4	0	0	0	47

ALL: Current enrollment plus small additional FTE for courses starting later.
 EPI: Lack of program history skews estimate.

St Johns River

	A&P	PSV	CP	EPI	PSAV	APP	CWE	AB	ASG	VP	TOT
2008	32	11	4	0	-7	14	10	-14	22	0	72

A&P: Late registration of dual enrollment.
 PSV: Expanded Respiratory Care and LPN Bridge programs.
 APP: Enrollment to date.
 AB: To be conservative based on rule changes.
 ASG: Expanded offerings.
 Other: Adjustments across reporting areas.

St Petersburg

	A&P	PSV	CP	EPI	PSAV	APP	CWE	AB	ASG	VP	TOT
2008	-67	-62	-18	0	-24	0	-83	0	0	0	-254

ALL: Decrease in number of classes offered based on current demand.

Santa Fe

	A&P	PSV	CP	EPI	PSAV	APP	CWE	AB	ASG	VP	TOT
2008	0	0	0	-12	-10	-10	-10	0	-10	-14	-66

Seminole

	A&P	PSV	CP	EPI	PSAV	APP	CWE	AB	ASG	VP	TOT
2008	0	-12	2	-7	-10	-41	-26	5	3	-3	-89

ALL: Current enrollment.

South Florida

	A&P	PSV	CP	EPI	PSAV	APP	CWE	AB	ASG	VP	TOT
2008	5	-3	0	-2	20	54	-22	51	32	0	135

ALL: Internal review and evaluations of current and future issues based on professional evaluation and personal experience.

A&P: Enrollment increase due to economy downturn and limited post-secondary opportunities, but increase is less than model estimates.

PSV: Enrollment increase due to program expansion and economy downturn, but increase is less than model estimates.

EPI: Continued growth in 2nd year, but expect less FTE than model estimates.

PSAV: Growth is moderate due to new program opportunities. New dual enrolled program in Hardee.

APP: Growth is due to expansion of OJT hours and economy downturn. College has increased the number of OJT hours required.

CWE: Enrollment expected to continue to increase in Spring term, but not as high as model estimates.

AB, ASG: Enrollment is up due to economy downturn and post-hurricane recovery. College continues to identify and implement activities to assist students in enrolling and maintaining their attendance.

Tallahassee

	A&P	PSV	CP	EPI	PSAV	APP	CWE	AB	ASG	VP	TOT
2008	-28	-4	4	-5	-15	0	79	519	-491	0	59

A&P,PSV,PSAV: Expect continued enrollment growth, but less than model estimates.

EPI: Adjusted to account for the initial spike in enrollment.

CWE: New program offerings at main campus and capital center.

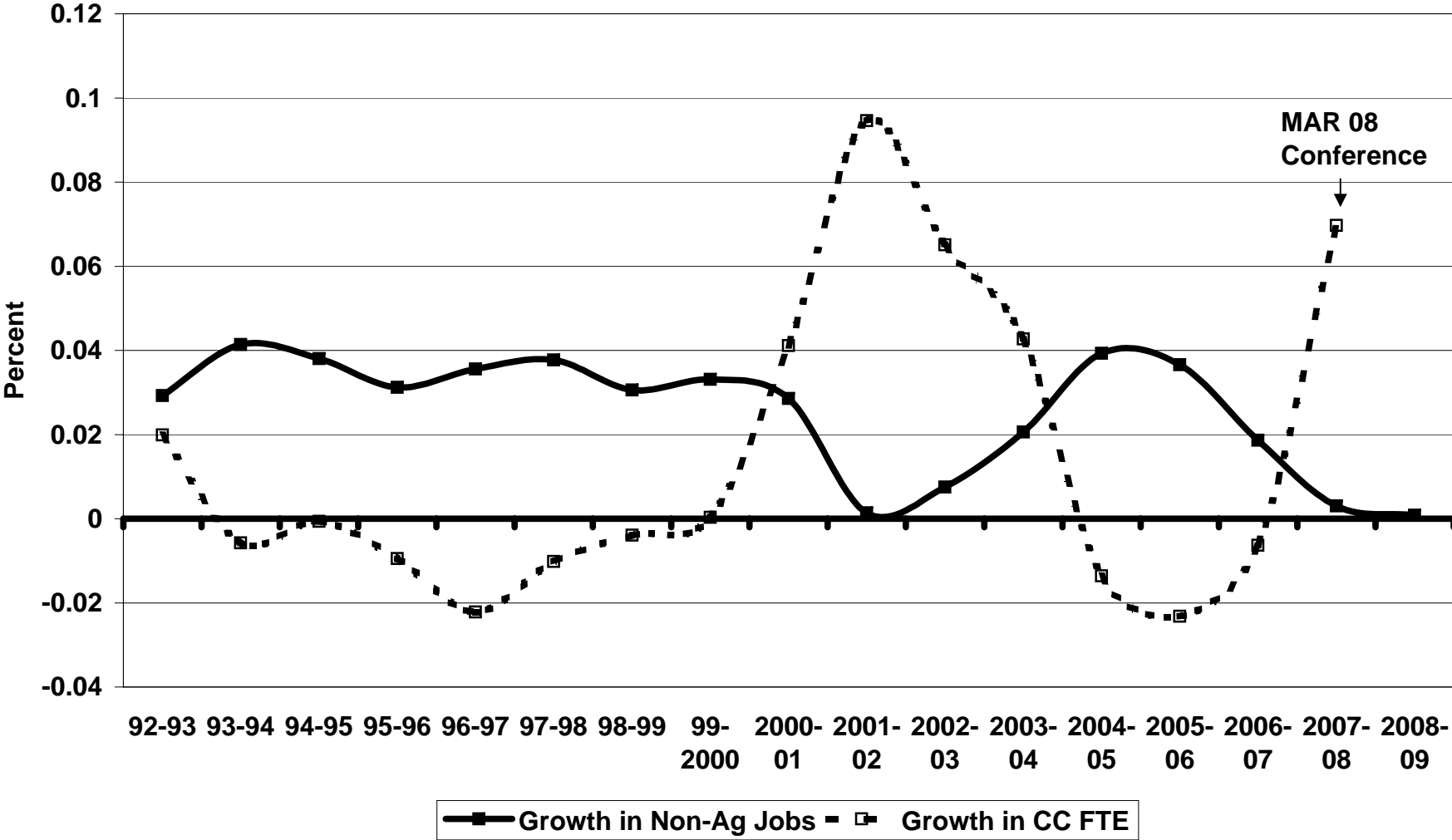
ABE/GED: To more accurately represent the enrollment.

Valencia

	A&P	PSV	CP	EPI	PSAV	APP	CWE	AB	ASG	VP	TOT
2008	0	0	0	-16	0	0	0	0	0	0	-16

EPI: More accurately reflect estimate.

Compare Growth in Community College FTE with Growth in Non-Agricultural Florida Jobs



FLORIDA COMMUNITY COLLEGE SYSTEM
COMMUNITY COLLEGE ENROLLMENT
ESTIMATING CONFERENCE

COMMUNITY COLLEGE PERFORMANCE PROJECTION PLANS



MARCH 4, 2008
117 KNOTT BLDG
8:30 AM

*State Board of Education
Strategic Imperative 7: Align Financial Resources with Performance*

Florida Community College Performance Projection Plans

Statewide Totals

	Actual				Estimated	Projected		
	2003-04	2004-05	2005-06	2006-07	2007-08	2008-09	2009-10	2010-11
Associate of Arts Degrees	30,809	31,830	32,700	33,836	35,643	36,044	37,236	38,527

Associate of Science Degrees & Certificates

Program Title	Actual				Estimated	Projected		
	2003-04 Degrees Awarded (Completers)	2004-05 Degrees Awarded (Completers)	2005-06 Degrees Awarded (Completers)	2006-07 Degrees Awarded (Completers)	2007-08 Degrees Awarded (Completers)	2008-09 Degrees Awarded (Completers)	2009-10 Degrees Awarded (Completers)	2010-11 Degrees Awarded (Completers)
Nursing	3,595	3,710	4,212	4,046	4,636	4,720	4,826	4,917
Paramedic (PSVC)	806	960	801	874	1,173	1,243	1,305	1,315
Emergency Medical Tech. (PSVC)	3,089	2,778	2,706	2,704	2,913	3,080	3,137	3,223
Radiography	373	430	406	392	485	480	482	494
Dental Hygiene	317	385	349	349	362	363	374	380
Business Administration	464	518	521	491	534	619	679	731
Emergency Med Servs-AS	280	314	347	364	412	397	418	448
Legal Assisting	386	401	432	429	469	441	463	490
Criminal Justice Technology	222	221	322	349	432	489	559	634
Respiratory Care	162	198	210	211	257	286	295	307
Physical Therapist Assistant	141	178	206	233	263	277	292	298
Industrial Management Tech.	140	160	233	194	204	217	226	234
Computer Engineering Tech.	222	207	201	147	159	191	206	224
Graphics Technology	260	262	203	216	191	219	218	221
Early Childhood Education AS	179	208	257	271	277	321	376	443
Network Administrator	324	247	207	220	222	252	268	276
Computer Information Administrator	326	300	204	169	202	230	253	292
Office Administration	183	175	179	209	221	246	282	310
Accounting Technology	165	171	168	177	199	264	311	371
Business Management (PSVC)	384	335	473	436	456	527	543	558
Health Information Management	88	107	139	117	163	166	187	196
Medical Info. Biller/Coder (PSVC)	247	278	237	250	305	333	355	377
Subtotal [high output progs.]	12,353	12,543	13,013	12,848	14,535	15,361	16,056	16,739

Career Technical Certificates (PSAV)

Program Title	Actual				Estimated	Projected		
	2003-04 Certificates Awarded (Completers)	2004-05 Certificates Awarded (Completers)	2005-06 Certificates Awarded (Completers)	2006-07 Certificates Awarded (Completers)	2007-08 Certificates Awarded (Completers)	2008-09 Certificates Awarded (Completers)	2009-10 Certificates Awarded (Completers)	2010-11 Certificates Awarded (Completers)
Law Enforcement Officer	1,904	1,500	1,717	1,815	1,982	2,178	2,416	2,584
Correctional Officer	2,186	1,778	2,074	2,405	2,299	2,197	2,416	2,598
Practical Nursing	649	755	639	631	671	694	717	730
Fire Fighter II	1,030	939	1,024	1,100	1,125	1,213	1,245	1,306
Cosmetology	294	279	397	362	393	420	446	473
Dental Assisting	210	185	202	219	237	241	243	246
Surgical Technology	127	126	124	146	153	153	174	168
Medical Assisting	99	95	110	89	177	194	202	210
Massage Therapy	123	173	188	141	188	240	245	220
Patient Care Technician	309	250	200	310	306	313	319	325
Subtotal [high output progs.]	6,931	6,080	6,675	7,218	7,421	7,679	8,257	8,722

Educator Preparation Institute Completers

	Actual				Estimated	Projected		
	2003-04	2004-05	2005-06	2006-07	2007-08	2008-09	2009-10	2010-11
	0	0	86	716	1,438	1,854	2,096	2,254

Adult Education

Benchmark	Actual				Estimated	Projected		
	2003-04 Count	2004-05 Count	2005-06 Count	2006-07 Count	2007-08	2008-09 Count	2009-10 Count	2010-11 Count
Adult High School Diplomas Awarded	690	581	517	668	675	721	753	786
General Equivalency Diplomas (GED) Awarded	5,060	4,958	4,875	4,790	4,790	4,984	5,118	5,301
Adult Basic Education Literacy Completion Points (LCPs) Awarded	32,981	29,101	26,110	26,396	28,366	29,142	30,722	30,250

Community College Baccalaureate Degree Completers

	Actual				Estimated	Projected		
	2003-04	2004-05	2005-06	2006-07	2007-08	2008-09	2009-10	2010-11
	123	228	398	570	771	983	1,326	1,859

FLORIDA COMMUNITY COLLEGE SYSTEM

COMMUNITY COLLEGE ENROLLMENT ESTIMATING CONFERENCE

Baccalaureate Degree Grants



MARCH 4, 2008
117 KNOTT BUILDING
8:30 AM

*State Board of Education
Strategic Imperative 7: Align Financial Resources with Performance*

2008-2009 BACCALAUREATE DEGREE GRANTS

<u>CURRENT PROGRAMS</u>	2007-08	SPECIAL	2007-08	2008-09	FUNDED
	APPROP. (1)	REVISED	2007-08	2008-09	2008-09
			APPROP.	PROJECTED	PROJECTED
				APPROP. (2)	FTE
			APPROP.		
Saint Petersburg College - Education, Allied Health, Technology Mgt and Public Safety	\$6,783,305	\$6,586,082	\$6,483,484	\$6,564,315	1,795.0
Chipola - BS in Secondary Education and BAS in Business Management	662,440	643,179	633,160	641,036	175.3
Daytona Beach - Bachelor of Applied Science in Management and Supervision	522,720	507,521	499,615	877,680	240.0
Edison - BAS in Management and Secondary Education	116,150	112,773	111,016	292,560	80.0
Florida Community College - Bachelor of Applied Science, Fire Science	46,464	45,113	44,410	87,768	24.0
Indian River Community College - BS Organizational Mgt, Nursing and Education	1,183,664	1,171,055	1,164,496	1,839,471	503.0
Miami-Dade - BAS in Secondary Education, Public Safety Mgt and BS in Nursing	1,244,351	1,208,173	1,189,353	2,098,387	573.8
Okaloosa-Walton - BS in Nursing, BAS in Project Acquisitions Mgt and BS in Education	972,901	959,151	951,999	851,715	232.9
TOTAL (CURRENT PROGRAMS)	\$11,531,995	\$11,233,047	\$11,077,533	\$13,252,931	3,624.0

<u>PROPOSED NEW PROGRAMS</u>	REVISD	2008-09	2008-09
	PROJECTED	PROJECTED	PROJECTED
	APPROP. (3)	FTE	FTE
Broward - BS in Middle School Math, General Science, Secondary Math and Biology, ESE	\$219,420	60.0	
Chipola - BS in Education, ESE and Nursing	0 (4)	73.0	
Daytona Beach - BS in Secon. Math, Bio., Chem., Physics, Earth/Space Science, Elem. Educ., ESE	304,628	83.3	
Edison - BS in Elementary Education, Supervision and Management and Nursing	160,908	44.0	
Florida Community College - BS in Nursing and BAS in Computer Networking and Organ. Mgt.	301,703	82.5	
Palm Beach - Bachelor of Applied Science, Supervision and Management	0	0.0	
TOTAL (NEW PROGRAMS)	\$986,659	342.8	
TOTAL (CURRENT AND NEW PROGRAMS)	\$14,239,590	3,967	

(1) Includes non-recurring funds for Indian River Community College in the amount of \$750,000; and Okaloosa-Walton College in the amount of \$500,000.

(2) The amount calculated for 2008-09 is based on \$3,657 per FTE.

(3) Chipola must serve a total of 175.3 FTE before they are eligible for additional state appropriations.

**FLORIDA COMMUNITY COLLEGE SYSTEM
PROPOSED 2008-2009 BACCALAUREATE DEGREE GRANTS
PROJECTED FULL TIME ENROLLMENT (FTE)**

COLLEGE	PROJECTED 2008-09
Broward - Bachelors of Science in Middle School Math	10.0
Broward - Bachelors of Science in Middle Grades General Science	10.0
Broward - Bachelors of Science in Secondary Math	10.0
Broward - Bachelors of Science in Secondary Biology	10.0
Broward - Bachelors of Science in Exceptional Student Education	20.0
----- Subtotal	60.0
Chipola - Bachelor of Science in Elementary Education	35.0
Chipola - Bachelor of Science in Exceptional Student Education	20.0
Chipola - Bachelor of Science in Nursing	18.0
----- Subtotal	73.0
Daytona Beach - Bachelor of Science in Secondary Mathematics Education	10.4
Daytona Beach - Bachelor of Science in Secondary Biology Education	4.5
Daytona Beach - Bachelor of Science in Secondary Chemistry Education	2.4
Daytona Beach - Bachelor of Science in Secondary Physics Education	3.6
Daytona Beach - Bachelor of Science in Earth/Space Science Education	2.4
Daytona Beach - Bachelor of Science in Elementary Education	30.0
Daytona Beach - Bachelor of Science in Exceptional Student Education	30.0
----- Subtotal	83.3
Edison - Bachelor of Science in Elementary Education	30.0
Edison - Bachelor of Applied Science in Supervision and Management	14.0
Edison - Bachelor of Science in Nursing	0.0
----- Subtotal	44.0
Florida Community College - Bachelor of Science in Nursing	19.2
Florida Community College - Bachelor of Applied Science in Computer Networking	40.0
Florida Community College - Bachelor of Applied Science in Organizational Management	23.3
----- Subtotal	82.5
Palm Beach - Bachelor of Applied Science, Supervision and Management	0.0
TOTAL (NEW PROGRAMS)	342.8

Revised 2/27/08

Legislative Methodology for State Funding of Community College Baccalaureate Degree Programs 2008-2009

State University System

Costs	Actual	Cost per FTE	% of Cost	3.16%	Cost per FTE
	06-07 Cost Analysis			Adjustment of Cost 06-07 to Cost 07-08	
Direct Instructional	504,964,343	4,320	52.5%	520,921,216	4,303
Subtotal	504,964,343	4,320	52.5%	520,921,216	4,303
Allocated Instructional Support					
Academic Support	153,162,761	1,310	15.9%	158,002,704	1,305
Student Services	86,899,788	743	9.0%	89,645,821	740
Institution Support	118,722,182	1,016	12.3%	122,473,803	1,012
Physical Plant	98,359,942	841	10.2%	101,468,116	838
Subtotal	457,144,673	3,911	47.5%	471,590,445	3,895
TOTAL COSTS	962,109,016	8,231	100.0%	992,511,661	8,198
FTE		116,893			121,064
Student Fees		(2,211)			(2,322)
State Funds		6,019			5,877

CC - Represents the Lower Division

SUS - Represents the Upper Division

LEGISLATIVE METHODOLOGY	Proposed 2008-2009 % of the SUS State Funding
<u>SUS Direct Instructional Cost</u>	<u>\$4,303</u>
85% of SUS Direct Instructional Cost	\$3,657 62%
Upper Division Student Fees	<u>2,023</u>
Total Funding Per FTE	\$5,680

**FLORIDA COMMUNITY COLLEGE SYSTEM
BACHELOR DEGREES AWARDED**

COLLEGE	ACTUAL 2003-04	ACTUAL 2004-05	ACTUAL 2005-2006	ACTUAL 2006-07	ESTIMATED 2007-08	PROJECTED 2008-09	PROJECTED 2009-10	PROJECTED 2010-11
Chipola	0.0	1.0	9.0	7.0	10.0	37.0	110.0	114.0
Broward	0.0	0.0	0.0	0.0	0.0	0.0	60.0	120.0
Daytona Beach	0.0	0.0	0.0	6.0	50.0	60.0	70.0	277.0
Edison	0.0	0.0	0.0	0.0	5.0	10.0	12.0	120.0
Florida CC at Jacksonville	0.0	0.0	0.0	0.0	0.0	5.0	57.0	98.0
Indian River	0.0	0.0	0.0	0.0	0.0	0.0	0.0	47.0
Miami-Dade	0.0	4.0	24.0	44.0	81.0	235.0	308.0	321.0
Okaloosa-Walton	0.0	0.0	26.0	42.0	86.0	97.0	103.0	108.0
Palm Beach	0.0	0.0	0.0	0.0	0.0	0.0	40.0	60.0
St. Petersburg	123.0	223.0	339.0	471.0	539.0	539.0	566.0	594.0
TOTAL	123.0	228.0	398.0	570.0	771.0	983.0	1,326.0	1,859.0

Source: 2003-04 Thru 2006-07 Student Data Base and 2007-08 Baccalaureate Enrollment, Performance and Budget Plan.

Current and new programs to begin in the 2008-09.

Note: Saint Pete's Degrees include EPI students.

Revised 2/29/2008

Community College Enrollment Estimating Conference
March 4, 2008

ACTION MINUTES

Principals attending:

Jessica Wiginton, Office of the Governor
Amy Baker, Legislative Office of Economic & Demographic Research (Chair)
Paul Bryant, Florida Senate
Mark Eggers, Florida House of Representatives

Presenters:

Ed Cisek, Department of Education/Division of Community Colleges (DOE/CC)
Robert McMullen, DOE/CC

Presentations:

Ed Cisek and Robert McMullen reviewed the Division Estimate with College Adjustments Full-Time-Equivalent (FTE) estimates for 2007-08, based on Final Summer, Final Fall and preliminary Spring data. Beth Lines distributed a graph comparing growth in community college FTE and growth in non-farm employment. See attached handouts for details. Ed Cisek shared information on community College performance projection plans and on Baccalaureate Degree Grants for information only. Copies of the handouts are attached.

Actions:

The Conference adopted the Division estimates with College Adjustments as recommended by the DOE/CC.

Consensus:

The Conference agreed to accept the FY 2007-08 FTE estimate with college adjustments. **March 2008 Consensus for FY 2007-08 is 307,046 FTE, based on 30 credit hours per FTE for Advanced & Professional (A&P), Postsecondary Vocational (PSV), College Prep and Education Preparation Institute (EPI) hours.** This is an increase of 20,290.7 FTE over the FY 2006-07 FTE total of 286,755.3, and an increase of 1,274 FTE over the estimate adopted at the November 2007 conference. See handouts for details, including FTE based on 40 credit hours per FTE for A&P, PSV, College Prep & EPI hours. A table summarizing the consensus estimate is presented on the next page.

The next meeting of the conference will be chaired by Mark Eggers, representing the Florida House of Representatives.

SUMMARY					2006-07 Final compared to 2007-08 MAR 08 (NEW) CONSENSUS	2006-07 Final compared to 2007-08 MAR 08 (NEW) CONSENSUS
PROGRAMS	2005-06 Final FTE	2006-07 Final FTE	2007-08 NOV 07 CONSENSUS Estimate (OLD)	2007-08 MAR 08 CONSENSUS Estimate (NEW)	Amount Change	Percent Change
A & P	163,204	164,530	175,477	176,500	11,971	7.28%
PSV	53,644	53,613	57,034	56,990	3,377	6.30%
COLLEGE PREP	27,351	27,087	29,132	29,303	2,216	8.18%
EPI	527	1,404	1,947	1,786	382	27.23%
PSAV	11,206	11,252	11,606	11,347	95	.085%
SUBTOTAL FEE PAYING	255,932	257,885	275,196	275,926	18,041	7.00%
APPRENTICESHIP	6,974	8,302	8,744	8,469	167	2.02%
CWE	5,814	6,702	7,294	7,744	1,042	15.54%
SUBTOTAL W/O ADULT	268,720	272,889	291,234	292,139	19,250	7.05%
VOCATIONAL PREP	1,706	1,676	2,054	1,839	163	9.71%
ADULT EDUCATION	17,288	12,190	12,485	13,068	878	7.20%
SUBTOTAL ADULT	18,994	13,866	14,539	14,907	1,041	7.51%
TOTAL (ALL PGMS)	287,714	286,755	305,773	307,046	20,291	7.08%