

Education Estimating Conference on
Florida College System Enrollment

EXECUTIVE SUMMARY
November 19, 2014

The Education Estimating Conference on Florida College Enrollment met on November 19, 2014, to consider Florida College System full-time-equivalent (FTE) enrollment estimates for FY 2014-15 (FTE-1A). The estimates are based on preliminary FY 2014-15 Term 1 enrollment data, the Division of Florida Colleges' enrollment model based on that data, and adjustments to the model provided by the colleges.

New estimates for the Florida College System total FTE enrollment anticipate an FTE reduction of 1.0% (from total actual enrollment of 340,556 in FY 2013-14 to an estimated enrollment of 337,213 in FY 2014-15) representing loss of 3,343 FTE from FY 2013-14 actual enrollment.

The estimated Upper Division enrollment for FY 2014-15 is projected to increase by 1,586 or 12.3% compared to FY 2013-14 FTE of 12,934. For all Lower Division programs, FTE enrollment is projected to decrease by 4,929 FTE (or 1.5%), from 327,622 FTE in FY 2013-14 to a projected 322,693 FTE in FY 2014-15. The loss in FTE is primarily due to declines in Development Education (decrease of 9,066 FTE or 29.5%) from FY 2013-14. The decline is partially offset by an increase in Advanced and Professional (increase of 4,993 FTE or 2.3%).

Upper Division FTE enrollment accounted for 3.8% of total enrollment in FY 2013-14, increasing to a projected 4.3% of total enrollment in FY 2014-15. In addition to Upper Division and Advanced and Professional programs, enrollment increases over FY 2013-14 are expected in Apprenticeship and Adult Secondary/GED Preparatory programs, while decreases are expected in all other program areas.

The Conference Principals adopted the new estimate as presented by the Division of Florida Colleges without modification.

Florida College System FTE Enrollment

	FY 2013-14	FY 2014-15		
	Actual	Nov 2014 FTE-1A Estimate	FTE-1A +/- 13-14 Actual	%
Lower Division	327,622	322,693	(4,929)	-1.5%
Upper Division	12,934	14,520	1,586	12.3%
Total	340,556	337,213	(3,343)	-1.0%

**FLORIDA COLLEGE SYSTEM
FTE ENROLLMENT: FUNDED-30, LOWER AND UPPER DIVISION
DIVISION ESTIMATES WITH COLLEGE ADJUSTMENTS AS OF NOVEMBER 2014
2014-15 FTE-1A**

	UPPER DIVISION	A & P	POSTSEC VOC	DEV ED	EPI	POSTSEC ADULT VOC	APPRENTICE	ADULT BASIC	ADULT SEC/GED PREP	VOC PREP	TOTAL
EFSC	225.0	7349.0	2416.0	446.0	0.0	692.0	0.0	0.0	0.0	0.0	11128.0
BROW	917.0	18567.0	7615.0	2907.0	66.0	465.0	0.0	0.0	0.0	0.0	30537.0
CFLA	266.0	3807.0	1221.0	338.0	0.0	133.0	0.0	11.0	10.0	0.0	5786.0
CHIP	125.0	891.0	255.0	50.0	0.0	129.0	0.0	0.0	0.0	1.0	1451.0
DAYT	930.0	5993.0	2143.0	443.0	0.0	767.0	284.0	541.0	101.0	4.0	11206.0
FSW	661.0	8189.0	529.0	385.0	0.0	20.0	0.0	0.0	0.0	0.0	9784.0
FJAX	1395.0	12188.0	3580.0	1214.0	0.0	1146.0	264.0	522.0	90.0	7.0	20406.0
FKEY	0.0	463.0	164.0	28.0	0.0	28.0	0.0	0.0	0.0	0.0	683.0
GULF	39.0	3061.0	735.0	148.0	22.0	163.0	0.0	0.0	0.0	0.0	4168.0
HILL	0.0	13702.0	3289.0	1387.0	175.0	466.0	1074.0	42.0	8.0	0.0	20143.0
INDR	1378.0	6631.0	2638.0	423.0	0.0	817.0	528.0	767.0	131.0	45.0	13358.0
FGC	22.0	1242.0	419.0	56.0	13.0	250.0	0.0	0.0	0.0	0.0	2002.0
LSSC	43.0	2040.0	620.0	104.0	13.0	0.0	0.0	0.0	0.0	0.0	2820.0
SCF	411.0	6209.0	618.0	385.0	49.0	0.0	0.0	0.0	0.0	0.0	7672.0
MIAM	1933.0	39495.0	3991.0	6148.0	29.0	800.0	200.0	1617.0	523.0	495.0	55231.0
NFLA	0.0	529.0	173.0	26.0	0.0	94.0	0.0	0.0	0.0	0.0	822.0
NWFC	367.0	3205.0	663.0	173.0	0.0	133.0	0.0	134.0	5.0	0.0	4680.0
PALM	628.0	15756.0	1579.0	823.0	33.0	959.0	550.0	0.0	0.0	0.0	20328.0
PASC	72.0	4388.0	2232.0	616.0	42.0	347.0	0.0	15.0	0.0	0.0	7712.0
PENS	255.0	4580.0	1717.0	326.0	9.0	381.0	0.0	232.0	283.0	0.0	7783.0
POLK	785.0	4683.0	1766.0	288.0	89.0	88.0	0.0	0.0	0.0	0.0	7699.0
ST.J	185.0	3189.0	1032.0	172.0	41.0	93.0	33.0	104.0	22.0	0.0	4871.0
ST.P	2605.0	11730.0	4991.0	1123.0	0.0	162.0	0.0	0.0	0.0	0.0	20611.0
SANF	436.0	7132.0	2491.0	651.0	30.0	265.0	207.0	125.0	5.0	0.0	11342.0
SEMI	596.0	7696.0	2945.0	615.0	42.0	268.0	558.0	267.0	210.0	0.0	13197.0
SFLA	97.0	1439.0	11.0	30.0	0.0	301.0	21.0	306.0	45.0	0.0	2250.0
TALL	0.0	7499.0	1067.0	774.0	0.0	289.0	2.0	65.0	14.0	0.0	9710.0
VALE	149.0	22469.0	5361.0	1562.0	91.0	201.0	0.0	0.0	0.0	0.0	29833.0
SYST	14520.0	224122.0	56261.0	21641.0	744.0	9457.0	3721.0	4748.0	1447.0	552.0	337213.0

**FLORIDA COLLEGE SYSTEM
FTE ENROLLMENT: FUNDED-30, LOWER AND UPPER DIVISION
DIVISION ESTIMATES WITH COLLEGE ADJUSTMENTS
COMPARISON 2013-14 FTE-3 ADOPTED BY EEC TO 2014-15 FTE-1A**

	2013-14 FTE-3	2014-15 FTE-1A	CHANGE	%CHANGE
EFSC	11545	11128	-417	-3.6%
BROW	30496	30537	41	0.1%
CFLA	5904	5786	-118	-2.0%
CHIP	1511	1451	-60	-3.9%
DAYT	11881	11206	-675	-5.7%
FSW	10149	9784	-365	-3.6%
FJAX	21676	20406	-1270	-5.9%
FKEY	776	683	-93	-12.0%
GULF	4257	4168	-89	-2.1%
HILL	19974	20143	169	0.8%
INDR	13123	13358	235	1.8%
FGC	2078	2002	-76	-3.6%
LSSC	2787	2820	34	1.2%
SCF	7634	7672	38	0.5%
MIAM	54472	55231	759	1.4%
NFLA	798	822	24	3.0%
NWFC	5023	4680	-343	-6.8%
PALM	20057	20328	271	1.3%
PASC	7095	7712	617	8.7%
PENS	8518	7783	-735	-8.6%
POLK	7905	7699	-206	-2.6%
ST.J	4768	4871	103	2.2%
ST.P	20692	20611	-81	-0.4%
SANF	11557	11342	-215	-1.9%
SEMI	13867	13197	-670	-4.8%
SFLA	2192	2250	58	2.6%
TALL	10208	9710	-498	-4.9%
VALE	29612	29833	221	0.7%
SYST	340556	337213	-3343	-1.0%



**THE FLORIDA COLLEGE SYSTEM
ENROLLMENT ESTIMATING CONFERENCE
NOVEMBER 19, 2014 MEETING PACKET**

Florida Department of Education

**FLORIDA COLLEGE SYSTEM
FTE ENROLLMENT: FUNDED-30, LOWER AND UPPER DIVISION**

2013-14 FTE-3

	UPPER DIVISION	A & P	POSTSEC VOC	DEV ED	EPI	POSTSEC ADULT VOC	APPRENTICE	ADULT BASIC	ADULT SEC/GED PREP	VOC PREP	TOTAL
EFSC	75.6	7529.9	2575.2	657.2	0.0	691.8	15.2	0.0	0.0	0.0	11544.9
BROW	797.2	17469.5	7501.6	4216.4	47.4	464.0	0.0	0.0	0.0	0.0	30496.1
CFLA	208.7	3717.8	1320.4	437.6	1.4	196.9	0.0	11.1	10.4	0.0	5904.3
CHIP	134.7	928.6	239.1	78.0	0.0	128.6	0.0	0.0	0.0	1.6	1510.6
DAYT	858.0	6145.7	2171.0	871.9	1.2	736.4	302.1	662.4	119.9	12.1	11880.7
FSW	599.0	8122.9	613.6	793.6	0.0	20.2	0.0	0.0	0.0	0.0	10149.3
FJAX	1288.8	12657.4	3757.5	1766.3	0.1	1245.0	342.6	522.2	89.7	6.8	21676.4
FKEY	0.0	507.7	196.9	42.8	0.0	29.0	0.0	0.0	0.0	0.0	776.4
GULF	54.8	2981.9	748.1	271.4	34.2	164.1	2.4	0.0	0.0	0.0	4256.9
HILL	0.0	12770.7	3387.1	2076.0	151.9	466.2	1072.8	41.6	7.6	0.0	19973.9
INDR	1190.1	6577.6	2657.3	578.5	0.0	815.8	439.8	696.5	122.0	45.3	13122.9
FGC	13.9	1291.3	415.2	106.0	14.0	237.3	0.0	0.0	0.0	0.0	2077.7
LSSC	30.2	1919.1	640.1	179.3	17.8	0.0	0.0	0.0	0.0	0.0	2786.5
SCF	375.6	6055.0	594.4	560.3	48.5	0.0	0.0	0.0	0.0	0.0	7633.8
MIAM	1867.5	37572.2	3956.4	7581.3	34.3	800.4	226.1	1617.2	321.6	495.3	54472.3
NFLA	0.0	484.9	156.2	63.4	0.0	93.6	0.0	0.0	0.0	0.0	798.1
NWFC	361.4	3357.3	756.9	274.5	0.0	132.4	0.0	134.0	6.4	0.0	5022.9
PALM	547.4	15249.2	1573.0	1180.3	43.7	959.4	504.4	0.0	0.0	0.0	20057.4
PASC	0.0	3972.7	2065.2	624.2	72.5	345.5	0.0	13.9	0.8	0.0	7094.8
PENS	229.4	4903.4	1864.7	610.3	14.2	381.3	0.0	231.6	283.1	0.0	8518.0
POLK	604.8	4753.3	1848.8	533.0	77.2	87.7	0.0	0.0	0.0	0.0	7904.8
ST.J	162.5	3099.0	994.9	271.1	42.2	92.8	32.8	50.4	22.4	0.0	4768.1
ST.P	2497.8	11627.4	4940.1	1464.6	0.0	162.5	0.0	0.0	0.0	0.0	20692.4
SANF	388.2	7164.0	2586.5	797.6	19.0	264.8	207.0	124.7	5.4	0.0	11557.2
SEMI	512.3	8008.2	3000.9	915.8	41.5	311.7	508.5	320.0	248.4	0.0	13867.3
SFLA	43.8	1334.7	34.9	92.4	0.0	305.7	20.4	306.4	53.7	0.0	2192.0
TALL	0.0	7490.9	1142.0	1186.5	0.0	290.3	16.1	64.9	17.1	0.0	10207.8
VALE	92.3	21437.1	5315.4	2476.7	90.0	200.5	0.0	0.0	0.0	0.0	29612.0
SYST	12934.0	219129.4	57053.4	30707.0	751.1	9623.9	3690.2	4796.9	1308.5	561.1	340555.5

**FLORIDA COLLEGE SYSTEM
FTE ENROLLMENT: FUNDED-30, LOWER AND UPPER DIVISION
DIVISION ESTIMATES WITH COLLEGE ADJUSTMENTS AS OF NOVEMBER 2014
2014-15 FTE-1A**

	UPPER DIVISION	A & P	POSTSEC VOC	DEV ED	EPI	POSTSEC ADULT VOC	APPRENTICE	ADULT BASIC	ADULT SEC/GED PREP	VOC PREP	TOTAL
EFSC	225.0	7349.0	2416.0	446.0	0.0	692.0	0.0	0.0	0.0	0.0	11128.0
BROW	917.0	18567.0	7615.0	2907.0	66.0	465.0	0.0	0.0	0.0	0.0	30537.0
CFLA	266.0	3807.0	1221.0	338.0	0.0	133.0	0.0	11.0	10.0	0.0	5786.0
CHIP	125.0	891.0	255.0	50.0	0.0	129.0	0.0	0.0	0.0	1.0	1451.0
DAYT	930.0	5993.0	2143.0	443.0	0.0	767.0	284.0	541.0	101.0	4.0	11206.0
FSW	661.0	8189.0	529.0	385.0	0.0	20.0	0.0	0.0	0.0	0.0	9784.0
FJAX	1395.0	12188.0	3580.0	1214.0	0.0	1146.0	264.0	522.0	90.0	7.0	20406.0
FKEY	0.0	463.0	164.0	28.0	0.0	28.0	0.0	0.0	0.0	0.0	683.0
GULF	39.0	3061.0	735.0	148.0	22.0	163.0	0.0	0.0	0.0	0.0	4168.0
HILL	0.0	13702.0	3289.0	1387.0	175.0	466.0	1074.0	42.0	8.0	0.0	20143.0
INDR	1378.0	6631.0	2638.0	423.0	0.0	817.0	528.0	767.0	131.0	45.0	13358.0
FGC	22.0	1242.0	419.0	56.0	13.0	250.0	0.0	0.0	0.0	0.0	2002.0
LSSC	43.0	2040.0	620.0	104.0	13.0	0.0	0.0	0.0	0.0	0.0	2820.0
SCF	411.0	6209.0	618.0	385.0	49.0	0.0	0.0	0.0	0.0	0.0	7672.0
MIAM	1933.0	39495.0	3991.0	6148.0	29.0	800.0	200.0	1617.0	523.0	495.0	55231.0
NFLA	0.0	529.0	173.0	26.0	0.0	94.0	0.0	0.0	0.0	0.0	822.0
NWFC	367.0	3205.0	663.0	173.0	0.0	133.0	0.0	134.0	5.0	0.0	4680.0
PALM	628.0	15756.0	1579.0	823.0	33.0	959.0	550.0	0.0	0.0	0.0	20328.0
PASC	72.0	4388.0	2232.0	616.0	42.0	347.0	0.0	15.0	0.0	0.0	7712.0
PENS	255.0	4580.0	1717.0	326.0	9.0	381.0	0.0	232.0	283.0	0.0	7783.0
POLK	785.0	4683.0	1766.0	288.0	89.0	88.0	0.0	0.0	0.0	0.0	7699.0
ST.J	185.0	3189.0	1032.0	172.0	41.0	93.0	33.0	104.0	22.0	0.0	4871.0
ST.P	2605.0	11730.0	4991.0	1123.0	0.0	162.0	0.0	0.0	0.0	0.0	20611.0
SANF	436.0	7132.0	2491.0	651.0	30.0	265.0	207.0	125.0	5.0	0.0	11342.0
SEMI	596.0	7696.0	2945.0	615.0	42.0	268.0	558.0	267.0	210.0	0.0	13197.0
SFLA	97.0	1439.0	11.0	30.0	0.0	301.0	21.0	306.0	45.0	0.0	2250.0
TALL	0.0	7499.0	1067.0	774.0	0.0	289.0	2.0	65.0	14.0	0.0	9710.0
VALE	149.0	22469.0	5361.0	1562.0	91.0	201.0	0.0	0.0	0.0	0.0	29833.0
SYST	14520.0	224122.0	56261.0	21641.0	744.0	9457.0	3721.0	4748.0	1447.0	552.0	337213.0

**FLORIDA COLLEGE SYSTEM
ENROLLMENT ESTIMATING CONFERENCE SUMMARY
FTE ENROLLMENT: FUNDED-30, LOWER AND UPPER DIVISION**

	2013-14	2014-15	FTE3	FTE3	2014-15	FTE3	FTE3	FTE1	FTE1
	FTE3	FTE1	TO FTE1	TO FTE1	FTE1A	TO FTE1A	TO FTE1A	TO FTE1A	TO FTE1A
	ACTUAL	DIVISION	CHANGE	%CHANGE	COLL ADJ	CHANGE	%CHANGE	CHANGE	%CHANGE
C1	C2	C1 TO C2	C1 TO C2	C3	C3 TO C1	C3 TO C1	C3 TO C2	C3 TO C2	C3 TO C2
EASTERN FLORIDA	11,544.9	11,128	-416.9	-3.60	11,128	-416.9	-3.60	0.0	0.00
BROWARD	30,496.1	30,537	40.9	0.10	30,537	40.9	0.10	0.0	0.00
CENTRAL FLORIDA	5,904.3	5,511	-393.3	-6.70	5,786	-118.3	-2.00	275.0	5.00
CHIPOLA	1,510.6	1,450	-60.6	-4.00	1,451	-59.6	-3.90	1.0	0.10
DAYTONA	11,880.7	10,807	-1073.7	-9.00	11,206	-674.7	-5.70	399.0	3.70
FL SOUTHWESTERN	10,149.3	9,784	-365.3	-3.60	9,784	-365.3	-3.60	0.0	0.00
FLA SC AT JAX	21,676.4	20,236	-1440.4	-6.60	20,406	-1270.4	-5.90	170.0	0.80
FLORIDA KEYS	776.4	683	-93.4	-12.00	683	-93.4	-12.00	0.0	0.00
GULF COAST	4,256.9	4,168	-88.9	-2.10	4,168	-88.9	-2.10	0.0	0.00
HILLSBOROUGH	19,973.9	20,143	169.1	0.80	20,143	169.1	0.80	0.0	0.00
INDIAN RIVER	13,122.9	13,191	68.1	0.50	13,358	235.1	1.80	167.0	1.30
FLORIDA GATEWAY	2,077.7	1,987	-90.7	-4.40	2,002	-75.7	-3.60	15.0	0.80
LAKE SUMTER	2,786.5	2,804	17.5	0.60	2,820	33.5	1.20	16.0	0.60
STATE COLLEGE FL	7,633.8	7,518	-115.8	-1.50	7,672	38.2	0.50	154.0	2.00
MIAMI DADE	54,472.3	53,987	-485.3	-0.90	55,231	758.7	1.40	1244.0	2.30
NORTH FLORIDA	798.1	822	23.9	3.00	822	23.9	3.00	0.0	0.00
NORTHWEST FLA	5,022.9	4,680	-342.9	-6.80	4,680	-342.9	-6.80	0.0	0.00
PALM BEACH STATE	20,057.4	19,813	-244.4	-1.20	20,328	270.6	1.30	515.0	2.60
PASCO-HERNANDO	7,094.8	7,712	617.2	8.70	7,712	617.2	8.70	0.0	0.00
PENSACOLA	8,518.0	7,783	-735.0	-8.60	7,783	-735.0	-8.60	0.0	0.00
POLK	7,904.8	7,699	-205.8	-2.60	7,699	-205.8	-2.60	0.0	0.00
ST. JOHNS RIVER	4,768.1	4,871	102.9	2.20	4,871	102.9	2.20	0.0	0.00
ST. PETERSBURG	20,692.4	20,611	-81.4	-0.40	20,611	-81.4	-0.40	0.0	0.00
SANTA FE	11,557.2	11,342	-215.2	-1.90	11,342	-215.2	-1.90	0.0	0.00
SEMINOLE STATE	13,867.3	13,379	-488.3	-3.50	13,197	-670.3	-4.80	-182.0	-1.40
SOUTH FLORIDA	2,192.0	2,308	116.0	5.30	2,250	58.0	2.60	-58.0	-2.50
TALLAHASSEE	10,207.8	9,712	-495.8	-4.90	9,710	-497.8	-4.90	-2.0	0.00
VALENCIA	29,612.0	29,833	221.0	0.70	29,833	221.0	0.70	0.0	0.00
SYSTEM TOTAL	340,555.5	334,499	-6056.5	-1.80	337,213	-3342.5	-1.00	2714.0	0.80

**FLORIDA COLLEGE SYSTEM
FTE ENROLLMENT: FUNDED-30, LOWER AND UPPER DIVISION
DIVISION ESTIMATES WITH COLLEGE ADJUSTMENTS
COMPARISON 2013-14 FTE-3 ADOPTED BY EEC TO 2014-15 FTE-1A**

	2013-14 FTE-3	2014-15 FTE-1A	CHANGE	%CHANGE
EFSC	11545	11128	-417	-3.6%
BROW	30496	30537	41	0.1%
CFLA	5904	5786	-118	-2.0%
CHIP	1511	1451	-60	-3.9%
DAYT	11881	11206	-675	-5.7%
FSW	10149	9784	-365	-3.6%
FJAX	21676	20406	-1270	-5.9%
FKEY	776	683	-93	-12.0%
GULF	4257	4168	-89	-2.1%
HILL	19974	20143	169	0.8%
INDR	13123	13358	235	1.8%
FGC	2078	2002	-76	-3.6%
LSSC	2787	2820	34	1.2%
SCF	7634	7672	38	0.5%
MIAM	54472	55231	759	1.4%
NFLA	798	822	24	3.0%
NWFC	5023	4680	-343	-6.8%
PALM	20057	20328	271	1.3%
PASC	7095	7712	617	8.7%
PENS	8518	7783	-735	-8.6%
POLK	7905	7699	-206	-2.6%
ST.J	4768	4871	103	2.2%
ST.P	20692	20611	-81	-0.4%
SANF	11557	11342	-215	-1.9%
SEMI	13867	13197	-670	-4.8%
SFLA	2192	2250	58	2.6%
TALL	10208	9710	-498	-4.9%
VALE	29612	29833	221	0.7%
SYST	340556	337213	-3343	-1.0%

**THE FLORIDA COLLEGE SYSTEM
FTE ENROLLMENT: FUNDED-30, LOWER AND UPPER DIVISIONS
2014-2015 FTE-1A**

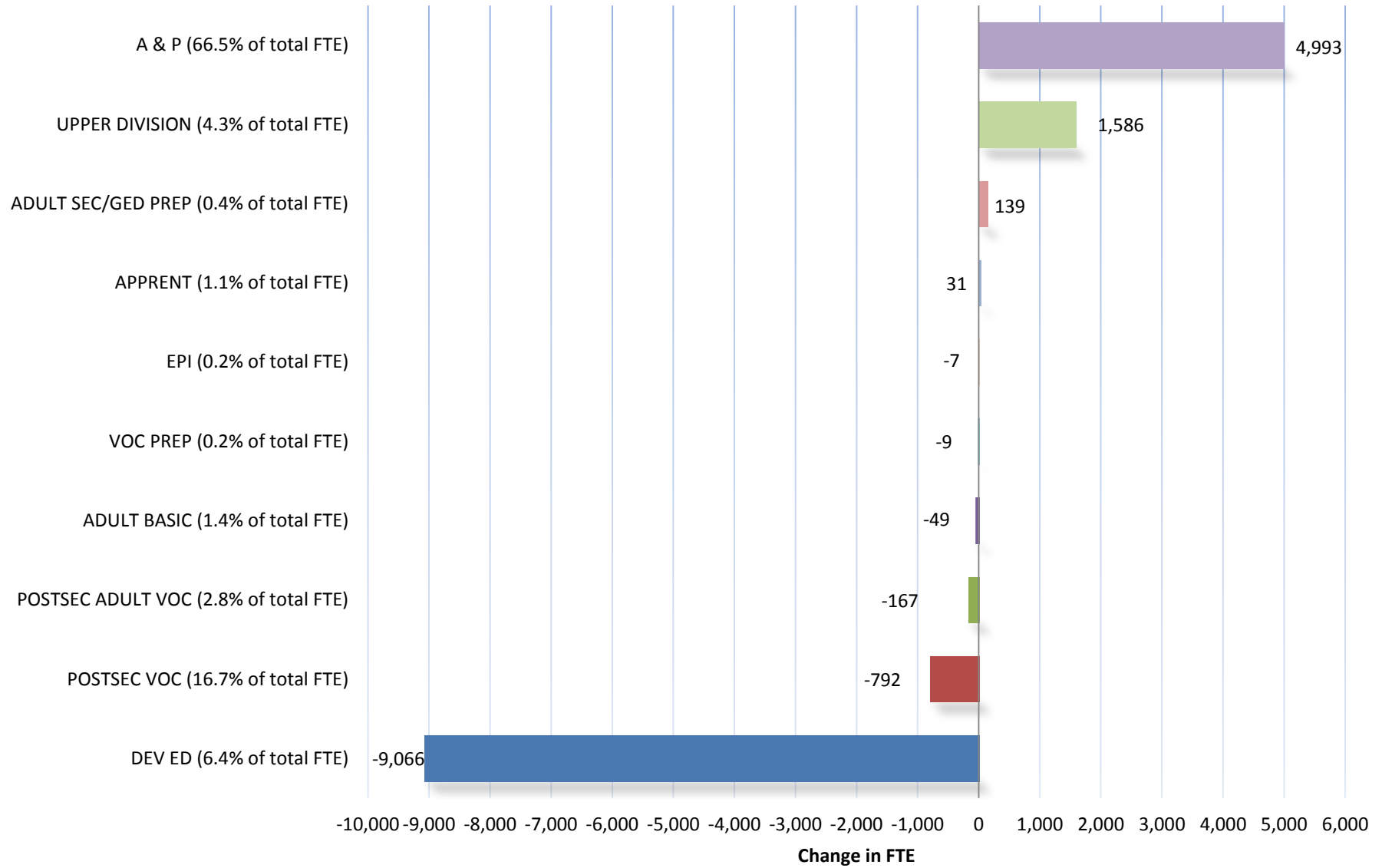
COLLEGE	UPPER DIVISION	A & P	POSTSEC VOC	DEV ED	EPI	POSTSEC ADULT VOC	APPRENT	ADULT BASIC	ADULT SEC/GED PREP	VOC PREP	2014-15 FTE-1A TOTAL
Eastern Florida State College	225	7,349	2,416	446	0	692	0	0	0	0	11,128
Broward College	917	18,567	7,615	2,907	66	465	0	0	0	0	30,537
College of Central Florida	266	3,807	1,221	338	0	133	0	11	10	0	5,786
Chipola College	125	891	255	50	0	129	0	0	0	1	1,451
Daytona State College	930	5,993	2,143	443	0	767	284	541	101	4	11,206
Florida SouthWestern State College	661	8,189	529	385	0	20	0	0	0	0	9,784
Florida State College at Jacksonville	1,395	12,188	3,580	1,214	0	1,146	264	522	90	7	20,406
Florida Keys Community College	0	463	164	28	0	28	0	0	0	0	683
Gulf Coast State College	39	3,061	735	148	22	163	0	0	0	0	4,168
Hillsborough Community College	0	13,702	3,289	1,387	175	466	1,074	42	8	0	20,143
Indian River State College	1,378	6,631	2,638	423	0	817	528	767	131	45	13,358
Florida Gateway College	22	1,242	419	56	13	250	0	0	0	0	2,002
Lake-Sumter State College	43	2,040	620	104	13	0	0	0	0	0	2,820
State College of Florida, Manatee-Sarasota	411	6,209	618	385	49	0	0	0	0	0	7,672
Miami Dade College	1,933	39,495	3,991	6,148	29	800	200	1,617	523	495	55,231
North Florida Community College	0	529	173	26	0	94	0	0	0	0	822
Northwest Florida State College	367	3,205	663	173	0	133	0	134	5	0	4,680
Palm Beach State College	628	15,756	1,579	823	33	959	550	0	0	0	20,328
Pasco-Hernando State College	72	4,388	2,232	616	42	347	0	15	0	0	7,712
Pensacola State College	255	4,580	1,717	326	9	381	0	232	283	0	7,783
Polk State College	785	4,683	1,766	288	89	88	0	0	0	0	7,699
St. Johns River State College	185	3,189	1,032	172	41	93	33	104	22	0	4,871
St. Petersburg College	2,605	11,730	4,991	1,123	0	162	0	0	0	0	20,611
Santa Fe College	436	7,132	2,491	651	30	265	207	125	5	0	11,342
Seminole State College of Florida	596	7,696	2,945	615	42	268	558	267	210	0	13,197
South Florida State College	97	1,439	11	30	0	301	21	306	45	0	2,250
Tallahassee Community College	0	7,499	1,067	774	0	289	2	65	14	0	9,710
Valencia College	149	22,469	5,361	1,562	91	201	0	0	0	0	29,833
SYSTEM	14,520	224,122	56,261	21,641	744	9,457	3,721	4,748	1,447	552	337,213
% CHANGE 2014-15 OVER 2013-14	12.3%	2.3%	-1.4%	-29.5%	-0.9%	-1.7%	0.8%	-1.0%	10.6%	-1.6%	-1.0%

Source: J:\Daisy\from CCTCMIS\2014-15 FTE-1A\CO1AF29C FTE-1A Estimates by Program area

*Beginning in FY 2010-11, enrollment in CWE programs is no longer included and upper division is included for funding purposes. This entire chart excludes CWE and includes upper division for comparison purposes.

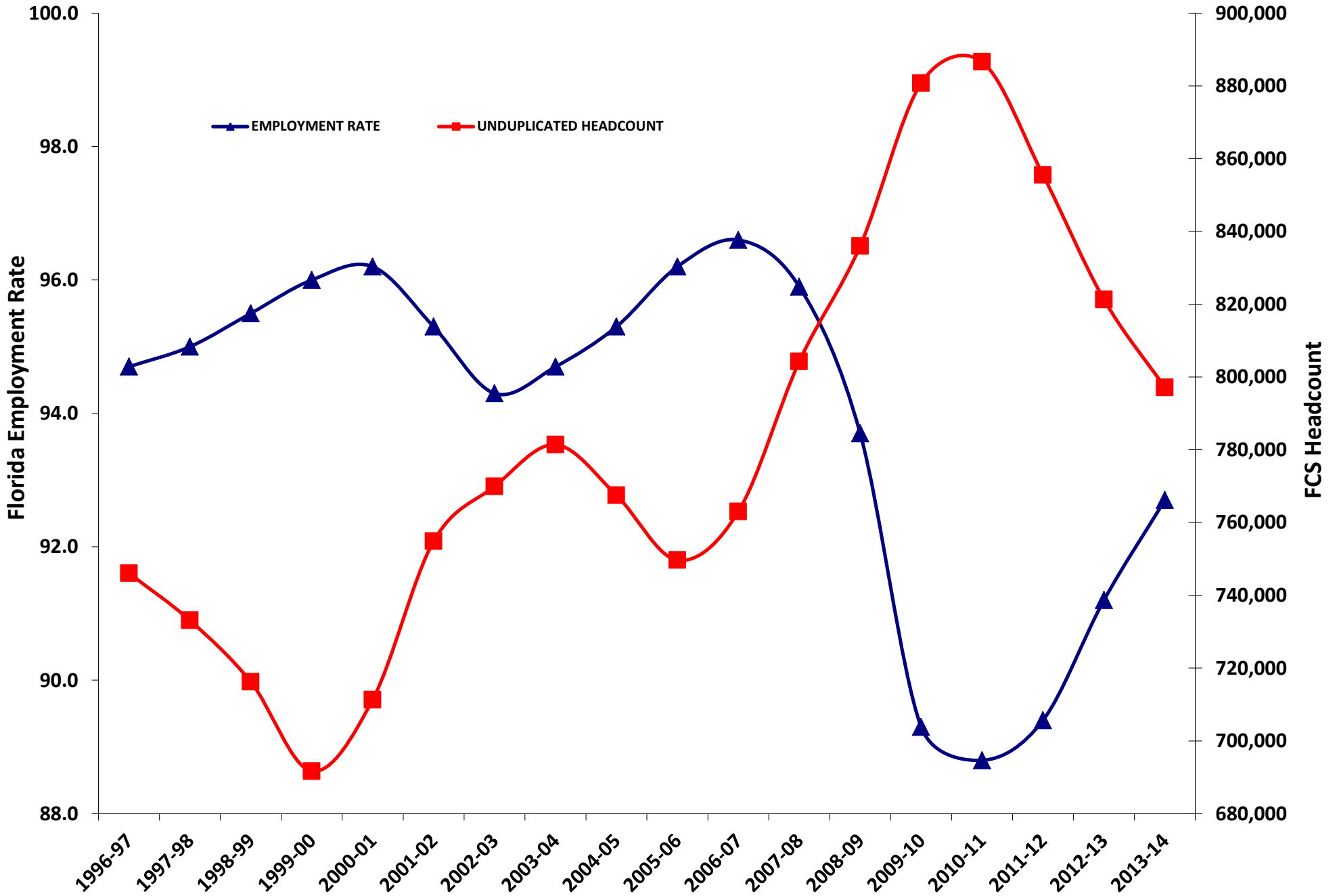
USING 2014-15 DEFINITION OF FUNDED FTE											
CHANGE OVER 1-YEAR 2013-14 TO 2014-15	CHANGE OVER 2-YEAR 2012-13 TO 2014-15	CHANGE OVER 3-YEAR 2011-12 TO 2014-15	CHANGE OVER 4-YEAR 2010-11 TO 2014-15	CHANGE OVER 5-YEAR 2009-10 TO 2014-15	CHANGE OVER 6-YEAR 2008-09 TO 2014-15						
-3.6%	11,545	-7.4%	12,018	-16.9%	13,395	-17.7%	13,514	-15.5%	13,173	-4.2%	11,621
0.1%	30,496	1.6%	30,054	-2.0%	31,152	0.2%	30,470	10.2%	27,703	24.3%	24,562
-2.0%	5,904	-3.2%	5,976	-11.2%	6,514	-12.2%	6,593	-7.8%	6,272	8.6%	5,330
-3.9%	1,511	-9.4%	1,602	-11.9%	1,646	-12.9%	1,666	-15.6%	1,719	-14.7%	1,702
-5.7%	11,881	-10.0%	12,449	-19.1%	13,844	-31.0%	16,242	-27.3%	15,406	-15.8%	13,314
-3.6%	10,149	-6.9%	10,513	-17.4%	11,843	-19.9%	12,215	-13.7%	11,333	6.6%	9,179
-5.9%	21,676	-10.1%	22,695	-19.0%	25,182	-20.1%	25,524	-14.8%	23,962	-2.2%	20,867
-12.0%	776	-18.4%	837	-24.9%	910	-29.4%	968	-34.3%	1,040	-23.6%	894
-2.1%	4,257	-7.5%	4,505	-14.0%	4,845	-15.1%	4,908	-14.7%	4,884	-10.7%	4,669
0.8%	19,974	-1.6%	20,472	-5.7%	21,358	-6.0%	21,419	-2.0%	20,553	9.2%	18,454
1.8%	13,123	-0.5%	13,429	-2.8%	13,745	-5.6%	14,151	-3.3%	13,807	4.4%	12,791
-3.6%	2,078	-7.6%	2,167	-14.4%	2,339	-13.7%	2,319	-13.7%	2,320	-2.5%	2,054
1.2%	2,787	-4.9%	2,966	-12.9%	3,238	-13.5%	3,261	-9.9%	3,129	2.4%	2,753
0.5%	7,634	-4.2%	8,008	-9.3%	8,463	-13.9%	8,912	-18.8%	9,449	-9.4%	8,465
1.4%	54,472	-1.1%	55,872	-7.5%	59,702	-7.6%	59,764	-1.4%	56,005	0.2%	55,101
3.0%	798	-8.4%	898	-14.6%	963	-20.1%	1,028	-10.8%	922	-1.6%	836
-6.8%	5,023	-9.9%	5,196	-16.3%	5,589	-20.8%	5,906	-19.1%	5,784	-15.5%	5,541
1.3%	20,057	1.2%	20,085	-3.1%	20,986	-2.4%	20,830	1.6%	20,007	11.5%	18,224
8.7%	7,095	9.5%	7,041	-1.4%	7,825	-0.8%	7,778	7.6%	7,168	28.3%	6,013
-8.6%	8,518	-16.3%	9,297	-17.9%	9,484	-16.6%	9,336	-15.6%	9,221	-9.8%	8,629
-2.6%	7,905	-1.6%	7,828	0.4%	7,667	7.5%	7,163	17.6%	6,545	32.7%	5,800
2.2%	4,768	1.6%	4,795	-3.5%	5,047	-2.6%	5,001	0.2%	4,862	8.4%	4,494
-0.4%	20,692	-3.1%	21,280	-8.1%	22,430	-7.7%	22,330	1.1%	20,389	13.0%	18,237
-1.9%	11,557	-5.0%	11,935	-9.6%	12,550	-10.6%	12,682	-6.6%	12,148	-4.8%	11,915
-4.8%	13,867	-11.4%	14,891	-13.0%	15,170	-14.5%	15,428	-5.6%	13,981	10.1%	11,990
2.6%	2,192	-1.3%	2,280	-6.9%	2,416	-17.8%	2,737	-20.0%	2,812	-16.3%	2,688
-4.9%	10,208	-11.3%	10,947	-20.5%	12,219	-18.9%	11,975	-16.7%	11,660	-11.2%	10,934
0.7%	29,612	-0.8%	30,074	-5.4%	31,531	-4.3%	31,174	3.0%	28,955	14.6%	26,033
-1.0%	340,556	-3.7%	350,109	-9.4%	372,050	-10.1%	375,292	-5.1%	355,207	4.4%	323,089
% CHANGE 2013-14 OVER 2012-13	-2.7%	% CHANGE 2012-13 OVER 2011-12	-5.9%	% CHANGE 2011-12 OVER 2010-11	-0.9%	% CHANGE 2010-11 OVER 2009-10	5.7%	% CHANGE 2009-10 OVER 2008-09	9.9%		

Florida College System 2014-15 FTE-1A Over 2013-14 FTE-3 Change in FTE by Program Area



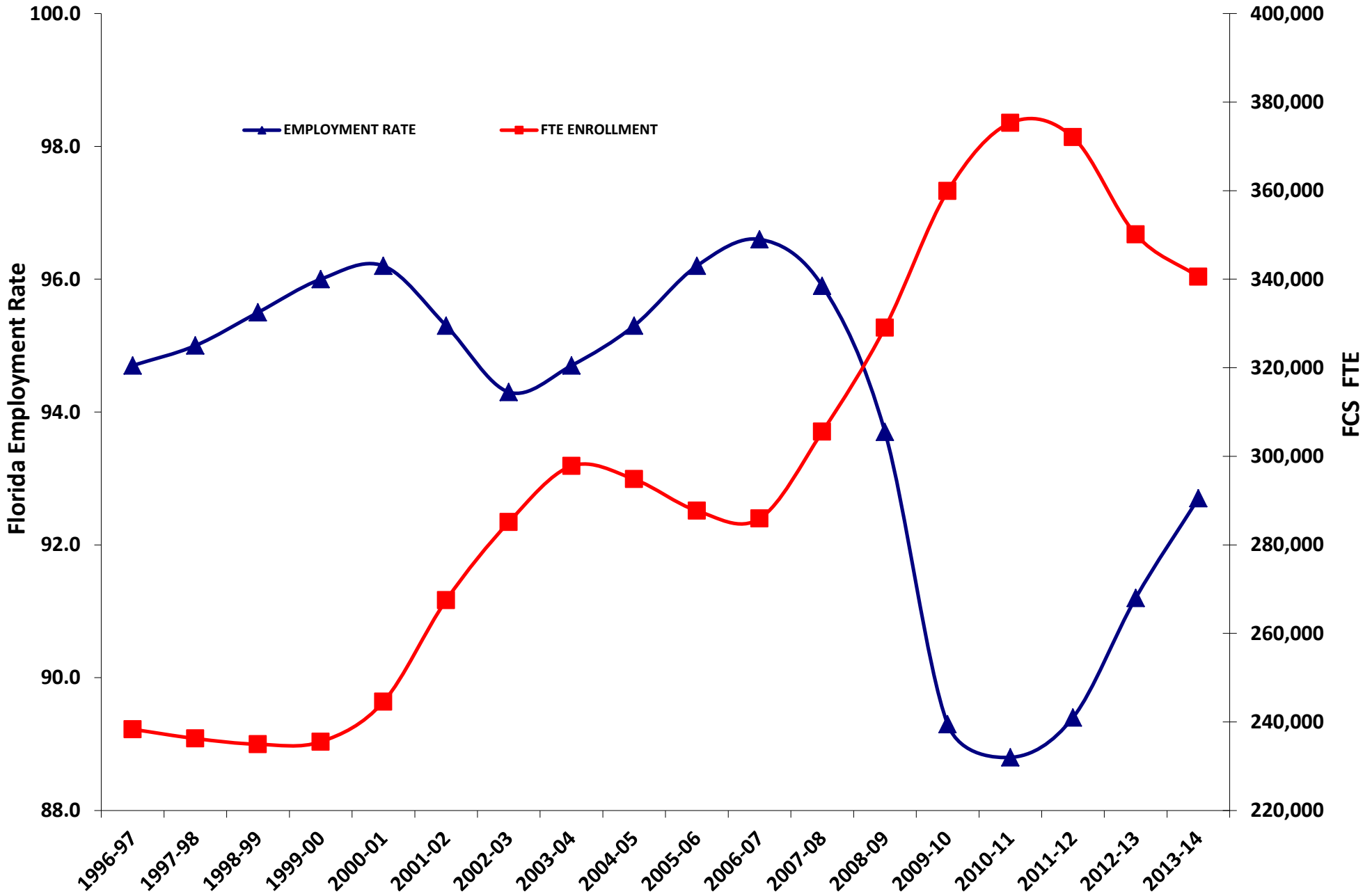
COUNTER-CYCLICAL HEADCOUNT ENROLLMENT PATTERN

Comparison of Florida Employment Rate to Florida College System Headcount Enrollment



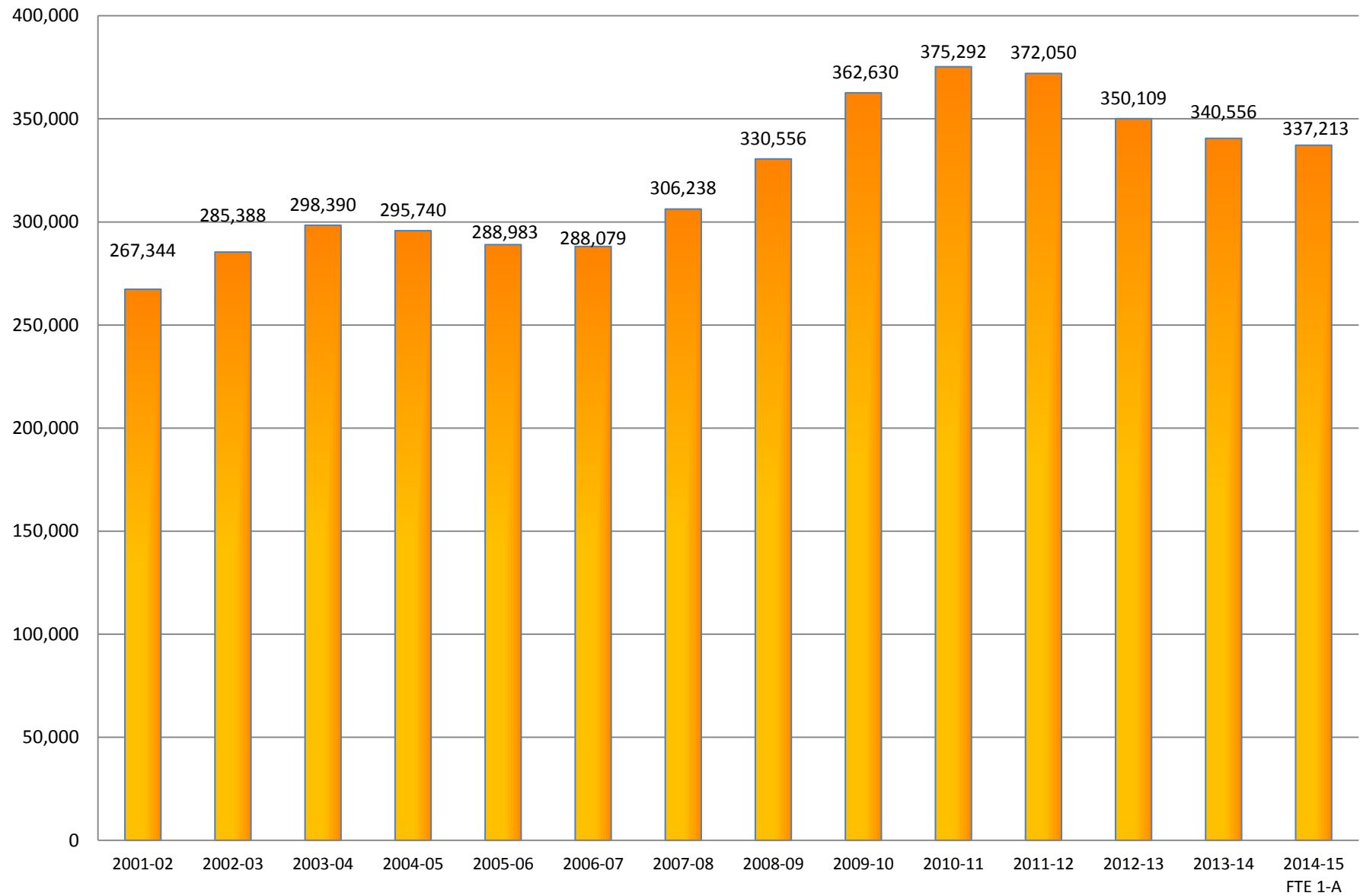
COUNTER-CYCLICAL FTE ENROLLMENT PATTERN

Comparison of Florida Employment Rate to Florida College System FTE Enrollment



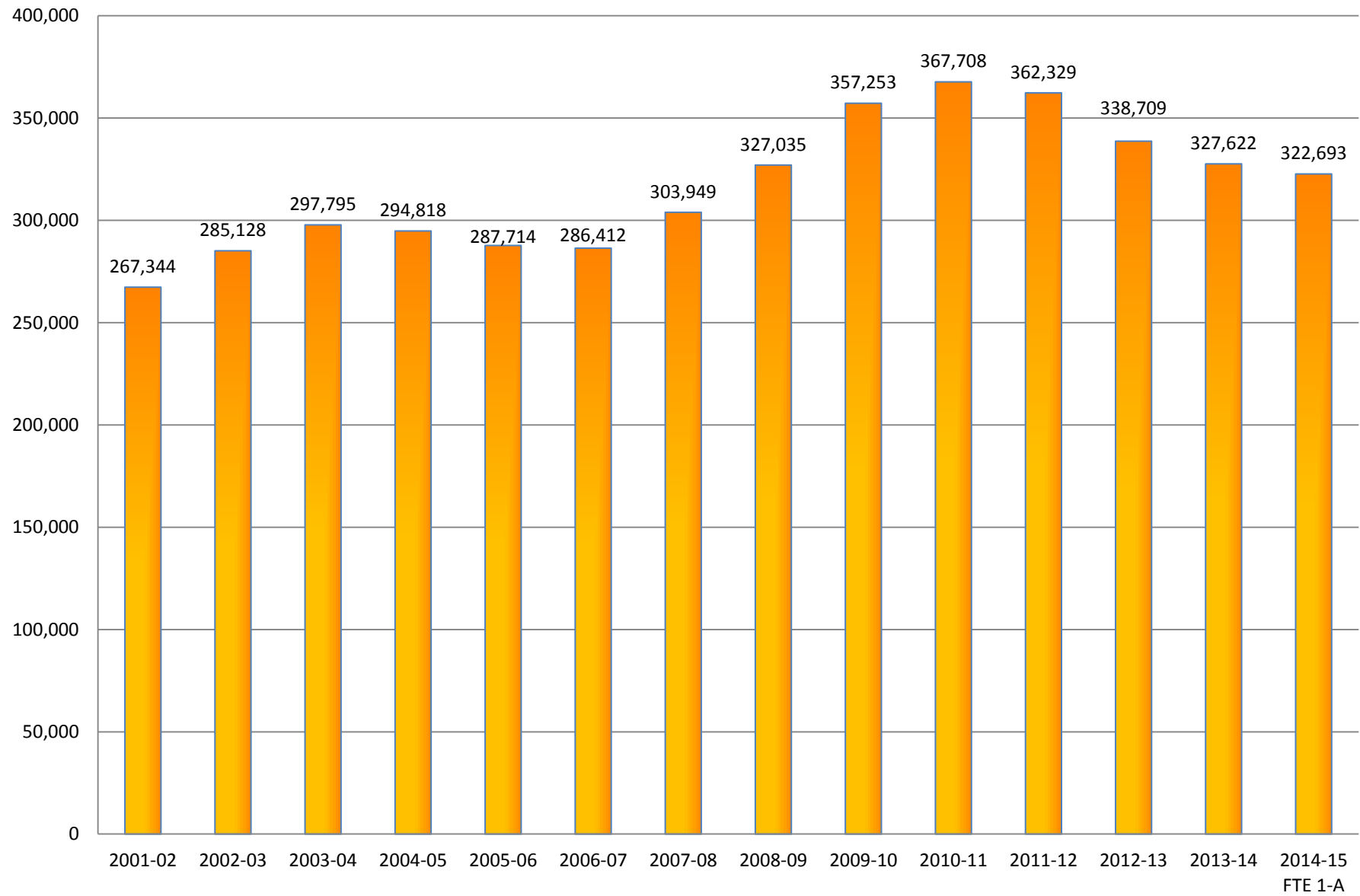
Note: 2012-13 uses FTE-2A.

Florida College System FTE History - Grand Total, All Programs

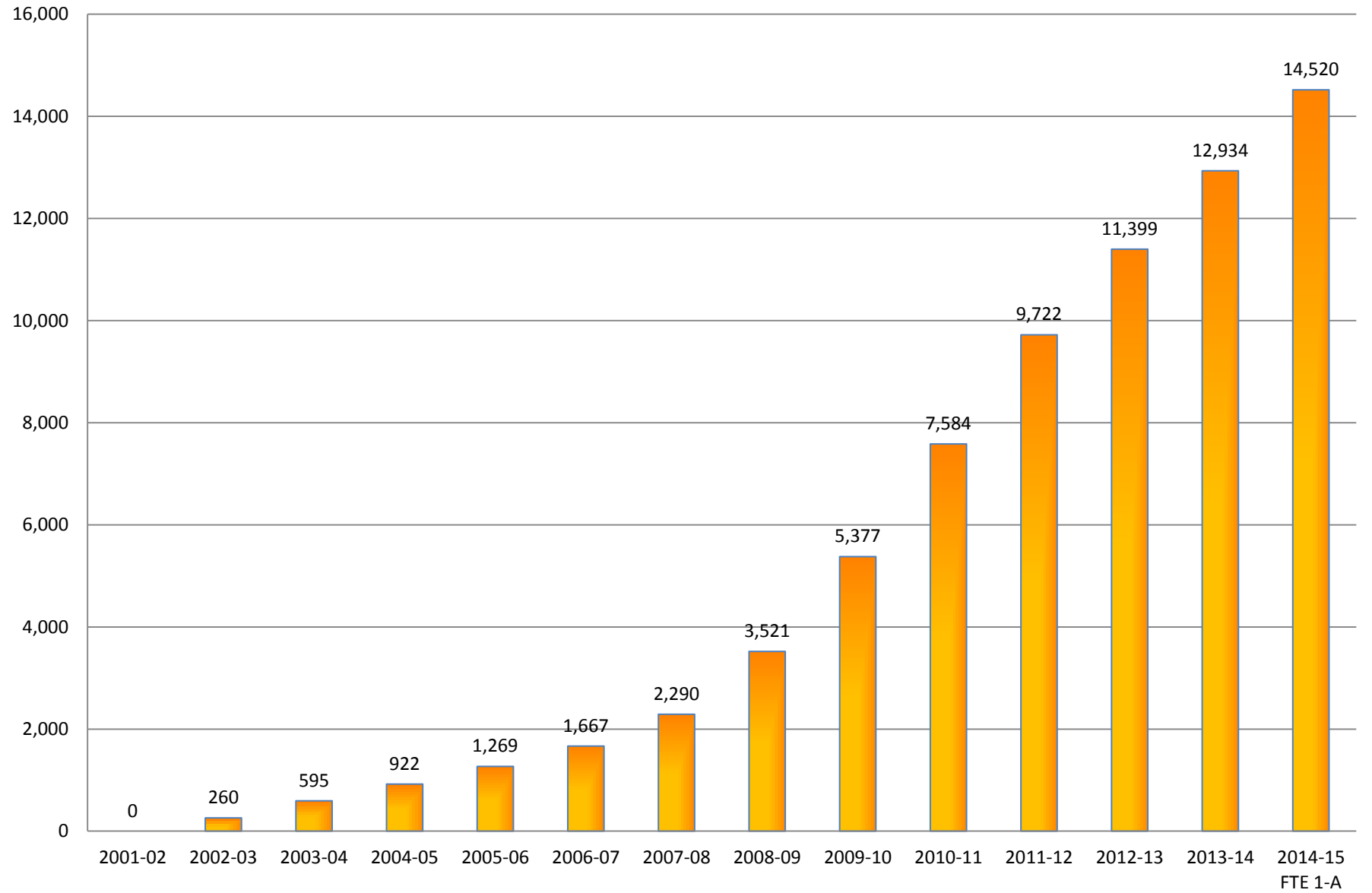


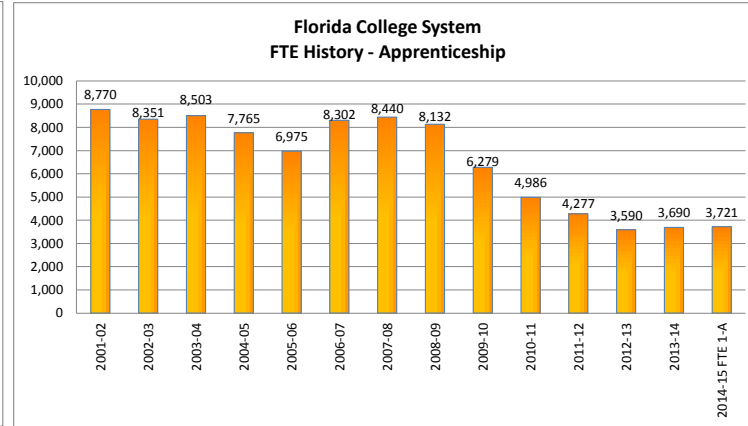
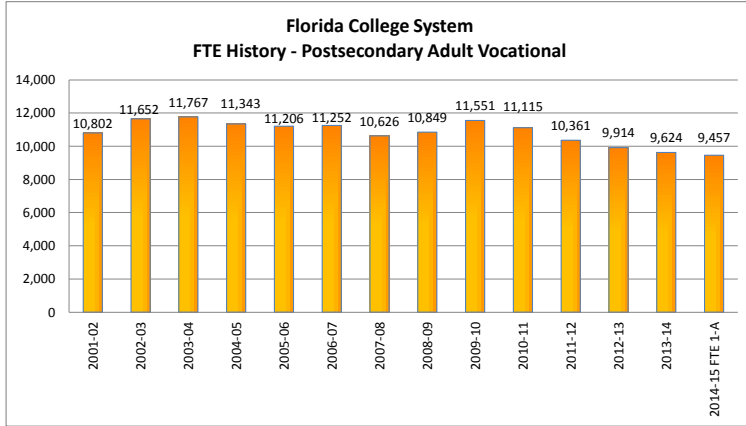
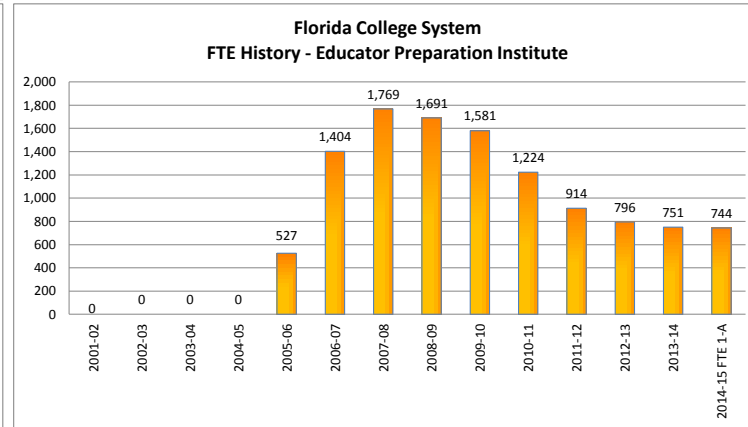
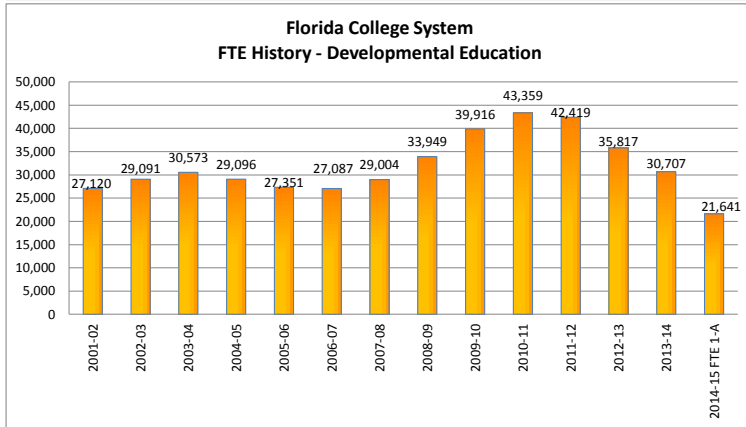
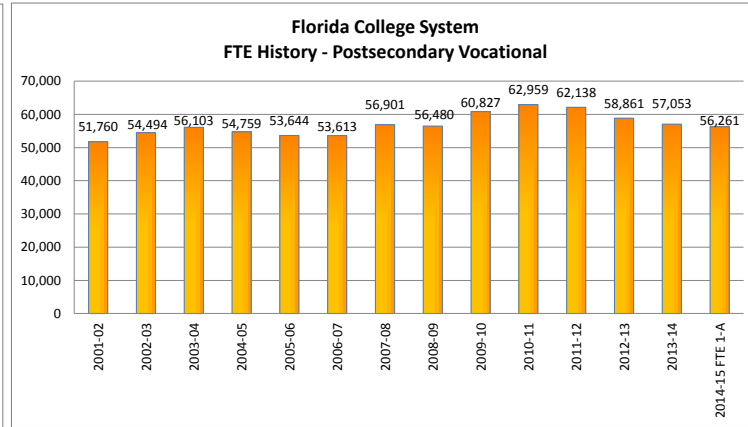
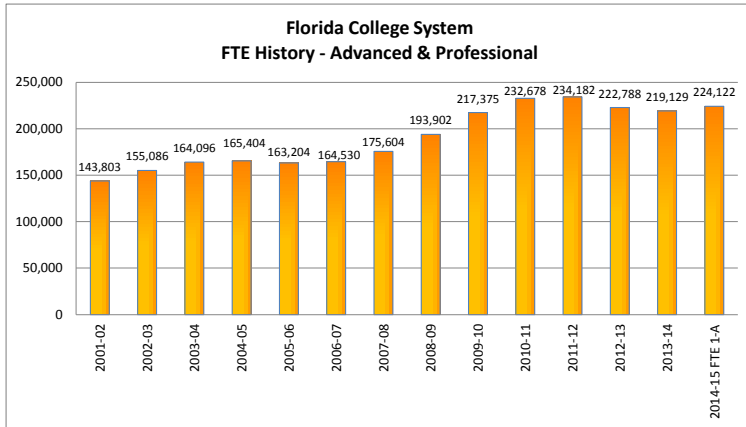
FTE 1-A

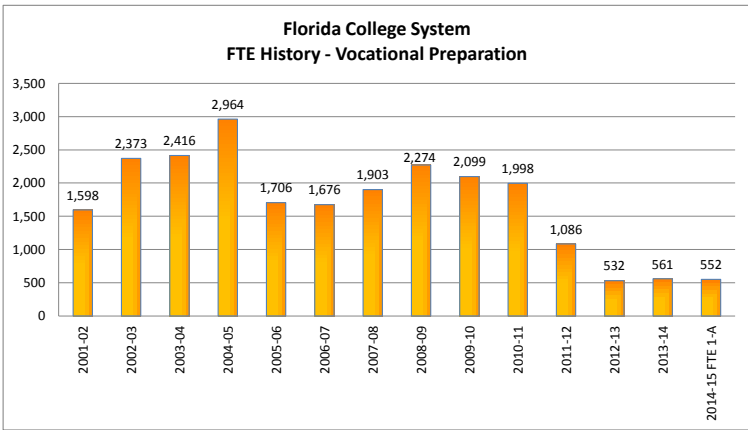
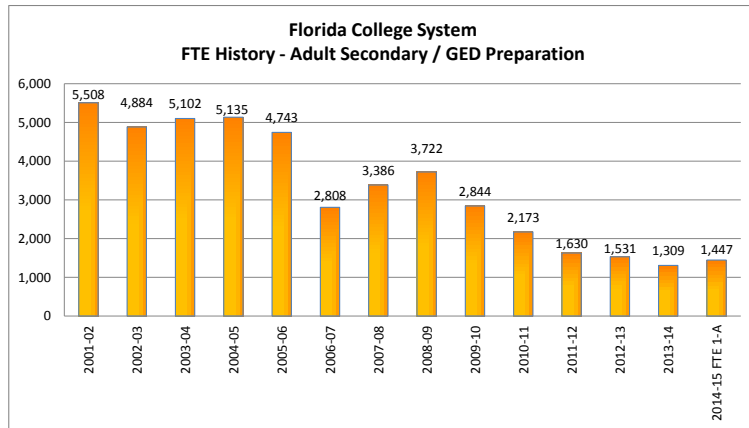
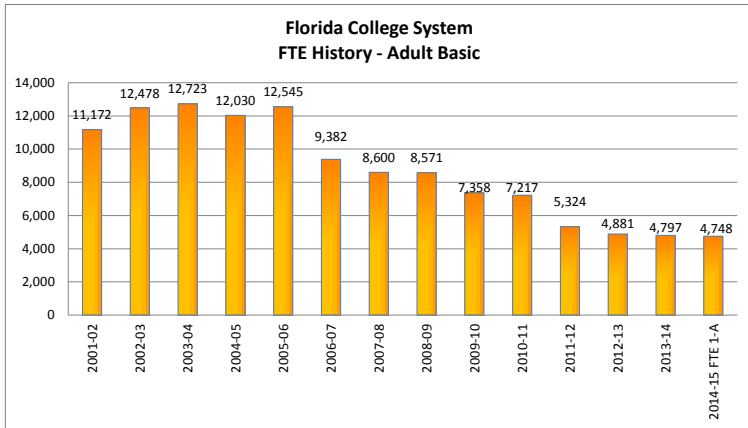
Florida College System FTE History - Lower Division



Florida College System FTE History - Upper Division









**THE FLORIDA COLLEGE SYSTEM
HISTORICAL DATA**

FTE HISTORY

Florida Department of Education

**FLORIDA COLLEGE SYSTEM
FTE ENROLLMENT: FUNDED-30, LOWER AND UPPER DIVISION**

2014-15 FTE-1A

COLLEGE	UPPER DIVISION	A & P	POSTSEC VOC	DEV ED	EPI	POSTSEC ADULT VOC	APPRENTICE	CWE	ADULT BASIC	ADULT SEC/GED PREP	VOC PREP	SPECIAL DISABLED ADULT	TOTAL LOWER DIVISION	GRAND TOTAL
EFSC	225	7,349	2,416	446	0	692	0		0	0	0		10,903	11,128
BROW	917	18,567	7,615	2,907	66	465	0		0	0	0		29,620	30,537
CFLA	266	3,807	1,221	338	0	133	0		11	10	0		5,520	5,786
CHIP	125	891	255	50	0	129	0		0	0	1		1,326	1,451
DAYT	930	5,993	2,143	443	0	767	284		541	101	4		10,276	11,206
FSW	661	8,189	529	385	0	20	0		0	0	0		9,123	9,784
FJAX	1,395	12,188	3,580	1,214	0	1,146	264		522	90	7		19,011	20,406
FKEY	0	463	164	28	0	28	0		0	0	0		683	683
GULF	39	3,061	735	148	22	163	0		0	0	0		4,129	4,168
HILL	0	13,702	3,289	1,387	175	466	1,074		42	8	0		20,143	20,143
INDR	1,378	6,631	2,638	423	0	817	528		767	131	45		11,980	13,358
FGC	22	1,242	419	56	13	250	0		0	0	0		1,980	2,002
LSSC	43	2,040	620	104	13	0	0		0	0	0		2,777	2,820
SCF	411	6,209	618	385	49	0	0		0	0	0		7,261	7,672
MIAM	1,933	39,495	3,991	6,148	29	800	200		1,617	523	495		53,298	55,231
NFLA	0	529	173	26	0	94	0		0	0	0		822	822
NWFC	367	3,205	663	173	0	133	0		134	5	0		4,313	4,680
PALM	628	15,756	1,579	823	33	959	550		0	0	0		19,700	20,328
PASC	72	4,388	2,232	616	42	347	0		15	0	0		7,640	7,712
PENS	255	4,580	1,717	326	9	381	0		232	283	0		7,528	7,783
POLK	785	4,683	1,766	288	89	88	0		0	0	0		6,914	7,699
ST.J	185	3,189	1,032	172	41	93	33		104	22	0		4,686	4,871
ST.P	2,605	11,730	4,991	1,123	0	162	0		0	0	0		18,006	20,611
SANF	436	7,132	2,491	651	30	265	207		125	5	0		10,906	11,342
SEMI	596	7,696	2,945	615	42	268	558		267	210	0		12,601	13,197
SFLA	97	1,439	11	30	0	301	21		306	45	0		2,250	2,250
TALL	0	7,499	1,067	774	0	289	2		65	14	0		9,710	9,710
VALE	149	22,469	5,361	1,562	91	201	0		0	0	0		29,684	29,833
SYST	14,520	224,122	56,261	21,641	744	9,457	3,721		4,748	1,447	552		322,693	337,213

CCTCMIS: FTECOL, CO2AF29C - 11/04/2014 10:43 AM

SOURCE: FN30C1A

Notes:

The Special Disabled Adult category was no longer reported starting in 2005-06.

The EPI (Educator Preparation Institute) category began reporting in 2005-06.

The Upper Division category began reporting in 2002-03.

The CWE (Continuing Workforce Education) category was no longer reported starting in 2010-11.

FLORIDA COLLEGE SYSTEM
FTE ENROLLMENT: FUNDED-30, LOWER AND UPPER DIVISION

2013-14 FTE-3

COLLEGE	UPPER DIVISION	A & P	POSTSEC VOC	DEV ED	EPI	POSTSEC ADULT VOC	APPRENTICE	CWE	ADULT BASIC	ADULT SEC/GED PREP	VOC PREP	SPECIAL DISABLED ADULT	TOTAL LOWER DIVISION	GRAND TOTAL
EFSC	76	7,530	2,575	657	0	692	15		0	0	0		11,469	11,545
BROW	797	17,470	7,502	4,216	47	464	0		0	0	0		29,699	30,496
CFLA	209	3,718	1,320	438	1	197	0		11	10	0		5,696	5,904
CHIP	135	929	239	78	0	129	0		0	0	2		1,376	1,511
DAYT	858	6,146	2,171	872	1	736	302		662	120	12		11,023	11,881
FSW	599	8,123	614	794	0	20	0		0	0	0		9,550	10,149
FJAX	1,289	12,657	3,758	1,766	0	1,245	343		522	90	7		20,388	21,676
FKEY	0	508	197	43	0	29	0		0	0	0		776	776
GULF	55	2,982	748	271	34	164	2		0	0	0		4,202	4,257
HILL	0	12,771	3,387	2,076	152	466	1,073		42	8	0		19,974	19,974
INDR	1,190	6,578	2,657	579	0	816	440		697	122	45		11,933	13,123
FGC	14	1,291	415	106	14	237	0		0	0	0		2,064	2,078
LSSC	30	1,919	640	179	18	0	0		0	0	0		2,756	2,787
SCF	376	6,055	594	560	49	0	0		0	0	0		7,258	7,634
MIAM	1,868	37,572	3,956	7,581	34	800	226		1,617	322	495		52,605	54,472
NFLA	0	485	156	63	0	94	0		0	0	0		798	798
NWFC	361	3,357	757	275	0	132	0		134	6	0		4,662	5,023
PALM	547	15,249	1,573	1,180	44	959	504		0	0	0		19,510	20,057
PASC	0	3,973	2,065	624	73	346	0		14	1	0		7,095	7,095
PENS	229	4,903	1,865	610	14	381	0		232	283	0		8,289	8,518
POLK	605	4,753	1,849	533	77	88	0		0	0	0		7,300	7,905
ST.J	163	3,099	995	271	42	93	33		50	22	0		4,606	4,768
ST.P	2,498	11,627	4,940	1,465	0	163	0		0	0	0		18,195	20,692
SANF	388	7,164	2,587	798	19	265	207		125	5	0		11,169	11,557
SEMI	512	8,008	3,001	916	42	312	509		320	248	0		13,355	13,867
SFLA	44	1,335	35	92	0	306	20		306	54	0		2,148	2,192
TALL	0	7,491	1,142	1,187	0	290	16		65	17	0		10,208	10,208
VALE	92	21,437	5,315	2,477	90	201	0		0	0	0		29,520	29,612
SYST	12,934	219,129	57,053	30,707	751	9,624	3,690		4,797	1,309	561		327,622	340,556

CCTCMIS: FTECOL, CO2AF29C - 07/16/2014 11:26 AM

SOURCE: FN30C3

Notes:

The Special Disabled Adult category was no longer reported starting in 2005-06.

The EPI (Educator Preparation Institute) category began reporting in 2005-06.

The Upper Division category began reporting in 2002-03.

The CWE (Continuing Workforce Education) category was no longer reported starting in 2010-11.

**FLORIDA COLLEGE SYSTEM
HISTORICAL FTE ENROLLMENT: LOWER AND UPPER DIVISION**

2012-13 FTE-3

COLLEGE	UPPER DIVISION	A & P	POSTSEC VOC	DEV ED	EPI	POSTSEC ADULT VOC	APPRENTICE	CWE	ADULT BASIC	ADULT SEC/GED PREP	VOC PREP	SPECIAL DISABLED ADULT	TOTAL LOWER DIVISION	GRAND TOTAL
EFSC	0	7,718	2,541	859	3	809	86		0	0	0		12,018	12,018
BROW	728	16,732	7,370	4,751	49	424	0		0	0	0		29,326	30,054
CFLA	155	3,716	1,342	439	7	278	0		23	17	0		5,821	5,976
CHIP	137	993	257	93	0	122	0		0	0	1		1,466	1,602
DAYT	854	6,480	2,227	962	1	761	328		687	158	11		11,595	12,449
EDIS	590	8,012	987	915	0	10	0		0	0	0		9,924	10,513
FJAX	1,172	13,149	4,200	1,933	4	1,186	365		547	125	14		21,523	22,695
FKEY	0	552	206	49	0	30	0		0	0	0		837	837
GULF	43	3,021	911	307	32	186	5		1	0	0		4,462	4,505
HILL	0	12,922	3,531	2,379	144	419	1,018		50	10	0		20,472	20,472
INDR	1,013	6,708	2,830	724	42	818	454		688	152	0		12,416	13,429
FGC	7	1,335	409	128	19	269	0		0	0	0		2,160	2,167
LSSC	8	2,071	633	240	16	0	0		0	0	0		2,959	2,966
SCF	267	6,377	567	747	50	0	0		0	0	0		7,741	8,008
MIAM	1,659	37,745	4,098	8,822	25	897	182		1,562	378	504		54,213	55,872
NFLA	0	511	206	79	0	102	0		0	0	0		898	898
NWFC	378	3,445	765	300	0	155	0		142	11	0		4,819	5,196
PALM	504	15,113	1,481	1,557	44	906	479		0	0	0		19,580	20,085
PASC	0	3,950	2,032	637	73	335	0		13	1	0		7,041	7,041
PENS	218	5,195	1,970	830	2	483	0		274	326	0		9,079	9,297
POLK	432	4,787	1,827	603	90	90	0		0	0	0		7,397	7,828
ST.J	136	3,136	911	319	37	119	73		43	22	0		4,659	4,795
ST.P	2,402	12,075	4,975	1,675	0	153	0		0	0	0		18,878	21,280
SANF	299	7,321	2,742	1,025	23	288	120		112	5	0		11,636	11,935
SEMI	313	8,692	3,146	1,393	46	306	399		323	273	1		14,579	14,891
SFLA	24	1,318	63	128	0	368	27		332	22	0		2,257	2,280
TALL	0	8,114	1,205	1,225	0	233	55		84	31	0		10,947	10,947
VALE	63	21,618	5,431	2,699	93	171	0		0	0	0		30,011	30,074
SYST	11,399	222,788	58,861	35,817	796	9,914	3,590		4,881	1,531	532		338,709	350,109

CCTCMIS: FTECOL, CO3F29C - 08/01/2013 1:31 PM

SOURCE: FN30C3

Notes:

The Special Disabled Adult category was no longer reported starting in 2005-06.

The EPI (Educator Preparation Institute) category began reporting in 2005-06.

The Upper Division category began reporting in 2002-03.

The CWE (Continuing Workforce Education) category was no longer reported starting in 2010-11.

**FLORIDA COLLEGE SYSTEM
HISTORICAL FTE ENROLLMENT: LOWER AND UPPER DIVISION**

2011-12 FTE-3

COLLEGE	UPPER DIVISION	A & P	POSTSEC VOC	DEV ED	EPI	POSTSEC ADULT VOC	APPRENTICE	CWE	ADULT BASIC	ADULT SEC/GED PREP	VOC PREP	SPECIAL DISABLED ADULT	TOTAL LOWER DIVISION	GRAND TOTAL
BREV	0	8,039	2,665	1,542	11	837	301		0	0	0		13,395	13,395
BROW	756	17,243	7,572	5,052	44	486	0		0	0	0		30,396	31,152
CFLA	79	3,940	1,449	576	10	403	0		45	11	1		6,435	6,514
CHIP	151	1,027	263	89	0	115	0		0	0	2		1,495	1,646
DAYT	782	7,346	2,505	1,160	0	776	370		719	184	3		13,063	13,844
EDIS	627	9,000	1,074	1,120	0	23	0		0	0	0		11,216	11,843
FJAX	962	14,810	4,546	2,186	50	1,340	379		708	180	21		24,220	25,182
FKEY	0	587	236	56	0	31	0		0	0	0		910	910
GULF	15	3,064	1,116	386	36	190	28		10	0	0		4,830	4,845
HILL	0	13,255	3,852	2,664	132	409	953		79	14	0		21,358	21,358
INDR	781	6,716	2,937	867	70	854	596		736	188	0		12,964	13,745
FGC	0	1,393	434	171	19	322	0		0	0	0		2,339	2,339
LSCC	0	2,261	687	276	13	0	0		0	0	0		3,238	3,238
SCF	115	6,713	581	997	57	0	0		0	0	0		8,348	8,463
MIAM	1,330	38,978	4,191	10,932	40	782	426		1,629	336	1,058		58,372	59,702
NFLA	0	572	196	93	0	103	0		0	0	0		963	963
NWFC	380	3,714	825	369	0	149	0		138	14	0		5,209	5,589
PALM	462	15,802	1,488	1,856	47	844	486		0	0	0		20,523	20,986
PASC	0	4,318	2,234	777	52	426	0		17	1	0		7,825	7,825
PENS	142	5,361	2,021	871	19	477	0		244	349	0		9,342	9,484
POLK	254	4,776	1,764	691	85	97	0		0	0	0		7,413	7,667
ST.J	83	3,329	935	401	46	126	95		25	7	0		4,964	5,047
ST.P	2,461	12,759	5,141	1,947	0	122	0		0	0	0		19,969	22,430
SANF	233	7,688	2,812	1,237	38	301	104		132	5	0		12,317	12,550
SEMI	71	8,788	3,418	1,432	44	300	472		381	262	2		15,099	15,170
SFLA	0	1,219	176	156	12	400	38		371	44	0		2,416	2,416
TALL	0	8,916	1,275	1,625	0	250	28		91	34	0		12,219	12,219
VALE	38	22,571	5,746	2,890	88	198	0		0	0	0		31,492	31,531
SYST	9,722	234,182	62,138	42,419	914	10,361	4,277		5,324	1,630	1,086		362,329	372,050

CCTCMIS: FTECOL, CO3F29C - 07/24/2012 10:59 AM

SOURCE: FN30C3

Notes:

The Special Disabled Adult category was no longer reported starting in 2005-06.

The EPI (Educator Preparation Institute) category began reporting in 2005-06.

The Upper Division category began reporting in 2002-03.

The CWE (Continuing Workforce Education) category was no longer reported starting in 2010-11.

**FLORIDA COLLEGE SYSTEM
HISTORICAL FTE ENROLLMENT: LOWER AND UPPER DIVISION**

2010-11 FTE-3

COLLEGE	UPPER DIVISION	A & P	POSTSEC VOC	DEV ED	EPI	POSTSEC ADULT VOC	APPRENTICE	CWE	ADULT BASIC	ADULT SEC/GED PREP	VOC PREP	SPECIAL DISABLED ADULT	TOTAL LOWER DIVISION	GRAND TOTAL
BREV	0	8,245	2,753	1,160	19	1,048	289		0	0	0		13,514	13,514
BROW	427	17,015	7,545	4,994	46	444	0		0	0	0		30,043	30,470
CFLA	17	3,861	1,382	800	18	438	0		64	13	1		6,576	6,593
CHIP	129	1,058	234	107	0	137	0		0	0	2		1,537	1,666
DAYT	700	8,288	2,935	1,671	0	854	451		1,101	241	0		15,541	16,242
EDIS	555	8,922	1,386	1,336	0	16	0		0	0	0		11,660	12,215
FJAX	690	15,078	4,555	2,160	110	1,340	398		930	243	22		24,835	25,524
FKEY	0	621	255	65	2	25	0		0	0	0		968	968
GULF	3	3,074	1,057	415	34	235	76		13	1	0		4,904	4,908
HILL	0	13,041	3,850	2,850	152	334	1,060		108	25	0		21,419	21,419
INDR	613	6,657	3,053	866	91	946	614		1,063	249	0		13,539	14,151
FGC	0	1,294	450	183	23	369	0		1	0	0		2,319	2,319
LSCC	0	2,263	663	317	18	0	0		0	0	0		3,261	3,261
SCF	69	7,033	597	1,150	62	0	0		0	0	0		8,843	8,912
MIAM	1,026	38,050	4,078	10,679	41	711	515		2,215	507	1,942		58,738	59,764
NFLA	0	582	192	99	17	138	0		0	0	0		1,028	1,028
NWFC	336	3,987	839	420	0	150	0		151	24	0		5,570	5,906
PALM	352	15,356	1,476	1,979	64	939	664		0	0	0		20,478	20,830
PASC	0	4,100	2,205	878	65	514	0		14	1	0		7,778	7,778
PENS	33	5,503	1,908	707	28	453	0		306	387	11		9,304	9,336
POLK	134	4,427	1,610	742	143	107	0		0	0	0		7,029	7,163
ST.J	14	3,220	957	420	75	129	168		15	4	0		4,987	5,001
ST.P	2,319	12,874	4,993	2,025	0	119	0		0	0	0		20,011	22,330
SANF	156	7,908	2,685	1,284	54	293	155		144	4	0		12,526	12,682
SEMI	11	8,589	3,774	1,337	54	340	498		479	326	19		15,417	15,428
SFLA	0	1,206	212	162	23	530	77		445	84	0		2,737	2,737
TALL	0	8,498	1,176	1,726	0	317	21		171	66	0		11,975	11,975
VALE	0	21,930	6,141	2,827	84	192	0		0	0	0		31,174	31,174
SYST	7,584	232,678	62,959	43,359	1,224	11,115	4,986		7,217	2,173	1,998		367,708	375,292

CCTCMIS: FTECOL, CO3F29C - 07/15/2011 5:17 PM

SOURCE: FN30C3

Notes:

The Special Disabled Adult category was no longer reported starting in 2005-06.

The EPI (Educator Preparation Institute) category began reporting in 2005-06.

The Upper Division category began reporting in 2002-03.

The CWE (Continuing Workforce Education) category was no longer reported starting in 2010-11.

**FLORIDA COLLEGE SYSTEM
HISTORICAL FTE ENROLLMENT: LOWER AND UPPER DIVISION**

2009-10 FTE-3 REVISED NOVEMBER 14, 2012

COLLEGE	UPPER DIVISION	A & P	POSTSEC VOC	DEV ED	EPI	POSTSEC ADULT VOC	APPRENTICE	CWE	ADULT BASIC	ADULT SEC/GED PREP	VOC PREP	SPECIAL DISABLED ADULT	TOTAL LOWER DIVISION	GRAND TOTAL
BREV	0	7,962	2,793	964	40	1,010	404	220	0	0	0		13,393	13,393
BROW	129	15,753	6,985	4,325	65	447	0	199	0	0	0		27,774	27,902
CFLA	0	3,615	1,253	771	18	529	0	133	74	8	5		6,405	6,405
CHIP	135	1,061	245	122	0	154	0	35	0	0	2		1,619	1,754
DAYT	495	7,570	2,799	1,635	27	940	542	73	1,113	286	0		14,984	15,479
EDIS	322	7,491	2,204	1,299	0	17	0	61	0	0	0		11,072	11,394
FJAX	355	14,158	4,140	2,013	153	1,416	450	2,199	1,037	216	24		25,806	26,161
FKEY	0	684	243	76	9	28	0	22	0	0	0		1,062	1,062
GULF	0	3,020	1,053	394	41	217	119	190	39	1	0		5,074	5,074
HILL	0	12,288	3,527	2,628	214	429	1,316	215	121	31	0		20,767	20,767
INDR	495	6,200	2,920	822	108	1,103	708	20	1,203	249	0		13,332	13,827
FGC	0	1,297	463	181	25	353	0	77	1	0	0		2,396	2,396
LSCC	0	2,139	626	340	24	0	0	74	0	0	0		3,203	3,203
SCF	13	7,523	559	1,262	92	0	0	117	0	0	0		9,552	9,565
MIAM	907	34,875	4,170	9,728	82	667	613	1,516	1,842	1,102	2,020		56,614	57,521
NFLA	0	532	164	88	10	128	0	19	0	0	0		941	941
NWFC	278	3,996	786	352	11	151	0	33	169	42	0		5,538	5,816
PALM	174	14,460	1,459	1,865	76	1,047	924	238	0	0	0		20,070	20,245
PASC	0	3,775	2,005	799	67	512	0	63	11	0	0		7,231	7,231
PENS	0	5,488	1,819	669	28	457	0	55	373	366	22		9,276	9,276
POLK	32	4,003	1,568	657	164	122	0	128	0	0	0		6,641	6,673
ST.J	0	2,981	938	407	83	116	239	52	92	6	0		4,913	4,913
ST.P	1,971	11,876	4,661	1,765	0	117	0	290	0	0	0		18,707	20,679
SANF	67	7,751	2,471	1,187	60	298	180	80	126	9	0		12,161	12,229
SEMI	5	7,469	3,322	1,222	52	355	651	22	503	378	25		13,998	14,003
SFLA	0	1,270	204	165	11	473	112	87	492	85	0		2,899	2,899
TALL	0	8,405	1,178	1,547	0	278	22	868	163	67	0		12,527	12,527
VALE	0	19,735	6,275	2,635	121	190	0	341	0	0	0		29,296	29,296
SYST	5,377	217,375	60,827	39,916	1,581	11,551	6,279	7,423	7,358	2,844	2,099		357,253	362,630

Daisy Date Entered: 7/07/2010

Source: 2009-2010 Student Data Base

Notes:

The Special Disabled Adult category was no longer reported starting in 2005-06.

The EPI (Educator Preparation Institute) category began reporting in 2005-06.

The Upper Division category began reporting in 2002-03.

The CWE (Continuing Workforce Education) category was no longer reported starting in 2010-11.

The total CWE enrollment for Florida State College at Jacksonville was reduced by 2,647 FTE by consensus of the November 14, 2012 Enrollment Estimating Conference. Supporting documentation is provided in the meeting packet.

**FLORIDA COLLEGE SYSTEM
HISTORICAL FTE ENROLLMENT: LOWER AND UPPER DIVISION**

2008-09 FTE-3 REVISED NOVEMBER 14, 2012

COLLEGE	UPPER DIVISION	A & P	POSTSEC VOC	DEV ED	EPI	POSTSEC ADULT VOC	APPRENTICE	CWE	ADULT BASIC	ADULT SEC/GED PREP	VOC PREP	SPECIAL DISABLED ADULT	TOTAL LOWER DIVISION	GRAND TOTAL
BREV	0	6,959	2,499	844	51	778	490	178	0	0	0		11,799	11,799
BROW	14	14,038	6,180	3,758	81	492	0	256	0	0	0		24,805	24,818
CFLA	0	3,045	1,068	602	34	481	0	143	88	9	3		5,473	5,473
CHIP	105	1,076	226	128	0	154	7	44	0	0	6		1,640	1,745
DAYT	285	6,488	2,602	1,158	62	806	562	69	985	355	11		13,097	13,383
EDIS	114	6,118	1,885	1,041	22	0	0	57	0	0	0		9,123	9,237
FJAX	112	11,912	3,746	1,581	166	1,198	569	1,938	1,266	268	48		22,693	22,805
FKEY	0	558	215	55	16	51	0	22	0	0	0		916	916
GULF	0	2,795	1,062	342	38	205	165	206	62	1	0		4,875	4,875
HILL	0	10,837	3,052	2,238	139	415	1,623	207	117	33	0		18,661	18,661
INDR	343	5,505	2,692	681	110	1,068	942	14	1,172	278	0		12,462	12,805
FGC	0	1,240	373	161	25	254	0	58	0	0	0		2,112	2,112
LSCC	0	1,819	613	290	31	0	0	80	0	0	0		2,833	2,833
SCF	0	6,672	547	1,098	78	0	0	136	66	5	0		8,602	8,602
MIAM	765	31,894	5,402	8,591	77	840	814	1,534	2,911	1,658	2,150		55,869	56,635
NFLA	0	472	138	79	12	125	0	33	9	1	0		868	868
NWFC	182	3,866	744	335	40	144	0	41	178	52	0		5,399	5,581
PALM	0	12,776	1,412	1,576	90	1,024	1,346	230	0	0	0		18,454	18,454
PASC	0	3,242	1,643	670	65	383	0	47	8	1	0		6,060	6,060
PENS	0	5,076	1,711	548	46	435	0	45	363	431	21		8,674	8,674
POLK	0	3,568	1,396	566	167	103	0	192	0	0	0		5,992	5,992
ST.J	0	2,596	821	359	115	123	389	35	87	5	0		4,529	4,529
ST.P	1,599	10,688	4,272	1,563	0	116	0	329	0	0	0		16,967	18,566
SANF	0	7,837	2,369	1,021	54	254	230	46	114	36	1		11,961	11,961
SEMI	0	5,969	2,774	959	37	323	848	52	588	460	34		12,042	12,042
SFLA	0	1,152	181	144	10	506	135	69	467	92	0		2,757	2,757
TALL	0	8,087	1,180	1,218	7	301	13	1,004	91	38	0		11,938	11,938
VALE	0	17,621	5,678	2,342	122	271	0	404	0	0	0		26,437	26,437
SYST	3,521	193,902	56,480	33,949	1,691	10,849	8,132	7,467	8,571	3,722	2,274		327,035	330,556

Daisy Date Entered: 7/13/2009

Source: 2008-2009 Student Data Base

Notes:

The Special Disabled Adult category was no longer reported starting in 2005-06.

The EPI (Educator Preparation Institute) category began reporting in 2005-06.

The Upper Division category began reporting in 2002-03.

The CWE (Continuing Workforce Education) category was no longer reported starting in 2010-11.

The total CWE enrollment for Florida State College at Jacksonville was reduced by 2,017 FTE by consensus of the November 14, 2012 Enrollment Estimating Conference. Supporting documentation is provided in the meeting packet.

**FLORIDA COLLEGE SYSTEM
HISTORICAL FTE ENROLLMENT: LOWER AND UPPER DIVISION**

2007-08 FTE-3 REVISED NOVEMBER 14, 2012

COLLEGE	UPPER DIVISION	A & P	POSTSEC VOC	DEV ED	EPI	POSTSEC ADULT VOC	APPRENTICE	CWE	ADULT BASIC	ADULT SEC/GED PREP	VOC PREP	SPECIAL DISABLED ADULT	TOTAL LOWER DIVISION	GRAND TOTAL
BREV	0	6,333	2,313	782	59	687	527	124	0	0	0		10,825	10,825
BROW	0	12,874	5,745	3,545	80	505	0	268	0	0	0		23,018	23,018
CFLA	0	2,627	998	477	50	477	0	178	66	11	2		4,886	4,886
CHIP	42	958	211	113	0	197	9	40	0	0	10		1,537	1,579
DAYT	176	5,675	2,383	1,068	85	757	641	69	932	410	23		12,043	12,218
EDIS	32	5,277	1,742	906	107	12	0	51	0	0	0		8,095	8,126
FJAX	2	10,646	3,468	1,514	151	1,040	577	2,080	1,099	264	39		20,878	20,880
FKEY	0	451	234	49	6	26	0	24	0	0	0		790	790
GULF	0	2,660	995	347	54	288	152	267	67	1	0		4,832	4,832
HILL	0	9,588	2,789	1,987	129	370	1,716	228	62	14	0		16,881	16,881
INDR	84	5,008	2,686	591	117	1,170	1,020	14	1,167	326	0		12,098	12,182
FGC	0	1,265	379	165	15	397	0	111	1	1	3		2,336	2,336
LSCC	0	1,616	609	269	40	0	0	46	0	0	0		2,580	2,580
SCF	0	5,872	616	992	84	0	0	110	40	5	0		7,718	7,718
MIAM	481	28,627	8,947	5,693	77	895	704	1,642	3,276	1,200	1,779		52,839	53,320
NFLA	0	509	156	110	14	103	0	53	10	2	1		956	956
NWFC	135	3,599	689	312	77	172	0	38	161	42	0		5,089	5,224
PALM	0	11,153	1,308	1,402	67	914	1,545	235	0	0	0		16,624	16,624
PASC	0	3,077	1,387	573	80	351	0	47	7	0	0		5,522	5,522
PENS	0	4,931	1,750	527	59	375	0	50	308	375	15		8,390	8,390
POLK	0	3,164	1,230	481	129	105	0	204	0	0	0		5,313	5,313
ST.J	0	2,302	784	305	86	127	400	43	122	22	0		4,190	4,190
ST.P	1,338	9,961	4,075	1,576	0	144	0	331	0	0	0		16,086	17,424
SANF	0	7,892	2,371	1,036	42	157	178	71	104	19	5		11,873	11,873
SEMI	0	5,088	2,338	880	40	302	815	11	624	542	28		10,669	10,669
SFLA	0	1,060	155	115	15	491	158	80	464	74	0		2,611	2,611
TALL	0	7,809	1,250	1,051	27	285	0	864	91	80	0		11,456	11,456
VALE	0	15,582	5,295	2,142	78	279	0	441	0	0	0		23,816	23,816
SYST	2,290	175,604	56,901	29,004	1,769	10,626	8,440	7,717	8,600	3,386	1,903		303,949	306,238

Daisy Date Entered: 7/29/2008

Source: 2007-2008 Student Data Base

Notes:

The Special Disabled Adult category was no longer reported starting in 2005-06.

The EPI (Educator Preparation Institute) category began reporting in 2005-06.

The Upper Division category began reporting in 2002-03.

The CWE (Continuing Workforce Education) category was no longer reported starting in 2010-11.

The total CWE enrollment for Florida State College at Jacksonville was reduced by 1,586 FTE by consensus of the November 14, 2012 Enrollment Estimating Conference. Supporting documentation is provided in the meeting packet.

**FLORIDA COLLEGE SYSTEM
HISTORICAL FTE ENROLLMENT: LOWER AND UPPER DIVISION**

2006-07 FTE-3 REVISED NOVEMBER 14, 2012

COLLEGE	UPPER DIVISION	A & P	POSTSEC VOC	DEV ED	EPI	POSTSEC ADULT VOC	APPRENTICE	CWE	ADULT BASIC	ADULT SEC/GED PREP	VOC PREP	SPECIAL DISABLED ADULT	TOTAL LOWER DIVISION	GRAND TOTAL
BREV	0	5,883	2,044	650	46	776	413	125	0	0	0		9,937	9,937
BROW	0	12,344	5,512	3,236	47	662	0	288	0	0	0		22,089	22,089
CFLA	0	2,364	989	406	38	474	0	165	94	22	3		4,553	4,553
CHIP	23	933	220	103	0	190	0	60	0	0	13		1,518	1,541
DAYT	76	4,929	2,113	926	86	700	614	80	706	366	7		10,526	10,602
EDIS	13	4,604	1,498	973	120	6	0	67	0	0	0		7,266	7,279
FJAX	0	10,897	3,522	1,344	104	1,219	581	963	1,320	372	52		20,374	20,374
FKEY	0	397	210	51	0	40	0	24	0	0	0		722	722
GULF	0	2,622	955	331	56	324	124	243	64	3	0		4,720	4,720
HILL	0	9,510	2,587	2,041	66	433	1,685	235	55	11	0		16,622	16,622
INDR	0	4,491	2,639	520	93	1,162	920	19	1,227	353	2		11,425	11,425
FGC	0	1,126	411	152	22	466	0	108	2	1	2		2,290	2,290
LSCC	0	1,489	594	222	32	0	0	39	0	0	0		2,377	2,377
SCF	0	5,248	646	810	60	0	0	119	33	3	0		6,919	6,919
MIAM	261	26,904	8,263	5,579	53	929	641	1,546	3,649	520	1,535		49,617	49,878
NFLA	0	496	155	100	28	129	0	38	9	2	0		957	957
NWFC	109	3,343	641	281	76	175	0	18	138	34	0		4,705	4,814
PALM	0	10,365	1,292	1,264	64	779	1,888	279	0	0	0		15,931	15,931
PASC	0	2,794	1,299	531	64	337	0	45	71	26	0		5,167	5,167
PENS	0	4,546	1,649	505	60	362	0	57	313	381	11		7,884	7,884
POLK	0	2,746	1,159	415	72	110	0	201	0	0	0		4,702	4,702
ST.J	0	2,191	738	252	36	114	407	56	59	11	0		3,863	3,863
ST.P	1,185	9,445	3,877	1,571	0	173	0	335	0	0	0		15,402	16,587
SANF	0	7,439	2,322	1,015	61	259	272	84	143	55	21		11,669	11,669
SEMI	0	4,656	2,151	807	28	370	646	67	613	517	29		9,885	9,885
SFLA	0	992	144	89	13	473	106	86	387	41	0		2,331	2,331
TALL	0	7,562	1,219	1,084	26	274	6	581	499	94	0		11,345	11,345
VALE	0	14,215	4,763	1,831	54	318	0	435	0	0	0		21,616	21,616
SYST	1,667	164,530	53,613	27,087	1,404	11,252	8,302	6,359	9,382	2,808	1,676		286,412	288,079

July 31, 2007 RGM M:\Bris_Prof1\Fte\2006-2007\reports\fte2007\CC Corrections v2\FTE3 cc corr.xls

Source: 2006-2007 Student Data Base

Notes:

The Special Disabled Adult category was no longer reported starting in 2005-06.

The EPI (Educator Preparation Institute) category began reporting in 2005-06.

The Upper Division category began reporting in 2002-03.

The CWE (Continuing Workforce Education) category was no longer reported starting in 2010-11.

The total CWE enrollment for Florida State College at Jacksonville was reduced by 343 FTE by consensus of the November 14, 2012 Enrollment Estimating Conference. Supporting documentation is provided in the meeting packet.

**FLORIDA COLLEGE SYSTEM
HISTORICAL FTE ENROLLMENT: LOWER AND UPPER DIVISION**

2005-06 FTE-3

COLLEGE	UPPER DIVISION	A & P	POSTSEC VOC	DEV ED	EPI	POSTSEC ADULT VOC	APPRENTICE	CWE	ADULT BASIC	ADULT SEC/GED PREP	VOC PREP	SPECIAL DISABLED ADULT	TOTAL LOWER DIVISION	GRAND TOTAL
BREV	0	5,801	2,131	651	24	793	507	130	0	0	0		10,036	10,036
BROW	0	12,438	5,598	3,394	9	587	0	194	0	0	0		22,220	22,220
CFLA	0	2,295	896	423	25	457	0	211	142	114	15		4,578	4,578
CHIP	14	979	282	110	0	214	0	63	0	0	13		1,662	1,676
DAYT	3	4,568	2,022	832	15	677	608	84	1,865	1,122	1		11,795	11,798
EDIS	0	4,640	1,483	899	21	7	0	41	0	0	0		7,091	7,091
FJAX	0	10,898	3,551	1,168	54	1,244	475	418	1,317	429	65		19,619	19,619
FKEY	0	440	233	42	0	33	0	24	0	0	0		772	772
GULF	0	2,662	1,030	317	39	245	56	242	83	49	0		4,723	4,723
HILL	0	9,565	2,483	2,002	12	468	1,554	271	34	6	0		16,395	16,395
INDR	0	4,148	2,554	528	49	1,084	936	18	2,073	575	4		11,968	11,968
FGC	0	1,123	405	156	13	518	0	159	1	2	4		2,381	2,381
LSCC	0	1,435	594	214	11	0	0	59	0	0	0		2,312	2,312
SCF	0	5,149	594	760	21	0	0	83	15	7	0		6,629	6,629
MIAM	187	28,024	8,233	5,889	9	1,031	412	1,569	3,319	412	1,550		50,447	50,634
NFLA	0	533	156	100	25	131	0	44	18	1	1		1,010	1,010
NWFC	90	3,385	663	293	27	115	0	18	189	49	0		4,738	4,829
PALM	0	10,503	1,307	1,302	14	838	1,184	260	0	0	0		15,406	15,406
PASC	0	2,619	1,279	517	90	316	0	38	266	158	0		5,282	5,282
PENS	0	4,543	1,589	457	29	277	0	65	443	522	7		7,933	7,933
POLK	0	2,646	1,155	428	30	102	0	276	0	0	0		4,636	4,636
ST.J	0	2,088	686	215	4	256	291	45	84	19	0		3,687	3,687
ST.P	974	9,321	4,006	1,614	0	39	0	324	0	0	0		15,304	16,278
SANF	0	7,171	2,317	1,044	0	265	266	94	256	87	14		11,515	11,515
SEMI	0	4,598	2,140	808	0	350	650	77	1,079	914	32		10,646	10,646
SFLA	0	944	126	99	0	533	34	71	1,048	192	0		3,046	3,046
TALL	0	7,391	1,257	1,182	7	321	2	454	314	85	0		11,013	11,013
VALE	0	13,300	4,875	1,906	0	307	0	485	0	0	0		20,872	20,872
SYST	1,269	163,204	53,644	27,351	527	11,206	6,975	5,814	12,545	4,743	1,706		287,714	288,983

Daisy Date Entered: August 31, 2006
Source: 2005-2006 Student Data Base

Notes:
The Special Disabled Adult category was no longer reported starting in 2005-06.
The EPI (Educator Preparation Institute) category began reporting in 2005-06.
The Upper Division category began reporting in 2002-03.
The CWE (Continuing Workforce Education) category was no longer reported starting in 2010-11.

**FLORIDA COLLEGE SYSTEM
HISTORICAL FTE ENROLLMENT: LOWER AND UPPER DIVISION**

2004-05 FTE-3

COLLEGE	UPPER DIVISION	A & P	POSTSEC VOC	DEV ED	EPI	POSTSEC ADULT VOC	APPRENTICE	CWE	ADULT BASIC	ADULT SEC/GED PREP	VOC PREP	SPECIAL DISABLED ADULT	TOTAL LOWER DIVISION	GRAND TOTAL
BREV	0	6,002	2,143	754		757	677	135	0	0	0	0	10,468	10,468
BROW	0	12,423	6,024	3,761		489	0	264	0	0	0	0	22,959	22,959
CFLA	0	2,423	848	449		458	0	260	137	175	13	0	4,763	4,763
CHIP	18	1,013	258	118		194	0	53	0	0	16	0	1,651	1,669
DAYT	0	4,594	2,106	886		702	662	75	1,986	1,347	1	467	12,825	12,825
EDIS	0	4,748	1,447	886		8	0	31	0	0	0	0	7,121	7,121
FJAX	0	10,550	3,571	1,232		1,267	843	438	1,439	500	69	30	19,939	19,939
FKEY	0	454	247	49		36	0	24	0	0	0	0	810	810
GULF	0	2,730	1,026	348		231	21	239	170	107	0	0	4,872	4,872
HILL	0	9,563	2,674	2,298		453	1,417	381	24	6	0	0	16,816	16,816
INDR	0	3,993	2,471	472		1,053	804	62	1,943	531	1	0	11,328	11,328
FGC	0	1,149	414	177		578	0	187	2	3	0	0	2,509	2,509
LSCC	0	1,480	592	211		0	0	57	0	0	0	0	2,339	2,339
SCF	0	5,135	561	783		0	0	83	22	10	0	0	6,593	6,593
MIAM	126	29,734	8,592	6,222		1,152	351	1,540	2,577	453	2,800	0	53,421	53,547
NFLA	0	557	132	94		151	0	42	21	2	2	0	1,001	1,001
NWFC	53	3,411	664	338		122	0	16	220	61	0	0	4,832	4,885
PALM	0	10,531	1,359	1,400		970	1,337	278	0	0	0	0	15,875	15,875
PASC	0	2,521	1,280	521		374	0	36	284	183	0	0	5,199	5,199
PENS	0	4,780	1,696	534		366	0	53	408	501	11	0	8,348	8,348
POLK	0	2,618	1,152	465		99	0	172	0	0	0	0	4,506	4,506
ST.J	0	2,128	661	213		135	489	34	56	17	0	53	3,786	3,786
ST.P	725	9,366	4,240	1,646		35	0	364	0	0	0	0	15,650	16,375
SANF	0	7,244	2,145	1,094		285	371	84	238	82	18	0	11,561	11,561
SEMI	0	4,848	2,211	880		402	715	52	1,146	912	33	44	11,243	11,243
SFLA	0	1,017	131	106		562	76	51	1,141	165	0	0	3,250	3,250
TALL	0	7,079	1,129	1,180		256	4	312	216	83	0	0	10,257	10,257
VALE	0	13,315	4,986	1,982		207	0	406	0	0	0	0	20,896	20,896
SYST	922	165,404	54,759	29,096		11,343	7,765	5,728	12,030	5,135	2,964	594	294,818	295,740

Daisy Date Entered: July 28, 2005

Source: 2004-2005 Student Data Base

Notes:

The Special Disabled Adult category was no longer reported starting in 2005-06.

The EPI (Educator Preparation Institute) category began reporting in 2005-06.

The Upper Division category began reporting in 2002-03.

The CWE (Continuing Workforce Education) category was no longer reported starting in 2010-11.

**FLORIDA COLLEGE SYSTEM
HISTORICAL FTE ENROLLMENT: LOWER AND UPPER DIVISION**

2003-04 FTE-3

COLLEGE	UPPER DIVISION	A & P	POSTSEC VOC	DEV ED	EPI	POSTSEC ADULT VOC	APPRENTICE	CWE	ADULT BASIC	ADULT SEC/GED PREP	VOC PREP	SPECIAL DISABLED ADULT	TOTAL LOWER DIVISION	GRAND TOTAL
BREV	0	5,874	2,258	779		760	761	102	0	0	0	0	10,535	10,535
BROW	0	12,023	6,018	3,924		498	0	220	0	0	0	0	22,682	22,682
CFLA	0	2,565	879	437		447	0	257	171	114	36	0	4,906	4,906
CHIP	6	1,035	259	121		201	0	53	0	0	17	0	1,686	1,691
DAYT	0	4,565	2,198	1,008		679	638	106	2,188	1,472	1	534	13,391	13,391
EDIS	0	4,859	1,413	911		7	0	51	0	0	0	0	7,242	7,242
FJAX	0	10,022	3,666	1,326		1,451	1,634	356	1,582	505	29	43	20,613	20,613
FKEY	0	484	297	42		40	0	17	0	0	0	0	880	880
GULF	0	2,654	1,069	358		175	17	241	142	74	0	0	4,731	4,731
HILL	0	9,427	2,524	2,418		484	1,361	337	0	0	0	0	16,551	16,551
INDR	0	3,867	2,604	535		1,128	835	75	2,328	599	3	0	11,975	11,975
FGC	0	1,072	488	148		544	0	168	18	5	0	0	2,443	2,443
LSCC	0	1,357	582	159		0	0	48	0	0	0	0	2,145	2,145
SCF	0	4,946	519	836		0	0	85	26	14	0	0	6,425	6,425
MIAM	47	30,419	9,091	6,317		1,275	194	1,704	2,740	435	2,219	0	54,393	54,439
NFLA	0	516	115	72		166	0	59	22	1	1	2	954	954
NWFC	0	3,634	764	382		160	0	15	259	112	0	0	5,326	5,326
PALM	0	10,332	1,319	1,456		1,022	1,302	201	0	0	0	0	15,633	15,633
PASC	0	2,399	1,263	525		394	0	45	201	168	0	0	4,995	4,995
PENS	0	4,898	1,722	628		382	0	56	474	476	13	15	8,663	8,663
POLK	0	2,646	1,200	466		125	0	232	0	0	0	0	4,669	4,669
ST.J	0	2,166	644	197		130	475	30	64	21	0	37	3,764	3,764
ST.P	543	9,209	4,347	1,604		27	0	434	0	0	0	0	15,621	16,163
SANF	0	6,975	2,292	1,263		274	367	98	157	99	19	0	11,542	11,542
SEMI	0	4,934	2,394	908		450	839	68	962	773	76	24	11,426	11,426
SFLA	0	1,062	155	110		559	67	73	1,244	206	0	0	3,475	3,475
TALL	0	6,663	1,085	1,265		151	13	267	146	28	0	0	9,618	9,618
VALE	0	13,495	4,939	2,380		238	0	461	0	0	0	0	21,513	21,513
SYST	595	164,096	56,103	30,573		11,767	8,503	5,857	12,723	5,102	2,416	655	297,795	298,390

Daisy Date Entered: July 7, 2004

Source: 2003-2004 Student Data Base

Notes:

The Special Disabled Adult category was no longer reported starting in 2005-06.

The EPI (Educator Preparation Institute) category began reporting in 2005-06.

The Upper Division category began reporting in 2002-03.

The CWE (Continuing Workforce Education) category was no longer reported starting in 2010-11.

**FLORIDA COLLEGE SYSTEM
HISTORICAL FTE ENROLLMENT: LOWER AND UPPER DIVISION**

2002-03 FTE-3

COLLEGE	UPPER DIVISION	A & P	POSTSEC VOC	DEV ED	EPI	POSTSEC ADULT VOC	APPRENTICE	CWE	ADULT BASIC	ADULT SEC/GED PREP	VOC PREP	SPECIAL DISABLED ADULT	TOTAL LOWER DIVISION	GRAND TOTAL
BREV	0	5,691	2,318	798		675	687	137	0	0	0	0	10,305	10,305
BROW	0	11,586	5,869	3,899		521	0	231	0	0	0	0	22,104	22,104
CFLA	0	2,562	862	450		398	0	275	178	61	36	0	4,823	4,823
CHIP	0	951	218	122		167	0	70	0	0	24	0	1,550	1,550
DAYT	0	4,299	2,170	938		585	649	109	1,973	1,380	3	579	12,684	12,684
EDIS	0	4,478	1,215	849		7	0	45	0	0	0	0	6,594	6,594
FJAX	0	9,167	3,620	1,333		1,446	1,832	403	1,754	514	24	47	20,139	20,139
FKEY	0	532	307	58		38	0	13	0	0	0	0	949	949
GULF	0	2,591	1,111	360		157	11	229	183	98	0	0	4,739	4,739
HILL	0	8,589	2,431	2,180		460	1,452	321	0	0	0	0	15,432	15,432
INDR	0	3,493	2,606	454		1,072	830	56	2,219	633	1	0	11,365	11,365
FGC	0	984	506	153		459	0	145	29	9	1	0	2,286	2,286
LSCC	0	1,295	537	171		5	0	57	0	0	0	0	2,064	2,064
SCF	0	4,700	490	770		0	0	67	19	9	0	0	6,056	6,056
MIAM	0	28,356	8,864	5,868		1,400	0	1,949	2,399	340	2,176	0	51,352	51,352
NFLA	0	524	128	71		195	0	42	40	2	2	0	1,004	1,004
NWFC	0	3,424	800	344		126	0	14	290	74	3	0	5,074	5,074
PALM	0	9,983	1,234	1,391		898	1,281	197	0	0	0	0	14,983	14,983
PASC	0	2,170	1,210	502		377	0	40	234	111	0	0	4,645	4,645
PENS	0	4,707	1,664	670		349	0	44	493	484	18	8	8,436	8,436
POLK	0	2,524	1,081	422		106	0	271	0	0	0	0	4,403	4,403
ST.J	0	2,085	561	175		121	454	31	65	21	0	43	3,556	3,556
ST.P	260	8,460	4,172	1,586		45	0	442	0	0	0	0	14,706	14,966
SANF	0	6,724	2,254	1,353		612	87	84	113	90	16	0	11,331	11,331
SEMI	0	4,371	2,342	739		480	998	79	1,076	818	65	24	10,991	10,991
SFLA	0	1,068	136	107		551	66	59	1,317	210	5	0	3,518	3,518
TALL	0	6,223	1,042	1,080		181	6	265	96	32	0	0	8,925	8,925
VALE	0	13,550	4,748	2,250		223	0	345	0	0	0	0	21,116	21,116
SYST	260	155,086	54,494	29,091		11,652	8,351	6,019	12,478	4,884	2,373	701	285,128	285,388

Daisy Date Entered: July 30, 2003

Source: 2002-2003 Student Data Base

Notes:

The Special Disabled Adult category was no longer reported starting in 2005-06.

The EPI (Educator Preparation Institute) category began reporting in 2005-06.

The Upper Division category began reporting in 2002-03.

The CWE (Continuing Workforce Education) category was no longer reported starting in 2010-11.

**FLORIDA COLLEGE SYSTEM
HISTORICAL FTE ENROLLMENT: LOWER AND UPPER DIVISION**

2001-02 FTE-3

COLLEGE	UPPER DIVISION	A & P	POSTSEC VOC	DEV ED	EPI	POSTSEC ADULT VOC	APPRENTICE	CWE	ADULT BASIC	ADULT SEC/GED PREP	VOC PREP	SPECIAL DISABLED ADULT	TOTAL LOWER DIVISION	GRAND TOTAL
BREV		5,134	2,208	770		583	726	152	0	0	0	0	9,571	9,571
BROW		10,754	5,585	3,642		503	0	251	0	0	0	0	20,734	20,734
CFLA		2,436	811	433		397	0	317	156	78	16	0	4,643	4,643
CHIP		866	182	86		189	0	63	0	0	25	0	1,411	1,411
DAYT		4,132	2,017	914		511	747	125	1,723	1,358	10	730	12,267	12,267
EDIS		4,143	1,034	924		11	0	81	0	0	0	0	6,193	6,193
FJAX		8,321	3,432	1,235		1,256	1,908	307	1,665	708	60	33	18,923	18,923
FKEY		521	286	49		45	0	10	0	0	0	0	911	911
GULF		2,408	1,123	348		204	19	246	134	83	0	0	4,565	4,565
HILL		7,769	2,317	1,914		373	1,522	331	0	0	0	0	14,226	14,226
INDR		3,433	2,538	346		1,339	671	95	2,125	685	2	0	11,233	11,233
FGC		851	481	192		232	0	123	36	16	1	0	1,933	1,933
LSCC		1,164	490	134		4	0	29	0	0	0	0	1,820	1,820
SCF		4,222	554	707		0	0	68	18	14	0	0	5,583	5,583
MIAM		26,038	8,484	5,250		1,505	0	1,784	2,072	462	1,376	0	46,971	46,971
NFLA		470	112	75		179	0	59	32	3	3	0	933	933
NWFC		3,233	810	296		130	0	18	252	64	7	0	4,811	4,811
PALM		9,499	1,153	1,333		707	1,305	177	0	0	0	0	14,174	14,174
PASC		1,892	1,033	412		344	0	49	93	302	0	0	4,125	4,125
PENS		4,614	1,725	677		352	0	45	523	653	15	0	8,602	8,602
POLK		2,286	962	426		98	0	260	0	0	0	0	4,031	4,031
ST.J		1,991	538	173		114	469	50	72	30	1	41	3,479	3,479
ST.P		7,575	3,871	1,387		19	0	416	0	0	0	0	13,268	13,268
SANF		6,380	2,270	1,289		247	252	81	62	42	9	0	10,633	10,633
SEMI		3,654	2,246	671		474	1,076	77	991	795	52	27	10,061	10,061
SFLA		991	117	79		557	64	64	1,165	184	20	0	3,239	3,239
TALL		6,054	988	1,060		188	12	231	54	29	0	0	8,616	8,616
VALE		12,976	4,392	2,302		242	0	476	0	0	0	0	20,388	20,388
SYST		143,803	51,760	27,120		10,802	8,770	5,983	11,172	5,508	1,598	830	267,344	267,344

Daisy Date Entered: August 14, 2002
Source: 2001-2002 Student Data Base

Notes:
The Special Disabled Adult category was no longer reported starting in 2005-06.
The EPI (Educator Preparation Institute) category began reporting in 2005-06.
The Upper Division category began reporting in 2002-03.
The CWE (Continuing Workforce Education) category was no longer reported starting in 2010-11.



**THE FLORIDA COLLEGE SYSTEM
PROJECTIONS DATA
FTE PROJECTIONS**

Florida Department of Education

FLORIDA COMMUNITY COLLEGE SYSTEM
Student Data Base FTE Report
2013-2014 FTE-3 Compared to the 2014-2015 FTE-1 (Division Estimates)

	Upper Division	Diff. Percent	Adv. & Prof.	Diff. Percent	Postsec. Voc.	Diff. Percent	Dev. Ed.	Diff. Percent	EPI	Diff. Percent	Postsec. Adult	Diff. Percent	Appren- ticeship	Diff. Percent	Adult Basic	Diff. Percent	Adult S&G	Diff. Percent	Voc. Prep	Diff. Percent	Total FTE	Diff. Percent
EFSC																						
2014 FTE-3	75.6	149	7529.9	-181	2575.2	-159	657.2	-211	0.0	0	691.8	0	15.2	-15	0.0	0	0.0	0	0.0	0	11544.9	-417
2015 FTE-1	225.0	197.6	7349.0	-2.4	2416.0	-6.2	446.0	-32.1	0.0	0.0	692.0	0.0	0.0	-100.0	0.0	0.0	0.0	0.0	0.0	0.0	11128.0	-3.6
BROW																						
2014 FTE-3	797.2	120	17469.5	1098	7501.6	113	4216.4	-1309	47.4	19	464.0	1	0.0	0	0.0	0	0.0	0	0.0	0	30496.1	41
2015 FTE-1	917.0	15.0	18567.0	6.3	7615.0	1.5	2907.0	-31.1	66.0	39.2	465.0	0.2	0.0	0.0	0.0	0.0	0.0	0.0	0.0	0.0	30537.0	0.1
CFLA																						
2014 FTE-3	208.7	78	3717.8	-233	1320.4	-91	437.6	-145	1.4	-1	196.9	-1	0.0	0	11.1	0	10.4	0	0.0	0	5904.3	-393
2015 FTE-1	287.0	37.5	3485.0	-6.3	1229.0	-6.9	293.0	-33.0	0.0	-100.0	196.0	-0.5	0.0	0.0	11.0	-0.9	10.0	-3.8	0.0	0.0	5511.0	-6.7
CHIP																						
2014 FTE-3	134.7	-10	928.6	-38	239.1	16	78.0	-28	0.0	0	128.6	0	0.0	0	0.0	0	0.0	0	1.6	-2	1510.6	-61
2015 FTE-1	125.0	-7.2	891.0	-4.0	255.0	6.6	50.0	-35.9	0.0	0.0	129.0	0.3	0.0	0.0	0.0	0.0	0.0	0.0	0.0	-100.0	1450.0	-4.0
DAYT																						
2014 FTE-3	858.0	29	6145.7	-473	2171.0	-197	871.9	-430	1.2	-1	736.4	0	302.1	0	662.4	-1	119.9	0	12.1	0	11880.7	-1074
2015 FTE-1	887.0	3.4	5673.0	-7.7	1974.0	-9.1	442.0	-49.3	0.0	-100.0	736.0	-0.1	302.0	0.0	661.0	-0.2	120.0	0.1	12.0	-0.8	10807.0	-9.0
FSW																						
2014 FTE-3	599.0	62	8122.9	66	613.6	-85	793.6	-409	0.0	0	20.2	0	0.0	0	0.0	0	0.0	0	0.0	0	10149.3	-365
2015 FTE-1	661.0	10.4	8189.0	0.8	529.0	-13.8	385.0	-51.5	0.0	0.0	20.0	-1.0	0.0	0.0	0.0	0.0	0.0	0.0	0.0	0.0	9784.0	-3.6
FJAX																						
2014 FTE-3	1288.8	106	12657.4	-769	3757.5	-228	1766.3	-552	0.1	0	1245.0	1	342.6	1	522.2	0	89.7	0	6.8	0	21676.4	-1440
2015 FTE-1	1395.0	8.2	11888.0	-6.1	3530.0	-6.1	1214.0	-31.3	0.0	-100.0	1246.0	0.1	344.0	0.4	522.0	0.0	90.0	0.3	7.0	2.9	20236.0	-6.6
FKEY																						
2014 FTE-3	0.0	0	507.7	-45	196.9	-33	42.8	-15	0.0	0	29.0	-1	0.0	0	0.0	0	0.0	0	0.0	0	776.4	-93
2015 FTE-1	0.0	0.0	463.0	-8.8	164.0	-16.7	28.0	-34.6	0.0	0.0	28.0	-3.4	0.0	0.0	0.0	0.0	0.0	0.0	0.0	0.0	683.0	-12.0
GULF																						
2014 FTE-3	54.8	-16	2981.9	79	748.1	-13	271.4	-123	34.2	-12	164.1	-1	2.4	-2	0.0	0	0.0	0	0.0	0	4256.9	-89
2015 FTE-1	39.0	-28.8	3061.0	2.7	735.0	-1.8	148.0	-45.5	22.0	-35.7	163.0	-0.7	0.0	-100.0	0.0	0.0	0.0	0.0	0.0	0.0	4168.0	-2.1
HILL																						
2014 FTE-3	0.0	0	12770.7	931	3387.1	-98	2076.0	-689	151.9	23	466.2	0	1072.8	1	41.6	0	7.6	0	0.0	0	19973.9	169
2015 FTE-1	0.0	0.0	13702.0	7.3	3289.0	-2.9	1387.0	-33.2	175.0	15.2	466.0	0.0	1074.0	0.1	42.0	1.0	8.0	5.3	0.0	0.0	20143.0	0.8
INDR																						
2014 FTE-3	1190.1	188	6577.6	53	2657.3	-19	578.5	-156	0.0	0	815.8	1	439.8	0	696.5	1	122.0	0	45.3	0	13122.9	68
2015 FTE-1	1378.0	15.8	6631.0	0.8	2638.0	-0.7	423.0	-26.9	0.0	0.0	817.0	0.1	440.0	0.0	697.0	0.1	122.0	0.0	45.0	-0.7	13191.0	0.5
FGC																						
2014 FTE-3	13.9	8	1291.3	-49	415.2	4	106.0	-52	14.0	-1	237.3	0	0.0	0	0.0	0	0.0	0	0.0	0	2077.7	-91
2015 FTE-1	22.0	58.3	1242.0	-3.8	419.0	0.9	54.0	-49.1	13.0	-7.1	237.0	-0.1	0.0	0.0	0.0	0.0	0.0	0.0	0.0	0.0	1987.0	-4.4
LSCC																						
2014 FTE-3	30.2	13	1919.1	108	640.1	-23	179.3	-75	17.8	-5	0.0	0	0.0	0	0.0	0	0.0	0	0.0	0	2786.5	17
2015 FTE-1	43.0	42.4	2027.0	5.6	617.0	-3.6	104.0	-42.0	13.0	-27.0	0.0	0.0	0.0	0.0	0.0	0.0	0.0	0.0	0.0	0.0	2804.0	0.6
SCF																						
2014 FTE-3	375.6	35	6055.0	61	594.4	-14	560.3	-175	48.5	-23	0.0	0	0.0	0	0.0	0	0.0	0	0.0	0	7633.8	-116
2015 FTE-1	411.0	9.4	6116.0	1.0	580.0	-2.4	385.0	-31.3	26.0	-46.4	0.0	0.0	0.0	0.0	0.0	0.0	0.0	0.0	0.0	0.0	7518.0	-1.5
MIAM																						
2014 FTE-3	1867.5	66	37572.2	1080	3956.4	35	7581.3	-1433	34.3	-5	800.4	0	226.1	-226	1617.2	0	321.6	0	495.3	0	54472.3	-485
2015 FTE-1	1933.0	3.5	38652.0	2.9	3991.0	0.9	6148.0	-18.9	29.0	-15.5	800.0	0.0	0.0	-100.0	1617.0	0.0	322.0	0.1	495.0	-0.1	53987.0	-0.9

Sources: 2013-2014 Student Data Base FTE-3
2014-2015 Estimates FTE-1 (Division Estimates)
Advanced and Professional, Post Secondary Vocational, Developmental Education and EPI are calculated as 30 Credit Hour FTE.

FLORIDA COMMUNITY COLLEGE SYSTEM
Student Data Base FTE Report
2013-2014 FTE-3 Compared to the 2014-2015 FTE-1 (Division Estimates)

	Upper Division	Diff. Percent	Adv. & Prof.	Diff. Percent	Postsec. Voc.	Diff. Percent	Dev. Ed.	Diff. Percent	EPI	Diff. Percent	Postsec. Adult	Diff. Percent	Appren-ticeship	Diff. Percent	Adult Basic	Diff. Percent	Adult S&G	Diff. Percent	Voc. Prep	Diff. Percent	Total FTE	Diff. Percent	
NFLA																							
2014 FTE-3	0.0	0	484.9	44	156.2	17	63.4	-37	0.0	0	93.6	0	0.0	0	0.0	0	0.0	0	0.0	0	0	798.1	24
2015 FTE-1	0.0	0.0	529.0	9.1	173.0	10.8	26.0	-59.0	0.0	0.0	94.0	0.4	0.0	0.0	0.0	0.0	0.0	0.0	0.0	0.0	0.0	822.0	3.0
NWFC																							
2014 FTE-3	361.4	6	3357.3	-152	756.9	-94	274.5	-102	0.0	0	132.4	1	0.0	0	134.0	0	6.4	-1	0.0	0	0	5022.9	-343
2015 FTE-1	367.0	1.5	3205.0	-4.5	663.0	-12.4	173.0	-37.0	0.0	0.0	133.0	0.5	0.0	0.0	134.0	0.0	5.0	-21.9	0.0	0.0	0.0	4680.0	-6.8
PALM																							
2014 FTE-3	547.4	69	15249.2	48	1573.0	5	1180.3	-357	43.7	-7	959.4	0	504.4	-1	0.0	0	0.0	0	0.0	0	0	20057.4	-244
2015 FTE-1	616.0	12.5	15297.0	0.3	1578.0	0.3	823.0	-30.3	37.0	-15.3	959.0	0.0	503.0	-0.3	0.0	0.0	0.0	0.0	0.0	0.0	0.0	19813.0	-1.2
PASC																							
2014 FTE-3	0.0	72	3972.7	415	2065.2	167	624.2	-8	72.5	-31	345.5	2	0.0	0	13.9	1	0.8	-1	0.0	0	0	7094.8	617
2015 FTE-1	72.0	0.0	4388.0	10.5	2232.0	8.1	616.0	-1.3	42.0	-42.1	347.0	0.4	0.0	0.0	15.0	7.9	0.0	-100.0	0.0	0.0	0.0	7712.0	8.7
PENS																							
2014 FTE-3	229.4	26	4903.4	-323	1864.7	-148	610.3	-284	14.2	-5	381.3	0	0.0	0	231.6	0	283.1	0	0.0	0	0	8518.0	-735
2015 FTE-1	255.0	11.2	4580.0	-6.6	1717.0	-7.9	326.0	-46.6	9.0	-36.6	381.0	-0.1	0.0	0.0	232.0	0.2	283.0	0.0	0.0	0.0	0.0	7783.0	-8.6
POLK																							
2014 FTE-3	604.8	180	4753.3	-70	1848.8	-83	533.0	-245	77.2	12	87.7	0	0.0	0	0.0	0	0.0	0	0.0	0	0	7904.8	-206
2015 FTE-1	785.0	29.8	4683.0	-1.5	1766.0	-4.5	288.0	-46.0	89.0	15.3	88.0	0.3	0.0	0.0	0.0	0.0	0.0	0.0	0.0	0.0	0.0	7699.0	-2.6
ST.J																							
2014 FTE-3	162.5	23	3099.0	90	994.9	37	271.1	-99	42.2	-1	92.8	0	32.8	0	50.4	54	22.4	0	0.0	0	0	4768.1	103
2015 FTE-1	185.0	13.8	3189.0	2.9	1032.0	3.7	172.0	-36.6	41.0	-2.8	93.0	0.2	33.0	0.6	104.0	106.3	22.0	-1.8	0.0	0.0	0.0	4871.0	2.2
ST.P																							
2014 FTE-3	2497.8	107	11627.4	103	4940.1	51	1464.6	-342	0.0	0	162.5	-1	0.0	0	0.0	0	0.0	0	0.0	0	0	20692.4	-81
2015 FTE-1	2605.0	4.3	11730.0	0.9	4991.0	1.0	1123.0	-23.3	0.0	0.0	162.0	-0.3	0.0	0.0	0.0	0.0	0.0	0.0	0.0	0.0	0.0	20611.0	-0.4
SANF																							
2014 FTE-3	388.2	48	7164.0	-32	2586.5	-96	797.6	-147	19.0	11	264.8	0	207.0	0	124.7	0	5.4	0	0.0	0	0	11557.2	-215
2015 FTE-1	436.0	12.3	7132.0	-0.4	2491.0	-3.7	651.0	-18.4	30.0	57.9	265.0	0.1	207.0	0.0	125.0	0.2	5.0	-7.4	0.0	0.0	0.0	11342.0	-1.9
SEMI																							
2014 FTE-3	512.3	150	8008.2	-265	3000.9	-65	915.8	-318	41.5	10	311.7	0	508.5	1	320.0	0	248.4	0	0.0	0	0	13867.3	-488
2015 FTE-1	662.0	29.2	7743.0	-3.3	2936.0	-2.2	598.0	-34.7	51.0	22.9	312.0	0.1	509.0	0.1	320.0	0.0	248.0	-0.2	0.0	0.0	0.0	13379.0	-3.5
SFLA																							
2014 FTE-3	43.8	55	1334.7	138	34.9	-22	92.4	-57	0.0	0	305.7	0	20.4	1	306.4	0	53.7	1	0.0	0	0	2192.0	116
2015 FTE-1	99.0	126.0	1473.0	10.4	13.0	-62.8	35.0	-62.1	0.0	0.0	306.0	0.1	21.0	2.9	306.0	-0.1	55.0	2.4	0.0	0.0	0.0	2308.0	5.3
TALL																							
2014 FTE-3	0.0	0	7490.9	8	1142.0	-75	1186.5	-413	0.0	0	290.3	0	16.1	-16	64.9	0	17.1	0	0.0	0	0	10207.8	-496
2015 FTE-1	0.0	0.0	7499.0	0.1	1067.0	-6.6	774.0	-34.8	0.0	0.0	290.0	-0.1	0.0	-100.0	65.0	0.2	17.0	-0.6	0.0	0.0	0.0	9712.0	-4.9
VALE																							
2014 FTE-3	92.3	57	21437.1	1032	5315.4	46	2476.7	-915	90.0	1	200.5	1	0.0	0	0.0	0	0.0	0	0.0	0	0	29612.0	221
2015 FTE-1	149.0	61.4	22469.0	4.8	5361.0	0.9	1562.0	-36.9	91.0	1.1	201.0	0.2	0.0	0.0	0.0	0.0	0.0	0.0	0.0	0.0	0.0	29833.0	0.7
SYST TOTAL																							
2014 FTE-3	12934.0	1620	219129.4	2724	57053.4	-1052	30707.0	-9126	751.1	-17	9623.9	2	3690.2	-257	4796.9	54	1308.5	-2	561.1	-2	0	340555.5	-6057
2015 FTE-1	14554.0	12.5	221853.0	1.2	56001.0	-1.8	21581.0	-29.7	734.0	-2.3	9626.0	0.0	3433.0	-7.0	4851.0	1.1	1307.0	-0.1	559.0	-0.4	0	334499.0	-1.8

Sources: 2013-2014 Student Data Base FTE-3
2014-2015 Estimates FTE-1 (Division Estimates)
Advanced and Professional, Post Secondary Vocational, Developmental Education and EPI are calculated as 30 Credit Hour FTE.

FLORIDA COMMUNITY COLLEGE SYSTEM
Student Data Base FTE Report
2013-2014 FTE-3 Compared to the 2014-2015 FTE-1A (Division Estimates with college adjustments)

	Upper Division	Diff. Percent	Adv. & Prof.	Diff. Percent	Postsec. Voc.	Diff. Percent	Dev. Ed.	Diff. Percent	EPI	Diff. Percent	Postsec. Adult	Diff. Percent	Appren-ticeship	Diff. Percent	Adult Basic	Diff. Percent	Adult S&G	Diff. Percent	Voc. Prep	Diff. Percent	Total FTE	Diff. Percent	
EFSC																							
2014 FTE-3	75.6	149	7529.9	-181	2575.2	-159	657.2	-211	0.0	0	691.8	0	15.2	-15	0.0	0	0.0	0	0.0	0	0	11544.9	-417
2015 FTE-1A	225.0	197.6	7349.0	-2.4	2416.0	-6.2	446.0	-32.1	0.0	0.0	692.0	0.0	0.0	-100.0	0.0	0.0	0.0	0.0	0.0	0.0	0.0	11128.0	-3.6
BROW																							
2014 FTE-3	797.2	120	17469.5	1098	7501.6	113	4216.4	-1309	47.4	19	464.0	1	0.0	0	0.0	0	0.0	0	0.0	0	0	30496.1	41
2015 FTE-1A	917.0	15.0	18567.0	6.3	7615.0	1.5	2907.0	-31.1	66.0	39.2	465.0	0.2	0.0	0.0	0.0	0.0	0.0	0.0	0.0	0.0	0.0	30537.0	0.1
CFLA																							
2014 FTE-3	208.7	57	3717.8	89	1320.4	-99	437.6	-100	1.4	-1	196.9	-64	0.0	0	11.1	0	10.4	0	0.0	0	0	5904.3	-118
2015 FTE-1A	266.0	27.5	3807.0	2.4	1221.0	-7.5	338.0	-22.8	0.0	-100.0	133.0	-32.5	0.0	0.0	11.0	-0.9	10.0	-3.8	0.0	0.0	0.0	5786.0	-2.0
CHIP																							
2014 FTE-3	134.7	-10	928.6	-38	239.1	16	78.0	-28	0.0	0	128.6	0	0.0	0	0.0	0	0.0	0	1.6	-1	1510.6	-60	
2015 FTE-1A	125.0	-7.2	891.0	-4.0	255.0	6.6	50.0	-35.9	0.0	0.0	129.0	0.3	0.0	0.0	0.0	0.0	0.0	0.0	1.0	-37.5	1451.0	-3.9	
DAYT																							
2014 FTE-3	858.0	72	6145.7	-153	2171.0	-28	871.9	-429	1.2	-1	736.4	31	302.1	-18	662.4	-121	119.9	-19	12.1	-8	11880.7	-675	
2015 FTE-1A	930.0	8.4	5993.0	-2.5	2143.0	-1.3	443.0	-49.2	0.0	-100.0	767.0	4.2	284.0	-6.0	541.0	-18.3	101.0	-15.8	4.0	-66.9	11206.0	-5.7	
FSW																							
2014 FTE-3	599.0	62	8122.9	66	613.6	-85	793.6	-409	0.0	0	20.2	0	0.0	0	0.0	0	0.0	0	0.0	0	0	10149.3	-365
2015 FTE-1A	661.0	10.4	8189.0	0.8	529.0	-13.8	385.0	-51.5	0.0	0.0	20.0	-1.0	0.0	0.0	0.0	0.0	0.0	0.0	0.0	0.0	0.0	9784.0	-3.6
FJAX																							
2014 FTE-3	1288.8	106	12657.4	-469	3757.5	-178	1766.3	-552	0.1	0	1245.0	-99	342.6	-79	522.2	0	89.7	0	6.8	0	21676.4	-1270	
2015 FTE-1A	1395.0	8.2	12188.0	-3.7	3580.0	-4.7	1214.0	-31.3	0.0	-100.0	1146.0	-8.0	264.0	-22.9	522.0	0.0	90.0	0.3	7.0	2.9	20406.0	-5.9	
FKEY																							
2014 FTE-3	0.0	0	507.7	-45	196.9	-33	42.8	-15	0.0	0	29.0	-1	0.0	0	0.0	0	0.0	0	0.0	0	0	776.4	-93
2015 FTE-1A	0.0	0.0	463.0	-8.8	164.0	-16.7	28.0	-34.6	0.0	0.0	28.0	-3.4	0.0	0.0	0.0	0.0	0.0	0.0	0.0	0.0	0.0	683.0	-12.0
GULF																							
2014 FTE-3	54.8	-16	2981.9	79	748.1	-13	271.4	-123	34.2	-12	164.1	-1	2.4	-2	0.0	0	0.0	0	0.0	0	0	4256.9	-89
2015 FTE-1A	39.0	-28.8	3061.0	2.7	735.0	-1.8	148.0	-45.5	22.0	-35.7	163.0	-0.7	0.0	-100.0	0.0	0.0	0.0	0.0	0.0	0.0	0.0	4168.0	-2.1
HILL																							
2014 FTE-3	0.0	0	12770.7	931	3387.1	-98	2076.0	-689	151.9	23	466.2	0	1072.8	1	41.6	0	7.6	0	0.0	0	0	19973.9	169
2015 FTE-1A	0.0	0.0	13702.0	7.3	3289.0	-2.9	1387.0	-33.2	175.0	15.2	466.0	0.0	1074.0	0.1	42.0	1.0	8.0	5.3	0.0	0.0	0.0	20143.0	0.8
INDR																							
2014 FTE-3	1190.1	188	6577.6	53	2657.3	-19	578.5	-156	0.0	0	815.8	1	439.8	88	696.5	71	122.0	9	45.3	0	13122.9	235	
2015 FTE-1A	1378.0	15.8	6631.0	0.8	2638.0	-0.7	423.0	-26.9	0.0	0.0	817.0	0.1	528.0	20.1	767.0	10.1	131.0	7.4	45.0	-0.7	13358.0	1.8	
FGC																							
2014 FTE-3	13.9	8	1291.3	-49	415.2	4	106.0	-50	14.0	-1	237.3	13	0.0	0	0.0	0	0.0	0	0.0	0	0	2077.7	-76
2015 FTE-1A	22.0	58.3	1242.0	-3.8	419.0	0.9	56.0	-47.2	13.0	-7.1	250.0	5.4	0.0	0.0	0.0	0.0	0.0	0.0	0.0	0.0	0.0	2002.0	-3.6
LSCC																							
2014 FTE-3	30.2	13	1919.1	121	640.1	-20	179.3	-75	17.8	-5	0.0	0	0.0	0	0.0	0	0.0	0	0.0	0	0	2786.5	33
2015 FTE-1A	43.0	42.4	2040.0	6.3	620.0	-3.1	104.0	-42.0	13.0	-27.0	0.0	0.0	0.0	0.0	0.0	0.0	0.0	0.0	0.0	0.0	0.0	2820.0	1.2
SCF																							
2014 FTE-3	375.6	35	6055.0	154	594.4	24	560.3	-175	48.5	1	0.0	0	0.0	0	0.0	0	0.0	0	0.0	0	0	7633.8	38
2015 FTE-1A	411.0	9.4	6209.0	2.5	618.0	4.0	385.0	-31.3	49.0	1.0	0.0	0.0	0.0	0.0	0.0	0.0	0.0	0.0	0.0	0.0	0.0	7672.0	0.5
MIAM																							
2014 FTE-3	1867.5	66	37572.2	1923	3956.4	35	7581.3	-1433	34.3	-5	800.4	0	226.1	-26	1617.2	0	321.6	201	495.3	0	54472.3	759	
2015 FTE-1A	1933.0	3.5	39495.0	5.1	3991.0	0.9	6148.0	-18.9	29.0	-15.5	800.0	0.0	200.0	-11.5	1617.0	0.0	523.0	62.6	495.0	-0.1	55231.0	1.4	

Sources: 2013-2014 Student Data Base FTE-3
2014-2015 Estimates FTE-1A (Division Estimates with college adjustments)
Advanced and Professional, Post Secondary Vocational, Developmental Education and EPI are calculated as 30 Credit Hour FTE.

FLORIDA COMMUNITY COLLEGE SYSTEM
Student Data Base FTE Report
2013-2014 FTE-3 Compared to the 2014-2015 FTE-1A (Division Estimates with college adjustments)

	Upper Division	Diff. Percent	Adv. & Prof.	Diff. Percent	Postsec. Voc.	Diff. Percent	Dev. Ed.	Diff. Percent	EPI	Diff. Percent	Postsec. Adult	Diff. Percent	Appren-ticeship	Diff. Percent	Adult Basic	Diff. Percent	Adult S&G	Diff. Percent	Voc. Prep	Diff. Percent	Total FTE	Diff. Percent	
NFLA																							
2014 FTE-3	0.0	0	484.9	44	156.2	17	63.4	-37	0.0	0	93.6	0	0.0	0	0.0	0	0.0	0	0.0	0	0	798.1	24
2015 FTE-1A	0.0	0.0	529.0	9.1	173.0	10.8	26.0	-59.0	0.0	0.0	94.0	0.4	0.0	0.0	0.0	0.0	0.0	0.0	0.0	0.0	0.0	822.0	3.0
NWFC																							
2014 FTE-3	361.4	6	3357.3	-152	756.9	-94	274.5	-102	0.0	0	132.4	1	0.0	0	134.0	0	6.4	-1	0.0	0	0	5022.9	-343
2015 FTE-1A	367.0	1.5	3205.0	-4.5	663.0	-12.4	173.0	-37.0	0.0	0.0	133.0	0.5	0.0	0.0	134.0	0.0	5.0	-21.9	0.0	0.0	0.0	4680.0	-6.8
PALM																							
2014 FTE-3	547.4	81	15249.2	507	1573.0	6	1180.3	-357	43.7	-11	959.4	0	504.4	46	0.0	0	0.0	0	0.0	0	0	20057.4	271
2015 FTE-1A	628.0	14.7	15756.0	3.3	1579.0	0.4	823.0	-30.3	33.0	-24.5	959.0	0.0	550.0	9.0	0.0	0.0	0.0	0.0	0.0	0.0	0.0	20328.0	1.3
PASC																							
2014 FTE-3	0.0	72	3972.7	415	2065.2	167	624.2	-8	72.5	-31	345.5	2	0.0	0	13.9	1	0.8	-1	0.0	0	0	7094.8	617
2015 FTE-1A	72.0	0.0	4388.0	10.5	2232.0	8.1	616.0	-1.3	42.0	-42.1	347.0	0.4	0.0	0.0	15.0	7.9	0.0	-100.0	0.0	0.0	0.0	7712.0	8.7
PENS																							
2014 FTE-3	229.4	26	4903.4	-323	1864.7	-148	610.3	-284	14.2	-5	381.3	0	0.0	0	231.6	0	283.1	0	0.0	0	0	8518.0	-735
2015 FTE-1A	255.0	11.2	4580.0	-6.6	1717.0	-7.9	326.0	-46.6	9.0	-36.6	381.0	-0.1	0.0	0.0	232.0	0.2	283.0	0.0	0.0	0.0	0.0	7783.0	-8.6
POLK																							
2014 FTE-3	604.8	180	4753.3	-70	1848.8	-83	533.0	-245	77.2	12	87.7	0	0.0	0	0.0	0	0.0	0	0.0	0	0	7904.8	-206
2015 FTE-1A	785.0	29.8	4683.0	-1.5	1766.0	-4.5	288.0	-46.0	89.0	15.3	88.0	0.3	0.0	0.0	0.0	0.0	0.0	0.0	0.0	0.0	0.0	7699.0	-2.6
ST.J																							
2014 FTE-3	162.5	23	3099.0	90	994.9	37	271.1	-99	42.2	-1	92.8	0	32.8	0	50.4	54	22.4	0	0.0	0	0	4768.1	103
2015 FTE-1A	185.0	13.8	3189.0	2.9	1032.0	3.7	172.0	-36.6	41.0	-2.8	93.0	0.2	33.0	0.6	104.0	106.3	22.0	-1.8	0.0	0.0	0.0	4871.0	2.2
ST.P																							
2014 FTE-3	2497.8	107	11627.4	103	4940.1	51	1464.6	-342	0.0	0	162.5	-1	0.0	0	0.0	0	0.0	0	0.0	0	0	20692.4	-81
2015 FTE-1A	2605.0	4.3	11730.0	0.9	4991.0	1.0	1123.0	-23.3	0.0	0.0	162.0	-0.3	0.0	0.0	0.0	0.0	0.0	0.0	0.0	0.0	0.0	20611.0	-0.4
SANF																							
2014 FTE-3	388.2	48	7164.0	-32	2586.5	-96	797.6	-147	19.0	11	264.8	0	207.0	0	124.7	0	5.4	0	0.0	0	0	11557.2	-215
2015 FTE-1A	436.0	12.3	7132.0	-0.4	2491.0	-3.7	651.0	-18.4	30.0	57.9	265.0	0.1	207.0	0.0	125.0	0.2	5.0	-7.4	0.0	0.0	0.0	11342.0	-1.9
SEMI																							
2014 FTE-3	512.3	84	8008.2	-312	3000.9	-56	915.8	-301	41.5	1	311.7	-44	508.5	50	320.0	-53	248.4	-38	0.0	0	0	13867.3	-670
2015 FTE-1A	596.0	16.3	7696.0	-3.9	2945.0	-1.9	615.0	-32.8	42.0	1.2	268.0	-14.0	558.0	9.7	267.0	-16.6	210.0	-15.5	0.0	0.0	0.0	13197.0	-4.8
SFLA																							
2014 FTE-3	43.8	53	1334.7	104	34.9	-24	92.4	-62	0.0	0	305.7	-5	20.4	1	306.4	0	53.7	-9	0.0	0	0	2192.0	58
2015 FTE-1A	97.0	121.5	1439.0	7.8	11.0	-68.5	30.0	-67.5	0.0	0.0	301.0	-1.5	21.0	2.9	306.0	-0.1	45.0	-16.2	0.0	0.0	0.0	2250.0	2.6
TALL																							
2014 FTE-3	0.0	0	7490.9	8	1142.0	-75	1186.5	-413	0.0	0	290.3	-1	16.1	-14	64.9	0	17.1	-3	0.0	0	0	10207.8	-498
2015 FTE-1A	0.0	0.0	7499.0	0.1	1067.0	-6.6	774.0	-34.8	0.0	0.0	289.0	-0.4	2.0	-87.6	65.0	0.2	14.0	-18.1	0.0	0.0	0.0	9710.0	-4.9
VALE																							
2014 FTE-3	92.3	57	21437.1	1032	5315.4	46	2476.7	-915	90.0	1	200.5	1	0.0	0	0.0	0	0.0	0	0.0	0	0	29612.0	221
2015 FTE-1A	149.0	61.4	22469.0	4.8	5361.0	0.9	1562.0	-36.9	91.0	1.1	201.0	0.2	0.0	0.0	0.0	0.0	0.0	0.0	0.0	0.0	0.0	29833.0	0.7
SYST TOTAL																							
2014 FTE-3	12934.0	1586	219129.4	4993	57053.4	-792	30707.0	-9066	751.1	-7	9623.9	-167	3690.2	31	4796.9	-49	1308.5	139	561.1	-9	340555.5	-3343	
2015 FTE-1A	14520.0	12.3	224122.0	2.3	56261.0	-1.4	21641.0	-29.5	744.0	-0.9	9457.0	-1.7	3721.0	0.8	4748.0	-1.0	1447.0	10.6	552.0	-1.6	337213.0	-1.0	

Sources: 2013-2014 Student Data Base FTE-3
2014-2015 Estimates FTE-1A (Division Estimates with college adjustments)
Advanced and Professional, Post Secondary Vocational, Developmental Education and EPI are calculated as 30 Credit Hour FTE.

FLORIDA COMMUNITY COLLEGE SYSTEM
Student Data Base FTE Report
2014-2015 FTE-1 (Division Estimates) Compared to the 2014-2015 FTE-1A (Division Estimates with college adjustments)

	Upper Division	Diff. Percent	Adv. & Prof.	Diff. Percent	Postsec. Voc.	Diff. Percent	Dev. Ed.	Diff. Percent	EPI	Diff. Percent	Postsec. Adult	Diff. Percent	Appren-ticeship	Diff. Percent	Adult Basic	Diff. Percent	Adult S&G	Diff. Percent	Voc. Prep	Diff. Percent	Total FTE	Diff. Percent	
EFSC																							
2015 FTE-1	225.0	0	7349.0	0	2416.0	0	446.0	0	0.0	0	692.0	0	0.0	0	0.0	0	0.0	0	0.0	0	0	11128.0	0
2015 FTE-1A	225.0	0.0	7349.0	0.0	2416.0	0.0	446.0	0.0	0.0	0.0	692.0	0.0	0.0	0.0	0.0	0.0	0.0	0.0	0.0	0.0	0	11128.0	0.0
BROW																							
2015 FTE-1	917.0	0	18567.0	0	7615.0	0	2907.0	0	66.0	0	465.0	0	0.0	0	0.0	0	0.0	0	0.0	0	0	30537.0	0
2015 FTE-1A	917.0	0.0	18567.0	0.0	7615.0	0.0	2907.0	0.0	66.0	0.0	465.0	0.0	0.0	0.0	0.0	0.0	0.0	0.0	0.0	0.0	0	30537.0	0.0
CFLA																							
2015 FTE-1	287.0	-21	3485.0	322	1229.0	-8	293.0	45	0.0	0	196.0	-63	0.0	0	11.0	0	10.0	0	0.0	0	0	5511.0	275
2015 FTE-1A	266.0	-7.3	3807.0	9.2	1221.0	-0.7	338.0	15.4	0.0	0.0	133.0	-32.1	0.0	0.0	11.0	0.0	10.0	0.0	0.0	0.0	0	5786.0	5.0
CHIP																							
2015 FTE-1	125.0	0	891.0	0	255.0	0	50.0	0	0.0	0	129.0	0	0.0	0	0.0	0	0.0	0	0.0	0	1	1450.0	1
2015 FTE-1A	125.0	0.0	891.0	0.0	255.0	0.0	50.0	0.0	0.0	0.0	129.0	0.0	0.0	0.0	0.0	0.0	0.0	0.0	0.0	1.0	0.0	1451.0	0.1
DAYT																							
2015 FTE-1	887.0	43	5673.0	320	1974.0	169	442.0	1	0.0	0	736.0	31	302.0	-18	661.0	-120	120.0	-19	12.0	-8	10807.0	399	
2015 FTE-1A	930.0	4.8	5993.0	5.6	2143.0	8.6	443.0	0.2	0.0	0.0	767.0	4.2	284.0	-6.0	541.0	-18.2	101.0	-15.8	4.0	-66.7	11206.0	3.7	
FSW																							
2015 FTE-1	661.0	0	8189.0	0	529.0	0	385.0	0	0.0	0	20.0	0	0.0	0	0.0	0	0.0	0	0.0	0	0	9784.0	0
2015 FTE-1A	661.0	0.0	8189.0	0.0	529.0	0.0	385.0	0.0	0.0	0.0	20.0	0.0	0.0	0.0	0.0	0.0	0.0	0.0	0.0	0.0	0	9784.0	0.0
FJAX																							
2015 FTE-1	1395.0	0	11888.0	300	3530.0	50	1214.0	0	0.0	0	1246.0	-100	344.0	-80	522.0	0	90.0	0	7.0	0	20236.0	170	
2015 FTE-1A	1395.0	0.0	12188.0	2.5	3580.0	1.4	1214.0	0.0	0.0	0.0	1146.0	-8.0	264.0	-23.3	522.0	0.0	90.0	0.0	7.0	0.0	20406.0	0.8	
FKEY																							
2015 FTE-1	0.0	0	463.0	0	164.0	0	28.0	0	0.0	0	28.0	0	0.0	0	0.0	0	0.0	0	0.0	0	0	683.0	0
2015 FTE-1A	0.0	0.0	463.0	0.0	164.0	0.0	28.0	0.0	0.0	0.0	28.0	0.0	0.0	0.0	0.0	0.0	0.0	0.0	0.0	0.0	0	683.0	0.0
GULF																							
2015 FTE-1	39.0	0	3061.0	0	735.0	0	148.0	0	22.0	0	163.0	0	0.0	0	0.0	0	0.0	0	0.0	0	0	4168.0	0
2015 FTE-1A	39.0	0.0	3061.0	0.0	735.0	0.0	148.0	0.0	22.0	0.0	163.0	0.0	0.0	0.0	0.0	0.0	0.0	0.0	0.0	0.0	0	4168.0	0.0
HILL																							
2015 FTE-1	0.0	0	13702.0	0	3289.0	0	1387.0	0	175.0	0	466.0	0	1074.0	0	42.0	0	8.0	0	0.0	0	0	20143.0	0
2015 FTE-1A	0.0	0.0	13702.0	0.0	3289.0	0.0	1387.0	0.0	175.0	0.0	466.0	0.0	1074.0	0.0	42.0	0.0	8.0	0.0	0.0	0.0	0	20143.0	0.0
INDR																							
2015 FTE-1	1378.0	0	6631.0	0	2638.0	0	423.0	0	0.0	0	817.0	0	440.0	88	697.0	70	122.0	9	45.0	0	13191.0	167	
2015 FTE-1A	1378.0	0.0	6631.0	0.0	2638.0	0.0	423.0	0.0	0.0	0.0	817.0	0.0	528.0	20.0	767.0	10.0	131.0	7.4	45.0	0.0	13358.0	1.3	
FGC																							
2015 FTE-1	22.0	0	1242.0	0	419.0	0	54.0	2	13.0	0	237.0	13	0.0	0	0.0	0	0.0	0	0.0	0	0	1987.0	15
2015 FTE-1A	22.0	0.0	1242.0	0.0	419.0	0.0	56.0	3.7	13.0	0.0	250.0	5.5	0.0	0.0	0.0	0.0	0.0	0.0	0.0	0.0	0	2002.0	0.8
LSCC																							
2015 FTE-1	43.0	0	2027.0	13	617.0	3	104.0	0	13.0	0	0.0	0	0.0	0	0.0	0	0.0	0	0.0	0	0	2804.0	16
2015 FTE-1A	43.0	0.0	2040.0	0.6	620.0	0.5	104.0	0.0	13.0	0.0	0.0	0.0	0.0	0.0	0.0	0.0	0.0	0.0	0.0	0.0	0	2820.0	0.6
SCF																							
2015 FTE-1	411.0	0	6116.0	93	580.0	38	385.0	0	26.0	23	0.0	0	0.0	0	0.0	0	0.0	0	0.0	0	0	7518.0	154
2015 FTE-1A	411.0	0.0	6209.0	1.5	618.0	6.6	385.0	0.0	49.0	88.5	0.0	0.0	0.0	0.0	0.0	0.0	0.0	0.0	0.0	0.0	0	7672.0	2.0
MIAM																							
2015 FTE-1	1933.0	0	38652.0	843	3991.0	0	6148.0	0	29.0	0	800.0	0	0.0	200	1617.0	0	322.0	201	495.0	0	53987.0	1244	
2015 FTE-1A	1933.0	0.0	39495.0	2.2	3991.0	0.0	6148.0	0.0	29.0	0.0	800.0	0.0	200.0	0.0	1617.0	0.0	523.0	62.4	495.0	0.0	55231.0	2.3	

Sources: 2014-2015 Estimates FTE-1 (Division Estimates)
2014-2015 Estimates FTE-1A (Division Estimates with college adjustments)
Advanced and Professional, Post Secondary Vocational, Developmental Education and EPI are calculated as 30 Credit Hour FTE.

FLORIDA COMMUNITY COLLEGE SYSTEM
Student Data Base FTE Report
2014-2015 FTE-1 (Division Estimates) Compared to the 2014-2015 FTE-1A (Division Estimates with college adjustments)

	Upper Division	Diff. Percent	Adv. & Prof.	Diff. Percent	Postsec. Voc.	Diff. Percent	Dev. Ed.	Diff. Percent	EPI	Diff. Percent	Postsec. Adult	Diff. Percent	Appren-ticeship	Diff. Percent	Adult Basic	Diff. Percent	Adult S&G	Diff. Percent	Voc. Prep	Diff. Percent	Total FTE	Diff. Percent	
NFLA																							
2015 FTE-1	0.0	0	529.0	0	173.0	0	26.0	0	0.0	0	94.0	0	0.0	0	0.0	0	0.0	0	0.0	0	0	822.0	0
2015 FTE-1A	0.0	0.0	529.0	0.0	173.0	0.0	26.0	0.0	0.0	0.0	94.0	0.0	0.0	0.0	0.0	0.0	0.0	0.0	0.0	0.0	0	822.0	0.0
NWFC																							
2015 FTE-1	367.0	0	3205.0	0	663.0	0	173.0	0	0.0	0	133.0	0	0.0	0	134.0	0	5.0	0	0.0	0	0	4680.0	0
2015 FTE-1A	367.0	0.0	3205.0	0.0	663.0	0.0	173.0	0.0	0.0	0.0	133.0	0.0	0.0	0.0	134.0	0.0	5.0	0.0	0.0	0.0	0	4680.0	0.0
PALM																							
2015 FTE-1	616.0	12	15297.0	459	1578.0	1	823.0	0	37.0	-4	959.0	0	503.0	47	0.0	0	0.0	0	0.0	0	0	19813.0	515
2015 FTE-1A	628.0	1.9	15756.0	3.0	1579.0	0.1	823.0	0.0	33.0	-10.8	959.0	0.0	550.0	9.3	0.0	0.0	0.0	0.0	0.0	0.0	0	20328.0	2.6
PASC																							
2015 FTE-1	72.0	0	4388.0	0	2232.0	0	616.0	0	42.0	0	347.0	0	0.0	0	15.0	0	0.0	0	0.0	0	0	7712.0	0
2015 FTE-1A	72.0	0.0	4388.0	0.0	2232.0	0.0	616.0	0.0	42.0	0.0	347.0	0.0	0.0	0.0	15.0	0.0	0.0	0.0	0.0	0.0	0	7712.0	0.0
PENS																							
2015 FTE-1	255.0	0	4580.0	0	1717.0	0	326.0	0	9.0	0	381.0	0	0.0	0	232.0	0	283.0	0	0.0	0	0	7783.0	0
2015 FTE-1A	255.0	0.0	4580.0	0.0	1717.0	0.0	326.0	0.0	9.0	0.0	381.0	0.0	0.0	0.0	232.0	0.0	283.0	0.0	0.0	0.0	0	7783.0	0.0
POLK																							
2015 FTE-1	785.0	0	4683.0	0	1766.0	0	288.0	0	89.0	0	88.0	0	0.0	0	0.0	0	0.0	0	0.0	0	0	7699.0	0
2015 FTE-1A	785.0	0.0	4683.0	0.0	1766.0	0.0	288.0	0.0	89.0	0.0	88.0	0.0	0.0	0.0	0.0	0.0	0.0	0.0	0.0	0.0	0	7699.0	0.0
ST.J																							
2015 FTE-1	185.0	0	3189.0	0	1032.0	0	172.0	0	41.0	0	93.0	0	33.0	0	104.0	0	22.0	0	0.0	0	0	4871.0	0
2015 FTE-1A	185.0	0.0	3189.0	0.0	1032.0	0.0	172.0	0.0	41.0	0.0	93.0	0.0	33.0	0.0	104.0	0.0	22.0	0.0	0.0	0.0	0	4871.0	0.0
ST.P																							
2015 FTE-1	2605.0	0	11730.0	0	4991.0	0	1123.0	0	0.0	0	162.0	0	0.0	0	0.0	0	0.0	0	0.0	0	0	20611.0	0
2015 FTE-1A	2605.0	0.0	11730.0	0.0	4991.0	0.0	1123.0	0.0	0.0	0.0	162.0	0.0	0.0	0.0	0.0	0.0	0.0	0.0	0.0	0.0	0	20611.0	0.0
SANF																							
2015 FTE-1	436.0	0	7132.0	0	2491.0	0	651.0	0	30.0	0	265.0	0	207.0	0	125.0	0	5.0	0	0.0	0	0	11342.0	0
2015 FTE-1A	436.0	0.0	7132.0	0.0	2491.0	0.0	651.0	0.0	30.0	0.0	265.0	0.0	207.0	0.0	125.0	0.0	5.0	0.0	0.0	0.0	0	11342.0	0.0
SEMI																							
2015 FTE-1	662.0	-66	7743.0	-47	2936.0	9	598.0	17	51.0	-9	312.0	-44	509.0	49	320.0	-53	248.0	-38	0.0	0	0	13379.0	-182
2015 FTE-1A	596.0	-10.0	7696.0	-0.6	2945.0	0.3	615.0	2.8	42.0	-17.6	268.0	-14.1	558.0	9.6	267.0	-16.6	210.0	-15.3	0.0	0.0	0	13197.0	-1.4
SFLA																							
2015 FTE-1	99.0	-2	1473.0	-34	13.0	-2	35.0	-5	0.0	0	306.0	-5	21.0	0	306.0	0	55.0	-10	0.0	0	0	2308.0	-58
2015 FTE-1A	97.0	-2.0	1439.0	-2.3	11.0	-15.4	30.0	-14.3	0.0	0.0	301.0	-1.6	21.0	0.0	306.0	0.0	45.0	-18.2	0.0	0.0	0	2250.0	-2.5
TALL																							
2015 FTE-1	0.0	0	7499.0	0	1067.0	0	774.0	0	0.0	0	290.0	-1	0.0	2	65.0	0	17.0	-3	0.0	0	0	9712.0	-2
2015 FTE-1A	0.0	0.0	7499.0	0.0	1067.0	0.0	774.0	0.0	0.0	0.0	289.0	-0.3	2.0	0.0	65.0	0.0	14.0	-17.6	0.0	0.0	0	9710.0	0.0
VALE																							
2015 FTE-1	149.0	0	22469.0	0	5361.0	0	1562.0	0	91.0	0	201.0	0	0.0	0	0.0	0	0.0	0	0.0	0	0	29833.0	0
2015 FTE-1A	149.0	0.0	22469.0	0.0	5361.0	0.0	1562.0	0.0	91.0	0.0	201.0	0.0	0.0	0.0	0.0	0.0	0.0	0.0	0.0	0.0	0	29833.0	0.0
SYST TOTAL																							
2015 FTE-1	14554.0	-34	221853.0	2269	56001.0	260	21581.0	60	734.0	10	9626.0	-169	3433.0	288	4851.0	-103	1307.0	140	559.0	-7	334499.0	2714	
2015 FTE-1A	14520.0	-0.2	224122.0	1.0	56261.0	0.5	21641.0	0.3	744.0	1.4	9457.0	-1.8	3721.0	8.4	4748.0	-2.1	1447.0	10.7	552.0	-1.3	337213.0	0.8	

Sources: 2014-2015 Estimates FTE-1 (Division Estimates)
2014-2015 Estimates FTE-1A (Division Estimates with college adjustments)
Advanced and Professional, Post Secondary Vocational, Developmental Education and EPI are calculated as 30 Credit Hour FTE.



THE FLORIDA COLLEGE SYSTEM

APPENDIX

Florida Department of Education

Florida College System
2014-15

College			Bachelor Enrollment Reported	
			Year	Term
1	EFSC	Eastern Florida State College	2013-14	Fall
2	BROW	Broward College	2008-09	WnSp
3	CFLA	College of Central Florida	2010-11	WnSp
4	CHIP	Chipola College	2003-04	Fall
5	DAYT	Daytona State College	2005-06	WnSp
6	EDIS	Edison State College	2006-07	Summ
7	FJAX	Florida State College at Jacksonville	2006-07	Fall
8	FKEY	Florida Keys Community College		
9	GULF	Gulf Coast State College	2010-11	WnSp
10	HILL	Hillsborough Community College		
11	INDR	Indian River State College	2007-08	WnSp
12	FGC	Florida Gateway College	2012-13	Fall
13	LSSC	Lake Sumter State College	2012-13	WnSp
14	SCF	State College of Florida, Manatee-Sarasota	2009-10	WnSp
15	MIAM	Miami Dade College	2003-04	Summ
16	NFLA	North Florida Community College		
17	NWFC	Northwest Florida State College	2004-05	Summ
18	PALM	Palm Beach State College	2009-10	Fall
19	PASC	Pasco-Hernando Community College	2014-15	Fall
20	PENS	Pensacola State College	2010-11	WnSp
21	POLK	Polk State College	2009-10	WnSp
22	ST.J	St. Johns River State College	2010-11	WnSp
23	ST.P	St. Petersburg College	2002-03	Fall
24	SANF	Santa Fe College	2009-10	Fall
25	SEMI	Seminole State College of Florida	2009-10	WnSp
26	SFLA	South Florida State College	2012-13	Fall
27	TALL	Tallahassee Community College		
28	VALE	Valencia College	2011-12	Fall

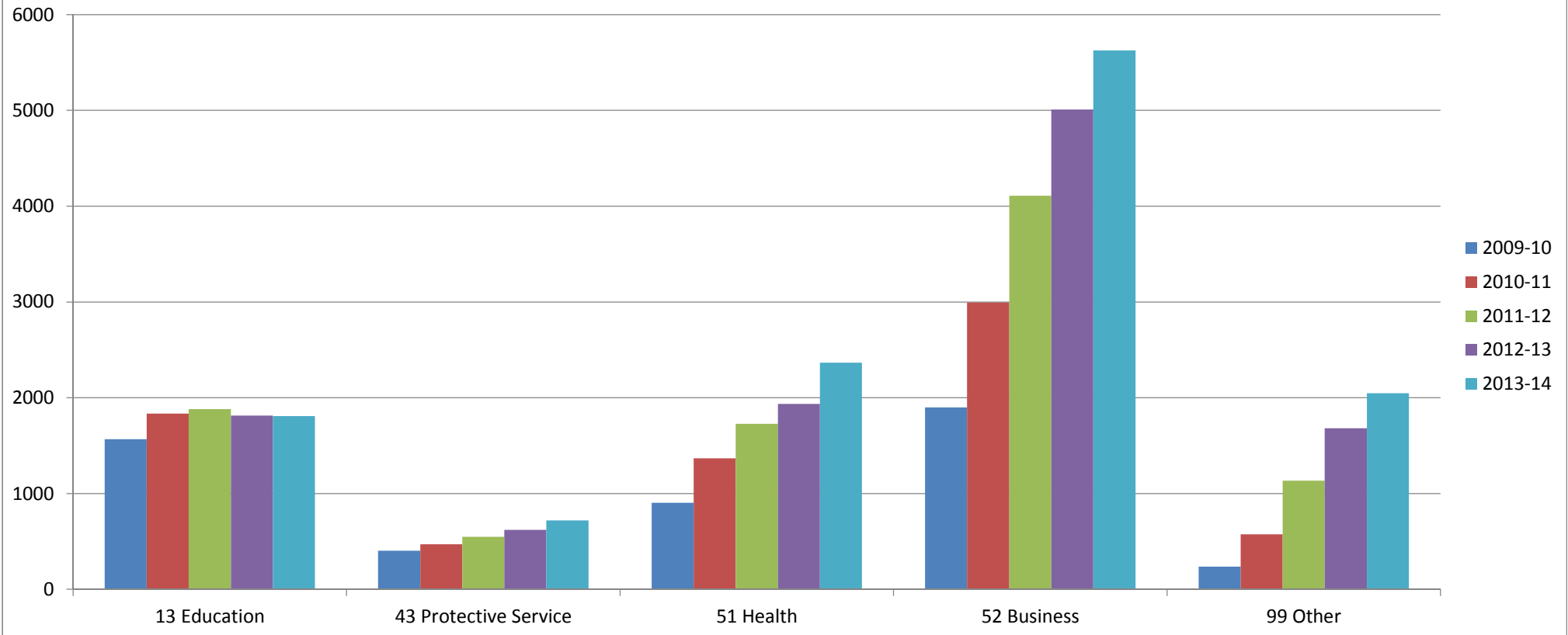
Two Year Only
Newly Four Year
Four Year



**THE FLORIDA COLLEGE SYSTEM
ENROLLMENT ESTIMATING CONFERENCE
BACCALAUREATE DATA PACK**

Florida Department of Education

**Florida College System
Upper Division FTE of Students Enrolled in Baccalaureate Programs
By Year and Program Areas
2009-10 to 2013-14**

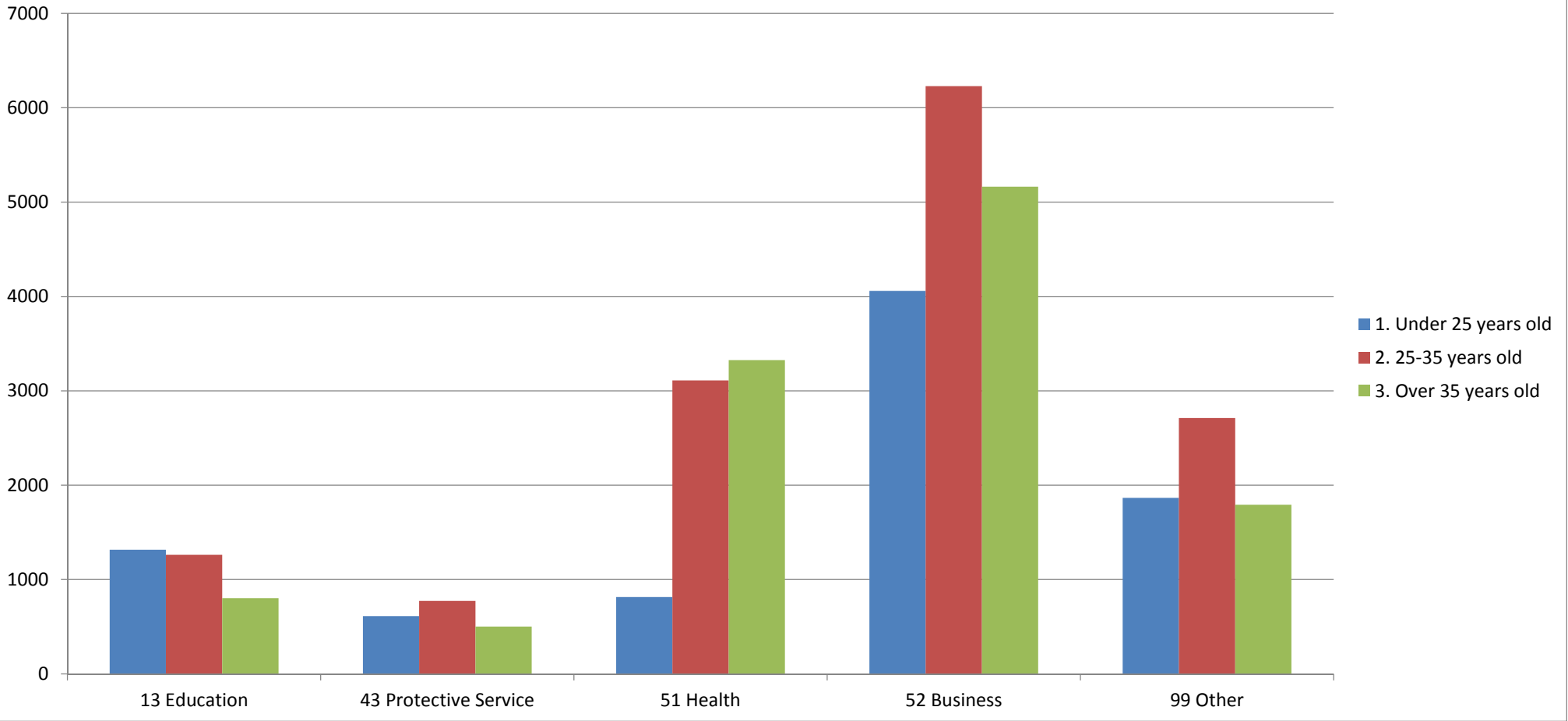


Source: 2009-10 to 2013-14 Student Data Base

Note: Student FTE may be in more than one program area for students in multiple program areas.
FTE does not include Lower Division courses taken as co-requisites or prerequisites.

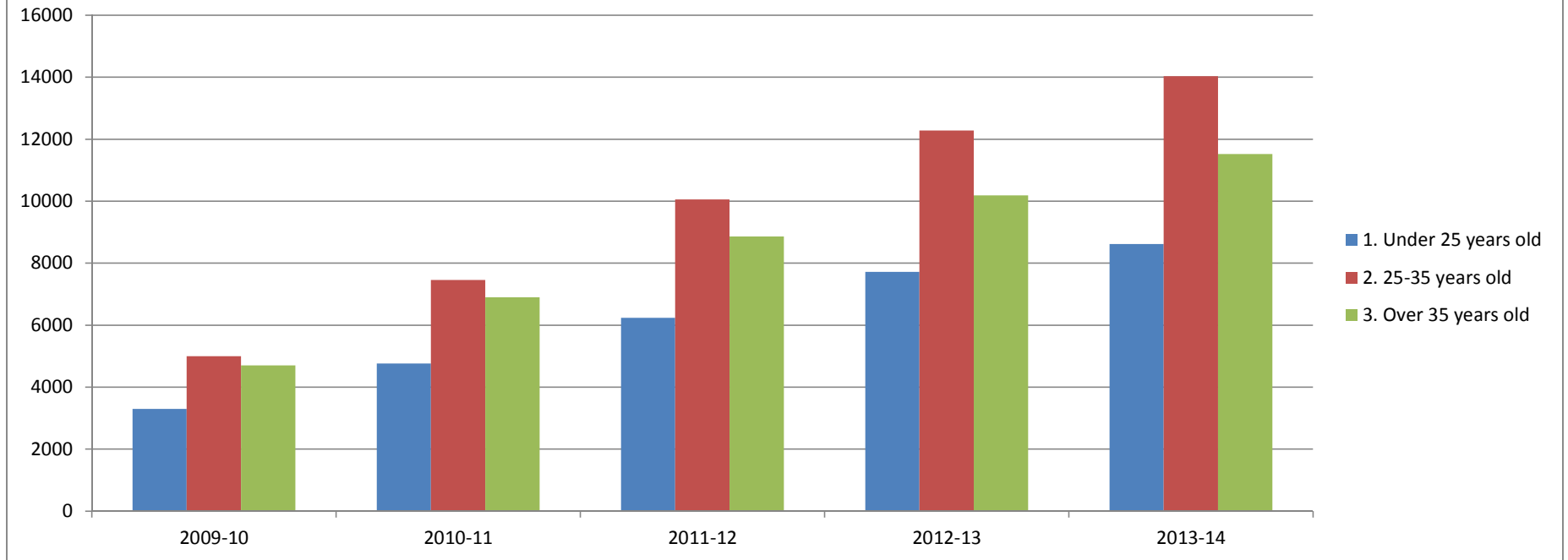
Adhoc 2013_11_12 EEC Baccalaureate 11/05/2014 9:02:16 AM

Florida College System Headcount of Students in Baccalaureate Programs By Program Area and Age Range 2013-14



Source: 2013-14 Student Data Base
 Note: Student may be in more than one program area.
 Includes Students who may only be taking Lower Division co-requisites and prerequisites.
 Excludes Students with Unknown Age

Florida College System Unduplicated Headcount of Students in Baccalaureate Programs By Year and Age Range 2009-10 to 2013-14



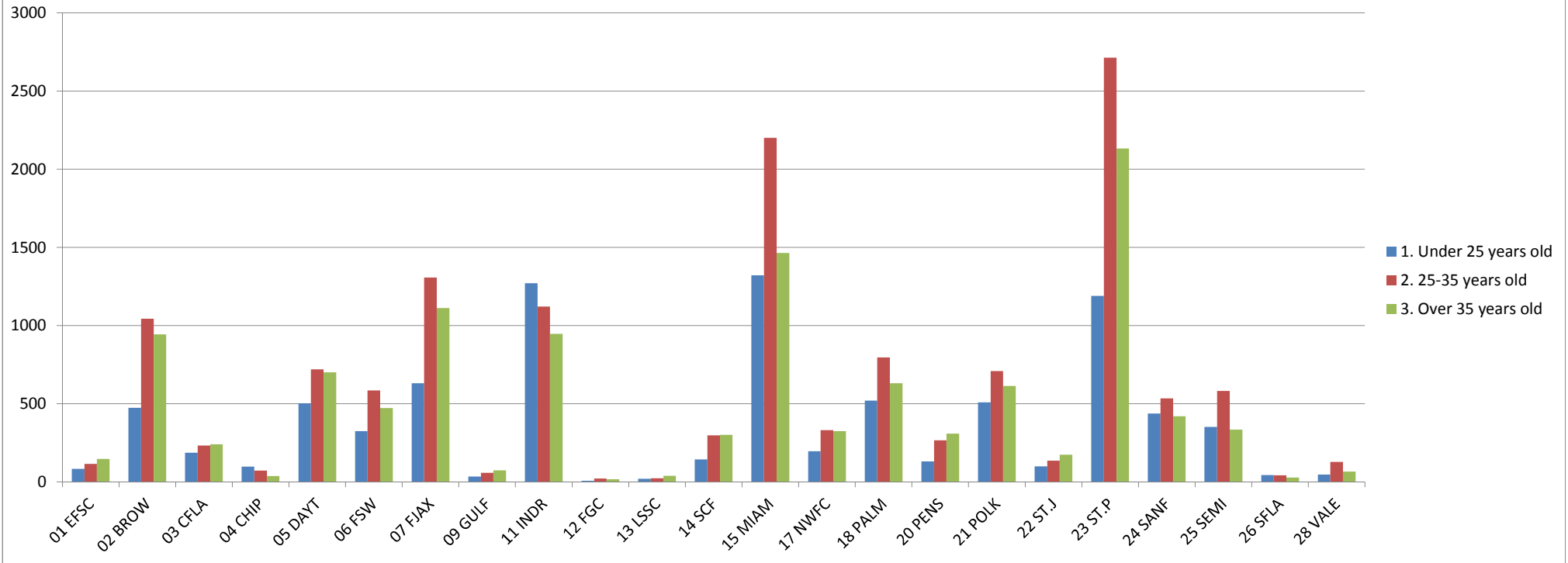
Source: 2009-10 to 2013-14 Student Data Base

Note: Includes Baccalaureate Students who may only be taking Lower Division courses as co-requisites or prerequisites.

Excludes students with Unknown Age

Adhoc 2013_11_12 EEC Baccalaureate 11/05/2014 8:33:46 AM

**Florida College System
Unduplicated Headcount of Students in Baccalaureate Programs
By College and Age Range
2013-14**



Source: 2013-14 Student Data Base
 Note: Includes Baccalaureate Students who may only be taking Lower Division courses as co-requisites or prerequisites.
 Excludes students with Unknown Age