

EXECUTIVE SUMMARY

Criminal Justice Estimating Conference, November 7, 2005

The Criminal Justice Estimating Conference convened November 7, 2005 to revise the forecast of prison admissions and populations. During the nine months since the last conference, admissions totaled 27,127, or 480 above the estimate. The population at the end of October 2005 was 86,212, or 116 below the estimate. A review of the latest criminal justice system measures included a decline of 3.3% in reported crime for the first six months of 2005, and a decline of .4% in guilty dispositions in FY 2004-05. Total prison admissions increased 1.5% in FY 2004-05. However, the second quarter of 2005 had the highest number of technical violators of supervision sentenced to prison ever, and admissions for August 2005 were the highest since October 1990. The set of background workpapers may be viewed [here](#).

The conferees adopted a compromise forecast holding new commitments flat at 33,896 per year throughout the forecast period, while significantly increasing the forecast of technical violators of conditional release. The results of the admissions changes and the shorter sentence lengths follow:

Year	Admissions	Releases	End of Yr Pop	End of Yr Difference
FY 2005-06	36,269	32,692	88,478	16
FY 2006-07	36,455	33,291	91,642	278
FY 2007-08	36,620	33,126	95,136	498
FY 2008-09	36,755	34,564	97,327	225
FY 2009-10	36,854	35,288	98,893	-1,050
FY 2010-11	36,913	35,091	100,715	---

The active supervised population declined by 7,023 in FY 2004-05 to 112,601 as more technical violators of supervision were sentenced to prison or county jail.

**CRIMINAL JUSTICE ESTIMATING CONFERENCE
HELD FEBRUARY 14, 2005 vs. NOVEMBER 7, 2005**

**Forecast adopted at the Conference
held February 14, 2005**

**Forecast adopted at the Conference
held November 7, 2005**

Difference

Year	Admissions	Releases	End of Year Pop	Admissions	Releases	End of Year Pop	Difference
FY 2005-06	34,544	31,377	88,462	36,269	32,692	88,478	16
FY 2006-07	35,035	32,133	91,364	36,455	33,291	91,642	278
FY 2007-08	35,529	32,255	94,638	36,620	33,126	95,136	498
FY 2008-09	36,033	33,569	97,102	36,755	34,564	97,327	225
FY 2009-10	36,544	33,703	99,943	36,854	35,288	98,893	-1,050
FY 2010-11				36,913	35,091	100,715	---

PRIOR FORECAST

NEW FORECAST

Month	Admissions	Releases	End of Month Pop	Admissions	Releases	End of Month Pop	End of Month Difference
JUL 05	2,914	2,735	85,474	2,749	2,642	85,008	
AUG 05	2,756	2,577	85,653	3,415	2,849	85,574	-79
SEP 05	2,703	2,567	85,789	3,217	2,655	86,136	347
OCT 05	3,153	2,614	86,328	2,761	2,685	86,212	-116
NOV 05	2,545	2,585	86,288	2,680	2,461	86,431	143
DEC 05	2,854	2,654	86,488	2,987	2,799	86,619	131
JAN 2006	2,563	2,597	86,454	2,700	2,744	86,575	121
FEB 06	2,619	2,427	86,646	2,753	2,525	86,803	157
MAR 06	3,188	2,630	87,204	3,336	2,872	87,267	63
APR 06	3,085	2,726	87,563	3,214	2,703	87,778	215
MAY 06	3,002	2,654	87,911	3,133	2,882	88,029	118
JUN 06	3,162	2,611	88,462	3,324	2,875	88,478	16

Month	PRIOR FORECAST			NEW FORECAST			End of Month Difference
	Admissions	Releases	End of Month Pop	Admissions	Releases	End of Month Pop	
JUL 06	2,955	2,595	88,822	2,969	2,832	88,615	-207
AUG 06	2,796	2,547	89,071	3,024	2,848	88,791	-280
SEP 06	2,741	2,744	89,068	2,852	2,806	88,837	-231
OCT 06	3,197	2,756	89,509	3,333	2,844	89,326	-183
NOV 06	2,581	2,713	89,377	2,695	2,845	89,176	-201
DEC 06	2,895	2,649	89,623	3,006	2,792	89,390	-233
JAN 2007	2,600	2,719	89,504	2,719	2,780	89,329	-175
FEB 07	2,656	2,652	89,508	2,770	2,667	89,432	-76
MAR 07	3,234	2,703	90,039	3,356	2,765	90,023	-16
APR 07	3,128	2,670	90,497	3,236	2,715	90,544	47
MAY 07	3,044	2,649	90,892	3,152	2,743	90,953	61
JUN 07	3,208	2,736	91,364	3,343	2,654	91,642	278
JUL 07	2,997	2,687	91,674	2,982	2,735	91,889	215
AUG 07	2,835	2,701	91,808	3,035	2,752	92,172	364
SEP 07	2,779	2,736	91,851	2,867	2,655	92,384	533
OCT 07	3,242	2,659	92,434	3,348	2,765	92,967	533
NOV 07	2,618	2,687	92,365	2,707	2,748	92,926	561
DEC 07	2,936	2,661	92,640	3,021	2,766	93,181	541
JAN 2008	2,636	2,631	92,645	2,732	2,722	93,191	546
FEB 08	2,693	2,653	92,685	2,782	2,701	93,272	587
MAR 08	3,280	2,680	93,285	3,371	2,780	93,863	578
APR 08	3,173	2,698	93,760	3,252	2,806	94,309	549
MAY 08	3,087	2,641	94,206	3,166	2,840	94,635	429
JUN 08	3,253	2,821	94,638	3,357	2,856	95,136	498
JUL 08	3,039	2,784	94,893	2,992	2,928	95,200	307
AUG 08	2,876	2,773	94,996	3,045	2,937	95,308	312
SEP 08	2,818	2,839	94,975	2,879	2,888	95,299	324
OCT 08	3,288	2,789	95,474	3,361	2,897	95,763	289
NOV 08	2,655	2,831	95,298	2,716	2,872	95,607	309
DEC 08	2,978	2,784	95,492	3,033	2,853	95,787	295
JAN 2009	2,674	2,773	95,393	2,743	2,829	95,701	308
FEB 09	2,732	2,807	95,318	2,792	2,793	95,700	382
MAR 09	3,326	2,754	95,890	3,383	2,819	96,264	374
APR 09	3,217	2,801	96,306	3,264	2,859	96,669	363
MAY 09	3,130	2,812	96,624	3,178	2,942	96,905	281
JUN 09	3,300	2,822	97,102	3,369	2,947	97,327	225

Month	PRIOR FORECAST			NEW FORECAST			End of Month Difference
	Admissions	Releases	End of Month Pop	Admissions	Releases	End of Month Pop	
JUL 09	3,082	2,749	97,435	2,999	2,961	97,365	-70
AUG 09	2,917	2,753	97,599	3,052	2,953	97,464	-135
SEP 09	2,858	2,787	97,670	2,887	2,943	97,408	-262
OCT 09	3,334	2,750	98,254	3,373	2,978	97,803	-451
NOV 09	2,693	2,847	98,100	2,723	2,960	97,566	-534
DEC 09	3,020	2,766	98,354	3,042	2,961	97,647	-707
JAN 2010	2,712	2,784	98,282	2,750	2,962	97,435	-847
FEB 10	2,771	2,793	98,260	2,799	2,910	97,324	-936
MAR 10	3,373	2,849	98,784	3,391	2,887	97,828	-956
APR 10	3,263	2,894	99,153	3,274	2,907	98,195	-958
MAY 10	3,174	2,862	99,465	3,187	2,947	98,435	-1,030
JUN 10	3,347	2,869	99,943	3,377	2,919	98,893	-1,050
JUL 10				3,004	2,926	98,971	---
AUG 10				3,056	2,939	99,088	---
SEP 10				2,893	2,895	99,086	---
OCT 10				3,377	2,936	99,527	---
NOV 10				2,727	2,911	99,343	---
DEC 10				3,047	2,946	99,444	---
JAN 2011				2,755	2,917	99,282	---
FEB 11				2,804	2,888	99,198	---
MAR 11				3,397	2,889	99,706	---
APR 11				3,279	2,940	100,045	---
MAY 11				3,192	2,976	100,261	---
JUN 11				3,382	2,928	100,715	---

**CRIMINAL JUSTICE ESTIMATING CONFERENCE
PREPARED AUGUST 2005**

	FY 98-99	FY 99-00	FY 00-01	FY 01-02	FY 02-03	FY 03-04	FY 04-05	FY 05-06	FY 06-07	FY 07-08
PROBATION										
GAINS	60,234	59,434	59,321	58,450	58,827	59,123	59,174	59,872	60,201	60,201
LOSSES	57,174	61,531	60,288	62,370	60,550	62,627	65,496	60,743	60,755	60,755
POPULATION	95,020	92,923	91,956	88,036	86,313	82,809	76,487	75,616	75,062	74,508
DRUG OFFENDER PROBATION										
GAINS	9,160	8,574	8,644	10,869	12,675	13,599	13,735	14,052	14,239	14,377
LOSSES	8,676	8,549	8,468	9,529	11,848	13,238	13,607	13,859	13,922	13,922
POPULATION	11,011	11,036	11,212	12,552	13,379	13,740	13,868	14,061	14,378	14,833
SEX OFFENDER PROBATION										
GAINS	200	372	609	816	980	1,003	1,229	1,451	1,617	1,744
LOSSES	44	22	130	145	460	694	1,057	1,267	1,359	1,521
POPULATION	183	533	1,012	1,683	2,203	2,512	2,684	2,868	3,126	3,349
COMMUNITY CONTROL										
GAINS	14,739	13,889	13,306	12,535	12,485	11,232	10,964	10,548	10,477	10,392
LOSSES	14,538	14,797	13,752	12,969	13,793	11,794	11,876	10,967	10,621	10,421
POPULATION	12,140	11,232	10,786	10,352	9,044	8,482	7,570	7,151	7,007	6,978
PAROLE										
GAINS	809	716	774	673	735	789	749	734	758	744
LOSSES	835	800	825	810	710	816	796	758	747	747
POPULATION	2,244	2,160	2,109	1,972	1,997	1,970	1,923	1,899	1,910	1,907
CONDITIONAL RELEASE										
GAINS	4,254	4,357	4,582	4,466	4,202	4,493	4,607	4,762	4,792	4,811
LOSSES	4,239	4,411	4,623	4,774	4,575	4,704	4,736	4,767	4,805	4,805
POPULATION	3,063	3,009	2,968	2,660	2,287	2,076	1,947	1,942	1,929	1,935
ADDICTION RECOVERY & OTHER										
GAINS	0	0	0	0	39	672	946	1,187	1,328	1,501
LOSSES	81	110	70	52	54	614	912	1,137	1,278	1,451
POPULATION	354	244	174	122	107	165	199	249	299	349
PRE-TRIAL INTERVENTION										
GAINS	9,386	9,252	9,028	8,915	8,505	9,122	9,743	10,064	10,088	10,188
LOSSES	9,092	9,272	8,943	8,987	8,931	8,974	9,690	9,876	9,834	9,971
POPULATION	8,155	8,135	8,220	8,148	7,722	7,870	7,923	8,111	8,365	8,582
TOTAL POP 6/30	132,170	129,272	128,437	125,525	123,052	119,624	112,601	111,897	112,076	112,441

On June 30, 2005 there were 3,954 sex offenders as designated by the Public Safety Information Act (F.S. 944.606 and 944.607 who have a current or prior sexual offense but did not qualify or were not placed on Sex Offender Probation.) They are included in the above as follows: Probation: 3,212 Conditional Release: 198 Parole: 97 and Drug Offender Probation: 38. In addition, on June 30, 2004 Community Control included 203 offenders on Sex Offender Community Control and an additional 209 sex offenders.

INVOLUNTARY CIVIL COMMITMENT OF SEXUALLY VIOLENT PREDATORS FORECAST

	Jul 00	Aug 00	Sep 00	Oct 00	Nov 00	Dec 00	Jan 01	Feb 01	Mar 01	Apr 01	May 01	Jun 01	13 Beginning pop
Commitments	3	2	3	0	0	4	2	3	1	3	2	1	24 Commitments
Releases	0	1	0	0	0	0	0	0	0	0	1	0	2 Releases
Population	16	17	20	20	20	24	26	29	30	33	34	35	
	Jul 01	Aug 01	Sep 01	Oct 01	Nov 01	Dec 01	Jan 02	Feb 02	Mar 02	Apr 02	May 02	Jun 02	36 Commitments
Commitments	2	3	3	3	3	2	4	4	2	5	5	0	4 Releases
Releases	0	0	0	0	1	0	1	0	1	0	0	1	
Population	37	40	43	46	48	50	53	57	58	63	68	67	
	Jul 02	Aug 02	Sep 02	Oct 02	Nov 02	Dec 02	Jan 03	Feb 03	Mar 03	Apr 03	May 03	Jun 03	53 Commitments
Commitments	5	6	4	5	5	2	2	7	7	1	4	5	7 Releases
Releases	2	0	2	1	0	0	1	0	0	1	0	0	
Population	70	76	78	82	87	89	90	97	104	104	108	113	
	Jul 03	Aug 03	Sep 03	Oct 03	Nov 03	Dec 03	Jan 04	Feb 04	Mar 04	Apr 04	May 04	Jun 04	48 Commitments
Commitments	9	1	7	6	5	3	3	5	2	2	3	2	7 Releases
Releases	1	2	0	1	0	1	0	0	1	0	0	1	
Population	121	120	127	132	137	139	142	147	148	150	153	154	
	Jul 04	Aug 04	Sep 04	Oct 04	Nov 04	Dec 04	Jan 05	Feb 05	Mar 05	Apr 05	May 05	Jun 05	52 Commitments
Commitments	5	3	3	5	8	2	2	4	6	8	4	2	7 Releases
Releases	0	0	2	1	0	0	0	0	0	2	1	1	
Population	159	162	163	167	175	177	179	183	189	195	198	199	
	Jul 05	Aug 05	Sep 05	Oct 05	Nov 05	Dec 05	Jan 06	Feb 06	Mar 06	Apr 06	May 06	Jun 06	56 Commitments
Commitments	4	2	3	2	5	6	6	5	6	5	6	6	8 Releases
Releases	0	0	1	2	1	0	1	1	0	1	0	1	
Population	203	205	207	207	211	217	222	226	232	236	242	247	
	Jul 06	Aug 06	Sep 06	Oct 06	Nov 06	Dec 06	Jan 07	Feb 07	Mar 07	Apr 07	May 07	Jun 07	60 Commitments
Commitments	5	5	5	5	5	5	5	5	5	5	5	5	8 Releases
Releases	1	0	1	1	1	0	1	1	0	1	0	1	
Population	5	10	14	18	22	27	31	35	40	44	49	53	
	FY 00-01	FY 01-02	FY 02-03	FY 03-04	FY 04-05	FY 05-06	FY 06-07						
Commitments	24	36	53	48	52	56	60						
Releases	2	4	7	7	7	8	8						
Population	35	67	113	154	199	247	299						

**WORKPAPERS OF THE
CRIMINAL JUSTICE ESTIMATING CONFERENCE**



HELD NOVEMBER 7, 2005

(Web Site: <http://edr.state.fl.us>)

Table of Contents

Monitoring Admissions and Population from 2/14/2005	1
Components of Admission Errors	2
Monitoring Admissions and Population from 10/18/2004	3
Monitoring Admissions and Population from 2/16/2004	4
Graph: Reported Crime	5
Six Month Uniform Crime Report	6
Graph: Crime Rate	7
Graph: Arrests	8
Arrests	9
Criminal Justice System Measures	11
Criminal Justice System Indices	14
Graph: Guilty Dispositions	17
Graph: Percent of Felons Imprisoned	18
Prison Admissions and Population by Fiscal Year	19
Graph: Admissions to Prison	20
Graph: Admissions by Fiscal Year	21
Graph: Percent Violent Offenders	22
Graph: Third Degree Felons as Percent of Admissions	23
Prison Admissions by Primary Offense	24
Graph: Drug Admissions by Type	27
Graph: Admissions by Type FY 2004-05	28
Analysis of New Commitments by Offense	29
Analysis of New Commitments "Other" and "Drugs"	30
New Commitment Offense Distribution	31
Analysis of New Commitment "Other"	32
Sentence Lengths by Offense Type	33
Graph: Average Sentence Length of Admissions	35
Sentence Length Distribution used in Release Model	36
Graph: Percent of New Commitments 21 months or less	37
Year and a Day Sentences	38
Analysis of Admissions by County FYs	39
Analysis of Admissions by County Q3 '05 and Q3 '03	40
Average Daily Population County Jails	41
Technical Violators Sentenced to Prison	42
Graph: Supervision Violators to Prison	44
Graph: Percent Technical Violators of All	45
Graph: New Commitments	46
Graph: New Commitments Before and After	47
Graph: Age and Race Trends of Inmates	48
Demographic Profile of Status Populations	49
Graph: Supervised Population	52
History and Forecast of Supervised Populations	53

**MONITORING PRISON ADMISSIONS TO THE DEPARTMENT OF CORRECTIONS
SINCE THE CRIMINAL JUSTICE ESTIMATING CONFERENCE HELD 2/14/2005**

<u>MONTH</u>	<u>ADMISSIONS</u>		<u>MONTHLY</u>	<u>CUMULATIVE</u>
	<u>ESTIMATE</u>	<u>ACTUAL</u>	<u>OVER/ (UNDER)</u>	<u>OVER/ (UNDER)</u>
February 2005	2,655	2,767	112	112
March 2005	3,206	3,216	10	122
April 2005	3,099	2,926	-173	-51
May 2005	3,007	2,873	-134	-185
June 2005	3,154	3,203	49	-136
July 2005	2,914	2,749	-165	-301
August 2005	2,756	3,415	659	358
September 2005	2,703	3,217	514	872
October 2005*	3,153	2,761	-392	480
Total	26,647	27,127	% Error:	1.8%

*Preliminary

**MONITORING PRISON POPULATION IN THE DEPARTMENT OF CORRECTIONS
SINCE THE CRIMINAL JUSTICE ESTIMATING CONFERENCE HELD 2/14/2005**

<u>MONTH</u>	<u>POPULATION</u>		<u>CUMULATIVE</u>
	<u>ESTIMATE</u>	<u>ACTUAL</u>	<u>OVER/ (UNDER)</u>
February 2005	83,393	83,372	-21
March 2005	83,920	83,863	-57
April 2005	84,390	84,148	-242
May 2005	84,743	84,359	-384
June 2005	85,295	84,901	-394
July 2005	85,474	85,008	-466
August 2005	85,653	85,574	-79
September 2005	85,789	86,136	347
October 2005	86,328	86,212	-116

-0.1% % Error

COMPONENTS OF ADMISSION ERRORS

NEW COMMITMENTS

	February 2005		
	CJEC	Actual	Diff
Feb 2005	2,511	2,599	88
Mar 2005	3,030	3,022	(8)
Apr 2005	2,907	2,732	(175)
May 2005	2,808	2,703	(105)
Jun 2005	2,992	3,014	22
Jul 2005	2,737	2,560	(177)
Aug 2005	2,621	3,161	540
Sep 2005	2,525	3,025	500
Oct 2005 *	2,954	2,598	(356)
Total	25,085	25,414	329

1.3% error

CONDITIONAL RELEASE OFFENDERS RETURNED WITH TECHNICAL VIOLATIONS

	February 2005		
	CJEC	Actual	Diff
Feb 2005	141	165	24
Mar 2005	174	193	19
Apr 2005	189	192	3
May 2005	197	168	(29)
Jun 2005	160	188	28
Jul 2005	174	187	13
Aug 2005	135	253	118
Sep 2005	175	190	15
Oct 2005 *	197	161	(36)
Total	1,542	1,697	155

10.1% error

*Preliminary

**MONITORING PRISON ADMISSIONS TO THE DEPARTMENT OF CORRECTIONS
SINCE THE CRIMINAL JUSTICE ESTIMATING CONFERENCE HELD 10/18/2004**

<u>MONTH</u>	<u>ADMISSIONS</u>		<u>MONTHLY</u>	<u>CUMULATIVE</u>
	<u>ESTIMATE</u>	<u>ACTUAL</u>	<u>OVER/ (UNDER)</u>	<u>OVER/ (UNDER)</u>
October 2004	3,082	3,024	-58	-58
November 2004	2,613	2,788	175	117
December 2004	2,908	2,942	34	151
January 2005	2,611	2,656	45	196
Total	11,214	11,410	% Error:	1.7%

**MONITORING PRISON POPULATION IN THE DEPARTMENT OF CORRECTIONS
SINCE THE CRIMINAL JUSTICE ESTIMATING CONFERENCE HELD 10/18/2004**

<u>MONTH</u>	<u>POPULATION</u>		<u>CUMULATIVE</u>
	<u>ESTIMATE</u>	<u>ACTUAL</u>	<u>OVER/ (UNDER)</u>
October 2004	82,668	82,545	-123
November 2004	82,773	82,746	-27
December 2004	83,034	83,165	131
January 2005	83,058	83,131	73
	0.1%	% Error	

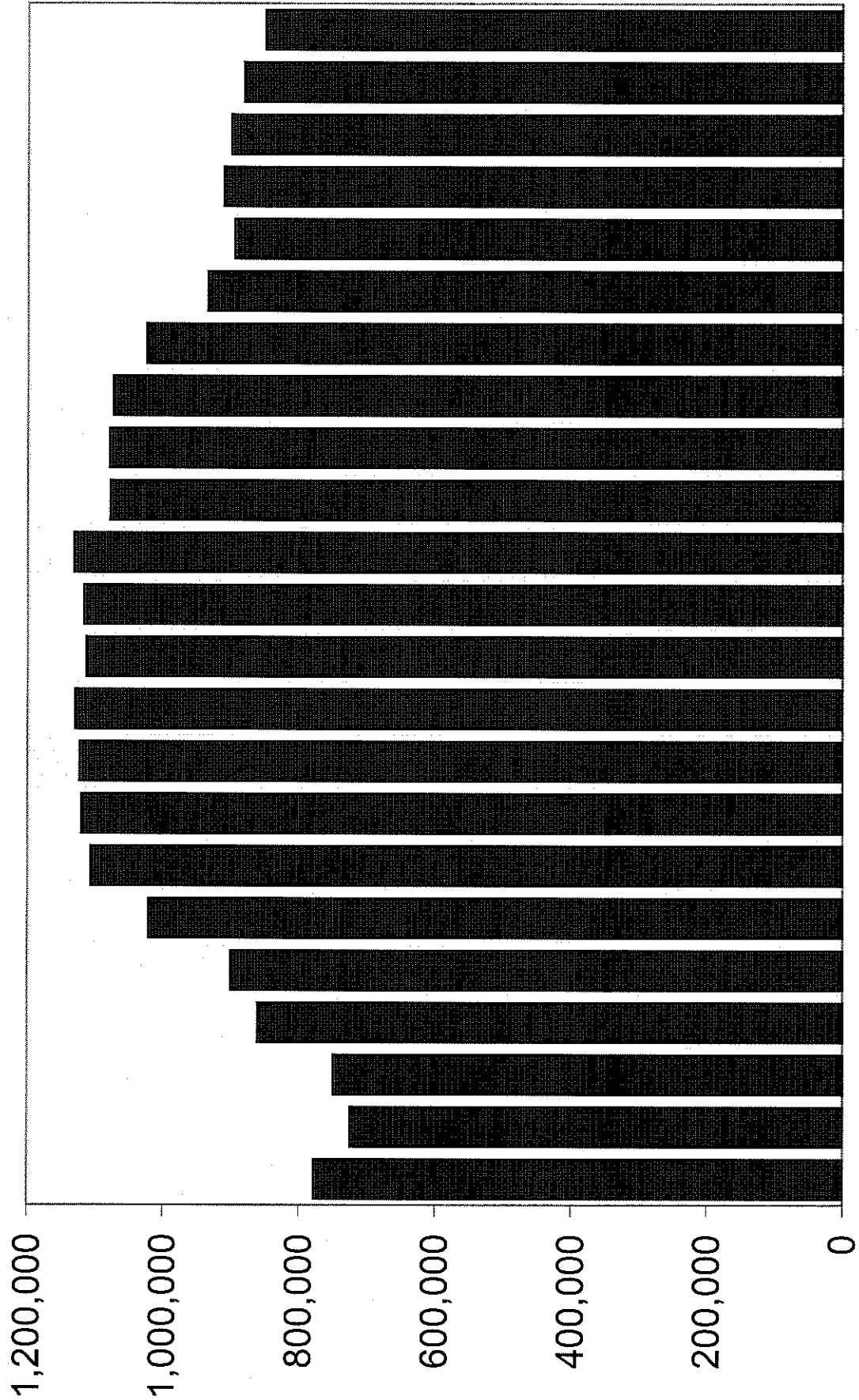
**MONITORING PRISON ADMISSIONS TO THE DEPARTMENT OF CORRECTIONS
SINCE THE CRIMINAL JUSTICE ESTIMATING CONFERENCE HELD 2/16/2004**

<u>MONTH</u>	<u>ADMISSIONS</u>		<u>MONTHLY</u>	<u>CUMULATIVE</u>
	<u>ESTIMATE</u>	<u>ACTUAL</u>	<u>OVER/ (UNDER)</u>	<u>OVER/ (UNDER)</u>
February 2004	2,618	2,542	-76	-76
March 2004	2,872	3,249	377	301
April 2004	2,927	2,893	-34	267
May 2004	2,807	2,833	26	293
June 2004	2,885	3,032	147	440
July 2004	2,912	2,675	-237	203
August 2004	2,719	2,687	-32	171
September 2004	2,770	2,373	-397	-226
Total	22,510	22,284	% Error:	-1.0%

**MONITORING PRISON POPULATION IN THE DEPARTMENT OF CORRECTIONS
SINCE THE CRIMINAL JUSTICE ESTIMATING CONFERENCE HELD 2/16/2004**

<u>MONTH</u>	<u>POPULATION</u>		<u>CUMULATIVE</u>
	<u>ESTIMATE</u>	<u>ACTUAL</u>	<u>OVER/ (UNDER)</u>
February 2004	79,961	79,792	-169
March 2004	80,436	80,520	84
April 2004	80,960	81,081	121
May 2004	81,215	81,395	180
June 2004	81,581	81,974	393
July 2004	82,092	82,205	113
August 2004	82,136	82,313	177
September 2004	82,319	82,141	-178
	-0.2%	% Error	

REPORTED CRIME (Index Offenses)



1982	1983	1984	1985	1986	1987	1988	1989	1990	1991	1992	1993	1994	1995	1996	1997	1998	1999	2000	2001	2002	2003	2004
777,517	724,247	749,231	880,957	900,374	1,021,203	1,106,212	1,120,515	1,122,895	1,129,704	1,112,746	1,116,567	1,130,875	1,073,619	1,079,623	1,073,757	1,025,100	934,349	885,709	911,292	900,155	881,615	850,490

Florida Department of Law Enforcement

Six Month Uniform Crime Report: January through June

INDEX CRIME TOTAL:

2001	439,331	1.2%
2002	442,604	0.7%
2003	436,882	-1.3%
2004	426,702	-2.3%
2005	412,743	-3.3%

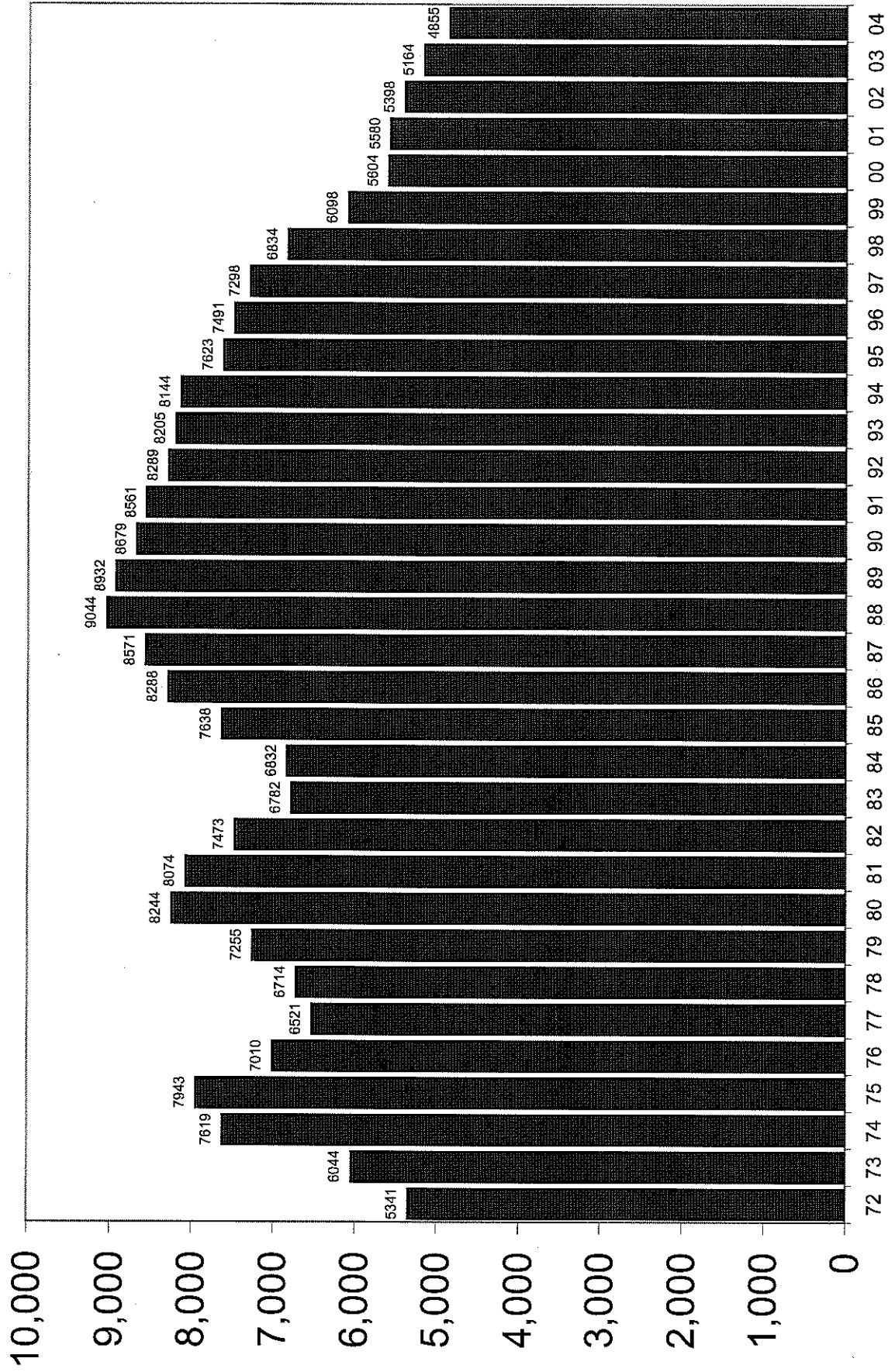
VIOLENT CRIME TOTAL:

2001	63,776	2.5%
2002	62,770	-1.6%
2003	61,699	-1.7%
2004	61,345	-0.6%
2005	61,737	0.6%

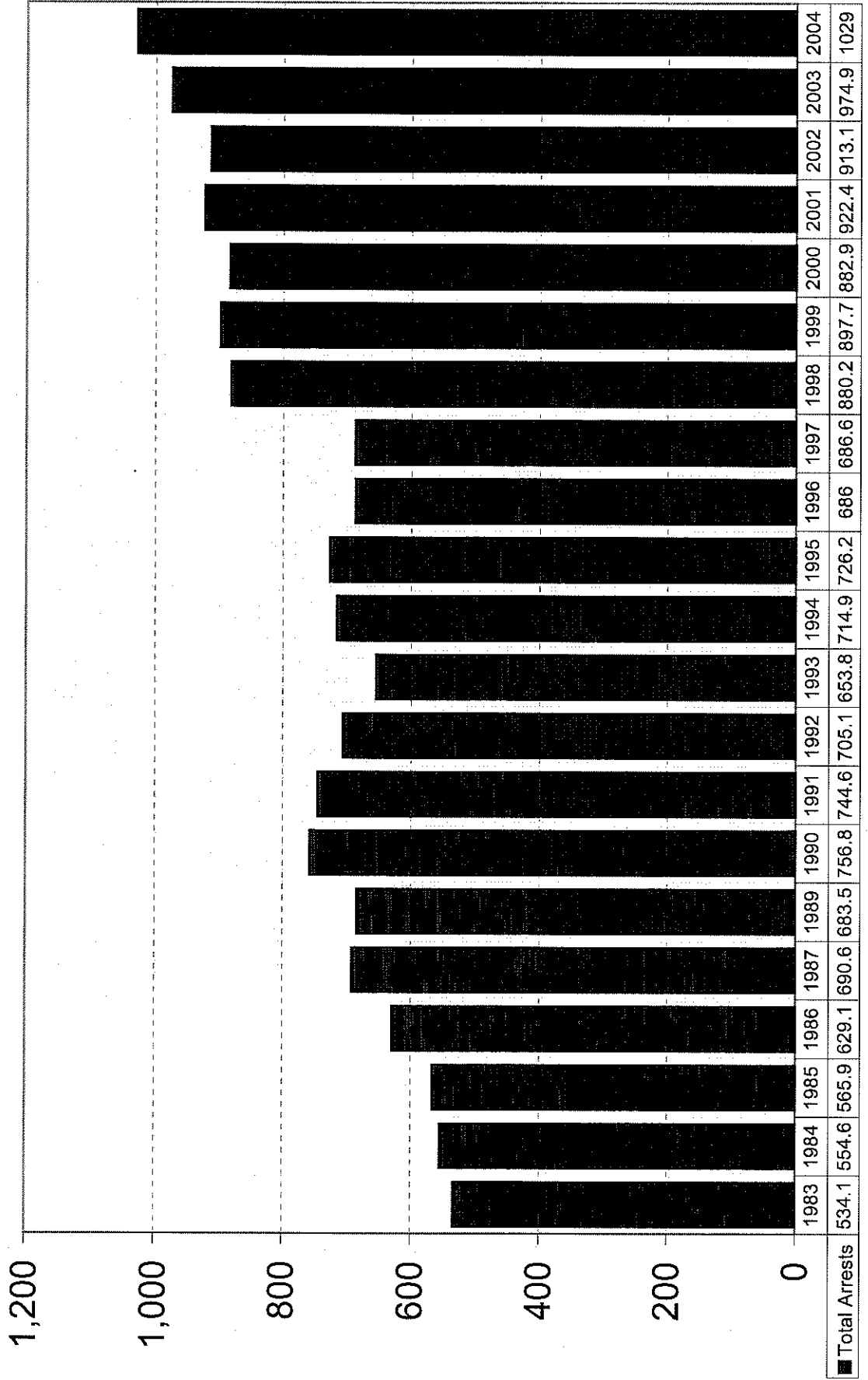
Source: Florida Department of Law Enforcement,
"Crime in Florida January - June 2005"

CRIME RATE

Crimes per 100,000 Population



ARRESTS (Thousands)



Source of data changed in '96 to fingerprint cards and in '98 to aggregate reports from Law Enforcement Agencies

ARRESTS

<u>Index Offenses</u>	<u>2000</u>	<u>2001</u>	<u>% Cng</u>	<u>2002</u>	<u>% Cng</u>	<u>2003</u>	<u>% Cng</u>
Murder	681	707	3.8%	730	3.3%	701	-4.0%
Forcible Sex Offenses	4,095	4,303	5.1%	4,077	-5.3%	3,943	-3.3%
Forcible Rape				2,218		2,251	1.5%
Forcible Sodomy				454		423	-6.8%
Forcible Fondling				1,405		1,269	-9.7%
Robbery	9,155	9,665	5.6%	9,470	-2.0%	9,096	-3.9%
Aggravated Assault	39,120	41,920	7.2%	38,449	-8.3%	38,135	-0.8%
Burglary	26,087	26,147	0.2%	27,271	4.3%	26,503	-2.8%
Larceny	84,211	90,609	7.6%	88,464	-2.4%	90,952	2.8%
Motor Vehicle Theft	12,266	13,061	6.5%	12,593	-3.6%	12,331	-2.1%
Total Index Offenses	175,615	186,412	6.1%	181,054	-2.9%	181,661	0.3%
Part II							
Manslaughter	85	112	31.8%	89	-20.5%	118	32.6%
Kidnap/Abduction	986	1,087	10.2%	904	-16.8%	877	-3.0%
Arson	541	589	8.9%	572	-2.9%	567	-0.9%
Simple Assault	85,707	86,250	0.6%	87,099	1.0%	88,143	1.2%
Drug Arrests	131,407	131,891	0.4%	126,087	-4.4%	136,804	8.5%
Bribery	87	95	9.2%	93	-2.1%	62	-33.3%
Embezzlement	1,014	976	-3.7%	893	-8.5%	1,007	12.8%
Fraud	12,352	13,266	7.4%	12,801	-3.5%	14,123	10.3%
Counterfeit/Forgery	5,087	5,494	8.0%	5,466	-0.5%	5,381	-1.6%
Extortion/Blackmail	265	265	0.0%	210	-20.8%	207	-1.4%
Intimidation	7,284	5,964	-18.1%	5,145	-13.7%	6,045	17.5%
Prostitution	13,812	8,698	-37.0%	7,742	-11.0%	7,529	-2.8%
Non-Forcible Sex Offenses	4,725	4,158	-12.0%	4,070	-2.1%	4,137	1.6%
Stolen Property	4,909	5,192	5.8%	4,078	-21.5%	3,978	-2.5%
Driving Under Influence	60,337	60,338	0.0%	60,574	0.4%	56,976	-5.9%
Destruction/Vandalism	6,954	7,830	12.6%	7,682	-1.9%	8,238	7.2%
Gambling	993	724	-27.1%	448	-38.1%	699	56.0%
Weapons Violations	6,607	6,717	1.7%	5,970	-11.1%	6,760	13.2%
Liquor Law Violations	39,031	41,486	6.3%	35,508	-14.4%	34,223	-3.6%
Miscellaneous	325,061	354,901	9.2%	366,602	3.3%	417,388	13.9%
Total Part II	707,244	736,033	4.1%	732,033	-0.5%	793,262	8.4%
ALL OFFENSES	882,859	922,445	4.5%	913,087	-1.0%	974,923	6.8%

Source: Florida Department of Law Enforcement, Uniform Crime Reports, various years

ARRESTS

<u>Index Offenses</u>	<u>2004 % Cng</u>	
Murder	693	-1.1%
Forcible Sex Offenses	3,903	-1.0%
Forcible Rape	2,157	-4.2%
Forcible Sodomy	413	-2.4%
Forcible Fondling	1,333	5.0%
Robbery	9,101	0.1%
Aggravated Assault	36,242	-5.0%
Burglary	25,970	-2.0%
Larceny	88,267	-3.0%
Motor Vehicle Theft	11,798	-4.3%
Total Index Offenses	175,974	-3.1%
 Part II		
Manslaughter	131	11.0%
Kidnap/Abduction	902	2.9%
Arson	565	-0.4%
Simple Assault	90,001	2.1%
Drug Arrests	150,334	9.9%
Bribery	58	-6.5%
Embezzlement	1,115	10.7%
Fraud	14,759	4.5%
Counterfeit/Forgery	5,222	-3.0%
Extortion/Blackmail	195	-5.8%
Intimidation	5,446	-9.9%
Prostitution	6,583	-12.6%
Non-Forcible Sex Offenses	4,015	-2.9%
Stolen Property	3,929	-1.2%
Driving Under Influence	55,805	-2.1%
Destruction/Vandalism	8,728	5.9%
Gambling	867	24.0%
Weapons Violations	7,777	15.0%
Liquor Law Violations	35,692	4.3%
Miscellaneous	460,902	10.4%
Total Part II	853,026	7.5%
 ALL OFFENSES	 1,029,000	 5.5%

Source: Florida Department of Law Enforcement, Uniform Crime Reports, various years

CRIMINAL JUSTICE SYSTEM MEASURES

	<u>1994</u>	<u>% Change</u>	<u>1995</u>	<u>% Change</u>	<u>1996</u>	<u>% Change</u>	<u>1997</u>	<u>% Change</u>	<u>1998</u>	<u>% Change</u>
REPORTED CRIMES (Part I)	1,130,875	1.3%	1,078,619	-4.6%	1,079,623	0.1%	1,073,757	-0.5%	1,025,100	-4.5%
Total Violent	157,835	-2.4%	150,208	-4.8%	151,350	0.8%	150,801	-0.4%	139,673	-7.4%
CRIME RATE* (per 100,000 Pop)	8,052.5	-1.0%	7,523.9	-6.6%	7,382.8	-1.9%	7,187.9	-2.6%	6,730.6	-6.4%
ARRESTS										
Part I	203,777	13.2%	190,862	-6.3%					200,251	
Part II	511,078	7.9%	535,378	4.8%					679,940	
TOTAL	714,855	9.3%	726,240	1.6%	685,992	-5.5%	686,565	0.1%	880,191	28.2%
FELONY FILINGS	160,421	4.4%	164,197	2.4%	177,687	8.2%	184,163	3.6%	192,942	4.8%
GUILTY DISPOSITIONS	116,939	-5.0%	128,202	9.6%	132,665	3.5%	141,736	6.8%	143,761	1.4%
% OF FILINGS FOUND GUILTY	72.9%		78.1%		74.7%		77.0%		74.5%	
PRISON ADMISSIONS	23,483	-15.4%	20,303	-13.5%	20,828	2.6%	21,839	4.9%	22,685	3.9%
% OF GUILTY DISPOSITIONS IMPRISONED	20.1%		15.8%		15.7%		15.4%		15.8%	
PRISON POPULATION ON JUNE 30	56,052	10.8%	61,992	10.6%	64,333	3.8%	64,713	0.6%	66,280	2.4%

CRIMINAL JUSTICE SYSTEM MEASURES

	<u>1999</u>	<u>% Change</u>	<u>2000</u>	<u>% Change</u>	<u>2001</u>	<u>% Change</u>	<u>2002</u>	<u>% Change</u>	<u>2003</u>	<u>% Change</u>
REPORTED CRIMES										
(Part I)	934,349	-8.9%	895,708	-4.1%	911,292	1.7%	900,155	-1.2%	881,615	-2.1%
Total Violent	128,859	-7.7%	128,041	-0.6%	130,323	1.8%	127,905	-1.9%	124,236	-2.9%
CRIME RATE* (per 100,000 Pop)	5,997.0	-10.9%	5,604.2	-6.6%	5,580.4	-0.4%	5,398.4	-3.3%	5,164.2	-4.3%
ARRESTS										
Part I	186,099	-7.1%	175,615	-5.6%	186,412	6.1%	181,054	-2.9%	181,661	0.3%
Part II	711,580	4.7%	707,244	-0.6%	736,033	4.1%	732,033	-0.5%	793,262	8.4%
TOTAL	897,679	2.0%	882,859	-1.7%	922,445	4.5%	913,087	-1.0%	974,923	6.8%
FELONY FILINGS	190,051	-1.5%	186,086	-2.1%	184,571	-0.8%	184,250	-0.2%	185,953	0.9%
GUILTY DISPOSITIONS	146,882	2.2%	138,884	-5.4%	142,907	2.9%	143,130	0.2%	146,491	2.3%
% OF FILINGS FOUND GUILTY	77.3%		74.6%		77.4%		77.7%		78.8%	
PRISON ADMISSIONS	24,315	7.2%	25,541	5.0%	25,571	0.1%	27,176	6.3%	30,340	11.6%
% OF GUILTY DISPOSITIONS IMPRISONED	16.6%		18.4%		17.9%		19.0%		20.7%	
PRISON POPULATION ON JUNE 30	68,599	3.5%	71,233	3.8%	72,007	1.1%	73,553	2.1%	77,316	5.1%

CRIMINAL JUSTICE SYSTEM MEASURES

	<u>2004</u>	<u>Change</u>
REPORTED CRIMES (Part I)	850,490	-3.5%
Total Violent	123,697	-0.4%
CRIME RATE* (per 100,000 Pop)	4,855.3	-6.0%
ARRESTS		
Part I	175,974	-3.1%
Part II	853,026	7.5%
TOTAL	1,029,000	5.5%
FELONY FILINGS	193,602	4.1%
GUILTY DISPOSITIONS	149,558	2.1%
% OF FILINGS FOUND GUILTY	77.3%	
PRISON ADMISSIONS	31,445	3.6%
% OF GUILTY DISPOSITIONS IMPRISONED	21.0%	
PRISON POPULATION ON JUNE 30	81,974	6.0%

Data Sources: Florida Dept. of Law Enforcement, Uniform Crime Report
 State Court Administrator, Summary Reporting System, run October 2005
 Florida Department of Corrections, Research and Data Analysis.

CRIMINAL JUSTICE INDICES

Date	Criminal Filings	Guilty Dispositions	Prison Admissions	Incarceration Rate
7-00	14,448	10,941	2,003	18.3%
8-00	16,615	13,019	2,349	18.0%
9-00	15,030	11,988	2,141	17.9%
Quarter 3	46,093	35,948	6,493	18.1%
10-00	16,016	11,866	2,238	18.9%
11-00	14,577	11,342	1,988	17.5%
12-00	14,339	9,400	1,843	19.6%
Quarter 4	44,932	32,608	6,069	18.6%
1-01	16,180	12,890	2,037	15.8%
2-01	14,925	12,376	2,004	16.2%
3-01	16,436	13,113	2,339	17.8%
Quarter 1	47,541	38,379	6,380	16.6%
4-01	14,683	12,119	2,152	17.8%
5-01	16,882	13,244	2,354	17.8%
6-01	15,718	11,043	2,077	18.8%
Quarter 2	47,283	36,406	6,583	18.1%
FY 00-01	185,849	143,341	25,525	17.8%
7-01	15,147	11,477	2,102	18.3%
8-01	16,925	12,848	2,246	17.5%
9-01	13,023	9,871	1,942	19.7%
Quarter 3	45,095	34,196	6,290	18.4%
10-01	16,827	13,404	2,345	17.5%
11-01	14,560	11,718	2,073	17.7%
12-01	13,265	8,804	1,900	21.6%
Quarter 4	44,652	33,926	6,318	18.6%
1-02	15,901	12,299	2,137	17.4%
2-02	14,901	12,014	2,153	17.9%
3-02	15,238	11,497	2,131	18.5%
Quarter 1	46,040	35,810	6,421	17.9%
4-02	15,741	12,432	2,175	17.5%
5-02	16,932	12,353	2,450	19.8%
6-02	14,904	10,905	2,200	20.2%
Quarter 2	47,577	35,690	6,825	19.1%
FY 01-02	183,364	139,622	25,854	18.5%

CRIMINAL JUSTICE INDICES

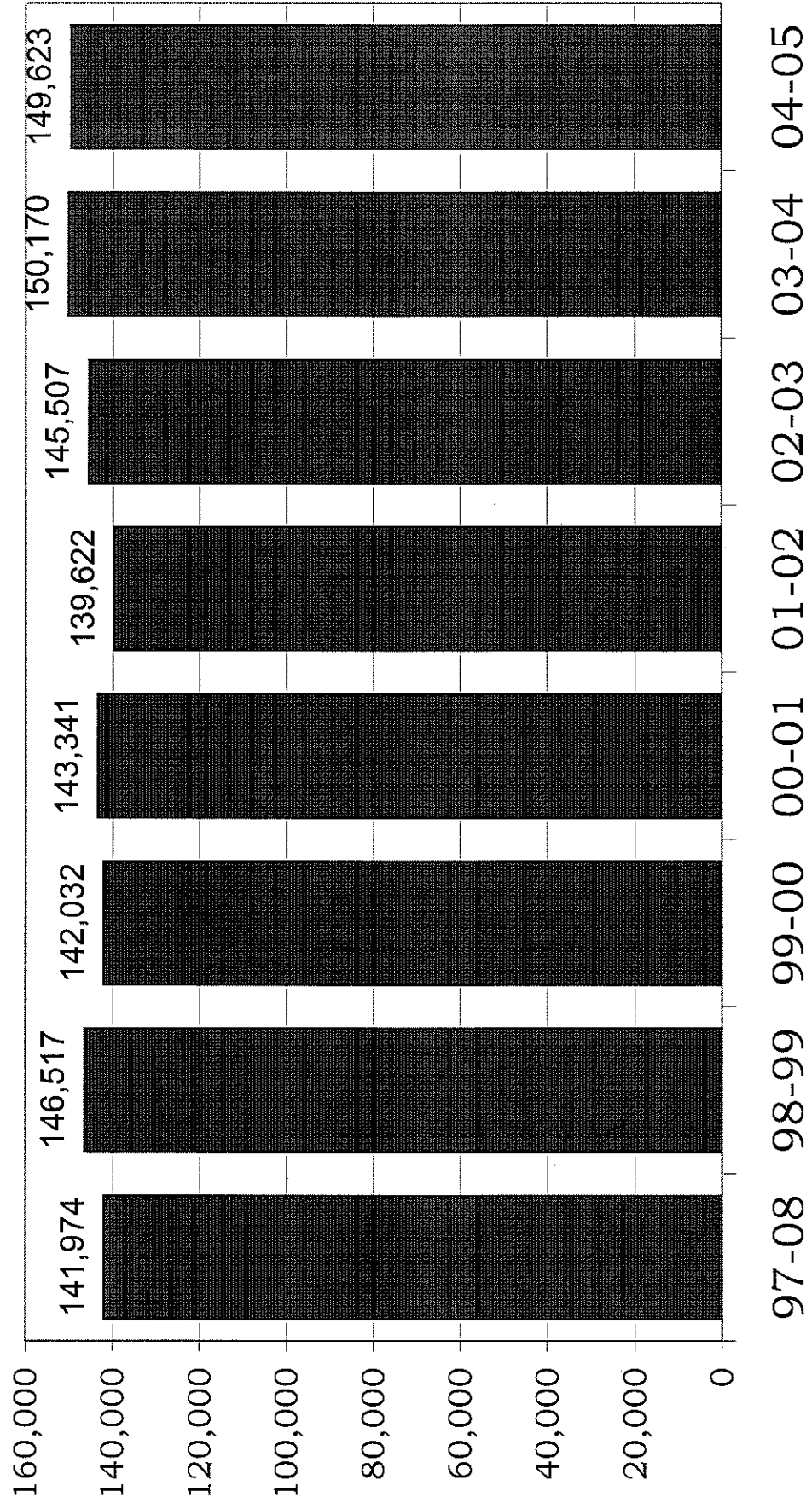
Date	Criminal Filings	Guilty Dispositions	Prison Admissions	Incarceration Rate
7-02	15,639	12,109	2,349	19.4%
8-02	16,076	12,675	2,405	19.0%
9-02	14,680	11,744	2,178	18.5%
Quarter 3	46,395	36,528	6,932	19.0%
10-02	16,730	13,833	2,583	18.7%
11-02	13,599	11,449	2,106	18.4%
12-02	13,909	9,820	2,309	23.5%
Quarter 4	44,238	35,102	6,998	19.9%
1-03	15,402	12,466	2,136	17.1%
2-03	14,486	12,079	2,186	18.1%
3-03	15,674	12,713	2,505	19.7%
Quarter 1	45,562	37,258	6,827	18.3%
4-03	15,457	12,792	2,657	20.8%
5-03	15,746	12,236	2,557	20.9%
6-03	15,818	11,591	2,687	23.2%
Quarter 2	47,021	36,619	7,901	21.6%
FY 02-03	183,216	145,507	28,658	19.7%
7-03	16,670	11,856	2,718	22.9%
8-03	15,557	12,380	2,448	19.8%
9-03	16,008	12,966	2,497	19.3%
Quarter 3	48,235	37,202	7,663	20.6%
10-03	16,804	13,997	2,886	20.6%
11-03	13,115	10,682	2,376	22.2%
12-03	15,216	10,733	2,687	25.0%
Quarter 4	45,135	35,412	7,949	22.4%
1-04	16,033	12,422	2,336	18.8%
2-04	15,579	12,116	2,401	19.8%
3-04	18,175	14,070	3,076	21.9%
Quarter 1	49,787	38,608	7,813	20.2%
4-04	16,090	13,320	2,703	20.3%
5-04	16,282	12,371	2,636	21.3%
6-04	17,296	13,257	2,874	21.7%
Quarter 2	49,668	38,948	8,213	21.1%
FY 03-04	192,825	150,170	31,638	21.1%

CRIMINAL JUSTICE INDICES

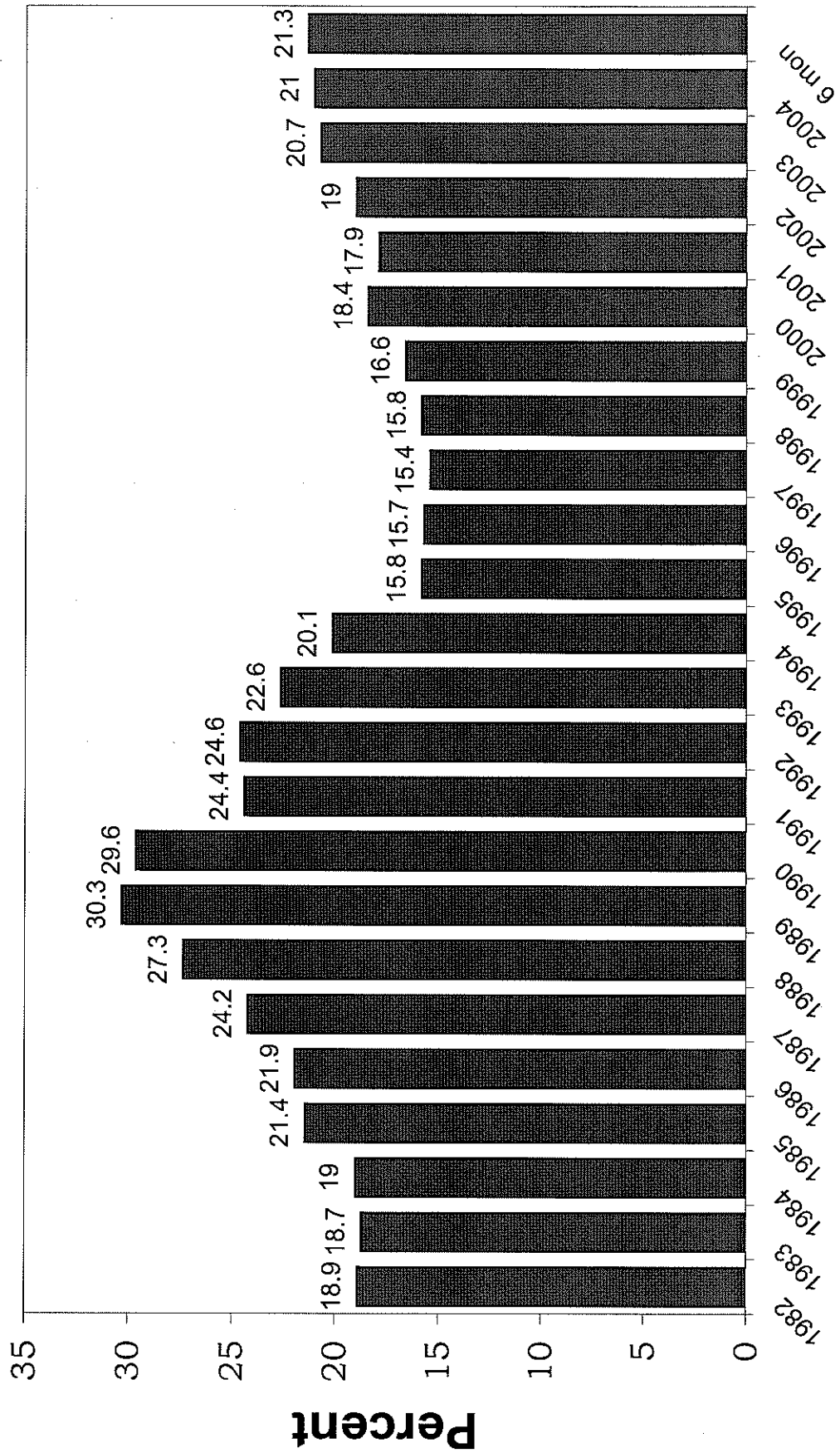
Date	Criminal Filings	Guilty Dispositions	Prison Admissions	Incarceration Rate
7-04	16,368	12,021	2,545	21.2%
8-04	16,117	13,668	2,534	18.5%
9-04	14,122	10,368	2,185	21.1%
Quarter 3	46,607	36,057	7,264	20.1%
10-04	16,001	13,029	2,803	21.5%
11-04	15,332	12,032	2,624	21.8%
12-04	16,207	10,884	2,728	25.1%
Quarter 4	47,540	35,945	8,155	22.7%
1-05	16,340	12,695	2,475	19.5%
2-05	16,399	12,315	2,599	21.1%
3-05	18,444	13,438	3,022	22.5%
Quarter 1	51,183	38,448	8,096	21.1%
4-05	16,957	12,952	2,732	21.1%
5-05	17,505	12,210	2,703	22.1%
6-05	18,720	14,011	3,014	21.5%
Quarter 2	53,182	39,173	8,449	21.6%
FY 04-05	198,512	149,623	31,964	21.4%

Data Sources: State Court Administrator, Summary Reporting System, (Run on October 2005) & Florida Department of Corrections. Several adjustments made to SRS data for incomplete or missing submissions.

GUILTY DISPOSITIONS



PERCENT OF FELONS IMPRISONED

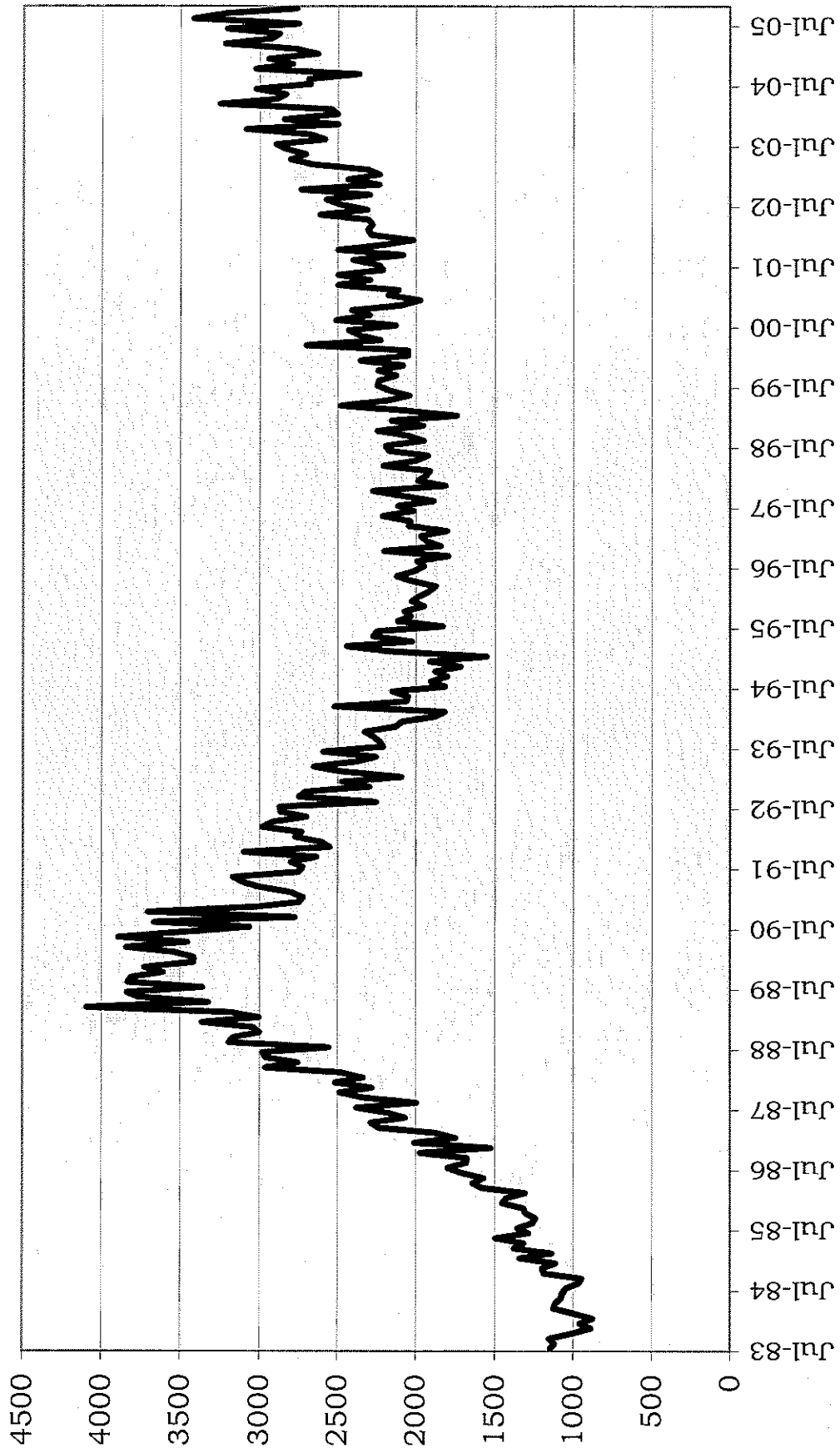


PRISON ADMISSIONS AND POPULATION BY FISCAL YEAR

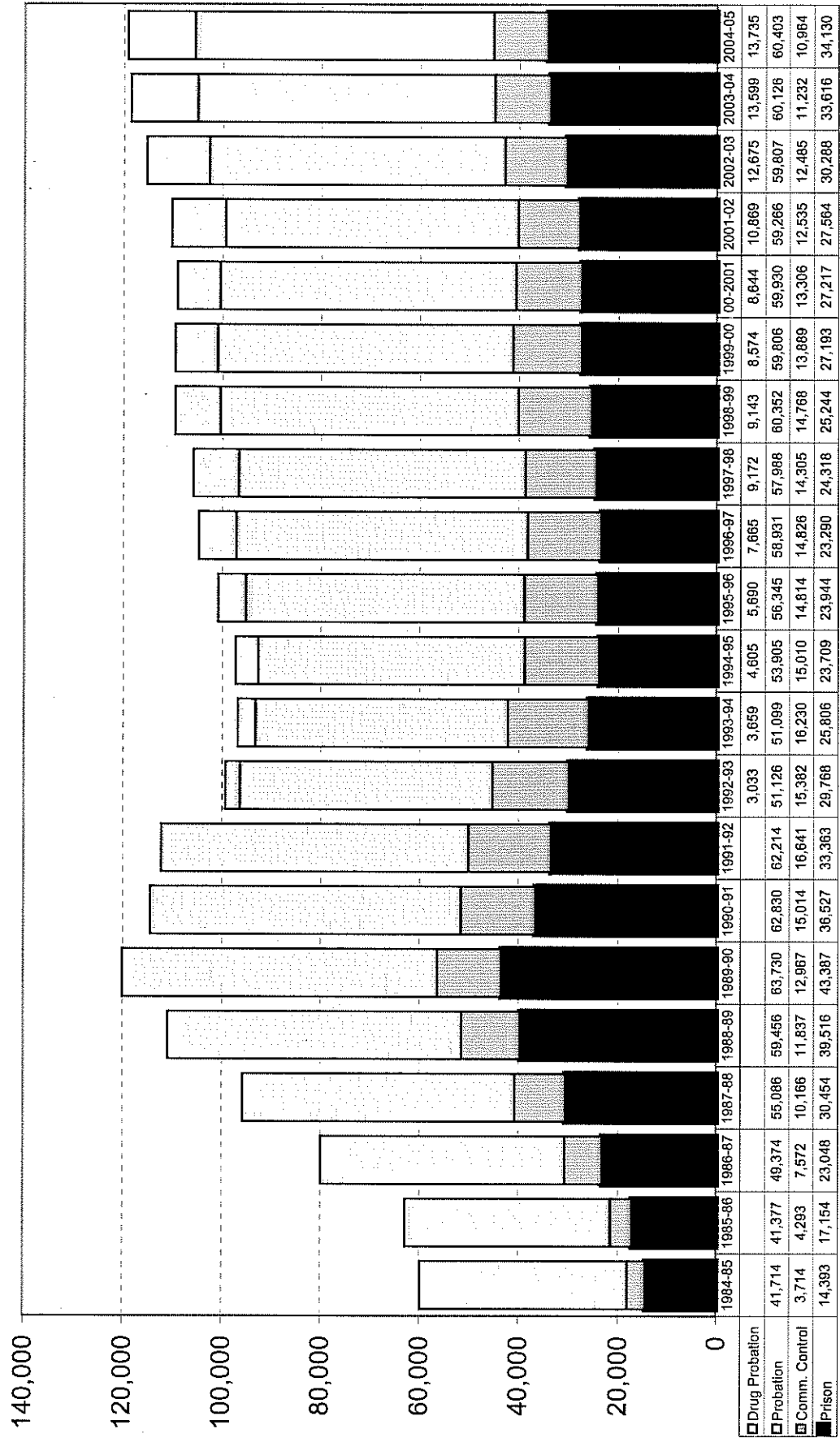
FISCAL YEAR	PRISON ADMISSIONS	% CHANGE	PRISON POP ON JUNE 30 OF FY	% CHANGE	RATIO OF ADMITS TO POP	INMATES PER 100,000 OF FL.'S POP
1972-73	4,958		10,344		0.48	126.8
1973-74	5,694	14.8%	11,326	9.5%	0.50	133.1
1974-75	7,222	26.8%	14,130	24.8%	0.51	163.3
1975-76	8,486	17.5%	17,172	21.5%	0.49	195.5
1976-77	8,224	-3.1%	19,269	12.2%	0.43	214.7
1977-78	7,974	-3.0%	19,881	3.2%	0.40	215.5
1978-79	8,292	4.0%	20,078	1.0%	0.41	210.9
1979-80	9,546	15.1%	19,722	-1.8%	0.48	200.4
1980-81	11,014	15.4%	21,579	9.4%	0.51	211.2
1981-82	13,621	23.7%	26,161	21.2%	0.52	249.3
1982-83	14,301	5.0%	27,717	5.9%	0.52	257.8
1983-84	12,516	-12.5%	26,471	-4.5%	0.47	239.2
1984-85	14,393	15.0%	28,310	6.9%	0.51	248.2
1985-86	17,154	19.2%	29,712	5.0%	0.58	253.1
1986-87	23,048	34.4%	32,764	10.3%	0.70	271.2
1987-88	30,454	32.1%	33,681	2.8%	0.90	271.4
1988-89	39,516	29.8%	38,059	13.0%	1.04	299.1
1989-90	43,387	9.8%	42,733	12.3%	1.02	328.2
1990-91	36,527	-15.8%	46,233	8.2%	0.79	347.0
1991-92	33,363	-8.7%	47,012	1.7%	0.71	346.9
1992-93	29,768	-10.8%	50,603	7.6%	0.59	366.6
1993-94	25,806	-13.3%	56,052	10.8%	0.46	397.0
1994-95	23,709	-8.1%	61,992	10.6%	0.38	430.3
1995-96	23,944	1.0%	64,333	3.8%	0.37	437.6
1996-97	23,799	-0.6%	64,713	0.6%	0.37	431.1
1997-98	24,318	2.2%	66,280	2.4%	0.37	432.8
1998-99	25,244	3.8%	68,599	3.5%	0.37	437.5
1999-00	27,119	7.4%	71,233	3.8%	0.38	443.2
2000-01	27,217	0.4%	72,007	1.1%	0.38	438.7
2001-02	27,564	1.3%	73,553	2.1%	0.37	438.6
2002-03	30,288	9.9%	77,316	5.1%	0.39	450.0
2003-04	33,616	11.0%	81,974	6.0%	0.41	465.4
2004-05	34,130	1.5%	84,901	3.6%	0.40	472.7

Data Sources: Florida Department of Corrections; Florida Consensus Demographic Estimating Conference database, updated July 2005.

ADMISSIONS TO PRISON

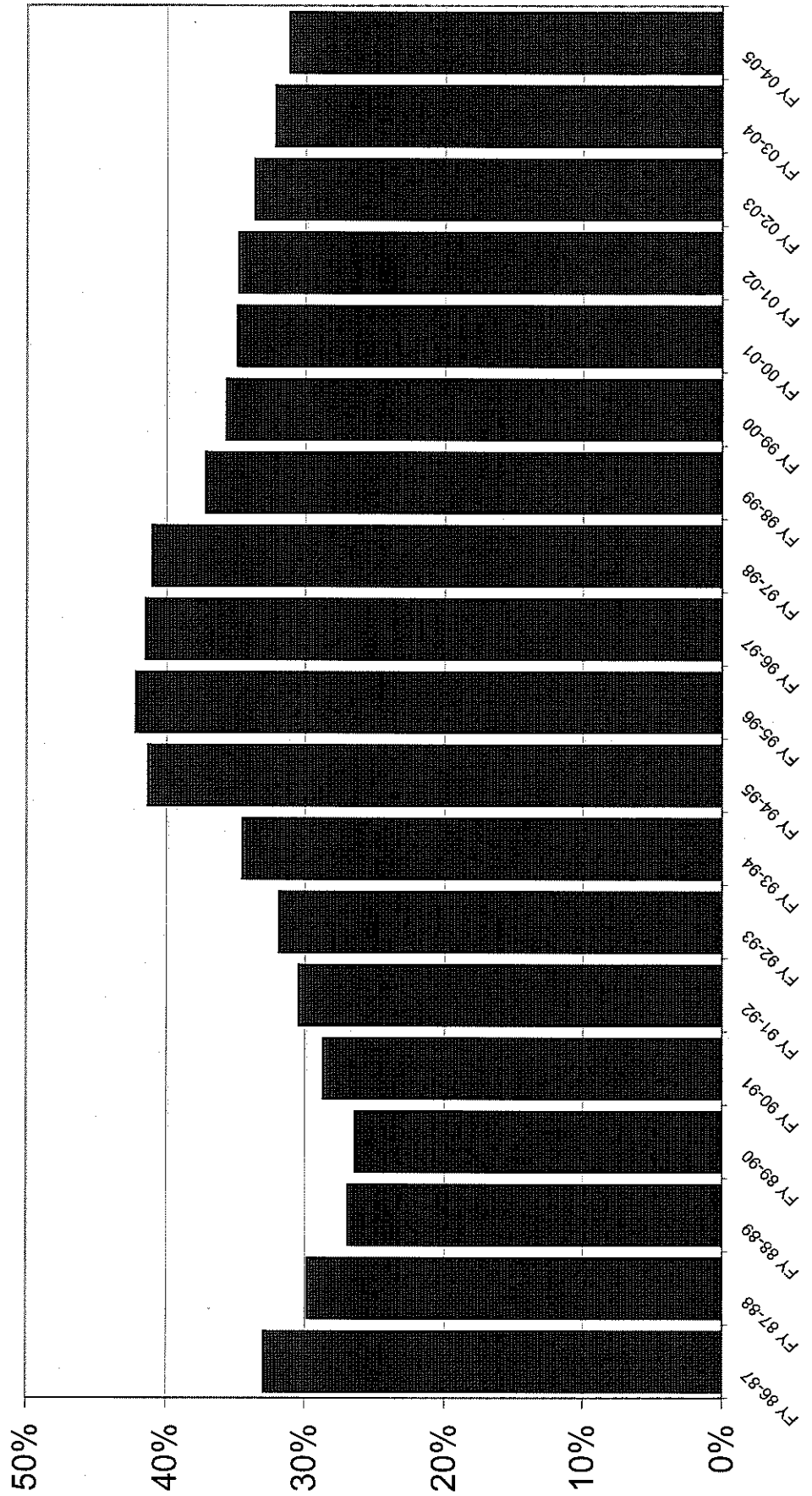


ADMISSIONS BY FISCAL YEAR

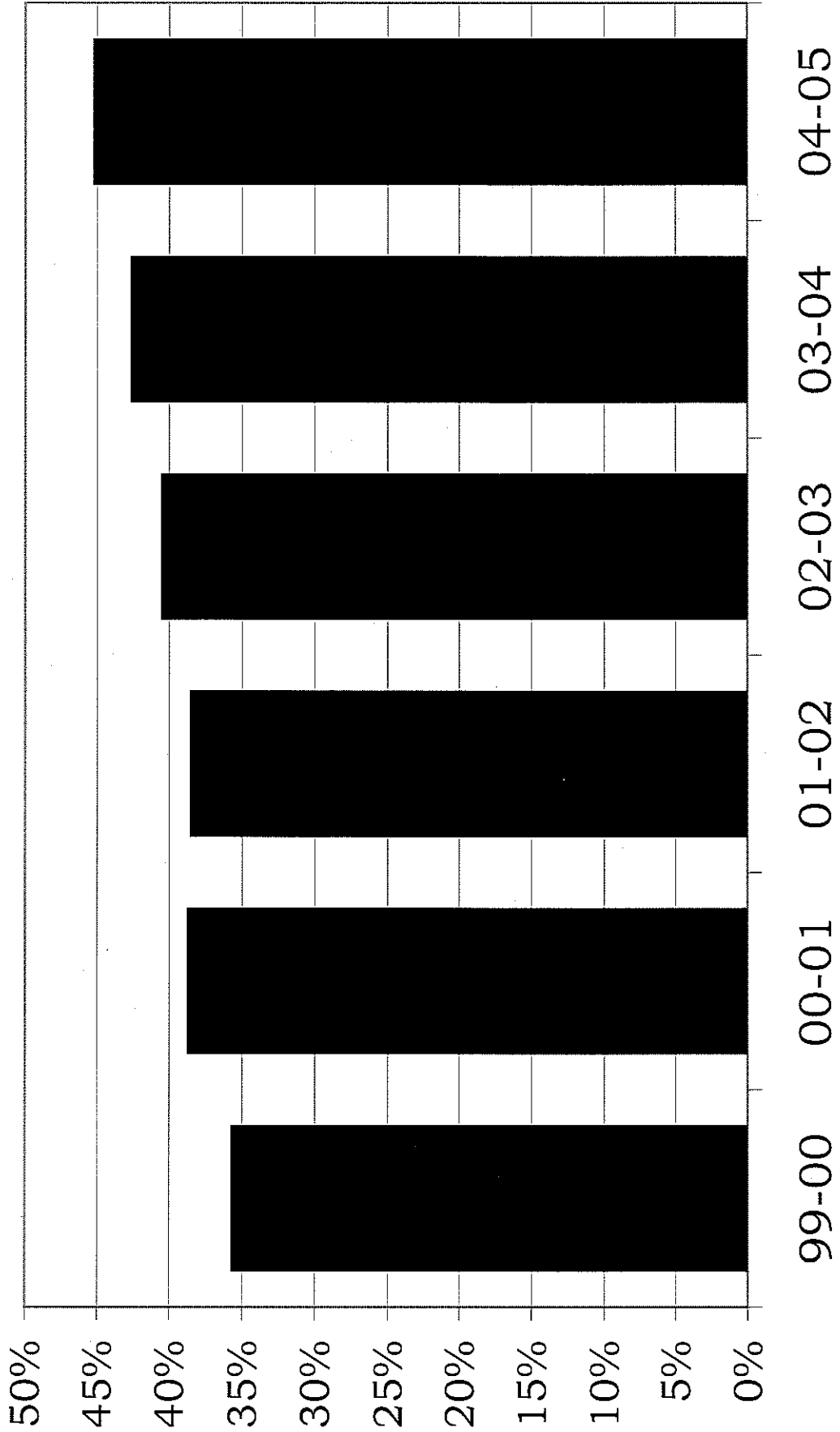


PERCENT VIOLENT OFFENDERS

Percent of Admissions that are Violent Offenders



Third Degree Felons as Percent of Admissions



PRIMARY OFFENSE TYPES OF NEW ADMISSIONS*
FISCAL YEAR COMPARISONS
(History, Percent Change From Prior Year)

<u>CATEGORY</u>	<u>FY8788</u>		<u>FY8889</u>		<u>FY8990</u>		<u>FY9091</u>	
		% <u>CHANGE</u>		% <u>CHANGE</u>		% <u>CHANGE</u>		% <u>CHANGE</u>
Murder	1,264	7.5%	1,348	6.6%	1,536	13.9%	1,428	-7.0%
Sexual Offenses	1,307	15.3%	1,370	4.8%	1,470	7.3%	1,407	-4.3%
Robbery	3,062	21.6%	3,471	13.4%	3,748	8.0%	3,352	-10.6%
Violent Personal Crimes	2,151	23.0%	2,714	26.2%	3,009	10.9%	2,765	-8.1%
Burglary	6,087	28.4%	7,452	22.4%	7,752	4.0%	6,616	-14.7%
Theft, Forgery, Fraud	5,357	27.7%	6,716	25.4%	6,966	3.7%	6,120	-12.1%
Drug Offenses	8,478	60.8%	12,936	52.6%	15,781	22.0%	12,018	-23.8%
Weapon Offenses	1,305	28.3%	1,725	32.2%	1,672	-3.1%	1,517	-9.3%
Other	1,443	16.1%	1,784	23.6%	1,396	-21.7%	1,304	-6.6%
TOTAL	30,454	32.1%	39,516	29.8%	43,330	9.7%	36,527	-15.7%

<u>CATEGORY</u>	<u>FY9192</u>		<u>FY9293</u>		<u>FY9394</u>		<u>FY9495</u>	
		% <u>CHANGE</u>		% <u>CHANGE</u>		% <u>CHANGE</u>		% <u>CHANGE</u>
Murder	1,352	-5.3%	1,308	-3.3%	1,281	-2.1%	1,277	-0.3%
Sexual Offenses	1,372	-2.5%	1,369	-0.2%	1,386	1.2%	1,461	5.4%
Robbery	3,050	-9.0%	2,905	-4.8%	2,643	-9.0%	2,480	-6.2%
Violent Personal Crimes	2,954	6.8%	2,671	-9.6%	2,541	-4.9%	2,604	2.5%
Burglary	6,028	-8.9%	5,624	-6.7%	4,992	-11.2%	4,213	-15.6%
Theft, Forgery, Fraud	5,570	-9.0%	5,191	-6.8%	4,397	-15.3%	3,023	-31.2%
Drug Offenses	10,730	-10.7%	8,838	-17.6%	6,880	-22.2%	4,820	-29.9%
Weapon Offenses	1,411	-7.0%	1,219	-13.6%	1,059	-13.1%	1,036	-2.2%
Other	896	-31.3%	643	-28.2%	627	-2.5%	541	-13.7%
TOTAL	33,363	-8.7%	29,768	-10.8%	25,806	-13.3%	21,455	-16.9%

*New court commitments, excludes technical violators without new sentences

PRIMARY OFFENSE TYPES OF NEW ADMISSIONS*
FISCAL YEAR COMPARISONS
(History, Percent Change From Prior Year)

<u>CATEGORY</u>	<u>FY9596</u>		<u>FY9697</u>		<u>FY9798</u>		<u>FY9899</u>	
		<u>CHANGE</u>		<u>CHANGE</u>		<u>CHANGE</u>		<u>CHANGE</u>
Murder	1,126	-11.8%	1,163	3.3%	1,036	-10.9%	991	-4.3%
Sexual Offenses	1,445	-1.1%	1,461	1.1%	1,493	2.2%	1,599	7.1%
Robbery	2,243	-9.6%	2,252	0.4%	2,326	3.3%	2,197	-5.5%
Violent Personal Crimes	2,580	-0.9%	3,140	21.7%	3,270	4.1%	3,172	-3.0%
Burglary	3,900	-7.4%	4,265	9.4%	4,132	-3.1%	4,285	3.7%
Theft, Forgery, Fraud	2,521	-16.6%	2,531	0.4%	2,659	5.1%	2,875	8.1%
Drug Offenses	4,615	-4.3%	4,806	4.1%	5,395	12.3%	6,407	18.8%
Weapon Offenses	1,134	9.5%	831	-26.7%	925	11.3%	780	-15.6%
Other	659	21.8%	844	28.1%	863	2.3%	1,199	38.9%
TOTAL	20,223	-5.7%	21,293	5.3%	22,099	3.8%	23,506	6.4%

<u>CATEGORY</u>	<u>FY9900</u>		<u>FY0001</u>		<u>FY0102</u>		<u>FY0203</u>	
		<u>CHANGE</u>		<u>CHANGE</u>		<u>CHANGE</u>		<u>CHANGE</u>
Murder	1,012	2.1%	900	-11.1%	853	-5.2%	887	4.0%
Sexual Offenses	1,638	2.5%	1,541	-6.0%	1,595	3.5%	1,669	4.6%
Robbery	2,089	-4.9%	2,028	-2.9%	2,106	3.9%	2,275	8.0%
Violent Personal Crimes	3,488	9.9%	3,567	2.3%	3,613	1.3%	3,933	8.9%
Burglary	4,129	-3.7%	3,571	-13.5%	3,791	6.2%	4,171	10.0%
Theft, Forgery, Fraud	3,294	14.6%	3,866	17.4%	3,806	-1.5%	4,224	11.0%
Drug Offenses	7,221	12.7%	7,242	0.3%	7,325	1.1%	8,308	13.4%
Weapon Offenses	833	6.7%	866	4.0%	824	-4.9%	855	3.8%
Other	1,674	39.6%	1,945	16.2%	1,941	-0.2%	2,336	20.3%
TOTAL	25,379	8.0%	25,525	0.6%	25,854	1.3%	28,658	10.8%

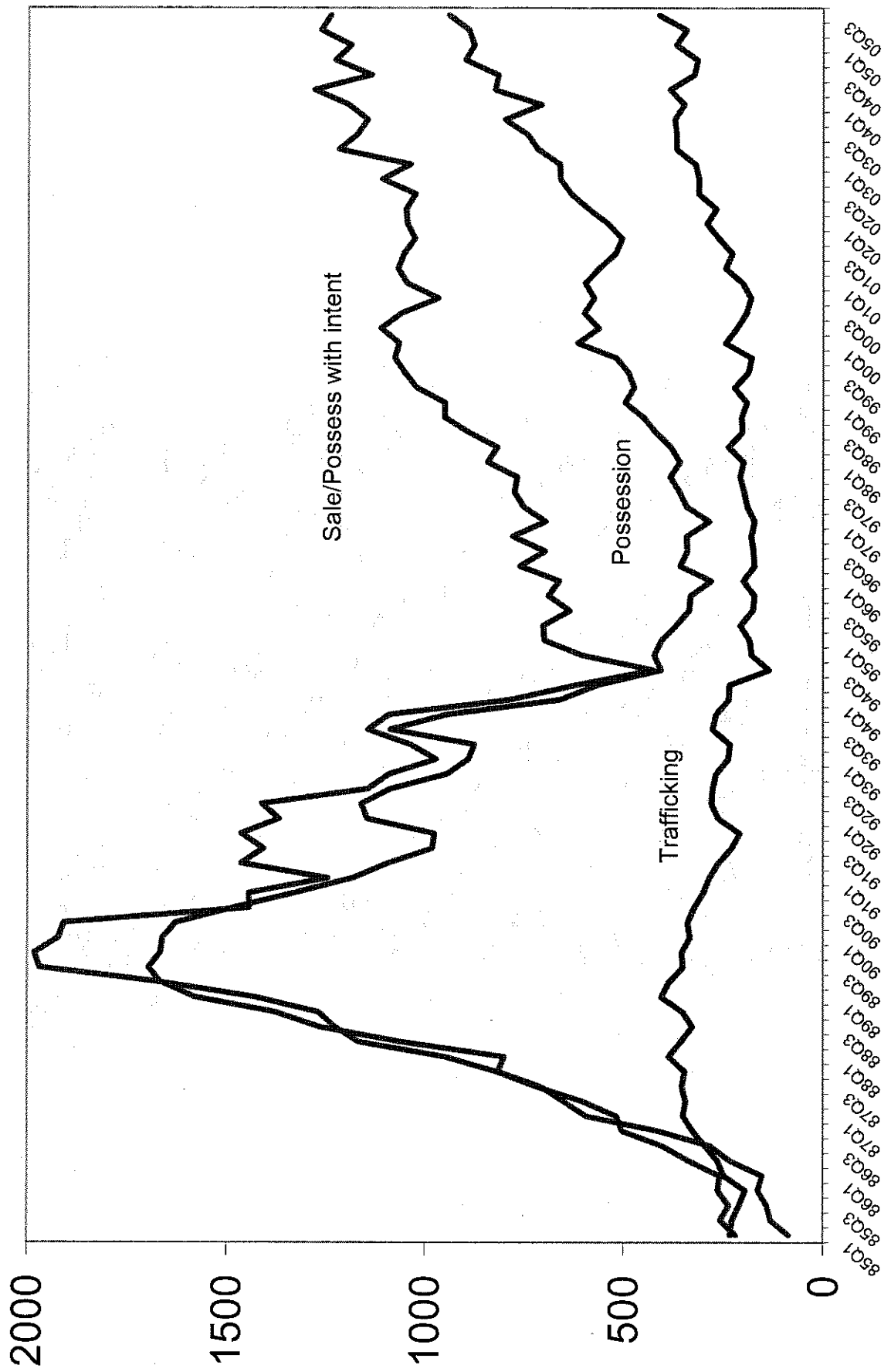
*New court commitments, excludes technical violators without new sentences

PRIMARY OFFENSE TYPES OF NEW ADMISSIONS*
FISCAL YEAR COMPARISONS
(History, Percent Change From Prior Year)

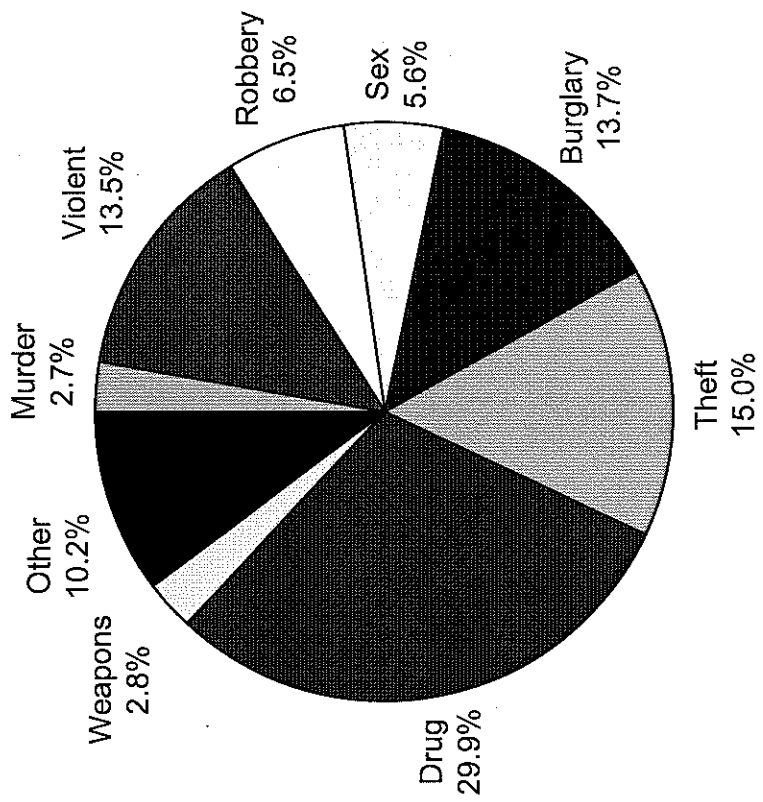
<u>CATEGORY</u>	<u>FY0304</u>	<u>%</u>	<u>FY0405</u>	<u>%</u>
		<u>CHANGE</u>		<u>CHANGE</u>
Murder	914	3.0%	860	-6.0%
Sexual Offenses	1,872	12.2%	1,785	-4.7%
Robbery	2,150	-5.5%	2,075	-3.5%
Violent Personal Crimes	4,357	10.8%	4,319	-0.9%
Burglary	4,376	4.9%	4,378	0.1%
Theft, Forgery, Fraud	4,977	17.8%	4,800	-3.6%
Drug Offenses	9,261	11.5%	9,571	3.4%
Weapon Offenses	866	1.2%	901	4.1%
Other	2,864	22.6%	3,275	14.3%
TOTAL	31,637	10.4%	31,964	1.0%

*New court commitments, excludes technical violators without new sentences

DRUG ADMISSIONS BY TYPE QUARTERLY



Admissions by Type FY 2004-05



ANALYSIS OF NEW COMMITMENTS BY OFFENSE

	Time period		Change	Percent Change	Percentage Share
	FY 03-04	FY 04-05			
Murder/Manslaughter	861	789	(72)	-8.4%	-28.7%
Sexual/Lewd Behavior	1,751	1,692	(59)	-3.4%	-23.5%
Robbery	2,081	2,013	(68)	-3.3%	-27.1%
Violent, Other	4,074	4,055	(19)	-0.5%	-7.6%
Burglary	4,211	4,196	(15)	-0.4%	-6.0%
Property Theft/Fraud/Damage	4,766	4,557	(209)	-4.4%	-83.3%
Drugs	8,844	9,168	324	3.7%	129.1%
Weapons	830	860	30	3.6%	12.0%
Other	2,711	3,050	339	12.5%	135.1%
Total	30,129	30,380	251	0.8%	100.0%
Missing	981	958			

ANALYSIS OF NEW COMMITMENTS OFFENSE CATEGORY "OTHER"

	Time period		Change	Percent Change	Percentage Share
	FY 03-04	FY 04-05			
Fleeing/eluding LEO offenses	671	771	100	14.9%	29.5%
Sex offender registration offenses	146	219	73	50.0%	21.5%
Drive with license suspended/revoked	1,005	1,066	61	6.1%	18.0%
Felony DUI (3rd or 4th conviction)	268	310	42	15.7%	12.4%
Prostitution--3rd conviction	48	64	16	33.3%	4.7%
Introduce drug, weapon in county facility	58	73	15	25.9%	4.4%
TOTAL-- "Other " offenses	2,711	3,050	339	12.5%	

ANALYSIS OF NEW COMMITMENTS OFFENSE CATEGORY "DRUGS"

	Time period		Change	Percent Change	Percentage Share
	FY 03-04	FY 04-05			
Cocaine possession	2265	2504	239	10.6%	70.5%
Possess controlled substance/other	180	286	106	58.9%	31.3%
Possess methamphetamine	153	220	67	43.8%	19.8%
Marijuana--S/M/D	226	291	65	28.8%	19.2%
Possess/Distribute chemical to manufacture controlled substance	21	48	27	128.6%	8.0%
S/M/D other Schedule I or II	30	53	23	76.7%	6.8%
S/M/D meth offenses	92	110	18	19.6%	5.3%
All "Drug " offenses	8,844	9,168	324	3.7%	

NEW COMMITMENT OFFENSE DISTRIBUTION

	FY 03-04	FY 04-05	July to Sep-05
Murder/Manslaughter	2.9%	2.6%	2.4%
Sexual/Lewd Behavior	5.8%	5.6%	5.4%
Robbery	6.9%	6.6%	5.9%
Violent, Other	13.5%	13.3%	13.7%
Burglary	14.0%	13.8%	13.6%
Property Theft/Fraud/Damage	15.8%	15.0%	15.4%
Drugs	29.4%	30.2%	29.6%
Weapons	2.8%	2.8%	2.7%
Other	9.0%	10.0%	11.4%
Total	100.0%	100.0%	100.0%

ANALYSIS OF NEW COMMITMENTS OFFENSE CATEGORY "OTHER"

	FY 03-04	FY 04-05	July to Sep-05
--	----------	----------	-------------------

Fleeing/eluding LEO offenses	671	771	107
Sex offender registration offenses	146	219	140
Drive with license suspended/revoked	1,005	1,066	305
Felony DUI (3rd or 4th conviction)	268	310	90
Prostitution--3rd conviction	48	64	13
Introduce drug, weapon in county facility	58	73	18
 Sub-total	 2,196	 2,503	 673
TOTAL-- "Other " offenses	2,711	3,050	828

Percent of Total "Other" Offenses

	FY 03-04	FY 04-05	July to Sep-05
--	----------	----------	-------------------

Fleeing/eluding LEO offenses	24.8%	25.3%	12.9%
Sex offender registration offenses	5.4%	7.2%	16.9%
Drive with license suspended/revoked	37.1%	35.0%	36.8%
Felony DUI (3rd or 4th conviction)	9.9%	10.2%	10.9%
Prostitution--3rd conviction	1.8%	2.1%	1.6%
Introduce drug, weapon in county facility	2.1%	2.4%	2.2%
 TOTAL-- "Other " offenses	 2,711	 3,050	 828

SENTENCE LENGTHS BY OFFENSE TYPE

New Court Commitments

AVERAGE SENTENCE LENGTHS (In Years)

CATEGORY	FY	FY	FY	FY	FY	FY	FY	FY
	97-98	98-99	99-00	00-01	01-02	02-03	03-04	04-05
Murder	24.9	24.3	23.6	23.9	22.9	23.2	23.8	24.8
Sexual Offenses	11.5	11.0	10.8	10.6	11.1	11.2	10.2	10.9
Robbery	8.4	8.9	8.8	8.7	8.9	8.8	8.7	8.7
Violent Personal Crime	4.8	4.7	4.7	4.7	4.6	4.5	4.4	4.2
Burglary	5.2	5.3	5.2	5.1	4.9	4.9	5.0	4.9
Theft, Forgery, Fraud	3.0	2.6	2.7	2.5	2.5	2.5	2.4	2.4
Drug Offenses	3.1	3.0	2.9	2.9	3.0	3.0	2.9	2.9
Weapon Offenses	3.9	3.9	4.1	4.0	4.3	3.8	3.9	3.7
Other Offenses	3.0	2.8	2.7	2.5	2.7	2.6	2.4	2.4
All Offenses	5.9	5.6	5.3	5.1	5.1	5.0	4.7	4.6

AVERAGE SENTENCE LENGTHS BY MONTH OF ADMISSION

(New Court Commitments)

Jan 1997	6.1	Oct 1999	5.3	Jul 2002	4.9	Apr 2005	4.8
Feb 1997	5.7	Nov 1999	5.6	Aug 2002	4.9	May 2005	4.7
Mar 1997	5.6	Dec 1999	5.3	Sep 2002	4.9	June 2005	4.7
Apr 1997	5.7	Jan 2000	5.0	Oct 2002	5.2	July 2005	4.5
May 1997	5.8	Feb 2000	5.3	Nov 2002	4.7	Aug 2005	4.7
June 1997	5.7	Mar 2000	5.1	Dec 2002	5.0	Sep 2005	4.8
July 1997	5.9	Apr 2000	5.1	Jan 2003	5.0		
Aug 1997	5.8	May 2000	5.4	Feb 2003	4.7		
Sept 1997	5.7	Jun 2000	5.5	Mar 2003	4.8		
Oct 1997	5.7	Jul 2000	5.3	Apr 2003	5.1		
Nov 1997	7.0	Aug 2000	5.0	May 2003	5.2		
Dec 1997	6.6	Sep 2000	5.1	June 2003	5.1		
Jan 1998	5.5	Oct 2000	5.0	Jul 2003	4.8		
Feb 1998	5.7	Nov 2000	4.9	Aug 2003	4.7		
Mar 1998	5.9	Dec 2000	5.2	Sep 2003	4.9		
Apr 1998	5.9	Jan 2001	5.2	Oct 2003	4.7		
May 1998	5.6	Feb 2001	4.8	Nov 2003	4.8		
Jun 1998	5.7	Mar 2001	5.2	Dec 2003	4.9		
Jul 1998	5.3	Apr 2001	5.2	Jan 2004	4.6		
Aug 1998	6.3	May 2001	5.1	Feb 2004	4.5		
Sep 1998	5.8	Jun 2001	5.6	Mar 2004	4.7		
Oct 1998	5.7	Jul 2001	5.1	Apr 2004	4.9		
Nov 1998	5.8	Aug 2001	5.4	May 2004	4.5		
Dec 1998	5.5	Sep 2001	4.7	June 2004	4.8		
Jan 1999	5.4	Oct 2001	5.1	July 2004	4.9		
Feb 1999	5.5	Nov 2001	5.4	Aug 2004	4.6		
Mar 1999	5.5	Dec 2001	5.2	Sep 2004	4.5		
Apr 1999	5.4	Jan 2002	5.0	Oct 2004	4.6		
May 1999	5.6	Feb 2002	4.8	Nov 2004	4.6		
June 1999	5.5	Mar 2002	4.8	Dec 2004	4.5		
July 1999	5.7	Apr 2002	5.2	Jan 2005	4.6		
Aug 1999	5.4	May 2002	5.3	Feb 2005	4.4		
Sept 1999	5.4	Jun 2002	5.1	Mar 2005	4.7		

(All sentences over 50 years have been treated as sentences of 50 yrs in the calculation of the mean, including life and death sentences.)

SENTENCE LENGTHS BY OFFENSE TYPE
New Court Commitments

AVERAGE SENTENCE LENGTHS (In Years)

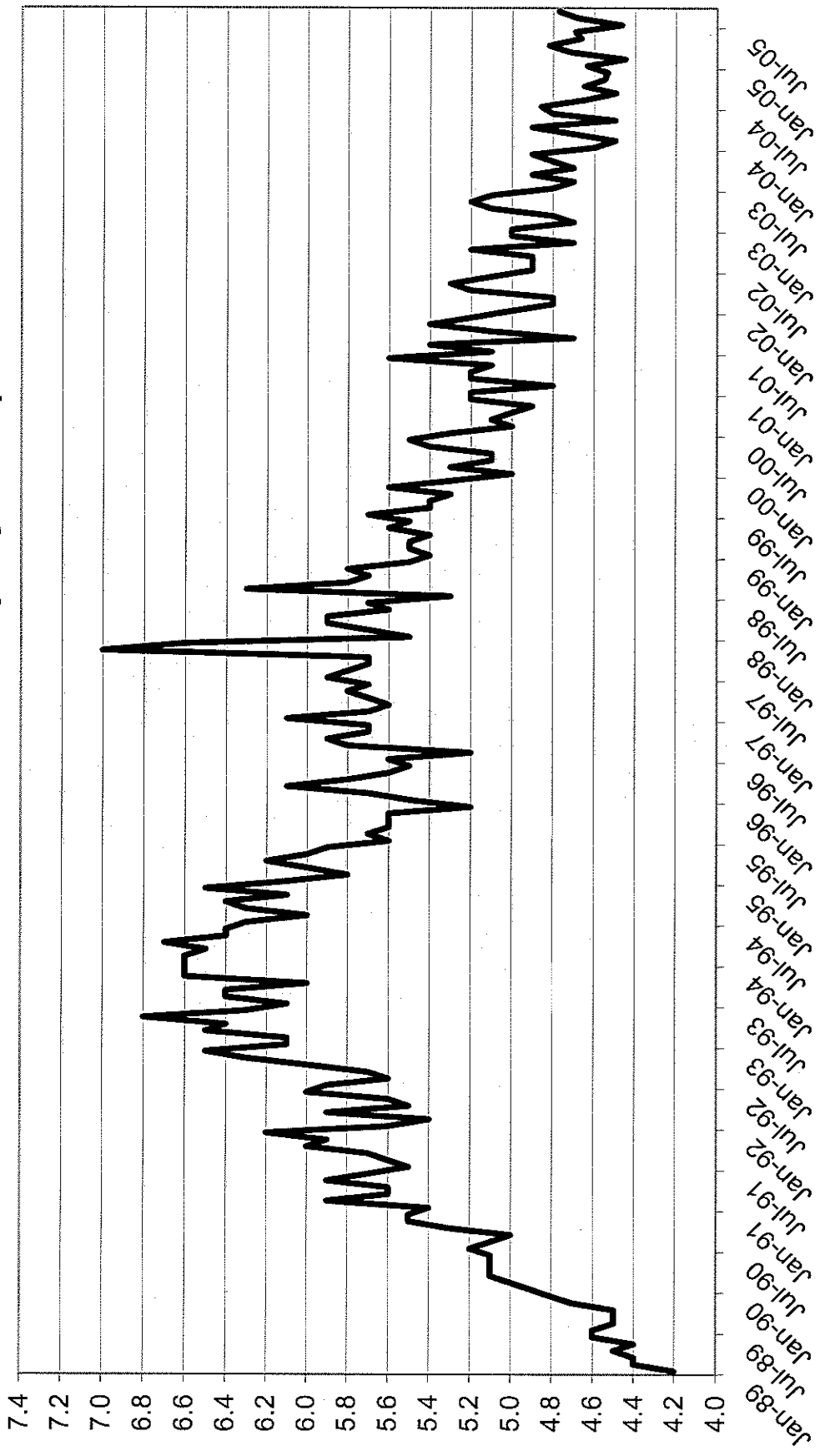
<u>CATEGORY</u>	<u>FY</u> <u>89-90</u>	<u>FY</u> <u>90-91</u>	<u>FY</u> <u>91-92</u>	<u>FY</u> <u>92-93</u>	<u>FY</u> <u>93-94</u>	<u>FY</u> <u>94-95</u>	<u>FY</u> <u>95-96</u>	<u>FY</u> <u>96-97</u>
Murder	20.2	21.0	21.4	21.7	21.9	22.5	21.1	21.0
Sexual Offenses	12.6	13.8	13.3	13.1	13.6	12.3	10.9	11.8
Robbery	7.4	7.8	8.1	8.6	8.8	7.7	7.3	7.2
Violent Personal Crime	3.2	3.7	5.3	5.5	5.5	5.0	4.2	4.6
Burglary	4.3	5.0	5.2	5.6	5.7	5.2	4.6	4.9
Theft, Forgery, Fraud	3.1	3.6	3.7	4.2	4.2	3.6	3.0	2.9
Drug Offenses	3.4	3.7	3.9	4.2	4.2	3.6	3.1	3.3
Weapon Offenses	3.2	4.1	3.8	4.2	4.1	3.6	3.5	3.9
Other Offenses	5.8	7.1	3.8	4.3	4.2	3.6	3.7	2.9
All Offenses	4.8	5.3	5.7	6.2	6.4	6.1	5.6	5.7

AVERAGE SENTENCE LENGTHS BY MONTH OF ADMISSION
(New Court Commitments)

Jan 1989	4.2	Jan 1991	5.4	Jan 1993	6.1	Jan 1995	6.1
Feb 1989	4.4	Feb 1991	5.9	Feb 1993	6.1	Feb 1995	5.8
Mar 1989	4.4	Mar 1991	5.6	Mar 1993	6.5	Mar 1995	6.0
Apr 1989	4.5	Apr 1991	5.6	Apr 1993	6.4	Apr 1995	6.2
May 1989	4.4	May 1991	5.9	May 1993	6.8	May 1995	6.0
June 1989	4.6	June 1991	5.7	June 1993	6.3	June 1995	5.9
July 1989	4.6	July 1991	5.5	July 1993	6.1	July 1995	5.6
Aug 1989	4.5	Aug 1991	5.6	Aug 1993	6.4	Aug 1995	5.7
Sept 1989	4.5	Sept 1991	5.7	Sept 1993	6.4	Sept 1995	5.6
Oct 1989	4.5	Oct 1991	6.0	Oct 1993	6.0	Oct 1995	5.6
Nov 1989	4.7	Nov 1991	5.9	Nov 1993	6.6	Nov 1995	5.6
Dec 1989	4.8	Dec 1991	6.2	Dec 1993	6.6	Dec 1995	5.2
Jan 1990	4.9	Jan 1992	5.6	Jan 1994	6.6	Jan 1996	5.5
Feb 1990	5.0	Feb 1992	5.4	Feb 1994	6.6	Feb 1996	5.7
Mar 1990	5.1	Mar 1992	5.9	Mar 1994	6.5	Mar 1996	6.1
Apr 1990	5.1	Apr 1992	5.5	Apr 1994	6.7	Apr 1996	5.8
May 1990	5.1	May 1992	5.6	May 1994	6.4	May 1996	5.6
June 1990	5.1	June 1992	6.0	June 1994	6.4	June 1996	5.5
July 1990	5.2	July 1992	5.9	July 1994	6.3	July 1996	5.6
Aug 1990	5.1	Aug 1992	5.6	Aug 1994	6.0	Aug 1996	5.2
Sept 1990	5.0	Sept 1992	5.7	Sept 1994	6.3	Sept 1996	5.8
Oct 1990	5.3	Oct 1992	6.0	Oct 1994	6.4	Oct 1996	5.9
Nov 1990	5.5	Nov 1992	6.3	Nov 1994	6.1	Nov 1996	5.7
Dec 1990	5.5	Dec 1992	6.5	Dec 1994	6.5	Dec 1996	5.7

(All sentences over 50 years have been treated as sentences of 50 yrs in the calculation of the mean, including life and death sentences.)

AVERAGE SENTENCE LENGTH OF ADMISSIONS (in years)



**SENTENCE LENGTH DISTRIBUTION USED
IN RELEASE MODEL FOR NEW COMMITMENTS**

Sentence Length	9/25/02 CJEC ¹		10/18/04 CJEC ²		11/17/05 CJEC ³	
	%	Cum. %	%	Cum. %	%	Cum. %
12 - 15 months	18.3%	18.3%	22.1%	22.1%	23.5%	23.5%
15.1 - 21 months	14.9%	33.2%	14.4%	36.6%	14.5%	37.9%
21.1 - 27 months	13.7%	46.9%	13.5%	50.1%	13.4%	51.4%
27.1 - 33 months	6.5%	53.4%	6.0%	56.1%	6.2%	57.5%
33.1 - 39 months	10.8%	64.2%	10.8%	66.9%	10.5%	68.0%
39.1 - 45 months	3.1%	67.4%	2.9%	69.7%	2.8%	70.8%
45.1 - 51 months	4.9%	72.3%	4.5%	74.2%	4.5%	75.4%
51.1 - 57 months	1.5%	73.7%	1.2%	75.4%	1.1%	76.4%
57.1 - 78 months	9.5%	83.3%	9.3%	84.7%	8.8%	85.2%
78.1 - 102 months	3.4%	86.7%	3.5%	88.1%	3.2%	88.5%
GT 102 months	13.4%	100.0%	11.9%	100.0%	11.5%	100.0%
	100.0%		100.0%		100.0%	

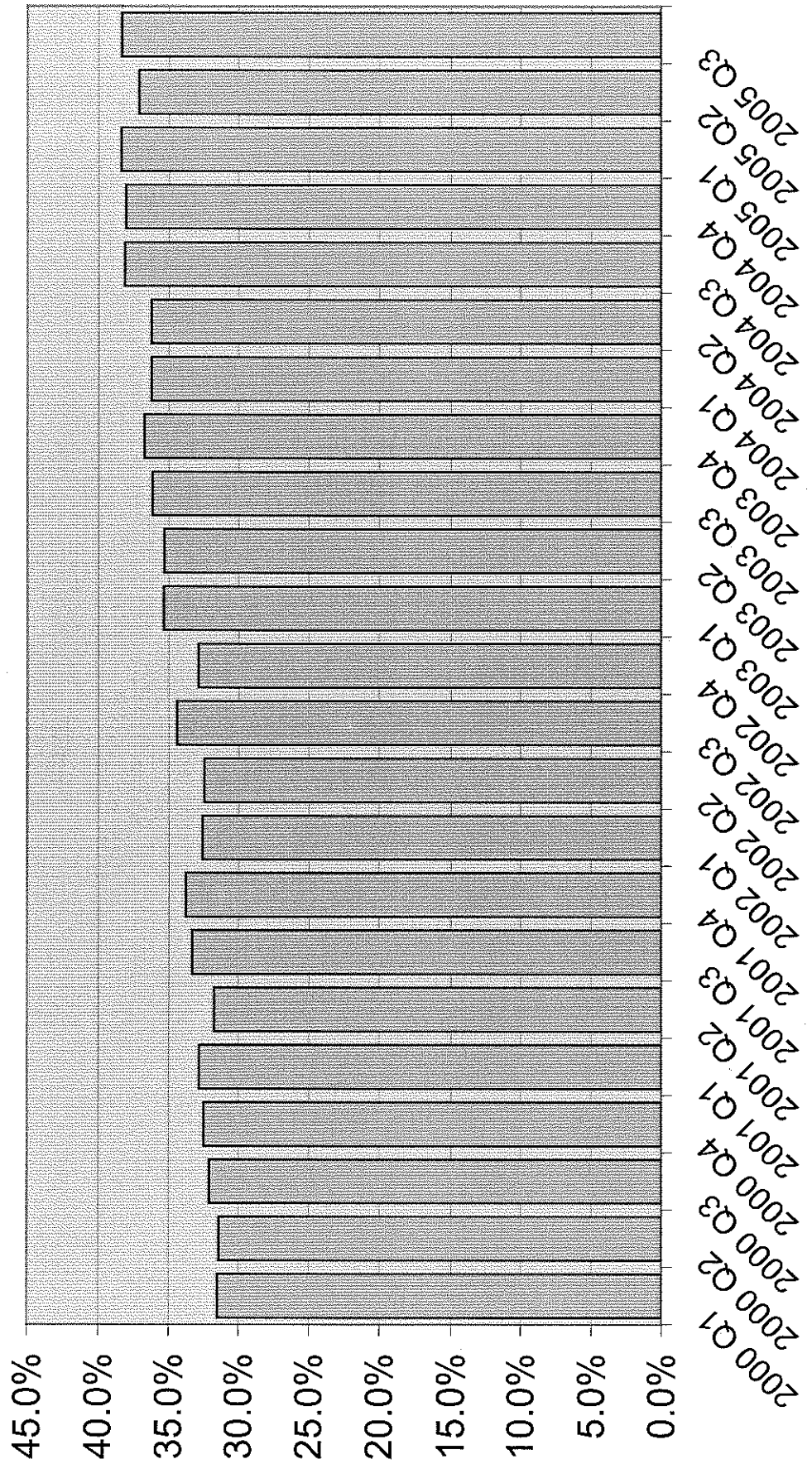
¹ New commitments 9/1/01 through 8/31/02

² New commitments 9/1/03 through 8/31/04

³ New commitments 9/1/04 through 8/31/05

Prepared 10/27/05

Percentage of New Commitments with Sentences of 21 Months or Less



New Commitments to Prison

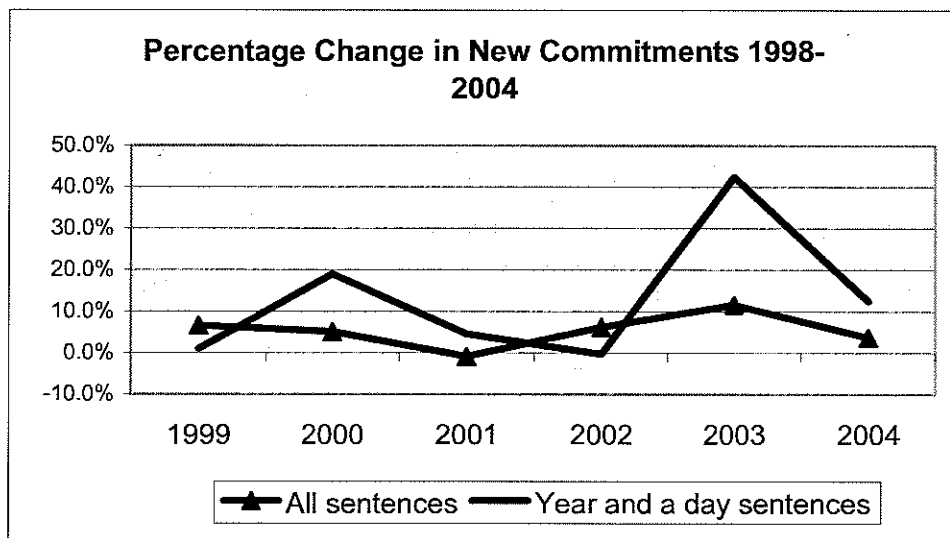
Year	All sentences	Year and a day sentences	Year and a day sentences as percent of all sentences
1998	22,629	1,835	8.1%
1999	24,118	1,853	7.7%
2000	25,350	2,206	8.7%
2001	25,140	2,306	9.2%
2002	26,687	2,298	8.6%
2003	29,788	3,274	11.0%
2004	30,894	3,681	11.9%
2005 (1st 9 mo.)	24,798	3,203	12.9%

Change from prior year

Year	All sentences	Year and a day sentences
1999	1,489	18
2000	1,232	353
2001	(210)	100
2002	1,547	(8)
2003	3,101	976
2004	1,106	407

Percentage change from prior year

Year	All sentences	Year and a day sentences
1999	6.6%	1.0%
2000	5.1%	19.1%
2001	-0.8%	4.5%
2002	6.2%	-0.3%
2003	11.6%	42.5%
2004	3.7%	12.4%



ANALYSIS OF ADMISSIONS BY COUNTY

	Time period		Change	Percent Change	% of Statewide Change	Cumulative % of Statewide Change
	FY 03-04	FY 04-05				
Marion	379	704	325	85.8%	141.3%	141.3%
Volusia	1,269	1,458	189	14.9%	82.2%	223.5%
Polk	1,757	1,942	185	10.5%	80.4%	303.9%
Walton	99	209	110	111.1%	47.8%	351.7%
Manatee	308	393	85	27.6%	37.0%	388.7%
Pasco	541	626	85	15.7%	37.0%	425.7%
Statewide	31,102	31,332	230	0.7%	100.0%	
Broward	2,748	2,748	-	0.0%	0.0%	
Miami-Dade	2,046	1,990	(56)	-2.7%	-24.3%	
Pinellas	1,726	1,742	16	0.9%	7.0%	

Prepared by Florida Legislature, Office of Economic and Demographic Research, 10/7/2005.

Source: Monthly status files prepared by the Department of Corrections.

ANALYSIS OF ADMISSIONS BY COUNTY

	Time period		Change	Percent Change	% of Statewide Change	Cumulative % of Statewide Change
	2003 Q 3	2005 Q 3				
Hillsborough	641	896	255	39.8%	24.3%	24.3%
Polk	417	649	232	55.6%	22.1%	46.4%
Marion	84	265	181	215.5%	17.2%	63.6%
Brevard	195	298	103	52.8%	9.8%	73.4%
Duval	343	420	77	22.4%	7.3%	80.8%
Palm Beach	238	313	75	31.5%	7.1%	87.9%
Statewide	7,519	8,569	1,050	14.0%	100.0%	
Broward	719	649	(70)	-9.7%	-6.7%	
Miami-Dade	552	492	(60)	-10.9%	-5.7%	
Pinellas	439	382	(57)	-13.0%	-5.4%	

Prepared by Florida Legislature, Office of Economic and Demographic Research, 10/7/2005.
 Source: Monthly status files prepared by the Department of Corrections.

AVERAGE DAILY POPULATION COUNTY JAILS

	ADP June 2001	ADP June 2002	ADP June 2003	ADP June 2004	ADP June 2005
HILLSBOROUGH	3,340	3,399	3,948	3,328	4,636
ORANGE	3,952	3,811	3,899	3,424	3,755
BREVARD	1,212	1,227	1,381	1,327	1,492
LEON	979	1,004	1,106	1,054	1,072
VOLUSIA	1,212	1,227	1,443	1,489	1,611
POLK	1,818	1,844	2,464	2,486	2,752
ESCAMBIA	1,611	1,713	1,748	1,692	1,563
ST. LUCIE	759	920	1,080	1,238	NR
ALACHUA	783	926	1,032	1,065	1,100
OSCEOLA	830	967	1,003	981	911
DUVAL	3,025	2,965	NR	3,634	3,576
NR=Nonreporting					
BROWARD	NR	4,890	4,779	4,987	5,176
MIAMI-DADE	6,748	6,821	6,855	6,803	6,701
PINELLAS	2,769	2,958	2,911	3,156	3,381
STATEWIDE	46,946	51,969	54,320	57,453	59,046

Hillsborough has reported a programing error which understated historical numbers.

June 2001 missing Gulf, Holmes, Jackson, Taylor, Broward.

June 2002 missing Baker, Bradford, Charlotte, Dixie, Gulf, Highlands, Holmes, Indian River, Liberty, and St. Johns

June 2003 missing Calhoun, and Duval.

June 2004 missing Bradford, Monroe (Main Jail only), Okeechobee, Sumter, and Walton

June 2005 missing Hendry, Lafayette, Okaloosa, Okeechobee, St. Lucie, Sumter, Union, and Washington.

Data Source: Dept. of Corrections, Florida County Detention Facilities ADP
Economic and Demographic Research 10/29/2005

"Zero Tolerance" Policy for Community Supervision Violators

<i>Technical violators to prison FY 2002-03:</i>	7,898	% Cng	
<i>Technical violators to prison FY 2003-04:</i>	9,478	20.0%	
<i>Technical violators to prison FY 2004-05:</i>	10,124	6.8%	
<i>Monthly average July 2002 through February 2003 (before zero tolerance):</i>			633
<i>Monthly average March 2003 through June 2005 (after zero tolerance):</i>			801
<i>Difference per month:</i>			168
<i>Total increase in violator admissions since start of zero tolerance:</i>			4,712

By supervision type:

<i>Community Control:</i>		
Monthly average July 2002 through February 2003	187	
Monthly average March 2003 through June 2005	203	
Increase per month:	16	

Drug Offender Probation:

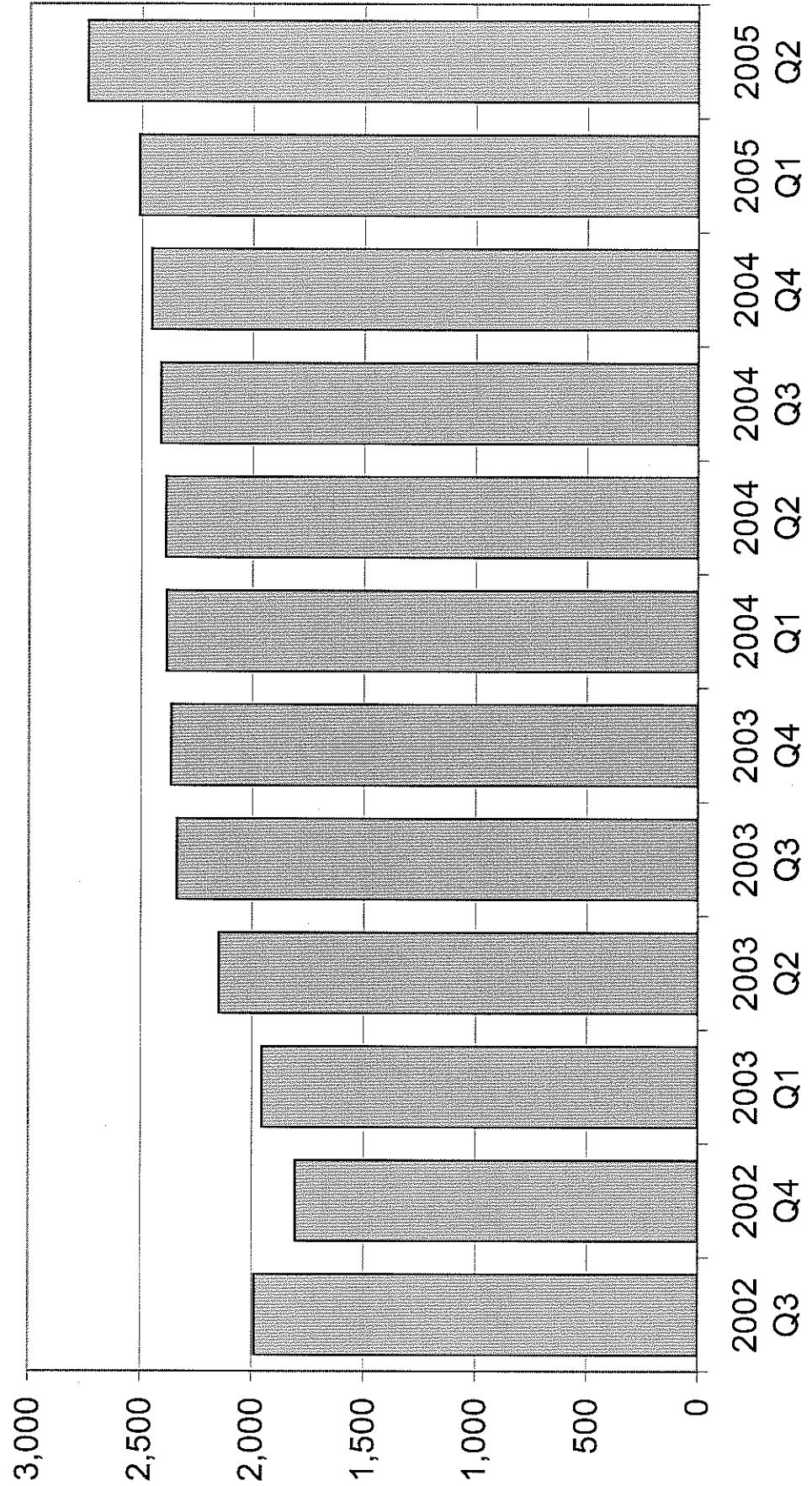
Monthly average July 2002 through February 2003	80	
Monthly average March 2003 through June 2005	121	
Increase per month:	41	

Probation:

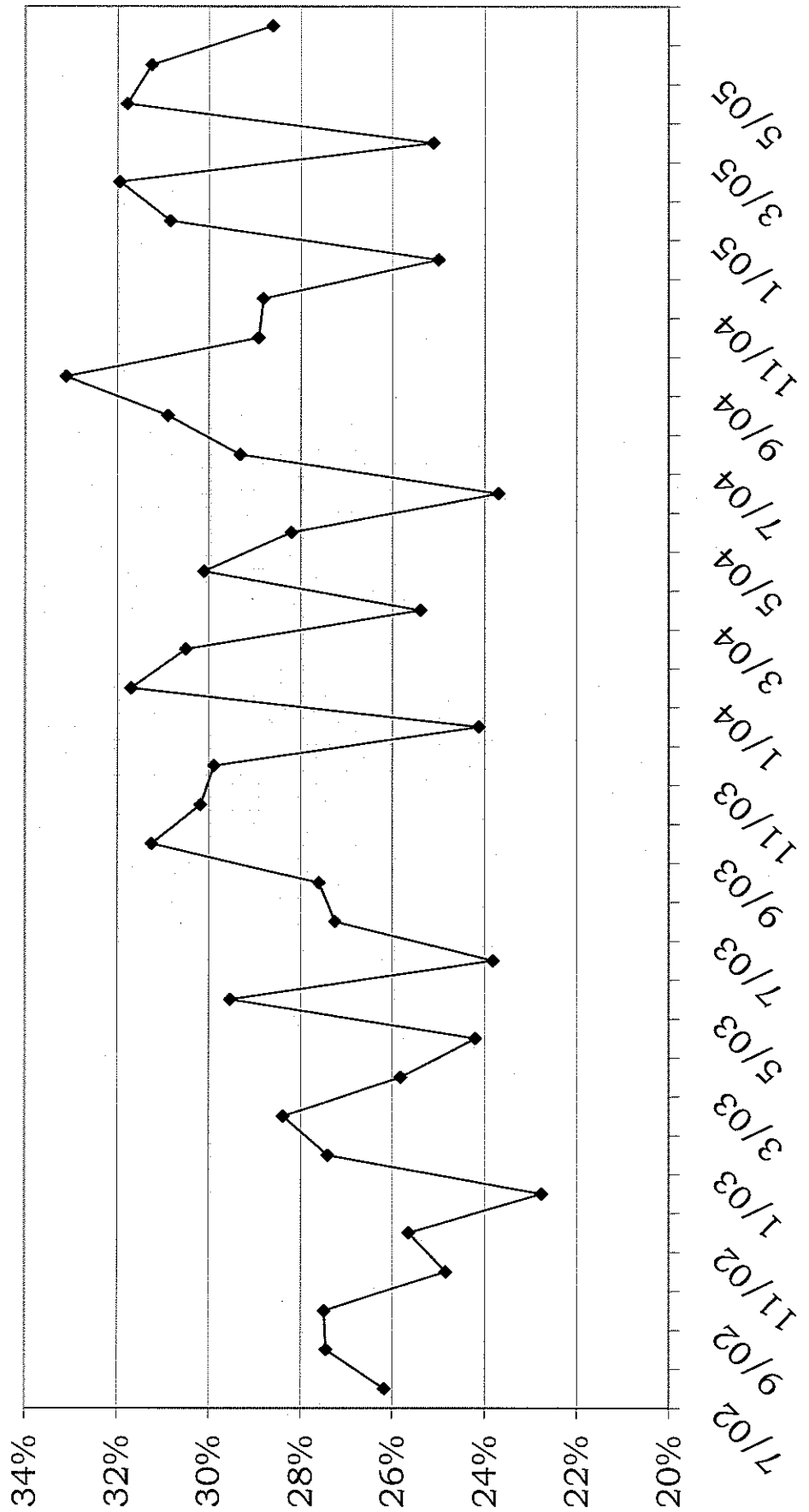
Monthly average July 2002 through February 2003	267	
Monthly average March 2003 through June 2005	336	
Increase per month:	69	

Data prepared by: Florida Department of Corrections, Bureau of Research and Data Analysis; October 2005.
 Other includes misdemeanor probation, state parole, conditional pardon, pretrial intervention, sex offender community control, addiction recovery, CC-parole, administrative probation, provisional release, control release, conditional medical release, and pretrial drug offender intervention.

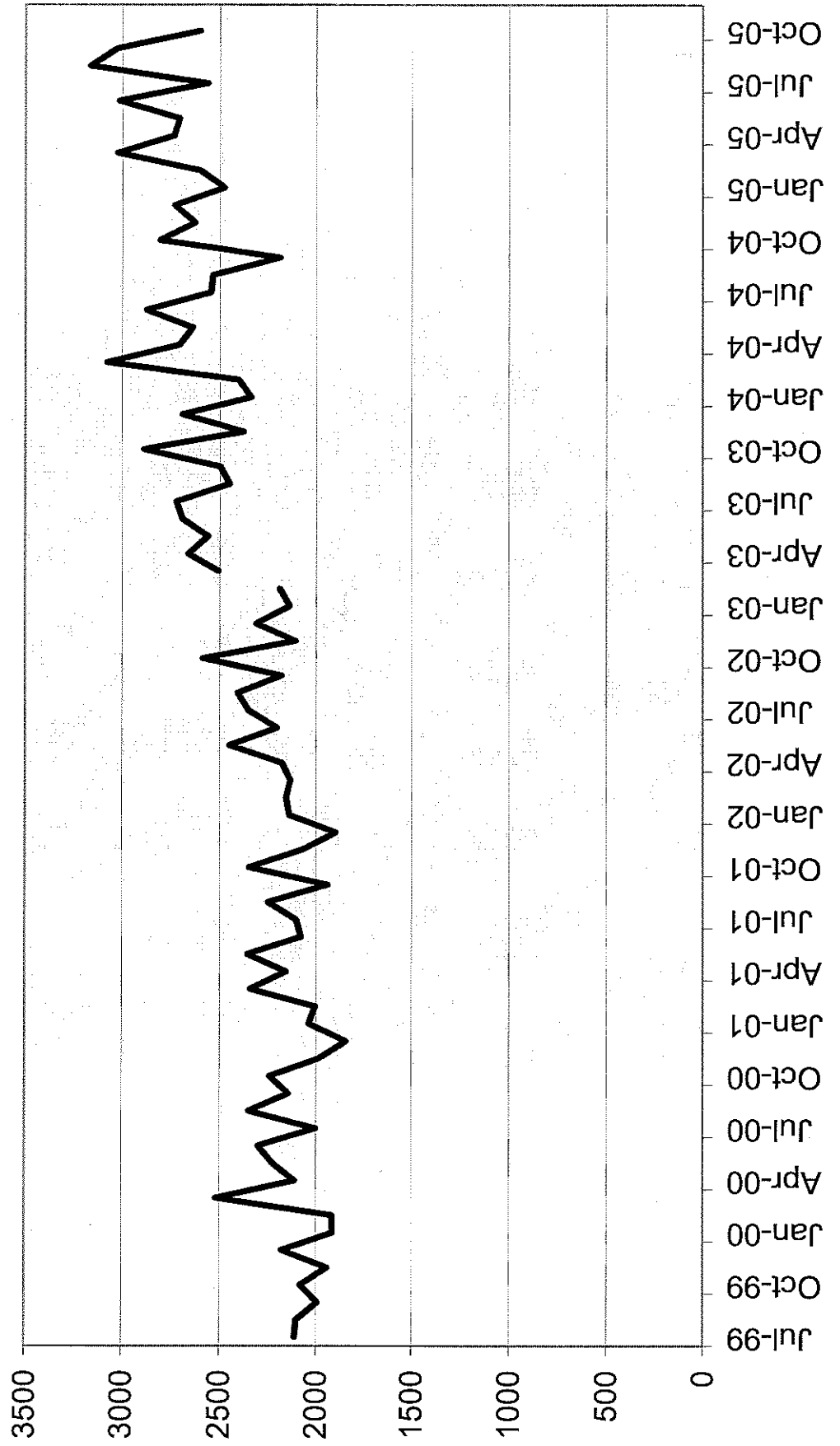
SUPERVISION VIOLATORS TO PRISON (Quarterly)



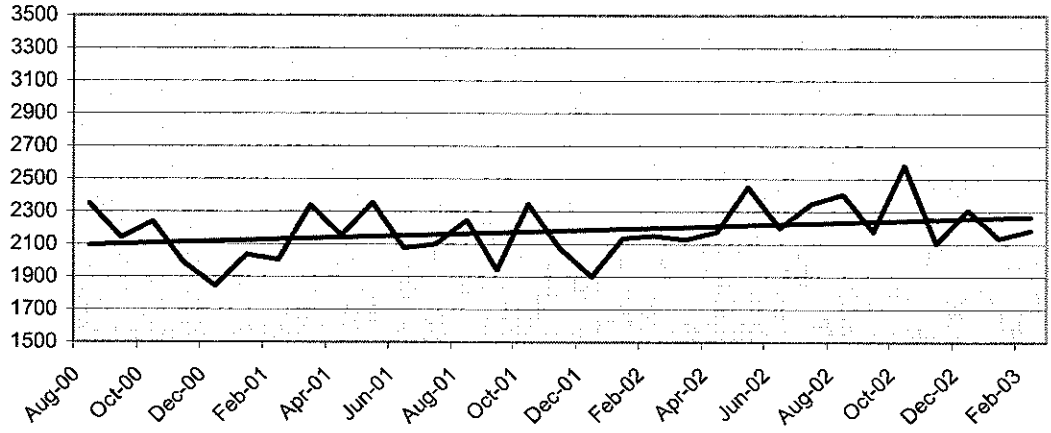
Percent Technical Violators of All Admissions



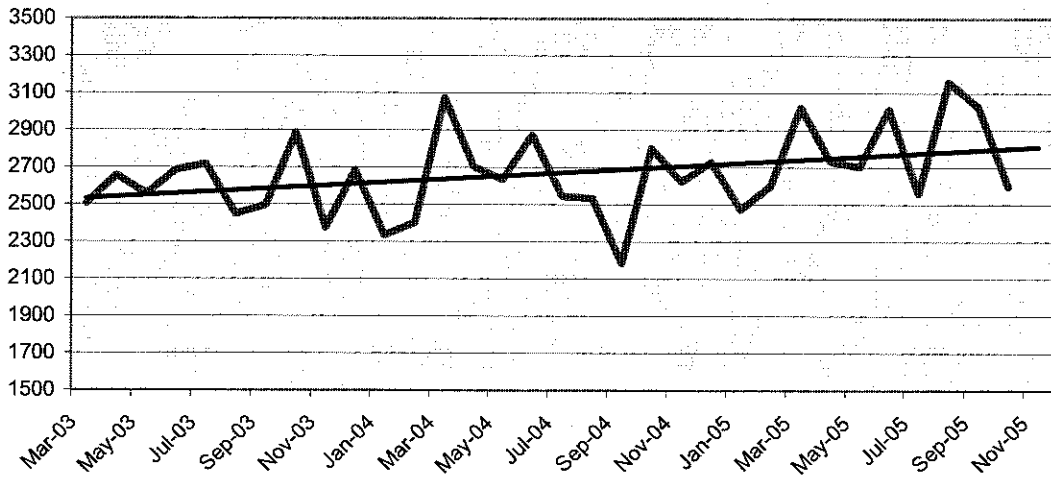
New Commitments



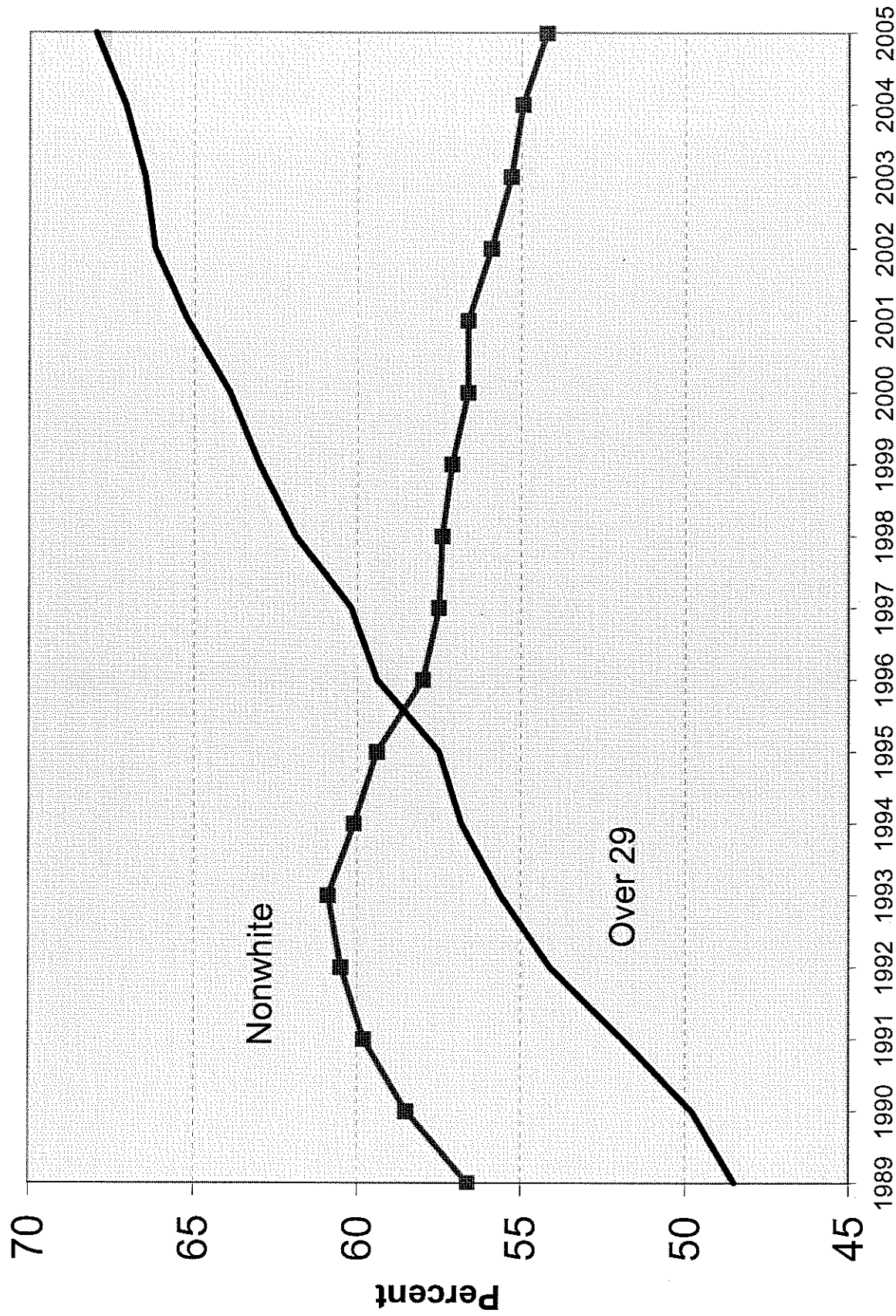
Earlier New Commitments (Aug 2000-Feb 2003)



Recent New Commitments (Mar 2003-Oct 2005)



AGE AND RACE TRENDS OF INMATES



Status Population on June 30th

DEMOGRAPHIC PROFILE IN BRIEF OF STATUS POPULATIONS

	Inmates As Of <u>6/30/97</u>		Inmates As Of <u>6/30/98</u>		Inmates As Of <u>6/30/99</u>		Inmates As Of <u>6/30/00</u>	
	<u>Percent</u>		<u>Percent</u>		<u>Percent</u>		<u>Percent</u>	
SEX:								
Male	61,282	94.7%	62,768	94.7%	64,966	94.7%	67,214	94.4%
Female	<u>3,431</u>	<u>5.3%</u>	<u>3,512</u>	<u>5.3%</u>	<u>3,633</u>	<u>5.3%</u>	<u>4,019</u>	<u>5.6%</u>
TOTAL	64,713	100.0%	66,280	100.0%	68,599	100.0%	71,233	100.0%
RACE:								
White	27,518	42.5%	28,235	42.6%	29,405	42.9%	30,894	43.4%
Black	35,874	55.4%	36,669	55.3%	37,718	55.0%	38,679	54.3%
Other	<u>1,321</u>	<u>2.0%</u>	<u>1,376</u>	<u>2.1%</u>	<u>1,476</u>	<u>2.2%</u>	<u>1,660</u>	<u>2.3%</u>
TOTAL	64,713	100.0%	66,280	100.0%	68,599	100.0%	71,233	100.0%
COUNTY								
COMMITTED FROM:								
Dade	8,590	13.3%	9,008	13.6%	9,160	13.4%	8,875	12.5%
Broward	6,970	10.8%	7,183	10.8%	7,686	11.2%	7,869	11.0%
Hillsborough	6,224	9.6%	6,255	9.4%	6,351	9.3%	6,150	8.6%
Pinellas	4,358	6.7%	4,240	6.4%	4,580	6.7%	4,684	6.6%
Duval	3,867	6.0%	4,169	6.3%	4,495	6.6%	4,611	6.5%
Orange	3,572	5.5%	3,600	5.4%	3,767	5.5%	4,264	6.0%
Palm Beach	2,637	4.1%	2,879	4.3%	3,096	4.5%	3,147	4.4%
Polk	2,754	4.3%	2,593	3.9%	2,736	4.0%	2,818	4.0%
Escambia	1,860	2.9%	1,947	2.9%	2,138	3.1%	2,167	3.0%
Brevard	1,645	2.5%	1,638	2.5%	1,736	2.5%	1,596	2.2%
Bay	1,190	1.8%	1,259	1.9%	1,358	2.0%	1,516	2.1%
Volusia	1,460	2.3%	1,395	2.1%	1,586	2.3%	1,409	2.0%
Leon	1,240	1.9%	1,262	1.9%	1,273	1.9%	1,183	1.7%
St. Lucie	882	1.4%	896	1.4%	866	1.3%	1,155	1.6%
Lee	1,005	1.6%	1,142	1.7%	1,146	1.7%	1,145	1.6%
Manatee	890	1.4%	878	1.3%	985	1.4%	1,068	1.5%
Alachua	887	1.4%	839	1.3%	952	1.4%	950	1.3%
Pasco	1,117	1.7%	954	1.4%	970	1.4%	930	1.3%
Sarasota	850	1.3%	920	1.4%	438	0.6%	900	1.3%
Marion	954	1.5%	994	1.5%	966	1.4%	863	1.2%
<u>All Others</u>	<u>11,761</u>	<u>18.2%</u>	<u>12,227</u>	<u>18.4%</u>	<u>12,314</u>	<u>18.0%</u>	<u>13,933</u>	<u>19.6%</u>
TOTAL	64,713	100.0%	66,280	100.0%	68,599	100.0%	71,233	100.0%

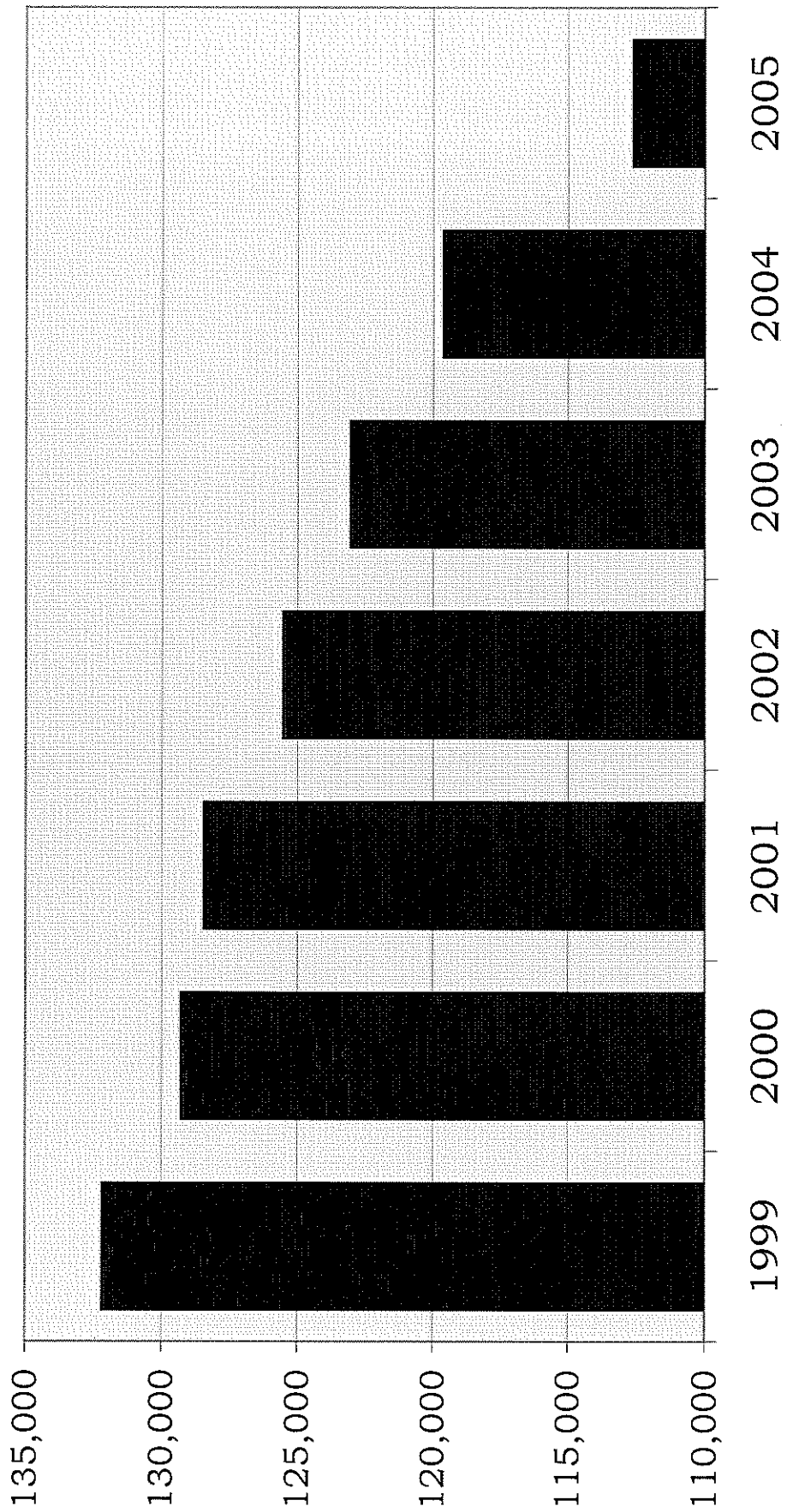
DEMOGRAPHIC PROFILE IN BRIEF OF STATUS POPULATIONS

	Inmates As Of <u>6/30/01</u>		Inmates As Of <u>6/30/02</u>		Inmates As Of <u>6/30/03</u>		Inmates As Of <u>6/30/04</u>	
	<u>Percent</u>		<u>Percent</u>		<u>Percent</u>		<u>Percent</u>	
SEX:								
Male	67,762	94.1%	69,164	94.0%	72,520	93.8%	76,675	93.5%
Female	4,245	5.9%	4,389	6.0%	4,796	6.2%	5,299	6.5%
TOTAL	72,007	100.0%	73,553	100.0%	77,316	100.0%	81,974	100.0%
RACE:								
White	31,308	43.5%	32,384	44.0%	34,588	44.7%	36,935	45.1%
Black	38,852	54.0%	39,239	53.3%	40,583	52.5%	42,572	51.9%
Other	1,847	2.6%	1,930	2.6%	2,145	2.8%	2,467	3.0%
TOTAL	72,007	100.0%	73,553	100.0%	77,316	100.0%	81,974	100.0%
COUNTY COMMITTED FROM:								
Miami-Dade	8,717	12.1%	8,681	11.8%	8,935	11.6%	8,664	10.6%
Broward	7,586	10.5%	7,765	10.6%	8,167	10.6%	8,172	10.0%
Hillsborough	6,242	8.7%	5,837	7.9%	6,166	8.0%	6,968	8.5%
Orange	4,362	6.1%	4,562	6.2%	4,890	6.3%	5,393	6.6%
Duval	4,838	6.7%	4,937	6.7%	5,182	6.7%	5,306	6.5%
Pinellas	4,698	6.5%	4,842	6.6%	5,166	6.7%	5,144	6.3%
Polk	3,049	4.2%	2,993	4.1%	3,265	4.2%	3,347	4.1%
Palm Beach	3,147	4.4%	3,007	4.1%	3,061	4.0%	3,143	3.8%
Escambia	2,106	2.9%	2,153	2.9%	2,545	3.3%	2,796	3.4%
Volusia	2,005	2.8%	2,123	2.9%	2,354	3.0%	2,604	3.2%
Brevard	1,486	2.1%	1,584	2.2%	1,814	2.3%	2,163	2.6%
Leon	1,263	1.8%	1,376	1.9%	1,671	2.2%	1,986	2.4%
Bay	1,508	2.1%	1,535	2.1%	1,533	2.0%	1,664	2.0%
Lee	1,240	1.7%	1,390	1.9%	1,550	2.0%	1,552	1.9%
St. Lucie	1,246	1.7%	1,315	1.8%	1,308	1.7%	1,506	1.8%
Pasco	951	1.3%	1,028	1.4%	1,143	1.5%	1,213	1.5%
Alachua	872	1.2%	909	1.2%	1,031	1.3%	1,210	1.5%
Seminole	959	1.3%	995	1.4%	1,046	1.4%	1,110	1.4%
Manatee	1,118	1.6%	1,116	1.5%	1,146	1.5%	1,104	1.3%
Sarasota	875	1.2%	940	1.3%	1,039	1.3%	1,087	1.3%
Marion	798	1.1%	837	1.1%	820	1.1%	949	1.2%
All Others	12,941	18.0%	13,628	18.5%	13,484	17.4%	14,893	18.2%
TOTAL	72,007	100.0%	73,553	100.0%	77,316	100.0%	81,974	100.0%

DEMOGRAPHIC PROFILE IN BRIEF OF STATUS POPULATIONS

	Inmates As Of <u>6/30/05</u>	<u>Percent</u>
<u>SEX:</u>		
Male	79,221	93.3%
Female	<u>5,680</u>	<u>6.7%</u>
TOTAL	84,901	100.0%
 <u>RACE:</u>		
White	38,870	45.8%
Black	43,303	51.0%
Other	<u>2,728</u>	<u>3.2%</u>
TOTAL	84,901	100.0%
 <u>COUNTY</u>		
<u>COMMITTED FROM:</u>		
Miami-Dade	8,410	9.9%
Broward	8,252	9.7%
Hillsborough	7,432	8.8%
Duval	5,391	6.3%
Pinellas	5,251	6.2%
Orange	5,160	6.1%
Polk	3,517	4.1%
Palm Beach	3,211	3.8%
Volusia	2,926	3.4%
Escambia	2,789	3.3%
Brevard	2,272	2.7%
Leon	2,153	2.5%
Bay	1,744	2.1%
St. Lucie	1,595	1.9%
Lee	1,560	1.8%
Pasco	1,358	1.6%
Marion	1,342	1.6%
Alachua	1,313	1.5%
Seminole	1,179	1.4%
Manatee	1,164	1.4%
Sarasota	1,023	1.2%
All Others	<u>15,859</u>	<u>18.7%</u>
TOTAL	84,901	100.0%

SUPERVISED POPULATION



June 30th

**CRIMINAL JUSTICE ESTIMATING CONFERENCE
PREPARED AUGUST 2005**

	FY 98-99	FY 99-00	FY 00-01	FY 01-02	FY 02-03	FY 03-04	FY 04-05	FY 05-06	FY 06-07	FY 07-08
PROBATION										
GAINS	60,234	59,434	59,321	58,450	58,827	59,123	59,174	59,872	60,201	60,201
LOSSES	57,174	61,531	60,288	62,370	60,550	62,627	65,496	60,743	60,755	60,755
POPULATION	95,020	92,923	91,956	88,036	86,313	82,809	76,487	75,616	75,062	74,508
DRUG OFFENDER PROBATION										
GAINS	9,160	8,574	8,644	10,869	12,675	13,599	13,735	14,052	14,239	14,377
LOSSES	8,676	8,549	8,468	9,529	11,848	13,238	13,607	13,859	13,922	13,922
POPULATION	11,011	11,036	11,212	12,552	13,379	13,740	13,868	14,061	14,378	14,833
SEX OFFENDER PROBATION										
GAINS	200	372	609	816	980	1,003	1,229	1,451	1,617	1,744
LOSSES	44	22	130	145	460	694	1,057	1,267	1,359	1,521
POPULATION	183	533	1,012	1,683	2,203	2,512	2,684	2,868	3,126	3,349
COMMUNITY CONTROL										
GAINS	14,739	13,889	13,306	12,535	12,485	11,232	10,964	10,548	10,477	10,392
LOSSES	14,538	14,797	13,752	12,969	13,793	11,794	11,876	10,967	10,621	10,421
POPULATION	12,140	11,232	10,786	10,352	9,044	8,482	7,570	7,151	7,007	6,978
PAROLE										
GAINS	809	716	774	673	735	789	749	734	758	744
LOSSES	835	800	825	810	710	816	796	758	747	747
POPULATION	2,244	2,160	2,109	1,972	1,997	1,970	1,923	1,899	1,910	1,907
CONDITIONAL RELEASE										
GAINS	4,254	4,357	4,582	4,466	4,202	4,493	4,607	4,762	4,792	4,811
LOSSES	4,239	4,411	4,623	4,774	4,575	4,704	4,736	4,767	4,805	4,805
POPULATION	3,063	3,009	2,968	2,660	2,287	2,076	1,947	1,942	1,929	1,935
ADDICTION RECOVERY & OTHER										
GAINS	0	0	0	0	39	672	946	1,187	1,328	1,501
LOSSES	81	110	70	52	54	614	912	1,137	1,278	1,451
POPULATION	354	244	174	122	107	165	199	249	299	349
PRE-TRIAL INTERVENTION										
GAINS	9,386	9,252	9,028	8,915	8,505	9,122	9,743	10,064	10,088	10,188
LOSSES	9,092	9,272	8,943	8,987	8,931	8,974	9,690	9,876	9,834	9,971
POPULATION	8,155	8,135	8,220	8,148	7,722	7,870	7,923	8,111	8,365	8,582
TOTAL POP 6/30	132,170	129,272	128,437	125,525	123,052	119,624	112,601	111,897	112,076	112,441

On June 30, 2005 there were 3,954 sex offenders as designated by the Public Safety Information Act (F.S. 944.606 and 944.607 who have a current or prior sexual offense but did not qualify or were not placed on Sex Offender Probation.) They are included in the above as follows: Probation: 3,212 Conditional Release: 198 Parole: 97 and Drug Offender Probation: 38. In addition, on June 30, 2004 Community Control included 203 offenders on Sex Offender Community Control and an additional 209 sex offenders.