

Demographic Estimating Conference

Executive Summary

The Demographic Estimating Conference met on February 19, 2007 to review the final April 1, 2006 population estimate and the state population projections.

Florida's April 1, 2006 final population estimate was 18,349,132, up 508 from the fall 2006 Demographic Estimating Conference estimate. The number of households was also revised up from 7,281,537 to 7,291,013. Florida's average household size remained constant at 2.46. The conference focused on the components of population growth, such as: births and deaths; and net migration.

The conference agreed to retain the fall population projections for April 1, 2010, 2015, 2020, 2025, and 2030. However, the population growth rates were adjusted for the fiscal year population projections from 2005-2006 through 2014-2015 to reflect slower net migration and stronger natural increase than the fall conference. The slightly slower growth rate in the near term (2006-2007 and 2007-2008) reflects Florida's slowing housing and job market. Thereafter, a rebound is expected to achieve the April 1, 2010 projection. By 2011, Florida's population is expected to surpass the 20 million mark, totaling over 20,360,000.

FLORIDA DEMOGRAPHIC ESTIMATING CONFERENCE

Tables

Held February 19, 2007

Florida Resident Population

	<u>FDEC, 10/06</u> <u>(As of 4/1)</u>	<u>% Chg</u>	<u>FDEC, 02/07</u> <u>(As of 4/1)</u>	<u>% Chg</u>
1990	12,938,071	2.27%	12,938,071	2.27%
1991	13,258,732	2.48%	13,258,732	2.48%
1992	13,497,541	1.80%	13,497,541	1.80%
1993	13,730,115	1.72%	13,730,115	1.72%
1994	14,043,757	2.28%	14,043,757	2.28%
1995	14,335,992	2.08%	14,335,992	2.08%
1996	14,623,421	2.00%	14,623,421	2.00%
1997	14,938,314	2.15%	14,938,314	2.15%
1998	15,230,421	1.96%	15,230,421	1.96%
1999	15,580,244	2.30%	15,580,244	2.30%
2000	15,982,824	2.58%	15,982,824	2.58%
2001	16,330,224	2.17%	16,330,224	2.17%
2002	16,674,608	2.11%	16,674,608	2.11%
2003	17,071,508	2.38%	17,071,508	2.38%
2004	17,516,732	2.61%	17,516,732	2.61%
2005	17,918,227	2.29%	17,918,227	2.29%
2006	18,348,624	2.40%	18,349,132	2.40%
Begins forecast.				
2007	18,747,953	2.18%	18,729,350	2.07%
2008	19,149,687	2.14%	19,132,888	2.15%
2009	19,562,501	2.16%	19,563,430	2.25%
2010	19,974,199	2.10%	19,974,199	2.10%
2011	20,366,731	1.97%	20,365,996	1.96%
2012	20,743,909	1.85%	20,742,469	1.85%
2013	21,112,676	1.78%	21,110,751	1.78%
2014	21,474,839	1.72%	21,473,421	1.72%
2015	21,831,512	1.66%	21,831,512	1.67%
2016	22,184,358	1.62%	22,185,953	1.62%
2017	22,534,635	1.58%	22,536,680	1.58%
2020	23,552,138	1.53%	23,552,138	1.53%
2025	25,085,972	1.27%	25,085,972	1.27%
2030	26,513,331	1.11%	26,513,331	1.11%

Florida Resident Households

	<u>FDEC, 10/06</u> <u>(As of 4/1)</u>	<u>% Chg</u>	<u>FDEC, 02/07</u> <u>(As of 4/1)</u>	<u>% Chg</u>
1990	5,134,869	3.40%	5,134,869	3.40%
1991	5,283,154	2.89%	5,283,154	2.89%
1992	5,378,499	1.80%	5,378,499	1.80%
1993	5,478,476	1.86%	5,478,476	1.86%
1994	5,589,093	2.02%	5,589,093	2.02%
1995	5,697,328	1.94%	5,697,328	1.94%
1996	5,806,031	1.91%	5,806,031	1.91%
1997	5,929,613	2.13%	5,929,613	2.13%
1998	6,040,514	1.87%	6,040,514	1.87%
1999	6,182,346	2.35%	6,182,346	2.35%
2000	6,338,075	2.52%	6,338,075	2.52%
2001	6,483,040	2.29%	6,483,040	2.29%
2002	6,620,674	2.12%	6,620,674	2.12%
2003	6,778,804	2.39%	6,778,804	2.39%
2004	6,949,759	2.52%	6,949,759	2.52%
2005	7,109,208	2.29%	7,109,208	2.29%
2006	7,281,537	2.42%	7,291,013	2.56%
Begins forecast.				
2007	7,442,308	2.21%	7,444,845	2.11%
2008	7,603,475	2.17%	7,607,344	2.18%
2009	7,768,030	2.16%	7,779,123	2.26%
2010	7,932,137	2.11%	7,943,089	2.11%
2011	8,088,772	1.97%	8,099,479	1.97%
2012	8,238,979	1.86%	8,249,822	1.86%
2013	8,385,670	1.78%	8,396,926	1.78%
2014	8,529,588	1.72%	8,541,818	1.73%
2015	8,671,301	1.66%	8,684,914	1.68%
2016	8,811,588	1.62%	8,826,564	1.63%
2017	8,950,850	1.58%	8,966,760	1.59%
2020	9,355,169	1.53%	9,372,837	1.54%
2025	9,964,993	1.27%	9,986,839	1.28%
2030	10,533,525	1.12%	10,558,796	1.12%

FLORIDA DEMOGRAPHIC ESTIMATING CONFERENCE

Held February 19, 2007

	FISCAL YEAR AVERAGE																			
	<u>2006-1</u>	<u>2006-2</u>	<u>2006-3</u>	<u>2006-4</u>	<u>2007-1</u>	<u>2007-2</u>	<u>2007-3</u>	<u>2007-4</u>	<u>2008-1</u>	<u>2008-2</u>	<u>2008-3</u>	<u>2008-4</u>	<u>2009-1</u>	<u>2009-2</u>	<u>2004-05</u>	<u>2005-06</u>	<u>2006-07</u>	<u>2007-08</u>	<u>2008-09</u>	
Population																				
FDEC, 10/2006	18,294.3	18,400.6	18,500.6	18,600.2	18,698.6	18,797.3	18,897.1	18,997.4	19,098.6	19,200.7	19,303.6	19,407.0	19,510.7	19,614.3	17,821.0	18,239.6	18,649.2	19,048.5	19,458.9	
FDEC, 02/2007	18,298.2	18,397.5	18,493.5	18,588.1	18,682.3	18,776.4	18,872.5	18,974.6	19,079.4	19,186.3	19,294.8	19,403.2	19,510.5	19,616.4	17,819.8	18,243.0	18,635.1	19,028.2	19,456.2	
Growth Rate																				
FDEC, 10/2006	2.41	2.34	2.19	2.17	2.13	2.13	2.14	2.14	2.15	2.16	2.16	2.16	2.15	2.14	2.39	2.35	2.25	2.14	2.15	
FDEC, 02/2007	2.33	2.19	2.10	2.06	2.04	2.03	2.06	2.18	2.23	2.26	2.28	2.27	2.23	2.19	2.39	2.37	2.15	2.11	2.25	
Net Change in Population																				
FDEC, 10/2006	108.4	106.3	100.0	99.5	98.4	98.8	99.7	100.4	101.2	102.1	102.9	103.4	103.7	103.5	400.8	429.8	396.7	403.4	413.5	
FDEC, 02/2007	105.2	99.4	95.9	94.7	94.2	94.0	96.1	102.1	104.8	106.9	108.4	108.5	107.3	105.9	405.7	424.4	378.8	410.0	430.0	
Households																				
FDEC, 10/2006	7,259.8	7,302.0	7,342.0	7,382.2	7,422.3	7,462.4	7,502.6	7,542.9	7,583.2	7,623.8	7,664.7	7,706.0	7,747.4	7,788.7	7,070.5	7,238.2	7,402.2	7,563.1	7,726.7	
FDEC, 02/2007	7,269.8	7,310.6	7,349.3	7,387.5	7,425.7	7,464.0	7,502.9	7,544.1	7,586.0	7,628.7	7,671.9	7,715.2	7,758.0	7,800.2	7,069.9	7,246.3	7,406.6	7,565.4	7,736.3	
Growth Rate																				
FDEC, 10/2006	2.40	2.34	2.21	2.21	2.19	2.18	2.17	2.16	2.16	2.16	2.17	2.17	2.17	2.15	2.37	2.37	2.27	2.17	2.16	
FDEC, 02/2007	2.47	2.26	2.14	2.10	2.08	2.08	2.11	2.21	2.24	2.27	2.29	2.28	2.24	2.20	2.36	2.49	2.21	2.14	2.26	
Net Change in Households																				
FDEC, 10/2006	42.8	42.1	40.1	40.2	40.0	40.1	40.2	40.3	40.3	40.6	41.0	41.2	41.4	41.3	160.6	170.8	160.4	161.4	164.9	
FDEC, 02/2007	44.1	40.7	38.7	38.2	38.2	38.2	39.0	41.1	42.0	42.7	43.3	43.3	42.8	42.2	162.9	178.1	153.4	164.7	171.6	
Household Size																				
FDEC, 10/2006	2.520	2.520	2.520	2.520	2.519	2.519	2.519	2.519	2.519	2.519	2.518	2.518	2.518	2.518	2.520	2.520	2.519	2.519	2.518	
FDEC, 02/2007	2.517	2.517	2.516	2.516	2.516	2.516	2.515	2.515	2.515	2.515	2.515	2.515	2.515	2.515	2.521	2.518	2.516	2.515	2.515	
Growth Rate																				
FDEC, 10/2006	0.01	0.00	-0.02	-0.04	-0.05	-0.05	-0.03	-0.02	-0.01	0.00	-0.01	-0.01	-0.01	-0.01	0.02	-0.02	-0.02	-0.03	-0.01	
FDEC, 02/2007	-0.13	-0.07	-0.03	-0.03	-0.04	-0.05	-0.04	-0.03	-0.01	-0.01	-0.01	-0.01	-0.01	-0.01	0.02	-0.12	-0.06	-0.03	-0.01	
Net Migration																				
FDEC, 10/2006	94.3	92.0	85.6	85.0	83.8	84.1	85.0	85.7	86.6	87.5	88.4	89.1	89.4	89.4	348.5	373.6	338.5	344.8	356.2	
FDEC, 02/2007	91.1	85.1	81.5	80.1	79.6	79.3	81.3	87.3	90.0	92.0	93.6	93.6	92.5	91.1	353.4	368.2	320.4	350.6	370.8	
Births																				
FDEC, 10/2006	57.0	57.3	57.6	57.8	58.1	58.4	58.6	58.9	59.1	59.4	59.7	60.0	60.3	60.6	221.3	227.7	231.9	236.1	240.5	
FDEC, 02/2007	57.1	57.4	57.7	57.9	58.2	58.5	58.8	59.1	59.5	59.8	60.1	60.4	60.8	61.1	221.3	227.8	232.3	237.2	242.4	
Deaths																				
FDEC, 10/2006	43.0	43.1	43.2	43.3	43.5	43.7	43.9	44.2	44.5	44.9	45.2	45.6	46.0	46.4	169.0	171.6	173.6	177.5	183.2	
FDEC, 02/2007	43.0	43.1	43.2	43.4	43.6	43.8	44.0	44.3	44.6	44.9	45.3	45.6	46.0	46.4	169.0	171.6	173.9	177.8	183.2	
Net Natural Increase																				
FDEC, 10/2006	14.1	14.3	14.4	14.6	14.6	14.7	14.7	14.7	14.6	14.6	14.5	14.4	14.3	14.1	52.3	56.2	58.3	58.6	57.3	
FDEC, 02/2007	14.1	14.3	14.4	14.6	14.7	14.7	14.8	14.8	14.9	14.9	14.9	14.8	14.8	14.7	52.3	56.3	58.4	59.4	59.2	

FLORIDA DEMOGRAPHIC ESTIMATING CONFERENCE

Held February 19, 2007

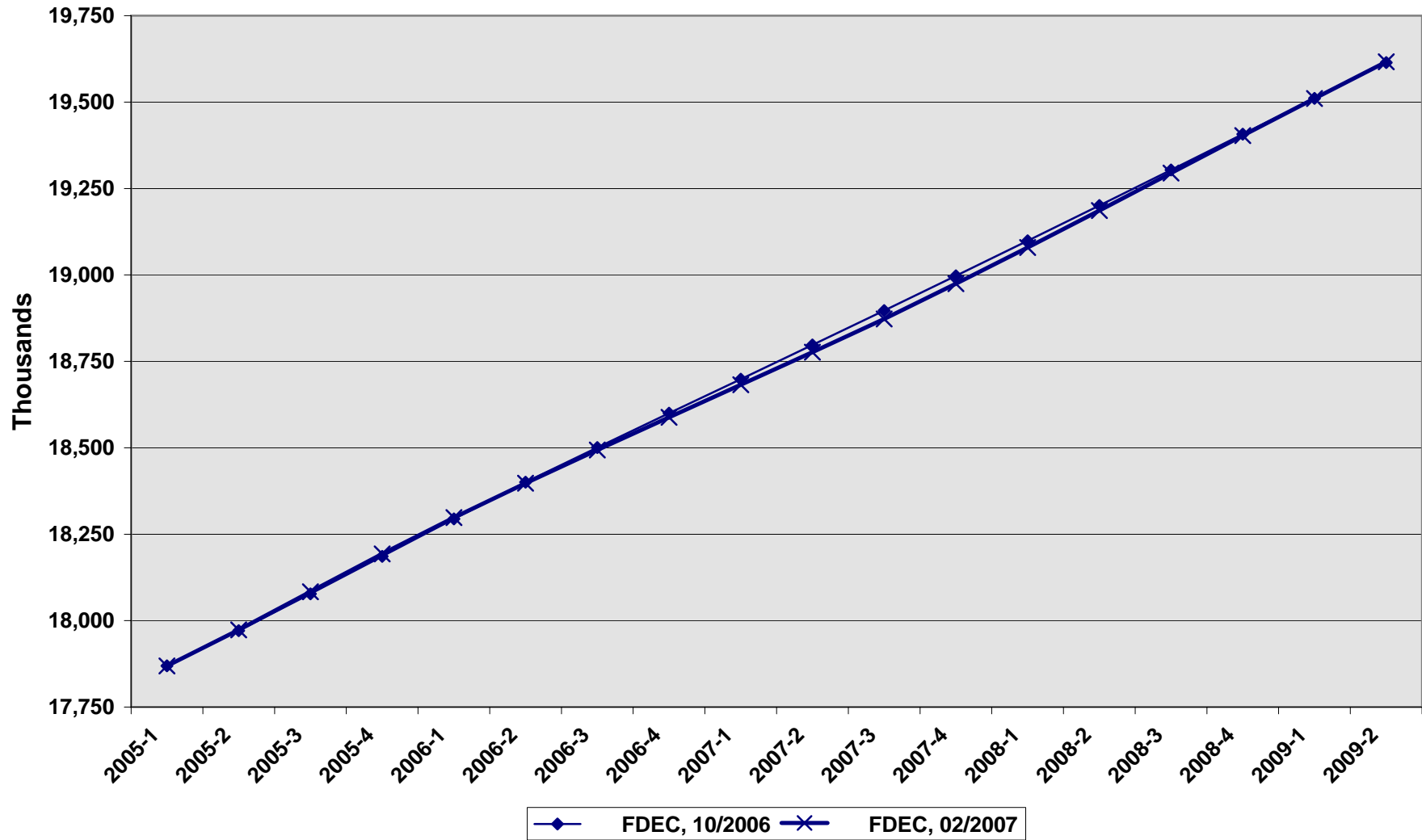
	<u>2002-03</u>	<u>2003-04</u>	<u>2004-05</u>	<u>2005-06</u>	<u>2006-07</u>	<u>2007-08</u>	<u>2008-09</u>	<u>2009-10</u>	<u>2010-11</u>	<u>2011-12</u>	<u>2012-13</u>	<u>2013-14</u>	<u>2014-15</u>	<u>2015-16</u>	<u>2016-17</u>
Population															
FDEC, 10/2006	16,968.2	17,405.7	17,821.0	18,239.6	18,649.2	19,048.5	19,458.9	19,871.3	20,269.8	20,650.2	21,020.9	21,384.7	21,742.6	22,096.3	22,447.3
FDEC, 02/2007	16,970.8	17,404.2	17,819.8	18,243.0	18,635.1	19,028.2	19,456.2	19,872.9	20,269.1	20,649.0	21,019.1	21,383.1	21,742.3	22,097.6	22,449.2
Growth Rate															
FDEC, 10/2006	2.30	2.58	2.39	2.35	2.25	2.14	2.15	2.12	2.01	1.88	1.80	1.73	1.67	1.63	1.59
FDEC, 02/2007	2.31	2.55	2.39	2.37	2.15	2.11	2.25	2.14	1.99	1.87	1.79	1.73	1.68	1.63	1.59
Net Change in Population															
FDEC, 10/2006	405.2	444.9	400.8	429.8	396.7	403.4	413.5	410.1	390.2	375.9	367.9	361.4	356.0	352.6	349.9
FDEC, 02/2007	404.7	441.0	405.7	424.4	378.8	410.0	430.0	407.9	389.6	375.1	367.4	362.1	357.6	354.0	350.2
Households															
FDEC, 10/2006	6,737.8	6,907.2	7,070.5	7,238.2	7,402.2	7,563.1	7,726.7	7,891.3	8,050.2	8,201.7	8,349.2	8,493.8	8,636.0	8,776.6	8,916.1
FDEC, 02/2007	6,738.7	6,906.6	7,069.9	7,246.3	7,406.6	7,565.4	7,736.3	7,902.6	8,060.8	8,212.5	8,360.3	8,505.7	8,649.2	8,791.2	8,931.8
Growth Rate															
FDEC, 10/2006	2.31	2.51	2.37	2.37	2.27	2.17	2.16	2.13	2.01	1.88	1.80	1.73	1.67	1.63	1.59
FDEC, 02/2007	2.31	2.49	2.36	2.49	2.21	2.14	2.26	2.15	2.00	1.88	1.80	1.74	1.69	1.64	1.60
Net Change in Households															
FDEC, 10/2006	161.1	170.8	160.6	170.8	160.4	161.4	164.9	163.7	155.5	149.7	146.3	143.6	141.5	140.2	139.1
FDEC, 02/2007	160.4	169.6	162.9	178.1	153.4	164.7	171.6	162.8	155.5	149.8	146.8	144.7	142.9	141.5	140.0
Household Size															
FDEC, 10/2006	2.518	2.520	2.520	2.520	2.519	2.519	2.518	2.518	2.518	2.518	2.518	2.518	2.518	2.518	2.518
FDEC, 02/2007	2.518	2.520	2.521	2.518	2.516	2.515	2.515	2.515	2.515	2.514	2.514	2.514	2.514	2.514	2.513
Growth Rate															
FDEC, 10/2006	-0.01	0.06	0.02	-0.02	-0.02	-0.03	-0.01	-0.01	-0.01	0.00	0.00	0.00	0.00	0.00	0.00
FDEC, 02/2007	-0.01	0.06	0.02	-0.12	-0.06	-0.03	-0.01	-0.01	-0.01	-0.01	-0.01	-0.01	-0.01	-0.01	-0.01
Net Migration															
FDEC, 10/2006	365.3	399.3	348.5	373.6	338.5	344.8	356.2	354.9	337.0	323.8	317.2	312.3	308.7	307.4	307.4
FDEC, 02/2007	364.7	395.4	353.4	368.2	320.4	350.6	370.8	349.9	332.8	318.9	312.1	307.9	304.8	303.0	301.5
Births															
FDEC, 10/2006	208.0	214.0	221.3	227.7	231.9	236.1	240.5	245.1	249.8	254.4	258.8	263.1	267.2	271.0	274.4
FDEC, 02/2007	208.0	214.0	221.3	227.8	232.3	237.2	242.4	247.6	252.4	257.3	262.0	266.5	270.8	275.0	278.6
Deaths															
FDEC, 10/2006	168.0	168.4	169.0	171.6	173.6	177.5	183.2	190.0	196.6	202.3	208.1	214.0	219.9	225.8	231.9
FDEC, 02/2007	168.0	168.4	169.0	171.6	173.9	177.8	183.2	189.6	195.7	201.1	206.6	212.3	218.1	223.9	229.9
Net Natural Increase															
FDEC, 10/2006	40.0	45.6	52.3	56.2	58.3	58.6	57.3	55.2	53.2	52.1	50.7	49.1	47.3	45.2	42.5
FDEC, 02/2007	40.0	45.6	52.3	56.3	58.4	59.4	59.2	58.0	56.8	56.2	55.3	54.2	52.8	51.0	48.7

FLORIDA DEMOGRAPHIC ESTIMATING CONFERENCE

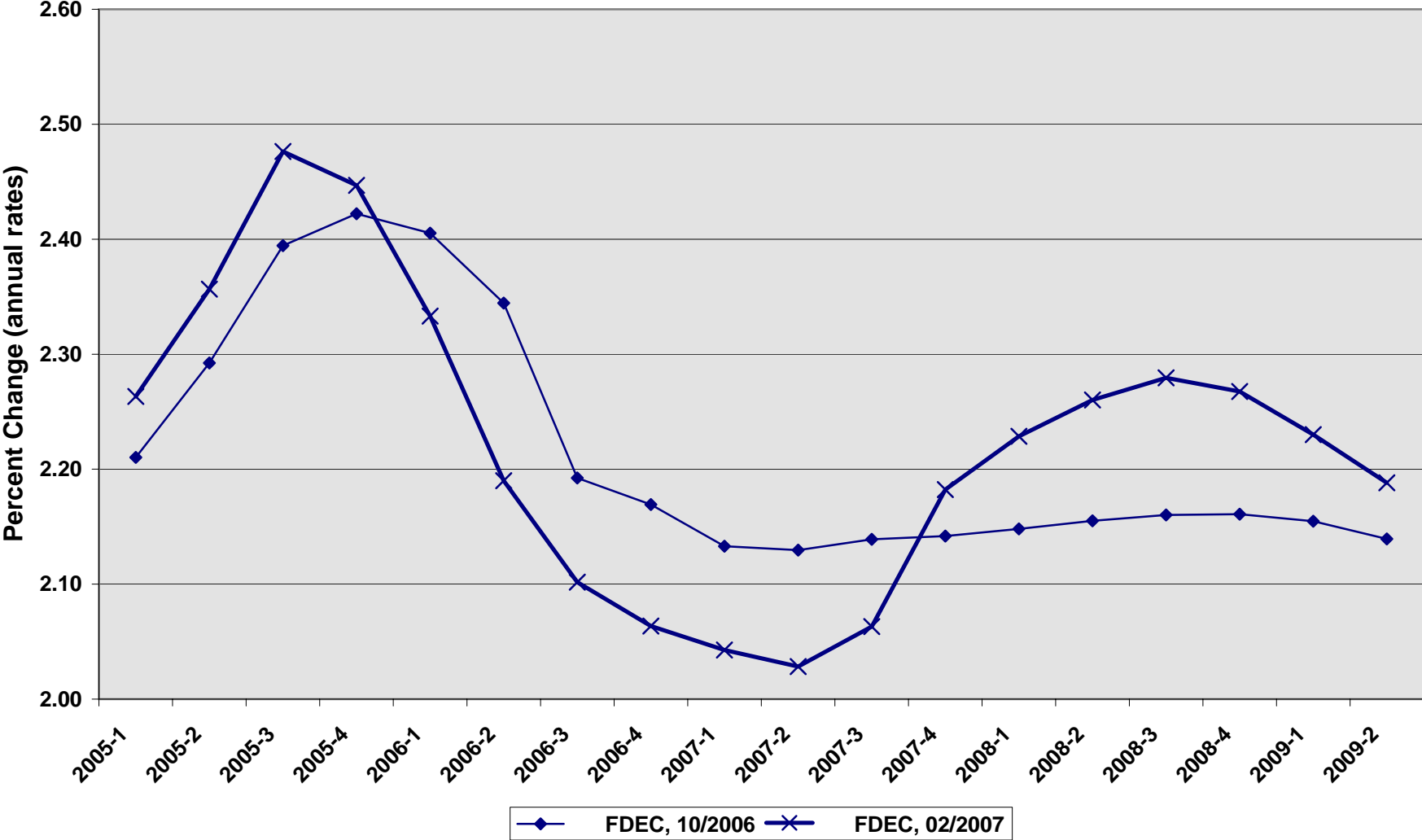
Charts

Held February 19, 2007

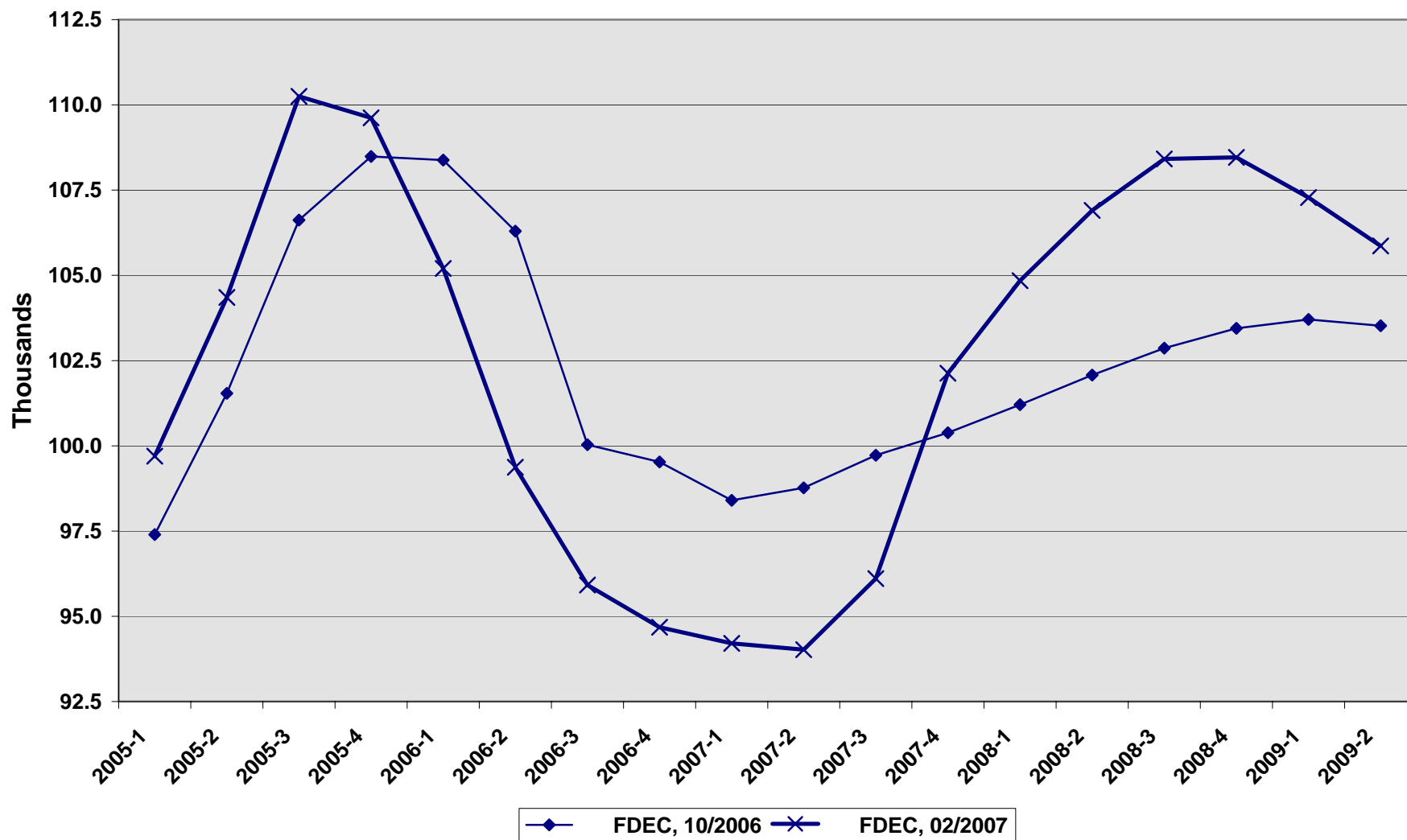
Florida Resident Population



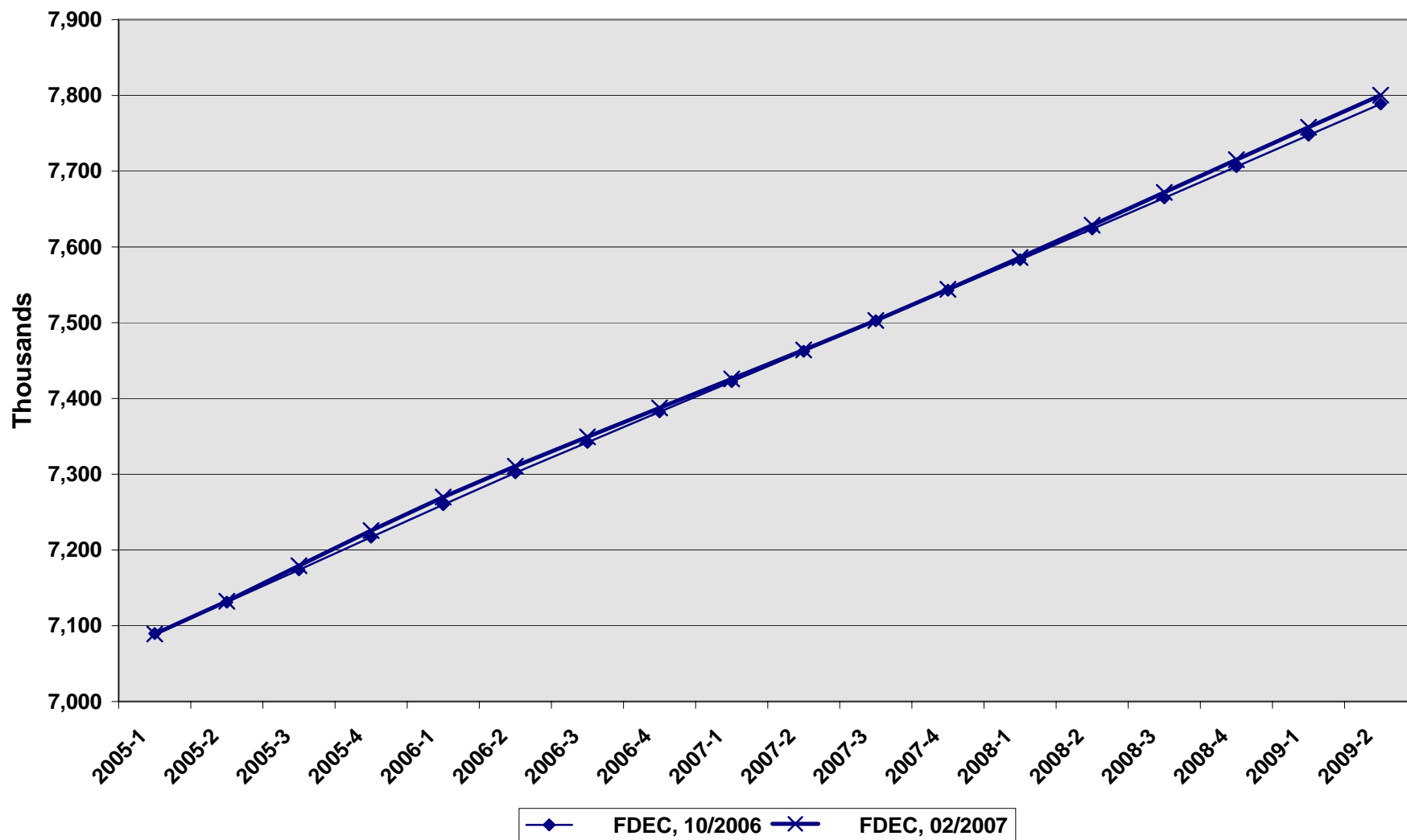
Growth In Florida Resident Population



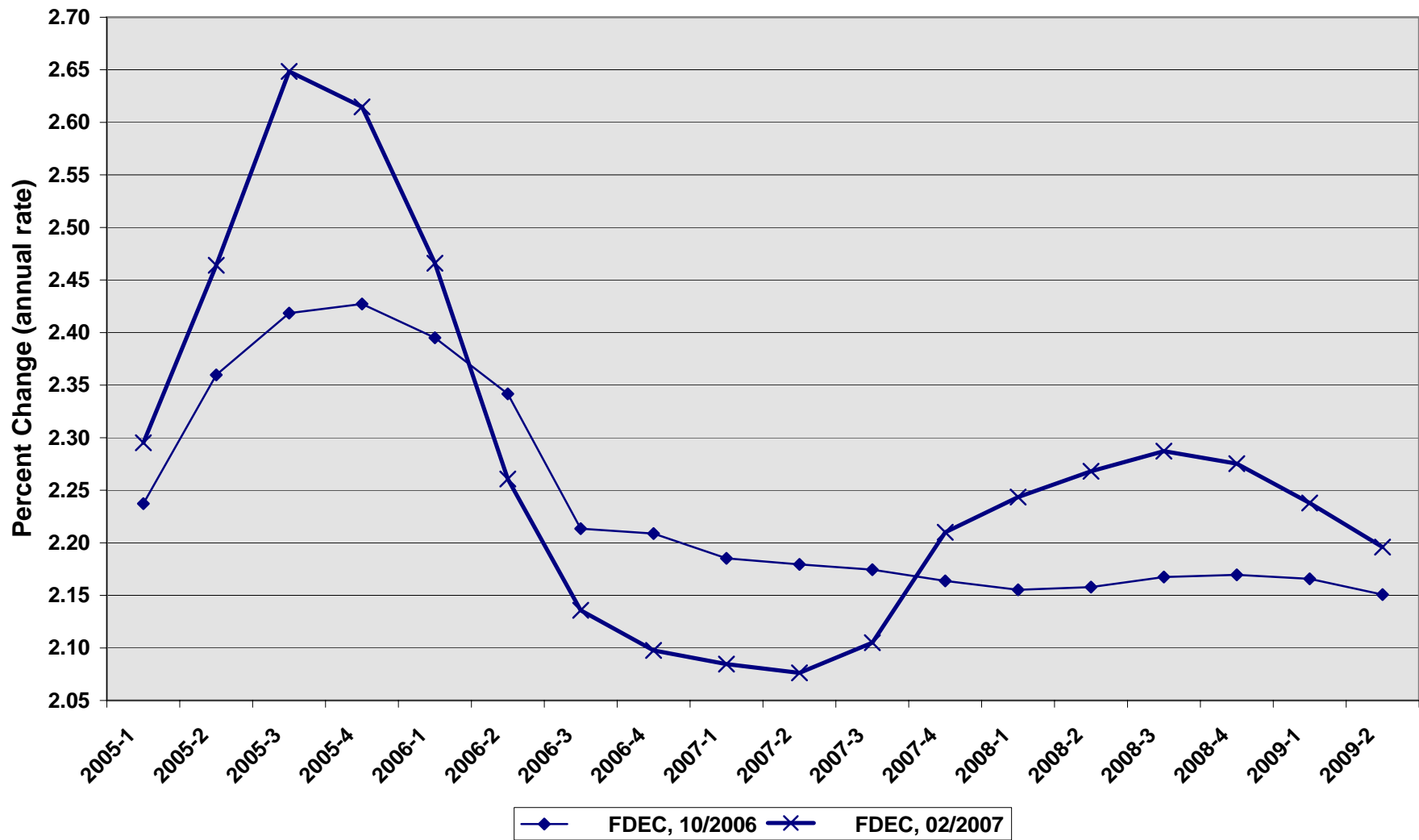
Net Change In Florida Resident Population



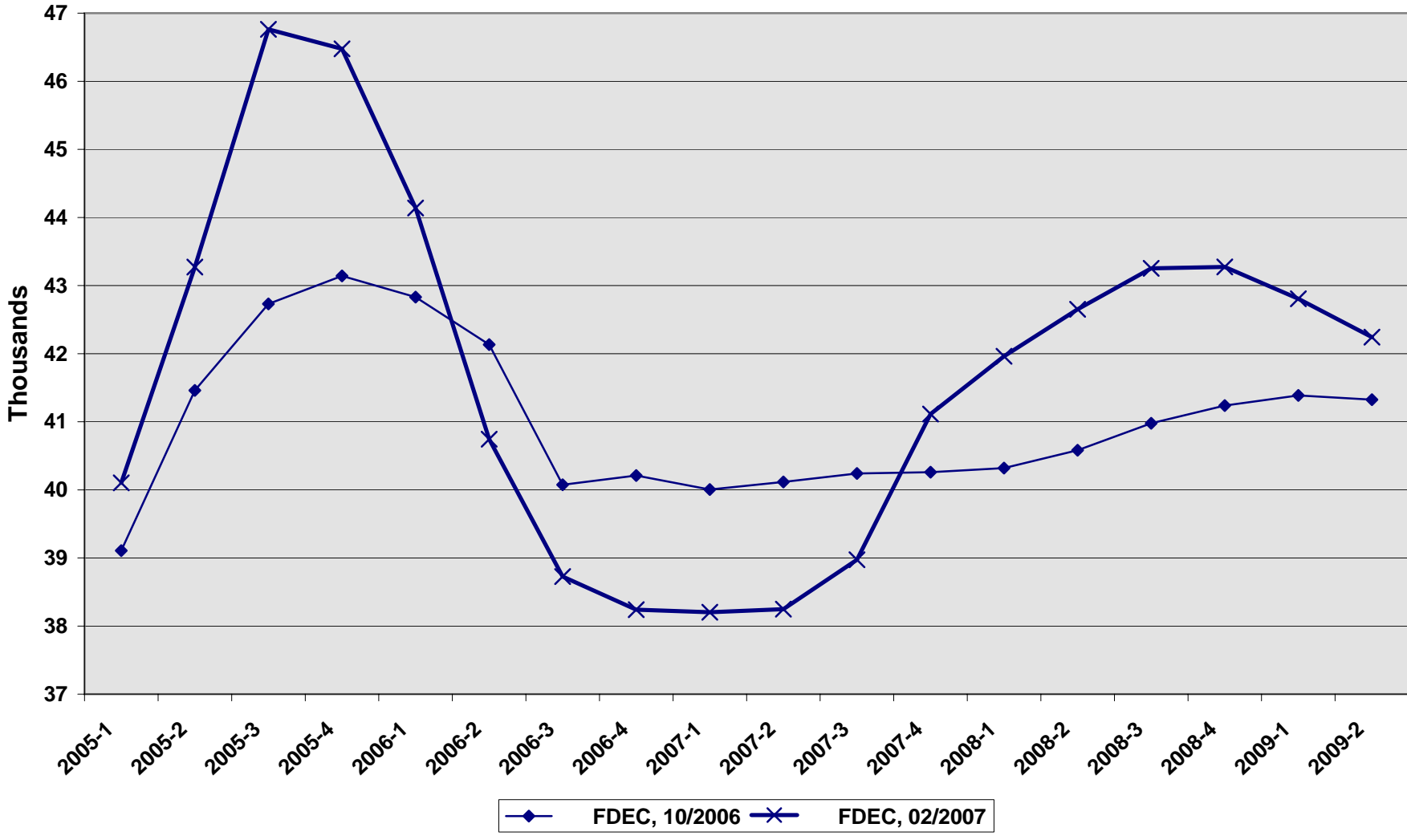
Florida Resident Households



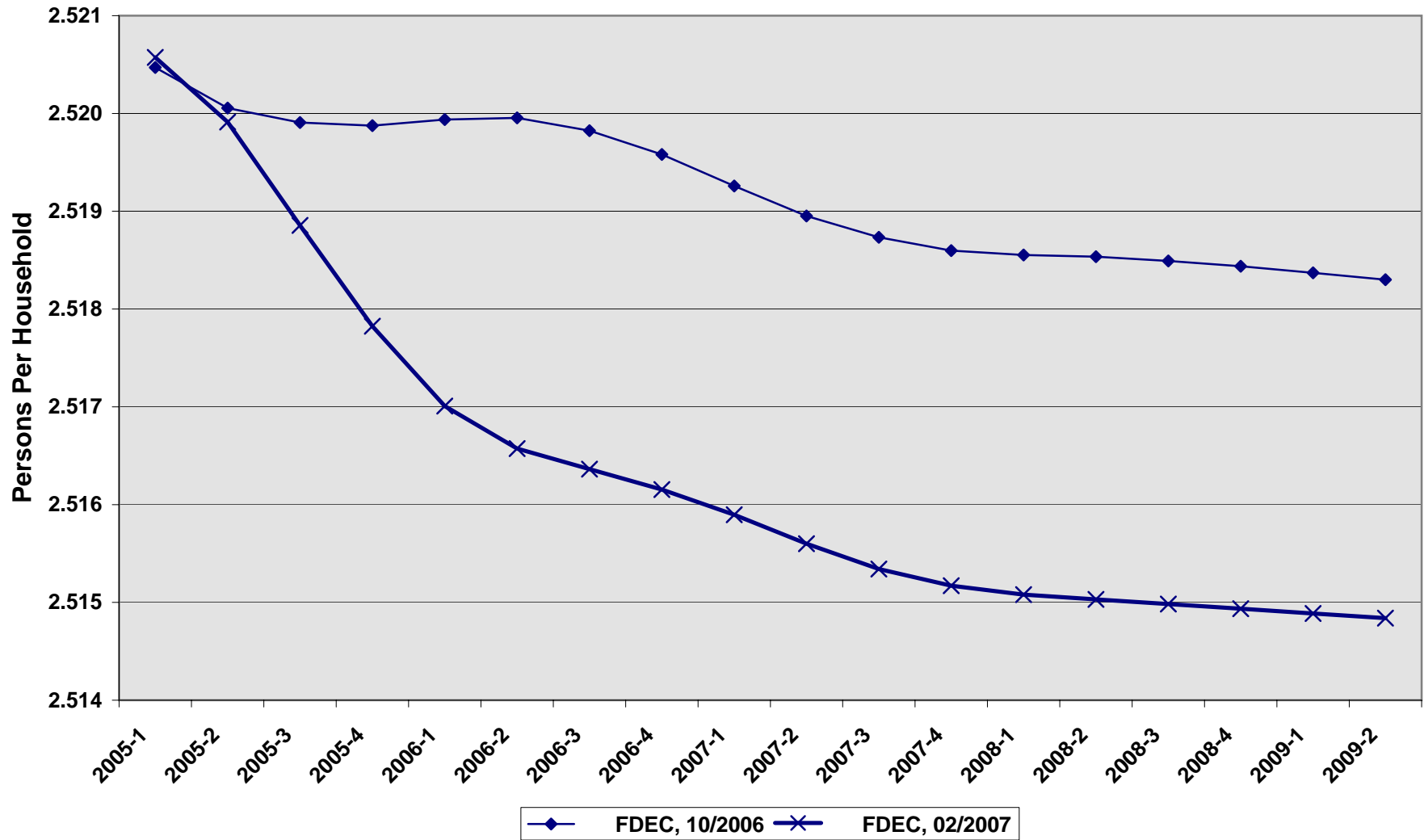
Growth In Florida Resident Households



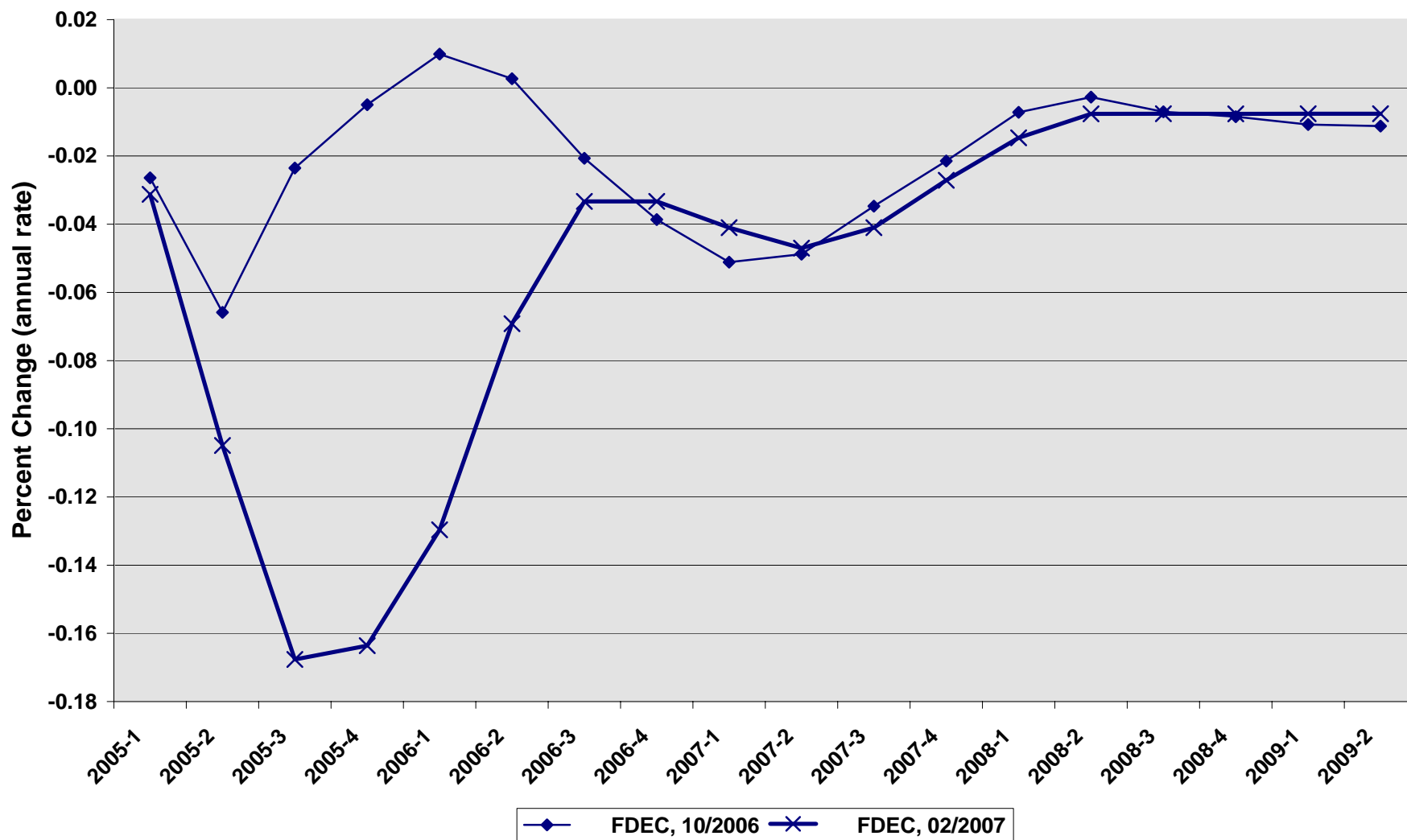
Net Change In Florida Resident Households



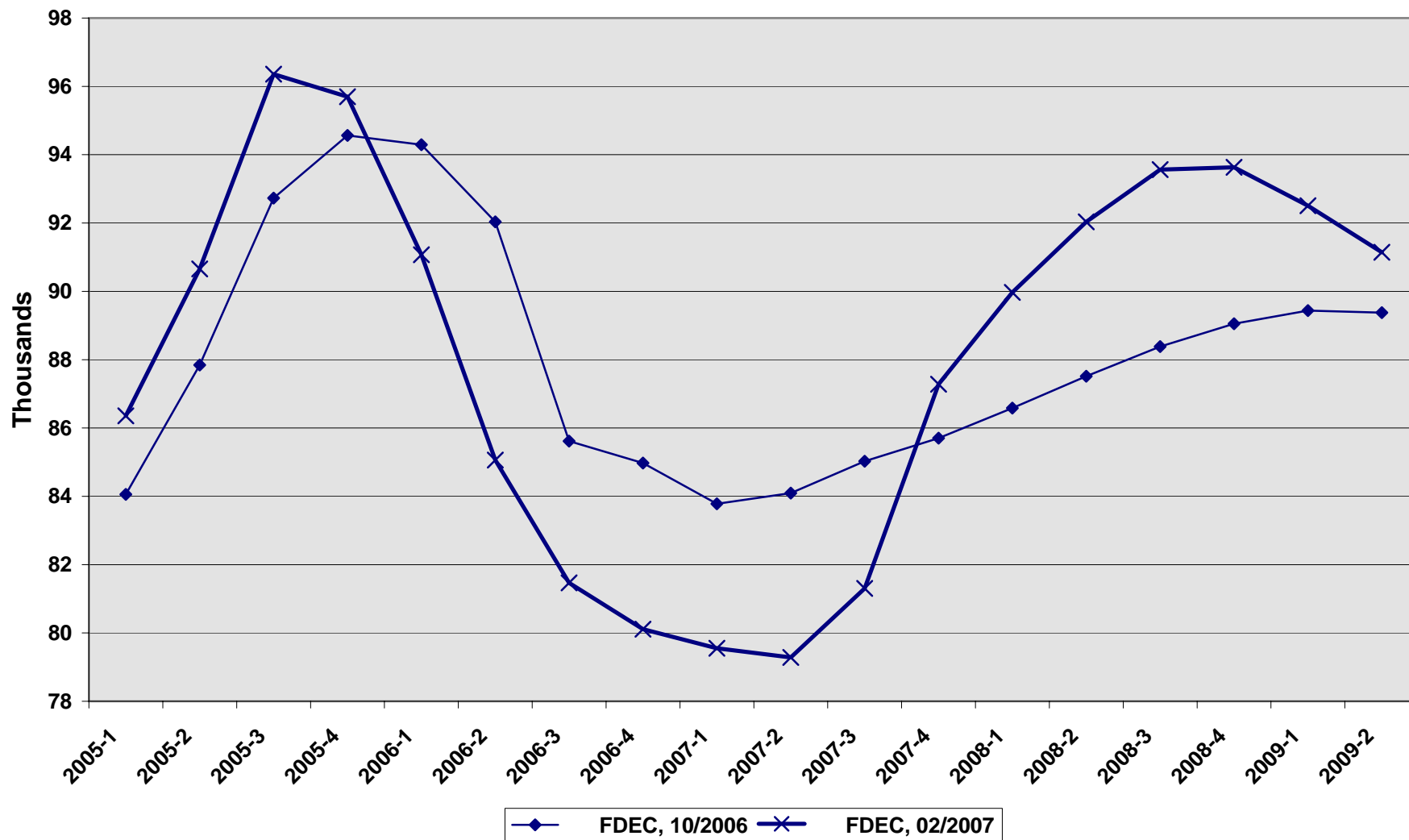
Florida Average Household Size



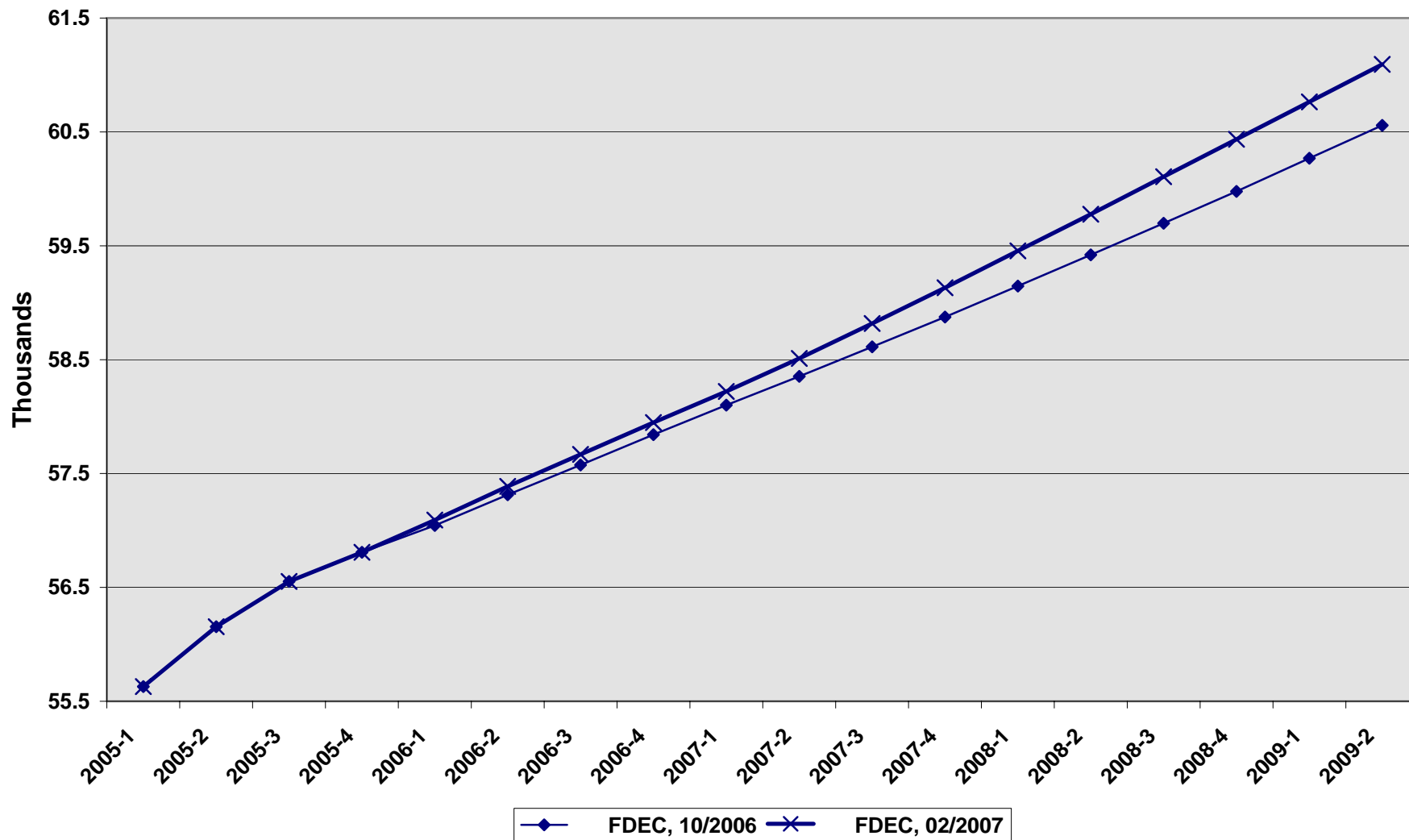
Growth In Florida Household Size



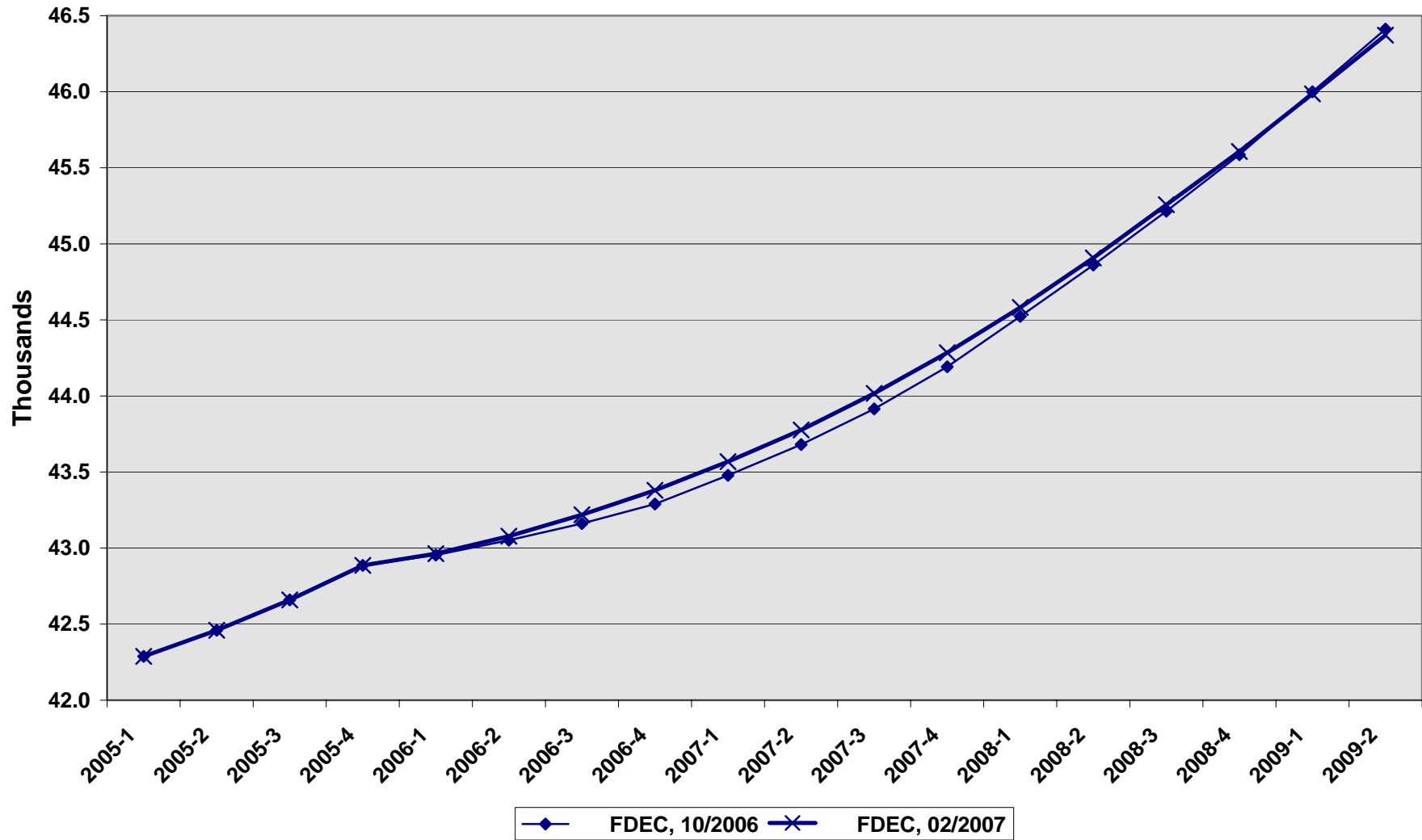
Florida Net Migration



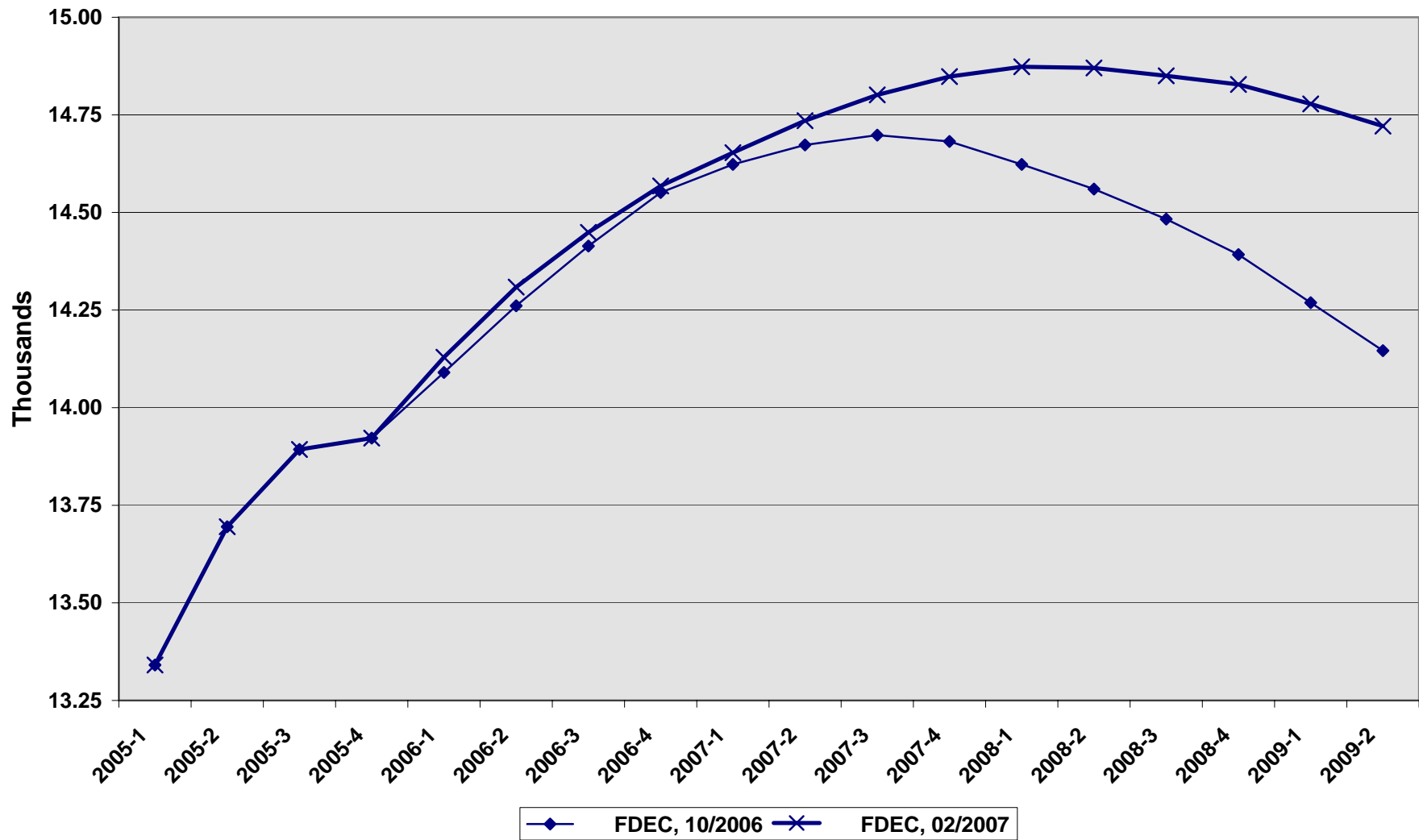
Florida Resident Births



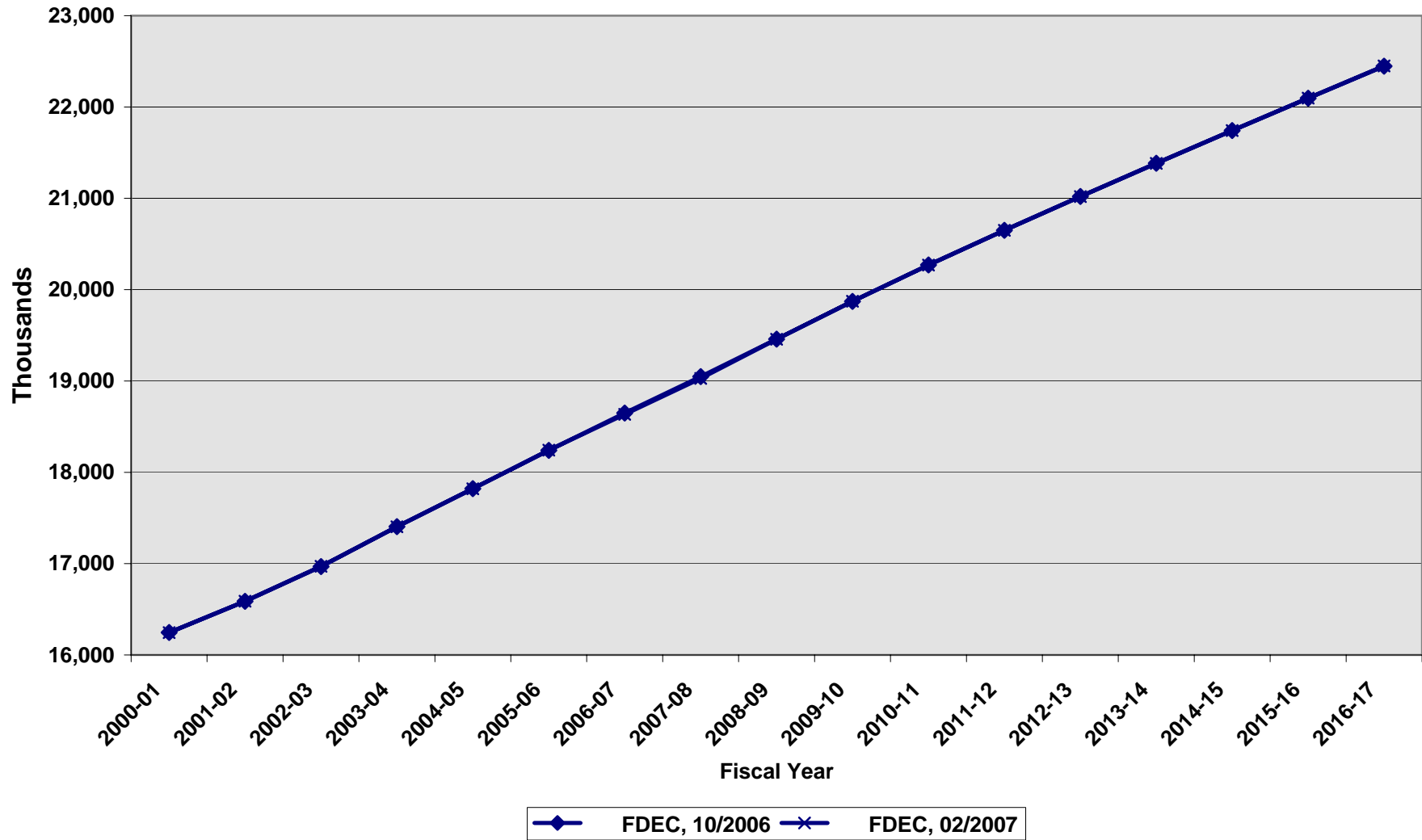
Florida Resident Deaths



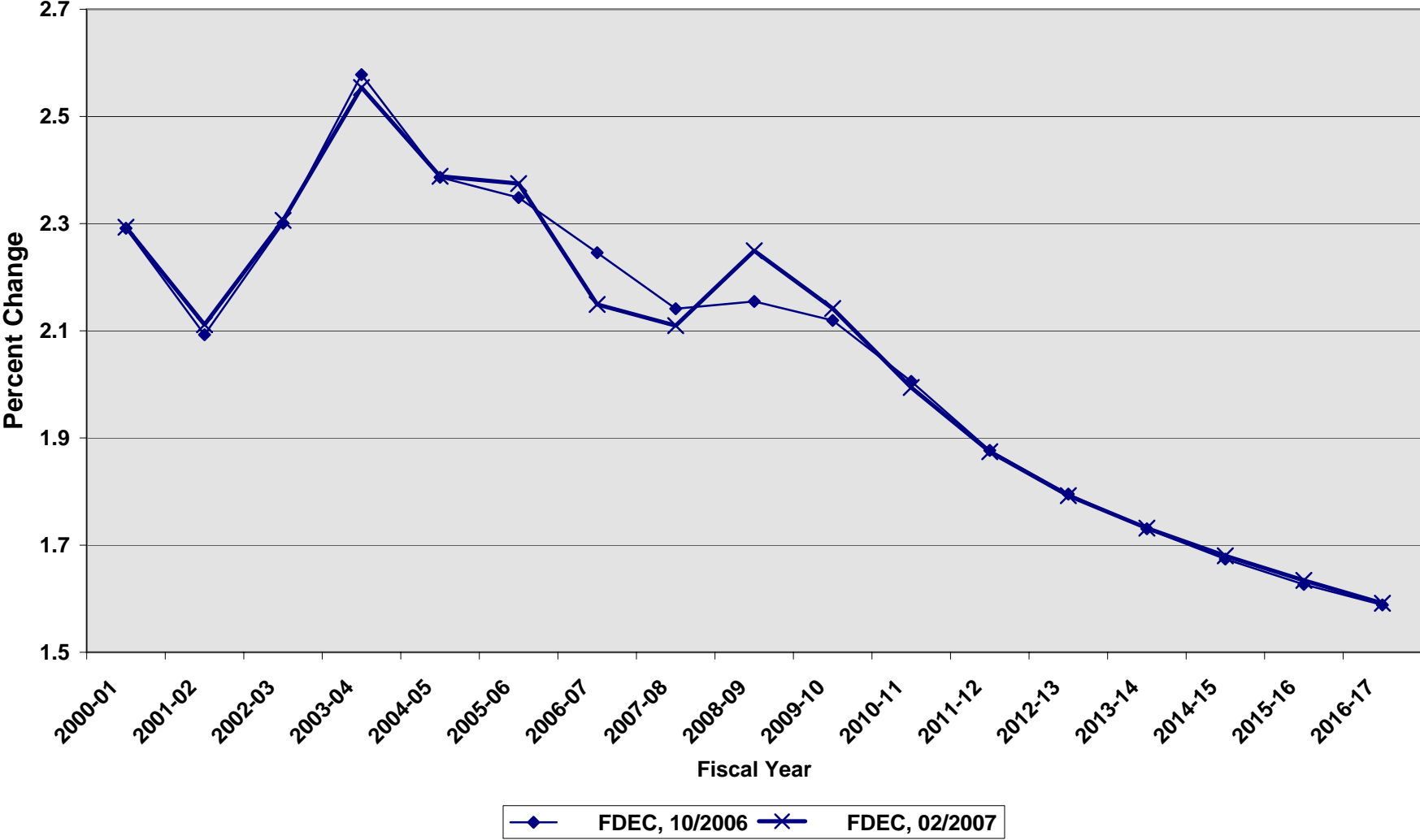
Florida Net Natural Increase



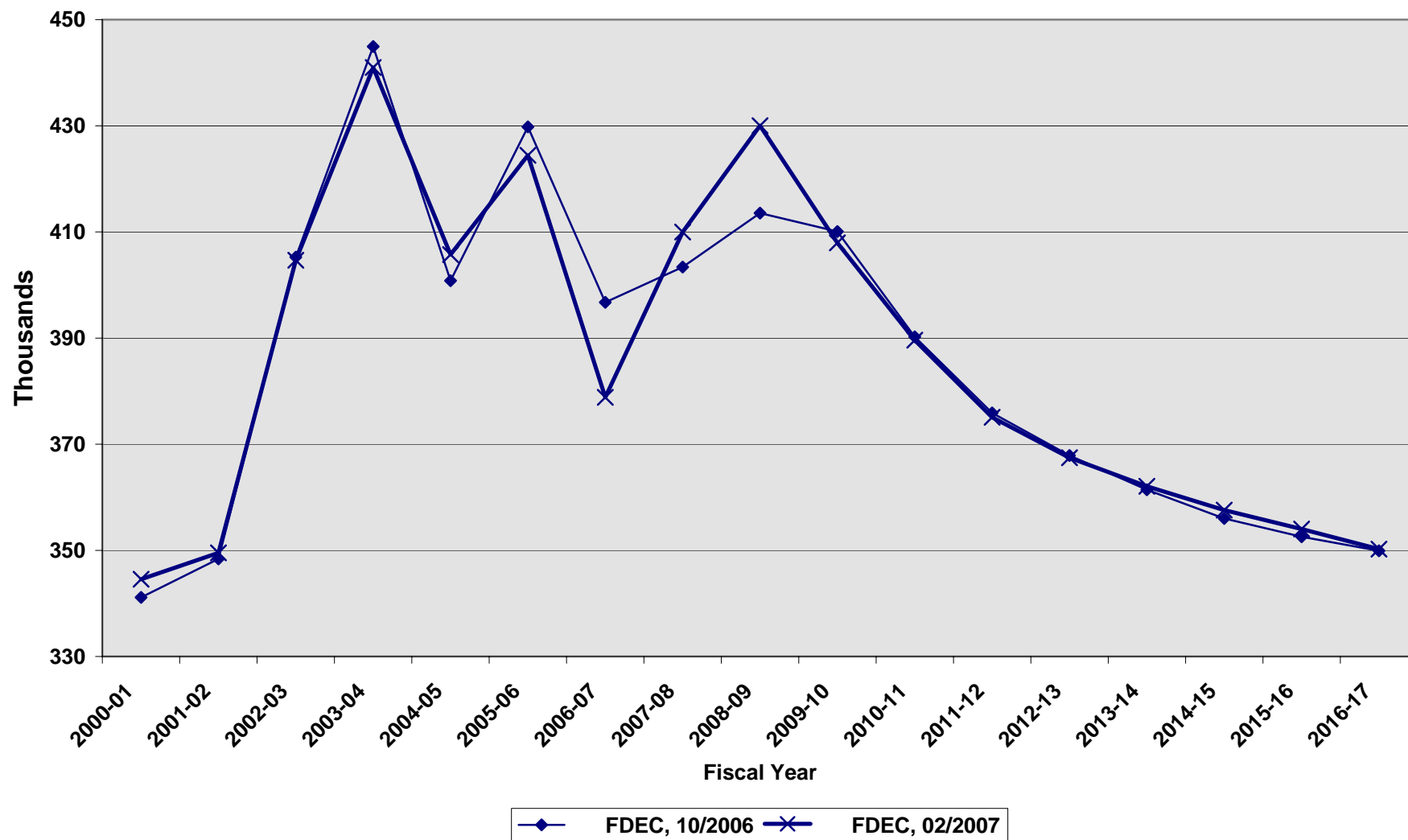
Florida Resident Population



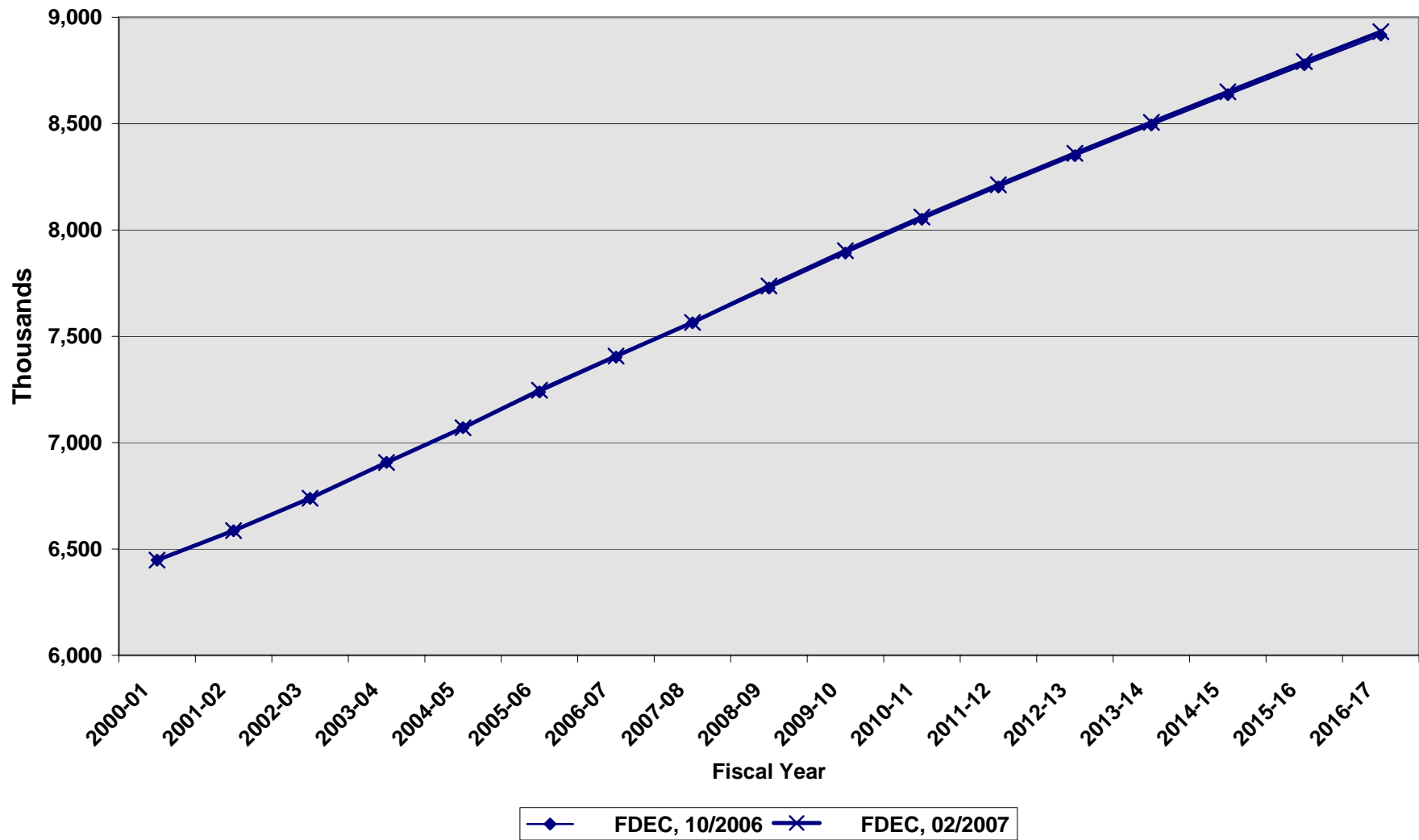
Growth In Florida Resident Population



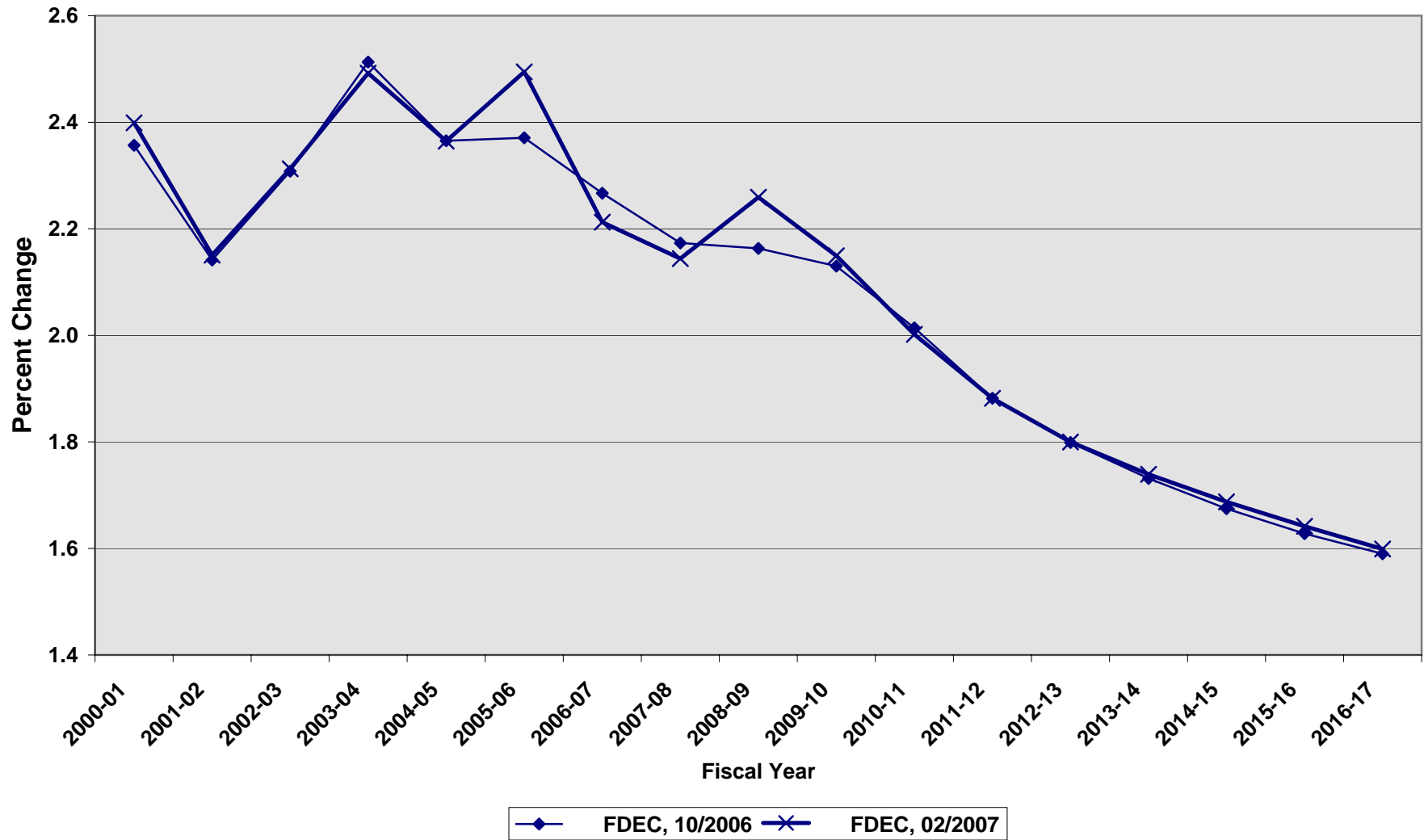
Net Change In Florida Resident Population



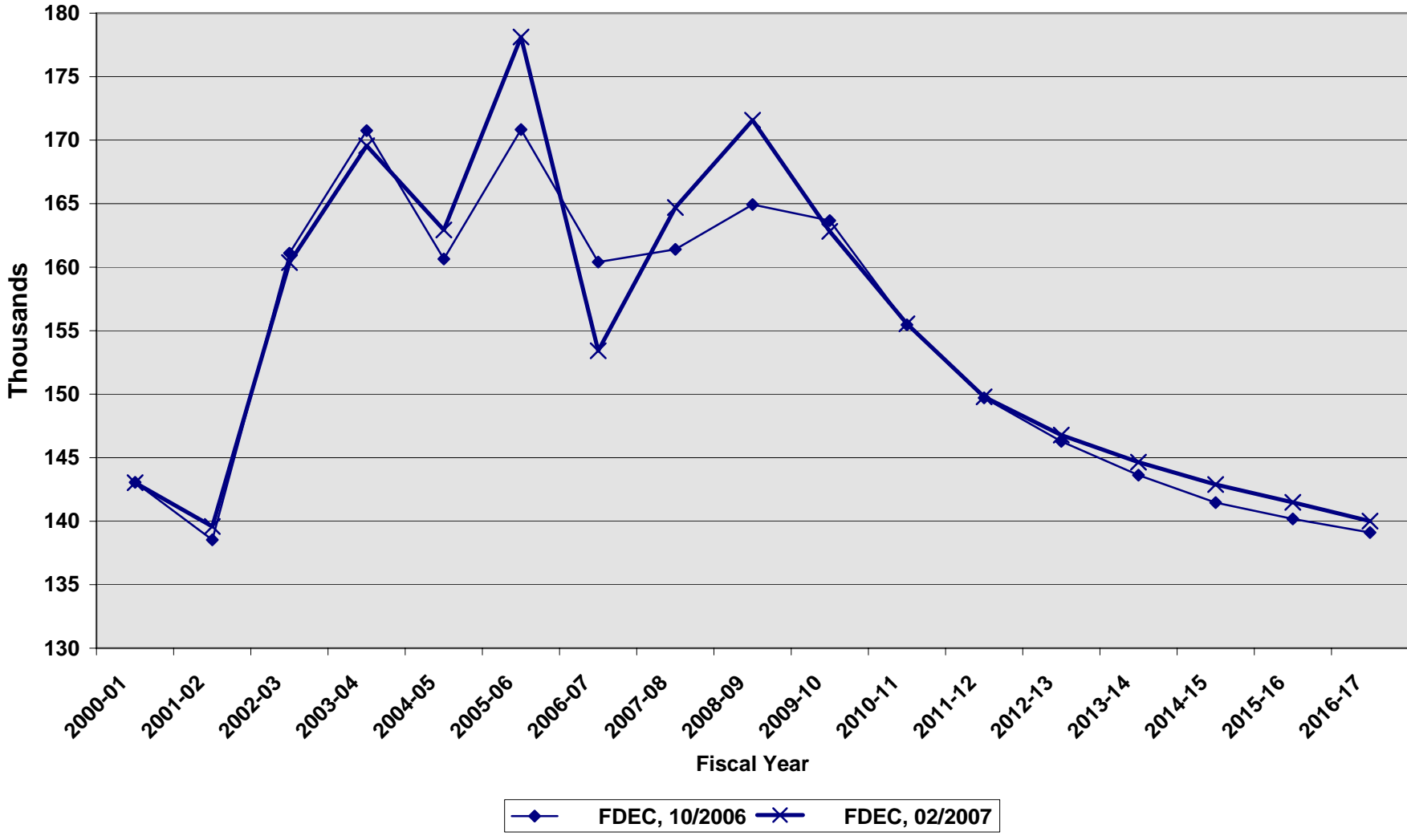
Florida Resident Households



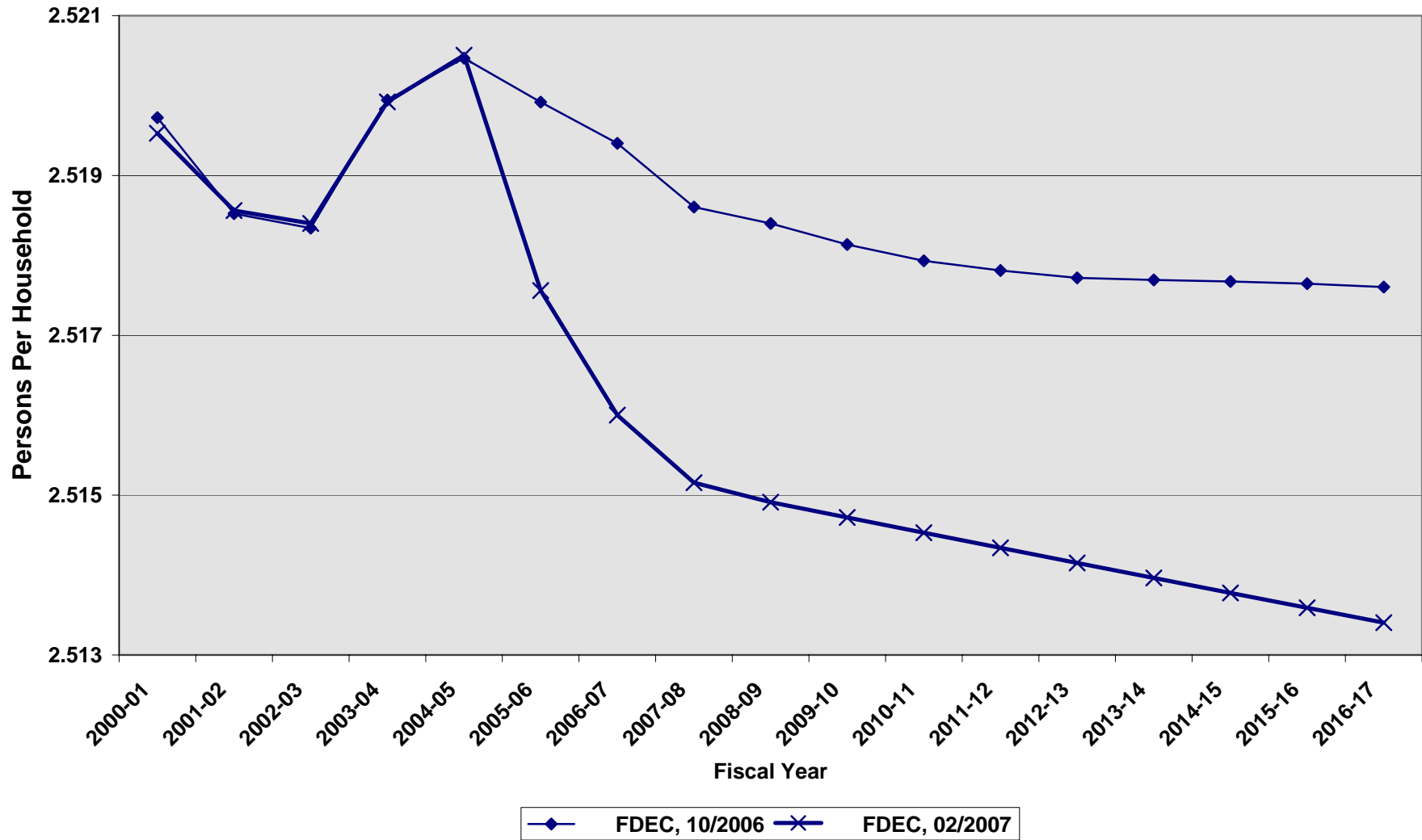
Growth In Florida Resident Households



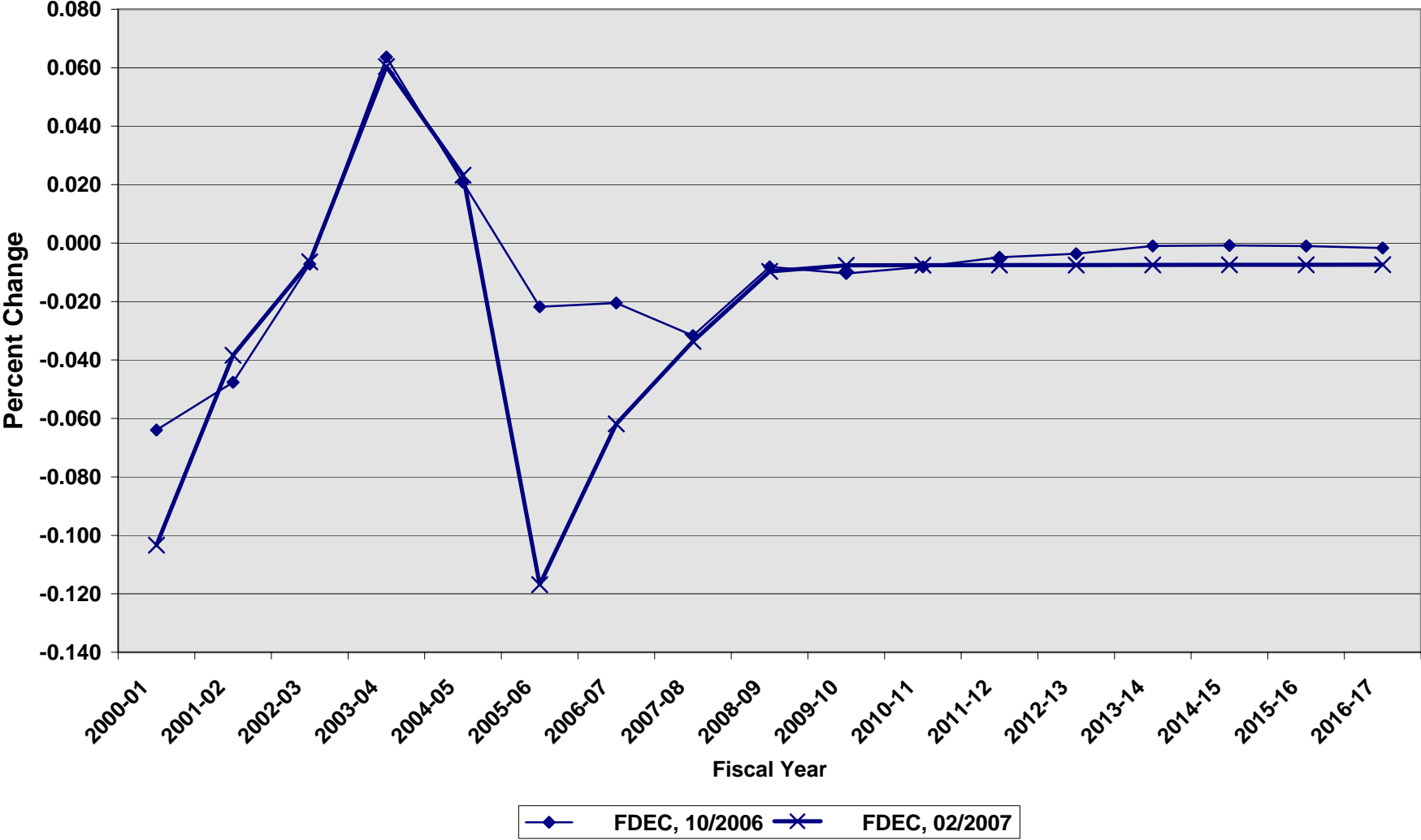
Net Change In Florida Resident Households



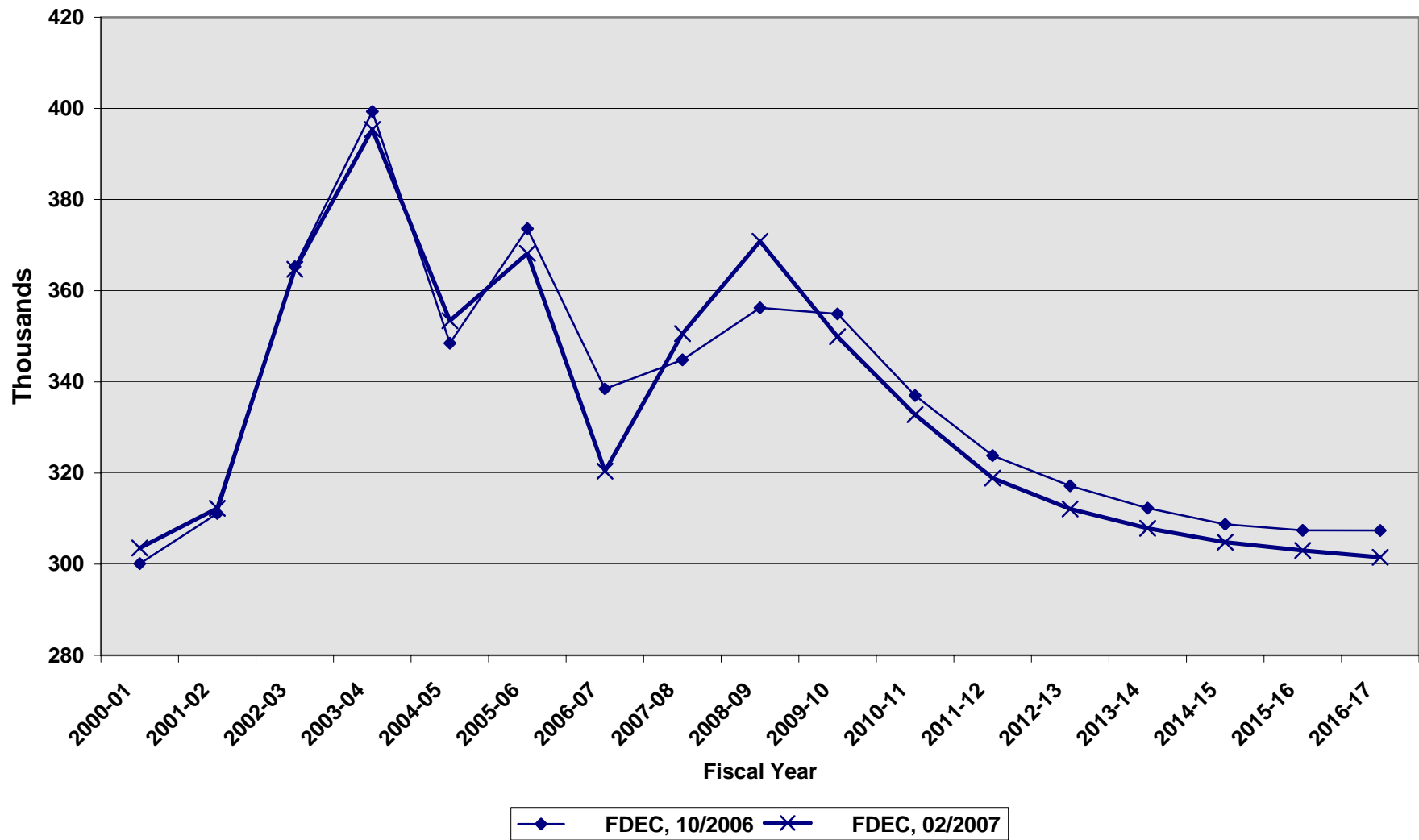
Average Florida Household Size



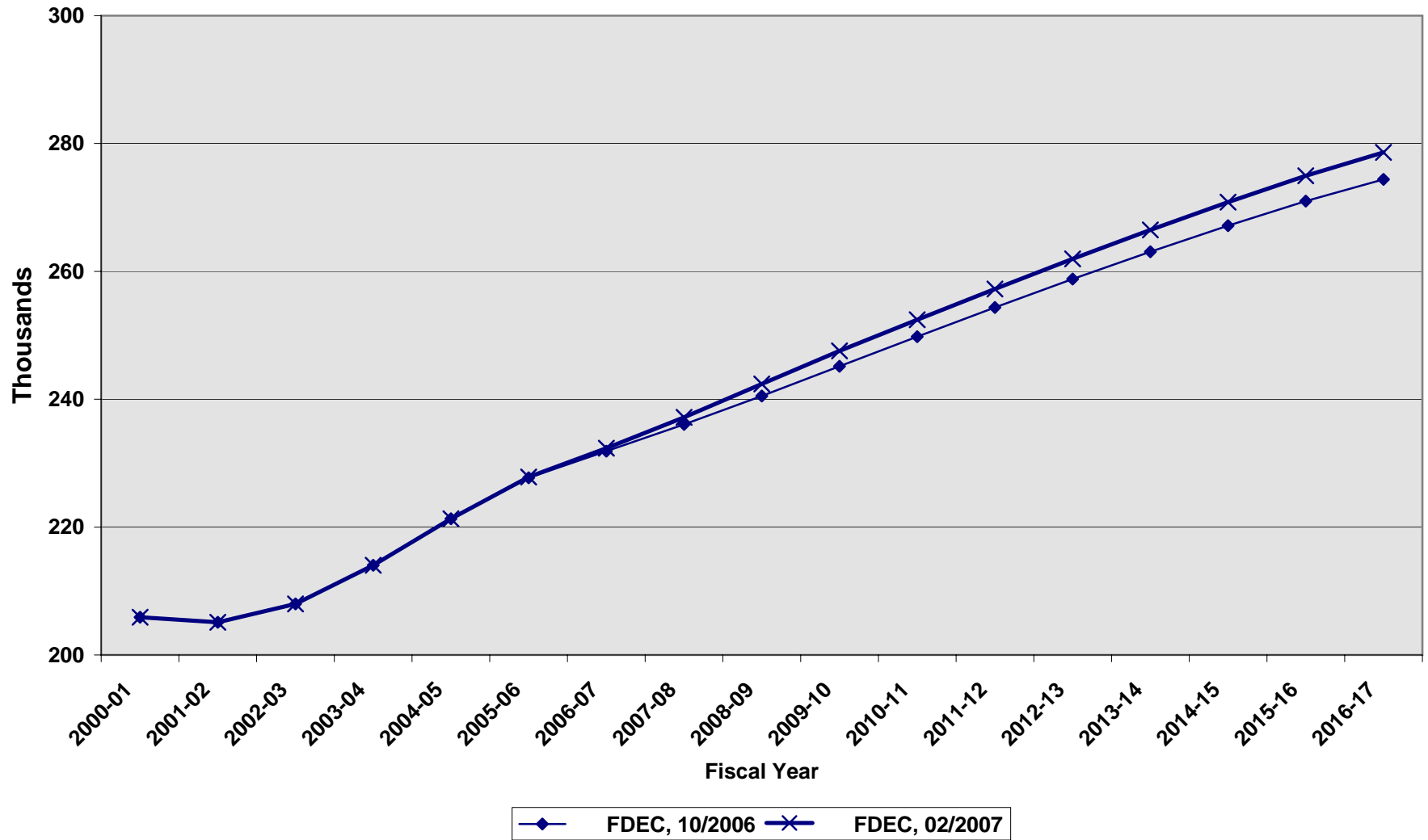
Growth In Average Florida Household Size



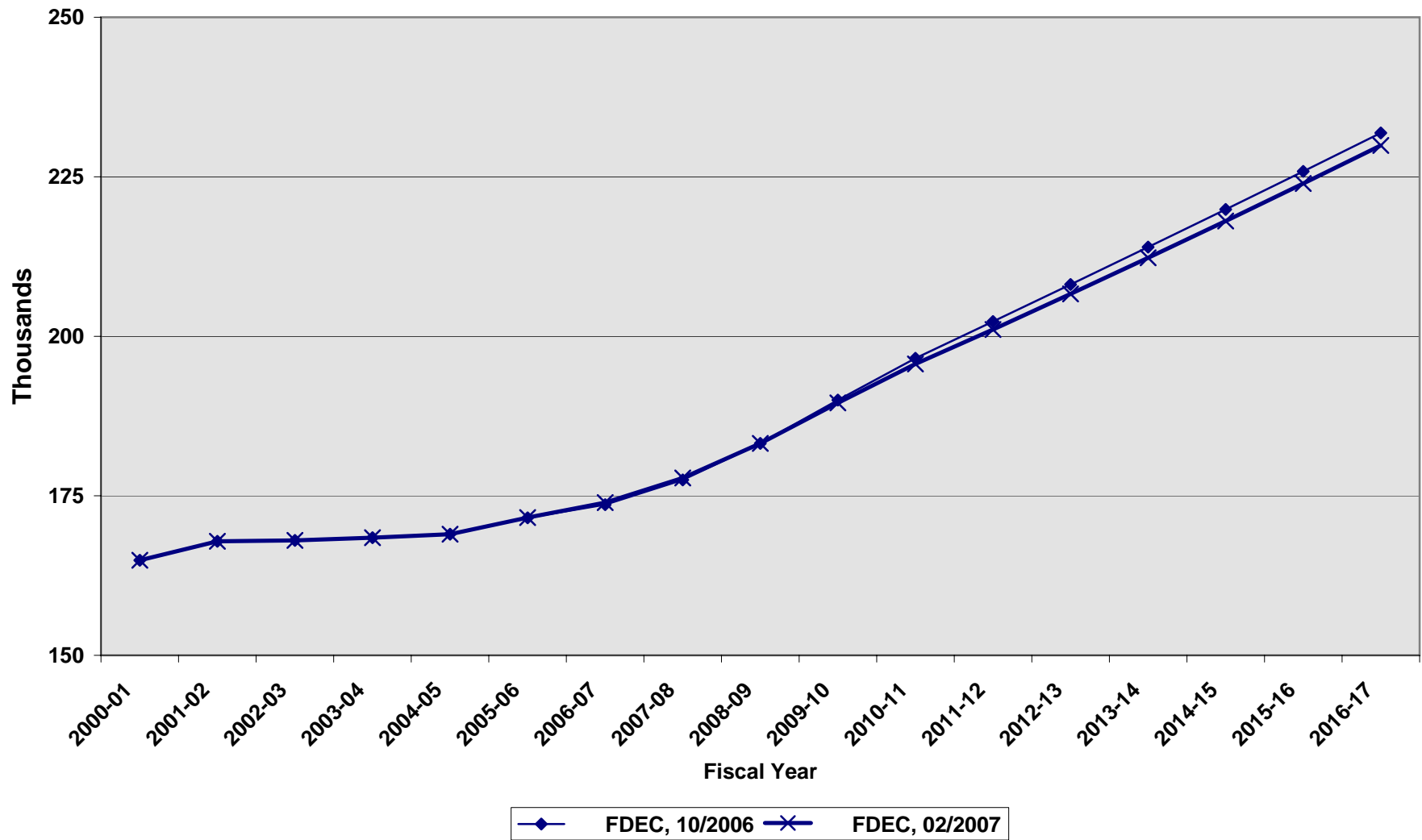
Florida Net Migration



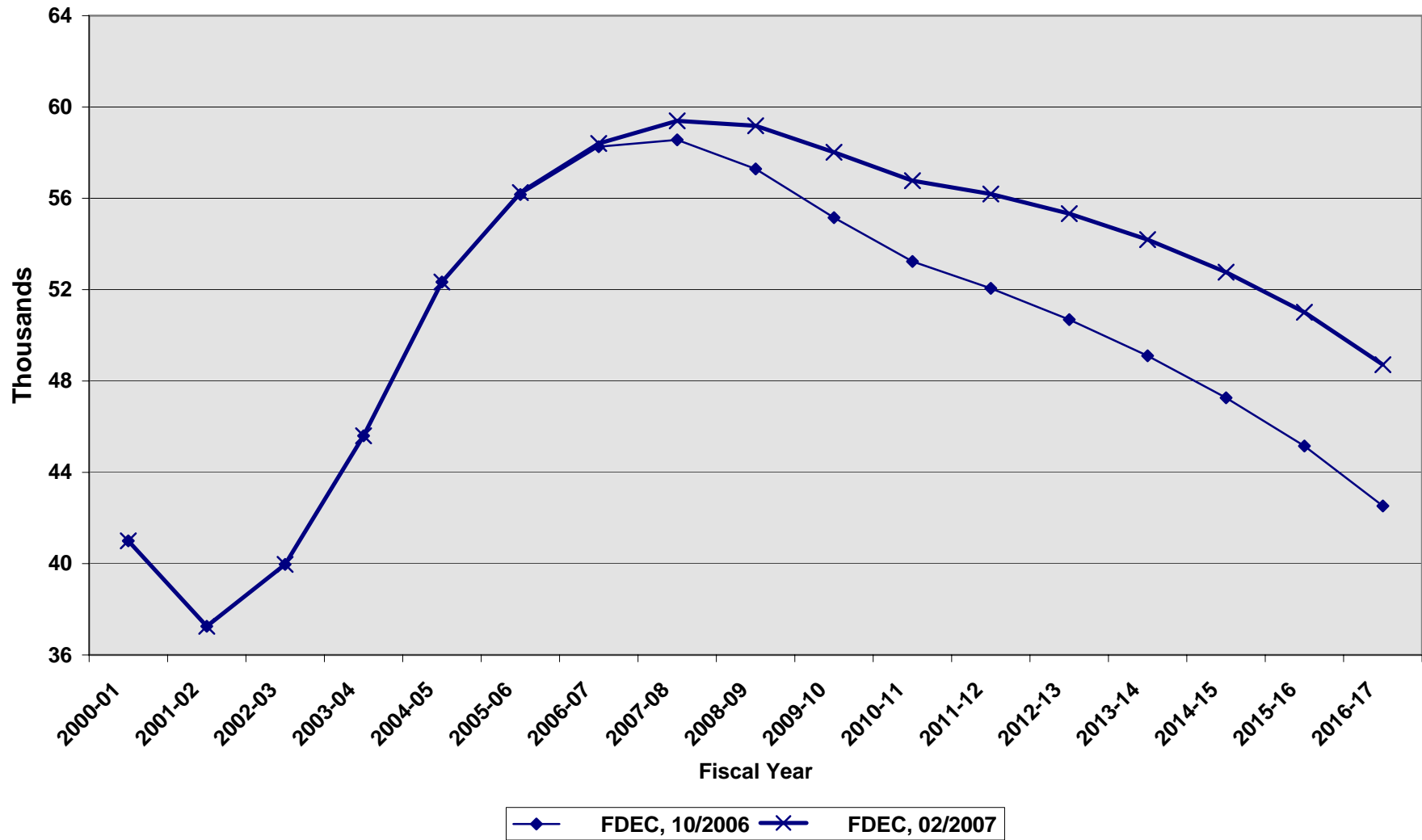
Florida Resident Live Births



Florida Resident Deaths



Florida Net Natural Increase



FLORIDA POPULATION AND COMPONENTS OF CHANGE

Fiscal Year	Population (end of FY)	Growth Rate	Annual Change in Population	Births	Deaths	Net Natural Increase	Net Migration
1950-51	2,980,135	6.07	170,545	67,604	27,186	40,418	130,127
1951-52	3,155,644	5.89	175,509	72,118	28,476	43,642	131,867
1952-53	3,312,485	4.97	156,841	77,156	29,856	47,300	109,541
1953-54	3,504,337	5.79	191,852	82,685	31,035	51,650	140,202
1954-55	3,747,378	6.94	243,041	86,265	32,083	54,182	188,859
1955-56	4,046,121	7.97	298,743	93,431	35,022	58,409	240,334
1956-57	4,369,885	8.00	323,764	100,811	38,319	62,492	261,272
1957-58	4,630,035	5.95	260,150	106,019	41,797	64,222	195,928
1958-59	4,813,142	3.95	183,107	110,457	43,746	66,711	116,396
1959-60	5,009,481	4.08	196,339	114,398	46,063	68,335	128,004
1960-61	5,241,204	4.63	231,723	116,419	48,302	68,117	163,606
1961-62	5,456,538	4.11	215,334	116,068	50,526	65,542	149,792
1962-63	5,628,501	3.15	171,963	114,946	54,302	60,644	111,319
1963-64	5,783,898	2.76	155,397	114,775	56,213	58,562	96,835
1964-65	5,951,548	2.90	167,650	110,465	57,868	52,597	115,053
1965-66	6,103,296	2.55	151,748	104,503	60,875	43,628	108,120
1966-67	6,245,644	2.33	142,348	101,129	62,765	38,364	103,984
1967-68	6,433,276	3.00	187,632	100,413	66,224	34,189	153,443
1968-69	6,634,307	3.12	201,031	104,362	71,133	33,229	167,802
1969-70	6,858,965	3.39	224,658	111,460	73,814	37,646	187,012
1970-71	7,234,230	5.47	375,265	117,071	75,362	41,709	333,556
1971-72	7,681,949	6.19	447,719	113,578	79,677	33,901	413,818
1972-73	8,159,681	6.22	477,732	107,692	86,284	21,408	456,324
1973-74	8,513,792	4.34	354,111	109,455	88,458	20,997	333,114
1974-75	8,646,585	1.56	132,793	108,752	87,185	21,567	111,226

FLORIDA POPULATION AND COMPONENTS OF CHANGE

Fiscal Year	Population (end of FY)	Growth Rate	Annual Change in Population	Births	Deaths	Net Natural Increase	Net Migration
1975-76	8,782,834	1.58	136,249	103,859	88,170	15,689	120,560
1976-77	8,972,672	2.16	189,838	107,735	90,432	17,303	172,535
1977-78	9,227,322	2.84	254,650	112,265	93,372	18,893	235,757
1978-79	9,518,233	3.15	290,911	116,269	96,826	19,443	271,468
1979-80	9,840,802	3.39	322,569	126,759	100,958	25,801	296,768
1980-81	10,222,857	3.88	382,055	135,511	107,686	27,825	354,230
1981-82	10,491,106	2.62	268,249	141,562	108,533	33,029	235,220
1982-83	10,748,180	2.45	257,074	146,890	110,534	36,356	220,718
1983-84	11,066,135	2.96	317,955	151,660	113,957	37,703	280,252
1984-85	11,405,254	3.06	339,119	159,879	117,469	42,410	296,709
1985-86	11,739,923	2.93	334,669	165,837	122,536	43,301	291,368
1986-87	12,083,010	2.92	343,087	170,743	124,846	45,897	297,190
1987-88	12,410,073	2.71	327,063	179,610	129,473	50,137	276,926
1988-89	12,723,105	2.52	313,032	188,272	131,997	56,275	256,757
1989-90	13,017,842	2.32	294,737	197,265	132,461	64,804	229,933
1990-91	13,326,534	2.37	308,692	197,197	134,147	63,050	245,642
1991-92	13,550,408	1.68	223,874	191,702	136,199	55,503	168,371
1992-93	13,803,239	1.87	252,831	192,150	142,167	49,983	202,848
1993-94	14,120,464	2.30	317,225	191,833	146,063	45,770	271,455
1994-95	14,405,457	2.02	284,993	189,272	149,127	40,145	244,848
1995-96	14,701,301	2.05	295,844	188,601	152,628	35,973	259,871
1996-97	15,011,734	2.11	310,433	190,552	153,018	37,534	272,899
1997-98	15,309,861	1.99	298,127	194,305	155,044	39,261	258,866
1998-99	15,679,863	2.42	370,002	195,827	160,050	35,777	334,225
1999-00	16,074,809	2.52	394,946	200,271	162,446	37,825	357,121

FLORIDA POPULATION AND COMPONENTS OF CHANGE

Fiscal Year	Population (end of FY)	Growth Rate	Annual Change in Population	Births	Deaths	Net Natural Increase	Net Migration
2000-01	16,413,469	2.11	338,660	205,898	164,901	40,997	297,663
2001-02	16,767,358	2.16	353,889	205,117	167,860	37,257	316,632
2002-03	17,181,411	2.47	414,053	207,979	168,011	39,968	374,085
2003-04	17,620,690	2.56	439,279	214,032	168,432	45,600	393,679
2004-05	18,027,974	2.31	407,284	221,306	168,974	52,332	354,952
2005-06	18,445,498	2.32	417,524	227,839	171,586	56,253	361,271
2006-07	18,824,412	2.05	378,914	232,348	173,943	58,405	320,509
2007-08	19,240,548	2.21	416,136	237,182	177,790	59,392	356,744
2008-09	19,668,279	2.22	427,731	242,399	183,222	59,177	368,554
2009-10	20,073,772	2.06	405,493	247,572	189,556	58,016	347,477
2010-11	20,461,257	1.93	387,485	252,439	195,664	56,775	330,710
2011-12	20,835,198	1.83	373,941	257,256	201,067	56,189	317,752
2012-13	21,201,887	1.76	366,689	261,966	206,638	55,328	311,361
2013-14	21,563,353	1.70	361,466	266,492	212,299	54,193	307,273
2014-15	21,920,448	1.66	357,095	270,834	218,071	52,763	304,332
2015-16	22,273,999	1.61	353,551	274,953	223,945	51,008	302,543
2016-17	22,623,720	1.57	349,721	278,618	229,907	48,711	301,010
2017-18	22,968,365	1.52	344,645	282,000	236,045	45,955	298,690
2018-19	23,305,212	1.47	336,847	285,161	242,382	42,779	294,068
2019-20	23,633,266	1.41	328,054	288,129	248,896	39,233	288,821