

Demographic Estimating Conference Executive Summary

The Demographic Estimating Conference met on February 9, 2011 to adopt a new population forecast and to revise the estimates for the years subsequent to the 2000 decennial census. These actions were guided by the 2010 Census count for April 1, 2010, and recent demographic and economic-related data. Florida's 2010 Census count was 18,801,310, slightly less than 30,000 higher than the population estimate adopted at the last conference.

Florida is still experiencing low levels and rates of growth due to slower than usual net migration to the state. Historically, Florida's population growth has been driven by positive net migration (more people permanently moving into the state than leaving). However, net migration fell to record low levels during much of 2008 and into 2009. During 2008, natural increase (births minus deaths) actually exceeded net migration. It is anticipated that Florida experienced and will continue to have low levels of net migration through 2010 and most of 2011. This is largely due to national economic conditions, including weakened housing markets and other lingering effects from the recession, that make it difficult for people to relocate.

The April 2011 and April 2012 projections have population growth of less than one percent annually as the state's economy continues its slow recovery (0.64% and 0.80%). Even so, Florida will be adding over 400 people per day between April 1, 2011 and April 1, 2012.

Stronger population growth is expected as the recovery picks up steam with growth rates of 1.40% (266,975 net new residents) and 1.63% (316,065 net new residents) between April 1, 2012 to April 1, 2013 and April 1, 2013 to April 1, 2014, respectively.

Between April 1, 2010 and April 1, 2020, population growth is expected to average 252,549 net new residents per year, representing a compound growth rate of 1.27% over this 10-year time horizon. These increases are analogous to adding a city the size of St. Petersburg every year. By April 1, 2016 Florida's population is expected to have broken the 20-million mark at 20,274,309.

**Florida
Demographic Estimating Conference**

Tables

February 9, 2011
Post Conference

Florida Resident Population

April 1

Year	FDEC, 10/10			FDEC, 2/11		
	Population	% Chg	Change	Population	% Chg	Change
1990	12,938,071	2.27%	287,136	12,938,071	2.27%	287,136
1991	13,258,732	2.48%	320,661	13,258,732	2.48%	320,661
1992	13,497,541	1.80%	238,809	13,497,541	1.80%	238,809
1993	13,730,115	1.72%	232,574	13,730,115	1.72%	232,574
1994	14,043,757	2.28%	313,642	14,043,757	2.28%	313,642
1995	14,335,992	2.08%	292,235	14,335,992	2.08%	292,235
1996	14,623,421	2.00%	287,429	14,623,421	2.00%	287,429
1997	14,938,314	2.15%	314,893	14,938,314	2.15%	314,893
1998	15,230,421	1.96%	292,107	15,230,421	1.96%	292,107
1999	15,580,244	2.30%	349,823	15,580,244	2.30%	349,823
2000	15,982,824	2.58%	402,580	15,982,824	2.58%	402,580
2001	16,330,224	2.17%	347,400	16,331,179	2.18%	348,355
2002	16,674,608	2.11%	344,384	16,654,470	1.98%	323,291
2003	17,071,508	2.38%	396,900	17,000,812	2.08%	346,342
2004	17,516,732	2.61%	445,224	17,378,150	2.22%	377,338
2005	17,918,227	2.29%	401,495	17,768,289	2.24%	390,139
2006	18,349,132	2.40%	430,905	18,168,964	2.26%	400,675
2007	18,680,367	1.81%	331,235	18,436,174	1.47%	267,210
2008	18,807,219	0.68%	126,852	18,579,976	0.78%	143,802
2009	18,750,483	-0.30%	-56,736	18,690,898	0.60%	110,922
2010	18,772,352	0.12%	21,869	18,801,310	0.59%	110,412
Begins forecast.						
2011	18,863,859	0.49%	91,507	18,920,975	0.64%	119,665
2012	19,012,578	0.79%	148,719	19,073,170	0.80%	152,195
2013	19,276,995	1.39%	264,417	19,340,145	1.40%	266,975
2014	19,586,377	1.60%	309,382	19,656,210	1.63%	316,065
2015	19,890,987	1.56%	304,610	19,974,415	1.62%	318,205
2016	20,180,412	1.46%	289,425	20,274,309	1.50%	299,894
2017	20,456,932	1.37%	276,520	20,552,516	1.37%	278,207
2018	20,724,542	1.31%	267,610	20,816,013	1.28%	263,497
2019	20,987,236	1.27%	262,694	21,071,781	1.23%	255,768
			5-Year Averages			
2020	21,249,007	1.33%	271,604	21,326,799	1.32%	270,477
2025	22,569,115	1.21%	264,022	22,641,337	1.20%	262,908
2030	23,811,183	1.08%	248,414	23,877,889	1.07%	247,310

Florida Resident Households

April 1

Year	FDEC, 10/10			FDEC, 2/11		
	Households	% Chg	Change	Households	% Chg	Change
1990	5,134,869	3.40%	168,985	5,134,869	3.40%	168,985
1991	5,283,154	2.89%	148,285	5,283,154	2.89%	148,285
1992	5,378,499	1.80%	95,345	5,378,499	1.80%	95,345
1993	5,478,476	1.86%	99,977	5,478,476	1.86%	99,977
1994	5,589,093	2.02%	110,617	5,589,093	2.02%	110,617
1995	5,697,328	1.94%	108,235	5,697,328	1.94%	108,235
1996	5,806,031	1.91%	108,703	5,806,031	1.91%	108,703
1997	5,929,613	2.13%	123,582	5,929,613	2.13%	123,582
1998	6,040,514	1.87%	110,901	6,040,514	1.87%	110,901
1999	6,182,346	2.35%	141,832	6,182,346	2.35%	141,832
2000	6,338,075	2.52%	155,729	6,338,075	2.52%	155,729
2001	6,483,040	2.29%	144,965	6,479,362	2.23%	141,287
2002	6,620,674	2.12%	137,634	6,607,627	1.98%	128,265
2003	6,778,804	2.39%	158,130	6,745,038	2.08%	137,411
2004	6,949,759	2.52%	170,955	6,894,746	2.22%	149,708
2005	7,109,208	2.29%	159,449	7,049,533	2.24%	154,787
2006	7,291,013	2.56%	181,805	7,208,500	2.26%	158,967
2007	7,443,963	2.10%	152,950	7,284,901	1.06%	76,401
2008	7,499,799	0.75%	55,836	7,282,753	-0.03%	-2,148
2009	7,477,339	-0.30%	-22,460	7,210,402	-0.99%	-72,351
2010	7,487,010	0.13%	9,671	7,167,999	-0.59%	-42,403
Begins forecast.						
2011	7,525,544	0.51%	38,534	7,214,466	0.65%	46,467
2012	7,587,187	0.82%	61,643	7,276,548	0.86%	62,082
2013	7,697,932	1.46%	110,745	7,381,934	1.45%	105,386
2014	7,825,797	1.66%	127,865	7,536,247	2.09%	154,313
2015	7,943,643	1.51%	117,846	7,704,545	2.23%	168,298
2016	8,061,628	1.49%	117,985	7,868,451	2.13%	163,906
2017	8,174,496	1.40%	112,868	8,018,796	1.91%	150,345
2018	8,283,889	1.34%	109,393	8,157,702	1.73%	138,906
2019	8,391,371	1.30%	107,482	8,287,289	1.59%	129,587
			5-Year Averages			
2020	8,498,553	1.36%	110,982	8,409,676	1.77%	141,026
2025	9,040,242	1.24%	108,338	8,959,344	1.27%	109,934
2030	9,552,194	1.11%	102,390	9,458,963	1.09%	99,924

Quarterly Data Table

QUARTERLY FORECAST TABLES

	2007-1	2007-2	2007-3	2007-4	2008-1	2008-2	2008-3	2008-4	2009-1	2009-2	2009-3	2009-4	2010-1	2010-2	2010-3	2010-4	2011-1	2011-2	2011-3	
Population																				
FDEC, 10/2010	18,647.1	18,707.1	18,753.7	18,785.8	18,802.7	18,804.1	18,792.9	18,775.3	18,758.1	18,747.4	18,745.7	18,752.0	18,764.4	18,780.3	18,800.8	18,824.2	18,850.0	18,877.8	18,908.5	
FDEC, 2/2011	18,409.8	18,457.9	18,498.3	18,533.5	18,565.0	18,594.2	18,622.2	18,649.8	18,677.2	18,704.3	18,731.3	18,758.9	18,787.1	18,815.6	18,844.7	18,874.6	18,905.4	18,936.6	18,969.1	
Population Growth Rate																				
FDEC, 10/2010	1.57	1.29	1.00	0.69	0.36	0.03	-0.24	-0.37	-0.37	-0.23	-0.04	0.13	0.27	0.34	0.44	0.50	0.55	0.59	0.65	
FDEC, 2/2011	1.26	1.05	0.88	0.76	0.68	0.63	0.60	0.59	0.59	0.58	0.58	0.59	0.60	0.61	0.62	0.64	0.65	0.66	0.69	
Net Change in Population																				
FDEC, 10/2010	72.4	60.0	46.5	32.1	16.9	1.4	-11.2	-17.6	-17.2	-10.7	-1.7	6.3	12.4	16.0	20.4	23.4	25.8	27.8	30.7	
FDEC, 2/2011	57.4	48.1	40.4	35.2	31.5	29.2	28.1	27.6	27.4	27.0	27.0	27.6	28.2	28.5	29.1	30.0	30.8	31.1	32.5	
Households																				
FDEC, 10/2010	7,428.4	7,456.1	7,476.9	7,490.8	7,497.9	7,498.6	7,494.1	7,487.1	7,480.3	7,476.2	7,475.7	7,478.5	7,483.7	7,490.3	7,498.6	7,508.1	7,518.5	7,529.8	7,542.3	
FDEC, 2/2011	7,279.3	7,288.2	7,292.7	7,292.5	7,286.9	7,275.8	7,259.9	7,240.8	7,220.6	7,201.4	7,185.2	7,173.5	7,168.6	7,171.8	7,183.1	7,195.1	7,207.8	7,221.2	7,235.0	
Household Growth Rate																				
FDEC, 10/2010	1.85	1.50	1.12	0.75	0.38	0.03	-0.24	-0.37	-0.36	-0.22	-0.03	0.15	0.28	0.35	0.45	0.51	0.56	0.60	0.67	
FDEC, 2/2011	0.75	0.49	0.25	-0.01	-0.30	-0.61	-0.87	-1.05	-1.11	-1.06	-0.90	-0.65	-0.28	0.18	0.63	0.67	0.71	0.75	0.77	
Net Change in Households																				
FDEC, 10/2010	33.9	27.7	20.8	13.9	7.1	0.6	-4.4	-7.0	-6.8	-4.1	-0.5	2.8	5.2	6.6	8.3	9.5	10.4	11.3	12.5	
FDEC, 2/2011	13.6	8.9	4.5	-0.2	-5.6	-11.1	-15.9	-19.1	-20.3	-19.2	-16.2	-11.6	-5.0	3.2	11.3	11.9	12.7	13.4	13.8	
Household Size																				
FDEC, 10/2010	2.510	2.509	2.508	2.508	2.508	2.508	2.508	2.508	2.508	2.508	2.508	2.507	2.507	2.507	2.507	2.507	2.507	2.507	2.507	
FDEC, 2/2011	2.529	2.533	2.537	2.541	2.548	2.556	2.565	2.576	2.587	2.597	2.607	2.615	2.621	2.624	2.623	2.623	2.623	2.622	2.622	
Household Size Growth Rate																				
FDEC, 10/2010	-0.27	-0.20	-0.12	-0.06	-0.02	0.00	0.00	0.00	0.00	-0.01	-0.01	-0.01	-0.01	-0.01	-0.01	-0.01	-0.01	-0.01	-0.01	
FDEC, 2/2011	0.50	0.56	0.63	0.78	0.99	1.25	1.49	1.66	1.72	1.65	1.49	1.25	0.88	0.43	-0.01	-0.03	-0.05	-0.08	-0.08	
Net Migration																				
FDEC, 10/2010	54.4	42.0	28.7	14.7	0.7	-14.1	-26.1	-31.9	-30.7	-23.8	-14.6	-6.4	0.0	3.6	8.1	11.2	13.7	15.9	18.9	
FDEC, 2/2011	39.3	30.0	22.5	17.7	15.3	13.7	13.1	13.3	13.7	13.9	14.4	15.5	16.8	17.4	18.0	19.0	19.9	20.4	21.9	
Births																				
FDEC, 10/2010	60.0	59.9	59.8	59.4	58.7	58.1	57.6	57.0	55.9	55.4	55.1	55.0	54.9	55.0	55.0	55.1	55.1	55.2	55.3	
FDEC, 2/2011	60.0	59.9	59.8	59.4	58.7	58.1	57.6	57.0	56.2	55.6	55.1	54.6	53.9	53.6	53.7	53.8	53.9	54.0	54.1	
Deaths																				
FDEC, 10/2010	41.9	41.9	41.9	42.0	42.5	42.6	42.7	42.7	42.4	42.3	42.3	42.3	42.5	42.6	42.7	42.8	43.1	43.3	43.5	
FDEC, 2/2011	41.9	41.9	41.9	42.0	42.5	42.6	42.7	42.7	42.5	42.5	42.5	42.4	42.5	42.5	42.6	42.7	43.0	43.2	43.4	
Net Natural Increase																				
FDEC, 10/2010	18.1	18.1	17.9	17.4	16.2	15.5	14.9	14.3	13.5	13.1	12.8	12.7	12.4	12.4	12.3	12.2	12.1	11.9	11.8	
FDEC, 2/2011	18.1	18.1	17.9	17.4	16.2	15.5	14.9	14.3	13.7	13.1	12.6	12.1	11.4	11.1	11.1	11.0	10.9	10.7	10.7	

Quarterly Data Table

QUARTERLY FORECAST TABLES

	<u>2011-4</u>	<u>2012-1</u>	<u>2012-2</u>	<u>2012-3</u>	<u>2012-4</u>	<u>2013-1</u>	<u>2013-2</u>	<u>2013-3</u>	<u>2013-4</u>	<u>2014-1</u>	<u>2014-2</u>	<u>2014-3</u>	<u>2014-4</u>	<u>2015-1</u>	<u>2015-2</u>	<u>2015-3</u>	<u>2015-4</u>	<u>2016-1</u>	<u>2016-2</u>
Population																			
FDEC, 10/2010	18,944.1	18,986.8	19,038.3	19,098.7	19,166.3	19,239.0	19,315.0	19,392.6	19,470.8	19,548.4	19,625.1	19,701.6	19,777.5	19,853.3	19,927.9	20,001.4	20,073.7	20,144.9	20,215.5
FDEC, 2/2011	19,004.5	19,047.6	19,098.7	19,157.7	19,226.3	19,301.3	19,379.0	19,457.4	19,536.7	19,616.1	19,696.3	19,776.3	19,855.8	19,935.2	20,013.0	20,089.7	20,164.6	20,238.0	20,310.0
Population Growth Rate																			
FDEC, 10/2010	0.76	0.90	1.09	1.27	1.42	1.53	1.59	1.62	1.62	1.60	1.58	1.57	1.55	1.54	1.51	1.48	1.45	1.43	1.41
FDEC, 2/2011	0.75	0.91	1.08	1.24	1.44	1.57	1.62	1.63	1.64	1.64	1.64	1.64	1.62	1.61	1.57	1.54	1.50	1.46	1.43
Net Change in Population																			
FDEC, 10/2010	35.6	42.7	51.5	60.4	67.6	72.7	76.0	77.7	78.2	77.6	76.7	76.5	76.0	75.8	74.5	73.5	72.3	71.2	70.6
FDEC, 2/2011	35.4	43.2	51.1	59.0	68.6	75.0	77.6	78.4	79.3	79.5	80.2	80.0	79.5	79.3	77.8	76.6	74.9	73.4	72.0
Households																			
FDEC, 10/2010	7,556.9	7,574.4	7,595.6	7,620.4	7,648.1	7,677.8	7,708.6	7,739.9	7,771.5	7,803.3	7,834.7	7,865.9	7,897.1	7,928.3	7,958.7	7,988.6	8,018.1	8,047.2	8,075.9
FDEC, 2/2011	7,249.5	7,265.7	7,287.4	7,310.8	7,337.0	7,366.8	7,397.0	7,435.8	7,475.5	7,515.8	7,556.7	7,598.1	7,640.1	7,682.9	7,725.7	7,767.6	7,808.6	7,848.6	7,887.8
Household Growth Rate																			
FDEC, 10/2010	0.77	0.93	1.12	1.32	1.46	1.56	1.61	1.63	1.64	1.65	1.62	1.60	1.60	1.59	1.55	1.51	1.49	1.46	1.44
FDEC, 2/2011	0.81	0.89	1.20	1.29	1.44	1.64	1.65	2.11	2.15	2.17	2.20	2.21	2.23	2.26	2.25	2.19	2.13	2.07	2.01
Net Change in Households																			
FDEC, 10/2010	14.6	17.5	21.2	24.9	27.7	29.7	30.8	31.3	31.6	31.8	31.4	31.2	31.2	31.2	30.5	29.9	29.5	29.1	28.8
FDEC, 2/2011	14.5	16.1	21.8	23.3	26.2	29.8	30.2	38.8	39.7	40.3	40.9	41.4	42.0	42.8	42.8	41.9	41.0	40.1	39.2
Household Size																			
FDEC, 10/2010	2.507	2.507	2.507	2.506	2.506	2.506	2.506	2.506	2.505	2.505	2.505	2.505	2.504	2.504	2.504	2.504	2.504	2.503	2.503
FDEC, 2/2011	2.621	2.622	2.621	2.620	2.620	2.620	2.620	2.617	2.613	2.610	2.606	2.603	2.599	2.595	2.590	2.586	2.582	2.579	2.575
Household Size Growth Rate																			
FDEC, 10/2010	-0.02	-0.03	-0.03	-0.04	-0.04	-0.03	-0.02	-0.02	-0.02	-0.04	-0.04	-0.03	-0.04	-0.05	-0.03	-0.03	-0.03	-0.03	-0.03
FDEC, 2/2011	-0.06	0.02	-0.13	-0.05	0.00	-0.07	-0.03	-0.48	-0.50	-0.52	-0.54	-0.56	-0.60	-0.64	-0.66	-0.63	-0.61	-0.59	-0.57
Net Migration																			
FDEC, 10/2010	24.0	31.0	40.0	48.9	56.2	61.4	64.7	66.4	67.0	66.5	65.7	65.4	64.8	64.5	63.1	62.0	60.6	59.2	58.5
FDEC, 2/2011	24.8	32.6	40.6	48.5	58.1	64.5	67.2	68.0	69.0	69.2	70.0	69.8	69.1	68.8	67.2	66.0	64.2	62.5	60.9
Births																			
FDEC, 10/2010	55.4	55.5	55.7	55.8	56.0	56.2	56.3	56.5	56.7	56.9	57.1	57.2	57.4	57.5	57.6	57.7	57.9	58.1	58.3
FDEC, 2/2011	54.2	54.4	54.6	54.8	55.1	55.3	55.5	55.7	55.9	56.1	56.3	56.4	56.6	56.7	56.8	56.9	57.0	57.2	57.4
Deaths																			
FDEC, 10/2010	43.7	43.9	44.2	44.4	44.6	44.8	45.0	45.3	45.6	45.8	46.1	46.1	46.2	46.2	46.2	46.2	46.2	46.2	46.3
FDEC, 2/2011	43.7	43.8	44.2	44.4	44.6	44.8	45.1	45.3	45.6	45.8	46.1	46.1	46.2	46.2	46.2	46.3	46.3	46.3	46.3
Net Natural Increase																			
FDEC, 10/2010	11.7	11.7	11.5	11.4	11.4	11.4	11.3	11.2	11.1	11.1	11.0	11.1	11.2	11.3	11.5	11.5	11.7	11.9	12.1
FDEC, 2/2011	10.6	10.6	10.4	10.4	10.5	10.5	10.4	10.4	10.3	10.2	10.2	10.3	10.4	10.5	10.6	10.6	10.8	10.9	11.1

Quarterly Data Table

QUARTERLY FORECAST TABLES

	<u>2016-3</u>	<u>2016-4</u>	<u>2017-1</u>	<u>2017-2</u>	<u>2017-3</u>	<u>2017-4</u>	<u>2018-1</u>	<u>2018-2</u>	<u>2018-3</u>	<u>2018-4</u>	<u>2019-1</u>	<u>2019-2</u>	<u>2019-3</u>	<u>2019-4</u>	<u>2020-1</u>	<u>2020-2</u>
Population																
FDEC, 10/2010	20,285.3	20,354.4	20,422.9	20,490.7	20,558.1	20,624.9	20,691.4	20,757.5	20,823.4	20,889.0	20,954.5	21,019.9	21,085.3	21,150.7	21,216.2	21,281.9
FDEC, 2/2011	20,380.7	20,450.2	20,518.6	20,586.0	20,652.6	20,718.4	20,783.6	20,848.2	20,912.4	20,976.3	21,040.0	21,103.6	21,167.1	21,230.8	21,294.8	21,359.0
Population Growth Rate																
FDEC, 10/2010	1.39	1.37	1.35	1.34	1.32	1.31	1.30	1.28	1.28	1.27	1.26	1.25	1.25	1.25	1.24	1.24
FDEC, 2/2011	1.40	1.37	1.34	1.32	1.30	1.28	1.26	1.25	1.24	1.23	1.22	1.21	1.21	1.21	1.21	1.21
Net Change in Population																
FDEC, 10/2010	69.8	69.1	68.4	67.9	67.3	66.9	66.5	66.1	65.9	65.6	65.5	65.4	65.4	65.4	65.5	65.7
FDEC, 2/2011	70.7	69.5	68.4	67.4	66.6	65.8	65.2	64.6	64.2	63.9	63.7	63.6	63.6	63.7	63.9	64.2
Households																
FDEC, 10/2010	8,104.3	8,132.5	8,160.6	8,188.3	8,215.7	8,243.1	8,270.4	8,297.4	8,324.2	8,351.1	8,378.0	8,404.7	8,431.4	8,458.2	8,485.1	8,512.0
FDEC, 2/2011	7,926.2	7,963.8	8,000.6	8,036.7	8,072.0	8,106.7	8,140.8	8,174.3	8,207.2	8,239.6	8,271.5	8,302.9	8,333.9	8,364.4	8,394.7	8,424.5
Household Growth Rate																
FDEC, 10/2010	1.41	1.40	1.39	1.36	1.35	1.34	1.33	1.31	1.30	1.30	1.30	1.28	1.27	1.28	1.28	1.27
FDEC, 2/2011	1.96	1.91	1.86	1.82	1.77	1.73	1.69	1.66	1.62	1.59	1.56	1.53	1.50	1.48	1.45	1.43
Net Change in Households																
FDEC, 10/2010	28.4	28.2	28.1	27.7	27.4	27.4	27.3	27.0	26.8	26.9	26.9	26.7	26.7	26.8	26.9	26.9
FDEC, 2/2011	38.4	37.6	36.8	36.1	35.4	34.7	34.1	33.5	32.9	32.4	31.9	31.4	31.0	30.6	30.2	29.9
Household Size																
FDEC, 10/2010	2.503	2.503	2.503	2.502	2.502	2.502	2.502	2.502	2.502	2.501	2.501	2.501	2.501	2.501	2.500	2.500
FDEC, 2/2011	2.571	2.568	2.565	2.562	2.559	2.556	2.553	2.550	2.548	2.546	2.544	2.542	2.540	2.538	2.537	2.535
Household Size Growth Rate																
FDEC, 10/2010	-0.02	-0.03	-0.04	-0.03	-0.02	-0.03	-0.04	-0.03	-0.02	-0.03	-0.04	-0.03	-0.02	-0.03	-0.03	-0.03
FDEC, 2/2011	-0.55	-0.53	-0.51	-0.49	-0.46	-0.44	-0.42	-0.40	-0.38	-0.35	-0.33	-0.31	-0.29	-0.26	-0.24	-0.22
Net Migration																
FDEC, 10/2010	57.6	56.7	56.0	55.4	54.9	54.4	54.0	53.7	53.4	53.2	53.0	52.9	52.9	52.9	53.0	53.4
FDEC, 2/2011	59.5	58.2	57.0	56.0	55.2	54.4	53.8	53.2	52.8	52.5	52.3	52.1	52.2	52.3	52.5	53.0
Births																
FDEC, 10/2010	58.5	58.7	58.9	59.1	59.3	59.4	59.6	59.8	59.9	60.1	60.2	60.4	60.5	60.6	60.8	60.6
FDEC, 2/2011	57.6	57.8	57.9	58.1	58.3	58.4	58.6	58.7	58.9	59.0	59.2	59.3	59.5	59.6	59.7	59.5
Deaths																
FDEC, 10/2010	46.3	46.4	46.5	46.6	46.8	47.0	47.1	47.3	47.4	47.6	47.7	47.9	48.0	48.1	48.3	48.3
FDEC, 2/2011	46.4	46.4	46.5	46.7	46.8	47.0	47.2	47.3	47.5	47.6	47.7	47.9	48.0	48.2	48.3	48.3
Net Natural Increase																
FDEC, 10/2010	12.2	12.4	12.4	12.4	12.5	12.5	12.5	12.5	12.5	12.5	12.5	12.5	12.5	12.5	12.5	12.3
FDEC, 2/2011	11.2	11.3	11.4	11.4	11.4	11.4	11.4	11.4	11.4	11.4	11.4	11.4	11.4	11.4	11.4	11.2

Fiscal Year Data Table

FISCAL YEAR
FORECAST TABLES

	1990-91	1991-92	1992-93	1993-94	1994-95	1995-96	1996-97	1997-98	1998-99	1999-00	2000-01	2001-02	2002-03	2003-04	2004-05	2005-06	2006-07
Population																	
FDEC, 10/2010	13,178.0	13,442.6	13,670.0	13,962.2	14,264.9	14,550.7	14,859.1	15,158.2	15,488.7	15,881.3	16,246.1	16,587.2	16,969.0	17,405.4	17,818.8	18,241.0	18,605.0
FDEC, 2/2011	13,178.0	13,442.6	13,670.0	13,962.2	14,264.9	14,550.7	14,859.1	15,158.2	15,488.7	15,881.4	16,246.6	16,572.8	16,911.8	17,282.1	17,668.9	18,069.7	18,376.4
Growth Rate																	
FDEC, 10/2010	2.42	2.01	1.69	2.14	2.17	2.00	2.12	2.01	2.18	2.53	2.30	2.10	2.30	2.57	2.38	2.37	2.00
FDEC, 2/2011	2.42	2.01	1.69	2.14	2.17	2.00	2.12	2.01	2.18	2.54	2.30	2.01	2.05	2.19	2.24	2.27	1.70
Net Change in Population																	
FDEC, 10/2010	315.1	232.0	241.6	315.7	289.2	291.1	313.1	295.0	359.3	399.3	343.0	349.0	406.0	441.0	403.7	426.3	309.1
FDEC, 2/2011	315.1	232.0	241.6	315.7	289.2	291.1	313.1	295.0	359.3	399.5	341.8	324.6	350.8	379.2	393.8	390.0	248.4
Households																	
FDEC, 10/2010	5,230.8	5,334.4	5,424.8	5,538.3	5,655.1	5,767.0	5,887.2	6,005.0	6,138.4	6,297.0	6,447.9	6,586.0	6,738.1	6,907.2	7,069.3	7,244.7	7,408.6
FDEC, 2/2011	5,230.8	5,334.4	5,424.8	5,538.3	5,655.1	5,767.0	5,887.2	6,005.0	6,138.4	6,296.9	6,445.1	6,575.3	6,709.7	6,856.7	7,009.9	7,169.7	7,270.1
Growth Rate																	
FDEC, 10/2010	2.44	1.98	1.69	2.09	2.11	1.98	2.08	2.00	2.22	2.58	2.40	2.14	2.31	2.51	2.35	2.48	2.26
FDEC, 2/2011	2.44	1.98	1.69	2.09	2.11	1.98	2.08	2.00	2.22	2.58	2.35	2.02	2.04	2.19	2.23	2.28	1.40
Net Change in Households																	
FDEC, 10/2010	124.4	92.2	94.4	122.0	112.8	113.3	122.3	117.9	144.1	162.8	142.6	139.3	161.0	169.4	161.4	181.9	143.0
FDEC, 2/2011	124.4	92.2	94.4	122.0	112.8	113.3	122.3	117.9	144.1	162.4	138.3	128.6	139.3	150.3	156.9	152.0	65.9
Household Size																	
FDEC, 10/2010	2.519	2.520	2.520	2.521	2.522	2.523	2.524	2.524	2.523	2.522	2.520	2.519	2.518	2.520	2.521	2.518	2.511
FDEC, 2/2011	2.519	2.520	2.520	2.521	2.522	2.523	2.524	2.524	2.523	2.522	2.521	2.520	2.521	2.520	2.521	2.520	2.528
Growth Rate																	
FDEC, 10/2010	-0.02	0.03	0.00	0.04	0.06	0.02	0.04	0.01	-0.04	-0.05	-0.10	-0.04	-0.01	0.06	0.03	-0.11	-0.26
FDEC, 2/2011	-0.02	0.03	0.00	0.04	0.06	0.02	0.04	0.01	-0.04	-0.05	-0.05	-0.01	0.00	0.00	0.00	-0.01	0.29
Net Migration																	
FDEC, 10/2010	252.1	176.2	191.4	270.0	249.0	254.8	275.5	256.2	323.0	361.3	302.6	311.3	365.5	394.2	351.2	364.3	238.1
FDEC, 2/2011	252.1	176.2	191.4	270.0	249.0	254.8	275.5	256.2	323.0	361.5	301.4	286.8	310.3	332.5	341.4	328.0	177.4
Births																	
FDEC, 10/2010	197.0	192.2	192.0	191.7	189.4	188.6	190.7	194.0	196.0	200.5	205.4	205.4	208.5	215.0	221.8	232.1	239.3
FDEC, 2/2011	197.0	192.2	192.0	191.7	189.4	188.6	190.7	194.0	196.0	200.5	205.4	205.4	208.5	215.0	221.8	232.1	239.3
Deaths																	
FDEC, 10/2010	134.0	136.4	141.8	146.0	149.3	152.3	153.1	155.2	159.7	162.5	165.0	167.6	168.1	168.3	169.4	170.1	168.3
FDEC, 2/2011	134.0	136.4	141.8	146.0	149.3	152.3	153.1	155.2	159.7	162.5	165.0	167.6	168.1	168.3	169.4	170.1	168.3
Net Natural Increase																	
FDEC, 10/2010	63.0	55.8	50.1	45.7	40.1	36.3	37.6	38.8	36.3	38.0	40.4	37.8	40.5	46.8	52.5	62.0	71.0
FDEC, 2/2011	63.0	55.8	50.1	45.7	40.1	36.3	37.6	38.8	36.3	38.0	40.4	37.8	40.5	46.8	52.5	62.0	71.0

Fiscal Year Data Table

FISCAL YEAR
FORECAST TABLES

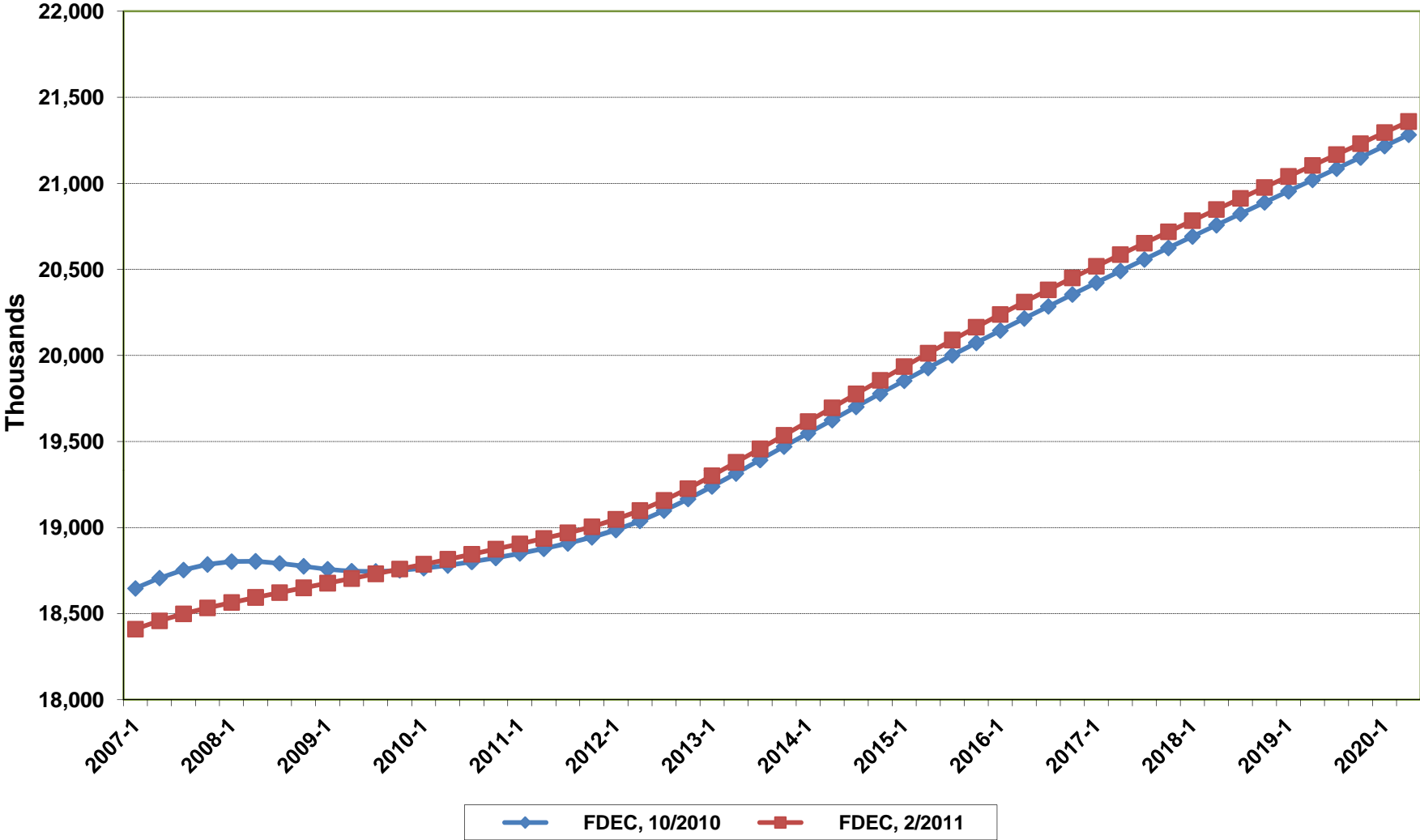
	<u>2007-08</u>	<u>2008-09</u>	<u>2009-10</u>	<u>2010-11</u>	<u>2011-12</u>	<u>2012-13</u>	<u>2013-14</u>	<u>2014-15</u>	<u>2015-16</u>	<u>2016-17</u>	<u>2017-18</u>	<u>2018-19</u>	<u>2019-20</u>
Population													
FDEC, 10/2010	18,786.6	18,768.4	18,760.6	18,838.2	18,969.5	19,204.7	19,509.2	19,815.1	20,108.9	20,388.3	20,658.0	20,921.7	21,183.5
FDEC, 2/2011	18,547.7	18,663.4	18,773.2	18,890.3	19,030.0	19,266.1	19,576.6	19,895.1	20,200.5	20,483.8	20,750.7	21,008.1	21,262.9
Growth Rate													
FDEC, 10/2010	0.98	-0.10	-0.04	0.41	0.70	1.24	1.59	1.57	1.48	1.39	1.32	1.28	1.25
FDEC, 2/2011	0.93	0.62	0.59	0.62	0.74	1.24	1.61	1.63	1.54	1.40	1.30	1.24	1.21
Net Change in Population													
FDEC, 10/2010	96.9	-56.7	32.9	97.4	160.6	276.7	310.1	302.8	287.6	275.2	266.8	262.4	262.0
FDEC, 2/2011	136.3	110.1	111.3	121.0	162.2	280.3	317.3	316.7	296.9	276.0	262.2	255.3	255.5
Households													
FDEC, 10/2010	7,491.0	7,484.5	7,482.1	7,513.8	7,567.3	7,663.8	7,787.4	7,912.5	8,032.4	8,146.4	8,256.6	8,364.5	8,471.7
FDEC, 2/2011	7,287.0	7,230.7	7,174.8	7,201.8	7,259.4	7,352.9	7,496.0	7,661.7	7,828.2	7,981.8	8,123.5	8,255.3	8,379.4
Growth Rate													
FDEC, 10/2010	1.11	-0.09	-0.03	0.42	0.71	1.27	1.61	1.61	1.52	1.42	1.35	1.31	1.28
FDEC, 2/2011	0.23	-0.77	-0.77	0.38	0.80	1.29	1.95	2.21	2.17	1.96	1.77	1.62	1.50
Net Change in Households													
FDEC, 10/2010	42.5	-22.4	14.1	39.5	65.8	113.0	126.1	124.0	117.2	112.4	109.1	107.4	107.3
FDEC, 2/2011	-12.4	-74.4	-29.6	49.4	66.3	109.6	159.7	169.0	162.1	148.8	137.6	128.6	121.7
Household Size													
FDEC, 10/2010	2.508	2.508	2.507	2.507	2.507	2.506	2.505	2.504	2.503	2.503	2.502	2.501	2.501
FDEC, 2/2011	2.545	2.581	2.617	2.623	2.621	2.620	2.612	2.597	2.580	2.566	2.554	2.545	2.538
Growth Rate													
FDEC, 10/2010	-0.13	-0.01	-0.01	-0.01	-0.02	-0.03	-0.03	-0.04	-0.03	-0.03	-0.03	-0.03	-0.03
FDEC, 2/2011	0.70	1.41	1.37	0.25	-0.06	-0.05	-0.33	-0.57	-0.62	-0.55	-0.46	-0.38	-0.29
Net Migration													
FDEC, 10/2010	30.0	-112.6	-17.4	48.9	113.9	231.1	265.7	257.7	240.3	225.8	217.0	212.4	212.2
FDEC, 2/2011	69.3	54.1	64.0	77.3	119.9	238.4	276.2	275.0	253.6	230.7	216.6	209.7	210.0
Births													
FDEC, 10/2010	236.0	225.9	220.0	220.4	221.9	224.3	227.1	229.7	232.2	235.3	238.0	240.5	242.5
FDEC, 2/2011	236.0	226.4	217.1	215.2	217.4	220.7	224.0	226.5	228.5	231.4	234.0	236.4	238.3
Deaths													
FDEC, 10/2010	169.1	170.1	169.6	171.9	175.3	178.8	182.7	184.6	184.9	185.8	188.2	190.6	192.7
FDEC, 2/2011	169.0	170.3	169.8	171.5	175.1	178.9	182.9	184.7	185.1	186.1	188.4	190.7	192.8
Net Natural Increase													
FDEC, 10/2010	67.0	55.9	50.4	48.5	46.6	45.5	44.4	45.1	47.3	49.4	49.8	49.9	49.8
FDEC, 2/2011	67.0	56.0	47.3	43.7	42.3	41.9	41.1	41.7	43.4	45.3	45.6	45.7	45.5

Florida Demographic Estimating Conference

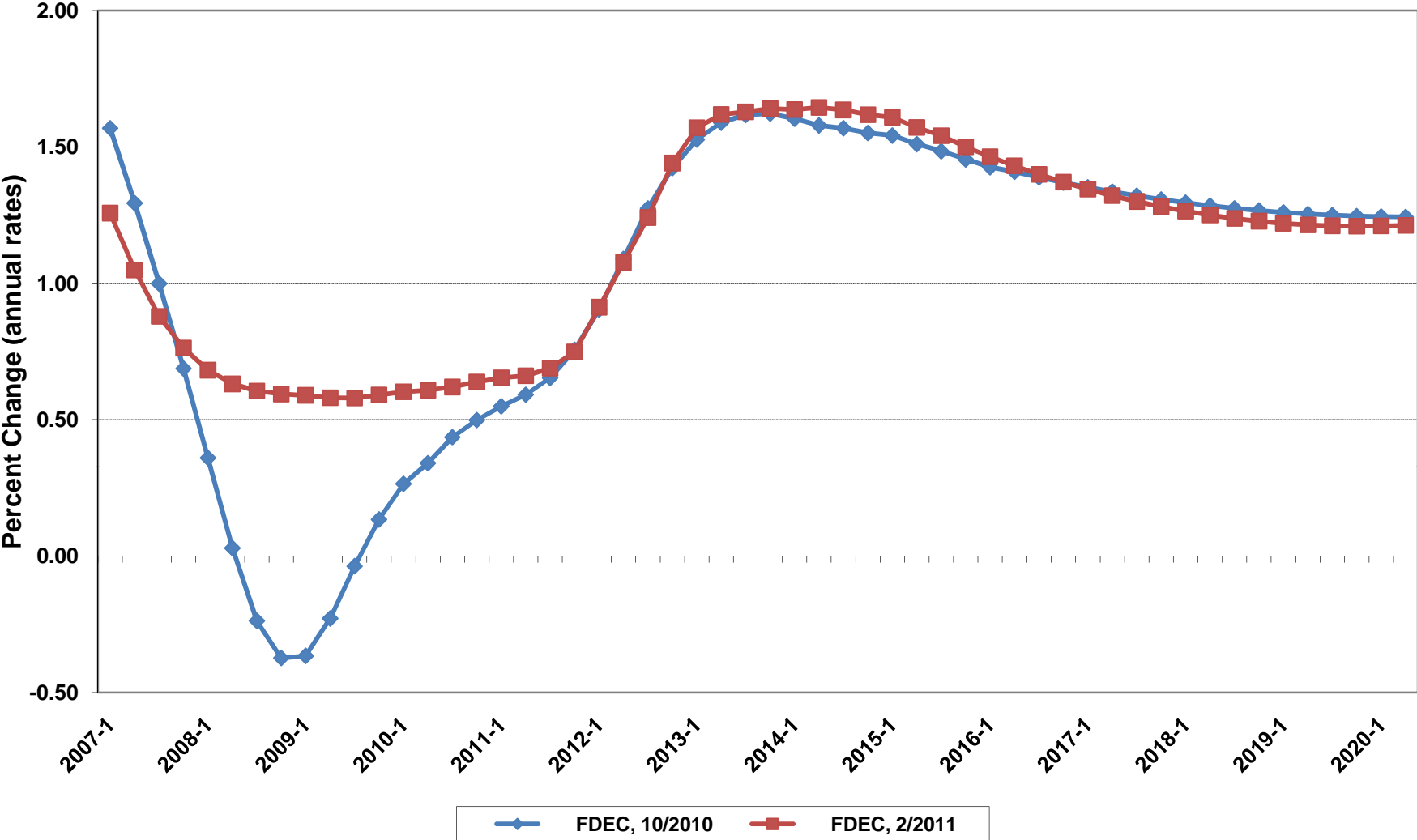
Charts

February 9, 2011
Post Conference

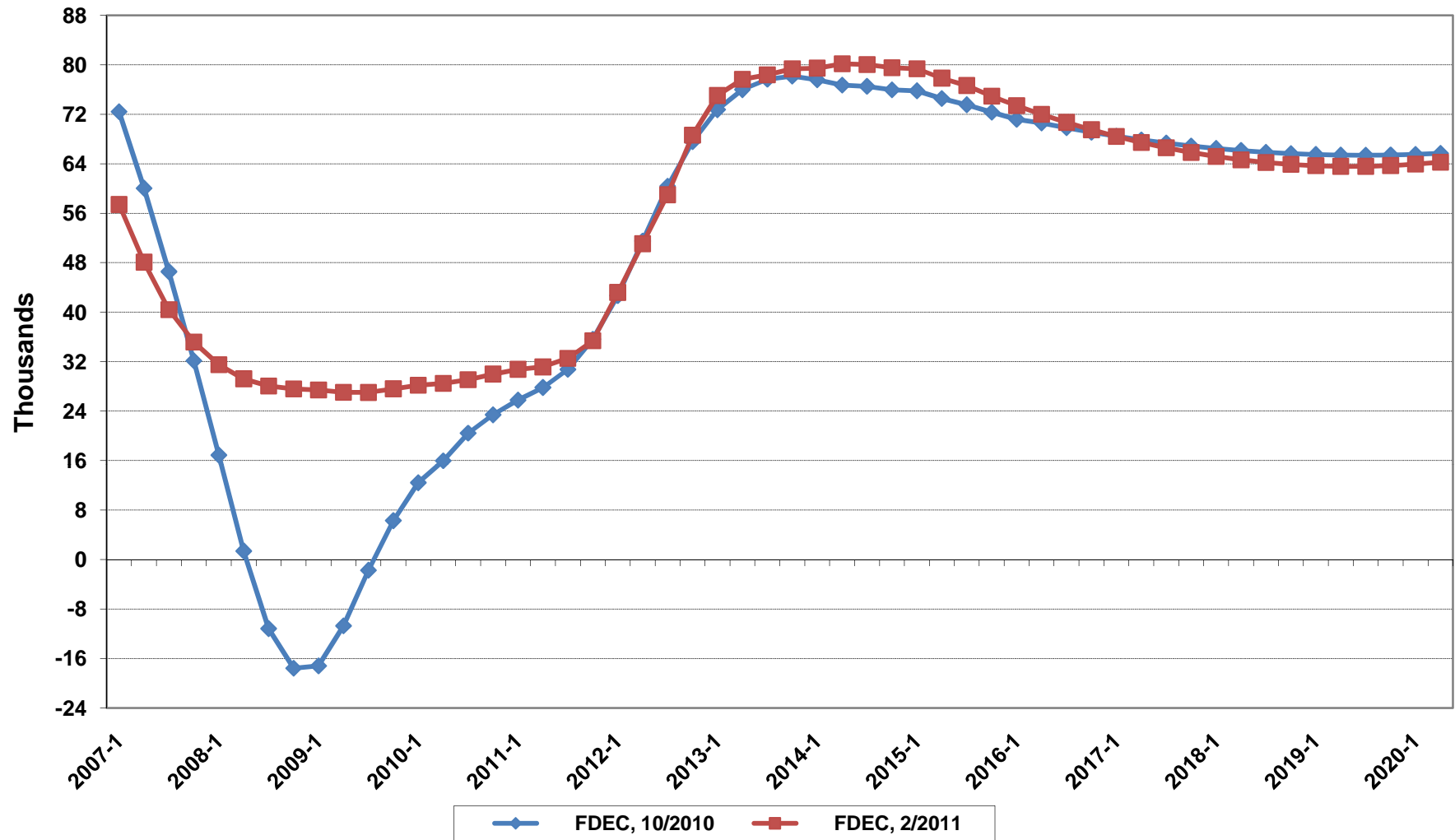
Florida Resident Population



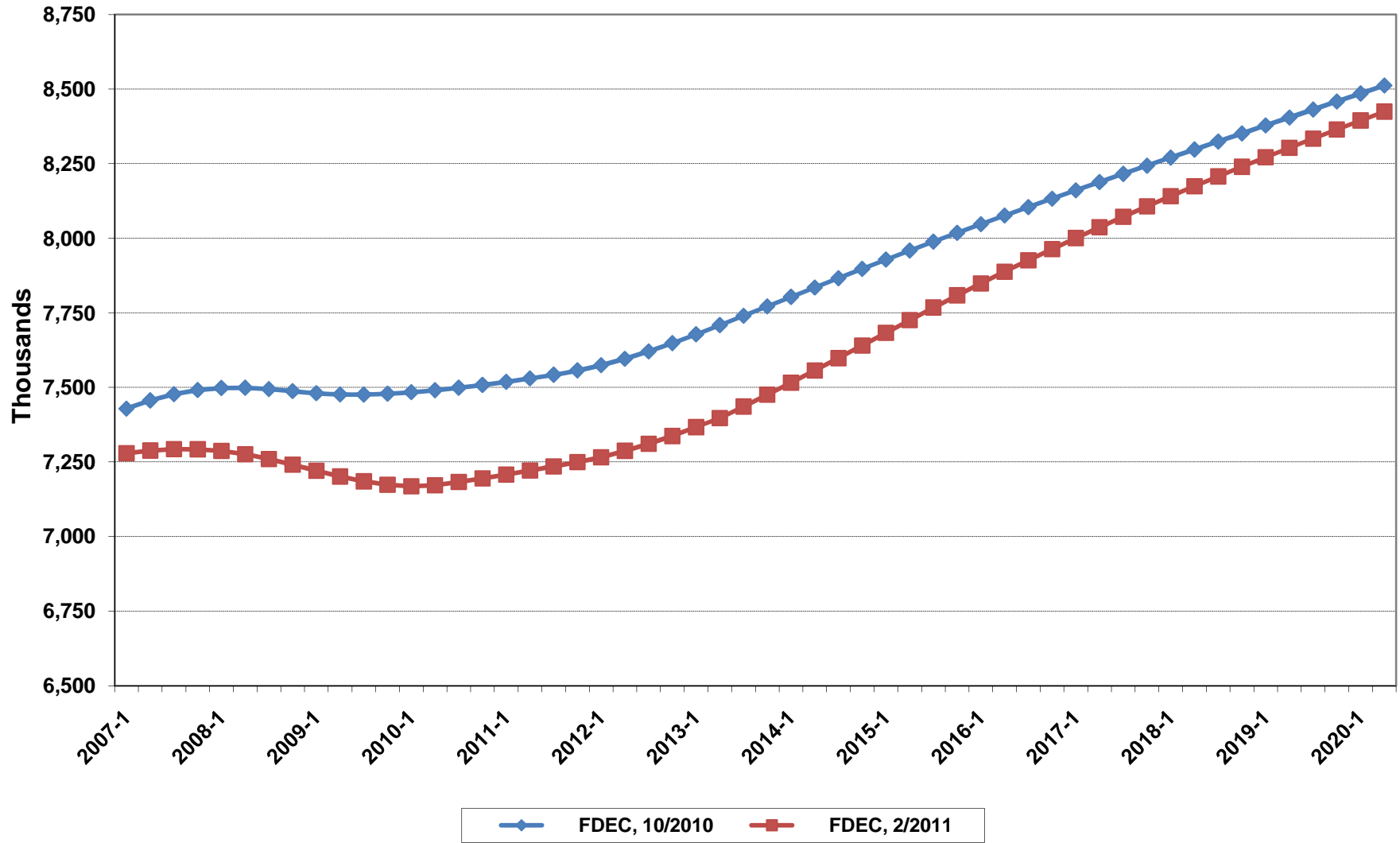
Growth In Florida Resident Population



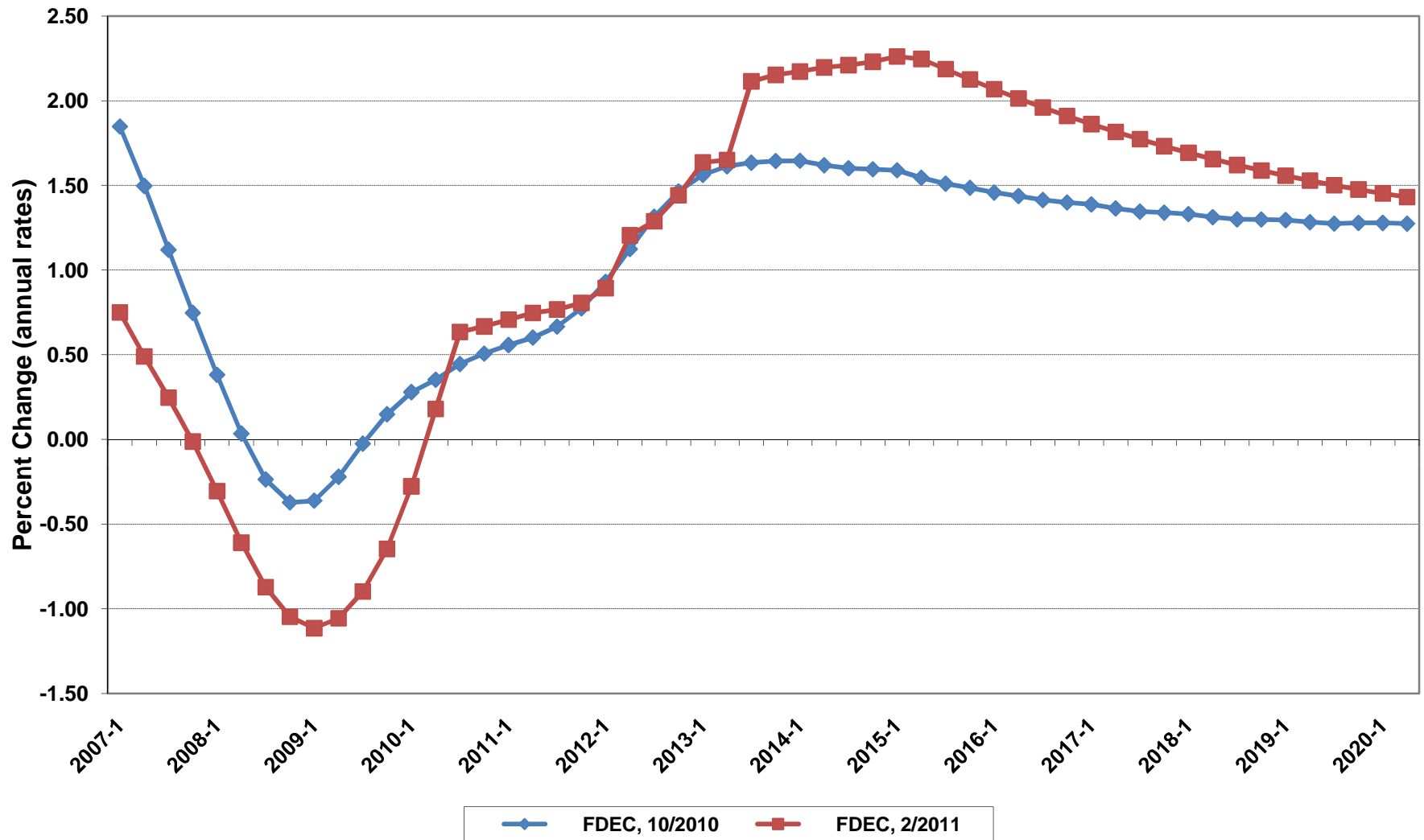
Net Change In Florida Resident Population



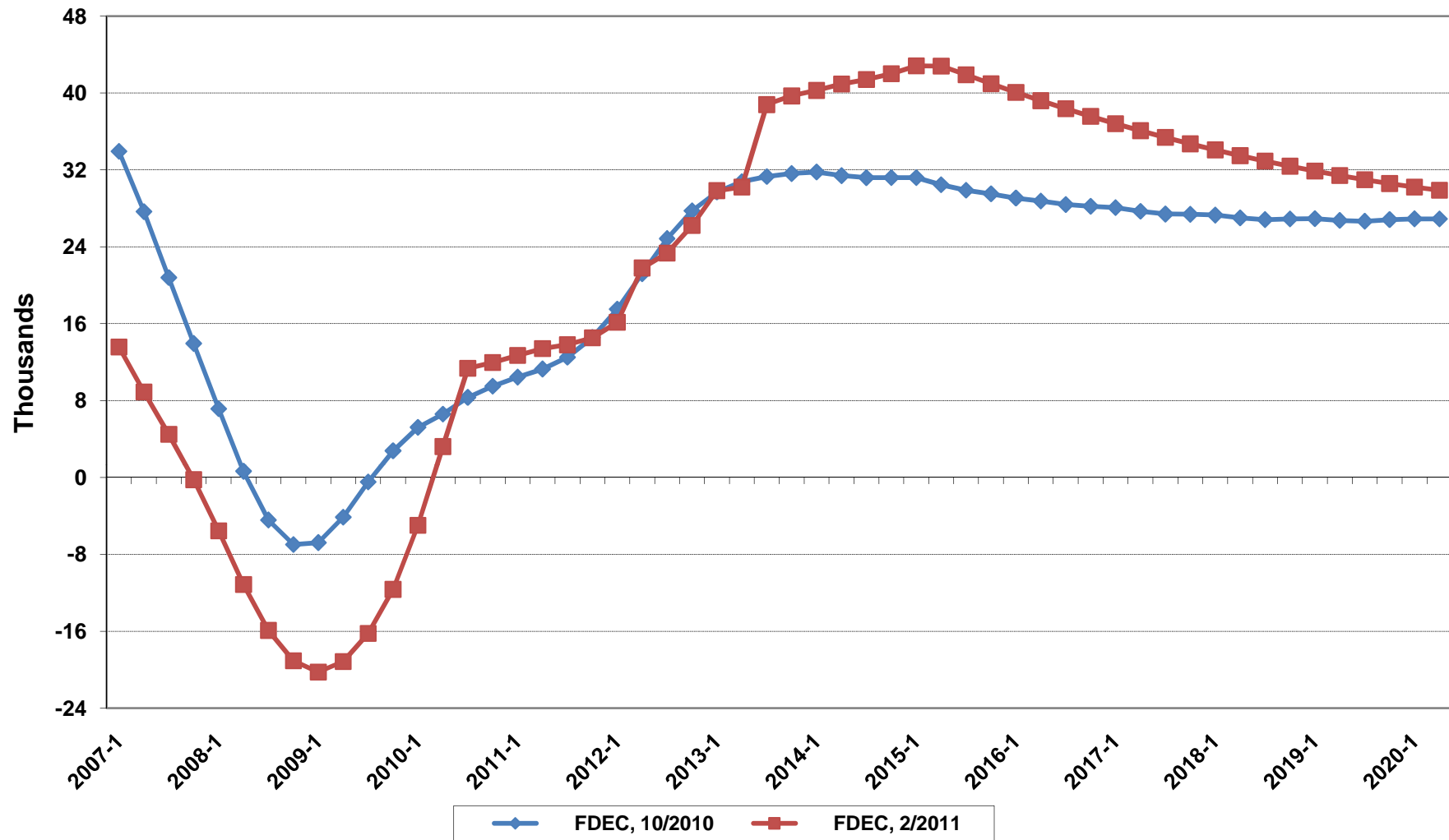
Florida Resident Households



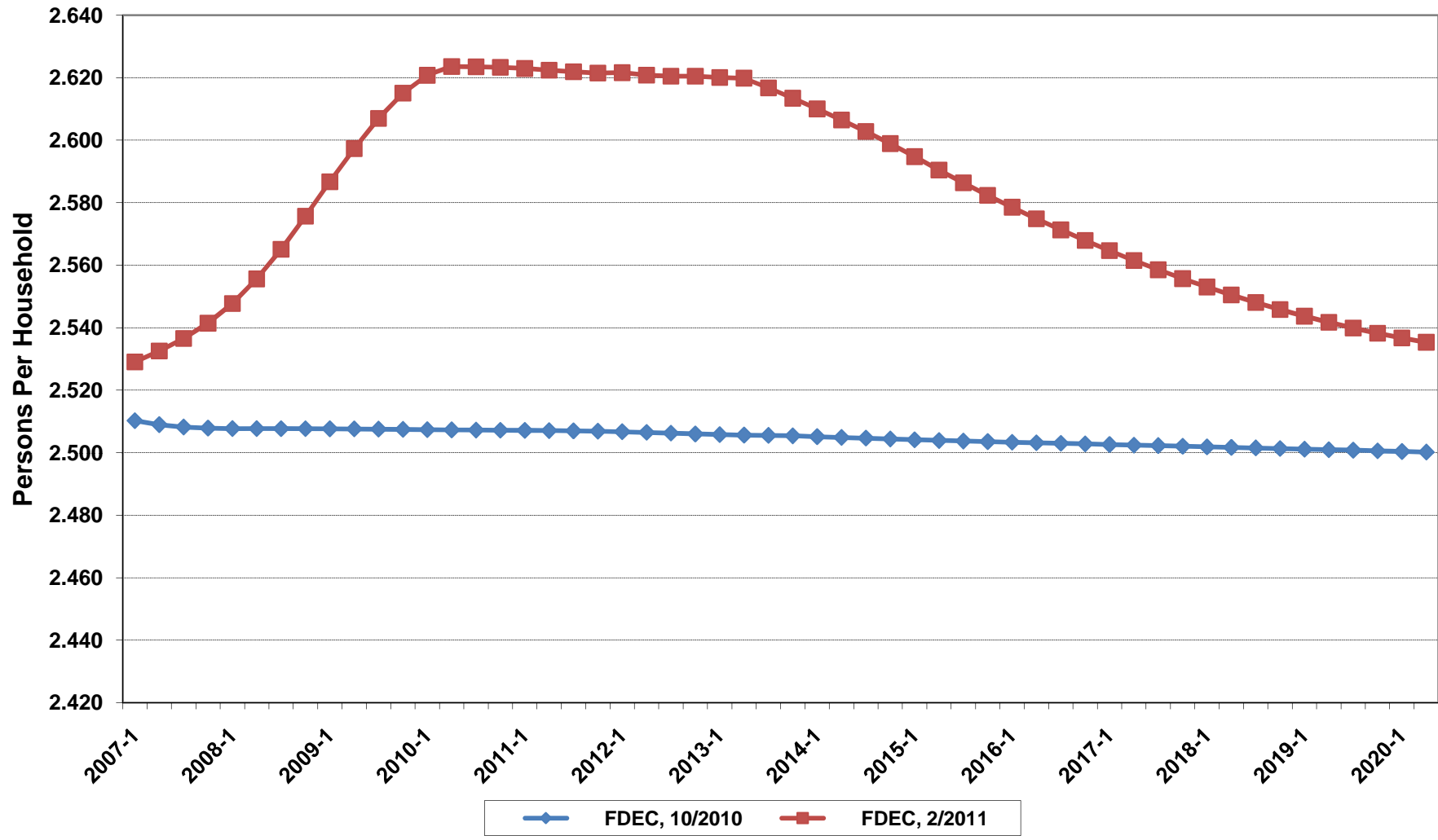
Growth In Florida Resident Households



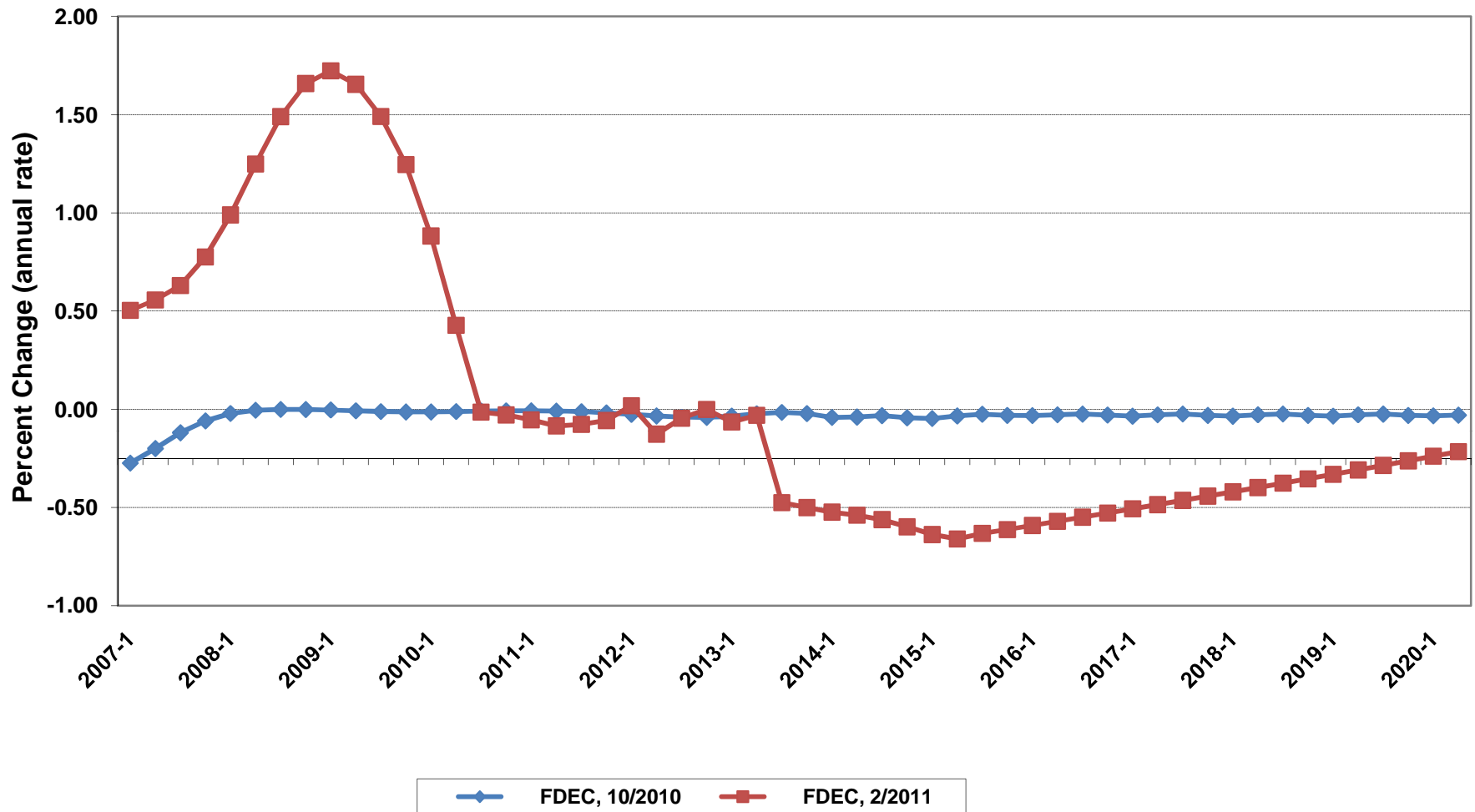
Net Change In Florida Resident Households



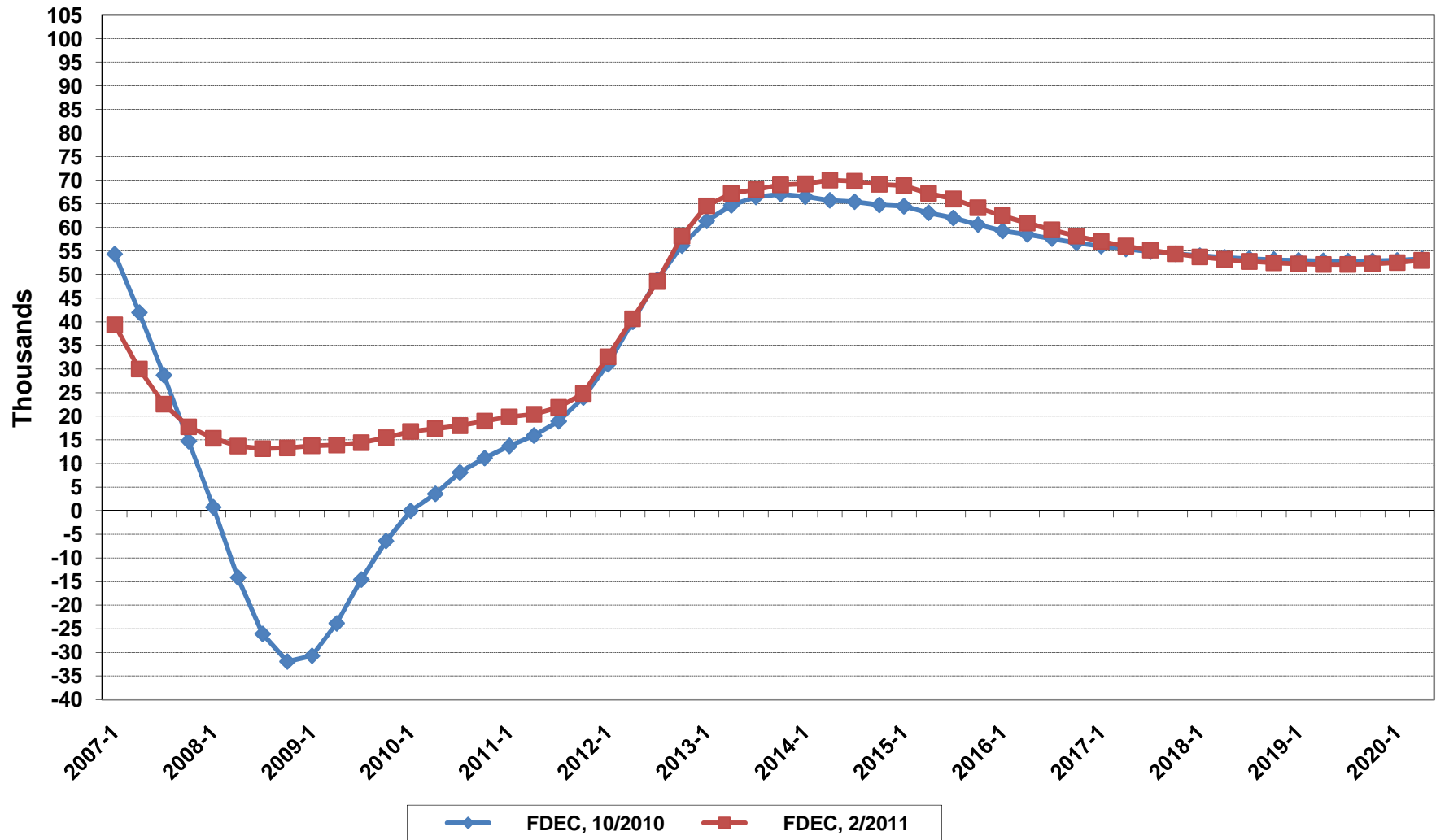
Florida Average Household Size



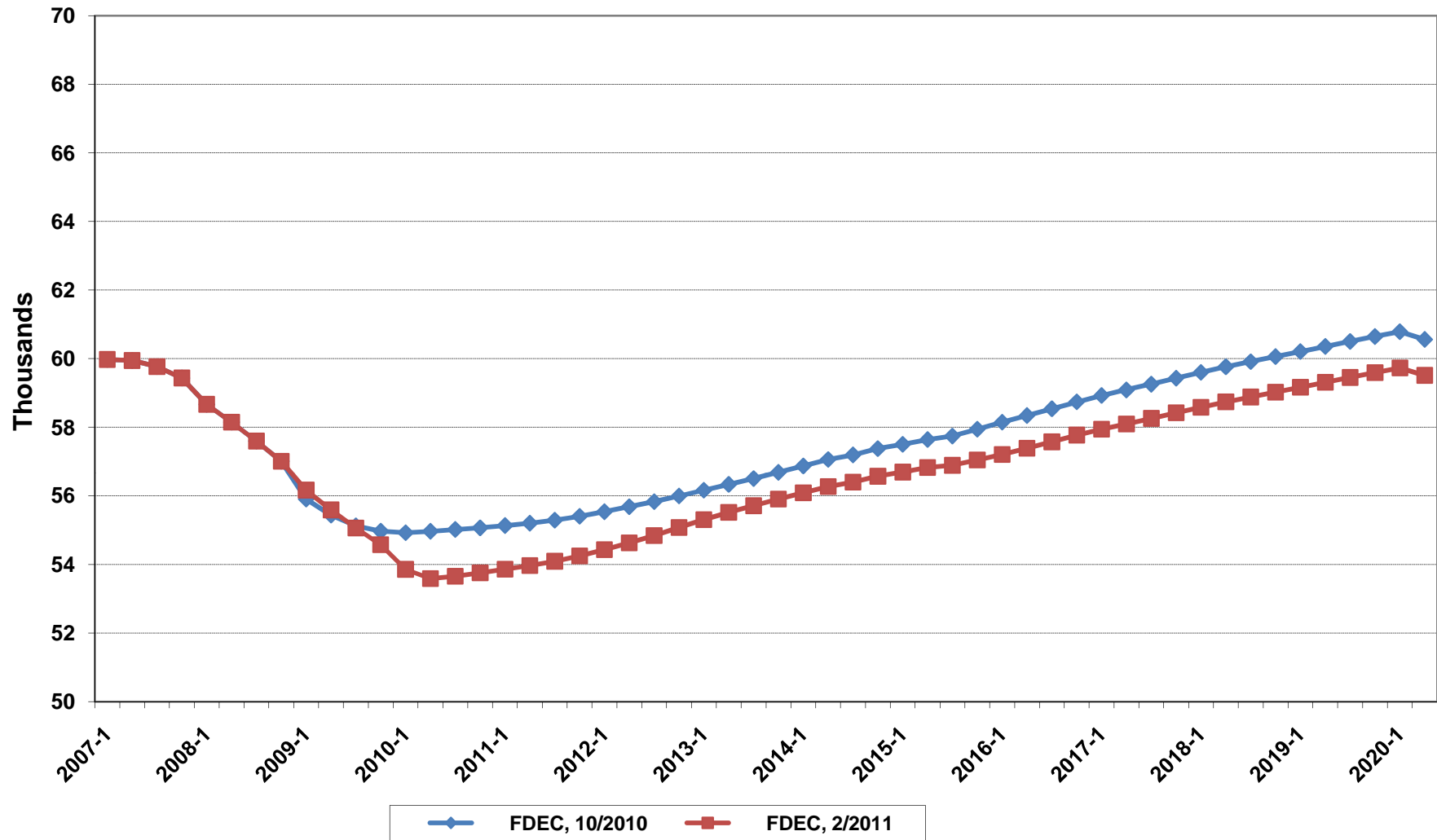
Growth In Florida Household Size



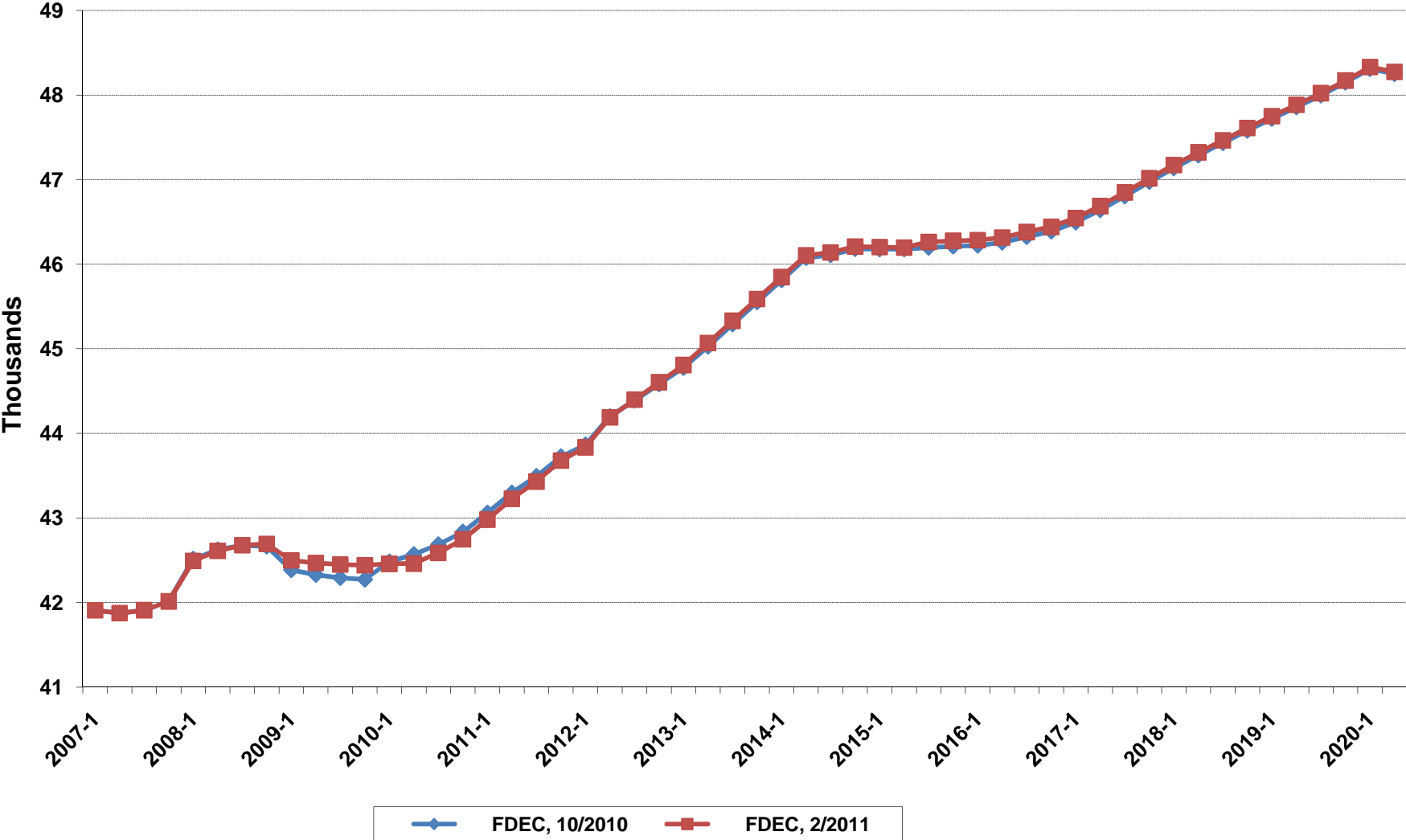
Florida Net Migration



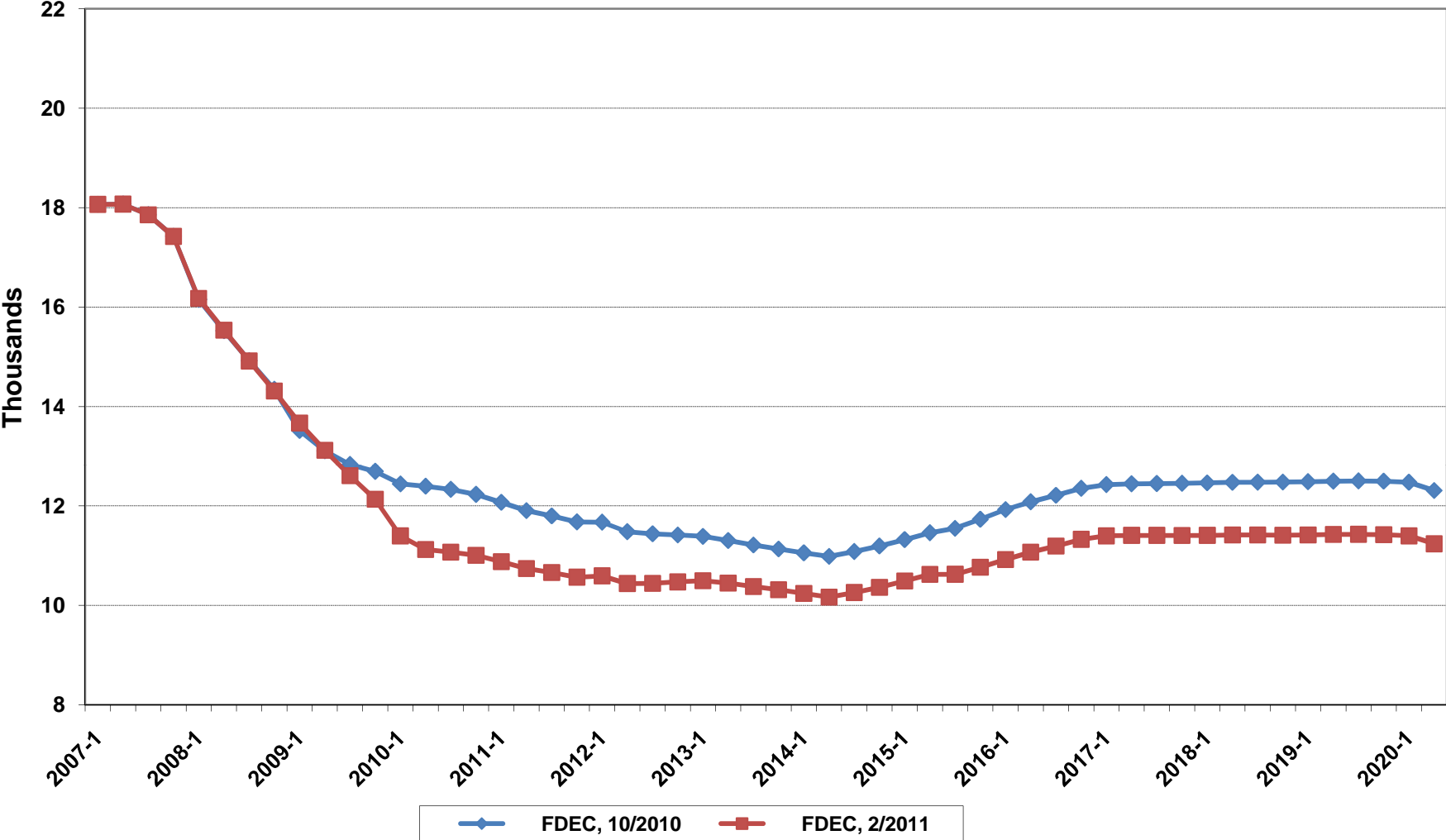
Florida Resident Births



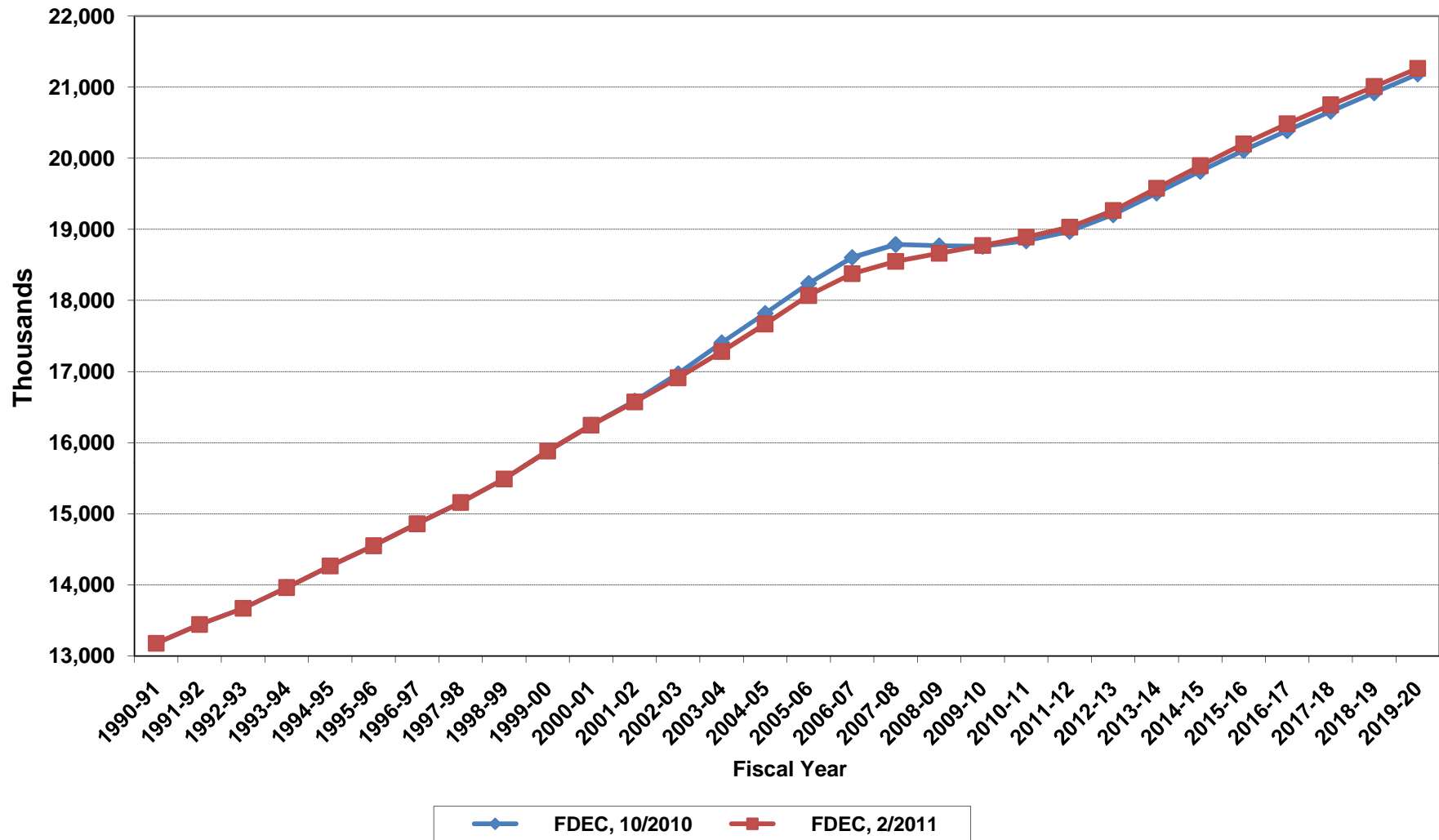
Florida Resident Deaths



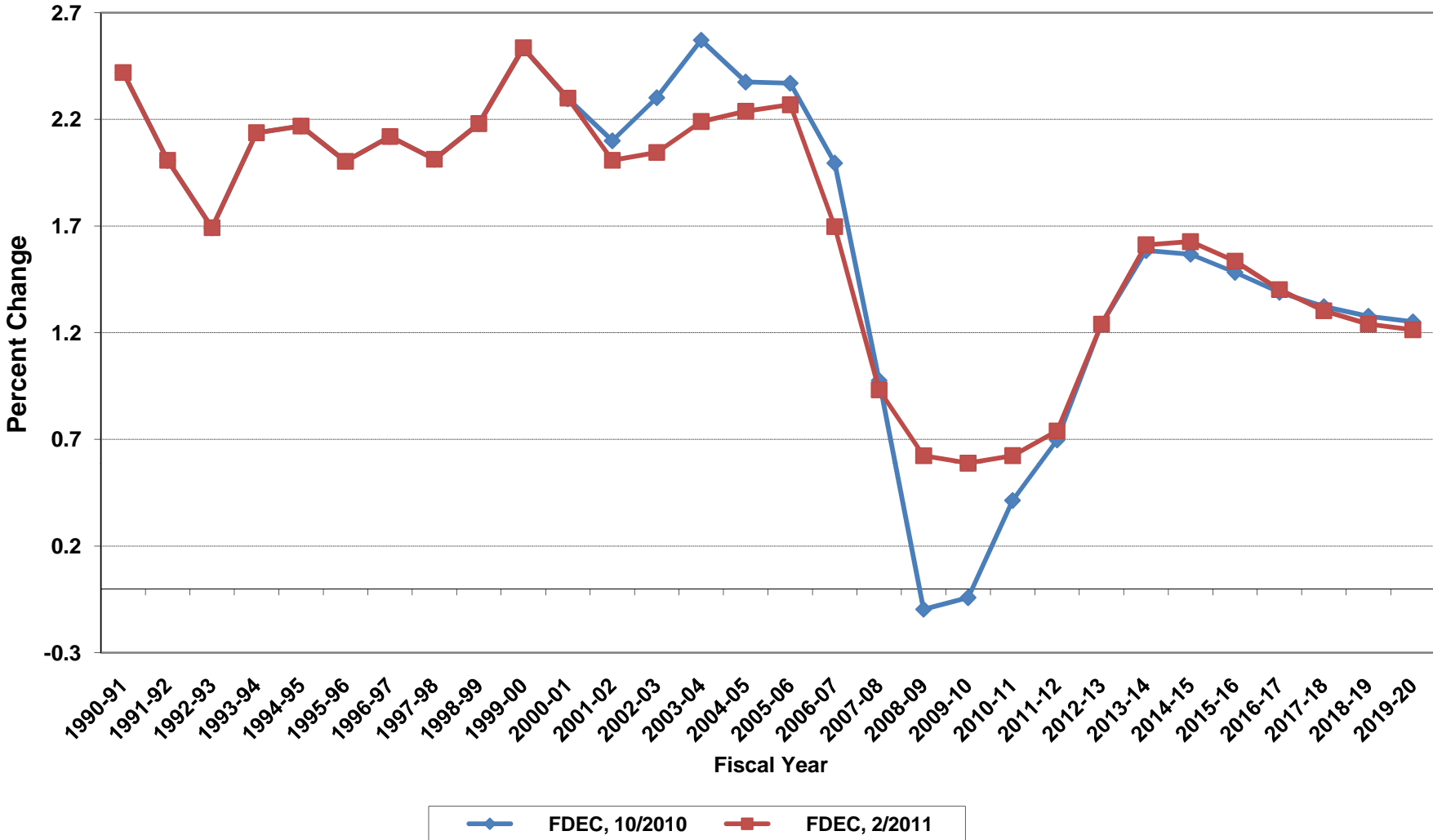
Florida Net Natural Increase



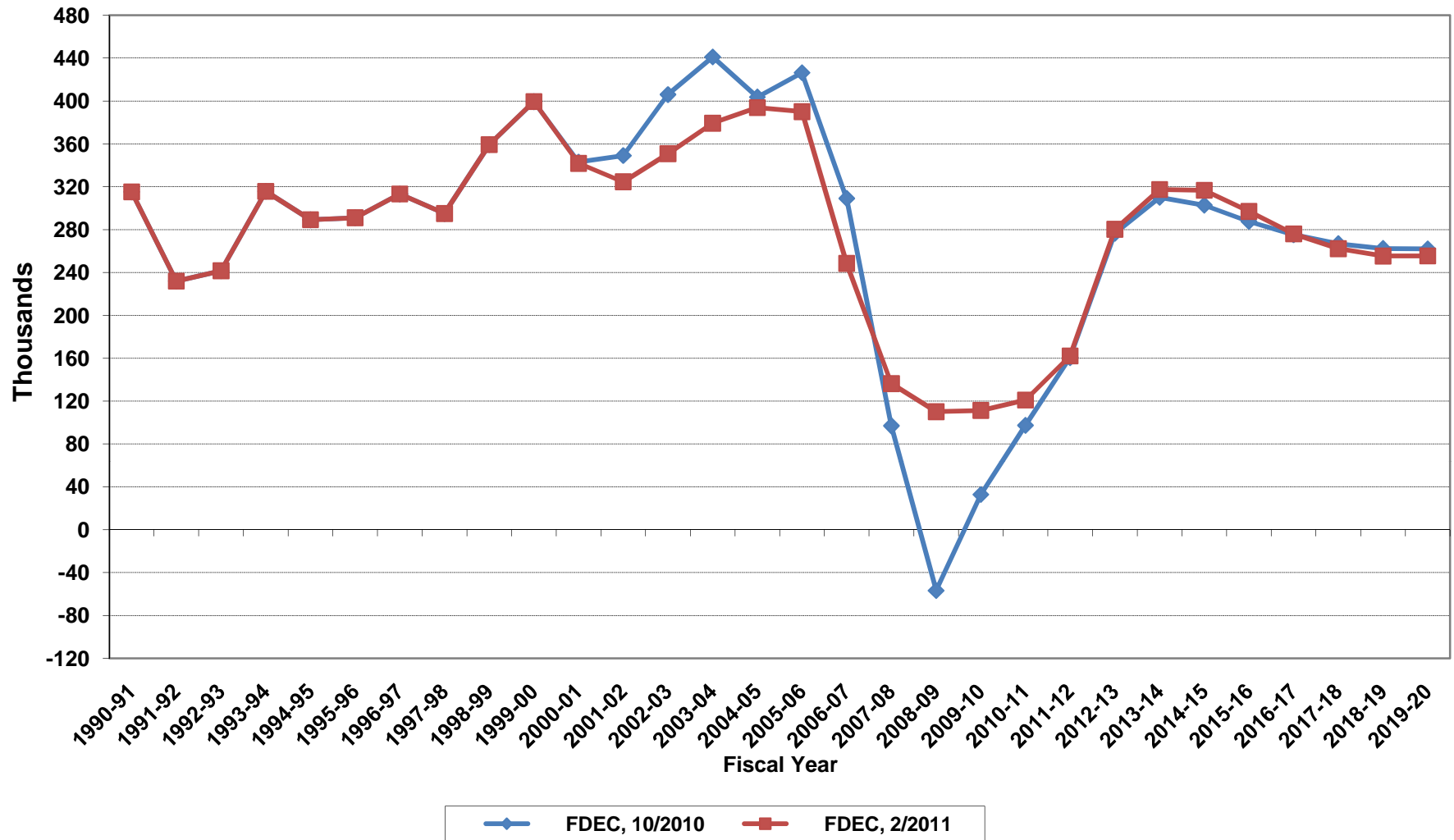
Florida Resident Population



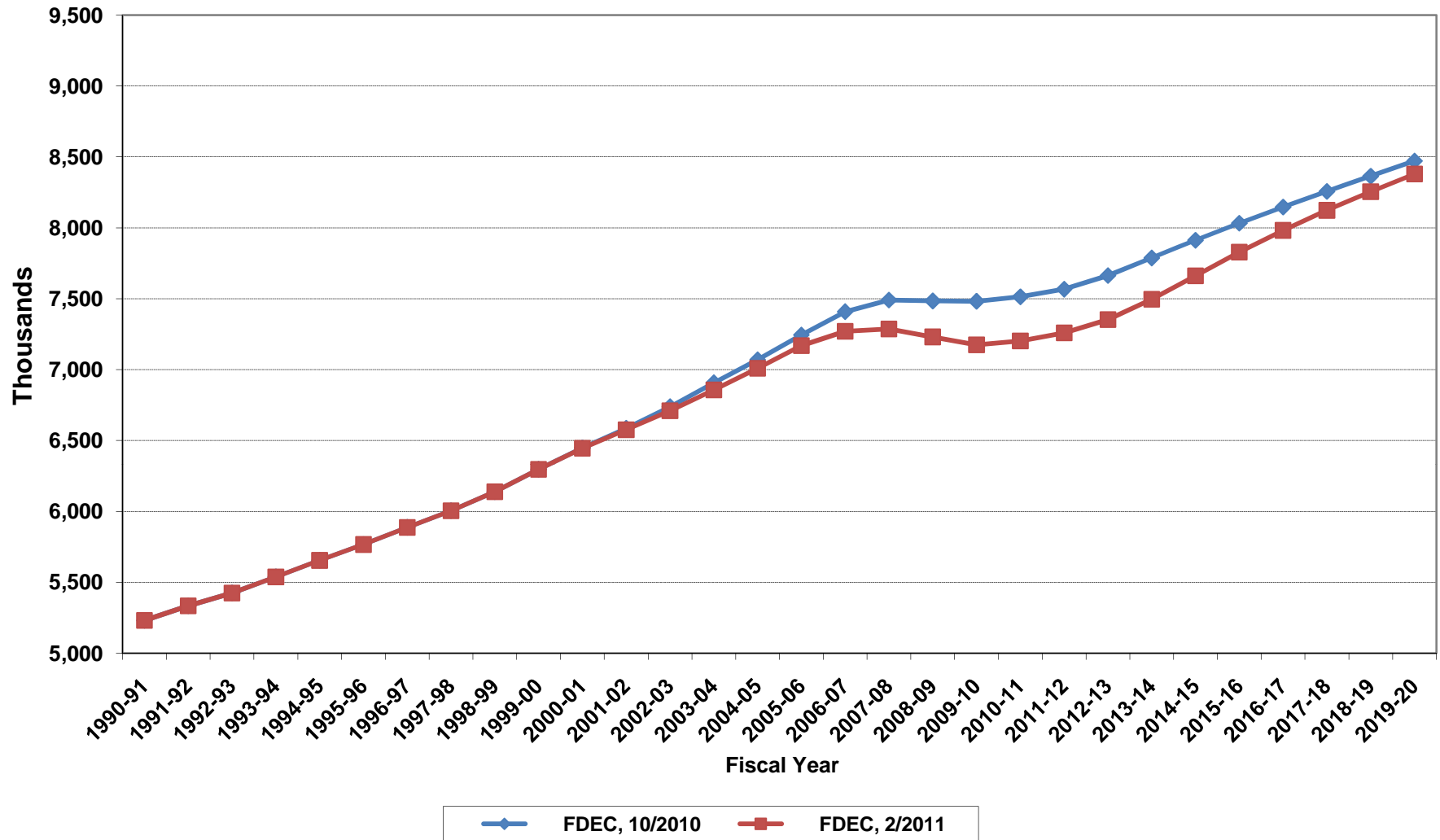
Growth In Florida Resident Population



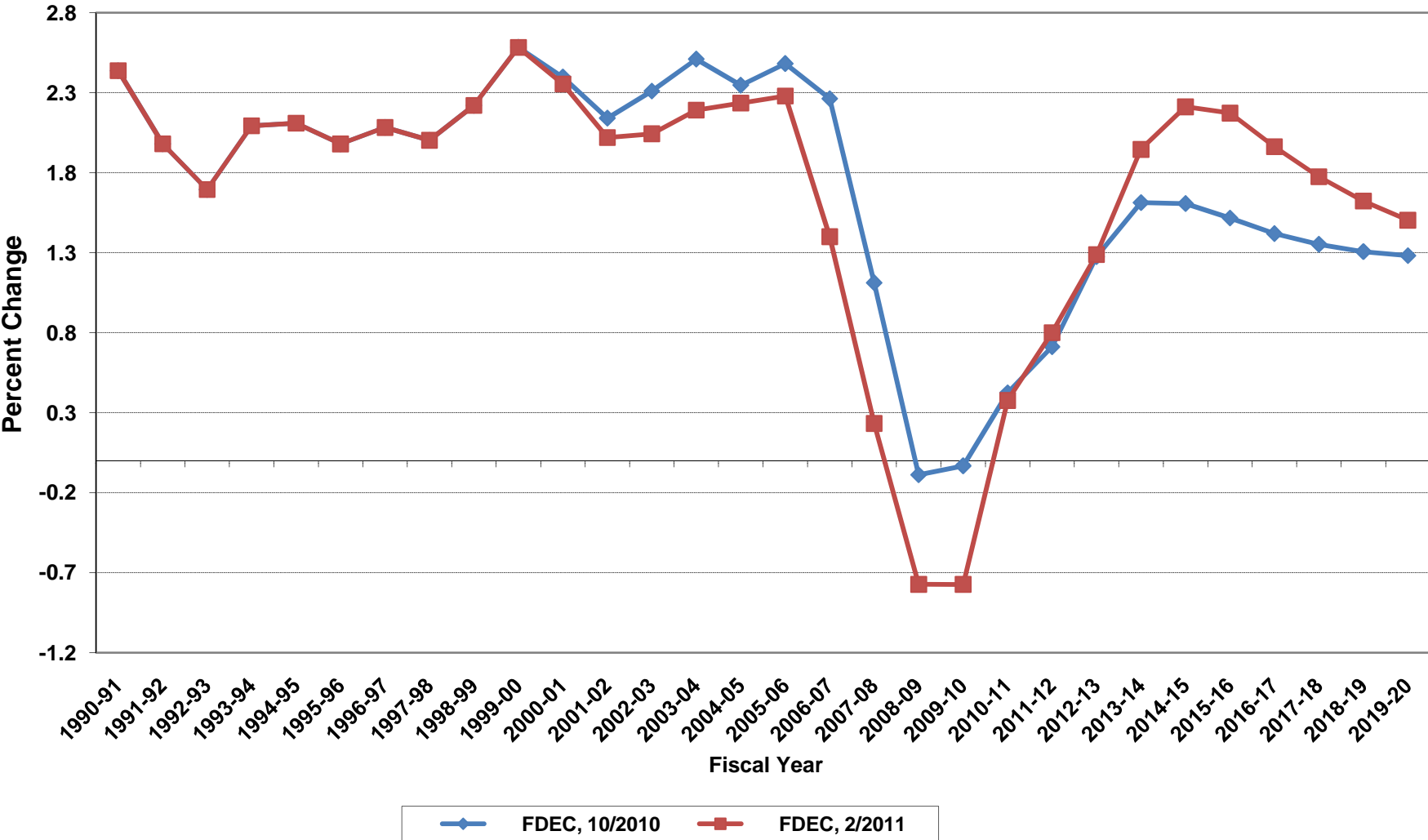
Net Change In Florida Resident Population



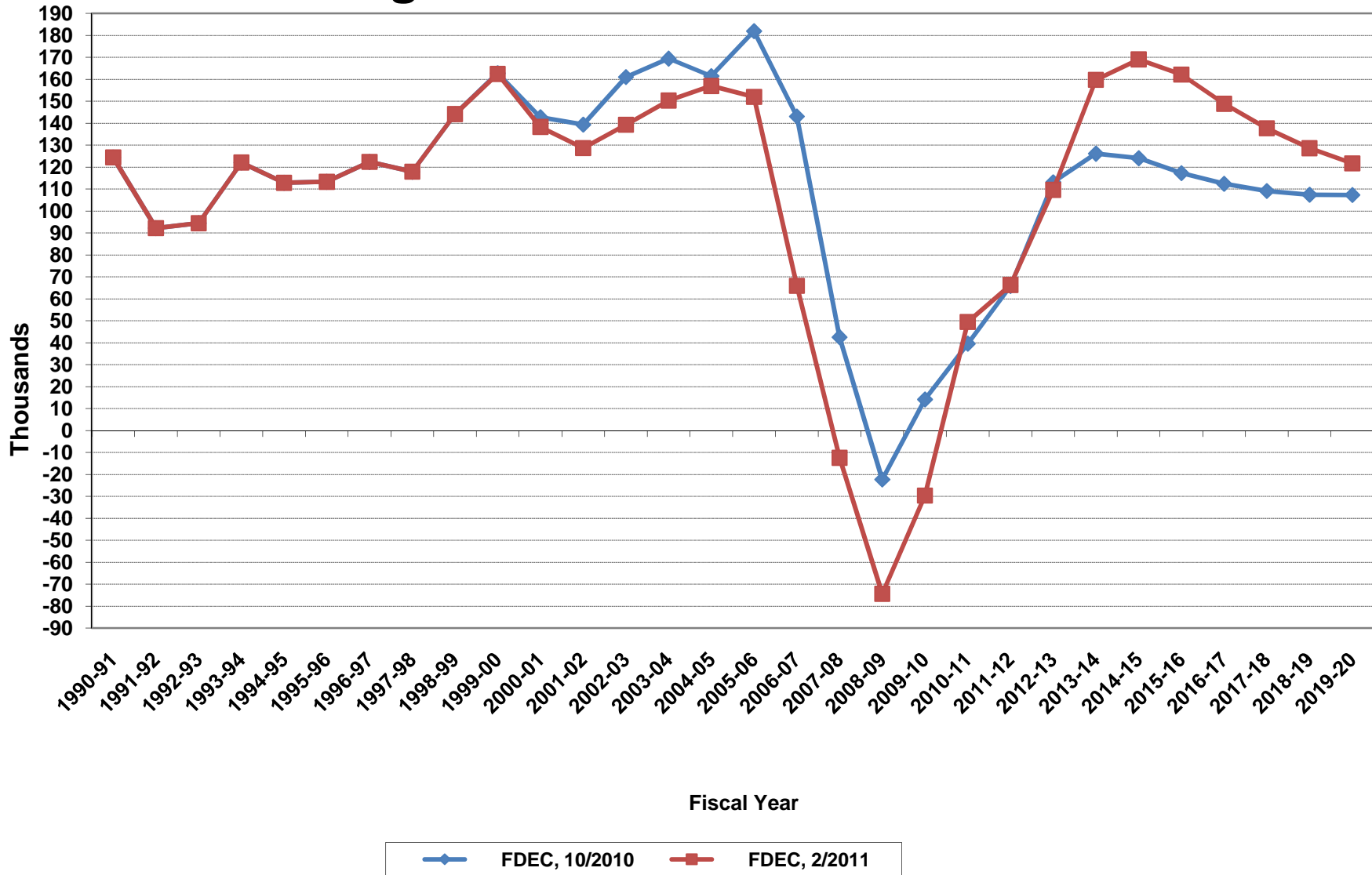
Florida Resident Households



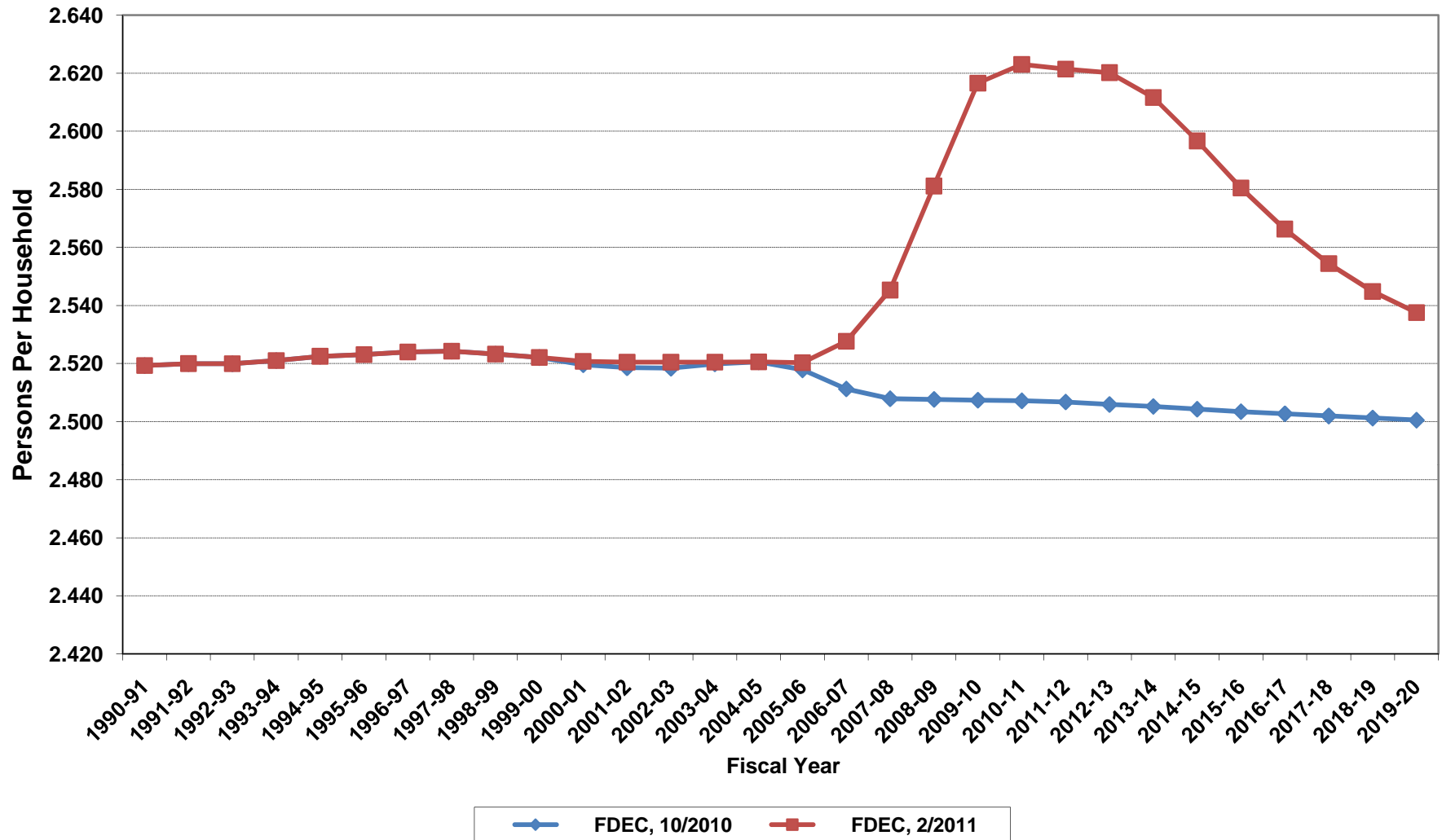
Growth In Florida Resident Households



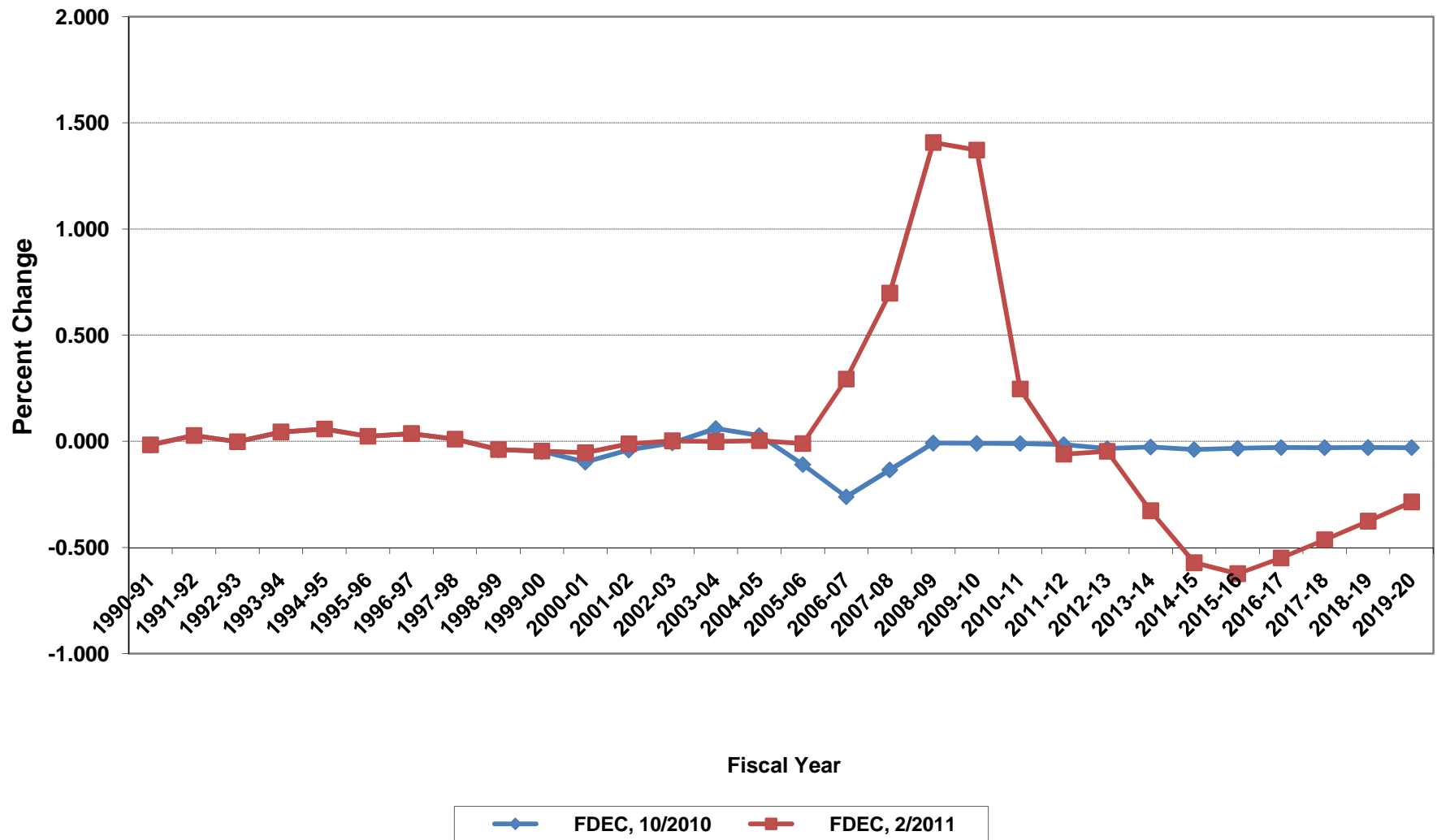
Net Change In Florida Resident Households



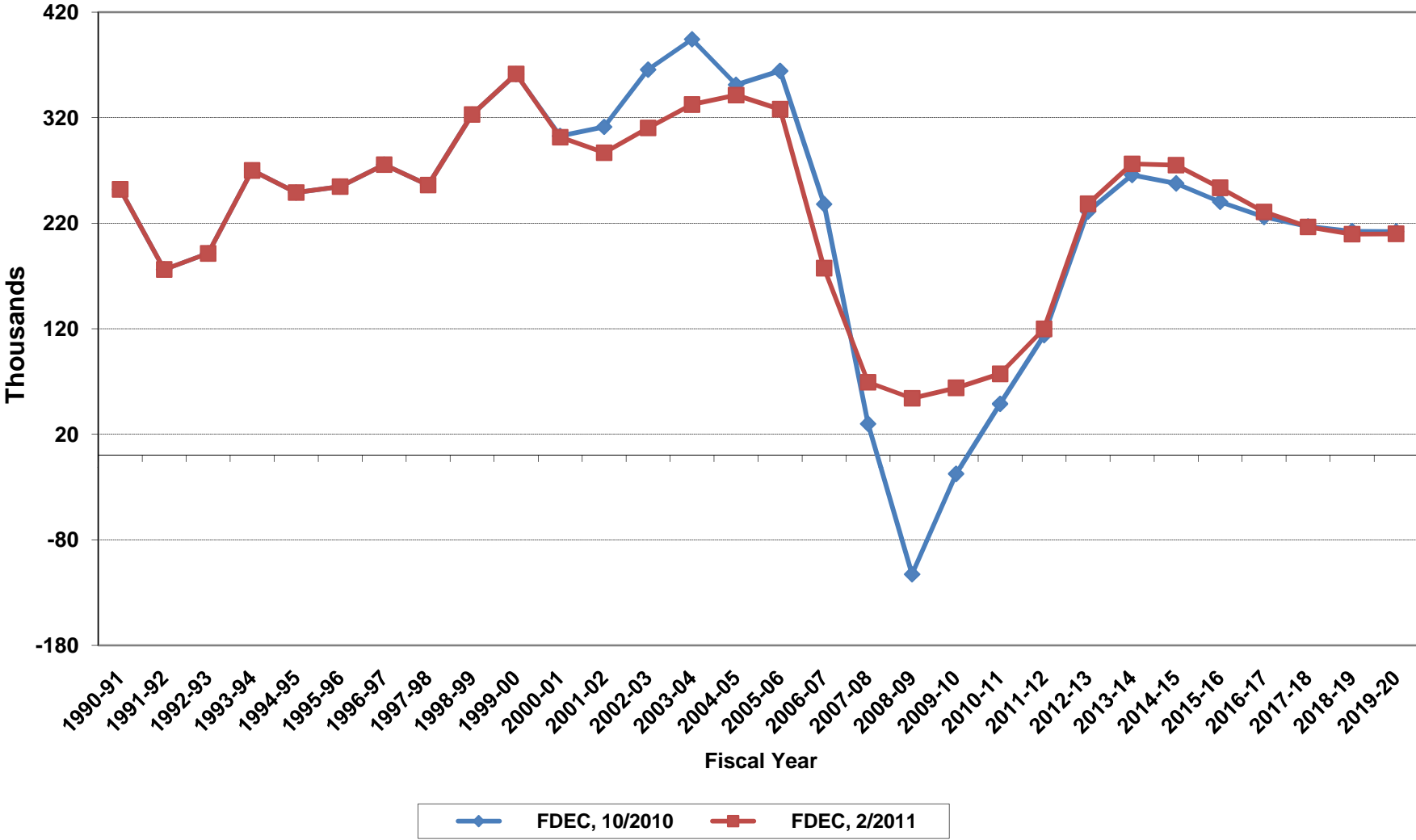
Average Florida Household Size



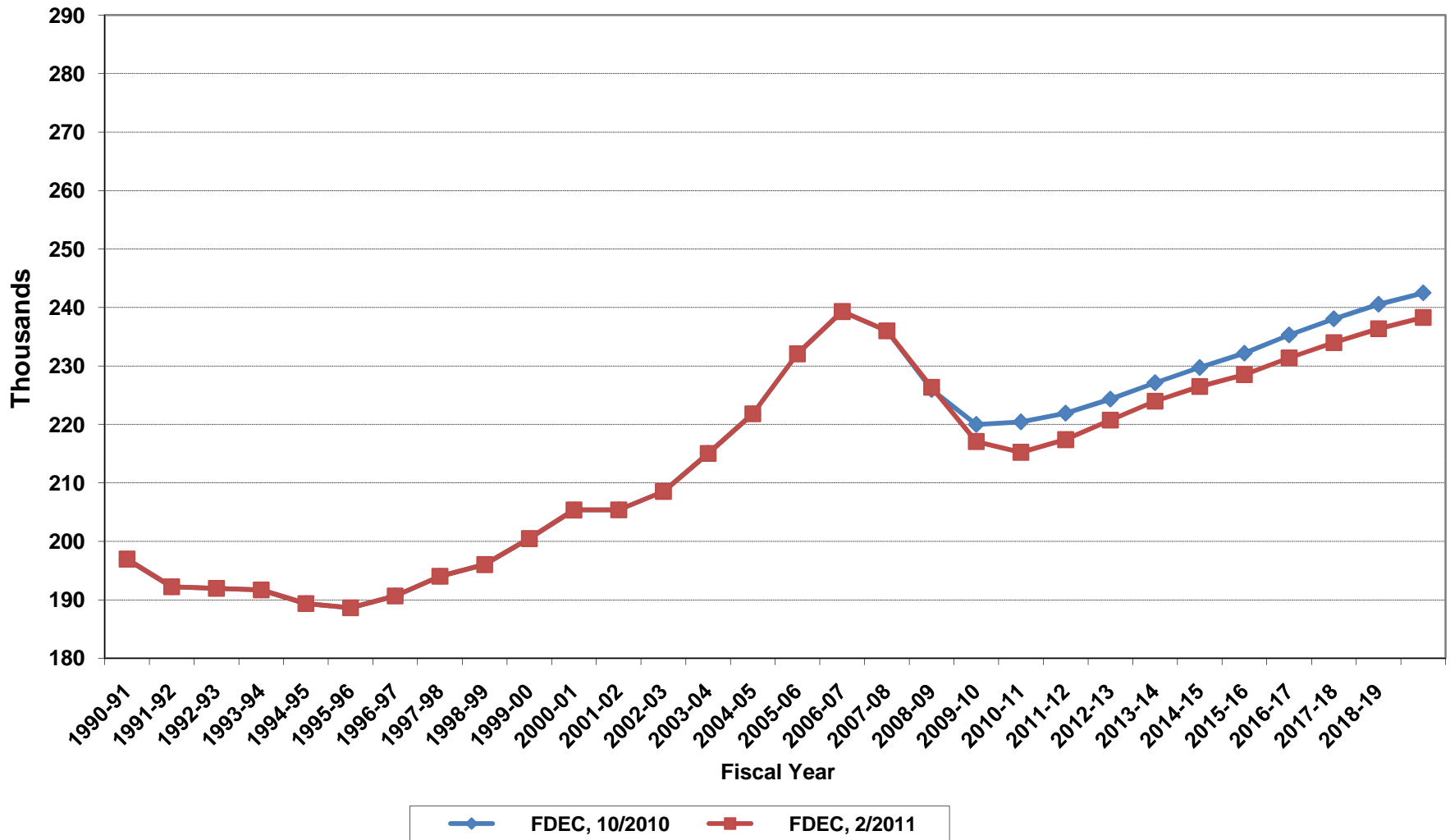
Growth In Average Florida Household Size



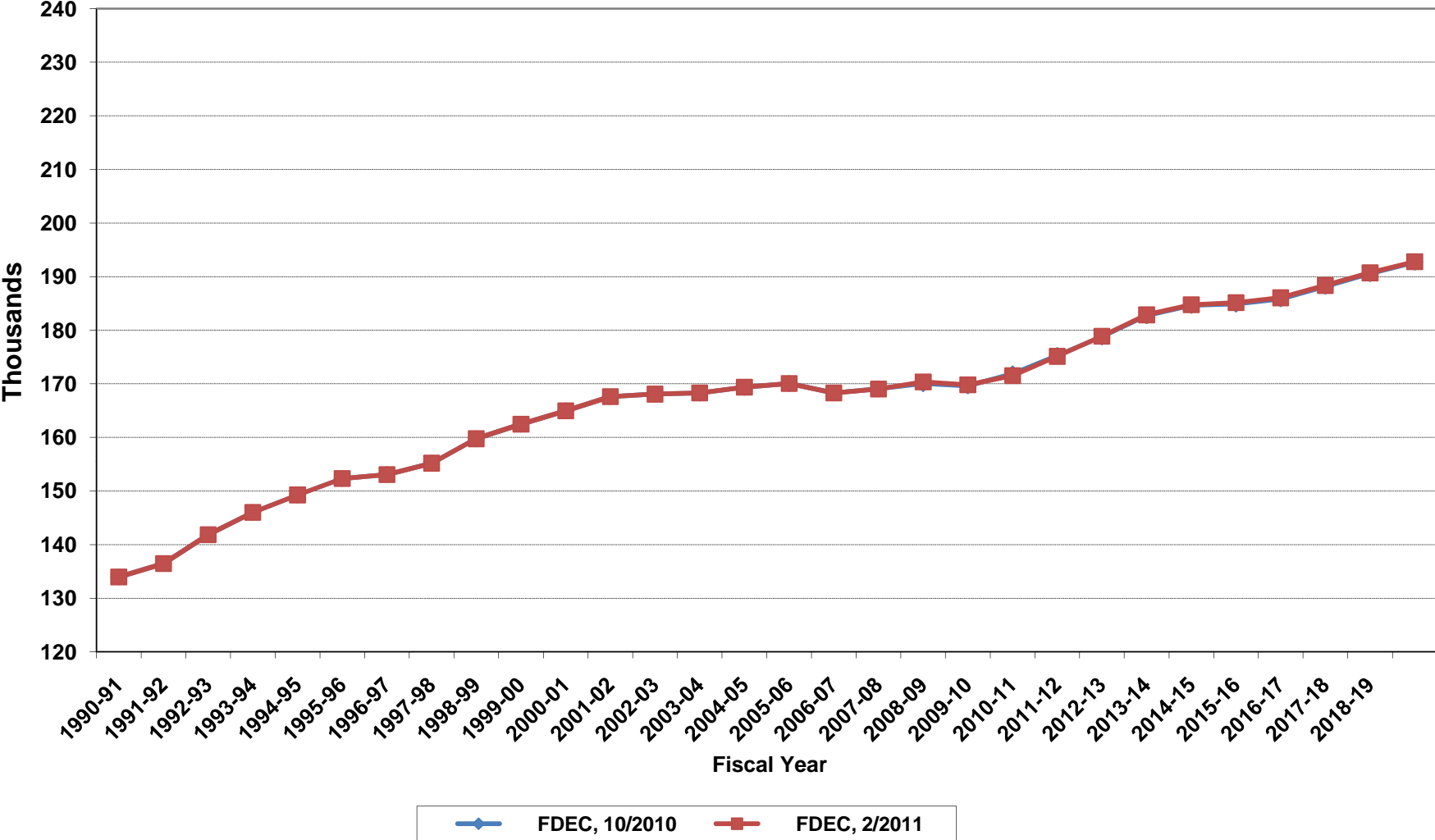
Florida Net Migration



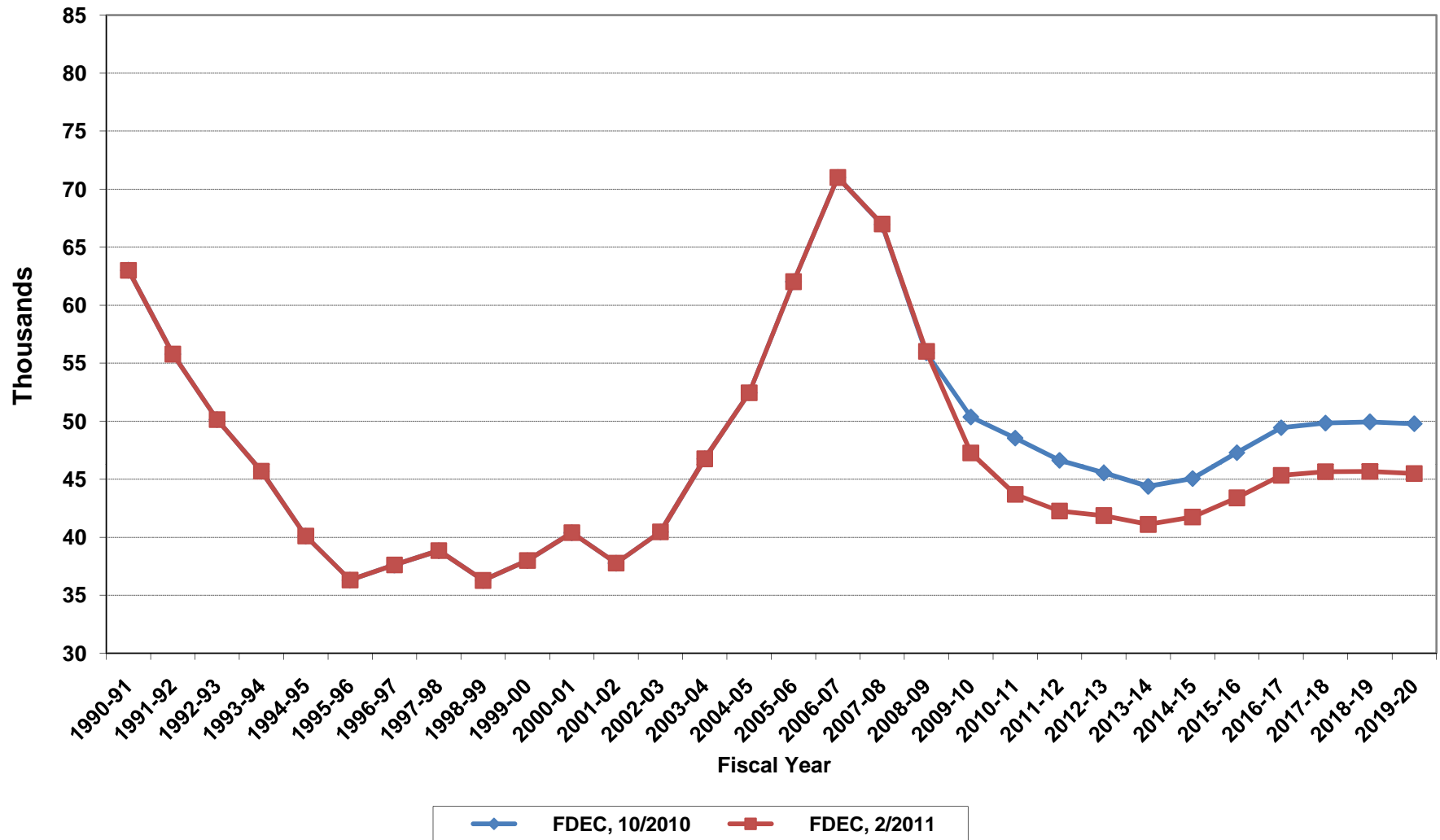
Florida Resident Live Births



Florida Resident Deaths



Florida Net Natural Increase



FLORIDA POPULATION AND COMPONENTS OF CHANGE

Fiscal Year	Population (end of FY)	Growth Rate	Annual Change in Population	Births	Deaths	Net Natural Increase	Net Migration
1950-51	2,980,000	6.05	170,000	67,604	27,186	40,418	129,582
1951-52	3,157,000	5.94	177,000	72,118	28,476	43,642	133,358
1952-53	3,310,000	4.85	153,000	77,156	29,856	47,300	105,700
1953-54	3,505,000	5.89	195,000	82,685	31,035	51,650	143,350
1954-55	3,747,000	6.90	242,000	86,265	32,083	54,182	187,818
1955-56	4,047,000	8.01	300,000	93,431	35,022	58,409	241,591
1956-57	4,372,000	8.03	325,000	100,811	38,319	62,492	262,508
1957-58	4,630,000	5.90	258,000	106,019	41,797	64,222	193,778
1958-59	4,808,000	3.84	178,000	110,457	43,746	66,711	111,289
1959-60	5,001,937	4.03	193,937	114,398	46,063	68,335	125,602
1960-61	5,185,560	3.67	183,623	116,419	48,302	68,117	115,506
1961-62	5,368,613	3.53	183,053	116,068	50,526	65,542	117,511
1962-63	5,552,114	3.42	183,501	114,946	54,302	60,644	122,857
1963-64	5,735,571	3.30	183,457	114,775	56,213	58,562	124,895
1964-65	5,884,050	2.59	148,479	110,465	57,868	52,597	95,882
1965-66	6,065,135	3.08	181,085	104,503	60,875	43,628	137,457
1966-67	6,250,236	3.05	185,101	101,129	62,765	38,364	146,737
1967-68	6,440,501	3.04	190,265	100,413	66,224	34,189	156,076
1968-69	6,632,001	2.97	191,500	104,362	71,133	33,229	158,271
1969-70	6,863,788	3.49	231,787	111,460	73,814	37,646	194,141
1970-71	7,233,605	5.39	369,817	117,071	75,362	41,709	328,108
1971-72	7,684,783	6.24	451,178	113,578	79,677	33,901	417,277
1972-73	8,157,779	6.15	472,996	107,692	86,284	21,408	451,588
1973-74	8,509,490	4.31	351,711	109,455	88,458	20,997	330,714
1974-75	8,650,224	1.65	140,734	108,752	87,185	21,567	119,167
1975-76	8,783,174	1.54	132,950	103,859	88,170	15,689	117,261
1976-77	8,973,716	2.17	190,542	107,735	90,432	17,303	173,239
1977-78	9,226,396	2.82	252,680	112,265	93,372	18,893	233,787
1978-79	9,519,160	3.17	292,764	116,269	96,826	19,443	273,321
1979-80	9,843,544	3.41	324,384	126,759	100,958	25,801	298,583

FLORIDA POPULATION AND COMPONENTS OF CHANGE

Fiscal Year	Population (end of FY)	Growth Rate	Annual Change in Population	Births	Deaths	Net Natural Increase	Net Migration
1980-81	10,218,346	3.81	374,802	135,511	107,686	27,825	346,977
1981-82	10,492,578	2.68	274,232	141,562	108,533	33,029	241,203
1982-83	10,750,266	2.46	257,688	146,890	110,534	36,356	221,332
1983-84	11,065,812	2.94	315,546	151,660	113,957	37,703	277,843
1984-85	11,405,171	3.07	339,359	159,879	117,469	42,410	296,949
1985-86	11,740,597	2.94	335,426	165,837	122,536	43,301	292,125
1986-87	12,083,205	2.92	342,608	170,743	124,846	45,897	296,711
1987-88	12,410,087	2.71	326,882	179,610	129,473	50,137	276,745
1988-89	12,723,453	2.53	313,366	188,272	131,997	56,275	257,091
1989-90	13,019,574	2.33	296,121	197,265	132,461	64,804	231,317
1990-91	13,323,139	2.33	303,565	197,197	134,147	63,050	240,515
1991-92	13,552,830	1.72	229,691	191,702	136,199	55,503	174,188
1992-93	13,804,917	1.86	252,087	192,150	142,167	49,983	202,104
1993-94	14,118,145	2.27	313,228	191,833	146,063	45,770	267,458
1994-95	14,407,012	2.05	288,867	189,272	149,127	40,145	248,722
1995-96	14,701,478	2.04	294,466	188,601	152,628	35,973	258,493
1996-97	15,010,271	2.10	308,793	190,552	153,018	37,534	271,259
1997-98	15,312,639	2.01	302,368	194,305	155,044	39,261	263,107
1998-99	15,680,103	2.40	367,464	195,827	160,050	35,777	331,687
1999-00	16,072,926	2.51	392,823	200,271	162,446	37,825	354,998
2000-01	16,410,791	2.10	337,865	205,370	164,977	40,393	297,472
2001-02	16,736,700	1.99	325,909	205,385	167,617	37,768	288,141
2002-03	17,091,950	2.12	355,250	208,536	168,080	40,456	314,794
2003-04	17,473,101	2.23	381,151	215,049	168,288	46,761	334,390
2004-05	17,870,592	2.27	397,491	221,810	169,358	52,452	345,039
2005-06	18,249,994	2.12	379,402	232,082	170,059	62,023	317,379
2006-07	18,479,608	1.26	229,614	239,308	168,304	71,004	158,610
2007-08	18,608,397	0.70	128,789	236,017	169,028	66,989	61,800
2008-09	18,717,663	0.59	109,266	226,356	170,340	56,016	53,250
2009-10	18,830,109	0.60	112,446	217,075	169,809	47,266	65,180

FLORIDA POPULATION AND COMPONENTS OF CHANGE

Fiscal Year	Population (end of FY)	Growth Rate	Annual Change in Population	Births	Deaths	Net Natural Increase	Net Migration
2010-11	18,952,815	0.65	122,706	215,236	171,541	43,695	79,011
2011-12	19,128,190	0.93	175,375	217,397	175,133	42,264	133,111
2012-13	19,418,155	1.52	289,965	220,741	178,877	41,864	248,101
2013-14	19,736,310	1.64	318,155	223,975	182,871	41,103	277,052
2014-15	20,051,804	1.60	315,494	226,482	184,744	41,738	273,756
2015-16	20,345,622	1.47	293,818	228,529	185,137	43,392	250,426
2016-17	20,619,496	1.35	273,874	231,384	186,053	45,331	228,543
2017-18	20,880,407	1.27	260,911	233,997	188,357	45,640	215,271
2018-19	21,135,333	1.22	254,926	236,377	190,706	45,671	209,255
2019-20	21,391,230	1.21	255,897	238,283	192,793	45,490	210,407
2020-21	21,652,125	1.22	260,895	237,450	195,101	42,349	218,546
2021-22	21,916,358	1.22	264,233	239,560	198,287	41,273	222,960
2022-23	22,181,618	1.21	265,260	241,544	201,961	39,583	225,677
2023-24	22,445,592	1.19	263,974	243,541	205,724	37,817	226,157
2024-25	22,705,974	1.16	260,382	244,714	209,159	35,555	224,827
2025-26	22,961,296	1.12	255,322	245,122	212,522	32,600	222,722
2026-27	23,211,715	1.09	250,419	247,103	216,498	30,605	219,814
2027-28	23,457,574	1.06	245,859	249,273	220,021	29,252	216,607
2028-29	23,699,217	1.03	241,643	251,409	223,429	27,980	213,663
2029-30	23,934,677	0.99	235,460	253,532	226,773	26,759	208,701