

## Demographic Estimating Conference Executive Summary

The Demographic Estimating Conference met on August 29, 2011 to adopt a new population forecast. This forecast reflects the 2010 Census count for April 1, 2010 and recent demographic and economic-related data.

Florida is still experiencing low levels and rates of growth due to slower than usual net migration to the state. Historically, Florida's population growth has been driven by net migration (more people permanently moving into the state than leaving). However, net migration fell to record low levels during much of 2008 and into 2009. During 2008 and into 2009, natural increase (births minus deaths) actually exceeded net migration. It is anticipated that Florida experienced and will continue to experience low levels of net migration during 2010 and 2011 and into 2012. This is largely due to national economic conditions, including weakened housing markets and other lingering effects from the recession, that make it difficult for people to relocate.

The April 1, 2011, 2012, and 2013 projections have population growth of less than one percent annually as the state's economy continues its slow recovery (.55%, .55%, and .82%, respectively). Even so, Florida will be adding over 350 people per day between April 1, 2011 and April 1, 2013.

<b>April 1</b>	<b>Population</b>	<b>Percent Change</b>	<b>Change</b>
2011	18,904,818	0.55%	103,508
2012	19,009,314	0.55%	104,496
2013	19,165,329	0.82%	156,015
2014	19,389,682	1.17%	224,353
2015	19,664,740	1.42%	275,058
2016	19,962,589	1.51%	297,849
2017	20,241,135	1.40%	278,546
2018	20,505,612	1.31%	264,477
2019	20,771,079	1.29%	265,467
2020	21,037,627	1.28%	266,548

Between April 1, 2010 and April 1, 2020, population growth is expected to average 223,632 net new residents per year, representing a compound growth rate of 1.13% over this 10-year time horizon. These increases are analogous to adding a city the size of Hialeah every year. During 2016, Florida's population is expected to break the 20-million mark.

# **Florida Demographic Estimating Conference**

## **Tables**

Post-Conference Packet

**August 29, 2011**

# Florida Resident Population

April 1

Year	FDEC, 7/11			FDEC, 8/11		
	Population	% Chg	Change	Population	% Chg	Change
1990	12,938,071	2.27%	287,136	12,938,071	2.27%	287,136
1991	13,258,732	2.48%	320,661	13,258,732	2.48%	320,661
1992	13,497,541	1.80%	238,809	13,497,541	1.80%	238,809
1993	13,730,115	1.72%	232,574	13,730,115	1.72%	232,574
1994	14,043,757	2.28%	313,642	14,043,757	2.28%	313,642
1995	14,335,992	2.08%	292,235	14,335,992	2.08%	292,235
1996	14,623,421	2.00%	287,429	14,623,421	2.00%	287,429
1997	14,938,314	2.15%	314,893	14,938,314	2.15%	314,893
1998	15,230,421	1.96%	292,107	15,230,421	1.96%	292,107
1999	15,580,244	2.30%	349,823	15,580,244	2.30%	349,823
2000	15,982,824	2.58%	402,580	15,982,824	2.58%	402,580
2001	16,305,100	2.02%	322,276	16,305,100	2.02%	322,276
2002	16,634,256	2.02%	329,156	16,634,256	2.02%	329,156
2003	16,979,706	2.08%	345,450	16,979,706	2.08%	345,450
2004	17,374,824	2.33%	395,118	17,374,824	2.33%	395,118
2005	17,778,156	2.32%	403,332	17,778,156	2.32%	403,332
2006	18,154,475	2.12%	376,319	18,154,475	2.12%	376,319
2007	18,446,768	1.61%	292,293	18,446,768	1.61%	292,293
2008	18,613,905	0.91%	167,137	18,613,905	0.91%	167,137
2009	18,687,425	0.39%	73,520	18,687,425	0.39%	73,520
2010	18,801,310	0.61%	113,885	18,801,310	0.61%	113,885
Begins forecast.						
2011	18,920,975	0.64%	119,665	18,904,818	0.55%	103,508
2012	19,073,170	0.80%	152,195	19,009,314	0.55%	104,496
2013	19,340,145	1.40%	266,975	19,165,329	0.82%	156,015
2014	19,656,210	1.63%	316,065	19,389,682	1.17%	224,353
2015	19,974,415	1.62%	318,205	19,664,740	1.42%	275,058
2016	20,274,309	1.50%	299,894	19,962,589	1.51%	297,849
2017	20,552,516	1.37%	278,207	20,241,135	1.40%	278,546
2018	20,816,013	1.28%	263,497	20,505,612	1.31%	264,477
2019	21,071,781	1.23%	255,768	20,771,079	1.29%	265,467
			5-Year Averages	5-Year Averages		
2020	21,326,799	1.32%	270,477	21,037,627	1.36%	274,577
2025	22,641,337	1.20%	262,908	22,372,716	1.24%	267,018
2030	23,877,889	1.07%	247,310	23,629,652	1.10%	251,387

# Florida Resident Households

April 1

Year	FDEC, 7/11			FDEC, 8/11			
	Households	% Chg	Change	Households	% Chg	Change	
1990	5,134,869	3.40%	168,985	5,134,869	3.40%	168,985	
1991	5,283,154	2.89%	148,285	5,283,154	2.89%	148,285	
1992	5,378,499	1.80%	95,345	5,378,499	1.80%	95,345	
1993	5,478,476	1.86%	99,977	5,478,476	1.86%	99,977	
1994	5,589,093	2.02%	110,617	5,589,093	2.02%	110,617	
1995	5,697,328	1.94%	108,235	5,697,328	1.94%	108,235	
1996	5,806,031	1.91%	108,703	5,806,031	1.91%	108,703	
1997	5,929,613	2.13%	123,582	5,929,613	2.13%	123,582	
1998	6,040,514	1.87%	110,901	6,040,514	1.87%	110,901	
1999	6,182,346	2.35%	141,832	6,182,346	2.35%	141,832	
2000	6,338,075	2.52%	155,729	6,338,075	2.52%	155,729	
2001	6,467,215	2.04%	129,140	6,467,215	2.04%	129,140	
2002	6,599,035	2.04%	131,820	6,599,035	2.04%	131,820	
2003	6,737,370	2.10%	138,335	6,737,370	2.10%	138,335	
2004	6,895,469	2.35%	158,099	6,895,469	2.35%	158,099	
2005	7,056,889	2.34%	161,420	7,056,889	2.34%	161,420	
2006	7,207,645	2.14%	150,756	7,207,645	2.14%	150,756	
2007	7,312,907	1.46%	105,262	7,312,907	1.46%	105,262	
2008	7,368,319	0.76%	55,412	7,368,319	0.76%	55,412	
2009	7,386,570	0.25%	18,251	7,386,570	0.25%	18,251	
2010	7,420,802	0.46%	34,232	7,420,802	0.46%	34,232	
Begins forecast.							
2011	7,468,908	0.65%	48,106	7,462,678	0.56%	41,876	
2012	7,533,180	0.86%	64,272	7,511,752	0.66%	49,074	
2013	7,642,283	1.45%	109,103	7,586,995	1.00%	75,243	
2014	7,802,038	2.09%	159,755	7,687,511	1.32%	100,516	
2015	7,976,272	2.23%	174,234	7,804,679	1.52%	117,168	
2016	8,145,959	2.13%	169,687	7,927,571	1.57%	122,892	
2017	8,301,606	1.91%	155,647	8,041,718	1.44%	114,147	
2018	8,445,411	1.73%	143,805	8,149,738	1.34%	108,020	
2019	8,579,568	1.59%	134,157	8,257,942	1.33%	108,204	
			5-Year Averages				5-Year Averages
2020	8,706,271	1.77%	146,000	8,366,388	1.40%	112,342	
2025	9,275,325	1.27%	113,811	8,907,366	1.26%	108,196	
2030	9,792,565	1.09%	103,448	9,414,870	1.11%	101,501	

Quarterly Data Table

QUARTERLY FORECAST TABLES

	2007-1	2007-2	2007-3	2007-4	2008-1	2008-2	2008-3	2008-4	2009-1	2009-2	2009-3	2009-4	2010-1	2010-2	2010-3	2010-4	2011-1	2011-2	2011-3	2011-4	2012-1	
Population																						
FDEC, 7/2011	18,415.6	18,473.9	18,523.9	18,565.7	18,599.2	18,624.8	18,644.2	18,660.8	18,678.1	18,699.3	18,725.4	18,754.7	18,785.7	18,815.6	18,844.7	18,874.6	18,905.4	18,936.6	18,969.1	19,004.5	19,047.6	
FDEC, 8/2011	18,415.2	18,474.0	18,524.4	18,566.4	18,599.6	18,625.4	18,645.5	18,661.9	18,678.6	18,699.6	18,726.1	18,755.5	18,786.0	18,815.2	18,842.3	18,868.2	18,892.9	18,917.3	18,942.4	18,968.2	18,995.4	
Population Growth Rate																						
FDEC, 7/2011	1.45	1.27	1.09	0.91	0.72	0.55	0.42	0.36	0.37	0.46	0.56	0.63	0.66	0.64	0.62	0.64	0.65	0.66	0.69	0.75	0.91	
FDEC, 8/2011	1.46	1.28	1.10	0.91	0.72	0.56	0.43	0.35	0.36	0.45	0.57	0.63	0.65	0.62	0.58	0.55	0.52	0.52	0.53	0.55	0.57	
Net Change in Population																						
FDEC, 7/2011	66.2	58.3	50.0	41.8	33.5	25.6	19.4	16.6	17.3	21.2	26.0	29.4	30.9	29.9	29.1	30.0	30.8	31.1	32.5	35.4	43.2	
FDEC, 8/2011	66.6	58.8	50.4	42.0	33.2	25.8	20.1	16.4	16.6	21.1	26.4	29.5	30.5	29.1	27.1	26.0	24.7	24.4	25.1	25.8	27.2	
Households																						
FDEC, 7/2011	7,302.1	7,322.2	7,339.1	7,353.0	7,363.8	7,371.4	7,376.5	7,380.4	7,384.4	7,389.7	7,396.9	7,405.6	7,415.6	7,426.4	7,437.8	7,449.8	7,462.4	7,475.7	7,489.9	7,505.7	7,523.6	
FDEC, 8/2011	7,302.1	7,322.2	7,339.4	7,353.3	7,363.9	7,371.6	7,377.0	7,380.8	7,384.5	7,389.9	7,397.3	7,406.2	7,415.9	7,426.0	7,436.5	7,447.0	7,457.5	7,468.2	7,479.6	7,491.7	7,504.9	
Household Growth Rate																						
FDEC, 7/2011	1.27	1.10	0.93	0.76	0.58	0.41	0.28	0.21	0.22	0.29	0.39	0.47	0.54	0.58	0.62	0.65	0.68	0.71	0.76	0.84	0.96	
FDEC, 8/2011	1.28	1.11	0.94	0.76	0.58	0.42	0.29	0.21	0.20	0.29	0.40	0.48	0.52	0.55	0.56	0.57	0.56	0.58	0.61	0.65	0.71	
Net Change in Households																						
FDEC, 7/2011	23.1	20.0	17.0	13.9	10.7	7.6	5.1	3.9	4.0	5.3	7.2	8.8	9.9	10.8	11.4	12.0	12.6	13.3	14.2	15.8	17.9	
FDEC, 8/2011	23.2	20.2	17.1	14.0	10.6	7.7	5.4	3.8	3.7	5.3	7.4	8.9	9.7	10.1	10.5	10.5	10.5	10.8	11.4	12.1	13.2	
Household Size																						
FDEC, 7/2011	2.522	2.523	2.524	2.525	2.526	2.527	2.528	2.528	2.529	2.530	2.532	2.532	2.533	2.534	2.534	2.534	2.533	2.533	2.533	2.532	2.532	
FDEC, 8/2011	2.522	2.523	2.524	2.525	2.526	2.527	2.528	2.528	2.529	2.530	2.531	2.532	2.533	2.534	2.534	2.534	2.533	2.533	2.533	2.532	2.531	
Household Size Growth Rate																						
FDEC, 7/2011	0.17	0.17	0.16	0.14	0.14	0.14	0.14	0.15	0.15	0.17	0.17	0.15	0.12	0.05	0.00	-0.01	-0.03	-0.05	-0.07	-0.10	-0.05	
FDEC, 8/2011	0.18	0.17	0.15	0.15	0.14	0.14	0.14	0.14	0.15	0.16	0.16	0.15	0.13	0.07	0.01	-0.01	-0.04	-0.06	-0.08	-0.10	-0.13	
Net Migration																						
FDEC, 7/2011	48.1	40.2	32.2	24.4	17.3	10.0	4.5	2.3	3.7	8.1	13.4	17.3	19.5	18.8	18.0	19.0	19.9	20.4	21.9	24.8	32.6	
FDEC, 8/2011	48.5	40.6	32.5	24.7	16.8	10.2	5.3	2.3	3.0	7.9	13.8	17.3	18.8	17.8	15.9	15.0	13.9	13.6	14.3	15.0	16.3	
Births																						
FDEC, 7/2011	60.0	59.9	59.8	59.4	58.7	58.1	57.6	57.0	56.2	55.6	55.1	54.6	53.9	53.6	53.7	53.8	53.9	54.0	54.1	54.2	54.4	
FDEC, 8/2011	60.0	60.0	59.7	59.3	58.8	58.2	57.5	56.9	56.3	55.6	55.0	54.5	54.0	53.6	53.3	53.1	53.0	53.0	53.0	53.2	53.3	
Deaths																						
FDEC, 7/2011	41.9	41.9	41.9	42.0	42.5	42.6	42.7	42.7	42.5	42.5	42.5	42.4	42.5	42.5	42.6	42.7	43.0	43.2	43.4	43.7	43.8	
FDEC, 8/2011	41.9	41.8	41.9	42.1	42.4	42.6	42.7	42.7	42.6	42.5	42.4	42.3	42.2	42.2	42.1	42.1	42.2	42.2	42.3	42.4	42.5	
Net Natural Increase																						
FDEC, 7/2011	18.1	18.1	17.9	17.4	16.2	15.5	14.9	14.3	13.7	13.1	12.6	12.1	11.4	11.1	11.1	11.0	10.9	10.7	10.7	10.6	10.6	
FDEC, 8/2011	18.1	18.1	17.8	17.3	16.4	15.6	14.8	14.2	13.6	13.1	12.6	12.2	11.7	11.4	11.1	10.9	10.8	10.8	10.7	10.8	10.9	

Quarterly Data Table

QUARTERLY FORECAST TABLES

	2012-2	2012-3	2012-4	2013-1	2013-2	2013-3	2013-4	2014-1	2014-2	2014-3	2014-4	2015-1	2015-2	2015-3	2015-4	2016-1	2016-2	2016-3	2016-4	2017-1	2017-2	
Population																						
FDEC, 7/2011	19,098.7	19,157.7	19,226.3	19,301.3	19,379.0	19,457.4	19,536.7	19,616.1	19,696.3	19,776.3	19,855.8	19,935.2	20,013.0	20,089.7	20,164.6	20,238.0	20,310.0	20,380.7	20,450.2	20,518.6	20,586.0	
FDEC, 8/2011	19,025.8	19,060.8	19,099.8	19,142.7	19,190.3	19,242.4	19,298.7	19,358.8	19,422.2	19,488.6	19,557.6	19,628.7	19,701.5	19,775.5	19,850.3	19,925.2	19,999.0	20,070.4	20,139.5	20,207.4	20,274.5	
Population Growth Rate																						
FDEC, 7/2011	1.08	1.24	1.44	1.57	1.62	1.63	1.64	1.64	1.64	1.64	1.62	1.61	1.57	1.54	1.50	1.46	1.43	1.40	1.37	1.34	1.32	
FDEC, 8/2011	0.64	0.74	0.82	0.90	1.00	1.09	1.18	1.25	1.32	1.37	1.42	1.46	1.49	1.51	1.52	1.52	1.49	1.44	1.38	1.36	1.33	
Net Change in Population																						
FDEC, 7/2011	51.1	59.0	68.6	75.0	77.6	78.4	79.3	79.5	80.2	80.0	79.5	79.3	77.8	76.6	74.9	73.4	72.0	70.7	69.5	68.4	67.4	
FDEC, 8/2011	30.4	35.0	39.0	43.0	47.5	52.1	56.3	60.1	63.4	66.4	69.0	71.1	72.8	74.0	74.8	74.9	73.8	71.4	69.1	67.9	67.1	
Households																						
FDEC, 7/2011	7,544.3	7,568.1	7,595.2	7,626.0	7,660.4	7,698.2	7,738.6	7,780.7	7,823.7	7,867.2	7,910.8	7,954.5	7,997.9	8,041.0	8,083.6	8,125.3	8,166.1	8,205.9	8,244.8	8,282.8	8,320.1	
FDEC, 8/2011	7,519.8	7,537.0	7,555.9	7,576.4	7,598.5	7,622.2	7,647.4	7,673.9	7,701.6	7,730.2	7,759.6	7,789.6	7,820.0	7,850.6	7,881.5	7,912.2	7,942.5	7,971.8	8,000.1	8,027.9	8,055.4	
Household Growth Rate																						
FDEC, 7/2011	1.10	1.27	1.44	1.63	1.82	1.99	2.11	2.19	2.23	2.24	2.24	2.23	2.20	2.17	2.13	2.08	2.02	1.96	1.91	1.86	1.81	
FDEC, 8/2011	0.80	0.92	1.01	1.09	1.17	1.26	1.33	1.39	1.45	1.49	1.53	1.55	1.57	1.58	1.58	1.57	1.54	1.48	1.43	1.40	1.37	
Net Change in Households																						
FDEC, 7/2011	20.7	23.8	27.2	30.8	34.4	37.8	40.4	42.1	43.0	43.5	43.6	43.7	43.5	43.1	42.5	41.7	40.8	39.8	38.9	38.0	37.3	
FDEC, 8/2011	15.0	17.2	18.9	20.5	22.1	23.7	25.2	26.5	27.7	28.6	29.4	30.0	30.4	30.7	30.8	30.8	30.3	29.3	28.3	27.8	27.4	
Household Size																						
FDEC, 7/2011	2.532	2.531	2.531	2.531	2.530	2.528	2.525	2.521	2.518	2.514	2.510	2.506	2.502	2.498	2.495	2.491	2.487	2.484	2.480	2.477	2.474	
FDEC, 8/2011	2.530	2.529	2.528	2.527	2.526	2.525	2.524	2.523	2.522	2.521	2.520	2.520	2.519	2.519	2.519	2.518	2.518	2.518	2.517	2.517	2.517	
Household Size Growth Rate																						
FDEC, 7/2011	-0.03	-0.03	0.00	-0.06	-0.20	-0.35	-0.46	-0.55	-0.57	-0.59	-0.61	-0.60	-0.62	-0.62	-0.62	-0.61	-0.58	-0.55	-0.53	-0.50	-0.48	
FDEC, 8/2011	-0.16	-0.18	-0.18	-0.18	-0.17	-0.16	-0.15	-0.14	-0.13	-0.12	-0.10	-0.09	-0.08	-0.07	-0.06	-0.05	-0.05	-0.05	-0.04	-0.04	-0.04	
Net Migration																						
FDEC, 7/2011	40.6	48.5	58.1	64.5	67.2	68.0	69.0	69.2	70.0	69.8	69.1	68.8	67.2	66.0	64.2	62.5	60.9	59.5	58.2	57.0	56.0	
FDEC, 8/2011	19.5	24.0	27.9	31.8	36.4	40.9	45.0	48.8	52.1	55.0	57.6	59.7	61.4	62.6	63.4	63.5	62.5	60.0	57.7	56.5	55.7	
Births																						
FDEC, 7/2011	54.6	54.8	55.1	55.3	55.5	55.7	55.9	56.1	56.3	56.4	56.6	56.7	56.8	56.9	57.0	57.2	57.4	57.6	57.8	57.9	58.1	
FDEC, 8/2011	53.5	53.7	53.9	54.1	54.3	54.5	54.8	55.0	55.3	55.5	55.7	55.9	56.1	56.3	56.5	56.7	56.9	57.0	57.2	57.4	57.6	
Deaths																						
FDEC, 7/2011	44.2	44.4	44.6	44.8	45.1	45.3	45.6	45.8	46.1	46.1	46.2	46.2	46.2	46.3	46.3	46.3	46.3	46.4	46.4	46.5	46.7	
FDEC, 8/2011	42.6	42.7	42.8	43.0	43.1	43.3	43.5	43.7	43.9	44.1	44.3	44.5	44.7	44.9	45.1	45.3	45.5	45.7	45.8	46.0	46.2	
Net Natural Increase																						
FDEC, 7/2011	10.4	10.4	10.5	10.5	10.4	10.4	10.3	10.2	10.2	10.3	10.4	10.5	10.6	10.6	10.8	10.9	11.1	11.2	11.3	11.4	11.4	
FDEC, 8/2011	11.0	11.0	11.1	11.2	11.2	11.2	11.3	11.3	11.3	11.4	11.4	11.4	11.4	11.4	11.4	11.4	11.4	11.4	11.4	11.4	11.4	

Quarterly Data Table

QUARTERLY FORECAST TABLES

	2017-3	2017-4	2018-1	2018-2	2018-3	2018-4	2019-1	2019-2	2019-3	2019-4	2020-1	2020-2	2020-3	2020-4	2021-1	2021-2
<b>Population</b>																
FDEC, 7/2011	20,652.6	20,718.4	20,783.6	20,848.2	20,912.4	20,976.3	21,040.0	21,103.6	21,167.1	21,230.8	21,294.8	21,359.0	21,423.6	21,488.6	21,553.8	21,619.3
FDEC, 8/2011	20,340.9	20,406.9	20,472.7	20,538.7	20,604.9	20,671.3	20,737.8	20,804.4	20,871.0	20,937.6	21,004.3	21,071.0	21,137.7	21,204.4	21,271.2	21,338.0
<b>Population Growth Rate</b>																
FDEC, 7/2011	1.30	1.28	1.26	1.25	1.24	1.23	1.22	1.21	1.21	1.21	1.21	1.21	1.22	1.22	1.22	1.22
FDEC, 8/2011	1.32	1.30	1.30	1.29	1.30	1.30	1.29	1.29	1.29	1.28	1.28	1.28	1.27	1.27	1.27	1.26
<b>Net Change in Population</b>																
FDEC, 7/2011	66.6	65.8	65.2	64.6	64.2	63.9	63.7	63.6	63.6	63.7	63.9	64.2	64.6	64.9	65.2	65.5
FDEC, 8/2011	66.4	66.0	65.8	65.9	66.2	66.4	66.5	66.6	66.6	66.6	66.7	66.7	66.7	66.7	66.8	66.8
<b>Households</b>																
FDEC, 7/2011	8,356.7	8,392.6	8,427.9	8,462.6	8,496.7	8,530.2	8,563.2	8,595.7	8,627.8	8,659.4	8,690.7	8,721.7	8,752.3	8,782.6	8,812.6	8,842.3
FDEC, 8/2011	8,082.5	8,109.5	8,136.3	8,163.2	8,190.2	8,217.3	8,244.4	8,271.5	8,298.6	8,325.7	8,352.8	8,379.9	8,407.1	8,434.2	8,461.3	8,488.4
<b>Household Growth Rate</b>																
FDEC, 7/2011	1.77	1.73	1.69	1.66	1.62	1.59	1.56	1.53	1.50	1.48	1.45	1.43	1.41	1.39	1.37	1.36
FDEC, 8/2011	1.36	1.34	1.33	1.33	1.33	1.33	1.33	1.32	1.32	1.31	1.31	1.30	1.30	1.30	1.29	1.29
<b>Net Change in Households</b>																
FDEC, 7/2011	36.6	35.9	35.3	34.7	34.1	33.5	33.0	32.5	32.1	31.7	31.3	30.9	30.6	30.3	30.0	29.7
FDEC, 8/2011	27.2	26.9	26.9	26.9	27.0	27.1	27.1	27.1	27.1	27.1	27.1	27.1	27.1	27.1	27.1	27.1
<b>Household Size</b>																
FDEC, 7/2011	2.471	2.469	2.466	2.464	2.461	2.459	2.457	2.455	2.453	2.452	2.450	2.449	2.448	2.447	2.446	2.445
FDEC, 8/2011	2.517	2.516	2.516	2.516	2.516	2.516	2.515	2.515	2.515	2.515	2.515	2.514	2.514	2.514	2.514	2.514
<b>Household Size Growth Rate</b>																
FDEC, 7/2011	-0.46	-0.44	-0.42	-0.40	-0.38	-0.35	-0.33	-0.31	-0.29	-0.26	-0.24	-0.22	-0.19	-0.17	-0.15	-0.13
FDEC, 8/2011	-0.04	-0.04	-0.03	-0.03	-0.03	-0.03	-0.03	-0.03	-0.03	-0.03	-0.03	-0.03	-0.03	-0.03	-0.03	-0.03
<b>Net Migration</b>																
FDEC, 7/2011	55.2	54.4	53.8	53.2	52.8	52.5	52.3	52.1	52.2	52.3	52.5	53.0	53.9	54.3	54.7	55.0
FDEC, 8/2011	55.1	54.6	54.4	54.6	54.9	55.0	55.2	55.2	55.3	55.3	55.4	55.4	55.5	55.5	55.6	55.6
<b>Births</b>																
FDEC, 7/2011	58.3	58.4	58.6	58.7	58.9	59.0	59.2	59.3	59.5	59.6	59.7	59.5	59.2	59.3	59.4	59.6
FDEC, 8/2011	57.7	57.9	58.1	58.2	58.4	58.6	58.7	58.9	59.1	59.2	59.4	59.6	59.8	59.9	60.1	60.3
<b>Deaths</b>																
FDEC, 7/2011	46.8	47.0	47.2	47.3	47.5	47.6	47.7	47.9	48.0	48.2	48.3	48.3	48.5	48.7	48.9	49.1
FDEC, 8/2011	46.4	46.5	46.7	46.9	47.0	47.2	47.4	47.6	47.7	47.9	48.1	48.3	48.5	48.7	48.9	49.1
<b>Net Natural Increase</b>																
FDEC, 7/2011	11.4	11.4	11.4	11.4	11.4	11.4	11.4	11.4	11.4	11.4	11.4	11.2	10.7	10.6	10.6	10.5
FDEC, 8/2011	11.4	11.4	11.4	11.4	11.4	11.4	11.4	11.3	11.3	11.3	11.3	11.3	11.3	11.2	11.2	11.2

Fiscal Year Data Table

FISCAL YEAR  
FORECAST TABLES

	<u>1990-91</u>	<u>1991-92</u>	<u>1992-93</u>	<u>1993-94</u>	<u>1994-95</u>	<u>1995-96</u>	<u>1996-97</u>	<u>1997-98</u>	<u>1998-99</u>	<u>1999-00</u>	<u>2000-01</u>	<u>2001-02</u>	<u>2002-03</u>	<u>2003-04</u>	<u>2004-05</u>	<u>2005-06</u>	<u>2006-07</u>
Population																	
FDEC, 7/2011	13,178.0	13,442.6	13,670.0	13,962.2	14,264.9	14,550.7	14,859.1	15,158.2	15,488.7	15,880.7	16,227.8	16,550.8	16,892.0	17,274.0	17,677.7	18,062.6	18,378.7
FDEC, 8/2011	13,178.0	13,442.6	13,670.0	13,962.2	14,264.9	14,550.7	14,859.1	15,158.3	15,488.4	15,881.5	16,228.0	16,551.2	16,892.0	17,273.8	17,677.3	18,062.2	18,378.2
Growth Rate																	
FDEC, 7/2011	2.42	2.01	1.69	2.14	2.17	2.00	2.12	2.01	2.18	2.53	2.19	1.99	2.06	2.26	2.34	2.18	1.75
FDEC, 8/2011	2.42	2.01	1.69	2.14	2.17	2.00	2.12	2.01	2.18	2.54	2.18	1.99	2.06	2.26	2.34	2.18	1.75
Net Change in Population																	
FDEC, 7/2011	315.1	232.0	241.6	315.7	289.2	291.1	313.1	295.0	359.3	396.7	318.6	331.2	350.9	398.6	401.8	368.6	277.8
FDEC, 8/2011	315.1	232.0	241.6	315.7	289.2	291.0	313.2	294.8	360.0	395.9	319.2	330.8	350.8	398.4	401.8	368.5	278.3
Households																	
FDEC, 7/2011	5,230.8	5,334.4	5,424.8	5,538.3	5,655.1	5,767.0	5,887.2	6,005.0	6,138.4	6,296.5	6,436.3	6,565.6	6,702.3	6,855.2	7,016.6	7,171.1	7,289.0
FDEC, 8/2011	5,230.7	5,335.4	5,424.2	5,538.0	5,655.6	5,766.7	5,887.3	6,005.5	6,137.4	6,296.9	6,436.4	6,565.8	6,702.3	6,855.1	7,016.4	7,170.9	7,288.9
Growth Rate																	
FDEC, 7/2011	2.44	1.98	1.69	2.09	2.11	1.98	2.08	2.00	2.22	2.58	2.22	2.01	2.08	2.28	2.36	2.20	1.64
FDEC, 8/2011	2.44	2.00	1.66	2.10	2.12	1.96	2.09	2.01	2.20	2.60	2.22	2.01	2.08	2.28	2.35	2.20	1.65
Net Change in Households																	
FDEC, 7/2011	124.4	92.2	94.4	122.0	112.8	113.3	122.3	117.9	144.1	161.1	127.5	132.7	140.5	159.4	161.1	146.4	98.9
FDEC, 8/2011	125.6	91.3	94.1	122.9	112.3	113.3	122.9	116.8	144.7	161.0	127.7	132.5	140.5	159.3	161.1	146.4	99.1
Household Size																	
FDEC, 7/2011	2.519	2.520	2.520	2.521	2.522	2.523	2.524	2.524	2.523	2.522	2.521	2.521	2.520	2.520	2.519	2.519	2.521
FDEC, 8/2011	2.519	2.520	2.520	2.521	2.522	2.523	2.524	2.524	2.524	2.522	2.521	2.521	2.520	2.520	2.519	2.519	2.521
Growth Rate																	
FDEC, 7/2011	-0.02	0.03	0.00	0.04	0.06	0.02	0.04	0.01	-0.04	-0.05	-0.03	-0.02	-0.02	-0.02	-0.02	-0.02	0.10
FDEC, 8/2011	-0.02	0.01	0.03	0.04	0.04	0.04	0.03	0.01	-0.02	-0.06	-0.03	-0.02	-0.02	-0.02	-0.02	-0.02	0.10
Net Migration																	
FDEC, 7/2011	252.1	176.2	191.4	270.0	249.0	254.8	275.5	256.2	323.0	358.7	278.2	293.4	310.4	351.9	349.3	306.6	206.8
FDEC, 8/2011	252.0	176.4	191.6	270.0	249.0	255.0	275.7	255.6	324.0	358.1	278.3	293.5	310.5	351.4	349.6	306.8	206.8
Births																	
FDEC, 7/2011	197.0	192.2	192.0	191.7	189.4	188.6	190.7	194.0	196.0	200.5	205.4	205.4	208.5	215.0	221.8	232.1	239.3
FDEC, 8/2011	197.2	191.8	192.1	191.8	189.3	188.6	190.6	194.2	195.9	200.3	205.8	205.2	208.4	215.3	221.5	232.0	239.6
Deaths																	
FDEC, 7/2011	134.0	136.4	141.8	146.0	149.3	152.3	153.1	155.2	159.7	162.5	165.0	167.6	168.1	168.3	169.4	170.1	168.3
FDEC, 8/2011	134.1	136.3	142.1	146.1	149.2	152.6	153.1	155.1	160.0	162.5	164.9	167.8	168.1	168.3	169.3	170.3	168.1
Net Natural Increase																	
FDEC, 7/2011	63.0	55.8	50.1	45.7	40.1	36.3	37.6	38.8	36.3	38.0	40.4	37.8	40.5	46.8	52.5	62.0	71.0
FDEC, 8/2011	63.1	55.5	50.0	45.7	40.1	36.0	37.5	39.2	35.9	37.8	40.9	37.4	40.3	47.0	52.2	61.7	71.5



Fiscal Year Data Table

FISCAL YEAR  
FORECAST TABLES

	<u>2007-08</u>	<u>2008-09</u>	<u>2009-10</u>	<u>2010-11</u>	<u>2011-12</u>	<u>2012-13</u>	<u>2013-14</u>	<u>2014-15</u>	<u>2015-16</u>	<u>2016-17</u>	<u>2017-18</u>	<u>2018-19</u>	<u>2019-20</u>	<u>2020-21</u>
Population														
FDEC, 7/2011	18,578.4	18,670.6	18,770.3	18,890.3	19,030.0	19,266.1	19,576.6	19,895.1	20,200.5	20,483.8	20,750.7	21,008.1	21,262.9	21,521.3
FDEC, 8/2011	18,578.9	18,671.4	18,770.7	18,880.2	18,982.9	19,123.4	19,330.5	19,594.1	19,887.5	20,173.0	20,439.8	20,704.6	20,971.0	21,237.8
Growth Rate														
FDEC, 7/2011	1.09	0.50	0.53	0.64	0.74	1.24	1.61	1.63	1.54	1.40	1.30	1.24	1.21	1.22
FDEC, 8/2011	1.09	0.50	0.53	0.58	0.54	0.74	1.08	1.36	1.50	1.44	1.32	1.30	1.29	1.27
Net Change in Population														
FDEC, 7/2011	150.9	74.6	116.2	121.0	162.2	280.3	317.3	316.7	296.9	276.0	262.2	255.3	255.5	260.3
FDEC, 8/2011	151.4	74.3	115.6	102.1	108.5	164.5	231.9	279.3	297.6	275.5	264.2	265.7	266.6	267.0
Households														
FDEC, 7/2011	7,356.8	7,382.7	7,411.1	7,456.4	7,515.9	7,612.4	7,760.3	7,932.6	8,104.0	8,263.4	8,410.0	8,546.4	8,674.9	8,797.4
FDEC, 8/2011	7,357.1	7,383.1	7,411.3	7,452.3	7,499.0	7,566.9	7,661.3	7,774.8	7,896.7	8,013.8	8,122.9	8,230.8	8,339.3	8,447.7
Growth Rate														
FDEC, 7/2011	0.93	0.35	0.38	0.61	0.80	1.28	1.94	2.22	2.16	1.97	1.77	1.62	1.50	1.41
FDEC, 8/2011	0.93	0.35	0.38	0.55	0.63	0.91	1.25	1.48	1.57	1.48	1.36	1.33	1.32	1.30
Net Change in Households														
FDEC, 7/2011	49.2	18.4	36.7	49.4	68.5	116.2	163.3	174.2	168.2	154.0	142.5	133.1	125.9	120.6
FDEC, 8/2011	49.3	18.3	36.1	42.2	51.6	78.6	103.1	118.4	122.6	112.8	107.9	108.3	108.4	108.4
Household Size														
FDEC, 7/2011	2.525	2.529	2.533	2.533	2.532	2.531	2.523	2.508	2.493	2.479	2.467	2.458	2.451	2.446
FDEC, 8/2011	2.525	2.529	2.533	2.533	2.531	2.527	2.523	2.520	2.518	2.517	2.516	2.515	2.515	2.514
Growth Rate														
FDEC, 7/2011	0.16	0.14	0.15	0.03	-0.06	-0.04	-0.32	-0.58	-0.61	-0.55	-0.46	-0.38	-0.29	-0.19
FDEC, 8/2011	0.16	0.14	0.15	0.03	-0.08	-0.16	-0.16	-0.12	-0.07	-0.05	-0.04	-0.03	-0.03	-0.03
Net Migration														
FDEC, 7/2011	83.9	18.6	69.0	77.3	119.9	238.4	276.2	275.0	253.6	230.7	216.6	209.7	210.0	217.9
FDEC, 8/2011	84.3	18.5	67.6	58.4	65.1	120.0	186.8	233.7	252.0	229.9	218.7	220.3	221.4	222.2
Births														
FDEC, 7/2011	236.0	226.4	217.1	215.2	217.4	220.7	224.0	226.5	228.5	231.4	234.0	236.4	238.3	237.5
FDEC, 8/2011	236.1	226.3	217.0	212.3	213.0	216.1	219.6	223.2	226.3	229.2	231.9	234.6	237.3	240.1
Deaths														
FDEC, 7/2011	169.0	170.3	169.8	171.5	175.1	178.9	182.9	184.7	185.1	186.1	188.4	190.7	192.8	195.1
FDEC, 8/2011	169.0	170.6	169.1	168.6	169.7	171.6	174.5	177.6	180.7	183.7	186.4	189.2	192.1	195.3
Net Natural Increase														
FDEC, 7/2011	67.0	56.0	47.3	43.7	42.3	41.9	41.1	41.7	43.4	45.3	45.6	45.7	45.5	42.3
FDEC, 8/2011	67.1	55.7	47.9	43.6	43.4	44.5	45.1	45.6	45.6	45.5	45.5	45.4	45.2	44.8

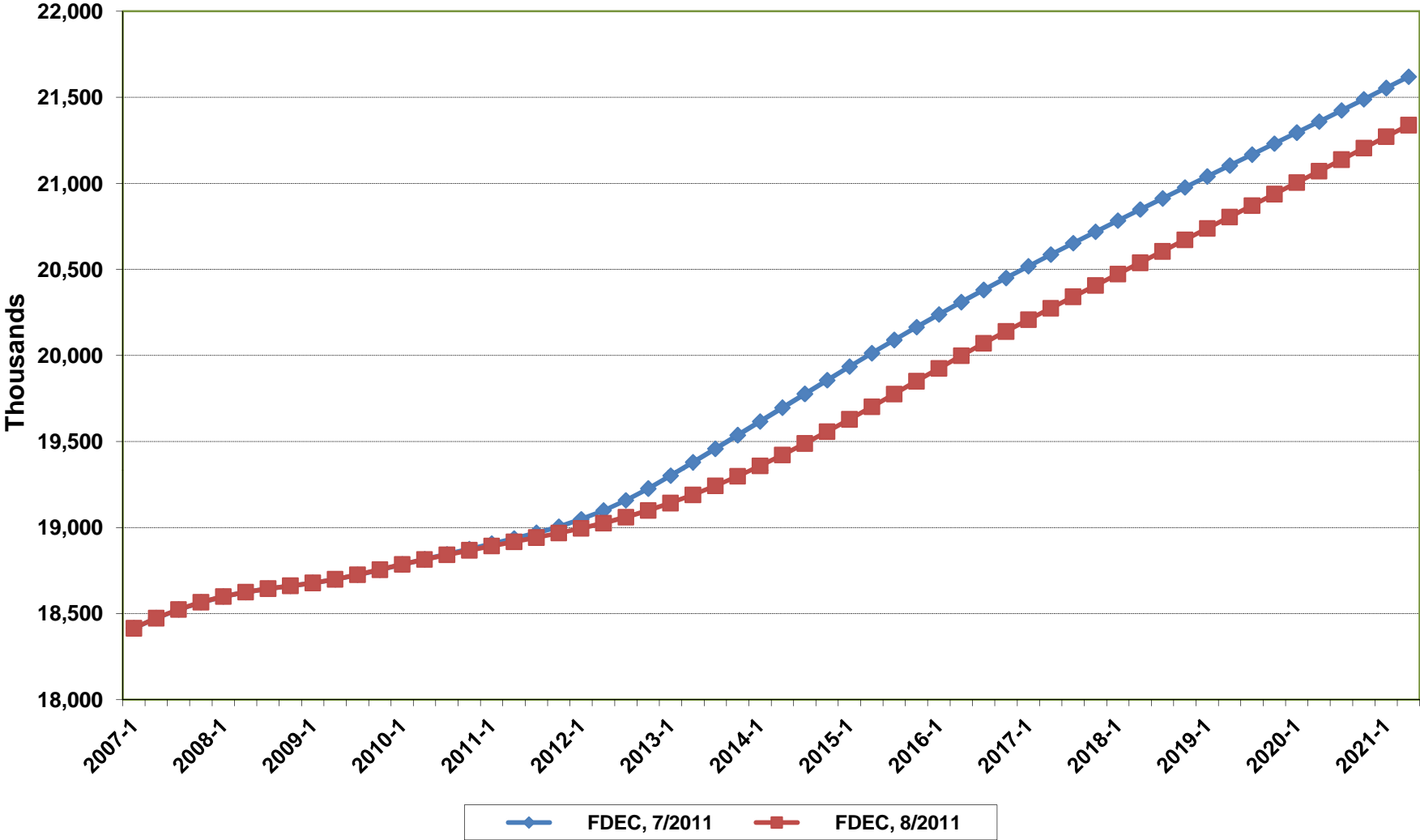
# **Florida Demographic Estimating Conference**

## **Charts**

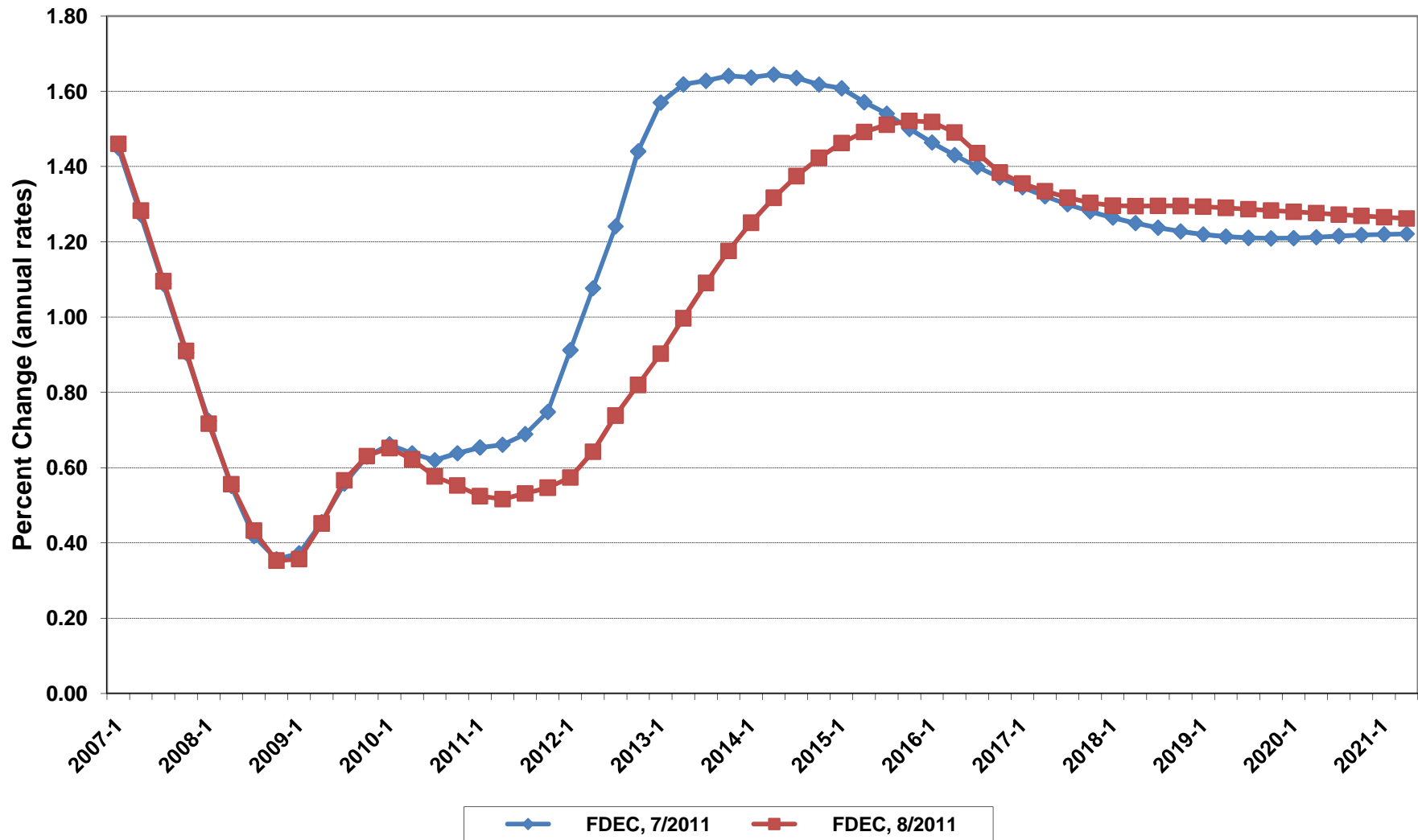
Post-Conference Packet

**August 29, 2011**

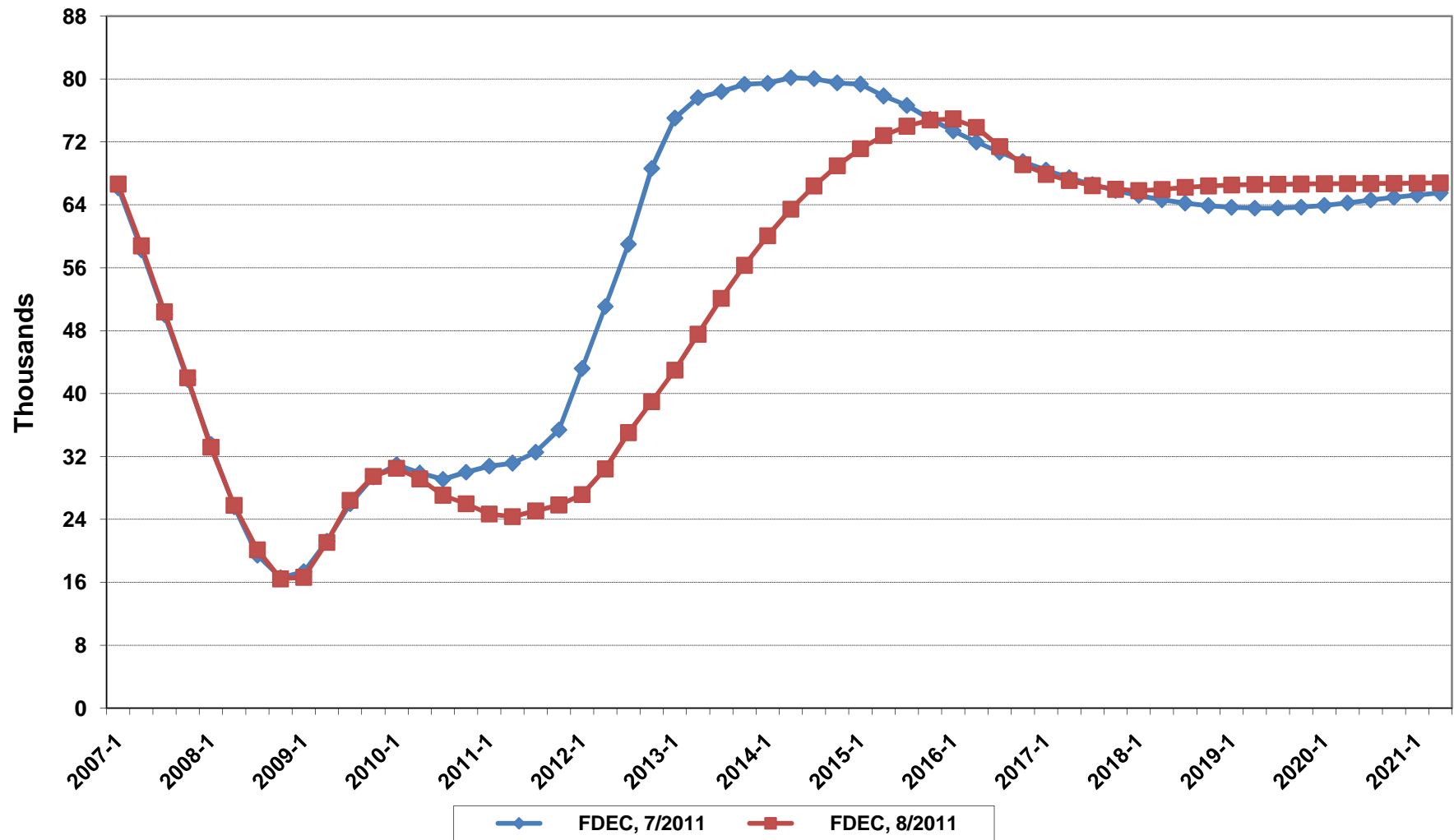
# Florida Resident Population



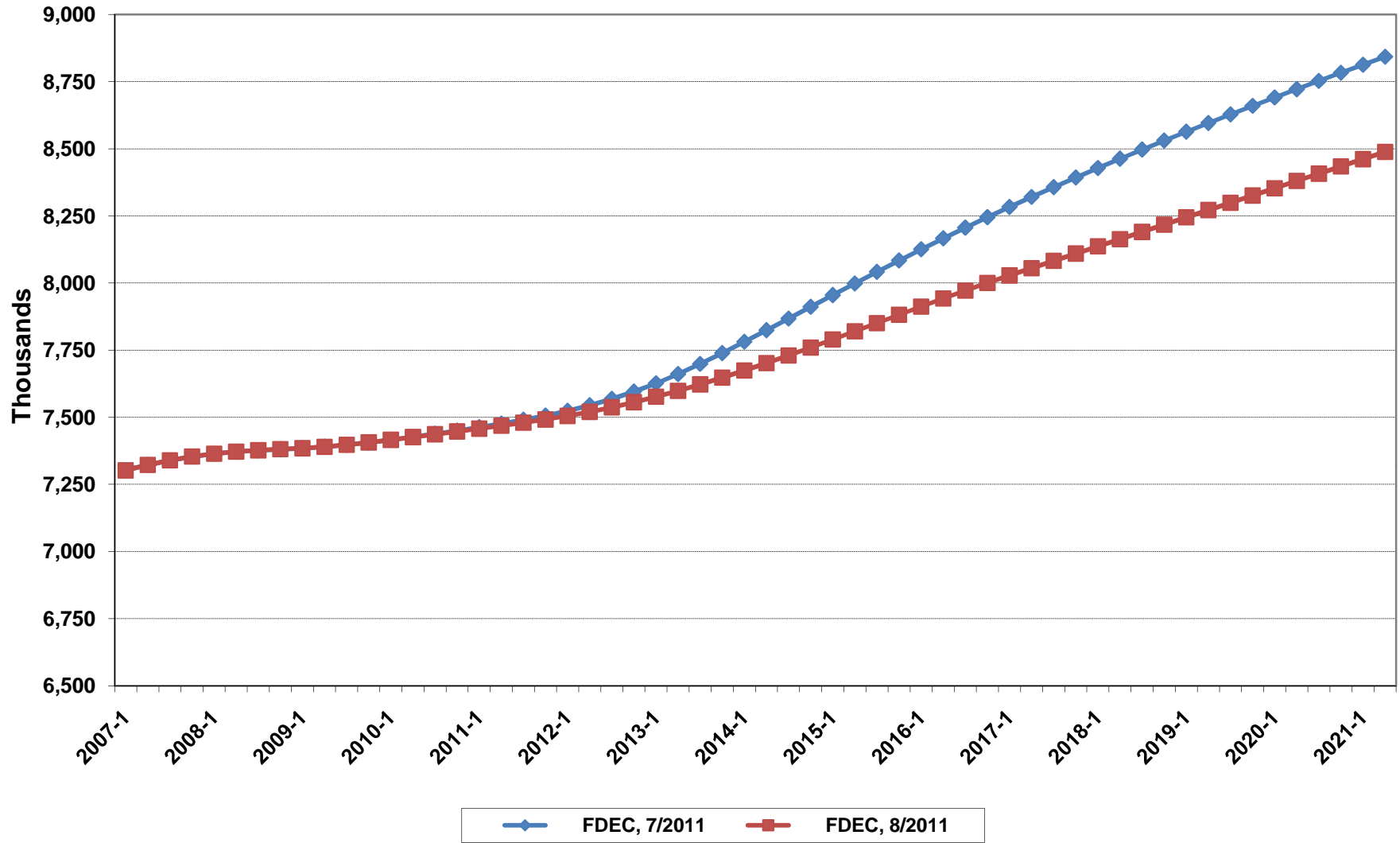
# Growth In Florida Resident Population



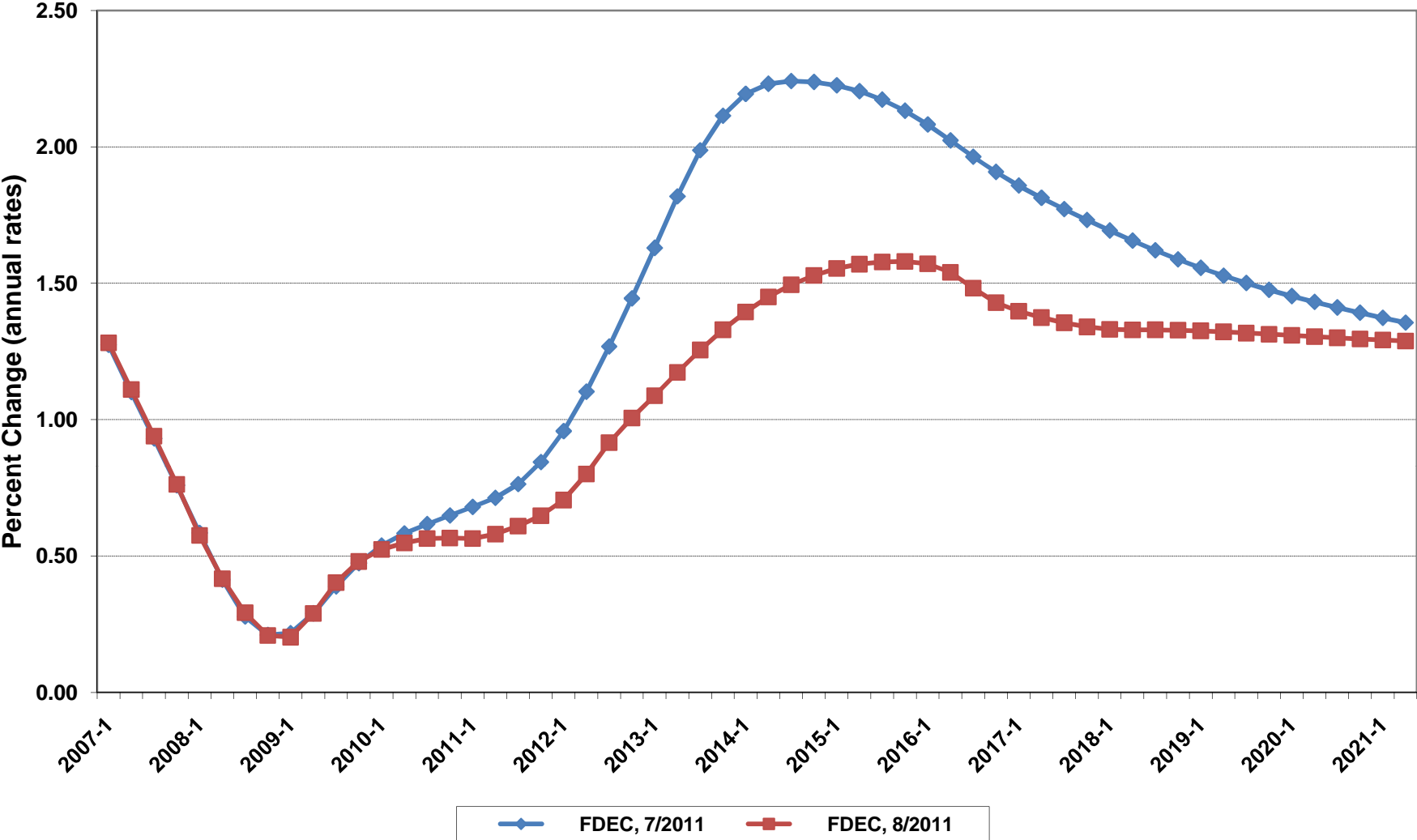
# Net Change In Florida Resident Population



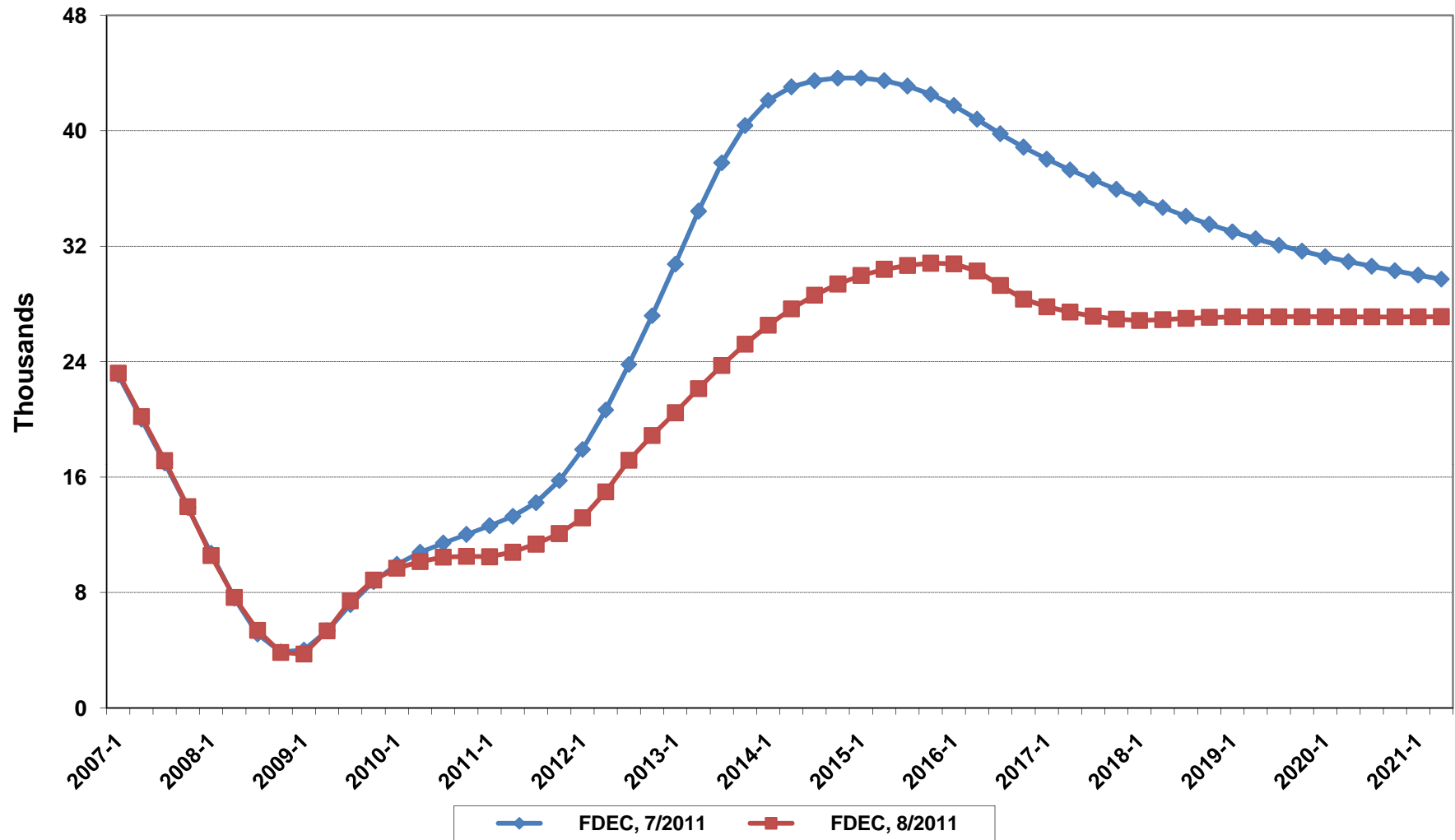
# Florida Resident Households



# Growth In Florida Resident Households

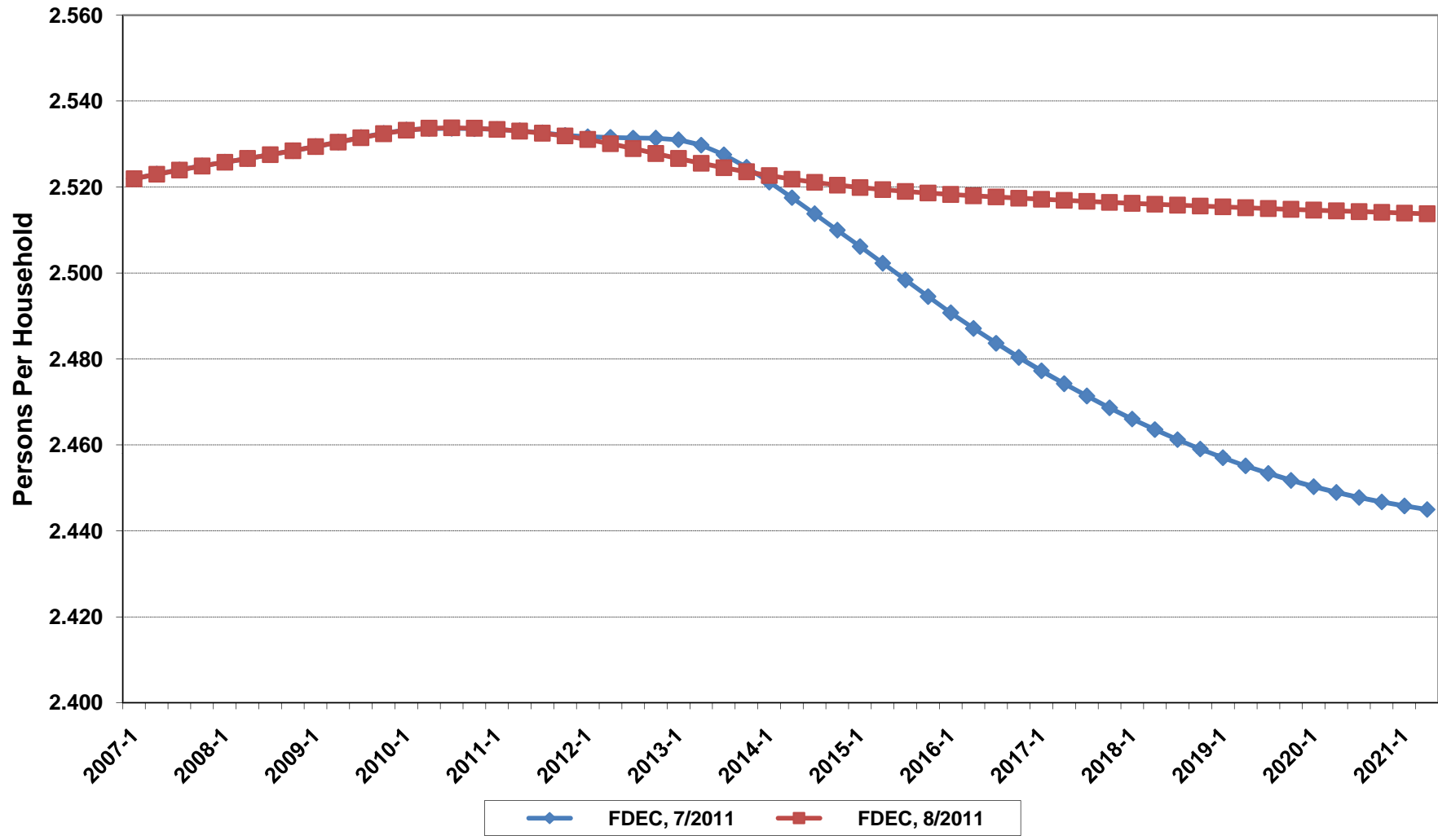


# Net Change In Florida Resident Households

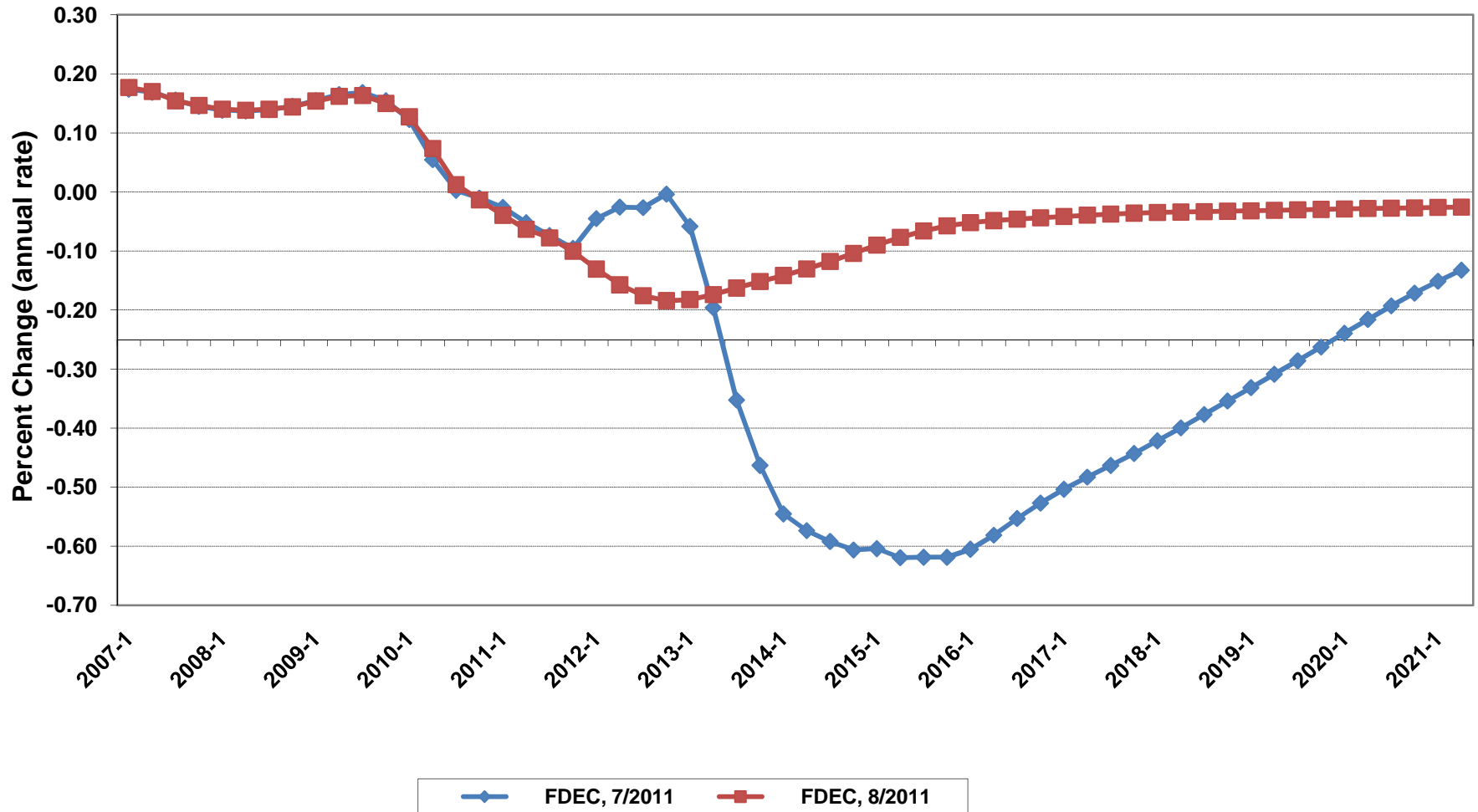




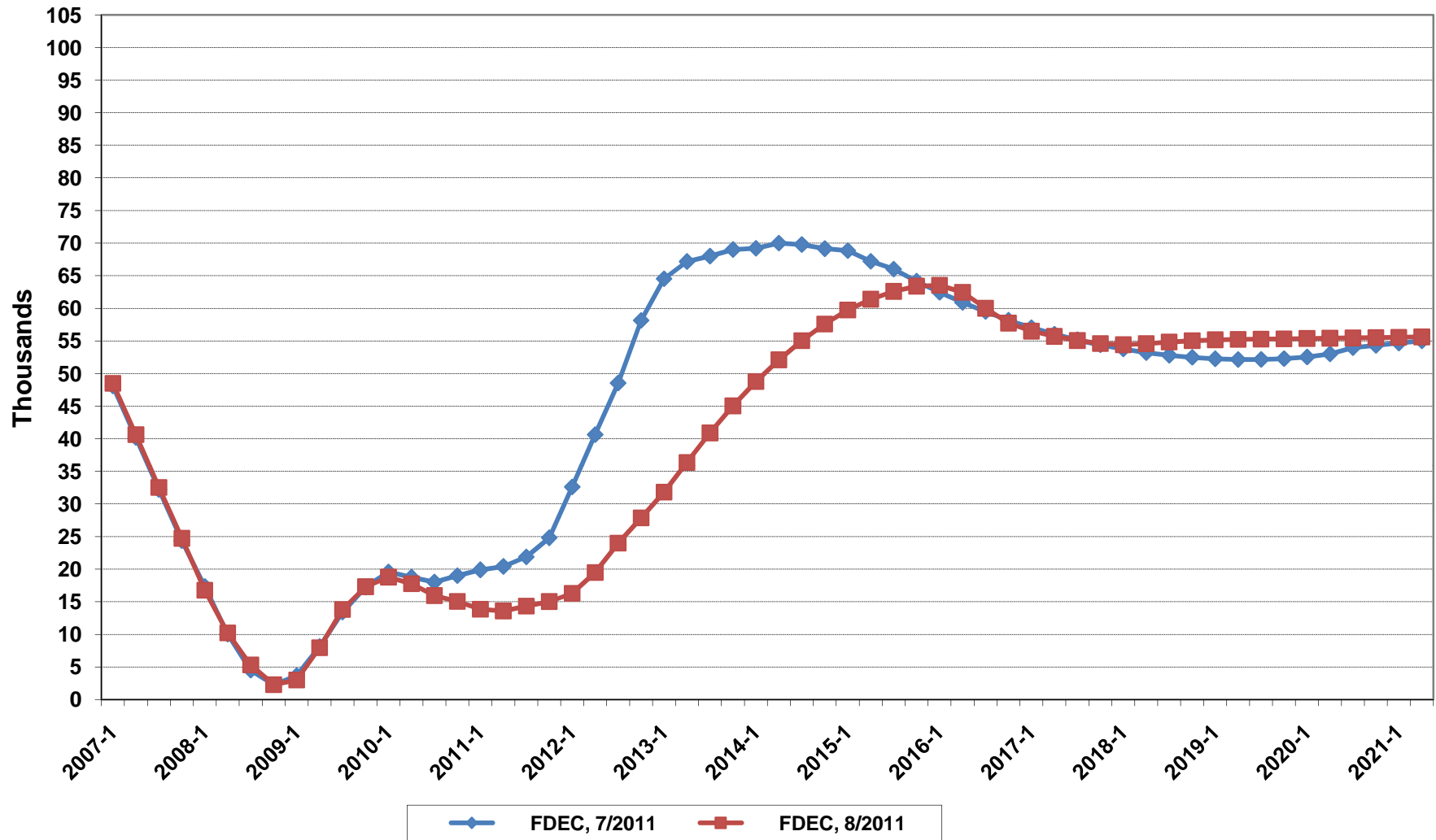
# Florida Average Household Size



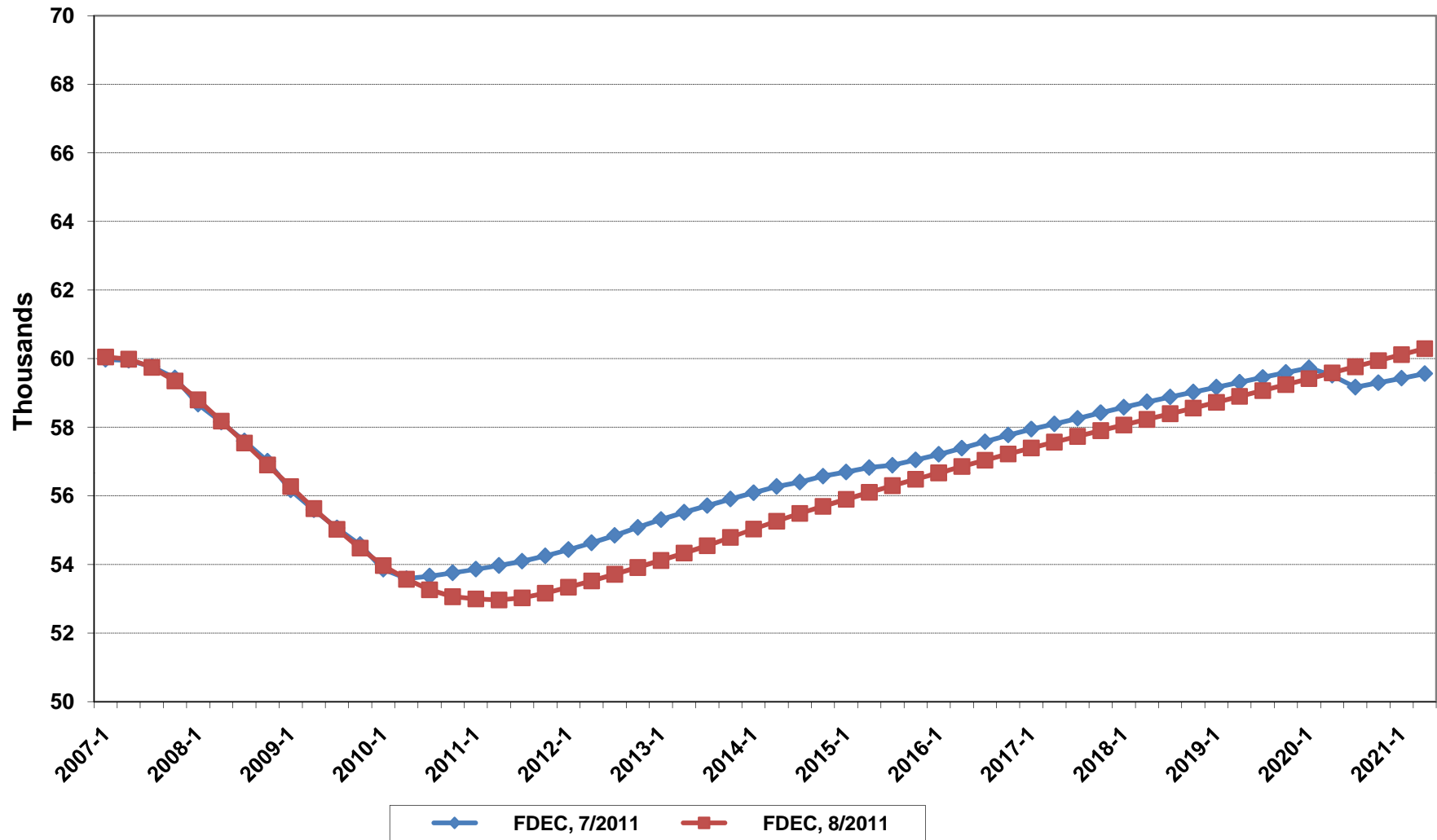
# Growth In Florida Household Size



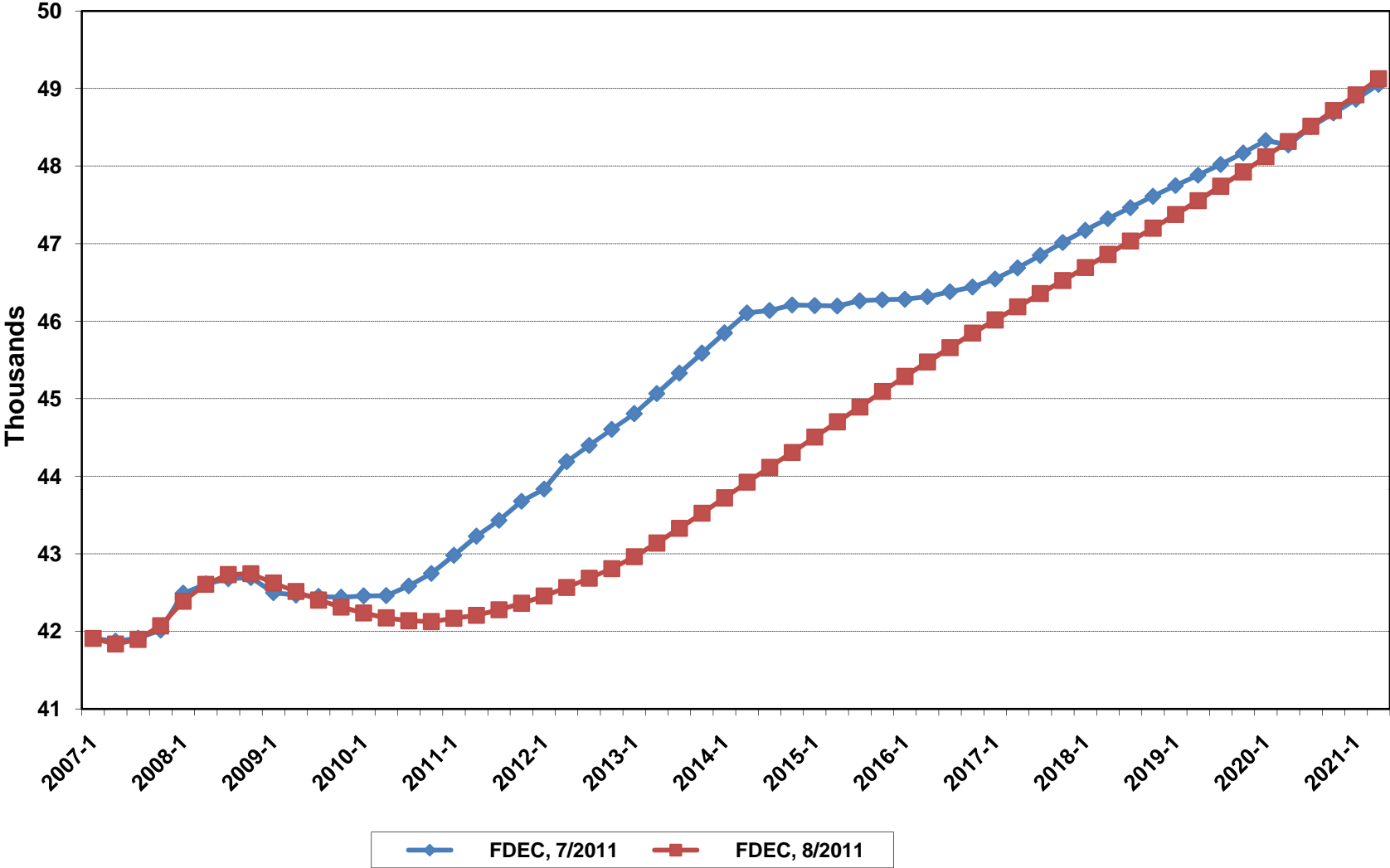
# Florida Net Migration



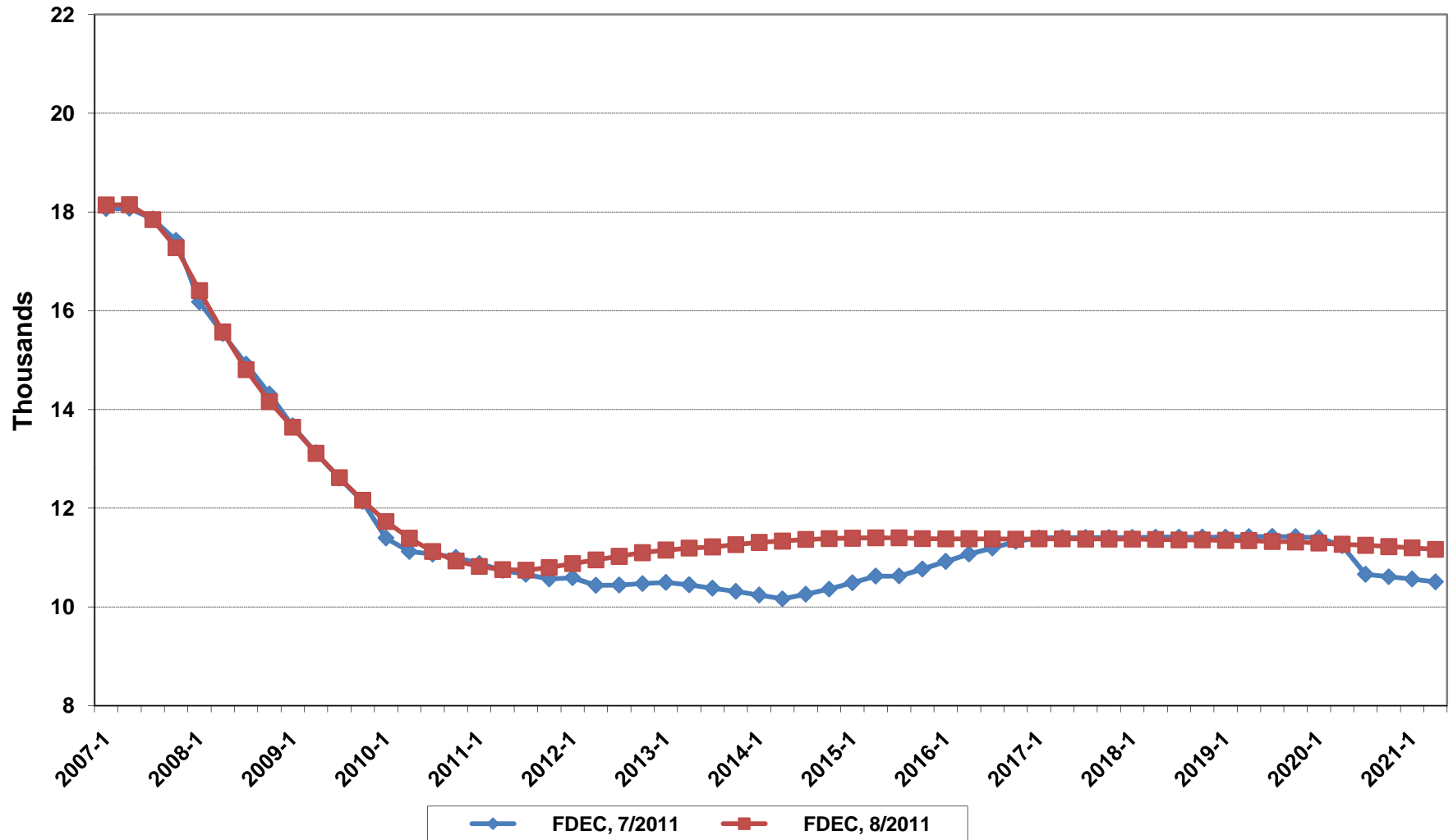
# Florida Resident Births



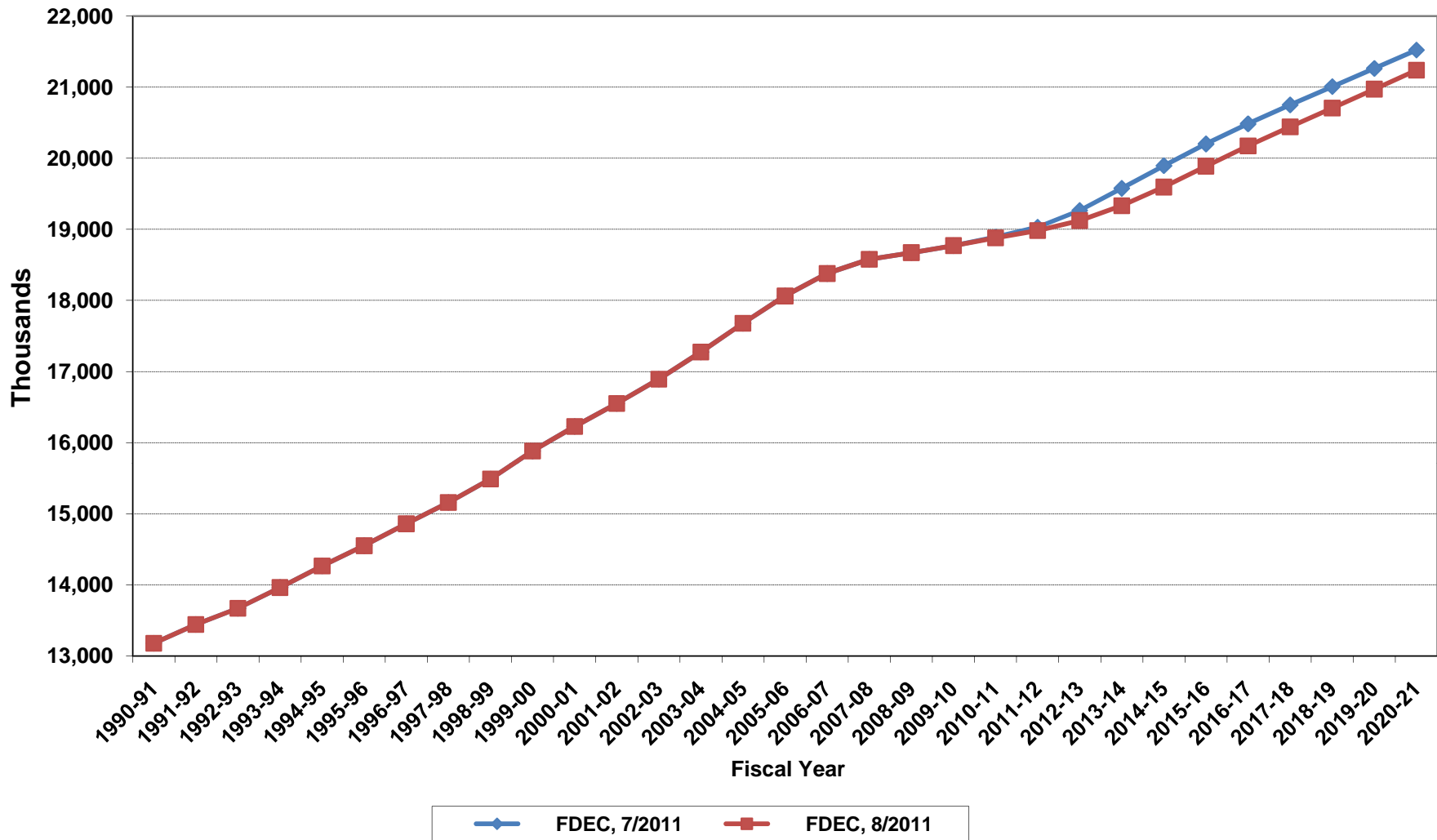
# Florida Resident Deaths



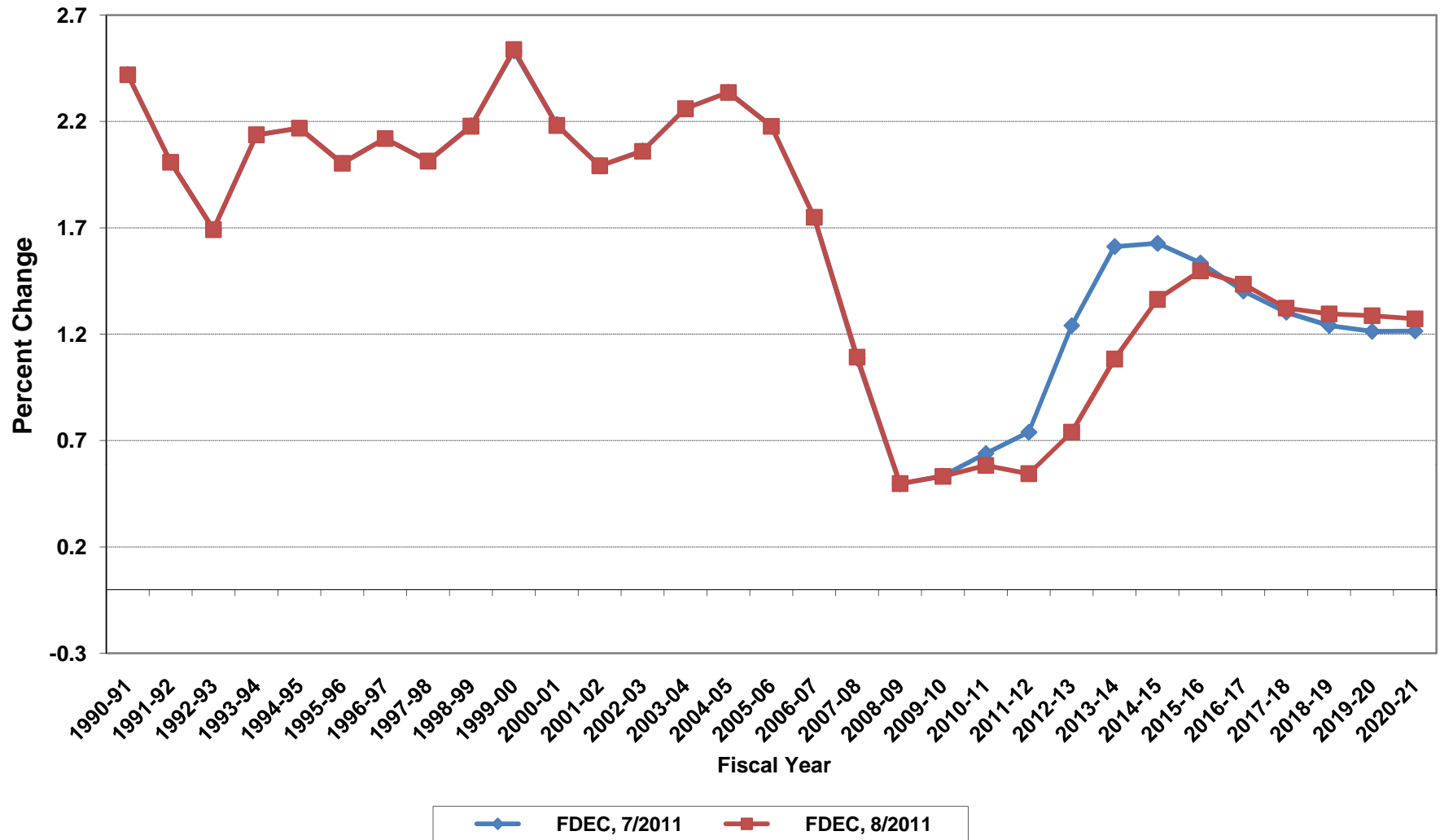
# Florida Net Natural Increase



# Florida Resident Population

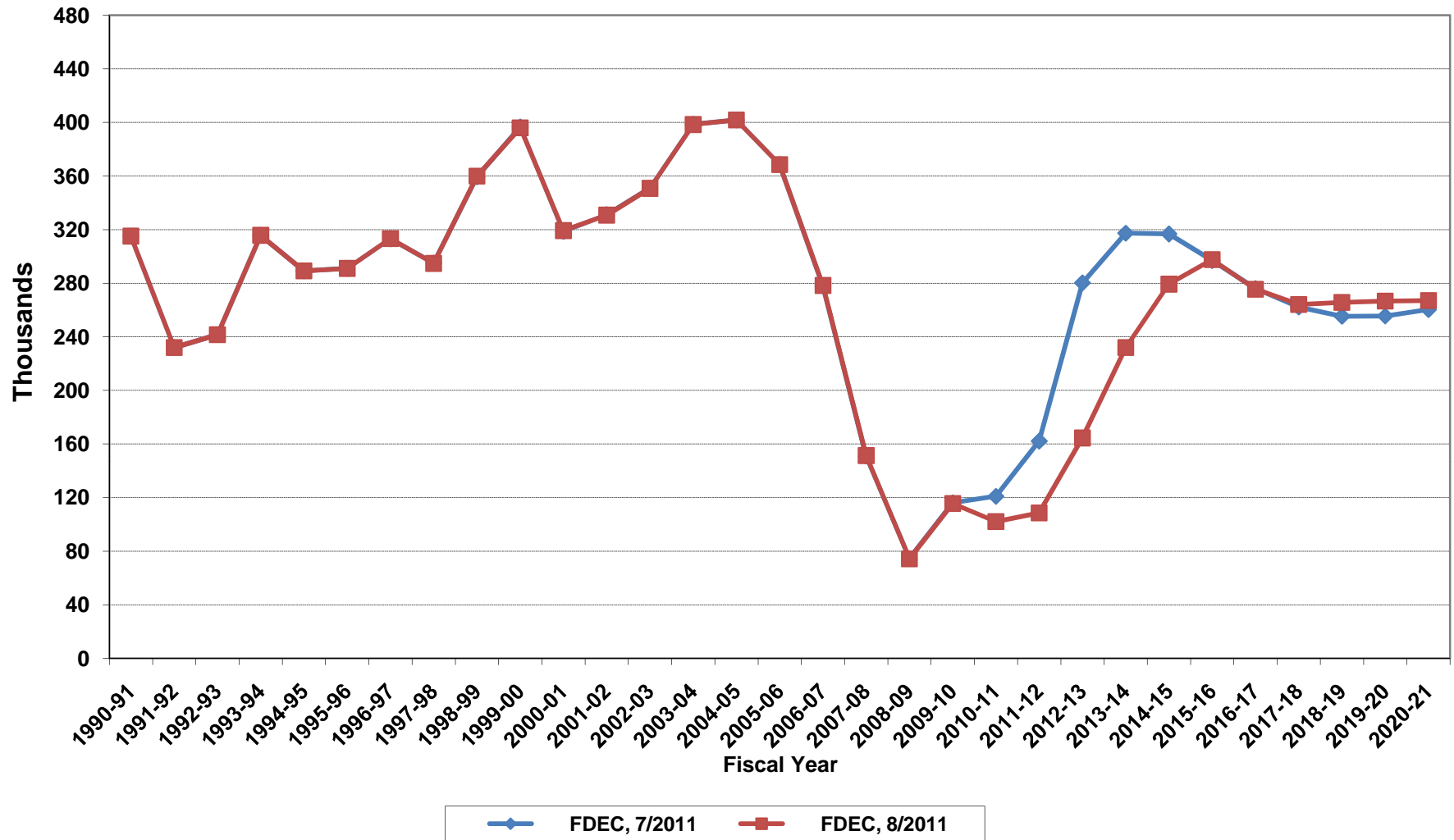


# Growth In Florida Resident Population

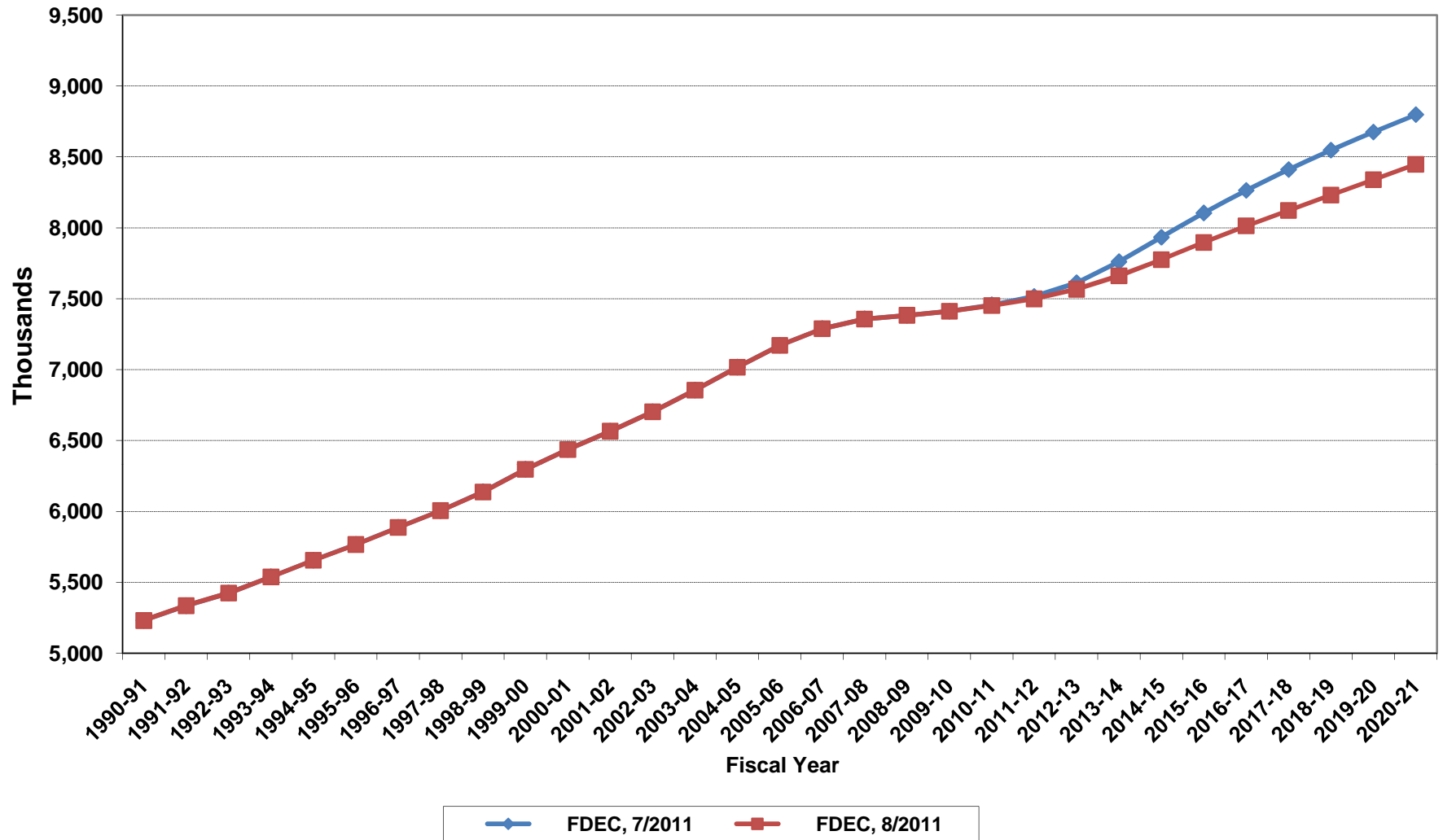




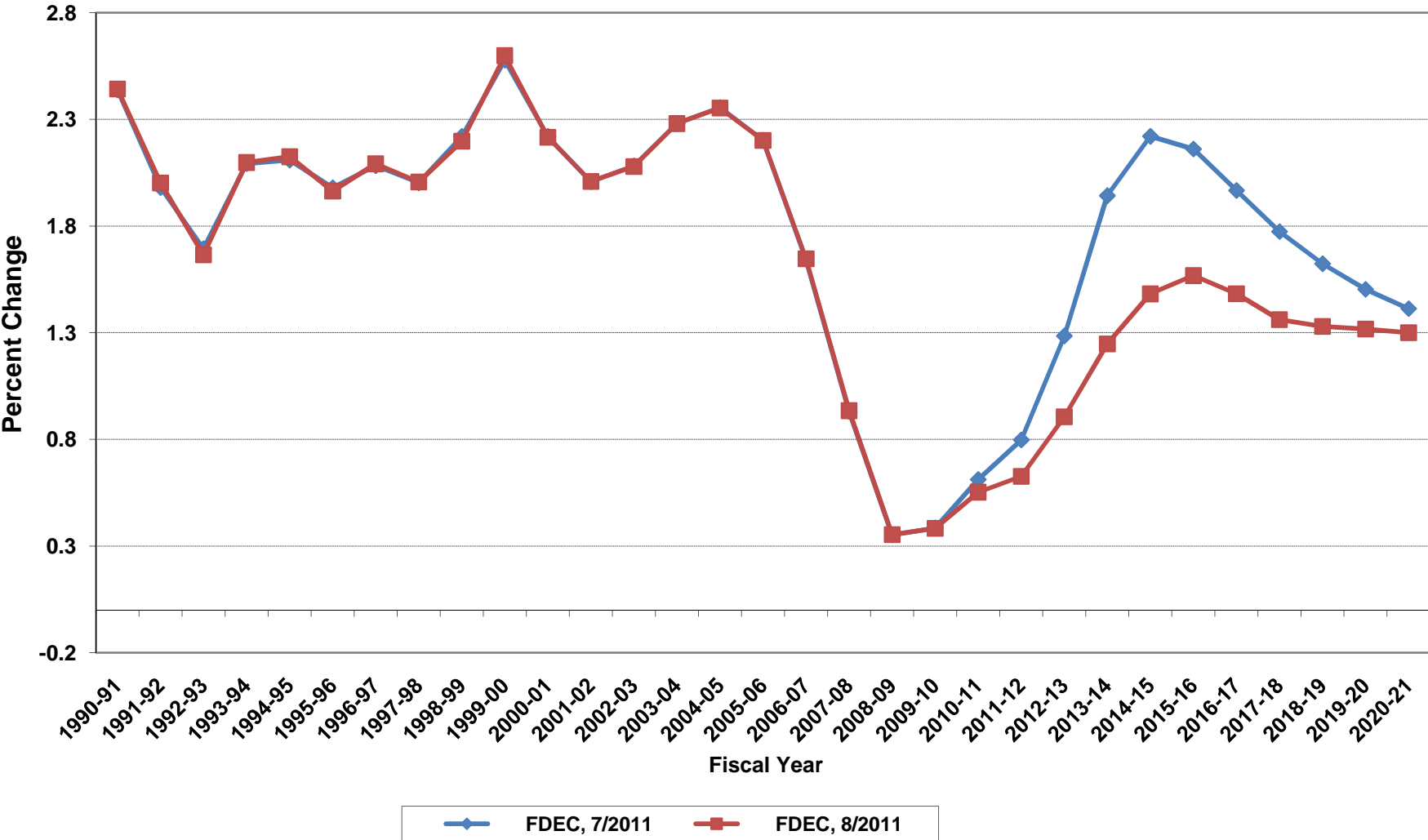
# Net Change In Florida Resident Population



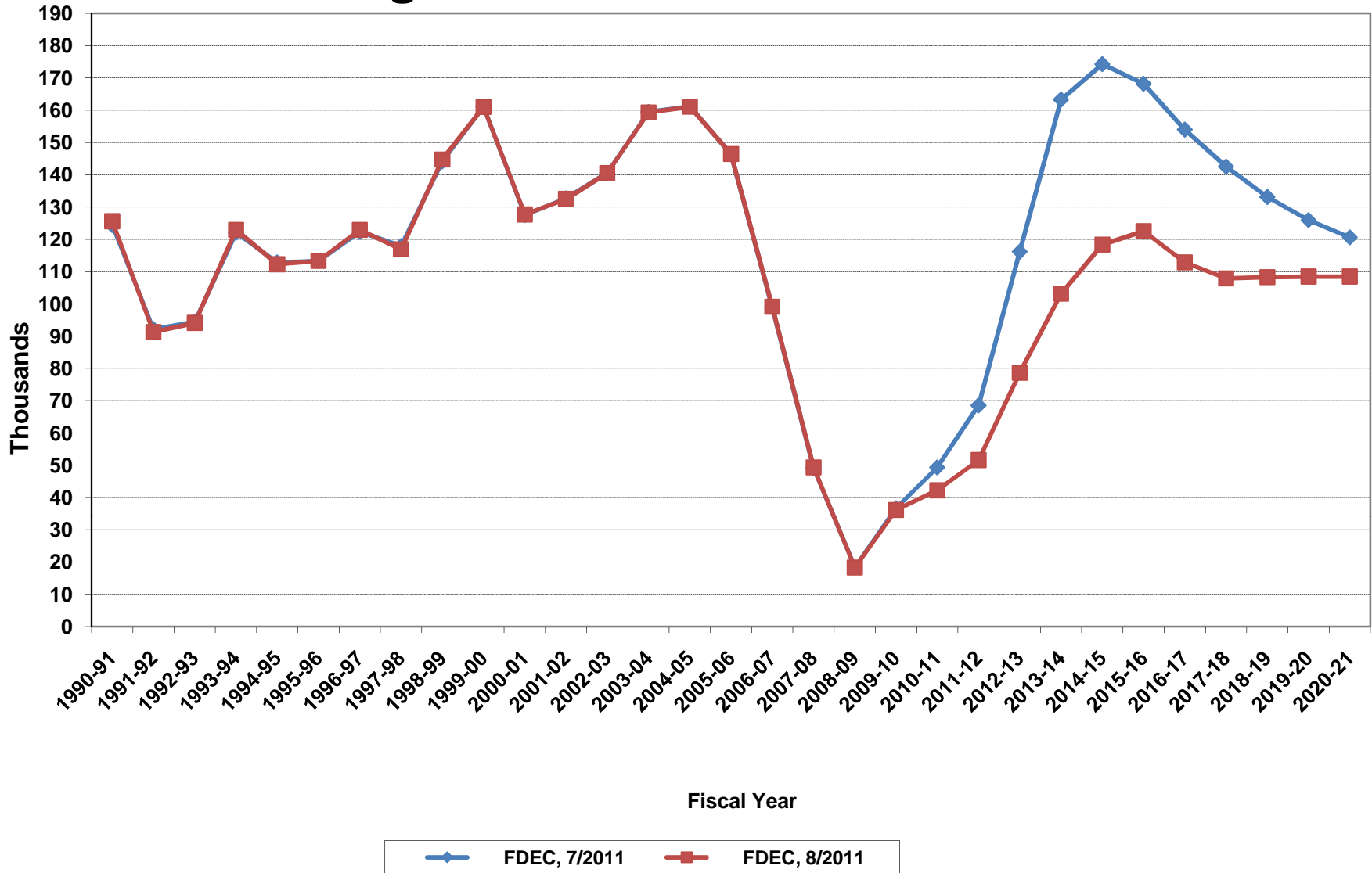
# Florida Resident Households



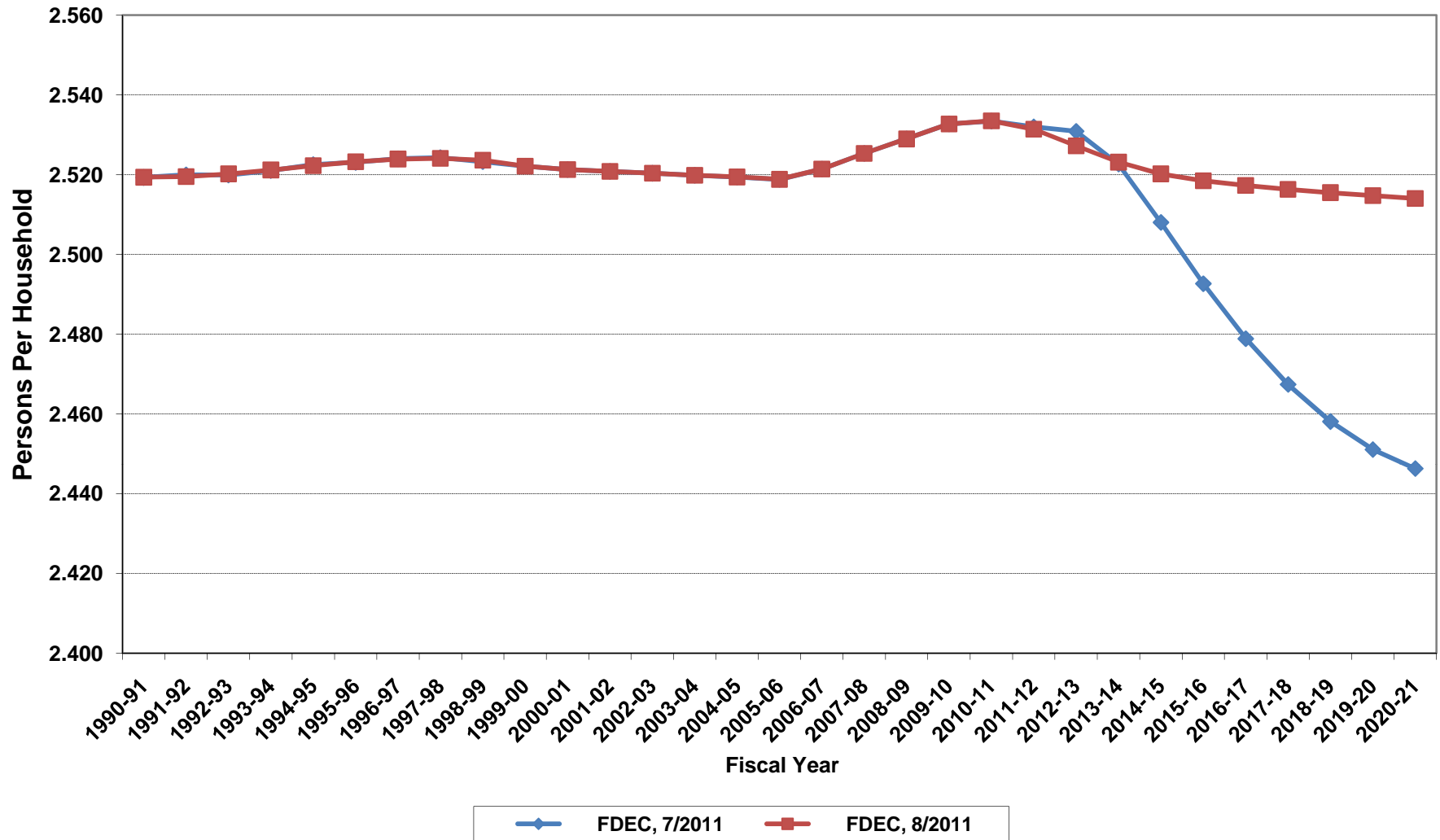
# Growth In Florida Resident Households



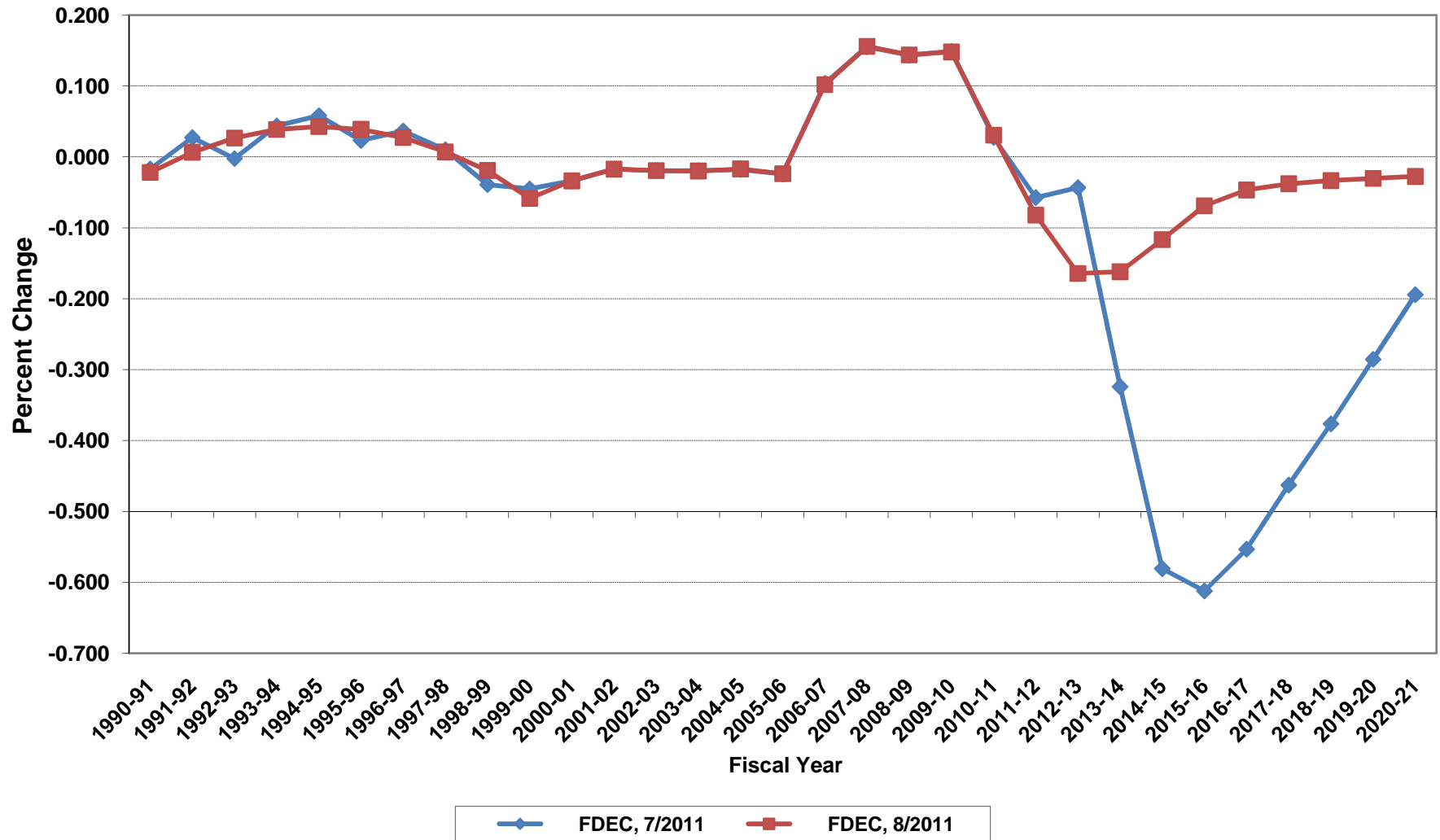
# Net Change In Florida Resident Households



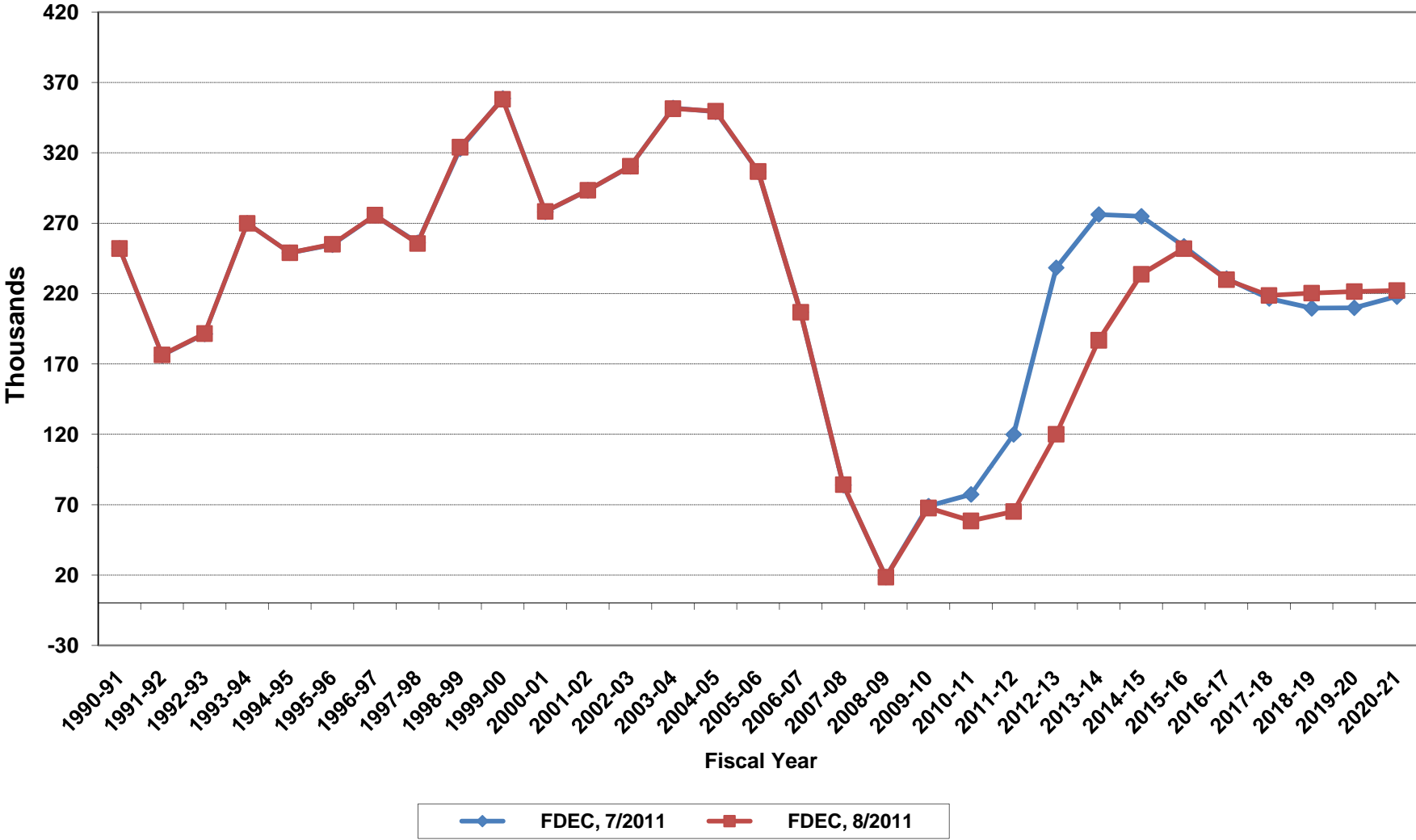
# Average Florida Household Size



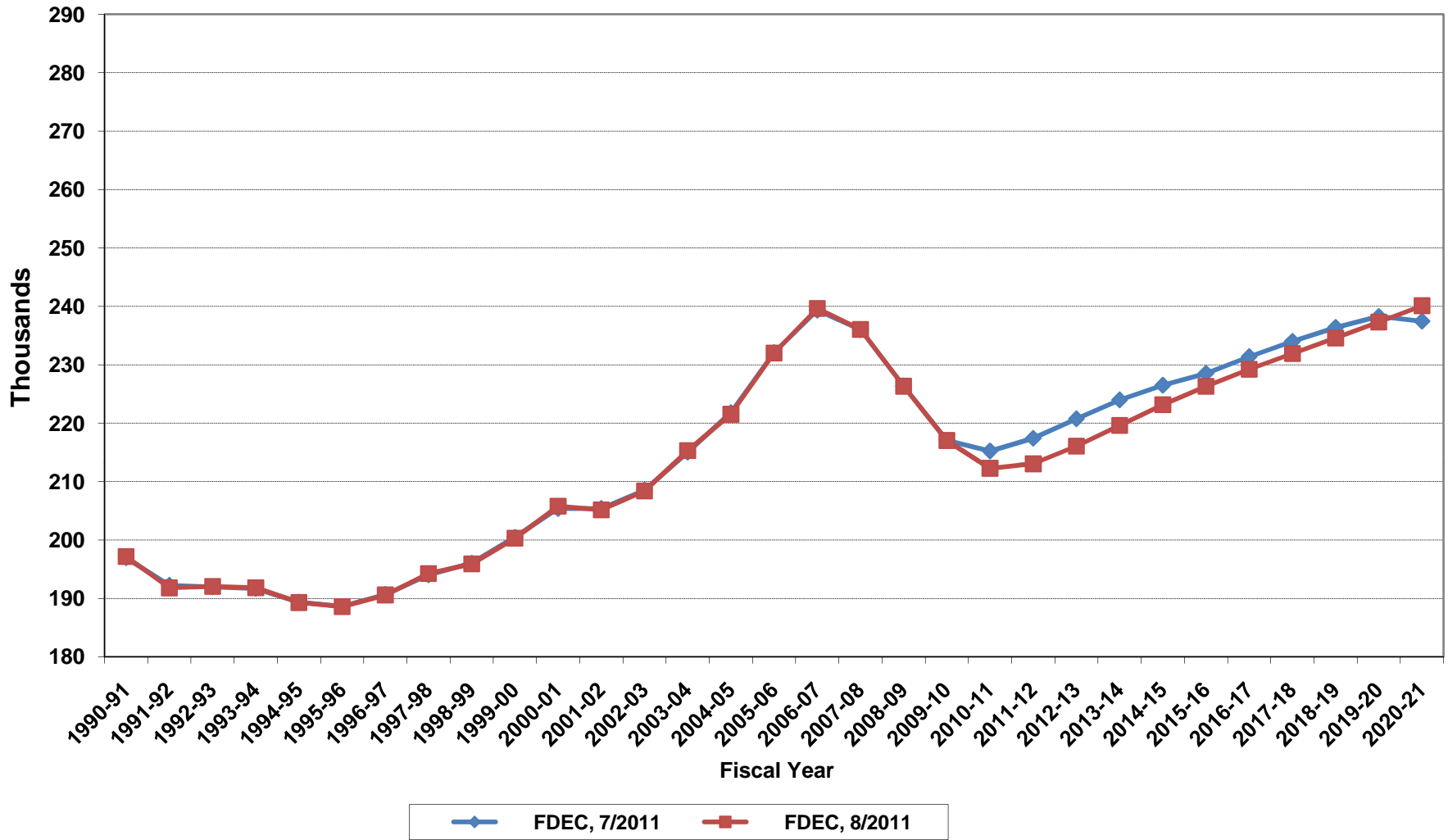
# Growth In Average Florida Household Size



# Florida Net Migration

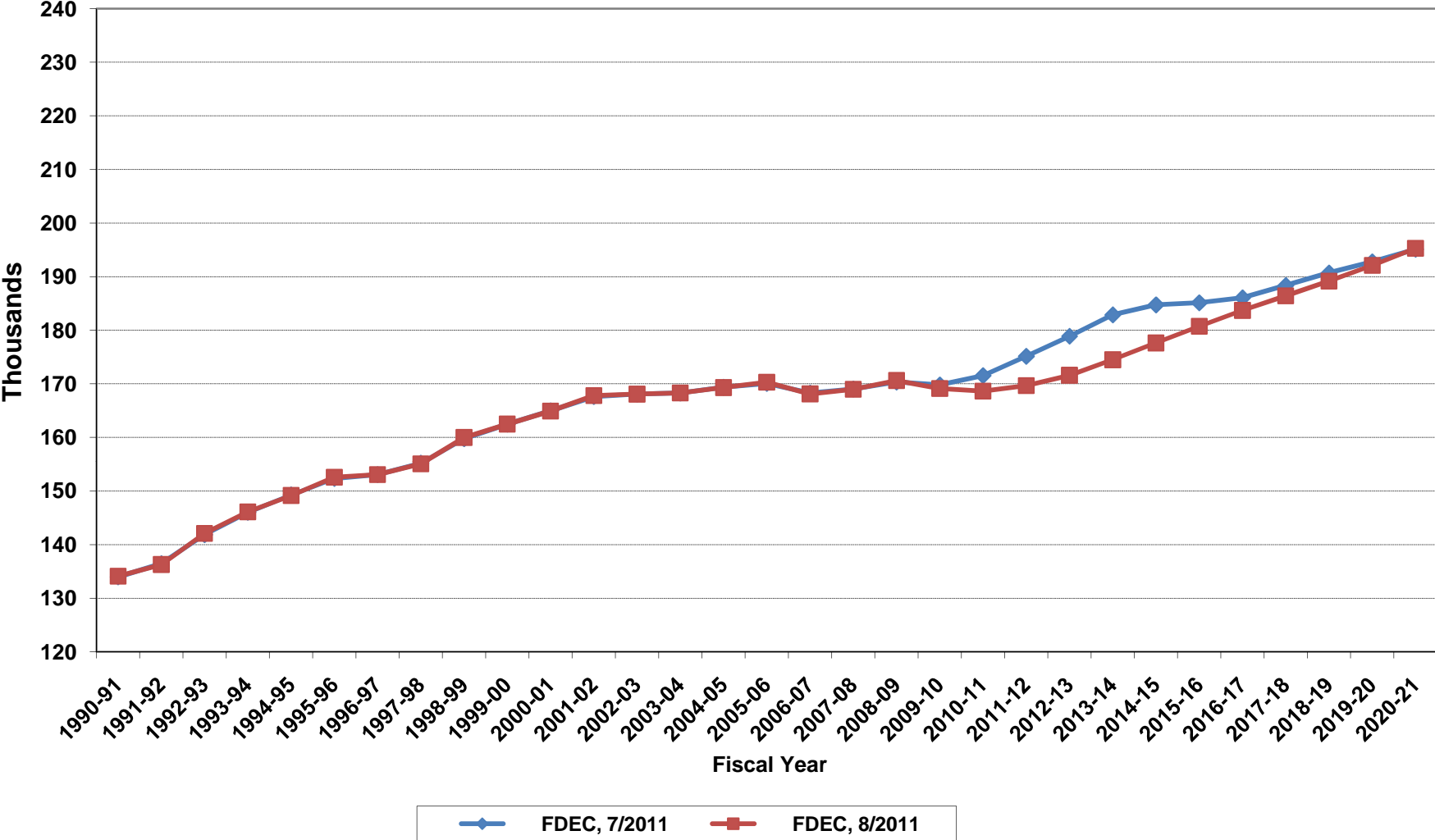


# Florida Resident Live Births

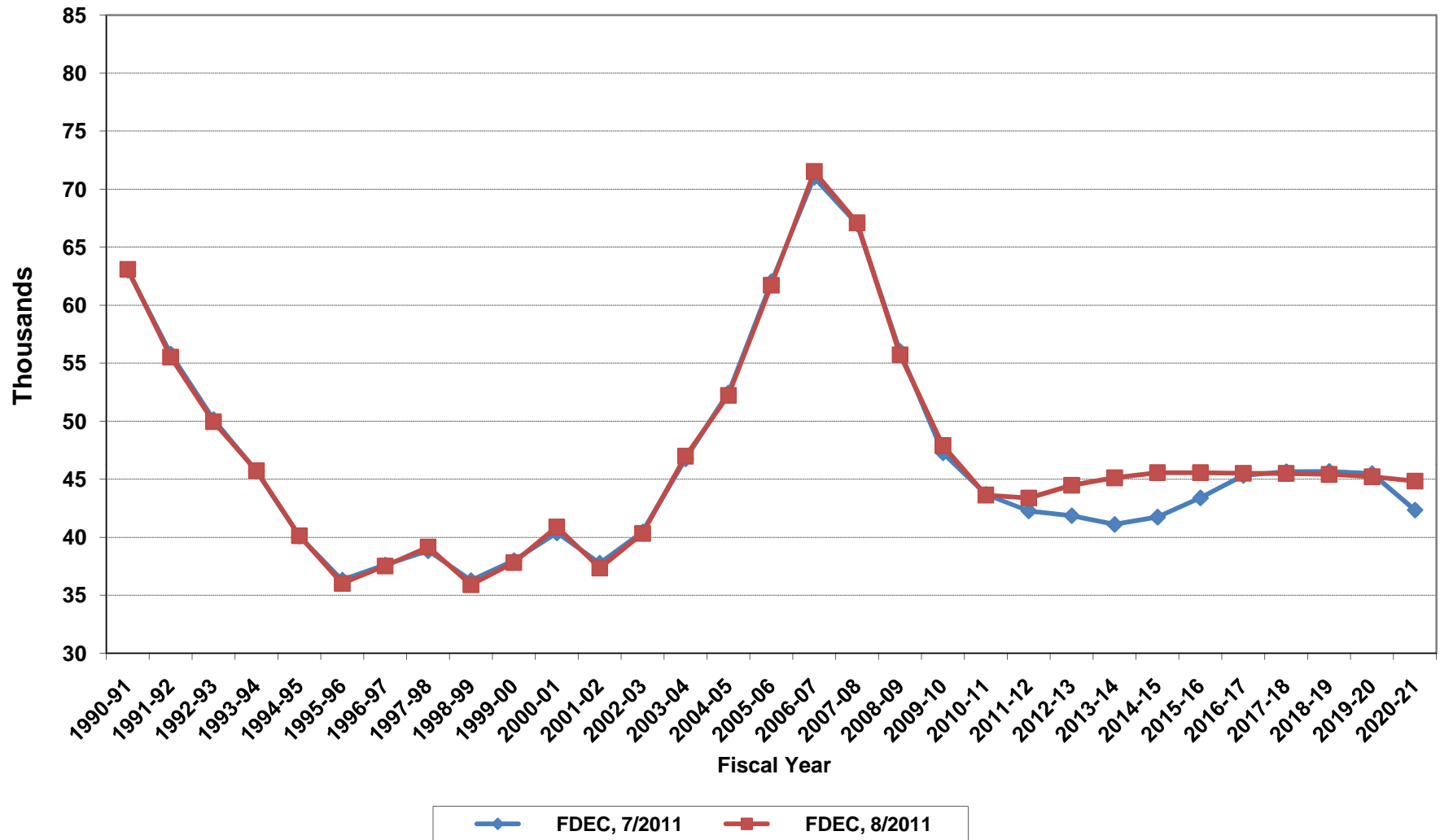




# Florida Resident Deaths



# Florida Net Natural Increase



**Florida Population and Components of Change**

<b>Fiscal Year</b>	<b>Population (End of Fiscal Year)</b>	<b>Growth Rate</b>	<b>Annual Change in Population</b>	<b>Births</b>	<b>Deaths</b>	<b>Net Natural Increase</b>	<b>Net Migration</b>
1950 - 51	2,981,346	6.50%	181,931	67,486	27,670	39,816	142,115
1951 - 52	3,155,442	5.84%	174,096	72,383	28,942	43,441	130,655
1952 - 53	3,312,521	4.98%	157,079	76,954	29,761	47,193	109,886
1953 - 54	3,504,323	5.79%	191,802	82,725	31,055	51,670	140,132
1954 - 55	3,747,400	6.94%	243,077	86,643	32,176	54,467	188,610
1955 - 56	4,046,062	7.97%	298,662	92,941	34,932	58,009	240,653
1956 - 57	4,370,045	8.01%	323,983	100,990	38,269	62,721	261,262
1957 - 58	4,629,510	5.94%	259,465	105,972	41,911	64,061	195,404
1958 - 59	4,812,270	3.95%	182,760	110,409	43,674	66,735	116,025
1959 - 60	4,998,508	3.87%	186,238	114,428	46,057	68,371	117,867
1960 - 61	5,185,913	3.75%	187,405	116,449	48,388	68,061	119,344
1961 - 62	5,367,899	3.51%	181,986	116,120	50,346	65,774	116,212
1962 - 63	5,553,522	3.46%	185,623	114,709	54,453	60,256	125,367
1963 - 64	5,728,499	3.15%	174,977	115,002	56,229	58,773	116,204
1964 - 65	5,881,195	2.67%	152,696	110,515	57,734	52,781	99,915
1965 - 66	6,065,768	3.14%	184,573	104,367	61,217	43,150	141,423
1966 - 67	6,249,674	3.03%	183,906	101,209	62,577	38,632	145,274
1967 - 68	6,441,756	3.07%	192,082	100,320	66,134	34,186	157,896
1968 - 69	6,633,546	2.98%	191,790	104,286	71,285	33,001	158,789
1969 - 70	6,861,118	3.43%	227,572	111,511	73,831	37,680	189,892
1970 - 71	7,233,583	5.43%	372,465	117,012	75,354	41,658	330,807
1971 - 72	7,681,540	6.19%	447,957	113,568	79,717	33,851	414,106
1972 - 73	8,157,883	6.20%	476,343	107,804	86,232	21,572	454,771
1973 - 74	8,515,208	4.38%	357,325	109,366	88,459	20,907	336,418
1974 - 75	8,648,587	1.57%	133,379	108,686	87,224	21,462	111,917
1975 - 76	8,782,975	1.55%	134,388	104,022	88,129	15,893	118,495
1976 - 77	8,972,678	2.16%	189,703	107,623	90,443	17,180	172,523
1977 - 78	9,225,527	2.82%	252,849	112,268	93,383	18,885	233,964
1978 - 79	9,523,728	3.23%	298,201	116,393	96,801	19,592	278,609
1979 - 80	9,894,625	3.89%	370,897	126,673	101,048	25,625	345,272
1980 - 81	10,212,969	3.22%	318,344	135,560	107,562	27,998	290,346
1981 - 82	10,492,851	2.74%	279,882	141,593	108,644	32,949	246,933
1982 - 83	10,748,466	2.44%	255,615	146,853	110,497	36,356	219,259
1983 - 84	11,065,911	2.95%	317,445	151,748	113,939	37,809	279,636
1984 - 85	11,405,533	3.07%	339,622	159,819	117,539	42,280	297,342
1985 - 86	11,740,069	2.93%	334,536	165,857	122,453	43,404	291,132
1986 - 87	12,083,241	2.92%	343,172	170,819	124,946	45,873	297,299
1987 - 88	12,410,339	2.71%	327,098	179,541	129,413	50,128	276,970
1988 - 89	12,723,719	2.53%	313,380	188,390	131,992	56,398	256,982
1989 - 90	13,017,296	2.31%	293,577	197,181	132,503	64,678	228,899
1990 - 91	13,326,892	2.38%	309,596	197,180	134,093	63,087	246,509
1991 - 92	13,552,021	1.69%	225,129	191,810	136,280	55,530	169,599
1992 - 93	13,802,571	1.85%	250,550	192,051	142,087	49,964	200,586
1993 - 94	14,120,323	2.30%	317,752	191,840	146,101	45,739	272,013
1994 - 95	14,406,418	2.03%	286,095	189,292	149,161	40,131	245,964
1995 - 96	14,701,040	2.05%	294,622	188,584	152,570	36,014	258,608
1996 - 97	15,012,615	2.12%	311,575	190,587	153,067	37,520	274,055
1997 - 98	15,310,069	1.98%	297,454	194,242	155,080	39,162	258,292
1998 - 99	15,680,164	2.42%	370,095	195,897	159,988	35,909	334,186
1999 - 00	16,069,889	2.49%	389,725	200,302	162,489	37,813	351,912
2000 - 01	16,385,615	1.96%	315,726	205,798	164,919	40,879	274,847
2001 - 02	16,718,076	2.03%	332,461	205,164	167,812	37,352	295,109
2002 - 03	17,074,258	2.13%	356,182	208,403	168,079	40,324	315,858
2003 - 04	17,475,944	2.35%	401,686	215,298	168,302	46,996	354,690
2004 - 05	17,876,215	2.29%	400,271	221,533	169,302	52,231	348,040
2005 - 06	18,236,885	2.02%	360,670	232,019	170,303	61,716	298,954
2006 - 07	18,501,231	1.45%	264,346	239,635	168,117	71,518	192,828
2007 - 08	18,636,837	0.73%	135,606	236,065	168,966	67,099	68,507
2008 - 09	18,711,844	0.40%	75,007	226,337	170,615	55,722	19,285
2009 - 10	18,829,069	0.63%	117,225	217,034	169,128	47,906	69,319

## Florida Population and Components of Change

Fiscal Year	Population (End of Fiscal Year)	Growth Rate	Annual Change in Population	Births	Deaths	Net Natural Increase	Net Migration
2010 - 11	18,929,718	0.53%	100,649	212,277	168,641	43,636	57,013
2011 - 12	19,042,228	0.59%	112,510	213,043	169,662	43,381	69,129
2012 - 13	19,215,218	0.91%	172,990	216,069	171,596	44,473	128,517
2013 - 14	19,454,705	1.25%	239,487	219,619	174,496	45,123	194,364
2014 - 15	19,738,242	1.46%	283,537	223,178	177,627	45,551	237,986
2015 - 16	20,035,498	1.51%	297,256	226,299	180,747	45,552	251,704
2016 - 17	20,307,858	1.36%	272,360	229,219	183,704	45,515	226,845
2017 - 18	20,571,699	1.30%	263,841	231,928	186,430	45,498	218,343
2018 - 19	20,837,659	1.29%	265,960	234,577	189,163	45,414	220,546
2019 - 20	21,104,327	1.28%	266,668	237,312	192,100	45,212	221,456
2020 - 21	21,371,371	1.27%	267,044	240,111	195,273	44,838	222,206
2021 - 22	21,639,062	1.25%	267,691	242,935	198,656	44,279	223,412
2022 - 23	21,907,266	1.24%	268,204	245,746	202,232	43,514	224,690
2023 - 24	22,174,412	1.22%	267,146	248,543	206,067	42,476	224,670
2024 - 25	22,438,260	1.19%	263,848	251,301	210,178	41,123	222,725
2025 - 26	22,698,015	1.16%	259,755	254,031	214,521	39,510	220,245
2026 - 27	22,953,953	1.13%	255,938	256,731	219,099	37,632	218,306
2027 - 28	23,204,162	1.09%	250,209	259,421	223,869	35,552	214,657
2028 - 29	23,448,622	1.05%	244,460	262,072	228,737	33,335	211,125
2029 - 30	23,689,785	1.03%	241,163	264,688	233,648	31,040	210,123