

Demographic Estimating Conference
Executive Summary
December 5, 2017

The Demographic Estimating Conference met on December 5, 2017, to adopt a new population forecast. The new estimates reflect recent demographic and economic-related data, including an estimate of the impact of Hurricanes Irma and Maria on the state’s population. In the short-term, the population projections were revised upward, mostly due to the influx of Puerto Ricans migrating to the state as a result of Maria’s extensive damage to the US territory.

Florida’s April 1, 2017 population increased by 10,372 over last conference. In total, population grew by 335,448 (1.67%) between April 1, 2016 and April 1, 2017. This level of increase is slightly more than what was experienced in the prior year.

In the new forecast, changes in population growth from the last conference are due almost entirely to net migration. No significant changes were made to natural increase, which is comprised of both births and deaths. The Conference first approved a baseline forecast that included typical natural increase and net migration, using the assumption that Floridians displaced by Hurricane Irma would remain within the state. The Conference then layered in a hurricane effect for migration from Puerto Rico and the US Virgin Islands. As part of this adjustment, the Conference assumed that an average level of in-migration that normally would have taken place would be displaced by the hurricane-induced migration, and that no out-migration would occur between Florida and Puerto Rico. The result was a net permanent increase in population of 53,137 persons due to Hurricane Maria. The key elements of this portion of the estimate are:

Estimate of Puerto Ricans and US Virgin Islanders Moving to Florida Permanently	69,056
<i>-minus- Average Net Migration from Puerto Rico and US Island Area Previously Built Into the Forecast</i>	(21,156)
<i>-plus- Typical Out-Migration from FL to Puerto Rico that Will Not Occur</i>	5,234
Net Incremental Change to the Baseline Estimate	<u>53,134</u>

This adjustment has been included in the final adopted forecast shown in the table below. Annual population change is expected to remain above 308,000 net new residents per year through 2023.

April 1	Population	Percent Change	Change
2012	19,074,434	0.90%	169,364
2013	19,259,543	0.97%	185,109
2014	19,507,369	1.29%	247,826
2015	19,815,183	1.58%	307,814
2016	20,148,654	1.68%	333,471
2017	20,484,142	1.67%	335,488
<i>Forecast</i>			
2018	20,869,919	1.88%	385,777
2019	21,199,435	1.58%	329,516
2020	21,526,547	1.54%	327,112
2021	21,848,648	1.50%	322,101
2022	22,164,683	1.45%	316,035
2023	22,472,887	1.39%	308,204

Between April 1, 2017 and April 1, 2023, population growth is expected to average 331,458 net new residents per year, representing a compound growth rate of 1.56% over this six-year time horizon. These increases are analogous to adding a city slightly smaller than Tampa every year.

Of note, the population estimates developed by the U.S. Census Bureau continue to be higher than the official state estimates adopted by the Demographic Estimating Conference. As of July 1, 2016, this difference was over 379,000 persons. The Legislative Office of Economic and Demographic Research is continuing its efforts to identify how the differing underlying methodologies contribute to the gap between the two sets of estimates.

Florida Demographic Estimating Conference

Tables
Conference Packet

December 5, 2017

Florida Resident Population

April 1

Year	Florida Demographic Estimating Conference July 2017			Florida Demographic Estimating Conference December 2017			
	Population	% Change	Change	Population	% Change	Change	
2000	15,982,824	2.58%	402,580	15,982,824	2.58%	402,580	
2001	16,305,100	2.02%	322,276	16,305,100	2.02%	322,276	
2002	16,634,256	2.02%	329,156	16,634,256	2.02%	329,156	
2003	16,979,706	2.08%	345,450	16,979,706	2.08%	345,450	
2004	17,374,824	2.33%	395,118	17,374,824	2.33%	395,118	
2005	17,778,156	2.32%	403,332	17,778,156	2.32%	403,332	
2006	18,154,475	2.12%	376,319	18,154,475	2.12%	376,319	
2007	18,446,768	1.61%	292,293	18,446,768	1.61%	292,293	
2008	18,613,905	0.91%	167,137	18,613,905	0.91%	167,137	
2009	18,687,425	0.39%	73,520	18,687,425	0.39%	73,520	
2010	18,801,332	0.61%	113,885	18,801,332	0.61%	113,907	
2011	18,905,070	0.55%	103,738	18,905,070	0.55%	103,738	
2012	19,074,434	0.90%	169,364	19,074,434	0.90%	169,364	
2013	19,259,543	0.97%	185,109	19,259,543	0.97%	185,109	
2014	19,507,369	1.29%	247,826	19,507,369	1.29%	247,826	
2015	19,815,183	1.58%	307,814	19,815,183	1.58%	307,814	
2016	20,148,654	1.68%	333,471	20,148,654	1.68%	333,471	
2017	20,473,770	1.61%	325,116	20,484,142	1.67%	335,488	
Begins forecast							
2018	20,797,856	1.58%	324,086	20,869,919	1.88%	385,777	
2019	21,119,578	1.55%	321,722	21,199,435	1.58%	329,516	
2020	21,437,753	1.51%	318,175	21,526,547	1.54%	327,112	
2021	21,752,002	1.47%	314,249	21,848,648	1.50%	322,101	
2022	22,060,593	1.42%	308,591	22,164,683	1.45%	316,035	
2023	22,363,171	1.37%	302,578	22,472,887	1.39%	308,204	
2024	22,657,423	1.32%	294,252	22,772,363	1.33%	299,476	
			5-Year Averages				5-Year Averages
2025	22,942,326	1.37%	300,915	23,061,892	1.39%	307,069	
2030	24,240,706	1.11%	259,676	24,357,003	1.10%	259,022	
2035	25,389,161	0.93%	229,691	25,485,553	0.91%	225,710	
2040	26,414,191	0.79%	205,006	26,492,005	0.78%	201,290	

Florida Resident Households

April 1

Year	Florida Demographic Estimating Conference July 2017			Florida Demographic Estimating Conference December 2017			
	Households	% Change	Change	Households	% Change	Change	
2000	6,338,075	2.52%	155,729	6,338,075	2.65%	163,703	
2001	6,467,215	2.04%	129,140	6,467,215	2.04%	129,140	
2002	6,599,035	2.04%	131,820	6,599,035	2.04%	131,820	
2003	6,737,370	2.10%	138,335	6,737,370	2.10%	138,335	
2004	6,895,469	2.35%	158,099	6,895,469	2.35%	158,099	
2005	7,056,889	2.34%	161,420	7,056,889	2.34%	161,420	
2006	7,207,645	2.14%	150,756	7,207,645	2.14%	150,756	
2007	7,312,907	1.46%	105,262	7,312,907	1.46%	105,262	
2008	7,368,319	0.76%	55,412	7,368,319	0.76%	55,412	
2009	7,386,570	0.25%	18,251	7,386,570	0.25%	18,251	
2010	7,537,442	2.04%	150,872	7,420,812	0.46%	34,242	
2011	7,461,978	-1.00%	-75,464	7,461,978	0.55%	41,166	
2012	7,537,442	1.01%	75,464	7,537,442	1.01%	75,464	
2013	7,610,153	0.96%	72,711	7,610,153	0.96%	72,711	
2014	7,669,541	0.78%	59,388	7,669,541	0.78%	59,388	
2015	7,785,434	1.51%	115,893	7,785,434	1.51%	115,893	
2016	7,899,268	1.46%	113,834	7,899,268	1.46%	113,834	
Begins forecast							
2017	8,024,836	1.59%	125,568	8,028,901	1.64%	129,633	
2018	8,152,543	1.59%	127,707	8,180,791	1.89%	151,890	
2019	8,281,439	1.58%	128,896	8,312,752	1.61%	131,961	
2020	8,410,671	1.56%	129,232	8,445,507	1.60%	132,755	
2021	8,539,384	1.53%	128,713	8,577,325	1.56%	131,818	
2022	8,667,052	1.50%	127,668	8,707,946	1.52%	130,621	
2023	8,793,892	1.46%	126,840	8,837,036	1.48%	129,090	
2024	8,918,808	1.42%	124,916	8,964,053	1.44%	127,017	
			5-Year Averages				5-Year Averages
2025	9,041,667	1.46%	126,199	9,088,788	1.48%	128,656	
2030	9,618,752	1.25%	115,417	9,664,899	1.24%	115,222	
2035	10,140,497	1.06%	104,349	10,178,996	1.04%	102,819	
2040	10,604,481	0.90%	92,797	10,635,721	0.88%	91,345	

Quarterly Data Table

	<u>2010-2</u>	<u>2010-3</u>	<u>2010-4</u>	<u>2011-1</u>	<u>2011-2</u>	<u>2011-3</u>	<u>2011-4</u>	<u>2012-1</u>	<u>2012-2</u>	<u>2012-3</u>	<u>2012-4</u>	<u>2013-1</u>	<u>2013-2</u>	<u>2013-3</u>
Population														
FDEC, July 2017	18,813.9	18,838.3	18,862.7	18,890.2	18,923.4	18,962.8	19,006.3	19,051.6	19,096.7	19,141.2	19,186.6	19,234.6	19,287.0	19,344.3
FDEC, December 2017	18,813.9	18,838.3	18,862.7	18,890.2	18,923.4	18,962.8	19,006.3	19,051.6	19,096.7	19,141.2	19,186.6	19,234.6	19,287.0	19,344.3
Population Growth Rate														
FDEC, July 2017	0.59	0.52	0.52	0.58	0.71	0.83	0.92	0.96	0.95	0.94	0.95	1.01	1.09	1.19
FDEC, December 2017	0.59	0.52	0.52	0.58	0.71	0.83	0.92	0.96	0.95	0.94	0.95	1.01	1.09	1.19
Net Change in Population														
FDEC, July 2017	27.9	24.4	24.4	27.5	33.2	39.4	43.5	45.3	45.1	44.5	45.4	48.1	52.4	57.4
FDEC, December 2017	27.9	24.4	24.4	27.5	33.2	39.4	43.5	45.3	45.1	44.5	45.4	48.1	52.3	57.3
Households														
FDEC, July 2017	7,425.2	7,434.2	7,443.9	7,455.6	7,470.0	7,487.3	7,506.7	7,527.1	7,547.6	7,567.4	7,585.9	7,602.4	7,616.7	7,629.7
FDEC, December 2017	7,425.2	7,434.2	7,443.9	7,455.6	7,470.0	7,487.3	7,506.7	7,527.1	7,547.6	7,567.4	7,585.9	7,602.4	7,616.7	7,629.7
Household Growth Rate														
FDEC, July 2017	0.49	0.48	0.52	0.63	0.78	0.93	1.04	1.09	1.09	1.05	0.98	0.88	0.76	0.68
FDEC, December 2017	0.49	0.48	0.52	0.63	0.78	0.93	1.04	1.09	1.09	1.05	0.98	0.88	0.76	0.68
Net Change in Households														
FDEC, July 2017	9.1	9.0	9.7	11.6	14.4	17.3	19.4	20.4	20.5	19.8	18.5	16.6	14.3	13.0
FDEC, December 2017	9.1	9.0	9.7	11.6	14.4	17.3	19.4	20.4	20.5	19.8	18.5	16.6	14.3	12.9
Household Size														
FDEC, July 2017	2.534	2.534	2.534	2.534	2.533	2.533	2.532	2.531	2.530	2.529	2.529	2.530	2.532	2.535
FDEC, December 2017	2.534	2.534	2.534	2.534	2.533	2.533	2.532	2.531	2.530	2.529	2.529	2.530	2.532	2.535
Household Size Growth Rate														
FDEC, July 2017	0.10	0.04	-0.01	-0.04	-0.07	-0.10	-0.12	-0.13	-0.14	-0.12	-0.03	0.13	0.33	0.51
FDEC, December 2017	0.10	0.04	-0.01	-0.04	-0.07	-0.10	-0.12	-0.13	-0.14	-0.12	-0.03	0.13	0.33	0.51
Net Migration														
FDEC, July 2017	17.2	14.1	14.3	17.2	23.1	29.3	33.7	35.8	35.7	35.3	36.3	39.1	43.5	48.6
FDEC, December 2017	17.2	14.1	14.3	17.2	23.1	29.3	33.7	35.8	35.7	35.3	36.3	39.1	43.5	48.6
Births														
FDEC, July 2017	53.7	53.5	53.3	53.4	53.3	53.3	53.2	53.2	53.2	53.3	53.4	53.5	53.7	53.9
FDEC, December 2017	53.7	53.5	53.3	53.4	53.3	53.3	53.2	53.2	53.2	53.3	53.4	53.5	53.7	53.9
Deaths														
FDEC, July 2017	43.1	43.2	43.2	43.1	43.1	43.2	43.4	43.6	43.8	44.1	44.3	44.6	44.9	45.1
FDEC, December 2017	43.1	43.2	43.2	43.1	43.1	43.3	43.4	43.6	43.8	44.1	44.3	44.6	44.9	45.1
Net Natural Increase														
FDEC, July 2017	10.6	10.3	10.0	10.3	10.2	10.0	9.9	9.5	9.3	9.2	9.0	8.9	8.8	8.7
FDEC, December 2017	10.6	10.3	10.0	10.3	10.2	10.0	9.8	9.5	9.3	9.2	9.0	8.9	8.8	8.7

Quarterly Data Table

	<u>2013-4</u>	<u>2014-1</u>	<u>2014-2</u>	<u>2014-3</u>	<u>2014-4</u>	<u>2015-1</u>	<u>2015-2</u>	<u>2015-3</u>	<u>2015-4</u>	<u>2016-1</u>	<u>2016-2</u>	<u>2016-3</u>	<u>2016-4</u>	<u>2017-1</u>
Population														
FDEC, July 2017	19,406.5	19,473.0	19,543.6	19,617.8	19,695.0	19,774.7	19,856.5	19,939.6	20,023.4	20,107.0	20,189.8	20,271.6	20,352.6	20,433.4
FDEC, December 2017	19,406.4	19,473.0	19,543.7	19,617.9	19,695.2	19,774.8	19,856.3	19,939.0	20,022.5	20,106.6	20,190.7	20,274.7	20,358.6	20,442.3
Population Growth Rate														
FDEC, July 2017	1.29	1.38	1.46	1.53	1.58	1.63	1.66	1.69	1.69	1.68	1.66	1.63	1.61	1.60
FDEC, December 2017	1.29	1.38	1.46	1.53	1.58	1.63	1.66	1.68	1.69	1.69	1.68	1.68	1.67	1.66
Net Change in Population														
FDEC, July 2017	62.1	66.6	70.6	74.1	77.2	79.8	81.8	83.1	83.8	83.6	82.8	81.8	81.1	80.8
FDEC, December 2017	62.1	66.6	70.7	74.3	77.3	79.6	81.4	82.7	83.6	84.0	84.1	84.0	83.9	83.7
Households														
FDEC, July 2017	7,643.4	7,660.1	7,681.9	7,708.7	7,738.8	7,769.9	7,800.1	7,828.8	7,856.8	7,885.0	7,914.3	7,945.0	7,976.6	8,008.7
FDEC, December 2017	7,643.4	7,660.1	7,681.9	7,708.8	7,738.9	7,769.9	7,800.0	7,828.6	7,856.5	7,884.8	7,914.7	7,946.2	7,978.9	8,012.2
Household Growth Rate														
FDEC, July 2017	0.72	0.88	1.14	1.40	1.57	1.62	1.56	1.48	1.44	1.44	1.49	1.56	1.60	1.62
FDEC, December 2017	0.72	0.88	1.14	1.41	1.57	1.62	1.56	1.47	1.43	1.45	1.52	1.60	1.66	1.68
Net Change in Households														
FDEC, July 2017	13.7	16.7	21.8	26.8	30.1	31.1	30.2	28.7	28.0	28.2	29.3	30.7	31.6	32.1
FDEC, December 2017	13.7	16.8	21.8	26.9	30.1	31.1	30.1	28.6	27.9	28.4	29.8	31.5	32.7	33.3
Household Size														
FDEC, July 2017	2.539	2.542	2.544	2.545	2.545	2.545	2.546	2.547	2.549	2.550	2.551	2.552	2.552	2.551
FDEC, December 2017	2.539	2.542	2.544	2.545	2.545	2.545	2.546	2.547	2.549	2.550	2.551	2.552	2.552	2.551
Household Size Growth Rate														
FDEC, July 2017	0.57	0.50	0.31	0.12	0.01	0.01	0.10	0.20	0.25	0.23	0.16	0.07	0.01	-0.02
FDEC, December 2017	0.57	0.50	0.31	0.12	0.01	0.01	0.10	0.20	0.25	0.23	0.16	0.07	0.01	-0.02
Net Migration														
FDEC, July 2017	53.4	57.7	61.8	65.5	68.6	71.3	73.4	75.0	75.9	76.3	75.7	75.0	74.5	74.4
FDEC, December 2017	53.4	57.8	61.9	65.6	68.7	71.1	73.1	74.6	75.7	76.7	77.1	77.2	77.3	77.3
Births														
FDEC, July 2017	54.1	54.5	54.8	55.1	55.4	55.8	56.0	56.2	56.3	56.1	56.2	56.3	56.4	56.7
FDEC, December 2017	54.1	54.5	54.8	55.1	55.4	55.8	56.0	56.2	56.3	56.1	56.2	56.3	56.5	56.7
Deaths														
FDEC, July 2017	45.4	45.7	46.1	46.4	46.8	47.3	47.7	48.1	48.4	48.8	49.1	49.5	49.9	50.3
FDEC, December 2017	45.4	45.7	46.1	46.4	46.8	47.3	47.7	48.1	48.4	48.8	49.1	49.5	49.9	50.3
Net Natural Increase														
FDEC, July 2017	8.7	8.8	8.8	8.7	8.6	8.5	8.3	8.1	7.8	7.3	7.1	6.8	6.6	6.4
FDEC, December 2017	8.7	8.8	8.8	8.7	8.6	8.5	8.3	8.1	7.8	7.3	7.1	6.8	6.6	6.5

Quarterly Data Table

	<u>2017-2</u>	<u>2017-3</u>	<u>2017-4</u>	<u>2018-1</u>	<u>2018-2</u>	<u>2018-3</u>	<u>2018-4</u>	<u>2019-1</u>	<u>2019-2</u>	<u>2019-3</u>	<u>2019-4</u>	<u>2020-1</u>	<u>2020-2</u>	<u>2020-3</u>
Population														
FDEC, July 2017	20,514.2	20,595.2	20,676.3	20,757.4	20,838.2	20,918.9	20,999.3	21,079.5	21,159.5	21,239.3	21,318.8	21,398.1	21,477.3	21,556.1
FDEC, December 2017	20,525.9	20,609.2	20,713.2	20,822.8	20,913.8	20,999.0	21,080.2	21,159.8	21,239.8	21,321.1	21,403.2	21,485.5	21,567.3	21,648.3
Population Growth Rate														
FDEC, July 2017	1.59	1.59	1.58	1.58	1.57	1.56	1.55	1.54	1.53	1.52	1.51	1.50	1.49	1.48
FDEC, December 2017	1.64	1.63	2.03	2.13	1.76	1.64	1.56	1.52	1.52	1.54	1.55	1.55	1.53	1.51
Net Change in Population														
FDEC, July 2017	80.8	81.0	81.1	81.0	80.9	80.7	80.4	80.2	80.0	79.8	79.5	79.3	79.1	78.9
FDEC, December 2017	83.5	83.4	104.0	109.5	91.0	85.2	81.2	79.6	80.0	81.3	82.1	82.3	81.8	81.1
Households														
FDEC, July 2017	8,040.9	8,072.8	8,104.7	8,136.6	8,168.6	8,200.7	8,233.0	8,265.3	8,297.6	8,329.9	8,362.2	8,394.5	8,426.8	8,459.0
FDEC, December 2017	8,045.4	8,078.3	8,119.2	8,162.2	8,198.2	8,232.1	8,264.7	8,296.7	8,329.1	8,362.0	8,395.3	8,428.8	8,462.1	8,495.2
Household Growth Rate														
FDEC, July 2017	1.62	1.60	1.59	1.58	1.58	1.58	1.58	1.58	1.57	1.57	1.56	1.55	1.55	1.54
FDEC, December 2017	1.67	1.65	2.04	2.14	1.77	1.67	1.59	1.56	1.57	1.59	1.60	1.60	1.59	1.57
Net Change in Households														
FDEC, July 2017	32.1	32.0	31.9	31.9	32.0	32.1	32.2	32.3	32.3	32.3	32.3	32.3	32.3	32.2
FDEC, December 2017	33.2	32.9	40.9	43.0	36.0	33.9	32.6	32.1	32.3	32.9	33.3	33.5	33.3	33.1
Household Size														
FDEC, July 2017	2.551	2.551	2.551	2.551	2.551	2.551	2.551	2.550	2.550	2.550	2.549	2.549	2.549	2.548
FDEC, December 2017	2.551	2.551	2.551	2.551	2.551	2.551	2.551	2.550	2.550	2.550	2.549	2.549	2.549	2.548
Household Size Growth Rate														
FDEC, July 2017	-0.02	-0.01	0.00	-0.01	-0.01	-0.03	-0.03	-0.04	-0.05	-0.05	-0.05	-0.06	-0.06	-0.06
FDEC, December 2017	-0.02	-0.01	0.00	-0.01	-0.01	-0.03	-0.03	-0.04	-0.05	-0.05	-0.05	-0.06	-0.06	-0.06
Net Migration														
FDEC, July 2017	74.6	74.9	75.1	75.1	75.0	74.9	74.7	74.3	74.1	73.9	73.8	73.6	73.4	73.3
FDEC, December 2017	77.2	77.2	97.9	103.5	85.2	79.4	75.4	73.8	74.3	75.6	76.5	76.6	76.2	75.6
Births														
FDEC, July 2017	56.8	57.1	57.3	57.5	57.8	58.0	58.3	58.6	58.9	59.1	59.4	59.5	59.8	60.0
FDEC, December 2017	56.9	57.1	57.4	57.6	57.8	58.1	58.3	58.6	58.8	59.0	59.3	59.5	59.7	59.9
Deaths														
FDEC, July 2017	50.6	51.0	51.3	51.6	51.9	52.2	52.5	52.8	53.0	53.3	53.6	53.8	54.1	54.3
FDEC, December 2017	50.6	51.0	51.3	51.6	51.9	52.2	52.5	52.8	53.1	53.3	53.6	53.8	54.1	54.4
Net Natural Increase														
FDEC, July 2017	6.2	6.1	6.0	5.9	5.8	5.8	5.8	5.9	5.8	5.8	5.8	5.7	5.7	5.6
FDEC, December 2017	6.3	6.2	6.1	6.0	5.9	5.8	5.8	5.8	5.7	5.7	5.7	5.6	5.6	5.5

Quarterly Data Table

	<u>2020-4</u>	<u>2021-1</u>	<u>2021-2</u>	<u>2021-3</u>	<u>2021-4</u>	<u>2022-1</u>	<u>2022-2</u>	<u>2022-3</u>	<u>2022-4</u>	<u>2023-1</u>	<u>2023-2</u>	<u>2023-3</u>	<u>2023-4</u>	<u>2024-1</u>
Population														
FDEC, July 2017	21,634.7	21,713.0	21,790.9	21,868.4	21,945.5	22,022.3	22,098.7	22,174.8	22,250.5	22,325.7	22,400.4	22,474.5	22,548.1	22,621.1
FDEC, December 2017	21,728.8	21,808.8	21,888.4	21,967.8	22,046.9	22,125.5	22,203.6	22,281.2	22,358.2	22,434.8	22,510.7	22,586.2	22,661.1	22,735.4
Population Growth Rate														
FDEC, July 2017	1.47	1.45	1.44	1.43	1.42	1.41	1.40	1.38	1.37	1.36	1.34	1.33	1.32	1.30
FDEC, December 2017	1.49	1.48	1.47	1.46	1.45	1.43	1.42	1.41	1.39	1.38	1.36	1.35	1.33	1.32
Net Change in Population														
FDEC, July 2017	78.6	78.3	77.9	77.5	77.1	76.8	76.4	76.1	75.7	75.2	74.7	74.1	73.6	73.0
FDEC, December 2017	80.4	80.0	79.7	79.4	79.1	78.6	78.1	77.6	77.0	76.5	76.0	75.4	74.9	74.3
Households														
FDEC, July 2017	8,491.2	8,523.3	8,555.4	8,587.4	8,619.3	8,651.1	8,683.0	8,714.8	8,746.5	8,778.1	8,809.6	8,841.0	8,872.2	8,903.3
FDEC, December 2017	8,528.1	8,560.9	8,593.7	8,626.4	8,659.1	8,691.7	8,724.2	8,756.6	8,788.8	8,821.0	8,853.0	8,884.9	8,916.7	8,948.3
Household Growth Rate														
FDEC, July 2017	1.53	1.52	1.51	1.50	1.49	1.49	1.48	1.47	1.46	1.45	1.44	1.43	1.42	1.41
FDEC, December 2017	1.56	1.55	1.54	1.53	1.52	1.51	1.50	1.49	1.48	1.47	1.46	1.45	1.44	1.43
Net Change in Households														
FDEC, July 2017	32.2	32.1	32.0	32.0	31.9	31.9	31.8	31.8	31.7	31.6	31.5	31.4	31.2	31.1
FDEC, December 2017	32.9	32.8	32.7	32.7	32.7	32.6	32.5	32.4	32.3	32.2	32.0	31.9	31.8	31.6
Household Size														
FDEC, July 2017	2.548	2.547	2.547	2.547	2.546	2.546	2.545	2.545	2.544	2.543	2.543	2.542	2.541	2.541
FDEC, December 2017	2.548	2.547	2.547	2.547	2.546	2.546	2.545	2.545	2.544	2.543	2.543	2.542	2.541	2.541
Household Size Growth Rate														
FDEC, July 2017	-0.06	-0.07	-0.07	-0.07	-0.08	-0.08	-0.08	-0.09	-0.09	-0.09	-0.10	-0.10	-0.10	-0.11
FDEC, December 2017	-0.06	-0.07	-0.07	-0.07	-0.08	-0.08	-0.08	-0.09	-0.09	-0.09	-0.10	-0.10	-0.10	-0.11
Net Migration														
FDEC, July 2017	73.1	72.9	72.6	72.3	72.1	71.9	71.7	71.5	71.3	70.9	70.6	70.1	69.7	69.3
FDEC, December 2017	75.0	74.7	74.5	74.3	74.1	73.9	73.5	73.1	72.7	72.3	71.9	71.5	71.1	70.6
Births														
FDEC, July 2017	60.2	60.4	60.5	60.7	60.9	61.0	61.2	61.3	61.5	61.6	61.8	61.9	62.1	62.2
FDEC, December 2017	60.1	60.3	60.5	60.7	60.8	61.0	61.1	61.3	61.4	61.6	61.8	61.9	62.1	62.2
Deaths														
FDEC, July 2017	54.6	55.0	55.2	55.5	55.8	56.2	56.5	56.8	57.0	57.3	57.6	57.9	58.2	58.5
FDEC, December 2017	54.7	55.0	55.3	55.6	55.9	56.2	56.5	56.8	57.1	57.4	57.7	58.0	58.3	58.5
Net Natural Increase														
FDEC, July 2017	5.5	5.4	5.3	5.2	5.0	4.9	4.7	4.6	4.4	4.3	4.1	4.0	3.8	3.7
FDEC, December 2017	5.4	5.3	5.2	5.1	5.0	4.8	4.6	4.5	4.4	4.2	4.1	3.9	3.8	3.7

Quarterly Data Table

	<u>2024-2</u>	<u>2024-3</u>	<u>2024-4</u>	<u>2025-1</u>	<u>2025-2</u>	<u>2025-3</u>	<u>2025-4</u>	<u>2026-1</u>	<u>2026-2</u>	<u>2026-3</u>	<u>2026-4</u>	<u>2027-1</u>	<u>2027-2</u>
Population													
FDEC, July 2017	22,693.5	22,765.3	22,836.5	22,907.2	22,977.2	23,046.7	23,115.6	23,183.9	23,251.6	23,318.7	23,385.2	23,451.3	23,516.8
FDEC, December 2017	22,809.0	22,882.1	22,954.5	23,026.2	23,097.3	23,167.7	23,237.4	23,306.4	23,374.7	23,442.3	23,509.3	23,575.5	23,641.1
Population Growth Rate													
FDEC, July 2017	1.29	1.27	1.26	1.24	1.23	1.22	1.20	1.19	1.17	1.16	1.15	1.13	1.12
FDEC, December 2017	1.30	1.29	1.27	1.26	1.24	1.22	1.21	1.19	1.18	1.16	1.15	1.13	1.12
Net Change in Population													
FDEC, July 2017	72.4	71.8	71.2	70.6	70.1	69.5	68.9	68.3	67.7	67.1	66.6	66.0	65.5
FDEC, December 2017	73.7	73.0	72.4	71.7	71.1	70.4	69.7	69.0	68.3	67.6	66.9	66.2	65.6
Households													
FDEC, July 2017	8,934.3	8,965.1	8,995.8	9,026.4	9,056.9	9,087.2	9,117.3	9,147.3	9,177.2	9,206.8	9,236.4	9,265.8	9,295.0
FDEC, December 2017	8,979.8	9,011.1	9,042.3	9,073.3	9,104.2	9,134.9	9,165.4	9,195.7	9,225.8	9,255.7	9,285.4	9,314.9	9,344.1
Household Growth Rate													
FDEC, July 2017	1.40	1.39	1.38	1.37	1.36	1.35	1.33	1.32	1.31	1.30	1.29	1.28	1.27
FDEC, December 2017	1.41	1.40	1.39	1.38	1.37	1.35	1.34	1.33	1.32	1.30	1.29	1.28	1.26
Net Change in Households													
FDEC, July 2017	31.0	30.8	30.7	30.6	30.4	30.3	30.2	30.0	29.8	29.7	29.5	29.4	29.3
FDEC, December 2017	31.5	31.3	31.2	31.0	30.9	30.7	30.5	30.3	30.1	29.9	29.7	29.5	29.3
Household Size													
FDEC, July 2017	2.540	2.539	2.539	2.538	2.537	2.536	2.535	2.535	2.534	2.533	2.532	2.531	2.530
FDEC, December 2017	2.540	2.539	2.539	2.538	2.537	2.536	2.535	2.535	2.534	2.533	2.532	2.531	2.530
Household Size Growth Rate													
FDEC, July 2017	-0.11	-0.11	-0.12	-0.12	-0.13	-0.13	-0.13	-0.13	-0.14	-0.14	-0.14	-0.14	-0.14
FDEC, December 2017	-0.11	-0.11	-0.12	-0.12	-0.13	-0.13	-0.13	-0.13	-0.14	-0.14	-0.14	-0.14	-0.14
Net Migration													
FDEC, July 2017	68.8	68.4	67.9	67.5	67.0	66.6	66.2	65.9	65.5	65.1	64.7	64.5	64.2
FDEC, December 2017	70.1	69.6	69.1	68.6	68.1	67.6	67.1	66.6	66.1	65.6	65.1	64.7	64.2
Births													
FDEC, July 2017	62.4	62.5	62.6	62.8	62.9	63.1	63.2	63.3	63.4	63.5	63.7	63.7	63.8
FDEC, December 2017	62.4	62.5	62.7	62.8	62.9	63.1	63.2	63.3	63.5	63.6	63.7	63.8	63.9
Deaths													
FDEC, July 2017	58.8	59.1	59.4	59.6	59.9	60.2	60.5	60.9	61.2	61.5	61.8	62.2	62.5
FDEC, December 2017	58.8	59.1	59.4	59.7	59.9	60.3	60.6	60.9	61.2	61.6	61.9	62.2	62.5
Net Natural Increase													
FDEC, July 2017	3.6	3.4	3.3	3.2	3.0	2.9	2.7	2.4	2.2	2.0	1.8	1.6	1.3
FDEC, December 2017	3.5	3.4	3.3	3.1	3.0	2.8	2.6	2.4	2.2	2.0	1.8	1.6	1.3

Fiscal Year Data Table

	<u>2000-01</u>	<u>2001-02</u>	<u>2002-03</u>	<u>2003-04</u>	<u>2004-05</u>	<u>2005-06</u>	<u>2006-07</u>	<u>2007-08</u>	<u>2008-09</u>	<u>2009-10</u>	<u>2010-11</u>	<u>2011-12</u>	<u>2012-13</u>	<u>2013-14</u>	<u>2014-15</u>
Population															
FDEC, July 2017	16,228.0	16,551.2	16,892.0	17,273.8	17,677.3	18,062.2	18,378.2	18,578.9	18,671.4	18,770.4	18,878.6	19,029.3	19,212.3	19,441.9	19,736.0
FDEC, December 2017	16,228.0	16,551.2	16,892.0	17,273.8	17,677.3	18,062.2	18,378.2	18,578.9	18,671.4	18,770.4	18,878.6	19,029.3	19,212.3	19,441.8	19,736.1
Growth Rate															
FDEC, July 2017	2.18	1.99	2.06	2.26	2.34	2.18	1.75	1.09	0.50	0.53	0.58	0.80	0.96	1.19	1.51
FDEC, December 2017	2.18	1.99	2.06	2.26	2.34	2.18	1.75	1.09	0.50	0.53	0.58	0.80	0.96	1.19	1.51
Net Change in Population															
FDEC, July 2017	346.4	323.2	340.9	381.8	403.5	384.9	316.0	200.7	92.5	99.0	108.2	150.7	183.0	229.5	294.1
FDEC, December 2017	346.4	323.2	340.9	381.8	403.5	384.9	316.0	200.7	92.5	99.0	108.2	150.7	183.0	229.5	294.2
Households															
FDEC, July 2017	6,436.3	6,565.6	6,702.3	6,855.2	7,016.6	7,171.1	7,289.0	7,356.8	7,382.6	7,411.4	7,450.9	7,517.2	7,593.1	7,653.8	7,754.4
FDEC, December 2017	6,436.3	6,565.6	6,702.3	6,855.2	7,016.6	7,171.1	7,289.0	7,356.8	7,382.6	7,411.4	7,450.9	7,517.2	7,593.1	7,653.8	7,754.4
Growth Rate															
FDEC, July 2017	2.21	2.01	2.08	2.28	2.36	2.20	1.64	0.93	0.35	0.39	0.53	0.89	1.01	0.80	1.31
FDEC, December 2017	2.21	2.01	2.08	2.28	2.36	2.20	1.64	0.93	0.35	0.39	0.53	0.89	1.01	0.80	1.31
Net Change in Households															
FDEC, July 2017	139.0	129.2	136.7	152.9	161.5	154.5	117.9	67.8	25.8	28.8	39.5	66.3	75.9	60.7	100.6
FDEC, December 2017	139.0	129.2	136.7	152.9	161.5	154.5	117.9	67.8	25.8	28.8	39.5	66.3	75.9	60.7	100.6
Household Size															
FDEC, July 2017	2.521	2.521	2.520	2.520	2.519	2.519	2.521	2.525	2.529	2.533	2.534	2.531	2.530	2.540	2.545
FDEC, December 2017	2.521	2.521	2.520	2.520	2.519	2.519	2.521	2.525	2.529	2.533	2.534	2.531	2.530	2.540	2.545
Growth Rate															
FDEC, July 2017	-0.03	-0.02	-0.02	-0.02	-0.02	-0.02	0.10	0.16	0.15	0.14	0.04	-0.09	-0.05	0.39	0.20
FDEC, December 2017	-0.03	-0.02	-0.02	-0.02	-0.02	-0.02	0.10	0.16	0.15	0.14	0.04	-0.09	-0.05	0.39	0.20
Net Migration															
FDEC, July 2017	306.0	285.5	300.4	335.0	351.1	322.9	245.0	133.7	36.3	52.7	67.4	112.0	147.0	194.5	260.0
FDEC, December 2017	306.0	285.5	300.4	335.0	351.1	322.9	245.0	133.7	36.3	52.7	67.4	112.0	147.0	194.5	260.1
Births															
FDEC, July 2017	205.4	205.4	208.5	215.0	221.8	232.1	239.3	236.0	226.4	217.4	213.5	212.9	213.8	217.4	222.3
FDEC, December 2017	205.4	205.4	208.5	215.0	221.8	232.1	239.3	236.0	226.4	217.4	213.5	212.9	213.8	217.4	222.3
Deaths															
FDEC, July 2017	165.0	167.7	168.1	168.3	169.4	170.1	168.3	169.0	170.2	171.1	172.7	174.1	177.8	182.4	188.2
FDEC, December 2017	165.0	167.7	168.1	168.3	169.4	170.1	168.3	169.0	170.2	171.1	172.7	174.1	177.8	182.4	188.2
Net Natural Increase															
FDEC, July 2017	40.3	37.7	40.4	46.7	52.4	62.0	71.0	67.0	56.2	46.3	40.8	38.8	36.0	35.0	34.1
FDEC, December 2017	40.3	37.7	40.4	46.7	52.4	62.0	71.0	67.0	56.2	46.3	40.8	38.8	36.0	35.0	34.1

Fiscal Year Data Table

	<u>2015-16</u>	<u>2016-17</u>	<u>2017-18</u>	<u>2018-19</u>	<u>2019-20</u>	<u>2020-21</u>	<u>2021-22</u>	<u>2022-23</u>	<u>2023-24</u>	<u>2024-25</u>	<u>2025-26</u>	<u>2026-27</u>
Population												
FDEC, July 2017	20,064.9	20,393.0	20,716.8	21,039.3	21,358.4	21,673.7	21,983.7	22,287.8	22,584.3	22,871.5	23,149.4	23,418.0
FDEC, December 2017	20,064.7	20,400.4	20,764.8	21,119.7	21,444.2	21,768.6	22,085.9	22,396.2	22,697.9	22,990.0	23,271.5	23,542.0
Growth Rate												
FDEC, July 2017	1.67	1.63	1.59	1.56	1.52	1.48	1.43	1.38	1.33	1.27	1.22	1.16
FDEC, December 2017	1.67	1.67	1.79	1.71	1.54	1.51	1.46	1.40	1.35	1.29	1.22	1.16
Net Change in Population												
FDEC, July 2017	328.9	328.0	323.8	322.5	319.1	315.3	310.1	304.1	296.4	287.3	277.9	268.6
FDEC, December 2017	328.6	335.7	364.4	354.9	324.5	324.3	317.4	310.3	301.7	292.1	281.5	270.5
Households												
FDEC, July 2017	7,871.2	7,992.8	8,120.7	8,249.1	8,378.4	8,507.2	8,635.2	8,762.2	8,887.7	9,011.0	9,132.2	9,251.0
FDEC, December 2017	7,871.1	7,995.7	8,139.5	8,280.7	8,412.1	8,544.5	8,675.3	8,804.9	8,932.4	9,057.7	9,180.4	9,300.0
Growth Rate												
FDEC, July 2017	1.51	1.54	1.60	1.58	1.57	1.54	1.50	1.47	1.43	1.39	1.34	1.30
FDEC, December 2017	1.51	1.58	1.80	1.73	1.59	1.57	1.53	1.49	1.45	1.40	1.35	1.30
Net Change in Households												
FDEC, July 2017	116.9	121.6	127.9	128.5	129.2	128.9	127.9	127.1	125.4	123.4	121.2	118.8
FDEC, December 2017	116.7	124.6	143.8	141.2	131.4	132.4	130.8	129.5	127.5	125.3	122.7	119.6
Household Size												
FDEC, July 2017	2.549	2.551	2.551	2.550	2.549	2.548	2.546	2.544	2.541	2.538	2.535	2.531
FDEC, December 2017	2.549	2.551	2.551	2.550	2.549	2.548	2.546	2.544	2.541	2.538	2.535	2.531
Growth Rate												
FDEC, July 2017	0.16	0.09	-0.01	-0.02	-0.05	-0.06	-0.07	-0.09	-0.10	-0.11	-0.13	-0.14
FDEC, December 2017	0.16	0.09	-0.01	-0.02	-0.05	-0.06	-0.07	-0.09	-0.10	-0.11	-0.13	-0.14
Net Migration												
FDEC, July 2017	298.6	302.0	300.0	299.3	296.0	293.5	290.3	286.7	281.3	274.3	267.7	261.8
FDEC, December 2017	298.3	309.5	340.3	331.8	302.0	302.9	297.9	293.2	286.8	279.3	271.4	263.8
Births												
FDEC, July 2017	224.7	226.2	229.6	233.8	237.8	241.0	243.8	246.2	248.6	250.9	253.0	254.8
FDEC, December 2017	224.7	226.4	229.9	233.8	237.5	240.8	243.6	246.1	248.5	250.9	253.1	255.0
Deaths												
FDEC, July 2017	194.4	200.2	205.8	210.6	214.7	219.2	224.0	228.8	233.4	237.9	242.8	248.0
FDEC, December 2017	194.4	200.2	205.8	210.6	214.9	219.3	224.2	229.0	233.6	238.1	243.0	248.2
Net Natural Increase												
FDEC, July 2017	30.3	26.0	23.8	23.3	23.0	21.8	19.8	17.4	15.1	12.9	10.2	6.7
FDEC, December 2017	30.3	26.2	24.1	23.1	22.6	21.5	19.5	17.1	14.9	12.8	10.1	6.7

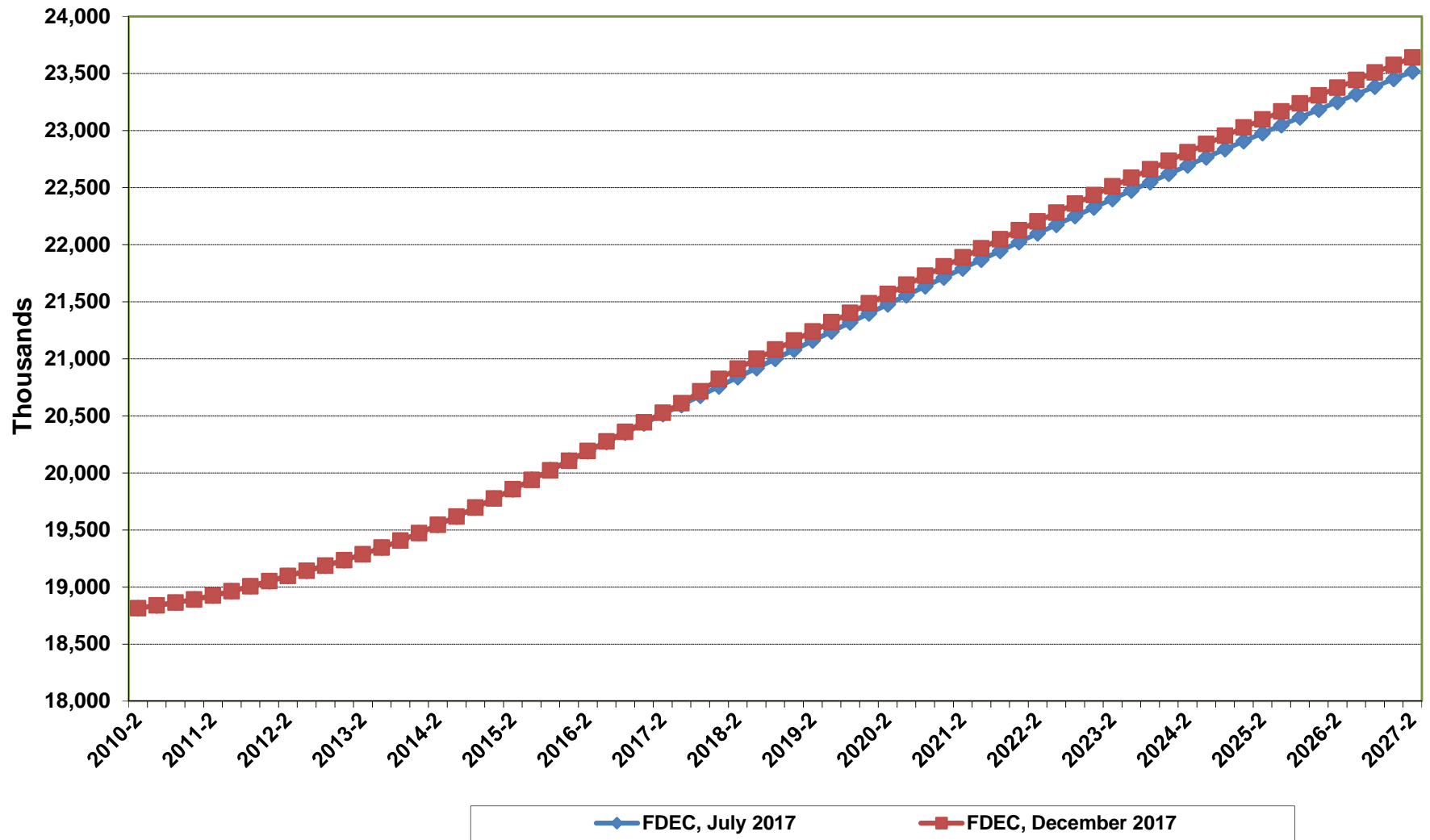
Florida Demographic Estimating Conference

Charts

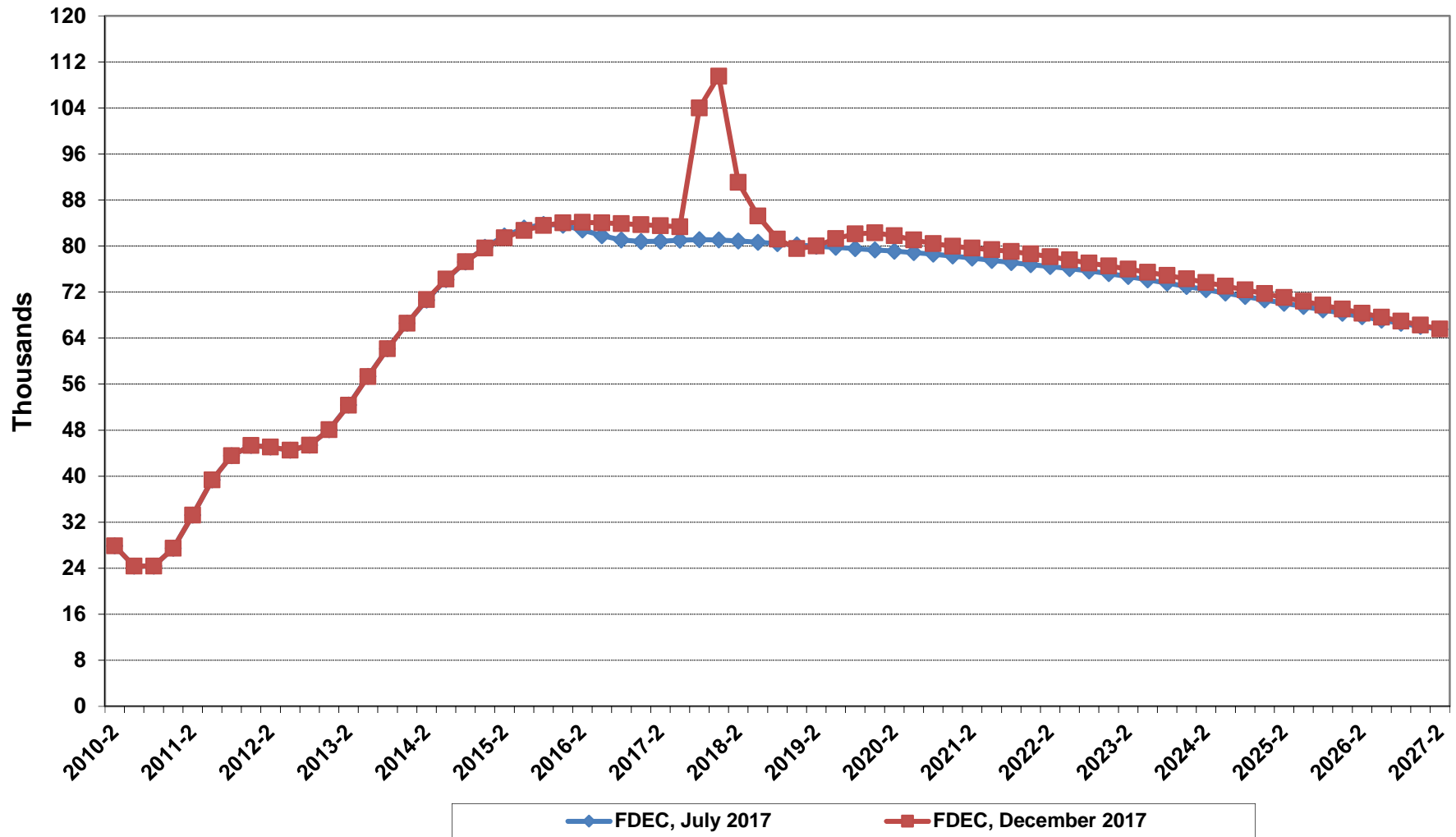
Conference Packet

December 5, 2017

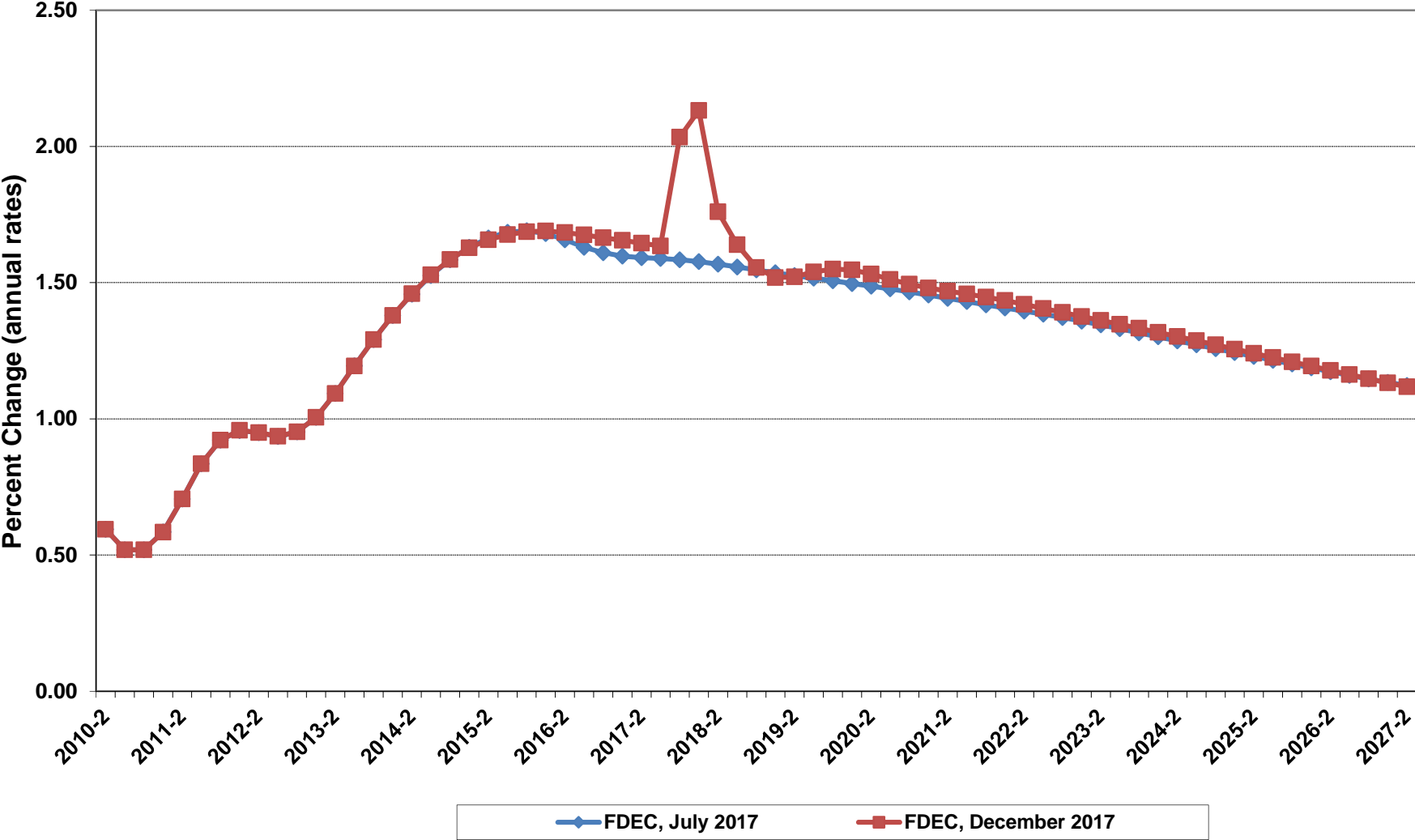
Florida Resident Population



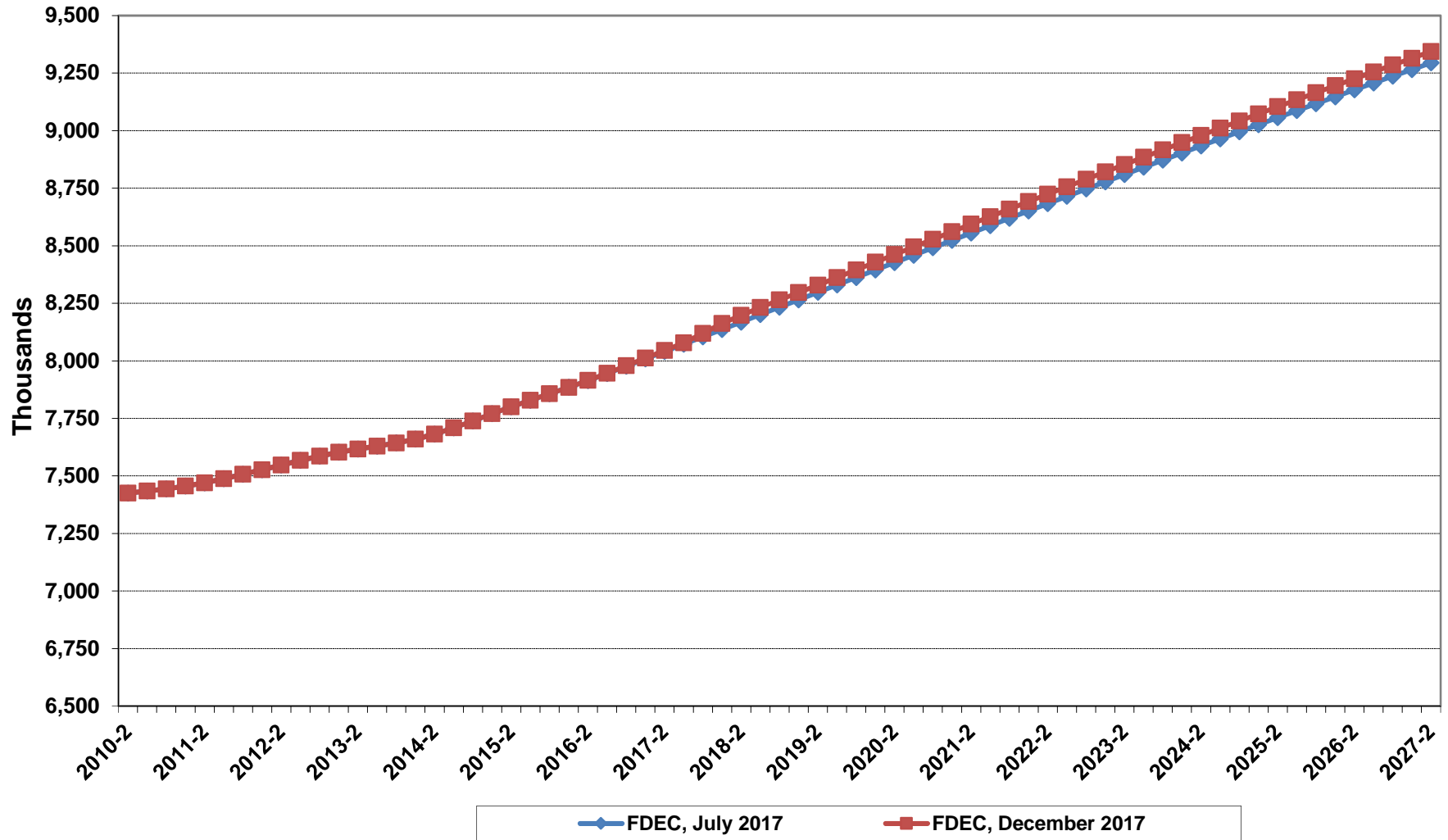
Net Change In Florida Resident Population



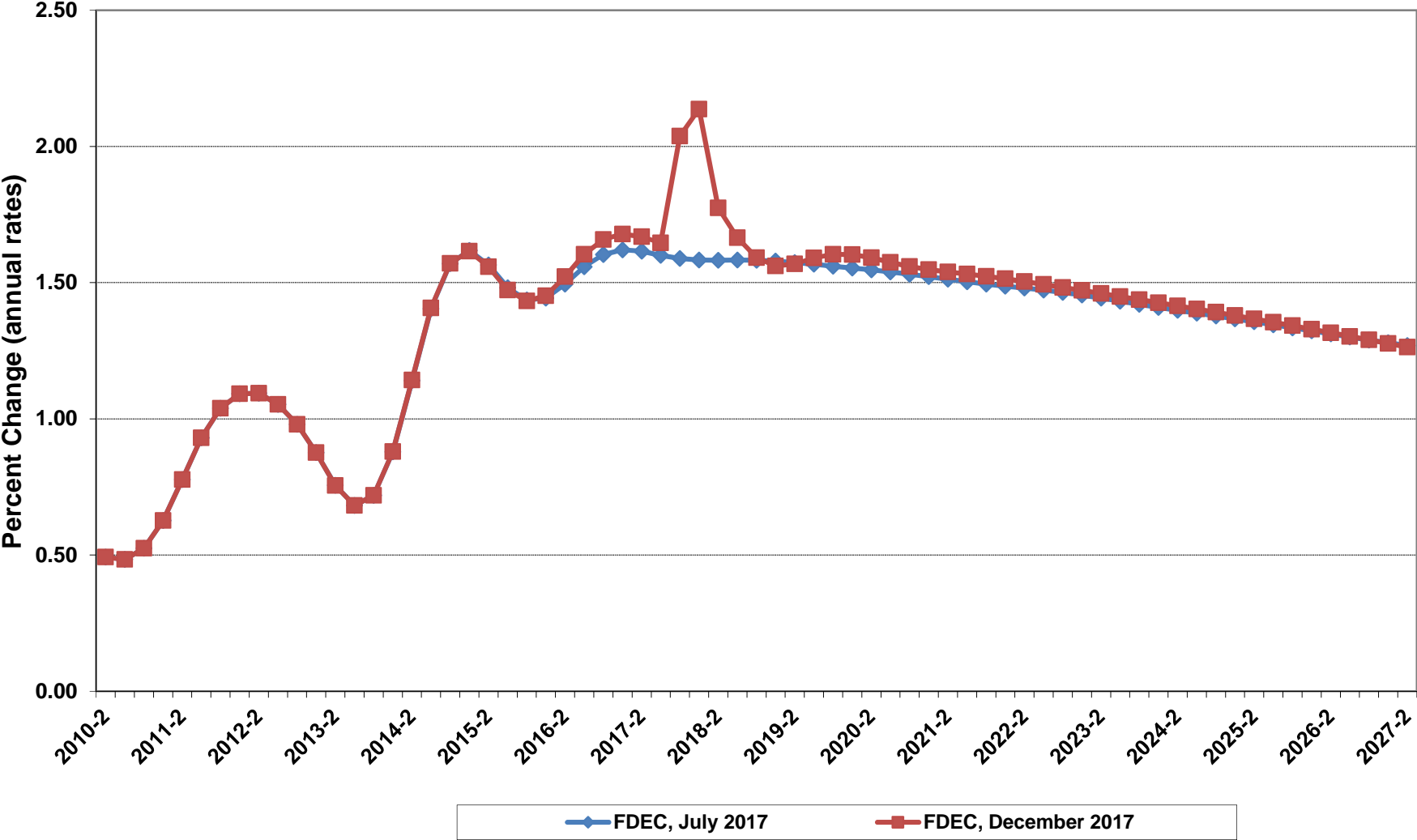
Growth In Florida Resident Population



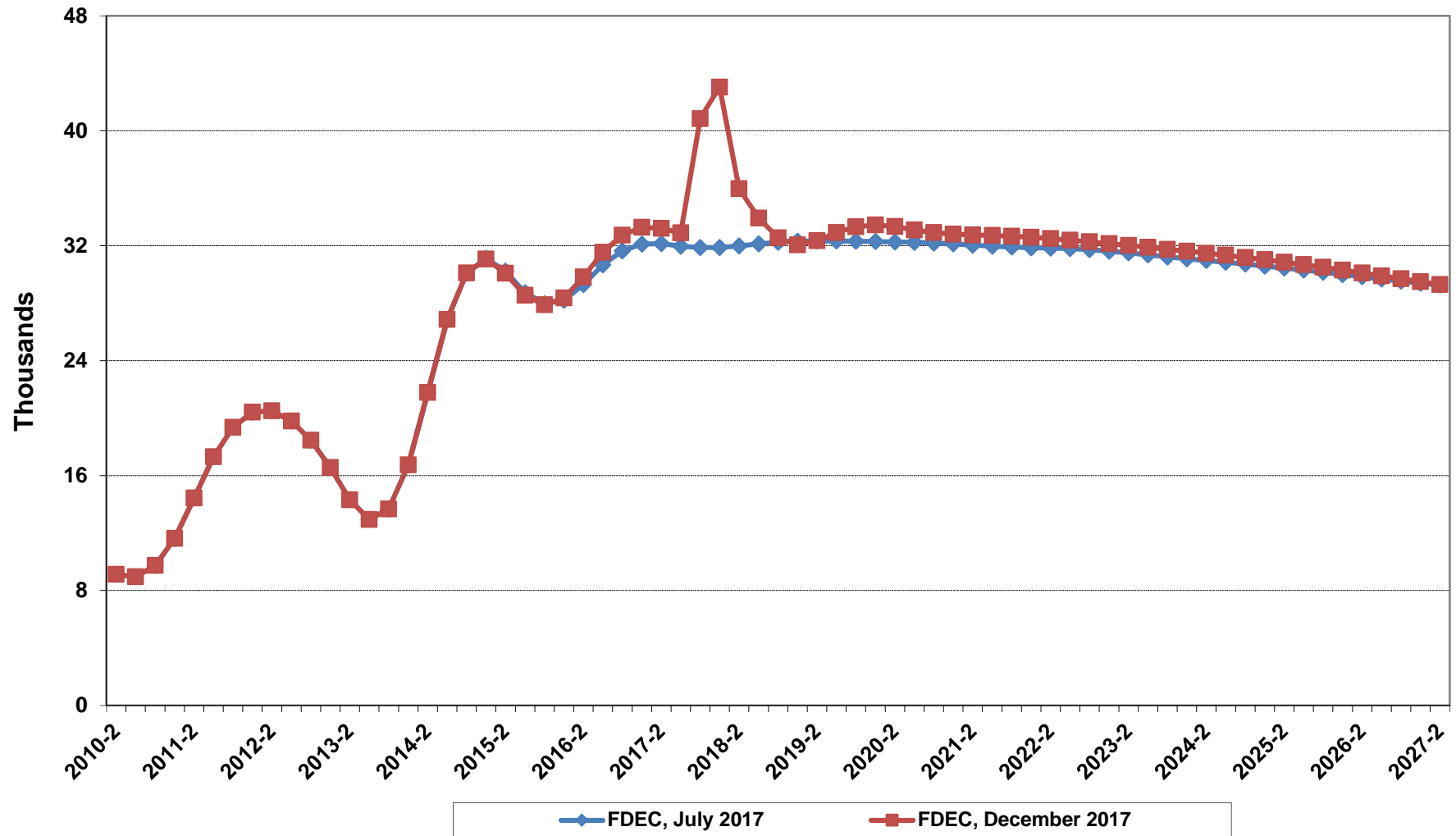
Florida Resident Households



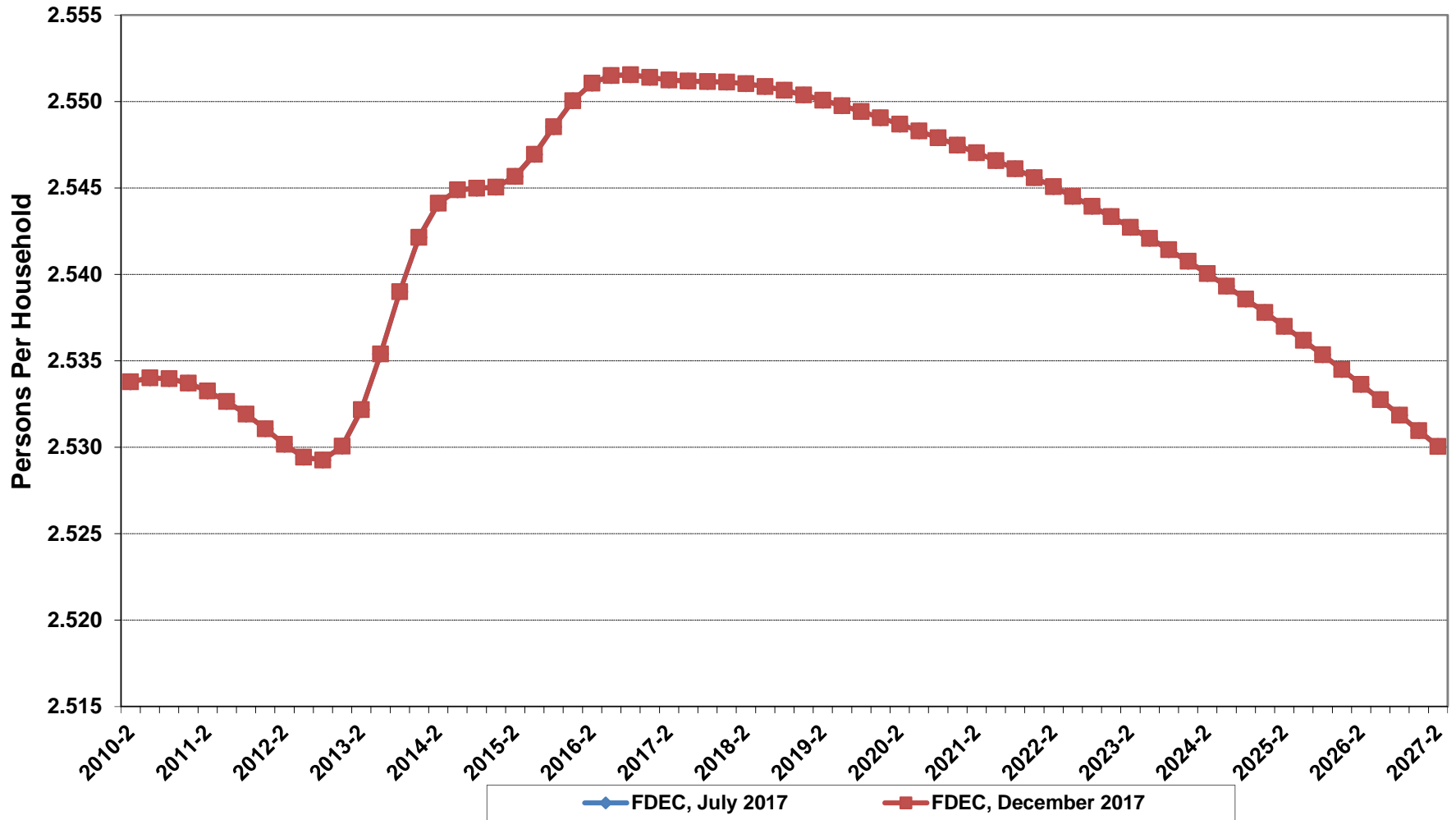
Growth In Florida Resident Households



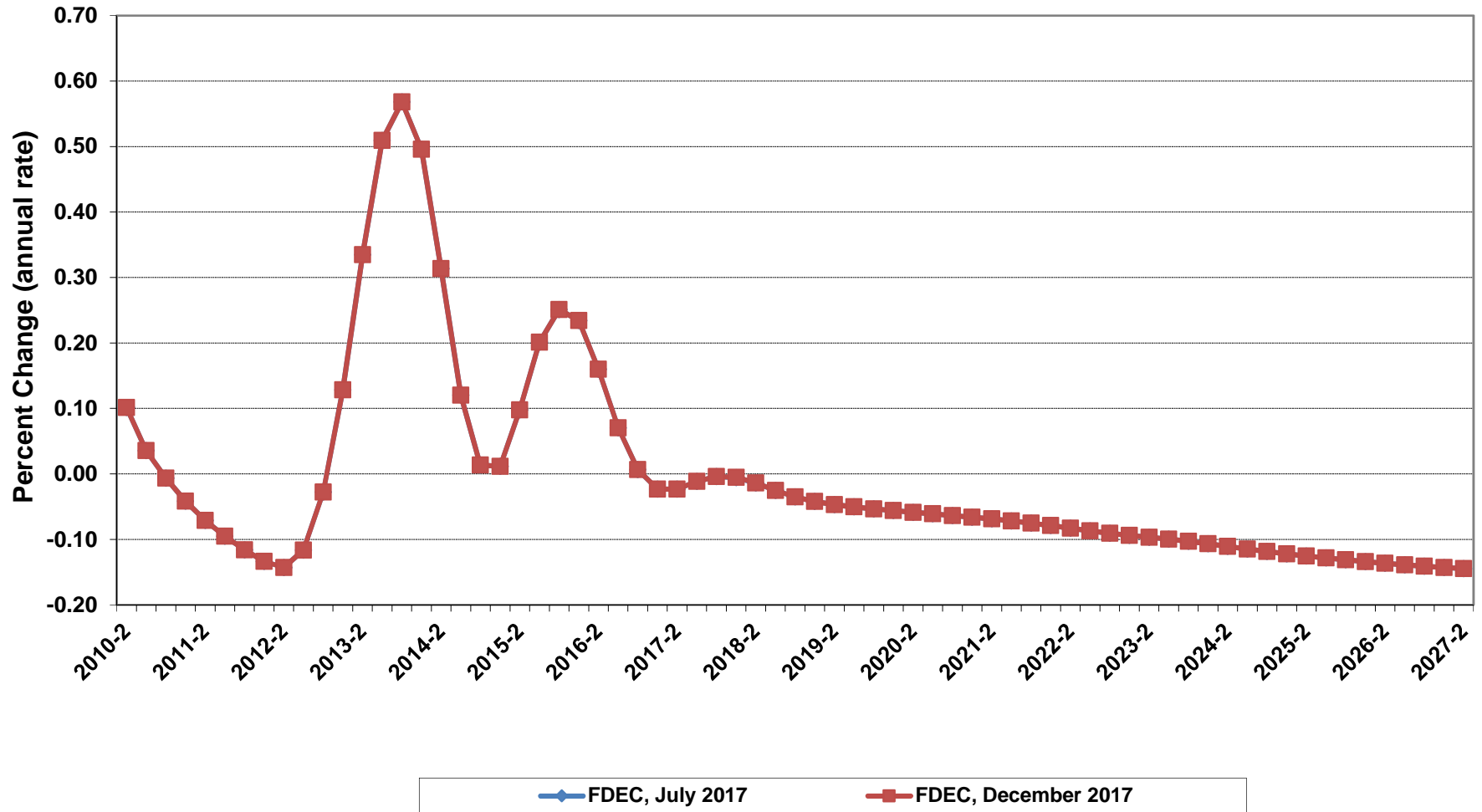
Net Change In Florida Resident Households



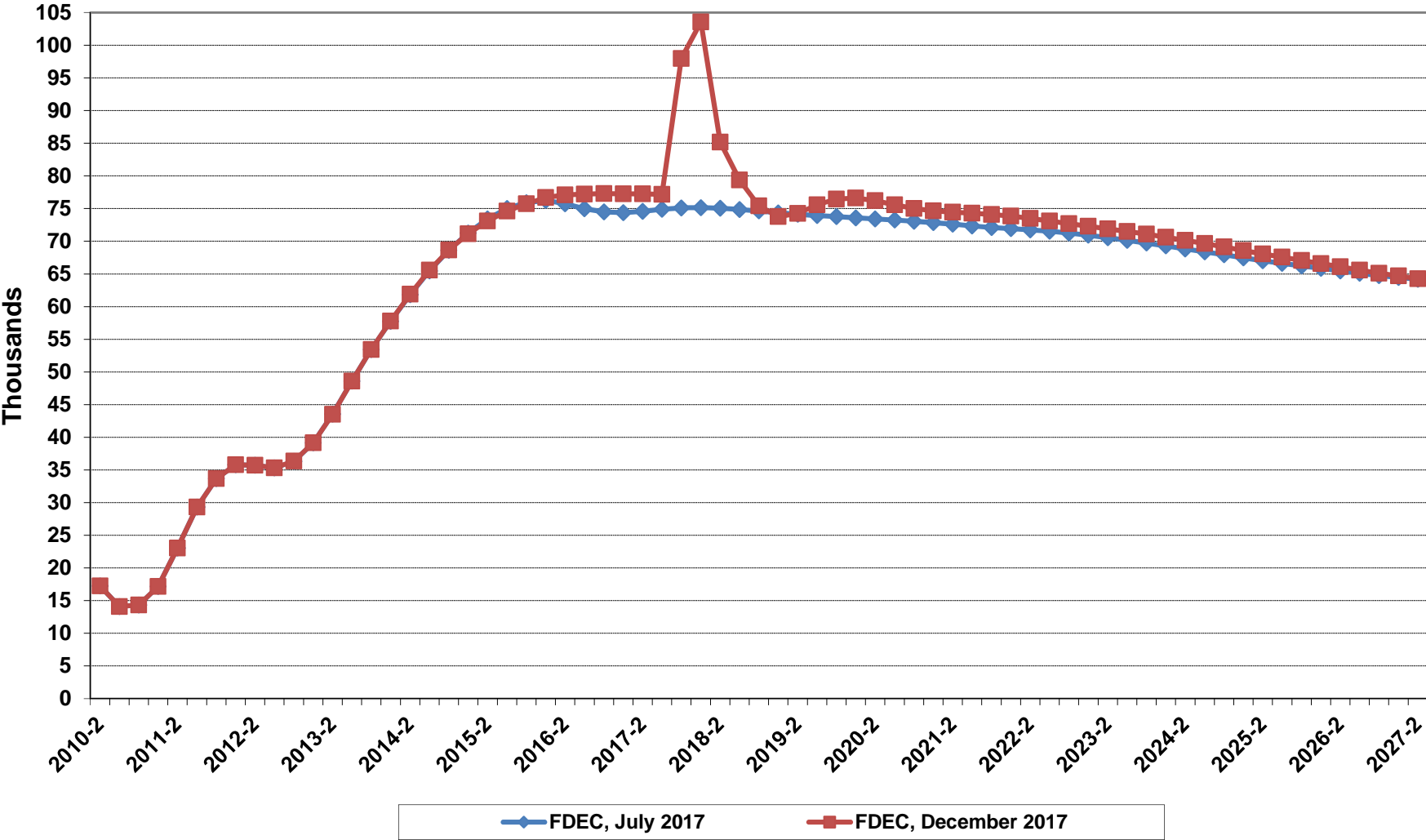
Florida Average Household Size



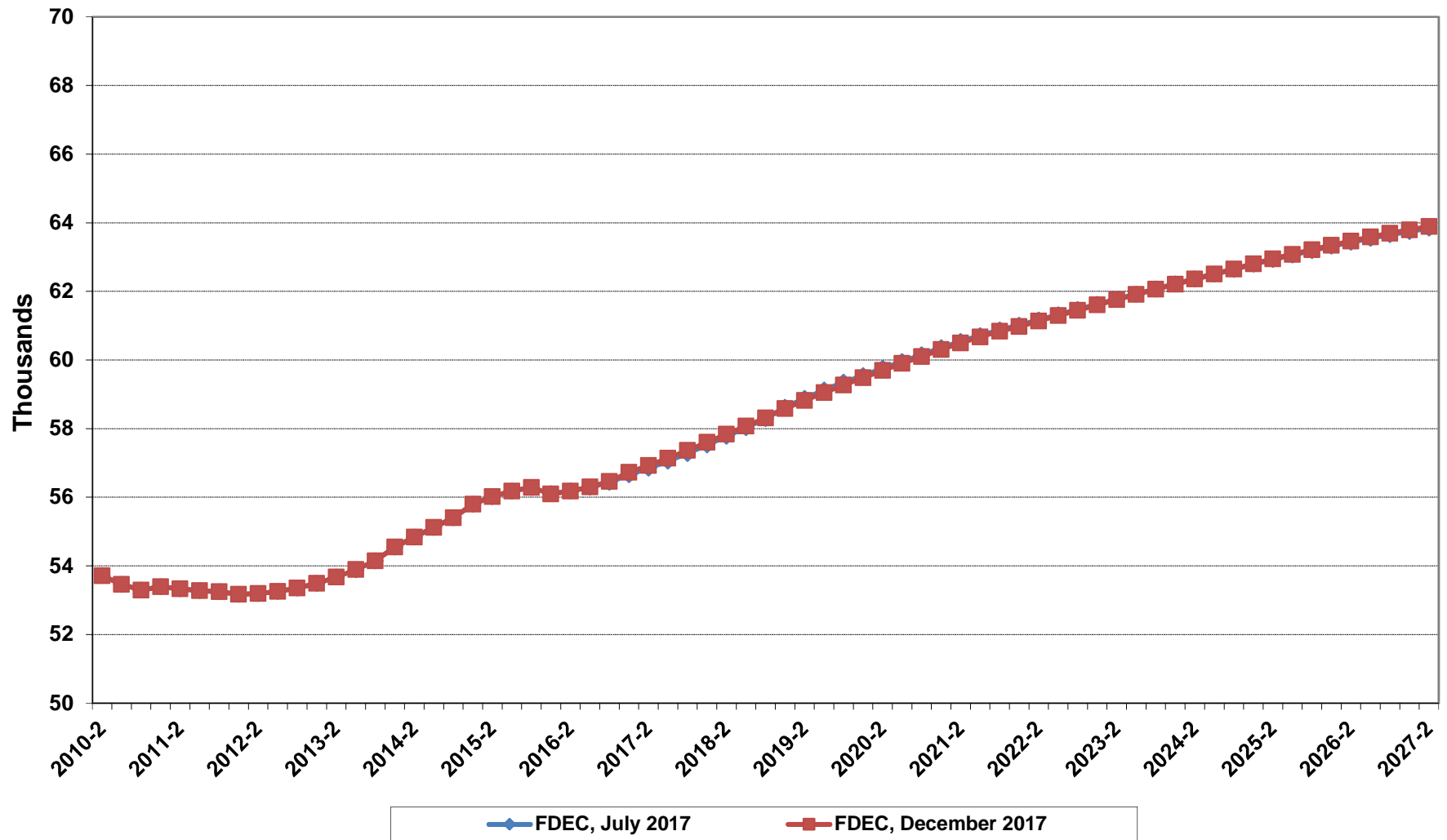
Growth In Florida Household Size



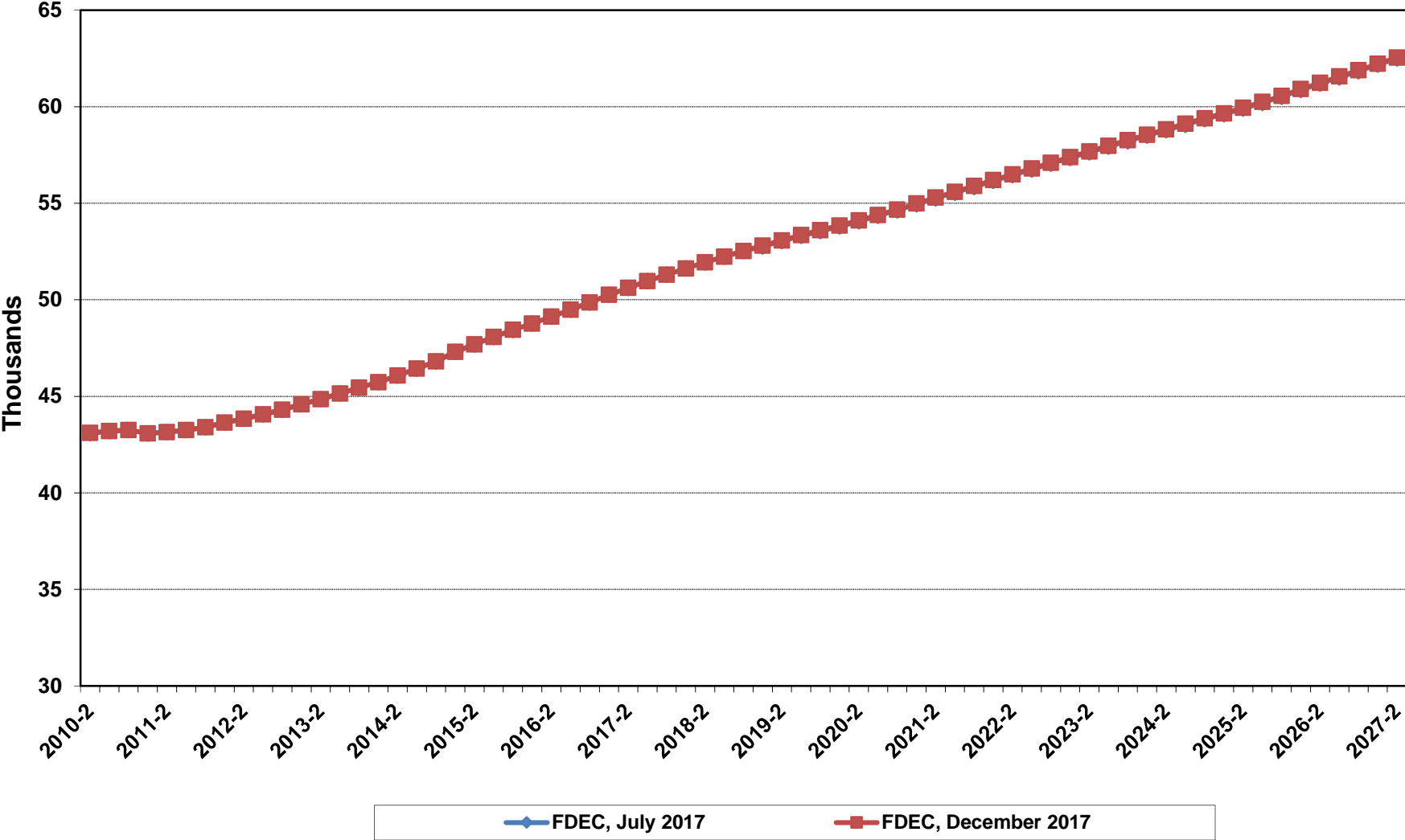
Florida Net Migration



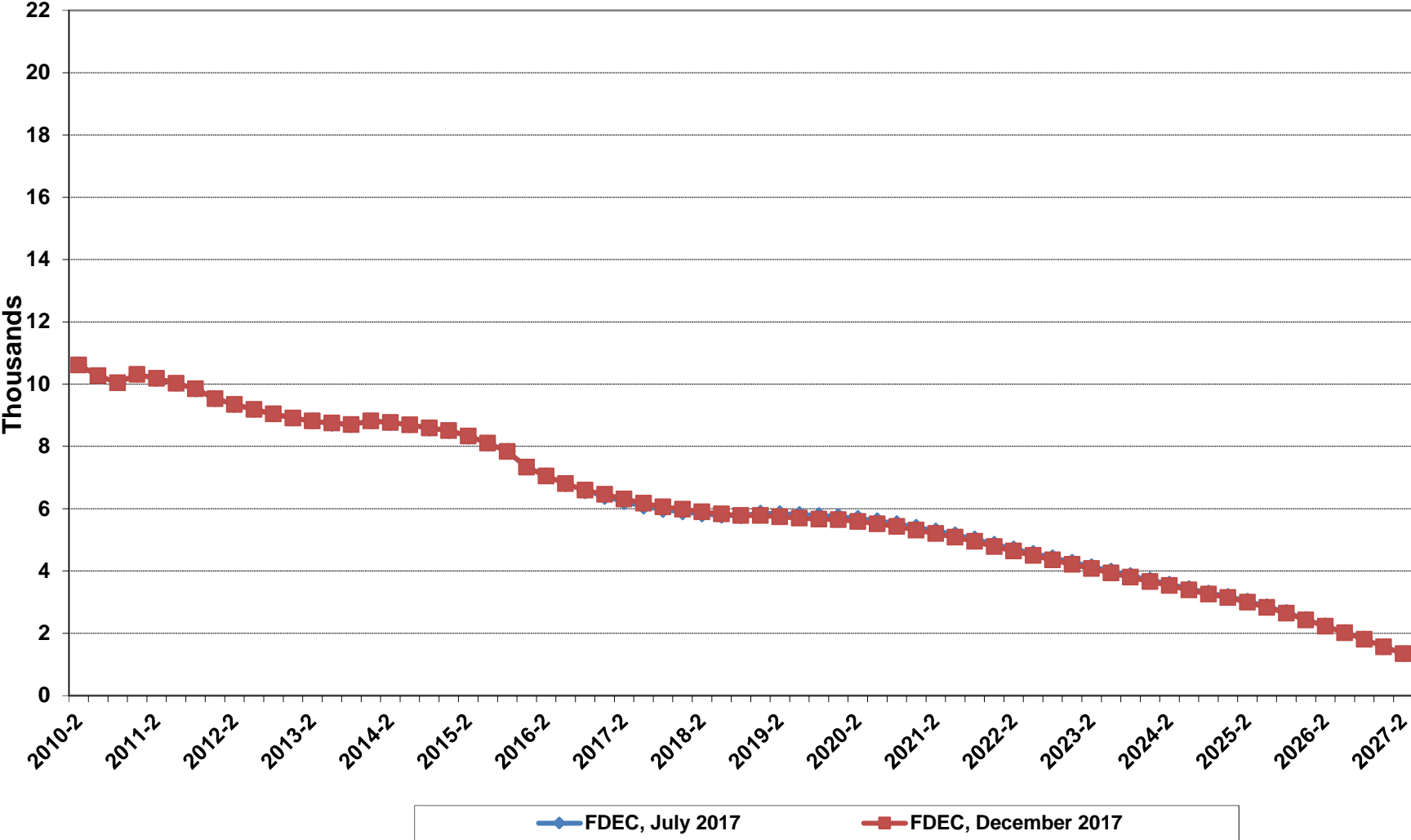
Florida Resident Births



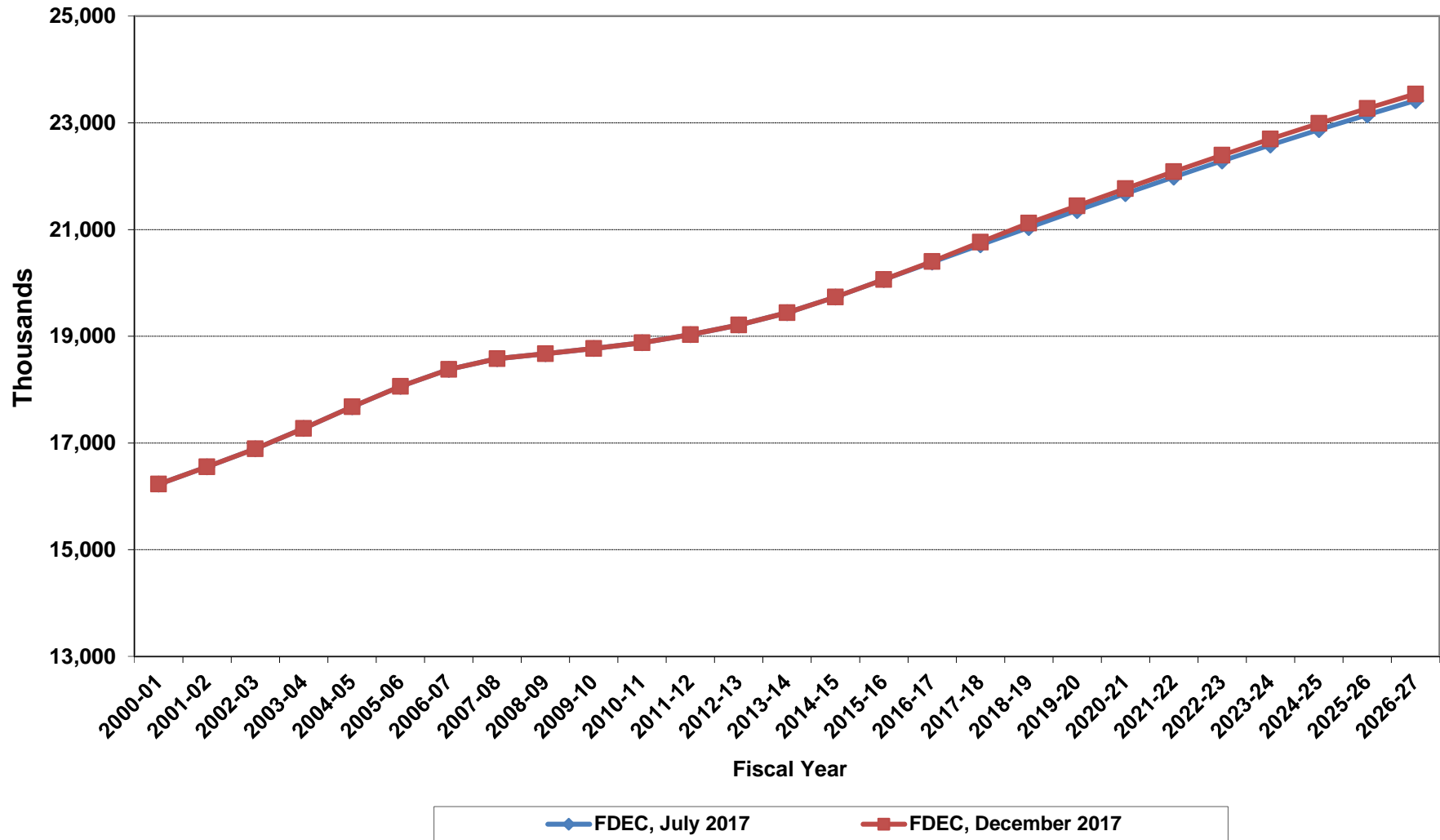
Florida Resident Deaths



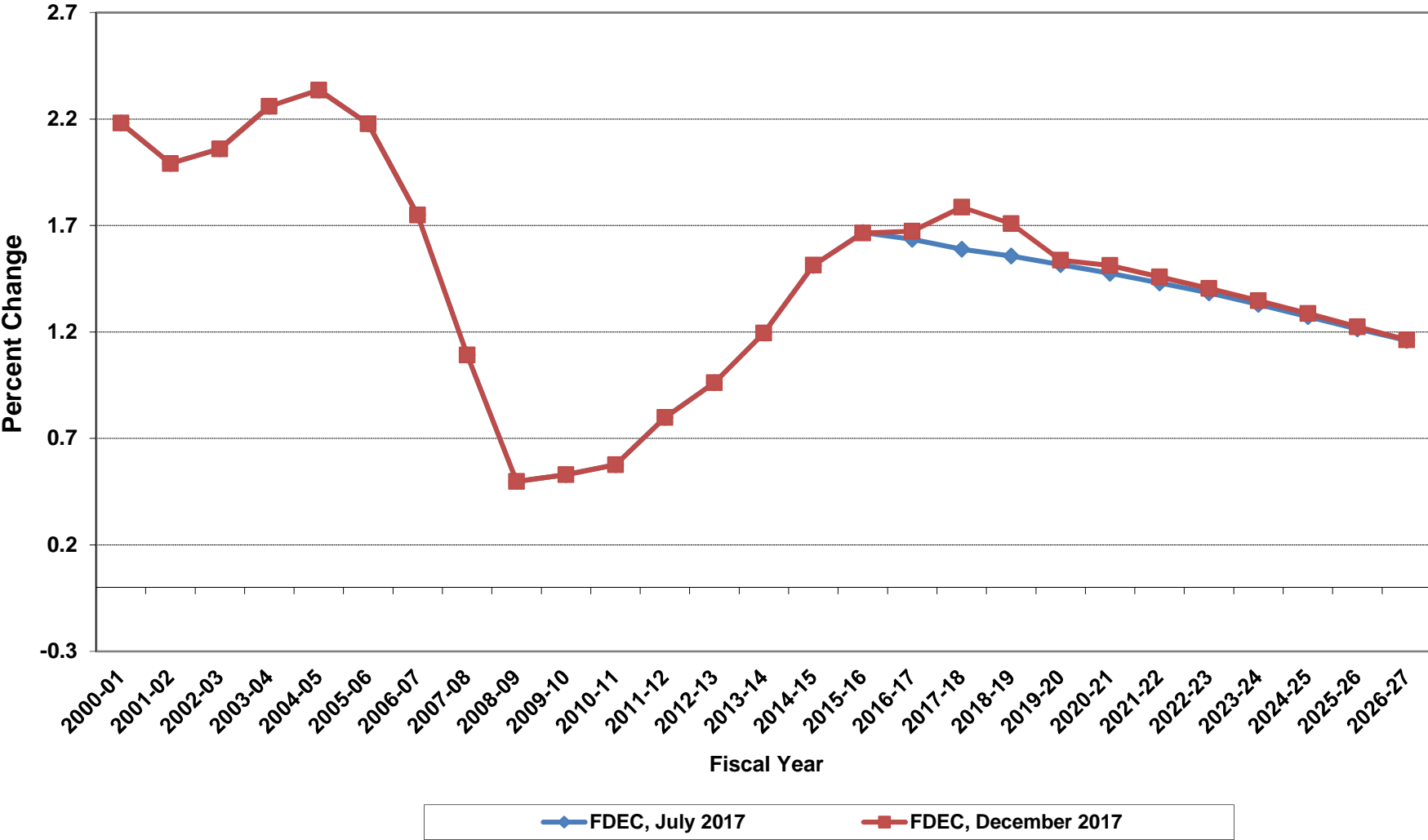
Florida Net Natural Increase



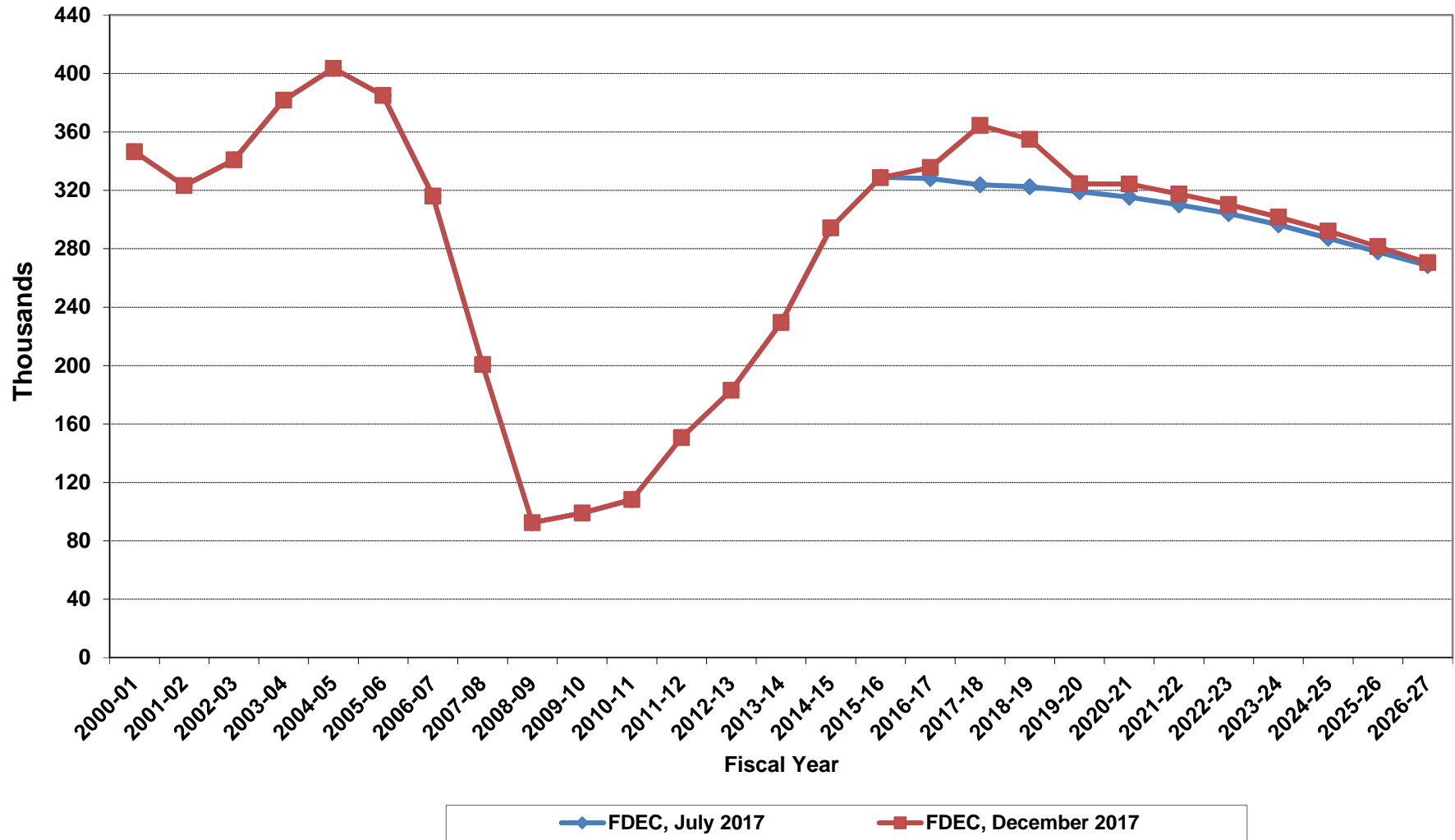
Florida Resident Population



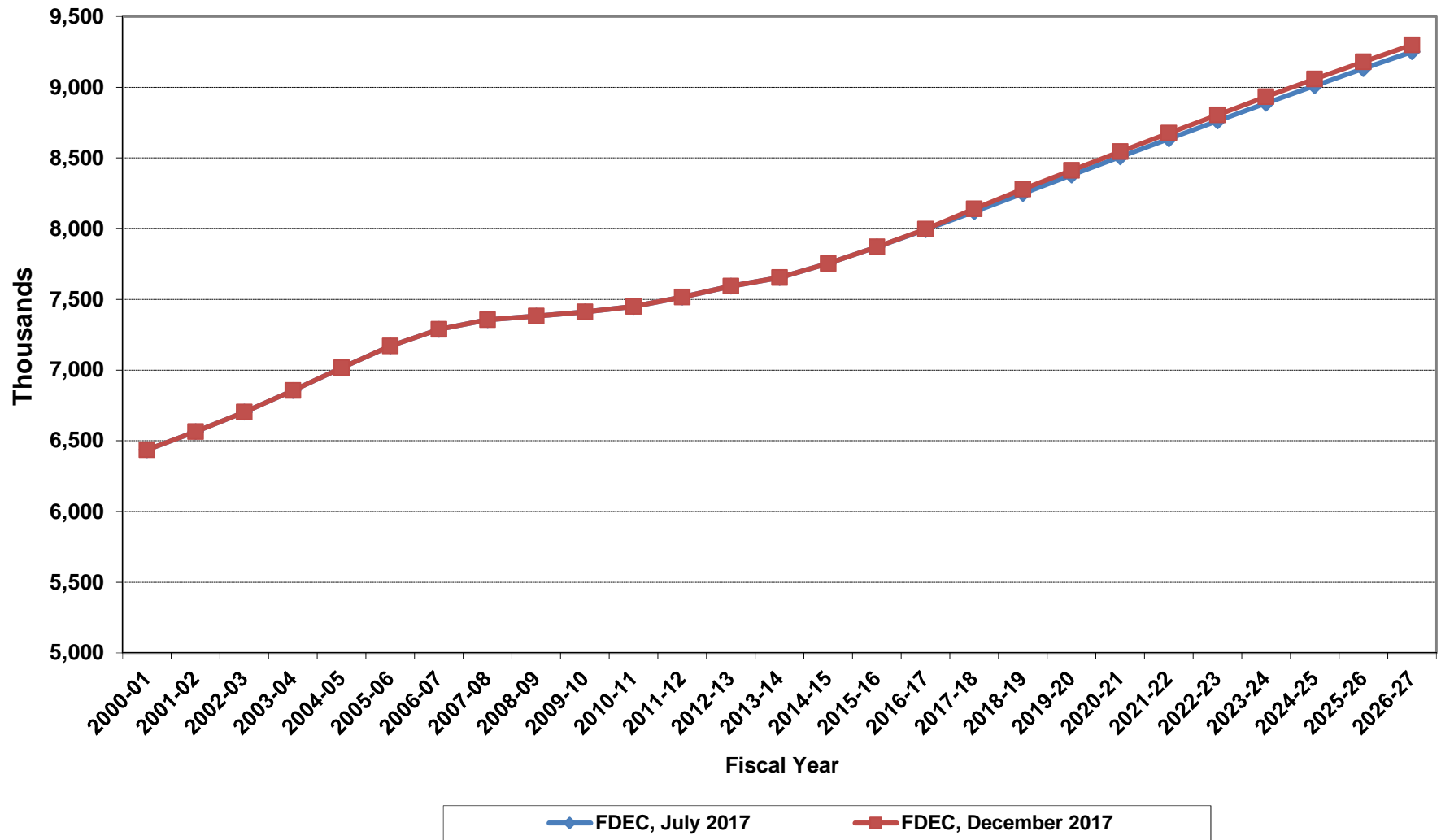
Growth In Florida Resident Population



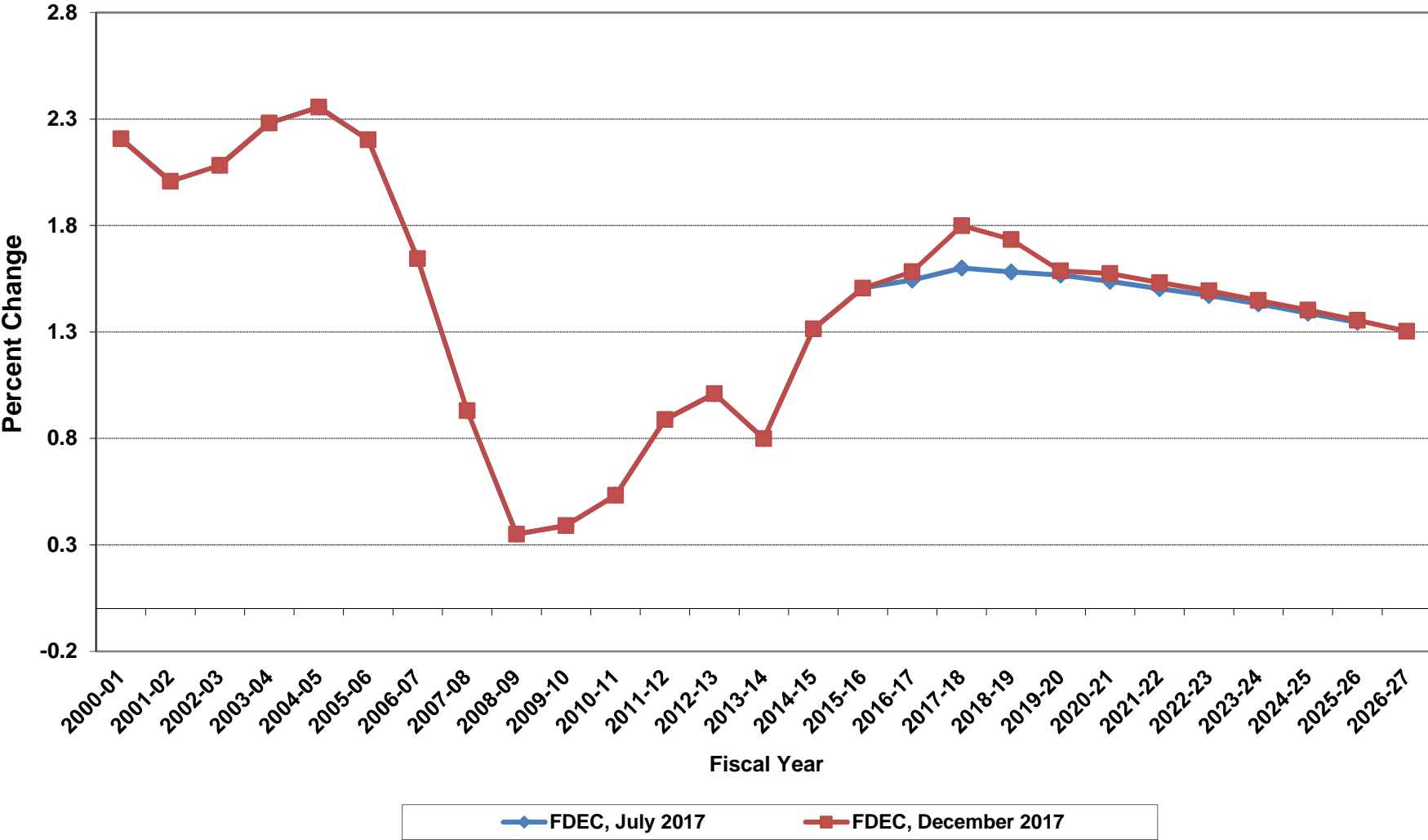
Net Change In Florida Resident Population



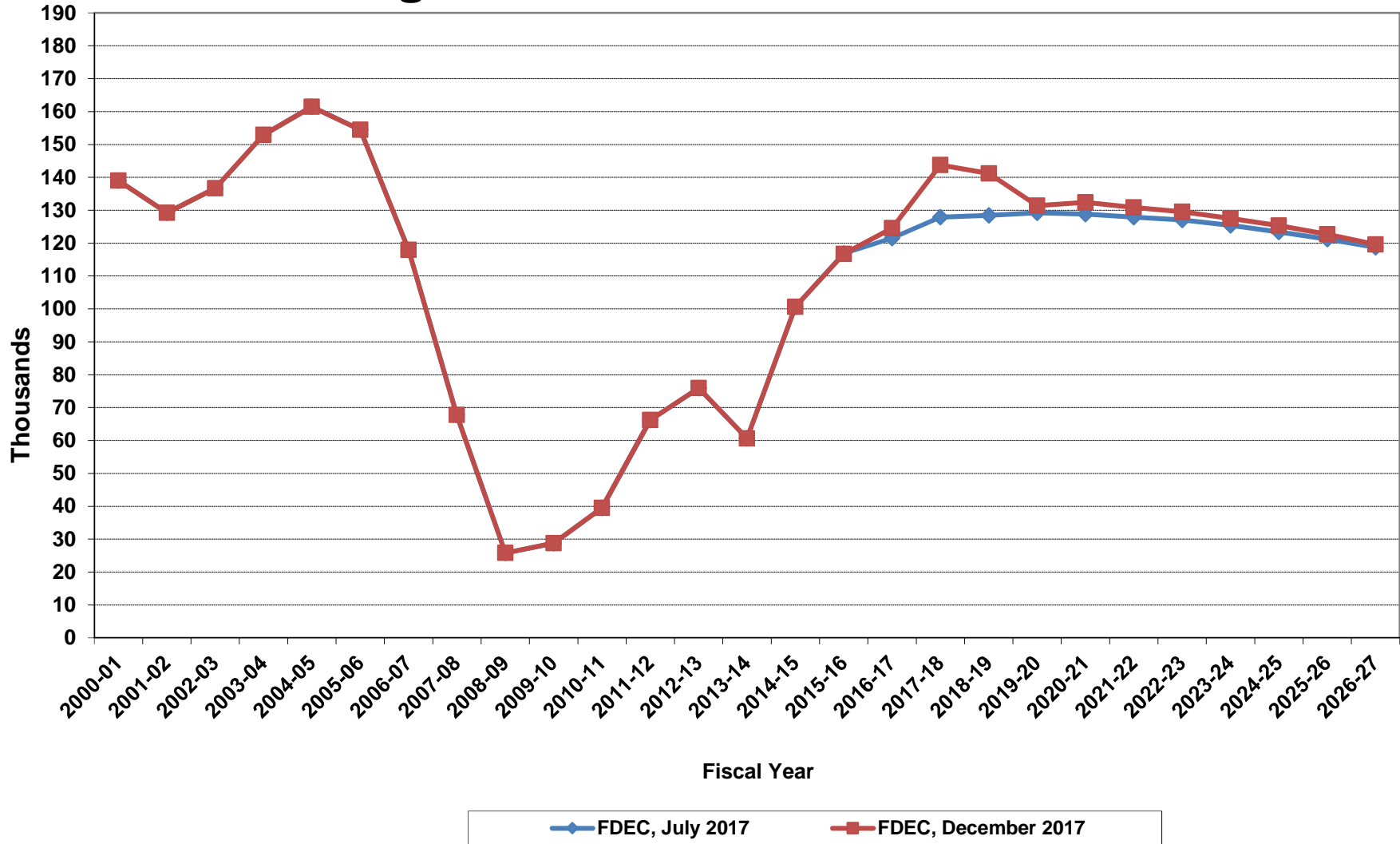
Florida Resident Households



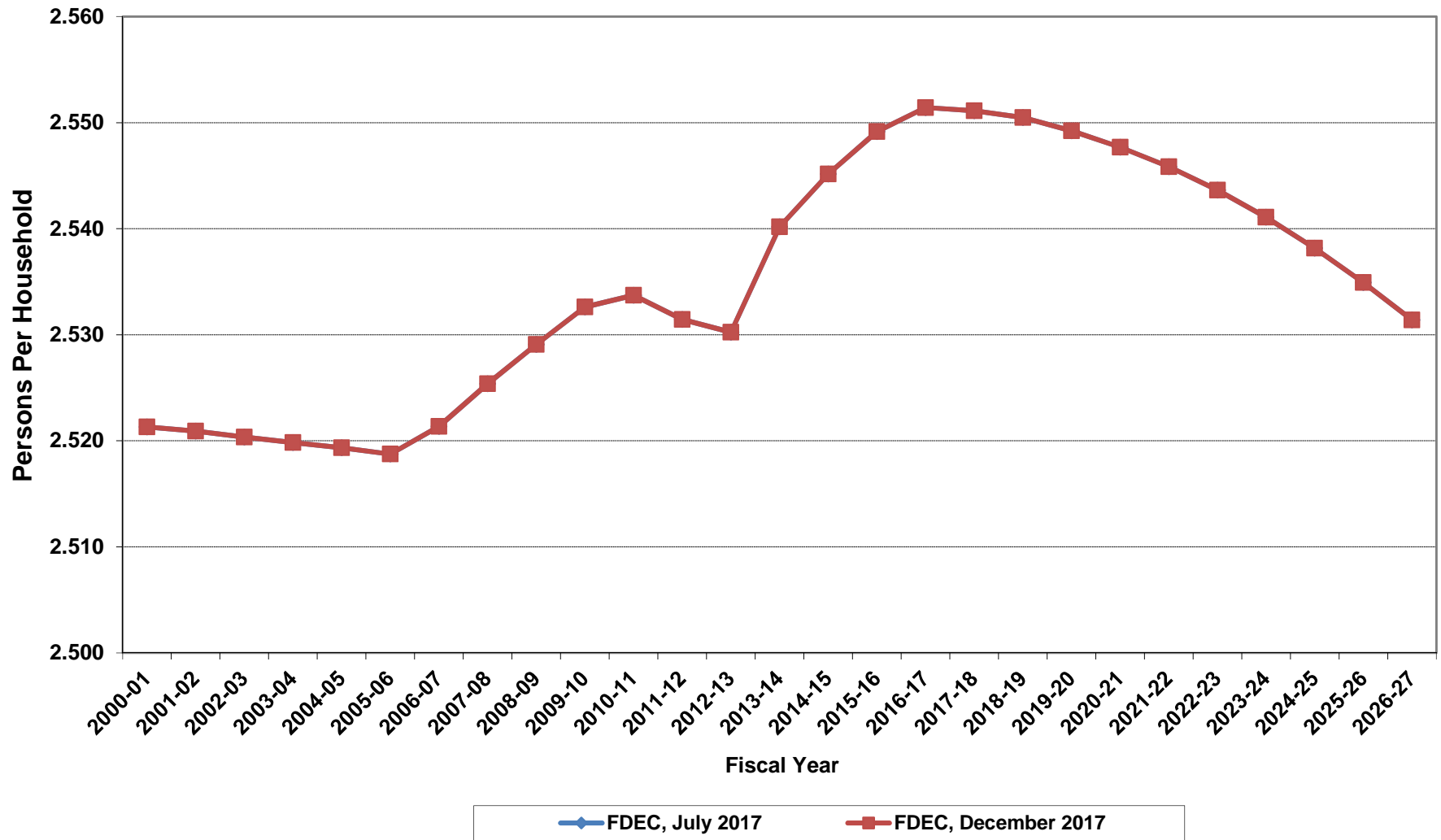
Growth In Florida Resident Households



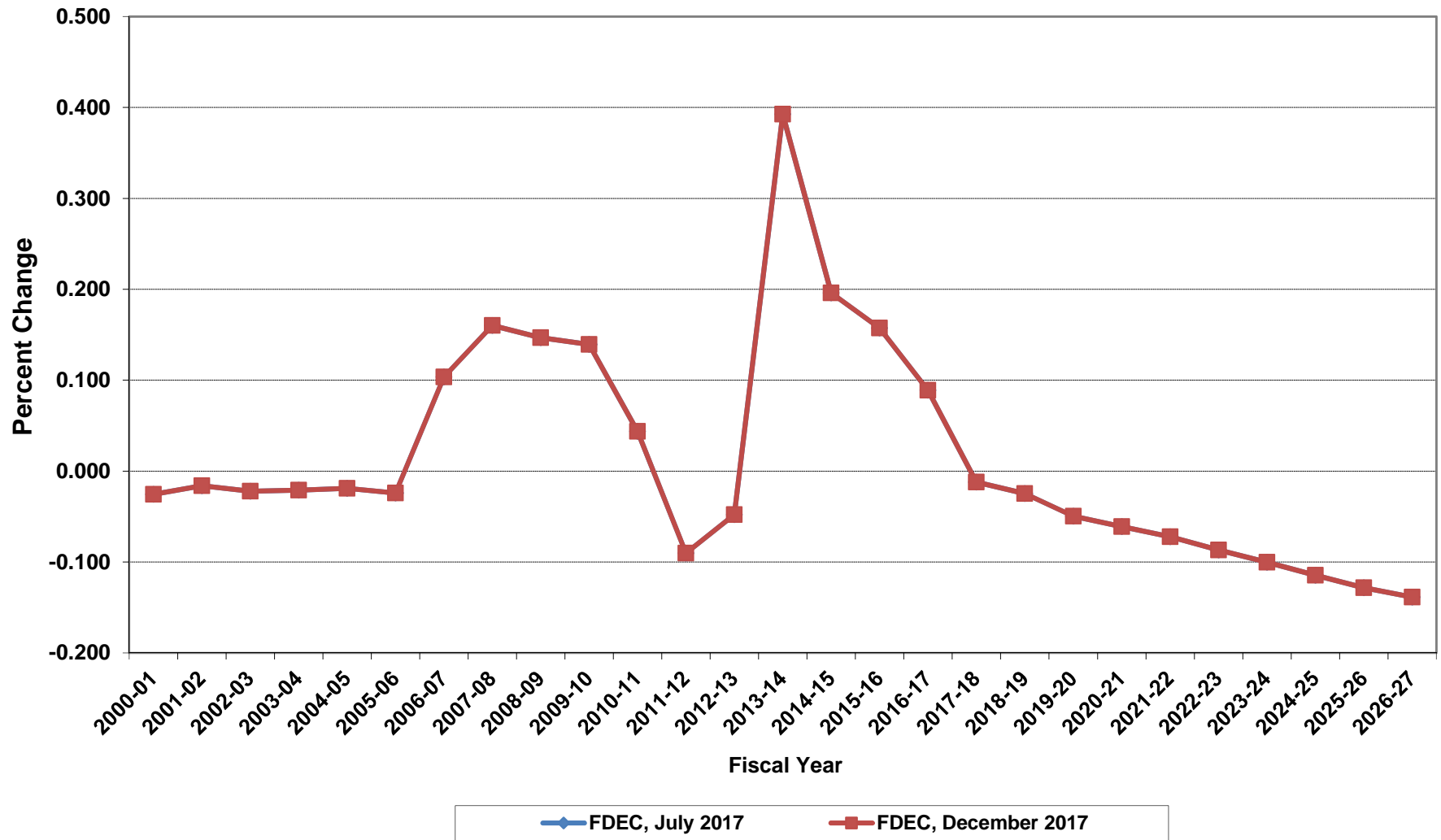
Net Change In Florida Resident Households



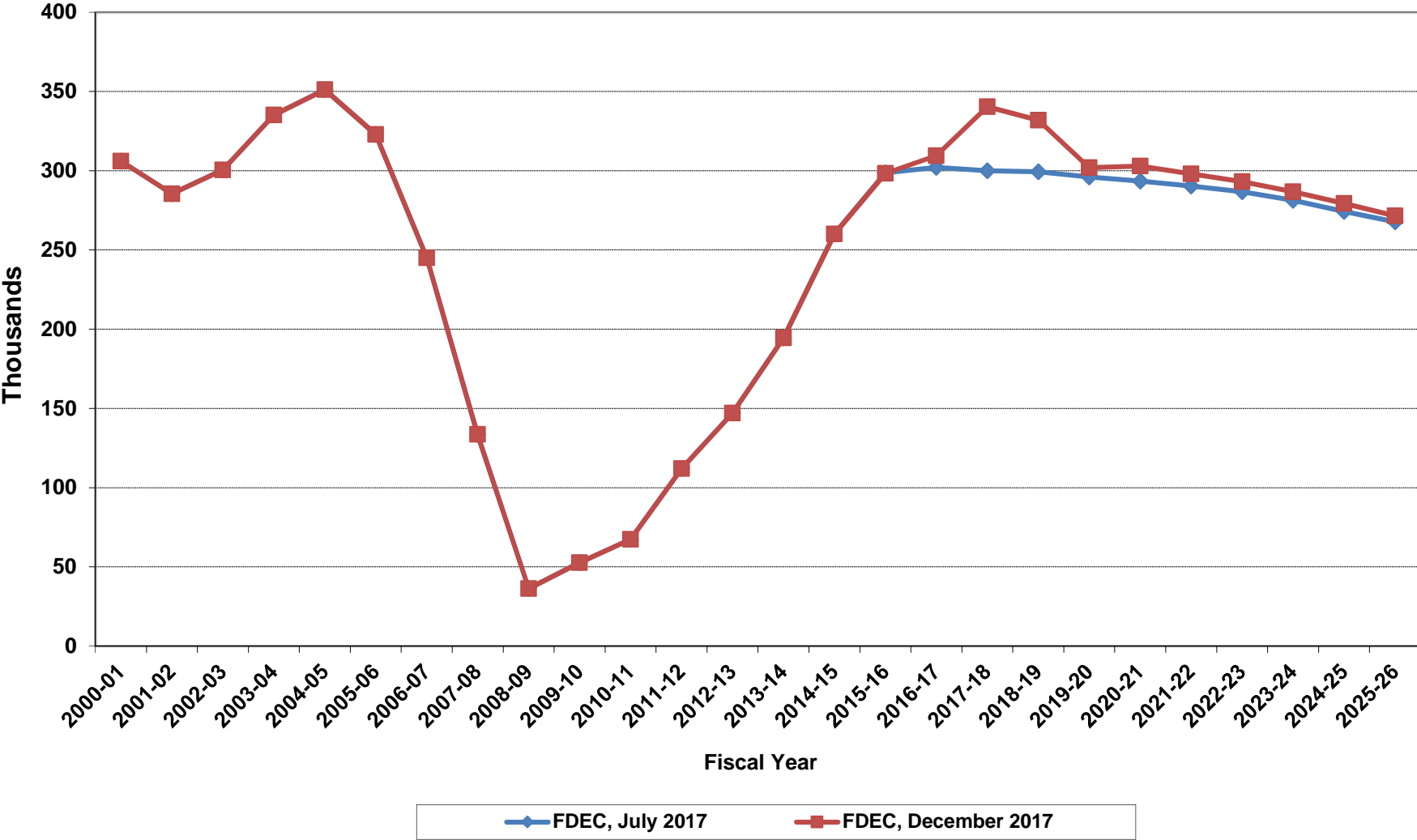
Average Florida Household Size



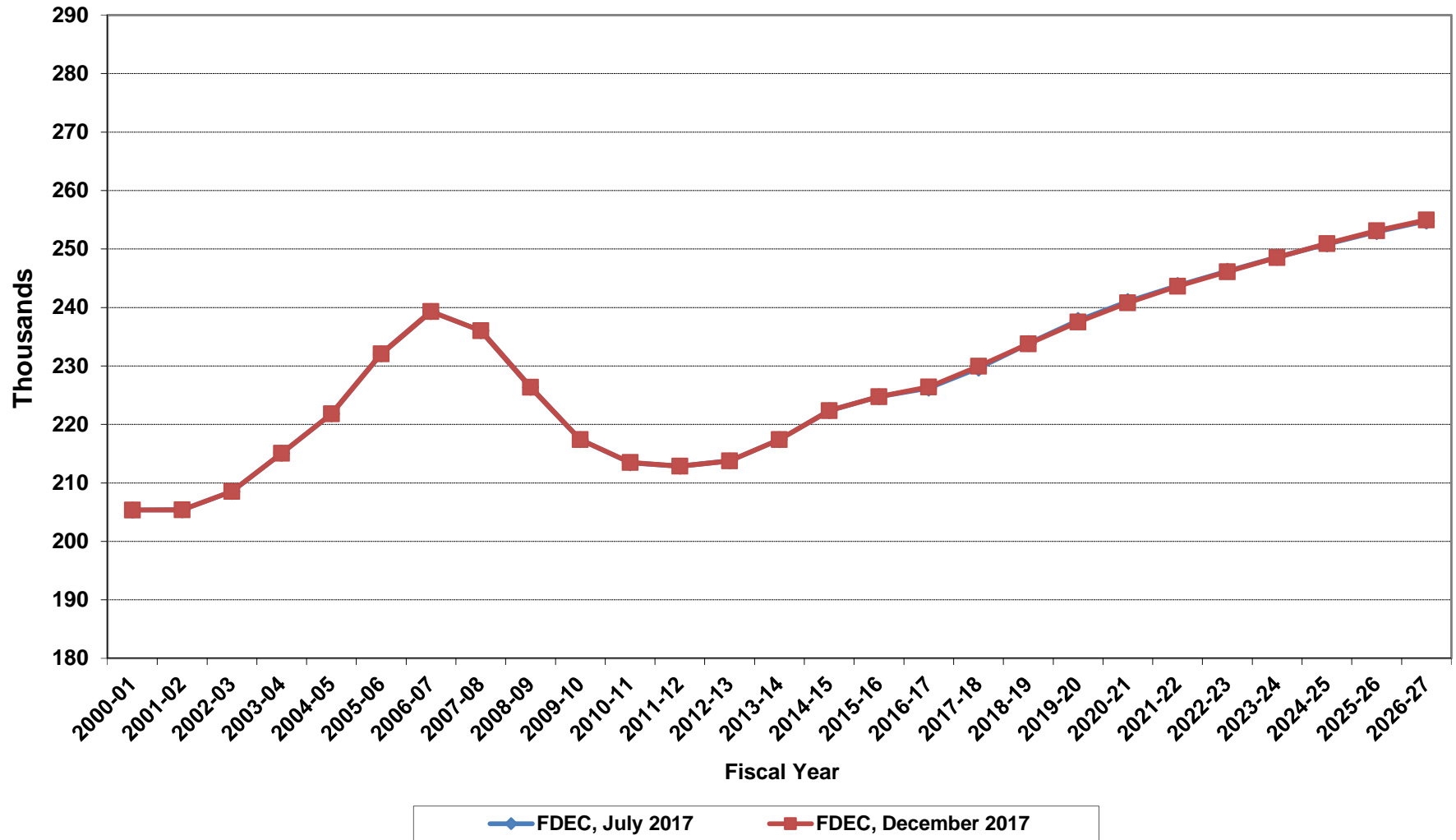
Growth In Average Florida Household Size



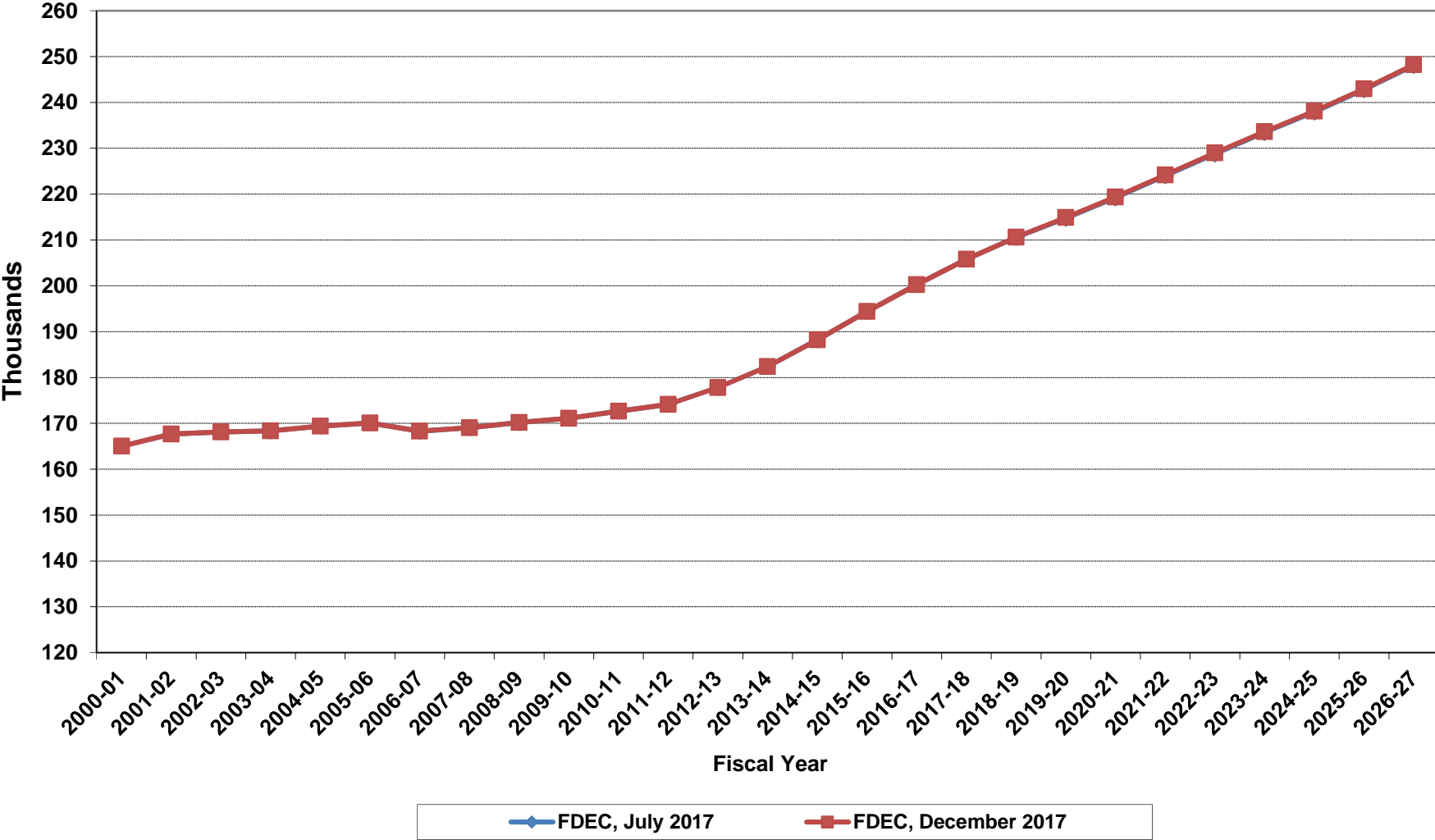
Florida Net Migration



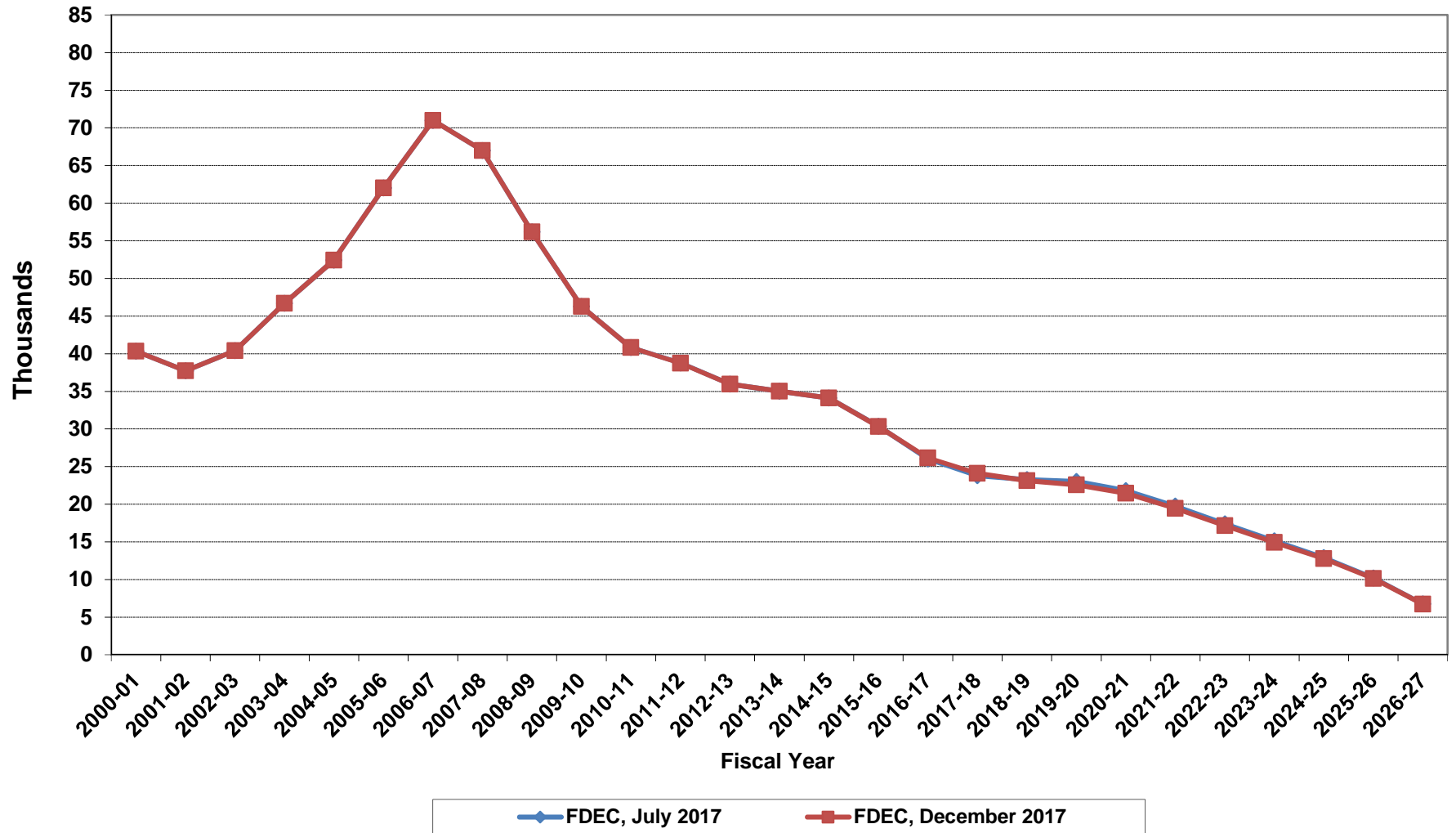
Florida Resident Live Births



Florida Resident Deaths



Florida Net Natural Increase



Florida Population and Components of Change

Fiscal Year	Population (End of Fiscal Year)	Growth Rate	Annual Change in Population	Births	Deaths	Net Natural Increase	Net Migration
1950 - 51	2,981,346	6.50%	181,931	67,486	27,670	39,816	142,115
1951 - 52	3,155,442	5.84%	174,096	72,383	28,942	43,441	130,655
1952 - 53	3,312,521	4.98%	157,079	76,954	29,761	47,193	109,886
1953 - 54	3,504,323	5.79%	191,802	82,725	31,055	51,670	140,132
1954 - 55	3,747,400	6.94%	243,077	86,643	32,176	54,467	188,610
1955 - 56	4,046,062	7.97%	298,662	92,941	34,932	58,009	240,653
1956 - 57	4,370,045	8.01%	323,983	100,990	38,269	62,721	261,262
1957 - 58	4,629,510	5.94%	259,465	105,972	41,911	64,061	195,404
1958 - 59	4,812,270	3.95%	182,760	110,409	43,674	66,735	116,025
1959 - 60	4,998,508	3.87%	186,238	114,428	46,057	68,371	117,867
1960 - 61	5,185,913	3.75%	187,405	116,449	48,388	68,061	119,344
1961 - 62	5,367,899	3.51%	181,986	116,120	50,346	65,774	116,212
1962 - 63	5,553,522	3.46%	185,623	114,709	54,453	60,256	125,367
1963 - 64	5,728,499	3.15%	174,977	115,002	56,229	58,773	116,204
1964 - 65	5,881,195	2.67%	152,696	110,515	57,734	52,781	99,915
1965 - 66	6,065,768	3.14%	184,573	104,367	61,217	43,150	141,423
1966 - 67	6,249,674	3.03%	183,906	101,209	62,577	38,632	145,274
1967 - 68	6,441,756	3.07%	192,082	100,320	66,134	34,186	157,896
1968 - 69	6,633,546	2.98%	191,790	104,286	71,285	33,001	158,789
1969 - 70	6,861,118	3.43%	227,572	111,511	73,831	37,680	189,892
1970 - 71	7,233,583	5.43%	372,465	117,012	75,354	41,658	330,807
1971 - 72	7,681,540	6.19%	447,957	113,568	79,717	33,851	414,106
1972 - 73	8,157,883	6.20%	476,343	107,804	86,232	21,572	454,771
1973 - 74	8,515,208	4.38%	357,325	109,366	88,459	20,907	336,418
1974 - 75	8,648,587	1.57%	133,379	108,686	87,224	21,462	111,917
1975 - 76	8,782,975	1.55%	134,388	104,022	88,129	15,893	118,495
1976 - 77	8,972,678	2.16%	189,703	107,623	90,443	17,180	172,523
1977 - 78	9,225,527	2.82%	252,849	112,268	93,383	18,885	233,964
1978 - 79	9,523,728	3.23%	298,201	116,393	96,801	19,592	278,609
1979 - 80	9,914,652	4.10%	390,924	126,673	101,048	25,625	365,299
1980 - 81	10,212,969	3.01%	298,317	135,560	107,562	27,998	270,319
1981 - 82	10,492,851	2.74%	279,882	141,593	108,644	32,949	246,933
1982 - 83	10,748,466	2.44%	255,615	146,853	110,497	36,356	219,259
1983 - 84	11,065,911	2.95%	317,445	151,748	113,939	37,809	279,636
1984 - 85	11,405,533	3.07%	339,622	159,819	117,539	42,280	297,342
1985 - 86	11,740,069	2.93%	334,536	165,857	122,453	43,404	291,132
1986 - 87	12,083,241	2.92%	343,172	170,819	124,946	45,873	297,299
1987 - 88	12,410,339	2.71%	327,098	179,541	129,413	50,128	276,970
1988 - 89	12,723,719	2.53%	313,380	188,390	131,992	56,398	256,982
1989 - 90	13,017,296	2.31%	293,577	197,181	132,503	64,678	228,899
1990 - 91	13,326,892	2.38%	309,596	197,180	134,093	63,087	246,509
1991 - 92	13,552,021	1.69%	225,129	191,810	136,280	55,530	169,599
1992 - 93	13,802,571	1.85%	250,550	192,051	142,087	49,964	200,586
1993 - 94	14,120,323	2.30%	317,752	191,840	146,101	45,739	272,013
1994 - 95	14,406,418	2.03%	286,095	189,292	149,161	40,131	245,964
1995 - 96	14,701,040	2.05%	294,622	188,584	152,570	36,014	258,608
1996 - 97	15,012,615	2.12%	311,575	190,587	153,067	37,520	274,055
1997 - 98	15,310,069	1.98%	297,454	194,242	155,080	39,162	258,292
1998 - 99	15,680,164	2.42%	370,095	195,897	159,988	35,909	334,186
1999 - 00	16,069,889	2.49%	389,725	200,302	162,489	37,813	351,912
2000 - 01	16,385,615	1.96%	315,726	205,798	164,919	40,879	274,847
2001 - 02	16,718,076	2.03%	332,461	205,164	167,812	37,352	295,109
2002 - 03	17,074,258	2.13%	356,182	208,403	168,079	40,324	315,858
2003 - 04	17,475,944	2.35%	401,686	215,298	168,302	46,996	354,690
2004 - 05	17,876,215	2.29%	400,271	221,533	169,302	52,231	348,040
2005 - 06	18,236,885	2.02%	360,670	232,019	170,303	61,716	298,954
2006 - 07	18,501,231	1.45%	264,346	239,635	168,117	71,518	192,828
2007 - 08	18,636,837	0.73%	135,606	236,065	168,966	67,099	68,507
2008 - 09	18,711,844	0.40%	75,007	226,337	170,615	55,722	19,285
2009 - 10	18,826,492	0.61%	114,648	217,408	171,117	46,291	68,357

Florida Population and Components of Change

Fiscal Year	Population (End of Fiscal Year)	Growth Rate	Annual Change in Population	Births	Deaths	Net Natural Increase	Net Migration
2010 - 11	18,941,740	0.61%	115,248	213,468	172,661	40,807	74,441
2011 - 12	19,118,946	0.94%	177,206	212,876	174,122	38,754	138,452
2012 - 13	19,314,367	1.02%	195,421	213,763	177,803	35,960	159,461
2013 - 14	19,579,980	1.38%	265,613	217,424	182,391	35,033	230,580
2014 - 15	19,897,357	1.62%	317,377	222,338	188,217	34,121	283,256
2015 - 16	20,232,751	1.69%	335,394	224,727	194,398	30,329	305,065
2016 - 17	20,567,600	1.65%	334,849	226,401	200,232	26,169	308,680
2017 - 18	20,957,707	1.90%	390,107	229,938	205,826	24,112	365,995
2018 - 19	21,280,125	1.54%	322,418	233,778	210,635	23,143	299,275
2019 - 20	21,607,979	1.54%	327,854	237,492	214,900	22,592	305,262
2020 - 21	21,928,184	1.48%	320,205	240,802	219,344	21,458	298,747
2021 - 22	22,242,542	1.43%	314,358	243,623	224,170	19,453	294,905
2022 - 23	22,548,610	1.38%	306,068	246,105	228,959	17,146	288,922
2023 - 24	22,845,717	1.32%	297,107	248,541	233,617	14,924	282,183
2024 - 25	23,132,630	1.26%	286,913	250,902	238,115	12,787	274,126
2025 - 26	23,408,698	1.19%	276,068	253,095	242,975	10,120	265,948
2026 - 27	23,673,718	1.13%	265,020	254,963	248,235	6,728	258,292
2027 - 28	23,929,023	1.08%	255,305	256,610	253,302	3,308	251,997
2028 - 29	24,176,234	1.03%	247,211	258,187	258,119	68	247,143
2029 - 30	24,416,627	0.99%	240,393	259,701	262,790	-3,089	243,482
2030 - 31	24,652,048	0.96%	235,421	261,178	267,668	-6,490	241,911
2031 - 32	24,881,823	0.93%	229,775	262,619	272,807	-10,188	239,963
2032 - 33	25,105,795	0.90%	223,972	264,028	277,868	-13,840	237,812
2033 - 34	25,324,626	0.87%	218,831	265,378	282,804	-17,426	236,257
2034 - 35	25,538,656	0.85%	214,030	266,660	287,618	-20,958	234,988
2035 - 36	25,747,814	0.82%	209,158	267,971	292,387	-24,416	233,574
2036 - 37	25,951,459	0.79%	203,645	269,477	297,094	-27,617	231,262
2037 - 38	26,150,977	0.77%	199,518	271,073	301,719	-30,646	230,164
2038 - 39	26,347,020	0.75%	196,043	272,609	306,265	-33,656	229,699
2039 - 40	26,539,974	0.73%	192,954	274,096	310,687	-36,591	229,545