

**Demographic Estimating Conference**  
**Executive Summary**  
**July 9, 2018**

The Demographic Estimating Conference met on July 9, 2018, to adopt a new population forecast. The new estimates reflect recent demographic and economic-related data, a revised household series, and the previously adopted estimate of the impact of Hurricanes Irma and Maria on the state’s population. Compared to the last conference, the population projections were revised downward by 28,561 for April 1, 2018. The downward revisions grow to 104,203 on April 1, 2024.

In the new forecast, changes in population growth from the last conference are due to both net migration and natural increase. The forecast for natural increase was revised downward due to fewer births in 2017, while net migration was revised downward to reflect slower growth than anticipated in residential electric meters. In addition, the forecast for households and household size was revised, reflecting a new historical series that was developed during calendar year 2017. As last time, the 2018 change in population was magnified due to the effects of Hurricane Maria.

<b>April 1</b>	<b>Population</b>	<b>Percent Change</b>	<b>Change</b>
2012	19,074,434	0.90%	169,364
2013	19,259,543	0.97%	185,109
2014	19,507,369	1.29%	247,826
2015	19,815,183	1.58%	307,814
2016	20,148,654	1.68%	333,471
2017	20,484,142	1.67%	335,488
<i>Forecast</i>			
2018	20,841,358	1.74%	357,216
2019	21,156,305	1.51%	314,947
2020	21,467,364	1.47%	311,059
2021	21,775,296	1.43%	307,932
2022	22,079,403	1.40%	304,107
2023	22,377,549	1.35%	298,146
2024	22,668,160	1.30%	290,611

Between April 1, 2017 and April 1, 2024, population growth is expected to average 312,003 net new residents per year (855 per day), representing a compound growth rate of 1.46% over this seven-year time horizon. These increases are analogous to adding a city slightly larger than Orlando every year.

Of note, the population estimates developed by the U.S. Census Bureau continue to be higher than the official state estimates adopted by the Demographic Estimating Conference. As of July 1, 2017, this difference was 416,800 persons. The Legislative Office of Economic and Demographic Research is continuing its efforts to identify how the differing underlying methodologies contribute to the gap between the two sets of estimates.

# **Florida Demographic Estimating Conference**

## **Tables**

Conference Packet

Florida's household series has been revised from 2001 forward

July 9, 2018

# Florida Resident Population

April 1

Year	Florida Demographic Estimating Conference December 2017			Florida Demographic Estimating Conference July 2018			
	Population	% Change	Change	Population	% Change	Change	
2000	15,982,824	2.58%	402,580	15,982,824	2.58%	402,580	
2001	16,305,100	2.02%	322,276	16,305,100	2.02%	322,276	
2002	16,634,256	2.02%	329,156	16,634,256	2.02%	329,156	
2003	16,979,706	2.08%	345,450	16,979,706	2.08%	345,450	
2004	17,374,824	2.33%	395,118	17,374,824	2.33%	395,118	
2005	17,778,156	2.32%	403,332	17,778,156	2.32%	403,332	
2006	18,154,475	2.12%	376,319	18,154,475	2.12%	376,319	
2007	18,446,768	1.61%	292,293	18,446,768	1.61%	292,293	
2008	18,613,905	0.91%	167,137	18,613,905	0.91%	167,137	
2009	18,687,425	0.39%	73,520	18,687,425	0.39%	73,520	
2010	18,801,332	0.61%	113,907	18,801,332	0.61%	113,907	
2011	18,905,070	0.55%	103,738	18,905,070	0.55%	103,738	
2012	19,074,434	0.90%	169,364	19,074,434	0.90%	169,364	
2013	19,259,543	0.97%	185,109	19,259,543	0.97%	185,109	
2014	19,507,369	1.29%	247,826	19,507,369	1.29%	247,826	
2015	19,815,183	1.58%	307,814	19,815,183	1.58%	307,814	
2016	20,148,654	1.68%	333,471	20,148,654	1.68%	333,471	
2017	20,484,142	1.67%	335,488	20,484,142	1.67%	335,488	
Begins forecast							
2018	20,869,919	1.88%	385,777	20,841,358	1.74%	357,216	
2019	21,199,435	1.58%	329,516	21,156,305	1.51%	314,947	
2020	21,526,547	1.54%	327,112	21,467,364	1.47%	311,059	
2021	21,848,648	1.50%	322,101	21,775,296	1.43%	307,932	
2022	22,164,683	1.45%	316,035	22,079,403	1.40%	304,107	
2023	22,472,887	1.39%	308,204	22,377,549	1.35%	298,146	
2024	22,772,363	1.33%	299,476	22,668,160	1.30%	290,611	
			5-Year Averages				5-Year Averages
2025	23,061,892	1.39%	307,069	22,951,176	1.35%	296,762	
2030	24,357,003	1.10%	259,022	24,234,352	1.09%	256,635	
2035	25,485,553	0.91%	225,710	25,341,383	0.90%	221,406	
2040	26,492,005	0.78%	201,290	26,302,793	0.75%	192,282	
2045	27,423,577	0.69%	186,314	27,164,973	0.65%	172,436	

# Florida Resident Households

April 1

Year	Florida Demographic Estimating Conference December 2017			Florida Demographic Estimating Conference July 2018			
	Households	% Change	Change	Households	% Change	Change	
2000	6,338,075	2.52%	155,729	6,338,075	2.65%	163,703	
2001	6,467,215	2.04%	129,140	6,460,934	1.94%	122,859	
2002	6,599,035	2.04%	131,820	6,586,806	1.95%	125,872	
2003	6,737,370	2.10%	138,335	6,719,399	2.01%	132,593	
2004	6,895,469	2.35%	158,099	6,872,318	2.28%	152,919	
2005	7,056,889	2.34%	161,420	7,029,787	2.29%	157,469	
2006	7,207,645	2.14%	150,756	7,178,486	2.12%	148,699	
2007	7,312,907	1.46%	105,262	7,292,550	1.59%	114,064	
2008	7,368,319	0.76%	55,412	7,354,880	0.85%	62,330	
2009	7,386,570	0.25%	18,251	7,379,964	0.34%	25,084	
2010	7,537,442	2.04%	150,872	7,420,802	0.55%	40,838	
2011	7,461,978	-1.00%	-75,464	7,456,791	0.48%	35,989	
2012	7,537,442	1.01%	75,464	7,525,335	0.92%	68,544	
2013	7,610,153	0.96%	72,711	7,602,417	1.02%	77,082	
2014	7,669,541	0.78%	59,388	7,708,538	1.40%	106,121	
2015	7,785,434	1.51%	115,893	7,840,780	1.72%	132,242	
2016	7,899,268	1.46%	113,834	7,982,938	1.81%	142,158	
2017	8,028,901	1.64%	129,633	8,125,176	1.78%	142,238	
Begins forecast							
2018	8,180,791	1.89%	151,890	8,266,408	1.74%	141,232	
2019	8,312,752	1.61%	131,961	8,412,978	1.77%	146,570	
2020	8,445,507	1.60%	132,755	8,549,162	1.62%	136,184	
2021	8,577,325	1.56%	131,818	8,684,874	1.59%	135,712	
2022	8,707,946	1.52%	130,621	8,819,118	1.55%	134,244	
2023	8,837,036	1.48%	129,090	8,949,695	1.48%	130,577	
2024	8,964,053	1.44%	127,017	9,080,127	1.46%	130,432	
			5-Year Averages				5-Year Averages
2025	9,088,788	1.48%	128,656	9,209,540	1.50%	132,076	
2030	9,664,899	1.24%	115,222	9,817,224	1.29%	121,537	
2035	10,178,996	1.04%	102,819	10,367,333	1.10%	110,022	
2040	10,635,721	0.88%	91,345	10,812,390	0.84%	89,011	
2045	11,038,909	0.75%	80,638	11,176,413	0.66%	72,805	

Note: Household series has been revised from 2001 forward.

<b>Quarterly Data</b>	<u>2010-2</u>	<u>2010-3</u>	<u>2010-4</u>	<u>2011-1</u>	<u>2011-2</u>	<u>2011-3</u>	<u>2011-4</u>	<u>2012-1</u>	<u>2012-2</u>	<u>2012-3</u>	<u>2012-4</u>	<u>2013-1</u>	<u>2013-2</u>	<u>2013-3</u>
<b>Population</b>														
FDEC, December 2017	18,813.9	18,838.3	18,862.7	18,890.2	18,923.4	18,962.8	19,006.3	19,051.6	19,096.7	19,141.2	19,186.6	19,234.6	19,287.0	19,344.3
FDEC, July 2018	18,813.9	18,838.3	18,862.7	18,890.2	18,923.4	18,962.8	19,006.3	19,051.6	19,096.7	19,141.2	19,186.6	19,234.6	19,286.9	19,344.3
<b>Population Growth Rate</b>														
FDEC, December 2017	0.59	0.52	0.52	0.58	0.71	0.83	0.92	0.96	0.95	0.94	0.95	1.01	1.09	1.19
FDEC, July 2018	0.59	0.52	0.52	0.58	0.71	0.83	0.92	0.96	0.95	0.94	0.95	1.01	1.09	1.19
<b>Net Change in Population</b>														
FDEC, December 2017	27.9	24.4	24.4	27.5	33.2	39.4	43.5	45.3	45.1	44.5	45.4	48.1	52.3	57.3
FDEC, July 2018	27.9	24.4	24.4	27.5	33.2	39.4	43.5	45.3	45.1	44.5	45.4	48.0	52.3	57.3
<b>Households</b>														
FDEC, December 2017	7,425.2	7,434.2	7,443.9	7,455.6	7,470.0	7,487.3	7,506.7	7,527.1	7,547.6	7,567.4	7,585.9	7,602.4	7,616.7	7,629.7
FDEC, July 2018	7,425.0	7,433.2	7,441.5	7,451.3	7,463.9	7,479.6	7,497.3	7,515.9	7,534.5	7,552.9	7,571.8	7,591.9	7,614.1	7,638.5
<b>Household Growth Rate</b>														
FDEC, December 2017	0.49	0.48	0.52	0.63	0.78	0.93	1.04	1.09	1.09	1.05	0.98	0.88	0.76	0.68
FDEC, July 2018	0.50	0.44	0.45	0.53	0.68	0.84	0.95	1.00	0.99	0.98	1.00	1.07	1.17	1.29
<b>Net Change in Households</b>														
FDEC, December 2017	9.1	9.0	9.7	11.6	14.4	17.3	19.4	20.4	20.5	19.8	18.5	16.6	14.3	12.9
FDEC, July 2018	9.3	8.2	8.3	9.8	12.6	15.6	17.7	18.6	18.6	18.4	18.9	20.1	22.1	24.4
<b>Household Size</b>														
FDEC, December 2017	2.534	2.534	2.534	2.534	2.533	2.533	2.532	2.531	2.530	2.529	2.529	2.530	2.532	2.535
FDEC, July 2018	2.534	2.534	2.535	2.535	2.535	2.535	2.535	2.535	2.535	2.534	2.534	2.534	2.533	2.532
<b>Household Size Growth Rate</b>														
FDEC, December 2017	0.10	0.04	-0.01	-0.04	-0.07	-0.10	-0.12	-0.13	-0.14	-0.12	-0.03	0.13	0.33	0.51
FDEC, July 2018	0.09	0.08	0.07	0.05	0.02	-0.01	-0.03	-0.04	-0.04	-0.04	-0.05	-0.06	-0.08	-0.09
<b>Net Migration</b>														
FDEC, December 2017	17.2	14.1	14.3	17.2	23.1	29.3	33.7	35.8	35.7	35.3	36.3	39.1	43.5	48.6
FDEC, July 2018	17.2	14.1	14.3	17.2	23.1	29.3	33.7	35.8	35.7	35.3	36.3	39.1	43.5	48.6
<b>Births</b>														
FDEC, December 2017	53.7	53.5	53.3	53.4	53.3	53.3	53.2	53.2	53.2	53.3	53.4	53.5	53.7	53.9
FDEC, July 2018	53.7	53.5	53.3	53.4	53.3	53.3	53.2	53.2	53.2	53.3	53.4	53.5	53.7	53.9
<b>Deaths</b>														
FDEC, December 2017	43.1	43.2	43.2	43.1	43.1	43.3	43.4	43.6	43.8	44.1	44.3	44.6	44.9	45.1
FDEC, July 2018	43.1	43.2	43.2	43.1	43.1	43.2	43.4	43.6	43.8	44.1	44.3	44.6	44.9	45.1
<b>Net Natural Increase</b>														
FDEC, December 2017	10.6	10.3	10.0	10.3	10.2	10.0	9.8	9.5	9.3	9.2	9.0	8.9	8.8	8.7
FDEC, July 2018	10.6	10.3	10.0	10.3	10.2	10.0	9.9	9.5	9.3	9.2	9.0	8.9	8.8	8.8

<b>Quarterly Data</b>	<u>2013-4</u>	<u>2014-1</u>	<u>2014-2</u>	<u>2014-3</u>	<u>2014-4</u>	<u>2015-1</u>	<u>2015-2</u>	<u>2015-3</u>	<u>2015-4</u>	<u>2016-1</u>	<u>2016-2</u>	<u>2016-3</u>	<u>2016-4</u>	<u>2017-1</u>
<b>Population</b>														
FDEC, December 2017	19,406.4	19,473.0	19,543.7	19,617.9	19,695.2	19,774.8	19,856.3	19,939.0	20,022.5	20,106.6	20,190.7	20,274.7	20,358.6	20,442.3
FDEC, July 2018	19,406.4	19,473.0	19,543.7	19,618.0	19,695.3	19,774.9	19,856.2	19,938.7	20,022.2	20,106.4	20,191.1	20,275.8	20,360.0	20,443.0
<b>Population Growth Rate</b>														
FDEC, December 2017	1.29	1.38	1.46	1.53	1.58	1.63	1.66	1.68	1.69	1.69	1.68	1.68	1.67	1.66
FDEC, July 2018	1.29	1.38	1.46	1.53	1.59	1.63	1.65	1.67	1.69	1.69	1.70	1.69	1.67	1.64
<b>Net Change in Population</b>														
FDEC, December 2017	62.1	66.6	70.7	74.3	77.3	79.6	81.4	82.7	83.6	84.0	84.1	84.0	83.9	83.7
FDEC, July 2018	62.1	66.6	70.7	74.3	77.3	79.6	81.3	82.5	83.5	84.2	84.7	84.7	84.2	83.0
<b>Households</b>														
FDEC, December 2017	7,643.4	7,660.1	7,681.9	7,708.8	7,738.9	7,769.9	7,800.0	7,828.6	7,856.5	7,884.8	7,914.7	7,946.2	7,978.9	8,012.2
FDEC, July 2018	7,665.1	7,693.7	7,724.2	7,756.1	7,789.4	7,823.5	7,858.3	7,893.6	7,929.1	7,965.0	8,000.9	8,036.9	8,072.6	8,107.8
<b>Household Growth Rate</b>														
FDEC, December 2017	0.72	0.88	1.14	1.41	1.57	1.62	1.56	1.47	1.43	1.45	1.52	1.60	1.66	1.68
FDEC, July 2018	1.40	1.50	1.59	1.67	1.72	1.77	1.79	1.81	1.82	1.82	1.82	1.81	1.79	1.75
<b>Net Change in Households</b>														
FDEC, December 2017	13.7	16.8	21.8	26.9	30.1	31.1	30.1	28.6	27.9	28.4	29.8	31.5	32.7	33.3
FDEC, July 2018	26.6	28.6	30.4	32.0	33.2	34.2	34.8	35.2	35.6	35.8	36.0	35.9	35.7	35.2
<b>Household Size</b>														
FDEC, December 2017	2.539	2.542	2.544	2.545	2.545	2.545	2.546	2.547	2.549	2.550	2.551	2.552	2.552	2.551
FDEC, July 2018	2.532	2.531	2.530	2.529	2.528	2.528	2.527	2.526	2.525	2.524	2.524	2.523	2.522	2.521
<b>Household Size Growth Rate</b>														
FDEC, December 2017	0.57	0.50	0.31	0.12	0.01	0.01	0.10	0.20	0.25	0.23	0.16	0.07	0.01	-0.02
FDEC, July 2018	-0.11	-0.12	-0.13	-0.13	-0.14	-0.14	-0.13	-0.13	-0.13	-0.12	-0.12	-0.12	-0.11	-0.11
<b>Net Migration</b>														
FDEC, December 2017	53.4	57.8	61.9	65.6	68.7	71.1	73.1	74.6	75.7	76.7	77.1	77.2	77.3	77.3
FDEC, July 2018	53.4	57.8	61.9	65.6	68.7	71.1	72.9	74.4	75.6	76.7	77.5	78.0	77.9	77.4
<b>Births</b>														
FDEC, December 2017	54.1	54.5	54.8	55.1	55.4	55.8	56.0	56.2	56.3	56.1	56.2	56.3	56.5	56.7
FDEC, July 2018	54.1	54.5	54.8	55.1	55.4	55.8	56.0	56.2	56.3	56.3	56.3	56.3	56.2	55.9
<b>Deaths</b>														
FDEC, December 2017	45.4	45.7	46.1	46.4	46.8	47.3	47.7	48.1	48.4	48.8	49.1	49.5	49.9	50.3
FDEC, July 2018	45.4	45.7	46.1	46.4	46.8	47.3	47.7	48.1	48.4	48.8	49.1	49.5	49.9	50.3
<b>Net Natural Increase</b>														
FDEC, December 2017	8.7	8.8	8.8	8.7	8.6	8.5	8.3	8.1	7.8	7.3	7.1	6.8	6.6	6.5
FDEC, July 2018	8.7	8.8	8.8	8.7	8.6	8.5	8.3	8.1	7.8	7.5	7.2	6.8	6.3	5.6

<b>Quarterly Data</b>	<u>2017-2</u>	<u>2017-3</u>	<u>2017-4</u>	<u>2018-1</u>	<u>2018-2</u>	<u>2018-3</u>	<u>2018-4</u>	<u>2019-1</u>	<u>2019-2</u>	<u>2019-3</u>	<u>2019-4</u>	<u>2020-1</u>	<u>2020-2</u>	<u>2020-3</u>
<b>Population</b>														
FDEC, December 2017	20,525.9	20,609.2	20,713.2	20,822.8	20,913.8	20,999.0	21,080.2	21,159.8	21,239.8	21,321.1	21,403.2	21,485.5	21,567.3	21,648.3
FDEC, July 2018	20,525.3	20,607.0	20,701.0	20,797.9	20,882.6	20,963.4	21,041.4	21,118.1	21,194.9	21,272.4	21,350.4	21,428.4	21,506.1	21,583.4
<b>Population Growth Rate</b>														
FDEC, December 2017	1.64	1.63	2.03	2.13	1.76	1.64	1.56	1.52	1.52	1.54	1.55	1.55	1.53	1.51
FDEC, July 2018	1.62	1.60	1.84	1.89	1.64	1.56	1.50	1.47	1.46	1.47	1.47	1.47	1.46	1.45
<b>Net Change in Population</b>														
FDEC, December 2017	83.5	83.4	104.0	109.5	91.0	85.2	81.2	79.6	80.0	81.3	82.1	82.3	81.8	81.1
FDEC, July 2018	82.3	81.7	93.9	96.9	84.7	80.8	78.0	76.7	76.8	77.5	78.0	78.0	77.7	77.3
<b>Households</b>														
FDEC, December 2017	8,045.4	8,078.3	8,119.2	8,162.2	8,198.2	8,232.1	8,264.7	8,296.7	8,329.1	8,362.0	8,395.3	8,428.8	8,462.1	8,495.2
FDEC, July 2018	8,142.2	8,176.0	8,211.7	8,248.5	8,284.7	8,321.6	8,358.5	8,394.9	8,430.5	8,465.0	8,498.8	8,532.4	8,566.0	8,599.9
<b>Household Growth Rate</b>														
FDEC, December 2017	1.67	1.65	2.04	2.14	1.77	1.67	1.59	1.56	1.57	1.59	1.60	1.60	1.59	1.57
FDEC, July 2018	1.71	1.67	1.76	1.81	1.77	1.79	1.79	1.76	1.70	1.65	1.61	1.59	1.59	1.59
<b>Net Change in Households</b>														
FDEC, December 2017	33.2	32.9	40.9	43.0	36.0	33.9	32.6	32.1	32.3	32.9	33.3	33.5	33.3	33.1
FDEC, July 2018	34.5	33.8	35.7	36.8	36.2	36.8	36.9	36.5	35.5	34.5	33.8	33.6	33.6	33.8
<b>Household Size</b>														
FDEC, December 2017	2.551	2.551	2.551	2.551	2.551	2.551	2.551	2.550	2.550	2.550	2.549	2.549	2.549	2.548
FDEC, July 2018	2.521	2.520	2.521	2.521	2.521	2.519	2.517	2.516	2.514	2.513	2.512	2.511	2.511	2.510
<b>Household Size Growth Rate</b>														
FDEC, December 2017	-0.02	-0.01	0.00	-0.01	-0.01	-0.03	-0.03	-0.04	-0.05	-0.05	-0.05	-0.06	-0.06	-0.06
FDEC, July 2018	-0.09	-0.07	0.08	0.08	-0.13	-0.23	-0.29	-0.28	-0.24	-0.17	-0.13	-0.12	-0.12	-0.14
<b>Net Migration</b>														
FDEC, December 2017	77.2	77.2	97.9	103.5	85.2	79.4	75.4	73.8	74.3	75.6	76.5	76.6	76.2	75.6
FDEC, July 2018	77.1	76.8	89.4	92.5	80.5	76.7	74.0	72.7	72.9	73.6	74.1	74.1	73.8	73.4
<b>Births</b>														
FDEC, December 2017	56.9	57.1	57.4	57.6	57.8	58.1	58.3	58.6	58.8	59.0	59.3	59.5	59.7	59.9
FDEC, July 2018	55.8	55.9	56.0	56.2	56.4	56.6	56.9	57.2	57.5	57.8	58.1	58.4	58.7	59.0
<b>Deaths</b>														
FDEC, December 2017	50.6	51.0	51.3	51.6	51.9	52.2	52.5	52.8	53.1	53.3	53.6	53.8	54.1	54.4
FDEC, July 2018	50.6	51.0	51.4	51.8	52.2	52.6	52.9	53.2	53.5	53.9	54.2	54.5	54.8	55.1
<b>Net Natural Increase</b>														
FDEC, December 2017	6.3	6.2	6.1	6.0	5.9	5.8	5.8	5.8	5.7	5.7	5.7	5.6	5.6	5.5
FDEC, July 2018	5.2	4.9	4.6	4.4	4.2	4.1	4.0	4.0	3.9	3.9	3.9	3.9	3.9	3.9

<b>Quarterly Data</b>	<u>2020-4</u>	<u>2021-1</u>	<u>2021-2</u>	<u>2021-3</u>	<u>2021-4</u>	<u>2022-1</u>	<u>2022-2</u>	<u>2022-3</u>	<u>2022-4</u>	<u>2023-1</u>	<u>2023-2</u>	<u>2023-3</u>	<u>2023-4</u>	<u>2024-1</u>
<b>Population</b>														
FDEC, December 2017	21,728.8	21,808.8	21,888.4	21,967.8	22,046.9	22,125.5	22,203.6	22,281.2	22,358.2	22,434.8	22,510.7	22,586.2	22,661.1	22,735.4
FDEC, July 2018	21,660.4	21,737.0	21,813.5	21,889.8	21,965.9	22,041.6	22,117.0	22,191.9	22,266.5	22,340.6	22,414.3	22,487.4	22,560.0	22,632.2
<b>Population Growth Rate</b>														
FDEC, December 2017	1.49	1.48	1.47	1.46	1.45	1.43	1.42	1.41	1.39	1.38	1.36	1.35	1.33	1.32
FDEC, July 2018	1.43	1.42	1.41	1.41	1.40	1.39	1.37	1.36	1.35	1.34	1.33	1.31	1.30	1.29
<b>Net Change in Population</b>														
FDEC, December 2017	80.4	80.0	79.7	79.4	79.1	78.6	78.1	77.6	77.0	76.5	76.0	75.4	74.9	74.3
FDEC, July 2018	76.9	76.7	76.5	76.3	76.1	75.8	75.4	75.0	74.5	74.1	73.7	73.1	72.6	72.2
<b>Households</b>														
FDEC, December 2017	8,528.1	8,560.9	8,593.7	8,626.4	8,659.1	8,691.7	8,724.2	8,756.6	8,788.8	8,821.0	8,853.0	8,884.9	8,916.7	8,948.3
FDEC, July 2018	8,633.9	8,667.9	8,701.8	8,735.6	8,769.2	8,802.5	8,835.6	8,868.4	8,901.0	8,933.5	8,965.9	8,998.6	9,031.2	9,063.8
<b>Household Growth Rate</b>														
FDEC, December 2017	1.56	1.55	1.54	1.53	1.52	1.51	1.50	1.49	1.48	1.47	1.46	1.45	1.44	1.43
FDEC, July 2018	1.59	1.59	1.58	1.56	1.55	1.53	1.51	1.49	1.48	1.47	1.46	1.46	1.46	1.45
<b>Net Change in Households</b>														
FDEC, December 2017	32.9	32.8	32.7	32.7	32.7	32.6	32.5	32.4	32.3	32.2	32.0	31.9	31.8	31.6
FDEC, July 2018	34.0	34.0	33.9	33.8	33.6	33.3	33.1	32.8	32.6	32.5	32.5	32.6	32.7	32.6
<b>Household Size</b>														
FDEC, December 2017	2.548	2.547	2.547	2.547	2.546	2.546	2.545	2.545	2.544	2.543	2.543	2.542	2.541	2.541
FDEC, July 2018	2.509	2.508	2.507	2.506	2.505	2.504	2.503	2.502	2.502	2.501	2.500	2.499	2.498	2.497
<b>Household Size Growth Rate</b>														
FDEC, December 2017	-0.06	-0.07	-0.07	-0.07	-0.08	-0.08	-0.08	-0.09	-0.09	-0.09	-0.10	-0.10	-0.10	-0.11
FDEC, July 2018	-0.15	-0.16	-0.16	-0.15	-0.15	-0.14	-0.13	-0.13	-0.13	-0.13	-0.13	-0.15	-0.16	-0.16
<b>Net Migration</b>														
FDEC, December 2017	75.0	74.7	74.5	74.3	74.1	73.9	73.5	73.1	72.7	72.3	71.9	71.5	71.1	70.6
FDEC, July 2018	73.1	73.0	72.9	72.8	72.7	72.5	72.3	72.0	71.7	71.4	71.1	70.7	70.3	70.1
<b>Births</b>														
FDEC, December 2017	60.1	60.3	60.5	60.7	60.8	61.0	61.1	61.3	61.4	61.6	61.8	61.9	62.1	62.2
FDEC, July 2018	59.2	59.4	59.6	59.8	60.0	60.2	60.3	60.5	60.7	60.9	61.0	61.2	61.3	61.4
<b>Deaths</b>														
FDEC, December 2017	54.7	55.0	55.3	55.6	55.9	56.2	56.5	56.8	57.1	57.4	57.7	58.0	58.3	58.5
FDEC, July 2018	55.4	55.7	56.0	56.3	56.6	56.9	57.2	57.5	57.8	58.1	58.4	58.7	59.0	59.4
<b>Net Natural Increase</b>														
FDEC, December 2017	5.4	5.3	5.2	5.1	5.0	4.8	4.6	4.5	4.4	4.2	4.1	3.9	3.8	3.7
FDEC, July 2018	3.8	3.7	3.6	3.5	3.4	3.2	3.1	3.0	2.9	2.7	2.6	2.4	2.2	2.1



<b>Quarterly Data</b>	<u>2024-2</u>	<u>2024-3</u>	<u>2024-4</u>	<u>2025-1</u>	<u>2025-2</u>	<u>2025-3</u>	<u>2025-4</u>	<u>2026-1</u>	<u>2026-2</u>	<u>2026-3</u>	<u>2026-4</u>	<u>2027-1</u>	<u>2027-2</u>
<b>Population</b>													
FDEC, December 2017	22,809.0	22,882.1	22,954.5	23,026.2	23,097.3	23,167.7	23,237.4	23,306.4	23,374.7	23,442.3	23,509.3	23,575.5	23,641.1
FDEC, July 2018	22,703.9	22,775.1	22,845.9	22,916.2	22,985.9	23,055.1	23,123.7	23,191.8	23,259.2	23,325.9	23,392.1	23,457.7	23,522.7
<b>Population Growth Rate</b>													
FDEC, December 2017	1.30	1.29	1.27	1.26	1.24	1.22	1.21	1.19	1.18	1.16	1.15	1.13	1.12
FDEC, July 2018	1.27	1.26	1.25	1.24	1.22	1.21	1.20	1.18	1.17	1.15	1.14	1.13	1.11
<b>Net Change in Population</b>													
FDEC, December 2017	73.7	73.0	72.4	71.7	71.1	70.4	69.7	69.0	68.3	67.6	66.9	66.2	65.6
FDEC, July 2018	71.7	71.2	70.8	70.3	69.7	69.2	68.6	68.0	67.4	66.8	66.2	65.6	65.0
<b>Households</b>													
FDEC, December 2017	8,979.8	9,011.1	9,042.3	9,073.3	9,104.2	9,134.9	9,165.4	9,195.7	9,225.8	9,255.7	9,285.4	9,314.9	9,344.1
FDEC, July 2018	9,096.4	9,128.8	9,161.2	9,193.4	9,225.6	9,257.6	9,289.5	9,321.1	9,352.5	9,383.6	9,414.5	9,445.2	9,475.7
<b>Household Growth Rate</b>													
FDEC, December 2017	1.41	1.40	1.39	1.38	1.37	1.35	1.34	1.33	1.32	1.30	1.29	1.28	1.26
FDEC, July 2018	1.44	1.43	1.43	1.42	1.41	1.40	1.38	1.37	1.35	1.34	1.32	1.31	1.30
<b>Net Change in Households</b>													
FDEC, December 2017	31.5	31.3	31.2	31.0	30.9	30.7	30.5	30.3	30.1	29.9	29.7	29.5	29.3
FDEC, July 2018	32.5	32.5	32.4	32.3	32.1	32.0	31.8	31.6	31.4	31.1	30.9	30.7	30.5
<b>Household Size</b>													
FDEC, December 2017	2.540	2.539	2.539	2.538	2.537	2.536	2.535	2.535	2.534	2.533	2.532	2.531	2.530
FDEC, July 2018	2.496	2.495	2.494	2.493	2.492	2.490	2.489	2.488	2.487	2.486	2.485	2.484	2.482
<b>Household Size Growth Rate</b>													
FDEC, December 2017	-0.11	-0.11	-0.12	-0.12	-0.13	-0.13	-0.13	-0.13	-0.14	-0.14	-0.14	-0.14	-0.14
FDEC, July 2018	-0.17	-0.17	-0.17	-0.18	-0.18	-0.18	-0.18	-0.18	-0.18	-0.18	-0.18	-0.18	-0.18
<b>Net Migration</b>													
FDEC, December 2017	70.1	69.6	69.1	68.6	68.1	67.6	67.1	66.6	66.1	65.6	65.1	64.7	64.2
FDEC, July 2018	69.8	69.5	69.2	68.9	68.6	68.3	67.9	67.6	67.2	66.8	66.5	66.2	65.9
<b>Births</b>													
FDEC, December 2017	62.4	62.5	62.7	62.8	62.9	63.1	63.2	63.3	63.5	63.6	63.7	63.8	63.9
FDEC, July 2018	61.6	61.7	61.8	61.9	62.1	62.2	62.3	62.4	62.5	62.6	62.7	62.8	62.8
<b>Deaths</b>													
FDEC, December 2017	58.8	59.1	59.4	59.7	59.9	60.3	60.6	60.9	61.2	61.6	61.9	62.2	62.5
FDEC, July 2018	59.7	60.0	60.3	60.6	60.9	61.2	61.6	62.0	62.3	62.7	63.0	63.4	63.7
<b>Net Natural Increase</b>													
FDEC, December 2017	3.5	3.4	3.3	3.1	3.0	2.8	2.6	2.4	2.2	2.0	1.8	1.6	1.3
FDEC, July 2018	1.9	1.7	1.5	1.4	1.2	0.9	0.7	0.4	0.2	-0.1	-0.3	-0.6	-0.9

<b>Quarterly Data</b>	<u>2027-3</u>	<u>2027-4</u>	<u>2028-1</u>	<u>2028-2</u>
<b>Population</b>				
FDEC, December 2017	23,706.0	23,770.4	23,834.2	23,897.5
FDEC, July 2018	23,587.2	23,651.2	23,714.6	23,777.5
<b>Population Growth Rate</b>				
FDEC, December 2017	1.10	1.09	1.08	1.07
FDEC, July 2018	1.10	1.09	1.08	1.07
<b>Net Change in Population</b>				
FDEC, December 2017	65.0	64.4	63.8	63.3
FDEC, July 2018	64.5	64.0	63.4	62.9
<b>Households</b>				
FDEC, December 2017	9,373.2	9,402.1	9,430.8	9,459.2
FDEC, July 2018	9,506.1	9,536.3	9,566.4	9,596.3
<b>Household Growth Rate</b>				
FDEC, December 2017	1.25	1.24	1.23	1.21
FDEC, July 2018	1.29	1.28	1.27	1.26
<b>Net Change in Households</b>				
FDEC, December 2017	29.1	28.9	28.7	28.5
FDEC, July 2018	30.4	30.2	30.1	29.9
<b>Household Size</b>				
FDEC, December 2017	2.529	2.528	2.527	2.526
FDEC, July 2018	2.481	2.480	2.479	2.478
<b>Household Size Growth Rate</b>				
FDEC, December 2017	-0.15	-0.15	-0.15	-0.14
FDEC, July 2018	-0.19	-0.19	-0.19	-0.19
<b>Net Migration</b>				
FDEC, December 2017	63.8	63.4	63.1	62.8
FDEC, July 2018	65.6	65.4	65.1	64.8
<b>Births</b>				
FDEC, December 2017	64.0	64.1	64.2	64.3
FDEC, July 2018	62.9	63.0	63.1	63.1
<b>Deaths</b>				
FDEC, December 2017	62.9	63.2	63.5	63.8
FDEC, July 2018	64.1	64.4	64.7	65.1
<b>Net Natural Increase</b>				
FDEC, December 2017	1.1	0.9	0.7	0.5
FDEC, July 2018	-1.1	-1.4	-1.7	-1.9

Fiscal Year Data	<u>2000-01</u>	<u>2001-02</u>	<u>2002-03</u>	<u>2003-04</u>	<u>2004-05</u>	<u>2005-06</u>	<u>2006-07</u>	<u>2007-08</u>	<u>2008-09</u>	<u>2009-10</u>	<u>2010-11</u>	<u>2011-12</u>	<u>2012-13</u>	<u>2013-14</u>	<u>2014-15</u>
<b>Population</b>															
FDEC,December 2017	16,228.0	16,551.2	16,892.0	17,273.8	17,677.3	18,062.2	18,378.2	18,578.9	18,671.4	18,770.4	18,878.6	19,029.3	19,212.3	19,441.8	19,736.1
FDEC, July 2018	16,228.0	16,551.2	16,892.0	17,273.8	17,677.3	18,062.2	18,378.2	18,578.9	18,671.4	18,770.4	18,878.6	19,029.3	19,212.3	19,441.8	19,736.1
<b>Growth Rate</b>															
FDEC,December 2017	2.18	1.99	2.06	2.26	2.34	2.18	1.75	1.09	0.50	0.53	0.58	0.80	0.96	1.19	1.51
FDEC, July 2018	2.18	1.99	2.06	2.26	2.34	2.18	1.75	1.09	0.50	0.53	0.58	0.80	0.96	1.19	1.51
<b>Net Change in Population</b>															
FDEC,December 2017	346.4	323.2	340.9	381.8	403.5	384.9	316.0	200.7	92.5	99.0	108.2	150.7	183.0	229.5	294.2
FDEC, July 2018	346.4	323.2	340.9	381.8	403.5	384.9	316.0	200.7	92.5	99.0	108.2	150.7	183.0	229.5	294.3
<b>Households</b>															
FDEC,December 2017	6,436.3	6,565.6	6,702.3	6,855.2	7,016.6	7,171.1	7,289.0	7,356.8	7,382.6	7,411.4	7,450.9	7,517.2	7,593.1	7,653.8	7,754.4
FDEC, July 2018	6,431.8	6,554.7	6,685.7	6,833.2	6,990.5	7,142.1	7,266.1	7,341.9	7,374.2	7,410.1	7,447.5	7,506.8	7,582.7	7,680.4	7,806.8
<b>Growth Rate</b>															
FDEC,December 2017	2.21	2.01	2.08	2.28	2.36	2.20	1.64	0.93	0.35	0.39	0.53	0.89	1.01	0.80	1.31
FDEC, July 2018	2.14	1.91	2.00	2.21	2.30	2.17	1.74	1.04	0.44	0.49	0.50	0.80	1.01	1.29	1.65
<b>Net Change in Households</b>															
FDEC,December 2017	139.0	129.2	136.7	152.9	161.5	154.5	117.9	67.8	25.8	28.8	39.5	66.3	75.9	60.7	100.6
FDEC, July 2018	134.6	122.9	131.0	147.5	157.3	151.7	124.0	75.7	32.3	35.9	37.4	59.3	75.9	97.7	126.4
<b>Household Size</b>															
FDEC,December 2017	2.521	2.521	2.520	2.520	2.519	2.519	2.521	2.525	2.529	2.533	2.534	2.531	2.530	2.540	2.545
FDEC, July 2018	2.523	2.525	2.527	2.528	2.529	2.529	2.529	2.531	2.532	2.533	2.535	2.535	2.534	2.531	2.528
<b>Growth Rate</b>															
FDEC,December 2017	-0.03	-0.02	-0.02	-0.02	-0.02	-0.02	0.10	0.16	0.15	0.14	0.04	-0.09	-0.05	0.39	0.20
FDEC, July 2018	0.04	0.08	0.06	0.05	0.03	0.01	0.01	0.05	0.06	0.04	0.07	0.00	-0.05	-0.09	-0.13
<b>Net Migration</b>															
FDEC,December 2017	306.0	285.5	300.4	335.0	351.1	322.9	245.0	133.7	36.3	52.7	67.4	112.0	147.0	194.5	260.1
FDEC, July 2018	306.0	285.5	300.4	335.0	351.1	322.9	245.0	133.7	36.3	52.7	67.4	112.0	147.0	194.5	260.1
<b>Births</b>															
FDEC,December 2017	205.4	205.4	208.5	215.0	221.8	232.1	239.3	236.0	226.4	217.4	213.5	212.9	213.8	217.4	222.3
FDEC, July 2018	205.4	205.4	208.5	215.0	221.8	232.1	239.3	236.0	226.4	217.4	213.5	212.9	213.8	217.4	222.3
<b>Deaths</b>															
FDEC,December 2017	165.0	167.7	168.1	168.3	169.4	170.1	168.3	169.0	170.2	171.1	172.7	174.1	177.8	182.4	188.2
FDEC, July 2018	165.0	167.7	168.1	168.3	169.4	170.1	168.3	169.0	170.2	171.1	172.7	174.1	177.8	182.4	188.2
<b>Net Natural Increase</b>															
FDEC,December 2017	40.3	37.7	40.4	46.7	52.4	62.0	71.0	67.0	56.2	46.3	40.8	38.8	36.0	35.0	34.1
FDEC, July 2018	40.3	37.7	40.4	46.7	52.4	62.0	71.0	67.0	56.2	46.3	40.8	38.8	36.0	35.0	34.1

Fiscal Year Data	<u>2015-16</u>	<u>2016-17</u>	<u>2017-18</u>	<u>2018-19</u>	<u>2019-20</u>	<u>2020-21</u>	<u>2021-22</u>	<u>2022-23</u>	<u>2023-24</u>	<u>2024-25</u>	<u>2025-26</u>	<u>2026-27</u>	<u>2027-28</u>
<b>Population</b>													
FDEC,December 2017	20,064.7	20,400.4	20,764.8	21,119.7	21,444.2	21,768.6	22,085.9	22,396.2	22,697.9	22,990.0	23,271.5	23,542.0	23,802.0
FDEC, July 2018	20,064.6	20,401.0	20,747.1	21,079.4	21,389.3	21,698.6	22,003.6	22,303.3	22,595.9	22,880.8	23,157.4	23,424.6	23,682.6
<b>Growth Rate</b>													
FDEC,December 2017	1.67	1.67	1.79	1.71	1.54	1.51	1.46	1.40	1.35	1.29	1.22	1.16	1.10
FDEC, July 2018	1.66	1.68	1.70	1.60	1.47	1.45	1.41	1.36	1.31	1.26	1.21	1.15	1.10
<b>Net Change in Population</b>													
FDEC,December 2017	328.6	335.7	364.4	354.9	324.5	324.3	317.4	310.3	301.7	292.1	281.5	270.5	260.0
FDEC, July 2018	328.5	336.5	346.1	332.3	309.9	309.3	305.0	299.8	292.6	284.9	276.7	267.1	258.0
<b>Households</b>													
FDEC,December 2017	7,871.1	7,995.7	8,139.5	8,280.7	8,412.1	8,544.5	8,675.3	8,804.9	8,932.4	9,057.7	9,180.4	9,300.0	9,416.3
FDEC, July 2018	7,947.2	8,089.9	8,230.2	8,376.4	8,515.6	8,650.9	8,785.7	8,917.2	9,047.5	9,177.3	9,305.2	9,429.7	9,551.3
<b>Growth Rate</b>													
FDEC,December 2017	1.51	1.58	1.80	1.73	1.59	1.57	1.53	1.49	1.45	1.40	1.35	1.30	1.25
FDEC, July 2018	1.80	1.80	1.73	1.78	1.66	1.59	1.56	1.50	1.46	1.43	1.39	1.34	1.29
<b>Net Change in Households</b>													
FDEC,December 2017	116.7	124.6	143.8	141.2	131.4	132.4	130.8	129.5	127.5	125.3	122.7	119.6	116.3
FDEC, July 2018	140.3	142.7	140.4	146.1	139.2	135.3	134.9	131.5	130.3	129.8	127.9	124.6	121.6
<b>Household Size</b>													
FDEC,December 2017	2.549	2.551	2.551	2.550	2.549	2.548	2.546	2.544	2.541	2.538	2.535	2.531	2.528
FDEC, July 2018	2.525	2.522	2.521	2.517	2.512	2.508	2.504	2.501	2.497	2.493	2.489	2.484	2.480
<b>Growth Rate</b>													
FDEC,December 2017	0.16	0.09	-0.01	-0.02	-0.05	-0.06	-0.07	-0.09	-0.10	-0.11	-0.13	-0.14	-0.14
FDEC, July 2018	-0.13	-0.12	-0.04	-0.17	-0.19	-0.14	-0.15	-0.13	-0.15	-0.17	-0.18	-0.18	-0.19
<b>Net Migration</b>													
FDEC,December 2017	298.3	309.5	340.3	331.8	302.0	302.9	297.9	293.2	286.8	279.3	271.4	263.8	256.7
FDEC, July 2018	297.9	312.5	328.1	316.4	294.3	294.3	291.8	288.6	283.9	279.2	274.4	269.0	264.2
<b>Births</b>													
FDEC,December 2017	224.7	226.4	229.9	233.8	237.5	240.8	243.6	246.1	248.5	250.9	253.1	255.0	256.6
FDEC, July 2018	225.0	224.2	224.4	228.1	233.0	237.2	240.3	243.1	245.4	247.5	249.3	250.9	252.1
<b>Deaths</b>													
FDEC,December 2017	194.4	200.2	205.8	210.6	214.9	219.3	224.2	229.0	233.6	238.1	243.0	248.2	253.3
FDEC, July 2018	194.4	200.3	206.5	212.2	217.4	222.3	227.1	231.9	236.8	241.8	247.1	252.7	258.3
<b>Net Natural Increase</b>													
FDEC,December 2017	30.3	26.2	24.1	23.1	22.6	21.5	19.5	17.1	14.9	12.8	10.1	6.7	3.3
FDEC, July 2018	30.6	23.9	18.0	15.9	15.6	14.9	13.2	11.2	8.6	5.7	2.3	-1.9	-6.1

# **Florida Demographic Estimating Conference**

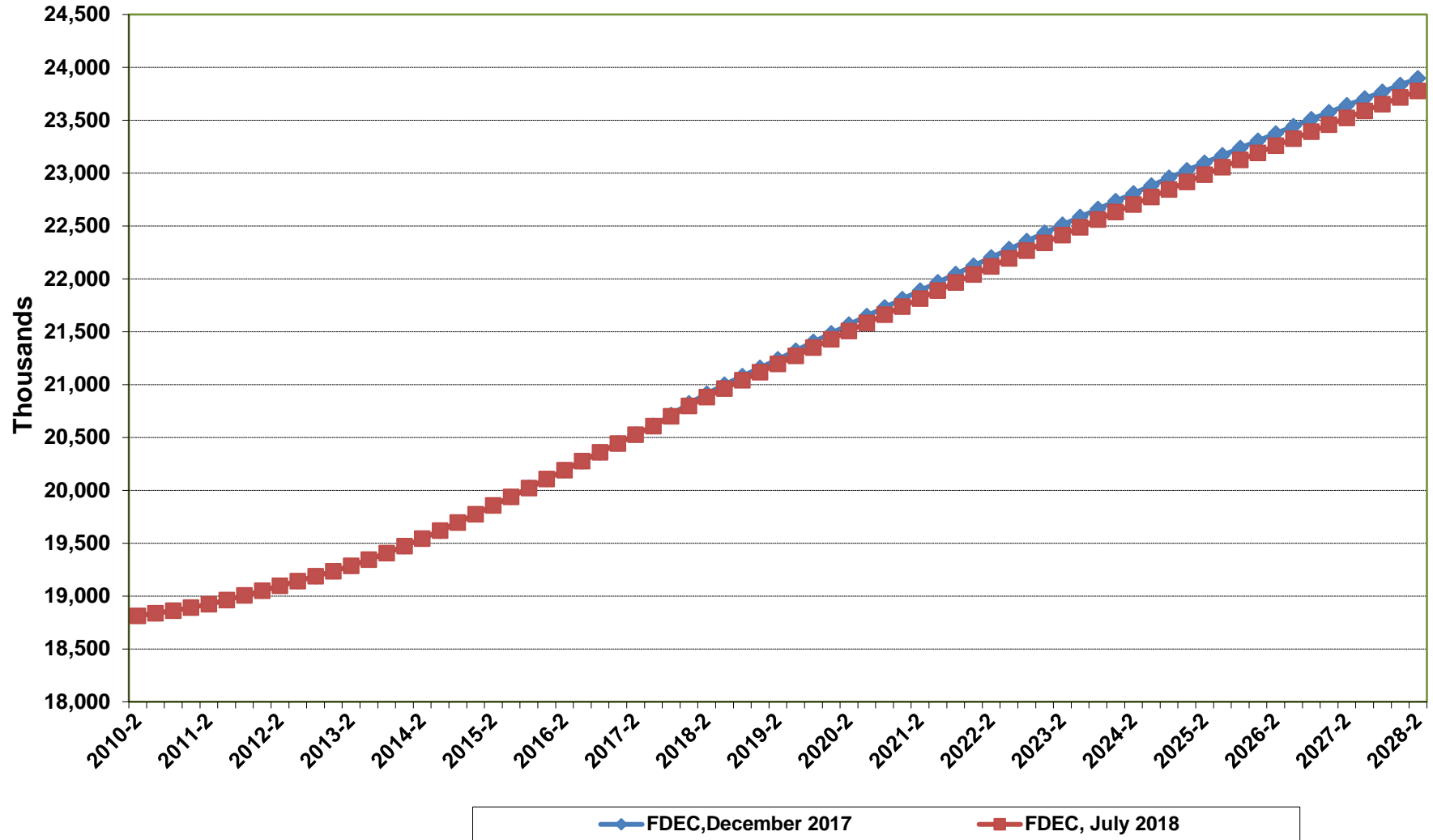
## **Charts**

Conference Packet

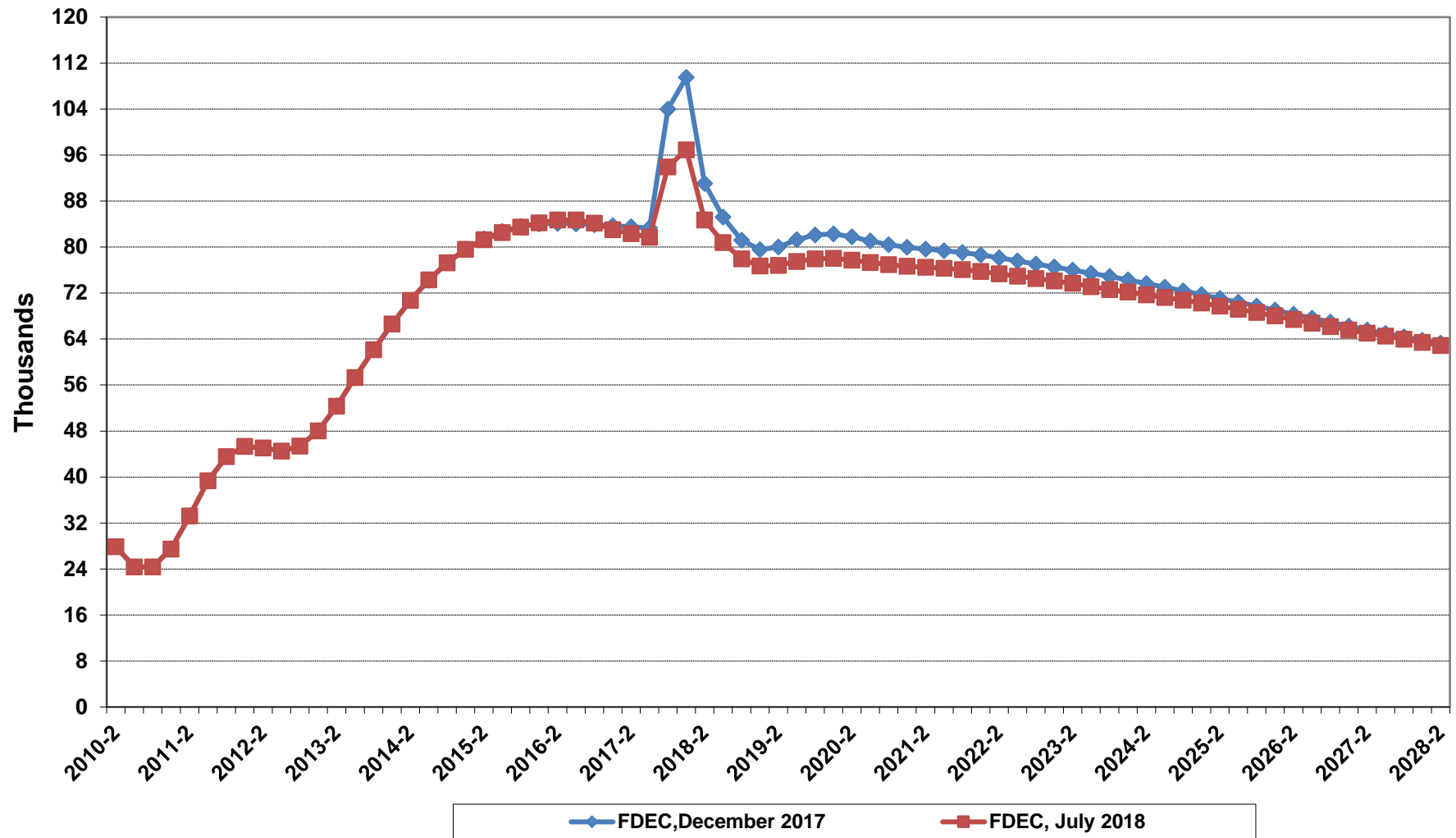
Florida's household series has been revised from 2001 forward

July 9, 2018

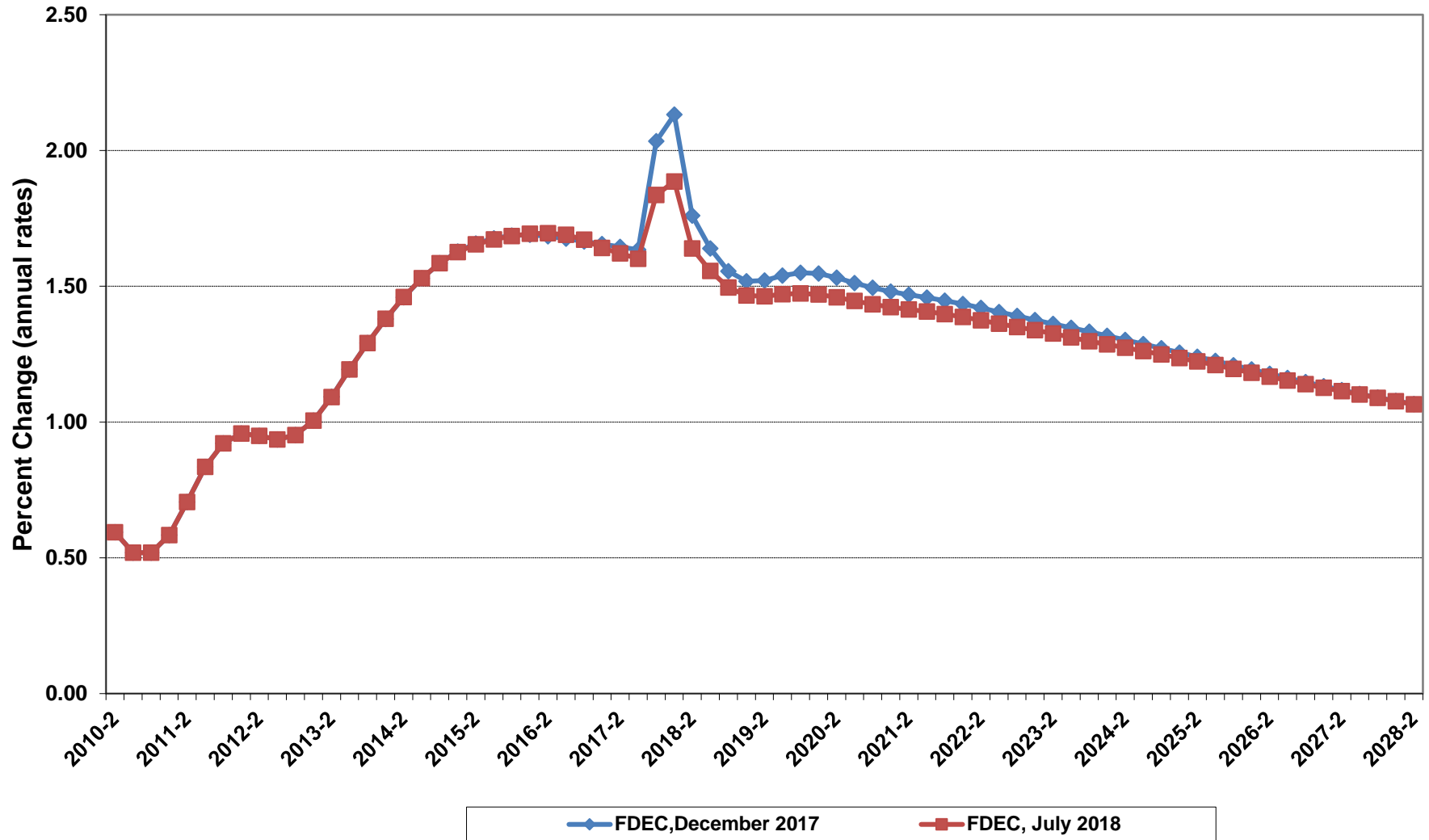
# Florida Resident Population



# Net Change In Florida Resident Population

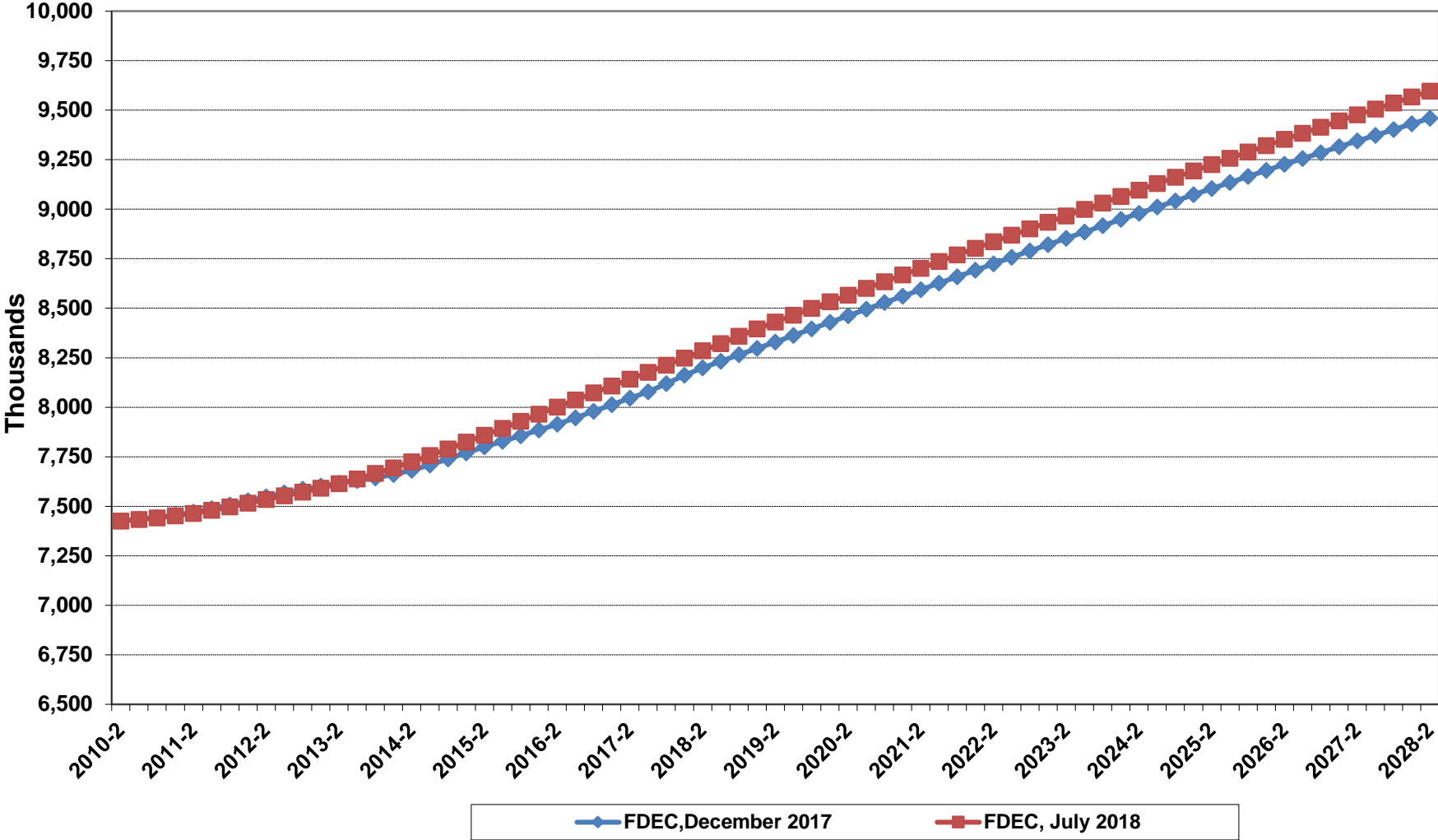


# Growth In Florida Resident Population

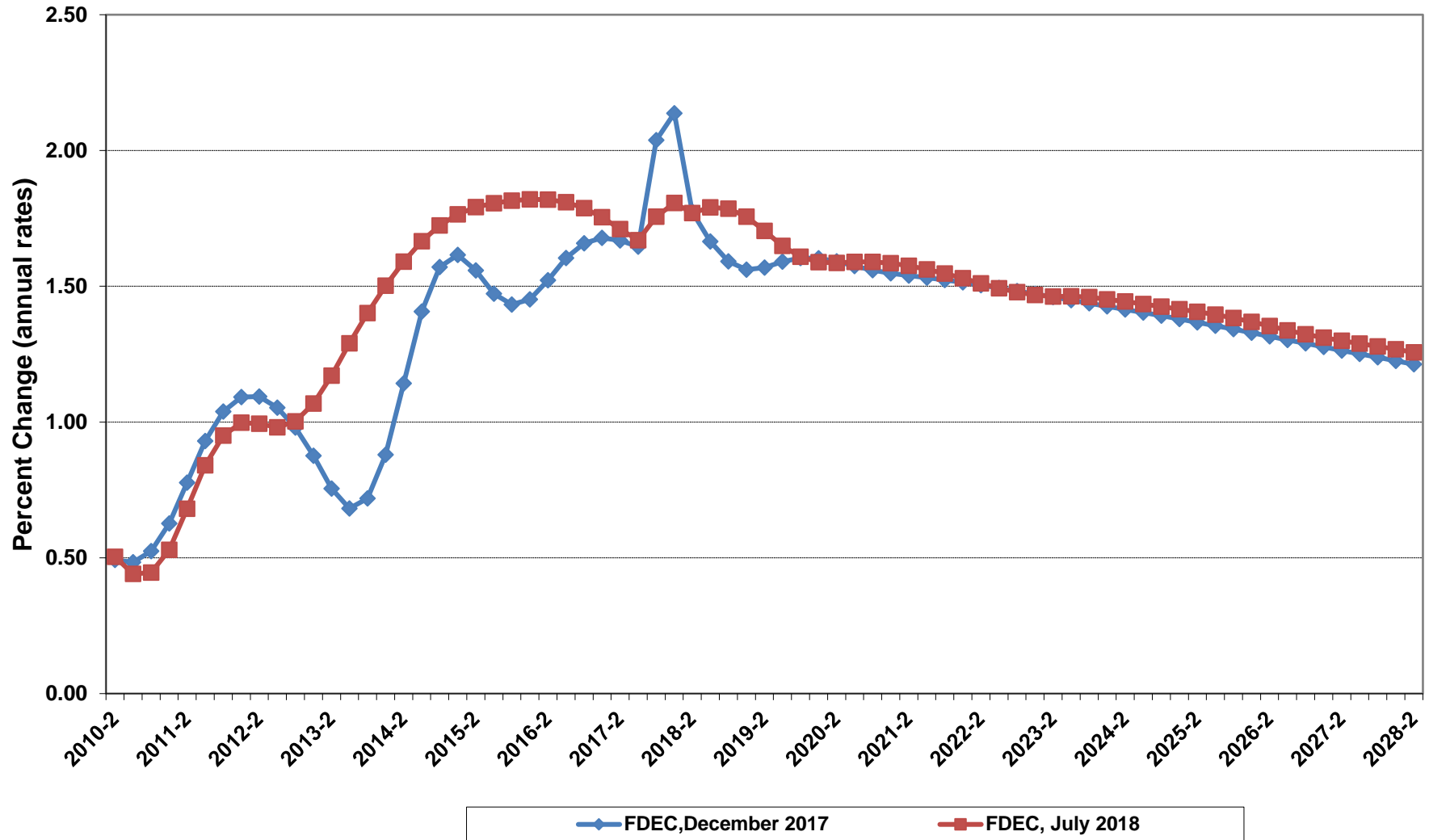




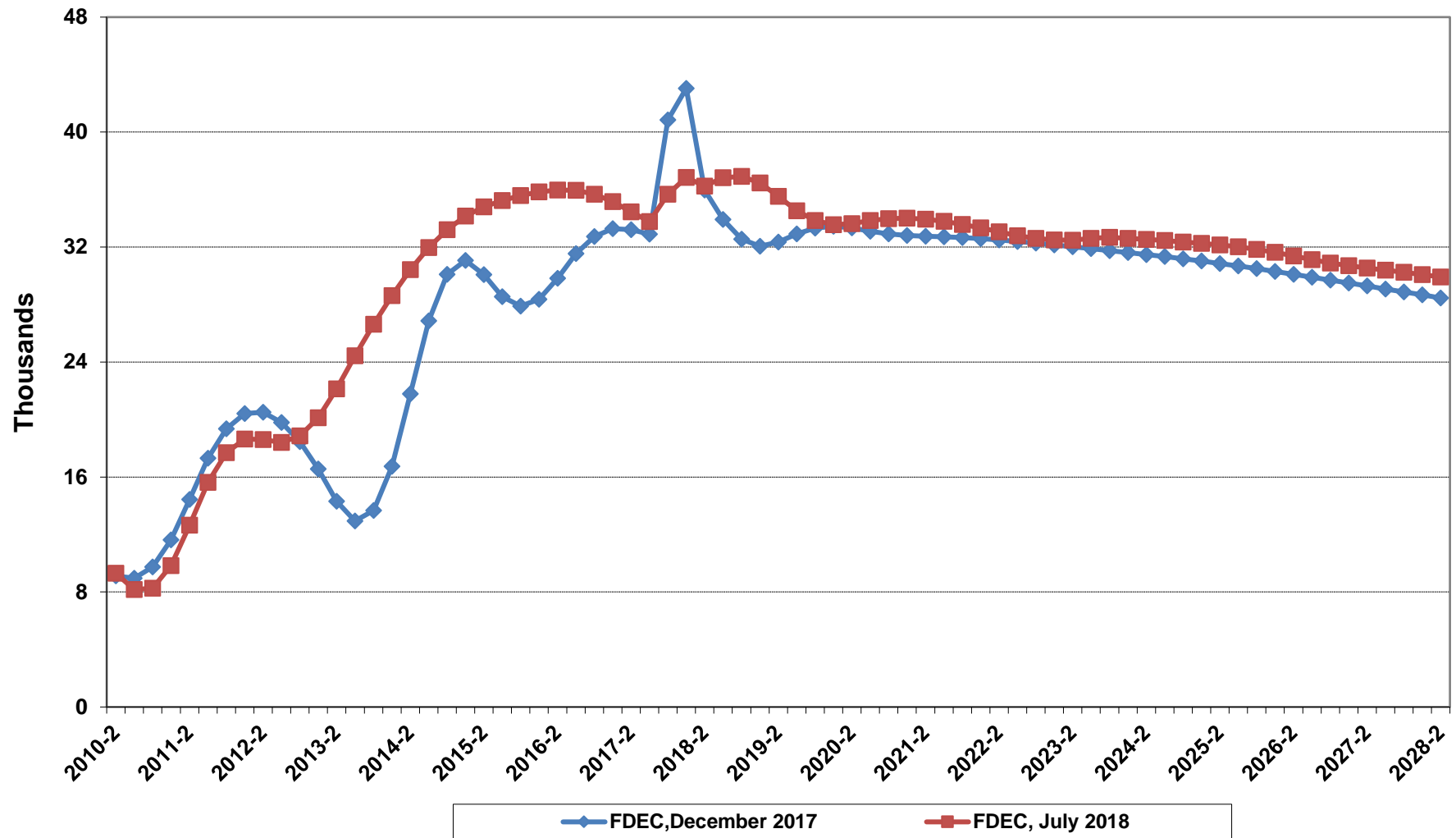
# Florida Resident Households



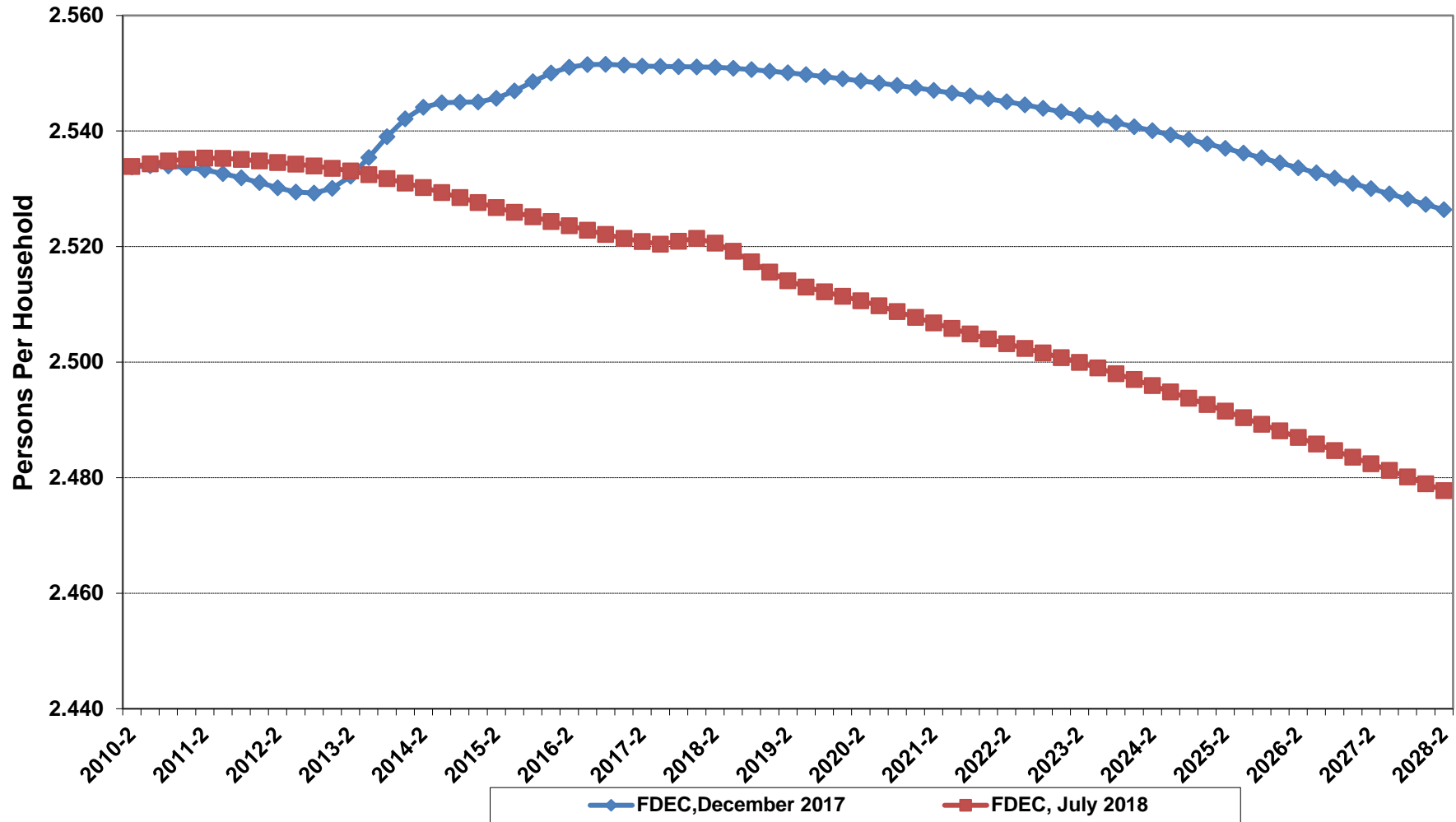
# Growth In Florida Resident Households



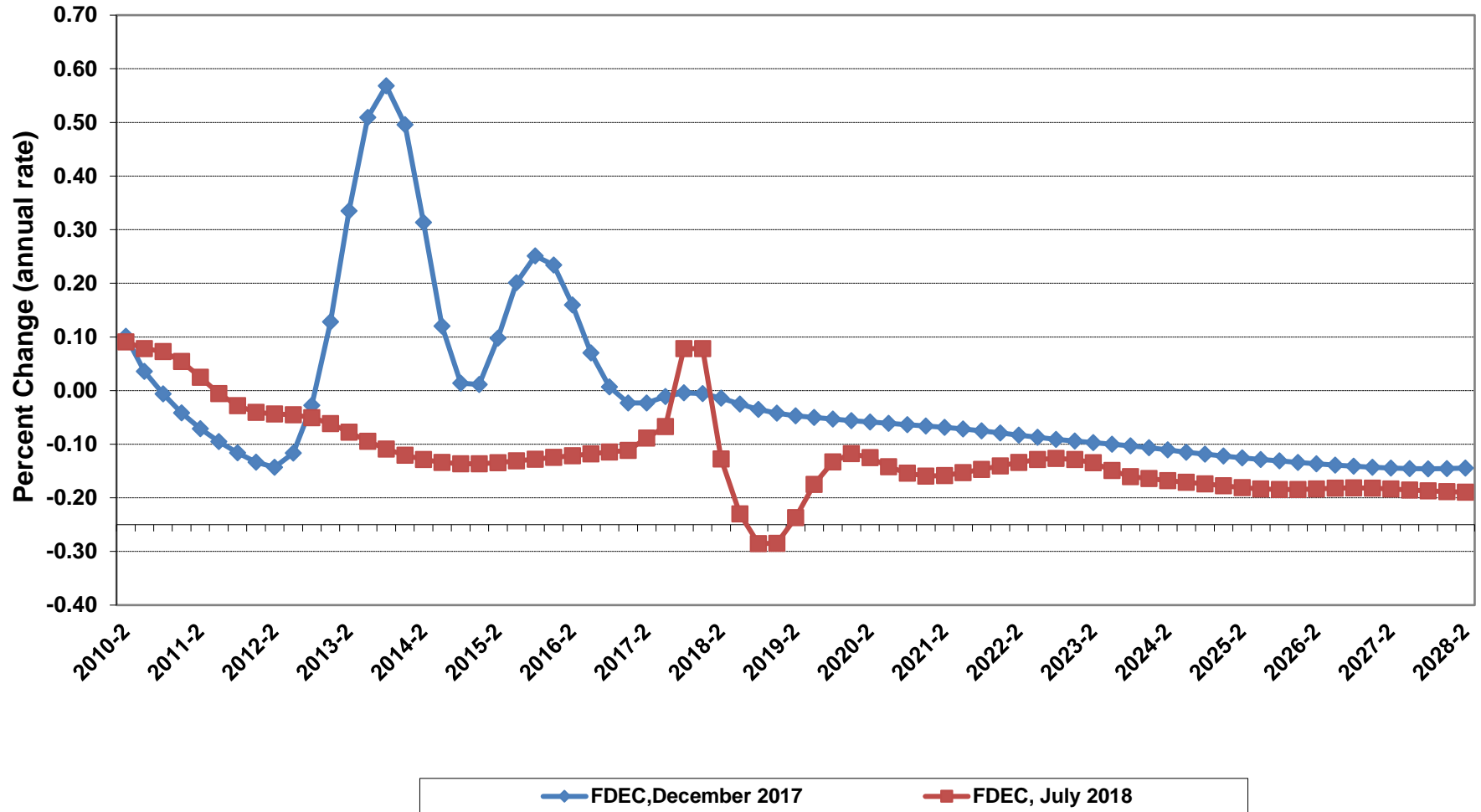
# Net Change In Florida Resident Households



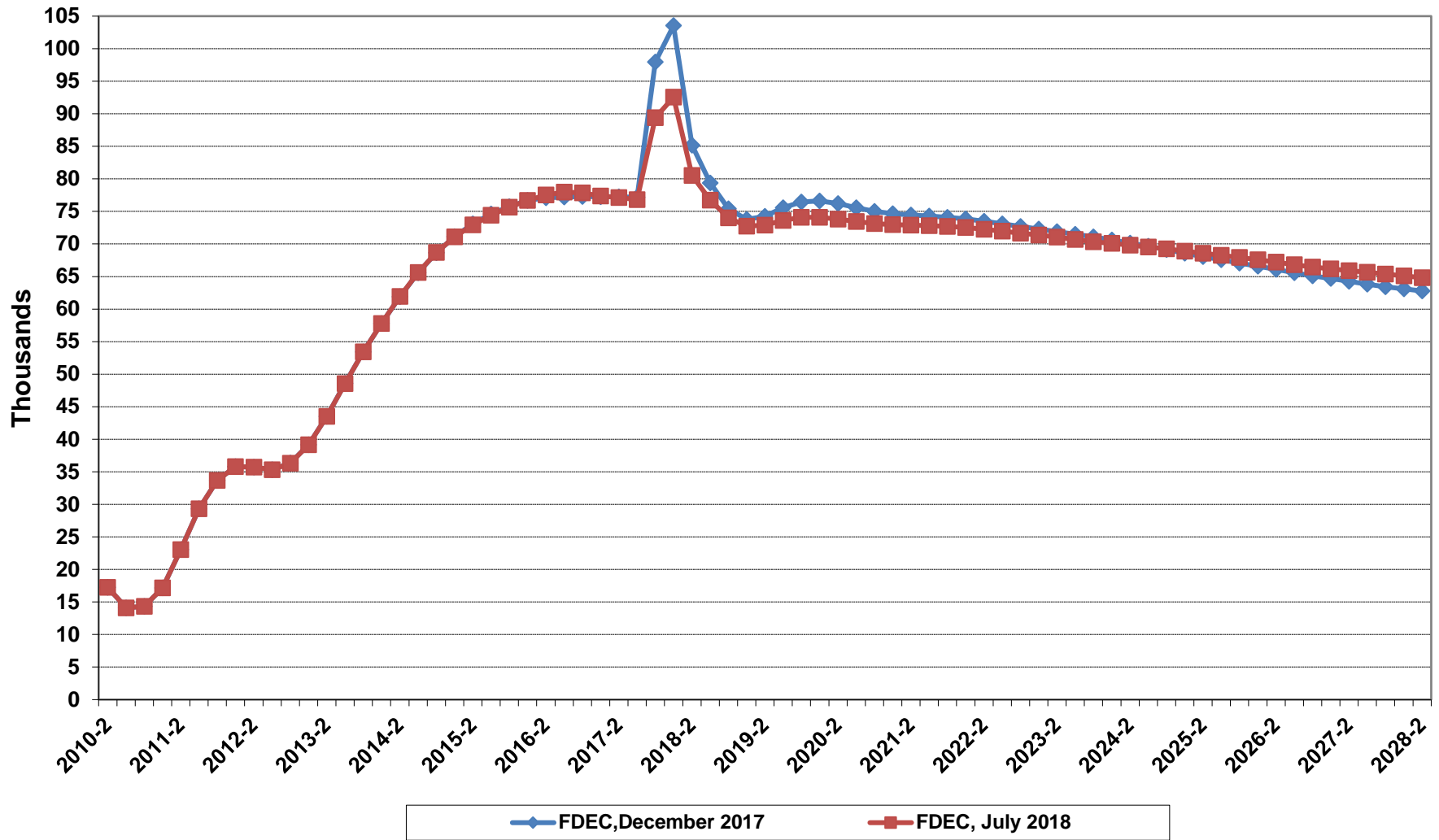
# Florida Average Household Size



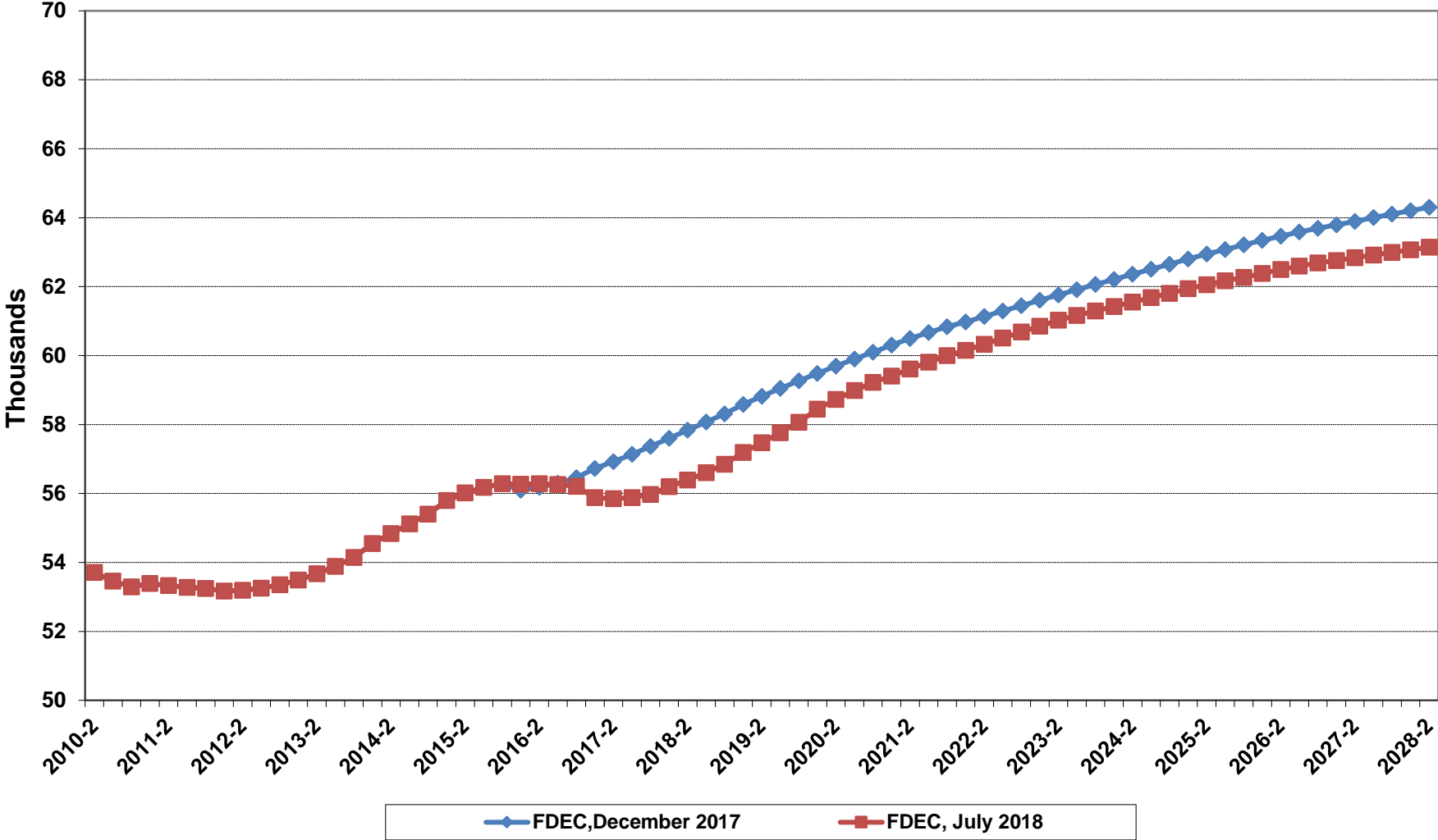
# Growth In Florida Household Size



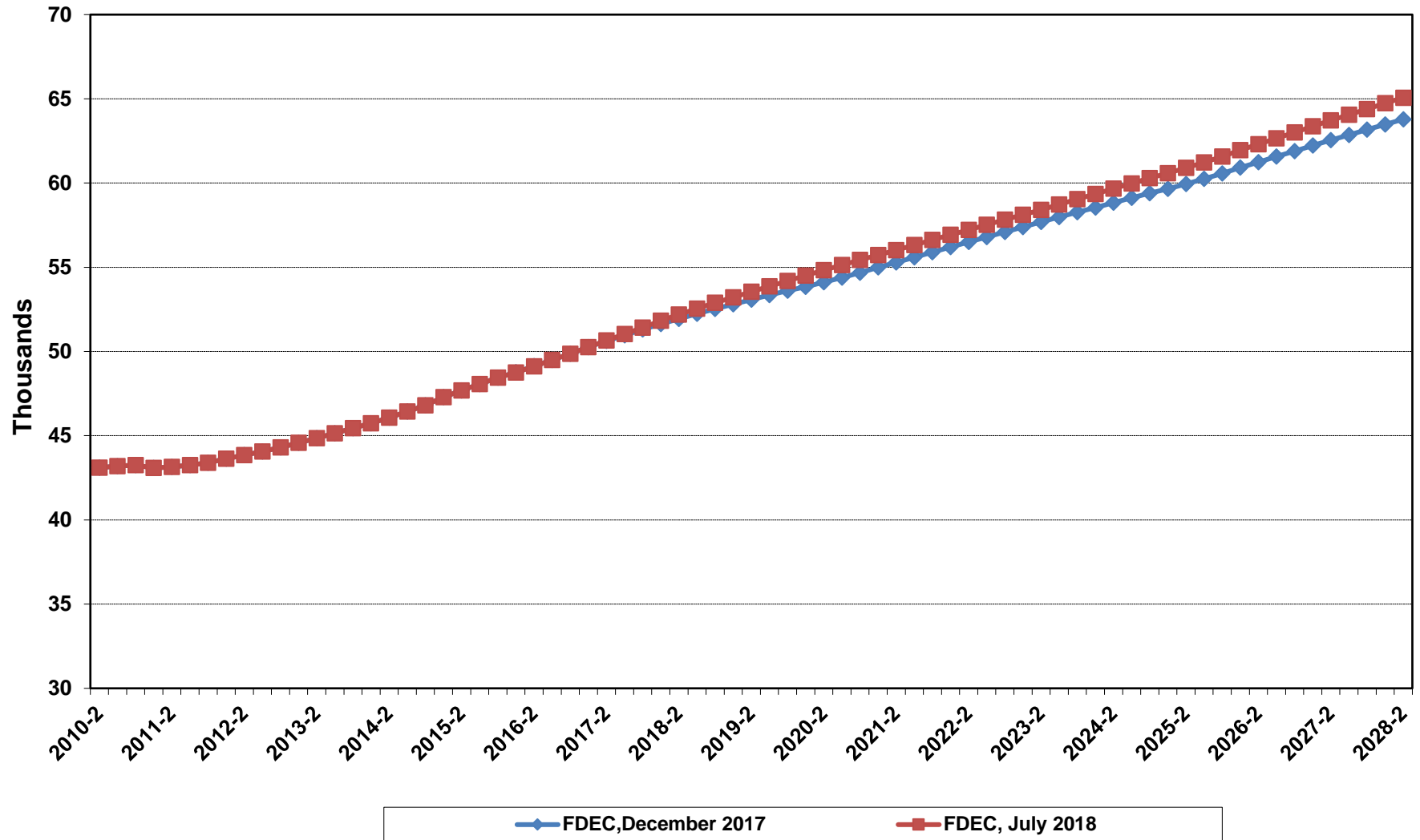
# Florida Net Migration



# Florida Resident Births

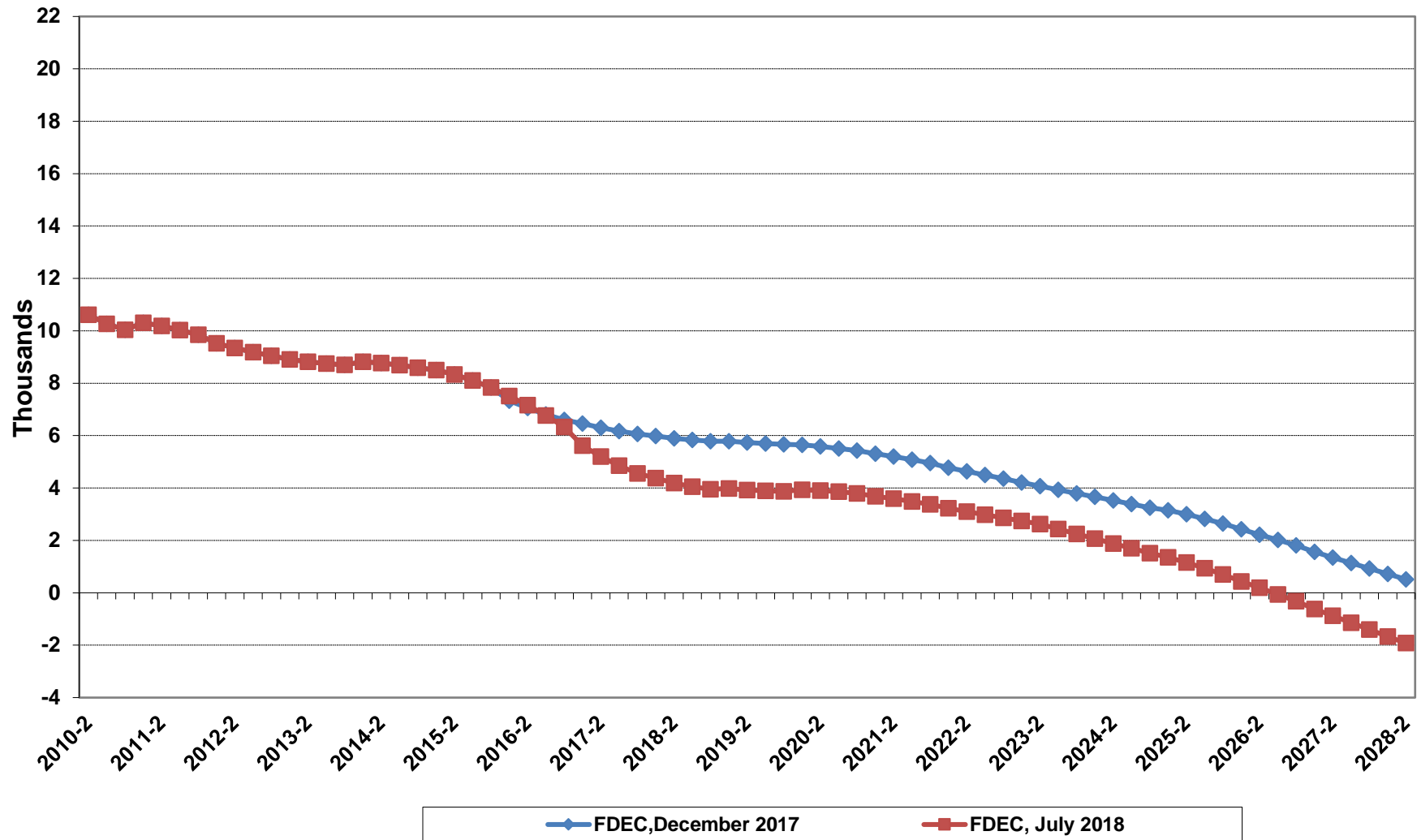


# Florida Resident Deaths

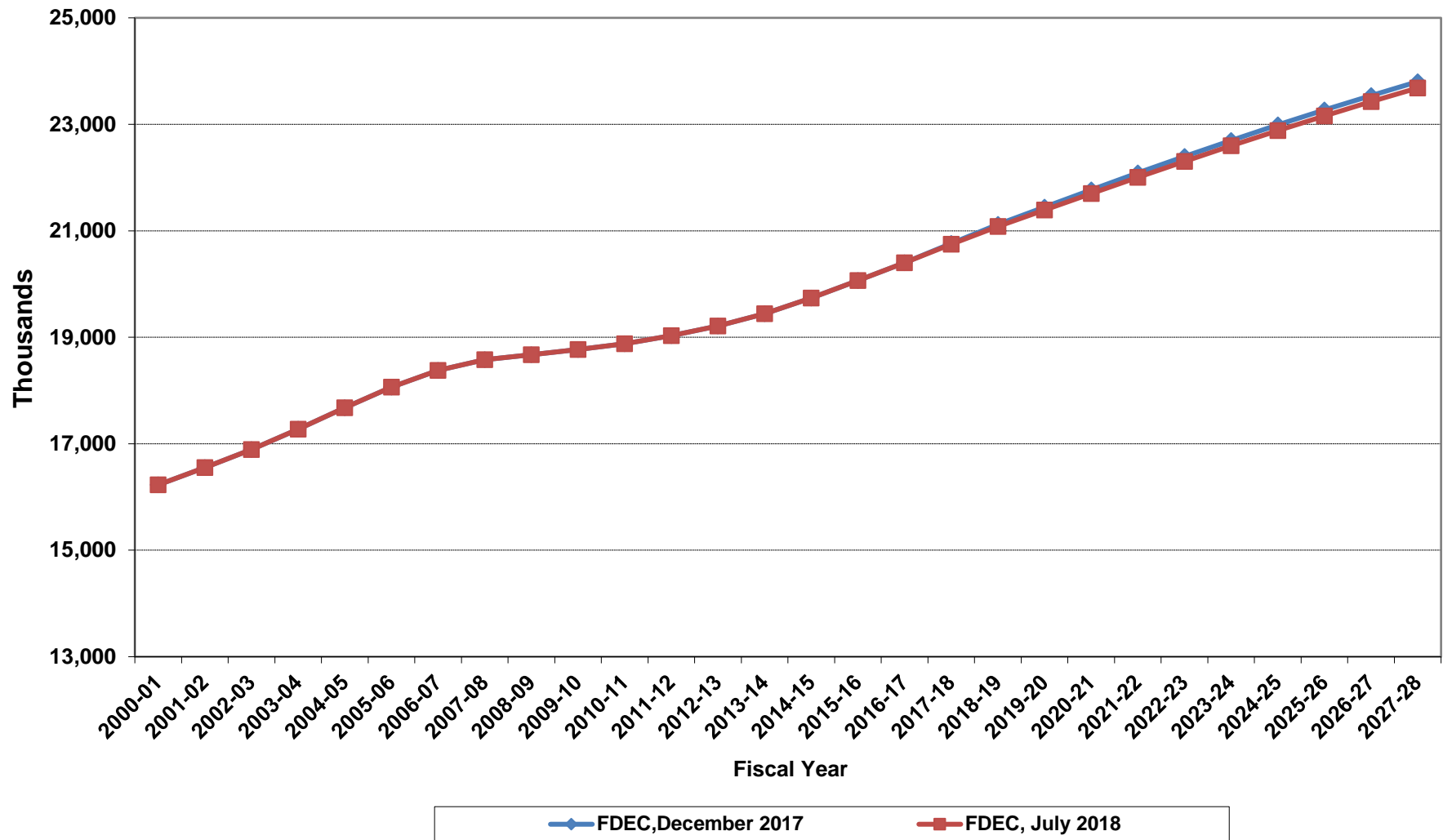




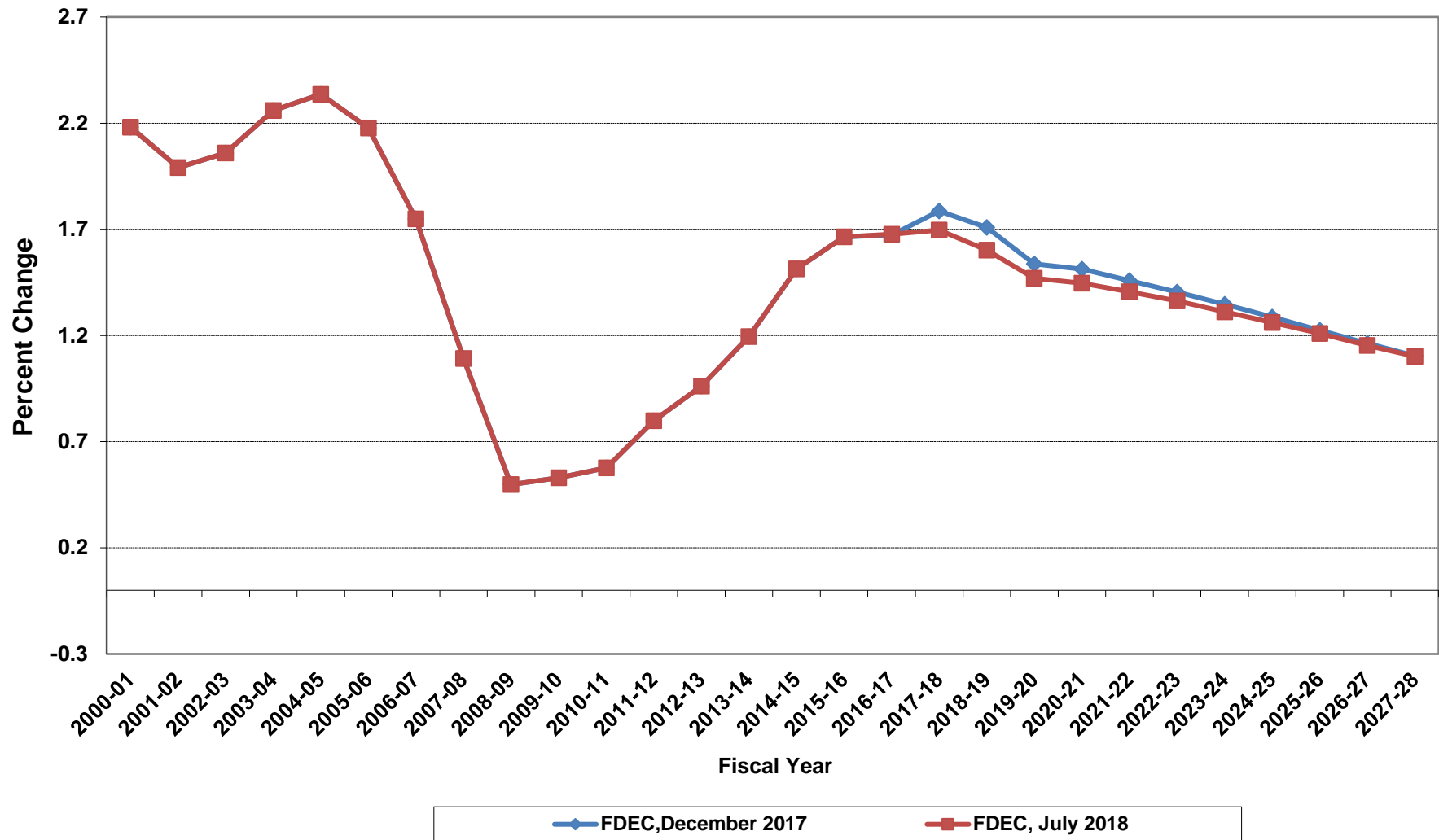
# Florida Net Natural Increase



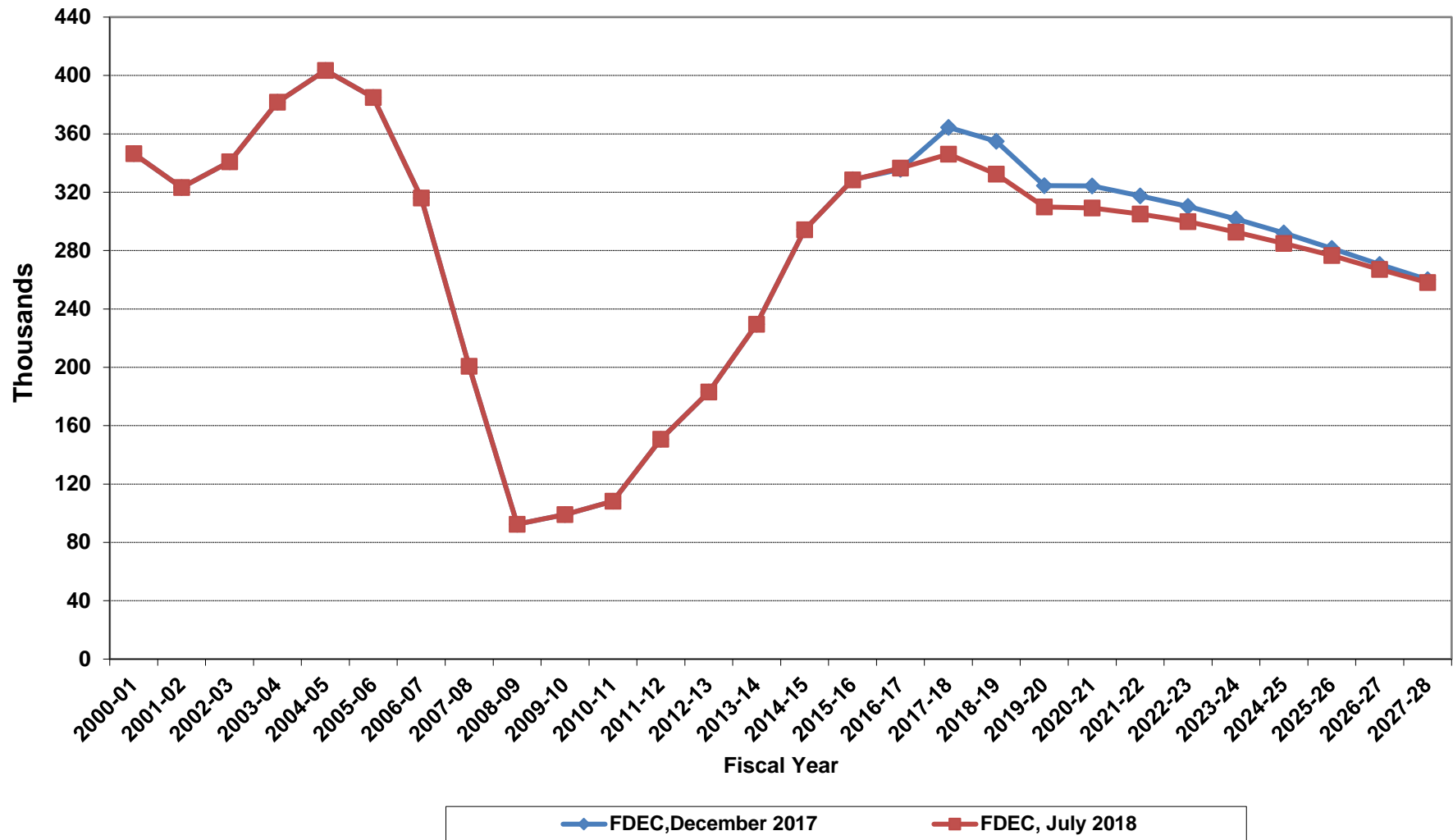
# Florida Resident Population



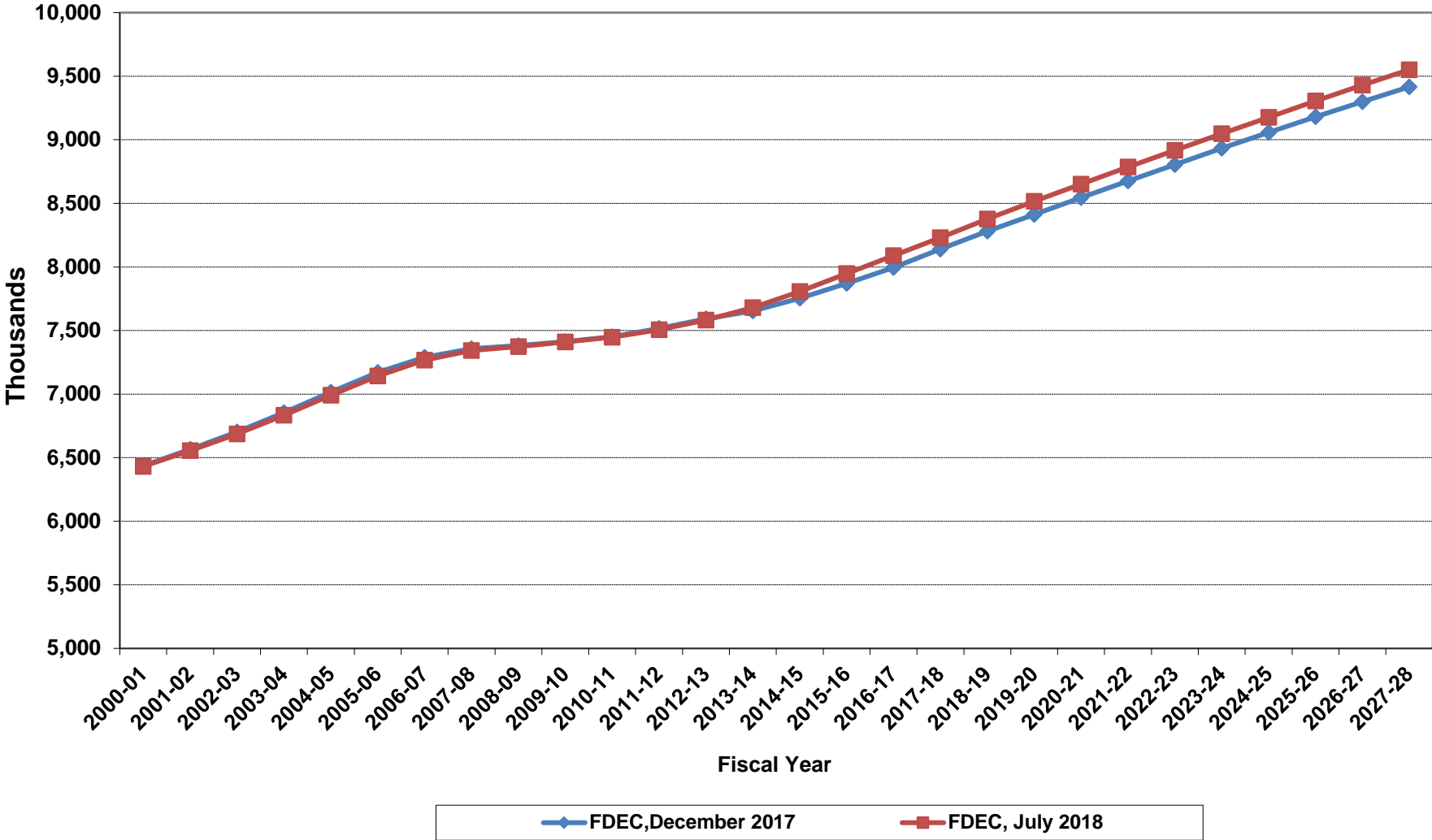
# Growth In Florida Resident Population



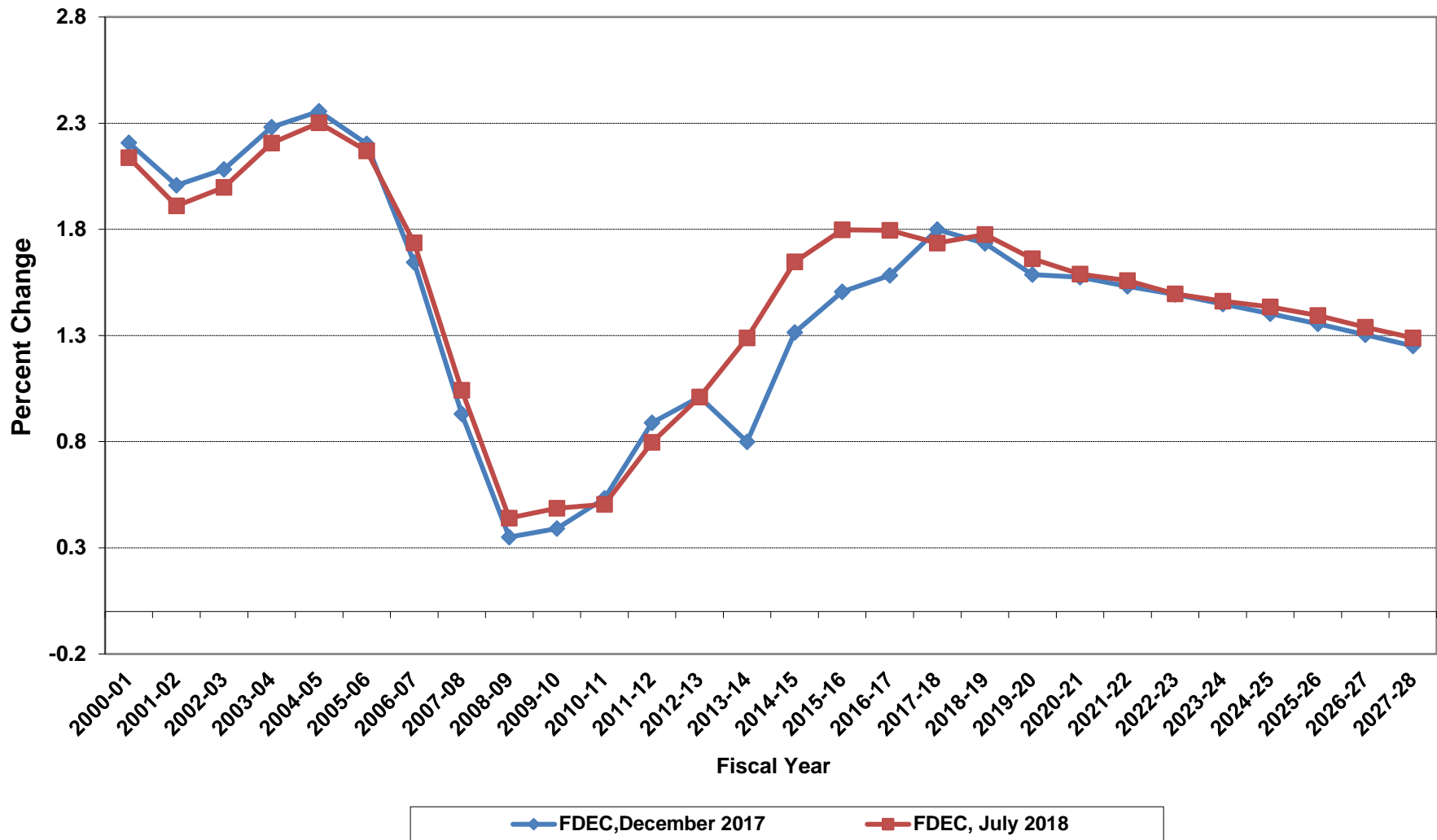
# Net Change In Florida Resident Population



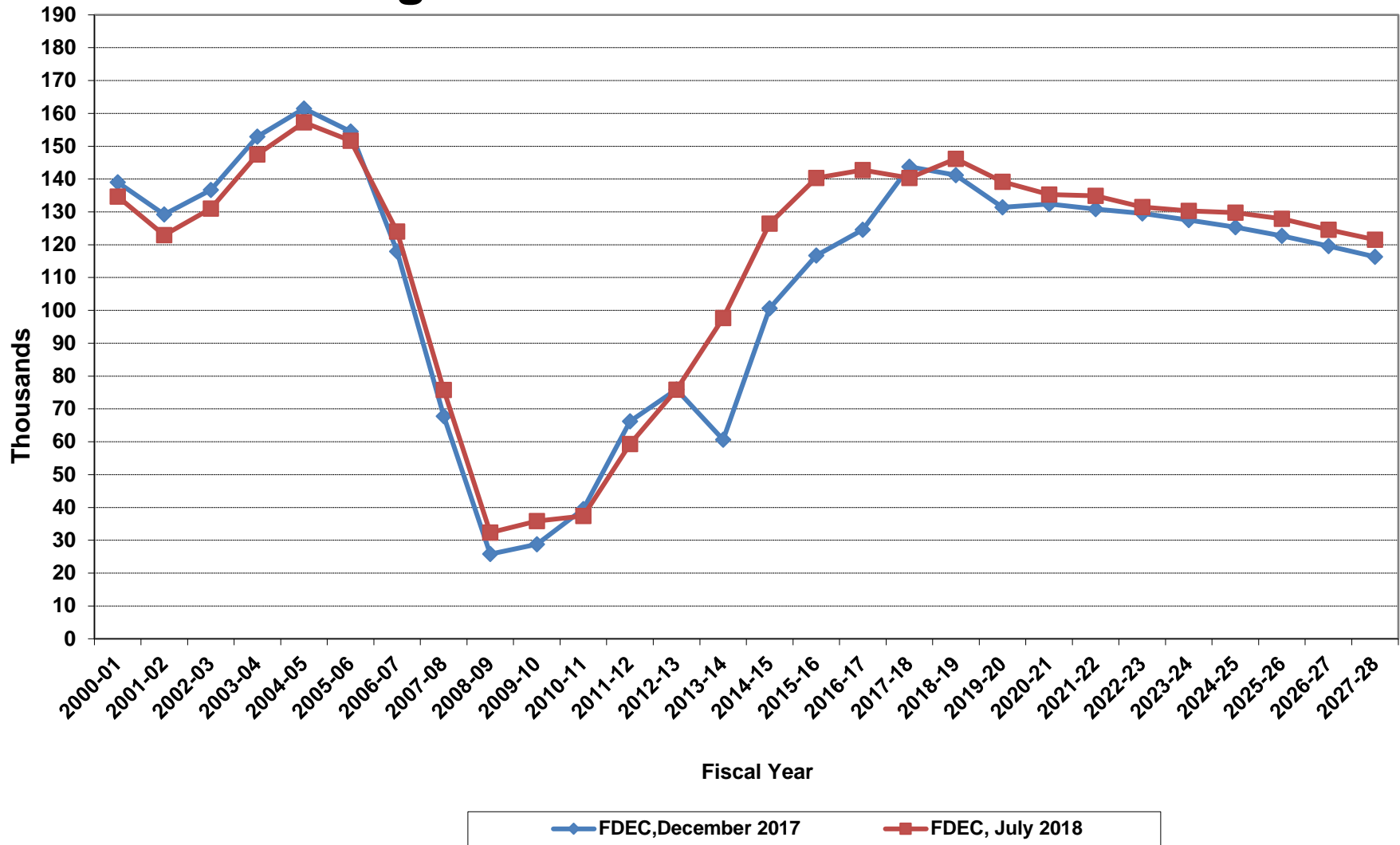
# Florida Resident Households



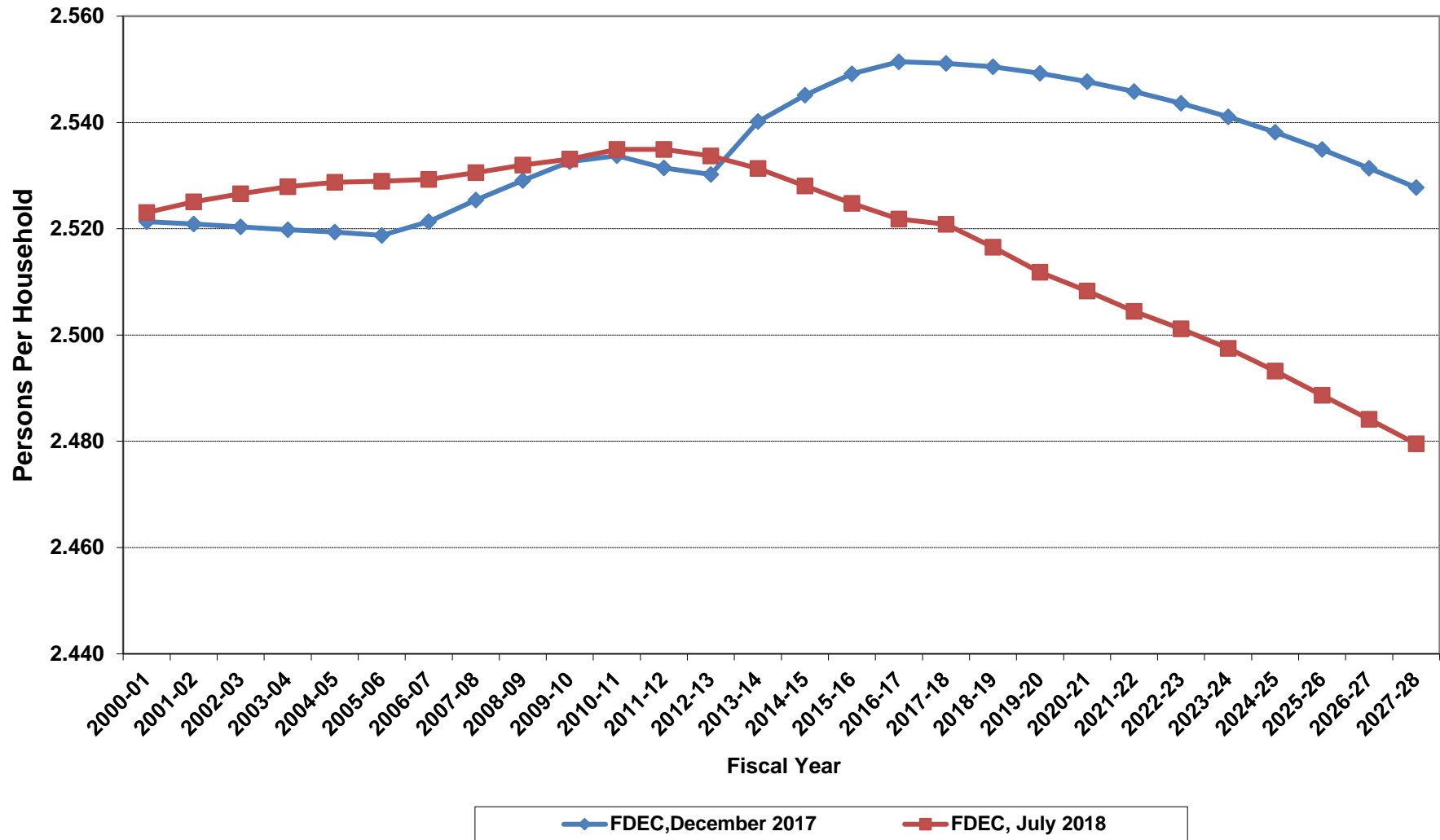
# Growth In Florida Resident Households



# Net Change In Florida Resident Households

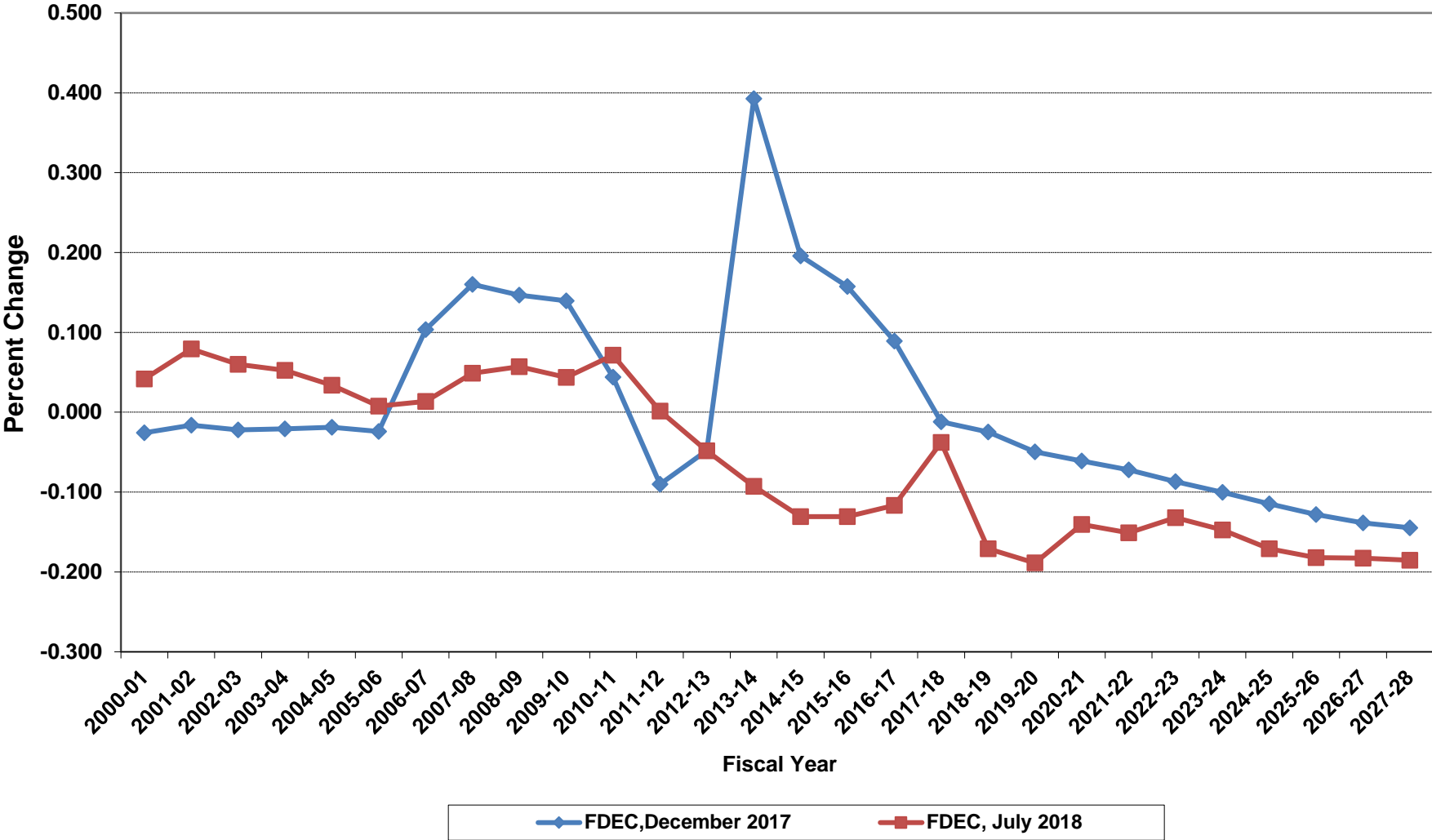


# Average Florida Household Size

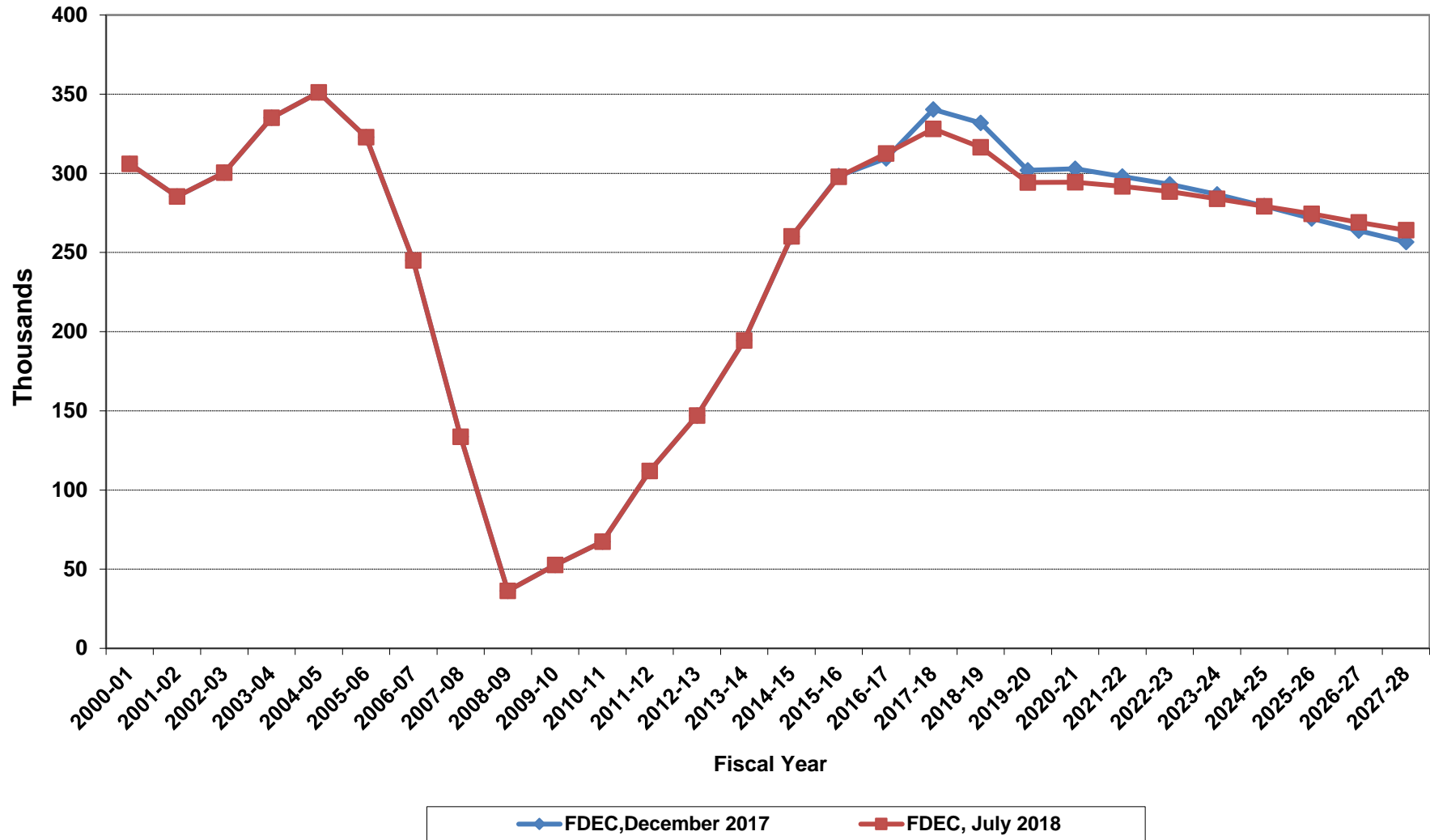




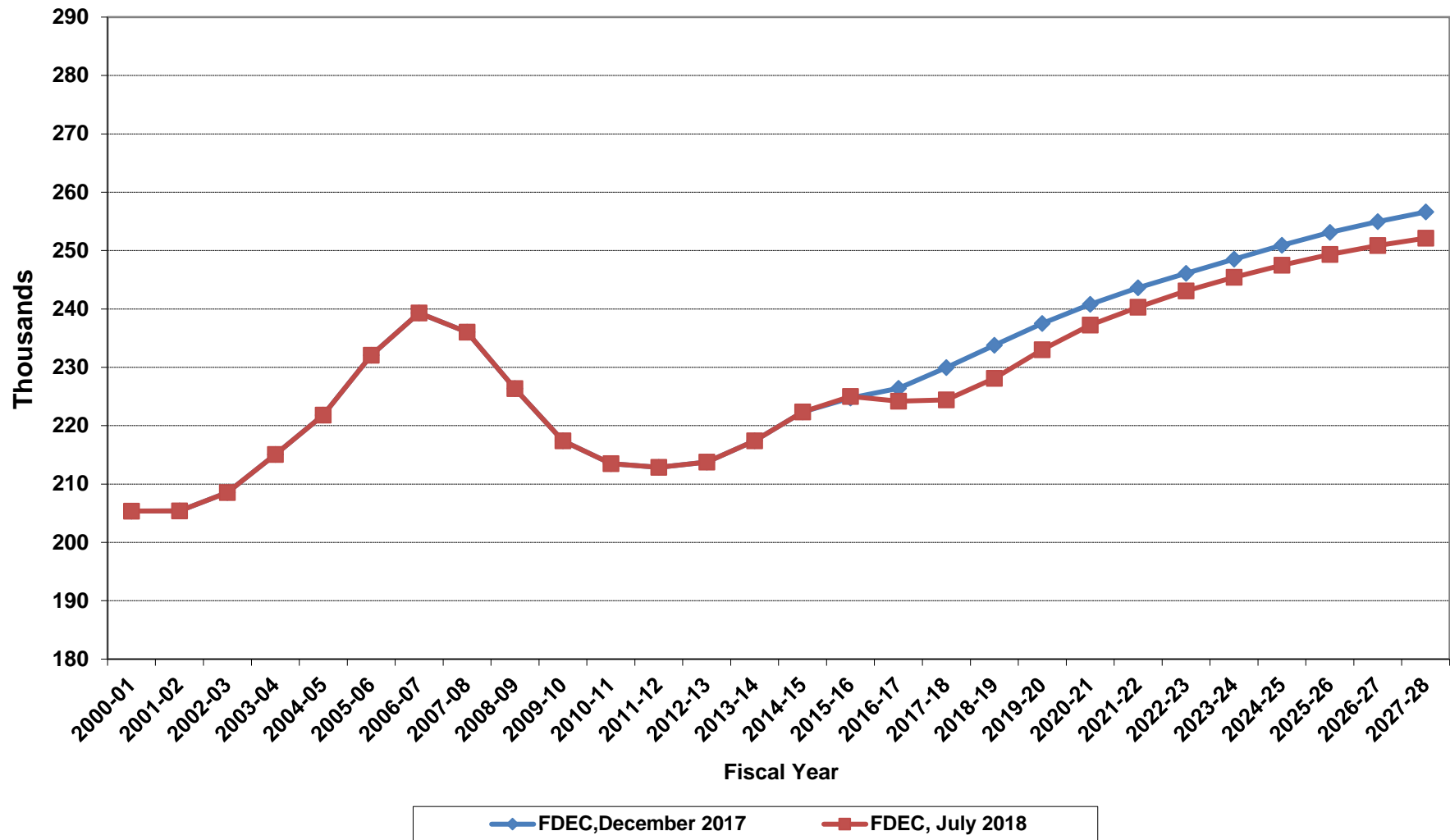
# Growth In Average Florida Household Size



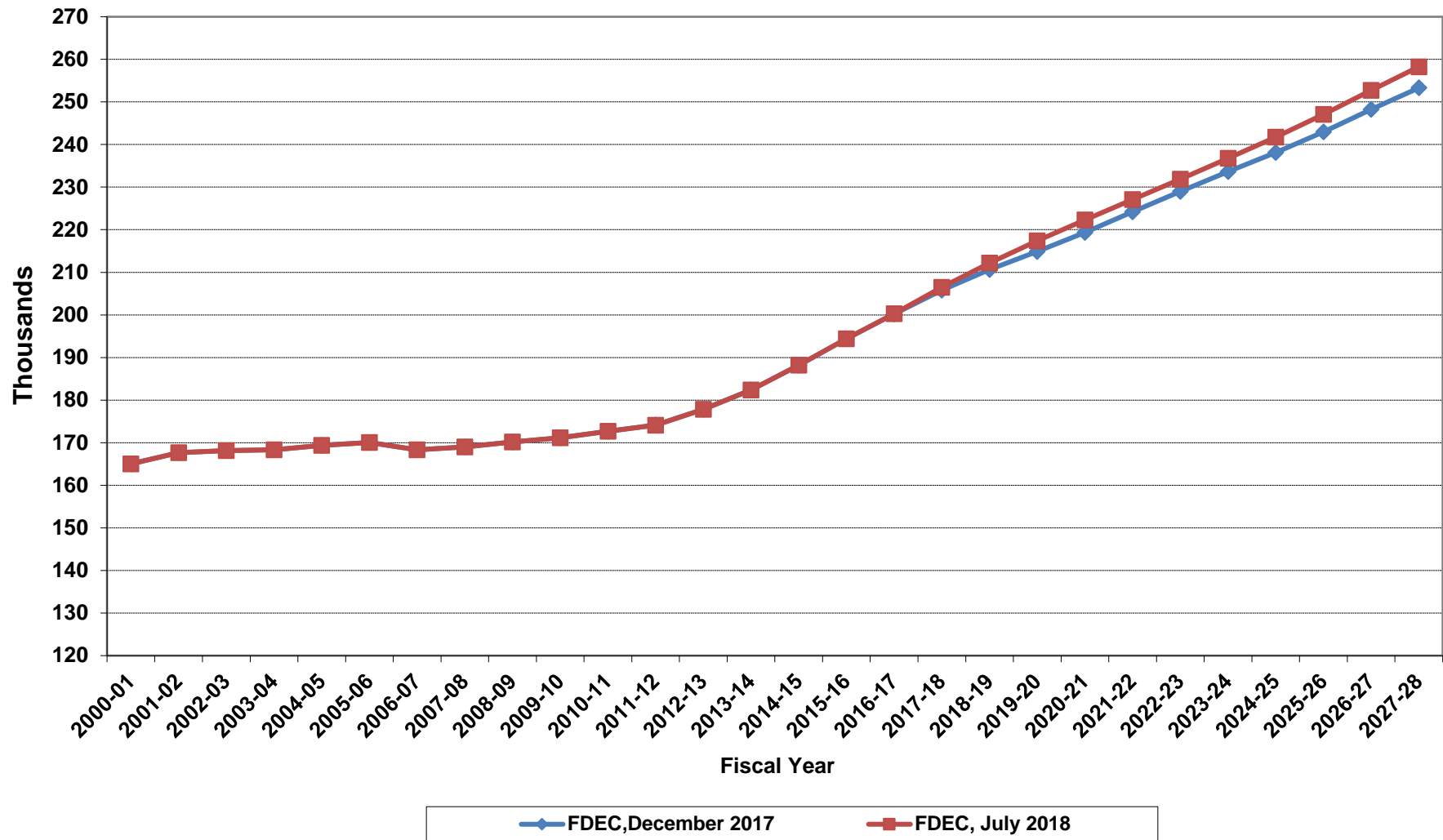
# Florida Net Migration



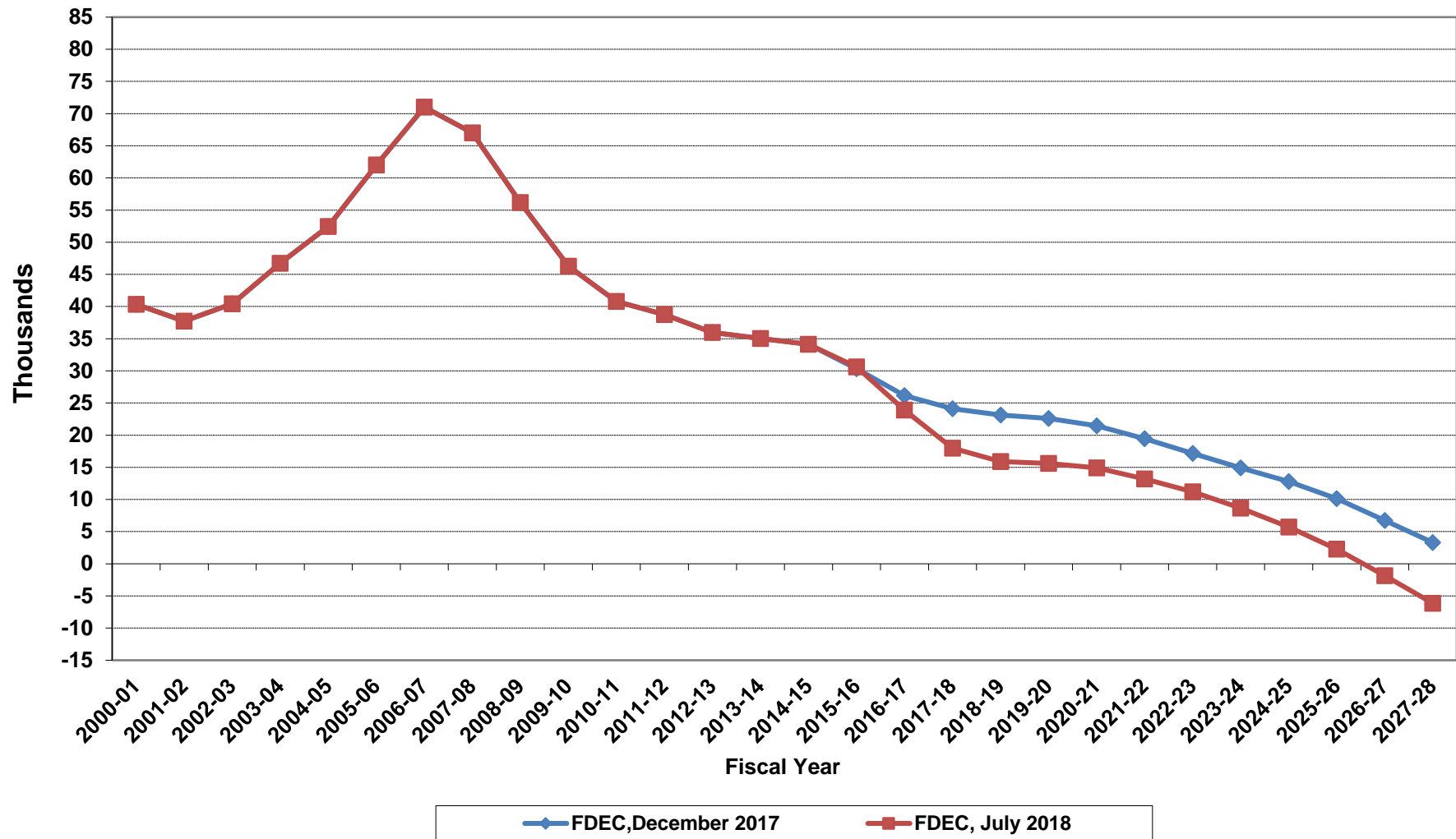
# Florida Resident Live Births



# Florida Resident Deaths



# Florida Net Natural Increase



**Florida Population and Components of Change**

<b>Fiscal Year</b>	<b>Population (End of Fiscal Year)</b>	<b>Growth Rate</b>	<b>Annual Change in Population</b>	<b>Births</b>	<b>Deaths</b>	<b>Net Natural Increase</b>	<b>Net Migration</b>
1950 - 51	2,981,346	6.50%	181,931	67,486	27,670	39,816	142,115
1951 - 52	3,155,442	5.84%	174,096	72,383	28,942	43,441	130,655
1952 - 53	3,312,521	4.98%	157,079	76,954	29,761	47,193	109,886
1953 - 54	3,504,323	5.79%	191,802	82,725	31,055	51,670	140,132
1954 - 55	3,747,400	6.94%	243,077	86,643	32,176	54,467	188,610
1955 - 56	4,046,062	7.97%	298,662	92,941	34,932	58,009	240,653
1956 - 57	4,370,045	8.01%	323,983	100,990	38,269	62,721	261,262
1957 - 58	4,629,510	5.94%	259,465	105,972	41,911	64,061	195,404
1958 - 59	4,812,270	3.95%	182,760	110,409	43,674	66,735	116,025
1959 - 60	4,998,508	3.87%	186,238	114,428	46,057	68,371	117,867
1960 - 61	5,185,913	3.75%	187,405	116,449	48,388	68,061	119,344
1961 - 62	5,367,899	3.51%	181,986	116,120	50,346	65,774	116,212
1962 - 63	5,553,522	3.46%	185,623	114,709	54,453	60,256	125,367
1963 - 64	5,728,499	3.15%	174,977	115,002	56,229	58,773	116,204
1964 - 65	5,881,195	2.67%	152,696	110,515	57,734	52,781	99,915
1965 - 66	6,065,768	3.14%	184,573	104,367	61,217	43,150	141,423
1966 - 67	6,249,674	3.03%	183,906	101,209	62,577	38,632	145,274
1967 - 68	6,441,756	3.07%	192,082	100,320	66,134	34,186	157,896
1968 - 69	6,633,546	2.98%	191,790	104,286	71,285	33,001	158,789
1969 - 70	6,861,118	3.43%	227,572	111,511	73,831	37,680	189,892
1970 - 71	7,233,583	5.43%	372,465	117,012	75,354	41,658	330,807
1971 - 72	7,681,540	6.19%	447,957	113,568	79,717	33,851	414,106
1972 - 73	8,157,883	6.20%	476,343	107,804	86,232	21,572	454,771
1973 - 74	8,515,208	4.38%	357,325	109,366	88,459	20,907	336,418
1974 - 75	8,648,587	1.57%	133,379	108,686	87,224	21,462	111,917
1975 - 76	8,782,975	1.55%	134,388	104,022	88,129	15,893	118,495
1976 - 77	8,972,678	2.16%	189,703	107,623	90,443	17,180	172,523
1977 - 78	9,225,527	2.82%	252,849	112,268	93,383	18,885	233,964
1978 - 79	9,523,728	3.23%	298,201	116,393	96,801	19,592	278,609
1979 - 80	9,914,652	4.10%	390,924	126,673	101,048	25,625	365,299
1980 - 81	10,212,969	3.01%	298,317	135,560	107,562	27,998	270,319
1981 - 82	10,492,851	2.74%	279,882	141,593	108,644	32,949	246,933
1982 - 83	10,748,466	2.44%	255,615	146,853	110,497	36,356	219,259
1983 - 84	11,065,911	2.95%	317,445	151,748	113,939	37,809	279,636
1984 - 85	11,405,533	3.07%	339,622	159,819	117,539	42,280	297,342
1985 - 86	11,740,069	2.93%	334,536	165,857	122,453	43,404	291,132
1986 - 87	12,083,241	2.92%	343,172	170,819	124,946	45,873	297,299
1987 - 88	12,410,339	2.71%	327,098	179,541	129,413	50,128	276,970
1988 - 89	12,723,719	2.53%	313,380	188,390	131,992	56,398	256,982
1989 - 90	13,017,296	2.31%	293,577	197,181	132,503	64,678	228,899
1990 - 91	13,326,892	2.38%	309,596	197,180	134,093	63,087	246,509
1991 - 92	13,552,021	1.69%	225,129	191,810	136,280	55,530	169,599
1992 - 93	13,802,571	1.85%	250,550	192,051	142,087	49,964	200,586
1993 - 94	14,120,323	2.30%	317,752	191,840	146,101	45,739	272,013
1994 - 95	14,406,418	2.03%	286,095	189,292	149,161	40,131	245,964
1995 - 96	14,701,040	2.05%	294,622	188,584	152,570	36,014	258,608
1996 - 97	15,012,615	2.12%	311,575	190,587	153,067	37,520	274,055
1997 - 98	15,310,069	1.98%	297,454	194,242	155,080	39,162	258,292
1998 - 99	15,680,164	2.42%	370,095	195,897	159,988	35,909	334,186
1999 - 00	16,069,889	2.49%	389,725	200,302	162,489	37,813	351,912
2000 - 01	16,385,615	1.96%	315,726	205,798	164,919	40,879	274,847
2001 - 02	16,718,076	2.03%	332,461	205,164	167,812	37,352	295,109
2002 - 03	17,074,258	2.13%	356,182	208,403	168,079	40,324	315,858
2003 - 04	17,475,944	2.35%	401,686	215,298	168,302	46,996	354,690
2004 - 05	17,876,215	2.29%	400,271	221,533	169,302	52,231	348,040
2005 - 06	18,236,885	2.02%	360,670	232,019	170,303	61,716	298,954
2006 - 07	18,501,231	1.45%	264,346	239,635	168,117	71,518	192,828
2007 - 08	18,636,837	0.73%	135,606	236,065	168,966	67,099	68,507
2008 - 09	18,711,844	0.40%	75,007	226,337	170,615	55,722	19,285
2009 - 10	18,826,492	0.61%	114,648	217,408	171,122	46,286	68,362

**Florida Population and Components of Change**

<b>Fiscal Year</b>	<b>Population (End of Fiscal Year)</b>	<b>Growth Rate</b>	<b>Annual Change in Population</b>	<b>Births</b>	<b>Deaths</b>	<b>Net Natural Increase</b>	<b>Net Migration</b>
2010 - 11	18,941,739	0.61%	115,247	213,468	172,661	40,807	74,440
2011 - 12	19,118,950	0.94%	177,211	212,876	174,121	38,755	138,456
2012 - 13	19,314,352	1.02%	195,402	213,762	177,807	35,955	159,447
2013 - 14	19,580,034	1.38%	265,682	217,422	182,383	35,039	230,643
2014 - 15	19,897,154	1.62%	317,120	222,338	188,216	34,122	282,998
2015 - 16	20,233,509	1.69%	336,355	225,014	194,385	30,629	305,726
2016 - 17	20,566,554	1.65%	333,045	224,193	200,274	23,919	309,126
2017 - 18	20,923,925	1.74%	357,371	224,441	206,458	17,983	339,388
2018 - 19	21,233,481	1.48%	309,556	228,108	212,199	15,909	293,647
2019 - 20	21,544,882	1.47%	311,401	232,999	217,397	15,602	295,799
2020 - 21	21,851,696	1.42%	306,814	237,227	222,300	14,927	291,887
2021 - 22	22,154,564	1.39%	302,868	240,283	227,083	13,200	289,668
2022 - 23	22,451,018	1.34%	296,454	243,073	231,871	11,202	285,252
2023 - 24	22,739,644	1.29%	288,626	245,435	236,797	8,638	279,988
2024 - 25	23,020,654	1.24%	281,010	247,483	241,755	5,728	275,282
2025 - 26	23,292,688	1.18%	272,034	249,315	247,054	2,261	269,773
2026 - 27	23,555,076	1.13%	262,388	250,871	252,743	-1,872	264,260
2027 - 28	23,808,808	1.08%	253,732	252,124	258,260	-6,136	259,868
2028 - 29	24,054,507	1.03%	245,699	253,321	263,554	-10,233	255,932
2029 - 30	24,293,504	0.99%	238,997	254,432	268,716	-14,284	253,281
2030 - 31	24,526,214	0.96%	232,710	255,548	274,106	-18,558	251,268
2031 - 32	24,752,402	0.92%	226,188	256,587	279,775	-23,188	249,376
2032 - 33	24,971,818	0.89%	219,416	257,695	285,379	-27,684	247,100
2033 - 34	25,185,168	0.85%	213,350	258,736	290,857	-32,121	245,471
2034 - 35	25,392,797	0.82%	207,629	259,519	296,231	-36,712	244,341
2035 - 36	25,594,608	0.79%	201,811	260,171	301,524	-41,353	243,164
2036 - 37	25,789,963	0.76%	195,355	261,171	306,662	-45,491	240,846
2037 - 38	25,980,245	0.74%	190,282	262,325	311,732	-49,407	239,689
2038 - 39	26,166,097	0.72%	185,852	263,405	316,703	-53,298	239,150

## Revised Estimates of Households and Average Household Size for Florida and Its Counties, 2000–2016, with Estimates for 2017

Stefan Rayer, Population Program Director

Ying Wang, Research Demographer

Richard Doty, GIS Coordinator/Research Demographer

Suzanne Roulston-Doty, GIS Project Manager/Research Demographer

Stanley K. Smith, Professor Emeritus

The Bureau of Economic and Business Research (BEBR) at the University of Florida produces population estimates for Florida and each of its cities and counties using the housing unit method. In this method, changes in population are based on changes in occupied housing units (or households), average household size, and the group quarters population. This is the most commonly used method for making local population estimates in the United States because it can utilize a wide variety of data sources, can be applied at any level of geography, and can produce estimates that are at least as accurate as those produced by any other method.

In most places, the two primary components of the housing unit method are the number of households and average household size (or persons per household – PPH). BEBR has published estimates of the number of households and average household size annually since the late 1970s for Florida and its counties. These have been postcensal estimates, i.e. they were based on results from the previous census and were updated using symptomatic indicators of changes in households and average household size available at the time. For many counties, estimates of the number of households and average household size published by BEBR during the 2000s have been found to be reasonably accurate. Nevertheless, to correct for errors in the data used to construct the original estimates, to draw on data that were not available when the original estimates were produced, and to incorporate the results of the 2010 census, we have developed a revised series of state and county estimates of the number of households and average household size for 2001–2009. We also revised the previously published estimates for 2011–2016 and produced new estimates for 2017.

This report provides these estimates and describes the methodology used to produce them. All estimates are as of April 1<sup>st</sup> of each year. We note that since these estimates have been created using a different methodology than in previous years, trends in the number of households and/or average household size may be different than those published previously.

Households are defined as housing units occupied by permanent residents. They should not be confused with total housing units, which include vacant and seasonally occupied units as well as units occupied by permanent residents. According to Census Bureau guidelines, a person's permanent residence is the place that person lives and sleeps most of the time. Because we follow these guidelines, temporary residents such as tourists and snowbirds are not included in the estimates shown here.

### Data and Methodology

#### (a) Intercensal Estimates of the Number of Households and Average Household Size, 2001–2009

Decennial census counts for 2000 and 2010 and the 2001–2009 BEBR intercensal population estimates by age, sex, race, and ethnicity (BEBR Special Population Report #10) formed the basis for developing intercensal estimates of the number of households and average household size for Florida and each of its counties. We developed these estimates using a headship rate model. Headship rates represent the share of the population that head a household; they are constructed by dividing the number of household heads by the number of people. They can be calculated either for the population as a whole or for the population



divided into specific demographic subgroups (e.g., by age and race). To give an example, the headship rate for Florida for 2000 can be calculated by dividing the number of household heads (6,333,929) by the population aged 15 and over (12,947,813), giving a headship rate of 48.9%. It should be noted that each household has a single self-designated head; consequently, the number of household heads is equal to the number of households.

Headship rates vary by demographic characteristics, in particular by age, race, and ethnicity. In Florida in 2000, headship rates were lowest for 15–24 year olds (14.7%) and highest for those aged 75 years and over (63.4%). Non-Hispanic whites had higher headship rates (52.1%) than the total population, while non-Hispanic nonwhites and Hispanics had lower headship rates (44.3% and 40.4%, respectively). Headship rates tend to be relatively stable and change only slowly over time. Between 2000 and 2010, the overall headship rate for Florida declined modestly from 48.9% to 47.8%; it declined between about 1 and 2.5 percentage points for ages 15–24 through 45–54, was largely unchanged for ages 55–74, and increased by about 2 percentage points for ages 75 and over. Headship rates declined slightly for Florida’s three main racial/ethnic groups between 2000 and 2010; from 52.1% to 51.8% for non-Hispanic whites, from 44.3% to 43.3% for non-Hispanic nonwhites, and from 40.4% to 40.3% for Hispanics.

Before headship rates can be applied to derive estimates of the number of households and average household size, the population in households needs to be determined. The population in households equals the total population minus the population in group quarters. In 2000, there were 388,945 persons in group quarters in Florida, representing 2.43% of total population; by 2010, Florida’s population in group quarters increased to 423,224, but its share of total population decreased to 2.25%. There are many different types of group quarters, both institutional and non-institutional. We differentiated between inmates in federal and state correctional facilities and persons in all other types of group quarters. Counts for the former can change substantially from year to year, such as when facilities expand or contract, are closed, or new ones are built. We also have a complete series of inmate counts in federal and state correctional facilities available for April 1 of all years from the Federal Bureau of Prisons and the Florida Department of Corrections. These were used to calculate the proportion of federal and state inmates out of the total population for each year between 2000 and 2010. For persons in other types of group quarters, we interpolated their proportions of total population between 2000 and 2010. Adding the

proportions of federal and state inmates to the proportions of persons in all other types of group quarters gives us the overall proportion of the group quarters population out of total population for each year. Subtracting that proportion from total population provides estimates of the population in households.

The next step was to apply the headship rates to the population in households. For the intercensal estimates we interpolated headship rates between 2000 and 2010. Headship rates can be calculated and applied for total population and/or for specific demographic subgroups. We calculated them separately for total population (Model 1) and by age, race, and ethnicity (Model 2). We applied the two headship rate models to get estimates of the number of households; average household size was estimated by dividing the population in households by the number of households.

In addition, we created two more data series focused on changes in average household size. The first (Model 3) was based on individual income tax return records from the Internal Revenue Service (IRS). Annual data on the number of income tax returns and exemptions have been available for states and counties since the late 1970s. Because large households generally claim more exemptions than small households, data on the average number of exemptions per return can provide useful information on PPH values and changes in those values over time. Since the average number of exemptions per return is only a proxy for PPH, changes over time in the average number of exemptions per return were used to estimate changes in average household size. The second series (Model 4) was based on a linear interpolation of changes in average household size between 2000 and 2010. We applied these two models to get average household size; the number of households was estimated by dividing the population in households by average household size.

The final intercensal estimates for 2001–2009 were based on a weighted average of these four models. The weights varied by county and by year; on average, the first model contributed about 35%, the second model 10%, the third model 15%, and the fourth model 40%. Estimates of the number of households for counties were added up to yield estimates of the number of households for the state. From these, we calculated average household size for Florida.

**(b) Revised Postcensal Estimates of the Number of Households and Average Household Size, 2011–2016, Including New Estimates for 2017**

The data used for the revised estimates of the number of households and average household size for 2011–2016 – and the new estimates for 2017 – included the 2010 decennial census counts and the 2011–2016 BEBR population estimates by age, sex, race, and ethnicity. Headship rates calculated from the 2010 census values were adjusted slightly in 2011–2017 to reflect statewide changes in headship rates as indicated by the American Community Survey (ACS) and the Current Population Survey (CPS). The applied headship rate models were similar to the ones used for the intercensal estimates for 2001–2009, with two exceptions. First, whereas the intercensal estimates were created as a weighted average of all four models, the post-2010 estimates only applied models 1, 2, and 4. Model 3, the one based on IRS data, was not used because the available data currently only extend through 2015. Incorporating this model would have required a phase-out over time. In addition, the IRS data showed significant ups-and-downs over the five-year period, which would have required many adjustments. Second, for the trend model, rather than interpolating between 2000 and 2010, we extrapolated changes in average household size between 1980 and 2010. These changes were weighted as follows: one-half of the 2000–2010 change plus one-third of the 1990–2010 change plus one-sixth of the 1980–2010 change. For the final estimates for 2011–2017 the weights again varied by county and by year; the first model contributed between 18% and 32%, the second model between 20% and 29%, and the fourth model between 43% and 52%. Estimates of the number of households for counties were added up to yield estimates of the number of households for the state. From these, we calculated average household size for Florida.

## Households

There were 8,125,176 households in Florida on April 1, 2017, an increase of 704,374 (9.5%) since April 1, 2010. Miami-Dade County had more households than any other county in Florida, with 959,184. Other counties with large numbers of households were Broward (733,636), Palm Beach (583,668), Hillsborough (532,500), Orange (484,409), Pinellas (439,880), and Duval (375,311). At the other end of the spectrum, six counties had fewer than 5,000 households: Liberty (2,642), Lafayette (2,696), Union (4,163), Franklin (4,664), Glades (4,671), and Hamilton (4,794).

Miami-Dade County had the largest increase in households between 2010 and 2017, growing by 91,832. Other large increases occurred in Orange (62,562), Hillsborough (58,470), Broward (47,589), Palm Beach (39,441), Lee

(34,150), and Duval (32,861). Putnam County was the only county with a net loss of households between 2010 and 2017. In percentage terms, the largest increases occurred in Sumter (38.2%), Osceola (25.0%), St. Johns (21.6%), Walton (19.6%), Orange (14.8%), Manatee (14.6%), and Santa Rosa (13.3%).

## Average Household Size

Florida's average household size declined substantially between 1950 and 1990, falling from 3.22 to 2.46. This decline was caused by falling birth rates, increasing divorce rates, a rising age at first marriage, and a substantial increase in Florida's older population. It remained constant between 1990 and 2000 before rising slightly to 2.48 in 2010. This turnaround was caused by a leveling off of birth and divorce rates and by shifts in Florida's demographic composition. We estimate that average household size has declined slightly since 2010 in the majority of counties. These declines are associated with the aging of the population and are expected to continue for some time. For the state, average household size increased marginally between 2010 and 2012, which was driven by increases in the largest counties; since then it has declined slightly, reaching 2.47 in 2017.

Average household size varies considerably among counties in Florida. In 2017, it was largest in Hardee (3.11), Hendry (3.10), Osceola (2.95), Miami-Dade (2.81), Baker (2.75) and Clay (2.72), and smallest in Sumter (1.97), Sarasota (2.11), Charlotte (2.11), Pinellas (2.14), Monroe (2.15) and Citrus (2.18).

In general, average household size tends to be higher for black than white households, for Hispanic than non-Hispanic households, and for households headed by young or middle-aged persons than for households headed by older persons. Although there is not a perfect correlation, the counties in Florida with the largest average household sizes tend to have low proportions of older residents and high proportions of black or Hispanic residents, whereas counties with the smallest average household sizes tend to have high proportions of older residents and low proportions of black and Hispanic residents.

## Acknowledgement

Funding for these estimates was provided by the Florida Legislature.

Copyright © 2017 by the University of Florida.

**Table 1. Number of Households in Florida and Its Counties, 2000–2010**

State and County	Census	Estimate				
	2000	2001	2002	2003	2004	2005
FLORIDA	6,338,075	6,460,934	6,586,806	6,719,399	6,872,318	7,029,787
Alachua	87,509	88,874	90,264	91,409	92,688	94,342
Baker	7,043	7,157	7,334	7,440	7,610	7,842
Bay	59,597	60,275	60,964	61,755	63,024	64,493
Bradford	8,497	8,615	8,662	8,720	8,835	9,010
Brevard	198,195	201,918	205,931	210,251	215,698	220,776
Broward	654,445	664,656	672,693	679,799	686,398	692,425
Calhoun	4,468	4,493	4,528	4,604	4,674	4,782
Charlotte	63,864	65,317	66,950	68,570	70,115	69,540
Citrus	52,634	53,698	54,786	56,001	57,462	59,121
Clay	50,243	51,581	53,708	55,862	58,460	60,890
Collier	102,973	107,237	111,689	115,920	120,233	124,722
Columbia	20,925	21,176	21,558	21,942	22,530	23,129
DeSoto	10,746	10,833	10,874	11,063	11,207	10,998
Dixie	5,205	5,311	5,402	5,481	5,615	5,760
Duval	303,747	307,853	312,263	316,087	320,185	324,531
Escambia	111,049	112,099	112,793	113,412	114,137	113,586
Flagler	21,294	22,630	24,267	26,245	29,011	32,137
Franklin	4,096	4,144	4,181	4,234	4,280	4,326
Gadsden	15,867	15,877	15,977	15,910	16,008	16,221
Gilchrist	5,021	5,114	5,225	5,358	5,510	5,651
Glades	3,852	3,956	4,064	4,149	4,278	4,411
Gulf	4,931	4,919	5,019	5,072	5,193	5,283
Hamilton	4,161	4,165	4,232	4,266	4,316	4,370
Hardee	8,166	8,123	8,093	8,085	8,136	8,063
Hendry	10,850	10,973	11,084	11,242	11,419	11,616
Hernando	55,425	56,466	57,994	59,896	62,187	64,938
Highlands	37,471	37,835	38,298	38,942	39,678	40,507
Hillsborough	391,357	401,097	410,965	420,098	430,724	441,906
Holmes	6,921	6,961	7,025	7,078	7,153	7,230
Indian River	49,137	50,150	51,154	52,262	54,013	55,378
Jackson	16,620	16,661	16,711	16,756	16,910	17,151
Jefferson	4,695	4,761	4,897	5,017	5,112	5,248
Lafayette	2,142	2,194	2,245	2,264	2,283	2,314

**Table 1. Number of Households in Florida and Its Counties, 2000–2010 (Continued)**

2006	Estimate			Census 2010	State and County
	2007	2008	2009		
7,178,486	7,292,550	7,354,880	7,379,964	7,420,802	FLORIDA
96,474	98,130	99,233	99,972	100,516	Alachua
8,121	8,356	8,561	8,709	8,772	Baker
66,051	67,255	68,162	68,259	68,438	Bay
9,173	9,337	9,472	9,481	9,479	Bradford
224,190	226,581	228,262	228,940	229,692	Brevard
693,150	689,374	687,057	684,387	686,047	Broward
4,875	4,973	5,010	5,013	5,061	Calhoun
71,167	72,948	73,242	73,152	73,370	Charlotte
61,087	62,840	63,570	63,503	63,304	Citrus
63,978	66,698	67,556	68,014	68,792	Clay
127,684	129,214	130,398	131,568	133,179	Collier
23,806	24,409	24,676	24,833	24,941	Columbia
11,069	11,236	11,338	11,380	11,445	DeSoto
5,953	6,079	6,150	6,221	6,316	Dixie
329,575	333,523	336,510	339,368	342,450	Duval
114,977	115,811	116,187	116,225	116,238	Escambia
35,263	37,577	38,563	38,863	39,186	Flagler
4,243	4,298	4,313	4,272	4,254	Franklin
16,499	16,697	16,913	16,869	16,952	Gadsden
5,798	5,936	6,011	6,037	6,121	Gilchrist
4,466	4,485	4,473	4,514	4,533	Glades
5,359	5,399	5,415	5,348	5,335	Gulf
4,433	4,522	4,593	4,619	4,617	Hamilton
8,066	8,128	8,212	8,227	8,245	Hardee
11,856	11,993	12,001	11,996	12,025	Hendry
67,807	70,308	71,469	71,532	71,745	Hernando
41,611	42,562	42,933	42,788	42,604	Highlands
454,088	462,966	466,969	469,660	474,030	Hillsborough
7,323	7,396	7,418	7,387	7,354	Holmes
57,264	58,979	59,871	59,966	60,176	Indian River
17,389	17,551	17,452	17,603	17,417	Jackson
5,377	5,470	5,550	5,614	5,646	Jefferson
2,400	2,451	2,527	2,565	2,580	Lafayette

**Table 1. Number of Households in Florida and Its Counties, 2000–2010 (Continued)**

State and County	Census	Estimate				
	2000	2001	2002	2003	2004	2005
Lake	88,412	92,238	95,891	99,717	104,221	109,055
Lee	188,599	195,051	202,102	209,646	219,059	231,116
Leon	96,521	97,965	99,349	101,791	104,253	106,393
Levy	13,867	14,151	14,462	14,722	14,979	15,276
Liberty	2,222	2,250	2,270	2,288	2,318	2,337
Madison	6,629	6,652	6,657	6,695	6,759	6,818
Manatee	112,460	115,161	117,945	120,982	124,398	128,254
Marion	106,755	108,886	111,675	115,079	119,407	124,453
Martin	55,288	56,393	57,603	58,996	60,325	61,458
Miami-Dade	776,906	786,875	796,648	807,319	817,225	828,338
Monroe	35,086	35,087	35,108	35,067	34,784	34,405
Nassau	21,980	22,568	23,200	23,807	24,473	25,245
Okaloosa	66,269	67,182	68,472	69,561	71,169	72,521
Okeechobee	12,593	12,760	12,921	13,124	13,353	13,500
Orange	336,286	347,469	356,520	365,610	376,385	389,198
Osceola	60,977	63,449	66,522	70,137	74,270	78,149
Palm Beach	474,179	483,745	494,367	506,197	519,142	528,805
Pasco	147,567	151,166	155,326	160,720	167,071	174,349
Pinellas	414,974	417,018	418,030	419,432	420,357	421,046
Polk	187,233	189,592	192,326	195,928	200,765	207,148
Putnam	27,839	27,950	28,166	28,384	28,743	29,031
St. Johns	49,614	51,838	54,017	56,465	59,912	63,260
St. Lucie	76,933	78,661	81,152	84,462	89,053	94,051
Santa Rosa	43,793	45,066	47,082	49,027	51,014	52,707
Sarasota	149,940	152,899	156,103	159,556	163,784	168,185
Seminole	139,573	143,658	147,177	149,874	152,823	156,556
Sumter	20,779	22,061	23,318	24,315	25,810	28,310
Suwannee	13,460	13,784	13,961	14,212	14,491	14,863
Taylor	7,176	7,236	7,308	7,351	7,454	7,560
Union	3,367	3,415	3,486	3,576	3,537	3,641
Volusia	184,723	187,735	190,800	194,285	198,781	202,729
Wakulla	8,450	8,574	8,817	9,031	9,296	9,596
Walton	16,548	17,257	18,110	18,707	19,537	20,260
Washington	7,931	8,023	8,085	8,146	8,288	8,477

**Table 1. Number of Households in Florida and Its Counties, 2000–2010 (Continued)**

	Estimate				Census 2010	State and County
	2006	2007	2008	2009		
114,530	118,686	119,958	120,541	121,289	Lake	
242,741	251,971	256,199	257,425	259,818	Lee	
107,919	109,185	110,134	110,515	110,945	Leon	
15,615	16,025	16,294	16,354	16,404	Levy	
2,411	2,461	2,513	2,531	2,525	Liberty	
6,857	6,892	6,941	6,983	6,985	Madison	
131,721	133,894	134,654	134,993	135,729	Manatee	
129,618	133,834	136,424	137,345	137,726	Marion	
62,208	62,988	63,395	63,622	63,899	Martin	
837,845	848,494	857,440	861,086	867,352	Miami-Dade	
33,755	33,392	32,983	32,893	32,629	Monroe	
26,131	27,036	27,790	28,351	28,794	Nassau	
72,926	72,792	72,579	72,437	72,379	Okaloosa	
13,675	13,888	14,018	14,005	14,013	Okeechobee	
401,159	410,359	415,280	417,854	421,847	Orange	
82,389	86,143	88,631	89,701	90,603	Osceola	
535,467	539,478	540,974	541,841	544,227	Palm Beach	
181,806	187,193	189,188	189,367	189,612	Pasco	
420,943	419,714	418,075	416,422	415,876	Pinellas	
214,530	221,044	224,808	226,265	227,485	Polk	
29,330	29,601	29,667	29,543	29,409	Putnam	
66,681	70,009	72,475	73,949	75,338	St. Johns	
99,001	103,406	106,218	107,279	108,523	St. Lucie	
53,685	54,571	55,549	56,209	56,910	Santa Rosa	
170,785	172,713	174,022	174,645	175,746	Sarasota	
159,910	161,976	162,976	163,705	164,706	Seminole	
31,590	34,575	36,963	39,054	41,361	Sumter	
15,225	15,653	16,013	16,012	15,953	Suwannee	
7,675	7,727	7,813	7,880	7,920	Taylor	
3,776	3,810	3,933	4,066	4,048	Union	
206,489	209,074	209,687	208,741	208,236	Volusia	
9,895	10,185	10,425	10,405	10,490	Wakulla	
20,977	21,518	21,973	22,173	22,301	Walton	
8,649	8,781	8,821	8,887	8,864	Washington	

**Table 2. Number of Households in Florida and Its Counties, 2010–2017**

State and County	Census		Estimate					
	2010	2011	2012	2013	2014	2015	2016	2017
FLORIDA	7,420,802	7,456,791	7,525,335	7,602,417	7,708,538	7,840,780	7,982,938	8,125,176
Alachua	100,516	100,562	100,647	101,277	102,526	104,395	105,398	106,698
Baker	8,772	8,742	8,772	8,763	8,841	8,863	8,795	8,877
Bay	68,438	68,634	68,752	69,052	69,557	70,711	71,917	73,147
Bradford	9,479	9,455	9,446	9,456	9,533	9,510	9,593	9,664
Brevard	229,692	230,673	231,615	233,260	235,555	240,003	243,526	246,591
Broward	686,047	686,689	693,103	698,279	705,516	714,653	725,548	733,636
Calhoun	5,061	5,069	5,058	5,064	5,058	5,085	5,121	5,271
Charlotte	73,370	73,896	75,006	75,279	75,827	77,259	78,916	80,145
Citrus	63,304	63,211	63,208	63,193	63,435	63,839	64,620	65,039
Clay	68,792	68,967	69,449	69,886	71,675	73,222	74,871	76,219
Collier	133,179	134,078	136,603	138,256	139,774	142,948	145,841	149,043
Columbia	24,941	24,966	25,009	25,008	25,225	25,386	25,643	25,880
DeSoto	11,445	11,389	11,259	11,230	11,265	11,440	11,594	11,755
Dixie	6,316	6,323	6,308	6,312	6,379	6,355	6,454	6,467
Duval	342,450	342,975	345,505	348,594	354,785	361,641	369,498	375,311
Escambia	116,238	116,932	117,189	118,063	119,355	120,798	122,182	123,659
Flagler	39,186	39,320	39,669	39,941	40,515	41,536	42,332	43,267
Franklin	4,254	4,262	4,241	4,290	4,346	4,401	4,473	4,664
Gadsden	16,952	17,194	17,155	17,309	17,465	17,582	17,722	17,709
Gilchrist	6,121	6,146	6,152	6,163	6,170	6,238	6,322	6,387
Glades	4,533	4,503	4,456	4,458	4,539	4,557	4,645	4,671
Gulf	5,335	5,369	5,396	5,485	5,660	5,689	5,839	5,819
Hamilton	4,617	4,658	4,678	4,712	4,734	4,779	4,794	4,794
Hardee	8,245	8,223	8,253	8,233	8,245	8,247	8,264	8,297
Hendry	12,025	11,980	11,944	11,907	11,943	12,017	12,121	12,354
Hernando	71,745	71,814	71,865	72,168	72,736	73,620	74,837	75,883
Highlands	42,604	42,586	42,718	42,817	43,181	43,651	44,059	44,376
Hillsborough	474,030	477,169	483,859	491,748	501,789	511,381	522,201	532,500
Holmes	7,354	7,324	7,334	7,354	7,377	7,370	7,413	7,485
Indian River	60,176	60,472	60,906	61,193	61,891	63,018	64,467	65,669
Jackson	17,417	17,636	17,369	17,646	17,686	17,858	17,936	18,024
Jefferson	5,646	5,645	5,631	5,645	5,686	5,678	5,751	5,790
Lafayette	2,580	2,593	2,609	2,611	2,637	2,659	2,658	2,696



**Table 2. Number of Households in Florida and Its Counties, 2010–2017** (Continued)

State and County	Census	Estimate						
	2010	2011	2012	2013	2014	2015	2016	2017
Lake	121,289	121,672	122,171	123,598	126,287	129,130	132,394	135,546
Lee	259,818	262,324	267,675	269,970	274,345	279,702	286,168	293,968
Leon	110,945	111,209	111,909	112,336	113,706	115,234	116,702	117,030
Levy	16,404	16,398	16,329	16,335	16,435	16,459	16,537	16,757
Liberty	2,525	2,547	2,534	2,513	2,540	2,579	2,621	2,642
Madison	6,985	7,009	6,992	7,097	7,078	7,077	7,137	7,157
Manatee	135,729	136,850	138,586	140,066	142,590	146,900	150,556	155,493
Marion	137,726	137,994	138,506	139,341	140,638	142,484	144,856	146,636
Martin	63,899	64,110	64,430	64,826	65,168	66,007	66,436	67,528
Miami-Dade	867,352	873,968	886,049	897,163	909,280	924,984	942,789	959,184
Monroe	32,629	32,476	32,622	32,978	33,262	33,397	34,282	34,740
Nassau	28,794	29,011	29,134	29,600	29,983	30,578	31,199	32,330
Okaloosa	72,379	72,804	75,117	75,688	76,769	77,435	77,993	79,112
Okeechobee	14,013	13,969	13,947	13,902	13,954	14,082	14,288	14,406
Orange	421,847	425,882	432,153	442,127	451,659	461,038	471,839	484,409
Osceola	90,603	92,135	94,362	96,770	99,127	103,401	108,281	113,259
Palm Beach	544,227	545,662	549,659	553,806	560,064	567,958	573,967	583,668
Pasco	189,612	189,832	190,342	192,250	194,633	198,129	201,715	206,036
Pinellas	415,876	416,868	418,056	421,383	425,195	431,182	436,026	439,880
Polk	227,485	228,194	228,992	231,682	235,289	239,351	244,938	250,798
Putnam	29,409	29,273	28,944	28,760	28,776	28,925	29,085	29,203
St. Johns	75,338	76,413	77,706	79,921	82,347	84,892	87,692	91,588
St. Lucie	108,523	109,152	109,417	109,772	110,536	112,589	114,699	116,706
Santa Rosa	56,910	57,598	57,864	58,739	59,847	60,995	62,729	64,505
Sarasota	175,746	176,678	177,864	178,777	179,882	182,454	186,133	189,931
Seminole	164,706	165,658	167,375	168,947	171,786	174,511	177,320	179,811
Sumter	41,361	43,124	45,249	47,894	51,331	53,837	55,728	57,159
Suwannee	15,953	16,030	16,150	16,195	16,295	16,456	16,533	16,747
Taylor	7,920	7,917	7,951	8,010	8,082	8,102	8,092	8,179
Union	4,048	4,049	4,071	4,070	4,138	4,236	4,212	4,163
Volusia	208,236	208,683	209,546	210,535	212,874	215,974	219,098	221,941
Wakulla	10,490	10,531	10,557	10,472	10,614	10,727	10,923	11,191
Walton	22,301	22,442	23,070	23,420	24,262	24,700	25,669	26,674
Washington	8,864	8,874	8,842	8,822	8,860	8,886	8,950	9,012



**Table 3. Average Household Size in Florida and Its Counties, 2000–2010**

State and County	Census	Estimate									Census
	2000	2001	2002	2003	2004	2005	2006	2007	2008	2009	2010
FLORIDA	2.46	2.46	2.47	2.47	2.47	2.47	2.47	2.47	2.47	2.47	2.48
Alachua	2.34	2.34	2.34	2.33	2.33	2.33	2.32	2.32	2.32	2.32	2.32
Baker	2.86	2.86	2.85	2.84	2.84	2.83	2.83	2.83	2.83	2.82	2.82
Bay	2.43	2.43	2.43	2.42	2.42	2.42	2.42	2.41	2.41	2.41	2.41
Bradford	2.58	2.58	2.57	2.56	2.55	2.55	2.54	2.54	2.54	2.53	2.53
Brevard	2.35	2.35	2.35	2.35	2.35	2.34	2.34	2.34	2.34	2.33	2.33
Broward	2.45	2.46	2.47	2.47	2.48	2.49	2.49	2.50	2.51	2.51	2.52
Calhoun	2.53	2.53	2.52	2.52	2.52	2.52	2.52	2.52	2.52	2.52	2.52
Charlotte	2.18	2.17	2.17	2.17	2.16	2.16	2.16	2.15	2.15	2.14	2.14
Citrus	2.20	2.20	2.20	2.20	2.20	2.20	2.20	2.20	2.19	2.20	2.20
Clay	2.77	2.77	2.77	2.76	2.76	2.76	2.76	2.76	2.76	2.76	2.76
Collier	2.39	2.40	2.40	2.40	2.40	2.40	2.39	2.39	2.39	2.38	2.38
Columbia	2.56	2.56	2.55	2.55	2.55	2.54	2.54	2.53	2.53	2.53	2.52
DeSoto	2.70	2.70	2.70	2.70	2.71	2.71	2.71	2.71	2.71	2.71	2.71
Dixie	2.44	2.43	2.42	2.42	2.41	2.40	2.39	2.39	2.38	2.38	2.37
Duval	2.51	2.51	2.51	2.50	2.50	2.50	2.49	2.48	2.48	2.47	2.47
Escambia	2.45	2.45	2.45	2.44	2.44	2.44	2.43	2.42	2.42	2.41	2.41
Flagler	2.32	2.33	2.34	2.35	2.36	2.37	2.38	2.39	2.40	2.42	2.42
Franklin	2.28	2.28	2.28	2.28	2.28	2.28	2.28	2.28	2.28	2.29	2.29
Gadsden	2.69	2.68	2.67	2.66	2.65	2.64	2.64	2.63	2.62	2.61	2.61
Gilchrist	2.61	2.61	2.61	2.60	2.60	2.60	2.60	2.59	2.59	2.59	2.58
Glades	2.51	2.51	2.51	2.51	2.51	2.50	2.50	2.50	2.51	2.51	2.52
Gulf	2.42	2.41	2.40	2.38	2.37	2.36	2.36	2.35	2.34	2.34	2.33
Hamilton	2.60	2.60	2.59	2.58	2.57	2.57	2.56	2.56	2.55	2.55	2.54
Hardee	3.06	3.07	3.07	3.08	3.09	3.09	3.10	3.11	3.11	3.12	3.12
Hendry	3.09	3.08	3.08	3.08	3.09	3.09	3.09	3.09	3.09	3.09	3.09
Hernando	2.32	2.33	2.34	2.34	2.35	2.35	2.36	2.36	2.37	2.38	2.38
Highlands	2.30	2.30	2.29	2.29	2.29	2.29	2.29	2.28	2.28	2.28	2.28
Hillsborough	2.51	2.51	2.52	2.52	2.53	2.53	2.53	2.53	2.54	2.54	2.55
Holmes	2.43	2.44	2.44	2.44	2.44	2.44	2.45	2.45	2.46	2.47	2.47
Indian River	2.25	2.25	2.25	2.26	2.26	2.26	2.26	2.26	2.26	2.26	2.26
Jackson	2.44	2.44	2.43	2.43	2.42	2.42	2.42	2.41	2.41	2.40	2.40
Jefferson	2.53	2.51	2.49	2.47	2.45	2.44	2.42	2.41	2.40	2.39	2.38
Lafayette	2.66	2.66	2.65	2.65	2.64	2.64	2.64	2.64	2.63	2.63	2.63

**Table 3. Average Household Size in Florida and Its Counties, 2000–2010** (Continued)

State and County	Census	Estimate									Census
	2000	2001	2002	2003	2004	2005	2006	2007	2008	2009	2010
Lake	2.34	2.35	2.36	2.37	2.37	2.38	2.39	2.39	2.40	2.41	2.42
Lee	2.31	2.31	2.32	2.32	2.33	2.33	2.33	2.34	2.34	2.35	2.35
Leon	2.34	2.34	2.34	2.34	2.34	2.34	2.34	2.34	2.34	2.35	2.35
Levy	2.44	2.44	2.44	2.44	2.44	2.44	2.44	2.44	2.45	2.45	2.45
Liberty	2.51	2.51	2.51	2.52	2.52	2.53	2.54	2.54	2.55	2.56	2.57
Madison	2.57	2.56	2.55	2.54	2.53	2.52	2.52	2.51	2.50	2.49	2.48
Manatee	2.29	2.30	2.31	2.31	2.32	2.32	2.33	2.33	2.34	2.34	2.34
Marion	2.36	2.36	2.36	2.35	2.35	2.35	2.35	2.35	2.35	2.35	2.35
Martin	2.23	2.23	2.23	2.23	2.23	2.23	2.23	2.23	2.23	2.23	2.23
Miami-Dade	2.84	2.84	2.84	2.84	2.84	2.84	2.84	2.84	2.83	2.83	2.83
Monroe	2.23	2.23	2.22	2.22	2.21	2.21	2.20	2.19	2.19	2.18	2.18
Nassau	2.59	2.58	2.58	2.57	2.56	2.55	2.55	2.54	2.54	2.53	2.53
Okaloosa	2.49	2.48	2.48	2.47	2.46	2.45	2.45	2.44	2.44	2.43	2.43
Okeechobee	2.69	2.68	2.68	2.68	2.68	2.68	2.68	2.67	2.67	2.67	2.68
Orange	2.61	2.62	2.62	2.62	2.63	2.63	2.63	2.64	2.64	2.64	2.64
Osceola	2.79	2.81	2.83	2.84	2.86	2.87	2.88	2.88	2.90	2.92	2.93
Palm Beach	2.34	2.35	2.36	2.36	2.37	2.37	2.37	2.38	2.38	2.38	2.39
Pasco	2.30	2.31	2.33	2.34	2.35	2.36	2.37	2.38	2.40	2.41	2.42
Pinellas	2.17	2.17	2.17	2.17	2.17	2.16	2.16	2.16	2.16	2.16	2.16
Polk	2.52	2.53	2.53	2.54	2.55	2.56	2.56	2.57	2.58	2.59	2.59
Putnam	2.48	2.48	2.48	2.48	2.48	2.48	2.48	2.48	2.48	2.48	2.48
St. Johns	2.44	2.44	2.45	2.45	2.46	2.46	2.47	2.48	2.48	2.48	2.49
St. Lucie	2.47	2.48	2.48	2.49	2.50	2.50	2.51	2.52	2.52	2.53	2.53
Santa Rosa	2.63	2.62	2.62	2.61	2.61	2.60	2.60	2.59	2.59	2.59	2.59
Sarasota	2.13	2.13	2.13	2.13	2.13	2.13	2.13	2.13	2.13	2.13	2.13
Seminole	2.59	2.59	2.59	2.58	2.58	2.58	2.57	2.56	2.56	2.55	2.55
Sumter	2.27	2.24	2.21	2.18	2.16	2.14	2.11	2.09	2.08	2.06	2.04
Suwannee	2.54	2.54	2.54	2.53	2.53	2.53	2.53	2.52	2.52	2.52	2.52
Taylor	2.51	2.50	2.49	2.49	2.48	2.47	2.46	2.46	2.45	2.44	2.44
Union	2.76	2.75	2.73	2.72	2.71	2.69	2.69	2.68	2.67	2.66	2.66
Volusia	2.32	2.32	2.32	2.32	2.32	2.32	2.32	2.32	2.32	2.31	2.31
Wakulla	2.57	2.57	2.57	2.57	2.58	2.58	2.58	2.59	2.59	2.60	2.61
Walton	2.35	2.34	2.35	2.35	2.35	2.35	2.36	2.36	2.37	2.37	2.38
Washington	2.46	2.47	2.47	2.47	2.48	2.48	2.49	2.49	2.49	2.50	2.50

**Table 4. Average Household Size in Florida and Its Counties, 2010–2017**

State and County	Census	Estimate						
	2010	2011	2012	2013	2014	2015	2016	2017
FLORIDA	2.48	2.48	2.48	2.48	2.47	2.47	2.47	2.47
Alachua	2.32	2.32	2.32	2.32	2.31	2.31	2.31	2.31
Baker	2.82	2.82	2.81	2.80	2.79	2.78	2.76	2.75
Bay	2.41	2.41	2.41	2.40	2.40	2.40	2.39	2.39
Bradford	2.53	2.54	2.54	2.54	2.53	2.53	2.52	2.52
Brevard	2.33	2.33	2.33	2.32	2.32	2.31	2.31	2.31
Broward	2.52	2.53	2.53	2.53	2.53	2.53	2.53	2.53
Calhoun	2.52	2.51	2.51	2.50	2.50	2.49	2.49	2.48
Charlotte	2.14	2.14	2.13	2.13	2.13	2.12	2.12	2.11
Citrus	2.20	2.19	2.19	2.19	2.18	2.18	2.18	2.18
Clay	2.76	2.75	2.75	2.74	2.74	2.73	2.72	2.72
Collier	2.38	2.38	2.38	2.38	2.38	2.37	2.37	2.36
Columbia	2.52	2.52	2.51	2.50	2.49	2.49	2.48	2.48
DeSoto	2.71	2.72	2.72	2.72	2.72	2.71	2.71	2.70
Dixie	2.37	2.37	2.36	2.35	2.34	2.33	2.31	2.31
Duval	2.47	2.46	2.46	2.46	2.45	2.45	2.44	2.44
Escambia	2.41	2.40	2.40	2.40	2.39	2.39	2.39	2.38
Flagler	2.42	2.43	2.43	2.43	2.43	2.42	2.42	2.41
Franklin	2.29	2.28	2.28	2.28	2.27	2.27	2.26	2.26
Gadsden	2.61	2.59	2.58	2.56	2.55	2.54	2.53	2.52
Gilchrist	2.58	2.58	2.57	2.57	2.56	2.55	2.55	2.54
Glades	2.52	2.52	2.51	2.51	2.51	2.50	2.49	2.48
Gulf	2.33	2.32	2.31	2.30	2.29	2.28	2.28	2.27
Hamilton	2.54	2.54	2.53	2.52	2.51	2.50	2.50	2.49
Hardee	3.12	3.12	3.12	3.12	3.12	3.11	3.11	3.11
Hendry	3.09	3.10	3.11	3.12	3.12	3.11	3.11	3.10
Hernando	2.38	2.38	2.38	2.38	2.38	2.38	2.37	2.37
Highlands	2.28	2.28	2.28	2.27	2.27	2.27	2.26	2.26
Hillsborough	2.55	2.55	2.55	2.55	2.55	2.55	2.54	2.54
Holmes	2.47	2.47	2.47	2.46	2.46	2.46	2.45	2.45
Indian River	2.26	2.26	2.26	2.26	2.26	2.25	2.25	2.25
Jackson	2.40	2.39	2.39	2.38	2.38	2.37	2.37	2.37
Jefferson	2.38	2.37	2.36	2.35	2.34	2.33	2.32	2.31
Lafayette	2.63	2.63	2.62	2.62	2.62	2.61	2.61	2.60

**Table 4. Average Household Size in Florida and Its Counties, 2010–2017 (Continued)**

State and County	Census	Estimate						
	2010	2011	2012	2013	2014	2015	2016	2017
Lake	2.42	2.42	2.42	2.42	2.42	2.42	2.42	2.42
Lee	2.35	2.35	2.35	2.35	2.35	2.35	2.35	2.34
Leon	2.35	2.35	2.35	2.34	2.34	2.34	2.33	2.33
Levy	2.45	2.45	2.45	2.44	2.44	2.43	2.43	2.42
Liberty	2.57	2.57	2.57	2.57	2.56	2.56	2.55	2.55
Madison	2.48	2.47	2.46	2.45	2.44	2.43	2.43	2.42
Manatee	2.34	2.35	2.35	2.35	2.35	2.34	2.34	2.34
Marion	2.35	2.34	2.34	2.34	2.33	2.33	2.32	2.32
Martin	2.23	2.23	2.22	2.22	2.21	2.21	2.21	2.20
Miami-Dade	2.83	2.83	2.83	2.83	2.83	2.82	2.82	2.81
Monroe	2.18	2.18	2.17	2.17	2.16	2.16	2.16	2.15
Nassau	2.53	2.52	2.51	2.50	2.49	2.48	2.48	2.47
Okaloosa	2.43	2.43	2.43	2.42	2.42	2.41	2.41	2.41
Okeechobee	2.68	2.68	2.67	2.67	2.66	2.66	2.65	2.65
Orange	2.64	2.64	2.64	2.64	2.64	2.64	2.64	2.63
Osceola	2.93	2.94	2.94	2.94	2.95	2.95	2.95	2.95
Palm Beach	2.39	2.39	2.39	2.39	2.39	2.39	2.39	2.39
Pasco	2.42	2.43	2.43	2.43	2.43	2.43	2.43	2.42
Pinellas	2.16	2.16	2.15	2.15	2.15	2.15	2.14	2.14
Polk	2.59	2.60	2.60	2.60	2.60	2.59	2.59	2.59
Putnam	2.48	2.48	2.48	2.48	2.47	2.47	2.46	2.46
St. Johns	2.49	2.49	2.49	2.48	2.48	2.48	2.47	2.47
St. Lucie	2.53	2.53	2.53	2.53	2.53	2.53	2.52	2.52
Santa Rosa	2.59	2.58	2.58	2.57	2.57	2.56	2.56	2.55
Sarasota	2.13	2.13	2.13	2.12	2.12	2.12	2.11	2.11
Seminole	2.55	2.54	2.54	2.53	2.52	2.52	2.51	2.51
Sumter	2.04	2.03	2.02	2.01	2.00	1.99	1.98	1.97
Suwannee	2.52	2.51	2.51	2.50	2.49	2.49	2.48	2.48
Taylor	2.44	2.44	2.43	2.43	2.42	2.42	2.41	2.41
Union	2.66	2.65	2.64	2.63	2.62	2.60	2.59	2.58
Volusia	2.31	2.31	2.31	2.31	2.31	2.30	2.30	2.30
Wakulla	2.61	2.61	2.61	2.60	2.60	2.60	2.59	2.59
Walton	2.38	2.38	2.38	2.38	2.38	2.38	2.37	2.37
Washington	2.50	2.51	2.51	2.51	2.50	2.50	2.50	2.49

**Table 5. Change in Households and Average Household Size  
in Florida and Its Counties, 2000–2010 and 2010–2017**

State and County	Numerical Change				Percentage Change			
	Households		Average Household Size		Households		Average Household Size	
	2000–2010	2010–2017	2000–2010	2010–2017	2000–2010	2010–2017	2000–2010	2010–2017
FLORIDA	1,082,727	704,374	0.02	-0.01	17.1	9.5	0.8	-0.4
Alachua	13,007	6,182	-0.02	-0.01	14.9	6.2	-0.9	-0.4
Baker	1,729	105	-0.04	-0.07	24.5	1.2	-1.4	-2.5
Bay	8,841	4,709	-0.02	-0.02	14.8	6.9	-0.8	-0.8
Bradford	982	185	-0.05	-0.01	11.6	2.0	-1.9	-0.4
Brevard	31,497	16,899	-0.02	-0.02	15.9	7.4	-0.9	-0.9
Broward	31,602	47,589	0.07	0.01	4.8	6.9	2.9	0.4
Calhoun	593	210	-0.01	-0.04	13.3	4.1	-0.4	-1.6
Charlotte	9,506	6,775	-0.04	-0.03	14.9	9.2	-1.8	-1.4
Citrus	10,670	1,735	0.00	-0.02	20.3	2.7	0.0	-0.9
Clay	18,549	7,427	-0.01	-0.04	36.9	10.8	-0.4	-1.4
Collier	30,206	15,864	-0.01	-0.02	29.3	11.9	-0.4	-0.8
Columbia	4,016	939	-0.04	-0.04	19.2	3.8	-1.6	-1.6
DeSoto	699	310	0.01	-0.01	6.5	2.7	0.4	-0.4
Dixie	1,111	151	-0.07	-0.06	21.3	2.4	-2.9	-2.5
Duval	38,703	32,861	-0.04	-0.03	12.7	9.6	-1.6	-1.2
Escambia	5,189	7,421	-0.04	-0.03	4.7	6.4	-1.6	-1.2
Flagler	17,892	4,081	0.10	-0.01	84.0	10.4	4.3	-0.4
Franklin	158	410	0.01	-0.03	3.9	9.6	0.4	-1.3
Gadsden	1,085	757	-0.08	-0.09	6.8	4.5	-3.0	-3.4
Gilchrist	1,100	266	-0.03	-0.04	21.9	4.3	-1.1	-1.6
Glades	681	138	0.01	-0.04	17.7	3.0	0.4	-1.6
Gulf	404	484	-0.09	-0.06	8.2	9.1	-3.7	-2.6
Hamilton	456	177	-0.06	-0.05	11.0	3.8	-2.3	-2.0
Hardee	79	52	0.06	-0.01	1.0	0.6	2.0	-0.3
Hendry	1,175	329	0.00	0.01	10.8	2.7	0.0	0.3
Hernando	16,320	4,138	0.06	-0.01	29.4	5.8	2.6	-0.4
Highlands	5,133	1,772	-0.02	-0.02	13.7	4.2	-0.9	-0.9
Hillsborough	82,673	58,470	0.04	-0.01	21.1	12.3	1.6	-0.4
Holmes	433	131	0.04	-0.02	6.3	1.8	1.6	-0.8
Indian River	11,039	5,493	0.01	-0.01	22.5	9.1	0.4	-0.4
Jackson	797	607	-0.04	-0.03	4.8	3.5	-1.6	-1.3
Jefferson	951	144	-0.15	-0.07	20.3	2.6	-5.9	-2.9
Lafayette	438	116	-0.03	-0.03	20.4	4.5	-1.1	-1.1

**Table 5. Change in Households and Average Household Size  
in Florida and Its Counties, 2000–2010 and 2010–2017 (Continued)**

State and County	Numerical Change				Percentage Change			
	Households		Average Household Size		Households		Average Household Size	
	2000–2010	2010–2017	2000–2010	2010–2017	2000–2010	2010–2017	2000–2010	2010–2017
Lake	32,877	14,257	0.08	0.00	37.2	11.8	3.4	0.0
Lee	71,219	34,150	0.04	-0.01	37.8	13.1	1.7	-0.4
Leon	14,424	6,085	0.01	-0.02	14.9	5.5	0.4	-0.9
Levy	2,537	353	0.01	-0.03	18.3	2.2	0.4	-1.2
Liberty	303	117	0.06	-0.02	13.6	4.6	2.4	-0.8
Madison	356	172	-0.09	-0.06	5.4	2.5	-3.5	-2.4
Manatee	23,269	19,764	0.05	0.00	20.7	14.6	2.2	0.0
Marion	30,971	8,910	-0.01	-0.03	29.0	6.5	-0.4	-1.3
Martin	8,611	3,629	0.00	-0.03	15.6	5.7	0.0	-1.3
Miami-Dade	90,446	91,832	-0.01	-0.02	11.6	10.6	-0.4	-0.7
Monroe	-2,457	2,111	-0.05	-0.03	-7.0	6.5	-2.2	-1.4
Nassau	6,814	3,536	-0.06	-0.06	31.0	12.3	-2.3	-2.4
Okaloosa	6,110	6,733	-0.06	-0.02	9.2	9.3	-2.4	-0.8
Okeechobee	1,420	393	-0.01	-0.03	11.3	2.8	-0.4	-1.1
Orange	85,561	62,562	0.03	-0.01	25.4	14.8	1.1	-0.4
Osceola	29,626	22,656	0.14	0.02	48.6	25.0	5.0	0.7
Palm Beach	70,048	39,441	0.05	0.00	14.8	7.2	2.1	0.0
Pasco	42,045	16,424	0.12	0.00	28.5	8.7	5.2	0.0
Pinellas	902	24,004	-0.01	-0.02	0.2	5.8	-0.5	-0.9
Polk	40,252	23,313	0.07	0.00	21.5	10.2	2.8	0.0
Putnam	1,570	-206	0.00	-0.02	5.6	-0.7	0.0	-0.8
St. Johns	25,724	16,250	0.05	-0.02	51.8	21.6	2.0	-0.8
St. Lucie	31,590	8,183	0.06	-0.01	41.1	7.5	2.4	-0.4
Santa Rosa	13,117	7,595	-0.04	-0.04	30.0	13.3	-1.5	-1.5
Sarasota	25,806	14,185	0.00	-0.02	17.2	8.1	0.0	-0.9
Seminole	25,133	15,105	-0.04	-0.04	18.0	9.2	-1.5	-1.6
Sumter	20,582	15,798	-0.23	-0.07	99.1	38.2	-10.1	-3.4
Suwannee	2,493	794	-0.02	-0.04	18.5	5.0	-0.8	-1.6
Taylor	744	259	-0.07	-0.03	10.4	3.3	-2.8	-1.2
Union	681	115	-0.10	-0.08	20.2	2.8	-3.6	-3.0
Volusia	23,513	13,705	-0.01	-0.01	12.7	6.6	-0.4	-0.4
Wakulla	2,040	701	0.04	-0.02	24.1	6.7	1.6	-0.8
Walton	5,753	4,373	0.03	-0.01	34.8	19.6	1.3	-0.4
Washington	933	148	0.04	-0.01	11.8	1.7	1.6	-0.4

