

**Demographic Estimating Conference  
Executive Summary  
November 13, 2020**

The Demographic Estimating Conference met on November 13, 2020, to adopt a new population forecast. The new estimates reflect the most recent demographic and economic-related data and trends. In addition, it incorporates the final population estimate for April 1, 2020 of 21,596,068, an increase of 21,985 from the July Conference.

The world-wide pandemic and its accompanying economic fallout continues to color this forecast, with slower population growth between April 1, 2020 and 2021 (1.38%) than was experienced in the prior year (1.83%). This is due to both less net-migration and negative natural increase.

Compared to the last conference, the short-term population projections were increased reflecting both the higher 2020 base and strengthened domestic net-migration projections supported by an apparent shift in lifestyle preferences away from the more dense urban areas found elsewhere. By April 1, 2025, the forecast was raised by 181,658. Average household size was held relatively constant in the near-term, as the economic impact the pandemic is expected to have an impact on household dynamics and structure; all else being equal, larger household sizes lead to a lower number of households.

April 1	Population	Change from the Prior Period		Change from the Prior Forecast
		Percent	Numeric	
2012	19,074,434	0.90%	169,364	
2013	19,259,543	0.97%	185,109	
2014	19,507,369	1.29%	247,826	
2015	19,815,183	1.58%	307,814	
2016	20,148,654	1.68%	333,471	
2017	20,484,142	1.67%	335,488	
2018	20,840,568	1.74%	356,426	
2019	21,208,589	1.77%	368,021	
2020	21,596,068	1.83%	387,479	21,985
<i>Forecast</i>				
2021	21,893,919	1.38%	297,851	63,555
2022	22,224,179	1.51%	330,260	105,104
2023	22,532,694	1.39%	308,515	132,009
2024	22,828,123	1.31%	295,429	157,008
2025	23,112,389	1.25%	284,266	181,658

Between April 1, 2020 and April 1, 2025, population growth is expected to average 303,264 net new residents per year (831 per day), representing a compound growth rate of 1.37% over this five-year time horizon. These increases are analogous to adding a city slightly larger than Orlando every year.

Of note, the population estimates developed by the U.S. Census Bureau continue to be higher than the official state estimates adopted by the Demographic Estimating Conference. In the latest comparable set of estimates (July 1, 2019), the difference was 170,853 persons. The Legislative Office of Economic and Demographic Research is continuing its efforts to identify how the differing underlying methodologies contribute to the gap between the two sets of estimates. In addition, after the 2020 Census counts are released, the historical series will be re-estimated to take this new data point into consideration.

# **Florida Demographic Estimating Conference**

**Tables**  
Conference Packet

November 13, 2020

# Florida Resident Population

April 1

Year	Florida Demographic Estimating Conference July 2020			Florida Demographic Estimating Conference November 2020		
	Population	% Change	Change	Population	% Change	Change
2000	15,982,824	2.58%	402,580	15,982,824	2.58%	402,580
2001	16,305,100	2.02%	322,276	16,305,100	2.02%	322,276
2002	16,634,256	2.02%	329,156	16,634,256	2.02%	329,156
2003	16,979,706	2.08%	345,450	16,979,706	2.08%	345,450
2004	17,374,824	2.33%	395,118	17,374,824	2.33%	395,118
2005	17,778,156	2.32%	403,332	17,778,156	2.32%	403,332
2006	18,154,475	2.12%	376,319	18,154,475	2.12%	376,319
2007	18,446,768	1.61%	292,293	18,446,768	1.61%	292,293
2008	18,613,905	0.91%	167,137	18,613,905	0.91%	167,137
2009	18,687,425	0.39%	73,520	18,687,425	0.39%	73,520
2010	18,801,332	0.61%	113,907	18,801,332	0.61%	113,907
2011	18,905,070	0.55%	103,738	18,905,070	0.55%	103,738
2012	19,074,434	0.90%	169,364	19,074,434	0.90%	169,364
2013	19,259,543	0.97%	185,109	19,259,543	0.97%	185,109
2014	19,507,369	1.29%	247,826	19,507,369	1.29%	247,826
2015	19,815,183	1.58%	307,814	19,815,183	1.58%	307,814
2016	20,148,654	1.68%	333,471	20,148,654	1.68%	333,471
2017	20,484,142	1.67%	335,488	20,484,142	1.67%	335,488
2018	20,840,568	1.74%	356,426	20,840,568	1.74%	356,426
2019	21,208,589	1.77%	368,021	21,208,589	1.77%	368,021
2020	21,574,083	1.72%	365,494	21,596,068	1.83%	387,479
Begins forecast						
2021	21,830,364	1.19%	256,281	21,893,919	1.38%	297,851
2022	22,119,075	1.32%	288,711	22,224,179	1.51%	330,260
2023	22,400,685	1.27%	281,610	22,532,694	1.39%	308,515
2024	22,671,115	1.21%	270,430	22,828,123	1.31%	295,429
2025	22,930,731	1.15%	259,616	23,112,389	1.25%	284,266
			5-Year Averages			
2030	24,179,166	1.07%	249,687	24,371,541	1.07%	251,830
2035	25,275,629	0.89%	219,293	25,426,202	0.85%	210,932
2040	26,218,547	0.74%	188,584	26,336,236	0.71%	182,007
2045	27,050,151	0.63%	166,321	27,142,823	0.61%	161,317

# Florida Resident Households

April 1

Year	Florida Demographic Estimating Conference July 2020			Florida Demographic Estimating Conference November 2020			
	Households	% Change	Change	Households	% Change	Change	
2000	6,338,075	2.52%	155,729	6,338,075	2.65%	163,703	
2001	6,467,215	2.04%	129,140	6,460,934	1.94%	122,859	
2002	6,599,035	2.04%	131,820	6,586,806	1.95%	125,872	
2003	6,737,370	2.10%	138,335	6,719,399	2.01%	132,593	
2004	6,895,469	2.35%	158,099	6,872,318	2.28%	152,919	
2005	7,056,889	2.34%	161,420	7,029,787	2.29%	157,469	
2006	7,207,645	2.14%	150,756	7,178,486	2.12%	148,699	
2007	7,312,907	1.46%	105,262	7,292,550	1.59%	114,064	
2008	7,368,319	0.76%	55,412	7,354,880	0.85%	62,330	
2009	7,386,570	0.25%	18,251	7,379,964	0.34%	25,084	
2010	7,525,335	1.88%	138,765	7,420,802	0.55%	40,838	
2011	7,456,791	-0.91%	-68,544	7,456,791	0.48%	35,989	
2012	7,525,335	0.92%	68,544	7,525,335	0.92%	68,544	
2013	7,602,417	1.02%	77,082	7,602,417	1.02%	77,082	
2014	7,708,538	1.40%	106,121	7,708,538	1.40%	106,121	
2015	7,840,780	1.72%	132,242	7,840,780	1.72%	132,242	
2016	7,982,938	1.81%	142,158	7,982,938	1.81%	142,158	
2017	8,125,176	1.78%	142,238	8,125,176	1.78%	142,238	
2018	8,271,058	1.80%	145,882	8,271,058	1.80%	145,882	
2019	8,427,696	1.89%	156,638	8,427,696	1.89%	156,638	
Begins forecast							
2020	8,580,271	1.81%	152,575	8,589,056	1.91%	161,360	
2021	8,683,883	1.21%	103,612	8,709,140	1.40%	120,084	
2022	8,815,721	1.52%	131,838	8,857,611	1.70%	148,471	
2023	8,938,034	1.39%	122,313	8,985,636	1.45%	128,025	
2024	9,056,739	1.33%	118,705	9,108,973	1.37%	123,337	
2025	9,172,711	1.28%	115,972	9,232,049	1.35%	123,076	
			5-Year Averages				5-Year Averages
2030	9,789,811	1.31%	123,420	9,857,661	1.32%	125,122	
2035	10,391,642	1.20%	120,366	10,442,689	1.16%	117,006	
2040	10,868,341	0.90%	95,340	10,921,171	0.90%	95,696	
2045	11,251,855	0.70%	76,703	11,306,396	0.70%	77,045	

QUARTERLY FORECAST TABLES

	<u>2010-2</u>	<u>2010-3</u>	<u>2010-4</u>	<u>2011-1</u>	<u>2011-2</u>	<u>2011-3</u>	<u>2011-4</u>	<u>2012-1</u>	<u>2012-2</u>	<u>2012-3</u>	<u>2012-4</u>	<u>2013-1</u>	<u>2013-2</u>	<u>2013-3</u>	<u>2013-4</u>	<u>2014-1</u>	<u>2014-2</u>
Population																	
FDEC, July 2020	18,813.9	18,838.3	18,862.7	18,890.2	18,923.4	18,962.8	19,006.3	19,051.6	19,096.7	19,141.2	19,186.6	19,234.6	19,286.9	19,344.2	19,406.4	19,473.0	19,543.7
FDEC, November 2020	18,813.9	18,838.3	18,862.7	18,890.2	18,923.4	18,962.8	19,006.3	19,051.6	19,096.7	19,141.2	19,186.6	19,234.6	19,286.9	19,344.2	19,406.4	19,473.0	19,543.7
Population Growth Rate																	
FDEC, July 2020	0.59	0.52	0.52	0.58	0.71	0.83	0.92	0.96	0.95	0.94	0.95	1.01	1.09	1.19	1.29	1.38	1.46
FDEC, November 2020	0.59	0.52	0.52	0.58	0.71	0.83	0.92	0.96	0.95	0.94	0.95	1.01	1.09	1.19	1.29	1.38	1.46
Net Change in Population																	
FDEC, July 2020	27.9	24.4	24.4	27.5	33.2	39.4	43.5	45.3	45.1	44.5	45.4	48.0	52.3	57.3	62.1	66.6	70.7
FDEC, November 2020	27.9	24.4	24.4	27.5	33.2	39.4	43.5	45.3	45.1	44.5	45.4	48.0	52.3	57.3	62.1	66.6	70.7
Households																	
FDEC, July 2020	7,425.0	7,433.2	7,441.5	7,451.3	7,463.9	7,479.6	7,497.3	7,515.9	7,534.5	7,552.9	7,571.8	7,591.9	7,614.1	7,638.5	7,665.1	7,693.7	7,724.2
FDEC, November 2020	7,425.0	7,433.2	7,441.5	7,451.3	7,463.9	7,479.6	7,497.3	7,515.9	7,534.5	7,552.9	7,571.8	7,591.9	7,614.1	7,638.5	7,665.1	7,693.7	7,724.2
Household Growth Rate																	
FDEC, July 2020	0.50	0.44	0.45	0.53	0.68	0.84	0.95	1.00	0.99	0.98	1.00	1.07	1.17	1.29	1.40	1.50	1.59
FDEC, November 2020	0.50	0.44	0.45	0.53	0.68	0.84	0.95	1.00	0.99	0.98	1.00	1.07	1.17	1.29	1.40	1.50	1.59
Net Change in Households																	
FDEC, July 2020	9.3	8.2	8.3	9.8	12.6	15.6	17.7	18.6	18.6	18.4	18.9	20.1	22.1	24.4	26.6	28.6	30.4
FDEC, November 2020	9.3	8.2	8.3	9.8	12.6	15.6	17.7	18.6	18.6	18.4	18.9	20.1	22.1	24.4	26.6	28.6	30.4
Household Size																	
FDEC, July 2020	2.534	2.534	2.535	2.535	2.535	2.535	2.535	2.535	2.535	2.534	2.534	2.534	2.533	2.532	2.532	2.531	2.530
FDEC, November 2020	2.534	2.534	2.535	2.535	2.535	2.535	2.535	2.535	2.535	2.534	2.534	2.534	2.533	2.532	2.532	2.531	2.530
Household Size Growth Rate																	
FDEC, July 2020	0.09	0.08	0.07	0.05	0.02	-0.01	-0.03	-0.04	-0.04	-0.04	-0.05	-0.06	-0.08	-0.09	-0.11	-0.12	-0.13
FDEC, November 2020	0.09	0.08	0.07	0.05	0.02	-0.01	-0.03	-0.04	-0.04	-0.04	-0.05	-0.06	-0.08	-0.09	-0.11	-0.12	-0.13
Net Migration																	
FDEC, July 2020	17.2	14.1	14.3	17.2	23.1	29.3	33.7	35.8	35.7	35.3	36.3	39.1	43.5	48.5	53.4	57.8	62.0
FDEC, November 2020	17.2	14.1	14.3	17.2	23.1	29.3	33.7	35.8	35.7	35.3	36.3	39.1	43.5	48.5	53.4	57.8	62.0
Net International Migration																	
FDEC, July 2020	20.5	20.6	20.8	20.3	20.8	21.7	23.0	25.4	27.1	28.8	30.5	33.0	34.5	35.8	36.8	37.4	38.0
FDEC, November 2020	20.5	20.6	20.8	20.3	20.8	21.7	23.0	25.4	27.1	28.8	30.5	33.0	34.5	35.8	36.8	37.4	38.0
Births																	
FDEC, July 2020	53.7	53.5	53.3	53.4	53.3	53.3	53.2	53.2	53.2	53.3	53.4	53.5	53.7	53.9	54.1	54.5	54.8
FDEC, November 2020	53.7	53.5	53.3	53.4	53.3	53.3	53.2	53.2	53.2	53.3	53.4	53.5	53.7	53.9	54.1	54.5	54.8
Deaths																	
FDEC, July 2020	43.1	43.2	43.2	43.1	43.1	43.2	43.4	43.6	43.8	44.1	44.3	44.6	44.9	45.1	45.4	45.7	46.1
FDEC, November 2020	43.1	43.2	43.2	43.1	43.1	43.2	43.4	43.6	43.8	44.1	44.3	44.6	44.9	45.1	45.4	45.7	46.1
Net Natural Increase																	
FDEC, July 2020	10.6	10.3	10.0	10.3	10.2	10.0	9.9	9.5	9.3	9.2	9.0	8.9	8.8	8.8	8.7	8.8	8.8
FDEC, November 2020	10.6	10.3	10.0	10.3	10.2	10.0	9.9	9.5	9.3	9.2	9.0	8.9	8.8	8.8	8.7	8.8	8.8

QUARTERLY FORECAST TABLES

	<u>2014-3</u>	<u>2014-4</u>	<u>2015-1</u>	<u>2015-2</u>	<u>2015-3</u>	<u>2015-4</u>	<u>2016-1</u>	<u>2016-2</u>	<u>2016-3</u>	<u>2016-4</u>	<u>2017-1</u>	<u>2017-2</u>	<u>2017-3</u>	<u>2017-4</u>	<u>2018-1</u>	<u>2018-2</u>	<u>2018-3</u>	
Population																		
FDEC, July 2020	19,618.1	19,695.4	19,774.9	19,856.1	19,938.5	20,021.9	20,106.3	20,191.3	20,276.6	20,361.0	20,443.5	20,523.3	20,611.6	20,705.7	20,795.6	20,885.4	20,975.3	
FDEC, November 2020	19,618.1	19,695.4	19,774.9	19,856.1	19,938.5	20,021.9	20,106.3	20,191.4	20,276.6	20,361.0	20,443.5	20,523.3	20,611.5	20,705.5	20,795.5	20,885.6	20,975.9	
Population Growth Rate																		
FDEC, July 2020	1.53	1.59	1.63	1.65	1.67	1.68	1.70	1.70	1.70	1.68	1.63	1.57	1.73	1.84	1.75	1.74	1.73	
FDEC, November 2020	1.53	1.59	1.63	1.65	1.67	1.68	1.70	1.70	1.70	1.68	1.63	1.57	1.73	1.84	1.75	1.74	1.74	
Net Change in Population																		
FDEC, July 2020	74.3	77.3	79.6	81.2	82.4	83.4	84.4	85.1	85.2	84.4	82.5	79.9	88.3	94.0	89.9	89.8	89.9	
FDEC, November 2020	74.4	77.3	79.6	81.2	82.4	83.4	84.4	85.1	85.2	84.4	82.5	79.8	88.2	94.0	90.0	90.1	90.3	
Households																		
FDEC, July 2020	7,756.2	7,789.4	7,823.5	7,858.2	7,893.4	7,928.9	7,964.9	8,001.2	8,037.5	8,073.4	8,108.2	8,141.3	8,177.4	8,215.7	8,252.5	8,289.9	8,327.9	
FDEC, November 2020	7,756.2	7,789.4	7,823.5	7,858.2	7,893.4	7,928.9	7,964.9	8,001.2	8,037.6	8,073.4	8,108.2	8,141.3	8,177.3	8,215.6	8,252.5	8,290.0	8,328.2	
Household Growth Rate																		
FDEC, July 2020	1.67	1.72	1.76	1.79	1.80	1.81	1.83	1.84	1.83	1.80	1.73	1.65	1.78	1.88	1.81	1.82	1.85	
FDEC, November 2020	1.67	1.72	1.76	1.79	1.80	1.81	1.83	1.84	1.83	1.80	1.73	1.64	1.78	1.88	1.81	1.83	1.86	
Net Change in Households																		
FDEC, July 2020	32.0	33.2	34.1	34.7	35.1	35.5	35.9	36.3	36.4	35.9	34.7	33.2	36.1	38.3	36.9	37.3	38.0	
FDEC, November 2020	32.0	33.2	34.1	34.7	35.1	35.5	35.9	36.3	36.4	35.9	34.7	33.1	36.0	38.2	36.9	37.5	38.2	
Household Size																		
FDEC, July 2020	2.529	2.528	2.528	2.527	2.526	2.525	2.524	2.524	2.523	2.522	2.521	2.521	2.521	2.520	2.520	2.519	2.519	
FDEC, November 2020	2.529	2.528	2.528	2.527	2.526	2.525	2.524	2.524	2.523	2.522	2.521	2.521	2.521	2.520	2.520	2.519	2.519	
Household Size Growth Rate																		
FDEC, July 2020	-0.13	-0.14	-0.14	-0.13	-0.13	-0.13	-0.13	-0.13	-0.13	-0.12	-0.10	-0.07	-0.05	-0.05	-0.06	-0.08	-0.11	
FDEC, November 2020	-0.13	-0.14	-0.14	-0.13	-0.13	-0.13	-0.13	-0.13	-0.13	-0.12	-0.10	-0.07	-0.05	-0.05	-0.06	-0.09	-0.11	
Net Migration																		
FDEC, July 2020	65.7	68.7	71.1	72.8	74.3	75.6	76.8	77.9	78.5	78.1	76.9	74.7	83.4	89.5	85.6	85.7	86.1	
FDEC, November 2020	65.7	68.7	71.0	72.8	74.3	75.6	76.8	77.9	78.5	78.1	76.9	74.6	83.3	89.5	85.7	86.0	86.4	
Net International Migration																		
FDEC, July 2020	38.5	38.8	37.7	38.3	39.2	40.6	45.2	46.2	46.4	45.9	41.9	40.9	40.2	39.9	42.0	41.4	40.3	
FDEC, November 2020	38.5	38.8	37.7	38.3	39.2	40.6	45.2	46.2	46.4	45.9	41.9	40.9	40.2	39.9	42.0	41.4	40.3	
Births																		
FDEC, July 2020	55.1	55.4	55.8	56.0	56.2	56.3	56.3	56.3	56.3	56.2	56.1	56.0	55.8	55.7	55.5	55.4	55.3	
FDEC, November 2020	55.1	55.4	55.8	56.0	56.2	56.3	56.3	56.3	56.3	56.2	56.1	56.0	55.8	55.7	55.5	55.4	55.3	
Deaths																		
FDEC, July 2020	46.4	46.8	47.3	47.7	48.1	48.4	48.8	49.1	49.5	49.9	50.4	50.7	51.0	51.2	51.2	51.3	51.4	
FDEC, November 2020	46.4	46.8	47.3	47.7	48.1	48.4	48.8	49.1	49.5	49.9	50.4	50.7	51.0	51.2	51.2	51.3	51.4	
Net Natural Increase																		
FDEC, July 2020	8.7	8.6	8.5	8.3	8.1	7.8	7.5	7.2	6.8	6.3	5.6	5.2	4.8	4.5	4.4	4.1	3.9	
FDEC, November 2020	8.7	8.6	8.5	8.3	8.1	7.8	7.5	7.2	6.8	6.3	5.6	5.2	4.8	4.5	4.4	4.1	3.9	

QUARTERLY FORECAST TABLES

	<u>2018-4</u>	<u>2019-1</u>	<u>2019-2</u>	<u>2019-3</u>	<u>2019-4</u>	<u>2020-1</u>	<u>2020-2</u>	<u>2020-3</u>	<u>2020-4</u>	<u>2021-1</u>	<u>2021-2</u>	<u>2021-3</u>	<u>2021-4</u>	<u>2022-1</u>	<u>2022-2</u>	<u>2022-3</u>
<b>Population</b>																
FDEC, July 2020	21,066.6	21,160.7	21,258.4	21,358.0	21,449.8	21,533.0	21,609.5	21,676.6	21,738.2	21,799.3	21,864.2	21,934.1	22,007.4	22,081.9	22,155.4	22,227.0
FDEC, November 2020	21,067.3	21,161.0	21,257.7	21,356.5	21,454.8	21,549.8	21,639.0	21,719.8	21,793.1	21,861.2	21,932.2	22,011.7	22,097.0	22,182.7	22,264.2	22,343.2
<b>Population Growth Rate</b>																
FDEC, July 2020	1.75	1.80	1.86	1.89	1.73	1.56	1.43	1.25	1.14	1.13	1.20	1.29	1.34	1.36	1.34	1.30
FDEC, November 2020	1.76	1.79	1.84	1.87	1.85	1.78	1.67	1.50	1.36	1.26	1.31	1.46	1.56	1.56	1.48	1.43
<b>Net Change in Population</b>																
FDEC, July 2020	91.3	94.1	97.7	99.6	91.9	83.2	76.5	67.0	61.6	61.1	64.9	69.9	73.3	74.4	73.5	71.7
FDEC, November 2020	91.5	93.7	96.7	98.8	98.3	95.0	89.2	80.8	73.3	68.1	71.1	79.5	85.3	85.6	81.5	79.0
<b>Households</b>																
FDEC, July 2020	8,366.9	8,407.2	8,448.9	8,491.3	8,529.6	8,563.5	8,594.4	8,620.9	8,645.5	8,670.8	8,699.0	8,730.7	8,764.5	8,798.7	8,831.9	8,863.4
FDEC, November 2020	8,367.3	8,407.4	8,448.5	8,490.1	8,531.0	8,570.1	8,606.4	8,636.7	8,664.0	8,693.7	8,726.6	8,762.9	8,801.0	8,839.0	8,874.9	8,908.3
<b>Household Growth Rate</b>																
FDEC, July 2020	1.89	1.94	2.00	2.02	1.82	1.60	1.45	1.24	1.14	1.17	1.31	1.46	1.56	1.57	1.52	1.43
FDEC, November 2020	1.89	1.93	1.97	1.98	1.94	1.85	1.70	1.42	1.27	1.38	1.52	1.67	1.75	1.73	1.64	1.51
<b>Net Change in Households</b>																
FDEC, July 2020	39.0	40.3	41.7	42.4	38.3	33.9	30.9	26.6	24.6	25.2	28.2	31.7	33.8	34.2	33.1	31.5
FDEC, November 2020	39.1	40.1	41.1	41.6	40.9	39.1	36.2	30.4	27.3	29.7	32.9	36.3	38.1	37.9	36.0	33.4
<b>Household Size</b>																
FDEC, July 2020	2.518	2.517	2.516	2.515	2.515	2.515	2.514	2.514	2.514	2.514	2.513	2.512	2.511	2.510	2.509	2.508
FDEC, November 2020	2.518	2.517	2.516	2.515	2.515	2.515	2.514	2.515	2.515	2.515	2.513	2.512	2.511	2.510	2.509	2.508
<b>Household Size Growth Rate</b>																
FDEC, July 2020	-0.13	-0.14	-0.14	-0.13	-0.08	-0.04	-0.02	0.00	0.00	-0.04	-0.11	-0.18	-0.21	-0.21	-0.17	-0.13
FDEC, November 2020	-0.13	-0.14	-0.13	-0.11	-0.09	-0.06	-0.04	0.08	0.08	-0.12	-0.21	-0.21	-0.19	-0.17	-0.16	-0.09
<b>Net Migration</b>																
FDEC, July 2020	87.6	90.5	94.3	96.4	89.0	81.2	74.7	65.2	59.6	58.8	62.3	67.2	70.6	72.0	71.2	69.4
FDEC, November 2020	87.8	90.2	93.4	95.6	95.3	97.4	92.6	84.5	76.5	68.1	70.1	77.5	83.5	84.0	80.1	77.7
<b>Net International Migration</b>																
FDEC, July 2020	38.6	33.6	31.9	30.7	30.1	21.1	13.2	15.0	19.9	19.9	19.9	20.0	20.1	20.2	20.5	20.8
FDEC, November 2020	38.6	33.6	31.9	30.7	30.1	21.1	13.2	15.0	19.9	19.9	19.9	20.0	20.1	20.2	20.5	20.8
<b>Births</b>																
FDEC, July 2020	55.2	55.0	54.9	55.0	55.1	55.5	55.7	55.9	56.2	56.6	56.8	57.1	57.3	57.5	57.7	58.0
FDEC, November 2020	55.2	55.1	55.0	55.0	55.0	55.0	55.0	55.1	55.2	55.5	55.6	55.8	56.0	56.1	56.3	56.5
<b>Deaths</b>																
FDEC, July 2020	51.5	51.4	51.5	51.8	52.2	53.5	53.9	54.1	54.2	54.2	54.3	54.3	54.6	55.1	55.4	55.7
FDEC, November 2020	51.5	51.6	51.7	51.8	52.0	57.4	58.4	58.8	58.5	55.5	54.7	53.8	54.1	54.5	54.8	55.2
<b>Net Natural Increase</b>																
FDEC, July 2020	3.7	3.6	3.4	3.2	2.9	2.0	1.8	1.9	2.0	2.3	2.5	2.8	2.7	2.4	2.3	2.2
FDEC, November 2020	3.7	3.5	3.3	3.2	3.0	-2.5	-3.4	-3.6	-3.2	0.0	1.0	2.0	1.8	1.6	1.4	1.3

QUARTERLY FORECAST TABLES

	<u>2022-4</u>	<u>2023-1</u>	<u>2023-2</u>	<u>2023-3</u>	<u>2023-4</u>	<u>2024-1</u>	<u>2024-2</u>	<u>2024-3</u>	<u>2024-4</u>	<u>2025-1</u>	<u>2025-2</u>	<u>2025-3</u>	<u>2025-4</u>	<u>2026-1</u>	<u>2026-2</u>	<u>2026-3</u>
Population																
FDEC, July 2020	22,297.2	22,366.3	22,434.9	22,503.0	22,570.7	22,637.8	22,704.1	22,769.6	22,834.5	22,898.7	22,962.9	23,027.1	23,091.2	23,155.1	23,218.9	23,282.5
FDEC, November 2020	22,420.3	22,495.5	22,569.9	22,644.1	22,718.1	22,791.6	22,864.3	22,936.1	23,007.1	23,077.4	23,147.0	23,216.0	23,284.3	23,352.0	23,418.9	23,485.1
Population Growth Rate																
FDEC, July 2020	1.27	1.25	1.23	1.22	1.21	1.19	1.18	1.16	1.14	1.13	1.12	1.12	1.12	1.11	1.11	1.10
FDEC, November 2020	1.39	1.35	1.33	1.32	1.31	1.30	1.28	1.26	1.24	1.23	1.21	1.20	1.18	1.17	1.15	1.14
Net Change in Population																
FDEC, July 2020	70.1	69.1	68.5	68.2	67.7	67.1	66.3	65.5	64.9	64.3	64.1	64.2	64.1	64.0	63.8	63.6
FDEC, November 2020	77.1	75.2	74.3	74.3	74.0	73.4	72.7	71.8	71.0	70.3	69.6	69.0	68.3	67.6	66.9	66.2
Households																
FDEC, July 2020	8,893.6	8,923.3	8,952.9	8,982.5	9,012.3	9,042.0	9,071.4	9,100.6	9,129.5	9,158.3	9,187.4	9,217.0	9,246.9	9,277.1	9,307.3	9,337.7
FDEC, November 2020	8,939.9	8,970.5	9,000.9	9,031.6	9,062.5	9,093.5	9,124.4	9,155.3	9,186.0	9,216.7	9,247.6	9,278.7	9,309.9	9,341.2	9,372.6	9,403.9
Household Growth Rate																
FDEC, July 2020	1.37	1.34	1.33	1.33	1.33	1.32	1.31	1.29	1.28	1.27	1.28	1.30	1.30	1.31	1.31	1.31
FDEC, November 2020	1.42	1.38	1.36	1.37	1.38	1.37	1.37	1.36	1.35	1.34	1.34	1.35	1.35	1.35	1.35	1.35
Net Change in Households																
FDEC, July 2020	30.3	29.6	29.6	29.7	29.7	29.7	29.4	29.2	29.0	28.8	29.1	29.6	29.9	30.1	30.3	30.4
FDEC, November 2020	31.6	30.6	30.4	30.7	30.9	31.0	30.9	30.9	30.8	30.7	30.8	31.1	31.2	31.3	31.4	31.4
Household Size																
FDEC, July 2020	2.507	2.507	2.506	2.505	2.504	2.504	2.503	2.502	2.501	2.500	2.499	2.498	2.497	2.496	2.495	2.493
FDEC, November 2020	2.508	2.508	2.508	2.507	2.507	2.506	2.506	2.505	2.505	2.504	2.503	2.502	2.501	2.500	2.499	2.497
Household Size Growth Rate																
FDEC, July 2020	-0.10	-0.09	-0.10	-0.11	-0.12	-0.13	-0.13	-0.13	-0.13	-0.14	-0.15	-0.17	-0.18	-0.19	-0.20	-0.21
FDEC, November 2020	-0.04	-0.03	-0.04	-0.05	-0.06	-0.07	-0.09	-0.10	-0.10	-0.11	-0.13	-0.15	-0.17	-0.18	-0.20	-0.21
Net Migration																
FDEC, July 2020	68.0	67.0	66.5	66.2	65.8	65.1	64.5	63.8	63.3	62.9	62.9	63.2	63.4	63.6	63.8	64.0
FDEC, November 2020	75.9	74.2	73.4	73.4	73.3	72.8	72.2	71.6	70.9	70.4	70.0	69.6	69.3	69.1	68.8	68.5
Net International Migration																
FDEC, July 2020	21.2	21.6	22.2	22.9	23.2	23.5	23.2	22.9	22.6	22.3	22.1	21.9	21.7	21.5	21.3	21.1
FDEC, November 2020	21.2	21.6	22.2	22.9	23.2	23.5	23.2	22.9	22.6	22.3	22.1	21.9	21.7	21.5	21.3	21.1
Births																
FDEC, July 2020	58.2	58.6	58.8	59.1	59.4	59.7	59.9	60.2	60.4	60.7	60.9	61.1	61.3	61.3	61.4	61.5
FDEC, November 2020	56.7	57.1	57.3	57.6	57.9	58.2	58.4	58.7	58.9	59.2	59.4	59.6	59.7	59.8	59.8	59.9
Deaths																
FDEC, July 2020	56.1	56.4	56.8	57.1	57.4	57.8	58.1	58.5	58.9	59.3	59.7	60.1	60.5	61.0	61.4	61.9
FDEC, November 2020	55.6	56.0	56.4	56.8	57.2	57.5	57.9	58.4	58.8	59.3	59.7	60.2	60.7	61.2	61.7	62.2
Net Natural Increase																
FDEC, July 2020	2.2	2.1	2.1	2.0	1.9	1.9	1.8	1.7	1.6	1.4	1.2	1.0	0.7	0.3	0.0	-0.4
FDEC, November 2020	1.2	1.1	0.9	0.8	0.7	0.6	0.5	0.3	0.1	-0.1	-0.3	-0.6	-1.0	-1.5	-1.9	-2.3



QUARTERLY FORECAST TABLES

	<u>2026-4</u>	<u>2027-1</u>	<u>2027-2</u>	<u>2027-3</u>	<u>2027-4</u>	<u>2028-1</u>	<u>2028-2</u>	<u>2028-3</u>	<u>2028-4</u>	<u>2029-1</u>	<u>2029-2</u>	<u>2029-3</u>	<u>2029-4</u>	<u>2030-1</u>	<u>2030-2</u>
<b>Population</b>															
FDEC, July 2020	23,345.8	23,409.1	23,472.2	23,535.2	23,598.0	23,660.7	23,723.0	23,785.1	23,846.8	23,908.1	23,969.1	24,029.6	24,089.7	24,149.4	24,208.7
FDEC, November 2020	23,550.7	23,615.5	23,679.7	23,743.1	23,805.9	23,868.0	23,929.5	23,990.3	24,050.5	24,110.1	24,169.1	24,227.5	24,285.5	24,342.9	24,399.9
<b>Population Growth Rate</b>															
FDEC, July 2020	1.09	1.09	1.08	1.08	1.07	1.07	1.06	1.05	1.04	1.03	1.02	1.01	1.00	0.99	0.99
FDEC, November 2020	1.12	1.11	1.09	1.08	1.06	1.05	1.03	1.02	1.01	0.99	0.98	0.97	0.96	0.95	0.94
<b>Net Change in Population</b>															
FDEC, July 2020	63.4	63.2	63.1	63.0	62.8	62.6	62.4	62.1	61.7	61.3	60.9	60.5	60.1	59.7	59.3
FDEC, November 2020	65.5	64.8	64.1	63.5	62.8	62.1	61.5	60.8	60.2	59.6	59.0	58.5	57.9	57.5	57.0
<b>Households</b>															
FDEC, July 2020	9,368.2	9,398.7	9,429.3	9,459.9	9,490.6	9,521.5	9,552.6	9,583.9	9,615.5	9,647.1	9,678.7	9,710.4	9,742.1	9,773.9	9,805.8
FDEC, November 2020	9,435.3	9,466.7	9,498.1	9,529.5	9,560.9	9,592.3	9,623.7	9,655.1	9,686.4	9,717.7	9,749.0	9,780.1	9,811.2	9,842.2	9,873.1
<b>Household Growth Rate</b>															
FDEC, July 2020	1.31	1.31	1.31	1.30	1.31	1.31	1.31	1.32	1.32	1.32	1.32	1.32	1.31	1.31	1.31
FDEC, November 2020	1.34	1.34	1.33	1.33	1.32	1.32	1.32	1.31	1.31	1.30	1.29	1.28	1.28	1.27	1.26
<b>Net Change in Households</b>															
FDEC, July 2020	30.5	30.5	30.6	30.6	30.7	30.9	31.1	31.3	31.5	31.6	31.6	31.7	31.7	31.8	31.9
FDEC, November 2020	31.4	31.4	31.4	31.4	31.4	31.4	31.4	31.4	31.4	31.3	31.2	31.1	31.1	31.0	30.9
<b>Household Size</b>															
FDEC, July 2020	2.492	2.491	2.489	2.488	2.486	2.485	2.483	2.482	2.480	2.478	2.476	2.475	2.473	2.471	2.469
FDEC, November 2020	2.496	2.495	2.493	2.492	2.490	2.488	2.487	2.485	2.483	2.481	2.479	2.477	2.475	2.473	2.471
<b>Household Size Growth Rate</b>															
FDEC, July 2020	-0.22	-0.22	-0.22	-0.22	-0.23	-0.24	-0.25	-0.26	-0.28	-0.28	-0.29	-0.30	-0.30	-0.31	-0.32
FDEC, November 2020	-0.22	-0.23	-0.24	-0.25	-0.26	-0.27	-0.28	-0.29	-0.29	-0.30	-0.30	-0.31	-0.31	-0.32	-0.32
<b>Net Migration</b>															
FDEC, July 2020	64.1	64.4	64.7	64.9	65.1	65.3	65.4	65.5	65.5	65.5	65.5	65.4	65.4	65.3	65.2
FDEC, November 2020	68.2	68.0	67.7	67.4	67.1	66.9	66.7	66.4	66.2	66.0	65.8	65.6	65.5	65.4	65.3
<b>Net International Migration</b>															
FDEC, July 2020	20.9	20.7	20.5	20.4	20.2	20.1	19.9	19.8	19.7	19.6	19.4	19.3	19.2	19.1	19.1
FDEC, November 2020	20.9	20.7	20.5	20.4	20.2	20.1	19.9	19.8	19.7	19.6	19.4	19.3	19.2	19.1	19.1
<b>Births</b>															
FDEC, July 2020	61.6	61.6	61.7	61.7	61.8	61.8	61.9	61.9	62.0	62.1	62.1	62.2	62.2	62.3	62.3
FDEC, November 2020	60.0	60.0	60.1	60.2	60.2	60.3	60.3	60.4	60.4	60.5	60.5	60.6	60.6	60.7	60.7
<b>Deaths</b>															
FDEC, July 2020	62.3	62.8	63.2	63.6	64.1	64.5	65.0	65.4	65.8	66.2	66.7	67.1	67.5	67.9	68.3
FDEC, November 2020	62.7	63.2	63.6	64.1	64.6	65.1	65.5	66.0	66.4	66.9	67.3	67.7	68.2	68.6	69.0
<b>Net Natural Increase</b>															
FDEC, July 2020	-0.8	-1.2	-1.5	-1.9	-2.3	-2.7	-3.1	-3.4	-3.8	-4.2	-4.5	-4.9	-5.3	-5.6	-6.0
FDEC, November 2020	-2.7	-3.1	-3.5	-4.0	-4.4	-4.8	-5.2	-5.6	-6.0	-6.4	-6.8	-7.2	-7.6	-7.9	-8.3

FISCAL YEAR  
FORECAST TABLES

	<u>2000-01</u>	<u>2001-02</u>	<u>2002-03</u>	<u>2003-04</u>	<u>2004-05</u>	<u>2005-06</u>	<u>2006-07</u>	<u>2007-08</u>	<u>2008-09</u>	<u>2009-10</u>	<u>2010-11</u>	<u>2011-12</u>	<u>2012-13</u>	<u>2013-14</u>	<u>2014-15</u>
<b>Population</b>															
FDEC, July 2020	16,228.0	16,551.2	16,892.0	17,273.8	17,677.3	18,062.2	18,378.2	18,578.9	18,671.4	18,770.4	18,878.6	19,029.3	19,212.3	19,441.8	19,736.1
FDEC, November 2020	16,228.0	16,551.2	16,892.0	17,273.8	17,677.3	18,062.2	18,378.2	18,578.9	18,671.4	18,770.4	18,878.6	19,029.3	19,212.3	19,441.8	19,736.1
<b>Growth Rate</b>															
FDEC, July 2020	2.18	1.99	2.06	2.26	2.34	2.18	1.75	1.09	0.50	0.53	0.58	0.80	0.96	1.19	1.51
FDEC, November 2020	2.18	1.99	2.06	2.26	2.34	2.18	1.75	1.09	0.50	0.53	0.58	0.80	0.96	1.19	1.51
<b>Net Change in Population</b>															
FDEC, July 2020	346.4	323.2	340.9	381.8	403.5	384.9	316.0	200.7	92.5	99.0	108.2	150.7	183.0	229.5	294.3
FDEC, November 2020	346.4	323.2	340.9	381.8	403.5	384.9	316.0	200.7	92.5	99.0	108.2	150.7	183.0	229.5	294.3
<b>Households</b>															
FDEC, July 2020	6,431.8	6,554.7	6,685.7	6,833.2	6,990.5	7,142.1	7,266.1	7,341.9	7,374.2	7,410.1	7,447.5	7,506.8	7,582.7	7,680.4	7,806.8
FDEC, November 2020	6,431.8	6,554.7	6,685.7	6,833.2	6,990.5	7,142.1	7,266.1	7,341.9	7,374.2	7,410.1	7,447.5	7,506.8	7,582.7	7,680.4	7,806.8
<b>Growth Rate</b>															
FDEC, July 2020	2.14	1.91	2.00	2.21	2.30	2.17	1.74	1.04	0.44	0.49	0.50	0.80	1.01	1.29	1.65
FDEC, November 2020	2.14	1.91	2.00	2.21	2.30	2.17	1.74	1.04	0.44	0.49	0.50	0.80	1.01	1.29	1.65
<b>Net Change in Households</b>															
FDEC, July 2020	134.6	122.9	131.0	147.5	157.3	151.7	124.0	75.7	32.3	35.9	37.4	59.3	75.9	97.7	126.5
FDEC, November 2020	134.6	122.9	131.0	147.5	157.3	151.7	124.0	75.7	32.3	35.9	37.4	59.3	75.9	97.7	126.5
<b>Household Size</b>															
FDEC, July 2020	2.523	2.525	2.527	2.528	2.529	2.529	2.529	2.531	2.532	2.533	2.535	2.535	2.534	2.531	2.528
FDEC, November 2020	2.523	2.525	2.527	2.528	2.529	2.529	2.529	2.531	2.532	2.533	2.535	2.535	2.534	2.531	2.528
<b>Growth Rate</b>															
FDEC, July 2020	0.04	0.08	0.06	0.05	0.03	0.01	0.01	0.05	0.06	0.04	0.07	0.00	-0.05	-0.09	-0.13
FDEC, November 2020	0.04	0.08	0.06	0.05	0.03	0.01	0.01	0.05	0.06	0.04	0.07	0.00	-0.05	-0.09	-0.13
<b>Net Migration</b>															
FDEC, July 2020	306.0	285.5	300.4	335.0	351.1	322.9	245.0	133.7	36.3	52.7	67.4	112.0	147.0	194.4	260.2
FDEC, November 2020	306.0	285.5	300.4	335.0	351.1	322.9	245.0	133.7	36.3	52.7	67.4	112.0	147.0	194.4	260.2
<b>Net International Migration</b>															
FDEC, July 2020	99.3	97.0	90.3	88.9	92.4	95.0	92.0	78.6	76.0	82.7	82.4	97.2	126.7	148.0	153.3
FDEC, November 2020	99.3	97.0	90.3	88.9	92.4	95.0	92.0	78.6	76.0	82.7	82.4	97.2	126.7	148.0	153.3
<b>Births</b>															
FDEC, July 2020	205.4	205.4	208.5	215.0	221.8	232.1	239.3	236.0	226.4	217.4	213.5	212.9	213.8	217.4	222.3
FDEC, November 2020	205.4	205.4	208.5	215.0	221.8	232.1	239.3	236.0	226.4	217.4	213.5	212.9	213.8	217.4	222.3
<b>Deaths</b>															
FDEC, July 2020	165.0	167.7	168.1	168.3	169.4	170.1	168.3	169.0	170.2	171.1	172.7	174.1	177.8	182.4	188.2
FDEC, November 2020	165.0	167.7	168.1	168.3	169.4	170.1	168.3	169.0	170.2	171.1	172.7	174.1	177.8	182.4	188.2
<b>Net Natural Increase</b>															
FDEC, July 2020	40.3	37.7	40.4	46.7	52.4	62.0	71.0	67.0	56.2	46.3	40.8	38.8	36.0	35.0	34.1
FDEC, November 2020	40.3	37.7	40.4	46.7	52.4	62.0	71.0	67.0	56.2	46.3	40.8	38.8	36.0	35.0	34.1

FISCAL YEAR  
FORECAST TABLES

	<u>2015-16</u>	<u>2016-17</u>	<u>2017-18</u>	<u>2018-19</u>	<u>2019-20</u>	<u>2020-21</u>	<u>2021-22</u>	<u>2022-23</u>	<u>2023-24</u>	<u>2024-25</u>	<u>2025-26</u>	<u>2026-27</u>	<u>2027-28</u>	<u>2028-29</u>	<u>2029-30</u>
<b>Population</b>															
FDEC, July 2020	20,064.5	20,401.1	20,749.6	21,115.3	21,487.6	21,769.6	22,044.7	22,331.4	22,603.9	22,866.4	23,123.1	23,377.4	23,629.2	23,877.3	24,119.4
FDEC, November 2020	20,064.5	20,401.1	20,749.5	21,115.5	21,500.0	21,826.6	22,138.9	22,457.2	22,754.5	23,041.9	23,317.8	23,582.7	23,836.6	24,080.0	24,314.0
<b>Growth Rate</b>															
FDEC, July 2020	1.66	1.68	1.71	1.76	1.76	1.31	1.26	1.30	1.22	1.16	1.12	1.10	1.08	1.05	1.01
FDEC, November 2020	1.66	1.68	1.71	1.76	1.82	1.52	1.43	1.44	1.32	1.26	1.20	1.14	1.08	1.02	0.97
<b>Net Change in Population</b>															
FDEC, July 2020	328.4	336.6	348.5	365.7	372.3	282.0	275.1	286.7	272.5	262.5	256.6	254.3	251.8	248.0	242.1
FDEC, November 2020	328.4	336.6	348.4	366.0	384.5	326.5	312.3	318.3	297.3	287.4	275.9	264.9	253.9	243.3	234.0
<b>Households</b>															
FDEC, July 2020	7,947.1	8,090.1	8,233.9	8,387.7	8,544.7	8,659.1	8,781.4	8,908.3	9,027.0	9,144.0	9,262.1	9,383.5	9,506.1	9,631.3	9,758.0
FDEC, November 2020	7,947.1	8,090.1	8,233.8	8,387.8	8,549.4	8,680.3	8,819.4	8,954.9	9,078.0	9,201.4	9,325.6	9,451.0	9,576.6	9,702.1	9,826.6
<b>Growth Rate</b>															
FDEC, July 2020	1.80	1.80	1.78	1.87	1.87	1.34	1.41	1.44	1.33	1.30	1.29	1.31	1.31	1.32	1.32
FDEC, November 2020	1.80	1.80	1.78	1.87	1.93	1.53	1.60	1.54	1.37	1.36	1.35	1.35	1.33	1.31	1.28
<b>Net Change in Households</b>															
FDEC, July 2020	140.2	143.0	143.8	153.9	157.0	114.4	122.4	126.9	118.8	116.9	118.1	121.4	122.7	125.1	126.7
FDEC, November 2020	140.2	143.0	143.7	154.0	161.5	130.9	139.2	135.5	123.1	123.4	124.2	125.5	125.6	125.4	124.6
<b>Household Size</b>															
FDEC, July 2020	2.525	2.522	2.520	2.517	2.515	2.514	2.510	2.507	2.504	2.501	2.497	2.491	2.486	2.479	2.472
FDEC, November 2020	2.525	2.522	2.520	2.517	2.515	2.515	2.510	2.508	2.507	2.504	2.500	2.495	2.489	2.482	2.474
<b>Growth Rate</b>															
FDEC, July 2020	-0.13	-0.12	-0.07	-0.10	-0.11	-0.03	-0.15	-0.14	-0.11	-0.13	-0.17	-0.21	-0.23	-0.26	-0.30
FDEC, November 2020	-0.13	-0.12	-0.07	-0.10	-0.10	-0.01	-0.17	-0.10	-0.05	-0.09	-0.15	-0.21	-0.25	-0.29	-0.31
<b>Net Migration</b>															
FDEC, July 2020	297.8	312.6	330.6	351.1	362.5	273.2	264.9	278.0	264.9	256.6	254.6	258.2	261.8	264.0	263.8
FDEC, November 2020	297.8	312.7	330.6	351.6	384.2	332.5	305.5	313.9	294.7	287.4	280.8	276.5	272.2	268.1	264.9
<b>Net International Migration</b>															
FDEC, July 2020	171.2	175.0	163.5	144.3	95.1	74.7	80.7	85.8	92.7	89.9	86.3	83.2	80.6	78.5	76.8
FDEC, November 2020	171.2	175.0	163.5	144.3	95.1	74.7	80.7	85.8	92.7	89.9	86.3	83.2	80.6	78.5	76.8
<b>Births</b>															
FDEC, July 2020	225.0	224.5	222.5	220.4	221.3	225.5	229.6	233.6	238.1	242.2	245.1	246.3	247.2	248.1	249.0
FDEC, November 2020	225.0	224.5	222.5	220.6	219.9	221.5	224.1	227.6	232.0	236.2	238.9	240.1	241.0	241.8	242.5
<b>Deaths</b>															
FDEC, July 2020	194.4	200.5	204.7	205.9	211.5	216.8	219.4	225.0	230.4	236.3	243.0	250.2	257.2	264.1	270.8
FDEC, November 2020	194.4	200.5	204.7	206.2	219.6	227.4	217.3	223.1	229.4	236.2	243.8	251.6	259.3	266.5	273.4
<b>Net Natural Increase</b>															
FDEC, July 2020	30.6	24.0	17.8	14.6	9.8	8.8	10.3	8.6	7.7	5.9	2.0	-3.9	-10.0	-16.0	-21.7
FDEC, November 2020	30.6	24.0	17.8	14.4	0.3	-5.9	6.8	4.4	2.6	0.0	-4.9	-11.6	-18.3	-24.8	-30.9

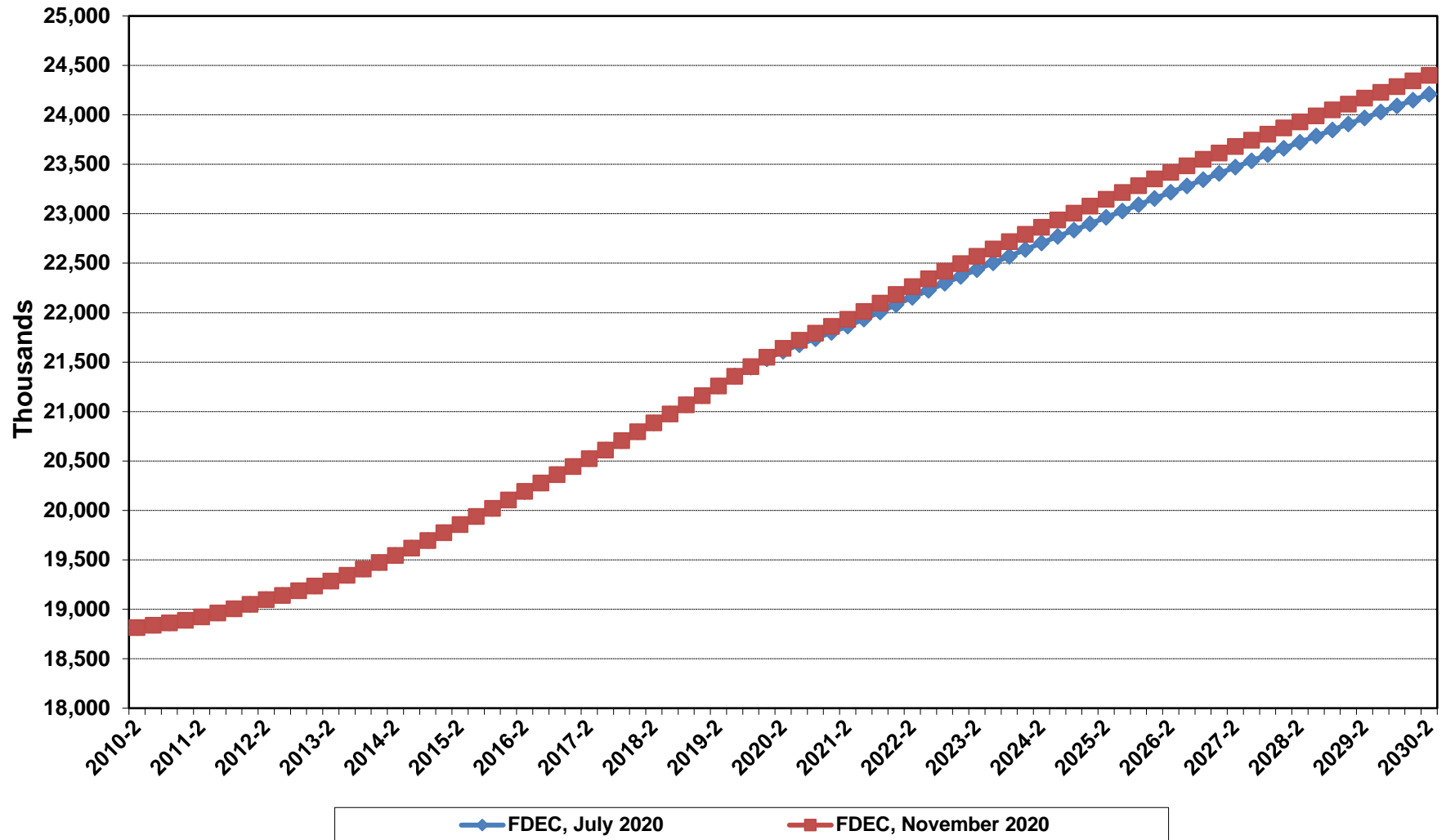
# **Florida Demographic Estimating Conference**

## **Charts**

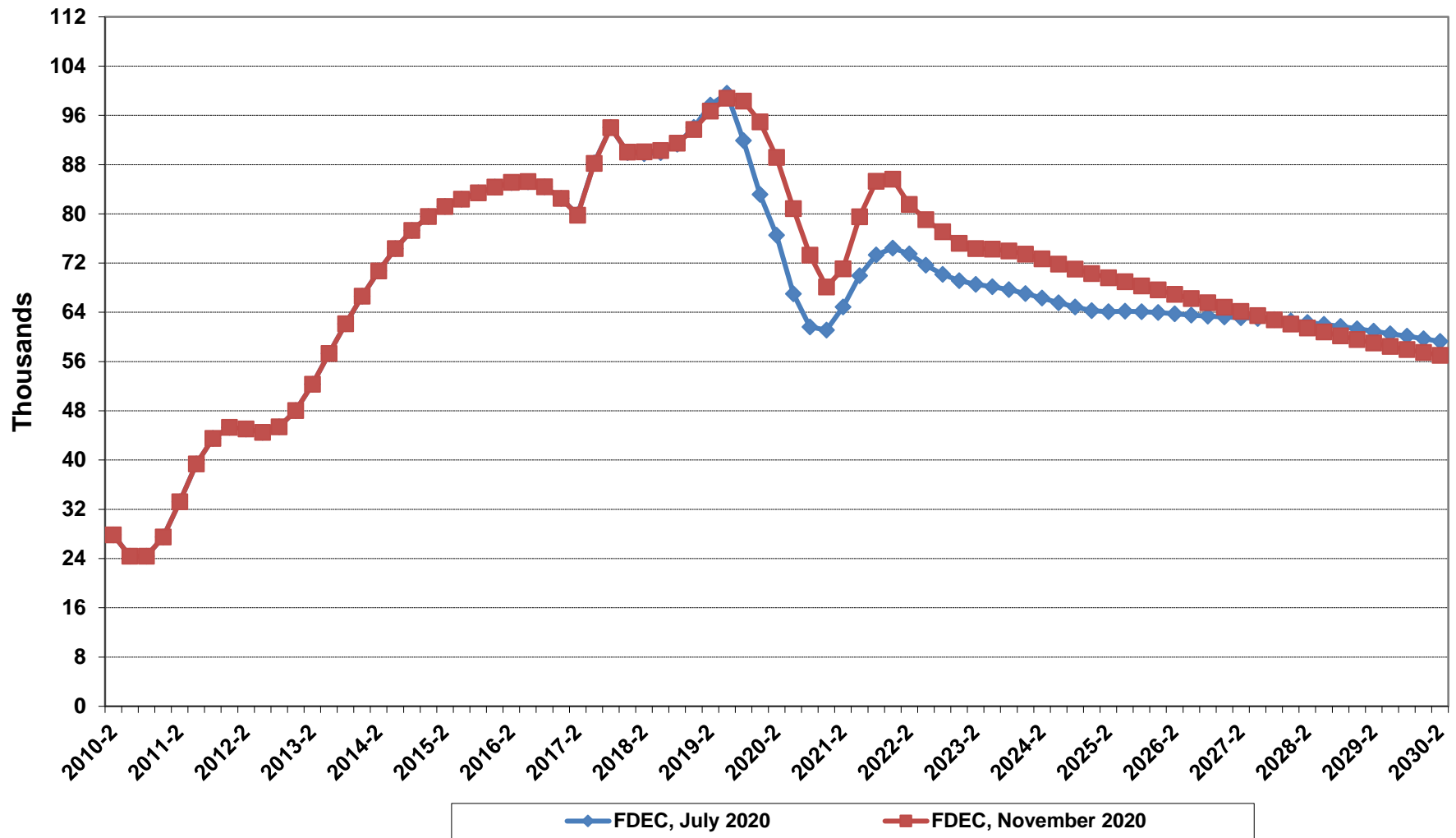
Conference Packet

November 13, 2020

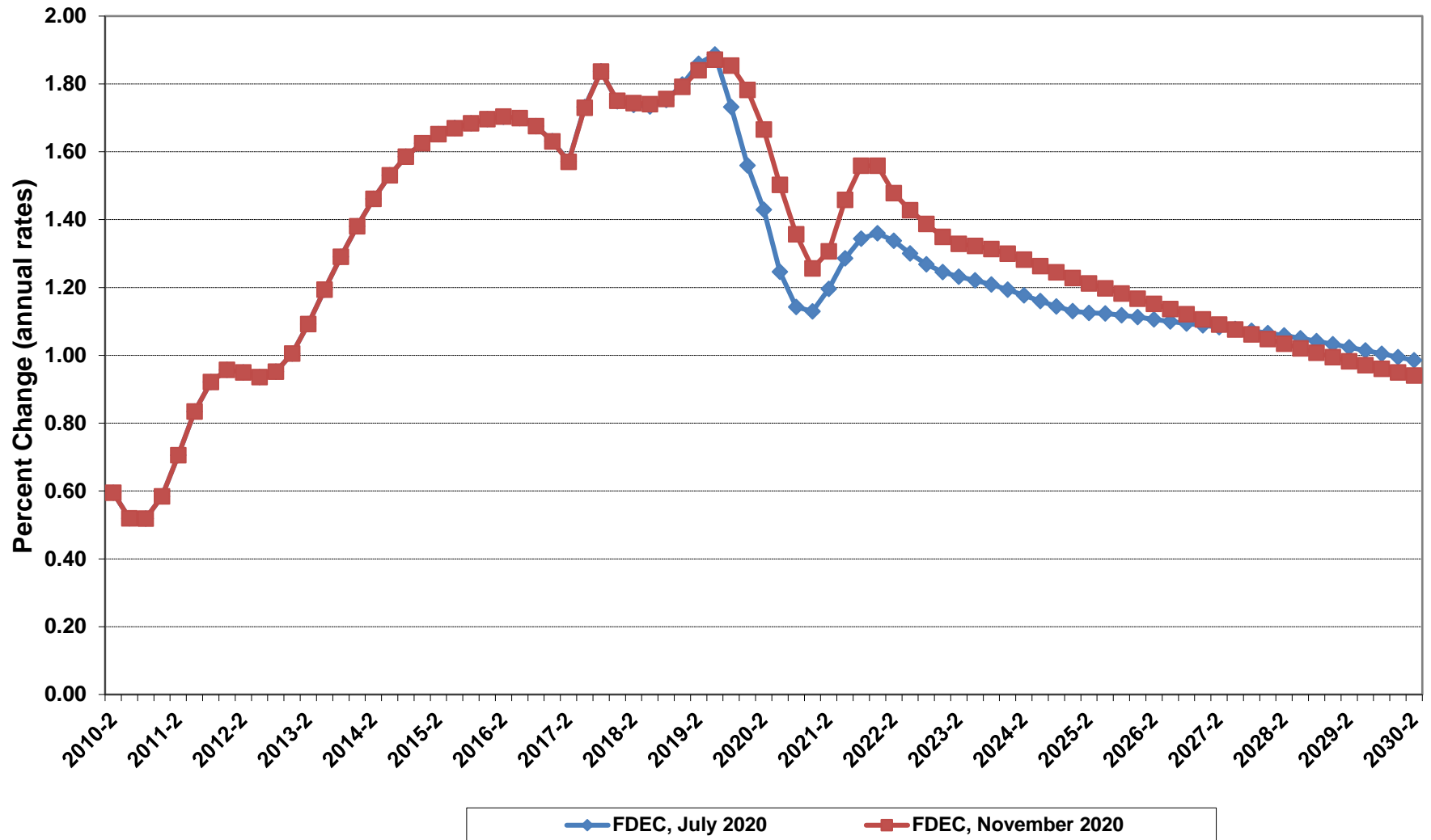
# Florida Resident Population



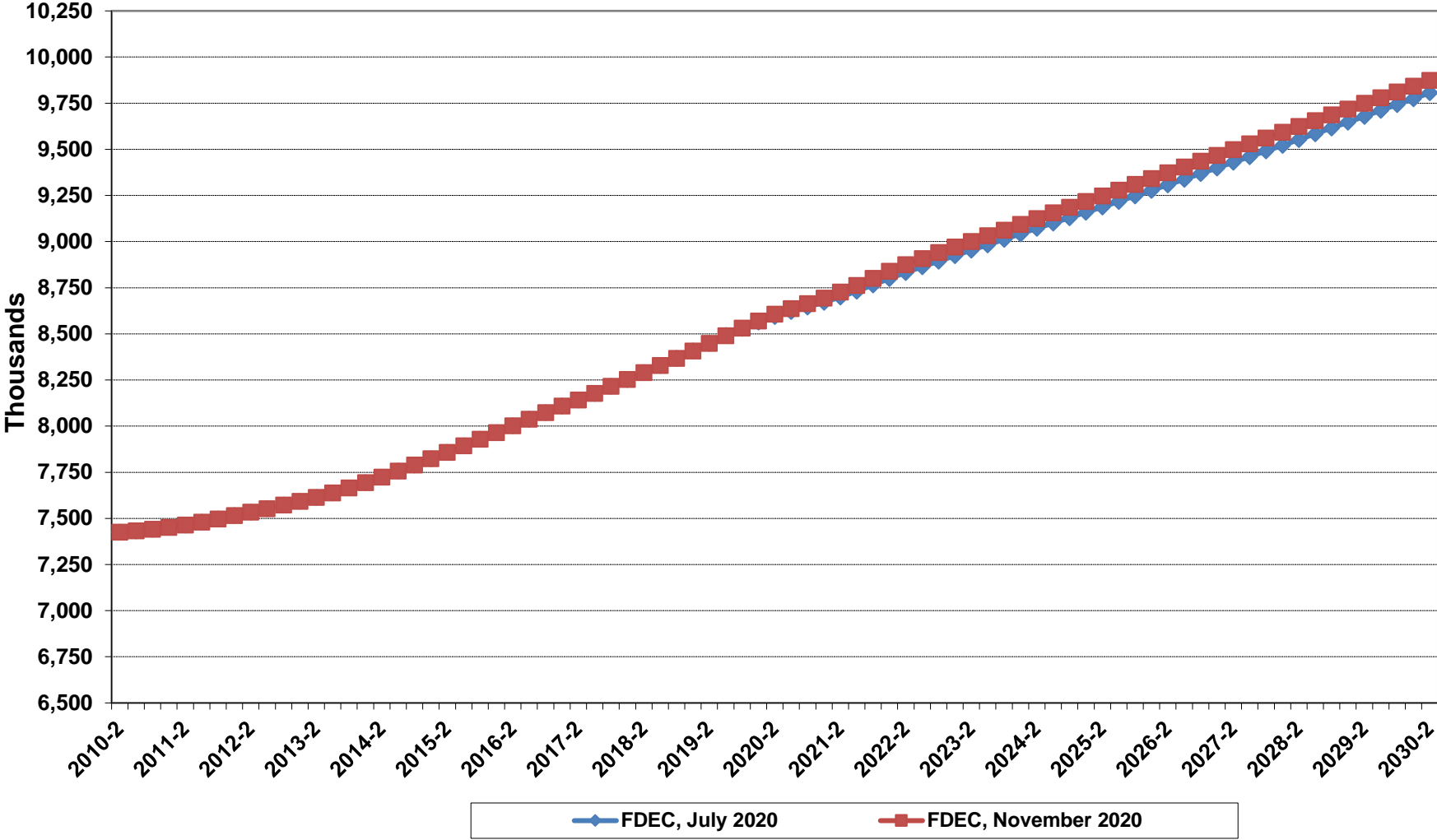
# Net Change In Florida Resident Population



# Growth In Florida Resident Population

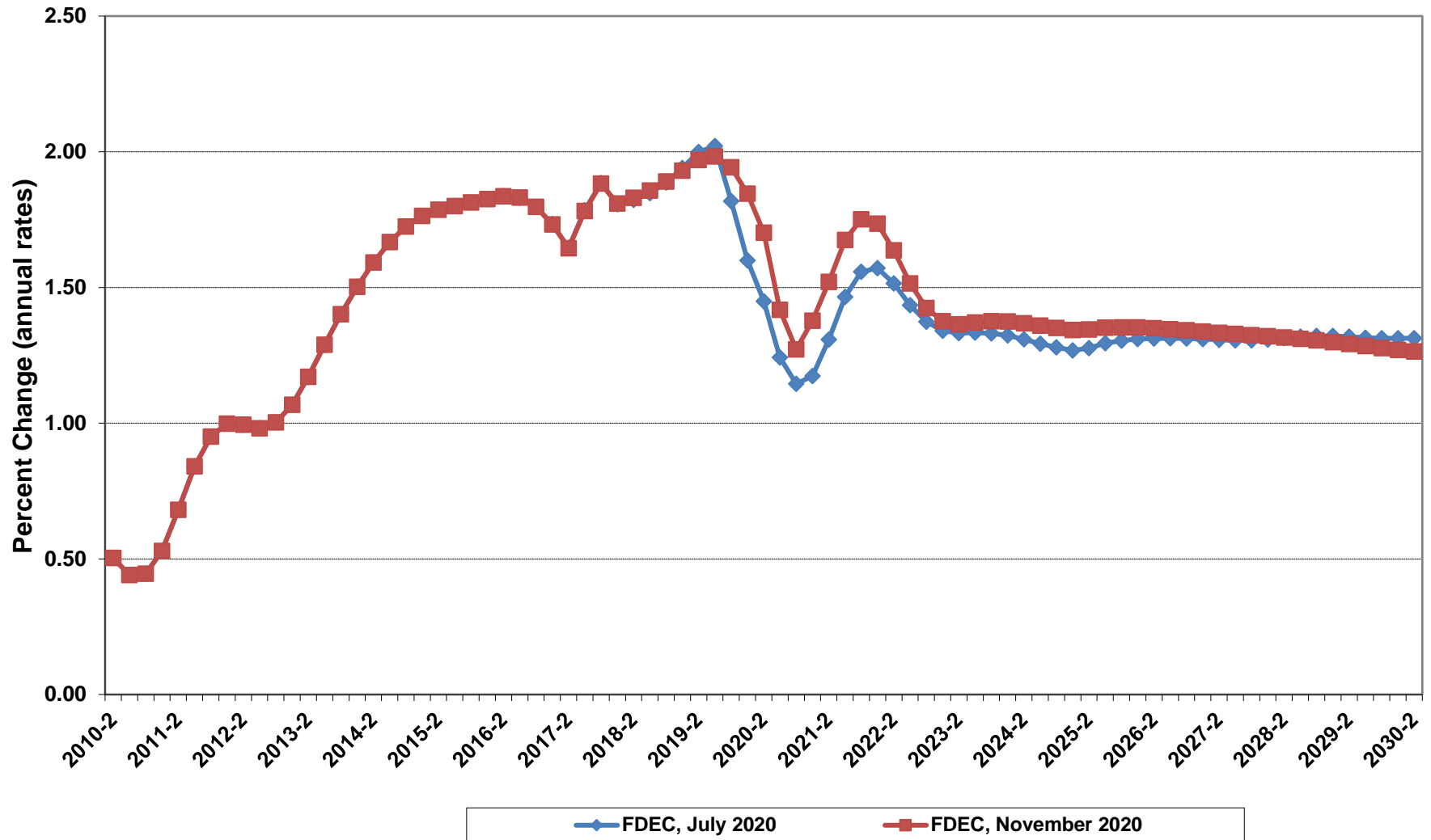


# Florida Resident Households

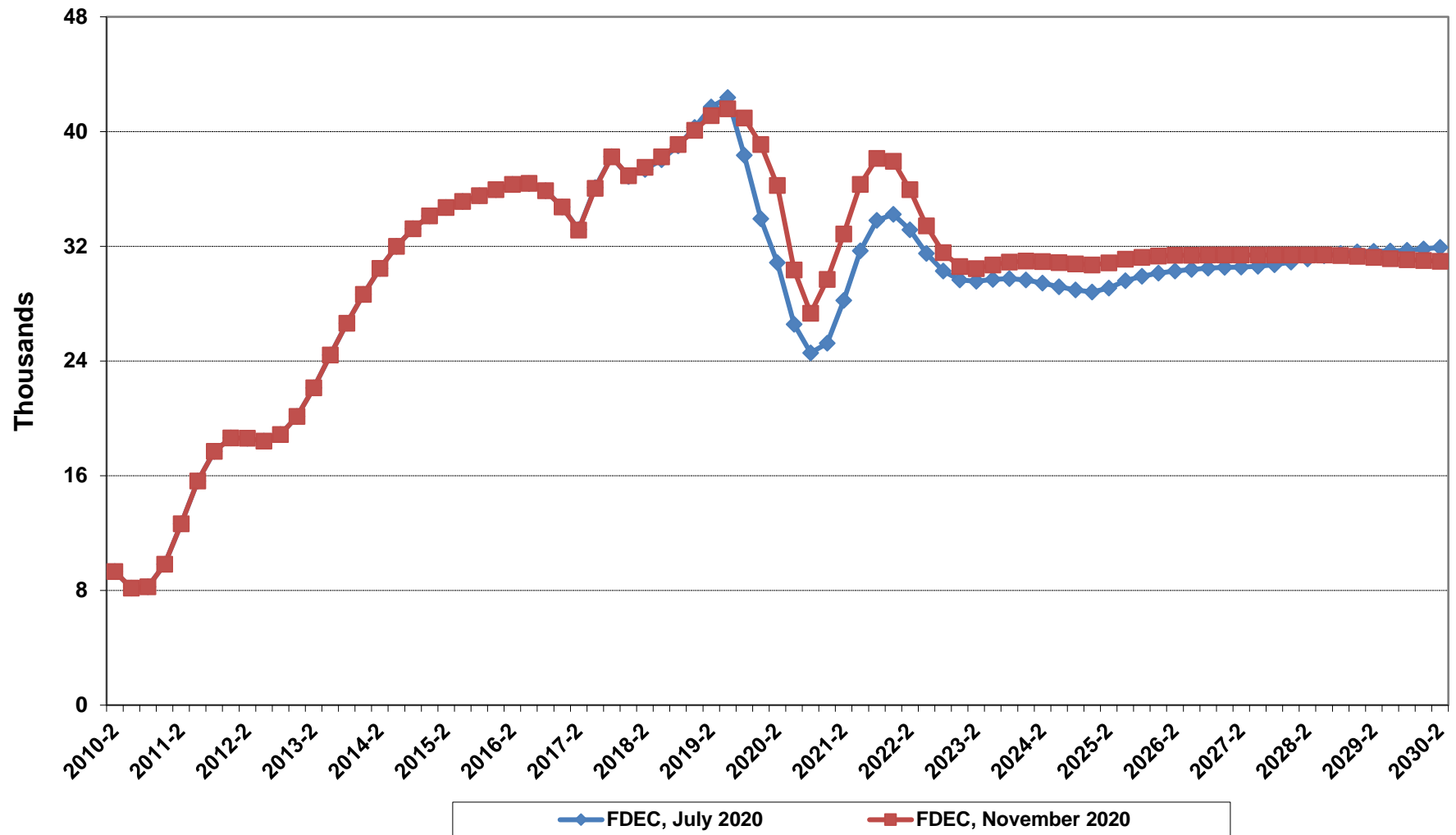




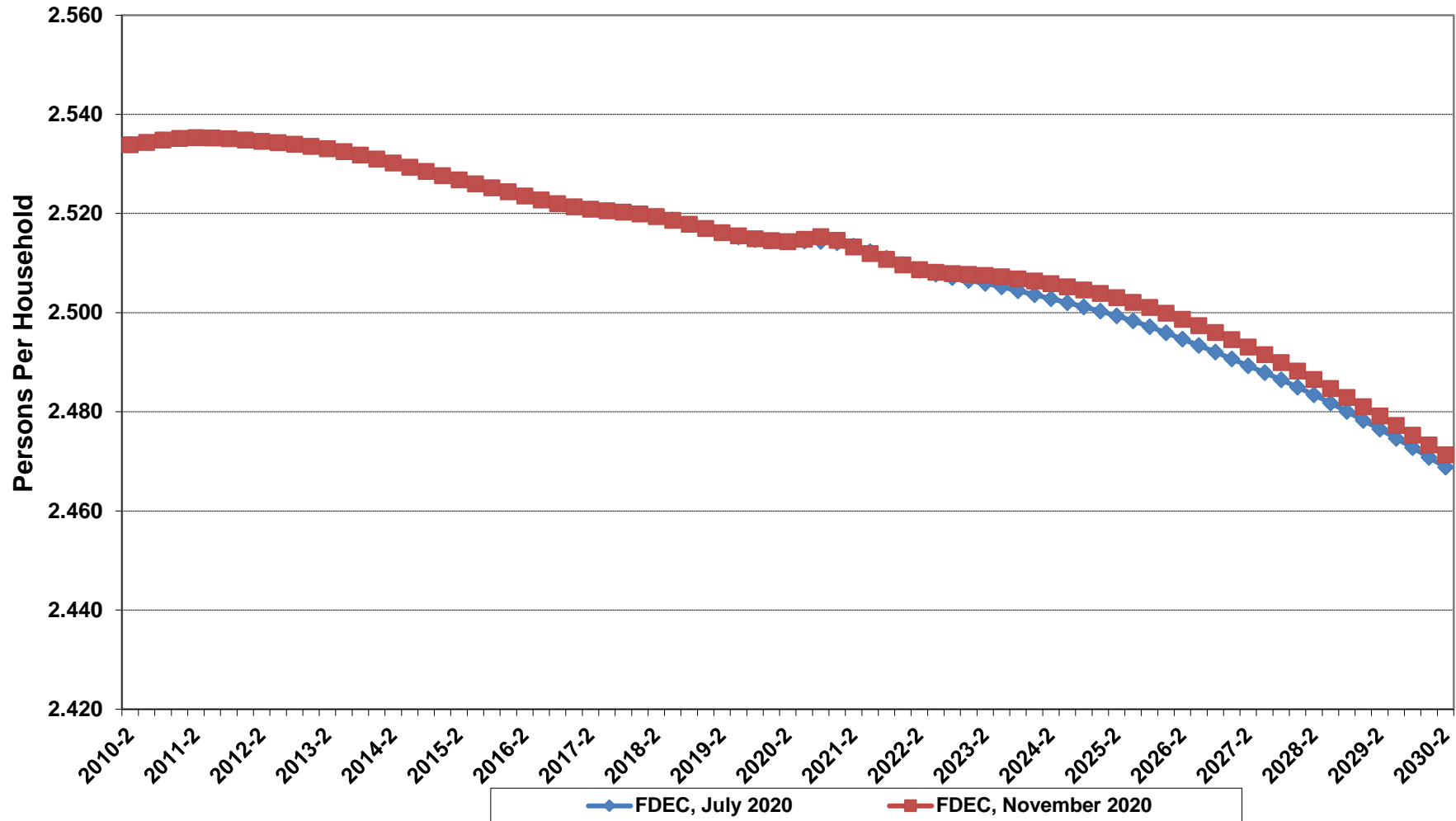
# Growth In Florida Resident Households



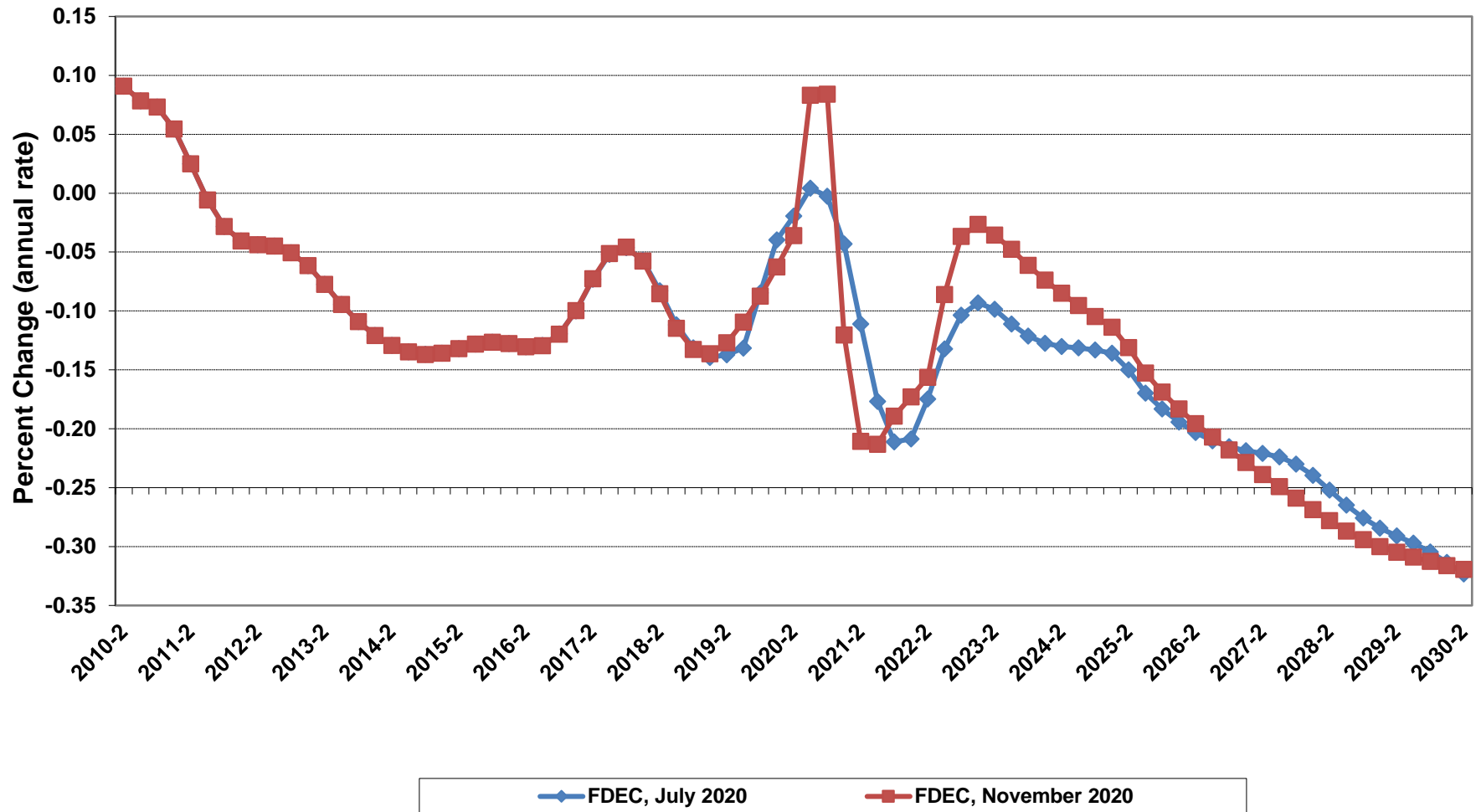
# Net Change In Florida Resident Households



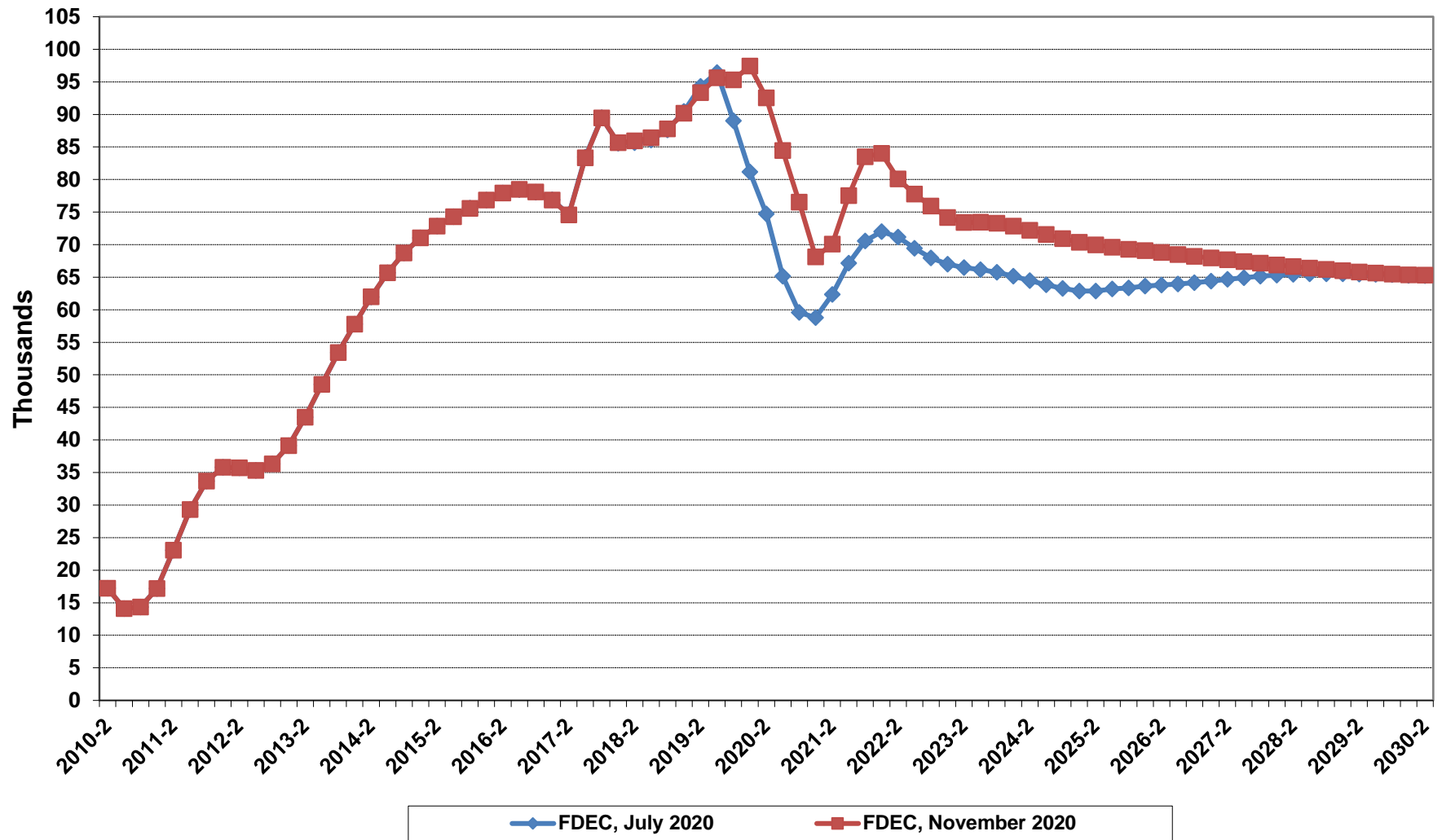
# Florida Average Household Size



# Growth In Florida Household Size



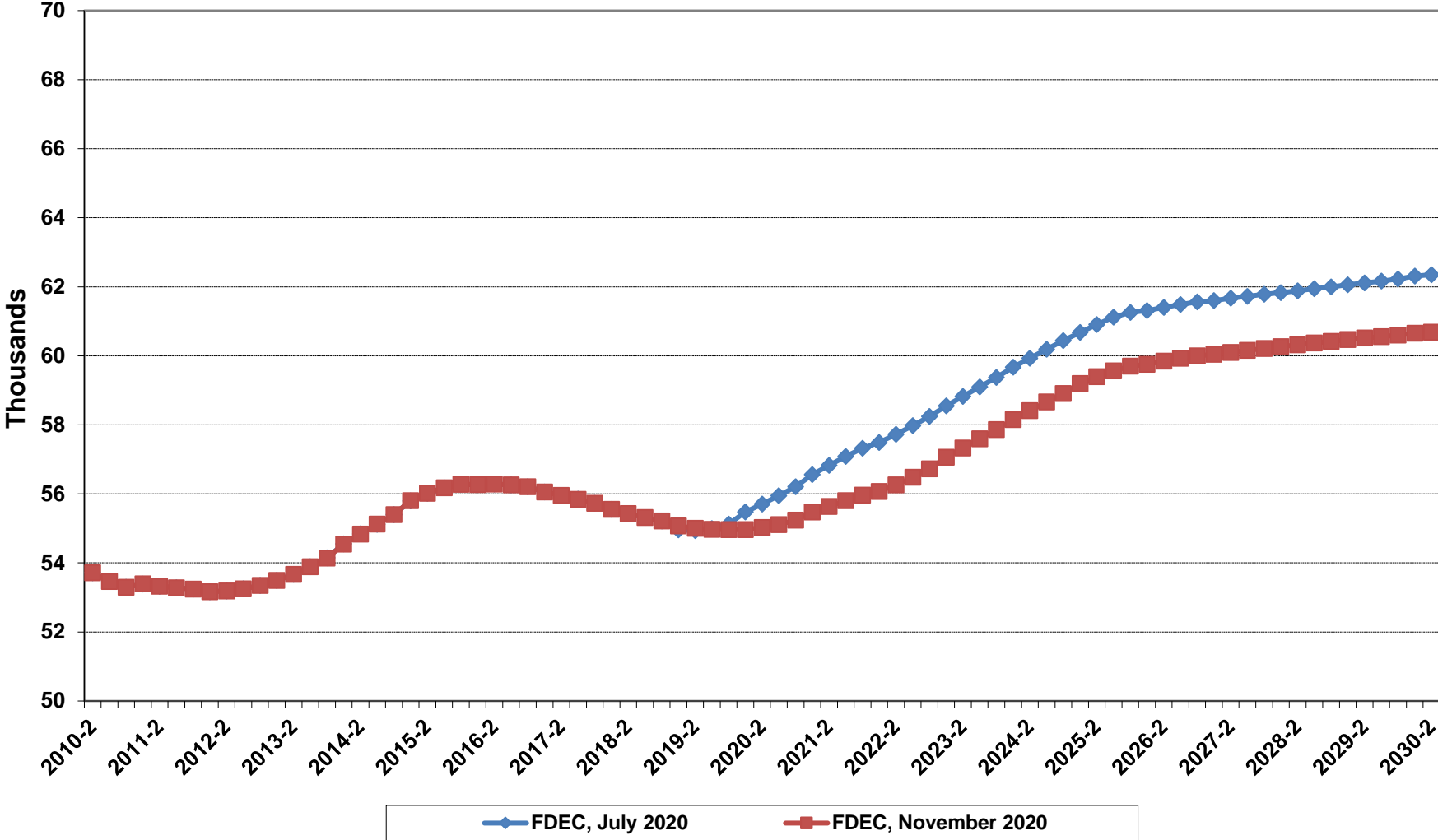
# Florida Net Migration



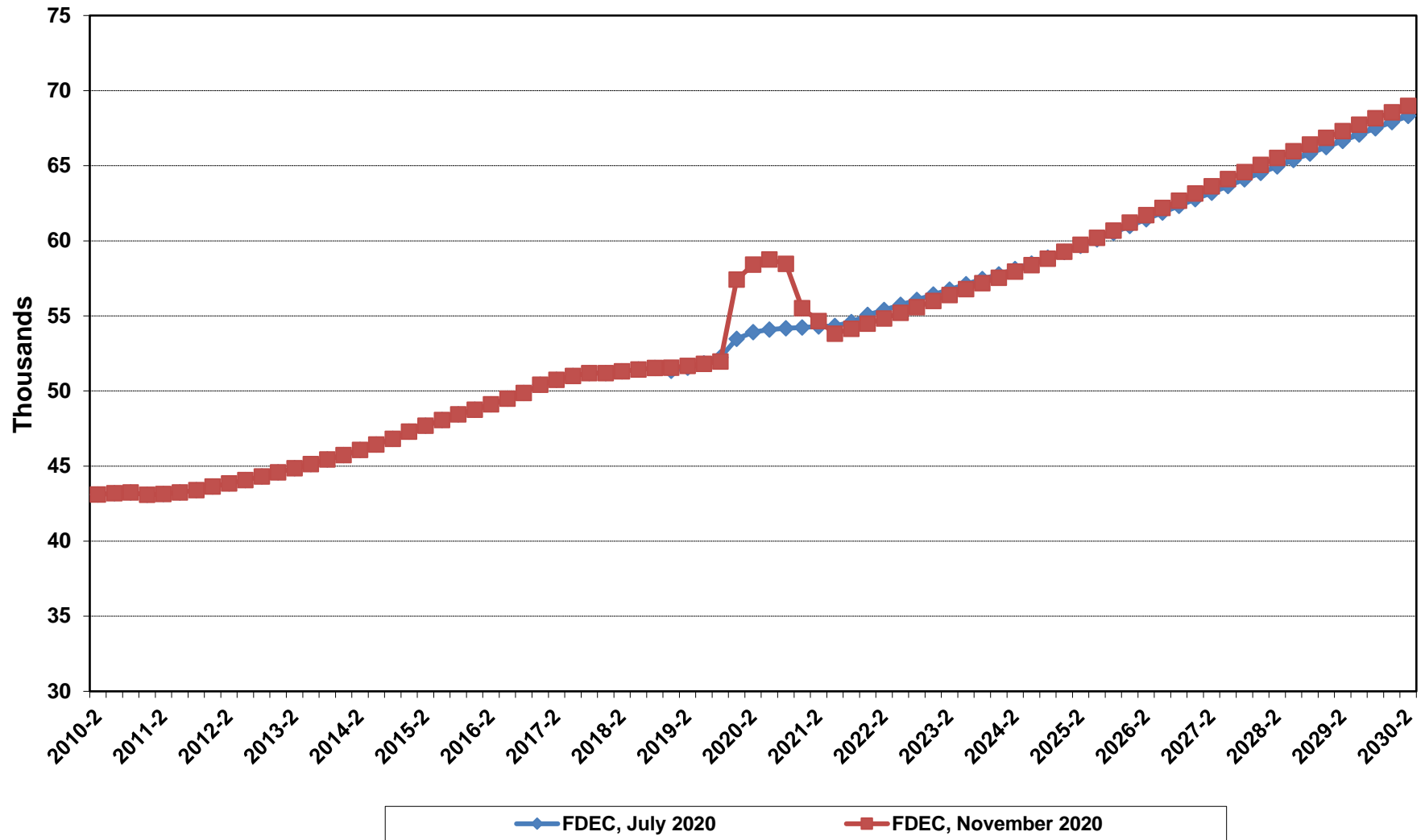
# Florida Net International Migration



# Florida Resident Births

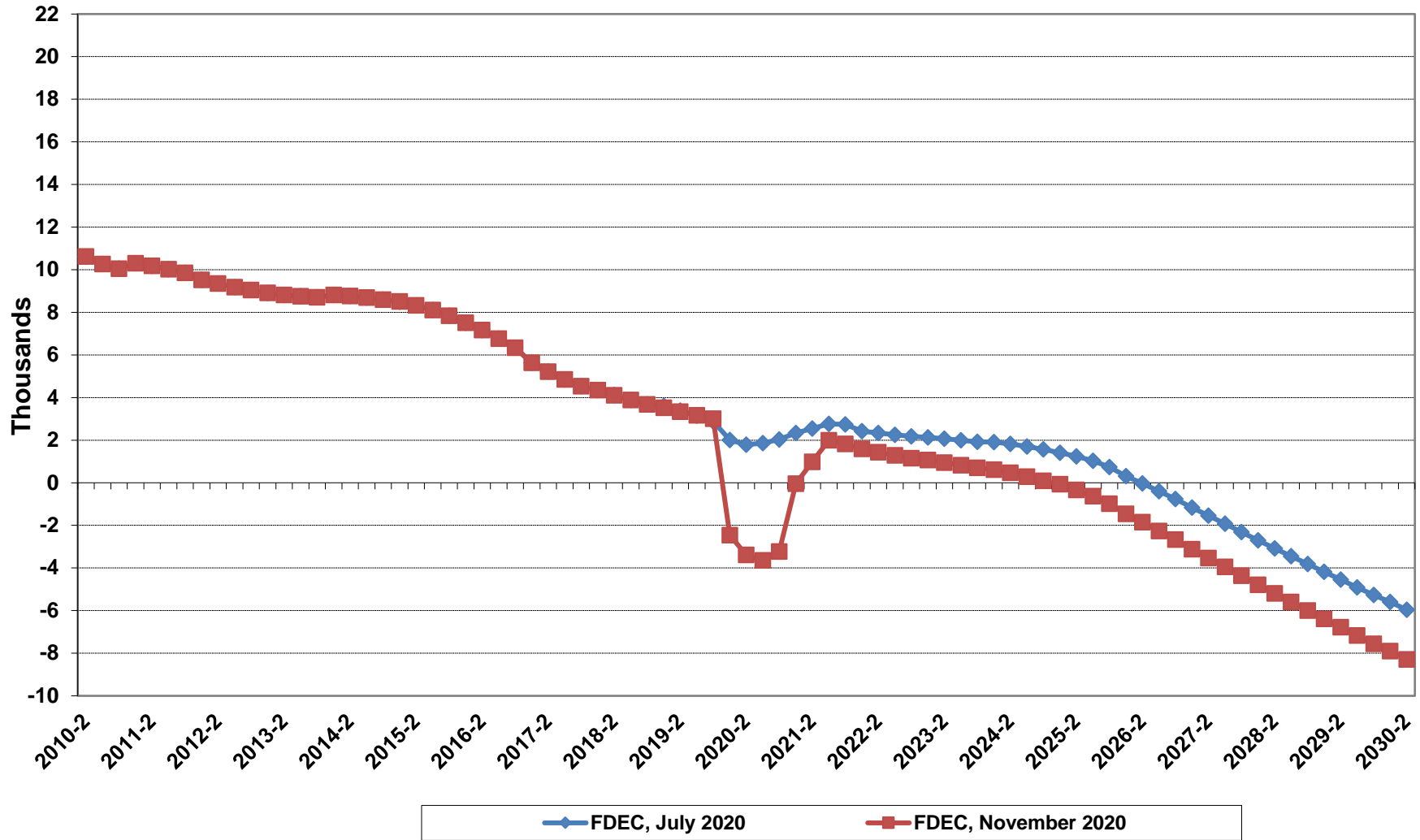


# Florida Resident Deaths

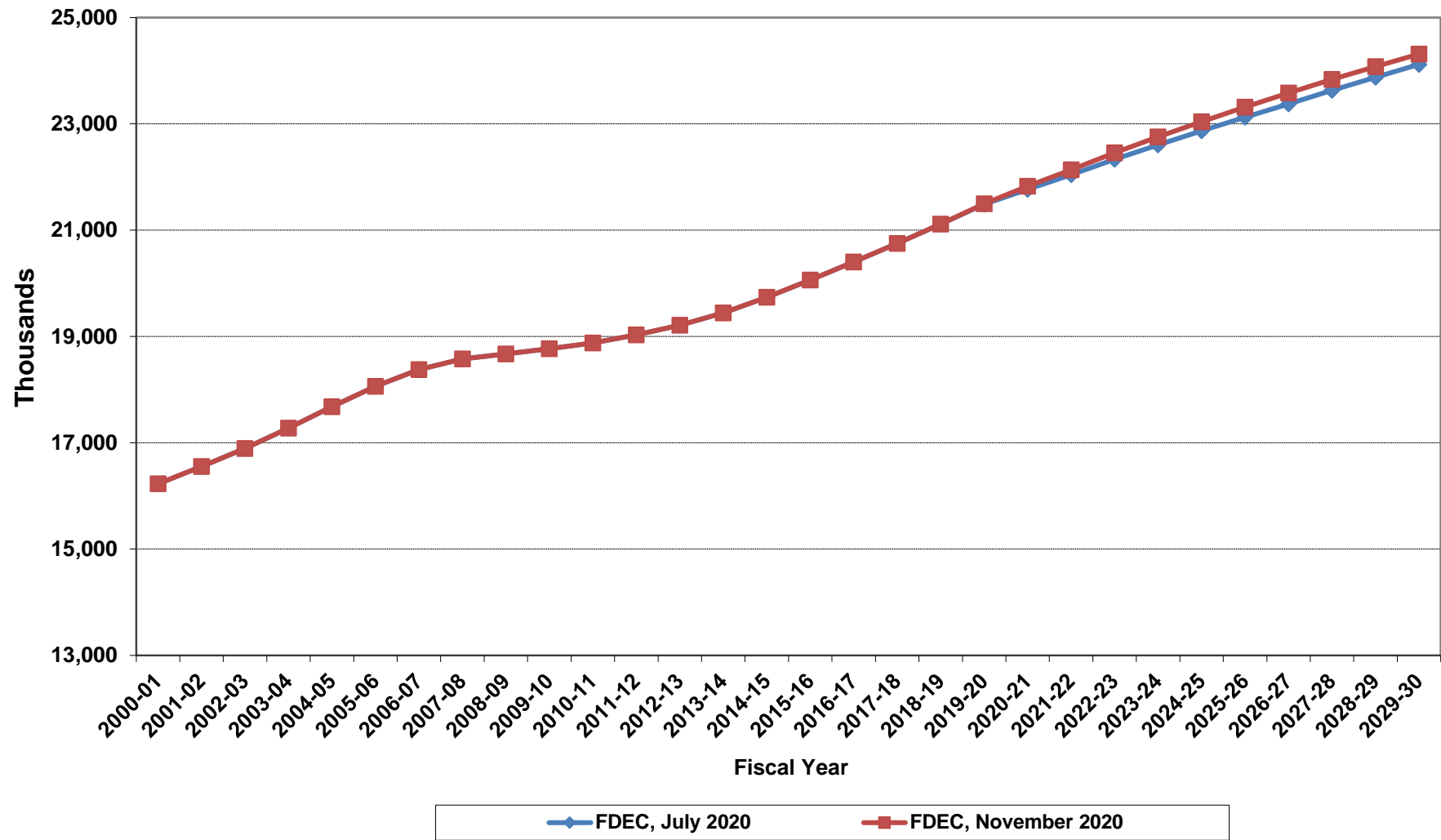




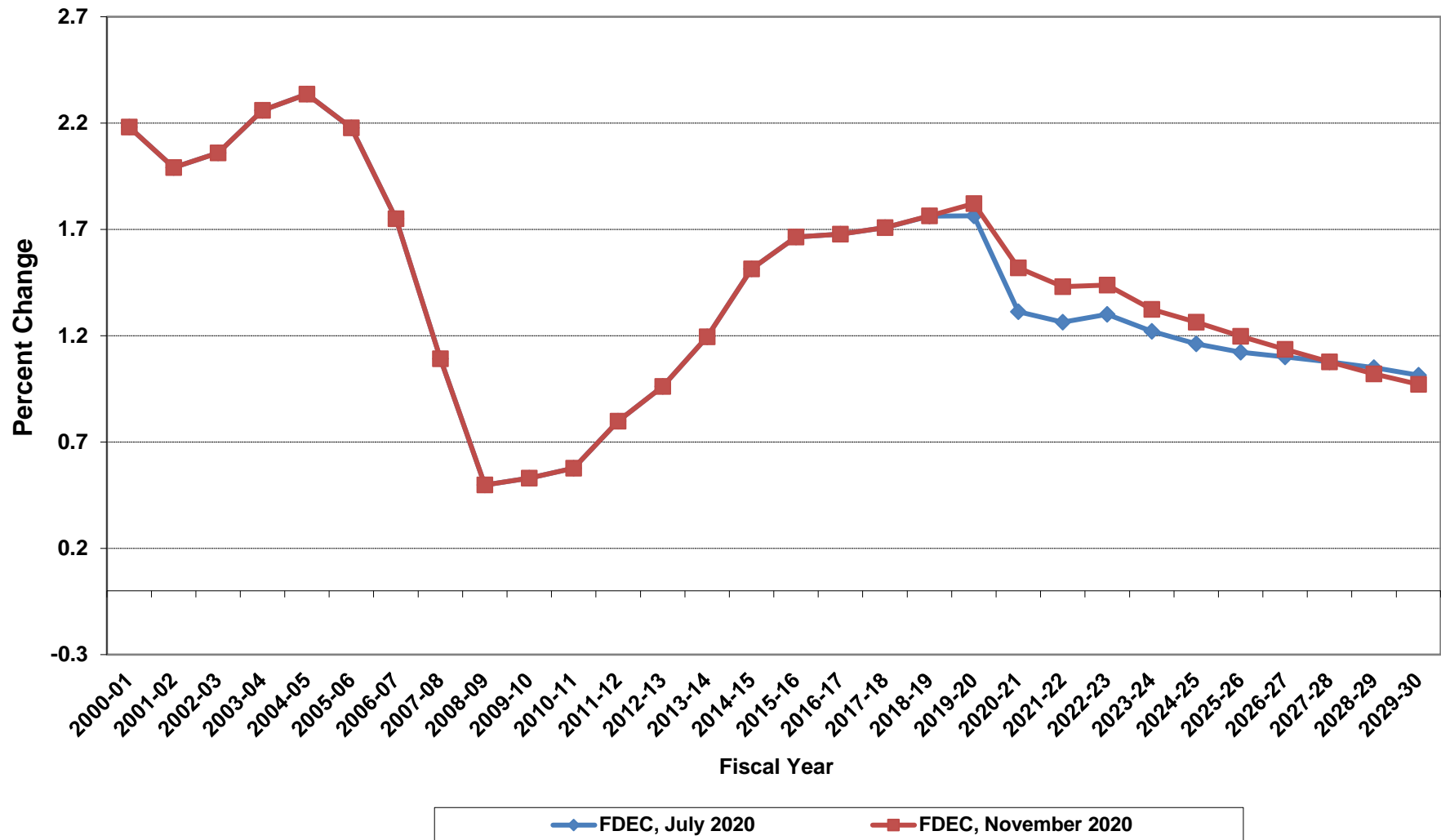
# Florida Net Natural Increase



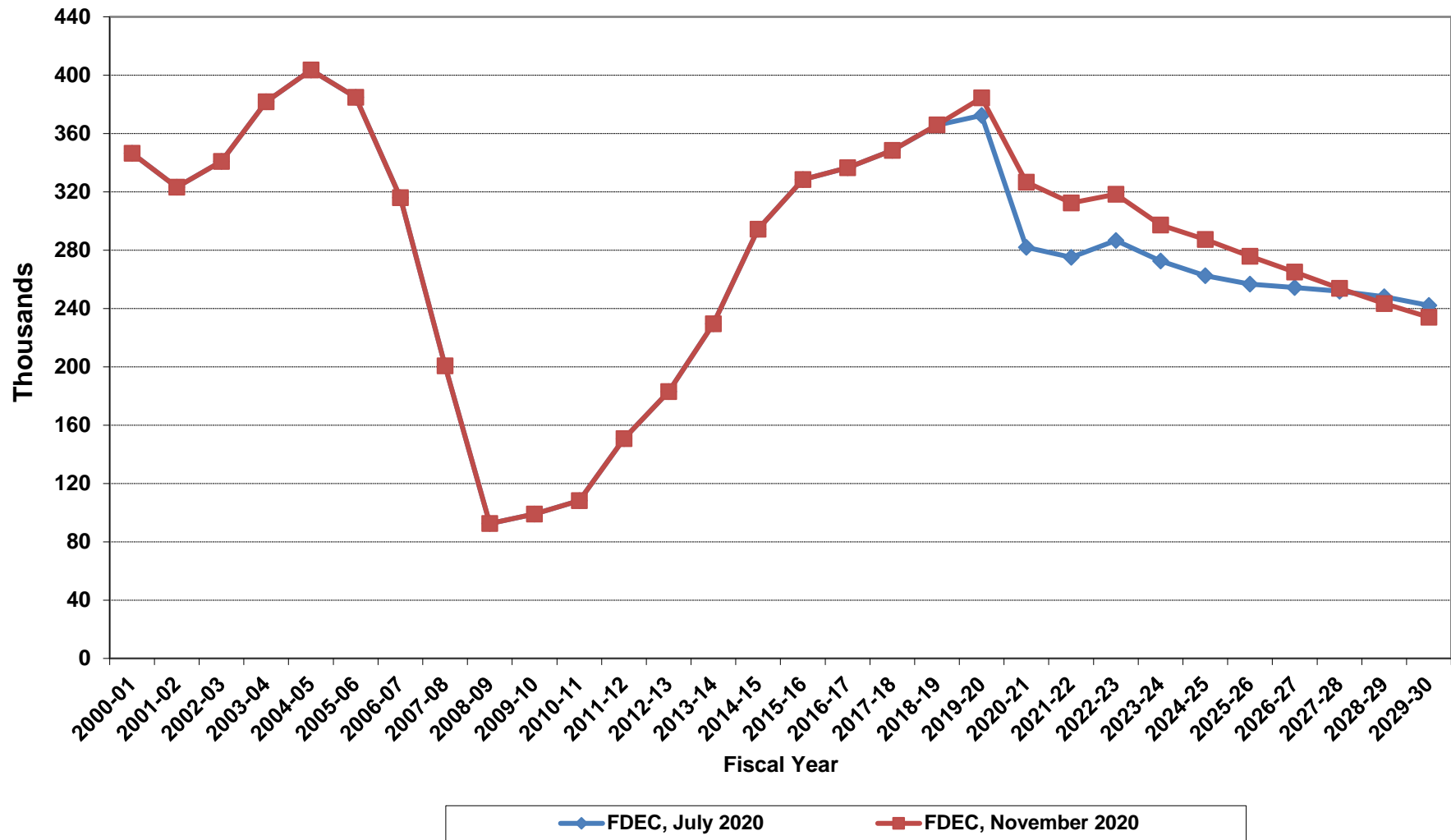
# Florida Resident Population



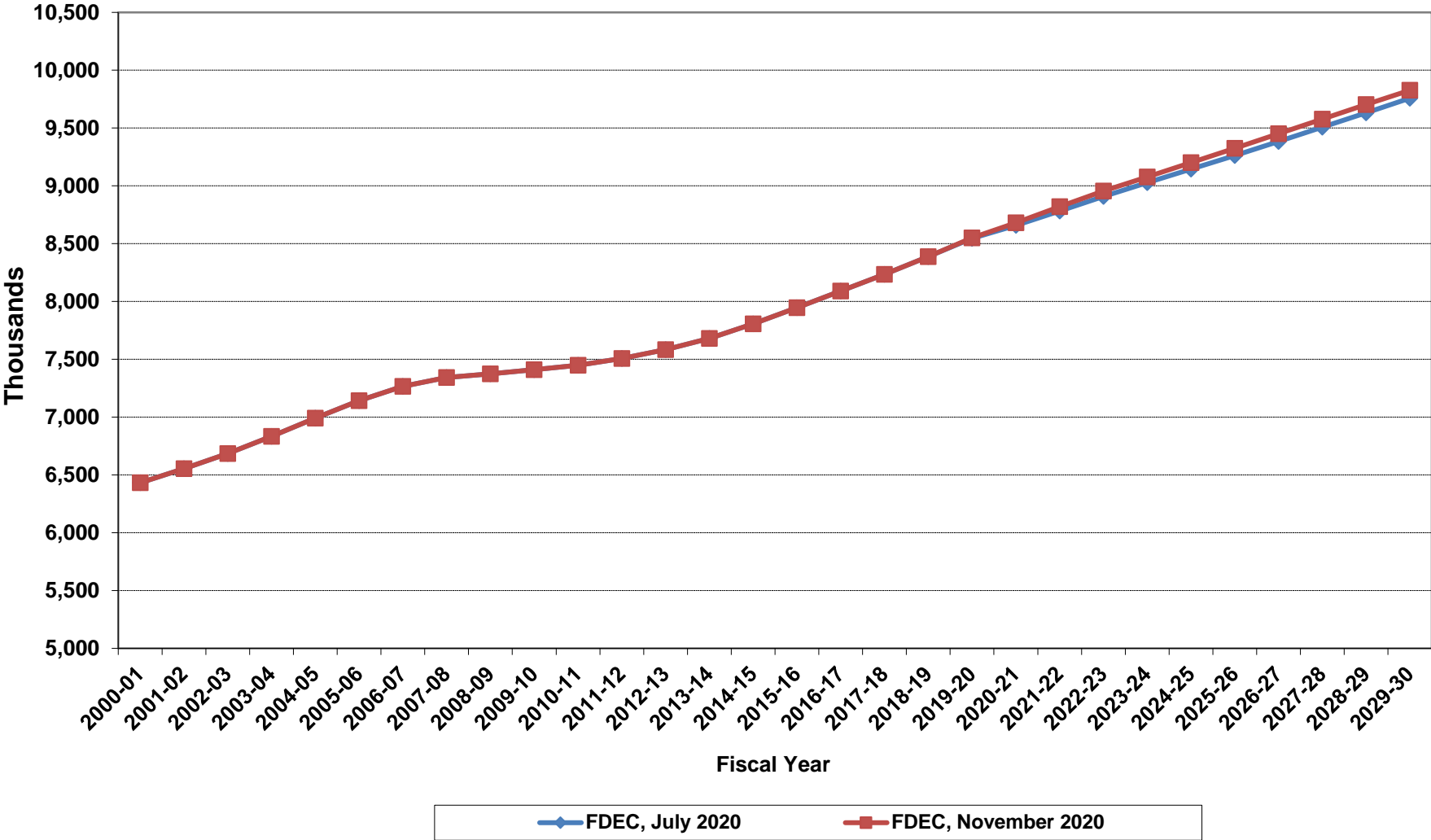
# Growth In Florida Resident Population



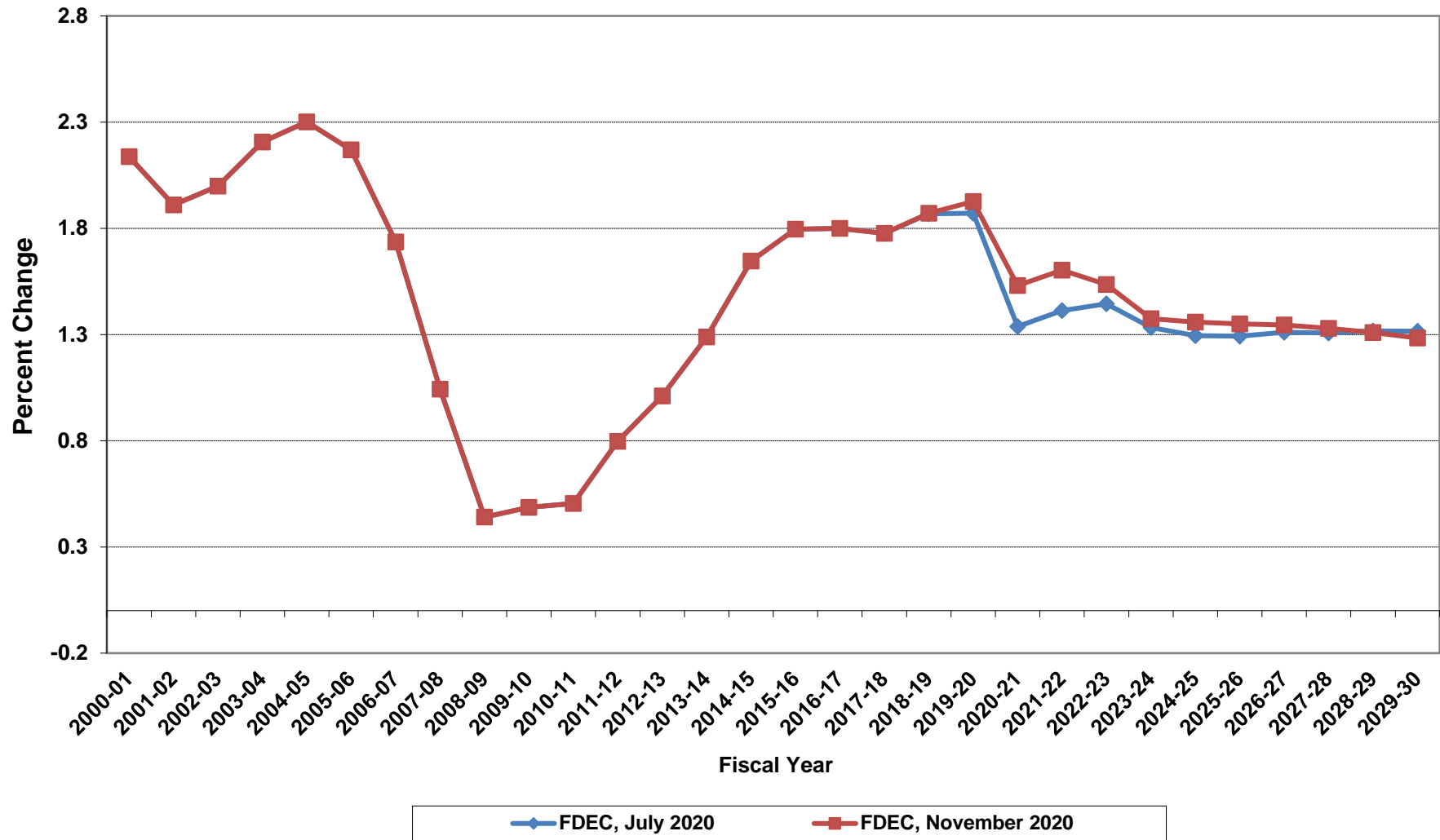
# Net Change In Florida Resident Population



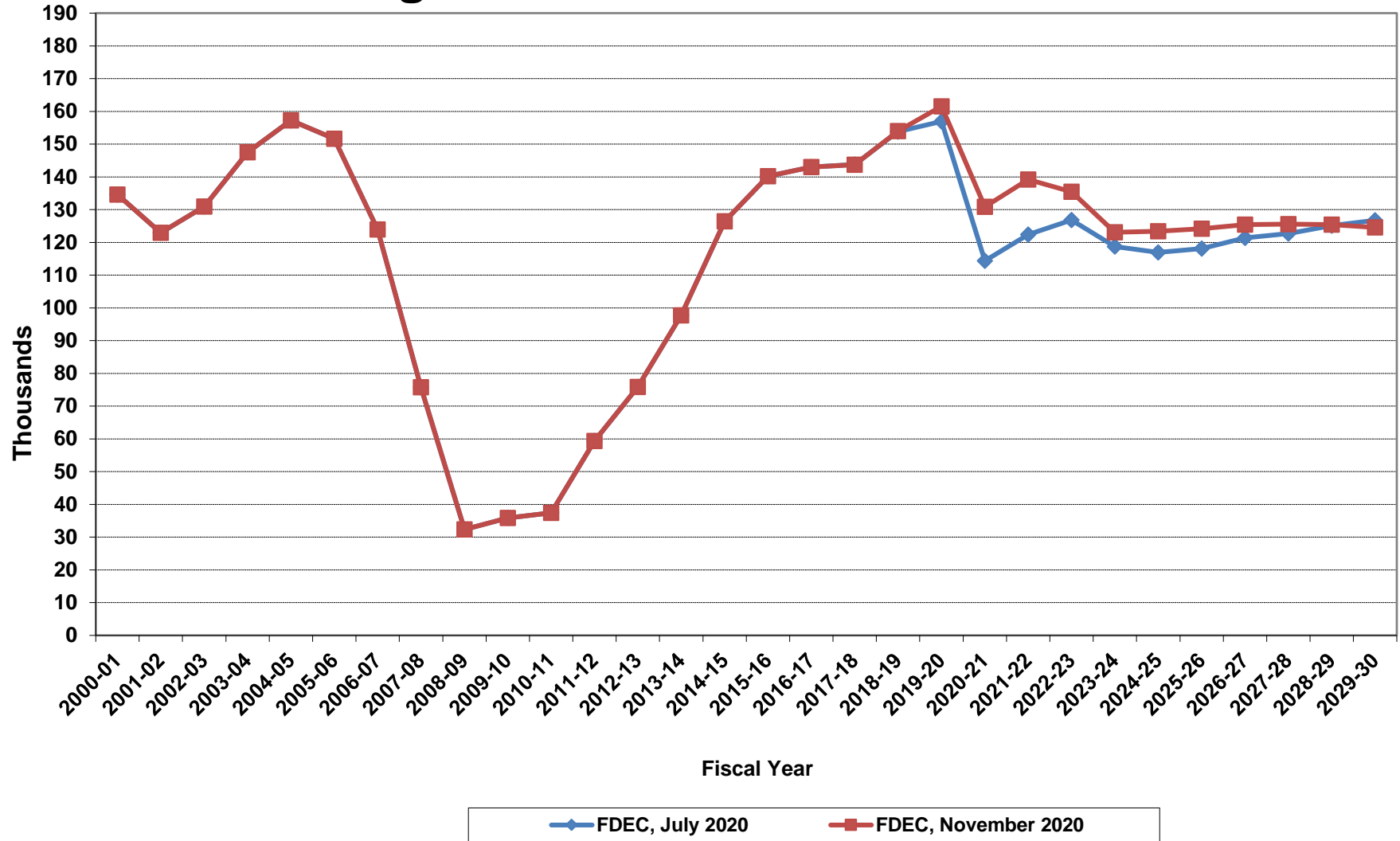
# Florida Resident Households



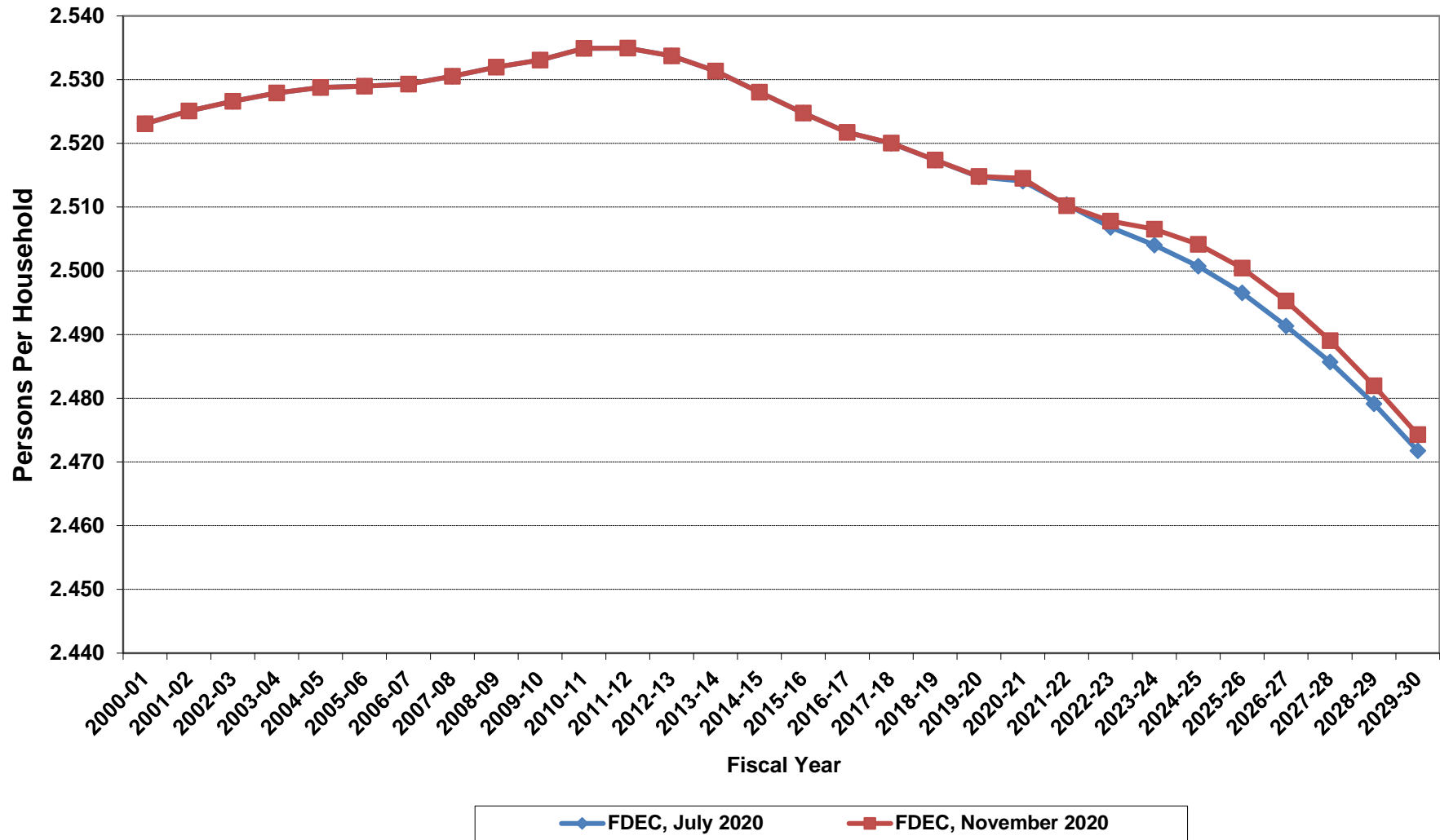
# Growth In Florida Resident Households



# Net Change In Florida Resident Households

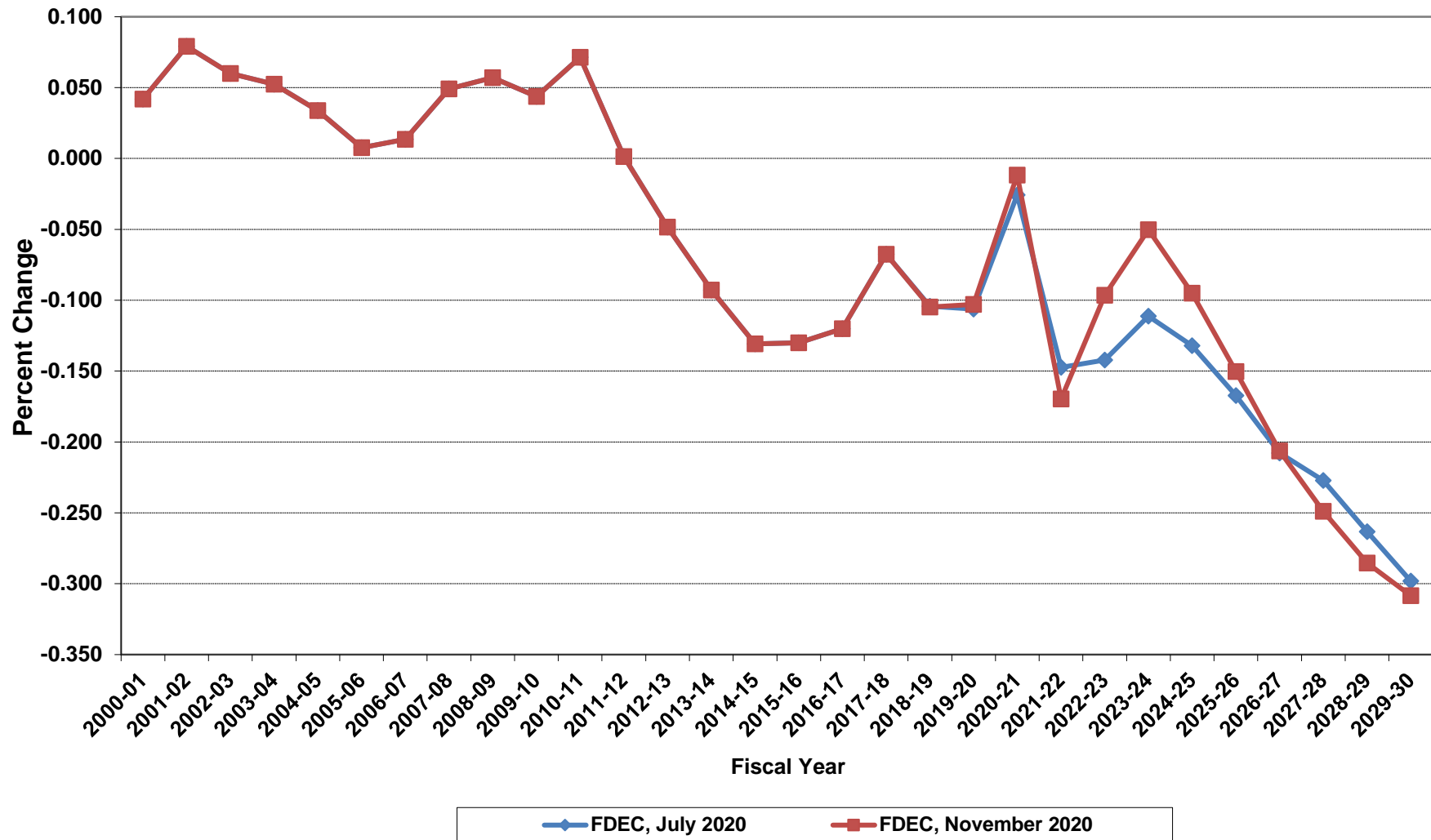


# Average Florida Household Size

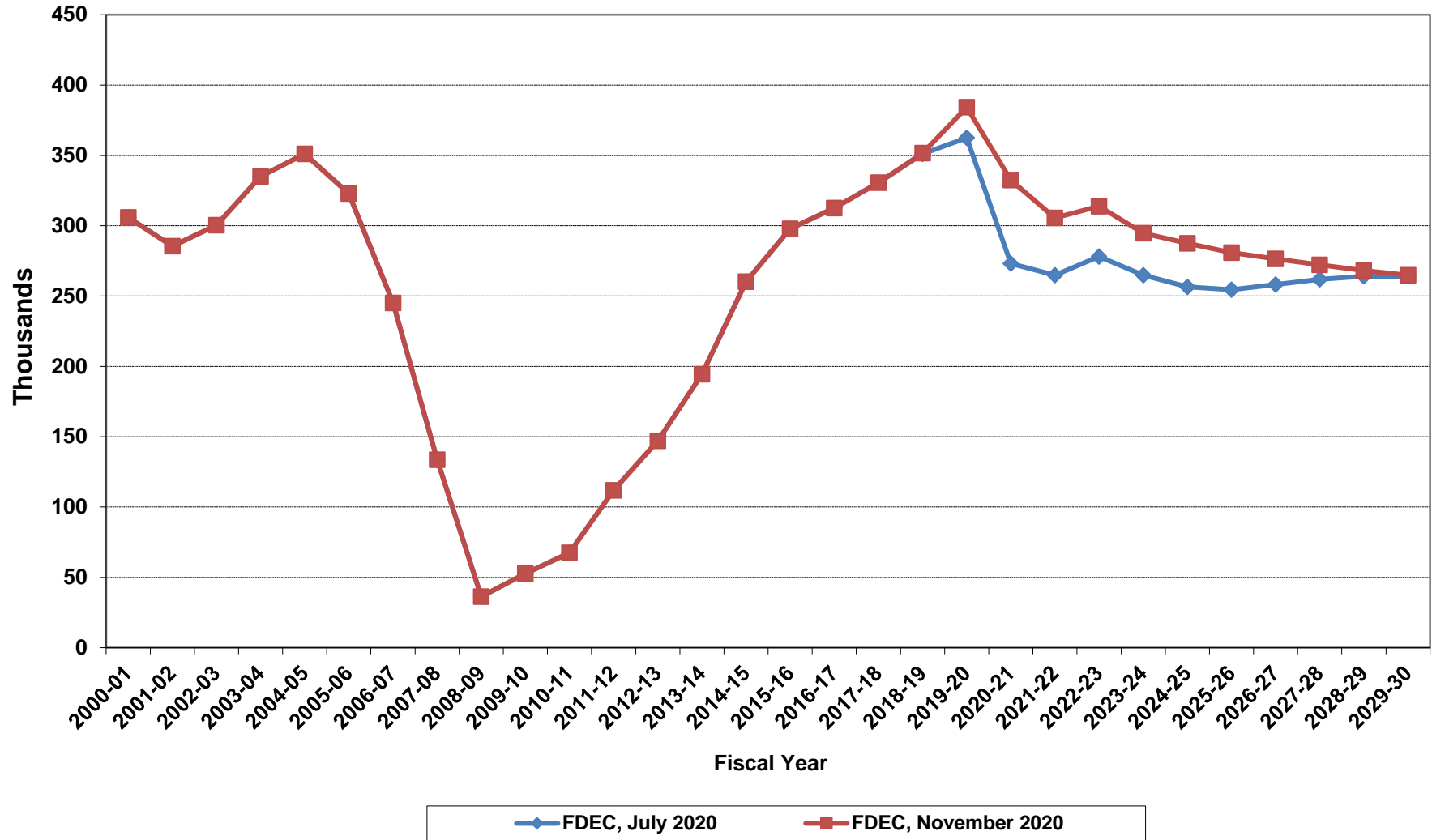




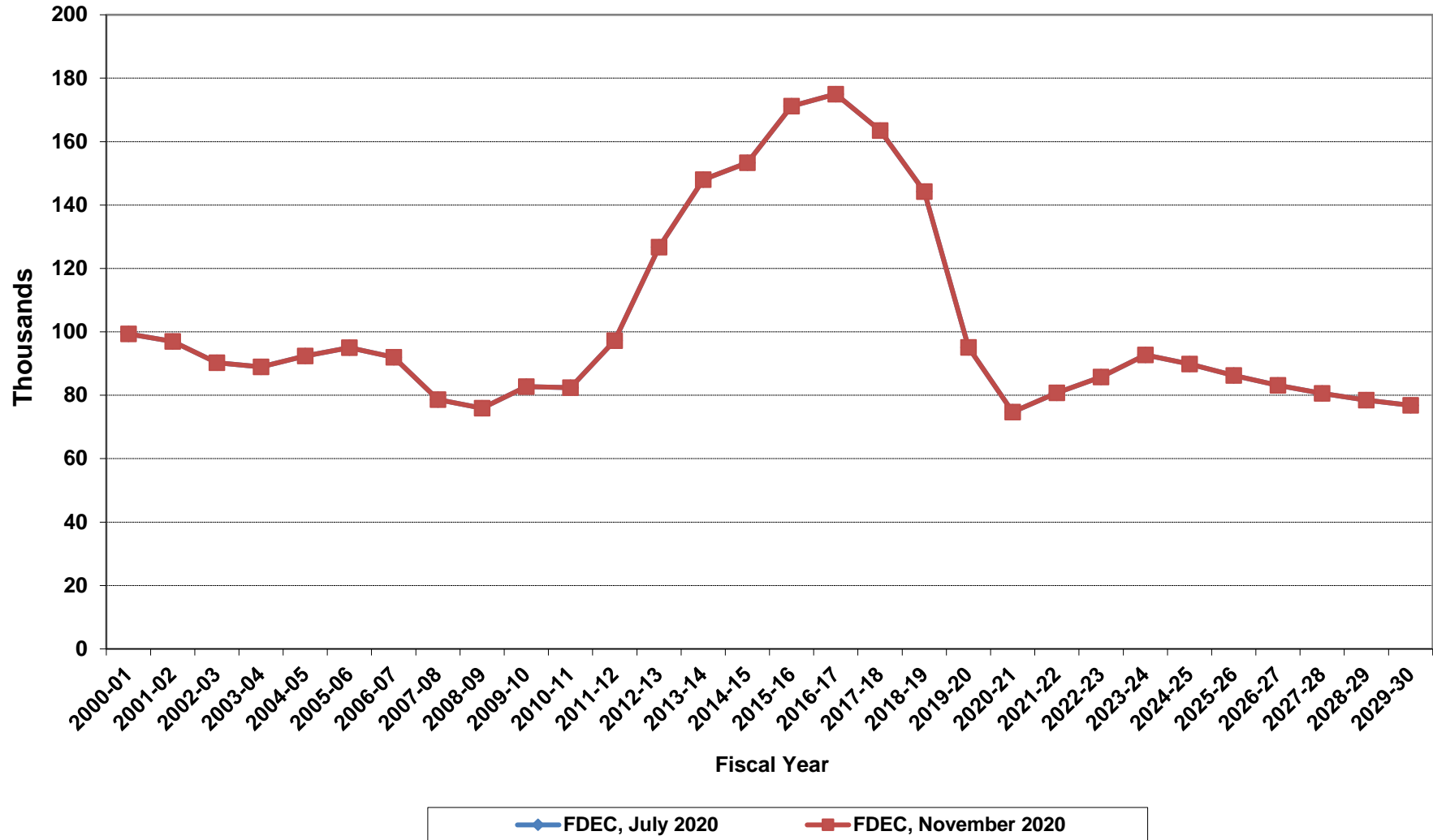
# Growth In Average Florida Household Size



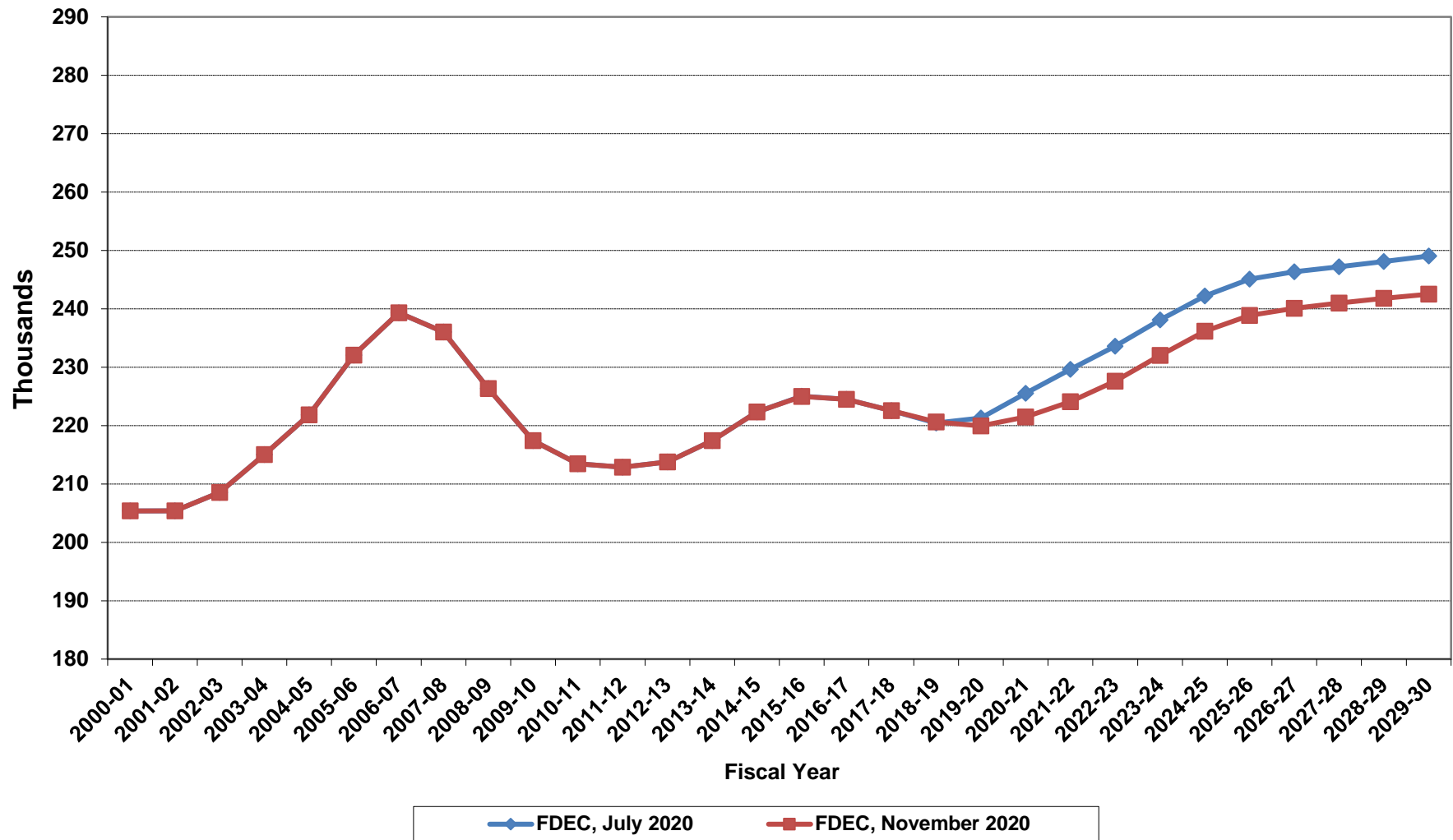
# Florida Net Migration



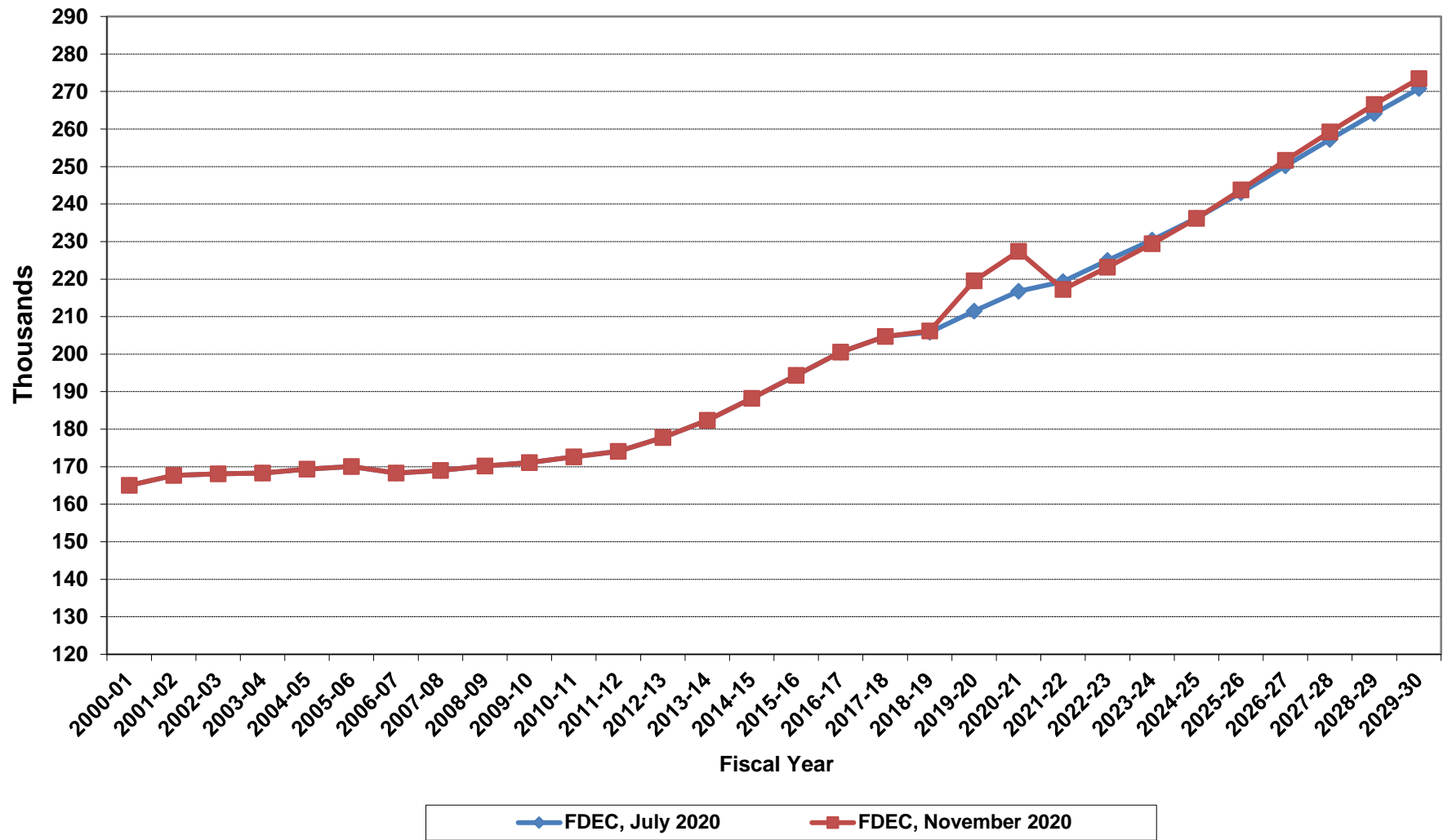
# Florida Net International Migration



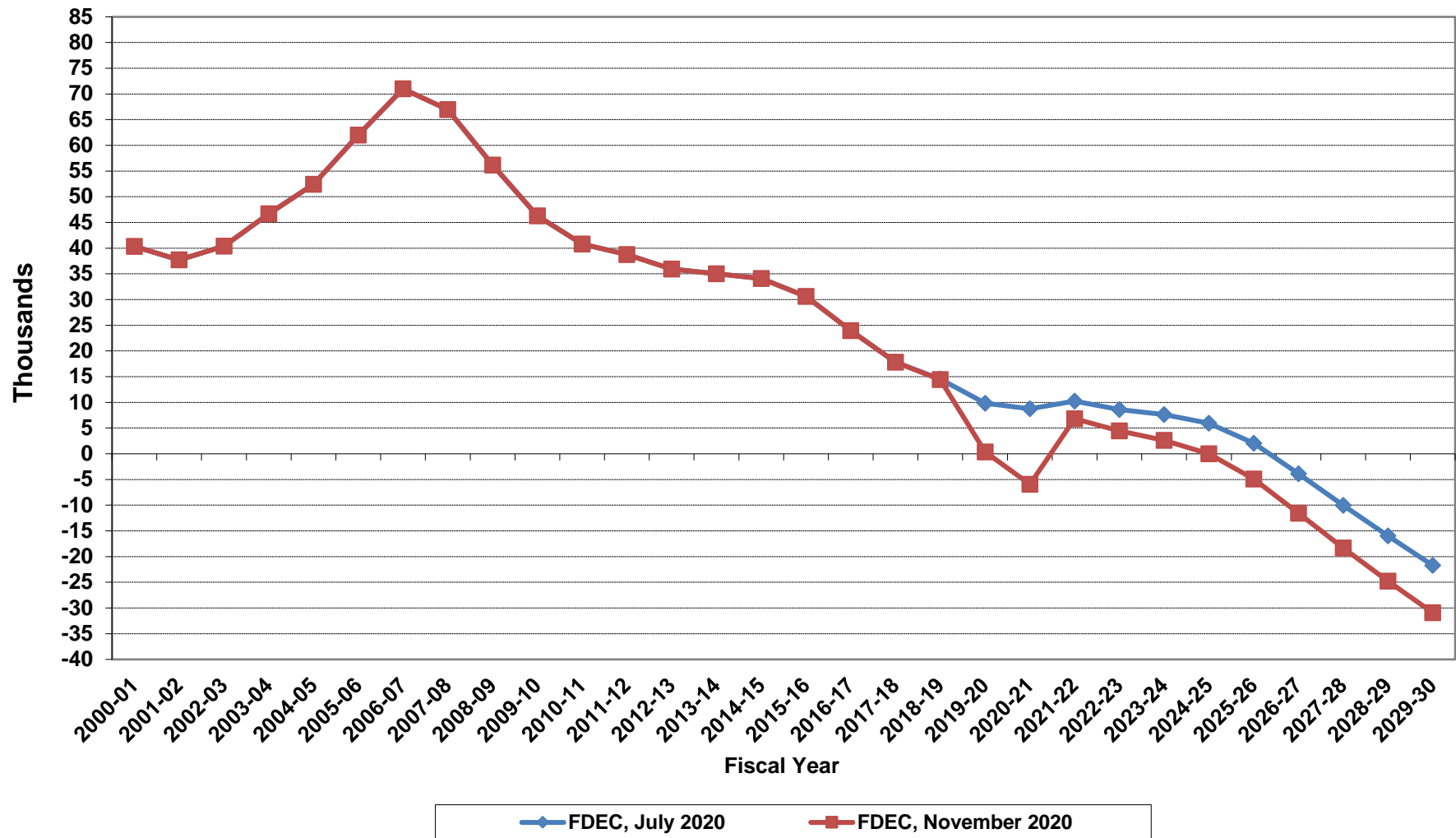
# Florida Resident Live Births



# Florida Resident Deaths



# Florida Net Natural Increase



**Florida Population and Components of Change**

<b>Fiscal Year</b>	<b>Population (End of Fiscal Year)</b>	<b>Growth Rate</b>	<b>Annual Change in Population</b>	<b>Births</b>	<b>Deaths</b>	<b>Net Natural Increase</b>	<b>Net Migration</b>
1950 - 51	2,981,346	6.50%	181,931	67,486	27,670	39,816	142,115
1951 - 52	3,155,442	5.84%	174,096	72,383	28,942	43,441	130,655
1952 - 53	3,312,521	4.98%	157,079	76,954	29,761	47,193	109,886
1953 - 54	3,504,323	5.79%	191,802	82,725	31,055	51,670	140,132
1954 - 55	3,747,400	6.94%	243,077	86,643	32,176	54,467	188,610
1955 - 56	4,046,062	7.97%	298,662	92,941	34,932	58,009	240,653
1956 - 57	4,370,045	8.01%	323,983	100,990	38,269	62,721	261,262
1957 - 58	4,629,510	5.94%	259,465	105,972	41,911	64,061	195,404
1958 - 59	4,812,270	3.95%	182,760	110,409	43,674	66,735	116,025
1959 - 60	4,998,508	3.87%	186,238	114,428	46,057	68,371	117,867
1960 - 61	5,185,913	3.75%	187,405	116,449	48,388	68,061	119,344
1961 - 62	5,367,899	3.51%	181,986	116,120	50,346	65,774	116,212
1962 - 63	5,553,522	3.46%	185,623	114,709	54,453	60,256	125,367
1963 - 64	5,728,499	3.15%	174,977	115,002	56,229	58,773	116,204
1964 - 65	5,881,195	2.67%	152,696	110,515	57,734	52,781	99,915
1965 - 66	6,065,768	3.14%	184,573	104,367	61,217	43,150	141,423
1966 - 67	6,249,674	3.03%	183,906	101,209	62,577	38,632	145,274
1967 - 68	6,441,756	3.07%	192,082	100,320	66,134	34,186	157,896
1968 - 69	6,633,546	2.98%	191,790	104,286	71,285	33,001	158,789
1969 - 70	6,861,118	3.43%	227,572	111,511	73,831	37,680	189,892
1970 - 71	7,233,583	5.43%	372,465	117,012	75,354	41,658	330,807
1971 - 72	7,681,540	6.19%	447,957	113,568	79,717	33,851	414,106
1972 - 73	8,157,883	6.20%	476,343	107,804	86,232	21,572	454,771
1973 - 74	8,515,208	4.38%	357,325	109,366	88,459	20,907	336,418
1974 - 75	8,648,587	1.57%	133,379	108,686	87,224	21,462	111,917
1975 - 76	8,782,975	1.55%	134,388	104,022	88,129	15,893	118,495
1976 - 77	8,972,678	2.16%	189,703	107,623	90,443	17,180	172,523
1977 - 78	9,225,527	2.82%	252,849	112,268	93,383	18,885	233,964
1978 - 79	9,523,728	3.23%	298,201	116,393	96,801	19,592	278,609
1979 - 80	9,914,652	4.10%	390,924	126,673	101,048	25,625	365,299
1980 - 81	10,212,969	3.01%	298,317	135,560	107,562	27,998	270,319
1981 - 82	10,492,851	2.74%	279,882	141,593	108,644	32,949	246,933
1982 - 83	10,748,466	2.44%	255,615	146,853	110,497	36,356	219,259
1983 - 84	11,065,911	2.95%	317,445	151,748	113,939	37,809	279,636
1984 - 85	11,405,533	3.07%	339,622	159,819	117,539	42,280	297,342
1985 - 86	11,740,069	2.93%	334,536	165,857	122,453	43,404	291,132
1986 - 87	12,083,241	2.92%	343,172	170,819	124,946	45,873	297,299
1987 - 88	12,410,339	2.71%	327,098	179,541	129,413	50,128	276,970
1988 - 89	12,723,719	2.53%	313,380	188,390	131,992	56,398	256,982
1989 - 90	13,017,296	2.31%	293,577	197,181	132,503	64,678	228,899
1990 - 91	13,326,892	2.38%	309,596	197,180	134,093	63,087	246,509
1991 - 92	13,552,021	1.69%	225,129	191,810	136,280	55,530	169,599
1992 - 93	13,802,571	1.85%	250,550	192,051	142,087	49,964	200,586
1993 - 94	14,120,323	2.30%	317,752	191,840	146,101	45,739	272,013
1994 - 95	14,406,418	2.03%	286,095	189,292	149,161	40,131	245,964
1995 - 96	14,701,040	2.05%	294,622	188,584	152,570	36,014	258,608
1996 - 97	15,012,615	2.12%	311,575	190,587	153,067	37,520	274,055
1997 - 98	15,310,069	1.98%	297,454	194,242	155,080	39,162	258,292
1998 - 99	15,680,164	2.42%	370,095	195,897	159,988	35,909	334,186
1999 - 00	16,069,889	2.49%	389,725	200,302	162,489	37,813	351,912
2000 - 01	16,385,615	1.96%	315,726	205,798	164,919	40,879	274,847
2001 - 02	16,718,076	2.03%	332,461	205,164	167,812	37,352	295,109
2002 - 03	17,074,258	2.13%	356,182	208,403	168,079	40,324	315,858
2003 - 04	17,475,944	2.35%	401,686	215,298	168,302	46,996	354,690
2004 - 05	17,876,215	2.29%	400,271	221,533	169,302	52,231	348,040
2005 - 06	18,236,885	2.02%	360,670	232,019	170,303	61,716	298,954
2006 - 07	18,501,231	1.45%	264,346	239,635	168,117	71,518	192,828
2007 - 08	18,636,837	0.73%	135,606	236,065	168,966	67,099	68,507
2008 - 09	18,711,844	0.40%	75,007	226,337	170,615	55,722	19,285
2009 - 10	18,826,492	0.61%	114,648	217,411	171,122	46,289	68,359

**Florida Population and Components of Change**

<b>Fiscal Year</b>	<b>Population (End of Fiscal Year)</b>	<b>Growth Rate</b>	<b>Annual Change in Population</b>	<b>Births</b>	<b>Deaths</b>	<b>Net Natural Increase</b>	<b>Net Migration</b>
2010 - 11	18,941,738	0.61%	115,246	213,466	172,661	40,805	74,441
2011 - 12	19,118,952	0.94%	177,214	212,877	174,121	38,756	138,458
2012 - 13	19,314,342	1.02%	195,390	213,765	177,807	35,958	159,432
2013 - 14	19,580,073	1.38%	265,731	217,417	182,383	35,034	230,697
2014 - 15	19,897,008	1.62%	316,935	222,337	188,216	34,121	282,814
2015 - 16	20,234,054	1.69%	337,046	225,008	194,385	30,623	306,423
2016 - 17	20,562,451	1.62%	328,397	224,475	200,523	23,952	304,445
2017 - 18	20,930,553	1.79%	368,102	222,547	204,706	17,841	350,261
2018 - 19	21,306,884	1.80%	376,331	220,609	206,185	14,424	361,907
2019 - 20	21,681,835	1.76%	374,951	219,923	219,582	341	374,610
2020 - 21	21,970,548	1.33%	288,713	221,465	227,392	-5,927	294,640
2021 - 22	22,304,186	1.52%	333,638	224,101	217,263	6,838	326,800
2022 - 23	22,607,044	1.36%	302,858	227,599	223,149	4,450	298,408
2023 - 24	22,900,382	1.30%	293,338	232,029	229,428	2,601	290,737
2024 - 25	23,181,692	1.23%	281,310	236,159	236,176	-17	281,327
2025 - 26	23,452,183	1.17%	270,491	238,867	243,783	-4,916	275,407
2026 - 27	23,711,563	1.11%	259,380	240,071	251,643	-11,572	270,952
2027 - 28	23,960,029	1.05%	248,466	240,958	259,256	-18,298	266,764
2028 - 29	24,198,426	0.99%	238,397	241,771	266,532	-24,761	263,158
2029 - 30	24,428,351	0.95%	229,925	242,497	273,412	-30,915	260,840
2030 - 31	24,651,201	0.91%	222,850	242,892	280,088	-37,196	260,046
2031 - 32	24,866,817	0.87%	215,616	243,080	286,816	-43,736	259,352
2032 - 33	25,075,478	0.84%	208,661	243,440	293,286	-49,846	258,507
2033 - 34	25,277,874	0.81%	202,396	244,014	299,287	-55,273	257,669
2034 - 35	25,475,051	0.78%	197,177	244,692	304,904	-60,212	257,389
2035 - 36	25,666,692	0.75%	191,641	245,337	310,385	-65,048	256,689
2036 - 37	25,851,813	0.72%	185,121	246,099	315,685	-69,586	254,707
2037 - 38	26,031,862	0.70%	180,049	246,944	320,818	-73,874	253,923
2038 - 39	26,207,373	0.67%	175,511	247,748	325,846	-78,098	253,609