

**Demographic Estimating Conference
Executive Summary
July 18, 2022**

The Demographic Estimating Conference met on July 18, 2022, to adopt a new population forecast. The new estimates reflect the most recent demographic and economic-related data and trends, including revised preliminary intercensal household estimates from 2011 through 2019 based on the 2020 Census count and the previously revised intercensal population estimates.

Compared to the last conference, population for April 1, 2022 was only slightly increased (by 3,795) to 22,251,246. On a fiscal year basis, this reflects an overall increase in net migration that offset the negative natural increase. The negative natural increase was intensified by both fewer births and more deaths than previously forecast. The population growth rates beginning in 2023 (shown as the percent change from the prior period in the table below) match the prior conference. Natural increase is expected to remain negative throughout the forecast horizon as deaths continue to outpace births. Overall, the forecast maintains the pattern that the Conference has long been expecting, with growth slowing modestly each year.

Historical households were updated to reflect the population intercensal revisions discussed at the prior conference, as was household size. The forecasted growth rates for households and average household size also match the ones adopted at the prior conference.

April 1	Population	Change from the Prior Period		Change from the Prior Forecast
		Percent	Numeric	
2020	21,538,187	1.64%	348,338	0
2021	21,898,945	1.67%	360,758	0
2022	22,251,246	1.61%	352,301	3,795
2023	22,568,268	1.42%	317,022	3,849
2024	22,873,947	1.35%	305,679	3,901
2025	23,167,959	1.29%	294,012	3,951
2026	23,452,281	1.23%	284,322	3,999
2027	23,725,027	1.16%	272,746	4,046
2028	23,986,305	1.10%	261,278	3,964
2029	24,236,310	1.04%	250,005	3,937
2030	24,475,060	0.99%	238,750	3,931
2031	24,702,804	0.93%	227,744	3,792
2032	24,920,411	0.88%	217,607	3,605

Between April 1, 2022 and April 1, 2027, population growth is expected to average 294,756 net new residents per year (808 per day), representing a compound growth rate of 1.29% over this five-year time horizon. These increases are analogous to adding a city about the size of Orlando every year.

Florida Demographic Estimating Conference

Tables
Conference Packet

July 18, 2022

Florida Resident Population

April 1

Year	Florida Demographic Estimating Conference December 2021			Florida Demographic Estimating Conference July 2022		
	Population	% Change	Change	Population	% Change	Change
2000	15,982,824	2.58%	402,580	15,982,824	2.58%	402,580
2001	16,305,100	2.02%	322,276	16,305,100	2.02%	322,276
2002	16,634,256	2.02%	329,156	16,634,256	2.02%	329,156
2003	16,979,706	2.08%	345,450	16,979,706	2.08%	345,450
2004	17,374,824	2.33%	395,118	17,374,824	2.33%	395,118
2005	17,778,156	2.32%	403,332	17,778,156	2.32%	403,332
2006	18,154,475	2.12%	376,319	18,154,475	2.12%	376,319
2007	18,446,768	1.61%	292,293	18,446,768	1.61%	292,293
2008	18,613,905	0.91%	167,137	18,613,905	0.91%	167,137
2009	18,687,425	0.39%	73,520	18,687,425	0.39%	73,520
2010	18,801,332	0.61%	113,907	18,801,332	0.61%	113,907
2011	18,949,860	0.79%	148,528	18,949,860	0.79%	148,528
2012	19,134,956	0.98%	185,096	19,134,956	0.98%	185,096
2013	19,337,590	1.06%	202,634	19,337,590	1.06%	202,634
2014	19,585,096	1.28%	247,506	19,585,096	1.28%	247,506
2015	19,879,230	1.50%	294,134	19,879,230	1.50%	294,134
2016	20,201,450	1.62%	322,220	20,201,450	1.62%	322,220
2017	20,524,865	1.60%	323,415	20,524,865	1.60%	323,415
2018	20,854,945	1.61%	330,080	20,854,945	1.61%	330,080
2019	21,189,849	1.61%	334,904	21,189,849	1.61%	334,904
2020	21,538,187	1.64%	348,338	21,538,187	1.64%	348,338
2021	21,898,945	1.67%	360,758	21,898,945	1.67%	360,758
Begins forecast						
2022	22,247,451	1.59%	348,506	22,251,246	1.61%	352,301
2023	22,564,419	1.42%	316,968	22,568,268	1.42%	317,022
2024	22,870,046	1.35%	305,627	22,873,947	1.35%	305,679
2025	23,164,008	1.29%	293,962	23,167,959	1.29%	294,012
2025	23,448,282	1.23%	284,274	23,452,281	1.23%	284,322
2026	23,720,981	1.16%	272,699	23,725,027	1.16%	272,746
			5-Year Averages			
2030	24,471,129	1.10%	261,424	24,475,060	1.10%	261,420
2035	25,520,837	0.84%	209,942	25,524,375	0.84%	209,863
2040	26,405,472	0.68%	176,927	26,408,519	0.68%	176,829
2045	27,176,715	0.58%	154,249	27,178,924	0.58%	154,081

Florida Resident Households

April 1

Year	Florida Demographic Estimating Conference December 2021			Florida Demographic Estimating Conference July 2022		
	Households	% Change	Change	Households	% Change	Change
2000	6,338,075	2.52%	155,729	6,338,075	2.65%	163,703
2001	6,467,215	2.04%	129,140	6,460,934	1.94%	122,859
2002	6,599,035	2.04%	131,820	6,586,806	1.95%	125,872
2003	6,737,370	2.10%	138,335	6,719,399	2.01%	132,593
2004	6,895,469	2.35%	158,099	6,872,318	2.28%	152,919
2005	7,056,889	2.34%	161,420	7,029,787	2.29%	157,469
2006	7,207,645	2.14%	150,756	7,178,486	2.12%	148,699
2007	7,312,907	1.46%	105,262	7,292,550	1.59%	114,064
2008	7,368,319	0.76%	55,412	7,354,880	0.85%	62,330
2009	7,386,570	0.25%	18,251	7,379,964	0.34%	25,084
2010	7,420,802	0.46%	34,232	7,420,802	0.55%	40,838
2011	7,456,791	0.48%	35,989	7,479,031	0.78%	58,229
2012	7,525,335	0.92%	68,544	7,554,206	1.01%	75,175
2013	7,602,417	1.02%	77,082	7,636,343	1.09%	82,137
2014	7,708,538	1.40%	106,121	7,737,048	1.32%	100,705
2015	7,840,780	1.72%	132,242	7,856,934	1.55%	119,886
2016	7,982,938	1.81%	142,158	7,988,256	1.67%	131,322
2017	8,125,176	1.78%	142,238	8,119,979	1.65%	131,723
2018	8,271,058	1.80%	145,882	8,253,445	1.64%	133,466
2019	8,427,696	1.89%	156,638	8,390,280	1.66%	136,835
2020	8,529,067	1.20%	101,371	8,529,067	1.65%	138,787
2021	8,676,264	1.73%	147,197	8,676,264	1.73%	147,197
Begins forecast						
2022	8,822,896	1.69%	146,632	8,823,920	1.70%	147,656
2023	8,957,563	1.53%	134,667	8,958,603	1.53%	134,683
2024	9,087,981	1.46%	130,418	9,089,036	1.46%	130,433
2025	9,215,760	1.41%	127,779	9,216,829	1.41%	127,793
2025	9,344,823	1.40%	129,063	9,345,907	1.40%	129,078
2026	9,471,910	1.36%	127,087	9,473,009	1.36%	127,102
			5-Year Averages			
2030	9,835,820	1.31%	124,012	9,836,942	1.31%	124,023
2035	10,374,207	1.07%	107,677	10,375,479	1.07%	107,707
2040	10,832,309	0.87%	91,620	10,833,687	0.87%	91,642
2045	11,205,402	0.68%	74,619	11,206,835	0.68%	74,630

QUARTERLY FORECAST TABLES

	<u>2010-2</u>	<u>2010-3</u>	<u>2010-4</u>	<u>2011-1</u>	<u>2011-2</u>	<u>2011-3</u>	<u>2011-4</u>	<u>2012-1</u>	<u>2012-2</u>	<u>2012-3</u>	<u>2012-4</u>	<u>2013-1</u>	<u>2013-2</u>	<u>2013-3</u>	<u>2013-4</u>	<u>2014-1</u>
Population																
FDEC, December 2021	18,818.4	18,853.5	18,890.3	18,929.6	18,971.6	19,016.3	19,063.0	19,110.8	19,159.2	19,208.1	19,258.4	19,310.8	19,366.1	19,424.7	19,486.7	19,551.8
FDEC, July 2022	18,818.4	18,853.5	18,890.3	18,929.6	18,971.6	19,016.3	19,063.0	19,110.8	19,159.2	19,208.1	19,258.4	19,310.8	19,366.1	19,424.7	19,486.7	19,551.8
Population Growth Rate																
FDEC, December 2021	0.72	0.75	0.78	0.83	0.89	0.95	0.99	1.01	1.02	1.03	1.05	1.09	1.15	1.22	1.28	1.34
FDEC, July 2022	0.72	0.75	0.78	0.83	0.89	0.95	0.99	1.01	1.02	1.03	1.05	1.09	1.15	1.22	1.28	1.34
Net Change in Population																
FDEC, December 2021	33.5	35.0	36.9	39.2	42.0	44.7	46.7	47.8	48.4	48.9	50.2	52.4	55.3	58.6	61.9	65.1
FDEC, July 2022	33.5	35.0	36.9	39.2	42.0	44.7	46.7	47.8	48.4	48.9	50.2	52.4	55.3	58.6	61.9	65.1
Households																
FDEC, December 2021	7,425.0	7,433.2	7,441.5	7,451.3	7,463.9	7,479.6	7,497.3	7,515.9	7,534.5	7,552.9	7,571.8	7,591.9	7,614.1	7,638.5	7,665.1	7,693.8
FDEC, July 2022	7,427.3	7,440.8	7,455.3	7,470.9	7,487.8	7,505.9	7,524.9	7,544.4	7,564.0	7,583.9	7,604.2	7,625.5	7,647.9	7,671.7	7,697.0	7,723.5
Household Growth Rate																
FDEC, December 2021	0.50	0.44	0.45	0.53	0.68	0.84	0.95	1.00	0.99	0.98	1.00	1.07	1.17	1.29	1.40	1.50
FDEC, July 2022	0.63	0.73	0.78	0.84	0.91	0.97	1.02	1.04	1.05	1.05	1.08	1.12	1.18	1.25	1.32	1.39
Net Change in Households																
FDEC, December 2021	9.3	8.2	8.3	9.8	12.6	15.6	17.7	18.6	18.6	18.4	18.9	20.1	22.1	24.4	26.6	28.6
FDEC, July 2022	11.6	13.5	14.5	15.6	16.9	18.1	19.0	19.5	19.7	19.8	20.3	21.2	22.5	23.8	25.2	26.5
Household Size																
FDEC, December 2021	2.534	2.536	2.539	2.540	2.542	2.542	2.543	2.543	2.543	2.543	2.543	2.544	2.543	2.543	2.542	2.541
FDEC, July 2022	2.534	2.534	2.534	2.534	2.534	2.533	2.533	2.533	2.533	2.533	2.533	2.532	2.532	2.532	2.532	2.531
Household Size Growth Rate																
FDEC, December 2021	0.21	0.30	0.34	0.30	0.21	0.10	0.03	0.01	0.02	0.04	0.05	0.02	-0.02	-0.07	-0.12	-0.16
FDEC, July 2022	0.09	0.02	0.00	-0.01	-0.02	-0.03	-0.03	-0.03	-0.03	-0.03	-0.03	-0.03	-0.03	-0.04	-0.04	-0.04
Net Migration																
FDEC, December 2021	22.9	24.7	26.8	28.9	31.9	34.7	36.8	38.3	39.0	39.8	41.2	43.5	46.5	49.9	53.2	56.3
FDEC, July 2022	22.9	24.7	26.8	28.9	31.9	34.7	36.8	38.3	39.0	39.8	41.2	43.5	46.5	49.9	53.2	56.3
Net Domestic Migration																
FDEC, December 2021	3.9	5.5	7.4	9.5	12.2	14.2	16.0	17.6	18.9	19.5	20.5	22.0	23.9	26.1	28.4	30.5
FDEC, July 2022	3.9	5.5	7.4	9.5	12.2	14.2	16.0	17.6	18.9	19.5	20.5	22.0	23.9	26.1	28.4	30.5
Net International Migration																
FDEC, December 2021	19.0	19.2	19.4	19.4	19.7	20.5	20.9	20.7	20.1	20.2	20.6	21.5	22.7	23.8	24.9	25.7
FDEC, July 2022	19.0	19.2	19.4	19.4	19.7	20.5	20.9	20.7	20.1	20.2	20.6	21.5	22.7	23.8	24.9	25.7
Births																
FDEC, December 2021	53.7	53.5	53.3	53.4	53.3	53.3	53.2	53.2	53.2	53.3	53.4	53.5	53.7	53.9	54.1	54.5
FDEC, July 2022	53.7	53.5	53.3	53.4	53.3	53.3	53.2	53.2	53.2	53.3	53.4	53.5	53.7	53.9	54.1	54.5
Deaths																
FDEC, December 2021	43.1	43.2	43.2	43.1	43.1	43.3	43.4	43.6	43.8	44.1	44.3	44.6	44.9	45.1	45.4	45.7
FDEC, July 2022	43.1	43.2	43.2	43.1	43.1	43.3	43.4	43.6	43.8	44.1	44.3	44.6	44.9	45.1	45.4	45.7
Net Natural Increase																
FDEC, December 2021	10.6	10.3	10.0	10.3	10.2	10.0	9.9	9.5	9.3	9.2	9.0	8.9	8.8	8.8	8.7	8.8
FDEC, July 2022	10.6	10.3	10.0	10.3	10.2	10.0	9.9	9.5	9.3	9.2	9.0	8.9	8.8	8.8	8.7	8.8

QUARTERLY FORECAST TABLES

	<u>2014-2</u>	<u>2014-3</u>	<u>2014-4</u>	<u>2015-1</u>	<u>2015-2</u>	<u>2015-3</u>	<u>2015-4</u>	<u>2016-1</u>	<u>2016-2</u>	<u>2016-3</u>	<u>2016-4</u>	<u>2017-1</u>	<u>2017-2</u>	<u>2017-3</u>	<u>2017-4</u>	<u>2018-1</u>
Population																
FDEC, December 2021	19,619.9	19,690.9	19,764.6	19,840.6	19,918.8	19,998.6	20,079.5	20,160.8	20,241.9	20,322.7	20,403.3	20,484.3	20,565.8	20,647.9	20,730.5	20,813.4
FDEC, July 2022	19,619.9	19,690.9	19,764.6	19,840.6	19,918.8	19,998.6	20,079.5	20,160.8	20,241.9	20,322.7	20,403.3	20,484.3	20,565.8	20,647.9	20,730.5	20,813.4
Population Growth Rate																
FDEC, December 2021	1.40	1.46	1.50	1.55	1.59	1.61	1.63	1.63	1.62	1.61	1.60	1.60	1.60	1.61	1.61	1.61
FDEC, July 2022	1.40	1.46	1.50	1.55	1.59	1.61	1.63	1.63	1.62	1.61	1.60	1.60	1.60	1.61	1.61	1.61
Net Change in Population																
FDEC, December 2021	68.2	71.0	73.7	76.0	78.2	79.8	80.9	81.3	81.1	80.8	80.7	80.9	81.5	82.1	82.6	82.9
FDEC, July 2022	68.2	71.0	73.7	76.0	78.2	79.8	80.9	81.3	81.1	80.8	80.7	80.9	81.5	82.1	82.6	82.9
Households																
FDEC, December 2021	7,724.2	7,756.1	7,789.3	7,823.5	7,858.3	7,893.6	7,929.2	7,965.0	8,000.9	8,036.6	8,072.2	8,107.6	8,142.7	8,177.8	8,213.9	8,251.6
FDEC, July 2022	7,751.2	7,780.2	7,810.2	7,841.2	7,873.1	7,905.6	7,938.5	7,971.7	8,004.8	8,037.7	8,070.6	8,103.5	8,136.5	8,169.7	8,203.0	8,236.6
Household Growth Rate																
FDEC, December 2021	1.59	1.67	1.72	1.77	1.79	1.81	1.82	1.82	1.81	1.80	1.78	1.76	1.74	1.74	1.77	1.85
FDEC, July 2022	1.45	1.50	1.55	1.60	1.63	1.66	1.68	1.68	1.67	1.66	1.65	1.64	1.64	1.64	1.64	1.65
Net Change in Households																
FDEC, December 2021	30.4	32.0	33.2	34.2	34.8	35.3	35.6	35.8	35.8	35.8	35.6	35.3	35.1	35.2	36.0	37.8
FDEC, July 2022	27.8	28.9	30.0	31.0	31.8	32.5	33.0	33.1	33.1	33.0	32.9	32.9	33.0	33.1	33.3	33.6
Household Size																
FDEC, December 2021	2.540	2.539	2.537	2.536	2.535	2.534	2.532	2.531	2.530	2.529	2.528	2.527	2.526	2.525	2.524	2.522
FDEC, July 2022	2.531	2.531	2.531	2.530	2.530	2.530	2.529	2.529	2.529	2.528	2.528	2.528	2.528	2.527	2.527	2.527
Household Size Growth Rate																
FDEC, December 2021	-0.19	-0.21	-0.22	-0.21	-0.20	-0.19	-0.19	-0.19	-0.19	-0.19	-0.18	-0.16	-0.14	-0.13	-0.16	-0.24
FDEC, July 2022	-0.04	-0.05	-0.05	-0.05	-0.05	-0.05	-0.05	-0.05	-0.05	-0.05	-0.05	-0.04	-0.04	-0.03	-0.03	-0.04
Net Migration																
FDEC, December 2021	59.4	62.3	65.1	67.5	69.8	71.7	73.0	73.8	73.9	74.0	74.4	75.3	76.3	77.3	78.1	78.6
FDEC, July 2022	59.4	62.3	65.1	67.5	69.8	71.7	73.0	73.8	73.9	74.0	74.4	75.3	76.3	77.3	78.1	78.6
Net Domestic Migration																
FDEC, December 2021	32.8	35.0	37.1	39.1	41.1	42.1	42.8	43.1	43.1	42.0	41.2	40.6	40.0	40.0	39.8	39.4
FDEC, July 2022	32.8	35.0	37.1	39.1	41.1	42.1	42.8	43.1	43.1	42.0	41.2	40.6	40.0	40.0	39.8	39.4
Net International Migration																
FDEC, December 2021	26.6	27.3	27.9	28.4	28.8	29.6	30.3	30.7	30.9	31.9	33.2	34.7	36.2	37.3	38.3	39.1
FDEC, July 2022	26.6	27.3	27.9	28.4	28.8	29.6	30.3	30.7	30.9	31.9	33.2	34.7	36.2	37.3	38.3	39.1
Births																
FDEC, December 2021	54.8	55.1	55.4	55.8	56.0	56.2	56.3	56.3	56.3	56.3	56.2	56.1	56.0	55.8	55.7	55.5
FDEC, July 2022	54.8	55.1	55.4	55.8	56.0	56.2	56.3	56.3	56.3	56.3	56.2	56.1	56.0	55.8	55.7	55.5
Deaths																
FDEC, December 2021	46.1	46.4	46.8	47.3	47.7	48.1	48.4	48.8	49.1	49.5	49.9	50.4	50.7	51.0	51.2	51.2
FDEC, July 2022	46.1	46.4	46.8	47.3	47.7	48.1	48.4	48.8	49.1	49.5	49.9	50.4	50.7	51.0	51.2	51.2
Net Natural Increase																
FDEC, December 2021	8.8	8.7	8.6	8.5	8.3	8.1	7.8	7.5	7.2	6.8	6.3	5.6	5.2	4.8	4.5	4.4
FDEC, July 2022	8.8	8.7	8.6	8.5	8.3	8.1	7.8	7.5	7.2	6.8	6.3	5.6	5.2	4.8	4.5	4.4

QUARTERLY FORECAST TABLES

	<u>2018-2</u>	<u>2018-3</u>	<u>2018-4</u>	<u>2019-1</u>	<u>2019-2</u>	<u>2019-3</u>	<u>2019-4</u>	<u>2020-1</u>	<u>2020-2</u>	<u>2020-3</u>	<u>2020-4</u>	<u>2021-1</u>	<u>2021-2</u>	<u>2021-3</u>	<u>2021-4</u>	<u>2022-1</u>
Population																
FDEC, December 2021	20,896.5	20,979.7	21,063.3	21,147.6	21,232.6	21,318.7	21,405.7	21,493.9	21,583.0	21,673.0	21,763.5	21,853.8	21,943.7	22,032.6	22,119.9	22,205.3
FDEC, July 2022	20,896.5	20,979.7	21,063.3	21,147.6	21,232.6	21,318.7	21,405.7	21,493.9	21,582.9	21,672.7	21,763.1	21,853.6	21,944.1	22,033.9	22,122.4	22,208.7
Population Growth Rate																
FDEC, December 2021	1.61	1.60	1.60	1.61	1.62	1.63	1.64	1.66	1.67	1.68	1.68	1.67	1.65	1.63	1.60	1.55
FDEC, July 2022	1.61	1.60	1.60	1.61	1.62	1.63	1.64	1.66	1.67	1.68	1.68	1.67	1.67	1.65	1.62	1.57
Net Change in Population																
FDEC, December 2021	83.1	83.2	83.6	84.2	85.1	86.0	87.1	88.1	89.2	90.0	90.4	90.4	89.9	88.9	87.4	85.4
FDEC, July 2022	83.1	83.2	83.6	84.2	85.1	86.0	87.1	88.1	89.1	89.8	90.3	90.6	90.5	89.8	88.5	86.3
Households																
FDEC, December 2021	8,291.7	8,333.1	8,373.6	8,410.5	8,441.6	8,467.5	8,491.0	8,515.9	8,545.1	8,579.3	8,617.2	8,656.5	8,695.5	8,733.2	8,769.8	8,805.3
FDEC, July 2022	8,270.4	8,304.5	8,338.8	8,373.1	8,407.4	8,441.8	8,476.4	8,511.4	8,547.1	8,583.4	8,620.3	8,657.6	8,695.0	8,732.5	8,769.6	8,806.0
Household Growth Rate																
FDEC, December 2021	1.96	2.01	1.96	1.77	1.49	1.23	1.12	1.18	1.38	1.61	1.77	1.84	1.81	1.75	1.68	1.63
FDEC, July 2022	1.65	1.66	1.66	1.66	1.65	1.64	1.65	1.66	1.69	1.71	1.73	1.74	1.74	1.73	1.71	1.67
Net Change in Households																
FDEC, December 2021	40.1	41.4	40.5	36.9	31.1	25.8	23.6	24.8	29.2	34.3	37.8	39.3	39.0	37.8	36.6	35.5
FDEC, July 2022	33.9	34.1	34.3	34.3	34.3	34.4	34.6	35.0	35.7	36.3	36.9	37.3	37.5	37.5	37.1	36.4
Household Size																
FDEC, December 2021	2.520	2.518	2.515	2.514	2.515	2.518	2.521	2.524	2.526	2.526	2.526	2.525	2.524	2.523	2.522	2.522
FDEC, July 2022	2.527	2.526	2.526	2.526	2.525	2.525	2.525	2.525	2.525	2.525	2.525	2.524	2.524	2.523	2.523	2.522
Household Size Growth Rate																
FDEC, December 2021	-0.34	-0.40	-0.35	-0.16	0.13	0.40	0.52	0.48	0.29	0.06	-0.09	-0.16	-0.16	-0.12	-0.09	-0.08
FDEC, July 2022	-0.05	-0.06	-0.06	-0.05	-0.03	-0.01	-0.01	-0.01	-0.02	-0.04	-0.05	-0.06	-0.08	-0.09	-0.09	-0.10
Net Migration																
FDEC, December 2021	78.9	79.3	79.9	79.1	80.8	83.2	86.3	92.8	96.0	98.5	100.1	101.2	100.6	98.7	95.7	88.0
FDEC, July 2022	78.9	79.3	79.9	79.1	80.8	83.2	86.3	92.6	95.8	98.4	100.3	102.6	102.6	101.3	98.5	90.6
Net Domestic Migration																
FDEC, December 2021	39.0	40.9	42.8	44.1	46.7	51.1	56.1	65.0	81.6	88.7	87.6	86.0	80.5	78.0	74.6	67.3
FDEC, July 2022	39.0	40.9	42.8	44.1	46.7	51.1	56.1	64.7	81.4	88.5	87.8	87.4	82.5	80.6	77.4	69.9
Net International Migration																
FDEC, December 2021	39.9	38.5	37.1	35.1	34.1	32.1	30.2	27.9	14.4	9.9	12.5	15.2	20.1	20.7	21.0	20.7
FDEC, July 2022	39.9	38.5	37.1	35.1	34.1	32.1	30.2	27.9	14.4	9.9	12.5	15.2	20.1	20.7	21.0	20.7
Births																
FDEC, December 2021	55.4	55.3	55.2	55.5	55.3	54.9	54.4	52.6	52.3	52.2	52.5	54.3	54.7	55.0	55.2	54.8
FDEC, July 2022	55.4	55.3	55.2	55.5	55.3	54.9	54.4	52.7	52.4	52.2	52.3	53.4	53.8	54.1	54.4	54.8
Deaths																
FDEC, December 2021	51.3	51.4	51.5	50.4	51.0	52.0	53.6	57.3	59.1	60.8	62.2	65.1	65.4	64.9	63.5	57.4
FDEC, July 2022	51.3	51.4	51.5	50.4	51.0	52.0	53.6	57.2	59.1	60.8	62.3	65.4	65.9	65.6	64.4	59.1
Net Natural Increase																
FDEC, December 2021	4.1	3.9	3.7	5.1	4.3	2.9	0.8	-4.7	-6.9	-8.5	-9.7	-10.8	-10.7	-9.9	-8.3	-2.6
FDEC, July 2022	4.1	3.9	3.7	5.1	4.3	2.9	0.8	-4.5	-6.7	-8.6	-10.0	-12.0	-12.2	-11.5	-10.0	-4.3

QUARTERLY FORECAST TABLES

	<u>2022-2</u>	<u>2022-3</u>	<u>2022-4</u>	<u>2023-1</u>	<u>2023-2</u>	<u>2023-3</u>	<u>2023-4</u>	<u>2024-1</u>	<u>2024-2</u>	<u>2024-3</u>	<u>2024-4</u>	<u>2025-1</u>	<u>2025-2</u>	<u>2025-3</u>	<u>2025-4</u>	<u>2026-1</u>
Population																
FDEC, December 2021	22,288.3	22,369.0	22,447.9	22,525.7	22,603.0	22,679.9	22,756.4	22,832.3	22,907.4	22,981.6	23,055.0	23,127.8	23,200.0	23,271.6	23,342.7	23,413.2
FDEC, July 2022	22,292.3	22,373.2	22,452.0	22,529.7	22,606.8	22,683.7	22,760.2	22,836.2	22,911.3	22,985.5	23,058.9	23,131.7	23,204.0	23,275.7	23,346.8	23,417.2
Population Growth Rate																
FDEC, December 2021	1.50	1.46	1.42	1.39	1.38	1.37	1.36	1.34	1.32	1.30	1.28	1.27	1.25	1.24	1.23	1.21
FDEC, July 2022	1.51	1.46	1.42	1.39	1.38	1.37	1.36	1.34	1.32	1.30	1.28	1.27	1.25	1.24	1.23	1.21
Net Change in Population																
FDEC, December 2021	83.0	80.7	78.9	77.8	77.3	76.9	76.5	75.9	75.1	74.2	73.4	72.8	72.2	71.6	71.1	70.5
FDEC, July 2022	83.6	80.9	78.8	77.6	77.1	76.9	76.5	75.9	75.1	74.2	73.4	72.8	72.2	71.7	71.1	70.4
Households																
FDEC, December 2021	8,840.1	8,874.2	8,907.8	8,941.0	8,974.0	9,006.8	9,039.4	9,071.8	9,104.0	9,136.0	9,167.9	9,199.8	9,231.8	9,263.9	9,296.2	9,328.6
FDEC, July 2022	8,841.3	8,875.6	8,909.1	8,942.2	8,975.0	9,007.8	9,040.4	9,072.9	9,105.1	9,137.0	9,168.9	9,200.8	9,232.9	9,265.2	9,297.5	9,329.8
Household Growth Rate																
FDEC, December 2021	1.59	1.55	1.52	1.50	1.48	1.47	1.46	1.44	1.43	1.41	1.40	1.40	1.40	1.40	1.40	1.40
FDEC, July 2022	1.62	1.56	1.52	1.49	1.48	1.47	1.46	1.44	1.43	1.41	1.40	1.40	1.40	1.40	1.40	1.40
Net Change in Households																
FDEC, December 2021	34.7	34.1	33.6	33.2	33.0	32.8	32.6	32.4	32.2	32.0	31.9	31.9	32.0	32.1	32.3	32.4
FDEC, July 2022	35.3	34.3	33.5	33.0	32.8	32.8	32.6	32.5	32.2	32.0	31.9	31.9	32.1	32.3	32.3	32.3
Household Size																
FDEC, December 2021	2.521	2.521	2.520	2.519	2.519	2.518	2.517	2.517	2.516	2.515	2.515	2.514	2.513	2.512	2.511	2.510
FDEC, July 2022	2.521	2.521	2.520	2.519	2.519	2.518	2.518	2.517	2.516	2.516	2.515	2.514	2.513	2.512	2.511	2.510
Household Size Growth Rate																
FDEC, December 2021	-0.08	-0.09	-0.10	-0.11	-0.10	-0.10	-0.10	-0.10	-0.10	-0.11	-0.12	-0.13	-0.14	-0.16	-0.17	-0.19
FDEC, July 2022	-0.10	-0.10	-0.10	-0.10	-0.10	-0.10	-0.10	-0.10	-0.10	-0.11	-0.12	-0.13	-0.14	-0.16	-0.17	-0.18
Net Migration																
FDEC, December 2021	83.9	80.5	78.4	79.0	78.7	78.6	78.4	77.9	77.3	76.7	76.2	75.9	75.6	75.3	75.0	74.6
FDEC, July 2022	86.1	82.1	79.4	79.1	78.5	78.3	78.1	78.0	77.4	76.8	76.3	75.9	75.7	75.4	75.1	74.7
Net Domestic Migration																
FDEC, December 2021	63.3	60.0	57.6	57.9	57.5	56.7	55.7	54.6	53.4	52.6	51.8	51.1	50.5	49.7	48.9	48.1
FDEC, July 2022	65.5	61.6	58.6	57.9	57.3	56.4	55.4	54.6	53.5	52.6	51.8	51.1	50.5	49.8	49.0	48.2
Net International Migration																
FDEC, December 2021	20.6	20.5	20.8	21.1	21.2	21.9	22.7	23.3	23.9	24.2	24.5	24.8	25.2	25.6	26.1	26.5
FDEC, July 2022	20.6	20.5	20.8	21.1	21.2	21.9	22.7	23.3	23.9	24.2	24.5	24.8	25.2	25.6	26.1	26.5
Births																
FDEC, December 2021	54.9	54.9	55.0	55.1	55.2	55.2	55.3	55.3	55.4	55.5	55.6	55.6	55.8	56.0	56.2	56.6
FDEC, July 2022	55.0	55.2	55.3	55.1	55.1	55.2	55.2	55.3	55.4	55.5	55.6	55.7	55.8	56.0	56.2	56.5
Deaths																
FDEC, December 2021	55.8	54.8	54.4	56.3	56.6	56.9	57.2	57.4	57.7	58.0	58.4	58.8	59.2	59.7	60.2	60.7
FDEC, July 2022	57.5	56.4	55.8	56.5	56.5	56.6	56.8	57.4	57.7	58.1	58.5	58.8	59.3	59.7	60.2	60.7
Net Natural Increase																
FDEC, December 2021	-0.9	0.1	0.6	-1.2	-1.4	-1.7	-1.9	-2.0	-2.3	-2.5	-2.8	-3.2	-3.4	-3.7	-3.9	-4.1
FDEC, July 2022	-2.5	-1.2	-0.5	-1.4	-1.4	-1.4	-1.6	-2.0	-2.3	-2.6	-2.8	-3.1	-3.4	-3.7	-4.0	-4.2

QUARTERLY FORECAST TABLES

	<u>2026-2</u>	<u>2026-3</u>	<u>2026-4</u>	<u>2027-1</u>	<u>2027-2</u>	<u>2027-3</u>	<u>2027-4</u>	<u>2028-1</u>	<u>2028-2</u>	<u>2028-3</u>	<u>2028-4</u>	<u>2029-1</u>	<u>2029-2</u>	<u>2029-3</u>	<u>2029-4</u>	<u>2030-1</u>
Population																
FDEC, December 2021	23,482.9	23,551.8	23,620.0	23,687.4	23,754.2	23,820.2	23,885.6	23,950.2	24,014.1	24,077.3	24,139.9	24,201.7	24,262.7	24,323.1	24,382.8	24,441.8
FDEC, July 2022	23,486.9	23,555.9	23,624.0	23,691.5	23,758.2	23,824.2	23,889.6	23,954.2	24,018.1	24,081.3	24,143.8	24,205.6	24,266.7	24,327.1	24,386.8	24,445.7
Population Growth Rate																
FDEC, December 2021	1.20	1.18	1.16	1.15	1.13	1.12	1.10	1.09	1.07	1.06	1.04	1.03	1.01	1.00	0.99	0.97
FDEC, July 2022	1.20	1.18	1.16	1.15	1.13	1.12	1.10	1.09	1.07	1.06	1.04	1.03	1.01	1.00	0.99	0.97
Net Change in Population																
FDEC, December 2021	69.8	68.9	68.2	67.4	66.7	66.0	65.3	64.6	63.9	63.2	62.5	61.8	61.1	60.4	59.7	59.0
FDEC, July 2022	69.7	68.9	68.2	67.4	66.7	66.0	65.3	64.6	63.9	63.2	62.5	61.8	61.1	60.4	59.7	59.0
Households																
FDEC, December 2021	9,360.8	9,392.8	9,424.6	9,456.2	9,487.6	9,518.9	9,550.0	9,581.0	9,611.8	9,642.4	9,672.7	9,702.9	9,732.8	9,762.6	9,792.0	9,821.3
FDEC, July 2022	9,361.9	9,393.9	9,425.6	9,457.2	9,488.7	9,520.0	9,551.1	9,582.1	9,612.9	9,643.5	9,673.9	9,704.0	9,734.0	9,763.7	9,793.2	9,822.4
Household Growth Rate																
FDEC, December 2021	1.39	1.37	1.36	1.35	1.34	1.33	1.31	1.30	1.29	1.28	1.27	1.25	1.24	1.23	1.21	1.20
FDEC, July 2022	1.39	1.37	1.36	1.35	1.34	1.33	1.31	1.30	1.29	1.28	1.27	1.25	1.24	1.23	1.21	1.20
Net Change in Households																
FDEC, December 2021	32.3	31.9	31.8	31.6	31.4	31.3	31.1	31.0	30.8	30.6	30.4	30.2	29.9	29.7	29.5	29.2
FDEC, July 2022	32.1	32.0	31.8	31.6	31.4	31.3	31.1	31.0	30.8	30.6	30.4	30.2	29.9	29.7	29.5	29.2
Household Size																
FDEC, December 2021	2.509	2.507	2.506	2.505	2.504	2.502	2.501	2.500	2.498	2.497	2.496	2.494	2.493	2.491	2.490	2.489
FDEC, July 2022	2.509	2.508	2.506	2.505	2.504	2.503	2.501	2.500	2.499	2.497	2.496	2.494	2.493	2.492	2.490	2.489
Household Size Growth Rate																
FDEC, December 2021	-0.19	-0.19	-0.19	-0.20	-0.20	-0.21	-0.21	-0.21	-0.22	-0.22	-0.22	-0.22	-0.22	-0.22	-0.23	-0.23
FDEC, July 2022	-0.19	-0.19	-0.19	-0.20	-0.20	-0.21	-0.21	-0.21	-0.22	-0.22	-0.22	-0.22	-0.22	-0.22	-0.23	-0.23
Net Migration																
FDEC, December 2021	74.1	73.5	73.0	72.6	72.2	71.8	71.4	71.0	70.7	70.3	69.9	69.6	69.2	68.8	68.5	68.1
FDEC, July 2022	74.2	73.7	73.2	72.7	72.3	71.9	71.5	71.1	70.7	70.3	69.9	69.5	69.2	68.8	68.4	68.1
Net Domestic Migration																
FDEC, December 2021	47.2	46.3	45.5	44.7	44.0	43.2	42.6	41.8	41.2	40.6	40.0	39.5	38.9	38.4	38.0	37.5
FDEC, July 2022	47.3	46.5	45.7	44.9	44.1	43.3	42.6	41.9	41.2	40.6	40.1	39.5	38.9	38.4	37.9	37.4
Net International Migration																
FDEC, December 2021	26.8	27.2	27.5	27.9	28.2	28.6	28.9	29.2	29.5	29.7	29.9	30.1	30.3	30.4	30.5	30.6
FDEC, July 2022	26.8	27.2	27.5	27.9	28.2	28.6	28.9	29.2	29.5	29.7	29.9	30.1	30.3	30.4	30.5	30.6
Births																
FDEC, December 2021	56.9	57.1	57.4	57.6	57.8	58.0	58.2	58.4	58.6	58.8	58.9	59.1	59.2	59.4	59.5	59.6
FDEC, July 2022	56.7	57.0	57.2	57.5	57.7	57.9	58.1	58.3	58.5	58.7	58.8	59.0	59.2	59.3	59.5	59.6
Deaths																
FDEC, December 2021	61.2	61.7	62.2	62.8	63.3	63.8	64.3	64.8	65.3	65.8	66.3	66.8	67.3	67.8	68.3	68.8
FDEC, July 2022	61.2	61.7	62.2	62.8	63.3	63.8	64.3	64.8	65.3	65.8	66.3	66.8	67.2	67.7	68.2	68.7
Net Natural Increase																
FDEC, December 2021	-4.3	-4.6	-4.8	-5.1	-5.5	-5.8	-6.1	-6.4	-6.7	-7.1	-7.4	-7.8	-8.1	-8.5	-8.8	-9.1
FDEC, July 2022	-4.5	-4.7	-5.0	-5.3	-5.6	-5.9	-6.2	-6.5	-6.8	-7.1	-7.4	-7.8	-8.1	-8.4	-8.7	-9.1

QUARTERLY FORECAST TABLES

	<u>2030-2</u>	<u>2030-3</u>	<u>2030-4</u>	<u>2031-1</u>	<u>2031-2</u>	<u>2031-3</u>	<u>2031-4</u>	<u>2032-1</u>	<u>2032-2</u>
Population									
FDEC, December 2021	24,500.1	24,557.7	24,614.7	24,671.0	24,726.7	24,781.8	24,836.2	24,890.1	24,943.2
FDEC, July 2022	24,504.0	24,561.6	24,618.6	24,674.8	24,730.5	24,785.5	24,839.9	24,893.7	24,946.8
Population Growth Rate									
FDEC, December 2021	0.96	0.94	0.93	0.92	0.91	0.89	0.88	0.87	0.86
FDEC, July 2022	0.96	0.94	0.93	0.92	0.91	0.89	0.88	0.87	0.86
Net Change in Population									
FDEC, December 2021	58.3	57.6	57.0	56.3	55.7	55.1	54.5	53.8	53.2
FDEC, July 2022	58.3	57.6	56.9	56.3	55.6	55.0	54.4	53.8	53.2
Households									
FDEC, December 2021	9,850.3	9,879.0	9,907.5	9,935.9	9,964.0	9,991.9	10,019.6	10,047.2	10,074.4
FDEC, July 2022	9,851.4	9,880.1	9,908.7	9,937.0	9,965.1	9,993.1	10,020.8	10,048.3	10,075.6
Household Growth Rate									
FDEC, December 2021	1.19	1.17	1.16	1.15	1.14	1.13	1.11	1.10	1.09
FDEC, July 2022	1.19	1.17	1.16	1.15	1.14	1.13	1.11	1.10	1.09
Net Change in Households									
FDEC, December 2021	29.0	28.8	28.5	28.3	28.1	27.9	27.7	27.5	27.3
FDEC, July 2022	29.0	28.8	28.5	28.3	28.1	27.9	27.7	27.5	27.3
Household Size									
FDEC, December 2021	2.487	2.486	2.484	2.483	2.482	2.480	2.479	2.477	2.476
FDEC, July 2022	2.487	2.486	2.485	2.483	2.482	2.480	2.479	2.477	2.476
Household Size Growth Rate									
FDEC, December 2021	-0.23	-0.23	-0.23	-0.23	-0.23	-0.23	-0.23	-0.23	-0.23
FDEC, July 2022	-0.23	-0.23	-0.23	-0.23	-0.23	-0.23	-0.23	-0.23	-0.23
Net Migration									
FDEC, December 2021	67.8	67.4	67.1	66.9	66.7	66.4	66.1	65.8	65.6
FDEC, July 2022	67.7	67.4	67.1	66.8	66.5	66.3	66.1	65.8	65.6
Net Domestic Migration									
FDEC, December 2021	37.0	36.6	36.2	35.9	35.5	35.3	35.0	34.7	34.4
FDEC, July 2022	37.0	36.5	36.2	35.8	35.4	35.2	34.9	34.7	34.4
Net International Migration									
FDEC, December 2021	30.8	30.8	30.9	31.0	31.1	31.1	31.2	31.1	31.1
FDEC, July 2022	30.8	30.8	30.9	31.0	31.1	31.1	31.2	31.1	31.1
Births									
FDEC, December 2021	59.8	59.9	60.0	60.1	60.2	60.3	60.3	60.4	60.5
FDEC, July 2022	59.7	59.9	60.0	60.1	60.2	60.3	60.4	60.4	60.5
Deaths									
FDEC, December 2021	69.2	69.7	70.2	70.7	71.1	71.6	72.0	72.4	72.9
FDEC, July 2022	69.2	69.6	70.1	70.6	71.1	71.5	72.0	72.5	72.9
Net Natural Increase									
FDEC, December 2021	-9.5	-9.8	-10.2	-10.6	-11.0	-11.3	-11.7	-12.0	-12.4
FDEC, July 2022	-9.4	-9.8	-10.1	-10.5	-10.9	-11.3	-11.7	-12.1	-12.4

FISCAL YEAR
FORECAST TABLES

	2000-01	2001-02	2002-03	2003-04	2004-05	2005-06	2006-07	2007-08	2008-09	2009-10	2010-11	2011-12	2012-13	2013-14	2014-15
Population															
FDEC, December 2021	16,228.0	16,551.2	16,892.0	17,273.8	17,677.3	18,062.2	18,378.2	18,578.9	18,671.2	18,770.1	18,911.2	19,087.3	19,285.8	19,520.8	19,803.7
FDEC, July 2022	16,228.0	16,551.2	16,892.0	17,273.8	17,677.3	18,062.2	18,378.2	18,578.9	18,671.2	18,770.1	18,911.2	19,087.3	19,285.8	19,520.8	19,803.7
Growth Rate															
FDEC, December 2021	2.18	1.99	2.06	2.26	2.34	2.18	1.75	1.09	0.50	0.53	0.75	0.93	1.04	1.22	1.45
FDEC, July 2022	2.18	1.99	2.06	2.26	2.34	2.18	1.75	1.09	0.50	0.53	0.75	0.93	1.04	1.22	1.45
Net Change in Population															
FDEC, December 2021	346.4	323.2	340.9	381.8	403.5	384.9	316.0	200.7	92.3	98.9	141.1	176.1	198.5	234.9	283.0
FDEC, July 2022	346.4	323.2	340.9	381.8	403.5	384.9	316.0	200.7	92.3	98.9	141.1	176.1	198.5	234.9	283.0
Households															
FDEC, December 2021	6,431.9	6,554.7	6,685.7	6,833.2	6,990.5	7,142.1	7,266.1	7,341.9	7,374.2	7,410.1	7,447.5	7,506.8	7,582.7	7,680.4	7,806.8
FDEC, July 2022	6,431.9	6,554.7	6,685.7	6,833.2	6,990.5	7,142.1	7,266.1	7,341.9	7,374.2	7,410.6	7,463.7	7,534.8	7,615.4	7,710.9	7,826.2
Growth Rate															
FDEC, December 2021	2.14	1.91	2.00	2.21	2.30	2.17	1.74	1.04	0.44	0.49	0.50	0.80	1.01	1.29	1.65
FDEC, July 2022	2.14	1.91	2.00	2.21	2.30	2.17	1.74	1.04	0.44	0.49	0.72	0.95	1.07	1.25	1.50
Net Change in Households															
FDEC, December 2021	134.6	122.9	131.0	147.5	157.3	151.7	124.0	75.7	32.3	35.9	37.4	59.3	75.9	97.7	126.4
FDEC, July 2022	134.6	122.9	131.0	147.5	157.3	151.7	124.0	75.7	32.3	36.4	53.1	71.1	80.5	95.5	115.3
Household Size															
FDEC, December 2021	2.523	2.525	2.527	2.528	2.529	2.529	2.529	2.531	2.532	2.533	2.539	2.543	2.543	2.542	2.537
FDEC, July 2022	2.523	2.525	2.527	2.528	2.529	2.529	2.529	2.531	2.532	2.533	2.534	2.533	2.532	2.532	2.530
Growth Rate															
FDEC, December 2021	0.04	0.08	0.06	0.05	0.03	0.01	0.01	0.05	0.06	0.04	0.25	0.13	0.03	-0.07	-0.19
FDEC, July 2022	0.04	0.08	0.06	0.05	0.03	0.01	0.01	0.05	0.06	0.04	0.04	-0.02	-0.03	-0.04	-0.05
Net Migration															
FDEC, December 2021	306.0	285.5	300.4	335.0	351.1	322.9	245.0	133.7	36.1	52.6	100.3	137.3	162.5	199.9	248.9
FDEC, July 2022	306.0	285.5	300.4	335.0	351.1	322.9	245.0	133.7	36.1	52.6	100.3	137.3	162.5	199.9	248.9
Net Domestic Migration															
FDEC, December 2021	181.9	177.0	199.2	236.3	262.1	226.3	135.9	57.6	8.1	-31.5	22.7	55.1	77.5	98.9	136.4
FDEC, July 2022	181.9	177.0	199.2	236.3	262.1	226.3	135.9	57.6	8.1	-31.5	22.7	55.1	77.5	98.9	136.4
Net International Migration															
FDEC, December 2021	124.2	108.4	101.2	98.7	88.9	96.6	109.1	76.1	28.0	84.2	77.6	82.2	85.0	101.0	112.5
FDEC, July 2022	124.2	108.4	101.2	98.7	88.9	96.6	109.1	76.1	28.0	84.2	77.6	82.2	85.0	101.0	112.5
Births															
FDEC, December 2021	205.4	205.4	208.5	215.0	221.8	232.1	239.3	236.0	226.4	217.4	213.5	212.9	213.8	217.4	222.3
FDEC, July 2022	205.4	205.4	208.5	215.0	221.8	232.1	239.3	236.0	226.4	217.4	213.5	212.9	213.8	217.4	222.3
Deaths															
FDEC, December 2021	165.0	167.7	168.1	168.3	169.4	170.1	168.3	169.0	170.2	171.1	172.7	174.1	177.8	182.4	188.2
FDEC, July 2022	165.0	167.7	168.1	168.3	169.4	170.1	168.3	169.0	170.2	171.1	172.7	174.1	177.8	182.4	188.2
Net Natural Increase															
FDEC, December 2021	40.3	37.7	40.4	46.7	52.4	62.0	71.0	67.0	56.2	46.3	40.8	38.8	36.0	35.0	34.1
FDEC, July 2022	40.3	37.7	40.4	46.7	52.4	62.0	71.0	67.0	56.2	46.3	40.8	38.8	36.0	35.0	34.1

FISCAL YEAR
FORECAST TABLES

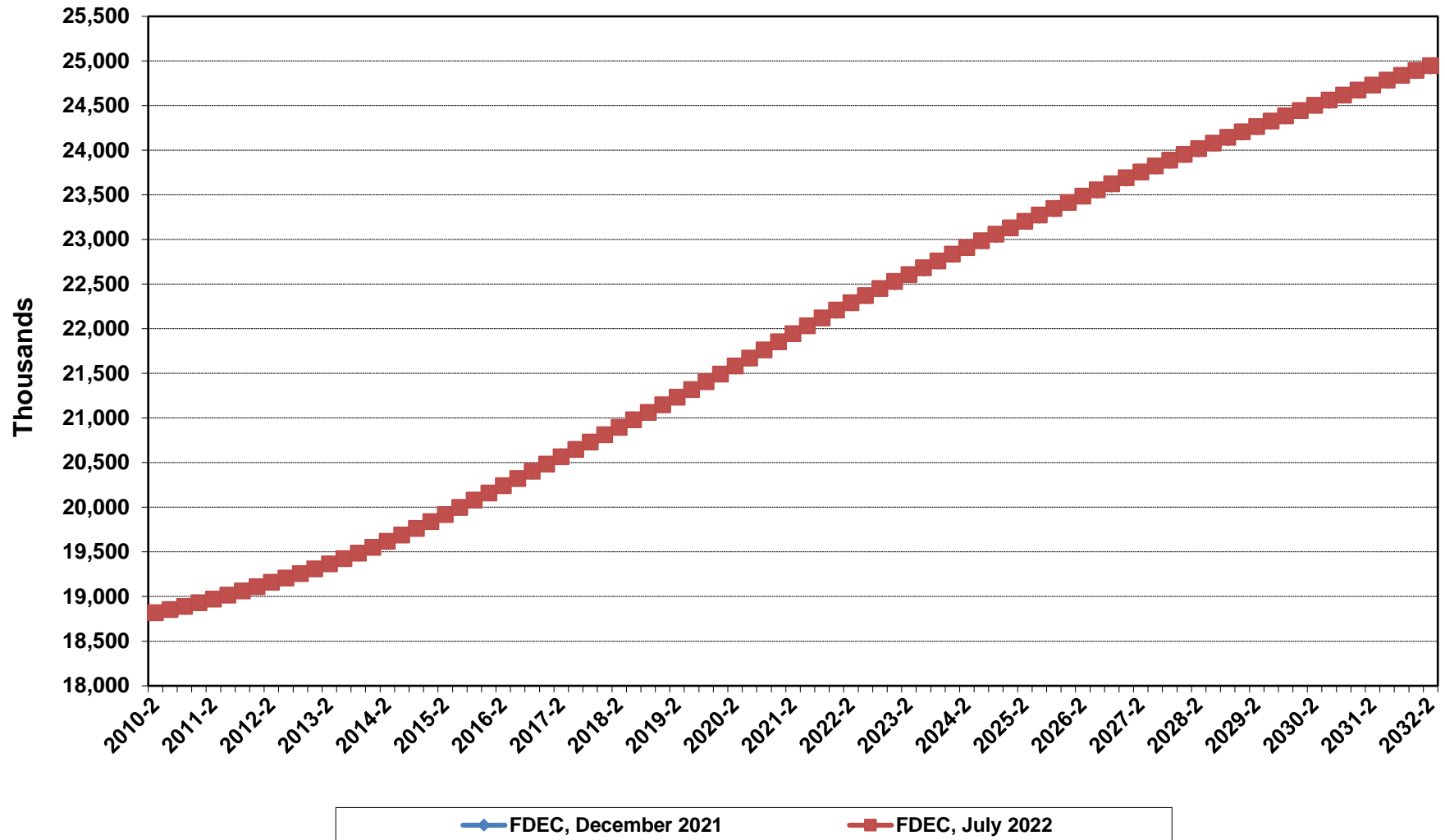
	<u>2015-16</u>	<u>2016-17</u>	<u>2017-18</u>	<u>2018-19</u>	<u>2019-20</u>	<u>2020-21</u>	<u>2021-22</u>	<u>2022-23</u>	<u>2023-24</u>	<u>2024-25</u>	<u>2025-26</u>	<u>2026-27</u>	<u>2027-28</u>	<u>2028-29</u>	<u>2029-30</u>	<u>2030-31</u>	<u>2031-32</u>
Population																	
FDEC, December 2021	20,120.2	20,444.0	20,772.1	21,105.8	21,450.3	21,808.5	22,161.5	22,486.4	22,794.0	23,091.1	23,377.6	23,653.4	23,917.5	24,170.4	24,412.0	24,642.5	24,862.8
FDEC, July 2022	20,120.2	20,444.0	20,772.1	21,105.8	21,450.3	21,808.4	22,164.3	22,490.4	22,797.8	23,095.0	23,381.7	23,657.4	23,921.5	24,174.3	24,415.9	24,646.4	24,866.5
Growth Rate																	
FDEC, December 2021	1.60	1.61	1.60	1.61	1.63	1.67	1.62	1.47	1.37	1.30	1.24	1.18	1.12	1.06	1.00	0.94	0.89
FDEC, July 2022	1.60	1.61	1.60	1.61	1.63	1.67	1.63	1.47	1.37	1.30	1.24	1.18	1.12	1.06	1.00	0.94	0.89
Net Change in Population																	
FDEC, December 2021	316.5	323.8	328.1	333.7	344.5	358.2	353.0	324.9	307.6	297.1	286.5	275.8	264.2	252.9	241.6	230.6	220.3
FDEC, July 2022	316.5	323.8	328.1	333.7	344.5	358.1	355.9	326.1	307.4	297.2	286.6	275.7	264.1	252.8	241.6	230.5	220.1
Households																	
FDEC, December 2021	7,947.2	8,089.8	8,233.8	8,389.7	8,504.9	8,637.1	8,787.1	8,924.3	9,055.5	9,183.9	9,312.4	9,440.3	9,565.4	9,687.7	9,806.5	9,921.6	10,033.3
FDEC, July 2022	7,955.1	8,087.1	8,219.9	8,356.0	8,494.2	8,639.1	8,787.3	8,925.5	9,056.5	9,184.9	9,313.6	9,441.4	9,566.5	9,688.8	9,807.6	9,922.7	10,034.4
Growth Rate																	
FDEC, December 2021	1.80	1.79	1.78	1.89	1.37	1.55	1.74	1.56	1.47	1.42	1.40	1.37	1.33	1.28	1.23	1.17	1.13
FDEC, July 2022	1.65	1.66	1.64	1.66	1.65	1.71	1.72	1.57	1.47	1.42	1.40	1.37	1.33	1.28	1.23	1.17	1.13
Net Change in Households																	
FDEC, December 2021	140.4	142.6	144.0	156.0	115.2	132.2	150.0	137.1	131.3	128.3	128.5	127.9	125.2	122.3	118.8	115.1	111.7
FDEC, July 2022	129.0	132.0	132.8	136.1	138.2	144.9	148.3	138.1	131.1	128.4	128.7	127.8	125.2	122.3	118.8	115.1	111.7
Household Size																	
FDEC, December 2021	2.532	2.527	2.523	2.516	2.522	2.525	2.522	2.520	2.517	2.514	2.510	2.506	2.500	2.495	2.489	2.484	2.478
FDEC, July 2022	2.529	2.528	2.527	2.526	2.525	2.524	2.522	2.520	2.517	2.514	2.510	2.506	2.501	2.495	2.489	2.484	2.478
Growth Rate																	
FDEC, December 2021	-0.20	-0.18	-0.17	-0.28	0.26	0.11	-0.12	-0.09	-0.10	-0.11	-0.16	-0.19	-0.21	-0.22	-0.22	-0.23	-0.23
FDEC, July 2022	-0.05	-0.05	-0.04	-0.05	-0.02	-0.04	-0.08	-0.10	-0.10	-0.11	-0.16	-0.19	-0.21	-0.22	-0.22	-0.23	-0.23
Net Migration																	
FDEC, December 2021	285.8	299.9	310.2	316.8	352.4	397.9	374.7	326.8	315.5	309.0	302.5	295.7	289.1	283.2	277.4	272.1	267.7
FDEC, July 2022	285.8	299.9	310.2	316.8	352.0	400.8	384.2	330.7	314.7	309.2	303.0	296.4	289.5	283.2	277.2	271.8	267.5
Net Domestic Migration																	
FDEC, December 2021	164.4	163.8	155.6	172.0	247.8	340.2	291.7	243.2	223.6	210.4	197.5	185.0	173.0	163.3	155.1	148.2	143.1
FDEC, July 2022	164.4	163.8	155.6	172.0	247.5	343.1	301.1	247.0	222.9	210.5	198.0	185.6	173.3	163.3	154.9	147.9	142.9
Net International Migration																	
FDEC, December 2021	121.5	136.1	154.7	144.8	104.6	57.7	83.0	83.6	91.9	98.6	105.0	110.7	116.1	119.9	122.3	123.9	124.6
FDEC, July 2022	121.5	136.1	154.7	144.8	104.6	57.7	83.0	83.6	91.9	98.6	105.0	110.7	116.1	119.9	122.3	123.9	124.6
Births																	
FDEC, December 2021	225.0	224.5	222.5	221.3	214.1	213.8	219.9	220.2	221.3	222.5	225.7	230.0	233.2	236.0	238.2	240.1	241.5
FDEC, July 2022	225.0	224.5	222.5	221.3	214.4	211.7	218.4	220.7	221.1	222.7	225.5	229.3	232.8	235.7	238.1	240.1	241.6
Deaths																	
FDEC, December 2021	194.4	200.5	204.7	204.3	222.0	253.5	241.6	222.1	229.1	234.5	241.7	249.9	258.2	266.3	274.1	281.7	288.9
FDEC, July 2022	194.4	200.5	204.7	204.3	221.9	254.4	246.6	225.2	228.4	234.7	241.8	250.0	258.1	266.1	273.8	281.4	289.0
Net Natural Increase																	
FDEC, December 2021	30.6	24.0	17.8	16.9	-7.9	-39.7	-21.7	-2.0	-7.9	-12.0	-16.0	-20.0	-25.0	-30.3	-35.8	-41.6	-47.4
FDEC, July 2022	30.6	24.0	17.8	16.9	-7.5	-42.7	-28.2	-4.6	-7.3	-12.0	-16.3	-20.6	-25.4	-30.4	-35.7	-41.3	-47.4

Florida Demographic Estimating Conference

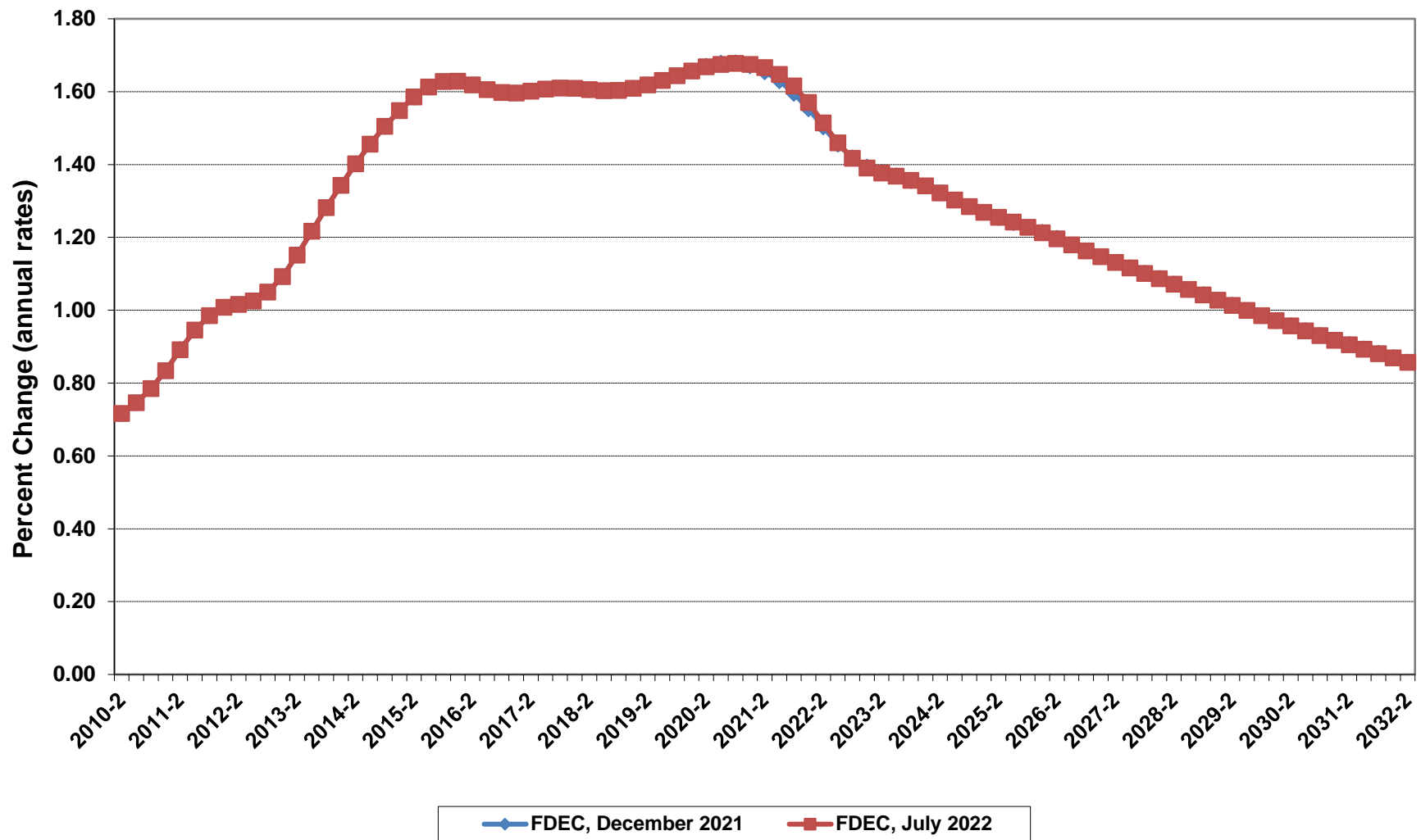
Charts
Conference Packet

July 18, 2022

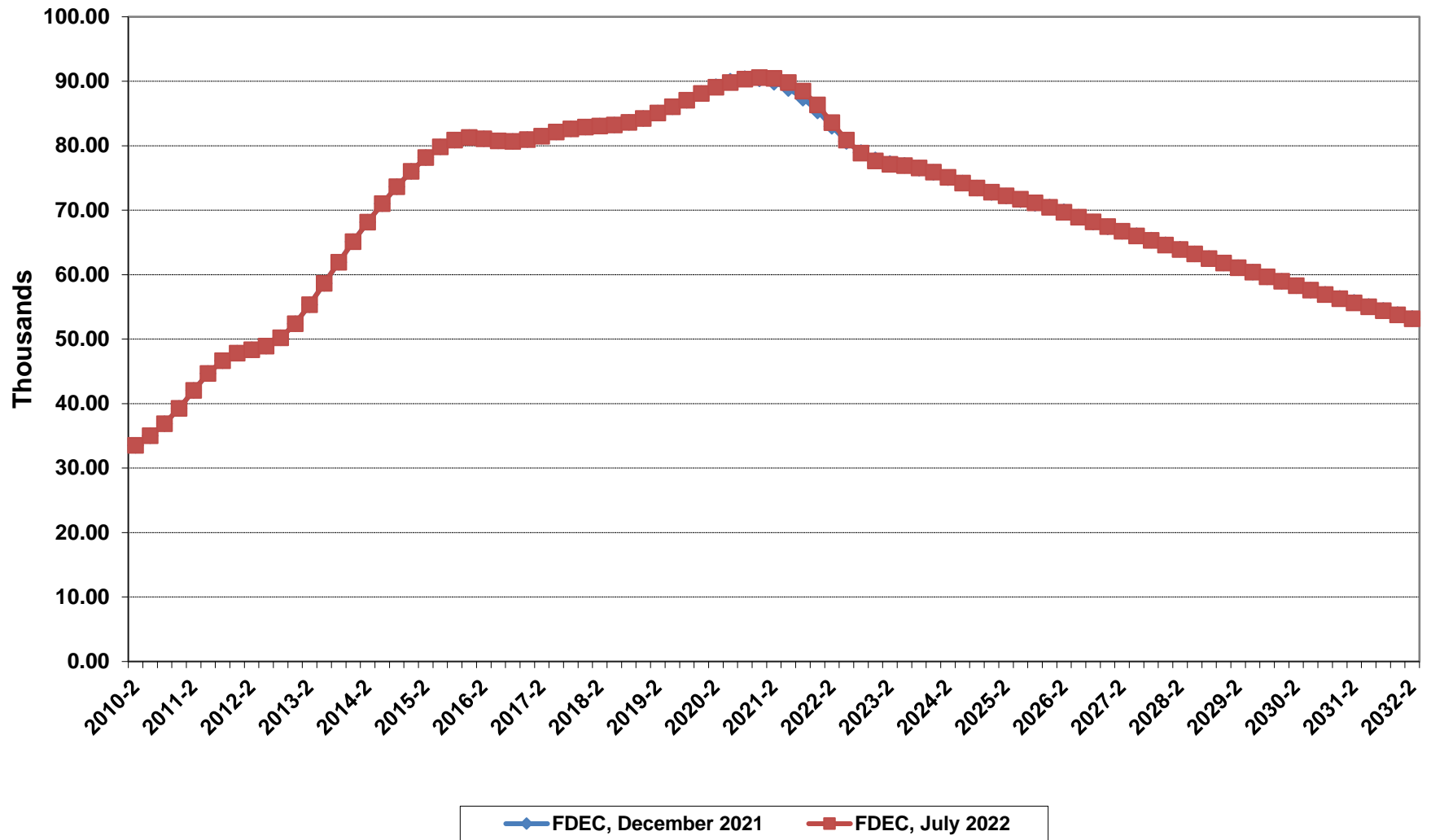
Florida Resident Population



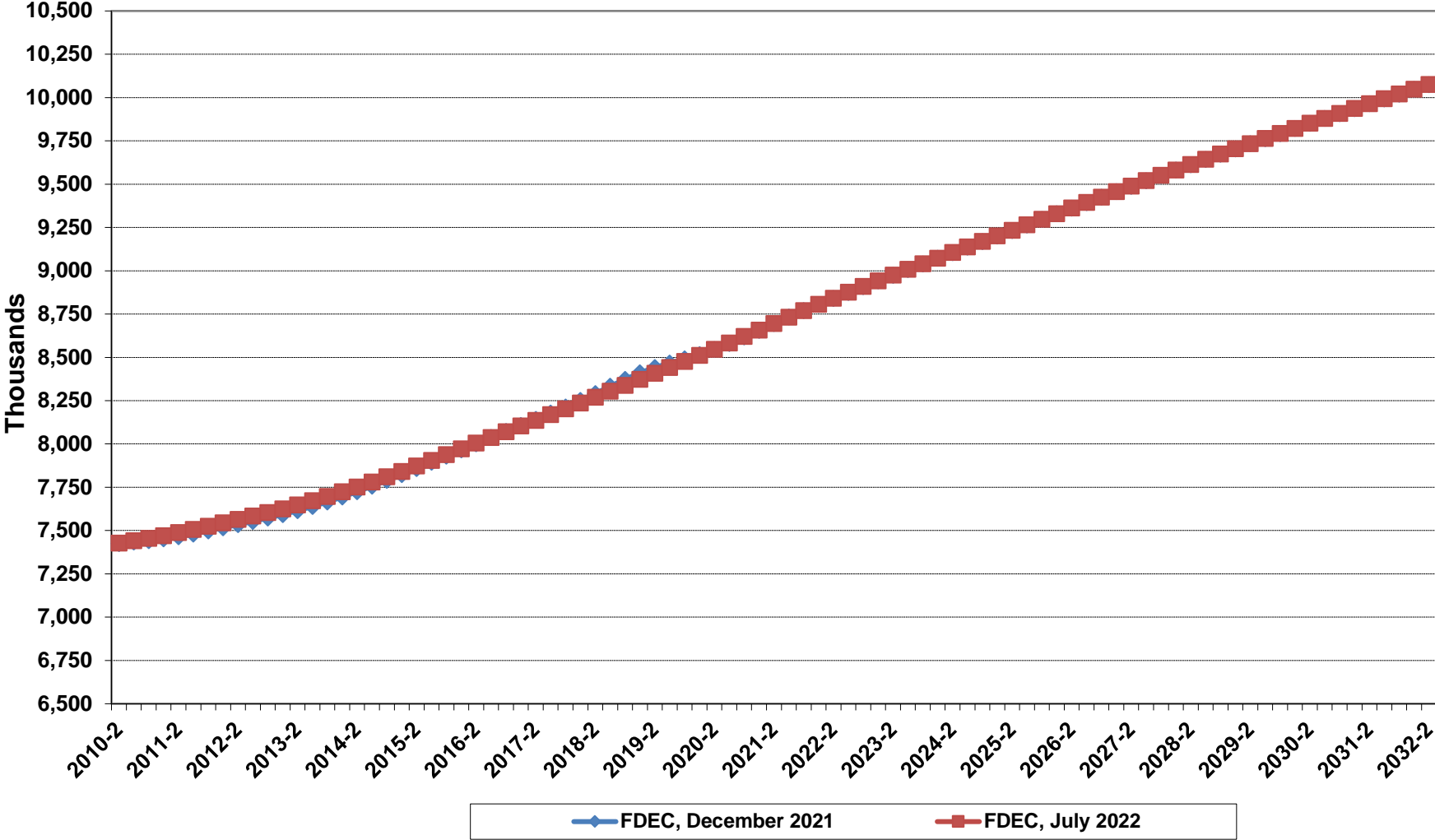
Growth In Florida Resident Population



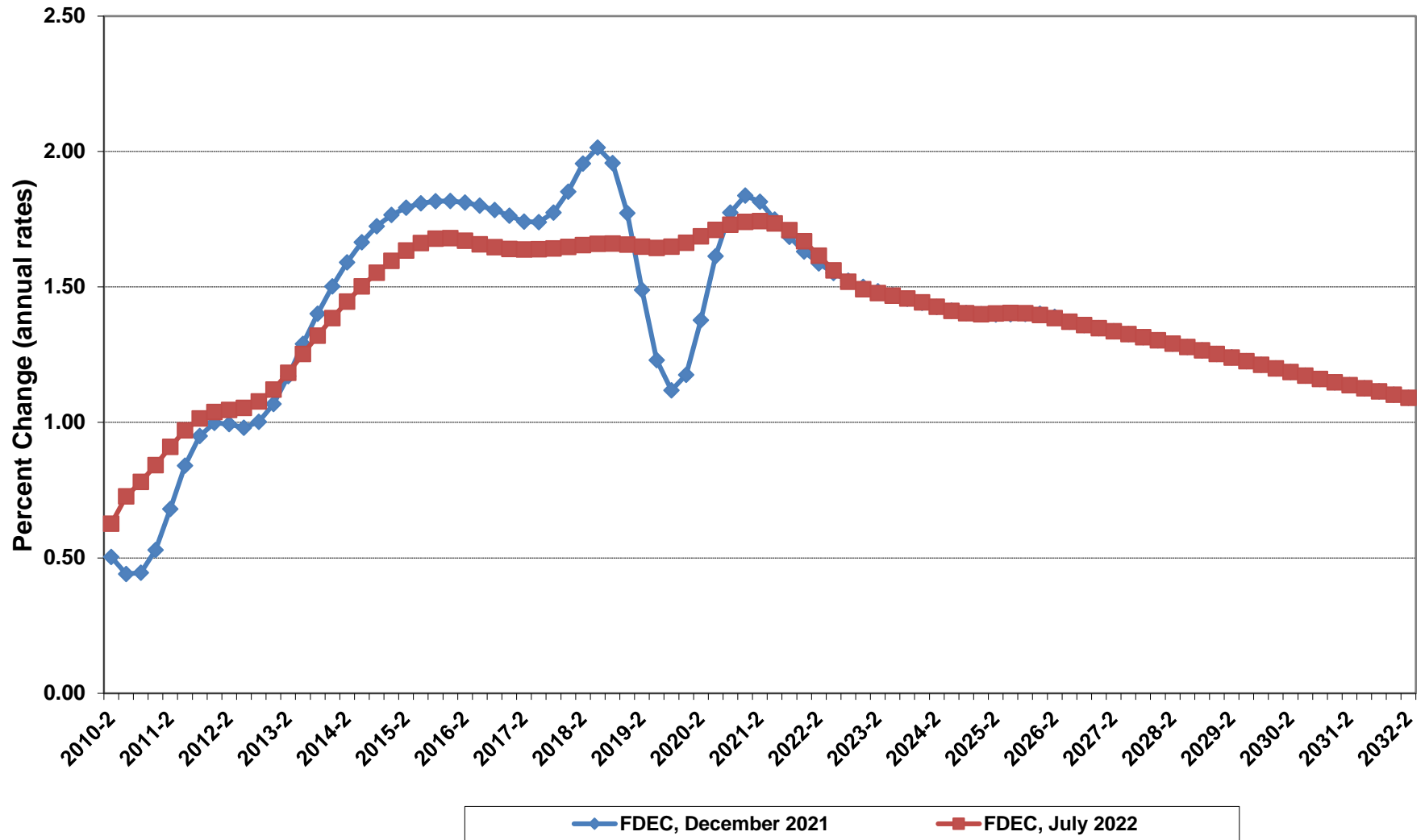
Net Change In Florida Resident Population



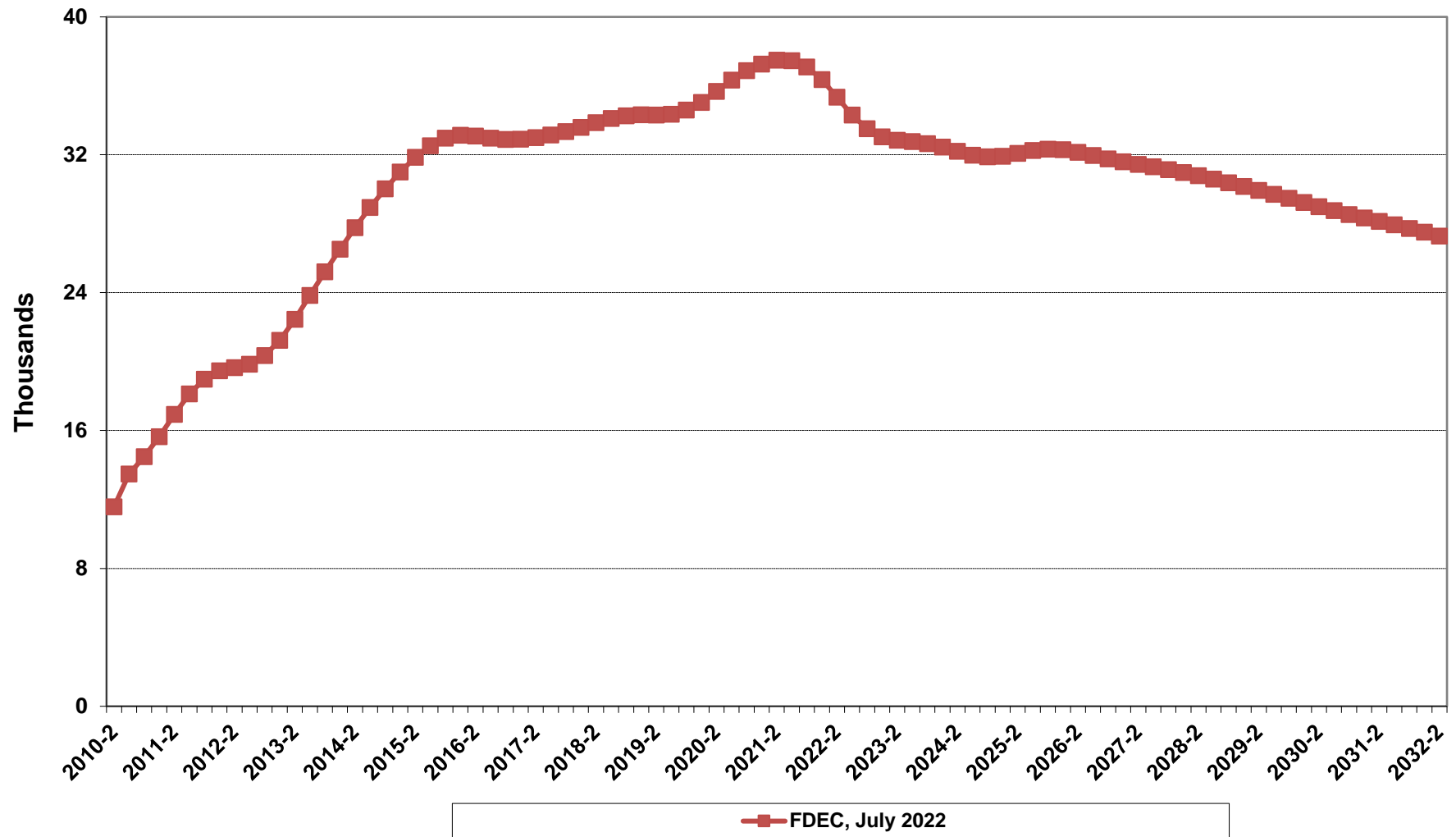
Florida Resident Households



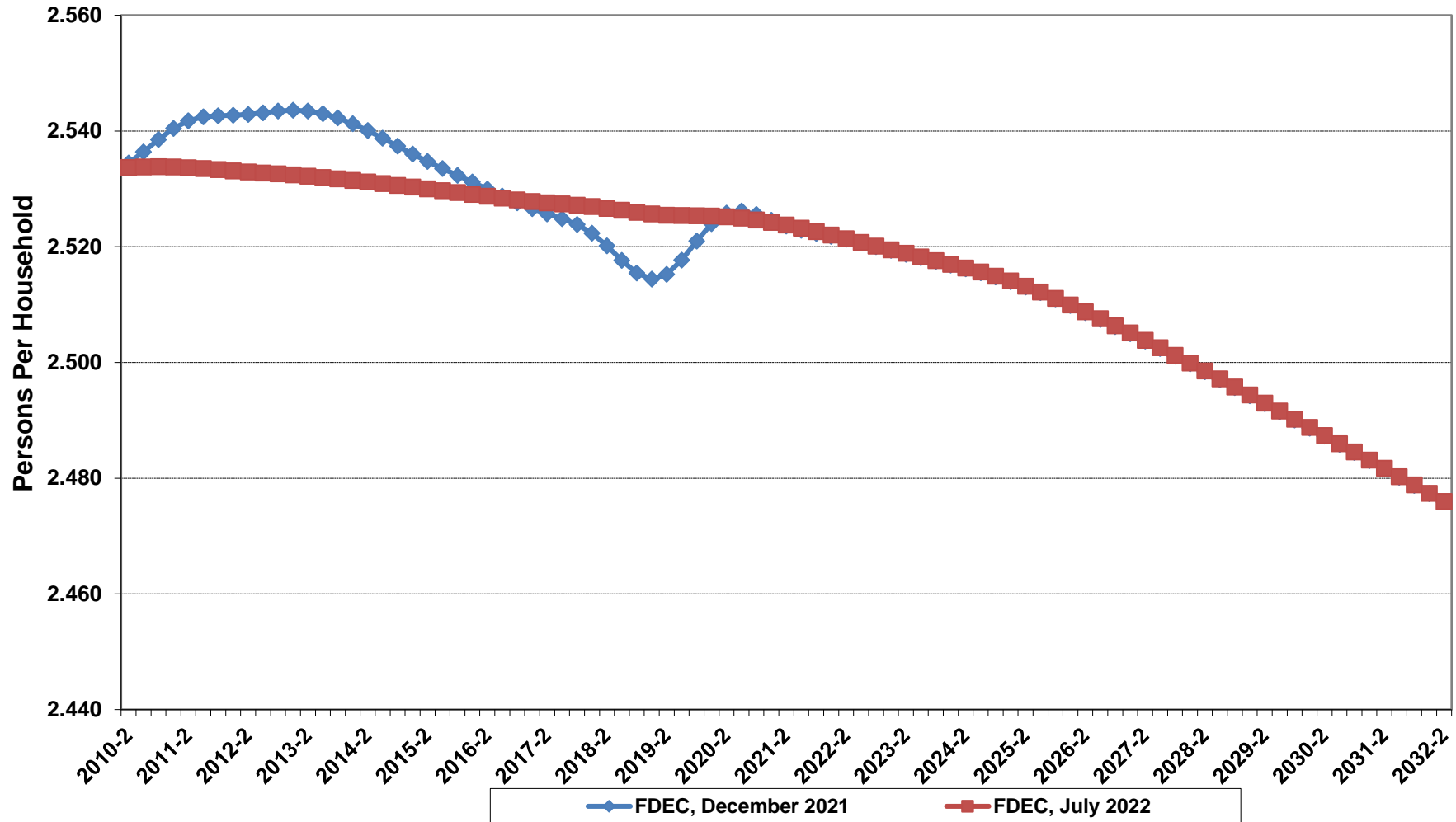
Growth In Florida Resident Households



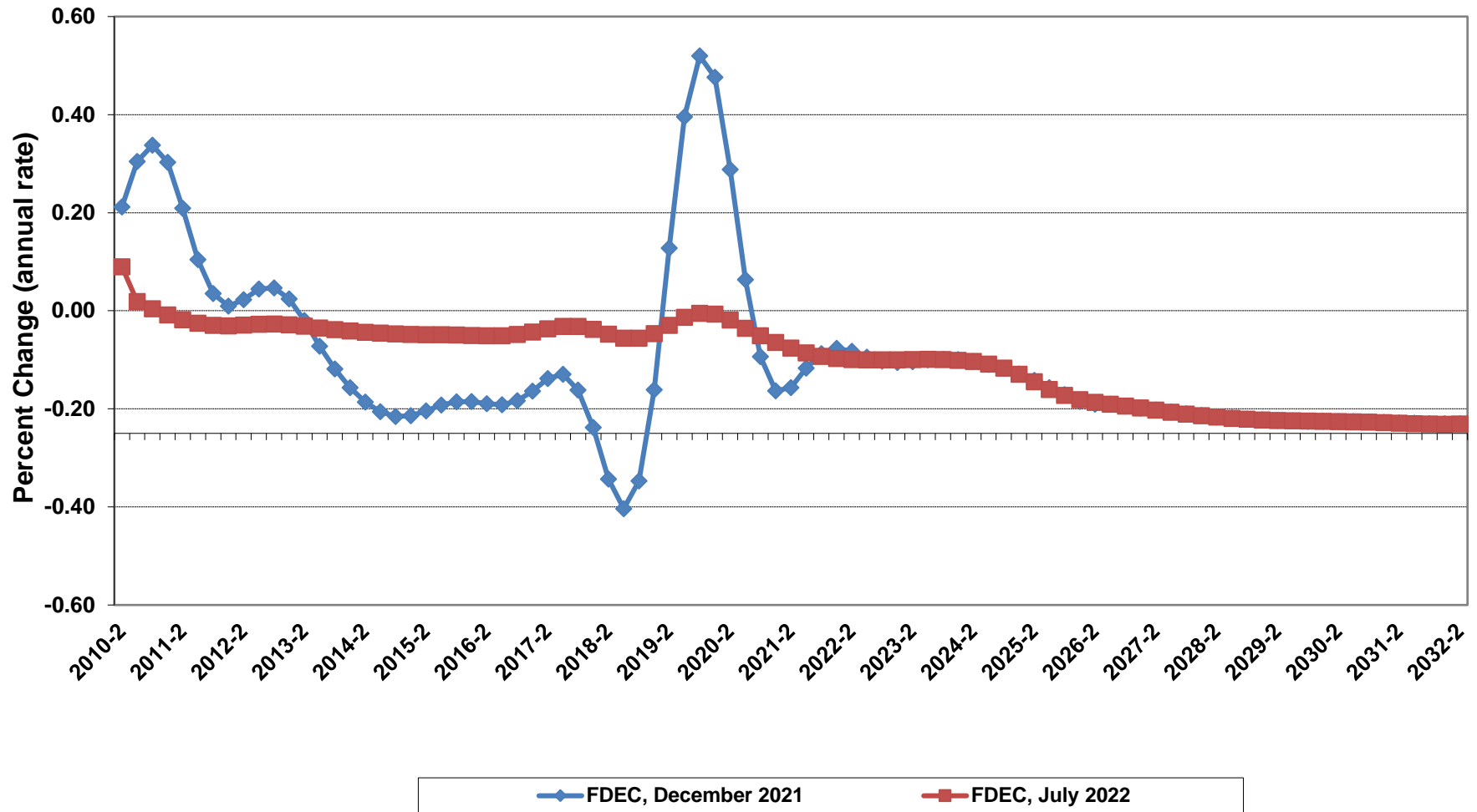
Net Change In Florida Resident Households



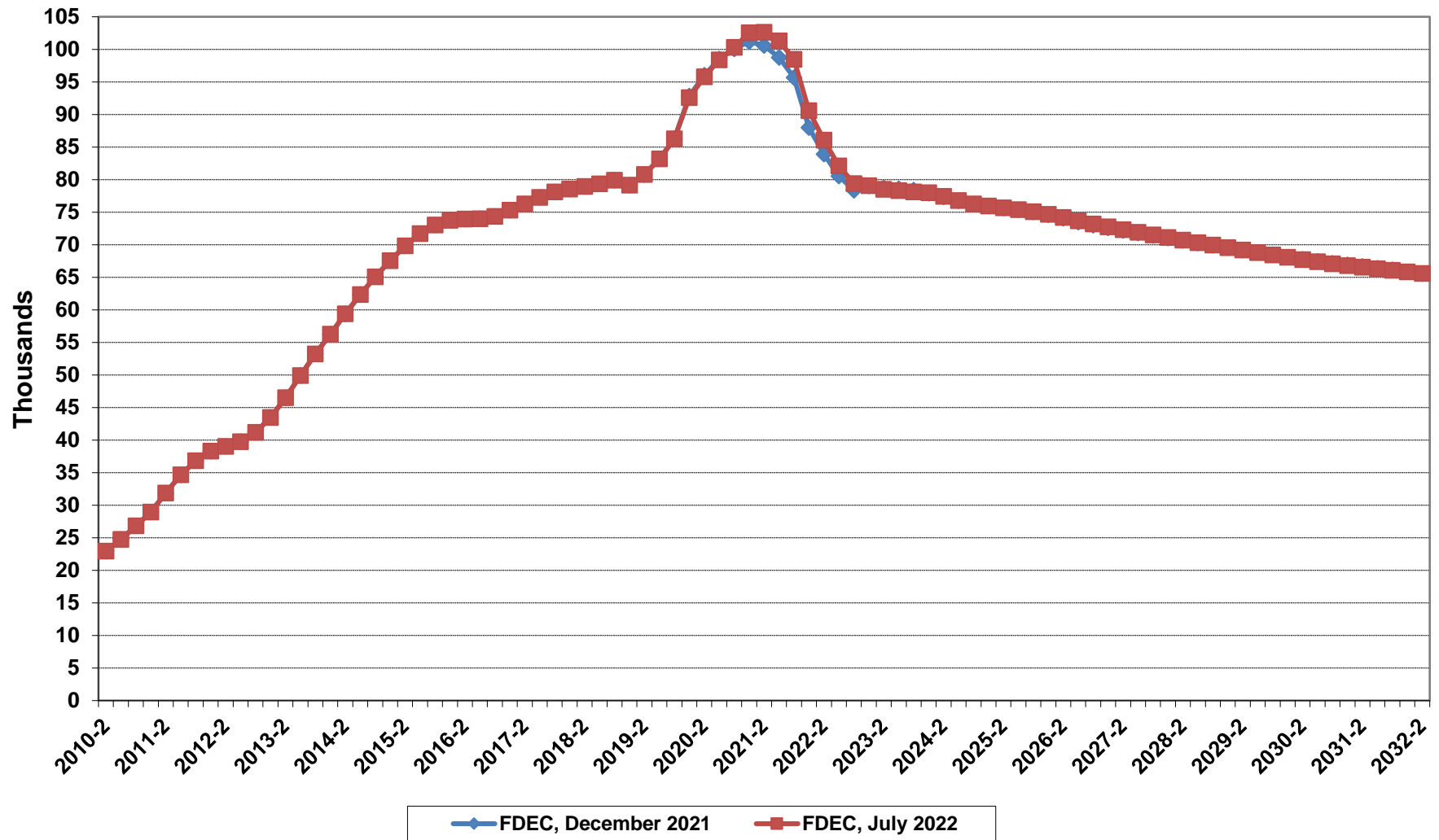
Florida Average Household Size



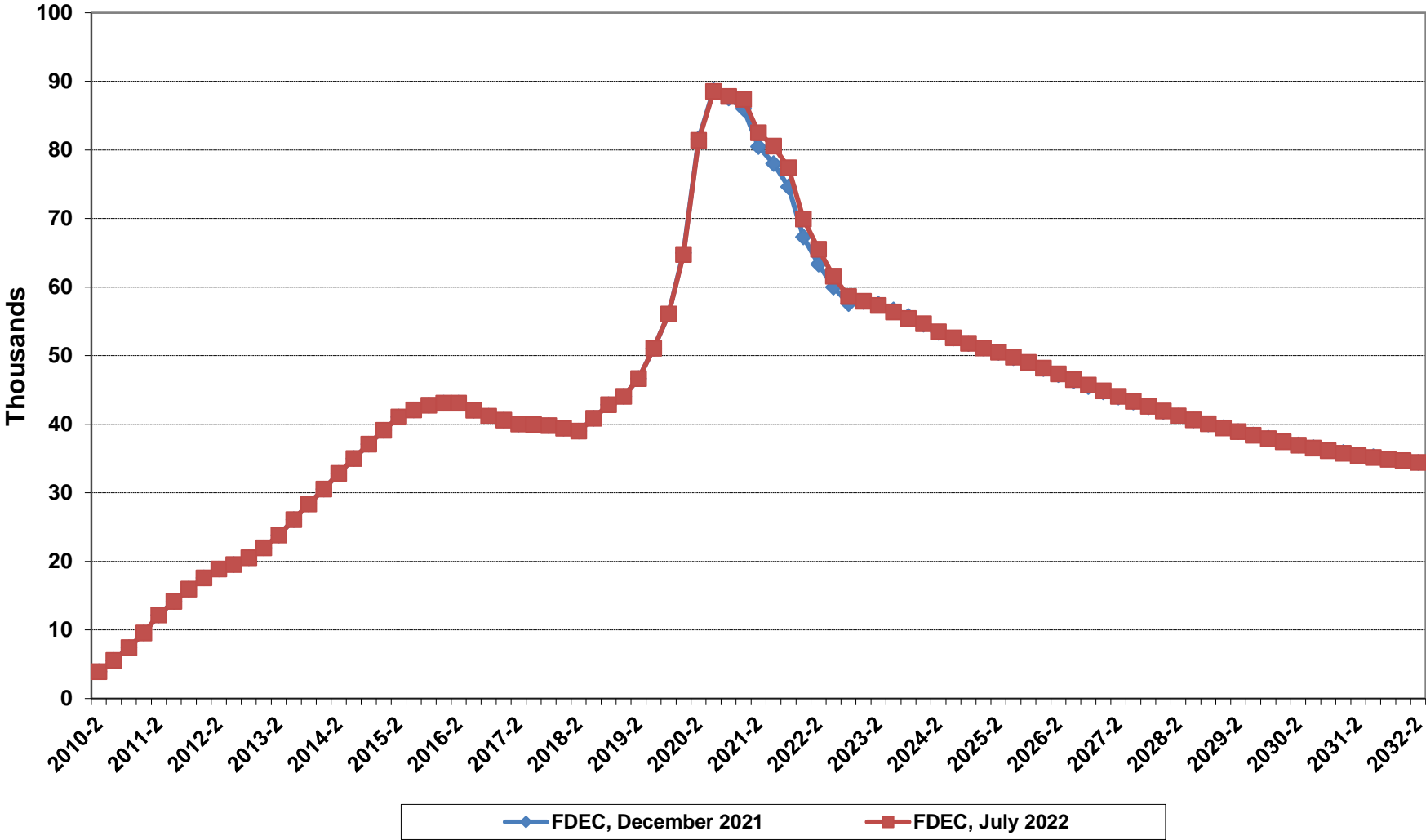
Growth In Florida Household Size



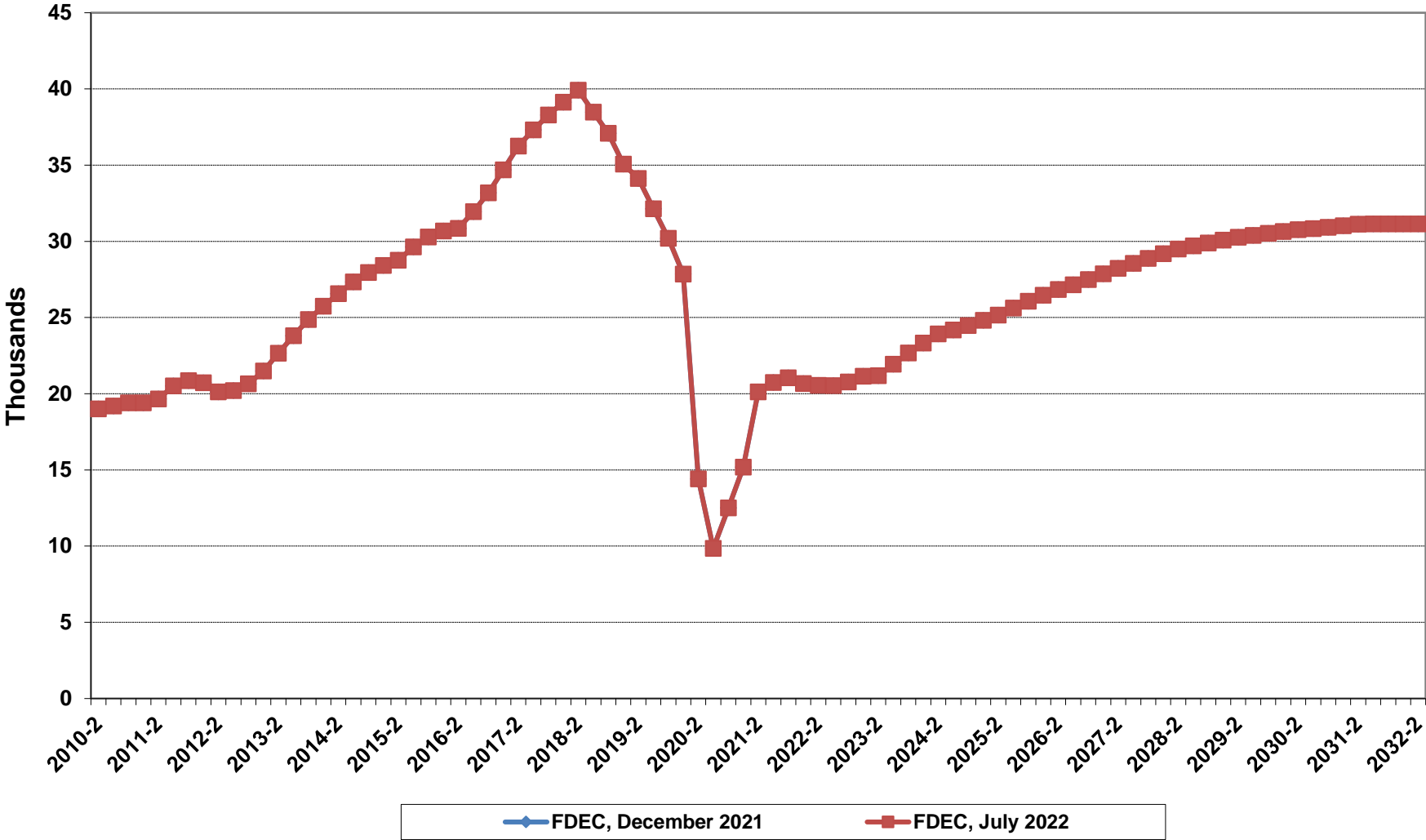
Florida Net Migration



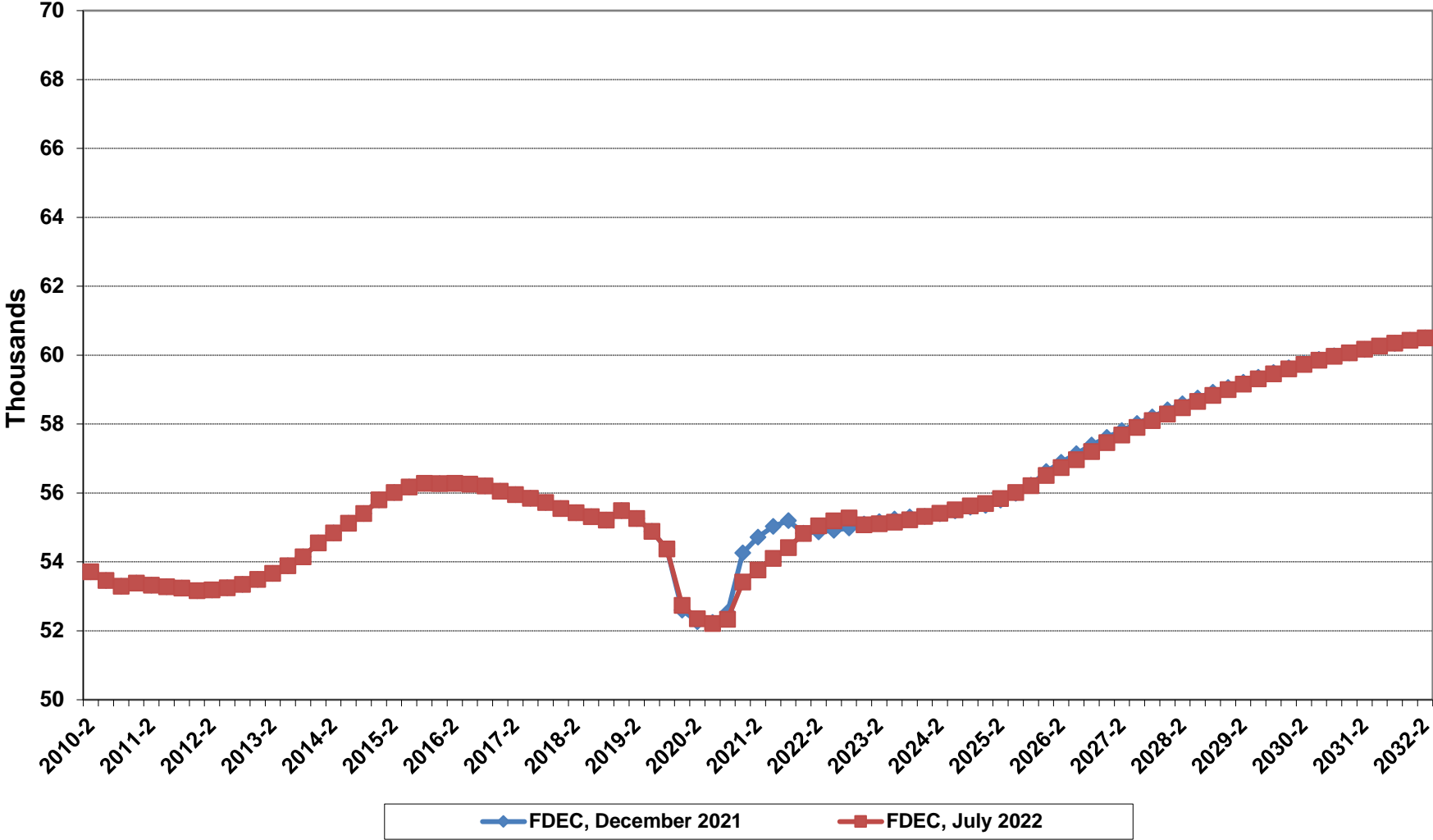
Florida Net Domestic Migration



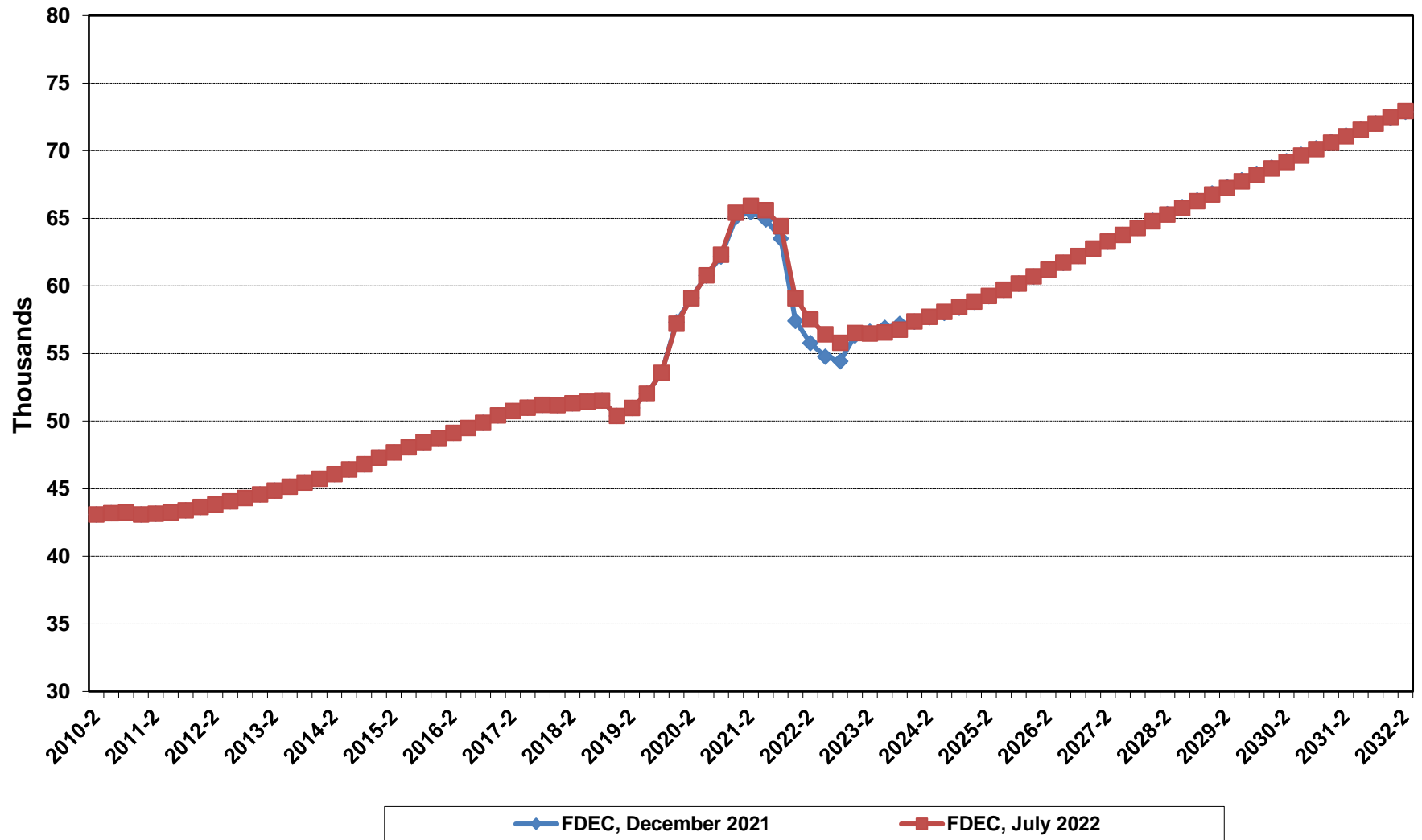
Florida Net International Migration



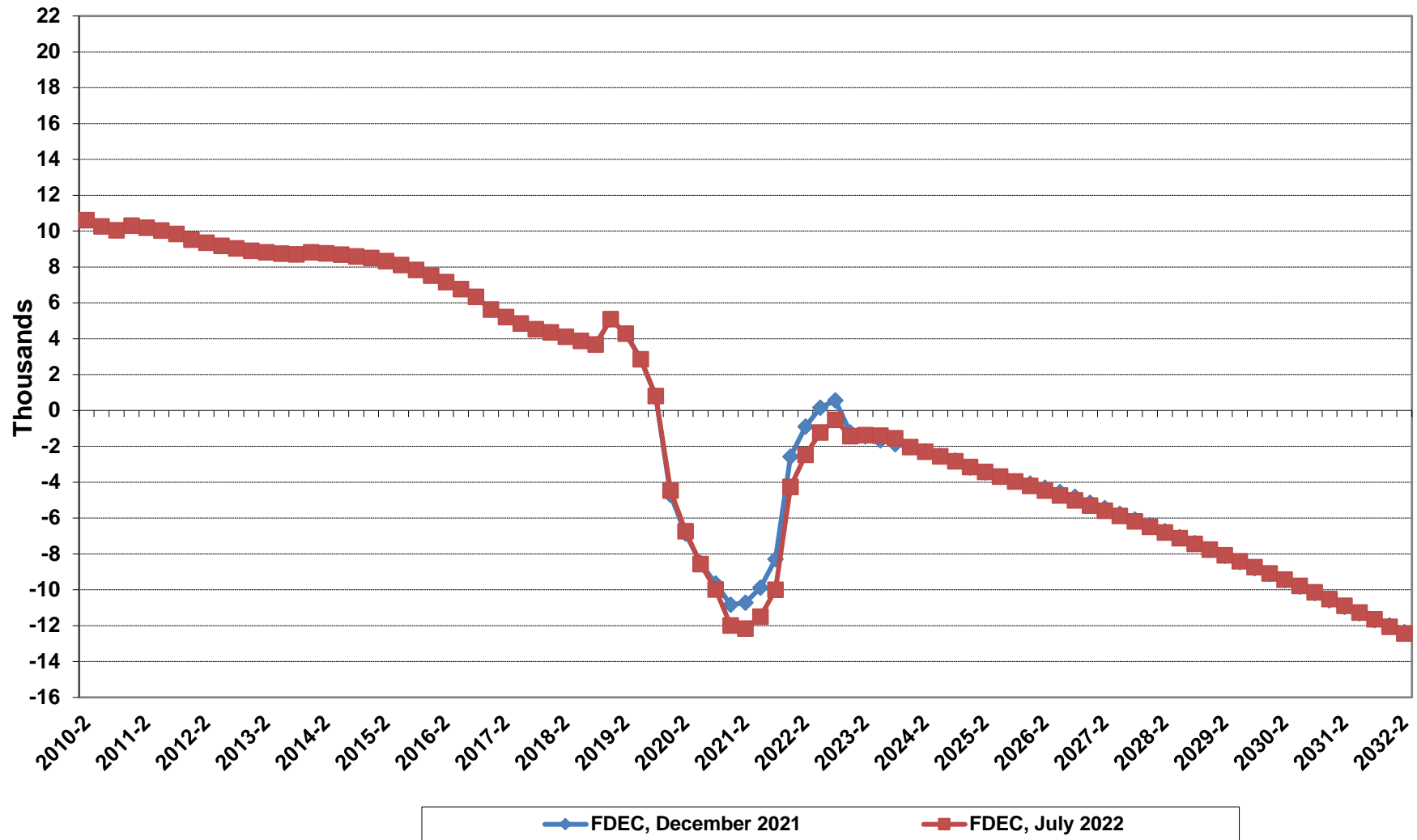
Florida Resident Births



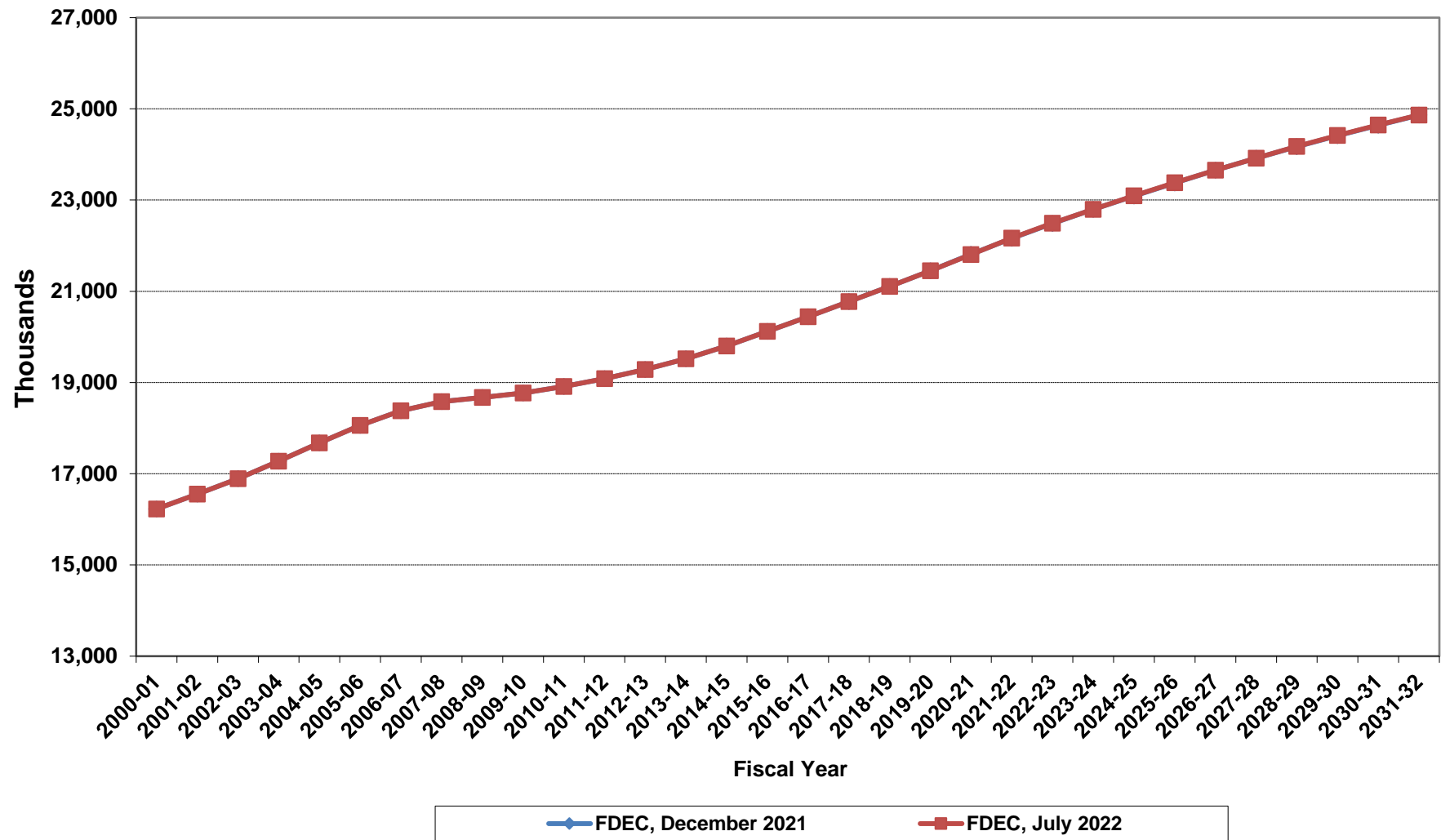
Florida Resident Deaths



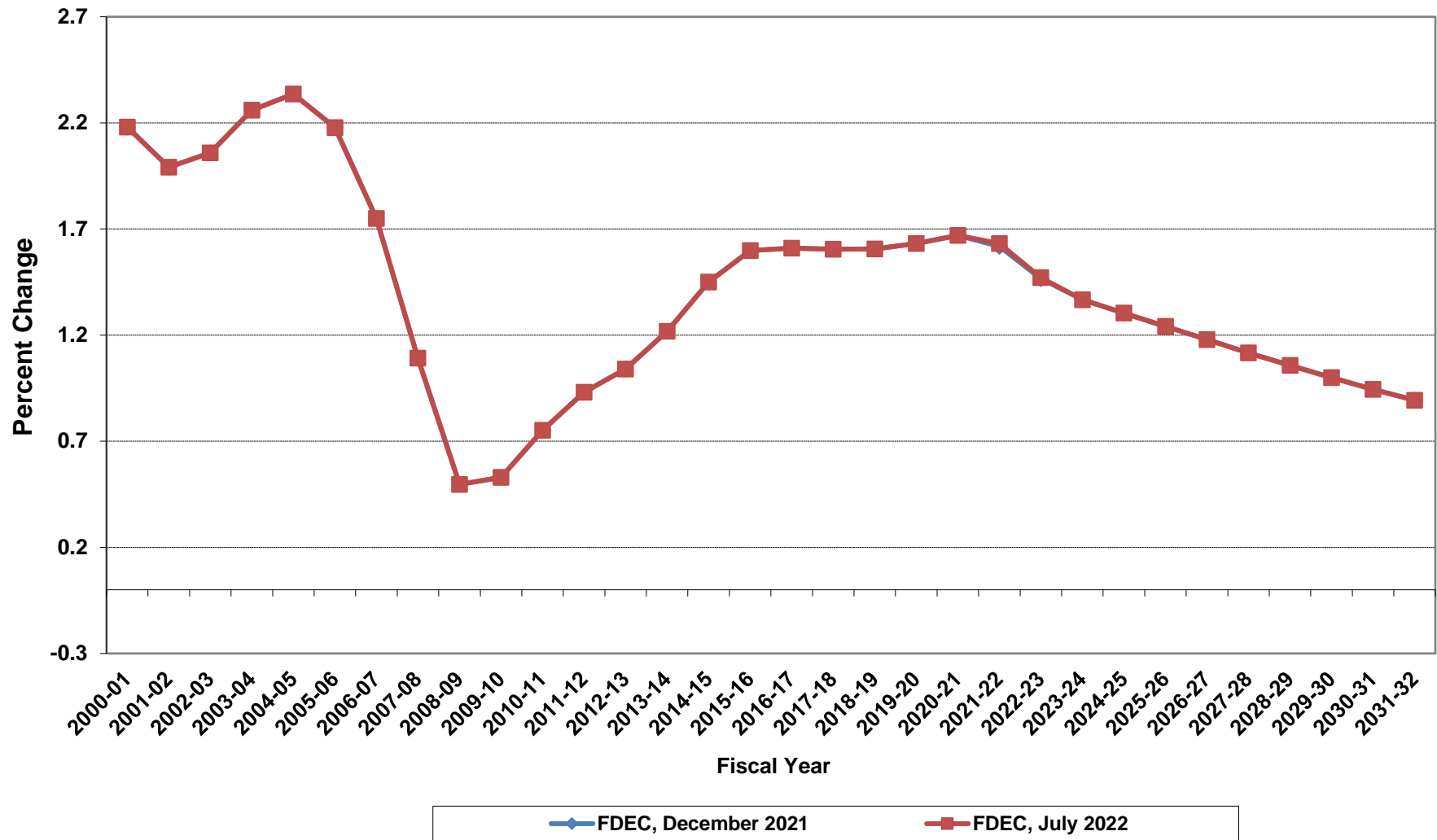
Florida Net Natural Increase



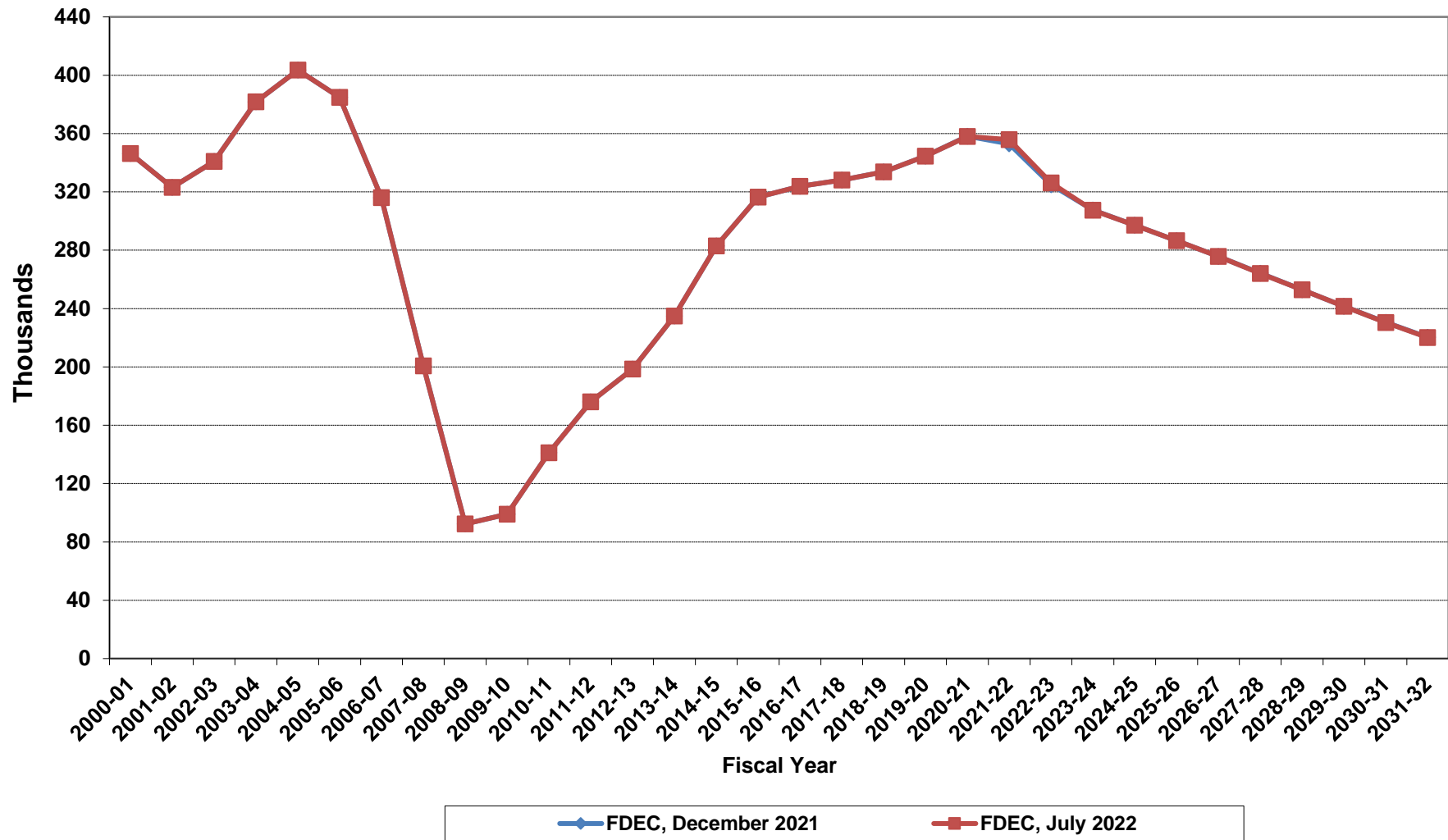
Florida Resident Population



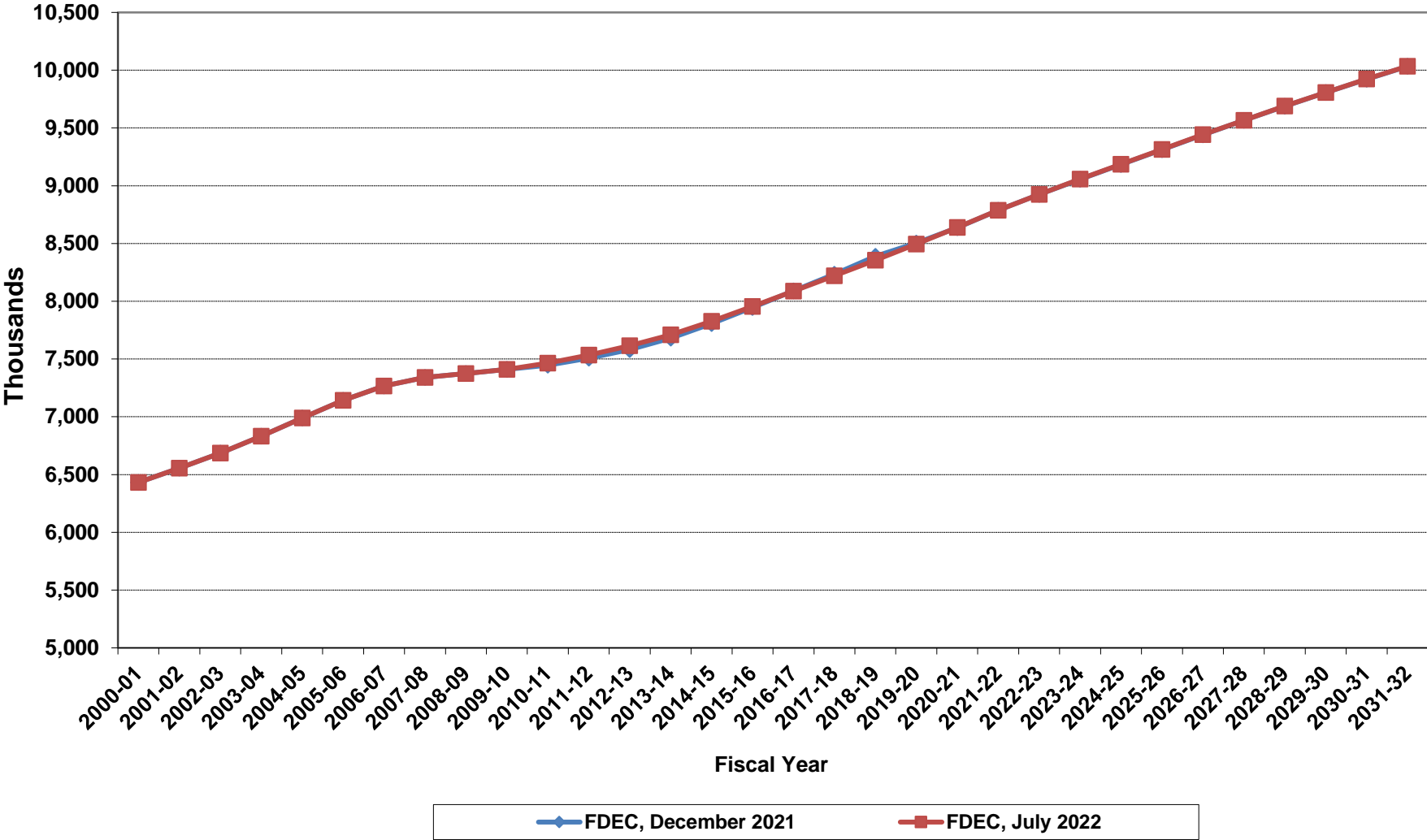
Growth In Florida Resident Population



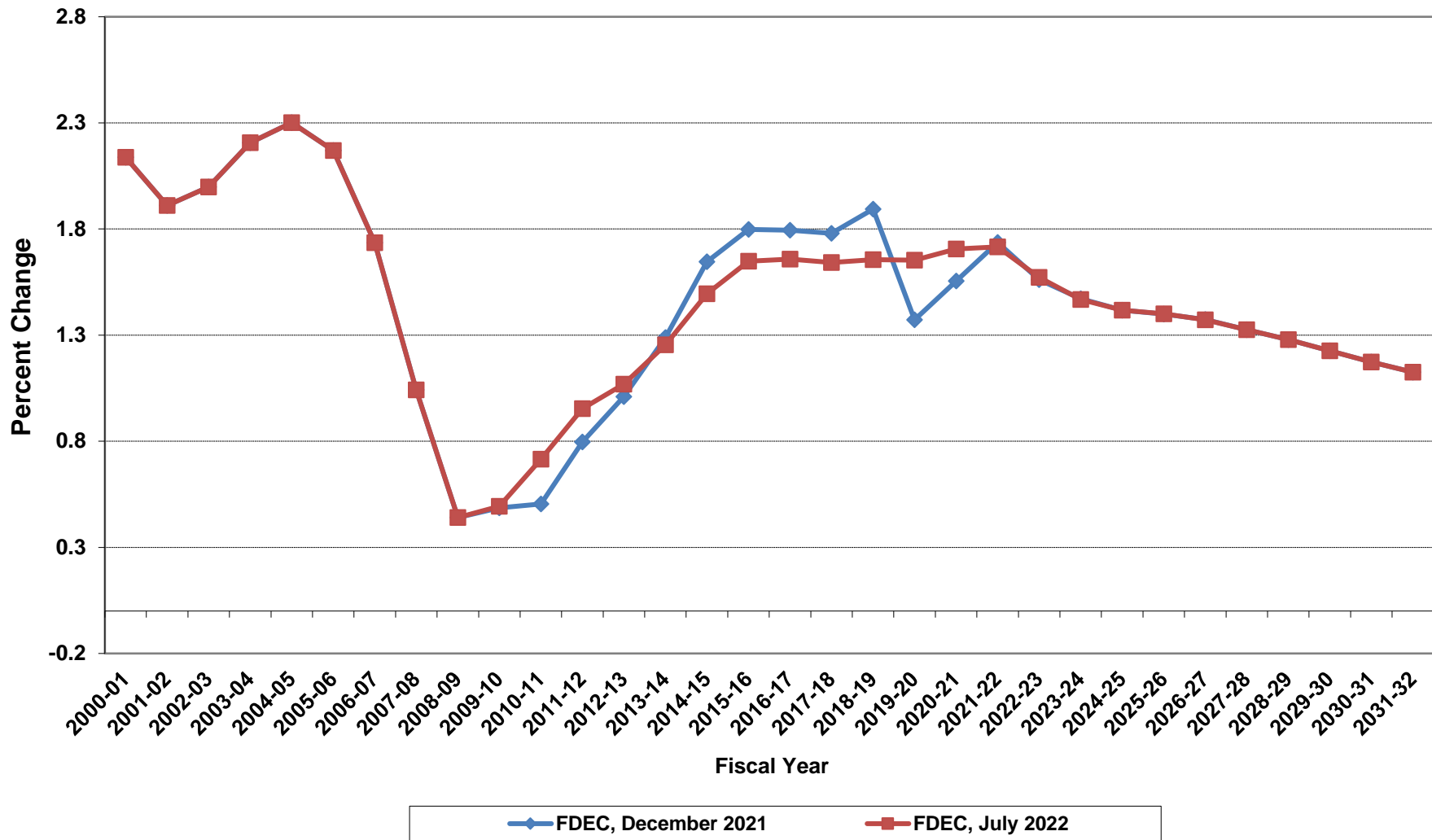
Net Change In Florida Resident Population



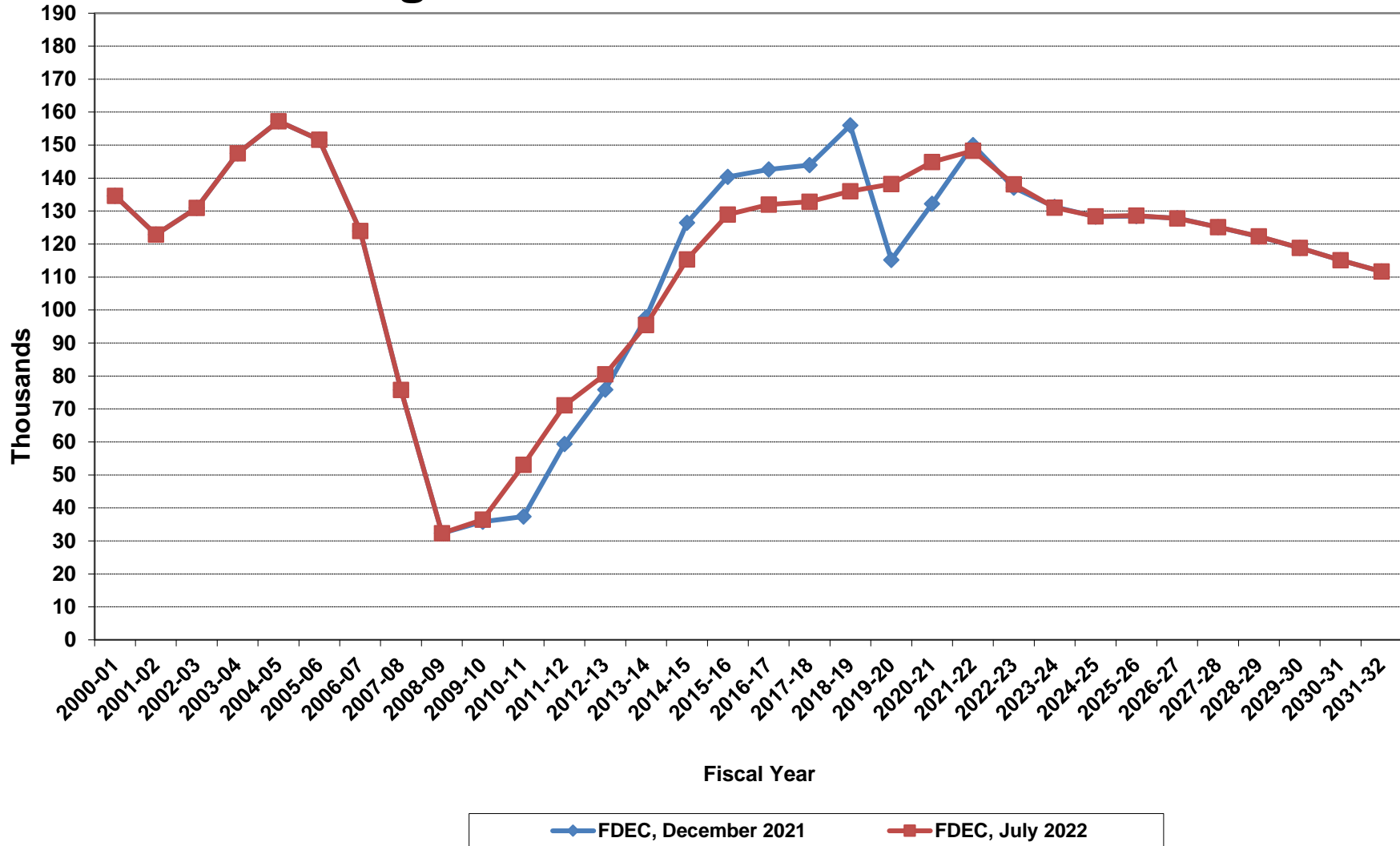
Florida Resident Households



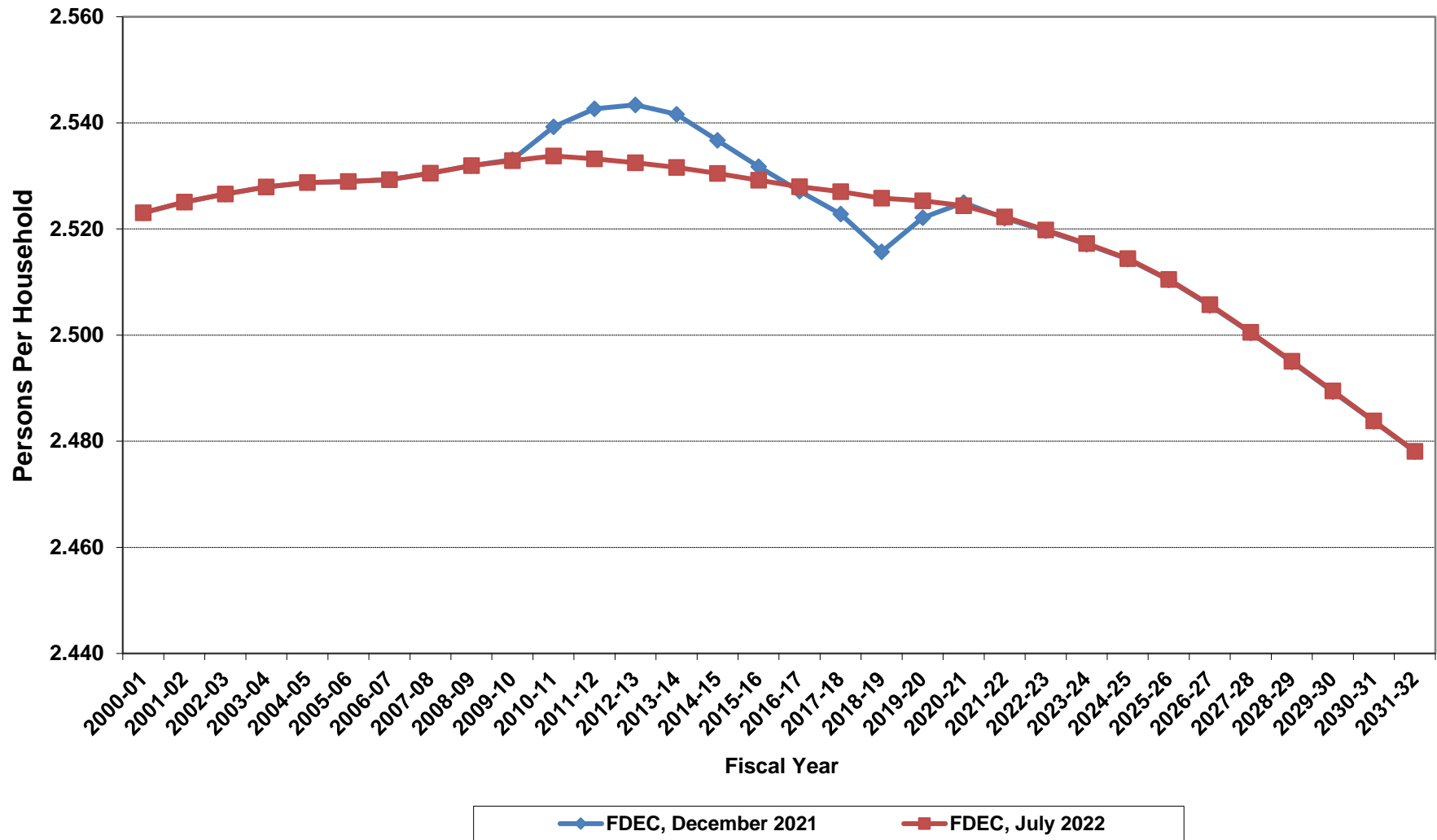
Growth In Florida Resident Households



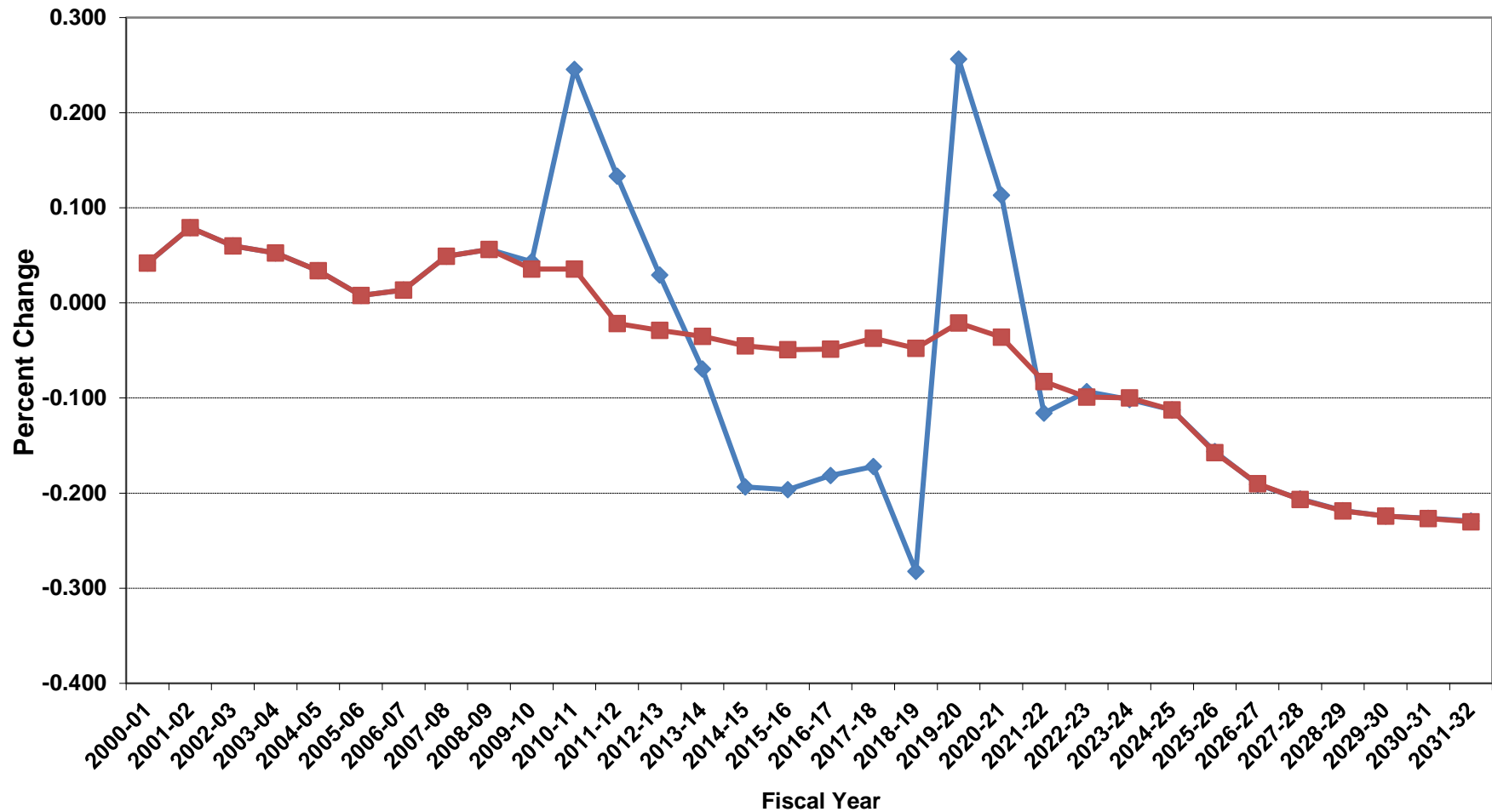
Net Change In Florida Resident Households



Average Florida Household Size

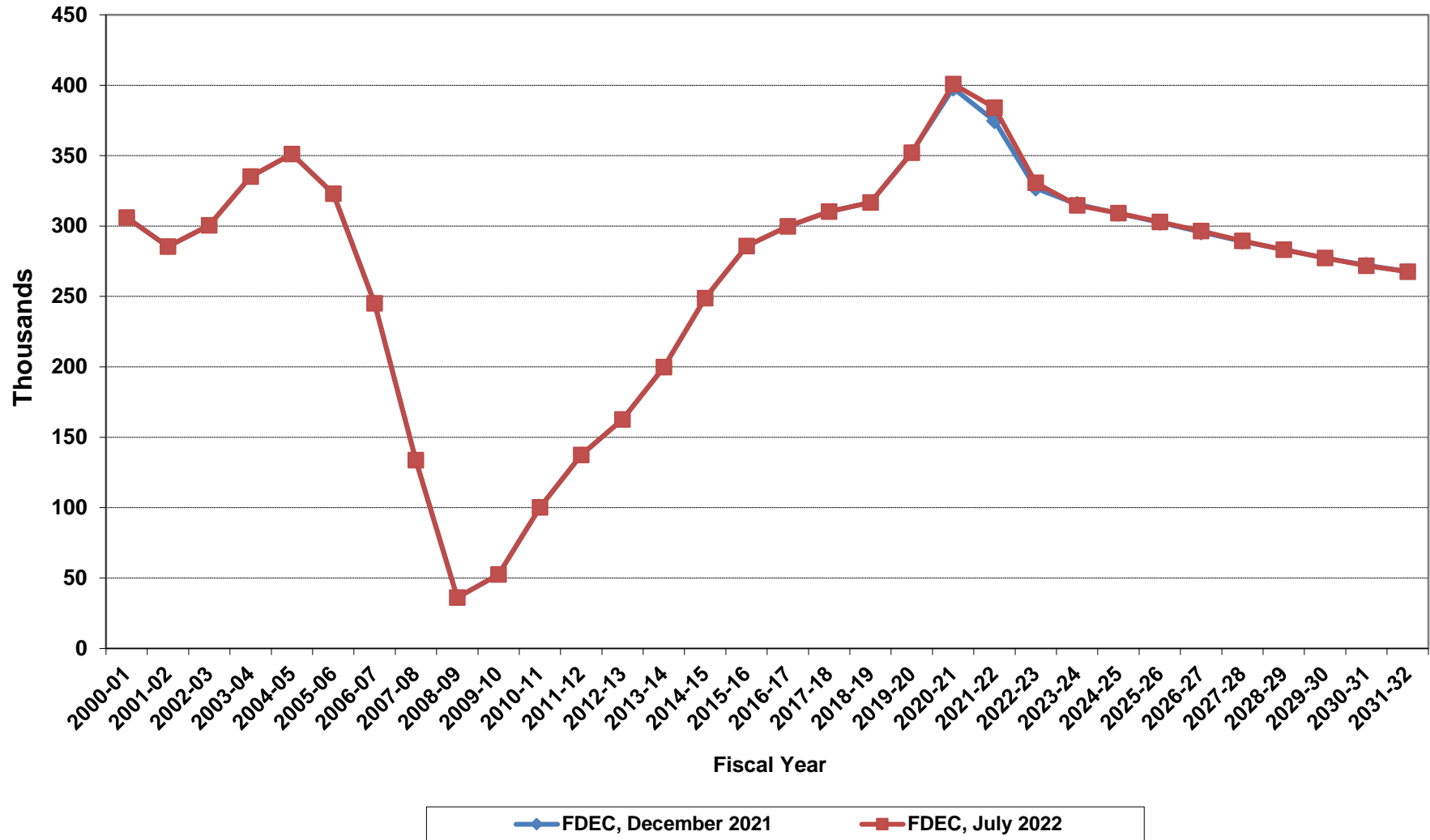


Growth In Average Florida Household Size

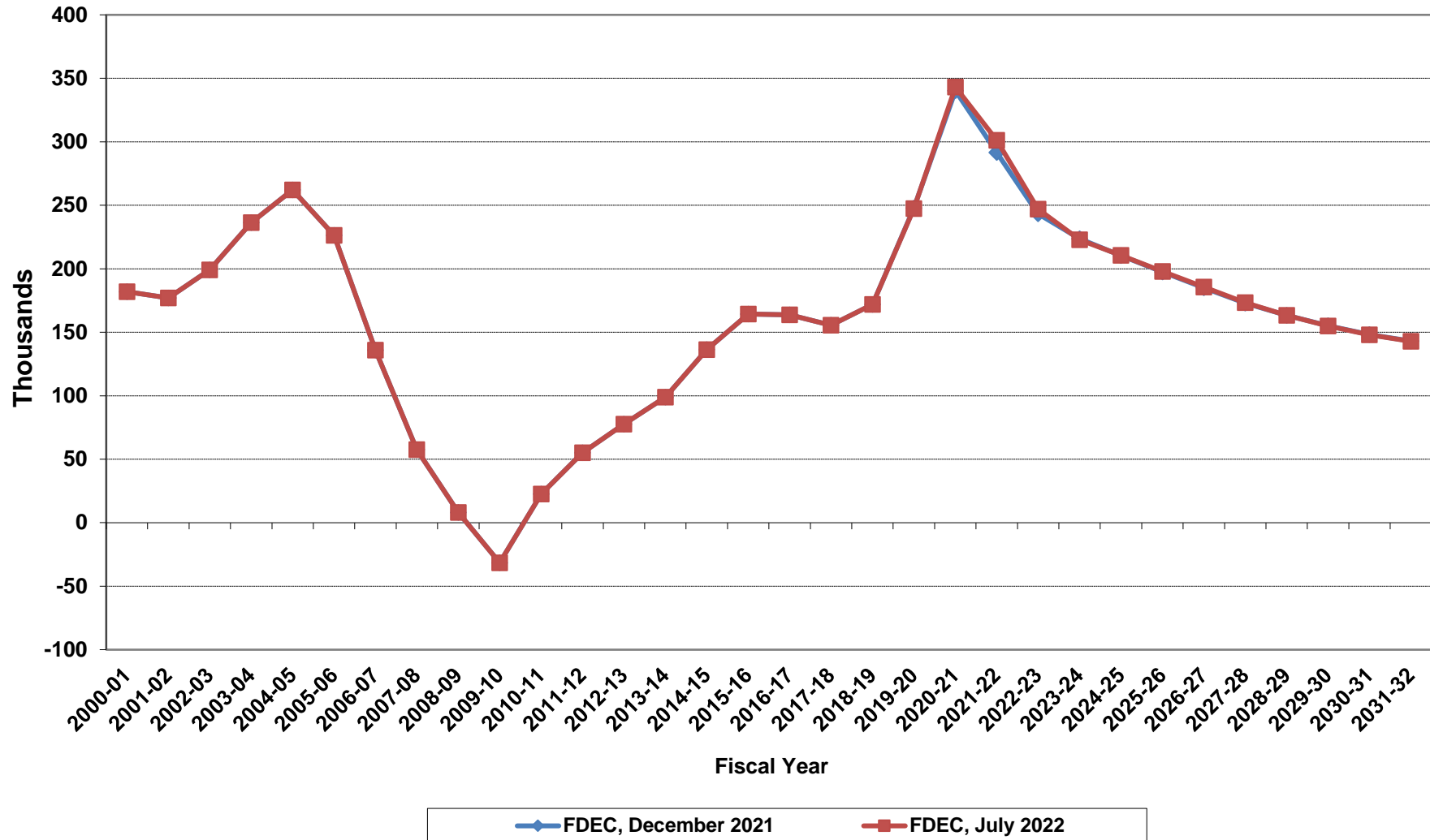


◆ FDEC, December 2021
 ■ FDEC, July 2022

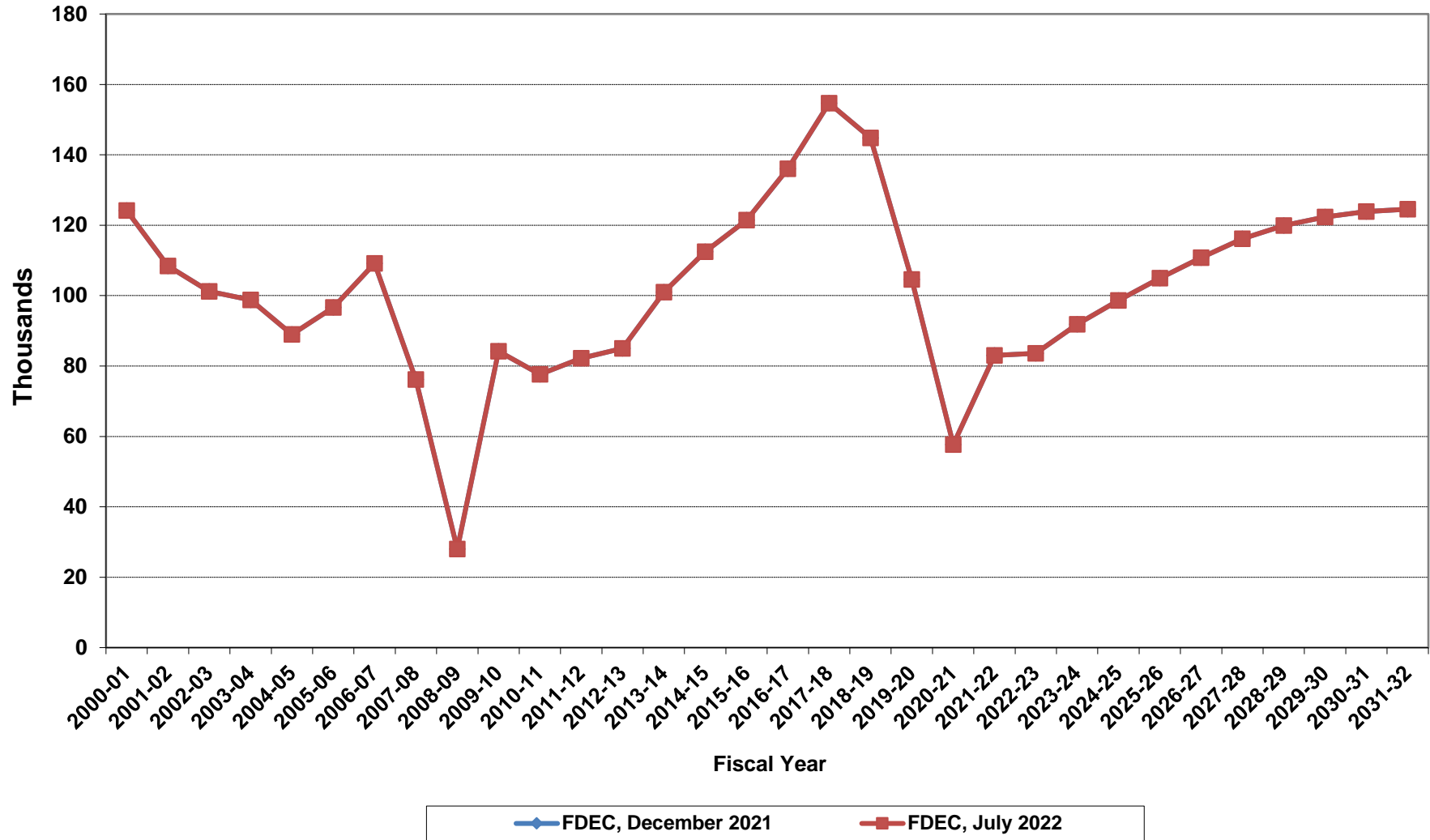
Florida Net Migration



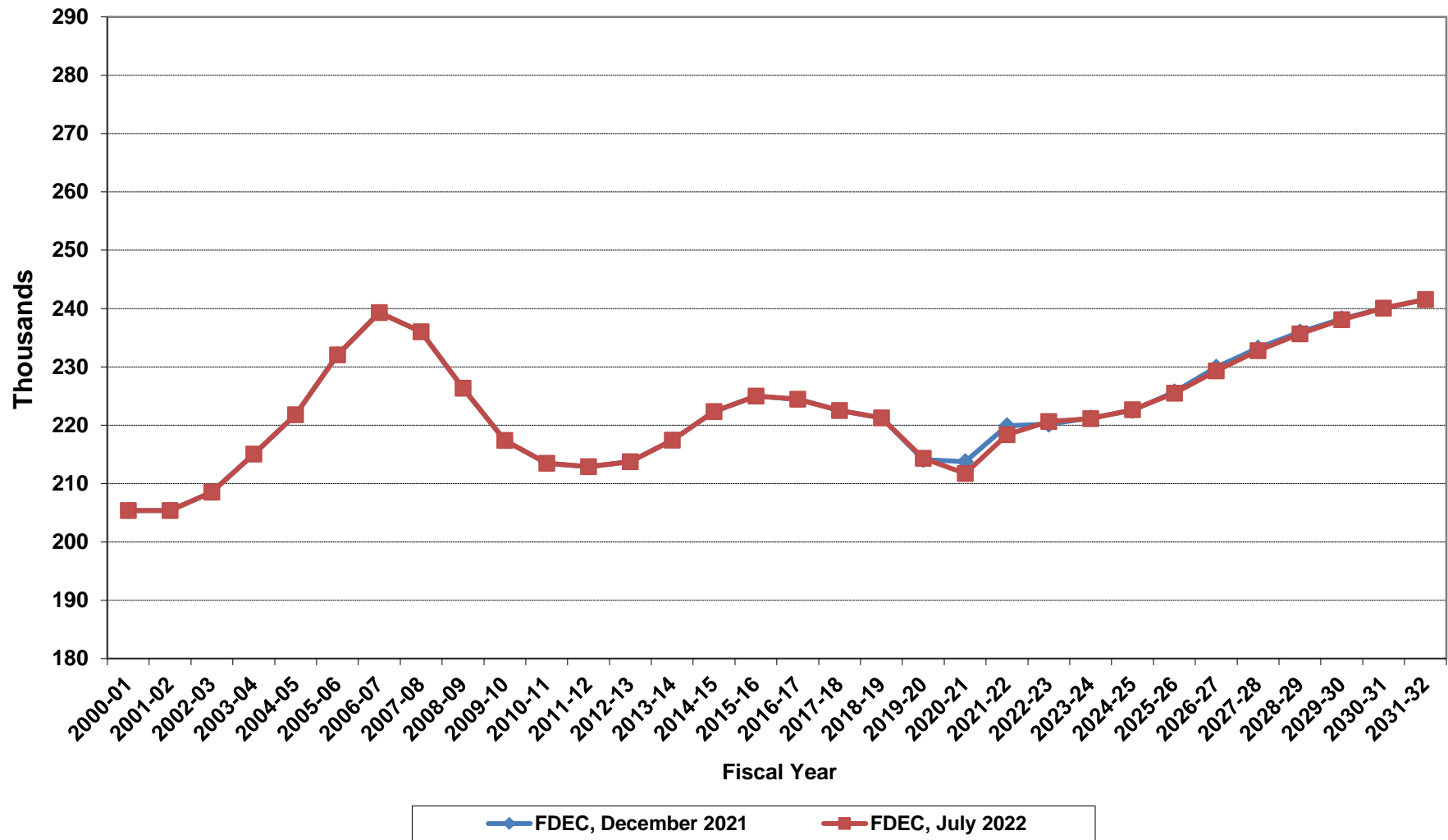
Florida Net Domestic Migration



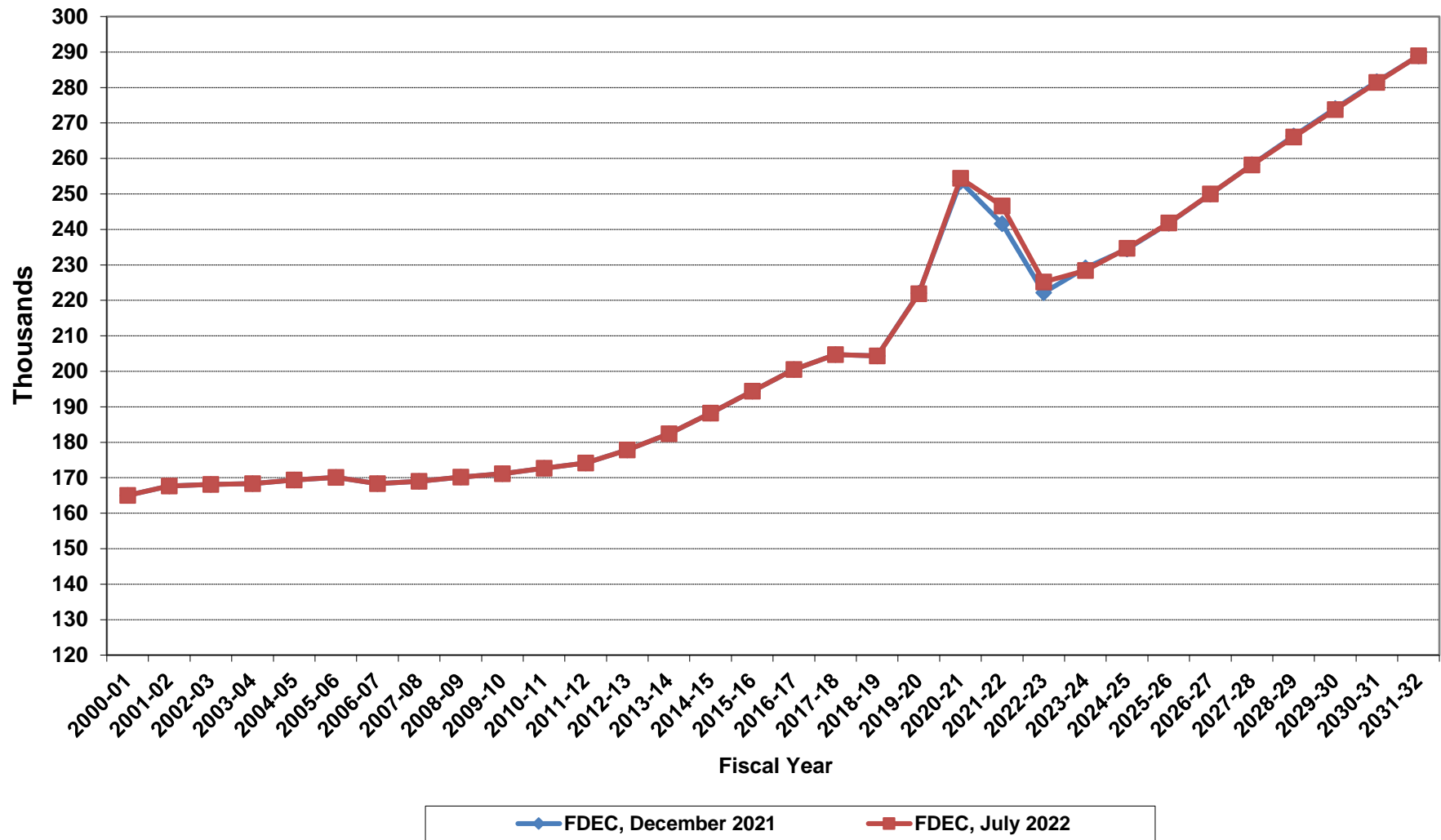
Florida Net International Migration



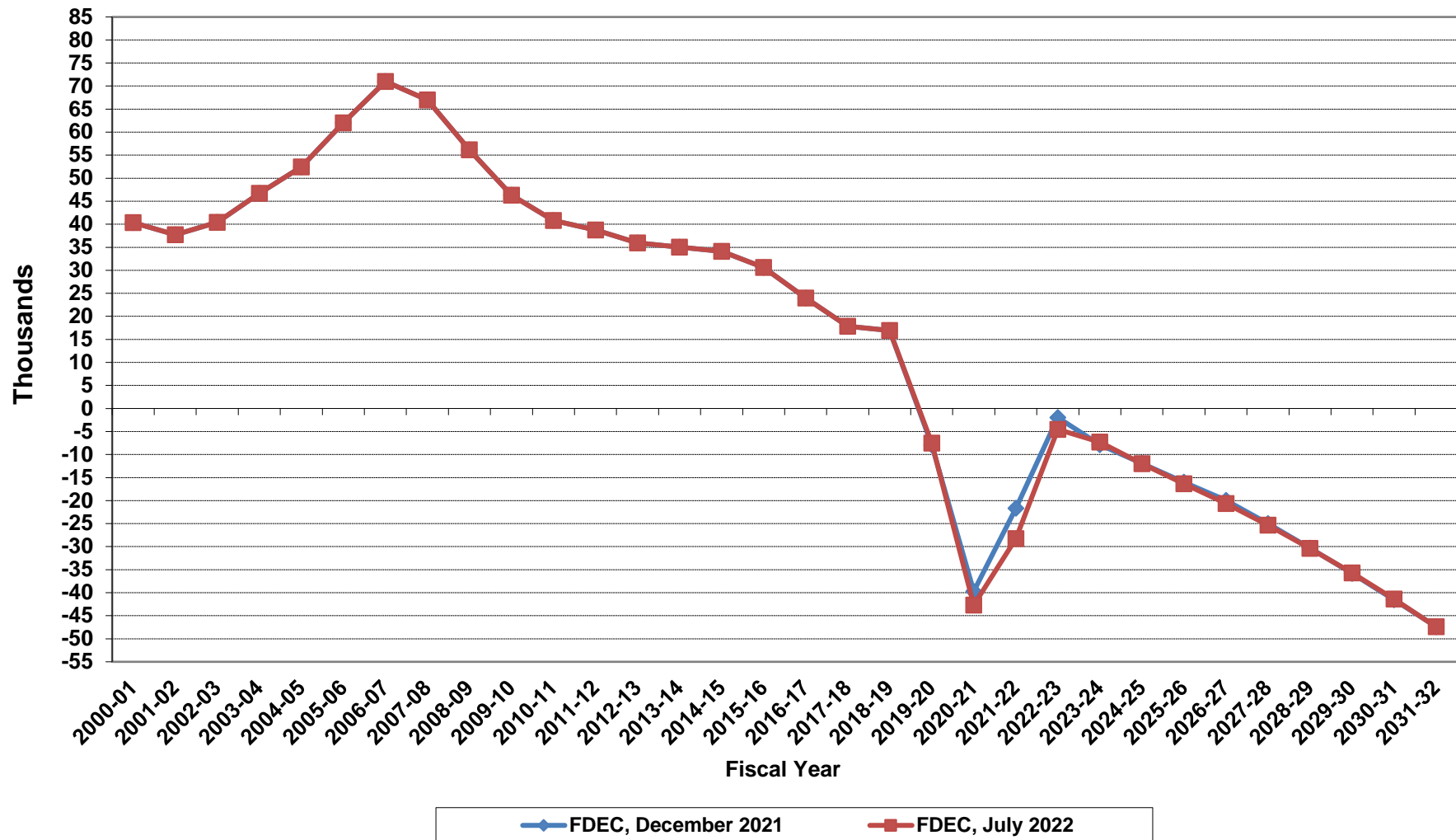
Florida Resident Live Births



Florida Resident Deaths



Florida Net Natural Increase



Florida Population and Components of Change

Fiscal Year	Population (End of Fiscal Year)	Growth Rate	Annual Change in Population	Births	Deaths	Net Natural Increase	Net Migration
1950 - 51	2,981,346	6.50%	181,931	67,486	27,670	39,816	142,115
1951 - 52	3,155,442	5.84%	174,096	72,383	28,942	43,441	130,655
1952 - 53	3,312,521	4.98%	157,079	76,954	29,761	47,193	109,886
1953 - 54	3,504,323	5.79%	191,802	82,725	31,055	51,670	140,132
1954 - 55	3,747,400	6.94%	243,077	86,643	32,176	54,467	188,610
1955 - 56	4,046,062	7.97%	298,662	92,941	34,932	58,009	240,653
1956 - 57	4,370,045	8.01%	323,983	100,990	38,269	62,721	261,262
1957 - 58	4,629,510	5.94%	259,465	105,972	41,911	64,061	195,404
1958 - 59	4,812,270	3.95%	182,760	110,409	43,674	66,735	116,025
1959 - 60	4,998,508	3.87%	186,238	114,428	46,057	68,371	117,867
1960 - 61	5,185,913	3.75%	187,405	116,449	48,388	68,061	119,344
1961 - 62	5,367,899	3.51%	181,986	116,120	50,346	65,774	116,212
1962 - 63	5,553,522	3.46%	185,623	114,709	54,453	60,256	125,367
1963 - 64	5,728,499	3.15%	174,977	115,002	56,229	58,773	116,204
1964 - 65	5,881,195	2.67%	152,696	110,515	57,734	52,781	99,915
1965 - 66	6,065,768	3.14%	184,573	104,367	61,217	43,150	141,423
1966 - 67	6,249,674	3.03%	183,906	101,209	62,577	38,632	145,274
1967 - 68	6,441,756	3.07%	192,082	100,320	66,134	34,186	157,896
1968 - 69	6,633,546	2.98%	191,790	104,286	71,285	33,001	158,789
1969 - 70	6,861,118	3.43%	227,572	111,511	73,831	37,680	189,892
1970 - 71	7,233,583	5.43%	372,465	117,012	75,354	41,658	330,807
1971 - 72	7,681,540	6.19%	447,957	113,568	79,717	33,851	414,106
1972 - 73	8,157,883	6.20%	476,343	107,804	86,232	21,572	454,771
1973 - 74	8,515,208	4.38%	357,325	109,366	88,459	20,907	336,418
1974 - 75	8,648,587	1.57%	133,379	108,686	87,224	21,462	111,917
1975 - 76	8,782,975	1.55%	134,388	104,022	88,129	15,893	118,495
1976 - 77	8,972,678	2.16%	189,703	107,623	90,443	17,180	172,523
1977 - 78	9,225,527	2.82%	252,849	112,268	93,383	18,885	233,964
1978 - 79	9,523,728	3.23%	298,201	116,393	96,801	19,592	278,609
1979 - 80	9,914,652	4.10%	390,924	126,673	101,048	25,625	365,299
1980 - 81	10,212,969	3.01%	298,317	135,560	107,562	27,998	270,319
1981 - 82	10,492,851	2.74%	279,882	141,593	108,644	32,949	246,933
1982 - 83	10,748,466	2.44%	255,615	146,853	110,497	36,356	219,259
1983 - 84	11,065,911	2.95%	317,445	151,748	113,939	37,809	279,636
1984 - 85	11,405,533	3.07%	339,622	159,819	117,539	42,280	297,342
1985 - 86	11,740,069	2.93%	334,536	165,857	122,453	43,404	291,132
1986 - 87	12,083,241	2.92%	343,172	170,819	124,946	45,873	297,299
1987 - 88	12,410,339	2.71%	327,098	179,541	129,413	50,128	276,970
1988 - 89	12,723,719	2.53%	313,380	188,390	131,992	56,398	256,982
1989 - 90	13,017,296	2.31%	293,577	197,181	132,503	64,678	228,899
1990 - 91	13,326,892	2.38%	309,596	197,180	134,093	63,087	246,509
1991 - 92	13,552,021	1.69%	225,129	191,810	136,280	55,530	169,599
1992 - 93	13,802,571	1.85%	250,550	192,051	142,087	49,964	200,586
1993 - 94	14,120,323	2.30%	317,752	191,840	146,101	45,739	272,013
1994 - 95	14,406,418	2.03%	286,095	189,292	149,161	40,131	245,964
1995 - 96	14,701,040	2.05%	294,622	188,584	152,570	36,014	258,608
1996 - 97	15,012,615	2.12%	311,575	190,587	153,067	37,520	274,055
1997 - 98	15,310,069	1.98%	297,454	194,242	155,080	39,162	258,292
1998 - 99	15,680,164	2.42%	370,095	195,897	159,988	35,909	334,186
1999 - 00	16,069,889	2.49%	389,725	200,302	162,489	37,813	351,912
2000 - 01	16,385,615	1.96%	315,726	205,798	164,919	40,879	274,847
2001 - 02	16,718,076	2.03%	332,461	205,164	167,812	37,352	295,109
2002 - 03	17,074,258	2.13%	356,182	208,403	168,079	40,324	315,858
2003 - 04	17,475,944	2.35%	401,686	215,298	168,302	46,996	354,690
2004 - 05	17,876,215	2.29%	400,271	221,533	169,302	52,231	348,040
2005 - 06	18,236,885	2.02%	360,670	232,019	170,303	61,716	298,954
2006 - 07	18,501,231	1.45%	264,346	239,635	168,117	71,518	192,828
2007 - 08	18,636,837	0.73%	135,606	236,065	168,966	67,099	68,507
2008 - 09	18,711,844	0.40%	75,007	226,337	170,615	55,722	19,285
2009 - 10	18,835,550	0.66%	123,706	217,408	171,121	46,287	77,419

Florida Population and Components of Change

Fiscal Year	Population (End of Fiscal Year)	Growth Rate	Annual Change in Population	Births	Deaths	Net Natural Increase	Net Migration
2010 - 11	18,993,373	0.84%	157,823	213,468	172,661	40,807	117,016
2011 - 12	19,183,462	1.00%	190,089	212,876	174,120	38,756	151,333
2012 - 13	19,394,565	1.10%	211,103	213,762	177,810	35,952	175,151
2013 - 14	19,654,737	1.34%	260,172	217,422	182,382	35,040	225,132
2014 - 15	19,958,376	1.54%	303,639	222,338	188,217	34,121	269,518
2015 - 16	20,282,338	1.62%	323,962	225,014	194,386	30,628	293,334
2016 - 17	20,606,703	1.60%	324,365	224,476	200,526	23,950	300,415
2017 - 18	20,938,045	1.61%	331,342	222,547	204,707	17,840	313,502
2018 - 19	21,275,386	1.61%	337,341	221,275	204,331	16,944	320,397
2019 - 20	21,627,670	1.66%	352,284	214,354	221,894	-7,540	359,824
2020 - 21	21,989,246	1.67%	361,576	211,741	254,431	-42,690	404,266
2021 - 22	22,333,350	1.56%	344,104	218,390	246,621	-28,231	372,335
2022 - 23	22,645,304	1.40%	311,954	220,657	225,212	-4,555	316,509
2023 - 24	22,948,594	1.34%	303,290	221,115	228,417	-7,302	310,592
2024 - 25	23,239,945	1.27%	291,351	222,674	234,651	-11,977	303,328
2025 - 26	23,521,594	1.21%	281,649	225,481	241,811	-16,330	297,979
2026 - 27	23,791,400	1.15%	269,806	229,321	249,967	-20,646	290,452
2027 - 28	24,049,864	1.09%	258,464	232,778	258,135	-25,357	283,821
2028 - 29	24,297,051	1.03%	247,187	235,662	266,051	-30,389	277,576
2029 - 30	24,532,997	0.97%	235,946	238,109	273,785	-35,676	271,622
2030 - 31	24,758,136	0.92%	225,139	240,069	281,417	-41,348	266,487
2031 - 32	24,973,270	0.87%	215,134	241,554	288,967	-47,413	262,547
2032 - 33	25,179,443	0.83%	206,173	242,490	295,854	-53,364	259,537
2033 - 34	25,378,762	0.79%	199,319	242,960	301,968	-59,008	258,327
2034 - 35	25,572,249	0.76%	193,487	243,302	307,688	-64,386	257,873
2035 - 36	25,759,649	0.73%	187,400	243,702	314,022	-70,320	257,720
2036 - 37	25,939,905	0.70%	180,256	244,135	320,837	-76,702	256,958
2037 - 38	26,114,535	0.67%	174,630	244,594	326,939	-82,345	256,975
2038 - 39	26,284,280	0.65%	169,745	245,058	332,403	-87,345	257,090