

**Demographic Estimating Conference
Executive Summary
February 10, 2023**

The Demographic Estimating Conference met on February 10, 2023, to adopt a new population forecast. The new estimates reflect the most recent demographic and economic-related data and trends.

Compared to the last conference, final population for April 1, 2022 was increased by 24,886 to 22,276,132, reflecting population estimates for local jurisdictions after providing them a challenge period. On a fiscal year basis, this reflects modestly stronger net migration that continues to counterbalance the negative natural increase. The negative natural increase was intensified, as more deaths offset the increase in births than previously forecast.

The population growth rates beginning in 2023 (shown as the percent change from the prior period in the table below) were similar—but slightly higher than—the prior conference. A large portion of the change came from the growth in 2022, which established a larger base in each year. Natural increase is expected to remain negative throughout the forecast horizon as deaths continue to outpace births. Overall, the forecast maintains the pattern that the Conference has long been expecting, with growth slowing modestly each year. The end of the decade continues to be an inflection point with the entry of the final baby boomer cohorts into retirement. Annual growth drops below 1.00% thereafter.

April 1	Population	Change from the Prior Period		Change from the Prior Forecast
		Percent	Numeric	
2020	21,538,187	1.64%	348,338	0
2021	21,898,945	1.67%	360,758	0
2022	22,276,132	1.72%	377,187	24,886
2023	22,607,751	1.49%	331,619	39,483
2024	22,916,816	1.37%	309,065	42,869
2025	23,218,811	1.32%	301,995	50,852
2026	23,512,598	1.27%	293,787	60,317
2027	23,797,686	1.21%	285,088	72,659
2028	24,073,029	1.16%	275,343	86,724
2029	24,336,696	1.10%	263,667	100,386
2030	24,588,452	1.03%	251,756	113,392
2031	24,828,661	0.98%	240,209	125,857
2032	25,057,038	0.92%	228,377	136,627

For the five-year period beginning April 1, 2023, and ending April 1, 2027, population growth over the prior year is expected to average 304,311 net new residents per year (834 per day), representing a compound growth rate of 1.33% over this time horizon. These increases are analogous to adding a city about the size of Orlando every year.

Florida Demographic Estimating Conference

Tables
Conference Packet

February 10, 2023

Florida Resident Population

April 1

Year	Florida Demographic Estimating Conference July 2022			Florida Demographic Estimating Conference February 2023		
	Population	% Change	Change	Population	% Change	Change
2000	15,982,824	2.58%	402,580	15,982,824	2.58%	402,580
2001	16,305,100	2.02%	322,276	16,305,100	2.02%	322,276
2002	16,634,256	2.02%	329,156	16,634,256	2.02%	329,156
2003	16,979,706	2.08%	345,450	16,979,706	2.08%	345,450
2004	17,374,824	2.33%	395,118	17,374,824	2.33%	395,118
2005	17,778,156	2.32%	403,332	17,778,156	2.32%	403,332
2006	18,154,475	2.12%	376,319	18,154,475	2.12%	376,319
2007	18,446,768	1.61%	292,293	18,446,768	1.61%	292,293
2008	18,613,905	0.91%	167,137	18,613,905	0.91%	167,137
2009	18,687,425	0.39%	73,520	18,687,425	0.39%	73,520
2010	18,801,332	0.61%	113,907	18,801,332	0.61%	113,907
2011	18,949,860	0.79%	148,528	18,949,860	0.79%	148,528
2012	19,134,956	0.98%	185,096	19,134,956	0.98%	185,096
2013	19,337,590	1.06%	202,634	19,337,590	1.06%	202,634
2014	19,585,096	1.28%	247,506	19,585,096	1.28%	247,506
2015	19,879,230	1.50%	294,134	19,879,230	1.50%	294,134
2016	20,201,450	1.62%	322,220	20,201,450	1.62%	322,220
2017	20,524,865	1.60%	323,415	20,524,865	1.60%	323,415
2018	20,854,945	1.61%	330,080	20,854,945	1.61%	330,080
2019	21,189,849	1.61%	334,904	21,189,849	1.61%	334,904
2020	21,538,187	1.64%	348,338	21,538,187	1.64%	348,338
2021	21,898,945	1.67%	360,758	21,898,945	1.67%	360,758
2022	22,251,246	1.61%	352,301	22,276,132	1.72%	377,187
Begins forecast						
2023	22,568,268	1.42%	317,022	22,607,751	1.49%	331,619
2024	22,873,947	1.35%	305,679	22,916,816	1.37%	309,065
2025	23,167,959	1.29%	294,012	23,218,811	1.32%	301,995
2026	23,452,281	1.23%	284,322	23,512,598	1.27%	293,787
2027	23,725,027	1.16%	272,746	23,797,686	1.21%	285,088
			5-Year Averages			
2030	24,475,060	1.10%	261,420	24,588,452	1.15%	273,928
2035	25,524,375	0.84%	209,863	25,675,568	0.87%	217,423
2040	26,408,519	0.68%	176,829	26,537,878	0.66%	172,462
2045	27,178,924	0.58%	154,081	27,270,041	0.55%	146,433
2050	27,878,956	0.51%	140,006	27,953,598	0.50%	136,711

Florida Resident Households

April 1

Year	Florida Demographic Estimating Conference July 2022			Florida Demographic Estimating Conference February 2023			
	Households	% Change	Change	Households	% Change	Change	
2000	6,338,075	2.52%	155,729	6,338,075	2.65%	163,703	
2001	6,467,215	2.04%	129,140	6,460,934	1.94%	122,859	
2002	6,599,035	2.04%	131,820	6,586,806	1.95%	125,872	
2003	6,737,370	2.10%	138,335	6,719,399	2.01%	132,593	
2004	6,895,469	2.35%	158,099	6,872,318	2.28%	152,919	
2005	7,056,889	2.34%	161,420	7,029,787	2.29%	157,469	
2006	7,207,645	2.14%	150,756	7,178,486	2.12%	148,699	
2007	7,312,907	1.46%	105,262	7,292,550	1.59%	114,064	
2008	7,368,319	0.76%	55,412	7,354,880	0.85%	62,330	
2009	7,386,570	0.25%	18,251	7,379,964	0.34%	25,084	
2010	7,420,802	0.46%	34,232	7,420,802	0.55%	40,838	
2011	7,479,031	0.78%	58,229	7,479,031	0.78%	58,229	
2012	7,554,206	1.01%	75,175	7,554,206	1.01%	75,175	
2013	7,636,343	1.09%	82,137	7,636,343	1.09%	82,137	
2014	7,737,048	1.32%	100,705	7,737,048	1.32%	100,705	
2015	7,856,934	1.55%	119,886	7,856,934	1.55%	119,886	
2016	7,988,256	1.67%	131,322	7,988,256	1.67%	131,322	
2017	8,119,979	1.65%	131,723	8,119,979	1.65%	131,723	
2018	8,253,445	1.64%	133,466	8,253,445	1.64%	133,466	
2019	8,390,280	1.66%	136,835	8,390,280	1.66%	136,835	
2020	8,529,067	1.65%	138,787	8,529,067	1.65%	138,787	
2021	8,676,264	1.73%	147,197	8,676,264	1.73%	147,197	
2022	8,823,920	1.70%	147,656	8,838,661	1.87%	162,397	
Begins forecast							
2023	8,958,603	1.53%	134,683	8,975,766	1.55%	137,105	
2024	9,089,036	1.46%	130,433	9,103,377	1.42%	127,611	
2025	9,216,829	1.41%	127,793	9,231,008	1.40%	127,631	
2026	9,345,907	1.40%	129,078	9,356,359	1.36%	125,351	
2027	9,473,009	1.36%	127,102	9,478,908	1.31%	122,549	
			5-Year Averages				5-Year Averages
2030	9,836,942	1.31%	124,023	9,832,607	1.27%	120,320	
2035	10,375,479	1.07%	107,707	10,370,539	1.07%	107,586	
2040	10,833,687	0.87%	91,642	10,836,444	0.88%	93,181	
2045	11,206,835	0.68%	74,630	11,212,011	0.68%	75,113	
2050	11,530,450	0.57%	64,723	11,545,888	0.59%	66,775	

QUARTERLY FORECAST TABLES

	<u>2010-2</u>	<u>2010-3</u>	<u>2010-4</u>	<u>2011-1</u>	<u>2011-2</u>	<u>2011-3</u>	<u>2011-4</u>	<u>2012-1</u>	<u>2012-2</u>	<u>2012-3</u>	<u>2012-4</u>	<u>2013-1</u>	<u>2013-2</u>	<u>2013-3</u>	<u>2013-4</u>	<u>2014-1</u>
Population																
FDEC, July 2022	18,818.4	18,853.5	18,890.3	18,929.6	18,971.6	19,016.3	19,063.0	19,110.8	19,159.2	19,208.1	19,258.4	19,310.8	19,366.1	19,424.7	19,486.7	19,551.8
FDEC, February 2023	18,818.4	18,853.5	18,890.3	18,929.6	18,971.6	19,016.3	19,063.0	19,110.8	19,159.2	19,208.1	19,258.4	19,310.8	19,366.1	19,424.7	19,486.7	19,551.8
Population Growth Rate																
FDEC, July 2022	0.72	0.75	0.78	0.83	0.89	0.95	0.99	1.01	1.02	1.03	1.05	1.09	1.15	1.22	1.28	1.34
FDEC, February 2023	0.72	0.75	0.78	0.83	0.89	0.95	0.99	1.01	1.02	1.03	1.05	1.09	1.15	1.22	1.28	1.34
Net Change in Population																
FDEC, July 2022	33.5	35.0	36.9	39.2	42.0	44.7	46.7	47.8	48.4	48.9	50.2	52.4	55.3	58.6	61.9	65.1
FDEC, February 2023	33.5	35.0	36.9	39.2	42.0	44.7	46.7	47.8	48.4	48.9	50.2	52.4	55.3	58.6	61.9	65.1
Households																
FDEC, July 2022	7,427.3	7,440.8	7,455.3	7,470.9	7,487.8	7,505.9	7,524.9	7,544.4	7,564.0	7,583.9	7,604.2	7,625.5	7,647.9	7,671.7	7,697.0	7,723.5
FDEC, February 2023	7,427.3	7,440.8	7,455.3	7,470.9	7,487.8	7,505.9	7,524.9	7,544.4	7,564.0	7,583.9	7,604.2	7,625.5	7,647.9	7,671.7	7,697.0	7,723.5
Household Growth Rate																
FDEC, July 2022	0.63	0.73	0.78	0.84	0.91	0.97	1.02	1.04	1.05	1.05	1.08	1.12	1.18	1.25	1.32	1.39
FDEC, February 2023	0.63	0.73	0.78	0.84	0.91	0.97	1.02	1.04	1.05	1.05	1.08	1.12	1.18	1.25	1.32	1.39
Net Change in Households																
FDEC, July 2022	11.6	13.5	14.5	15.6	16.9	18.1	19.0	19.5	19.7	19.8	20.3	21.2	22.5	23.8	25.2	26.5
FDEC, February 2023	11.6	13.5	14.5	15.6	16.9	18.1	19.0	19.5	19.7	19.8	20.3	21.2	22.5	23.8	25.2	26.5
Household Size																
FDEC, July 2022	2.534	2.534	2.534	2.534	2.534	2.533	2.533	2.533	2.533	2.533	2.533	2.532	2.532	2.532	2.532	2.531
FDEC, February 2023	2.534	2.534	2.534	2.534	2.534	2.533	2.533	2.533	2.533	2.533	2.533	2.532	2.532	2.532	2.532	2.531
Household Size Growth Rate																
FDEC, July 2022	0.09	0.02	0.00	-0.01	-0.02	-0.03	-0.03	-0.03	-0.03	-0.03	-0.03	-0.03	-0.03	-0.04	-0.04	-0.04
FDEC, February 2023	0.09	0.02	0.00	-0.01	-0.02	-0.03	-0.03	-0.03	-0.03	-0.03	-0.03	-0.03	-0.03	-0.04	-0.04	-0.04
Net Migration																
FDEC, July 2022	22.9	24.7	26.8	28.9	31.9	34.7	36.8	38.3	39.0	39.8	41.2	43.5	46.5	49.9	53.2	56.3
FDEC, February 2023	22.9	24.7	26.8	28.9	31.9	34.7	36.8	38.3	39.0	39.8	41.2	43.5	46.5	49.9	53.2	56.3
Net Domestic Migration																
FDEC, July 2022	3.9	5.5	7.4	9.5	12.2	14.2	16.0	17.6	18.9	19.5	20.5	22.0	23.9	26.1	28.4	30.5
FDEC, February 2023	3.9	5.5	7.4	9.5	12.2	14.2	16.0	17.6	18.9	19.5	20.5	22.0	23.9	26.1	28.4	30.5
Net International Migration																
FDEC, July 2022	19.0	19.2	19.4	19.4	19.7	20.5	20.9	20.7	20.1	20.2	20.6	21.5	22.7	23.8	24.9	25.7
FDEC, February 2023	19.0	19.2	19.4	19.4	19.7	20.5	20.9	20.7	20.1	20.2	20.6	21.5	22.7	23.8	24.9	25.7
Births																
FDEC, July 2022	53.7	53.5	53.3	53.4	53.3	53.3	53.2	53.2	53.2	53.3	53.4	53.5	53.7	53.9	54.1	54.5
FDEC, February 2023	53.7	53.5	53.3	53.4	53.3	53.3	53.2	53.2	53.2	53.3	53.4	53.5	53.7	53.9	54.1	54.5
Deaths																
FDEC, July 2022	43.1	43.2	43.2	43.1	43.1	43.3	43.4	43.6	43.8	44.1	44.3	44.6	44.9	45.1	45.4	45.7
FDEC, February 2023	43.1	43.2	43.2	43.1	43.1	43.3	43.4	43.6	43.8	44.1	44.3	44.6	44.9	45.1	45.4	45.7
Net Natural Increase																
FDEC, July 2022	10.6	10.3	10.0	10.3	10.2	10.0	9.9	9.5	9.3	9.2	9.0	8.9	8.8	8.8	8.7	8.8
FDEC, February 2023	10.6	10.3	10.0	10.3	10.2	10.0	9.9	9.5	9.3	9.2	9.0	8.9	8.8	8.8	8.7	8.8

QUARTERLY FORECAST TABLES

	<u>2014-2</u>	<u>2014-3</u>	<u>2014-4</u>	<u>2015-1</u>	<u>2015-2</u>	<u>2015-3</u>	<u>2015-4</u>	<u>2016-1</u>	<u>2016-2</u>	<u>2016-3</u>	<u>2016-4</u>	<u>2017-1</u>	<u>2017-2</u>	<u>2017-3</u>	<u>2017-4</u>	<u>2018-1</u>
Population																
FDEC, July 2022	19,619.9	19,690.9	19,764.6	19,840.6	19,918.8	19,998.6	20,079.5	20,160.8	20,241.9	20,322.7	20,403.3	20,484.3	20,565.8	20,647.9	20,730.5	20,813.4
FDEC, February 2023	19,619.9	19,690.9	19,764.6	19,840.6	19,918.8	19,998.6	20,079.5	20,160.8	20,241.9	20,322.7	20,403.3	20,484.3	20,565.8	20,647.9	20,730.5	20,813.4
Population Growth Rate																
FDEC, July 2022	1.40	1.46	1.50	1.55	1.59	1.61	1.63	1.63	1.62	1.61	1.60	1.60	1.60	1.61	1.61	1.61
FDEC, February 2023	1.40	1.46	1.50	1.55	1.59	1.61	1.63	1.63	1.62	1.61	1.60	1.60	1.60	1.61	1.61	1.61
Net Change in Population																
FDEC, July 2022	68.2	71.0	73.7	76.0	78.2	79.8	80.9	81.3	81.1	80.8	80.7	80.9	81.5	82.1	82.6	82.9
FDEC, February 2023	68.2	71.0	73.7	76.0	78.2	79.8	80.9	81.3	81.1	80.8	80.7	80.9	81.5	82.1	82.6	82.9
Households																
FDEC, July 2022	7,751.2	7,780.2	7,810.2	7,841.2	7,873.1	7,905.6	7,938.5	7,971.7	8,004.8	8,037.7	8,070.6	8,103.5	8,136.5	8,169.7	8,203.0	8,236.6
FDEC, February 2023	7,751.2	7,780.2	7,810.2	7,841.2	7,873.1	7,905.6	7,938.5	7,971.7	8,004.8	8,037.7	8,070.6	8,103.5	8,136.5	8,169.7	8,203.0	8,236.6
Household Growth Rate																
FDEC, July 2022	1.45	1.50	1.55	1.60	1.63	1.66	1.68	1.68	1.67	1.66	1.65	1.64	1.64	1.64	1.64	1.65
FDEC, February 2023	1.45	1.50	1.55	1.60	1.63	1.66	1.68	1.68	1.67	1.66	1.65	1.64	1.64	1.64	1.64	1.65
Net Change in Households																
FDEC, July 2022	27.8	28.9	30.0	31.0	31.8	32.5	33.0	33.1	33.1	33.0	32.9	32.9	33.0	33.1	33.3	33.6
FDEC, February 2023	27.8	28.9	30.0	31.0	31.8	32.5	33.0	33.1	33.1	33.0	32.9	32.9	33.0	33.1	33.3	33.6
Household Size																
FDEC, July 2022	2.531	2.531	2.531	2.530	2.530	2.530	2.529	2.529	2.529	2.528	2.528	2.528	2.528	2.527	2.527	2.527
FDEC, February 2023	2.531	2.531	2.531	2.530	2.530	2.530	2.529	2.529	2.529	2.528	2.528	2.528	2.528	2.527	2.527	2.527
Household Size Growth Rate																
FDEC, July 2022	-0.04	-0.05	-0.05	-0.05	-0.05	-0.05	-0.05	-0.05	-0.05	-0.05	-0.05	-0.04	-0.04	-0.03	-0.03	-0.04
FDEC, February 2023	-0.04	-0.05	-0.05	-0.05	-0.05	-0.05	-0.05	-0.05	-0.05	-0.05	-0.05	-0.04	-0.04	-0.03	-0.03	-0.04
Net Migration																
FDEC, July 2022	59.4	62.3	65.1	67.5	69.8	71.7	73.0	73.8	73.9	74.0	74.4	75.3	76.3	77.3	78.1	78.6
FDEC, February 2023	59.4	62.3	65.1	67.5	69.8	71.7	73.0	73.8	73.9	74.0	74.4	75.3	76.3	77.3	78.1	78.6
Net Domestic Migration																
FDEC, July 2022	32.8	35.0	37.1	39.1	41.1	42.1	42.8	43.1	43.1	42.0	41.2	40.6	40.0	40.0	39.8	39.4
FDEC, February 2023	32.8	35.0	37.1	39.1	41.1	42.1	42.8	43.1	43.1	42.0	41.2	40.6	40.0	40.0	39.8	39.4
Net International Migration																
FDEC, July 2022	26.6	27.3	27.9	28.4	28.8	29.6	30.3	30.7	30.9	31.9	33.2	34.7	36.2	37.3	38.3	39.1
FDEC, February 2023	26.6	27.3	27.9	28.4	28.8	29.6	30.3	30.7	30.9	31.9	33.2	34.7	36.2	37.3	38.3	39.1
Births																
FDEC, July 2022	54.8	55.1	55.4	55.8	56.0	56.2	56.3	56.3	56.3	56.3	56.2	56.1	56.0	55.8	55.7	55.5
FDEC, February 2023	54.8	55.1	55.4	55.8	56.0	56.2	56.3	56.3	56.3	56.3	56.2	56.1	56.0	55.8	55.7	55.5
Deaths																
FDEC, July 2022	46.1	46.4	46.8	47.3	47.7	48.1	48.4	48.8	49.1	49.5	49.9	50.4	50.7	51.0	51.2	51.2
FDEC, February 2023	46.1	46.4	46.8	47.3	47.7	48.1	48.4	48.8	49.1	49.5	49.9	50.4	50.7	51.0	51.2	51.2
Net Natural Increase																
FDEC, July 2022	8.8	8.7	8.6	8.5	8.3	8.1	7.8	7.5	7.2	6.8	6.3	5.6	5.2	4.8	4.5	4.4
FDEC, February 2023	8.8	8.7	8.6	8.5	8.3	8.1	7.8	7.5	7.2	6.8	6.3	5.6	5.2	4.8	4.5	4.4

QUARTERLY FORECAST TABLES

	<u>2018-2</u>	<u>2018-3</u>	<u>2018-4</u>	<u>2019-1</u>	<u>2019-2</u>	<u>2019-3</u>	<u>2019-4</u>	<u>2020-1</u>	<u>2020-2</u>	<u>2020-3</u>	<u>2020-4</u>	<u>2021-1</u>	<u>2021-2</u>	<u>2021-3</u>	<u>2021-4</u>	<u>2022-1</u>
Population																
FDEC, July 2022	20,896.5	20,979.7	21,063.3	21,147.6	21,232.6	21,318.7	21,405.7	21,493.9	21,582.9	21,672.7	21,763.1	21,853.6	21,944.1	22,033.9	22,122.4	22,208.7
FDEC, February 2023	20,896.5	20,979.7	21,063.3	21,147.6	21,232.6	21,318.7	21,405.7	21,493.9	21,582.3	21,670.8	21,760.6	21,852.4	21,946.8	22,042.8	22,138.3	22,230.9
Population Growth Rate																
FDEC, July 2022	1.61	1.60	1.60	1.61	1.62	1.63	1.64	1.66	1.67	1.68	1.68	1.67	1.67	1.65	1.62	1.57
FDEC, February 2023	1.61	1.60	1.60	1.61	1.62	1.63	1.64	1.66	1.66	1.65	1.67	1.70	1.74	1.76	1.74	1.68
Net Change in Population																
FDEC, July 2022	83.1	83.2	83.6	84.2	85.1	86.0	87.1	88.1	89.1	89.8	90.3	90.6	90.5	89.8	88.5	86.3
FDEC, February 2023	83.1	83.2	83.6	84.2	85.1	86.0	87.1	88.1	88.4	88.6	89.8	91.8	94.3	96.0	95.5	92.6
Households																
FDEC, July 2022	8,270.4	8,304.5	8,338.8	8,373.1	8,407.4	8,441.8	8,476.4	8,511.4	8,547.1	8,583.4	8,620.3	8,657.6	8,695.0	8,732.5	8,769.6	8,806.0
FDEC, February 2023	8,270.4	8,304.5	8,338.8	8,373.1	8,407.4	8,441.8	8,476.4	8,511.4	8,546.7	8,582.3	8,618.8	8,656.8	8,696.6	8,737.8	8,779.1	8,819.1
Household Growth Rate																
FDEC, July 2022	1.65	1.66	1.66	1.66	1.65	1.64	1.65	1.66	1.69	1.71	1.73	1.74	1.74	1.73	1.71	1.67
FDEC, February 2023	1.65	1.66	1.66	1.66	1.65	1.64	1.65	1.66	1.67	1.68	1.71	1.78	1.85	1.91	1.90	1.84
Net Change in Households																
FDEC, July 2022	33.9	34.1	34.3	34.3	34.3	34.4	34.6	35.0	35.7	36.3	36.9	37.3	37.5	37.5	37.1	36.4
FDEC, February 2023	33.9	34.1	34.3	34.3	34.3	34.4	34.6	35.0	35.3	35.6	36.6	38.0	39.8	41.1	41.3	40.1
Household Size																
FDEC, July 2022	2.527	2.526	2.526	2.526	2.525	2.525	2.525	2.525	2.525	2.525	2.525	2.524	2.524	2.523	2.523	2.522
FDEC, February 2023	2.527	2.526	2.526	2.526	2.525	2.525	2.525	2.525	2.525	2.525	2.525	2.524	2.524	2.523	2.522	2.521
Household Size Growth Rate																
FDEC, July 2022	-0.05	-0.06	-0.06	-0.05	-0.03	-0.01	-0.01	-0.01	-0.02	-0.04	-0.05	-0.06	-0.08	-0.09	-0.09	-0.10
FDEC, February 2023	-0.05	-0.06	-0.06	-0.05	-0.03	-0.01	-0.01	-0.01	-0.01	-0.02	-0.05	-0.08	-0.11	-0.14	-0.16	-0.15
Net Migration																
FDEC, July 2022	78.9	79.3	79.9	79.1	80.8	83.2	86.3	92.6	95.8	98.4	100.3	102.6	102.6	101.3	98.5	90.6
FDEC, February 2023	78.9	79.3	79.9	79.1	80.8	83.2	86.3	92.6	95.1	97.1	99.7	103.4	106.2	107.5	105.8	98.2
Net Domestic Migration																
FDEC, July 2022	39.0	40.9	42.8	44.1	46.7	51.1	56.1	64.7	81.4	88.5	87.8	87.4	82.5	80.6	77.4	69.9
FDEC, February 2023	39.0	40.9	42.8	44.1	46.7	51.1	56.1	64.8	80.7	87.3	87.2	88.0	87.4	86.9	85.2	77.7
Net International Migration																
FDEC, July 2022	39.9	38.5	37.1	35.1	34.1	32.1	30.2	27.9	14.4	9.9	12.5	15.2	20.1	20.7	21.0	20.7
FDEC, February 2023	39.9	38.5	37.1	35.1	34.1	32.1	30.2	27.9	14.4	9.9	12.5	15.4	18.8	20.6	20.5	20.5
Births																
FDEC, July 2022	55.4	55.3	55.2	55.5	55.3	54.9	54.4	52.7	52.4	52.2	52.3	53.4	53.8	54.1	54.4	54.8
FDEC, February 2023	55.4	55.3	55.2	55.5	55.3	54.9	54.4	52.7	52.3	52.2	52.4	53.4	53.8	54.3	54.8	55.8
Deaths																
FDEC, July 2022	51.3	51.4	51.5	50.4	51.0	52.0	53.6	57.2	59.1	60.8	62.3	65.4	65.9	65.6	64.4	59.1
FDEC, February 2023	51.3	51.4	51.5	50.4	51.0	52.0	53.6	57.2	59.1	60.8	62.3	65.0	65.7	65.7	65.0	61.5
Net Natural Increase																
FDEC, July 2022	4.1	3.9	3.7	5.1	4.3	2.9	0.8	-4.5	-6.7	-8.6	-10.0	-12.0	-12.2	-11.5	-10.0	-4.3
FDEC, February 2023	4.1	3.9	3.7	5.1	4.3	2.9	0.8	-4.5	-6.7	-8.6	-10.0	-11.6	-11.9	-11.4	-10.3	-5.6

QUARTERLY FORECAST TABLES

	<u>2022-2</u>	<u>2022-3</u>	<u>2022-4</u>	<u>2023-1</u>	<u>2023-2</u>	<u>2023-3</u>	<u>2023-4</u>	<u>2024-1</u>	<u>2024-2</u>	<u>2024-3</u>	<u>2024-4</u>	<u>2025-1</u>	<u>2025-2</u>	<u>2025-3</u>	<u>2025-4</u>	<u>2026-1</u>
Population																
FDEC, July 2022	22,292.3	22,373.2	22,452.0	22,529.7	22,606.8	22,683.7	22,760.2	22,836.2	22,911.3	22,985.5	23,058.9	23,131.7	23,204.0	23,275.7	23,346.8	23,417.2
FDEC, February 2023	22,319.1	22,404.9	22,488.4	22,568.4	22,646.7	22,724.3	22,801.6	22,878.5	22,954.9	23,030.9	23,106.4	23,181.4	23,255.9	23,329.9	23,403.4	23,476.3
Population Growth Rate																
FDEC, July 2022	1.51	1.46	1.42	1.39	1.38	1.37	1.36	1.34	1.32	1.30	1.28	1.27	1.25	1.24	1.23	1.21
FDEC, February 2023	1.60	1.55	1.50	1.43	1.39	1.38	1.37	1.36	1.34	1.33	1.32	1.30	1.29	1.28	1.27	1.25
Net Change in Population																
FDEC, July 2022	83.6	80.9	78.8	77.6	77.1	76.9	76.5	75.9	75.1	74.2	73.4	72.8	72.2	71.7	71.1	70.4
FDEC, February 2023	88.2	85.8	83.5	80.0	78.2	77.7	77.3	76.9	76.4	76.0	75.5	75.0	74.5	74.0	73.5	72.9
Households																
FDEC, July 2022	8,841.3	8,875.6	8,909.1	8,942.2	8,975.0	9,007.8	9,040.4	9,072.9	9,105.1	9,137.0	9,168.9	9,200.8	9,232.9	9,265.2	9,297.5	9,329.8
FDEC, February 2023	8,856.8	8,892.4	8,926.6	8,959.5	8,991.8	9,023.7	9,055.5	9,087.4	9,119.4	9,151.3	9,183.3	9,215.1	9,246.8	9,278.3	9,309.7	9,340.8
Household Growth Rate																
FDEC, July 2022	1.62	1.56	1.52	1.49	1.48	1.47	1.46	1.44	1.43	1.41	1.40	1.40	1.40	1.40	1.40	1.40
FDEC, February 2023	1.72	1.62	1.55	1.48	1.45	1.43	1.42	1.42	1.41	1.41	1.40	1.39	1.38	1.37	1.36	1.35
Net Change in Households																
FDEC, July 2022	35.3	34.3	33.5	33.0	32.8	32.8	32.6	32.5	32.2	32.0	31.9	31.9	32.1	32.3	32.3	32.3
FDEC, February 2023	37.7	35.6	34.2	32.9	32.2	31.9	31.8	31.9	32.0	32.0	31.9	31.8	31.7	31.5	31.3	31.2
Household Size																
FDEC, July 2022	2.521	2.521	2.520	2.519	2.519	2.518	2.518	2.517	2.516	2.516	2.515	2.514	2.513	2.512	2.511	2.510
FDEC, February 2023	2.520	2.520	2.519	2.519	2.519	2.518	2.518	2.518	2.517	2.517	2.516	2.516	2.515	2.514	2.514	2.513
Household Size Growth Rate																
FDEC, July 2022	-0.10	-0.10	-0.10	-0.10	-0.10	-0.10	-0.10	-0.10	-0.10	-0.11	-0.12	-0.13	-0.14	-0.16	-0.17	-0.18
FDEC, February 2023	-0.12	-0.07	-0.05	-0.05	-0.05	-0.05	-0.05	-0.06	-0.07	-0.08	-0.08	-0.09	-0.09	-0.09	-0.09	-0.09
Net Migration																
FDEC, July 2022	86.1	82.1	79.4	79.1	78.5	78.3	78.1	78.0	77.4	76.8	76.3	75.9	75.7	75.4	75.1	74.7
FDEC, February 2023	90.9	88.8	85.8	82.3	80.5	80.1	79.8	79.6	79.4	79.1	78.8	78.6	78.3	78.1	77.9	77.7
Net Domestic Migration																
FDEC, July 2022	65.5	61.6	58.6	57.9	57.3	56.4	55.4	54.6	53.5	52.6	51.8	51.1	50.5	49.8	49.0	48.2
FDEC, February 2023	70.2	66.9	63.6	60.8	58.8	58.0	57.6	57.2	56.8	56.4	56.1	55.7	55.4	55.1	54.9	54.6
Net International Migration																
FDEC, July 2022	20.6	20.5	20.8	21.1	21.2	21.9	22.7	23.3	23.9	24.2	24.5	24.8	25.2	25.6	26.1	26.5
FDEC, February 2023	20.7	21.9	22.2	21.5	21.8	22.0	22.2	22.4	22.5	22.7	22.8	22.8	22.9	23.0	23.0	23.0
Births																
FDEC, July 2022	55.0	55.2	55.3	55.1	55.1	55.2	55.2	55.3	55.4	55.5	55.6	55.7	55.8	56.0	56.2	56.5
FDEC, February 2023	58.1	55.5	56.2	56.5	56.8	57.1	57.3	57.5	57.7	57.9	58.1	58.2	58.4	58.5	58.6	58.8
Deaths																
FDEC, July 2022	57.5	56.4	55.8	56.5	56.5	56.6	56.8	57.4	57.7	58.1	58.5	58.8	59.3	59.7	60.2	60.7
FDEC, February 2023	60.7	58.6	58.5	58.8	59.2	59.5	59.9	60.3	60.6	61.0	61.4	61.8	62.2	62.6	63.1	63.5
Net Natural Increase																
FDEC, July 2022	-2.5	-1.2	-0.5	-1.4	-1.4	-1.4	-1.6	-2.0	-2.3	-2.6	-2.8	-3.1	-3.4	-3.7	-4.0	-4.2
FDEC, February 2023	-2.7	-3.1	-2.3	-2.3	-2.3	-2.4	-2.6	-2.7	-2.9	-3.1	-3.3	-3.5	-3.8	-4.1	-4.4	-4.7

QUARTERLY FORECAST TABLES

	<u>2026-2</u>	<u>2026-3</u>	<u>2026-4</u>	<u>2027-1</u>	<u>2027-2</u>	<u>2027-3</u>	<u>2027-4</u>	<u>2028-1</u>	<u>2028-2</u>	<u>2028-3</u>	<u>2028-4</u>	<u>2029-1</u>	<u>2029-2</u>	<u>2029-3</u>	<u>2029-4</u>	<u>2030-1</u>
Population																
FDEC, July 2022	23,486.9	23,555.9	23,624.0	23,691.5	23,758.2	23,824.2	23,889.6	23,954.2	24,018.1	24,081.3	24,143.8	24,205.6	24,266.7	24,327.1	24,386.8	24,445.7
FDEC, February 2023	23,548.6	23,620.5	23,691.7	23,762.5	23,832.6	23,902.1	23,971.0	24,039.1	24,106.6	24,173.2	24,239.1	24,304.3	24,368.7	24,432.4	24,495.3	24,557.5
Population Growth Rate																
FDEC, July 2022	1.20	1.18	1.16	1.15	1.13	1.12	1.10	1.09	1.07	1.06	1.04	1.03	1.01	1.00	0.99	0.97
FDEC, February 2023	1.24	1.23	1.21	1.20	1.19	1.17	1.16	1.14	1.13	1.11	1.10	1.08	1.06	1.05	1.03	1.02
Net Change in Population																
FDEC, July 2022	69.7	68.9	68.2	67.4	66.7	66.0	65.3	64.6	63.9	63.2	62.5	61.8	61.1	60.4	59.7	59.0
FDEC, February 2023	72.4	71.8	71.3	70.7	70.1	69.5	68.9	68.2	67.4	66.7	65.9	65.2	64.4	63.7	62.9	62.2
Households																
FDEC, July 2022	9,361.9	9,393.9	9,425.6	9,457.2	9,488.7	9,520.0	9,551.1	9,582.1	9,612.9	9,643.5	9,673.9	9,704.0	9,734.0	9,763.7	9,793.2	9,822.4
FDEC, February 2023	9,371.8	9,402.6	9,433.2	9,463.7	9,494.1	9,524.4	9,554.6	9,584.6	9,614.5	9,644.2	9,673.7	9,703.0	9,732.1	9,761.0	9,789.8	9,818.4
Household Growth Rate																
FDEC, July 2022	1.39	1.37	1.36	1.35	1.34	1.33	1.31	1.30	1.29	1.28	1.27	1.25	1.24	1.23	1.21	1.20
FDEC, February 2023	1.33	1.32	1.31	1.30	1.29	1.28	1.27	1.26	1.25	1.24	1.23	1.22	1.21	1.19	1.18	1.17
Net Change in Households																
FDEC, July 2022	32.1	32.0	31.8	31.6	31.4	31.3	31.1	31.0	30.8	30.6	30.4	30.2	29.9	29.7	29.5	29.2
FDEC, February 2023	31.0	30.8	30.6	30.5	30.4	30.3	30.2	30.0	29.9	29.7	29.5	29.3	29.1	28.9	28.8	28.6
Household Size																
FDEC, July 2022	2.509	2.508	2.506	2.505	2.504	2.503	2.501	2.500	2.499	2.497	2.496	2.494	2.493	2.492	2.490	2.489
FDEC, February 2023	2.513	2.512	2.512	2.511	2.510	2.510	2.509	2.508	2.507	2.507	2.506	2.505	2.504	2.503	2.502	2.501
Household Size Growth Rate																
FDEC, July 2022	-0.19	-0.19	-0.19	-0.20	-0.20	-0.21	-0.21	-0.21	-0.22	-0.22	-0.22	-0.22	-0.22	-0.22	-0.23	-0.23
FDEC, February 2023	-0.09	-0.09	-0.10	-0.10	-0.10	-0.11	-0.11	-0.12	-0.12	-0.13	-0.13	-0.14	-0.14	-0.14	-0.15	-0.15
Net Migration																
FDEC, July 2022	74.2	73.7	73.2	72.7	72.3	71.9	71.5	71.1	70.7	70.3	69.9	69.5	69.2	68.8	68.4	68.1
FDEC, February 2023	77.4	77.2	77.0	76.7	76.5	76.2	75.8	75.5	75.0	74.6	74.2	73.7	73.3	72.9	72.5	72.1
Net Domestic Migration																
FDEC, July 2022	47.3	46.5	45.7	44.9	44.1	43.3	42.6	41.9	41.2	40.6	40.1	39.5	38.9	38.4	37.9	37.4
FDEC, February 2023	54.4	54.1	53.9	53.6	53.3	53.0	52.7	52.3	51.9	51.4	51.0	50.6	50.1	49.7	49.3	48.9
Net International Migration																
FDEC, July 2022	26.8	27.2	27.5	27.9	28.2	28.6	28.9	29.2	29.5	29.7	29.9	30.1	30.3	30.4	30.5	30.6
FDEC, February 2023	23.1	23.1	23.1	23.1	23.1	23.1	23.1	23.2	23.2	23.2	23.2	23.2	23.2	23.2	23.2	23.2
Births																
FDEC, July 2022	56.7	57.0	57.2	57.5	57.7	57.9	58.1	58.3	58.5	58.7	58.8	59.0	59.2	59.3	59.5	59.6
FDEC, February 2023	58.9	59.0	59.1	59.3	59.4	59.5	59.6	59.7	59.8	59.9	60.0	60.1	60.2	60.3	60.4	60.5
Deaths																
FDEC, July 2022	61.2	61.7	62.2	62.8	63.3	63.8	64.3	64.8	65.3	65.8	66.3	66.8	67.2	67.7	68.2	68.7
FDEC, February 2023	63.9	64.4	64.8	65.3	65.7	66.1	66.6	67.0	67.4	67.9	68.3	68.7	69.1	69.5	70.0	70.4
Net Natural Increase																
FDEC, July 2022	-4.5	-4.7	-5.0	-5.3	-5.6	-5.9	-6.2	-6.5	-6.8	-7.1	-7.4	-7.8	-8.1	-8.4	-8.7	-9.1
FDEC, February 2023	-5.1	-5.4	-5.7	-6.0	-6.3	-6.6	-7.0	-7.3	-7.6	-7.9	-8.3	-8.6	-8.9	-9.2	-9.5	-9.9

QUARTERLY FORECAST TABLES

	<u>2030-2</u>	<u>2030-3</u>	<u>2030-4</u>	<u>2031-1</u>	<u>2031-2</u>	<u>2031-3</u>	<u>2031-4</u>	<u>2032-1</u>	<u>2032-2</u>
Population									
FDEC, July 2022	24,504.0	24,561.6	24,618.6	24,674.8	24,730.5	24,785.5	24,839.9	24,893.7	24,946.8
FDEC, February 2023	24,619.0	24,679.8	24,739.8	24,799.2	24,857.8	24,915.7	24,972.8	25,029.1	25,084.6
Population Growth Rate									
FDEC, July 2022	0.96	0.94	0.93	0.92	0.91	0.89	0.88	0.87	0.86
FDEC, February 2023	1.01	0.99	0.98	0.96	0.95	0.93	0.92	0.91	0.89
Net Change in Population									
FDEC, July 2022	58.3	57.6	56.9	56.3	55.6	55.0	54.4	53.8	53.2
FDEC, February 2023	61.5	60.8	60.1	59.3	58.6	57.9	57.1	56.3	55.5
Households									
FDEC, July 2022	9,851.4	9,880.1	9,908.7	9,937.0	9,965.1	9,993.1	10,020.8	10,048.3	10,075.6
FDEC, February 2023	9,846.8	9,875.0	9,903.1	9,931.1	9,958.9	9,986.5	10,014.0	10,041.3	10,068.4
Household Growth Rate									
FDEC, July 2022	1.19	1.17	1.16	1.15	1.14	1.13	1.11	1.10	1.09
FDEC, February 2023	1.16	1.15	1.14	1.13	1.12	1.11	1.10	1.10	1.08
Net Change in Households									
FDEC, July 2022	29.0	28.8	28.5	28.3	28.1	27.9	27.7	27.5	27.3
FDEC, February 2023	28.4	28.3	28.1	27.9	27.8	27.6	27.5	27.3	27.1
Household Size									
FDEC, July 2022	2.487	2.486	2.485	2.483	2.482	2.480	2.479	2.477	2.476
FDEC, February 2023	2.500	2.499	2.498	2.497	2.496	2.495	2.494	2.493	2.491
Household Size Growth Rate									
FDEC, July 2022	-0.23	-0.23	-0.23	-0.23	-0.23	-0.23	-0.23	-0.23	-0.23
FDEC, February 2023	-0.16	-0.16	-0.16	-0.17	-0.17	-0.18	-0.18	-0.19	-0.19
Net Migration									
FDEC, July 2022	67.7	67.4	67.1	66.8	66.5	66.3	66.1	65.8	65.6
FDEC, February 2023	71.7	71.4	71.0	70.7	70.3	69.9	69.5	69.1	68.7
Net Domestic Migration									
FDEC, July 2022	37.0	36.5	36.2	35.8	35.4	35.2	34.9	34.7	34.4
FDEC, February 2023	48.5	48.2	47.8	47.5	47.1	46.8	46.4	45.9	45.5
Net International Migration									
FDEC, July 2022	30.8	30.8	30.9	31.0	31.1	31.1	31.2	31.1	31.1
FDEC, February 2023	23.2	23.2	23.2	23.2	23.2	23.2	23.2	23.2	23.2
Births									
FDEC, July 2022	59.7	59.9	60.0	60.1	60.2	60.3	60.4	60.4	60.5
FDEC, February 2023	60.6	60.7	60.8	60.9	61.0	61.0	61.1	61.2	61.3
Deaths									
FDEC, July 2022	69.2	69.6	70.1	70.6	71.1	71.5	72.0	72.5	72.9
FDEC, February 2023	70.8	71.3	71.7	72.2	72.6	73.1	73.6	74.0	74.5
Net Natural Increase									
FDEC, July 2022	-9.4	-9.8	-10.1	-10.5	-10.9	-11.3	-11.7	-12.1	-12.4
FDEC, February 2023	-10.2	-10.6	-11.0	-11.3	-11.7	-12.1	-12.4	-12.8	-13.2

FISCAL YEAR
FORECAST TABLES

	<u>2000-01</u>	<u>2001-02</u>	<u>2002-03</u>	<u>2003-04</u>	<u>2004-05</u>	<u>2005-06</u>	<u>2006-07</u>	<u>2007-08</u>	<u>2008-09</u>	<u>2009-10</u>	<u>2010-11</u>	<u>2011-12</u>	<u>2012-13</u>	<u>2013-14</u>	<u>2014-15</u>
Population															
FDEC, July 2022	16,228.0	16,551.2	16,892.0	17,273.8	17,677.3	18,062.2	18,378.2	18,578.9	18,671.2	18,770.1	18,911.2	19,087.3	19,285.8	19,520.8	19,803.7
FDEC, February 2023	16,228.0	16,551.2	16,892.0	17,273.8	17,677.3	18,062.2	18,378.2	18,578.9	18,671.2	18,770.1	18,911.2	19,087.3	19,285.8	19,520.8	19,803.7
Growth Rate															
FDEC, July 2022	2.18	1.99	2.06	2.26	2.34	2.18	1.75	1.09	0.50	0.53	0.75	0.93	1.04	1.22	1.45
FDEC, February 2023	2.18	1.99	2.06	2.26	2.34	2.18	1.75	1.09	0.50	0.53	0.75	0.93	1.04	1.22	1.45
Net Change in Population															
FDEC, July 2022	346.4	323.2	340.9	381.8	403.5	384.9	316.0	200.7	92.3	98.9	141.1	176.1	198.5	234.9	283.0
FDEC, February 2023	346.4	323.2	340.9	381.8	403.5	384.9	316.0	200.7	92.3	98.9	141.1	176.1	198.5	234.9	283.0
Households															
FDEC, July 2022	6,431.9	6,554.7	6,685.7	6,833.2	6,990.5	7,142.1	7,266.1	7,341.9	7,374.2	7,410.6	7,463.7	7,534.8	7,615.4	7,710.9	7,826.2
FDEC, February 2023	6,431.9	6,554.7	6,685.7	6,833.2	6,990.5	7,142.1	7,266.1	7,341.9	7,374.2	7,410.6	7,463.7	7,534.8	7,615.4	7,710.9	7,826.2
Growth Rate															
FDEC, July 2022	2.14	1.91	2.00	2.21	2.30	2.17	1.74	1.04	0.44	0.49	0.72	0.95	1.07	1.25	1.50
FDEC, February 2023	2.14	1.91	2.00	2.21	2.30	2.17	1.74	1.04	0.44	0.49	0.72	0.95	1.07	1.25	1.50
Net Change in Households															
FDEC, July 2022	134.6	122.9	131.0	147.5	157.3	151.7	124.0	75.7	32.3	36.4	53.1	71.1	80.5	95.5	115.3
FDEC, February 2023	134.6	122.9	131.0	147.5	157.3	151.7	124.0	75.7	32.3	36.4	53.1	71.1	80.5	95.5	115.3
Household Size															
FDEC, July 2022	2.523	2.525	2.527	2.528	2.529	2.529	2.529	2.531	2.532	2.533	2.534	2.533	2.532	2.532	2.530
FDEC, February 2023	2.523	2.525	2.527	2.528	2.529	2.529	2.529	2.531	2.532	2.533	2.534	2.533	2.532	2.532	2.530
Growth Rate															
FDEC, July 2022	0.04	0.08	0.06	0.05	0.03	0.01	0.01	0.05	0.06	0.04	0.04	-0.02	-0.03	-0.04	-0.05
FDEC, February 2023	0.04	0.08	0.06	0.05	0.03	0.01	0.01	0.05	0.06	0.04	0.04	-0.02	-0.03	-0.04	-0.05
Net Migration															
FDEC, July 2022	306.0	285.5	300.4	335.0	351.1	322.9	245.0	133.7	36.1	52.6	100.3	137.3	162.5	199.9	248.9
FDEC, February 2023	306.0	285.5	300.4	335.0	351.1	322.9	245.0	133.7	36.1	52.6	100.3	137.3	162.5	199.9	248.9
Net Domestic Migration															
FDEC, July 2022	181.9	177.0	199.2	236.3	262.1	226.3	135.9	57.6	8.1	-31.5	22.7	55.1	77.5	98.9	136.4
FDEC, February 2023	181.9	177.0	199.2	236.3	262.1	226.3	135.9	57.6	8.1	-31.5	22.7	55.1	77.5	98.9	136.4
Net International Migration															
FDEC, July 2022	124.2	108.4	101.2	98.7	88.9	96.6	109.1	76.1	28.0	84.2	77.6	82.2	85.0	101.0	112.5
FDEC, February 2023	124.2	108.4	101.2	98.7	88.9	96.6	109.1	76.1	28.0	84.2	77.7	82.2	85.0	101.0	112.5
Births															
FDEC, July 2022	205.4	205.4	208.5	215.0	221.8	232.1	239.3	236.0	226.4	217.4	213.5	212.9	213.8	217.4	222.3
FDEC, February 2023	205.4	205.4	208.5	215.0	221.8	232.1	239.3	236.0	226.4	217.4	213.5	212.9	213.8	217.4	222.3
Deaths															
FDEC, July 2022	165.0	167.7	168.1	168.3	169.4	170.1	168.3	169.0	170.2	171.1	172.7	174.1	177.8	182.4	188.2
FDEC, February 2023	165.0	167.7	168.1	168.3	169.4	170.1	168.3	169.0	170.2	171.1	172.7	174.1	177.8	182.4	188.2
Net Natural Increase															
FDEC, July 2022	40.3	37.7	40.4	46.7	52.4	62.0	71.0	67.0	56.2	46.3	40.8	38.8	36.0	35.0	34.1
FDEC, February 2023	40.3	37.7	40.4	46.7	52.4	62.0	71.0	67.0	56.2	46.3	40.8	38.8	36.0	35.0	34.1

FISCAL YEAR
FORECAST TABLES

	<u>2015-16</u>	<u>2016-17</u>	<u>2017-18</u>	<u>2018-19</u>	<u>2019-20</u>	<u>2020-21</u>	<u>2021-22</u>	<u>2022-23</u>	<u>2023-24</u>	<u>2024-25</u>	<u>2025-26</u>	<u>2026-27</u>	<u>2027-28</u>	<u>2028-29</u>	<u>2029-30</u>	<u>2030-31</u>	<u>2031-32</u>
Population																	
FDEC, July 2022	20,120.2	20,444.0	20,772.1	21,105.8	21,450.3	21,808.4	22,164.3	22,490.4	22,797.8	23,095.0	23,381.7	23,657.4	23,921.5	24,174.3	24,415.9	24,646.4	24,866.5
FDEC, February 2023	20,120.2	20,444.0	20,772.1	21,105.8	21,450.1	21,807.7	22,182.8	22,527.1	22,839.8	23,143.7	23,439.5	23,726.8	24,004.7	24,271.3	24,526.1	24,769.1	25,000.5
Growth Rate																	
FDEC, July 2022	1.60	1.61	1.60	1.61	1.63	1.67	1.63	1.47	1.37	1.30	1.24	1.18	1.12	1.06	1.00	0.94	0.89
FDEC, February 2023	1.60	1.61	1.60	1.61	1.63	1.67	1.72	1.55	1.39	1.33	1.28	1.23	1.17	1.11	1.05	0.99	0.93
Net Change in Population																	
FDEC, July 2022	316.5	323.8	328.1	333.7	344.5	358.1	355.9	326.1	307.4	297.2	286.6	275.7	264.1	252.8	241.6	230.5	220.1
FDEC, February 2023	316.5	323.8	328.1	333.7	344.3	357.5	375.1	344.3	312.7	303.8	295.9	287.3	277.9	266.7	254.7	243.1	231.4
Households																	
FDEC, July 2022	7,955.1	8,087.1	8,219.9	8,356.0	8,494.2	8,639.1	8,787.3	8,925.5	9,056.5	9,184.9	9,313.6	9,441.4	9,566.5	9,688.8	9,807.6	9,922.7	10,034.4
FDEC, February 2023	7,955.1	8,087.1	8,219.9	8,356.0	8,494.1	8,638.6	8,798.2	8,942.6	9,071.5	9,199.1	9,325.2	9,448.4	9,569.5	9,688.2	9,804.0	9,917.0	10,027.5
Growth Rate																	
FDEC, July 2022	1.65	1.66	1.64	1.66	1.65	1.71	1.72	1.57	1.47	1.42	1.40	1.37	1.33	1.28	1.23	1.17	1.13
FDEC, February 2023	1.65	1.66	1.64	1.66	1.65	1.70	1.85	1.64	1.44	1.41	1.37	1.32	1.28	1.24	1.19	1.15	1.11
Net Change in Households																	
FDEC, July 2022	129.0	132.0	132.8	136.1	138.2	144.9	148.3	138.1	131.1	128.4	128.7	127.8	125.2	122.3	118.8	115.1	111.7
FDEC, February 2023	129.0	132.0	132.8	136.1	138.1	144.6	159.5	144.4	128.9	127.6	126.0	123.2	121.1	118.7	115.8	113.0	110.5
Household Size																	
FDEC, July 2022	2.529	2.528	2.527	2.526	2.525	2.524	2.522	2.520	2.517	2.514	2.510	2.506	2.501	2.495	2.489	2.484	2.478
FDEC, February 2023	2.529	2.528	2.527	2.526	2.525	2.524	2.521	2.519	2.518	2.516	2.514	2.511	2.508	2.505	2.502	2.498	2.493
Growth Rate																	
FDEC, July 2022	-0.05	-0.05	-0.04	-0.05	-0.02	-0.04	-0.08	-0.10	-0.10	-0.11	-0.16	-0.19	-0.21	-0.22	-0.22	-0.23	-0.23
FDEC, February 2023	-0.05	-0.05	-0.04	-0.05	-0.02	-0.03	-0.12	-0.09	-0.05	-0.08	-0.09	-0.09	-0.11	-0.13	-0.14	-0.16	-0.18
Net Migration																	
FDEC, July 2022	285.8	299.9	310.2	316.8	352.0	400.8	384.2	330.7	314.7	309.2	303.0	296.4	289.5	283.2	277.2	271.8	267.5
FDEC, February 2023	285.8	299.9	310.2	316.8	351.9	399.6	405.1	354.3	323.4	317.6	314.2	310.7	306.4	300.3	293.6	287.6	281.8
Net Domestic Migration																	
FDEC, July 2022	164.4	163.8	155.6	172.0	247.5	343.1	301.1	247.0	222.9	210.5	198.0	185.6	173.3	163.3	154.9	147.9	142.9
FDEC, February 2023	164.4	163.8	155.6	172.0	247.3	343.0	322.8	266.8	234.2	226.5	222.2	218.2	213.8	207.7	200.9	194.9	189.1
Net International Migration																	
FDEC, July 2022	121.5	136.1	154.7	144.8	104.6	57.7	83.0	83.6	91.9	98.6	105.0	110.7	116.1	119.9	122.3	123.9	124.6
FDEC, February 2023	121.5	136.1	154.7	144.8	104.6	56.6	82.3	87.5	89.2	91.2	92.1	92.4	92.6	92.7	92.7	92.7	92.7
Births																	
FDEC, July 2022	225.0	224.5	222.5	221.3	214.4	211.7	218.4	220.7	221.1	222.7	225.5	229.3	232.8	235.7	238.1	240.1	241.6
FDEC, February 2023	225.0	224.5	222.5	221.3	214.3	211.7	222.9	225.0	229.7	232.5	234.8	236.8	238.6	240.3	241.8	243.3	244.6
Deaths																	
FDEC, July 2022	194.4	200.5	204.7	204.3	221.9	254.4	246.6	225.2	228.4	234.7	241.8	250.0	258.1	266.1	273.8	281.4	289.0
FDEC, February 2023	194.4	200.5	204.7	204.3	221.9	253.8	252.9	235.0	240.3	246.3	253.1	260.2	267.1	273.9	280.7	287.8	295.1
Net Natural Increase																	
FDEC, July 2022	30.6	24.0	17.8	16.9	-7.5	-42.7	-28.2	-4.6	-7.3	-12.0	-16.3	-20.6	-25.4	-30.4	-35.7	-41.3	-47.4
FDEC, February 2023	30.6	24.0	17.8	16.9	-7.6	-42.0	-30.0	-10.0	-10.6	-13.8	-18.3	-23.4	-28.5	-33.7	-38.8	-44.5	-50.5

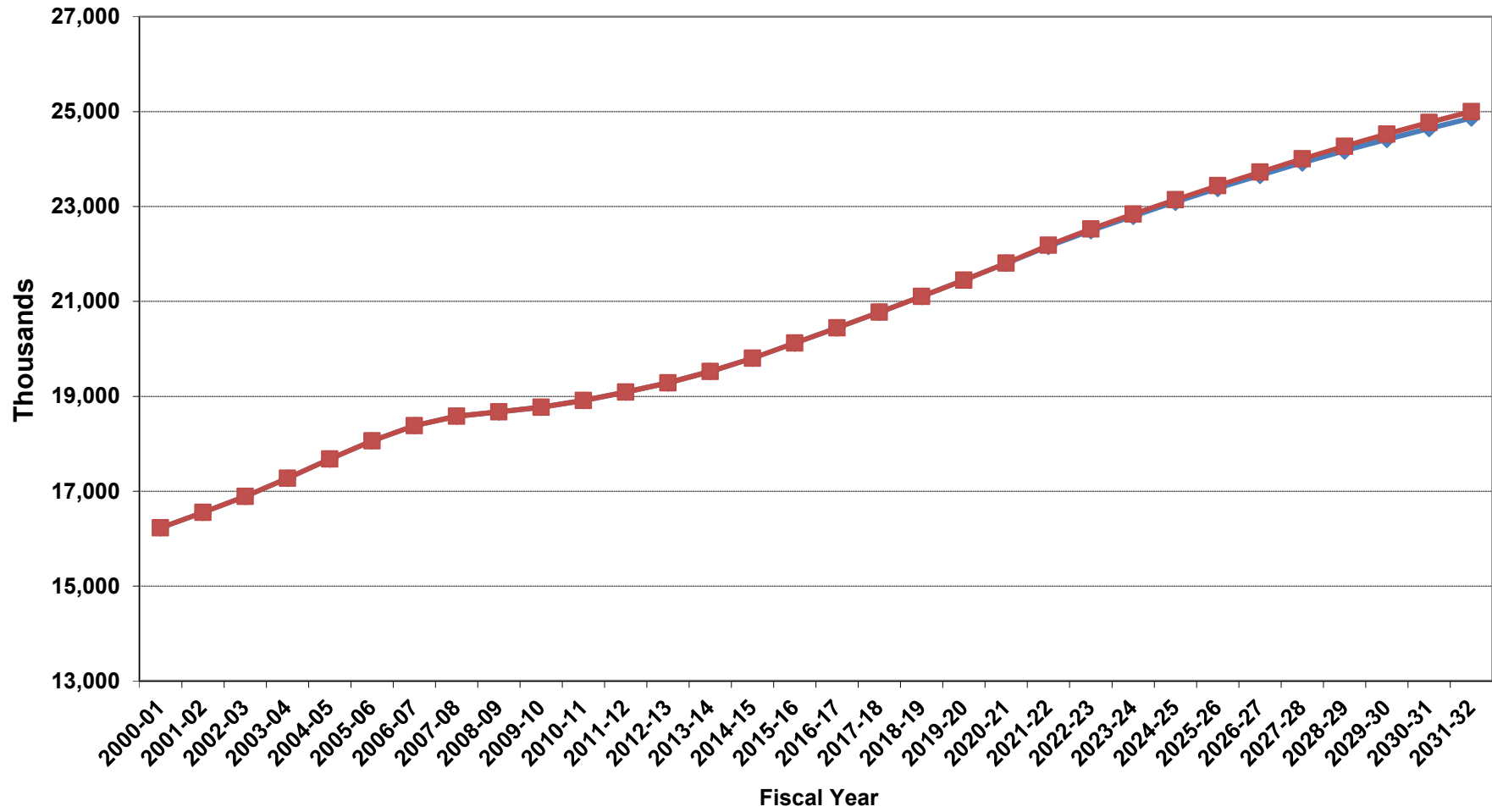
Florida Demographic Estimating Conference

Charts

Conference Packet

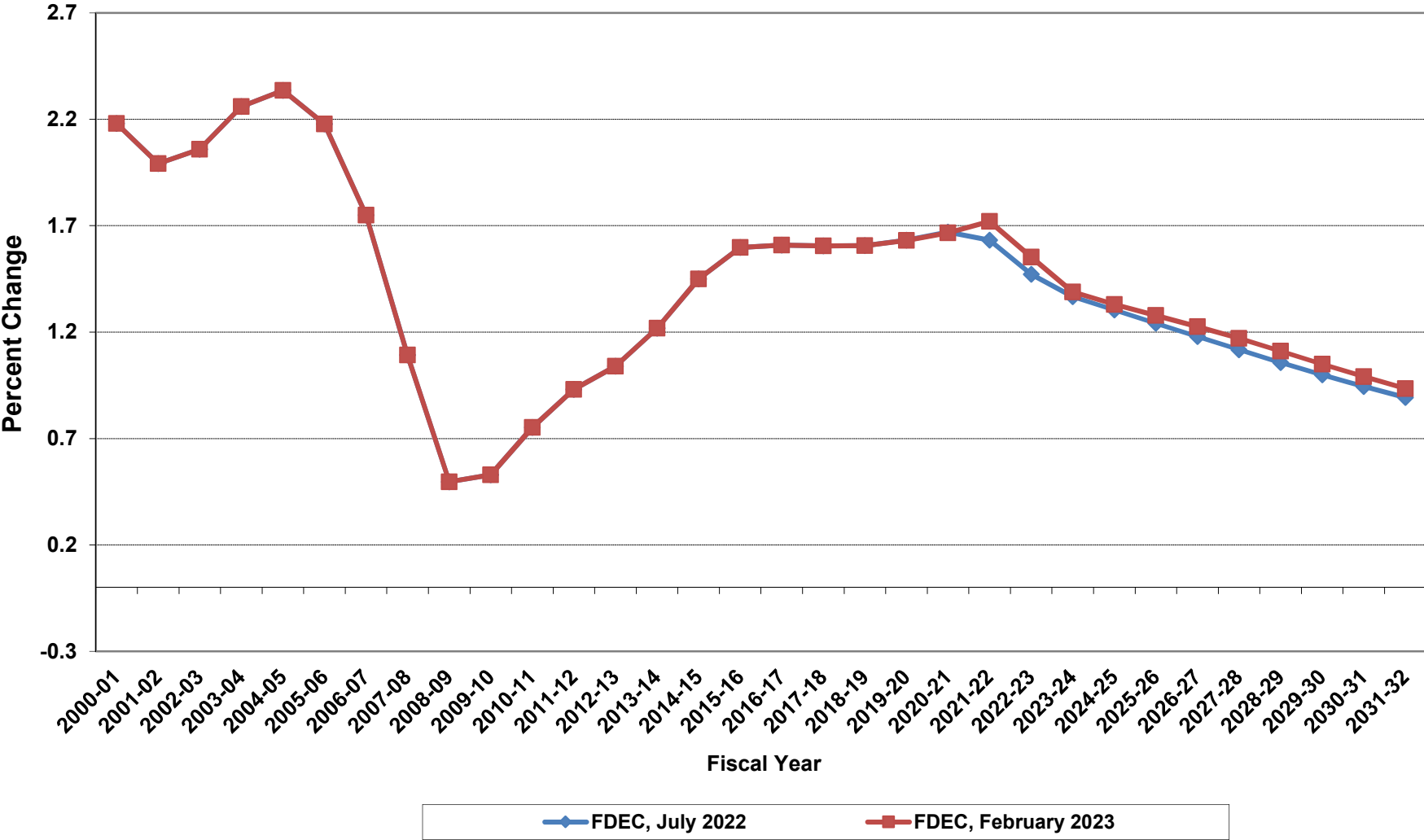
February 10, 2023

Florida Resident Population

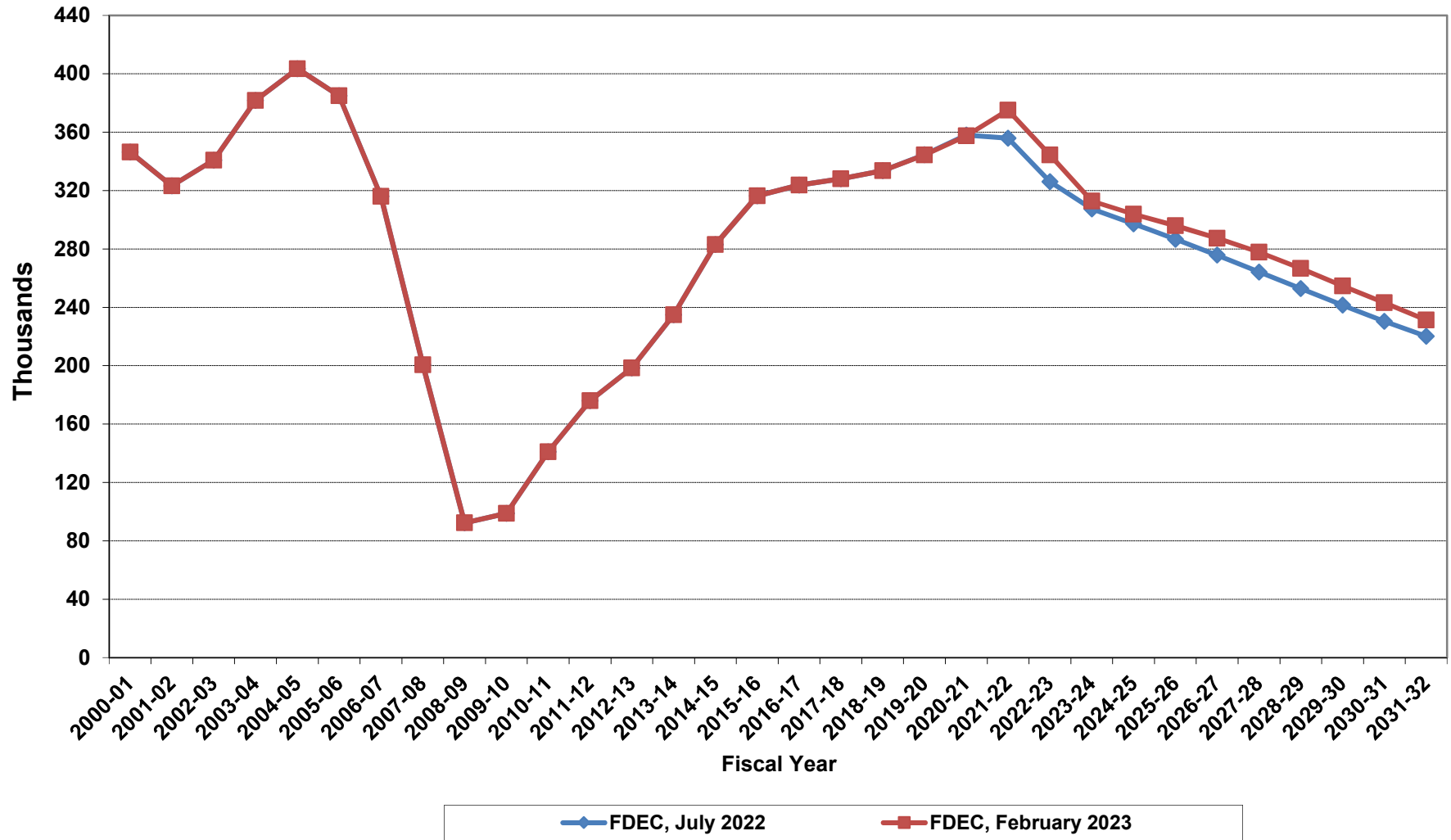


FDEC, July 2022 FDEC, February 2023

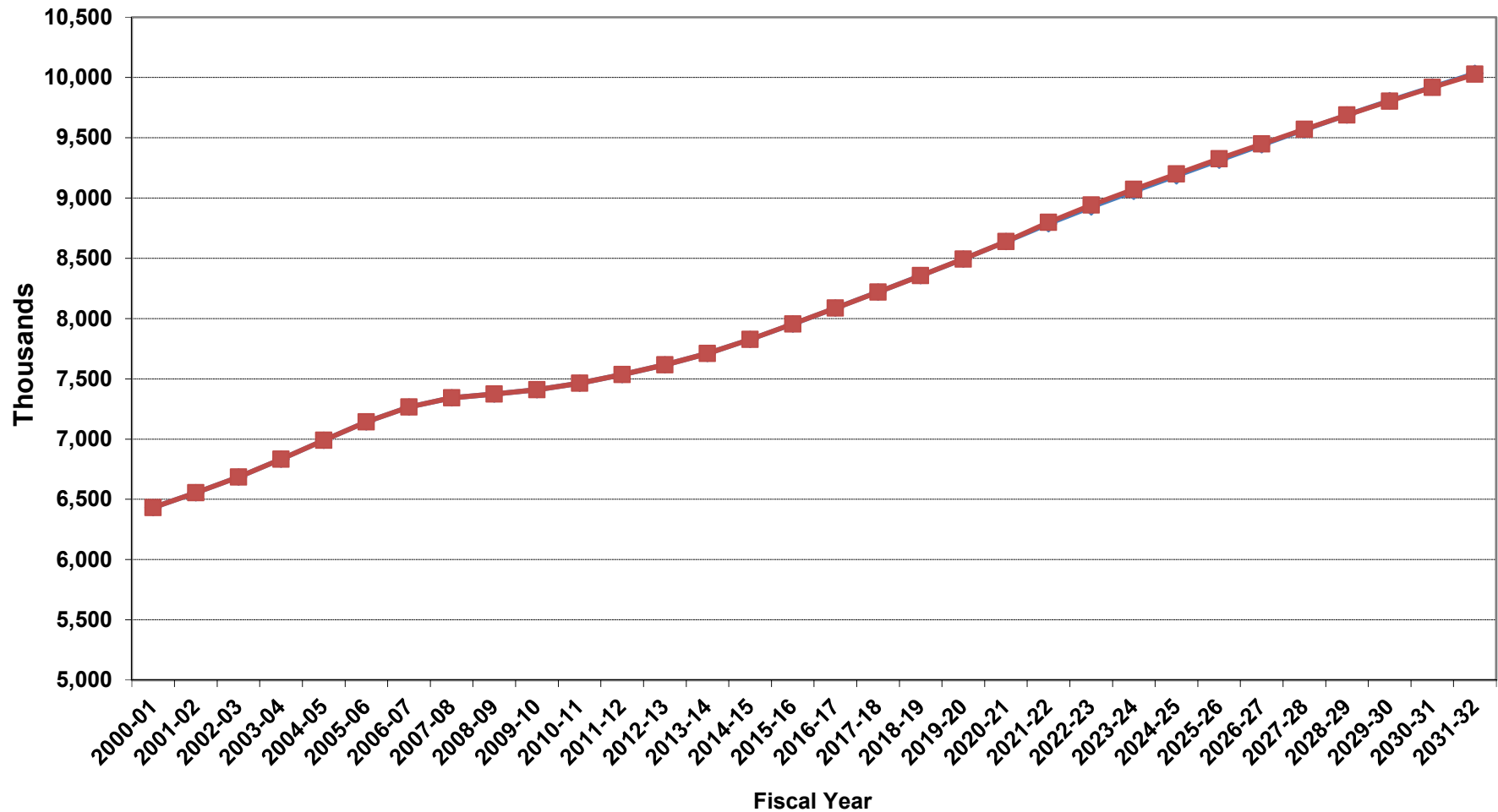
Growth In Florida Resident Population



Net Change In Florida Resident Population

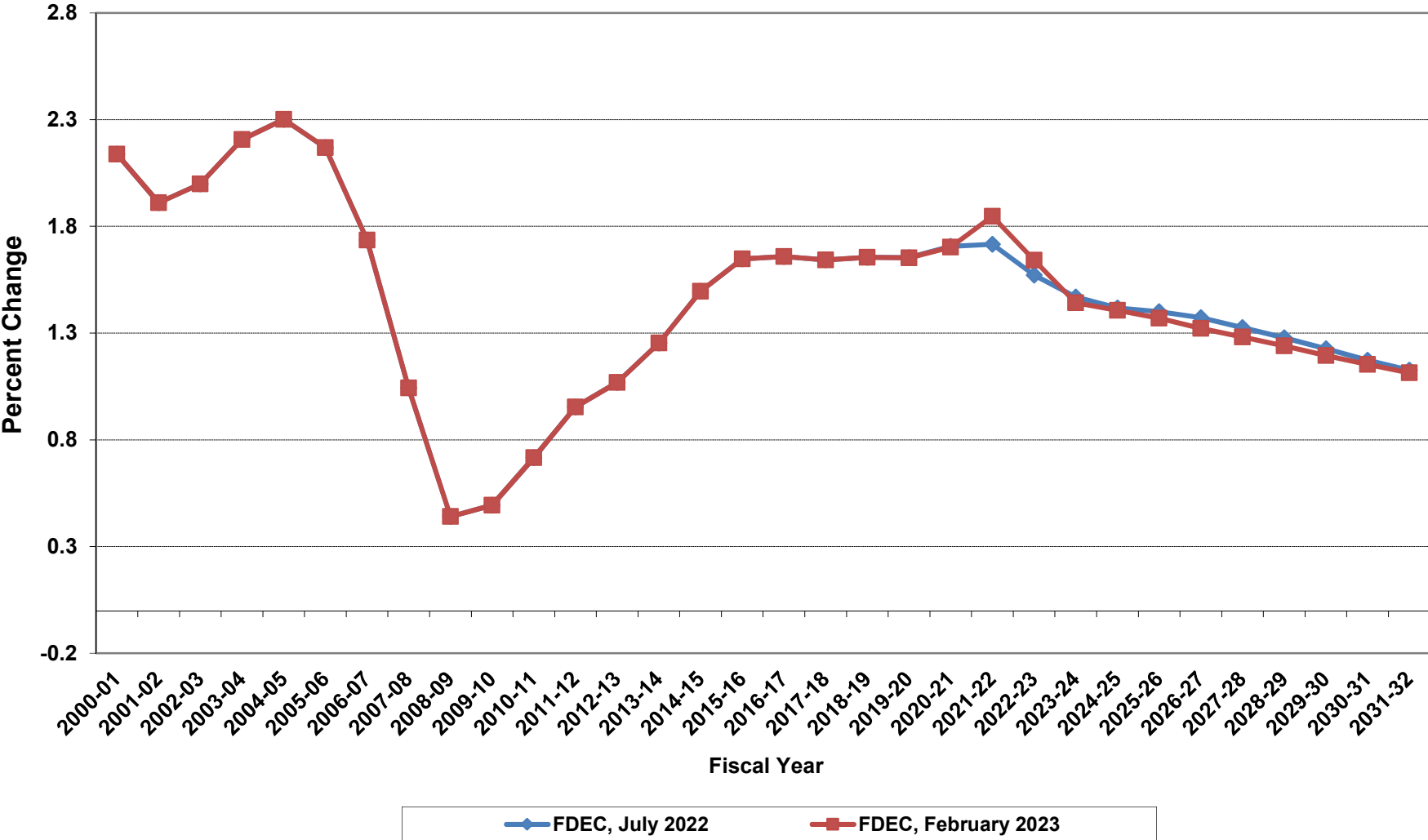


Florida Resident Households

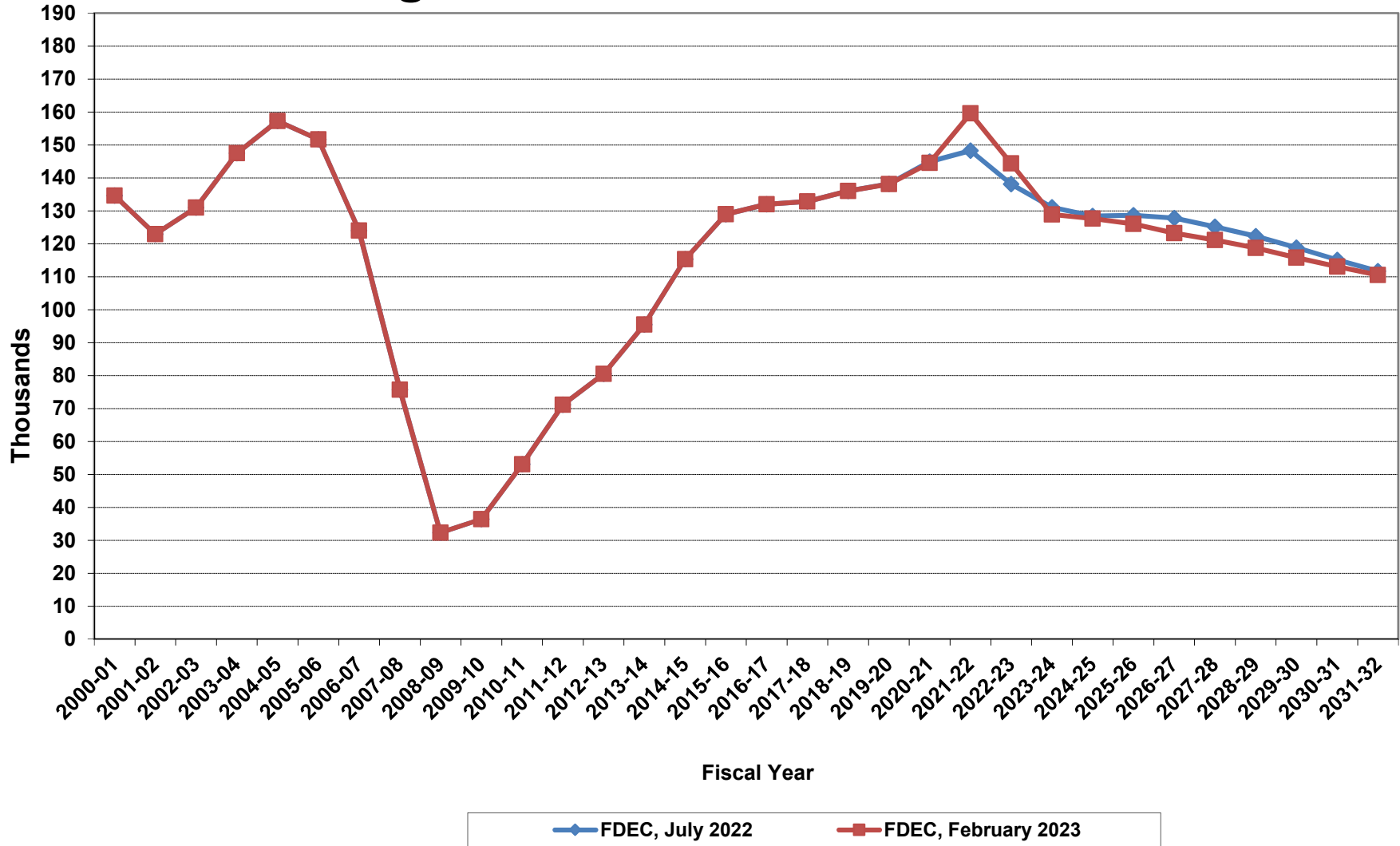


FDEC, July 2022 FDEC, February 2023

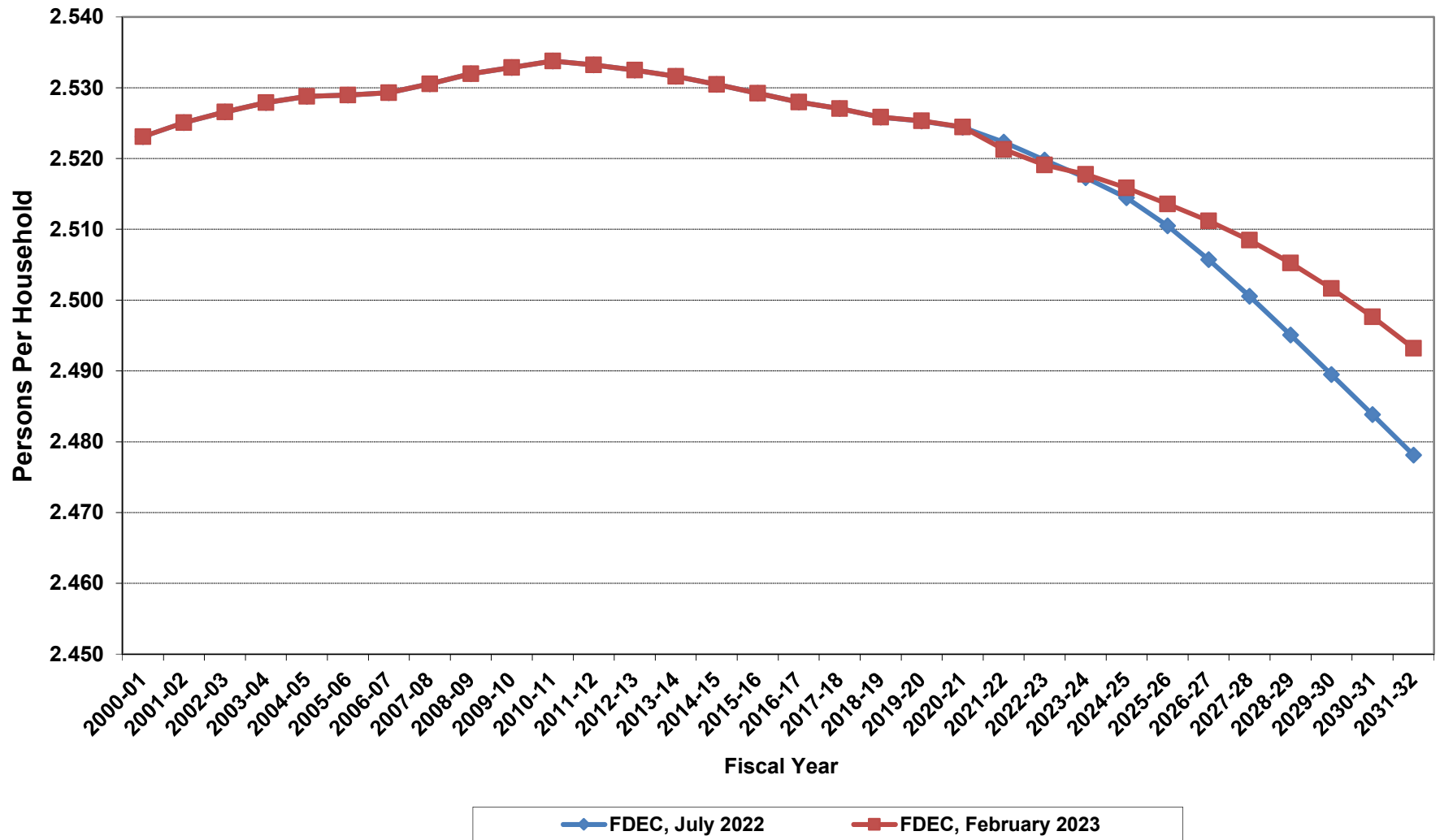
Growth In Florida Resident Households



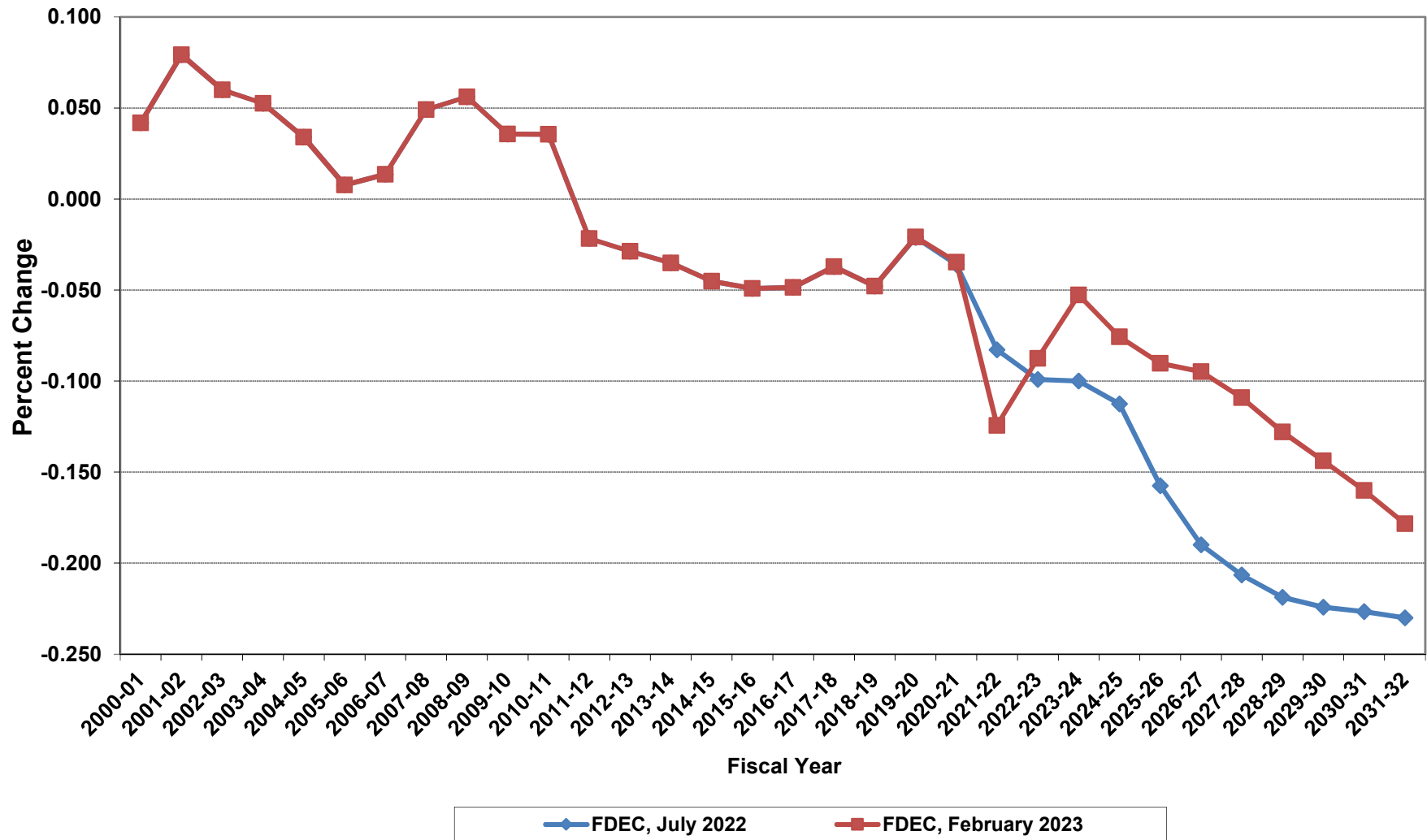
Net Change In Florida Resident Households



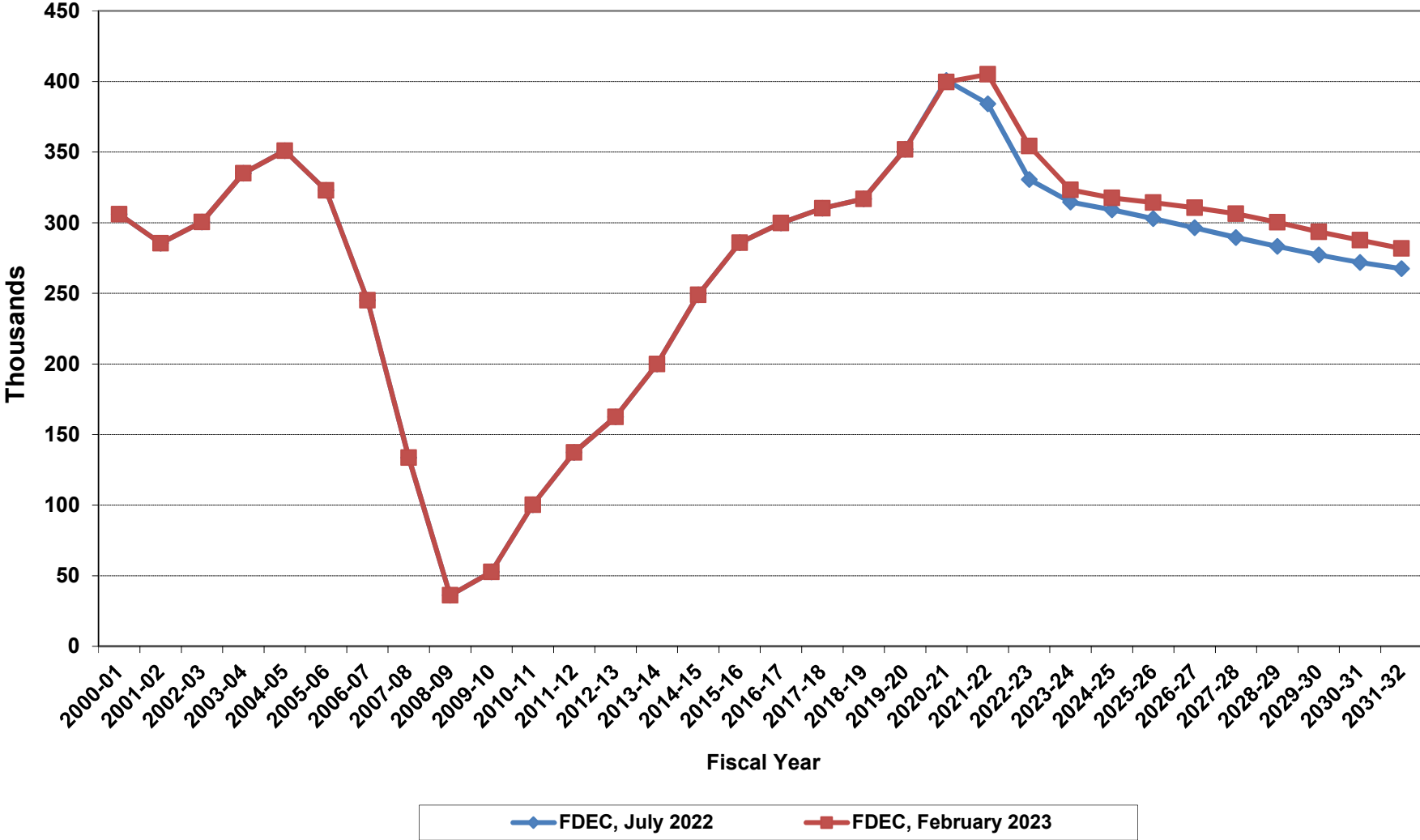
Average Florida Household Size



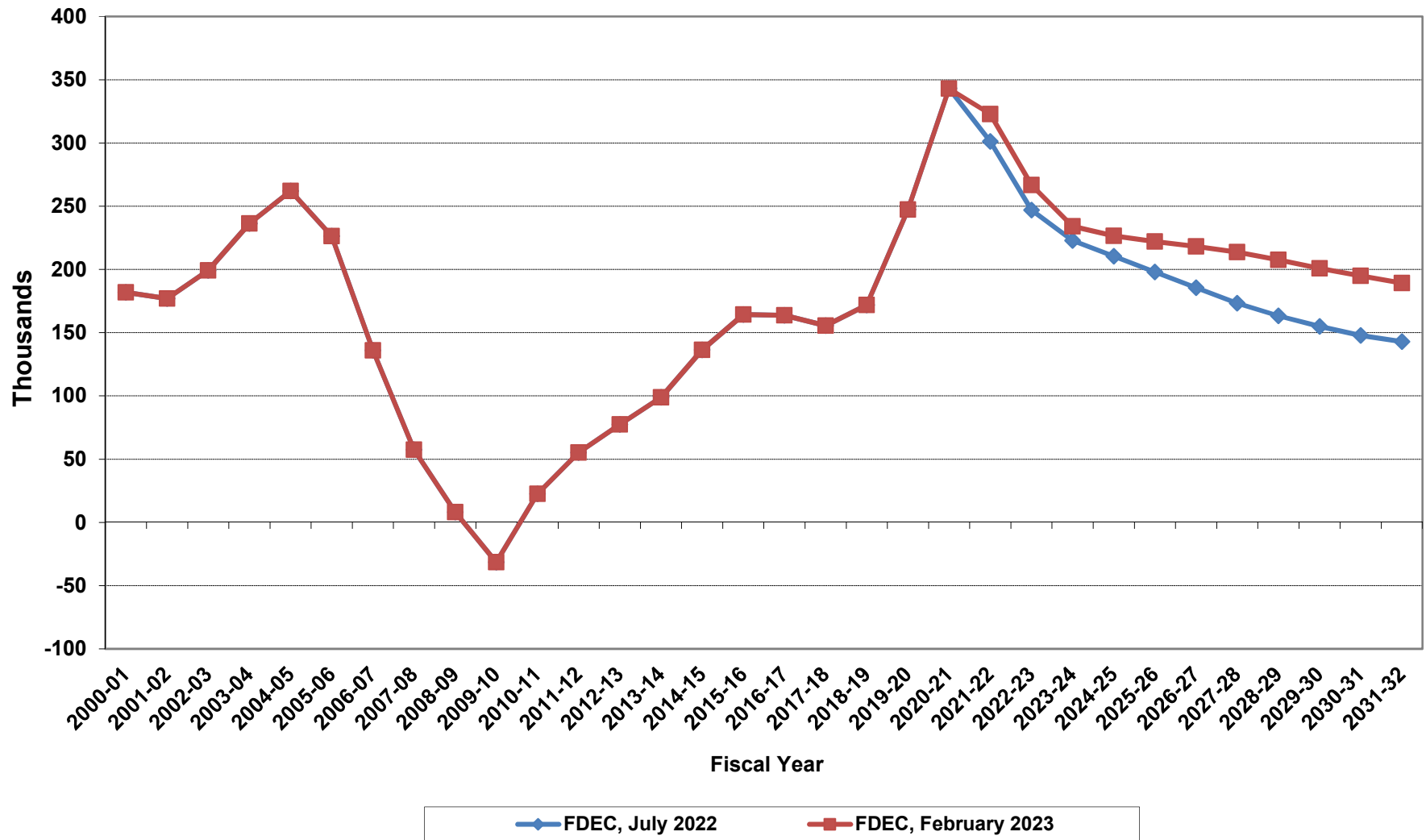
Growth In Average Florida Household Size



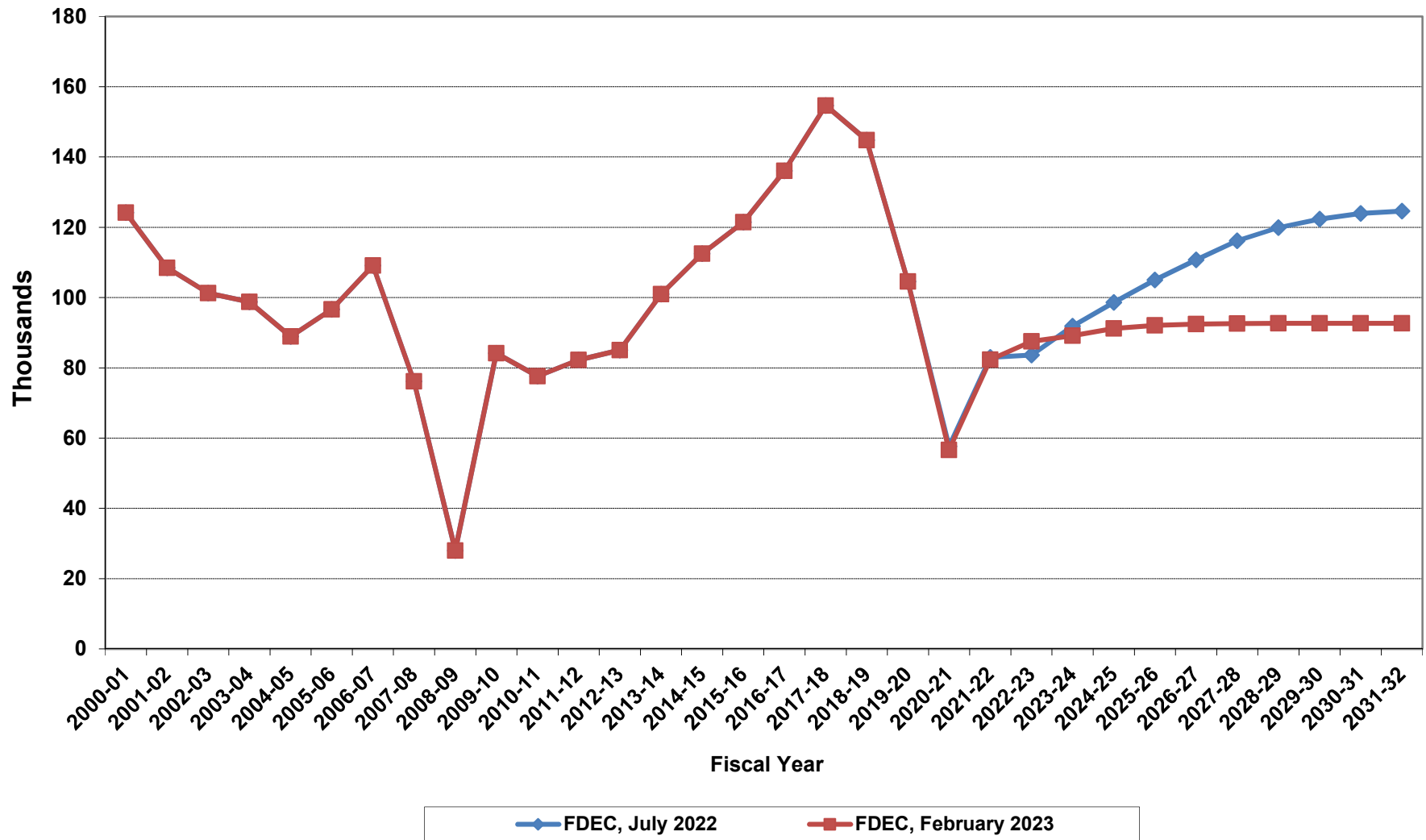
Florida Net Migration



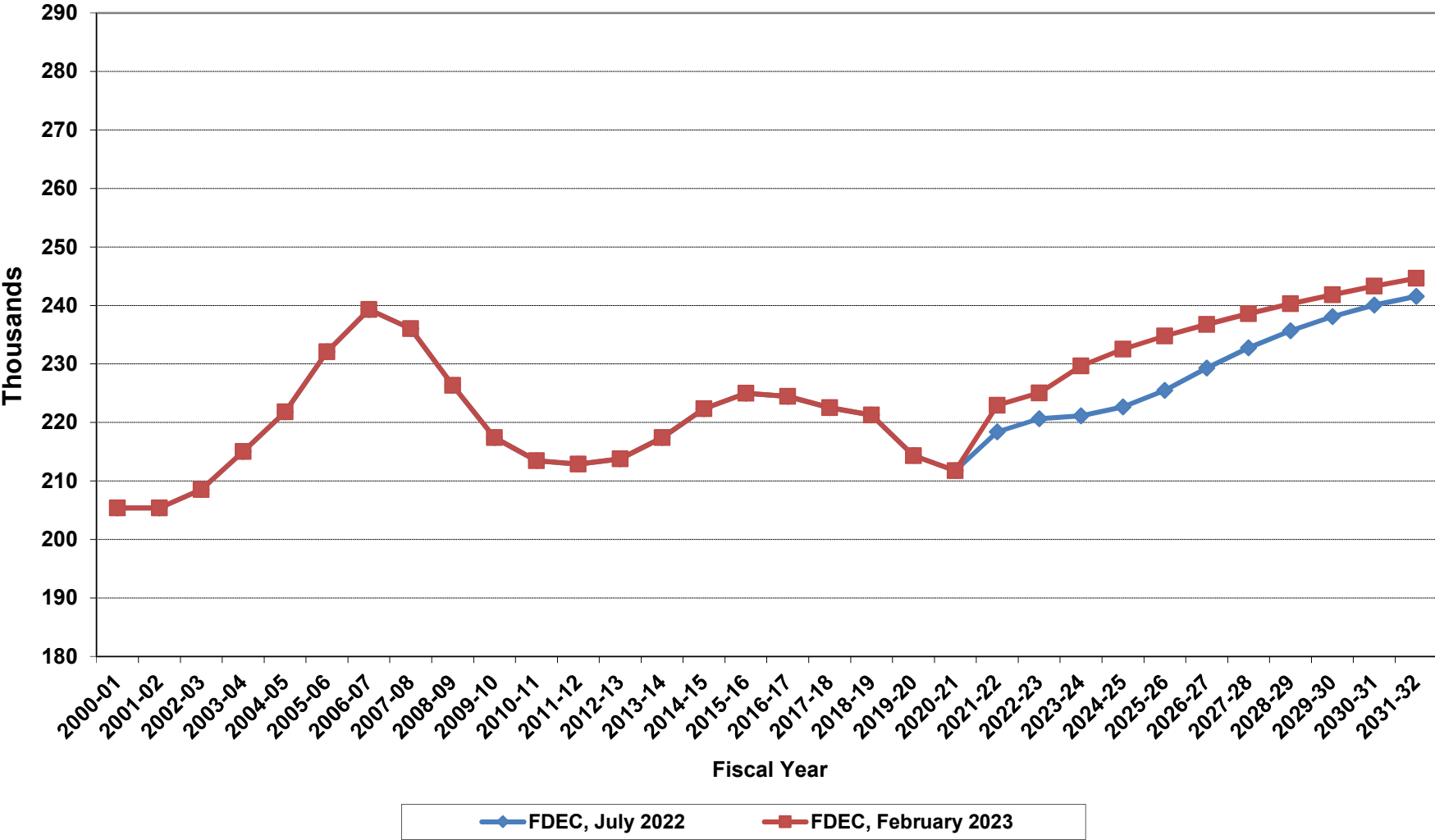
Florida Net Domestic Migration



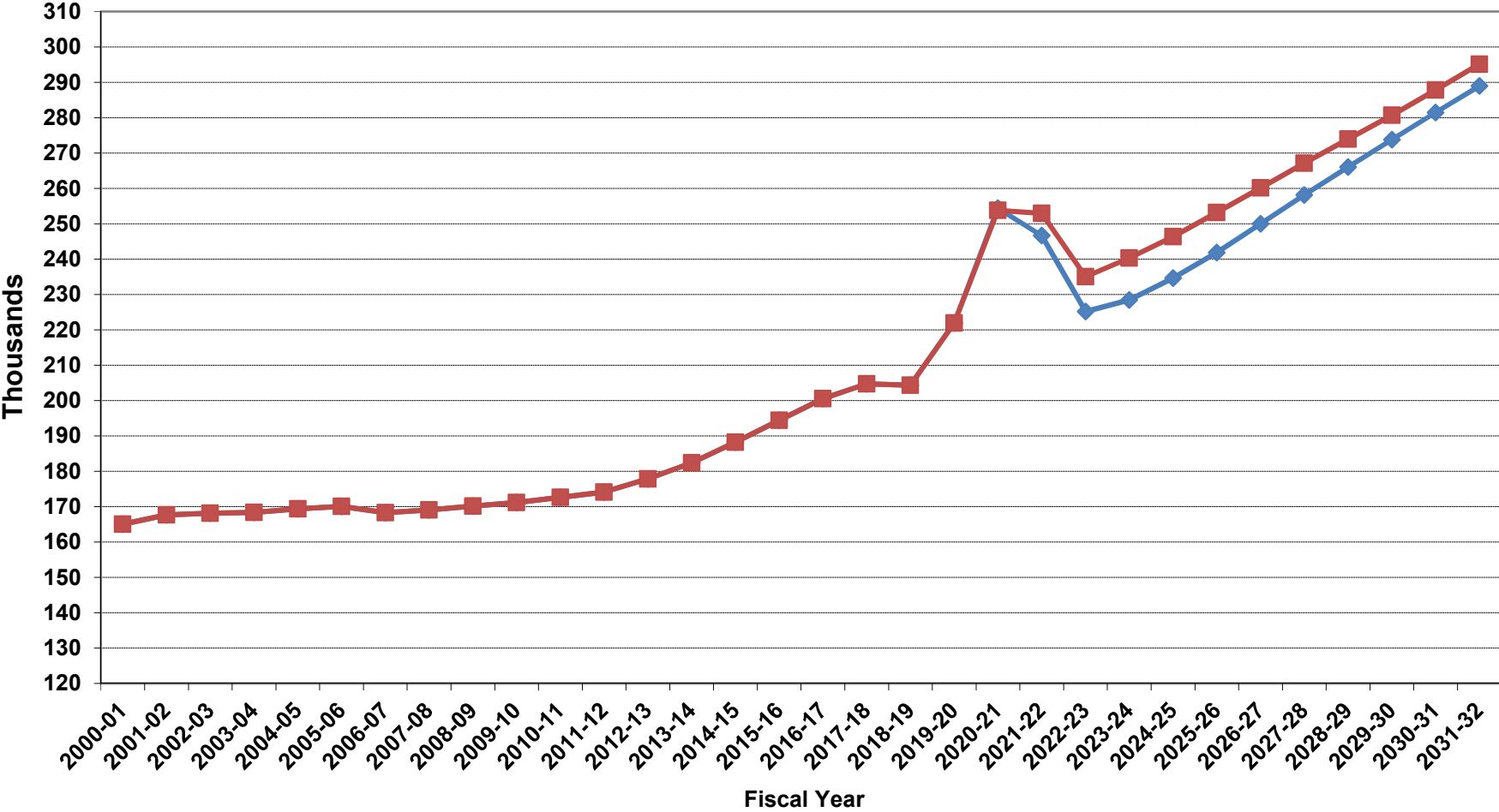
Florida Net International Migration



Florida Resident Live Births

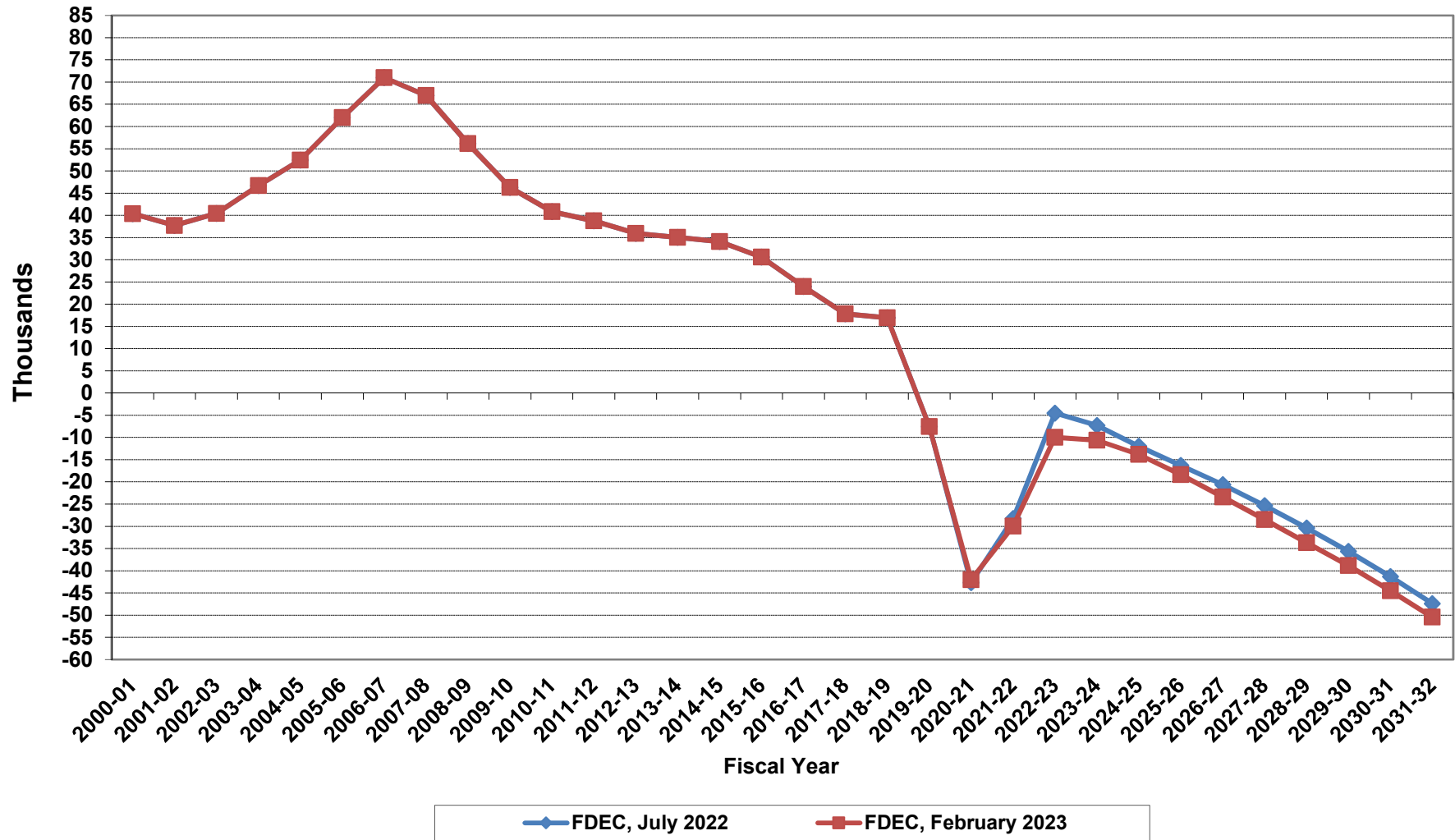


Florida Resident Deaths



FDEC, July 2022 FDEC, February 2023

Florida Net Natural Increase



Demographic Estimating Conference

AGENDA

Date
February 10, 2023

Time
1:30 pm

Place of Meeting
117 Knott

Agenda Item	Speaker
<ul style="list-style-type: none">● April 1, 2022 Population Estimates	BEBR
<ul style="list-style-type: none">● Comparison of 2022 Population Estimates<ul style="list-style-type: none">● BEBR and Census	BEBR
<ul style="list-style-type: none">● Differences in State Projections: July 2022 and December 2021<ul style="list-style-type: none">● BEBR	BEBR
<ul style="list-style-type: none">● Since last Conference<ul style="list-style-type: none">● Components of Change<ul style="list-style-type: none">◆ Births and Deaths● State Indicators● Electric Customers● Driver's Licenses● ACS Migration (In, Out, and Net)	BEBR and EDR
<ul style="list-style-type: none">● Discuss / Reach Consensus:<ul style="list-style-type: none">● Forecast (2023-2027)	

Estimates Challenges Summary 2022

Challenge Summary	Number								Percent of Total							
	2015	2016	2017	2018	2019	2020	2021	2022	2015	2016	2017	2018	2019	2020	2021	2022
Incorporated Areas																
Agreed	291	277	256	258	252	246	216	234	71%	67%	62%	63%	61%	60%	53%	57%
Did not respond	109	123	141	142	142	151	181	162	27%	30%	34%	34%	34%	37%	44%	39%
Challenged	11	11	15	12	18	15	14	15	3%	3%	4%	3%	4%	4%	3%	4%
Accepted	1	3	5	3	3	9	4	10	0%	1%	1%	1%	1%	2%	1%	2%
Rejected	10	8	10	9	15	6	10	5	2%	2%	2%	2%	4%	1%	2%	1%
Total	411	411	412	412	412	412	411	411	100%	100%	100%	100%	100%	100%	100%	100%
Unincorporated Areas																
Agreed	48	44	43	36	39	39	26	37	73%	67%	65%	55%	59%	59%	39%	56%
Did not respond	17	21	22	29	25	27	38	29	26%	32%	33%	44%	38%	41%	58%	44%
Challenged	1	1	1	1	2	0	2	0	2%	2%	2%	2%	3%	0%	3%	0%
Accepted	0	0	0	0	1	0	0	0	0%	0%	0%	0%	2%	0%	0%	0%
Rejected	1	1	1	1	1	0	2	0	2%	2%	2%	2%	2%	0%	3%	0%
Total	66	66	66	66	66	66	66	66	100%	100%	100%	100%	100%	100%	100%	100%
Total Areas																
Agreed	339	321	299	294	291	285	242	271	71%	67%	63%	62%	61%	60%	51%	57%
Did not respond	126	144	163	171	167	178	219	191	26%	30%	34%	36%	35%	37%	46%	40%
Challenged	12	12	16	13	20	15	16	15	3%	3%	3%	3%	4%	3%	3%	3%
Accepted	1	3	5	3	4	9	4	10	0%	1%	1%	1%	1%	2%	1%	2%
Rejected	11	9	11	10	16	6	12	5	2%	2%	2%	2%	3%	1%	3%	1%
Total	477	477	478	478	478	478	477	477	100%	100%	100%	100%	100%	100%	100%	100%

Estimates Challenges Summary 2022 by Place

		Estimate 2022			Challenge		Comments
County	Place	Original	Revised	Difference	No Change	Revised	
Clay	Penney Farms	832	832	0	1		Cited our 2020 estimate on a doc from EDR saying it was the official estimate. Accepted estimate after explanation.
Hardee	Bowling Green	2,438	2,438	0	1		Challenge was related to the 2020 Census count, not 2020-2022 growth. Accepted estimate after explanation, though disagreed with 2020 Census.
Manatee	Bradenton Beach	897	897	0	1		Cited our 2021 estimate, which was 3 persons higher. No other rationale or information. Accepted estimate after explanation of how it was derived.
Orange	Windermere	3,038	3,038	0	1		Cited certificates of occupancy over past year, but did not take demolitions into account. When that was done, the estimate was exactly the same as ours, so they accepted.
St. Johns	St. Augustine Beach	6,914	6,914	0	1		Challenged using certificates of occupancy, assuming no demolitions, 100% occupancy, and used higher (ACS) average household size. After explanation, they accepted.
Bay	Springfield	8,133	8,431	298		1	Increase based on certificates of occupancy and demolition data. Gulf Pwr/FP&L customer data does not appear to have captured annexations since 2020.
Bradford	Hampton	441	479	38		1	Increase based on count of housing units within an unreported annexation.
Lake	Howey-in-the-Hills	1,723	1,778	55		1	Increase based on certificates of occupancy and demolition data. Duke Power's change in customers appears incorrect, perhaps due to recent billing system change.
Miami-Dade	Palmetto Bay	24,499	25,041	542		1	New multi-family development built and occupied before 4/1/2022 not reflected in FP&L customer count, which was identical to 2021.
Okaloosa	Mary Esther	4,037	4,396	359		1	Increase based on certificates of occupancy for large multi-family redevelopment of shopping mall. Actually was consistent with electric customer change, but hadn't used EC method due to big (14%) increase since 2020 though nothing new was visible on satellite imagery. Was later able to find on street view imagery.
Orange	Oakland	3,931	5,396	1,465		1	Increase based on certificates of occupancy and demolition data. Duke Power's change in customers appears incorrect, perhaps due to missed annexation or recent billing system change.
Orange	Ocoee	48,426	49,221	795		1	Increase based on certificates of occupancy and demolition data. Duke Power's change in customers appears incorrect, perhaps due to missed annexation or recent billing system change.
Palm Beach	Westlake	2,875	2,981	106		1	Increase based on certificates of occupancy and demolition data in rapidly growing community.
Polk	Haines City	30,566	31,979	1,413		1	Increase based on certificates of occupancy and demolition data. Duke Power's change in customers appears incorrect, perhaps due to missed annexation or recent billing system change.
Volusia	Deltona	95,073	95,918	845		1	Increase based on certificates of occupancy and demolition data. Duke Power's negative change in customers appears incorrect, perhaps due to recent billing system change.
				5,916	5	10	

State Population Estimates Comparison, April 1, 2021 to April 1, 2022, BEBR vs. U.S. Census Bureau

The Bureau of Economic and Business Research (BEBR) at the University of Florida and the U.S. Census Bureau (USCB) produce population estimates for Florida each year. While the BEBR estimates are for April 1, the USCB estimates are for July 1. To make the analysis more meaningful, both estimates were compared for a common date, April 1 of each year. The USCB estimates for July 1 were converted to April 1 by taking three quarters of each annual population change and adding this change to the July 1 estimate of the previous year. For example, the April 1, 2022 estimate was created by taking three quarters of the July 1, 2021 to July 1, 2022 population change and adding it to the July 1, 2021 population estimate. While not a perfect comparison, it is preferable to comparing the original estimates that are three months apart.

Table 1 shows that the USCB population estimates that were released in December 2022 were lower than the BEBR population estimates in both 2021 and 2022. BEBR estimated Florida's population to grow by 360,758 persons between April 1, 2020 and April 1, 2021, which was 130,493 higher than the growth estimated by the USCB (230,226) in their latest Vintage 2022 set of estimates. In percentage terms, the estimated population of Florida according to BEBR was 0.60% higher on April 1, 2021 than the USCB estimate. From April 1, 2021 to April 1, 2022, BEBR estimated statewide population growth of 377,187, which was 5,004 higher than the growth estimated by the USCB (372,183). The percent difference between the BEBR and the USCB estimate for April 1, 2022 was 0.61%.

What accounts for the differences between the BEBR and the USCB population estimates at the state level? The BEBR population estimates for Florida use a bottom-up housing unit method approach, in which changes in population for counties and subcounty areas are based

on changes in occupied housing units (or households). The first component of the housing unit method, the number of households, is estimated using three different data sources – residential building permits, residential electric customers, and, at the county level, homestead exemptions. The second component of the housing unit method, the average number of persons per household (PPH), is estimated based on local PPH values from the 2020 census, state-level changes in PPH since the 2020 census as measured by the American Community Survey, and local changes in the mix of single-family, multifamily, and mobile home units since the 2020 census. The BEBR population estimate for Florida equals the sum of all subcounty population estimates.

The USCB estimates, in contrast, are produced with an administrative record-based component of change method, which updates the 2020 census population using data on births, deaths, and domestic and international migration. Estimates for the nation are produced first, which are followed by county estimates that are controlled to the national estimates. Estimates for states are then created as the sum of each state’s county estimates.

We like to conclude by noting that although the BEBR estimates were compared to the USCB estimates in this report, the latter represent an alternative set of estimates, not a benchmark along the lines of the decennial census. There exists no “gold standard” against which both sets of estimates can currently be compared; we have to wait until the 2030 decennial census for such a comparison.

Table 1. State Comparison, BEBR vs. U.S. Census Bureau April 1, 2021 to April 1, 2022 Population Estimates

Year	Population Estimate		Population Change		% Population Change		BEBR vs. USCB		
	BEBR	USCB	BEBR	USCB	BEBR	USCB	Numeric	Percent	Pop. Change
2020	21,538,187	21,538,226							
2021	21,898,945	21,768,452	360,758	230,226	1.67	1.07	130,493	0.60	130,532
2022	22,276,132	22,140,635	377,187	372,183	1.72	1.71	135,497	0.61	5,004

Notes:

U.S. Census Bureau estimates for July 1 were converted to April 1 by taking three quarters of the annual change and adding it to the July 1 estimate of the previous year. For example, the April 1, 2022 population estimate was created by taking three quarters of the July 1, 2021 to July 1, 2022 population change and adding it to the July 1, 2021 population estimate.

Differences in State Projections: July 2022 and December 2021

The Bureau of Economic and Business Research (BEBR) at the University of Florida produces long-range projections of the Florida population that are consistent with the short-range projections produced by the Demographic Estimating Conference (DEC). This report summarizes the differences in methodology and outcomes between the projections produced in conjunction with the DEC held in July 2022 and the DEC held in December 2021.

The basic methodology used in producing these two sets of projections was the same: Both applied a cohort-component method in which births, deaths, and migration were projected separately, and both used a single year projection model. The main data sources were also the same. Differences between the projections made for the July 2022 DEC and the ones for the December 2021 DEC relate to updated data and weights on births, deaths, and migration.

The migration data used in both the December 2021 and the July 2022 BEBR projections came from Public Use Microdata Sample (PUMS) files based on American Community Survey (ACS) data collected over the period 2011–2019, with the most recent data for 2015–2019 weighted more strongly. PUMS data were used because they provide the only source of detailed information about domestic in- and out-migration, as well as migration from abroad. The migration rates were weighted slightly differently through 2026/2027 in the two sets to approximate the projected migration components of their respective DEC's, with small additional differences through 2033; long-term, the weights were identical in both sets.

The survival rates used in both sets of projections were based on Florida Life Tables for 2009–2011, which were adjusted based on changes in national survival rates as projected by

the U.S. Census Bureau. For the July 2022 projections, the number of deaths for 2020–2022 was adjusted from the December 2021 projections, based on more recent mortality data. We also made some changes to the projected number of deaths through 2027 to approximate the projected number of deaths as determined by the July 2022 DEC; beyond 2027 the mortality weights were identical in both sets. The fertility rates in both sets were based on Florida birth data for 2009–2011. The number of recorded births in Florida declined slightly from 2010–2012, went up from 2012–2016, declined again from 2016–2020, before rebounding in 2020–2022. We adjusted the number of births for 2020–2022 accordingly, with some small adjustments thereafter.

Both sets of BEBR projections incorporated the short-range projections agreed upon at the respective DEC. The July 2022 BEBR projections incorporated the July 2022 DEC projections for 2021–2027, and the December 2021 BEBR projections incorporated the December 2021 DEC projections for 2021–2026. Table 1 shows the projected state population from 2025 through 2050 for both sets of projections, including the numeric and percent differences between the two sets. The projections in both sets were very similar. The July 2022 projections were slightly higher than the December 2021 projections by about 4,000 (0.02%) in 2025, 3,900 (0.02%) in 2030, 3,500 (0.01%) in 2035, 3,000 (0.01%) in 2040, 2,200 (0.01%) in 2045, and 1,200 (0.00%) in 2050.

Table 1. BEBR State Projections: July 2022 and December 2021

Year	Jul-22	21-Dec	Difference	% Difference
2020	21,538,187	21,538,187	0	0.00
2025	23,167,959	23,164,008	3,951	0.02
2030	24,475,060	24,471,129	3,931	0.02
2035	25,524,375	25,520,837	3,538	0.01
2040	26,408,519	26,405,472	3,047	0.01
2045	27,178,924	27,176,715	2,209	0.01
2050	27,878,956	27,877,707	1,249	0.00

Components of Change

Florida Department of Health Data			
Year	Births	Deaths	Natural Increase
2000	204,030	162,839	41,191
2001	205,800	167,181	38,619
2002	205,580	167,702	37,878
2003	212,243	168,459	43,784
2004	218,045	168,364	49,681
2005	226,219	170,300	55,919
2006	237,166	169,365	67,801
2007	239,120	167,708	71,412
2008	231,417	170,473	60,944
2009	221,391	169,853	51,538
2010	214,519	172,509	42,010
2011	213,237	172,856	40,381
2012	212,954	175,849	37,105
2013	215,194	180,014	35,180
2014	219,905	185,038	34,867
2015	224,273	191,488	32,785
2016	225,018	197,236	27,782
2017	223,579	203,353	20,226
2018	221,508	205,461	16,047
2019	220,010	206,975	13,035
2020	209,645	239,381	-29,736
2021	216,189	261,246	-45,057
2022 ¹	223,993	238,632	-14,639

² Provisional data as of February 6, 2023

ACS PUMS 1-Year Estimates				
Year	Domestic Migration			Foreign
	In	Out	Net	In-Migration
2000				
2001				
2002				
2003				
2004				
2005	628,583	442,778	185,805	145,899
2006	601,236	540,324	60,912	163,278
2007	489,800	543,510	-53,710	144,832
2008	497,603	519,012	-21,409	153,944
2009	460,078	447,569	12,509	128,374
2010	480,166	427,591	52,575	150,035
2011	501,905	425,069	76,836	170,684
2012	532,886	424,735	108,151	162,556
2013	529,351	428,866	100,485	170,932
2014	546,996	440,175	106,821	208,243
2015	583,064	441,040	142,024	216,745
2016	595,807	419,120	176,687	238,528
2017	566,362	431,712	134,650	248,383
2018	589,192	478,716	110,476	219,415
2019	607,818	472,081	135,737	205,843
2020 ¹	643,934	443,696	200,238	159,201
2021	675,855	467,652	208,203	134,354
2022				

¹ From 2020 ACS 1-Year Experimental Data Release

Census Bureau Vintage 2022 Estimates Components of Change									
From	To	Population Change	Births	Deaths	Natural Change	Net Migration			Residual
						Domestic	International	Total	
4/2020	7/2020	51,376	50,292	56,302	-6,010	59,688	2,842	62,530	-5,144
7/2020	7/2021	238,467	207,964	250,785	-42,821	243,933	46,862	290,795	-9,507
7/2021	7/2022	416,754	220,578	260,794	-40,216	318,855	125,629	444,484	12,486

Census Bureau Vintage 2021 Estimates Components of Change									
From	To	Population Change	Births	Deaths	Natural Increase	Net Migration			Residual
						Domestic	International	Total	
4/2020	7/2020	31,745	50,641	63,596	-12,955	43,068	2,670	45,738	-1,038
7/2020	7/2021	211,196	210,305	255,553	-45,248	220,890	38,590	259,480	-3,036

Census Bureau Vintage 2022 vs. 2021 Estimates Components of Change									
From	To	Population Change	Births	Deaths	Natural Increase	Net Migration			Residual
						Domestic	International	Total	
4/2020	7/2020	19,631	-349	-7,294	6,945	16,620	172	16,792	-4,106
7/2020	7/2021	27,271	-2,341	-4,768	2,427	23,043	8,272	31,315	-6,471

State Indicators

	1	2	3	4	5	6a	6b	6	7	8
Year	BEBR Estimates	Census Estimates	Electric Customers	Homestead Exemptions	Total Employment	Public School Enrollment	Private School Enrollment	Total School Enrollment	Building Permits	Housing Units
2000	15,982,824	16,047,515	7,205,763	3,827,675	7,575,000	2,430,128	348,736	2,778,864	176,559	7,342,168
2001	16,305,100	16,356,966	7,375,643	3,931,360	7,728,000	2,495,426	354,541	2,849,967	176,977	7,502,520
2002	16,634,256	16,689,370	7,528,884	4,022,187	7,606,000	2,535,155	377,701	2,912,856	179,811	7,671,369
2003	16,979,706	17,004,085	7,710,525	4,122,692	7,721,000	2,591,033	381,346	2,972,379	188,628	7,857,016
2004	17,374,824	17,415,318	7,921,959	4,226,729	7,947,000	2,628,429	366,742	2,995,171	226,239	8,071,606
2005	17,778,156	17,842,038	8,101,381	4,308,111	8,276,000	2,662,658	350,287	3,012,945	259,922	8,335,166
2006	18,154,475	18,166,990	8,323,582	4,405,083	8,627,000	2,655,782	349,059	3,004,841	292,740	8,622,831
2007	18,446,768	18,367,842	8,523,878	4,504,537	8,839,000	2,652,684	335,211	2,987,895	233,866	8,817,298
2008	18,613,905	18,527,305	8,577,402	4,550,813	8,745,000	2,628,754	321,298	2,950,052	131,957	8,913,044
2009	18,687,425	18,652,644	8,552,847	4,521,988	8,226,000	2,634,382	313,291	2,947,673	74,337	8,967,149
2010	18,801,332	18,846,143	8,582,243	4,491,427	8,077,000	2,643,396	305,825	2,949,221	50,963	8,995,126
2011	18,949,860	19,055,607	8,634,416	4,417,629	8,291,000	2,667,830	316,745	2,984,575	41,244	9,020,869
2012	19,134,956	19,302,016	8,692,773	4,380,574	8,468,000	2,691,322	320,423	3,011,745	43,016	9,050,020
2013	19,337,590	19,551,678	8,761,252	4,333,692	8,646,000	2,720,074	325,502	3,045,576	55,329	9,100,970
2014	19,585,096	19,853,880	8,865,446	4,302,818	8,872,000	2,756,994	331,013	3,088,007	81,840	9,173,137
2015	19,879,230	20,219,111	8,999,769	4,306,744	9,044,000	2,792,234	345,796	3,138,030	91,389	9,242,697
2016	20,201,450	20,627,237	9,128,540	4,366,586	9,293,000	2,817,076	369,321	3,186,397	100,436	9,337,421
2017	20,524,865	20,977,089	9,255,774	4,444,699	9,498,000	2,833,115	370,166	3,203,281	123,446	9,438,667
2018	20,854,945	21,254,926	9,378,394	4,536,884	9,680,000	2,846,857	380,295	3,227,152	132,831	9,545,820
2019	21,189,849	21,492,056	9,511,473	4,641,236	9,840,000	2,858,949	397,970	3,256,919	142,419	9,674,877
2020	21,538,187	21,589,602	9,670,966	4,747,579	9,771,000	2,791,687	364,420	3,156,107	155,030	9,900,732
2021	21,898,945	21,828,069	9,842,065	4,851,475	9,642,000	2,833,179	416,084	3,249,263	177,126	10,054,457
2022	22,276,132	22,244,823	9,995,419	4,937,942	10,174,000	2,870,507	-	-	202,074	-
2000-01	2.0	1.9	2.4	2.7	2.0	2.7	1.7	2.6	0.2	2.2
2001-02	2.0	2.0	2.1	2.3	-1.6	1.6	6.5	2.2	1.6	2.3
2002-03	2.1	1.9	2.4	2.5	1.5	2.2	1.0	2.0	4.9	2.4
2003-04	2.3	2.4	2.7	2.5	2.9	1.4	-3.8	0.8	19.9	2.7
2004-05	2.3	2.5	2.3	1.9	4.1	1.3	-4.5	0.6	14.9	3.3
2005-06	2.1	1.8	2.7	2.3	4.2	-0.3	-0.4	-0.3	12.6	3.5
2006-07	1.6	1.1	2.4	2.3	2.5	-0.1	-4.0	-0.6	-20.1	2.3
2007-08	0.9	0.9	0.6	1.0	-1.1	-0.9	-4.2	-1.3	-43.6	1.1
2008-09	0.4	0.7	-0.3	-0.6	-5.9	0.2	-2.5	-0.1	-43.7	0.6
2009-10	0.6	1.0	0.3	-0.7	-1.8	0.3	-2.4	0.1	-31.4	0.3
2010-11	0.8	1.1	0.6	-1.6	2.6	0.9	3.6	1.2	-19.1	0.3
2011-12	1.0	1.3	0.7	-0.8	2.1	0.9	1.2	0.9	4.3	0.3
2012-13	1.1	1.3	0.8	-1.1	2.1	1.1	1.6	1.1	28.6	0.6
2013-14	1.3	1.5	1.2	-0.7	2.6	1.4	1.7	1.4	47.9	0.8
2014-15	1.5	1.8	1.5	0.1	1.9	1.3	4.5	1.6	11.7	0.8
2015-16	1.6	2.0	1.4	1.4	2.8	0.9	6.8	1.5	9.9	1.0
2016-17	1.6	1.7	1.4	1.8	2.2	0.6	0.2	0.5	22.9	1.1
2017-18	1.6	1.3	1.3	2.1	1.9	0.5	2.7	0.7	7.6	1.1
2018-19	1.6	1.1	1.4	2.3	1.7	0.4	4.6	0.9	7.2	1.4
2019-20	1.6	0.5	1.7	2.3	-0.7	-2.4	-8.4	-3.1	8.9	2.3
2020-21	1.7	1.1	1.8	2.2	-1.3	1.5	14.2	3.0	14.3	1.6
2021-22	1.7	1.9	1.6	1.8	5.5	1.3	-	-	14.1	-

- 1 BEBR estimate April 1st (2000, 2010, and 2020 are Census counts; 2001–2019 are revised intercensal estimates)
- 2 Census estimate July 1st (2000, 2010, and 2020 are July 1st estimates, not April 1st decennial census counts; 2000–2009 are revised intercensal estimates)
- 3 Active residential electric customers March 31st
- 4 Florida Property Valuations and Tax Data Book (DOR) - January 1st of each year
- 5 Florida Agency for Workforce Innovation - Labor Market Statistics - Local Area Unemployment Statistics - March (seasonally adjusted)
- 6a Florida Department of Education - Fall school enrollment (Public Schools)
- 6b Florida Department of Education - Fall school enrollment (Private Schools)
- 7 US Department of Commerce - Permits issued prior calendar year for single-family units, two years prior for multifamily units, no lag for mobile home units and demolitions
- 8 Census estimate July 1st (2000, 2010, and 2020 are July 1st estimates, not April 1st decennial census counts; 2000–2009 are revised intercensal estimates)

Electric Customers

Month	Florida Power & Light / Duke / Tampa													All Companies (March)												
	Electric Customers Count													Electric Customers Count												
	2010	2011	2012	2013	2014	2015	2016	2017	2018	2019	2020	2021	2022	2010	2011	2012	2013	2014	2015	2016	2017	2018	2019	2020	2021	2022
Jan	6,075,338	6,114,800	6,153,018	6,205,065	6,270,238	6,363,486	6,456,978	6,547,244	6,630,223	6,729,265	6,833,598	6,945,905	7,073,632													
Feb	6,088,124	6,125,236	6,162,987	6,213,469	6,281,626	6,374,364	6,466,859	6,556,887	6,639,054	6,737,252	6,845,039	6,957,631	7,084,298													
Mar	6,095,387	6,133,172	6,173,963	6,223,110	6,292,274	6,385,291	6,475,704	6,567,601	6,649,316	6,747,890	6,854,683	6,968,724	7,095,264	8,550,255	8,602,234	8,660,373	8,728,597	8,832,403	8,966,225	9,094,516	9,221,276	9,343,439	9,476,022	9,634,973	9,805,328	9,995,419
Apr	6,097,285	6,135,013	6,176,295	6,227,619	6,296,958	6,389,911	6,481,568	6,574,156	6,657,054	6,755,363	6,863,721	6,983,053	7,101,715													
May	6,098,698	6,135,403	6,176,849	6,230,142	6,301,340	6,394,074	6,487,340	6,580,549	6,664,514	6,764,086	6,873,591	6,994,277	7,111,574													
Jun	6,098,630	6,133,784	6,176,605	6,233,525	6,306,123	6,400,283	6,492,386	6,586,772	6,673,346	6,771,940	6,886,387	7,004,090	7,119,431													
Jul	6,100,075	6,133,723	6,179,082	6,237,160	6,311,184	6,405,875	6,499,110	6,593,362	6,680,257	6,781,275	6,896,281	7,013,695	7,125,159													
Aug	6,103,396	6,134,285	6,181,227	6,240,701	6,316,939	6,412,633	6,506,967	6,599,938	6,688,451	6,789,536	6,907,948	7,025,429	7,134,966													
Sep	6,100,844	6,130,696	6,181,311	6,244,867	6,324,059	6,418,696	6,512,205	6,599,118	6,696,351	6,796,024	6,916,259	7,033,671	7,142,697													
Oct	6,100,578	6,132,910	6,183,906	6,249,875	6,332,472	6,426,130	6,518,057	6,605,549	6,705,219	6,805,023	6,925,205	7,043,426	7,148,230													
Nov	6,103,676	6,136,891	6,189,052	6,255,241	6,342,776	6,437,455	6,526,768	6,613,973	6,712,550	6,813,770	6,928,049	7,052,115	7,155,642													
Dec	6,107,340	6,143,693	6,195,340	6,259,795	6,353,045	6,448,489	6,537,275	6,621,356	6,717,374	6,823,824	6,936,898	7,063,669	7,163,556													
Month	Year-to-Year Change in Electric Customers													Year-to-Year Change in Electric Customers												
	2009-10	2010-11	2011-12	2012-13	2013-14	2014-15	2015-16	2016-17	2017-18	2018-19	2019-20	2020-21	2021-22	2009-10	2010-11	2011-12	2012-13	2013-14	2014-15	2015-16	2016-17	2017-18	2018-19	2019-20	2020-21	2021-22
Jan	7,425	39,462	38,218	52,047	65,173	93,247	93,492	90,266	82,980	99,041	104,333	112,307	127,727													
Feb	12,361	37,112	37,751	50,481	68,157	92,738	92,495	90,028	82,167	98,198	107,787	112,592	126,667													
Mar	18,555	37,785	40,791	49,147	69,164	93,017	90,413	91,896	81,715	98,574	106,793	114,041	126,540	29,286	51,979	58,140	68,224	103,806	133,822	128,291	126,760	122,163	132,583	158,951	170,355	190,091
Apr	23,540	37,727	41,282	51,325	69,339	92,952	91,658	92,588	82,897	98,309	108,358	119,332	118,662													
May	30,077	36,705	41,447	53,293	71,198	92,734	93,265	93,209	83,964	99,573	109,505	120,686	117,297													
Jun	31,407	35,154	42,821	56,920	72,597	94,161	92,102	94,386	86,574	98,595	114,446	117,704	115,341													
Jul	33,358	33,648	45,359	58,077	74,025	94,691	93,234	94,252	86,896	101,017	115,006	117,414	111,464													
Aug	37,560	30,889	46,941	59,475	76,238	95,694	94,334	92,971	88,513	101,085	118,412	117,480	109,537													
Sep	35,789	29,852	50,615	63,556	79,192	94,637	93,508	86,914	97,233	99,673	120,235	117,411	109,026													
Oct	38,220	32,332	50,996	65,969	82,597	93,658	91,927	87,492	99,670	99,804	120,182	118,221	104,804													
Nov	35,973	33,215	52,161	66,189	87,535	94,679	89,313	87,205	98,577	101,219	114,280	124,066	103,527													
Dec	38,173	36,353	51,647	64,455	93,250	95,444	88,786	84,081	96,018	106,451	113,074	126,771	99,887													
Month	Year-to-Year Change in Electric Customers (in %)													Year-to-Year Change in Electric Customers (in %)												
	2009-10	2010-11	2011-12	2012-13	2013-14	2014-15	2015-16	2016-17	2017-18	2018-19	2019-20	2020-21	2021-22	2009-10	2010-11	2011-12	2012-13	2013-14	2014-15	2015-16	2016-17	2017-18	2018-19	2019-20	2020-21	2021-22
Jan	0.12	0.65	0.63	0.85	1.05	1.49	1.47	1.40	1.27	1.49	1.55	1.64	1.84													
Feb	0.20	0.61	0.62	0.82	1.10	1.48	1.45	1.39	1.25	1.48	1.60	1.64	1.82													
Mar	0.31	0.62	0.67	0.80	1.11	1.48	1.42	1.42	1.24	1.48	1.58	1.66	1.82	0.34	0.61	0.68	0.79	1.19	1.52	1.43	1.39	1.32	1.42	1.68	1.77	1.94
Apr	0.39	0.62	0.67	0.83	1.11	1.48	1.43	1.43	1.26	1.48	1.60	1.74	1.70													
May	0.50	0.60	0.68	0.86	1.14	1.47	1.46	1.44	1.28	1.49	1.62	1.76	1.68													
Jun	0.52	0.58	0.70	0.92	1.16	1.49	1.44	1.45	1.31	1.48	1.69	1.71	1.65													
Jul	0.55	0.55	0.74	0.94	1.19	1.50	1.46	1.45	1.32	1.51	1.70	1.70	1.59													
Aug	0.62	0.51	0.77	0.96	1.22	1.51	1.47	1.43	1.34	1.51	1.74	1.70	1.56													
Sep	0.59	0.49	0.83	1.03	1.27	1.50	1.46	1.33	1.47	1.49	1.77	1.70	1.55													
Oct	0.63	0.53	0.83	1.07	1.32	1.48	1.43	1.34	1.51	1.49	1.77	1.71	1.49													
Nov	0.59	0.54	0.85	1.07	1.40	1.49	1.39	1.34	1.49	1.51	1.68	1.79	1.47													
Dec	0.63	0.60	0.84	1.04	1.49	1.50	1.38	1.29	1.45	1.58	1.66	1.83	1.41													

Notes:

All Companies (March):

The March total has been adjusted downward by 0.373% each year prior to 2020 to make the series comparable to the new Duke data used for the estimates. The totals for 2020 and 2021 are based on the new Duke data and are about 36,000–37,000 lower than the EC reports for those years.

Florida Power & Light:

Data for FP&L raised by 1% prior to July 2013, reduced gradually through December 2013.

Includes City of Vero Beach adjustment, which transferred to FP&L in December 2018 to January 2019.

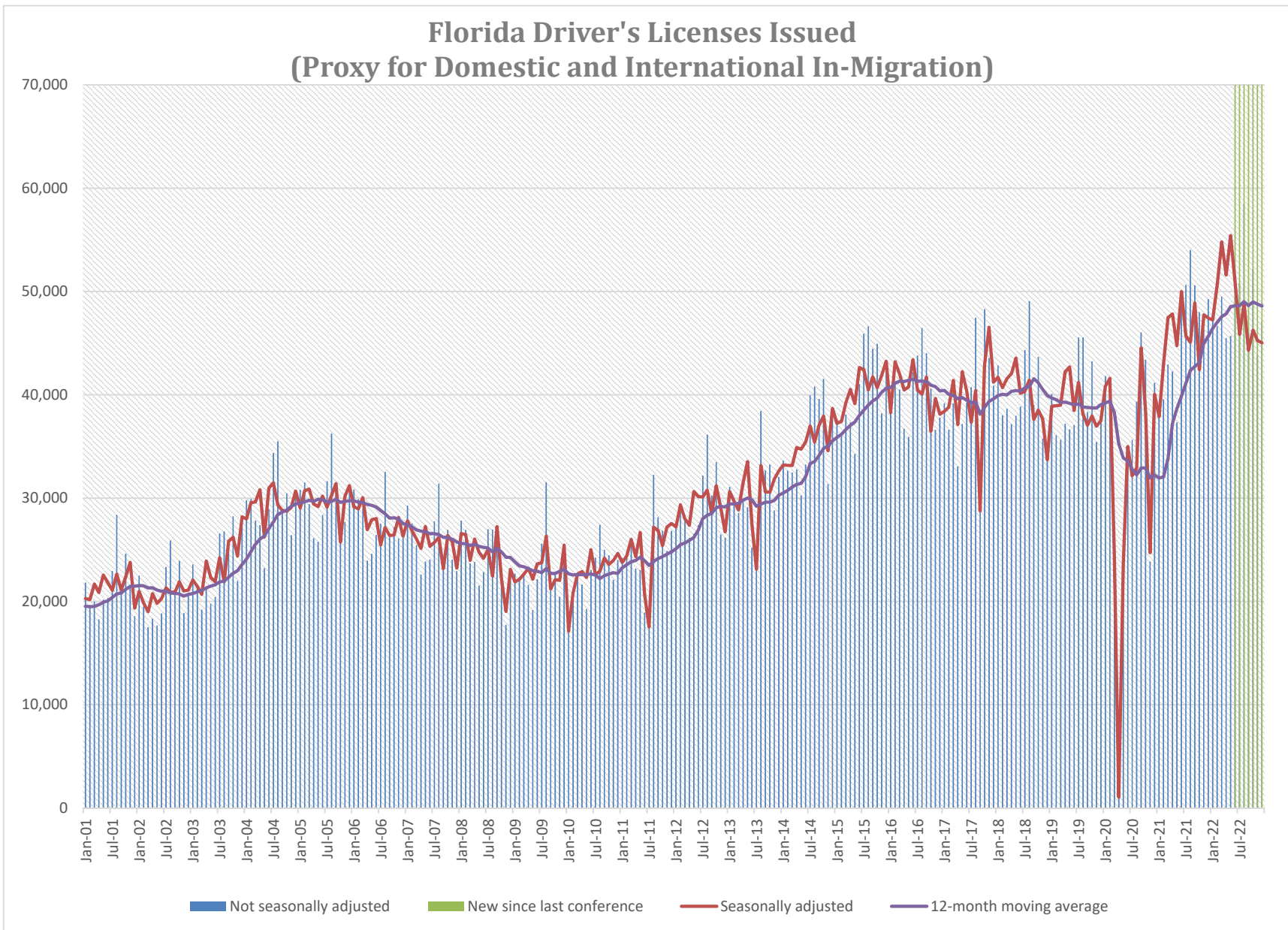
Duke:

Includes Hardee County adjustment (transfer from Duke to Peace River Electric Coop) through July 2019.

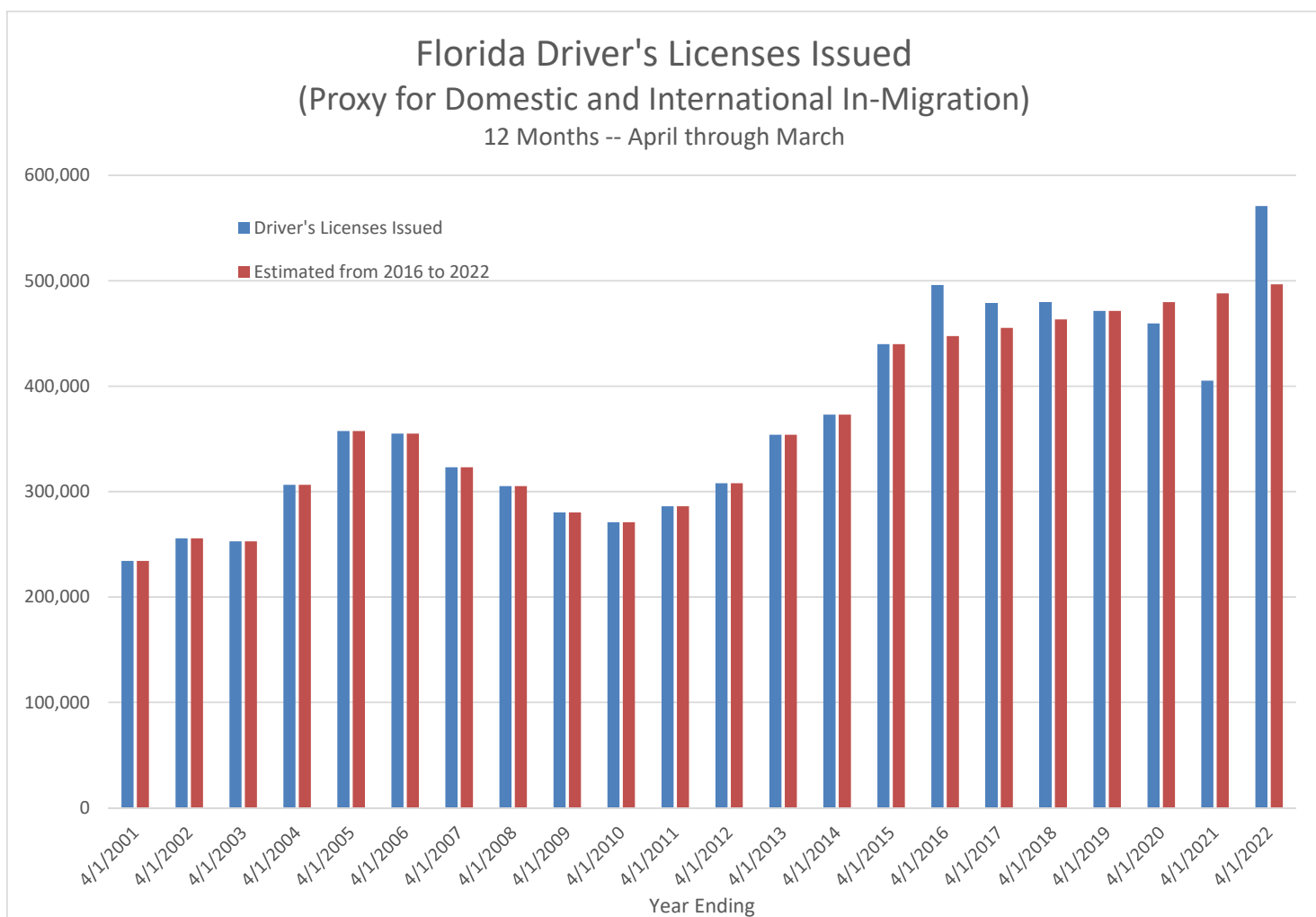
Duke changed their billing system in November 2021. Data for earlier months were inflated due to inclusion of some non-housing units. We lowered the data prior to November 2021 by 13,680 each month to make the series comparable with the new and improved billing system. Also included are updated monthly customer counts since November 2021.

Tampa Electric:

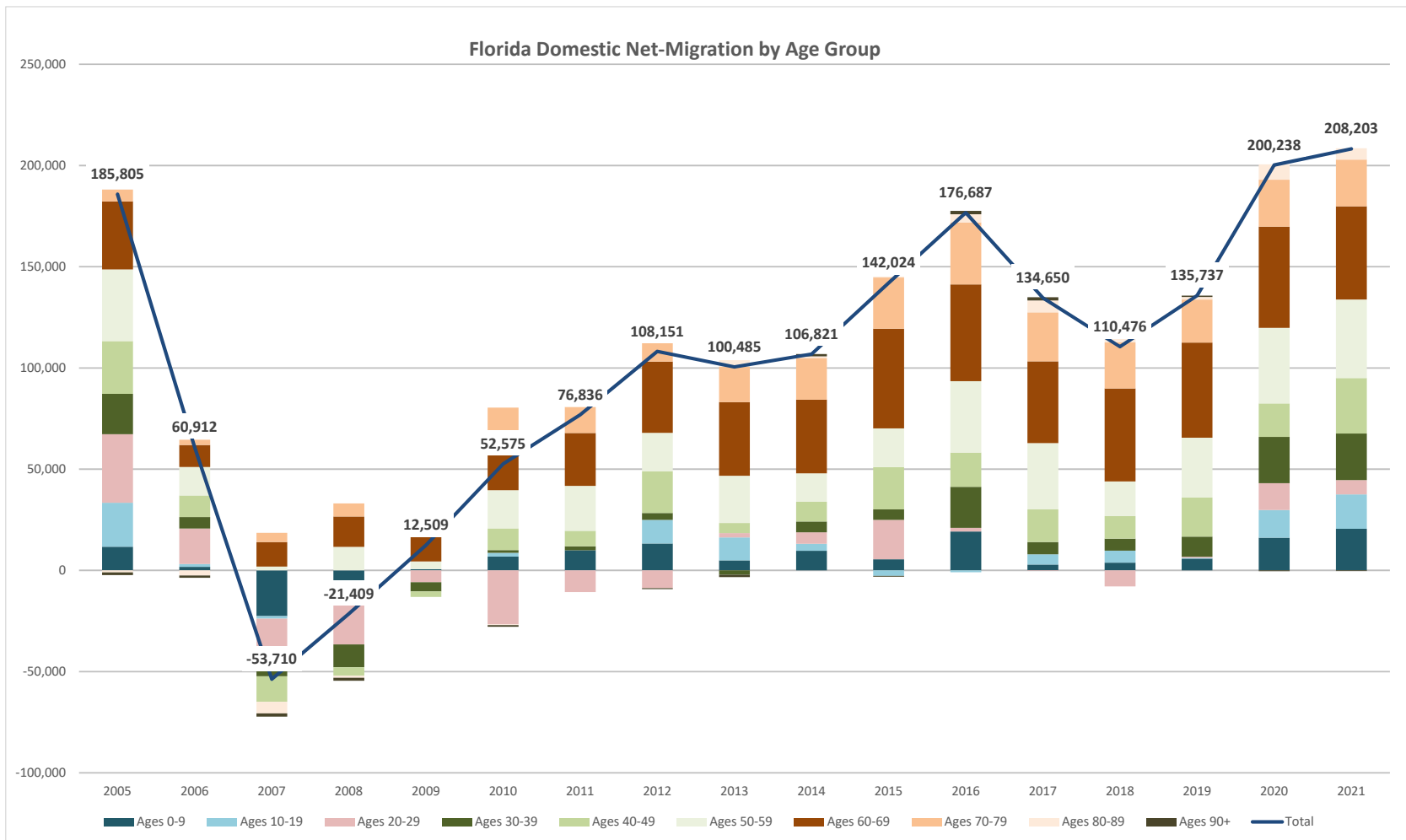
Adjusted data for TECO for January 2017 through April 2018.



Source: Florida Highway Safety and Motor Vehicles monthly data



Source: Florida Highway Safety and Motor Vehicles monthly data



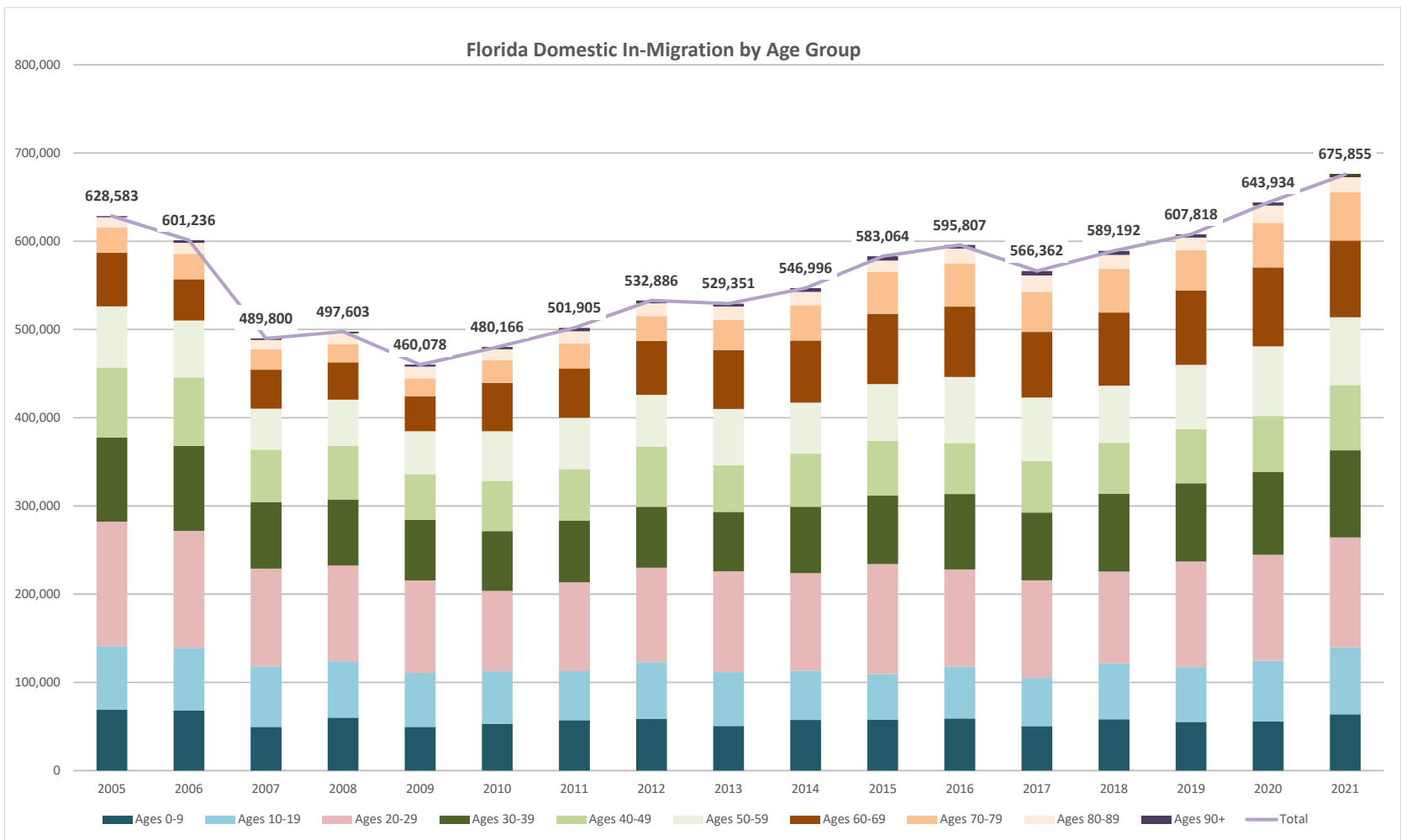
Florida Net-Migration by Age

Age Group	2005	2006	2007	2008	2009	2010	2011	2012	2013	2014	2015	2016	2017	2018	2019	2020	2021
Ages 0-9	11,708	1,758	-22,576	-5,960	562	6,803	9,970	13,271	4,977	9,678	5,499	19,240	2,866	3,803	5,799	16,128	20,569
Ages 10-19	21,697	1,407	-1,235	-3,950	93	1,911	-1	11,668	11,269	3,463	-2,695	-914	5,062	5,931	419	13,678	16,980
Ages 20-29	33,854	17,507	-18,676	-26,666	-5,842	-26,726	-10,702	-8,798	2,184	5,679	19,473	1,789	-273	-7,880	520	13,232	7,048
Ages 30-39	19,925	5,649	-9,795	-11,237	-4,530	1,288	1,912	3,428	-2,187	5,352	5,155	20,243	6,060	5,927	9,915	22,906	22,956
Ages 40-49	26,061	10,661	-12,626	-4,221	-2,748	10,752	7,678	20,555	4,999	9,702	20,859	16,902	16,148	11,172	19,373	16,484	27,418
Ages 50-59	35,420	14,088	1,915	11,635	3,734	18,817	22,160	18,965	23,282	14,074	19,099	35,234	32,714	17,086	29,476	37,382	38,870
Ages 60-69	33,578	10,873	12,118	14,949	13,153	27,872	26,100	35,188	36,377	36,383	49,330	47,887	40,412	45,897	46,986	49,961	45,994
Ages 70-79	5,887	2,595	4,493	6,486	5,223	12,960	12,843	12,175	17,574	20,577	25,279	30,554	24,238	22,749	21,308	23,212	23,113
Ages 80-89	-1,009	-2,498	-5,692	-984	2,507	-284	5,311	2,170	3,168	792	440	4,070	5,863	4,449	1,296	7,608	5,572
Ages 90+	-1,316	-1,128	-1,636	-1,461	357	-818	1,565	-471	-1,158	1,121	-415	1,682	1,560	1,342	645	-353	-317
Total	185,805	60,912	-53,710	-21,409	12,509	52,575	76,836	108,151	100,485	106,821	142,024	176,687	134,650	110,476	135,737	200,238	208,203

Florida Net-Migration per 1,000 US Population the year prior

Age Group	2005	2006	2007	2008	2009	2010	2011	2012	2013	2014	2015	2016	2017	2018	2019	2020	2021
Ages 0-9	0.041	0.006	-0.075	-0.020	0.002	0.022	0.032	0.043	0.016	0.031	0.017	0.060	0.009	0.012	0.018	0.049	0.062
Ages 10-19	0.076	0.005	-0.004	-0.013	0.000	0.006	0.000	0.037	0.036	0.011	-0.008	-0.003	0.016	0.018	0.001	0.042	0.052
Ages 20-29	0.119	0.061	-0.062	-0.088	-0.019	-0.087	-0.035	-0.028	0.007	0.018	0.061	0.006	-0.001	-0.024	0.002	0.040	0.021
Ages 30-39	0.070	0.020	-0.033	-0.037	-0.015	0.004	0.006	0.011	-0.007	0.017	0.016	0.063	0.019	0.018	0.030	0.070	0.070
Ages 40-49	0.091	0.037	-0.042	-0.014	-0.009	0.035	0.025	0.066	0.016	0.031	0.065	0.053	0.050	0.034	0.059	0.050	0.083
Ages 50-59	0.124	0.049	0.006	0.039	0.012	0.061	0.072	0.061	0.074	0.045	0.060	0.110	0.101	0.052	0.090	0.114	0.118
Ages 60-69	0.118	0.038	0.040	0.050	0.043	0.091	0.084	0.113	0.116	0.115	0.155	0.149	0.125	0.141	0.144	0.152	0.140
Ages 70-79	0.021	0.009	0.015	0.022	0.017	0.042	0.042	0.039	0.056	0.065	0.079	0.095	0.075	0.070	0.065	0.071	0.070
Ages 80-89	-0.004	-0.009	-0.019	-0.003	0.008	-0.001	0.017	0.007	0.010	0.003	0.001	0.013	0.018	0.014	0.004	0.023	0.017
Ages 90+	-0.005	-0.004	-0.005	-0.005	0.001	-0.003	0.005	-0.002	-0.004	0.004	-0.001	0.005	0.005	0.004	0.002	-0.001	-0.001
Total	0.650	0.211	-0.179	-0.071	0.041	0.171	0.248	0.347	0.320	0.338	0.445	0.550	0.417	0.339	0.415	0.610	0.632

Source: US Census Bureau, American Community Survey (ACS), Public Use Microdata Sample (PUMS), 1-year data.



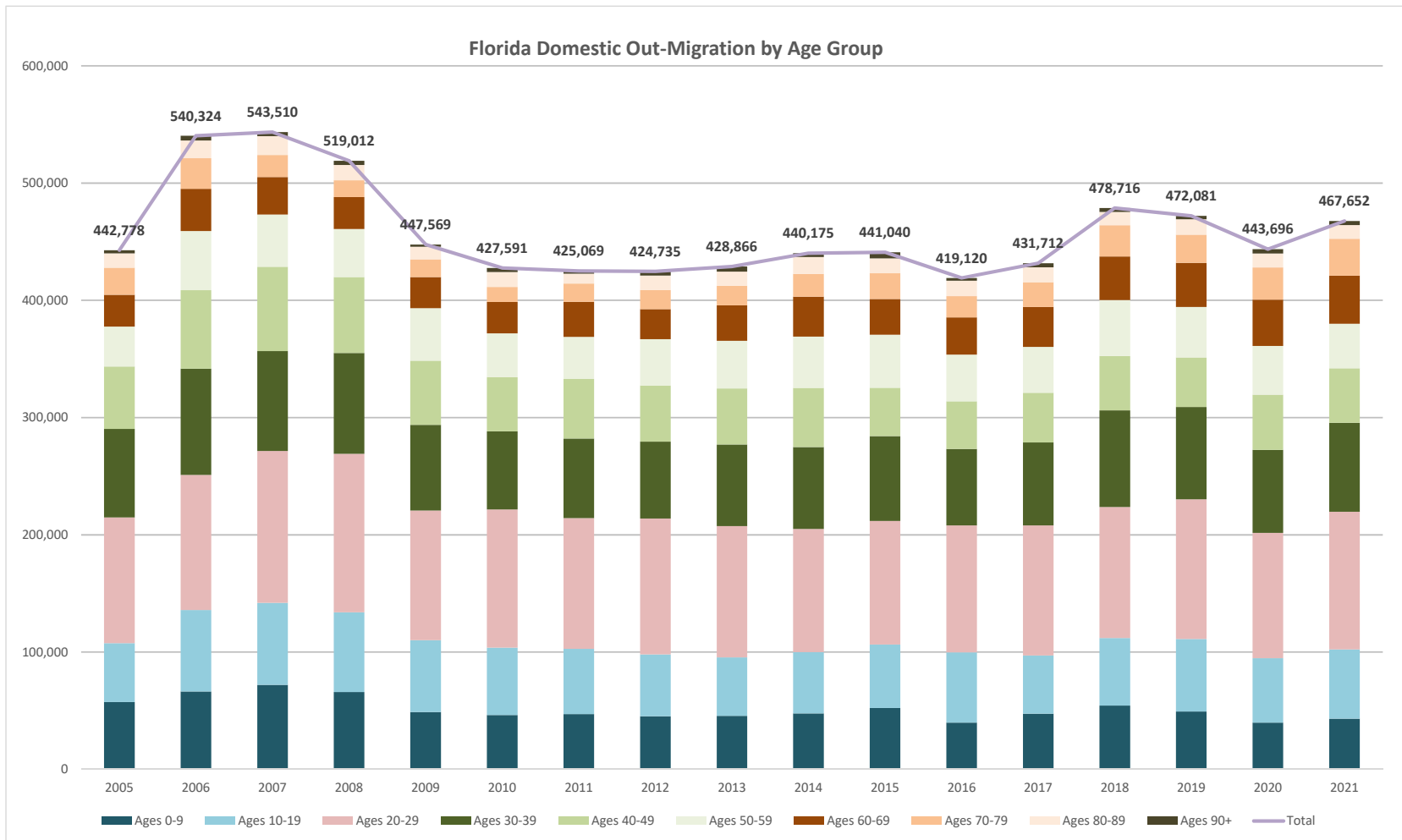
Florida In-Migration by Age

Age Group	2005	2006	2007	2008	2009	2010	2011	2012	2013	2014	2015	2016	2017	2018	2019	2020	2021
Ages 0-9	69,157	68,238	49,495	59,994	49,505	53,153	57,120	58,548	50,581	57,404	57,869	59,096	50,420	58,273	55,198	55,981	63,793
Ages 10-19	71,921	70,787	68,706	64,029	61,305	59,401	55,633	64,461	61,154	55,779	51,463	58,995	54,622	63,526	62,193	68,659	76,078
Ages 20-29	140,977	132,654	110,743	108,459	104,753	91,060	100,735	107,000	114,154	110,660	124,817	110,010	110,613	103,756	119,660	120,068	124,352
Ages 30-39	95,420	96,235	75,459	74,724	68,532	67,878	69,751	69,024	67,388	75,209	77,441	85,454	76,804	88,280	88,620	93,662	98,789
Ages 40-49	79,249	77,797	59,296	60,703	51,868	56,968	58,526	68,401	52,819	60,081	62,123	57,578	58,490	57,616	61,540	63,570	73,985
Ages 50-59	69,559	64,489	46,481	52,506	48,685	56,120	58,055	58,510	63,845	57,863	64,280	74,953	71,814	64,851	72,640	78,885	76,862
Ages 60-69	60,704	46,885	44,136	42,275	39,648	54,836	56,058	60,848	66,710	70,439	79,868	79,790	74,598	83,011	84,590	89,567	87,051
Ages 70-79	28,990	28,707	23,273	20,781	20,370	25,743	28,380	28,497	34,209	39,957	47,306	48,726	45,312	49,442	45,346	50,614	54,569
Ages 80-89	11,174	12,550	10,370	12,014	13,185	12,379	13,828	14,461	15,266	15,264	13,035	17,126	18,631	15,795	14,460	19,526	17,230
Ages 90+	1,432	2,894	1,841	2,118	2,227	2,628	3,819	3,136	3,225	4,340	4,862	4,079	5,058	4,642	3,571	3,402	3,146
Total	628,583	601,236	489,800	497,603	460,078	480,166	501,905	532,886	529,351	546,996	583,064	595,807	566,362	589,192	607,818	643,934	675,855

Florida In-Migration per 1,000 US Population the year prior

Age Group	2005	2006	2007	2008	2009	2010	2011	2012	2013	2014	2015	2016	2017	2018	2019	2020	2021
Ages 0-9	0.242	0.237	0.165	0.199	0.163	0.173	0.185	0.188	0.161	0.182	0.181	0.184	0.156	0.179	0.169	0.171	0.194
Ages 10-19	0.252	0.245	0.229	0.212	0.202	0.193	0.180	0.207	0.195	0.176	0.161	0.184	0.169	0.195	0.190	0.209	0.231
Ages 20-29	0.493	0.460	0.370	0.360	0.345	0.297	0.326	0.343	0.364	0.350	0.391	0.342	0.342	0.319	0.366	0.366	0.377
Ages 30-39	0.334	0.334	0.252	0.248	0.225	0.221	0.225	0.222	0.215	0.238	0.243	0.266	0.238	0.271	0.271	0.285	0.300
Ages 40-49	0.277	0.270	0.198	0.201	0.171	0.186	0.189	0.220	0.168	0.190	0.195	0.179	0.181	0.177	0.188	0.194	0.225
Ages 50-59	0.243	0.224	0.155	0.174	0.160	0.183	0.188	0.188	0.203	0.183	0.202	0.233	0.222	0.199	0.222	0.240	0.233
Ages 60-69	0.212	0.163	0.147	0.140	0.130	0.179	0.181	0.195	0.213	0.223	0.250	0.248	0.231	0.255	0.259	0.273	0.264
Ages 70-79	0.101	0.100	0.078	0.069	0.067	0.084	0.092	0.091	0.109	0.126	0.148	0.152	0.140	0.152	0.139	0.154	0.166
Ages 80-89	0.039	0.044	0.035	0.040	0.043	0.040	0.045	0.046	0.049	0.048	0.041	0.053	0.058	0.048	0.044	0.059	0.052
Ages 90+	0.005	0.010	0.006	0.007	0.007	0.009	0.012	0.010	0.010	0.014	0.015	0.013	0.016	0.014	0.011	0.010	0.010
Total	2.200	2.085	1.636	1.650	1.513	1.564	1.622	1.710	1.686	1.730	1.829	1.854	1.753	1.809	1.858	1.962	2.051

Source: US Census Bureau, American Community Survey (ACS), Public Use Microdata Sample (PUMS), 1-year data.



Florida Out-Migration by Age

Age Group	2005	2006	2007	2008	2009	2010	2011	2012	2013	2014	2015	2016	2017	2018	2019	2020	2021
Ages 0-9	57,449	66,480	72,071	65,954	48,943	46,350	47,150	45,277	45,604	47,726	52,370	39,856	47,554	54,470	49,399	39,853	43,224
Ages 10-19	50,224	69,380	69,941	67,979	61,212	57,490	55,634	52,793	49,885	52,316	54,158	59,909	49,560	57,595	61,774	54,981	59,098
Ages 20-29	107,123	115,147	129,419	135,125	110,595	117,786	111,437	115,798	111,970	104,981	105,344	108,221	110,886	111,636	119,140	106,836	117,304
Ages 30-39	75,495	90,586	85,254	85,961	73,062	66,590	67,839	65,596	69,575	69,857	72,286	65,211	70,744	82,353	78,705	70,756	75,833
Ages 40-49	53,188	67,136	71,922	64,924	54,616	46,216	50,848	47,846	47,820	50,379	41,264	40,676	42,342	46,444	42,167	47,086	46,567
Ages 50-59	34,139	50,401	44,566	40,871	44,951	37,303	35,895	39,545	40,563	43,789	45,181	39,719	39,100	47,765	43,164	41,503	37,992
Ages 60-69	27,126	36,012	32,018	27,326	26,495	26,964	29,958	25,660	30,333	34,056	30,538	31,903	34,186	37,114	37,604	39,606	41,057
Ages 70-79	23,103	26,112	18,780	14,295	15,147	12,783	15,537	16,322	16,635	19,380	22,027	18,172	21,074	26,693	24,038	27,402	31,456
Ages 80-89	12,183	15,048	16,062	12,998	10,678	12,663	8,517	12,291	12,098	14,472	12,595	13,056	12,768	11,346	13,164	11,918	11,658
Ages 90+	2,748	4,022	3,477	3,579	1,870	3,446	2,254	3,607	4,383	3,219	5,277	2,397	3,498	3,300	2,926	3,755	3,463
Total	442,778	540,324	543,510	519,012	447,569	427,591	425,069	424,735	428,866	440,175	441,040	419,120	431,712	478,716	472,081	443,696	467,652

Florida Out Migration per 1,000 US Population the year prior

Age Group	2005	2006	2007	2008	2009	2010	2011	2012	2013	2014	2015	2016	2017	2018	2019	2020	2021
Ages 0-9	0.201	0.231	0.241	0.219	0.161	0.151	0.152	0.145	0.145	0.151	0.164	0.124	0.147	0.167	0.151	0.121	0.131
Ages 10-19	0.176	0.241	0.234	0.225	0.201	0.187	0.180	0.169	0.159	0.165	0.170	0.186	0.153	0.177	0.189	0.168	0.179
Ages 20-29	0.375	0.399	0.432	0.448	0.364	0.384	0.360	0.372	0.357	0.332	0.330	0.337	0.343	0.343	0.364	0.325	0.356
Ages 30-39	0.264	0.314	0.285	0.285	0.240	0.217	0.219	0.211	0.222	0.221	0.227	0.203	0.219	0.253	0.241	0.216	0.230
Ages 40-49	0.186	0.233	0.240	0.215	0.180	0.151	0.164	0.154	0.152	0.159	0.129	0.127	0.131	0.143	0.129	0.143	0.141
Ages 50-59	0.120	0.175	0.149	0.136	0.148	0.122	0.116	0.127	0.129	0.139	0.142	0.124	0.121	0.147	0.132	0.126	0.115
Ages 60-69	0.095	0.125	0.107	0.091	0.087	0.088	0.097	0.082	0.097	0.108	0.096	0.099	0.106	0.114	0.115	0.121	0.125
Ages 70-79	0.081	0.091	0.063	0.047	0.050	0.042	0.050	0.052	0.053	0.061	0.069	0.057	0.065	0.082	0.073	0.083	0.095
Ages 80-89	0.043	0.052	0.054	0.043	0.035	0.041	0.028	0.039	0.039	0.046	0.040	0.041	0.040	0.035	0.040	0.036	0.035
Ages 90+	0.010	0.014	0.012	0.012	0.006	0.011	0.007	0.012	0.014	0.010	0.017	0.007	0.011	0.010	0.009	0.011	0.011
Total	1.550	1.874	1.815	1.721	1.472	1.393	1.374	1.363	1.366	1.392	1.383	1.304	1.336	1.470	1.443	1.352	1.419

Source: US Census Bureau, American Community Survey (ACS), Public Use Microdata Sample (PUMS), 1-year data.

Florida Population and Components of Change

Fiscal Year	Population (End of Fiscal Year)	Growth Rate	Annual Change in Population	Births	Deaths	Net Natural Increase	Net Migration
1950 - 51	2,981,346	6.50%	181,931	67,486	27,670	39,816	142,115
1951 - 52	3,155,442	5.84%	174,096	72,383	28,942	43,441	130,655
1952 - 53	3,312,521	4.98%	157,079	76,954	29,761	47,193	109,886
1953 - 54	3,504,323	5.79%	191,802	82,725	31,055	51,670	140,132
1954 - 55	3,747,400	6.94%	243,077	86,643	32,176	54,467	188,610
1955 - 56	4,046,062	7.97%	298,662	92,941	34,932	58,009	240,653
1956 - 57	4,370,045	8.01%	323,983	100,990	38,269	62,721	261,262
1957 - 58	4,629,510	5.94%	259,465	105,972	41,911	64,061	195,404
1958 - 59	4,812,270	3.95%	182,760	110,409	43,674	66,735	116,025
1959 - 60	4,998,508	3.87%	186,238	114,428	46,057	68,371	117,867
1960 - 61	5,185,913	3.75%	187,405	116,449	48,388	68,061	119,344
1961 - 62	5,367,899	3.51%	181,986	116,120	50,346	65,774	116,212
1962 - 63	5,553,522	3.46%	185,623	114,709	54,453	60,256	125,367
1963 - 64	5,728,499	3.15%	174,977	115,002	56,229	58,773	116,204
1964 - 65	5,881,195	2.67%	152,696	110,515	57,734	52,781	99,915
1965 - 66	6,065,768	3.14%	184,573	104,367	61,217	43,150	141,423
1966 - 67	6,249,674	3.03%	183,906	101,209	62,577	38,632	145,274
1967 - 68	6,441,756	3.07%	192,082	100,320	66,134	34,186	157,896
1968 - 69	6,633,546	2.98%	191,790	104,286	71,285	33,001	158,789
1969 - 70	6,861,118	3.43%	227,572	111,511	73,831	37,680	189,892
1970 - 71	7,233,583	5.43%	372,465	117,012	75,354	41,658	330,807
1971 - 72	7,681,540	6.19%	447,957	113,568	79,717	33,851	414,106
1972 - 73	8,157,883	6.20%	476,343	107,804	86,232	21,572	454,771
1973 - 74	8,515,208	4.38%	357,325	109,366	88,459	20,907	336,418
1974 - 75	8,648,587	1.57%	133,379	108,686	87,224	21,462	111,917
1975 - 76	8,782,975	1.55%	134,388	104,022	88,129	15,893	118,495
1976 - 77	8,972,678	2.16%	189,703	107,623	90,443	17,180	172,523
1977 - 78	9,225,527	2.82%	252,849	112,268	93,383	18,885	233,964
1978 - 79	9,523,728	3.23%	298,201	116,393	96,801	19,592	278,609
1979 - 80	9,914,652	4.10%	390,924	126,673	101,048	25,625	365,299
1980 - 81	10,212,969	3.01%	298,317	135,560	107,562	27,998	270,319
1981 - 82	10,492,851	2.74%	279,882	141,593	108,644	32,949	246,933
1982 - 83	10,748,466	2.44%	255,615	146,853	110,497	36,356	219,259
1983 - 84	11,065,911	2.95%	317,445	151,748	113,939	37,809	279,636
1984 - 85	11,405,533	3.07%	339,622	159,819	117,539	42,280	297,342
1985 - 86	11,740,069	2.93%	334,536	165,857	122,453	43,404	291,132
1986 - 87	12,083,241	2.92%	343,172	170,819	124,946	45,873	297,299
1987 - 88	12,410,339	2.71%	327,098	179,541	129,413	50,128	276,970
1988 - 89	12,723,719	2.53%	313,380	188,390	131,992	56,398	256,982
1989 - 90	13,017,296	2.31%	293,577	197,181	132,503	64,678	228,899
1990 - 91	13,326,892	2.38%	309,596	197,180	134,093	63,087	246,509
1991 - 92	13,552,021	1.69%	225,129	191,810	136,280	55,530	169,599
1992 - 93	13,802,571	1.85%	250,550	192,051	142,087	49,964	200,586
1993 - 94	14,120,323	2.30%	317,752	191,840	146,101	45,739	272,013
1994 - 95	14,406,418	2.03%	286,095	189,292	149,161	40,131	245,964
1995 - 96	14,701,040	2.05%	294,622	188,584	152,570	36,014	258,608
1996 - 97	15,012,615	2.12%	311,575	190,587	153,067	37,520	274,055
1997 - 98	15,310,069	1.98%	297,454	194,242	155,080	39,162	258,292
1998 - 99	15,680,164	2.42%	370,095	195,897	159,988	35,909	334,186
1999 - 00	16,069,889	2.49%	389,725	200,302	162,489	37,813	351,912
2000 - 01	16,385,615	1.96%	315,726	205,798	164,919	40,879	274,847
2001 - 02	16,718,076	2.03%	332,461	205,164	167,812	37,352	295,109
2002 - 03	17,074,258	2.13%	356,182	208,403	168,079	40,324	315,858
2003 - 04	17,475,944	2.35%	401,686	215,298	168,302	46,996	354,690
2004 - 05	17,876,215	2.29%	400,271	221,533	169,302	52,231	348,040
2005 - 06	18,236,885	2.02%	360,670	232,019	170,303	61,716	298,954
2006 - 07	18,501,231	1.45%	264,346	239,635	168,117	71,518	192,828
2007 - 08	18,636,837	0.73%	135,606	236,065	168,966	67,099	68,507
2008 - 09	18,711,844	0.40%	75,007	226,337	170,615	55,722	19,285
2009 - 10	18,835,550	0.66%	123,706	217,408	171,121	46,287	77,419

Florida Population and Components of Change

Fiscal Year	Population (End of Fiscal Year)	Growth Rate	Annual Change in Population	Births	Deaths	Net Natural Increase	Net Migration
2010 - 11	18,993,373	0.84%	157,823	213,468	172,661	40,807	117,016
2011 - 12	19,183,462	1.00%	190,089	212,876	174,120	38,756	151,333
2012 - 13	19,394,565	1.10%	211,103	213,762	177,810	35,952	175,151
2013 - 14	19,654,737	1.34%	260,172	217,422	182,382	35,040	225,132
2014 - 15	19,958,376	1.54%	303,639	222,338	188,217	34,121	269,518
2015 - 16	20,282,338	1.62%	323,962	225,014	194,386	30,628	293,334
2016 - 17	20,606,703	1.60%	324,365	224,476	200,526	23,950	300,415
2017 - 18	20,938,045	1.61%	331,342	222,547	204,707	17,840	313,502
2018 - 19	21,275,386	1.61%	337,341	221,275	204,331	16,944	320,397
2019 - 20	21,626,336	1.65%	350,950	214,323	221,895	-7,572	358,522
2020 - 21	21,994,613	1.70%	368,277	211,744	253,757	-42,013	410,290
2021 - 22	22,362,118	1.67%	367,505	222,943	252,912	-29,969	397,474
2022 - 23	22,685,583	1.45%	323,465	225,045	235,028	-9,983	333,448
2023 - 24	22,993,039	1.36%	307,456	229,667	240,295	-10,627	318,083
2024 - 25	23,293,052	1.30%	300,013	232,544	246,336	-13,792	313,805
2025 - 26	23,584,696	1.25%	291,644	234,780	253,129	-18,349	309,993
2026 - 27	23,867,514	1.20%	282,818	236,764	260,169	-23,405	306,223
2027 - 28	24,140,078	1.14%	272,564	238,598	267,118	-28,520	301,084
2028 - 29	24,400,736	1.08%	260,658	240,278	273,948	-33,670	294,328
2029 - 30	24,649,581	1.02%	248,845	241,829	280,672	-38,843	287,688
2030 - 31	24,886,909	0.96%	237,328	243,293	287,837	-44,543	281,871
2031 - 32	25,112,130	0.90%	225,221	244,649	295,108	-50,459	275,680
2032 - 33	25,325,455	0.85%	213,325	245,881	302,241	-56,361	269,686
2033 - 34	25,528,967	0.80%	203,512	247,007	309,249	-62,242	265,754
2034 - 35	25,723,576	0.76%	194,609	248,054	316,141	-68,087	262,696
2035 - 36	25,910,439	0.73%	186,863	249,347	322,992	-73,645	260,508
2036 - 37	26,087,888	0.68%	177,449	250,687	329,758	-79,072	256,521
2037 - 38	26,257,607	0.65%	169,719	251,943	336,416	-84,473	254,192
2038 - 39	26,420,262	0.62%	162,655	253,130	342,978	-89,849	252,504