



Florida Vital Statistics

Florida Births

There were 223,579 resident live births in Florida in 2017, 0.6 percent below 2016's level of 225,018. In 2007, there was a record 239,120 resident live births in the state.

Most of the resident births in Florida were to white mothers (Figure 1).

Figure 1 - Florida Resident Births by Race 2017

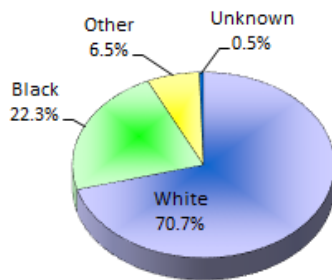


Table 1 - Florida Live Birth Rates* by Race 2017

Florida		
Total	White	Nonwhite
10.9	9.9	14.0

Florida's birth rate has been hovering between 11.1 and 11.4 since 2010. Birth rates were higher for nonwhites than whites, 14.0 versus 11.1 (Table 1). In 2017, the birth rate for Hispanics (regardless of race) was 13.0, while Non-Hispanics was 10.1. Hispanic births represent 29.8 percent of all births in the state.

Table 2 shows the number of live births by age and race of the mother. Overall, 49.2 percent of all births are to women aged 20-29, while 77.2 percent are to women aged 20-34. The highest number of births are to women aged 25-29, representing 29.5 percent of total births.

Table 2 - Florida Resident Births by Age and Race of Mother 2017

Mother's Age	Mother's Race				Total
	White	Black	Other NonWhite	Unknown	
<15	60	37	9	0	106
15-17	1,591	829	124	16	2,560
18-19	5,221	2,462	432	34	8,149
20-24	29,219	12,508	2,142	216	44,085
25-29	46,929	14,666	4,056	313	65,964
30-34	46,192	11,412	4,621	324	62,549
35-39	23,556	6,183	2,495	174	32,408
40-44	4,933	1,601	622	56	7,212
45+	381	103	51	4	539
Unknown	6	0	1	0	7
Total	158,088	49,801	14,553	1,137	223,579

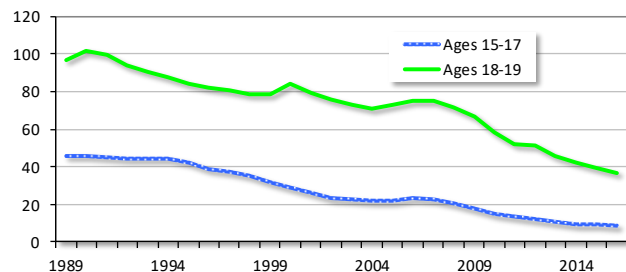
Note: Totals may differ from those in text due to missing data on age and/or race.
*Rate per 1,000 women.

Teen Births

Teen births (to mothers aged 15-19) accounted for 4.8 percent of all births in 2017. These births represented 4.3 percent of births to white mothers and 6.0 percent to nonwhite mothers. Birth rates were higher for nonwhites than whites (22.7 vs 16.6), even though the number of births to teens was more for whites than nonwhites (6,812 versus 3,847).

Teen birth rates are higher for older teens (ages 18-19) than for younger teens (ages 15-17). Both rates have been trending downward over time, as shown in Figure 2. In 2016 there were 8.3 births per 1,000 girls aged 15-17 and 36.4 births per 1,000 girls aged 18-19. Since 1989, birth rates hit a high of 45.7 for girls aged 15-17 in 1989 and 101.7 for girls aged 18-19 in 1990.

Figure 2 - Florida Teen Birth Rate* by Age



Unwed Mothers

In general, the percent of live births to unwed Florida mothers had been steadily increasing, representing 15.0 percent of all births in 1970, 22.9 percent in 1980, 31.7 percent in 1990, 38.2 percent in 2000, and 46.9 percent in 2017. For white mothers, 41.9 percent of live births was to an unwed woman, while for nonwhite mothers this percentage was 59.2 percent.

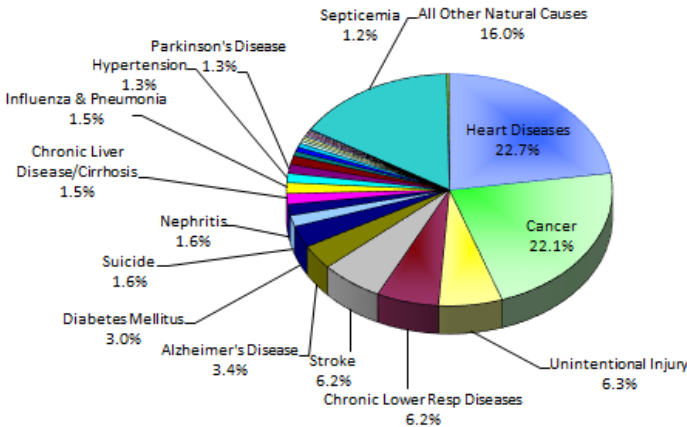
Florida Deaths

There were 203,353 resident deaths in Florida in 2017, an increase of 3.1 percent from 197,236 in 2016. As shown in Table 3, male death rates typically equal or exceed female death rates by age group. Also, for most age groups, nonwhite death rates equal or exceed the death rates for whites. The exceptions are the 45-54 and 85+ age groups for males; and the 20-24, 25-34 and 85+ age groups for females.

The two major causes of deaths in Florida in 2017 were heart diseases and cancer (Figure 3), representing 44.8 percent of all deaths in the state. The number of deaths due to these two major causes typically increases as the population ages. However, the percentage of deaths due to heart diseases and cancer relative to the total number of deaths by age group is greatest for the 65-74 year old group (53.6%).

For residents between age 1 and 44, unintentional injury (accidents) was the primary cause of death, representing 40.2% of the deaths in this age group.

Figure 3 - Florida Resident Deaths by Major Cause 2017



Florida Infant Mortality

In 2017, 1,355 babies died prior to their first birthday. The infant death rate was 6.1 deaths per 1,000 live births. Between 1995 and 2008, Florida's infant mortality rate had been hovering between 7.0 and 7.5; however, over the past six years, the rate has ranged between 6.0 and 6.2. In 1980 the rate was 14.6, higher than the 1990 rate of 9.6.

Figure 4 displays decade data (1960 through 1990) and annual data (1995 through 2017). Through the mid-1990s, infant mortality rates trended downward for both whites and nonwhites. White rates were 7.5 in 1990 and 4.4 in 2017, while nonwhite rates were 16.0 in 1990 and 10.1 in 2017. The Infant mortality rate for nonwhites is more than double the rate for whites. As shown in Figure 4, nonwhite infant mortality rates have consistently exceeded the rates for whites.

Figure 4 - Florida Infant Mortality Rate (per 1,000 Live Births)

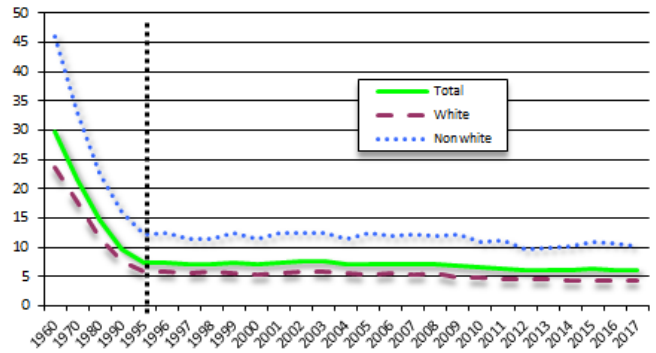


Table 3 - Florida Resident Deaths by Age and Race 2017

Age	White Males		White Females		Nonwhite Males		Nonwhite Females		Total*	
	Number	Death Rate**	Number	Death Rate**	Number	Death Rate**	Number	Death Rate**	Number	Death Rate**
<1	390	4.9	306	4.0	362	11.2	286	9.2	1,355	6.2
1-4	92	0.3	67	0.2	62	0.4	57	0.4	281	0.3
5-9	41	0.1	38	0.1	31	0.2	26	0.1	136	0.1
10-14	70	0.2	37	0.1	50	0.3	36	0.2	193	0.2
15-19	289	0.7	125	0.3	162	0.9	58	0.3	635	0.5
20-24	649	1.4	278	0.6	296	1.6	105	0.6	1,330	1.0
25-34	2,098	2.1	961	1.0	730	2.1	301	0.8	4,092	1.5
35-44	2,481	2.7	1,386	1.5	770	2.7	544	1.7	5,186	2.1
45-54	5,667	5.2	3,398	3.1	1,363	5.1	1,060	3.5	11,501	4.2
55-64	12,853	12.1	7,788	6.7	2,800	12.7	2,069	7.8	25,536	9.4
65-74	19,091	20.7	13,125	12.5	3,172	24.4	2,428	14.8	37,855	16.7
75-84	23,681	46.4	20,054	32.9	2,726	48.5	2,801	35.5	49,286	39.3
85+	25,305	128.1	35,746	116.8	1,790	110.7	3,091	93.9	65,949	119.3
Unknown	1		4		2		1		18	
Total	92,708	11.8	83,313	10.3	14,316	6.5	12,863	5.4	203,353	9.9

*Totals may not add due to unknown. **Death Rate per 1,000 population. Data in this report are from the Florida Vital Statistics Annual Report 2017, Florida Department of Health, <http://www.flpublichealth.com/VBOOK/pdf/2017/vscomp.pdf>; Florida Department of Health, CHARTS system.