



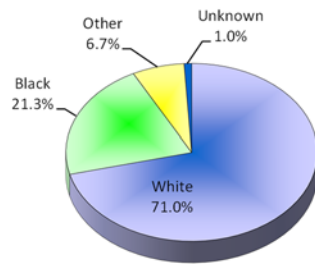
## Florida Vital Statistics

### Florida Births

There were 216,189 resident live births in Florida in 2021, 6,544 (3.1%) more than the year prior. In 2007, there was a record 239,120 resident live births in the state.

Most of the resident births in Florida were to white mothers (Figure 1).

Figure 1 - Florida Resident Births



### Teen Births

Teen births (to mothers aged 15-19) accounted for 3.7 percent of all births in 2021. These births represented 3.4 percent of births to white mothers and 4.6 percent to nonwhite mothers. Birth rates were higher for nonwhites than whites (7.9 vs 6.0), even though the number of births to teens was more for whites than nonwhites (5,197 vs 2,893).

Teen birth rates are higher for older teens (ages 18-19) than for younger teens (ages 15-17). Prior to 2020, both rates had been trending downward over time, as shown in Figure 2. In 2021 there were 2.6 births per 1,000 girls aged 15-17 and 13.0 births per 1,000 girls aged 18-19. Since 1989, birth rates hit a high of 22.2 for girls aged 15-17 in 1989 and 49.6 for girls aged 18-19 in 1990.

Table 1 - Florida Live Birth Rates\* by Mother's Race 2021

Florida		
Total	White	Nonwhite
9.8	9.1	12.0

Florida's birth rate had been hovering between 11.1 and 11.4 since 2010, falling more recently to 10.3, 9.7, and 9.8 in 2019, 2020, and 2021, respectively. Birth rates continue to be higher for nonwhites than whites, 12.0 versus 9.1 (Table 1). In 2021, the birth rate for Hispanics (regardless of race) was 11.7, while Non-Hispanics was 9.0. Hispanic births represent 31.9 percent of all births in the state.

Table 2 shows the number of live births by age and race of the mother. Overall, 45.9 percent of all births are to women aged 20-29, while 75.5 percent are to women aged 20-34. The highest number of births are to women aged 30-34, representing 29.6 percent of total births.

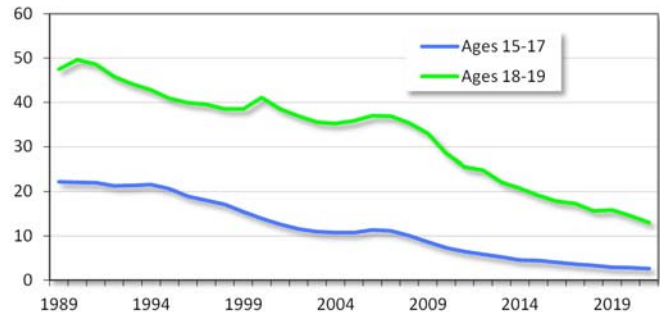
Table 2 - Florida Resident Births by Age and Race of Mother

Mother's Age	Mother's Race				Total
	White	Black	Other NonWhite	Unknown	
<15	58	33	7	0	98
15-17	1,221	587	99	18	1,925
18-19	3,976	1,825	295	69	6,165
20-24	25,007	9,764	1,937	405	37,113
25-29	42,282	13,143	3,661	591	59,677
30-34	48,740	11,984	4,793	573	66,090
35-39	26,258	6,777	2,962	336	36,333
40-44	5,606	1,769	712	89	8,176
45+	416	124	54	8	602
Unknown	5	0	0	0	5
Total	153,569	46,006	14,520	2,089	216,184

Note: Totals may differ from those in text due to missing data on age and/or race.

\*Rate per 1,000 women.

Figure 2 - Florida Teen Birth Rate\* by Age



### Unwed Mothers

In general, the percent of live births to unwed Florida mothers had been steadily increasing, representing 15.0 percent of all births in 1970, 22.9 percent in 1980, 31.7 percent in 1990, 38.2 percent in 2000, and 47.5 percent in 2010. This percentage appears to have peaked in 2012 and 2013 at 48.0 percent, before it fell to 46.5 percent in 2021. For white mothers, 41.4 percent of live births was to an unwed woman, while for nonwhite mothers this percentage was 59.3 percent.

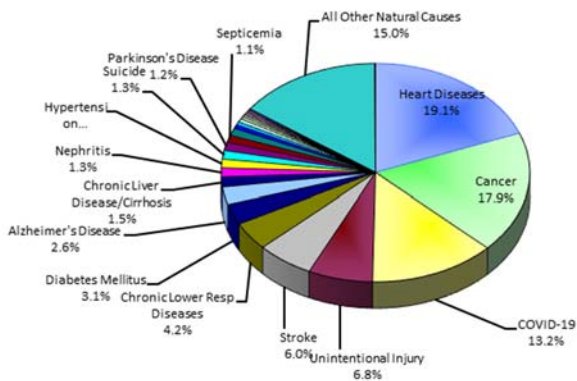
### Florida Deaths

There were 261,246 resident deaths in Florida in 2021, an increase of 9.1 percent from 239,381 in 2020. As shown in Table 3, male death rates typically equal or exceed female death rates by age group. Also, for most age groups, nonwhite death rates equal or exceed the death rates for whites.

The two major causes of deaths in Florida in 2021 were heart diseases and cancer (Figure 3), representing 37.1 percent of all deaths in the state. The number of deaths due to these two major causes typically increases as the population ages. However, the percentage of deaths due to heart diseases and cancer relative to the total number of deaths by age group is greatest for the 65-74 year old group (43.6%). In addition, the third largest cause of death during the year was COVID-19, representing 13.2 percent of all deaths in the state. During 2021, COVID-19 deaths totaled 34,490.

For residents between age 1 and 44, unintentional injury (accidents) was the primary cause of death, representing 38.8 percent of the deaths in this age group.

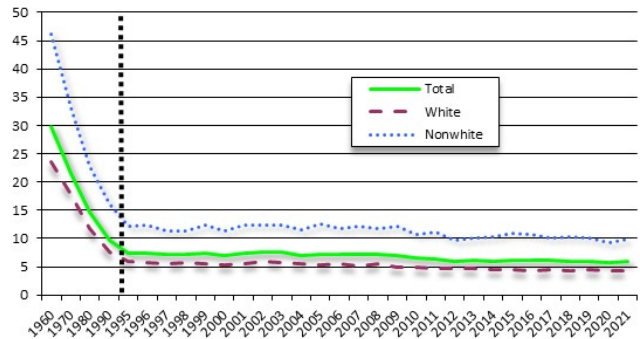
**Figure 3 - Florida Resident Deaths by Major Cause 2021**



### Florida Infant Mortality

In 2021, 1,267 babies died prior to their first birthday. The infant death rate was 5.9 deaths per 1,000 live births. Figure 4 displays decade data (1960 through 1990) and annual data (1995 through 2021). Through the mid-1990s, infant mortality rates trended downward for both whites and nonwhites.

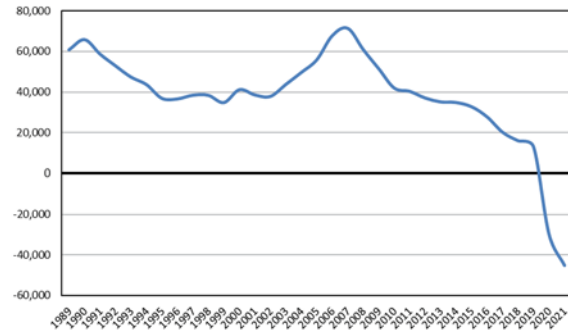
**Figure 4 - Florida Infant Mortality Rate**



### Florida Natural Increase

Natural increase is defined as the difference between births and deaths. Since 1989 and prior to 2020, Florida's natural increase remained positive (number of annual births were greater than the number of annual deaths in Florida). In 2020, Florida's natural increase turned negative and this trend has continued.

**Figure 5 - Florida Natural Increase**



**Table 3 - Florida Resident Deaths by Age and Race 2021**

Age	White Males		White Females		Nonwhite Males		Nonwhite Females		Total*	
	Number	Death Rate**	Number	Death Rate**	Number	Death Rate**	Number	Death Rate**	Number	Death Rate**
<1	358	4.60	280	3.78	351	11.63	270	9.18	1,267	5.91
1-4	82	0.25	82	0.27	66	0.42	49	0.32	281	0.26
5-9	35	0.08	39	0.10	43	0.22	25	0.13	142	0.13
10-14	73	0.17	57	0.14	43	0.23	30	0.16	203	0.17
15-19	327	0.74	154	0.37	229	1.27	73	0.42	783	0.59
20-24	713	1.53	272	0.61	371	2.01	174	0.95	1,533	1.14
25-34	2,839	2.67	1,177	1.17	1,141	2.92	567	1.44	5,731	1.72
35-44	4,325	4.26	2,148	2.15	1,423	4.44	972	2.76	8,888	2.66
45-54	7,260	6.87	4,019	3.75	2,220	7.91	1,579	4.95	15,095	4.49
55-64	16,836	14.45	10,199	8.07	4,114	16.43	3,075	10.32	34,279	10.10
65-74	25,735	25.30	17,556	14.92	4,953	30.34	4,170	19.90	52,505	18.66
75-84	31,574	51.25	25,897	35.37	4,033	56.68	4,067	41.49	65,630	41.82
85+	28,999	129.58	38,968	121.80	2,589	126.96	4,305	113.67	74,900	128.14
Unknown	5		1		2		0		9	
Total	119,161	14.32	100,849	11.68	21,578	8.88	19,356	7.39	261,246	11.87

\*Totals may not add due to unknown. \*\*Death Rate per 1,000 population. Data in this report are from the Florida Vital Statistics Annual Report 2021, Florida Department of Health,